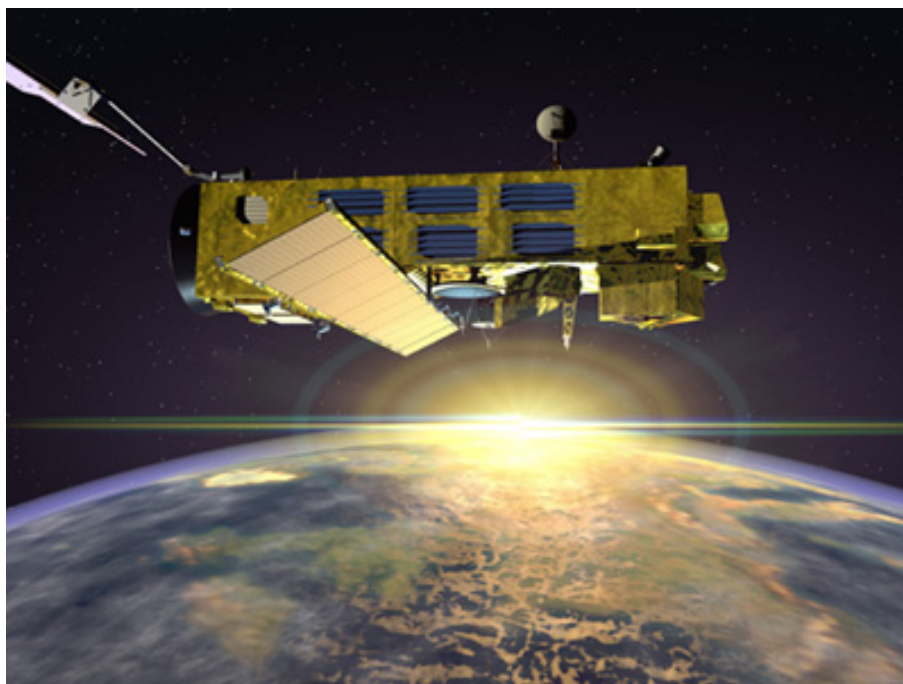

ENVISAT GOMOS report: October 2006



Prepared by:	Lidia Saavedra de Miguel – SERCO
Approved by:	Gilbert Barrot – ACRI
Inputs from:	GOMOS Quality Working Group, ECMWF
Issue:	1.0
Reference:	ENVI-SPPA-EOPG-TN-06-0043
Date of issue:	15 th November 2006
Status:	Reviewed
Document type:	Technical Note

TABLE OF CONTENTS

1 INTRODUCTION.....3

1.1 Scope..... 3

1.2 References..... 3

1.3 Acronyms and Abbreviations..... 3

2 SUMMARY.....6

3 INSTRUMENT AND DATA AVAILABILITY.....7

3.1 GOMOS Unavailability Periods 7

3.2 Stars Lost in Centering..... 8

3.3 Stars lost due to VCCS anomaly 10

3.4 Data Generation Gaps 10

3.5 Data availability to users..... 11

4 INSTRUMENT CONFIGURATION AND PERFORMANCE.....12

4.1 Instrument Operation and Configuration 12

4.1.1 Operations since beginning of mission..... 12

4.1.2 Current operations and configuration 13

4.2 Limb, Illumination conditions and instrument gain setting..... 14

4.3 Thermal Performance..... 15

4.4 Optomechanical Performance 19

4.5 Electronic Performance..... 20

4.5.1 Dark Charge Evolution and Trend..... 20

4.5.2 Signal Modulation 26

4.5.3 Electronic Chain Gain and Offset..... 27

4.6 Acquisition, Detection and Pointing Performance 29

4.6.1 SATU Noise Equivalent Angle 29

4.6.2 Tracking Loss Information 31

4.6.3 Most Illuminated Pixel (MIP)..... 34

5 LEVEL 1 PRODUCT QUALITY MONITORING35

5.1 Processor Configuration..... 35

5.1.1 Version 35

5.1.2 Auxiliary Data files (ADF)..... 38

5.2 Quality Flags Monitoring..... 42

5.2.1 Quality Flags Monitoring (extracted from Level 2 products)..... 43

5.3 Spectral Performance 47

5.4 Radiometric Performance 47

5.4.1 Radiometric Sensitivity 47

5.4.2 Pixel Response Non Uniformity 49

5.5 Other Calibration Results..... 49

6 LEVEL 2 PRODUCT QUALITY MONITORING50

6.1 Processor Configuration..... 50

6.1.1 Version 50

6.1.2 Auxiliary Data Files (ADF)..... 52

6.1.3 Re-Processing Status 53

6.2 Quality Flags Monitoring..... 54

6.3 Other Level 2 Performance Issues 55

7 VALIDATION ACTIVITIES AND RESULTS	56
7.1 GOMOS-ECMWF Comparisons	56
7.1.1 Temperature and Ozone Comparisons.....	56
7.2 GOMOS-Climatology comparisons.....	56
7.3 GOMOS Assimilation.....	56
7.4 Consistency Verification: GOMOS-GOMOS Inter-comparison	57
7.4.1 Examples of O ₃ vertical profiles for coincidences in full dark conditions.....	57
7.4.2 Examples of O ₃ vertical profiles for coincidences in straylight conditions	59
7.5 Inter-Comparison with external data.....	60

1 INTRODUCTION

The GOMOS monthly report documents the current status and recent changes to the GOMOS instrument, its data processing chain, and its data products.

The Monthly Report (hereafter MR) is composed of analysis results obtained by the Data Processing and Quality Control, combined with inputs received from the different entities working on GOMOS operation, calibration, product validation and data quality. These teams participate in the GOMOS Quality Working Group:

- European Space Agency (ESRIN, ESOC, ESTEC-PLSO)
- DPQC
- ACRI
- Service d'Aeronomie
- Finnish Meteorological Institute
- IASB-Belgian Institute for Space Aeronomy
- Astrium Space
- ECMWF

In addition, the group interfaces with the Atmospheric Chemistry Validation Team.

1.1 *Scope*

The main objective of the Monthly Report is to give, on a regular basis, the status of GOMOS instrument performance, data acquisition, results of anomaly investigations, calibration activities and validation campaigns. The following six sections compose the MR:

- Summary
- Unavailability
- Instrument Configuration and Performance
- Level 1 Product Quality Monitoring
- Level 2 Product Quality Monitoring
- Validation Activities and Results

1.2 *References*

- [1] ENVISAT Weekly Mission Operations Report #224, 225#, #226, #227 ENVI-ESOC-OPS-RP-1011-TOS-OF
- [2] ECMWF GOMOS Monthly Reports

1.3 *Acronyms and Abbreviations*

ACVT	Atmospheric Chemistry Validation Team
ADC	Analogue-to-Digital Converter

ADF	Auxiliary Data File
ADS	Auxiliary Data Server
ANX	Ascending Node Crossing
AOCS	Attitude and Orbit Control System
ARB	Anomaly Review Board
ARF	Archiving Facility (PDS)
CCU	Central Communication Unit
CFS	CCU Flight Software
CNES	Centre National d'Études Spatiales
CTI	Configuration Table Interface / Configurable Transfer Item
CR	Cyclic Report
DC	Dark Charge
DMOP	Detailed Mission Operation Plan
DPM	Detailed Processing Model
DPQC	Data Processing and Quality Control
DS	Data Server
DSA	Dark Sky Area
DSD	Data Set Descriptor
ECMWF	European Centre for Medium Weather Forecast\
EO	Earth Observation
EQSOL	Equipment Switch Off Line
ESA	European Space Agency
ESL	Expert Support Laboratory
ESRIN	European Space Research Institute
ESTEC	European Space Research & Technology Centre
ESOC	European Space Operations Centre
FCM	Fine Control Mode
FinCoPAC	Finnish Products Archiving Center
FMI	Finnish Meteorological Institute
FOCC	Flight Operations Control Centre (ENVISAT)
FP1	Fast Photometer 1
FP2	Fast Photometer 2
GADS	Global Annotations Data Set
GOMOS	Global Ozone Monitoring by Occultation of Stars
GOPR	Gomos Prototype
GS	Ground Segment
HK	Housekeeping
IASB	Institut d'Aeronomie Spatiale de Belgique
IAT	Interactive Analysis Tool
ICU	Instrument Control Unit
IDL	Interactive Data Language
IECF	Instrument Engineering and Calibration Facilities
IMK	Institute of Meteorology Karlsruhe (Meteorologisch Institut Karlsruhe)
INV	Inventory Facilities (PDS)
IPF	Instrument Processing Facilities (PDS)
JPL	Jet Propulsion Laboratory
LAN	Local Area Network
LMA	Levenberg-Marquardt Algorithm

LPCE	Laboratoire de Physique et Chimie de l'Environnement
LRAC	Low Rate Archiving Center
LUT	Look Up Table
MCMD	Macro Command
MDE	Mechanism Drive Electronics
MIP	Most Illuminated Pixel
MPH	Main Product Header
MPS	Mission Planning System
MR	Monthly Report
NRT	Near Real Time
OBDH	On-Board Data Handling
OBT	On Board Time
OCM	Orbit Control Manoeuvre
OOP	Out-of-plane
OP	Operational Phase of ENVISAT
PAC	Processing and Archiving Centre (PDS)
PCF	Product Control Facility
PDCC	Payload Data Control Centre (PDS)
PDHS	Payload Data Handling Station (PDS)
PDHS-E	Payload Data Handling Station – ESRIN
PDHS-K	Payload Data Handling Station – Kiruna
PDS	Payload Data Segment
PEB	Payload Equipment Bay
PLSOL	Payload Switch off Line
PMC	Payload Module Computer
PRNU	Pixel Response Non Uniformity
PSO	On-Orbit Position
QC	Quality Control
QUARC	Quality Analysis and Reporting Computer
QWG	Quality Working Group
RDV	RenDez-Vous
RGT	ROP Generation Tool
RIVM	Rijksinstituut voor Volksgezondheid en Milieu
ROP	Reference Operations Plan
RRM	Rate Reduction Mode
RTS	Random Telegraphic Signal
SA	Service d'Aeronomie
SAA	South Atlantic Anomaly
SATU	Star Acquisition and Tracking Unit
SFA	Steering Front Assembly
SFCM	Stellar Fine Control Mode
SFM	Steering Front Mechanism
SM	Service Module
SMNA	Servicio Meteorológico Nacional de Argentina
SODAP	Switch On and Data Acquisition Phase
SPA1	Spectrometer A CCD 1
SPA2	Spectrometer A CCD 2
SPB1	Spectrometer B CCD 1

SPB2	Spectrometer B CCD 2
SPH	Specific Product Header
SQADS	Summary Quality Annotation Data Set
SSP	Sun Shade Position
SYSM	Stellar Yaw Steering Mode
SZA	Solar Zenith Angle
VCCS	Voice Coil Command Saturation

2 SUMMARY

Instrument availability (section 3.1): On 15th October at 11:10:17, GOMOS entered Heater/Refuse during Uniformity Mode sequence. The RDV time for the current target was reached but the SFA fine stage was not in the target position to sufficient tolerance. The last occurrence of this anomaly was on 14th May, again during Uniformity Mode sequence. In future planning the order of the observation could be adjusted in order to avoid the lost of the end of the calibration sequence in case of occurrence of such anomaly. Since this is a known anomaly that occurs from time to time, the recovery was started soon and GOMOS resumed operations on 15th October at 18:55:49.

Instrument operations (section 4.1.2): Due to some operational problems, the planning between 01-08 October 2006 (week 40, orbits #23980-24079) that was originally planned using the azimuth range $[+5^{\circ}, +30^{\circ}]$, was scheduled using another azimuth range $[-5^{\circ}, +20^{\circ}]$ with the result that some stars and DSA observations could not be performed. Due to the missing DSA observations, products from orbit 23980 to 24031 have been calibrated at a lower level of accuracy.

Data availability when instrument was in operation (section 3.4): For October the level 0 data availability is higher than 99% except for the first week, which is 96% (anomalous activation of azimuth constraint of $[-5^{\circ}, +20^{\circ}]$ instead of the required $[+5^{\circ}, +30^{\circ}]$) and last week, which is 95% (DDS dissemination problems). For level 1b the archived products are around 95% except for the first and last weeks (73% and 88% respectively).

Data availability for users (section 3.5): Routine dissemination of Level 1b and Level 2 products produced by the PDS to the users is enabled. Level 1b data are available on request to the EO Helpdesk (EOHelp@esa.int), while level 2 data are available for the whole mission on different ftp sites. **Be aware that the GOMOS level 2 products from ESRIN** are available now in a new ftp server while the old one has been dismissed (see section 3.5 for detailed information). All data (reprocessed, NRT and consolidated) are processed with the same version of GOMOS processor.

Pointing performance (section 4.6.1): the SATU NEA (“Y” axis) has a gradual increase since mid April 2006. This increase is due to fluctuations of the SATU ‘Y’ data observed at the beginning of the occultations (starting at 130 km that corresponds to an elevation angle of around 65°). Preliminary investigations carried out by the ESL, ESA and industry point to a problem on the SFM (mechanical or electrical) and not to a problem on the SATU itself. Since mid June the increase was stable for a while at around 5.5 micro radians. Currently the SATU NEA is stable at around 2.2 micro radians and the start altitude of the occultations is 112.5 Km.

Temperatures (section 4.3): The CCD temperatures show the expected global increase due to the radiator ageing. Another expected variation of the temperatures, the seasonal one, with amplitude of around 0.8 degree can also be observed.

Modulation signal (section 4.5.2): The standard deviation of the modulation signal shows high values during summer time for the ESRIN data, it now being confirmed that the South Atlantic Anomaly is the cause of these unexpected peaks. The quality of ESRIN data, in particular over the SAA zone, is impacted but the measure of this impact is under investigation. However, in the second half of the months of October (2004, 2005 and 2006) the peaks are smaller because the DSA zone where the data are taken for this analysis is moving towards the Northern Hemisphere. At the end of October the DSA zone is definitely chosen by the planning system in the Northern Hemisphere (to fill the criteria 'DSA in full dark limb conditions') and the high peaks disappear.

The small decreasing trend observed through the years is too small to have a significant impact on the retrieval (QWG conclusion).

Star detection performance (section 4.6.3): the stars should be detected not far from the SATU center, that is, pixel number 145 in elevation and number 205 in azimuth. It has been observed that the azimuth MIP was within the threshold since September 2002 until the occurrence of the VCCS anomaly on January 2005. The reason for the change in trend observed after the anomaly is, at the moment, not understood. The elevation MIP had a significant variation until 12th December 2003 when a new PSO algorithm was activated in order to reduce the deviations of the ENVISAT platform attitude with respect to the nominal one. Similarly to the azimuth, after the anomaly of January 2005 the Elevation MIP has a drift that has no explanation. Investigations are ongoing to try to understand this behavior of the MIP as although it does not impact the data quality, it may invalidate attitude monitoring by GOMOS and could represent a hidden anomaly.

Radiometric sensitivity monitoring (section 5.4.1): for stars 25 and 9, the UV ratio is greater than the threshold 10%. It is clear that there is a global decrease of UV ratios for all the stars. This confirms the expected degradation suffered by the UV optics that is, anyway, very small considering also the small variation for the rest of the stars. For the photometers radiometric sensitivity ratios it is observed that every star has a variation that seems to be seasonally related. The variation is significant for stars 25 and 18. After some investigations performed by the QWG that exclude an inaccurate reflectivity correction LUT, it seems that the PH1/2 radiometric sensitivity variations could come from the fact that the spectrometers and the photometers are not illuminated the same way when the straylight appears.

Auxiliary Data File (sections 5.1.2): Four GOM_CAL_AX with updated DC maps have been disseminated during the reporting month.

3 INSTRUMENT AND DATA AVAILABILITY

3.1 GOMOS Unavailability Periods

On table 3.1-1 there is a list of GOMOS unavailability reports issued during the period 1st October to 31st October 2006.

On 15th October at 11:10:17, GOMOS entered Heater/Refuse during Uniformity Mode sequence. The RDV time for the current target was reached but the SFA fine stage was not in the target position to sufficient tolerance. The last occurrence of this anomaly was on 14th May, again during Uniformity Mode sequence. In future planning the order of the observation could be adjusted in order to avoid the lost of the end of the calibration sequence in case of occurrence of such anomaly. Since this is a known anomaly that occurs from time to time, the recovery was started soon and GOMOS resumed operations on 15th October at 18:55:49.

Table 3.1-1: List of unavailability periods issued during the reporting period

Reference of unavailability report	Start time Star orbit	Stop time Stop orbit	Description
EN-UNA-2006/0309	15 Oct 2006 11:10:17 Orbit = 24182	15 Oct 2006 18:55:49 Orbit = 24187	GOMOS back to operations after failure in FINE RALLYING phase

3.2 Stars Lost in Centering

The acquisition of a star initiates with a rallying phase where the telescope mechanism is directed towards the expected position of the star. Subsequently the acquisition procedure enters into detection mode, where the SATU star tracker output signal is pre-processed for spot presence survey and for the location of the most illuminated couple of adjacent pixels for two added lines, over the detection field. The Most Illuminated Pixel (MIP) defines the position of the first SATU centering window. The following step in the acquisition sequence is then initiated and consists of a centering phase where the SATU output signal is pre-processed for spot presence survey over the maximum of 10x10 pixel field. This allows the third phase to begin: the tracking phase.

The centering phase has occasionally resulted in loss of the star from the field of view. Fig. 3.2-1 reports the percentage of the stars lost in centering for the period 03-FEB-2003 to 29-OCT-2006. It can be seen that only three stars, mainly weak stars (higher star id means higher magnitude) are lost during the centering phase between 4 and 7 % of their planned observations. The star id 115 was lost almost 9% of the times but it was planned to be occulted twenty three times and was lost twice (in period 19-25 January 2004), so this percentage of loss is not statistically significant.

As the monitoring shows neither a trend nor excessively high percentages of loss, there is no need for the moment to reject any star from the catalogue, and there is no indication of instrument-related problems.

Now with the instrument in a new operation scenario, the stars are also lost due to the anomaly “elevation voice coil command saturation” even if the instrument is not going anymore to Stand by / Refuse mode (section 3.3).

Statistics on stars lost in centering: 03-FEB-2003 until 29-OCT-2006

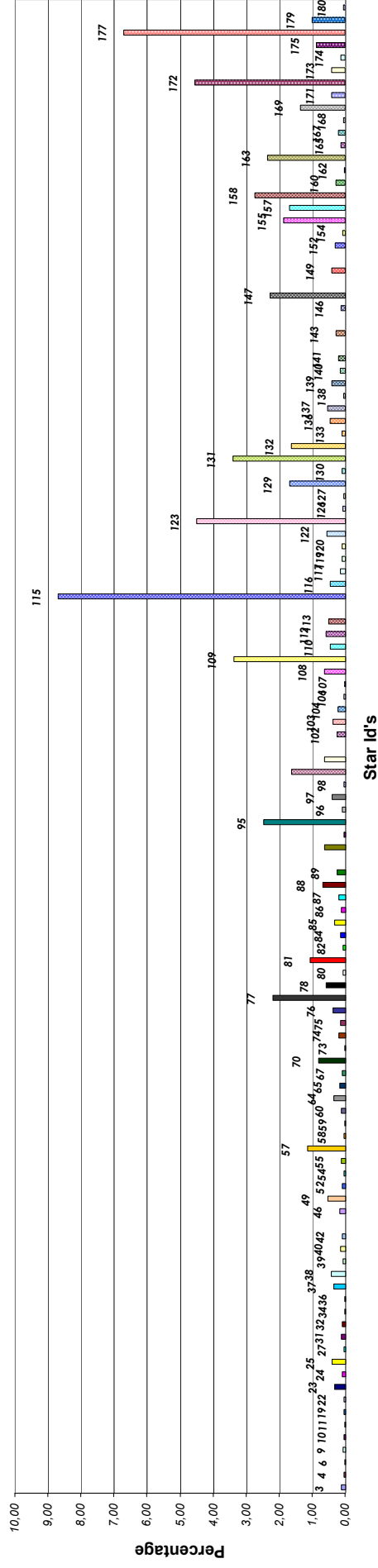


Figure 3.2-1: Statistics on stars that have been lost during the centering phase. The number above the columns correspond to the Star ID



3.3 Stars lost due to VCCS anomaly

No VCCS anomalies occurred during the reporting period

3.4 Data Generation Gaps

The trend in percentage of available data within the archives PDHS-K and PDHS-E is depicted in fig. 3.4-1 (when instrument was in operation). It is a good indicator on how the PDS chain is working in terms of generation and dissemination of data to the archives. The percentage is calculated once per week.

For October the level 0 data availability is higher than 99% except for the first week, which is 96% (anomalous activation of azimuth constraint of $[-5^\circ, +20^\circ]$ instead of the required $[+5^\circ, +30^\circ]$) and last week, which is 95% (DDS dissemination problems). For level 1b the archived products are around 95% except for the first and last weeks (73% and 88% respectively).

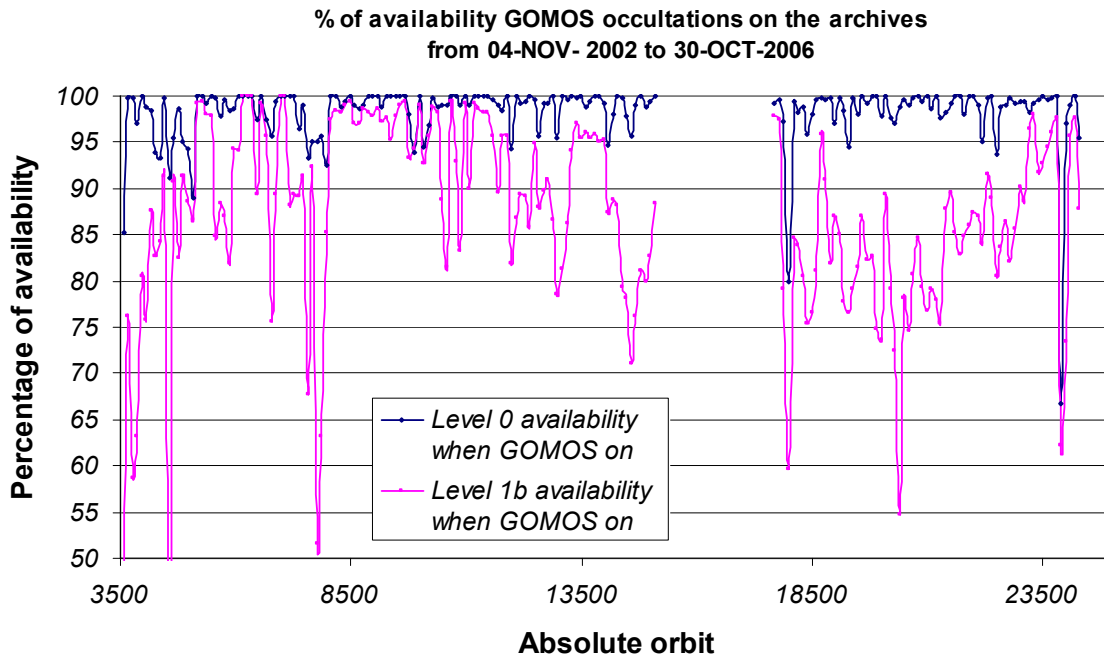


Figure 3.4-1: Percentage of level 0 and level 1b data availability on the archives PDHS-E and PDHS-K

Occultations planned to be acquired but for which no GOM_NL__0P data product has become available are presented in fig. 3.4-2 for the reporting period.

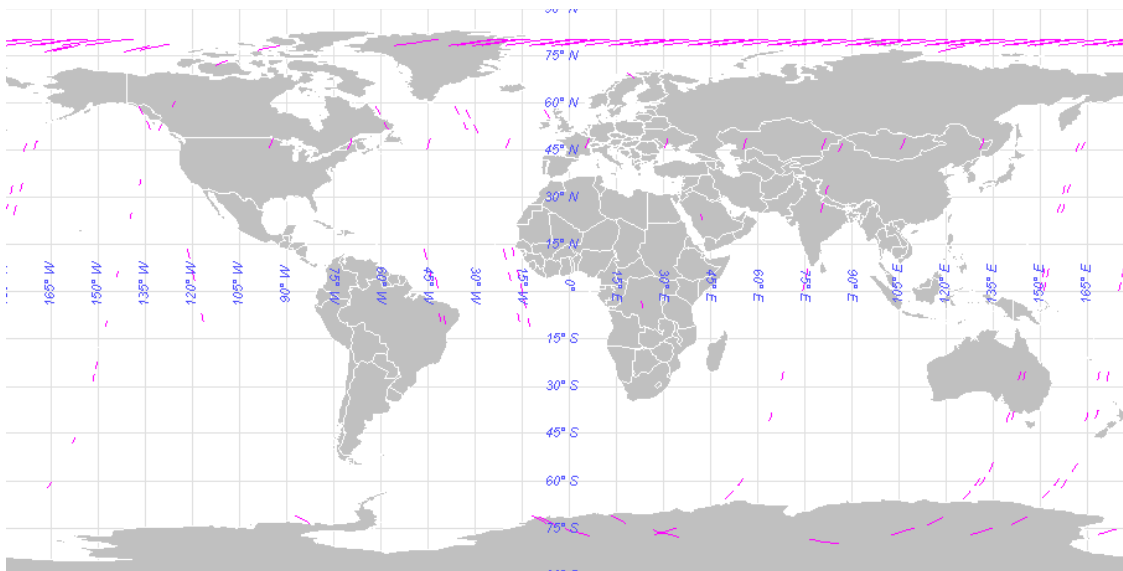


Figure 3.4-2: The pink lines are the orbit segments corresponding to planned data acquisitions for which no GOMOS level 0 product has become available

3.5 Data availability to users

Routine dissemination of higher-level products produced by the PDS to the users is enabled. Level 1b data are available on request to the EO Helpdesk (EOHelp@esa.int), while level 2 data are available for the whole mission. For information on the passwords, please, contact the EO Helpdesk (EOHelp@esa.int):

- Reprocessed products GOM_NL__2P are available at D-PAC ftp server <ftp://gomo2usr@ftp-ops.de.envisat.esa.int> from **August 2002 to 4th July 2006**.
- Near Real Time products GOM_NL__2P (generated three hours after sensing time) are available on servers <ftp://gomosusr@oa-es.eo.esa.int> (note the **new server** for ESRIN data) and <ftp://gomosusr@ftp-ops.pdk.envisat.esa.int/> (for KIRUNA data). **A seven-day rolling archive has been set-up on this server.**
- Consolidated products GOM_NL__2P (generated three weeks after sensing time) are available at D-PAC ftp server <ftp://gomo2usr@ftp-ops.de.envisat.esa.int> since **23 July 2006**

All data (reprocessed, NRT and consolidated) are processed with the same version of GOMOS processor.

4 INSTRUMENT CONFIGURATION AND PERFORMANCE

4.1 Instrument Operation and Configuration

4.1.1 OPERATIONS SINCE BEGINNING OF MISSION

During the period end of March 2003 to July 2003 the azimuth range had to be decreased in steps (table 4.1-1) to avoid an instrument problem (“Voice_coil_command_saturation” anomaly) that caused GOMOS to go into STAND BY/REFUSE mode. On July 2003 the driver assembly was switched to the redundant B-side and since that date the full azimuth range (-10.8, +90.8) was again available until the second major anomaly occurred on 25th January 2005. Between this date and until the instrument was declared operational again (29th August 2005), GOMOS has been operated for testing and anomaly investigation purposes in different operations scenarios. The changes in azimuth configuration during the whole mission until end of reporting period are summarized in table 4.1-1.

Table 4.1-1: Historical changes in Azimuth configuration when GOMOS is in operations

Date	Orbit	Minimum Azimuth (°)	Maximum Azimuth (°)	Comment
01-MAR-2002		-10.8	+90.8	Nominal
29-MAR-2003 17:40	5635	0.0	+90.8	Reduced
31-MAY-2003 06:22	6530	+4.0	+90.8	Reduced
16-JUN-2003 16:17	6765	+12.0	+90.8	Reduced
15-JUL-2003 01:39	7200	-10.8	+90.8	Nominal
25-JAN-2005 23:33	15200	tests	tests	Different configuration for testing purposes
29-AUG-2005 02:52	18280	-10	+10	Reduced
26-SEP-2005 01:32	18680	-5	+20	Reduced
03-OCT-2005 01:12	18780	-5	+15	Reduced
09-OCT-2005 21:30	18878	-5	+20	Reduced
12-MAR-2006 17:29	21080	+10	+35	Reduced
09-APR-2006 12:47	21480	+5	+30	Reduced
16-APR-2006 15:48	21580	0	+25	Reduced
30-APR-2006 15:08	21780	-5	+20	Reduced
07-MAY-2006 14:48	21880	0	+25	Reduced
14-MAY-2006 14:28	21980	+15	+40	Reduced
28-MAY-2006 13:47	22180	+20	+45	Reduced
04-JUN-2006 13:27	22280	+15	+40	Reduced
18-JUN-2006 12:47	22480	+20	+45	Reduced
25-JUN-2006 12:27	22580	0	+25	Reduced
02-JUL-2006 12:07	22680	-5	+20	Reduced
16-JUL-2006 11:27	22880	0	+25	Reduced
23-JUL-2006 11:07	22980	+10	+35	Reduced
06-AUG-2006 10:26	23180	0	+25	Reduced
27-AUG-2006 09:26	23480	+5	+30	Reduced
03-SEP-2006 09:06	23580	0	+25	Reduced
10-SEP-2006 08:46	23680	-5	+20	Reduced
01-OCT-2006 07:45	23980	+5	+30	Reduced
15-OCT-2006 07:05	24180	-5	+20	Reduced
22-OCT-2006 06:45	24280	0	+25	Reduced
29-OCT-2006 06:25	24380	-5	+20	Reduced

4.1.2 CURRENT OPERATIONS AND CONFIGURATION

Due to some operational problems, the planning between 01-08 October 2006 (week 40, orbits #23980-24079) that was originally planned using the azimuth range [+5°, +30°], was scheduled using another azimuth range [-5°, +20°] with the result that some stars and DSA observations could not be performed. Due to the missing DSA observations, products from orbit 23980 to 24031 have been calibrated at a lower level of accuracy.

The start altitude of the occultations was reduced to 112.5 km for some periods in order to avoid the SATU “Y” axis oscillations (table 4.1-2).

The planned GOMOS operations for the reporting period are identified in table 4.1-2. The operation scenario of GOMOS since 29th August 2005 until end of reporting month consists of:

- Planning 2 orbits per sequence (nominal were 5): this is done because in case of a voice coil failure with subsequent loss of star observation, the maximum loss of consecutive observations cannot exceed two orbits.
- Reduced azimuth field of view (nominal was [-10°, +90°]): as the anomaly occurs during the rallying of the telescope in the preparation for the star observation, it has been decided to reduce the field of view in order to minimize the failure occurrence probability. Different ranges have been used during the reporting period (table 4.1-1) in order to optimize the number of occultations per orbit.

Table 4.1-2: GOMOS planned operations. The planning is built on a 2-orbit sequence basis (2 orbits with the same stars)

UTC Start	Start Orbit	Stop Orbit	Mode (<u>A</u> synchronous or <u>S</u> ynchronous)	Calibration (CAL) Dark Sky Area (DSA) or Nominal (Nom)
27-SEP-2006 03:09:54	23920	23977	S	Nom; altitude range [112.5, 5] km
01-OCT-2006 04:24:38	23978	23978	A	Nom; altitude range [112.5, 5] km
01-OCT-2006 07:45:50	23980	24077	S	Nom
08-OCT-2006 04:04:31	24078	24078	A	Nom
08-OCT-2006 07:25:43	24080	24177	S	Nom; altitude range [112.5, 5] km
15-OCT-2006 03:44:24	24178	24178	A	Nom; altitude range [112.5, 5] km
15-OCT-2006 07:05:36	24180	24187	A	CAL82
15-OCT-2006 20:30:23	24188	24189	S	CAL82
15-OCT-2006 23:51:35	24190	24277	S	Nom
22-OCT-2006 03:24:17	24278	24278	A	Nom
22-OCT-2006 06:45:29	24280	24377	S	Nom; altitude range [112.5, 5] km
29-OCT-2006 03:04:09	24378	24378	A	Nom; altitude range [112.5, 5] km
29-OCT-2006 06:25:21	24380	24419	S	Nom; altitude range [112.5, 5] km

There was no new Configurable Table Interface (CTI) uploaded to the instrument. The files used since the beginning of the mission are in table 4.1-3.

Table 4.1-3: Historic CTI Tables

CTI filename								Dissemination to FOCC
CTI_SMP	GMVIEC20030716	123904	00000000	00000004	20030715	000000	20781231_235959.N1	16-JUL-2003
CTI_SMP	GMVIEC20021104	075734	00000000	00000003	20021002	000000	20781231_235959.N1	06-NOV-2002
CTI_SMP	GMVIEC20021002	082339	00000000	00000002	20021002	000000	20781231_235959.N1	07-OCT-2002
CTI_SMP	GMVIEC20020207	154455	00000000	00000000	20020301	032709	20781231_235959.N1	21-FEB-2002

4.2 Limb, Illumination conditions and instrument gain setting

The **limb** and the **illumination condition** are two parameters that can confuse the user community. In table 4.2-1 there are specified the product parameter (level 1b and level 2 of processor GOMOS/4.02 operational until 8th August 2006) where the flag is located, the meaning and the source. The difference between the limb (SPH/bright_limb) and the illumination condition (SUMMARY_QUALITY/limb_flag) is that the first one is coming from the mission scenario and the second is coming from the processing (defined from the computation of the sun zenith and azimuth angles at both instrument and tangent point locations). The SPH/bright_limb is for some occultations set to “dark” in the mission scenario while they are in fact in bright limb illumination conditions. To select the highest quality data for scientific applications, data with SUMMARY_QUALITY/limb_flag equal to ‘0’ should be used (see also the disclaimer: <http://envisat.esa.int/dataproducts/availability/disclaimers>). The instrument gain settings are also specified in table 4.2-1 (they depend on the mission scenario flags) just for completeness of information.

Table 4.2-1: Relationship between limb, illumination condition flags and instrument gain settings (IPF version GOMOS/4.02 operational until 8 August 2006)

Products parameter	SPH/bright_limb	0 = Dark	1 = Bright	Coming from mission scenario
	SUMMARY_QUALITY/limb_flag	0 = Full Dark 1 = Bright 2 = Twilight	1 = Bright 2 = Twilight	In the geolocation process the sun zenith angle is computed and the occultation then is flagged accordingly
Instrument Gain	SPA Gain	3 (2)	0	Gain setting for spectrometer A. In parenthesis, values valid only for Sirius occultations (starID=1)
	SPB Gain	0	0	Gain setting for spectrometer B

The same is valid for the prototype version GOPR_6.0a_6.0a and following ones (including the one that is used for the on-going second reprocessing of 2002-2005 years), where the **limb** is in fields SPH/bright_limb and SUMMARY_QUALITY/dark_bright_limb and the **illumination condition** is in field SUMMARY_QUALITY/obs_ill_cond. For these prototypes **and the processor GOMOS/5.00 in operations since 8th August 2006**, the illumination condition can have five values (see table 4.2-2).

Table 4.2-2: Relationship between limb, illumination condition flags and instrument gain settings (prototype version GOPR 6.0a_6.0a and following ones)

Products parameter	SPH/bright_limb SUMMARY_QUALITY/dark_bright_limb	0 = Dark	1 = Bright	Coming from mission scenario
	SUMMARY_QUALITY/obs_ill_cond	0 = Full Dark 1 = Bright 2 = Twilight 3 = Straylight 4 = Twi.+Stray		In the geolocation process the sun zenith angle is computed and the occultation is then flagged accordingly
Instrument Gain	SPA Gain	3 (2)	0	Gain setting for spectrometer A. In parenthesis, values valid only for Sirius occultations (starID=1)
	SPB Gain	0	0	Gain setting for spectrometer B

4.3 Thermal Performance

Since the beginning of the mission, the hot pixel and RTS phenomena have been producing a continuous increase of the dark charge signal within the CCD detectors (see section 4.5.1). In order to minimize this effect, three successive CCD cool downs were performed in orbits 800 (25th April 2002), 1050 (13th May 2002) and 2780 (11th September 2002) with a total decrease in temperature of 14 degrees.

Fig. 4.3-1 and 4.3-2 display, respectively, the overall temperature variation and the temperature variation around the Ascending Node Crossing (ANX) time with a resolution of 0.4 degrees (coding accuracy for level 0 data). The CCD temperatures show the expected global increase due to the radiator ageing.

Another expected variation of the temperatures, the seasonal one, with amplitude of around 0.8 degrees, can be also observed. The peaks that occur mainly in spectrometer B1 and B2 are also to be noted. They happen a little before the ANX for some consecutive orbits and every 8-10 days. Their origin is not known, as we did not find any correlation between these peaks and other activities carried out by other ENVISAT instruments. The CCD temperature at almost the same latitude location (fig. 4.3-2) is monitored in order to detect any inter-orbital temperature variation. The abnormal decreases observed sometimes in all detectors are after GOMOS switch off periods, when the instrument did not have enough time to reach the nominal temperature before starting the measurements.

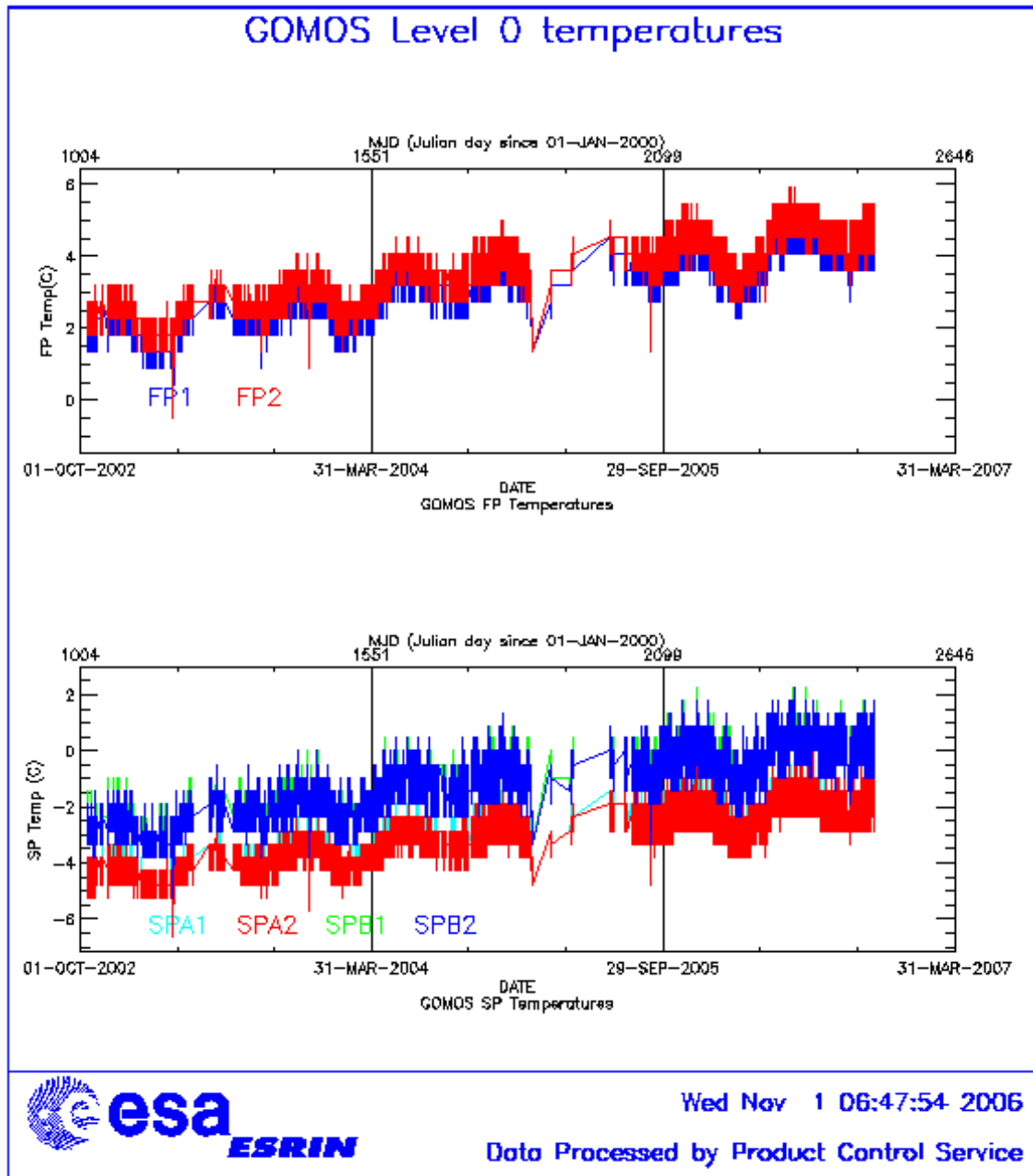


Figure 4.3-1: Level 0 temperature evolution of all GOMOS CCD detectors since October 2002 until the end of the reporting period

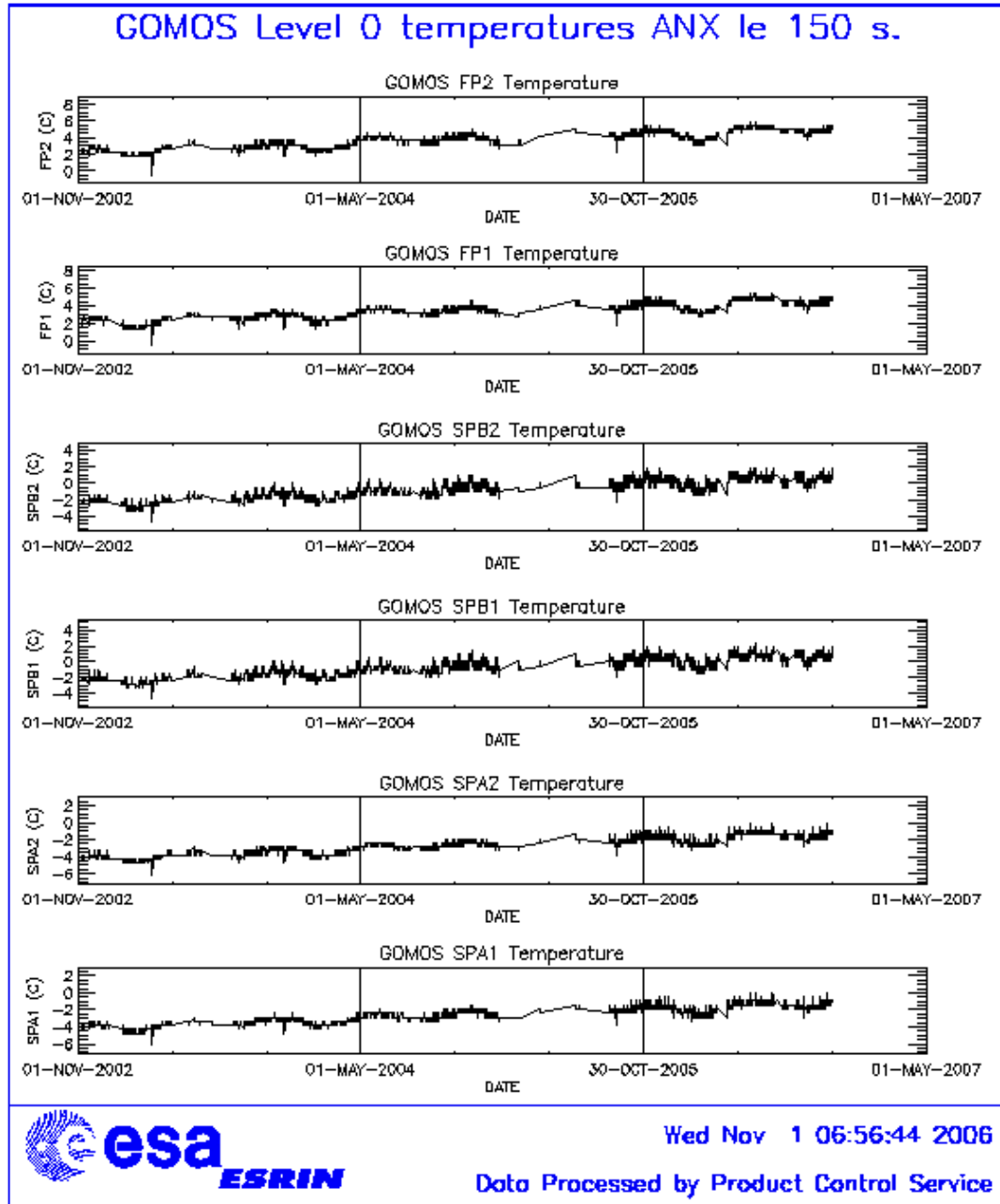


Figure 4.3-2: Level 0 temperature evolution of all GOMOS CCD detectors around ANX since November 2002 until the end of the reporting period

During the reporting period, the orbital temperature variation of the detector SPB2 for ascending and descending passes (fig. 4.3-3 and 4.3-4) is nominal, around 2.5-3 degrees. The stability of the temperature during the orbit is important because it affects the position of the interference patterns. The phenomenon of the interference is present mainly in SPB and this Pixel Response Non-Uniformity (PRNU) is corrected during the processing.

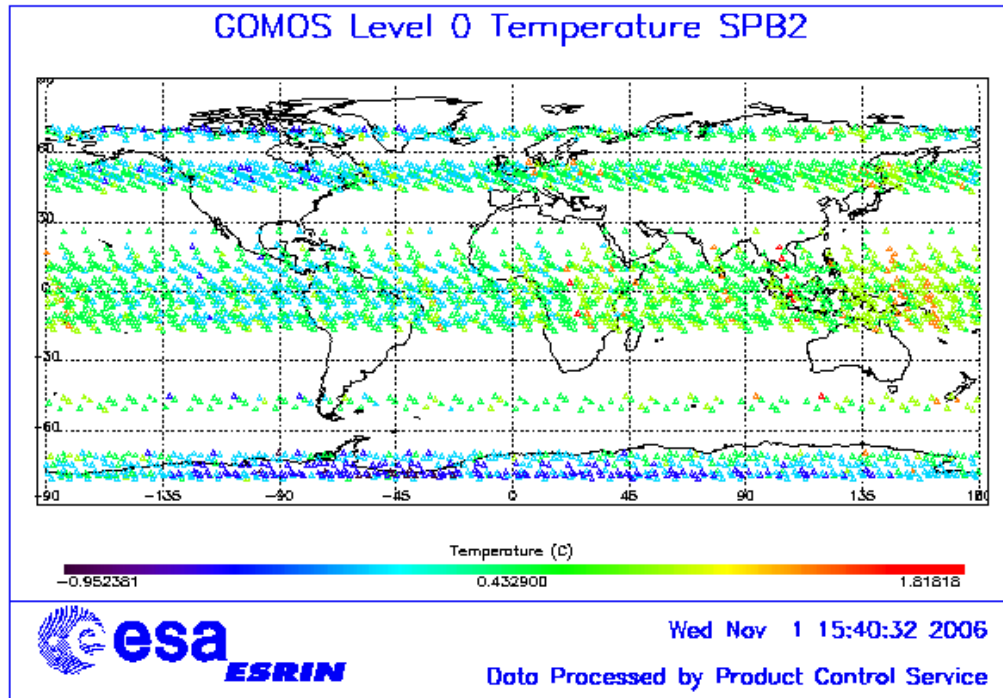


Figure 4.3-3: Ascending orbital variation of SPB2 temperature during reporting period

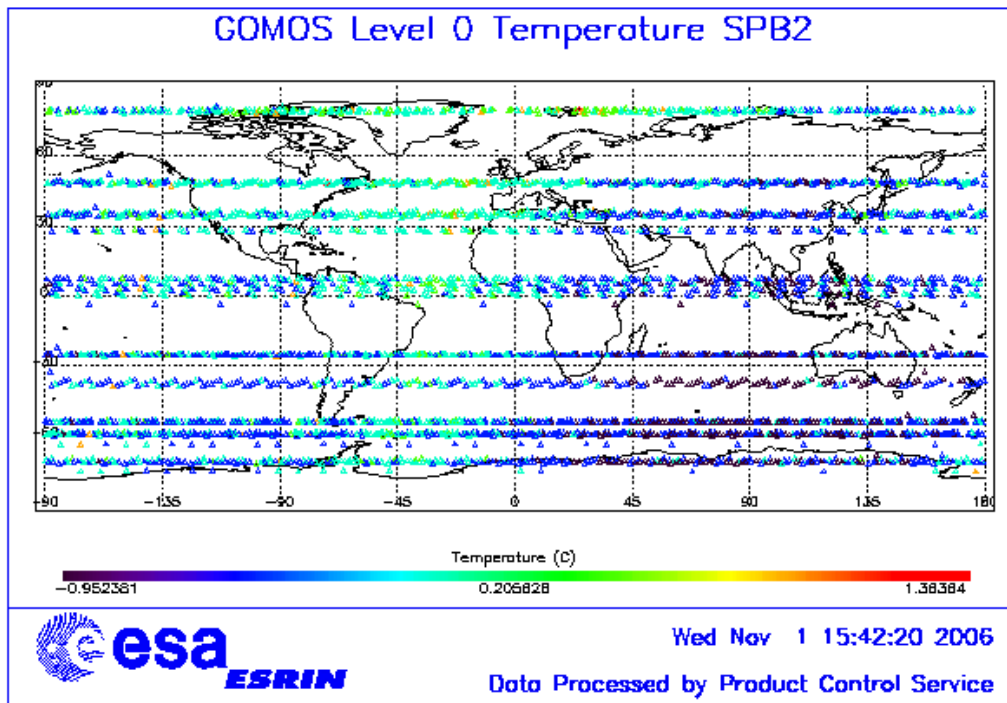


Figure 4.3-4: Descending orbital variation of SPB2 temperature during reporting period

4.4 Optomechanical Performance

New band setting calibration has been performed during the reporting period.

- Version GOMOS/4.00 and previous ones: in the GOMOS processor versions GOMOS/4.00 and previous, the spectra are expected to be aligned along CCD lines, and therefore use only a single average line index per CCD. In table 4.4-1, the mean values of the location of the star signal for all the calibration analysis done is reported. The ‘left’ and ‘right’ values are calculated (the whole interval is not used) because the spectra present a slight slope, more pronounced in spectrometer B (see fig. 4.4-1). In table 4.4-2, mean values of the location of the star signal are calculated for some specific wavelength intervals. These intervals have been changed between the calibration performed in September 2002 and the ones performed afterwards (until November 2003). Table 4.4-3 reports the average location of the star spot on the photometer 1 and 2 CCD.
- Version GOMOS/4.02: in this processor version (GOMOS/4.02) operational since 23rd March 2004 to 8th August 2006, a Look Up Table (LUT) gives the line index of the spectra location as a function of the wavelength. However this characterization curve is not exactly the location of the star spectrum on the CCD but rather a combination of this position and some artefact created by the shape of the instrument optical point spread function (PSF). The exact shape is actually a straight line (especially for SPB) that has been characterised in 2005.
- Current version GOMOS/5.00 (since 8th August 2006): the exact shape of the CCD spectra location curve (which is a straight line) that has been characterised in 2005 was implemented in the current set of GOMOS ADFs. The position of the spectra convoluted with the PSF is calculated during the processing.

Table 4.4-1: Mean value of the location of the star signal during the occultation at the edges of every band (mean over 50 values, filtering the outliers)

	UV (SPA1) left/right	VIS (SPA2) left/right (Inverted spectra)	IR1 (SPB1) left/right	IR2 (SPB2) left/right
11/09/2002	80.7/80.7	79.8/79.5	82.8/81.9	83.1/82.1
01/01/2003	80.7/80.6	79.8/79.5	82.8/82.0	83.2/82.2
17/07/2003 & 02/08/2003	80.7/80.7	79.8/79.5	82.8/81.9	83.1/82.1
08/11/2003	80.7/80.6	79.8/79.5	82.8/81.9	83.1/82.1

Table 4.4-2: Mean value of the location of the star signal during the occultation (as table 4.4-1) but now within some wavelength intervals

	UV (SPA1)	VIS (SPA2)	IR1 (SPB1)	IR2 (SPB2)
11/09/2002	80.8	79.8	82.6	82.9
wl range (nm)	[300-330]	[500-530]	[760-765]	[937-942]
01/01/2003	80.6	78.6	81.6	80.3
wl range (nm)	[350-360]	[650-670]	[760-765]	[935-945]
02/08/2003	80.6	79.7	82.5	82.8
08/11/2003	80.6	79.9	82.4	82.8

Table 4.4-3: Average column and row pixel location of the star spot on the photometer CCD during the occultation

	FP1 (column/row)	FP2 (column/row)
11/09/2002	11/4	5/5
01/01/2003	10/4	6/4.9
02/08/2003	10/4	6/5
08/11/2003	10/4	6/5

Table 4.4-4: Location of the star signal on the CCD's (corresponding to fig. 4.4-1)

Pixel Column	LUT (Pixel line)	Calibration on 10-APR-2004	Calibration on 04-DEC-2004	Calibration on 27-NOV-2005	Calibration on 19-FEB-2006	Calibration on 14-MAY-2006 and 11-JUN-2006
0	80.59	80.80	80.67	80.93	80.67	80.85
20	80.46	80.60	80.44	80.32	80.43	80.49
449	80.42	80.50	80.42	80.40	80.53	80.56
450	79.25	79.39	79.30	79.16	79.30	79.35
900	79.50	79.63	79.57	79.36	79.45	79.61
1415	79.70	79.76	79.76	80.00	79.81	79.93
1416	82.64	82.80	82.88	82.95	82.76	82.81
1500	82.31	82.60	82.66	82.63	82.58	82.55
1600	82.12	82.22	82.30	82.35	82.41	82.20
1700	81.97	82.04	82.08	82.09	82.05	82.06
1750	81.89	81.98	82.03	82.00	81.92	81.97
1800	81.78	81.91	81.96	81.93	81.83	81.98
1835	81.68	81.88	81.94	81.96	81.79	81.91
1836	82.98	83.10	83.10	83.27	83.17	83.08
2000	82.78	82.90	82.94	83.04	82.83	82.93
2100	82.33	82.70	82.73	82.82	82.83	82.67
2150	82.17	82.40	82.54	82.79	82.70	82.49
2350	81.83	82.00	82.00	82.68	81.96	82.11

4.5 Electronic Performance

4.5.1 DARK CHARGE EVOLUTION AND TREND

The trend of Dark Charge (DC) is of crucial importance for the final quality of the products, and is therefore subject to intense monitoring. As part of the DC there is:

- “Hot pixels”, a pixel is “hot” when its dark charge exceeds its value measured on ground, at the same temperature, by a significant amount.
- RTS phenomenon (Random Telegraphic Signal), it is an abrupt change (positive or negative) of the CCD pixel signal, random in time, affecting only the DC part of the signal and not the photon generated signal.

The temperature dependence of the DC would make this parameter a good indicator of the DC behaviour, but the hot pixels and the RTS are producing a continuous increase of the DC (see trend in fig. 4.5-1 and 4.5-2). To take into account these phenomena, since version GOMOS/4.00 (the current one is GOMOS/5.00) a DC map per orbit is extracted from a Dark Sky Area (DSA) observation performed around

ANX (full dark conditions). For every level 1b product (occultation), the actual thermistor temperature of the CCD is used to convert the DC map measured around ANX into an estimate of the DC at the time (and different temperature) of the actual occultation. When the DSA observation is not available, the DC map inside the calibration product that was measured at a given thermistor reference temperature is used; again, the actual thermistor temperature of the CCD is used to compute the actual map. Table 4.5-1 reports the list of products that used the DC maps inside the calibration file due to the non-availability of DSA observation. A “CAL DC map with no T dep.” means that, as the temperature information was not available for that occultation, the DC map used is exactly the one inside the Calibration product.

The “quality ranking” of the products depending on DC correction performed is as follows:

- Best quality: products with DC correction using DSA observation inside the orbit
- Less quality than previous ones: products with DC correction using the map inside the calibration product, thermal corrected (‘DC map used’ in table 4.5-1)
- Less quality than previous ones: products with DC correction using the map inside the calibration product, no thermal corrected (‘DC map with no T dep.’ in table 4.5-1)

Table 4.5-1: Table of level 1b products that used the Calibration DC maps instead of the DSA observation

Product name	DC information
GOM_TRA_IPNPDE20061001_212951_000000412051_00387_23988_1432.N1	DC map used
GOM_TRA_IPNPDE20061001_214655_000000372051_00387_23988_1433.N1	DC map used
GOM_TRA_IPNPDE20061001_215033_000000362051_00387_23988_1434.N1	DC map used
GOM_TRA_IPNPDE20061001_220755_000000332051_00387_23988_1435.N1	DC map used
GOM_TRA_IPNPDE20061001_221553_000000372051_00387_23988_1436.N1	DC map used
GOM_TRA_IPNPDE20061001_221723_000000352051_00387_23988_1437.N1	DC map used
GOM_TRA_IPNPDE20061001_222716_000000362051_00387_23988_1438.N1	DC map used
GOM_TRA_IPNPDE20061001_223652_000000432051_00387_23988_1439.N1	DC map used
GOM_TRA_IPNPDE20061001_224632_000000442051_00387_23988_1440.N1	DC map used
GOM_TRA_IPNPDE20061001_224909_000000422051_00387_23988_1441.N1	DC map used
GOM_TRA_IPNPDE20061001_230338_000000392051_00388_23989_1442.N1	DC map used
GOM_TRA_IPNPDE20061001_230506_000000492051_00388_23989_1443.N1	DC map used
GOM_TRA_IPNPDE20061001_231027_000000422051_00388_23989_1433.N1	DC map used
GOM_TRA_IPNPDE20061001_232731_000000372051_00388_23989_1434.N1	DC map used
GOM_TRA_IPNPDE20061001_233109_000000392051_00388_23989_1435.N1	DC map used
GOM_TRA_IPNPDE20061001_234831_000000362051_00388_23989_1436.N1	DC map used
GOM_TRA_IPNPDE20061001_235629_000000362051_00388_23989_1437.N1	DC map used
GOM_TRA_IPNPDE20061001_235759_000000362051_00388_23989_1438.N1	DC map used
GOM_TRA_IPNPDE20061002_000752_000000362051_00388_23989_1439.N1	DC map used
GOM_TRA_IPNPDE20061002_001728_000000472051_00388_23989_1440.N1	DC map used
GOM_TRA_IPNPDE20061002_002709_000000462051_00388_23989_1441.N1	DC map used
GOM_TRA_IPNPDE20061002_002946_000000412051_00388_23989_1442.N1	DC map used
GOM_TRA_IPNPDE20061002_040527_000000372051_00391_23992_1434.N1	DC map used
GOM_TRA_IPNPDE20061002_040655_000000462051_00391_23992_1441.N1	DC map used
GOM_TRA_IPNPDE20061002_041215_000000422051_00391_23992_1442.N1	DC map used
GOM_TRA_IPNPDE20061002_042919_000000362051_00391_23992_1435.N1	DC map used
GOM_TRA_IPNPDE20061002_043256_000000362051_00391_23992_1436.N1	DC map used
GOM_TRA_IPNPDE20061002_045018_000000372051_00391_23992_1437.N1	DC map used
GOM_TRA_IPNPDE20061002_045817_000000362051_00391_23992_1438.N1	DC map used
GOM_TRA_IPNPDE20061002_045947_000000412051_00391_23992_1439.N1	DC map used

GOM_TRA_IPNPDE20061002_050941_000000352051_00391_23992_1440.N1	DC map used
GOM_TRA_IPNPDE20061002_051917_000000452051_00391_23992_1441.N1	DC map used
GOM_TRA_IPNPDE20061002_052858_000000472051_00391_23992_1442.N1	DC map used
GOM_TRA_IPNPDE20061002_053135_000000392051_00391_23992_1443.N1	DC map used
GOM_TRA_IPNPDE20061002_054604_000000382051_00392_23993_1444.N1	DC map used
GOM_TRA_IPNPDE20061002_054731_000000512051_00392_23993_1445.N1	DC map used
GOM_TRA_IPNPDE20061002_055252_000000432051_00392_23993_1446.N1	DC map used
GOM_TRA_IPNPDE20061002_223854_000000442051_00402_24003_1436.N1	DC map used
GOM_TRA_IPNPDE20061002_225555_000000362051_00402_24003_1437.N1	DC map used
GOM_TRA_IPNPDE20061002_225932_000000352051_00402_24003_1438.N1	DC map used
GOM_TRA_IPNPDE20061002_231654_000000352051_00402_24003_1439.N1	DC map used
GOM_TRA_IPNPDE20061002_232454_000000372051_00402_24003_1440.N1	DC map used
GOM_TRA_IPNPDE20061002_232624_000000352051_00402_24003_1441.N1	DC map used
GOM_TRA_IPNPDE20061002_233618_000000362051_00402_24003_1442.N1	DC map used
GOM_TRA_IPNPDE20061002_234557_000000502051_00402_24003_1443.N1	DC map used
GOM_TRA_IPNPDE20061002_235537_000000502051_00402_24003_1444.N1	DC map used
GOM_TRA_IPNPDE20061002_235817_000000432051_00402_24003_1445.N1	DC map used
GOM_TRA_IPNPDE20061003_001243_000000382051_00403_24004_1446.N1	DC map used
GOM_TRA_IPNPDE20061003_001411_000000452051_00403_24004_1447.N1	DC map used
GOM_TRA_IPNPDE20061003_001930_000000392051_00403_24004_1448.N1	DC map used
GOM_TRA_IPNPDE20061003_003631_000000362051_00403_24004_1438.N1	DC map used
GOM_TRA_IPNPDE20061003_004008_000000372051_00403_24004_1439.N1	DC map used
GOM_TRA_IPNPDE20061003_005730_000000362051_00403_24004_1440.N1	DC map used
GOM_TRA_IPNPDE20061003_010530_000000372051_00403_24004_1441.N1	DC map used
GOM_TRA_IPNPDE20061003_010700_000000362051_00403_24004_1442.N1	DC map used
GOM_TRA_IPNPDE20061003_011654_000000352051_00403_24004_1443.N1	DC map used
GOM_TRA_IPNPDE20061003_012633_000000492051_00403_24004_1444.N1	DC map used
GOM_TRA_IPNPDE20061003_013614_000000422051_00403_24004_1445.N1	DC map used
GOM_TRA_IPNPDE20061003_013854_000000432051_00403_24004_1446.N1	DC map used
GOM_TRA_IPNPDE20061003_015319_000000382051_00404_24005_1447.N1	DC map used
GOM_TRA_IPNPDE20061003_015447_000000462051_00404_24005_1448.N1	DC map used
GOM_TRA_IPNPDE20061003_020006_000000382051_00404_24005_1449.N1	DC map used
GOM_TRA_IPNPDE20061003_021707_000000372051_00404_24005_1437.N1	DC map used
GOM_TRA_IPNPDE20061003_022044_000000372051_00404_24005_1438.N1	DC map used
GOM_TRA_IPNPDE20061003_023805_000000362051_00404_24005_1439.N1	DC map used
GOM_TRA_IPNPDE20061003_024606_000000372051_00404_24005_1440.N1	DC map used
GOM_TRA_IPNPDE20061003_024736_000000432051_00404_24005_1441.N1	DC map used
GOM_TRA_IPNPDE20061003_025730_000000352051_00404_24005_1442.N1	DC map used
GOM_TRA_IPNPDE20061003_030710_000000472051_00404_24005_1443.N1	DC map used
GOM_TRA_IPNPDE20061003_031650_000000472051_00404_24005_1444.N1	DC map used
GOM_TRA_IPNPDE20061003_031930_000000422051_00404_24005_1445.N1	DC map used
GOM_TRA_IPNPDE20061003_033356_000000392051_00405_24006_1446.N1	DC map used
GOM_TRA_IPNPDE20061003_033523_000000502051_00405_24006_1447.N1	DC map used
GOM_TRA_IPNPDE20061003_034042_000000422051_00405_24006_1448.N1	DC map used
GOM_TRA_IPNPDE20061003_035743_000000362051_00405_24006_1439.N1	DC map used
GOM_TRA_IPNPDE20061003_040120_000000372051_00405_24006_1440.N1	DC map used
GOM_TRA_IPNPDE20061003_041841_000000362051_00405_24006_1441.N1	DC map used
GOM_TRA_IPNPDE20061003_042642_000000372051_00405_24006_1442.N1	DC map used
GOM_TRA_IPNPDE20061003_042812_000000522051_00405_24006_1443.N1	DC map used
GOM_TRA_IPNPDE20061003_043807_000000362051_00405_24006_1444.N1	DC map used
GOM_TRA_IPNPDE20061003_044746_000000462051_00405_24006_1445.N1	DC map used
GOM_TRA_IPNPDE20061003_045726_000000512051_00405_24006_1446.N1	DC map used



GOM_TRA_IPNPDE20061003_050007_000000422051_00405_24006_1447.N1	DC map used
GOM_TRA_IPNPDE20061003_051432_000000392051_00406_24007_1448.N1	DC map used
GOM_TRA_IPNPDE20061003_051600_000000442051_00406_24007_1449.N1	DC map used
GOM_TRA_IPNPDE20061003_052119_000000422051_00406_24007_1450.N1	DC map used
GOM_TRA_IPNPDE20061003_220721_000000422051_00416_24017_1444.N1	DC map used
GOM_TRA_IPNPDE20061003_222419_000000372051_00416_24017_1445.N1	DC map used
GOM_TRA_IPNPDE20061003_222756_000000372051_00416_24017_1446.N1	DC map used
GOM_TRA_IPNPDE20061003_224517_000000322051_00416_24017_1447.N1	DC map used
GOM_TRA_IPNPDE20061003_225318_000000372051_00416_24017_1448.N1	DC map used
GOM_TRA_IPNPDE20061003_225449_000000352051_00416_24017_1449.N1	DC map used
GOM_TRA_IPNPDE20061003_230749_000000342051_00416_24017_1450.N1	DC map used
GOM_TRA_IPNPDE20061003_231426_000000522051_00416_24017_1451.N1	DC map used
GOM_TRA_IPNPDE20061003_232406_000000462051_00416_24017_1452.N1	DC map used
GOM_TRA_IPNPDE20061003_232648_000000452051_00416_24017_1453.N1	DC map used
GOM_TRA_IPNPDE20061003_234111_000000382051_00417_24018_1454.N1	DC map used
GOM_TRA_IPNPDE20061004_000455_000000372051_00417_24018_1445.N1	DC map used
GOM_TRA_IPNPDE20061004_000832_000000382051_00417_24018_1446.N1	DC map used
GOM_TRA_IPNPDE20061004_002553_000000372051_00417_24018_1447.N1	DC map used
GOM_TRA_IPNPDE20061004_003354_000000372051_00417_24018_1448.N1	DC map used
GOM_TRA_IPNPDE20061004_003525_000000352051_00417_24018_1449.N1	DC map used
GOM_TRA_IPNPDE20061004_004825_000000332051_00417_24018_1450.N1	DC map used
GOM_TRA_IPNPDE20061004_005503_000000442051_00417_24018_1451.N1	DC map used
GOM_TRA_IPNPDE20061004_010443_000000432051_00417_24018_1452.N1	DC map used
GOM_TRA_IPNPDE20061004_010725_000000412051_00417_24018_1453.N1	DC map used
GOM_TRA_IPNPDE20061004_012148_000000392051_00418_24019_1454.N1	DC map used
GOM_TRA_IPNPDE20061004_012315_000000522051_00418_24019_1455.N1	DC map used
GOM_TRA_IPNPDE20061004_012833_000000422051_00418_24019_1456.N1	DC map used
GOM_TRA_IPNPDE20061004_014531_000000372051_00418_24019_1446.N1	DC map used
GOM_TRA_IPNPDE20061004_014908_000000382051_00418_24019_1447.N1	DC map used
GOM_TRA_IPNPDE20061004_020628_000000332051_00418_24019_1448.N1	DC map used
GOM_TRA_IPNPDE20061004_021430_000000522051_00418_24019_1449.N1	DC map used
GOM_TRA_IPNPDE20061004_021601_000000352051_00418_24019_1450.N1	DC map used
GOM_TRA_IPNPDE20061004_022901_000000322051_00418_24019_1451.N1	DC map used
GOM_TRA_IPNPDE20061004_023539_000000462051_00418_24019_1452.N1	DC map used
GOM_TRA_IPNPDE20061004_024519_000000442051_00418_24019_1453.N1	DC map used
GOM_TRA_IPNPDE20061004_024802_000000432051_00418_24019_1454.N1	DC map used
GOM_TRA_IPNPDE20061004_030224_000000412051_00419_24020_1455.N1	DC map used
GOM_TRA_IPNPDE20061004_030352_000000432051_00419_24020_1456.N1	DC map used
GOM_TRA_IPNPDE20061004_030909_000000442051_00419_24020_1457.N1	DC map used
GOM_TRA_IPNPDE20061004_032607_000000372051_00419_24020_1447.N1	DC map used
GOM_TRA_IPNPDE20061004_032944_000000362051_00419_24020_1448.N1	DC map used
GOM_TRA_IPNPDE20061004_034704_000000362051_00419_24020_1449.N1	DC map used
GOM_TRA_IPNPDE20061004_035506_000000372051_00419_24020_1450.N1	DC map used
GOM_TRA_IPNPDE20061004_035637_000000342051_00419_24020_1451.N1	DC map used
GOM_TRA_IPNPDE20061004_040938_000000332051_00419_24020_1452.N1	DC map used
GOM_TRA_IPNPDE20061004_041615_000000452051_00419_24020_1453.N1	DC map used
GOM_TRA_IPNPDE20061004_042555_000000502051_00419_24020_1454.N1	DC map used
GOM_TRA_IPNPDE20061004_042838_000000412051_00419_24020_1455.N1	DC map used
GOM_TRA_IPNPDE20061004_044300_000000392051_00420_24021_1456.N1	DC map used
GOM_TRA_IPNPDE20061004_044428_000000402051_00420_24021_1457.N1	DC map used
GOM_TRA_IPNPDE20061004_044945_000000392051_00420_24021_1458.N1	DC map used
GOM_TRA_IPNPDE20061004_050643_000000372051_00420_24021_1448.N1	DC map used



GOM_TRA_IPNPDE20061004_051020_00000362051_00420_24021_1449.N1	DC map used
GOM_TRA_IPNPDE20061004_052741_00000362051_00420_24021_1450.N1	DC map used
GOM_TRA_IPNPDE20061004_053542_00000372051_00420_24021_1451.N1	DC map used
GOM_TRA_IPNPDE20061004_053713_00000332051_00420_24021_1452.N1	DC map used
GOM_TRA_IPNPDE20061004_055014_00000342051_00420_24021_1453.N1	DC map used
GOM_TRA_IPNPDE20061004_055652_00000422051_00420_24021_1454.N1	DC map used
GOM_TRA_IPNPDE20061004_060632_00000442051_00420_24021_1455.N1	DC map used
GOM_TRA_IPNPDE20061004_060915_00000412051_00420_24021_1456.N1	DC map used
GOM_TRA_IPNPDE20061004_062337_00000392051_00421_24022_1457.N1	DC map used
GOM_TRA_IPNPDE20061004_062504_00000442051_00421_24022_1458.N1	DC map used
GOM_TRA_IPNPDE20061004_063022_00000442051_00421_24022_1459.N1	DC map used
GOM_TRA_IPNPDE20061004_213547_00000462051_00430_24031_1456.N1	DC map used
GOM_TRA_IPNPDE20061004_215243_00000372051_00430_24031_1457.N1	DC map used
GOM_TRA_IPNPDE20061015_041106_00000362052_00076_24178_1592.N1	DC map with no T dep.
GOM_TRA_IPNPDE20061015_042046_00000292052_00076_24178_1593.N1	DC map used
GOM_TRA_IPNPDE20061015_042444_00000312052_00076_24178_1594.N1	DC map used
GOM_TRA_IPNPDE20061015_043248_00000322052_00076_24178_1595.N1	DC map used
GOM_TRA_IPNPDE20061015_043411_00000322052_00076_24178_1596.N1	DC map used
GOM_TRA_IPNPDE20061015_044146_00000282052_00076_24178_1597.N1	DC map used
GOM_TRA_IPNPDE20061015_044959_00000322052_00076_24178_1598.N1	DC map used
GOM_TRA_IPNPDE20061015_045133_00000322052_00076_24178_1599.N1	DC map used
GOM_TRA_IPNPDE20061015_045455_00000292052_00076_24178_1600.N1	DC map used
GOM_TRA_IPNPDE20061015_050234_00000322052_00076_24178_1601.N1	DC map used
GOM_TRA_IPNPDE20061015_050507_00000342052_00076_24178_1602.N1	DC map used
GOM_TRA_IPNPDE20061015_052200_00000382052_00076_24178_1603.N1	DC map used
GOM_TRA_IPNPDE20061015_052508_00000392052_00077_24179_1604.N1	DC map used

The average DC inserted by the processor into the level 1b data products for the spectrometers SPA1 and SPB2 (per band: upper, central and lower) is plotted in fig. 4.5-1 and 4.5-2. From the figures, it can be noted that the DC increase is similar throughout the mission.

The same DC values are plotted in fig. 4.5-3 but for some occultations belonging only to the reporting month.

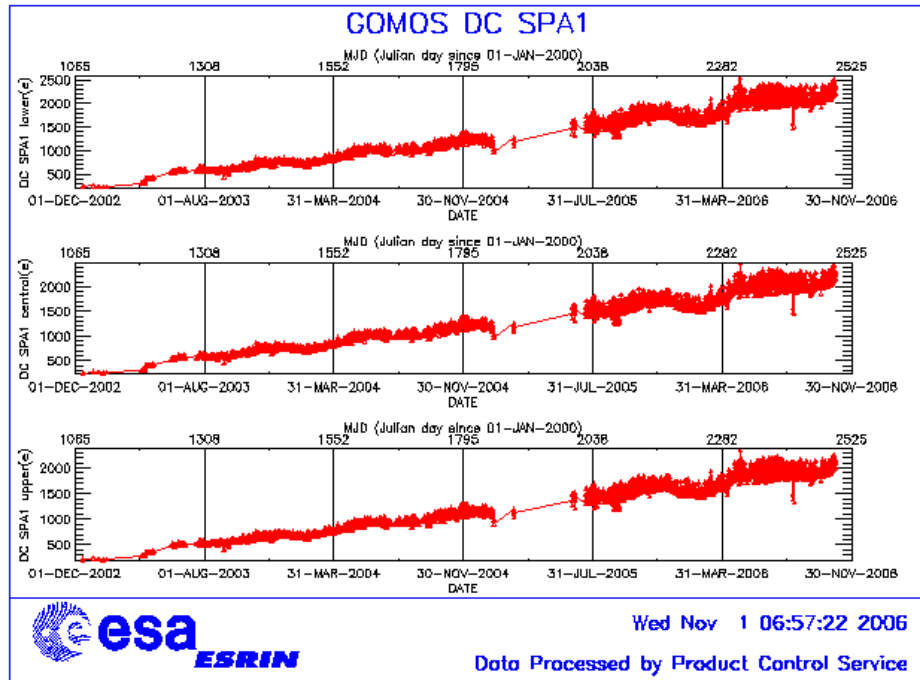


Figure 4.5-1: Mean DC evolution on SPA1 since 15th December 2002 until the end of the reporting period

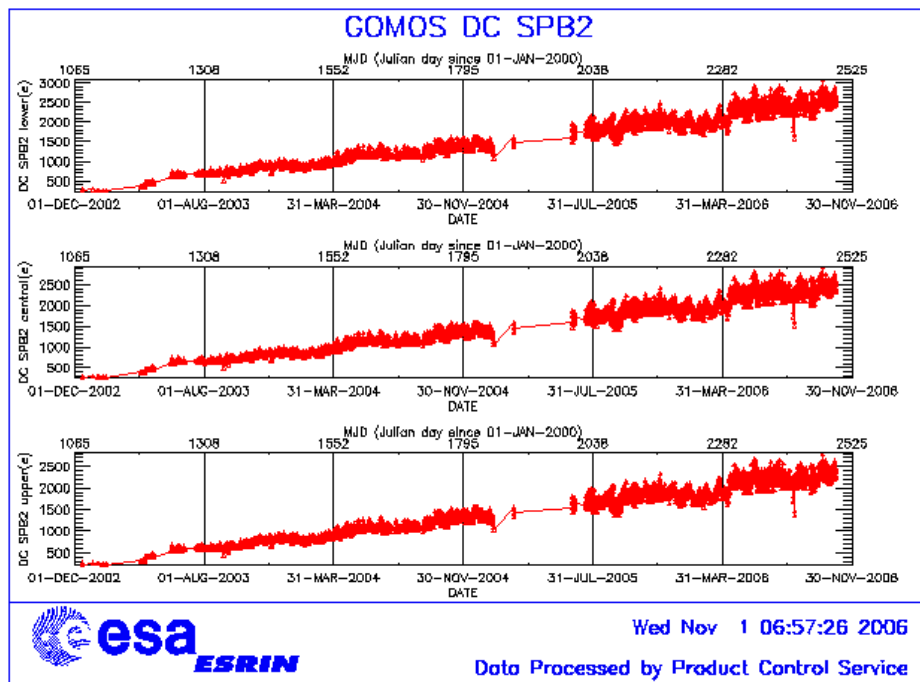


Figure 4.5-2: Mean DC evolution on SPB2 from 15th December 2002 until the end of the reporting period

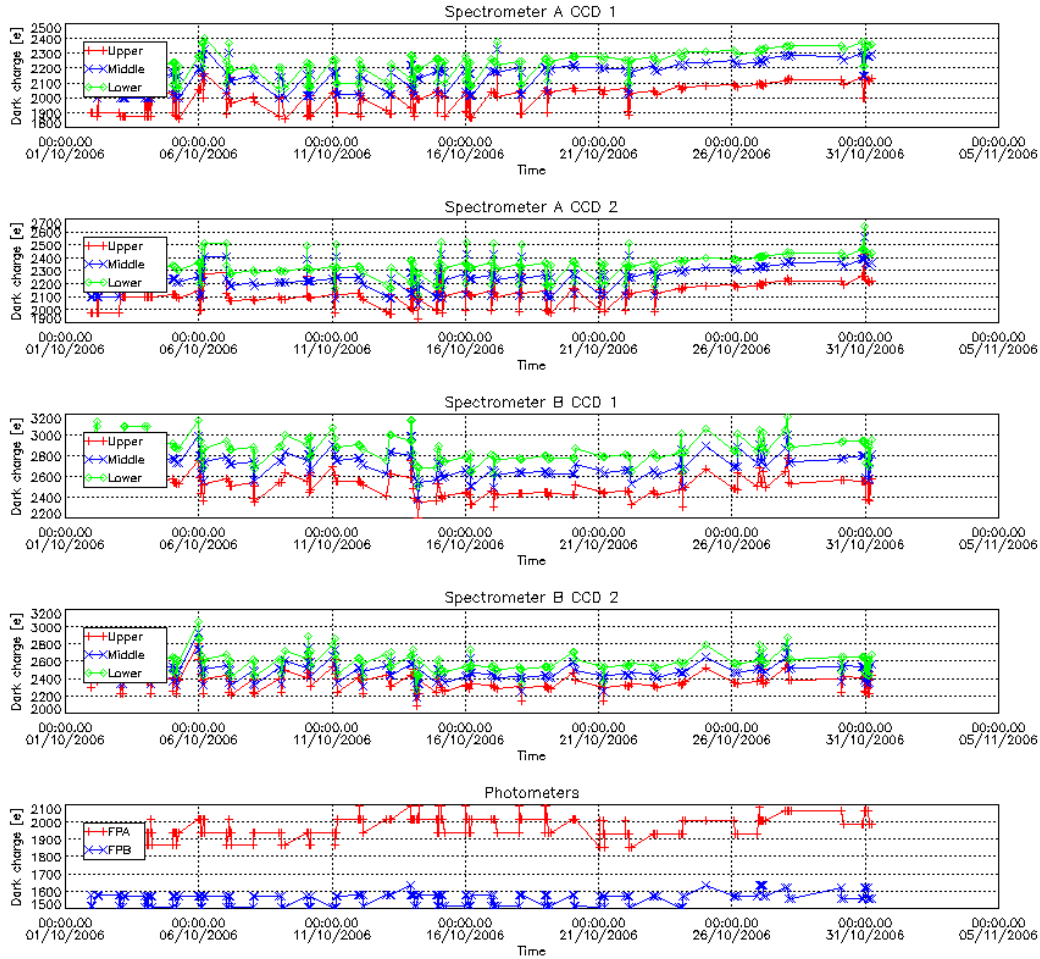


Figure 4.5-3: Mean Dark Charge of spectrometers during the reporting period

4.5.2 SIGNAL MODULATION

A parasitic signal was found to be systematically present, added to the useful signal, for the spectrometers A and B. The modulation is corrected in the data processing for spectrometers A1 and A2 (for spectrometer B it has much smaller amplitude and so is not corrected) and the modulation signal standard deviation is routinely monitored in order to detect any trend (fig. 4.5-4).

The modulation standard deviation, for every spectrometer, is characterised as follows:

$$\sigma_{\text{mod}} = (\text{‘static noises’} - \text{‘total static variance’})^{1/2} / \text{gain} \quad (\text{in ADU})$$

- The ‘static noises’ are calculated from the DSA observation performed once per orbit
- The ‘total static variance’ is obtained from ADF data (electronic chain noise, quantization noise).

The standard deviation of the modulation signal (fig. 4.5-4) shows high values during summer time for the ESRIN data, it now being confirmed that the South Atlantic Anomaly is the cause of these unexpected

peaks. The quality of ESRIN data, in particular over the SAA zone, is impacted but the measure of this impact is under investigation. However, in the second half of the months of October (2004, 2005 and 2006) the peaks are smaller because the DSA zone where the data are taken for this analysis is moving towards the Northern Hemisphere. At the end of October the DSA zone is definitely chosen by the planning system in the Northern Hemisphere (to fill the criteria ‘DSA in full dark limb conditions’) and the high peaks disappear.

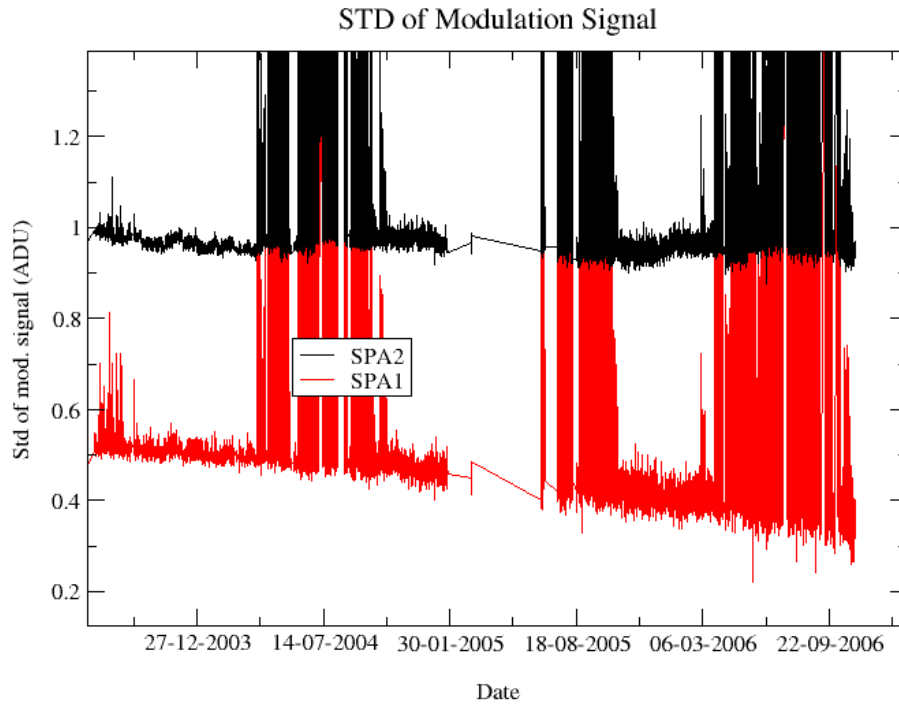


Figure 4.5-4: Standard deviation of the modulation signal

The QWG team has checked if the trend observed mainly for SPA1 in fig. 4.5-4 has an impact on the GOMOS products quality. The conclusion is that the differences between the current amplitudes and the values used in the data processing are too small to have a significant impact on the retrieval.

4.5.3 ELECTRONIC CHAIN GAIN AND OFFSET

No new electronic chain gain and offset calibration has been done during the reporting period so the results have been presented in previous MR.

The routine monitoring of the ADC offset is a good indicator of the ageing of the instrument electronics. During November 2005 an exercise has been done to analyze the variation of the ADC offset using the calibration observation in linearity mode performed on 28th November 2005.

The fig. 4.5-7 presents the evolution of the calibrated ADC offset for each spectrometer electronic chain. The unexpected increase of this offset seems to be due to an external contribution. In the ADC offset calibration procedure, linearity observations are used with two integration times of 0.25 and 0.50 seconds to

extrapolate to an integration time of 0 seconds that gives the complete chain offset and not only the ADC offset. The complete offset contains any possible offsets, and especially the static dark charge (i.e. the dark charge that does not depend on the spectrometer integration time). If the memory area of the CCD is affected by the generation of hot pixels (this is confirmed by the presence of vertical lines visible in the measurement maps in spatial spread monitoring mode), it can be concluded that the increase observed in fig. 4.5-5 is due to these new hot pixels.

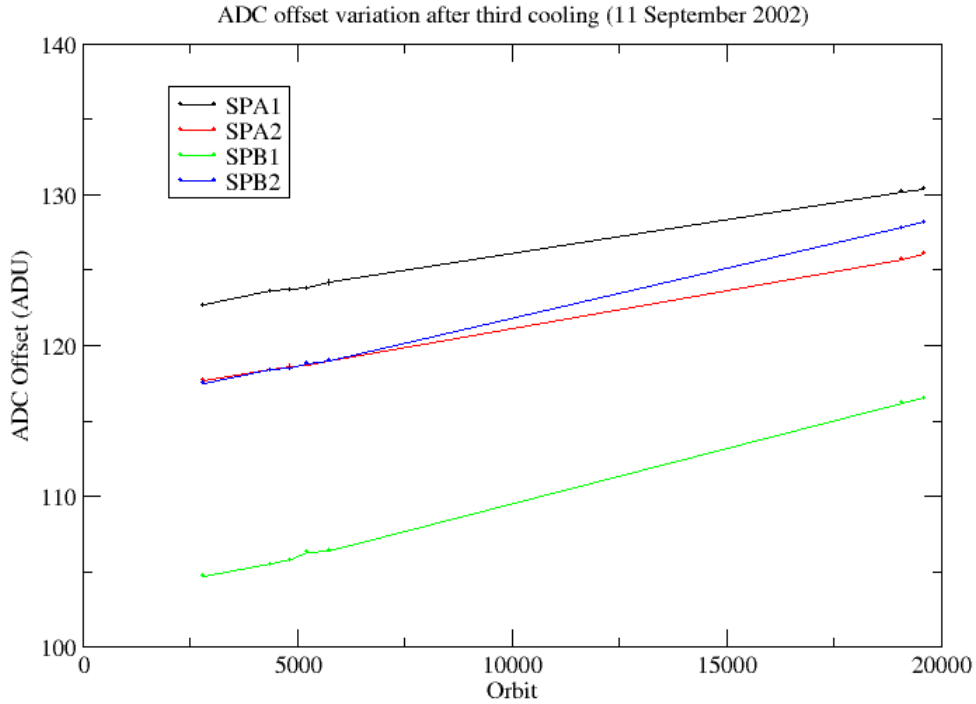


Figure 4.5-5: Evolution of the ADC offset for each spectrometer electronic chain

A current QWG task consists in completing the analysis to confirm that the offset increase is due to the dark charge increase in the memory area. This can be proven by the study of the noise due to the increased dark charge. The increase of ADC offset will be assumed to be equal to the increase of ‘static dark charge’ and the corresponding noise will be computed and compared to the increase of the residual of the signal variance.

If we keep the ADC offset constant, as it is also used to compute the dark charge at band level (which is used to correct the samples in the level 1b processing), the increase of the static dark charge - not taken into account in the ADC offset - is compensated by an artificial increase of the calibrated dark charge. So, the star and limb spectra are correctly corrected for dark charge. A small bias can be added to the instrument noise due to the incorrect dark charge level. Anyway, this quantity is not large enough to require a modification of the ADC offset value.

4.6 Acquisition, Detection and Pointing Performance

4.6.1 SATU NOISE EQUIVALENT ANGLE

The Star Acquisition and Tracking Unit (SATU) noise equivalent angle (SATU NEA) consists of the statistical angular variation of the SATU data above the atmosphere. The mean of the standard deviation (STD over the 50 values per measurement) above 105 km are computed for every occultation, giving two values per occultation: one in the 'X' direction, one in the 'Y' direction. A mean value per day in every direction and limb is calculated and monitored in order to assess instrument performance in terms of star pointing (fig. 4.6-1, upper). Also monthly averages are calculated and plotted (fig. 4.6-2). The thresholds are 2 and 3 micro radians in 'X' and 'Y' directions respectively. Before May 2003, data above 90 km have been considered (instead of 105 km) but from May 2003 on, data taken in the mesospheric oxygen layer (located around 100 km altitude) have been avoided because they could cause fluctuations on the SATU data. Also the products with errors (error flag set) are discarded from May 2003 onwards.

As can be seen in fig. 4-6.1, the SATU NEA had a sudden increase on 8th September 2005 mainly in 'Y' axis. These values remained high, fluctuating between 1 and 1.8 microrad until December 2005 when they came back to the values they used to be before the increase of September. The reason why there was higher noise in the data causing the jump in daily SATU average is not known.

Now a different problem has been present since mid April 2006. A gradual increase of the daily SATU Y mean is observed. This increase is due to fluctuations of the SATU 'Y' data observed at the beginning of the occultations (starting at 130 km that corresponds to an elevation angle of around 65°). The decrease of the start elevation angle of the occultation has no impact on the amplitude of the SATU-Y fluctuations. Preliminary investigations carried out by the ESL, ESA and industry point to a problem on the SFM (mechanical or electrical) and not to a problem on the SATU itself. Since mid June the increase was stable for a while at around 5.5 micro radians. The evolution of the anomaly can be summarized as follows:

- 1) Mid April – mid June: gradual increase until 5.5 microrad (unknown reason of the fluctuations)
- 2) Mid June – mid July: stability until mid July when it starts to decrease (unknown reason of less fluctuations)
- 3) Mid July – end August: further decrease due to a change in the start altitude of the occultations, from nominal 130 km to 112.5 km
- 4) End August – end September: increase and then stability to values found at the end of period 2) due to change in start tangent altitude of the occultations, from 112.5 Km to nominal 130 km. An increase has been observed after the ENVISAT anomaly on 13th September 2006.

Now the value is stable at around 2.2 micro radians.

The results for some occultations belonging to previous months (monthly averages) are presented in fig. 4.6-2, where the change in trend in September 2005 and May 2006, mainly for the 'Y' axis is visible.

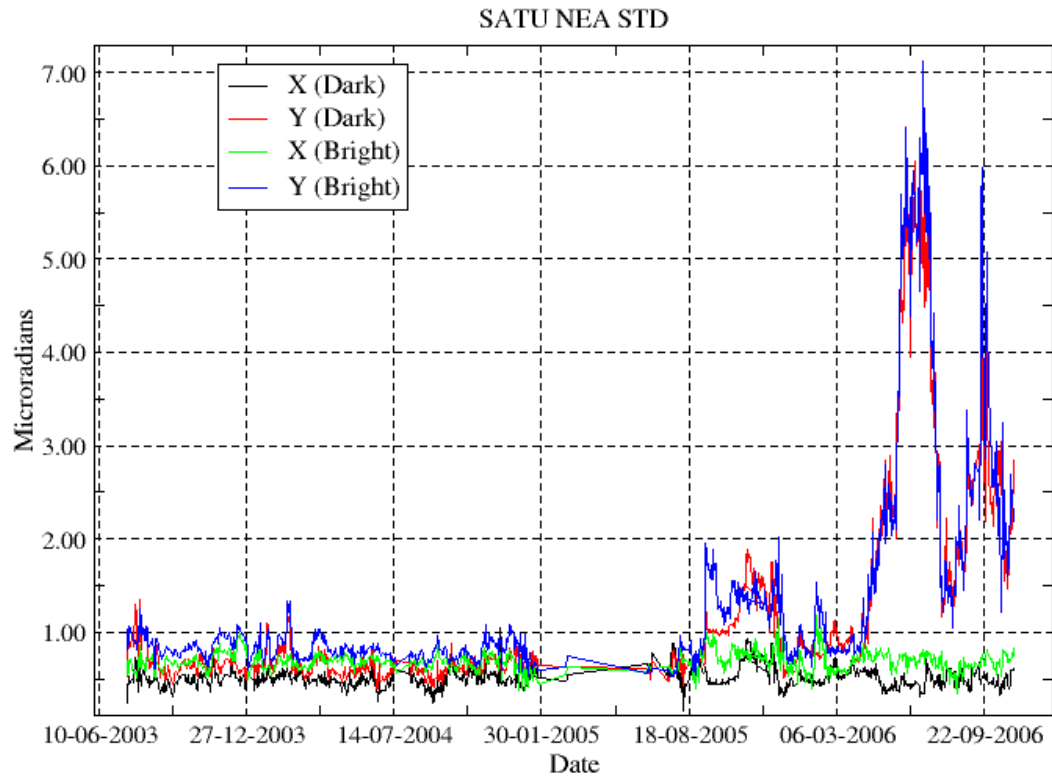


Figure 4.6-1: Average value per day of SATU NEA STD above 105 km

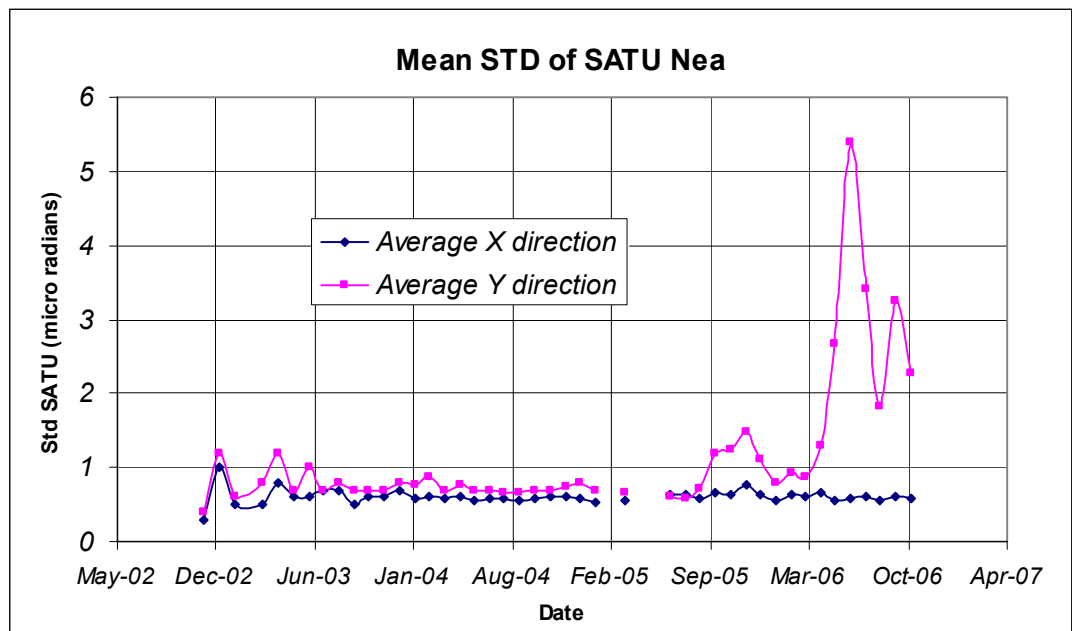


Figure 4.6-2: Average value per month of SATU NEA STD above 105 km

4.6.2 TRACKING LOSS INFORMATION

This verification consists of the monitoring of the tangent altitude at which the star is lost. It is an indicator of the pointing performance although it is to be considered that star tracking is also lost due to the presence of clouds and hence not only due to deficiencies in the pointing performance. Therefore, only the detection of any systematic long-term trend is the main purpose of this monitoring. The recent results are presented in fig. 4.6-3 and 4.6-4:

- The dependence of the altitude at which tracking is lost on the magnitude of the star is very small because the tracking is mainly lost due to the refraction and the scintillation that depend on the atmospheric conditions.
- The azimuth of some stars could be very near to the reduced instrument azimuth edges and therefore there could be occultations planned to have a duration very small (2, 6, 10...seconds). To avoid planning this kind of useless occultation, it has been decided to set the minimum occultation duration value to 25 seconds. Fig. 4.6-3 and 4.6-4 (dark and bright limb) shows stars lost at altitudes higher than 30 km which corresponds with durations around 25-35 seconds.
- In bright limb it is not expected that the stars are lost at very low altitudes due to the amount of light arriving to the pointing system mainly when the refraction effects start to be important. We see from fig. 4.6-4 that there are some stars lost at altitudes around 4 km. This occurs when the pointing system is not able to point to the star anymore but, instead of finishing the occultation, it continues to track light until the planned duration is reached.
- Daily statistics are given in fig. 4.6-5 (calculated using 50 products per day). The high peaks in standard deviation before 25th January 2005 are due to the long lasting occultations or partial occultations (the entire occultation is included within the following orbit data). The ones during June/July/August 2005 are due to the tests performed for the anomaly investigation. After 29th August the peaks are due to the “short occultations”.
- Monthly statistics are given in fig. 4.6-6 (calculated using 50 products per day) where the change in trends, mainly for dark limb, is visible for the period of GOMOS testing.

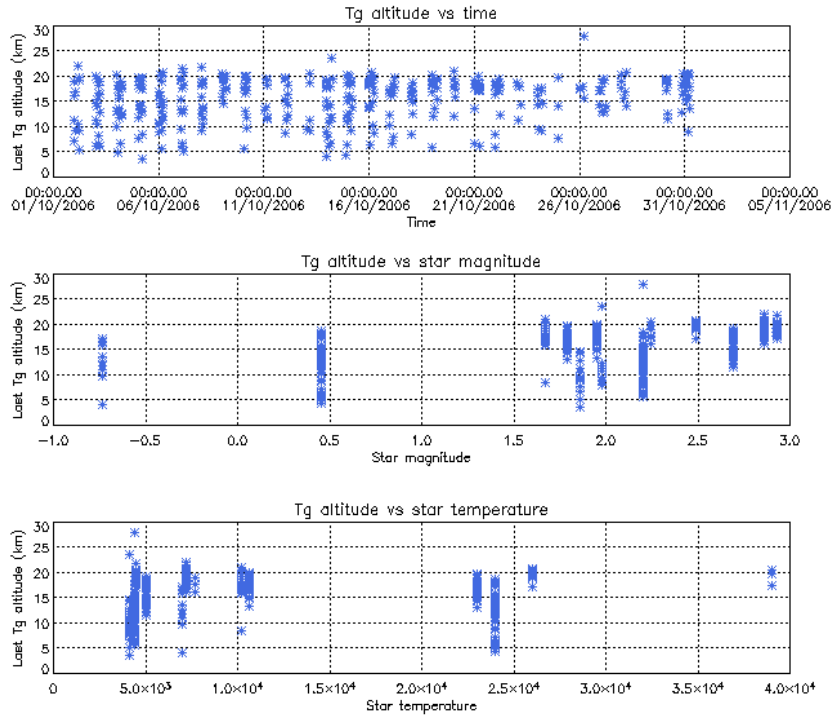


Figure 4.6-3: Last tangent altitude of the occultation (dark limb), point at which the star is lost

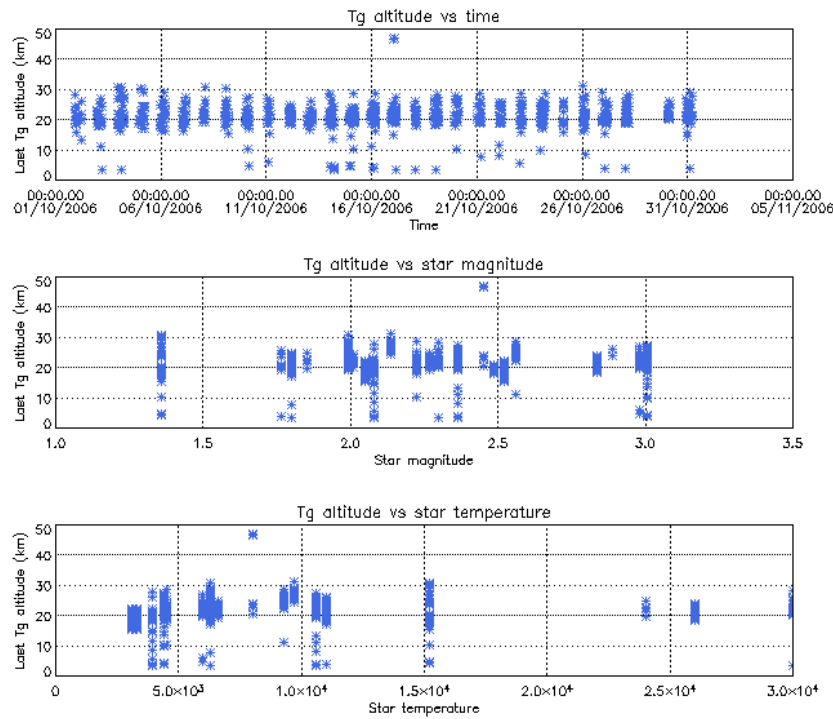


Figure 4.6-4: Last tangent altitude of the occultation (bright limb), point at which the star is lost

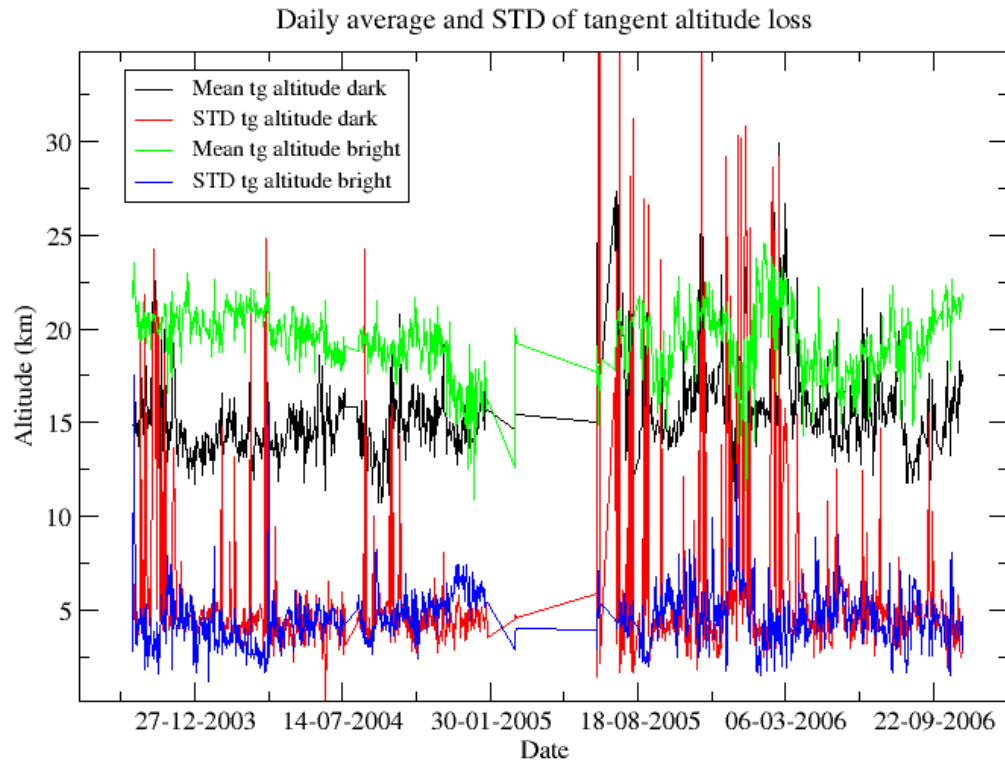


Figure 4.6-5: Daily average and STD of tangent altitude loss for the reporting period

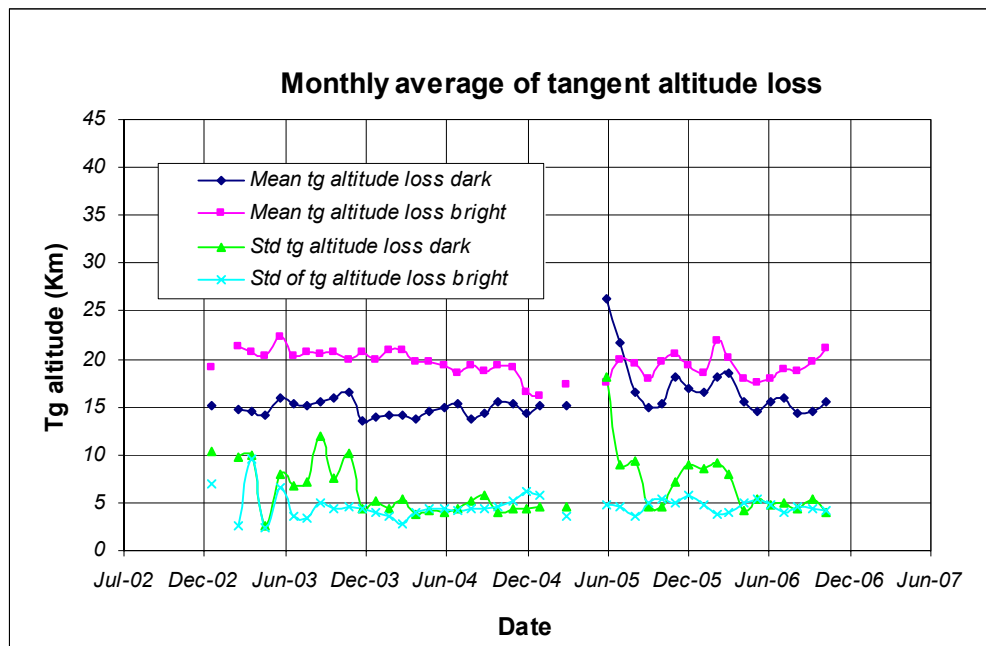


Figure 4.6-6: Monthly mean tangent altitude (and STD) at which the star is lost since January 2003

4.6.3 MOST ILLUMINATED PIXEL (MIP)

The MIP (Most Illuminated Pixel) is the star position on the SATU CCD in detection mode and it is recorded in the housekeeping data. The nominal centre of the SATU is pixel number **145** in elevation and number **205** in azimuth. The detection of the stars should not be far from this centre. As it can be seen in fig. 4.6-7 the **azimuth MIP** was within the threshold (table 4.6-1) since September 2002 until the occurrence of the anomaly on January 2005, even if a small variation is present. The reason for the change in trend observed after the anomaly is, at the moment, not understood. The **elevation MIP** had a significant variation (see the *note* below) until 12th December 2003 when a new PSO algorithm was activated in order to reduce the deviations of the ENVISAT platform attitude with respect to the nominal one. Similarly to the azimuth, after the anomaly of January 2005 the Elevation MIP has a drift that has no explanation. Investigations are ongoing to try to understand this behavior of the MIP as, although it does not impact the data quality or the star location on the CCD array during the measurements, it may invalidate attitude monitoring by GOMOS and could represent a hidden anomaly.

Note: A MIP variation onto the SATU CCD of 50 pixels corresponds to a de-pointing of 0.1 degrees

Table 4.6-1: MIP Thresholds

MIP X	Mean delta Az	[198 - 210]
	Std delta Az	7
MIP Y	Mean delta El	[140 - 150]
	Std delta El	4

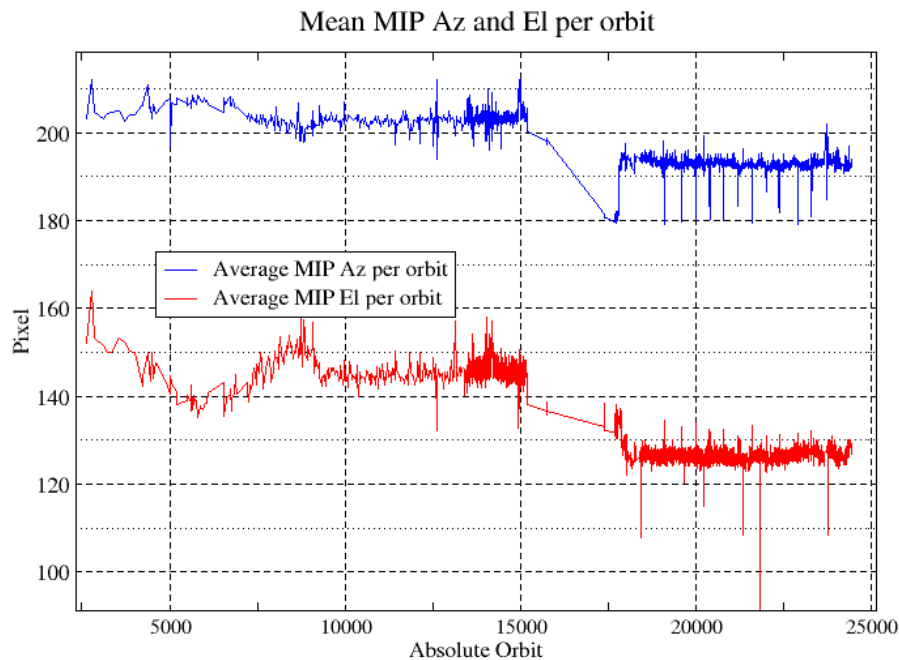


Figure 4.6-7: Mean values of MIP for some orbits since 1st September 2002 (see table 4.6-1)

Fig. 4.6-8 shows the standard deviation of azimuth and elevation MIP that should be within the thresholds of table 4.6-1. The peaks observed mean that one (or more) stars were detected very far from the SATU detection point and, in this case, the stars were lost during the centering phase (see section 3.2 for stars lost in centering).

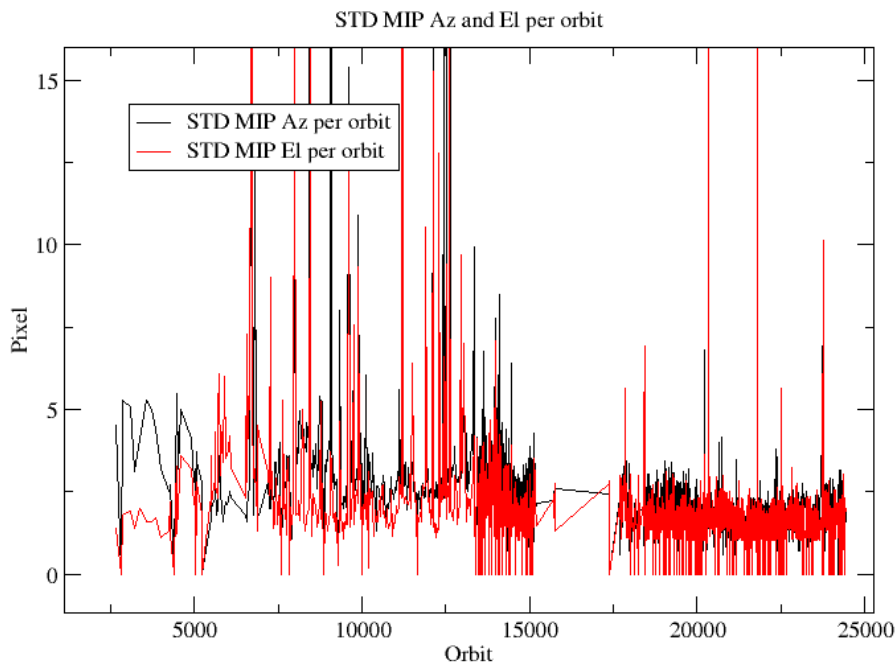


Figure 4.6-8: Standard deviation of MIP Azimuth and Elevation for some orbits since 1st September 2002 until end of reporting period (see table 4.6-1)

5 LEVEL 1 PRODUCT QUALITY MONITORING

5.1 Processor Configuration

5.1.1 VERSION

About 18% of near real time GOM_TRA_1P products have been received by the DPQC team for routine quality control and long term trend quality monitoring. The current level 1-processor software version for the operational ground segment is GOMOS/5.00 since 8th August 2006 (see table 5.1-1). The product specification is PO-RS-MDA-GS2009_10_3I. This processor has been cleared for level 1 data release, with a disclaimer for known artefacts (<http://envisat.esa.int/dataproducts/availability/disclaimers>) that are currently being resolved and will be implemented in following releases of the processor (<http://envisat.esa.int/dataproducts/availability>).

Table 5.1-1: PDS level 1b product version and main modifications implemented

Date	Version	Description of changes
08-AUG-2006	Level 1b version 5.00 at PDHS-E, PDHS-K	Algorithm baseline level 1b DPM 6.3 <ul style="list-style-type: none"> • Correction of FP unfolding algorithm • Background correction of SPB in full dark limb • Modification of the computation of the incidence angle • Correction of the flat-field correction equations • Star spectrum location on CCD modified for SPB • Provide SFA and SATU angles in degrees • Elevation angle dependency of the reflectivity LUT added in the algorithms • Ratio upper/star signal added (FLAGUC) • Add Dark Charge used for dark charge correction (per band) • Flag for illumination condition (PCDillum) • Minimum sample value for which the cosmic rays detection processing is applied (Crmin) is a function of gain index
23-JUL-2006	Level 1b version 5.00 at LRAC	<ul style="list-style-type: none"> • Logic for computation of the flags attached to the reference star spectrum (Flref) modified • Add the computation of the sun direction in the inertial geocentric frame to be written in the level 1b and limb products. • Spectrometer effective sampling time added Change in configuration at the time of switch over: <ul style="list-style-type: none"> ○ Use of new reflectivity LUT (GOM_CAL_AX) ○ New wavelength assignment for SPA1, A2, B1 (GOM_CAL_AX) ○ Location of star spectrum projection on the CCD arrays (GOM_CAL_AX) ○ Spatial PSF of SPB modified (GOM_INS_AX) ○ Some universal constants (GOM_PR1 AX)
23-MAR-2004	Level 1b version 4.02 at PDHS-E and PDHS-K	Algorithm baseline level 1b DPM 6.0 <ul style="list-style-type: none"> • Adding a new calibration parameters (these values are hard coded at the moment) • Removal of redundancy chain from code • Modifications in the processing to apply new configuration and calibration parameter • New algorithm to determine between dark, twilight and bright limb and to handle data accordingly • Added handling of source packages with invalid packet header • Added enumerations for all configuration flags
31-MAY-2003	Level 1b version 4.00 at PDHS-E and PDHS-K	Algorithm baseline level 1b DPM 5.4: <ul style="list-style-type: none"> • Modulation correction step added after the cosmic rays detection processing • Inversion of the non-linearity and offset corrections • Modification of the computation of the estimated background signal measured by the photometers: use the spectrometer radiometric sensitivity curve and the photometer transfer function. • Use of the dark charge map at orbit level computed from the DSA (dark sky area) if any in the level 0

		<ul style="list-style-type: none"> product Implementation of a new unfolding algorithm for the photometer samples
21-NOV-2002	Level 1b version 3.61 at PDHS-E and PDHS-K	Algorithm baseline DPM 5.3: <ul style="list-style-type: none"> Review of some default values New definition of one PCD flag (atmosphere) Temporal interpolation of ECMWF data

Users are also supplied with 2002 - 4th July 2006 data sets reprocessed by the last prototype processor GOPR_6.0c_6.0f developed and operated by ACRI. See table 5.1-2 for prototype level 1b versions and modifications. The current GOMOS operational ground segment version GOMOS/5.00 is line with the prototype version used for this second reprocessing.

Table 5.1-2: GOPR level 1b product version and main modifications implemented

Date	Version	Description of changes
22-JUL-2005	GOPR_6.0c	Level 1b: <ul style="list-style-type: none"> Correction of FP unfolding algorithm Background correction of SPB in full dark limb Modification of the computation of the incidence angle Correction of the flat-field correction equations Star spectrum location on CCD modified for SPB Configuration for second reprocessing: <ul style="list-style-type: none"> Use of new reflectivity LUT New wavelength assignment for SPA1, A2, B1 Spatial PSF of SPB modified
17-MAR-2004	GOPR 6.0a	<ul style="list-style-type: none"> Provide SFA and SATU angles in degrees Elevation angle dependency of the reflectivity LUT added in the algorithms Ratio upper/star signal added (FLAGUC) Add Dark Charge used for dark charge correction (per band) Flag for illumination condition (PCDillum) Minimum sample value for which the cosmic rays detection processing is applied (Crmin) is a function of gain index Logic for computation of the flags attached to the reference star spectrum (Flref) modified Add the computation of the sun direction in the inertial geocentric frame to be written in the level 1b and limb products. Spectrometer effective sampling time added
25-JUL-2003	GOPR 5.4f	<ul style="list-style-type: none"> The demodulation process is applied only in full dark limb and twilight limb conditions.
17-JUL-2003	GOPR 5.4e	<ul style="list-style-type: none"> Sun zenith angle is computed in the geolocation process. The occultation is now classified into (0) full dark limb condition, (1) bright limb condition and (2) twilight limb condition. No background correction applied in full dark limb condition. The location of the image of the star spectrum on the CCD array is no more aligned with the CCD lines.
02-JUL2003	GOPR 5.4d	<ul style="list-style-type: none"> The maximum number of measurements is set to 509 (instead of 510) in the GOPR prototype.

17-MAR-2003	GOPR 5.4c	<ul style="list-style-type: none"> Modification of the CAL ADFs (update of the limb radiometric LUT). The products are affected only if the limb spectra are converted into physical units Modifications to allow compatibility with ACRI computational cluster (no modifications of the results) Modification of the logic to handle dark charge map refresh at orbit level (DSA data is now directly processed by the level 1b processor if available in the level 0 product). No impact on the results
21-FEB-2003	GOPR 5.4b	<ul style="list-style-type: none"> DC map values are rounded when written in the level 1b product Modification of the CAL ADFs (update of the wavelength assignment of SPB1 and SPB2) Modify the computation of flag_mod in the modulation correction routine
17-JAN-2003	GOPR 5.4a	<ul style="list-style-type: none"> use the start and stop dates of the occultation when calling the CFI Interpol instead of start and stop dates of the level 0 product modify the ECMWF filename information in the SPH of the level 1b and limb products

5.1.2 AUXILIARY DATA FILES (ADF)

The ADF’s files in tables 5.1-3, 5.1-4, 5.1-5, 5.1-6 and 5.1-7 have been disseminated to the PDS during the whole mission. Note that the files outlined in yellow are the set of auxiliary files used during the reporting period. For every type of file, the validity runs from the start validity time until the start validity time of the following one, but if an ADF file has been disseminated after the start validity time, it is obvious that it will be used by the PDHS-E and PDHS-K PDS only after the dissemination time (this happens the majority of the time). Just like the other ADF’s, the calibration auxiliary file (GOM_CAL_AX) has been updated several times in the past (table 5.1-7) but the difference is that now it is updated in a weekly basis with only new DC maps, and that is why the files used during October 2006 are reported in a separate table (table 5.1-8) that changes from report to report.

Table 5.1-3: Table of historic GOM_PR1_AX files used by PDS for level 1b products generation. The GOM_PR1_AX is a file containing the configuration parameters used for processing from level 0 to level 1b products

Used by PDS for Level 1b products generation in period	GOM_PR1_AX (GOMOS processing level 1b configuration file)
01-MAR-2002 → 29-MAR-2002	GOM_PR1_AXVIEC20020121_165314_20020101_000000_20200101_000000 <ul style="list-style-type: none"> Pre-launch configuration
30-MAR-2002 → 14-NOV-2002	GOM_PR1_AXVIEC20020329_115921_20020324_200000_20100101_000000 <ul style="list-style-type: none"> Changed num_grid_upper, thr_conv and max_iter in the atmospheric GADS
Not used	GOM_PR1_AXVIEC20020729_083756_20020301_000000_20100101_000000 <ul style="list-style-type: none"> Cosmic Ray mode + threshold DC correction based on maps Non-linearity correction disabled
Not used	GOM_PR1_AXVIEC20021112_170331_20020301_000000_20100101_000000 <ul style="list-style-type: none"> Central background estimation by linear interpolation + associated thresholds

15-NOV-2002 → 26-MAR-2003	<p>GOM_PR1_AXVIEC20021114_153119_20020324_000000_20100101_000000</p> <ul style="list-style-type: none"> • Same content as GOM_PR1_AXVIEC20021112_170331_20020301_000000_20100101_000000 but validity start updated so as to supersede according to the PDS file selection rules
27-MAR-2003 → 19-MAR-2004	<p>GOM_PR1_AXVIEC20030326_085805_20020324_200000_20100101_000000</p> <ul style="list-style-type: none"> • Same content as GOM_PR1_AXVIEC20021112_170331_20020301_000000_20100101_000000 but validity start updated so as to supersede according to the PDS file selection rules
20-MAR-2004 → 22-MAR-2004	<p>GOM_PR1_AXVIEC20040319_134932_20020324_200000_20100101_000000</p> <ul style="list-style-type: none"> • Ray tracing parameter changed: convergence criteria set to 0.1 microrad
<p>23-MAR-2004 → 01-APR-2004</p> <p><i>Notes:</i></p> <ul style="list-style-type: none"> • This file was constructed from GOM_PR1_AXVIEC20030326_085805_20020324_200000_20100101_000000 (so without the ray tracing parameter changed) • This file was used by the GOMOS/4.02 processors before the IECF dissemination. The dissemination was done on 25th March 2004 	<p>GOM_PR1_AXVIEC20040316_144850_20020324_200000_20100101_000000</p> <p>GOM_PR1 ADF for version GOMOS/4.02, changes:</p> <ul style="list-style-type: none"> • The central band estimation mode • Atmosphere thickness • Altitude discretisation
02-APR-2004 → 07-AUG-2006	<p>GOM_PR1_AXVIEC20040401_083133_20020324_200000_20100101_000000</p> <ul style="list-style-type: none"> • Ray tracing parameter changed: convergence criteria set to 0.1 microrad
<p>08-AUG-2006</p> <p>Used at the time of switching over GOMOS/5.00</p>	<p>GOM_PR1_AXVIEC20050627_151042_20020301_000000_20100101_000000</p> <ul style="list-style-type: none"> • Change of some universal constants

Table 5.1-4: Table of historic GOM_INS_AX files used by PDS for level 1b products generation. The GOM_INS_AX is a file containing the characteristics of the instrument and it is used for processing from level 0 to level 1b products and from level 1b to level 2 products

Used by PDS for Level 1b products generation in period	GOM_INS_AX (GOMOS instrument characteristics file)
01-MAR-2002 → 29-JUL-2002	<p>GOM_INS_AXVIEC20020121_165107_20020101_000000_20200101_000000</p> <ul style="list-style-type: none"> • Pre-launch configuration
30-JUL-2002 → 12-NOV-2002	<p>GOM_INS_AXVIEC20020729_083625_20020301_000000_20100101_000000</p> <ul style="list-style-type: none"> • Factors for the conversion of the SFA angles from SFM axes to GOMOS axes
13-NOV-2002 → 16-JUL-2003	<p>GOM_INS_AXVIEC20021112_170146_20020301_000000_20100101_000000</p> <ul style="list-style-type: none"> • No more invalid spectral range
Not used	<p>GOM_INS_AXVIEC20030716_080112_20030711_120000_20100101_000000</p> <ul style="list-style-type: none"> • New value for SFM elevation zero offset for redundant chain: 10004

17-JUL-2003 → 07-AUG-2006	GOM_INS_AXVIEC20030716_105425_20030716_120000_20100101_000000 <ul style="list-style-type: none"> Bias induct azimuth redundant value set to -0.0084 rad (-0.4813 deg)
08-AUG-2006 Used at the time of switching over GOMOS/5.00	GOM_INS_AXNIEC20050627_150713_20030716_120000_20100101_000000 <ul style="list-style-type: none"> The spatial PSF of SPB

Table 5.1-5: Table of historic GOM_CAT_AX files used by PDS for level 1b products generation. The GOM_CAT_AX is a file holding the star catalogue used for processing from level 0 to level 1b products

Used by PDS for Level 1b products generation in period	GOM_CAT_AX (GOMOS Stat Catalogue file)
01-MAR-2002	GOM_CAT_AXVIEC20020121_161009_20020101_000000_20200101_000000 <ul style="list-style-type: none"> Pre-launch configuration

Table 5.1-6: Table of historic GOM_STS_AX files used by PDS for level 1b products generation. The GOM_STS_AX is a file containing star spectra used for processing from level 0 to level 1b products

Used by PDS for Level 1b products generation in period	GOM_STS_AX (GOMOS Star Spectra file)
01-MAR-2002 → 07-AUG-2006	GOM_STS_AXVIEC20020121_165822_20020101_000000_20200101_000000 <ul style="list-style-type: none"> Pre-launch configuration
08-AUG-2006 Used at the time of switching over GOMOS/5.00	GOM_STS_AXNIEC20040308_103538_20020101_160000_20100101_000000 <ul style="list-style-type: none"> Wavelength assignment GADS has been suppressed from the product Wavelength assignment vector has been added to the star spectrum

Table 5.1-7: Table of historic GOM_CAL_AX files used by PDS for level 1b products generation. The GOM_CAL_AX is a file containing the calibration parameters used for processing from level 0 to level 1b products

Used by PDS for Level 1b products generation in period	GOM_CAL_AX (GOMOS Calibration file)
01-MAR-2002 → 29-JUL-2002	GOM_CAL_AXVIEC20020121_164808_20020101_000000_20200101_000000 <ul style="list-style-type: none"> Pre-launch configuration
Not used	GOM_CAL_AXVIEC20020121_142519_20020101_000000_20200101_000000 <ul style="list-style-type: none"> Pre-launch configuration
30-JUL-2002 → 12-NOV-2002	GOM_CAL_AXVIEC20020729_082426_20020717_193500_20100101_000000 <ul style="list-style-type: none"> Band setting information Wavelength assignment Spectral dispersion LUT ADC offset for Spectrometers PRNU maps Thermistor coding LUT DC maps
Not used	GOM_CAL_AXVIEC20021112_165603_20020914_000000_20100101_000000 <ul style="list-style-type: none"> Band setting information DC maps PRNU maps Wavelength assignment Spectral dispersion LUT Radiometric sensitivity LUT (star and limb) SP-FP intercalibration LUT Vignetting LUT

	<ul style="list-style-type: none"> • Reflectivity LUT • ADC offset
13-NOV-2002 → 30-JAN-2003	GOM_CAL_AXVIEC20021112_165948_20021019_000000_20100101_000000 <ul style="list-style-type: none"> • Only DC maps updated
31-JAN-2003 → 11-APR-2003	GOM_CAL_AXVIEC20030130_133032_20030101_000000_20100101_000000 <ul style="list-style-type: none"> • Only DC maps updated (using DSA of orbit 04541)
12-APR-2003 → 02-JUN-2003	GOM_CAL_AXVIEC20030411_065739_20030407_000000_20100101_000000 <ul style="list-style-type: none"> • Modification of the radiometric sensitivity curve for the limb spectra. Note that the modification of this LUT has no impact on the GOMOS processing. The LUT is just copied into the level 1b limb product for user conversion purpose. • Updated DC map only (using DSA of orbit 05762).
03-JUN-2003: from this date onwards, mainly updates to DC maps are done. Every month, the table of new GOM_CAL files with only DC maps updated is provided (table 5.1-8). Eventual changes to this file not corresponding only to DC maps updates will be reported in this table.	GOM_CAL_AXVIEC20030602_094748_20030531_000000_20100101_000000 <ul style="list-style-type: none"> • Updated DC maps only (using DSA of orbit 06530)
13-FEB-2004 → 23-FEB-2004	GOM_CAL_AXVIEC20040212_103916_20040209_000000_20100101_000000 <ul style="list-style-type: none"> • Update of the reflectivity LUT • Updated DC maps (Orbit 10194, date 11-FEB-2004)
08-AUG-2006 Used at the time of switching over GOMOS/5.00	GOM_CAL_AXNIEC20050704_110915_20050125_224800_20100101_000000 <ul style="list-style-type: none"> • Reflectivity LUT updated • Location of the star spectrum projection on the CCD arrays • Wavelength assignment of the spectra updated • The spatial LSF of SPB updated • Updated DC maps (orbit 15200, date 25 JAN 2005)

Table 5.1-8: Calibration ADF for reporting period. These files are updated (only with DC maps) in a 8-10 days basis

Used by PDS for Level 1b products generation in period	GOM_CAL_AX (GOMOS Calibration file)
28-SEP-2006 → 02-OCT-2006	GOM_CAL_AXVIEC20060927_124349_20060925_000000_20100101_000000 (orbit 23900, date 25 SEP 2006)
03-OCT-2006 → 11-OCT-2006	GOM_CAL_AXVIEC20061002_131438_20060930_000000_20100101_000000 (orbit 23971, date 30 SEP 2006)
12-OCT-2006 → 20-OCT-2006	GOM_CAL_AXVIEC20061011_074727_20061009_000000_20100101_000000 (orbit 24107, date 10 OCT 2006)
21-OCT-2006 → 27-OCT-2006	GOM_CAL_AXVIEC20061020_081026_20061018_000000_20100101_000000 (orbit 24244, date 19 OCT 2006)
28-OCT-2006 → 03-NOV-2006	GOM_CAL_AXVIEC20061027_141550_20061025_000000_20100101_000000 (orbit 24345, date 26 OCT 2006)

5.2 Quality Flags Monitoring

In this section, the results of monitoring some Product Quality information stored in level 1b products that did not have a fatal error (MPH error flag not set) are discussed. The products with fatal errors were around 11% of the products received during the reporting month for the quality monitoring.

On the one hand, for every product we have information of the **number of measurements** where a given problem was detected (i.e. number of invalid measurements, number of measurements containing saturated samples, number of measurements with demodulation flag set...). On the other hand, there are **flags** that indicate problems within the product (i.e. flag set to one if the reference spectrum was computed from DB, flag set to zero if SATU data were not used...).

For the information on the number of measurements a plot of percentages with respect to time is provided in fig. 5.2-1. The most relevant part of this information is also plotted in a world map as a function of ENVISAT position: % of cosmic ray hits per profile, % of datation errors per profile, % of star falling outside the central band per profile and % of saturation errors per profile (fig.5-2.2).

It can be seen from fig. 5.2-1 that the cosmic rays hits occurred several times for the 95% of the measurements of the products. Looking at fig. 5.2-2 it can be clearly observed that this high percentage occurred when the satellite crossed the South Atlantic Anomaly (SAA) zone. Also the percentage of saturation errors per profile shows an increase over the SAA zone.

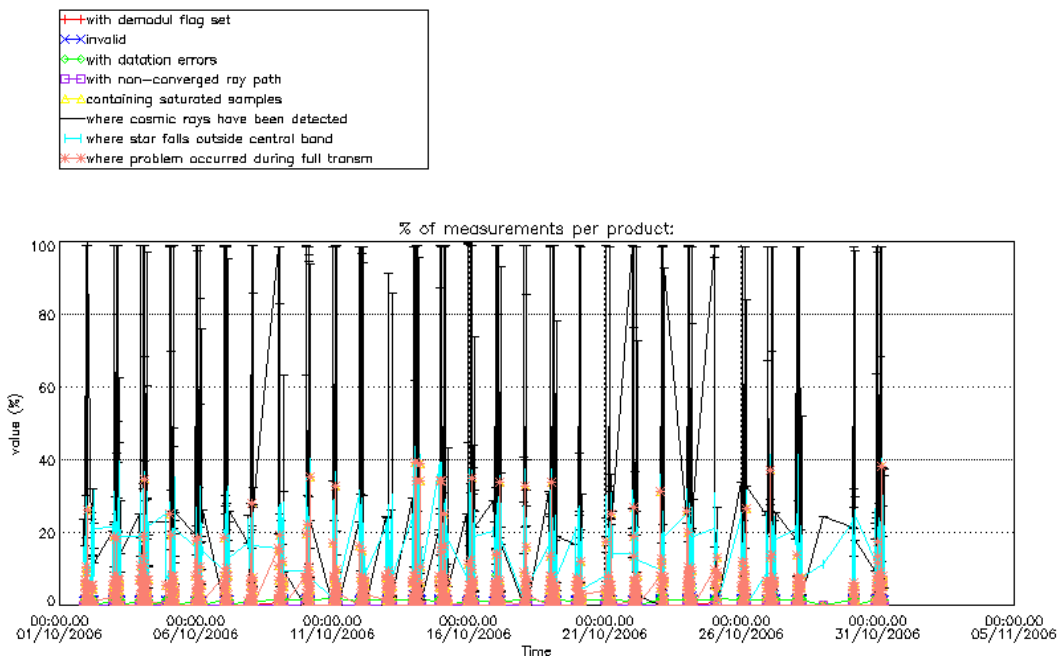


Figure 5.2-1: Level 1b product quality monitoring with respect to time

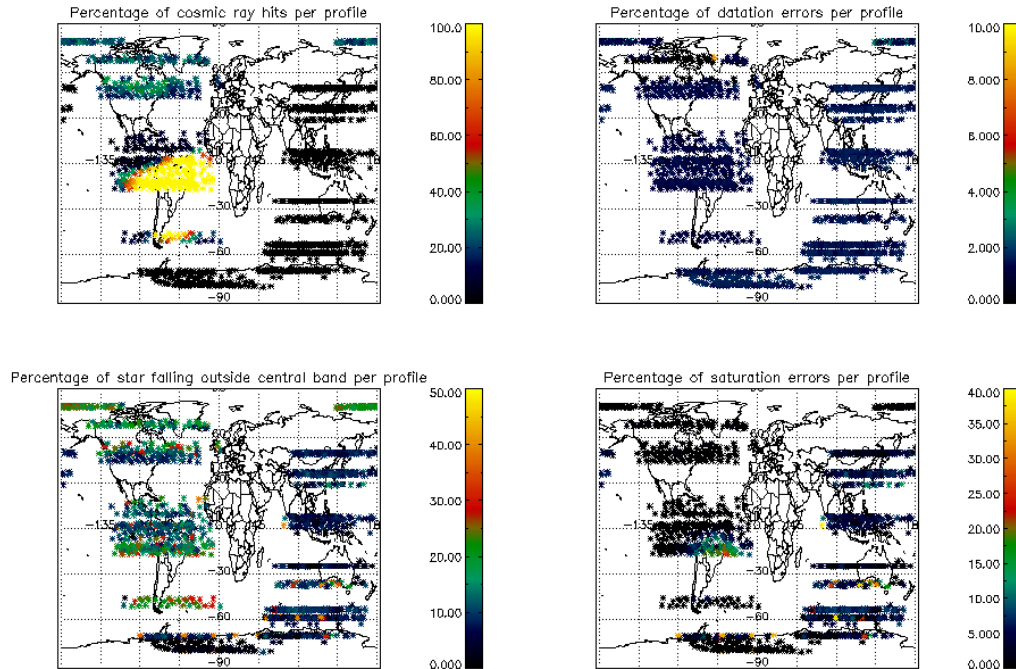


Figure 5.2-2: Level 1b product quality monitoring with respect to geolocation of ENVISAT

Another observation from fig. 5.2-1 is that for many products, 20-25% of the measurements have the star signal falling outside the central band. In fig. 5.2-2 it is observed that this percentage occurred mainly during twilight/dark conditions while in bright conditions the percentage is around 10% (fig.5.2-2). This is because during the night the stars are lost deeper within the atmosphere and the turbulence phenomena becomes more important, producing the star to be less ‘focused’ on the spectrometers central band.

The other values (% of invalid measurements per product, % of measurements per product with datation errors...) are quite low.

The flag information is given in table 5.2-1. The percentage of the products that have at least one measurement with demodulation flag set is also reported.

Table 5.2-1: Percentage of products during the reporting period with:

At least one measurement with demodulation flag set:	16 %
Reference spectrum computed from DB:	0.0 %
Reference spectrum with small number of measurements:	0.0 %
SATU data not used:	0.0 %

5.2.1 QUALITY FLAGS MONITORING (EXTRACTED FROM LEVEL 2 PRODUCTS)

In this section, the Product Quality information coming from the level 1 processing that is also stored in the level 2 products is plotted. Only products that did not have a fatal error (MPH error flag not set) are

considered. The purpose of using the level 2 data is simply that the percentage of level 2 products arriving to the DPQC team for the quality monitoring is much higher. For the reporting month, 77% of the archived products have been received. The plots are very similar to fig. 5.2-1 and 5.2-2 (demodulation flag information is not included) but separating ascending from descending passes. Since new version of the processor (GOMOS/5.00) there is no correspondence between illumination condition and latitude range when separating the passages (ascending and descending). Now, in the geolocation process, the sun zenith angle is computed and the occultation is then flagged accordingly (dark, bright, twilight, straylight, twilight+straylight). You can see in fig. 5.2-3 the location of the occultations and their limb for the reporting month.

Fig. 5.2-4 and 5.2-5 present some quality information as a function of the time whereas in fig. 5.2-6 and 5.2-7 the plot is respect to the satellite position at the beginning of the occultations.

In ascending (fig. 5.2-4) the percentage of measurements “where a problem occurred during the full transmission” per product is around 2% while for the descending passes (fig. 5.2-5) is between 10-40%. This is due to the saturation that occurs mainly in bright limb. In dark limb the saturation occurs over the SAA zone but it is quite low elsewhere. From fig. 5.2-4 and 5.2-5 you can see also that there are a variable percentage of the measurements that have the star signal falling outside the central band. This is because in dark the stars are lost deeper within the atmosphere and the turbulence phenomena become more important, resulting in the star being less ‘focused’ on the spectrometers central band.

In ascending (fig. 5.2-6) the SAA is perfectly localized by the high percentage of cosmic ray hits per product (upper left panel). It is not the same if we look at fig. 5.2-7, because in descending most of the occultations in that world region are in bright limb conditions and the cosmic rays detection processing is not activated.

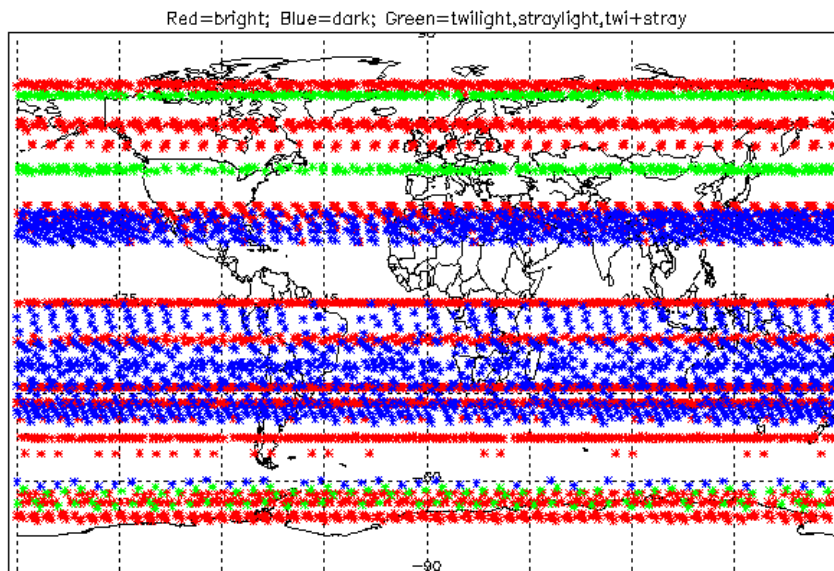


Figure 5.2-3: Position of the occultations based on illumination conditions

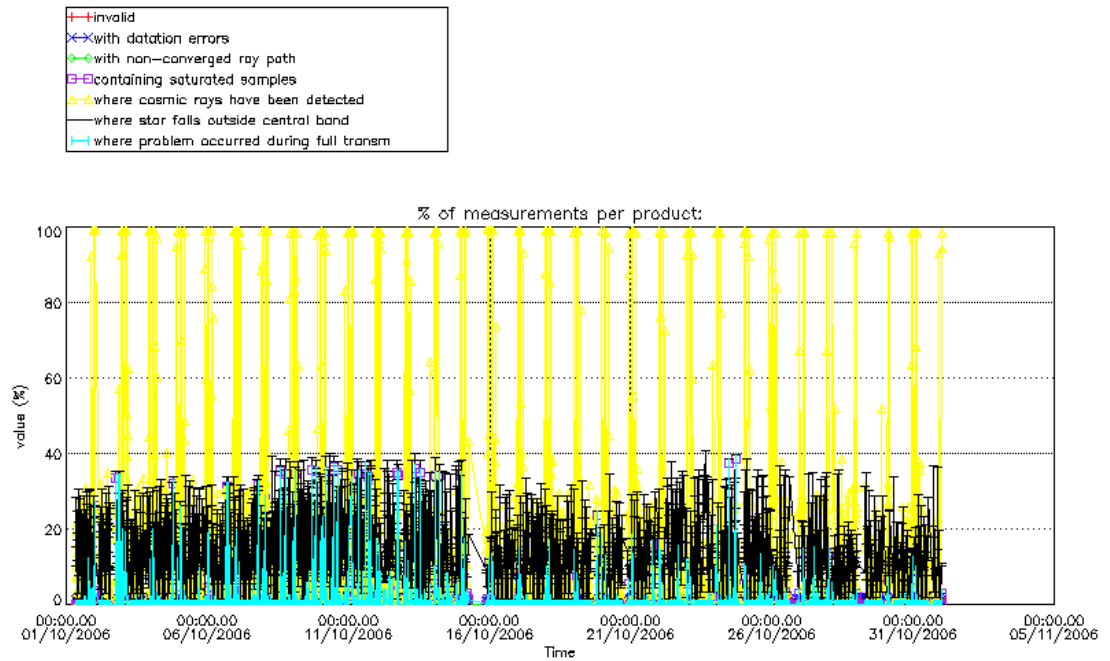


Figure 5.2-4: Level 1b product quality monitoring with respect to time ASCENDING ENVISAT passes

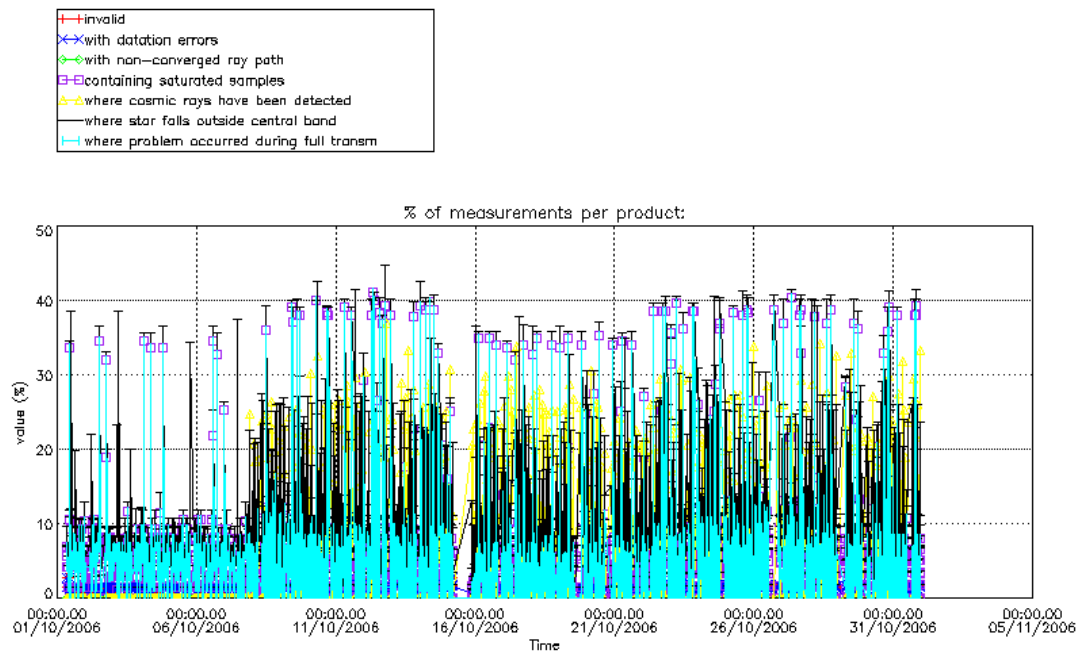


Figure 5.2-5: Level 1b product quality monitoring with respect to time DESCENDING ENVISAT passes

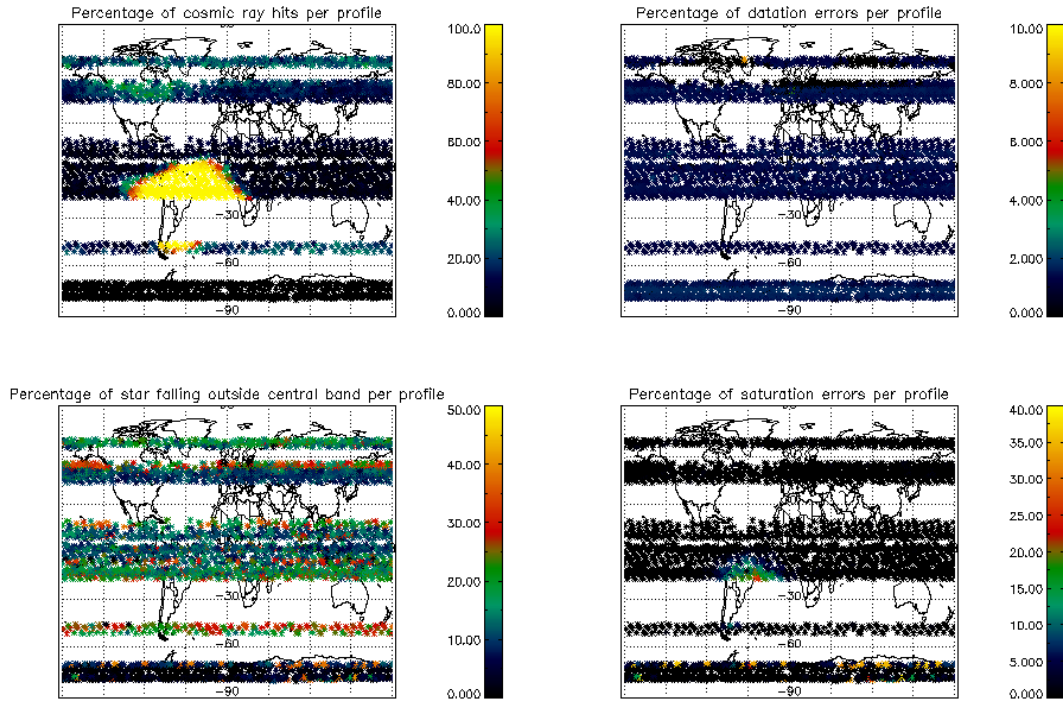


Figure 5.2-6: Level 1b product quality monitoring with respect to geo-location for ASCENDING ENVISAT passes

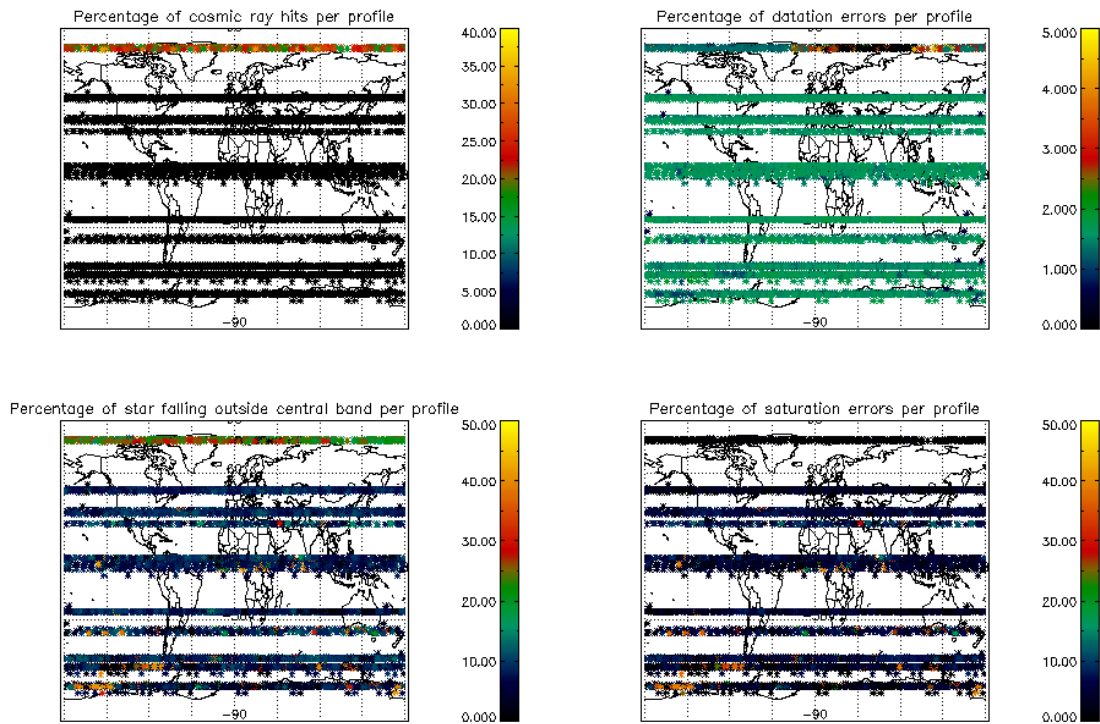


Figure 5.2-7: Level 1b product quality monitoring with respect to geo-location for DESCENDING ENVISAT passes

5.3 Spectral Performance

In previous spectral calibration exercises the results exceeded the warning value which is 0.07 nm (fig. 5.3-1). Since 8th August 2006, in parallel to the switch to GOMOS/5.00, a new set of ADFs is in use, and the wavelength shifts are again within the threshold. This set of ADF was used also for the second reprocessing (2002-4th July 2006), so good wavelength characterization has been used for the second reprocessing.

The values reported in the plot of fig. 5.3-1 are, for every star ID (1, 2, 9, 18, 25), the spectral shift on SPA2 CCD for which a maximum correlation has been found between the reference spectrum and the one of the occultation. During the last wavelength calibration analysis performed using some occultations of star id 1, 2 and 9 measured during August, the spectral shifts were again within the threshold.

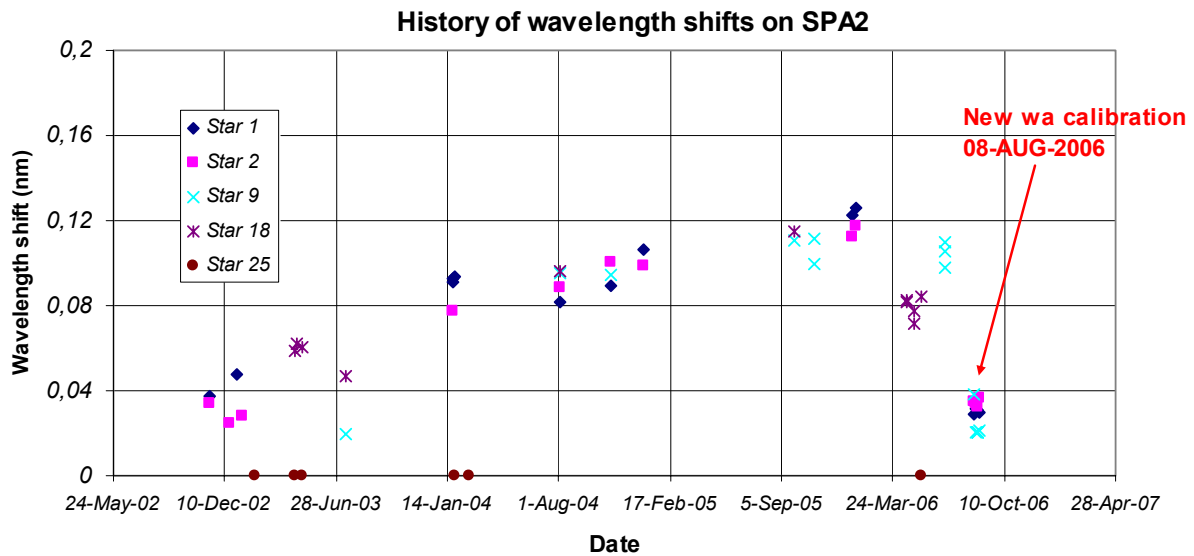


Figure 5.3-1: Wavelength shifts on SPA2 since 12th November 2002 calculated using different stars

5.4 Radiometric Performance

5.4.1 RADIOMETRIC SENSITIVITY

The monitoring performed consists of the calculation of the radiometric sensitivity of each CCD by computing the ratio between parts of the reference spectrum using specific stars (fig. 5.4-1). The parts of the spectrum used are:

- UV: 250–300 nm
- Yellow: 500–550 nm
- Red: 640–690 nm
- Ir1: 761-770 nm
- Ir2: 935-944 nm

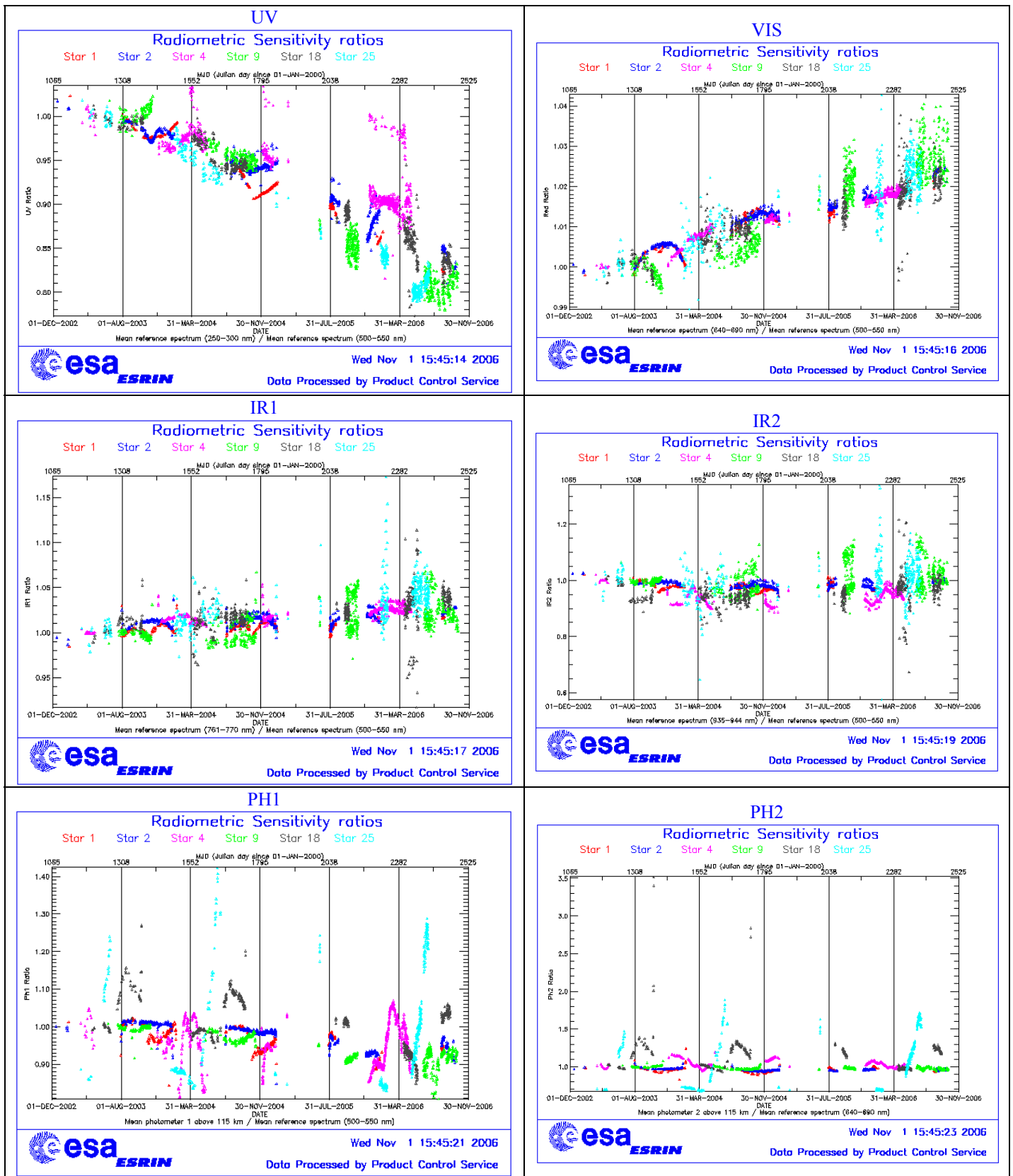


Figure 5.4-1: Radiometric sensitivity ratios since December 2002



For the spectrometers the ratios are with respect to the ‘yellow’ spectral range. For the photometers, the ratios are calculated by dividing the mean photometer signal above the atmosphere (115 km) by the ‘yellow’ spectral range (for PH1) or by the ‘red’ spectral range (for PH2).

The variation of the ratio should be within a given threshold which is set to 10% (see table 5.4-1 that corresponds to fig. 5.4-1). For every star, this variation is calculated as the difference between the maximum (or minimum) ratio, and the mean over the 15 first values (if there were not 15 values computed yet, all values would be used).

Table 5.4-1: Variation of RS for the different ratios (corresponds to fig. 5.4-1). Should be less than 10%

Star Id	% Variation of UV ratio	% Variation of Red ratio	% Variation of IR1 ratio	% Variation of IR2 ratio	% Variation of Ph1 ratio	% Variation of Ph2 ratio
1	3.9	0.8	0.4	0.2	8.6	30.2
2	1.0	1.1	0.6	0.4	8.3	7.9
4	0.5	1.3	1.5	1.3	8.1	23.5
9	16.5	1.3	0.8	0.6	11.1	9.1
18	3.2	1.4	1.6	1.8	14.8	300.0
25	29.3	1.3	1.8	1.3	28.1	147.4

For star 9 and 25 the UV ratio is greater than the threshold 10%. It is clear (fig. 5.4-1) that there is a global decrease of UV ratios for all the stars. This confirms the expected degradation suffered by the UV optics that is, anyway, very small considering also the small variation for the rest of the stars (table 5.4-1).

By looking at the photometers radiometric sensitivity ratios of fig. 5.4-1, it can be seen that every star has a variation that seems to be annual. The variation is significant for stars 25 and 18. After some investigations performed by the QWG that exclude an inaccurate reflectivity correction LUT, it seems that the PH1/2 radiometric sensitivity variations could come from the fact that the spectrometers and the photometers are not illuminated the same way when the straylight appears (seasonal effect).

5.4.2 PIXEL RESPONSE NON UNIFORMITY

No new PRNU calibration has been performed during the reporting period. This means that the PRNU maps inside the ADF remain as they are without any change for the moment.

5.5 Other Calibration Results

Future reports will address other calibration results, when available.

6 LEVEL 2 PRODUCT QUALITY MONITORING

6.1 Processor Configuration

6.1.1 VERSION

Level 2 products from the operational ground segment have been disseminated during the reporting period to the users. About 77% of GOM_NL_2P products have been received by the DPQC team for routine quality control and long term trend monitoring. The current level 2-processor software version for the operational ground segment is GOMOS/5.00 since 8th August 2006 (see table 6.1-1). The product specification is PO-RS-MDA-GS2009_10_3I. Users are also supplied with 2002 - 4th July 2006 data sets reprocessed by the last prototype processor GOPR_6.0c_6.0f (developed and operated by ACRI) which is in line with the current GOMOS operational ground segment version GOMOS/5.00

Table 6.1-1: PDS level 2 product version and main modifications implemented

Date	Version	Description of changes
08-AUG-2006	Level 2 version 5.00 at PDHS-E and PDHS-K	Algorithm baseline level 2 DPM 6.2: <ul style="list-style-type: none"> • The optimisation of the DOAS iterations • Negative column densities and local densities not flagged anymore • Suppress the setting of maximum error in case of negative local densities • Correction of H RTP discrepancies, and error estimates fixed • Rename Turbulence MDS into High Resolution Temperature MDS (H RTP) • Add vertical resolution per species in local densities MDS • Add Solar zenith angle at tangent point and at satellite level in geolocation ADS • Add "tangent point density from external model" in geolocation ADS • Suppress contribution of "tangent point density from external model" in "local air density from GOMOS atmospheric profile" in geolocation ADS
23-JUL-2006	Level 2 version 5.00 at FinCoPAC	Change in configuration at the time of the switch over: <ul style="list-style-type: none"> ○ 2nd order polynomial for aerosol ○ Air fixed to ECMWF (local density set to 0 in the L2 products) ○ Orphal cross-sections for O₃ ○ GOMOS cross-sections for other species ○ Covariance matrix terms linked to air set to 0 ○ Air and NO₂ additional errors set to 0
23-MAR-2003	Level 2 version 4.02 at PDHS-E and	Algorithm baseline level 2 DPM 5.5:

	PDHS-K	<p>Section 3</p> <ul style="list-style-type: none"> • Add references to technical notes on Tikhonov regularization • Change High level breakdown of modules: SMO/PFG • Change parameter: NFS in I2 ADF • Change parameter σ_G in I2 ADF (Table 3.4.1.1-II) • Change content of Level 2/res products – GAP • Change time sampling discretisation • Add covariance matrix explanation <p>Section 5</p> <ul style="list-style-type: none"> • Replace SMO by PFG VER-1/2: Depending on NFS, Apply either a Gaussian filter or a Tikhonov regularization to the vertical inversion matrix • Unit conversion applied on kernel matrix • Suppress VER-3 <p>Section 6</p> <ul style="list-style-type: none"> • GOMOS Atmospheric Profile (GAP): not used in this version • Time sampling in equation (6.5.3.7-73)
31-MAY-2003	Level 2 version 4.00 at PDHS-E and PDHS-K	<p>Algorithm baseline level 2 DPM 5.4:</p> <ul style="list-style-type: none"> • Revision of some default values • Add a new parameter • Transmission model computation: suppress tests on valid pixels and species • Apply a Gaussian filter to the vertical inversion matrix • Very low signal values are substituted by threshold value
21-NOV-2002	Level 2 version 3.61 at PDHS-E and PDHS-K	<p>Algorithm baseline level 2 DPM 5.3a:</p> <ul style="list-style-type: none"> • Revision of some default values • Wording of test T11 • Dilution term computation of jend • Covariance computation scaling applied before and after

Table 6.1-2: GOPR level 2 product version and main modifications implemented

Date	Version	Description of changes
14-OCT-2005	GOPR_6.0f	<ul style="list-style-type: none"> • The optimisation of the DOAS iterations • Negative column densities and local densities not flagged anymore • Suppress the setting of maximum error in case of negative local densities • Correction of H RTP discrepancies, and error estimates fixed <p>Configuration for second reprocessing:</p> <ul style="list-style-type: none"> ○ 2nd order polynomial for aerosol ○ Air fixed to ECMWF (local density set to 0 in the L2 products)

		<ul style="list-style-type: none"> ○ Orphal cross-sections for O₃ ○ GOMOS cross-sections for other species ○ Covariance matrix terms linked to air set to 0 ○ Air and NO₂ additional errors set to 0
17-MAR-2004	GOPR 6.0a	<ul style="list-style-type: none"> • Rename Turbulence MDS into High Resolution Temperature MDS (HRTP) • Add vertical resolution per species in local densities MDS • Add Solar zenith angle at tangent point and at satellite level in geolocation ADS • Add "tangent point density from external model" in geolocation ADS • Suppress contribution of "tangent point density from external model" in "local air density from GOMOS atmospheric profile" in geolocation ADS
18-AUG-2003	GOPR 5.4d	<ul style="list-style-type: none"> • Tikhonov regularisation is implemented
18-MAR-2003	GOPR 5.4b	<ul style="list-style-type: none"> • Modification to implement the computation of Tmodel for spectrometer B (in version 5.4b, the Tmodel for SPB is still set to 1)
30-JAN-2003	GOPR 5.4a	<ul style="list-style-type: none"> • Modifications for ACRI internal use only. No impact on level 2 products.

6.1.2 AUXILIARY DATA FILES (ADF)

The ADF's files in table 6.1-3 and 6.1-4 are used by the PDS to process the data from level 1 to level 2. For every type of file, the validity runs from the start validity time until the start validity time of the following one, but if an ADF file has been disseminated after the start validity time, it is obvious that it will be used by the PDHS-E and PDHS-K PDS only after the dissemination time (this happens the majority of the time). Note that the files outlined in yellow are the set of auxiliary files used during the reporting period.

Table 6.1-3: Table of historic GOM_PR2_AX files used by PDS for level 2 products generation. The GOM_PR2_AX is a file containing the configuration parameters used for processing from level 1b to level 2 products

Used by PDS for Level 2 products generation in period	GOM_PR2_AX (GOMOS Processing level 2 configuration file)
01-MAR-2002 → 29-JUL-2002	GOM_PR2_AXVIEC20020121_165624_20020101_000000_20200101_000000 <ul style="list-style-type: none"> • Pre-launch configuration
30-JUL-2002 → 02-SEP-2002	GOM_PR2_AXVIEC20020729_083851_20020301_000000_20100101_000000 <ul style="list-style-type: none"> • Maximum value of chi2 before a warning flag is raised (set to 5) • Maximum number of iterations for the main loop (set to 1)
03-SEP-2002 → 12-NOV-2003	GOM_PR2_AXVIEC20020902_151029_20020301_000000_20100101_000000 <ul style="list-style-type: none"> • Maximum value of chi2 before a warning flag is raised (set to 100)
13-NOV-2003 → 22-MAR-2004	GOM_PR2_AXVIEC20021112_170458_20020301_000000_20100101_000000 <ul style="list-style-type: none"> • Smoothing mode • Hanning filter • Number of iterations • Spectral windows to suppress the O2 absorption in the high spectral range of SPA2
23-MAR-2004 <i>Note:</i> this file was used by the GOMOS/4.02 processors before the IECF dissemination. The	GOM_PR2_AXVIEC20040316_145613_20020301_000000_20100101_000000 <ul style="list-style-type: none"> • Pressure at the top of the atmosphere • Number of GOMOS sources data (used in GAP)

dissemination was done on 25 th March 2004	<ul style="list-style-type: none"> • Activation flag for GOMOS sources data (GAP) • Smoothing mode (after the spectral inversion) • Atmosphere thickness
08-AUG-2006 Used at the time of switching over GOMOS/5.00	GOM_PR2_AXNIEC20051021_081111_20020301_000000_20100101_000000 <ul style="list-style-type: none"> • Several level 2 processing configuration parameters

Table 6.1-4: Table of historic GOM_CRS_AX files used by PDS for level 2 products generation. The GOM_CRS_AX is a file containing the cross sections used for processing from level 1b to level 2 products

Used by PDS for Level 2 products generation in period	GOM_CRS_AX (GOMOS Cross Sections file)
01-MAR-2002 → 08-MAR-2002	GOM_CRS_AXVIEC20020121_164026_20020101_000000_20200101_000000 <ul style="list-style-type: none"> • Pre-launch configuration
09-MAR-2003 → 29-JUL-2002	GOM_CRS_AXVIEC20020308_185417_20020101_000000_20200101_000000 <ul style="list-style-type: none"> • Corrected NUM_DSD in MPH - was 14 and is now 19 - and corrected spare DSD format by replacing last spare by carriage returns in file GOM_CRS_AXVIEC20020121_164026_20020101_000000_20200101_000000
30-JUL-2002 → 25-MAR-2004	GOM_CRS_AXVIEC20020729_082931_20020301_000000_20100101_000000 <ul style="list-style-type: none"> • O3 cross-sections summary description (SPA) • NO3 cross-sections summary description • O2 transmissions summary description • H2O transmissions summary description • O3 cross sections (SPA)
26-MAR-2004 <i>Note:</i> the file was disseminated on 27 Jan 2004 but could not be used by PDS until version GOMOS/4.02 was in operation	GOM_CRS_AXVIEC20040127_150241_20020301_000000_20100101_000000 <ul style="list-style-type: none"> • Update of the O2 and H2O transmissions (S.A input) • Extension by continuity of the O3 cross-section for SPB
08-AUG-2006 Used at the time of switching over GOMOS/5.00	GOM_CRS_AXNIEC20051021_080452_20020301_000000_20100101_000000 <ul style="list-style-type: none"> • Updated O₃ cross-sections

6.1.3 RE-PROCESSING STATUS

The improvement of the GOMOS processing chain is a continuous on-going activity, not only for the processing algorithm but also for the instrument characterization data. In order to provide the best quality products to the users and due to the normal delay between algorithm specification and implementation in the operational PDS, it has been decided to reprocess the GOMOS data using the GOPR prototype.

The second reprocessing activity covering years 2002-2006 (until 4th July 2006) using the prototype GOPR_6.0c_6.0f is completed. All reprocessed data can be retrieved via web query from <http://www.enviport.org/gomos/index.jsp>. FTP access to bulk reprocessing results (one tar file of GOMOS products per day) is allowed from the D-PAC: <ftp://gomo2usr@ftp-ops.de.envisat.esa.int>. See more details and latest status on http://www.enviport.org/boards/board_gomos.htm

6.2 Quality Flags Monitoring

In this section, some information contained in the Quality Summary data set of the level 2 products of October 2006 is shown. In particular, the percentage of flagged points per profile for the local species O₃, H₂O, NO₂ and NO₃ is depicted. Only products in dark limb illumination conditions and without fatal errors (error flag in the MPH set to "0") are used.

The flagging strategy for GOMOS version GOMOS/5.00 foresees that a profile point is flagged when:

- The local density is greater than a given maximum value
- The line density is not valid. And it occurs when:
 - The acquisition from level 1b is not valid
 - There is no acquisition used for reference star spectrum
 - The line density is greater than a given maximum value

Only for species: air, aerosol, O₃, NO₂, NO₃, OCIO

- No convergence after a given number of LMA iterations
- χ^2 out of LMA is bigger than χ^2
- Failure of inversion

Only for species: O₂, H₂O

- Spectro B only: no convergence
- Spectro B only: data not available
- Spectro B only: covariance not available

There are points mainly between -80° and +30° latitude (fig. 6.2-1) because in this period of the year full dark illumination condition occultations (only those products have been used for these plots) are geo-located on that region. In summer, full dark illumination data are mainly in the Southern Hemisphere while in winter it is the contrary: full dark illumination occultations are found mainly in the Northern Hemisphere.

Looking at fig. 6.2-1, the most evident characteristic that can be observed is the high percentage of flagged points per profile for some H₂O profiles. Users should be careful in using these data as the quality is only guaranteed for few stars. As a consequence of the new flagging strategy the percentage of flagged points per profile for O₃, NO₂ and NO₃ is around 10-15%. It can be seen also that there are latitudinal bands with almost the same color (same percentages) mainly for H₂O. This means that the percentages of flagged points per profile have a dependence on the stars that have been observed: a given star is always observed at the same latitude but at different longitude.

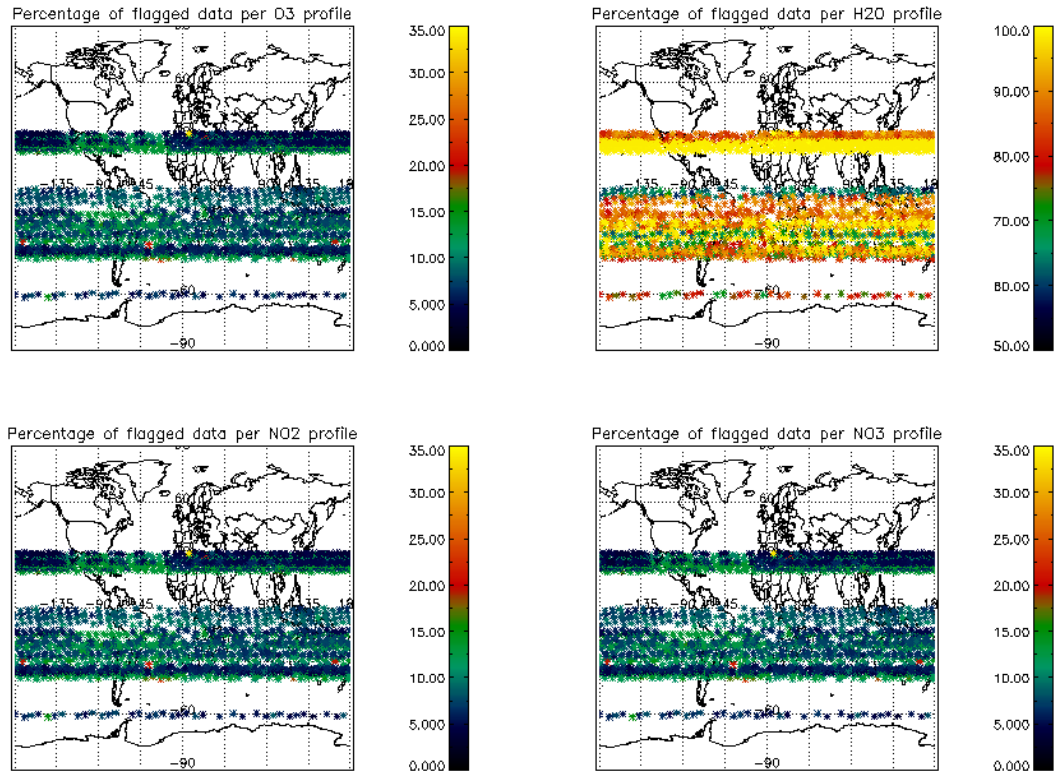


Figure 6.2-1: Percentage of flagged points per profile

6.3 Other Level 2 Performance Issues

The plot presented in fig. 6.3-1 is the average of the Ozone values during the reporting month in a grid of 0.5 degrees in latitude per 1 km in altitude. Only occultations in dark limb have been used. Even though there is a reduction on latitude coverage due to the restricted azimuth field of view of the instrument, still some known characteristics can be seen:

- O₃ concentrations show a decrease with latitude near 40 km altitude. In the lower latitudes O₃ is generated by photolysis of O₂
- In the middle stratosphere (25-30 km) O₃ is strongly influenced by transport effects. Strong meridional and zonal transport is visible in middle and higher latitudes
- The lower stratosphere shows an O₃ increase with latitude. Highest values can be found within higher latitude regions due to downward transport of rich air masses

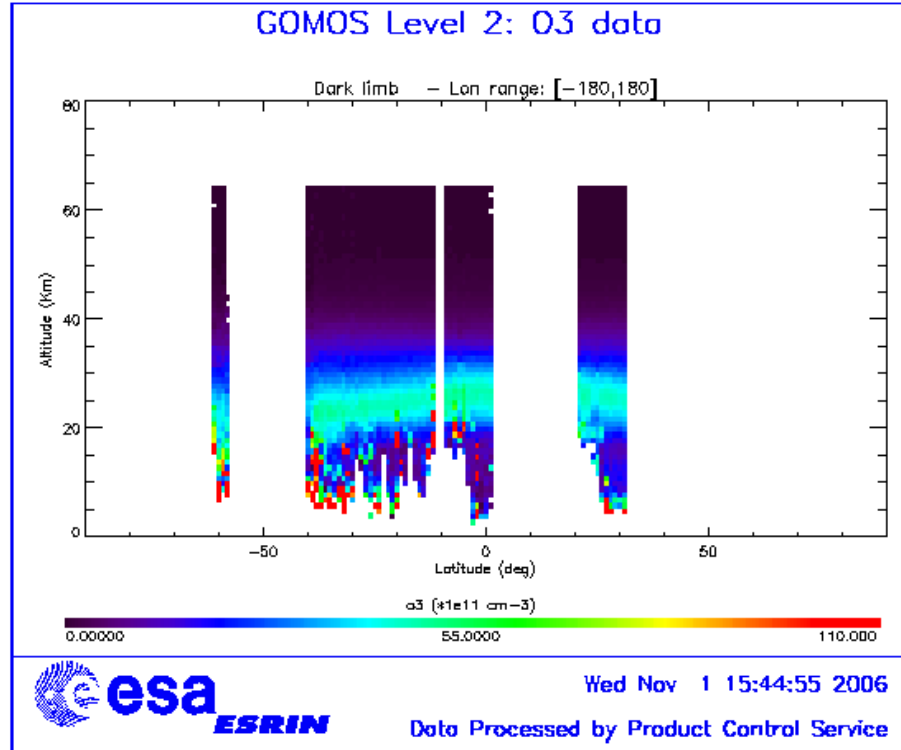


Figure 6.3-1: Average GOMOS O₃ profile during the reporting month: average in a grid of 0.5° latitude x 1 km altitude

7 VALIDATION ACTIVITIES AND RESULTS

7.1 GOMOS-ECMWF Comparisons

7.1.1 TEMPERATURE AND OZONE COMPARISONS

Following the changes in the retrieval scheme and conversion procedure into BUFR files of GOMOS data, the monitoring of NRT temperature and ozone profiles by ECMWF was not possible for October 2006. With the new version of the BUFR software, which is currently being installed, the problems will be solved and the service will be restored.

7.2 GOMOS-Climatology comparisons

Results are presented when available.

7.3 GOMOS Assimilation

Results are presented when available.

7.4 Consistency Verification: GOMOS-GOMOS Inter-comparison

There are presented here some results on the comparison of GOMOS measurements made on successive orbits and at very close locations. The swath corresponding to two successive orbits of ENVISAT overlap significantly. Since the launch of ENVISAT, GOMOS has been providing a significant number of couples of measurements from two successive orbits and in close spatial coincidence. The comparison of local density vertical profiles processed from such occultations measured in close coincidence may provide indications on the robustness of the processing algorithm. It also may give information on the impact of the star characteristics and of the illumination conditions on the retrieval quality.

7.4.1 EXAMPLES OF O₃ VERTICAL PROFILES FOR COINCIDENCES IN FULL DARK CONDITIONS

The vertical profiles of O₃ local density for the two occultations R8508/S143 and R8509/S1 measured in full dark conditions are plotted on fig. 7.4-1, upper panel-left (altitudes up to 60km, linear scale) and on fig. 7.4-1, upper panel-right (altitudes up to 100km, logarithmic scale). Only non-flagged values are plotted. The comparison of those profiles highlights some discrepancies between the local density values below 35km and above 60km, which may be due to the large difference of brightness between the two stars.

The vertical profiles of O₃ local density for the two occultations R7987/S88 and R7988/S14 are plotted on fig. 7.4-1 central panel (linear and logarithmic). As for the previous example, there are discrepancies between the two profiles. In the mesosphere (and thermosphere), the vertical profile of the brighter star occultation (S14) is discontinuous and of lower quality than the vertical profile from the other star.

The vertical profiles of O₃ local density for the two occultations R7782/S23 and R7783/S30 are plotted on fig. 7.4-1 lower panel (linear and logarithmic). For those two stars of closer brightness than for the previous examples, the agreement between the two profiles is good above 20km and up to the higher mesosphere. They also both capture the small-scale feature of the O₃ local minimum at 25km.

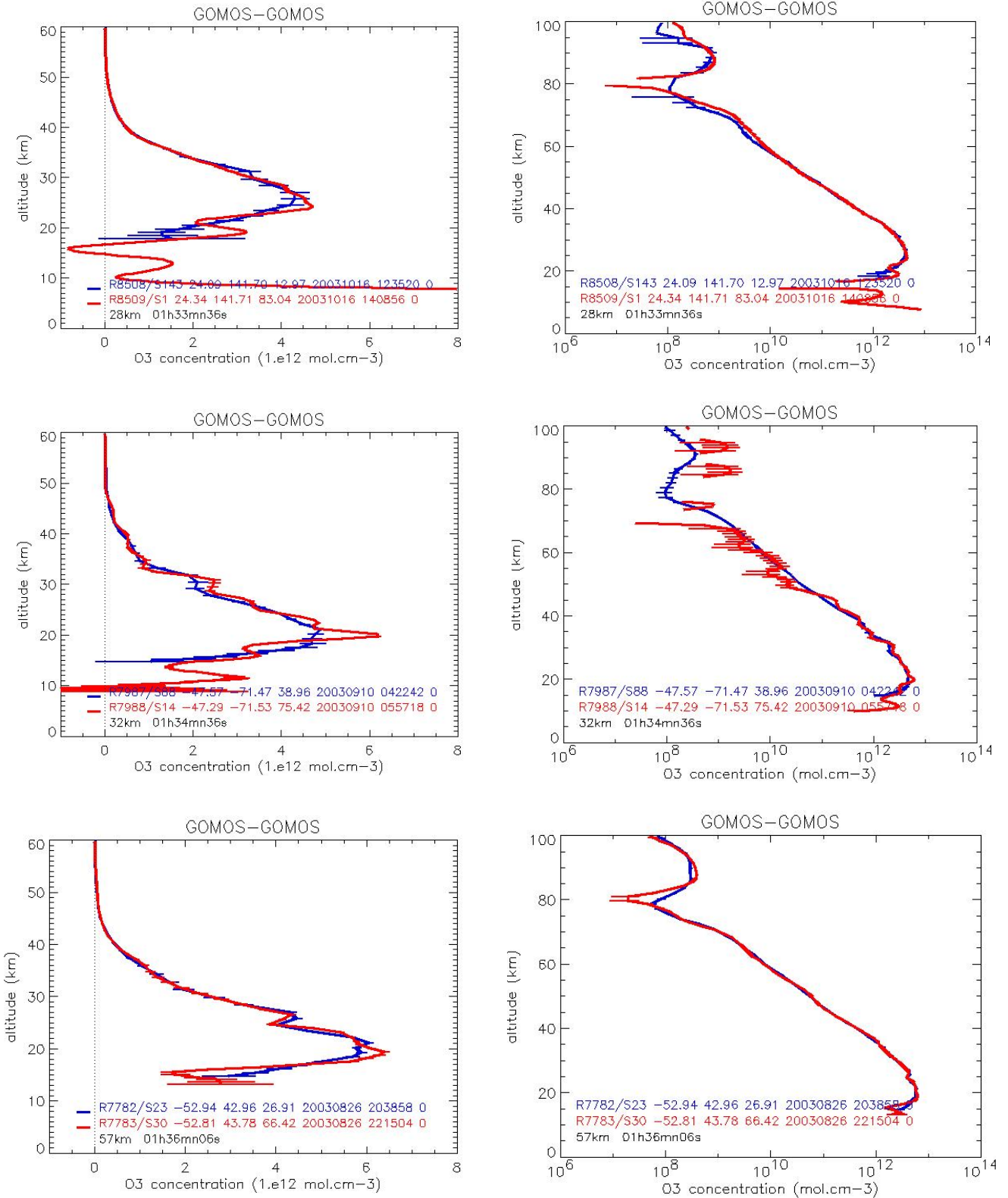


Figure 7.4-1: Vertical profiles of O₃ local density with error bars for different orbits (RXXXXX) and stars (SXX) in dark limb conditions. Latitude, longitude, obliquity, date (YYYYMMDD hhminsec) of the profiles are given in the legend, as well as distance and time difference between the two profiles

7.4.2 EXAMPLES OF O₃ VERTICAL PROFILES FOR COINCIDENCES IN STRAYLIGHT CONDITIONS

The vertical profiles of O₃ local density for the two occultations R11147/S12 and R11148/S25 measured in straylight conditions are plotted on fig. 7.4-2 upper panel (linear and logarithmic). The agreement between the two profiles is excellent above 20km. Fig. 7.4-2 lower panel (linear and logarithmic) present the O₃ vertical profiles for the occultation of S30 on two successive orbits. The agreement between the local density values of two profiles, including the error bar values, is good in the altitude range 25km-65km. At other altitude levels, as the impact of the star characteristics is to be ruled out, further analysis will be needed to determine if there is an impact of the algorithm itself on the discrepancies between the two profiles, or if some small-scale variability (the longitude difference between the two profiles is about 25°), especially in the lower stratosphere, may explain the differences between the two profiles. This investigation of the discrepancy sources will be extended to similar cases of self-coincidences.

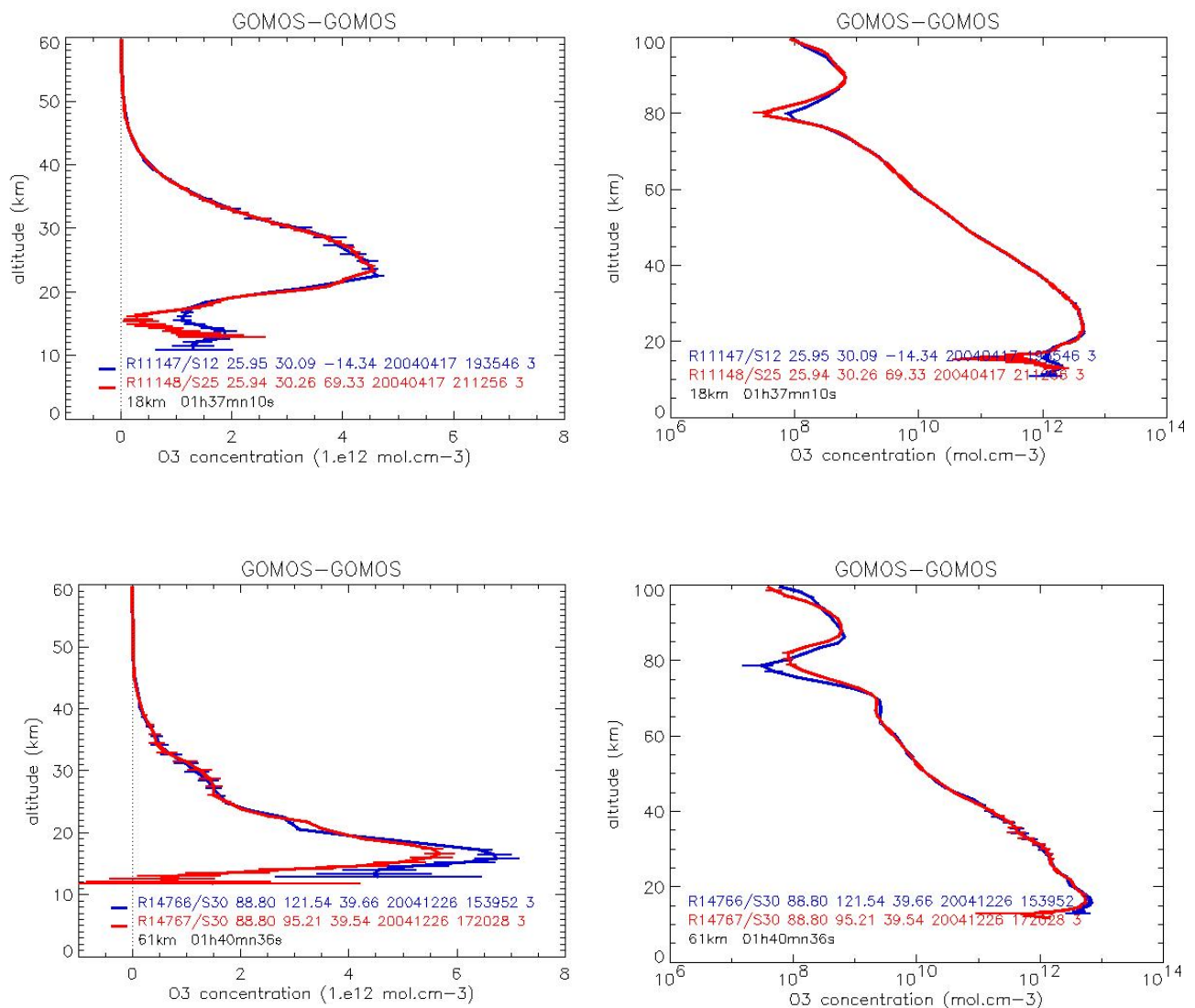


Figure 7.4-2: Vertical profiles of O₃ local density with error bars for different orbits (RXXXXX) and stars (SXX) in straylight conditions. Latitude, longitude, obliquity, date (YYYYMMDD hhminsec) of the profiles are given in the legend, as well as distance and time difference between the two profiles

7.5 Inter-Comparison with external data

Results are presented when available.