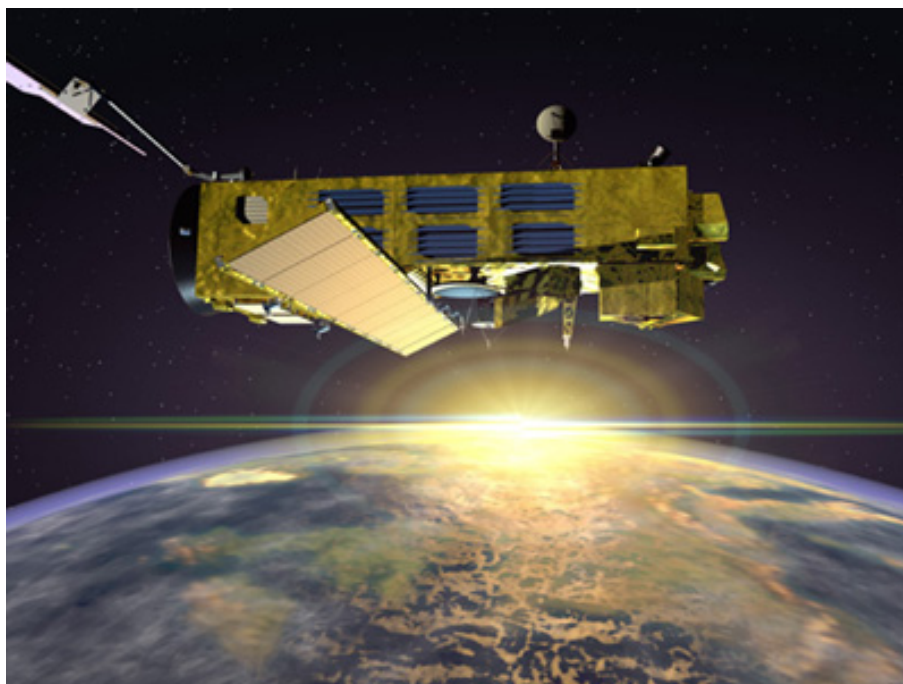

ENVISAT GOMOS Monthly report: November 2005



| | |
|----------------|------------------------------------|
| Prepared by: | Lidia Saavedra de Miguel - SERCO |
| Checked by: | Gareth Davies - VEGA |
| Approved by: | Gilbert Barrot - ACRI |
| Inputs from: | GOMOS Quality Working Group, ECMWF |
| Issue: | 1.0 |
| Reference: | ENVI-SPPA-EOPG-TN-05-0026 |
| Date of issue: | 20 December 2005 |
| Status: | Reviewed |
| Document type: | Technical Note |

T A B L E O F C O N T E N T S

| | |
|---|-----------|
| 1 INTRODUCTION..... | 3 |
| 1.1 Scope..... | 3 |
| 1.2 References..... | 3 |
| 1.3 Acronyms and Abbreviations..... | 3 |
| 2 SUMMARY..... | 6 |
| 3 INSTRUMENT UNAVAILABILITY..... | 7 |
| 3.1 GOMOS Unavailability Periods | 7 |
| 3.2 Stars Lost in Centering..... | 7 |
| 3.3 Data Generation Gaps..... | 10 |
| 3.3.1 Level 0 Products: GOM_NL__0P | 10 |
| 3.3.2 Higher Level Products..... | 11 |
| 4 INSTRUMENT CONFIGURATION AND PERFORMANCE..... | 11 |
| 4.1 Instrument Operation and Configuration | 11 |
| 4.2 Limb, Illumination conditions and instrument gain setting..... | 13 |
| 4.3 Thermal Performance..... | 14 |
| 4.4 Optomechanical Performance | 17 |
| 4.5 Electronic Performance..... | 20 |
| 4.5.1 Dark Charge Evolution and Trend..... | 20 |
| 4.5.2 Signal Modulation | 24 |
| 4.5.3 Electronic Chain Gain and Offset..... | 25 |
| 4.6 Acquisition, Detection and Pointing Performance | 26 |
| 4.6.1 SATU Noise Equivalent Angle | 26 |
| 4.6.2 Tracking Loss Information | 27 |
| 4.6.3 Most Illuminated Pixel (MIP)..... | 30 |
| 5 LEVEL 1 PRODUCT QUALITY MONITORING | 31 |
| 5.1 Processor Configuration..... | 31 |
| 5.1.1 Version | 31 |
| 5.1.2 Auxiliary Data files (ADF)..... | 33 |
| 5.2 Quality Flags Monitoring..... | 37 |
| 5.2.1 Quality Flags Monitoring (extracted from Level 2 products)..... | 39 |
| 5.3 Spectral Performance | 41 |
| 5.4 Radiometric Performance | 42 |
| 5.4.1 Radiometric Sensitivity | 42 |
| 5.4.2 Pixel Response Non Uniformity..... | 44 |
| 5.5 Other Calibration Results..... | 44 |
| 6 LEVEL 2 PRODUCT QUALITY MONITORING | 44 |
| 6.1 Processor Configuration..... | 44 |
| 6.1.1 Version | 44 |
| 6.1.2 Auxiliary Data Files (ADF)..... | 46 |
| 6.1.3 Re-Processing Status | 47 |
| 6.1.3.1 First reprocessing..... | 48 |
| 6.1.3.2 Second reprocessing | 48 |
| 6.1.3.2.1 New flagging strategy | 49 |
| 6.2 Quality Flags Monitoring..... | 50 |
| 6.3 Other Level 2 Performance Issues | 52 |

| | |
|--|-----------|
| 7 VALIDATION ACTIVITIES AND RESULTS | 53 |
| 7.1 GOMOS-ECMWF Comparisons | 53 |
| 7.1.1 Temperature and Ozone Comparisons..... | 53 |
| 7.1.1.1 November 2005 | 54 |
| 7.2 GOMOS-Climatology comparisons..... | 54 |
| 7.3 GOMOS Assimilation..... | 54 |
| 7.4 Consistency Verification: GOMOS-GOMOS Inter-comparison | 54 |
| 7.5 Inter-Comparison with external data..... | 54 |

1 INTRODUCTION

The GOMOS monthly report documents the current status and recent changes to the GOMOS instrument, its data processing chain, and its data products.

The Monthly Report (hereafter MR) is composed of analysis results obtained by the Data Processing and Quality Control, combined with inputs received from the different entities working on GOMOS operation, calibration, product validation and data quality. These teams participate in the GOMOS Quality Working Group:

- European Space Agency (ESRIN, ESOC, ESTEC-PLSO)
- DPQC
- ACRI
- Service d'Aeronomie
- Finnish Meteorological Institute
- IASB-Belgian Institute for Space Aeronomy
- Astrium Space
- ECMWF

In addition, the group interfaces with the Atmospheric Chemistry Validation Team.

1.1 *Scope*

The main objective of the Monthly Report is to give, on a regular basis, the status of GOMOS instrument performance, data acquisition, results of anomaly investigations, calibration activities and validation campaigns. The following six sections compose the MR:

- Summary
- Unavailability
- Instrument Configuration and Performance
- Level 1 Product Quality Monitoring
- Level 2 Product Quality Monitoring
- Validation Activities and Results

1.2 *References*

- [1] ENVISAT Weekly Mission Operations Report #177, 178#, #179, #180 ENVI-ESOC-OPS-RP-1011-TOS-OF
- [2] ECMWF GOMOS Monthly Reports

1.3 *Acronyms and Abbreviations*

| | |
|------|---------------------------------------|
| ACVT | Atmospheric Chemistry Validation Team |
| ADC | Analogue-to-Digital Converter |

| | |
|-------|--|
| ADF | Auxiliary Data File |
| ADS | Auxiliary Data Server |
| ANX | Ascending Node Crossing |
| ARB | Anomaly Review Board |
| ARF | Archiving Facility (PDS) |
| CCU | Central Communication Unit |
| CFS | CCU Flight Software |
| CNES | Centre National d'Études Spatiales |
| CTI | Configuration Table Interface / Configurable Transfer Item |
| CR | Cyclic Report |
| DC | Dark Charge |
| DMOP | Detailed Mission Operation Plan |
| DPM | Detailed Processing Model |
| DPQC | Data Processing and Quality Control |
| DS | Data Server |
| DSA | Dark Sky Area |
| DSD | Data Set Descriptor |
| ECMWF | European Centre for Medium Weather Forecast |
| EQSOL | Equipment Switch Off Line |
| ESA | European Space Agency |
| ESL | Expert Support Laboratory |
| ESRIN | European Space Research Institute |
| ESTEC | European Space Research & Technology Centre |
| ESOC | European Space Operations Centre |
| FCM | Fine Control Mode |
| FMI | Finnish Meteorological Institute |
| FOCC | Flight Operations Control Centre (ENVISAT) |
| FP1 | Fast Photometer 1 |
| FP2 | Fast Photometer 2 |
| GADS | Global Annotations Data Set |
| GOMOS | Global Ozone Monitoring by Occultation of Stars |
| GOPR | GOmos PRototype |
| GS | Ground Segment |
| HK | Housekeeping |
| IASB | Institut d'Aeronomie Spatiale de Belgique |
| IAT | Interactive Analysis Tool |
| ICU | Instrument Control Unit |
| IDL | Interactive Data Language |
| IECF | Instrument Engineering and Calibration Facilities |
| IMK | Institute of Meteorology Karlsruhe (Meteorologisch Institut Karlsruhe) |
| INV | Inventory Facilities (PDS) |
| IPF | Instrument Processing Facilities (PDS) |
| JPL | Jet Propulsion Laboratory |
| LAN | Local Area Network |
| LMA | Levenberg-Marquardt Algorithm |
| LPCE | Laboratoire de Physique et Chimie de l'Environnement |
| LUT | Look Up Table |
| MCMD | Macro Command |

| | |
|--------|---|
| MDE | Mechanism Drive Electronics |
| MIP | Most Illuminated Pixel |
| MPH | Main Product Header |
| MPS | Mission Planning System |
| MR | Monthly Report |
| OBT | On Board Time |
| OCM | Orbit Control Manoeuvre |
| OOP | Out-of-plane |
| OP | Operational Phase of ENVISAT |
| PAC | Processing and Archiving Centre (PDS) |
| PCF | Product Control Facility |
| PDCC | Payload Data Control Centre (PDS) |
| PDHS | Payload Data Handling Station (PDS) |
| PDHS-E | Payload Data Handling Station – ESRIN |
| PDHS-K | Payload Data Handling Station – Kiruna |
| PDS | Payload Data Segment |
| PEB | Payload Equipment Bay |
| PLSOL | Payload Switch off Line |
| PMC | Payload Module Computer |
| PRNU | Pixel Response Non Uniformity |
| PSO | On-Orbit Position |
| QC | Quality Control |
| QUARC | Quality Analysis and Reporting Computer |
| QWG | Quality Working Group |
| RGT | ROP Generation Tool |
| RIVM | Rijksinstituut voor Volksgezondheid en Milieu |
| ROP | Reference Operations Plan |
| RTS | Random Telegraphic Signal |
| SA | Service d’Aeronomie |
| SAA | South Atlantic Anomaly |
| SATU | Star Acquisition and Tracking Unit |
| SFA | Steering Front Assembly |
| SFCM | Stellar Fine Control Mode |
| SFM | Steering Front Mechanism |
| SMNA | Servicio Meteorológico Nacional de Argentina |
| SODAP | Switch On and Data Acquisition Phase |
| SPA1 | Spectrometer A CCD 1 |
| SPA2 | Spectrometer A CCD 2 |
| SPB1 | Spectrometer B CCD 1 |
| SPB2 | Spectrometer B CCD 2 |
| SPH | Specific Product Header |
| SQADS | Summary Quality Annotation Data Set |
| SSP | Sun Shade Position |
| SZA | Solar Zenith Angle |
| VCCS | Voice Coil Command Saturation |

2 SUMMARY

During the month of November 2005 GOMOS was always available and working well within the new operation scenario which foresees that in case of a voice coil anomaly occurrence (to which GOMOS has been subject since 25th January 2005) the instrument control unit (ICU) ignores the error, continues operation and rallies the telescope to the position of the following star observation (section 4.1).

On 10th November 2005 GOMOS suffered one occurrence of Voice Coil anomaly with the subsequent loss of star 113.

Data availability (when instrument was in operation): the level 0 data availability is around 97% for the reporting month while for level 1b the archived products are around 80%. The reason for the low statistics on level 1b products is that the allocated processing time is lower than the real processing time with the result that the end of the orbit is systematically not processed. Now the problem is solved and the statistics on level 1b products availability should increase for the next months (section 3.3).

Temperatures: The CCD temperatures during November 2005 period show the expected global increase due to the radiator ageing. Another expected variation of the temperatures, the seasonal one, with amplitude of around 0.8 degree can also be observed (section 4.3).

Optomechanical performance: A new calibration exercise was performed during November. The position of the stellar spectra of star id 29, 112, 94 and 26 observed in dark-limb spatial spread monitoring mode have been averaged above 120 km altitude and compared to the values of the LUT. The results confirm the LUT values so for the time being there is no need to update the table (section 4.4).

Modulation signal: The standard deviation of the modulation signal presents high values during summer time. The South Atlantic Anomaly is now confirmed as the cause of these unexpected peaks. The quality of ESRIN data, in particular over the SAA zone, is thus under investigation. However, in the second half of October (both 2004 and 2005), the peaks are smaller because the DSA zone where the data are taken for this analysis is moving towards the Northern Hemisphere. At the end of October the DSA zone is definitely chosen by the planning system in the Northern Hemisphere (to fill the criteria 'DSA in full dark limb conditions') and the high peaks disappear (section 4.5.2).

Electronic chain gain and offset calibration:

- **Offset:** During November 2005 an exercise has been done to analyze the variation of the ADC offset using the calibration observation in linearity mode performed on 28th November 2005. The unexpected increase of this offset since the beginning of the mission seems to be related with the presence of hot pixels in the memory area of the CCD (section 4.5.3).
- **Electronic chain gain:** An electronic chain gain calibration exercise has been performed. The values obtained have been compared with the ones written in the ADF and used by the operational IPF. The relative difference is much less than 20% (threshold to change the ADF values) and thus no update of the gain is foreseen after this analysis (section 4.5.3).

Star detection performance: the stars should be detected not far from the SATU center, that is, pixel number 145 in elevation and number 205 in azimuth. It has been observed that the azimuth MIP was within the threshold since September 2002 until the occurrence of the VCCS anomaly on January 2005. The reason for the change in trend observed after the anomaly is, at the moment, not understood. The

elevation MIP had a significant variation until 12th December 2003 when a new PSO algorithm was activated in order to reduce the deviations of the ENVISAT platform attitude with respect to the nominal one. Similarly to the azimuth, after the anomaly of January 2005 the Elevation MIP has a drift that has no explanation. Investigations are ongoing to try to understand this behavior of the MIP as although it does not impact the data quality, it may invalidate attitude monitoring by GOMOS and could represent a hidden anomaly (section 4.6.3).

Radiometric sensitivity monitoring: for stars 25 and 9, the UV ratio is greater than the threshold 10%. It is clear that there is a global decrease of UV ratios for all the stars. This confirms the expected degradation suffered by the UV optics that is, anyway, very small considering also the small variation for the rest of the stars. For the photometers radiometric sensitivity ratios it is observed that every star has a variation that seems to be seasonally related. The variation is significant for stars 25 and 18. After some investigations performed by the QWG, it has been concluded that the problem is not linked to the photometers. A further indication that the problem is not on the photometer sensitivity is that every star has a very different behaviour (section 5.4.1).

Dark Charge calibration: new calibration ADF's (GOM_CAL_AX files) were disseminated during the reporting period with updated DC calibration maps (see dates and orbits used for the calibrations in section 5.1.2).

3 INSTRUMENT UNAVAILABILITY

3.1 GOMOS Unavailability Periods

During the reporting period (1st November – 30th November 2005) GOMOS was always in measurement mode.

3.2 Stars Lost in Centering

The acquisition of a star initiates with a rallying phase where the telescope mechanism is directed towards the expected position of the star. Subsequently the acquisition procedure enters into detection mode, where the SATU star tracker output signal is pre-processed for spot presence survey and for the location of the most illuminated couple of adjacent pixels for two added lines, over the detection field. The Most Illuminated Pixel (MIP) defines the position of the first SATU centering window. The following step in the acquisition sequence is then initiated and consists of a centering phase where the SATU output signal is pre-processed for spot presence survey over the maximum of 10x10 pixel field. This allows the third phase to begin: the tracking phase.

The centering phase has occasionally resulted in loss of the star from the field of view. Fig. 3.2-1 reports the percentage of the stars lost in centering for the period 03-FEB-2003 to 27-NOV-2005. It can be seen that three stars, mainly weak stars (higher star id means higher magnitude) are lost during the centering phase between 5 and 6 % of their planned observations. The star id 115 was lost 40% of the times but it was planned to be occulted five times and was lost twice (in period 19-25 January 2004), so this high percentage of loss is not statistically significant.

As the monitoring shows neither a trend nor excessively high percentages of loss, there is no need for the moment to reject any star from the catalogue, and there is no indication of instrument-related problems.

Now with the instrument in a new operation scenario, the stars are also lost due to the anomaly “elevation voice coil command saturation” even if the instrument is not going anymore to stand by / Refuse mode. During the reporting month GOMOS suffered only one VCCS anomaly with the loss of star 113.

Statistics on stars lost in centering: 03-FEB-2003 until 27-NOV-2005

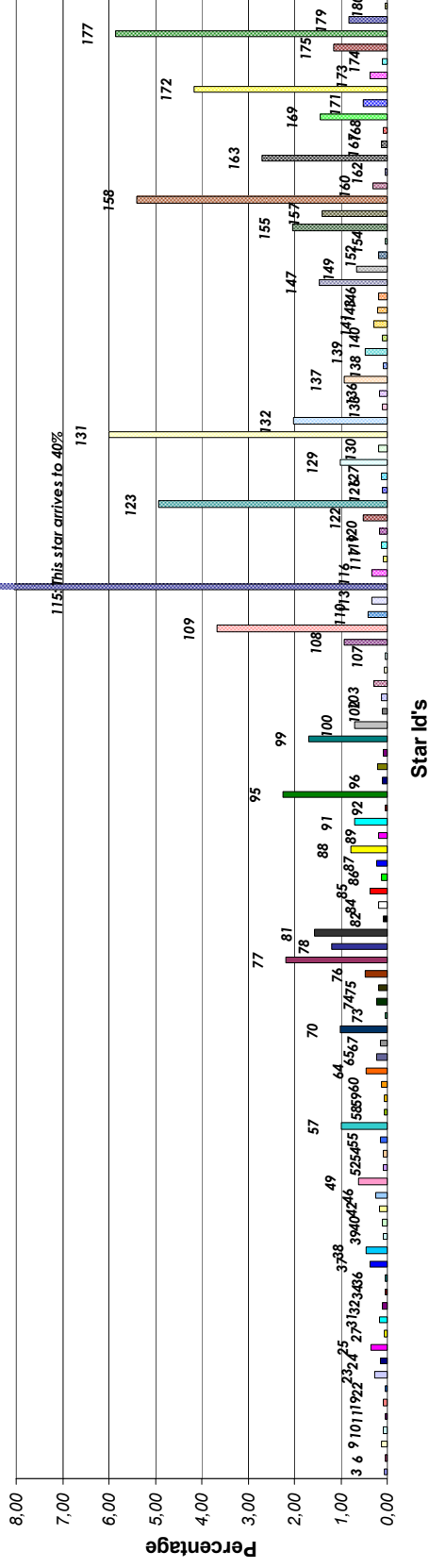


Figure 3.2-1: Statistics on stars that have been lost during the centering phase. The number above the columns correspond to the Star ID



3.3 Data Generation Gaps

The trend in percentage of available data within the archives PDHS-K and PDHS-E is depicted in fig. 3.3-1 (when instrument was in operation). It is a good indicator on how the PDS chain is working in terms of generation and dissemination of data to the archives. The percentage is calculated once per week.

For November the level 0 data availability is around 97% while for level 1b the archived products are around 80%. The reason for the low statistics on level 1b products is that the allocated processing time is lower than the real processing time with the result that the end of the orbit is systematically not processed. Now the problem is solved and the statistics on level 1b products availability should increase for the next months.

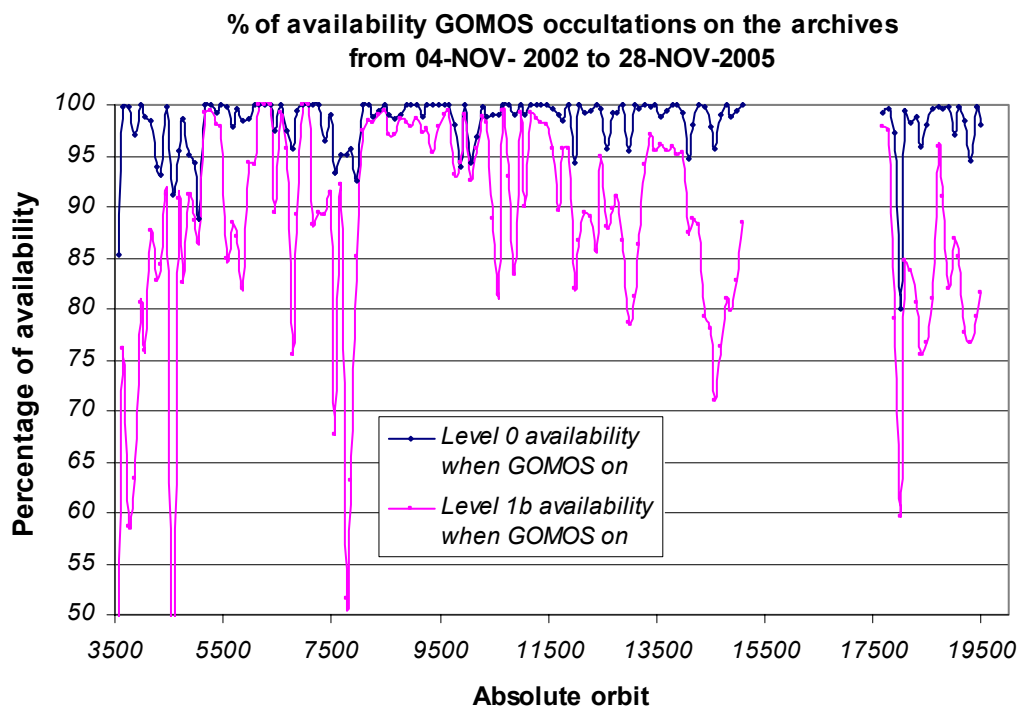


Figure 3.3-1: Percentage of level 0 and level 1b data availability on the archives PDHS-E and PDHS-K

3.3.1 LEVEL 0 PRODUCTS: GOM_NL__0P

Occultations planned to be acquired but for which no GOM_NL__0P data product has become available are presented in fig. 3.3-2 for the reporting period.

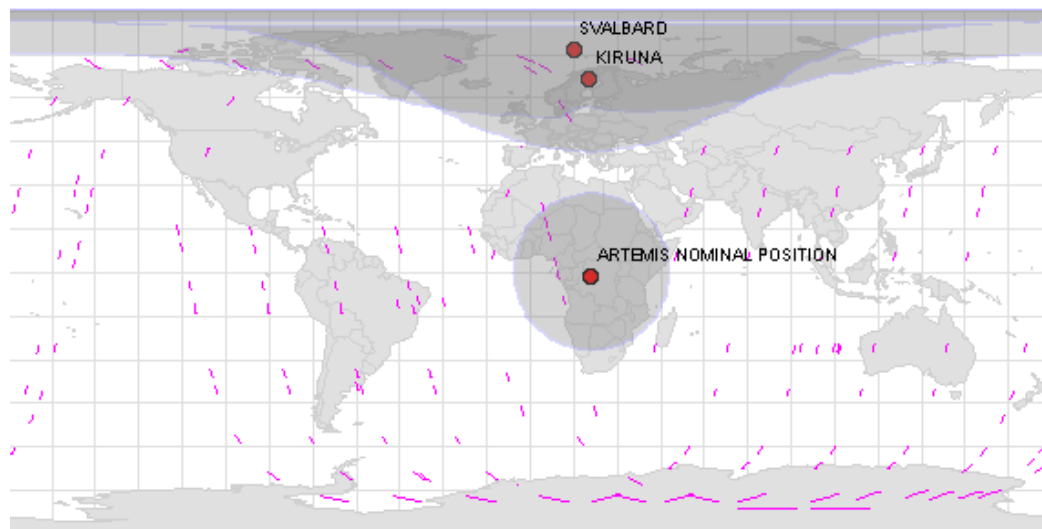


Figure 3.3-2: The pink lines are the orbit segments corresponding to planned data acquisitions for which no GOMOS level 0 product has become available. The grey shadows centered in Kiruna and Svalbard represents the visibility of those acquisition stations while the point over Africa represents the nominal position of ARTEMIS satellite

3.3.2 HIGHER LEVEL PRODUCTS

Routine dissemination of higher-level products produced by the PDS to the users is enabled. Year 2003 data (level 2) reprocessed by the processor developed and operated by ACRI are available (see section 6.1.3). A new reprocessing activity with the latest prototype version is on-going and products of years 2002-2004 and January 2005 will be soon available through the D-PAC ftp server <ftp-ops.de.envisat.esa.int>. The next operational processor (the current version is GOMOS 4.02, the next one will be GOMOS/5.00) that generates data in near real time will be in line with the prototype used for the last reprocessing.

4 INSTRUMENT CONFIGURATION AND PERFORMANCE

4.1 *Instrument Operation and Configuration*

During the period end of March 2003 to July 2003 the azimuth range had to be decreased in steps (table 4.1-1) to avoid an instrument problem (“Voice_coil_command_saturation” anomaly) that caused GOMOS to go into STAND BY/REFUSE mode. On July 2003 the driver assembly was switched to the redundant B-side and since that date the full azimuth range (-10.8, +90.8) was again available until the second major anomaly occurred on 25th January 2005. Between this date and until the instrument was declared operational again (29th August 2005), GOMOS has been operated for testing and anomaly investigation purposes in different operations scenarios. The historical changes in azimuth configuration are summarized in table 4.1-1.

The new operation scenario of GOMOS consists of:

- Planning 2 orbits per sequence (nominal were 5): this is done because in case of a voice coil failure with subsequent loss of star observation, the maximum loss of consecutive observations cannot exceed two orbits.
- Reduced azimuth field of view $[-5^\circ, +20^\circ]$ (nominal was $[-10^\circ, +90^\circ]$): as the anomaly occurs during the rallying of the telescope in the preparation for the star observation, it has been decided to reduce the field of view in order to minimize the voice failure occurrence probability

Table 4.1-1: Historical changes in Azimuth configuration when GOMOS operational

| Date | Orbit | Minimum Azimuth | Maximum Azimuth |
|-------------------|-------|-----------------|-----------------|
| 29-MAR-2003 17:40 | 5635 | 0.0 | +90.8 |
| 31-MAY-2003 06:22 | 6530 | +4.0 | +90.8 |
| 16-JUN-2003 16:17 | 6765 | +12.0 | +90.8 |
| 15-JUL-2003 01:39 | 7200 | -10.8 | +90.8 |
| 25-JAN-2005 23:33 | 15200 | tests | tests |
| 29-AUG-2005 02:52 | 18280 | -10 | +10 |
| 26-SEP-2005 01:32 | 18680 | -5 | +20 |
| 03-OCT-2005 01:12 | 18780 | -5 | +15 |
| 09-OCT-2005 21:30 | 18878 | -5 | +20 |

The planned GOMOS operations are identified in table 4.1-2. During the reporting month the instrument was working in occultation mode except for eight orbits on 27th November 2005 when a calibration sequence was performed.

Table 4.1-2: GOMOS planned operations. The planning is built on a 2-orbit sequence basis (2 orbits with the same stars)

| UTC Start | Start Orbit | Stop Orbit | Mode (Asynchronous or Synchronous) | Calibration (CAL) Dark Sky Area (DSA) or Nominal (Nom) |
|----------------------|-------------|------------|------------------------------------|--|
| 01-NOV-2005 02:41:10 | 19196 | 19579 | S | Nom |
| 27-NOV-2005 22:31:06 | 19580 | 19587 | A | CAL71 |
| 28-NOV-2005 11:55:54 | 19588 | 19623 | S | Nom |

There was no new Configurable Table Interface (CTI) uploaded to the instrument. The files used since the beginning of the mission are in table 4.1-3.

Table 4.1-3: Historic CTI Tables

| CTI filename | Dissemination to FOCC |
|--|-----------------------|
| CTI_SMP_GMVIEC20030716_123904_00000000_00000004_20030715_000000_20781231_235959.N1 | 16-JUL-2003 |
| CTI_SMP_GMVIEC20021104_075734_00000000_00000003_20021002_000000_20781231_235959.N1 | 06-NOV-2003 |
| CTI_SMP_GMVIEC20021002_082339_00000000_00000002_20021002_000000_20781231_235959.N1 | 07-OCT-2003 |
| CTI_SMP_GMVIEC20020207_154455_00000000_00000000_20020301_032709_20781231_235959.N1 | 21-FEB-2002 |

4.2 Limb, Illumination conditions and instrument gain setting

The **limb** and the **illumination condition** are two parameters that can confuse the user community. In table 4.2-1 there are specified the product parameter (level 1b and level 2 of operational processor GOMOS/4.02) where the flag is located, the meaning and the source. The difference between the limb (SPH/bright_limb) and the illumination condition (SUMMARY_QUALITY/limb_flag) is that the first one is coming from the mission scenario and the second is coming from the processing (sun zenith angle computed). The SPH/bright_limb is for some occultations set to “dark” in the mission scenario while they are in fact in bright limb illumination conditions. To select the highest quality data for scientific applications, data with SUMMARY_QUALITY/limb_flag equal to ‘0’ should be used (see also the disclaimer: <http://envisat.esa.int/dataproducts/availability/disclaimers>). The instrument gain settings are also specified in table 4.2-1 (they depend on the mission scenario flags) just for completeness of information.

Table 4.2-1: Relationship between limb, illumination condition flags and instrument gain settings (operational IPF version GOMOS/4.02)

| | | | | |
|--------------------|---------------------------|---|----------------------------|---|
| Products parameter | SPH/bright_limb | 0 = Dark | 1 = Bright | Coming from mission scenario |
| | SUMMARY_QUALITY/limb_flag | 0 = Full Dark 1 = Bright 2 = Twilight | 1 = Bright 2 = Twilight | In the geolocation process the sun zenith angle is computed and the occultation then is flagged accordingly |
| Instrument Gain | SPA Gain | 3 (2) | 0 | Gain setting for spectrometer A. In parenthesis, values valid only for Sirius occultations (starID=1) |
| | SPB Gain | 0 | 0 | Gain setting for spectrometer B |

The same is valid for the prototype version GOPR_6.0a_6.0a and following ones (including the one that is used for the on-going second reprocessing of 2002-2005 years), where the **limb** is in fields SPH/bright_limb and SUMMARY_QUALITY/dark_bright_limb and the **illumination condition** is in field SUMMARY_QUALITY/obs_ill_cond. For these prototypes, the illumination condition can have five values (see table 4.2-2).

Table 4.2-2: Relationship between limb, illumination condition flags and instrument gain settings (prototype version GOPR 6.0a_6.0a and following ones)

| | | | | |
|--------------------|---|--|------------|---|
| Products parameter | SPH/bright_limb SUMMARY_QUALITY/dark_bright limb | 0 = Dark | 1 = Bright | Coming from mission scenario |
| | SUMMARY_QUALITY/obs_ill_cond | 0 = Full Dark 1 = Bright 2 = Twilight 3 = Straylight 4 = Twi.+Stray. | | In the geolocation process the sun zenith angle is computed and the occultation then is flagged accordingly |
| Instrument Gain | SPA Gain | 3 (2) | 0 | Gain setting for spectrometer A. In parenthesis, values valid only for Sirius occultations (starID=1) |
| | SPB Gain | 0 | 0 | Gain setting for spectrometer B |

4.3 Thermal Performance

Since the beginning of the mission, the hot pixel and RTS phenomena have been producing a continuous increase of the dark charge signal within the CCD detectors (see section 4.5.1). In order to minimize this effect, three successive CCD cool downs were performed in orbits 800 (25th April 2002), 1050 (13th May 2002) and 2780 (11th September 2002) with a total decrease in temperature of 14 degrees.

Fig. 4.3-1 and 4.3-2 display, respectively, the overall temperature variation and the temperature variation around the Ascending Node Crossing (ANX) time with a resolution of 0.4 degrees (coding accuracy for level 0 data). The CCD temperatures during November 2005 period show the expected global increase due to the radiator ageing.

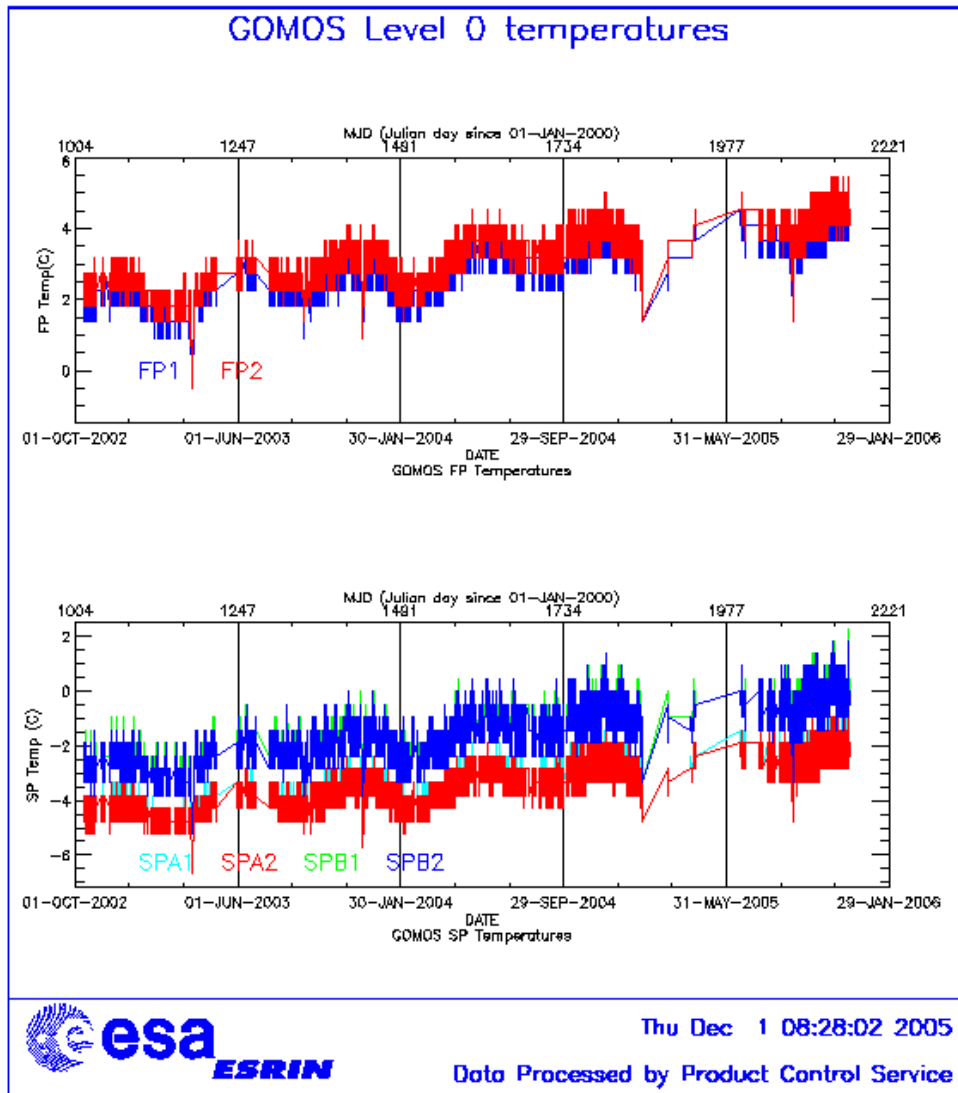


Figure 4.3-1: Level 0 temperature evolution of all GOMOS CCD detectors since October 2002 until the end of the reporting period

Another expected variation of the temperatures, the seasonal one, with amplitude of around 0.8 degree, can be also observed. The peaks that occur mainly in spectrometer B1 and B2 are also to be noted. They happen a little before the ANX for some consecutive orbits and every 8-10 days. Their origin is not known, as we did not find any correlation between these peaks and other activities carried out by other ENVISAT instruments. The CCD temperature at almost the same latitude location (fig. 4.3-2) is monitored in order to detect any inter-orbital temperature variation. The abnormal decreases observed sometimes in all detectors are after GOMOS switch off periods, when the instrument did not have enough time to reach the nominal temperature before starting the measurements.

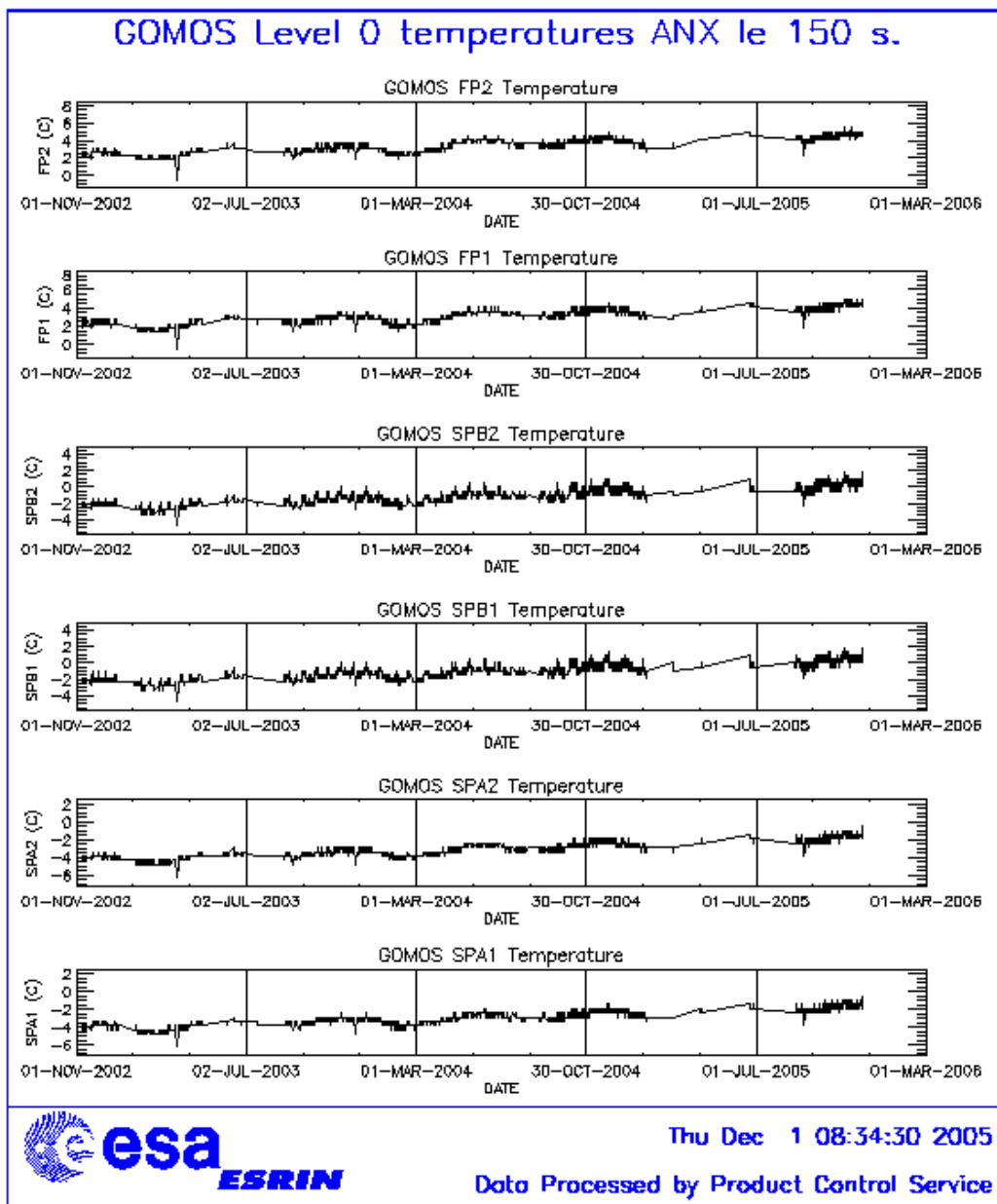


Figure 4.3-2: Level 0 temperature evolution of all GOMOS CCD detectors around ANX since November 2002 until the end of the reporting period

During November 2005, the orbital temperature variation of the detector SPB2 for ascending and descending passes (fig. 4.3-3 and 4.3-4) is nominal, 2.5-3 degrees.

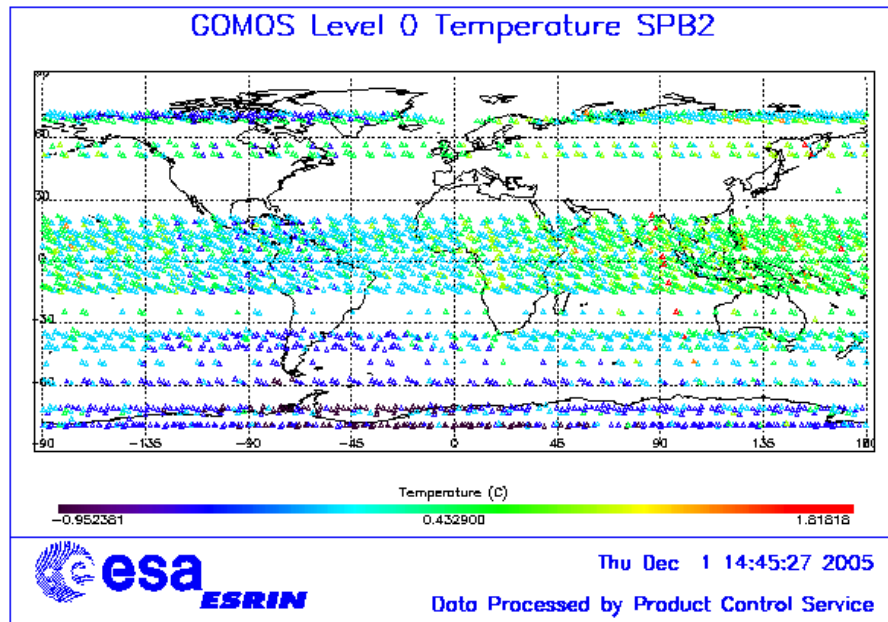


Figure 4.3-3: Ascending orbital variation of SPB2 temperature during reporting period

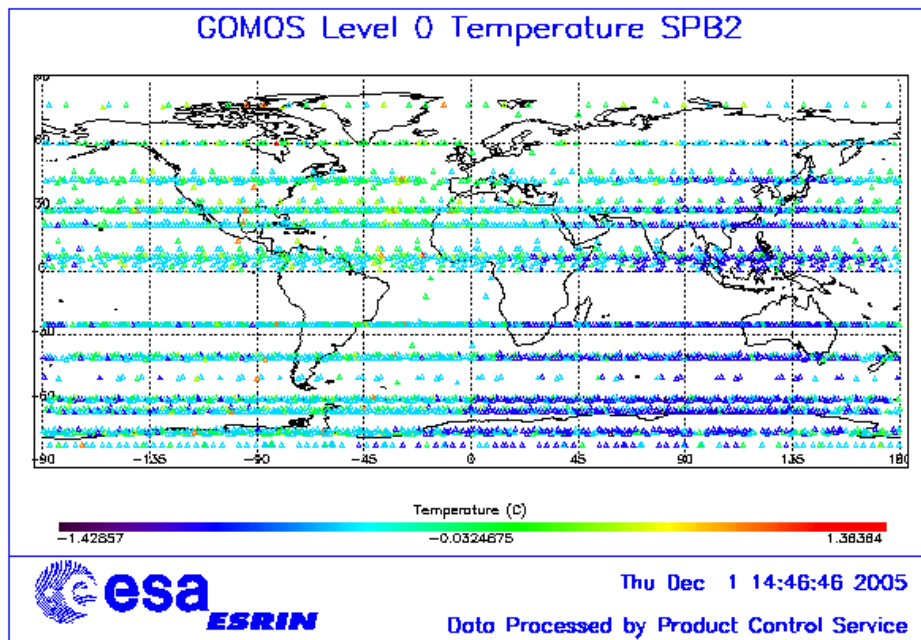


Figure 4.3-4: Descending orbital variation of SPB2 temperature during reporting period

The stability of the temperature during the orbit is important because it affects the position of the interference patterns. The phenomenon of the interference is present mainly in SPB and this Pixel Response Non-Uniformity (PRNU) is corrected during the processing.

4.4 Optomechanical Performance

A new band setting calibration has been performed during the reporting period with data acquired on 27th November 2005.

- Version GOMOS/4.00 and previous ones: in the GOMOS processor versions GOMOS/4.00 and previous, the spectra are expected to be aligned along CCD lines, and therefore use only a single average line index per CCD. In table 4.4-1, the mean values of the location of the star signal for all the calibration analysis done is reported. The ‘left’ and ‘right’ values are calculated (the whole interval is not used) because the spectra present a slight slope, more pronounced in spectrometer B (see fig. 4.4-1 & 4.4-2). In table 4.4-2, mean values of the location of the star signal are calculated for some specific wavelength intervals. These intervals have been changed between the calibration performed in September 2002 and the ones performed afterwards (until November 2003). Table 4.4-3 reports the average location of the star spot on the photometer 1 and 2 CCD.
- Version GOMOS/4.02: in the current processor version (GOMOS/4.02) operational since 23rd March 2004, a Look Up Table (LUT) gives the line index of the spectra location as a function of the wavelength (blue dots in fig. 4.4-1). However this characterization curve is not exactly the location of the star spectrum on the CCD but rather a combination of this position and some artefact created by the shape of the instrument optical point spread function. The exact shape is actually a straight line (especially for SPB) that has been characterised in 2005 and will be implemented in next updates of GOMOS ADF’s. In the meantime calibration exercises should be performed in order to check if the LUT values are still valid.

A new calibration exercise was performed during November 2005. The position of the stellar spectra of star id 29, 112, 94 and 26 (fig. 4.4-1 & 4.4-2) observed in dark-limb spatial spread monitoring mode have been averaged above 120 km altitude and compared to the values of the LUT. The results confirm the LUT values (see table 4.4-4) which means that for the time being there is no need to update the table.

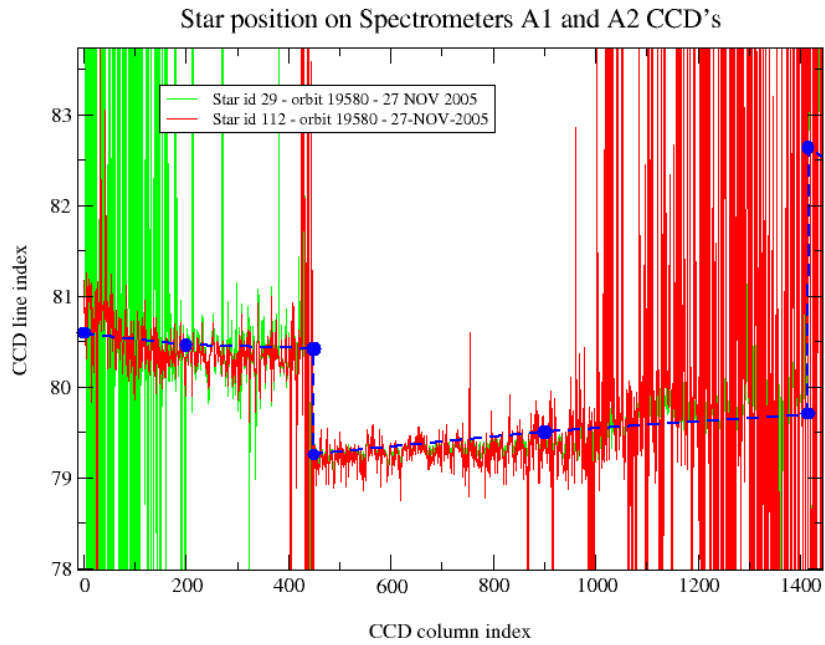


Figure 4.4-1: Average position of star spectra on the CCD for Spectrometers A1 and A2

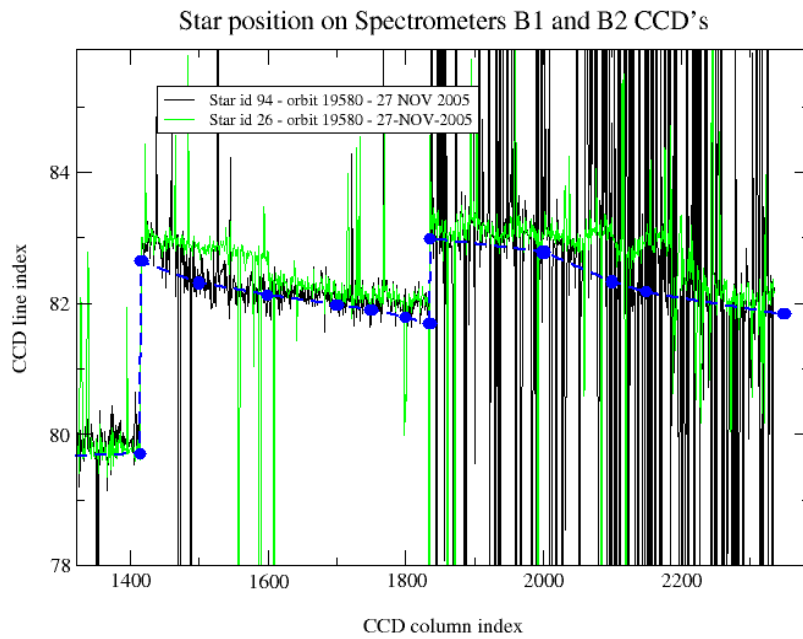


Figure 4.4-2: Average position of star spectra on the CCD for Spectrometers B1 and B2

Table 4.4-1: Mean value of the location of the star signal during the occultation at the edges of every band (mean over 50 values, filtering the outliers)

| | UV (SPA1) left/right | VIS (SPA2) left/right (Inverted spectra) | IR1 (SPB1) left/right | IR2 (SPB2) left/right |
|-------------------------|-------------------------|--|--------------------------|--------------------------|
| 11/09/2002 | 80.7/80.7 | 79.8/79.5 | 82.8/81.9 | 83.1/82.1 |
| 01/01/2003 | 80.7/80.6 | 79.8/79.5 | 82.8/82.0 | 83.2/82.2 |
| 17/07/2003 & 02/08/2003 | 80.7/80.7 | 79.8/79.5 | 82.8/81.9 | 83.1/82.1 |
| 08/11/2003 | 80.7/80.6 | 79.8/79.5 | 82.8/81.9 | 83.1/82.1 |

Table 4.4-2: Mean value of the location of the star signal during the occultation (as table 4.4-1) but now within some wavelength intervals

| | UV (SPA1) | VIS (SPA2) | IR1 (SPB1) | IR2 (SPB2) |
|-----------------------------|-------------------|-------------------|-------------------|-------------------|
| 11/09/2002 wl range (nm) | 80.8 [300-330] | 79.8 [500-530] | 82.6 [760-765] | 82.9 [937-942] |
| 01/01/2003 wl range (nm) | 80.6 [350-360] | 78.6 [650-670] | 81.6 [760-765] | 80.3 [935-945] |
| 02/08/2003 | 80.6 | 79.7 | 82.5 | 82.8 |
| 08/11/2003 | 80.6 | 79.9 | 82.4 | 82.8 |

Table 4.4-3: Average column and row pixel location of the star spot on the photometer CCD during the occultation

| | FP1 (column/row) | FP2 (column/row) |
|------------|------------------|------------------|
| 11/09/2002 | 11/4 | 5/5 |
| 01/01/2003 | 10/4 | 6/4.9 |
| 02/08/2003 | 10/4 | 6/5 |
| 08/11/2003 | 10/4 | 6/5 |

Table 4.4-4: Location of the star signal on the CCD's (corresponding to fig. 4.4-1)

| Pixel Column | LUT (Pixel line) | Calibration on 10-APR-2004 | Calibration on 27-NOV-2005 |
|--------------|------------------|----------------------------|----------------------------|
| 0 | 80.59 | 80.80 | 80.93 |
| 20 | 80.46 | 80.60 | 80.32 |
| 449 | 80.42 | 80.50 | 80.40 |
| 450 | 79.25 | 79.39 | 79.16 |
| 900 | 79.50 | 79.63 | 79.36 |
| 1415 | 79.70 | 79.76 | 80.00 |
| 1416 | 82.64 | 82.80 | 82.95 |
| 1500 | 82.31 | 82.60 | 82.63 |
| 1600 | 82.12 | 82.22 | 82.35 |
| 1700 | 81.97 | 82.04 | 82.09 |
| 1750 | 81.89 | 81.98 | 82.00 |
| 1800 | 81.78 | 81.91 | 81.93 |
| 1835 | 81.68 | 81.88 | 81.96 |
| 1836 | 82.98 | 83.10 | 83.27 |
| 2000 | 82.78 | 82.90 | 83.04 |
| 2100 | 82.33 | 82.70 | 82.82 |
| 2150 | 82.17 | 82.40 | 82.79 |
| 2350 | 81.83 | 82.00 | 82.68 |

4.5 Electronic Performance

4.5.1 DARK CHARGE EVOLUTION AND TREND

The trend of Dark Charge (DC) is of crucial importance for the final quality of the products, and is therefore subject to intense monitoring. As part of the DC there is:

- “Hot pixels”, a pixel is “hot” when its dark charge exceeds its value measured on ground, at the same temperature, by a significant amount.
- RTS phenomenon (Random Telegraphic Signal), it is an abrupt change (positive or negative) of the CCD pixel signal, random in time, affecting only the DC part of the signal and not the photon generated signal.

The temperature dependence of the DC would make this parameter a good indicator of the DC behaviour, but the hot pixels and the RTS are producing a continuous increase of the DC (see trend in fig. 4.5-1 and 4.5-2). To take into account these phenomena, since version GOMOS/4.00 (the current one is GOMOS/4.02) a DC map per orbit is extracted from a Dark Sky Area (DSA) observation performed around ANX (full dark conditions). For every level 1b product (occultation), the actual thermistor temperature of the CCD is used to convert the DC map measured around ANX into an estimate of the DC at the time (and different temperature) of the actual occultation. When the DSA observation is not available, the DC map inside the calibration product that was measured at a given thermistor reference temperature is used; again, the actual thermistor temperature of the CCD is used to compute the actual map. Table 4.5-1 reports the list of products that used the DC maps inside the calibration file due to the non-availability of DSA observation. A “CAL DC map with no T dep.” means that, as the temperature information was not available for that occultation, the DC map used is exactly the one inside the Calibration product.

Table 4.5-1: Table of level 1b products that used the Calibration DC maps instead of the DSA observation

| Product name | DC information |
|--|-----------------------|
| GOM_TRA_1PNPDE20051101_033827_000000322042_00104_19196_0000.N1 | DC map used |
| GOM_TRA_1PNPDE20051101_194308_000000482042_00114_19206_0000.N1 | DC map with no T dep. |
| GOM_TRA_1PNPDE20051101_194628_000000272042_00114_19206_0001.N1 | DC map used |
| GOM_TRA_1PNPDE20051102_030650_000000322042_00118_19210_0000.N1 | DC map used |
| GOM_TRA_1PNPDE20051102_205209_000000422042_00129_19221_0000.N1 | DC map with no T dep. |
| GOM_TRA_1PNPDE20051102_205532_000000402042_00129_19221_0001.N1 | DC map used |
| GOM_TRA_1PNPDE20051104_195226_000000402042_00157_19249_0000.N1 | DC map used |
| GOM_TRA_1PNPDE20051104_201347_000000362042_00157_19249_0001.N1 | DC map used |
| GOM_TRA_1PNPDE20051104_202057_000000372042_00157_19249_0002.N1 | DC map used |
| GOM_TRA_1PNPDE20051104_203011_000000362042_00157_19249_0003.N1 | DC map used |
| GOM_TRA_1PNPDE20051104_203410_000000372042_00157_19249_0004.N1 | DC map used |
| GOM_TRA_1PNPDE20051104_204000_000000362042_00157_19249_0005.N1 | DC map used |
| GOM_TRA_1PNPDE20051104_204123_000000352042_00157_19249_0006.N1 | DC map used |
| GOM_TRA_1PNPDE20051104_204457_000000332042_00157_19249_0007.N1 | DC map used |
| GOM_TRA_1PNPDE20051104_205228_000000272042_00157_19249_0008.N1 | DC map used |
| GOM_TRA_1PNPDE20051105_205639_000000392042_00172_19264_0000.N1 | DC map with no T dep. |
| GOM_TRA_1PNPDE20051105_205801_000000432042_00172_19264_0001.N1 | DC map used |
| GOM_TRA_1PNPDE20051105_210130_000000382042_00172_19264_0002.N1 | DC map used |

| | |
|--|-----------------------|
| GOM_TRA_1PNPDE20051105_212251_000000362042_00172_19264_0003.NI | DC map used |
| GOM_TRA_1PNPDE20051105_212957_000000372042_00172_19264_0004.NI | DC map used |
| GOM_TRA_1PNPDE20051105_213909_000000362042_00172_19264_0005.NI | DC map used |
| GOM_TRA_1PNPDE20051105_214311_000000322042_00172_19264_0006.NI | DC map used |
| GOM_TRA_1PNPDE20051107_201635_000000382042_00200_19292_0000.NI | DC map used |
| GOM_TRA_1PNPDE20051107_202048_000000352042_00200_19292_0001.NI | DC map used |
| GOM_TRA_1PNPDE20051107_202645_000000372042_00200_19292_0002.NI | DC map used |
| GOM_TRA_1PNPDE20051107_203555_000000372042_00200_19292_0003.NI | DC map used |
| GOM_TRA_1PNPDE20051107_204001_000000332042_00200_19292_0004.NI | DC map used |
| GOM_TRA_1PNPDE20051107_204548_000000352042_00200_19292_0005.NI | DC map used |
| GOM_TRA_1PNPDE20051107_204716_000000352042_00200_19292_0006.NI | DC map used |
| GOM_TRA_1PNPDE20051108_210727_000000402042_00215_19307_0000.NI | DC map used |
| GOM_TRA_1PNPDE20051108_212533_000000372042_00215_19307_0001.NI | DC map used |
| GOM_TRA_1PNPDE20051108_212948_000000362042_00215_19307_0002.NI | DC map used |
| GOM_TRA_1PNPDE20051108_213546_000000372042_00215_19307_0003.NI | DC map used |
| GOM_TRA_1PNPDE20051108_214454_000000362042_00215_19307_0004.NI | DC map used |
| GOM_TRA_1PNPDE20051108_214902_000000352042_00215_19307_0005.NI | DC map used |
| GOM_TRA_1PNPDE20051108_215448_000000382042_00215_19307_0006.NI | DC map used |
| GOM_TRA_1PNPDE20051109_203554_000000412042_00229_19321_0000.NI | DC map with no T dep. |
| GOM_TRA_1PNPDE20051109_205356_000000352042_00229_19321_0001.NI | DC map used |
| GOM_TRA_1PNPDE20051109_205812_000000362042_00229_19321_0002.NI | DC map used |
| GOM_TRA_1PNPDE20051109_210410_000000372042_00229_19321_0003.NI | DC map used |
| GOM_TRA_1PNPDE20051109_211316_000000372042_00229_19321_0004.NI | DC map used |
| GOM_TRA_1PNPDE20051109_211727_000000322042_00229_19321_0005.NI | DC map used |
| GOM_TRA_1PNPDE20051110_200420_000000402042_00243_19335_0000.NI | DC map with no T dep. |
| GOM_TRA_1PNPDE20051110_202219_000000372042_00243_19335_0001.NI | DC map used |
| GOM_TRA_1PNPDE20051110_202637_000000372042_00243_19335_0002.NI | DC map used |
| GOM_TRA_1PNPDE20051110_202830_000000382042_00243_19335_0003.NI | DC map used |
| GOM_TRA_1PNPDE20051111_020603_000000322042_00246_19338_0000.NI | DC map used |
| GOM_TRA_1PNPDE20051111_211323_000000402042_00258_19350_0000.NI | DC map with no T dep. |
| GOM_TRA_1PNPDE20051111_213118_000000352042_00258_19350_0001.NI | DC map used |
| GOM_TRA_1PNPDE20051111_213523_000000362042_00258_19350_0002.NI | DC map used |
| GOM_TRA_1PNPDE20051112_204149_000000402042_00272_19364_0000.NI | DC map with no T dep. |
| GOM_TRA_1PNPDE20051112_205941_000000362042_00272_19364_0001.NI | DC map used |
| GOM_TRA_1PNPDE20051112_210345_000000362042_00272_19364_0002.NI | DC map used |
| GOM_TRA_1PNPDE20051112_210549_000000362042_00272_19364_0003.NI | DC map used |
| GOM_TRA_1PNPDE20051112_211000_000000352042_00272_19364_0004.NI | DC map used |
| GOM_TRA_1PNPDE20051112_211901_000000362042_00272_19364_0005.NI | DC map used |
| GOM_TRA_1PNPDE20051114_193842_000000382042_00300_19392_0000.NI | DC map with no T dep. |
| GOM_TRA_1PNPDE20051114_195627_000000362042_00300_19392_0001.NI | DC map used |
| GOM_TRA_1PNPDE20051114_200028_000000352042_00300_19392_0002.NI | DC map used |
| GOM_TRA_1PNPDE20051114_200232_000000382042_00300_19392_0003.NI | DC map used |
| GOM_TRA_1PNPDE20051114_200651_000000372042_00300_19392_0004.NI | DC map used |
| GOM_TRA_1PNPDE20051114_201546_000000372042_00300_19392_0005.NI | DC map used |
| GOM_TRA_1PNPDE20051114_202006_000000332042_00300_19392_0006.NI | DC map used |
| GOM_TRA_1PNPDE20051114_202545_000000382042_00300_19392_0007.NI | DC map used |
| GOM_TRA_1PNPDE20051114_202723_000000362042_00300_19392_0008.NI | DC map used |
| GOM_TRA_1PNPDE20051122_023801_000000322042_00404_19496_0000.NI | DC map used |
| GOM_TRA_1PNPDE20051122_202757_000000382042_00415_19507_0000.NI | DC map with no T dep. |
| GOM_TRA_1PNPDE20051122_204028_000000442042_00415_19507_0001.NI | DC map used |
| GOM_TRA_1PNPDE20051128_203941_000000382042_00501_19593_0000.NI | DC map with no T dep. |
| GOM_TRA_1PNPDE20051128_205200_000000432042_00501_19593_0001.NI | DC map used |



| | |
|--|-----------------------|
| GOM_TRA_1PNPDE20051128_205717_000000362042_00501_19593_0002.NI | DC map used |
| GOM_TRA_1PNPDE20051128_210057_000000352042_00501_19593_0003.NI | DC map used |
| GOM_TRA_1PNPDE20051128_210229_000000362042_00501_19593_0004.NI | DC map used |
| GOM_TRA_1PNPDE20051128_210602_000000362042_00501_19593_0005.NI | DC map used |
| GOM_TRA_1PNPDE20051128_210814_000000362042_00501_19593_0006.NI | DC map used |
| GOM_TRA_1PNPDE20051128_211604_000000362042_00501_19593_0007.NI | DC map used |
| GOM_TRA_1PNPDE20051128_212042_000000372042_00501_19593_0008.NI | DC map used |
| GOM_TRA_1PNPDE20051128_222017_000000372043_00001_19594_0000.NI | DC map with no T dep. |
| GOM_TRA_1PNPDE20051128_223236_000000402043_00001_19594_0001.NI | DC map used |
| GOM_TRA_1PNPDE20051128_223753_000000362043_00001_19594_0002.NI | DC map used |
| GOM_TRA_1PNPDE20051128_224133_000000342043_00001_19594_0003.NI | DC map used |
| GOM_TRA_1PNPDE20051128_224305_000000362043_00001_19594_0004.NI | DC map used |
| GOM_TRA_1PNPDE20051128_224638_000000352043_00001_19594_0005.NI | DC map used |
| GOM_TRA_1PNPDE20051128_224851_000000342043_00001_19594_0006.NI | DC map used |
| GOM_TRA_1PNPDE20051128_225640_000000372043_00001_19594_0007.NI | DC map used |
| GOM_TRA_1PNPDE20051128_230118_000000382043_00001_19594_0008.NI | DC map used |

The average DC inserted by the processor into the level 1b data products for the spectrometers SPA1 and SPB2 (per band: upper, central and lower) is plotted in fig. 4.5-1 and 4.5-2. From the figures, it can be noted that the DC is increasing at the expected rate: 400 electrons per year for SPA1 and 500 electrons per year for SPB2.

The same DC values are plotted in fig. 4.5-3 but for some occultations belonging only to the reporting month.

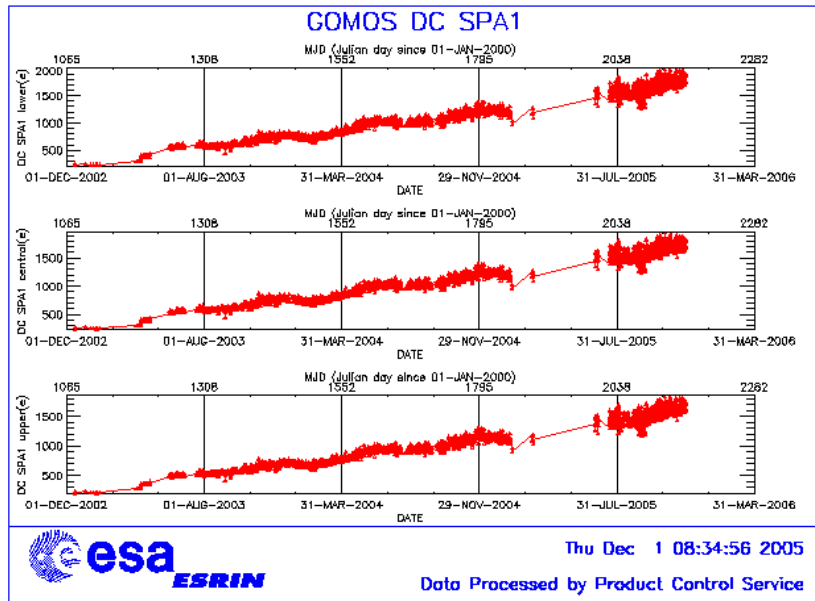


Figure 4.5-1: Mean DC evolution on SPA1 since 15th December 2002 until the end of the reporting period

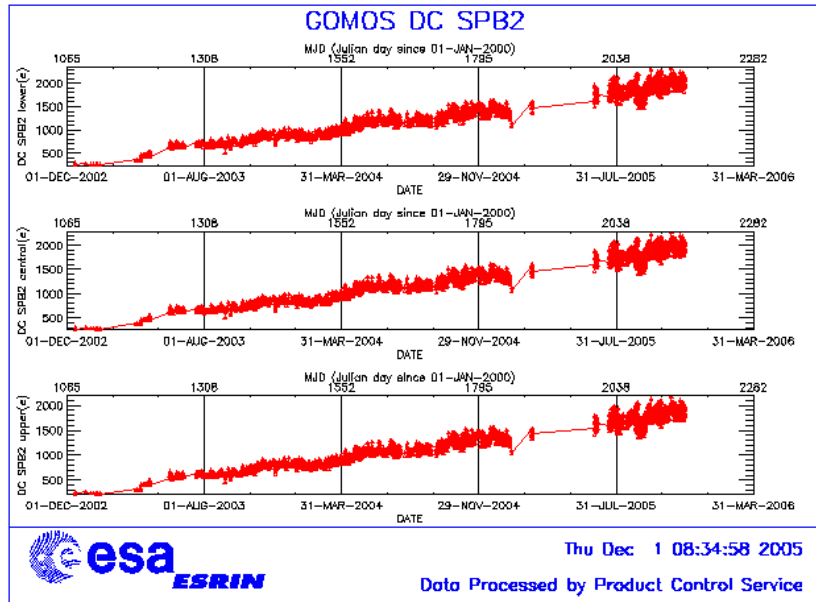


Figure 4.5-2: Mean DC evolution on SPB2 from 15th December 2002 until the end of the reporting period

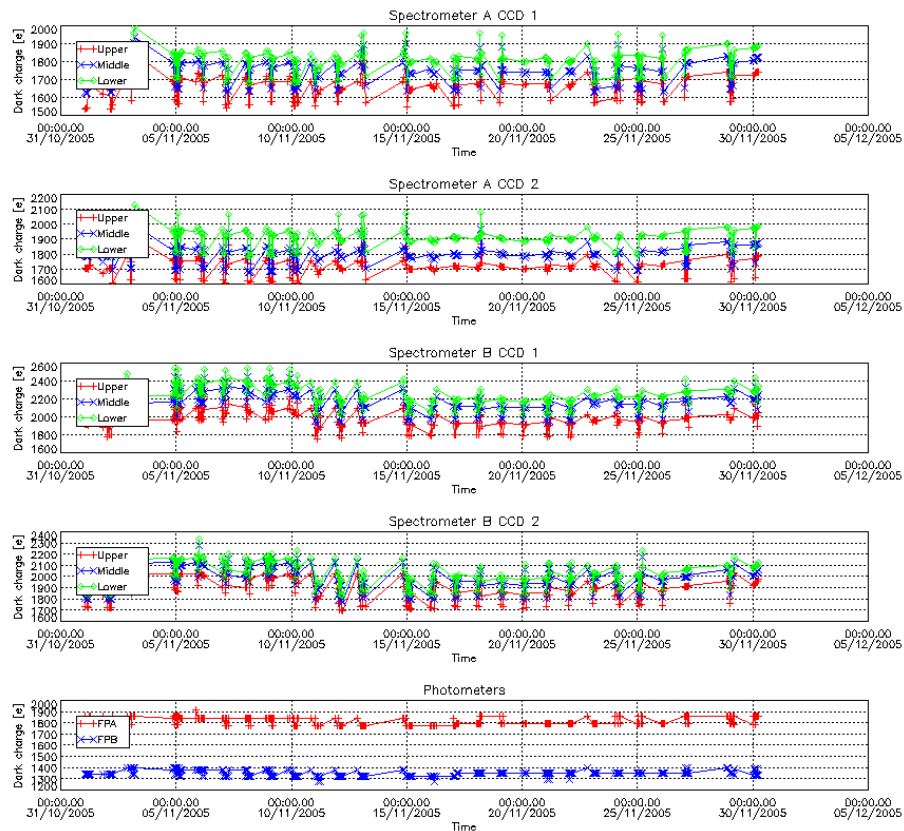


Figure 4.5-3: Mean Dark Charge of spectrometers and photometers during the reporting period

4.5.2 SIGNAL MODULATION

A parasitic signal was found to be systematically present, added to the useful signal, at least for spectrometers A1 and A2. The modulation is corrected in the data processing, but the modulation signal standard deviation is routinely monitored in order to detect any trend (fig. 4.5-4).

The modulation standard deviation, for every spectrometer, is characterised as follows:

$$\sigma_{\text{mod}} = (\text{'static noises'} - \text{'total static variance'})^{1/2} / \text{gain} \quad (\text{in ADU})$$

- The 'static noises' are calculated from the DSA observation performed once per orbit
- The 'total static variance' is obtained from ADF data (electronic chain noise, quantization noise).

The standard deviation of the modulation signal (fig. 4.5-4) shows high values during summer time both in 2004 and 2005 for the ESRIN data, it now being confirmed that the South Atlantic Anomaly is the cause of these unexpected peaks. The quality of ESRIN data, in particular over the SAA zone, is thus under investigation. However, in the second half of October (both 2004 and 2005) the peaks are smaller because the DSA zone where the data are taken for this analysis is moving towards the Northern Hemisphere. At the end of October the DSA zone is definitely chosen by the planning system in the Northern Hemisphere (to fill the criteria 'DSA in full dark limb conditions') and the high peaks disappear.

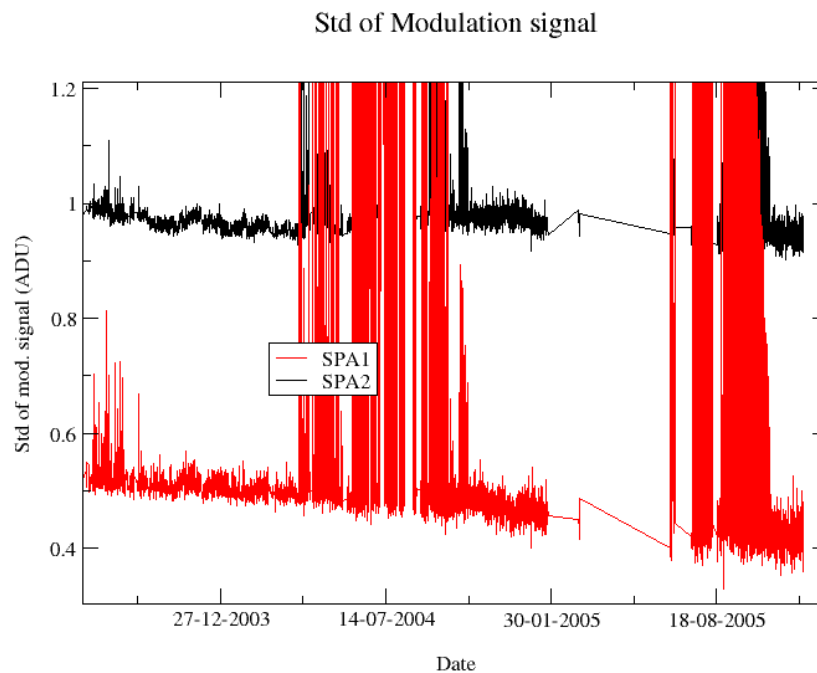


Figure 4.5-4: Standard deviation of the modulation signal

4.5.3 ELECTRONIC CHAIN GAIN AND OFFSET

The routine monitoring of the ADC offset is a good indicator of the ageing of the instrument electronics. During November 2005 an exercise has been done to analyze the variation of the ADC offset using the calibration observation in linearity mode performed on 28th November 2005.

The fig. 4.5-5 presents the evolution of the calibrated ADC offset for each spectrometer electronic chain. The unexpected increase of this offset seems to be due to an external contribution. In the ADC offset calibration procedure, linearity observations are used with two integration times of 0.25 and 0.50 seconds to extrapolate to an integration time of 0 seconds that gives the complete chain offset and not only the ADC offset. The complete offset contains any possible offsets, and especially the static dark charge (i.e. the dark charge that does not depend on the spectrometer integration time). If the memory area of the CCD is affected by the generation of hot pixels (this is confirmed by the presence of vertical lines visible in the measurement maps in spatial spread monitoring mode), it can be concluded that the increase observed in fig. 4.5-5 is due to these new hot pixels.

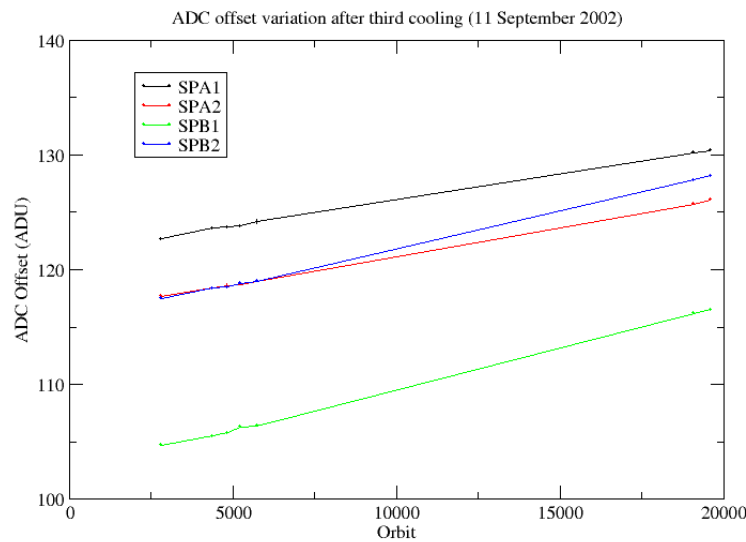


Figure 4.5-5: Evolution of the ADC offset for each spectrometer electronic chain

The next task consists of completing the analysis to confirm that the offset increase is due to the hot pixels in the memory area. This can be proven by the study of the noise due to the increased dark charge. The increase of ADC offset will be assumed to be equal to the increase of ‘static dark charge’ and the corresponding noise will be computed and compared to the increase of the residual of the signal variance.

If we keep the ADC offset constant, as it is also used to compute the dark charge at band level (which is used to correct the samples in the level 1b processing), the increase of the static dark charge - not taken into account in the ADC offset - is compensated by an artificial increase of the calibrated dark charge. So, the star and limb spectra are correctly corrected for dark charge. A small bias can be added to the instrument noise due to the incorrect dark charge level. Anyway, this quantity is not large enough to require a modification of the ADC offset value.

An electronic chain gain calibration exercise has been performed. The values obtained have been compared with the ones written in the ADF and used by the operational IPF. The relative difference is much less than the 20% (threshold to change the ADF values) and thus no update of the gain is foreseen after this analysis.

4.6 Acquisition, Detection and Pointing Performance

4.6.1 SATU NOISE EQUIVALENT ANGLE

The Star Acquisition and Tracking Unit (SATU) noise equivalent angle (SATU NEA) consists of the statistical angular variation of the SATU data above the atmosphere.

The mean of the standard deviation (STD over the 50 values per measurement) above 105 km are computed for every occultation, giving two values per occultation: one in the ‘X’ direction, one in the ‘Y’ direction. A mean value per day in every direction and limb is calculated and monitored in order to assess instrument performance in terms of star pointing. The thresholds are 2 and 3 micro radians in ‘X’ and ‘Y’ directions respectively. Before May 2003, data above 90 km have been considered (instead of 105 km) but from May 2003 on, data taken in the mesospheric oxygen layer (located around 100 km altitude) have been avoided because they could cause fluctuations on the SATU data. Also the products with errors (error flag set) are discarded from May 2003 onwards.

As can be seen in fig. 4-6.1, the SATU NEA had a sudden increase on 8th September 2005 mainly in ‘Y’ axis. Since then these values fluctuate between 1 and 1.8 microrad. The cause of this unexpected behavior is under investigation although the values are still below the threshold.

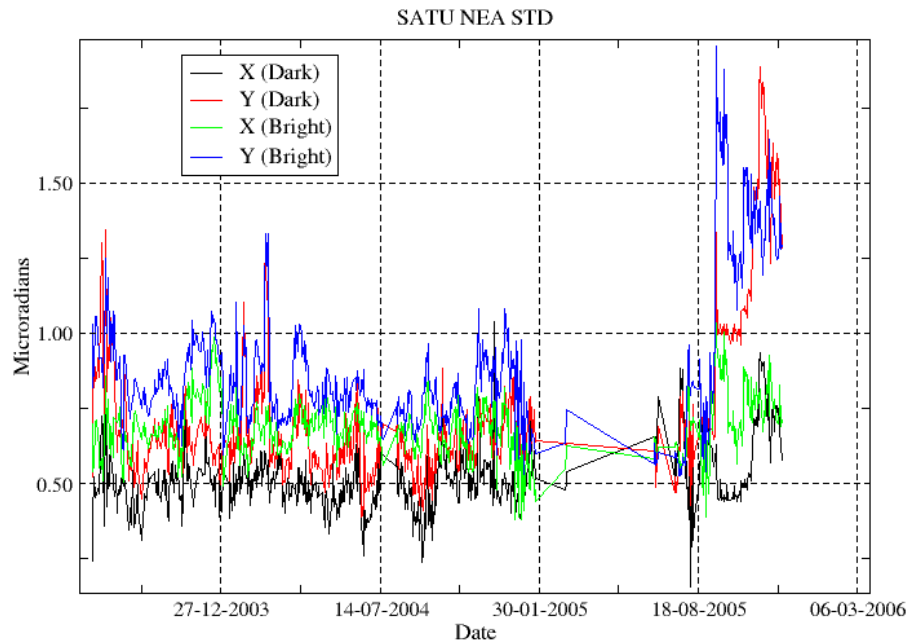


Figure 4.6-1: Average value per day of SATU NEA STD above 105 km

The results for some occultations belonging to previous months (monthly averages) are presented in fig. 4.6-2, where the change in trend in September, mainly for the ‘Y’ axis is visible.

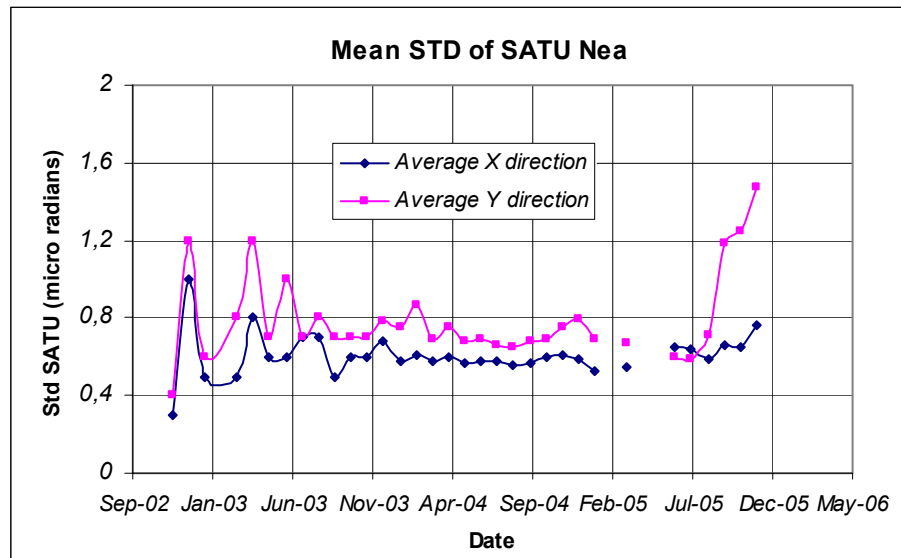


Figure 4.6-2: Average value per month of SATU NEA STD above 105 km

4.6.2 TRACKING LOSS INFORMATION

This verification consists of the monitoring of the tangent altitude at which the star is lost. It is an indicator of the pointing performance although it is to be considered that star tracking is also lost due to the presence of clouds and hence not only due to deficiencies in the pointing performance. Therefore, only the detection of any systematic long-term trend is the main purpose of this monitoring. The recent results are presented in fig. 4.6-3 and 4.6-4:

- The dependence of the altitude at which tracking is lost on the magnitude of the star is very small because the tracking is mainly lost due to the refraction and the scintillation that depend on the atmospheric conditions.
- There are some stars lost at very high altitude in dark limb (fig. 4.6-3). They are “short occultation”, that is, occultations planned to have a duration very small (2, 6, 10...seconds) because the azimuth of those stars is very near to the new reduced instrument azimuth edges. To avoid planning this kind of useless occultation, it has been decided to set the minimum occultation duration value to 25 seconds. This should be in place from 31st October 2005 but the planning system did not work when setting minimum occultation duration, so the “short occultations” will continue to occur.
- In bright limb:
 - The star lost at 50 km on 26th November 2005 corresponds to a “short occultation”.
 - It is not expected that the occultations are lost at very low altitudes due to the amount of light arriving to the pointing system mainly when the refraction effects start to be important. We see from fig. 4.6-4 that there are stars lost at altitudes around 4 km. This occurs when the pointing system is not able to point to the star anymore but, instead of finishing the occultation, it continues to track light until the planned duration is reached.

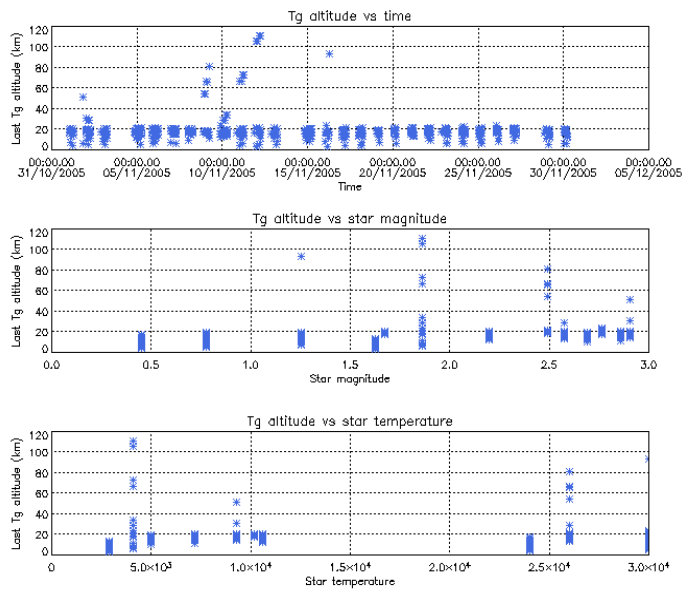


Figure 4.6-3: Last tangent altitude of the occultation (dark limb), point at which the star is lost

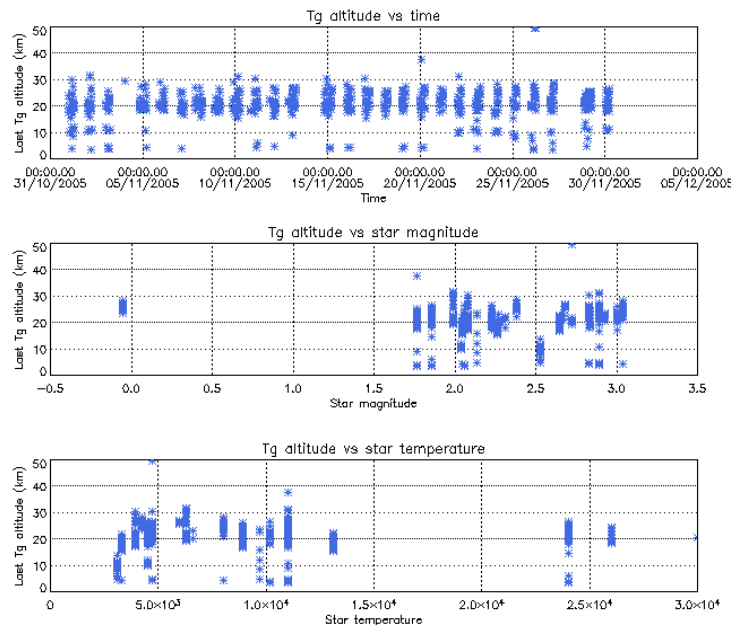


Figure 4.6-4: Last tangent altitude of the occultation (bright limb), point at which the star is lost

- Daily statistics are given in fig. 4.6-5 (calculated using 50 products per day). The high peaks in standard deviation before the unavailability of GOMOS (25th January 2005) are due to the long lasting occultations or partial occultations (the entire occultation is included within the following orbit data). The ones during June/July/August 2005 are due to the tests performed for the anomaly

investigation. After 29th August (GOMOS operational again) the peaks are due to the “short occultations”.

- Monthly statistics are given in fig. 4.6-6 (calculated using 50 products per day) where the change in trends, mainly for dark limb, is visible for the period of GOMOS testing.

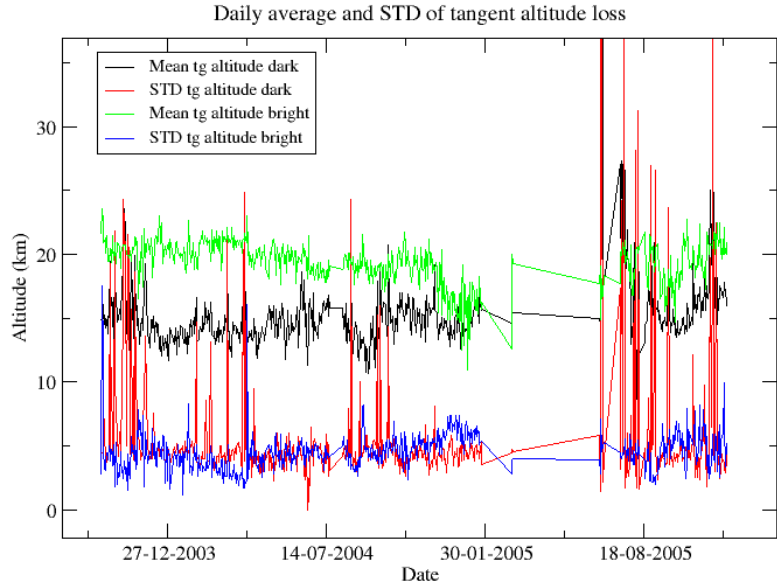


Figure 4.6-5: Daily average and STD of tangent altitude loss for the reporting period

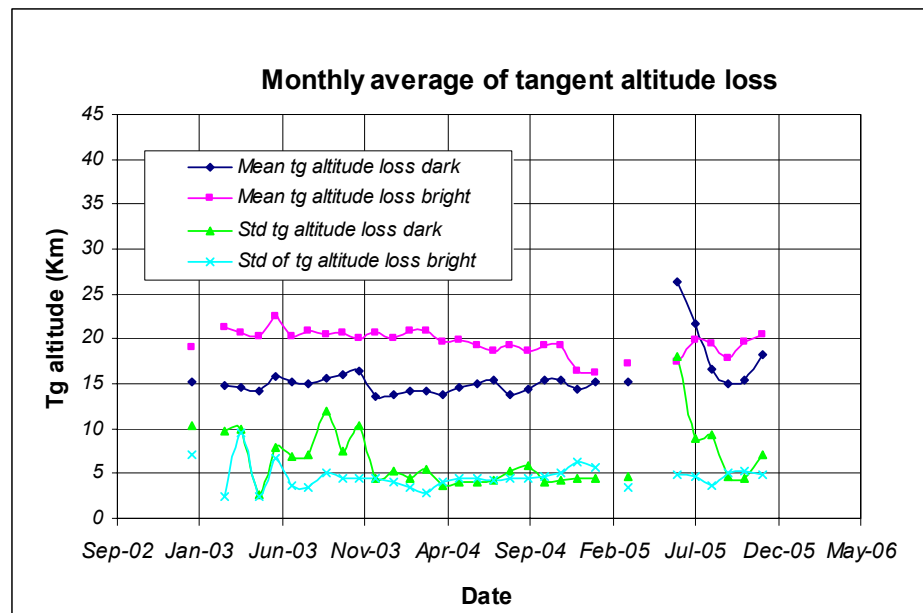


Figure 4.6-6: Monthly mean tangent altitude (and STD) at which the star is lost since January 2003

4.6.3 MOST ILLUMINATED PIXEL (MIP)

The MIP (Most Illuminated Pixel) is the star position on the SATU CCD in detection mode and it is recorded in the housekeeping data. The nominal centre of the SATU is pixel number **145** in elevation and number **205** in azimuth. The detection of the stars should not be far from this centre. As it can be seen in fig. 4.6-7 the **azimuth MIP** was within the threshold (table 4.6-1) since September 2002 until the occurrence of the anomaly on January 2005, even if a small variation is present. The reason for the change in trend observed after the anomaly is, at the moment, not understood. The **elevation MIP** had a significant variation (see the *note* below) until 12th December 2003 when a new PSO algorithm was activated in order to reduce the deviations of the ENVISAT platform attitude with respect to the nominal one. Similarly to the azimuth, after the anomaly of January 2005 the Elevation MIP has a drift that has no explanation. Investigations are ongoing to try to understand this behavior of the MIP as, although it does not impact the data quality, it may invalidate attitude monitoring by GOMOS and could represent a hidden anomaly.

Note: A MIP variation onto the SATU CCD of 50 pixels corresponds to a de-pointing of 0.1 degrees

Table 4.6-1: MIP Thresholds

| | | |
|--------------|----------------------|-------------|
| MIP X | Mean delta Az | [198 - 210] |
| | Std delta Az | 7 |
| MIP Y | Mean delta El | [140 – 150] |
| | Std delta El | 4 |

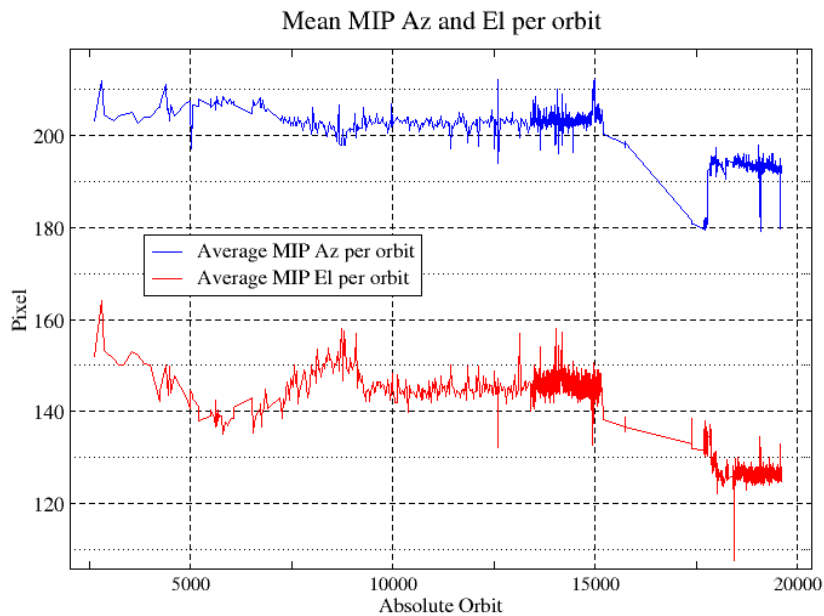


Figure 4.6-7: Mean values of MIP for some orbits since 1st September 2002 (see table 4.6-1)

Fig. 4.6-8 shows the standard deviation of azimuth and elevation MIP that should be within the thresholds of table 4.6-1. The peaks observed mean that one (or more) star/s where detected very far from the SATU

detection point and, in this case, the star/s is lost during the centering phase (see section 3.2 for stars lost in centering).

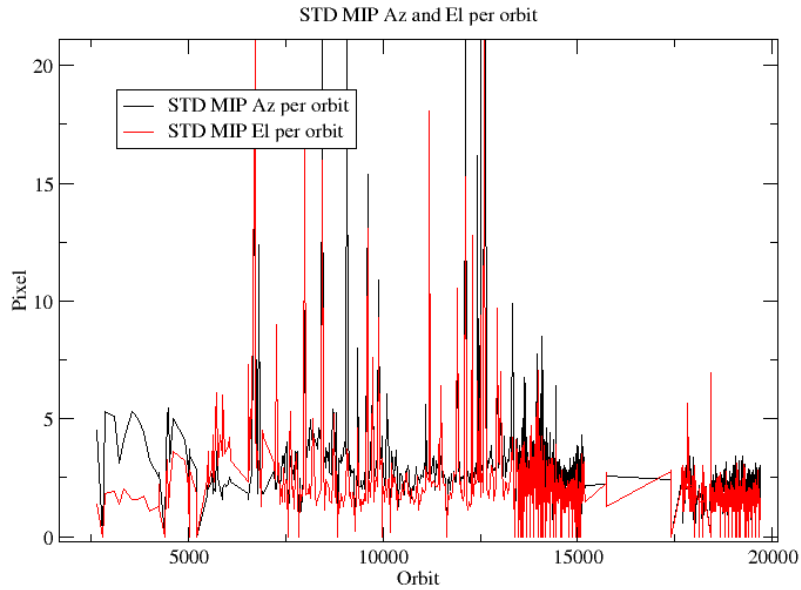


Figure 4.6-8: Standard deviation of MIP Azimuth and Elevation for some orbits since 1st September 2002 until end of reporting period (see table 4.6-1)

5 LEVEL 1 PRODUCT QUALITY MONITORING

5.1 Processor Configuration

5.1.1 VERSION

About 24% of near real time GOM_TRA_1P products have been received by the DPQC team for routine quality control and long term trend quality monitoring. The current level 1-processor software version for the operational ground segment is GOMOS/4.02 (see table 5.1-1). The product specification is PO-RS-MDA-GS2009_10_3H. This processor has been cleared for initial level 1 data release, with a disclaimer for known artefacts (<http://envisat.esa.int/dataproducts/availability/disclaimers>) that are currently being resolved and will be implemented in the next release (<http://envisat.esa.int/dataproducts/availability>).

Users are supplied with 2003 data sets reprocessed by the prototype processor GOPR_6.0a developed and operated by ACRI. See table 5.1-2 for prototype level 1b versions and modifications. The version for the second reprocessing (already on-going) is GOPR_6.0c and the next GOMOS operational ground segment version (GOMOS/5.00) will be in line with it.

Table 5.1-1: PDS level 1b product version and main modifications implemented

| Date | Version | Description of changes |
|-------------|--|--|
| 23-MAR-2004 | Level 1b version 4.02 at PDHS-E and PDHS-K | Algorithm baseline level 1b DPM 6.0 <ul style="list-style-type: none"> • Adding a new calibration parameters (these values are hard coded at the moment) • Removal of redundancy chain from code • Modifications in the processing to apply new configuration and calibration parameter • New algorithm to determine between dark, twilight and bright limb and to handle data accordingly • Added handling of source packages with invalid packet header • Added enumerations for all configuration flags |
| 31-MAY-2003 | Level 1b version 4.00 at PDHS-E and PDHS-K | Algorithm baseline level 1b DPM 5.4: <ul style="list-style-type: none"> • Modulation correction step added after the cosmic rays detection processing • Inversion of the non-linearity and offset corrections • Modification of the computation of the estimated background signal measured by the photometers: use the spectrometer radiometric sensitivity curve and the photometer transfer function. • Use of the dark charge map at orbit level computed from the DSA (dark sky area) if any in the level 0 product • Implementation of a new unfolding algorithm for the photometer samples |
| 21-NOV-2002 | Level 1b version 3.61 at PDHS-E and PDHS-K | Algorithm baseline DPM 5.3: <ul style="list-style-type: none"> • Review of some default values • New definition of one PCD flag (atmosphere) • Temporal interpolation of ECMWF data |

Table 5.1-2: GOPR level 1b product version and main modifications implemented

| Date | Version | Description of changes |
|-------------|-----------|---|
| 22-JUL-2005 | GOPR_6.0c | Level 1b: <ul style="list-style-type: none"> • Correction of FP unfolding algorithm • Background correction of SPB in full dark limb • Modification of the computation of the incidence angle • Correction of the flat-field correction equations • Star spectrum location on CCD modified for SPB Configuration for second reprocessing: <ul style="list-style-type: none"> • Use of new reflectivity LUT • New wavelength assignment for SPA1, A2, B1 • Spatial PSF of SPB modified |
| 17-MAR-2004 | GOPR 6.0a | <ul style="list-style-type: none"> • Provide SFA and SATU angles in degrees • Elevation angle dependency of the reflectivity LUT added in the algorithms • Ratio upper/star signal added (FLAGUC) • Add Dark Charge used for dark charge correction (per band) • Flag for illumination condition (PCDillum) • Minimum sample value for which the cosmic rays detection processing is applied (Crmin) is a function of gain index |

| | | |
|-------------|-----------|--|
| | | <ul style="list-style-type: none"> • Logic for computation of the flags attached to the reference star spectrum (Flref) modified • Add the computation of the sun direction in the inertial geocentric frame to be written in the level 1b and limb products. • Spectrometer effective sampling time added |
| 25-JUL-2003 | GOPR 5.4f | <ul style="list-style-type: none"> • The demodulation process is applied only in full dark limb and twilight limb conditions. |
| 17-JUL-2003 | GOPR 5.4e | <ul style="list-style-type: none"> • Sun zenith angle is computed in the geolocation process. The occultation is now classified into (0) full dark limb condition, (1) bright limb condition and (2) twilight limb condition. • No background correction applied in full dark limb condition. The location of the image of the star spectrum on the CCD array is no more aligned with the CCD lines. |
| 02-JUL2003 | GOPR 5.4d | <ul style="list-style-type: none"> • The maximum number of measurements is set to 509 (instead of 510) in the GOPR prototype. |
| 17-MAR-2003 | GOPR 5.4c | <ul style="list-style-type: none"> • Modification of the CAL ADFs (update of the limb radiometric LUT). The products are affected only if the limb spectra are converted into physical units • Modifications to allow compatibility with ACRI computational cluster (no modifications of the results) • Modification of the logic to handle dark charge map refresh at orbit level (DSA data is now directly processed by the level 1b processor if available in the level 0 product). No impact on the results |
| 21-FEB-2003 | GOPR 5.4b | <ul style="list-style-type: none"> • DC map values are rounded when written in the level 1b product • Modification of the CAL ADFs (update of the wavelength assignment of SPB1 and SPB2) • Modify the computation of flag_mod in the modulation correction routine |
| 17-JAN-2003 | GOPR 5.4a | <ul style="list-style-type: none"> • use the start and stop dates of the occultation when calling the CFI <ul style="list-style-type: none"> □nterpol instead of start and stop dates of the level 0 product • modify the ECMWF filename information in the SPH of the level 1b and limb products |

5.1.2 AUXILIARY DATA FILES (ADF)

The ADF's files in tables 5.1-3, 5.1-4, 5.1-5, 5.1-6 and 5.1-7 have been disseminated to the PDS during the whole mission. Note that the files outlined in yellow are the set of auxiliary files used during the reporting period. For every type of file, the validity runs from the start validity time until the start validity time of the following one, but if an ADF file has been disseminated after the start validity time, it is obvious that it will be used by the PDHS-E and PDHS-K PDS only after the dissemination time (this happens the majority of the time). Just like the other ADF's, the calibration auxiliary file (GOM_CAL_AX) has been updated several times in the past (table 5.1-7) but the difference is that now it is updated in a weekly basis with only new DC maps, and that is why the files used during November 2005 are reported in a separate table (table 5.1-8) that changes from report to report.

Table 5.1-3: Table of historic GOM_PR1_AX files used by PDS for level 1b products generation. The GOM_PR1_AX is a file containing the configuration parameters used for processing from level 0 to level 1b products

| Used by PDS for Level 1b products generation in period | GOM_PR1_AX (GOMOS processing level 1b configuration file) |
|---|--|
| 01-MAR-2002 → 29-MAR-2002 | GOM_PR1_AXVIEC20020121_165314_20020101_000000_20200101_000000 <ul style="list-style-type: none"> • Pre-launch configuration |
| 30-MAR-2002 → 14-NOV-2002 | GOM_PR1_AXVIEC20020329_115921_20020324_200000_20100101_000000 <ul style="list-style-type: none"> • Changed num_grid_upper, thr_conv and max_iter in the atmospheric GADS |
| Not used | GOM_PR1_AXVIEC20020729_083756_20020301_000000_20100101_000000 <ul style="list-style-type: none"> • Cosmic Ray mode + threshold • DC correction based on maps • Non-linearity correction disabled |
| Not used | GOM_PR1_AXVIEC20021112_170331_20020301_000000_20100101_000000 <ul style="list-style-type: none"> • Central background estimation by linear interpolation + associated thresholds |
| 15-NOV-2002 → 26-MAR-2003 | GOM_PR1_AXVIEC20021114_153119_20020324_000000_20100101_000000 <ul style="list-style-type: none"> • Same content as GOM_PR1_AXVIEC20021112_170331_20020301_000000_20100101_000000 but validity start updated so as to supersede according to the PDS file selection rules GOM_PR1_AXVIEC20020329_115921_20020324_200000_20100101_000000 |
| 27-MAR-2003 → 19-MAR-2004 | GOM_PR1_AXVIEC20030326_085805_20020324_200000_20100101_000000 <ul style="list-style-type: none"> • Same content as GOM_PR1_AXVIEC20021112_170331_20020301_000000_20100101_000000 but validity start updated so as to supersede according to the PDS file selection rules GOM_PR1_AXVIEC20020329_115921_20020324_200000_20100101_000000 |
| 20-MAR-2004 → 22-MAR-2004 | GOM_PR1_AXVIEC20040319_134932_20020324_200000_20100101_000000 <ul style="list-style-type: none"> • Ray tracing parameter changed: convergence criteria set to 0.1 microrad |
| 23-MAR-2004 → 01-APR-2004 <i>Notes:</i> <ul style="list-style-type: none"> • This file was constructed from GOM_PR1_AXVIEC20030326_085805_20020324_200000_20100101_000000 (so without the ray tracing parameter changed) • This file was used by the GOMOS/4.02 processors before the IECF dissemination. The dissemination was done on 25th March 2004 | GOM_PR1_AXVIEC20040316_144850_20020324_200000_20100101_000000 GOM_PR1 ADF for version GOMOS/4.02, changes: <ul style="list-style-type: none"> • The central band estimation mode • Atmosphere thickness • Altitude discretisation |
| 02-APR-2004 | GOM_PR1_AXVIEC20040401_083133_20020324_200000_20100101_000000 <ul style="list-style-type: none"> • Ray tracing parameter changed: convergence criteria set to 0.1 microrad |

Table 5.1-4: Table of historic GOM_INS_AX files used by PDS for level 1b products generation. The GOM_INS_AX is a file containing the characteristics of the instrument and it is used for processing from level 0 to level 1b products and from level 1b to level 2 products

| Used by PDS for Level 1b products generation in period | GOM_INS_AX (GOMOS instrument characteristics file) |
|--|--|
| 01-MAR-2002 → 29-JUL-2002 | GOM_INS_AXVIEC20020121_165107_20020101_000000_20200101_000000 <ul style="list-style-type: none"> • Pre-launch configuration |
| 30-JUL-2002 → 12-NOV-2002 | GOM_INS_AXVIEC20020729_083625_20020301_000000_20100101_000000 <ul style="list-style-type: none"> • Factors for the conversion of the SFA angles from SFM axes to GOMOS axes |
| 13-NOV-2002 → 16-JUL-2003 | GOM_INS_AXVIEC20021112_170146_20020301_000000_20100101_000000 <ul style="list-style-type: none"> • No more invalid spectral range |
| Not used | GOM_INS_AXVIEC20030716_080112_20030711_120000_20100101_000000 <ul style="list-style-type: none"> • New value for SFM elevation zero offset for redundant chain: 10004 |
| 17-JUL-2003 | GOM_INS_AXVIEC20030716_105425_20030716_120000_20100101_000000 <ul style="list-style-type: none"> • Bias induct azimuth redundant value set to -0.0084 rad (-0.4813 deg) |

Table 5.1-5: Table of historic GOM_CAT_AX files used by PDS for level 1b products generation. The GOM_CAT_AX is a file holding the star catalogue used for processing from level 0 to level 1b products

| Used by PDS for Level 1b products generation in period | GOM_CAT_AX (GOMOS Stat Catalogue file) |
|--|--|
| 01-MAR-2002 | GOM_CAT_AXVIEC20020121_161009_20020101_000000_20200101_000000 <ul style="list-style-type: none"> • Pre-launch configuration |

Table 5.1-6: Table of historic GOM_STS_AX files used by PDS for level 1b products generation. The GOM_STS_AX is a file containing star spectra used for processing from level 0 to level 1b products

| Used by PDS for Level 1b products generation in period | GOM_STS_AX (GOMOS Star Spectra file) |
|--|--|
| 01-MAR-2002 | GOM_STS_AXVIEC20020121_165822_20020101_000000_20200101_000000 <ul style="list-style-type: none"> • Pre-launch configuration |

Table 5.1-7: Table of historic GOM_CAL_AX files used by PDS for level 1b products generation. The GOM_CAL_AX is a file containing the calibration parameters used for processing from level 0 to level 1b products

| Used by PDS for Level 1b products generation in period | GOM_CAL_AX (GOMOS Calibration file) |
|--|--|
| 01-MAR-2002 → 29-JUL-2002 | GOM_CAL_AXVIEC20020121_164808_20020101_000000_20200101_000000 <ul style="list-style-type: none"> • Pre-launch configuration |
| Not used | GOM_CAL_AXVIEC20020121_142519_20020101_000000_20200101_000000 <ul style="list-style-type: none"> • Pre-launch configuration |
| 30-JUL-2002 → 12-NOV-2002 | GOM_CAL_AXVIEC20020729_082426_20020717_193500_20100101_000000 <ul style="list-style-type: none"> • Band setting information • Wavelength assignment • Spectral dispersion LUT |

| | |
|--|---|
| | <ul style="list-style-type: none"> • ADC offset for Spectrometers • PRNU maps • Thermistor coding LUT • DC maps |
| Not used | <p>GOM_CAL_AXVIEC20021112_165603_20020914_000000_20100101_000000</p> <ul style="list-style-type: none"> • Band setting information • DC maps • PRNU maps • Wavelength assignment • Spectral dispersion LUT • Radiometric sensitivity LUT (star and limb) • SP-FP intercalibration LUT • Vignetting LUT • Reflectivity LUT • ADC offset |
| 13-NOV-2002 → 30-JAN-2003 | <p>GOM_CAL_AXVIEC20021112_165948_20021019_000000_20100101_000000</p> <ul style="list-style-type: none"> • Only DC maps updated |
| 31-JAN-2003 → 11-APR-2003 | <p>GOM_CAL_AXVIEC20030130_133032_20030101_000000_20100101_000000</p> <ul style="list-style-type: none"> • Only DC maps updated (using DSA of orbit 04541) |
| 12-APR-2003 → 02-JUN-2003 | <p>GOM_CAL_AXVIEC20030411_065739_20030407_000000_20100101_000000</p> <ul style="list-style-type: none"> • Modification of the radiometric sensitivity curve for the limb spectra. Note that the modification of this LUT has no impact on the GOMOS processing. The LUT is just copied into the level 1b limb product for user conversion purpose. • Updated DC map only (using DSA of orbit 05762). |
| 03-JUN-2003: from this date onwards, mainly updates to DC maps are done. Every month, the table of new GOM_CAL files with only DC maps updated is provided (table 5.1-8). Eventual changes to this file not corresponding only to DC maps updates will be reported in this table. | <p>GOM_CAL_AXVIEC20030602_094748_20030531_000000_20100101_000000</p> <ul style="list-style-type: none"> • Updated DC maps only (using DSA of orbit 06530) |
| 13-FEB-2004 → 23-FEB-2004 | <p>GOM_CAL_AXVIEC20040212_103916_20040209_000000_20100101_000000</p> <ul style="list-style-type: none"> • Update of the reflectivity LUT • Updated DC maps (Orbit 10194, date 11-FEB-2004) |

Table 5.1-8: Calibration ADF for reporting period. These files are updated (only with DC maps) in a 8-10 days basis

| Used by PDS for Level 1b products generation in period | GOM_CAL_AX (GOMOS Calibration file) |
|--|---|
| 21-OCT-2005 → 02-NOV-2005 | GOM_CAL_AXVIEC20051020_122240_20051017_000000_20100101_000000 (orbit 19019, date 19 OCT 2005) |
| 3-NOV-2005 → 16-NOV-2005 | GOM_CAL_AXVIEC20051102_113111_20051031_000000_20100101_000000 (orbit 19191, date 31 OCT 2005) |
| 17-NOV-2005 → 28-NOV-2005 | GOM_CAL_AXVIEC20051116_162749_20051114_000000_20100101_000000 (orbit 19400, date 15 NOV 2005) |
| 29-NOV-2005 → 07-DEC-2005 | GOM_CAL_AXVIEC20051128_103624_20051126_000000_20100101_000000 (orbit 19576, date 27 NOV 2005) |

5.2 Quality Flags Monitoring

In this section, the results of monitoring some Product Quality information stored in level 1b products that did not have a fatal error (MPH error flag not set) are discussed. The products with fatal errors were around 0.6% of the products received during the reporting month for the quality monitoring.

On the one hand, for every product we have information of the **number of measurements** where a given problem was detected (i.e. number of invalid measurements, number of measurements containing saturated samples, number of measurements with demodulation flag set...). On the other hand, there are **flags** that indicate problems within the product (i.e. flag set to one if the reference spectrum was computed from DB, flag set to zero if SATU data were not used...).

For the information on the number of measurements a plot of percentages with respect to time is provided in fig. 5.2-1. Part of this information, the most relevant one, is also plotted in a world map as a function of ENVISAT position: % of cosmic ray hits per profile, % of datation errors per profile, % of star falling outside the central band per profile and % of saturation errors per profile (fig.5-2.2).

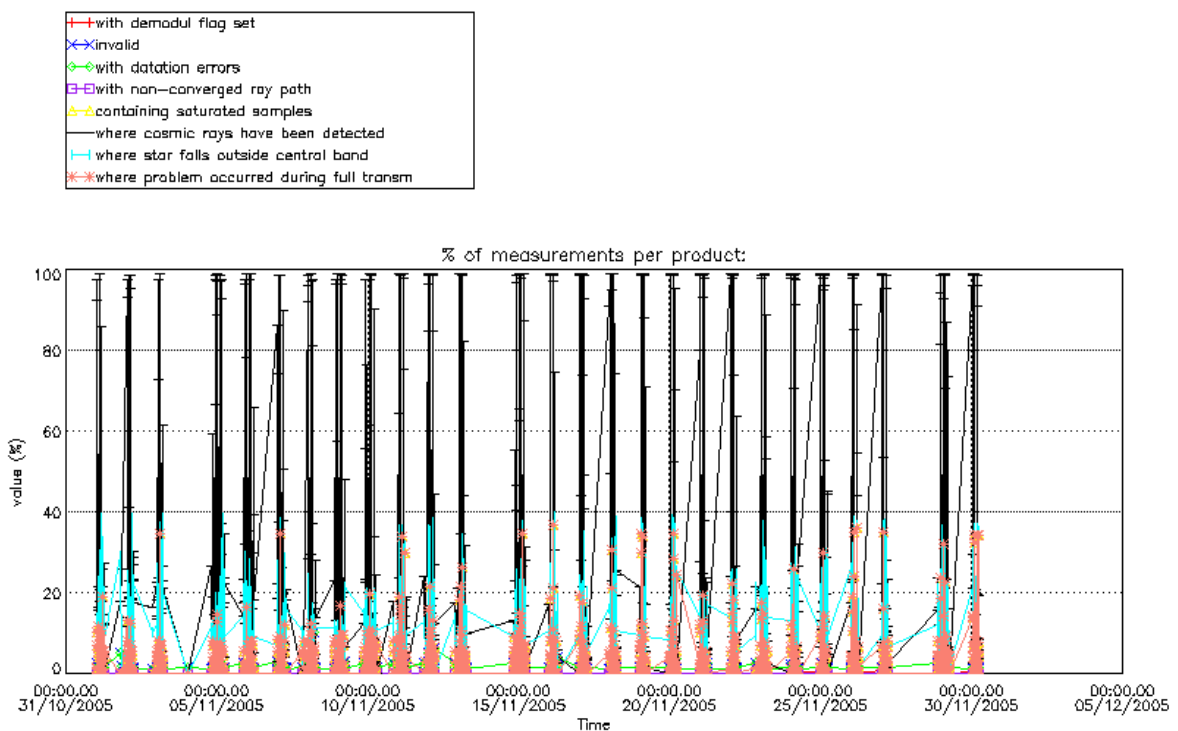


Figure 5.2-1: Level 1b product quality monitoring with respect to time

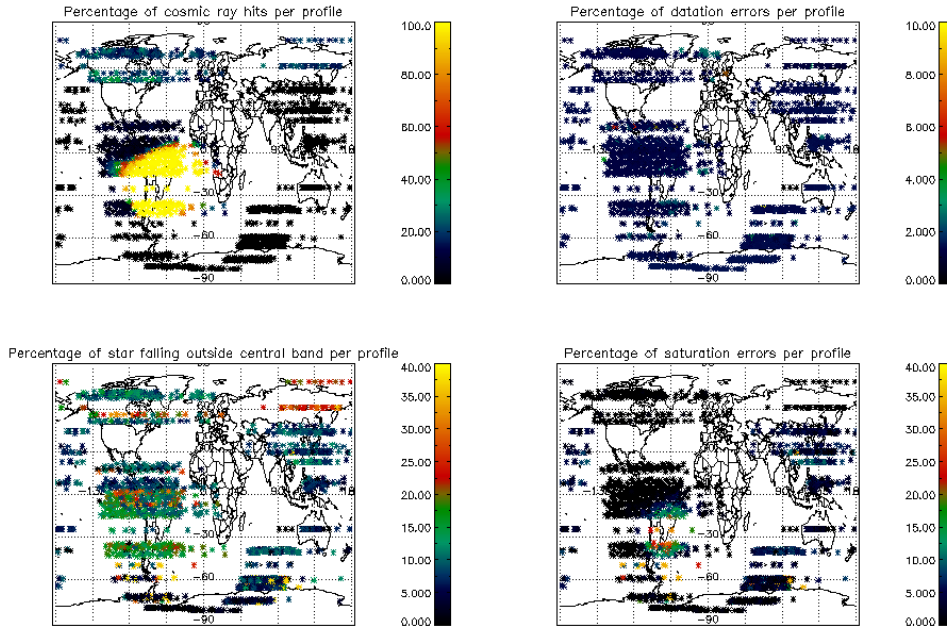


Figure 5.2-2: Level 1b product quality monitoring with respect to geolocation of ENVISAT

It can be seen from fig. 5.2-1 that the cosmic rays hits occurred several times for the 95% of the measurements of the products. Looking at fig. 5.2-2 it can be clearly observed that this high percentage occurred when the satellite crossed the South Atlantic Anomaly (SAA) zone. The percentage of saturation errors per profile shows a slight increase over the SAA zone. Another observation from fig. 5.2-1 is that, for many products, 15-20 % of the measurements have the star signal falling outside the central band. In fig. 5.2-2 it is observed that this percentage occurred mainly during the ascending part of the orbit (twilight/night-side of the orbit) while in the descending part (day-side of the orbit) the percentage is around 10 %. This is because during the night the stars are lost deeper within the atmosphere and the turbulence phenomena become more important, producing the star to be less ‘focused’ on the spectrometers central band. At the end of the descending/start of ascending (over Antarctic area) the percentage grows up to 40% for some occultations. This occurs when the pointing system is not able to point to the star anymore but, instead of finishing the occultation, it continues to track light until the planned duration is reached.

The other values (% of invalid measurements per product, % of measurements per product with datation errors...) are quite low.

The flag information is given in table 5.2-1. The percentage of the products that have at least one measurement with demodulation flag set is also reported.

Table 5.2-1: Percentage of products during the reporting period with:

| | |
|---|--------|
| At least one measurement with demodulation flag set: | 19.4 % |
| Reference spectrum computed from DB: | 0.0 % |
| Reference spectrum with small number of measurements: | 0.0 % |
| SATU data not used: | 0.0 % |

5.2.1 QUALITY FLAGS MONITORING (EXTRACTED FROM LEVEL 2 PRODUCTS)

In this section, the Product Quality information coming from the level 1 processing but stored also in the level 2 products is plotted. Only products that did not have a fatal error (MPH error flag not set) are considered. The purpose of using the level 2 data is simply that the percentage of level 2 products arriving to the DPQC team for the quality monitoring is much higher. For the reporting month, 79% of the archived products have been received. The plots are very similar to fig. 5.2-1 and 5.2-2 (demodulation flag information is not included) but separating ascending from descending passes. The ascending part of the orbit above -15° latitude is in dark limb whereas below it is twilight and bright limb (over South Pole). The descending part of the orbit is in bright limb. Fig. 5.2-3 and 5.2-4 present some quality information as a function of the time whereas in fig. 5.2-5 and 5.2-6 the plot is respect to the satellite position at the beginning of the occultations.

In ascending (fig. 5.2-3) the percentage of measurements “where a problem occurred during the full transmission” per product is around 2% while for the descending passes (fig. 5.2-4) is around 8%. This is due to the saturation that occurs mainly in bright limb. In ascending the saturation occurs over the SAA zone but it is quite low elsewhere. Sometimes the percentage of measurements “where a problem occurred during the full transmission” arrives almost to 40% at the end of the descending/start of ascending. This occurs because, as stated earlier, when the pointing system is not able to point to the star anymore it may happen that it continues to track light until the planned duration is reached. For those occultations the saturation percentage increases and a problem during full transmission is reported.

In ascending (fig. 5.2-5) the SAA is perfectly localized by the high percentage of cosmic ray hits per product (upper left panel). It is not the same if we look at fig. 5.2-6, because in descending most of the occultations are in bright limb conditions and the cosmic rays detection processing is not activated.

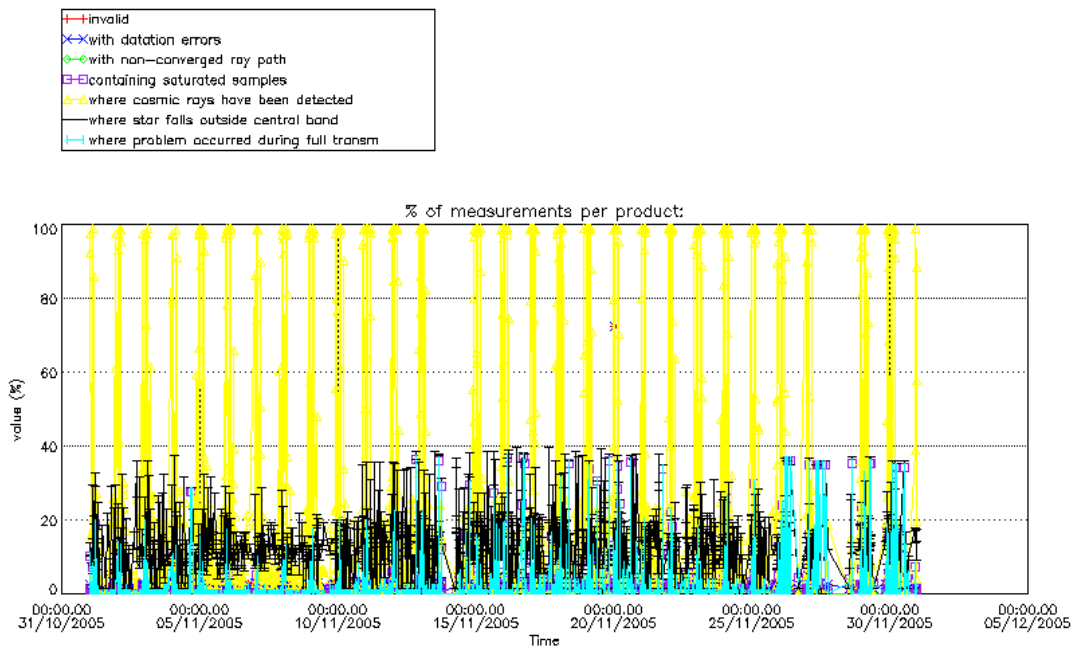


Figure 5.2-3: Level 1b product quality monitoring with respect to time ASCENDING ENVISAT passes

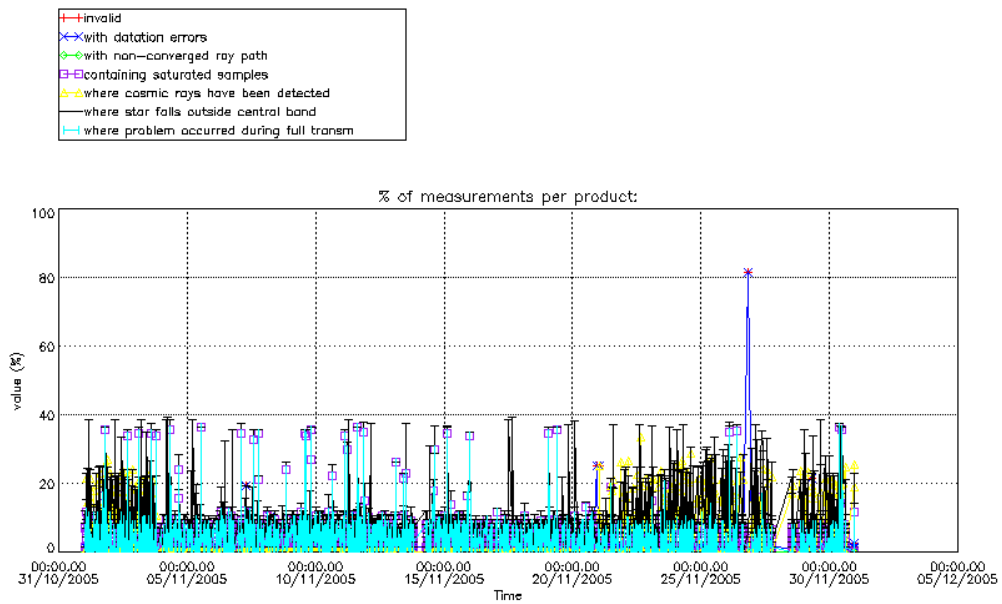


Figure 5.2-4: Level 1b product quality monitoring with respect to time DESCENDING ENVISAT passes

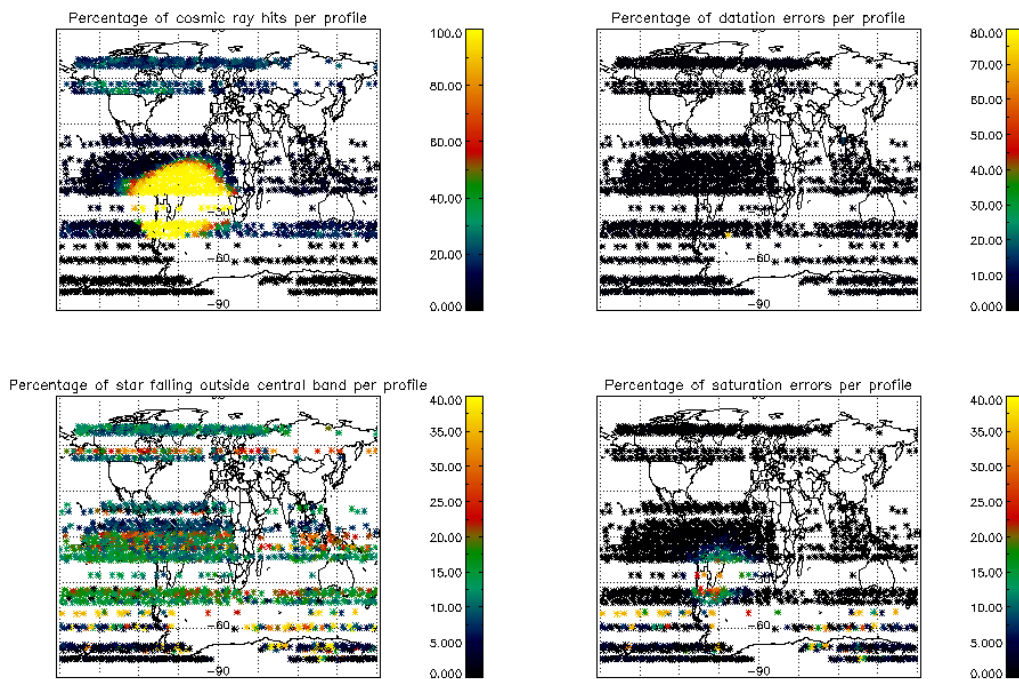


Figure 5.2-5: Level 1b product quality monitoring with respect to geolocation for ASCENDING ENVISAT passes

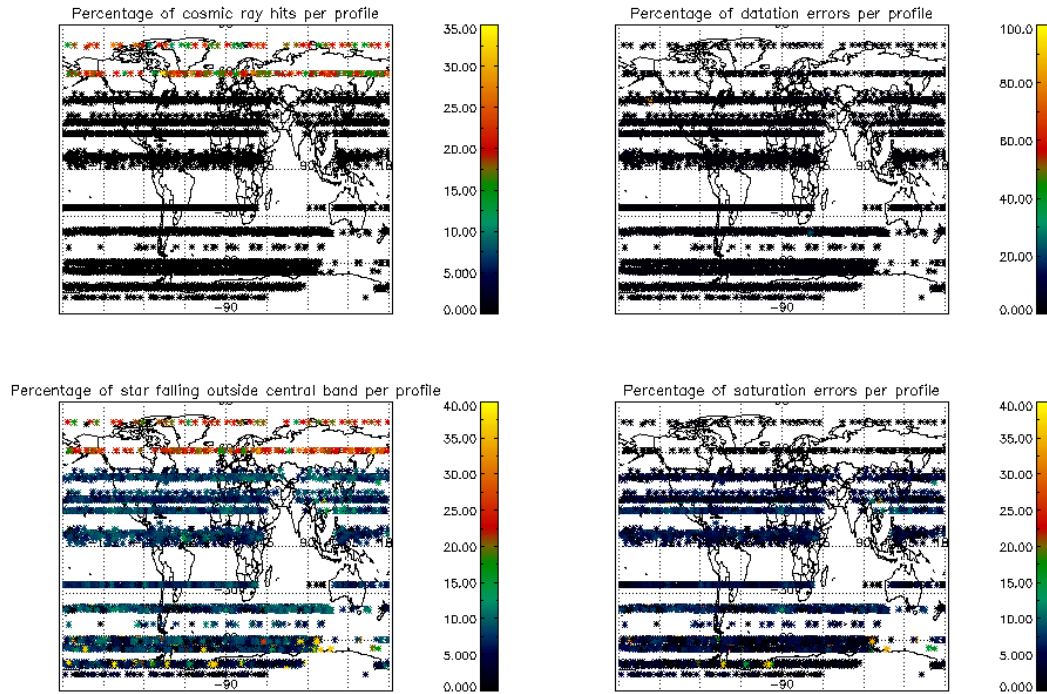


Figure 5.2-6: Level 1b product quality monitoring with respect to geolocation for **DESCENDING** ENVISAT passes

5.3 Spectral Performance

A new spectral calibration has been performed during the reporting period. As occurred during the last calibration exercises the results exceed the warning value which is 0.07 nm (fig. 5.3-1).

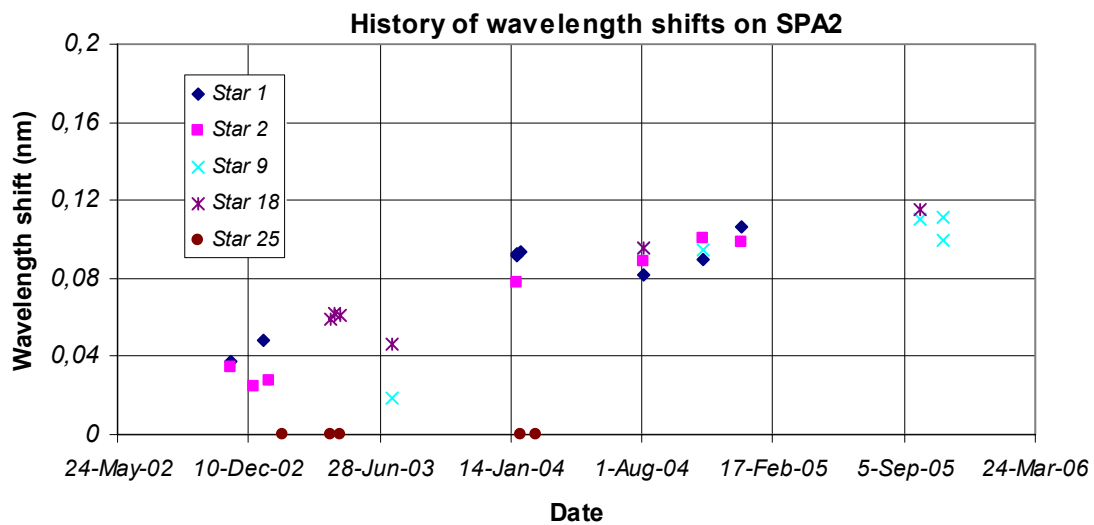


Figure 5.3-1: Wavelength shifts on SPA2 since 12th November 2002 calculated using different stars

The values reported in the plot of fig. 5.3-1 are, for every star ID (1, 2, 4, 9, 18, 25), the spectral shift on SPA2 CCD for which a maximum correlation has been found between the reference spectrum and the one of the occultation.

During the last wavelength calibration analysis performed using two occultations on 4th November 2005, the spectral shifts were greater than 0.07 nm (warning value) and the QWG has decided to recalibrate the wavelength assignment when the new processor is ready.

5.4 Radiometric Performance

5.4.1 RADIOMETRIC SENSITIVITY

The monitoring performed consists of the calculation of the radiometric sensitivity of each CCD by computing the ratio between parts of the reference spectrum using specific stars. The parts of the spectrum used are:

- UV: 250–300 nm
- Yellow: 500–550 nm
- Red: 640–690 nm
- Ir1: 761-770 nm
- Ir2: 935-944 nm

For the spectrometers the ratios are with respect to the ‘yellow’ spectral range. For the photometers, the ratios are calculated by dividing the mean photometer signal above the atmosphere (115 km) by the ‘yellow’ spectral range (for PH1) or by the ‘red’ spectral range (for PH2).

The variation of the ratio should be within a given threshold which is set to 10% (see table 5.4-1 that corresponds to fig. 5.4-1). For every star, this variation is calculated as the difference between the maximum (or minimum) ratio, and the mean over the 15 first values (if there were not 15 values computed yet, all values would be used).

Table 5.4-1: Variation of RS for the different ratios (corresponds to fig. 5.4-1). Should be less than 10%

| Star Id | % Variation of UV ratio | % Variation of Red ratio | % Variation of IR1 ratio | % Variation of IR2 ratio | % Variation of Ph1 ratio | % Variation of Ph2 ratio |
|---------|-------------------------|--------------------------|--------------------------|--------------------------|--------------------------|--------------------------|
| 1 | 2.44196 | 0.545067 | 0.401701 | 0.250543 | 8.55029 | 30.1656 |
| 2 | 0.641065 | 0.705293 | 0.625175 | 0.383392 | 8.27717 | 7.93166 |
| 4 | 0.150048 | 0.844181 | 1.52463 | 1.30163 | 8.08780 | 23.5227 |
| 9 | 13.0014 | 1.05504 | 0.783493 | 0.528085 | 5.59734 | 9.05862 |
| 18 | 1.73015 | 0.919592 | 0.844914 | 0.852089 | 14.7885 | 299.989 |
| 25 | 19.2603 | 0.715622 | 1.04061 | 1.12662 | 28.0870 | 147.396 |

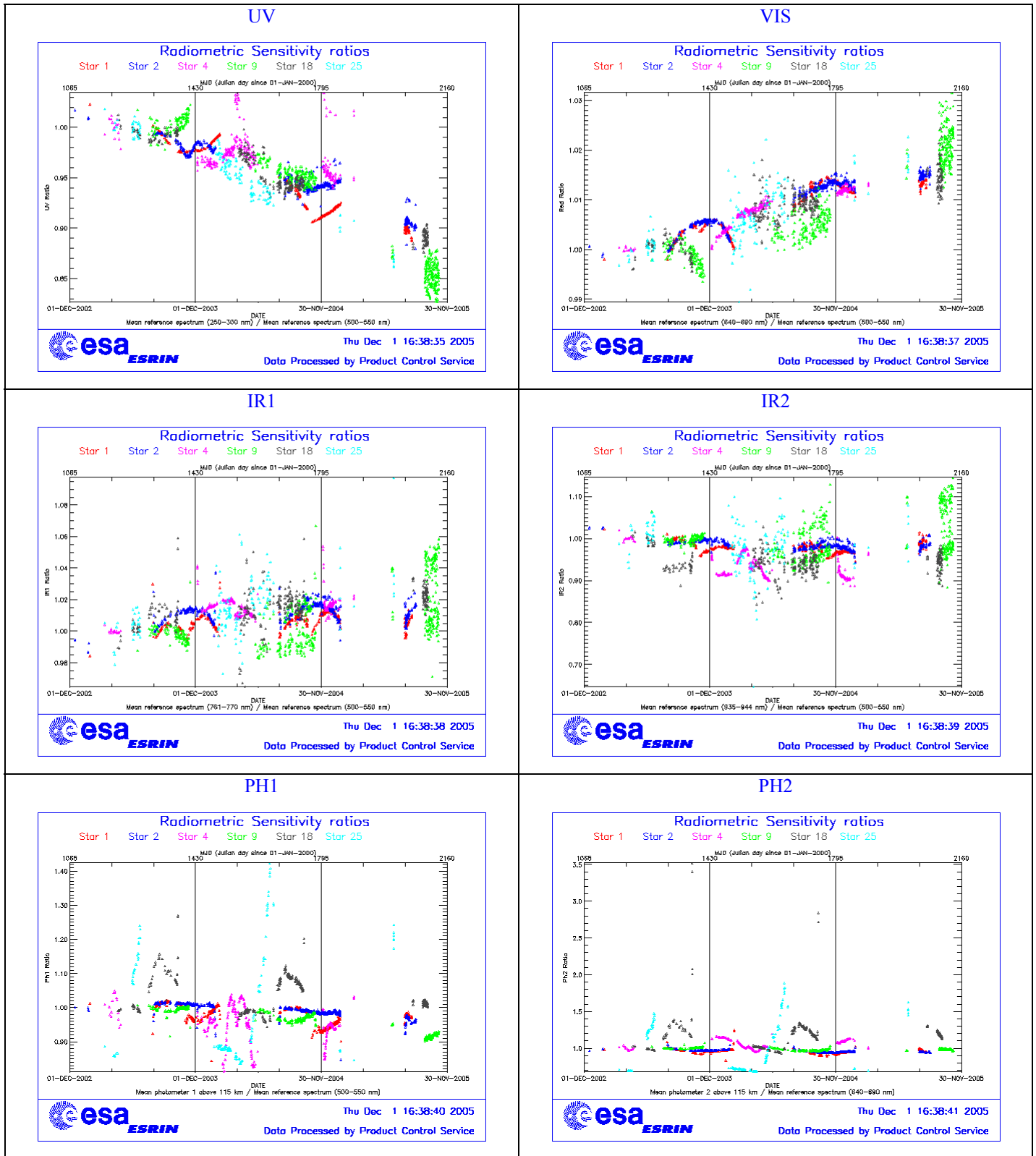


Figure 5.4-1: Radiometric sensitivity ratios since December 2002

For star 9 and 25 the UV ratio is greater than the threshold 10%. It is clear (fig. 5.4-1) that there is a global decrease of UV ratios for all the stars. This confirms the expected degradation suffered by the UV optics that is, anyway, very small considering also the small variation for the rest of the stars (table 5.4-1).

By looking at the photometers radiometric sensitivity ratios of fig. 5.4-1, it can be seen that every star has a variation that seems to be annual. The variation is significant for stars 25 and 18. After some investigations performed by the QWG that exclude an inaccurate reflectivity correction LUT or the different limbs (dark, twilight, bright) as sources of the variation, it has been concluded that the problem is not linked to the photometers. A further indication that the problem is not on the photometer sensitivity is that every star has a very different behaviour.

5.4.2 PIXEL RESPONSE NON UNIFORMITY

No new PRNU calibration has been performed during the reporting period. This means that the PRNU maps inside the ADF remain as they are without any change for the moment.

5.5 *Other Calibration Results*

Future reports will address other calibration results, when available.

6 LEVEL 2 PRODUCT QUALITY MONITORING

6.1 *Processor Configuration*

6.1.1 VERSION

Level 2 products from the operational ground segment have been disseminated during November 2005 to the users. About 79% of GOM_NL__2P products have been received by the DPQC team for routine quality control and long term trend monitoring. The current level 2-processor software version for the operational ground segment is GOMOS/4.02 (see table 6.1-1). The product specification is PO-RS-MDA-GS2009_10_3H. The improvements defined at the first Validation Workshop have been implemented into the prototype processor GOPR 6.0a (see table 6.1-2), and the first reprocessing activity (for 2003 data) has been performed with this prototype. A second reprocessing is on-going (for years 2002 - 2005) with the prototype version GOPR 6.0f (see table 6.1-2). The next operational ground segment processor GOMOS/5.00 will be in line with it.

Table 6.1-1: PDS level 2 product version and main modifications implemented

| Date | Version | Description of changes |
|-------------|---|---|
| 23-MAR-2003 | Level 2 version 4.02 at PDHS-E and PDHS-K | Algorithm baseline level 2 DPM 5.5: Section 3 <ul style="list-style-type: none"> • Add references to technical notes on Tikhonov regularization • Change High level breakdown of modules: SMO/PFG • Change parameter: NFS in I2 ADF • Change parameter σ_G in I2 ADF (Table 3.4.1.1-II) • Change content of Level 2/res products – GAP • Change time sampling discretisation • Add covariance matrix explanation Section 5 <ul style="list-style-type: none"> • Replace SMO by PFG VER-1/2: Depending on NFS, Apply either a Gaussian filter or a Tikhonov regularization to the vertical inversion matrix • Unit conversion applied on kernel matrix • Suppress VER-3 Section 6 <ul style="list-style-type: none"> • GOMOS Atmospheric Profile (GAP): not used in this version • Time sampling in equation (6.5.3.7-73) |
| 31-MAY-2003 | Level 2 version 4.00 at PDHS-E and PDHS-K | Algorithm baseline level 2 DPM 5.4: <ul style="list-style-type: none"> • Revision of some default values • Add a new parameter • Transmission model computation: suppress tests on valid pixels and species • Apply a Gaussian filter to the vertical inversion matrix • Very low signal values are substituted by threshold value |
| 21-NOV-2002 | Level 2 version 3.61 at PDHS-E and PDHS-K | Algorithm baseline level 2 DPM 5.3a: <ul style="list-style-type: none"> • Revision of some default values • Wording of test T11 • Dilution term computation of jend • Covariance computation scaling applied before and after |

Table 6.1-2: GOPR level 2 product version and main modifications implemented

| Date | Version | Description of changes |
|-------------|-----------|---|
| 14-OCT-2005 | GOPR_6.0f | <ul style="list-style-type: none"> • The optimisation of the DOAS iterations • Negative column densities and local densities not flagged anymore • Suppress the setting of maximum error in case of negative local |

| | | |
|-------------|-----------|---|
| | | densities <ul style="list-style-type: none"> • Correction of HRTP discrepancies, and error estimates fixed Configuration for second reprocessing: <ul style="list-style-type: none"> • 2nd order polynomial for aerosol • Air fixed to ECMWF (local density set to 0 in the L2 products) • Orphal cross-sections for O₃ • GOMOS cross-sections for NO₂ • Covariance matrix terms linked to air set to 0 • Air and NO₂ additional errors set to 0 |
| 17-MAR-2004 | GOPR 6.0a | <ul style="list-style-type: none"> • Rename Turbulence MDS into High Resolution Temperature MDS (HRTP) • Add vertical resolution per species in local densities MDS • Add Solar zenith angle at tangent point and at satellite level in geolocation ADS • Add "tangent point density from external model" in geolocation ADS • Suppress contribution of "tangent point density from external model" in "local air density from GOMOS atmospheric profile" in geolocation ADS |
| 18-AUG-2003 | GOPR 5.4d | <ul style="list-style-type: none"> • Tikhonov regularisation is implemented |
| 18-MAR-2003 | GOPR 5.4b | <ul style="list-style-type: none"> • Modification to implement the computation of Tmodel for spectrometer B (in version 5.4b, the Tmodel for SPB is still set to 1) |
| 30-JAN-2003 | GOPR 5.4a | <ul style="list-style-type: none"> • Modifications for ACRI internal use only. No impact on level 2 products. |

6.1.2 AUXILIARY DATA FILES (ADF)

The ADF's files in table 6.1-3 and 6.1-4 are used by the PDS to process the data from level 1 to level 2. For every type of file, the validity runs from the start validity time until the start validity time of the following one, but if an ADF file has been disseminated after the start validity time, it is obvious that it will be used by the PDHS-E and PDHS-K PDS only after the dissemination time (this happens the majority of the time). Note that the files outlined in yellow are the set of auxiliary files used during the reporting period.

Table 6.1-3: Table of historic GOM_PR2_AX files used by PDS for level 2 products generation. The GOM_PR2_AX is a file containing the configuration parameters used for processing from level 1b to level 2 products

| Used by PDS for Level 2 products generation in period | GOM_PR2_AX (GOMOS Processing level 2 configuration file) |
|---|--|
| 01-MAR-2002 → 29-JUL-2002 | GOM_PR2_AKVIEC20020121_165624_20020101_000000_20200101_000000 <ul style="list-style-type: none"> • Pre-launch configuration |
| 30-JUL-2002 → 02-SEP-2002 | GOM_PR2_AKVIEC20020729_083851_20020301_000000_20100101_000000 <ul style="list-style-type: none"> • Maximum value of chi2 before a warning flag is raised (set to 5) • Maximum number of iterations for the main loop (set to 1) |
| 03-SEP-2002 → 12-NOV-2003 | GOM_PR2_AKVIEC20020902_151029_20020301_000000_20100101_000000 <ul style="list-style-type: none"> • Maximum value of chi2 before a warning flag is raised (set to 100) |

| | |
|---|--|
| <p>13-NOV-2003 → 22-MAR-2004</p> | <p>GOM_PR2_AXVIEC20021112_170458_20020301_000000_20100101_000000</p> <ul style="list-style-type: none"> • Smoothing mode • Hanning filter • Number of iterations • Spectral windows to suppress the O2 absorption in the high spectral range of SPA2 |
| <p>23-MAR-2004 <i>Note:</i> this file was used by the GOMOS/4.02 processors before the IECF dissemination. The dissemination was done on 25th March 2004</p> | <p>GOM_PR2_AXVIEC20040316_145613_20020301_000000_20100101_000000</p> <ul style="list-style-type: none"> • Pressure at the top of the atmosphere • Number of GOMOS sources data (used in GAP) • Activation flag for GOMOS sources data (GAP) • Smoothing mode (after the spectral inversion) • Atmosphere thickness |

Table 6.1-4: Table of historic GOM_CRS_AX files used by PDS for level 2 products generation. The GOM_CRS_AX is a file containing the cross sections used for processing from level 1b to level 2 products

| Used by PDS for Level 2 products generation in period | GOM_CRS_AX (GOMOS Cross Sections file) |
|---|---|
| <p>01-MAR-2002 → 08-MAR-2002</p> | <p>GOM_CRS_AXVIEC20020121_164026_20020101_000000_20200101_000000</p> <ul style="list-style-type: none"> • Pre-launch configuration |
| <p>09-MAR-2003 → 29-JUL-2002</p> | <p>GOM_CRS_AXVIEC20020308_185417_20020101_000000_20200101_000000</p> <ul style="list-style-type: none"> • Corrected NUM_DSD in MPH - was 14 and is now 19 - and corrected spare DSD format by replacing last spare by carriage returns in file GOM_CRS_AXVIEC20020121_164026_20020101_000000_20200101_000000 |
| <p>30-JUL-2002 → 25-MAR-2004</p> | <p>GOM_CRS_AXVIEC20020729_082931_20020301_000000_20100101_000000</p> <ul style="list-style-type: none"> • O3 cross-sections summary description (SPA) • NO3 cross-sections summary description • O2 transmissions summary description • H2O transmissions summary description • O3 cross sections (SPA) |
| <p>26-MAR-2004 <i>Note:</i> the file was disseminated on 27 Jan 2004 but could not be used by PDS until version GOMOS/4.02 was in operation</p> | <p>GOM_CRS_AXVIEC20040127_150241_20020301_000000_20100101_000000</p> <ul style="list-style-type: none"> • Update of the O2 and H2O transmissions (S.A input) • Extension by continuity of the O3 cross-section for SPB |

6.1.3 RE-PROCESSING STATUS

The improvement of the GOMOS processing chain is a continuous on-going activity, not only for the processing algorithm but also for the instrument characterization data. In order to provide the best quality products to the users and due to the normal delay between algorithm specification and implementation in the operational PDS, it has been decided to reprocess the GOMOS data using the GOPR prototype.

6.1.3.1 First reprocessing

Data from the first reprocessing activity covering the year 2003 can be retrieved via web query from <http://www.enviport.org/gomos/index.jsp>. FTP access to bulk reprocessing results (one tar file of GOMOS products per day) is allowed from the D-PAC: <ftp://gomo2usr@ftp-ops.de.envisat.esa.int>.

The table 6.1-5 presents the status of the first GOMOS reprocessing task in terms of availability of the instrument, level 0 input products and level 1b/2 output products. The status is presented by cycle. Each cycle is made of 501 orbits or 35 days. The last three columns of the table indicate the percentage of availability of each item with respect to the instrument availability in observation mode (i.e. for example without taking account of the calibration or DSA observation of GOMOS). Values greater than 100% may occur due to the fact that some calibration observations are not taken into account in the instrument availability but they can be processed. See more details on http://www.enviport.org/boards/board_gomos.htm

Table 6.1-5: Summary of reprocessing status at ACRI

| Cycle | Orbits | Cycle Time Interval | % Instr. Availability | % L0 in ACRI | % Lv1b/L2 in ACRI |
|-------|-------------|---------------------------------|-----------------------|--------------|-------------------|
| 5 | 556-1056 | 08/04/02 21:59 - 13/05/02 20:18 | 89.6 | 0.0 | 0.0 |
| 6 | 1057-1557 | 13/05/02 21:59 -17/06/02 20:18 | 86.4 | 0.0 | 0.0 |
| 7 | 1558-2058 | 17/06/02 21:59 - 22/07/02 20:18 | 88.8 | 0.2 | 0.0 |
| 8 | 2059-2559 | 22/07/02 21:59 - 26/08/02 20:18 | 88.0 | 0.0 | 0.0 |
| 9 | 2560-3060 | 26/08/02 21:59 - 30/09/02 20:18 | 75.0 | 7.2 | 0.0 |
| 10 | 3061-3561 | 30/09/02 21:59 - 04/11/02 20:18 | 95.4 | 2.7 | 0.0 |
| 11 | 3562-4062 | 04/11/02 21:59 - 09/12/02 20:18 | 88.4 | 0.0 | 0.0 |
| 12 | 4063-4563 | 09/12/02 21:59 - 13/01/03 20:18 | 95.0 | 0.0 | 0.0 |
| 13 | 4564-5064 | 13/01/03 21:59 - 17/02/03 20:18 | 97.4 | 78.7 | 78.5 |
| 14 | 5065-5565 | 17/02/03 21:59 - 24/03/03 20:18 | 60.7 | 95.7 | 95.4 |
| 15 | 5566-6066 | 24/03/03 21:59 - 28/04/03 20:19 | 84.6 | 77.4 | 75.2 |
| 16 | 6067-6567 | 28/04/03 21:59 - 02/06/03 20:18 | 14.0 | 94.3 | 94.3 |
| 17 | 6568-7068 | 02/06/03 21:59 - 07/07/03 20:19 | 52.9 | 85.7 | 84.9 |
| 18 | 7069-7569 | 07/07/03 21:59 - 11/08/03 20:19 | 65.1 | 97.2 | 97.2 |
| 19 | 7570-8070 | 11/08/03 21:59 - 15/09/03 20:19 | 84.0 | 95.2 | 94.3 |
| 20 | 8071-8571 | 15/09/03 21:59 - 20/10/03 20:19 | 93.6 | 97.2 | 96.8 |
| 21 | 8572-9072 | 20/10/03 21:59 - 24/11/03 20:19 | 92.6 | 98.9 | 98.1 |
| 22 | 9073-9573 | 24/11/03 21:59 - 29/12/03 20:19 | 90.6 | 102.8 | 102.8 |
| 23 | 9574-10074 | 29/12/03 21:59 - 02/02/04 20:19 | 95.0 | 0.0 | 0.0 |
| 24 | 10075-10575 | 02/02/04 21:59 - 08/03/04 20:19 | 95.2 | 0.0 | 0.0 |
| 25 | 10576-11076 | 08/03/04 21:59 - 12/04/04 20:19 | 96.6 | 0.0 | 0.0 |
| 26 | 11077-11577 | 12/04/04 21:59 - 17/05/04 20:19 | 100.0 | 0.0 | 0.0 |
| 27 | 11578-12078 | 17/05/04 21:59 - 21/06/04 20:19 | 46.3 | 0.0 | 0.0 |
| 28 | 12079-12579 | 21/06/04 21:59 - 26/07/04 20:19 | 0.0 | 0.0 | 0.0 |
| 29 | 12580-13080 | 26/07/04 21:59 - 30/08/04 20:19 | 0.0 | 0.0 | 0.0 |

6.1.3.2 Second reprocessing

The first part of the second reprocessing activity (using the prototype GOPR_6.0c_6.0f) is completed. All reprocessed products will be soon available through the D-PAC server <ftp-ops.de.envisat.esa.int>. Remaining gaps will be filled in early 2006. The configuration of the prototype GOPR_6.0c_6.0f version is as follows:



Level 1b configuration:

- FP unfolding algorithm corrected
- Background correction of SPB in full dark limb
- Correction of the flat-field correction implementation
- Corrected reflectivity LUT
- Updated wavelength assignment
- Correction of the star spectra from reflectivity variations

Level 2 configuration:

- DOAS iteration is based on the relative variation of NO₂ and NO₃ and no more χ^2 .
- Suppress flagging of negative column densities
- Suppress flagging of negative local densities
- Suppress the setting to max-error in case of negative local densities
- Correction of the H RTP algorithm
- Aerosol polynomial degree 2
- Air fixed to ECMWF
- ORPHAL cross-sections only for O₃
- Air local density set to 0
- Error bar and vertical resolution for air set to 0
- Covariance matrix terms linked to air set to 0
- Air and NO₂ additional errors set to 0

6.1.3.2.1 *New flagging strategy*

Some results related to the number of negative non-flagged values of vertical profiles of local density are presented. With the new processing chain, the PCD flag of products must be understood as a processor flag, indicating if the retrieval has been successful or not. As there is no more a systematic flagging of negative values of column and line densities, non-flagged negative values may be included in the vertical profiles. This new flagging strategy implies to use other criteria for user data selection than the selection of non-flagged values. This new criteria could be based on the “standard deviation” values stored in the products. The number of non-flagged values that has been not filtered by a 3σ criteria is investigated in this section.

The dataset analyzed consist on 589 occultations measured in full dark limb at various latitudes. The vertical profiles were processed with the GOPR version 6.0cf, which is the version selected for the second reprocessing. For each vertical profile of local density, we calculate the number of negative non-flagged values with defined error and for which the value amplitude is larger than 3 times the associated error bar (or “standard deviation” in the product). This number is divided by the total number of retrieved values per profile and is expressed as a percentage. Results are presented for O₃, H₂O, NO₂, NO₃, and O₂ for several altitude layers. For each species, we also provide by altitude layer the number of negative non-flagged values with amplitude larger than 3 times the associated error bar on the whole dataset; and the number of profiles containing those values.

The number of negative non-flagged values of amplitude larger than 3 times the error bar, by altitude layer, is lower than 4% (table 6.1-6) for O₃, NO₂, NO₃, and O₂, which seems a reasonable limit. It is up to 8.32%

for H₂O in the altitude layer 20km-40km (results for H₂O were not presented at higher altitudes). However, it is worth noting that the error bar is not defined for all density values, so that only a partial conclusion may be reached basing on these results. This is under further investigation.

Table 6.1-6: Relative number of negative, non-flagged values, with amplitude larger than 3 times the error bar (as a percentage of the total number of values for all profiles of the dataset)

| Species | 0-20km | 20km-40km | 40km-60km | 60km-80km | 80km-100km |
|------------------|--------|-----------|-----------|-----------|------------|
| O ₃ | 2.47 | 0 | 0.47 | 0.01 | 0.02 |
| H ₂ O | 4.32 | 8.32 | - | - | - |
| NO ₂ | 2.66 | 0.13 | 0.10 | 1.21 | 1.66 |
| NO ₃ | 3.33 | 1.31 | 0.22 | 0.31 | 0.53 |
| O ₂ | 0.55 | 0.77 | 0.58 | 0.36 | 0.15 |

Table 6.1-7: Relative number of profiles containing negative, non-flagged values, with amplitude larger than 3 times the error bar (as a percentage of the total number of profiles of the dataset)

| Species | 0-20km | 20km-40km | 40km-60km | 60km-80km | 80km-100km |
|------------------|--------|-----------|-----------|-----------|------------|
| O ₃ | 3.90 | 0 | 4.24 | 0.17 | 0.34 |
| H ₂ O | 13.58 | 41.09 | - | - | - |
| NO ₂ | 4.41 | 1.19 | 1.36 | 9.68 | 10.87 |
| NO ₃ | 4.07 | 7.81 | 1.87 | 3.06 | 4.07 |
| O ₂ | 2.89 | 5.60 | 1.53 | 1.53 | 1.02 |

6.2 Quality Flags Monitoring

In this section, some information contained in the Quality Summary data set of the level 2 products of November 2005 is shown. In particular, the percentage of flagged points per profile for the local species O₃, H₂O, NO₂ and Air is depicted. Only products in dark limb illumination conditions and without fatal errors (error flag in the MPH set to "0") are used.

A profile point in a level 2 product is flagged when:

- The local density is less than a given minimum value
- The local density is greater than a given maximum value
- A negative local density was found
- The line density is not valid. And it occurs when:
 - The acquisition from level 1b is not valid
 - There is no acquisition used for reference star spectrum
 - The line density is less than a given minimum value
 - The line density is greater than a given maximum value
 - A negative line density was found

- For species: air, aerosol, O₃, NO₂, NO₃, OClO
 - No convergence after a given number of LMA iterations
 - χ^2 out of LMA is bigger than χ^2
 - Failure of inversion
- For species: O₂, H₂O
 - Spectro B only: no convergence
 - Spectro B only: data not available
 - Spectro B only: covariance not available

There are points mainly between -40° and +50° latitude because in this period of the year full dark illumination condition occultations (only those products have been used for these plots) are found on that region. In summer, full dark illumination data are mainly in the Southern Hemisphere while in winter it is the contrary: full dark illumination occultations are found mainly in the Northern Hemisphere.

Looking at fig. 6.2-1, the most evident characteristic that can be observed is the high percentage of flagged points per profile for H₂O. Users should not use these data, as their quality is still poor. The percentage of flagged points per profile for O₃ and Air is around 35% whereas for NO₂ it becomes 60%. It can be seen also that there are latitudinal bands with almost the same color (same percentages). This means that the percentages of flagged points per profile have a dependence on the stars that have been observed: a given star is always observed at the same latitude but at different longitude.

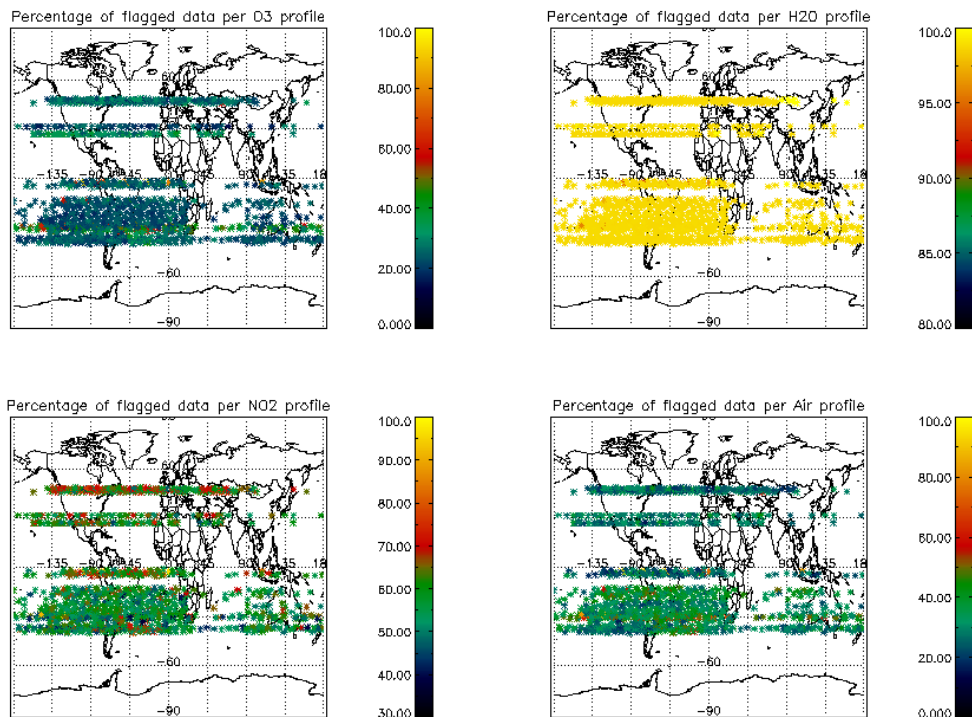


Figure 6.2-1: Percentage of flagged points per profile

Fig. 6.2-2 shows the same information as in fig. 6.2-1 but for given specie **valid altitude ranges** (see table 6.2-1), that is, altitude ranges where data with the best quality should be found. If there are no points within

the altitude range for a given occultation then a value of -20 is used. For O₃ the percentage of flagged points per profile is on average around 5% between 20 and 60 Km altitude. For NO₂ it becomes 15 % for altitudes between 20 and 50 Km and for Air profiles, the percentage of flagged points is small for altitudes between 25 and 45 Km., being many of them around 0%. For H₂O, considering the whole profiles or considering points below 50 Km does not change the high percentage of flagged points.

Table 6.2-1: Valid altitude ranges

| Specie | O ₃ | NO ₂ | Air | H ₂ O |
|----------------------------------|----------------|-----------------|---------|------------------|
| Valid altitude range (km) | 20 - 60 | 20 - 50 | 25 - 45 | < 50 |

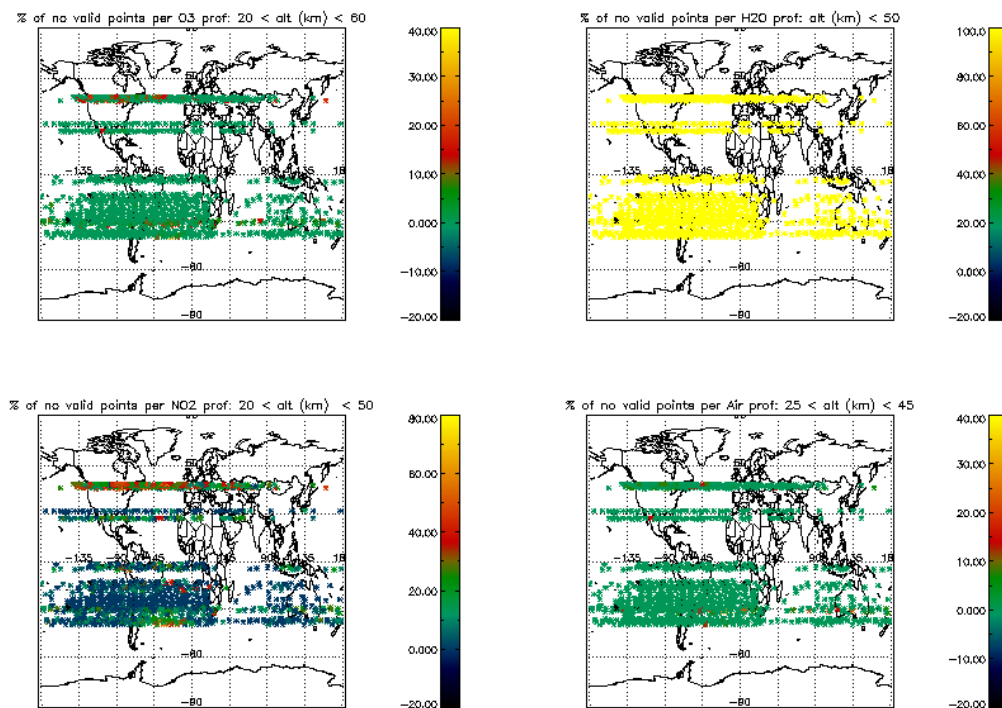


Figure 6.2-2: Same as fig. 6.2-1 but for valid altitude ranges of table 6.2-1

6.3 Other Level 2 Performance Issues

The plot presented in fig. 6.3-1 is the average of the Ozone values during November 2005 in a grid of 0.5 degrees in latitude per 1 km in altitude. Only occultations in dark limb have been used. Even though there is a clear reduction on latitude coverage due to the restricted azimuth field of view of the instrument, still some known characteristics can be seen:

- O₃ concentrations show a decrease with latitude near 40 km altitude. In the lower latitudes O₃ is generated by photolysis of O₂

- In the middle stratosphere (25-30 km) O₃ is strongly influenced by transport effects. Strong meridional and zonal transport is visible in middle and higher latitudes
- The lower stratosphere shows an O₃ increase with latitude. Highest values can be found within higher latitude regions due to downward transport of rich air masses

However, other characteristics seem not to be realistic as the values below 15 km, where data are not reliable at the moment.

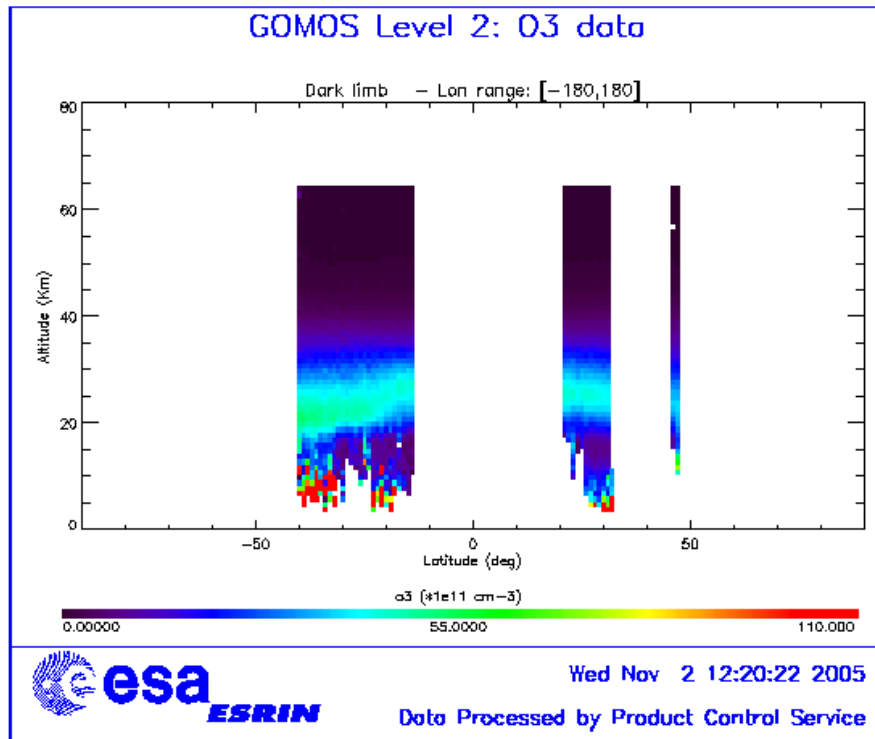


Figure 6.3-1: Average GOMOS O₃ profile during the reporting month: average in a grid of 0.5° latitude x 1 km altitude

7 VALIDATION ACTIVITIES AND RESULTS

7.1 GOMOS-ECMWF Comparisons

7.1.1 TEMPERATURE AND OZONE COMPARISONS

Due to restrictions in the current METEO product format, filtering of METEO data is not possible. **ECMWF results are therefore partially based on data that are not to be used for scientific application**, as mentioned in the disclaimer (<http://envisat.esa.int/dataproducts/availability/disclaimers>)

7.1.1.1 November 2005

Due to unavailability of GOM_RR_2P BUFR files on ESA's ftp servers (since 24th October 2005), ECMWF monthly report about GOMOS data for November 2005 has not been produced

7.2 GOMOS-Climatology comparisons

Results are presented when available.

7.3 GOMOS Assimilation

Results are presented when available.

7.4 Consistency Verification: GOMOS-GOMOS Inter-comparison

Results are presented when available.

7.5 Inter-Comparison with external data

The GOMOS O₃ vertical profiles retrieved with the GOPR configuration 6.0cf used for the second reprocessing (see section 6.1.3.2 for configuration) are compared to ground-based measurements: ozonesondes, lidar, and microwave radiometers. Those comparisons are performed within the frame of EQUAL project (Y. Meijer and D. Swart, RIVM). Results for a dataset of 241 occultations at various latitudes in full-dark limb are presented on fig. 7.5-1 and may be compared to the results from the same dataset retrieved with GOPR 6.0ab, which was the version used for the first reprocessing (fig. 7.5-2).

When processed with the GOPR version 6.0cf, the agreement of the GOMOS profiles with the ground-based measurements is improved for a few kilometers around 10km altitude level and between 15km and 33km. Previous studies have shown that the change of cross-section for O₃ in this new version produces higher values of the concentration average around the maximum level. There is no significant change in the concentration average at altitudes higher than 50km.

The dispersion of the O₃ concentration values with this version is larger than with the older version in the altitude ranges 10km-13km and 25km-30km. It is decreased between 50km and 70km. For those altitude ranges, the amplitude of the difference with the dispersion of ground-based measurements is increased for the GOPR version 6.0cf when compared to the version 6.0ab.

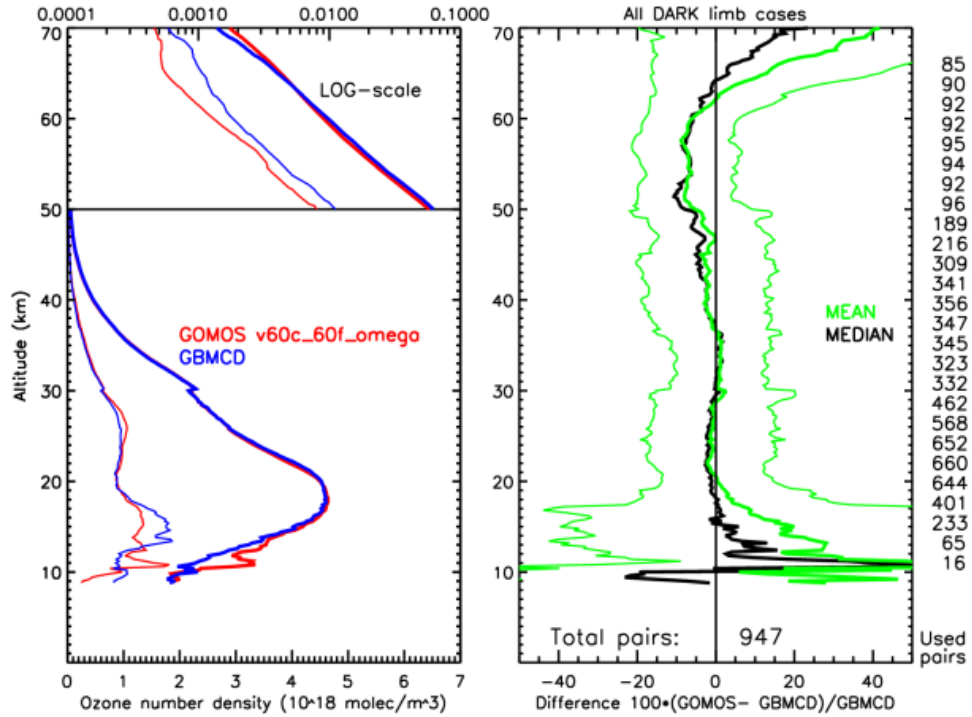


Figure 7.5-1: Left figure: Vertical profiles of the average and of the dispersion of O₃ local density retrieved with GPR 6.0cf (red line), and measured by ground-based instruments (blue line). Top figure: logarithmic scale and altitudes between 50km and 70km; bottom figure: linear scale and altitudes between 0 and 50km. Right figure: Vertical profiles of the average relative difference between O₃ local density retrieved with GPR 6.0cf and measured by ground-based instruments

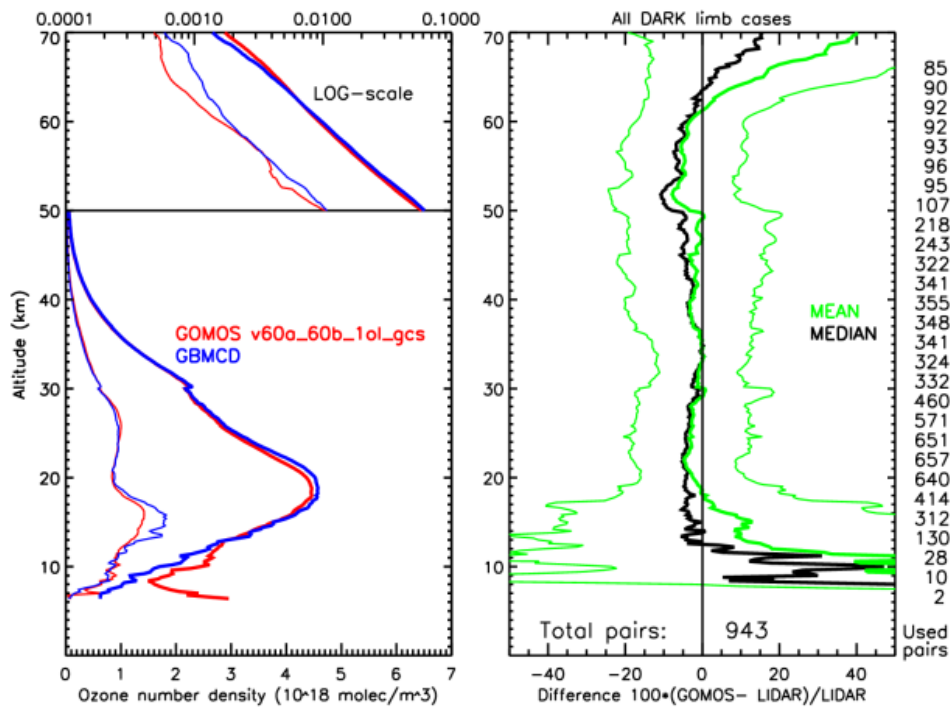


Figure 7.5-2: Same as fig. 7.5-1 for O₃ vertical profiles retrieved with GPR 6.0ab