

# GOMOS Level 2 Daily Report

## SUMMARY

### [1. General Info](#)

### [2. Summary of processed GOM\\_NL\\_2P products](#)

### [3. Level 2 Quality information per product](#)

#### [3.1 Plot of level 2 quality information per product \(time dependant\)](#)

#### [3.2 Plot of level 2 quality information per product \(world map\)](#)

### [4. Level 1 Quality information per product \(stored on level 2 products\)](#)

#### [4.1 Plot of level 1 quality information per product \(time dependant\)](#)

##### [4.1.1 Plot of level 1 quality information per product \(time dependant\): ASCENDING](#)

##### [4.1.2 Plot of level 1 quality information per product \(time dependant\): DESCENDING](#)

#### [4.2 Plot of level 1 quality information per product \(world map\)](#)

##### [4.2.1 Plot of level 1 quality information per product \(world map\): ASCENDING](#)

##### [4.2.2 Plot of level 1 quality information per product \(world map\): DESCENDING](#)

### [5. Ozone profiles based on quality statistics and other trace gas profiles](#)

#### [5.1 Ozone statistics based on quality of products](#)

#### [5.2 Plot ozone profiles for all STD \(dark without errors\)](#)

#### [5.3 Plot ozone profiles where STD < 20% \(dark without errors\)](#)

#### [5.4. Plot ozone profiles where STD < 10% \(dark without errors\)](#)

#### [5.5. Plot ozone profiles where STD < 5% \(dark without errors\)](#)

#### [5.6 Plot NO2 profiles for all STD \(dark without errors\)](#)

#### [5.7 Plot NO3 profiles for all STD \(dark without errors\)](#)

#### [5.8 Plot H2O profiles \(only for occultations of stars 1,2,3,4,13,14,16,26,63 dark without errors\) for all STD](#)

### [6. Auxiliary Data Files used for the production reported in section 2](#)

This report presents the daily analysis on parameters extracted from GOMOS level 2 data (GOM\_NL\_\_2P). It is intended to monitor some important parameters that will impact the quality of these products. A list of level 2 products (and content) that have arrived during the reporting day to the PCF is also given.

Item	Value
Time of report generation	18APR2013 14:13:21
Data source version	GOMOS/6.01
Start time of products	26-03-2012 (26MAR2012 00:00:00)
Stop time of products	27-03-2012 (27MAR2012 00:00:00)
Store outputs in DB	Yes
Nb of level 2 prods	46
Nb of prods with errors	0

## 2. Summary of processed GOM\_NL\_\_2P products.

**!Warning: No products without errors in DARK limb contitions found**

Nr	Filename	UTC Start time	Limb	Duration	Star Id	Star Name	Star Mag	Star Temp	Nb Meas	Orbit	Prod. error
1	GOM_NL__2PRFIN20120326_001530_000000433113_00074_52674_9893.N1	26-MAR-2012 00:15:30	Straylight	42.500	77	Eps Cen	2.3030	28000.	85	52674	No
2	GOM_NL__2PRFIN20120326_010620_000000363113_00074_52674_9894.N1	26-MAR-2012 01:06:20	Bright	35.500	89	5Alp Cep	2.4510	8000.0	71	52674	No
3	GOM_NL__2PRFIN20120326_015544_000000433113_00075_52675_9904.N1	26-MAR-2012 01:55:44	Straylight	43.000	77	Eps Cen	2.3030	28000.	86	52675	No
4	GOM_NL__2PRFIN20120326_024633_000000373113_00075_52675_9905.N1	26-MAR-2012 02:46:33	Bright	37.000	89	5Alp Cep	2.4510	8000.0	74	52675	No
5	GOM_NL__2PRFIN20120326_033558_000000403113_00076_52676_9915.N1	26-MAR-2012 03:35:58	Straylight	40.000	77	Eps Cen	2.3030	28000.	80	52676	No
6	GOM_NL__2PRFIN20120326_042648_000000383113_00076_52676_9916.N1	26-MAR-2012 04:26:48	Bright	38.000	89	5Alp Cep	2.4510	8000.0	76	52676	No
7	GOM_NL__2PRFIN20120326_051613_000000423113_00077_52677_9936.N1	26-MAR-2012 05:16:13	Straylight	41.500	77	Eps Cen	2.3030	28000.	83	52677	No
8	GOM_NL__2PRFIN20120326_053943_000000303113_00077_52677_9937.N1	26-MAR-2012 05:39:43	Bright	29.500	96	68Del Leo	2.5600	9300.0	59	52677	No
9	GOM_NL__2PRFIN20120326_060702_000000373113_00077_52677_9938.N1	26-MAR-2012 06:07:02	Bright	37.000	89	5Alp Cep	2.4510	8000.0	74	52677	No
10	GOM_NL__2PRFIN20120326_065627_000000413113_00078_52678_9957.N1	26-MAR-2012 06:56:27	Straylight	40.500	77	Eps Cen	2.3030	28000.	81	52678	No
11	GOM_NL__2PRFIN20120326_071957_000000363113_00078_52678_9958.N1	26-MAR-2012 07:19:57	Bright	36.000	96	68Del Leo	2.5600	9300.0	72	52678	No
12	GOM_NL__2PRFIN20120326_074715_000000373113_00078_52678_9959.N1	26-MAR-2012 07:47:15	Bright	36.500	89	5Alp Cep	2.4510	8000.0	73	52678	No
13	GOM_NL__2PRFIN20120326_083642_000000413113_00079_52679_9988.N1	26-MAR-2012 08:36:42	Straylight	40.500	77	Eps Cen	2.3030	28000.	81	52679	No
14	GOM_NL__2PRFIN20120326_090010_000000433113_00079_52679_9989.N1	26-MAR-2012 09:00:10	Bright	43.000	96	68Del Leo	2.5600	9300.0	86	52679	No
15	GOM_NL__2PRFIN20120326_090701_000000293113_00079_52679_9990.N1	26-MAR-2012 09:07:01	Bright	29.000	174	52Psi UMa	3.0040	4400.0	58	52679	No
16	GOM_NL__2PRFIN20120326_092729_000000373113_00079_52679_9991.N1	26-MAR-2012 09:27:29	Bright	37.000	89	5Alp Cep	2.4510	8000.0	74	52679	No
17	GOM_NL__2PRFIN20120326_101656_000000403113_00080_52680_0023.N1	26-MAR-2012 10:16:56	Straylight	40.000	77	Eps Cen	2.3030	28000.	80	52680	No
18	GOM_NL__2PRFIN20120326_104024_000000383113_00080_52680_0024.N1	26-MAR-2012 10:40:24	Bright	37.500	96	68Del Leo	2.5600	9300.0	75	52680	No
19	GOM_NL__2PRFIN20120326_104715_000000353113_00080_52680_0025.N1	26-MAR-2012 10:47:15	Bright	35.000	174	52Psi UMa	3.0040	4400.0	70	52680	No
20	GOM_NL__2PRFIN20120326_110743_000000473113_00080_52680_0026.N1	26-MAR-2012 11:07:43	Bright	47.000	89	5Alp Cep	2.4510	8000.0	94	52680	No
21	GOM_NL__2PRFIN20120326_115710_000000403113_00081_52681_0080.N1	26-MAR-2012 11:57:10	Straylight	39.500	77	Eps Cen	2.3030	28000.	79	52681	No
22	GOM_NL__2PRFIN20120326_122038_000000363113_00081_52681_0081.N1	26-MAR-2012 12:20:38	Bright	36.000	96	68Del Leo	2.5600	9300.0	72	52681	No
23	GOM_NL__2PRFIN20120326_122729_000000383113_00081_52681_0082.N1	26-MAR-2012 12:27:29	Bright	37.500	174	52Psi UMa	3.0040	4400.0	75	52681	No
24	GOM_NL__2PRFIN20120326_124757_000000363113_00081_52681_0083.N1	26-MAR-2012 12:47:57	Bright	36.000	89	5Alp Cep	2.4510	8000.0	72	52681	No
25	GOM_NL__2PRFIN20120326_133725_000000393113_00082_52682_0156.N1	26-MAR-2012 13:37:25	Straylight	38.500	77	Eps Cen	2.3030	28000.	77	52682	No
26	GOM_NL__2PRFIN20120326_140052_000000543113_00082_52682_0157.N1	26-MAR-2012 14:00:52	Bright	54.000	96	68Del Leo	2.5600	9300.0	108	52682	No
27	GOM_NL__2PRFIN20120326_140742_000000363113_00082_52682_0158.N1	26-MAR-2012 14:07:42	Bright	36.000	174	52Psi UMa	3.0040	4400.0	72	52682	No
28	GOM_NL__2PRFIN20120326_142811_000000383113_00082_52682_0159.N1	26-MAR-2012 14:28:11	Bright	37.500	89	5Alp Cep	2.4510	8000.0	75	52682	No
29	GOM_NL__2PRFIN20120326_151739_000000403113_00083_52683_0189.N1	26-MAR-2012 15:17:39	Straylight	39.500	77	Eps Cen	2.3030	28000.	79	52683	No
30	GOM_NL__2PRFIN20120326_154106_000000363113_00083_52683_0190.N1	26-MAR-2012 15:41:06	Bright	36.000	96	68Del Leo	2.5600	9300.0	72	52683	No
31	GOM_NL__2PRFIN20120326_154756_000000373113_00083_52683_0191.N1	26-MAR-2012 15:47:56	Bright	37.000	174	52Psi UMa	3.0040	4400.0	74	52683	No
32	GOM_NL__2PRFIN20120326_160825_000000393113_00083_52683_0192.N1	26-MAR-2012 16:08:25	Bright	38.500	89	5Alp Cep	2.4510	8000.0	77	52683	No
33	GOM_NL__2PRFIN20120326_165754_000000403113_00084_52684_0224.N1	26-MAR-2012 16:57:54	Straylight	40.000	77	Eps Cen	2.3030	28000.	80	52684	No
34	GOM_NL__2PRFIN20120326_172120_000000383113_00084_52684_0225.N1	26-MAR-2012 17:21:20	Bright	37.500	96	68Del Leo	2.5600	9300.0	75	52684	No
35	GOM_NL__2PRFIN20120326_172810_000000363113_00084_52684_0226.N1	26-MAR-2012 17:28:10	Bright	36.000	174	52Psi UMa	3.0040	4400.0	72	52684	No
36	GOM_NL__2PRFIN20120326_174839_000000383113_00084_52684_0227.N1	26-MAR-2012 17:48:39	Bright	38.000	89	5Alp Cep	2.4510	8000.0	76	52684	No
37	GOM_NL__2PRFIN20120326_183808_000000403113_00085_52685_0250.N1	26-MAR-2012 18:38:08	Straylight	40.000	77	Eps Cen	2.3030	28000.	80	52685	No
38	GOM_NL__2PRFIN20120326_190134_000000383113_00085_52685_0251.N1	26-MAR-2012 19:01:34	Bright	38.000	96	68Del Leo	2.5600	9300.0	76	52685	No
39	GOM_NL__2PRFIN20120326_190824_000000373113_00085_52685_0252.N1	26-MAR-2012 19:08:24	Bright	36.500	174	52Psi UMa	3.0040	4400.0	73	52685	No
40	GOM_NL__2PRFIN20120326_192853_000000363113_00085_52685_0253.N1	26-MAR-2012 19:28:53	Bright	36.000	89	5Alp Cep	2.4510	8000.0	72	52685	No
41	GOM_NL__2PRFIN20120326_204148_000000383113_00086_52686_0279.N1	26-MAR-2012 20:41:48	Bright	38.000	96	68Del Leo	2.5600	9300.0	76	52686	No

42	GOM_NL__2PRFIN20120326_204838_000000363113_00086_52686_0280.N1	26-MAR-2012 20:48:38	Bright	36.000	174	52Psi UMa	3.0040	4400.0	72	52686	No
43	GOM_NL__2PRFIN20120326_210907_000000373113_00086_52686_0281.N1	26-MAR-2012 21:09:07	Bright	36.500	89	5Alp Cep	2.4510	8000.0	73	52686	No
44	GOM_NL__2PRFIN20120326_222201_000000373113_00087_52687_0315.N1	26-MAR-2012 22:22:01	Bright	37.000	96	68Del Leo	2.5600	9300.0	74	52687	No
45	GOM_NL__2PRFIN20120326_222852_000000363113_00087_52687_0316.N1	26-MAR-2012 22:28:52	Bright	35.500	174	52Psi UMa	3.0040	4400.0	71	52687	No
46	GOM_NL__2PRFIN20120326_224920_000000373113_00087_52687_0317.N1	26-MAR-2012 22:49:20	Bright	37.000	89	5Alp Cep	2.4510	8000.0	74	52687	No

### 3. Quality information per product

In this section it is plotted some information contained in the Quality Summary data set of the level 2 products. Only products in dark limb conditions and without errors (error flag in the MPH set to "0") are used.

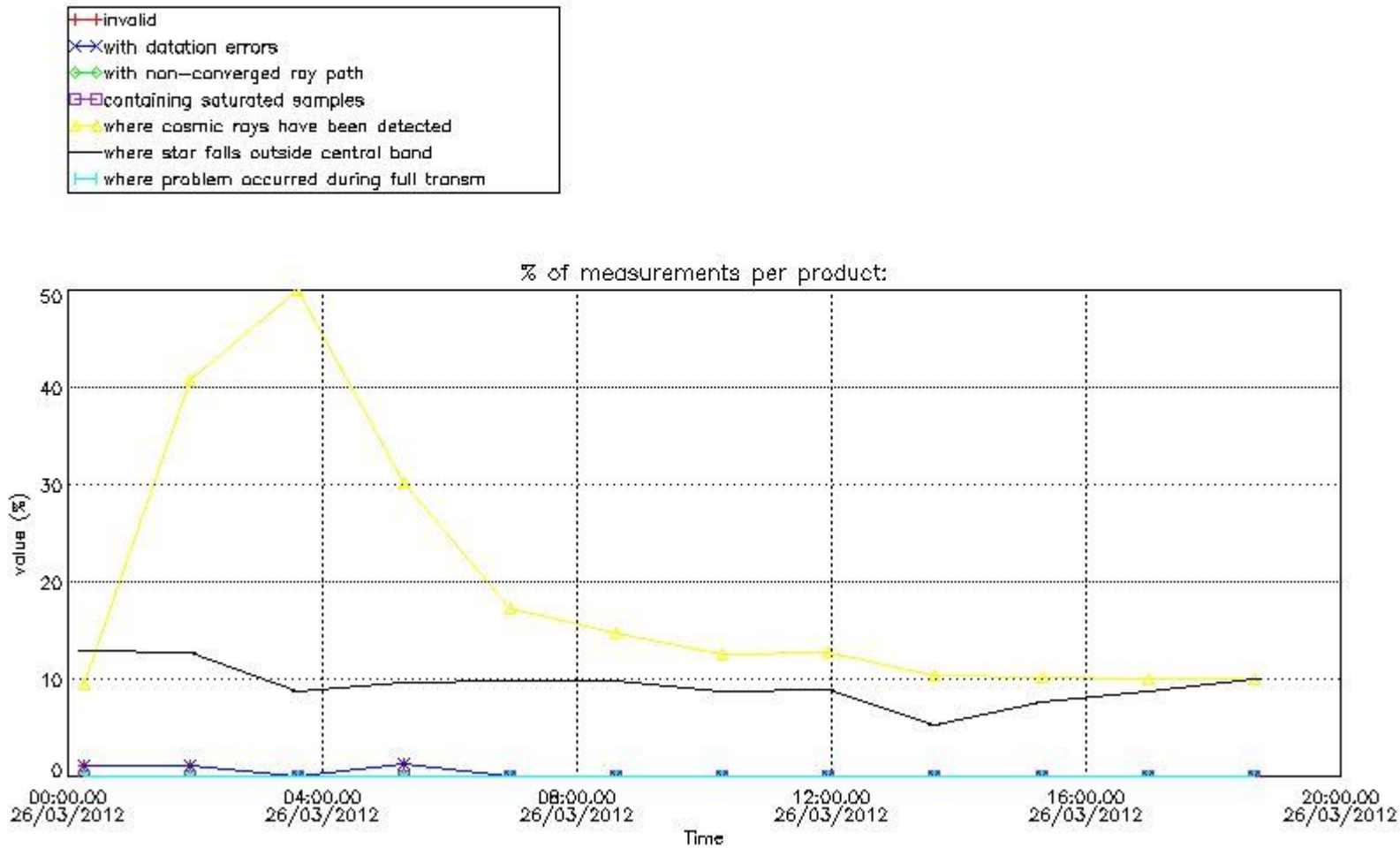
#### 3.1 Plot quality information per product (time dependant)

#### 4. Level 1 quality information per product

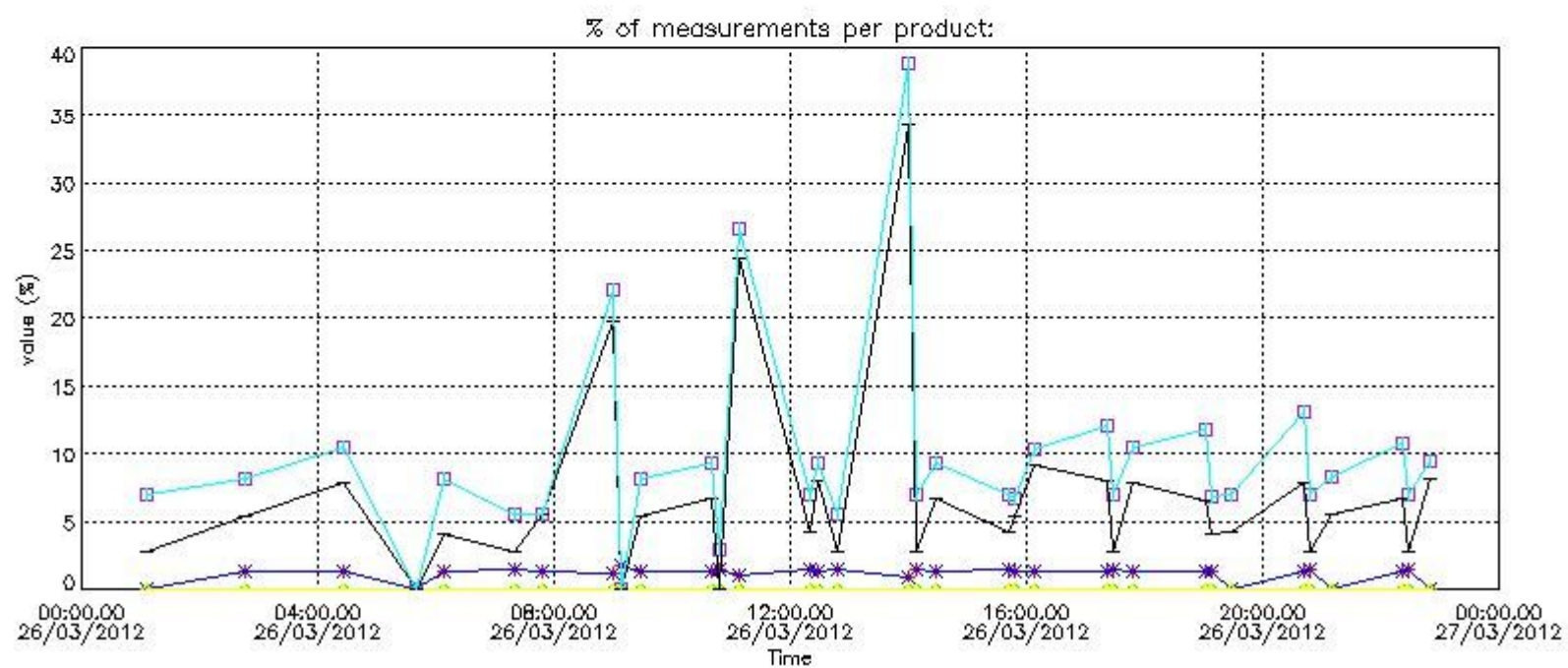
In this section it is plotted some information contained in the Quality Summary data set of the level 2 products that comes from the level 1b processing. Products without errors (error flag in the MPH set to "0") are used.

#### 4.1 Plot quality information per product (time dependant) coming from level 1b processing

##### 4.1.1 Plot level 1 quality information per product (time dependant): ENVISAT ASCENDING passes



##### 4.1.2 Plot level 1 quality information per product (time dependant): ENVISAT DESCENDING passes

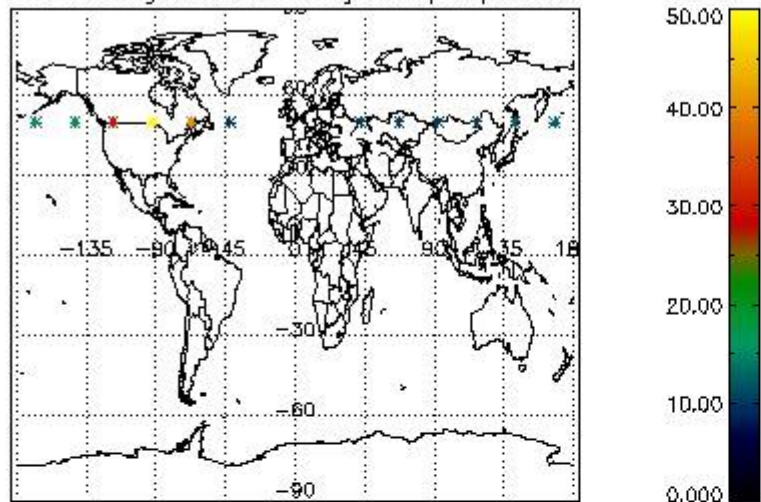


4.2 Plot quality information per product coming from level 1b processing (world map)

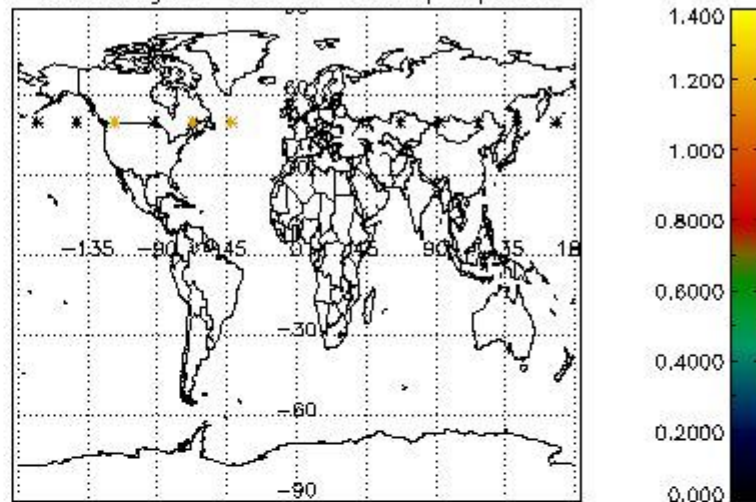
4.2.1 Plot level 1 quality information per product (world map): ENVISAT ASCENDING passes



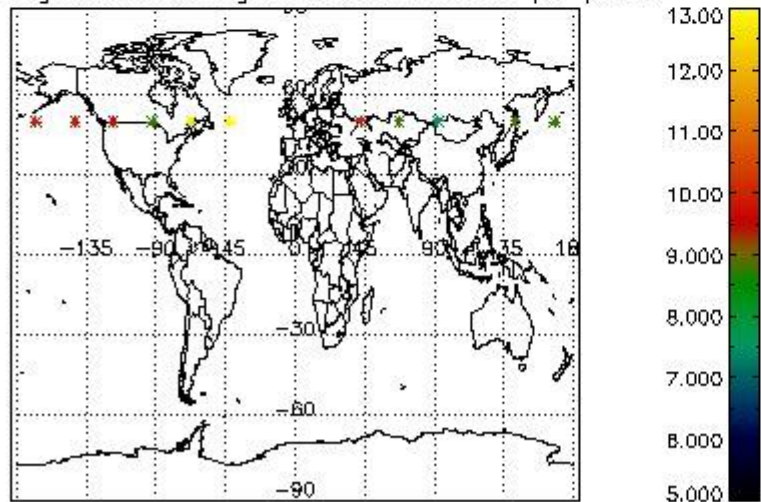
Percentage of cosmic ray hits per profile



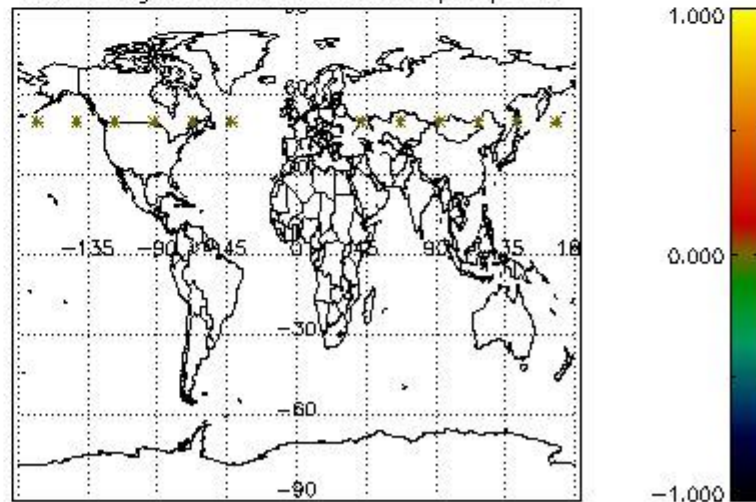
Percentage of datation errors per profile



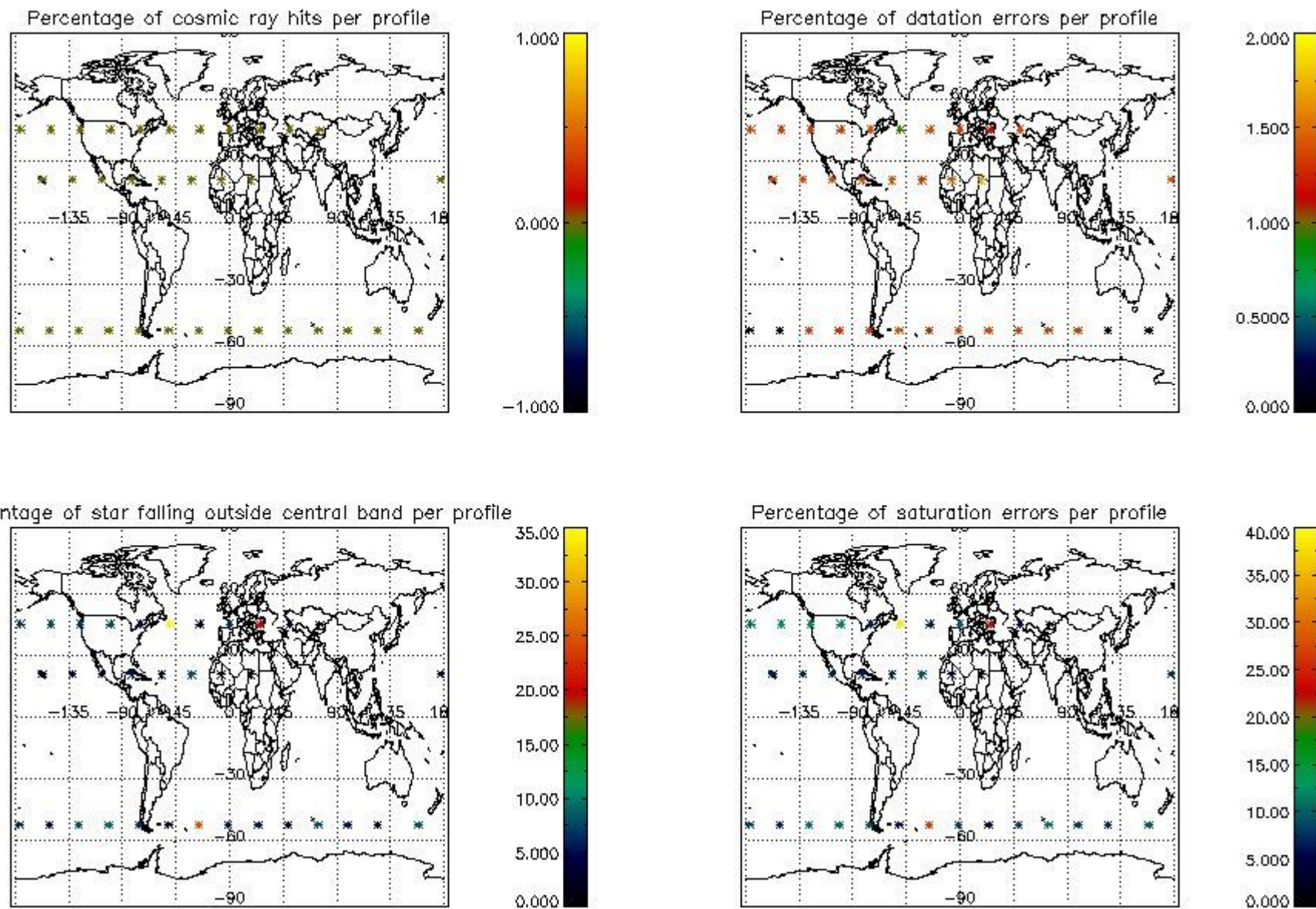
Percentage of star falling outside central band per profile



Percentage of saturation errors per profile



4.2.2 Plot level 1 quality information per product (world map): ENVISAT DESCENDING passes



## 6. Auxiliary Data Files used for the production reported in section 2

The number reported in the third column indicates since which file (see list in section 2) the corresponding auxiliary file has been used. The fourth column is the date of those product files.

Type	Auxiliary Filename	Used since product	Used since product date
INST_PHYS_CHARACTERISTICS	GOM_INS_AXVIEC20111213_163131_20111215_000000_20500101_000000	1	26-MAR-2012 00:15:30
LEVEL-2_PROC_CONFIG	GOM_PR2_AXVIEC20091111_152718_20020301_000000_20500101_000000	1	26-MAR-2012 00:15:30
CROSS_SECTIONS_FILE	GOM_CR2_AXVIEC20091111_154832_20020301_000000_20500101_000000	1	26-MAR-2012 00:15:30

# GOMOS Level 2 Daily Report

## SUMMARY

### [1. General Info](#)

### [2. Summary of processed GOM\\_NL\\_2P products](#)

### [3. Level 2 Quality information per product](#)

#### [3.1 Plot of level 2 quality information per product \(time dependant\)](#)

#### [3.2 Plot of level 2 quality information per product \(world map\)](#)

### [4. Level 1 Quality information per product \(stored on level 2 products\)](#)

#### [4.1 Plot of level 1 quality information per product \(time dependant\)](#)

##### [4.1.1 Plot of level 1 quality information per product \(time dependant\): ASCENDING](#)

##### [4.1.2 Plot of level 1 quality information per product \(time dependant\): DESCENDING](#)

#### [4.2 Plot of level 1 quality information per product \(world map\)](#)

##### [4.2.1 Plot of level 1 quality information per product \(world map\): ASCENDING](#)

##### [4.2.2 Plot of level 1 quality information per product \(world map\): DESCENDING](#)

### [5. Ozone profiles based on quality statistics and other trace gas profiles](#)

#### [5.1 Ozone statistics based on quality of products](#)

#### [5.2 Plot ozone profiles for all STD \(dark without errors\)](#)

#### [5.3 Plot ozone profiles where STD < 20% \(dark without errors\)](#)

#### [5.4. Plot ozone profiles where STD < 10% \(dark without errors\)](#)

#### [5.5. Plot ozone profiles where STD < 5% \(dark without errors\)](#)

#### [5.6 Plot NO2 profiles for all STD \(dark without errors\)](#)

#### [5.7 Plot NO3 profiles for all STD \(dark without errors\)](#)

#### [5.8 Plot H2O profiles \(only for occultations of stars 1,2,3,4,13,14,16,26,63 dark without errors\) for all STD](#)

### [6. Auxiliary Data Files used for the production reported in section 2](#)



This report presents the daily analysis on parameters extracted from GOMOS level 2 data (GOM\_NL\_\_2P). It is intended to monitor some important parameters that will impact the quality of these products. A list of level 2 products (and content) that have arrived during the reporting day to the PCF is also given.

Item	Value
Time of report generation	18APR2013 14:13:21
Data source version	GOMOS/6.01
Start time of products	26-03-2012 (26MAR2012 00:00:00)
Stop time of products	27-03-2012 (27MAR2012 00:00:00)
Store outputs in DB	Yes
Nb of level 2 prods	46
Nb of prods with errors	0

## 2. Summary of processed GOM\_NL\_\_2P products.

**!Warning: No products without errors in DARK limb contitions found**

Nr	Filename	UTC Start time	Limb	Duration	Star Id	Star Name	Star Mag	Star Temp	Nb Meas	Orbit	Prod. error
1	GOM_NL__2PRFIN20120326_001530_000000433113_00074_52674_9893.N1	26-MAR-2012 00:15:30	Straylight	42.500	77	Eps Cen	2.3030	28000.	85	52674	No
2	GOM_NL__2PRFIN20120326_010620_000000363113_00074_52674_9894.N1	26-MAR-2012 01:06:20	Bright	35.500	89	5Alp Cep	2.4510	8000.0	71	52674	No
3	GOM_NL__2PRFIN20120326_015544_000000433113_00075_52675_9904.N1	26-MAR-2012 01:55:44	Straylight	43.000	77	Eps Cen	2.3030	28000.	86	52675	No
4	GOM_NL__2PRFIN20120326_024633_000000373113_00075_52675_9905.N1	26-MAR-2012 02:46:33	Bright	37.000	89	5Alp Cep	2.4510	8000.0	74	52675	No
5	GOM_NL__2PRFIN20120326_033558_000000403113_00076_52676_9915.N1	26-MAR-2012 03:35:58	Straylight	40.000	77	Eps Cen	2.3030	28000.	80	52676	No
6	GOM_NL__2PRFIN20120326_042648_000000383113_00076_52676_9916.N1	26-MAR-2012 04:26:48	Bright	38.000	89	5Alp Cep	2.4510	8000.0	76	52676	No
7	GOM_NL__2PRFIN20120326_051613_000000423113_00077_52677_9936.N1	26-MAR-2012 05:16:13	Straylight	41.500	77	Eps Cen	2.3030	28000.	83	52677	No
8	GOM_NL__2PRFIN20120326_053943_000000303113_00077_52677_9937.N1	26-MAR-2012 05:39:43	Bright	29.500	96	68Del Leo	2.5600	9300.0	59	52677	No
9	GOM_NL__2PRFIN20120326_060702_000000373113_00077_52677_9938.N1	26-MAR-2012 06:07:02	Bright	37.000	89	5Alp Cep	2.4510	8000.0	74	52677	No
10	GOM_NL__2PRFIN20120326_065627_000000413113_00078_52678_9957.N1	26-MAR-2012 06:56:27	Straylight	40.500	77	Eps Cen	2.3030	28000.	81	52678	No
11	GOM_NL__2PRFIN20120326_071957_000000363113_00078_52678_9958.N1	26-MAR-2012 07:19:57	Bright	36.000	96	68Del Leo	2.5600	9300.0	72	52678	No
12	GOM_NL__2PRFIN20120326_074715_000000373113_00078_52678_9959.N1	26-MAR-2012 07:47:15	Bright	36.500	89	5Alp Cep	2.4510	8000.0	73	52678	No
13	GOM_NL__2PRFIN20120326_083642_000000413113_00079_52679_9988.N1	26-MAR-2012 08:36:42	Straylight	40.500	77	Eps Cen	2.3030	28000.	81	52679	No
14	GOM_NL__2PRFIN20120326_090010_000000433113_00079_52679_9989.N1	26-MAR-2012 09:00:10	Bright	43.000	96	68Del Leo	2.5600	9300.0	86	52679	No
15	GOM_NL__2PRFIN20120326_090701_000000293113_00079_52679_9990.N1	26-MAR-2012 09:07:01	Bright	29.000	174	52Psi UMa	3.0040	4400.0	58	52679	No
16	GOM_NL__2PRFIN20120326_092729_000000373113_00079_52679_9991.N1	26-MAR-2012 09:27:29	Bright	37.000	89	5Alp Cep	2.4510	8000.0	74	52679	No
17	GOM_NL__2PRFIN20120326_101656_000000403113_00080_52680_0023.N1	26-MAR-2012 10:16:56	Straylight	40.000	77	Eps Cen	2.3030	28000.	80	52680	No
18	GOM_NL__2PRFIN20120326_104024_000000383113_00080_52680_0024.N1	26-MAR-2012 10:40:24	Bright	37.500	96	68Del Leo	2.5600	9300.0	75	52680	No
19	GOM_NL__2PRFIN20120326_104715_000000353113_00080_52680_0025.N1	26-MAR-2012 10:47:15	Bright	35.000	174	52Psi UMa	3.0040	4400.0	70	52680	No
20	GOM_NL__2PRFIN20120326_110743_000000473113_00080_52680_0026.N1	26-MAR-2012 11:07:43	Bright	47.000	89	5Alp Cep	2.4510	8000.0	94	52680	No
21	GOM_NL__2PRFIN20120326_115710_000000403113_00081_52681_0080.N1	26-MAR-2012 11:57:10	Straylight	39.500	77	Eps Cen	2.3030	28000.	79	52681	No
22	GOM_NL__2PRFIN20120326_122038_000000363113_00081_52681_0081.N1	26-MAR-2012 12:20:38	Bright	36.000	96	68Del Leo	2.5600	9300.0	72	52681	No
23	GOM_NL__2PRFIN20120326_122729_000000383113_00081_52681_0082.N1	26-MAR-2012 12:27:29	Bright	37.500	174	52Psi UMa	3.0040	4400.0	75	52681	No
24	GOM_NL__2PRFIN20120326_124757_000000363113_00081_52681_0083.N1	26-MAR-2012 12:47:57	Bright	36.000	89	5Alp Cep	2.4510	8000.0	72	52681	No
25	GOM_NL__2PRFIN20120326_133725_000000393113_00082_52682_0156.N1	26-MAR-2012 13:37:25	Straylight	38.500	77	Eps Cen	2.3030	28000.	77	52682	No
26	GOM_NL__2PRFIN20120326_140052_000000543113_00082_52682_0157.N1	26-MAR-2012 14:00:52	Bright	54.000	96	68Del Leo	2.5600	9300.0	108	52682	No
27	GOM_NL__2PRFIN20120326_140742_000000363113_00082_52682_0158.N1	26-MAR-2012 14:07:42	Bright	36.000	174	52Psi UMa	3.0040	4400.0	72	52682	No
28	GOM_NL__2PRFIN20120326_142811_000000383113_00082_52682_0159.N1	26-MAR-2012 14:28:11	Bright	37.500	89	5Alp Cep	2.4510	8000.0	75	52682	No
29	GOM_NL__2PRFIN20120326_151739_000000403113_00083_52683_0189.N1	26-MAR-2012 15:17:39	Straylight	39.500	77	Eps Cen	2.3030	28000.	79	52683	No
30	GOM_NL__2PRFIN20120326_154106_000000363113_00083_52683_0190.N1	26-MAR-2012 15:41:06	Bright	36.000	96	68Del Leo	2.5600	9300.0	72	52683	No
31	GOM_NL__2PRFIN20120326_154756_000000373113_00083_52683_0191.N1	26-MAR-2012 15:47:56	Bright	37.000	174	52Psi UMa	3.0040	4400.0	74	52683	No
32	GOM_NL__2PRFIN20120326_160825_000000393113_00083_52683_0192.N1	26-MAR-2012 16:08:25	Bright	38.500	89	5Alp Cep	2.4510	8000.0	77	52683	No
33	GOM_NL__2PRFIN20120326_165754_000000403113_00084_52684_0224.N1	26-MAR-2012 16:57:54	Straylight	40.000	77	Eps Cen	2.3030	28000.	80	52684	No
34	GOM_NL__2PRFIN20120326_172120_000000383113_00084_52684_0225.N1	26-MAR-2012 17:21:20	Bright	37.500	96	68Del Leo	2.5600	9300.0	75	52684	No
35	GOM_NL__2PRFIN20120326_172810_000000363113_00084_52684_0226.N1	26-MAR-2012 17:28:10	Bright	36.000	174	52Psi UMa	3.0040	4400.0	72	52684	No
36	GOM_NL__2PRFIN20120326_174839_000000383113_00084_52684_0227.N1	26-MAR-2012 17:48:39	Bright	38.000	89	5Alp Cep	2.4510	8000.0	76	52684	No
37	GOM_NL__2PRFIN20120326_183808_000000403113_00085_52685_0250.N1	26-MAR-2012 18:38:08	Straylight	40.000	77	Eps Cen	2.3030	28000.	80	52685	No
38	GOM_NL__2PRFIN20120326_190134_000000383113_00085_52685_0251.N1	26-MAR-2012 19:01:34	Bright	38.000	96	68Del Leo	2.5600	9300.0	76	52685	No
39	GOM_NL__2PRFIN20120326_190824_000000373113_00085_52685_0252.N1	26-MAR-2012 19:08:24	Bright	36.500	174	52Psi UMa	3.0040	4400.0	73	52685	No
40	GOM_NL__2PRFIN20120326_192853_000000363113_00085_52685_0253.N1	26-MAR-2012 19:28:53	Bright	36.000	89	5Alp Cep	2.4510	8000.0	72	52685	No
41	GOM_NL__2PRFIN20120326_204148_000000383113_00086_52686_0279.N1	26-MAR-2012 20:41:48	Bright	38.000	96	68Del Leo	2.5600	9300.0	76	52686	No



42	GOM_NL__2PRFIN20120326_204838_000000363113_00086_52686_0280.N1	26-MAR-2012 20:48:38	Bright	36.000	174	52Psi UMa	3.0040	4400.0	72	52686	No
43	GOM_NL__2PRFIN20120326_210907_000000373113_00086_52686_0281.N1	26-MAR-2012 21:09:07	Bright	36.500	89	5Alp Cep	2.4510	8000.0	73	52686	No
44	GOM_NL__2PRFIN20120326_222201_000000373113_00087_52687_0315.N1	26-MAR-2012 22:22:01	Bright	37.000	96	68Del Leo	2.5600	9300.0	74	52687	No
45	GOM_NL__2PRFIN20120326_222852_000000363113_00087_52687_0316.N1	26-MAR-2012 22:28:52	Bright	35.500	174	52Psi UMa	3.0040	4400.0	71	52687	No
46	GOM_NL__2PRFIN20120326_224920_000000373113_00087_52687_0317.N1	26-MAR-2012 22:49:20	Bright	37.000	89	5Alp Cep	2.4510	8000.0	74	52687	No

### 3. Quality information per product

In this section it is plotted some information contained in the Quality Summary data set of the level 2 products. Only products in dark limb conditions and without errors (error flag in the MPH set to "0") are used.

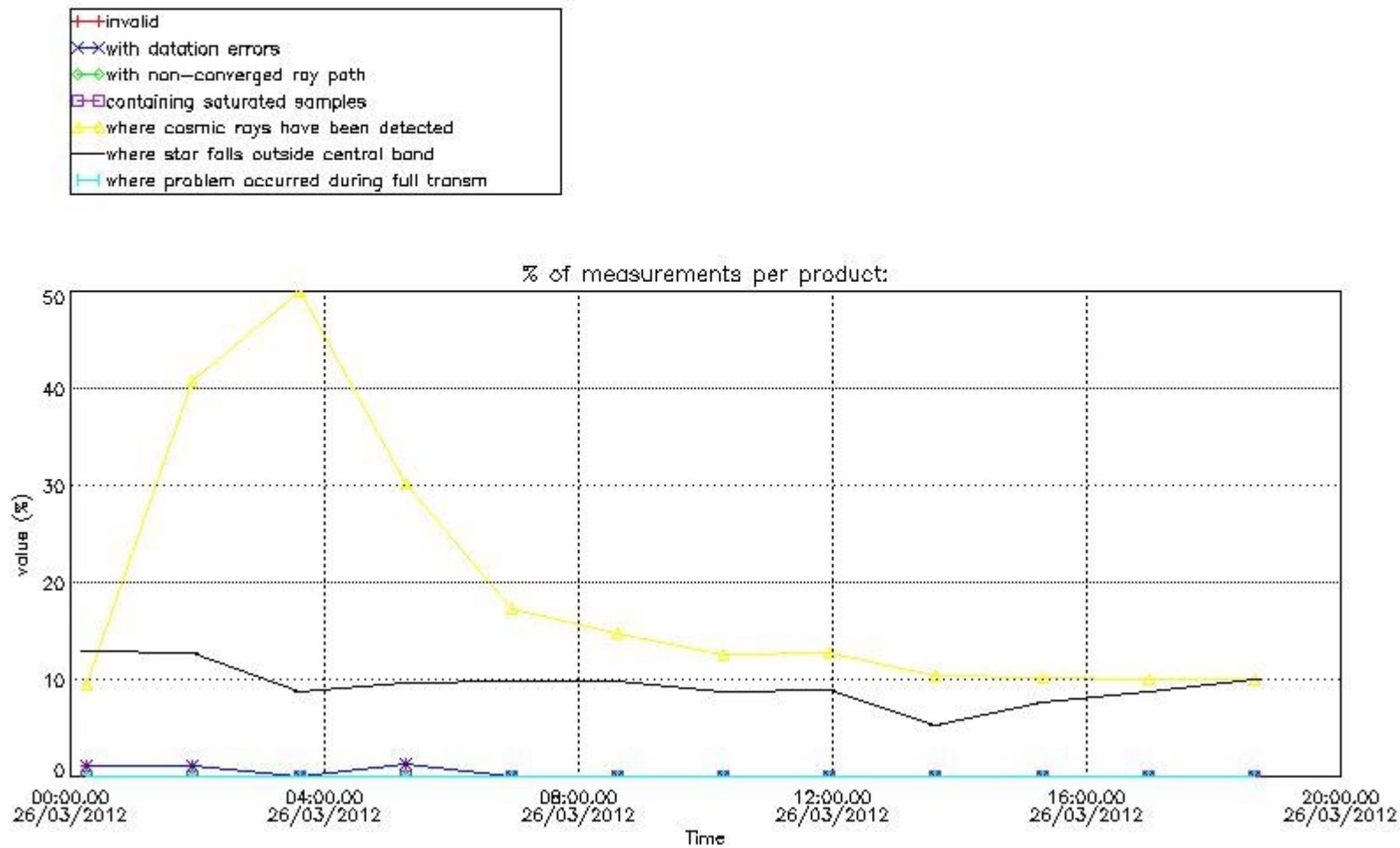
#### 3.1 Plot quality information per product (time dependant)

#### 4. Level 1 quality information per product

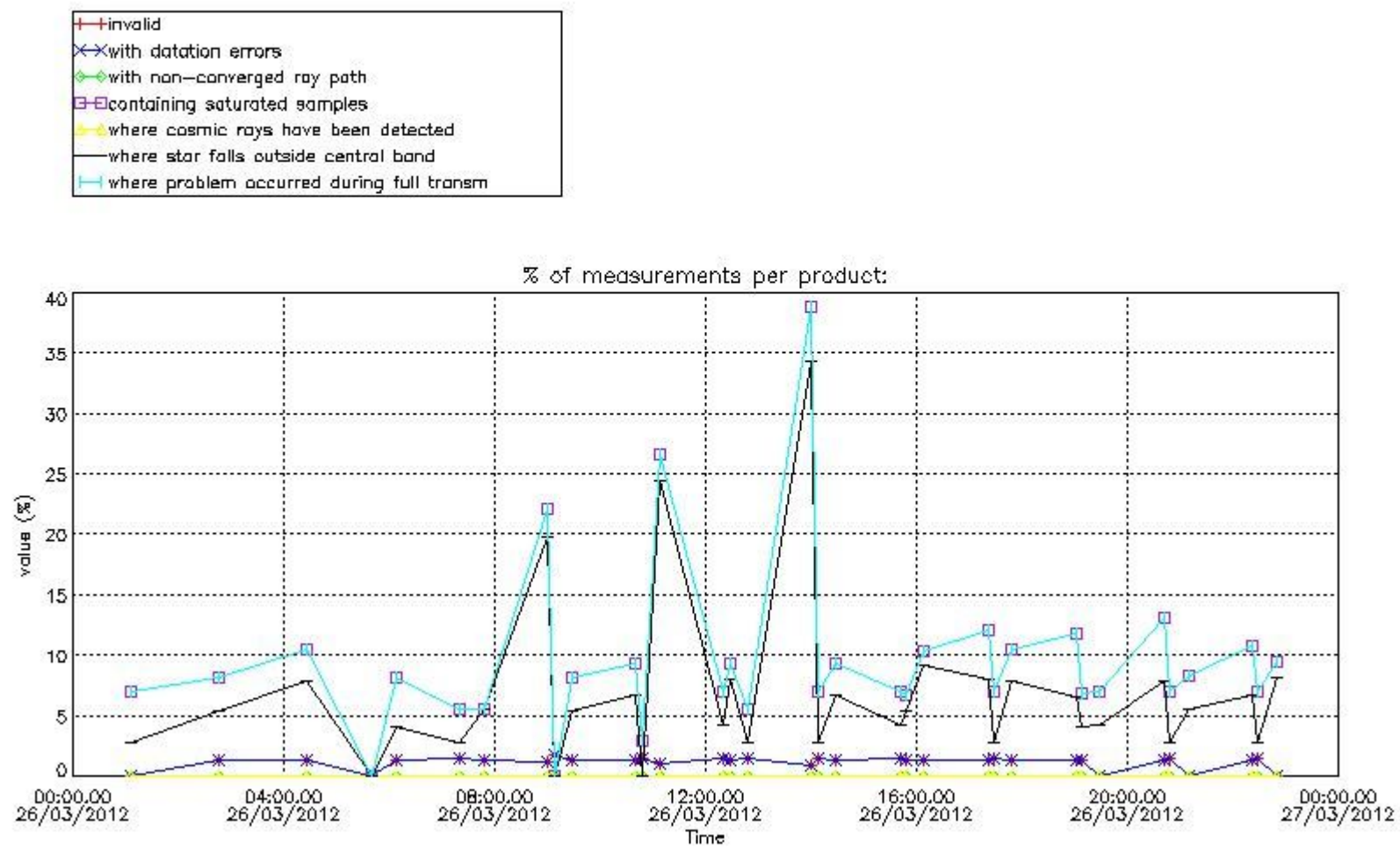
In this section it is plotted some information contained in the Quality Summary data set of the level 2 products that comes from the level 1b processing. Products without errors (error flag in the MPH set to "0") are used.

#### 4.1 Plot quality information per product (time dependant) coming from level 1b processing

##### 4.1.1 Plot level 1 quality information per product (time dependant): ENVISAT ASCENDING passes



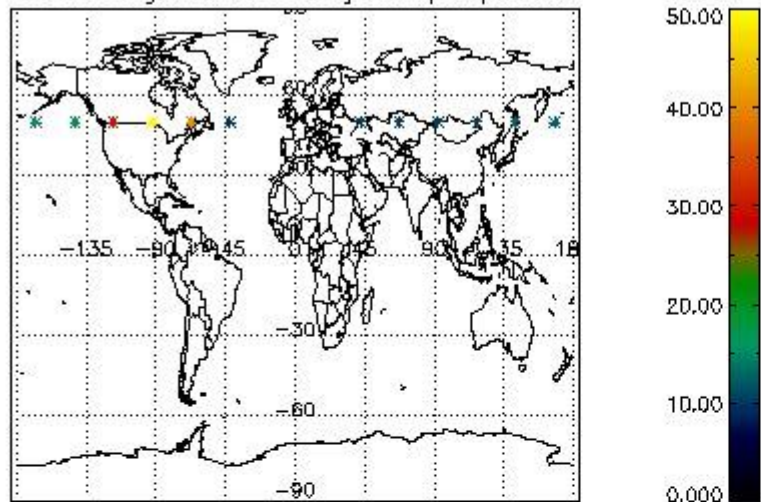
##### 4.1.2 Plot level 1 quality information per product (time dependant): ENVISAT DESCENDING passes



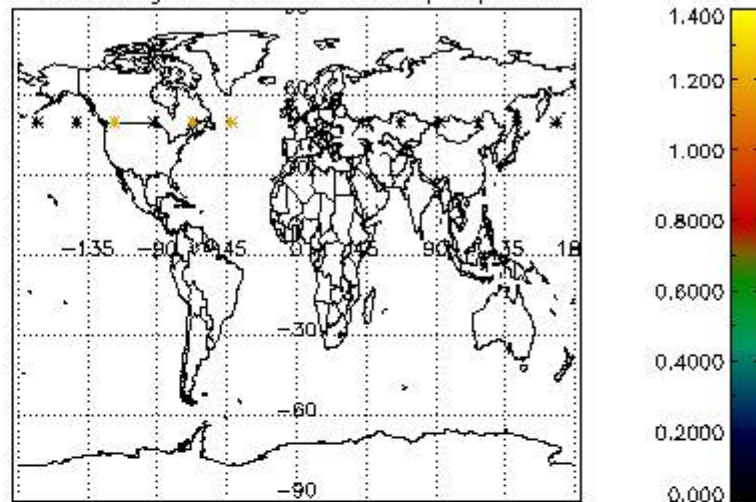
#### 4.2 Plot quality information per product coming from level 1b processing (world map)

##### 4.2.1 Plot level 1 quality information per product (world map): ENVISAT ASCENDING passes

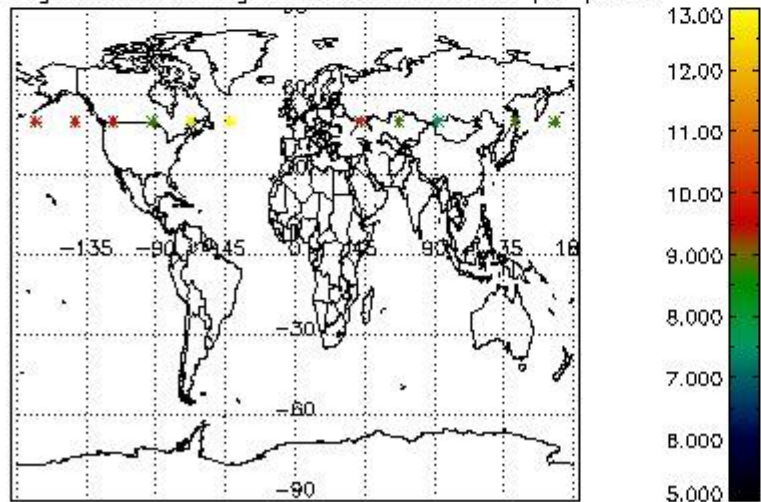
Percentage of cosmic ray hits per profile



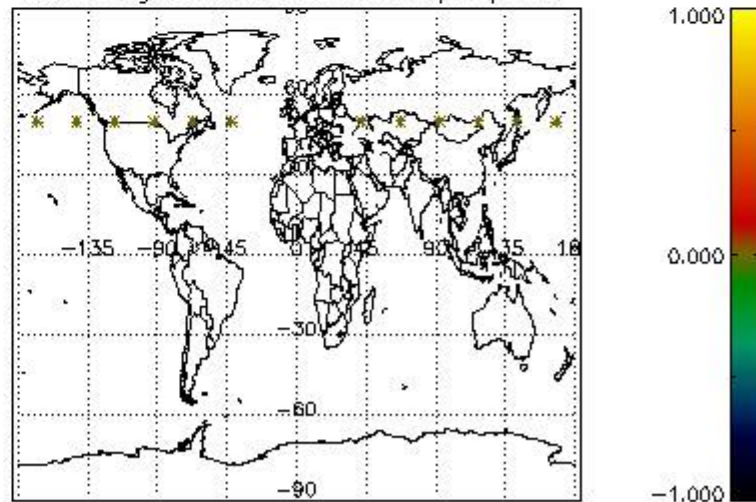
Percentage of datation errors per profile



Percentage of star falling outside central band per profile



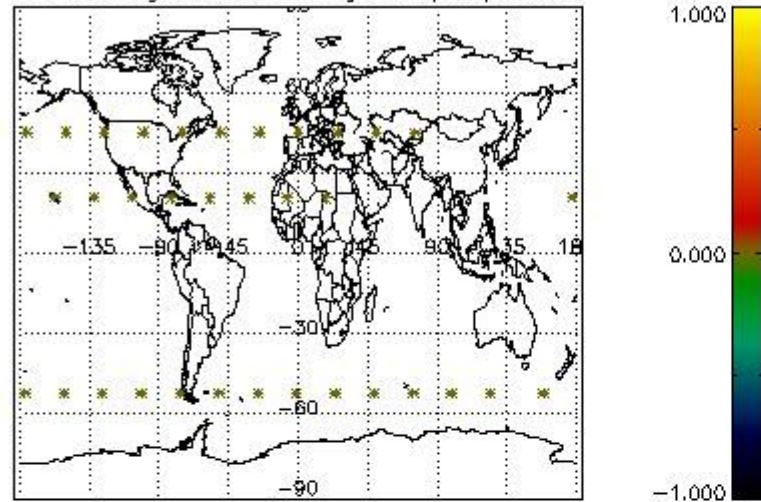
Percentage of saturation errors per profile



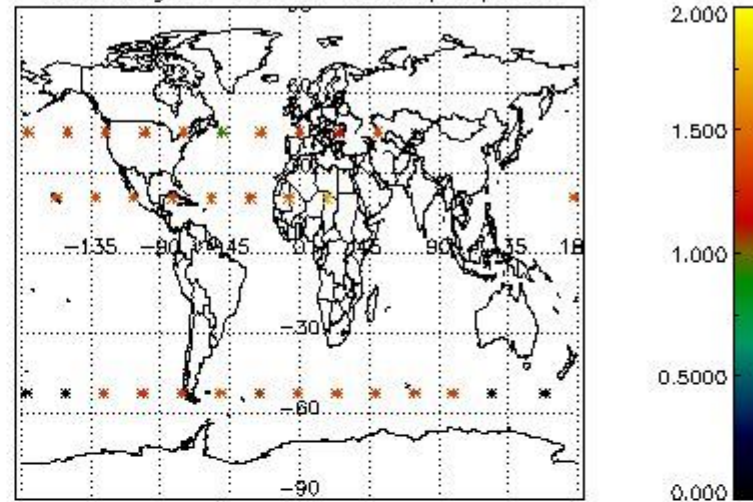
4.2.2 Plot level 1 quality information per product (world map): ENVISAT DESCENDING passes



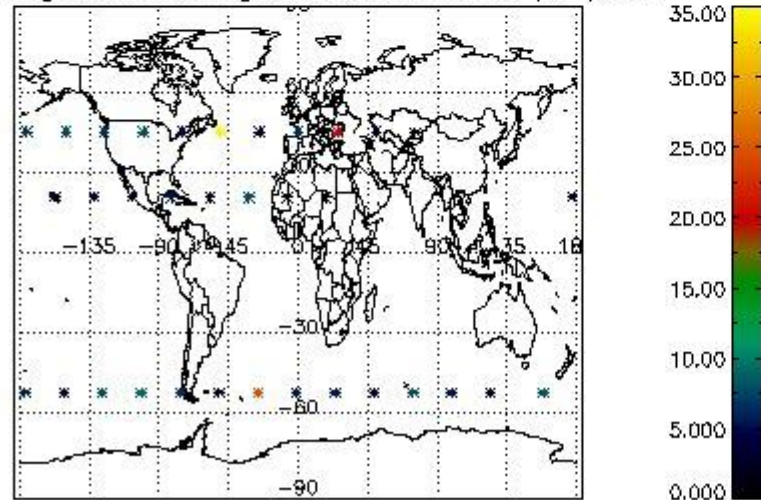
Percentage of cosmic ray hits per profile



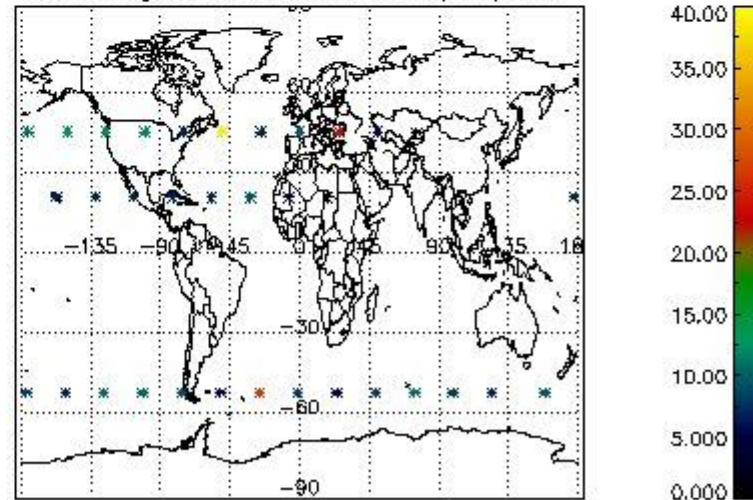
Percentage of datation errors per profile



Percentage of star falling outside central band per profile



Percentage of saturation errors per profile

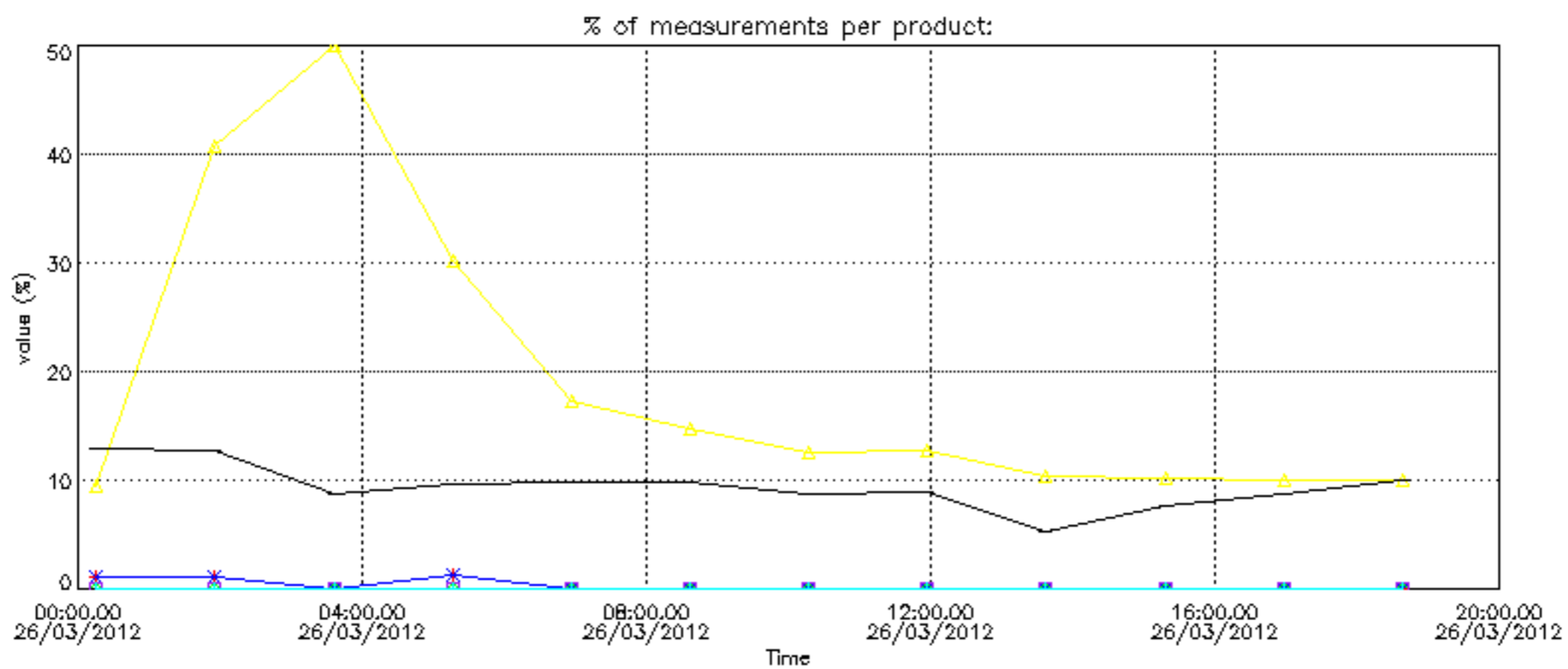


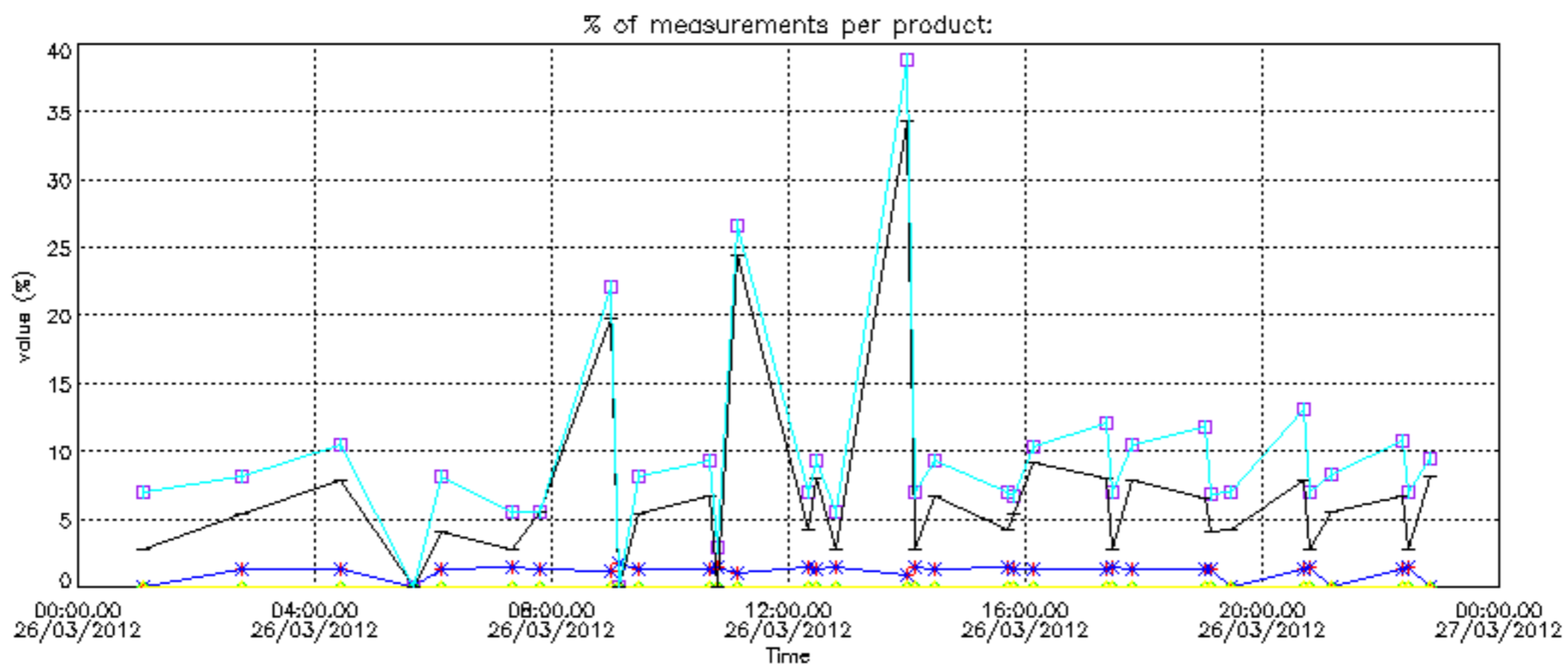
## 6. Auxiliary Data Files used for the production reported in section 2

The number reported in the third column indicates since which file (see list in section 2) the corresponding auxiliary file has been used. The fourth column is the date of those product files.

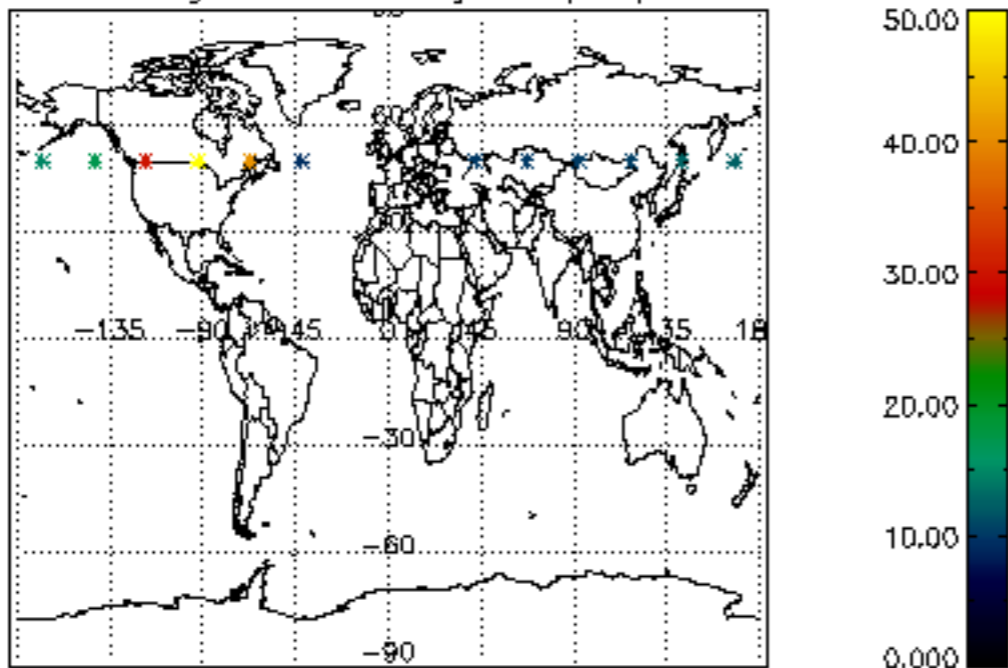
Type	Auxiliary Filename	Used since product	Used since product date
INST_PHYS_CHARACTERISTICS	GOM_INS_AXVIEC20111213_163131_20111215_000000_20500101_000000	1	26-MAR-2012 00:15:30
LEVEL-2_PROC_CONFIG	GOM_PR2_AXVIEC20091111_152718_20020301_000000_20500101_000000	1	26-MAR-2012 00:15:30
CROSS_SECTIONS_FILE	GOM_CR2_AXVIEC20091111_154832_20020301_000000_20500101_000000	1	26-MAR-2012 00:15:30



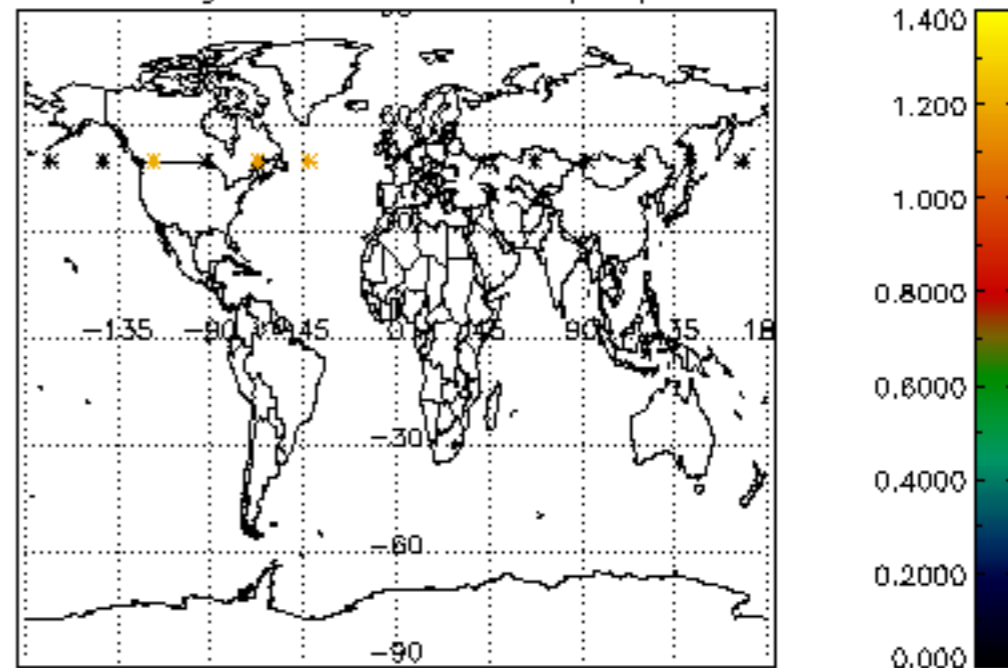




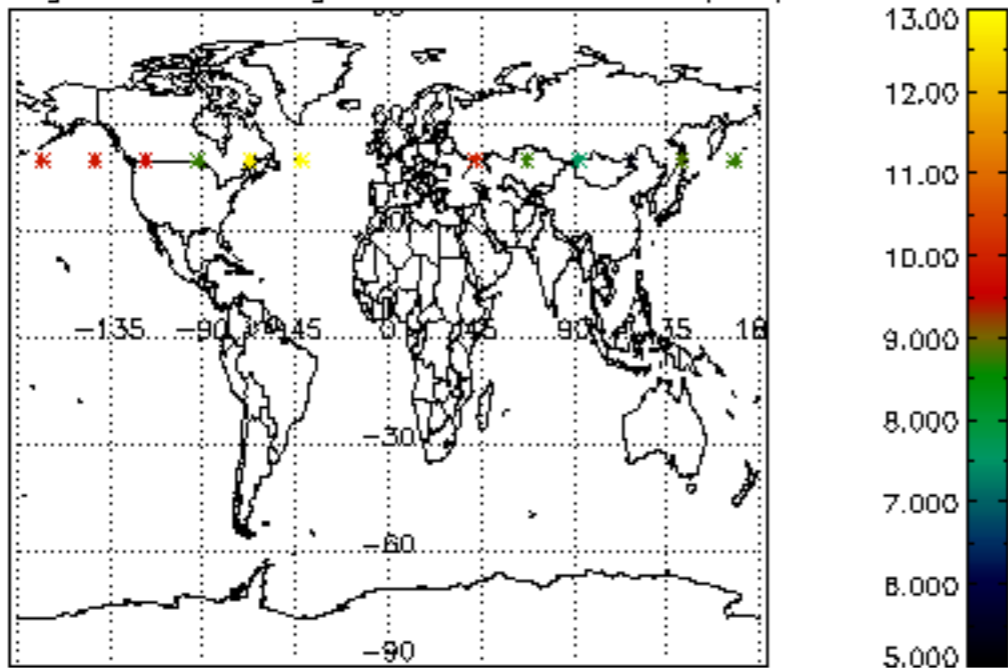
Percentage of cosmic ray hits per profile



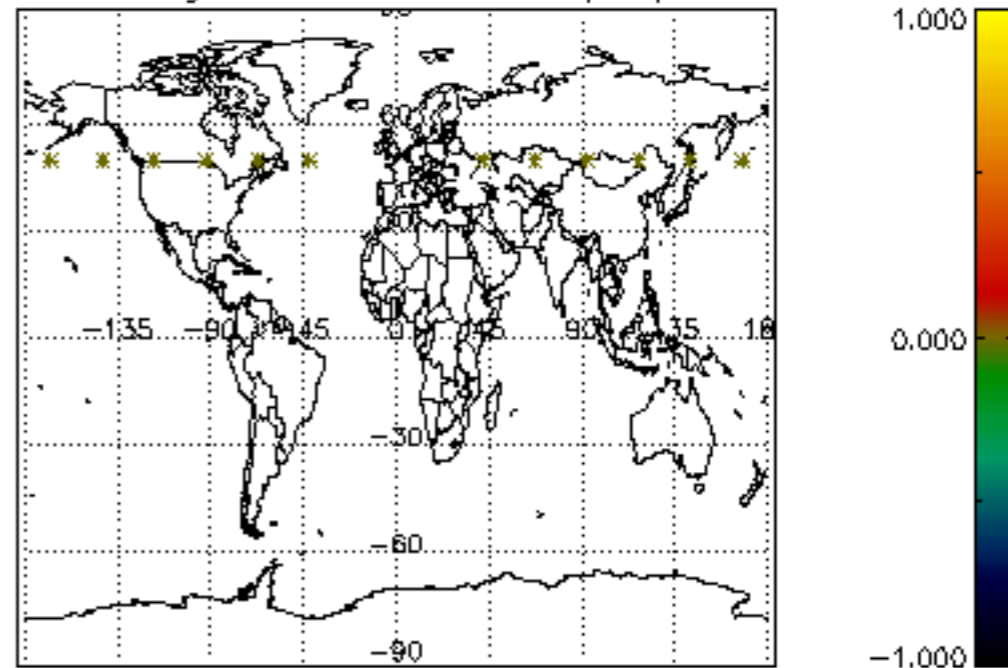
Percentage of datation errors per profile



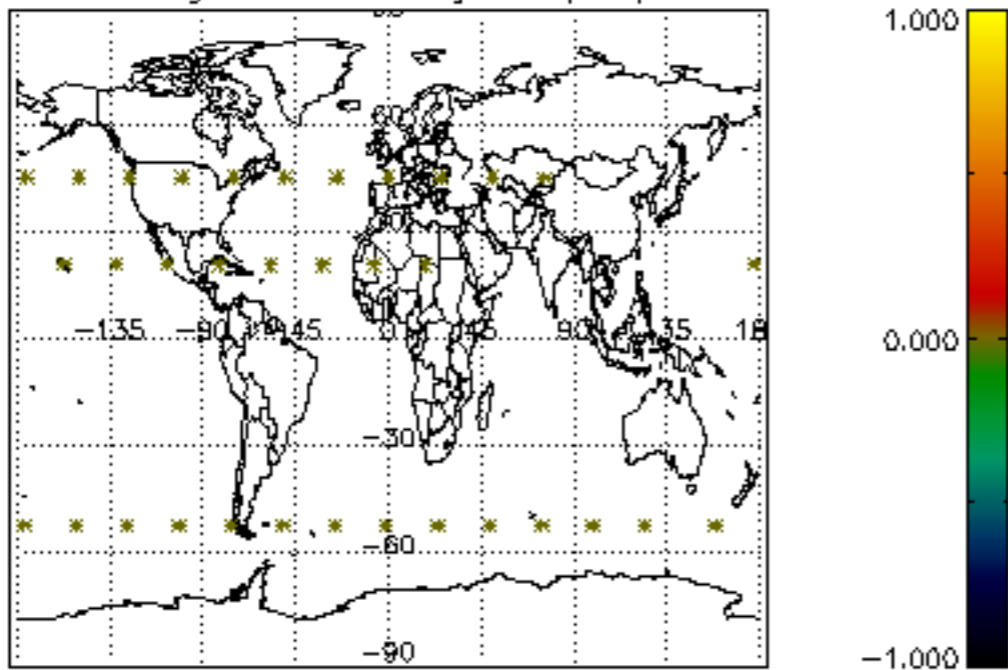
Percentage of star falling outside central band per profile



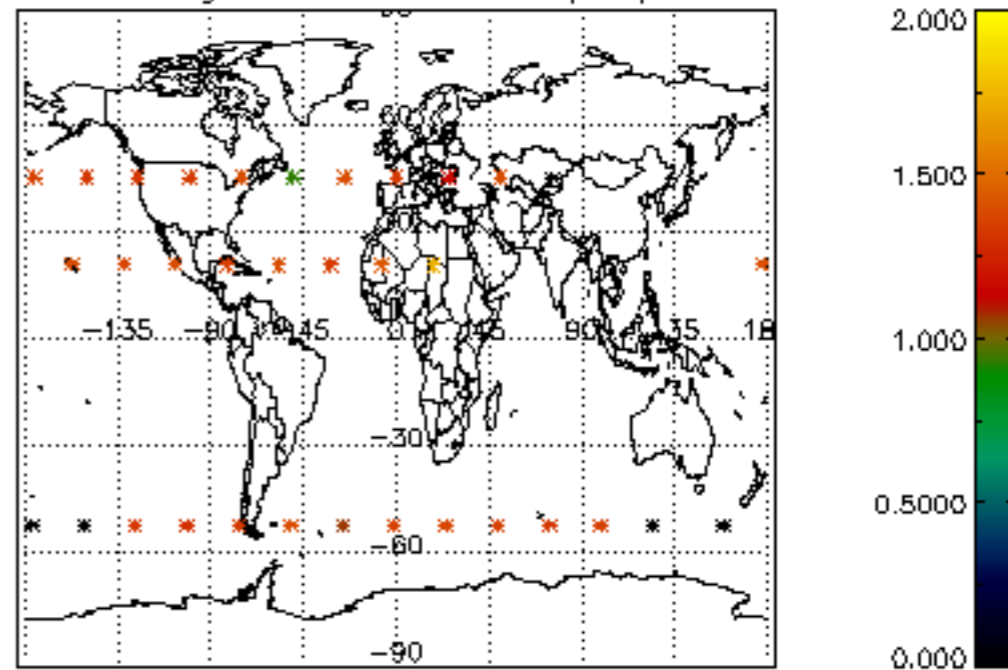
Percentage of saturation errors per profile



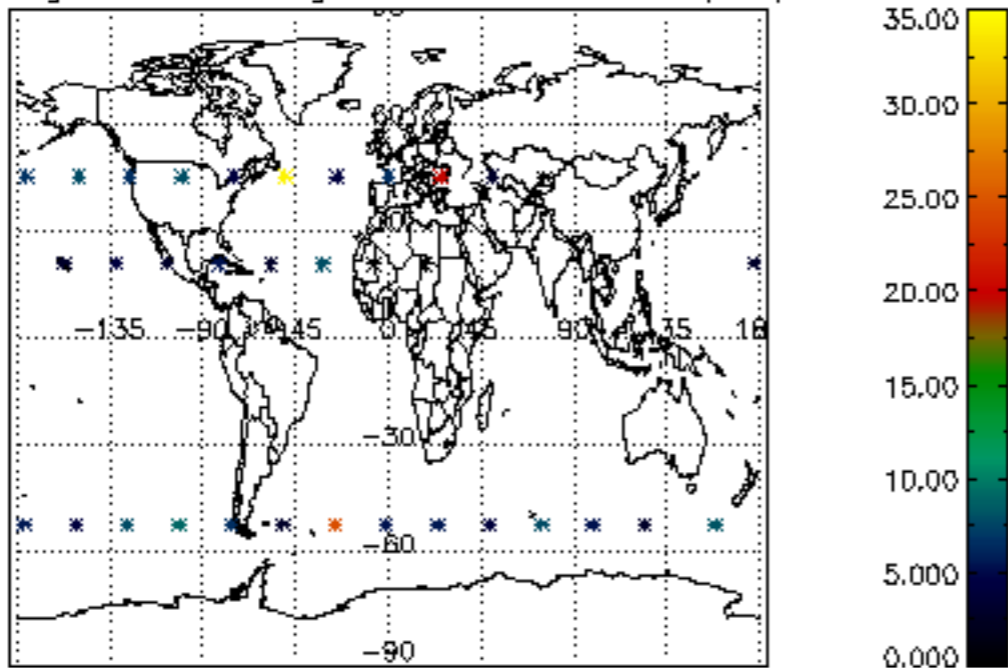
Percentage of cosmic ray hits per profile



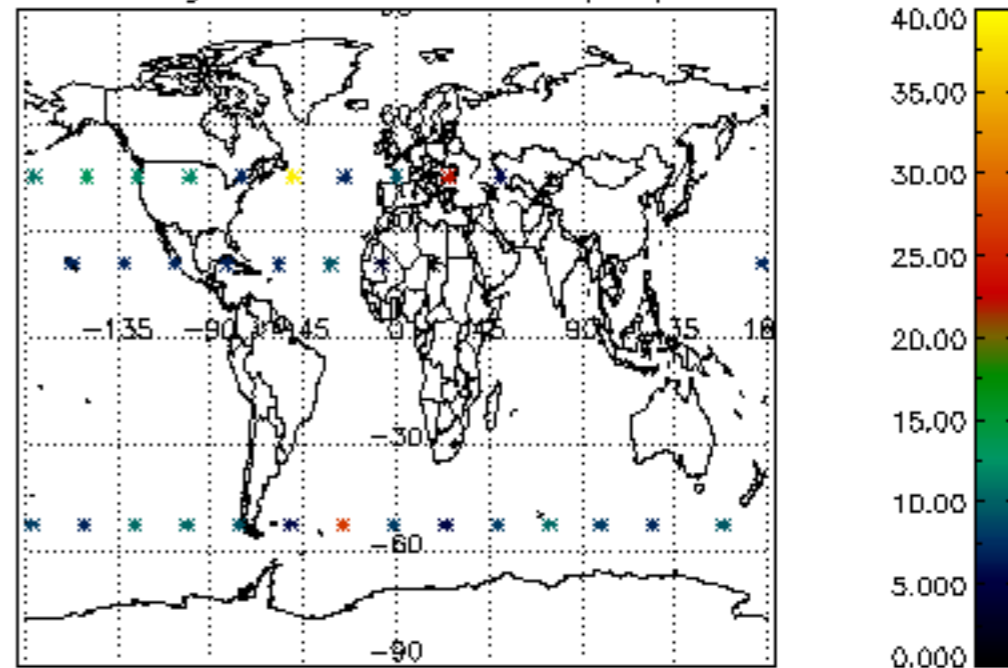
Percentage of datation errors per profile



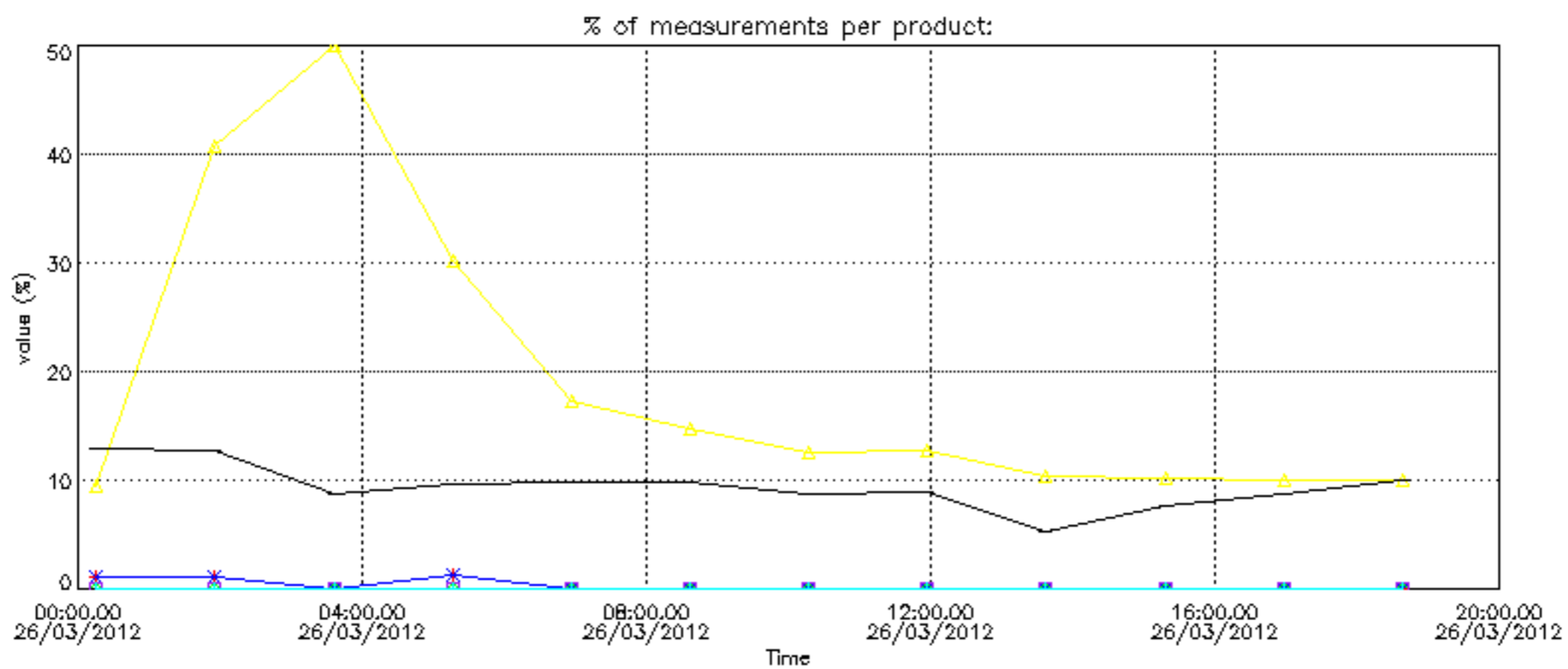
Percentage of star falling outside central band per profile

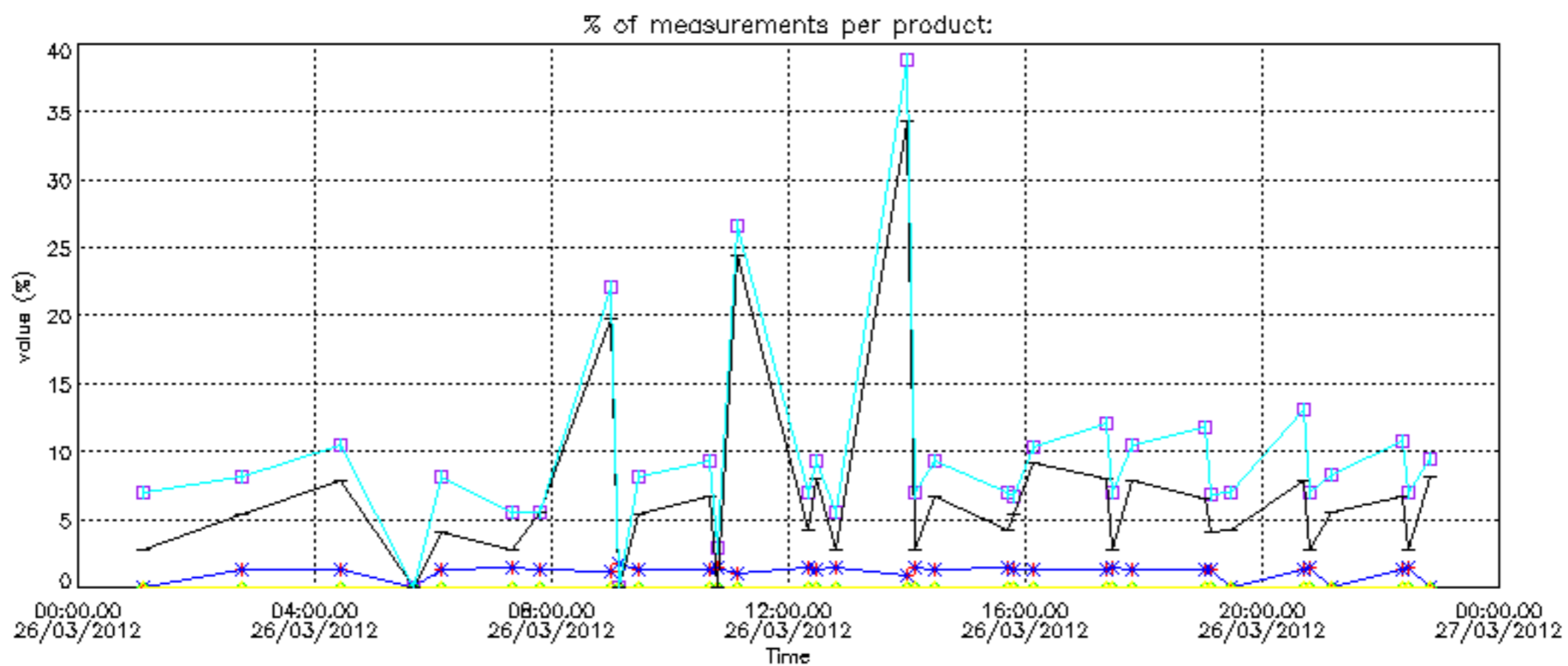


Percentage of saturation errors per profile

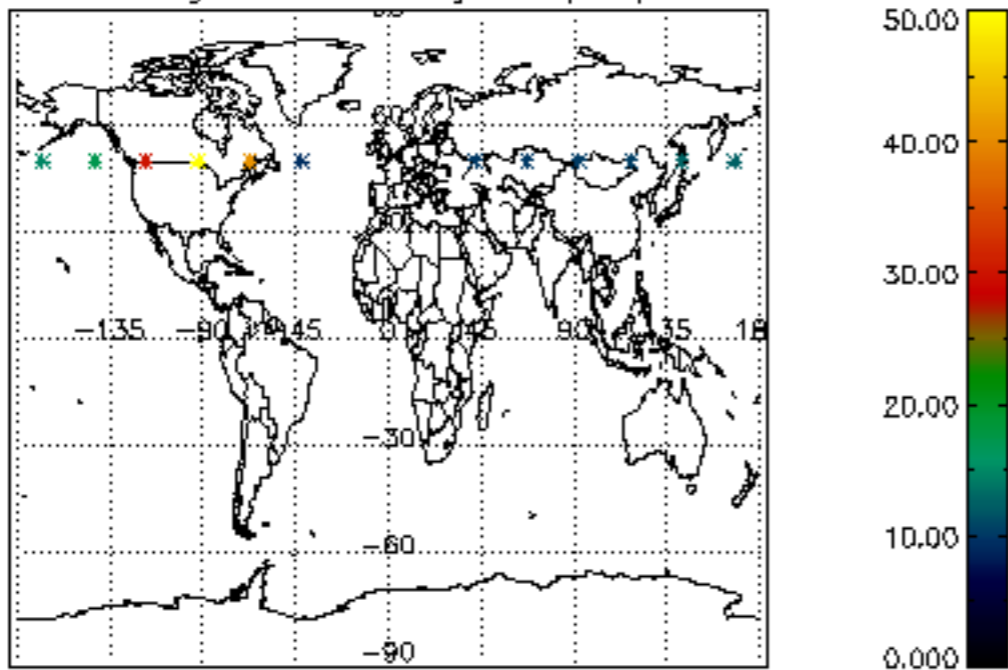




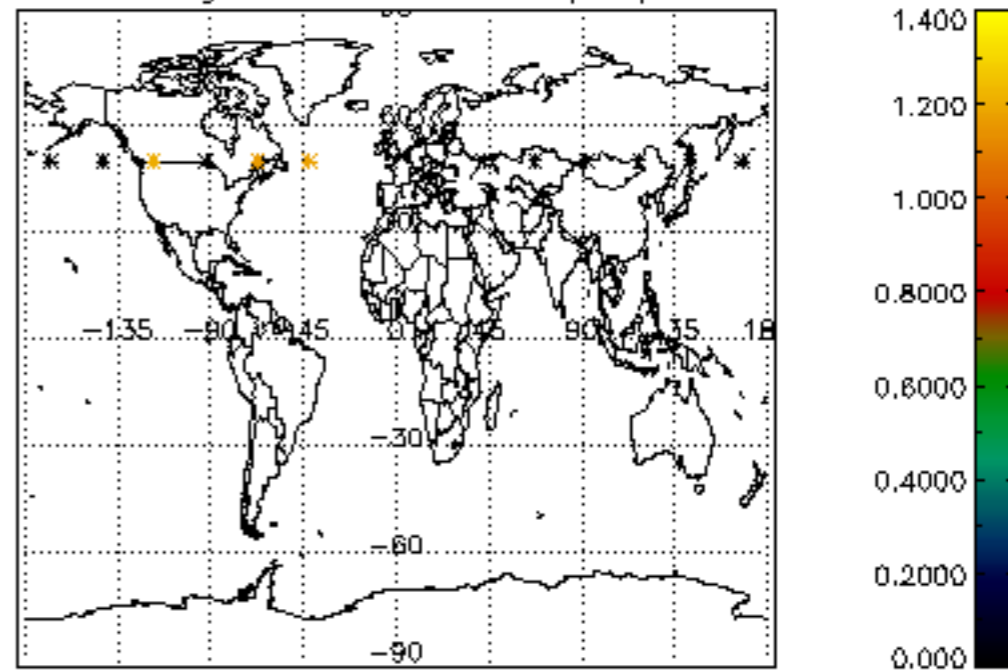




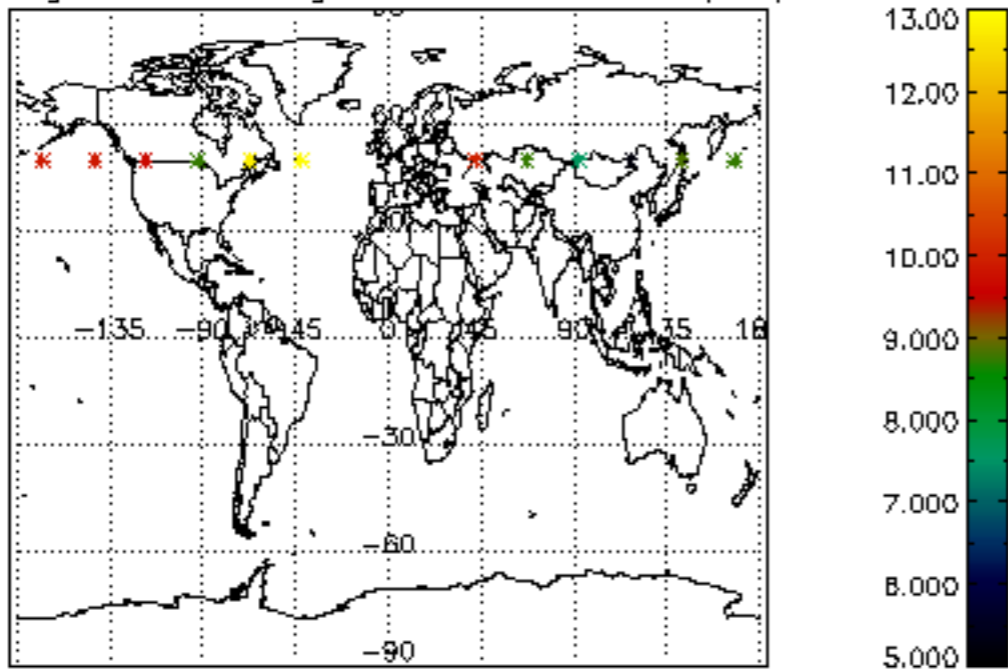
Percentage of cosmic ray hits per profile



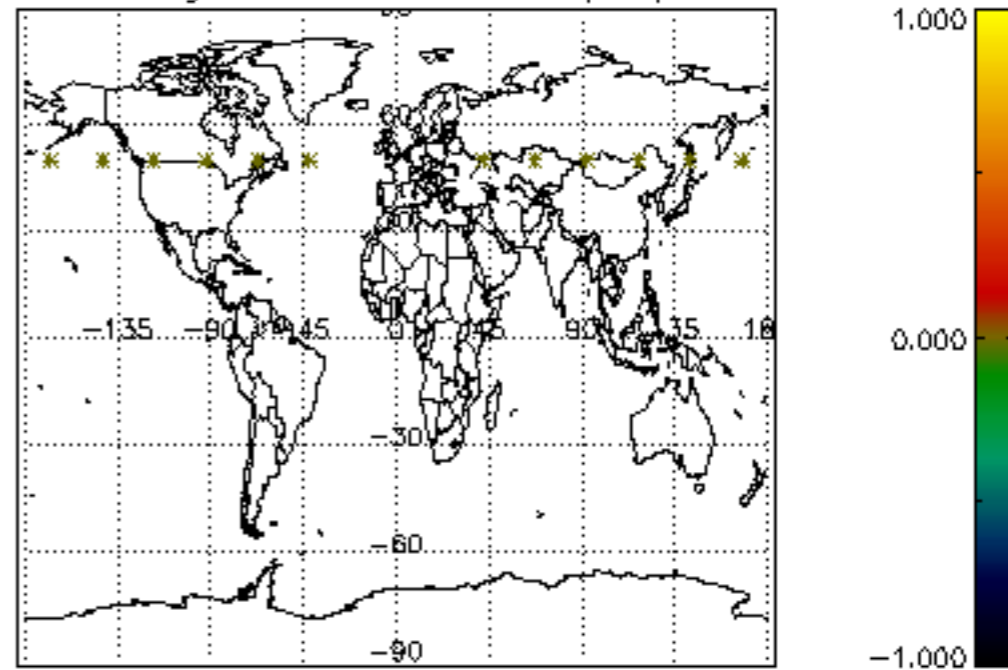
Percentage of datation errors per profile



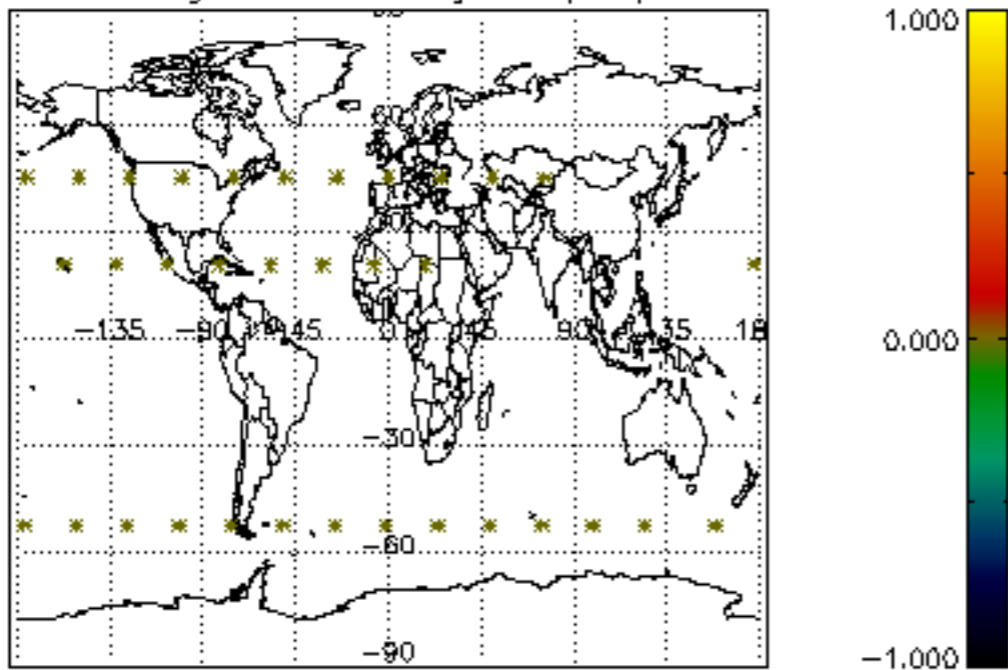
Percentage of star falling outside central band per profile



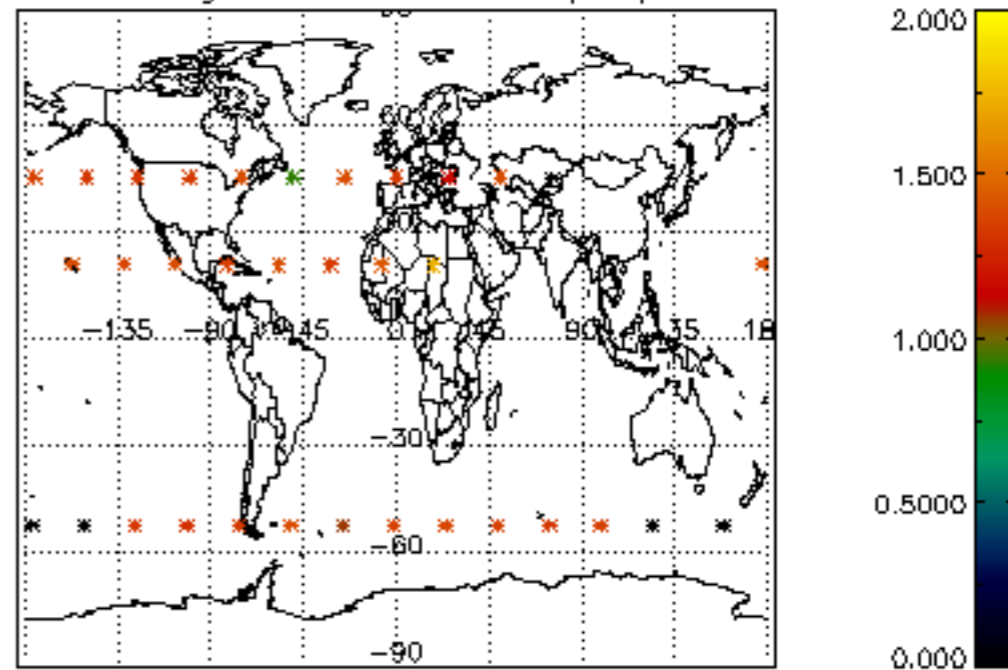
Percentage of saturation errors per profile



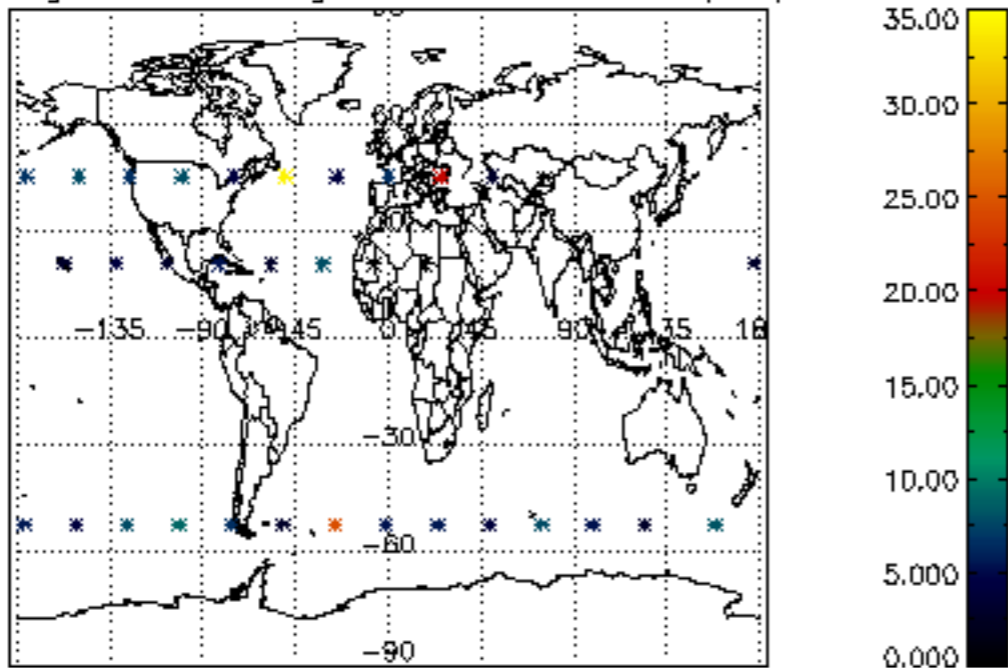
Percentage of cosmic ray hits per profile



Percentage of datation errors per profile



Percentage of star falling outside central band per profile



Percentage of saturation errors per profile

