

GOMOS Level 2 Daily Report

SUMMARY

[1. General Info](#)

[2. Summary of processed GOM_NL_2P products](#)

[3. Level 2 Quality information per product](#)

[3.1 Plot of level 2 quality information per product \(time dependant\)](#)

[3.2 Plot of level 2 quality information per product \(world map\)](#)

[4. Level 1 Quality information per product \(stored on level 2 products\)](#)

[4.1 Plot of level 1 quality information per product \(time dependant\)](#)

[4.1.1 Plot of level 1 quality information per product \(time dependant\): ASCENDING](#)

[4.1.2 Plot of level 1 quality information per product \(time dependant\): DESCENDING](#)

[4.2 Plot of level 1 quality information per product \(world map\)](#)

[4.2.1 Plot of level 1 quality information per product \(world map\): ASCENDING](#)

[4.2.2 Plot of level 1 quality information per product \(world map\): DESCENDING](#)

[5. Ozone profiles based on quality statistics and other trace gas profiles](#)

[5.1 Ozone statistics based on quality of products](#)

[5.2 Plot ozone profiles for all STD \(dark without errors\)](#)

[5.3 Plot ozone profiles where STD < 20% \(dark without errors\)](#)

[5.4. Plot ozone profiles where STD < 10% \(dark without errors\)](#)

[5.5. Plot ozone profiles where STD < 5% \(dark without errors\)](#)

[5.6 Plot NO2 profiles for all STD \(dark without errors\)](#)

[5.7 Plot NO3 profiles for all STD \(dark without errors\)](#)

[5.8 Plot H2O profiles \(only for occultations of stars 1,2,3,4,13,14,16,26,63 dark without errors\) for all STD](#)

[6. Auxiliary Data Files used for the production reported in section 2](#)

This report presents the daily analysis on parameters extracted from GOMOS level 2 data (GOM_NL__2P). It is intended to monitor some important parameters that will impact the quality of these products. A list of level 2 products (and content) that have arrived during the reporting day to the PCF is also given.

Item	Value
Time of report generation	18APR2013 14:13:07
Data source version	GOMOS/6.01
Start time of products	25-03-2012 (25MAR2012 00:00:00)
Stop time of products	26-03-2012 (26MAR2012 00:00:00)
Store outputs in DB	Yes
Nb of level 2 prods	25
Nb of prods with errors	0

2. Summary of processed GOM_NL__2P products.

!Warning: No products without errors in DARK limb contitions found

Nr	Filename	UTC Start time	Limb	Duration	Star Id	Star Name	Star Mag	Star Temp	Nb Meas	Orbit	Prod. error
1	GOM_NL__2PRFIN20120325_005208_000000353113_00060_52660_9449.N1	25-MAR-2012 00:52:08	Straylight	34.500	77	Eps Cen	2.3030	28000.	69	52660	No
2	GOM_NL__2PRFIN20120325_023222_000000373113_00061_52661_9477.N1	25-MAR-2012 02:32:22	Straylight	36.500	77	Eps Cen	2.3030	28000.	73	52661	No
3	GOM_NL__2PRFIN20120325_041237_000000403113_00062_52662_9500.N1	25-MAR-2012 04:12:37	Straylight	39.500	77	Eps Cen	2.3030	28000.	79	52662	No
4	GOM_NL__2PRFIN20120325_055251_000000413113_00063_52663_9508.N1	25-MAR-2012 05:52:51	Straylight	40.500	77	Eps Cen	2.3030	28000.	81	52663	No
5	GOM_NL__2PRFIN20120325_064347_000000373113_00063_52663_9509.N1	25-MAR-2012 06:43:47	Bright	37.000	89	5Alp Cep	2.4510	8000.0	74	52663	No
6	GOM_NL__2PRFIN20120325_073306_000000413113_00064_52664_9522.N1	25-MAR-2012 07:33:06	Straylight	40.500	77	Eps Cen	2.3030	28000.	81	52664	No
7	GOM_NL__2PRFIN20120325_082401_000000373113_00064_52664_9523.N1	25-MAR-2012 08:24:01	Bright	37.000	89	5Alp Cep	2.4510	8000.0	74	52664	No
8	GOM_NL__2PRFIN20120325_091320_000000393113_00065_52665_9544.N1	25-MAR-2012 09:13:20	Straylight	38.500	77	Eps Cen	2.3030	28000.	77	52665	No
9	GOM_NL__2PRFIN20120325_100415_000000373113_00065_52665_9545.N1	25-MAR-2012 10:04:15	Bright	36.500	89	5Alp Cep	2.4510	8000.0	73	52665	No
10	GOM_NL__2PRFIN20120325_105335_000000403113_00066_52666_9576.N1	25-MAR-2012 10:53:35	Straylight	40.000	77	Eps Cen	2.3030	28000.	80	52666	No
11	GOM_NL__2PRFIN20120325_114428_000000353113_00066_52666_9577.N1	25-MAR-2012 11:44:28	Bright	34.500	89	5Alp Cep	2.4510	8000.0	69	52666	No
12	GOM_NL__2PRFIN20120325_123349_000000403113_00067_52667_9654.N1	25-MAR-2012 12:33:49	Straylight	40.000	77	Eps Cen	2.3030	28000.	80	52667	No
13	GOM_NL__2PRFIN20120325_132442_000000373113_00067_52667_9655.N1	25-MAR-2012 13:24:42	Bright	37.000	89	5Alp Cep	2.4510	8000.0	74	52667	No
14	GOM_NL__2PRFIN20120325_141403_000000453113_00068_52668_9708.N1	25-MAR-2012 14:14:03	Straylight	45.000	77	Eps Cen	2.3030	28000.	90	52668	No
15	GOM_NL__2PRFIN20120325_150456_000000373113_00068_52668_9709.N1	25-MAR-2012 15:04:56	Bright	37.000	89	5Alp Cep	2.4510	8000.0	74	52668	No
16	GOM_NL__2PRFIN20120325_155418_000000403113_00069_52669_9742.N1	25-MAR-2012 15:54:18	Straylight	39.500	77	Eps Cen	2.3030	28000.	79	52669	No
17	GOM_NL__2PRFIN20120325_164510_000000363113_00069_52669_9743.N1	25-MAR-2012 16:45:10	Bright	36.000	89	5Alp Cep	2.4510	8000.0	72	52669	No
18	GOM_NL__2PRFIN20120325_173432_000000403113_00070_52670_9775.N1	25-MAR-2012 17:34:32	Straylight	39.500	77	Eps Cen	2.3030	28000.	79	52670	No
19	GOM_NL__2PRFIN20120325_182524_000000363113_00070_52670_9776.N1	25-MAR-2012 18:25:24	Bright	35.500	89	5Alp Cep	2.4510	8000.0	71	52670	No
20	GOM_NL__2PRFIN20120325_191447_000000413113_00071_52671_9834.N1	25-MAR-2012 19:14:47	Straylight	41.000	77	Eps Cen	2.3030	28000.	82	52671	No
21	GOM_NL__2PRFIN20120325_200538_000000383113_00071_52671_9835.N1	25-MAR-2012 20:05:38	Bright	37.500	89	5Alp Cep	2.4510	8000.0	75	52671	No
22	GOM_NL__2PRFIN20120325_205501_000000443113_00072_52672_9874.N1	25-MAR-2012 20:55:01	Straylight	43.500	77	Eps Cen	2.3030	28000.	87	52672	No
23	GOM_NL__2PRFIN20120325_214552_000000363113_00072_52672_9875.N1	25-MAR-2012 21:45:52	Bright	36.000	89	5Alp Cep	2.4510	8000.0	72	52672	No
24	GOM_NL__2PRFIN20120325_223515_000000403113_00073_52673_9885.N1	25-MAR-2012 22:35:15	Straylight	39.500	77	Eps Cen	2.3030	28000.	79	52673	No
25	GOM_NL__2PRFIN20120325_232606_000000363113_00073_52673_9886.N1	25-MAR-2012 23:26:06	Bright	35.500	89	5Alp Cep	2.4510	8000.0	71	52673	No

3. Quality information per product

In this section it is plotted some information contained in the Quality Summary data set of the level 2 products. Only products in dark limb conditions and without errors (error flag in the MPH set to "0") are used.

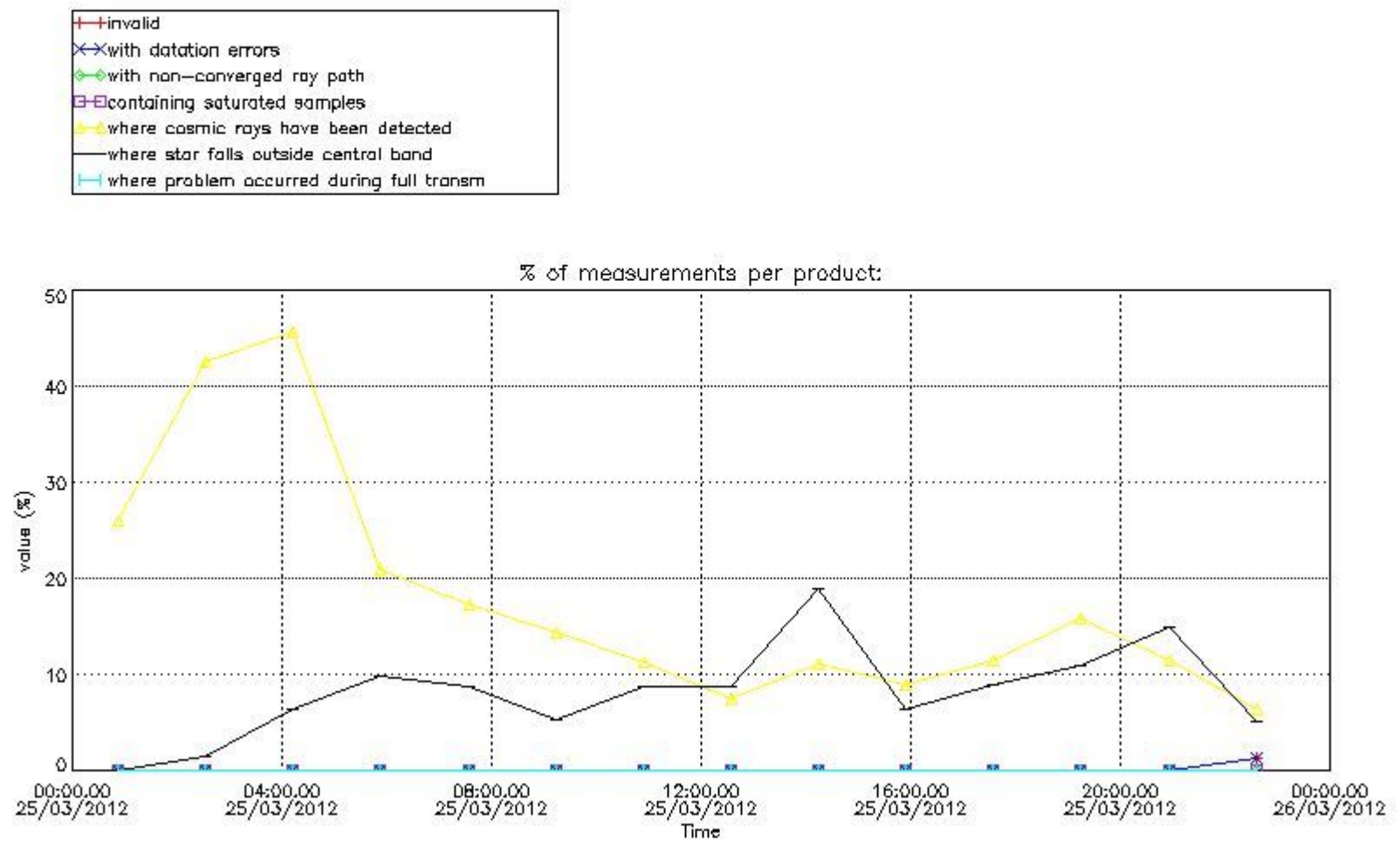
3.1 Plot quality information per product (time dependant)

4. Level 1 quality information per product

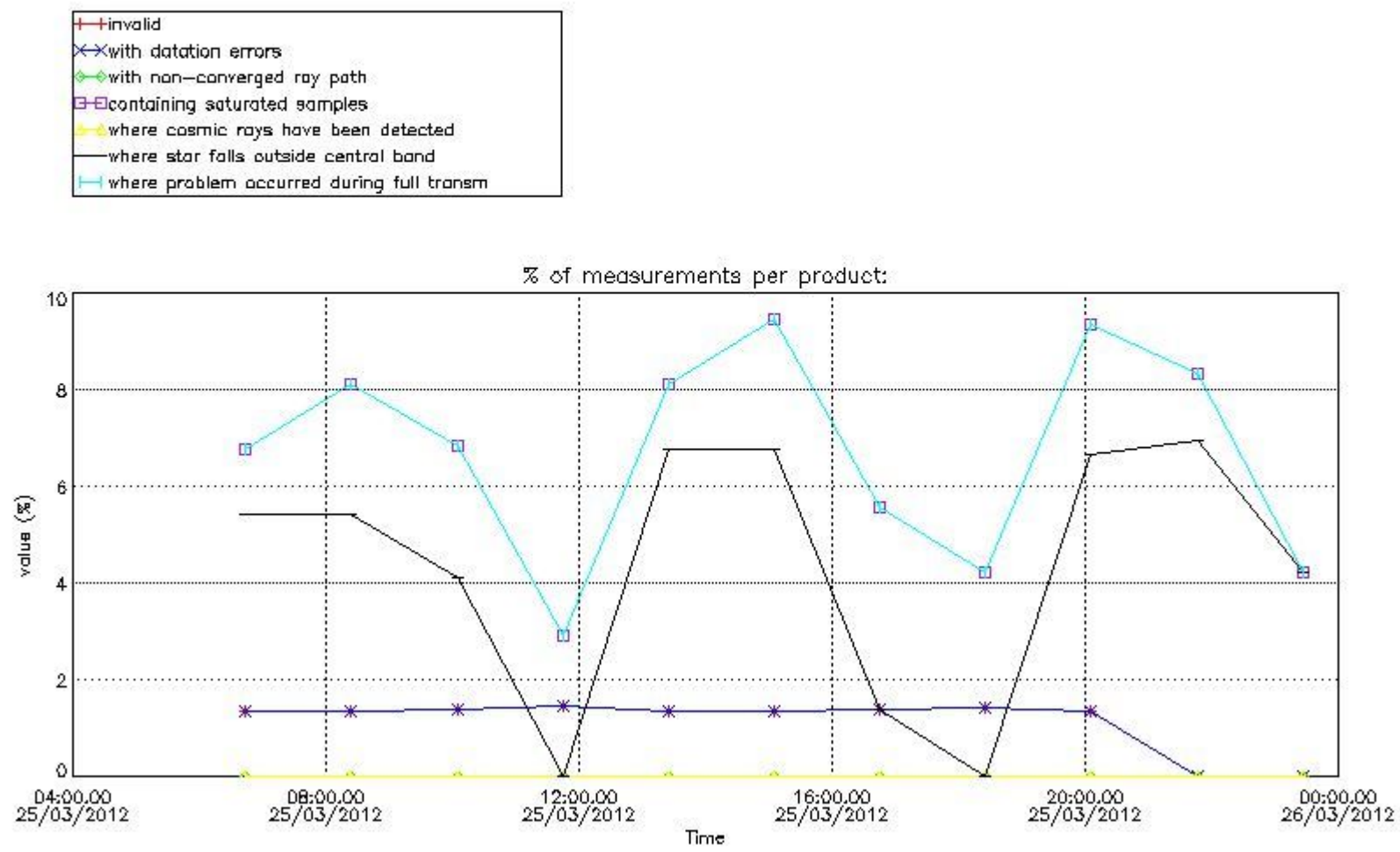
In this section it is plotted some information contained in the Quality Summary data set of the level 2 products that comes from the level 1b processing. Products without errors (error flag in the MPH set to "0") are used.

4.1 Plot quality information per product (time dependant) coming from level 1b processing

4.1.1 Plot level 1 quality information per product (time dependant): ENVISAT ASCENDING passes



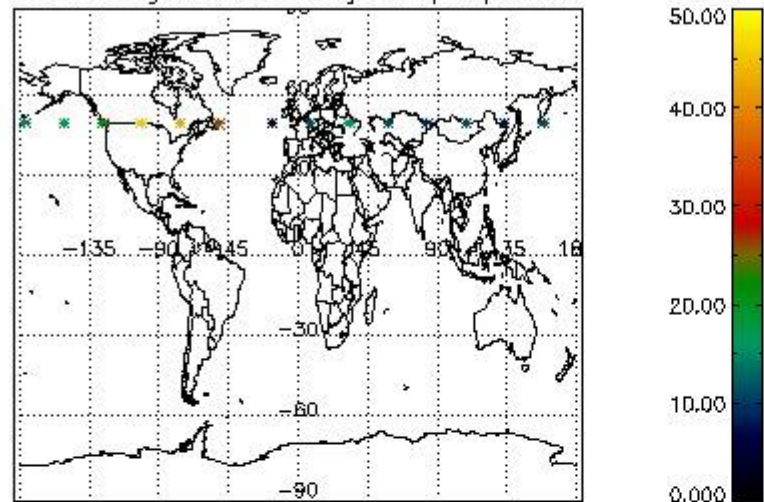
4.1.2 Plot level 1 quality information per product (time dependant): ENVISAT DESCENDING passes



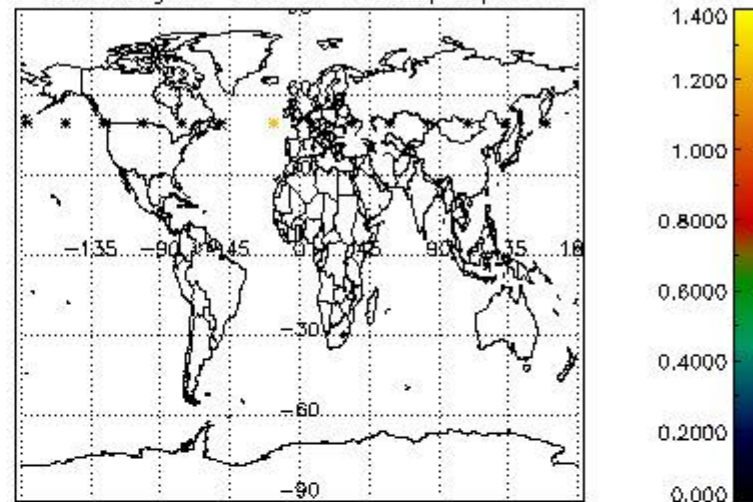
4.2 Plot quality information per product coming from level 1b processing (world map)

4.2.1 Plot level 1 quality information per product (world map): ENVISAT ASCENDING passes

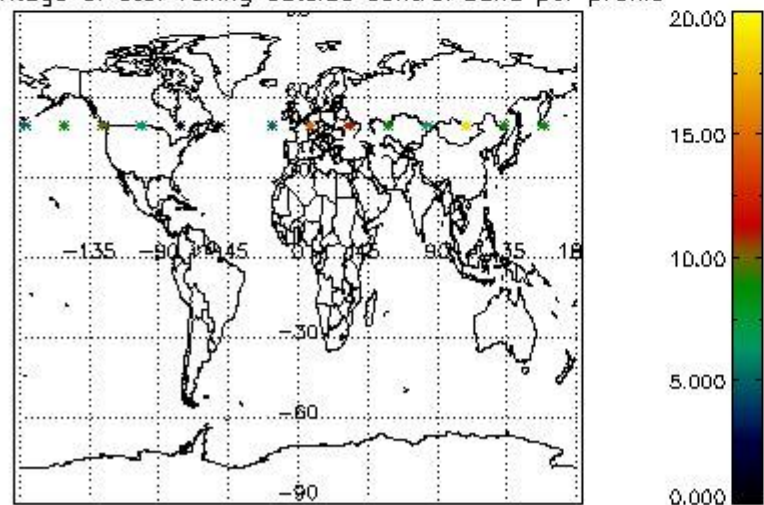
Percentage of cosmic ray hits per profile



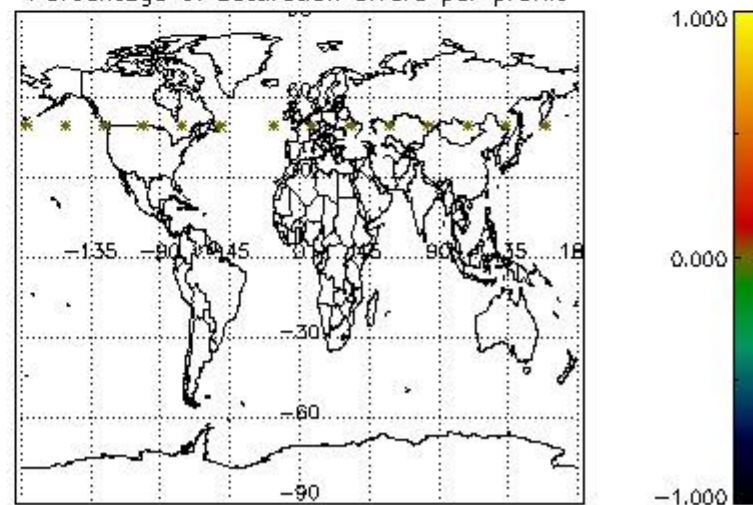
Percentage of datation errors per profile



Percentage of star falling outside central band per profile

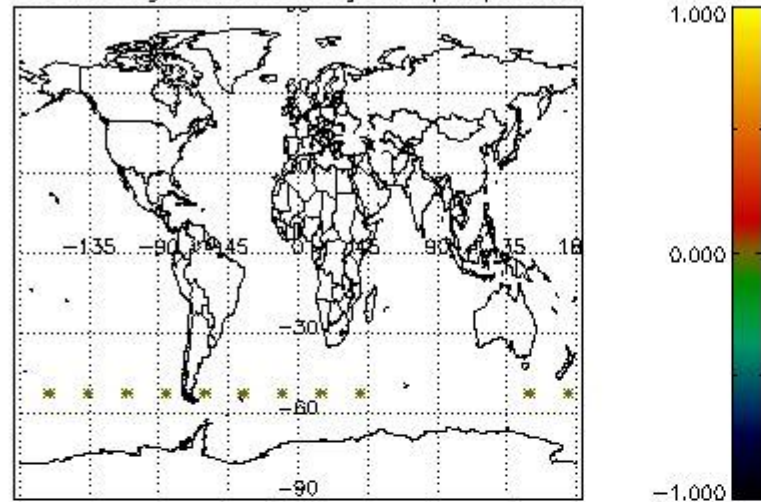


Percentage of saturation errors per profile

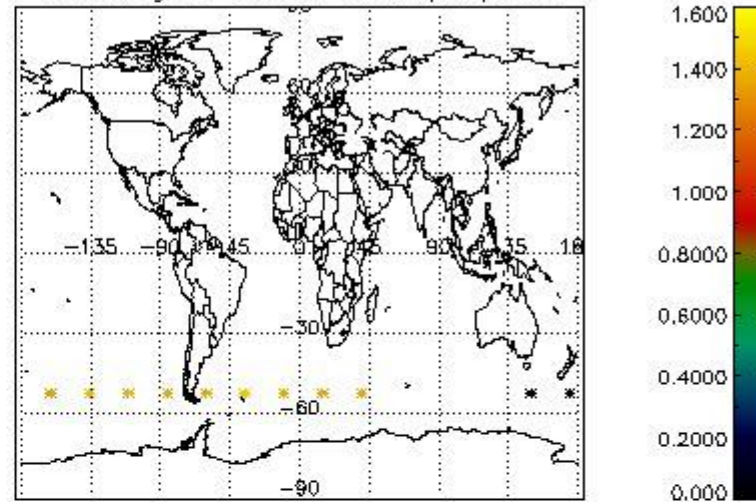


4.2.2 Plot level 1 quality information per product (world map): ENVISAT DESCENDING passes

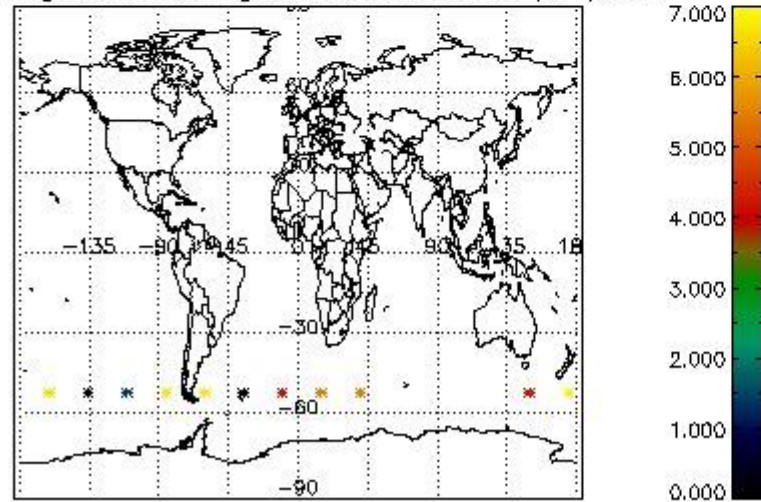
Percentage of cosmic ray hits per profile



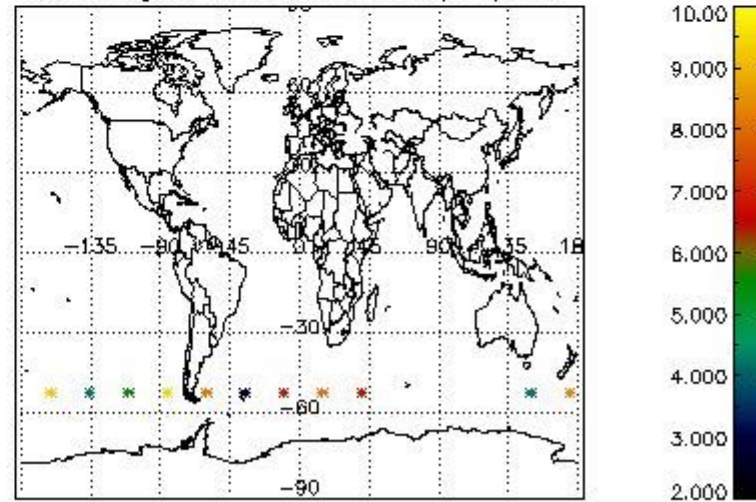
Percentage of datation errors per profile



Percentage of star falling outside central band per profile



Percentage of saturation errors per profile



6. Auxiliary Data Files used for the production reported in section 2

The number reported in the third column indicates since which file (see list in section 2) the corresponding auxiliary file has been used. The fourth column is the date of those product files.

Type	Auxiliary Filename	Used since product	Used since product date
INST_PHYS_CHARACTERISTICS	GOM_INS_AXVIEC20111213_163131_20111215_000000_20500101_000000	1	25-MAR-2012 00:52:08
LEVEL-2_PROC_CONFIG	GOM_PR2_AXVIEC20091111_152718_20020301_000000_20500101_000000	1	25-MAR-2012 00:52:08
CROSS_SECTIONS_FILE	GOM_CR2_AXVIEC20091111_154832_20020301_000000_20500101_000000	1	25-MAR-2012 00:52:08

GOMOS Level 2 Daily Report

SUMMARY

[1. General Info](#)

[2. Summary of processed GOM_NL_2P products](#)

[3. Level 2 Quality information per product](#)

[3.1 Plot of level 2 quality information per product \(time dependant\)](#)

[3.2 Plot of level 2 quality information per product \(world map\)](#)

[4. Level 1 Quality information per product \(stored on level 2 products\)](#)

[4.1 Plot of level 1 quality information per product \(time dependant\)](#)

[4.1.1 Plot of level 1 quality information per product \(time dependant\): ASCENDING](#)

[4.1.2 Plot of level 1 quality information per product \(time dependant\): DESCENDING](#)

[4.2 Plot of level 1 quality information per product \(world map\)](#)

[4.2.1 Plot of level 1 quality information per product \(world map\): ASCENDING](#)

[4.2.2 Plot of level 1 quality information per product \(world map\): DESCENDING](#)

[5. Ozone profiles based on quality statistics and other trace gas profiles](#)

[5.1 Ozone statistics based on quality of products](#)

[5.2 Plot ozone profiles for all STD \(dark without errors\)](#)

[5.3 Plot ozone profiles where STD < 20% \(dark without errors\)](#)

[5.4. Plot ozone profiles where STD < 10% \(dark without errors\)](#)

[5.5. Plot ozone profiles where STD < 5% \(dark without errors\)](#)

[5.6 Plot NO2 profiles for all STD \(dark without errors\)](#)

[5.7 Plot NO3 profiles for all STD \(dark without errors\)](#)

[5.8 Plot H2O profiles \(only for occultations of stars 1,2,3,4,13,14,16,26,63 dark without errors\) for all STD](#)

[6. Auxiliary Data Files used for the production reported in section 2](#)

This report presents the daily analysis on parameters extracted from GOMOS level 2 data (GOM_NL__2P). It is intended to monitor some important parameters that will impact the quality of these products. A list of level 2 products (and content) that have arrived during the reporting day to the PCF is also given.

Item	Value
Time of report generation	18APR2013 14:13:07
Data source version	GOMOS/6.01
Start time of products	25-03-2012 (25MAR2012 00:00:00)
Stop time of products	26-03-2012 (26MAR2012 00:00:00)
Store outputs in DB	Yes
Nb of level 2 prods	25
Nb of prods with errors	0

2. Summary of processed GOM_NL__2P products.

!Warning: No products without errors in DARK limb contitions found

Nr	Filename	UTC Start time	Limb	Duration	Star Id	Star Name	Star Mag	Star Temp	Nb Meas	Orbit	Prod. error
1	GOM_NL__2PRFIN20120325_005208_000000353113_00060_52660_9449.N1	25-MAR-2012 00:52:08	Straylight	34.500	77	Eps Cen	2.3030	28000.	69	52660	No
2	GOM_NL__2PRFIN20120325_023222_000000373113_00061_52661_9477.N1	25-MAR-2012 02:32:22	Straylight	36.500	77	Eps Cen	2.3030	28000.	73	52661	No
3	GOM_NL__2PRFIN20120325_041237_000000403113_00062_52662_9500.N1	25-MAR-2012 04:12:37	Straylight	39.500	77	Eps Cen	2.3030	28000.	79	52662	No
4	GOM_NL__2PRFIN20120325_055251_000000413113_00063_52663_9508.N1	25-MAR-2012 05:52:51	Straylight	40.500	77	Eps Cen	2.3030	28000.	81	52663	No
5	GOM_NL__2PRFIN20120325_064347_000000373113_00063_52663_9509.N1	25-MAR-2012 06:43:47	Bright	37.000	89	5Alp Cep	2.4510	8000.0	74	52663	No
6	GOM_NL__2PRFIN20120325_073306_000000413113_00064_52664_9522.N1	25-MAR-2012 07:33:06	Straylight	40.500	77	Eps Cen	2.3030	28000.	81	52664	No
7	GOM_NL__2PRFIN20120325_082401_000000373113_00064_52664_9523.N1	25-MAR-2012 08:24:01	Bright	37.000	89	5Alp Cep	2.4510	8000.0	74	52664	No
8	GOM_NL__2PRFIN20120325_091320_000000393113_00065_52665_9544.N1	25-MAR-2012 09:13:20	Straylight	38.500	77	Eps Cen	2.3030	28000.	77	52665	No
9	GOM_NL__2PRFIN20120325_100415_000000373113_00065_52665_9545.N1	25-MAR-2012 10:04:15	Bright	36.500	89	5Alp Cep	2.4510	8000.0	73	52665	No
10	GOM_NL__2PRFIN20120325_105335_000000403113_00066_52666_9576.N1	25-MAR-2012 10:53:35	Straylight	40.000	77	Eps Cen	2.3030	28000.	80	52666	No
11	GOM_NL__2PRFIN20120325_114428_000000353113_00066_52666_9577.N1	25-MAR-2012 11:44:28	Bright	34.500	89	5Alp Cep	2.4510	8000.0	69	52666	No
12	GOM_NL__2PRFIN20120325_123349_000000403113_00067_52667_9654.N1	25-MAR-2012 12:33:49	Straylight	40.000	77	Eps Cen	2.3030	28000.	80	52667	No
13	GOM_NL__2PRFIN20120325_132442_000000373113_00067_52667_9655.N1	25-MAR-2012 13:24:42	Bright	37.000	89	5Alp Cep	2.4510	8000.0	74	52667	No
14	GOM_NL__2PRFIN20120325_141403_000000453113_00068_52668_9708.N1	25-MAR-2012 14:14:03	Straylight	45.000	77	Eps Cen	2.3030	28000.	90	52668	No
15	GOM_NL__2PRFIN20120325_150456_000000373113_00068_52668_9709.N1	25-MAR-2012 15:04:56	Bright	37.000	89	5Alp Cep	2.4510	8000.0	74	52668	No
16	GOM_NL__2PRFIN20120325_155418_000000403113_00069_52669_9742.N1	25-MAR-2012 15:54:18	Straylight	39.500	77	Eps Cen	2.3030	28000.	79	52669	No
17	GOM_NL__2PRFIN20120325_164510_000000363113_00069_52669_9743.N1	25-MAR-2012 16:45:10	Bright	36.000	89	5Alp Cep	2.4510	8000.0	72	52669	No
18	GOM_NL__2PRFIN20120325_173432_000000403113_00070_52670_9775.N1	25-MAR-2012 17:34:32	Straylight	39.500	77	Eps Cen	2.3030	28000.	79	52670	No
19	GOM_NL__2PRFIN20120325_182524_000000363113_00070_52670_9776.N1	25-MAR-2012 18:25:24	Bright	35.500	89	5Alp Cep	2.4510	8000.0	71	52670	No
20	GOM_NL__2PRFIN20120325_191447_000000413113_00071_52671_9834.N1	25-MAR-2012 19:14:47	Straylight	41.000	77	Eps Cen	2.3030	28000.	82	52671	No
21	GOM_NL__2PRFIN20120325_200538_000000383113_00071_52671_9835.N1	25-MAR-2012 20:05:38	Bright	37.500	89	5Alp Cep	2.4510	8000.0	75	52671	No
22	GOM_NL__2PRFIN20120325_205501_000000443113_00072_52672_9874.N1	25-MAR-2012 20:55:01	Straylight	43.500	77	Eps Cen	2.3030	28000.	87	52672	No
23	GOM_NL__2PRFIN20120325_214552_000000363113_00072_52672_9875.N1	25-MAR-2012 21:45:52	Bright	36.000	89	5Alp Cep	2.4510	8000.0	72	52672	No
24	GOM_NL__2PRFIN20120325_223515_000000403113_00073_52673_9885.N1	25-MAR-2012 22:35:15	Straylight	39.500	77	Eps Cen	2.3030	28000.	79	52673	No
25	GOM_NL__2PRFIN20120325_232606_000000363113_00073_52673_9886.N1	25-MAR-2012 23:26:06	Bright	35.500	89	5Alp Cep	2.4510	8000.0	71	52673	No

3. Quality information per product

In this section it is plotted some information contained in the Quality Summary data set of the level 2 products. Only products in dark limb conditions and without errors (error flag in the MPH set to "0") are used.

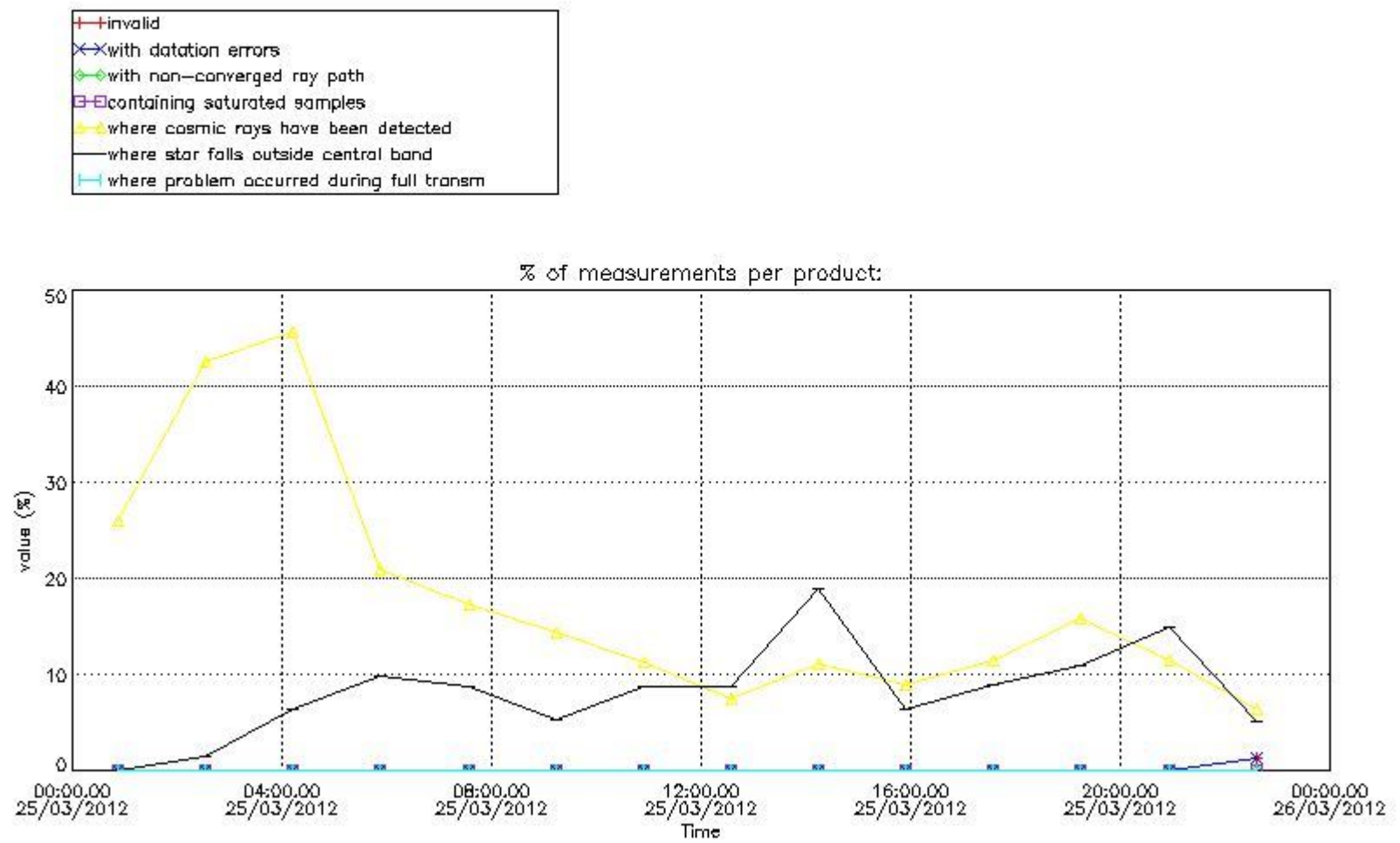
3.1 Plot quality information per product (time dependant)

4. Level 1 quality information per product

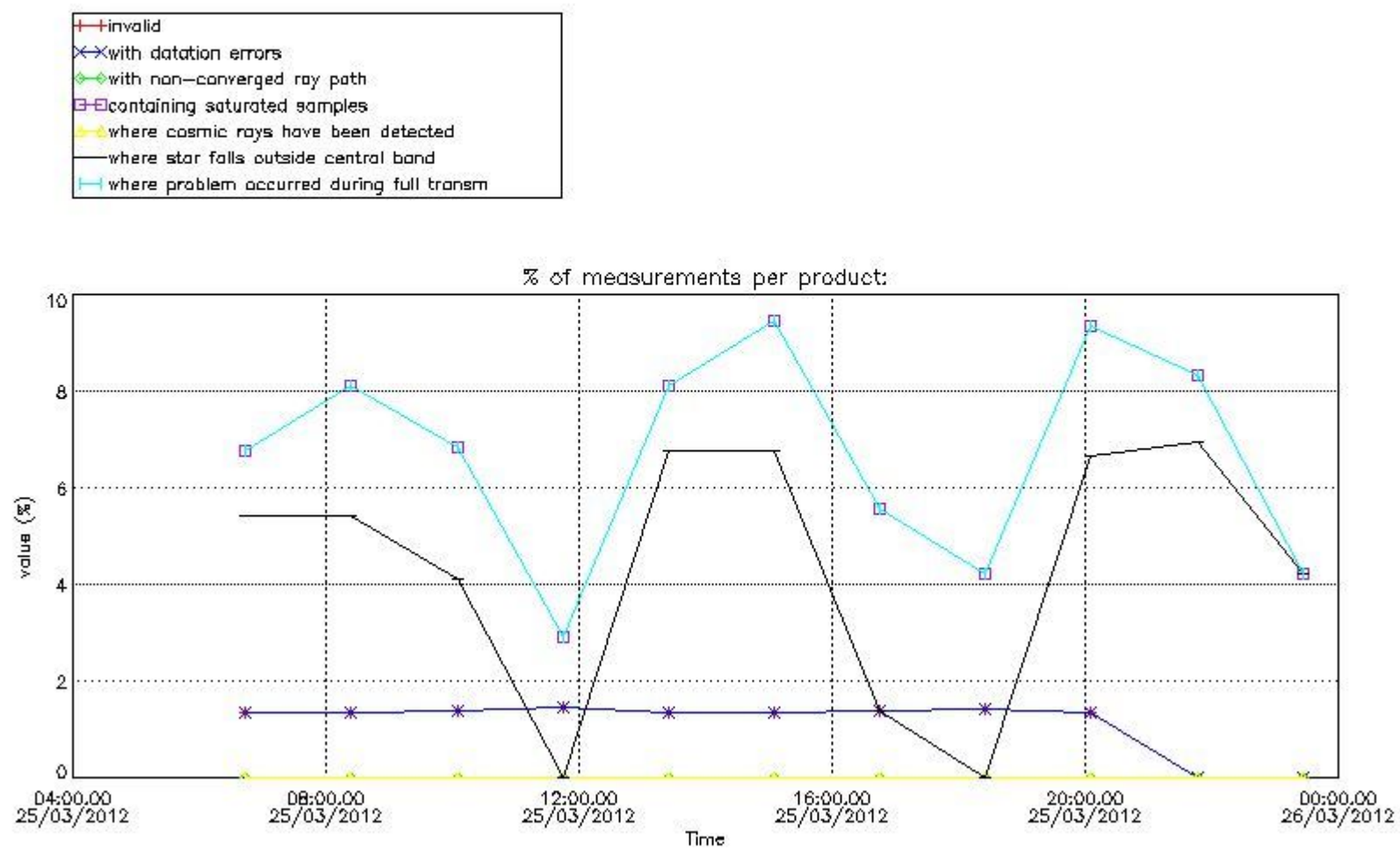
In this section it is plotted some information contained in the Quality Summary data set of the level 2 products that comes from the level 1b processing. Products without errors (error flag in the MPH set to "0") are used.

4.1 Plot quality information per product (time dependant) coming from level 1b processing

4.1.1 Plot level 1 quality information per product (time dependant): ENVISAT ASCENDING passes

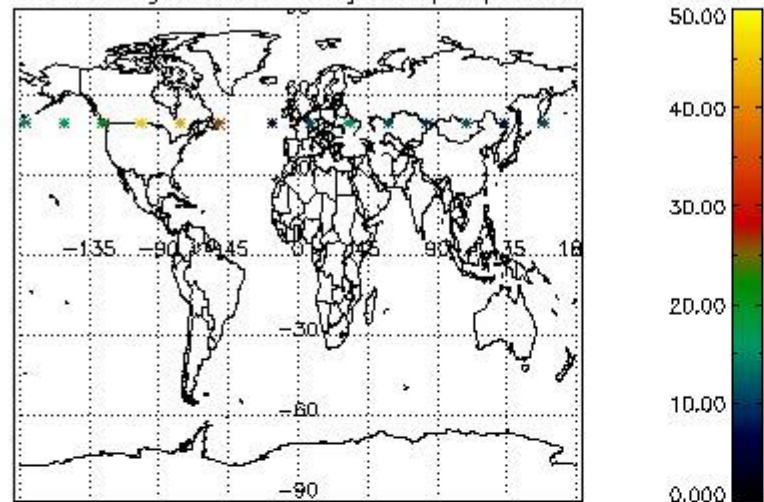


4.1.2 Plot level 1 quality information per product (time dependant): ENVISAT DESCENDING passes

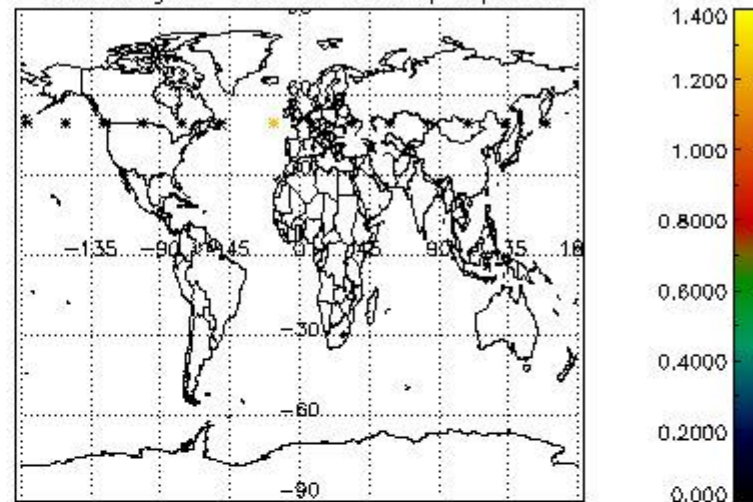


4.2 Plot quality information per product coming from level 1b processing (world map)
 4.2.1 Plot level 1 quality information per product (world map): ENVISAT ASCENDING passes

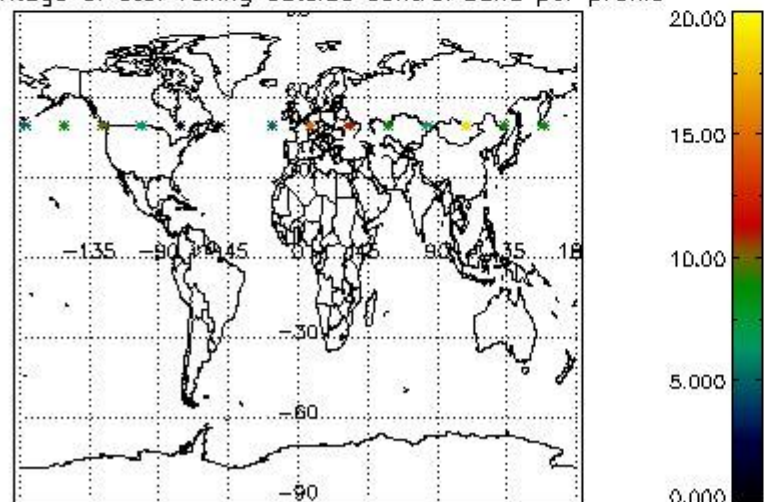
Percentage of cosmic ray hits per profile



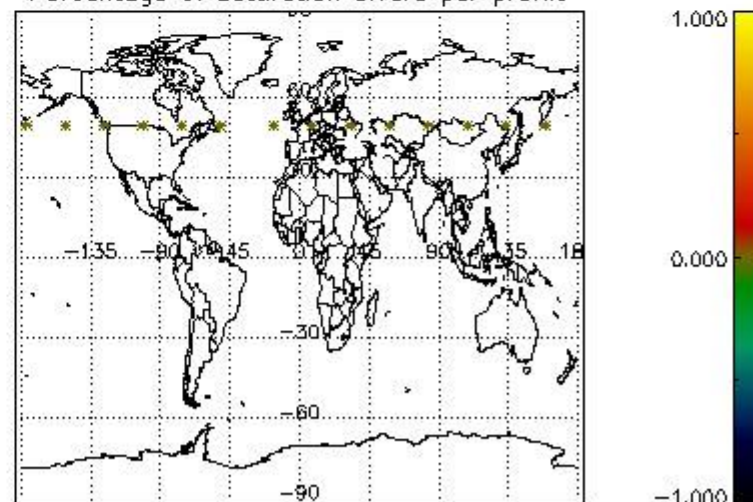
Percentage of datation errors per profile



Percentage of star falling outside central band per profile

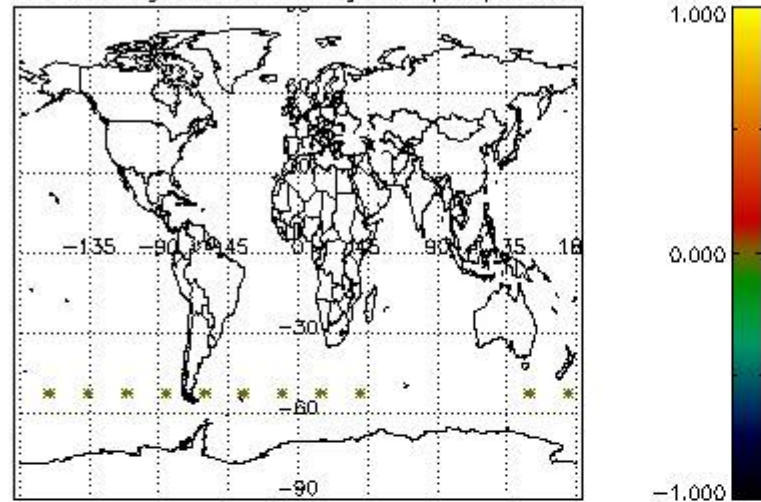


Percentage of saturation errors per profile

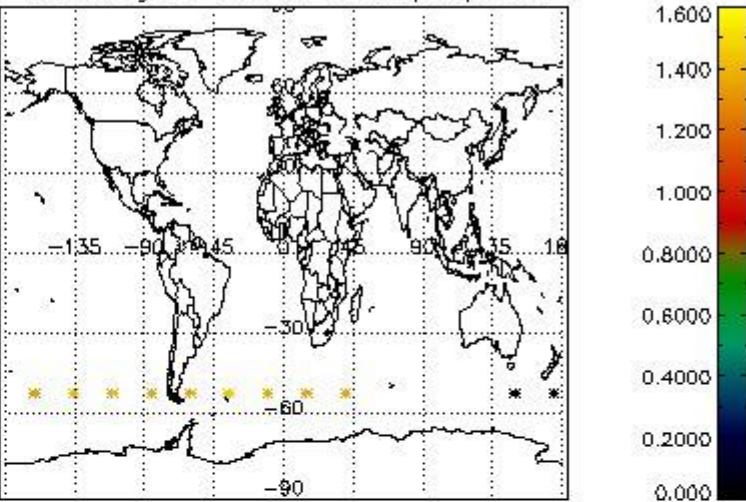


4.2.2 Plot level 1 quality information per product (world map): ENVISAT DESCENDING passes

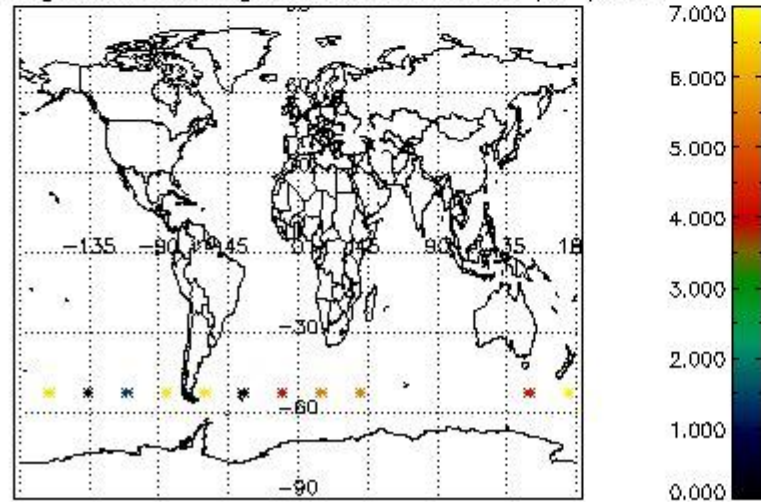
Percentage of cosmic ray hits per profile



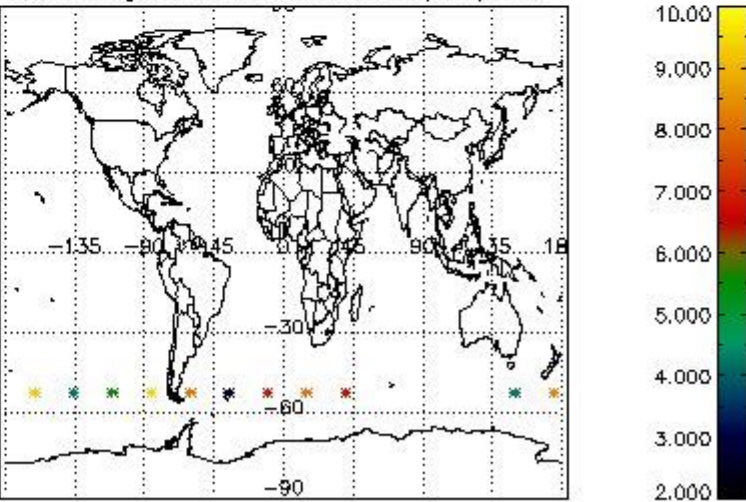
Percentage of datation errors per profile



Percentage of star falling outside central band per profile



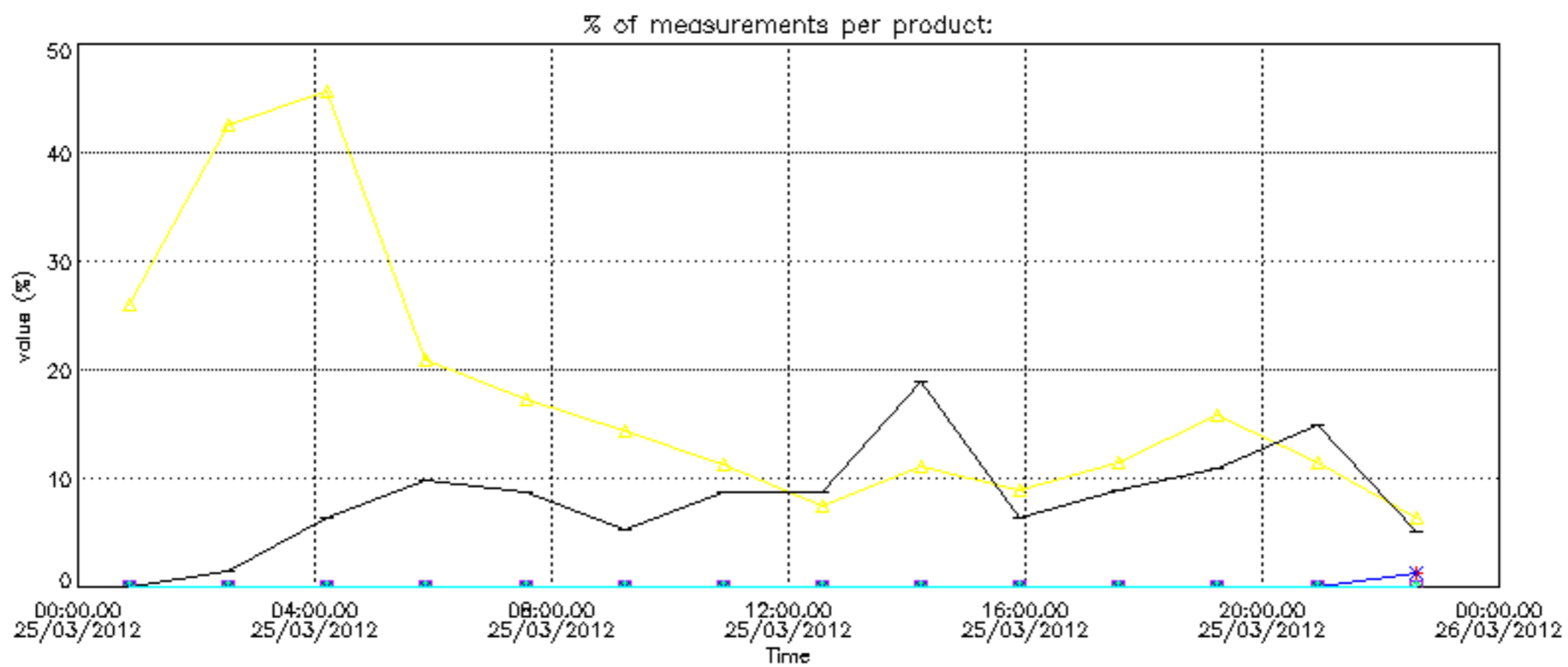
Percentage of saturation errors per profile

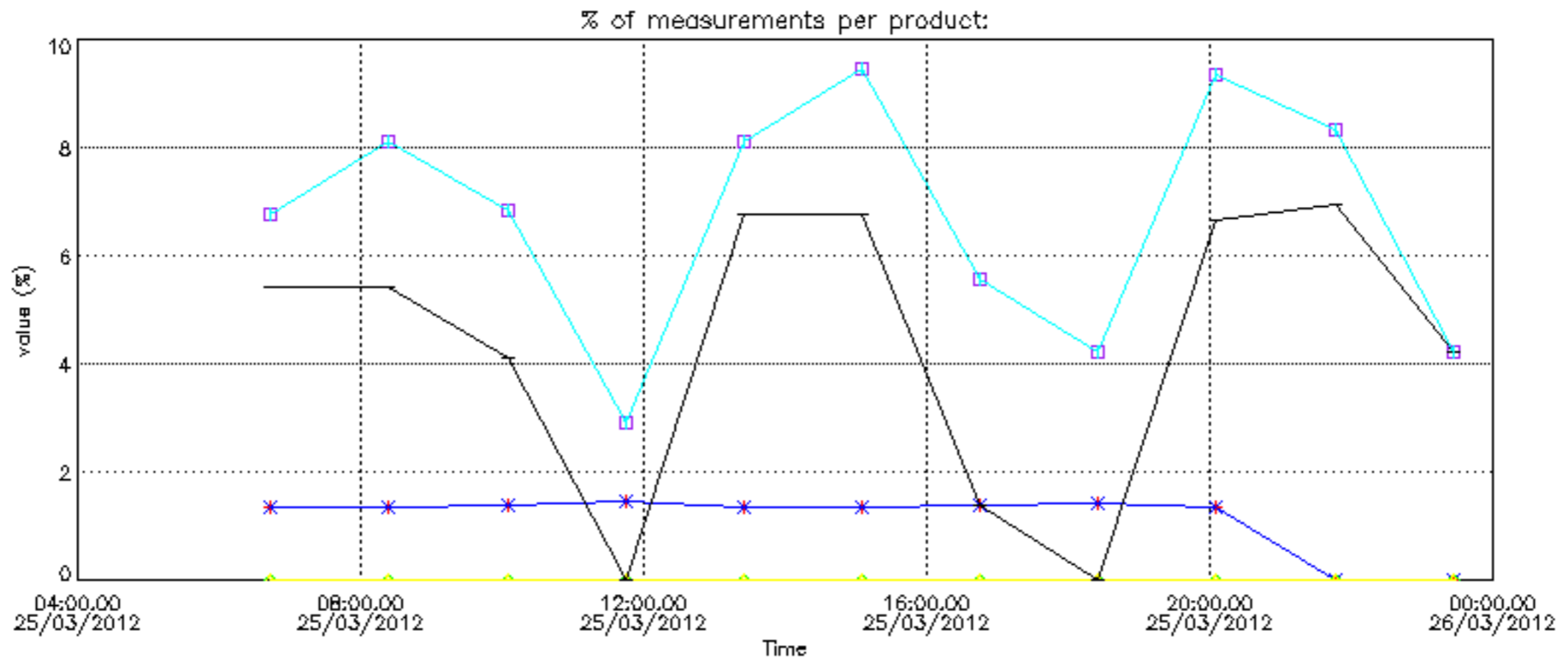


6. Auxiliary Data Files used for the production reported in section 2

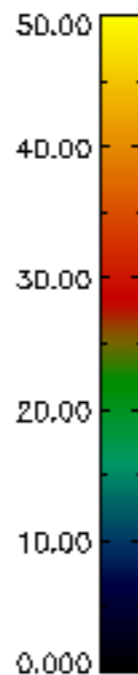
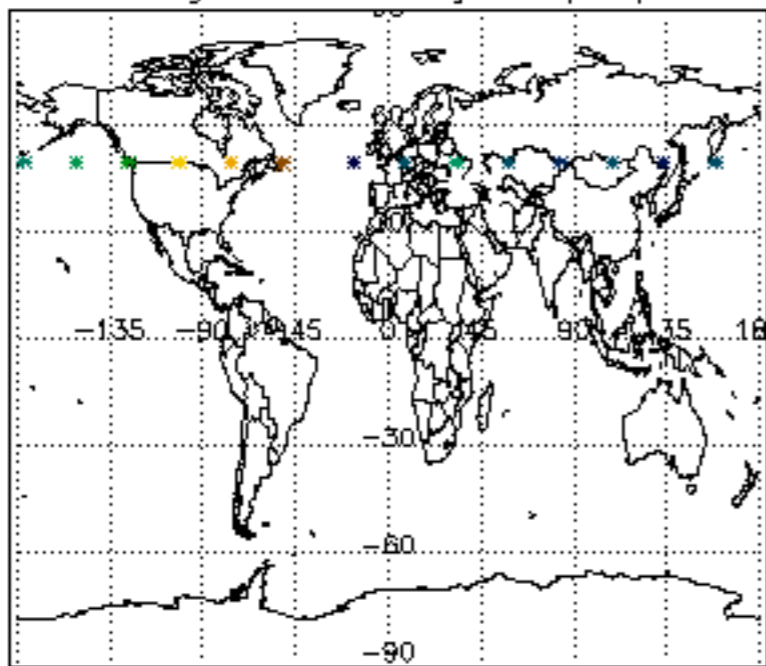
The number reported in the third column indicates since which file (see list in section 2) the corresponding auxiliary file has been used. The fourth column is the date of those product files.

Type	Auxiliary Filename	Used since product	Used since product date
INST_PHYS_CHARACTERISTICS	GOM_INS_AXVIEC20111213_163131_20111215_000000_20500101_000000	1	25-MAR-2012 00:52:08
LEVEL-2_PROC_CONFIG	GOM_PR2_AXVIEC20091111_152718_20020301_000000_20500101_000000	1	25-MAR-2012 00:52:08
CROSS_SECTIONS_FILE	GOM_CR2_AXVIEC20091111_154832_20020301_000000_20500101_000000	1	25-MAR-2012 00:52:08

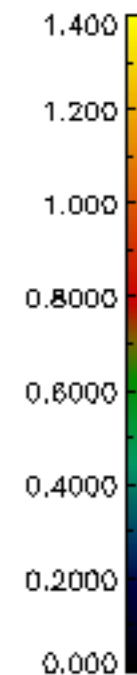
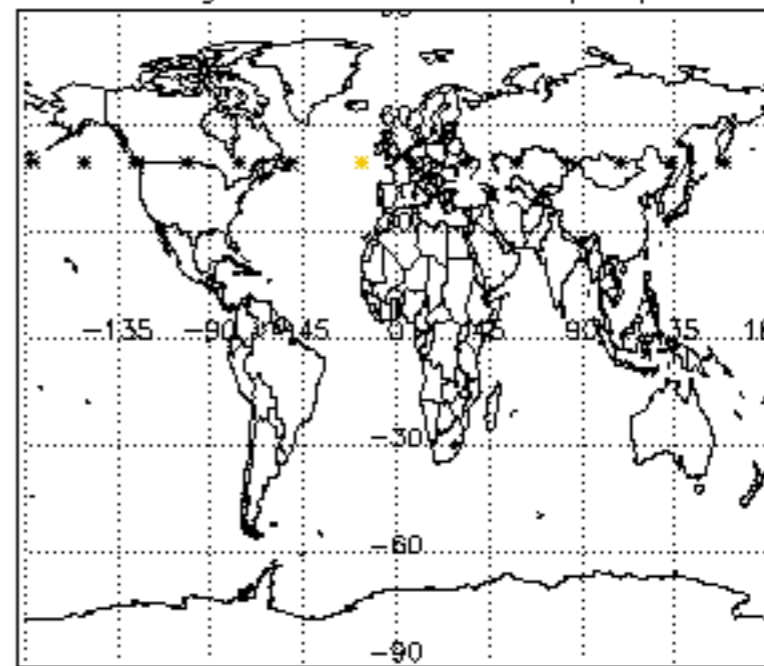




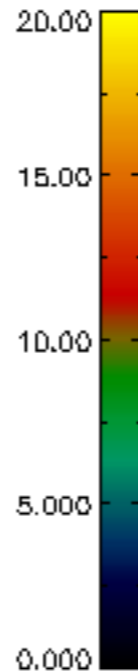
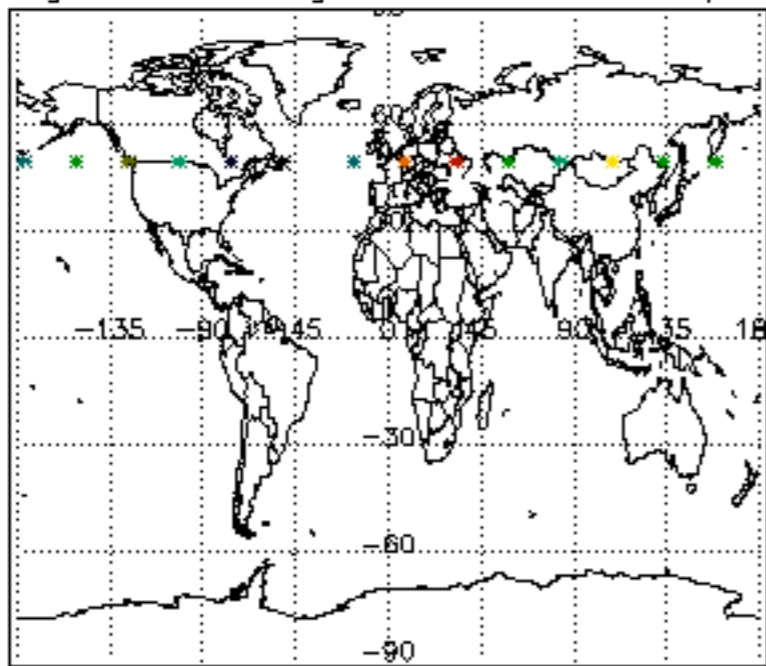
Percentage of cosmic ray hits per profile



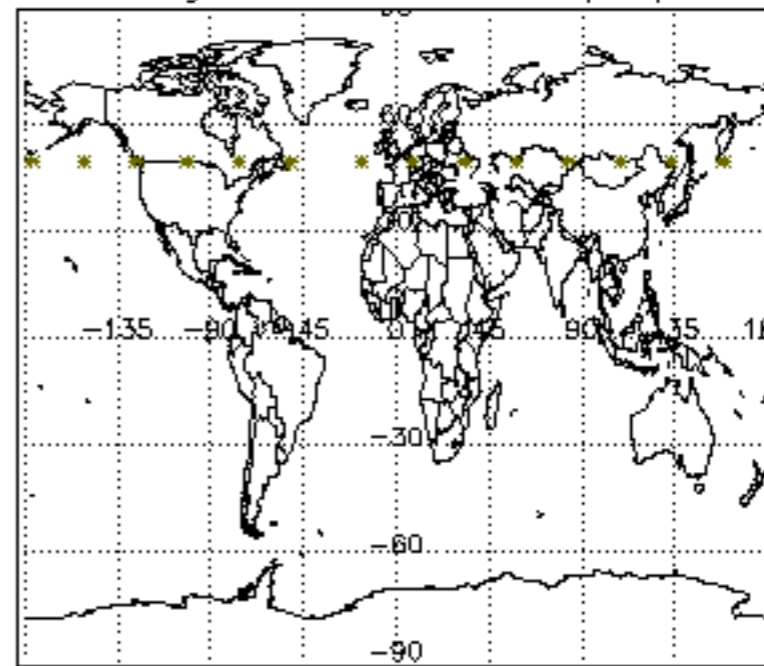
Percentage of datation errors per profile



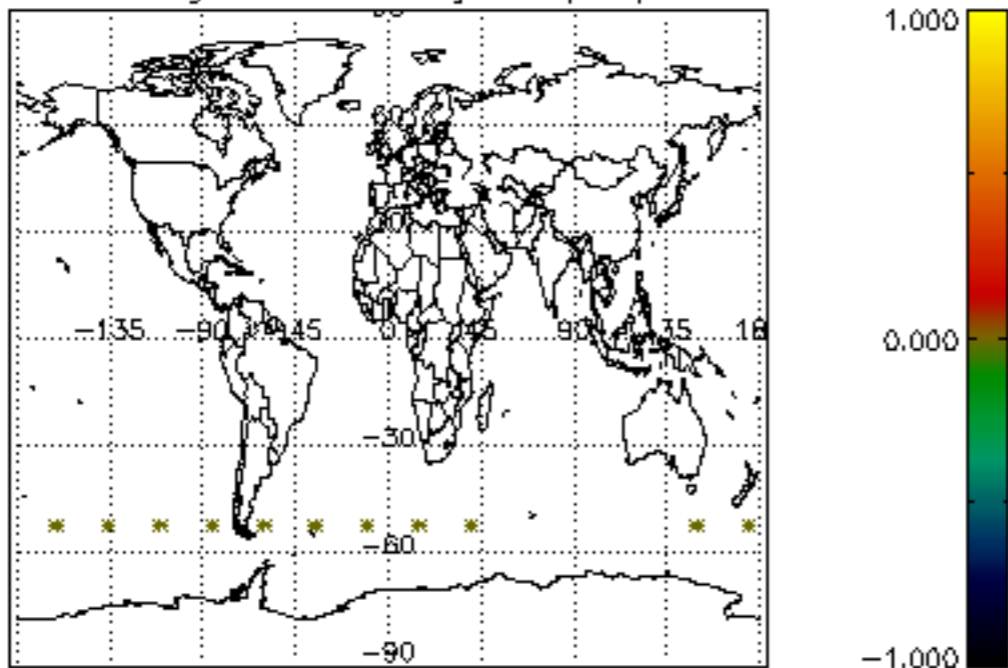
Percentage of star falling outside central band per profile



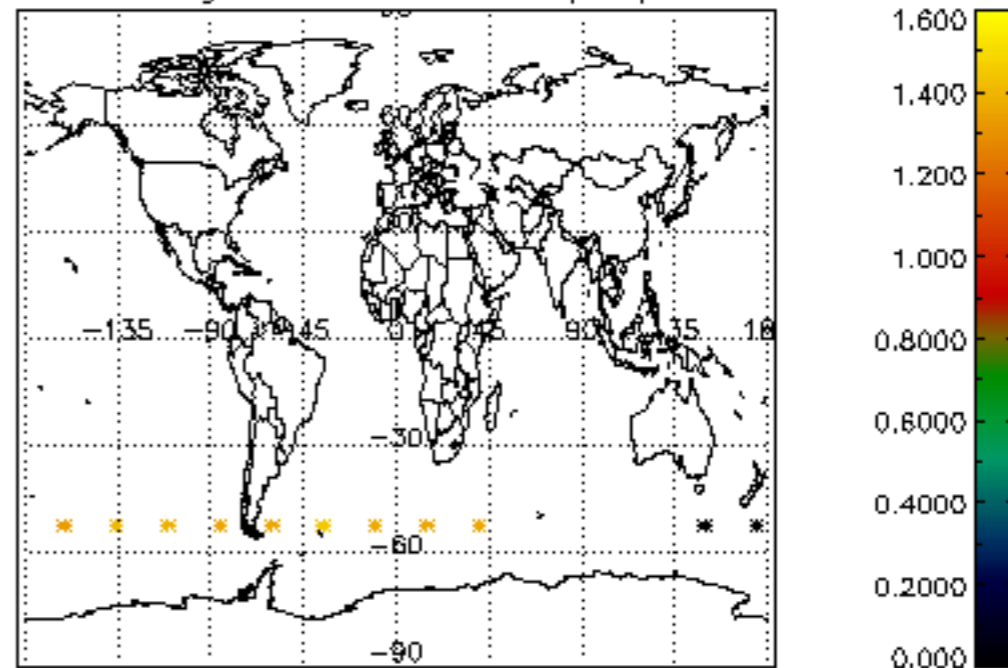
Percentage of saturation errors per profile



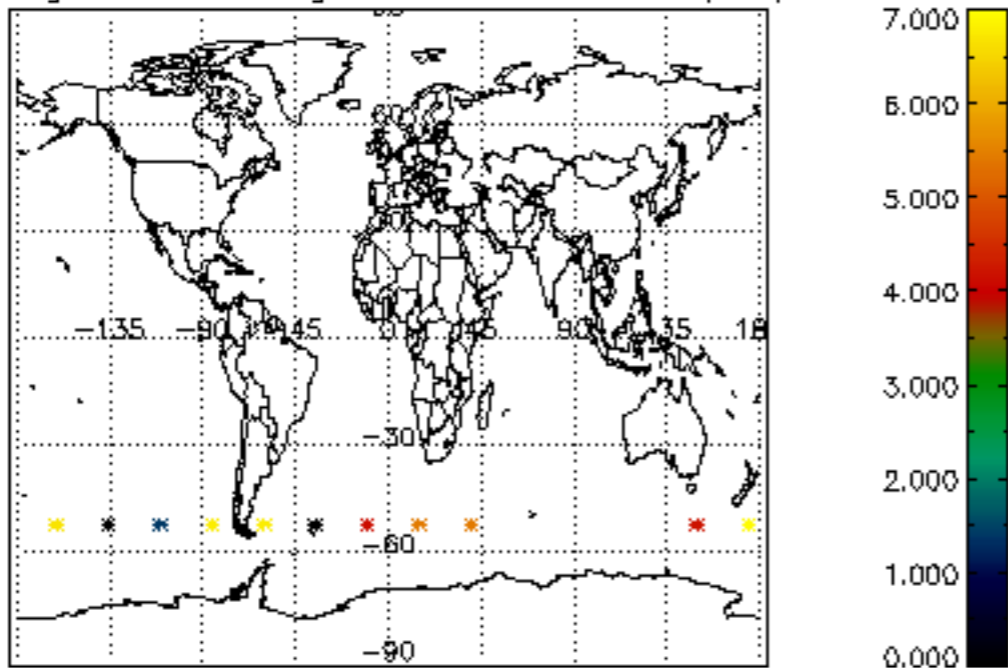
Percentage of cosmic ray hits per profile



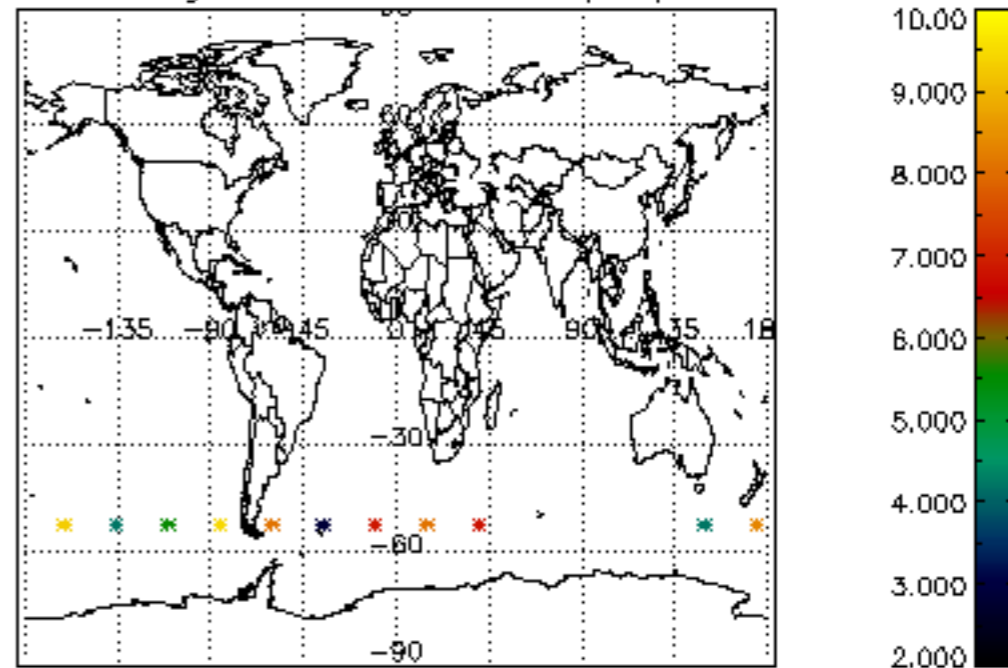
Percentage of datation errors per profile

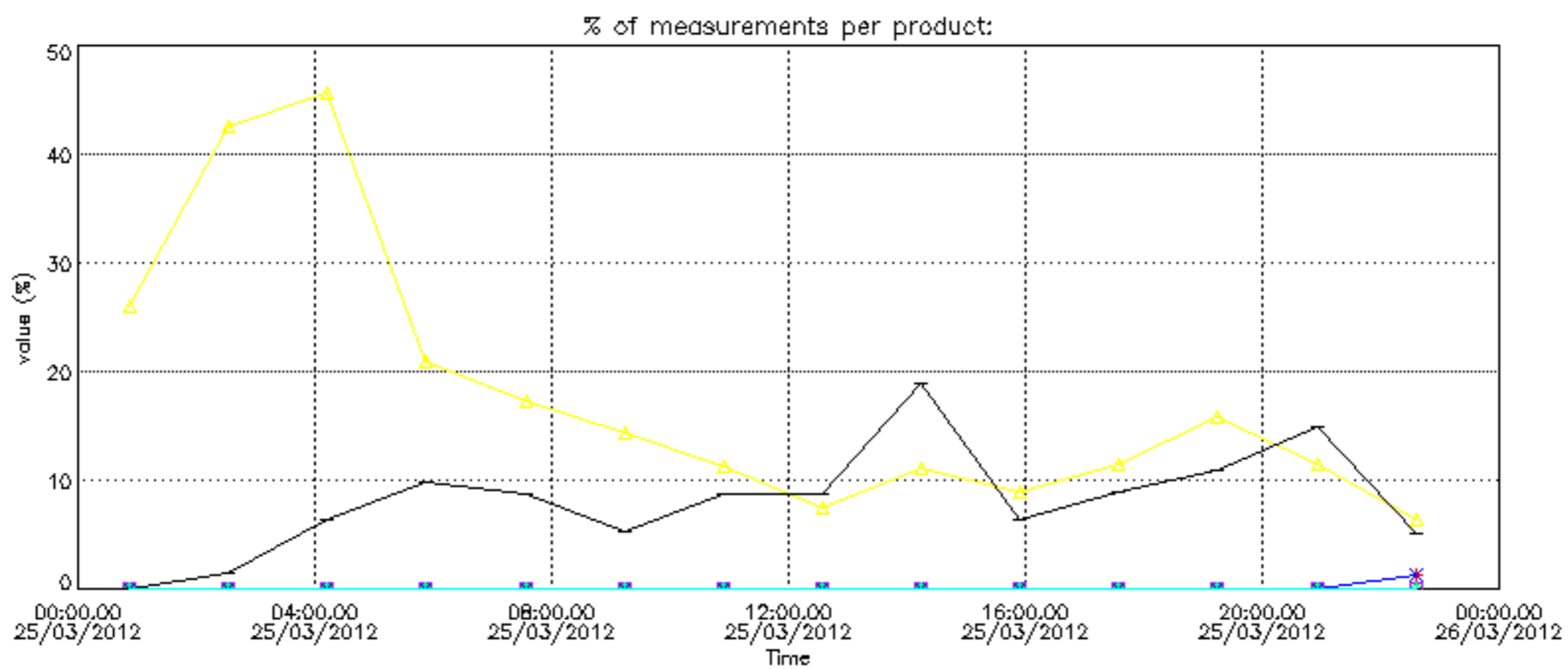


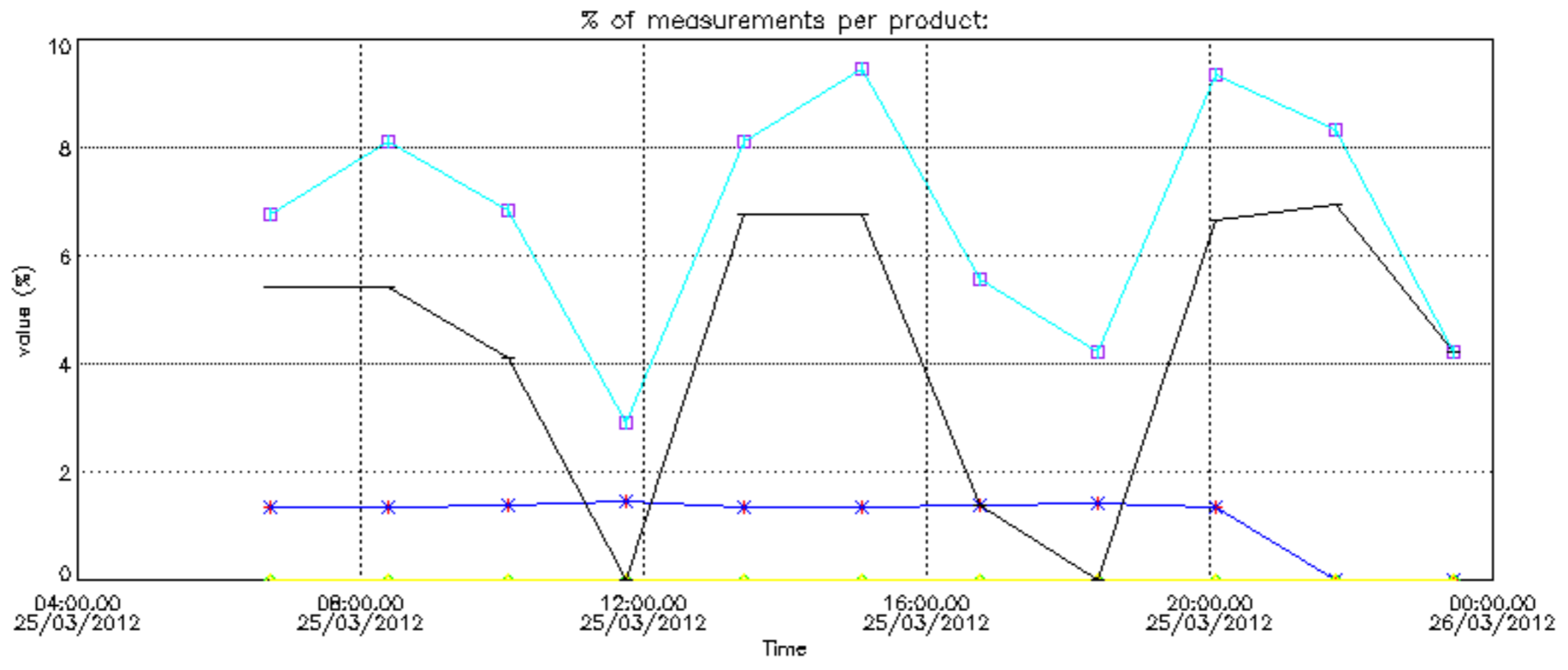
Percentage of star falling outside central band per profile



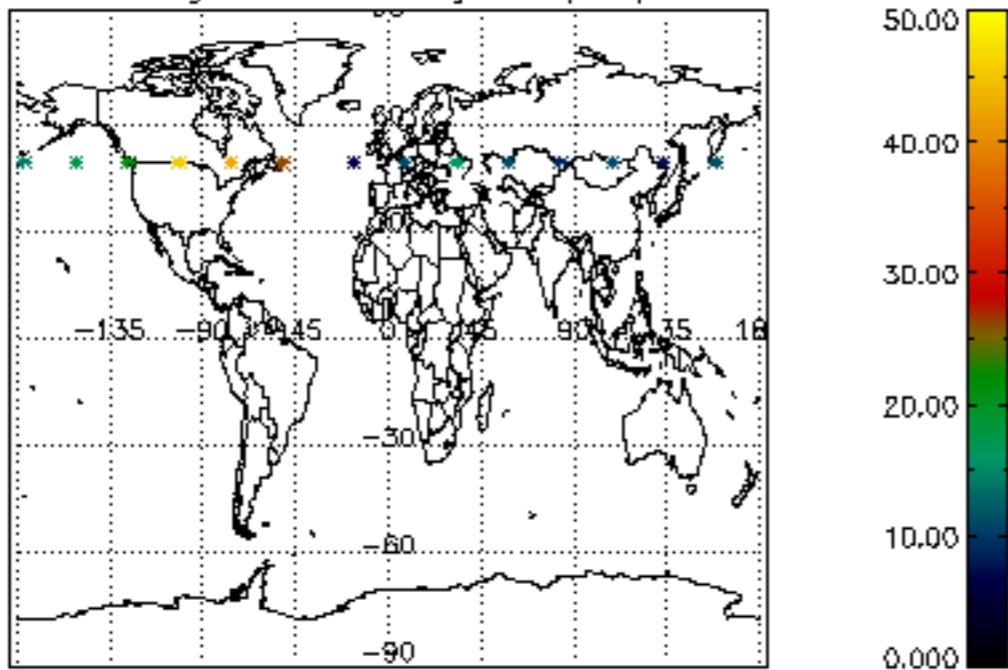
Percentage of saturation errors per profile



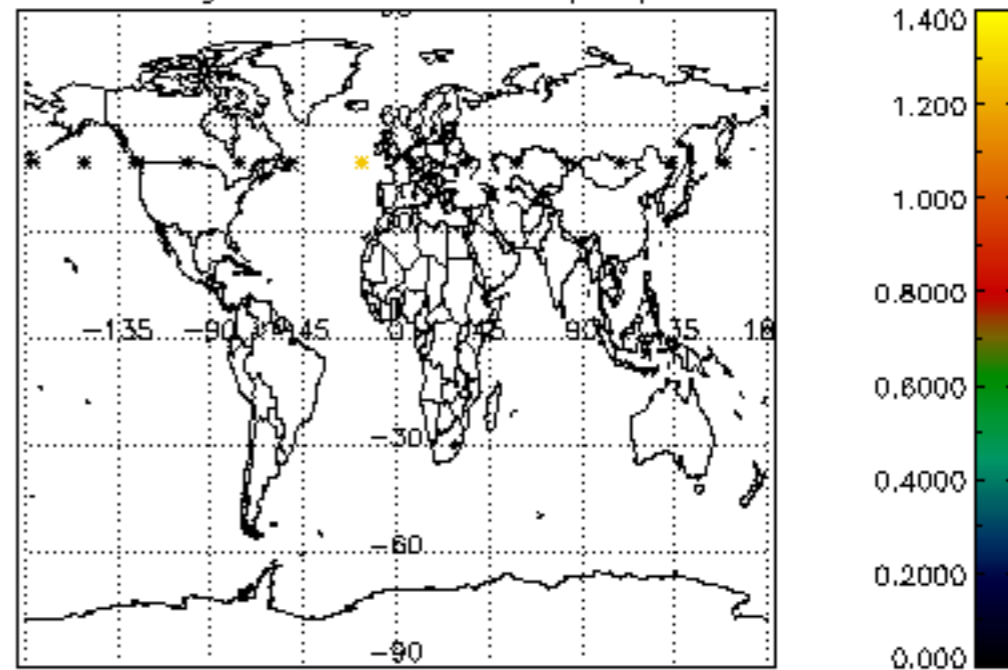




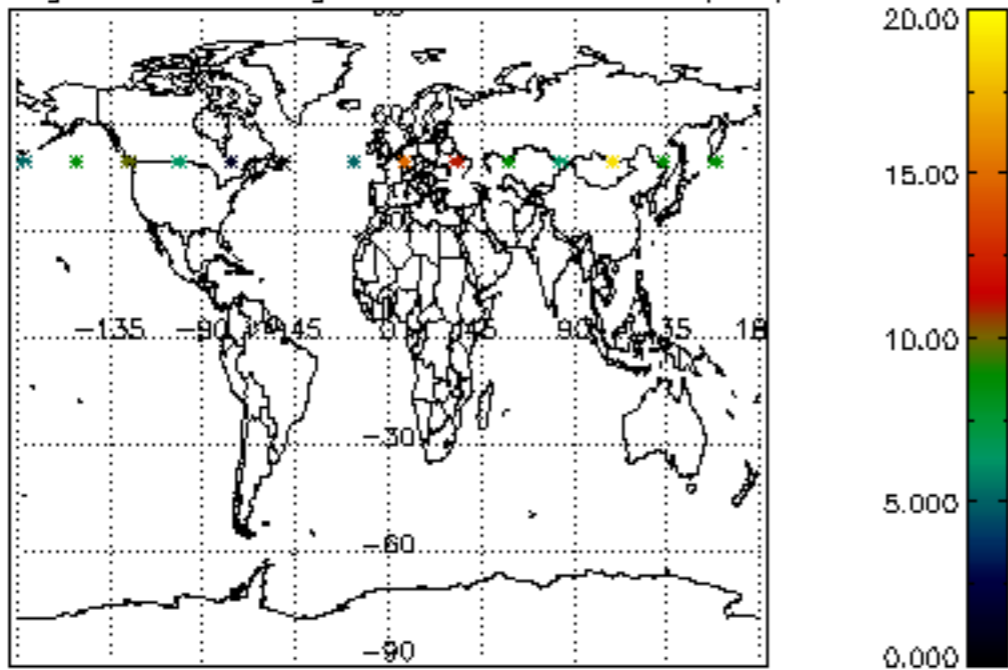
Percentage of cosmic ray hits per profile



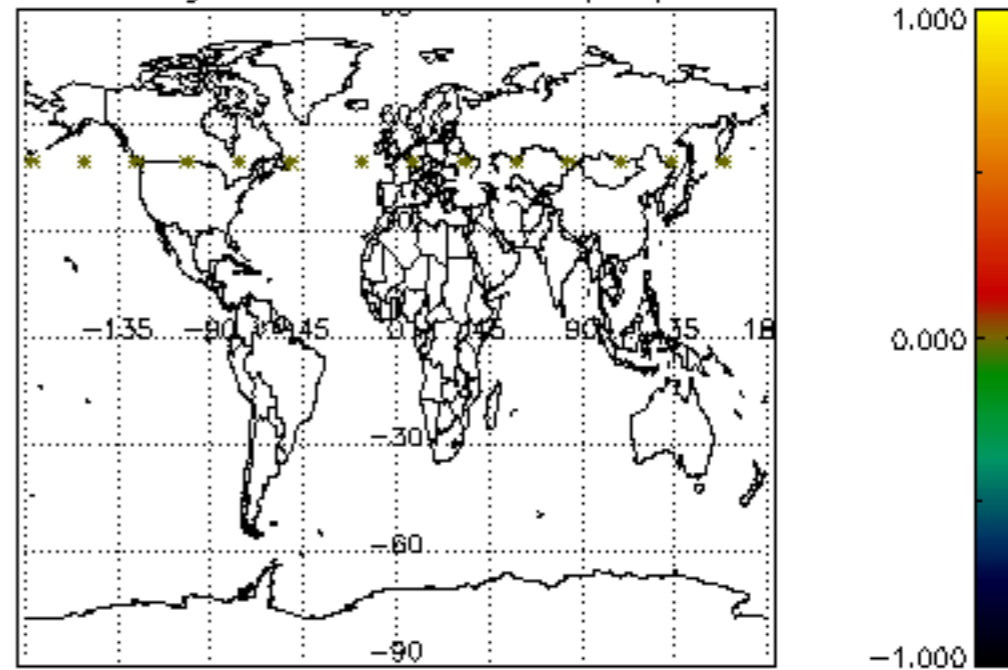
Percentage of datation errors per profile



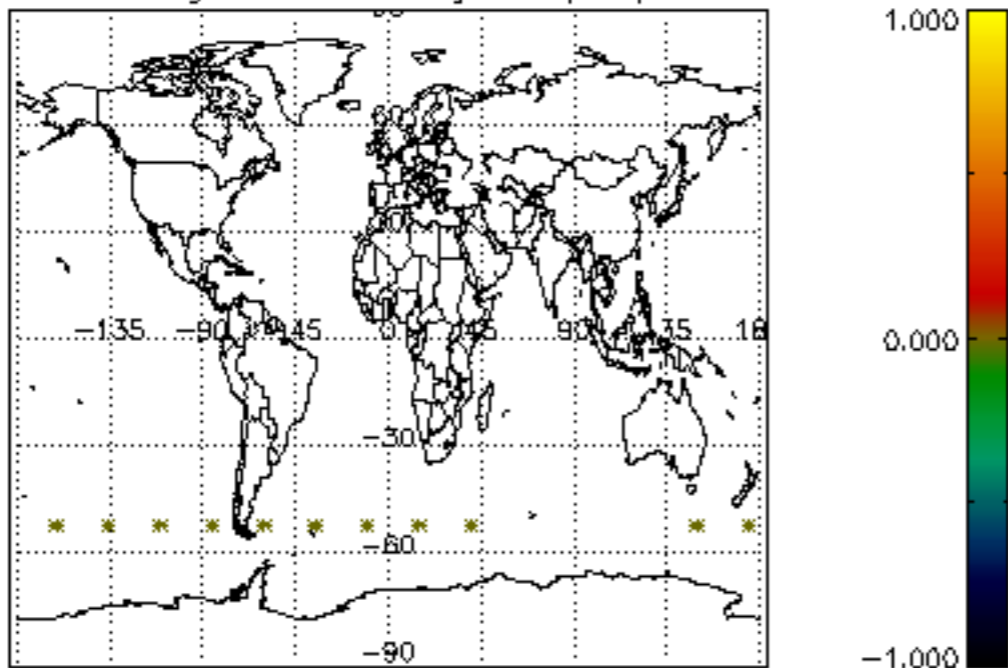
Percentage of star falling outside central band per profile



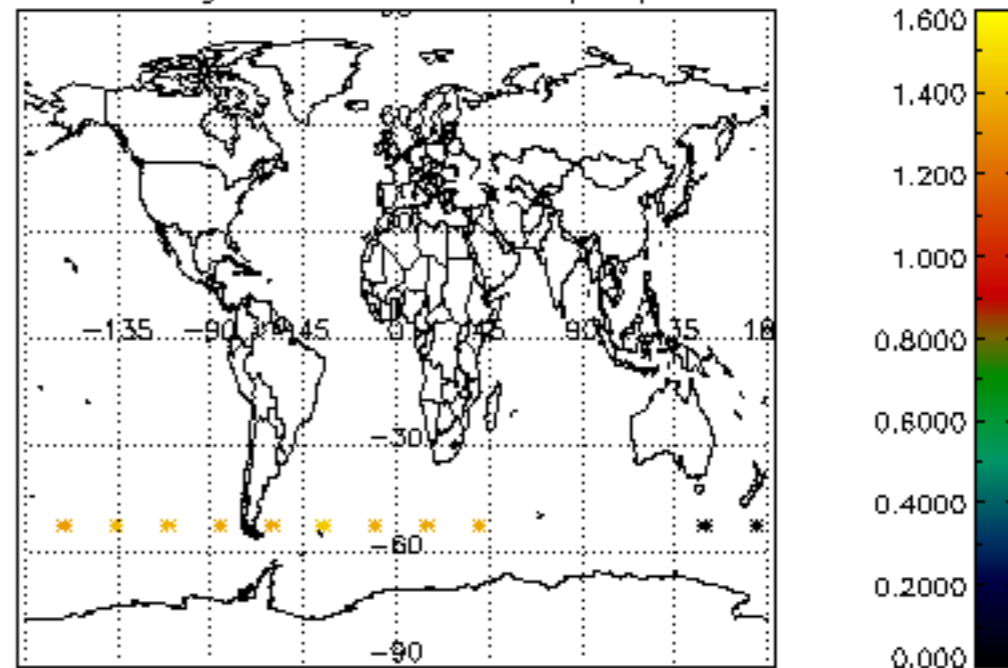
Percentage of saturation errors per profile



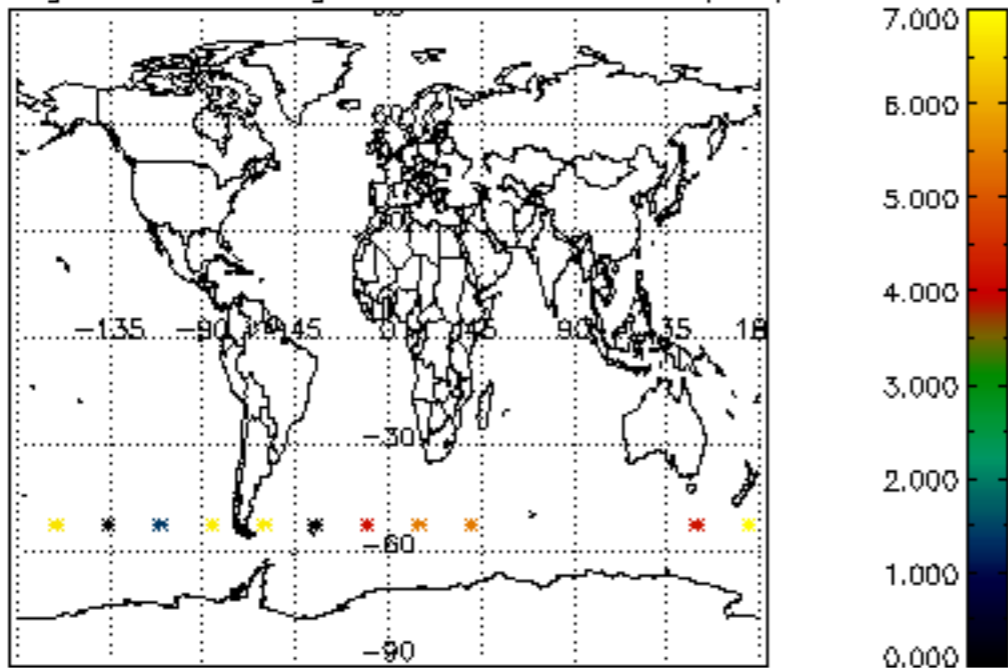
Percentage of cosmic ray hits per profile



Percentage of datation errors per profile



Percentage of star falling outside central band per profile



Percentage of saturation errors per profile

