

GOMOS Level 2 Daily Report

SUMMARY

[1. General Info](#)

[2. Summary of processed GOM_NL_2P products](#)

[3. Level 2 Quality information per product](#)

[3.1 Plot of level 2 quality information per product \(time dependant\)](#)

[3.2 Plot of level 2 quality information per product \(world map\)](#)

[4. Level 1 Quality information per product \(stored on level 2 products\)](#)

[4.1 Plot of level 1 quality information per product \(time dependant\)](#)

[4.1.1 Plot of level 1 quality information per product \(time dependant\): ASCENDING](#)

[4.1.2 Plot of level 1 quality information per product \(time dependant\): DESCENDING](#)

[4.2 Plot of level 1 quality information per product \(world map\)](#)

[4.2.1 Plot of level 1 quality information per product \(world map\): ASCENDING](#)

[4.2.2 Plot of level 1 quality information per product \(world map\): DESCENDING](#)

[5. Ozone profiles based on quality statistics and other trace gas profiles](#)

[5.1 Ozone statistics based on quality of products](#)

[5.2 Plot ozone profiles for all STD \(dark without errors\)](#)

[5.3 Plot ozone profiles where STD < 20% \(dark without errors\)](#)

[5.4. Plot ozone profiles where STD < 10% \(dark without errors\)](#)

[5.5. Plot ozone profiles where STD < 5% \(dark without errors\)](#)

[5.6 Plot NO2 profiles for all STD \(dark without errors\)](#)

[5.7 Plot NO3 profiles for all STD \(dark without errors\)](#)

[5.8 Plot H2O profiles \(only for occultations of stars 1,2,3,4,13,14,16,26,63 dark without errors\) for all STD](#)

[6. Auxiliary Data Files used for the production reported in section 2](#)

This report presents the daily analysis on parameters extracted from GOMOS level 2 data (GOM_NL__2P). It is intended to monitor some important parameters that will impact the quality of these products. A list of level 2 products (and content) that have arrived during the reporting day to the PCF is also given.

Item	Value
Time of report generation	18APR2013 14:12:23
Data source version	GOMOS/6.01
Start time of products	18-03-2012 (18MAR2012 00:00:00)
Stop time of products	19-03-2012 (19MAR2012 00:00:00)
Store outputs in DB	Yes
Nb of level 2 prods	10
Nb of prods with errors	0

2. Summary of processed GOM_NL__2P products.

!Warning: No products without errors in DARK limb contitions found !Warning: No products without errors in BRIGHT limb contitions found

Nr	Filename	UTC Start time	Limb	Duration	Star Id	Star Name	Star Mag	Star Temp	Nb Meas	Orbit	Prod. error
1	GOM_NL__2PRFIN20120318_083148_000000413112_00395_52564_6410.N1	18-MAR-2012 08:31:48	Straylight	40.500	64	Gam Cen	2.2000	10600.	81	52564	No
2	GOM_NL__2PRFIN20120318_101202_000000423112_00396_52565_6445.N1	18-MAR-2012 10:12:02	Straylight	41.500	64	Gam Cen	2.2000	10600.	83	52565	No
3	GOM_NL__2PRFIN20120318_115217_000000433112_00397_52566_6487.N1	18-MAR-2012 11:52:17	Straylight	42.500	64	Gam Cen	2.2000	10600.	85	52566	No
4	GOM_NL__2PRFIN20120318_133231_000000393112_00398_52567_6524.N1	18-MAR-2012 13:32:31	Straylight	39.000	64	Gam Cen	2.2000	10600.	78	52567	No
5	GOM_NL__2PRFIN20120318_151245_000000403112_00399_52568_6618.N1	18-MAR-2012 15:12:45	Straylight	40.000	64	Gam Cen	2.2000	10600.	80	52568	No
6	GOM_NL__2PRFIN20120318_165300_000000413112_00400_52569_6641.N1	18-MAR-2012 16:53:00	Straylight	41.000	64	Gam Cen	2.2000	10600.	82	52569	No
7	GOM_NL__2PRFIN20120318_183314_000000413112_00401_52570_6656.N1	18-MAR-2012 18:33:14	Straylight	40.500	64	Gam Cen	2.2000	10600.	81	52570	No
8	GOM_NL__2PRFIN20120318_201329_000000453112_00402_52571_6685.N1	18-MAR-2012 20:13:29	Straylight	45.000	64	Gam Cen	2.2000	10600.	90	52571	No
9	GOM_NL__2PRFIN20120318_215343_000000453112_00403_52572_6711.N1	18-MAR-2012 21:53:43	Straylight	45.000	64	Gam Cen	2.2000	10600.	90	52572	No
10	GOM_NL__2PRFIN20120318_233357_000000443112_00404_52573_6733.N1	18-MAR-2012 23:33:57	Straylight	43.500	64	Gam Cen	2.2000	10600.	87	52573	No

3. Quality information per product

In this section it is plotted some information contained in the Quality Summary data set of the level 2 products. Only products in dark limb conditions and without errors (error flag in the MPH set to "0") are used.

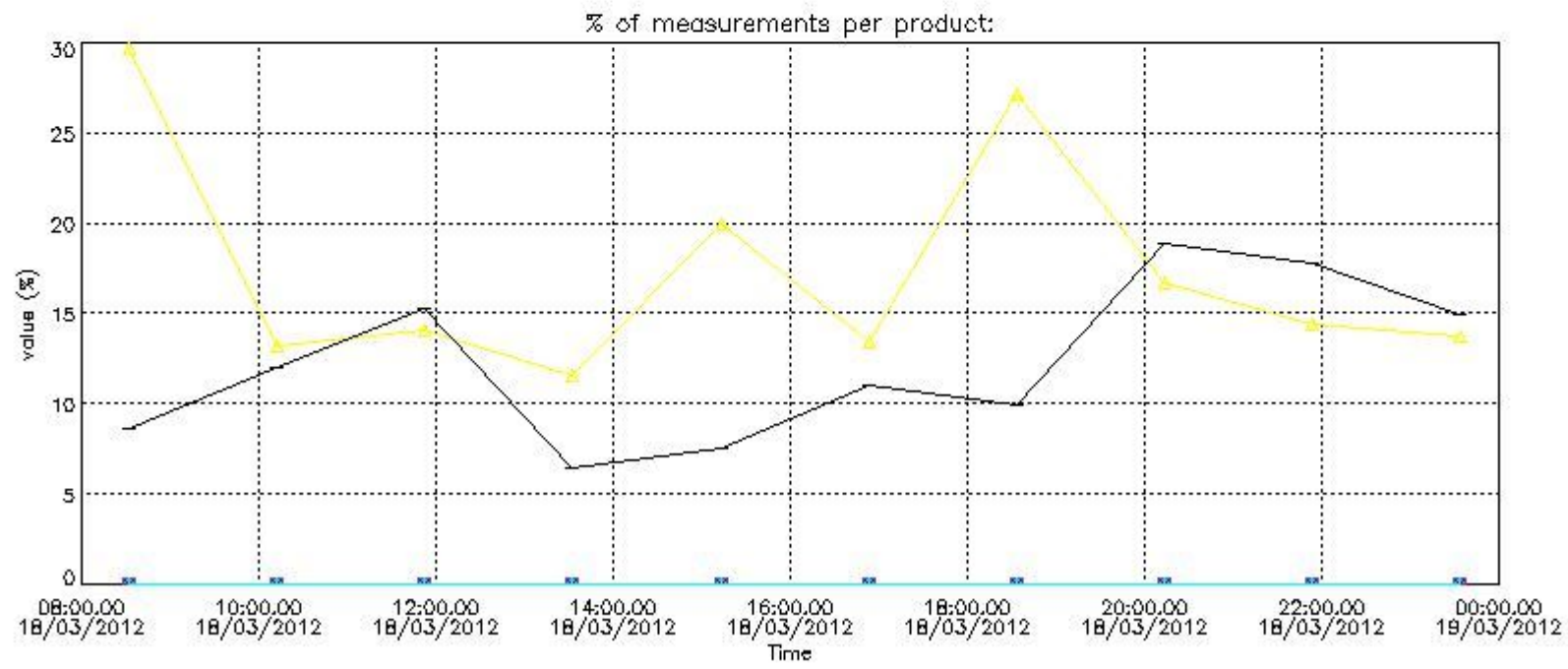
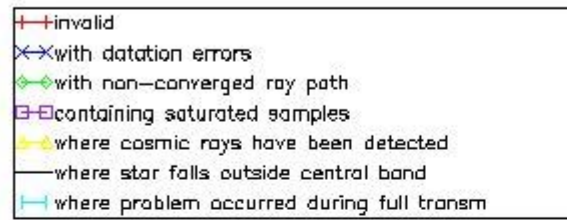
3.1 Plot quality information per product (time dependant)

4. Level 1 quality information per product

In this section it is plotted some information contained in the Quality Summary data set of the level 2 products that comes from the level 1b processing. Products without errors (error flag in the MPH set to "0") are used.

4.1 Plot quality information per product (time dependant) coming from level 1b processing

4.1.1 Plot level 1 quality information per product (time dependant): ENVISAT ASCENDING passes

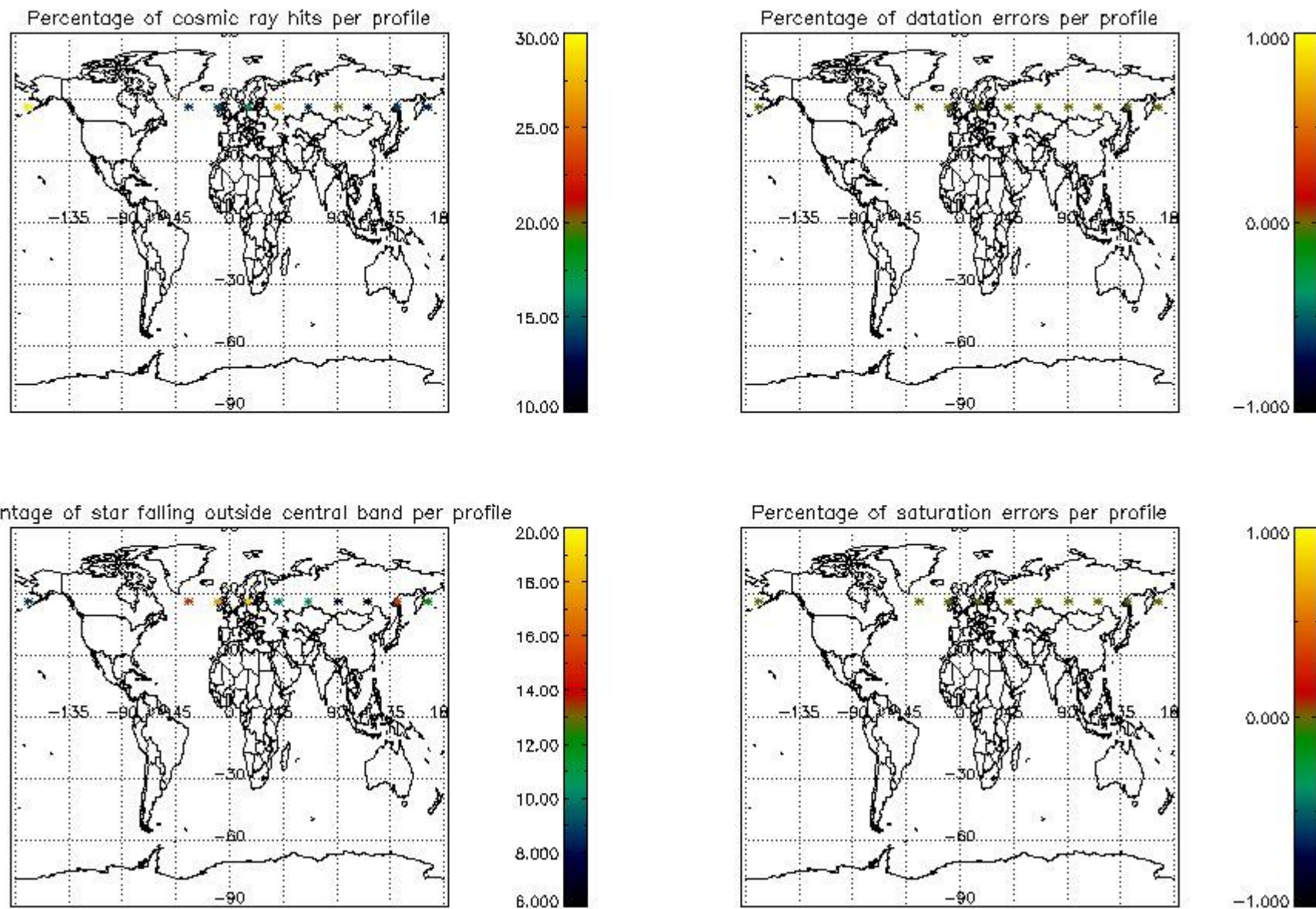


4.1.2 Plot level 1 quality information per product (time dependant): ENVISAT DESCENDING passes

!Warning: No products without errors in descending found

4.2 Plot quality information per product coming from level 1b processing (world map)

4.2.1 Plot level 1 quality information per product (world map): ENVISAT ASCENDING passes



4.2.2 Plot level 1 quality information per product (world map): ENVISAT DESCENDING passes

!Warning: No products without errors in descending found

6. Auxiliary Data Files used for the production reported in section 2

The number reported in the third column indicates since which file (see list in section 2) the corresponding auxiliary file has been used. The fourth column is the date of those product files.

Type	Auxiliary Filename	Used since product	Used since product date
INST_PHYS_CHARACTERISTICS	GOM_INS_AXVIEC20111213_163131_20111215_000000_20500101_000000	1	18-MAR-2012 08:31:48
LEVEL-2_PROC_CONFIG	GOM_PR2_AXVIEC20091111_152718_20020301_000000_20500101_000000	1	18-MAR-2012 08:31:48
CROSS_SECTIONS_FILE	GOM_CRS_AXVIEC20091111_154832_20020301_000000_20500101_000000	1	18-MAR-2012 08:31:48

GOMOS Level 2 Daily Report

SUMMARY

[1. General Info](#)

[2. Summary of processed GOM_NL_2P products](#)

[3. Level 2 Quality information per product](#)

[3.1 Plot of level 2 quality information per product \(time dependant\)](#)

[3.2 Plot of level 2 quality information per product \(world map\)](#)

[4. Level 1 Quality information per product \(stored on level 2 products\)](#)

[4.1 Plot of level 1 quality information per product \(time dependant\)](#)

[4.1.1 Plot of level 1 quality information per product \(time dependant\): ASCENDING](#)

[4.1.2 Plot of level 1 quality information per product \(time dependant\): DESCENDING](#)

[4.2 Plot of level 1 quality information per product \(world map\)](#)

[4.2.1 Plot of level 1 quality information per product \(world map\): ASCENDING](#)

[4.2.2 Plot of level 1 quality information per product \(world map\): DESCENDING](#)

[5. Ozone profiles based on quality statistics and other trace gas profiles](#)

[5.1 Ozone statistics based on quality of products](#)

[5.2 Plot ozone profiles for all STD \(dark without errors\)](#)

[5.3 Plot ozone profiles where STD < 20% \(dark without errors\)](#)

[5.4. Plot ozone profiles where STD < 10% \(dark without errors\)](#)

[5.5. Plot ozone profiles where STD < 5% \(dark without errors\)](#)

[5.6 Plot NO2 profiles for all STD \(dark without errors\)](#)

[5.7 Plot NO3 profiles for all STD \(dark without errors\)](#)

[5.8 Plot H2O profiles \(only for occultations of stars 1,2,3,4,13,14,16,26,63 dark without errors\) for all STD](#)

[6. Auxiliary Data Files used for the production reported in section 2](#)

This report presents the daily analysis on parameters extracted from GOMOS level 2 data (GOM_NL__2P). It is intended to monitor some important parameters that will impact the quality of these products. A list of level 2 products (and content) that have arrived during the reporting day to the PCF is also given.

Item	Value
Time of report generation	18APR2013 14:12:23
Data source version	GOMOS/6.01
Start time of products	18-03-2012 (18MAR2012 00:00:00)
Stop time of products	19-03-2012 (19MAR2012 00:00:00)
Store outputs in DB	Yes
Nb of level 2 prods	10
Nb of prods with errors	0

2. Summary of processed GOM_NL__2P products.

!Warning: No products without errors in DARK limb contitions found !Warning: No products without errors in BRIGHT limb contitions found

Nr	Filename	UTC Start time	Limb	Duration	Star Id	Star Name	Star Mag	Star Temp	Nb Meas	Orbit	Prod. error
1	GOM_NL__2PRFIN20120318_083148_000000413112_00395_52564_6410.N1	18-MAR-2012 08:31:48	Straylight	40.500	64	Gam Cen	2.2000	10600.	81	52564	No
2	GOM_NL__2PRFIN20120318_101202_000000423112_00396_52565_6445.N1	18-MAR-2012 10:12:02	Straylight	41.500	64	Gam Cen	2.2000	10600.	83	52565	No
3	GOM_NL__2PRFIN20120318_115217_000000433112_00397_52566_6487.N1	18-MAR-2012 11:52:17	Straylight	42.500	64	Gam Cen	2.2000	10600.	85	52566	No
4	GOM_NL__2PRFIN20120318_133231_000000393112_00398_52567_6524.N1	18-MAR-2012 13:32:31	Straylight	39.000	64	Gam Cen	2.2000	10600.	78	52567	No
5	GOM_NL__2PRFIN20120318_151245_000000403112_00399_52568_6618.N1	18-MAR-2012 15:12:45	Straylight	40.000	64	Gam Cen	2.2000	10600.	80	52568	No
6	GOM_NL__2PRFIN20120318_165300_000000413112_00400_52569_6641.N1	18-MAR-2012 16:53:00	Straylight	41.000	64	Gam Cen	2.2000	10600.	82	52569	No
7	GOM_NL__2PRFIN20120318_183314_000000413112_00401_52570_6656.N1	18-MAR-2012 18:33:14	Straylight	40.500	64	Gam Cen	2.2000	10600.	81	52570	No
8	GOM_NL__2PRFIN20120318_201329_000000453112_00402_52571_6685.N1	18-MAR-2012 20:13:29	Straylight	45.000	64	Gam Cen	2.2000	10600.	90	52571	No
9	GOM_NL__2PRFIN20120318_215343_000000453112_00403_52572_6711.N1	18-MAR-2012 21:53:43	Straylight	45.000	64	Gam Cen	2.2000	10600.	90	52572	No
10	GOM_NL__2PRFIN20120318_233357_000000443112_00404_52573_6733.N1	18-MAR-2012 23:33:57	Straylight	43.500	64	Gam Cen	2.2000	10600.	87	52573	No

3. Quality information per product

In this section it is plotted some information contained in the Quality Summary data set of the level 2 products. Only products in dark limb conditions and without errors (error flag in the MPH set to "0") are used.

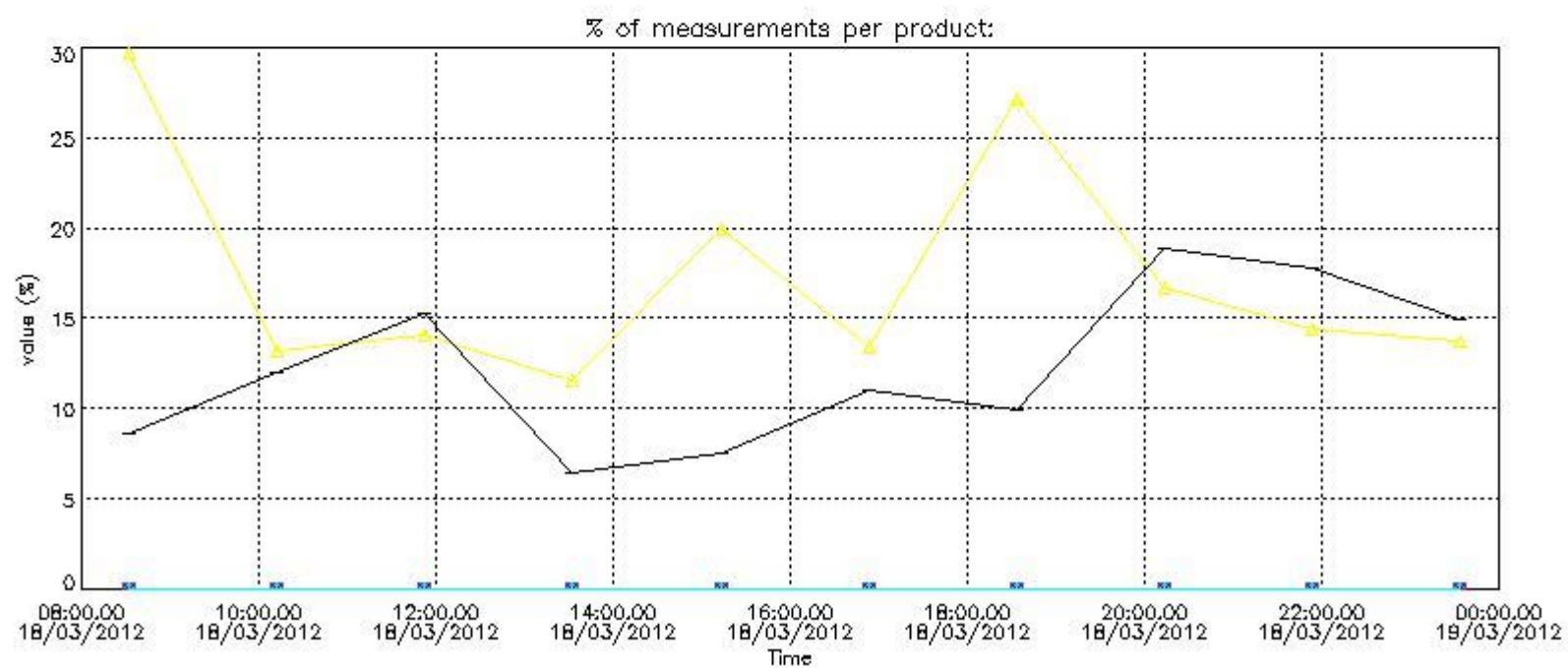
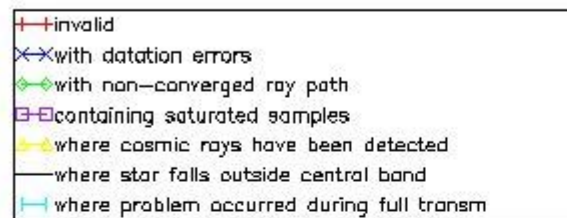
3.1 Plot quality information per product (time dependant)

4. Level 1 quality information per product

In this section it is plotted some information contained in the Quality Summary data set of the level 2 products that comes from the level 1b processing. Products without errors (error flag in the MPH set to "0") are used.

4.1 Plot quality information per product (time dependant) coming from level 1b processing

4.1.1 Plot level 1 quality information per product (time dependant): ENVISAT ASCENDING passes

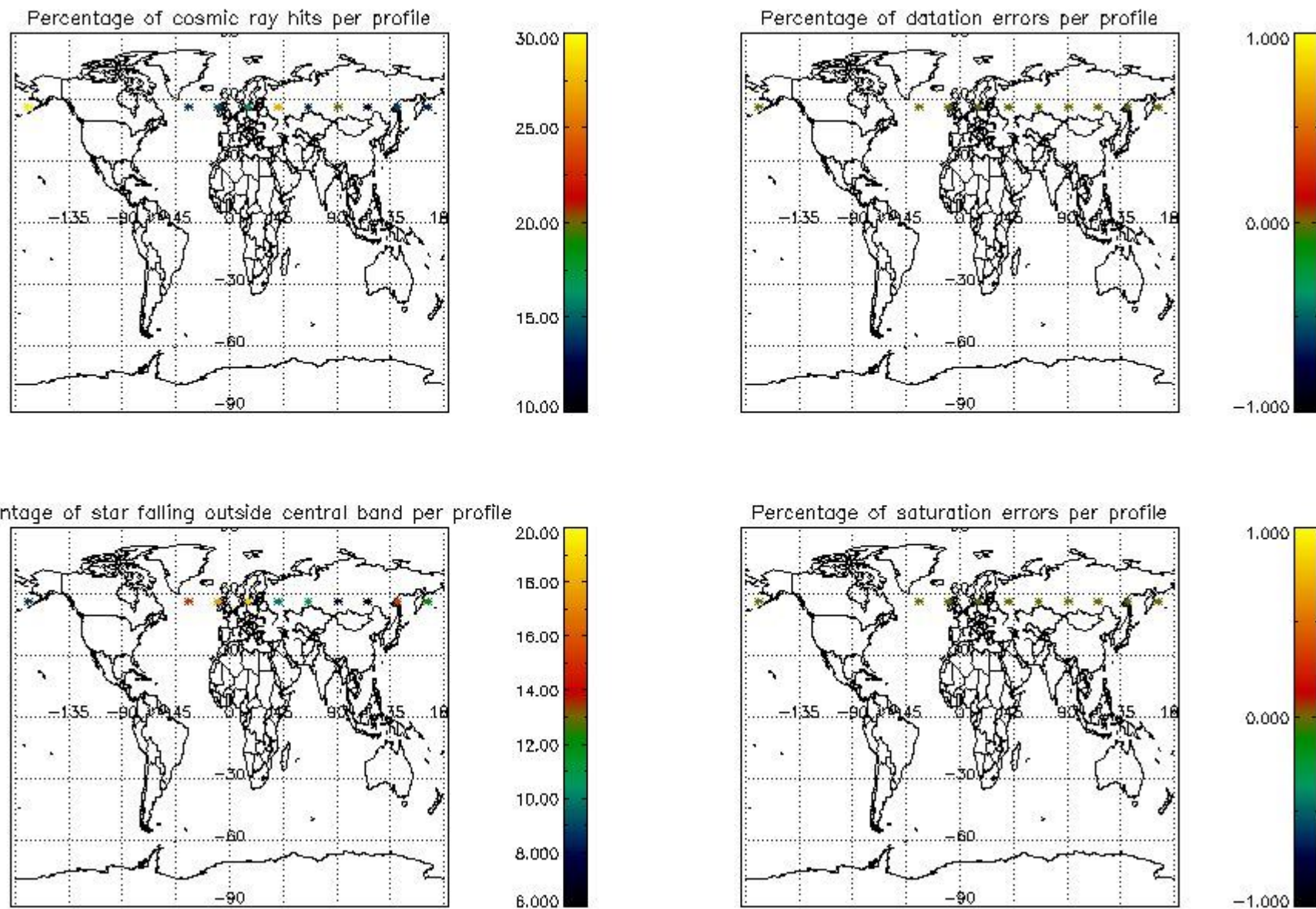


4.1.2 Plot level 1 quality information per product (time dependant): ENVI SAT DESCENDING passes

!Warning: No products without errors in descending found

4.2 Plot quality information per product coming from level 1b processing (world map)

4.2.1 Plot level 1 quality information per product (world map): ENVI SAT ASCENDING passes



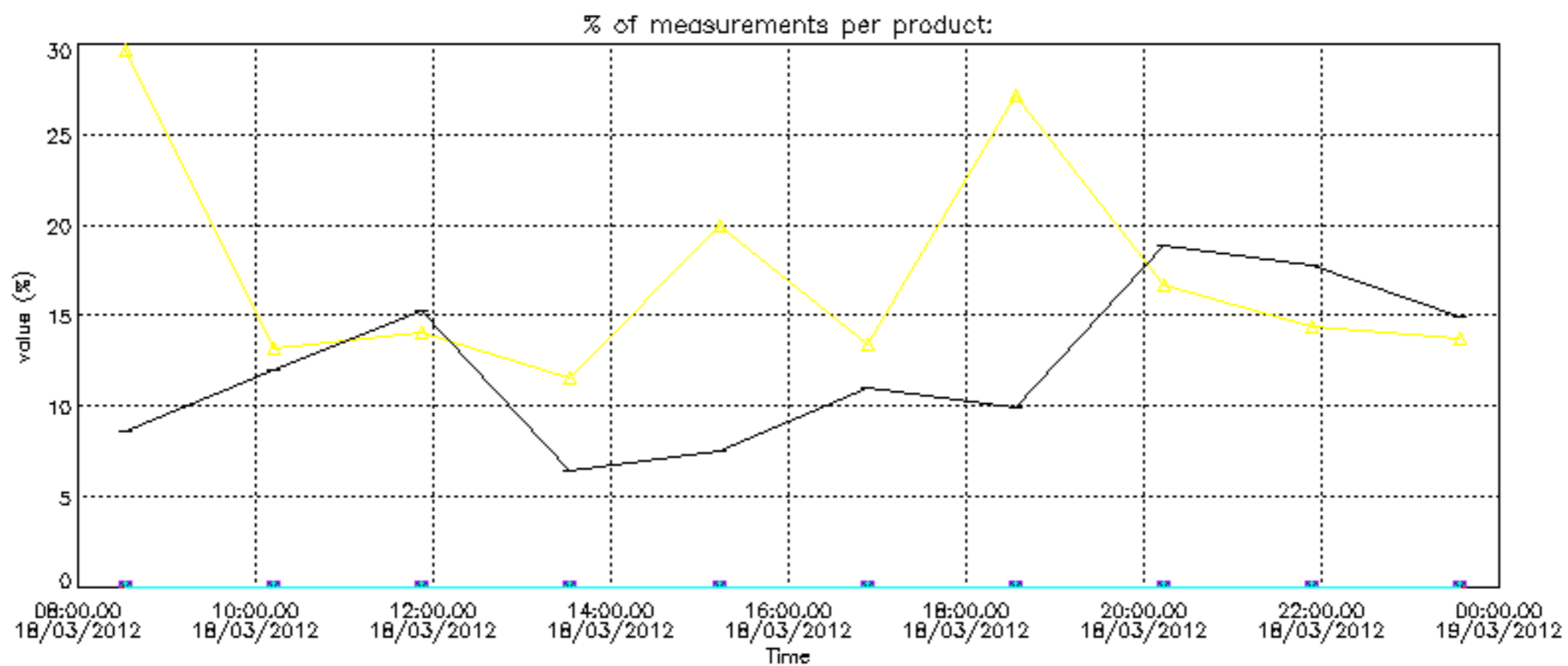
4.2.2 Plot level 1 quality information per product (world map): ENVISAT DESCENDING passes

!Warning: No products without errors in descending found

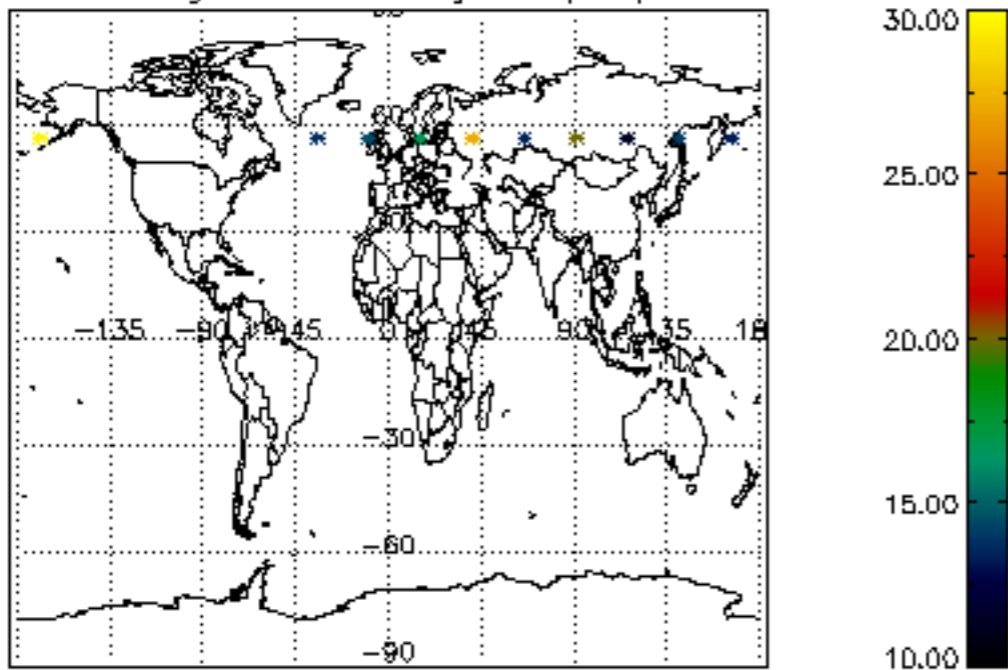
6. Auxiliary Data Files used for the production reported in section 2

The number reported in the third column indicates since which file (see list in section 2) the corresponding auxiliary file has been used. The fourth column is the date of those product files.

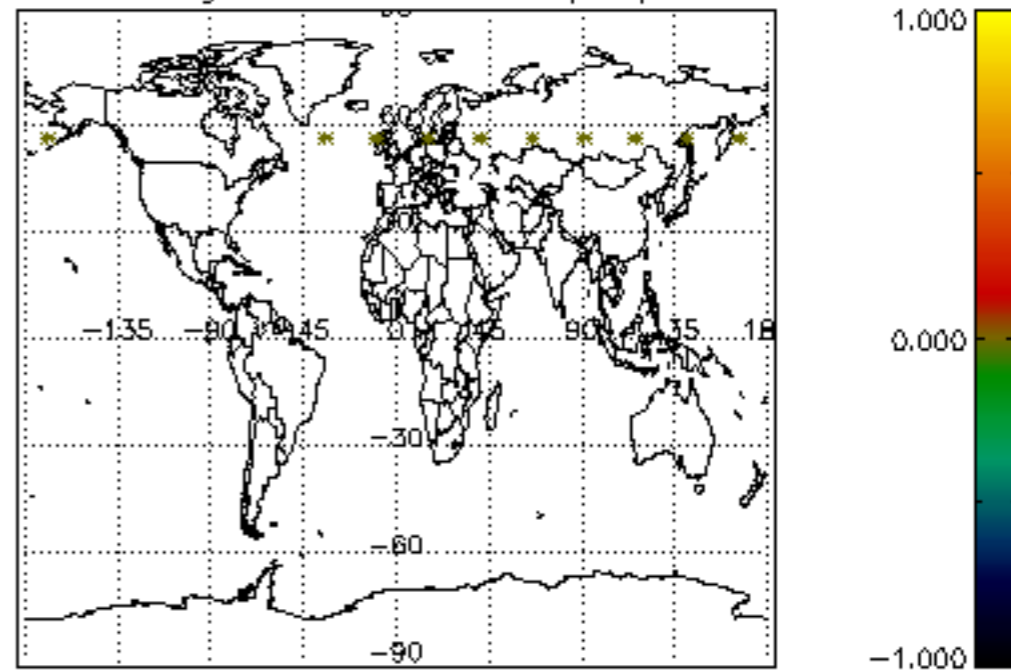
Type	Auxiliary Filename	Used since product	Used since product date
INST_PHYS_CHARACTERISTICS	GOM_INS_AXVIEC20111213_163131_20111215_000000_20500101_000000	1	18-MAR-2012 08:31:48
LEVEL-2_PROC_CONFIG	GOM_PR2_AXVIEC20091111_152718_20020301_000000_20500101_000000	1	18-MAR-2012 08:31:48
CROSS_SECTIONS_FILE	GOM_CRS_AXVIEC20091111_154832_20020301_000000_20500101_000000	1	18-MAR-2012 08:31:48



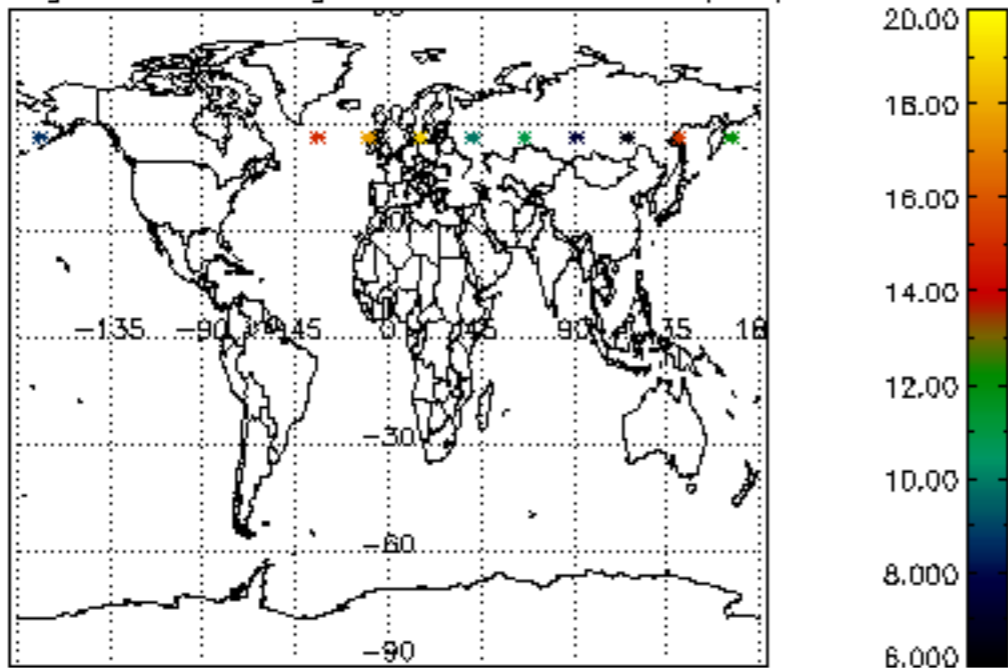
Percentage of cosmic ray hits per profile



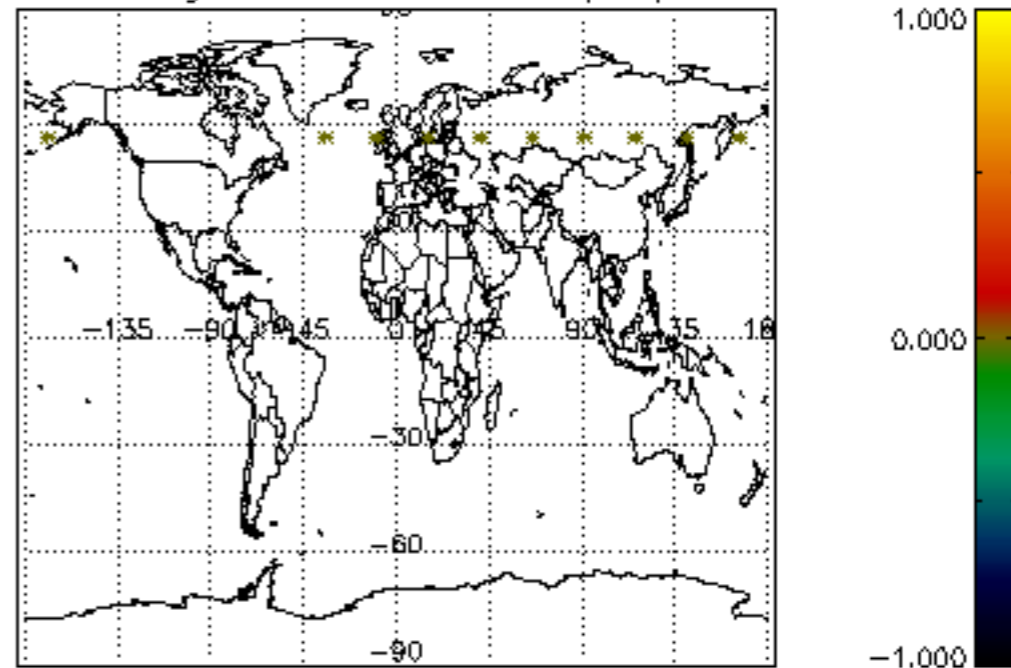
Percentage of datation errors per profile

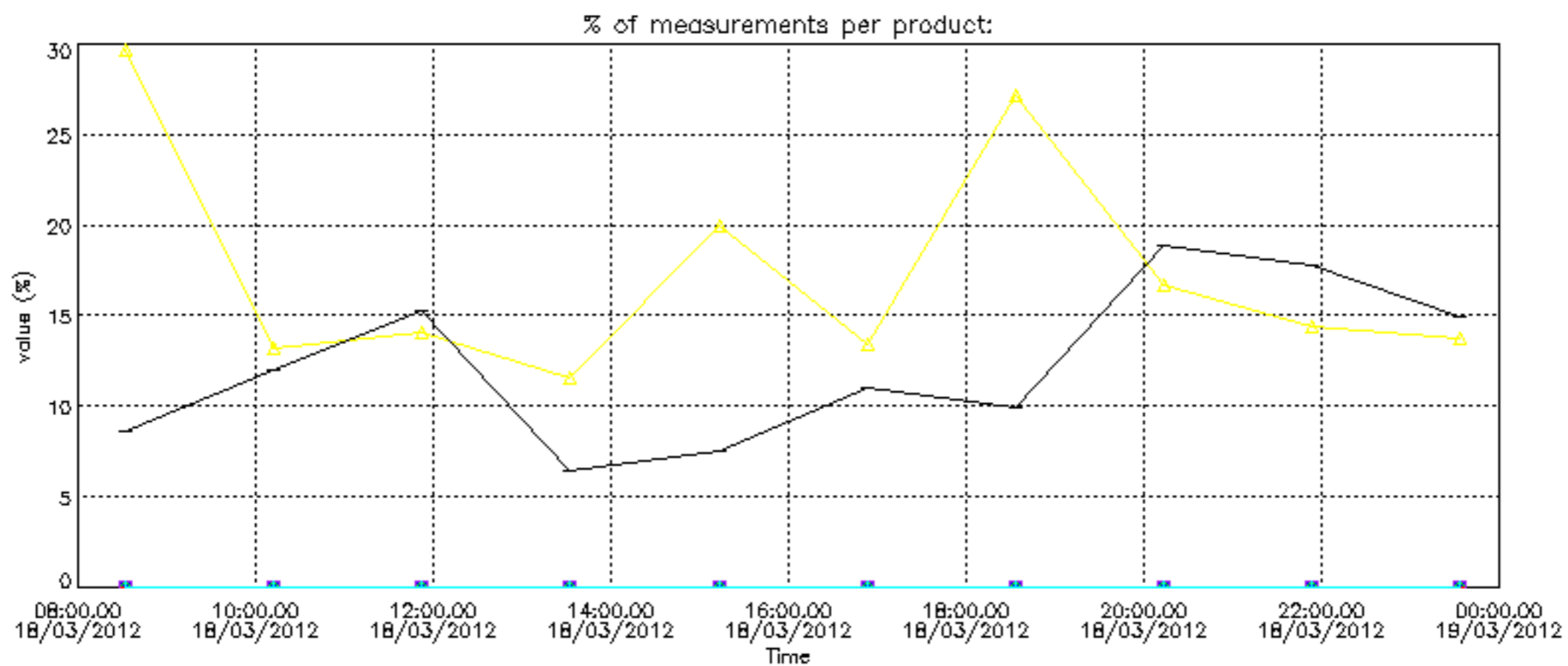


Percentage of star falling outside central band per profile

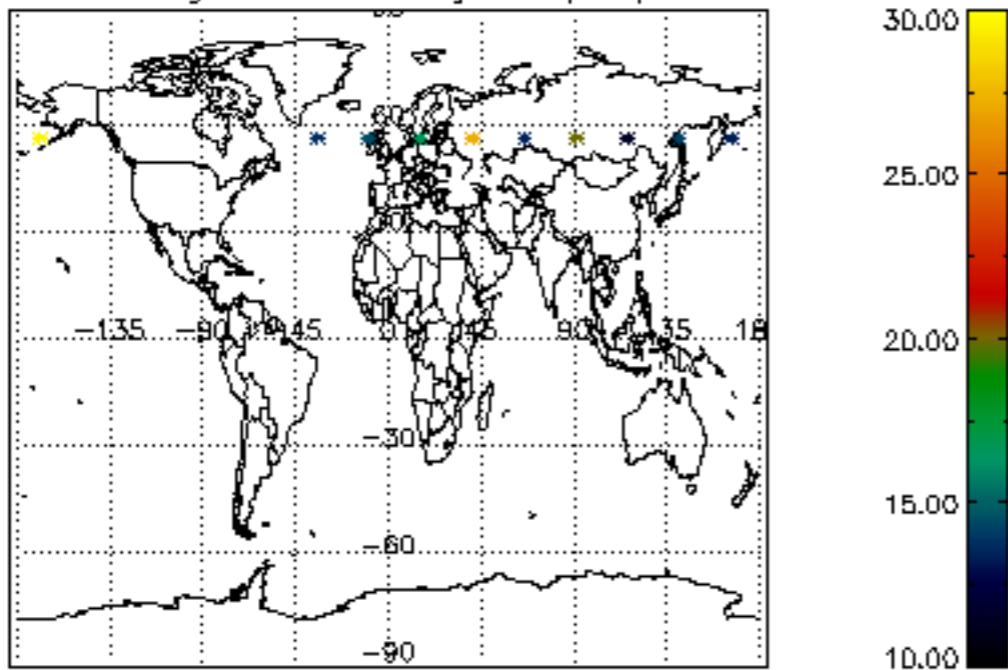


Percentage of saturation errors per profile

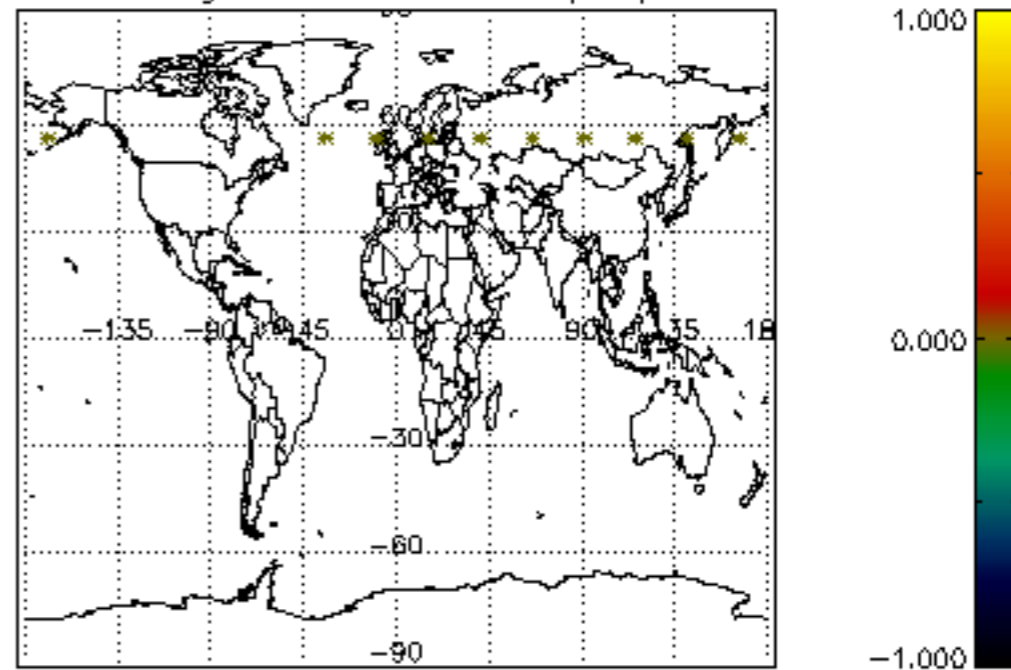




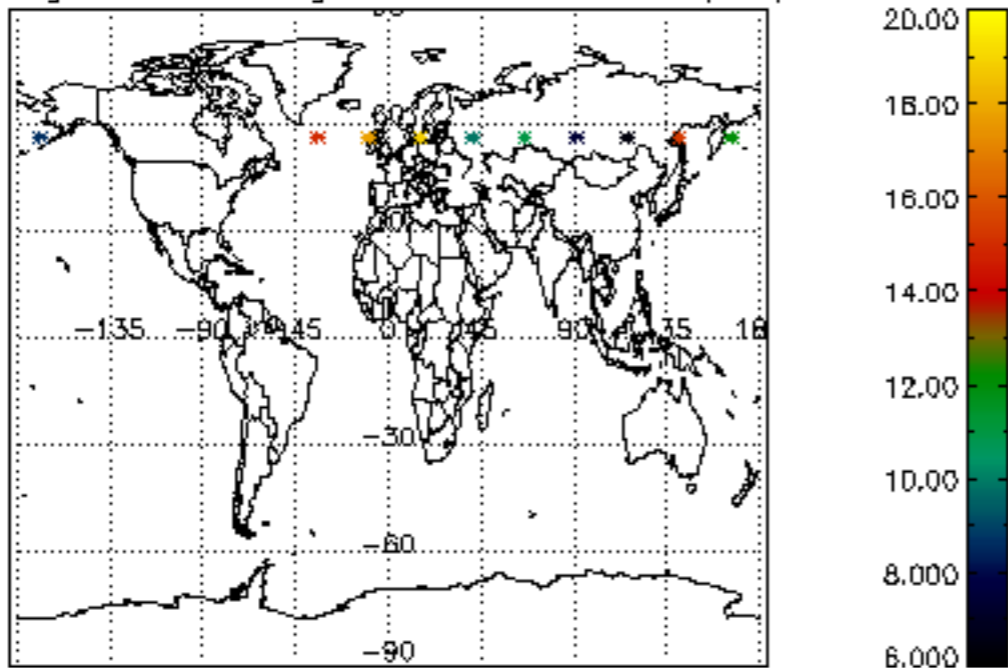
Percentage of cosmic ray hits per profile



Percentage of datation errors per profile



Percentage of star falling outside central band per profile



Percentage of saturation errors per profile

