

GOMOS Level 2 Daily Report

SUMMARY

[1. General Info](#)

[2. Summary of processed GOM_NL_2P products](#)

[3. Level 2 Quality information per product](#)

[3.1 Plot of level 2 quality information per product \(time dependant\)](#)

[3.2 Plot of level 2 quality information per product \(world map\)](#)

[4. Level 1 Quality information per product \(stored on level 2 products\)](#)

[4.1 Plot of level 1 quality information per product \(time dependant\)](#)

[4.1.1 Plot of level 1 quality information per product \(time dependant\): ASCENDING](#)

[4.1.2 Plot of level 1 quality information per product \(time dependant\): DESCENDING](#)

[4.2 Plot of level 1 quality information per product \(world map\)](#)

[4.2.1 Plot of level 1 quality information per product \(world map\): ASCENDING](#)

[4.2.2 Plot of level 1 quality information per product \(world map\): DESCENDING](#)

[5. Ozone profiles based on quality statistics and other trace gas profiles](#)

[5.1 Ozone statistics based on quality of products](#)

[5.2 Plot ozone profiles for all STD \(dark without errors\)](#)

[5.3 Plot ozone profiles where STD < 20% \(dark without errors\)](#)

[5.4. Plot ozone profiles where STD < 10% \(dark without errors\)](#)

[5.5. Plot ozone profiles where STD < 5% \(dark without errors\)](#)

[5.6 Plot NO2 profiles for all STD \(dark without errors\)](#)

[5.7 Plot NO3 profiles for all STD \(dark without errors\)](#)

[5.8 Plot H2O profiles \(only for occultations of stars 1,2,3,4,13,14,16,26,63 dark without errors\) for all STD](#)

[6. Auxiliary Data Files used for the production reported in section 2](#)

This report presents the daily analysis on parameters extracted from GOMOS level 2 data (GOM_NL__2P). It is intended to monitor some important parameters that will impact the quality of these products. A list of level 2 products (and content) that have arrived during the reporting day to the PCF is also given.

Item	Value
Time of report generation	24APR2013 17:58:27
Data source version	GOMOS/6.01
Start time of products	15-10-2011 (15OCT2011 00:00:00)
Stop time of products	16-10-2011 (16OCT2011 00:00:00)
Store outputs in DB	Yes
Nb of level 2 prods	36
Nb of prods with errors	0

2. Summary of processed GOM_NL__2P products.

!Warning: No products without errors in DARK limb contitions found

Nr	Filename	UTC Start time	Limb	Duration	Star Id	Star Name	Star Mag	Star Temp	Nb Meas	Orbit	Prod. error
1	GOM_NL__2PRFIN20111015_001623_000000473107_00318_50332_7112.N1	15-OCT-2011 00:16:23	Bright	47.000	105	6Bet Ari	2.6450	8900.0	94	50332	No
2	GOM_NL__2PRFIN20111015_002124_000000473107_00318_50332_7113.N1	15-OCT-2011 00:21:24	Bright	46.500	173	4Bet Tri	3.0040	8900.0	93	50332	No
3	GOM_NL__2PRFIN20111015_002831_000000473107_00318_50332_7114.N1	15-OCT-2011 00:28:31	Bright	47.000	160	23Gam Per	2.9300	4700.0	94	50332	No
4	GOM_NL__2PRFIN20111015_015637_000000473107_00319_50333_7121.N1	15-OCT-2011 01:56:37	Bright	47.000	105	6Bet Ari	2.6450	8900.0	94	50333	No
5	GOM_NL__2PRFIN20111015_020137_000000473107_00319_50333_7122.N1	15-OCT-2011 02:01:37	Bright	47.000	173	4Bet Tri	3.0040	8900.0	94	50333	No
6	GOM_NL__2PRFIN20111015_020844_000000453107_00319_50333_7123.N1	15-OCT-2011 02:08:44	Bright	44.500	160	23Gam Per	2.9300	4700.0	89	50333	No
7	GOM_NL__2PRFIN20111015_033650_000000473107_00320_50334_7136.N1	15-OCT-2011 03:36:50	Bright	47.000	105	6Bet Ari	2.6450	8900.0	94	50334	No
8	GOM_NL__2PRFIN20111015_034150_000000473107_00320_50334_7137.N1	15-OCT-2011 03:41:50	Bright	47.000	173	4Bet Tri	3.0040	8900.0	94	50334	No
9	GOM_NL__2PRFIN20111015_034858_000000463107_00320_50334_7138.N1	15-OCT-2011 03:48:58	Bright	46.000	160	23Gam Per	2.9300	4700.0	92	50334	No
10	GOM_NL__2PRFIN20111015_051704_000000463107_00321_50335_7157.N1	15-OCT-2011 05:17:04	Bright	45.500	105	6Bet Ari	2.6450	8900.0	91	50335	No
11	GOM_NL__2PRFIN20111015_052204_000000473107_00321_50335_7158.N1	15-OCT-2011 05:22:04	Bright	46.500	173	4Bet Tri	3.0040	8900.0	93	50335	No
12	GOM_NL__2PRFIN20111015_052911_000000473107_00321_50335_7159.N1	15-OCT-2011 05:29:11	Bright	47.000	160	23Gam Per	2.9300	4700.0	94	50335	No
13	GOM_NL__2PRFIN20111015_065717_000000473107_00322_50336_7168.N1	15-OCT-2011 06:57:17	Bright	46.500	105	6Bet Ari	2.6450	8900.0	93	50336	No
14	GOM_NL__2PRFIN20111015_070217_000000463107_00322_50336_7169.N1	15-OCT-2011 07:02:17	Bright	46.000	173	4Bet Tri	3.0040	8900.0	92	50336	No
15	GOM_NL__2PRFIN20111015_070924_000000473107_00322_50336_7170.N1	15-OCT-2011 07:09:24	Bright	47.000	160	23Gam Per	2.9300	4700.0	94	50336	No
16	GOM_NL__2PRFIN20111015_083731_000000463107_00323_50337_7196.N1	15-OCT-2011 08:37:31	Bright	46.000	105	6Bet Ari	2.6450	8900.0	92	50337	No
17	GOM_NL__2PRFIN20111015_084230_000000463107_00323_50337_7197.N1	15-OCT-2011 08:42:30	Bright	46.000	173	4Bet Tri	3.0040	8900.0	92	50337	No
18	GOM_NL__2PRFIN20111015_084937_000000463107_00323_50337_7198.N1	15-OCT-2011 08:49:37	Bright	45.500	160	23Gam Per	2.9300	4700.0	91	50337	No
19	GOM_NL__2PRFIN20111015_115757_000000463107_00325_50339_7287.N1	15-OCT-2011 11:57:57	Bright	46.000	105	6Bet Ari	2.6450	8900.0	92	50339	No
20	GOM_NL__2PRFIN20111015_120257_000000463107_00325_50339_7288.N1	15-OCT-2011 12:02:57	Bright	46.000	173	4Bet Tri	3.0040	8900.0	92	50339	No
21	GOM_NL__2PRFIN20111015_121004_000000473107_00325_50339_7289.N1	15-OCT-2011 12:10:04	Bright	47.000	160	23Gam Per	2.9300	4700.0	94	50339	No
22	GOM_NL__2PRFIN20111015_133811_000000463107_00326_50340_7298.N1	15-OCT-2011 13:38:11	Bright	46.000	105	6Bet Ari	2.6450	8900.0	92	50340	No
23	GOM_NL__2PRFIN20111015_134310_000000483107_00326_50340_7299.N1	15-OCT-2011 13:43:10	Bright	47.500	173	4Bet Tri	3.0040	8900.0	95	50340	No
24	GOM_NL__2PRFIN20111015_135017_000000483107_00326_50340_7300.N1	15-OCT-2011 13:50:17	Bright	47.500	160	23Gam Per	2.9300	4700.0	95	50340	No
25	GOM_NL__2PRFIN20111015_152323_000000463107_00327_50341_7326.N1	15-OCT-2011 15:23:23	Bright	45.500	173	4Bet Tri	3.0040	8900.0	91	50341	No
26	GOM_NL__2PRFIN20111015_153030_000000463107_00327_50341_7327.N1	15-OCT-2011 15:30:30	Bright	46.000	160	23Gam Per	2.9300	4700.0	92	50341	No
27	GOM_NL__2PRFIN20111015_170337_000000463107_00328_50342_7353.N1	15-OCT-2011 17:03:37	Bright	46.000	173	4Bet Tri	3.0040	8900.0	92	50342	No
28	GOM_NL__2PRFIN20111015_171043_000000463107_00328_50342_7354.N1	15-OCT-2011 17:10:43	Bright	45.500	160	23Gam Per	2.9300	4700.0	91	50342	No
29	GOM_NL__2PRFIN20111015_184350_000000463107_00329_50343_7400.N1	15-OCT-2011 18:43:50	Bright	46.000	173	4Bet Tri	3.0040	8900.0	92	50343	No
30	GOM_NL__2PRFIN20111015_185057_000000463107_00329_50343_7401.N1	15-OCT-2011 18:50:57	Bright	46.000	160	23Gam Per	2.9300	4700.0	92	50343	No
31	GOM_NL__2PRFIN20111015_202403_000000463107_00330_50344_7450.N1	15-OCT-2011 20:24:03	Bright	45.500	173	4Bet Tri	3.0040	8900.0	91	50344	No
32	GOM_NL__2PRFIN20111015_203110_000000473107_00330_50344_7451.N1	15-OCT-2011 20:31:10	Bright	47.000	160	23Gam Per	2.9300	4700.0	94	50344	No
33	GOM_NL__2PRFIN20111015_220416_000000463107_00331_50345_7459.N1	15-OCT-2011 22:04:16	Bright	45.500	173	4Bet Tri	3.0040	8900.0	91	50345	No
34	GOM_NL__2PRFIN20111015_221123_000000473107_00331_50345_7460.N1	15-OCT-2011 22:11:23	Bright	47.000	160	23Gam Per	2.9300	4700.0	94	50345	No
35	GOM_NL__2PRFIN20111015_234430_000000453107_00332_50346_7466.N1	15-OCT-2011 23:44:30	Bright	45.000	173	4Bet Tri	3.0040	8900.0	90	50346	No
36	GOM_NL__2PRFIN20111015_235136_000000443107_00332_50346_7467.N1	15-OCT-2011 23:51:36	Bright	43.500	160	23Gam Per	2.9300	4700.0	87	50346	No

3. Quality information per product

In this section it is plotted some information contained in the Quality Summary data set of the level 2 products. Only products in dark limb conditions and without errors (error flag in

the MPH set to "0") are used.

3.1 Plot quality information per product (time dependant)

4. Level 1 quality information per product

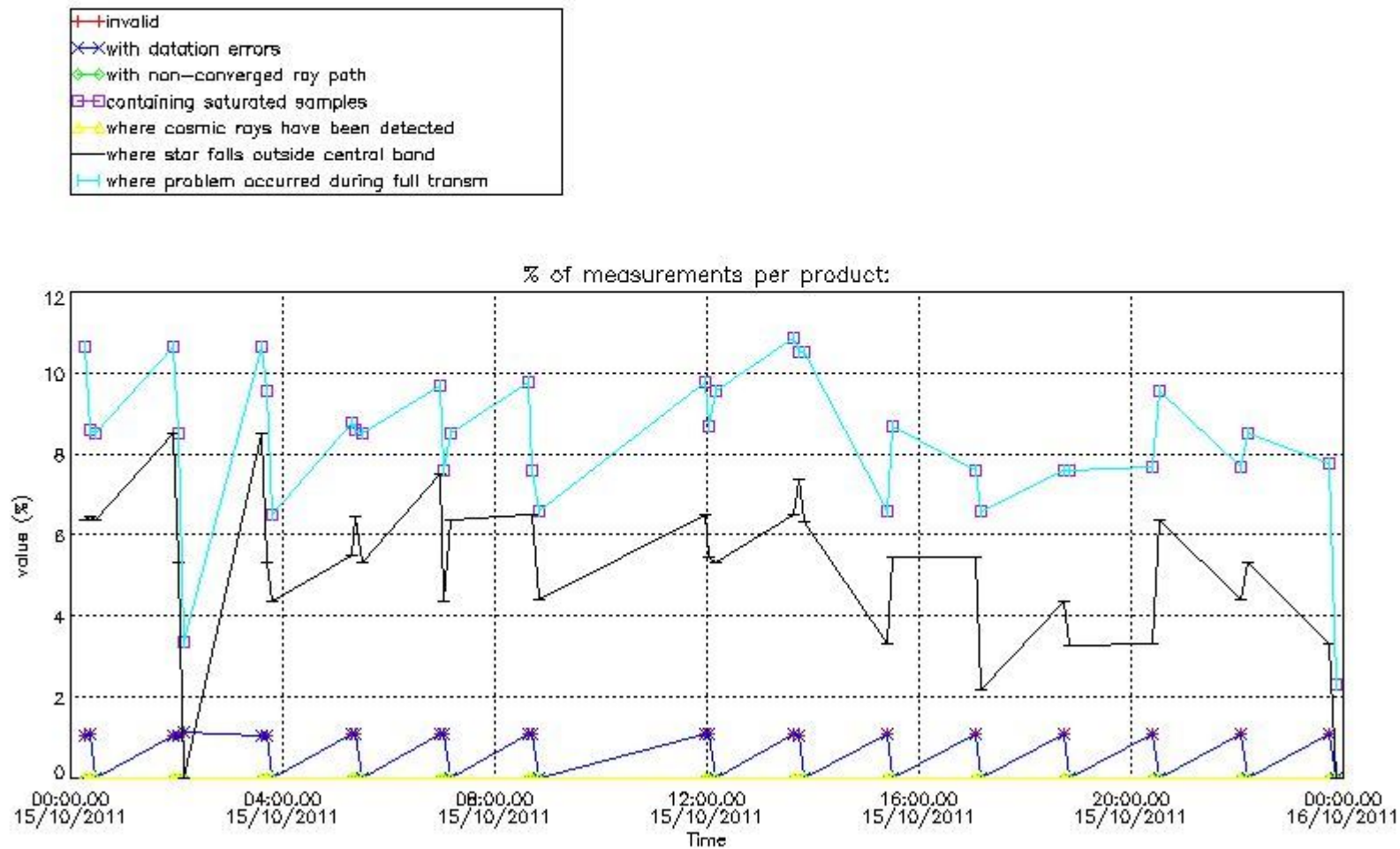
In this section it is plotted some information contained in the Quality Summary data set of the level 2 products that comes from the level 1b processing. Products without errors (error flag in the MPH set to "0") are used.

4.1 Plot quality information per product (time dependant) coming from level 1b processing

4.1.1 Plot level 1 quality information per product (time dependant): ENVISAT ASCENDING passes

!Warning: No products without errors in ascending found

4.1.2 Plot level 1 quality information per product (time dependant): ENVISAT DESCENDING passes



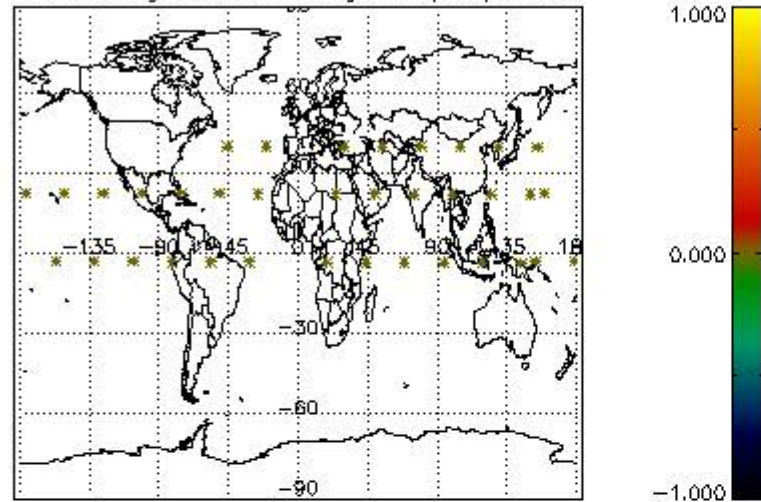
4.2 Plot quality information per product coming from level 1b processing (world map)

4.2.1 Plot level 1 quality information per product (world map): ENVISAT ASCENDING passes

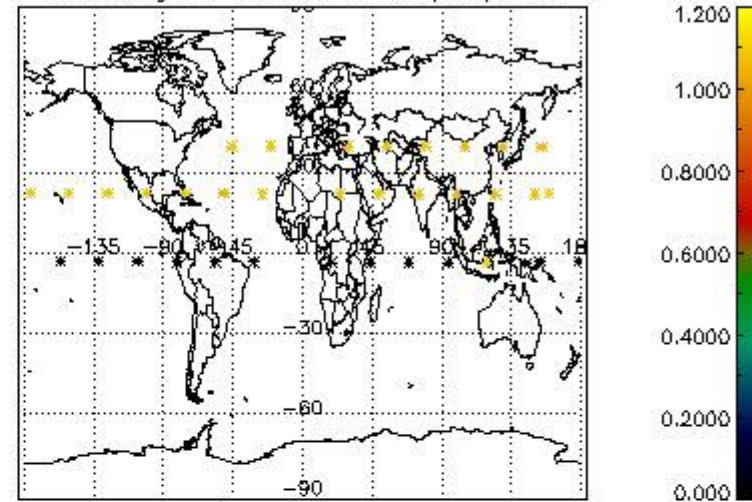
!Warning: No products without errors in ascending found

4.2.2 Plot level 1 quality information per product (world map): ENVISAT DESCENDING passes

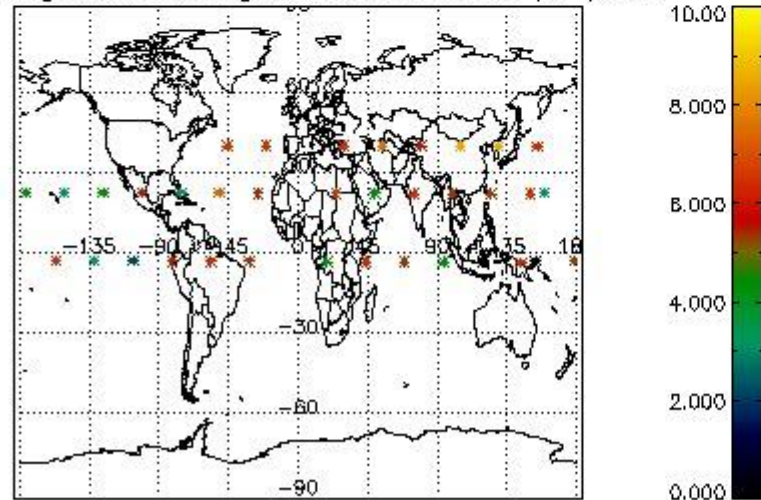
Percentage of cosmic ray hits per profile



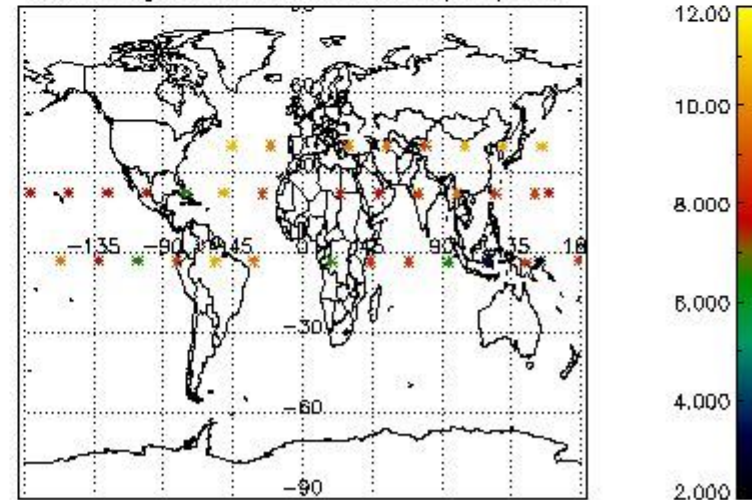
Percentage of datation errors per profile



Percentage of star falling outside central band per profile



Percentage of saturation errors per profile



6. Auxiliary Data Files used for the production reported in section 2

The number reported in the third column indicates since which file (see list in section 2) the corresponding auxiliary file has been used. The fourth column is the date of those product files.

Type	Auxiliary Filename	Used since product	Used since product date
INST_PHYS_CHARACTERISTICS	GOM_INS_AXVIEC20091111_143220_20030716_120000_20500101_000000	1	15-OCT-2011 00:16:23
LEVEL-2_PROC_CONFIG	GOM_PR2_AXVIEC20091111_152718_20020301_000000_20500101_000000	1	15-OCT-2011 00:16:23
CROSS_SECTIONS_FILE	GOM_CR2_AXVIEC20091111_154832_20020301_000000_20500101_000000	1	15-OCT-2011 00:16:23

GOMOS Level 2 Daily Report

SUMMARY

[1. General Info](#)

[2. Summary of processed GOM_NL_2P products](#)

[3. Level 2 Quality information per product](#)

[3.1 Plot of level 2 quality information per product \(time dependant\)](#)

[3.2 Plot of level 2 quality information per product \(world map\)](#)

[4. Level 1 Quality information per product \(stored on level 2 products\)](#)

[4.1 Plot of level 1 quality information per product \(time dependant\)](#)

[4.1.1 Plot of level 1 quality information per product \(time dependant\): ASCENDING](#)

[4.1.2 Plot of level 1 quality information per product \(time dependant\): DESCENDING](#)

[4.2 Plot of level 1 quality information per product \(world map\)](#)

[4.2.1 Plot of level 1 quality information per product \(world map\): ASCENDING](#)

[4.2.2 Plot of level 1 quality information per product \(world map\): DESCENDING](#)

[5. Ozone profiles based on quality statistics and other trace gas profiles](#)

[5.1 Ozone statistics based on quality of products](#)

[5.2 Plot ozone profiles for all STD \(dark without errors\)](#)

[5.3 Plot ozone profiles where STD < 20% \(dark without errors\)](#)

[5.4. Plot ozone profiles where STD < 10% \(dark without errors\)](#)

[5.5. Plot ozone profiles where STD < 5% \(dark without errors\)](#)

[5.6 Plot NO2 profiles for all STD \(dark without errors\)](#)

[5.7 Plot NO3 profiles for all STD \(dark without errors\)](#)

[5.8 Plot H2O profiles \(only for occultations of stars 1,2,3,4,13,14,16,26,63 dark without errors\) for all STD](#)

[6. Auxiliary Data Files used for the production reported in section 2](#)

This report presents the daily analysis on parameters extracted from GOMOS level 2 data (GOM_NL__2P). It is intended to monitor some important parameters that will impact the quality of these products. A list of level 2 products (and content) that have arrived during the reporting day to the PCF is also given.

Item	Value
Time of report generation	24APR2013 17:58:27
Data source version	GOMOS/6.01
Start time of products	15-10-2011 (15OCT2011 00:00:00)
Stop time of products	16-10-2011 (16OCT2011 00:00:00)
Store outputs in DB	Yes
Nb of level 2 prods	36
Nb of prods with errors	0

2. Summary of processed GOM_NL__2P products.

!Warning: No products without errors in DARK limb contitions found

Nr	Filename	UTC Start time	Limb	Duration	Star Id	Star Name	Star Mag	Star Temp	Nb Meas	Orbit	Prod. error
1	GOM_NL__2PRFIN20111015_001623_000000473107_00318_50332_7112.N1	15-OCT-2011 00:16:23	Bright	47.000	105	6Bet Ari	2.6450	8900.0	94	50332	No
2	GOM_NL__2PRFIN20111015_002124_000000473107_00318_50332_7113.N1	15-OCT-2011 00:21:24	Bright	46.500	173	4Bet Tri	3.0040	8900.0	93	50332	No
3	GOM_NL__2PRFIN20111015_002831_000000473107_00318_50332_7114.N1	15-OCT-2011 00:28:31	Bright	47.000	160	23Gam Per	2.9300	4700.0	94	50332	No
4	GOM_NL__2PRFIN20111015_015637_000000473107_00319_50333_7121.N1	15-OCT-2011 01:56:37	Bright	47.000	105	6Bet Ari	2.6450	8900.0	94	50333	No
5	GOM_NL__2PRFIN20111015_020137_000000473107_00319_50333_7122.N1	15-OCT-2011 02:01:37	Bright	47.000	173	4Bet Tri	3.0040	8900.0	94	50333	No
6	GOM_NL__2PRFIN20111015_020844_000000453107_00319_50333_7123.N1	15-OCT-2011 02:08:44	Bright	44.500	160	23Gam Per	2.9300	4700.0	89	50333	No
7	GOM_NL__2PRFIN20111015_033650_000000473107_00320_50334_7136.N1	15-OCT-2011 03:36:50	Bright	47.000	105	6Bet Ari	2.6450	8900.0	94	50334	No
8	GOM_NL__2PRFIN20111015_034150_000000473107_00320_50334_7137.N1	15-OCT-2011 03:41:50	Bright	47.000	173	4Bet Tri	3.0040	8900.0	94	50334	No
9	GOM_NL__2PRFIN20111015_034858_000000463107_00320_50334_7138.N1	15-OCT-2011 03:48:58	Bright	46.000	160	23Gam Per	2.9300	4700.0	92	50334	No
10	GOM_NL__2PRFIN20111015_051704_000000463107_00321_50335_7157.N1	15-OCT-2011 05:17:04	Bright	45.500	105	6Bet Ari	2.6450	8900.0	91	50335	No
11	GOM_NL__2PRFIN20111015_052204_000000473107_00321_50335_7158.N1	15-OCT-2011 05:22:04	Bright	46.500	173	4Bet Tri	3.0040	8900.0	93	50335	No
12	GOM_NL__2PRFIN20111015_052911_000000473107_00321_50335_7159.N1	15-OCT-2011 05:29:11	Bright	47.000	160	23Gam Per	2.9300	4700.0	94	50335	No
13	GOM_NL__2PRFIN20111015_065717_000000473107_00322_50336_7168.N1	15-OCT-2011 06:57:17	Bright	46.500	105	6Bet Ari	2.6450	8900.0	93	50336	No
14	GOM_NL__2PRFIN20111015_070217_000000463107_00322_50336_7169.N1	15-OCT-2011 07:02:17	Bright	46.000	173	4Bet Tri	3.0040	8900.0	92	50336	No
15	GOM_NL__2PRFIN20111015_070924_000000473107_00322_50336_7170.N1	15-OCT-2011 07:09:24	Bright	47.000	160	23Gam Per	2.9300	4700.0	94	50336	No
16	GOM_NL__2PRFIN20111015_083731_000000463107_00323_50337_7196.N1	15-OCT-2011 08:37:31	Bright	46.000	105	6Bet Ari	2.6450	8900.0	92	50337	No
17	GOM_NL__2PRFIN20111015_084230_000000463107_00323_50337_7197.N1	15-OCT-2011 08:42:30	Bright	46.000	173	4Bet Tri	3.0040	8900.0	92	50337	No
18	GOM_NL__2PRFIN20111015_084937_000000463107_00323_50337_7198.N1	15-OCT-2011 08:49:37	Bright	45.500	160	23Gam Per	2.9300	4700.0	91	50337	No
19	GOM_NL__2PRFIN20111015_115757_000000463107_00325_50339_7287.N1	15-OCT-2011 11:57:57	Bright	46.000	105	6Bet Ari	2.6450	8900.0	92	50339	No
20	GOM_NL__2PRFIN20111015_120257_000000463107_00325_50339_7288.N1	15-OCT-2011 12:02:57	Bright	46.000	173	4Bet Tri	3.0040	8900.0	92	50339	No
21	GOM_NL__2PRFIN20111015_121004_000000473107_00325_50339_7289.N1	15-OCT-2011 12:10:04	Bright	47.000	160	23Gam Per	2.9300	4700.0	94	50339	No
22	GOM_NL__2PRFIN20111015_133811_000000463107_00326_50340_7298.N1	15-OCT-2011 13:38:11	Bright	46.000	105	6Bet Ari	2.6450	8900.0	92	50340	No
23	GOM_NL__2PRFIN20111015_134310_000000483107_00326_50340_7299.N1	15-OCT-2011 13:43:10	Bright	47.500	173	4Bet Tri	3.0040	8900.0	95	50340	No
24	GOM_NL__2PRFIN20111015_135017_000000483107_00326_50340_7300.N1	15-OCT-2011 13:50:17	Bright	47.500	160	23Gam Per	2.9300	4700.0	95	50340	No
25	GOM_NL__2PRFIN20111015_152323_000000463107_00327_50341_7326.N1	15-OCT-2011 15:23:23	Bright	45.500	173	4Bet Tri	3.0040	8900.0	91	50341	No
26	GOM_NL__2PRFIN20111015_153030_000000463107_00327_50341_7327.N1	15-OCT-2011 15:30:30	Bright	46.000	160	23Gam Per	2.9300	4700.0	92	50341	No
27	GOM_NL__2PRFIN20111015_170337_000000463107_00328_50342_7353.N1	15-OCT-2011 17:03:37	Bright	46.000	173	4Bet Tri	3.0040	8900.0	92	50342	No
28	GOM_NL__2PRFIN20111015_171043_000000463107_00328_50342_7354.N1	15-OCT-2011 17:10:43	Bright	45.500	160	23Gam Per	2.9300	4700.0	91	50342	No
29	GOM_NL__2PRFIN20111015_184350_000000463107_00329_50343_7400.N1	15-OCT-2011 18:43:50	Bright	46.000	173	4Bet Tri	3.0040	8900.0	92	50343	No
30	GOM_NL__2PRFIN20111015_185057_000000463107_00329_50343_7401.N1	15-OCT-2011 18:50:57	Bright	46.000	160	23Gam Per	2.9300	4700.0	92	50343	No
31	GOM_NL__2PRFIN20111015_202403_000000463107_00330_50344_7450.N1	15-OCT-2011 20:24:03	Bright	45.500	173	4Bet Tri	3.0040	8900.0	91	50344	No
32	GOM_NL__2PRFIN20111015_203110_000000473107_00330_50344_7451.N1	15-OCT-2011 20:31:10	Bright	47.000	160	23Gam Per	2.9300	4700.0	94	50344	No
33	GOM_NL__2PRFIN20111015_220416_000000463107_00331_50345_7459.N1	15-OCT-2011 22:04:16	Bright	45.500	173	4Bet Tri	3.0040	8900.0	91	50345	No
34	GOM_NL__2PRFIN20111015_221123_000000473107_00331_50345_7460.N1	15-OCT-2011 22:11:23	Bright	47.000	160	23Gam Per	2.9300	4700.0	94	50345	No
35	GOM_NL__2PRFIN20111015_234430_000000453107_00332_50346_7466.N1	15-OCT-2011 23:44:30	Bright	45.000	173	4Bet Tri	3.0040	8900.0	90	50346	No
36	GOM_NL__2PRFIN20111015_235136_000000443107_00332_50346_7467.N1	15-OCT-2011 23:51:36	Bright	43.500	160	23Gam Per	2.9300	4700.0	87	50346	No

3. Quality information per product

In this section it is plotted some information contained in the Quality Summary data set of the level 2 products. Only products in dark limb conditions and without errors (error flag in

the MPH set to "0") are used.

3.1 Plot quality information per product (time dependant)

4. Level 1 quality information per product

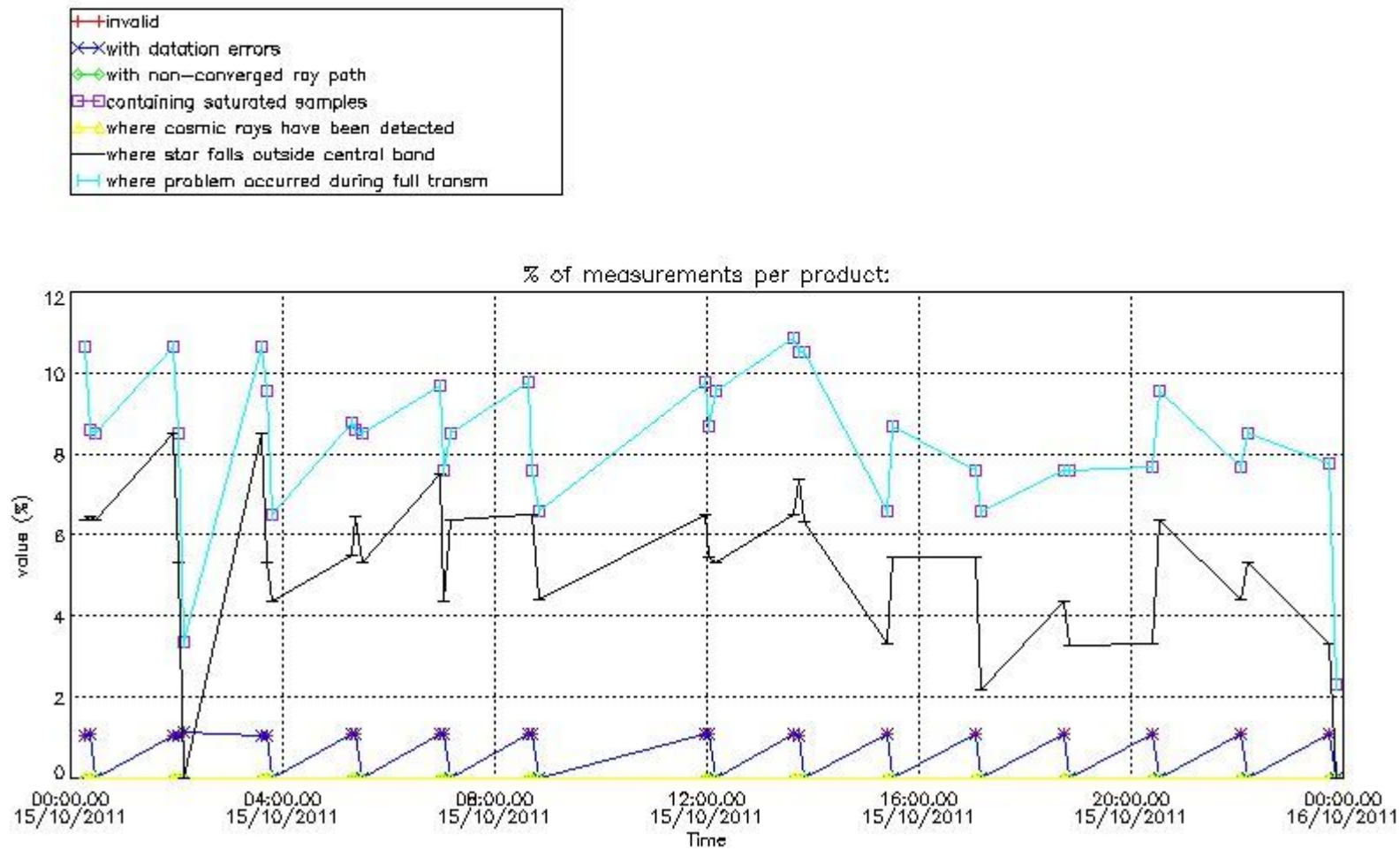
In this section it is plotted some information contained in the Quality Summary data set of the level 2 products that comes from the level 1b processing. Products without errors (error flag in the MPH set to "0") are used.

4.1 Plot quality information per product (time dependant) coming from level 1b processing

4.1.1 Plot level 1 quality information per product (time dependant): ENVISAT ASCENDING passes

!Warning: No products without errors in ascending found

4.1.2 Plot level 1 quality information per product (time dependant): ENVISAT DESCENDING passes



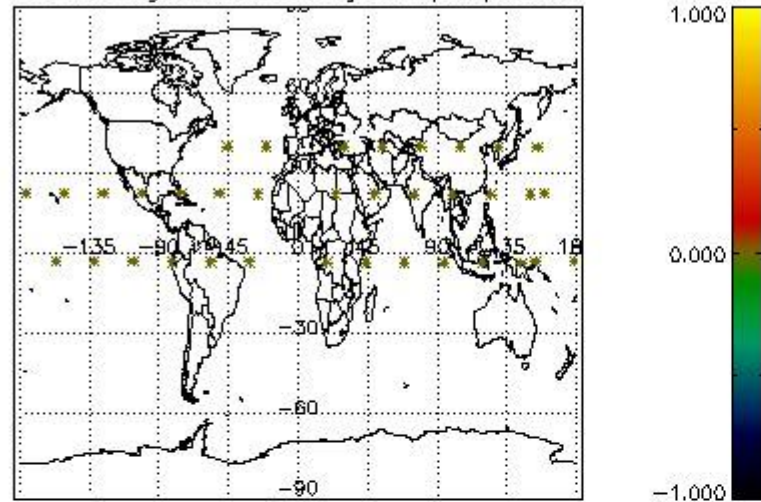
4.2 Plot quality information per product coming from level 1b processing (world map)

4.2.1 Plot level 1 quality information per product (world map): ENVISAT ASCENDING passes

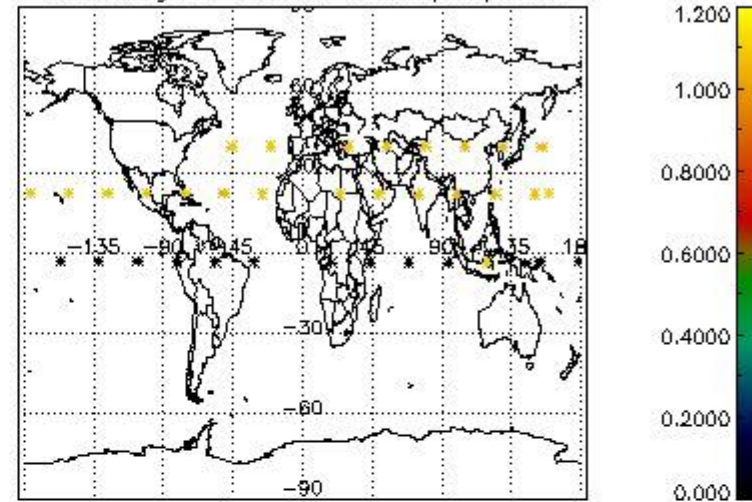
!Warning: No products without errors in ascending found

4.2.2 Plot level 1 quality information per product (world map): ENVISAT DESCENDING passes

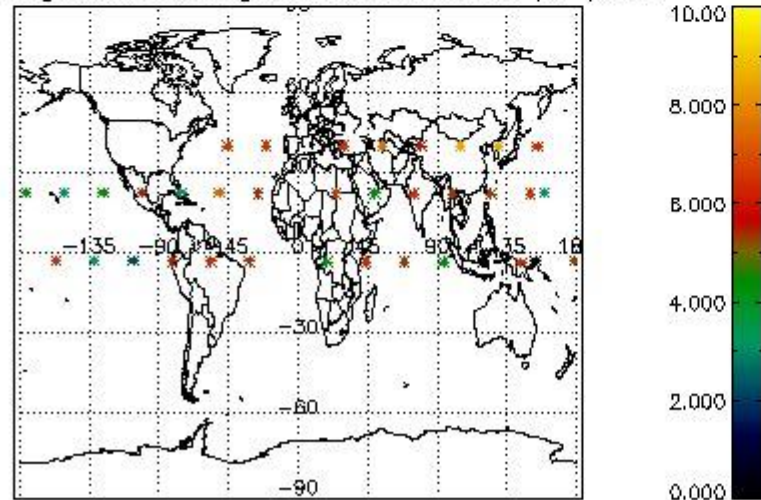
Percentage of cosmic ray hits per profile



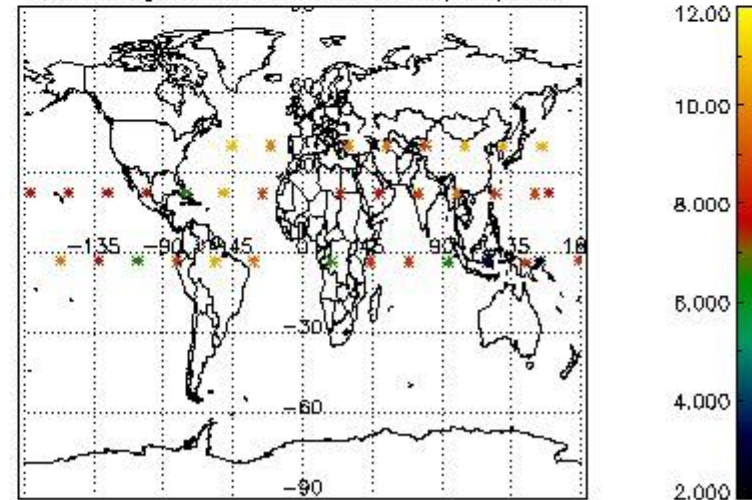
Percentage of datation errors per profile



Percentage of star falling outside central band per profile



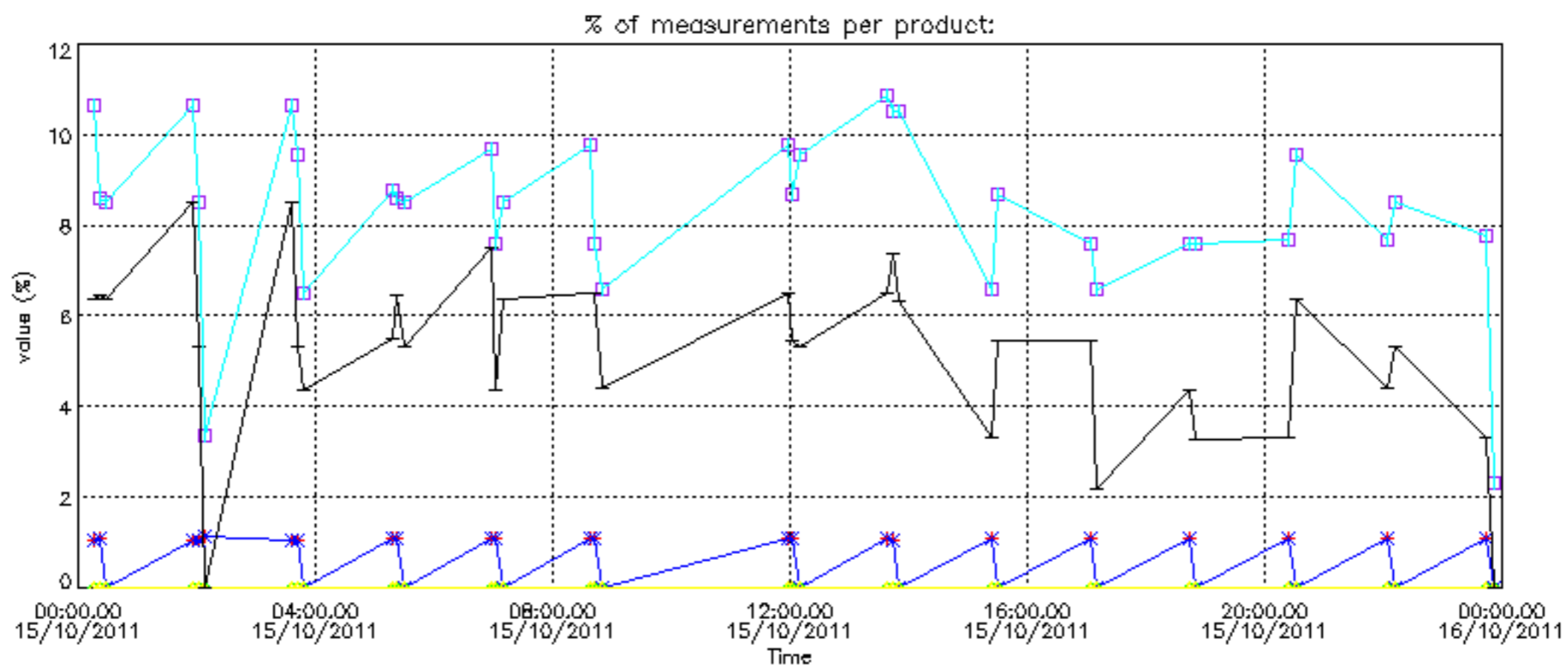
Percentage of saturation errors per profile



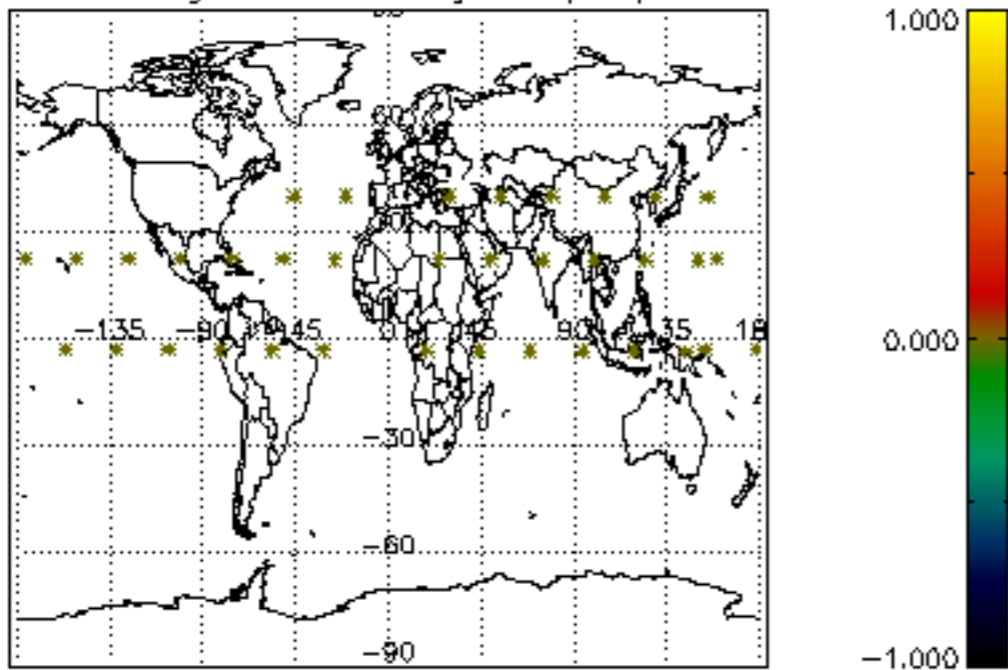
6. Auxiliary Data Files used for the production reported in section 2

The number reported in the third column indicates since which file (see list in section 2) the corresponding auxiliary file has been used. The fourth column is the date of those product files.

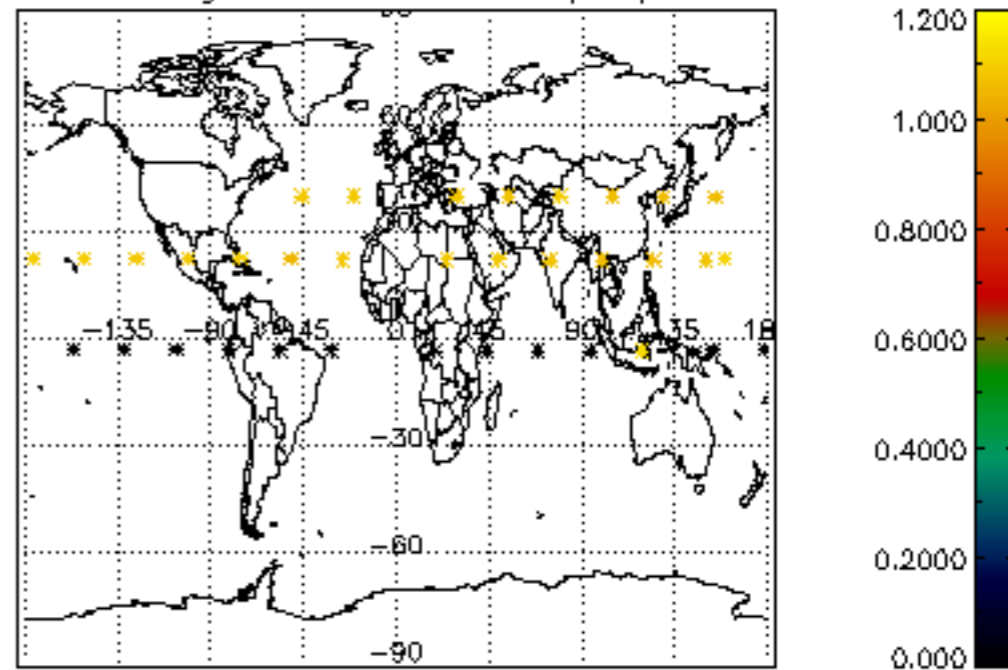
Type	Auxiliary Filename	Used since product	Used since product date
INST_PHYS_CHARACTERISTICS	GOM_INS_AXVIEC20091111_143220_20030716_120000_20500101_000000	1	15-OCT-2011 00:16:23
LEVEL-2_PROC_CONFIG	GOM_PR2_AXVIEC20091111_152718_20020301_000000_20500101_000000	1	15-OCT-2011 00:16:23
CROSS_SECTIONS_FILE	GOM_CR2_AXVIEC20091111_154832_20020301_000000_20500101_000000	1	15-OCT-2011 00:16:23



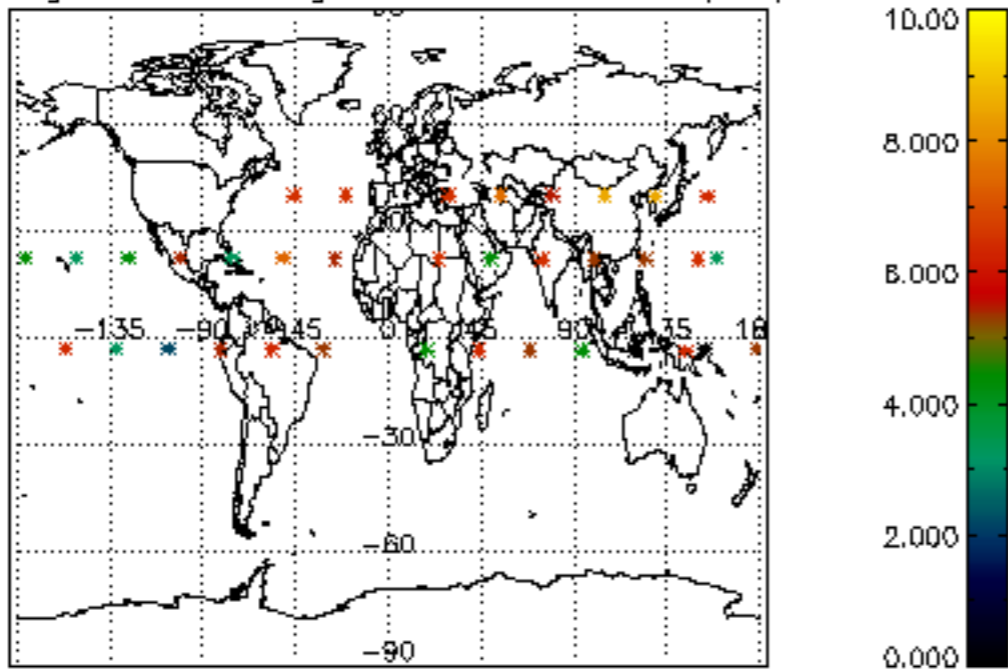
Percentage of cosmic ray hits per profile



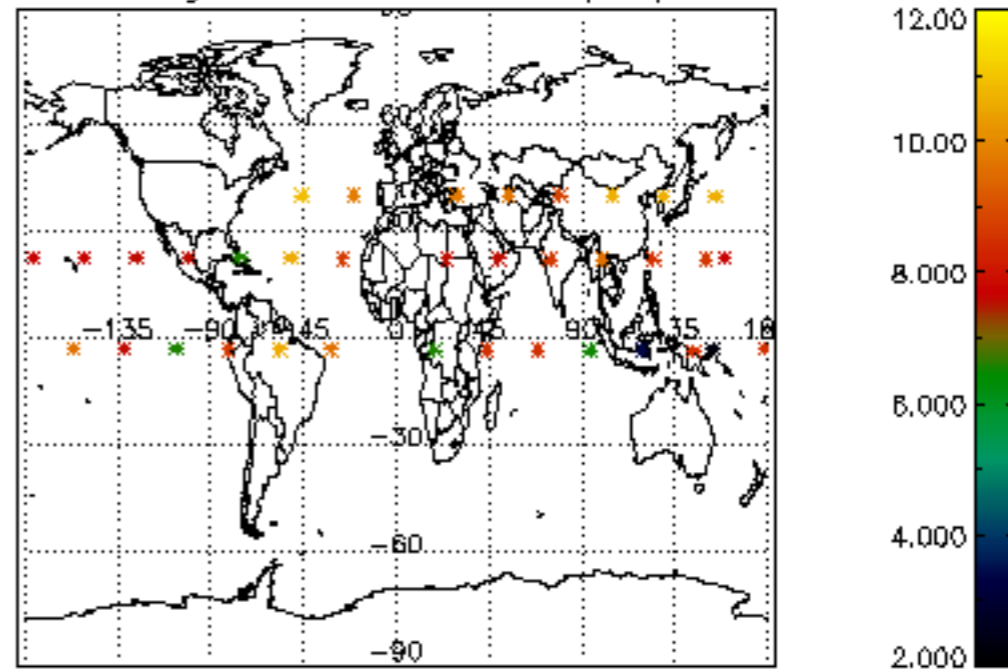
Percentage of datation errors per profile

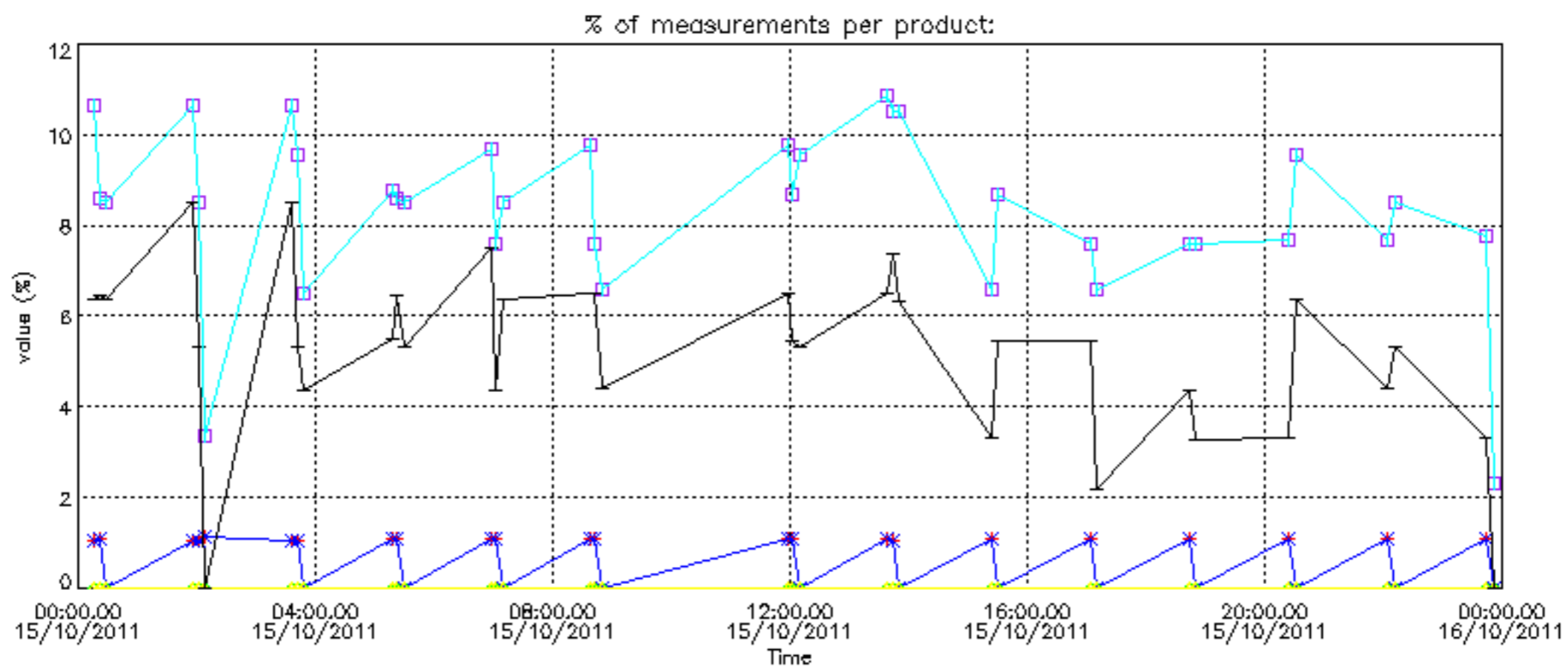


Percentage of star falling outside central band per profile

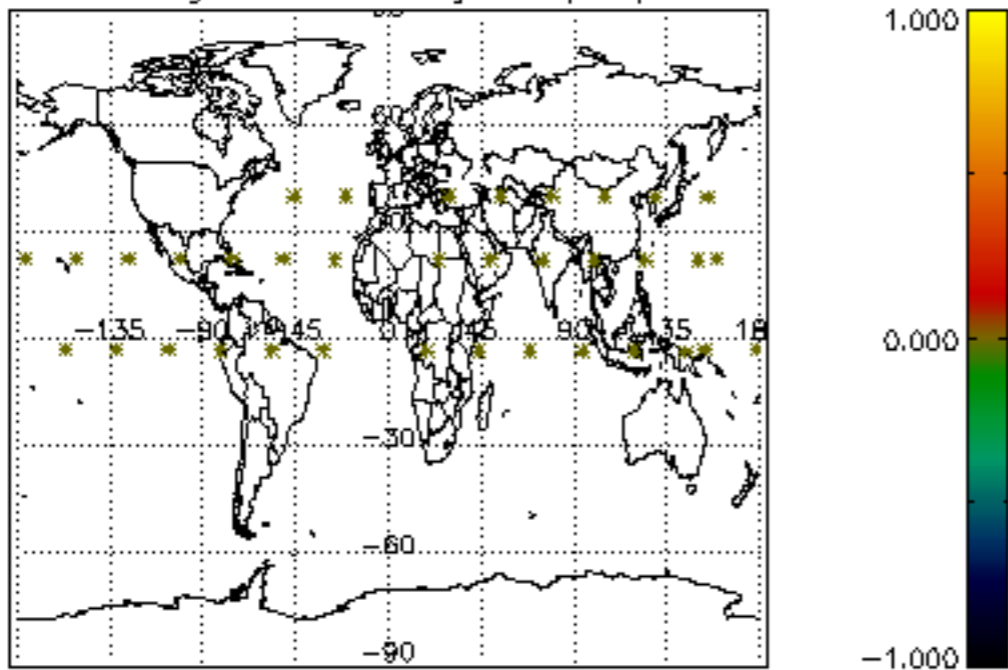


Percentage of saturation errors per profile

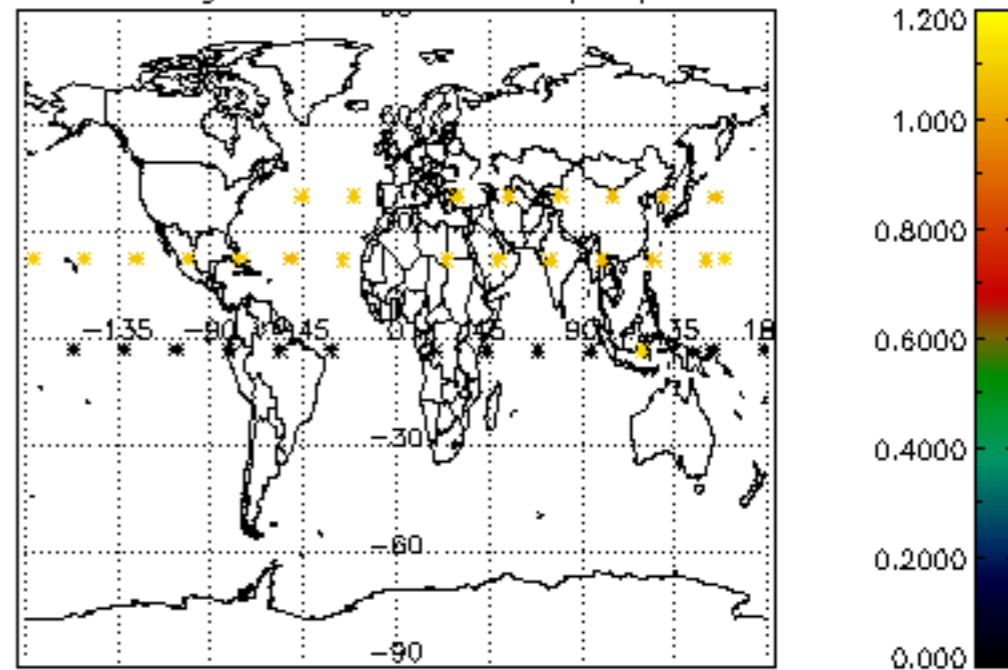




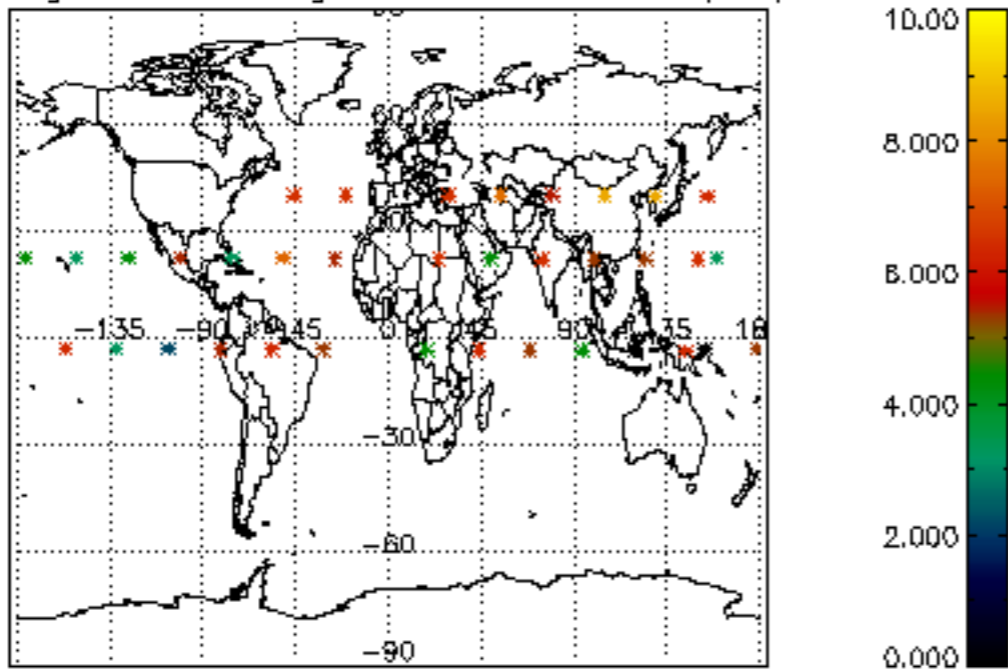
Percentage of cosmic ray hits per profile



Percentage of datation errors per profile



Percentage of star falling outside central band per profile



Percentage of saturation errors per profile

