

GOMOS Level 2 Daily Report

SUMMARY

[1. General Info](#)

[2. Summary of processed GOM_NL_2P products](#)

[3. Level 2 Quality information per product](#)

[3.1 Plot of level 2 quality information per product \(time dependant\)](#)

[3.2 Plot of level 2 quality information per product \(world map\)](#)

[4. Level 1 Quality information per product \(stored on level 2 products\)](#)

[4.1 Plot of level 1 quality information per product \(time dependant\)](#)

[4.1.1 Plot of level 1 quality information per product \(time dependant\): ASCENDING](#)

[4.1.2 Plot of level 1 quality information per product \(time dependant\): DESCENDING](#)

[4.2 Plot of level 1 quality information per product \(world map\)](#)

[4.2.1 Plot of level 1 quality information per product \(world map\): ASCENDING](#)

[4.2.2 Plot of level 1 quality information per product \(world map\): DESCENDING](#)

[5. Ozone profiles based on quality statistics and other trace gas profiles](#)

[5.1 Ozone statistics based on quality of products](#)

[5.2 Plot ozone profiles for all STD \(dark without errors\)](#)

[5.3 Plot ozone profiles where STD < 20% \(dark without errors\)](#)

[5.4. Plot ozone profiles where STD < 10% \(dark without errors\)](#)

[5.5. Plot ozone profiles where STD < 5% \(dark without errors\)](#)

[5.6 Plot NO2 profiles for all STD \(dark without errors\)](#)

[5.7 Plot NO3 profiles for all STD \(dark without errors\)](#)

[5.8 Plot H2O profiles \(only for occultations of stars 1,2,3,4,13,14,16,26,63 dark without errors\) for all STD](#)

[6. Auxiliary Data Files used for the production reported in section 2](#)

This report presents the daily analysis on parameters extracted from GOMOS level 2 data (GOM_NL__2P). It is intended to monitor some important parameters that will impact the quality of these products. A list of level 2 products (and content) that have arrived during the reporting day to the PCF is also given.

| Item | Value |
|---------------------------|---------------------------------|
| Time of report generation | 24APR2013 17:57:56 |
| Data source version | GOMOS/6.01 |
| Start time of products | 14-10-2011 (14OCT2011 00:00:00) |
| Stop time of products | 15-10-2011 (15OCT2011 00:00:00) |
| Store outputs in DB | Yes |
| Nb of level 2 prods | 24 |
| Nb of prods with errors | 0 |

2. Summary of processed GOM_NL__2P products.

!Warning: No products without errors in DARK limb contitions found

| Nr | Filename | UTC Start time | Limb | Duration | Star Id | Star Name | Star Mag | Star Temp | Nb Meas | Orbit | Prod. error |
|----|--|----------------------|----------|----------|---------|-----------|----------|-----------|---------|-------|-------------|
| 1 | GOM_NL__2PRFIN20111014_010526_000000373107_00304_50318_6770.N1 | 14-OCT-2011 01:05:26 | Bright | 37.000 | 160 | 23Gam Per | 2.9300 | 4700.0 | 74 | 50318 | No |
| 2 | GOM_NL__2PRFIN20111014_055859_000000263107_00307_50321_6809.N1 | 14-OCT-2011 05:58:59 | Twilight | 26.000 | 173 | 4Bet Tri | 3.0040 | 8900.0 | 52 | 50321 | No |
| 3 | GOM_NL__2PRFIN20111014_060607_000000403107_00307_50321_6810.N1 | 14-OCT-2011 06:06:07 | Bright | 39.500 | 160 | 23Gam Per | 2.9300 | 4700.0 | 79 | 50321 | No |
| 4 | GOM_NL__2PRFIN20111014_073912_000000323107_00308_50322_6824.N1 | 14-OCT-2011 07:39:12 | Twilight | 32.000 | 173 | 4Bet Tri | 3.0040 | 8900.0 | 64 | 50322 | No |
| 5 | GOM_NL__2PRFIN20111014_074620_000000443107_00308_50322_6825.N1 | 14-OCT-2011 07:46:20 | Bright | 43.500 | 160 | 23Gam Per | 2.9300 | 4700.0 | 87 | 50322 | No |
| 6 | GOM_NL__2PRFIN20111014_091926_000000323107_00309_50323_6849.N1 | 14-OCT-2011 09:19:26 | Twilight | 32.000 | 173 | 4Bet Tri | 3.0040 | 8900.0 | 64 | 50323 | No |
| 7 | GOM_NL__2PRFIN20111014_092633_000000443107_00309_50323_6850.N1 | 14-OCT-2011 09:26:33 | Bright | 43.500 | 160 | 23Gam Per | 2.9300 | 4700.0 | 87 | 50323 | No |
| 8 | GOM_NL__2PRFIN20111014_142712_000000443107_00312_50326_6920.N1 | 14-OCT-2011 14:27:12 | Bright | 43.500 | 160 | 23Gam Per | 2.9300 | 4700.0 | 87 | 50326 | No |
| 9 | GOM_NL__2PRFIN20111014_155516_000000473107_00313_50327_6969.N1 | 14-OCT-2011 15:55:16 | Bright | 47.000 | 105 | 6Bet Ari | 2.6450 | 8900.0 | 94 | 50327 | No |
| 10 | GOM_NL__2PRFIN20111014_160018_000000453107_00313_50327_6970.N1 | 14-OCT-2011 16:00:18 | Bright | 45.000 | 173 | 4Bet Tri | 3.0040 | 8900.0 | 90 | 50327 | No |
| 11 | GOM_NL__2PRFIN20111014_160725_000000473107_00313_50327_6971.N1 | 14-OCT-2011 16:07:25 | Bright | 46.500 | 160 | 23Gam Per | 2.9300 | 4700.0 | 93 | 50327 | No |
| 12 | GOM_NL__2PRFIN20111014_173530_000000493107_00314_50328_6994.N1 | 14-OCT-2011 17:35:30 | Bright | 48.500 | 105 | 6Bet Ari | 2.6450 | 8900.0 | 97 | 50328 | No |
| 13 | GOM_NL__2PRFIN20111014_174031_000000453107_00314_50328_6995.N1 | 14-OCT-2011 17:40:31 | Bright | 45.000 | 173 | 4Bet Tri | 3.0040 | 8900.0 | 90 | 50328 | No |
| 14 | GOM_NL__2PRFIN20111014_174738_000000483107_00314_50328_6996.N1 | 14-OCT-2011 17:47:38 | Bright | 47.500 | 160 | 23Gam Per | 2.9300 | 4700.0 | 95 | 50328 | No |
| 15 | GOM_NL__2PRFIN20111014_191543_000000483107_00315_50329_7021.N1 | 14-OCT-2011 19:15:43 | Bright | 47.500 | 105 | 6Bet Ari | 2.6450 | 8900.0 | 95 | 50329 | No |
| 16 | GOM_NL__2PRFIN20111014_192044_000000473107_00315_50329_7022.N1 | 14-OCT-2011 19:20:44 | Bright | 46.500 | 173 | 4Bet Tri | 3.0040 | 8900.0 | 93 | 50329 | No |
| 17 | GOM_NL__2PRFIN20111014_192752_000000483107_00315_50329_7023.N1 | 14-OCT-2011 19:27:52 | Bright | 48.000 | 160 | 23Gam Per | 2.9300 | 4700.0 | 96 | 50329 | No |
| 18 | GOM_NL__2PRFIN20111014_205557_000000463107_00316_50330_7074.N1 | 14-OCT-2011 20:55:57 | Bright | 46.000 | 105 | 6Bet Ari | 2.6450 | 8900.0 | 92 | 50330 | No |
| 19 | GOM_NL__2PRFIN20111014_210057_000000453107_00316_50330_7075.N1 | 14-OCT-2011 21:00:57 | Bright | 45.000 | 173 | 4Bet Tri | 3.0040 | 8900.0 | 90 | 50330 | No |
| 20 | GOM_NL__2PRFIN20111014_210249_000000463107_00316_50330_7076.N1 | 14-OCT-2011 21:02:49 | Bright | 46.000 | 73 | 57Gam1And | 2.2600 | 13100. | 92 | 50330 | No |
| 21 | GOM_NL__2PRFIN20111014_210805_000000443107_00316_50330_7077.N1 | 14-OCT-2011 21:08:05 | Bright | 43.500 | 160 | 23Gam Per | 2.9300 | 4700.0 | 87 | 50330 | No |
| 22 | GOM_NL__2PRFIN20111014_223610_000000473107_00317_50331_7079.N1 | 14-OCT-2011 22:36:10 | Bright | 47.000 | 105 | 6Bet Ari | 2.6450 | 8900.0 | 94 | 50331 | No |
| 23 | GOM_NL__2PRFIN20111014_224111_000000453107_00317_50331_7080.N1 | 14-OCT-2011 22:41:11 | Bright | 44.500 | 173 | 4Bet Tri | 3.0040 | 8900.0 | 89 | 50331 | No |
| 24 | GOM_NL__2PRFIN20111014_224818_000000473107_00317_50331_7081.N1 | 14-OCT-2011 22:48:18 | Bright | 47.000 | 160 | 23Gam Per | 2.9300 | 4700.0 | 94 | 50331 | No |

3. Quality information per product

In this section it is plotted some information contained in the Quality Summary data set of the level 2 products. Only products in dark limb conditions and without errors (error flag in the MPH set to "0") are used.

3.1 Plot quality information per product (time dependant)

4. Level 1 quality information per product

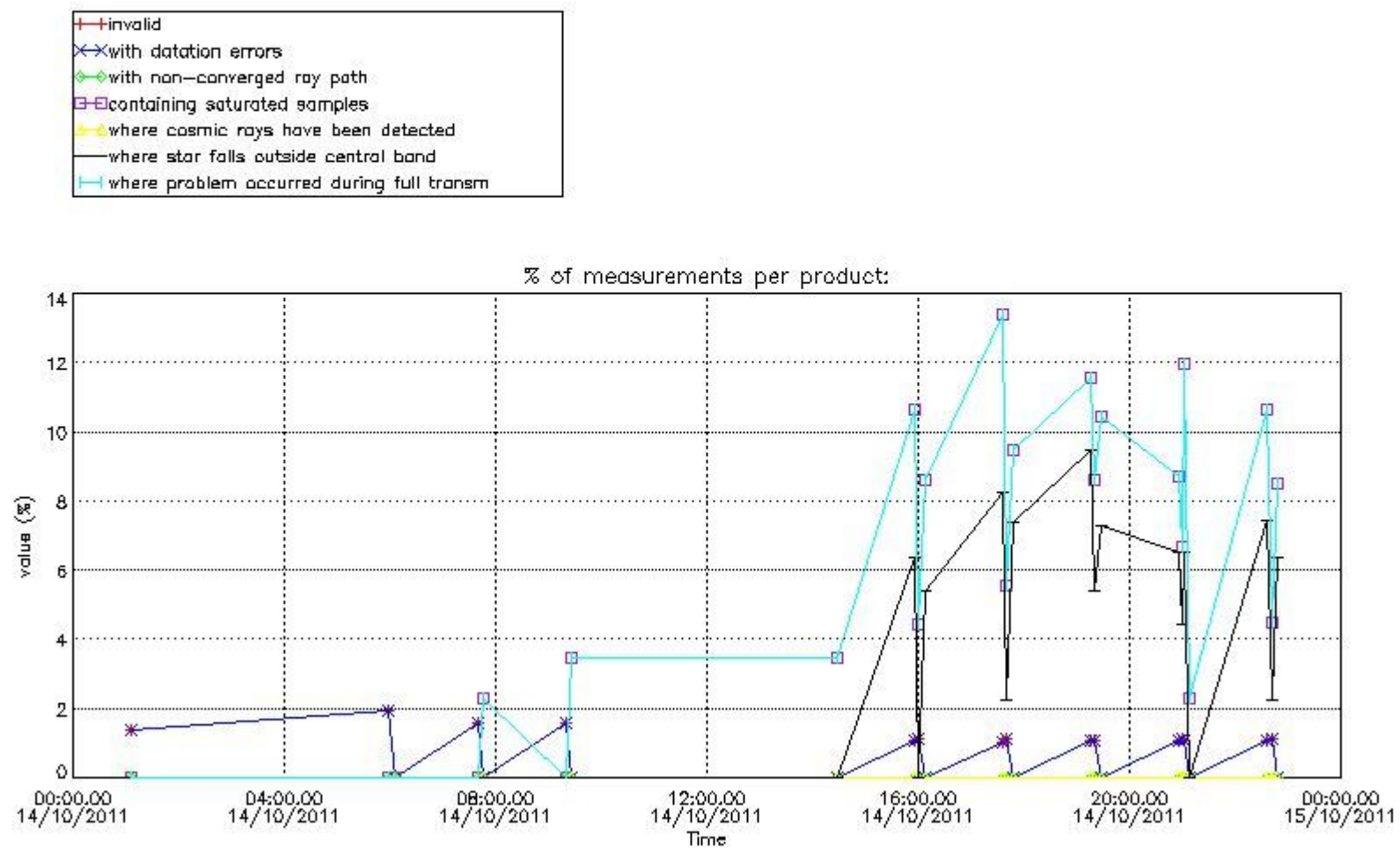
In this section it is plotted some information contained in the Quality Summary data set of the level 2 products that comes from the level 1b processing. Products without errors (error flag in the MPH set to "0") are used.

4.1 Plot quality information per product (time dependant) coming from level 1b processing

4.1.1 Plot level 1 quality information per product (time dependant): ENVISAT ASCENDING passes

!Warning: No products without errors in ascending found

4.1.2 Plot level 1 quality information per product (time dependant): ENVISAT DESCENDING passes



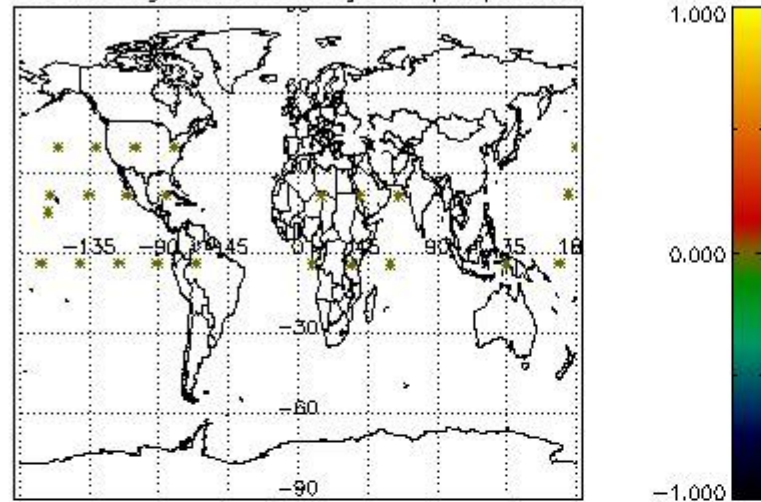
4.2 Plot quality information per product coming from level 1b processing (world map)

4.2.1 Plot level 1 quality information per product (world map): ENVISAT ASCENDING passes

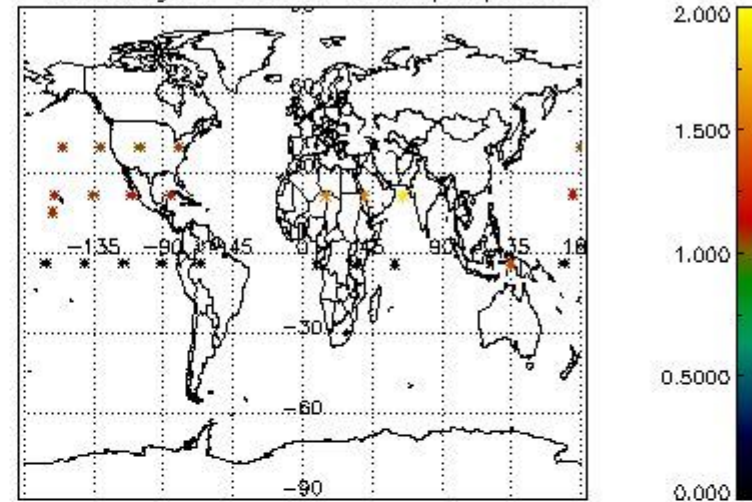
!Warning: No products without errors in ascending found

4.2.2 Plot level 1 quality information per product (world map): ENVISAT DESCENDING passes

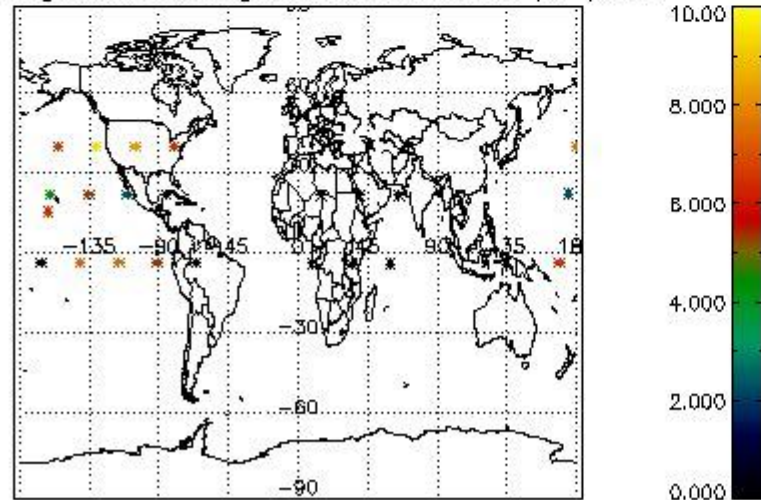
Percentage of cosmic ray hits per profile



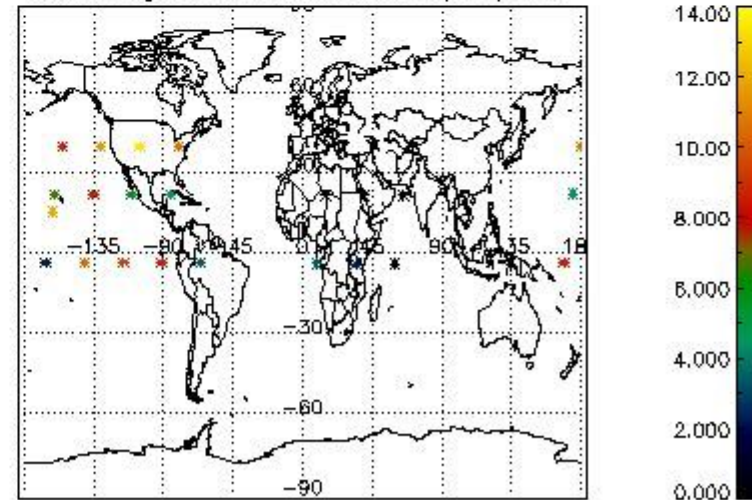
Percentage of datation errors per profile



Percentage of star falling outside central band per profile



Percentage of saturation errors per profile



6. Auxiliary Data Files used for the production reported in section 2

The number reported in the third column indicates since which file (see list in section 2) the corresponding auxiliary file has been used. The fourth column is the date of those product files.

| Type | Auxiliary Filename | Used since product | Used since product date |
|---------------------------|---|--------------------|-------------------------|
| INST_PHYS_CHARACTERISTICS | GOM_INS_AXVIEC20091111_143220_20030716_120000_20500101_000000 | 1 | 14-OCT-2011 01:05:26 |
| LEVEL-2_PROC_CONFIG | GOM_PR2_AXVIEC20091111_152718_20020301_000000_20500101_000000 | 1 | 14-OCT-2011 01:05:26 |
| CROSS_SECTIONS_FILE | GOM_CR2_AXVIEC20091111_154832_20020301_000000_20500101_000000 | 1 | 14-OCT-2011 01:05:26 |

GOMOS Level 2 Daily Report

SUMMARY

[1. General Info](#)

[2. Summary of processed GOM_NL_2P products](#)

[3. Level 2 Quality information per product](#)

[3.1 Plot of level 2 quality information per product \(time dependant\)](#)

[3.2 Plot of level 2 quality information per product \(world map\)](#)

[4. Level 1 Quality information per product \(stored on level 2 products\)](#)

[4.1 Plot of level 1 quality information per product \(time dependant\)](#)

[4.1.1 Plot of level 1 quality information per product \(time dependant\): ASCENDING](#)

[4.1.2 Plot of level 1 quality information per product \(time dependant\): DESCENDING](#)

[4.2 Plot of level 1 quality information per product \(world map\)](#)

[4.2.1 Plot of level 1 quality information per product \(world map\): ASCENDING](#)

[4.2.2 Plot of level 1 quality information per product \(world map\): DESCENDING](#)

[5. Ozone profiles based on quality statistics and other trace gas profiles](#)

[5.1 Ozone statistics based on quality of products](#)

[5.2 Plot ozone profiles for all STD \(dark without errors\)](#)

[5.3 Plot ozone profiles where STD < 20% \(dark without errors\)](#)

[5.4. Plot ozone profiles where STD < 10% \(dark without errors\)](#)

[5.5. Plot ozone profiles where STD < 5% \(dark without errors\)](#)

[5.6 Plot NO2 profiles for all STD \(dark without errors\)](#)

[5.7 Plot NO3 profiles for all STD \(dark without errors\)](#)

[5.8 Plot H2O profiles \(only for occultations of stars 1,2,3,4,13,14,16,26,63 dark without errors\) for all STD](#)

[6. Auxiliary Data Files used for the production reported in section 2](#)

This report presents the daily analysis on parameters extracted from GOMOS level 2 data (GOM_NL__2P). It is intended to monitor some important parameters that will impact the quality of these products. A list of level 2 products (and content) that have arrived during the reporting day to the PCF is also given.

| Item | Value |
|---------------------------|---------------------------------|
| Time of report generation | 24APR2013 17:57:56 |
| Data source version | GOMOS/6.01 |
| Start time of products | 14-10-2011 (14OCT2011 00:00:00) |
| Stop time of products | 15-10-2011 (15OCT2011 00:00:00) |
| Store outputs in DB | Yes |
| Nb of level 2 prods | 24 |
| Nb of prods with errors | 0 |

2. Summary of processed GOM_NL__2P products.

!Warning: No products without errors in DARK limb contitions found

| Nr | Filename | UTC Start time | Limb | Duration | Star Id | Star Name | Star Mag | Star Temp | Nb Meas | Orbit | Prod. error |
|----|--|----------------------|----------|----------|---------|-----------|----------|-----------|---------|-------|-------------|
| 1 | GOM_NL__2PRFIN20111014_010526_000000373107_00304_50318_6770.N1 | 14-OCT-2011 01:05:26 | Bright | 37.000 | 160 | 23Gam Per | 2.9300 | 4700.0 | 74 | 50318 | No |
| 2 | GOM_NL__2PRFIN20111014_055859_000000263107_00307_50321_6809.N1 | 14-OCT-2011 05:58:59 | Twilight | 26.000 | 173 | 4Bet Tri | 3.0040 | 8900.0 | 52 | 50321 | No |
| 3 | GOM_NL__2PRFIN20111014_060607_000000403107_00307_50321_6810.N1 | 14-OCT-2011 06:06:07 | Bright | 39.500 | 160 | 23Gam Per | 2.9300 | 4700.0 | 79 | 50321 | No |
| 4 | GOM_NL__2PRFIN20111014_073912_000000323107_00308_50322_6824.N1 | 14-OCT-2011 07:39:12 | Twilight | 32.000 | 173 | 4Bet Tri | 3.0040 | 8900.0 | 64 | 50322 | No |
| 5 | GOM_NL__2PRFIN20111014_074620_000000443107_00308_50322_6825.N1 | 14-OCT-2011 07:46:20 | Bright | 43.500 | 160 | 23Gam Per | 2.9300 | 4700.0 | 87 | 50322 | No |
| 6 | GOM_NL__2PRFIN20111014_091926_000000323107_00309_50323_6849.N1 | 14-OCT-2011 09:19:26 | Twilight | 32.000 | 173 | 4Bet Tri | 3.0040 | 8900.0 | 64 | 50323 | No |
| 7 | GOM_NL__2PRFIN20111014_092633_000000443107_00309_50323_6850.N1 | 14-OCT-2011 09:26:33 | Bright | 43.500 | 160 | 23Gam Per | 2.9300 | 4700.0 | 87 | 50323 | No |
| 8 | GOM_NL__2PRFIN20111014_142712_000000443107_00312_50326_6920.N1 | 14-OCT-2011 14:27:12 | Bright | 43.500 | 160 | 23Gam Per | 2.9300 | 4700.0 | 87 | 50326 | No |
| 9 | GOM_NL__2PRFIN20111014_155516_000000473107_00313_50327_6969.N1 | 14-OCT-2011 15:55:16 | Bright | 47.000 | 105 | 6Bet Ari | 2.6450 | 8900.0 | 94 | 50327 | No |
| 10 | GOM_NL__2PRFIN20111014_160018_000000453107_00313_50327_6970.N1 | 14-OCT-2011 16:00:18 | Bright | 45.000 | 173 | 4Bet Tri | 3.0040 | 8900.0 | 90 | 50327 | No |
| 11 | GOM_NL__2PRFIN20111014_160725_000000473107_00313_50327_6971.N1 | 14-OCT-2011 16:07:25 | Bright | 46.500 | 160 | 23Gam Per | 2.9300 | 4700.0 | 93 | 50327 | No |
| 12 | GOM_NL__2PRFIN20111014_173530_000000493107_00314_50328_6994.N1 | 14-OCT-2011 17:35:30 | Bright | 48.500 | 105 | 6Bet Ari | 2.6450 | 8900.0 | 97 | 50328 | No |
| 13 | GOM_NL__2PRFIN20111014_174031_000000453107_00314_50328_6995.N1 | 14-OCT-2011 17:40:31 | Bright | 45.000 | 173 | 4Bet Tri | 3.0040 | 8900.0 | 90 | 50328 | No |
| 14 | GOM_NL__2PRFIN20111014_174738_000000483107_00314_50328_6996.N1 | 14-OCT-2011 17:47:38 | Bright | 47.500 | 160 | 23Gam Per | 2.9300 | 4700.0 | 95 | 50328 | No |
| 15 | GOM_NL__2PRFIN20111014_191543_000000483107_00315_50329_7021.N1 | 14-OCT-2011 19:15:43 | Bright | 47.500 | 105 | 6Bet Ari | 2.6450 | 8900.0 | 95 | 50329 | No |
| 16 | GOM_NL__2PRFIN20111014_192044_000000473107_00315_50329_7022.N1 | 14-OCT-2011 19:20:44 | Bright | 46.500 | 173 | 4Bet Tri | 3.0040 | 8900.0 | 93 | 50329 | No |
| 17 | GOM_NL__2PRFIN20111014_192752_000000483107_00315_50329_7023.N1 | 14-OCT-2011 19:27:52 | Bright | 48.000 | 160 | 23Gam Per | 2.9300 | 4700.0 | 96 | 50329 | No |
| 18 | GOM_NL__2PRFIN20111014_205557_000000463107_00316_50330_7074.N1 | 14-OCT-2011 20:55:57 | Bright | 46.000 | 105 | 6Bet Ari | 2.6450 | 8900.0 | 92 | 50330 | No |
| 19 | GOM_NL__2PRFIN20111014_210057_000000453107_00316_50330_7075.N1 | 14-OCT-2011 21:00:57 | Bright | 45.000 | 173 | 4Bet Tri | 3.0040 | 8900.0 | 90 | 50330 | No |
| 20 | GOM_NL__2PRFIN20111014_210249_000000463107_00316_50330_7076.N1 | 14-OCT-2011 21:02:49 | Bright | 46.000 | 73 | 57Gam1And | 2.2600 | 13100. | 92 | 50330 | No |
| 21 | GOM_NL__2PRFIN20111014_210805_000000443107_00316_50330_7077.N1 | 14-OCT-2011 21:08:05 | Bright | 43.500 | 160 | 23Gam Per | 2.9300 | 4700.0 | 87 | 50330 | No |
| 22 | GOM_NL__2PRFIN20111014_223610_000000473107_00317_50331_7079.N1 | 14-OCT-2011 22:36:10 | Bright | 47.000 | 105 | 6Bet Ari | 2.6450 | 8900.0 | 94 | 50331 | No |
| 23 | GOM_NL__2PRFIN20111014_224111_000000453107_00317_50331_7080.N1 | 14-OCT-2011 22:41:11 | Bright | 44.500 | 173 | 4Bet Tri | 3.0040 | 8900.0 | 89 | 50331 | No |
| 24 | GOM_NL__2PRFIN20111014_224818_000000473107_00317_50331_7081.N1 | 14-OCT-2011 22:48:18 | Bright | 47.000 | 160 | 23Gam Per | 2.9300 | 4700.0 | 94 | 50331 | No |

3. Quality information per product

In this section it is plotted some information contained in the Quality Summary data set of the level 2 products. Only products in dark limb conditions and without errors (error flag in the MPH set to "0") are used.

3.1 Plot quality information per product (time dependant)

4. Level 1 quality information per product

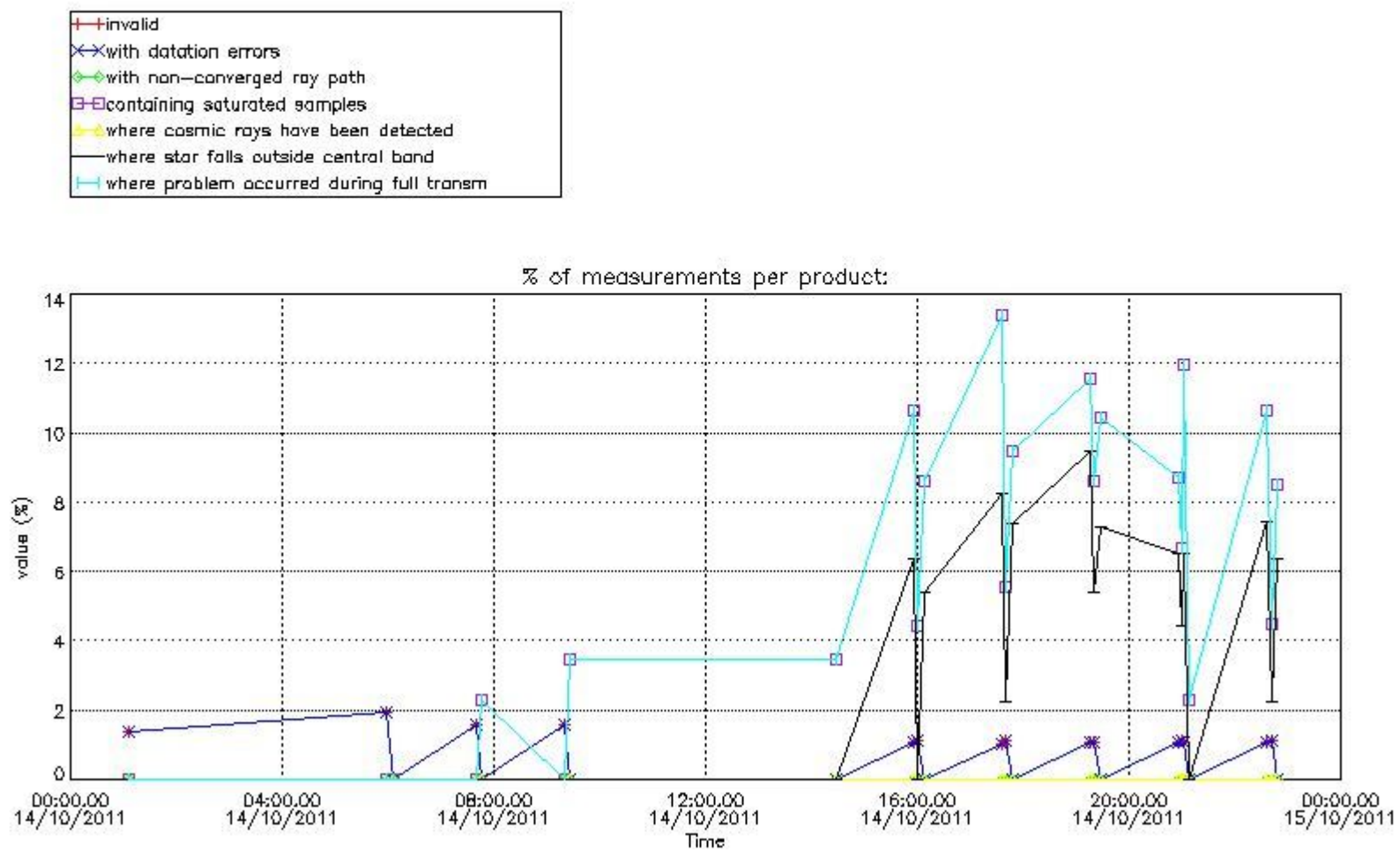
In this section it is plotted some information contained in the Quality Summary data set of the level 2 products that comes from the level 1b processing. Products without errors (error flag in the MPH set to "0") are used.

4.1 Plot quality information per product (time dependant) coming from level 1b processing

4.1.1 Plot level 1 quality information per product (time dependant): ENVISAT ASCENDING passes

!Warning: No products without errors in ascending found

4.1.2 Plot level 1 quality information per product (time dependant): ENVISAT DESCENDING passes



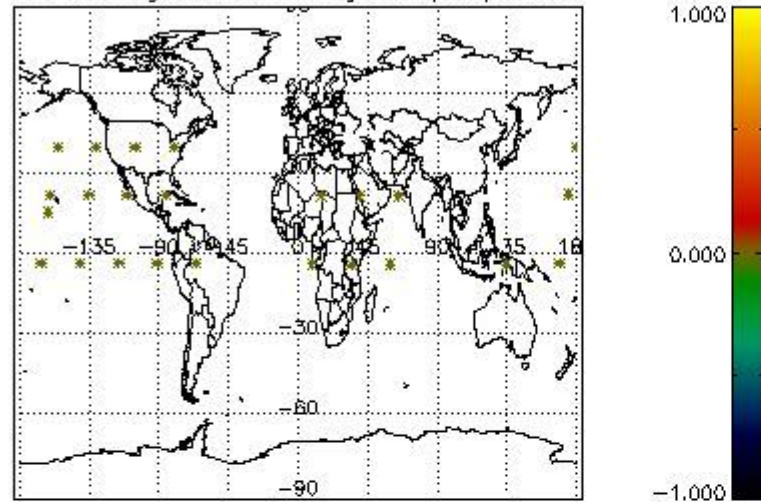
4.2 Plot quality information per product coming from level 1b processing (world map)

4.2.1 Plot level 1 quality information per product (world map): ENVISAT ASCENDING passes

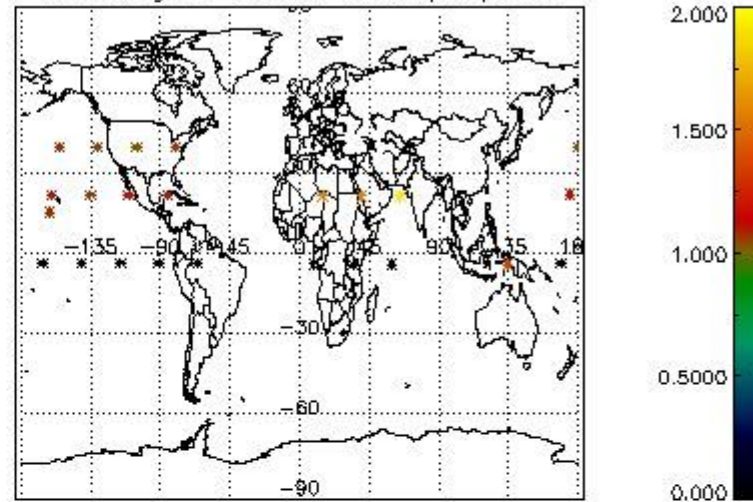
!Warning: No products without errors in ascending found

4.2.2 Plot level 1 quality information per product (world map): ENVISAT DESCENDING passes

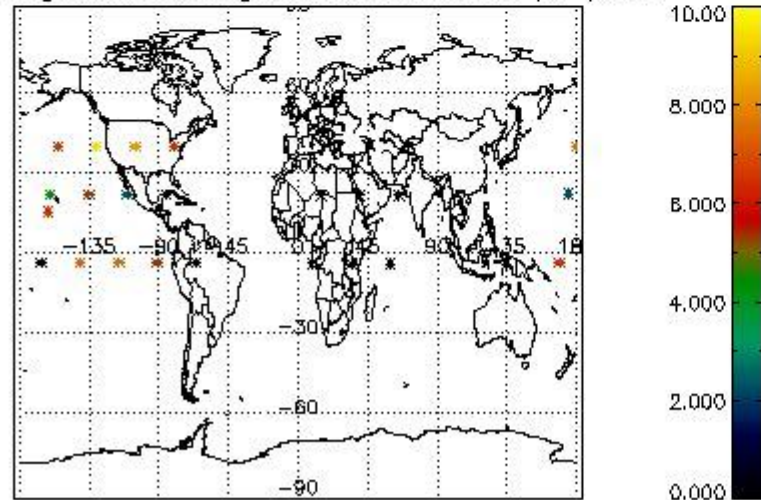
Percentage of cosmic ray hits per profile



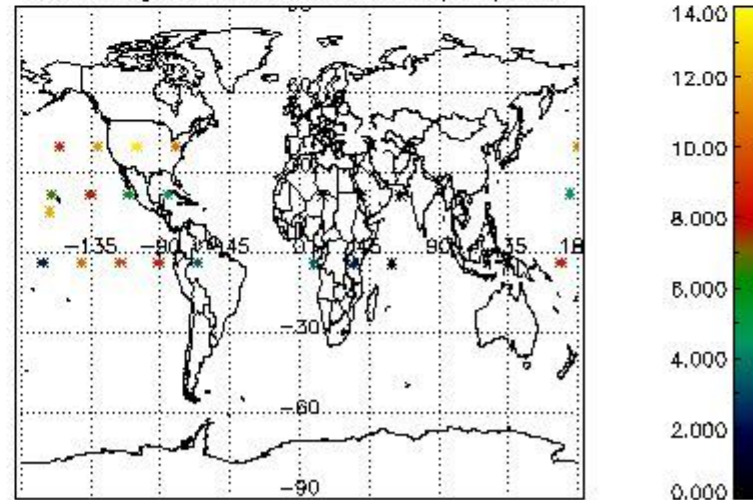
Percentage of datation errors per profile



Percentage of star falling outside central band per profile



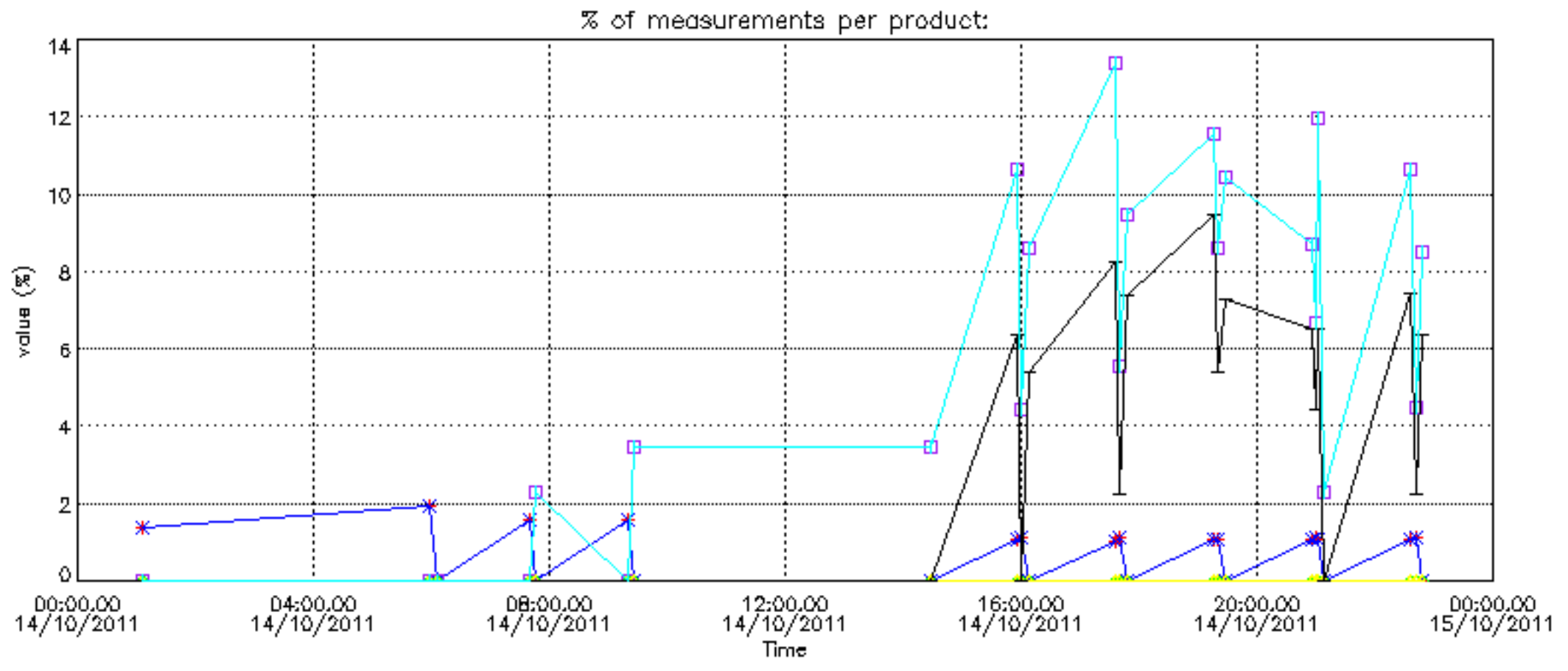
Percentage of saturation errors per profile



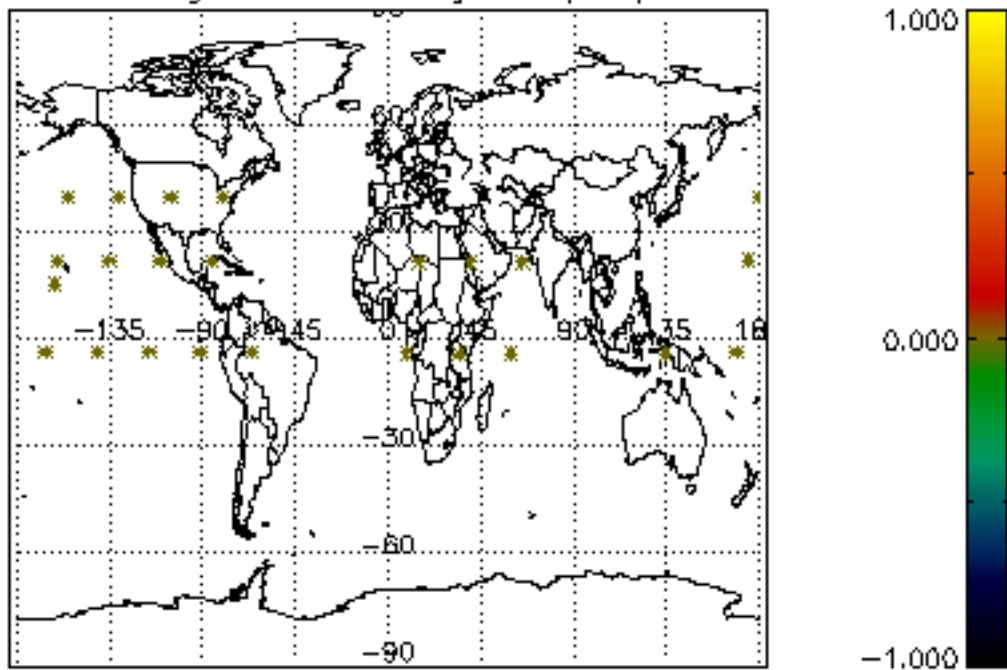
6. Auxiliary Data Files used for the production reported in section 2

The number reported in the third column indicates since which file (see list in section 2) the corresponding auxiliary file has been used. The fourth column is the date of those product files.

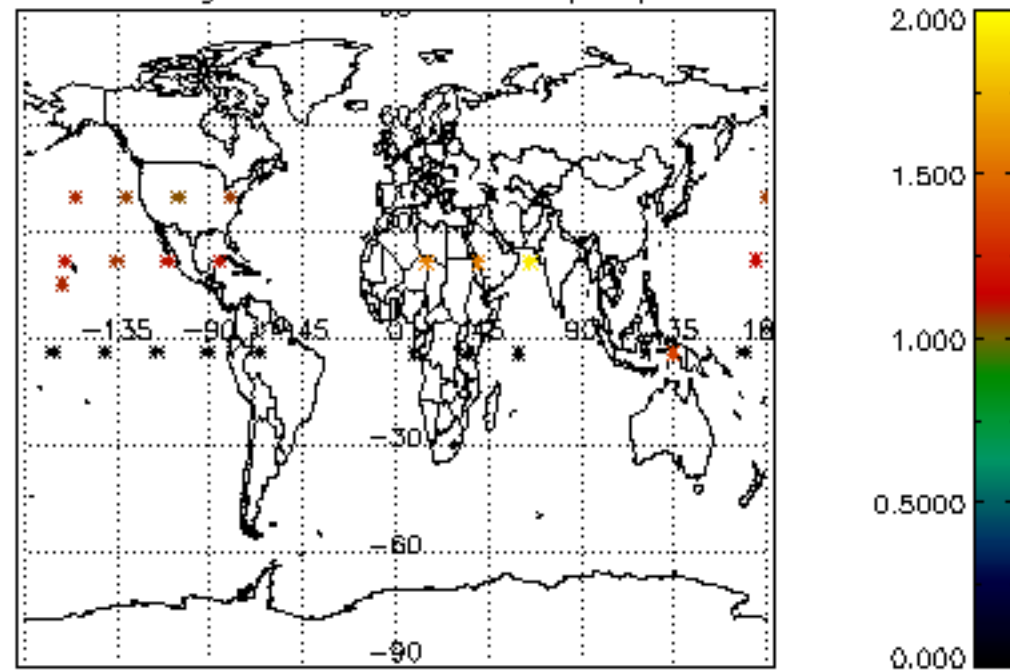
| Type | Auxiliary Filename | Used since product | Used since product date |
|---------------------------|---|--------------------|-------------------------|
| INST_PHYS_CHARACTERISTICS | GOM_INS_AXVIEC20091111_143220_20030716_120000_20500101_000000 | 1 | 14-OCT-2011 01:05:26 |
| LEVEL-2_PROC_CONFIG | GOM_PR2_AXVIEC20091111_152718_20020301_000000_20500101_000000 | 1 | 14-OCT-2011 01:05:26 |
| CROSS_SECTIONS_FILE | GOM_CR2_AXVIEC20091111_154832_20020301_000000_20500101_000000 | 1 | 14-OCT-2011 01:05:26 |



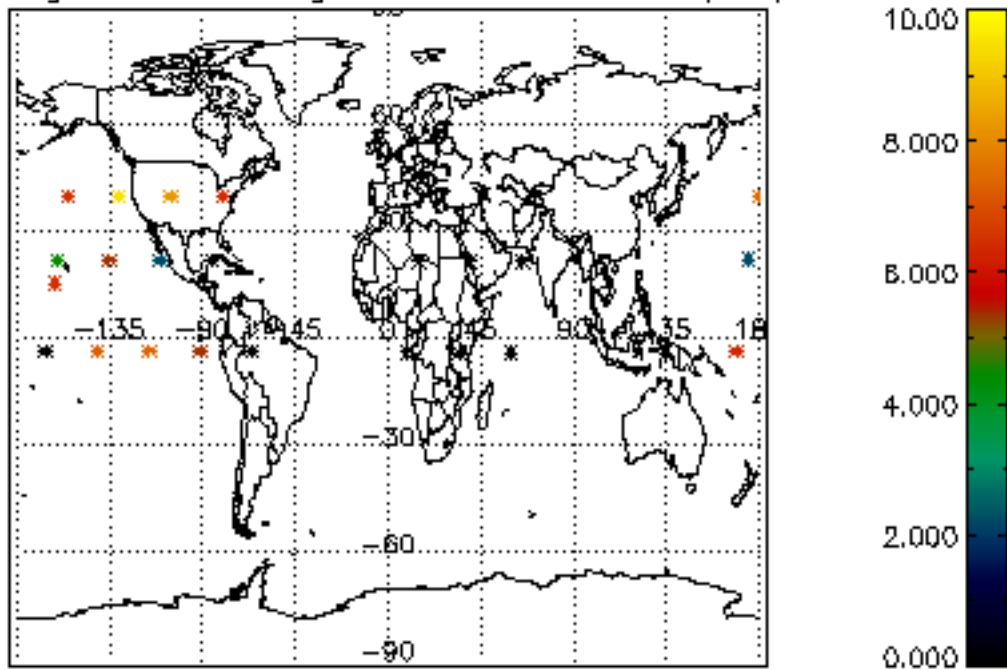
Percentage of cosmic ray hits per profile



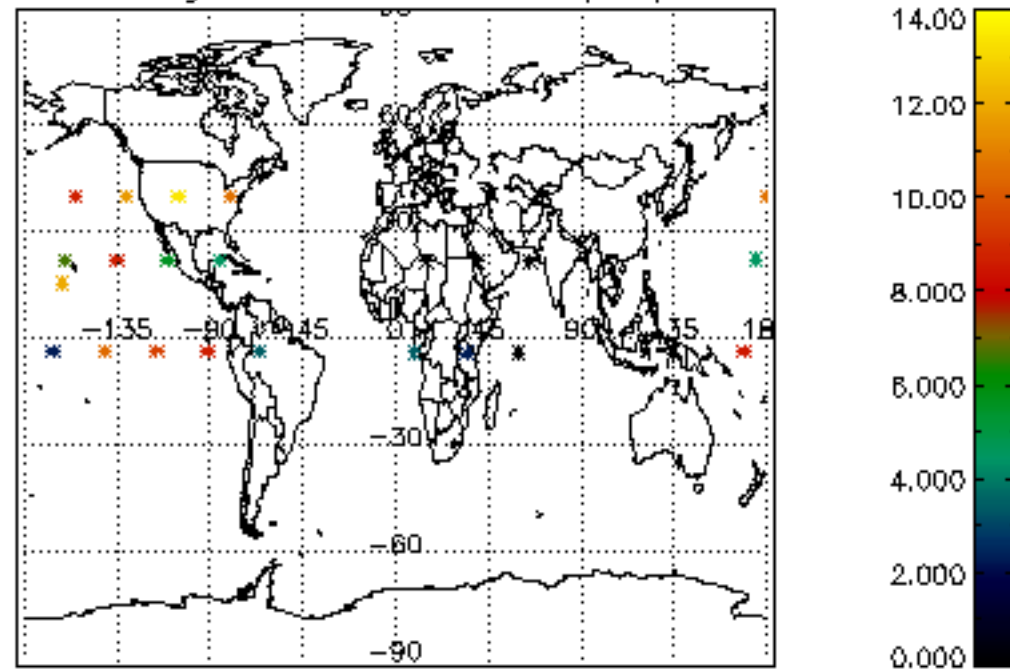
Percentage of datation errors per profile

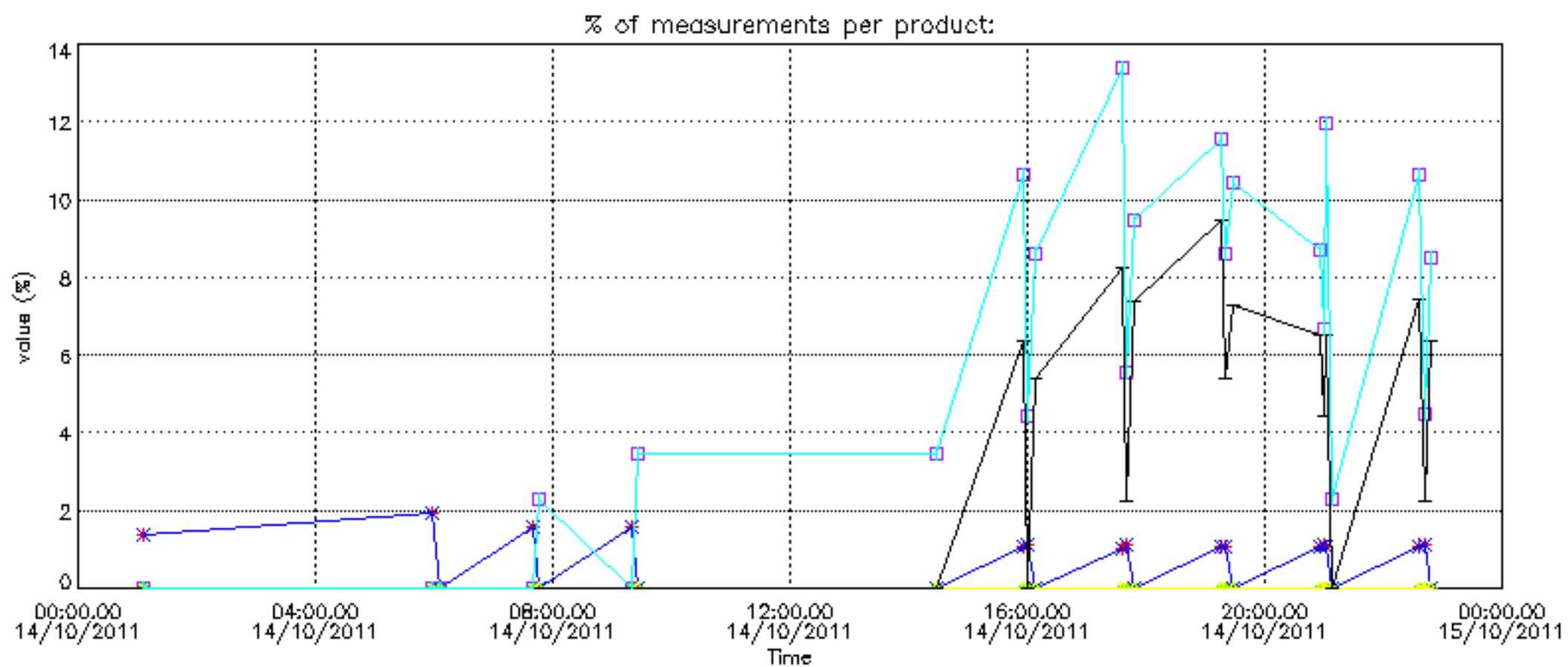


Percentage of star falling outside central band per profile

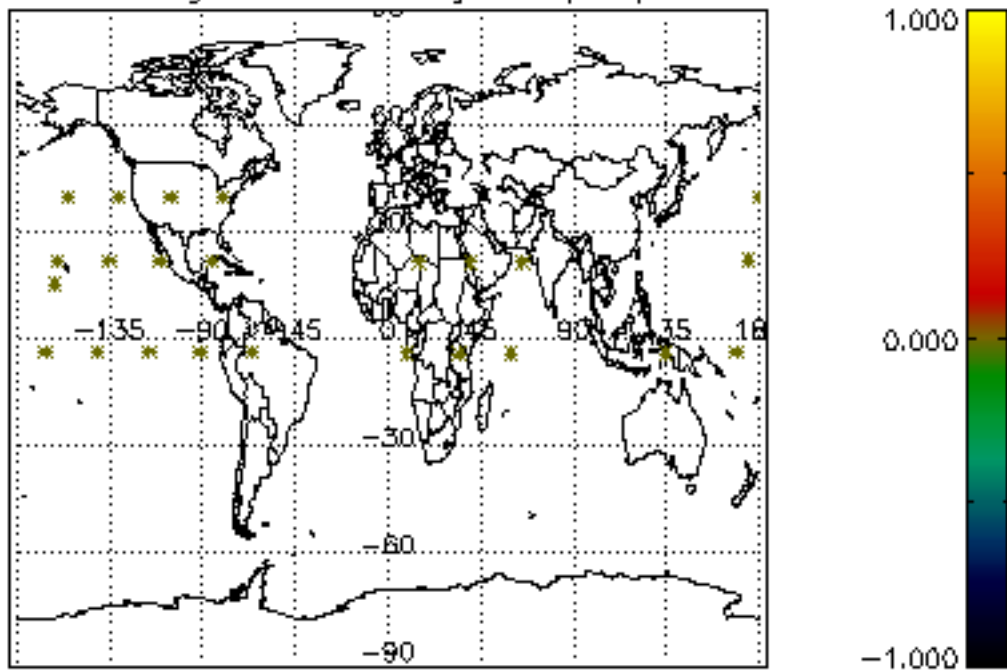


Percentage of saturation errors per profile

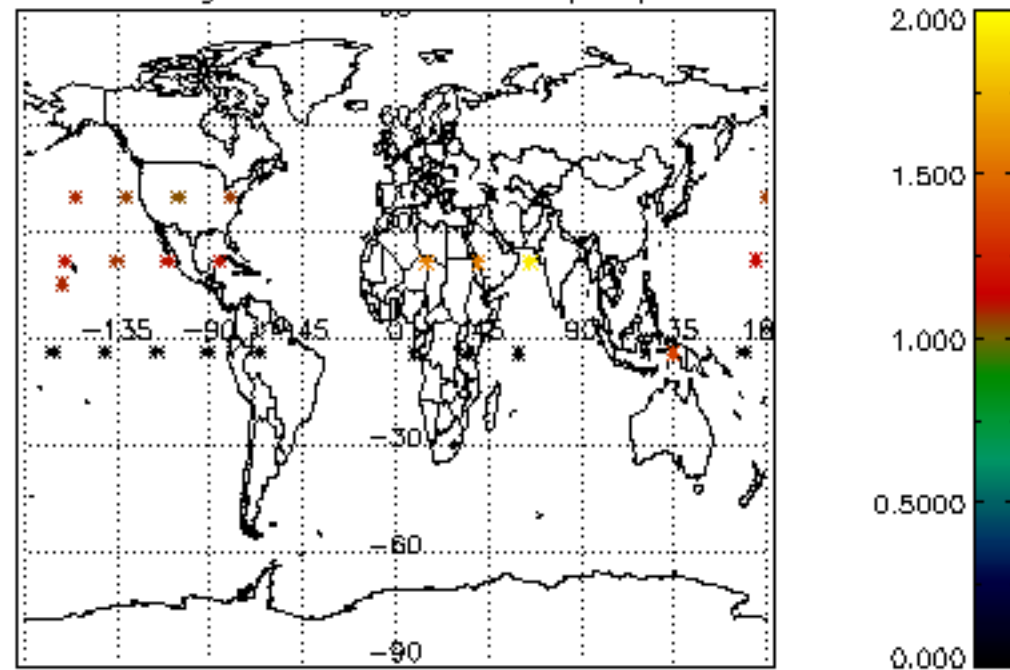




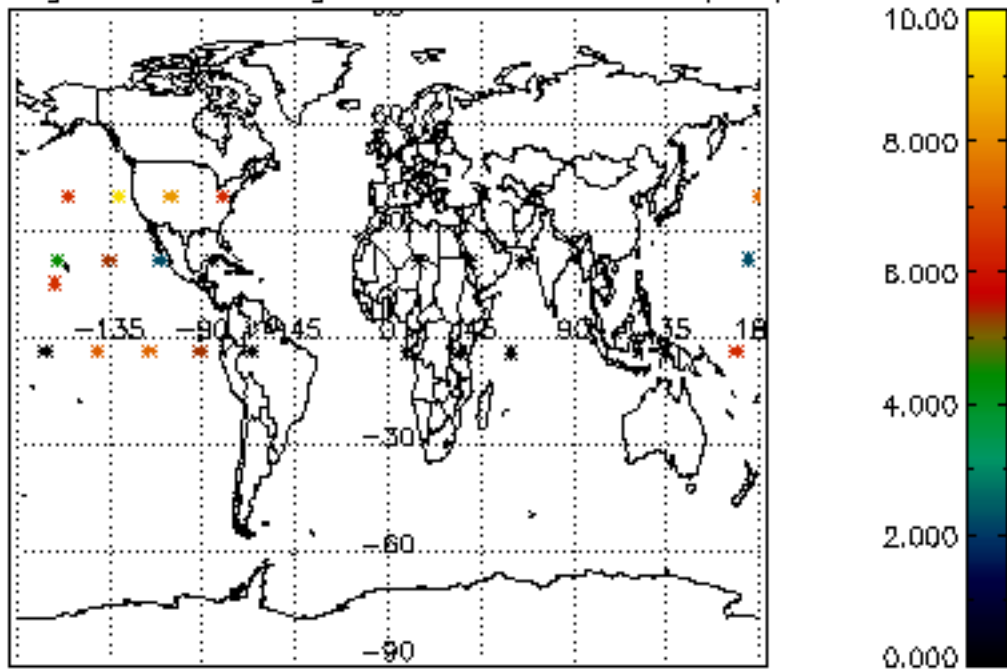
Percentage of cosmic ray hits per profile



Percentage of datation errors per profile



Percentage of star falling outside central band per profile



Percentage of saturation errors per profile

