

GOMOS Level 2 Daily Report

SUMMARY

[1. General Info](#)

[2. Summary of processed GOM_NL_2P products](#)

[3. Level 2 Quality information per product](#)

[3.1 Plot of level 2 quality information per product \(time dependant\)](#)

[3.2 Plot of level 2 quality information per product \(world map\)](#)

[4. Level 1 Quality information per product \(stored on level 2 products\)](#)

[4.1 Plot of level 1 quality information per product \(time dependant\)](#)

[4.1.1 Plot of level 1 quality information per product \(time dependant\): ASCENDING](#)

[4.1.2 Plot of level 1 quality information per product \(time dependant\): DESCENDING](#)

[4.2 Plot of level 1 quality information per product \(world map\)](#)

[4.2.1 Plot of level 1 quality information per product \(world map\): ASCENDING](#)

[4.2.2 Plot of level 1 quality information per product \(world map\): DESCENDING](#)

[5. Ozone profiles based on quality statistics and other trace gas profiles](#)

[5.1 Ozone statistics based on quality of products](#)

[5.2 Plot ozone profiles for all STD \(dark without errors\)](#)

[5.3 Plot ozone profiles where STD < 20% \(dark without errors\)](#)

[5.4. Plot ozone profiles where STD < 10% \(dark without errors\)](#)

[5.5. Plot ozone profiles where STD < 5% \(dark without errors\)](#)

[5.6 Plot NO2 profiles for all STD \(dark without errors\)](#)

[5.7 Plot NO3 profiles for all STD \(dark without errors\)](#)

[5.8 Plot H2O profiles \(only for occultations of stars 1,2,3,4,13,14,16,26,63 dark without errors\) for all STD](#)

[6. Auxiliary Data Files used for the production reported in section 2](#)

This report presents the daily analysis on parameters extracted from GOMOS level 2 data (GOM_NL__2P). It is intended to monitor some important parameters that will impact the quality of these products. A list of level 2 products (and content) that have arrived during the reporting day to the PCF is also given.

Item	Value
Time of report generation	24APR2013 17:57:31
Data source version	GOMOS/6.01
Start time of products	13-10-2011 (13OCT2011 00:00:00)
Stop time of products	14-10-2011 (14OCT2011 00:00:00)
Store outputs in DB	Yes
Nb of level 2 prods	19
Nb of prods with errors	0

2. Summary of processed GOM_NL__2P products.

!Warning: No products without errors in DARK limb contitions found

Nr	Filename	UTC Start time	Limb	Duration	Star Id	Star Name	Star Mag	Star Temp	Nb Meas	Orbit	Prod. error
1	GOM_NL__2PRFIN20111013_013702_000000443107_00290_50304_6366.N1	13-OCT-2011 01:37:02	Bright	44.000	73	57Gam1And	2.2600	13100.	88	50304	No
2	GOM_NL__2PRFIN20111013_031716_000000473107_00291_50305_6385.N1	13-OCT-2011 03:17:16	Bright	46.500	73	57Gam1And	2.2600	13100.	93	50305	No
3	GOM_NL__2PRFIN20111013_045729_000000463107_00292_50306_6395.N1	13-OCT-2011 04:57:29	Bright	46.000	73	57Gam1And	2.2600	13100.	92	50306	No
4	GOM_NL__2PRFIN20111013_081756_000000483107_00294_50308_6430.N1	13-OCT-2011 08:17:56	Bright	47.500	73	57Gam1And	2.2600	13100.	95	50308	No
5	GOM_NL__2PRFIN20111013_113822_000000523107_00296_50310_6520.N1	13-OCT-2011 11:38:22	Bright	51.500	73	57Gam1And	2.2600	13100.	103	50310	No
6	GOM_NL__2PRFIN20111013_131836_000000473107_00297_50311_6557.N1	13-OCT-2011 13:18:36	Bright	46.500	73	57Gam1And	2.2600	13100.	93	50311	No
7	GOM_NL__2PRFIN20111013_145516_000000393107_00298_50312_6584.N1	13-OCT-2011 14:55:16	Bright	39.000	53	43Bet And	2.0480	3300.0	78	50312	No
8	GOM_NL__2PRFIN20111013_145849_000000453107_00298_50312_6585.N1	13-OCT-2011 14:58:49	Bright	45.000	73	57Gam1And	2.2600	13100.	90	50312	No
9	GOM_NL__2PRFIN20111013_150407_000000253107_00298_50312_6586.N1	13-OCT-2011 15:04:07	Twilight	24.500	160	23Gam Per	2.9300	4700.0	49	50312	No
10	GOM_NL__2PRFIN20111013_163902_000000473107_00299_50313_6615.N1	13-OCT-2011 16:39:02	Bright	46.500	73	57Gam1And	2.2600	13100.	93	50313	No
11	GOM_NL__2PRFIN20111013_164421_000000253107_00299_50313_6616.N1	13-OCT-2011 16:44:21	Twilight	24.500	160	23Gam Per	2.9300	4700.0	49	50313	No
12	GOM_NL__2PRFIN20111013_181916_000000463107_00300_50314_6645.N1	13-OCT-2011 18:19:16	Bright	45.500	73	57Gam1And	2.2600	13100.	91	50314	No
13	GOM_NL__2PRFIN20111013_182434_000000293107_00300_50314_6646.N1	13-OCT-2011 18:24:34	Twilight	28.500	160	23Gam Per	2.9300	4700.0	57	50314	No
14	GOM_NL__2PRFIN20111013_195929_000000463107_00301_50315_6713.N1	13-OCT-2011 19:59:29	Bright	46.000	73	57Gam1And	2.2600	13100.	92	50315	No
15	GOM_NL__2PRFIN20111013_200447_000000293107_00301_50315_6714.N1	13-OCT-2011 20:04:47	Twilight	28.500	160	23Gam Per	2.9300	4700.0	57	50315	No
16	GOM_NL__2PRFIN20111013_213942_000000463107_00302_50316_6719.N1	13-OCT-2011 21:39:42	Bright	46.000	73	57Gam1And	2.2600	13100.	92	50316	No
17	GOM_NL__2PRFIN20111013_214500_000000333107_00302_50316_6720.N1	13-OCT-2011 21:45:00	Twilight	32.500	160	23Gam Per	2.9300	4700.0	65	50316	No
18	GOM_NL__2PRFIN20111013_231955_000000483107_00303_50317_6732.N1	13-OCT-2011 23:19:55	Bright	47.500	73	57Gam1And	2.2600	13100.	95	50317	No
19	GOM_NL__2PRFIN20111013_232513_000000333107_00303_50317_6733.N1	13-OCT-2011 23:25:13	Twilight	32.500	160	23Gam Per	2.9300	4700.0	65	50317	No

3. Quality information per product

In this section it is plotted some information contained in the Quality Summary data set of the level 2 products. Only products in dark limb conditions and without errors (error flag in the MPH set to "0") are used.

3.1 Plot quality information per product (time dependant)

4. Level 1 quality information per product

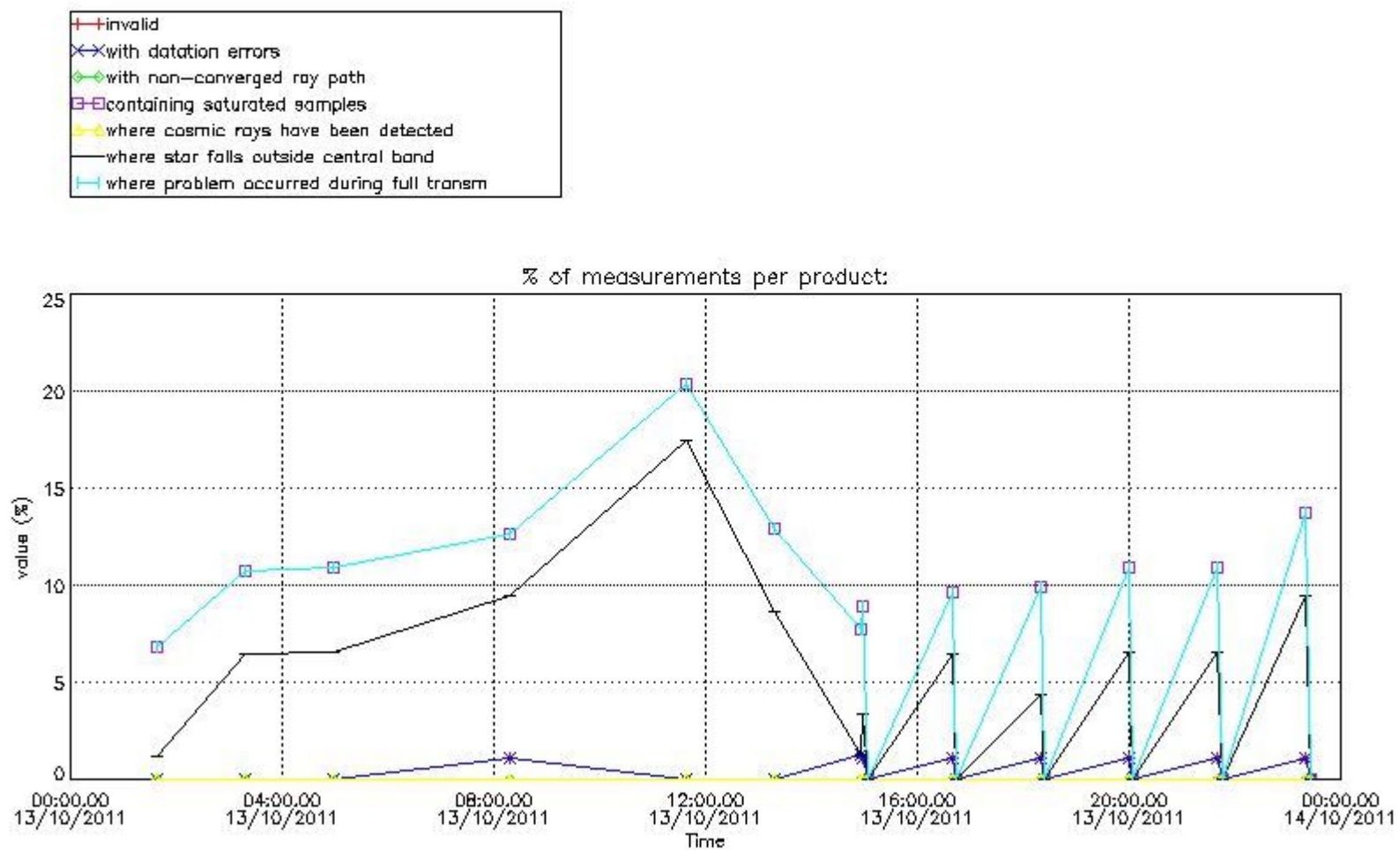
In this section it is plotted some information contained in the Quality Summary data set of the level 2 products that comes from the level 1b processing. Products without errors (error flag in the MPH set to "0") are used.

4.1 Plot quality information per product (time dependant) coming from level 1b processing

4.1.1 Plot level 1 quality information per product (time dependant): ENVISAT ASCENDING passes

!Warning: No products without errors in ascending found

4.1.2 Plot level 1 quality information per product (time dependant): ENVISAT DESCENDING passes



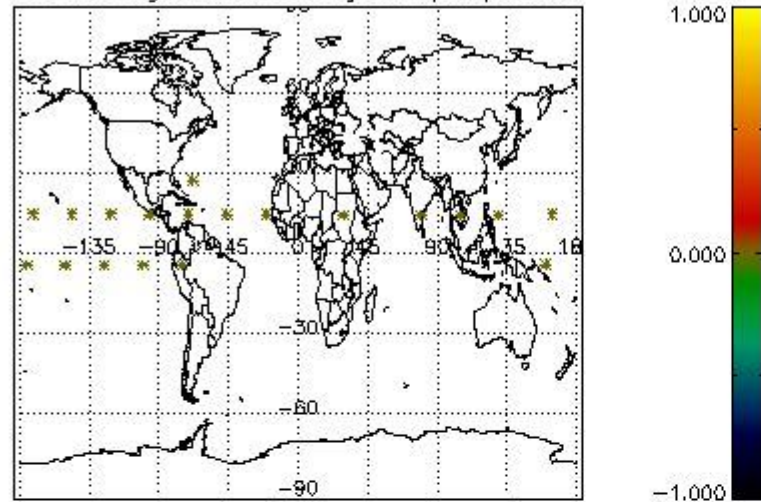
4.2 Plot quality information per product coming from level 1b processing (world map)

4.2.1 Plot level 1 quality information per product (world map): ENVISAT ASCENDING passes

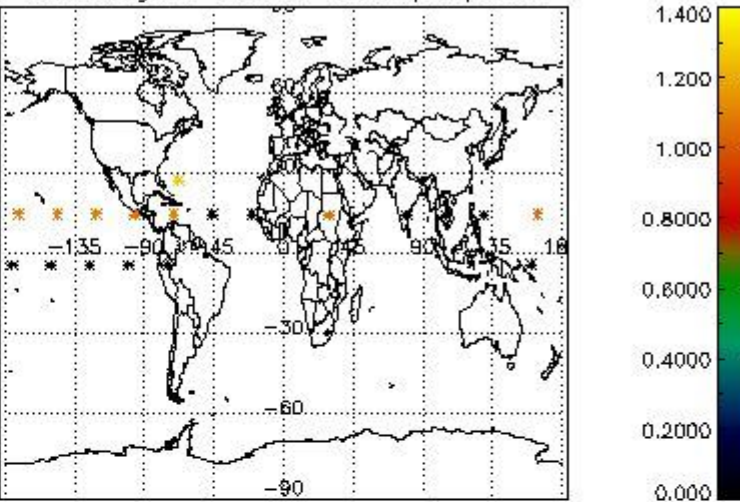
!Warning: No products without errors in ascending found

4.2.2 Plot level 1 quality information per product (world map): ENVISAT DESCENDING passes

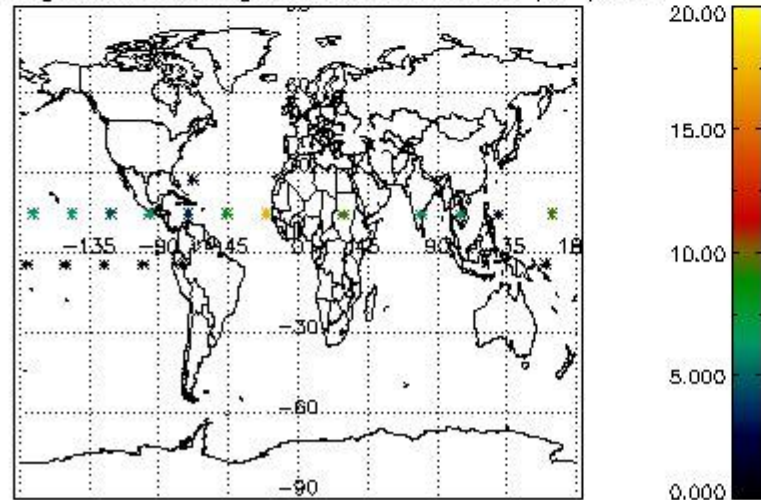
Percentage of cosmic ray hits per profile



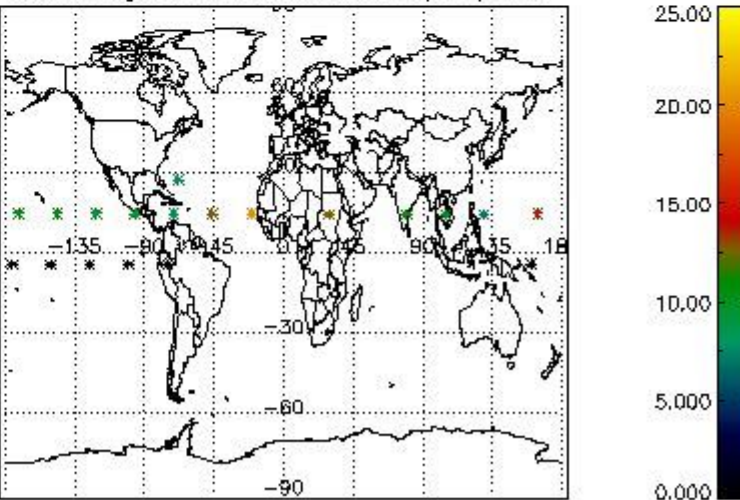
Percentage of datation errors per profile



Percentage of star falling outside central band per profile



Percentage of saturation errors per profile



6. Auxiliary Data Files used for the production reported in section 2

The number reported in the third column indicates since which file (see list in section 2) the corresponding auxiliary file has been used. The fourth column is the date of those product files.

Type	Auxiliary Filename	Used since product	Used since product date
INST_PHYS_CHARACTERISTICS	GOM_INS_AXVIEC20091111_143220_20030716_120000_20500101_000000	1	13-OCT-2011 01:37:02
LEVEL-2_PROC_CONFIG	GOM_PR2_AXVIEC20091111_152718_20020301_000000_20500101_000000	1	13-OCT-2011 01:37:02
CROSS_SECTIONS_FILE	GOM_CR2_AXVIEC20091111_154832_20020301_000000_20500101_000000	1	13-OCT-2011 01:37:02

GOMOS Level 2 Daily Report

SUMMARY

[1. General Info](#)

[2. Summary of processed GOM_NL_2P products](#)

[3. Level 2 Quality information per product](#)

[3.1 Plot of level 2 quality information per product \(time dependant\)](#)

[3.2 Plot of level 2 quality information per product \(world map\)](#)

[4. Level 1 Quality information per product \(stored on level 2 products\)](#)

[4.1 Plot of level 1 quality information per product \(time dependant\)](#)

[4.1.1 Plot of level 1 quality information per product \(time dependant\): ASCENDING](#)

[4.1.2 Plot of level 1 quality information per product \(time dependant\): DESCENDING](#)

[4.2 Plot of level 1 quality information per product \(world map\)](#)

[4.2.1 Plot of level 1 quality information per product \(world map\): ASCENDING](#)

[4.2.2 Plot of level 1 quality information per product \(world map\): DESCENDING](#)

[5. Ozone profiles based on quality statistics and other trace gas profiles](#)

[5.1 Ozone statistics based on quality of products](#)

[5.2 Plot ozone profiles for all STD \(dark without errors\)](#)

[5.3 Plot ozone profiles where STD < 20% \(dark without errors\)](#)

[5.4. Plot ozone profiles where STD < 10% \(dark without errors\)](#)

[5.5. Plot ozone profiles where STD < 5% \(dark without errors\)](#)

[5.6 Plot NO2 profiles for all STD \(dark without errors\)](#)

[5.7 Plot NO3 profiles for all STD \(dark without errors\)](#)

[5.8 Plot H2O profiles \(only for occultations of stars 1,2,3,4,13,14,16,26,63 dark without errors\) for all STD](#)

[6. Auxiliary Data Files used for the production reported in section 2](#)

This report presents the daily analysis on parameters extracted from GOMOS level 2 data (GOM_NL__2P). It is intended to monitor some important parameters that will impact the quality of these products. A list of level 2 products (and content) that have arrived during the reporting day to the PCF is also given.

Item	Value
Time of report generation	24APR2013 17:57:31
Data source version	GOMOS/6.01
Start time of products	13-10-2011 (13OCT2011 00:00:00)
Stop time of products	14-10-2011 (14OCT2011 00:00:00)
Store outputs in DB	Yes
Nb of level 2 prods	19
Nb of prods with errors	0

2. Summary of processed GOM_NL__2P products.

!Warning: No products without errors in DARK limb contitions found

Nr	Filename	UTC Start time	Limb	Duration	Star Id	Star Name	Star Mag	Star Temp	Nb Meas	Orbit	Prod. error
1	GOM_NL__2PRFIN20111013_013702_000000443107_00290_50304_6366.N1	13-OCT-2011 01:37:02	Bright	44.000	73	57Gam1And	2.2600	13100.	88	50304	No
2	GOM_NL__2PRFIN20111013_031716_000000473107_00291_50305_6385.N1	13-OCT-2011 03:17:16	Bright	46.500	73	57Gam1And	2.2600	13100.	93	50305	No
3	GOM_NL__2PRFIN20111013_045729_000000463107_00292_50306_6395.N1	13-OCT-2011 04:57:29	Bright	46.000	73	57Gam1And	2.2600	13100.	92	50306	No
4	GOM_NL__2PRFIN20111013_081756_000000483107_00294_50308_6430.N1	13-OCT-2011 08:17:56	Bright	47.500	73	57Gam1And	2.2600	13100.	95	50308	No
5	GOM_NL__2PRFIN20111013_113822_000000523107_00296_50310_6520.N1	13-OCT-2011 11:38:22	Bright	51.500	73	57Gam1And	2.2600	13100.	103	50310	No
6	GOM_NL__2PRFIN20111013_131836_000000473107_00297_50311_6557.N1	13-OCT-2011 13:18:36	Bright	46.500	73	57Gam1And	2.2600	13100.	93	50311	No
7	GOM_NL__2PRFIN20111013_145516_000000393107_00298_50312_6584.N1	13-OCT-2011 14:55:16	Bright	39.000	53	43Bet And	2.0480	3300.0	78	50312	No
8	GOM_NL__2PRFIN20111013_145849_000000453107_00298_50312_6585.N1	13-OCT-2011 14:58:49	Bright	45.000	73	57Gam1And	2.2600	13100.	90	50312	No
9	GOM_NL__2PRFIN20111013_150407_000000253107_00298_50312_6586.N1	13-OCT-2011 15:04:07	Twilight	24.500	160	23Gam Per	2.9300	4700.0	49	50312	No
10	GOM_NL__2PRFIN20111013_163902_000000473107_00299_50313_6615.N1	13-OCT-2011 16:39:02	Bright	46.500	73	57Gam1And	2.2600	13100.	93	50313	No
11	GOM_NL__2PRFIN20111013_164421_000000253107_00299_50313_6616.N1	13-OCT-2011 16:44:21	Twilight	24.500	160	23Gam Per	2.9300	4700.0	49	50313	No
12	GOM_NL__2PRFIN20111013_181916_000000463107_00300_50314_6645.N1	13-OCT-2011 18:19:16	Bright	45.500	73	57Gam1And	2.2600	13100.	91	50314	No
13	GOM_NL__2PRFIN20111013_182434_000000293107_00300_50314_6646.N1	13-OCT-2011 18:24:34	Twilight	28.500	160	23Gam Per	2.9300	4700.0	57	50314	No
14	GOM_NL__2PRFIN20111013_195929_000000463107_00301_50315_6713.N1	13-OCT-2011 19:59:29	Bright	46.000	73	57Gam1And	2.2600	13100.	92	50315	No
15	GOM_NL__2PRFIN20111013_200447_000000293107_00301_50315_6714.N1	13-OCT-2011 20:04:47	Twilight	28.500	160	23Gam Per	2.9300	4700.0	57	50315	No
16	GOM_NL__2PRFIN20111013_213942_000000463107_00302_50316_6719.N1	13-OCT-2011 21:39:42	Bright	46.000	73	57Gam1And	2.2600	13100.	92	50316	No
17	GOM_NL__2PRFIN20111013_214500_000000333107_00302_50316_6720.N1	13-OCT-2011 21:45:00	Twilight	32.500	160	23Gam Per	2.9300	4700.0	65	50316	No
18	GOM_NL__2PRFIN20111013_231955_000000483107_00303_50317_6732.N1	13-OCT-2011 23:19:55	Bright	47.500	73	57Gam1And	2.2600	13100.	95	50317	No
19	GOM_NL__2PRFIN20111013_232513_000000333107_00303_50317_6733.N1	13-OCT-2011 23:25:13	Twilight	32.500	160	23Gam Per	2.9300	4700.0	65	50317	No

3. Quality information per product

In this section it is plotted some information contained in the Quality Summary data set of the level 2 products. Only products in dark limb conditions and without errors (error flag in the MPH set to "0") are used.

3.1 Plot quality information per product (time dependant)

4. Level 1 quality information per product

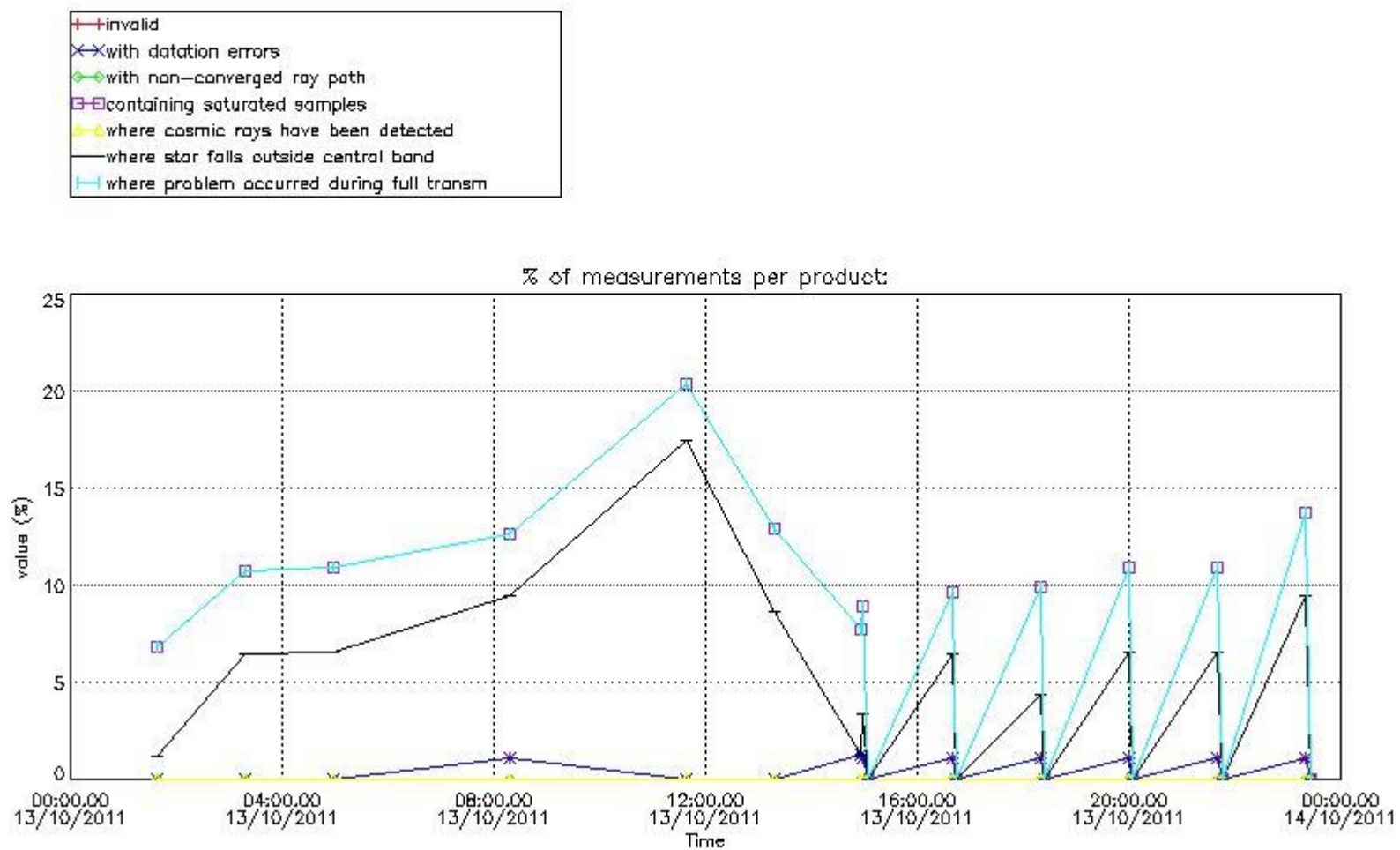
In this section it is plotted some information contained in the Quality Summary data set of the level 2 products that comes from the level 1b processing. Products without errors (error flag in the MPH set to "0") are used.

4.1 Plot quality information per product (time dependant) coming from level 1b processing

4.1.1 Plot level 1 quality information per product (time dependant): ENVISAT ASCENDING passes

!Warning: No products without errors in ascending found

4.1.2 Plot level 1 quality information per product (time dependant): ENVISAT DESCENDING passes



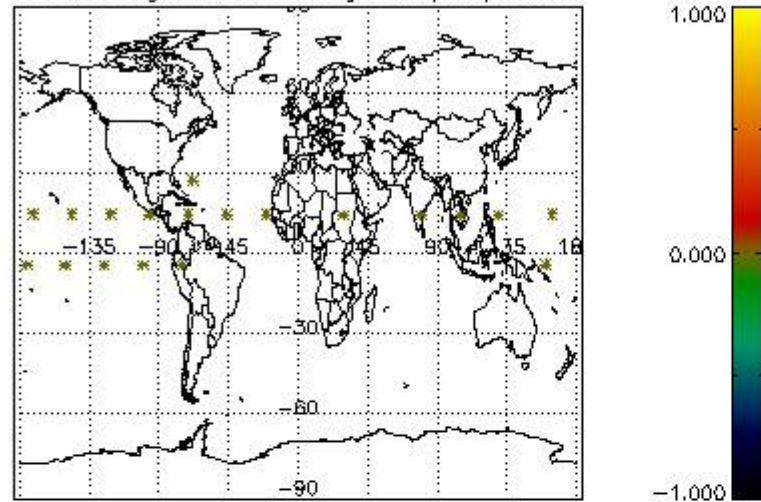
4.2 Plot quality information per product coming from level 1b processing (world map)

4.2.1 Plot level 1 quality information per product (world map): ENVISAT ASCENDING passes

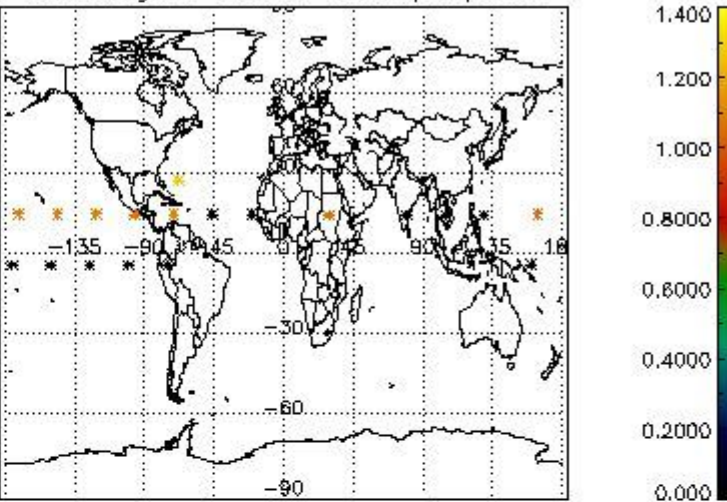
!Warning: No products without errors in ascending found

4.2.2 Plot level 1 quality information per product (world map): ENVISAT DESCENDING passes

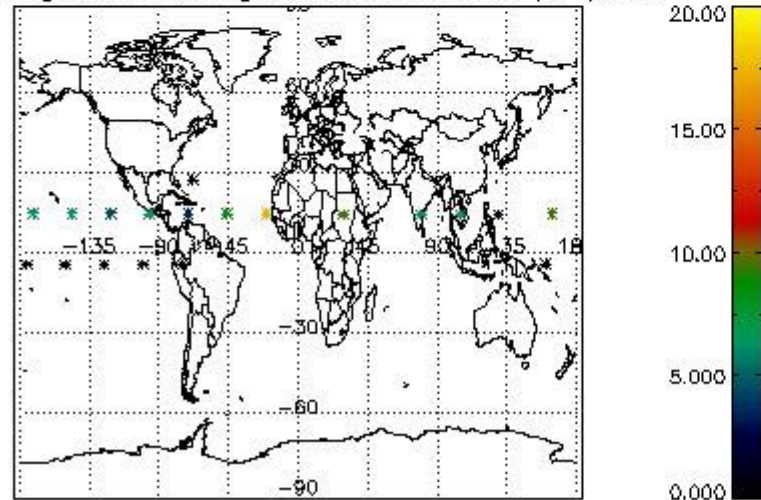
Percentage of cosmic ray hits per profile



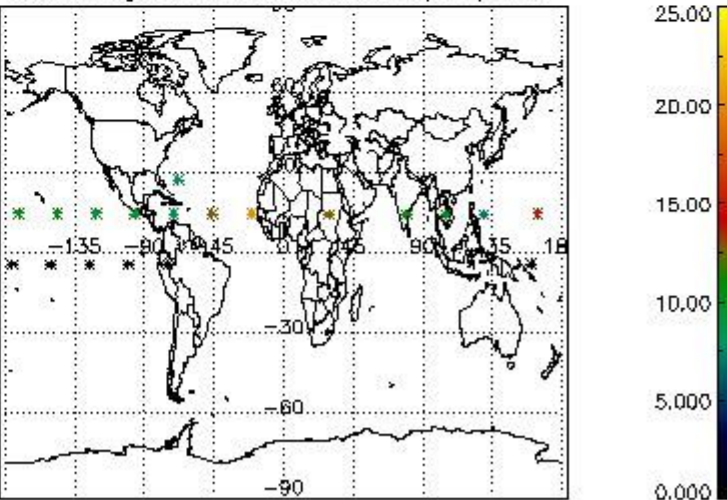
Percentage of datation errors per profile



Percentage of star falling outside central band per profile



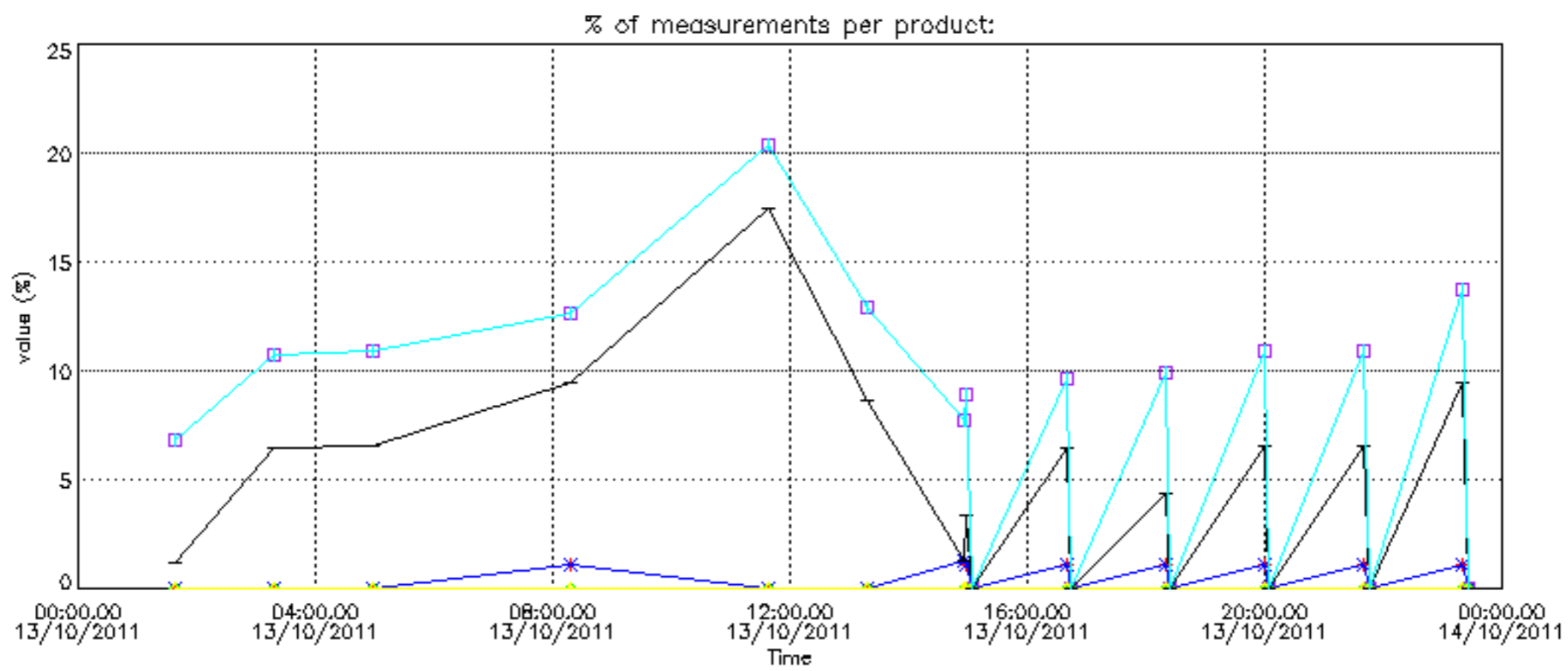
Percentage of saturation errors per profile



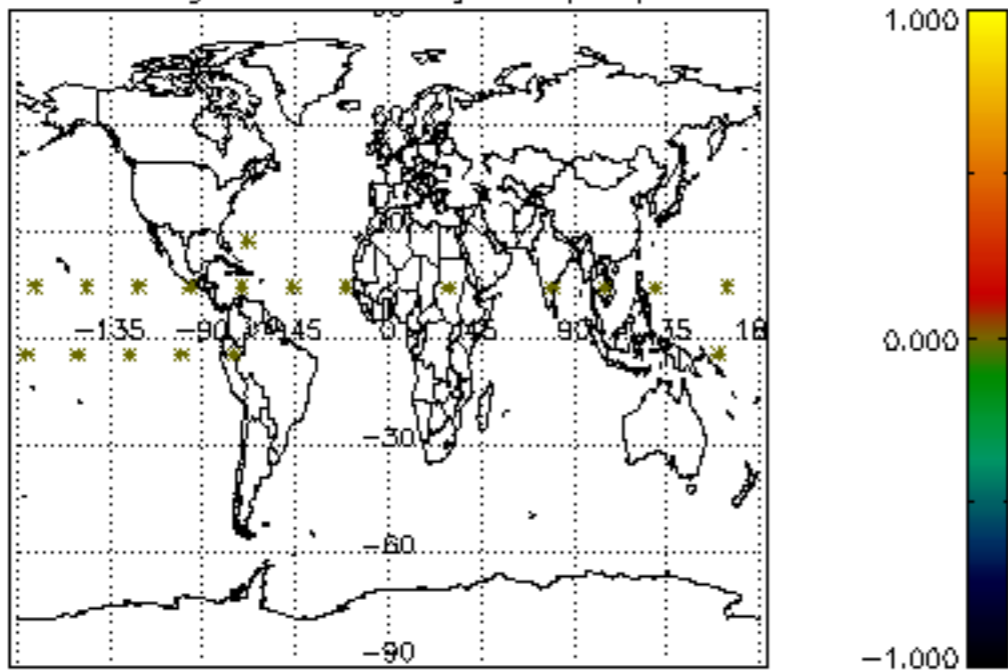
6. Auxiliary Data Files used for the production reported in section 2

The number reported in the third column indicates since which file (see list in section 2) the corresponding auxiliary file has been used. The fourth column is the date of those product files.

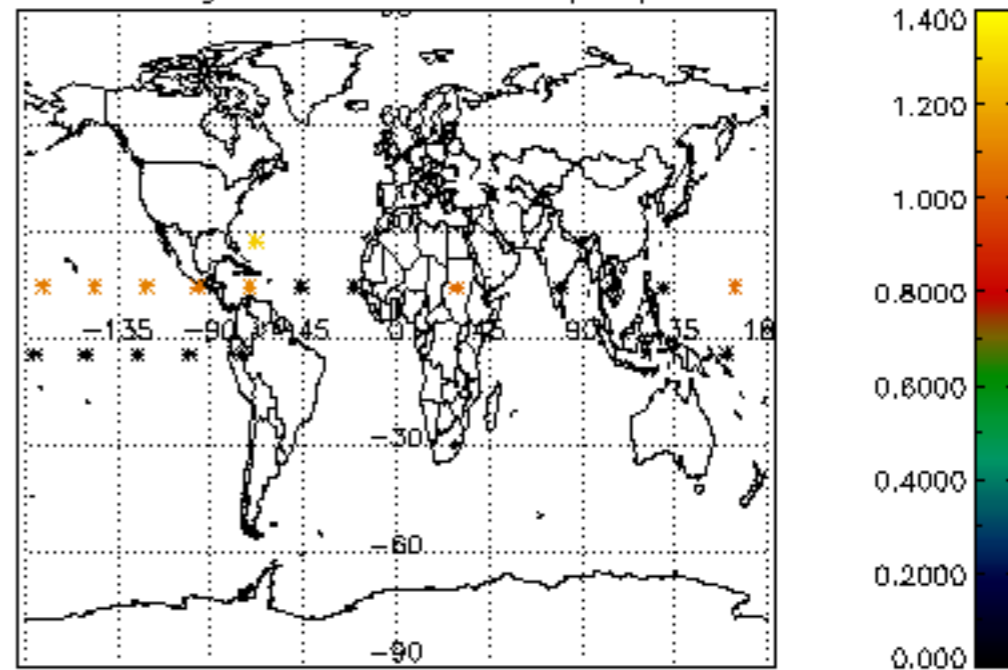
Type	Auxiliary Filename	Used since product	Used since product date
INST_PHYS_CHARACTERISTICS	GOM_INS_AXVIEC20091111_143220_20030716_120000_20500101_000000	1	13-OCT-2011 01:37:02
LEVEL-2_PROC_CONFIG	GOM_PR2_AXVIEC20091111_152718_20020301_000000_20500101_000000	1	13-OCT-2011 01:37:02
CROSS_SECTIONS_FILE	GOM_CR2_AXVIEC20091111_154832_20020301_000000_20500101_000000	1	13-OCT-2011 01:37:02



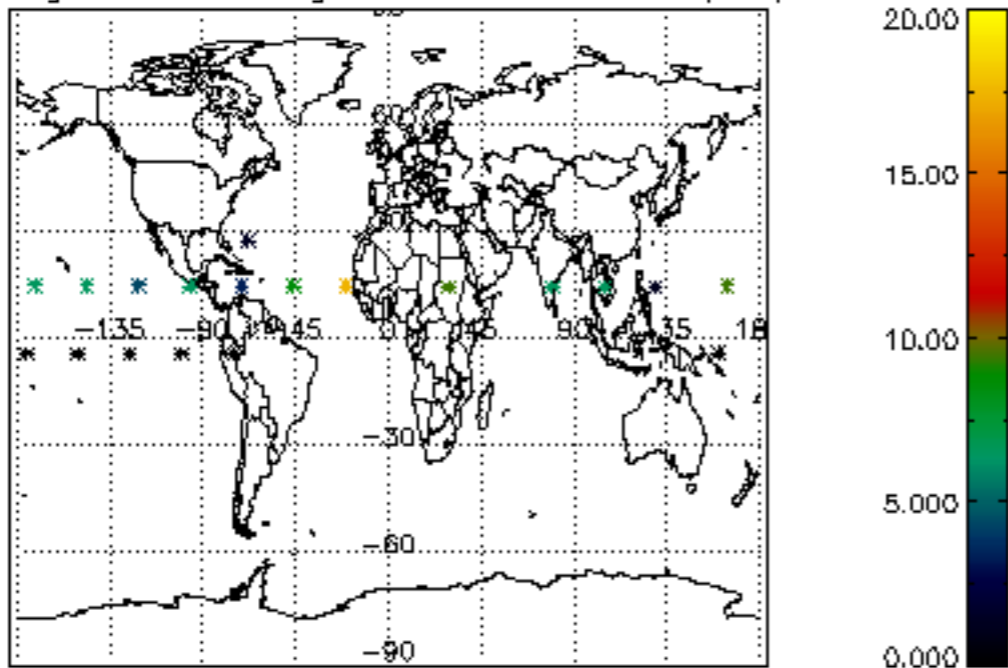
Percentage of cosmic ray hits per profile



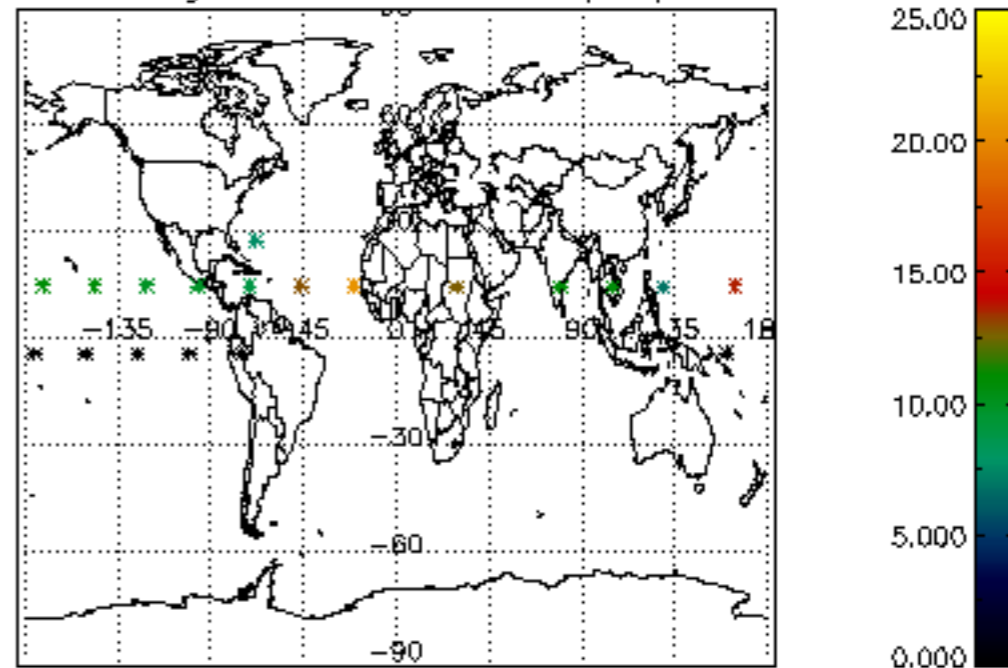
Percentage of datation errors per profile

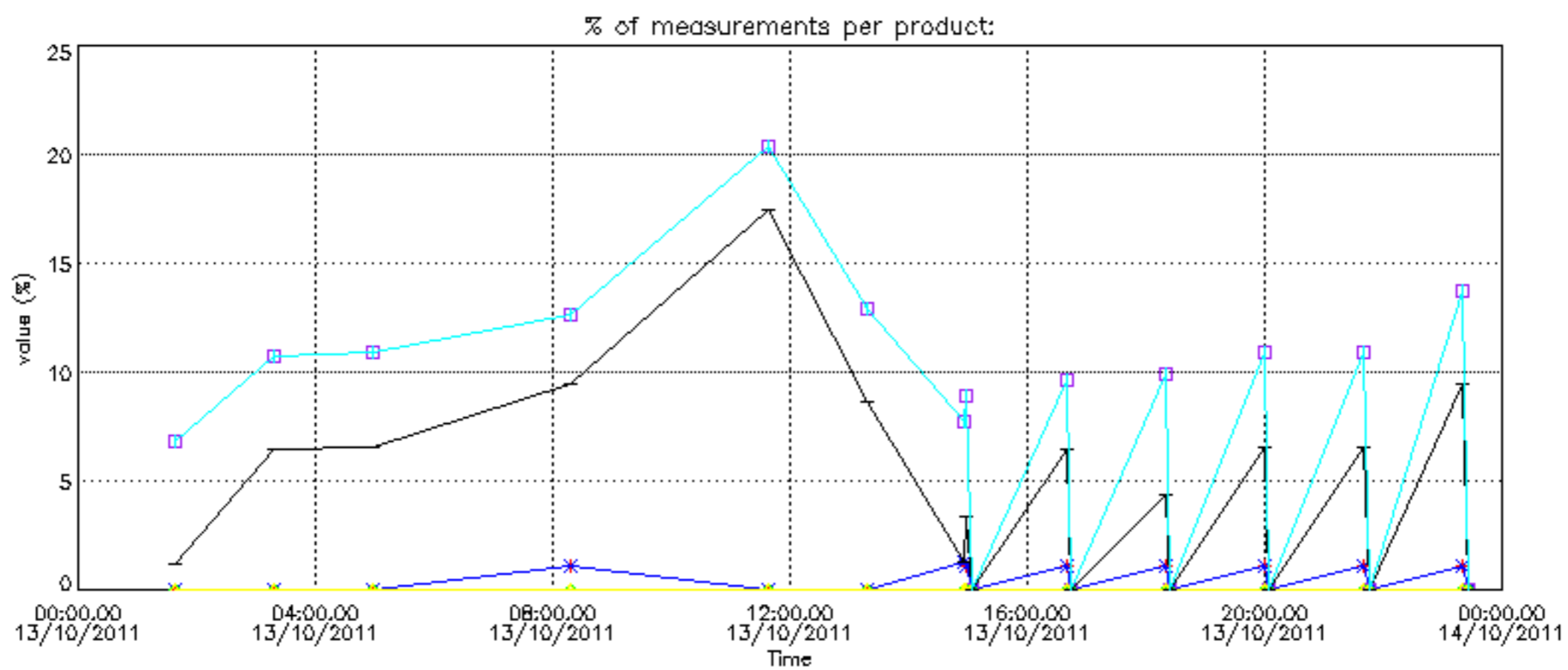
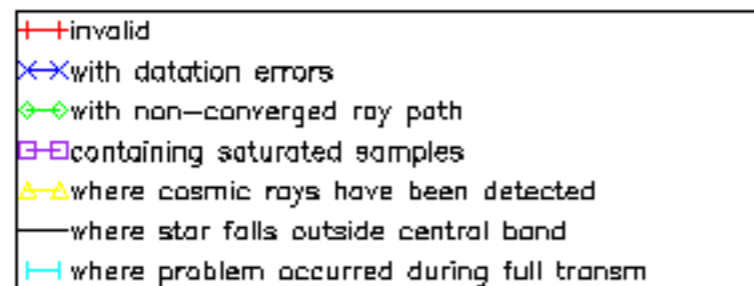


Percentage of star falling outside central band per profile

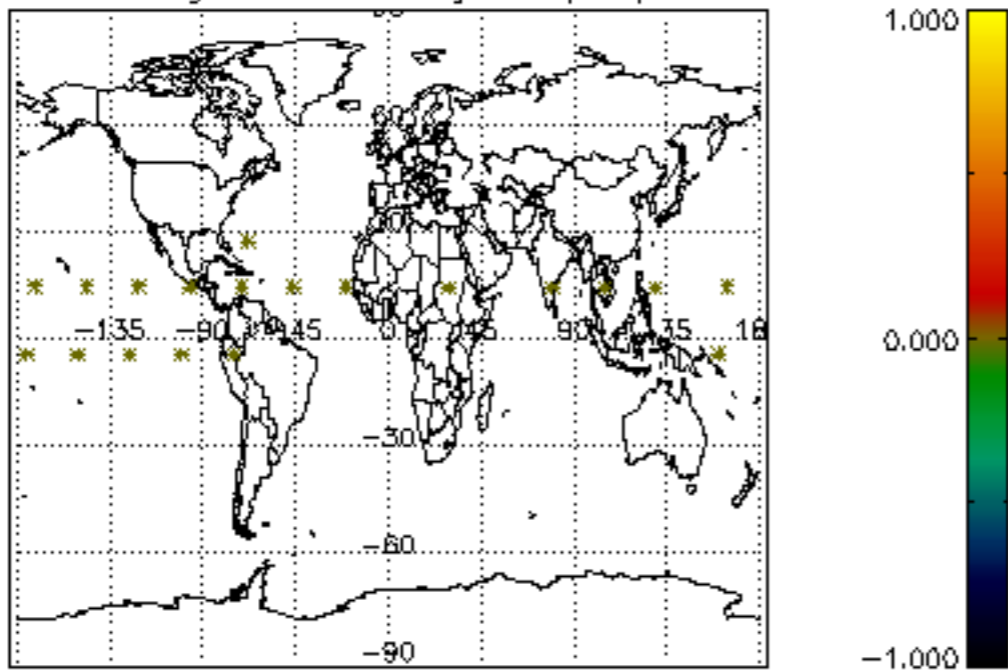


Percentage of saturation errors per profile

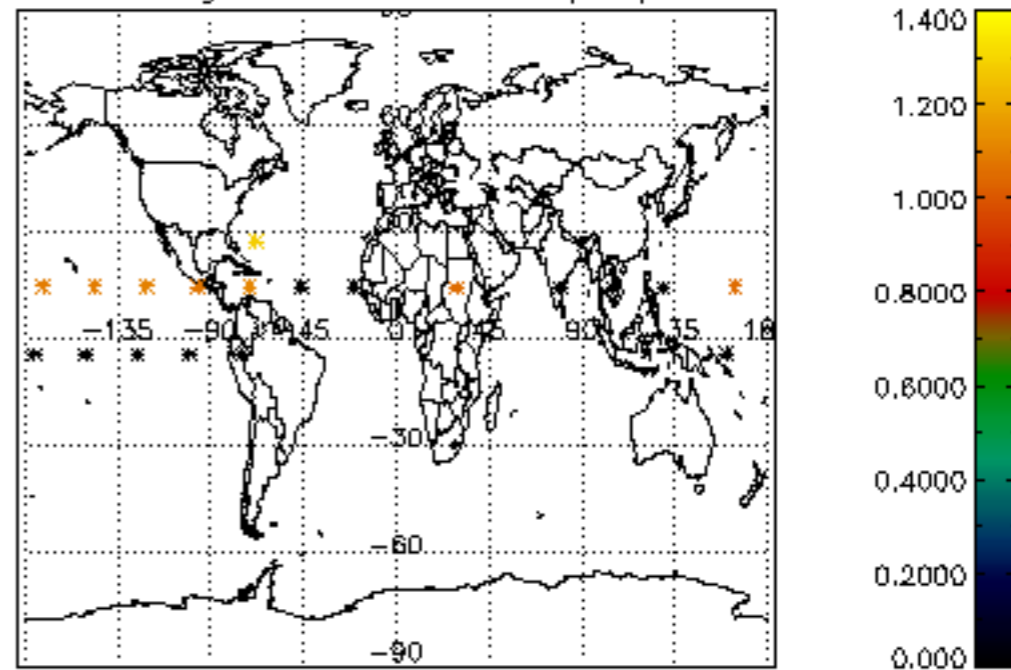




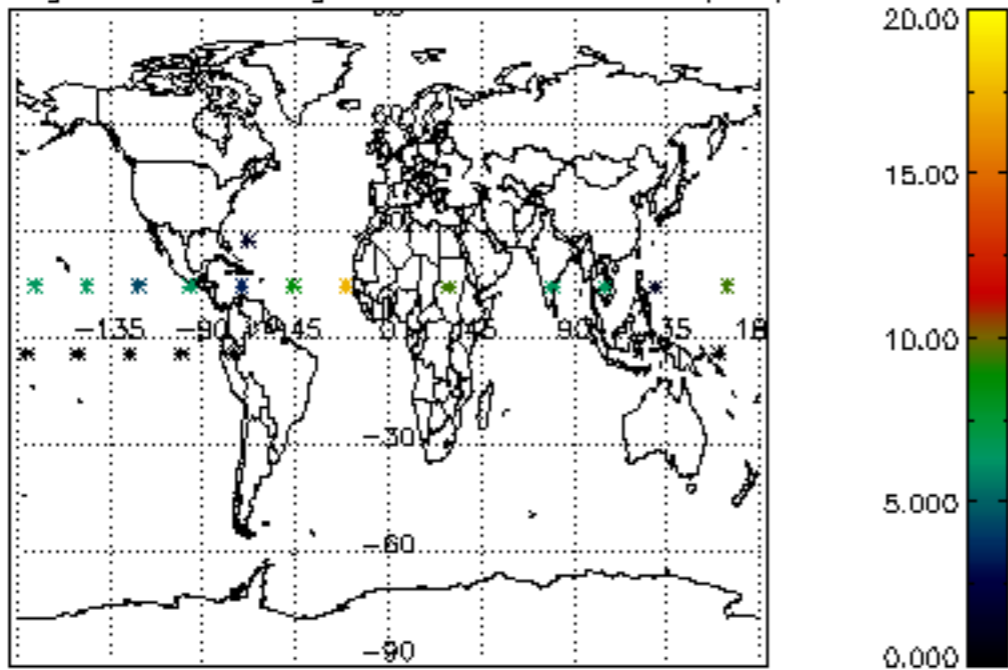
Percentage of cosmic ray hits per profile



Percentage of datation errors per profile



Percentage of star falling outside central band per profile



Percentage of saturation errors per profile

