

# GOMOS Daily Report 22-MAR-2012

## Level 0 and Level 1 products

### SUMMARY

#### [1. General Info](#)

#### [2. Summary of products arrived in PCF \(Product Control Facility\)](#)

[2.1 Level 0: products arrived in PCF during current month \(see template here\)](#)

[2.2 Level 0: plot of mission plan versus production during reporting period](#)

[2.3 Level 0: summary of missing occultations with respect to the plan](#)

[2.4 Level 1: products arrived in PCF during reporting period](#)

#### [3. Plot of Spectrometers and Photometers temperatures](#)

#### [4. Dark Charge monitoring](#)

[4.1 Products that did not use the Dark Sky Area observation for DC computation](#)

[4.2 Plot of Dark Charge](#)

#### [5. Demodulation correction and quality product information monitoring](#)

[5.1 Percentage of products with some flags set](#)

[5.2 Plot of quality information per product \(time dependant\)](#)

[5.3 Plot of quality information per product \(world map\)](#)

#### [6. Star tangent altitude lost](#)

[6.1 Statistics on star tangent altitude lost](#)

[6.2 Plot of star tangent altitude lost: DARK products](#)

[6.3 Plot of star tangent altitude lost: BRIGHT products](#)

[6.3 Plot of star tangent altitude lost: TWILIGHT products](#)

#### [7. Star Acquisition and Tracking Unit \(SATU\)](#)

[7.1 SATU plots \(dark limb\): 'X' and 'Y' axis](#)

[7.2 SATU Noise Equivalent Angle statistics](#)

[7.2.1 SATU NEA Statistics \(table\)](#)

[7.2.2 Daily SATU NEA STD \(dark limb\) - trend since 1st April 2006](#)

[8. Auxiliary Data Files used for the production reported in section 2.4](#)

## [Level 2 products](#)

---

This report presents the daily analysis on parameters extracted from GOMOS level 1b data (GOM\_TRA\_1P). It is intended to monitor some important parameters that will impact the quality of the level 2 products as the Spectrometers and Photometers CCD Temperatures and Dark Charge, SATU noise equivalent angle... A list of level 0 products (and content) that have arrived during the actual month to the PCF is also given.

Item	Value
Time of report generation	24MAR2012 07:00:36
Data source version	GOMOS/6.01
Start time of products	22MAR2012 16:39:39
Stop time of products	22MAR2012 23:20:34
Store outputs in DB	Yes
Nb of level 1b prods	5
Nb of prods with errors	0

## 2. Summary of products arrived in PCF (Product Control Facility)

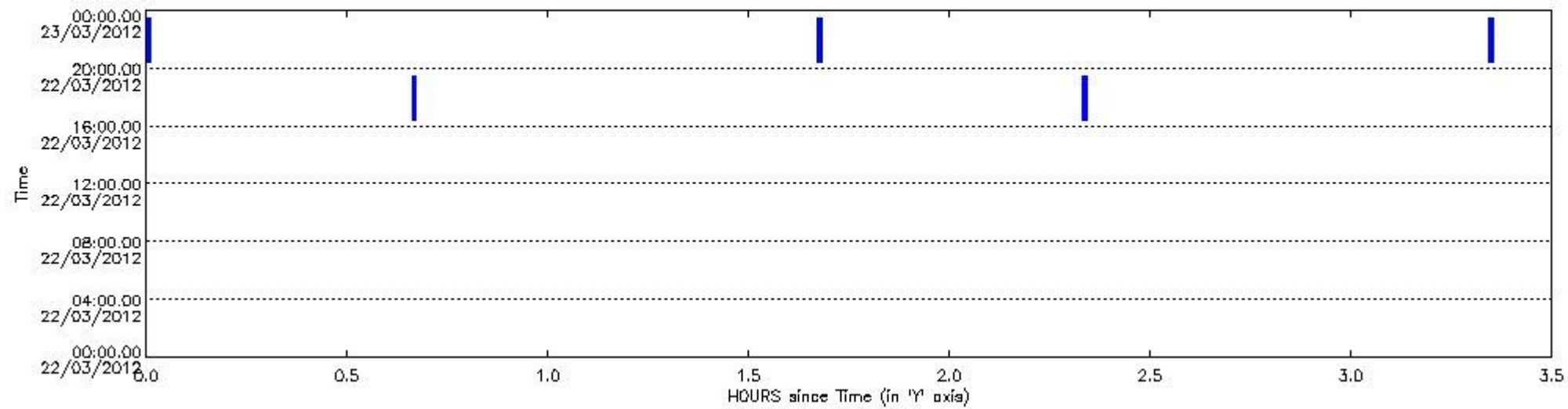
### 2.1 Level 0 products arrived in PCF (see template [here](#))

### 2.2 Plot of mission plan versus Level 0 production arrived in PCF during reporting period

Red segments are missing products.

Blue segments are available products.

Green segments are calibration measurements (not available products to users).



### 2.3 Summary of missing occultations (red segments in previous plot)

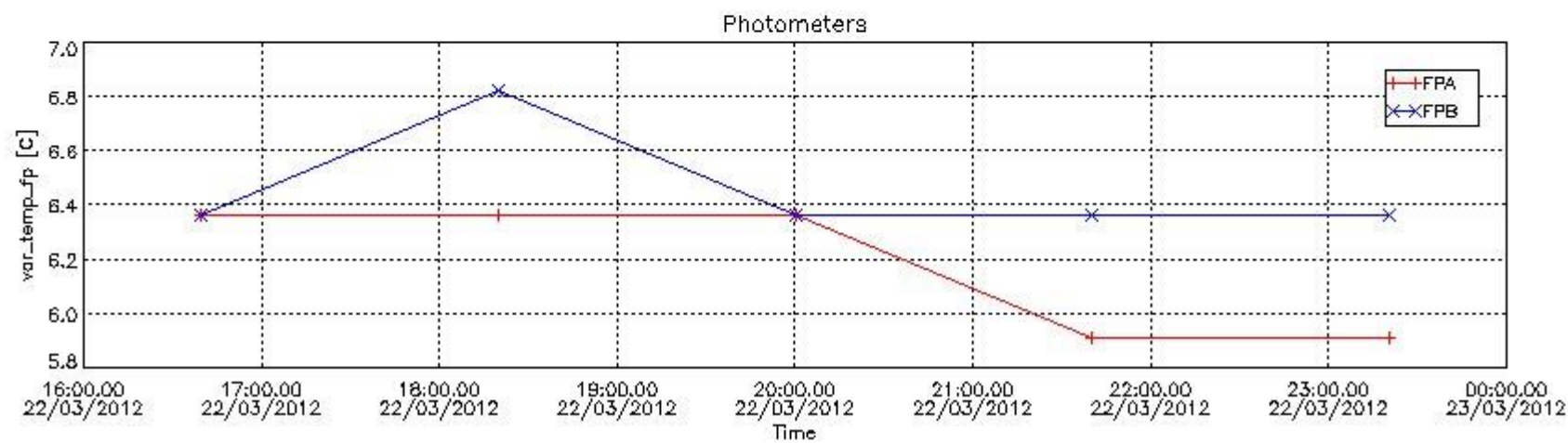
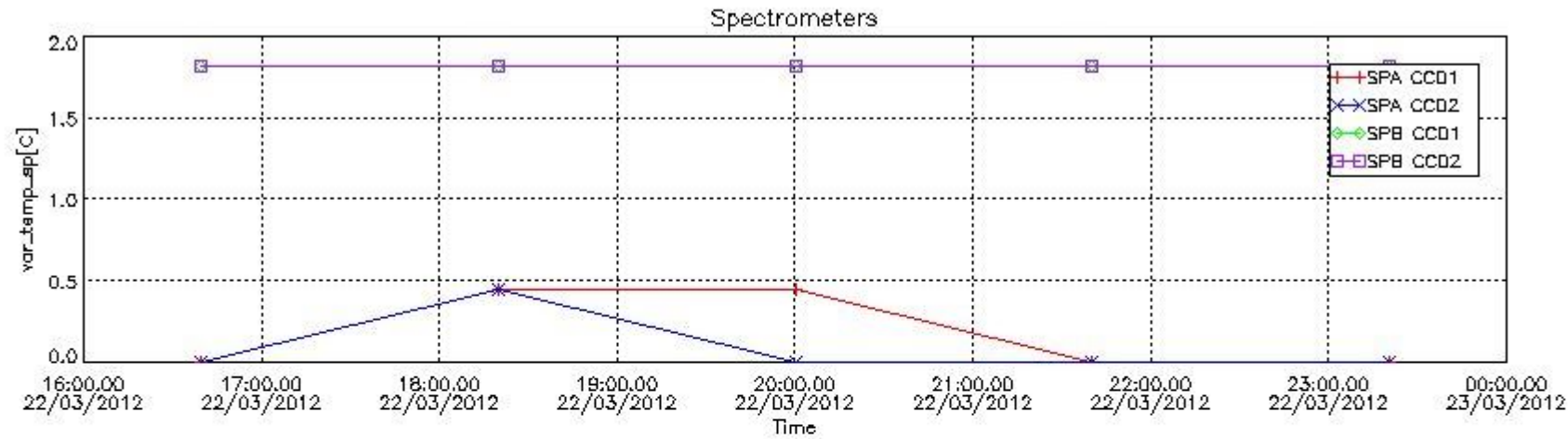
No missing products.

### 2.4 Summary of processed GOM\_TRA\_1P products

**!Warning: No products without errors in DARK limb conditions found**

Nr	Filename	UTC Start time	Limb	Duration	Star Id	Star Name	Star Mag	Star Temp	Nb Meas	Orbit	Prod. error
1	GOM_TRA_1PNPDK20120322_163939_000000383113_00026_52626_7966.N1	22-MAR-2012 16:39:39	Bright	37.500	36	50Alp UMa	1.8000	6300.0	75	52626	No
2	GOM_TRA_1PNPDK20120322_181952_000000373113_00027_52627_8000.N1	22-MAR-2012 18:19:52	Bright	37.000	36	50Alp UMa	1.8000	6300.0	74	52627	No
3	GOM_TRA_1PNPDK20120322_200006_000000373113_00028_52628_8031.N1	22-MAR-2012 20:00:06	Bright	36.500	36	50Alp UMa	1.8000	6300.0	73	52628	No
4	GOM_TRA_1PNPDE20120322_214020_000000383113_00029_52629_1963.N1	22-MAR-2012 21:40:20	Bright	37.500	36	50Alp UMa	1.8000	6300.0	75	52629	No
5	GOM_TRA_1PNPDE20120322_232034_000000363113_00030_52630_2000.N1	22-MAR-2012 23:20:34	Bright	36.000	36	50Alp UMa	1.8000	6300.0	72	52630	No

## 3. Plot of GOMOS spectrometers and photometers temperatures from level 1b data



#### 4. Overview of dark signal processing per product

The Dark Charge (DC) is a temperature-dependant signal added to the useful measurements and it is therefore subtracted from them during the processing. There are two phenomena that produce a continuous increase of the DC: the "hot pixels" (a pixel is "hot" when its DC exceeds by a significant amount its value measured on ground at the same temperature) and the "Random Telegraphic Signal" (abrupt change positive or negative of the CCD pixel signal, random in time, affecting only the DC part of the signal and not the photon generated signal).

In this section a list of products that did not use the Dark Sky Area (DSA) observation for the DC computation is given. It is also provided the mean DC plot per product for dark limb products with no error flag set.

##### 4.1 These products did not use the DSA observation for DC computation:

Product name	DC information
GOM_TRA_1PNPDK20120322_163939_000000383113_00026_52626_7966.N1	DC map used
GOM_TRA_1PNPDK20120322_181952_000000373113_00027_52627_8000.N1	DC map used
GOM_TRA_1PNPDK20120322_200006_000000373113_00028_52628_8031.N1	DC map used
GOM_TRA_1PNPDE20120322_214020_000000383113_00029_52629_1963.N1	DC map used
GOM_TRA_1PNPDE20120322_232034_000000363113_00030_52630_2000.N1	DC map used

##### 4.2 Plot of mean dark charges per product: only products in DARK limb conditions without errors are used

No products without errors in DARK limb conditions found. No plot performed.

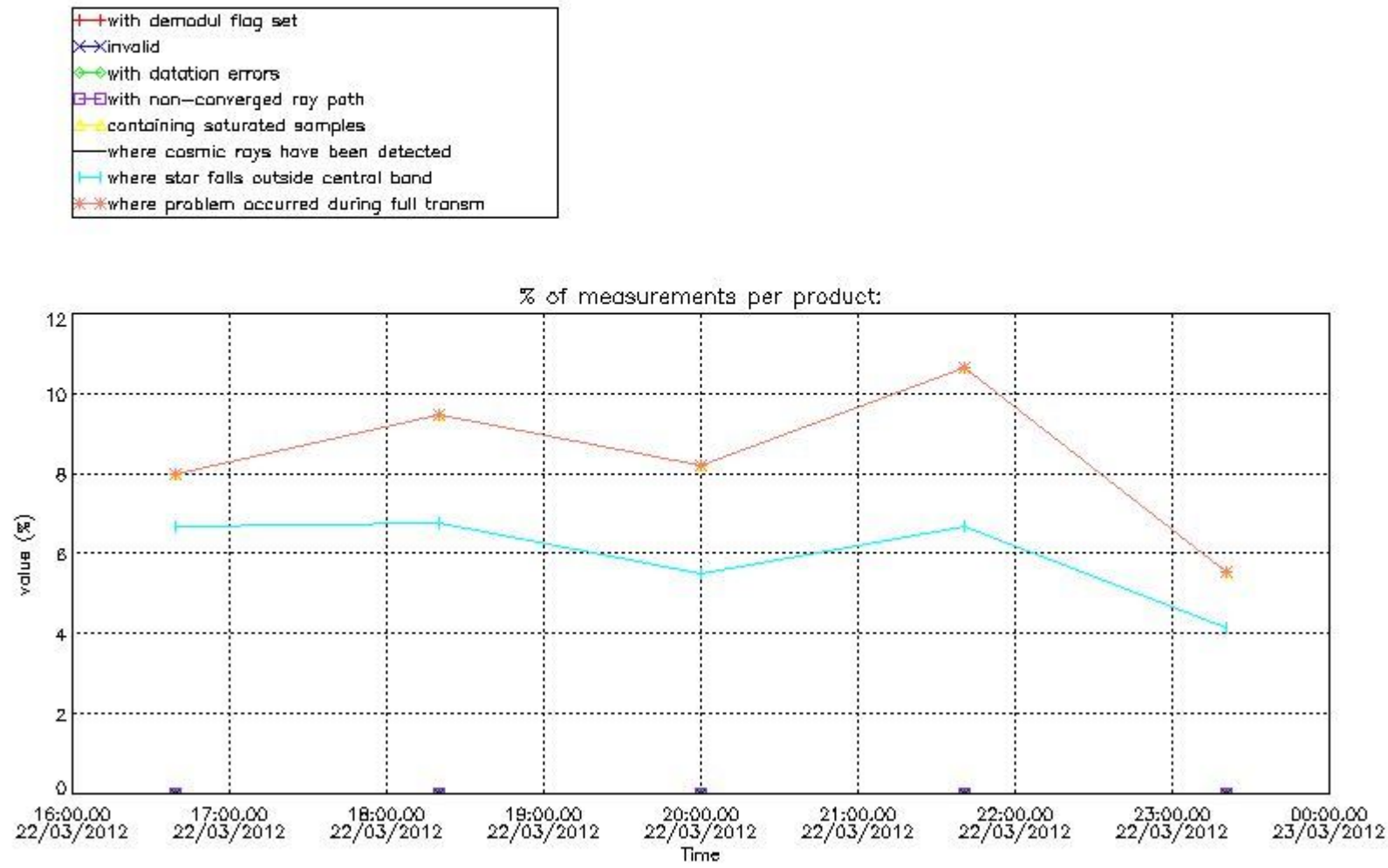
#### 5. Demodulation flag and quality information monitoring

In this section it is presented the modulation information extracted from the pcd (product confidence data) at measurement level and information extracted from the Quality Summary dataset. Only products without errors (error flag in the MPH set to "0") are used.

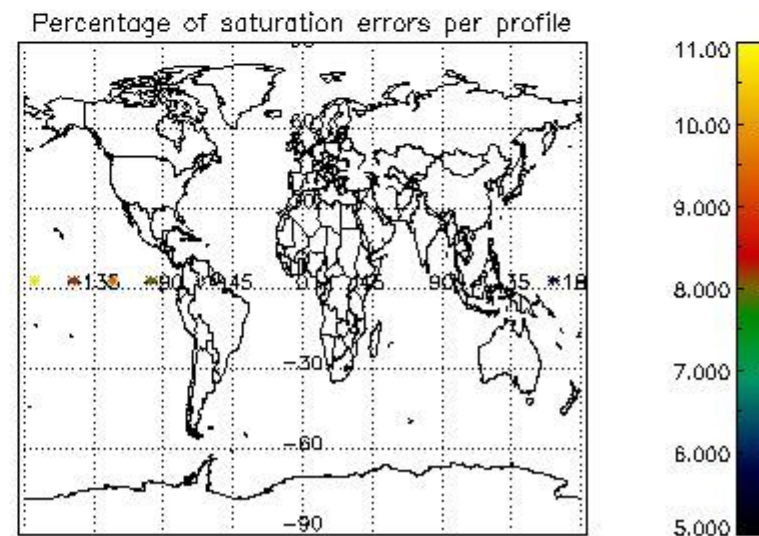
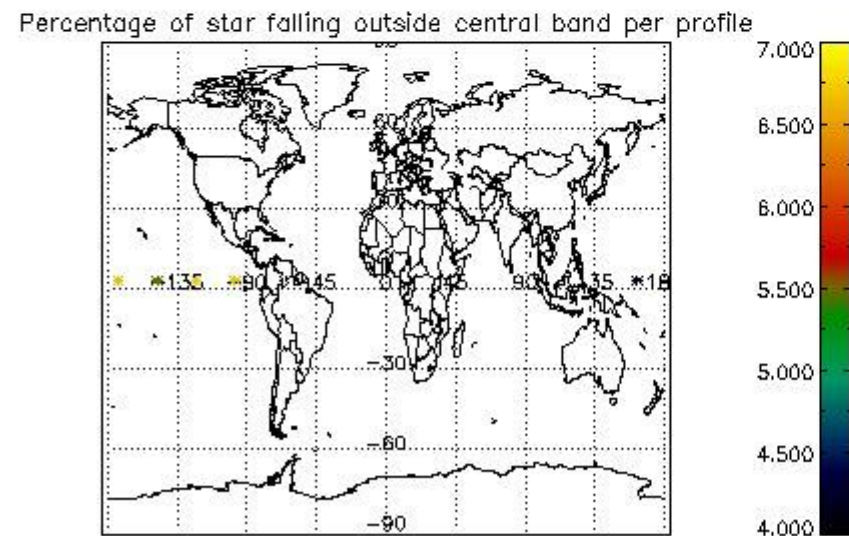
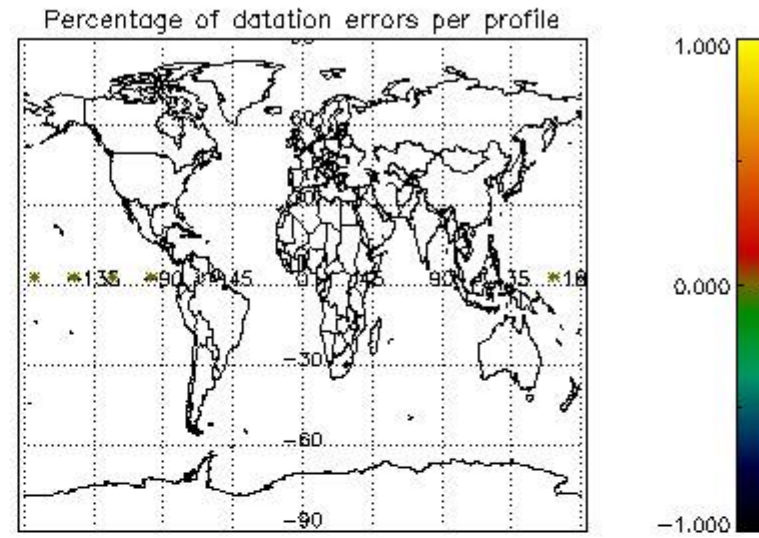
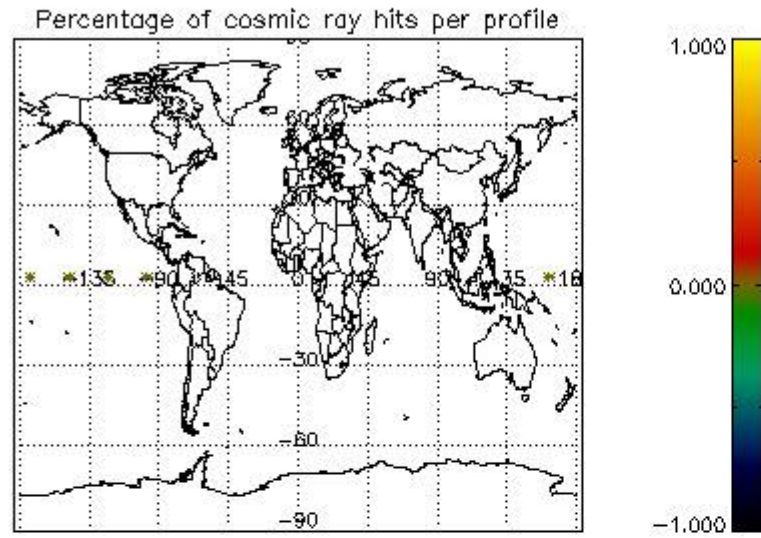
5.1 Percentage of products during reporting period with:

At least one measurement with demodulation flag set:	0.00000 %
Reference spectrum computed from DB:	0.00000 %
Reference spectrum with small number of measurements:	0.00000 %
SATU data not used:	100.000 %

5.2 Plot quality information per product (time dependant)



5.3 Plot quality information per product (world map)



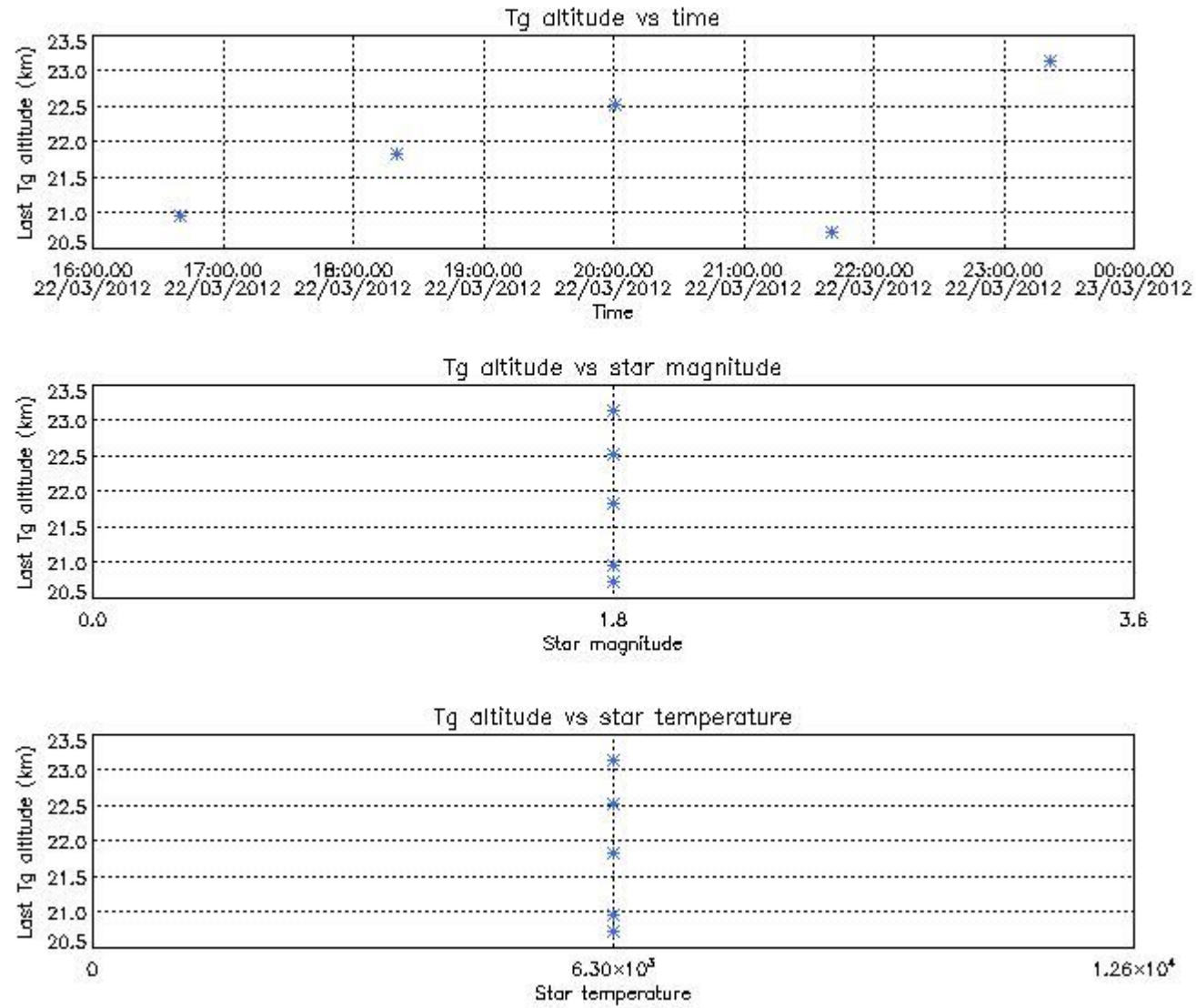
## 6. Statistics and plot of tangent altitude of the last measurement (DARK & BRIGHT products without errors)

### 6.1 Statistics on tangent altitude lost:

Statistics	DARK	BRIGHT	TWILIGHT
Mean:	NaN	21.836	NaN
St. deviation:	NaN	1.0186	NaN
Maximum:	NaN	23.139	NaN
Minimum:	NaN	20.722	NaN
Number of data:	NaN	5.0000	NaN

### 6.3 Plot for BRIGHT limb products

## Tangent altitude at which the star is lost



## 7. Star Acquisition and Tracking Unit (SATU)

The Star Acquisition and Tracking Unit (SATU) analyses the position of the tracked star beam collected by the GOMOS telescope and deflected by the optical beam dispatcher. The main function of the SATU is to detect a star, provide its image position to the science data electronics and to help the pointing function to keep the star image at a fixed position. In tracking mode the SATU data is recorded with a frequency of 100 Hz.

### 7.1 SATU 'X' and 'Y' axis plots (dark limb)

SATU CCD 'X' and 'Y' axis plots are provided in order to detect any abnormal behaviour of the tracking system. For every occultation (color) the plot should remain stable (with some noise) until we are deep in the atmosphere where big fluctuations are registered due to the refractive effects.

### 7.2 Statistics on SATU Noise Equivalent Angle (NEA) for DARK (D) and BRIGHT (B) products above 105 kms

The Star Acquisition and Tracking Unit (it is the CCD that tracks the star while it is occulted) Noise Equivalent Angle consists of the statistical angular variation of the SATU data above the atmosphere. Statistics (in microradians) above 105 km are computed for every occultation, giving four values per occultation: one in the 'X' direction and one in the 'Y' direction for dark and bright limbs. A mean value per day in every direction and limb is calculated and monitored in order to assess instrument performance in terms of star pointing.

### 7.2.1 SATU NEA Statistics (table)

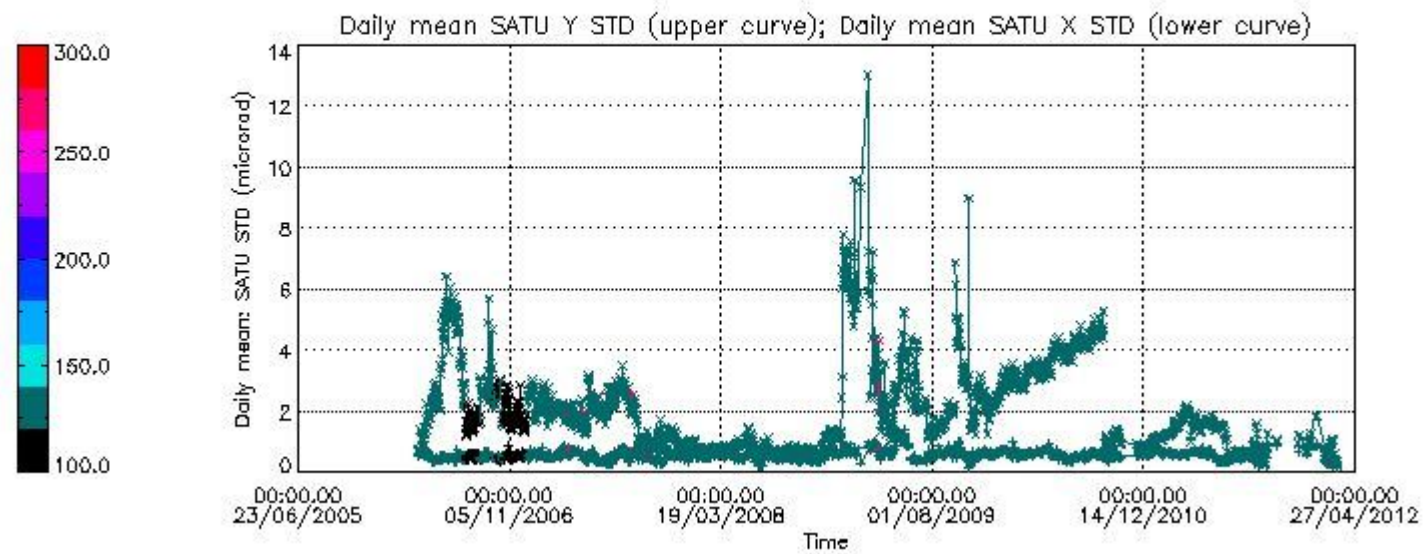
Statistics	SATU X (D)	SATU Y (D)	SATU X (B)	SATU Y (B)
Mean:	NaN	NaN	0.085643	-0.30708
St. deviation:	NaN	NaN	0.32007	0.55428
Maximum:	NaN	NaN	1.3000	1.9000
Minimum:	NaN	NaN	-1.1000	-2.2000
Number of data:	NaN	NaN	4350.0	4350.0
90Percentile:	NaN	NaN	0.50000	0.40000

### 7.2.2 Trend of daily SATU NEA St. deviation since 1st April 2006 (dark limb) and of daily SATU NEA 90th percentile since May 2011

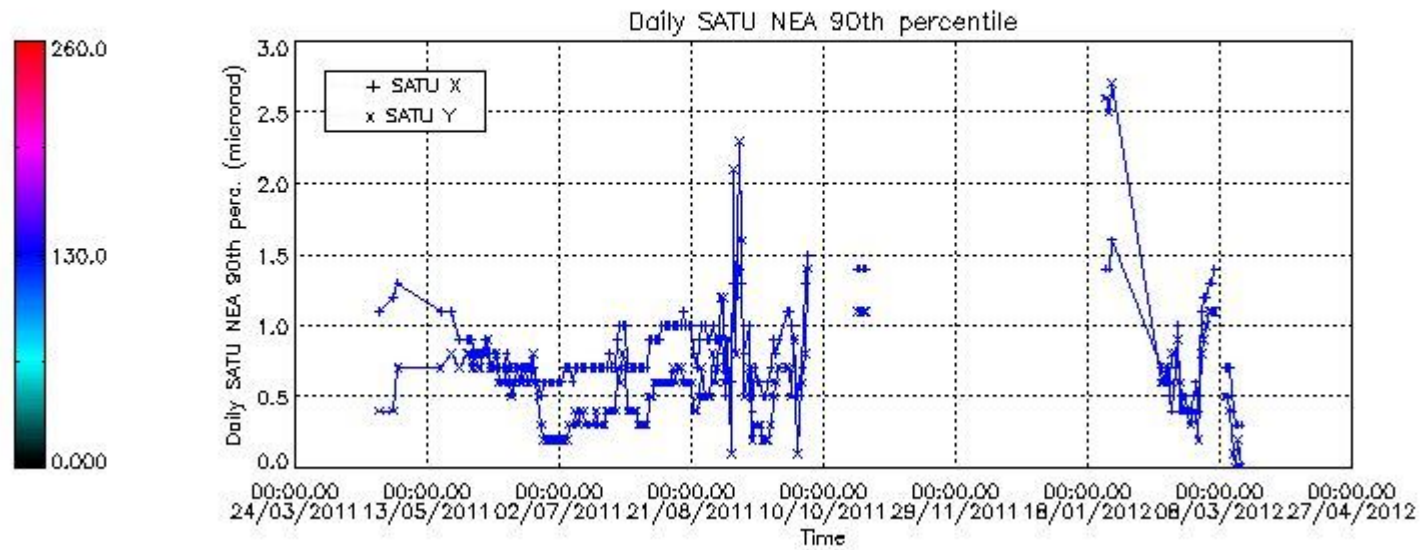
The long term trend of the SATU 'X' and 'Y' standard deviations should be constant during the whole mission.

The colorbar represents the start tangent altitude (km) of the occultations.

Upper curve: STD of SATU Y axis  
 Lower curve: STD of SATU X axis



Lower curve: 90th percentile of SATU Y axis  
 Upper curve: 90th percentile of SATU X axis

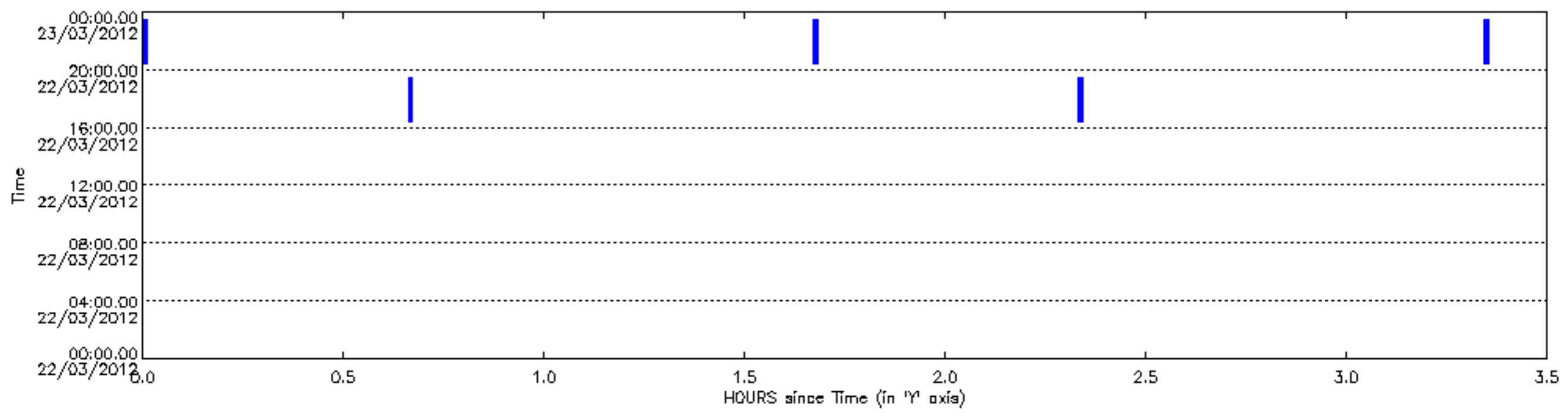


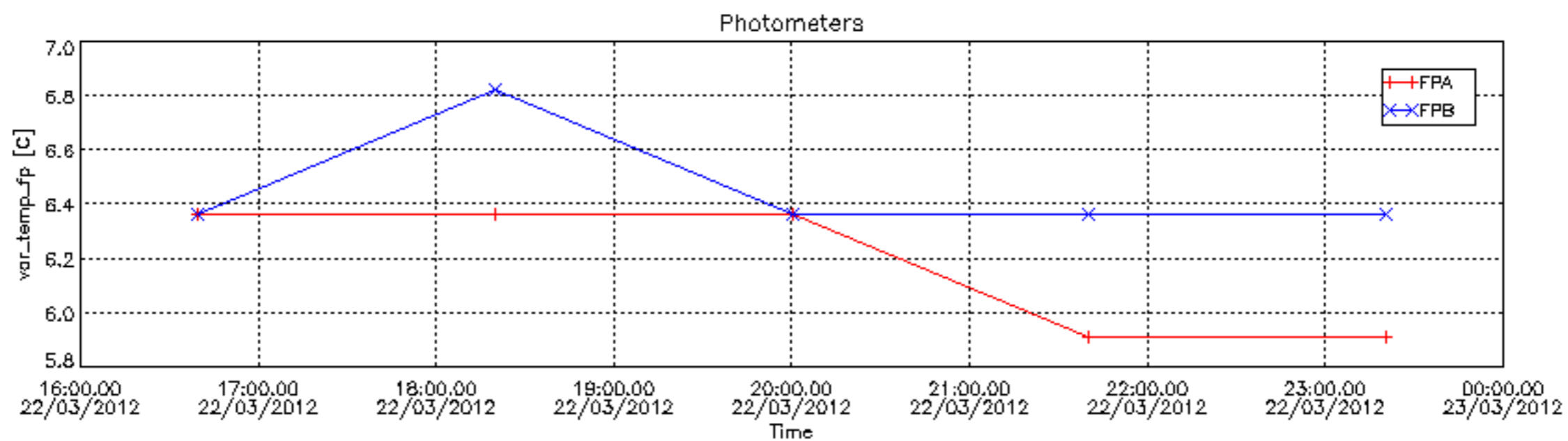
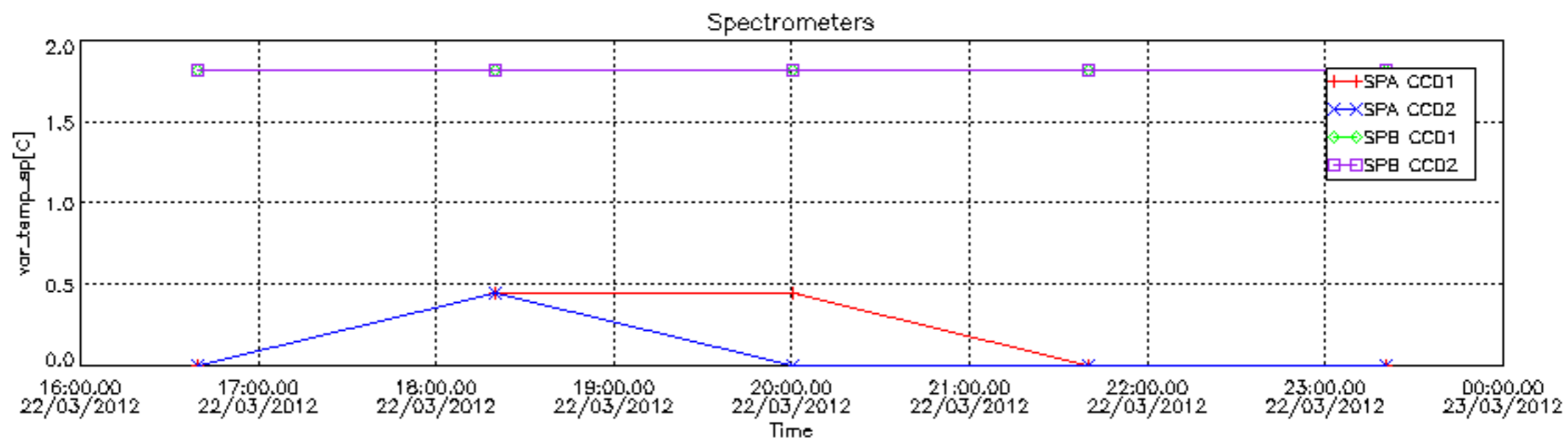
### 8. Auxiliary Data Files used for the production reported in section 2.4

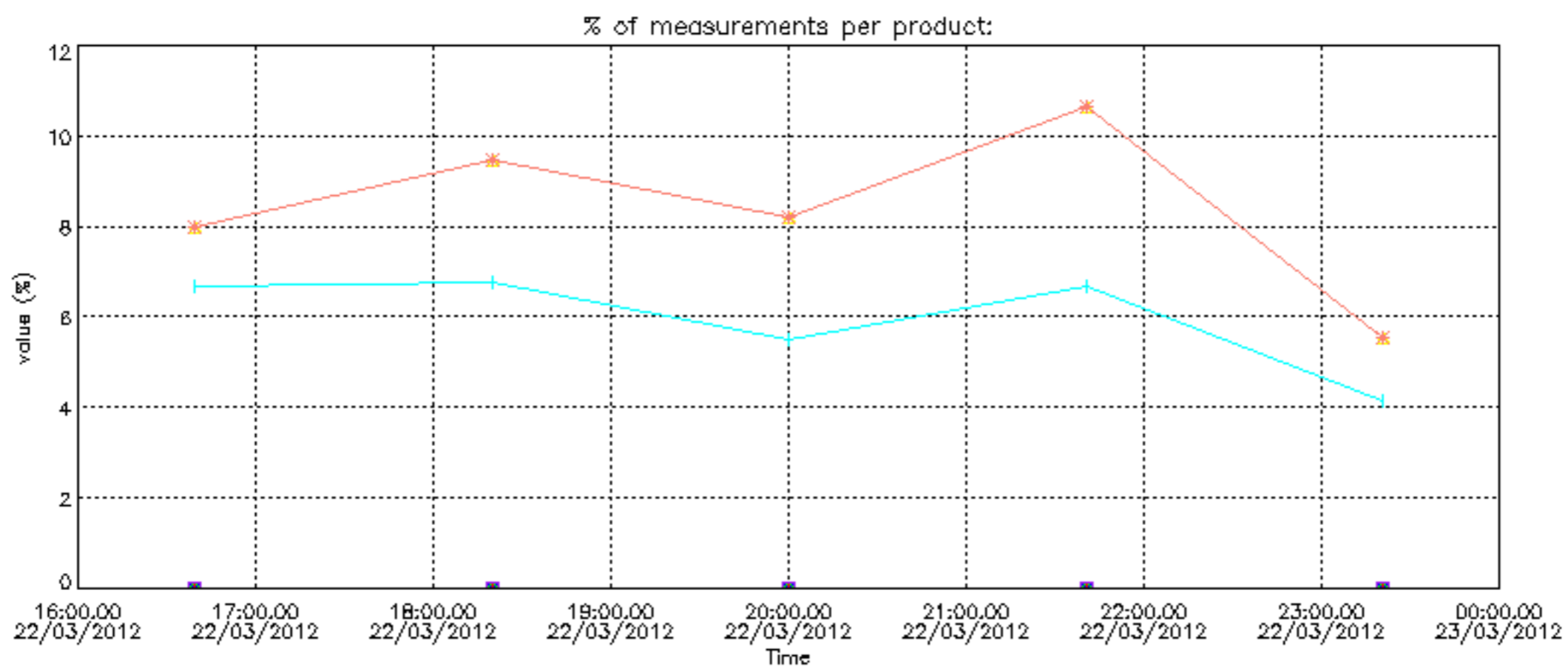
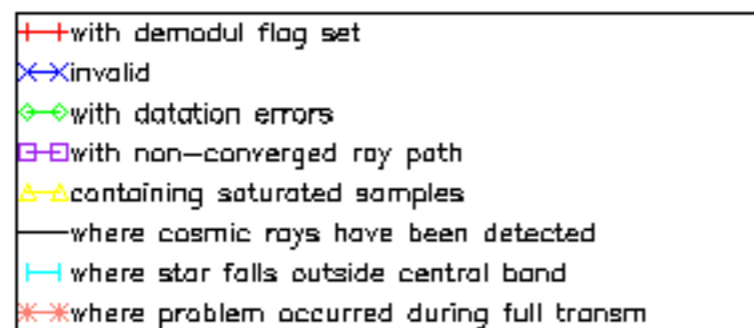
The number reported in the third column indicates since which file (see list in section 2.4) the corresponding auxiliary file has been used. The fourth column is the date of those product files.

Type	Auxiliary Filename	Used since product	Used since product date
INST_PHYS_CHARACTERISTICS	GOM_INS_AXVIEC20111213_163131_20111215_000000_20500101_000000	1	22-MAR-2012 16:39:39
CALIBRATION_DATABASE	GOM_CAL_AXVIEC20120316_091957_20120315_000000_20500101_000000	1	22-MAR-2012 16:39:39
LEVEL-1B_PROC_CONFIG	GOM_PR1_AXVIEC20110513_081743_20020301_000000_20500101_000000	1	22-MAR-2012 16:39:39
STAR_CATALOGUE	GOM_CAT_AXVIEC20020121_161009_20020101_000000_20200101_000000	1	22-MAR-2012 16:39:39
STELLAR_SPECTRA_DATABANK	GOM_STS_AXVIEC20091111_151504_20020101_160000_20500101_000000	1	22-MAR-2012 16:39:39
ECMWF_FILE	AUX_ECF_AXNECM20120322_062116_20120322_150000_20120323_030000	1	22-MAR-2012 16:39:39
ECMWF_FILE	AUX_ECA_AXNECM20120322_183259_20120322_090000_20120322_210000	2	22-MAR-2012 18:19:52
ECMWF_FILE	AUX_ECF_AXNECM20120322_062116_20120322_210000_20120323_090000	4	22-MAR-2012 21:40:20
OPTIONAL_ECMWF_FILE	MISSING	1	22-MAR-2012 16:39:39
ORBIT_DATA_FILE	AUX_FPO_AXVPDS20120321_232113_20120321_194739_20120331_202105	1	22-MAR-2012 16:39:39

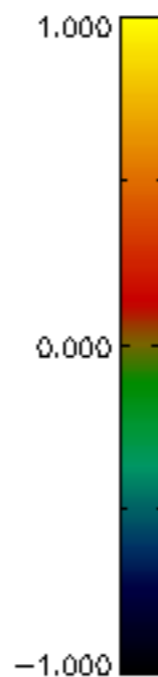
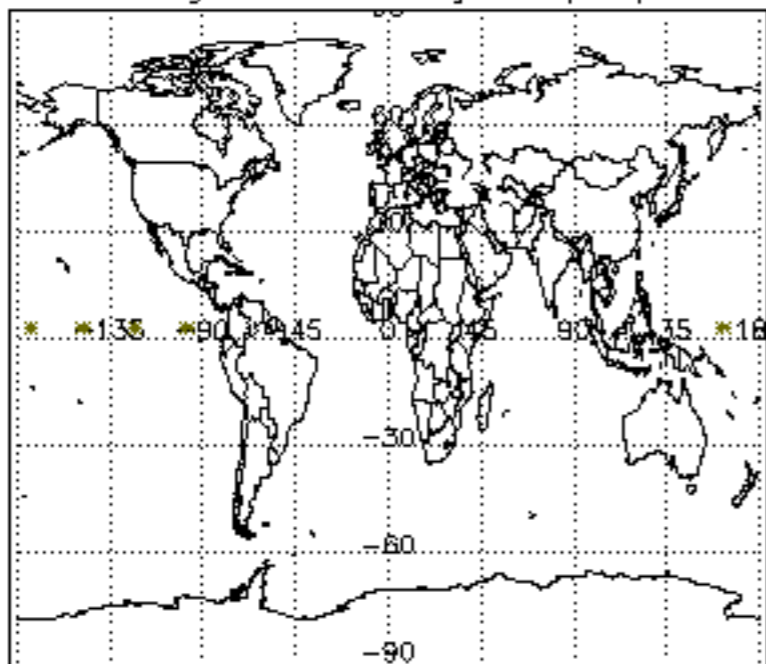




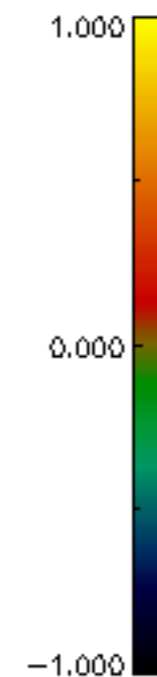
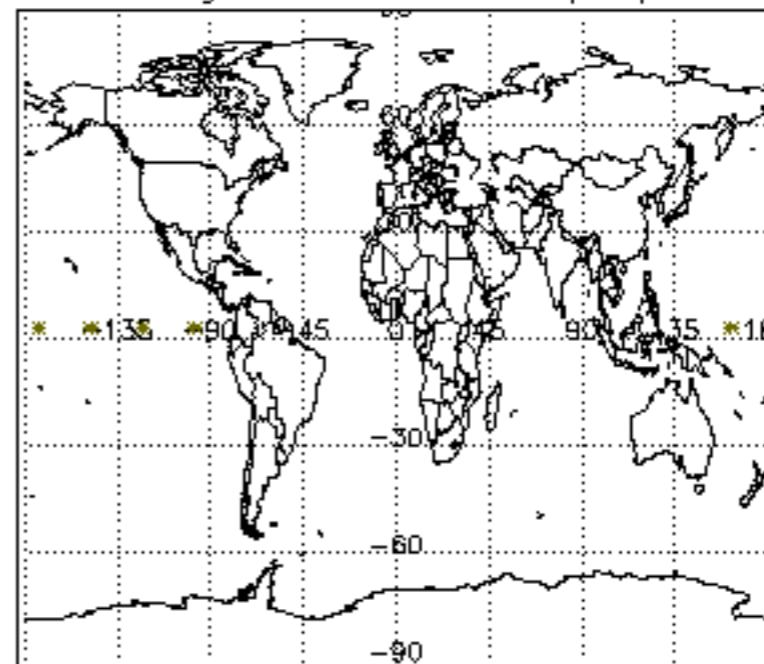




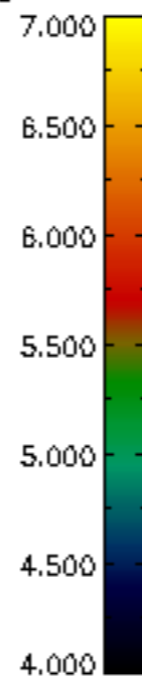
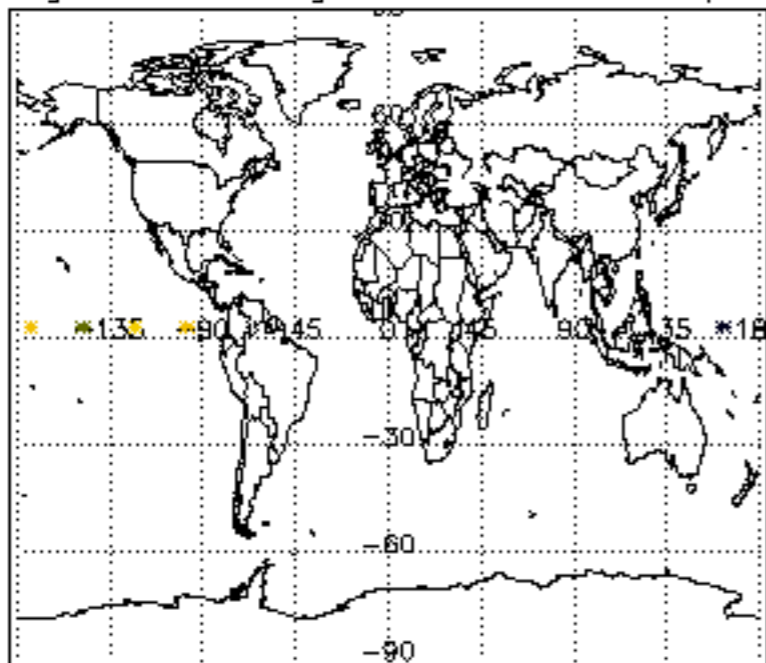
Percentage of cosmic ray hits per profile



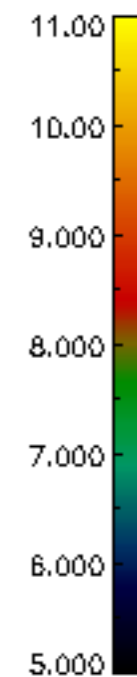
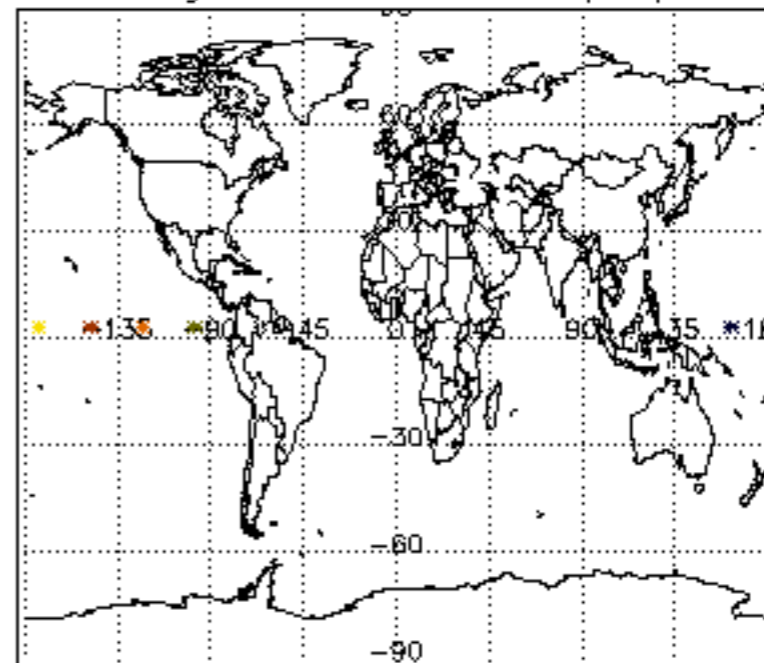
Percentage of datation errors per profile



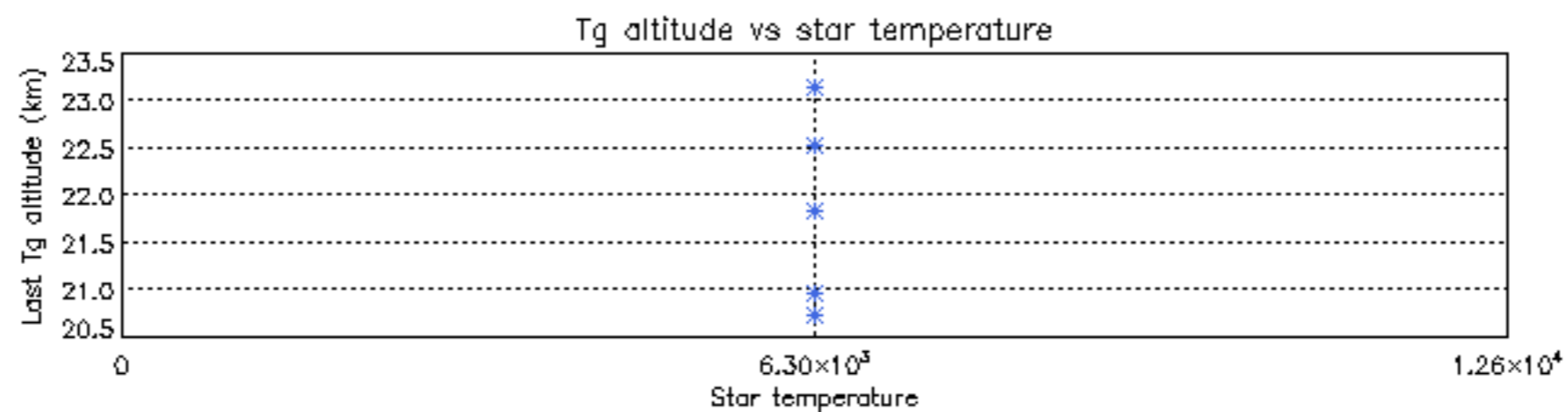
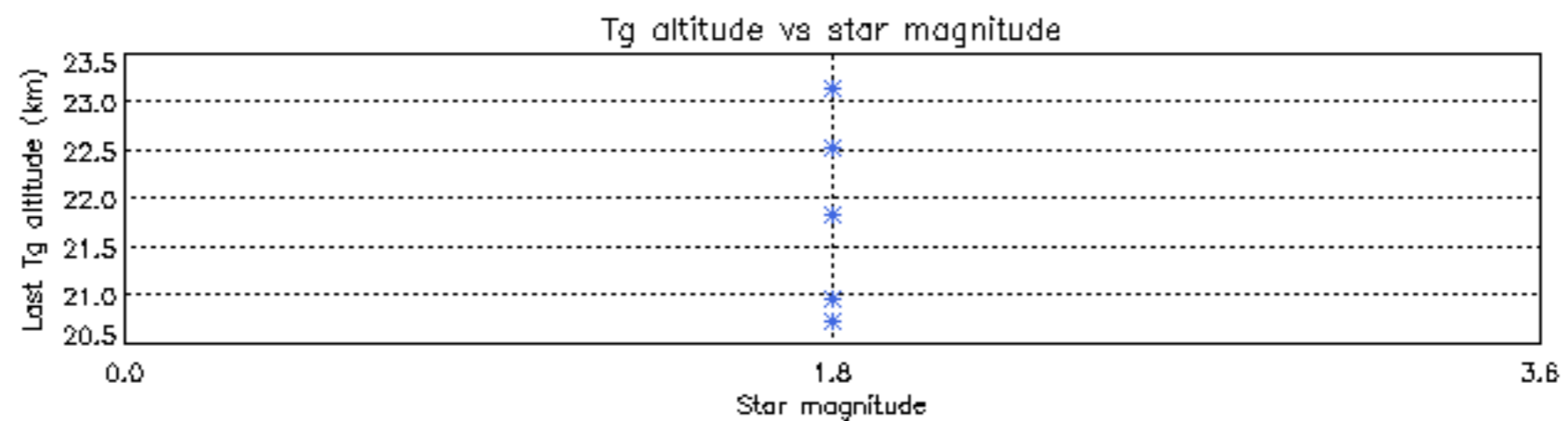
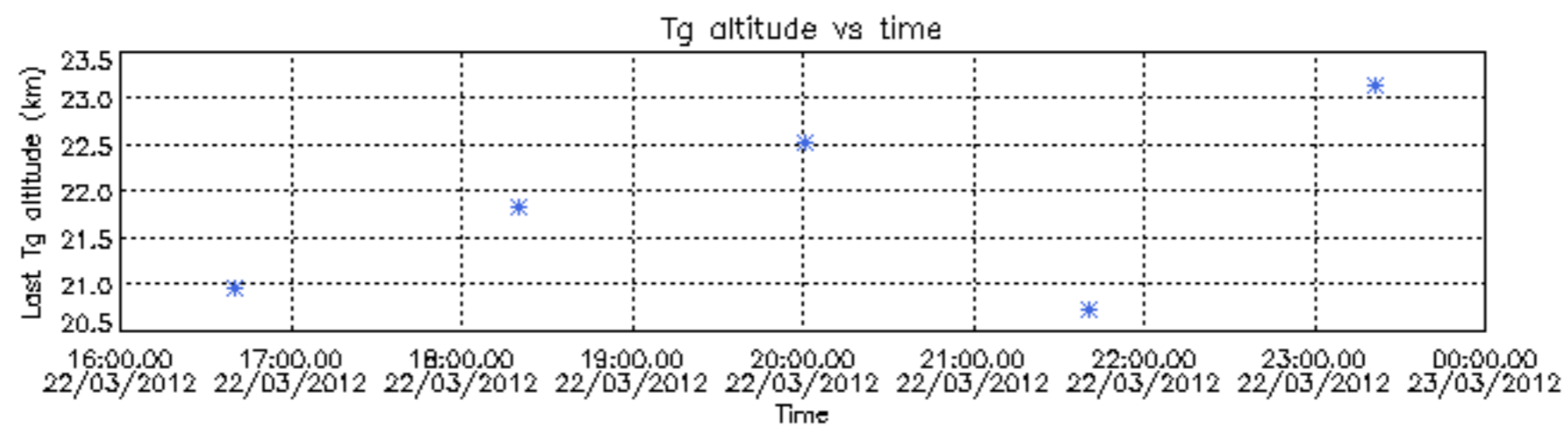
Percentage of star falling outside central band per profile

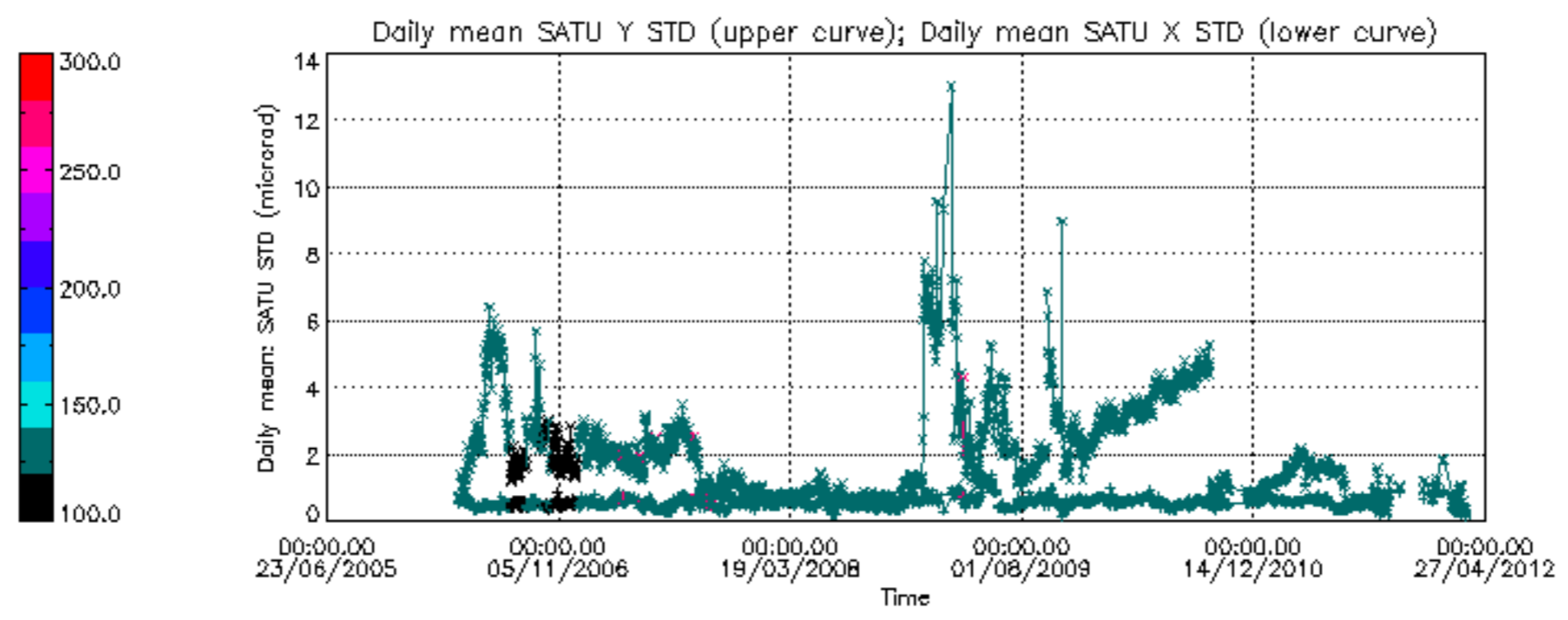


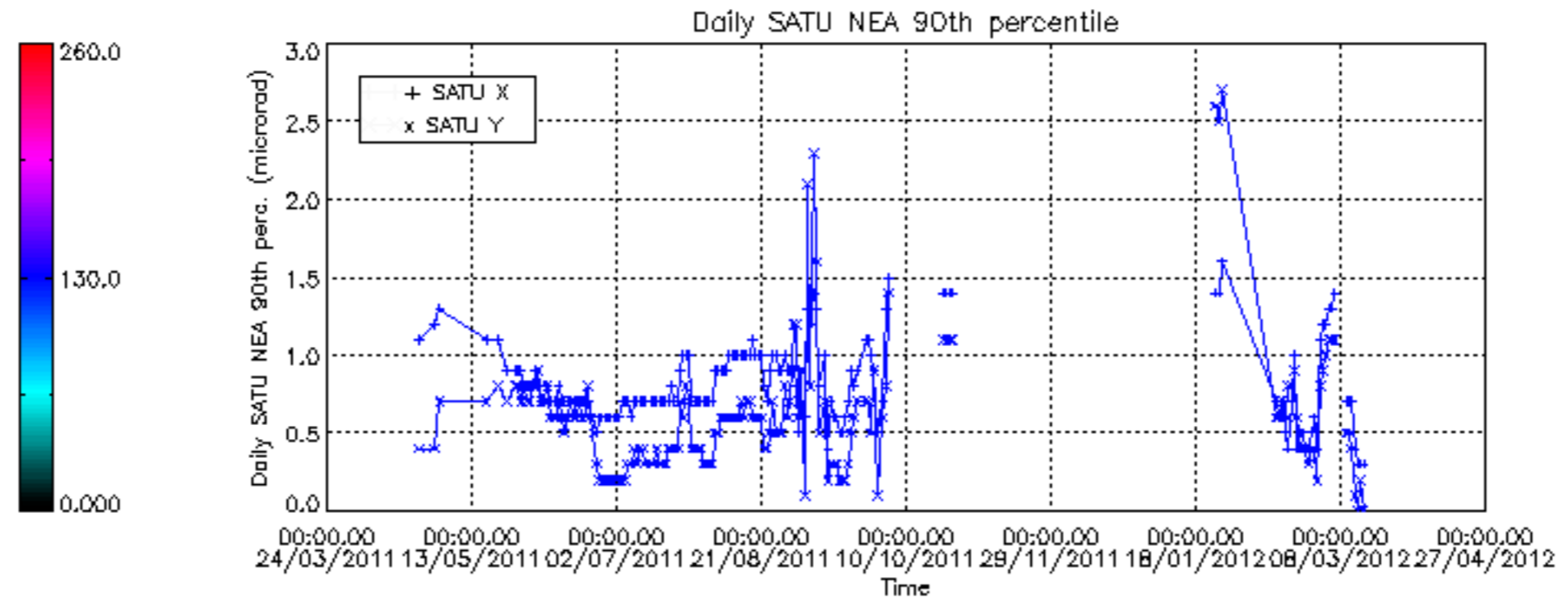
Percentage of saturation errors per profile



Tangent altitude at which the star is lost







/nas3/ENVISAT/GOMOS/GOM\_NL\_\_0P/GOM\_NL\_\_0PNPDE20120301\_002653\_00000463112\_00146\_52315\_6689.N1  
1; 521.9; 01-MAR-2012 00:26:53; Dark ; 46.5; 10; Bet Cen ; 0.61; 28000;occ; 93; 0;52315  
/nas3/ENVISAT/GOMOS/GOM\_NL\_\_0P/GOM\_NL\_\_0PNPDE20120301\_220059\_000042423112\_00158\_52327\_6691.N1  
1; -13.1; 01-MAR-2012 22:00:59; Dark ; 42.5; 147; Alp Ara ; 2.88; 26000;occ; 85; 0;52327  
2; 529.6; 01-MAR-2012 22:10:02; Dark ; 46.5; 10; Bet Cen ; 0.61; 28000;occ; 93; 0;52328  
3; 4193.8; 01-MAR-2012 23:11:06; Bright; 36.0; 144; 18Del Cyg ; 2.86; 11000;occ; 72; 0;52328  
/nas3/ENVISAT/GOMOS/GOM\_NL\_\_0P/GOM\_NL\_\_0PNPDE20120301\_234114\_000042413112\_00159\_52328\_6692.N1  
1; -12.4; 01-MAR-2012 23:41:14; Dark ; 41.5; 147; Alp Ara ; 2.88; 26000;occ; 83; 0;52328  
2; 530.1; 01-MAR-2012 23:50:16; Dark ; 42.5; 10; Bet Cen ; 0.61; 28000;occ; 85; 0;52329  
3; 4193.8; 02-MAR-2012 00:51:20; Bright; 35.5; 144; 18Del Cyg ; 2.86; 11000;occ; 71; 0;52329  
/nas3/ENVISAT/GOMOS/GOM\_NL\_\_0P/GOM\_NL\_\_0PNPDK20120301\_062846\_000023863112\_00149\_52318\_5720.N1  
1;-1820.5; 01-MAR-2012 06:28:46; Bright; 35.5; 144; 18Del Cyg ; 2.86; 11000;occ; 71; 0;52318  
2; -18.6; 01-MAR-2012 06:58:48; Dark ; 41.0; 147; Alp Ara ; 2.88; 26000;occ; 82; 0;52318  
3; 524.8; 01-MAR-2012 07:07:52; Dark ; 41.5; 10; Bet Cen ; 0.61; 28000;occ; 83; 0;52319  
/nas3/ENVISAT/GOMOS/GOM\_NL\_\_0P/GOM\_NL\_\_0PNPDK20120301\_080901\_000023903112\_00150\_52319\_5721.N1  
1;-1820.2; 01-MAR-2012 08:09:01; Bright; 36.0; 144; 18Del Cyg ; 2.86; 11000;occ; 72; 0;52319  
2; -17.3; 01-MAR-2012 08:39:04; Dark ; 40.0; 147; Alp Ara ; 2.88; 26000;occ; 80; 0;52319  
3; 526.1; 01-MAR-2012 08:48:07; Dark ; 44.0; 10; Bet Cen ; 0.61; 28000;occ; 88; 0;52320  
/nas3/ENVISAT/GOMOS/GOM\_NL\_\_0P/GOM\_NL\_\_0PNPDK20120301\_112928\_000023903112\_00152\_52321\_5723.N1  
1;-1820.5; 01-MAR-2012 11:29:28; Bright; 36.5; 144; 18Del Cyg ; 2.86; 11000;occ; 73; 0;52321  
2; -17.0; 01-MAR-2012 11:59:32; Dark ; 41.0; 147; Alp Ara ; 2.88; 26000;occ; 82; 0;52321  
3; 526.3; 01-MAR-2012 12:08:35; Dark ; 44.0; 10; Bet Cen ; 0.61; 28000;occ; 88; 0;52322  
/nas3/ENVISAT/GOMOS/GOM\_NL\_\_0P/GOM\_NL\_\_0PNPDK20120301\_130942\_000023883112\_00153\_52322\_5724.N1  
1;-1820.4; 01-MAR-2012 13:09:42; Bright; 37.0; 144; 18Del Cyg ; 2.86; 11000;occ; 74; 0;52322  
2; -16.2; 01-MAR-2012 13:39:46; Dark ; 40.5; 147; Alp Ara ; 2.88; 26000;occ; 81; 0;52322  
3; 526.6; 01-MAR-2012 13:48:49; Dark ; 41.5; 10; Bet Cen ; 0.61; 28000;occ; 83; 0;52323  
/nas3/ENVISAT/GOMOS/GOM\_NL\_\_0P/GOM\_NL\_\_0PNPDK20120301\_144956\_000023883112\_00154\_52323\_5725.N1  
1;-1820.1; 01-MAR-2012 14:49:56; Bright; 41.0; 144; 18Del Cyg ; 2.86; 11000;occ; 82; 0;52323  
2; -15.8; 01-MAR-2012 15:20:01; Dark ; 41.0; 147; Alp Ara ; 2.88; 26000;occ; 82; 0;52323  
3; 527.2; 01-MAR-2012 15:29:04; Dark ; 41.5; 10; Bet Cen ; 0.61; 28000;occ; 83; 0;52324  
/nas3/ENVISAT/GOMOS/GOM\_NL\_\_0P/GOM\_NL\_\_0PNPDK20120301\_163010\_000023913112\_00155\_52324\_5726.N1  
1;-1820.3; 01-MAR-2012 16:30:10; Bright; 37.0; 144; 18Del Cyg ; 2.86; 11000;occ; 74; 0;52324  
2; -15.0; 01-MAR-2012 17:00:16; Dark ; 41.5; 147; Alp Ara ; 2.88; 26000;occ; 83; 0;52324  
3; 527.8; 01-MAR-2012 17:09:18; Dark ; 43.0; 10; Bet Cen ; 0.61; 28000;occ; 86; 0;52325  
/nas3/ENVISAT/GOMOS/GOM\_NL\_\_0P/GOM\_NL\_\_0PNPDK20120301\_181024\_000024013112\_00156\_52325\_5727.N1  
1;-1820.3; 01-MAR-2012 18:10:24; Bright; 36.0; 144; 18Del Cyg ; 2.86; 11000;occ; 72; 0;52325  
2; -14.3; 01-MAR-2012 18:40:30; Dark ; 39.5; 147; Alp Ara ; 2.88; 26000;occ; 79; 0;52325  
3; 528.3; 01-MAR-2012 18:49:33; Dark ; 52.5; 10; Bet Cen ; 0.61; 28000;occ; 105; 0;52326  
/nas3/ENVISAT/GOMOS/GOM\_NL\_\_0P/GOM\_NL\_\_0PNPDK20120301\_195038\_000023963112\_00157\_52326\_5728.N1  
1;-1820.1; 01-MAR-2012 19:50:38; Bright; 35.5; 144; 18Del Cyg ; 2.86; 11000;occ; 71; 0;52326  
2; -13.7; 01-MAR-2012 20:20:45; Dark ; 41.0; 147; Alp Ara ; 2.88; 26000;occ; 82; 0;52326  
3; 529.0; 01-MAR-2012 20:29:48; Dark ; 47.0; 10; Bet Cen ; 0.61; 28000;occ; 94; 0;52327  
/nas3/ENVISAT/GOMOS/GOM\_NL\_\_0P/GOM\_NL\_\_0PNPDE20120301\_213052\_000000353112\_00158\_52327\_6690.N1  
1;-1820.2; 01-MAR-2012 21:30:52; Bright; 35.5; 144; 18Del Cyg ; 2.86; 11000;occ; 71; 0;52327  
/nas3/ENVISAT/GOMOS/GOM\_NL\_\_0P/GOM\_NL\_\_0PNPDE20120302\_012128\_000065983112\_00160\_52329\_6693.N1  
1; -11.7; 02-MAR-2012 01:21:28; Dark ; 40.0; 147; Alp Ara ; 2.88; 26000;occ; 80; 0;52329  
2; 530.7; 02-MAR-2012 01:30:31; Dark ; 42.0; 10; Bet Cen ; 0.61; 28000;occ; 84; 0;52330  
3; 5493.0; 02-MAR-2012 02:53:13; Dark ; 44.5; 57; 34Sig Sgr ; 2.07; 26000;occ; 89; 0;52330  
4; 6003.0; 02-MAR-2012 03:01:43; Dark ; 40.0; 147; Alp Ara ; 2.88; 26000;occ; 80; 0;52330  
5; 6545.3; 02-MAR-2012 03:10:45; Dark ; 41.0; 10; Bet Cen ; 0.61; 28000;occ; 82; 0;52331  
/nas3/ENVISAT/GOMOS/GOM\_NL\_\_0P/GOM\_NL\_\_0PNPDE20120302\_043328\_000011033112\_00162\_52331\_6694.N1  
1; -520.2; 02-MAR-2012 04:33:28; Dark ; 42.5; 57; 34Sig Sgr ; 2.07; 26000;occ; 85; 0;52331  
2; -10.3; 02-MAR-2012 04:41:58; Dark ; 41.5; 147; Alp Ara ; 2.88; 26000;occ; 83; 0;52331  
3; 532.0; 02-MAR-2012 04:51:00; Dark ; 51.0; 10; Bet Cen ; 0.61; 28000;occ; 102; 0;52332  
/nas3/ENVISAT/GOMOS/GOM\_NL\_\_0P/GOM\_NL\_\_0PNPDE20120302\_061342\_000010933112\_00163\_52332\_6695.N1  
1; -519.7; 02-MAR-2012 06:13:42; Dark ; 43.5; 57; 34Sig Sgr ; 2.07; 26000;occ; 87; 0;52332  
2; -9.7; 02-MAR-2012 06:22:12; Dark ; 40.5; 147; Alp Ara ; 2.88; 26000;occ; 81; 0;52332  
3; 532.6; 02-MAR-2012 06:31:15; Dark ; 41.5; 10; Bet Cen ; 0.61; 28000;occ; 83; 0;52333  
/nas3/ENVISAT/GOMOS/GOM\_NL\_\_0P/GOM\_NL\_\_0PNPDE20120302\_211553\_000005393112\_00172\_52341\_6696.N1  
1; -514.5; 02-MAR-2012 21:15:53; Dark ; 45.0; 57; 34Sig Sgr ; 2.07; 26000;occ; 90; 0;52341  
2; -3.6; 02-MAR-2012 21:24:24; Dark ; 28.5; 147; Alp Ara ; 2.88; 26000;occ; 57; 0;52341  
/nas3/ENVISAT/GOMOS/GOM\_NL\_\_0P/GOM\_NL\_\_0PNPDE20120302\_225608\_000005363112\_00173\_52342\_6697.N1  
1; -514.3; 02-MAR-2012 22:56:08; Dark ; 42.5; 57; 34Sig Sgr ; 2.07; 26000;occ; 85; 0;52342  
2; -3.3; 02-MAR-2012 23:04:39; Dark ; 25.5; 147; Alp Ara ; 2.88; 26000;occ; 51; 0;52342  
/nas3/ENVISAT/GOMOS/GOM\_NL\_\_0P/GOM\_NL\_\_0PNPDK20120302\_075357\_000010933112\_00164\_52333\_5729.N1  
1; -519.2; 02-MAR-2012 07:53:57; Dark ; 45.5; 57; 34Sig Sgr ; 2.07; 26000;occ; 91; 0;52333  
2; -9.0; 02-MAR-2012 08:02:27; Dark ; 39.0; 147; Alp Ara ; 2.88; 26000;occ; 78; 0;52333  
3; 533.1; 02-MAR-2012 08:11:29; Dark ; 41.0; 10; Bet Cen ; 0.61; 28000;occ; 82; 0;52334



/nas3/ENVISAT/GOMOS/GOM\_NL\_\_0P/GOM\_NL\_\_0PNPDK20120302\_093412\_000010933112\_00165\_52334\_5730.N1  
1; -518.5; 02-MAR-2012 09:34:12; Dark ; 45.0; 57; 34Sig Sgr ; 2.07; 26000;occ; 90; 0;52334  
2; -8.4; 02-MAR-2012 09:42:42; Dark ; 41.0; 147; Alp Ara ; 2.88; 26000;occ; 82; 0;52334  
3; 533.6; 02-MAR-2012 09:51:44; Dark ; 41.0; 10; Bet Cen ; 0.61; 28000;occ; 82; 0;52335  
/nas3/ENVISAT/GOMOS/GOM\_NL\_\_0P/GOM\_NL\_\_0PNPDK20120302\_111426\_000011043112\_00166\_52335\_5731.N1  
1; -517.9; 02-MAR-2012 11:14:26; Dark ; 46.0; 57; 34Sig Sgr ; 2.07; 26000;occ; 92; 0;52335  
2; -7.6; 02-MAR-2012 11:22:56; Dark ; 41.5; 147; Alp Ara ; 2.88; 26000;occ; 83; 0;52335  
3; 534.1; 02-MAR-2012 11:31:58; Dark ; 52.0; 10; Bet Cen ; 0.61; 28000;occ; 104; 0;52336  
/nas3/ENVISAT/GOMOS/GOM\_NL\_\_0P/GOM\_NL\_\_0PNPDK20120302\_125440\_000010943112\_00167\_52336\_5732.N1  
1; -517.4; 02-MAR-2012 12:54:40; Dark ; 46.0; 57; 34Sig Sgr ; 2.07; 26000;occ; 92; 0;52336  
2; -7.0; 02-MAR-2012 13:03:11; Dark ; 41.0; 147; Alp Ara ; 2.88; 26000;occ; 82; 0;52336  
3; 534.7; 02-MAR-2012 13:12:12; Dark ; 42.5; 10; Bet Cen ; 0.61; 28000;occ; 85; 0;52337  
/nas3/ENVISAT/GOMOS/GOM\_NL\_\_0P/GOM\_NL\_\_0PNPDK20120302\_143455\_000010933112\_00168\_52337\_5733.N1  
1; -516.7; 02-MAR-2012 14:34:55; Dark ; 45.5; 57; 34Sig Sgr ; 2.07; 26000;occ; 91; 0;52337  
2; -6.3; 02-MAR-2012 14:43:25; Dark ; 40.0; 147; Alp Ara ; 2.88; 26000;occ; 80; 0;52337  
3; 536.9; 02-MAR-2012 14:52:29; Dark ; 39.5; 10; Bet Cen ; 0.61; 28000;occ; 79; 0;52338  
/nas3/ENVISAT/GOMOS/GOM\_NL\_\_0P/GOM\_NL\_\_0PNPDK20120302\_161509\_000005473112\_00169\_52338\_5734.N1  
1; -516.2; 02-MAR-2012 16:15:09; Dark ; 43.5; 57; 34Sig Sgr ; 2.07; 26000;occ; 87; 0;52338  
2; -5.6; 02-MAR-2012 16:23:40; Dark ; 36.5; 147; Alp Ara ; 2.88; 26000;occ; 73; 0;52338  
/nas3/ENVISAT/GOMOS/GOM\_NL\_\_0P/GOM\_NL\_\_0PNPDK20120302\_175524\_000005453112\_00170\_52339\_5735.N1  
1; -515.7; 02-MAR-2012 17:55:24; Dark ; 45.0; 57; 34Sig Sgr ; 2.07; 26000;occ; 90; 0;52339  
2; -5.0; 02-MAR-2012 18:03:55; Dark ; 34.5; 147; Alp Ara ; 2.88; 26000;occ; 69; 0;52339  
/nas3/ENVISAT/GOMOS/GOM\_NL\_\_0P/GOM\_NL\_\_0PNPDK20120302\_193539\_000005423112\_00171\_52340\_5736.N1  
1; -515.1; 02-MAR-2012 19:35:39; Dark ; 45.5; 57; 34Sig Sgr ; 2.07; 26000;occ; 91; 0;52340  
2; -4.3; 02-MAR-2012 19:44:09; Dark ; 31.5; 147; Alp Ara ; 2.88; 26000;occ; 63; 0;52340  
/nas3/ENVISAT/GOMOS/GOM\_NL\_\_0P/GOM\_NL\_\_0PNPDE20120303\_021637\_000000303112\_00175\_52344\_6698.N1  
1; -513.1; 03-MAR-2012 02:16:37; Dark ; 30.5; 57; 34Sig Sgr ; 2.07; 26000;occ; 61; 0;52344  
/nas3/ENVISAT/GOMOS/GOM\_NL\_\_0P/GOM\_NL\_\_0PNPDE20120303\_044346\_000000263112\_00177\_52346\_6699.N1  
1; 2302.6; 03-MAR-2012 04:43:46; Bright; 26.5; 166; 17Eps Leo ; 2.98; 6000;occ; 53; 0;52346  
/nas3/ENVISAT/GOMOS/GOM\_NL\_\_0P/GOM\_NL\_\_0PNPDE20120303\_062400\_000000323112\_00178\_52347\_6700.N1  
1; 2302.4; 03-MAR-2012 06:24:00; Bright; 32.5; 166; 17Eps Leo ; 2.98; 6000;occ; 65; 0;52347  
/nas3/ENVISAT/GOMOS/GOM\_NL\_\_0P/GOM\_NL\_\_0PNPDE20120303\_212605\_000000383112\_00187\_52356\_6701.N1  
1; 2302.1; 03-MAR-2012 21:26:05; Bright; 38.5; 166; 17Eps Leo ; 2.98; 6000;occ; 77; 0;52356  
/nas3/ENVISAT/GOMOS/GOM\_NL\_\_0P/GOM\_NL\_\_0PNPDE20120303\_221739\_000029583112\_00187\_52356\_6702.N1  
1; -618.3; 03-MAR-2012 22:17:39; Dark ; 42.5; 155; 41Pi Sgr ; 2.90; 6600;occ; 85; 0;52356  
2; 2301.9; 03-MAR-2012 23:06:19; Bright; 38.0; 166; 17Eps Leo ; 2.98; 6000;occ; 76; 0;52357  
/nas3/ENVISAT/GOMOS/GOM\_NL\_\_0P/GOM\_NL\_\_0PNPDK20120303\_080414\_000000373112\_00179\_52348\_5737.N1  
1; 2302.4; 03-MAR-2012 08:04:14; Bright; 37.5; 166; 17Eps Leo ; 2.98; 6000;occ; 75; 0;52348  
/nas3/ENVISAT/GOMOS/GOM\_NL\_\_0P/GOM\_NL\_\_0PNPDK20120303\_112442\_000031323112\_00181\_52350\_5739.N1  
1; 2302.1; 03-MAR-2012 11:24:42; Bright; 37.5; 166; 17Eps Leo ; 2.98; 6000;occ; 75; 0;52350  
2; 5391.9; 03-MAR-2012 12:16:11; Dark ; 43.0; 155; 41Pi Sgr ; 2.90; 6600;occ; 86; 0;52350  
/nas3/ENVISAT/GOMOS/GOM\_NL\_\_0P/GOM\_NL\_\_0PNPDK20120303\_130455\_000031323112\_00182\_52351\_5740.N1  
1; 2301.9; 03-MAR-2012 13:04:55; Bright; 38.5; 166; 17Eps Leo ; 2.98; 6000;occ; 77; 0;52351  
2; 5392.5; 03-MAR-2012 13:56:26; Dark ; 41.5; 155; 41Pi Sgr ; 2.90; 6600;occ; 83; 0;52351  
/nas3/ENVISAT/GOMOS/GOM\_NL\_\_0P/GOM\_NL\_\_0PNPDK20120303\_144509\_000031333112\_00183\_52352\_5741.N1  
1; 2301.9; 03-MAR-2012 14:45:09; Bright; 37.5; 166; 17Eps Leo ; 2.98; 6000;occ; 75; 0;52352  
2; 5393.0; 03-MAR-2012 15:36:40; Dark ; 42.0; 155; 41Pi Sgr ; 2.90; 6600;occ; 84; 0;52352  
/nas3/ENVISAT/GOMOS/GOM\_NL\_\_0P/GOM\_NL\_\_0PNPDK20120303\_162524\_000031363112\_00184\_52353\_5742.N1  
1; 2302.4; 03-MAR-2012 16:25:24; Bright; 37.0; 166; 17Eps Leo ; 2.98; 6000;occ; 74; 0;52353  
2; 5394.2; 03-MAR-2012 17:16:55; Dark ; 44.5; 155; 41Pi Sgr ; 2.90; 6600;occ; 89; 0;52353  
/nas3/ENVISAT/GOMOS/GOM\_NL\_\_0P/GOM\_NL\_\_0PNPDK20120303\_180538\_000031353112\_00185\_52354\_5743.N1  
1; 2302.3; 03-MAR-2012 18:05:38; Bright; 38.5; 166; 17Eps Leo ; 2.98; 6000;occ; 77; 0;52354  
2; 5394.7; 03-MAR-2012 18:57:10; Dark ; 43.5; 155; 41Pi Sgr ; 2.90; 6600;occ; 87; 0;52354  
/nas3/ENVISAT/GOMOS/GOM\_NL\_\_0P/GOM\_NL\_\_0PNPDK20120303\_194552\_000031343112\_00186\_52355\_5744.N1  
1; 2302.2; 03-MAR-2012 19:45:52; Bright; 38.5; 166; 17Eps Leo ; 2.98; 6000;occ; 77; 0;52355  
2; 5395.2; 03-MAR-2012 20:37:25; Dark ; 42.0; 155; 41Pi Sgr ; 2.90; 6600;occ; 84; 0;52355  
/nas3/ENVISAT/GOMOS/GOM\_NL\_\_0P/GOM\_NL\_\_0PNPDE20120304\_013808\_000000433112\_00189\_52358\_6704.N1  
1; -617.1; 04-MAR-2012 01:38:08; Dark ; 44.0; 155; 41Pi Sgr ; 2.90; 6600;occ; 88; 0;52358  
/nas3/ENVISAT/GOMOS/GOM\_NL\_\_0P/GOM\_NL\_\_0PNPDE20120304\_031822\_000000403112\_00190\_52359\_6705.N1  
1; -616.5; 04-MAR-2012 03:18:22; Dark ; 41.0; 155; 41Pi Sgr ; 2.90; 6600;occ; 82; 0;52359  
/nas3/ENVISAT/GOMOS/GOM\_NL\_\_0P/GOM\_NL\_\_0PNPDE20120304\_045837\_000000433112\_00191\_52360\_6706.N1  
1; -616.0; 04-MAR-2012 04:58:37; Dark ; 44.0; 155; 41Pi Sgr ; 2.90; 6600;occ; 88; 0;52360  
/nas3/ENVISAT/GOMOS/GOM\_NL\_\_0P/GOM\_NL\_\_0PNPDE20120304\_213110\_000000383112\_00201\_52370\_6707.N1  
1; -1202.5; 04-MAR-2012 21:31:10; Bright; 39.0; 118; 50Gam Aql ; 2.72; 4600;occ; 78; 0;52370  
/nas3/ENVISAT/GOMOS/GOM\_NL\_\_0P/GOM\_NL\_\_0PNPDE20120304\_220601\_000039643112\_00202\_52371\_6708.N1  
1; 888.3; 04-MAR-2012 22:06:01; Dark ; 38.0; 99; Del Cen ; 2.58; 26000;occ; 76; 0;52371  
2; 4811.7; 04-MAR-2012 23:11:24; Bright; 41.5; 118; 50Gam Aql ; 2.72; 4600;occ; 83; 0;52371  
/nas3/ENVISAT/GOMOS/GOM\_NL\_\_0P/GOM\_NL\_\_0PNPDE20120304\_234615\_000039633112\_00203\_52372\_6709.N1

1; 888.8; 04-MAR-2012 23:46:15; Dark ; 40.0; 99; Del Cen ; 2.58; 26000;occ; 80; 0;52372  
 2; 4812.0; 05-MAR-2012 00:51:38; Bright; 40.0; 118; 50Gam Aql ; 2.72; 4600;occ; 80; 0;52372  
 /nas3/ENVISAT/GOMOS/GOM\_NL\_\_0P/GOM\_NL\_\_0PNPDK20120304\_063852\_000000403112\_00192\_52361\_5745.N1  
 1; -615.5; 04-MAR-2012 06:38:52; Dark ; 40.5; 155; 41Pi Sgr ; 2.90; 6600;occ; 81; 0;52361  
 /nas3/ENVISAT/GOMOS/GOM\_NL\_\_0P/GOM\_NL\_\_0PNPDK20120304\_080916\_000006233112\_00193\_52362\_5746.N1  
 1; -1204.8; 04-MAR-2012 08:09:16; Bright; 38.5; 118; 50Gam Aql ; 2.72; 4600;occ; 77; 0;52362  
 2; -614.8; 04-MAR-2012 08:19:06; Dark ; 33.5; 155; 41Pi Sgr ; 2.90; 6600;occ; 67; 0;52362  
 /nas3/ENVISAT/GOMOS/GOM\_NL\_\_0P/GOM\_NL\_\_0PNPDK20120304\_094930\_000006163112\_00194\_52363\_5747.N1  
 1; -1204.5; 04-MAR-2012 09:49:30; Bright; 39.5; 118; 50Gam Aql ; 2.72; 4600;occ; 79; 0;52363  
 2; -614.4; 04-MAR-2012 09:59:20; Dark ; 26.5; 155; 41Pi Sgr ; 2.90; 6600;occ; 53; 0;52363  
 /nas3/ENVISAT/GOMOS/GOM\_NL\_\_0P/GOM\_NL\_\_0PNPDK20120304\_112944\_000000383112\_00195\_52364\_5748.N1  
 1; -1204.2; 04-MAR-2012 11:29:44; Bright; 39.0; 118; 50Gam Aql ; 2.72; 4600;occ; 78; 0;52364  
 /nas3/ENVISAT/GOMOS/GOM\_NL\_\_0P/GOM\_NL\_\_0PNPDK20120304\_130959\_000021153112\_00196\_52365\_5749.N1  
 1; -1204.0; 04-MAR-2012 13:09:59; Bright; 40.5; 118; 50Gam Aql ; 2.72; 4600;occ; 81; 0;52365  
 2; 886.2; 04-MAR-2012 13:44:49; Dark ; 25.5; 99; Del Cen ; 2.58; 26000;occ; 51; 0;52366  
 /nas3/ENVISAT/GOMOS/GOM\_NL\_\_0P/GOM\_NL\_\_0PNPDK20120304\_145013\_000021183112\_00197\_52366\_5750.N1  
 1; -1203.6; 04-MAR-2012 14:50:13; Bright; 40.5; 118; 50Gam Aql ; 2.72; 4600;occ; 81; 0;52366  
 2; 886.7; 04-MAR-2012 15:25:03; Dark ; 28.5; 99; Del Cen ; 2.58; 26000;occ; 57; 0;52367  
 /nas3/ENVISAT/GOMOS/GOM\_NL\_\_0P/GOM\_NL\_\_0PNPDK20120304\_163027\_000021203112\_00198\_52367\_5751.N1  
 1; -1203.4; 04-MAR-2012 16:30:27; Bright; 40.5; 118; 50Gam Aql ; 2.72; 4600;occ; 81; 0;52367  
 2; 887.0; 04-MAR-2012 17:05:18; Dark ; 30.5; 99; Del Cen ; 2.58; 26000;occ; 61; 0;52368  
 /nas3/ENVISAT/GOMOS/GOM\_NL\_\_0P/GOM\_NL\_\_0PNPDK20120304\_181042\_000021233112\_00199\_52368\_5752.N1  
 1; -1203.1; 04-MAR-2012 18:10:42; Bright; 40.0; 118; 50Gam Aql ; 2.72; 4600;occ; 80; 0;52368  
 2; 887.5; 04-MAR-2012 18:45:32; Dark ; 32.5; 99; Del Cen ; 2.58; 26000;occ; 65; 0;52369  
 /nas3/ENVISAT/GOMOS/GOM\_NL\_\_0P/GOM\_NL\_\_0PNPDE20120305\_012630\_000060543112\_00204\_52373\_6710.N1  
 1; 889.2; 05-MAR-2012 01:26:30; Dark ; 41.0; 99; Del Cen ; 2.58; 26000;occ; 82; 0;52373  
 2; 4812.3; 05-MAR-2012 02:31:53; Bright; 38.5; 118; 50Gam Aql ; 2.72; 4600;occ; 77; 0;52373  
 3; 6903.6; 05-MAR-2012 03:06:44; Dark ; 40.0; 99; Del Cen ; 2.58; 26000;occ; 80; 0;52374  
 /nas3/ENVISAT/GOMOS/GOM\_NL\_\_0P/GOM\_NL\_\_0PNPDE20120305\_041207\_000021323112\_00205\_52374\_6711.N1  
 1; -1201.4; 05-MAR-2012 04:12:07; Bright; 37.0; 118; 50Gam Aql ; 2.72; 4600;occ; 74; 0;52374  
 2; 890.1; 05-MAR-2012 04:46:58; Dark ; 41.0; 99; Del Cen ; 2.58; 26000;occ; 82; 0;52375  
 /nas3/ENVISAT/GOMOS/GOM\_NL\_\_0P/GOM\_NL\_\_0PNPDE20120305\_055221\_000021343112\_00206\_52375\_6712.N1  
 1; -1201.0; 05-MAR-2012 05:52:21; Bright; 26.0; 118; 50Gam Aql ; 2.72; 4600;occ; 52; 0;52375  
 2; 890.6; 05-MAR-2012 06:27:13; Dark ; 42.5; 99; Del Cen ; 2.58; 26000;occ; 85; 0;52376  
 /nas3/ENVISAT/GOMOS/GOM\_NL\_\_0P/GOM\_NL\_\_0PNPDE20120305\_205455\_000000403112\_00215\_52384\_6713.N1  
 1; -1173.2; 05-MAR-2012 20:54:55; Bright; 40.5; 11; 53Alp Aql ; 0.76; 8000;occ; 81; 0;52384  
 /nas3/ENVISAT/GOMOS/GOM\_NL\_\_0P/GOM\_NL\_\_0PNPDE20120305\_210657\_000000393112\_00215\_52384\_6714.N1  
 1; -450.8; 05-MAR-2012 21:06:57; Dark ; 39.5; 103; 38Zet Sgr ; 2.60; 9700;occ; 79; 0;52384  
 /nas3/ENVISAT/GOMOS/GOM\_NL\_\_0P/GOM\_NL\_\_0PNPDE20120305\_230937\_000039883112\_00217\_52386\_6715.N1  
 1; 894.9; 05-MAR-2012 23:09:37; Dark ; 42.0; 99; Del Cen ; 2.58; 26000;occ; 84; 0;52386  
 2; 4841.3; 06-MAR-2012 00:15:23; Bright; 42.0; 11; 53Alp Aql ; 0.76; 8000;occ; 84; 0;52386  
 /nas3/ENVISAT/GOMOS/GOM\_NL\_\_0P/GOM\_NL\_\_0PNPDK20120305\_080727\_000000403112\_00208\_52377\_5753.N1  
 1; 891.0; 05-MAR-2012 08:07:27; Dark ; 41.0; 99; Del Cen ; 2.58; 26000;occ; 82; 0;52377  
 /nas3/ENVISAT/GOMOS/GOM\_NL\_\_0P/GOM\_NL\_\_0PNPDK20120305\_094742\_000000433112\_00209\_52378\_5754.N1  
 1; 891.4; 05-MAR-2012 09:47:42; Dark ; 43.5; 99; Del Cen ; 2.58; 26000;occ; 87; 0;52378  
 /nas3/ENVISAT/GOMOS/GOM\_NL\_\_0P/GOM\_NL\_\_0PNPDK20120305\_112756\_000000393112\_00210\_52379\_5755.N1  
 1; 891.9; 05-MAR-2012 11:27:56; Dark ; 39.5; 99; Del Cen ; 2.58; 26000;occ; 79; 0;52379  
 /nas3/ENVISAT/GOMOS/GOM\_NL\_\_0P/GOM\_NL\_\_0PNPDK20120305\_130810\_000000383112\_00211\_52380\_5756.N1  
 1; 892.4; 05-MAR-2012 13:08:10; Dark ; 38.5; 99; Del Cen ; 2.58; 26000;occ; 77; 0;52380  
 /nas3/ENVISAT/GOMOS/GOM\_NL\_\_0P/GOM\_NL\_\_0PNPDK20120305\_144825\_000000383112\_00212\_52381\_5757.N1  
 1; 892.8; 05-MAR-2012 14:48:25; Dark ; 39.0; 99; Del Cen ; 2.58; 26000;occ; 78; 0;52381  
 /nas3/ENVISAT/GOMOS/GOM\_NL\_\_0P/GOM\_NL\_\_0PNPDK20120305\_162839\_000000393112\_00213\_52382\_5758.N1  
 1; 893.2; 05-MAR-2012 16:28:39; Dark ; 39.5; 99; Del Cen ; 2.58; 26000;occ; 79; 0;52382  
 /nas3/ENVISAT/GOMOS/GOM\_NL\_\_0P/GOM\_NL\_\_0PNPDK20120305\_191440\_000021063112\_00214\_52383\_5760.N1  
 1; -1173.5; 05-MAR-2012 19:14:40; Bright; 43.5; 11; 53Alp Aql ; 0.76; 8000;occ; 87; 0;52383  
 2; -451.3; 05-MAR-2012 19:26:43; Dark ; 43.0; 103; 38Zet Sgr ; 2.60; 9700;occ; 86; 0;52383  
 3; 893.9; 05-MAR-2012 19:49:08; Dark ; 39.5; 99; Del Cen ; 2.58; 26000;occ; 79; 0;52384  
 /nas3/ENVISAT/GOMOS/GOM\_NL\_\_0P/GOM\_NL\_\_0PNPDE20120306\_004951\_000039893112\_00218\_52387\_6716.N1  
 1; 895.3; 06-MAR-2012 00:49:51; Dark ; 41.5; 99; Del Cen ; 2.58; 26000;occ; 83; 0;52387  
 2; 4841.6; 06-MAR-2012 01:55:37; Bright; 43.0; 11; 53Alp Aql ; 0.76; 8000;occ; 86; 0;52387  
 /nas3/ENVISAT/GOMOS/GOM\_NL\_\_0P/GOM\_NL\_\_0PNPDE20120306\_020741\_000013833112\_00218\_52387\_6717.N1  
 1; -448.8; 06-MAR-2012 02:07:41; Dark ; 41.5; 103; 38Zet Sgr ; 2.60; 9700;occ; 83; 0;52387  
 2; 895.8; 06-MAR-2012 02:30:05; Dark ; 39.0; 99; Del Cen ; 2.58; 26000;occ; 78; 0;52388  
 /nas3/ENVISAT/GOMOS/GOM\_NL\_\_0P/GOM\_NL\_\_0PNPDE20120306\_033551\_000021063112\_00219\_52388\_6718.N1  
 1; -1172.0; 06-MAR-2012 03:35:51; Bright; 42.5; 11; 53Alp Aql ; 0.76; 8000;occ; 85; 0;52388  
 2; -446.9; 06-MAR-2012 03:47:57; Dark ; 41.5; 103; 38Zet Sgr ; 2.60; 9700;occ; 83; 0;52388  
 3; 896.5; 06-MAR-2012 04:10:20; Dark ; 38.5; 99; Del Cen ; 2.58; 26000;occ; 77; 0;52389  
 /nas3/ENVISAT/GOMOS/GOM\_NL\_\_0P/GOM\_NL\_\_0PNPDE20120306\_051606\_000021113112\_00220\_52389\_6719.N1

```

1; -1171.5; 06-MAR-2012 05:16:06; Bright; 43.0; 11; 53Alp Aql ; 0.76; 8000;occ; 86; 0;52389
2; -447.5; 06-MAR-2012 05:28:10; Dark ; 42.0; 103; 38Zet Sgr ; 2.60; 9700;occ; 84; 0;52389
3; 896.8; 06-MAR-2012 05:50:34; Dark ; 43.5; 99; Del Cen ; 2.58; 26000;occ; 87; 0;52390
/nas3/ENVISAT/GOMOS/GOM_NL__0P/GOM_NL__0PNPDE20120306_221035_000004953112_00230_52399_6720.N1
1; -441.6; 06-MAR-2012 22:10:35; Dark ; 25.0; 103; 38Zet Sgr ; 2.60; 9700;occ; 50; 0;52399
2; -5.3; 06-MAR-2012 22:17:52; Dark ; 59.0; 0; ; 0.00; 0;occ; 118; 0;52399
/nas3/ENVISAT/GOMOS/GOM_NL__0P/GOM_NL__0PNPDE20120306_235806_00000583112_00231_52400_6721.N1
1; -4.6; 06-MAR-2012 23:58:06; Dark ; 59.0; 0; ; 0.00; 0;occ; 118; 0;52400
/nas3/ENVISAT/GOMOS/GOM_NL__0P/GOM_NL__0PNPDK20120306_065620_000021093112_00221_52390_5761.N1
1; -1171.3; 06-MAR-2012 06:56:20; Bright; 43.0; 11; 53Alp Aql ; 0.76; 8000;occ; 86; 0;52390
2; -447.0; 06-MAR-2012 07:08:25; Dark ; 43.5; 103; 38Zet Sgr ; 2.60; 9700;occ; 87; 0;52390
3; 897.3; 06-MAR-2012 07:30:49; Dark ; 41.0; 99; Del Cen ; 2.58; 26000;occ; 82; 0;52391
/nas3/ENVISAT/GOMOS/GOM_NL__0P/GOM_NL__0PNPDK20120306_083634_000007653112_00222_52391_5762.N1
1; -1171.1; 06-MAR-2012 08:36:34; Bright; 42.0; 11; 53Alp Aql ; 0.76; 8000;occ; 84; 0;52391
2; -446.3; 06-MAR-2012 08:48:39; Dark ; 41.0; 103; 38Zet Sgr ; 2.60; 9700;occ; 82; 0;52391
/nas3/ENVISAT/GOMOS/GOM_NL__0P/GOM_NL__0PNPDK20120306_101649_000012183112_00223_52392_5763.N1
1; -1170.6; 06-MAR-2012 10:16:49; Bright; 43.0; 11; 53Alp Aql ; 0.76; 8000;occ; 86; 0;52392
2; -445.7; 06-MAR-2012 10:28:54; Dark ; 43.0; 103; 38Zet Sgr ; 2.60; 9700;occ; 86; 0;52392
3; -9.9; 06-MAR-2012 10:36:09; Dark ; 58.0; 0; ; 0.00; 0;occ; 116; 0;52392
/nas3/ENVISAT/GOMOS/GOM_NL__0P/GOM_NL__0PNPDK20120306_115703_000012203112_00224_52393_5764.N1
1; -1170.3; 06-MAR-2012 11:57:03; Bright; 43.0; 11; 53Alp Aql ; 0.76; 8000;occ; 86; 0;52393
2; -445.2; 06-MAR-2012 12:09:08; Dark ; 42.0; 103; 38Zet Sgr ; 2.60; 9700;occ; 84; 0;52393
3; -9.3; 06-MAR-2012 12:16:24; Dark ; 59.0; 0; ; 0.00; 0;occ; 118; 0;52393
/nas3/ENVISAT/GOMOS/GOM_NL__0P/GOM_NL__0PNPDK20120306_133717_000012203112_00225_52394_5765.N1
1; -1169.9; 06-MAR-2012 13:37:17; Bright; 43.0; 11; 53Alp Aql ; 0.76; 8000;occ; 86; 0;52394
2; -444.5; 06-MAR-2012 13:49:23; Dark ; 44.5; 103; 38Zet Sgr ; 2.60; 9700;occ; 89; 0;52394
3; -8.6; 06-MAR-2012 13:56:39; Dark ; 59.0; 0; ; 0.00; 0;occ; 118; 0;52394
/nas3/ENVISAT/GOMOS/GOM_NL__0P/GOM_NL__0PNPDK20120306_203021_000004953112_00229_52398_5769.N1
1; -442.2; 06-MAR-2012 20:30:21; Dark ; 31.0; 103; 38Zet Sgr ; 2.60; 9700;occ; 62; 0;52398
2; -5.9; 06-MAR-2012 20:37:37; Dark ; 59.0; 0; ; 0.00; 0;occ; 118; 0;52398
/nas3/ENVISAT/GOMOS/GOM_NL__0P/GOM_NL__0PNPDE20120307_013821_000060733112_00232_52401_6722.N1
1; -3.9; 07-MAR-2012 01:38:21; Dark ; 59.0; 0; ; 0.00; 0;occ; 118; 0;52401
2; 6010.7; 07-MAR-2012 03:18:35; Dark ; 59.0; 0; ; 0.00; 0;occ; 118; 0;52402
/nas3/ENVISAT/GOMOS/GOM_NL__0P/GOM_NL__0PNPDE20120307_045850_00000583112_00234_52403_6723.N1
1; -2.6; 07-MAR-2012 04:58:50; Dark ; 59.0; 0; ; 0.00; 0;occ; 118; 0;52403
/nas3/ENVISAT/GOMOS/GOM_NL__0P/GOM_NL__0PNPDE20120307_063905_00000583112_00235_52404_6724.N1
1; -1.9; 07-MAR-2012 06:39:05; Dark ; 59.0; 0; ; 0.00; 0;occ; 118; 0;52404
/nas3/ENVISAT/GOMOS/GOM_NL__0P/GOM_NL__0PNPDE20120307_203557_00000383112_00244_52413_6725.N1
1; 2098.4; 07-MAR-2012 20:35:57; Bright; 38.5; 22; 32Alp Leo ; 1.36; 15200;occ; 77; 0;52413
/nas3/ENVISAT/GOMOS/GOM_NL__0P/GOM_NL__0PNPDE20120307_214116_000021333112_00245_52414_6726.N1
1; 4.2; 07-MAR-2012 21:41:16; Dark ; 59.5; 0; ; 0.00; 0;occ; 119; 0;52414
2; 2098.4; 07-MAR-2012 22:16:10; Bright; 39.0; 22; 32Alp Leo ; 1.36; 15200;occ; 78; 0;52414
/nas3/ENVISAT/GOMOS/GOM_NL__0P/GOM_NL__0PNPDE20120307_232131_000021313112_00246_52415_6727.N1
1; 4.9; 07-MAR-2012 23:21:31; Dark ; 59.5; 0; ; 0.00; 0;occ; 119; 0;52415
2; 2098.3; 07-MAR-2012 23:56:24; Bright; 38.0; 22; 32Alp Leo ; 1.36; 15200;occ; 76; 0;52415
/nas3/ENVISAT/GOMOS/GOM_NL__0P/GOM_NL__0PNPDK20120307_081919_00000583112_00237_52406_5770.N1
1; -1.2; 07-MAR-2012 08:19:19; Dark ; 59.0; 0; ; 0.00; 0;occ; 118; 0;52406
/nas3/ENVISAT/GOMOS/GOM_NL__0P/GOM_NL__0PNPDK20120307_095934_00000583112_00238_52407_5771.N1
1; -0.5; 07-MAR-2012 09:59:34; Dark ; 59.0; 0; ; 0.00; 0;occ; 118; 0;52407
/nas3/ENVISAT/GOMOS/GOM_NL__0P/GOM_NL__0PNPDK20120307_103433_000039743112_00238_52407_5772.N1
1; 2098.4; 07-MAR-2012 10:34:33; Bright; 25.0; 22; 32Alp Leo ; 1.36; 15200;occ; 50; 0;52407
2; 6014.0; 07-MAR-2012 11:39:48; Dark ; 59.0; 0; ; 0.00; 0;occ; 118; 0;52408
/nas3/ENVISAT/GOMOS/GOM_NL__0P/GOM_NL__0PNPDK20120307_121447_000039753112_00239_52408_5773.N1
1; 2098.5; 07-MAR-2012 12:14:47; Bright; 31.0; 22; 32Alp Leo ; 1.36; 15200;occ; 62; 0;52408
2; 6014.7; 07-MAR-2012 13:20:03; Dark ; 59.0; 0; ; 0.00; 0;occ; 118; 0;52409
/nas3/ENVISAT/GOMOS/GOM_NL__0P/GOM_NL__0PNPDK20120307_135501_000039763112_00240_52409_5774.N1
1; 2098.6; 07-MAR-2012 13:55:01; Bright; 37.0; 22; 32Alp Leo ; 1.36; 15200;occ; 74; 0;52409
2; 6015.4; 07-MAR-2012 15:00:18; Dark ; 59.5; 0; ; 0.00; 0;occ; 119; 0;52410
/nas3/ENVISAT/GOMOS/GOM_NL__0P/GOM_NL__0PNPDK20120307_153515_000039773112_00241_52410_5775.N1
1; 2098.6; 07-MAR-2012 15:35:15; Bright; 41.5; 22; 32Alp Leo ; 1.36; 15200;occ; 83; 0;52410
2; 6016.2; 07-MAR-2012 16:40:32; Dark ; 59.5; 0; ; 0.00; 0;occ; 119; 0;52411
/nas3/ENVISAT/GOMOS/GOM_NL__0P/GOM_NL__0PNPDK20120307_171529_000039773112_00242_52411_5776.N1
1; 2098.6; 07-MAR-2012 17:15:29; Bright; 39.0; 22; 32Alp Leo ; 1.36; 15200;occ; 78; 0;52411
2; 6016.9; 07-MAR-2012 18:20:47; Dark ; 59.5; 0; ; 0.00; 0;occ; 119; 0;52412
/nas3/ENVISAT/GOMOS/GOM_NL__0P/GOM_NL__0PNPDK20120307_185543_000039783112_00243_52412_5777.N1
1; 2098.5; 07-MAR-2012 18:55:43; Bright; 39.0; 22; 32Alp Leo ; 1.36; 15200;occ; 78; 0;52412
2; 6017.5; 07-MAR-2012 20:01:02; Dark ; 59.5; 0; ; 0.00; 0;occ; 119; 0;52413
/nas3/ENVISAT/GOMOS/GOM_NL__0P/GOM_NL__0PNPDE20120308_010145_000021313112_00247_52416_6728.N1

```

1; 5.6; 08-MAR-2012 01:01:45; Dark ; 59.5; 0; ; 0.00; 0;occ; 119; 0;52416  
2; 2098.2; 08-MAR-2012 01:36:38; Bright; 39.0; 22; 32Alp Leo ; 1.36; 15200;occ; 78; 0;52416  
/nas3/ENVISAT/GOMOS/GOM\_NL\_\_0P/GOM\_NL\_\_0PNPDE20120308\_024200\_000021303112\_00248\_52417\_6729.N1  
1; 6.2; 08-MAR-2012 02:42:00; Dark ; 57.5; 0; ; 0.00; 0;occ; 115; 0;52417  
2; 2098.5; 08-MAR-2012 03:16:52; Bright; 38.0; 22; 32Alp Leo ; 1.36; 15200;occ; 76; 0;52417  
/nas3/ENVISAT/GOMOS/GOM\_NL\_\_0P/GOM\_NL\_\_0PNPDE20120308\_042215\_000021293112\_00249\_52418\_6730.N1  
1; 6.9; 08-MAR-2012 04:22:15; Dark ; 55.5; 0; ; 0.00; 0;occ; 111; 0;52418  
2; 2098.3; 08-MAR-2012 04:57:06; Bright; 38.5; 22; 32Alp Leo ; 1.36; 15200;occ; 77; 0;52418  
/nas3/ENVISAT/GOMOS/GOM\_NL\_\_0P/GOM\_NL\_\_0PNPDE20120310\_213327\_000041793112\_00288\_52457\_6731.N1  
1; 136.3; 10-MAR-2012 21:33:27; Dark ; 43.0; 141; Bet Ara ; 2.84; 4600;occ; 86; 0;52457  
2; 4279.6; 10-MAR-2012 22:42:31; Bright; 36.5; 66; 37Gam Cyg ; 2.21; 5900;occ; 73; 0;52457  
/nas3/ENVISAT/GOMOS/GOM\_NL\_\_0P/GOM\_NL\_\_0PNPDE20120310\_231342\_000041783112\_00289\_52458\_6732.N1  
1; 136.8; 10-MAR-2012 23:13:42; Dark ; 43.0; 141; Bet Ara ; 2.84; 4600;occ; 86; 0;52458  
2; 4279.6; 11-MAR-2012 00:22:45; Bright; 36.0; 66; 37Gam Cyg ; 2.21; 5900;occ; 72; 0;52458  
/nas3/ENVISAT/GOMOS/GOM\_NL\_\_0P/GOM\_NL\_\_0PNPDE20120311\_005356\_000041803112\_00290\_52459\_6733.N1  
1; 137.5; 11-MAR-2012 00:53:56; Dark ; 41.5; 141; Bet Ara ; 2.84; 4600;occ; 83; 0;52459  
2; 4279.7; 11-MAR-2012 02:02:59; Bright; 38.0; 66; 37Gam Cyg ; 2.21; 5900;occ; 76; 0;52459  
/nas3/ENVISAT/GOMOS/GOM\_NL\_\_0P/GOM\_NL\_\_0PNPDE20120311\_023411\_00000433112\_00291\_52460\_6734.N1  
1; 138.2; 11-MAR-2012 02:34:11; Dark ; 44.0; 141; Bet Ara ; 2.84; 4600;occ; 88; 0;52460  
/nas3/ENVISAT/GOMOS/GOM\_NL\_\_0P/GOM\_NL\_\_0PNPDE20120311\_034312\_000019233112\_00291\_52460\_6735.N1  
1;-1734.2; 11-MAR-2012 03:43:12; Bright; 36.0; 66; 37Gam Cyg ; 2.21; 5900;occ; 72; 0;52460  
2; 139.0; 11-MAR-2012 04:14:26; Dark ; 50.5; 141; Bet Ara ; 2.84; 4600;occ; 101; 0;52461  
/nas3/ENVISAT/GOMOS/GOM\_NL\_\_0P/GOM\_NL\_\_0PNPDE20120311\_052327\_000019183112\_00292\_52461\_6736.N1  
1;-1734.0; 11-MAR-2012 05:23:27; Bright; 36.0; 66; 37Gam Cyg ; 2.21; 5900;occ; 72; 0;52461  
2; 139.6; 11-MAR-2012 05:54:40; Dark ; 44.5; 141; Bet Ara ; 2.84; 4600;occ; 89; 0;52462  
/nas3/ENVISAT/GOMOS/GOM\_NL\_\_0P/GOM\_NL\_\_0PNPDE20120311\_213140\_00000383112\_00302\_52471\_6737.N1  
1; 2234.4; 11-MAR-2012 21:31:40; Bright; 38.5; 51; 41Gam1Leo ; 2.01; 4500;occ; 77; 0;52471  
/nas3/ENVISAT/GOMOS/GOM\_NL\_\_0P/GOM\_NL\_\_0PNPDE20120311\_223706\_000021263112\_00303\_52472\_6738.N1  
1; 146.0; 11-MAR-2012 22:37:06; Dark ; 51.5; 141; Bet Ara ; 2.84; 4600;occ; 103; 0;52472  
2; 2234.3; 11-MAR-2012 23:11:54; Bright; 38.0; 51; 41Gam1Leo ; 2.01; 4500;occ; 76; 0;52472  
/nas3/ENVISAT/GOMOS/GOM\_NL\_\_0P/GOM\_NL\_\_0PNPDK20120311\_070341\_000019183112\_00293\_52462\_5778.N1  
1;-1733.9; 11-MAR-2012 07:03:41; Bright; 35.5; 66; 37Gam Cyg ; 2.21; 5900;occ; 71; 0;52462  
2; 140.4; 11-MAR-2012 07:34:55; Dark ; 44.0; 141; Bet Ara ; 2.84; 4600;occ; 88; 0;52463  
/nas3/ENVISAT/GOMOS/GOM\_NL\_\_0P/GOM\_NL\_\_0PNPDK20120311\_084355\_000019183112\_00294\_52463\_5779.N1  
1;-1733.8; 11-MAR-2012 08:43:55; Bright; 36.5; 66; 37Gam Cyg ; 2.21; 5900;occ; 73; 0;52463  
2; 141.0; 11-MAR-2012 09:15:10; Dark ; 44.0; 141; Bet Ara ; 2.84; 4600;occ; 88; 0;52464  
/nas3/ENVISAT/GOMOS/GOM\_NL\_\_0P/GOM\_NL\_\_0PNPDK20120311\_102409\_000019163112\_00295\_52464\_5780.N1  
1;-1733.7; 11-MAR-2012 10:24:09; Bright; 36.0; 66; 37Gam Cyg ; 2.21; 5900;occ; 72; 0;52464  
2; 141.5; 11-MAR-2012 10:55:24; Dark ; 41.5; 141; Bet Ara ; 2.84; 4600;occ; 83; 0;52465  
/nas3/ENVISAT/GOMOS/GOM\_NL\_\_0P/GOM\_NL\_\_0PNPDK20120311\_113017\_000039623112\_00296\_52465\_5781.N1  
1; 2234.9; 11-MAR-2012 11:30:17; Bright; 30.0; 51; 41Gam1Leo ; 2.01; 4500;occ; 60; 0;52465  
2; 4280.2; 11-MAR-2012 12:04:23; Bright; 39.0; 66; 37Gam Cyg ; 2.21; 5900;occ; 78; 0;52465  
3; 6156.1; 11-MAR-2012 12:35:39; Dark ; 41.0; 141; Bet Ara ; 2.84; 4600;occ; 82; 0;52466  
/nas3/ENVISAT/GOMOS/GOM\_NL\_\_0P/GOM\_NL\_\_0PNPDK20120311\_131031\_000039633112\_00297\_52466\_5782.N1  
1; 2234.7; 11-MAR-2012 13:10:31; Bright; 36.0; 51; 41Gam1Leo ; 2.01; 4500;occ; 72; 0;52466  
2; 4280.3; 11-MAR-2012 13:44:37; Bright; 37.0; 66; 37Gam Cyg ; 2.21; 5900;occ; 74; 0;52466  
3; 6156.9; 11-MAR-2012 14:15:53; Dark ; 41.0; 141; Bet Ara ; 2.84; 4600;occ; 82; 0;52467  
/nas3/ENVISAT/GOMOS/GOM\_NL\_\_0P/GOM\_NL\_\_0PNPDK20120311\_145045\_000039643112\_00298\_52467\_5783.N1  
1; 2234.7; 11-MAR-2012 14:50:45; Bright; 42.0; 51; 41Gam1Leo ; 2.01; 4500;occ; 84; 0;52467  
2; 4280.5; 11-MAR-2012 15:24:51; Bright; 36.5; 66; 37Gam Cyg ; 2.21; 5900;occ; 73; 0;52467  
3; 6157.5; 11-MAR-2012 15:56:08; Dark ; 41.5; 141; Bet Ara ; 2.84; 4600;occ; 83; 0;52468  
/nas3/ENVISAT/GOMOS/GOM\_NL\_\_0P/GOM\_NL\_\_0PNPDK20120311\_163059\_000039663112\_00299\_52468\_5784.N1  
1; 2234.7; 11-MAR-2012 16:30:59; Bright; 38.5; 51; 41Gam1Leo ; 2.01; 4500;occ; 77; 0;52468  
2; 4280.4; 11-MAR-2012 17:05:05; Bright; 38.0; 66; 37Gam Cyg ; 2.21; 5900;occ; 76; 0;52468  
3; 6158.2; 11-MAR-2012 17:36:22; Dark ; 43.5; 141; Bet Ara ; 2.84; 4600;occ; 87; 0;52469  
/nas3/ENVISAT/GOMOS/GOM\_NL\_\_0P/GOM\_NL\_\_0PNPDK20120311\_181113\_000039683112\_00300\_52469\_5785.N1  
1; 2234.6; 11-MAR-2012 18:11:13; Bright; 39.5; 51; 41Gam1Leo ; 2.01; 4500;occ; 79; 0;52469  
2; 4280.4; 11-MAR-2012 18:45:19; Bright; 38.5; 66; 37Gam Cyg ; 2.21; 5900;occ; 77; 0;52469  
3; 6158.8; 11-MAR-2012 19:16:37; Dark ; 44.0; 141; Bet Ara ; 2.84; 4600;occ; 88; 0;52470  
/nas3/ENVISAT/GOMOS/GOM\_NL\_\_0P/GOM\_NL\_\_0PNPDK20120311\_195127\_000039663112\_00301\_52470\_5786.N1  
1; 2234.4; 11-MAR-2012 19:51:27; Bright; 39.0; 51; 41Gam1Leo ; 2.01; 4500;occ; 78; 0;52470  
2; 4280.5; 11-MAR-2012 20:25:33; Bright; 30.0; 66; 37Gam Cyg ; 2.21; 5900;occ; 60; 0;52470  
3; 6159.3; 11-MAR-2012 20:56:51; Dark ; 42.0; 141; Bet Ara ; 2.84; 4600;occ; 84; 0;52471  
/nas3/ENVISAT/GOMOS/GOM\_NL\_\_0P/GOM\_NL\_\_0PNPDE20120312\_001720\_000021253112\_00304\_52473\_6739.N1  
1; 146.7; 12-MAR-2012 00:17:20; Dark ; 43.0; 141; Bet Ara ; 2.84; 4600;occ; 86; 0;52473  
2; 2234.3; 12-MAR-2012 00:52:08; Bright; 38.0; 51; 41Gam1Leo ; 2.01; 4500;occ; 76; 0;52473  
/nas3/ENVISAT/GOMOS/GOM\_NL\_\_0P/GOM\_NL\_\_0PNPDE20120312\_015735\_000021253112\_00305\_52474\_6740.N1  
1; 147.4; 12-MAR-2012 01:57:35; Dark ; 41.0; 141; Bet Ara ; 2.84; 4600;occ; 82; 0;52474

2; 2234.2; 12-MAR-2012 02:32:22; Bright; 39.0; 51; 41Gam1Leo ; 2.01; 4500;occ; 78; 0;52474  
/nas3/ENVISAT/GOMOS/GOM\_NL\_\_0P/GOM\_NL\_\_0PNPDE20120312\_033750\_000021253112\_00306\_52475\_6741.N1  
1; 148.2; 12-MAR-2012 03:37:50; Dark ; 44.5; 141; Bet Ara ; 2.84; 4600;occ; 89; 0;52475  
2; 2234.2; 12-MAR-2012 04:12:36; Bright; 39.0; 51; 41Gam1Leo ; 2.01; 4500;occ; 78; 0;52475  
/nas3/ENVISAT/GOMOS/GOM\_NL\_\_0P/GOM\_NL\_\_0PNPDE20120312\_051804\_000021243112\_00307\_52476\_6742.N1  
1; 148.6; 12-MAR-2012 05:18:04; Dark ; 41.0; 141; Bet Ara ; 2.84; 4600;occ; 82; 0;52476  
2; 2234.2; 12-MAR-2012 05:52:50; Bright; 39.0; 51; 41Gam1Leo ; 2.01; 4500;occ; 78; 0;52476  
/nas3/ENVISAT/GOMOS/GOM\_NL\_\_0P/GOM\_NL\_\_0PNPDE20120312\_220030\_00000423112\_00317\_52486\_6743.N1  
1; 155.4; 12-MAR-2012 22:00:30; Dark ; 42.5; 141; Bet Ara ; 2.84; 4600;occ; 85; 0;52486  
/nas3/ENVISAT/GOMOS/GOM\_NL\_\_0P/GOM\_NL\_\_0PNPDE20120312\_234045\_00000403112\_00318\_52487\_6744.N1  
1; 156.1; 12-MAR-2012 23:40:45; Dark ; 41.0; 141; Bet Ara ; 2.84; 4600;occ; 82; 0;52487  
/nas3/ENVISAT/GOMOS/GOM\_NL\_\_0P/GOM\_NL\_\_0PNPDK20120312\_065819\_00000423112\_00308\_52477\_5787.N1  
1; 149.4; 12-MAR-2012 06:58:19; Dark ; 42.5; 141; Bet Ara ; 2.84; 4600;occ; 85; 0;52477  
/nas3/ENVISAT/GOMOS/GOM\_NL\_\_0P/GOM\_NL\_\_0PNPDK20120312\_083833\_00000433112\_00309\_52478\_5788.N1  
1; 149.9; 12-MAR-2012 08:38:33; Dark ; 43.5; 141; Bet Ara ; 2.84; 4600;occ; 87; 0;52478  
/nas3/ENVISAT/GOMOS/GOM\_NL\_\_0P/GOM\_NL\_\_0PNPDK20120312\_101848\_00000433112\_00310\_52479\_5789.N1  
1; 150.9; 12-MAR-2012 10:18:48; Dark ; 44.0; 141; Bet Ara ; 2.84; 4600;occ; 88; 0;52479  
/nas3/ENVISAT/GOMOS/GOM\_NL\_\_0P/GOM\_NL\_\_0PNPDK20120312\_115903\_00000393112\_00311\_52480\_5790.N1  
1; 151.4; 12-MAR-2012 11:59:03; Dark ; 40.0; 141; Bet Ara ; 2.84; 4600;occ; 80; 0;52480  
/nas3/ENVISAT/GOMOS/GOM\_NL\_\_0P/GOM\_NL\_\_0PNPDK20120312\_133917\_00000413112\_00312\_52481\_5791.N1  
1; 152.2; 12-MAR-2012 13:39:17; Dark ; 42.0; 141; Bet Ara ; 2.84; 4600;occ; 84; 0;52481  
/nas3/ENVISAT/GOMOS/GOM\_NL\_\_0P/GOM\_NL\_\_0PNPDK20120312\_151932\_00000423112\_00313\_52482\_5792.N1  
1; 152.7; 12-MAR-2012 15:19:32; Dark ; 43.0; 141; Bet Ara ; 2.84; 4600;occ; 86; 0;52482  
/nas3/ENVISAT/GOMOS/GOM\_NL\_\_0P/GOM\_NL\_\_0PNPDK20120312\_165946\_00000413112\_00314\_52483\_5793.N1  
1; 153.4; 12-MAR-2012 16:59:46; Dark ; 42.0; 141; Bet Ara ; 2.84; 4600;occ; 84; 0;52483  
/nas3/ENVISAT/GOMOS/GOM\_NL\_\_0P/GOM\_NL\_\_0PNPDK20120312\_184001\_00000433112\_00315\_52484\_5794.N1  
1; 154.1; 12-MAR-2012 18:40:01; Dark ; 43.5; 141; Bet Ara ; 2.84; 4600;occ; 87; 0;52484  
/nas3/ENVISAT/GOMOS/GOM\_NL\_\_0P/GOM\_NL\_\_0PNPDK20120312\_202016\_00000443112\_00316\_52485\_5795.N1  
1; 154.8; 12-MAR-2012 20:20:16; Dark ; 45.0; 141; Bet Ara ; 2.84; 4600;occ; 90; 0;52485  
/nas3/ENVISAT/GOMOS/GOM\_NL\_\_0P/GOM\_NL\_\_0PNPDE20120313\_012059\_0000060563112\_00319\_52488\_6745.N1  
1; 156.7; 13-MAR-2012 01:20:59; Dark ; 44.0; 141; Bet Ara ; 2.84; 4600;occ; 88; 0;52488  
2; 6171.4; 13-MAR-2012 03:01:14; Dark ; 41.5; 141; Bet Ara ; 2.84; 4600;occ; 83; 0;52489  
/nas3/ENVISAT/GOMOS/GOM\_NL\_\_0P/GOM\_NL\_\_0PNPDE20120313\_044128\_00000393112\_00321\_52490\_6746.N1  
1; 158.0; 13-MAR-2012 04:41:28; Dark ; 39.5; 141; Bet Ara ; 2.84; 4600;occ; 79; 0;52490  
/nas3/ENVISAT/GOMOS/GOM\_NL\_\_0P/GOM\_NL\_\_0PNPDE20120313\_062143\_00000373112\_00322\_52491\_6747.N1  
1; 158.5; 13-MAR-2012 06:21:43; Dark ; 37.5; 141; Bet Ara ; 2.84; 4600;occ; 75; 0;52491  
/nas3/ENVISAT/GOMOS/GOM\_NL\_\_0P/GOM\_NL\_\_0PNPDE20120313\_212555\_000003093112\_00331\_52500\_6748.N1  
1; 285.4; 13-MAR-2012 21:25:55; Dark ; 58.5; 0; ; 0.00; 0;occ; 117; 0;52500  
2; 550.0; 13-MAR-2012 21:30:20; Dark ; 45.0; 4; Alp1Cen ;-0.01; 5800;occ; 90; 0;52500  
/nas3/ENVISAT/GOMOS/GOM\_NL\_\_0P/GOM\_NL\_\_0PNPDE20120313\_230610\_000003133112\_00332\_52501\_6749.N1  
1; 286.1; 13-MAR-2012 23:06:10; Dark ; 58.5; 0; ; 0.00; 0;occ; 117; 0;52501  
2; 550.5; 13-MAR-2012 23:10:34; Dark ; 49.5; 4; Alp1Cen ;-0.01; 5800;occ; 99; 0;52501  
/nas3/ENVISAT/GOMOS/GOM\_NL\_\_0P/GOM\_NL\_\_0PNPDK20120313\_080158\_00000363112\_00323\_52492\_5796.N1  
1; 159.2; 13-MAR-2012 08:01:58; Dark ; 36.5; 141; Bet Ara ; 2.84; 4600;occ; 73; 0;52492  
/nas3/ENVISAT/GOMOS/GOM\_NL\_\_0P/GOM\_NL\_\_0PNPDK20120313\_112428\_000003123112\_00325\_52494\_5797.N1  
1; 281.7; 13-MAR-2012 11:24:28; Dark ; 58.5; 0; ; 0.00; 0;occ; 117; 0;52494  
2; 546.9; 13-MAR-2012 11:28:53; Dark ; 47.0; 4; Alp1Cen ;-0.01; 5800;occ; 94; 0;52494  
/nas3/ENVISAT/GOMOS/GOM\_NL\_\_0P/GOM\_NL\_\_0PNPDK20120313\_130442\_000003063112\_00326\_52495\_5798.N1  
1; 282.4; 13-MAR-2012 13:04:42; Dark ; 58.5; 0; ; 0.00; 0;occ; 117; 0;52495  
2; 547.3; 13-MAR-2012 13:09:07; Dark ; 41.5; 4; Alp1Cen ;-0.01; 5800;occ; 83; 0;52495  
/nas3/ENVISAT/GOMOS/GOM\_NL\_\_0P/GOM\_NL\_\_0PNPDK20120313\_144457\_000003073112\_00327\_52496\_5799.N1  
1; 283.0; 13-MAR-2012 14:44:57; Dark ; 58.5; 0; ; 0.00; 0;occ; 117; 0;52496  
2; 548.0; 13-MAR-2012 14:49:22; Dark ; 42.0; 4; Alp1Cen ;-0.01; 5800;occ; 84; 0;52496  
/nas3/ENVISAT/GOMOS/GOM\_NL\_\_0P/GOM\_NL\_\_0PNPDK20120313\_162512\_000003133112\_00328\_52497\_5800.N1  
1; 283.6; 13-MAR-2012 16:25:12; Dark ; 58.5; 0; ; 0.00; 0;occ; 117; 0;52497  
2; 548.5; 13-MAR-2012 16:29:36; Dark ; 49.0; 4; Alp1Cen ;-0.01; 5800;occ; 98; 0;52497  
/nas3/ENVISAT/GOMOS/GOM\_NL\_\_0P/GOM\_NL\_\_0PNPDK20120313\_180526\_000003083112\_00329\_52498\_5801.N1  
1; 284.2; 13-MAR-2012 18:05:26; Dark ; 58.5; 0; ; 0.00; 0;occ; 117; 0;52498  
2; 549.0; 13-MAR-2012 18:09:51; Dark ; 44.0; 4; Alp1Cen ;-0.01; 5800;occ; 88; 0;52498  
/nas3/ENVISAT/GOMOS/GOM\_NL\_\_0P/GOM\_NL\_\_0PNPDK20120313\_194541\_000003213112\_00330\_52499\_5802.N1  
1; 284.8; 13-MAR-2012 19:45:41; Dark ; 58.5; 0; ; 0.00; 0;occ; 117; 0;52499  
2; 549.5; 13-MAR-2012 19:50:05; Dark ; 56.5; 4; Alp1Cen ;-0.01; 5800;occ; 113; 0;52499  
/nas3/ENVISAT/GOMOS/GOM\_NL\_\_0P/GOM\_NL\_\_0PNPDE20120314\_004624\_000003203112\_00333\_52502\_6750.N1  
1; 286.7; 14-MAR-2012 00:46:24; Dark ; 58.5; 0; ; 0.00; 0;occ; 117; 0;52502  
2; 551.0; 14-MAR-2012 00:50:49; Dark ; 56.5; 4; Alp1Cen ;-0.01; 5800;occ; 113; 0;52502  
/nas3/ENVISAT/GOMOS/GOM\_NL\_\_0P/GOM\_NL\_\_0PNPDE20120314\_022639\_000003113112\_00334\_52503\_6751.N1  
1; 287.3; 14-MAR-2012 02:26:39; Dark ; 58.5; 0; ; 0.00; 0;occ; 117; 0;52503  
2; 551.7; 14-MAR-2012 02:31:03; Dark ; 47.0; 4; Alp1Cen ;-0.01; 5800;occ; 94; 0;52503

/nas3/ENVISAT/GOMOS/GOM\_NL\_\_0P/GOM\_NL\_\_0PNPDE20120314\_033141\_000024323112\_00334\_52503\_6752.N1  
1;-1824.7; 14-MAR-2012 03:31:41; Bright; 36.5; 19; 50Alp Cyg ; 1.25; 10500;occ; 73; 0;52503  
2; 287.9; 14-MAR-2012 04:06:53; Dark ; 58.5; 0; ; 0.00; 0;occ; 117; 0;52504  
3; 552.4; 14-MAR-2012 04:11:18; Dark ; 55.5; 4; Alp1Cen ;-0.01; 5800;occ; 111; 0;52504  
/nas3/ENVISAT/GOMOS/GOM\_NL\_\_0P/GOM\_NL\_\_0PNPDE20120314\_051155\_000024193112\_00335\_52504\_6753.N1  
1;-1824.7; 14-MAR-2012 05:11:55; Bright; 38.0; 19; 50Alp Cyg ; 1.25; 10500;occ; 76; 0;52504  
2; 288.5; 14-MAR-2012 05:47:08; Dark ; 58.5; 0; ; 0.00; 0;occ; 117; 0;52505  
3; 552.9; 14-MAR-2012 05:51:32; Dark ; 41.5; 4; Alp1Cen ;-0.01; 5800;occ; 83; 0;52505  
/nas3/ENVISAT/GOMOS/GOM\_NL\_\_0P/GOM\_NL\_\_0PNPDE20120314\_215415\_000000373112\_00345\_52514\_6754.N1  
1;-1824.1; 14-MAR-2012 21:54:15; Bright; 37.5; 19; 50Alp Cyg ; 1.25; 10500;occ; 75; 0;52514  
/nas3/ENVISAT/GOMOS/GOM\_NL\_\_0P/GOM\_NL\_\_0PNPDE20120314\_222933\_000039303112\_00346\_52515\_6755.N1  
1; 294.7; 14-MAR-2012 22:29:33; Dark ; 58.5; 0; ; 0.00; 0;occ; 117; 0;52515  
2; 558.2; 14-MAR-2012 22:33:57; Dark ; 45.5; 4; Alp1Cen ;-0.01; 5800;occ; 91; 0;52515  
3; 4189.9; 14-MAR-2012 23:34:29; Bright; 35.0; 19; 50Alp Cyg ; 1.25; 10500;occ; 70; 0;52515  
/nas3/ENVISAT/GOMOS/GOM\_NL\_\_0P/GOM\_NL\_\_0PNPDK20120314\_065209\_000024233112\_00336\_52505\_5803.N1  
1;-1824.4; 14-MAR-2012 06:52:09; Bright; 38.0; 19; 50Alp Cyg ; 1.25; 10500;occ; 76; 0;52505  
2; 289.1; 14-MAR-2012 07:27:22; Dark ; 58.5; 0; ; 0.00; 0;occ; 117; 0;52506  
3; 553.4; 14-MAR-2012 07:31:47; Dark ; 45.5; 4; Alp1Cen ;-0.01; 5800;occ; 91; 0;52506  
/nas3/ENVISAT/GOMOS/GOM\_NL\_\_0P/GOM\_NL\_\_0PNPDK20120314\_083223\_000024343112\_00337\_52506\_5804.N1  
1;-1824.4; 14-MAR-2012 08:32:23; Bright; 37.5; 19; 50Alp Cyg ; 1.25; 10500;occ; 75; 0;52506  
2; 289.7; 14-MAR-2012 09:07:37; Dark ; 58.5; 0; ; 0.00; 0;occ; 117; 0;52507  
3; 554.0; 14-MAR-2012 09:12:01; Dark ; 56.5; 4; Alp1Cen ;-0.01; 5800;occ; 113; 0;52507  
/nas3/ENVISAT/GOMOS/GOM\_NL\_\_0P/GOM\_NL\_\_0PNPDK20120314\_101237\_000024273112\_00338\_52507\_5805.N1  
1;-1824.3; 14-MAR-2012 10:12:37; Bright; 36.5; 19; 50Alp Cyg ; 1.25; 10500;occ; 73; 0;52507  
2; 290.4; 14-MAR-2012 10:47:51; Dark ; 58.5; 0; ; 0.00; 0;occ; 117; 0;52508  
3; 554.5; 14-MAR-2012 10:52:16; Dark ; 48.5; 4; Alp1Cen ;-0.01; 5800;occ; 97; 0;52508  
/nas3/ENVISAT/GOMOS/GOM\_NL\_\_0P/GOM\_NL\_\_0PNPDK20120314\_115251\_000024203112\_00339\_52508\_5806.N1  
1;-1824.3; 14-MAR-2012 11:52:51; Bright; 35.5; 19; 50Alp Cyg ; 1.25; 10500;occ; 71; 0;52508  
2; 291.0; 14-MAR-2012 12:28:06; Dark ; 58.5; 0; ; 0.00; 0;occ; 117; 0;52509  
3; 555.1; 14-MAR-2012 12:32:30; Dark ; 41.5; 4; Alp1Cen ;-0.01; 5800;occ; 83; 0;52509  
/nas3/ENVISAT/GOMOS/GOM\_NL\_\_0P/GOM\_NL\_\_0PNPDK20120314\_133305\_000024223112\_00340\_52509\_5807.N1  
1;-1824.2; 14-MAR-2012 13:33:05; Bright; 36.5; 19; 50Alp Cyg ; 1.25; 10500;occ; 73; 0;52509  
2; 291.6; 14-MAR-2012 14:08:20; Dark ; 58.5; 0; ; 0.00; 0;occ; 117; 0;52510  
3; 555.7; 14-MAR-2012 14:12:45; Dark ; 43.0; 4; Alp1Cen ;-0.01; 5800;occ; 86; 0;52510  
/nas3/ENVISAT/GOMOS/GOM\_NL\_\_0P/GOM\_NL\_\_0PNPDK20120314\_151319\_000024233112\_00341\_52510\_5808.N1  
1;-1824.1; 14-MAR-2012 15:13:19; Bright; 36.0; 19; 50Alp Cyg ; 1.25; 10500;occ; 72; 0;52510  
2; 292.2; 14-MAR-2012 15:48:35; Dark ; 58.5; 0; ; 0.00; 0;occ; 117; 0;52511  
3; 556.2; 14-MAR-2012 15:52:59; Dark ; 43.5; 4; Alp1Cen ;-0.01; 5800;occ; 87; 0;52511  
/nas3/ENVISAT/GOMOS/GOM\_NL\_\_0P/GOM\_NL\_\_0PNPDK20120314\_165333\_000024253112\_00342\_52511\_5809.N1  
1;-1824.3; 14-MAR-2012 16:53:33; Bright; 36.0; 19; 50Alp Cyg ; 1.25; 10500;occ; 72; 0;52511  
2; 292.8; 14-MAR-2012 17:28:50; Dark ; 58.5; 0; ; 0.00; 0;occ; 117; 0;52512  
3; 556.7; 14-MAR-2012 17:33:14; Dark ; 44.5; 4; Alp1Cen ;-0.01; 5800;occ; 89; 0;52512  
/nas3/ENVISAT/GOMOS/GOM\_NL\_\_0P/GOM\_NL\_\_0PNPDK20120314\_183346\_000024373112\_00343\_52512\_5810.N1  
1;-1824.3; 14-MAR-2012 18:33:46; Bright; 36.0; 19; 50Alp Cyg ; 1.25; 10500;occ; 72; 0;52512  
2; 293.5; 14-MAR-2012 19:09:04; Dark ; 58.5; 0; ; 0.00; 0;occ; 117; 0;52513  
3; 557.2; 14-MAR-2012 19:13:28; Dark ; 56.0; 4; Alp1Cen ;-0.01; 5800;occ; 112; 0;52513  
/nas3/ENVISAT/GOMOS/GOM\_NL\_\_0P/GOM\_NL\_\_0PNPDK20120314\_201401\_000024263112\_00344\_52513\_5811.N1  
1;-1824.2; 14-MAR-2012 20:14:01; Bright; 35.5; 19; 50Alp Cyg ; 1.25; 10500;occ; 71; 0;52513  
2; 294.1; 14-MAR-2012 20:49:19; Dark ; 58.5; 0; ; 0.00; 0;occ; 117; 0;52514  
3; 557.7; 14-MAR-2012 20:53:42; Dark ; 44.5; 4; Alp1Cen ;-0.01; 5800;occ; 89; 0;52514  
/nas3/ENVISAT/GOMOS/GOM\_NL\_\_0P/GOM\_NL\_\_0PNPDE20120315\_000948\_000039323112\_00347\_52516\_6756.N1  
1; 295.3; 15-MAR-2012 00:09:48; Dark ; 58.5; 0; ; 0.00; 0;occ; 117; 0;52516  
2; 558.7; 15-MAR-2012 00:14:11; Dark ; 45.0; 4; Alp1Cen ;-0.01; 5800;occ; 90; 0;52516  
3; 4190.0; 15-MAR-2012 01:14:42; Bright; 38.0; 19; 50Alp Cyg ; 1.25; 10500;occ; 76; 0;52516  
/nas3/ENVISAT/GOMOS/GOM\_NL\_\_0P/GOM\_NL\_\_0PNPDE20120315\_015002\_0000003093112\_00348\_52517\_6757.N1  
1; 296.0; 15-MAR-2012 01:50:02; Dark ; 57.5; 0; ; 0.00; 0;occ; 115; 0;52517  
2; 559.3; 15-MAR-2012 01:54:26; Dark ; 46.5; 4; Alp1Cen ;-0.01; 5800;occ; 93; 0;52517  
/nas3/ENVISAT/GOMOS/GOM\_NL\_\_0P/GOM\_NL\_\_0PNPDE20120315\_025456\_000024323112\_00348\_52517\_6758.N1  
1;-1824.0; 15-MAR-2012 02:54:56; Bright; 35.0; 19; 50Alp Cyg ; 1.25; 10500;occ; 70; 0;52517  
2; 296.6; 15-MAR-2012 03:30:17; Dark ; 56.5; 0; ; 0.00; 0;occ; 113; 0;52518  
3; 560.0; 15-MAR-2012 03:34:40; Dark ; 48.5; 4; Alp1Cen ;-0.01; 5800;occ; 97; 0;52518  
/nas3/ENVISAT/GOMOS/GOM\_NL\_\_0P/GOM\_NL\_\_0PNPDE20120315\_043510\_000024403112\_00349\_52518\_6759.N1  
1;-1823.9; 15-MAR-2012 04:35:10; Bright; 37.5; 19; 50Alp Cyg ; 1.25; 10500;occ; 75; 0;52518  
2; 297.2; 15-MAR-2012 05:10:31; Dark ; 56.5; 0; ; 0.00; 0;occ; 113; 0;52519  
3; 560.5; 15-MAR-2012 05:14:55; Dark ; 56.5; 4; Alp1Cen ;-0.01; 5800;occ; 113; 0;52519  
/nas3/ENVISAT/GOMOS/GOM\_NL\_\_0P/GOM\_NL\_\_0PNPDE20120315\_212049\_000000343112\_00359\_52528\_6760.N1  
1;-1625.0; 15-MAR-2012 21:20:49; Bright; 35.0; 92; 53Eps Cyg ; 2.50; 4500;occ; 70; 0;52528  
/nas3/ENVISAT/GOMOS/GOM\_NL\_\_0P/GOM\_NL\_\_0PNPDE20120315\_215720\_000038583112\_00360\_52529\_6761.N1

1; 565.9; 15-MAR-2012 21:57:20; Dark ; 45.5; 4; Alp1Cen ; -0.01; 5800;occ; 91; 0;52529  
2; 4389.0; 15-MAR-2012 23:01:03; Bright; 35.5; 92; 53Eps Cyg ; 2.50; 4500;occ; 71; 0;52529  
/nas3/ENVISAT/GOMOS/GOM\_NL\_\_0P/GOM\_NL\_\_0PNPDE20120315\_233734\_000038593112\_00361\_52530\_6762.N1  
1; 566.4; 15-MAR-2012 23:37:34; Dark ; 54.5; 4; Alp1Cen ; -0.01; 5800;occ; 109; 0;52530  
2; 4389.1; 16-MAR-2012 00:41:17; Bright; 36.5; 92; 53Eps Cyg ; 2.50; 4500;occ; 73; 0;52530  
/nas3/ENVISAT/GOMOS/GOM\_NL\_\_0P/GOM\_NL\_\_0PNPDK20120315\_061524\_000024283112\_00350\_52519\_5812.N1  
1; -1823.8; 15-MAR-2012 06:15:24; Bright; 38.0; 19; 50Alp Cyg ; 1.25; 10500;occ; 76; 0;52519  
2; 297.7; 15-MAR-2012 06:50:46; Dark ; 55.5; 0; ; 0.00; 0;occ; 111; 0;52520  
3; 561.1; 15-MAR-2012 06:55:09; Dark ; 44.0; 4; Alp1Cen ; -0.01; 5800;occ; 88; 0;52520  
/nas3/ENVISAT/GOMOS/GOM\_NL\_\_0P/GOM\_NL\_\_0PNPDK20120315\_075539\_000024413112\_00351\_52520\_5813.N1  
1; -1823.7; 15-MAR-2012 07:55:39; Bright; 38.5; 19; 50Alp Cyg ; 1.25; 10500;occ; 77; 0;52520  
2; 298.3; 15-MAR-2012 08:31:01; Dark ; 54.5; 0; ; 0.00; 0;occ; 109; 0;52521  
3; 561.7; 15-MAR-2012 08:35:24; Dark ; 56.5; 4; Alp1Cen ; -0.01; 5800;occ; 113; 0;52521  
/nas3/ENVISAT/GOMOS/GOM\_NL\_\_0P/GOM\_NL\_\_0PNPDK20120315\_093553\_000024303112\_00352\_52521\_5814.N1  
1; -1823.6; 15-MAR-2012 09:35:53; Bright; 36.0; 19; 50Alp Cyg ; 1.25; 10500;occ; 72; 0;52521  
2; 298.9; 15-MAR-2012 10:11:15; Dark ; 54.5; 0; ; 0.00; 0;occ; 109; 0;52522  
3; 562.2; 15-MAR-2012 10:15:38; Dark ; 45.0; 4; Alp1Cen ; -0.01; 5800;occ; 90; 0;52522  
/nas3/ENVISAT/GOMOS/GOM\_NL\_\_0P/GOM\_NL\_\_0PNPDK20120315\_111606\_000024393112\_00353\_52522\_5815.N1  
1; -1823.7; 15-MAR-2012 11:16:06; Bright; 36.0; 19; 50Alp Cyg ; 1.25; 10500;occ; 72; 0;52522  
2; 562.9; 15-MAR-2012 11:55:53; Dark ; 53.0; 4; Alp1Cen ; -0.01; 5800;occ; 106; 0;52523  
/nas3/ENVISAT/GOMOS/GOM\_NL\_\_0P/GOM\_NL\_\_0PNPDK20120315\_125620\_000024283112\_00354\_52523\_5816.N1  
1; -1823.5; 15-MAR-2012 12:56:20; Bright; 34.0; 19; 50Alp Cyg ; 1.25; 10500;occ; 68; 0;52523  
2; 563.3; 15-MAR-2012 13:36:07; Dark ; 41.5; 4; Alp1Cen ; -0.01; 5800;occ; 83; 0;52524  
/nas3/ENVISAT/GOMOS/GOM\_NL\_\_0P/GOM\_NL\_\_0PNPDK20120315\_151622\_000000423112\_00356\_52525\_5817.N1  
1; 563.8; 15-MAR-2012 15:16:22; Dark ; 42.5; 4; Alp1Cen ; -0.01; 5800;occ; 85; 0;52525  
/nas3/ENVISAT/GOMOS/GOM\_NL\_\_0P/GOM\_NL\_\_0PNPDK20120315\_165636\_000000433112\_00357\_52526\_5818.N1  
1; 564.4; 15-MAR-2012 16:56:36; Dark ; 44.0; 4; Alp1Cen ; -0.01; 5800;occ; 88; 0;52526  
/nas3/ENVISAT/GOMOS/GOM\_NL\_\_0P/GOM\_NL\_\_0PNPDK20120315\_183651\_000000493112\_00358\_52527\_5819.N1  
1; 564.9; 15-MAR-2012 18:36:51; Dark ; 50.0; 4; Alp1Cen ; -0.01; 5800;occ; 100; 0;52527  
/nas3/ENVISAT/GOMOS/GOM\_NL\_\_0P/GOM\_NL\_\_0PNPDK20120315\_194035\_000022433112\_00358\_52527\_5820.N1  
1; -1625.1; 15-MAR-2012 19:40:35; Bright; 37.5; 92; 53Eps Cyg ; 2.50; 4500;occ; 75; 0;52527  
2; 565.4; 15-MAR-2012 20:17:05; Dark ; 53.0; 4; Alp1Cen ; -0.01; 5800;occ; 106; 0;52528  
/nas3/ENVISAT/GOMOS/GOM\_NL\_\_0P/GOM\_NL\_\_0PNPDE20120316\_011750\_000038743112\_00362\_52531\_6763.N1  
1; 568.0; 16-MAR-2012 01:17:50; Dark ; 45.0; 4; Alp1Cen ; -0.01; 5800;occ; 90; 0;52531  
2; 4389.3; 16-MAR-2012 02:21:31; Bright; 53.5; 92; 53Eps Cyg ; 2.50; 4500;occ; 107; 0;52531  
/nas3/ENVISAT/GOMOS/GOM\_NL\_\_0P/GOM\_NL\_\_0PNPDE20120316\_040145\_000000353112\_00363\_52532\_6764.N1  
1; -1624.5; 16-MAR-2012 04:01:45; Bright; 35.5; 92; 53Eps Cyg ; 2.50; 4500;occ; 71; 0;52532  
/nas3/ENVISAT/GOMOS/GOM\_NL\_\_0P/GOM\_NL\_\_0PNPDE20120316\_054159\_000000363112\_00364\_52533\_6765.N1  
1; -1624.4; 16-MAR-2012 05:41:59; Bright; 37.0; 92; 53Eps Cyg ; 2.50; 4500;occ; 74; 0;52533  
/nas3/ENVISAT/GOMOS/GOM\_NL\_\_0P/GOM\_NL\_\_0PNPDE20120316\_222420\_000000333112\_00374\_52543\_6767.N1  
1; -1623.1; 16-MAR-2012 22:24:20; Bright; 33.5; 92; 53Eps Cyg ; 2.50; 4500;occ; 67; 0;52543  
/nas3/ENVISAT/GOMOS/GOM\_NL\_\_0P/GOM\_NL\_\_0PNPDK20120316\_072213\_000000533112\_00365\_52534\_5821.N1  
1; -1624.4; 16-MAR-2012 07:22:13; Bright; 53.5; 92; 53Eps Cyg ; 2.50; 4500;occ; 107; 0;52534  
/nas3/ENVISAT/GOMOS/GOM\_NL\_\_0P/GOM\_NL\_\_0PNPDK20120316\_090227\_000000383112\_00366\_52535\_5822.N1  
1; -1624.2; 16-MAR-2012 09:02:27; Bright; 38.5; 92; 53Eps Cyg ; 2.50; 4500;occ; 77; 0;52535  
/nas3/ENVISAT/GOMOS/GOM\_NL\_\_0P/GOM\_NL\_\_0PNPDK20120316\_104241\_000000363112\_00367\_52536\_5823.N1  
1; -1624.0; 16-MAR-2012 10:42:41; Bright; 37.0; 92; 53Eps Cyg ; 2.50; 4500;occ; 74; 0;52536  
/nas3/ENVISAT/GOMOS/GOM\_NL\_\_0P/GOM\_NL\_\_0PNPDK20120316\_122255\_000000353112\_00368\_52537\_5824.N1  
1; -1623.8; 16-MAR-2012 12:22:55; Bright; 35.5; 92; 53Eps Cyg ; 2.50; 4500;occ; 71; 0;52537  
/nas3/ENVISAT/GOMOS/GOM\_NL\_\_0P/GOM\_NL\_\_0PNPDK20120316\_140309\_000000373112\_00369\_52538\_5827.N1  
1; -1623.7; 16-MAR-2012 14:03:09; Bright; 37.5; 92; 53Eps Cyg ; 2.50; 4500;occ; 75; 0;52538  
/nas3/ENVISAT/GOMOS/GOM\_NL\_\_0P/GOM\_NL\_\_0PNPDK20120316\_154323\_000000353112\_00370\_52539\_5828.N1  
1; -1623.6; 16-MAR-2012 15:43:23; Bright; 35.5; 92; 53Eps Cyg ; 2.50; 4500;occ; 71; 0;52539  
/nas3/ENVISAT/GOMOS/GOM\_NL\_\_0P/GOM\_NL\_\_0PNPDK20120316\_172338\_000000353112\_00371\_52540\_5829.N1  
1; -1623.5; 16-MAR-2012 17:23:38; Bright; 36.0; 92; 53Eps Cyg ; 2.50; 4500;occ; 72; 0;52540  
/nas3/ENVISAT/GOMOS/GOM\_NL\_\_0P/GOM\_NL\_\_0PNPDK20120316\_190352\_000000383112\_00372\_52541\_5830.N1  
1; -1623.4; 16-MAR-2012 19:03:52; Bright; 38.5; 92; 53Eps Cyg ; 2.50; 4500;occ; 77; 0;52541  
/nas3/ENVISAT/GOMOS/GOM\_NL\_\_0P/GOM\_NL\_\_0PNPDE20120318\_201337\_000000363112\_00402\_52571\_6768.N1  
1; 957.0; 18-MAR-2012 20:13:37; Dark ; 45.0; 64; Gam Cen ; 2.20; 10600;occ; 90; 16;52571  
/nas3/ENVISAT/GOMOS/GOM\_NL\_\_0P/GOM\_NL\_\_0PNPDE20120318\_213050\_000014183112\_00402\_52571\_6769.N1  
1; -423.7; 18-MAR-2012 21:30:50; Dark ; 59.0; 0; ; 0.00; 0;occ; 118; 0;52571  
2; 949.3; 18-MAR-2012 21:53:43; Dark ; 45.0; 64; Gam Cen ; 2.20; 10600;occ; 90; 0;52572  
/nas3/ENVISAT/GOMOS/GOM\_NL\_\_0P/GOM\_NL\_\_0PNPDE20120318\_231104\_000014163112\_00403\_52572\_6770.N1  
1; -423.1; 18-MAR-2012 23:11:04; Dark ; 59.0; 0; ; 0.00; 0;occ; 118; 0;52572  
2; 949.7; 18-MAR-2012 23:33:57; Dark ; 43.5; 64; Gam Cen ; 2.20; 10600;occ; 87; 0;52573  
/nas3/ENVISAT/GOMOS/GOM\_NL\_\_0P/GOM\_NL\_\_0PNPDK20120318\_083148\_000000403112\_00395\_52564\_5831.N1  
1; 946.4; 18-MAR-2012 08:31:48; Dark ; 40.5; 64; Gam Cen ; 2.20; 10600;occ; 81; 0;52564  
/nas3/ENVISAT/GOMOS/GOM\_NL\_\_0P/GOM\_NL\_\_0PNPDK20120318\_094908\_000014153112\_00395\_52564\_5832.N1

1; -427.8; 18-MAR-2012 09:49:08; Dark ; 59.0; 0; ; 0.00; 0;occ; 118; 0;52564  
2; 946.6; 18-MAR-2012 10:12:02; Dark ; 41.5; 64; Gam Cen ; 2.20; 10600;occ; 83; 0;52565  
/nas3/ENVISAT/GOMOS/GOM\_NL\_\_0P/GOM\_NL\_\_0PNPDK20120318\_112922\_000014163112\_00396\_52565\_5833.N1  
1; -427.2; 18-MAR-2012 11:29:22; Dark ; 59.0; 0; ; 0.00; 0;occ; 118; 0;52565  
2; 946.9; 18-MAR-2012 11:52:17; Dark ; 42.5; 64; Gam Cen ; 2.20; 10600;occ; 85; 0;52566  
/nas3/ENVISAT/GOMOS/GOM\_NL\_\_0P/GOM\_NL\_\_0PNPDK20120318\_130937\_000014133112\_00397\_52566\_5834.N1  
1; -426.7; 18-MAR-2012 13:09:37; Dark ; 59.0; 0; ; 0.00; 0;occ; 118; 0;52566  
2; 947.4; 18-MAR-2012 13:32:31; Dark ; 39.0; 64; Gam Cen ; 2.20; 10600;occ; 78; 0;52567  
/nas3/ENVISAT/GOMOS/GOM\_NL\_\_0P/GOM\_NL\_\_0PNPDK20120318\_144951\_000014133112\_00398\_52567\_5835.N1  
1; -426.1; 18-MAR-2012 14:49:51; Dark ; 59.0; 0; ; 0.00; 0;occ; 118; 0;52567  
2; 947.7; 18-MAR-2012 15:12:45; Dark ; 40.0; 64; Gam Cen ; 2.20; 10600;occ; 80; 0;52568  
/nas3/ENVISAT/GOMOS/GOM\_NL\_\_0P/GOM\_NL\_\_0PNPDK20120318\_163006\_000014143112\_00399\_52568\_5836.N1  
1; -425.5; 18-MAR-2012 16:30:06; Dark ; 59.0; 0; ; 0.00; 0;occ; 118; 0;52568  
2; 948.2; 18-MAR-2012 16:53:00; Dark ; 41.0; 64; Gam Cen ; 2.20; 10600;occ; 82; 0;52569  
/nas3/ENVISAT/GOMOS/GOM\_NL\_\_0P/GOM\_NL\_\_0PNPDK20120318\_181021\_000014143112\_00400\_52569\_5837.N1  
1; -424.9; 18-MAR-2012 18:10:21; Dark ; 59.0; 0; ; 0.00; 0;occ; 118; 0;52569  
2; 948.6; 18-MAR-2012 18:33:14; Dark ; 40.5; 64; Gam Cen ; 2.20; 10600;occ; 81; 0;52570  
/nas3/ENVISAT/GOMOS/GOM\_NL\_\_0P/GOM\_NL\_\_0PNPDK20120318\_195035\_000014183112\_00401\_52570\_5838.N1  
1; -424.3; 18-MAR-2012 19:50:35; Dark ; 59.0; 0; ; 0.00; 0;occ; 118; 0;52570  
2; 949.0; 18-MAR-2012 20:13:29; Dark ; 45.0; 64; Gam Cen ; 2.20; 10600;occ; 90; 0;52571  
/nas3/ENVISAT/GOMOS/GOM\_NL\_\_0P/GOM\_NL\_\_0PNPDE20120319\_011411\_000000413112\_00405\_52574\_6771.N1  
1; 950.1; 19-MAR-2012 01:14:11; Dark ; 42.0; 64; Gam Cen ; 2.20; 10600;occ; 84; 0;52574  
/nas3/ENVISAT/GOMOS/GOM\_NL\_\_0P/GOM\_NL\_\_0PNPDE20120319\_025426\_000000423112\_00406\_52575\_6772.N1  
1; 950.6; 19-MAR-2012 02:54:26; Dark ; 43.0; 64; Gam Cen ; 2.20; 10600;occ; 86; 0;52575  
/nas3/ENVISAT/GOMOS/GOM\_NL\_\_0P/GOM\_NL\_\_0PNPDE20120319\_043440\_000000393112\_00407\_52576\_6773.N1  
1; 950.9; 19-MAR-2012 04:34:40; Dark ; 39.5; 64; Gam Cen ; 2.20; 10600;occ; 79; 0;52576  
/nas3/ENVISAT/GOMOS/GOM\_NL\_\_0P/GOM\_NL\_\_0PNPDE20120319\_061454\_000000423112\_00408\_52577\_6774.N1  
1; 951.4; 19-MAR-2012 06:14:54; Dark ; 42.5; 64; Gam Cen ; 2.20; 10600;occ; 85; 0;52577  
/nas3/ENVISAT/GOMOS/GOM\_NL\_\_0P/GOM\_NL\_\_0PNPDK20120319\_075509\_000000433112\_00409\_52578\_5839.N1  
1; 951.8; 19-MAR-2012 07:55:09; Dark ; 44.0; 64; Gam Cen ; 2.20; 10600;occ; 88; 0;52578  
/nas3/ENVISAT/GOMOS/GOM\_NL\_\_0P/GOM\_NL\_\_0PNPDE20120322\_214020\_000000373113\_00029\_52629\_6775.N1  
1; 2952.2; 22-MAR-2012 21:40:20; Bright; 37.5; 36; 50Alp UMA ; 1.80; 6300;occ; 75; 0; -1  
/nas3/ENVISAT/GOMOS/GOM\_NL\_\_0P/GOM\_NL\_\_0PNPDE20120322\_232034\_000000353113\_00030\_52630\_6776.N1  
1; 2952.1; 22-MAR-2012 23:20:34; Bright; 36.0; 36; 50Alp UMA ; 1.80; 6300;occ; 72; 0; -1  
/nas3/ENVISAT/GOMOS/GOM\_NL\_\_0P/GOM\_NL\_\_0PNPDK20120322\_163939\_000000373113\_00026\_52626\_5840.N1  
1; 2952.6; 22-MAR-2012 16:39:39; Bright; 37.5; 36; 50Alp UMA ; 1.80; 6300;occ; 75; 0; -1  
/nas3/ENVISAT/GOMOS/GOM\_NL\_\_0P/GOM\_NL\_\_0PNPDK20120322\_181952\_000000363113\_00027\_52627\_5841.N1  
1; 2952.5; 22-MAR-2012 18:19:52; Bright; 37.0; 36; 50Alp UMA ; 1.80; 6300;occ; 74; 0; -1  
/nas3/ENVISAT/GOMOS/GOM\_NL\_\_0P/GOM\_NL\_\_0PNPDK20120322\_200006\_000000363113\_00028\_52628\_5842.N1  
1; 2952.4; 22-MAR-2012 20:00:06; Bright; 36.5; 36; 50Alp UMA ; 1.80; 6300;occ; 73; 0; -1  
/nas3/ENVISAT/GOMOS/GOM\_NL\_\_0P/GOM\_NL\_\_0PNPDE20120323\_010048\_000000373113\_00031\_52631\_6777.N1  
1; 2951.9; 23-MAR-2012 01:00:48; Bright; 38.0; 36; 50Alp UMA ; 1.80; 6300;occ; 76; 0; -1  
/nas3/ENVISAT/GOMOS/GOM\_NL\_\_0P/GOM\_NL\_\_0PNPDE20120323\_024101\_000000353113\_00032\_52632\_6778.N1  
1; 2951.7; 23-MAR-2012 02:41:01; Bright; 35.5; 36; 50Alp UMA ; 1.80; 6300;occ; 71; 0; -1  
/nas3/ENVISAT/GOMOS/GOM\_NL\_\_0P/GOM\_NL\_\_0PNPDE20120323\_042115\_000000363113\_00033\_52633\_6779.N1  
1; 2951.8; 23-MAR-2012 04:21:15; Bright; 37.0; 36; 50Alp UMA ; 1.80; 6300;occ; 74; 0; -1  
/nas3/ENVISAT/GOMOS/GOM\_NL\_\_0P/GOM\_NL\_\_0PNPDE20120323\_060129\_000000363113\_00034\_52634\_6780.N1  
1; 2951.6; 23-MAR-2012 06:01:29; Bright; 37.0; 36; 50Alp UMA ; 1.80; 6300;occ; 74; 0; -1  
/nas3/ENVISAT/GOMOS/GOM\_NL\_\_0P/GOM\_NL\_\_0PNPDE20120323\_210202\_000001293113\_00043\_52643\_6781.N1  
1; 2859.1; 23-MAR-2012 21:02:02; Bright; 37.5; 82; 48Bet UMA ; 2.37; 10600;occ; 75; 0; -1  
2; 2950.2; 23-MAR-2012 21:03:33; Bright; 38.5; 36; 50Alp UMA ; 1.80; 6300;occ; 77; 0; -1  
/nas3/ENVISAT/GOMOS/GOM\_NL\_\_0P/GOM\_NL\_\_0PNPDE20120323\_224216\_000001293113\_00044\_52644\_6782.N1  
1; 2858.9; 23-MAR-2012 22:42:16; Bright; 38.0; 82; 48Bet UMA ; 2.37; 10600;occ; 76; 0; -1  
2; 2950.1; 23-MAR-2012 22:43:47; Bright; 38.5; 36; 50Alp UMA ; 1.80; 6300;occ; 77; 0; -1  
/nas3/ENVISAT/GOMOS/GOM\_NL\_\_0P/GOM\_NL\_\_0PNPDK20120323\_074012\_000001283113\_00035\_52635\_5844.N1  
1; 2860.4; 23-MAR-2012 07:40:12; Bright; 27.0; 82; 48Bet UMA ; 2.37; 10600;occ; 54; 0; -1  
2; 2951.5; 23-MAR-2012 07:41:43; Bright; 37.5; 36; 50Alp UMA ; 1.80; 6300;occ; 75; 0; -1  
/nas3/ENVISAT/GOMOS/GOM\_NL\_\_0P/GOM\_NL\_\_0PNPDK20120323\_092026\_000001283113\_00036\_52636\_5845.N1  
1; 2860.2; 23-MAR-2012 09:20:26; Bright; 32.0; 82; 48Bet UMA ; 2.37; 10600;occ; 64; 0; -1  
2; 2951.4; 23-MAR-2012 09:21:57; Bright; 37.0; 36; 50Alp UMA ; 1.80; 6300;occ; 74; 0; -1  
/nas3/ENVISAT/GOMOS/GOM\_NL\_\_0P/GOM\_NL\_\_0PNPDK20120323\_110039\_000001283113\_00037\_52637\_5846.N1  
1; 2859.9; 23-MAR-2012 11:00:39; Bright; 37.0; 82; 48Bet UMA ; 2.37; 10600;occ; 74; 0; -1  
2; 2951.2; 23-MAR-2012 11:02:11; Bright; 37.0; 36; 50Alp UMA ; 1.80; 6300;occ; 74; 0; -1  
/nas3/ENVISAT/GOMOS/GOM\_NL\_\_0P/GOM\_NL\_\_0PNPDK20120323\_124053\_000001293113\_00038\_52638\_5847.N1  
1; 2859.9; 23-MAR-2012 12:40:53; Bright; 36.5; 82; 48Bet UMA ; 2.37; 10600;occ; 73; 0; -1  
2; 2951.0; 23-MAR-2012 12:42:24; Bright; 38.5; 36; 50Alp UMA ; 1.80; 6300;occ; 77; 0; -1  
/nas3/ENVISAT/GOMOS/GOM\_NL\_\_0P/GOM\_NL\_\_0PNPDK20120323\_142107\_000001293113\_00039\_52639\_5848.N1  
1; 2859.7; 23-MAR-2012 14:21:07; Bright; 38.5; 82; 48Bet UMA ; 2.37; 10600;occ; 77; 0; -1











/nas3/ENVISAT/GOMOS/GOM\_NL\_\_0P/GOM\_NL\_\_0PNPDK20120331\_172452\_000055253113\_00156\_52756\_5903.N1  
1; 1455.0; 31-MAR-2012 17:24:52; Dark ; 46.5; 106; 9Bet Crv ; 2.65; 5600;occ; 93; 0;52756  
2; 6952.7; 31-MAR-2012 18:56:30; Dark ; 27.5; 95; Zet Cen ; 2.55; 26000;occ; 55; 0;52757  
/nas3/ENVISAT/GOMOS/GOM\_NL\_\_0P/GOM\_NL\_\_0PNPDK20120331\_185630\_000060563113\_00157\_52757\_5904.N1  
1; 938.7; 31-MAR-2012 18:56:30; Dark ; 41.5; 95; Zet Cen ; 2.55; 26000;occ; 83; 0;52757  
2; 1455.2; 31-MAR-2012 19:05:06; Dark ; 46.0; 106; 9Bet Crv ; 2.65; 5600;occ; 92; 0;52757  
3; 6953.2; 31-MAR-2012 20:36:44; Dark ; 42.0; 95; Zet Cen ; 2.55; 26000;occ; 84; 0;52758