

# GOMOS Daily Report 25-FEB-2012

## Level 0 and Level 1 products

### SUMMARY

#### [1. General Info](#)

#### [2. Summary of products arrived in PCF \(Product Control Facility\)](#)

[2.1 Level 0: products arrived in PCF during current month \(see template here\)](#)

[2.2 Level 0: plot of mission plan versus production during reporting period](#)

[2.3 Level 0: summary of missing occultations with respect to the plan](#)

[2.4 Level 1: products arrived in PCF during reporting period](#)

#### [3. Plot of Spectrometers and Photometers temperatures](#)

#### [4. Dark Charge monitoring](#)

[4.1 Products that did not use the Dark Sky Area observation for DC computation](#)

[4.2 Plot of Dark Charge](#)

#### [5. Demodulation correction and quality product information monitoring](#)

[5.1 Percentage of products with some flags set](#)

[5.2 Plot of quality information per product \(time dependant\)](#)

[5.3 Plot of quality information per product \(world map\)](#)

#### [6. Star tangent altitude lost](#)

[6.1 Statistics on star tangent altitude lost](#)

[6.2 Plot of star tangent altitude lost: DARK products](#)

[6.3 Plot of star tangent altitude lost: BRIGHT products](#)

[6.3 Plot of star tangent altitude lost: TWILIGHT products](#)

#### [7. Star Acquisition and Tracking Unit \(SATU\)](#)

[7.1 SATU plots \(dark limb\): 'X' and 'Y' axis](#)

[7.2 SATU Noise Equivalent Angle statistics](#)

[7.2.1 SATU NEA Statistics \(table\)](#)

[7.2.2 Daily SATU NEA STD \(dark limb\) - trend since 1st April 2006](#)

[8. Auxiliary Data Files used for the production reported in section 2.4](#)

## [Level 2 products](#)

This report presents the daily analysis on parameters extracted from GOMOS level 1b data (GOM\_TRA\_1P). It is intended to monitor some important parameters that will impact the quality of the level 2 products as the Spectrometers and Photometers CCD Temperatures and Dark Charge, SATU noise equivalent angle... A list of level 0 products (and content) that have arrived during the actual month to the PCF is also given.

Item	Value
Time of report generation	28FEB2012 07:00:59
Data source version	GOMOS/6.01
Start time of products	25FEB2012 00:09:27
Stop time of products	25FEB2012 23:36:29
Store outputs in DB	Yes
Nb of level 1b prods	35
Nb of prods with errors	0

## 2. Summary of products arrived in PCF (Product Control Facility)

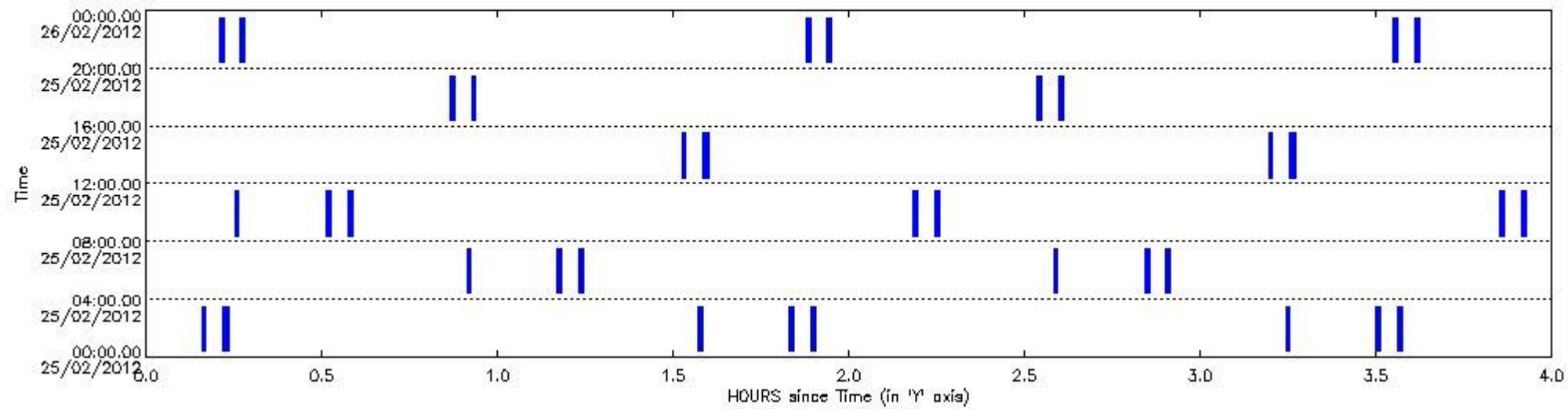
### 2.1 Level 0 products arrived in PCF (see template [here](#))

### 2.2 Plot of mission plan versus Level 0 production arrived in PCF during reporting period

Red segments are missing products.

Blue segments are available products.

Green segments are calibration measurements (not available products to users).



### 2.3 Summary of missing occultations (red segments in previous plot)

No missing products.

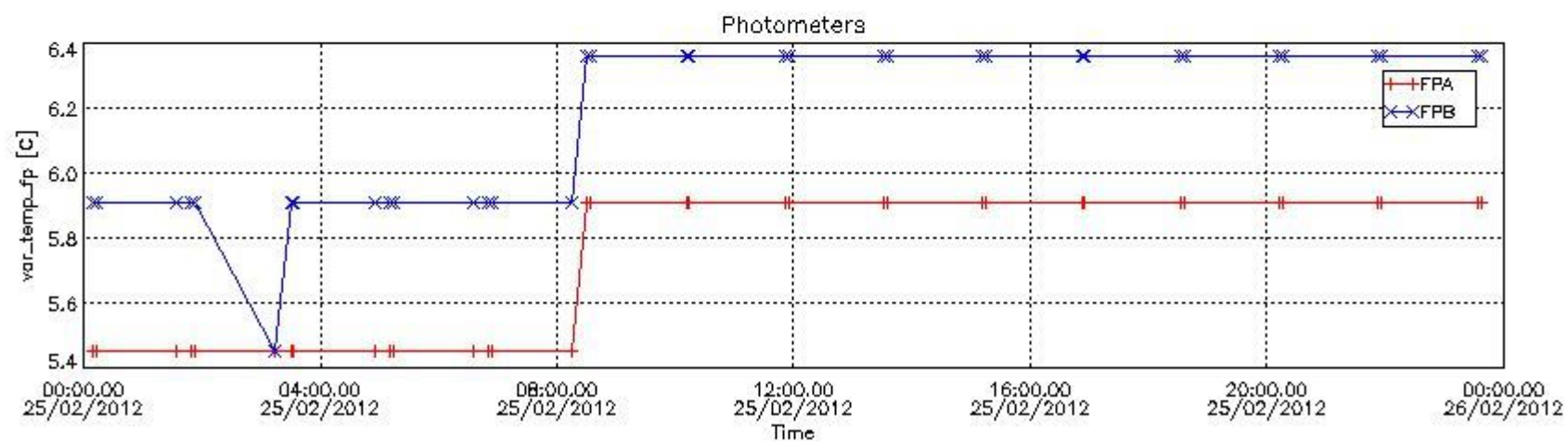
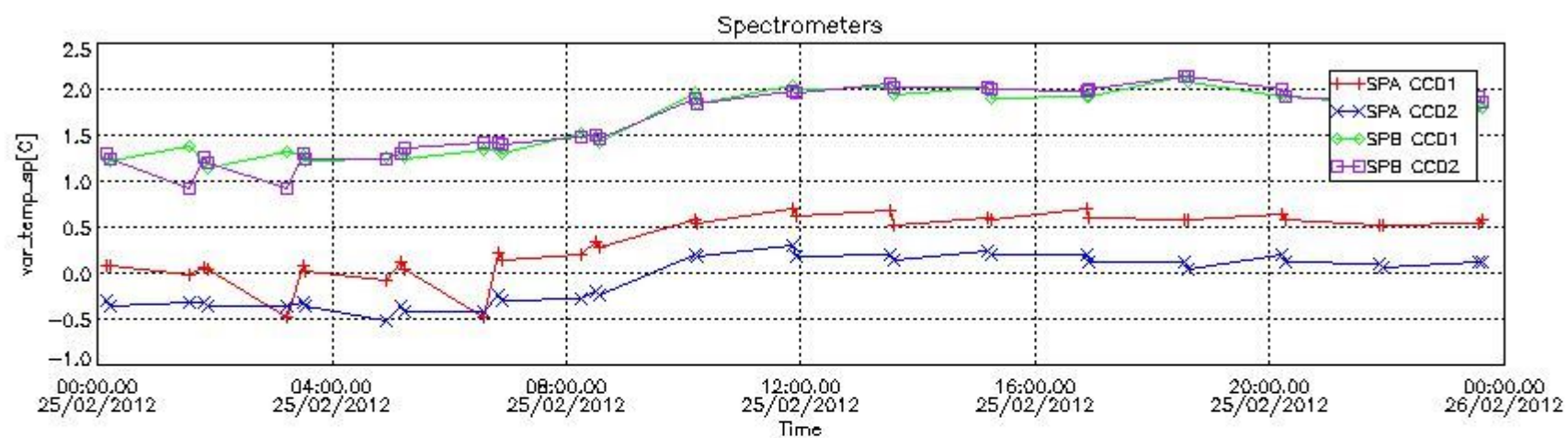
### 2.4 Summary of processed GOM\_TRA\_1P products

**!Warning: No products without errors in BRIGHT limb conditions found**

Nr	Filename	UTC Start time	Limb	Duration	Star Id	Star Name	Star Mag	Star Temp	Nb Meas	Orbit	Prod. error
1	GOM_TRA_1PNPDE20120225_000927_000000423112_00074_52243_1933.N1	25-FEB-2012 00:09:27	Dark	42.000	10	Bet Cen	0.61000	28000.	84	52243	No
2	GOM_TRA_1PNPDE20120225_001306_000000573112_00074_52243_1934.N1	25-FEB-2012 00:13:06	Dark	57.000	26	Gam Cru	1.6240	2900.0	114	52243	No
3	GOM_TRA_1PNPDE20120225_013416_000000463112_00074_52243_1978.N1	25-FEB-2012 01:34:16	Dark	45.500	116	19Del Sgr	2.7000	4100.0	91	52243	No
4	GOM_TRA_1PNPDE20120225_014942_000000463112_00075_52244_1979.N1	25-FEB-2012 01:49:42	Dark	45.500	10	Bet Cen	0.61000	28000.	91	52244	No
5	GOM_TRA_1PNPDE20120225_015321_000000553112_00075_52244_1980.N1	25-FEB-2012 01:53:21	Dark	55.000	26	Gam Cru	1.6240	2900.0	110	52244	No
6	GOM_TRA_1PNPDE20120225_031431_000000423112_00075_52244_1981.N1	25-FEB-2012 03:14:31	Dark	42.000	116	19Del Sgr	2.7000	4100.0	84	52244	No
7	GOM_TRA_1PNPDE20120225_032956_000000433112_00076_52245_1982.N1	25-FEB-2012 03:29:56	Dark	42.500	10	Bet Cen	0.61000	28000.	85	52245	No
8	GOM_TRA_1PNPDE20120225_033335_000000583112_00076_52245_1983.N1	25-FEB-2012 03:33:35	Dark	57.500	26	Gam Cru	1.6240	2900.0	115	52245	No
9	GOM_TRA_1PNPDE20120225_045445_000000373112_00076_52245_2032.N1	25-FEB-2012 04:54:45	Dark	37.000	116	19Del Sgr	2.7000	4100.0	74	52245	No
10	GOM_TRA_1PNPDE20120225_051011_000000413112_00077_52246_2033.N1	25-FEB-2012 05:10:11	Dark	41.000	10	Bet Cen	0.61000	28000.	82	52246	No
11	GOM_TRA_1PNPDE20120225_051350_000000483112_00077_52246_2034.N1	25-FEB-2012 05:13:50	Dark	48.000	26	Gam Cru	1.6240	2900.0	96	52246	No

12	GOM_TRA_1PNPDK20120225_063500_000000313112_00077_52246_6441.N1	25-FEB-2012 06:35:00	Dark	31.000	116	19Del Sgr	2.7000	4100.0	62	52246	No
13	GOM_TRA_1PNPDK20120225_065025_000000483112_00078_52247_6442.N1	25-FEB-2012 06:50:25	Dark	48.000	10	Bet Cen	0.61000	28000.	96	52247	No
14	GOM_TRA_1PNPDK20120225_065404_000000493112_00078_52247_6443.N1	25-FEB-2012 06:54:04	Dark	48.500	26	Gam Cru	1.6240	2900.0	97	52247	No
15	GOM_TRA_1PNPDK20120225_081514_000000253112_00078_52247_6480.N1	25-FEB-2012 08:15:14	Dark	25.000	116	19Del Sgr	2.7000	4100.0	50	52247	No
16	GOM_TRA_1PNPDK20120225_083040_000000513112_00079_52248_6481.N1	25-FEB-2012 08:30:40	Dark	51.000	10	Bet Cen	0.61000	28000.	102	52248	No
17	GOM_TRA_1PNPDK20120225_083419_000000573112_00079_52248_6482.N1	25-FEB-2012 08:34:19	Dark	56.500	26	Gam Cru	1.6240	2900.0	113	52248	No
18	GOM_TRA_1PNPDK20120225_101054_000000513112_00080_52249_6513.N1	25-FEB-2012 10:10:54	Dark	50.500	10	Bet Cen	0.61000	28000.	101	52249	No
19	GOM_TRA_1PNPDK20120225_101433_000000553112_00080_52249_6514.N1	25-FEB-2012 10:14:33	Dark	55.000	26	Gam Cru	1.6240	2900.0	110	52249	No
20	GOM_TRA_1PNPDK20120225_115109_000000413112_00081_52250_6544.N1	25-FEB-2012 11:51:09	Dark	41.000	10	Bet Cen	0.61000	28000.	82	52250	No
21	GOM_TRA_1PNPDK20120225_115448_000000493112_00081_52250_6545.N1	25-FEB-2012 11:54:48	Dark	48.500	26	Gam Cru	1.6240	2900.0	97	52250	No
22	GOM_TRA_1PNPDK20120225_133123_000000463112_00082_52251_6589.N1	25-FEB-2012 13:31:23	Dark	46.000	10	Bet Cen	0.61000	28000.	92	52251	No
23	GOM_TRA_1PNPDK20120225_133502_000000573112_00082_52251_6590.N1	25-FEB-2012 13:35:02	Dark	56.500	26	Gam Cru	1.6240	2900.0	113	52251	No
24	GOM_TRA_1PNPDK20120225_151138_000000443112_00083_52252_6623.N1	25-FEB-2012 15:11:38	Dark	44.000	10	Bet Cen	0.61000	28000.	88	52252	No
25	GOM_TRA_1PNPDK20120225_151516_000000563112_00083_52252_6624.N1	25-FEB-2012 15:15:16	Dark	56.000	26	Gam Cru	1.6240	2900.0	112	52252	No
26	GOM_TRA_1PNPDK20120225_165153_000000443112_00084_52253_6662.N1	25-FEB-2012 16:51:53	Dark	43.500	10	Bet Cen	0.61000	28000.	87	52253	No
27	GOM_TRA_1PNPDK20120225_165531_000000433112_00084_52253_6663.N1	25-FEB-2012 16:55:31	Dark	43.000	26	Gam Cru	1.6240	2900.0	86	52253	No
28	GOM_TRA_1PNPDK20120225_183207_000000433112_00085_52254_6697.N1	25-FEB-2012 18:32:07	Dark	42.500	10	Bet Cen	0.61000	28000.	85	52254	No
29	GOM_TRA_1PNPDK20120225_183545_000000433112_00085_52254_6698.N1	25-FEB-2012 18:35:45	Dark	43.000	26	Gam Cru	1.6240	2900.0	86	52254	No
30	GOM_TRA_1PNPDK20120225_201222_000000533112_00086_52255_6722.N1	25-FEB-2012 20:12:22	Dark	52.500	10	Bet Cen	0.61000	28000.	105	52255	No
31	GOM_TRA_1PNPDK20120225_201600_000000523112_00086_52255_6723.N1	25-FEB-2012 20:16:00	Dark	51.500	26	Gam Cru	1.6240	2900.0	103	52255	No
32	GOM_TRA_1PNPDE20120225_215236_000000453112_00087_52256_2260.N1	25-FEB-2012 21:52:36	Dark	45.000	10	Bet Cen	0.61000	28000.	90	52256	No
33	GOM_TRA_1PNPDE20120225_215614_000000493112_00087_52256_2261.N1	25-FEB-2012 21:56:14	Dark	49.000	26	Gam Cru	1.6240	2900.0	98	52256	No
34	GOM_TRA_1PNPDE20120225_233251_000000433112_00088_52257_2285.N1	25-FEB-2012 23:32:51	Dark	42.500	10	Bet Cen	0.61000	28000.	85	52257	No
35	GOM_TRA_1PNPDE20120225_233629_000000573112_00088_52257_2286.N1	25-FEB-2012 23:36:29	Dark	56.500	26	Gam Cru	1.6240	2900.0	113	52257	No

### 3. Plot of GOMOS spectrometers and photometers temperatures from level 1b data



#### 4. Overview of dark signal processing per product

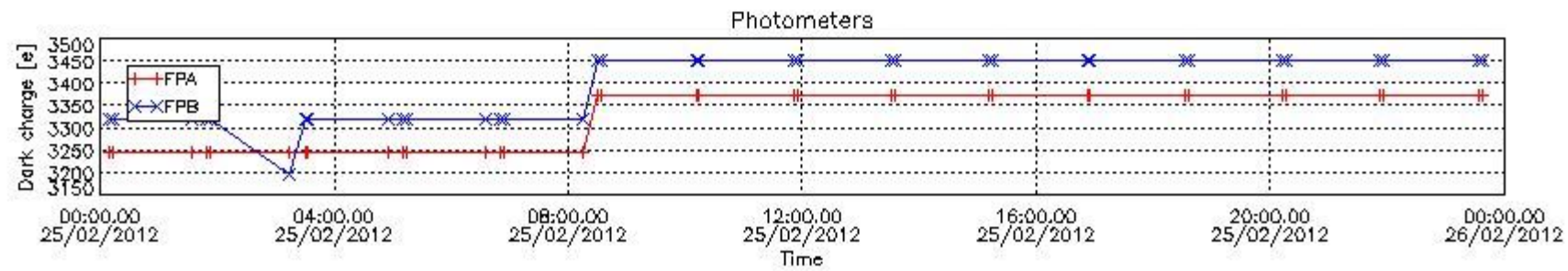
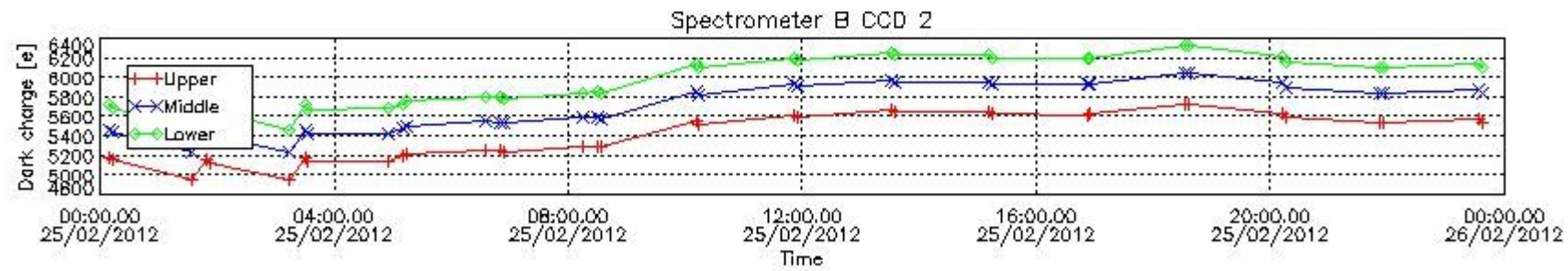
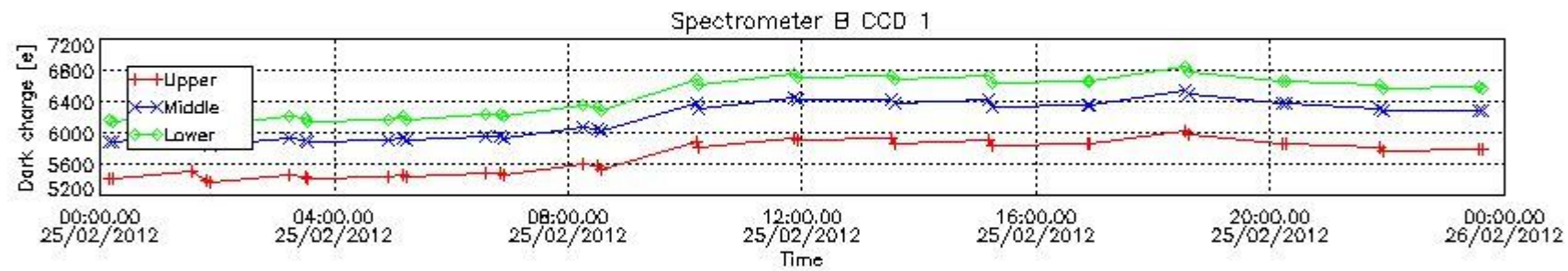
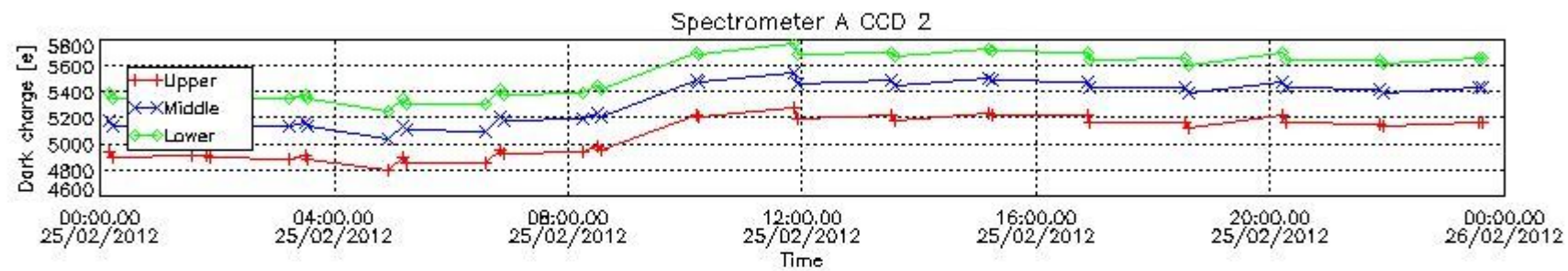
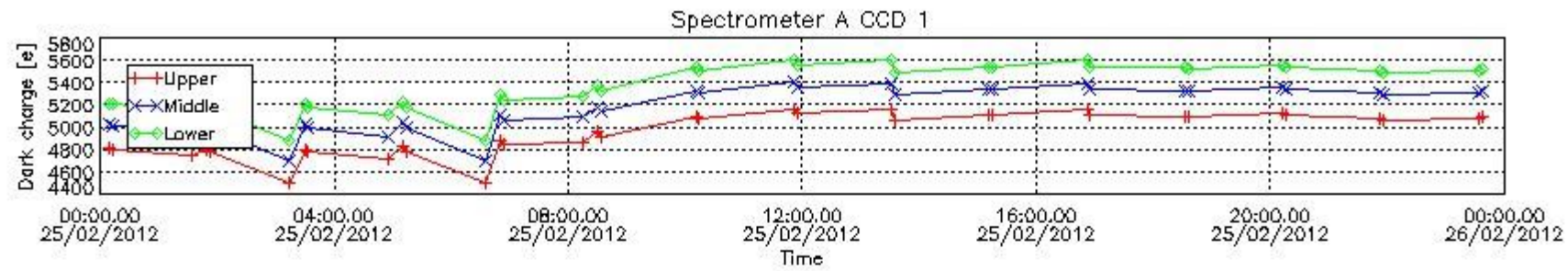
The Dark Charge (DC) is a temperature-dependant signal added to the useful measurements and it is therefore subtracted from them during the processing. There are two phenomena that produce a continuous increase of the DC: the "hot pixels" (a pixel is "hot" when its DC exceeds by a significant amount its value measured on ground at the same temperature) and the "Random Telegraphic Signal" (abrupt change positive or negative of the CCD pixel signal, random in time, affecting only the DC part of the signal and not the photon generated signal).

In this section a list of products that did not use the Dark Sky Area (DSA) observation for the DC computation is given. It is also provided the mean DC plot per product for dark limb products with no error flag set.

##### 4.1 These products did not use the DSA observation for DC computation:

Product name	DC information
GOM_TRA_1PNPDE20120225_000927_000000423112_00074_52243_1933.N1	DC map used
GOM_TRA_1PNPDE20120225_001306_000000573112_00074_52243_1934.N1	DC map used
GOM_TRA_1PNPDE20120225_013416_000000463112_00074_52243_1978.N1	DC map used
GOM_TRA_1PNPDE20120225_014942_000000463112_00075_52244_1979.N1	DC map used
GOM_TRA_1PNPDE20120225_015321_000000553112_00075_52244_1980.N1	DC map used
GOM_TRA_1PNPDE20120225_031431_000000423112_00075_52244_1981.N1	DC map used
GOM_TRA_1PNPDE20120225_032956_000000433112_00076_52245_1982.N1	DC map used
GOM_TRA_1PNPDE20120225_033335_000000583112_00076_52245_1983.N1	DC map used
GOM_TRA_1PNPDE20120225_045445_000000373112_00076_52245_2032.N1	DC map used
GOM_TRA_1PNPDE20120225_051011_000000413112_00077_52246_2033.N1	DC map used
GOM_TRA_1PNPDE20120225_051350_000000483112_00077_52246_2034.N1	DC map used
GOM_TRA_1PNPDK20120225_063500_000000313112_00077_52246_6441.N1	DC map used
GOM_TRA_1PNPDK20120225_065025_000000483112_00078_52247_6442.N1	DC map used
GOM_TRA_1PNPDK20120225_065404_000000493112_00078_52247_6443.N1	DC map used
GOM_TRA_1PNPDK20120225_081514_000000253112_00078_52247_6480.N1	DC map used
GOM_TRA_1PNPDK20120225_083040_000000513112_00079_52248_6481.N1	DC map used
GOM_TRA_1PNPDK20120225_083419_000000573112_00079_52248_6482.N1	DC map used
GOM_TRA_1PNPDK20120225_101054_000000513112_00080_52249_6513.N1	DC map used
GOM_TRA_1PNPDK20120225_101433_000000553112_00080_52249_6514.N1	DC map used
GOM_TRA_1PNPDK20120225_115109_000000413112_00081_52250_6544.N1	DC map used
GOM_TRA_1PNPDK20120225_115448_000000493112_00081_52250_6545.N1	DC map used
GOM_TRA_1PNPDK20120225_133123_000000463112_00082_52251_6589.N1	DC map used
GOM_TRA_1PNPDK20120225_133502_000000573112_00082_52251_6590.N1	DC map used
GOM_TRA_1PNPDK20120225_151138_000000443112_00083_52252_6623.N1	DC map used
GOM_TRA_1PNPDK20120225_151516_000000563112_00083_52252_6624.N1	DC map used
GOM_TRA_1PNPDK20120225_165153_000000443112_00084_52253_6662.N1	DC map used
GOM_TRA_1PNPDK20120225_165531_000000433112_00084_52253_6663.N1	DC map used
GOM_TRA_1PNPDK20120225_183207_000000433112_00085_52254_6697.N1	DC map used
GOM_TRA_1PNPDK20120225_183545_000000433112_00085_52254_6698.N1	DC map used
GOM_TRA_1PNPDK20120225_201222_000000533112_00086_52255_6722.N1	DC map used
GOM_TRA_1PNPDK20120225_201600_000000523112_00086_52255_6723.N1	DC map used
GOM_TRA_1PNPDE20120225_215236_000000453112_00087_52256_2260.N1	DC map used
GOM_TRA_1PNPDE20120225_215614_000000493112_00087_52256_2261.N1	DC map used
GOM_TRA_1PNPDE20120225_233251_000000433112_00088_52257_2285.N1	DC map used
GOM_TRA_1PNPDE20120225_233629_000000573112_00088_52257_2286.N1	DC map used

##### 4.2 Plot of mean dark charges per product: only products in DARK limb conditions without errors are used



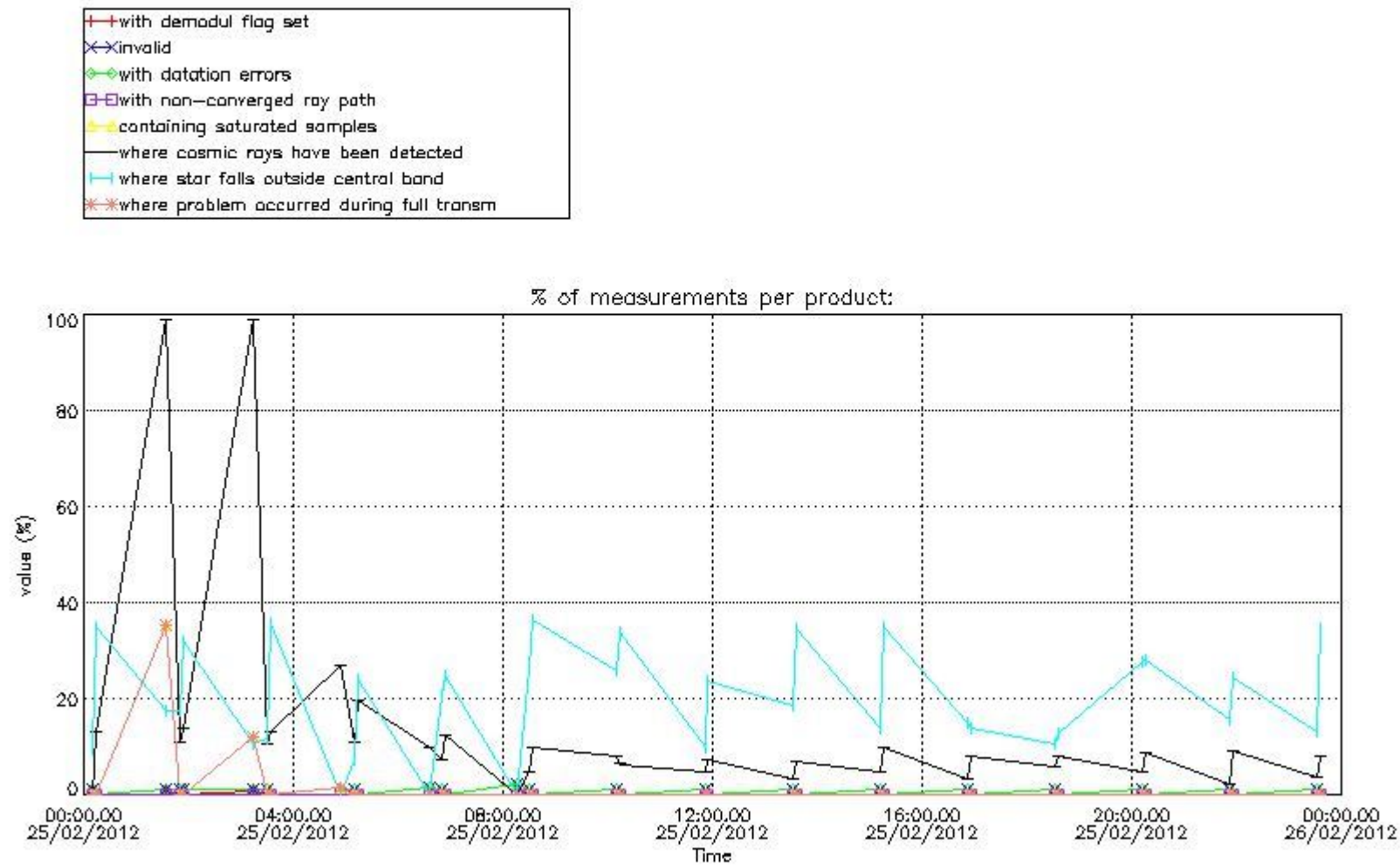
## 5. Demodulation flag and quality information monitoring

In this section it is presented the modulation information extracted from the pcd (product confidence data) at measurement level and information extracted from the Quality Summary dataset. Only products without errors (error flag in the MPH set to "0") are used.

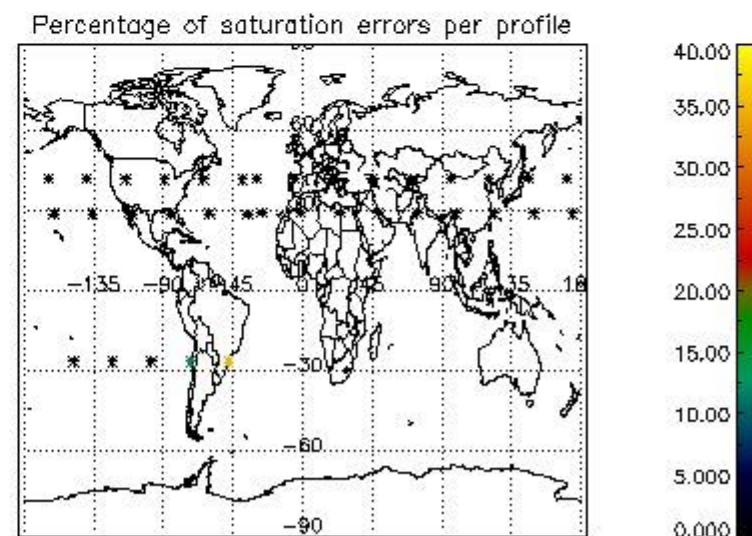
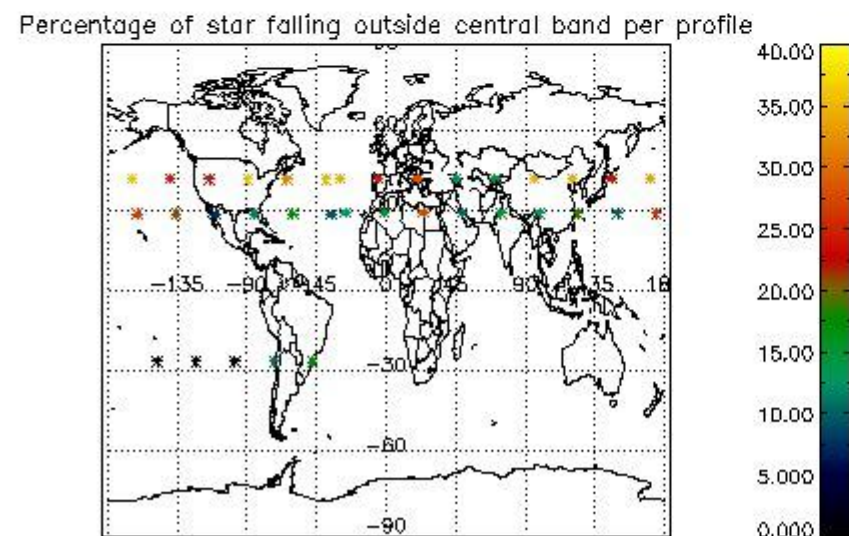
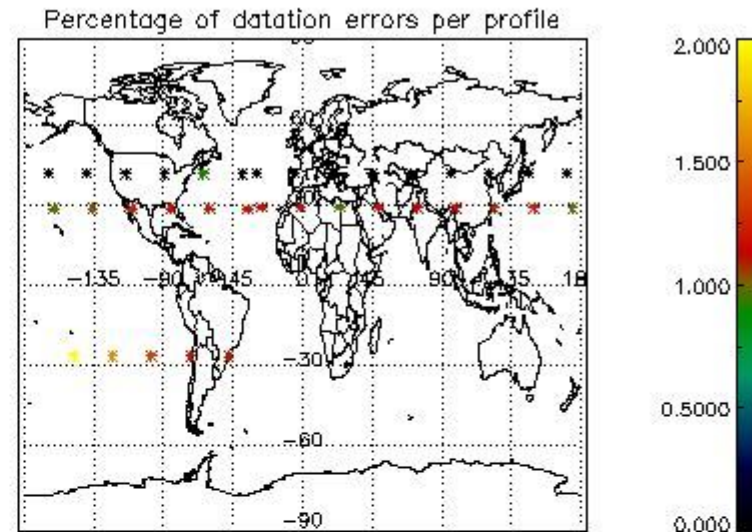
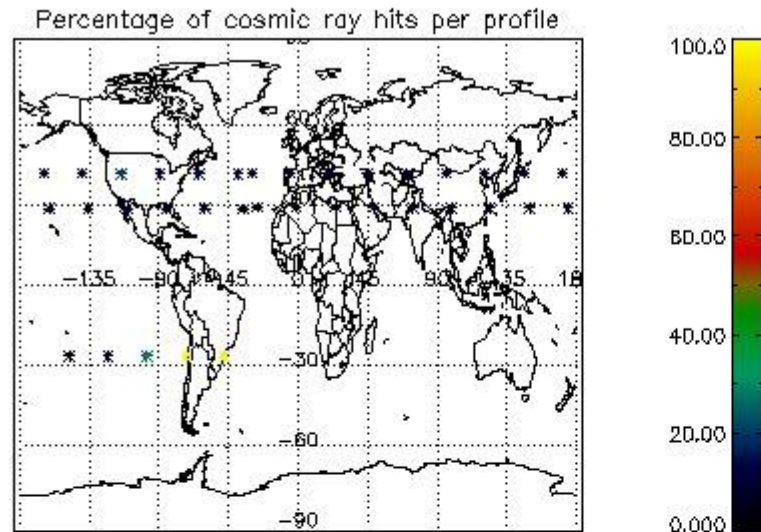
### 5.1 Percentage of products during reporting period with:

At least one measurement with demodulation flag set:	85.7143 %
Reference spectrum computed from DB:	0.00000 %
Reference spectrum with small number of measurements:	0.00000 %
SATU data not used:	0.00000 %

5.2 Plot quality information per product (time dependant)



5.3 Plot quality information per product (world map)



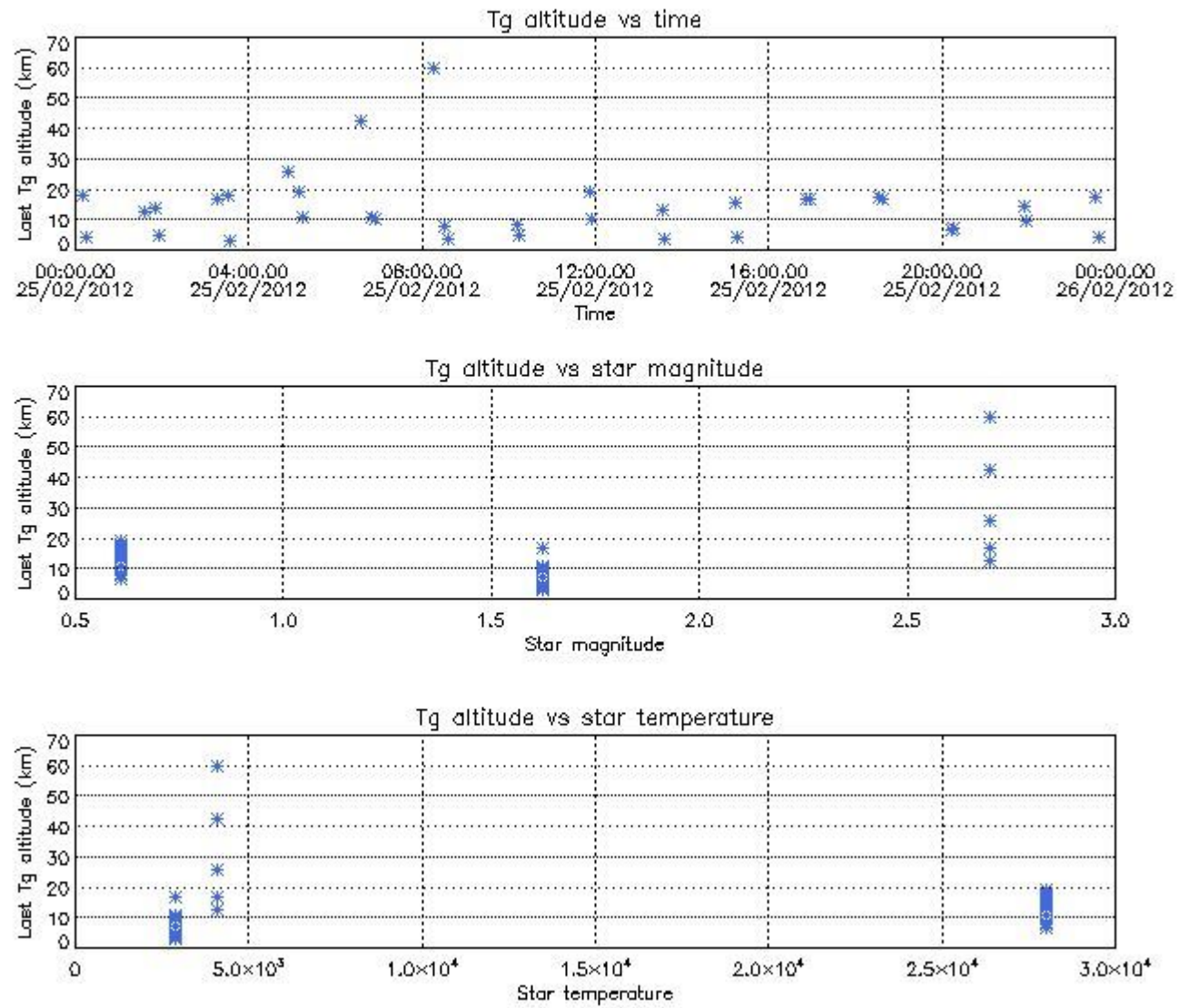
## 6. Statistics and plot of tangent altitude of the last measurement (DARK & BRIGHT products without errors)

### 6.1 Statistics on tangent altitude lost:

Statistics	DARK	BRIGHT	TWILIGHT
Mean:	13.936	NaN	NaN
St. deviation:	11.193	NaN	NaN
Maximum:	60.114	NaN	NaN
Minimum:	3.1205	NaN	NaN
Number of data:	35.000	NaN	NaN

### 6.2 Plot for DARK limb products

## Tangent altitude at which the star is lost



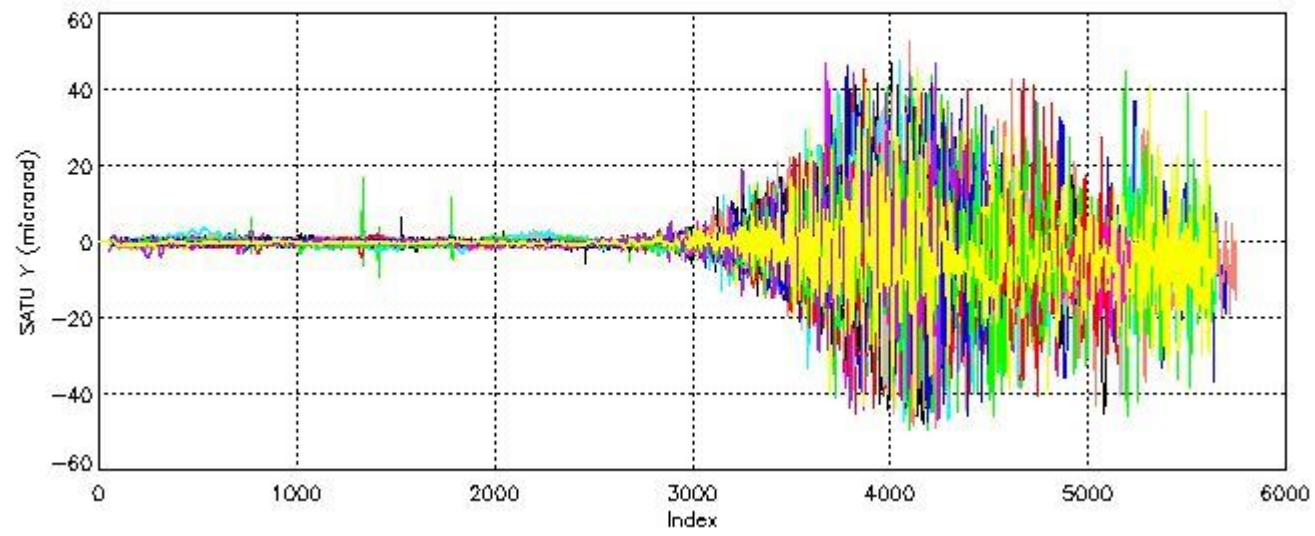
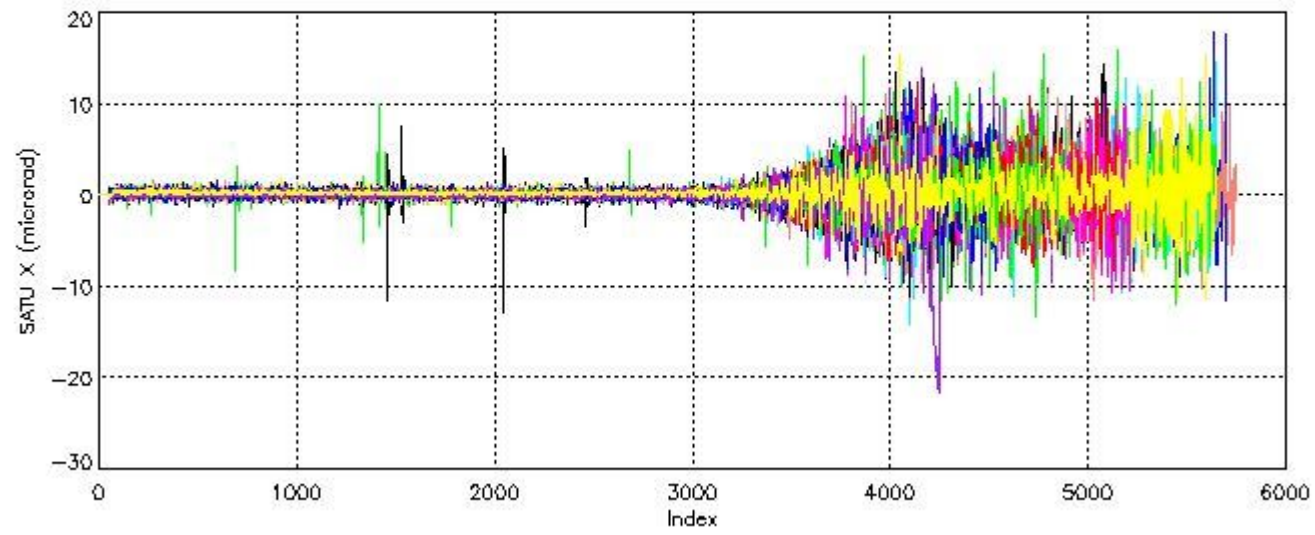
## 7. Star Acquisition and Tracking Unit (SATU)

The Star Acquisition and Tracking Unit (SATU) analyses the position of the tracked star beam collected by the GOMOS telescope and deflected by the optical beam dispatcher. The main function of the SATU is to detect a star, provide its image position to the science data electronics and to help the pointing function to keep the star image at a fixed position. In tracking mode the SATU data is recorded with a frequency of 100 Hz.

### 7.1 SATU 'X' and 'Y' axis plots (dark limb)

SATU CCD 'X' and 'Y' axis plots are provided in order to detect any abnormal behaviour of the tracking system. For every occultation (color) the plot should remain stable (with some noise) until we are deep in the atmosphere where big fluctuations are registered due to the refractive effects.





## 7.2 Statistics on SATU Noise Equivalent Angle (NEA) for DARK (D) and BRIGHT (B) products above 105 kms

The Star Acquisition and Tracking Unit (it is the CCD that tracks the star while it is occulted) Noise Equivalent Angle consists of the statistical angular variation of the SATU data above the atmosphere.

Statistics (in microradians) above 105 km are computed for every occultation, giving four values per occultation: one in the 'X' direction and one in the 'Y' direction for dark and bright limbs. A mean value per day in every direction and limb is calculated and monitored in order to assess instrument performance in terms of star pointing.

### 7.2.1 SATU NEA Statistics (table)

Statistics	SATU X (D)	SATU Y (D)	SATU X (B)	SATU Y (B)
Mean:	0.16330	-0.23340	NaN	NaN
St. deviation:	0.23091	0.51610	NaN	NaN
Maximum:	3.1000	6.1000	NaN	NaN
Minimum:	-8.2000	-4.4000	NaN	NaN

Number of data:	33600.	33600.	NaN	NaN
90Percentile:	0.40000	0.40000	NaN	NaN

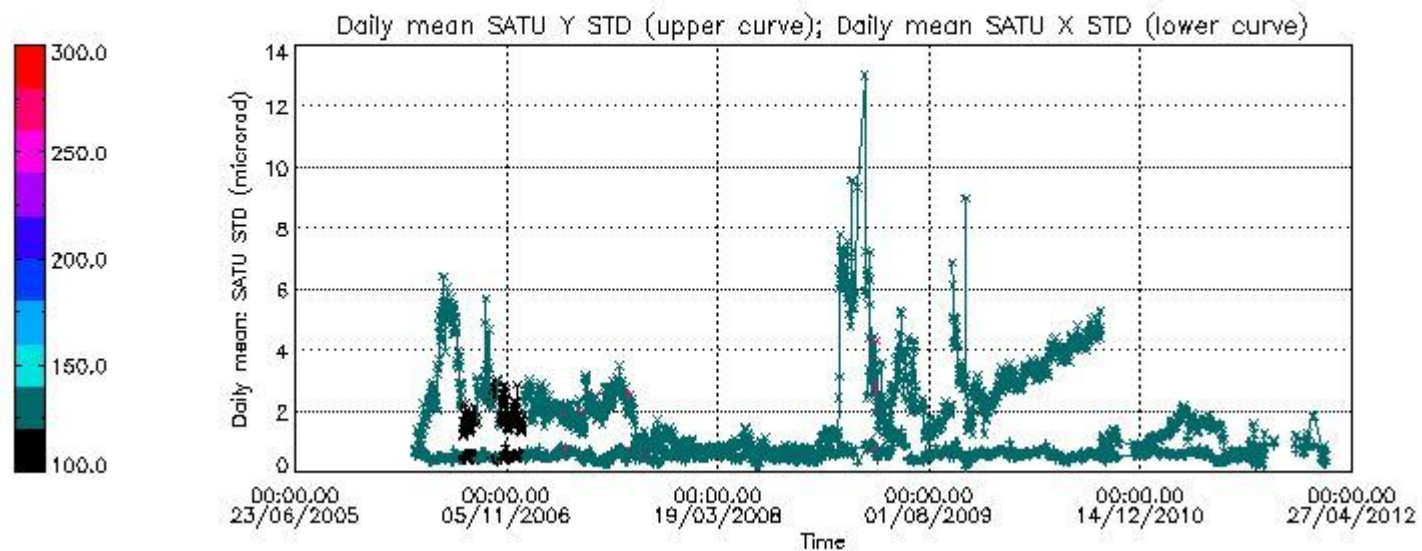
### 7.2.2 Trend of daily SATU NEA St. deviation since 1st April 2006 (dark limb) and of daily SATU NEA 90th percentile since May 2011

The long term trend of the SATU 'X' and 'Y' standard deviations should be constant during the whole mission.

The colorbar represents the start tangent altitude (km) of the occultations.

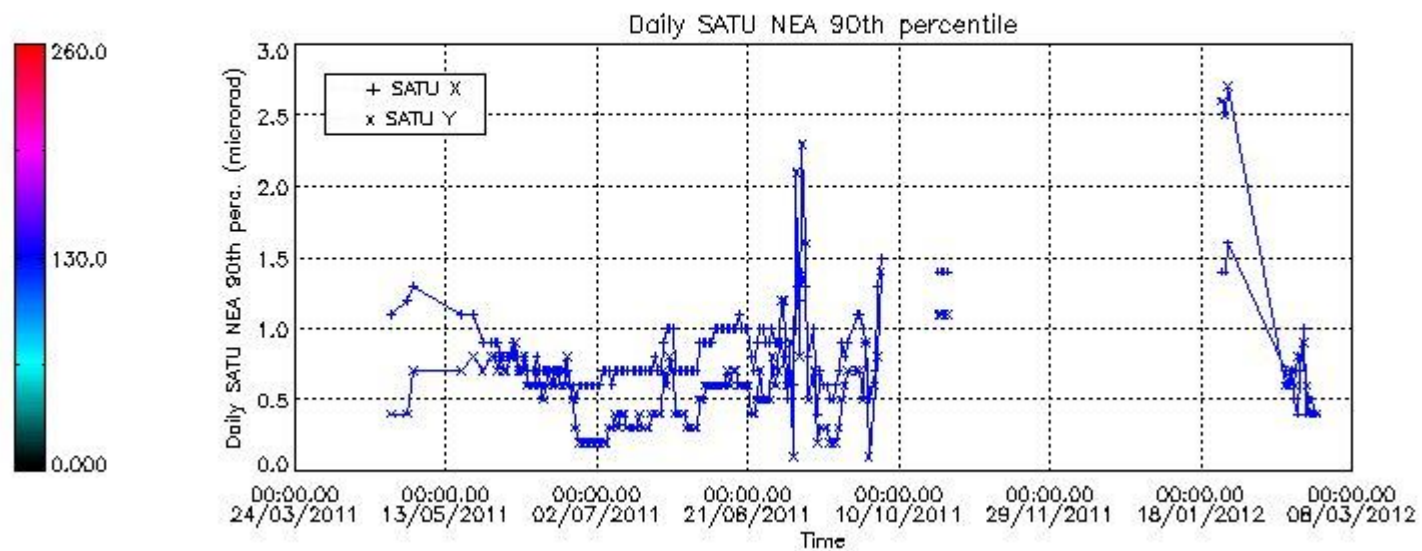
Upper curve: STD of SATU Y axis

Lower curve: STD of SATU X axis



Lower curve: 90th percentile of SATU Y axis

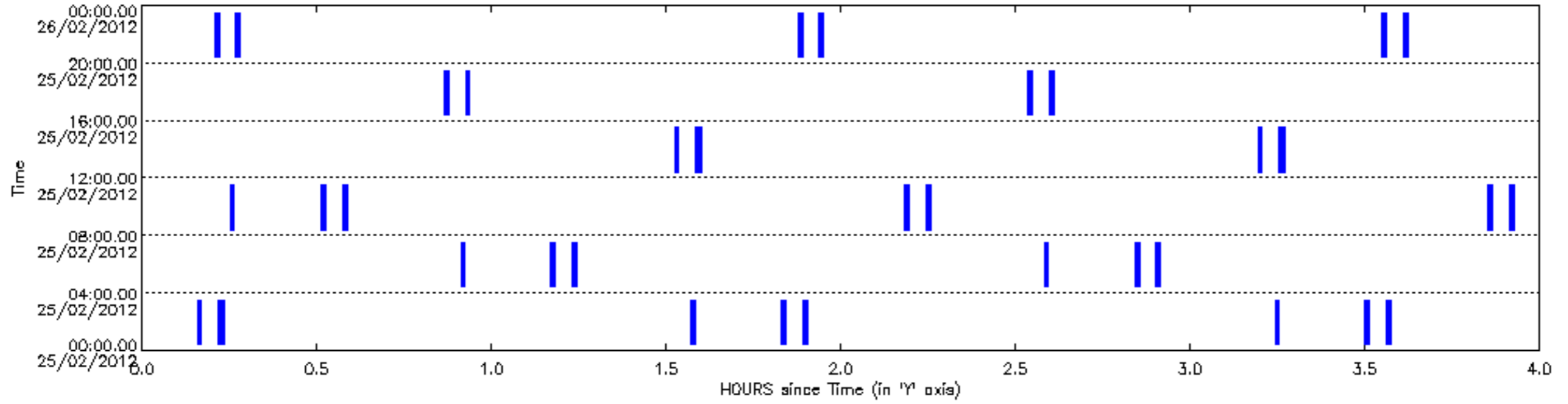
Upper curve: 90th percentile of SATU X axis

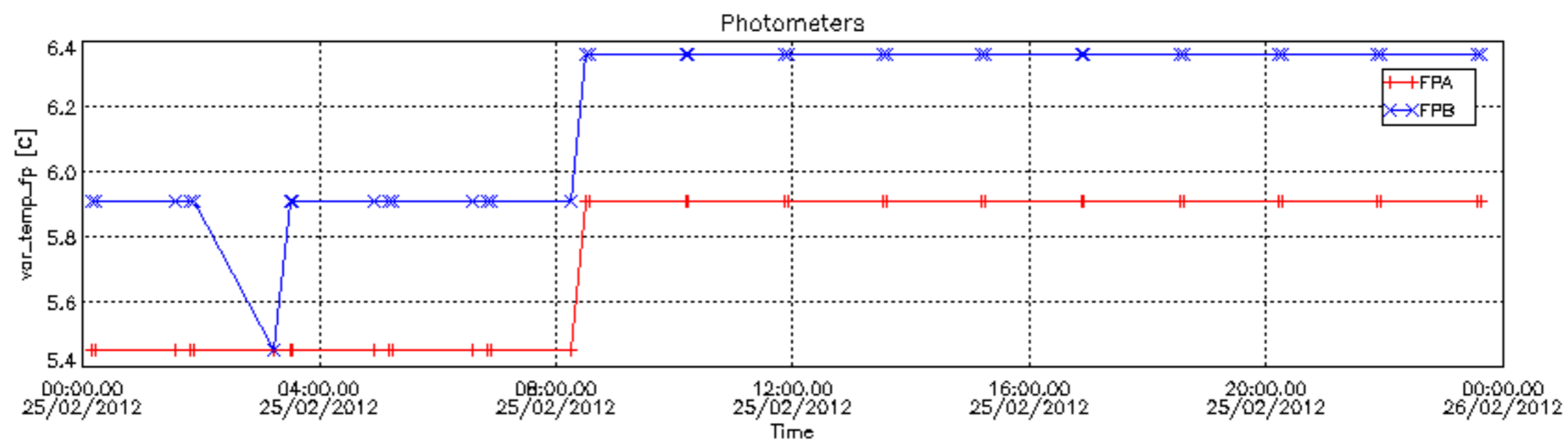
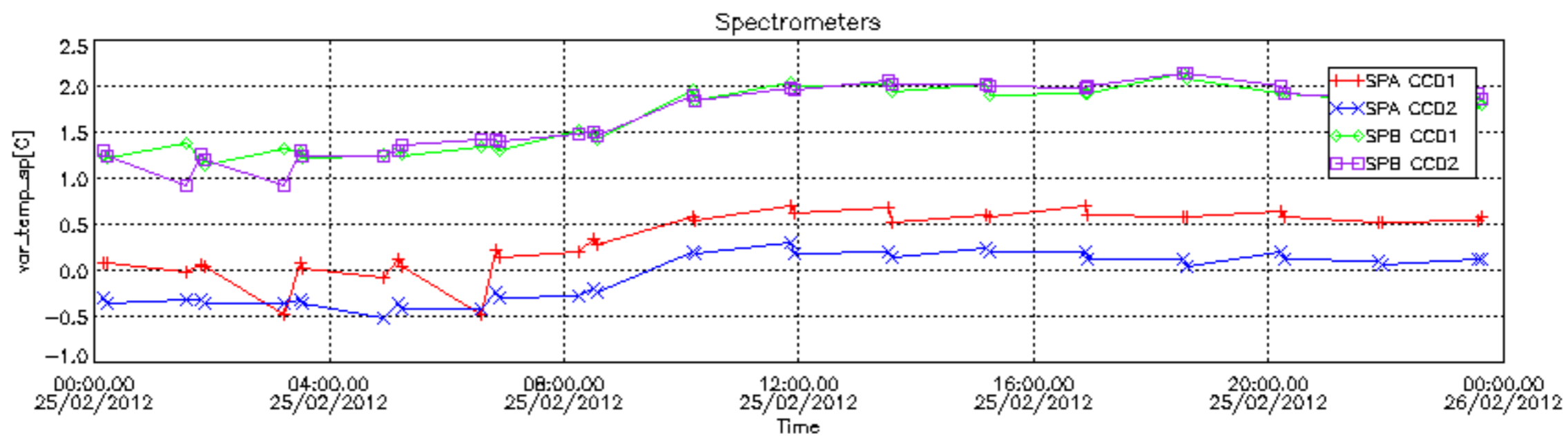


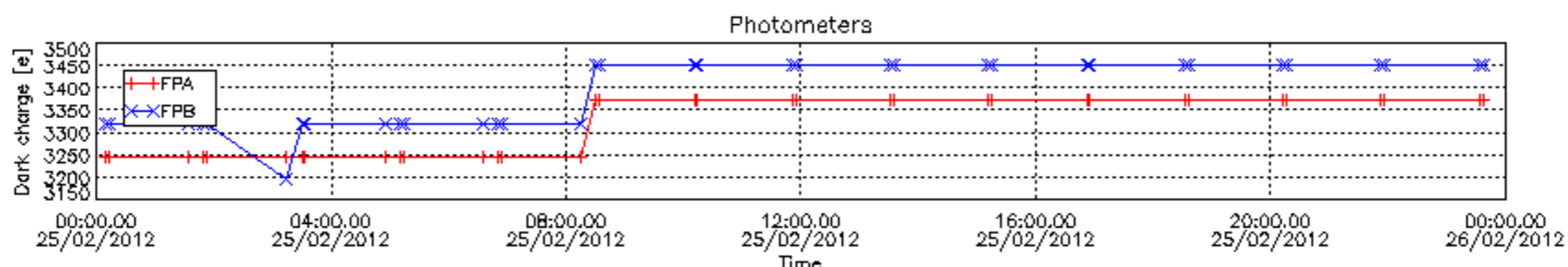
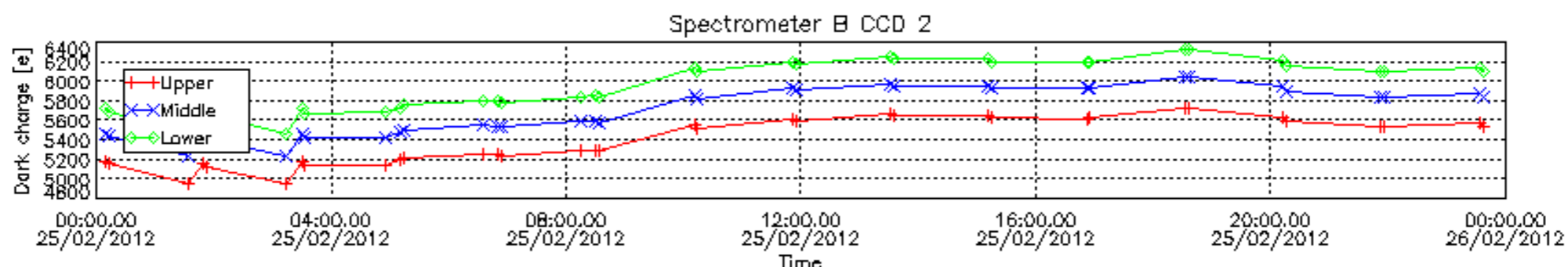
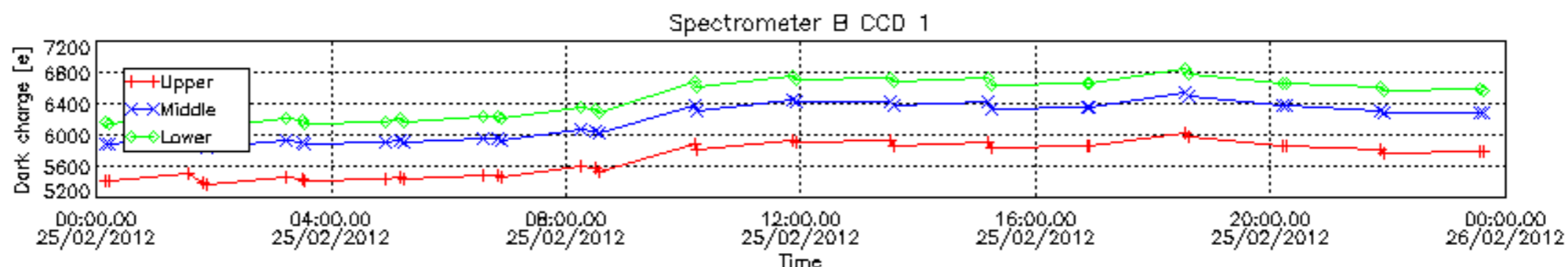
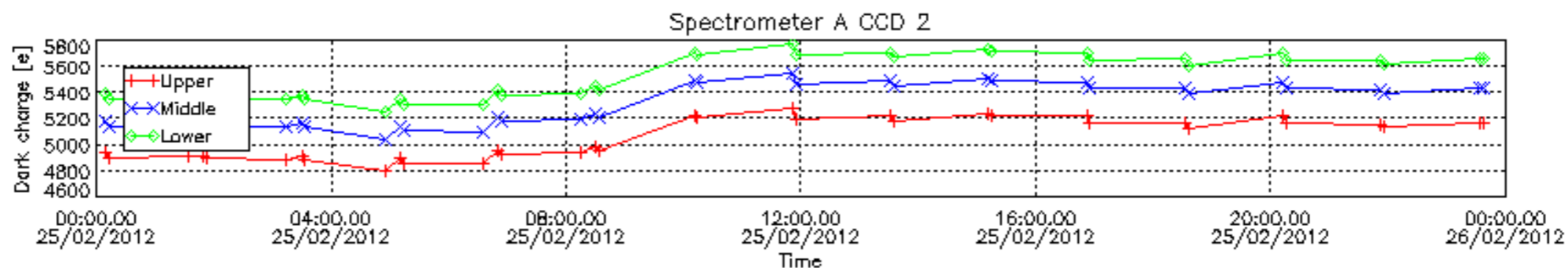
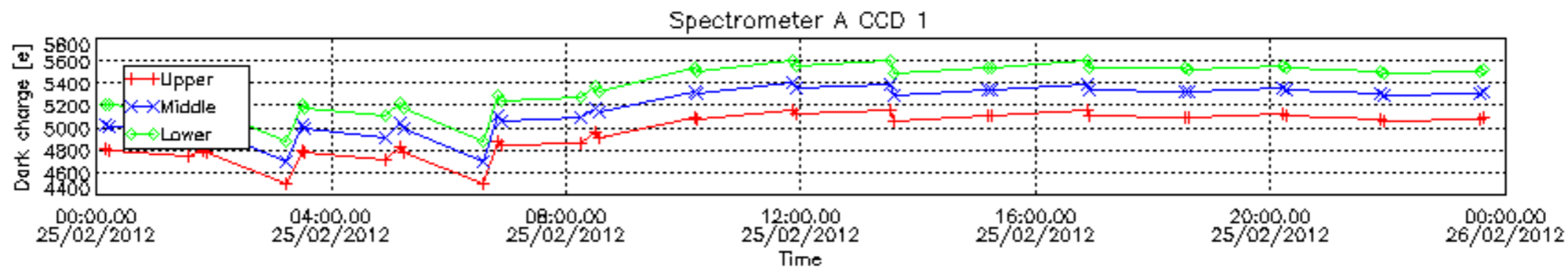
### 8. Auxiliary Data Files used for the production reported in section 2.4

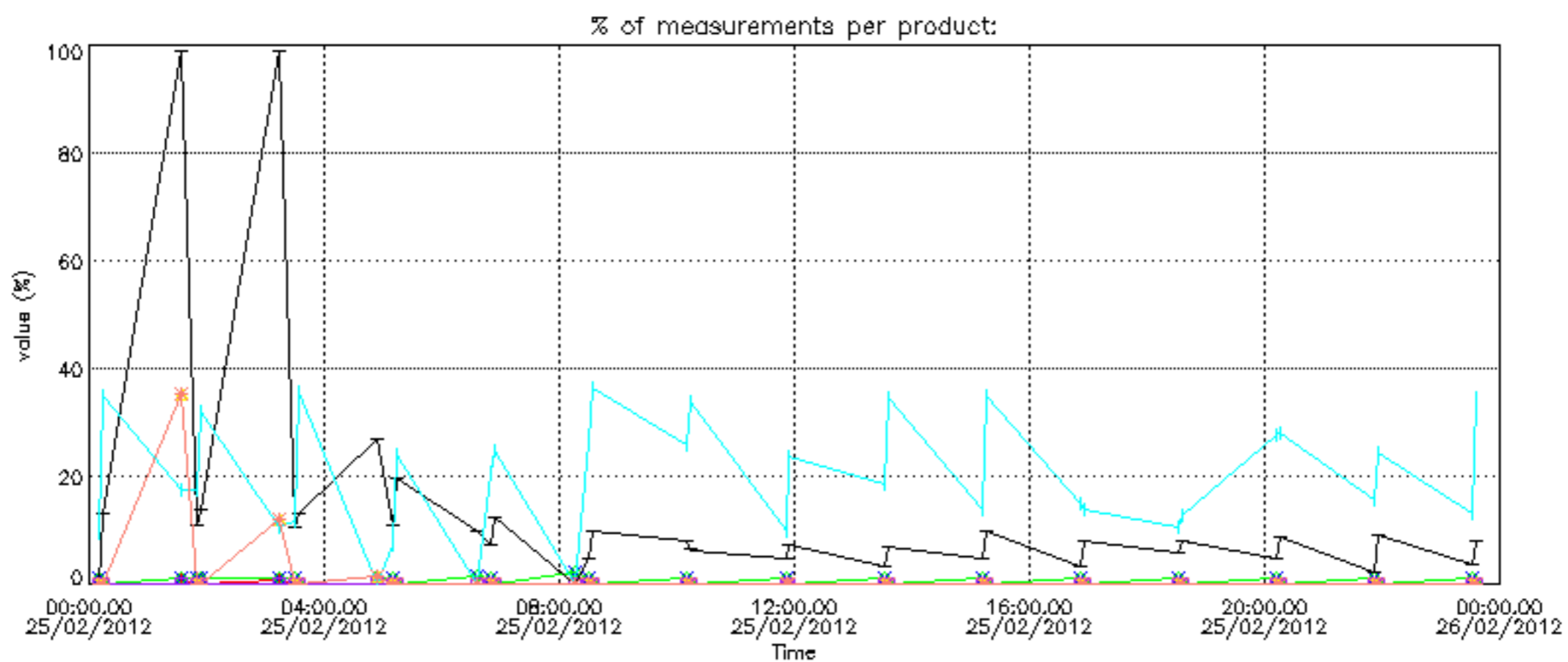
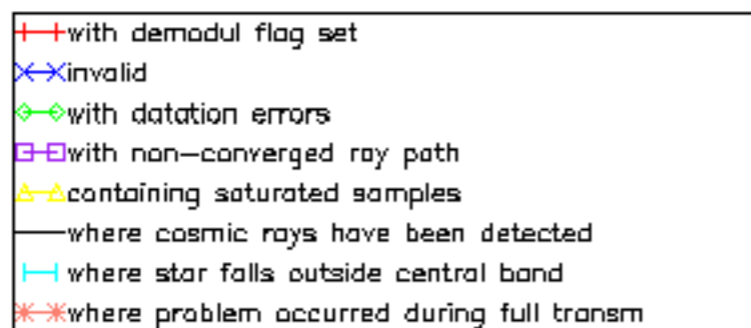
The number reported in the third column indicates since which file (see list in section 2.4) the corresponding auxiliary file has been used. The fourth column is the date of those product files.

Type	Auxiliary Filename	Used since product	Used since product date
INST_PHYS_CHARACTERISTICS	GOM_INS_AXVIEC20111213_163131_20111215_000000_20500101_000000	1	25-FEB-2012 00:09:27
CALIBRATION_DATABASE	GOM_CAL_AXVIEC20120130_103112_20120125_000000_20500101_000000	1	25-FEB-2012 00:09:27
LEVEL-1B_PROC_CONFIG	GOM_PR1_AXVIEC20110513_081743_20020301_000000_20500101_000000	1	25-FEB-2012 00:09:27
STAR_CATALOGUE	GOM_CAT_AXVIEC20020121_161009_20020101_000000_20200101_000000	1	25-FEB-2012 00:09:27
STELLAR_SPECTRA_DATABANK	GOM_STS_AXVIEC20091111_151504_20020101_160000_20500101_000000	1	25-FEB-2012 00:09:27
ECMWF_FILE	AUX_ECF_AXNECM20120224_062114_20120224_210000_20120225_090000	1	25-FEB-2012 00:09:27
ECMWF_FILE	AUX_ECF_AXNECM20120224_181419_20120225_030000_20120225_150000	9	25-FEB-2012 04:54:45
ECMWF_FILE	AUX_ECA_AXNECM20120225_062112_20120224_210000_20120225_090000	12	25-FEB-2012 06:35:00
ECMWF_FILE	AUX_ECF_AXNECM20120225_062113_20120225_090000_20120225_210000	18	25-FEB-2012 10:10:54
ECMWF_FILE	AUX_ECF_AXNECM20120225_062113_20120225_150000_20120226_030000	24	25-FEB-2012 15:11:38
ECMWF_FILE	AUX_ECA_AXNECM20120225_181052_20120225_090000_20120225_210000	30	25-FEB-2012 20:12:22
ECMWF_FILE	AUX_ECF_AXNECM20120225_062114_20120225_210000_20120226_090000	32	25-FEB-2012 21:52:36
OPTIONAL_ECMWF_FILE	MISSING	1	25-FEB-2012 00:09:27
ORBIT_DATA_FILE	AUX_FPO_AXVPDS20120224_112114_20120223_193730_20120304_201058	1	25-FEB-2012 00:09:27

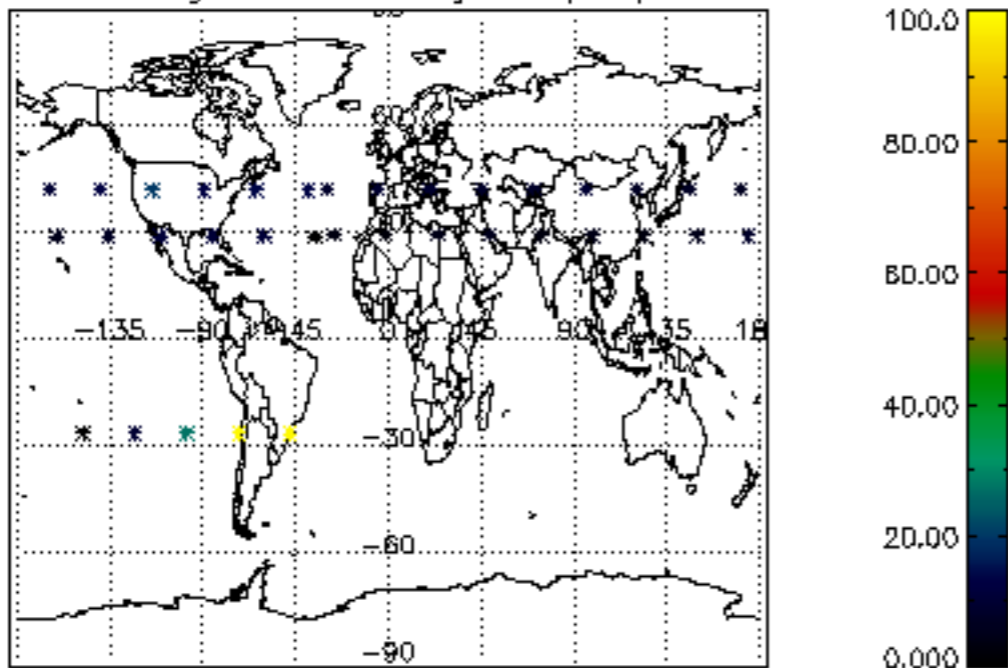




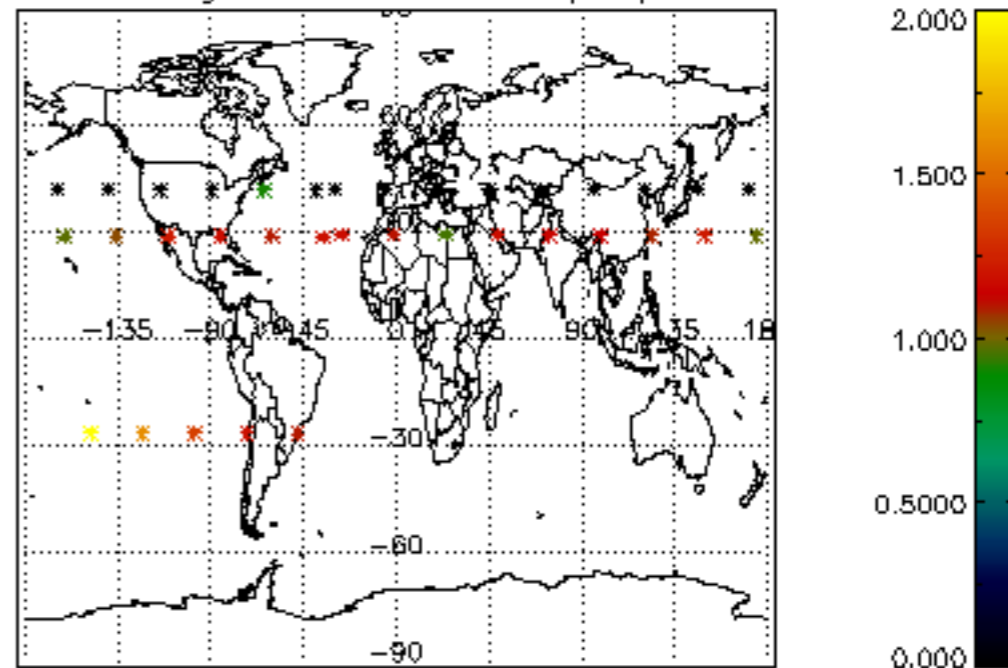




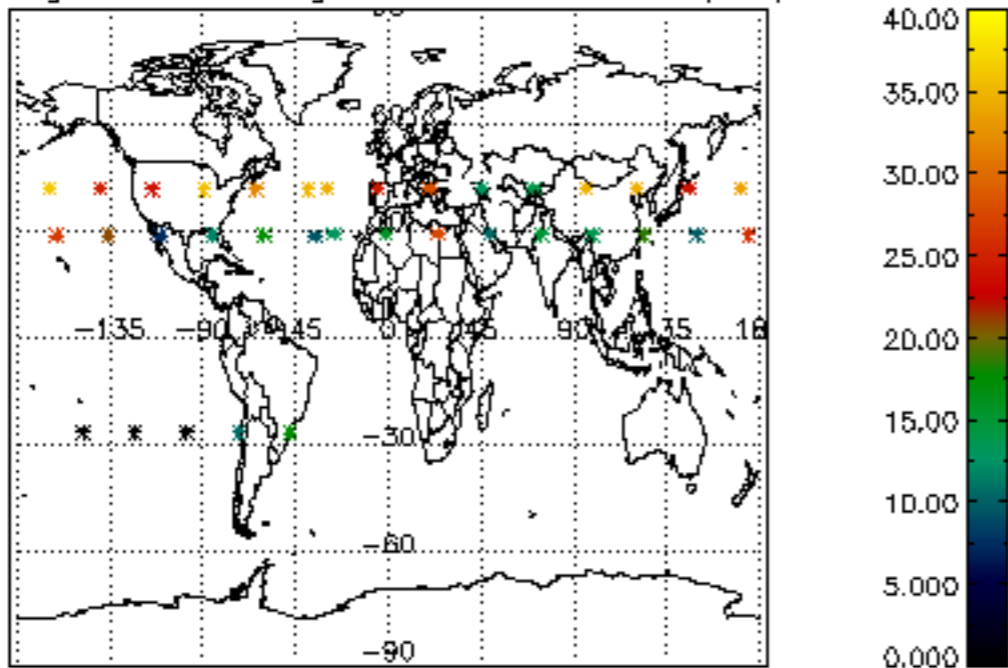
Percentage of cosmic ray hits per profile



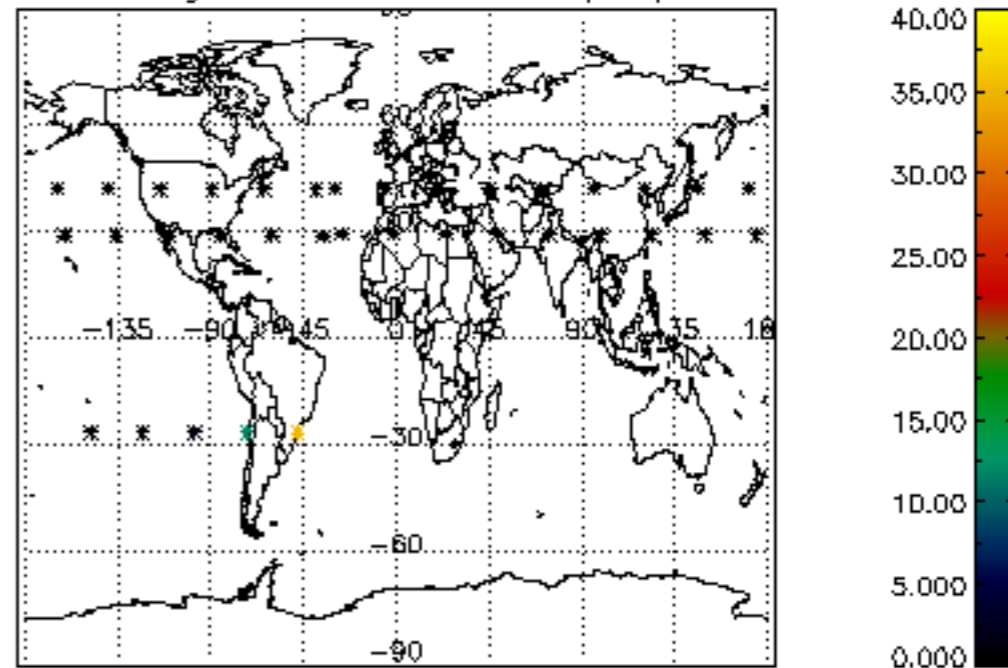
Percentage of datation errors per profile



Percentage of star falling outside central band per profile

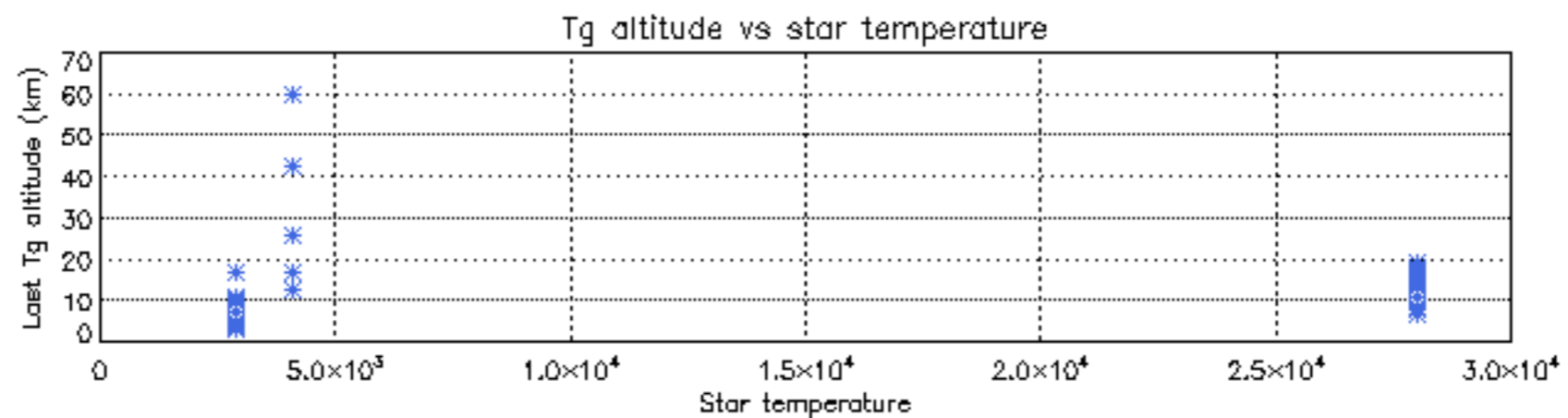
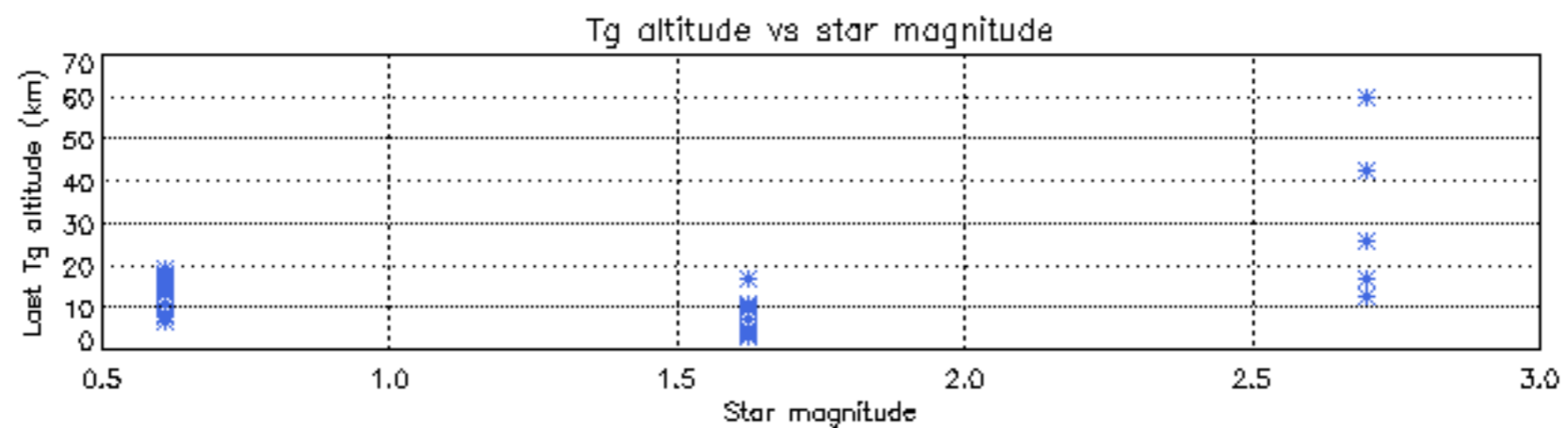
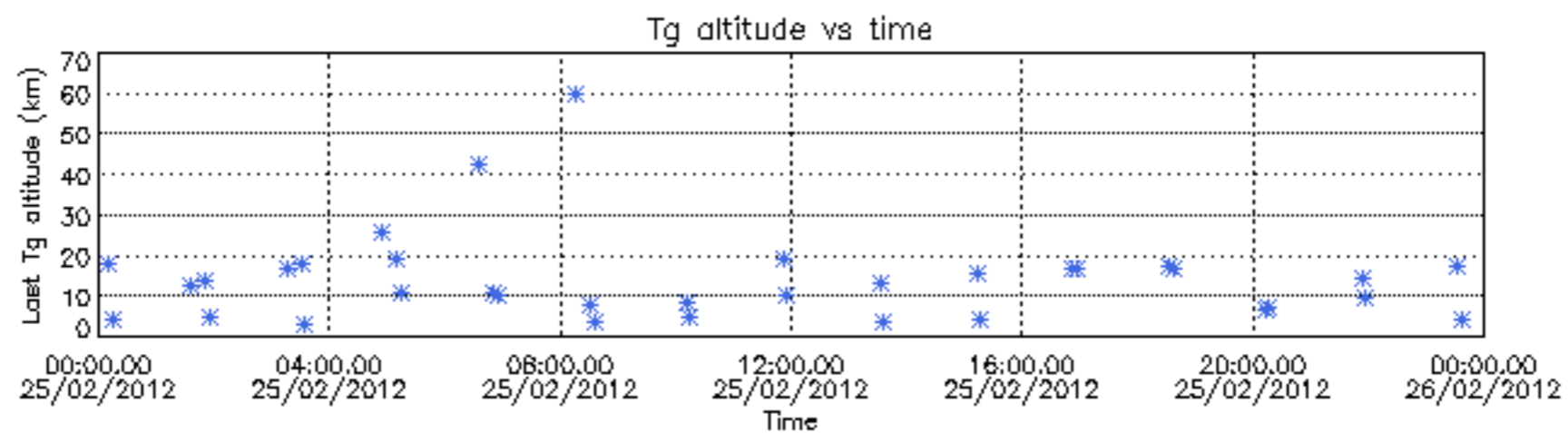


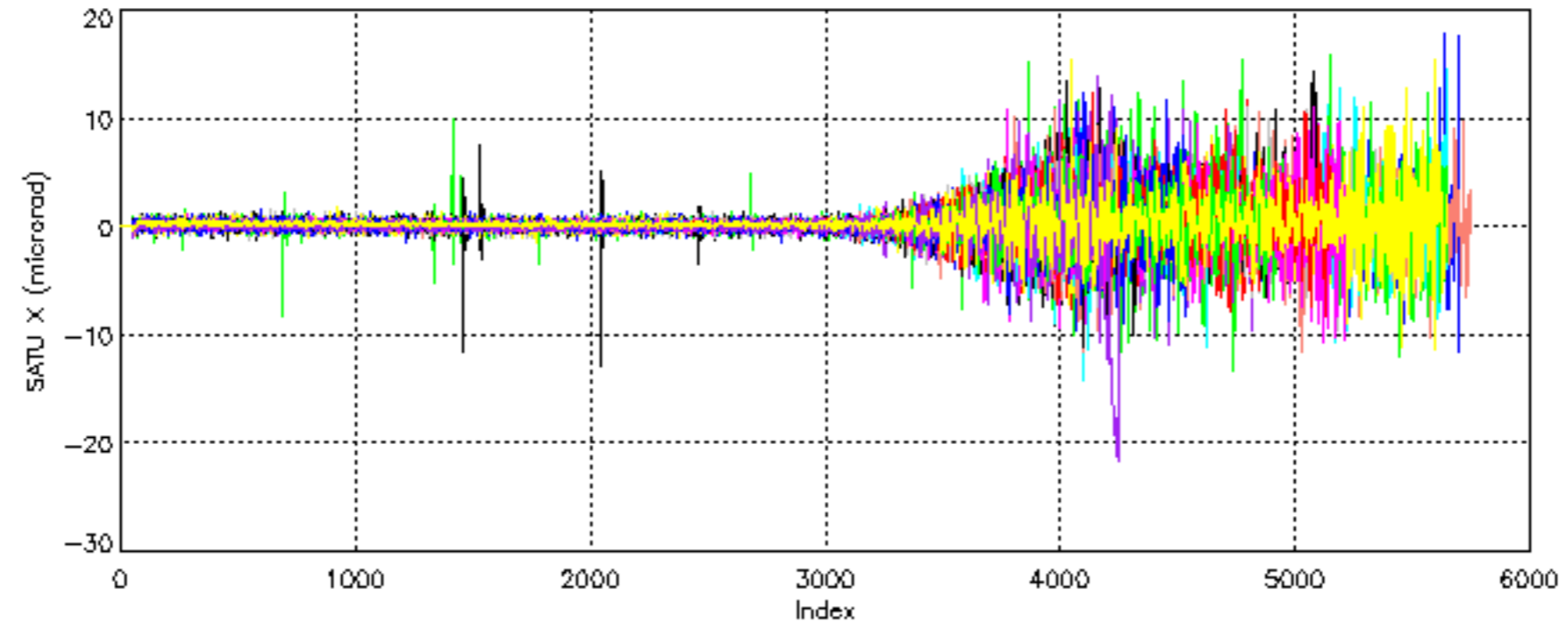
Percentage of saturation errors per profile

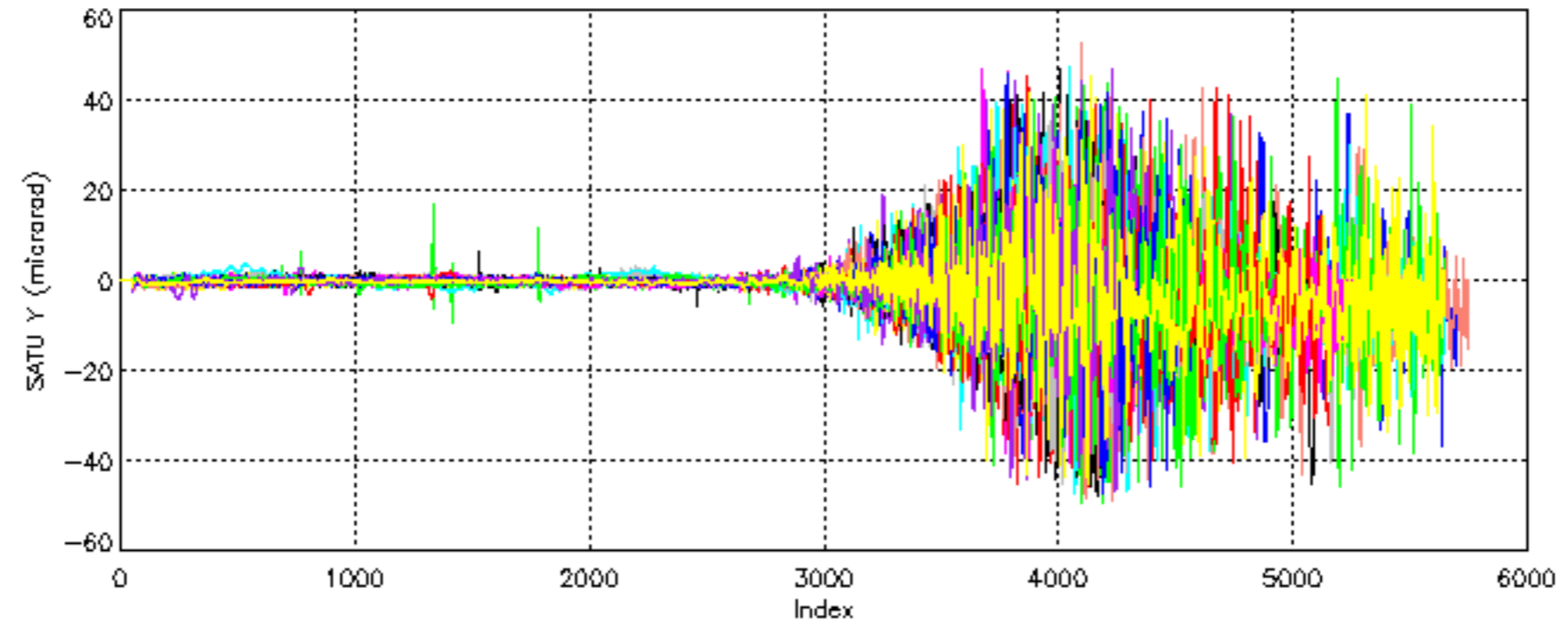


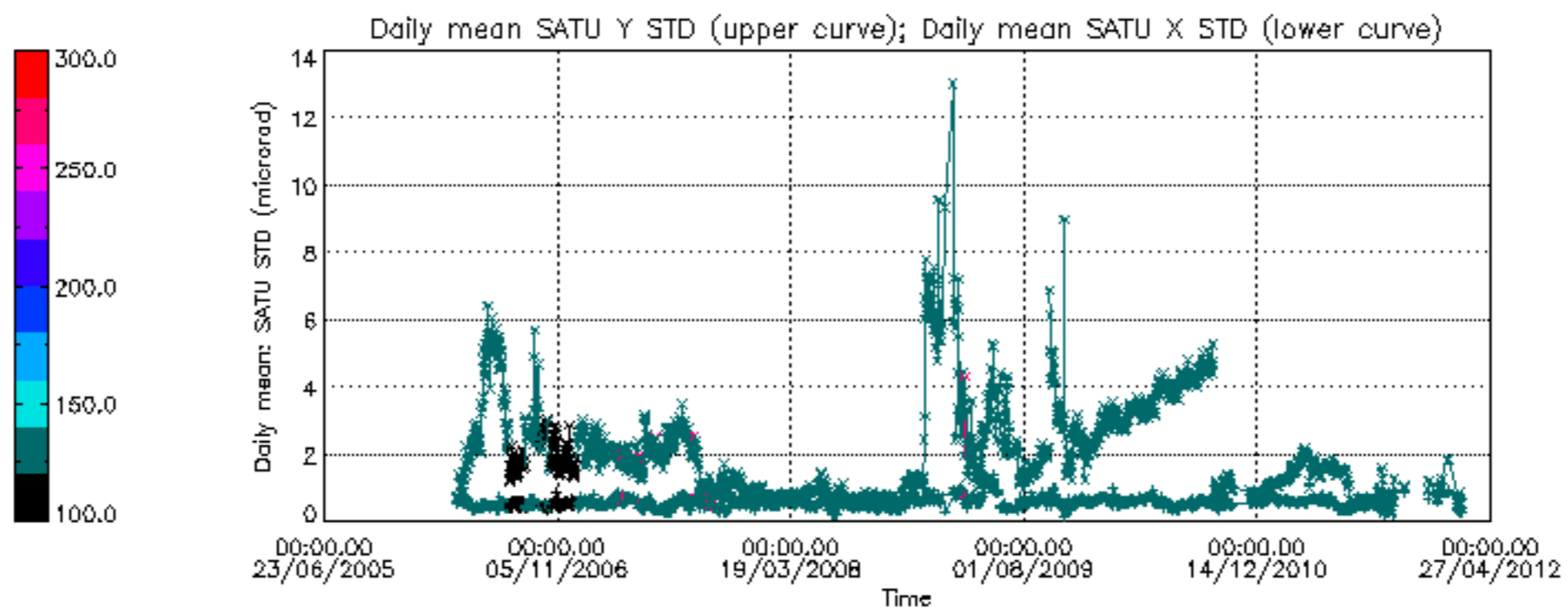


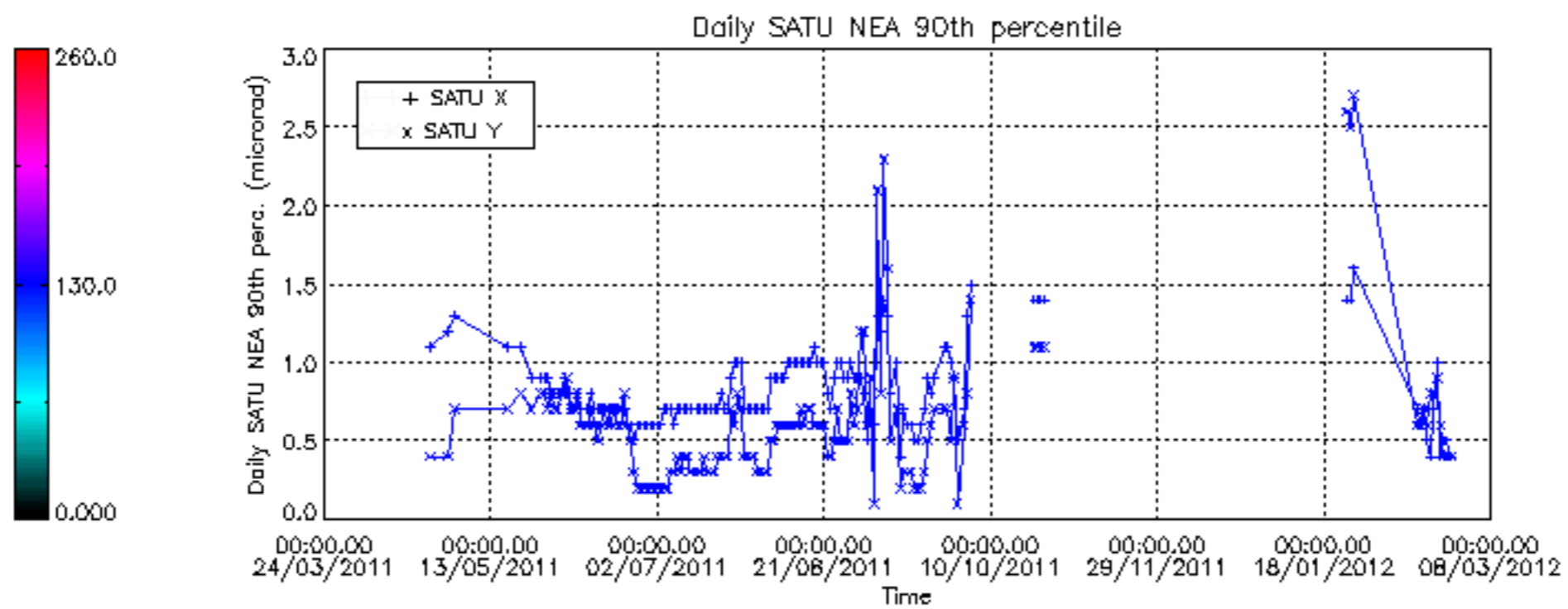
Tangent altitude at which the star is lost











/nas3/ENVISAT/GOMOS/GOM\_NL\_\_0P/GOM\_NL\_\_0PNPDE20120215\_061534\_000005593111\_00365\_52103\_6611.N1  
1; 395.4; 15-FEB-2012 06:15:34; Dark ; 41.0; 10; Bet Cen ; 0.61; 28000;occ; 82; 0;52103  
2; 564.2; 15-FEB-2012 06:18:23; Dark ; 50.5; 20; Bet Cru ; 1.25; 30000;occ; 101; 0;52103  
3; 921.0; 15-FEB-2012 06:24:20; Dark ; 33.5; 113; Mu Vel ; 2.69; 5000;occ; 67; 0;52103

/nas3/ENVISAT/GOMOS/GOM\_NL\_\_0P/GOM\_NL\_\_0PNPDE20120215\_211745\_000005673111\_00374\_52112\_6613.N1  
1; 400.7; 15-FEB-2012 21:17:45; Dark ; 43.5; 10; Bet Cen ; 0.61; 28000;occ; 87; 0;52112  
2; 569.2; 15-FEB-2012 21:20:33; Dark ; 42.0; 20; Bet Cru ; 1.25; 30000;occ; 84; 0;52112  
3; 924.7; 15-FEB-2012 21:26:29; Dark ; 44.0; 113; Mu Vel ; 2.69; 5000;occ; 88; 0;52112

/nas3/ENVISAT/GOMOS/GOM\_NL\_\_0P/GOM\_NL\_\_0PNPDE20120215\_225759\_000005663111\_00375\_52113\_6614.N1  
1; 401.4; 15-FEB-2012 22:57:59; Dark ; 42.0; 10; Bet Cen ; 0.61; 28000;occ; 84; 0;52113  
2; 569.8; 15-FEB-2012 23:00:48; Dark ; 43.5; 20; Bet Cru ; 1.25; 30000;occ; 87; 0;52113  
3; 925.1; 15-FEB-2012 23:06:43; Dark ; 43.0; 113; Mu Vel ; 2.69; 5000;occ; 86; 0;52113

/nas3/ENVISAT/GOMOS/GOM\_NL\_\_0P/GOM\_NL\_\_0PNPDK20120215\_075549\_000005603111\_00366\_52104\_5593.N1  
1; 396.1; 15-FEB-2012 07:55:49; Dark ; 50.0; 10; Bet Cen ; 0.61; 28000;occ; 100; 0;52104  
2; 564.7; 15-FEB-2012 07:58:37; Dark ; 45.5; 20; Bet Cru ; 1.25; 30000;occ; 91; 0;52104  
3; 921.3; 15-FEB-2012 08:04:34; Dark ; 35.5; 113; Mu Vel ; 2.69; 5000;occ; 71; 0;52104

/nas3/ENVISAT/GOMOS/GOM\_NL\_\_0P/GOM\_NL\_\_0PNPDK20120215\_093603\_000005633111\_00367\_52105\_5594.N1  
1; 396.6; 15-FEB-2012 09:36:03; Dark ; 42.5; 10; Bet Cen ; 0.61; 28000;occ; 85; 0;52105  
2; 565.3; 15-FEB-2012 09:38:52; Dark ; 45.5; 20; Bet Cru ; 1.25; 30000;occ; 91; 0;52105  
3; 921.7; 15-FEB-2012 09:44:48; Dark ; 38.5; 113; Mu Vel ; 2.69; 5000;occ; 77; 0;52105

/nas3/ENVISAT/GOMOS/GOM\_NL\_\_0P/GOM\_NL\_\_0PNPDK20120215\_125632\_000005663111\_00369\_52107\_5596.N1  
1; 397.8; 15-FEB-2012 12:56:32; Dark ; 44.0; 10; Bet Cen ; 0.61; 28000;occ; 88; 0;52107  
2; 566.4; 15-FEB-2012 12:59:21; Dark ; 40.5; 20; Bet Cru ; 1.25; 30000;occ; 81; 0;52107  
3; 922.5; 15-FEB-2012 13:05:17; Dark ; 41.5; 113; Mu Vel ; 2.69; 5000;occ; 83; 0;52107

/nas3/ENVISAT/GOMOS/GOM\_NL\_\_0P/GOM\_NL\_\_0PNPDK20120215\_143647\_000005703111\_00370\_52108\_5597.N1  
1; 398.5; 15-FEB-2012 14:36:47; Dark ; 44.0; 10; Bet Cen ; 0.61; 28000;occ; 88; 0;52108  
2; 567.1; 15-FEB-2012 14:39:35; Dark ; 41.5; 20; Bet Cru ; 1.25; 30000;occ; 83; 0;52108  
3; 923.1; 15-FEB-2012 14:45:31; Dark ; 45.5; 113; Mu Vel ; 2.69; 5000;occ; 91; 0;52108

/nas3/ENVISAT/GOMOS/GOM\_NL\_\_0P/GOM\_NL\_\_0PNPDK20120215\_161701\_000005693111\_00371\_52109\_5598.N1  
1; 399.0; 15-FEB-2012 16:17:01; Dark ; 43.5; 10; Bet Cen ; 0.61; 28000;occ; 87; 0;52109  
2; 567.7; 15-FEB-2012 16:19:50; Dark ; 43.5; 20; Bet Cru ; 1.25; 30000;occ; 87; 0;52109  
3; 923.5; 15-FEB-2012 16:25:46; Dark ; 45.5; 113; Mu Vel ; 2.69; 5000;occ; 91; 0;52109

/nas3/ENVISAT/GOMOS/GOM\_NL\_\_0P/GOM\_NL\_\_0PNPDK20120215\_175716\_000005403111\_00372\_52110\_5599.N1  
1; 399.6; 15-FEB-2012 17:57:16; Dark ; 48.0; 10; Bet Cen ; 0.61; 28000;occ; 96; 0;52110  
2; 568.2; 15-FEB-2012 18:00:04; Dark ; 43.0; 20; Bet Cru ; 1.25; 30000;occ; 86; 0;52110  
3; 924.0; 15-FEB-2012 18:06:00; Dark ; 16.5; 113; Mu Vel ; 2.69; 5000;occ; 33; 0;52110

/nas3/ENVISAT/GOMOS/GOM\_NL\_\_0P/GOM\_NL\_\_0PNPDE20120215\_194625\_000000333111\_00373\_52111\_6612.N1  
1; 935.2; 15-FEB-2012 19:46:25; Dark ; 44.5; 113; Mu Vel ; 2.69; 5000;occ; 89; 22;52111

/nas3/ENVISAT/GOMOS/GOM\_NL\_\_0P/GOM\_NL\_\_0PNPDK20120215\_193730\_000005683111\_00373\_52111\_5600.N1  
1; 400.2; 15-FEB-2012 19:37:30; Dark ; 46.0; 10; Bet Cen ; 0.61; 28000;occ; 92; 0;52111  
2; 568.6; 15-FEB-2012 19:40:19; Dark ; 41.5; 20; Bet Cru ; 1.25; 30000;occ; 83; 0;52111  
3; 924.2; 15-FEB-2012 19:46:14; Dark ; 44.5; 113; Mu Vel ; 2.69; 5000;occ; 89; 0;52111

/nas3/ENVISAT/GOMOS/GOM\_NL\_\_0P/GOM\_NL\_\_0PNPDE20120216\_003814\_000005643111\_00376\_52114\_6615.N1  
1; 402.0; 16-FEB-2012 00:38:14; Dark ; 44.5; 10; Bet Cen ; 0.61; 28000;occ; 89; 0;52114  
2; 570.3; 16-FEB-2012 00:41:02; Dark ; 51.0; 20; Bet Cru ; 1.25; 30000;occ; 102; 0;52114  
3; 925.6; 16-FEB-2012 00:46:57; Dark ; 41.0; 113; Mu Vel ; 2.69; 5000;occ; 82; 0;52114

/nas3/ENVISAT/GOMOS/GOM\_NL\_\_0P/GOM\_NL\_\_0PNPDE20120216\_021828\_000005683111\_00377\_52115\_6616.N1  
1; 402.6; 16-FEB-2012 02:18:28; Dark ; 41.0; 10; Bet Cen ; 0.61; 28000;occ; 82; 0;52115  
2; 571.0; 16-FEB-2012 02:21:17; Dark ; 40.0; 20; Bet Cru ; 1.25; 30000;occ; 80; 0;52115  
3; 925.9; 16-FEB-2012 02:27:11; Dark ; 45.0; 113; Mu Vel ; 2.69; 5000;occ; 90; 0;52115

/nas3/ENVISAT/GOMOS/GOM\_NL\_\_0P/GOM\_NL\_\_0PNPDE20120216\_053858\_000005633111\_00379\_52117\_6617.N1  
1; 404.1; 16-FEB-2012 05:38:58; Dark ; 42.5; 10; Bet Cen ; 0.61; 28000;occ; 85; 0;52117  
2; 572.3; 16-FEB-2012 05:41:46; Dark ; 40.5; 20; Bet Cru ; 1.25; 30000;occ; 81; 0;52117  
3; 927.0; 16-FEB-2012 05:47:40; Dark ; 40.5; 113; Mu Vel ; 2.69; 5000;occ; 81; 0;52117

/nas3/ENVISAT/GOMOS/GOM\_NL\_\_0P/GOM\_NL\_\_0PNPDE20120216\_222004\_000002893111\_00389\_52127\_6618.N1  
1; 330.9; 16-FEB-2012 22:20:04; Dark ; 43.5; 4; Alp1Cen ; -0.01; 5800;occ; 87; 0;52127  
2; 409.9; 16-FEB-2012 22:21:23; Dark ; 44.0; 10; Bet Cen ; 0.61; 28000;occ; 88; 0;52127  
3; 577.7; 16-FEB-2012 22:24:10; Dark ; 43.0; 20; Bet Cru ; 1.25; 30000;occ; 86; 0;52127

/nas3/ENVISAT/GOMOS/GOM\_NL\_\_0P/GOM\_NL\_\_0PNPDK20120216\_071912\_000005643111\_00380\_52118\_5601.N1  
1; 404.6; 16-FEB-2012 07:19:12; Dark ; 42.5; 10; Bet Cen ; 0.61; 28000;occ; 85; 0;52118  
2; 572.8; 16-FEB-2012 07:22:00; Dark ; 45.5; 20; Bet Cru ; 1.25; 30000;occ; 91; 0;52118  
3; 927.5; 16-FEB-2012 07:27:55; Dark ; 42.0; 113; Mu Vel ; 2.69; 5000;occ; 84; 0;52118

/nas3/ENVISAT/GOMOS/GOM\_NL\_\_0P/GOM\_NL\_\_0PNPDK20120216\_085926\_000005643111\_00381\_52119\_5602.N1  
1; 405.2; 16-FEB-2012 08:59:27; Dark ; 51.0; 10; Bet Cen ; 0.61; 28000;occ; 102; 0;52119  
2; 573.3; 16-FEB-2012 09:02:15; Dark ; 50.5; 20; Bet Cru ; 1.25; 30000;occ; 101; 0;52119  
3; 927.9; 16-FEB-2012 09:08:09; Dark ; 42.0; 113; Mu Vel ; 2.69; 5000;occ; 84; 0;52119

/nas3/ENVISAT/GOMOS/GOM\_NL\_\_0P/GOM\_NL\_\_0PNPDK20120216\_103822\_000002873111\_00382\_52120\_5603.N1  
1; 326.8; 16-FEB-2012 10:38:22; Dark ; 42.0; 4; Alp1Cen ; -0.01; 5800;occ; 84; 0;52120

```

2; 405.8; 16-FEB-2012 10:39:41; Dark ; 48.0; 10; Bet Cen ; 0.61; 28000;occ; 96; 0;52120
3; 573.9; 16-FEB-2012 10:42:29; Dark ; 40.5; 20; Bet Cru ; 1.25; 30000;occ; 81; 0;52120
/nas3/ENVISAT/GOMOS/GOM_NL__0P/GOM_NL__0PNPDK20120216_121837_000002963111_00383_52121_5604.N1
1; 327.5; 16-FEB-2012 12:18:37; Dark ; 44.5; 4; Alp1Cen ; -0.01; 5800;occ; 89; 0;52121
2; 406.4; 16-FEB-2012 12:19:56; Dark ; 42.0; 10; Bet Cen ; 0.61; 28000;occ; 84; 0;52121
3; 574.6; 16-FEB-2012 12:22:44; Dark ; 49.0; 20; Bet Cru ; 1.25; 30000;occ; 98; 0;52121
/nas3/ENVISAT/GOMOS/GOM_NL__0P/GOM_NL__0PNPDK20120216_135851_000002903111_00384_52122_5605.N1
1; 328.1; 16-FEB-2012 13:58:51; Dark ; 43.5; 4; Alp1Cen ; -0.01; 5800;occ; 87; 0;52122
2; 407.1; 16-FEB-2012 14:00:10; Dark ; 42.0; 10; Bet Cen ; 0.61; 28000;occ; 84; 0;52122
3; 575.1; 16-FEB-2012 14:02:58; Dark ; 43.0; 20; Bet Cru ; 1.25; 30000;occ; 86; 0;52122
/nas3/ENVISAT/GOMOS/GOM_NL__0P/GOM_NL__0PNPDK20120216_153906_000002903111_00385_52123_5606.N1
1; 328.7; 16-FEB-2012 15:39:06; Dark ; 43.5; 4; Alp1Cen ; -0.01; 5800;occ; 87; 0;52123
2; 407.5; 16-FEB-2012 15:40:24; Dark ; 42.0; 10; Bet Cen ; 0.61; 28000;occ; 84; 0;52123
3; 575.7; 16-FEB-2012 15:43:13; Dark ; 43.5; 20; Bet Cru ; 1.25; 30000;occ; 87; 0;52123
/nas3/ENVISAT/GOMOS/GOM_NL__0P/GOM_NL__0PNPDK20120216_171920_000002993111_00386_52124_5607.N1
1; 329.3; 16-FEB-2012 17:19:20; Dark ; 46.0; 4; Alp1Cen ; -0.01; 5800;occ; 92; 0;52124
2; 408.2; 16-FEB-2012 17:20:39; Dark ; 44.0; 10; Bet Cen ; 0.61; 28000;occ; 88; 0;52124
3; 576.2; 16-FEB-2012 17:23:27; Dark ; 52.5; 20; Bet Cru ; 1.25; 30000;occ; 105; 0;52124
/nas3/ENVISAT/GOMOS/GOM_NL__0P/GOM_NL__0PNPDK20120216_185935_000002873111_00387_52125_5608.N1
1; 329.8; 16-FEB-2012 18:59:35; Dark ; 43.0; 4; Alp1Cen ; -0.01; 5800;occ; 86; 0;52125
2; 408.8; 16-FEB-2012 19:00:54; Dark ; 47.5; 10; Bet Cen ; 0.61; 28000;occ; 95; 0;52125
3; 576.7; 16-FEB-2012 19:03:42; Dark ; 41.0; 20; Bet Cru ; 1.25; 30000;occ; 82; 0;52125
/nas3/ENVISAT/GOMOS/GOM_NL__0P/GOM_NL__0PNPDK20120216_203949_000002923111_00388_52126_5609.N1
1; 330.4; 16-FEB-2012 20:39:49; Dark ; 51.5; 4; Alp1Cen ; -0.01; 5800;occ; 103; 0;52126
2; 409.4; 16-FEB-2012 20:41:08; Dark ; 43.5; 10; Bet Cen ; 0.61; 28000;occ; 87; 0;52126
3; 577.3; 16-FEB-2012 20:43:56; Dark ; 45.5; 20; Bet Cru ; 1.25; 30000;occ; 91; 0;52126
/nas3/ENVISAT/GOMOS/GOM_NL__0P/GOM_NL__0PNPDE20120217_014152_000062233111_00391_52129_6619.N1
1; 411.2; 17-FEB-2012 01:41:52; Dark ; 46.0; 10; Bet Cen ; 0.61; 28000;occ; 92; 0;52129
2; 578.9; 17-FEB-2012 01:44:39; Dark ; 42.0; 20; Bet Cru ; 1.25; 30000;occ; 84; 0;52129
3; 5710.4; 17-FEB-2012 03:10:11; Dark ; 42.0; 25; 35Lam Sco ; 1.62; 28000;occ; 84; 0;52129
4; 6425.8; 17-FEB-2012 03:22:06; Dark ; 43.0; 10; Bet Cen ; 0.61; 28000;occ; 86; 0;52130
5; 6593.5; 17-FEB-2012 03:24:54; Dark ; 41.0; 20; Bet Cru ; 1.25; 30000;occ; 82; 0;52130
/nas3/ENVISAT/GOMOS/GOM_NL__0P/GOM_NL__0PNPDE20120217_045025_000009233111_00392_52130_6620.N1
1; -302.8; 17-FEB-2012 04:50:25; Dark ; 41.5; 25; 35Lam Sco ; 1.62; 28000;occ; 83; 0;52130
2; 412.4; 17-FEB-2012 05:02:21; Dark ; 44.0; 10; Bet Cen ; 0.61; 28000;occ; 88; 0;52131
3; 579.9; 17-FEB-2012 05:05:08; Dark ; 40.5; 20; Bet Cru ; 1.25; 30000;occ; 81; 0;52131
/nas3/ENVISAT/GOMOS/GOM_NL__0P/GOM_NL__0PNPDE20120217_063040_000009263111_00393_52131_6621.N1
1; -302.2; 17-FEB-2012 06:30:40; Dark ; 44.0; 25; 35Lam Sco ; 1.62; 28000;occ; 88; 0;52131
2; 413.1; 17-FEB-2012 06:42:35; Dark ; 47.0; 10; Bet Cen ; 0.61; 28000;occ; 94; 0;52132
3; 580.6; 17-FEB-2012 06:45:23; Dark ; 44.0; 20; Bet Cru ; 1.25; 30000;occ; 88; 0;52132
/nas3/ENVISAT/GOMOS/GOM_NL__0P/GOM_NL__0PNPDE20120217_213251_000009253111_00402_52140_6622.N1
1; -296.5; 17-FEB-2012 21:32:51; Dark ; 41.5; 25; 35Lam Sco ; 1.62; 28000;occ; 83; 0;52140
2; 418.6; 17-FEB-2012 21:44:46; Dark ; 42.0; 10; Bet Cen ; 0.61; 28000;occ; 84; 0;52141
3; 585.6; 17-FEB-2012 21:47:33; Dark ; 43.0; 20; Bet Cru ; 1.25; 30000;occ; 86; 0;52141
/nas3/ENVISAT/GOMOS/GOM_NL__0P/GOM_NL__0PNPDE20120217_231306_000009233111_00403_52141_6623.N1
1; -295.9; 17-FEB-2012 23:13:06; Dark ; 38.0; 25; 35Lam Sco ; 1.62; 28000;occ; 76; 0;52141
2; 419.2; 17-FEB-2012 23:25:01; Dark ; 43.5; 10; Bet Cen ; 0.61; 28000;occ; 87; 0;52142
3; 586.1; 17-FEB-2012 23:27:48; Dark ; 41.5; 20; Bet Cru ; 1.25; 30000;occ; 83; 0;52142
/nas3/ENVISAT/GOMOS/GOM_NL__0P/GOM_NL__0PNPDK20120217_081055_000009313111_00394_52132_5610.N1
1; -301.5; 17-FEB-2012 08:10:55; Dark ; 46.0; 25; 35Lam Sco ; 1.62; 28000;occ; 92; 0;52132
2; 413.6; 17-FEB-2012 08:22:50; Dark ; 43.5; 10; Bet Cen ; 0.61; 28000;occ; 87; 0;52133
3; 581.1; 17-FEB-2012 08:25:37; Dark ; 49.0; 20; Bet Cru ; 1.25; 30000;occ; 98; 0;52133
/nas3/ENVISAT/GOMOS/GOM_NL__0P/GOM_NL__0PNPDK20120217_095109_000009233111_00395_52133_5611.N1
1; -301.0; 17-FEB-2012 09:51:09; Dark ; 49.5; 25; 35Lam Sco ; 1.62; 28000;occ; 99; 0;52133
2; 414.3; 17-FEB-2012 10:03:04; Dark ; 50.5; 10; Bet Cen ; 0.61; 28000;occ; 101; 0;52134
3; 581.7; 17-FEB-2012 10:05:52; Dark ; 41.0; 20; Bet Cru ; 1.25; 30000;occ; 82; 0;52134
/nas3/ENVISAT/GOMOS/GOM_NL__0P/GOM_NL__0PNPDK20120217_113124_000009223111_00396_52134_5612.N1
1; -300.4; 17-FEB-2012 11:31:24; Dark ; 41.5; 25; 35Lam Sco ; 1.62; 28000;occ; 83; 0;52134
2; 415.0; 17-FEB-2012 11:43:19; Dark ; 43.0; 10; Bet Cen ; 0.61; 28000;occ; 86; 0;52135
3; 582.3; 17-FEB-2012 11:46:06; Dark ; 40.0; 20; Bet Cru ; 1.25; 30000;occ; 80; 0;52135
/nas3/ENVISAT/GOMOS/GOM_NL__0P/GOM_NL__0PNPDK20120217_131138_000009273111_00397_52135_5613.N1
1; -299.7; 17-FEB-2012 13:11:38; Dark ; 45.5; 25; 35Lam Sco ; 1.62; 28000;occ; 91; 0;52135
2; 415.6; 17-FEB-2012 13:23:33; Dark ; 42.5; 10; Bet Cen ; 0.61; 28000;occ; 85; 0;52136
3; 582.9; 17-FEB-2012 13:26:21; Dark ; 44.5; 20; Bet Cru ; 1.25; 30000;occ; 89; 0;52136
/nas3/ENVISAT/GOMOS/GOM_NL__0P/GOM_NL__0PNPDK20120217_145153_000009243111_00398_52136_5614.N1
1; -299.0; 17-FEB-2012 14:51:53; Dark ; 45.5; 25; 35Lam Sco ; 1.62; 28000;occ; 91; 0;52136
2; 416.1; 17-FEB-2012 15:03:48; Dark ; 42.0; 10; Bet Cen ; 0.61; 28000;occ; 84; 0;52137
3; 583.5; 17-FEB-2012 15:06:35; Dark ; 42.0; 20; Bet Cru ; 1.25; 30000;occ; 84; 0;52137

```

/nas3/ENVISAT/GOMOS/GOM\_NL\_\_0P/GOM\_NL\_\_0PNPDK20120217\_163207\_000009293111\_00399\_52137\_5615.N1  
1; -298.5; 17-FEB-2012 16:32:07; Dark ; 42.0; 25; 35Lam Sco ; 1.62; 28000;occ; 84; 0;52137  
2; 416.7; 17-FEB-2012 16:44:02; Dark ; 41.5; 10; Bet Cen ; 0.61; 28000;occ; 83; 0;52138  
3; 584.0; 17-FEB-2012 16:46:50; Dark ; 47.5; 20; Bet Cru ; 1.25; 30000;occ; 95; 0;52138  
/nas3/ENVISAT/GOMOS/GOM\_NL\_\_0P/GOM\_NL\_\_0PNPDK20120217\_181222\_000009223111\_00400\_52138\_5616.N1  
1; -297.8; 17-FEB-2012 18:12:22; Dark ; 43.0; 25; 35Lam Sco ; 1.62; 28000;occ; 86; 0;52138  
2; 417.3; 17-FEB-2012 18:24:17; Dark ; 48.0; 10; Bet Cen ; 0.61; 28000;occ; 96; 0;52139  
3; 584.6; 17-FEB-2012 18:27:04; Dark ; 40.5; 20; Bet Cru ; 1.25; 30000;occ; 81; 0;52139  
/nas3/ENVISAT/GOMOS/GOM\_NL\_\_0P/GOM\_NL\_\_0PNPDK20120217\_195237\_000009263111\_00401\_52139\_5617.N1  
1; -297.2; 17-FEB-2012 19:52:37; Dark ; 41.0; 25; 35Lam Sco ; 1.62; 28000;occ; 82; 0;52139  
2; 418.0; 17-FEB-2012 20:04:32; Dark ; 47.0; 10; Bet Cen ; 0.61; 28000;occ; 94; 0;52140  
3; 585.1; 17-FEB-2012 20:07:19; Dark ; 44.0; 20; Bet Cru ; 1.25; 30000;occ; 88; 0;52140  
/nas3/ENVISAT/GOMOS/GOM\_NL\_\_0P/GOM\_NL\_\_0PNPDE20120218\_005320\_000009233111\_00404\_52142\_6624.N1  
1; -295.3; 18-FEB-2012 00:53:20; Dark ; 33.0; 25; 35Lam Sco ; 1.62; 28000;occ; 66; 0;52142  
2; 419.8; 18-FEB-2012 01:05:15; Dark ; 45.0; 10; Bet Cen ; 0.61; 28000;occ; 90; 0;52143  
3; 586.7; 18-FEB-2012 01:08:02; Dark ; 41.5; 20; Bet Cru ; 1.25; 30000;occ; 83; 0;52143  
/nas3/ENVISAT/GOMOS/GOM\_NL\_\_0P/GOM\_NL\_\_0PNPDE20120218\_023335\_000009293111\_00405\_52143\_6625.N1  
1; -294.6; 18-FEB-2012 02:33:35; Dark ; 28.0; 25; 35Lam Sco ; 1.62; 28000;occ; 56; 0;52143  
2; 420.5; 18-FEB-2012 02:45:30; Dark ; 45.5; 10; Bet Cen ; 0.61; 28000;occ; 91; 0;52144  
3; 587.3; 18-FEB-2012 02:48:16; Dark ; 48.0; 20; Bet Cru ; 1.25; 30000;occ; 96; 0;52144  
/nas3/ENVISAT/GOMOS/GOM\_NL\_\_0P/GOM\_NL\_\_0PNPDE20120218\_042544\_000009503111\_00407\_52145\_6626.N1  
1; 420.9; 18-FEB-2012 04:25:44; Dark ; 51.0; 10; Bet Cen ; 0.61; 28000;occ; 102; 0;52145  
/nas3/ENVISAT/GOMOS/GOM\_NL\_\_0P/GOM\_NL\_\_0PNPDE20120218\_060559\_000009453111\_00408\_52146\_6627.N1  
1; 421.5; 18-FEB-2012 06:05:59; Dark ; 45.5; 10; Bet Cen ; 0.61; 28000;occ; 91; 0;52146  
/nas3/ENVISAT/GOMOS/GOM\_NL\_\_0P/GOM\_NL\_\_0PNPDE20120218\_224824\_000009423111\_00418\_52156\_6628.N1  
1; 427.7; 18-FEB-2012 22:48:24; Dark ; 42.5; 10; Bet Cen ; 0.61; 28000;occ; 85; 0;52156  
/nas3/ENVISAT/GOMOS/GOM\_NL\_\_0P/GOM\_NL\_\_0PNPDK20120218\_074613\_000009493111\_00409\_52147\_5618.N1  
1; 422.2; 18-FEB-2012 07:46:13; Dark ; 50.0; 10; Bet Cen ; 0.61; 28000;occ; 100; 0;52147  
/nas3/ENVISAT/GOMOS/GOM\_NL\_\_0P/GOM\_NL\_\_0PNPDK20120218\_092628\_000009533111\_00410\_52148\_5619.N1  
1; 422.8; 18-FEB-2012 09:26:28; Dark ; 53.5; 10; Bet Cen ; 0.61; 28000;occ; 107; 0;52148  
/nas3/ENVISAT/GOMOS/GOM\_NL\_\_0P/GOM\_NL\_\_0PNPDK20120218\_110642\_000009503111\_00411\_52149\_5620.N1  
1; 423.4; 18-FEB-2012 11:06:42; Dark ; 50.5; 10; Bet Cen ; 0.61; 28000;occ; 101; 0;52149  
/nas3/ENVISAT/GOMOS/GOM\_NL\_\_0P/GOM\_NL\_\_0PNPDK20120218\_124657\_000009393111\_00412\_52150\_5621.N1  
1; 424.0; 18-FEB-2012 12:46:57; Dark ; 40.0; 10; Bet Cen ; 0.61; 28000;occ; 80; 0;52150  
/nas3/ENVISAT/GOMOS/GOM\_NL\_\_0P/GOM\_NL\_\_0PNPDK20120218\_142711\_000009433111\_00413\_52151\_5622.N1  
1; 424.6; 18-FEB-2012 14:27:11; Dark ; 43.5; 10; Bet Cen ; 0.61; 28000;occ; 87; 0;52151  
/nas3/ENVISAT/GOMOS/GOM\_NL\_\_0P/GOM\_NL\_\_0PNPDK20120218\_160726\_000009433111\_00414\_52152\_5623.N1  
1; 425.4; 18-FEB-2012 16:07:26; Dark ; 44.0; 10; Bet Cen ; 0.61; 28000;occ; 88; 0;52152  
/nas3/ENVISAT/GOMOS/GOM\_NL\_\_0P/GOM\_NL\_\_0PNPDK20120218\_174740\_000009453111\_00415\_52153\_5624.N1  
1; 425.9; 18-FEB-2012 17:47:40; Dark ; 46.0; 10; Bet Cen ; 0.61; 28000;occ; 92; 0;52153  
/nas3/ENVISAT/GOMOS/GOM\_NL\_\_0P/GOM\_NL\_\_0PNPDK20120218\_192755\_000009473111\_00416\_52154\_5625.N1  
1; 426.5; 18-FEB-2012 19:27:55; Dark ; 47.5; 10; Bet Cen ; 0.61; 28000;occ; 95; 0;52154  
/nas3/ENVISAT/GOMOS/GOM\_NL\_\_0P/GOM\_NL\_\_0PNPDK20120218\_210810\_000009403111\_00417\_52155\_5626.N1  
1; 427.1; 18-FEB-2012 21:08:10; Dark ; 41.0; 10; Bet Cen ; 0.61; 28000;occ; 82; 0;52155  
/nas3/ENVISAT/GOMOS/GOM\_NL\_\_0P/GOM\_NL\_\_0PNPDE20120219\_002838\_000009473111\_00419\_52157\_6629.N1  
1; 428.2; 19-FEB-2012 00:28:38; Dark ; 47.5; 10; Bet Cen ; 0.61; 28000;occ; 95; 0;52157  
/nas3/ENVISAT/GOMOS/GOM\_NL\_\_0P/GOM\_NL\_\_0PNPDE20120219\_020853\_000009443111\_00420\_52158\_6630.N1  
1; 428.8; 19-FEB-2012 02:08:53; Dark ; 44.5; 10; Bet Cen ; 0.61; 28000;occ; 89; 0;52158  
/nas3/ENVISAT/GOMOS/GOM\_NL\_\_0P/GOM\_NL\_\_0PNPDE20120219\_034907\_000009443111\_00421\_52159\_6631.N1  
1; 429.4; 19-FEB-2012 03:49:07; Dark ; 44.5; 10; Bet Cen ; 0.61; 28000;occ; 89; 0;52159  
/nas3/ENVISAT/GOMOS/GOM\_NL\_\_0P/GOM\_NL\_\_0PNPDE20120219\_052922\_000009503111\_00422\_52160\_6632.N1  
1; 430.2; 19-FEB-2012 05:29:22; Dark ; 50.5; 10; Bet Cen ; 0.61; 28000;occ; 101; 0;52160  
/nas3/ENVISAT/GOMOS/GOM\_NL\_\_0P/GOM\_NL\_\_0PNPDE20120219\_221147\_000009413112\_00001\_52170\_6633.N1  
1; 436.1; 19-FEB-2012 22:11:47; Dark ; 41.5; 10; Bet Cen ; 0.61; 28000;occ; 83; 0;52170  
/nas3/ENVISAT/GOMOS/GOM\_NL\_\_0P/GOM\_NL\_\_0PNPDE20120219\_235202\_000009453112\_00002\_52171\_6634.N1  
1; 436.8; 19-FEB-2012 23:52:02; Dark ; 46.0; 10; Bet Cen ; 0.61; 28000;occ; 92; 0;52171  
/nas3/ENVISAT/GOMOS/GOM\_NL\_\_0P/GOM\_NL\_\_0PNPDK20120219\_070937\_000009463111\_00423\_52161\_5627.N1  
1; 430.8; 19-FEB-2012 07:09:37; Dark ; 46.5; 10; Bet Cen ; 0.61; 28000;occ; 93; 0;52161  
/nas3/ENVISAT/GOMOS/GOM\_NL\_\_0P/GOM\_NL\_\_0PNPDK20120219\_084951\_000009403111\_00424\_52162\_5628.N1  
1; 431.5; 19-FEB-2012 08:49:51; Dark ; 41.0; 10; Bet Cen ; 0.61; 28000;occ; 82; 0;52162  
/nas3/ENVISAT/GOMOS/GOM\_NL\_\_0P/GOM\_NL\_\_0PNPDK20120219\_103006\_000009523111\_00425\_52163\_5629.N1  
1; 432.0; 19-FEB-2012 10:30:06; Dark ; 53.0; 10; Bet Cen ; 0.61; 28000;occ; 106; 0;52163  
/nas3/ENVISAT/GOMOS/GOM\_NL\_\_0P/GOM\_NL\_\_0PNPDK20120219\_121020\_000009423111\_00426\_52164\_5630.N1  
1; 432.5; 19-FEB-2012 12:10:20; Dark ; 42.5; 10; Bet Cen ; 0.61; 28000;occ; 85; 0;52164  
/nas3/ENVISAT/GOMOS/GOM\_NL\_\_0P/GOM\_NL\_\_0PNPDK20120219\_135035\_000009413111\_00427\_52165\_5631.N1  
1; 433.2; 19-FEB-2012 13:50:35; Dark ; 42.0; 10; Bet Cen ; 0.61; 28000;occ; 84; 0;52165  
/nas3/ENVISAT/GOMOS/GOM\_NL\_\_0P/GOM\_NL\_\_0PNPDK20120219\_153049\_000009393111\_00428\_52166\_5632.N1  
1; 433.8; 19-FEB-2012 15:30:49; Dark ; 40.0; 10; Bet Cen ; 0.61; 28000;occ; 80; 0;52166



/nas3/ENVISAT/GOMOS/GOM\_NL\_\_0P/GOM\_NL\_\_0PNPDK20120219\_171104\_000000413111\_00429\_52167\_5633.N1  
1; 434.4; 19-FEB-2012 17:11:04; Dark ; 41.5; 10; Bet Cen ; 0.61; 28000;occ; 83; 0;52167  
/nas3/ENVISAT/GOMOS/GOM\_NL\_\_0P/GOM\_NL\_\_0PNPDK20120219\_185118\_000000413111\_00430\_52168\_5634.N1  
1; 435.0; 19-FEB-2012 18:51:18; Dark ; 41.5; 10; Bet Cen ; 0.61; 28000;occ; 83; 0;52168  
/nas3/ENVISAT/GOMOS/GOM\_NL\_\_0P/GOM\_NL\_\_0PNPDE20120220\_013216\_0000060653112\_00003\_52172\_6635.N1  
1; 437.4; 20-FEB-2012 01:32:16; Dark ; 41.0; 10; Bet Cen ; 0.61; 28000;occ; 82; 0;52172  
2; 6452.0; 20-FEB-2012 03:12:31; Dark ; 50.5; 10; Bet Cen ; 0.61; 28000;occ; 101; 0;52173  
/nas3/ENVISAT/GOMOS/GOM\_NL\_\_0P/GOM\_NL\_\_0PNPDE20120220\_045245\_000000473112\_00005\_52174\_6636.N1  
1; 438.7; 20-FEB-2012 04:52:45; Dark ; 48.0; 10; Bet Cen ; 0.61; 28000;occ; 96; 0;52174  
/nas3/ENVISAT/GOMOS/GOM\_NL\_\_0P/GOM\_NL\_\_0PNPDE20120220\_063300\_000000433112\_00006\_52175\_6637.N1  
1; 439.1; 20-FEB-2012 06:33:00; Dark ; 43.5; 10; Bet Cen ; 0.61; 28000;occ; 87; 0;52175  
/nas3/ENVISAT/GOMOS/GOM\_NL\_\_0P/GOM\_NL\_\_0PNPDE20120220\_212027\_000009243112\_00014\_52183\_6638.N1  
1; -438.9; 20-FEB-2012 21:20:27; Dark ; 43.0; 167; 10Gam2Sgr ; 2.98; 4500;occ; 86; 0;52183  
2; -263.5; 20-FEB-2012 21:23:22; Dark ; 39.5; 85; Kap Sco ; 2.41; 28000;occ; 79; 0;52183  
3; 444.5; 20-FEB-2012 21:35:10; Dark ; 41.0; 10; Bet Cen ; 0.61; 28000;occ; 82; 0;52184  
/nas3/ENVISAT/GOMOS/GOM\_NL\_\_0P/GOM\_NL\_\_0PNPDE20120220\_230041\_000009283112\_00015\_52184\_6639.N1  
1; -438.5; 20-FEB-2012 23:00:41; Dark ; 46.5; 167; 10Gam2Sgr ; 2.98; 4500;occ; 93; 0;52184  
2; -262.8; 20-FEB-2012 23:03:37; Dark ; 40.0; 85; Kap Sco ; 2.41; 28000;occ; 80; 0;52184  
3; 445.1; 20-FEB-2012 23:15:25; Dark ; 45.0; 10; Bet Cen ; 0.61; 28000;occ; 90; 0;52185  
/nas3/ENVISAT/GOMOS/GOM\_NL\_\_0P/GOM\_NL\_\_0PNPDK20120220\_081315\_000000483112\_00007\_52176\_5635.N1  
1; 439.9; 20-FEB-2012 08:13:15; Dark ; 49.0; 10; Bet Cen ; 0.61; 28000;occ; 98; 0;52176  
/nas3/ENVISAT/GOMOS/GOM\_NL\_\_0P/GOM\_NL\_\_0PNPDK20120220\_095329\_000000483112\_00008\_52177\_5636.N1  
1; 440.4; 20-FEB-2012 09:53:29; Dark ; 49.0; 10; Bet Cen ; 0.61; 28000;occ; 98; 0;52177  
/nas3/ENVISAT/GOMOS/GOM\_NL\_\_0P/GOM\_NL\_\_0PNPDK20120220\_113343\_000000433112\_00009\_52178\_5637.N1  
1; 441.0; 20-FEB-2012 11:33:43; Dark ; 43.5; 10; Bet Cen ; 0.61; 28000;occ; 87; 0;52178  
/nas3/ENVISAT/GOMOS/GOM\_NL\_\_0P/GOM\_NL\_\_0PNPDK20120220\_131358\_000000423112\_00010\_52179\_5638.N1  
1; 441.6; 20-FEB-2012 13:13:58; Dark ; 42.5; 10; Bet Cen ; 0.61; 28000;occ; 85; 0;52179  
/nas3/ENVISAT/GOMOS/GOM\_NL\_\_0P/GOM\_NL\_\_0PNPDK20120220\_144225\_000007483112\_00010\_52179\_5639.N1  
1; -264.8; 20-FEB-2012 14:42:25; Dark ; 41.0; 85; Kap Sco ; 2.41; 28000;occ; 82; 0;52179  
2; 442.3; 20-FEB-2012 14:54:12; Dark ; 41.5; 10; Bet Cen ; 0.61; 28000;occ; 83; 0;52180  
/nas3/ENVISAT/GOMOS/GOM\_NL\_\_0P/GOM\_NL\_\_0PNPDK20120220\_162239\_000007523112\_00011\_52180\_5640.N1  
1; -265.2; 20-FEB-2012 16:22:39; Dark ; 41.5; 85; Kap Sco ; 2.41; 28000;occ; 83; 0;52180  
2; 442.9; 20-FEB-2012 16:34:27; Dark ; 44.5; 10; Bet Cen ; 0.61; 28000;occ; 89; 0;52181  
/nas3/ENVISAT/GOMOS/GOM\_NL\_\_0P/GOM\_NL\_\_0PNPDK20120220\_175958\_000009243112\_00012\_52181\_5641.N1  
1; -439.9; 20-FEB-2012 17:59:58; Dark ; 45.0; 167; 10Gam2Sgr ; 2.98; 4500;occ; 90; 0;52181  
2; -264.6; 20-FEB-2012 18:02:54; Dark ; 41.5; 85; Kap Sco ; 2.41; 28000;occ; 83; 0;52181  
3; 443.4; 20-FEB-2012 18:14:42; Dark ; 41.5; 10; Bet Cen ; 0.61; 28000;occ; 83; 0;52182  
/nas3/ENVISAT/GOMOS/GOM\_NL\_\_0P/GOM\_NL\_\_0PNPDK20120220\_194013\_000009263112\_00013\_52182\_5642.N1  
1; -439.4; 20-FEB-2012 19:40:13; Dark ; 42.0; 167; 10Gam2Sgr ; 2.98; 4500;occ; 84; 0;52182  
2; -264.1; 20-FEB-2012 19:43:08; Dark ; 40.5; 85; Kap Sco ; 2.41; 28000;occ; 81; 0;52182  
3; 443.9; 20-FEB-2012 19:54:56; Dark ; 43.5; 10; Bet Cen ; 0.61; 28000;occ; 87; 0;52183  
/nas3/ENVISAT/GOMOS/GOM\_NL\_\_0P/GOM\_NL\_\_0PNPDE20120221\_004056\_000009333112\_00016\_52185\_6640.N1  
1; -437.8; 21-FEB-2012 00:40:56; Dark ; 46.0; 167; 10Gam2Sgr ; 2.98; 4500;occ; 92; 0;52185  
2; 445.6; 21-FEB-2012 00:55:39; Dark ; 50.0; 10; Bet Cen ; 0.61; 28000;occ; 100; 0;52186  
/nas3/ENVISAT/GOMOS/GOM\_NL\_\_0P/GOM\_NL\_\_0PNPDE20120221\_022406\_000007503112\_00017\_52186\_6641.N1  
1; -261.5; 21-FEB-2012 02:24:06; Dark ; 41.5; 85; Kap Sco ; 2.41; 28000;occ; 83; 0;52186  
2; 446.4; 21-FEB-2012 02:35:54; Dark ; 43.0; 10; Bet Cen ; 0.61; 28000;occ; 86; 0;52187  
/nas3/ENVISAT/GOMOS/GOM\_NL\_\_0P/GOM\_NL\_\_0PNPDE20120221\_040125\_000009363112\_00018\_52187\_6642.N1  
1; -436.6; 21-FEB-2012 04:01:25; Dark ; 39.5; 167; 10Gam2Sgr ; 2.98; 4500;occ; 79; 0;52187  
2; -260.9; 21-FEB-2012 04:04:21; Dark ; 41.5; 85; Kap Sco ; 2.41; 28000;occ; 83; 0;52187  
3; 447.1; 21-FEB-2012 04:16:09; Dark ; 52.5; 10; Bet Cen ; 0.61; 28000;occ; 105; 0;52188  
/nas3/ENVISAT/GOMOS/GOM\_NL\_\_0P/GOM\_NL\_\_0PNPDE20120221\_054140\_000009243112\_00019\_52188\_6643.N1  
1; -436.0; 21-FEB-2012 05:41:40; Dark ; 45.0; 167; 10Gam2Sgr ; 2.98; 4500;occ; 90; 0;52188  
2; -260.1; 21-FEB-2012 05:44:35; Dark ; 41.5; 85; Kap Sco ; 2.41; 28000;occ; 83; 0;52188  
3; 447.8; 21-FEB-2012 05:56:23; Dark ; 40.5; 10; Bet Cen ; 0.61; 28000;occ; 81; 0;52189  
/nas3/ENVISAT/GOMOS/GOM\_NL\_\_0P/GOM\_NL\_\_0PNPDE20120221\_211955\_000000353112\_00029\_52198\_6644.N1  
1; 1734.2; 21-FEB-2012 21:19:55; Dark ; 35.5; 48; 30Alp Hya ; 1.98; 4100;occ; 71; 0;52198  
/nas3/ENVISAT/GOMOS/GOM\_NL\_\_0P/GOM\_NL\_\_0PNPDE20120221\_222701\_000020293112\_00029\_52198\_6645.N1  
1; -253.8; 21-FEB-2012 22:27:01; Dark ; 26.0; 85; Kap Sco ; 2.41; 28000;occ; 52; 0;52198  
2; 453.7; 21-FEB-2012 22:38:48; Dark ; 44.5; 10; Bet Cen ; 0.61; 28000;occ; 89; 0;52199  
3; 1734.3; 21-FEB-2012 23:00:09; Dark ; 41.5; 48; 30Alp Hya ; 1.98; 4100;occ; 83; 0;52199  
/nas3/ENVISAT/GOMOS/GOM\_NL\_\_0P/GOM\_NL\_\_0PNPDK20120221\_072154\_000009313112\_00020\_52189\_5643.N1  
1; -435.1; 21-FEB-2012 07:21:54; Dark ; 45.5; 167; 10Gam2Sgr ; 2.98; 4500;occ; 91; 0;52189  
2; -259.5; 21-FEB-2012 07:24:50; Dark ; 44.5; 85; Kap Sco ; 2.41; 28000;occ; 89; 0;52189  
3; 448.4; 21-FEB-2012 07:36:38; Dark ; 48.0; 10; Bet Cen ; 0.61; 28000;occ; 96; 0;52190  
/nas3/ENVISAT/GOMOS/GOM\_NL\_\_0P/GOM\_NL\_\_0PNPDK20120221\_090209\_000009323112\_00021\_52190\_5644.N1  
1; -434.6; 21-FEB-2012 09:02:09; Dark ; 43.0; 167; 10Gam2Sgr ; 2.98; 4500;occ; 86; 0;52190  
2; -258.8; 21-FEB-2012 09:05:04; Dark ; 42.0; 85; Kap Sco ; 2.41; 28000;occ; 84; 0;52190

```

3; 449.0; 21-FEB-2012 09:16:52; Dark ; 48.5; 10; Bet Cen ; 0.61; 28000;occ; 97; 0;52191
/nas3/ENVISAT/GOMOS/GOM_NL__0P/GOM_NL__0PNPDK20120221_104223_000009263112_00022_52191_5645.N1
1; -433.9; 21-FEB-2012 10:42:23; Dark ; 43.5; 167; 10Gam2Sgr ; 2.98; 4500;occ; 87; 0;52191
2; -258.2; 21-FEB-2012 10:45:19; Dark ; 44.0; 85; Kap Sco ; 2.41; 28000;occ; 88; 0;52191
3; 449.6; 21-FEB-2012 10:57:07; Dark ; 43.0; 10; Bet Cen ; 0.61; 28000;occ; 86; 0;52192
/nas3/ENVISAT/GOMOS/GOM_NL__0P/GOM_NL__0PNPDK20120221_122238_000009273112_00023_52192_5646.N1
1; -433.4; 21-FEB-2012 12:22:38; Dark ; 45.5; 167; 10Gam2Sgr ; 2.98; 4500;occ; 91; 0;52192
2; -257.5; 21-FEB-2012 12:25:33; Dark ; 41.0; 85; Kap Sco ; 2.41; 28000;occ; 82; 0;52192
3; 450.2; 21-FEB-2012 12:37:21; Dark ; 44.0; 10; Bet Cen ; 0.61; 28000;occ; 88; 0;52193
/nas3/ENVISAT/GOMOS/GOM_NL__0P/GOM_NL__0PNPDK20120221_140252_000009283112_00024_52193_5647.N1
1; -432.9; 21-FEB-2012 14:02:52; Dark ; 43.5; 167; 10Gam2Sgr ; 2.98; 4500;occ; 87; 0;52193
2; -256.9; 21-FEB-2012 14:05:48; Dark ; 40.0; 85; Kap Sco ; 2.41; 28000;occ; 80; 0;52193
3; 450.7; 21-FEB-2012 14:17:36; Dark ; 45.0; 10; Bet Cen ; 0.61; 28000;occ; 90; 0;52194
/nas3/ENVISAT/GOMOS/GOM_NL__0P/GOM_NL__0PNPDK20120221_154307_000009363112_00025_52194_5648.N1
1; -432.1; 21-FEB-2012 15:43:07; Dark ; 40.0; 167; 10Gam2Sgr ; 2.98; 4500;occ; 80; 0;52194
2; -256.2; 21-FEB-2012 15:46:03; Dark ; 41.0; 85; Kap Sco ; 2.41; 28000;occ; 82; 0;52194
3; 451.4; 21-FEB-2012 15:57:50; Dark ; 53.0; 10; Bet Cen ; 0.61; 28000;occ; 106; 0;52195
/nas3/ENVISAT/GOMOS/GOM_NL__0P/GOM_NL__0PNPDK20120221_172321_000009253112_00026_52195_5649.N1
1; -431.5; 21-FEB-2012 17:23:21; Dark ; 34.0; 167; 10Gam2Sgr ; 2.98; 4500;occ; 68; 0;52195
2; -255.6; 21-FEB-2012 17:26:17; Dark ; 40.0; 85; Kap Sco ; 2.41; 28000;occ; 80; 0;52195
3; 451.9; 21-FEB-2012 17:38:05; Dark ; 42.5; 10; Bet Cen ; 0.61; 28000;occ; 85; 0;52196
/nas3/ENVISAT/GOMOS/GOM_NL__0P/GOM_NL__0PNPDK20120221_190336_000009243112_00027_52196_5650.N1
1; -431.1; 21-FEB-2012 19:03:36; Dark ; 29.0; 167; 10Gam2Sgr ; 2.98; 4500;occ; 58; 0;52196
2; -255.2; 21-FEB-2012 19:06:32; Dark ; 35.0; 85; Kap Sco ; 2.41; 28000;occ; 70; 0;52196
3; 452.4; 21-FEB-2012 19:18:19; Dark ; 41.0; 10; Bet Cen ; 0.61; 28000;occ; 82; 0;52197
/nas3/ENVISAT/GOMOS/GOM_NL__0P/GOM_NL__0PNPDK20120221_193941_000047753112_00028_52197_5651.N1
1; 1734.2; 21-FEB-2012 19:39:41; Dark ; 31.0; 48; 30Alp Hya ; 1.98; 4100;occ; 62; 0;52197
2; 5759.5; 21-FEB-2012 20:46:46; Dark ; 31.0; 85; Kap Sco ; 2.41; 28000;occ; 62; 0;52197
3; 6467.1; 21-FEB-2012 20:58:34; Dark ; 43.0; 10; Bet Cen ; 0.61; 28000;occ; 86; 0;52198
/nas3/ENVISAT/GOMOS/GOM_NL__0P/GOM_NL__0PNPDE20120222_001903_000013263112_00031_52200_6646.N1
1; 454.1; 22-FEB-2012 00:19:03; Dark ; 50.5; 10; Bet Cen ; 0.61; 28000;occ; 101; 0;52200
2; 1734.3; 22-FEB-2012 00:40:23; Dark ; 46.5; 48; 30Alp Hya ; 1.98; 4100;occ; 93; 0;52200
/nas3/ENVISAT/GOMOS/GOM_NL__0P/GOM_NL__0PNPDE20120222_015917_000013273112_00032_52201_6647.N1
1; 454.9; 22-FEB-2012 01:59:17; Dark ; 47.0; 10; Bet Cen ; 0.61; 28000;occ; 94; 0;52201
2; 1734.4; 22-FEB-2012 02:20:37; Dark ; 48.0; 48; 30Alp Hya ; 1.98; 4100;occ; 96; 0;52201
/nas3/ENVISAT/GOMOS/GOM_NL__0P/GOM_NL__0PNPDE20120222_033932_000013263112_00033_52202_6648.N1
1; 455.6; 22-FEB-2012 03:39:32; Dark ; 52.0; 10; Bet Cen ; 0.61; 28000;occ; 104; 0;52202
2; 1734.7; 22-FEB-2012 04:00:51; Dark ; 47.0; 48; 30Alp Hya ; 1.98; 4100;occ; 94; 0;52202
/nas3/ENVISAT/GOMOS/GOM_NL__0P/GOM_NL__0PNPDE20120222_051946_000013243112_00034_52203_6649.N1
1; 456.0; 22-FEB-2012 05:19:46; Dark ; 47.0; 10; Bet Cen ; 0.61; 28000;occ; 94; 0;52203
2; 1734.8; 22-FEB-2012 05:41:05; Dark ; 46.0; 48; 30Alp Hya ; 1.98; 4100;occ; 92; 0;52203
/nas3/ENVISAT/GOMOS/GOM_NL__0P/GOM_NL__0PNPDE20120222_215129_000008913112_00043_52212_6650.N1
1; -180.8; 22-FEB-2012 21:51:29; Dark ; 41.5; 40; The Sco ; 1.86; 7100;occ; 83; 0;52212
2; 462.2; 22-FEB-2012 22:02:12; Dark ; 46.5; 10; Bet Cen ; 0.61; 28000;occ; 93; 0;52213
3; 683.2; 22-FEB-2012 22:05:53; Dark ; 27.5; 26; Gam Cru ; 1.62; 2900;occ; 55; 0;52213
/nas3/ENVISAT/GOMOS/GOM_NL__0P/GOM_NL__0PNPDE20120222_233143_000008923112_00044_52213_6651.N1
1; -180.2; 22-FEB-2012 23:31:43; Dark ; 41.0; 40; The Sco ; 1.86; 7100;occ; 82; 0;52213
2; 462.7; 22-FEB-2012 23:42:26; Dark ; 43.0; 10; Bet Cen ; 0.61; 28000;occ; 86; 0;52214
3; 683.7; 22-FEB-2012 23:46:07; Dark ; 28.5; 26; Gam Cru ; 1.62; 2900;occ; 57; 0;52214
/nas3/ENVISAT/GOMOS/GOM_NL__0P/GOM_NL__0PNPDK20120222_070001_000012993112_00035_52204_5652.N1
1; 456.7; 22-FEB-2012 07:00:01; Dark ; 48.5; 10; Bet Cen ; 0.61; 28000;occ; 97; 0;52204
2; 1734.8; 22-FEB-2012 07:21:19; Dark ; 21.5; 48; 30Alp Hya ; 1.98; 4100;occ; 43; 0;52204
/nas3/ENVISAT/GOMOS/GOM_NL__0P/GOM_NL__0PNPDK20120222_072119_000047873112_00035_52204_5653.N1
1; 1734.8; 22-FEB-2012 07:21:19; Dark ; 48.0; 48; 30Alp Hya ; 1.98; 4100;occ; 96; 0;52204
2; 6471.2; 22-FEB-2012 08:40:15; Dark ; 51.5; 10; Bet Cen ; 0.61; 28000;occ; 103; 0;52205
/nas3/ENVISAT/GOMOS/GOM_NL__0P/GOM_NL__0PNPDK20120222_090133_000047893112_00036_52205_5654.N1
1; 1735.0; 22-FEB-2012 09:01:33; Dark ; 47.5; 48; 30Alp Hya ; 1.98; 4100;occ; 95; 0;52205
2; 6471.9; 22-FEB-2012 10:20:30; Dark ; 53.0; 10; Bet Cen ; 0.61; 28000;occ; 106; 0;52206
/nas3/ENVISAT/GOMOS/GOM_NL__0P/GOM_NL__0PNPDK20120222_104147_000047903112_00037_52206_5655.N1
1; 1735.0; 22-FEB-2012 10:41:47; Dark ; 48.5; 48; 30Alp Hya ; 1.98; 4100;occ; 97; 0;52206
2; 4750.5; 22-FEB-2012 11:32:02; Bright; 36.0; 168; 17Zet Aql ; 2.99; 11000;occ; 72; 0;52206
3; 6472.5; 22-FEB-2012 12:00:44; Dark ; 53.0; 10; Bet Cen ; 0.61; 28000;occ; 106; 0;52207
/nas3/ENVISAT/GOMOS/GOM_NL__0P/GOM_NL__0PNPDK20120222_131217_000017643112_00038_52207_5656.N1
1; -1263.1; 22-FEB-2012 13:12:17; Bright; 41.5; 168; 17Zet Aql ; 2.99; 11000;occ; 83; 0;52207
2; 459.2; 22-FEB-2012 13:40:59; Dark ; 42.5; 10; Bet Cen ; 0.61; 28000;occ; 85; 0;52208
/nas3/ENVISAT/GOMOS/GOM_NL__0P/GOM_NL__0PNPDK20120222_145231_000017693112_00039_52208_5657.N1
1; -1262.8; 22-FEB-2012 14:52:31; Bright; 37.0; 168; 17Zet Aql ; 2.99; 11000;occ; 74; 0;52208
2; 459.9; 22-FEB-2012 15:21:13; Dark ; 46.5; 10; Bet Cen ; 0.61; 28000;occ; 93; 0;52209

```

/nas3/ENVISAT/GOMOS/GOM\_NL\_\_0P/GOM\_NL\_\_0PNPDK20120222\_163245\_000017653112\_00040\_52209\_5658.N1  
1; -1262.5; 22-FEB-2012 16:32:45; Bright; 55.0; 168; 17Zet Aql ; 2.99; 11000;occ; 110; 0;52209  
2; 460.4; 22-FEB-2012 17:01:28; Dark ; 43.0; 10; Bet Cen ; 0.61; 28000;occ; 86; 0;52210  
/nas3/ENVISAT/GOMOS/GOM\_NL\_\_0P/GOM\_NL\_\_0PNPDK20120222\_181259\_000019683112\_00041\_52210\_5659.N1  
1; -1262.2; 22-FEB-2012 18:12:59; Bright; 37.5; 168; 17Zet Aql ; 2.99; 11000;occ; 75; 0;52210  
2; 461.0; 22-FEB-2012 18:41:43; Dark ; 51.0; 10; Bet Cen ; 0.61; 28000;occ; 102; 0;52211  
3; 682.1; 22-FEB-2012 18:45:24; Dark ; 24.5; 26; Gam Cru ; 1.62; 2900;occ; 49; 0;52211  
/nas3/ENVISAT/GOMOS/GOM\_NL\_\_0P/GOM\_NL\_\_0PNPDK20120222\_201013\_000009513112\_00042\_52211\_5660.N1  
1; -242.7; 22-FEB-2012 20:10:13; Dark ; 44.0; 178; Tot1Sco ; 3.02; 6550;occ; 88; 0;52211  
2; 461.6; 22-FEB-2012 20:21:57; Dark ; 45.5; 10; Bet Cen ; 0.61; 28000;occ; 91; 0;52212  
3; 682.7; 22-FEB-2012 20:25:38; Dark ; 26.5; 26; Gam Cru ; 1.62; 2900;occ; 53; 0;52212  
/nas3/ENVISAT/GOMOS/GOM\_NL\_\_0P/GOM\_NL\_\_0PNPDE20120223\_011158\_000069093112\_00045\_52214\_6652.N1  
1; -179.6; 23-FEB-2012 01:11:58; Dark ; 49.5; 40; The Sco ; 1.86; 7100;occ; 99; 0;52214  
2; 463.4; 23-FEB-2012 01:22:40; Dark ; 44.5; 10; Bet Cen ; 0.61; 28000;occ; 89; 0;52215  
3; 684.3; 23-FEB-2012 01:26:21; Dark ; 30.0; 26; Gam Cru ; 1.62; 2900;occ; 60; 0;52215  
4; 6477.9; 23-FEB-2012 03:02:55; Dark ; 45.5; 10; Bet Cen ; 0.61; 28000;occ; 91; 0;52216  
5; 6698.8; 23-FEB-2012 03:06:36; Dark ; 31.5; 26; Gam Cru ; 1.62; 2900;occ; 63; 0;52216  
/nas3/ENVISAT/GOMOS/GOM\_NL\_\_0P/GOM\_NL\_\_0PNPDE20120223\_043227\_000008963112\_00047\_52216\_6653.N1  
1; -178.3; 23-FEB-2012 04:32:27; Dark ; 50.5; 40; The Sco ; 1.86; 7100;occ; 101; 0;52216  
2; 464.6; 23-FEB-2012 04:43:10; Dark ; 46.5; 10; Bet Cen ; 0.61; 28000;occ; 93; 0;52217  
3; 685.5; 23-FEB-2012 04:46:50; Dark ; 32.5; 26; Gam Cru ; 1.62; 2900;occ; 65; 0;52217  
/nas3/ENVISAT/GOMOS/GOM\_NL\_\_0P/GOM\_NL\_\_0PNPDE20120223\_061241\_000008963112\_00048\_52217\_6654.N1  
1; -177.6; 23-FEB-2012 06:12:41; Dark ; 44.5; 40; The Sco ; 1.86; 7100;occ; 89; 0;52217  
2; 465.1; 23-FEB-2012 06:23:24; Dark ; 49.0; 10; Bet Cen ; 0.61; 28000;occ; 98; 0;52218  
3; 685.9; 23-FEB-2012 06:27:05; Dark ; 33.5; 26; Gam Cru ; 1.62; 2900;occ; 67; 0;52218  
/nas3/ENVISAT/GOMOS/GOM\_NL\_\_0P/GOM\_NL\_\_0PNPDE20120223\_211452\_000009063112\_00057\_52226\_6655.N1  
1; -171.9; 23-FEB-2012 21:14:52; Dark ; 42.0; 40; The Sco ; 1.86; 7100;occ; 84; 0;52226  
2; 470.4; 23-FEB-2012 21:25:35; Dark ; 42.0; 10; Bet Cen ; 0.61; 28000;occ; 84; 0;52227  
3; 690.6; 23-FEB-2012 21:29:15; Dark ; 44.5; 26; Gam Cru ; 1.62; 2900;occ; 89; 0;52227  
/nas3/ENVISAT/GOMOS/GOM\_NL\_\_0P/GOM\_NL\_\_0PNPDE20120223\_225507\_000009083112\_00058\_52227\_6656.N1  
1; -171.1; 23-FEB-2012 22:55:07; Dark ; 48.0; 40; The Sco ; 1.86; 7100;occ; 96; 0;52227  
2; 471.0; 23-FEB-2012 23:05:49; Dark ; 44.0; 10; Bet Cen ; 0.61; 28000;occ; 88; 0;52228  
3; 691.0; 23-FEB-2012 23:09:29; Dark ; 46.5; 26; Gam Cru ; 1.62; 2900;occ; 93; 0;52228  
/nas3/ENVISAT/GOMOS/GOM\_NL\_\_0P/GOM\_NL\_\_0PNPDK20120223\_075256\_000008973112\_00049\_52218\_5661.N1  
1; -176.9; 23-FEB-2012 07:52:56; Dark ; 44.5; 40; The Sco ; 1.86; 7100;occ; 89; 0;52218  
2; 465.8; 23-FEB-2012 08:03:39; Dark ; 41.0; 10; Bet Cen ; 0.61; 28000;occ; 82; 0;52219  
3; 686.5; 23-FEB-2012 08:07:19; Dark ; 34.5; 26; Gam Cru ; 1.62; 2900;occ; 69; 0;52219  
/nas3/ENVISAT/GOMOS/GOM\_NL\_\_0P/GOM\_NL\_\_0PNPDK20120223\_093311\_000008993112\_00050\_52219\_5662.N1  
1; -176.2; 23-FEB-2012 09:33:11; Dark ; 46.0; 40; The Sco ; 1.86; 7100;occ; 92; 0;52219  
2; 466.4; 23-FEB-2012 09:43:53; Dark ; 53.5; 10; Bet Cen ; 0.61; 28000;occ; 107; 0;52220  
3; 687.1; 23-FEB-2012 09:47:34; Dark ; 36.5; 26; Gam Cru ; 1.62; 2900;occ; 73; 0;52220  
/nas3/ENVISAT/GOMOS/GOM\_NL\_\_0P/GOM\_NL\_\_0PNPDK20120223\_111325\_000009003112\_00051\_52220\_5663.N1  
1; -175.6; 23-FEB-2012 11:13:25; Dark ; 48.0; 40; The Sco ; 1.86; 7100;occ; 96; 0;52220  
2; 466.9; 23-FEB-2012 11:24:08; Dark ; 50.5; 10; Bet Cen ; 0.61; 28000;occ; 101; 0;52221  
3; 687.5; 23-FEB-2012 11:27:48; Dark ; 37.5; 26; Gam Cru ; 1.62; 2900;occ; 75; 0;52221  
/nas3/ENVISAT/GOMOS/GOM\_NL\_\_0P/GOM\_NL\_\_0PNPDK20120223\_125340\_000009013112\_00052\_52221\_5664.N1  
1; -174.8; 23-FEB-2012 12:53:40; Dark ; 45.5; 40; The Sco ; 1.86; 7100;occ; 91; 0;52221  
2; 467.5; 23-FEB-2012 13:04:22; Dark ; 44.5; 10; Bet Cen ; 0.61; 28000;occ; 89; 0;52222  
3; 688.0; 23-FEB-2012 13:08:03; Dark ; 38.5; 26; Gam Cru ; 1.62; 2900;occ; 77; 0;52222  
/nas3/ENVISAT/GOMOS/GOM\_NL\_\_0P/GOM\_NL\_\_0PNPDK20120223\_143354\_000009023112\_00053\_52222\_5665.N1  
1; -174.3; 23-FEB-2012 14:33:54; Dark ; 45.0; 40; The Sco ; 1.86; 7100;occ; 90; 0;52222  
2; 468.1; 23-FEB-2012 14:44:37; Dark ; 41.0; 10; Bet Cen ; 0.61; 28000;occ; 82; 0;52223  
3; 688.6; 23-FEB-2012 14:48:17; Dark ; 39.5; 26; Gam Cru ; 1.62; 2900;occ; 79; 0;52223  
/nas3/ENVISAT/GOMOS/GOM\_NL\_\_0P/GOM\_NL\_\_0PNPDK20120223\_161409\_000009043112\_00054\_52223\_5666.N1  
1; -173.6; 23-FEB-2012 16:14:09; Dark ; 48.0; 40; The Sco ; 1.86; 7100;occ; 96; 0;52223  
2; 468.8; 23-FEB-2012 16:24:51; Dark ; 43.5; 10; Bet Cen ; 0.61; 28000;occ; 87; 0;52224  
3; 689.2; 23-FEB-2012 16:28:32; Dark ; 41.5; 26; Gam Cru ; 1.62; 2900;occ; 83; 0;52224  
/nas3/ENVISAT/GOMOS/GOM\_NL\_\_0P/GOM\_NL\_\_0PNPDK20120223\_175423\_000009053112\_00055\_52224\_5667.N1  
1; -173.2; 23-FEB-2012 17:54:23; Dark ; 43.5; 40; The Sco ; 1.86; 7100;occ; 87; 0;52224  
2; 469.4; 23-FEB-2012 18:05:06; Dark ; 43.0; 10; Bet Cen ; 0.61; 28000;occ; 86; 0;52225  
3; 689.7; 23-FEB-2012 18:08:46; Dark ; 42.5; 26; Gam Cru ; 1.62; 2900;occ; 85; 0;52225  
/nas3/ENVISAT/GOMOS/GOM\_NL\_\_0P/GOM\_NL\_\_0PNPDK20120223\_193438\_000009053112\_00056\_52225\_5668.N1  
1; -172.4; 23-FEB-2012 19:34:38; Dark ; 41.5; 40; The Sco ; 1.86; 7100;occ; 83; 0;52225  
2; 469.9; 23-FEB-2012 19:45:20; Dark ; 52.5; 10; Bet Cen ; 0.61; 28000;occ; 105; 0;52226  
3; 690.0; 23-FEB-2012 19:49:00; Dark ; 43.5; 26; Gam Cru ; 1.62; 2900;occ; 87; 0;52226  
/nas3/ENVISAT/GOMOS/GOM\_NL\_\_0P/GOM\_NL\_\_0PNPDE20120224\_003521\_000009093112\_00059\_52228\_6657.N1  
1; -170.5; 24-FEB-2012 00:35:21; Dark ; 44.0; 40; The Sco ; 1.86; 7100;occ; 88; 0;52228  
2; 471.5; 24-FEB-2012 00:46:03; Dark ; 45.0; 10; Bet Cen ; 0.61; 28000;occ; 90; 0;52229

```

3; 691.6; 24-FEB-2012 00:49:43; Dark ; 47.5; 26; Gam Cru ; 1.62; 2900;occ; 95; 0;52229
/nas3/ENVISAT/GOMOS/GOM_NL__0P/GOM_NL__0PNPDE20120224_021536_000009103112_00060_52229_6658.N1
1; -169.8; 24-FEB-2012 02:15:36; Dark ; 41.0; 40; The Sco ; 1.86; 7100;occ; 82; 0;52229
2; 472.2; 24-FEB-2012 02:26:18; Dark ; 46.0; 10; Bet Cen ; 0.61; 28000;occ; 92; 0;52230
3; 692.2; 24-FEB-2012 02:29:58; Dark ; 48.5; 26; Gam Cru ; 1.62; 2900;occ; 97; 0;52230
/nas3/ENVISAT/GOMOS/GOM_NL__0P/GOM_NL__0PNPDE20120224_035551_000009113112_00061_52230_6659.N1
1; -169.2; 24-FEB-2012 03:55:51; Dark ; 37.0; 40; The Sco ; 1.86; 7100;occ; 74; 0;52230
2; 472.9; 24-FEB-2012 04:06:33; Dark ; 54.0; 10; Bet Cen ; 0.61; 28000;occ; 108; 0;52231
3; 692.8; 24-FEB-2012 04:10:12; Dark ; 49.5; 26; Gam Cru ; 1.62; 2900;occ; 99; 0;52231
/nas3/ENVISAT/GOMOS/GOM_NL__0P/GOM_NL__0PNPDE20120224_053605_000009083112_00062_52231_6660.N1
1; -168.4; 24-FEB-2012 05:36:05; Dark ; 33.0; 40; The Sco ; 1.86; 7100;occ; 66; 0;52231
2; 473.5; 24-FEB-2012 05:46:47; Dark ; 47.5; 10; Bet Cen ; 0.61; 28000;occ; 95; 0;52232
3; 693.4; 24-FEB-2012 05:50:27; Dark ; 47.0; 26; Gam Cru ; 1.62; 2900;occ; 94; 0;52232
/nas3/ENVISAT/GOMOS/GOM_NL__0P/GOM_NL__0PNPDE20120224_221347_000011933112_00072_52241_6661.N1
1; -446.3; 24-FEB-2012 22:13:47; Dark ; 48.0; 116; 19Del Sgr ; 2.70; 4100;occ; 96; 0;52241
2; 479.4; 24-FEB-2012 22:29:13; Dark ; 42.0; 10; Bet Cen ; 0.61; 28000;occ; 84; 0;52242
3; 698.5; 24-FEB-2012 22:32:52; Dark ; 48.5; 26; Gam Cru ; 1.62; 2900;occ; 97; 0;52242
/nas3/ENVISAT/GOMOS/GOM_NL__0P/GOM_NL__0PNPDE20120224_235402_000012013112_00073_52242_6662.N1
1; -445.6; 24-FEB-2012 23:54:02; Dark ; 41.5; 116; 19Del Sgr ; 2.70; 4100;occ; 83; 0;52242
2; 479.9; 25-FEB-2012 00:09:27; Dark ; 42.0; 10; Bet Cen ; 0.61; 28000;occ; 84; 0;52243
3; 698.9; 25-FEB-2012 00:13:06; Dark ; 57.0; 26; Gam Cru ; 1.62; 2900;occ; 114; 0;52243
/nas3/ENVISAT/GOMOS/GOM_NL__0P/GOM_NL__0PNPDK20120224_071620_000009073112_00063_52232_5669.N1
1; -167.7; 24-FEB-2012 07:16:20; Dark ; 29.0; 40; The Sco ; 1.86; 7100;occ; 58; 0;52232
2; 474.2; 24-FEB-2012 07:27:02; Dark ; 50.0; 10; Bet Cen ; 0.61; 28000;occ; 100; 0;52233
3; 693.9; 24-FEB-2012 07:30:42; Dark ; 46.0; 26; Gam Cru ; 1.62; 2900;occ; 92; 0;52233
/nas3/ENVISAT/GOMOS/GOM_NL__0P/GOM_NL__0PNPDK20120224_085635_000009083112_00064_52233_5670.N1
1; -167.0; 24-FEB-2012 08:56:35; Dark ; 25.0; 40; The Sco ; 1.86; 7100;occ; 50; 0;52233
2; 474.8; 24-FEB-2012 09:07:16; Dark ; 42.0; 10; Bet Cen ; 0.61; 28000;occ; 84; 0;52234
3; 694.5; 24-FEB-2012 09:10:56; Dark ; 47.0; 26; Gam Cru ; 1.62; 2900;occ; 94; 0;52234
/nas3/ENVISAT/GOMOS/GOM_NL__0P/GOM_NL__0PNPDK20120224_103205_000011903112_00065_52234_5671.N1
1; -450.3; 24-FEB-2012 10:32:05; Dark ; 44.5; 116; 19Del Sgr ; 2.70; 4100;occ; 89; 0;52234
2; 475.4; 24-FEB-2012 10:47:31; Dark ; 51.5; 10; Bet Cen ; 0.61; 28000;occ; 103; 0;52235
3; 695.0; 24-FEB-2012 10:51:10; Dark ; 45.0; 26; Gam Cru ; 1.62; 2900;occ; 90; 0;52235
/nas3/ENVISAT/GOMOS/GOM_NL__0P/GOM_NL__0PNPDK20120224_121220_000011993112_00066_52235_5672.N1
1; -449.8; 24-FEB-2012 12:12:20; Dark ; 47.5; 116; 19Del Sgr ; 2.70; 4100;occ; 95; 0;52235
2; 476.0; 24-FEB-2012 12:27:45; Dark ; 44.0; 10; Bet Cen ; 0.61; 28000;occ; 88; 0;52236
3; 695.5; 24-FEB-2012 12:31:25; Dark ; 54.0; 26; Gam Cru ; 1.62; 2900;occ; 108; 0;52236
/nas3/ENVISAT/GOMOS/GOM_NL__0P/GOM_NL__0PNPDK20120224_135234_000012023112_00067_52236_5673.N1
1; -449.1; 24-FEB-2012 13:52:34; Dark ; 46.0; 116; 19Del Sgr ; 2.70; 4100;occ; 92; 0;52236
2; 476.5; 24-FEB-2012 14:08:00; Dark ; 41.5; 10; Bet Cen ; 0.61; 28000;occ; 83; 0;52237
3; 696.0; 24-FEB-2012 14:11:39; Dark ; 57.0; 26; Gam Cru ; 1.62; 2900;occ; 114; 0;52237
/nas3/ENVISAT/GOMOS/GOM_NL__0P/GOM_NL__0PNPDK20120224_153249_000012023112_00068_52237_5674.N1
1; -448.6; 24-FEB-2012 15:32:49; Dark ; 41.5; 116; 19Del Sgr ; 2.70; 4100;occ; 83; 0;52237
2; 477.0; 24-FEB-2012 15:48:14; Dark ; 48.0; 10; Bet Cen ; 0.61; 28000;occ; 96; 0;52238
3; 696.6; 24-FEB-2012 15:51:54; Dark ; 57.5; 26; Gam Cru ; 1.62; 2900;occ; 115; 0;52238
/nas3/ENVISAT/GOMOS/GOM_NL__0P/GOM_NL__0PNPDK20120224_171303_000012003112_00069_52238_5675.N1
1; -447.9; 24-FEB-2012 17:13:03; Dark ; 44.5; 116; 19Del Sgr ; 2.70; 4100;occ; 89; 0;52238
2; 477.7; 24-FEB-2012 17:28:29; Dark ; 44.0; 10; Bet Cen ; 0.61; 28000;occ; 88; 0;52239
3; 697.0; 24-FEB-2012 17:32:08; Dark ; 56.0; 26; Gam Cru ; 1.62; 2900;occ; 112; 0;52239
/nas3/ENVISAT/GOMOS/GOM_NL__0P/GOM_NL__0PNPDK20120224_185318_000011923112_00070_52239_5676.N1
1; -447.4; 24-FEB-2012 18:53:18; Dark ; 47.0; 116; 19Del Sgr ; 2.70; 4100;occ; 94; 0;52239
2; 478.2; 24-FEB-2012 19:08:44; Dark ; 44.5; 10; Bet Cen ; 0.61; 28000;occ; 89; 0;52240
3; 697.5; 24-FEB-2012 19:12:23; Dark ; 48.0; 26; Gam Cru ; 1.62; 2900;occ; 96; 0;52240
/nas3/ENVISAT/GOMOS/GOM_NL__0P/GOM_NL__0PNPDK20120224_203333_000011993112_00071_52240_5677.N1
1; -446.8; 24-FEB-2012 20:33:33; Dark ; 47.5; 116; 19Del Sgr ; 2.70; 4100;occ; 95; 0;52240
2; 478.8; 24-FEB-2012 20:48:58; Dark ; 51.5; 10; Bet Cen ; 0.61; 28000;occ; 103; 0;52241
3; 698.0; 24-FEB-2012 20:52:37; Dark ; 54.5; 26; Gam Cru ; 1.62; 2900;occ; 109; 0;52241
/nas3/ENVISAT/GOMOS/GOM_NL__0P/GOM_NL__0PNPDE20120225_013416_000072163112_00074_52243_6663.N1
1; -444.9; 25-FEB-2012 01:34:16; Dark ; 45.5; 116; 19Del Sgr ; 2.70; 4100;occ; 91; 0;52243
2; 480.5; 25-FEB-2012 01:49:42; Dark ; 45.5; 10; Bet Cen ; 0.61; 28000;occ; 91; 0;52244
3; 699.5; 25-FEB-2012 01:53:21; Dark ; 55.0; 26; Gam Cru ; 1.62; 2900;occ; 110; 0;52244
4; 5569.5; 25-FEB-2012 03:14:31; Dark ; 42.0; 116; 19Del Sgr ; 2.70; 4100;occ; 84; 0;52244
5; 6495.1; 25-FEB-2012 03:29:56; Dark ; 42.5; 10; Bet Cen ; 0.61; 28000;occ; 85; 0;52245
6; 6714.0; 25-FEB-2012 03:33:35; Dark ; 57.5; 26; Gam Cru ; 1.62; 2900;occ; 115; 0;52245
/nas3/ENVISAT/GOMOS/GOM_NL__0P/GOM_NL__0PNPDE20120225_045445_000011923112_00076_52245_6664.N1
1; -443.8; 25-FEB-2012 04:54:45; Dark ; 37.0; 116; 19Del Sgr ; 2.70; 4100;occ; 74; 0;52245
2; 481.7; 25-FEB-2012 05:10:11; Dark ; 41.0; 10; Bet Cen ; 0.61; 28000;occ; 82; 0;52246
3; 700.7; 25-FEB-2012 05:13:50; Dark ; 48.0; 26; Gam Cru ; 1.62; 2900;occ; 96; 0;52246

```

/nas3/ENVISAT/GOMOS/GOM\_NL\_\_0P/GOM\_NL\_\_0PNPDE20120225\_215236\_000002673112\_00087\_52256\_6665.N1  
1; 487.7; 25-FEB-2012 21:52:36; Dark ; 45.0; 10; Bet Cen ; 0.61; 28000;occ; 90; 0;52256  
2; 705.9; 25-FEB-2012 21:56:14; Dark ; 49.0; 26; Gam Cru ; 1.62; 2900;occ; 98; 0;52256  
/nas3/ENVISAT/GOMOS/GOM\_NL\_\_0P/GOM\_NL\_\_0PNPDE20120225\_233251\_000002743112\_00088\_52257\_6666.N1  
1; 488.4; 25-FEB-2012 23:32:51; Dark ; 42.5; 10; Bet Cen ; 0.61; 28000;occ; 85; 0;52257  
2; 706.4; 25-FEB-2012 23:36:29; Dark ; 56.5; 26; Gam Cru ; 1.62; 2900;occ; 113; 0;52257  
/nas3/ENVISAT/GOMOS/GOM\_NL\_\_0P/GOM\_NL\_\_0PNPDK20120225\_063500\_000011923112\_00077\_52246\_5678.N1  
1; -443.1; 25-FEB-2012 06:35:00; Dark ; 31.0; 116; 19Del Sgr ; 2.70; 4100;occ; 62; 0;52246  
2; 482.5; 25-FEB-2012 06:50:25; Dark ; 48.0; 10; Bet Cen ; 0.61; 28000;occ; 96; 0;52247  
3; 701.2; 25-FEB-2012 06:54:04; Dark ; 48.5; 26; Gam Cru ; 1.62; 2900;occ; 97; 0;52247  
/nas3/ENVISAT/GOMOS/GOM\_NL\_\_0P/GOM\_NL\_\_0PNPDK20120225\_081514\_000012003112\_00078\_52247\_5679.N1  
1; -442.5; 25-FEB-2012 08:15:14; Dark ; 25.0; 116; 19Del Sgr ; 2.70; 4100;occ; 50; 0;52247  
2; 483.1; 25-FEB-2012 08:30:40; Dark ; 51.0; 10; Bet Cen ; 0.61; 28000;occ; 102; 0;52248  
3; 701.7; 25-FEB-2012 08:34:19; Dark ; 56.5; 26; Gam Cru ; 1.62; 2900;occ; 113; 0;52248  
/nas3/ENVISAT/GOMOS/GOM\_NL\_\_0P/GOM\_NL\_\_0PNPDK20120225\_101054\_000002733112\_00080\_52249\_5680.N1  
1; 483.6; 25-FEB-2012 10:10:54; Dark ; 50.5; 10; Bet Cen ; 0.61; 28000;occ; 101; 0;52249  
2; 702.2; 25-FEB-2012 10:14:33; Dark ; 55.0; 26; Gam Cru ; 1.62; 2900;occ; 110; 0;52249  
/nas3/ENVISAT/GOMOS/GOM\_NL\_\_0P/GOM\_NL\_\_0PNPDK20120225\_115109\_000002673112\_00081\_52250\_5681.N1  
1; 484.2; 25-FEB-2012 11:51:09; Dark ; 41.0; 10; Bet Cen ; 0.61; 28000;occ; 82; 0;52250  
2; 702.8; 25-FEB-2012 11:54:48; Dark ; 48.5; 26; Gam Cru ; 1.62; 2900;occ; 97; 0;52250  
/nas3/ENVISAT/GOMOS/GOM\_NL\_\_0P/GOM\_NL\_\_0PNPDK20120225\_133123\_000002743112\_00082\_52251\_5682.N1  
1; 484.8; 25-FEB-2012 13:31:23; Dark ; 46.0; 10; Bet Cen ; 0.61; 28000;occ; 92; 0;52251  
2; 703.2; 25-FEB-2012 13:35:02; Dark ; 56.5; 26; Gam Cru ; 1.62; 2900;occ; 113; 0;52251  
/nas3/ENVISAT/GOMOS/GOM\_NL\_\_0P/GOM\_NL\_\_0PNPDK20120225\_151138\_000002743112\_00083\_52252\_5683.N1  
1; 485.4; 25-FEB-2012 15:11:38; Dark ; 44.0; 10; Bet Cen ; 0.61; 28000;occ; 88; 0;52252  
2; 703.8; 25-FEB-2012 15:15:16; Dark ; 56.0; 26; Gam Cru ; 1.62; 2900;occ; 112; 0;52252  
/nas3/ENVISAT/GOMOS/GOM\_NL\_\_0P/GOM\_NL\_\_0PNPDK20120225\_165153\_000002613112\_00084\_52253\_5684.N1  
1; 486.1; 25-FEB-2012 16:51:53; Dark ; 43.5; 10; Bet Cen ; 0.61; 28000;occ; 87; 0;52253  
2; 704.3; 25-FEB-2012 16:55:31; Dark ; 43.0; 26; Gam Cru ; 1.62; 2900;occ; 86; 0;52253  
/nas3/ENVISAT/GOMOS/GOM\_NL\_\_0P/GOM\_NL\_\_0PNPDK20120225\_201222\_000002693112\_00086\_52255\_5686.N1  
1; 487.2; 25-FEB-2012 20:12:22; Dark ; 52.5; 10; Bet Cen ; 0.61; 28000;occ; 105; 0;52255  
2; 705.5; 25-FEB-2012 20:16:00; Dark ; 51.5; 26; Gam Cru ; 1.62; 2900;occ; 103; 0;52255  
/nas3/ENVISAT/GOMOS/GOM\_NL\_\_0P/GOM\_NL\_\_0PNPDK20120225\_183207\_000002613112\_00085\_52254\_5685.N1  
1; 486.6; 25-FEB-2012 18:32:07; Dark ; 42.5; 10; Bet Cen ; 0.61; 28000;occ; 85; 0;52254  
2; 704.8; 25-FEB-2012 18:35:45; Dark ; 43.0; 26; Gam Cru ; 1.62; 2900;occ; 86; 0;52254  
/nas3/ENVISAT/GOMOS/GOM\_NL\_\_0P/GOM\_NL\_\_0PNPDE20120226\_011305\_000002713112\_00089\_52258\_6667.N1  
1; 488.9; 26-FEB-2012 01:13:05; Dark ; 45.5; 10; Bet Cen ; 0.61; 28000;occ; 91; 0;52258  
2; 706.9; 26-FEB-2012 01:16:43; Dark ; 53.5; 26; Gam Cru ; 1.62; 2900;occ; 107; 0;52258  
/nas3/ENVISAT/GOMOS/GOM\_NL\_\_0P/GOM\_NL\_\_0PNPDE20120226\_025320\_000002743112\_00090\_52259\_6668.N1  
1; 489.6; 26-FEB-2012 02:53:20; Dark ; 45.0; 10; Bet Cen ; 0.61; 28000;occ; 90; 0;52259  
2; 709.0; 26-FEB-2012 02:56:59; Dark ; 55.5; 26; Gam Cru ; 1.62; 2900;occ; 111; 0;52259  
/nas3/ENVISAT/GOMOS/GOM\_NL\_\_0P/GOM\_NL\_\_0PNPDE20120226\_043334\_00000403112\_00091\_52260\_6669.N1  
1; 490.2; 26-FEB-2012 04:33:34; Dark ; 40.5; 10; Bet Cen ; 0.61; 28000;occ; 81; 0;52260  
/nas3/ENVISAT/GOMOS/GOM\_NL\_\_0P/GOM\_NL\_\_0PNPDE20120226\_061349\_00000473112\_00092\_52261\_6670.N1  
1; 490.7; 26-FEB-2012 06:13:49; Dark ; 47.5; 10; Bet Cen ; 0.61; 28000;occ; 95; 0;52261  
/nas3/ENVISAT/GOMOS/GOM\_NL\_\_0P/GOM\_NL\_\_0PNPDE20120226\_211600\_00000503112\_00101\_52270\_6671.N1  
1; 495.9; 26-FEB-2012 21:16:00; Dark ; 50.5; 10; Bet Cen ; 0.61; 28000;occ; 101; 0;52270  
/nas3/ENVISAT/GOMOS/GOM\_NL\_\_0P/GOM\_NL\_\_0PNPDE20120226\_225614\_00000413112\_00102\_52271\_6672.N1  
1; 496.4; 26-FEB-2012 22:56:14; Dark ; 42.0; 10; Bet Cen ; 0.61; 28000;occ; 84; 0;52271  
/nas3/ENVISAT/GOMOS/GOM\_NL\_\_0P/GOM\_NL\_\_0PNPDK20120226\_075403\_00000513112\_00093\_52262\_5688.N1  
1; 491.3; 26-FEB-2012 07:54:03; Dark ; 51.5; 10; Bet Cen ; 0.61; 28000;occ; 103; 0;52262  
/nas3/ENVISAT/GOMOS/GOM\_NL\_\_0P/GOM\_NL\_\_0PNPDK20120226\_093418\_00000453112\_00094\_52263\_5689.N1  
1; 491.9; 26-FEB-2012 09:34:18; Dark ; 45.5; 10; Bet Cen ; 0.61; 28000;occ; 91; 0;52263  
/nas3/ENVISAT/GOMOS/GOM\_NL\_\_0P/GOM\_NL\_\_0PNPDK20120226\_111432\_00000523112\_00095\_52264\_5690.N1  
1; 492.4; 26-FEB-2012 11:14:32; Dark ; 53.0; 10; Bet Cen ; 0.61; 28000;occ; 106; 0;52264  
/nas3/ENVISAT/GOMOS/GOM\_NL\_\_0P/GOM\_NL\_\_0PNPDK20120226\_125447\_00000503112\_00096\_52265\_5691.N1  
1; 493.1; 26-FEB-2012 12:54:47; Dark ; 50.5; 10; Bet Cen ; 0.61; 28000;occ; 101; 0;52265  
/nas3/ENVISAT/GOMOS/GOM\_NL\_\_0P/GOM\_NL\_\_0PNPDK20120226\_143501\_00000403112\_00097\_52266\_5692.N1  
1; 493.7; 26-FEB-2012 14:35:01; Dark ; 41.0; 10; Bet Cen ; 0.61; 28000;occ; 82; 0;52266  
/nas3/ENVISAT/GOMOS/GOM\_NL\_\_0P/GOM\_NL\_\_0PNPDK20120226\_161516\_00000403112\_00098\_52267\_5693.N1  
1; 494.3; 26-FEB-2012 16:15:16; Dark ; 41.0; 10; Bet Cen ; 0.61; 28000;occ; 82; 0;52267  
/nas3/ENVISAT/GOMOS/GOM\_NL\_\_0P/GOM\_NL\_\_0PNPDK20120226\_175531\_00000413112\_00099\_52268\_5694.N1  
1; 494.8; 26-FEB-2012 17:55:31; Dark ; 42.0; 10; Bet Cen ; 0.61; 28000;occ; 84; 0;52268  
/nas3/ENVISAT/GOMOS/GOM\_NL\_\_0P/GOM\_NL\_\_0PNPDK20120226\_193545\_00000463112\_00100\_52269\_5695.N1  
1; 495.4; 26-FEB-2012 19:35:45; Dark ; 47.0; 10; Bet Cen ; 0.61; 28000;occ; 94; 0;52269  
/nas3/ENVISAT/GOMOS/GOM\_NL\_\_0P/GOM\_NL\_\_0PNPDE20120227\_003629\_00000403112\_00103\_52272\_6673.N1  
1; 497.0; 27-FEB-2012 00:36:29; Dark ; 41.0; 10; Bet Cen ; 0.61; 28000;occ; 82; 0;52272  
/nas3/ENVISAT/GOMOS/GOM\_NL\_\_0P/GOM\_NL\_\_0PNPDE20120227\_021643\_00000443112\_00104\_52273\_6674.N1

1; 497.7; 27-FEB-2012 02:16:43; Dark ; 44.5; 10; Bet Cen ; 0.61; 28000;occ; 89; 0;52273  
/nas3/ENVISAT/GOMOS/GOM\_NL\_\_0P/GOM\_NL\_\_0PNPDE20120227\_035658\_00000443112\_00105\_52274\_6675.N1  
1; 498.4; 27-FEB-2012 03:56:58; Dark ; 44.5; 10; Bet Cen ; 0.61; 28000;occ; 89; 0;52274  
/nas3/ENVISAT/GOMOS/GOM\_NL\_\_0P/GOM\_NL\_\_0PNPDE20120227\_053712\_00000413112\_00106\_52275\_6676.N1  
1; 499.0; 27-FEB-2012 05:37:12; Dark ; 41.5; 10; Bet Cen ; 0.61; 28000;occ; 83; 0;52275  
/nas3/ENVISAT/GOMOS/GOM\_NL\_\_0P/GOM\_NL\_\_0PNPDE20120227\_220513\_000009093112\_00115\_52284\_6677.N1  
1; -360.3; 27-FEB-2012 22:05:13; Dark ; 42.0; 38; 20Eps Sgr ; 1.84; 11000;occ; 84; 0;52284  
2; 504.6; 27-FEB-2012 22:19:38; Dark ; 44.5; 10; Bet Cen ; 0.61; 28000;occ; 89; 0;52285  
/nas3/ENVISAT/GOMOS/GOM\_NL\_\_0P/GOM\_NL\_\_0PNPDE20120227\_234527\_000009083112\_00116\_52285\_6678.N1  
1; -359.7; 27-FEB-2012 23:45:27; Dark ; 44.5; 38; 20Eps Sgr ; 1.84; 11000;occ; 89; 0;52285  
2; 505.2; 27-FEB-2012 23:59:52; Dark ; 43.5; 10; Bet Cen ; 0.61; 28000;occ; 87; 0;52286  
/nas3/ENVISAT/GOMOS/GOM\_NL\_\_0P/GOM\_NL\_\_0PNPDK20120227\_071727\_00000423112\_00107\_52276\_5696.N1  
1; 499.6; 27-FEB-2012 07:17:27; Dark ; 43.0; 10; Bet Cen ; 0.61; 28000;occ; 86; 0;52276  
/nas3/ENVISAT/GOMOS/GOM\_NL\_\_0P/GOM\_NL\_\_0PNPDK20120227\_103756\_00000473112\_00109\_52278\_5697.N1  
1; 500.7; 27-FEB-2012 10:37:56; Dark ; 47.5; 10; Bet Cen ; 0.61; 28000;occ; 95; 0;52278  
/nas3/ENVISAT/GOMOS/GOM\_NL\_\_0P/GOM\_NL\_\_0PNPDK20120227\_121810\_00000403112\_00110\_52279\_5698.N1  
1; 501.3; 27-FEB-2012 12:18:10; Dark ; 40.5; 10; Bet Cen ; 0.61; 28000;occ; 81; 0;52279  
/nas3/ENVISAT/GOMOS/GOM\_NL\_\_0P/GOM\_NL\_\_0PNPDK20120227\_135825\_00000423112\_00111\_52280\_5699.N1  
1; 501.9; 27-FEB-2012 13:58:25; Dark ; 43.0; 10; Bet Cen ; 0.61; 28000;occ; 86; 0;52280  
/nas3/ENVISAT/GOMOS/GOM\_NL\_\_0P/GOM\_NL\_\_0PNPDK20120227\_153839\_00000423112\_00112\_52281\_5700.N1  
1; 502.4; 27-FEB-2012 15:38:39; Dark ; 43.0; 10; Bet Cen ; 0.61; 28000;occ; 86; 0;52281  
/nas3/ENVISAT/GOMOS/GOM\_NL\_\_0P/GOM\_NL\_\_0PNPDK20120227\_171854\_00000423112\_00113\_52282\_5701.N1  
1; 503.0; 27-FEB-2012 17:18:54; Dark ; 43.0; 10; Bet Cen ; 0.61; 28000;occ; 86; 0;52282  
/nas3/ENVISAT/GOMOS/GOM\_NL\_\_0P/GOM\_NL\_\_0PNPDK20120227\_184444\_000009073112\_00113\_52282\_5702.N1  
1; -361.3; 27-FEB-2012 18:44:44; Dark ; 42.0; 38; 20Eps Sgr ; 1.84; 11000;occ; 84; 0;52282  
2; 503.5; 27-FEB-2012 18:59:09; Dark ; 42.5; 10; Bet Cen ; 0.61; 28000;occ; 85; 0;52283  
/nas3/ENVISAT/GOMOS/GOM\_NL\_\_0P/GOM\_NL\_\_0PNPDK20120227\_202458\_000009063112\_00114\_52283\_5703.N1  
1; -360.6; 27-FEB-2012 20:24:58; Dark ; 46.5; 38; 20Eps Sgr ; 1.84; 11000;occ; 93; 0;52283  
2; 504.1; 27-FEB-2012 20:39:23; Dark ; 41.5; 10; Bet Cen ; 0.61; 28000;occ; 83; 0;52284  
/nas3/ENVISAT/GOMOS/GOM\_NL\_\_0P/GOM\_NL\_\_0PNPDE20120228\_012542\_000069203112\_00117\_52286\_6679.N1  
1; -359.0; 28-FEB-2012 01:25:42; Dark ; 45.5; 38; 20Eps Sgr ; 1.84; 11000;occ; 91; 0;52286  
2; 505.8; 28-FEB-2012 01:40:07; Dark ; 45.0; 10; Bet Cen ; 0.61; 28000;occ; 90; 0;52287  
3; 5655.6; 28-FEB-2012 03:05:56; Dark ; 45.0; 38; 20Eps Sgr ; 1.84; 11000;occ; 90; 0;52287  
4; 6520.5; 28-FEB-2012 03:20:21; Dark ; 41.0; 10; Bet Cen ; 0.61; 28000;occ; 82; 0;52288  
/nas3/ENVISAT/GOMOS/GOM\_NL\_\_0P/GOM\_NL\_\_0PNPDE20120228\_044611\_000009153112\_00119\_52288\_6680.N1  
1; -357.7; 28-FEB-2012 04:46:11; Dark ; 45.5; 38; 20Eps Sgr ; 1.84; 11000;occ; 91; 0;52288  
2; 507.1; 28-FEB-2012 05:00:36; Dark ; 50.5; 10; Bet Cen ; 0.61; 28000;occ; 101; 0;52289  
/nas3/ENVISAT/GOMOS/GOM\_NL\_\_0P/GOM\_NL\_\_0PNPDE20120228\_062626\_000009123112\_00120\_52289\_6681.N1  
1; -357.1; 28-FEB-2012 06:26:26; Dark ; 43.5; 38; 20Eps Sgr ; 1.84; 11000;occ; 87; 0;52289  
2; 507.6; 28-FEB-2012 06:40:50; Dark ; 47.5; 10; Bet Cen ; 0.61; 28000;occ; 95; 0;52290  
/nas3/ENVISAT/GOMOS/GOM\_NL\_\_0P/GOM\_NL\_\_0PNPDE20120228\_212837\_000009063112\_00129\_52298\_6682.N1  
1; -351.4; 28-FEB-2012 21:28:37; Dark ; 32.0; 38; 20Eps Sgr ; 1.84; 11000;occ; 64; 0;52298  
2; 512.9; 28-FEB-2012 21:43:01; Dark ; 42.5; 10; Bet Cen ; 0.61; 28000;occ; 85; 0;52299  
/nas3/ENVISAT/GOMOS/GOM\_NL\_\_0P/GOM\_NL\_\_0PNPDK20120228\_080640\_000009053112\_00121\_52290\_5704.N1  
1; -356.5; 28-FEB-2012 08:06:40; Dark ; 46.0; 38; 20Eps Sgr ; 1.84; 11000;occ; 92; 0;52290  
2; 508.3; 28-FEB-2012 08:21:05; Dark ; 41.0; 10; Bet Cen ; 0.61; 28000;occ; 82; 0;52291  
/nas3/ENVISAT/GOMOS/GOM\_NL\_\_0P/GOM\_NL\_\_0PNPDK20120228\_094655\_000009173112\_00122\_52291\_5705.N1  
1; -355.8; 28-FEB-2012 09:46:55; Dark ; 44.5; 38; 20Eps Sgr ; 1.84; 11000;occ; 89; 0;52291  
2; 508.8; 28-FEB-2012 10:01:19; Dark ; 52.5; 10; Bet Cen ; 0.61; 28000;occ; 105; 0;52292  
/nas3/ENVISAT/GOMOS/GOM\_NL\_\_0P/GOM\_NL\_\_0PNPDK20120228\_112709\_000009153112\_00123\_52292\_5706.N1  
1; -355.2; 28-FEB-2012 11:27:09; Dark ; 43.0; 38; 20Eps Sgr ; 1.84; 11000;occ; 86; 0;52292  
2; 509.4; 28-FEB-2012 11:41:34; Dark ; 51.0; 10; Bet Cen ; 0.61; 28000;occ; 102; 0;52293  
/nas3/ENVISAT/GOMOS/GOM\_NL\_\_0P/GOM\_NL\_\_0PNPDK20120228\_144738\_000009063112\_00125\_52294\_5707.N1  
1; -354.0; 28-FEB-2012 14:47:38; Dark ; 46.5; 38; 20Eps Sgr ; 1.84; 11000;occ; 93; 0;52294  
2; 510.5; 28-FEB-2012 15:02:03; Dark ; 42.0; 10; Bet Cen ; 0.61; 28000;occ; 84; 0;52295  
/nas3/ENVISAT/GOMOS/GOM\_NL\_\_0P/GOM\_NL\_\_0PNPDK20120228\_162753\_000009063112\_00126\_52295\_5708.N1  
1; -353.3; 28-FEB-2012 16:27:53; Dark ; 47.0; 38; 20Eps Sgr ; 1.84; 11000;occ; 94; 0;52295  
2; 511.2; 28-FEB-2012 16:42:17; Dark ; 42.0; 10; Bet Cen ; 0.61; 28000;occ; 84; 0;52296  
/nas3/ENVISAT/GOMOS/GOM\_NL\_\_0P/GOM\_NL\_\_0PNPDK20120228\_180808\_000009073112\_00127\_52296\_5709.N1  
1; -352.7; 28-FEB-2012 18:08:08; Dark ; 42.0; 38; 20Eps Sgr ; 1.84; 11000;occ; 84; 0;52296  
2; 511.7; 28-FEB-2012 18:22:32; Dark ; 43.0; 10; Bet Cen ; 0.61; 28000;occ; 86; 0;52297  
/nas3/ENVISAT/GOMOS/GOM\_NL\_\_0P/GOM\_NL\_\_0PNPDK20120228\_194822\_000009083112\_00128\_52297\_5710.N1  
1; -352.1; 28-FEB-2012 19:48:22; Dark ; 37.0; 38; 20Eps Sgr ; 1.84; 11000;occ; 74; 0;52297  
2; 512.3; 28-FEB-2012 20:02:47; Dark ; 44.0; 10; Bet Cen ; 0.61; 28000;occ; 88; 0;52298  
/nas3/ENVISAT/GOMOS/GOM\_NL\_\_0P/GOM\_NL\_\_0PNPDK20120228\_130724\_000009053112\_00124\_52293\_6008.N1  
1; -354.6; 28-FEB-2012 13:07:24; Dark ; 42.0; 38; 20Eps Sgr ; 1.84; 11000;occ; 84; 0;52293  
2; 510.0; 28-FEB-2012 13:21:48; Dark ; 40.5; 10; Bet Cen ; 0.61; 28000;occ; 81; 0;52294  
/nas3/ENVISAT/GOMOS/GOM\_NL\_\_0P/GOM\_NL\_\_0PNPDE20120229\_010330\_00000443112\_00132\_52301\_6684.N1

1; 514.0; 29-FEB-2012 01:03:30; Dark ; 44.5; 10; Bet Cen ; 0.61; 28000;occ; 89; 0;52301  
/nas3/ENVISAT/GOMOS/GOM\_NL\_\_0P/GOM\_NL\_\_0PNPDE20120229\_024344\_000000443112\_00133\_52302\_6685.N1  
1; 514.7; 29-FEB-2012 02:43:44; Dark ; 44.5; 10; Bet Cen ; 0.61; 28000;occ; 89; 0;52302  
/nas3/ENVISAT/GOMOS/GOM\_NL\_\_0P/GOM\_NL\_\_0PNPDE20120229\_042359\_000000453112\_00134\_52303\_6686.N1  
1; 515.2; 29-FEB-2012 04:23:59; Dark ; 45.5; 10; Bet Cen ; 0.61; 28000;occ; 91; 0;52303  
/nas3/ENVISAT/GOMOS/GOM\_NL\_\_0P/GOM\_NL\_\_0PNPDE20120229\_060414\_000000463112\_00135\_52304\_6687.N1  
1; 515.8; 29-FEB-2012 06:04:14; Dark ; 46.5; 10; Bet Cen ; 0.61; 28000;occ; 93; 0;52304  
/nas3/ENVISAT/GOMOS/GOM\_NL\_\_0P/GOM\_NL\_\_0PNPDE20120229\_224639\_000000443112\_00145\_52314\_6688.N1  
1; 521.3; 29-FEB-2012 22:46:39; Dark ; 45.0; 10; Bet Cen ; 0.61; 28000;occ; 90; 0;52314  
/nas3/ENVISAT/GOMOS/GOM\_NL\_\_0P/GOM\_NL\_\_0PNPDK20120229\_074428\_000000393112\_00136\_52305\_5711.N1  
1; 516.4; 29-FEB-2012 07:44:28; Dark ; 39.5; 10; Bet Cen ; 0.61; 28000;occ; 79; 0;52305  
/nas3/ENVISAT/GOMOS/GOM\_NL\_\_0P/GOM\_NL\_\_0PNPDK20120229\_110457\_000000503112\_00138\_52307\_5713.N1  
1; 517.5; 29-FEB-2012 11:04:57; Dark ; 51.0; 10; Bet Cen ; 0.61; 28000;occ; 102; 0;52307  
/nas3/ENVISAT/GOMOS/GOM\_NL\_\_0P/GOM\_NL\_\_0PNPDK20120229\_124512\_000000413112\_00139\_52308\_5714.N1  
1; 518.1; 29-FEB-2012 12:45:12; Dark ; 42.0; 10; Bet Cen ; 0.61; 28000;occ; 84; 0;52308  
/nas3/ENVISAT/GOMOS/GOM\_NL\_\_0P/GOM\_NL\_\_0PNPDK20120229\_142526\_000000443112\_00140\_52309\_5715.N1  
1; 518.7; 29-FEB-2012 14:25:26; Dark ; 45.0; 10; Bet Cen ; 0.61; 28000;occ; 90; 0;52309  
/nas3/ENVISAT/GOMOS/GOM\_NL\_\_0P/GOM\_NL\_\_0PNPDK20120229\_160541\_000000433112\_00141\_52310\_5716.N1  
1; 519.2; 29-FEB-2012 16:05:41; Dark ; 43.5; 10; Bet Cen ; 0.61; 28000;occ; 87; 0;52310  
/nas3/ENVISAT/GOMOS/GOM\_NL\_\_0P/GOM\_NL\_\_0PNPDK20120229\_174555\_000000463112\_00142\_52311\_5717.N1  
1; 519.8; 29-FEB-2012 17:45:55; Dark ; 47.0; 10; Bet Cen ; 0.61; 28000;occ; 94; 0;52311  
/nas3/ENVISAT/GOMOS/GOM\_NL\_\_0P/GOM\_NL\_\_0PNPDK20120229\_192610\_000000443112\_00143\_52312\_5718.N1  
1; 520.2; 29-FEB-2012 19:26:10; Dark ; 44.5; 10; Bet Cen ; 0.61; 28000;occ; 89; 0;52312  
/nas3/ENVISAT/GOMOS/GOM\_NL\_\_0P/GOM\_NL\_\_0PNPDK20120229\_210624\_000000403112\_00144\_52313\_5719.N1  
1; 520.7; 29-FEB-2012 21:06:24; Dark ; 41.0; 10; Bet Cen ; 0.61; 28000;occ; 82; 0;52313