

GOMOS Daily Report 24-FEB-2012

Level 0 and Level 1 products

SUMMARY

[1. General Info](#)

[2. Summary of products arrived in PCF \(Product Control Facility\)](#)

[2.1 Level 0: products arrived in PCF during current month \(see template here\)](#)

[2.2 Level 0: plot of mission plan versus production during reporting period](#)

[2.3 Level 0: summary of missing occultations with respect to the plan](#)

[2.4 Level 1: products arrived in PCF during reporting period](#)

[3. Plot of Spectrometers and Photometers temperatures](#)

[4. Dark Charge monitoring](#)

[4.1 Products that did not use the Dark Sky Area observation for DC computation](#)

[4.2 Plot of Dark Charge](#)

[5. Demodulation correction and quality product information monitoring](#)

[5.1 Percentage of products with some flags set](#)

[5.2 Plot of quality information per product \(time dependant\)](#)

[5.3 Plot of quality information per product \(world map\)](#)

[6. Star tangent altitude lost](#)

[6.1 Statistics on star tangent altitude lost](#)

[6.2 Plot of star tangent altitude lost: DARK products](#)

[6.3 Plot of star tangent altitude lost: BRIGHT products](#)

[6.3 Plot of star tangent altitude lost: TWILIGHT products](#)

[7. Star Acquisition and Tracking Unit \(SATU\)](#)

[7.1 SATU plots \(dark limb\): 'X' and 'Y' axis](#)

[7.2 SATU Noise Equivalent Angle statistics](#)

[7.2.1 SATU NEA Statistics \(table\)](#)

[7.2.2 Daily SATU NEA STD \(dark limb\) - trend since 1st April 2006](#)

[8. Auxiliary Data Files used for the production reported in section 2.4](#)

[Level 2 products](#)

This report presents the daily analysis on parameters extracted from GOMOS level 1b data (GOM_TRA_1P). It is intended to monitor some important parameters that will impact the quality of the level 2 products as the Spectrometers and Photometers CCD Temperatures and Dark Charge, SATU noise equivalent angle... A list of level 0 products (and content) that have arrived during the actual month to the PCF is also given.

Item	Value
Time of report generation	27FEB2012 12:03:52
Data source version	GOMOS/6.01
Start time of products	24FEB2012 00:35:21
Stop time of products	24FEB2012 23:54:02
Store outputs in DB	Yes
Nb of level 1b prods	43
Nb of prods with errors	0

2. Summary of products arrived in PCF (Product Control Facility)

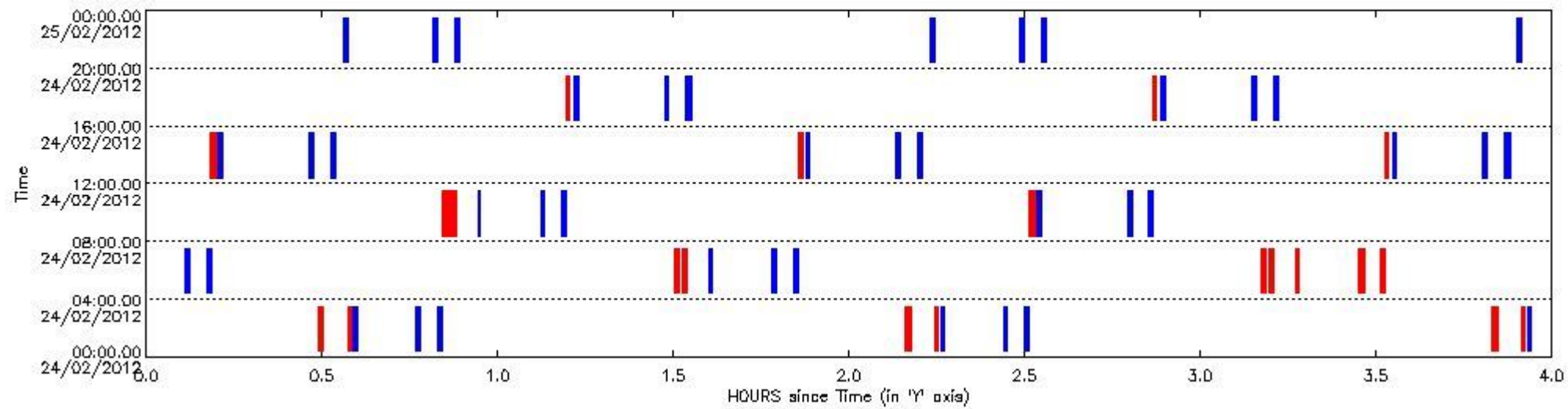
2.1 Level 0 products arrived in PCF (see template [here](#))

2.2 Plot of mission plan versus Level 0 production arrived in PCF during reporting period

Red segments are missing products.

Blue segments are available products.

Green segments are calibration measurements (not available products to users).



2.3 Summary of missing occultations (red segments in previous plot)

UTC start time	Star name	Star ID	Orbit
24-FEB-2012 00:29:18	22LamSgr	137	52242
24-FEB-2012 00:34:22	lot1Sco	178	52242
24-FEB-2012 02:09:33	22LamSgr	137	52243
24-FEB-2012 02:14:37	lot1Sco	178	52243
24-FEB-2012 03:49:47	22LamSgr	137	52244
24-FEB-2012 03:54:51	lot1Sco	178	52244
24-FEB-2012 05:30:02	22LamSgr	137	52245
24-FEB-2012 05:31:24	19DelSgr	116	52245
24-FEB-2012 07:10:16	22LamSgr	137	52246
24-FEB-2012 07:11:38	19DelSgr	116	52246
24-FEB-2012 07:16:22	TheSco	40	52246
24-FEB-2012 07:27:04	BetCen	10	52246
24-FEB-2012 07:30:44	GamCru	26	52246
24-FEB-2012 08:50:31	22LamSgr	137	52247
24-FEB-2012 08:51:53	19DelSgr	116	52247

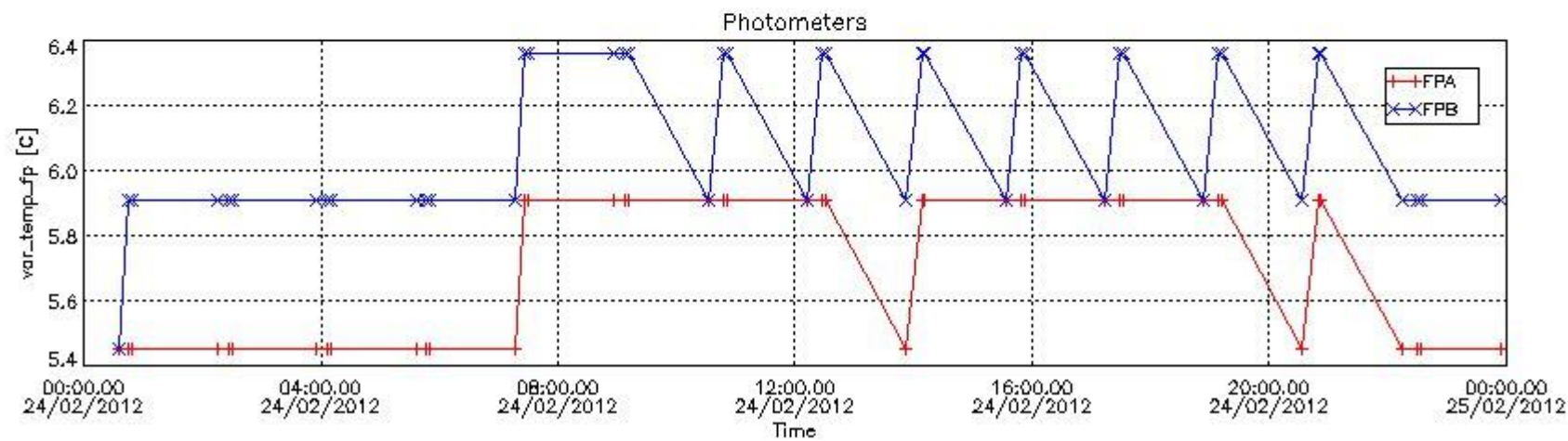
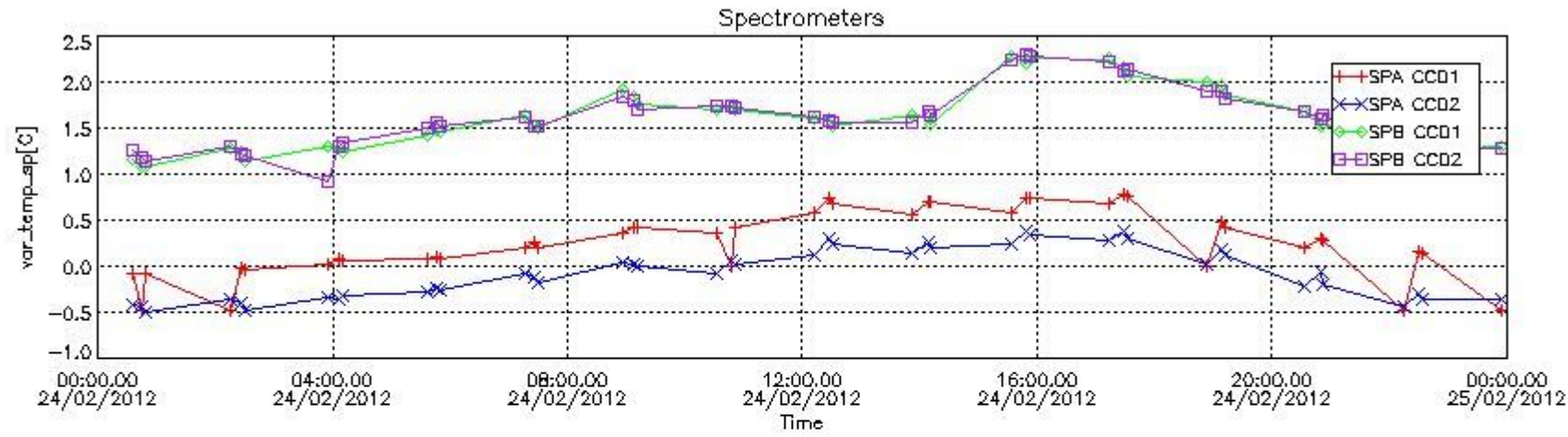
24-FEB-2012 10:30:45	22LamSgr	137	52248
24-FEB-2012 12:11:00	22LamSgr	137	52249
24-FEB-2012 13:51:14	22LamSgr	137	52250
24-FEB-2012 15:31:29	22LamSgr	137	52251
24-FEB-2012 17:11:43	22LamSgr	137	52252
24-FEB-2012 18:51:58	22LamSgr	137	52253

2.4 Summary of processed GOM_TRA_1P products

!Warning: No products without errors in BRIGHT limb contitions found

Nr	Filename	UTC Start time	Limb	Duration	Star Id	Star Name	Star Mag	Star Temp	Nb Meas	Orbit	Prod. error
1	GOM_TRA_1PNPDE20120224_003521_000000443112_00059_52228_1534.N1	24-FEB-2012 00:35:21	Dark	44.000	40	The Sco	1.8590	7100.0	88	52228	No
2	GOM_TRA_1PNPDE20120224_004603_000000453112_00060_52229_1535.N1	24-FEB-2012 00:46:03	Dark	45.000	10	Bet Cen	0.61000	28000.	90	52229	No
3	GOM_TRA_1PNPDE20120224_004943_000000483112_00060_52229_1536.N1	24-FEB-2012 00:49:43	Dark	47.500	26	Gam Cru	1.6240	2900.0	95	52229	No
4	GOM_TRA_1PNPDE20120224_021536_000000413112_00060_52229_1554.N1	24-FEB-2012 02:15:36	Dark	41.000	40	The Sco	1.8590	7100.0	82	52229	No
5	GOM_TRA_1PNPDE20120224_022618_000000463112_00061_52230_1555.N1	24-FEB-2012 02:26:18	Dark	46.000	10	Bet Cen	0.61000	28000.	92	52230	No
6	GOM_TRA_1PNPDE20120224_022958_000000493112_00061_52230_1556.N1	24-FEB-2012 02:29:58	Dark	48.500	26	Gam Cru	1.6240	2900.0	97	52230	No
7	GOM_TRA_1PNPDE20120224_035551_000000373112_00061_52230_1604.N1	24-FEB-2012 03:55:51	Dark	37.000	40	The Sco	1.8590	7100.0	74	52230	No
8	GOM_TRA_1PNPDE20120224_040633_000000543112_00062_52231_1605.N1	24-FEB-2012 04:06:33	Dark	54.000	10	Bet Cen	0.61000	28000.	108	52231	No
9	GOM_TRA_1PNPDE20120224_041012_000000503112_00062_52231_1606.N1	24-FEB-2012 04:10:12	Dark	49.500	26	Gam Cru	1.6240	2900.0	99	52231	No
10	GOM_TRA_1PNPDE20120224_053605_000000333112_00062_52231_1659.N1	24-FEB-2012 05:36:05	Dark	33.000	40	The Sco	1.8590	7100.0	66	52231	No
11	GOM_TRA_1PNPDE20120224_054647_000000483112_00063_52232_1660.N1	24-FEB-2012 05:46:47	Dark	47.500	10	Bet Cen	0.61000	28000.	95	52232	No
12	GOM_TRA_1PNPDE20120224_055027_000000473112_00063_52232_1661.N1	24-FEB-2012 05:50:27	Dark	47.000	26	Gam Cru	1.6240	2900.0	94	52232	No
13	GOM_TRA_1PNPDK20120224_071620_000000293112_00063_52232_6068.N1	24-FEB-2012 07:16:20	Dark	29.000	40	The Sco	1.8590	7100.0	58	52232	No
14	GOM_TRA_1PNPDK20120224_072702_000000503112_00064_52233_6069.N1	24-FEB-2012 07:27:02	Dark	50.000	10	Bet Cen	0.61000	28000.	100	52233	No
15	GOM_TRA_1PNPDK20120224_073042_000000463112_00064_52233_6070.N1	24-FEB-2012 07:30:42	Dark	46.000	26	Gam Cru	1.6240	2900.0	92	52233	No
16	GOM_TRA_1PNPDK20120224_085635_000000253112_00064_52233_6102.N1	24-FEB-2012 08:56:35	Dark	25.000	40	The Sco	1.8590	7100.0	50	52233	No
17	GOM_TRA_1PNPDK20120224_090716_000000423112_00065_52234_6103.N1	24-FEB-2012 09:07:16	Dark	42.000	10	Bet Cen	0.61000	28000.	84	52234	No
18	GOM_TRA_1PNPDK20120224_091056_000000473112_00065_52234_6104.N1	24-FEB-2012 09:10:56	Dark	47.000	26	Gam Cru	1.6240	2900.0	94	52234	No
19	GOM_TRA_1PNPDK20120224_103205_000000453112_00065_52234_6137.N1	24-FEB-2012 10:32:05	Dark	44.500	116	19Del Sgr	2.7000	4100.0	89	52234	No
20	GOM_TRA_1PNPDK20120224_104731_000000523112_00066_52235_6138.N1	24-FEB-2012 10:47:31	Dark	51.500	10	Bet Cen	0.61000	28000.	103	52235	No
21	GOM_TRA_1PNPDK20120224_105110_000000453112_00066_52235_6139.N1	24-FEB-2012 10:51:10	Dark	45.000	26	Gam Cru	1.6240	2900.0	90	52235	No
22	GOM_TRA_1PNPDK20120224_121220_000000483112_00066_52235_6179.N1	24-FEB-2012 12:12:20	Dark	47.500	116	19Del Sgr	2.7000	4100.0	95	52235	No
23	GOM_TRA_1PNPDK20120224_122745_000000443112_00067_52236_6180.N1	24-FEB-2012 12:27:45	Dark	44.000	10	Bet Cen	0.61000	28000.	88	52236	No
24	GOM_TRA_1PNPDK20120224_123125_000000543112_00067_52236_6181.N1	24-FEB-2012 12:31:25	Dark	54.000	26	Gam Cru	1.6240	2900.0	108	52236	No
25	GOM_TRA_1PNPDK20120224_135234_000000463112_00067_52236_6209.N1	24-FEB-2012 13:52:34	Dark	46.000	116	19Del Sgr	2.7000	4100.0	92	52236	No
26	GOM_TRA_1PNPDK20120224_140800_000000423112_00068_52237_6210.N1	24-FEB-2012 14:08:00	Dark	41.500	10	Bet Cen	0.61000	28000.	83	52237	No
27	GOM_TRA_1PNPDK20120224_141139_000000573112_00068_52237_6211.N1	24-FEB-2012 14:11:39	Dark	57.000	26	Gam Cru	1.6240	2900.0	114	52237	No
28	GOM_TRA_1PNPDK20120224_153249_000000423112_00068_52237_6256.N1	24-FEB-2012 15:32:49	Dark	41.500	116	19Del Sgr	2.7000	4100.0	83	52237	No
29	GOM_TRA_1PNPDK20120224_154814_000000483112_00069_52238_6257.N1	24-FEB-2012 15:48:14	Dark	48.000	10	Bet Cen	0.61000	28000.	96	52238	No
30	GOM_TRA_1PNPDK20120224_155154_000000583112_00069_52238_6258.N1	24-FEB-2012 15:51:54	Dark	57.500	26	Gam Cru	1.6240	2900.0	115	52238	No
31	GOM_TRA_1PNPDK20120224_171303_000000453112_00069_52238_6286.N1	24-FEB-2012 17:13:03	Dark	44.500	116	19Del Sgr	2.7000	4100.0	89	52238	No
32	GOM_TRA_1PNPDK20120224_172829_000000443112_00070_52239_6287.N1	24-FEB-2012 17:28:29	Dark	44.000	10	Bet Cen	0.61000	28000.	88	52239	No
33	GOM_TRA_1PNPDK20120224_173208_000000563112_00070_52239_6288.N1	24-FEB-2012 17:32:08	Dark	56.000	26	Gam Cru	1.6240	2900.0	112	52239	No
34	GOM_TRA_1PNPDK20120224_185318_000000473112_00070_52239_6314.N1	24-FEB-2012 18:53:18	Dark	47.000	116	19Del Sgr	2.7000	4100.0	94	52239	No
35	GOM_TRA_1PNPDK20120224_190844_000000453112_00071_52240_6315.N1	24-FEB-2012 19:08:44	Dark	44.500	10	Bet Cen	0.61000	28000.	89	52240	No
36	GOM_TRA_1PNPDK20120224_191223_000000483112_00071_52240_6316.N1	24-FEB-2012 19:12:23	Dark	48.000	26	Gam Cru	1.6240	2900.0	96	52240	No
37	GOM_TRA_1PNPDK20120224_203333_000000483112_00071_52240_6350.N1	24-FEB-2012 20:33:33	Dark	47.500	116	19Del Sgr	2.7000	4100.0	95	52240	No
38	GOM_TRA_1PNPDK20120224_204858_000000523112_00072_52241_6351.N1	24-FEB-2012 20:48:58	Dark	51.500	10	Bet Cen	0.61000	28000.	103	52241	No
39	GOM_TRA_1PNPDK20120224_205237_000000553112_00072_52241_6352.N1	24-FEB-2012 20:52:37	Dark	54.500	26	Gam Cru	1.6240	2900.0	109	52241	No
40	GOM_TRA_1PNPDE20120224_221347_000000483112_00072_52241_1894.N1	24-FEB-2012 22:13:47	Dark	48.000	116	19Del Sgr	2.7000	4100.0	96	52241	No
41	GOM_TRA_1PNPDE20120224_222913_000000423112_00073_52242_1895.N1	24-FEB-2012 22:29:13	Dark	42.000	10	Bet Cen	0.61000	28000.	84	52242	No
42	GOM_TRA_1PNPDE20120224_223252_000000493112_00073_52242_1896.N1	24-FEB-2012 22:32:52	Dark	48.500	26	Gam Cru	1.6240	2900.0	97	52242	No
43	GOM_TRA_1PNPDE20120224_235402_000000423112_00073_52242_1932.N1	24-FEB-2012 23:54:02	Dark	41.500	116	19Del Sgr	2.7000	4100.0	83	52242	No

3. Plot of GOMOS spectrometers and photometers temperatures from level 1b data



4. Overview of dark signal processing per product

The Dark Charge (DC) is a temperature-dependant signal added to the useful measurements and it is therefore subtracted from them during the processing. There are two phenomena that produce a continuous increase of the DC: the "hot pixels" (a pixel is "hot" when its DC exceeds by a significant amount its value measured on ground at the same temperature) and the "Random Telegraphic Signal" (abrupt change positive or negative of the CCD pixel signal, random in time, affecting only the DC part of the signal and not the photon generated signal).

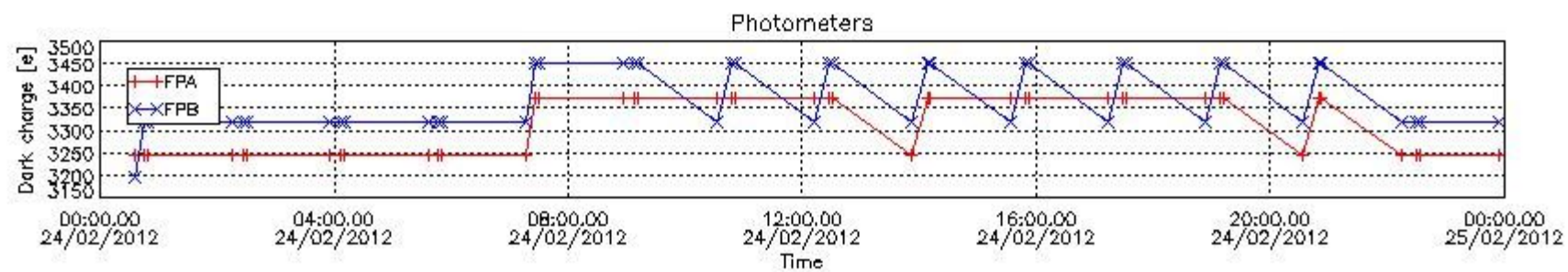
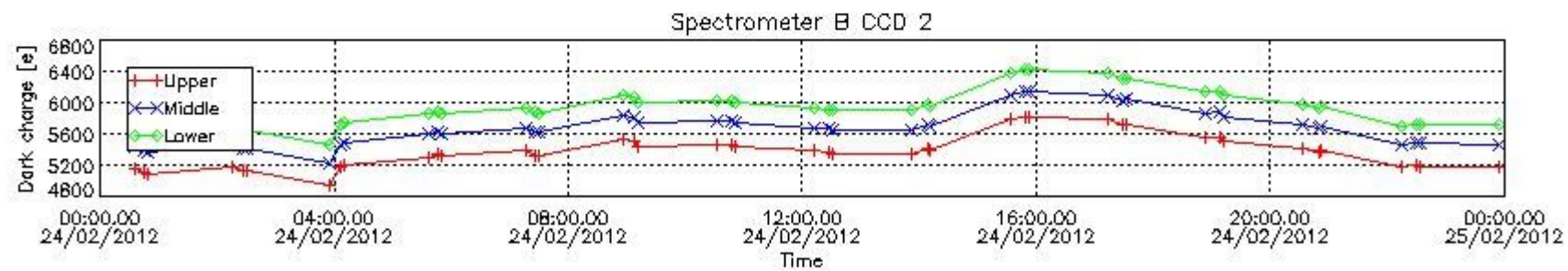
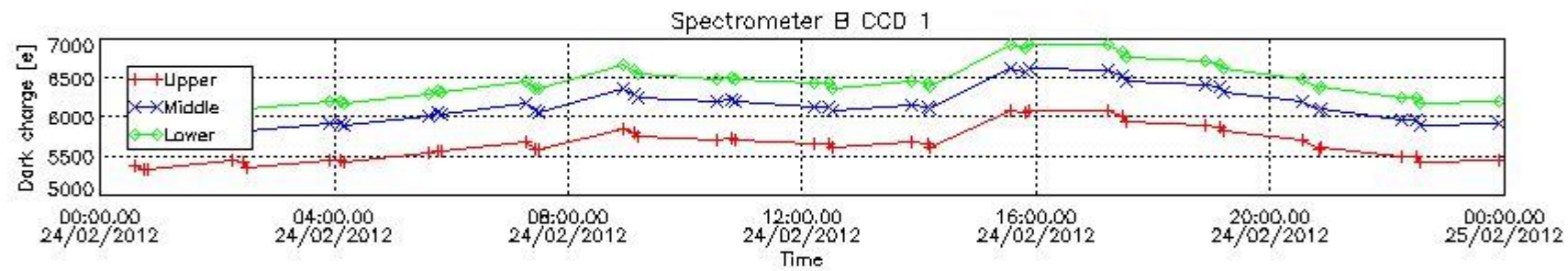
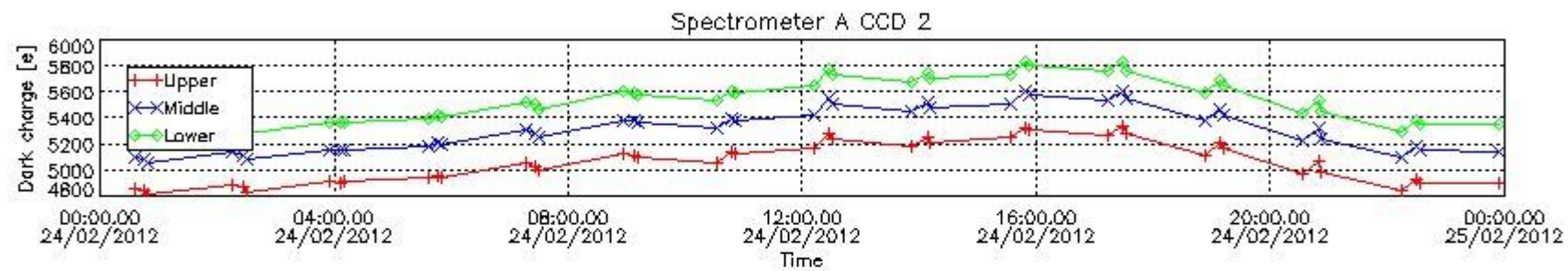
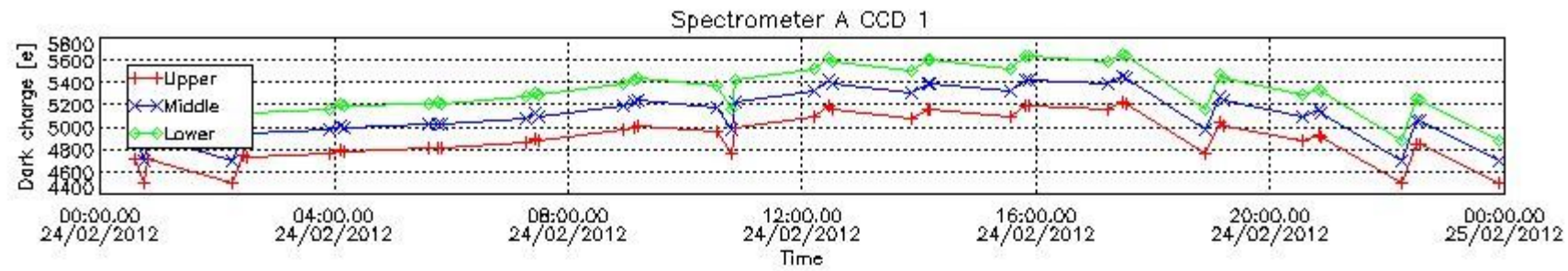
In this section a list of products that did not use the Dark Sky Area (DSA) observation for the DC computation is given. It is also provided the mean DC plot per product for dark limb products with no error flag set.

4.1 These products did not use the DSA observation for DC computation:

Product name	DC information
GOM_TRA_1PNPDE20120224_003521_000000443112_00059_52228_1534.N1	DC map used
GOM_TRA_1PNPDE20120224_004603_000000453112_00060_52229_1535.N1	DC map used
GOM_TRA_1PNPDE20120224_004943_000000483112_00060_52229_1536.N1	DC map used
GOM_TRA_1PNPDE20120224_021536_000000413112_00060_52229_1554.N1	DC map used
GOM_TRA_1PNPDE20120224_022618_000000463112_00061_52230_1555.N1	DC map used
GOM_TRA_1PNPDE20120224_022958_000000493112_00061_52230_1556.N1	DC map used
GOM_TRA_1PNPDE20120224_035551_000000373112_00061_52230_1604.N1	DC map used
GOM_TRA_1PNPDE20120224_040633_000000543112_00062_52231_1605.N1	DC map used
GOM_TRA_1PNPDE20120224_041012_000000503112_00062_52231_1606.N1	DC map used
GOM_TRA_1PNPDE20120224_053605_000000333112_00062_52231_1659.N1	DC map used
GOM_TRA_1PNPDE20120224_054647_000000483112_00063_52232_1660.N1	DC map used
GOM_TRA_1PNPDE20120224_055027_000000473112_00063_52232_1661.N1	DC map used
GOM_TRA_1PNPDK20120224_071620_000000293112_00063_52232_6068.N1	DC map used
GOM_TRA_1PNPDK20120224_072702_000000503112_00064_52233_6069.N1	DC map used

GOM_TRA_1PNPDK20120224_073042_000000463112_00064_52233_6070.N1	DC map used
GOM_TRA_1PNPDK20120224_085635_000000253112_00064_52233_6102.N1	DC map used
GOM_TRA_1PNPDK20120224_090716_000000423112_00065_52234_6103.N1	DC map used
GOM_TRA_1PNPDK20120224_091056_000000473112_00065_52234_6104.N1	DC map used
GOM_TRA_1PNPDK20120224_103205_000000453112_00065_52234_6137.N1	DC map used
GOM_TRA_1PNPDK20120224_104731_000000523112_00066_52235_6138.N1	DC map used
GOM_TRA_1PNPDK20120224_105110_000000453112_00066_52235_6139.N1	DC map used
GOM_TRA_1PNPDK20120224_121220_000000483112_00066_52235_6179.N1	DC map used
GOM_TRA_1PNPDK20120224_122745_000000443112_00067_52236_6180.N1	DC map used
GOM_TRA_1PNPDK20120224_123125_000000543112_00067_52236_6181.N1	DC map used
GOM_TRA_1PNPDK20120224_135234_000000463112_00067_52236_6209.N1	DC map used
GOM_TRA_1PNPDK20120224_140800_000000423112_00068_52237_6210.N1	DC map used
GOM_TRA_1PNPDK20120224_141139_000000573112_00068_52237_6211.N1	DC map used
GOM_TRA_1PNPDK20120224_153249_000000423112_00068_52237_6256.N1	DC map used
GOM_TRA_1PNPDK20120224_154814_000000483112_00069_52238_6257.N1	DC map used
GOM_TRA_1PNPDK20120224_155154_000000583112_00069_52238_6258.N1	DC map used
GOM_TRA_1PNPDK20120224_171303_000000453112_00069_52238_6286.N1	DC map used
GOM_TRA_1PNPDK20120224_172829_000000443112_00070_52239_6287.N1	DC map used
GOM_TRA_1PNPDK20120224_173208_000000563112_00070_52239_6288.N1	DC map used
GOM_TRA_1PNPDK20120224_185318_000000473112_00070_52239_6314.N1	DC map used
GOM_TRA_1PNPDK20120224_190844_000000453112_00071_52240_6315.N1	DC map used
GOM_TRA_1PNPDK20120224_191223_000000483112_00071_52240_6316.N1	DC map used
GOM_TRA_1PNPDK20120224_203333_000000483112_00071_52240_6350.N1	DC map used
GOM_TRA_1PNPDK20120224_204858_000000523112_00072_52241_6351.N1	DC map used
GOM_TRA_1PNPDK20120224_205237_000000553112_00072_52241_6352.N1	DC map used
GOM_TRA_1PNPDE20120224_221347_000000483112_00072_52241_1894.N1	DC map used
GOM_TRA_1PNPDE20120224_222913_000000423112_00073_52242_1895.N1	DC map used
GOM_TRA_1PNPDE20120224_223252_000000493112_00073_52242_1896.N1	DC map used
GOM_TRA_1PNPDE20120224_235402_000000423112_00073_52242_1932.N1	DC map used

4.2 Plot of mean dark charges per product: only products in DARK limb conditions without errors are used



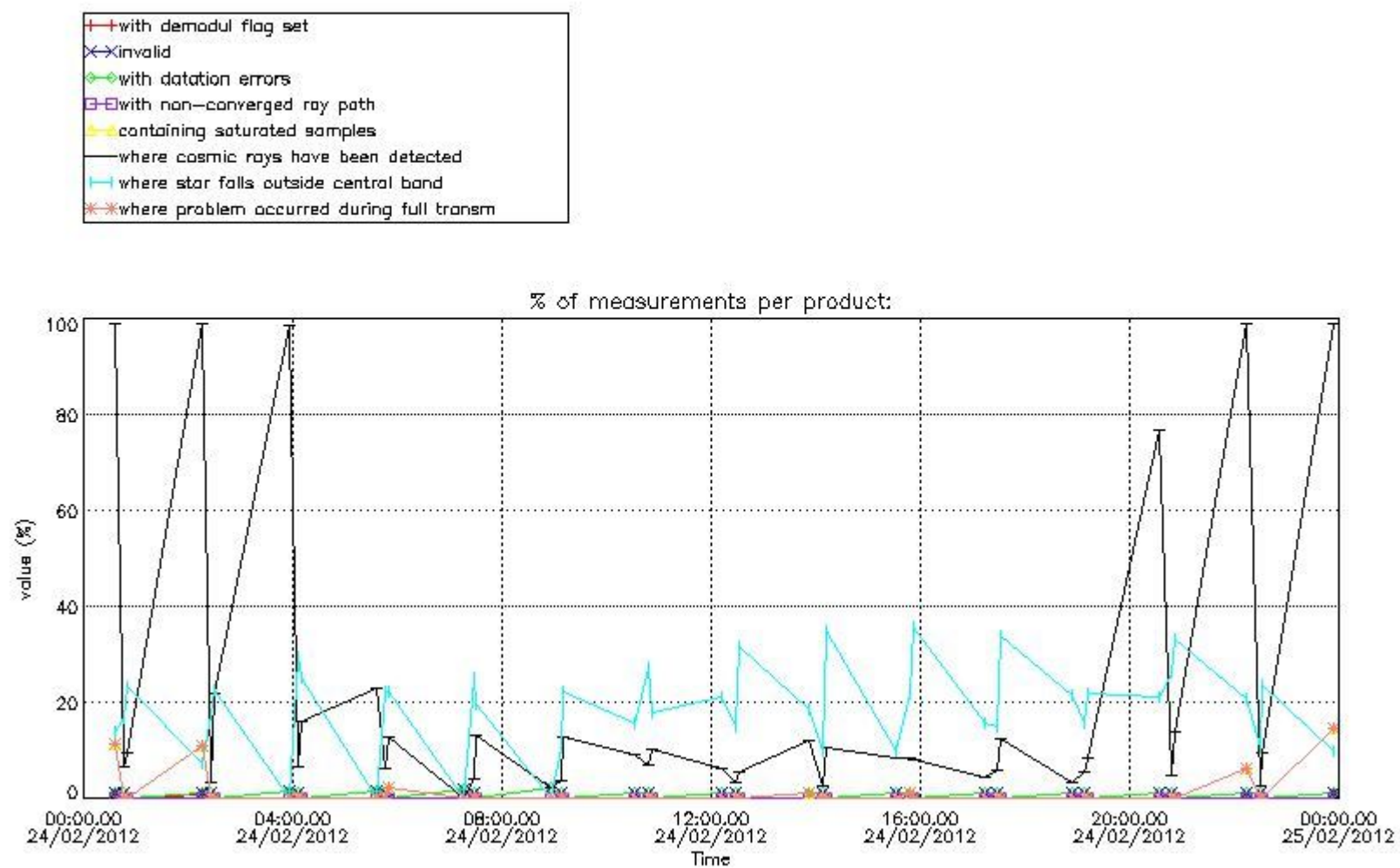
5. Demodulation flag and quality information monitoring

In this section it is presented the modulation information extracted from the pcd (product confidence data) at measurement level and information extracted from the Quality Summary dataset. Only products without errors (error flag in the MPH set to "0") are used.

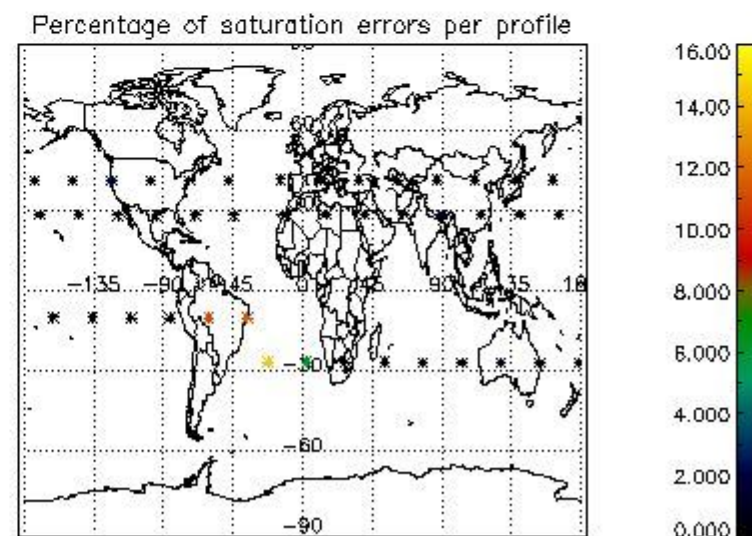
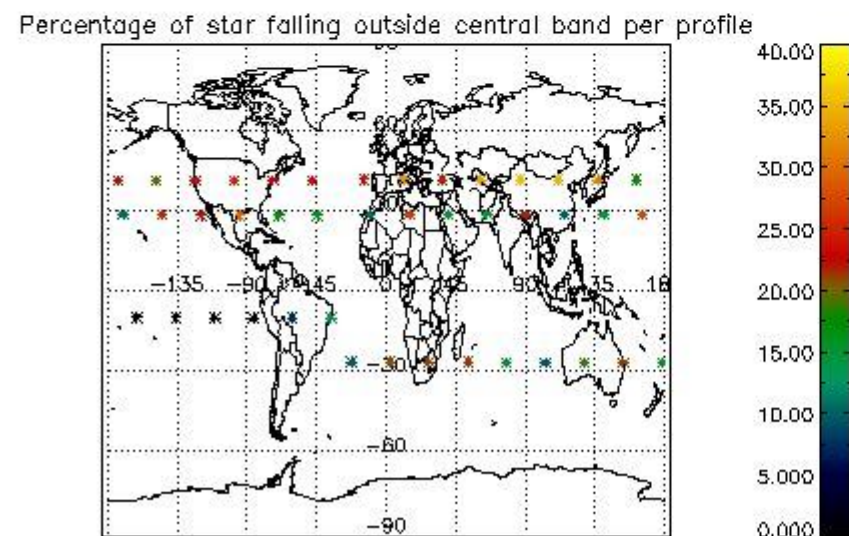
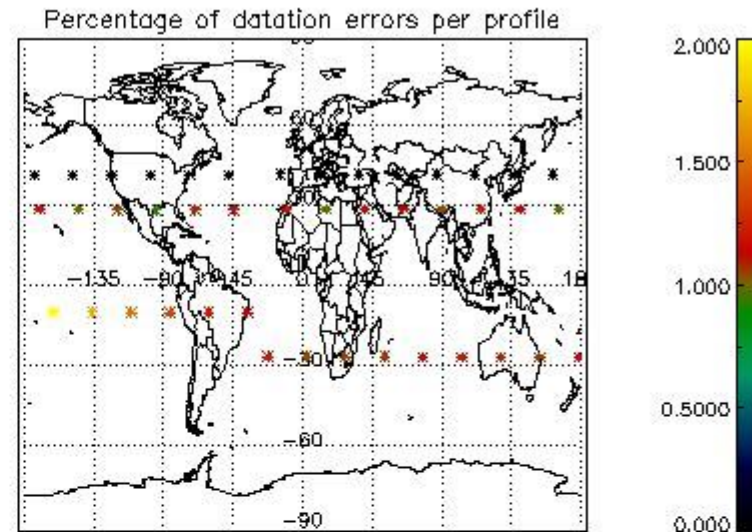
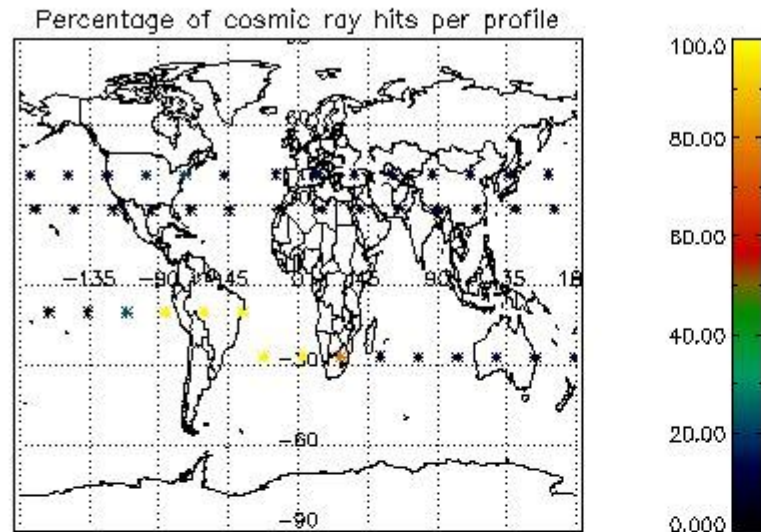
5.1 Percentage of products during reporting period with:

At least one measurement with demodulation flag set:	86.0465 %
Reference spectrum computed from DB:	0.00000 %
Reference spectrum with small number of measurements:	0.00000 %
SATU data not used:	0.00000 %

5.2 Plot quality information per product (time dependant)



5.3 Plot quality information per product (world map)



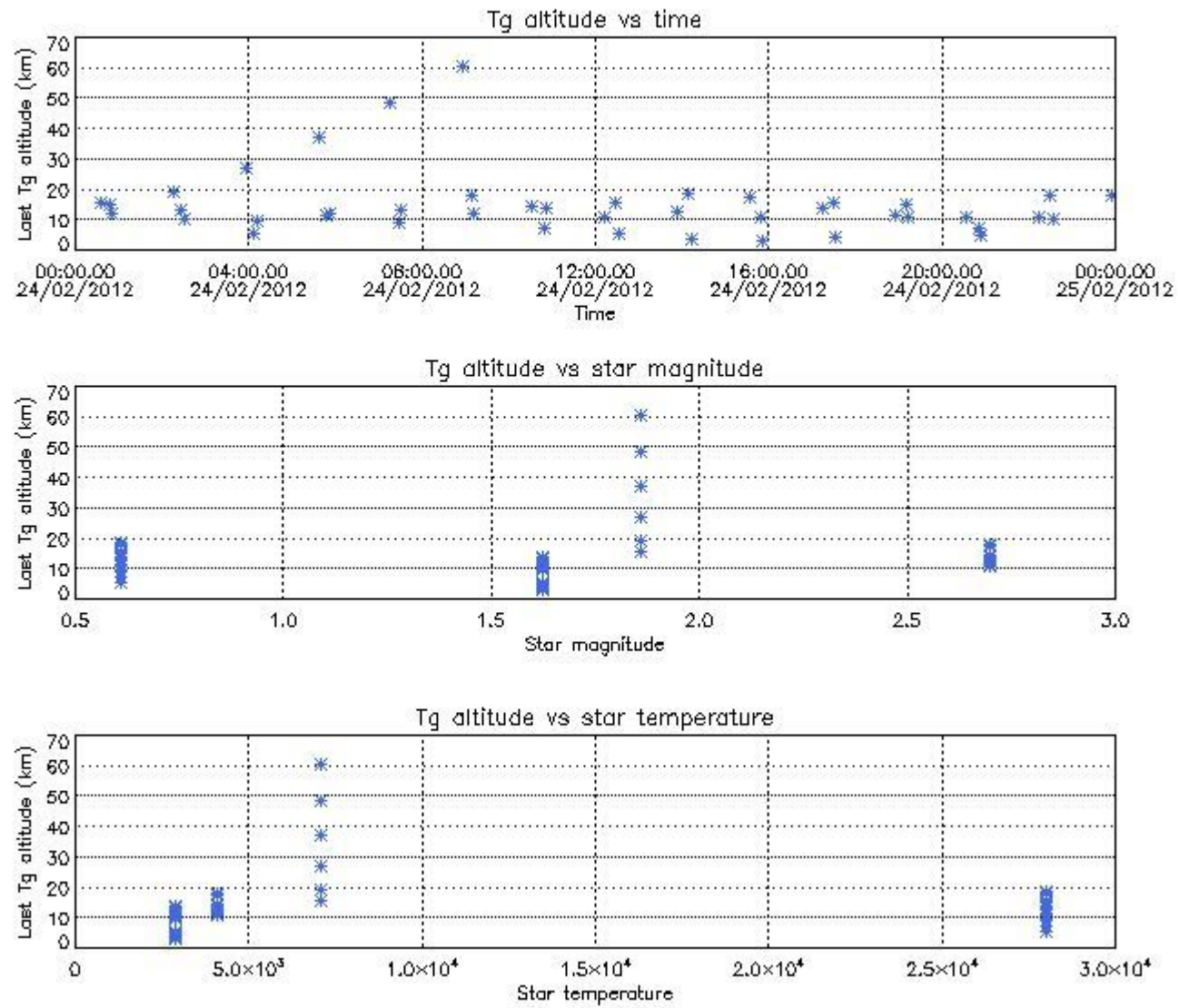
6. Statistics and plot of tangent altitude of the last measurement (DARK & BRIGHT products without errors)

6.1 Statistics on tangent altitude lost:

Statistics	DARK	BRIGHT	TWILIGHT
Mean:	14.715	NaN	NaN
St. deviation:	10.885	NaN	NaN
Maximum:	60.565	NaN	NaN
Minimum:	2.9843	NaN	NaN
Number of data:	43.000	NaN	NaN

6.2 Plot for DARK limb products

Tangent altitude at which the star is lost

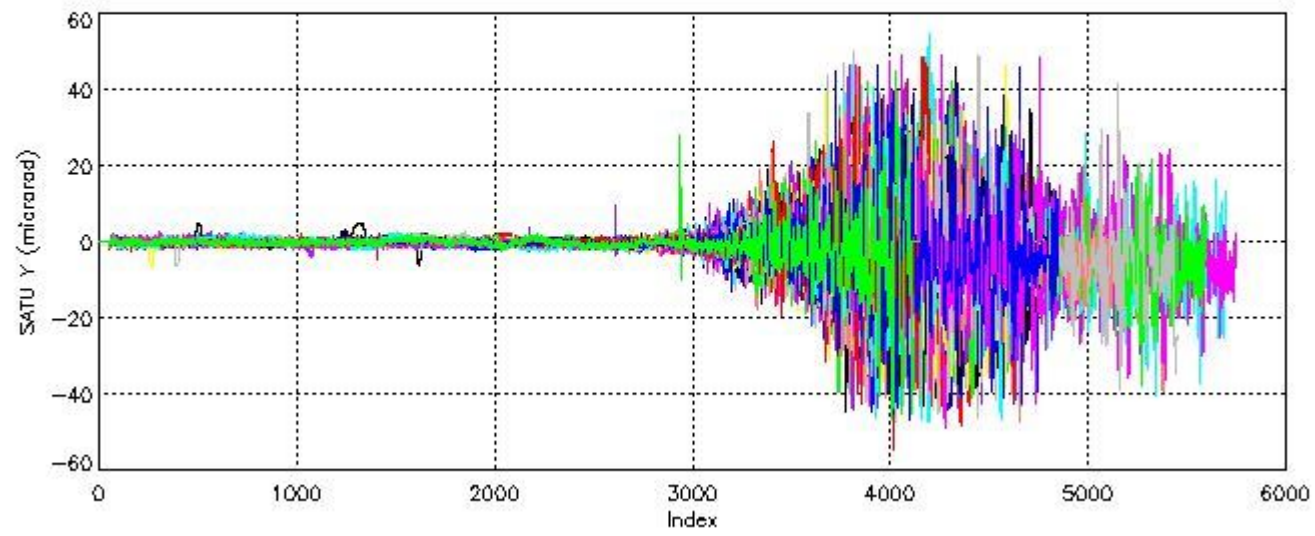
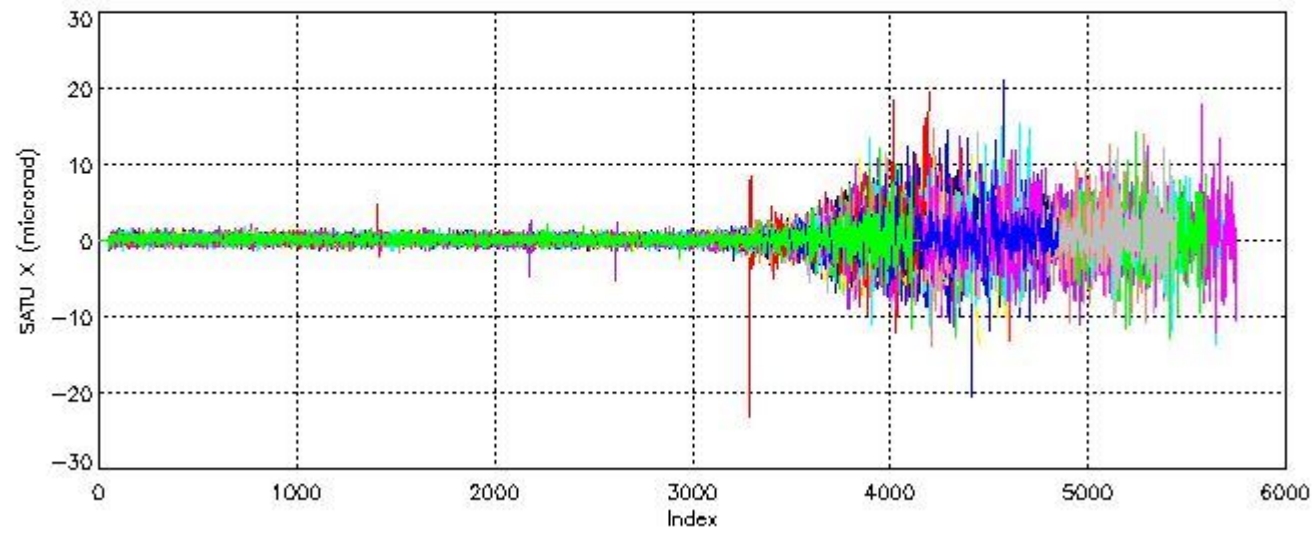


7. Star Acquisition and Tracking Unit (SATU)

The Star Acquisition and Tracking Unit (SATU) analyses the position of the tracked star beam collected by the GOMOS telescope and deflected by the optical beam dispatcher. The main function of the SATU is to detect a star, provide its image position to the science data electronics and to help the pointing function to keep the star image at a fixed position. In tracking mode the SATU data is recorded with a frequency of 100 Hz.

7.1 SATU 'X' and 'Y' axis plots (dark limb)

SATU CCD 'X' and 'Y' axis plots are provided in order to detect any abnormal behaviour of the tracking system. For every occultation (color) the plot should remain stable (with some noise) until we are deep in the atmosphere where big fluctuations are registered due to the refractive effects.



7.2 Statistics on SATU Noise Equivalent Angle (NEA) for DARK (D) and BRIGHT (B) products above 105 kms

The Star Acquisition and Tracking Unit (it is the CCD that tracks the star while it is occulted) Noise Equivalent Angle consists of the statistical angular variation of the SATU data above the atmosphere.

Statistics (in microradians) above 105 km are computed for every occultation, giving four values per occultation: one in the 'X' direction and one in the 'Y' direction for dark and bright limbs. A mean value per day in every direction and limb is calculated and monitored in order to assess instrument performance in terms of star pointing.

7.2.1 SATU NEA Statistics (table)

Statistics	SATU X (D)	SATU Y (D)	SATU X (B)	SATU Y (B)
Mean:	0.15601	-0.18817	NaN	NaN
St. deviation:	0.26183	0.47380	NaN	NaN
Maximum:	2.2000	4.9000	NaN	NaN
Minimum:	-1.4000	-6.9000	NaN	NaN

Number of data:	41500.	41500.	NaN	NaN
90Percentile:	0.50000	0.40000	NaN	NaN

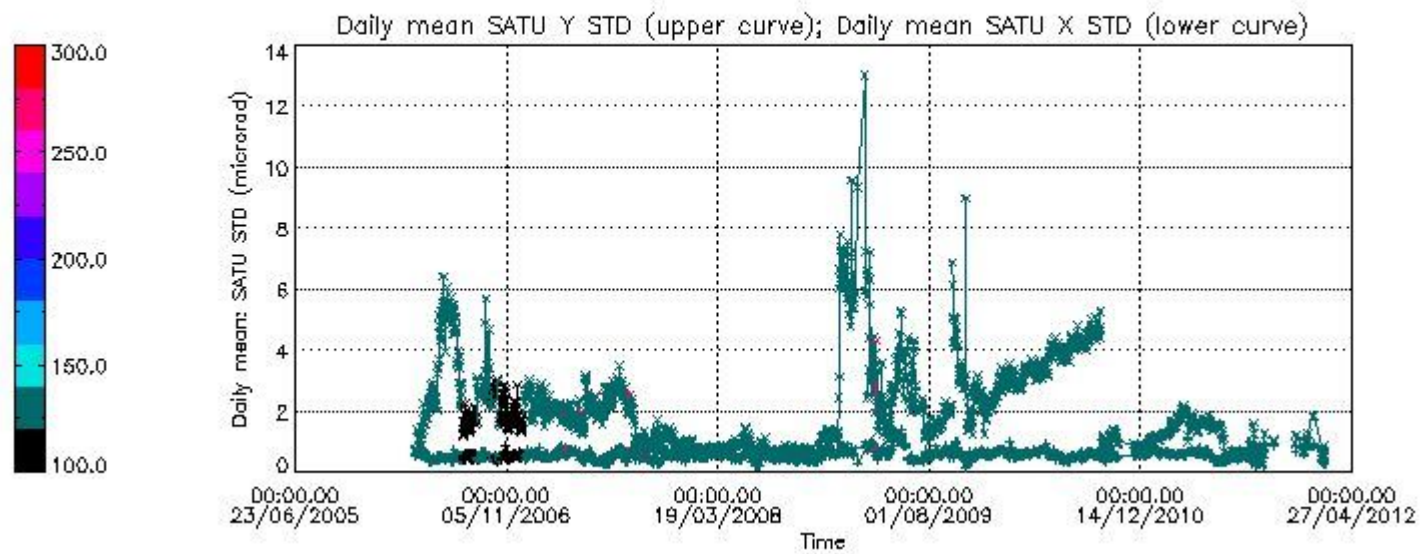
7.2.2 Trend of daily SATU NEA St. deviation since 1st April 2006 (dark limb) and of daily SATU NEA 90th percentile since May 2011

The long term trend of the SATU 'X' and 'Y' standard deviations should be constant during the whole mission.

The colorbar represents the start tangent altitude (km) of the occultations.

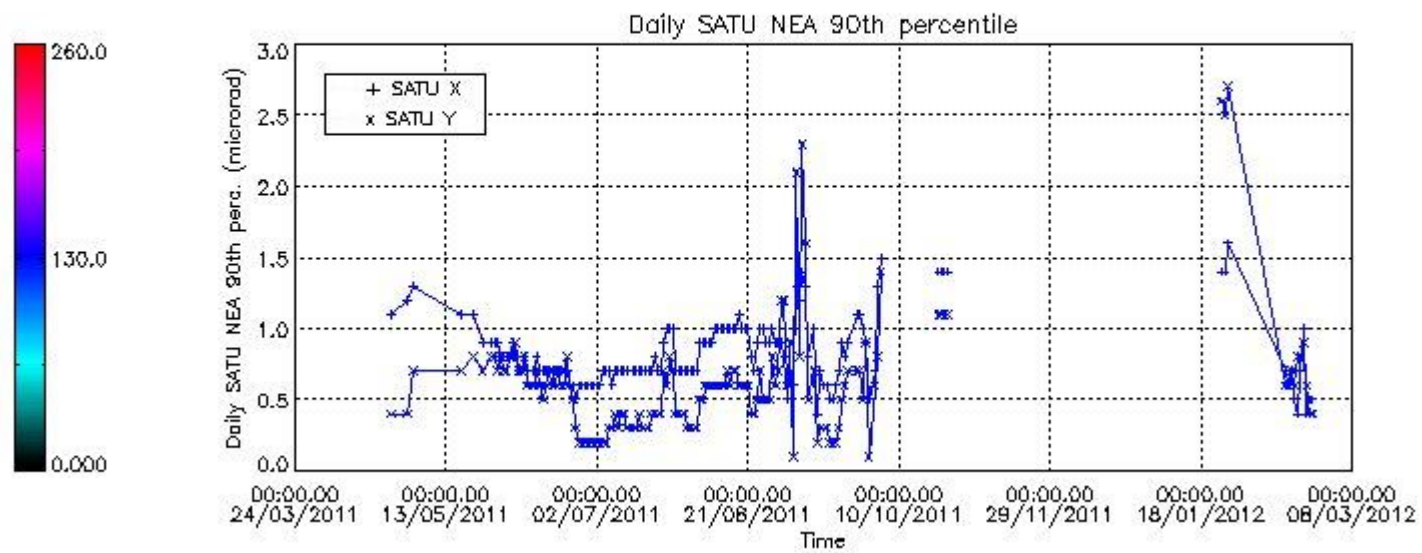
Upper curve: STD of SATU Y axis

Lower curve: STD of SATU X axis



Lower curve: 90th percentile of SATU Y axis

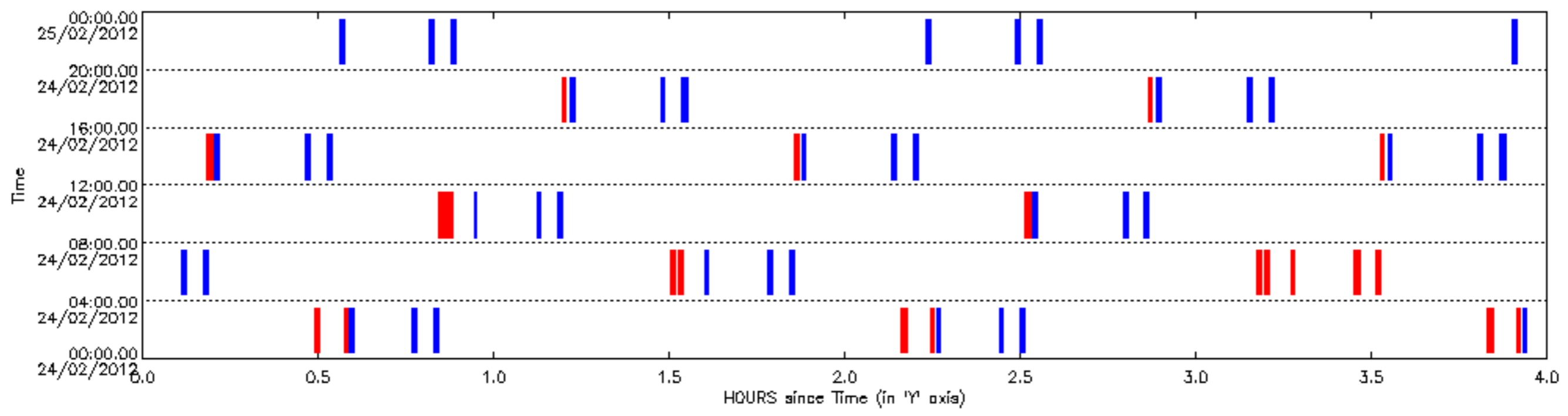
Upper curve: 90th percentile of SATU X axis

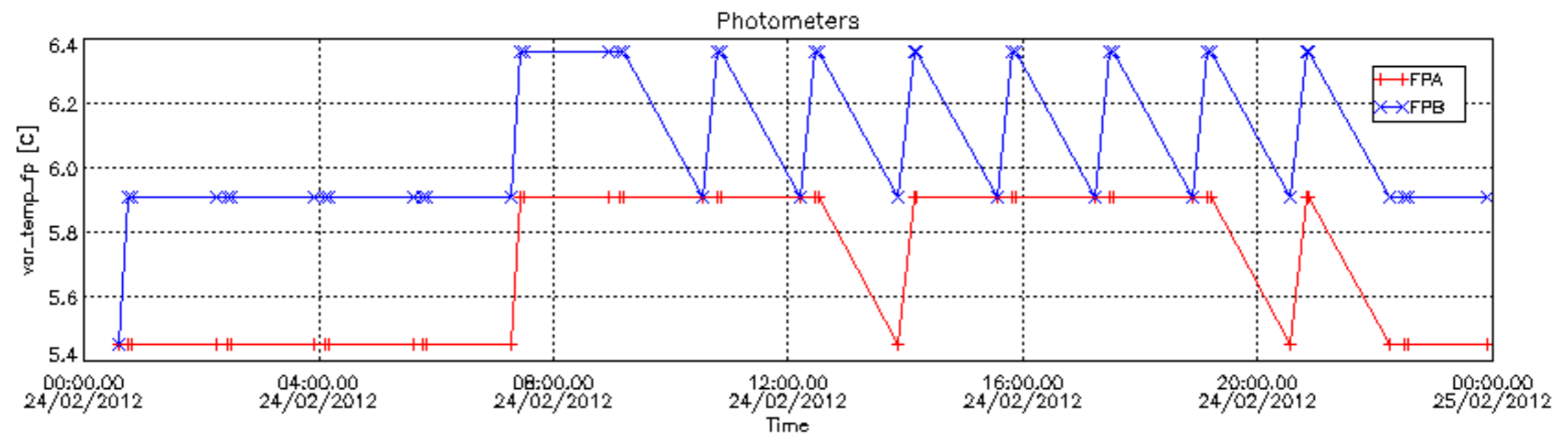
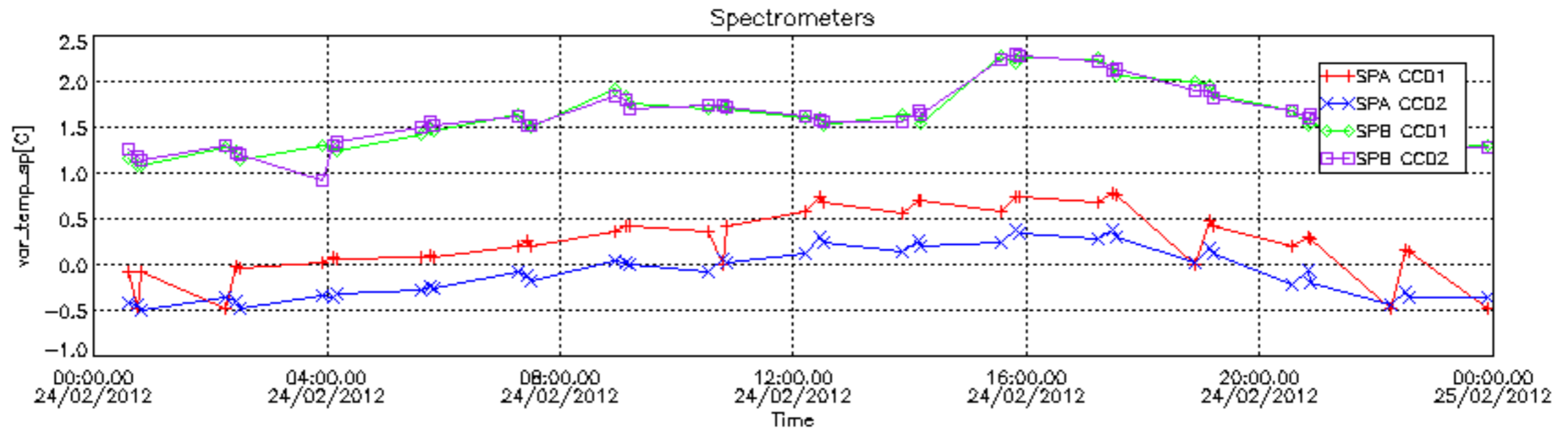


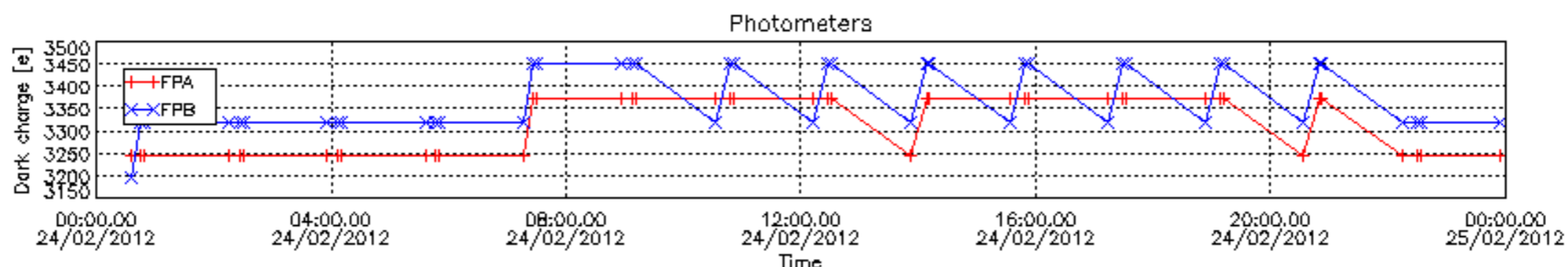
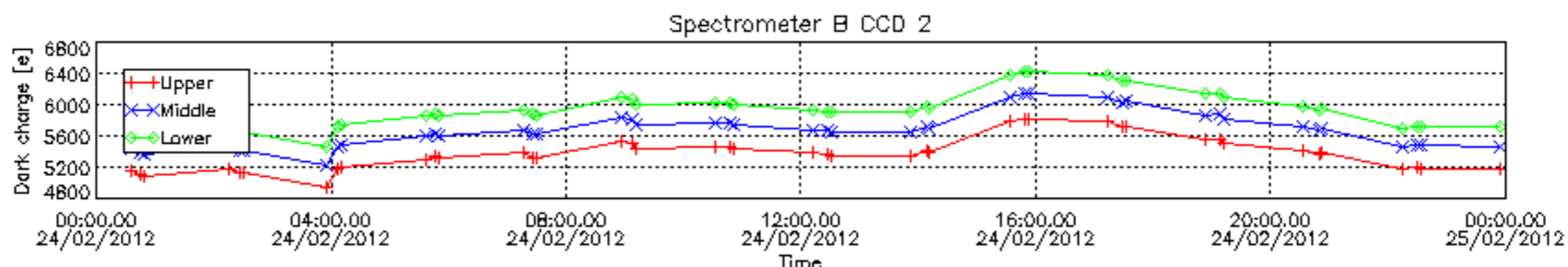
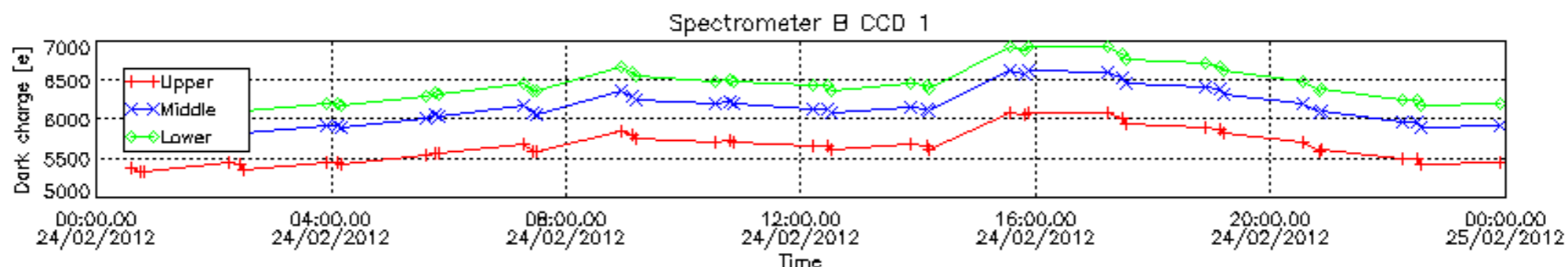
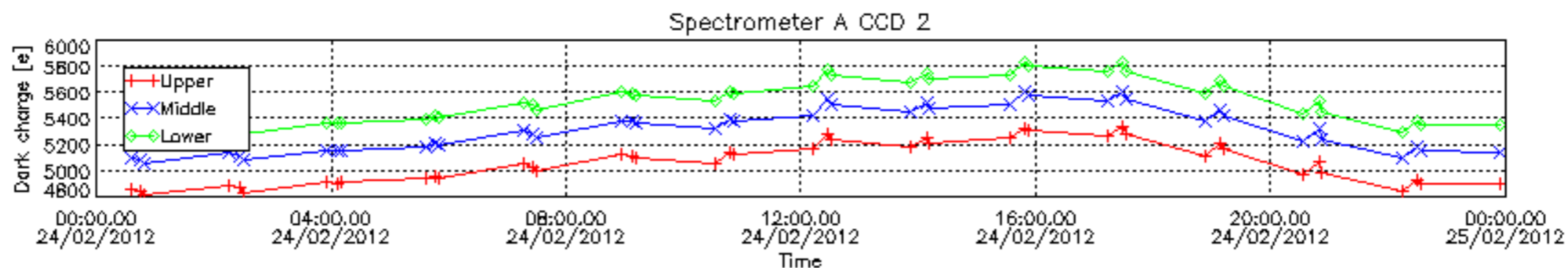
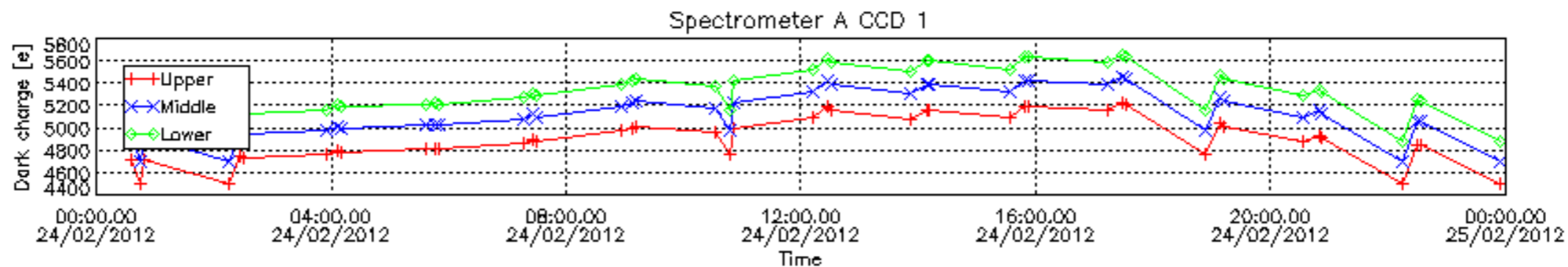
8. Auxiliary Data Files used for the production reported in section 2.4

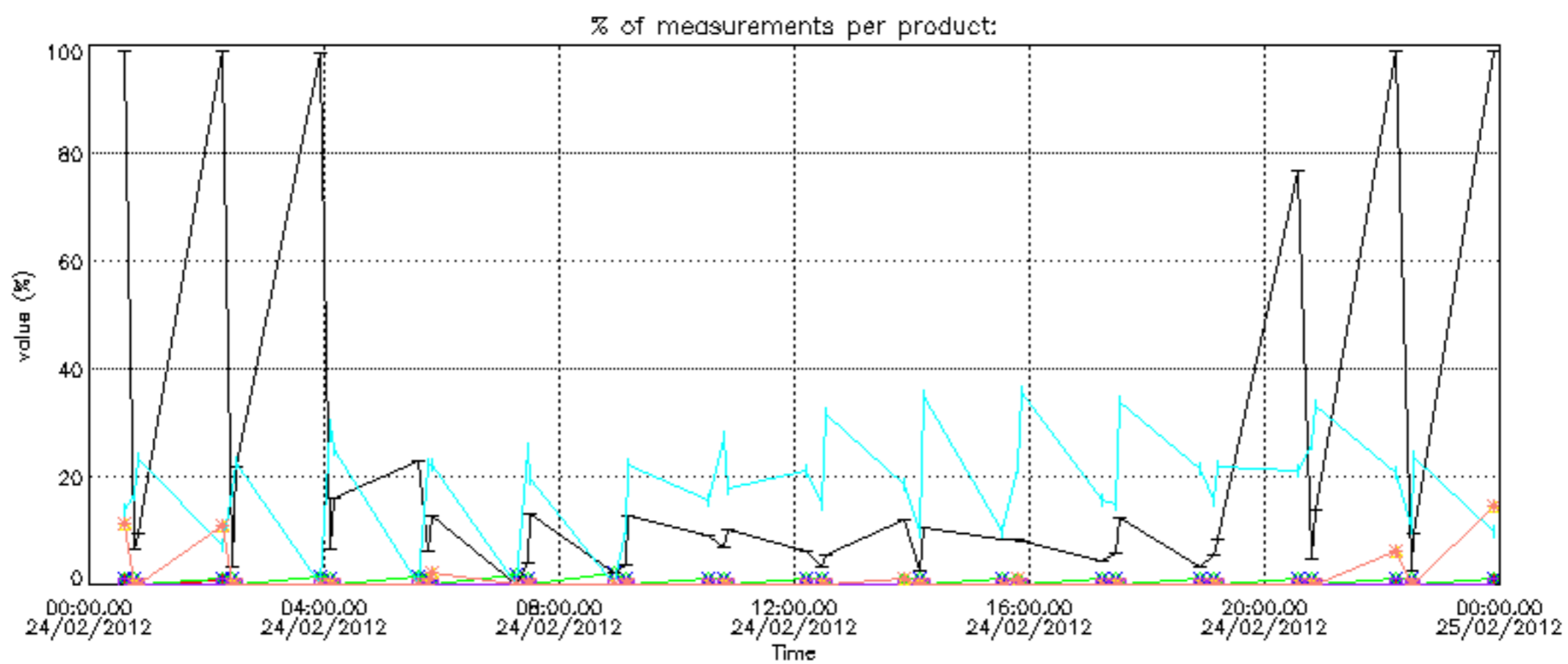
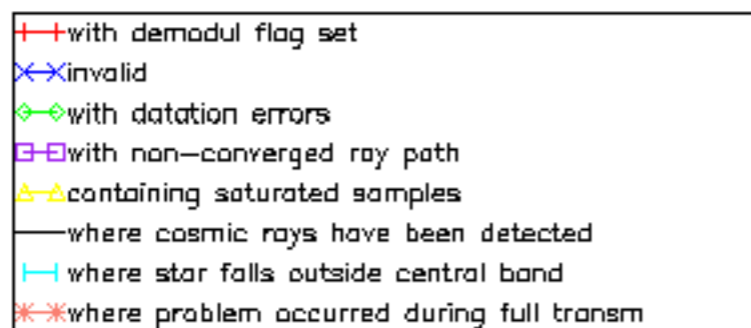
The number reported in the third column indicates since which file (see list in section 2.4) the corresponding auxiliary file has been used. The fourth column is the date of those product files.

Type	Auxiliary Filename	Used since product	Used since product date
INST_PHYS_CHARACTERISTICS	GOM_INS_AXVIEC20111213_163131_20111215_000000_20500101_000000	1	24-FEB-2012 00:35:21
CALIBRATION_DATABASE	GOM_CAL_AXVIEC20120130_103112_20120125_000000_20500101_000000	1	24-FEB-2012 00:35:21
LEVEL-1B_PROC_CONFIG	GOM_PR1_AXVIEC20110513_081743_20020301_000000_20500101_000000	1	24-FEB-2012 00:35:21
STAR_CATALOGUE	GOM_CAT_AXVIEC20020121_161009_20020101_000000_20200101_000000	1	24-FEB-2012 00:35:21
STELLAR_SPECTRA_DATABANK	GOM_STS_AXVIEC20091111_151504_20020101_160000_20500101_000000	1	24-FEB-2012 00:35:21
ECMWF_FILE	AUX_ECF_AXNECM20120223_105229_20120223_210000_20120224_090000	1	24-FEB-2012 00:35:21
ECMWF_FILE	AUX_ECF_AXNECM20120223_181227_20120224_030000_20120224_150000	7	24-FEB-2012 03:55:51
ECMWF_FILE	AUX_ECA_AXNECM20120224_062113_20120223_210000_20120224_090000	10	24-FEB-2012 05:36:05
ECMWF_FILE	AUX_ECF_AXNECM20120223_181227_20120224_030000_20120224_150000	16	24-FEB-2012 08:56:35
ECMWF_FILE	AUX_ECF_AXNECM20120224_062114_20120224_090000_20120224_210000	19	24-FEB-2012 10:32:05
ECMWF_FILE	AUX_ECF_AXNECM20120224_062114_20120224_150000_20120225_030000	28	24-FEB-2012 15:32:49
ECMWF_FILE	AUX_ECA_AXNECM20120224_181418_20120224_090000_20120224_210000	34	24-FEB-2012 18:53:18
ECMWF_FILE	AUX_ECF_AXNECM20120224_062114_20120224_210000_20120225_090000	40	24-FEB-2012 22:13:47
OPTIONAL_ECMWF_FILE	MISSING	1	24-FEB-2012 00:35:21
ORBIT_DATA_FILE	AUX_FPO_AXVPDS20120223_233226_20120223_125634_20120304_151016	1	24-FEB-2012 00:35:21
ORBIT_DATA_FILE	AUX_FPO_AXVPDS20120223_233225_20120223_125634_20120304_151016	13	24-FEB-2012 07:16:20
ORBIT_DATA_FILE	AUX_FPO_AXVPDS20120224_112114_20120223_193730_20120304_201058	22	24-FEB-2012 12:12:20

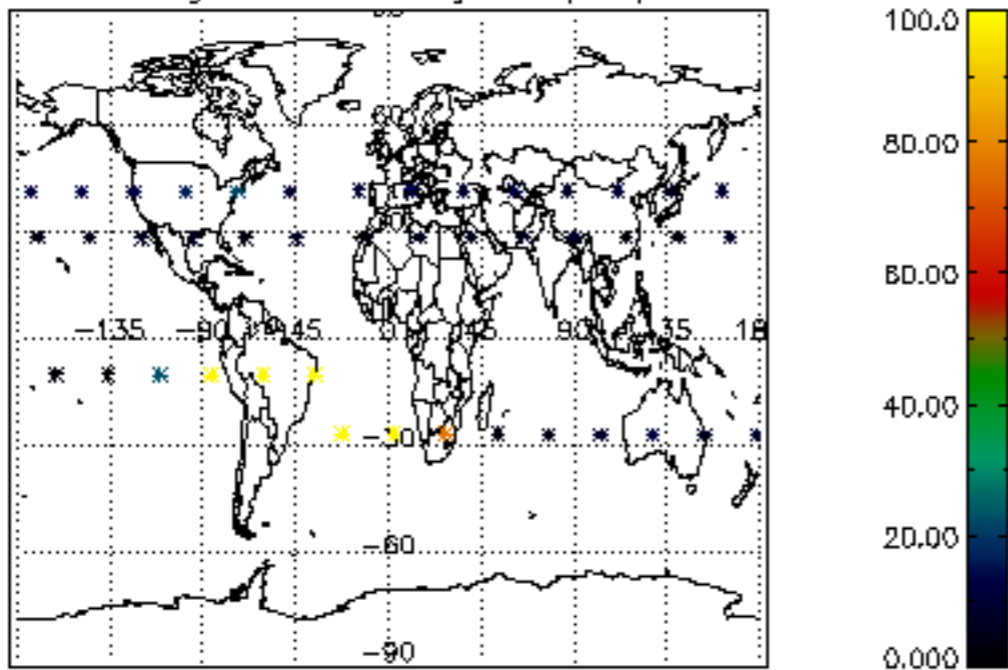




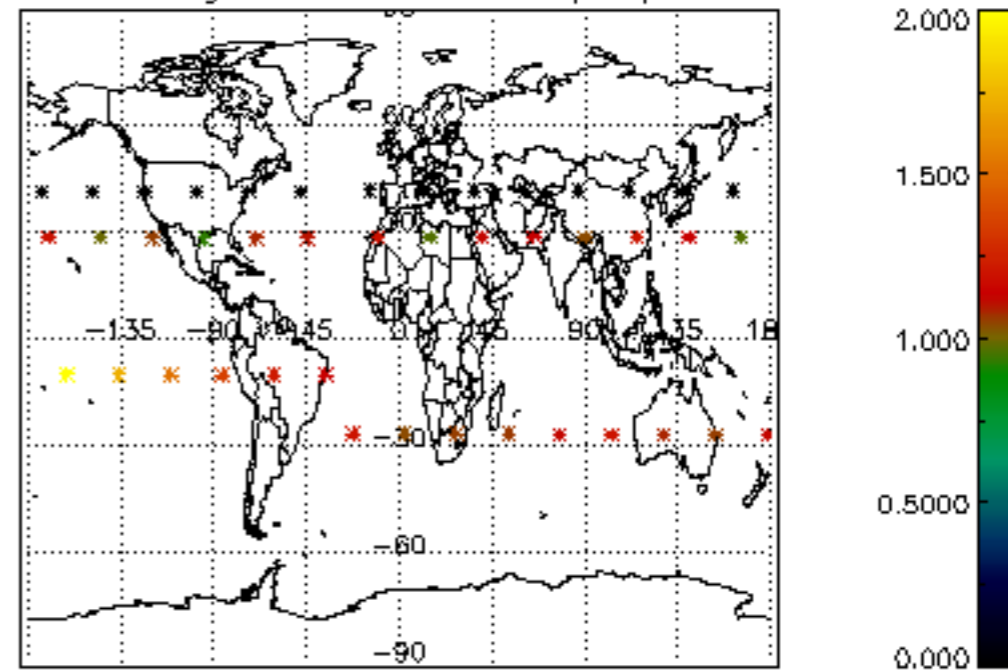




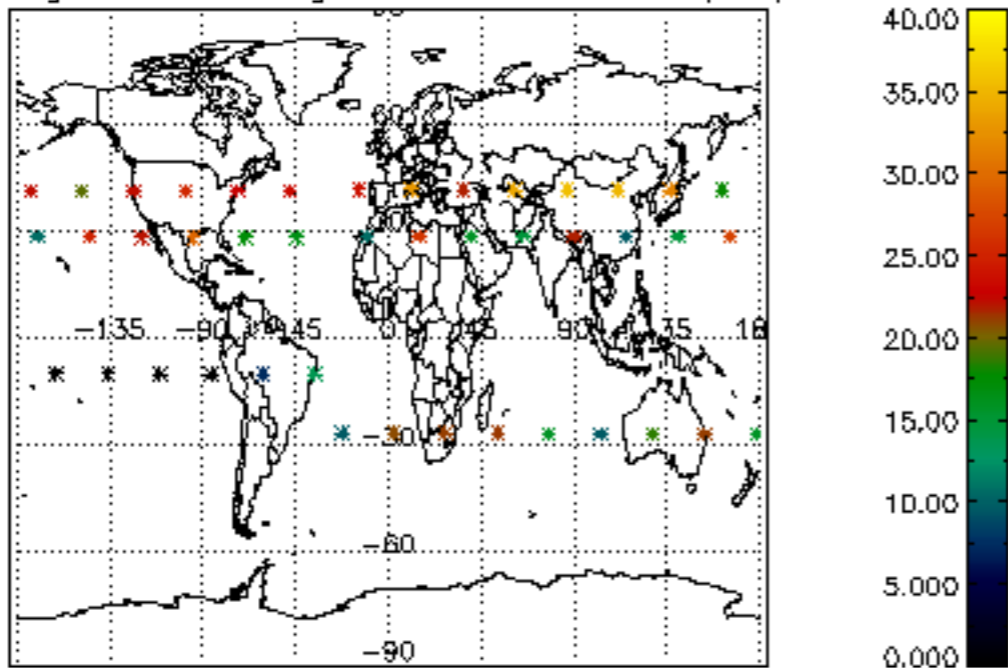
Percentage of cosmic ray hits per profile



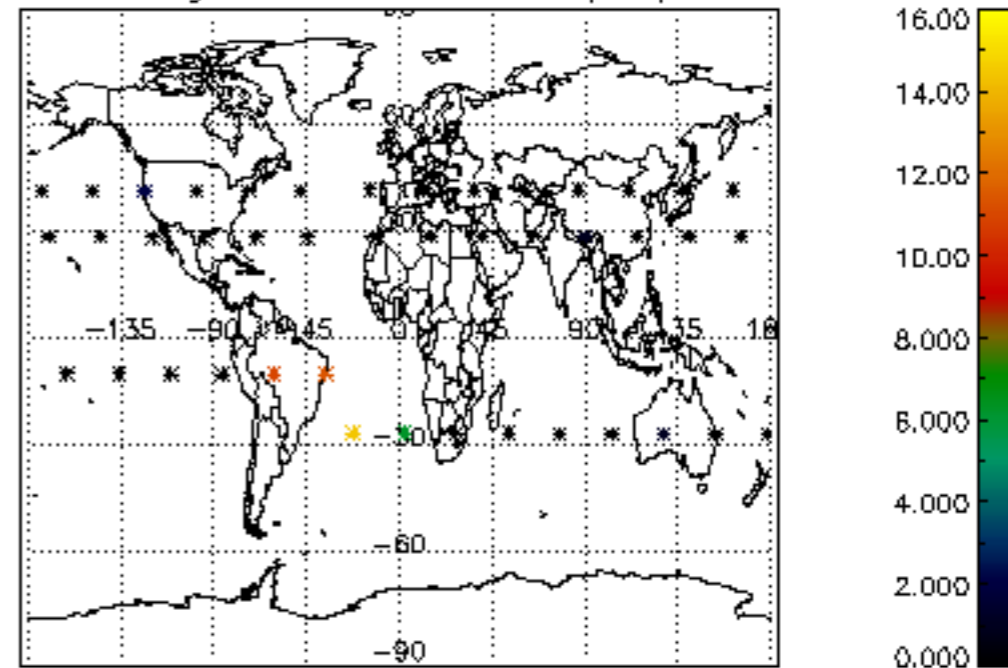
Percentage of datation errors per profile



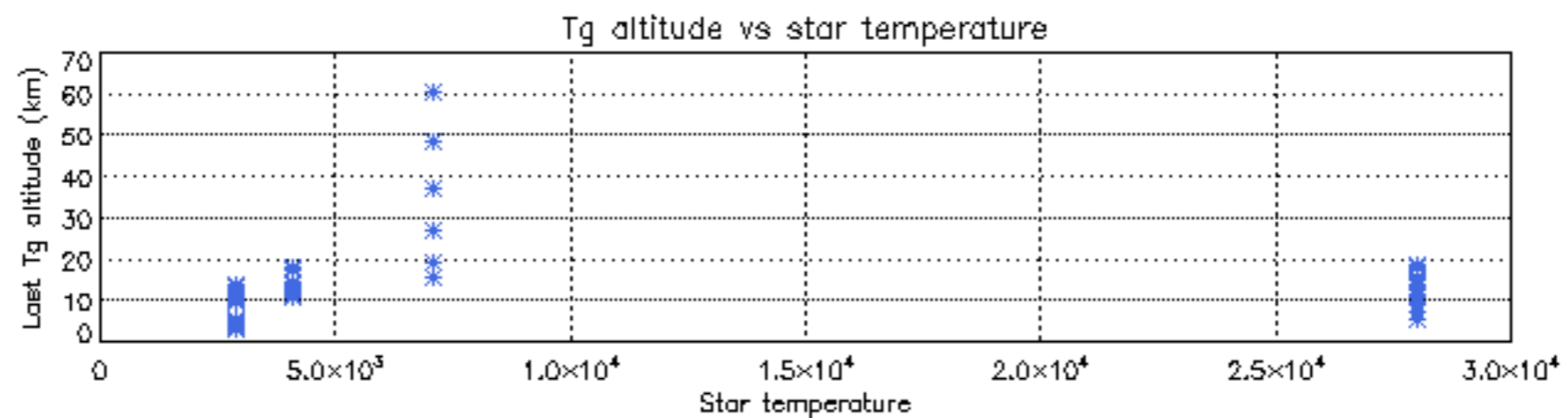
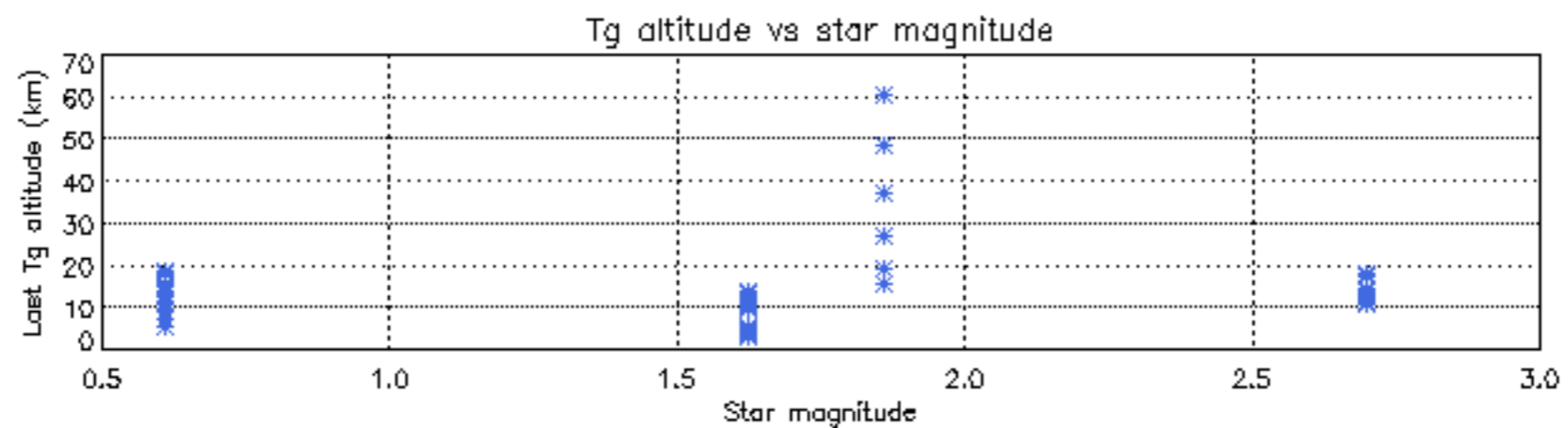
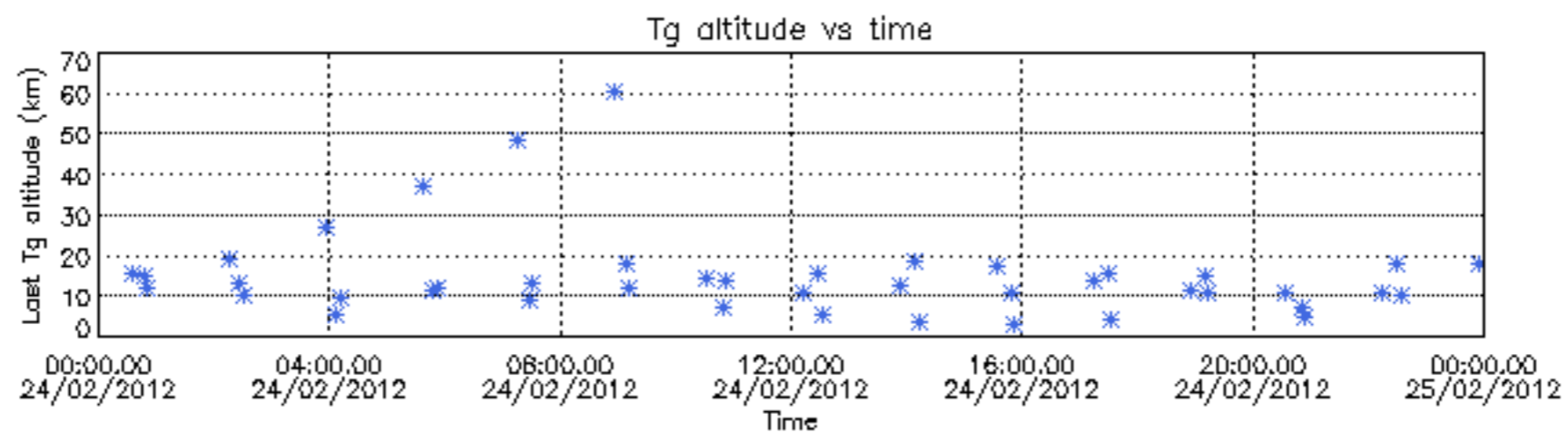
Percentage of star falling outside central band per profile

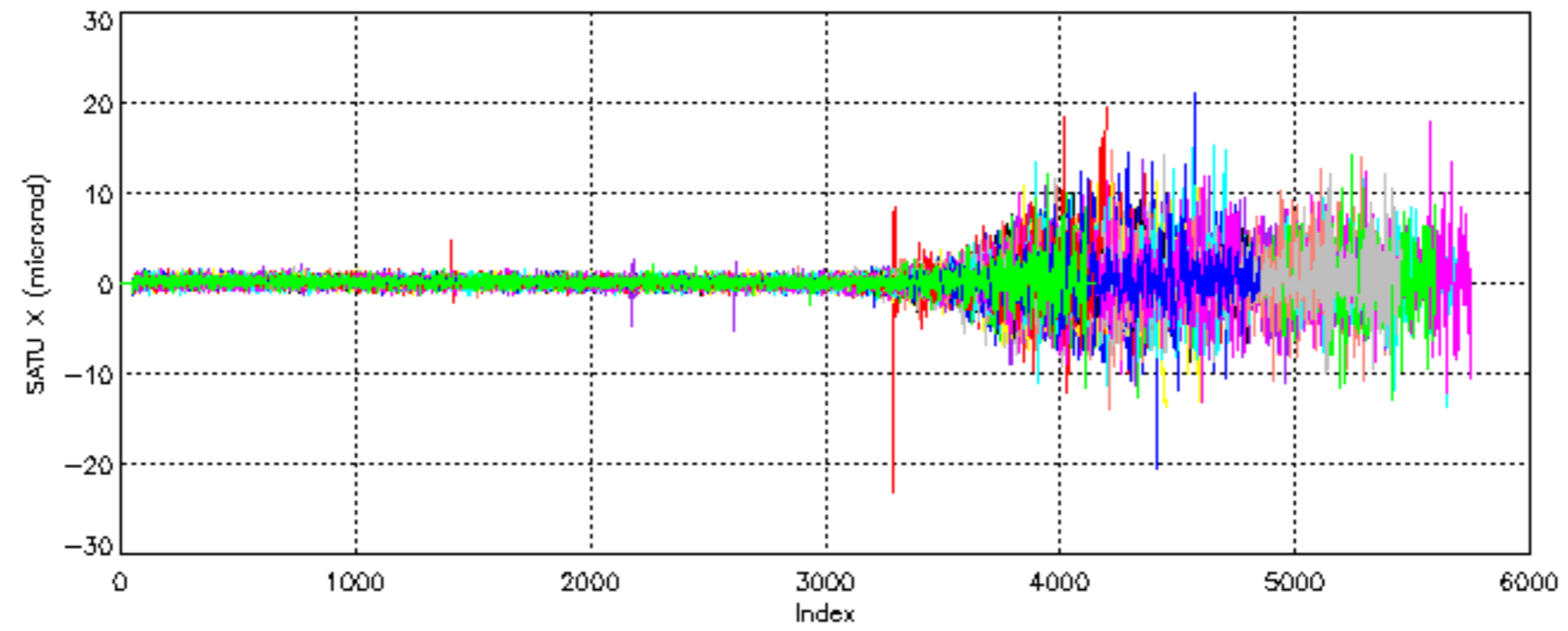


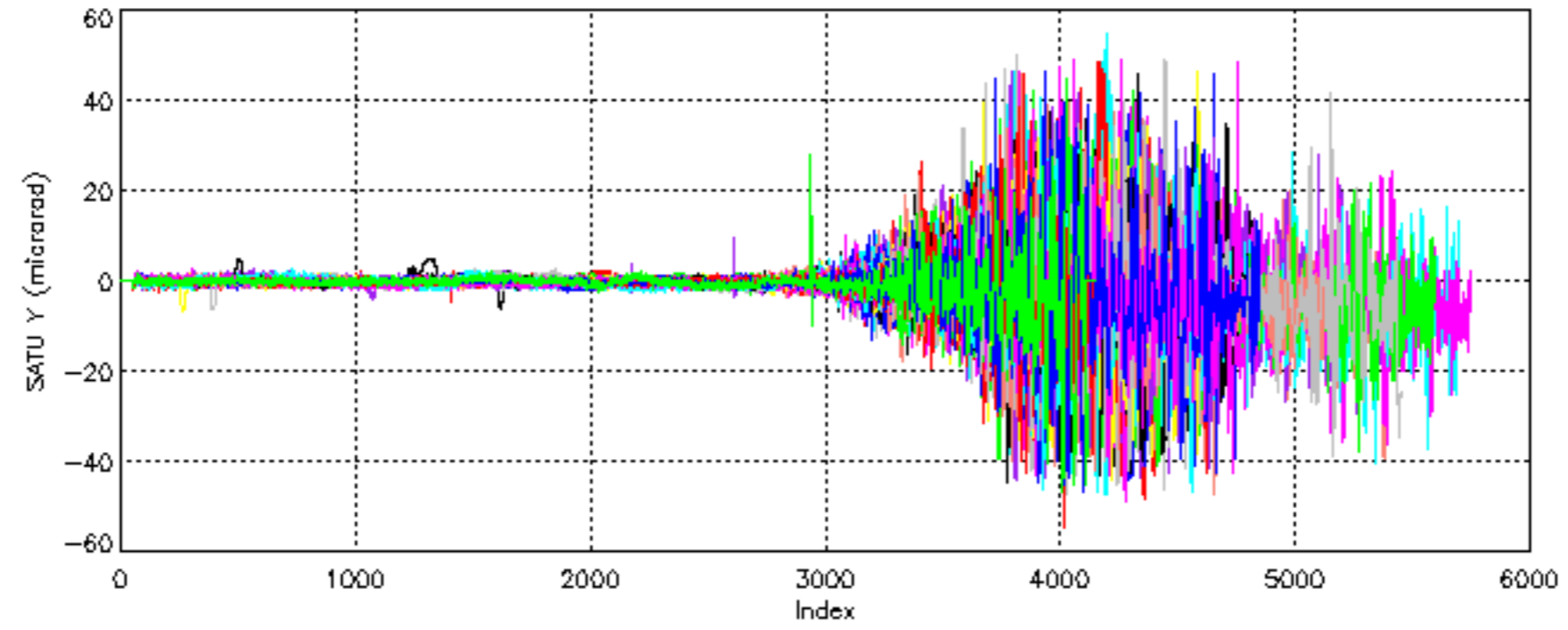
Percentage of saturation errors per profile

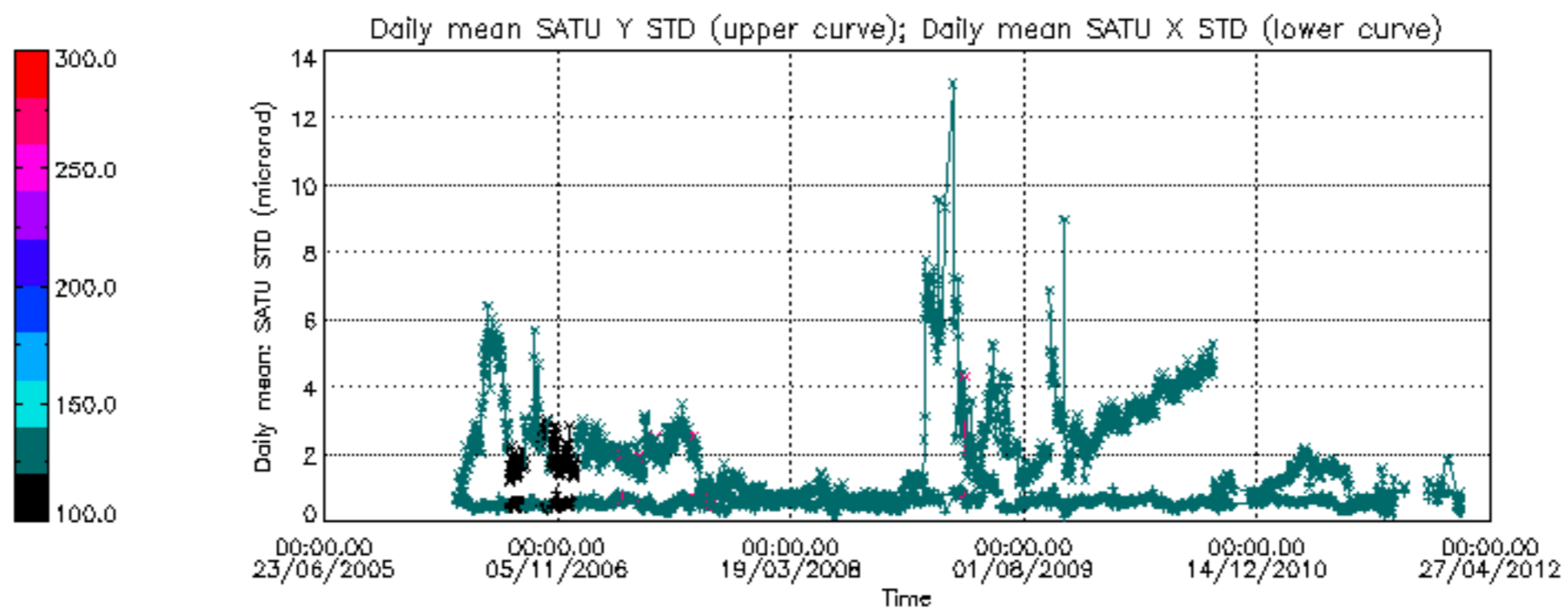


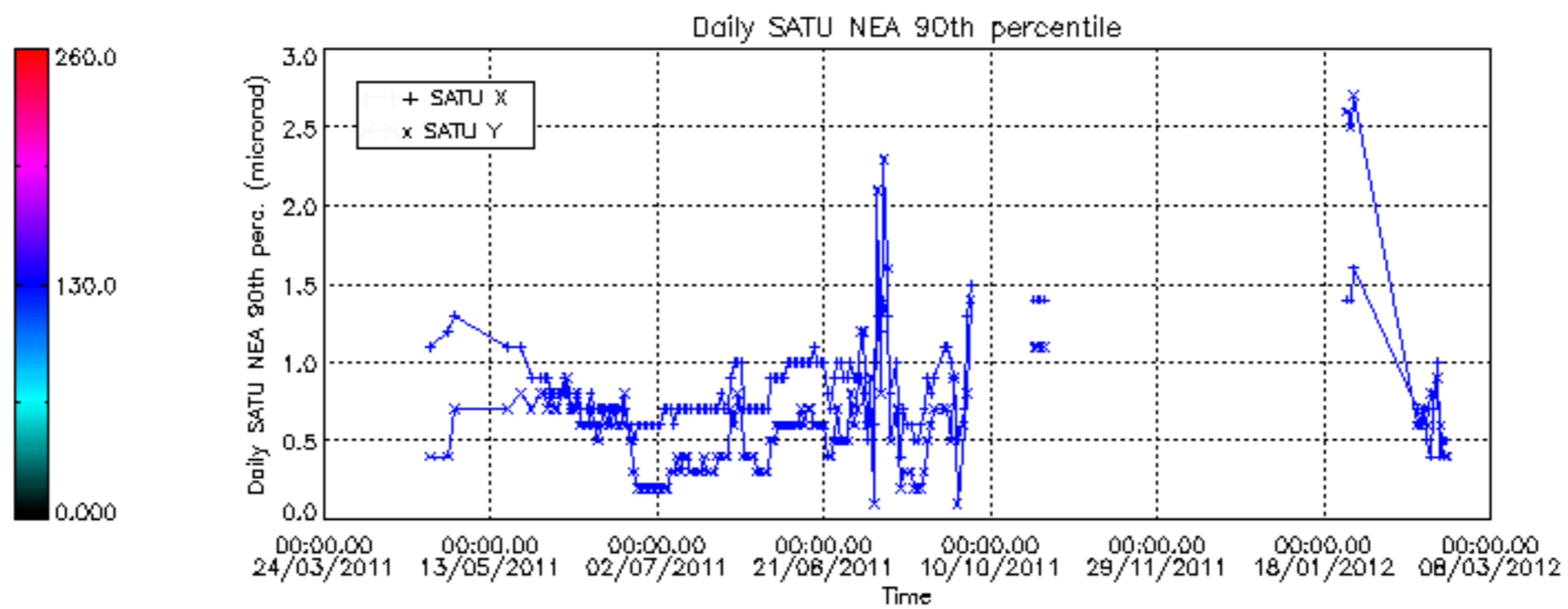
Tangent altitude at which the star is lost











/nas3/ENVISAT/GOMOS/GOM_NL__0P/GOM_NL__0PNPDE20120215_061534_000005593111_00365_52103_6611.N1
1; 395.4; 15-FEB-2012 06:15:34; Dark ; 41.0; 10; Bet Cen ; 0.61; 28000;occ; 82; 0;52103
2; 564.2; 15-FEB-2012 06:18:23; Dark ; 50.5; 20; Bet Cru ; 1.25; 30000;occ; 101; 0;52103
3; 921.0; 15-FEB-2012 06:24:20; Dark ; 33.5; 113; Mu Vel ; 2.69; 5000;occ; 67; 0;52103
/nas3/ENVISAT/GOMOS/GOM_NL__0P/GOM_NL__0PNPDE20120215_211745_000005673111_00374_52112_6613.N1
1; 400.7; 15-FEB-2012 21:17:45; Dark ; 43.5; 10; Bet Cen ; 0.61; 28000;occ; 87; 0;52112
2; 569.2; 15-FEB-2012 21:20:33; Dark ; 42.0; 20; Bet Cru ; 1.25; 30000;occ; 84; 0;52112
3; 924.7; 15-FEB-2012 21:26:29; Dark ; 44.0; 113; Mu Vel ; 2.69; 5000;occ; 88; 0;52112
/nas3/ENVISAT/GOMOS/GOM_NL__0P/GOM_NL__0PNPDE20120215_225759_000005663111_00375_52113_6614.N1
1; 401.4; 15-FEB-2012 22:57:59; Dark ; 42.0; 10; Bet Cen ; 0.61; 28000;occ; 84; 0;52113
2; 569.8; 15-FEB-2012 23:00:48; Dark ; 43.5; 20; Bet Cru ; 1.25; 30000;occ; 87; 0;52113
3; 925.1; 15-FEB-2012 23:06:43; Dark ; 43.0; 113; Mu Vel ; 2.69; 5000;occ; 86; 0;52113
/nas3/ENVISAT/GOMOS/GOM_NL__0P/GOM_NL__0PNPDK20120215_075549_000005603111_00366_52104_5593.N1
1; 396.1; 15-FEB-2012 07:55:49; Dark ; 50.0; 10; Bet Cen ; 0.61; 28000;occ; 100; 0;52104
2; 564.7; 15-FEB-2012 07:58:37; Dark ; 45.5; 20; Bet Cru ; 1.25; 30000;occ; 91; 0;52104
3; 921.3; 15-FEB-2012 08:04:34; Dark ; 35.5; 113; Mu Vel ; 2.69; 5000;occ; 71; 0;52104
/nas3/ENVISAT/GOMOS/GOM_NL__0P/GOM_NL__0PNPDK20120215_093603_000005633111_00367_52105_5594.N1
1; 396.6; 15-FEB-2012 09:36:03; Dark ; 42.5; 10; Bet Cen ; 0.61; 28000;occ; 85; 0;52105
2; 565.3; 15-FEB-2012 09:38:52; Dark ; 45.5; 20; Bet Cru ; 1.25; 30000;occ; 91; 0;52105
3; 921.7; 15-FEB-2012 09:44:48; Dark ; 38.5; 113; Mu Vel ; 2.69; 5000;occ; 77; 0;52105
/nas3/ENVISAT/GOMOS/GOM_NL__0P/GOM_NL__0PNPDK20120215_125632_000005663111_00369_52107_5596.N1
1; 397.8; 15-FEB-2012 12:56:32; Dark ; 44.0; 10; Bet Cen ; 0.61; 28000;occ; 88; 0;52107
2; 566.4; 15-FEB-2012 12:59:21; Dark ; 40.5; 20; Bet Cru ; 1.25; 30000;occ; 81; 0;52107
3; 922.5; 15-FEB-2012 13:05:17; Dark ; 41.5; 113; Mu Vel ; 2.69; 5000;occ; 83; 0;52107
/nas3/ENVISAT/GOMOS/GOM_NL__0P/GOM_NL__0PNPDK20120215_143647_000005703111_00370_52108_5597.N1
1; 398.5; 15-FEB-2012 14:36:47; Dark ; 44.0; 10; Bet Cen ; 0.61; 28000;occ; 88; 0;52108
2; 567.1; 15-FEB-2012 14:39:35; Dark ; 41.5; 20; Bet Cru ; 1.25; 30000;occ; 83; 0;52108
3; 923.1; 15-FEB-2012 14:45:31; Dark ; 45.5; 113; Mu Vel ; 2.69; 5000;occ; 91; 0;52108
/nas3/ENVISAT/GOMOS/GOM_NL__0P/GOM_NL__0PNPDK20120215_161701_000005693111_00371_52109_5598.N1
1; 399.0; 15-FEB-2012 16:17:01; Dark ; 43.5; 10; Bet Cen ; 0.61; 28000;occ; 87; 0;52109
2; 567.7; 15-FEB-2012 16:19:50; Dark ; 43.5; 20; Bet Cru ; 1.25; 30000;occ; 87; 0;52109
3; 923.5; 15-FEB-2012 16:25:46; Dark ; 45.5; 113; Mu Vel ; 2.69; 5000;occ; 91; 0;52109
/nas3/ENVISAT/GOMOS/GOM_NL__0P/GOM_NL__0PNPDK20120215_175716_000005403111_00372_52110_5599.N1
1; 399.6; 15-FEB-2012 17:57:16; Dark ; 48.0; 10; Bet Cen ; 0.61; 28000;occ; 96; 0;52110
2; 568.2; 15-FEB-2012 18:00:04; Dark ; 43.0; 20; Bet Cru ; 1.25; 30000;occ; 86; 0;52110
3; 924.0; 15-FEB-2012 18:06:00; Dark ; 16.5; 113; Mu Vel ; 2.69; 5000;occ; 33; 0;52110
/nas3/ENVISAT/GOMOS/GOM_NL__0P/GOM_NL__0PNPDE20120215_194625_000000333111_00373_52111_6612.N1
1; 935.2; 15-FEB-2012 19:46:25; Dark ; 44.5; 113; Mu Vel ; 2.69; 5000;occ; 89; 22;52111
/nas3/ENVISAT/GOMOS/GOM_NL__0P/GOM_NL__0PNPDK20120215_193730_000005683111_00373_52111_5600.N1
1; 400.2; 15-FEB-2012 19:37:30; Dark ; 46.0; 10; Bet Cen ; 0.61; 28000;occ; 92; 0;52111
2; 568.6; 15-FEB-2012 19:40:19; Dark ; 41.5; 20; Bet Cru ; 1.25; 30000;occ; 83; 0;52111
3; 924.2; 15-FEB-2012 19:46:14; Dark ; 44.5; 113; Mu Vel ; 2.69; 5000;occ; 89; 0;52111
/nas3/ENVISAT/GOMOS/GOM_NL__0P/GOM_NL__0PNPDE20120216_003814_000005643111_00376_52114_6615.N1
1; 402.0; 16-FEB-2012 00:38:14; Dark ; 44.5; 10; Bet Cen ; 0.61; 28000;occ; 89; 0;52114
2; 570.3; 16-FEB-2012 00:41:02; Dark ; 51.0; 20; Bet Cru ; 1.25; 30000;occ; 102; 0;52114
3; 925.6; 16-FEB-2012 00:46:57; Dark ; 41.0; 113; Mu Vel ; 2.69; 5000;occ; 82; 0;52114
/nas3/ENVISAT/GOMOS/GOM_NL__0P/GOM_NL__0PNPDE20120216_021828_000005683111_00377_52115_6616.N1
1; 402.6; 16-FEB-2012 02:18:28; Dark ; 41.0; 10; Bet Cen ; 0.61; 28000;occ; 82; 0;52115
2; 571.0; 16-FEB-2012 02:21:17; Dark ; 40.0; 20; Bet Cru ; 1.25; 30000;occ; 80; 0;52115
3; 925.9; 16-FEB-2012 02:27:11; Dark ; 45.0; 113; Mu Vel ; 2.69; 5000;occ; 90; 0;52115
/nas3/ENVISAT/GOMOS/GOM_NL__0P/GOM_NL__0PNPDE20120216_053858_000005633111_00379_52117_6617.N1
1; 404.1; 16-FEB-2012 05:38:58; Dark ; 42.5; 10; Bet Cen ; 0.61; 28000;occ; 85; 0;52117
2; 572.3; 16-FEB-2012 05:41:46; Dark ; 40.5; 20; Bet Cru ; 1.25; 30000;occ; 81; 0;52117
3; 927.0; 16-FEB-2012 05:47:40; Dark ; 40.5; 113; Mu Vel ; 2.69; 5000;occ; 81; 0;52117
/nas3/ENVISAT/GOMOS/GOM_NL__0P/GOM_NL__0PNPDE20120216_222004_000002893111_00389_52127_6618.N1
1; 330.9; 16-FEB-2012 22:20:04; Dark ; 43.5; 4; Alp1Cen ; -0.01; 5800;occ; 87; 0;52127
2; 409.9; 16-FEB-2012 22:21:23; Dark ; 44.0; 10; Bet Cen ; 0.61; 28000;occ; 88; 0;52127
3; 577.7; 16-FEB-2012 22:24:10; Dark ; 43.0; 20; Bet Cru ; 1.25; 30000;occ; 86; 0;52127
/nas3/ENVISAT/GOMOS/GOM_NL__0P/GOM_NL__0PNPDK20120216_071912_000005643111_00380_52118_5601.N1
1; 404.6; 16-FEB-2012 07:19:12; Dark ; 42.5; 10; Bet Cen ; 0.61; 28000;occ; 85; 0;52118
2; 572.8; 16-FEB-2012 07:22:00; Dark ; 45.5; 20; Bet Cru ; 1.25; 30000;occ; 91; 0;52118
3; 927.5; 16-FEB-2012 07:27:55; Dark ; 42.0; 113; Mu Vel ; 2.69; 5000;occ; 84; 0;52118
/nas3/ENVISAT/GOMOS/GOM_NL__0P/GOM_NL__0PNPDK20120216_085926_000005643111_00381_52119_5602.N1
1; 405.2; 16-FEB-2012 08:59:27; Dark ; 51.0; 10; Bet Cen ; 0.61; 28000;occ; 102; 0;52119
2; 573.3; 16-FEB-2012 09:02:15; Dark ; 50.5; 20; Bet Cru ; 1.25; 30000;occ; 101; 0;52119
3; 927.9; 16-FEB-2012 09:08:09; Dark ; 42.0; 113; Mu Vel ; 2.69; 5000;occ; 84; 0;52119
/nas3/ENVISAT/GOMOS/GOM_NL__0P/GOM_NL__0PNPDK20120216_103822_000002873111_00382_52120_5603.N1
1; 326.8; 16-FEB-2012 10:38:22; Dark ; 42.0; 4; Alp1Cen ; -0.01; 5800;occ; 84; 0;52120

```

2; 405.8; 16-FEB-2012 10:39:41; Dark ; 48.0; 10; Bet Cen ; 0.61; 28000;occ; 96; 0;52120
3; 573.9; 16-FEB-2012 10:42:29; Dark ; 40.5; 20; Bet Cru ; 1.25; 30000;occ; 81; 0;52120
/nas3/ENVISAT/GOMOS/GOM_NL__0P/GOM_NL__0PNPDK20120216_121837_000002963111_00383_52121_5604.N1
1; 327.5; 16-FEB-2012 12:18:37; Dark ; 44.5; 4; Alp1Cen ; -0.01; 5800;occ; 89; 0;52121
2; 406.4; 16-FEB-2012 12:19:56; Dark ; 42.0; 10; Bet Cen ; 0.61; 28000;occ; 84; 0;52121
3; 574.6; 16-FEB-2012 12:22:44; Dark ; 49.0; 20; Bet Cru ; 1.25; 30000;occ; 98; 0;52121
/nas3/ENVISAT/GOMOS/GOM_NL__0P/GOM_NL__0PNPDK20120216_135851_000002903111_00384_52122_5605.N1
1; 328.1; 16-FEB-2012 13:58:51; Dark ; 43.5; 4; Alp1Cen ; -0.01; 5800;occ; 87; 0;52122
2; 407.1; 16-FEB-2012 14:00:10; Dark ; 42.0; 10; Bet Cen ; 0.61; 28000;occ; 84; 0;52122
3; 575.1; 16-FEB-2012 14:02:58; Dark ; 43.0; 20; Bet Cru ; 1.25; 30000;occ; 86; 0;52122
/nas3/ENVISAT/GOMOS/GOM_NL__0P/GOM_NL__0PNPDK20120216_153906_000002903111_00385_52123_5606.N1
1; 328.7; 16-FEB-2012 15:39:06; Dark ; 43.5; 4; Alp1Cen ; -0.01; 5800;occ; 87; 0;52123
2; 407.5; 16-FEB-2012 15:40:24; Dark ; 42.0; 10; Bet Cen ; 0.61; 28000;occ; 84; 0;52123
3; 575.7; 16-FEB-2012 15:43:13; Dark ; 43.5; 20; Bet Cru ; 1.25; 30000;occ; 87; 0;52123
/nas3/ENVISAT/GOMOS/GOM_NL__0P/GOM_NL__0PNPDK20120216_171920_000002993111_00386_52124_5607.N1
1; 329.3; 16-FEB-2012 17:19:20; Dark ; 46.0; 4; Alp1Cen ; -0.01; 5800;occ; 92; 0;52124
2; 408.2; 16-FEB-2012 17:20:39; Dark ; 44.0; 10; Bet Cen ; 0.61; 28000;occ; 88; 0;52124
3; 576.2; 16-FEB-2012 17:23:27; Dark ; 52.5; 20; Bet Cru ; 1.25; 30000;occ; 105; 0;52124
/nas3/ENVISAT/GOMOS/GOM_NL__0P/GOM_NL__0PNPDK20120216_185935_000002873111_00387_52125_5608.N1
1; 329.8; 16-FEB-2012 18:59:35; Dark ; 43.0; 4; Alp1Cen ; -0.01; 5800;occ; 86; 0;52125
2; 408.8; 16-FEB-2012 19:00:54; Dark ; 47.5; 10; Bet Cen ; 0.61; 28000;occ; 95; 0;52125
3; 576.7; 16-FEB-2012 19:03:42; Dark ; 41.0; 20; Bet Cru ; 1.25; 30000;occ; 82; 0;52125
/nas3/ENVISAT/GOMOS/GOM_NL__0P/GOM_NL__0PNPDK20120216_203949_000002923111_00388_52126_5609.N1
1; 330.4; 16-FEB-2012 20:39:49; Dark ; 51.5; 4; Alp1Cen ; -0.01; 5800;occ; 103; 0;52126
2; 409.4; 16-FEB-2012 20:41:08; Dark ; 43.5; 10; Bet Cen ; 0.61; 28000;occ; 87; 0;52126
3; 577.3; 16-FEB-2012 20:43:56; Dark ; 45.5; 20; Bet Cru ; 1.25; 30000;occ; 91; 0;52126
/nas3/ENVISAT/GOMOS/GOM_NL__0P/GOM_NL__0PNPDE20120217_014152_000062233111_00391_52129_6619.N1
1; 411.2; 17-FEB-2012 01:41:52; Dark ; 46.0; 10; Bet Cen ; 0.61; 28000;occ; 92; 0;52129
2; 578.9; 17-FEB-2012 01:44:39; Dark ; 42.0; 20; Bet Cru ; 1.25; 30000;occ; 84; 0;52129
3; 5710.4; 17-FEB-2012 03:10:11; Dark ; 42.0; 25; 35Lam Sco ; 1.62; 28000;occ; 84; 0;52129
4; 6425.8; 17-FEB-2012 03:22:06; Dark ; 43.0; 10; Bet Cen ; 0.61; 28000;occ; 86; 0;52130
5; 6593.5; 17-FEB-2012 03:24:54; Dark ; 41.0; 20; Bet Cru ; 1.25; 30000;occ; 82; 0;52130
/nas3/ENVISAT/GOMOS/GOM_NL__0P/GOM_NL__0PNPDE20120217_045025_000009233111_00392_52130_6620.N1
1; -302.8; 17-FEB-2012 04:50:25; Dark ; 41.5; 25; 35Lam Sco ; 1.62; 28000;occ; 83; 0;52130
2; 412.4; 17-FEB-2012 05:02:21; Dark ; 44.0; 10; Bet Cen ; 0.61; 28000;occ; 88; 0;52131
3; 579.9; 17-FEB-2012 05:05:08; Dark ; 40.5; 20; Bet Cru ; 1.25; 30000;occ; 81; 0;52131
/nas3/ENVISAT/GOMOS/GOM_NL__0P/GOM_NL__0PNPDE20120217_063040_000009263111_00393_52131_6621.N1
1; -302.2; 17-FEB-2012 06:30:40; Dark ; 44.0; 25; 35Lam Sco ; 1.62; 28000;occ; 88; 0;52131
2; 413.1; 17-FEB-2012 06:42:35; Dark ; 47.0; 10; Bet Cen ; 0.61; 28000;occ; 94; 0;52132
3; 580.6; 17-FEB-2012 06:45:23; Dark ; 44.0; 20; Bet Cru ; 1.25; 30000;occ; 88; 0;52132
/nas3/ENVISAT/GOMOS/GOM_NL__0P/GOM_NL__0PNPDE20120217_213251_000009253111_00402_52140_6622.N1
1; -296.5; 17-FEB-2012 21:32:51; Dark ; 41.5; 25; 35Lam Sco ; 1.62; 28000;occ; 83; 0;52140
2; 418.6; 17-FEB-2012 21:44:46; Dark ; 42.0; 10; Bet Cen ; 0.61; 28000;occ; 84; 0;52141
3; 585.6; 17-FEB-2012 21:47:33; Dark ; 43.0; 20; Bet Cru ; 1.25; 30000;occ; 86; 0;52141
/nas3/ENVISAT/GOMOS/GOM_NL__0P/GOM_NL__0PNPDE20120217_231306_000009233111_00403_52141_6623.N1
1; -295.9; 17-FEB-2012 23:13:06; Dark ; 38.0; 25; 35Lam Sco ; 1.62; 28000;occ; 76; 0;52141
2; 419.2; 17-FEB-2012 23:25:01; Dark ; 43.5; 10; Bet Cen ; 0.61; 28000;occ; 87; 0;52142
3; 586.1; 17-FEB-2012 23:27:48; Dark ; 41.5; 20; Bet Cru ; 1.25; 30000;occ; 83; 0;52142
/nas3/ENVISAT/GOMOS/GOM_NL__0P/GOM_NL__0PNPDK20120217_081055_000009313111_00394_52132_5610.N1
1; -301.5; 17-FEB-2012 08:10:55; Dark ; 46.0; 25; 35Lam Sco ; 1.62; 28000;occ; 92; 0;52132
2; 413.6; 17-FEB-2012 08:22:50; Dark ; 43.5; 10; Bet Cen ; 0.61; 28000;occ; 87; 0;52133
3; 581.1; 17-FEB-2012 08:25:37; Dark ; 49.0; 20; Bet Cru ; 1.25; 30000;occ; 98; 0;52133
/nas3/ENVISAT/GOMOS/GOM_NL__0P/GOM_NL__0PNPDK20120217_095109_000009233111_00395_52133_5611.N1
1; -301.0; 17-FEB-2012 09:51:09; Dark ; 49.5; 25; 35Lam Sco ; 1.62; 28000;occ; 99; 0;52133
2; 414.3; 17-FEB-2012 10:03:04; Dark ; 50.5; 10; Bet Cen ; 0.61; 28000;occ; 101; 0;52134
3; 581.7; 17-FEB-2012 10:05:52; Dark ; 41.0; 20; Bet Cru ; 1.25; 30000;occ; 82; 0;52134
/nas3/ENVISAT/GOMOS/GOM_NL__0P/GOM_NL__0PNPDK20120217_113124_000009223111_00396_52134_5612.N1
1; -300.4; 17-FEB-2012 11:31:24; Dark ; 41.5; 25; 35Lam Sco ; 1.62; 28000;occ; 83; 0;52134
2; 415.0; 17-FEB-2012 11:43:19; Dark ; 43.0; 10; Bet Cen ; 0.61; 28000;occ; 86; 0;52135
3; 582.3; 17-FEB-2012 11:46:06; Dark ; 40.0; 20; Bet Cru ; 1.25; 30000;occ; 80; 0;52135
/nas3/ENVISAT/GOMOS/GOM_NL__0P/GOM_NL__0PNPDK20120217_131138_000009273111_00397_52135_5613.N1
1; -299.7; 17-FEB-2012 13:11:38; Dark ; 45.5; 25; 35Lam Sco ; 1.62; 28000;occ; 91; 0;52135
2; 415.6; 17-FEB-2012 13:23:33; Dark ; 42.5; 10; Bet Cen ; 0.61; 28000;occ; 85; 0;52136
3; 582.9; 17-FEB-2012 13:26:21; Dark ; 44.5; 20; Bet Cru ; 1.25; 30000;occ; 89; 0;52136
/nas3/ENVISAT/GOMOS/GOM_NL__0P/GOM_NL__0PNPDK20120217_145153_000009243111_00398_52136_5614.N1
1; -299.0; 17-FEB-2012 14:51:53; Dark ; 45.5; 25; 35Lam Sco ; 1.62; 28000;occ; 91; 0;52136
2; 416.1; 17-FEB-2012 15:03:48; Dark ; 42.0; 10; Bet Cen ; 0.61; 28000;occ; 84; 0;52137
3; 583.5; 17-FEB-2012 15:06:35; Dark ; 42.0; 20; Bet Cru ; 1.25; 30000;occ; 84; 0;52137

```


/nas3/ENVISAT/GOMOS/GOM_NL__0P/GOM_NL__0PNPDK20120217_163207_000009293111_00399_52137_5615.N1
1; -298.5; 17-FEB-2012 16:32:07; Dark ; 42.0; 25; 35Lam Sco ; 1.62; 28000;occ; 84; 0;52137
2; 416.7; 17-FEB-2012 16:44:02; Dark ; 41.5; 10; Bet Cen ; 0.61; 28000;occ; 83; 0;52138
3; 584.0; 17-FEB-2012 16:46:50; Dark ; 47.5; 20; Bet Cru ; 1.25; 30000;occ; 95; 0;52138
/nas3/ENVISAT/GOMOS/GOM_NL__0P/GOM_NL__0PNPDK20120217_181222_000009223111_00400_52138_5616.N1
1; -297.8; 17-FEB-2012 18:12:22; Dark ; 43.0; 25; 35Lam Sco ; 1.62; 28000;occ; 86; 0;52138
2; 417.3; 17-FEB-2012 18:24:17; Dark ; 48.0; 10; Bet Cen ; 0.61; 28000;occ; 96; 0;52139
3; 584.6; 17-FEB-2012 18:27:04; Dark ; 40.5; 20; Bet Cru ; 1.25; 30000;occ; 81; 0;52139
/nas3/ENVISAT/GOMOS/GOM_NL__0P/GOM_NL__0PNPDK20120217_195237_000009263111_00401_52139_5617.N1
1; -297.2; 17-FEB-2012 19:52:37; Dark ; 41.0; 25; 35Lam Sco ; 1.62; 28000;occ; 82; 0;52139
2; 418.0; 17-FEB-2012 20:04:32; Dark ; 47.0; 10; Bet Cen ; 0.61; 28000;occ; 94; 0;52140
3; 585.1; 17-FEB-2012 20:07:19; Dark ; 44.0; 20; Bet Cru ; 1.25; 30000;occ; 88; 0;52140
/nas3/ENVISAT/GOMOS/GOM_NL__0P/GOM_NL__0PNPDE20120218_005320_000009233111_00404_52142_6624.N1
1; -295.3; 18-FEB-2012 00:53:20; Dark ; 33.0; 25; 35Lam Sco ; 1.62; 28000;occ; 66; 0;52142
2; 419.8; 18-FEB-2012 01:05:15; Dark ; 45.0; 10; Bet Cen ; 0.61; 28000;occ; 90; 0;52143
3; 586.7; 18-FEB-2012 01:08:02; Dark ; 41.5; 20; Bet Cru ; 1.25; 30000;occ; 83; 0;52143
/nas3/ENVISAT/GOMOS/GOM_NL__0P/GOM_NL__0PNPDE20120218_023335_000009293111_00405_52143_6625.N1
1; -294.6; 18-FEB-2012 02:33:35; Dark ; 28.0; 25; 35Lam Sco ; 1.62; 28000;occ; 56; 0;52143
2; 420.5; 18-FEB-2012 02:45:30; Dark ; 45.5; 10; Bet Cen ; 0.61; 28000;occ; 91; 0;52144
3; 587.3; 18-FEB-2012 02:48:16; Dark ; 48.0; 20; Bet Cru ; 1.25; 30000;occ; 96; 0;52144
/nas3/ENVISAT/GOMOS/GOM_NL__0P/GOM_NL__0PNPDE20120218_042544_000009503111_00407_52145_6626.N1
1; 420.9; 18-FEB-2012 04:25:44; Dark ; 51.0; 10; Bet Cen ; 0.61; 28000;occ; 102; 0;52145
/nas3/ENVISAT/GOMOS/GOM_NL__0P/GOM_NL__0PNPDE20120218_060559_000009453111_00408_52146_6627.N1
1; 421.5; 18-FEB-2012 06:05:59; Dark ; 45.5; 10; Bet Cen ; 0.61; 28000;occ; 91; 0;52146
/nas3/ENVISAT/GOMOS/GOM_NL__0P/GOM_NL__0PNPDE20120218_224824_000009423111_00418_52156_6628.N1
1; 427.7; 18-FEB-2012 22:48:24; Dark ; 42.5; 10; Bet Cen ; 0.61; 28000;occ; 85; 0;52156
/nas3/ENVISAT/GOMOS/GOM_NL__0P/GOM_NL__0PNPDK20120218_074613_000009493111_00409_52147_5618.N1
1; 422.2; 18-FEB-2012 07:46:13; Dark ; 50.0; 10; Bet Cen ; 0.61; 28000;occ; 100; 0;52147
/nas3/ENVISAT/GOMOS/GOM_NL__0P/GOM_NL__0PNPDK20120218_092628_000009533111_00410_52148_5619.N1
1; 422.8; 18-FEB-2012 09:26:28; Dark ; 53.5; 10; Bet Cen ; 0.61; 28000;occ; 107; 0;52148
/nas3/ENVISAT/GOMOS/GOM_NL__0P/GOM_NL__0PNPDK20120218_110642_000009503111_00411_52149_5620.N1
1; 423.4; 18-FEB-2012 11:06:42; Dark ; 50.5; 10; Bet Cen ; 0.61; 28000;occ; 101; 0;52149
/nas3/ENVISAT/GOMOS/GOM_NL__0P/GOM_NL__0PNPDK20120218_124657_000009393111_00412_52150_5621.N1
1; 424.0; 18-FEB-2012 12:46:57; Dark ; 40.0; 10; Bet Cen ; 0.61; 28000;occ; 80; 0;52150
/nas3/ENVISAT/GOMOS/GOM_NL__0P/GOM_NL__0PNPDK20120218_142711_000009433111_00413_52151_5622.N1
1; 424.6; 18-FEB-2012 14:27:11; Dark ; 43.5; 10; Bet Cen ; 0.61; 28000;occ; 87; 0;52151
/nas3/ENVISAT/GOMOS/GOM_NL__0P/GOM_NL__0PNPDK20120218_160726_000009433111_00414_52152_5623.N1
1; 425.4; 18-FEB-2012 16:07:26; Dark ; 44.0; 10; Bet Cen ; 0.61; 28000;occ; 88; 0;52152
/nas3/ENVISAT/GOMOS/GOM_NL__0P/GOM_NL__0PNPDK20120218_174740_000009453111_00415_52153_5624.N1
1; 425.9; 18-FEB-2012 17:47:40; Dark ; 46.0; 10; Bet Cen ; 0.61; 28000;occ; 92; 0;52153
/nas3/ENVISAT/GOMOS/GOM_NL__0P/GOM_NL__0PNPDK20120218_192755_000009473111_00416_52154_5625.N1
1; 426.5; 18-FEB-2012 19:27:55; Dark ; 47.5; 10; Bet Cen ; 0.61; 28000;occ; 95; 0;52154
/nas3/ENVISAT/GOMOS/GOM_NL__0P/GOM_NL__0PNPDK20120218_210810_000009403111_00417_52155_5626.N1
1; 427.1; 18-FEB-2012 21:08:10; Dark ; 41.0; 10; Bet Cen ; 0.61; 28000;occ; 82; 0;52155
/nas3/ENVISAT/GOMOS/GOM_NL__0P/GOM_NL__0PNPDE20120219_002838_000009473111_00419_52157_6629.N1
1; 428.2; 19-FEB-2012 00:28:38; Dark ; 47.5; 10; Bet Cen ; 0.61; 28000;occ; 95; 0;52157
/nas3/ENVISAT/GOMOS/GOM_NL__0P/GOM_NL__0PNPDE20120219_020853_000009443111_00420_52158_6630.N1
1; 428.8; 19-FEB-2012 02:08:53; Dark ; 44.5; 10; Bet Cen ; 0.61; 28000;occ; 89; 0;52158
/nas3/ENVISAT/GOMOS/GOM_NL__0P/GOM_NL__0PNPDE20120219_034907_000009443111_00421_52159_6631.N1
1; 429.4; 19-FEB-2012 03:49:07; Dark ; 44.5; 10; Bet Cen ; 0.61; 28000;occ; 89; 0;52159
/nas3/ENVISAT/GOMOS/GOM_NL__0P/GOM_NL__0PNPDE20120219_052922_000009503111_00422_52160_6632.N1
1; 430.2; 19-FEB-2012 05:29:22; Dark ; 50.5; 10; Bet Cen ; 0.61; 28000;occ; 101; 0;52160
/nas3/ENVISAT/GOMOS/GOM_NL__0P/GOM_NL__0PNPDE20120219_221147_000009413112_00001_52170_6633.N1
1; 436.1; 19-FEB-2012 22:11:47; Dark ; 41.5; 10; Bet Cen ; 0.61; 28000;occ; 83; 0;52170
/nas3/ENVISAT/GOMOS/GOM_NL__0P/GOM_NL__0PNPDE20120219_235202_000009453112_00002_52171_6634.N1
1; 436.8; 19-FEB-2012 23:52:02; Dark ; 46.0; 10; Bet Cen ; 0.61; 28000;occ; 92; 0;52171
/nas3/ENVISAT/GOMOS/GOM_NL__0P/GOM_NL__0PNPDK20120219_070937_000009463111_00423_52161_5627.N1
1; 430.8; 19-FEB-2012 07:09:37; Dark ; 46.5; 10; Bet Cen ; 0.61; 28000;occ; 93; 0;52161
/nas3/ENVISAT/GOMOS/GOM_NL__0P/GOM_NL__0PNPDK20120219_084951_000009403111_00424_52162_5628.N1
1; 431.5; 19-FEB-2012 08:49:51; Dark ; 41.0; 10; Bet Cen ; 0.61; 28000;occ; 82; 0;52162
/nas3/ENVISAT/GOMOS/GOM_NL__0P/GOM_NL__0PNPDK20120219_103006_000009523111_00425_52163_5629.N1
1; 432.0; 19-FEB-2012 10:30:06; Dark ; 53.0; 10; Bet Cen ; 0.61; 28000;occ; 106; 0;52163
/nas3/ENVISAT/GOMOS/GOM_NL__0P/GOM_NL__0PNPDK20120219_121020_000009423111_00426_52164_5630.N1
1; 432.5; 19-FEB-2012 12:10:20; Dark ; 42.5; 10; Bet Cen ; 0.61; 28000;occ; 85; 0;52164
/nas3/ENVISAT/GOMOS/GOM_NL__0P/GOM_NL__0PNPDK20120219_135035_000009413111_00427_52165_5631.N1
1; 433.2; 19-FEB-2012 13:50:35; Dark ; 42.0; 10; Bet Cen ; 0.61; 28000;occ; 84; 0;52165
/nas3/ENVISAT/GOMOS/GOM_NL__0P/GOM_NL__0PNPDK20120219_153049_000009393111_00428_52166_5632.N1
1; 433.8; 19-FEB-2012 15:30:49; Dark ; 40.0; 10; Bet Cen ; 0.61; 28000;occ; 80; 0;52166

/nas3/ENVISAT/GOMOS/GOM_NL__0P/GOM_NL__0PNPDK20120219_171104_00000413111_00429_52167_5633.N1
1; 434.4; 19-FEB-2012 17:11:04; Dark ; 41.5; 10; Bet Cen ; 0.61; 28000;occ; 83; 0;52167

/nas3/ENVISAT/GOMOS/GOM_NL__0P/GOM_NL__0PNPDK20120219_185118_00000413111_00430_52168_5634.N1
1; 435.0; 19-FEB-2012 18:51:18; Dark ; 41.5; 10; Bet Cen ; 0.61; 28000;occ; 83; 0;52168

/nas3/ENVISAT/GOMOS/GOM_NL__0P/GOM_NL__0PNPDE20120220_013216_000060653112_00003_52172_6635.N1
1; 437.4; 20-FEB-2012 01:32:16; Dark ; 41.0; 10; Bet Cen ; 0.61; 28000;occ; 82; 0;52172
2; 6452.0; 20-FEB-2012 03:12:31; Dark ; 50.5; 10; Bet Cen ; 0.61; 28000;occ; 101; 0;52173

/nas3/ENVISAT/GOMOS/GOM_NL__0P/GOM_NL__0PNPDE20120220_045245_00000473112_00005_52174_6636.N1
1; 438.7; 20-FEB-2012 04:52:45; Dark ; 48.0; 10; Bet Cen ; 0.61; 28000;occ; 96; 0;52174

/nas3/ENVISAT/GOMOS/GOM_NL__0P/GOM_NL__0PNPDE20120220_063300_00000433112_00006_52175_6637.N1
1; 439.1; 20-FEB-2012 06:33:00; Dark ; 43.5; 10; Bet Cen ; 0.61; 28000;occ; 87; 0;52175

/nas3/ENVISAT/GOMOS/GOM_NL__0P/GOM_NL__0PNPDE20120220_212027_00009243112_00014_52183_6638.N1
1; -438.9; 20-FEB-2012 21:20:27; Dark ; 43.0; 167; 10Gam2Sgr ; 2.98; 4500;occ; 86; 0;52183
2; -263.5; 20-FEB-2012 21:23:22; Dark ; 39.5; 85; Kap Sco ; 2.41; 28000;occ; 79; 0;52183
3; 444.5; 20-FEB-2012 21:35:10; Dark ; 41.0; 10; Bet Cen ; 0.61; 28000;occ; 82; 0;52184

/nas3/ENVISAT/GOMOS/GOM_NL__0P/GOM_NL__0PNPDE20120220_230041_00009283112_00015_52184_6639.N1
1; -438.5; 20-FEB-2012 23:00:41; Dark ; 46.5; 167; 10Gam2Sgr ; 2.98; 4500;occ; 93; 0;52184
2; -262.8; 20-FEB-2012 23:03:37; Dark ; 40.0; 85; Kap Sco ; 2.41; 28000;occ; 80; 0;52184
3; 445.1; 20-FEB-2012 23:15:25; Dark ; 45.0; 10; Bet Cen ; 0.61; 28000;occ; 90; 0;52185

/nas3/ENVISAT/GOMOS/GOM_NL__0P/GOM_NL__0PNPDK20120220_081315_00000483112_00007_52176_5635.N1
1; 439.9; 20-FEB-2012 08:13:15; Dark ; 49.0; 10; Bet Cen ; 0.61; 28000;occ; 98; 0;52176

/nas3/ENVISAT/GOMOS/GOM_NL__0P/GOM_NL__0PNPDK20120220_095329_00000483112_00008_52177_5636.N1
1; 440.4; 20-FEB-2012 09:53:29; Dark ; 49.0; 10; Bet Cen ; 0.61; 28000;occ; 98; 0;52177

/nas3/ENVISAT/GOMOS/GOM_NL__0P/GOM_NL__0PNPDK20120220_113343_00000433112_00009_52178_5637.N1
1; 441.0; 20-FEB-2012 11:33:43; Dark ; 43.5; 10; Bet Cen ; 0.61; 28000;occ; 87; 0;52178

/nas3/ENVISAT/GOMOS/GOM_NL__0P/GOM_NL__0PNPDK20120220_131358_00000423112_00010_52179_5638.N1
1; 441.6; 20-FEB-2012 13:13:58; Dark ; 42.5; 10; Bet Cen ; 0.61; 28000;occ; 85; 0;52179

/nas3/ENVISAT/GOMOS/GOM_NL__0P/GOM_NL__0PNPDK20120220_144225_000007483112_00010_52179_5639.N1
1; -264.8; 20-FEB-2012 14:42:25; Dark ; 41.0; 85; Kap Sco ; 2.41; 28000;occ; 82; 0;52179
2; 442.3; 20-FEB-2012 14:54:12; Dark ; 41.5; 10; Bet Cen ; 0.61; 28000;occ; 83; 0;52180

/nas3/ENVISAT/GOMOS/GOM_NL__0P/GOM_NL__0PNPDK20120220_162239_000007523112_00011_52180_5640.N1
1; -265.2; 20-FEB-2012 16:22:39; Dark ; 41.5; 85; Kap Sco ; 2.41; 28000;occ; 83; 0;52180
2; 442.9; 20-FEB-2012 16:34:27; Dark ; 44.5; 10; Bet Cen ; 0.61; 28000;occ; 89; 0;52181

/nas3/ENVISAT/GOMOS/GOM_NL__0P/GOM_NL__0PNPDK20120220_175958_00009243112_00012_52181_5641.N1
1; -439.9; 20-FEB-2012 17:59:58; Dark ; 45.0; 167; 10Gam2Sgr ; 2.98; 4500;occ; 90; 0;52181
2; -264.6; 20-FEB-2012 18:02:54; Dark ; 41.5; 85; Kap Sco ; 2.41; 28000;occ; 83; 0;52181
3; 443.4; 20-FEB-2012 18:14:42; Dark ; 41.5; 10; Bet Cen ; 0.61; 28000;occ; 83; 0;52182

/nas3/ENVISAT/GOMOS/GOM_NL__0P/GOM_NL__0PNPDK20120220_194013_00009263112_00013_52182_5642.N1
1; -439.4; 20-FEB-2012 19:40:13; Dark ; 42.0; 167; 10Gam2Sgr ; 2.98; 4500;occ; 84; 0;52182
2; -264.1; 20-FEB-2012 19:43:08; Dark ; 40.5; 85; Kap Sco ; 2.41; 28000;occ; 81; 0;52182
3; 443.9; 20-FEB-2012 19:54:56; Dark ; 43.5; 10; Bet Cen ; 0.61; 28000;occ; 87; 0;52183

/nas3/ENVISAT/GOMOS/GOM_NL__0P/GOM_NL__0PNPDE20120221_004056_00009333112_00016_52185_6640.N1
1; -437.8; 21-FEB-2012 00:40:56; Dark ; 46.0; 167; 10Gam2Sgr ; 2.98; 4500;occ; 92; 0;52185
2; 445.6; 21-FEB-2012 00:55:39; Dark ; 50.0; 10; Bet Cen ; 0.61; 28000;occ; 100; 0;52186

/nas3/ENVISAT/GOMOS/GOM_NL__0P/GOM_NL__0PNPDE20120221_022406_000007503112_00017_52186_6641.N1
1; -261.5; 21-FEB-2012 02:24:06; Dark ; 41.5; 85; Kap Sco ; 2.41; 28000;occ; 83; 0;52186
2; 446.4; 21-FEB-2012 02:35:54; Dark ; 43.0; 10; Bet Cen ; 0.61; 28000;occ; 86; 0;52187

/nas3/ENVISAT/GOMOS/GOM_NL__0P/GOM_NL__0PNPDE20120221_040125_00009363112_00018_52187_6642.N1
1; -436.6; 21-FEB-2012 04:01:25; Dark ; 39.5; 167; 10Gam2Sgr ; 2.98; 4500;occ; 79; 0;52187
2; -260.9; 21-FEB-2012 04:04:21; Dark ; 41.5; 85; Kap Sco ; 2.41; 28000;occ; 83; 0;52187
3; 447.1; 21-FEB-2012 04:16:09; Dark ; 52.5; 10; Bet Cen ; 0.61; 28000;occ; 105; 0;52188

/nas3/ENVISAT/GOMOS/GOM_NL__0P/GOM_NL__0PNPDE20120221_054140_00009243112_00019_52188_6643.N1
1; -436.0; 21-FEB-2012 05:41:40; Dark ; 45.0; 167; 10Gam2Sgr ; 2.98; 4500;occ; 90; 0;52188
2; -260.1; 21-FEB-2012 05:44:35; Dark ; 41.5; 85; Kap Sco ; 2.41; 28000;occ; 83; 0;52188
3; 447.8; 21-FEB-2012 05:56:23; Dark ; 40.5; 10; Bet Cen ; 0.61; 28000;occ; 81; 0;52189

/nas3/ENVISAT/GOMOS/GOM_NL__0P/GOM_NL__0PNPDE20120221_211955_00000353112_00029_52198_6644.N1
1; 1734.2; 21-FEB-2012 21:19:55; Dark ; 35.5; 48; 30Alp Hya ; 1.98; 4100;occ; 71; 0;52198

/nas3/ENVISAT/GOMOS/GOM_NL__0P/GOM_NL__0PNPDE20120221_222701_000020293112_00029_52198_6645.N1
1; -253.8; 21-FEB-2012 22:27:01; Dark ; 26.0; 85; Kap Sco ; 2.41; 28000;occ; 52; 0;52198
2; 453.7; 21-FEB-2012 22:38:48; Dark ; 44.5; 10; Bet Cen ; 0.61; 28000;occ; 89; 0;52199
3; 1734.3; 21-FEB-2012 23:00:09; Dark ; 41.5; 48; 30Alp Hya ; 1.98; 4100;occ; 83; 0;52199

/nas3/ENVISAT/GOMOS/GOM_NL__0P/GOM_NL__0PNPDK20120221_072154_00009313112_00020_52189_5643.N1
1; -435.1; 21-FEB-2012 07:21:54; Dark ; 45.5; 167; 10Gam2Sgr ; 2.98; 4500;occ; 91; 0;52189
2; -259.5; 21-FEB-2012 07:24:50; Dark ; 44.5; 85; Kap Sco ; 2.41; 28000;occ; 89; 0;52189
3; 448.4; 21-FEB-2012 07:36:38; Dark ; 48.0; 10; Bet Cen ; 0.61; 28000;occ; 96; 0;52190

/nas3/ENVISAT/GOMOS/GOM_NL__0P/GOM_NL__0PNPDK20120221_090209_00009323112_00021_52190_5644.N1
1; -434.6; 21-FEB-2012 09:02:09; Dark ; 43.0; 167; 10Gam2Sgr ; 2.98; 4500;occ; 86; 0;52190
2; -258.8; 21-FEB-2012 09:05:04; Dark ; 42.0; 85; Kap Sco ; 2.41; 28000;occ; 84; 0;52190

```

3; 449.0; 21-FEB-2012 09:16:52; Dark ; 48.5; 10; Bet Cen ; 0.61; 28000;occ; 97; 0;52191
/nas3/ENVISAT/GOMOS/GOM_NL__0P/GOM_NL__0PNPDK20120221_104223_000009263112_00022_52191_5645.N1
1; -433.9; 21-FEB-2012 10:42:23; Dark ; 43.5; 167; 10Gam2Sgr ; 2.98; 4500;occ; 87; 0;52191
2; -258.2; 21-FEB-2012 10:45:19; Dark ; 44.0; 85; Kap Sco ; 2.41; 28000;occ; 88; 0;52191
3; 449.6; 21-FEB-2012 10:57:07; Dark ; 43.0; 10; Bet Cen ; 0.61; 28000;occ; 86; 0;52192
/nas3/ENVISAT/GOMOS/GOM_NL__0P/GOM_NL__0PNPDK20120221_122238_000009273112_00023_52192_5646.N1
1; -433.4; 21-FEB-2012 12:22:38; Dark ; 45.5; 167; 10Gam2Sgr ; 2.98; 4500;occ; 91; 0;52192
2; -257.5; 21-FEB-2012 12:25:33; Dark ; 41.0; 85; Kap Sco ; 2.41; 28000;occ; 82; 0;52192
3; 450.2; 21-FEB-2012 12:37:21; Dark ; 44.0; 10; Bet Cen ; 0.61; 28000;occ; 88; 0;52193
/nas3/ENVISAT/GOMOS/GOM_NL__0P/GOM_NL__0PNPDK20120221_140252_000009283112_00024_52193_5647.N1
1; -432.9; 21-FEB-2012 14:02:52; Dark ; 43.5; 167; 10Gam2Sgr ; 2.98; 4500;occ; 87; 0;52193
2; -256.9; 21-FEB-2012 14:05:48; Dark ; 40.0; 85; Kap Sco ; 2.41; 28000;occ; 80; 0;52193
3; 450.7; 21-FEB-2012 14:17:36; Dark ; 45.0; 10; Bet Cen ; 0.61; 28000;occ; 90; 0;52194
/nas3/ENVISAT/GOMOS/GOM_NL__0P/GOM_NL__0PNPDK20120221_154307_000009363112_00025_52194_5648.N1
1; -432.1; 21-FEB-2012 15:43:07; Dark ; 40.0; 167; 10Gam2Sgr ; 2.98; 4500;occ; 80; 0;52194
2; -256.2; 21-FEB-2012 15:46:03; Dark ; 41.0; 85; Kap Sco ; 2.41; 28000;occ; 82; 0;52194
3; 451.4; 21-FEB-2012 15:57:50; Dark ; 53.0; 10; Bet Cen ; 0.61; 28000;occ; 106; 0;52195
/nas3/ENVISAT/GOMOS/GOM_NL__0P/GOM_NL__0PNPDK20120221_172321_000009253112_00026_52195_5649.N1
1; -431.5; 21-FEB-2012 17:23:21; Dark ; 34.0; 167; 10Gam2Sgr ; 2.98; 4500;occ; 68; 0;52195
2; -255.6; 21-FEB-2012 17:26:17; Dark ; 40.0; 85; Kap Sco ; 2.41; 28000;occ; 80; 0;52195
3; 451.9; 21-FEB-2012 17:38:05; Dark ; 42.5; 10; Bet Cen ; 0.61; 28000;occ; 85; 0;52196
/nas3/ENVISAT/GOMOS/GOM_NL__0P/GOM_NL__0PNPDK20120221_190336_000009243112_00027_52196_5650.N1
1; -431.1; 21-FEB-2012 19:03:36; Dark ; 29.0; 167; 10Gam2Sgr ; 2.98; 4500;occ; 58; 0;52196
2; -255.2; 21-FEB-2012 19:06:32; Dark ; 35.0; 85; Kap Sco ; 2.41; 28000;occ; 70; 0;52196
3; 452.4; 21-FEB-2012 19:18:19; Dark ; 41.0; 10; Bet Cen ; 0.61; 28000;occ; 82; 0;52197
/nas3/ENVISAT/GOMOS/GOM_NL__0P/GOM_NL__0PNPDK20120221_193941_000047753112_00028_52197_5651.N1
1; 1734.2; 21-FEB-2012 19:39:41; Dark ; 31.0; 48; 30Alp Hya ; 1.98; 4100;occ; 62; 0;52197
2; 5759.5; 21-FEB-2012 20:46:46; Dark ; 31.0; 85; Kap Sco ; 2.41; 28000;occ; 62; 0;52197
3; 6467.1; 21-FEB-2012 20:58:34; Dark ; 43.0; 10; Bet Cen ; 0.61; 28000;occ; 86; 0;52198
/nas3/ENVISAT/GOMOS/GOM_NL__0P/GOM_NL__0PNPDE20120222_001903_000013263112_00031_52200_6646.N1
1; 454.1; 22-FEB-2012 00:19:03; Dark ; 50.5; 10; Bet Cen ; 0.61; 28000;occ; 101; 0;52200
2; 1734.3; 22-FEB-2012 00:40:23; Dark ; 46.5; 48; 30Alp Hya ; 1.98; 4100;occ; 93; 0;52200
/nas3/ENVISAT/GOMOS/GOM_NL__0P/GOM_NL__0PNPDE20120222_015917_000013273112_00032_52201_6647.N1
1; 454.9; 22-FEB-2012 01:59:17; Dark ; 47.0; 10; Bet Cen ; 0.61; 28000;occ; 94; 0;52201
2; 1734.4; 22-FEB-2012 02:20:37; Dark ; 48.0; 48; 30Alp Hya ; 1.98; 4100;occ; 96; 0;52201
/nas3/ENVISAT/GOMOS/GOM_NL__0P/GOM_NL__0PNPDE20120222_033932_000013263112_00033_52202_6648.N1
1; 455.6; 22-FEB-2012 03:39:32; Dark ; 52.0; 10; Bet Cen ; 0.61; 28000;occ; 104; 0;52202
2; 1734.7; 22-FEB-2012 04:00:51; Dark ; 47.0; 48; 30Alp Hya ; 1.98; 4100;occ; 94; 0;52202
/nas3/ENVISAT/GOMOS/GOM_NL__0P/GOM_NL__0PNPDE20120222_051946_000013243112_00034_52203_6649.N1
1; 456.0; 22-FEB-2012 05:19:46; Dark ; 47.0; 10; Bet Cen ; 0.61; 28000;occ; 94; 0;52203
2; 1734.8; 22-FEB-2012 05:41:05; Dark ; 46.0; 48; 30Alp Hya ; 1.98; 4100;occ; 92; 0;52203
/nas3/ENVISAT/GOMOS/GOM_NL__0P/GOM_NL__0PNPDE20120222_215129_000008913112_00043_52212_6650.N1
1; -180.8; 22-FEB-2012 21:51:29; Dark ; 41.5; 40; The Sco ; 1.86; 7100;occ; 83; 0;52212
2; 462.2; 22-FEB-2012 22:02:12; Dark ; 46.5; 10; Bet Cen ; 0.61; 28000;occ; 93; 0;52213
3; 683.2; 22-FEB-2012 22:05:53; Dark ; 27.5; 26; Gam Cru ; 1.62; 2900;occ; 55; 0;52213
/nas3/ENVISAT/GOMOS/GOM_NL__0P/GOM_NL__0PNPDE20120222_233143_000008923112_00044_52213_6651.N1
1; -180.2; 22-FEB-2012 23:31:43; Dark ; 41.0; 40; The Sco ; 1.86; 7100;occ; 82; 0;52213
2; 462.7; 22-FEB-2012 23:42:26; Dark ; 43.0; 10; Bet Cen ; 0.61; 28000;occ; 86; 0;52214
3; 683.7; 22-FEB-2012 23:46:07; Dark ; 28.5; 26; Gam Cru ; 1.62; 2900;occ; 57; 0;52214
/nas3/ENVISAT/GOMOS/GOM_NL__0P/GOM_NL__0PNPDK20120222_070001_000012993112_00035_52204_5652.N1
1; 456.7; 22-FEB-2012 07:00:01; Dark ; 48.5; 10; Bet Cen ; 0.61; 28000;occ; 97; 0;52204
2; 1734.8; 22-FEB-2012 07:21:19; Dark ; 21.5; 48; 30Alp Hya ; 1.98; 4100;occ; 43; 0;52204
/nas3/ENVISAT/GOMOS/GOM_NL__0P/GOM_NL__0PNPDK20120222_072119_000047873112_00035_52204_5653.N1
1; 1734.8; 22-FEB-2012 07:21:19; Dark ; 48.0; 48; 30Alp Hya ; 1.98; 4100;occ; 96; 0;52204
2; 6471.2; 22-FEB-2012 08:40:15; Dark ; 51.5; 10; Bet Cen ; 0.61; 28000;occ; 103; 0;52205
/nas3/ENVISAT/GOMOS/GOM_NL__0P/GOM_NL__0PNPDK20120222_090133_000047893112_00036_52205_5654.N1
1; 1735.0; 22-FEB-2012 09:01:33; Dark ; 47.5; 48; 30Alp Hya ; 1.98; 4100;occ; 95; 0;52205
2; 6471.9; 22-FEB-2012 10:20:30; Dark ; 53.0; 10; Bet Cen ; 0.61; 28000;occ; 106; 0;52206
/nas3/ENVISAT/GOMOS/GOM_NL__0P/GOM_NL__0PNPDK20120222_104147_000047903112_00037_52206_5655.N1
1; 1735.0; 22-FEB-2012 10:41:47; Dark ; 48.5; 48; 30Alp Hya ; 1.98; 4100;occ; 97; 0;52206
2; 4750.5; 22-FEB-2012 11:32:02; Bright; 36.0; 168; 17Zet Aql ; 2.99; 11000;occ; 72; 0;52206
3; 6472.5; 22-FEB-2012 12:00:44; Dark ; 53.0; 10; Bet Cen ; 0.61; 28000;occ; 106; 0;52207
/nas3/ENVISAT/GOMOS/GOM_NL__0P/GOM_NL__0PNPDK20120222_131217_000017643112_00038_52207_5656.N1
1; -1263.1; 22-FEB-2012 13:12:17; Bright; 41.5; 168; 17Zet Aql ; 2.99; 11000;occ; 83; 0;52207
2; 459.2; 22-FEB-2012 13:40:59; Dark ; 42.5; 10; Bet Cen ; 0.61; 28000;occ; 85; 0;52208
/nas3/ENVISAT/GOMOS/GOM_NL__0P/GOM_NL__0PNPDK20120222_145231_000017693112_00039_52208_5657.N1
1; -1262.8; 22-FEB-2012 14:52:31; Bright; 37.0; 168; 17Zet Aql ; 2.99; 11000;occ; 74; 0;52208
2; 459.9; 22-FEB-2012 15:21:13; Dark ; 46.5; 10; Bet Cen ; 0.61; 28000;occ; 93; 0;52209

```

/nas3/ENVISAT/GOMOS/GOM_NL__0P/GOM_NL__0PNPDK20120222_163245_000017653112_00040_52209_5658.N1
1; -1262.5; 22-FEB-2012 16:32:45; Bright; 55.0; 168; 17Zet Aql ; 2.99; 11000;occ; 110; 0;52209
2; 460.4; 22-FEB-2012 17:01:28; Dark ; 43.0; 10; Bet Cen ; 0.61; 28000;occ; 86; 0;52210

/nas3/ENVISAT/GOMOS/GOM_NL__0P/GOM_NL__0PNPDK20120222_181259_000019683112_00041_52210_5659.N1
1; -1262.2; 22-FEB-2012 18:12:59; Bright; 37.5; 168; 17Zet Aql ; 2.99; 11000;occ; 75; 0;52210
2; 461.0; 22-FEB-2012 18:41:43; Dark ; 51.0; 10; Bet Cen ; 0.61; 28000;occ; 102; 0;52211
3; 682.1; 22-FEB-2012 18:45:24; Dark ; 24.5; 26; Gam Cru ; 1.62; 2900;occ; 49; 0;52211

/nas3/ENVISAT/GOMOS/GOM_NL__0P/GOM_NL__0PNPDK20120222_201013_000009513112_00042_52211_5660.N1
1; -242.7; 22-FEB-2012 20:10:13; Dark ; 44.0; 178; Tot1Sco ; 3.02; 6550;occ; 88; 0;52211
2; 461.6; 22-FEB-2012 20:21:57; Dark ; 45.5; 10; Bet Cen ; 0.61; 28000;occ; 91; 0;52212
3; 682.7; 22-FEB-2012 20:25:38; Dark ; 26.5; 26; Gam Cru ; 1.62; 2900;occ; 53; 0;52212

/nas3/ENVISAT/GOMOS/GOM_NL__0P/GOM_NL__0PNPDE20120223_011158_000069093112_00045_52214_6652.N1
1; -179.6; 23-FEB-2012 01:11:58; Dark ; 49.5; 40; The Sco ; 1.86; 7100;occ; 99; 0;52214
2; 463.4; 23-FEB-2012 01:22:40; Dark ; 44.5; 10; Bet Cen ; 0.61; 28000;occ; 89; 0;52215
3; 684.3; 23-FEB-2012 01:26:21; Dark ; 30.0; 26; Gam Cru ; 1.62; 2900;occ; 60; 0;52215
4; 6477.9; 23-FEB-2012 03:02:55; Dark ; 45.5; 10; Bet Cen ; 0.61; 28000;occ; 91; 0;52216
5; 6698.8; 23-FEB-2012 03:06:36; Dark ; 31.5; 26; Gam Cru ; 1.62; 2900;occ; 63; 0;52216

/nas3/ENVISAT/GOMOS/GOM_NL__0P/GOM_NL__0PNPDE20120223_043227_000008963112_00047_52216_6653.N1
1; -178.3; 23-FEB-2012 04:32:27; Dark ; 50.5; 40; The Sco ; 1.86; 7100;occ; 101; 0;52216
2; 464.6; 23-FEB-2012 04:43:10; Dark ; 46.5; 10; Bet Cen ; 0.61; 28000;occ; 93; 0;52217
3; 685.5; 23-FEB-2012 04:46:50; Dark ; 32.5; 26; Gam Cru ; 1.62; 2900;occ; 65; 0;52217

/nas3/ENVISAT/GOMOS/GOM_NL__0P/GOM_NL__0PNPDE20120223_061241_000008963112_00048_52217_6654.N1
1; -177.6; 23-FEB-2012 06:12:41; Dark ; 44.5; 40; The Sco ; 1.86; 7100;occ; 89; 0;52217
2; 465.1; 23-FEB-2012 06:23:24; Dark ; 49.0; 10; Bet Cen ; 0.61; 28000;occ; 98; 0;52218
3; 685.9; 23-FEB-2012 06:27:05; Dark ; 33.5; 26; Gam Cru ; 1.62; 2900;occ; 67; 0;52218

/nas3/ENVISAT/GOMOS/GOM_NL__0P/GOM_NL__0PNPDE20120223_211452_000009063112_00057_52226_6655.N1
1; -171.9; 23-FEB-2012 21:14:52; Dark ; 42.0; 40; The Sco ; 1.86; 7100;occ; 84; 0;52226
2; 470.4; 23-FEB-2012 21:25:35; Dark ; 42.0; 10; Bet Cen ; 0.61; 28000;occ; 84; 0;52227
3; 690.6; 23-FEB-2012 21:29:15; Dark ; 44.5; 26; Gam Cru ; 1.62; 2900;occ; 89; 0;52227

/nas3/ENVISAT/GOMOS/GOM_NL__0P/GOM_NL__0PNPDE20120223_225507_000009083112_00058_52227_6656.N1
1; -171.1; 23-FEB-2012 22:55:07; Dark ; 48.0; 40; The Sco ; 1.86; 7100;occ; 96; 0;52227
2; 471.0; 23-FEB-2012 23:05:49; Dark ; 44.0; 10; Bet Cen ; 0.61; 28000;occ; 88; 0;52228
3; 691.0; 23-FEB-2012 23:09:29; Dark ; 46.5; 26; Gam Cru ; 1.62; 2900;occ; 93; 0;52228

/nas3/ENVISAT/GOMOS/GOM_NL__0P/GOM_NL__0PNPDK20120223_075256_000008973112_00049_52218_5661.N1
1; -176.9; 23-FEB-2012 07:52:56; Dark ; 44.5; 40; The Sco ; 1.86; 7100;occ; 89; 0;52218
2; 465.8; 23-FEB-2012 08:03:39; Dark ; 41.0; 10; Bet Cen ; 0.61; 28000;occ; 82; 0;52219
3; 686.5; 23-FEB-2012 08:07:19; Dark ; 34.5; 26; Gam Cru ; 1.62; 2900;occ; 69; 0;52219

/nas3/ENVISAT/GOMOS/GOM_NL__0P/GOM_NL__0PNPDK20120223_093311_000008993112_00050_52219_5662.N1
1; -176.2; 23-FEB-2012 09:33:11; Dark ; 46.0; 40; The Sco ; 1.86; 7100;occ; 92; 0;52219
2; 466.4; 23-FEB-2012 09:43:53; Dark ; 53.5; 10; Bet Cen ; 0.61; 28000;occ; 107; 0;52220
3; 687.1; 23-FEB-2012 09:47:34; Dark ; 36.5; 26; Gam Cru ; 1.62; 2900;occ; 73; 0;52220

/nas3/ENVISAT/GOMOS/GOM_NL__0P/GOM_NL__0PNPDK20120223_111325_000009003112_00051_52220_5663.N1
1; -175.6; 23-FEB-2012 11:13:25; Dark ; 48.0; 40; The Sco ; 1.86; 7100;occ; 96; 0;52220
2; 466.9; 23-FEB-2012 11:24:08; Dark ; 50.5; 10; Bet Cen ; 0.61; 28000;occ; 101; 0;52221
3; 687.5; 23-FEB-2012 11:27:48; Dark ; 37.5; 26; Gam Cru ; 1.62; 2900;occ; 75; 0;52221

/nas3/ENVISAT/GOMOS/GOM_NL__0P/GOM_NL__0PNPDK20120223_125340_000009013112_00052_52221_5664.N1
1; -174.8; 23-FEB-2012 12:53:40; Dark ; 45.5; 40; The Sco ; 1.86; 7100;occ; 91; 0;52221
2; 467.5; 23-FEB-2012 13:04:22; Dark ; 44.5; 10; Bet Cen ; 0.61; 28000;occ; 89; 0;52222
3; 688.0; 23-FEB-2012 13:08:03; Dark ; 38.5; 26; Gam Cru ; 1.62; 2900;occ; 77; 0;52222

/nas3/ENVISAT/GOMOS/GOM_NL__0P/GOM_NL__0PNPDK20120223_143354_000009023112_00053_52222_5665.N1
1; -174.3; 23-FEB-2012 14:33:54; Dark ; 45.0; 40; The Sco ; 1.86; 7100;occ; 90; 0;52222
2; 468.1; 23-FEB-2012 14:44:37; Dark ; 41.0; 10; Bet Cen ; 0.61; 28000;occ; 82; 0;52223
3; 688.6; 23-FEB-2012 14:48:17; Dark ; 39.5; 26; Gam Cru ; 1.62; 2900;occ; 79; 0;52223

/nas3/ENVISAT/GOMOS/GOM_NL__0P/GOM_NL__0PNPDK20120223_161409_000009043112_00054_52223_5666.N1
1; -173.6; 23-FEB-2012 16:14:09; Dark ; 48.0; 40; The Sco ; 1.86; 7100;occ; 96; 0;52223
2; 468.8; 23-FEB-2012 16:24:51; Dark ; 43.5; 10; Bet Cen ; 0.61; 28000;occ; 87; 0;52224
3; 689.2; 23-FEB-2012 16:28:32; Dark ; 41.5; 26; Gam Cru ; 1.62; 2900;occ; 83; 0;52224

/nas3/ENVISAT/GOMOS/GOM_NL__0P/GOM_NL__0PNPDK20120223_175423_000009053112_00055_52224_5667.N1
1; -173.2; 23-FEB-2012 17:54:23; Dark ; 43.5; 40; The Sco ; 1.86; 7100;occ; 87; 0;52224
2; 469.4; 23-FEB-2012 18:05:06; Dark ; 43.0; 10; Bet Cen ; 0.61; 28000;occ; 86; 0;52225
3; 689.7; 23-FEB-2012 18:08:46; Dark ; 42.5; 26; Gam Cru ; 1.62; 2900;occ; 85; 0;52225

/nas3/ENVISAT/GOMOS/GOM_NL__0P/GOM_NL__0PNPDK20120223_193438_000009053112_00056_52225_5668.N1
1; -172.4; 23-FEB-2012 19:34:38; Dark ; 41.5; 40; The Sco ; 1.86; 7100;occ; 83; 0;52225
2; 469.9; 23-FEB-2012 19:45:20; Dark ; 52.5; 10; Bet Cen ; 0.61; 28000;occ; 105; 0;52226
3; 690.0; 23-FEB-2012 19:49:00; Dark ; 43.5; 26; Gam Cru ; 1.62; 2900;occ; 87; 0;52226

/nas3/ENVISAT/GOMOS/GOM_NL__0P/GOM_NL__0PNPDE20120224_003521_000009093112_00059_52228_6657.N1
1; -170.5; 24-FEB-2012 00:35:21; Dark ; 44.0; 40; The Sco ; 1.86; 7100;occ; 88; 0;52228
2; 471.5; 24-FEB-2012 00:46:03; Dark ; 45.0; 10; Bet Cen ; 0.61; 28000;occ; 90; 0;52229

```

3; 691.6; 24-FEB-2012 00:49:43; Dark ; 47.5; 26; Gam Cru ; 1.62; 2900;occ; 95; 0;52229
/nas3/ENVISAT/GOMOS/GOM_NL__0P/GOM_NL__0PNPDE20120224_021536_000009103112_00060_52229_6658.N1
1; -169.8; 24-FEB-2012 02:15:36; Dark ; 41.0; 40; The Sco ; 1.86; 7100;occ; 82; 0;52229
2; 472.2; 24-FEB-2012 02:26:18; Dark ; 46.0; 10; Bet Cen ; 0.61; 28000;occ; 92; 0;52230
3; 692.2; 24-FEB-2012 02:29:58; Dark ; 48.5; 26; Gam Cru ; 1.62; 2900;occ; 97; 0;52230
/nas3/ENVISAT/GOMOS/GOM_NL__0P/GOM_NL__0PNPDE20120224_035551_000009113112_00061_52230_6659.N1
1; -169.2; 24-FEB-2012 03:55:51; Dark ; 37.0; 40; The Sco ; 1.86; 7100;occ; 74; 0;52230
2; 472.9; 24-FEB-2012 04:06:33; Dark ; 54.0; 10; Bet Cen ; 0.61; 28000;occ; 108; 0;52231
3; 692.8; 24-FEB-2012 04:10:12; Dark ; 49.5; 26; Gam Cru ; 1.62; 2900;occ; 99; 0;52231
/nas3/ENVISAT/GOMOS/GOM_NL__0P/GOM_NL__0PNPDE20120224_053605_000009083112_00062_52231_6660.N1
1; -168.4; 24-FEB-2012 05:36:05; Dark ; 33.0; 40; The Sco ; 1.86; 7100;occ; 66; 0;52231
2; 473.5; 24-FEB-2012 05:46:47; Dark ; 47.5; 10; Bet Cen ; 0.61; 28000;occ; 95; 0;52232
3; 693.4; 24-FEB-2012 05:50:27; Dark ; 47.0; 26; Gam Cru ; 1.62; 2900;occ; 94; 0;52232
/nas3/ENVISAT/GOMOS/GOM_NL__0P/GOM_NL__0PNPDE20120224_221347_000011933112_00072_52241_6661.N1
1; -446.3; 24-FEB-2012 22:13:47; Dark ; 48.0; 116; 19Del Sgr ; 2.70; 4100;occ; 96; 0;52241
2; 479.4; 24-FEB-2012 22:29:13; Dark ; 42.0; 10; Bet Cen ; 0.61; 28000;occ; 84; 0;52242
3; 698.5; 24-FEB-2012 22:32:52; Dark ; 48.5; 26; Gam Cru ; 1.62; 2900;occ; 97; 0;52242
/nas3/ENVISAT/GOMOS/GOM_NL__0P/GOM_NL__0PNPDE20120224_235402_000012013112_00073_52242_6662.N1
1; -445.6; 24-FEB-2012 23:54:02; Dark ; 41.5; 116; 19Del Sgr ; 2.70; 4100;occ; 83; 0;52242
2; 479.9; 25-FEB-2012 00:09:27; Dark ; 42.0; 10; Bet Cen ; 0.61; 28000;occ; 84; 0;52243
3; 698.9; 25-FEB-2012 00:13:06; Dark ; 57.0; 26; Gam Cru ; 1.62; 2900;occ; 114; 0;52243
/nas3/ENVISAT/GOMOS/GOM_NL__0P/GOM_NL__0PNPDK20120224_071620_000009073112_00063_52232_5669.N1
1; -167.7; 24-FEB-2012 07:16:20; Dark ; 29.0; 40; The Sco ; 1.86; 7100;occ; 58; 0;52232
2; 474.2; 24-FEB-2012 07:27:02; Dark ; 50.0; 10; Bet Cen ; 0.61; 28000;occ; 100; 0;52233
3; 693.9; 24-FEB-2012 07:30:42; Dark ; 46.0; 26; Gam Cru ; 1.62; 2900;occ; 92; 0;52233
/nas3/ENVISAT/GOMOS/GOM_NL__0P/GOM_NL__0PNPDK20120224_085635_000009083112_00064_52233_5670.N1
1; -167.0; 24-FEB-2012 08:56:35; Dark ; 25.0; 40; The Sco ; 1.86; 7100;occ; 50; 0;52233
2; 474.8; 24-FEB-2012 09:07:16; Dark ; 42.0; 10; Bet Cen ; 0.61; 28000;occ; 84; 0;52234
3; 694.5; 24-FEB-2012 09:10:56; Dark ; 47.0; 26; Gam Cru ; 1.62; 2900;occ; 94; 0;52234
/nas3/ENVISAT/GOMOS/GOM_NL__0P/GOM_NL__0PNPDK20120224_103205_000011903112_00065_52234_5671.N1
1; -450.3; 24-FEB-2012 10:32:05; Dark ; 44.5; 116; 19Del Sgr ; 2.70; 4100;occ; 89; 0;52234
2; 475.4; 24-FEB-2012 10:47:31; Dark ; 51.5; 10; Bet Cen ; 0.61; 28000;occ; 103; 0;52235
3; 695.0; 24-FEB-2012 10:51:10; Dark ; 45.0; 26; Gam Cru ; 1.62; 2900;occ; 90; 0;52235
/nas3/ENVISAT/GOMOS/GOM_NL__0P/GOM_NL__0PNPDK20120224_121220_000011993112_00066_52235_5672.N1
1; -449.8; 24-FEB-2012 12:12:20; Dark ; 47.5; 116; 19Del Sgr ; 2.70; 4100;occ; 95; 0;52235
2; 476.0; 24-FEB-2012 12:27:45; Dark ; 44.0; 10; Bet Cen ; 0.61; 28000;occ; 88; 0;52236
3; 695.5; 24-FEB-2012 12:31:25; Dark ; 54.0; 26; Gam Cru ; 1.62; 2900;occ; 108; 0;52236
/nas3/ENVISAT/GOMOS/GOM_NL__0P/GOM_NL__0PNPDK20120224_135234_000012023112_00067_52236_5673.N1
1; -449.1; 24-FEB-2012 13:52:34; Dark ; 46.0; 116; 19Del Sgr ; 2.70; 4100;occ; 92; 0;52236
2; 476.5; 24-FEB-2012 14:08:00; Dark ; 41.5; 10; Bet Cen ; 0.61; 28000;occ; 83; 0;52237
3; 696.0; 24-FEB-2012 14:11:39; Dark ; 57.0; 26; Gam Cru ; 1.62; 2900;occ; 114; 0;52237
/nas3/ENVISAT/GOMOS/GOM_NL__0P/GOM_NL__0PNPDK20120224_153249_000012023112_00068_52237_5674.N1
1; -448.6; 24-FEB-2012 15:32:49; Dark ; 41.5; 116; 19Del Sgr ; 2.70; 4100;occ; 83; 0;52237
2; 477.0; 24-FEB-2012 15:48:14; Dark ; 48.0; 10; Bet Cen ; 0.61; 28000;occ; 96; 0;52238
3; 696.6; 24-FEB-2012 15:51:54; Dark ; 57.5; 26; Gam Cru ; 1.62; 2900;occ; 115; 0;52238
/nas3/ENVISAT/GOMOS/GOM_NL__0P/GOM_NL__0PNPDK20120224_171303_000012003112_00069_52238_5675.N1
1; -447.9; 24-FEB-2012 17:13:03; Dark ; 44.5; 116; 19Del Sgr ; 2.70; 4100;occ; 89; 0;52238
2; 477.7; 24-FEB-2012 17:28:29; Dark ; 44.0; 10; Bet Cen ; 0.61; 28000;occ; 88; 0;52239
3; 697.0; 24-FEB-2012 17:32:08; Dark ; 56.0; 26; Gam Cru ; 1.62; 2900;occ; 112; 0;52239
/nas3/ENVISAT/GOMOS/GOM_NL__0P/GOM_NL__0PNPDK20120224_185318_000011923112_00070_52239_5676.N1
1; -447.4; 24-FEB-2012 18:53:18; Dark ; 47.0; 116; 19Del Sgr ; 2.70; 4100;occ; 94; 0;52239
2; 478.2; 24-FEB-2012 19:08:44; Dark ; 44.5; 10; Bet Cen ; 0.61; 28000;occ; 89; 0;52240
3; 697.5; 24-FEB-2012 19:12:23; Dark ; 48.0; 26; Gam Cru ; 1.62; 2900;occ; 96; 0;52240
/nas3/ENVISAT/GOMOS/GOM_NL__0P/GOM_NL__0PNPDK20120224_203333_000011993112_00071_52240_5677.N1
1; -446.8; 24-FEB-2012 20:33:33; Dark ; 47.5; 116; 19Del Sgr ; 2.70; 4100;occ; 95; 0;52240
2; 478.8; 24-FEB-2012 20:48:58; Dark ; 51.5; 10; Bet Cen ; 0.61; 28000;occ; 103; 0;52241
3; 698.0; 24-FEB-2012 20:52:37; Dark ; 54.5; 26; Gam Cru ; 1.62; 2900;occ; 109; 0;52241
/nas3/ENVISAT/GOMOS/GOM_NL__0P/GOM_NL__0PNPDE20120225_013416_000072163112_00074_52243_6663.N1
1; -444.9; 25-FEB-2012 01:34:16; Dark ; 45.5; 116; 19Del Sgr ; 2.70; 4100;occ; 91; 0;52243
2; 480.5; 25-FEB-2012 01:49:42; Dark ; 45.5; 10; Bet Cen ; 0.61; 28000;occ; 91; 0;52244
3; 699.5; 25-FEB-2012 01:53:21; Dark ; 55.0; 26; Gam Cru ; 1.62; 2900;occ; 110; 0;52244
4; 5569.5; 25-FEB-2012 03:14:31; Dark ; 42.0; 116; 19Del Sgr ; 2.70; 4100;occ; 84; 0;52244
5; 6495.1; 25-FEB-2012 03:29:56; Dark ; 42.5; 10; Bet Cen ; 0.61; 28000;occ; 85; 0;52245
6; 6714.0; 25-FEB-2012 03:33:35; Dark ; 57.5; 26; Gam Cru ; 1.62; 2900;occ; 115; 0;52245
/nas3/ENVISAT/GOMOS/GOM_NL__0P/GOM_NL__0PNPDE20120225_045445_000011923112_00076_52245_6664.N1
1; -443.8; 25-FEB-2012 04:54:45; Dark ; 37.0; 116; 19Del Sgr ; 2.70; 4100;occ; 74; 0;52245
2; 481.7; 25-FEB-2012 05:10:11; Dark ; 41.0; 10; Bet Cen ; 0.61; 28000;occ; 82; 0;52246
3; 700.7; 25-FEB-2012 05:13:50; Dark ; 48.0; 26; Gam Cru ; 1.62; 2900;occ; 96; 0;52246

```

/nas3/ENVISAT/GOMOS/GOM_NL__0P/GOM_NL__0PNPDE20120225_215236_000002673112_00087_52256_6665.N1
1; 487.7; 25-FEB-2012 21:52:36; Dark ; 45.0; 10; Bet Cen ; 0.61; 28000;occ; 90; 0;52256
2; 705.9; 25-FEB-2012 21:56:14; Dark ; 49.0; 26; Gam Cru ; 1.62; 2900;occ; 98; 0;52256
/nas3/ENVISAT/GOMOS/GOM_NL__0P/GOM_NL__0PNPDE20120225_233251_000002743112_00088_52257_6666.N1
1; 488.4; 25-FEB-2012 23:32:51; Dark ; 42.5; 10; Bet Cen ; 0.61; 28000;occ; 85; 0;52257
2; 706.4; 25-FEB-2012 23:36:29; Dark ; 56.5; 26; Gam Cru ; 1.62; 2900;occ; 113; 0;52257
/nas3/ENVISAT/GOMOS/GOM_NL__0P/GOM_NL__0PNPDK20120225_063500_000011923112_00077_52246_5678.N1
1; -443.1; 25-FEB-2012 06:35:00; Dark ; 31.0; 116; 19Del Sgr ; 2.70; 4100;occ; 62; 0;52246
2; 482.5; 25-FEB-2012 06:50:25; Dark ; 48.0; 10; Bet Cen ; 0.61; 28000;occ; 96; 0;52247
3; 701.2; 25-FEB-2012 06:54:04; Dark ; 48.5; 26; Gam Cru ; 1.62; 2900;occ; 97; 0;52247
/nas3/ENVISAT/GOMOS/GOM_NL__0P/GOM_NL__0PNPDK20120225_081514_000012003112_00078_52247_5679.N1
1; -442.5; 25-FEB-2012 08:15:14; Dark ; 25.0; 116; 19Del Sgr ; 2.70; 4100;occ; 50; 0;52247
2; 483.1; 25-FEB-2012 08:30:40; Dark ; 51.0; 10; Bet Cen ; 0.61; 28000;occ; 102; 0;52248
3; 701.7; 25-FEB-2012 08:34:19; Dark ; 56.5; 26; Gam Cru ; 1.62; 2900;occ; 113; 0;52248
/nas3/ENVISAT/GOMOS/GOM_NL__0P/GOM_NL__0PNPDK20120225_101054_000002733112_00080_52249_5680.N1
1; 483.6; 25-FEB-2012 10:10:54; Dark ; 50.5; 10; Bet Cen ; 0.61; 28000;occ; 101; 0;52249
2; 702.2; 25-FEB-2012 10:14:33; Dark ; 55.0; 26; Gam Cru ; 1.62; 2900;occ; 110; 0;52249
/nas3/ENVISAT/GOMOS/GOM_NL__0P/GOM_NL__0PNPDK20120225_115109_000002673112_00081_52250_5681.N1
1; 484.2; 25-FEB-2012 11:51:09; Dark ; 41.0; 10; Bet Cen ; 0.61; 28000;occ; 82; 0;52250
2; 702.8; 25-FEB-2012 11:54:48; Dark ; 48.5; 26; Gam Cru ; 1.62; 2900;occ; 97; 0;52250
/nas3/ENVISAT/GOMOS/GOM_NL__0P/GOM_NL__0PNPDK20120225_133123_000002743112_00082_52251_5682.N1
1; 484.8; 25-FEB-2012 13:31:23; Dark ; 46.0; 10; Bet Cen ; 0.61; 28000;occ; 92; 0;52251
2; 703.2; 25-FEB-2012 13:35:02; Dark ; 56.5; 26; Gam Cru ; 1.62; 2900;occ; 113; 0;52251
/nas3/ENVISAT/GOMOS/GOM_NL__0P/GOM_NL__0PNPDK20120225_151138_000002743112_00083_52252_5683.N1
1; 485.4; 25-FEB-2012 15:11:38; Dark ; 44.0; 10; Bet Cen ; 0.61; 28000;occ; 88; 0;52252
2; 703.8; 25-FEB-2012 15:15:16; Dark ; 56.0; 26; Gam Cru ; 1.62; 2900;occ; 112; 0;52252
/nas3/ENVISAT/GOMOS/GOM_NL__0P/GOM_NL__0PNPDK20120225_165153_000002613112_00084_52253_5684.N1
1; 486.1; 25-FEB-2012 16:51:53; Dark ; 43.5; 10; Bet Cen ; 0.61; 28000;occ; 87; 0;52253
2; 704.3; 25-FEB-2012 16:55:31; Dark ; 43.0; 26; Gam Cru ; 1.62; 2900;occ; 86; 0;52253
/nas3/ENVISAT/GOMOS/GOM_NL__0P/GOM_NL__0PNPDK20120225_201222_000002693112_00086_52255_5686.N1
1; 487.2; 25-FEB-2012 20:12:22; Dark ; 52.5; 10; Bet Cen ; 0.61; 28000;occ; 105; 0;52255
2; 705.5; 25-FEB-2012 20:16:00; Dark ; 51.5; 26; Gam Cru ; 1.62; 2900;occ; 103; 0;52255
/nas3/ENVISAT/GOMOS/GOM_NL__0P/GOM_NL__0PNPDK20120225_183207_000002613112_00085_52254_5685.N1
1; 486.6; 25-FEB-2012 18:32:07; Dark ; 42.5; 10; Bet Cen ; 0.61; 28000;occ; 85; 0;52254
2; 704.8; 25-FEB-2012 18:35:45; Dark ; 43.0; 26; Gam Cru ; 1.62; 2900;occ; 86; 0;52254
/nas3/ENVISAT/GOMOS/GOM_NL__0P/GOM_NL__0PNPDE20120226_011305_000002713112_00089_52258_6667.N1
1; 488.9; 26-FEB-2012 01:13:05; Dark ; 45.5; 10; Bet Cen ; 0.61; 28000;occ; 91; 0;52258
2; 706.9; 26-FEB-2012 01:16:43; Dark ; 53.5; 26; Gam Cru ; 1.62; 2900;occ; 107; 0;52258
/nas3/ENVISAT/GOMOS/GOM_NL__0P/GOM_NL__0PNPDE20120226_025320_000002743112_00090_52259_6668.N1
1; 489.6; 26-FEB-2012 02:53:20; Dark ; 45.0; 10; Bet Cen ; 0.61; 28000;occ; 90; 0;52259
2; 709.0; 26-FEB-2012 02:56:59; Dark ; 55.5; 26; Gam Cru ; 1.62; 2900;occ; 111; 0;52259
/nas3/ENVISAT/GOMOS/GOM_NL__0P/GOM_NL__0PNPDE20120226_043334_00000403112_00091_52260_6669.N1
1; 490.2; 26-FEB-2012 04:33:34; Dark ; 40.5; 10; Bet Cen ; 0.61; 28000;occ; 81; 0;52260
/nas3/ENVISAT/GOMOS/GOM_NL__0P/GOM_NL__0PNPDE20120226_061349_00000473112_00092_52261_6670.N1
1; 490.7; 26-FEB-2012 06:13:49; Dark ; 47.5; 10; Bet Cen ; 0.61; 28000;occ; 95; 0;52261
/nas3/ENVISAT/GOMOS/GOM_NL__0P/GOM_NL__0PNPDE20120226_211600_00000503112_00101_52270_6671.N1
1; 495.9; 26-FEB-2012 21:16:00; Dark ; 50.5; 10; Bet Cen ; 0.61; 28000;occ; 101; 0;52270
/nas3/ENVISAT/GOMOS/GOM_NL__0P/GOM_NL__0PNPDE20120226_225614_00000413112_00102_52271_6672.N1
1; 496.4; 26-FEB-2012 22:56:14; Dark ; 42.0; 10; Bet Cen ; 0.61; 28000;occ; 84; 0;52271
/nas3/ENVISAT/GOMOS/GOM_NL__0P/GOM_NL__0PNPDK20120226_075403_00000513112_00093_52262_5688.N1
1; 491.3; 26-FEB-2012 07:54:03; Dark ; 51.5; 10; Bet Cen ; 0.61; 28000;occ; 103; 0;52262
/nas3/ENVISAT/GOMOS/GOM_NL__0P/GOM_NL__0PNPDK20120226_093418_00000453112_00094_52263_5689.N1
1; 491.9; 26-FEB-2012 09:34:18; Dark ; 45.5; 10; Bet Cen ; 0.61; 28000;occ; 91; 0;52263
/nas3/ENVISAT/GOMOS/GOM_NL__0P/GOM_NL__0PNPDK20120226_111432_00000523112_00095_52264_5690.N1
1; 492.4; 26-FEB-2012 11:14:32; Dark ; 53.0; 10; Bet Cen ; 0.61; 28000;occ; 106; 0;52264
/nas3/ENVISAT/GOMOS/GOM_NL__0P/GOM_NL__0PNPDK20120226_125447_00000503112_00096_52265_5691.N1
1; 493.1; 26-FEB-2012 12:54:47; Dark ; 50.5; 10; Bet Cen ; 0.61; 28000;occ; 101; 0;52265
/nas3/ENVISAT/GOMOS/GOM_NL__0P/GOM_NL__0PNPDK20120226_143501_00000403112_00097_52266_5692.N1
1; 493.7; 26-FEB-2012 14:35:01; Dark ; 41.0; 10; Bet Cen ; 0.61; 28000;occ; 82; 0;52266
/nas3/ENVISAT/GOMOS/GOM_NL__0P/GOM_NL__0PNPDK20120226_161516_00000403112_00098_52267_5693.N1
1; 494.3; 26-FEB-2012 16:15:16; Dark ; 41.0; 10; Bet Cen ; 0.61; 28000;occ; 82; 0;52267
/nas3/ENVISAT/GOMOS/GOM_NL__0P/GOM_NL__0PNPDK20120226_175531_00000413112_00099_52268_5694.N1
1; 494.8; 26-FEB-2012 17:55:31; Dark ; 42.0; 10; Bet Cen ; 0.61; 28000;occ; 84; 0;52268
/nas3/ENVISAT/GOMOS/GOM_NL__0P/GOM_NL__0PNPDK20120226_193545_00000463112_00100_52269_5695.N1
1; 495.4; 26-FEB-2012 19:35:45; Dark ; 47.0; 10; Bet Cen ; 0.61; 28000;occ; 94; 0;52269
/nas3/ENVISAT/GOMOS/GOM_NL__0P/GOM_NL__0PNPDE20120227_003629_00000403112_00103_52272_6673.N1
1; 497.0; 27-FEB-2012 00:36:29; Dark ; 41.0; 10; Bet Cen ; 0.61; 28000;occ; 82; 0;52272
/nas3/ENVISAT/GOMOS/GOM_NL__0P/GOM_NL__0PNPDE20120227_021643_00000443112_00104_52273_6674.N1

1; 497.7; 27-FEB-2012 02:16:43; Dark ; 44.5; 10; Bet Cen ; 0.61; 28000;occ; 89; 0;52273
/nas3/ENVISAT/GOMOS/GOM_NL__0P/GOM_NL__0PNPDE20120227_035658_000000443112_00105_52274_6675.N1
1; 498.4; 27-FEB-2012 03:56:58; Dark ; 44.5; 10; Bet Cen ; 0.61; 28000;occ; 89; 0;52274
/nas3/ENVISAT/GOMOS/GOM_NL__0P/GOM_NL__0PNPDE20120227_053712_000000413112_00106_52275_6676.N1
1; 499.0; 27-FEB-2012 05:37:12; Dark ; 41.5; 10; Bet Cen ; 0.61; 28000;occ; 83; 0;52275
/nas3/ENVISAT/GOMOS/GOM_NL__0P/GOM_NL__0PNPDE20120227_220513_000009093112_00115_52284_6677.N1
1; -360.3; 27-FEB-2012 22:05:13; Dark ; 42.0; 38; 20Eps Sgr ; 1.84; 11000;occ; 84; 0;52284
2; 504.6; 27-FEB-2012 22:19:38; Dark ; 44.5; 10; Bet Cen ; 0.61; 28000;occ; 89; 0;52285
/nas3/ENVISAT/GOMOS/GOM_NL__0P/GOM_NL__0PNPDE20120227_234527_000009083112_00116_52285_6678.N1
1; -359.7; 27-FEB-2012 23:45:27; Dark ; 44.5; 38; 20Eps Sgr ; 1.84; 11000;occ; 89; 0;52285
2; 505.2; 27-FEB-2012 23:59:52; Dark ; 43.5; 10; Bet Cen ; 0.61; 28000;occ; 87; 0;52286
/nas3/ENVISAT/GOMOS/GOM_NL__0P/GOM_NL__0PNPDK20120227_071727_000000423112_00107_52276_5696.N1
1; 499.6; 27-FEB-2012 07:17:27; Dark ; 43.0; 10; Bet Cen ; 0.61; 28000;occ; 86; 0;52276
/nas3/ENVISAT/GOMOS/GOM_NL__0P/GOM_NL__0PNPDK20120227_103756_000000473112_00109_52278_5697.N1
1; 500.7; 27-FEB-2012 10:37:56; Dark ; 47.5; 10; Bet Cen ; 0.61; 28000;occ; 95; 0;52278
/nas3/ENVISAT/GOMOS/GOM_NL__0P/GOM_NL__0PNPDK20120227_121810_000000403112_00110_52279_5698.N1
1; 501.3; 27-FEB-2012 12:18:10; Dark ; 40.5; 10; Bet Cen ; 0.61; 28000;occ; 81; 0;52279
/nas3/ENVISAT/GOMOS/GOM_NL__0P/GOM_NL__0PNPDK20120227_135825_000000423112_00111_52280_5699.N1
1; 501.9; 27-FEB-2012 13:58:25; Dark ; 43.0; 10; Bet Cen ; 0.61; 28000;occ; 86; 0;52280
/nas3/ENVISAT/GOMOS/GOM_NL__0P/GOM_NL__0PNPDK20120227_153839_000000423112_00112_52281_5700.N1
1; 502.4; 27-FEB-2012 15:38:39; Dark ; 43.0; 10; Bet Cen ; 0.61; 28000;occ; 86; 0;52281
/nas3/ENVISAT/GOMOS/GOM_NL__0P/GOM_NL__0PNPDK20120227_171854_000000423112_00113_52282_5701.N1
1; 503.0; 27-FEB-2012 17:18:54; Dark ; 43.0; 10; Bet Cen ; 0.61; 28000;occ; 86; 0;52282
/nas3/ENVISAT/GOMOS/GOM_NL__0P/GOM_NL__0PNPDK20120227_184444_000009073112_00113_52282_5702.N1
1; -361.3; 27-FEB-2012 18:44:44; Dark ; 42.0; 38; 20Eps Sgr ; 1.84; 11000;occ; 84; 0;52282
2; 503.5; 27-FEB-2012 18:59:09; Dark ; 42.5; 10; Bet Cen ; 0.61; 28000;occ; 85; 0;52283
/nas3/ENVISAT/GOMOS/GOM_NL__0P/GOM_NL__0PNPDK20120227_202458_000009063112_00114_52283_5703.N1
1; -360.6; 27-FEB-2012 20:24:58; Dark ; 46.5; 38; 20Eps Sgr ; 1.84; 11000;occ; 93; 0;52283
2; 504.1; 27-FEB-2012 20:39:23; Dark ; 41.5; 10; Bet Cen ; 0.61; 28000;occ; 83; 0;52284
/nas3/ENVISAT/GOMOS/GOM_NL__0P/GOM_NL__0PNPDE20120228_012542_000069203112_00117_52286_6679.N1
1; -359.0; 28-FEB-2012 01:25:42; Dark ; 45.5; 38; 20Eps Sgr ; 1.84; 11000;occ; 91; 0;52286
2; 505.8; 28-FEB-2012 01:40:07; Dark ; 45.0; 10; Bet Cen ; 0.61; 28000;occ; 90; 0;52287
3; 5655.6; 28-FEB-2012 03:05:56; Dark ; 45.0; 38; 20Eps Sgr ; 1.84; 11000;occ; 90; 0;52287
4; 6520.5; 28-FEB-2012 03:20:21; Dark ; 41.0; 10; Bet Cen ; 0.61; 28000;occ; 82; 0;52288
/nas3/ENVISAT/GOMOS/GOM_NL__0P/GOM_NL__0PNPDE20120228_044611_000009153112_00119_52288_6680.N1
1; -357.7; 28-FEB-2012 04:46:11; Dark ; 45.5; 38; 20Eps Sgr ; 1.84; 11000;occ; 91; 0;52288
2; 507.1; 28-FEB-2012 05:00:36; Dark ; 50.5; 10; Bet Cen ; 0.61; 28000;occ; 101; 0;52289
/nas3/ENVISAT/GOMOS/GOM_NL__0P/GOM_NL__0PNPDE20120228_062626_000009123112_00120_52289_6681.N1
1; -357.1; 28-FEB-2012 06:26:26; Dark ; 43.5; 38; 20Eps Sgr ; 1.84; 11000;occ; 87; 0;52289
2; 507.6; 28-FEB-2012 06:40:50; Dark ; 47.5; 10; Bet Cen ; 0.61; 28000;occ; 95; 0;52290
/nas3/ENVISAT/GOMOS/GOM_NL__0P/GOM_NL__0PNPDE20120228_212837_000009063112_00129_52298_6682.N1
1; -351.4; 28-FEB-2012 21:28:37; Dark ; 32.0; 38; 20Eps Sgr ; 1.84; 11000;occ; 64; 0;52298
2; 512.9; 28-FEB-2012 21:43:01; Dark ; 42.5; 10; Bet Cen ; 0.61; 28000;occ; 85; 0;52299
/nas3/ENVISAT/GOMOS/GOM_NL__0P/GOM_NL__0PNPDK20120228_080640_000009053112_00121_52290_5704.N1
1; -356.5; 28-FEB-2012 08:06:40; Dark ; 46.0; 38; 20Eps Sgr ; 1.84; 11000;occ; 92; 0;52290
2; 508.3; 28-FEB-2012 08:21:05; Dark ; 41.0; 10; Bet Cen ; 0.61; 28000;occ; 82; 0;52291
/nas3/ENVISAT/GOMOS/GOM_NL__0P/GOM_NL__0PNPDK20120228_094655_000009173112_00122_52291_5705.N1
1; -355.8; 28-FEB-2012 09:46:55; Dark ; 44.5; 38; 20Eps Sgr ; 1.84; 11000;occ; 89; 0;52291
2; 508.8; 28-FEB-2012 10:01:19; Dark ; 52.5; 10; Bet Cen ; 0.61; 28000;occ; 105; 0;52292
/nas3/ENVISAT/GOMOS/GOM_NL__0P/GOM_NL__0PNPDK20120228_112709_000009153112_00123_52292_5706.N1
1; -355.2; 28-FEB-2012 11:27:09; Dark ; 43.0; 38; 20Eps Sgr ; 1.84; 11000;occ; 86; 0;52292
2; 509.4; 28-FEB-2012 11:41:34; Dark ; 51.0; 10; Bet Cen ; 0.61; 28000;occ; 102; 0;52293
/nas3/ENVISAT/GOMOS/GOM_NL__0P/GOM_NL__0PNPDK20120228_144738_000009063112_00125_52294_5707.N1
1; -354.0; 28-FEB-2012 14:47:38; Dark ; 46.5; 38; 20Eps Sgr ; 1.84; 11000;occ; 93; 0;52294
2; 510.5; 28-FEB-2012 15:02:03; Dark ; 42.0; 10; Bet Cen ; 0.61; 28000;occ; 84; 0;52295
/nas3/ENVISAT/GOMOS/GOM_NL__0P/GOM_NL__0PNPDK20120228_162753_000009063112_00126_52295_5708.N1
1; -353.3; 28-FEB-2012 16:27:53; Dark ; 47.0; 38; 20Eps Sgr ; 1.84; 11000;occ; 94; 0;52295
2; 511.2; 28-FEB-2012 16:42:17; Dark ; 42.0; 10; Bet Cen ; 0.61; 28000;occ; 84; 0;52296
/nas3/ENVISAT/GOMOS/GOM_NL__0P/GOM_NL__0PNPDK20120228_180808_000009073112_00127_52296_5709.N1
1; -352.7; 28-FEB-2012 18:08:08; Dark ; 42.0; 38; 20Eps Sgr ; 1.84; 11000;occ; 84; 0;52296
2; 511.7; 28-FEB-2012 18:22:32; Dark ; 43.0; 10; Bet Cen ; 0.61; 28000;occ; 86; 0;52297
/nas3/ENVISAT/GOMOS/GOM_NL__0P/GOM_NL__0PNPDK20120228_194822_000009083112_00128_52297_5710.N1
1; -352.1; 28-FEB-2012 19:48:22; Dark ; 37.0; 38; 20Eps Sgr ; 1.84; 11000;occ; 74; 0;52297
2; 512.3; 28-FEB-2012 20:02:47; Dark ; 44.0; 10; Bet Cen ; 0.61; 28000;occ; 88; 0;52298
/nas3/ENVISAT/GOMOS/GOM_NL__0P/GOM_NL__0PNPDK20120228_130724_000009053112_00124_52293_6008.N1
1; -354.6; 28-FEB-2012 13:07:24; Dark ; 42.0; 38; 20Eps Sgr ; 1.84; 11000;occ; 84; 0;52293
2; 510.0; 28-FEB-2012 13:21:48; Dark ; 40.5; 10; Bet Cen ; 0.61; 28000;occ; 81; 0;52294
/nas3/ENVISAT/GOMOS/GOM_NL__0P/GOM_NL__0PNPDE20120229_010330_000000443112_00132_52301_6684.N1

1; 514.0; 29-FEB-2012 01:03:30; Dark ; 44.5; 10; Bet Cen ; 0.61; 28000;occ; 89; 0;52301
/nas3/ENVISAT/GOMOS/GOM_NL__0P/GOM_NL__0PNPDE20120229_024344_000000443112_00133_52302_6685.N1
1; 514.7; 29-FEB-2012 02:43:44; Dark ; 44.5; 10; Bet Cen ; 0.61; 28000;occ; 89; 0;52302
/nas3/ENVISAT/GOMOS/GOM_NL__0P/GOM_NL__0PNPDE20120229_042359_000000453112_00134_52303_6686.N1
1; 515.2; 29-FEB-2012 04:23:59; Dark ; 45.5; 10; Bet Cen ; 0.61; 28000;occ; 91; 0;52303
/nas3/ENVISAT/GOMOS/GOM_NL__0P/GOM_NL__0PNPDE20120229_060414_000000463112_00135_52304_6687.N1
1; 515.8; 29-FEB-2012 06:04:14; Dark ; 46.5; 10; Bet Cen ; 0.61; 28000;occ; 93; 0;52304
/nas3/ENVISAT/GOMOS/GOM_NL__0P/GOM_NL__0PNPDE20120229_224639_000000443112_00145_52314_6688.N1
1; 521.3; 29-FEB-2012 22:46:39; Dark ; 45.0; 10; Bet Cen ; 0.61; 28000;occ; 90; 0;52314
/nas3/ENVISAT/GOMOS/GOM_NL__0P/GOM_NL__0PNPDK20120229_074428_000000393112_00136_52305_5711.N1
1; 516.4; 29-FEB-2012 07:44:28; Dark ; 39.5; 10; Bet Cen ; 0.61; 28000;occ; 79; 0;52305
/nas3/ENVISAT/GOMOS/GOM_NL__0P/GOM_NL__0PNPDK20120229_110457_000000503112_00138_52307_5713.N1
1; 517.5; 29-FEB-2012 11:04:57; Dark ; 51.0; 10; Bet Cen ; 0.61; 28000;occ; 102; 0;52307
/nas3/ENVISAT/GOMOS/GOM_NL__0P/GOM_NL__0PNPDK20120229_124512_000000413112_00139_52308_5714.N1
1; 518.1; 29-FEB-2012 12:45:12; Dark ; 42.0; 10; Bet Cen ; 0.61; 28000;occ; 84; 0;52308
/nas3/ENVISAT/GOMOS/GOM_NL__0P/GOM_NL__0PNPDK20120229_142526_000000443112_00140_52309_5715.N1
1; 518.7; 29-FEB-2012 14:25:26; Dark ; 45.0; 10; Bet Cen ; 0.61; 28000;occ; 90; 0;52309
/nas3/ENVISAT/GOMOS/GOM_NL__0P/GOM_NL__0PNPDK20120229_160541_000000433112_00141_52310_5716.N1
1; 519.2; 29-FEB-2012 16:05:41; Dark ; 43.5; 10; Bet Cen ; 0.61; 28000;occ; 87; 0;52310
/nas3/ENVISAT/GOMOS/GOM_NL__0P/GOM_NL__0PNPDK20120229_174555_000000463112_00142_52311_5717.N1
1; 519.8; 29-FEB-2012 17:45:55; Dark ; 47.0; 10; Bet Cen ; 0.61; 28000;occ; 94; 0;52311
/nas3/ENVISAT/GOMOS/GOM_NL__0P/GOM_NL__0PNPDK20120229_192610_000000443112_00143_52312_5718.N1
1; 520.2; 29-FEB-2012 19:26:10; Dark ; 44.5; 10; Bet Cen ; 0.61; 28000;occ; 89; 0;52312
/nas3/ENVISAT/GOMOS/GOM_NL__0P/GOM_NL__0PNPDK20120229_210624_000000403112_00144_52313_5719.N1
1; 520.7; 29-FEB-2012 21:06:24; Dark ; 41.0; 10; Bet Cen ; 0.61; 28000;occ; 82; 0;52313