

GOMOS Daily Report 23-FEB-2012

Level 0 and Level 1 products

SUMMARY

[1. General Info](#)

[2. Summary of products arrived in PCF \(Product Control Facility\)](#)

[2.1 Level 0: products arrived in PCF during current month \(see template here\)](#)

[2.2 Level 0: plot of mission plan versus production during reporting period](#)

[2.3 Level 0: summary of missing occultations with respect to the plan](#)

[2.4 Level 1: products arrived in PCF during reporting period](#)

[3. Plot of Spectrometers and Photometers temperatures](#)

[4. Dark Charge monitoring](#)

[4.1 Products that did not use the Dark Sky Area observation for DC computation](#)

[4.2 Plot of Dark Charge](#)

[5. Demodulation correction and quality product information monitoring](#)

[5.1 Percentage of products with some flags set](#)

[5.2 Plot of quality information per product \(time dependant\)](#)

[5.3 Plot of quality information per product \(world map\)](#)

[6. Star tangent altitude lost](#)

[6.1 Statistics on star tangent altitude lost](#)

[6.2 Plot of star tangent altitude lost: DARK products](#)

[6.3 Plot of star tangent altitude lost: BRIGHT products](#)

[6.3 Plot of star tangent altitude lost: TWILIGHT products](#)

[7. Star Acquisition and Tracking Unit \(SATU\)](#)

[7.1 SATU plots \(dark limb\): 'X' and 'Y' axis](#)

[7.2 SATU Noise Equivalent Angle statistics](#)

[7.2.1 SATU NEA Statistics \(table\)](#)

[7.2.2 Daily SATU NEA STD \(dark limb\) - trend since 1st April 2006](#)

[8. Auxiliary Data Files used for the production reported in section 2.4](#)

[Level 2 products](#)

This report presents the daily analysis on parameters extracted from GOMOS level 1b data (GOM_TRA_1P). It is intended to monitor some important parameters that will impact the quality of the level 2 products as the Spectrometers and Photometers CCD Temperatures and Dark Charge, SATU noise equivalent angle... A list of level 0 products (and content) that have arrived during the actual month to the PCF is also given.

Item	Value
Time of report generation	27FEB2012 12:08:53
Data source version	GOMOS/6.01
Start time of products	23FEB2012 01:11:58
Stop time of products	23FEB2012 23:09:29
Store outputs in DB	Yes
Nb of level 1b prods	41
Nb of prods with errors	0

2. Summary of products arrived in PCF (Product Control Facility)

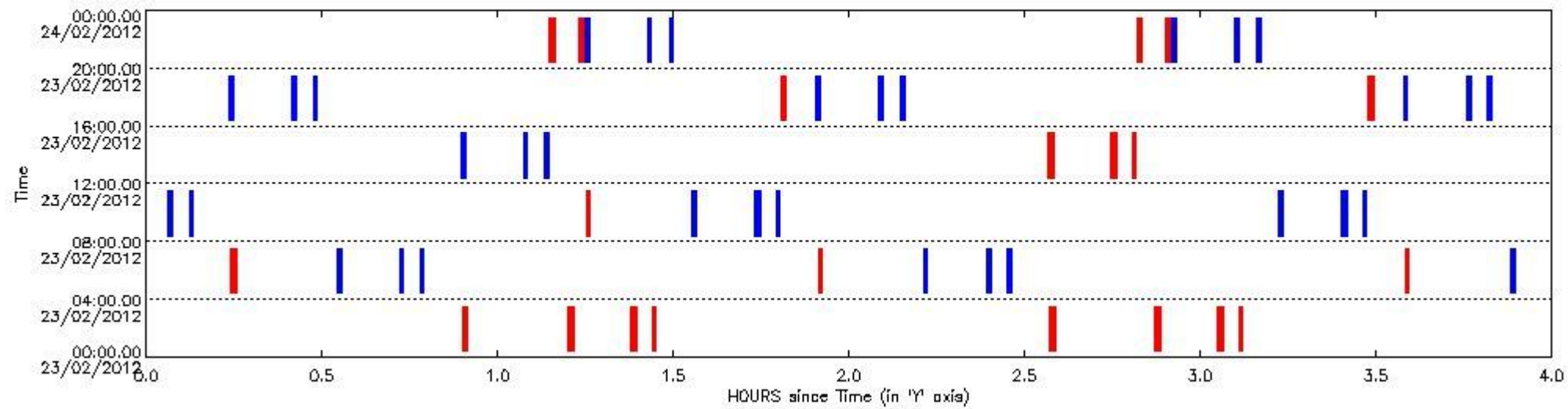
2.1 Level 0 products arrived in PCF (see template [here](#))

2.2 Plot of mission plan versus Level 0 production arrived in PCF during reporting period

Red segments are missing products.

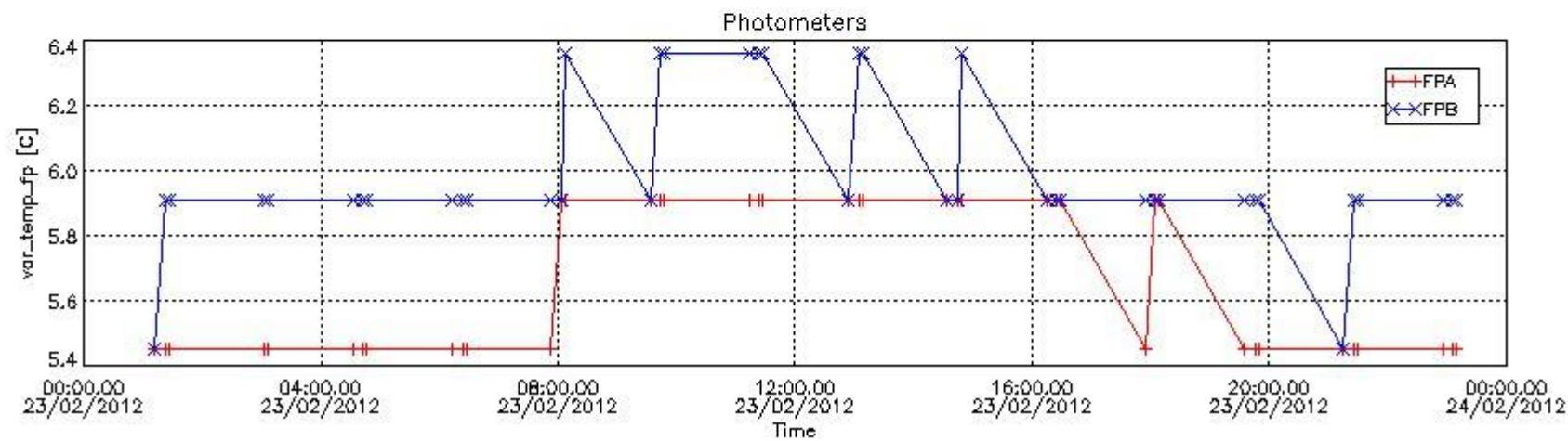
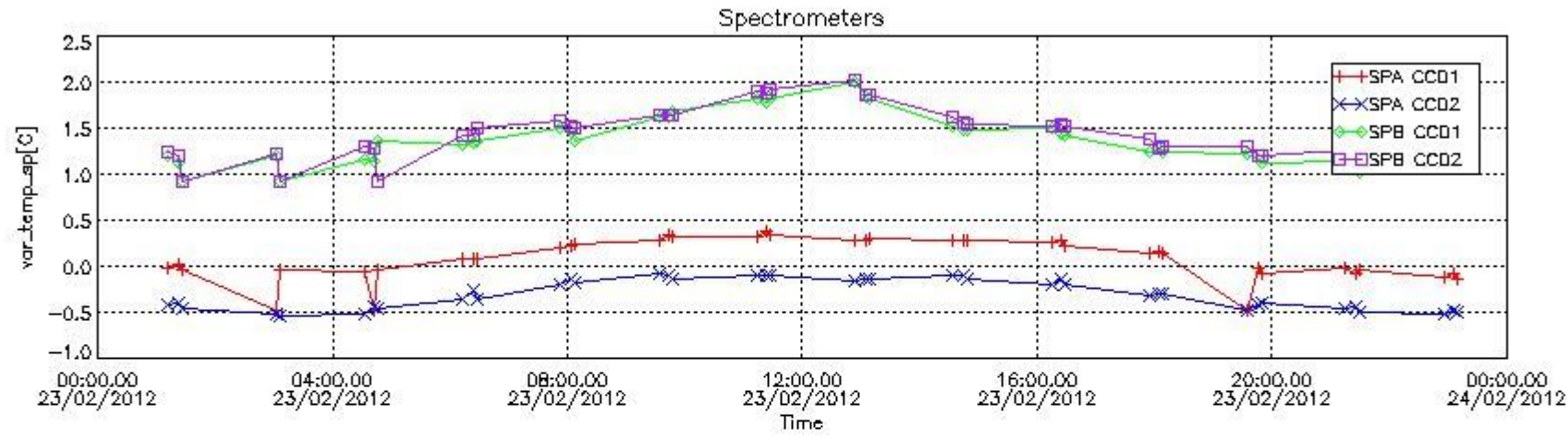
Blue segments are available products.

Green segments are calibration measurements (not available products to users).



2.3 Summary of missing occultations (red segments in previous plot)

UTC start time	Star name	Star ID	Orbit
23-FEB-2012 00:53:58	17ZetAql	168	52228
23-FEB-2012 01:12:00	TheSco	40	52228
23-FEB-2012 01:22:42	BetCen	10	52228
23-FEB-2012 01:26:23	GamCru	26	52228
23-FEB-2012 02:34:12	17ZetAql	168	52229
23-FEB-2012 02:52:14	TheSco	40	52229
23-FEB-2012 03:02:57	BetCen	10	52229
23-FEB-2012 03:06:38	GamCru	26	52229
23-FEB-2012 04:14:26	17ZetAql	168	52230
23-FEB-2012 05:54:41	17ZetAql	168	52231
23-FEB-2012 07:34:55	17ZetAql	168	52232
23-FEB-2012 09:15:09	17ZetAql	168	52233
23-FEB-2012 14:33:56	TheSco	40	52236
23-FEB-2012 14:44:39	BetCen	10	52236
23-FEB-2012 14:48:19	GamCru	26	52236



4. Overview of dark signal processing per product

The Dark Charge (DC) is a temperature-dependant signal added to the useful measurements and it is therefore subtracted from them during the processing. There are two phenomena that produce a continuous increase of the DC: the "hot pixels" (a pixel is "hot" when its DC exceeds by a significant amount its value measured on ground at the same temperature) and the "Random Telegraphic Signal" (abrupt change positive or negative of the CCD pixel signal, random in time, affecting only the DC part of the signal and not the photon generated signal).

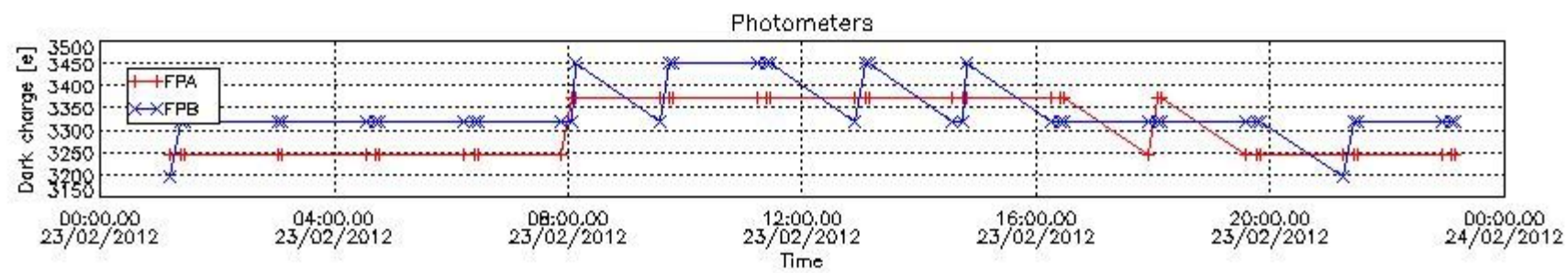
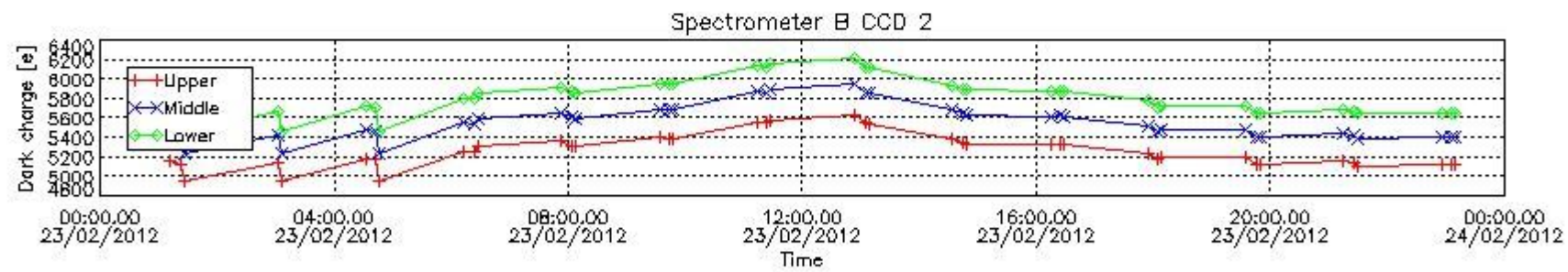
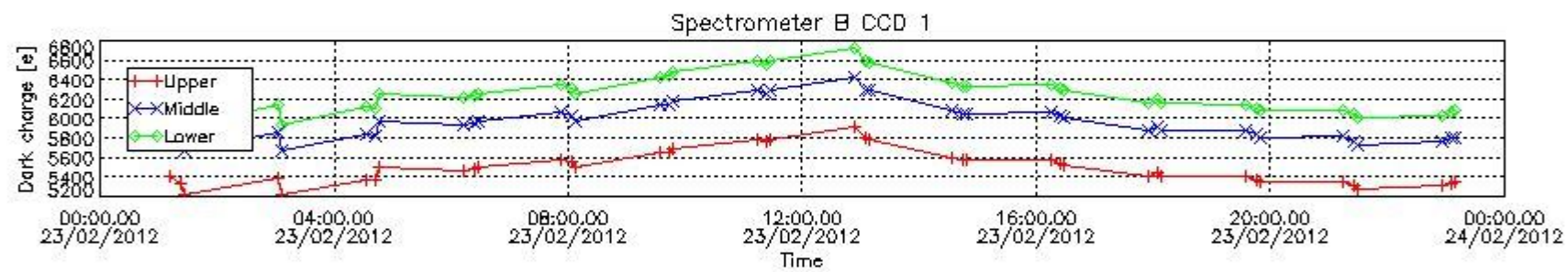
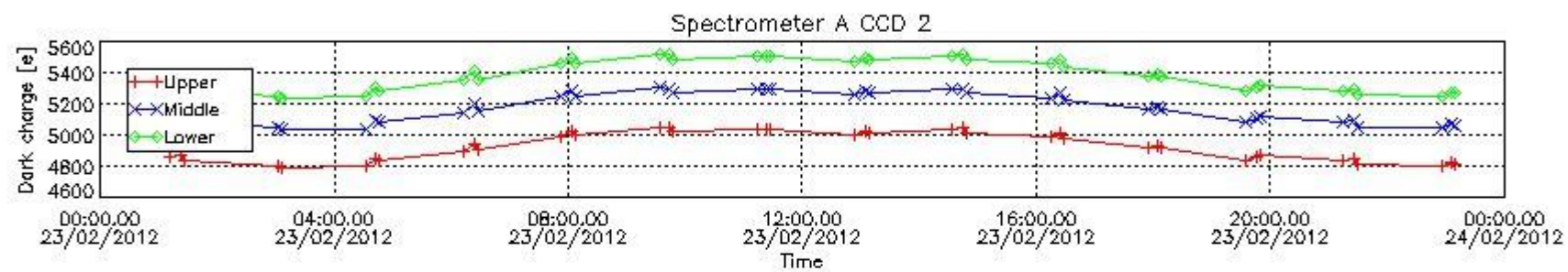
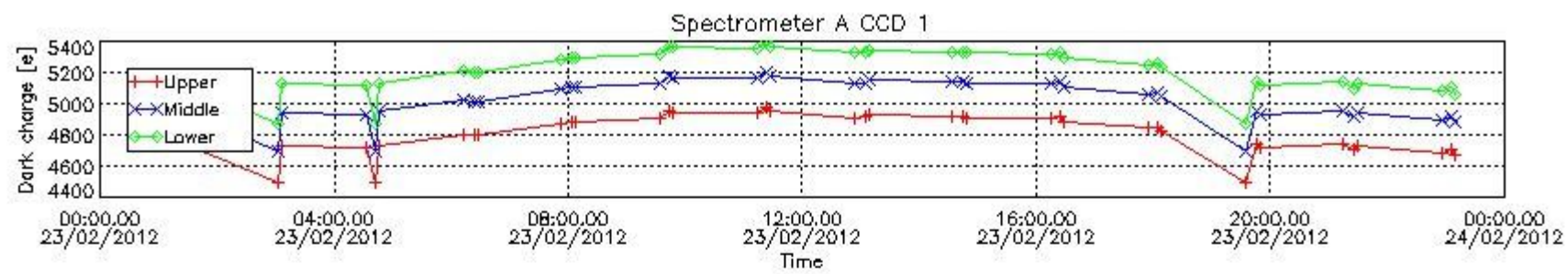
In this section a list of products that did not use the Dark Sky Area (DSA) observation for the DC computation is given. It is also provided the mean DC plot per product for dark limb products with no error flag set.

4.1 These products did not use the DSA observation for DC computation:

Product name	DC information
GOM_TRA_1PNPDE20120223_011158_000000503112_00045_52214_1171.N1	DC map used
GOM_TRA_1PNPDE20120223_012240_000000453112_00046_52215_1172.N1	DC map used
GOM_TRA_1PNPDE20120223_012621_000000303112_00046_52215_1173.N1	DC map used
GOM_TRA_1PNPDE20120223_030255_000000463112_00047_52216_1174.N1	DC map used
GOM_TRA_1PNPDE20120223_030636_000000323112_00047_52216_1175.N1	DC map used
GOM_TRA_1PNPDE20120223_043227_000000513112_00047_52216_1234.N1	DC map used
GOM_TRA_1PNPDE20120223_044310_000000473112_00048_52217_1235.N1	DC map used
GOM_TRA_1PNPDE20120223_044650_000000333112_00048_52217_1236.N1	DC map used
GOM_TRA_1PNPDE20120223_061241_000000453112_00048_52217_1280.N1	DC map used
GOM_TRA_1PNPDE20120223_062324_000000493112_00049_52218_1281.N1	DC map used
GOM_TRA_1PNPDE20120223_062705_000000343112_00049_52218_1282.N1	DC map used
GOM_TRA_1PNPDK20120223_075256_000000453112_00049_52218_5715.N1	DC map used
GOM_TRA_1PNPDK20120223_080339_000000413112_00050_52219_5716.N1	DC map used
GOM_TRA_1PNPDK20120223_080719_000000353112_00050_52219_5717.N1	DC map used

GOM_TRA_1PNPDK20120223_093311_000000463112_00050_52219_5750.N1	DC map used
GOM_TRA_1PNPDK20120223_094353_000000543112_00051_52220_5751.N1	DC map used
GOM_TRA_1PNPDK20120223_094734_000000373112_00051_52220_5752.N1	DC map used
GOM_TRA_1PNPDK20120223_111325_000000483112_00051_52220_5786.N1	DC map used
GOM_TRA_1PNPDK20120223_112408_000000513112_00052_52221_5787.N1	DC map used
GOM_TRA_1PNPDK20120223_112748_000000383112_00052_52221_5788.N1	DC map used
GOM_TRA_1PNPDK20120223_125340_000000463112_00052_52221_5820.N1	DC map used
GOM_TRA_1PNPDK20120223_130422_000000453112_00053_52222_5821.N1	DC map used
GOM_TRA_1PNPDK20120223_130803_000000393112_00053_52222_5822.N1	DC map used
GOM_TRA_1PNPDK20120223_143354_000000453112_00053_52222_5872.N1	DC map used
GOM_TRA_1PNPDK20120223_144437_000000413112_00054_52223_5873.N1	DC map used
GOM_TRA_1PNPDK20120223_144817_000000403112_00054_52223_5874.N1	DC map used
GOM_TRA_1PNPDK20120223_161409_000000483112_00054_52223_5900.N1	DC map used
GOM_TRA_1PNPDK20120223_162451_000000443112_00055_52224_5901.N1	DC map used
GOM_TRA_1PNPDK20120223_162832_000000423112_00055_52224_5902.N1	DC map used
GOM_TRA_1PNPDK20120223_175423_000000443112_00055_52224_5931.N1	DC map used
GOM_TRA_1PNPDK20120223_180506_000000433112_00056_52225_5932.N1	DC map used
GOM_TRA_1PNPDK20120223_180846_000000433112_00056_52225_5933.N1	DC map used
GOM_TRA_1PNPDK20120223_193438_000000423112_00056_52225_5958.N1	DC map used
GOM_TRA_1PNPDK20120223_194520_000000533112_00057_52226_5959.N1	DC map used
GOM_TRA_1PNPDK20120223_194900_000000443112_00057_52226_5960.N1	DC map used
GOM_TRA_1PNPDE20120223_211452_000000423112_00057_52226_1476.N1	DC map used
GOM_TRA_1PNPDE20120223_212535_000000423112_00058_52227_1477.N1	DC map used
GOM_TRA_1PNPDE20120223_212915_000000453112_00058_52227_1478.N1	DC map used
GOM_TRA_1PNPDE20120223_225507_000000483112_00058_52227_1503.N1	DC map used
GOM_TRA_1PNPDE20120223_230549_000000443112_00059_52228_1504.N1	DC map used
GOM_TRA_1PNPDE20120223_230929_000000473112_00059_52228_1505.N1	DC map used

4.2 Plot of mean dark charges per product: only products in DARK limb conditions without errors are used



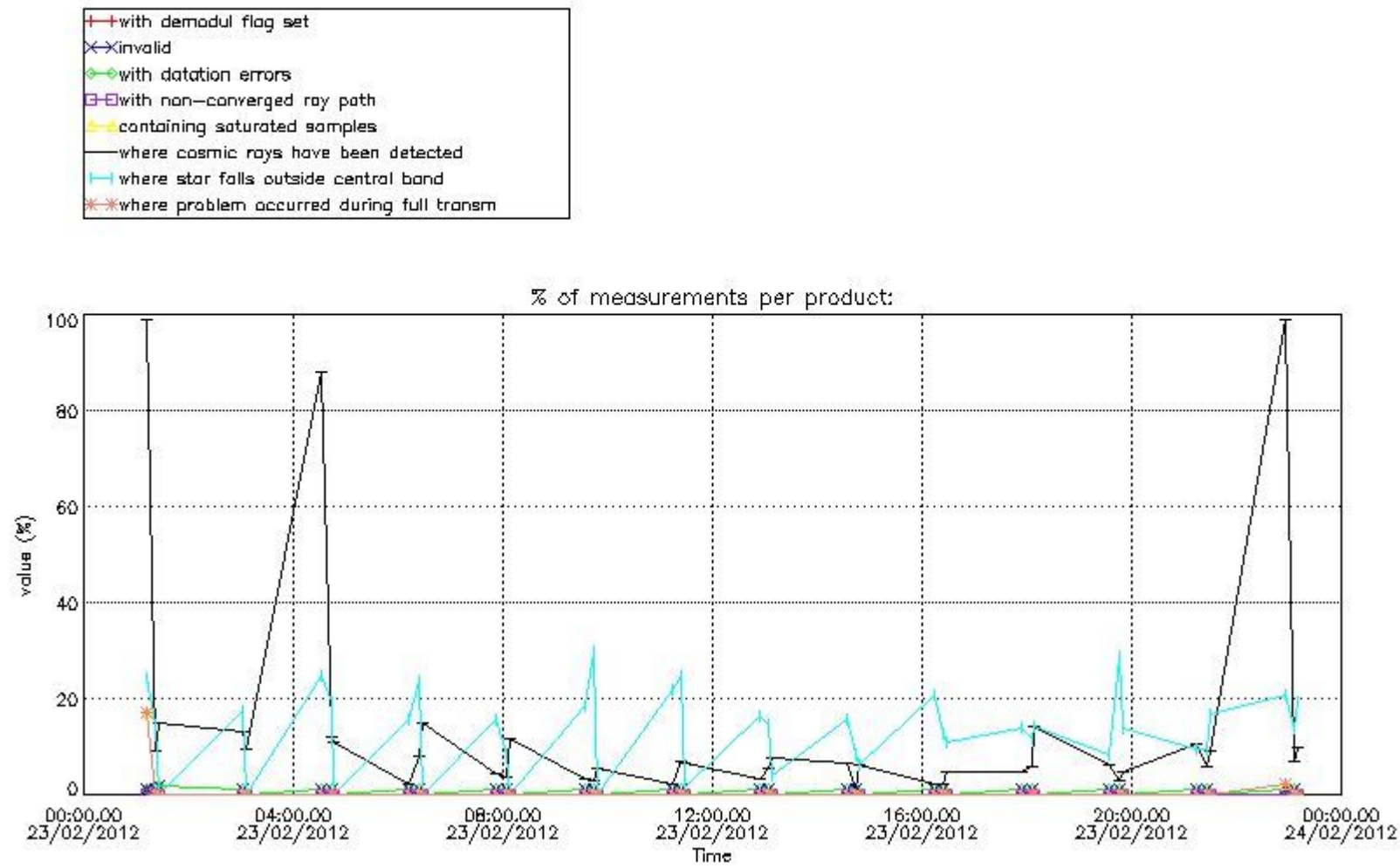
5. Demodulation flag and quality information monitoring

In this section it is presented the modulation information extracted from the pcd (product confidence data) at measurement level and information extracted from the Quality Summary dataset. Only products without errors (error flag in the MPH set to "0") are used.

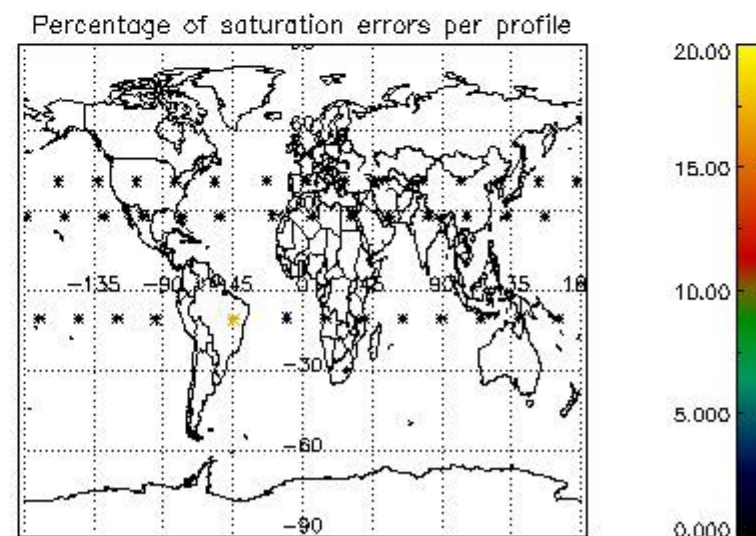
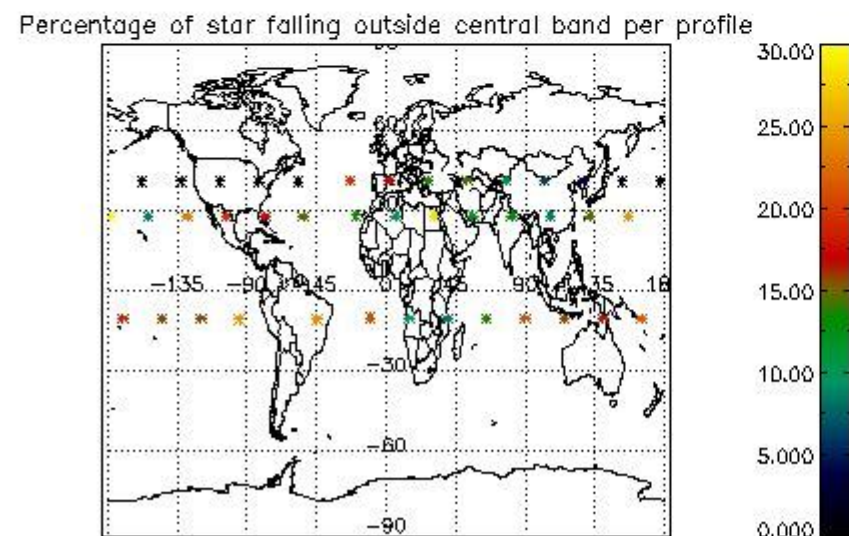
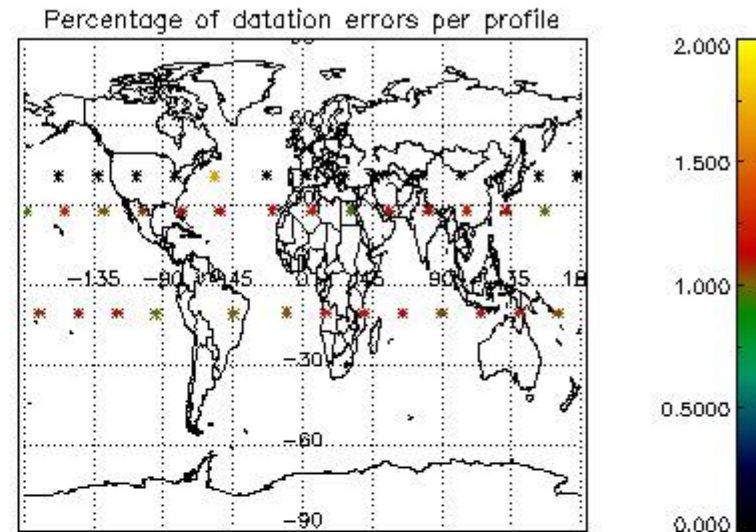
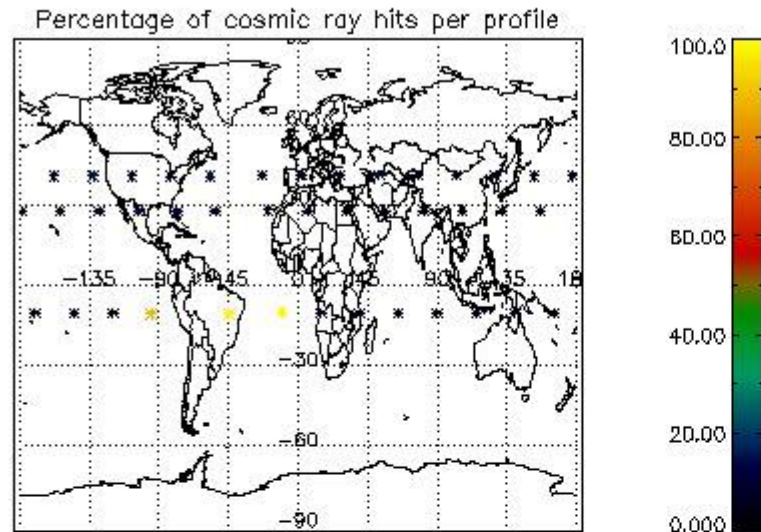
5.1 Percentage of products during reporting period with:

At least one measurement with demodulation flag set:	90.2439 %
Reference spectrum computed from DB:	0.00000 %
Reference spectrum with small number of measurements:	0.00000 %
SATU data not used:	0.00000 %

5.2 Plot quality information per product (time dependant)



5.3 Plot quality information per product (world map)



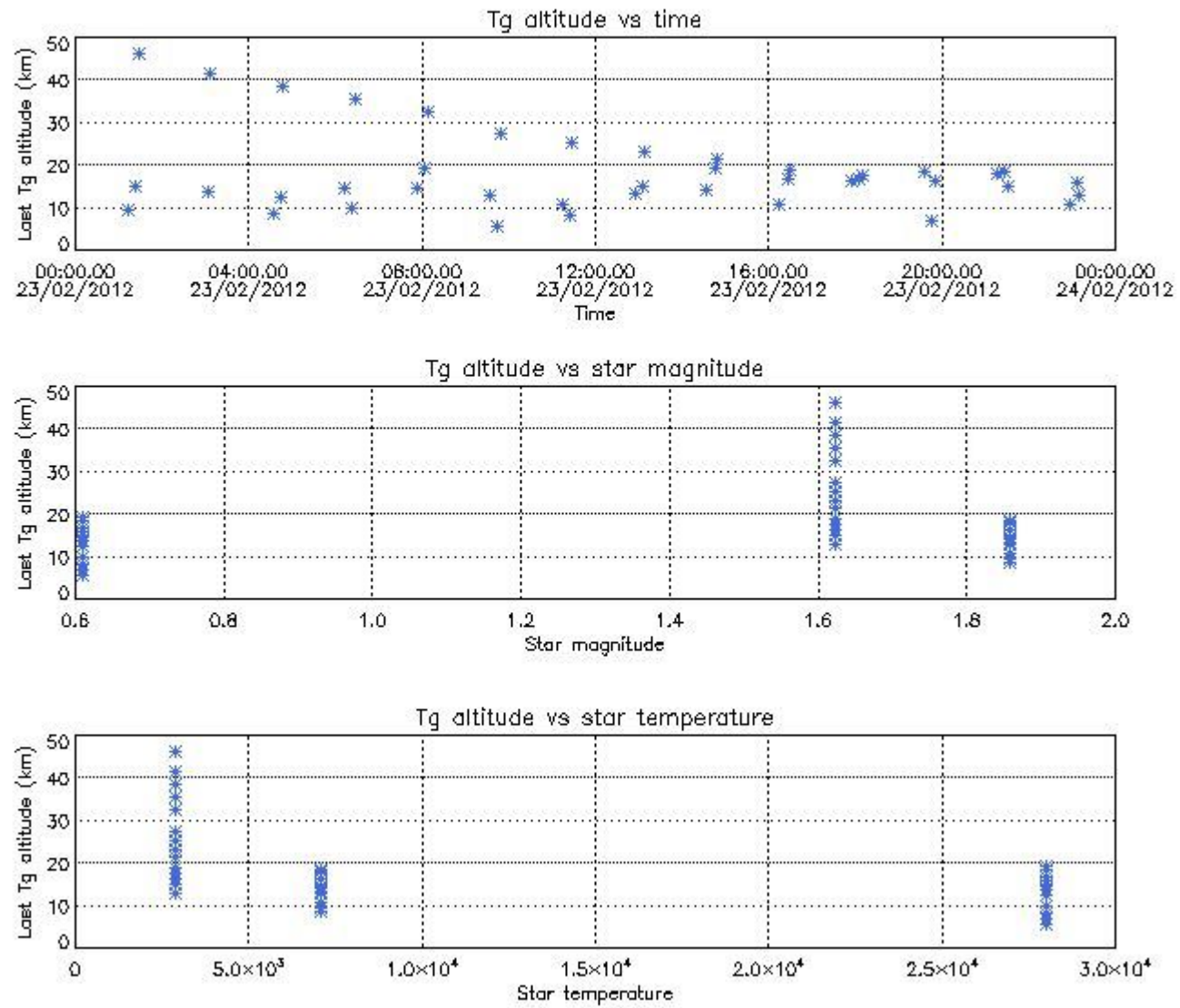
6. Statistics and plot of tangent altitude of the last measurement (DARK & BRIGHT products without errors)

6.1 Statistics on tangent altitude lost:

Statistics	DARK	BRIGHT	TWILIGHT
Mean:	17.975	NaN	NaN
St. deviation:	9.2770	NaN	NaN
Maximum:	46.327	NaN	NaN
Minimum:	5.7324	NaN	NaN
Number of data:	41.000	NaN	NaN

6.2 Plot for DARK limb products

Tangent altitude at which the star is lost

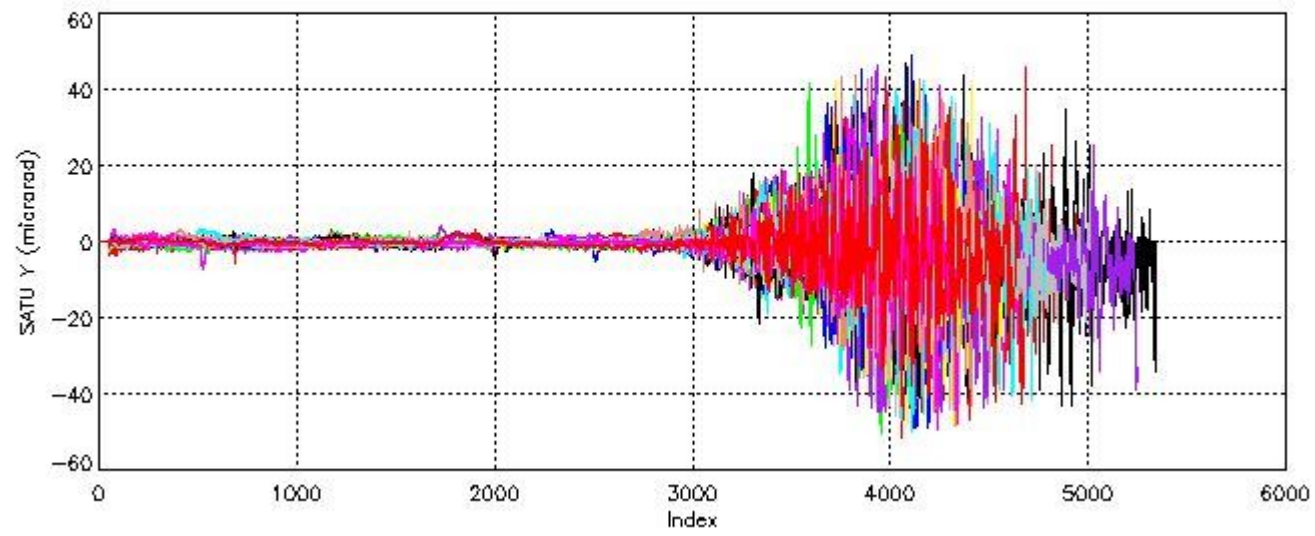
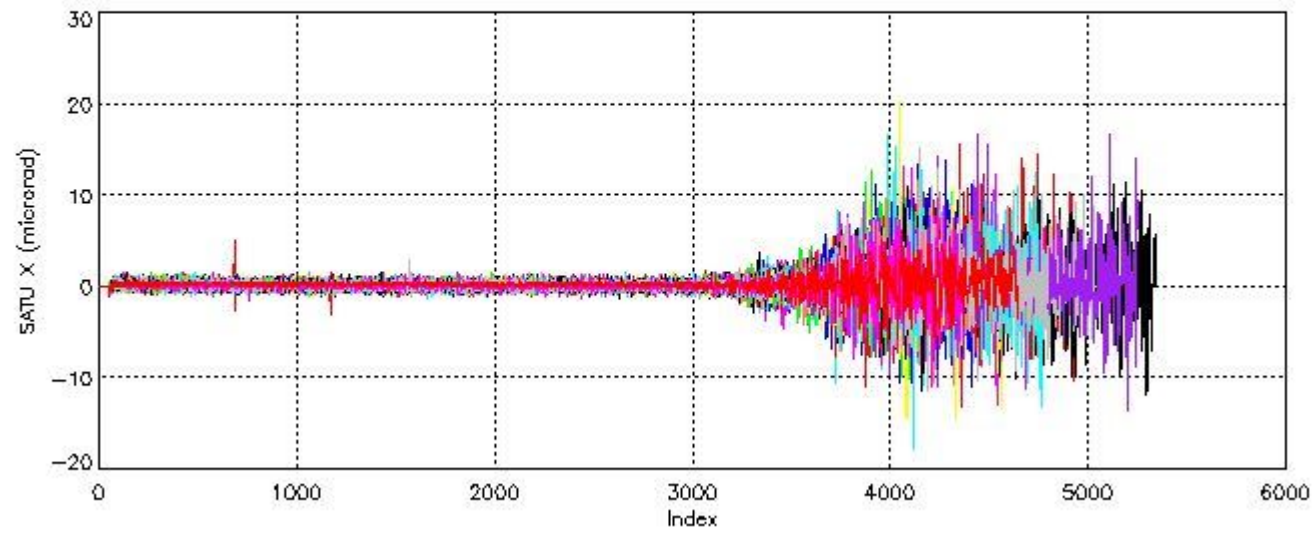


7. Star Acquisition and Tracking Unit (SATU)

The Star Acquisition and Tracking Unit (SATU) analyses the position of the tracked star beam collected by the GOMOS telescope and deflected by the optical beam dispatcher. The main function of the SATU is to detect a star, provide its image position to the science data electronics and to help the pointing function to keep the star image at a fixed position. In tracking mode the SATU data is recorded with a frequency of 100 Hz.

7.1 SATU 'X' and 'Y' axis plots (dark limb)

SATU CCD 'X' and 'Y' axis plots are provided in order to detect any abnormal behaviour of the tracking system. For every occultation (color) the plot should remain stable (with some noise) until we are deep in the atmosphere where big fluctuations are registered due to the refractive effects.



7.2 Statistics on SATU Noise Equivalent Angle (NEA) for DARK (D) and BRIGHT (B) products above 105 kms

The Star Acquisition and Tracking Unit (it is the CCD that tracks the star while it is occulted) Noise Equivalent Angle consists of the statistical angular variation of the SATU data above the atmosphere.

Statistics (in microradians) above 105 km are computed for every occultation, giving four values per occultation: one in the 'X' direction and one in the 'Y' direction for dark and bright limbs. A mean value per day in every direction and limb is calculated and monitored in order to assess instrument performance in terms of star pointing.

7.2.1 SATU NEA Statistics (table)

Statistics	SATU X (D)	SATU Y (D)	SATU X (B)	SATU Y (B)
Mean:	0.15265	-0.30877	NaN	NaN
St. deviation:	0.24791	0.54499	NaN	NaN
Maximum:	5.0000	3.4000	NaN	NaN
Minimum:	-2.7000	-7.3000	NaN	NaN

Number of data:	39750.	39750.	NaN	NaN
90Percentile:	0.50000	0.40000	NaN	NaN

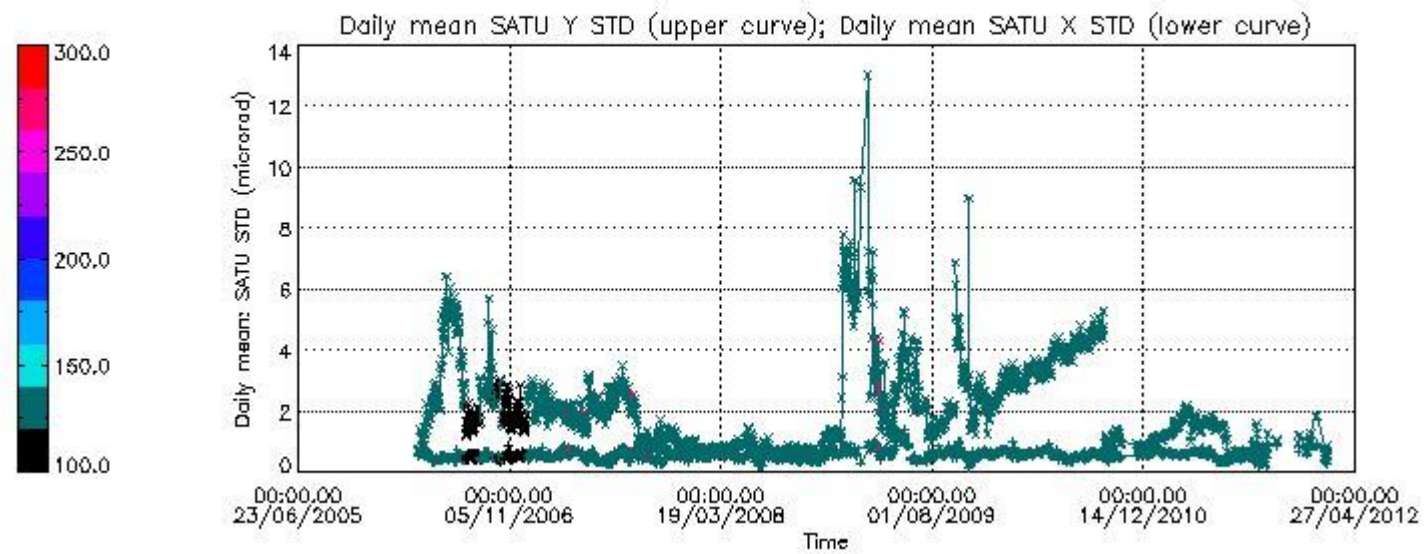
7.2.2 Trend of daily SATU NEA St. deviation since 1st April 2006 (dark limb) and of daily SATU NEA 90th percentile since May 2011

The long term trend of the SATU 'X' and 'Y' standard deviations should be constant during the whole mission.

The colorbar represents the start tangent altitude (km) of the occultations.

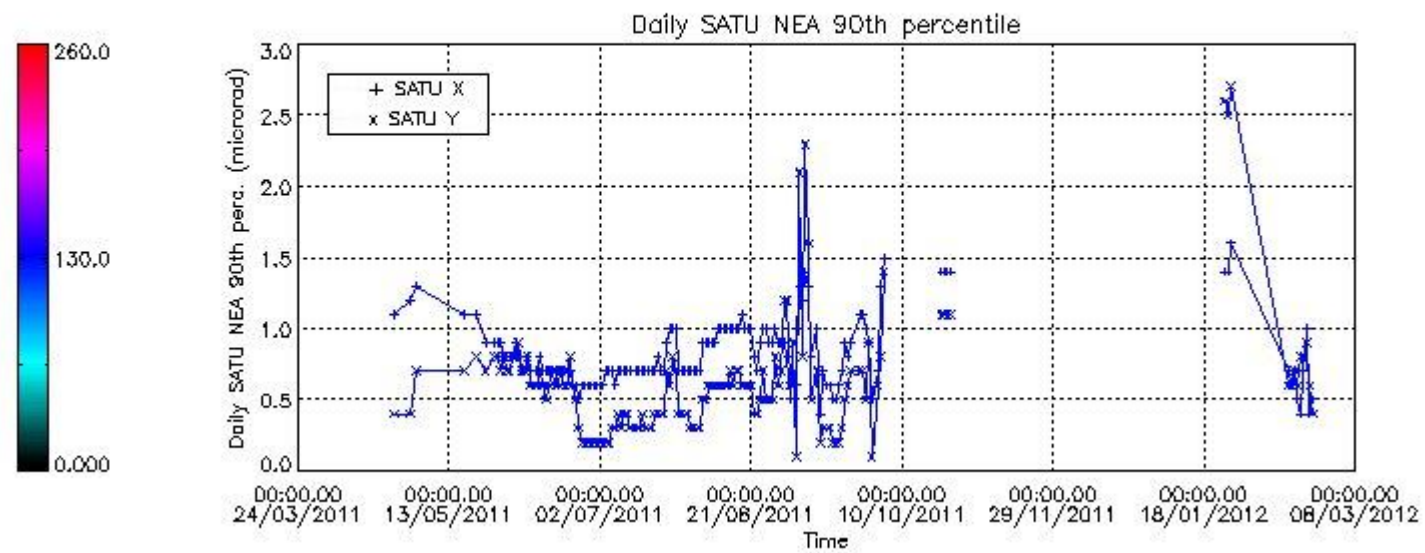
Upper curve: STD of SATU Y axis

Lower curve: STD of SATU X axis



Lower curve: 90th percentile of SATU Y axis

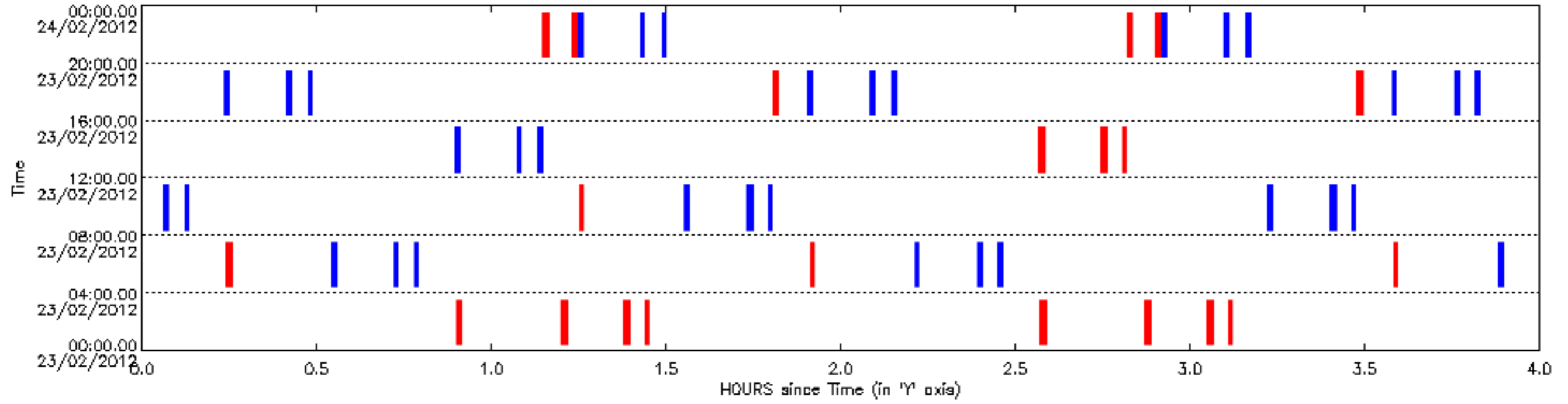
Upper curve: 90th percentile of SATU X axis

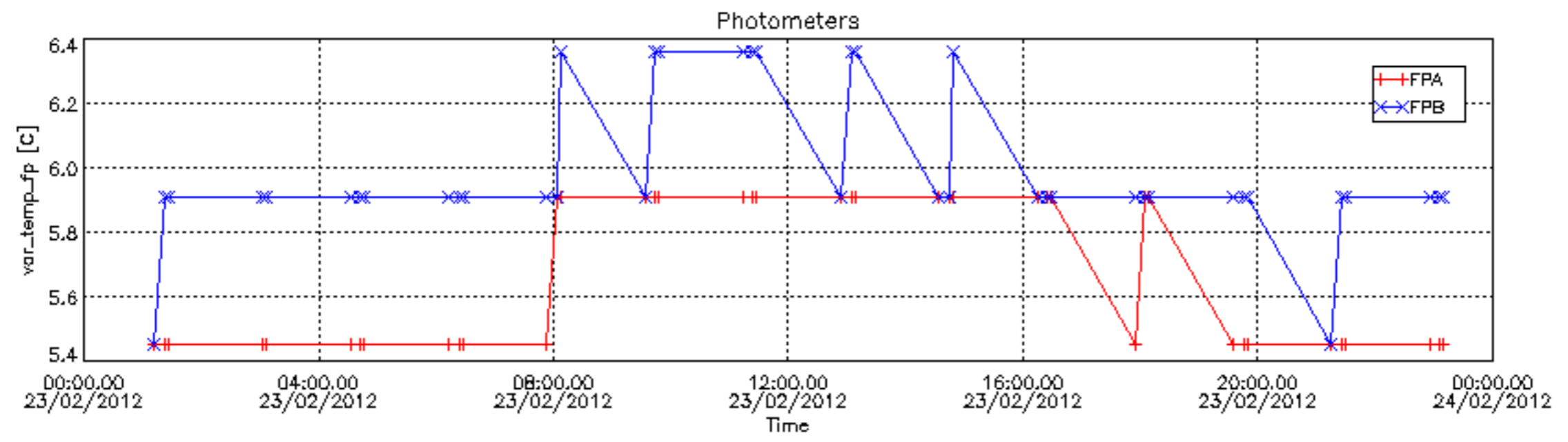
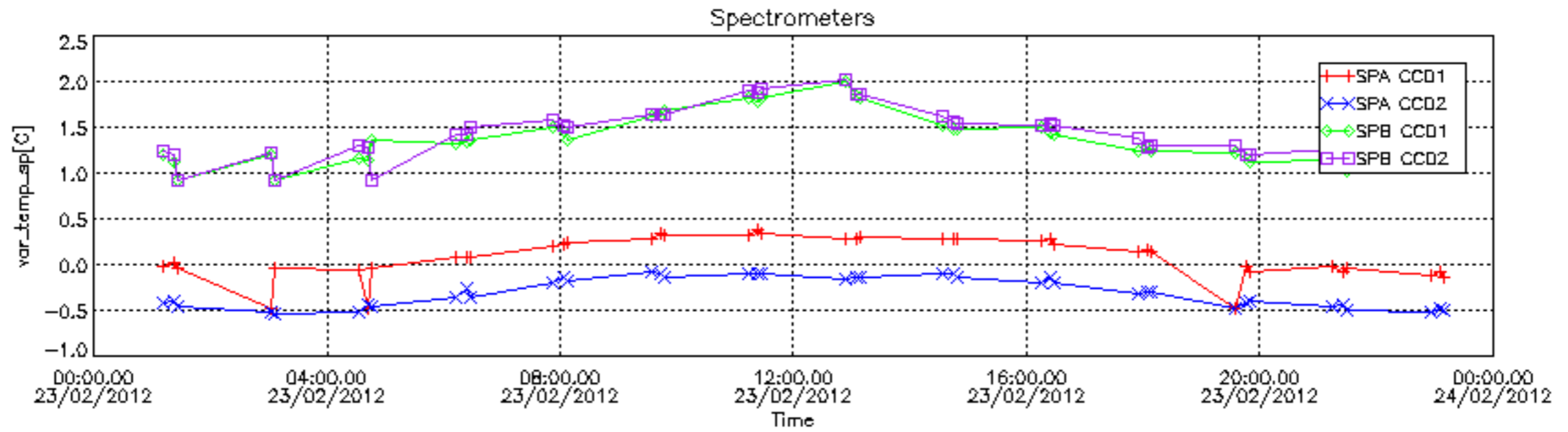


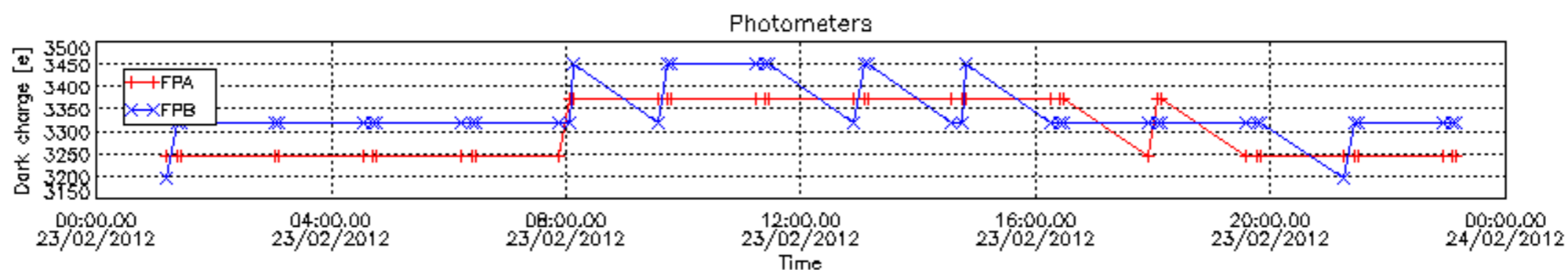
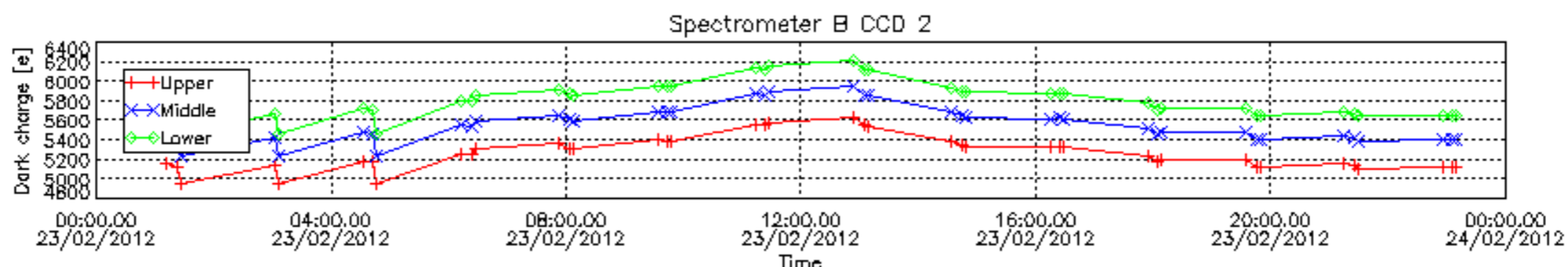
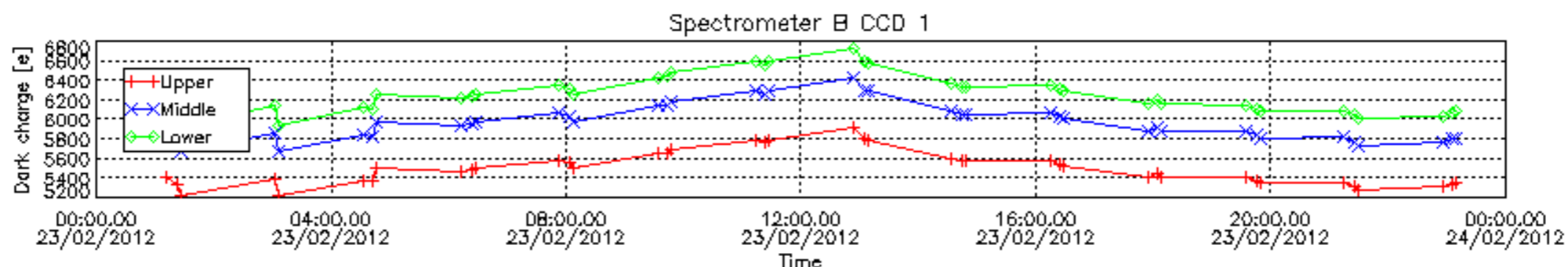
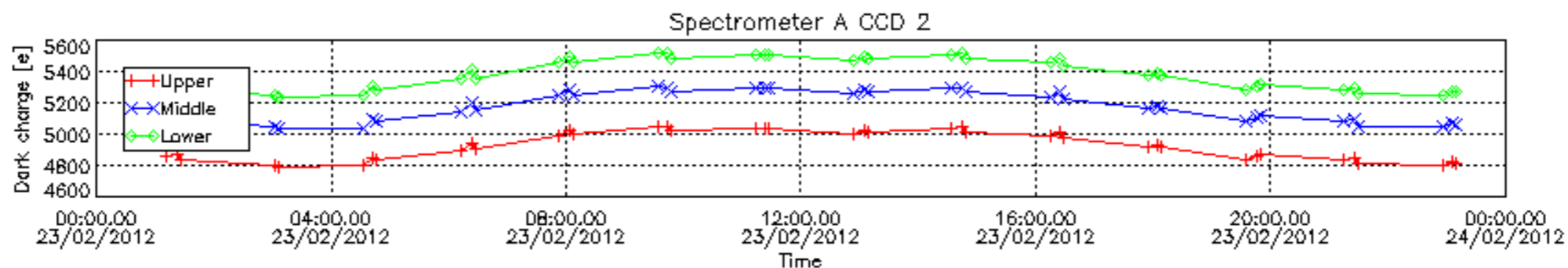
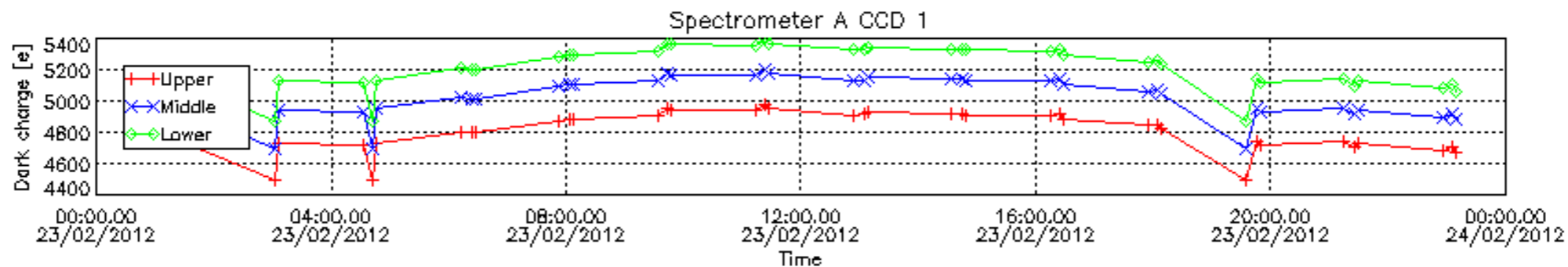
8. Auxiliary Data Files used for the production reported in section 2.4

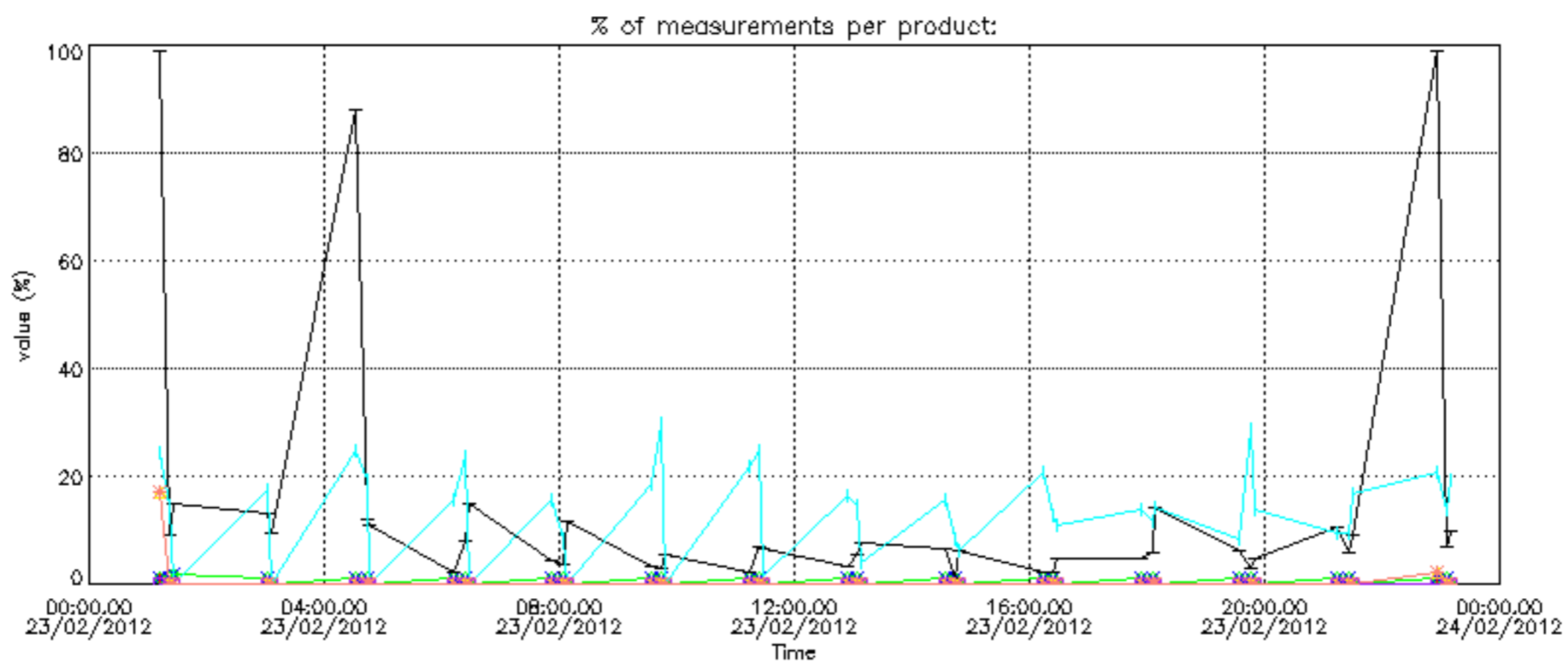
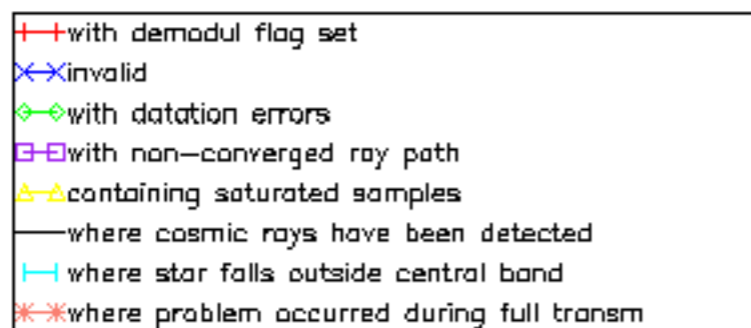
The number reported in the third column indicates since which file (see list in section 2.4) the corresponding auxiliary file has been used. The fourth column is the date of those product files.

Type	Auxiliary Filename	Used since product	Used since product date
INST_PHYS_CHARACTERISTICS	GOM_INS_AXVIEC20111213_163131_20111215_000000_20500101_000000	1	23-FEB-2012 01:11:58
CALIBRATION_DATABASE	GOM_CAL_AXVIEC20120130_103112_20120125_000000_20500101_000000	1	23-FEB-2012 01:11:58
LEVEL-1B_PROC_CONFIG	GOM_PR1_AXVIEC20110513_081743_20020301_000000_20500101_000000	1	23-FEB-2012 01:11:58
STAR_CATALOGUE	GOM_CAT_AXVIEC20020121_161009_20020101_000000_20200101_000000	1	23-FEB-2012 01:11:58
STELLAR_SPECTRA_DATABANK	GOM_STS_AXVIEC20091111_151504_20020101_160000_20500101_000000	1	23-FEB-2012 01:11:58
ECMWF_FILE	AUX_ECF_AXNECM20120222_062116_20120222_210000_20120223_090000	1	23-FEB-2012 01:11:58
ECMWF_FILE	MISSING	15	23-FEB-2012 09:33:11
ECMWF_FILE	AUX_ECF_AXNECM20120223_105228_20120223_090000_20120223_210000	18	23-FEB-2012 11:13:25
ECMWF_FILE	AUX_ECF_AXNECM20120223_105228_20120223_150000_20120224_030000	27	23-FEB-2012 16:14:09
ECMWF_FILE	AUX_ECA_AXNECM20120223_181226_20120223_090000_20120223_210000	33	23-FEB-2012 19:34:38
ECMWF_FILE	AUX_ECF_AXNECM20120223_105229_20120223_210000_20120224_090000	36	23-FEB-2012 21:14:52
OPTIONAL_ECMWF_FILE	MISSING	1	23-FEB-2012 01:11:58
ORBIT_DATA_FILE	AUX_FPO_AXVPDS20120222_232929_20120221_191047_20120302_212428	1	23-FEB-2012 01:11:58
ORBIT_DATA_FILE	AUX_FPO_AXVPDS20120223_233226_20120223_125634_20120304_151016	39	23-FEB-2012 22:55:07

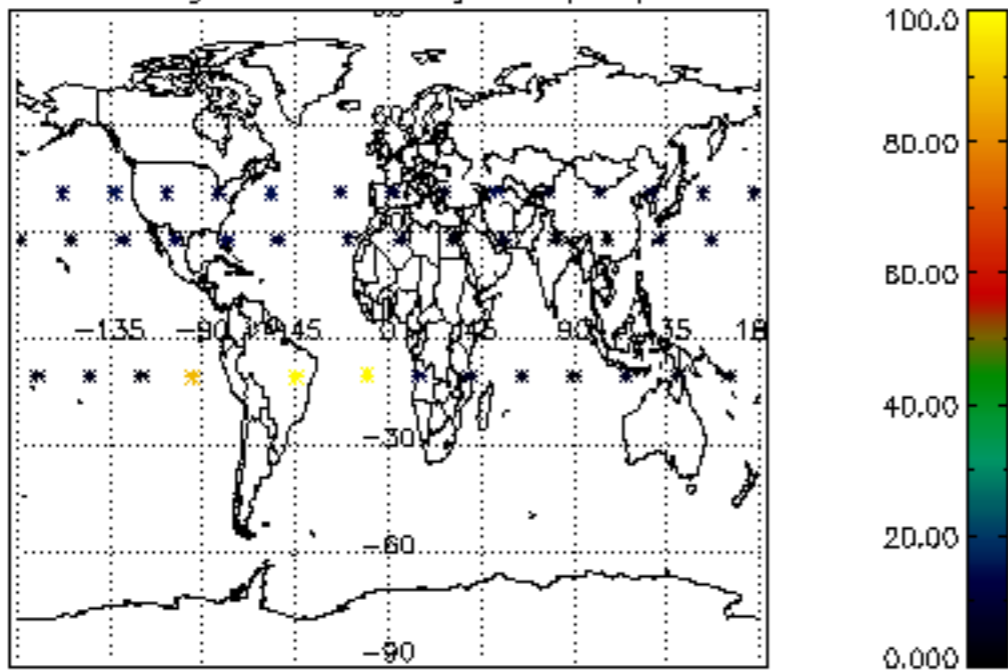




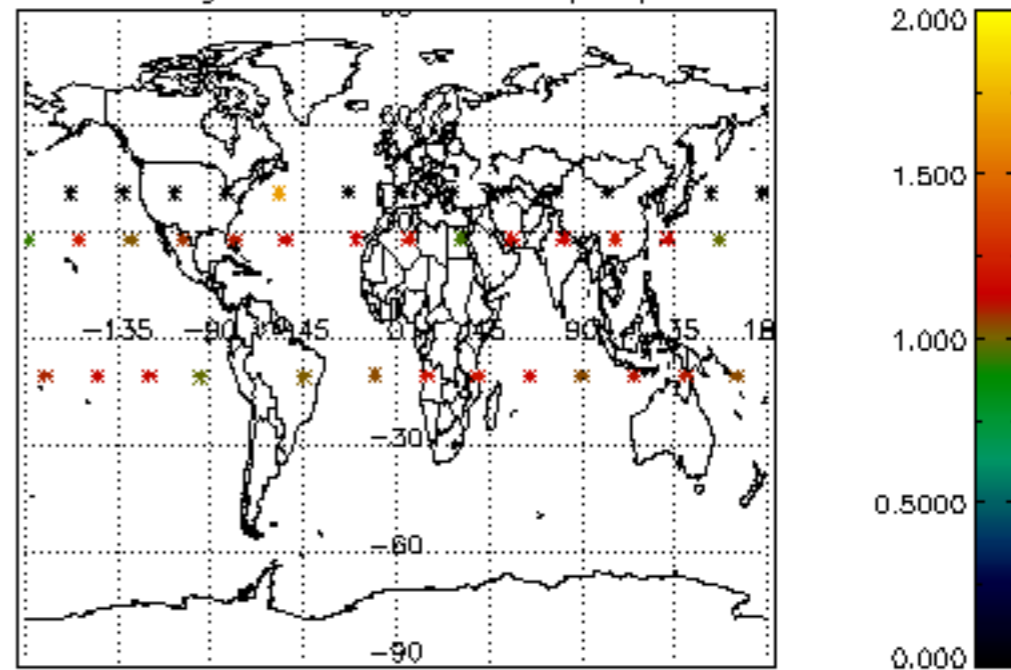




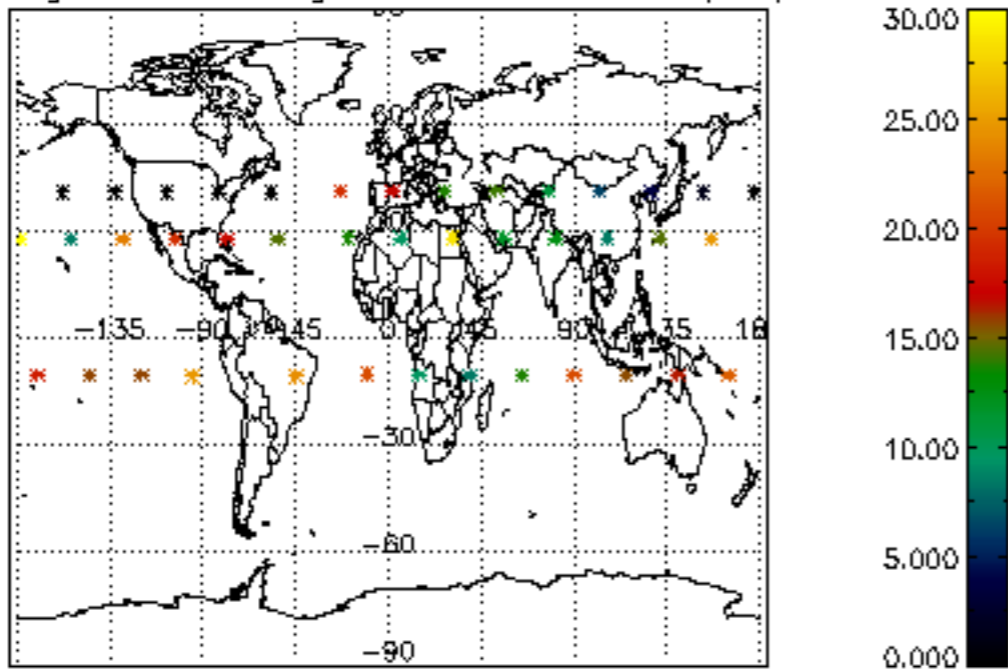
Percentage of cosmic ray hits per profile



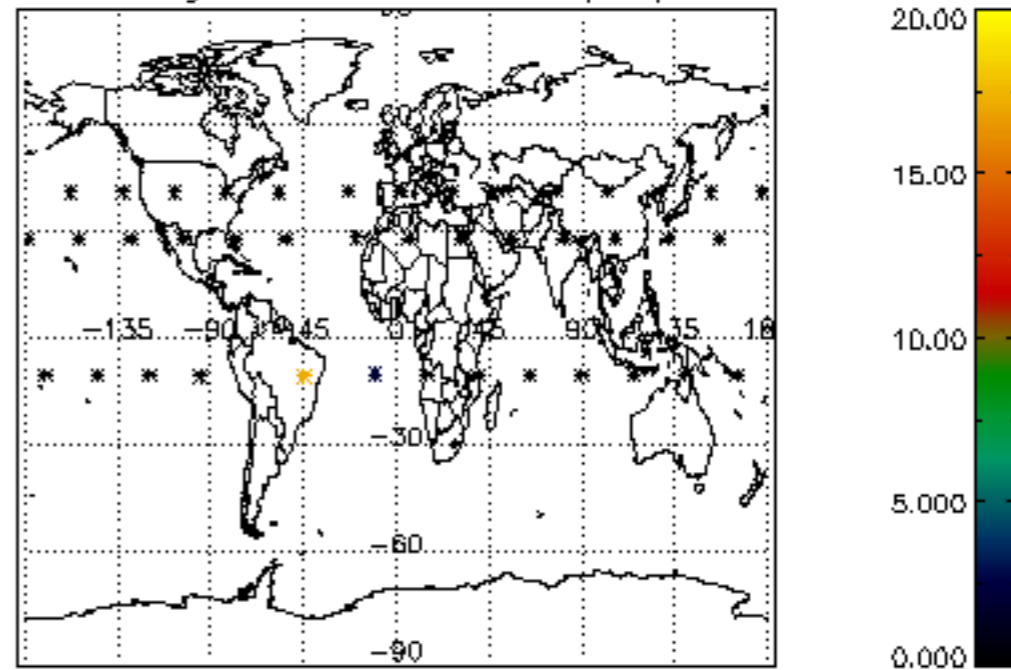
Percentage of datation errors per profile



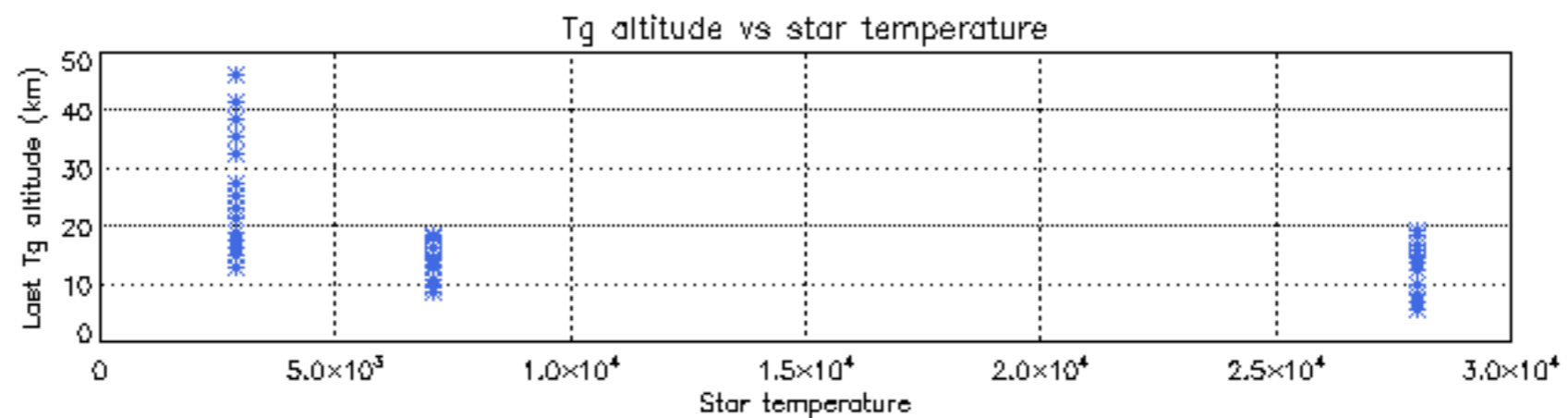
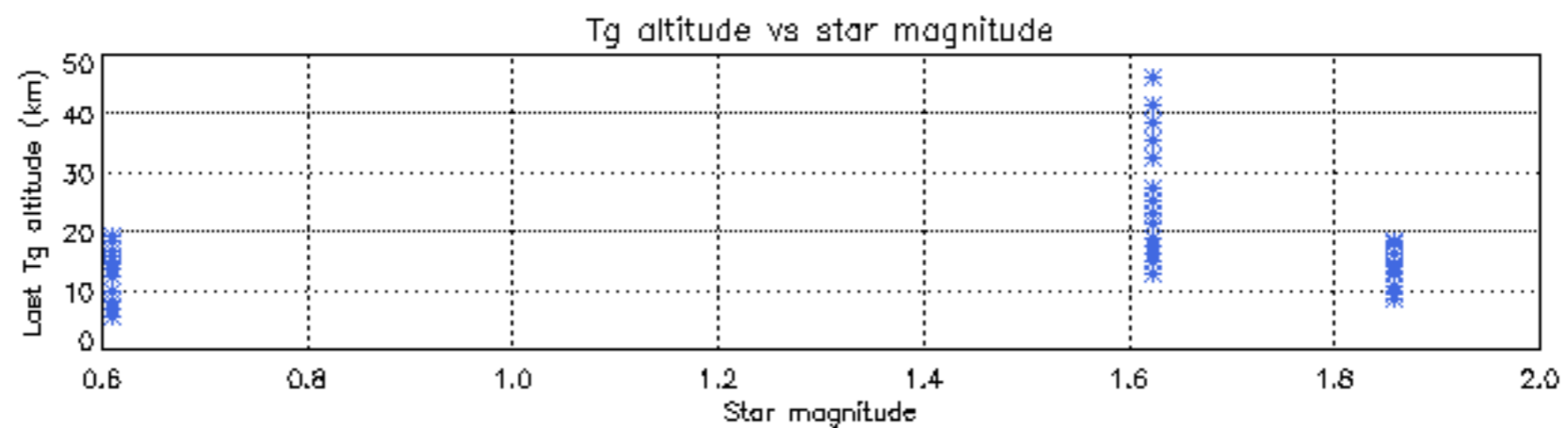
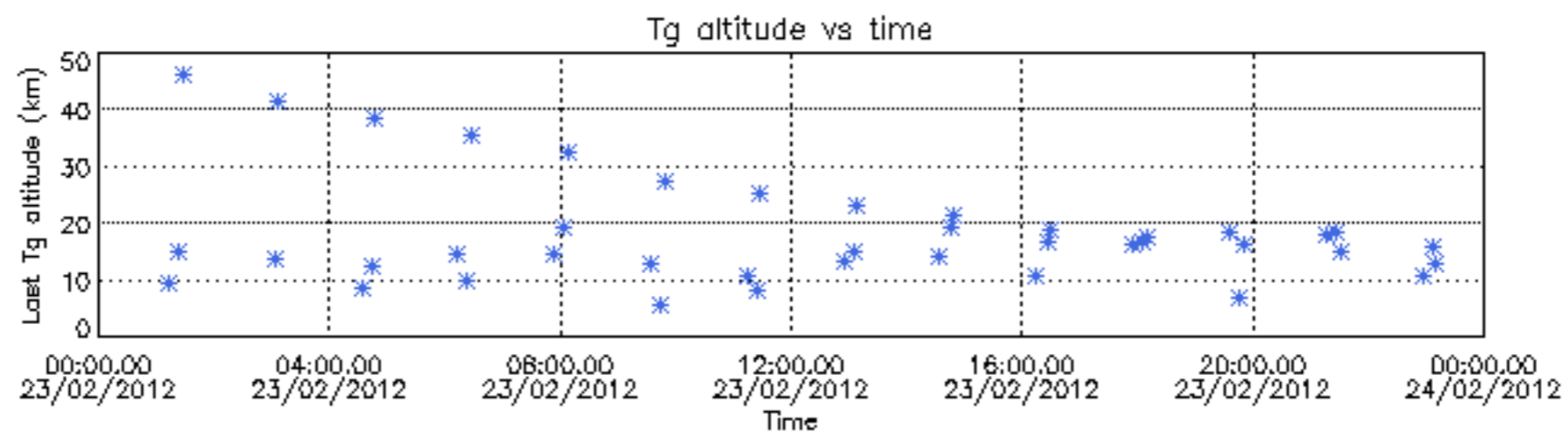
Percentage of star falling outside central band per profile

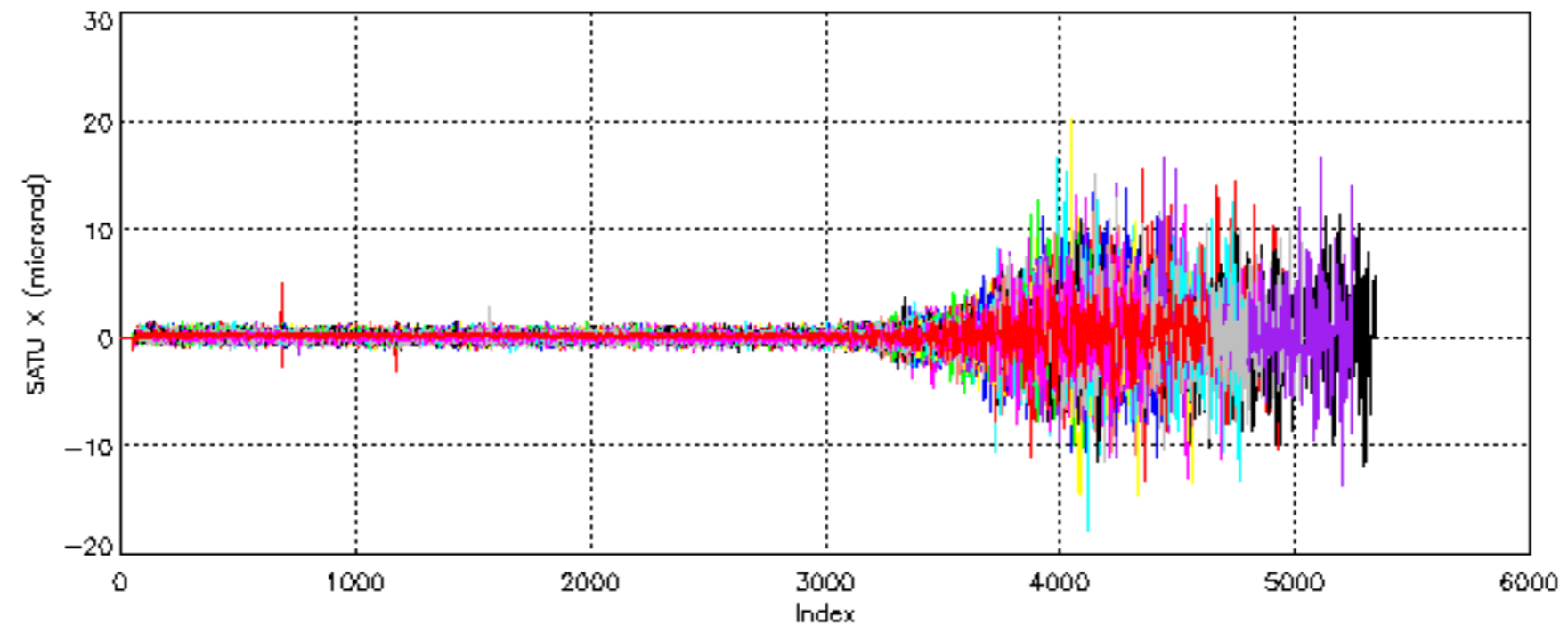


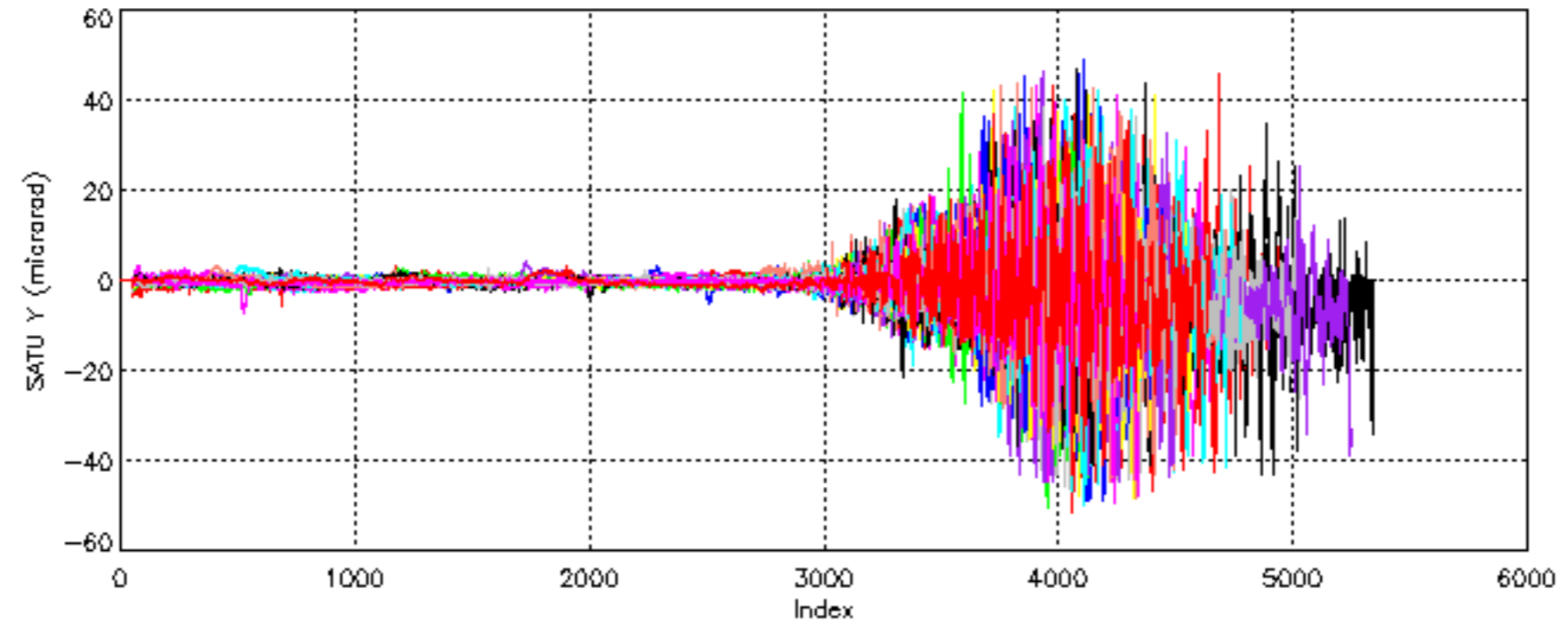
Percentage of saturation errors per profile

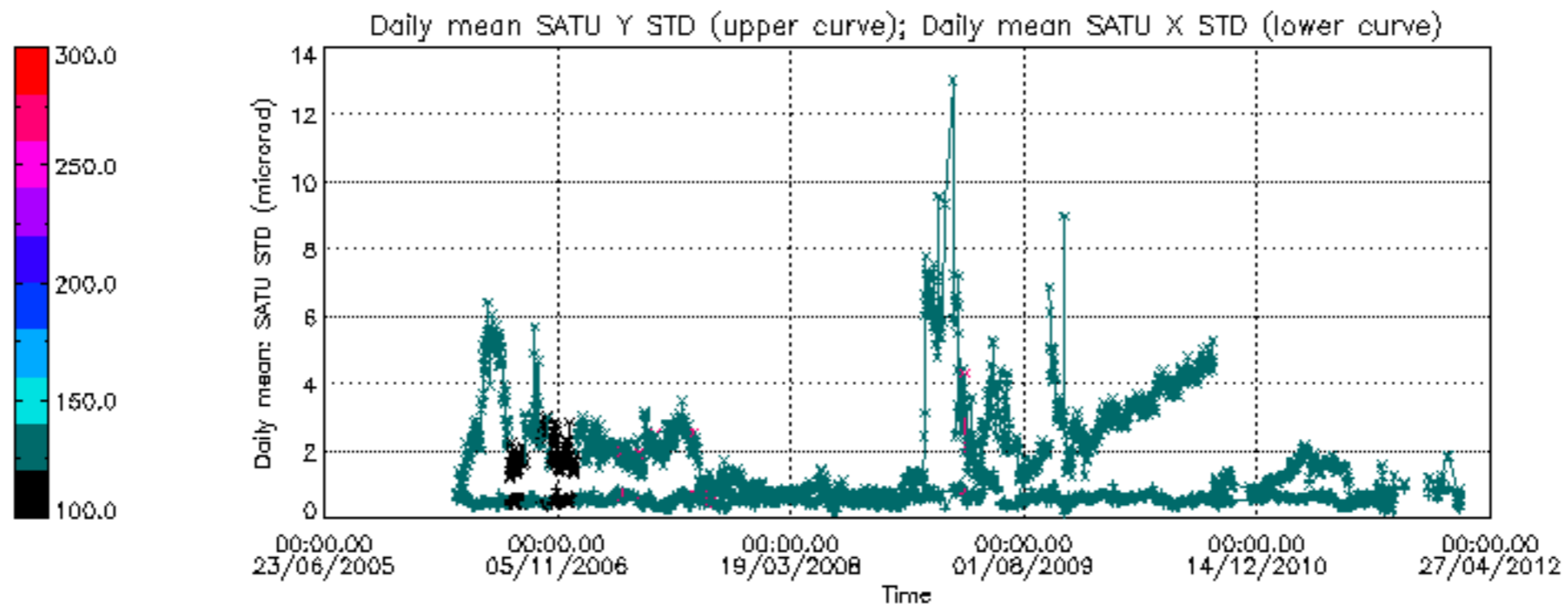


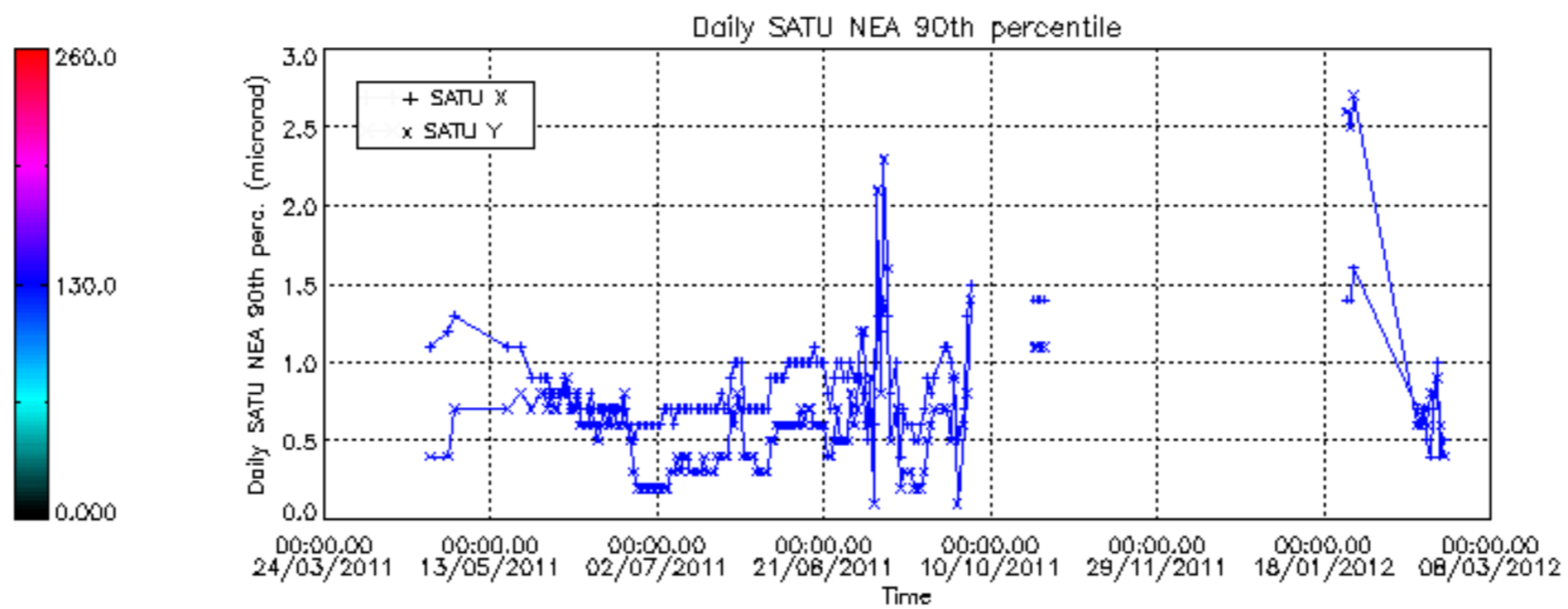
Tangent altitude at which the star is lost











/nas3/ENVISAT/GOMOS/GOM_NL__0P/GOM_NL__0PNPDE20120215_061534_000005593111_00365_52103_6611.N1
1; 395.4; 15-FEB-2012 06:15:34; Dark ; 41.0; 10; Bet Cen ; 0.61; 28000;occ; 82; 0;52103
2; 564.2; 15-FEB-2012 06:18:23; Dark ; 50.5; 20; Bet Cru ; 1.25; 30000;occ; 101; 0;52103
3; 921.0; 15-FEB-2012 06:24:20; Dark ; 33.5; 113; Mu Vel ; 2.69; 5000;occ; 67; 0;52103

/nas3/ENVISAT/GOMOS/GOM_NL__0P/GOM_NL__0PNPDE20120215_211745_000005673111_00374_52112_6613.N1
1; 400.7; 15-FEB-2012 21:17:45; Dark ; 43.5; 10; Bet Cen ; 0.61; 28000;occ; 87; 0;52112
2; 569.2; 15-FEB-2012 21:20:33; Dark ; 42.0; 20; Bet Cru ; 1.25; 30000;occ; 84; 0;52112
3; 924.7; 15-FEB-2012 21:26:29; Dark ; 44.0; 113; Mu Vel ; 2.69; 5000;occ; 88; 0;52112

/nas3/ENVISAT/GOMOS/GOM_NL__0P/GOM_NL__0PNPDE20120215_225759_000005663111_00375_52113_6614.N1
1; 401.4; 15-FEB-2012 22:57:59; Dark ; 42.0; 10; Bet Cen ; 0.61; 28000;occ; 84; 0;52113
2; 569.8; 15-FEB-2012 23:00:48; Dark ; 43.5; 20; Bet Cru ; 1.25; 30000;occ; 87; 0;52113
3; 925.1; 15-FEB-2012 23:06:43; Dark ; 43.0; 113; Mu Vel ; 2.69; 5000;occ; 86; 0;52113

/nas3/ENVISAT/GOMOS/GOM_NL__0P/GOM_NL__0PNPDK20120215_075549_000005603111_00366_52104_5593.N1
1; 396.1; 15-FEB-2012 07:55:49; Dark ; 50.0; 10; Bet Cen ; 0.61; 28000;occ; 100; 0;52104
2; 564.7; 15-FEB-2012 07:58:37; Dark ; 45.5; 20; Bet Cru ; 1.25; 30000;occ; 91; 0;52104
3; 921.3; 15-FEB-2012 08:04:34; Dark ; 35.5; 113; Mu Vel ; 2.69; 5000;occ; 71; 0;52104

/nas3/ENVISAT/GOMOS/GOM_NL__0P/GOM_NL__0PNPDK20120215_093603_000005633111_00367_52105_5594.N1
1; 396.6; 15-FEB-2012 09:36:03; Dark ; 42.5; 10; Bet Cen ; 0.61; 28000;occ; 85; 0;52105
2; 565.3; 15-FEB-2012 09:38:52; Dark ; 45.5; 20; Bet Cru ; 1.25; 30000;occ; 91; 0;52105
3; 921.7; 15-FEB-2012 09:44:48; Dark ; 38.5; 113; Mu Vel ; 2.69; 5000;occ; 77; 0;52105

/nas3/ENVISAT/GOMOS/GOM_NL__0P/GOM_NL__0PNPDK20120215_125632_000005663111_00369_52107_5596.N1
1; 397.8; 15-FEB-2012 12:56:32; Dark ; 44.0; 10; Bet Cen ; 0.61; 28000;occ; 88; 0;52107
2; 566.4; 15-FEB-2012 12:59:21; Dark ; 40.5; 20; Bet Cru ; 1.25; 30000;occ; 81; 0;52107
3; 922.5; 15-FEB-2012 13:05:17; Dark ; 41.5; 113; Mu Vel ; 2.69; 5000;occ; 83; 0;52107

/nas3/ENVISAT/GOMOS/GOM_NL__0P/GOM_NL__0PNPDK20120215_143647_000005703111_00370_52108_5597.N1
1; 398.5; 15-FEB-2012 14:36:47; Dark ; 44.0; 10; Bet Cen ; 0.61; 28000;occ; 88; 0;52108
2; 567.1; 15-FEB-2012 14:39:35; Dark ; 41.5; 20; Bet Cru ; 1.25; 30000;occ; 83; 0;52108
3; 923.1; 15-FEB-2012 14:45:31; Dark ; 45.5; 113; Mu Vel ; 2.69; 5000;occ; 91; 0;52108

/nas3/ENVISAT/GOMOS/GOM_NL__0P/GOM_NL__0PNPDK20120215_161701_000005693111_00371_52109_5598.N1
1; 399.0; 15-FEB-2012 16:17:01; Dark ; 43.5; 10; Bet Cen ; 0.61; 28000;occ; 87; 0;52109
2; 567.7; 15-FEB-2012 16:19:50; Dark ; 43.5; 20; Bet Cru ; 1.25; 30000;occ; 87; 0;52109
3; 923.5; 15-FEB-2012 16:25:46; Dark ; 45.5; 113; Mu Vel ; 2.69; 5000;occ; 91; 0;52109

/nas3/ENVISAT/GOMOS/GOM_NL__0P/GOM_NL__0PNPDK20120215_175716_000005403111_00372_52110_5599.N1
1; 399.6; 15-FEB-2012 17:57:16; Dark ; 48.0; 10; Bet Cen ; 0.61; 28000;occ; 96; 0;52110
2; 568.2; 15-FEB-2012 18:00:04; Dark ; 43.0; 20; Bet Cru ; 1.25; 30000;occ; 86; 0;52110
3; 924.0; 15-FEB-2012 18:06:00; Dark ; 16.5; 113; Mu Vel ; 2.69; 5000;occ; 33; 0;52110

/nas3/ENVISAT/GOMOS/GOM_NL__0P/GOM_NL__0PNPDE20120215_194625_000000333111_00373_52111_6612.N1
1; 935.2; 15-FEB-2012 19:46:25; Dark ; 44.5; 113; Mu Vel ; 2.69; 5000;occ; 89; 22;52111

/nas3/ENVISAT/GOMOS/GOM_NL__0P/GOM_NL__0PNPDK20120215_193730_000005683111_00373_52111_5600.N1
1; 400.2; 15-FEB-2012 19:37:30; Dark ; 46.0; 10; Bet Cen ; 0.61; 28000;occ; 92; 0;52111
2; 568.6; 15-FEB-2012 19:40:19; Dark ; 41.5; 20; Bet Cru ; 1.25; 30000;occ; 83; 0;52111
3; 924.2; 15-FEB-2012 19:46:14; Dark ; 44.5; 113; Mu Vel ; 2.69; 5000;occ; 89; 0;52111

/nas3/ENVISAT/GOMOS/GOM_NL__0P/GOM_NL__0PNPDE20120216_003814_000005643111_00376_52114_6615.N1
1; 402.0; 16-FEB-2012 00:38:14; Dark ; 44.5; 10; Bet Cen ; 0.61; 28000;occ; 89; 0;52114
2; 570.3; 16-FEB-2012 00:41:02; Dark ; 51.0; 20; Bet Cru ; 1.25; 30000;occ; 102; 0;52114
3; 925.6; 16-FEB-2012 00:46:57; Dark ; 41.0; 113; Mu Vel ; 2.69; 5000;occ; 82; 0;52114

/nas3/ENVISAT/GOMOS/GOM_NL__0P/GOM_NL__0PNPDE20120216_021828_000005683111_00377_52115_6616.N1
1; 402.6; 16-FEB-2012 02:18:28; Dark ; 41.0; 10; Bet Cen ; 0.61; 28000;occ; 82; 0;52115
2; 571.0; 16-FEB-2012 02:21:17; Dark ; 40.0; 20; Bet Cru ; 1.25; 30000;occ; 80; 0;52115
3; 925.9; 16-FEB-2012 02:27:11; Dark ; 45.0; 113; Mu Vel ; 2.69; 5000;occ; 90; 0;52115

/nas3/ENVISAT/GOMOS/GOM_NL__0P/GOM_NL__0PNPDE20120216_053858_000005633111_00379_52117_6617.N1
1; 404.1; 16-FEB-2012 05:38:58; Dark ; 42.5; 10; Bet Cen ; 0.61; 28000;occ; 85; 0;52117
2; 572.3; 16-FEB-2012 05:41:46; Dark ; 40.5; 20; Bet Cru ; 1.25; 30000;occ; 81; 0;52117
3; 927.0; 16-FEB-2012 05:47:40; Dark ; 40.5; 113; Mu Vel ; 2.69; 5000;occ; 81; 0;52117

/nas3/ENVISAT/GOMOS/GOM_NL__0P/GOM_NL__0PNPDE20120216_222004_000002893111_00389_52127_6618.N1
1; 330.9; 16-FEB-2012 22:20:04; Dark ; 43.5; 4; Alp1Cen ; -0.01; 5800;occ; 87; 0;52127
2; 409.9; 16-FEB-2012 22:21:23; Dark ; 44.0; 10; Bet Cen ; 0.61; 28000;occ; 88; 0;52127
3; 577.7; 16-FEB-2012 22:24:10; Dark ; 43.0; 20; Bet Cru ; 1.25; 30000;occ; 86; 0;52127

/nas3/ENVISAT/GOMOS/GOM_NL__0P/GOM_NL__0PNPDK20120216_071912_000005643111_00380_52118_5601.N1
1; 404.6; 16-FEB-2012 07:19:12; Dark ; 42.5; 10; Bet Cen ; 0.61; 28000;occ; 85; 0;52118
2; 572.8; 16-FEB-2012 07:22:00; Dark ; 45.5; 20; Bet Cru ; 1.25; 30000;occ; 91; 0;52118
3; 927.5; 16-FEB-2012 07:27:55; Dark ; 42.0; 113; Mu Vel ; 2.69; 5000;occ; 84; 0;52118

/nas3/ENVISAT/GOMOS/GOM_NL__0P/GOM_NL__0PNPDK20120216_085926_000005643111_00381_52119_5602.N1
1; 405.2; 16-FEB-2012 08:59:27; Dark ; 51.0; 10; Bet Cen ; 0.61; 28000;occ; 102; 0;52119
2; 573.3; 16-FEB-2012 09:02:15; Dark ; 50.5; 20; Bet Cru ; 1.25; 30000;occ; 101; 0;52119
3; 927.9; 16-FEB-2012 09:08:09; Dark ; 42.0; 113; Mu Vel ; 2.69; 5000;occ; 84; 0;52119

/nas3/ENVISAT/GOMOS/GOM_NL__0P/GOM_NL__0PNPDK20120216_103822_000002873111_00382_52120_5603.N1
1; 326.8; 16-FEB-2012 10:38:22; Dark ; 42.0; 4; Alp1Cen ; -0.01; 5800;occ; 84; 0;52120

```
2; 405.8; 16-FEB-2012 10:39:41; Dark ; 48.0; 10; Bet Cen ; 0.61; 28000;occ; 96; 0;52120
3; 573.9; 16-FEB-2012 10:42:29; Dark ; 40.5; 20; Bet Cru ; 1.25; 30000;occ; 81; 0;52120
/nas3/ENVISAT/GOMOS/GOM_NL__0P/GOM_NL__0PNPDK20120216_121837_000002963111_00383_52121_5604.N1
1; 327.5; 16-FEB-2012 12:18:37; Dark ; 44.5; 4; Alp1Cen ; -0.01; 5800;occ; 89; 0;52121
2; 406.4; 16-FEB-2012 12:19:56; Dark ; 42.0; 10; Bet Cen ; 0.61; 28000;occ; 84; 0;52121
3; 574.6; 16-FEB-2012 12:22:44; Dark ; 49.0; 20; Bet Cru ; 1.25; 30000;occ; 98; 0;52121
/nas3/ENVISAT/GOMOS/GOM_NL__0P/GOM_NL__0PNPDK20120216_135851_000002903111_00384_52122_5605.N1
1; 328.1; 16-FEB-2012 13:58:51; Dark ; 43.5; 4; Alp1Cen ; -0.01; 5800;occ; 87; 0;52122
2; 407.1; 16-FEB-2012 14:00:10; Dark ; 42.0; 10; Bet Cen ; 0.61; 28000;occ; 84; 0;52122
3; 575.1; 16-FEB-2012 14:02:58; Dark ; 43.0; 20; Bet Cru ; 1.25; 30000;occ; 86; 0;52122
/nas3/ENVISAT/GOMOS/GOM_NL__0P/GOM_NL__0PNPDK20120216_153906_000002903111_00385_52123_5606.N1
1; 328.7; 16-FEB-2012 15:39:06; Dark ; 43.5; 4; Alp1Cen ; -0.01; 5800;occ; 87; 0;52123
2; 407.5; 16-FEB-2012 15:40:24; Dark ; 42.0; 10; Bet Cen ; 0.61; 28000;occ; 84; 0;52123
3; 575.7; 16-FEB-2012 15:43:13; Dark ; 43.5; 20; Bet Cru ; 1.25; 30000;occ; 87; 0;52123
/nas3/ENVISAT/GOMOS/GOM_NL__0P/GOM_NL__0PNPDK20120216_171920_000002993111_00386_52124_5607.N1
1; 329.3; 16-FEB-2012 17:19:20; Dark ; 46.0; 4; Alp1Cen ; -0.01; 5800;occ; 92; 0;52124
2; 408.2; 16-FEB-2012 17:20:39; Dark ; 44.0; 10; Bet Cen ; 0.61; 28000;occ; 88; 0;52124
3; 576.2; 16-FEB-2012 17:23:27; Dark ; 52.5; 20; Bet Cru ; 1.25; 30000;occ; 105; 0;52124
/nas3/ENVISAT/GOMOS/GOM_NL__0P/GOM_NL__0PNPDK20120216_185935_000002873111_00387_52125_5608.N1
1; 329.8; 16-FEB-2012 18:59:35; Dark ; 43.0; 4; Alp1Cen ; -0.01; 5800;occ; 86; 0;52125
2; 408.8; 16-FEB-2012 19:00:54; Dark ; 47.5; 10; Bet Cen ; 0.61; 28000;occ; 95; 0;52125
3; 576.7; 16-FEB-2012 19:03:42; Dark ; 41.0; 20; Bet Cru ; 1.25; 30000;occ; 82; 0;52125
/nas3/ENVISAT/GOMOS/GOM_NL__0P/GOM_NL__0PNPDK20120216_203949_000002923111_00388_52126_5609.N1
1; 330.4; 16-FEB-2012 20:39:49; Dark ; 51.5; 4; Alp1Cen ; -0.01; 5800;occ; 103; 0;52126
2; 409.4; 16-FEB-2012 20:41:08; Dark ; 43.5; 10; Bet Cen ; 0.61; 28000;occ; 87; 0;52126
3; 577.3; 16-FEB-2012 20:43:56; Dark ; 45.5; 20; Bet Cru ; 1.25; 30000;occ; 91; 0;52126
/nas3/ENVISAT/GOMOS/GOM_NL__0P/GOM_NL__0PNPDE20120217_014152_000062233111_00391_52129_6619.N1
1; 411.2; 17-FEB-2012 01:41:52; Dark ; 46.0; 10; Bet Cen ; 0.61; 28000;occ; 92; 0;52129
2; 578.9; 17-FEB-2012 01:44:39; Dark ; 42.0; 20; Bet Cru ; 1.25; 30000;occ; 84; 0;52129
3; 5710.4; 17-FEB-2012 03:10:11; Dark ; 42.0; 25; 35Lam Sco ; 1.62; 28000;occ; 84; 0;52129
4; 6425.8; 17-FEB-2012 03:22:06; Dark ; 43.0; 10; Bet Cen ; 0.61; 28000;occ; 86; 0;52130
5; 6593.5; 17-FEB-2012 03:24:54; Dark ; 41.0; 20; Bet Cru ; 1.25; 30000;occ; 82; 0;52130
/nas3/ENVISAT/GOMOS/GOM_NL__0P/GOM_NL__0PNPDE20120217_045025_000009233111_00392_52130_6620.N1
1; -302.8; 17-FEB-2012 04:50:25; Dark ; 41.5; 25; 35Lam Sco ; 1.62; 28000;occ; 83; 0;52130
2; 412.4; 17-FEB-2012 05:02:21; Dark ; 44.0; 10; Bet Cen ; 0.61; 28000;occ; 88; 0;52131
3; 579.9; 17-FEB-2012 05:05:08; Dark ; 40.5; 20; Bet Cru ; 1.25; 30000;occ; 81; 0;52131
/nas3/ENVISAT/GOMOS/GOM_NL__0P/GOM_NL__0PNPDE20120217_063040_000009263111_00393_52131_6621.N1
1; -302.2; 17-FEB-2012 06:30:40; Dark ; 44.0; 25; 35Lam Sco ; 1.62; 28000;occ; 88; 0;52131
2; 413.1; 17-FEB-2012 06:42:35; Dark ; 47.0; 10; Bet Cen ; 0.61; 28000;occ; 94; 0;52132
3; 580.6; 17-FEB-2012 06:45:23; Dark ; 44.0; 20; Bet Cru ; 1.25; 30000;occ; 88; 0;52132
/nas3/ENVISAT/GOMOS/GOM_NL__0P/GOM_NL__0PNPDE20120217_213251_000009253111_00402_52140_6622.N1
1; -296.5; 17-FEB-2012 21:32:51; Dark ; 41.5; 25; 35Lam Sco ; 1.62; 28000;occ; 83; 0;52140
2; 418.6; 17-FEB-2012 21:44:46; Dark ; 42.0; 10; Bet Cen ; 0.61; 28000;occ; 84; 0;52141
3; 585.6; 17-FEB-2012 21:47:33; Dark ; 43.0; 20; Bet Cru ; 1.25; 30000;occ; 86; 0;52141
/nas3/ENVISAT/GOMOS/GOM_NL__0P/GOM_NL__0PNPDE20120217_231306_000009233111_00403_52141_6623.N1
1; -295.9; 17-FEB-2012 23:13:06; Dark ; 38.0; 25; 35Lam Sco ; 1.62; 28000;occ; 76; 0;52141
2; 419.2; 17-FEB-2012 23:25:01; Dark ; 43.5; 10; Bet Cen ; 0.61; 28000;occ; 87; 0;52142
3; 586.1; 17-FEB-2012 23:27:48; Dark ; 41.5; 20; Bet Cru ; 1.25; 30000;occ; 83; 0;52142
/nas3/ENVISAT/GOMOS/GOM_NL__0P/GOM_NL__0PNPDK20120217_081055_000009313111_00394_52132_5610.N1
1; -301.5; 17-FEB-2012 08:10:55; Dark ; 46.0; 25; 35Lam Sco ; 1.62; 28000;occ; 92; 0;52132
2; 413.6; 17-FEB-2012 08:22:50; Dark ; 43.5; 10; Bet Cen ; 0.61; 28000;occ; 87; 0;52133
3; 581.1; 17-FEB-2012 08:25:37; Dark ; 49.0; 20; Bet Cru ; 1.25; 30000;occ; 98; 0;52133
/nas3/ENVISAT/GOMOS/GOM_NL__0P/GOM_NL__0PNPDK20120217_095109_000009233111_00395_52133_5611.N1
1; -301.0; 17-FEB-2012 09:51:09; Dark ; 49.5; 25; 35Lam Sco ; 1.62; 28000;occ; 99; 0;52133
2; 414.3; 17-FEB-2012 10:03:04; Dark ; 50.5; 10; Bet Cen ; 0.61; 28000;occ; 101; 0;52134
3; 581.7; 17-FEB-2012 10:05:52; Dark ; 41.0; 20; Bet Cru ; 1.25; 30000;occ; 82; 0;52134
/nas3/ENVISAT/GOMOS/GOM_NL__0P/GOM_NL__0PNPDK20120217_113124_000009223111_00396_52134_5612.N1
1; -300.4; 17-FEB-2012 11:31:24; Dark ; 41.5; 25; 35Lam Sco ; 1.62; 28000;occ; 83; 0;52134
2; 415.0; 17-FEB-2012 11:43:19; Dark ; 43.0; 10; Bet Cen ; 0.61; 28000;occ; 86; 0;52135
3; 582.3; 17-FEB-2012 11:46:06; Dark ; 40.0; 20; Bet Cru ; 1.25; 30000;occ; 80; 0;52135
/nas3/ENVISAT/GOMOS/GOM_NL__0P/GOM_NL__0PNPDK20120217_131138_000009273111_00397_52135_5613.N1
1; -299.7; 17-FEB-2012 13:11:38; Dark ; 45.5; 25; 35Lam Sco ; 1.62; 28000;occ; 91; 0;52135
2; 415.6; 17-FEB-2012 13:23:33; Dark ; 42.5; 10; Bet Cen ; 0.61; 28000;occ; 85; 0;52136
3; 582.9; 17-FEB-2012 13:26:21; Dark ; 44.5; 20; Bet Cru ; 1.25; 30000;occ; 89; 0;52136
/nas3/ENVISAT/GOMOS/GOM_NL__0P/GOM_NL__0PNPDK20120217_145153_000009243111_00398_52136_5614.N1
1; -299.0; 17-FEB-2012 14:51:53; Dark ; 45.5; 25; 35Lam Sco ; 1.62; 28000;occ; 91; 0;52136
2; 416.1; 17-FEB-2012 15:03:48; Dark ; 42.0; 10; Bet Cen ; 0.61; 28000;occ; 84; 0;52137
3; 583.5; 17-FEB-2012 15:06:35; Dark ; 42.0; 20; Bet Cru ; 1.25; 30000;occ; 84; 0;52137
```


/nas3/ENVISAT/GOMOS/GOM_NL__0P/GOM_NL__0PNPDK20120217_163207_000009293111_00399_52137_5615.N1
1; -298.5; 17-FEB-2012 16:32:07; Dark ; 42.0; 25; 35Lam Sco ; 1.62; 28000;occ; 84; 0;52137
2; 416.7; 17-FEB-2012 16:44:02; Dark ; 41.5; 10; Bet Cen ; 0.61; 28000;occ; 83; 0;52138
3; 584.0; 17-FEB-2012 16:46:50; Dark ; 47.5; 20; Bet Cru ; 1.25; 30000;occ; 95; 0;52138
/nas3/ENVISAT/GOMOS/GOM_NL__0P/GOM_NL__0PNPDK20120217_181222_000009223111_00400_52138_5616.N1
1; -297.8; 17-FEB-2012 18:12:22; Dark ; 43.0; 25; 35Lam Sco ; 1.62; 28000;occ; 86; 0;52138
2; 417.3; 17-FEB-2012 18:24:17; Dark ; 48.0; 10; Bet Cen ; 0.61; 28000;occ; 96; 0;52139
3; 584.6; 17-FEB-2012 18:27:04; Dark ; 40.5; 20; Bet Cru ; 1.25; 30000;occ; 81; 0;52139
/nas3/ENVISAT/GOMOS/GOM_NL__0P/GOM_NL__0PNPDK20120217_195237_000009263111_00401_52139_5617.N1
1; -297.2; 17-FEB-2012 19:52:37; Dark ; 41.0; 25; 35Lam Sco ; 1.62; 28000;occ; 82; 0;52139
2; 418.0; 17-FEB-2012 20:04:32; Dark ; 47.0; 10; Bet Cen ; 0.61; 28000;occ; 94; 0;52140
3; 585.1; 17-FEB-2012 20:07:19; Dark ; 44.0; 20; Bet Cru ; 1.25; 30000;occ; 88; 0;52140
/nas3/ENVISAT/GOMOS/GOM_NL__0P/GOM_NL__0PNPDE20120218_005320_000009233111_00404_52142_6624.N1
1; -295.3; 18-FEB-2012 00:53:20; Dark ; 33.0; 25; 35Lam Sco ; 1.62; 28000;occ; 66; 0;52142
2; 419.8; 18-FEB-2012 01:05:15; Dark ; 45.0; 10; Bet Cen ; 0.61; 28000;occ; 90; 0;52143
3; 586.7; 18-FEB-2012 01:08:02; Dark ; 41.5; 20; Bet Cru ; 1.25; 30000;occ; 83; 0;52143
/nas3/ENVISAT/GOMOS/GOM_NL__0P/GOM_NL__0PNPDE20120218_023335_000009293111_00405_52143_6625.N1
1; -294.6; 18-FEB-2012 02:33:35; Dark ; 28.0; 25; 35Lam Sco ; 1.62; 28000;occ; 56; 0;52143
2; 420.5; 18-FEB-2012 02:45:30; Dark ; 45.5; 10; Bet Cen ; 0.61; 28000;occ; 91; 0;52144
3; 587.3; 18-FEB-2012 02:48:16; Dark ; 48.0; 20; Bet Cru ; 1.25; 30000;occ; 96; 0;52144
/nas3/ENVISAT/GOMOS/GOM_NL__0P/GOM_NL__0PNPDE20120218_042544_00000503111_00407_52145_6626.N1
1; 420.9; 18-FEB-2012 04:25:44; Dark ; 51.0; 10; Bet Cen ; 0.61; 28000;occ; 102; 0;52145
/nas3/ENVISAT/GOMOS/GOM_NL__0P/GOM_NL__0PNPDE20120218_060559_00000453111_00408_52146_6627.N1
1; 421.5; 18-FEB-2012 06:05:59; Dark ; 45.5; 10; Bet Cen ; 0.61; 28000;occ; 91; 0;52146
/nas3/ENVISAT/GOMOS/GOM_NL__0P/GOM_NL__0PNPDE20120218_224824_00000423111_00418_52156_6628.N1
1; 427.7; 18-FEB-2012 22:48:24; Dark ; 42.5; 10; Bet Cen ; 0.61; 28000;occ; 85; 0;52156
/nas3/ENVISAT/GOMOS/GOM_NL__0P/GOM_NL__0PNPDK20120218_074613_00000493111_00409_52147_5618.N1
1; 422.2; 18-FEB-2012 07:46:13; Dark ; 50.0; 10; Bet Cen ; 0.61; 28000;occ; 100; 0;52147
/nas3/ENVISAT/GOMOS/GOM_NL__0P/GOM_NL__0PNPDK20120218_092628_00000533111_00410_52148_5619.N1
1; 422.8; 18-FEB-2012 09:26:28; Dark ; 53.5; 10; Bet Cen ; 0.61; 28000;occ; 107; 0;52148
/nas3/ENVISAT/GOMOS/GOM_NL__0P/GOM_NL__0PNPDK20120218_110642_00000503111_00411_52149_5620.N1
1; 423.4; 18-FEB-2012 11:06:42; Dark ; 50.5; 10; Bet Cen ; 0.61; 28000;occ; 101; 0;52149
/nas3/ENVISAT/GOMOS/GOM_NL__0P/GOM_NL__0PNPDK20120218_124657_00000393111_00412_52150_5621.N1
1; 424.0; 18-FEB-2012 12:46:57; Dark ; 40.0; 10; Bet Cen ; 0.61; 28000;occ; 80; 0;52150
/nas3/ENVISAT/GOMOS/GOM_NL__0P/GOM_NL__0PNPDK20120218_142711_00000433111_00413_52151_5622.N1
1; 424.6; 18-FEB-2012 14:27:11; Dark ; 43.5; 10; Bet Cen ; 0.61; 28000;occ; 87; 0;52151
/nas3/ENVISAT/GOMOS/GOM_NL__0P/GOM_NL__0PNPDK20120218_160726_00000433111_00414_52152_5623.N1
1; 425.4; 18-FEB-2012 16:07:26; Dark ; 44.0; 10; Bet Cen ; 0.61; 28000;occ; 88; 0;52152
/nas3/ENVISAT/GOMOS/GOM_NL__0P/GOM_NL__0PNPDK20120218_174740_00000453111_00415_52153_5624.N1
1; 425.9; 18-FEB-2012 17:47:40; Dark ; 46.0; 10; Bet Cen ; 0.61; 28000;occ; 92; 0;52153
/nas3/ENVISAT/GOMOS/GOM_NL__0P/GOM_NL__0PNPDK20120218_192755_00000473111_00416_52154_5625.N1
1; 426.5; 18-FEB-2012 19:27:55; Dark ; 47.5; 10; Bet Cen ; 0.61; 28000;occ; 95; 0;52154
/nas3/ENVISAT/GOMOS/GOM_NL__0P/GOM_NL__0PNPDK20120218_210810_00000403111_00417_52155_5626.N1
1; 427.1; 18-FEB-2012 21:08:10; Dark ; 41.0; 10; Bet Cen ; 0.61; 28000;occ; 82; 0;52155
/nas3/ENVISAT/GOMOS/GOM_NL__0P/GOM_NL__0PNPDE20120219_002838_00000473111_00419_52157_6629.N1
1; 428.2; 19-FEB-2012 00:28:38; Dark ; 47.5; 10; Bet Cen ; 0.61; 28000;occ; 95; 0;52157
/nas3/ENVISAT/GOMOS/GOM_NL__0P/GOM_NL__0PNPDE20120219_020853_00000443111_00420_52158_6630.N1
1; 428.8; 19-FEB-2012 02:08:53; Dark ; 44.5; 10; Bet Cen ; 0.61; 28000;occ; 89; 0;52158
/nas3/ENVISAT/GOMOS/GOM_NL__0P/GOM_NL__0PNPDE20120219_034907_00000443111_00421_52159_6631.N1
1; 429.4; 19-FEB-2012 03:49:07; Dark ; 44.5; 10; Bet Cen ; 0.61; 28000;occ; 89; 0;52159
/nas3/ENVISAT/GOMOS/GOM_NL__0P/GOM_NL__0PNPDE20120219_052922_00000503111_00422_52160_6632.N1
1; 430.2; 19-FEB-2012 05:29:22; Dark ; 50.5; 10; Bet Cen ; 0.61; 28000;occ; 101; 0;52160
/nas3/ENVISAT/GOMOS/GOM_NL__0P/GOM_NL__0PNPDE20120219_221147_00000413112_00001_52170_6633.N1
1; 436.1; 19-FEB-2012 22:11:47; Dark ; 41.5; 10; Bet Cen ; 0.61; 28000;occ; 83; 0;52170
/nas3/ENVISAT/GOMOS/GOM_NL__0P/GOM_NL__0PNPDE20120219_235202_00000453112_00002_52171_6634.N1
1; 436.8; 19-FEB-2012 23:52:02; Dark ; 46.0; 10; Bet Cen ; 0.61; 28000;occ; 92; 0;52171
/nas3/ENVISAT/GOMOS/GOM_NL__0P/GOM_NL__0PNPDK20120219_070937_00000463111_00423_52161_5627.N1
1; 430.8; 19-FEB-2012 07:09:37; Dark ; 46.5; 10; Bet Cen ; 0.61; 28000;occ; 93; 0;52161
/nas3/ENVISAT/GOMOS/GOM_NL__0P/GOM_NL__0PNPDK20120219_084951_00000403111_00424_52162_5628.N1
1; 431.5; 19-FEB-2012 08:49:51; Dark ; 41.0; 10; Bet Cen ; 0.61; 28000;occ; 82; 0;52162
/nas3/ENVISAT/GOMOS/GOM_NL__0P/GOM_NL__0PNPDK20120219_103006_00000523111_00425_52163_5629.N1
1; 432.0; 19-FEB-2012 10:30:06; Dark ; 53.0; 10; Bet Cen ; 0.61; 28000;occ; 106; 0;52163
/nas3/ENVISAT/GOMOS/GOM_NL__0P/GOM_NL__0PNPDK20120219_121020_00000423111_00426_52164_5630.N1
1; 432.5; 19-FEB-2012 12:10:20; Dark ; 42.5; 10; Bet Cen ; 0.61; 28000;occ; 85; 0;52164
/nas3/ENVISAT/GOMOS/GOM_NL__0P/GOM_NL__0PNPDK20120219_135035_00000413111_00427_52165_5631.N1
1; 433.2; 19-FEB-2012 13:50:35; Dark ; 42.0; 10; Bet Cen ; 0.61; 28000;occ; 84; 0;52165
/nas3/ENVISAT/GOMOS/GOM_NL__0P/GOM_NL__0PNPDK20120219_153049_00000393111_00428_52166_5632.N1
1; 433.8; 19-FEB-2012 15:30:49; Dark ; 40.0; 10; Bet Cen ; 0.61; 28000;occ; 80; 0;52166

/nas3/ENVISAT/GOMOS/GOM_NL__0P/GOM_NL__0PNPDK20120219_171104_000000413111_00429_52167_5633.N1
1; 434.4; 19-FEB-2012 17:11:04; Dark ; 41.5; 10; Bet Cen ; 0.61; 28000;occ; 83; 0;52167

/nas3/ENVISAT/GOMOS/GOM_NL__0P/GOM_NL__0PNPDK20120219_185118_000000413111_00430_52168_5634.N1
1; 435.0; 19-FEB-2012 18:51:18; Dark ; 41.5; 10; Bet Cen ; 0.61; 28000;occ; 83; 0;52168

/nas3/ENVISAT/GOMOS/GOM_NL__0P/GOM_NL__0PNPDE20120220_013216_000060653112_00003_52172_6635.N1
1; 437.4; 20-FEB-2012 01:32:16; Dark ; 41.0; 10; Bet Cen ; 0.61; 28000;occ; 82; 0;52172
2; 6452.0; 20-FEB-2012 03:12:31; Dark ; 50.5; 10; Bet Cen ; 0.61; 28000;occ; 101; 0;52173

/nas3/ENVISAT/GOMOS/GOM_NL__0P/GOM_NL__0PNPDE20120220_045245_000000473112_00005_52174_6636.N1
1; 438.7; 20-FEB-2012 04:52:45; Dark ; 48.0; 10; Bet Cen ; 0.61; 28000;occ; 96; 0;52174

/nas3/ENVISAT/GOMOS/GOM_NL__0P/GOM_NL__0PNPDE20120220_063300_000000433112_00006_52175_6637.N1
1; 439.1; 20-FEB-2012 06:33:00; Dark ; 43.5; 10; Bet Cen ; 0.61; 28000;occ; 87; 0;52175

/nas3/ENVISAT/GOMOS/GOM_NL__0P/GOM_NL__0PNPDE20120220_212027_000009243112_00014_52183_6638.N1
1; -438.9; 20-FEB-2012 21:20:27; Dark ; 43.0; 167; 10Gam2Sgr ; 2.98; 4500;occ; 86; 0;52183
2; -263.5; 20-FEB-2012 21:23:22; Dark ; 39.5; 85; Kap Sco ; 2.41; 28000;occ; 79; 0;52183
3; 444.5; 20-FEB-2012 21:35:10; Dark ; 41.0; 10; Bet Cen ; 0.61; 28000;occ; 82; 0;52184

/nas3/ENVISAT/GOMOS/GOM_NL__0P/GOM_NL__0PNPDE20120220_230041_000009283112_00015_52184_6639.N1
1; -438.5; 20-FEB-2012 23:00:41; Dark ; 46.5; 167; 10Gam2Sgr ; 2.98; 4500;occ; 93; 0;52184
2; -262.8; 20-FEB-2012 23:03:37; Dark ; 40.0; 85; Kap Sco ; 2.41; 28000;occ; 80; 0;52184
3; 445.1; 20-FEB-2012 23:15:25; Dark ; 45.0; 10; Bet Cen ; 0.61; 28000;occ; 90; 0;52185

/nas3/ENVISAT/GOMOS/GOM_NL__0P/GOM_NL__0PNPDK20120220_081315_000000483112_00007_52176_5635.N1
1; 439.9; 20-FEB-2012 08:13:15; Dark ; 49.0; 10; Bet Cen ; 0.61; 28000;occ; 98; 0;52176

/nas3/ENVISAT/GOMOS/GOM_NL__0P/GOM_NL__0PNPDK20120220_095329_000000483112_00008_52177_5636.N1
1; 440.4; 20-FEB-2012 09:53:29; Dark ; 49.0; 10; Bet Cen ; 0.61; 28000;occ; 98; 0;52177

/nas3/ENVISAT/GOMOS/GOM_NL__0P/GOM_NL__0PNPDK20120220_113343_000000433112_00009_52178_5637.N1
1; 441.0; 20-FEB-2012 11:33:43; Dark ; 43.5; 10; Bet Cen ; 0.61; 28000;occ; 87; 0;52178

/nas3/ENVISAT/GOMOS/GOM_NL__0P/GOM_NL__0PNPDK20120220_131358_000000423112_00010_52179_5638.N1
1; 441.6; 20-FEB-2012 13:13:58; Dark ; 42.5; 10; Bet Cen ; 0.61; 28000;occ; 85; 0;52179

/nas3/ENVISAT/GOMOS/GOM_NL__0P/GOM_NL__0PNPDK20120220_144225_000007483112_00010_52179_5639.N1
1; -264.8; 20-FEB-2012 14:42:25; Dark ; 41.0; 85; Kap Sco ; 2.41; 28000;occ; 82; 0;52179
2; 442.3; 20-FEB-2012 14:54:12; Dark ; 41.5; 10; Bet Cen ; 0.61; 28000;occ; 83; 0;52180

/nas3/ENVISAT/GOMOS/GOM_NL__0P/GOM_NL__0PNPDK20120220_162239_000007523112_00011_52180_5640.N1
1; -265.2; 20-FEB-2012 16:22:39; Dark ; 41.5; 85; Kap Sco ; 2.41; 28000;occ; 83; 0;52180
2; 442.9; 20-FEB-2012 16:34:27; Dark ; 44.5; 10; Bet Cen ; 0.61; 28000;occ; 89; 0;52181

/nas3/ENVISAT/GOMOS/GOM_NL__0P/GOM_NL__0PNPDK20120220_175958_000009243112_00012_52181_5641.N1
1; -439.9; 20-FEB-2012 17:59:58; Dark ; 45.0; 167; 10Gam2Sgr ; 2.98; 4500;occ; 90; 0;52181
2; -264.6; 20-FEB-2012 18:02:54; Dark ; 41.5; 85; Kap Sco ; 2.41; 28000;occ; 83; 0;52181
3; 443.4; 20-FEB-2012 18:14:42; Dark ; 41.5; 10; Bet Cen ; 0.61; 28000;occ; 83; 0;52182

/nas3/ENVISAT/GOMOS/GOM_NL__0P/GOM_NL__0PNPDK20120220_194013_000009263112_00013_52182_5642.N1
1; -439.4; 20-FEB-2012 19:40:13; Dark ; 42.0; 167; 10Gam2Sgr ; 2.98; 4500;occ; 84; 0;52182
2; -264.1; 20-FEB-2012 19:43:08; Dark ; 40.5; 85; Kap Sco ; 2.41; 28000;occ; 81; 0;52182
3; 443.9; 20-FEB-2012 19:54:56; Dark ; 43.5; 10; Bet Cen ; 0.61; 28000;occ; 87; 0;52183

/nas3/ENVISAT/GOMOS/GOM_NL__0P/GOM_NL__0PNPDE20120221_004056_000009333112_00016_52185_6640.N1
1; -437.8; 21-FEB-2012 00:40:56; Dark ; 46.0; 167; 10Gam2Sgr ; 2.98; 4500;occ; 92; 0;52185
2; 445.6; 21-FEB-2012 00:55:39; Dark ; 50.0; 10; Bet Cen ; 0.61; 28000;occ; 100; 0;52186

/nas3/ENVISAT/GOMOS/GOM_NL__0P/GOM_NL__0PNPDE20120221_022406_000007503112_00017_52186_6641.N1
1; -261.5; 21-FEB-2012 02:24:06; Dark ; 41.5; 85; Kap Sco ; 2.41; 28000;occ; 83; 0;52186
2; 446.4; 21-FEB-2012 02:35:54; Dark ; 43.0; 10; Bet Cen ; 0.61; 28000;occ; 86; 0;52187

/nas3/ENVISAT/GOMOS/GOM_NL__0P/GOM_NL__0PNPDE20120221_040125_000009363112_00018_52187_6642.N1
1; -436.6; 21-FEB-2012 04:01:25; Dark ; 39.5; 167; 10Gam2Sgr ; 2.98; 4500;occ; 79; 0;52187
2; -260.9; 21-FEB-2012 04:04:21; Dark ; 41.5; 85; Kap Sco ; 2.41; 28000;occ; 83; 0;52187
3; 447.1; 21-FEB-2012 04:16:09; Dark ; 52.5; 10; Bet Cen ; 0.61; 28000;occ; 105; 0;52188

/nas3/ENVISAT/GOMOS/GOM_NL__0P/GOM_NL__0PNPDE20120221_054140_000009243112_00019_52188_6643.N1
1; -436.0; 21-FEB-2012 05:41:40; Dark ; 45.0; 167; 10Gam2Sgr ; 2.98; 4500;occ; 90; 0;52188
2; -260.1; 21-FEB-2012 05:44:35; Dark ; 41.5; 85; Kap Sco ; 2.41; 28000;occ; 83; 0;52188
3; 447.8; 21-FEB-2012 05:56:23; Dark ; 40.5; 10; Bet Cen ; 0.61; 28000;occ; 81; 0;52189

/nas3/ENVISAT/GOMOS/GOM_NL__0P/GOM_NL__0PNPDE20120221_211955_000000353112_00029_52198_6644.N1
1; 1734.2; 21-FEB-2012 21:19:55; Dark ; 35.5; 48; 30Alp Hya ; 1.98; 4100;occ; 71; 0;52198

/nas3/ENVISAT/GOMOS/GOM_NL__0P/GOM_NL__0PNPDE20120221_222701_000020293112_00029_52198_6645.N1
1; -253.8; 21-FEB-2012 22:27:01; Dark ; 26.0; 85; Kap Sco ; 2.41; 28000;occ; 52; 0;52198
2; 453.7; 21-FEB-2012 22:38:48; Dark ; 44.5; 10; Bet Cen ; 0.61; 28000;occ; 89; 0;52199
3; 1734.3; 21-FEB-2012 23:00:09; Dark ; 41.5; 48; 30Alp Hya ; 1.98; 4100;occ; 83; 0;52199

/nas3/ENVISAT/GOMOS/GOM_NL__0P/GOM_NL__0PNPDK20120221_072154_000009313112_00020_52189_5643.N1
1; -435.1; 21-FEB-2012 07:21:54; Dark ; 45.5; 167; 10Gam2Sgr ; 2.98; 4500;occ; 91; 0;52189
2; -259.5; 21-FEB-2012 07:24:50; Dark ; 44.5; 85; Kap Sco ; 2.41; 28000;occ; 89; 0;52189
3; 448.4; 21-FEB-2012 07:36:38; Dark ; 48.0; 10; Bet Cen ; 0.61; 28000;occ; 96; 0;52190

/nas3/ENVISAT/GOMOS/GOM_NL__0P/GOM_NL__0PNPDK20120221_090209_000009323112_00021_52190_5644.N1
1; -434.6; 21-FEB-2012 09:02:09; Dark ; 43.0; 167; 10Gam2Sgr ; 2.98; 4500;occ; 86; 0;52190
2; -258.8; 21-FEB-2012 09:05:04; Dark ; 42.0; 85; Kap Sco ; 2.41; 28000;occ; 84; 0;52190

```

3; 449.0; 21-FEB-2012 09:16:52; Dark ; 48.5; 10; Bet Cen ; 0.61; 28000;occ; 97; 0;52191
/nas3/ENVISAT/GOMOS/GOM_NL__0P/GOM_NL__0PNPDK20120221_104223_000009263112_00022_52191_5645.N1
1; -433.9; 21-FEB-2012 10:42:23; Dark ; 43.5; 167; 10Gam2Sgr ; 2.98; 4500;occ; 87; 0;52191
2; -258.2; 21-FEB-2012 10:45:19; Dark ; 44.0; 85; Kap Sco ; 2.41; 28000;occ; 88; 0;52191
3; 449.6; 21-FEB-2012 10:57:07; Dark ; 43.0; 10; Bet Cen ; 0.61; 28000;occ; 86; 0;52192
/nas3/ENVISAT/GOMOS/GOM_NL__0P/GOM_NL__0PNPDK20120221_122238_000009273112_00023_52192_5646.N1
1; -433.4; 21-FEB-2012 12:22:38; Dark ; 45.5; 167; 10Gam2Sgr ; 2.98; 4500;occ; 91; 0;52192
2; -257.5; 21-FEB-2012 12:25:33; Dark ; 41.0; 85; Kap Sco ; 2.41; 28000;occ; 82; 0;52192
3; 450.2; 21-FEB-2012 12:37:21; Dark ; 44.0; 10; Bet Cen ; 0.61; 28000;occ; 88; 0;52193
/nas3/ENVISAT/GOMOS/GOM_NL__0P/GOM_NL__0PNPDK20120221_140252_000009283112_00024_52193_5647.N1
1; -432.9; 21-FEB-2012 14:02:52; Dark ; 43.5; 167; 10Gam2Sgr ; 2.98; 4500;occ; 87; 0;52193
2; -256.9; 21-FEB-2012 14:05:48; Dark ; 40.0; 85; Kap Sco ; 2.41; 28000;occ; 80; 0;52193
3; 450.7; 21-FEB-2012 14:17:36; Dark ; 45.0; 10; Bet Cen ; 0.61; 28000;occ; 90; 0;52194
/nas3/ENVISAT/GOMOS/GOM_NL__0P/GOM_NL__0PNPDK20120221_154307_000009363112_00025_52194_5648.N1
1; -432.1; 21-FEB-2012 15:43:07; Dark ; 40.0; 167; 10Gam2Sgr ; 2.98; 4500;occ; 80; 0;52194
2; -256.2; 21-FEB-2012 15:46:03; Dark ; 41.0; 85; Kap Sco ; 2.41; 28000;occ; 82; 0;52194
3; 451.4; 21-FEB-2012 15:57:50; Dark ; 53.0; 10; Bet Cen ; 0.61; 28000;occ; 106; 0;52195
/nas3/ENVISAT/GOMOS/GOM_NL__0P/GOM_NL__0PNPDK20120221_172321_000009253112_00026_52195_5649.N1
1; -431.5; 21-FEB-2012 17:23:21; Dark ; 34.0; 167; 10Gam2Sgr ; 2.98; 4500;occ; 68; 0;52195
2; -255.6; 21-FEB-2012 17:26:17; Dark ; 40.0; 85; Kap Sco ; 2.41; 28000;occ; 80; 0;52195
3; 451.9; 21-FEB-2012 17:38:05; Dark ; 42.5; 10; Bet Cen ; 0.61; 28000;occ; 85; 0;52196
/nas3/ENVISAT/GOMOS/GOM_NL__0P/GOM_NL__0PNPDK20120221_190336_000009243112_00027_52196_5650.N1
1; -431.1; 21-FEB-2012 19:03:36; Dark ; 29.0; 167; 10Gam2Sgr ; 2.98; 4500;occ; 58; 0;52196
2; -255.2; 21-FEB-2012 19:06:32; Dark ; 35.0; 85; Kap Sco ; 2.41; 28000;occ; 70; 0;52196
3; 452.4; 21-FEB-2012 19:18:19; Dark ; 41.0; 10; Bet Cen ; 0.61; 28000;occ; 82; 0;52197
/nas3/ENVISAT/GOMOS/GOM_NL__0P/GOM_NL__0PNPDK20120221_193941_000047753112_00028_52197_5651.N1
1; 1734.2; 21-FEB-2012 19:39:41; Dark ; 31.0; 48; 30Alp Hya ; 1.98; 4100;occ; 62; 0;52197
2; 5759.5; 21-FEB-2012 20:46:46; Dark ; 31.0; 85; Kap Sco ; 2.41; 28000;occ; 62; 0;52197
3; 6467.1; 21-FEB-2012 20:58:34; Dark ; 43.0; 10; Bet Cen ; 0.61; 28000;occ; 86; 0;52198
/nas3/ENVISAT/GOMOS/GOM_NL__0P/GOM_NL__0PNPDE20120222_001903_000013263112_00031_52200_6646.N1
1; 454.1; 22-FEB-2012 00:19:03; Dark ; 50.5; 10; Bet Cen ; 0.61; 28000;occ; 101; 0;52200
2; 1734.3; 22-FEB-2012 00:40:23; Dark ; 46.5; 48; 30Alp Hya ; 1.98; 4100;occ; 93; 0;52200
/nas3/ENVISAT/GOMOS/GOM_NL__0P/GOM_NL__0PNPDE20120222_015917_000013273112_00032_52201_6647.N1
1; 454.9; 22-FEB-2012 01:59:17; Dark ; 47.0; 10; Bet Cen ; 0.61; 28000;occ; 94; 0;52201
2; 1734.4; 22-FEB-2012 02:20:37; Dark ; 48.0; 48; 30Alp Hya ; 1.98; 4100;occ; 96; 0;52201
/nas3/ENVISAT/GOMOS/GOM_NL__0P/GOM_NL__0PNPDE20120222_033932_000013263112_00033_52202_6648.N1
1; 455.6; 22-FEB-2012 03:39:32; Dark ; 52.0; 10; Bet Cen ; 0.61; 28000;occ; 104; 0;52202
2; 1734.7; 22-FEB-2012 04:00:51; Dark ; 47.0; 48; 30Alp Hya ; 1.98; 4100;occ; 94; 0;52202
/nas3/ENVISAT/GOMOS/GOM_NL__0P/GOM_NL__0PNPDE20120222_051946_000013243112_00034_52203_6649.N1
1; 456.0; 22-FEB-2012 05:19:46; Dark ; 47.0; 10; Bet Cen ; 0.61; 28000;occ; 94; 0;52203
2; 1734.8; 22-FEB-2012 05:41:05; Dark ; 46.0; 48; 30Alp Hya ; 1.98; 4100;occ; 92; 0;52203
/nas3/ENVISAT/GOMOS/GOM_NL__0P/GOM_NL__0PNPDE20120222_215129_000008913112_00043_52212_6650.N1
1; -180.8; 22-FEB-2012 21:51:29; Dark ; 41.5; 40; The Sco ; 1.86; 7100;occ; 83; 0;52212
2; 462.2; 22-FEB-2012 22:02:12; Dark ; 46.5; 10; Bet Cen ; 0.61; 28000;occ; 93; 0;52213
3; 683.2; 22-FEB-2012 22:05:53; Dark ; 27.5; 26; Gam Cru ; 1.62; 2900;occ; 55; 0;52213
/nas3/ENVISAT/GOMOS/GOM_NL__0P/GOM_NL__0PNPDE20120222_233143_000008923112_00044_52213_6651.N1
1; -180.2; 22-FEB-2012 23:31:43; Dark ; 41.0; 40; The Sco ; 1.86; 7100;occ; 82; 0;52213
2; 462.7; 22-FEB-2012 23:42:26; Dark ; 43.0; 10; Bet Cen ; 0.61; 28000;occ; 86; 0;52214
3; 683.7; 22-FEB-2012 23:46:07; Dark ; 28.5; 26; Gam Cru ; 1.62; 2900;occ; 57; 0;52214
/nas3/ENVISAT/GOMOS/GOM_NL__0P/GOM_NL__0PNPDK20120222_070001_000012993112_00035_52204_5652.N1
1; 456.7; 22-FEB-2012 07:00:01; Dark ; 48.5; 10; Bet Cen ; 0.61; 28000;occ; 97; 0;52204
2; 1734.8; 22-FEB-2012 07:21:19; Dark ; 21.5; 48; 30Alp Hya ; 1.98; 4100;occ; 43; 0;52204
/nas3/ENVISAT/GOMOS/GOM_NL__0P/GOM_NL__0PNPDK20120222_072119_000047873112_00035_52204_5653.N1
1; 1734.8; 22-FEB-2012 07:21:19; Dark ; 48.0; 48; 30Alp Hya ; 1.98; 4100;occ; 96; 0;52204
2; 6471.2; 22-FEB-2012 08:40:15; Dark ; 51.5; 10; Bet Cen ; 0.61; 28000;occ; 103; 0;52205
/nas3/ENVISAT/GOMOS/GOM_NL__0P/GOM_NL__0PNPDK20120222_090133_000047893112_00036_52205_5654.N1
1; 1735.0; 22-FEB-2012 09:01:33; Dark ; 47.5; 48; 30Alp Hya ; 1.98; 4100;occ; 95; 0;52205
2; 6471.9; 22-FEB-2012 10:20:30; Dark ; 53.0; 10; Bet Cen ; 0.61; 28000;occ; 106; 0;52206
/nas3/ENVISAT/GOMOS/GOM_NL__0P/GOM_NL__0PNPDK20120222_104147_000047903112_00037_52206_5655.N1
1; 1735.0; 22-FEB-2012 10:41:47; Dark ; 48.5; 48; 30Alp Hya ; 1.98; 4100;occ; 97; 0;52206
2; 4750.5; 22-FEB-2012 11:32:02; Bright; 36.0; 168; 17Zet Aql ; 2.99; 11000;occ; 72; 0;52206
3; 6472.5; 22-FEB-2012 12:00:44; Dark ; 53.0; 10; Bet Cen ; 0.61; 28000;occ; 106; 0;52207
/nas3/ENVISAT/GOMOS/GOM_NL__0P/GOM_NL__0PNPDK20120222_131217_000017643112_00038_52207_5656.N1
1; -1263.1; 22-FEB-2012 13:12:17; Bright; 41.5; 168; 17Zet Aql ; 2.99; 11000;occ; 83; 0;52207
2; 459.2; 22-FEB-2012 13:40:59; Dark ; 42.5; 10; Bet Cen ; 0.61; 28000;occ; 85; 0;52208
/nas3/ENVISAT/GOMOS/GOM_NL__0P/GOM_NL__0PNPDK20120222_145231_000017693112_00039_52208_5657.N1
1; -1262.8; 22-FEB-2012 14:52:31; Bright; 37.0; 168; 17Zet Aql ; 2.99; 11000;occ; 74; 0;52208
2; 459.9; 22-FEB-2012 15:21:13; Dark ; 46.5; 10; Bet Cen ; 0.61; 28000;occ; 93; 0;52209

```

/nas3/ENVISAT/GOMOS/GOM_NL__0P/GOM_NL__0PNPDK20120222_163245_000017653112_00040_52209_5658.N1
1; -1262.5; 22-FEB-2012 16:32:45; Bright; 55.0; 168; 17Zet Aql ; 2.99; 11000;occ; 110; 0;52209
2; 460.4; 22-FEB-2012 17:01:28; Dark ; 43.0; 10; Bet Cen ; 0.61; 28000;occ; 86; 0;52210
/nas3/ENVISAT/GOMOS/GOM_NL__0P/GOM_NL__0PNPDK20120222_181259_000019683112_00041_52210_5659.N1
1; -1262.2; 22-FEB-2012 18:12:59; Bright; 37.5; 168; 17Zet Aql ; 2.99; 11000;occ; 75; 0;52210
2; 461.0; 22-FEB-2012 18:41:43; Dark ; 51.0; 10; Bet Cen ; 0.61; 28000;occ; 102; 0;52211
3; 682.1; 22-FEB-2012 18:45:24; Dark ; 24.5; 26; Gam Cru ; 1.62; 2900;occ; 49; 0;52211
/nas3/ENVISAT/GOMOS/GOM_NL__0P/GOM_NL__0PNPDK20120222_201013_000009513112_00042_52211_5660.N1
1; -242.7; 22-FEB-2012 20:10:13; Dark ; 44.0; 178; Tot1Sco ; 3.02; 6550;occ; 88; 0;52211
2; 461.6; 22-FEB-2012 20:21:57; Dark ; 45.5; 10; Bet Cen ; 0.61; 28000;occ; 91; 0;52212
3; 682.7; 22-FEB-2012 20:25:38; Dark ; 26.5; 26; Gam Cru ; 1.62; 2900;occ; 53; 0;52212
/nas3/ENVISAT/GOMOS/GOM_NL__0P/GOM_NL__0PNPDE20120223_011158_000069093112_00045_52214_6652.N1
1; -179.6; 23-FEB-2012 01:11:58; Dark ; 49.5; 40; The Sco ; 1.86; 7100;occ; 99; 0;52214
2; 463.4; 23-FEB-2012 01:22:40; Dark ; 44.5; 10; Bet Cen ; 0.61; 28000;occ; 89; 0;52215
3; 684.3; 23-FEB-2012 01:26:21; Dark ; 30.0; 26; Gam Cru ; 1.62; 2900;occ; 60; 0;52215
4; 6477.9; 23-FEB-2012 03:02:55; Dark ; 45.5; 10; Bet Cen ; 0.61; 28000;occ; 91; 0;52216
5; 6698.8; 23-FEB-2012 03:06:36; Dark ; 31.5; 26; Gam Cru ; 1.62; 2900;occ; 63; 0;52216
/nas3/ENVISAT/GOMOS/GOM_NL__0P/GOM_NL__0PNPDE20120223_043227_000008963112_00047_52216_6653.N1
1; -178.3; 23-FEB-2012 04:32:27; Dark ; 50.5; 40; The Sco ; 1.86; 7100;occ; 101; 0;52216
2; 464.6; 23-FEB-2012 04:43:10; Dark ; 46.5; 10; Bet Cen ; 0.61; 28000;occ; 93; 0;52217
3; 685.5; 23-FEB-2012 04:46:50; Dark ; 32.5; 26; Gam Cru ; 1.62; 2900;occ; 65; 0;52217
/nas3/ENVISAT/GOMOS/GOM_NL__0P/GOM_NL__0PNPDE20120223_061241_000008963112_00048_52217_6654.N1
1; -177.6; 23-FEB-2012 06:12:41; Dark ; 44.5; 40; The Sco ; 1.86; 7100;occ; 89; 0;52217
2; 465.1; 23-FEB-2012 06:23:24; Dark ; 49.0; 10; Bet Cen ; 0.61; 28000;occ; 98; 0;52218
3; 685.9; 23-FEB-2012 06:27:05; Dark ; 33.5; 26; Gam Cru ; 1.62; 2900;occ; 67; 0;52218
/nas3/ENVISAT/GOMOS/GOM_NL__0P/GOM_NL__0PNPDE20120223_211452_000009063112_00057_52226_6655.N1
1; -171.9; 23-FEB-2012 21:14:52; Dark ; 42.0; 40; The Sco ; 1.86; 7100;occ; 84; 0;52226
2; 470.4; 23-FEB-2012 21:25:35; Dark ; 42.0; 10; Bet Cen ; 0.61; 28000;occ; 84; 0;52227
3; 690.6; 23-FEB-2012 21:29:15; Dark ; 44.5; 26; Gam Cru ; 1.62; 2900;occ; 89; 0;52227
/nas3/ENVISAT/GOMOS/GOM_NL__0P/GOM_NL__0PNPDE20120223_225507_000009083112_00058_52227_6656.N1
1; -171.1; 23-FEB-2012 22:55:07; Dark ; 48.0; 40; The Sco ; 1.86; 7100;occ; 96; 0;52227
2; 471.0; 23-FEB-2012 23:05:49; Dark ; 44.0; 10; Bet Cen ; 0.61; 28000;occ; 88; 0;52228
3; 691.0; 23-FEB-2012 23:09:29; Dark ; 46.5; 26; Gam Cru ; 1.62; 2900;occ; 93; 0;52228
/nas3/ENVISAT/GOMOS/GOM_NL__0P/GOM_NL__0PNPDK20120223_075256_000008973112_00049_52218_5661.N1
1; -176.9; 23-FEB-2012 07:52:56; Dark ; 44.5; 40; The Sco ; 1.86; 7100;occ; 89; 0;52218
2; 465.8; 23-FEB-2012 08:03:39; Dark ; 41.0; 10; Bet Cen ; 0.61; 28000;occ; 82; 0;52219
3; 686.5; 23-FEB-2012 08:07:19; Dark ; 34.5; 26; Gam Cru ; 1.62; 2900;occ; 69; 0;52219
/nas3/ENVISAT/GOMOS/GOM_NL__0P/GOM_NL__0PNPDK20120223_093311_000008993112_00050_52219_5662.N1
1; -176.2; 23-FEB-2012 09:33:11; Dark ; 46.0; 40; The Sco ; 1.86; 7100;occ; 92; 0;52219
2; 466.4; 23-FEB-2012 09:43:53; Dark ; 53.5; 10; Bet Cen ; 0.61; 28000;occ; 107; 0;52220
3; 687.1; 23-FEB-2012 09:47:34; Dark ; 36.5; 26; Gam Cru ; 1.62; 2900;occ; 73; 0;52220
/nas3/ENVISAT/GOMOS/GOM_NL__0P/GOM_NL__0PNPDK20120223_111325_000009003112_00051_52220_5663.N1
1; -175.6; 23-FEB-2012 11:13:25; Dark ; 48.0; 40; The Sco ; 1.86; 7100;occ; 96; 0;52220
2; 466.9; 23-FEB-2012 11:24:08; Dark ; 50.5; 10; Bet Cen ; 0.61; 28000;occ; 101; 0;52221
3; 687.5; 23-FEB-2012 11:27:48; Dark ; 37.5; 26; Gam Cru ; 1.62; 2900;occ; 75; 0;52221
/nas3/ENVISAT/GOMOS/GOM_NL__0P/GOM_NL__0PNPDK20120223_125340_000009013112_00052_52221_5664.N1
1; -174.8; 23-FEB-2012 12:53:40; Dark ; 45.5; 40; The Sco ; 1.86; 7100;occ; 91; 0;52221
2; 467.5; 23-FEB-2012 13:04:22; Dark ; 44.5; 10; Bet Cen ; 0.61; 28000;occ; 89; 0;52222
3; 688.0; 23-FEB-2012 13:08:03; Dark ; 38.5; 26; Gam Cru ; 1.62; 2900;occ; 77; 0;52222
/nas3/ENVISAT/GOMOS/GOM_NL__0P/GOM_NL__0PNPDK20120223_143354_000009023112_00053_52222_5665.N1
1; -174.3; 23-FEB-2012 14:33:54; Dark ; 45.0; 40; The Sco ; 1.86; 7100;occ; 90; 0;52222
2; 468.1; 23-FEB-2012 14:44:37; Dark ; 41.0; 10; Bet Cen ; 0.61; 28000;occ; 82; 0;52223
3; 688.6; 23-FEB-2012 14:48:17; Dark ; 39.5; 26; Gam Cru ; 1.62; 2900;occ; 79; 0;52223
/nas3/ENVISAT/GOMOS/GOM_NL__0P/GOM_NL__0PNPDK20120223_161409_000009043112_00054_52223_5666.N1
1; -173.6; 23-FEB-2012 16:14:09; Dark ; 48.0; 40; The Sco ; 1.86; 7100;occ; 96; 0;52223
2; 468.8; 23-FEB-2012 16:24:51; Dark ; 43.5; 10; Bet Cen ; 0.61; 28000;occ; 87; 0;52224
3; 689.2; 23-FEB-2012 16:28:32; Dark ; 41.5; 26; Gam Cru ; 1.62; 2900;occ; 83; 0;52224
/nas3/ENVISAT/GOMOS/GOM_NL__0P/GOM_NL__0PNPDK20120223_175423_000009053112_00055_52224_5667.N1
1; -173.2; 23-FEB-2012 17:54:23; Dark ; 43.5; 40; The Sco ; 1.86; 7100;occ; 87; 0;52224
2; 469.4; 23-FEB-2012 18:05:06; Dark ; 43.0; 10; Bet Cen ; 0.61; 28000;occ; 86; 0;52225
3; 689.7; 23-FEB-2012 18:08:46; Dark ; 42.5; 26; Gam Cru ; 1.62; 2900;occ; 85; 0;52225
/nas3/ENVISAT/GOMOS/GOM_NL__0P/GOM_NL__0PNPDK20120223_193438_000009053112_00056_52225_5668.N1
1; -172.4; 23-FEB-2012 19:34:38; Dark ; 41.5; 40; The Sco ; 1.86; 7100;occ; 83; 0;52225
2; 469.9; 23-FEB-2012 19:45:20; Dark ; 52.5; 10; Bet Cen ; 0.61; 28000;occ; 105; 0;52226
3; 690.0; 23-FEB-2012 19:49:00; Dark ; 43.5; 26; Gam Cru ; 1.62; 2900;occ; 87; 0;52226
/nas3/ENVISAT/GOMOS/GOM_NL__0P/GOM_NL__0PNPDE20120224_003521_000009093112_00059_52228_6657.N1
1; -170.5; 24-FEB-2012 00:35:21; Dark ; 44.0; 40; The Sco ; 1.86; 7100;occ; 88; 0;52228
2; 471.5; 24-FEB-2012 00:46:03; Dark ; 45.0; 10; Bet Cen ; 0.61; 28000;occ; 90; 0;52229

```

3; 691.6; 24-FEB-2012 00:49:43; Dark ; 47.5; 26; Gam Cru ; 1.62; 2900;occ; 95; 0;52229
/nas3/ENVISAT/GOMOS/GOM_NL__0P/GOM_NL__0PNPDE20120224_021536_000009103112_00060_52229_6658.N1
1; -169.8; 24-FEB-2012 02:15:36; Dark ; 41.0; 40; The Sco ; 1.86; 7100;occ; 82; 0;52229
2; 472.2; 24-FEB-2012 02:26:18; Dark ; 46.0; 10; Bet Cen ; 0.61; 28000;occ; 92; 0;52230
3; 692.2; 24-FEB-2012 02:29:58; Dark ; 48.5; 26; Gam Cru ; 1.62; 2900;occ; 97; 0;52230
/nas3/ENVISAT/GOMOS/GOM_NL__0P/GOM_NL__0PNPDE20120224_035551_000009113112_00061_52230_6659.N1
1; -169.2; 24-FEB-2012 03:55:51; Dark ; 37.0; 40; The Sco ; 1.86; 7100;occ; 74; 0;52230
2; 472.9; 24-FEB-2012 04:06:33; Dark ; 54.0; 10; Bet Cen ; 0.61; 28000;occ; 108; 0;52231
3; 692.8; 24-FEB-2012 04:10:12; Dark ; 49.5; 26; Gam Cru ; 1.62; 2900;occ; 99; 0;52231
/nas3/ENVISAT/GOMOS/GOM_NL__0P/GOM_NL__0PNPDE20120224_053605_000009083112_00062_52231_6660.N1
1; -168.4; 24-FEB-2012 05:36:05; Dark ; 33.0; 40; The Sco ; 1.86; 7100;occ; 66; 0;52231
2; 473.5; 24-FEB-2012 05:46:47; Dark ; 47.5; 10; Bet Cen ; 0.61; 28000;occ; 95; 0;52232
3; 693.4; 24-FEB-2012 05:50:27; Dark ; 47.0; 26; Gam Cru ; 1.62; 2900;occ; 94; 0;52232
/nas3/ENVISAT/GOMOS/GOM_NL__0P/GOM_NL__0PNPDE20120224_221347_000011933112_00072_52241_6661.N1
1; -446.3; 24-FEB-2012 22:13:47; Dark ; 48.0; 116; 19Del Sgr ; 2.70; 4100;occ; 96; 0;52241
2; 479.4; 24-FEB-2012 22:29:13; Dark ; 42.0; 10; Bet Cen ; 0.61; 28000;occ; 84; 0;52242
3; 698.5; 24-FEB-2012 22:32:52; Dark ; 48.5; 26; Gam Cru ; 1.62; 2900;occ; 97; 0;52242
/nas3/ENVISAT/GOMOS/GOM_NL__0P/GOM_NL__0PNPDE20120224_235402_000012013112_00073_52242_6662.N1
1; -445.6; 24-FEB-2012 23:54:02; Dark ; 41.5; 116; 19Del Sgr ; 2.70; 4100;occ; 83; 0;52242
2; 479.9; 25-FEB-2012 00:09:27; Dark ; 42.0; 10; Bet Cen ; 0.61; 28000;occ; 84; 0;52243
3; 698.9; 25-FEB-2012 00:13:06; Dark ; 57.0; 26; Gam Cru ; 1.62; 2900;occ; 114; 0;52243
/nas3/ENVISAT/GOMOS/GOM_NL__0P/GOM_NL__0PNPDK20120224_071620_000009073112_00063_52232_5669.N1
1; -167.7; 24-FEB-2012 07:16:20; Dark ; 29.0; 40; The Sco ; 1.86; 7100;occ; 58; 0;52232
2; 474.2; 24-FEB-2012 07:27:02; Dark ; 50.0; 10; Bet Cen ; 0.61; 28000;occ; 100; 0;52233
3; 693.9; 24-FEB-2012 07:30:42; Dark ; 46.0; 26; Gam Cru ; 1.62; 2900;occ; 92; 0;52233
/nas3/ENVISAT/GOMOS/GOM_NL__0P/GOM_NL__0PNPDK20120224_085635_000009083112_00064_52233_5670.N1
1; -167.0; 24-FEB-2012 08:56:35; Dark ; 25.0; 40; The Sco ; 1.86; 7100;occ; 50; 0;52233
2; 474.8; 24-FEB-2012 09:07:16; Dark ; 42.0; 10; Bet Cen ; 0.61; 28000;occ; 84; 0;52234
3; 694.5; 24-FEB-2012 09:10:56; Dark ; 47.0; 26; Gam Cru ; 1.62; 2900;occ; 94; 0;52234
/nas3/ENVISAT/GOMOS/GOM_NL__0P/GOM_NL__0PNPDK20120224_103205_000011903112_00065_52234_5671.N1
1; -450.3; 24-FEB-2012 10:32:05; Dark ; 44.5; 116; 19Del Sgr ; 2.70; 4100;occ; 89; 0;52234
2; 475.4; 24-FEB-2012 10:47:31; Dark ; 51.5; 10; Bet Cen ; 0.61; 28000;occ; 103; 0;52235
3; 695.0; 24-FEB-2012 10:51:10; Dark ; 45.0; 26; Gam Cru ; 1.62; 2900;occ; 90; 0;52235
/nas3/ENVISAT/GOMOS/GOM_NL__0P/GOM_NL__0PNPDK20120224_121220_000011993112_00066_52235_5672.N1
1; -449.8; 24-FEB-2012 12:12:20; Dark ; 47.5; 116; 19Del Sgr ; 2.70; 4100;occ; 95; 0;52235
2; 476.0; 24-FEB-2012 12:27:45; Dark ; 44.0; 10; Bet Cen ; 0.61; 28000;occ; 88; 0;52236
3; 695.5; 24-FEB-2012 12:31:25; Dark ; 54.0; 26; Gam Cru ; 1.62; 2900;occ; 108; 0;52236
/nas3/ENVISAT/GOMOS/GOM_NL__0P/GOM_NL__0PNPDK20120224_135234_000012023112_00067_52236_5673.N1
1; -449.1; 24-FEB-2012 13:52:34; Dark ; 46.0; 116; 19Del Sgr ; 2.70; 4100;occ; 92; 0;52236
2; 476.5; 24-FEB-2012 14:08:00; Dark ; 41.5; 10; Bet Cen ; 0.61; 28000;occ; 83; 0;52237
3; 696.0; 24-FEB-2012 14:11:39; Dark ; 57.0; 26; Gam Cru ; 1.62; 2900;occ; 114; 0;52237
/nas3/ENVISAT/GOMOS/GOM_NL__0P/GOM_NL__0PNPDK20120224_153249_000012023112_00068_52237_5674.N1
1; -448.6; 24-FEB-2012 15:32:49; Dark ; 41.5; 116; 19Del Sgr ; 2.70; 4100;occ; 83; 0;52237
2; 477.0; 24-FEB-2012 15:48:14; Dark ; 48.0; 10; Bet Cen ; 0.61; 28000;occ; 96; 0;52238
3; 696.6; 24-FEB-2012 15:51:54; Dark ; 57.5; 26; Gam Cru ; 1.62; 2900;occ; 115; 0;52238
/nas3/ENVISAT/GOMOS/GOM_NL__0P/GOM_NL__0PNPDK20120224_171303_000012003112_00069_52238_5675.N1
1; -447.9; 24-FEB-2012 17:13:03; Dark ; 44.5; 116; 19Del Sgr ; 2.70; 4100;occ; 89; 0;52238
2; 477.7; 24-FEB-2012 17:28:29; Dark ; 44.0; 10; Bet Cen ; 0.61; 28000;occ; 88; 0;52239
3; 697.0; 24-FEB-2012 17:32:08; Dark ; 56.0; 26; Gam Cru ; 1.62; 2900;occ; 112; 0;52239
/nas3/ENVISAT/GOMOS/GOM_NL__0P/GOM_NL__0PNPDK20120224_185318_000011923112_00070_52239_5676.N1
1; -447.4; 24-FEB-2012 18:53:18; Dark ; 47.0; 116; 19Del Sgr ; 2.70; 4100;occ; 94; 0;52239
2; 478.2; 24-FEB-2012 19:08:44; Dark ; 44.5; 10; Bet Cen ; 0.61; 28000;occ; 89; 0;52240
3; 697.5; 24-FEB-2012 19:12:23; Dark ; 48.0; 26; Gam Cru ; 1.62; 2900;occ; 96; 0;52240
/nas3/ENVISAT/GOMOS/GOM_NL__0P/GOM_NL__0PNPDK20120224_203333_000011993112_00071_52240_5677.N1
1; -446.8; 24-FEB-2012 20:33:33; Dark ; 47.5; 116; 19Del Sgr ; 2.70; 4100;occ; 95; 0;52240
2; 478.8; 24-FEB-2012 20:48:58; Dark ; 51.5; 10; Bet Cen ; 0.61; 28000;occ; 103; 0;52241
3; 698.0; 24-FEB-2012 20:52:37; Dark ; 54.5; 26; Gam Cru ; 1.62; 2900;occ; 109; 0;52241
/nas3/ENVISAT/GOMOS/GOM_NL__0P/GOM_NL__0PNPDE20120225_013416_000072163112_00074_52243_6663.N1
1; -444.9; 25-FEB-2012 01:34:16; Dark ; 45.5; 116; 19Del Sgr ; 2.70; 4100;occ; 91; 0;52243
2; 480.5; 25-FEB-2012 01:49:42; Dark ; 45.5; 10; Bet Cen ; 0.61; 28000;occ; 91; 0;52244
3; 699.5; 25-FEB-2012 01:53:21; Dark ; 55.0; 26; Gam Cru ; 1.62; 2900;occ; 110; 0;52244
4; 5569.5; 25-FEB-2012 03:14:31; Dark ; 42.0; 116; 19Del Sgr ; 2.70; 4100;occ; 84; 0;52244
5; 6495.1; 25-FEB-2012 03:29:56; Dark ; 42.5; 10; Bet Cen ; 0.61; 28000;occ; 85; 0;52245
6; 6714.0; 25-FEB-2012 03:33:35; Dark ; 57.5; 26; Gam Cru ; 1.62; 2900;occ; 115; 0;52245
/nas3/ENVISAT/GOMOS/GOM_NL__0P/GOM_NL__0PNPDE20120225_045445_000011923112_00076_52245_6664.N1
1; -443.8; 25-FEB-2012 04:54:45; Dark ; 37.0; 116; 19Del Sgr ; 2.70; 4100;occ; 74; 0;52245
2; 481.7; 25-FEB-2012 05:10:11; Dark ; 41.0; 10; Bet Cen ; 0.61; 28000;occ; 82; 0;52246
3; 700.7; 25-FEB-2012 05:13:50; Dark ; 48.0; 26; Gam Cru ; 1.62; 2900;occ; 96; 0;52246

```

/nas3/ENVISAT/GOMOS/GOM_NL__0P/GOM_NL__0PNPDE20120225_215236_000002673112_00087_52256_6665.N1
1; 487.7; 25-FEB-2012 21:52:36; Dark ; 45.0; 10; Bet Cen ; 0.61; 28000;occ; 90; 0;52256
2; 705.9; 25-FEB-2012 21:56:14; Dark ; 49.0; 26; Gam Cru ; 1.62; 2900;occ; 98; 0;52256
/nas3/ENVISAT/GOMOS/GOM_NL__0P/GOM_NL__0PNPDE20120225_233251_000002743112_00088_52257_6666.N1
1; 488.4; 25-FEB-2012 23:32:51; Dark ; 42.5; 10; Bet Cen ; 0.61; 28000;occ; 85; 0;52257
2; 706.4; 25-FEB-2012 23:36:29; Dark ; 56.5; 26; Gam Cru ; 1.62; 2900;occ; 113; 0;52257
/nas3/ENVISAT/GOMOS/GOM_NL__0P/GOM_NL__0PNPDK20120225_063500_000011923112_00077_52246_5678.N1
1; -443.1; 25-FEB-2012 06:35:00; Dark ; 31.0; 116; 19Del Sgr ; 2.70; 4100;occ; 62; 0;52246
2; 482.5; 25-FEB-2012 06:50:25; Dark ; 48.0; 10; Bet Cen ; 0.61; 28000;occ; 96; 0;52247
3; 701.2; 25-FEB-2012 06:54:04; Dark ; 48.5; 26; Gam Cru ; 1.62; 2900;occ; 97; 0;52247
/nas3/ENVISAT/GOMOS/GOM_NL__0P/GOM_NL__0PNPDK20120225_081514_000012003112_00078_52247_5679.N1
1; -442.5; 25-FEB-2012 08:15:14; Dark ; 25.0; 116; 19Del Sgr ; 2.70; 4100;occ; 50; 0;52247
2; 483.1; 25-FEB-2012 08:30:40; Dark ; 51.0; 10; Bet Cen ; 0.61; 28000;occ; 102; 0;52248
3; 701.7; 25-FEB-2012 08:34:19; Dark ; 56.5; 26; Gam Cru ; 1.62; 2900;occ; 113; 0;52248
/nas3/ENVISAT/GOMOS/GOM_NL__0P/GOM_NL__0PNPDK20120225_101054_000002733112_00080_52249_5680.N1
1; 483.6; 25-FEB-2012 10:10:54; Dark ; 50.5; 10; Bet Cen ; 0.61; 28000;occ; 101; 0;52249
2; 702.2; 25-FEB-2012 10:14:33; Dark ; 55.0; 26; Gam Cru ; 1.62; 2900;occ; 110; 0;52249
/nas3/ENVISAT/GOMOS/GOM_NL__0P/GOM_NL__0PNPDK20120225_115109_000002673112_00081_52250_5681.N1
1; 484.2; 25-FEB-2012 11:51:09; Dark ; 41.0; 10; Bet Cen ; 0.61; 28000;occ; 82; 0;52250
2; 702.8; 25-FEB-2012 11:54:48; Dark ; 48.5; 26; Gam Cru ; 1.62; 2900;occ; 97; 0;52250
/nas3/ENVISAT/GOMOS/GOM_NL__0P/GOM_NL__0PNPDK20120225_133123_000002743112_00082_52251_5682.N1
1; 484.8; 25-FEB-2012 13:31:23; Dark ; 46.0; 10; Bet Cen ; 0.61; 28000;occ; 92; 0;52251
2; 703.2; 25-FEB-2012 13:35:02; Dark ; 56.5; 26; Gam Cru ; 1.62; 2900;occ; 113; 0;52251
/nas3/ENVISAT/GOMOS/GOM_NL__0P/GOM_NL__0PNPDK20120225_151138_000002743112_00083_52252_5683.N1
1; 485.4; 25-FEB-2012 15:11:38; Dark ; 44.0; 10; Bet Cen ; 0.61; 28000;occ; 88; 0;52252
2; 703.8; 25-FEB-2012 15:15:16; Dark ; 56.0; 26; Gam Cru ; 1.62; 2900;occ; 112; 0;52252
/nas3/ENVISAT/GOMOS/GOM_NL__0P/GOM_NL__0PNPDK20120225_165153_000002613112_00084_52253_5684.N1
1; 486.1; 25-FEB-2012 16:51:53; Dark ; 43.5; 10; Bet Cen ; 0.61; 28000;occ; 87; 0;52253
2; 704.3; 25-FEB-2012 16:55:31; Dark ; 43.0; 26; Gam Cru ; 1.62; 2900;occ; 86; 0;52253
/nas3/ENVISAT/GOMOS/GOM_NL__0P/GOM_NL__0PNPDK20120225_201222_000002693112_00086_52255_5686.N1
1; 487.2; 25-FEB-2012 20:12:22; Dark ; 52.5; 10; Bet Cen ; 0.61; 28000;occ; 105; 0;52255
2; 705.5; 25-FEB-2012 20:16:00; Dark ; 51.5; 26; Gam Cru ; 1.62; 2900;occ; 103; 0;52255
/nas3/ENVISAT/GOMOS/GOM_NL__0P/GOM_NL__0PNPDK20120225_183207_000002613112_00085_52254_5685.N1
1; 486.6; 25-FEB-2012 18:32:07; Dark ; 42.5; 10; Bet Cen ; 0.61; 28000;occ; 85; 0;52254
2; 704.8; 25-FEB-2012 18:35:45; Dark ; 43.0; 26; Gam Cru ; 1.62; 2900;occ; 86; 0;52254
/nas3/ENVISAT/GOMOS/GOM_NL__0P/GOM_NL__0PNPDE20120226_011305_000002713112_00089_52258_6667.N1
1; 488.9; 26-FEB-2012 01:13:05; Dark ; 45.5; 10; Bet Cen ; 0.61; 28000;occ; 91; 0;52258
2; 706.9; 26-FEB-2012 01:16:43; Dark ; 53.5; 26; Gam Cru ; 1.62; 2900;occ; 107; 0;52258
/nas3/ENVISAT/GOMOS/GOM_NL__0P/GOM_NL__0PNPDE20120226_025320_000002743112_00090_52259_6668.N1
1; 489.6; 26-FEB-2012 02:53:20; Dark ; 45.0; 10; Bet Cen ; 0.61; 28000;occ; 90; 0;52259
2; 709.0; 26-FEB-2012 02:56:59; Dark ; 55.5; 26; Gam Cru ; 1.62; 2900;occ; 111; 0;52259
/nas3/ENVISAT/GOMOS/GOM_NL__0P/GOM_NL__0PNPDE20120226_043334_00000403112_00091_52260_6669.N1
1; 490.2; 26-FEB-2012 04:33:34; Dark ; 40.5; 10; Bet Cen ; 0.61; 28000;occ; 81; 0;52260
/nas3/ENVISAT/GOMOS/GOM_NL__0P/GOM_NL__0PNPDE20120226_061349_00000473112_00092_52261_6670.N1
1; 490.7; 26-FEB-2012 06:13:49; Dark ; 47.5; 10; Bet Cen ; 0.61; 28000;occ; 95; 0;52261
/nas3/ENVISAT/GOMOS/GOM_NL__0P/GOM_NL__0PNPDE20120226_211600_00000503112_00101_52270_6671.N1
1; 495.9; 26-FEB-2012 21:16:00; Dark ; 50.5; 10; Bet Cen ; 0.61; 28000;occ; 101; 0;52270
/nas3/ENVISAT/GOMOS/GOM_NL__0P/GOM_NL__0PNPDE20120226_225614_00000413112_00102_52271_6672.N1
1; 496.4; 26-FEB-2012 22:56:14; Dark ; 42.0; 10; Bet Cen ; 0.61; 28000;occ; 84; 0;52271
/nas3/ENVISAT/GOMOS/GOM_NL__0P/GOM_NL__0PNPDK20120226_075403_00000513112_00093_52262_5688.N1
1; 491.3; 26-FEB-2012 07:54:03; Dark ; 51.5; 10; Bet Cen ; 0.61; 28000;occ; 103; 0;52262
/nas3/ENVISAT/GOMOS/GOM_NL__0P/GOM_NL__0PNPDK20120226_093418_00000453112_00094_52263_5689.N1
1; 491.9; 26-FEB-2012 09:34:18; Dark ; 45.5; 10; Bet Cen ; 0.61; 28000;occ; 91; 0;52263
/nas3/ENVISAT/GOMOS/GOM_NL__0P/GOM_NL__0PNPDK20120226_111432_00000523112_00095_52264_5690.N1
1; 492.4; 26-FEB-2012 11:14:32; Dark ; 53.0; 10; Bet Cen ; 0.61; 28000;occ; 106; 0;52264
/nas3/ENVISAT/GOMOS/GOM_NL__0P/GOM_NL__0PNPDK20120226_125447_00000503112_00096_52265_5691.N1
1; 493.1; 26-FEB-2012 12:54:47; Dark ; 50.5; 10; Bet Cen ; 0.61; 28000;occ; 101; 0;52265
/nas3/ENVISAT/GOMOS/GOM_NL__0P/GOM_NL__0PNPDK20120226_143501_00000403112_00097_52266_5692.N1
1; 493.7; 26-FEB-2012 14:35:01; Dark ; 41.0; 10; Bet Cen ; 0.61; 28000;occ; 82; 0;52266
/nas3/ENVISAT/GOMOS/GOM_NL__0P/GOM_NL__0PNPDK20120226_161516_00000403112_00098_52267_5693.N1
1; 494.3; 26-FEB-2012 16:15:16; Dark ; 41.0; 10; Bet Cen ; 0.61; 28000;occ; 82; 0;52267
/nas3/ENVISAT/GOMOS/GOM_NL__0P/GOM_NL__0PNPDK20120226_175531_00000413112_00099_52268_5694.N1
1; 494.8; 26-FEB-2012 17:55:31; Dark ; 42.0; 10; Bet Cen ; 0.61; 28000;occ; 84; 0;52268
/nas3/ENVISAT/GOMOS/GOM_NL__0P/GOM_NL__0PNPDK20120226_193545_00000463112_00100_52269_5695.N1
1; 495.4; 26-FEB-2012 19:35:45; Dark ; 47.0; 10; Bet Cen ; 0.61; 28000;occ; 94; 0;52269
/nas3/ENVISAT/GOMOS/GOM_NL__0P/GOM_NL__0PNPDE20120227_003629_00000403112_00103_52272_6673.N1
1; 497.0; 27-FEB-2012 00:36:29; Dark ; 41.0; 10; Bet Cen ; 0.61; 28000;occ; 82; 0;52272
/nas3/ENVISAT/GOMOS/GOM_NL__0P/GOM_NL__0PNPDE20120227_021643_00000443112_00104_52273_6674.N1

1; 497.7; 27-FEB-2012 02:16:43; Dark ; 44.5; 10; Bet Cen ; 0.61; 28000;occ; 89; 0;52273
/nas3/ENVISAT/GOMOS/GOM_NL__0P/GOM_NL__0PNPDE20120227_035658_00000443112_00105_52274_6675.N1
1; 498.4; 27-FEB-2012 03:56:58; Dark ; 44.5; 10; Bet Cen ; 0.61; 28000;occ; 89; 0;52274
/nas3/ENVISAT/GOMOS/GOM_NL__0P/GOM_NL__0PNPDE20120227_053712_00000413112_00106_52275_6676.N1
1; 499.0; 27-FEB-2012 05:37:12; Dark ; 41.5; 10; Bet Cen ; 0.61; 28000;occ; 83; 0;52275
/nas3/ENVISAT/GOMOS/GOM_NL__0P/GOM_NL__0PNPDE20120227_220513_000009093112_00115_52284_6677.N1
1; -360.3; 27-FEB-2012 22:05:13; Dark ; 42.0; 38; 20Eps Sgr ; 1.84; 11000;occ; 84; 0;52284
2; 504.6; 27-FEB-2012 22:19:38; Dark ; 44.5; 10; Bet Cen ; 0.61; 28000;occ; 89; 0;52285
/nas3/ENVISAT/GOMOS/GOM_NL__0P/GOM_NL__0PNPDE20120227_234527_000009083112_00116_52285_6678.N1
1; -359.7; 27-FEB-2012 23:45:27; Dark ; 44.5; 38; 20Eps Sgr ; 1.84; 11000;occ; 89; 0;52285
2; 505.2; 27-FEB-2012 23:59:52; Dark ; 43.5; 10; Bet Cen ; 0.61; 28000;occ; 87; 0;52286
/nas3/ENVISAT/GOMOS/GOM_NL__0P/GOM_NL__0PNPDK20120227_071727_00000423112_00107_52276_5696.N1
1; 499.6; 27-FEB-2012 07:17:27; Dark ; 43.0; 10; Bet Cen ; 0.61; 28000;occ; 86; 0;52276
/nas3/ENVISAT/GOMOS/GOM_NL__0P/GOM_NL__0PNPDK20120227_103756_00000473112_00109_52278_5697.N1
1; 500.7; 27-FEB-2012 10:37:56; Dark ; 47.5; 10; Bet Cen ; 0.61; 28000;occ; 95; 0;52278
/nas3/ENVISAT/GOMOS/GOM_NL__0P/GOM_NL__0PNPDK20120227_121810_00000403112_00110_52279_5698.N1
1; 501.3; 27-FEB-2012 12:18:10; Dark ; 40.5; 10; Bet Cen ; 0.61; 28000;occ; 81; 0;52279
/nas3/ENVISAT/GOMOS/GOM_NL__0P/GOM_NL__0PNPDK20120227_135825_00000423112_00111_52280_5699.N1
1; 501.9; 27-FEB-2012 13:58:25; Dark ; 43.0; 10; Bet Cen ; 0.61; 28000;occ; 86; 0;52280
/nas3/ENVISAT/GOMOS/GOM_NL__0P/GOM_NL__0PNPDK20120227_153839_00000423112_00112_52281_5700.N1
1; 502.4; 27-FEB-2012 15:38:39; Dark ; 43.0; 10; Bet Cen ; 0.61; 28000;occ; 86; 0;52281
/nas3/ENVISAT/GOMOS/GOM_NL__0P/GOM_NL__0PNPDK20120227_171854_00000423112_00113_52282_5701.N1
1; 503.0; 27-FEB-2012 17:18:54; Dark ; 43.0; 10; Bet Cen ; 0.61; 28000;occ; 86; 0;52282
/nas3/ENVISAT/GOMOS/GOM_NL__0P/GOM_NL__0PNPDK20120227_184444_000009073112_00113_52282_5702.N1
1; -361.3; 27-FEB-2012 18:44:44; Dark ; 42.0; 38; 20Eps Sgr ; 1.84; 11000;occ; 84; 0;52282
2; 503.5; 27-FEB-2012 18:59:09; Dark ; 42.5; 10; Bet Cen ; 0.61; 28000;occ; 85; 0;52283
/nas3/ENVISAT/GOMOS/GOM_NL__0P/GOM_NL__0PNPDK20120227_202458_000009063112_00114_52283_5703.N1
1; -360.6; 27-FEB-2012 20:24:58; Dark ; 46.5; 38; 20Eps Sgr ; 1.84; 11000;occ; 93; 0;52283
2; 504.1; 27-FEB-2012 20:39:23; Dark ; 41.5; 10; Bet Cen ; 0.61; 28000;occ; 83; 0;52284
/nas3/ENVISAT/GOMOS/GOM_NL__0P/GOM_NL__0PNPDE20120228_012542_000069203112_00117_52286_6679.N1
1; -359.0; 28-FEB-2012 01:25:42; Dark ; 45.5; 38; 20Eps Sgr ; 1.84; 11000;occ; 91; 0;52286
2; 505.8; 28-FEB-2012 01:40:07; Dark ; 45.0; 10; Bet Cen ; 0.61; 28000;occ; 90; 0;52287
3; 5655.6; 28-FEB-2012 03:05:56; Dark ; 45.0; 38; 20Eps Sgr ; 1.84; 11000;occ; 90; 0;52287
4; 6520.5; 28-FEB-2012 03:20:21; Dark ; 41.0; 10; Bet Cen ; 0.61; 28000;occ; 82; 0;52288
/nas3/ENVISAT/GOMOS/GOM_NL__0P/GOM_NL__0PNPDE20120228_044611_000009153112_00119_52288_6680.N1
1; -357.7; 28-FEB-2012 04:46:11; Dark ; 45.5; 38; 20Eps Sgr ; 1.84; 11000;occ; 91; 0;52288
2; 507.1; 28-FEB-2012 05:00:36; Dark ; 50.5; 10; Bet Cen ; 0.61; 28000;occ; 101; 0;52289
/nas3/ENVISAT/GOMOS/GOM_NL__0P/GOM_NL__0PNPDE20120228_062626_000009123112_00120_52289_6681.N1
1; -357.1; 28-FEB-2012 06:26:26; Dark ; 43.5; 38; 20Eps Sgr ; 1.84; 11000;occ; 87; 0;52289
2; 507.6; 28-FEB-2012 06:40:50; Dark ; 47.5; 10; Bet Cen ; 0.61; 28000;occ; 95; 0;52290
/nas3/ENVISAT/GOMOS/GOM_NL__0P/GOM_NL__0PNPDE20120228_212837_000009063112_00129_52298_6682.N1
1; -351.4; 28-FEB-2012 21:28:37; Dark ; 32.0; 38; 20Eps Sgr ; 1.84; 11000;occ; 64; 0;52298
2; 512.9; 28-FEB-2012 21:43:01; Dark ; 42.5; 10; Bet Cen ; 0.61; 28000;occ; 85; 0;52299
/nas3/ENVISAT/GOMOS/GOM_NL__0P/GOM_NL__0PNPDK20120228_080640_000009053112_00121_52290_5704.N1
1; -356.5; 28-FEB-2012 08:06:40; Dark ; 46.0; 38; 20Eps Sgr ; 1.84; 11000;occ; 92; 0;52290
2; 508.3; 28-FEB-2012 08:21:05; Dark ; 41.0; 10; Bet Cen ; 0.61; 28000;occ; 82; 0;52291
/nas3/ENVISAT/GOMOS/GOM_NL__0P/GOM_NL__0PNPDK20120228_094655_000009173112_00122_52291_5705.N1
1; -355.8; 28-FEB-2012 09:46:55; Dark ; 44.5; 38; 20Eps Sgr ; 1.84; 11000;occ; 89; 0;52291
2; 508.8; 28-FEB-2012 10:01:19; Dark ; 52.5; 10; Bet Cen ; 0.61; 28000;occ; 105; 0;52292
/nas3/ENVISAT/GOMOS/GOM_NL__0P/GOM_NL__0PNPDK20120228_112709_000009153112_00123_52292_5706.N1
1; -355.2; 28-FEB-2012 11:27:09; Dark ; 43.0; 38; 20Eps Sgr ; 1.84; 11000;occ; 86; 0;52292
2; 509.4; 28-FEB-2012 11:41:34; Dark ; 51.0; 10; Bet Cen ; 0.61; 28000;occ; 102; 0;52293
/nas3/ENVISAT/GOMOS/GOM_NL__0P/GOM_NL__0PNPDK20120228_144738_000009063112_00125_52294_5707.N1
1; -354.0; 28-FEB-2012 14:47:38; Dark ; 46.5; 38; 20Eps Sgr ; 1.84; 11000;occ; 93; 0;52294
2; 510.5; 28-FEB-2012 15:02:03; Dark ; 42.0; 10; Bet Cen ; 0.61; 28000;occ; 84; 0;52295
/nas3/ENVISAT/GOMOS/GOM_NL__0P/GOM_NL__0PNPDK20120228_162753_000009063112_00126_52295_5708.N1
1; -353.3; 28-FEB-2012 16:27:53; Dark ; 47.0; 38; 20Eps Sgr ; 1.84; 11000;occ; 94; 0;52295
2; 511.2; 28-FEB-2012 16:42:17; Dark ; 42.0; 10; Bet Cen ; 0.61; 28000;occ; 84; 0;52296
/nas3/ENVISAT/GOMOS/GOM_NL__0P/GOM_NL__0PNPDK20120228_180808_000009073112_00127_52296_5709.N1
1; -352.7; 28-FEB-2012 18:08:08; Dark ; 42.0; 38; 20Eps Sgr ; 1.84; 11000;occ; 84; 0;52296
2; 511.7; 28-FEB-2012 18:22:32; Dark ; 43.0; 10; Bet Cen ; 0.61; 28000;occ; 86; 0;52297
/nas3/ENVISAT/GOMOS/GOM_NL__0P/GOM_NL__0PNPDK20120228_194822_000009083112_00128_52297_5710.N1
1; -352.1; 28-FEB-2012 19:48:22; Dark ; 37.0; 38; 20Eps Sgr ; 1.84; 11000;occ; 74; 0;52297
2; 512.3; 28-FEB-2012 20:02:47; Dark ; 44.0; 10; Bet Cen ; 0.61; 28000;occ; 88; 0;52298
/nas3/ENVISAT/GOMOS/GOM_NL__0P/GOM_NL__0PNPDK20120228_130724_000009053112_00124_52293_6008.N1
1; -354.6; 28-FEB-2012 13:07:24; Dark ; 42.0; 38; 20Eps Sgr ; 1.84; 11000;occ; 84; 0;52293
2; 510.0; 28-FEB-2012 13:21:48; Dark ; 40.5; 10; Bet Cen ; 0.61; 28000;occ; 81; 0;52294
/nas3/ENVISAT/GOMOS/GOM_NL__0P/GOM_NL__0PNPDE20120229_010330_00000443112_00132_52301_6684.N1

1; 514.0; 29-FEB-2012 01:03:30; Dark ; 44.5; 10; Bet Cen ; 0.61; 28000;occ; 89; 0;52301
/nas3/ENVISAT/GOMOS/GOM_NL__0P/GOM_NL__0PNPDE20120229_024344_000000443112_00133_52302_6685.N1
1; 514.7; 29-FEB-2012 02:43:44; Dark ; 44.5; 10; Bet Cen ; 0.61; 28000;occ; 89; 0;52302
/nas3/ENVISAT/GOMOS/GOM_NL__0P/GOM_NL__0PNPDE20120229_042359_000000453112_00134_52303_6686.N1
1; 515.2; 29-FEB-2012 04:23:59; Dark ; 45.5; 10; Bet Cen ; 0.61; 28000;occ; 91; 0;52303
/nas3/ENVISAT/GOMOS/GOM_NL__0P/GOM_NL__0PNPDE20120229_060414_000000463112_00135_52304_6687.N1
1; 515.8; 29-FEB-2012 06:04:14; Dark ; 46.5; 10; Bet Cen ; 0.61; 28000;occ; 93; 0;52304
/nas3/ENVISAT/GOMOS/GOM_NL__0P/GOM_NL__0PNPDE20120229_224639_000000443112_00145_52314_6688.N1
1; 521.3; 29-FEB-2012 22:46:39; Dark ; 45.0; 10; Bet Cen ; 0.61; 28000;occ; 90; 0;52314
/nas3/ENVISAT/GOMOS/GOM_NL__0P/GOM_NL__0PNPDK20120229_074428_000000393112_00136_52305_5711.N1
1; 516.4; 29-FEB-2012 07:44:28; Dark ; 39.5; 10; Bet Cen ; 0.61; 28000;occ; 79; 0;52305
/nas3/ENVISAT/GOMOS/GOM_NL__0P/GOM_NL__0PNPDK20120229_110457_000000503112_00138_52307_5713.N1
1; 517.5; 29-FEB-2012 11:04:57; Dark ; 51.0; 10; Bet Cen ; 0.61; 28000;occ; 102; 0;52307
/nas3/ENVISAT/GOMOS/GOM_NL__0P/GOM_NL__0PNPDK20120229_124512_000000413112_00139_52308_5714.N1
1; 518.1; 29-FEB-2012 12:45:12; Dark ; 42.0; 10; Bet Cen ; 0.61; 28000;occ; 84; 0;52308
/nas3/ENVISAT/GOMOS/GOM_NL__0P/GOM_NL__0PNPDK20120229_142526_000000443112_00140_52309_5715.N1
1; 518.7; 29-FEB-2012 14:25:26; Dark ; 45.0; 10; Bet Cen ; 0.61; 28000;occ; 90; 0;52309
/nas3/ENVISAT/GOMOS/GOM_NL__0P/GOM_NL__0PNPDK20120229_160541_000000433112_00141_52310_5716.N1
1; 519.2; 29-FEB-2012 16:05:41; Dark ; 43.5; 10; Bet Cen ; 0.61; 28000;occ; 87; 0;52310
/nas3/ENVISAT/GOMOS/GOM_NL__0P/GOM_NL__0PNPDK20120229_174555_000000463112_00142_52311_5717.N1
1; 519.8; 29-FEB-2012 17:45:55; Dark ; 47.0; 10; Bet Cen ; 0.61; 28000;occ; 94; 0;52311
/nas3/ENVISAT/GOMOS/GOM_NL__0P/GOM_NL__0PNPDK20120229_192610_000000443112_00143_52312_5718.N1
1; 520.2; 29-FEB-2012 19:26:10; Dark ; 44.5; 10; Bet Cen ; 0.61; 28000;occ; 89; 0;52312
/nas3/ENVISAT/GOMOS/GOM_NL__0P/GOM_NL__0PNPDK20120229_210624_000000403112_00144_52313_5719.N1
1; 520.7; 29-FEB-2012 21:06:24; Dark ; 41.0; 10; Bet Cen ; 0.61; 28000;occ; 82; 0;52313