

GOMOS Daily Report 17-FEB-2012

Level 0 and Level 1 products

SUMMARY

[1. General Info](#)

[2. Summary of products arrived in PCF \(Product Control Facility\)](#)

[2.1 Level 0: products arrived in PCF during current month \(see template here\)](#)

[2.2 Level 0: plot of mission plan versus production during reporting period](#)

[2.3 Level 0: summary of missing occultations with respect to the plan](#)

[2.4 Level 1: products arrived in PCF during reporting period](#)

[3. Plot of Spectrometers and Photometers temperatures](#)

[4. Dark Charge monitoring](#)

[4.1 Products that did not use the Dark Sky Area observation for DC computation](#)

[4.2 Plot of Dark Charge](#)

[5. Demodulation correction and quality product information monitoring](#)

[5.1 Percentage of products with some flags set](#)

[5.2 Plot of quality information per product \(time dependant\)](#)

[5.3 Plot of quality information per product \(world map\)](#)

[6. Star tangent altitude lost](#)

[6.1 Statistics on star tangent altitude lost](#)

[6.2 Plot of star tangent altitude lost: DARK products](#)

[6.3 Plot of star tangent altitude lost: BRIGHT products](#)

[6.3 Plot of star tangent altitude lost: TWILIGHT products](#)

[7. Star Acquisition and Tracking Unit \(SATU\)](#)

[7.1 SATU plots \(dark limb\): 'X' and 'Y' axis](#)

[7.2 SATU Noise Equivalent Angle statistics](#)

[7.2.1 SATU NEA Statistics \(table\)](#)

[7.2.2 Daily SATU NEA STD \(dark limb\) - trend since 1st April 2006](#)

[8. Auxiliary Data Files used for the production reported in section 2.4](#)

[Level 2 products](#)

This report presents the daily analysis on parameters extracted from GOMOS level 1b data (GOM_TRA_1P). It is intended to monitor some important parameters that will impact the quality of the level 2 products as the Spectrometers and Photometers CCD Temperatures and Dark Charge, SATU noise equivalent angle... A list of level 0 products (and content) that have arrived during the actual month to the PCF is also given.

Item	Value
Time of report generation	27FEB2012 12:10:07
Data source version	GOMOS/6.01
Start time of products	17FEB2012 01:41:52
Stop time of products	17FEB2012 23:27:48
Store outputs in DB	Yes
Nb of level 1b prods	41
Nb of prods with errors	0

2. Summary of products arrived in PCF (Product Control Facility)

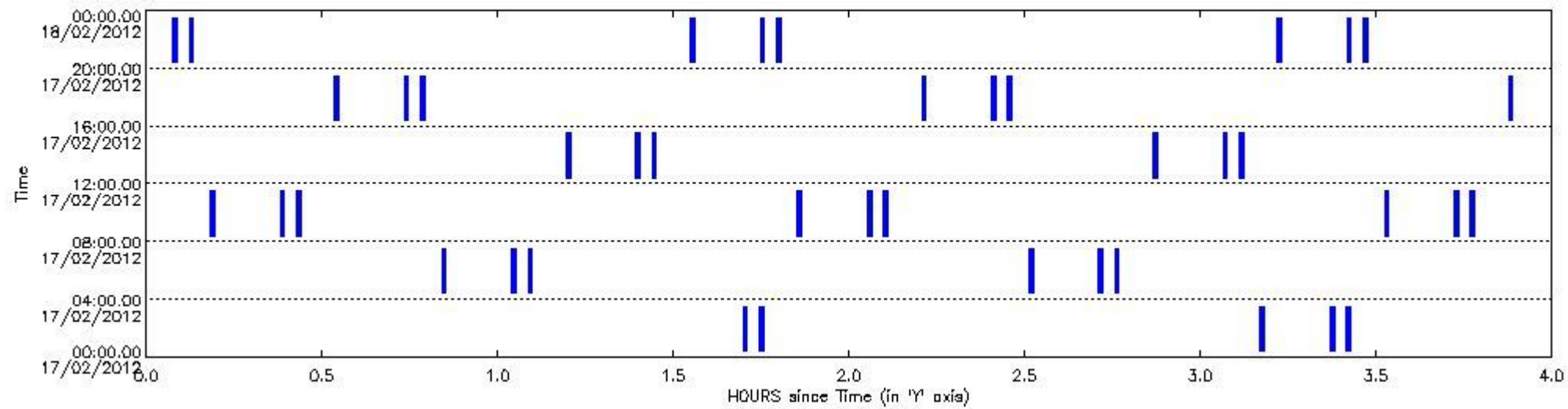
2.1 Level 0 products arrived in PCF (see template [here](#))

2.2 Plot of mission plan versus Level 0 production arrived in PCF during reporting period

Red segments are missing products.

Blue segments are available products.

Green segments are calibration measurements (not available products to users).



2.3 Summary of missing occultations (red segments in previous plot)

No missing products.

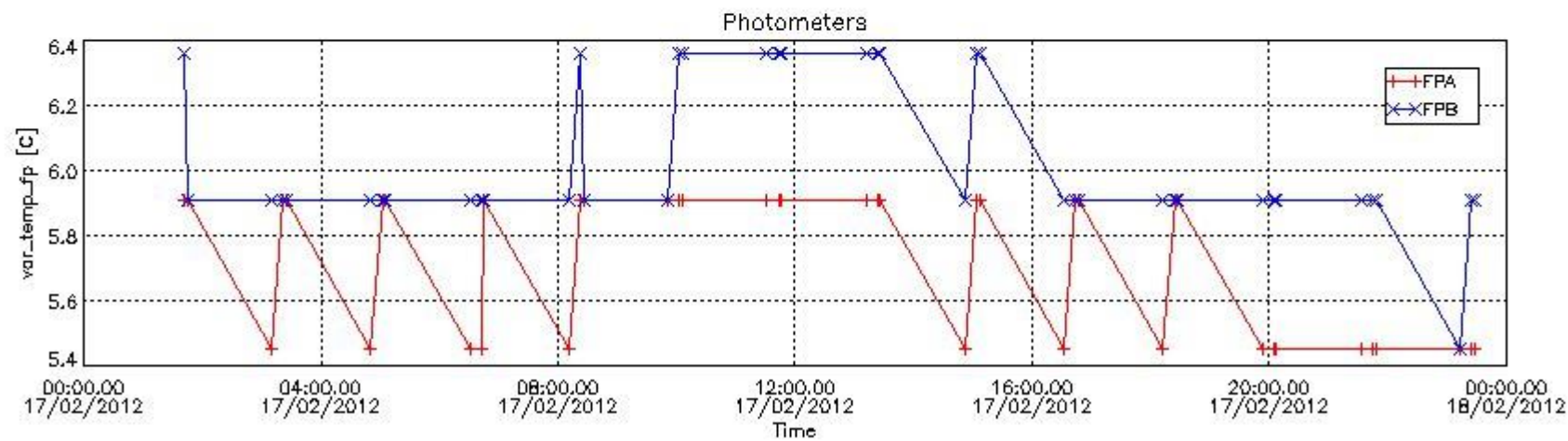
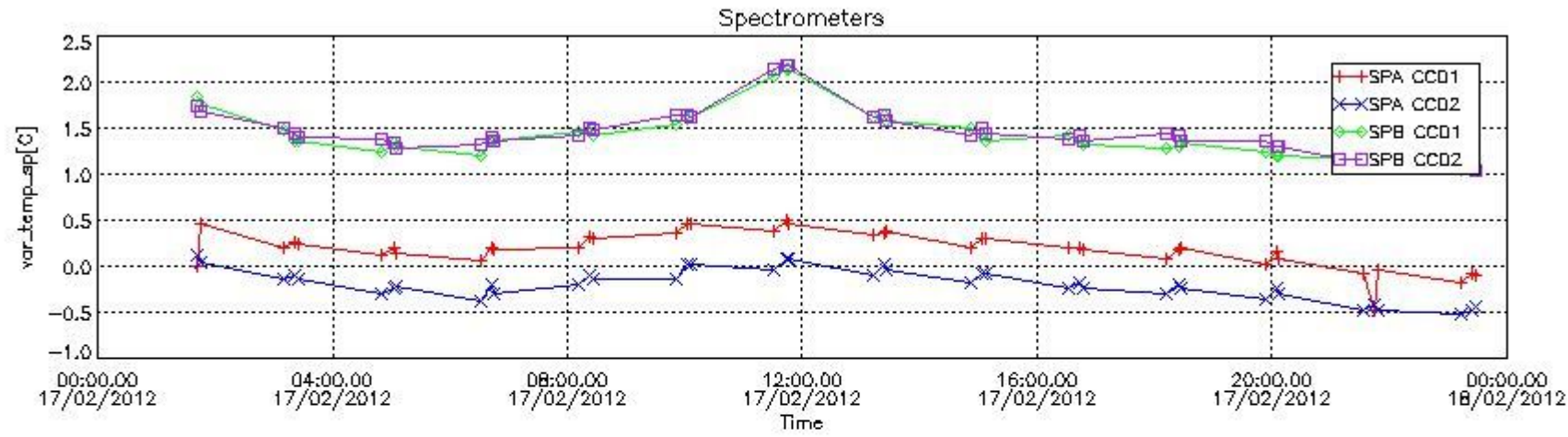
2.4 Summary of processed GOM_TRA_1P products

!Warning: No products without errors in BRIGHT limb conditions found

Nr	Filename	UTC Start time	Limb	Duration	Star Id	Star Name	Star Mag	Star Temp	Nb Meas	Orbit	Prod. error
1	GOM_TRA_1PNPDE20120217_014152_000000463111_00391_52129_8853.N1	17-FEB-2012 01:41:52	Dark	46.000	10	Bet Cen	0.61000	28000.	92	52129	No
2	GOM_TRA_1PNPDE20120217_014439_000000423111_00391_52129_8854.N1	17-FEB-2012 01:44:39	Dark	42.000	20	Bet Cru	1.2530	30000.	84	52129	No
3	GOM_TRA_1PNPDE20120217_031011_000000423111_00391_52129_8855.N1	17-FEB-2012 03:10:11	Dark	42.000	25	35Lam Sco	1.6200	28000.	84	52129	No
4	GOM_TRA_1PNPDE20120217_032206_000000433111_00392_52130_8856.N1	17-FEB-2012 03:22:06	Dark	43.000	10	Bet Cen	0.61000	28000.	86	52130	No
5	GOM_TRA_1PNPDE20120217_032454_000000413111_00392_52130_8857.N1	17-FEB-2012 03:24:54	Dark	41.000	20	Bet Cru	1.2530	30000.	82	52130	No
6	GOM_TRA_1PNPDE20120217_045025_000000423111_00392_52130_8903.N1	17-FEB-2012 04:50:25	Dark	41.500	25	35Lam Sco	1.6200	28000.	83	52130	No
7	GOM_TRA_1PNPDE20120217_050221_000000443111_00393_52131_8904.N1	17-FEB-2012 05:02:21	Dark	44.000	10	Bet Cen	0.61000	28000.	88	52131	No
8	GOM_TRA_1PNPDE20120217_050508_000000413111_00393_52131_8905.N1	17-FEB-2012 05:05:08	Dark	40.500	20	Bet Cru	1.2530	30000.	81	52131	No
9	GOM_TRA_1PNPDE20120217_063040_000000443111_00393_52131_8953.N1	17-FEB-2012 06:30:40	Dark	44.000	25	35Lam Sco	1.6200	28000.	88	52131	No
10	GOM_TRA_1PNPDE20120217_064235_000000473111_00394_52132_8954.N1	17-FEB-2012 06:42:35	Dark	47.000	10	Bet Cen	0.61000	28000.	94	52132	No
11	GOM_TRA_1PNPDE20120217_064523_000000443111_00394_52132_8955.N1	17-FEB-2012 06:45:23	Dark	44.000	20	Bet Cru	1.2530	30000.	88	52132	No

12	GOM_TRA_1PNPDK20120217_081055_000000463111_00394_52132_3392.N1	17-FEB-2012 08:10:55	Dark	46.000	25	35Lam Sco	1.6200	28000.	92	52132	No
13	GOM_TRA_1PNPDK20120217_082250_000000443111_00395_52133_3393.N1	17-FEB-2012 08:22:50	Dark	43.500	10	Bet Cen	0.61000	28000.	87	52133	No
14	GOM_TRA_1PNPDK20120217_082537_000000493111_00395_52133_3394.N1	17-FEB-2012 08:25:37	Dark	49.000	20	Bet Cru	1.2530	30000.	98	52133	No
15	GOM_TRA_1PNPDK20120217_095109_000000503111_00395_52133_3427.N1	17-FEB-2012 09:51:09	Dark	49.500	25	35Lam Sco	1.6200	28000.	99	52133	No
16	GOM_TRA_1PNPDK20120217_100304_000000513111_00396_52134_3428.N1	17-FEB-2012 10:03:04	Dark	50.500	10	Bet Cen	0.61000	28000.	101	52134	No
17	GOM_TRA_1PNPDK20120217_100552_000000413111_00396_52134_3429.N1	17-FEB-2012 10:05:52	Dark	41.000	20	Bet Cru	1.2530	30000.	82	52134	No
18	GOM_TRA_1PNPDK20120217_113124_000000423111_00396_52134_3465.N1	17-FEB-2012 11:31:24	Dark	41.500	25	35Lam Sco	1.6200	28000.	83	52134	No
19	GOM_TRA_1PNPDK20120217_114319_000000433111_00397_52135_3466.N1	17-FEB-2012 11:43:19	Dark	43.000	10	Bet Cen	0.61000	28000.	86	52135	No
20	GOM_TRA_1PNPDK20120217_114606_000000403111_00397_52135_3467.N1	17-FEB-2012 11:46:06	Dark	40.000	20	Bet Cru	1.2530	30000.	80	52135	No
21	GOM_TRA_1PNPDK20120217_131138_000000463111_00397_52135_3507.N1	17-FEB-2012 13:11:38	Dark	45.500	25	35Lam Sco	1.6200	28000.	91	52135	No
22	GOM_TRA_1PNPDK20120217_132333_000000433111_00398_52136_3508.N1	17-FEB-2012 13:23:33	Dark	42.500	10	Bet Cen	0.61000	28000.	85	52136	No
23	GOM_TRA_1PNPDK20120217_132621_000000453111_00398_52136_3509.N1	17-FEB-2012 13:26:21	Dark	44.500	20	Bet Cru	1.2530	30000.	89	52136	No
24	GOM_TRA_1PNPDK20120217_145153_000000463111_00398_52136_3545.N1	17-FEB-2012 14:51:53	Dark	45.500	25	35Lam Sco	1.6200	28000.	91	52136	No
25	GOM_TRA_1PNPDK20120217_150348_000000423111_00399_52137_3546.N1	17-FEB-2012 15:03:48	Dark	42.000	10	Bet Cen	0.61000	28000.	84	52137	No
26	GOM_TRA_1PNPDK20120217_150635_000000423111_00399_52137_3547.N1	17-FEB-2012 15:06:35	Dark	42.000	20	Bet Cru	1.2530	30000.	84	52137	No
27	GOM_TRA_1PNPDK20120217_163207_000000423111_00399_52137_3575.N1	17-FEB-2012 16:32:07	Dark	42.000	25	35Lam Sco	1.6200	28000.	84	52137	No
28	GOM_TRA_1PNPDK20120217_164402_000000423111_00400_52138_3576.N1	17-FEB-2012 16:44:02	Dark	41.500	10	Bet Cen	0.61000	28000.	83	52138	No
29	GOM_TRA_1PNPDK20120217_164650_000000483111_00400_52138_3577.N1	17-FEB-2012 16:46:50	Dark	47.500	20	Bet Cru	1.2530	30000.	95	52138	No
30	GOM_TRA_1PNPDK20120217_181222_000000433111_00400_52138_3608.N1	17-FEB-2012 18:12:22	Dark	43.000	25	35Lam Sco	1.6200	28000.	86	52138	No
31	GOM_TRA_1PNPDK20120217_182417_000000483111_00401_52139_3609.N1	17-FEB-2012 18:24:17	Dark	48.000	10	Bet Cen	0.61000	28000.	96	52139	No
32	GOM_TRA_1PNPDK20120217_182704_000000413111_00401_52139_3610.N1	17-FEB-2012 18:27:04	Dark	40.500	20	Bet Cru	1.2530	30000.	81	52139	No
33	GOM_TRA_1PNPDK20120217_195237_000000413111_00401_52139_3638.N1	17-FEB-2012 19:52:37	Dark	41.000	25	35Lam Sco	1.6200	28000.	82	52139	No
34	GOM_TRA_1PNPDK20120217_200432_000000473111_00402_52140_3639.N1	17-FEB-2012 20:04:32	Dark	47.000	10	Bet Cen	0.61000	28000.	94	52140	No
35	GOM_TRA_1PNPDK20120217_200719_000000443111_00402_52140_3640.N1	17-FEB-2012 20:07:19	Dark	44.000	20	Bet Cru	1.2530	30000.	88	52140	No
36	GOM_TRA_1PNPDE20120217_213251_000000423111_00402_52140_9197.N1	17-FEB-2012 21:32:51	Dark	41.500	25	35Lam Sco	1.6200	28000.	83	52140	No
37	GOM_TRA_1PNPDE20120217_214446_000000423111_00403_52141_9198.N1	17-FEB-2012 21:44:46	Dark	42.000	10	Bet Cen	0.61000	28000.	84	52141	No
38	GOM_TRA_1PNPDE20120217_214733_000000433111_00403_52141_9199.N1	17-FEB-2012 21:47:33	Dark	43.000	20	Bet Cru	1.2530	30000.	86	52141	No
39	GOM_TRA_1PNPDE20120217_231306_000000383111_00403_52141_9226.N1	17-FEB-2012 23:13:06	Dark	38.000	25	35Lam Sco	1.6200	28000.	76	52141	No
40	GOM_TRA_1PNPDE20120217_232501_000000443111_00404_52142_9227.N1	17-FEB-2012 23:25:01	Dark	43.500	10	Bet Cen	0.61000	28000.	87	52142	No
41	GOM_TRA_1PNPDE20120217_232748_000000423111_00404_52142_9228.N1	17-FEB-2012 23:27:48	Dark	41.500	20	Bet Cru	1.2530	30000.	83	52142	No

3. Plot of GOMOS spectrometers and photometers temperatures from level 1b data



4. Overview of dark signal processing per product

The Dark Charge (DC) is a temperature-dependant signal added to the useful measurements and it is therefore subtracted from them during the processing. There are two phenomena that produce a continuous increase of the DC: the "hot pixels" (a pixel is "hot" when its DC exceeds by a significant amount its value measured on ground at the same temperature) and the "Random Telegraphic Signal" (abrupt change positive or negative of the CCD pixel signal, random in time, affecting only the DC part of the signal and not the photon generated signal).

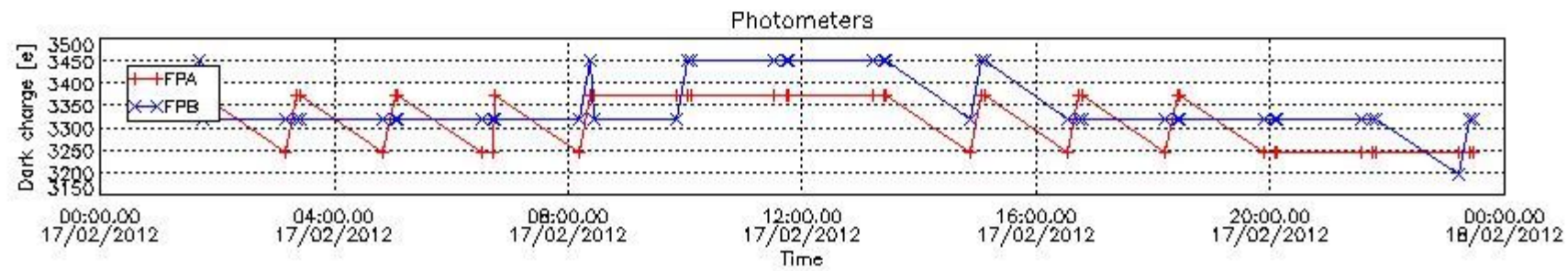
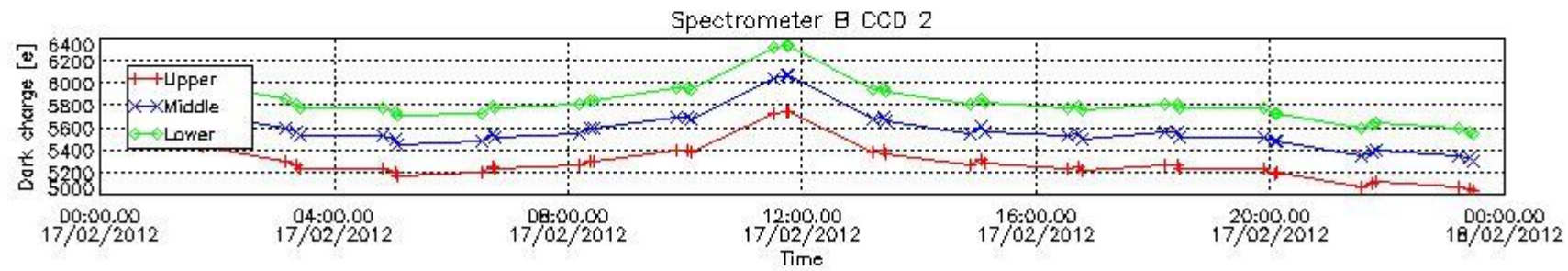
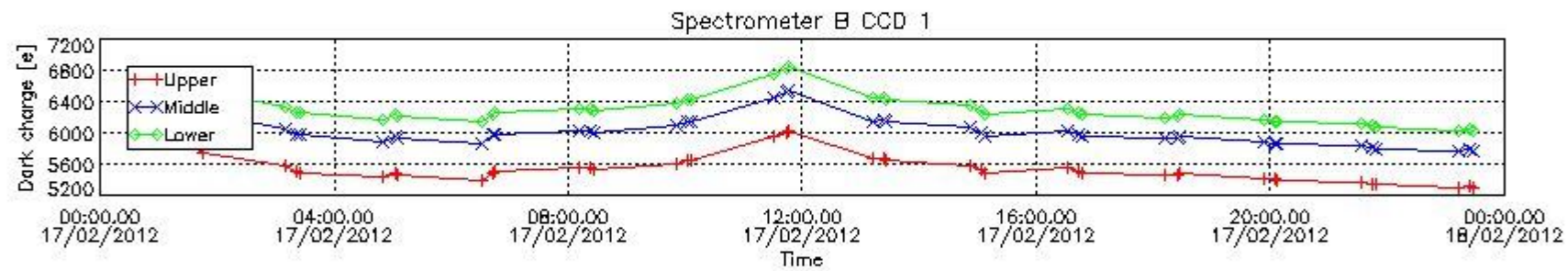
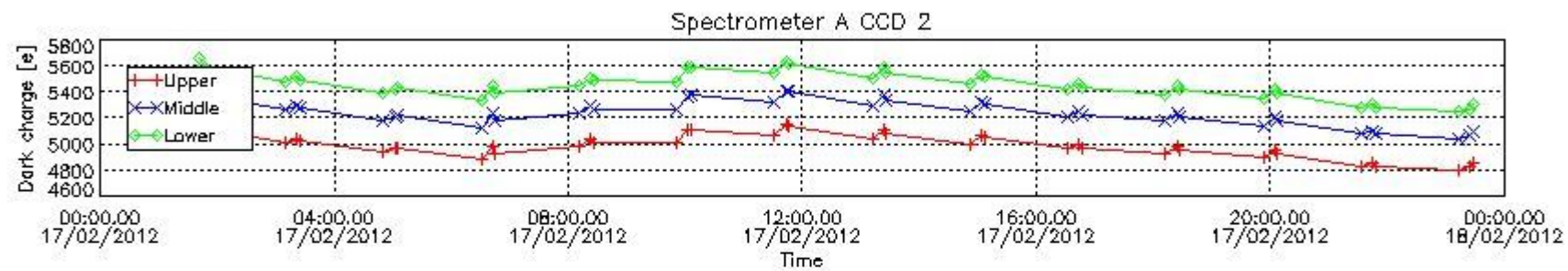
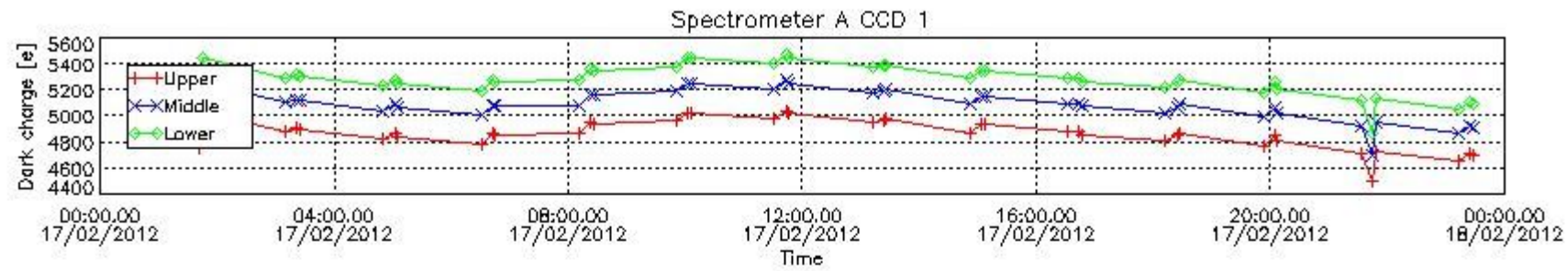
In this section a list of products that did not use the Dark Sky Area (DSA) observation for the DC computation is given. It is also provided the mean DC plot per product for dark limb products with no error flag set.

4.1 These products did not use the DSA observation for DC computation:

Product name	DC information
GOM_TRA_1PNPDE20120217_014152_000000463111_00391_52129_8853.N1	DC map used
GOM_TRA_1PNPDE20120217_014439_000000423111_00391_52129_8854.N1	DC map used
GOM_TRA_1PNPDE20120217_031011_000000423111_00391_52129_8855.N1	DC map used
GOM_TRA_1PNPDE20120217_032206_000000433111_00392_52130_8856.N1	DC map used
GOM_TRA_1PNPDE20120217_032454_000000413111_00392_52130_8857.N1	DC map used
GOM_TRA_1PNPDE20120217_045025_000000423111_00392_52130_8903.N1	DC map used
GOM_TRA_1PNPDE20120217_050221_000000443111_00393_52131_8904.N1	DC map used
GOM_TRA_1PNPDE20120217_050508_000000413111_00393_52131_8905.N1	DC map used
GOM_TRA_1PNPDE20120217_063040_000000443111_00393_52131_8953.N1	DC map used
GOM_TRA_1PNPDE20120217_064235_000000473111_00394_52132_8954.N1	DC map used
GOM_TRA_1PNPDE20120217_064523_000000443111_00394_52132_8955.N1	DC map used
GOM_TRA_1PNPDK20120217_081055_000000463111_00394_52132_3392.N1	DC map used
GOM_TRA_1PNPDK20120217_082250_000000443111_00395_52133_3393.N1	DC map used
GOM_TRA_1PNPDK20120217_082537_000000493111_00395_52133_3394.N1	DC map used

GOM_TRA_1PNPDK20120217_095109_000000503111_00395_52133_3427.N1	DC map used
GOM_TRA_1PNPDK20120217_100304_000000513111_00396_52134_3428.N1	DC map used
GOM_TRA_1PNPDK20120217_100552_000000413111_00396_52134_3429.N1	DC map used
GOM_TRA_1PNPDK20120217_113124_000000423111_00396_52134_3465.N1	DC map used
GOM_TRA_1PNPDK20120217_114319_000000433111_00397_52135_3466.N1	DC map used
GOM_TRA_1PNPDK20120217_114606_000000403111_00397_52135_3467.N1	DC map used
GOM_TRA_1PNPDK20120217_131138_000000463111_00397_52135_3507.N1	DC map used
GOM_TRA_1PNPDK20120217_132333_000000433111_00398_52136_3508.N1	DC map used
GOM_TRA_1PNPDK20120217_132621_000000453111_00398_52136_3509.N1	DC map used
GOM_TRA_1PNPDK20120217_145153_000000463111_00398_52136_3545.N1	DC map used
GOM_TRA_1PNPDK20120217_150348_000000423111_00399_52137_3546.N1	DC map used
GOM_TRA_1PNPDK20120217_150635_000000423111_00399_52137_3547.N1	DC map used
GOM_TRA_1PNPDK20120217_163207_000000423111_00399_52137_3575.N1	DC map used
GOM_TRA_1PNPDK20120217_164402_000000423111_00400_52138_3576.N1	DC map used
GOM_TRA_1PNPDK20120217_164650_000000483111_00400_52138_3577.N1	DC map used
GOM_TRA_1PNPDK20120217_181222_000000433111_00400_52138_3608.N1	DC map used
GOM_TRA_1PNPDK20120217_182417_000000483111_00401_52139_3609.N1	DC map used
GOM_TRA_1PNPDK20120217_182704_000000413111_00401_52139_3610.N1	DC map used
GOM_TRA_1PNPDK20120217_195237_000000413111_00401_52139_3638.N1	DC map used
GOM_TRA_1PNPDK20120217_200432_000000473111_00402_52140_3639.N1	DC map used
GOM_TRA_1PNPDK20120217_200719_000000443111_00402_52140_3640.N1	DC map used
GOM_TRA_1PNPDE20120217_213251_000000423111_00402_52140_9197.N1	DC map used
GOM_TRA_1PNPDE20120217_214446_000000423111_00403_52141_9198.N1	DC map used
GOM_TRA_1PNPDE20120217_214733_000000433111_00403_52141_9199.N1	DC map used
GOM_TRA_1PNPDE20120217_231306_000000383111_00403_52141_9226.N1	DC map used
GOM_TRA_1PNPDE20120217_232501_000000443111_00404_52142_9227.N1	DC map used
GOM_TRA_1PNPDE20120217_232748_000000423111_00404_52142_9228.N1	DC map used

4.2 Plot of mean dark charges per product: only products in DARK limb conditions without errors are used



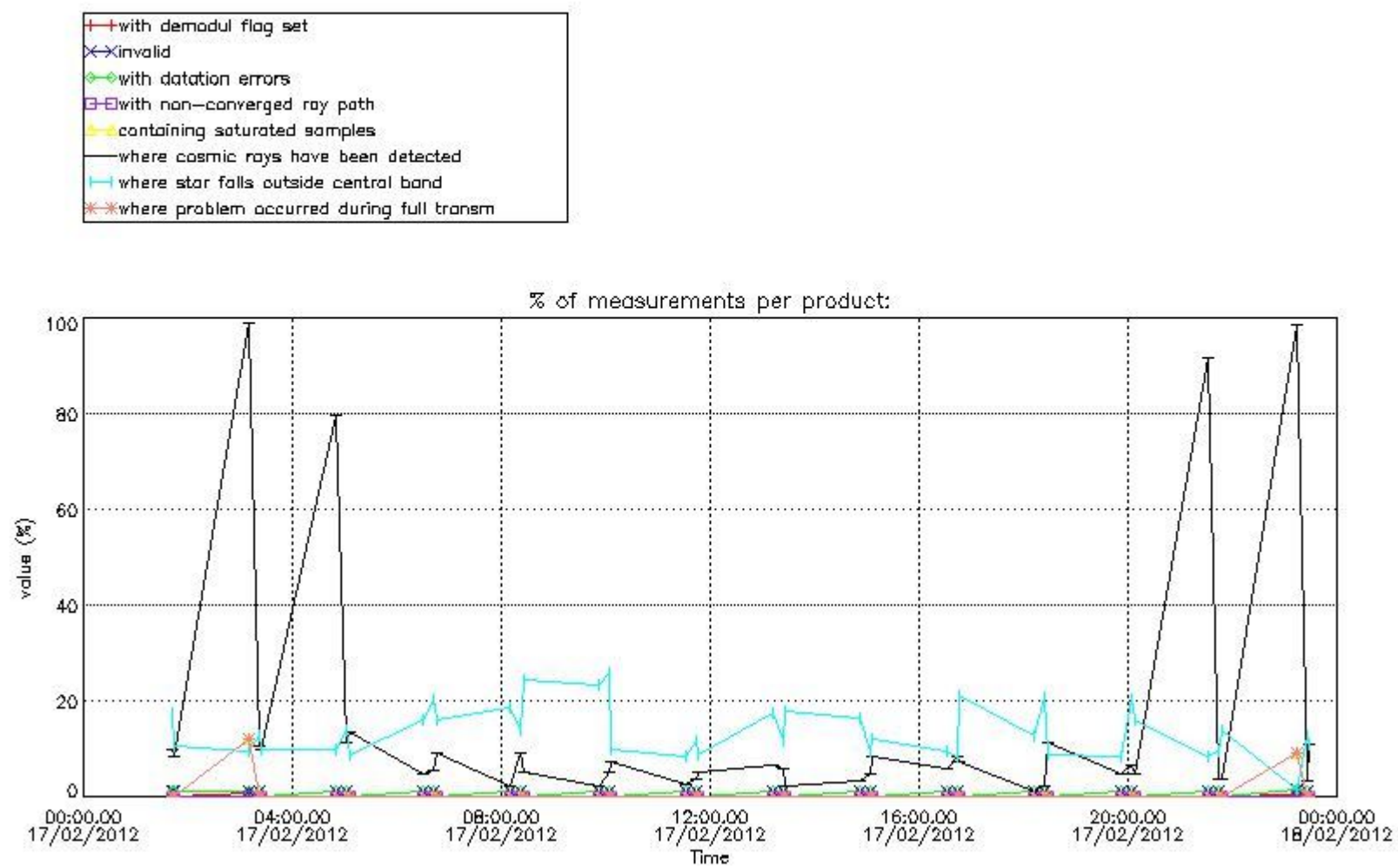
5. Demodulation flag and quality information monitoring

In this section it is presented the modulation information extracted from the pcd (product confidence data) at measurement level and information extracted from the Quality Summary dataset. Only products without errors (error flag in the MPH set to "0") are used.

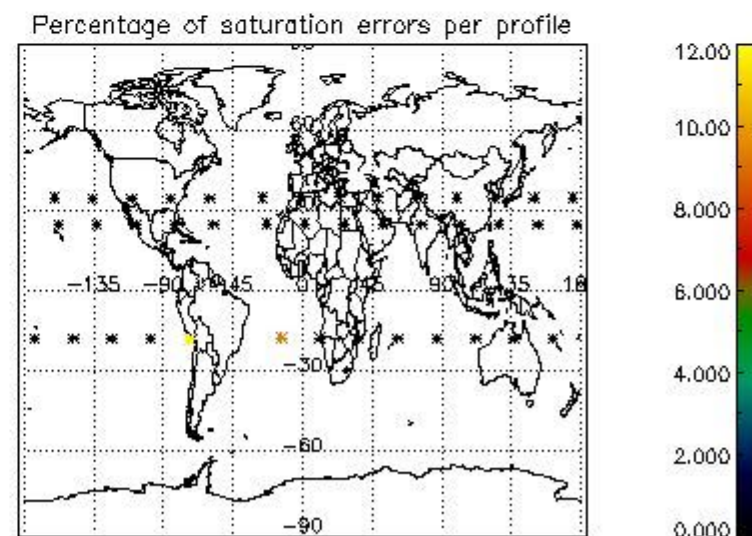
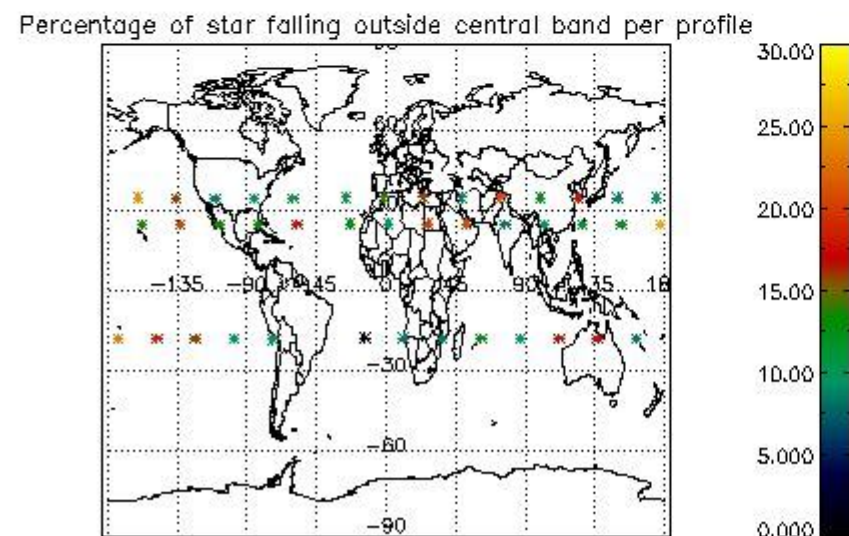
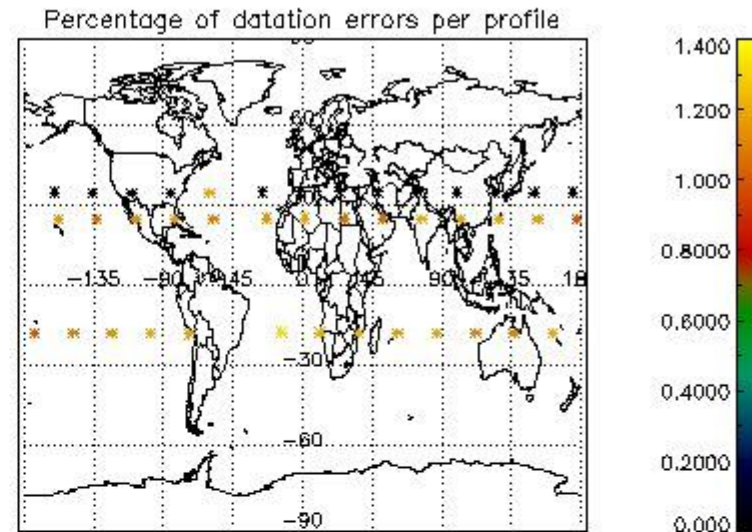
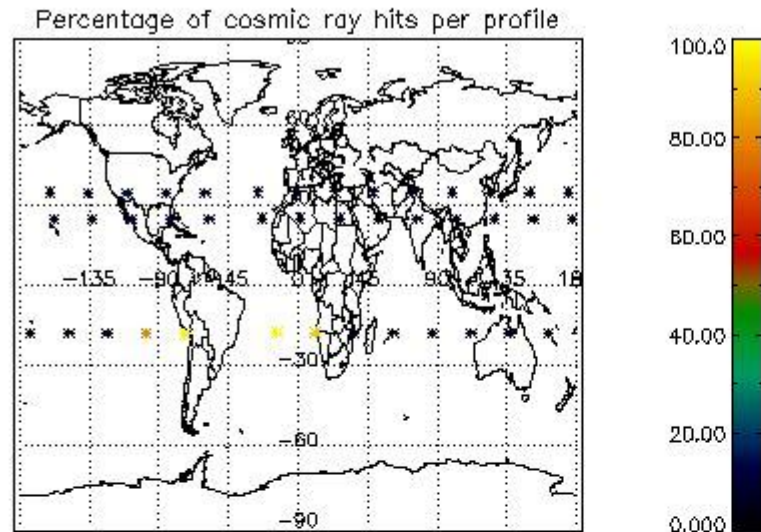
5.1 Percentage of products during reporting period with:

At least one measurement with demodulation flag set:	85.3659 %
Reference spectrum computed from DB:	0.00000 %
Reference spectrum with small number of measurements:	0.00000 %
SATU data not used:	0.00000 %

5.2 Plot quality information per product (time dependant)



5.3 Plot quality information per product (world map)



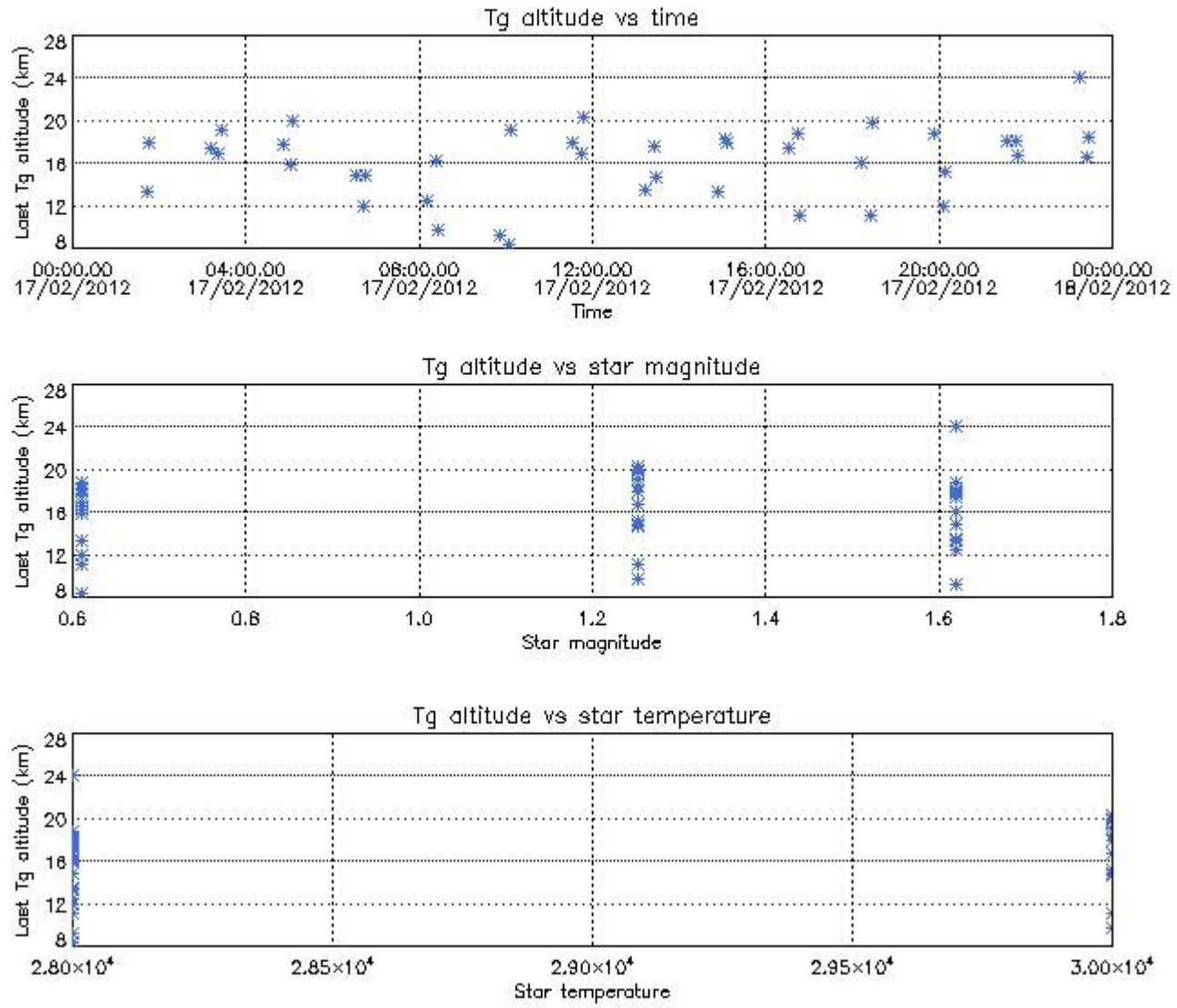
6. Statistics and plot of tangent altitude of the last measurement (DARK & BRIGHT products without errors)

6.1 Statistics on tangent altitude lost:

Statistics	DARK	BRIGHT	TWILIGHT
Mean:	16.039	NaN	NaN
St. deviation:	3.3894	NaN	NaN
Maximum:	24.065	NaN	NaN
Minimum:	8.2681	NaN	NaN
Number of data:	41.000	NaN	NaN

6.2 Plot for DARK limb products

Tangent altitude at which the star is lost

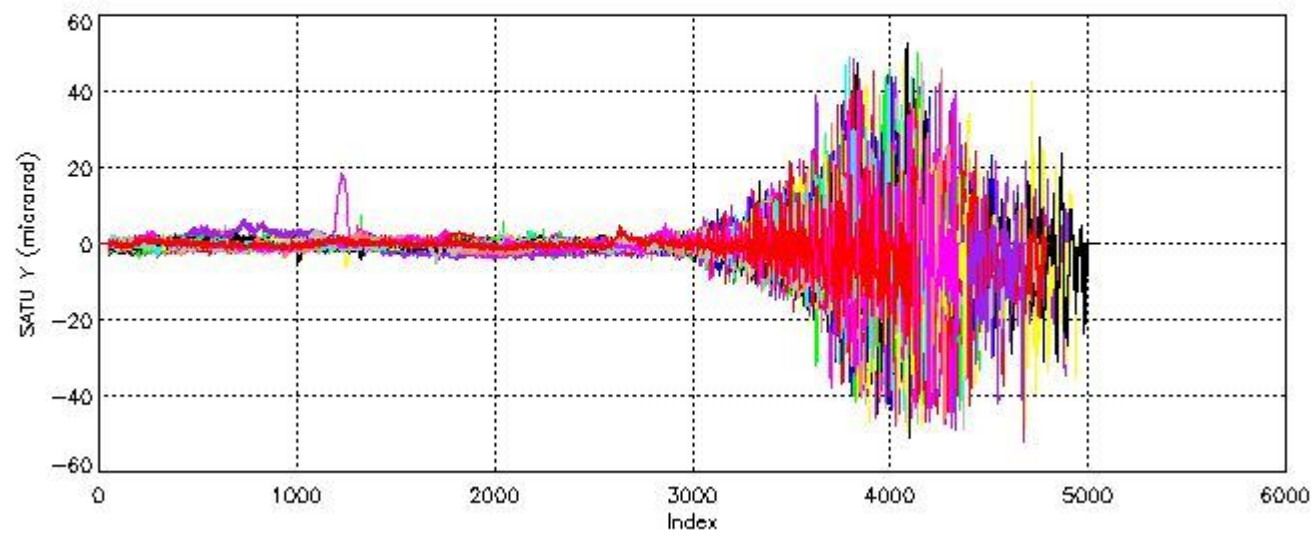
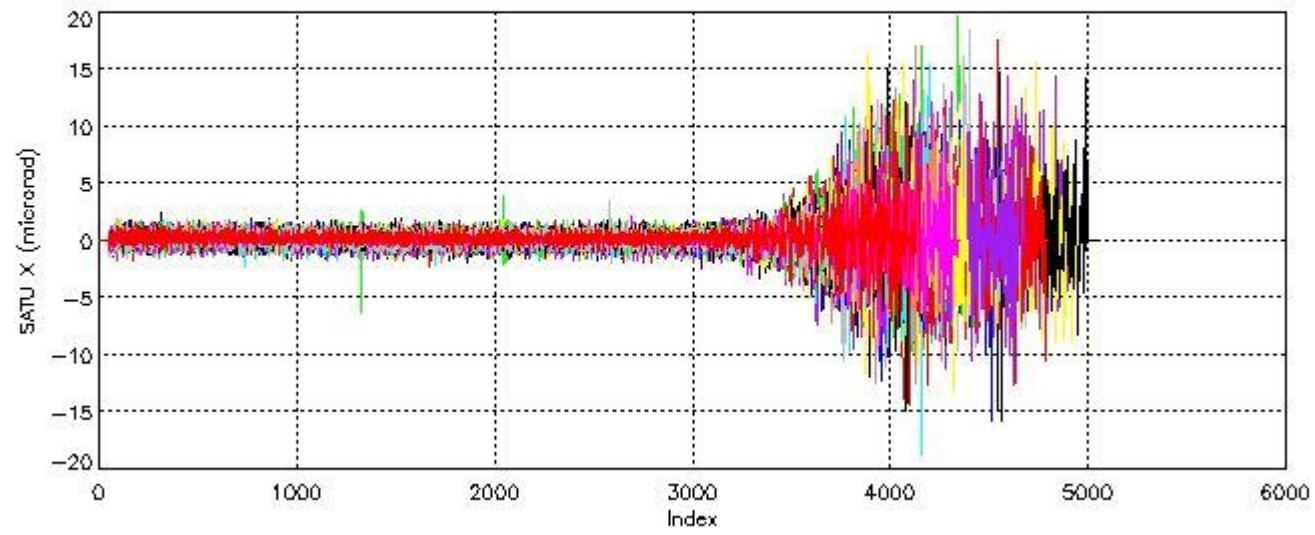


7. Star Acquisition and Tracking Unit (SATU)

The Star Acquisition and Tracking Unit (SATU) analyses the position of the tracked star beam collected by the GOMOS telescope and deflected by the optical beam dispatcher. The main function of the SATU is to detect a star, provide its image position to the science data electronics and to help the pointing function to keep the star image at a fixed position. In tracking mode the SATU data is recorded with a frequency of 100 Hz.

7.1 SATU 'X' and 'Y' axis plots (dark limb)

SATU CCD 'X' and 'Y' axis plots are provided in order to detect any abnormal behaviour of the tracking system. For every occultation (color) the plot should remain stable (with some noise) until we are deep in the atmosphere where big fluctuations are registered due to the refractive effects.



7.2 Statistics on SATU Noise Equivalent Angle (NEA) for DARK (D) and BRIGHT (B) products above 105 kms

The Star Acquisition and Tracking Unit (it is the CCD that tracks the star while it is occulted) Noise Equivalent Angle consists of the statistical angular variation of the SATU data above the atmosphere.

Statistics (in microradians) above 105 km are computed for every occultation, giving four values per occultation: one in the 'X' direction and one in the 'Y' direction for dark and bright limbs. A mean value per day in every direction and limb is calculated and monitored in order to assess instrument performance in terms of star pointing.

7.2.1 SATU NEA Statistics (table)

Statistics	SATU X (D)	SATU Y (D)	SATU X (B)	SATU Y (B)
Mean:	0.17793	-0.23454	NaN	NaN
St. deviation:	0.37481	0.75375	NaN	NaN
Maximum:	2.5000	6.4000	NaN	NaN
Minimum:	-2.2000	-3.6000	NaN	NaN

Number of data:	39300.	39300.	NaN	NaN
90Percentile:	0.70000	0.70000	NaN	NaN

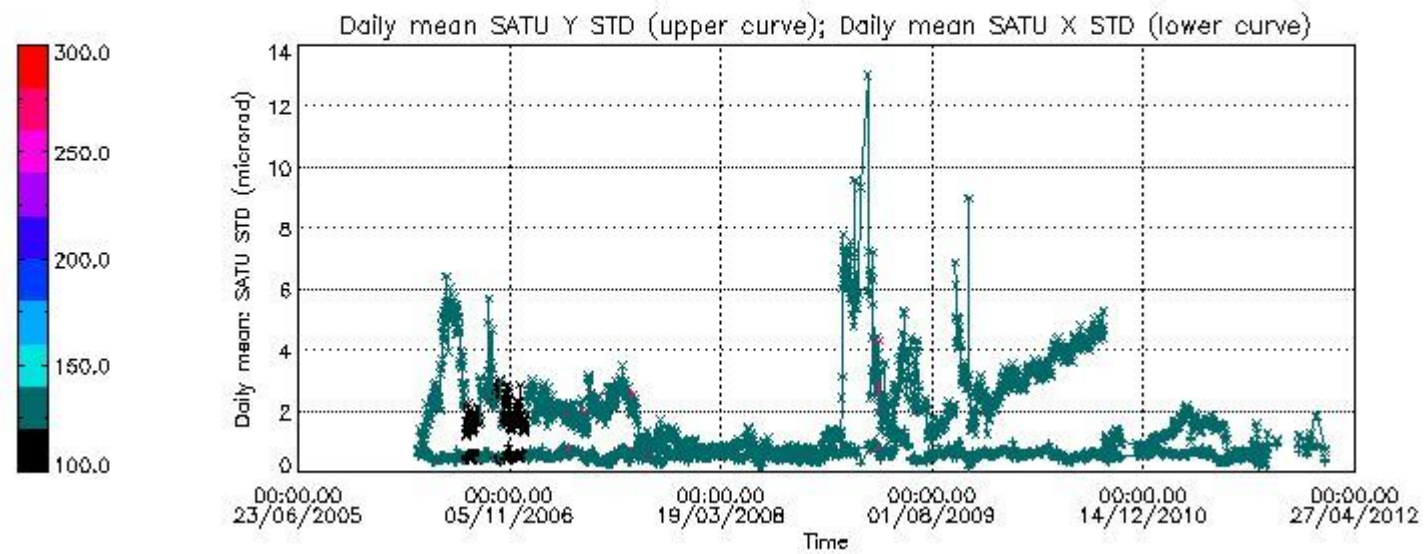
7.2.2 Trend of daily SATU NEA St. deviation since 1st April 2006 (dark limb) and of daily SATU NEA 90th percentile since May 2011

The long term trend of the SATU 'X' and 'Y' standard deviations should be constant during the whole mission.

The colorbar represents the start tangent altitude (km) of the occultations.

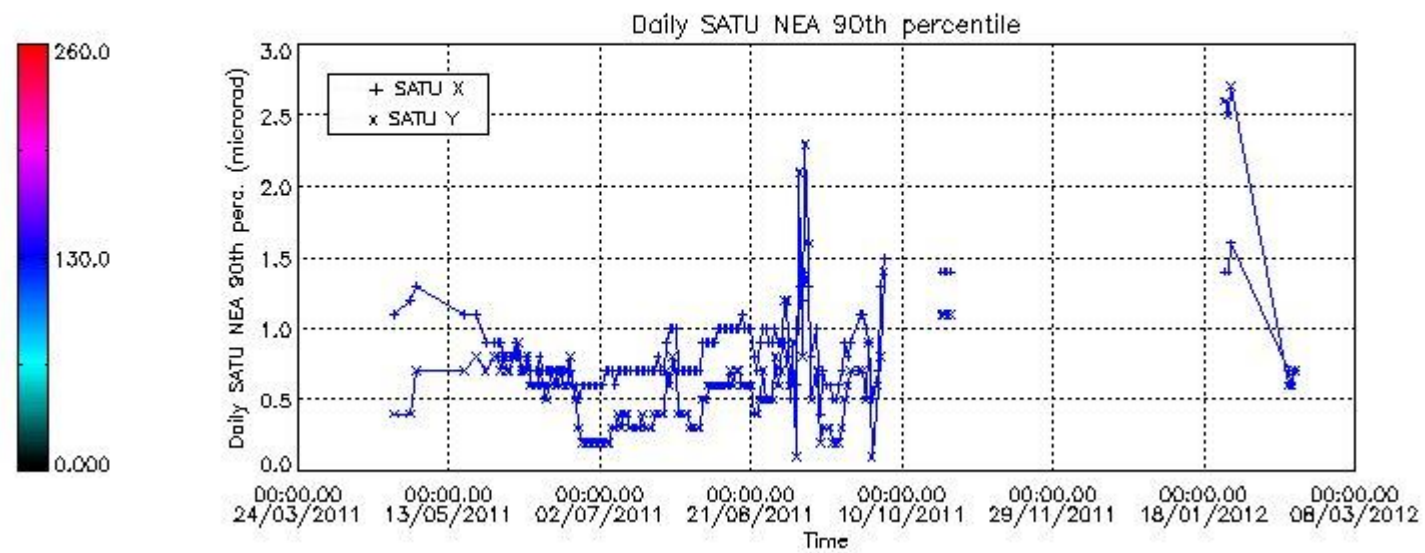
Upper curve: STD of SATU Y axis

Lower curve: STD of SATU X axis



Lower curve: 90th percentile of SATU Y axis

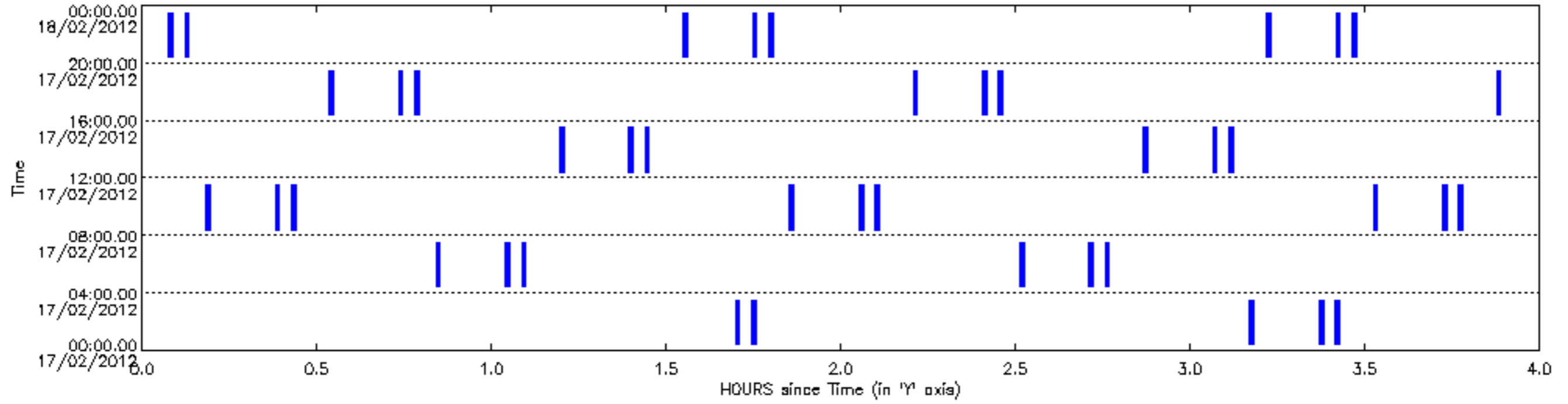
Upper curve: 90th percentile of SATU X axis

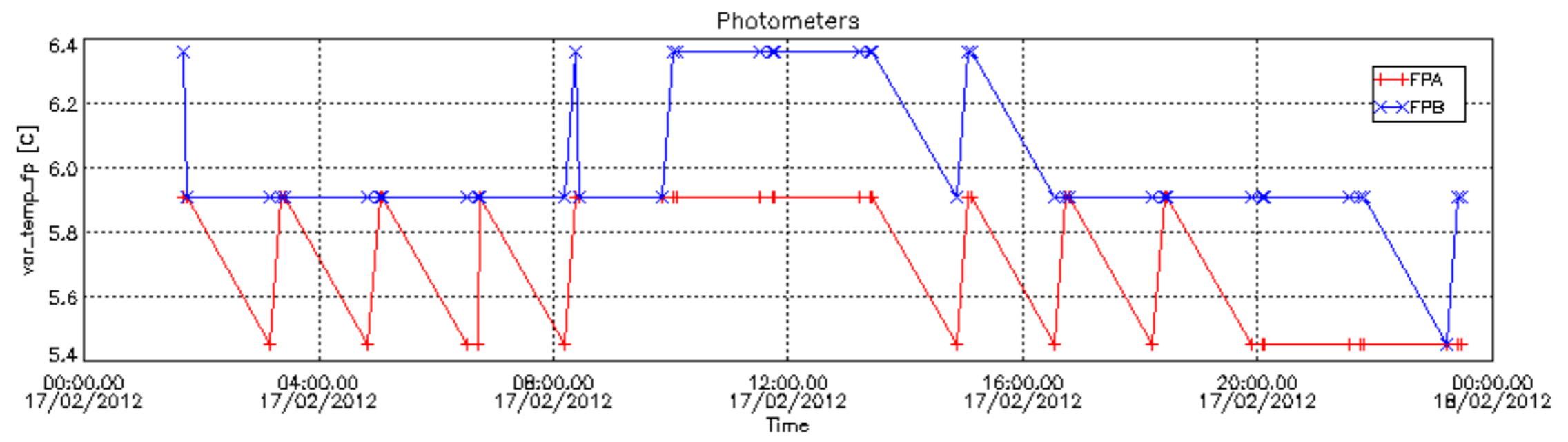
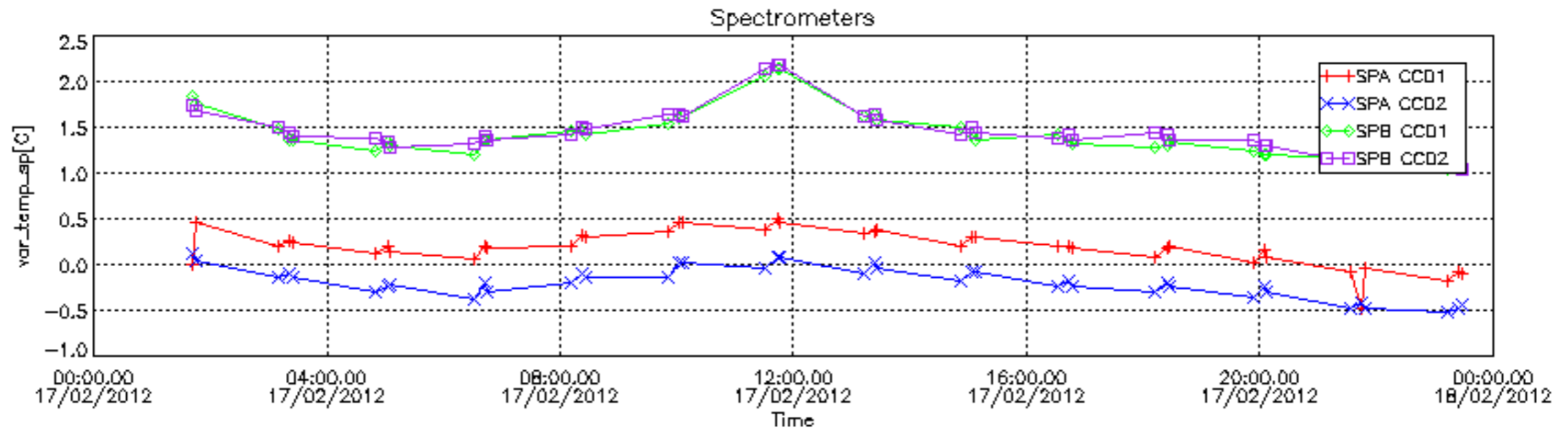


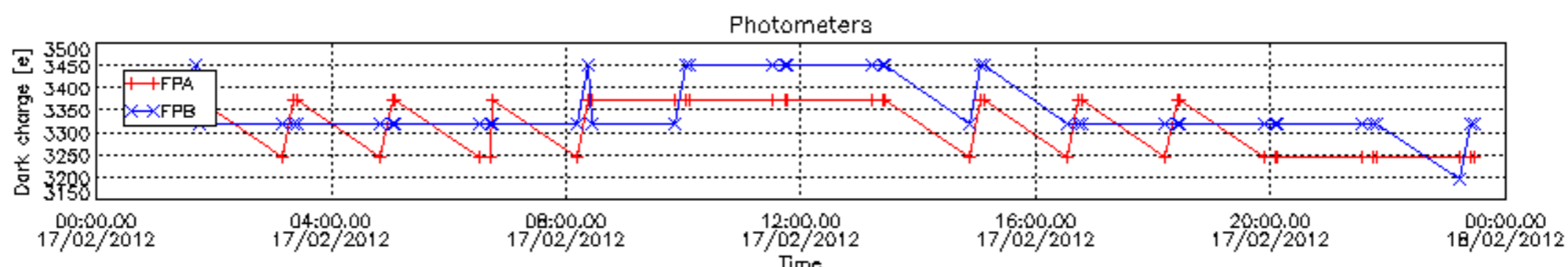
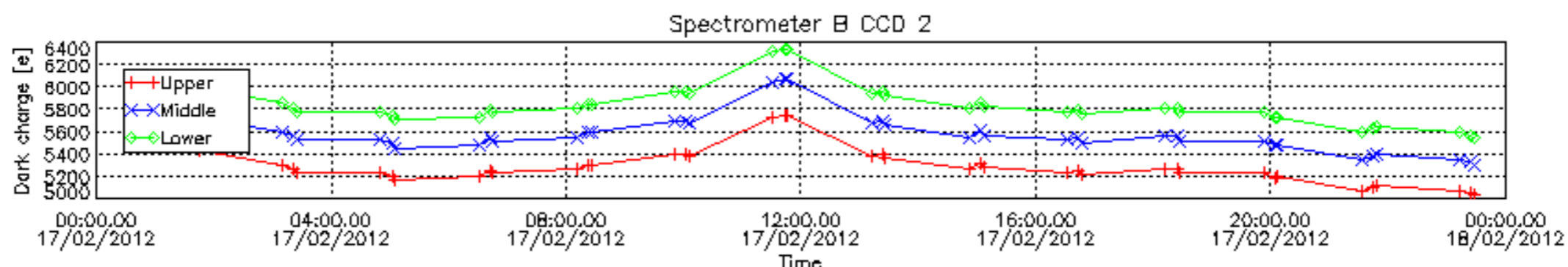
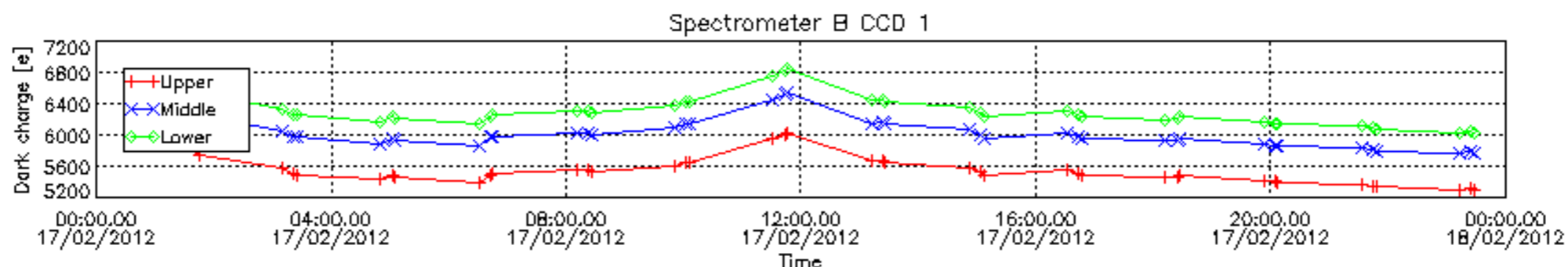
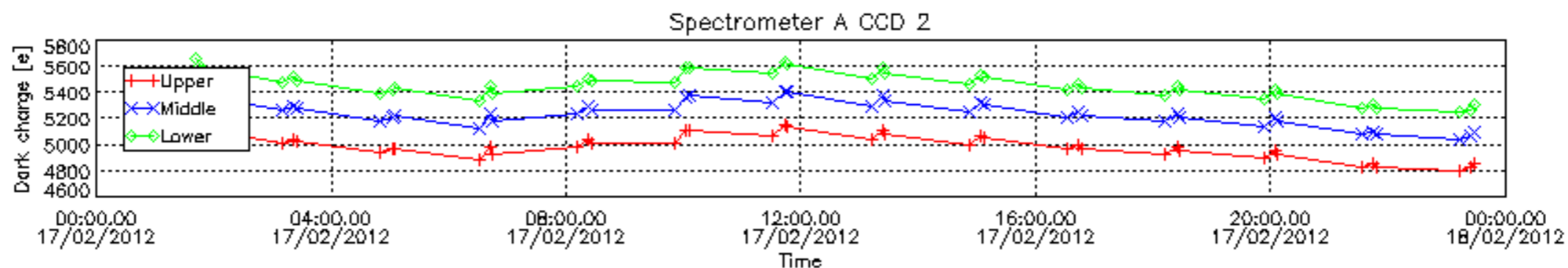
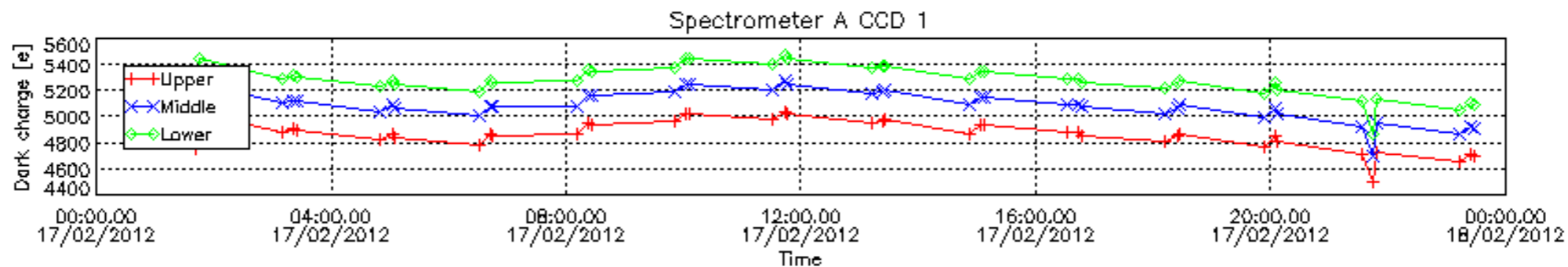
8. Auxiliary Data Files used for the production reported in section 2.4

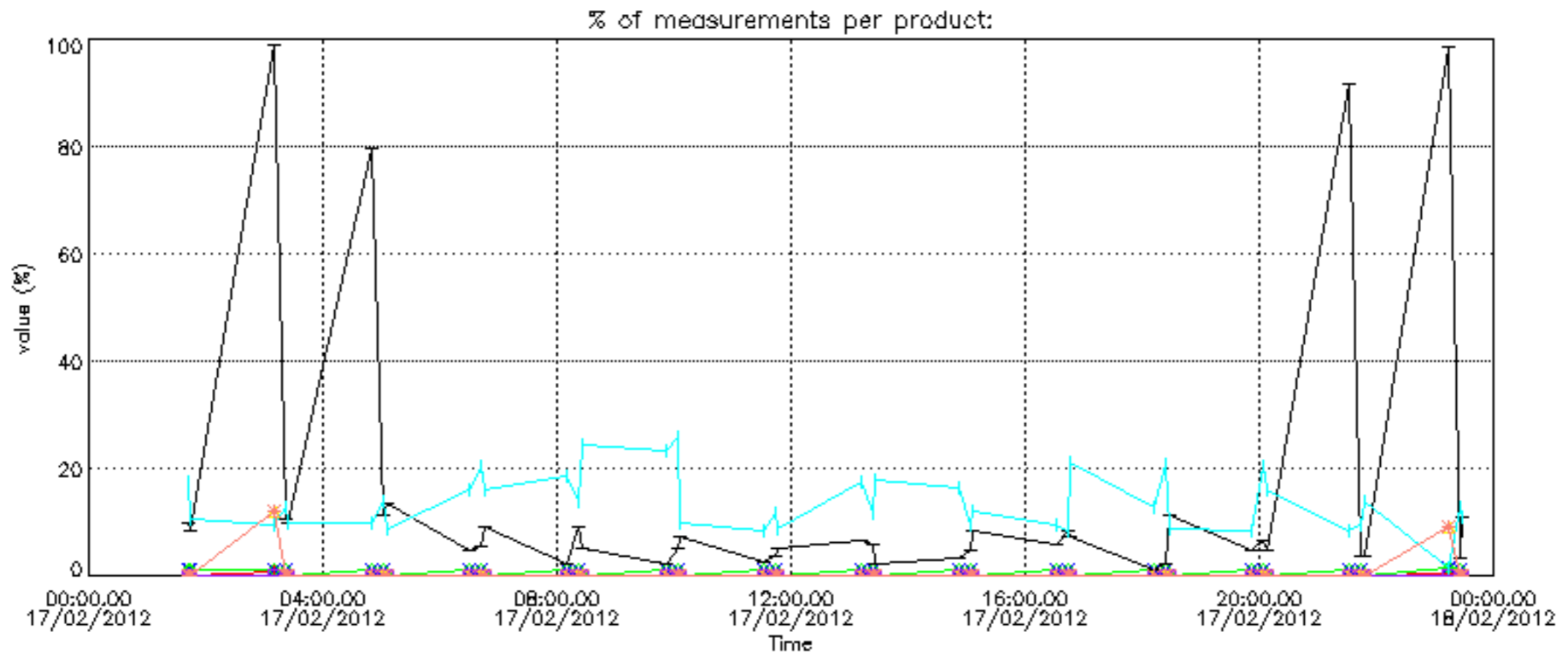
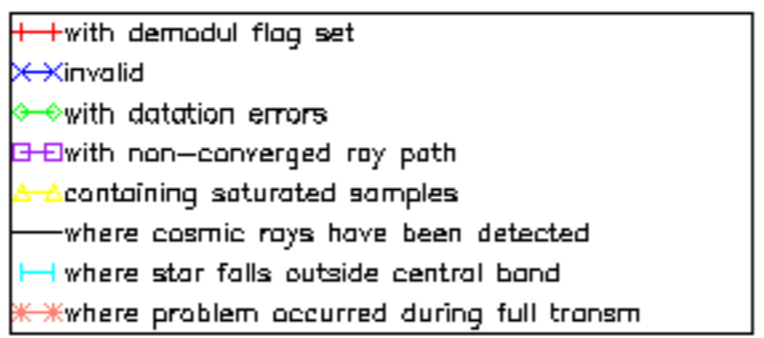
The number reported in the third column indicates since which file (see list in section 2.4) the corresponding auxiliary file has been used. The fourth column is the date of those product files.

Type	Auxiliary Filename	Used since product	Used since product date
INST_PHYS_CHARACTERISTICS	GOM_INS_AXVIEC20111213_163131_20111215_000000_20500101_000000	1	17-FEB-2012 01:41:52
CALIBRATION_DATABASE	GOM_CAL_AXVIEC20120130_103112_20120125_000000_20500101_000000	1	17-FEB-2012 01:41:52
LEVEL-1B_PROC_CONFIG	GOM_PR1_AXVIEC20110513_081743_20020301_000000_20500101_000000	1	17-FEB-2012 01:41:52
STAR_CATALOGUE	GOM_CAT_AXVIEC20020121_161009_20020101_000000_20200101_000000	1	17-FEB-2012 01:41:52
STELLAR_SPECTRA_DATABANK	GOM_STS_AXVIEC20091111_151504_20020101_160000_20500101_000000	1	17-FEB-2012 01:41:52
ECMWF_FILE	AUX_ECF_AXNECM20120216_062116_20120216_210000_20120217_090000	1	17-FEB-2012 01:41:52
ECMWF_FILE	AUX_ECF_AXNECM20120216_182116_20120217_030000_20120217_150000	6	17-FEB-2012 04:50:25
ECMWF_FILE	AUX_ECA_AXNECM20120217_060129_20120216_210000_20120217_090000	9	17-FEB-2012 06:30:40
ECMWF_FILE	AUX_ECF_AXNECM20120217_060129_20120217_090000_20120217_210000	15	17-FEB-2012 09:51:09
ECMWF_FILE	AUX_ECF_AXNECM20120217_060130_20120217_150000_20120218_030000	27	17-FEB-2012 16:32:07
ECMWF_FILE	AUX_ECA_AXNECM20120217_180854_20120217_090000_20120217_210000	33	17-FEB-2012 19:52:37
ECMWF_FILE	AUX_ECF_AXNECM20120217_064853_20120217_210000_20120218_090000	36	17-FEB-2012 21:32:51
OPTIONAL_ECMWF_FILE	MISSING	1	17-FEB-2012 01:41:52
ORBIT_DATA_FILE	AUX_FPO_AXVPDS20120215_232113_20120215_193050_20120225_200414	1	17-FEB-2012 01:41:52
ORBIT_DATA_FILE	AUX_FPO_AXVPDS20120217_112854_20120216_185405_20120226_210742	18	17-FEB-2012 11:31:24
ORBIT_DATA_FILE	AUX_FPO_AXVPDS20120217_233138_20120217_195734_20120227_203057	39	17-FEB-2012 23:13:06

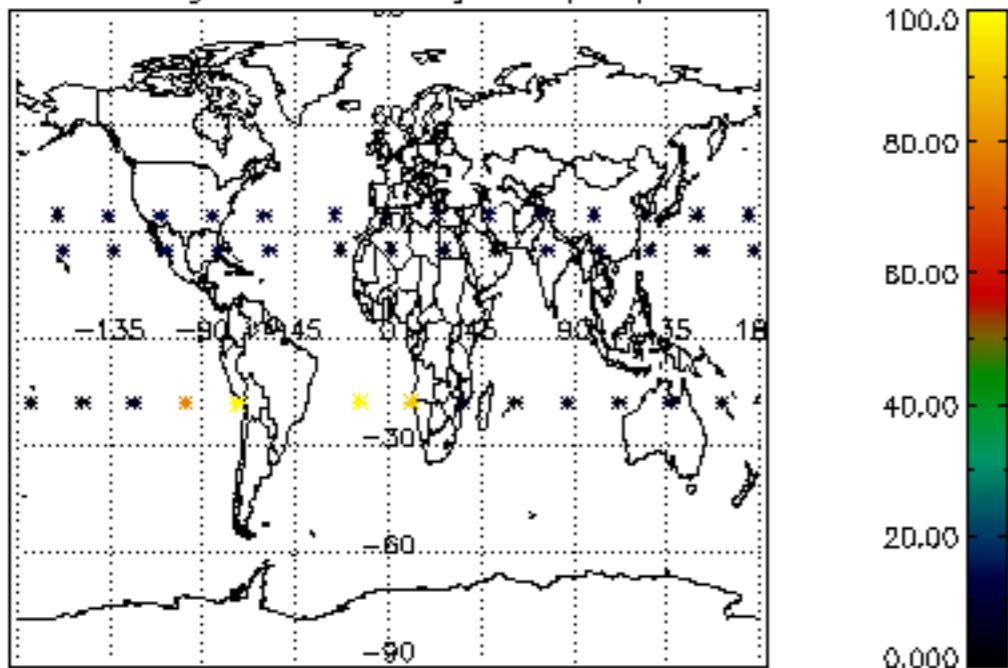




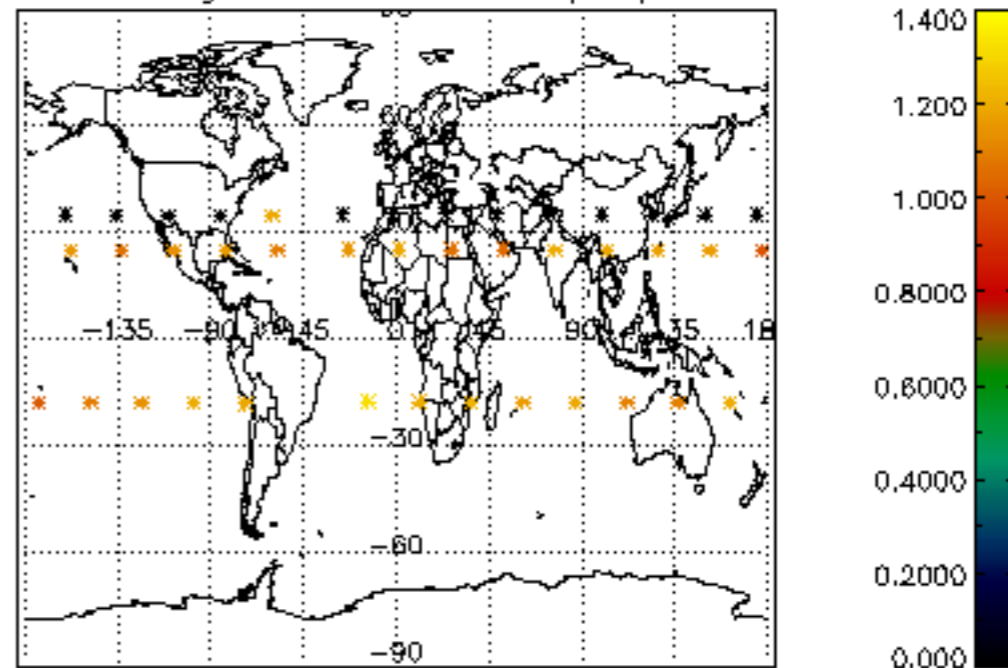




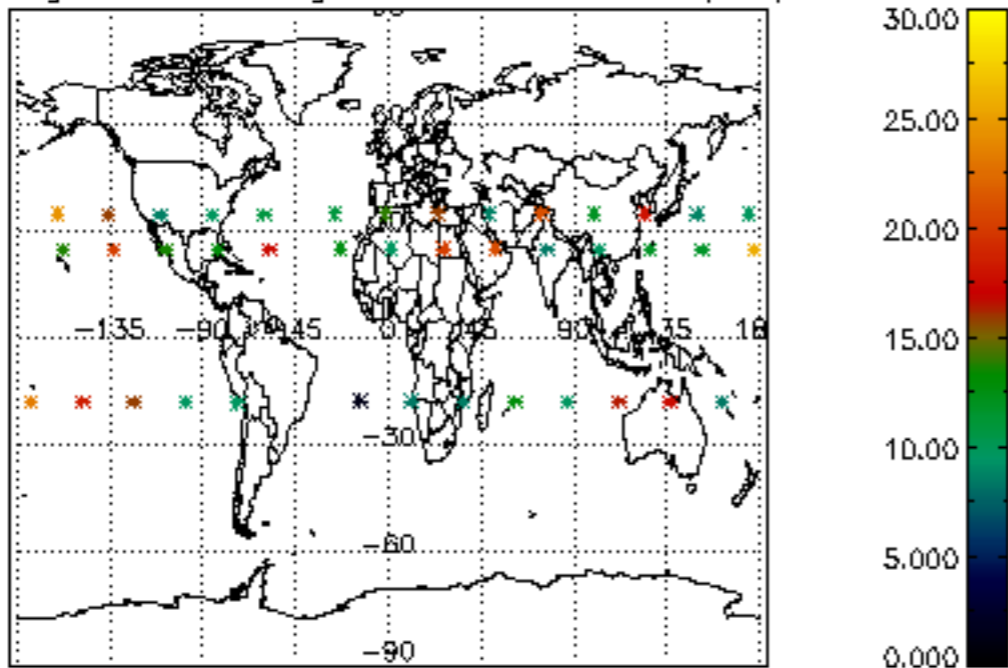
Percentage of cosmic ray hits per profile



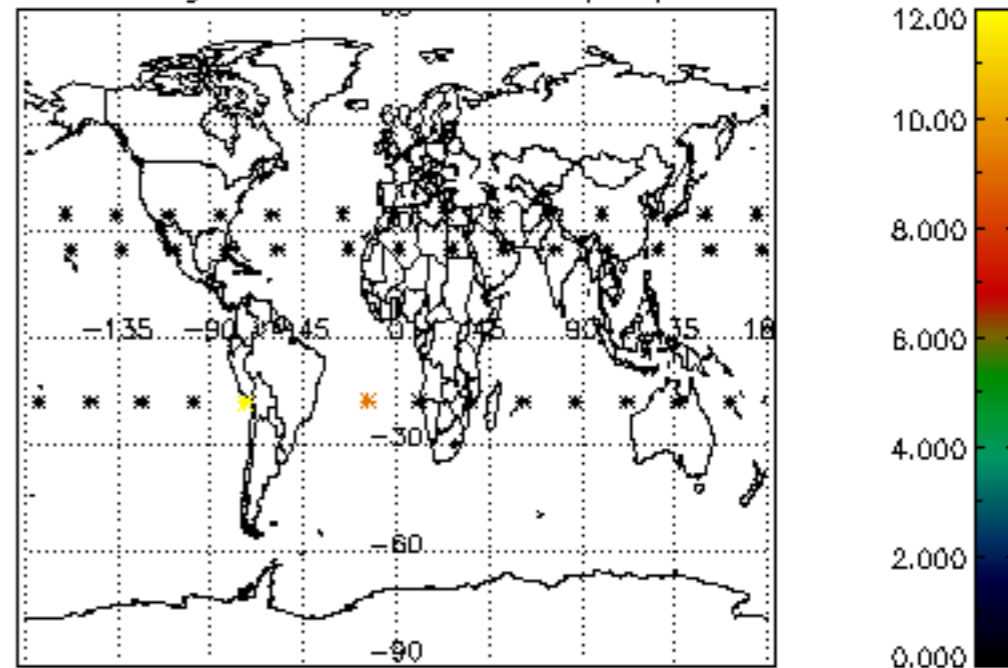
Percentage of datation errors per profile



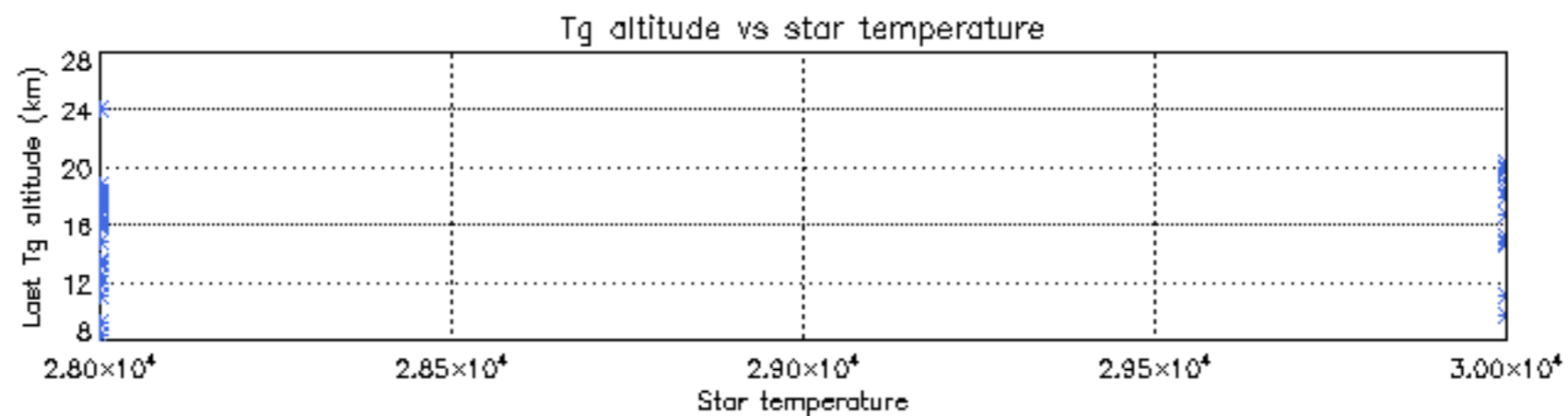
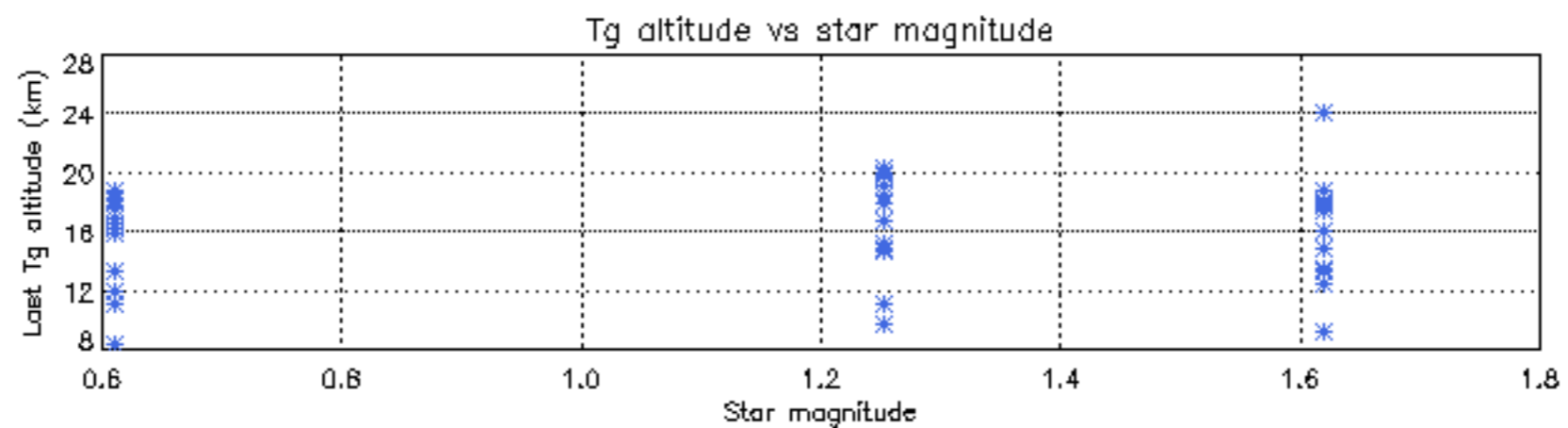
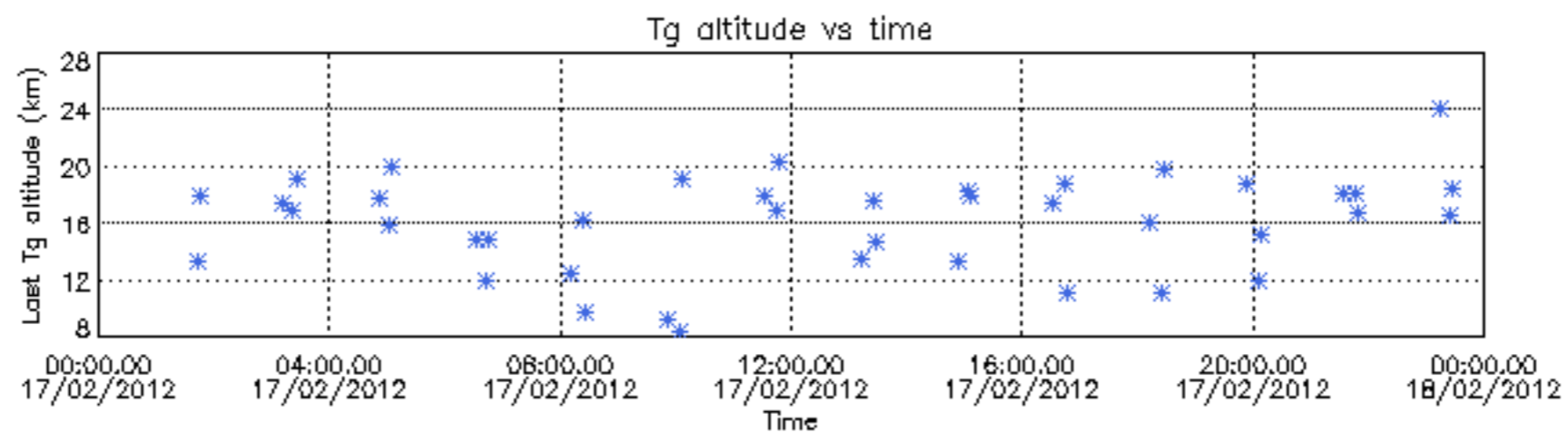
Percentage of star falling outside central band per profile

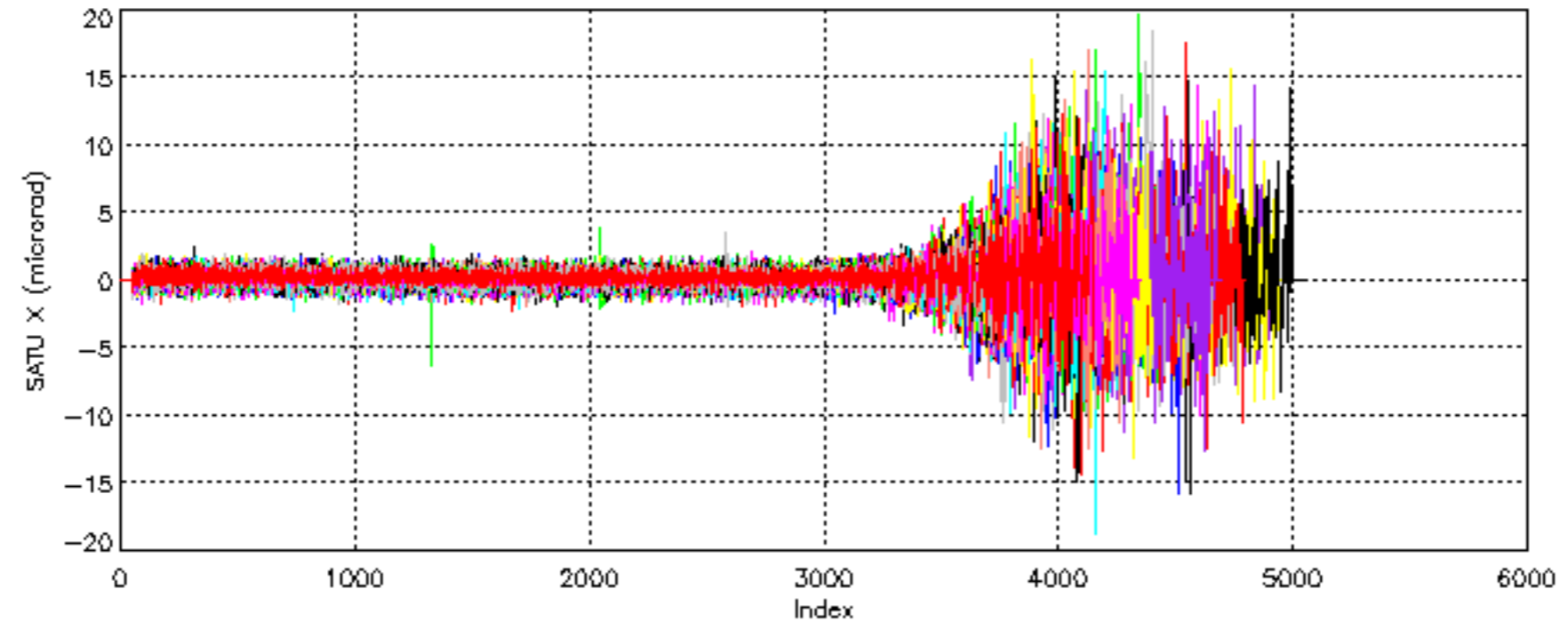


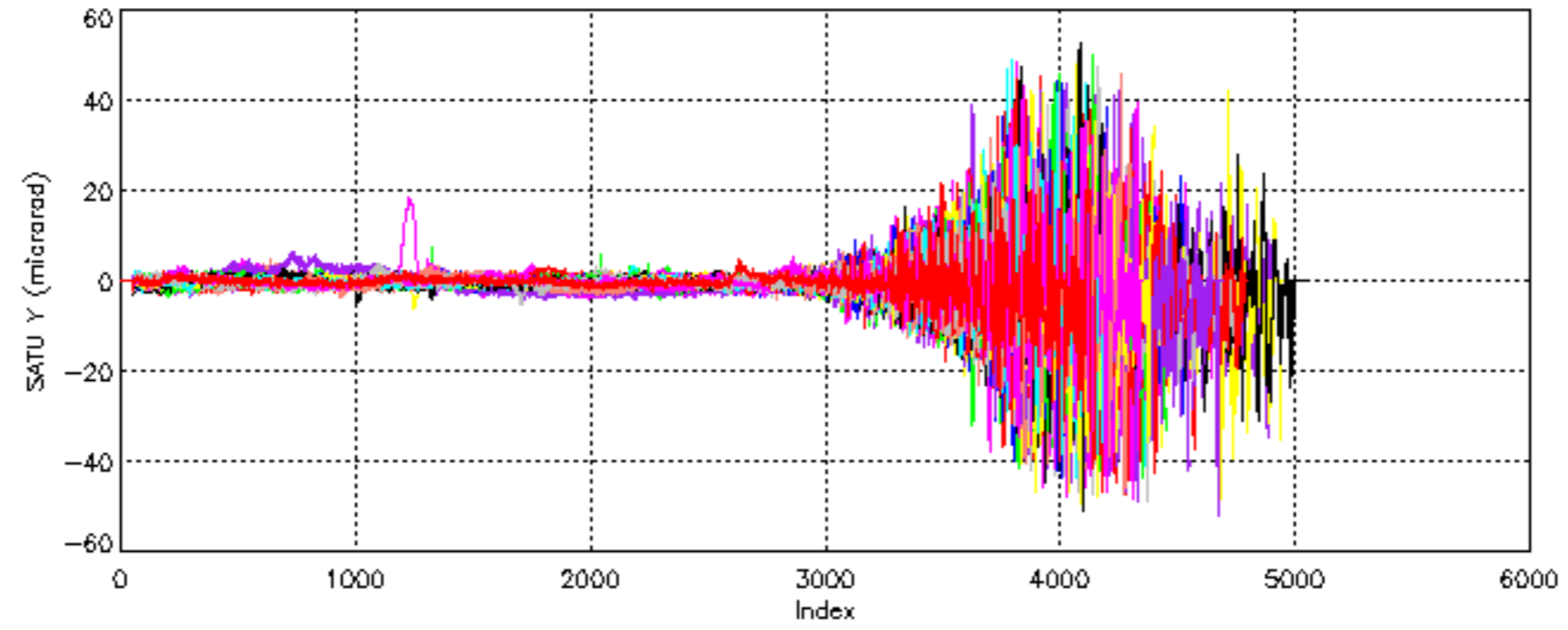
Percentage of saturation errors per profile

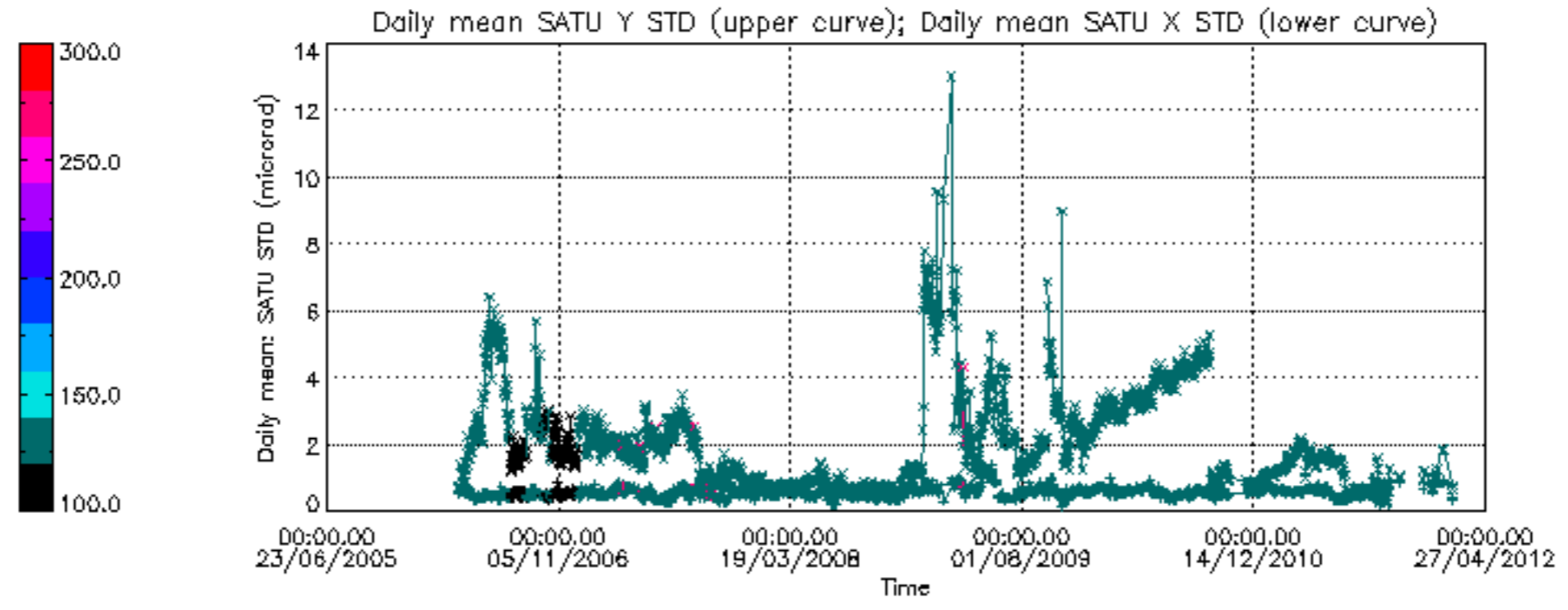


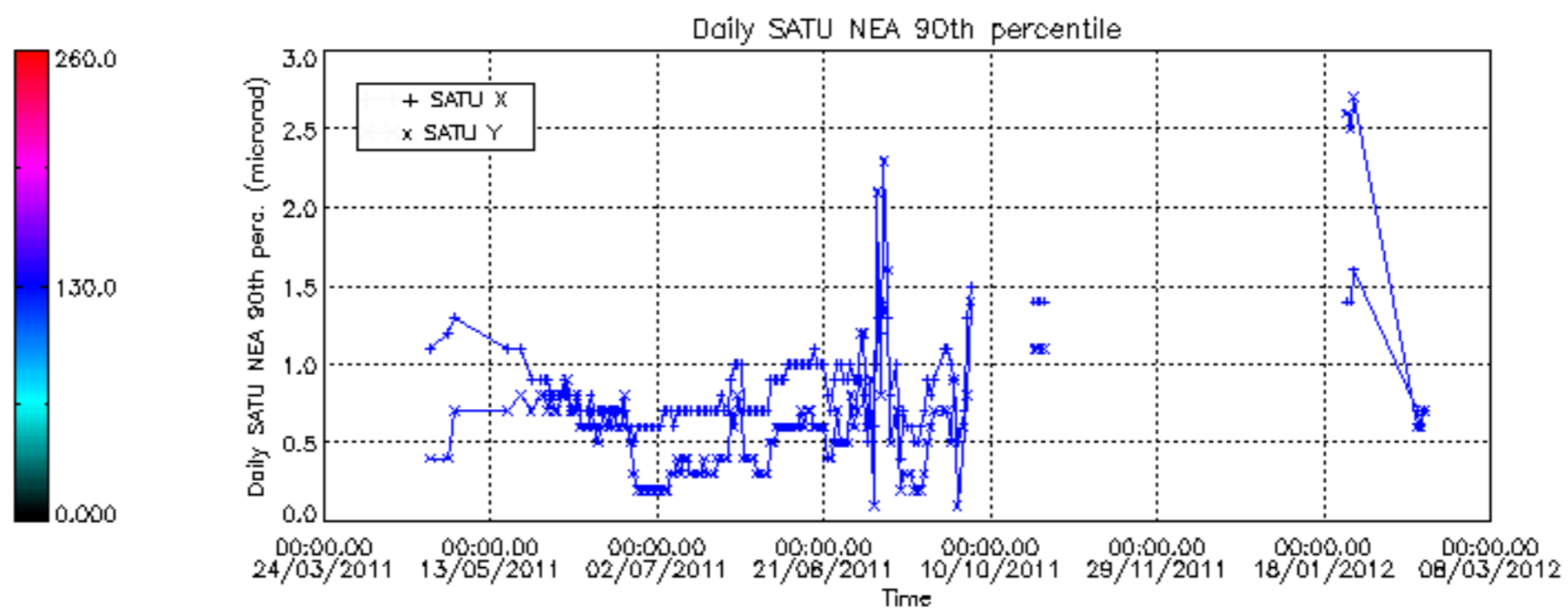
Tangent altitude at which the star is lost











```

/nas3/ENVISAT/GOMOS/GOM_NL__0P/GOM_NL__0PNPDE20120215_061534_000005593111_00365_52103_6611.N1
 1; 395.4; 15-FEB-2012 06:15:34; Dark ; 41.0; 10; Bet Cen ; 0.61; 28000;occ; 82; 0;52103
 2; 564.2; 15-FEB-2012 06:18:23; Dark ; 50.5; 20; Bet Cru ; 1.25; 30000;occ; 101; 0;52103
 3; 921.0; 15-FEB-2012 06:24:20; Dark ; 33.5; 113; Mu Vel ; 2.69; 5000;occ; 67; 0;52103
/nas3/ENVISAT/GOMOS/GOM_NL__0P/GOM_NL__0PNPDE20120215_211745_000005673111_00374_52112_6613.N1
 1; 400.7; 15-FEB-2012 21:17:45; Dark ; 43.5; 10; Bet Cen ; 0.61; 28000;occ; 87; 0;52112
 2; 569.2; 15-FEB-2012 21:20:33; Dark ; 42.0; 20; Bet Cru ; 1.25; 30000;occ; 84; 0;52112
 3; 924.7; 15-FEB-2012 21:26:29; Dark ; 44.0; 113; Mu Vel ; 2.69; 5000;occ; 88; 0;52112
/nas3/ENVISAT/GOMOS/GOM_NL__0P/GOM_NL__0PNPDE20120215_225759_000005663111_00375_52113_6614.N1
 1; 401.4; 15-FEB-2012 22:57:59; Dark ; 42.0; 10; Bet Cen ; 0.61; 28000;occ; 84; 0;52113
 2; 569.8; 15-FEB-2012 23:00:48; Dark ; 43.5; 20; Bet Cru ; 1.25; 30000;occ; 87; 0;52113
 3; 925.1; 15-FEB-2012 23:06:43; Dark ; 43.0; 113; Mu Vel ; 2.69; 5000;occ; 86; 0;52113
/nas3/ENVISAT/GOMOS/GOM_NL__0P/GOM_NL__0PNPDK20120215_075549_000005603111_00366_52104_5593.N1
 1; 396.1; 15-FEB-2012 07:55:49; Dark ; 50.0; 10; Bet Cen ; 0.61; 28000;occ; 100; 0;52104
 2; 564.7; 15-FEB-2012 07:58:37; Dark ; 45.5; 20; Bet Cru ; 1.25; 30000;occ; 91; 0;52104
 3; 921.3; 15-FEB-2012 08:04:34; Dark ; 35.5; 113; Mu Vel ; 2.69; 5000;occ; 71; 0;52104
/nas3/ENVISAT/GOMOS/GOM_NL__0P/GOM_NL__0PNPDK20120215_093603_000005633111_00367_52105_5594.N1
 1; 396.6; 15-FEB-2012 09:36:03; Dark ; 42.5; 10; Bet Cen ; 0.61; 28000;occ; 85; 0;52105
 2; 565.3; 15-FEB-2012 09:38:52; Dark ; 45.5; 20; Bet Cru ; 1.25; 30000;occ; 91; 0;52105
 3; 921.7; 15-FEB-2012 09:44:48; Dark ; 38.5; 113; Mu Vel ; 2.69; 5000;occ; 77; 0;52105
/nas3/ENVISAT/GOMOS/GOM_NL__0P/GOM_NL__0PNPDK20120215_125632_000005663111_00369_52107_5596.N1
 1; 397.8; 15-FEB-2012 12:56:32; Dark ; 44.0; 10; Bet Cen ; 0.61; 28000;occ; 88; 0;52107
 2; 566.4; 15-FEB-2012 12:59:21; Dark ; 40.5; 20; Bet Cru ; 1.25; 30000;occ; 81; 0;52107
 3; 922.5; 15-FEB-2012 13:05:17; Dark ; 41.5; 113; Mu Vel ; 2.69; 5000;occ; 83; 0;52107
/nas3/ENVISAT/GOMOS/GOM_NL__0P/GOM_NL__0PNPDK20120215_143647_000005703111_00370_52108_5597.N1
 1; 398.5; 15-FEB-2012 14:36:47; Dark ; 44.0; 10; Bet Cen ; 0.61; 28000;occ; 88; 0;52108
 2; 567.1; 15-FEB-2012 14:39:35; Dark ; 41.5; 20; Bet Cru ; 1.25; 30000;occ; 83; 0;52108
 3; 923.1; 15-FEB-2012 14:45:31; Dark ; 45.5; 113; Mu Vel ; 2.69; 5000;occ; 91; 0;52108
/nas3/ENVISAT/GOMOS/GOM_NL__0P/GOM_NL__0PNPDK20120215_161701_000005693111_00371_52109_5598.N1
 1; 399.0; 15-FEB-2012 16:17:01; Dark ; 43.5; 10; Bet Cen ; 0.61; 28000;occ; 87; 0;52109
 2; 567.7; 15-FEB-2012 16:19:50; Dark ; 43.5; 20; Bet Cru ; 1.25; 30000;occ; 87; 0;52109
 3; 923.5; 15-FEB-2012 16:25:46; Dark ; 45.5; 113; Mu Vel ; 2.69; 5000;occ; 91; 0;52109
/nas3/ENVISAT/GOMOS/GOM_NL__0P/GOM_NL__0PNPDK20120215_175716_000005403111_00372_52110_5599.N1
 1; 399.6; 15-FEB-2012 17:57:16; Dark ; 48.0; 10; Bet Cen ; 0.61; 28000;occ; 96; 0;52110
 2; 568.2; 15-FEB-2012 18:00:04; Dark ; 43.0; 20; Bet Cru ; 1.25; 30000;occ; 86; 0;52110
 3; 924.0; 15-FEB-2012 18:06:00; Dark ; 16.5; 113; Mu Vel ; 2.69; 5000;occ; 33; 0;52110
/nas3/ENVISAT/GOMOS/GOM_NL__0P/GOM_NL__0PNPDE20120215_194625_000000333111_00373_52111_6612.N1
 1; 935.2; 15-FEB-2012 19:46:25; Dark ; 44.5; 113; Mu Vel ; 2.69; 5000;occ; 89; 22;52111
/nas3/ENVISAT/GOMOS/GOM_NL__0P/GOM_NL__0PNPDK20120215_193730_000005683111_00373_52111_5600.N1
 1; 400.2; 15-FEB-2012 19:37:30; Dark ; 46.0; 10; Bet Cen ; 0.61; 28000;occ; 92; 0;52111
 2; 568.6; 15-FEB-2012 19:40:19; Dark ; 41.5; 20; Bet Cru ; 1.25; 30000;occ; 83; 0;52111
 3; 924.2; 15-FEB-2012 19:46:14; Dark ; 44.5; 113; Mu Vel ; 2.69; 5000;occ; 89; 0;52111
/nas3/ENVISAT/GOMOS/GOM_NL__0P/GOM_NL__0PNPDE20120216_003814_000005643111_00376_52114_6615.N1
 1; 402.0; 16-FEB-2012 00:38:14; Dark ; 44.5; 10; Bet Cen ; 0.61; 28000;occ; 89; 0;52114
 2; 570.3; 16-FEB-2012 00:41:02; Dark ; 51.0; 20; Bet Cru ; 1.25; 30000;occ; 102; 0;52114
 3; 925.6; 16-FEB-2012 00:46:57; Dark ; 41.0; 113; Mu Vel ; 2.69; 5000;occ; 82; 0;52114
/nas3/ENVISAT/GOMOS/GOM_NL__0P/GOM_NL__0PNPDE20120216_021828_000005683111_00377_52115_6616.N1
 1; 402.6; 16-FEB-2012 02:18:28; Dark ; 41.0; 10; Bet Cen ; 0.61; 28000;occ; 82; 0;52115
 2; 571.0; 16-FEB-2012 02:21:17; Dark ; 40.0; 20; Bet Cru ; 1.25; 30000;occ; 80; 0;52115
 3; 925.9; 16-FEB-2012 02:27:11; Dark ; 45.0; 113; Mu Vel ; 2.69; 5000;occ; 90; 0;52115
/nas3/ENVISAT/GOMOS/GOM_NL__0P/GOM_NL__0PNPDE20120216_053858_000005633111_00379_52117_6617.N1
 1; 404.1; 16-FEB-2012 05:38:58; Dark ; 42.5; 10; Bet Cen ; 0.61; 28000;occ; 85; 0;52117
 2; 572.3; 16-FEB-2012 05:41:46; Dark ; 40.5; 20; Bet Cru ; 1.25; 30000;occ; 81; 0;52117
 3; 927.0; 16-FEB-2012 05:47:40; Dark ; 40.5; 113; Mu Vel ; 2.69; 5000;occ; 81; 0;52117
/nas3/ENVISAT/GOMOS/GOM_NL__0P/GOM_NL__0PNPDE20120216_222004_000002893111_00389_52127_6618.N1
 1; 330.9; 16-FEB-2012 22:20:04; Dark ; 43.5; 4; Alp1Cen ; -0.01; 5800;occ; 87; 0;52127
 2; 409.9; 16-FEB-2012 22:21:23; Dark ; 44.0; 10; Bet Cen ; 0.61; 28000;occ; 88; 0;52127
 3; 577.7; 16-FEB-2012 22:24:10; Dark ; 43.0; 20; Bet Cru ; 1.25; 30000;occ; 86; 0;52127
/nas3/ENVISAT/GOMOS/GOM_NL__0P/GOM_NL__0PNPDK20120216_071912_000005643111_00380_52118_5601.N1
 1; 404.6; 16-FEB-2012 07:19:12; Dark ; 42.5; 10; Bet Cen ; 0.61; 28000;occ; 85; 0;52118
 2; 572.8; 16-FEB-2012 07:22:00; Dark ; 45.5; 20; Bet Cru ; 1.25; 30000;occ; 91; 0;52118
 3; 927.5; 16-FEB-2012 07:27:55; Dark ; 42.0; 113; Mu Vel ; 2.69; 5000;occ; 84; 0;52118
/nas3/ENVISAT/GOMOS/GOM_NL__0P/GOM_NL__0PNPDK20120216_085926_000005643111_00381_52119_5602.N1
 1; 405.2; 16-FEB-2012 08:59:27; Dark ; 51.0; 10; Bet Cen ; 0.61; 28000;occ; 102; 0;52119
 2; 573.3; 16-FEB-2012 09:02:15; Dark ; 50.5; 20; Bet Cru ; 1.25; 30000;occ; 101; 0;52119
 3; 927.9; 16-FEB-2012 09:08:09; Dark ; 42.0; 113; Mu Vel ; 2.69; 5000;occ; 84; 0;52119
/nas3/ENVISAT/GOMOS/GOM_NL__0P/GOM_NL__0PNPDK20120216_103822_000002873111_00382_52120_5603.N1
 1; 326.8; 16-FEB-2012 10:38:22; Dark ; 42.0; 4; Alp1Cen ; -0.01; 5800;occ; 84; 0;52120

```

```

2; 405.8; 16-FEB-2012 10:39:41; Dark ; 48.0; 10; Bet Cen ; 0.61; 28000;occ; 96; 0;52120
3; 573.9; 16-FEB-2012 10:42:29; Dark ; 40.5; 20; Bet Cru ; 1.25; 30000;occ; 81; 0;52120
/nas3/ENVISAT/GOMOS/GOM_NL__0P/GOM_NL__0PNPDK20120216_121837_000002963111_00383_52121_5604.N1
1; 327.5; 16-FEB-2012 12:18:37; Dark ; 44.5; 4; Alp1Cen ; -0.01; 5800;occ; 89; 0;52121
2; 406.4; 16-FEB-2012 12:19:56; Dark ; 42.0; 10; Bet Cen ; 0.61; 28000;occ; 84; 0;52121
3; 574.6; 16-FEB-2012 12:22:44; Dark ; 49.0; 20; Bet Cru ; 1.25; 30000;occ; 98; 0;52121
/nas3/ENVISAT/GOMOS/GOM_NL__0P/GOM_NL__0PNPDK20120216_135851_000002903111_00384_52122_5605.N1
1; 328.1; 16-FEB-2012 13:58:51; Dark ; 43.5; 4; Alp1Cen ; -0.01; 5800;occ; 87; 0;52122
2; 407.1; 16-FEB-2012 14:00:10; Dark ; 42.0; 10; Bet Cen ; 0.61; 28000;occ; 84; 0;52122
3; 575.1; 16-FEB-2012 14:02:58; Dark ; 43.0; 20; Bet Cru ; 1.25; 30000;occ; 86; 0;52122
/nas3/ENVISAT/GOMOS/GOM_NL__0P/GOM_NL__0PNPDK20120216_153906_000002903111_00385_52123_5606.N1
1; 328.7; 16-FEB-2012 15:39:06; Dark ; 43.5; 4; Alp1Cen ; -0.01; 5800;occ; 87; 0;52123
2; 407.5; 16-FEB-2012 15:40:24; Dark ; 42.0; 10; Bet Cen ; 0.61; 28000;occ; 84; 0;52123
3; 575.7; 16-FEB-2012 15:43:13; Dark ; 43.5; 20; Bet Cru ; 1.25; 30000;occ; 87; 0;52123
/nas3/ENVISAT/GOMOS/GOM_NL__0P/GOM_NL__0PNPDK20120216_171920_000002993111_00386_52124_5607.N1
1; 329.3; 16-FEB-2012 17:19:20; Dark ; 46.0; 4; Alp1Cen ; -0.01; 5800;occ; 92; 0;52124
2; 408.2; 16-FEB-2012 17:20:39; Dark ; 44.0; 10; Bet Cen ; 0.61; 28000;occ; 88; 0;52124
3; 576.2; 16-FEB-2012 17:23:27; Dark ; 52.5; 20; Bet Cru ; 1.25; 30000;occ; 105; 0;52124
/nas3/ENVISAT/GOMOS/GOM_NL__0P/GOM_NL__0PNPDK20120216_185935_000002873111_00387_52125_5608.N1
1; 329.8; 16-FEB-2012 18:59:35; Dark ; 43.0; 4; Alp1Cen ; -0.01; 5800;occ; 86; 0;52125
2; 408.8; 16-FEB-2012 19:00:54; Dark ; 47.5; 10; Bet Cen ; 0.61; 28000;occ; 95; 0;52125
3; 576.7; 16-FEB-2012 19:03:42; Dark ; 41.0; 20; Bet Cru ; 1.25; 30000;occ; 82; 0;52125
/nas3/ENVISAT/GOMOS/GOM_NL__0P/GOM_NL__0PNPDK20120216_203949_000002923111_00388_52126_5609.N1
1; 330.4; 16-FEB-2012 20:39:49; Dark ; 51.5; 4; Alp1Cen ; -0.01; 5800;occ; 103; 0;52126
2; 409.4; 16-FEB-2012 20:41:08; Dark ; 43.5; 10; Bet Cen ; 0.61; 28000;occ; 87; 0;52126
3; 577.3; 16-FEB-2012 20:43:56; Dark ; 45.5; 20; Bet Cru ; 1.25; 30000;occ; 91; 0;52126
/nas3/ENVISAT/GOMOS/GOM_NL__0P/GOM_NL__0PNPDE20120217_014152_000062233111_00391_52129_6619.N1
1; 411.2; 17-FEB-2012 01:41:52; Dark ; 46.0; 10; Bet Cen ; 0.61; 28000;occ; 92; 0;52129
2; 578.9; 17-FEB-2012 01:44:39; Dark ; 42.0; 20; Bet Cru ; 1.25; 30000;occ; 84; 0;52129
3; 5710.4; 17-FEB-2012 03:10:11; Dark ; 42.0; 25; 35Lam Sco ; 1.62; 28000;occ; 84; 0;52129
4; 6425.8; 17-FEB-2012 03:22:06; Dark ; 43.0; 10; Bet Cen ; 0.61; 28000;occ; 86; 0;52130
5; 6593.5; 17-FEB-2012 03:24:54; Dark ; 41.0; 20; Bet Cru ; 1.25; 30000;occ; 82; 0;52130
/nas3/ENVISAT/GOMOS/GOM_NL__0P/GOM_NL__0PNPDE20120217_045025_000009233111_00392_52130_6620.N1
1; -302.8; 17-FEB-2012 04:50:25; Dark ; 41.5; 25; 35Lam Sco ; 1.62; 28000;occ; 83; 0;52130
2; 412.4; 17-FEB-2012 05:02:21; Dark ; 44.0; 10; Bet Cen ; 0.61; 28000;occ; 88; 0;52131
3; 579.9; 17-FEB-2012 05:05:08; Dark ; 40.5; 20; Bet Cru ; 1.25; 30000;occ; 81; 0;52131
/nas3/ENVISAT/GOMOS/GOM_NL__0P/GOM_NL__0PNPDE20120217_063040_000009263111_00393_52131_6621.N1
1; -302.2; 17-FEB-2012 06:30:40; Dark ; 44.0; 25; 35Lam Sco ; 1.62; 28000;occ; 88; 0;52131
2; 413.1; 17-FEB-2012 06:42:35; Dark ; 47.0; 10; Bet Cen ; 0.61; 28000;occ; 94; 0;52132
3; 580.6; 17-FEB-2012 06:45:23; Dark ; 44.0; 20; Bet Cru ; 1.25; 30000;occ; 88; 0;52132
/nas3/ENVISAT/GOMOS/GOM_NL__0P/GOM_NL__0PNPDE20120217_213251_000009253111_00402_52140_6622.N1
1; -296.5; 17-FEB-2012 21:32:51; Dark ; 41.5; 25; 35Lam Sco ; 1.62; 28000;occ; 83; 0;52140
2; 418.6; 17-FEB-2012 21:44:46; Dark ; 42.0; 10; Bet Cen ; 0.61; 28000;occ; 84; 0;52141
3; 585.6; 17-FEB-2012 21:47:33; Dark ; 43.0; 20; Bet Cru ; 1.25; 30000;occ; 86; 0;52141
/nas3/ENVISAT/GOMOS/GOM_NL__0P/GOM_NL__0PNPDE20120217_231306_000009233111_00403_52141_6623.N1
1; -295.9; 17-FEB-2012 23:13:06; Dark ; 38.0; 25; 35Lam Sco ; 1.62; 28000;occ; 76; 0;52141
2; 419.2; 17-FEB-2012 23:25:01; Dark ; 43.5; 10; Bet Cen ; 0.61; 28000;occ; 87; 0;52142
3; 586.1; 17-FEB-2012 23:27:48; Dark ; 41.5; 20; Bet Cru ; 1.25; 30000;occ; 83; 0;52142
/nas3/ENVISAT/GOMOS/GOM_NL__0P/GOM_NL__0PNPDK20120217_081055_000009313111_00394_52132_5610.N1
1; -301.5; 17-FEB-2012 08:10:55; Dark ; 46.0; 25; 35Lam Sco ; 1.62; 28000;occ; 92; 0;52132
2; 413.6; 17-FEB-2012 08:22:50; Dark ; 43.5; 10; Bet Cen ; 0.61; 28000;occ; 87; 0;52133
3; 581.1; 17-FEB-2012 08:25:37; Dark ; 49.0; 20; Bet Cru ; 1.25; 30000;occ; 98; 0;52133
/nas3/ENVISAT/GOMOS/GOM_NL__0P/GOM_NL__0PNPDK20120217_095109_000009233111_00395_52133_5611.N1
1; -301.0; 17-FEB-2012 09:51:09; Dark ; 49.5; 25; 35Lam Sco ; 1.62; 28000;occ; 99; 0;52133
2; 414.3; 17-FEB-2012 10:03:04; Dark ; 50.5; 10; Bet Cen ; 0.61; 28000;occ; 101; 0;52134
3; 581.7; 17-FEB-2012 10:05:52; Dark ; 41.0; 20; Bet Cru ; 1.25; 30000;occ; 82; 0;52134
/nas3/ENVISAT/GOMOS/GOM_NL__0P/GOM_NL__0PNPDK20120217_113124_000009223111_00396_52134_5612.N1
1; -300.4; 17-FEB-2012 11:31:24; Dark ; 41.5; 25; 35Lam Sco ; 1.62; 28000;occ; 83; 0;52134
2; 415.0; 17-FEB-2012 11:43:19; Dark ; 43.0; 10; Bet Cen ; 0.61; 28000;occ; 86; 0;52135
3; 582.3; 17-FEB-2012 11:46:06; Dark ; 40.0; 20; Bet Cru ; 1.25; 30000;occ; 80; 0;52135
/nas3/ENVISAT/GOMOS/GOM_NL__0P/GOM_NL__0PNPDK20120217_131138_000009273111_00397_52135_5613.N1
1; -299.7; 17-FEB-2012 13:11:38; Dark ; 45.5; 25; 35Lam Sco ; 1.62; 28000;occ; 91; 0;52135
2; 415.6; 17-FEB-2012 13:23:33; Dark ; 42.5; 10; Bet Cen ; 0.61; 28000;occ; 85; 0;52136
3; 582.9; 17-FEB-2012 13:26:21; Dark ; 44.5; 20; Bet Cru ; 1.25; 30000;occ; 89; 0;52136
/nas3/ENVISAT/GOMOS/GOM_NL__0P/GOM_NL__0PNPDK20120217_145153_000009243111_00398_52136_5614.N1
1; -299.0; 17-FEB-2012 14:51:53; Dark ; 45.5; 25; 35Lam Sco ; 1.62; 28000;occ; 91; 0;52136
2; 416.1; 17-FEB-2012 15:03:48; Dark ; 42.0; 10; Bet Cen ; 0.61; 28000;occ; 84; 0;52137
3; 583.5; 17-FEB-2012 15:06:35; Dark ; 42.0; 20; Bet Cru ; 1.25; 30000;occ; 84; 0;52137

```


/nas3/ENVISAT/GOMOS/GOM_NL__0P/GOM_NL__0PNPDK20120217_163207_000009293111_00399_52137_5615.N1
1; -298.5; 17-FEB-2012 16:32:07; Dark ; 42.0; 25; 35Lam Sco ; 1.62; 28000;occ; 84; 0;52137
2; 416.7; 17-FEB-2012 16:44:02; Dark ; 41.5; 10; Bet Cen ; 0.61; 28000;occ; 83; 0;52138
3; 584.0; 17-FEB-2012 16:46:50; Dark ; 47.5; 20; Bet Cru ; 1.25; 30000;occ; 95; 0;52138
/nas3/ENVISAT/GOMOS/GOM_NL__0P/GOM_NL__0PNPDK20120217_181222_000009223111_00400_52138_5616.N1
1; -297.8; 17-FEB-2012 18:12:22; Dark ; 43.0; 25; 35Lam Sco ; 1.62; 28000;occ; 86; 0;52138
2; 417.3; 17-FEB-2012 18:24:17; Dark ; 48.0; 10; Bet Cen ; 0.61; 28000;occ; 96; 0;52139
3; 584.6; 17-FEB-2012 18:27:04; Dark ; 40.5; 20; Bet Cru ; 1.25; 30000;occ; 81; 0;52139
/nas3/ENVISAT/GOMOS/GOM_NL__0P/GOM_NL__0PNPDK20120217_195237_000009263111_00401_52139_5617.N1
1; -297.2; 17-FEB-2012 19:52:37; Dark ; 41.0; 25; 35Lam Sco ; 1.62; 28000;occ; 82; 0;52139
2; 418.0; 17-FEB-2012 20:04:32; Dark ; 47.0; 10; Bet Cen ; 0.61; 28000;occ; 94; 0;52140
3; 585.1; 17-FEB-2012 20:07:19; Dark ; 44.0; 20; Bet Cru ; 1.25; 30000;occ; 88; 0;52140
/nas3/ENVISAT/GOMOS/GOM_NL__0P/GOM_NL__0PNPDE20120218_005320_000009233111_00404_52142_6624.N1
1; -295.3; 18-FEB-2012 00:53:20; Dark ; 33.0; 25; 35Lam Sco ; 1.62; 28000;occ; 66; 0;52142
2; 419.8; 18-FEB-2012 01:05:15; Dark ; 45.0; 10; Bet Cen ; 0.61; 28000;occ; 90; 0;52143
3; 586.7; 18-FEB-2012 01:08:02; Dark ; 41.5; 20; Bet Cru ; 1.25; 30000;occ; 83; 0;52143
/nas3/ENVISAT/GOMOS/GOM_NL__0P/GOM_NL__0PNPDE20120218_023335_000009293111_00405_52143_6625.N1
1; -294.6; 18-FEB-2012 02:33:35; Dark ; 28.0; 25; 35Lam Sco ; 1.62; 28000;occ; 56; 0;52143
2; 420.5; 18-FEB-2012 02:45:30; Dark ; 45.5; 10; Bet Cen ; 0.61; 28000;occ; 91; 0;52144
3; 587.3; 18-FEB-2012 02:48:16; Dark ; 48.0; 20; Bet Cru ; 1.25; 30000;occ; 96; 0;52144
/nas3/ENVISAT/GOMOS/GOM_NL__0P/GOM_NL__0PNPDE20120218_042544_000009503111_00407_52145_6626.N1
1; 420.9; 18-FEB-2012 04:25:44; Dark ; 51.0; 10; Bet Cen ; 0.61; 28000;occ; 102; 0;52145
/nas3/ENVISAT/GOMOS/GOM_NL__0P/GOM_NL__0PNPDE20120218_060559_000009453111_00408_52146_6627.N1
1; 421.5; 18-FEB-2012 06:05:59; Dark ; 45.5; 10; Bet Cen ; 0.61; 28000;occ; 91; 0;52146
/nas3/ENVISAT/GOMOS/GOM_NL__0P/GOM_NL__0PNPDE20120218_224824_000009423111_00418_52156_6628.N1
1; 427.7; 18-FEB-2012 22:48:24; Dark ; 42.5; 10; Bet Cen ; 0.61; 28000;occ; 85; 0;52156
/nas3/ENVISAT/GOMOS/GOM_NL__0P/GOM_NL__0PNPDK20120218_074613_000009493111_00409_52147_5618.N1
1; 422.2; 18-FEB-2012 07:46:13; Dark ; 50.0; 10; Bet Cen ; 0.61; 28000;occ; 100; 0;52147
/nas3/ENVISAT/GOMOS/GOM_NL__0P/GOM_NL__0PNPDK20120218_092628_000009533111_00410_52148_5619.N1
1; 422.8; 18-FEB-2012 09:26:28; Dark ; 53.5; 10; Bet Cen ; 0.61; 28000;occ; 107; 0;52148
/nas3/ENVISAT/GOMOS/GOM_NL__0P/GOM_NL__0PNPDK20120218_110642_000009503111_00411_52149_5620.N1
1; 423.4; 18-FEB-2012 11:06:42; Dark ; 50.5; 10; Bet Cen ; 0.61; 28000;occ; 101; 0;52149
/nas3/ENVISAT/GOMOS/GOM_NL__0P/GOM_NL__0PNPDK20120218_124657_000009393111_00412_52150_5621.N1
1; 424.0; 18-FEB-2012 12:46:57; Dark ; 40.0; 10; Bet Cen ; 0.61; 28000;occ; 80; 0;52150
/nas3/ENVISAT/GOMOS/GOM_NL__0P/GOM_NL__0PNPDK20120218_142711_000009433111_00413_52151_5622.N1
1; 424.6; 18-FEB-2012 14:27:11; Dark ; 43.5; 10; Bet Cen ; 0.61; 28000;occ; 87; 0;52151
/nas3/ENVISAT/GOMOS/GOM_NL__0P/GOM_NL__0PNPDK20120218_160726_000009433111_00414_52152_5623.N1
1; 425.4; 18-FEB-2012 16:07:26; Dark ; 44.0; 10; Bet Cen ; 0.61; 28000;occ; 88; 0;52152
/nas3/ENVISAT/GOMOS/GOM_NL__0P/GOM_NL__0PNPDK20120218_174740_000009453111_00415_52153_5624.N1
1; 425.9; 18-FEB-2012 17:47:40; Dark ; 46.0; 10; Bet Cen ; 0.61; 28000;occ; 92; 0;52153
/nas3/ENVISAT/GOMOS/GOM_NL__0P/GOM_NL__0PNPDK20120218_192755_000009473111_00416_52154_5625.N1
1; 426.5; 18-FEB-2012 19:27:55; Dark ; 47.5; 10; Bet Cen ; 0.61; 28000;occ; 95; 0;52154
/nas3/ENVISAT/GOMOS/GOM_NL__0P/GOM_NL__0PNPDK20120218_210810_000009403111_00417_52155_5626.N1
1; 427.1; 18-FEB-2012 21:08:10; Dark ; 41.0; 10; Bet Cen ; 0.61; 28000;occ; 82; 0;52155
/nas3/ENVISAT/GOMOS/GOM_NL__0P/GOM_NL__0PNPDE20120219_002838_000009473111_00419_52157_6629.N1
1; 428.2; 19-FEB-2012 00:28:38; Dark ; 47.5; 10; Bet Cen ; 0.61; 28000;occ; 95; 0;52157
/nas3/ENVISAT/GOMOS/GOM_NL__0P/GOM_NL__0PNPDE20120219_020853_000009443111_00420_52158_6630.N1
1; 428.8; 19-FEB-2012 02:08:53; Dark ; 44.5; 10; Bet Cen ; 0.61; 28000;occ; 89; 0;52158
/nas3/ENVISAT/GOMOS/GOM_NL__0P/GOM_NL__0PNPDE20120219_034907_000009443111_00421_52159_6631.N1
1; 429.4; 19-FEB-2012 03:49:07; Dark ; 44.5; 10; Bet Cen ; 0.61; 28000;occ; 89; 0;52159
/nas3/ENVISAT/GOMOS/GOM_NL__0P/GOM_NL__0PNPDE20120219_052922_000009503111_00422_52160_6632.N1
1; 430.2; 19-FEB-2012 05:29:22; Dark ; 50.5; 10; Bet Cen ; 0.61; 28000;occ; 101; 0;52160
/nas3/ENVISAT/GOMOS/GOM_NL__0P/GOM_NL__0PNPDE20120219_221147_000009413112_00001_52170_6633.N1
1; 436.1; 19-FEB-2012 22:11:47; Dark ; 41.5; 10; Bet Cen ; 0.61; 28000;occ; 83; 0;52170
/nas3/ENVISAT/GOMOS/GOM_NL__0P/GOM_NL__0PNPDE20120219_235202_000009453112_00002_52171_6634.N1
1; 436.8; 19-FEB-2012 23:52:02; Dark ; 46.0; 10; Bet Cen ; 0.61; 28000;occ; 92; 0;52171
/nas3/ENVISAT/GOMOS/GOM_NL__0P/GOM_NL__0PNPDK20120219_070937_000009463111_00423_52161_5627.N1
1; 430.8; 19-FEB-2012 07:09:37; Dark ; 46.5; 10; Bet Cen ; 0.61; 28000;occ; 93; 0;52161
/nas3/ENVISAT/GOMOS/GOM_NL__0P/GOM_NL__0PNPDK20120219_084951_000009403111_00424_52162_5628.N1
1; 431.5; 19-FEB-2012 08:49:51; Dark ; 41.0; 10; Bet Cen ; 0.61; 28000;occ; 82; 0;52162
/nas3/ENVISAT/GOMOS/GOM_NL__0P/GOM_NL__0PNPDK20120219_103006_000009523111_00425_52163_5629.N1
1; 432.0; 19-FEB-2012 10:30:06; Dark ; 53.0; 10; Bet Cen ; 0.61; 28000;occ; 106; 0;52163
/nas3/ENVISAT/GOMOS/GOM_NL__0P/GOM_NL__0PNPDK20120219_121020_000009423111_00426_52164_5630.N1
1; 432.5; 19-FEB-2012 12:10:20; Dark ; 42.5; 10; Bet Cen ; 0.61; 28000;occ; 85; 0;52164
/nas3/ENVISAT/GOMOS/GOM_NL__0P/GOM_NL__0PNPDK20120219_135035_000009413111_00427_52165_5631.N1
1; 433.2; 19-FEB-2012 13:50:35; Dark ; 42.0; 10; Bet Cen ; 0.61; 28000;occ; 84; 0;52165
/nas3/ENVISAT/GOMOS/GOM_NL__0P/GOM_NL__0PNPDK20120219_153049_000009393111_00428_52166_5632.N1
1; 433.8; 19-FEB-2012 15:30:49; Dark ; 40.0; 10; Bet Cen ; 0.61; 28000;occ; 80; 0;52166

/nas3/ENVISAT/GOMOS/GOM_NL__0P/GOM_NL__0PNPDK20120219_171104_000000413111_00429_52167_5633.N1
1; 434.4; 19-FEB-2012 17:11:04; Dark ; 41.5; 10; Bet Cen ; 0.61; 28000;occ; 83; 0;52167

/nas3/ENVISAT/GOMOS/GOM_NL__0P/GOM_NL__0PNPDK20120219_185118_000000413111_00430_52168_5634.N1
1; 435.0; 19-FEB-2012 18:51:18; Dark ; 41.5; 10; Bet Cen ; 0.61; 28000;occ; 83; 0;52168

/nas3/ENVISAT/GOMOS/GOM_NL__0P/GOM_NL__0PNPDE20120220_013216_000060653112_00003_52172_6635.N1
1; 437.4; 20-FEB-2012 01:32:16; Dark ; 41.0; 10; Bet Cen ; 0.61; 28000;occ; 82; 0;52172
2; 6452.0; 20-FEB-2012 03:12:31; Dark ; 50.5; 10; Bet Cen ; 0.61; 28000;occ; 101; 0;52173

/nas3/ENVISAT/GOMOS/GOM_NL__0P/GOM_NL__0PNPDE20120220_045245_000000473112_00005_52174_6636.N1
1; 438.7; 20-FEB-2012 04:52:45; Dark ; 48.0; 10; Bet Cen ; 0.61; 28000;occ; 96; 0;52174

/nas3/ENVISAT/GOMOS/GOM_NL__0P/GOM_NL__0PNPDE20120220_063300_000000433112_00006_52175_6637.N1
1; 439.1; 20-FEB-2012 06:33:00; Dark ; 43.5; 10; Bet Cen ; 0.61; 28000;occ; 87; 0;52175

/nas3/ENVISAT/GOMOS/GOM_NL__0P/GOM_NL__0PNPDE20120220_212027_000009243112_00014_52183_6638.N1
1; -438.9; 20-FEB-2012 21:20:27; Dark ; 43.0; 167; 10Gam2Sgr ; 2.98; 4500;occ; 86; 0;52183
2; -263.5; 20-FEB-2012 21:23:22; Dark ; 39.5; 85; Kap Sco ; 2.41; 28000;occ; 79; 0;52183
3; 444.5; 20-FEB-2012 21:35:10; Dark ; 41.0; 10; Bet Cen ; 0.61; 28000;occ; 82; 0;52184

/nas3/ENVISAT/GOMOS/GOM_NL__0P/GOM_NL__0PNPDE20120220_230041_000009283112_00015_52184_6639.N1
1; -438.5; 20-FEB-2012 23:00:41; Dark ; 46.5; 167; 10Gam2Sgr ; 2.98; 4500;occ; 93; 0;52184
2; -262.8; 20-FEB-2012 23:03:37; Dark ; 40.0; 85; Kap Sco ; 2.41; 28000;occ; 80; 0;52184
3; 445.1; 20-FEB-2012 23:15:25; Dark ; 45.0; 10; Bet Cen ; 0.61; 28000;occ; 90; 0;52185

/nas3/ENVISAT/GOMOS/GOM_NL__0P/GOM_NL__0PNPDK20120220_081315_000000483112_00007_52176_5635.N1
1; 439.9; 20-FEB-2012 08:13:15; Dark ; 49.0; 10; Bet Cen ; 0.61; 28000;occ; 98; 0;52176

/nas3/ENVISAT/GOMOS/GOM_NL__0P/GOM_NL__0PNPDK20120220_095329_000000483112_00008_52177_5636.N1
1; 440.4; 20-FEB-2012 09:53:29; Dark ; 49.0; 10; Bet Cen ; 0.61; 28000;occ; 98; 0;52177

/nas3/ENVISAT/GOMOS/GOM_NL__0P/GOM_NL__0PNPDK20120220_113343_000000433112_00009_52178_5637.N1
1; 441.0; 20-FEB-2012 11:33:43; Dark ; 43.5; 10; Bet Cen ; 0.61; 28000;occ; 87; 0;52178

/nas3/ENVISAT/GOMOS/GOM_NL__0P/GOM_NL__0PNPDK20120220_131358_000000423112_00010_52179_5638.N1
1; 441.6; 20-FEB-2012 13:13:58; Dark ; 42.5; 10; Bet Cen ; 0.61; 28000;occ; 85; 0;52179

/nas3/ENVISAT/GOMOS/GOM_NL__0P/GOM_NL__0PNPDK20120220_144225_000007483112_00010_52179_5639.N1
1; -264.8; 20-FEB-2012 14:42:25; Dark ; 41.0; 85; Kap Sco ; 2.41; 28000;occ; 82; 0;52179
2; 442.3; 20-FEB-2012 14:54:12; Dark ; 41.5; 10; Bet Cen ; 0.61; 28000;occ; 83; 0;52180

/nas3/ENVISAT/GOMOS/GOM_NL__0P/GOM_NL__0PNPDK20120220_162239_000007523112_00011_52180_5640.N1
1; -265.2; 20-FEB-2012 16:22:39; Dark ; 41.5; 85; Kap Sco ; 2.41; 28000;occ; 83; 0;52180
2; 442.9; 20-FEB-2012 16:34:27; Dark ; 44.5; 10; Bet Cen ; 0.61; 28000;occ; 89; 0;52181

/nas3/ENVISAT/GOMOS/GOM_NL__0P/GOM_NL__0PNPDK20120220_175958_000009243112_00012_52181_5641.N1
1; -439.9; 20-FEB-2012 17:59:58; Dark ; 45.0; 167; 10Gam2Sgr ; 2.98; 4500;occ; 90; 0;52181
2; -264.6; 20-FEB-2012 18:02:54; Dark ; 41.5; 85; Kap Sco ; 2.41; 28000;occ; 83; 0;52181
3; 443.4; 20-FEB-2012 18:14:42; Dark ; 41.5; 10; Bet Cen ; 0.61; 28000;occ; 83; 0;52182

/nas3/ENVISAT/GOMOS/GOM_NL__0P/GOM_NL__0PNPDK20120220_194013_000009263112_00013_52182_5642.N1
1; -439.4; 20-FEB-2012 19:40:13; Dark ; 42.0; 167; 10Gam2Sgr ; 2.98; 4500;occ; 84; 0;52182
2; -264.1; 20-FEB-2012 19:43:08; Dark ; 40.5; 85; Kap Sco ; 2.41; 28000;occ; 81; 0;52182
3; 443.9; 20-FEB-2012 19:54:56; Dark ; 43.5; 10; Bet Cen ; 0.61; 28000;occ; 87; 0;52183

/nas3/ENVISAT/GOMOS/GOM_NL__0P/GOM_NL__0PNPDE20120221_004056_000009333112_00016_52185_6640.N1
1; -437.8; 21-FEB-2012 00:40:56; Dark ; 46.0; 167; 10Gam2Sgr ; 2.98; 4500;occ; 92; 0;52185
2; 445.6; 21-FEB-2012 00:55:39; Dark ; 50.0; 10; Bet Cen ; 0.61; 28000;occ; 100; 0;52186

/nas3/ENVISAT/GOMOS/GOM_NL__0P/GOM_NL__0PNPDE20120221_022406_000007503112_00017_52186_6641.N1
1; -261.5; 21-FEB-2012 02:24:06; Dark ; 41.5; 85; Kap Sco ; 2.41; 28000;occ; 83; 0;52186
2; 446.4; 21-FEB-2012 02:35:54; Dark ; 43.0; 10; Bet Cen ; 0.61; 28000;occ; 86; 0;52187

/nas3/ENVISAT/GOMOS/GOM_NL__0P/GOM_NL__0PNPDE20120221_040125_000009363112_00018_52187_6642.N1
1; -436.6; 21-FEB-2012 04:01:25; Dark ; 39.5; 167; 10Gam2Sgr ; 2.98; 4500;occ; 79; 0;52187
2; -260.9; 21-FEB-2012 04:04:21; Dark ; 41.5; 85; Kap Sco ; 2.41; 28000;occ; 83; 0;52187
3; 447.1; 21-FEB-2012 04:16:09; Dark ; 52.5; 10; Bet Cen ; 0.61; 28000;occ; 105; 0;52188

/nas3/ENVISAT/GOMOS/GOM_NL__0P/GOM_NL__0PNPDE20120221_054140_000009243112_00019_52188_6643.N1
1; -436.0; 21-FEB-2012 05:41:40; Dark ; 45.0; 167; 10Gam2Sgr ; 2.98; 4500;occ; 90; 0;52188
2; -260.1; 21-FEB-2012 05:44:35; Dark ; 41.5; 85; Kap Sco ; 2.41; 28000;occ; 83; 0;52188
3; 447.8; 21-FEB-2012 05:56:23; Dark ; 40.5; 10; Bet Cen ; 0.61; 28000;occ; 81; 0;52189

/nas3/ENVISAT/GOMOS/GOM_NL__0P/GOM_NL__0PNPDE20120221_211955_000000353112_00029_52198_6644.N1
1; 1734.2; 21-FEB-2012 21:19:55; Dark ; 35.5; 48; 30Alp Hya ; 1.98; 4100;occ; 71; 0;52198

/nas3/ENVISAT/GOMOS/GOM_NL__0P/GOM_NL__0PNPDE20120221_222701_000020293112_00029_52198_6645.N1
1; -253.8; 21-FEB-2012 22:27:01; Dark ; 26.0; 85; Kap Sco ; 2.41; 28000;occ; 52; 0;52198
2; 453.7; 21-FEB-2012 22:38:48; Dark ; 44.5; 10; Bet Cen ; 0.61; 28000;occ; 89; 0;52199
3; 1734.3; 21-FEB-2012 23:00:09; Dark ; 41.5; 48; 30Alp Hya ; 1.98; 4100;occ; 83; 0;52199

/nas3/ENVISAT/GOMOS/GOM_NL__0P/GOM_NL__0PNPDK20120221_072154_000009313112_00020_52189_5643.N1
1; -435.1; 21-FEB-2012 07:21:54; Dark ; 45.5; 167; 10Gam2Sgr ; 2.98; 4500;occ; 91; 0;52189
2; -259.5; 21-FEB-2012 07:24:50; Dark ; 44.5; 85; Kap Sco ; 2.41; 28000;occ; 89; 0;52189
3; 448.4; 21-FEB-2012 07:36:38; Dark ; 48.0; 10; Bet Cen ; 0.61; 28000;occ; 96; 0;52190

/nas3/ENVISAT/GOMOS/GOM_NL__0P/GOM_NL__0PNPDK20120221_090209_000009323112_00021_52190_5644.N1
1; -434.6; 21-FEB-2012 09:02:09; Dark ; 43.0; 167; 10Gam2Sgr ; 2.98; 4500;occ; 86; 0;52190
2; -258.8; 21-FEB-2012 09:05:04; Dark ; 42.0; 85; Kap Sco ; 2.41; 28000;occ; 84; 0;52190

```

3; 449.0; 21-FEB-2012 09:16:52; Dark ; 48.5; 10; Bet Cen ; 0.61; 28000;occ; 97; 0;52191
/nas3/ENVISAT/GOMOS/GOM_NL__0P/GOM_NL__0PNPDK20120221_104223_000009263112_00022_52191_5645.N1
1; -433.9; 21-FEB-2012 10:42:23; Dark ; 43.5; 167; 10Gam2Sgr ; 2.98; 4500;occ; 87; 0;52191
2; -258.2; 21-FEB-2012 10:45:19; Dark ; 44.0; 85; Kap Sco ; 2.41; 28000;occ; 88; 0;52191
3; 449.6; 21-FEB-2012 10:57:07; Dark ; 43.0; 10; Bet Cen ; 0.61; 28000;occ; 86; 0;52192
/nas3/ENVISAT/GOMOS/GOM_NL__0P/GOM_NL__0PNPDK20120221_122238_000009273112_00023_52192_5646.N1
1; -433.4; 21-FEB-2012 12:22:38; Dark ; 45.5; 167; 10Gam2Sgr ; 2.98; 4500;occ; 91; 0;52192
2; -257.5; 21-FEB-2012 12:25:33; Dark ; 41.0; 85; Kap Sco ; 2.41; 28000;occ; 82; 0;52192
3; 450.2; 21-FEB-2012 12:37:21; Dark ; 44.0; 10; Bet Cen ; 0.61; 28000;occ; 88; 0;52193
/nas3/ENVISAT/GOMOS/GOM_NL__0P/GOM_NL__0PNPDK20120221_140252_000009283112_00024_52193_5647.N1
1; -432.9; 21-FEB-2012 14:02:52; Dark ; 43.5; 167; 10Gam2Sgr ; 2.98; 4500;occ; 87; 0;52193
2; -256.9; 21-FEB-2012 14:05:48; Dark ; 40.0; 85; Kap Sco ; 2.41; 28000;occ; 80; 0;52193
3; 450.7; 21-FEB-2012 14:17:36; Dark ; 45.0; 10; Bet Cen ; 0.61; 28000;occ; 90; 0;52194
/nas3/ENVISAT/GOMOS/GOM_NL__0P/GOM_NL__0PNPDK20120221_154307_000009363112_00025_52194_5648.N1
1; -432.1; 21-FEB-2012 15:43:07; Dark ; 40.0; 167; 10Gam2Sgr ; 2.98; 4500;occ; 80; 0;52194
2; -256.2; 21-FEB-2012 15:46:03; Dark ; 41.0; 85; Kap Sco ; 2.41; 28000;occ; 82; 0;52194
3; 451.4; 21-FEB-2012 15:57:50; Dark ; 53.0; 10; Bet Cen ; 0.61; 28000;occ; 106; 0;52195
/nas3/ENVISAT/GOMOS/GOM_NL__0P/GOM_NL__0PNPDK20120221_172321_000009253112_00026_52195_5649.N1
1; -431.5; 21-FEB-2012 17:23:21; Dark ; 34.0; 167; 10Gam2Sgr ; 2.98; 4500;occ; 68; 0;52195
2; -255.6; 21-FEB-2012 17:26:17; Dark ; 40.0; 85; Kap Sco ; 2.41; 28000;occ; 80; 0;52195
3; 451.9; 21-FEB-2012 17:38:05; Dark ; 42.5; 10; Bet Cen ; 0.61; 28000;occ; 85; 0;52196
/nas3/ENVISAT/GOMOS/GOM_NL__0P/GOM_NL__0PNPDK20120221_190336_000009243112_00027_52196_5650.N1
1; -431.1; 21-FEB-2012 19:03:36; Dark ; 29.0; 167; 10Gam2Sgr ; 2.98; 4500;occ; 58; 0;52196
2; -255.2; 21-FEB-2012 19:06:32; Dark ; 35.0; 85; Kap Sco ; 2.41; 28000;occ; 70; 0;52196
3; 452.4; 21-FEB-2012 19:18:19; Dark ; 41.0; 10; Bet Cen ; 0.61; 28000;occ; 82; 0;52197
/nas3/ENVISAT/GOMOS/GOM_NL__0P/GOM_NL__0PNPDK20120221_193941_000047753112_00028_52197_5651.N1
1; 1734.2; 21-FEB-2012 19:39:41; Dark ; 31.0; 48; 30Alp Hya ; 1.98; 4100;occ; 62; 0;52197
2; 5759.5; 21-FEB-2012 20:46:46; Dark ; 31.0; 85; Kap Sco ; 2.41; 28000;occ; 62; 0;52197
3; 6467.1; 21-FEB-2012 20:58:34; Dark ; 43.0; 10; Bet Cen ; 0.61; 28000;occ; 86; 0;52198
/nas3/ENVISAT/GOMOS/GOM_NL__0P/GOM_NL__0PNPDE20120222_001903_000013263112_00031_52200_6646.N1
1; 454.1; 22-FEB-2012 00:19:03; Dark ; 50.5; 10; Bet Cen ; 0.61; 28000;occ; 101; 0;52200
2; 1734.3; 22-FEB-2012 00:40:23; Dark ; 46.5; 48; 30Alp Hya ; 1.98; 4100;occ; 93; 0;52200
/nas3/ENVISAT/GOMOS/GOM_NL__0P/GOM_NL__0PNPDE20120222_015917_000013273112_00032_52201_6647.N1
1; 454.9; 22-FEB-2012 01:59:17; Dark ; 47.0; 10; Bet Cen ; 0.61; 28000;occ; 94; 0;52201
2; 1734.4; 22-FEB-2012 02:20:37; Dark ; 48.0; 48; 30Alp Hya ; 1.98; 4100;occ; 96; 0;52201
/nas3/ENVISAT/GOMOS/GOM_NL__0P/GOM_NL__0PNPDE20120222_033932_000013263112_00033_52202_6648.N1
1; 455.6; 22-FEB-2012 03:39:32; Dark ; 52.0; 10; Bet Cen ; 0.61; 28000;occ; 104; 0;52202
2; 1734.7; 22-FEB-2012 04:00:51; Dark ; 47.0; 48; 30Alp Hya ; 1.98; 4100;occ; 94; 0;52202
/nas3/ENVISAT/GOMOS/GOM_NL__0P/GOM_NL__0PNPDE20120222_051946_000013243112_00034_52203_6649.N1
1; 456.0; 22-FEB-2012 05:19:46; Dark ; 47.0; 10; Bet Cen ; 0.61; 28000;occ; 94; 0;52203
2; 1734.8; 22-FEB-2012 05:41:05; Dark ; 46.0; 48; 30Alp Hya ; 1.98; 4100;occ; 92; 0;52203
/nas3/ENVISAT/GOMOS/GOM_NL__0P/GOM_NL__0PNPDE20120222_215129_000008913112_00043_52212_6650.N1
1; -180.8; 22-FEB-2012 21:51:29; Dark ; 41.5; 40; The Sco ; 1.86; 7100;occ; 83; 0;52212
2; 462.2; 22-FEB-2012 22:02:12; Dark ; 46.5; 10; Bet Cen ; 0.61; 28000;occ; 93; 0;52213
3; 683.2; 22-FEB-2012 22:05:53; Dark ; 27.5; 26; Gam Cru ; 1.62; 2900;occ; 55; 0;52213
/nas3/ENVISAT/GOMOS/GOM_NL__0P/GOM_NL__0PNPDE20120222_233143_000008923112_00044_52213_6651.N1
1; -180.2; 22-FEB-2012 23:31:43; Dark ; 41.0; 40; The Sco ; 1.86; 7100;occ; 82; 0;52213
2; 462.7; 22-FEB-2012 23:42:26; Dark ; 43.0; 10; Bet Cen ; 0.61; 28000;occ; 86; 0;52214
3; 683.7; 22-FEB-2012 23:46:07; Dark ; 28.5; 26; Gam Cru ; 1.62; 2900;occ; 57; 0;52214
/nas3/ENVISAT/GOMOS/GOM_NL__0P/GOM_NL__0PNPDK20120222_070001_000012993112_00035_52204_5652.N1
1; 456.7; 22-FEB-2012 07:00:01; Dark ; 48.5; 10; Bet Cen ; 0.61; 28000;occ; 97; 0;52204
2; 1734.8; 22-FEB-2012 07:21:19; Dark ; 21.5; 48; 30Alp Hya ; 1.98; 4100;occ; 43; 0;52204
/nas3/ENVISAT/GOMOS/GOM_NL__0P/GOM_NL__0PNPDK20120222_072119_000047873112_00035_52204_5653.N1
1; 1734.8; 22-FEB-2012 07:21:19; Dark ; 48.0; 48; 30Alp Hya ; 1.98; 4100;occ; 96; 0;52204
2; 6471.2; 22-FEB-2012 08:40:15; Dark ; 51.5; 10; Bet Cen ; 0.61; 28000;occ; 103; 0;52205
/nas3/ENVISAT/GOMOS/GOM_NL__0P/GOM_NL__0PNPDK20120222_090133_000047893112_00036_52205_5654.N1
1; 1735.0; 22-FEB-2012 09:01:33; Dark ; 47.5; 48; 30Alp Hya ; 1.98; 4100;occ; 95; 0;52205
2; 6471.9; 22-FEB-2012 10:20:30; Dark ; 53.0; 10; Bet Cen ; 0.61; 28000;occ; 106; 0;52206
/nas3/ENVISAT/GOMOS/GOM_NL__0P/GOM_NL__0PNPDK20120222_104147_000047903112_00037_52206_5655.N1
1; 1735.0; 22-FEB-2012 10:41:47; Dark ; 48.5; 48; 30Alp Hya ; 1.98; 4100;occ; 97; 0;52206
2; 4750.5; 22-FEB-2012 11:32:02; Bright; 36.0; 168; 17Zet Aql ; 2.99; 11000;occ; 72; 0;52206
3; 6472.5; 22-FEB-2012 12:00:44; Dark ; 53.0; 10; Bet Cen ; 0.61; 28000;occ; 106; 0;52207
/nas3/ENVISAT/GOMOS/GOM_NL__0P/GOM_NL__0PNPDK20120222_131217_000017643112_00038_52207_5656.N1
1; -1263.1; 22-FEB-2012 13:12:17; Bright; 41.5; 168; 17Zet Aql ; 2.99; 11000;occ; 83; 0;52207
2; 459.2; 22-FEB-2012 13:40:59; Dark ; 42.5; 10; Bet Cen ; 0.61; 28000;occ; 85; 0;52208
/nas3/ENVISAT/GOMOS/GOM_NL__0P/GOM_NL__0PNPDK20120222_145231_000017693112_00039_52208_5657.N1
1; -1262.8; 22-FEB-2012 14:52:31; Bright; 37.0; 168; 17Zet Aql ; 2.99; 11000;occ; 74; 0;52208
2; 459.9; 22-FEB-2012 15:21:13; Dark ; 46.5; 10; Bet Cen ; 0.61; 28000;occ; 93; 0;52209

```

/nas3/ENVISAT/GOMOS/GOM_NL__0P/GOM_NL__0PNPDK20120222_163245_000017653112_00040_52209_5658.N1
1; -1262.5; 22-FEB-2012 16:32:45; Bright; 55.0; 168; 17Zet Aql ; 2.99; 11000;occ; 110; 0;52209
2; 460.4; 22-FEB-2012 17:01:28; Dark ; 43.0; 10; Bet Cen ; 0.61; 28000;occ; 86; 0;52210
/nas3/ENVISAT/GOMOS/GOM_NL__0P/GOM_NL__0PNPDK20120222_181259_000019683112_00041_52210_5659.N1
1; -1262.2; 22-FEB-2012 18:12:59; Bright; 37.5; 168; 17Zet Aql ; 2.99; 11000;occ; 75; 0;52210
2; 461.0; 22-FEB-2012 18:41:43; Dark ; 51.0; 10; Bet Cen ; 0.61; 28000;occ; 102; 0;52211
3; 682.1; 22-FEB-2012 18:45:24; Dark ; 24.5; 26; Gam Cru ; 1.62; 2900;occ; 49; 0;52211
/nas3/ENVISAT/GOMOS/GOM_NL__0P/GOM_NL__0PNPDK20120222_201013_000009513112_00042_52211_5660.N1
1; -242.7; 22-FEB-2012 20:10:13; Dark ; 44.0; 178; Tot1Sco ; 3.02; 6550;occ; 88; 0;52211
2; 461.6; 22-FEB-2012 20:21:57; Dark ; 45.5; 10; Bet Cen ; 0.61; 28000;occ; 91; 0;52212
3; 682.7; 22-FEB-2012 20:25:38; Dark ; 26.5; 26; Gam Cru ; 1.62; 2900;occ; 53; 0;52212
/nas3/ENVISAT/GOMOS/GOM_NL__0P/GOM_NL__0PNPDE20120223_011158_000069093112_00045_52214_6652.N1
1; -179.6; 23-FEB-2012 01:11:58; Dark ; 49.5; 40; The Sco ; 1.86; 7100;occ; 99; 0;52214
2; 463.4; 23-FEB-2012 01:22:40; Dark ; 44.5; 10; Bet Cen ; 0.61; 28000;occ; 89; 0;52215
3; 684.3; 23-FEB-2012 01:26:21; Dark ; 30.0; 26; Gam Cru ; 1.62; 2900;occ; 60; 0;52215
4; 6477.9; 23-FEB-2012 03:02:55; Dark ; 45.5; 10; Bet Cen ; 0.61; 28000;occ; 91; 0;52216
5; 6698.8; 23-FEB-2012 03:06:36; Dark ; 31.5; 26; Gam Cru ; 1.62; 2900;occ; 63; 0;52216
/nas3/ENVISAT/GOMOS/GOM_NL__0P/GOM_NL__0PNPDE20120223_043227_000008963112_00047_52216_6653.N1
1; -178.3; 23-FEB-2012 04:32:27; Dark ; 50.5; 40; The Sco ; 1.86; 7100;occ; 101; 0;52216
2; 464.6; 23-FEB-2012 04:43:10; Dark ; 46.5; 10; Bet Cen ; 0.61; 28000;occ; 93; 0;52217
3; 685.5; 23-FEB-2012 04:46:50; Dark ; 32.5; 26; Gam Cru ; 1.62; 2900;occ; 65; 0;52217
/nas3/ENVISAT/GOMOS/GOM_NL__0P/GOM_NL__0PNPDE20120223_061241_000008963112_00048_52217_6654.N1
1; -177.6; 23-FEB-2012 06:12:41; Dark ; 44.5; 40; The Sco ; 1.86; 7100;occ; 89; 0;52217
2; 465.1; 23-FEB-2012 06:23:24; Dark ; 49.0; 10; Bet Cen ; 0.61; 28000;occ; 98; 0;52218
3; 685.9; 23-FEB-2012 06:27:05; Dark ; 33.5; 26; Gam Cru ; 1.62; 2900;occ; 67; 0;52218
/nas3/ENVISAT/GOMOS/GOM_NL__0P/GOM_NL__0PNPDE20120223_211452_000009063112_00057_52226_6655.N1
1; -171.9; 23-FEB-2012 21:14:52; Dark ; 42.0; 40; The Sco ; 1.86; 7100;occ; 84; 0;52226
2; 470.4; 23-FEB-2012 21:25:35; Dark ; 42.0; 10; Bet Cen ; 0.61; 28000;occ; 84; 0;52227
3; 690.6; 23-FEB-2012 21:29:15; Dark ; 44.5; 26; Gam Cru ; 1.62; 2900;occ; 89; 0;52227
/nas3/ENVISAT/GOMOS/GOM_NL__0P/GOM_NL__0PNPDE20120223_225507_000009083112_00058_52227_6656.N1
1; -171.1; 23-FEB-2012 22:55:07; Dark ; 48.0; 40; The Sco ; 1.86; 7100;occ; 96; 0;52227
2; 471.0; 23-FEB-2012 23:05:49; Dark ; 44.0; 10; Bet Cen ; 0.61; 28000;occ; 88; 0;52228
3; 691.0; 23-FEB-2012 23:09:29; Dark ; 46.5; 26; Gam Cru ; 1.62; 2900;occ; 93; 0;52228
/nas3/ENVISAT/GOMOS/GOM_NL__0P/GOM_NL__0PNPDK20120223_075256_000008973112_00049_52218_5661.N1
1; -176.9; 23-FEB-2012 07:52:56; Dark ; 44.5; 40; The Sco ; 1.86; 7100;occ; 89; 0;52218
2; 465.8; 23-FEB-2012 08:03:39; Dark ; 41.0; 10; Bet Cen ; 0.61; 28000;occ; 82; 0;52219
3; 686.5; 23-FEB-2012 08:07:19; Dark ; 34.5; 26; Gam Cru ; 1.62; 2900;occ; 69; 0;52219
/nas3/ENVISAT/GOMOS/GOM_NL__0P/GOM_NL__0PNPDK20120223_093311_000008993112_00050_52219_5662.N1
1; -176.2; 23-FEB-2012 09:33:11; Dark ; 46.0; 40; The Sco ; 1.86; 7100;occ; 92; 0;52219
2; 466.4; 23-FEB-2012 09:43:53; Dark ; 53.5; 10; Bet Cen ; 0.61; 28000;occ; 107; 0;52220
3; 687.1; 23-FEB-2012 09:47:34; Dark ; 36.5; 26; Gam Cru ; 1.62; 2900;occ; 73; 0;52220
/nas3/ENVISAT/GOMOS/GOM_NL__0P/GOM_NL__0PNPDK20120223_111325_000009003112_00051_52220_5663.N1
1; -175.6; 23-FEB-2012 11:13:25; Dark ; 48.0; 40; The Sco ; 1.86; 7100;occ; 96; 0;52220
2; 466.9; 23-FEB-2012 11:24:08; Dark ; 50.5; 10; Bet Cen ; 0.61; 28000;occ; 101; 0;52221
3; 687.5; 23-FEB-2012 11:27:48; Dark ; 37.5; 26; Gam Cru ; 1.62; 2900;occ; 75; 0;52221
/nas3/ENVISAT/GOMOS/GOM_NL__0P/GOM_NL__0PNPDK20120223_125340_000009013112_00052_52221_5664.N1
1; -174.8; 23-FEB-2012 12:53:40; Dark ; 45.5; 40; The Sco ; 1.86; 7100;occ; 91; 0;52221
2; 467.5; 23-FEB-2012 13:04:22; Dark ; 44.5; 10; Bet Cen ; 0.61; 28000;occ; 89; 0;52222
3; 688.0; 23-FEB-2012 13:08:03; Dark ; 38.5; 26; Gam Cru ; 1.62; 2900;occ; 77; 0;52222
/nas3/ENVISAT/GOMOS/GOM_NL__0P/GOM_NL__0PNPDK20120223_143354_000009023112_00053_52222_5665.N1
1; -174.3; 23-FEB-2012 14:33:54; Dark ; 45.0; 40; The Sco ; 1.86; 7100;occ; 90; 0;52222
2; 468.1; 23-FEB-2012 14:44:37; Dark ; 41.0; 10; Bet Cen ; 0.61; 28000;occ; 82; 0;52223
3; 688.6; 23-FEB-2012 14:48:17; Dark ; 39.5; 26; Gam Cru ; 1.62; 2900;occ; 79; 0;52223
/nas3/ENVISAT/GOMOS/GOM_NL__0P/GOM_NL__0PNPDK20120223_161409_000009043112_00054_52223_5666.N1
1; -173.6; 23-FEB-2012 16:14:09; Dark ; 48.0; 40; The Sco ; 1.86; 7100;occ; 96; 0;52223
2; 468.8; 23-FEB-2012 16:24:51; Dark ; 43.5; 10; Bet Cen ; 0.61; 28000;occ; 87; 0;52224
3; 689.2; 23-FEB-2012 16:28:32; Dark ; 41.5; 26; Gam Cru ; 1.62; 2900;occ; 83; 0;52224
/nas3/ENVISAT/GOMOS/GOM_NL__0P/GOM_NL__0PNPDK20120223_175423_000009053112_00055_52224_5667.N1
1; -173.2; 23-FEB-2012 17:54:23; Dark ; 43.5; 40; The Sco ; 1.86; 7100;occ; 87; 0;52224
2; 469.4; 23-FEB-2012 18:05:06; Dark ; 43.0; 10; Bet Cen ; 0.61; 28000;occ; 86; 0;52225
3; 689.7; 23-FEB-2012 18:08:46; Dark ; 42.5; 26; Gam Cru ; 1.62; 2900;occ; 85; 0;52225
/nas3/ENVISAT/GOMOS/GOM_NL__0P/GOM_NL__0PNPDK20120223_193438_000009053112_00056_52225_5668.N1
1; -172.4; 23-FEB-2012 19:34:38; Dark ; 41.5; 40; The Sco ; 1.86; 7100;occ; 83; 0;52225
2; 469.9; 23-FEB-2012 19:45:20; Dark ; 52.5; 10; Bet Cen ; 0.61; 28000;occ; 105; 0;52226
3; 690.0; 23-FEB-2012 19:49:00; Dark ; 43.5; 26; Gam Cru ; 1.62; 2900;occ; 87; 0;52226
/nas3/ENVISAT/GOMOS/GOM_NL__0P/GOM_NL__0PNPDE20120224_003521_000009093112_00059_52228_6657.N1
1; -170.5; 24-FEB-2012 00:35:21; Dark ; 44.0; 40; The Sco ; 1.86; 7100;occ; 88; 0;52228
2; 471.5; 24-FEB-2012 00:46:03; Dark ; 45.0; 10; Bet Cen ; 0.61; 28000;occ; 90; 0;52229

```

3; 691.6; 24-FEB-2012 00:49:43; Dark ; 47.5; 26; Gam Cru ; 1.62; 2900;occ; 95; 0;52229
/nas3/ENVISAT/GOMOS/GOM_NL__0P/GOM_NL__0PNPDE20120224_021536_000009103112_00060_52229_6658.N1
1; -169.8; 24-FEB-2012 02:15:36; Dark ; 41.0; 40; The Sco ; 1.86; 7100;occ; 82; 0;52229
2; 472.2; 24-FEB-2012 02:26:18; Dark ; 46.0; 10; Bet Cen ; 0.61; 28000;occ; 92; 0;52230
3; 692.2; 24-FEB-2012 02:29:58; Dark ; 48.5; 26; Gam Cru ; 1.62; 2900;occ; 97; 0;52230
/nas3/ENVISAT/GOMOS/GOM_NL__0P/GOM_NL__0PNPDE20120224_035551_000009113112_00061_52230_6659.N1
1; -169.2; 24-FEB-2012 03:55:51; Dark ; 37.0; 40; The Sco ; 1.86; 7100;occ; 74; 0;52230
2; 472.9; 24-FEB-2012 04:06:33; Dark ; 54.0; 10; Bet Cen ; 0.61; 28000;occ; 108; 0;52231
3; 692.8; 24-FEB-2012 04:10:12; Dark ; 49.5; 26; Gam Cru ; 1.62; 2900;occ; 99; 0;52231
/nas3/ENVISAT/GOMOS/GOM_NL__0P/GOM_NL__0PNPDE20120224_053605_000009083112_00062_52231_6660.N1
1; -168.4; 24-FEB-2012 05:36:05; Dark ; 33.0; 40; The Sco ; 1.86; 7100;occ; 66; 0;52231
2; 473.5; 24-FEB-2012 05:46:47; Dark ; 47.5; 10; Bet Cen ; 0.61; 28000;occ; 95; 0;52232
3; 693.4; 24-FEB-2012 05:50:27; Dark ; 47.0; 26; Gam Cru ; 1.62; 2900;occ; 94; 0;52232
/nas3/ENVISAT/GOMOS/GOM_NL__0P/GOM_NL__0PNPDE20120224_221347_000011933112_00072_52241_6661.N1
1; -446.3; 24-FEB-2012 22:13:47; Dark ; 48.0; 116; 19Del Sgr ; 2.70; 4100;occ; 96; 0;52241
2; 479.4; 24-FEB-2012 22:29:13; Dark ; 42.0; 10; Bet Cen ; 0.61; 28000;occ; 84; 0;52242
3; 698.5; 24-FEB-2012 22:32:52; Dark ; 48.5; 26; Gam Cru ; 1.62; 2900;occ; 97; 0;52242
/nas3/ENVISAT/GOMOS/GOM_NL__0P/GOM_NL__0PNPDE20120224_235402_000012013112_00073_52242_6662.N1
1; -445.6; 24-FEB-2012 23:54:02; Dark ; 41.5; 116; 19Del Sgr ; 2.70; 4100;occ; 83; 0;52242
2; 479.9; 25-FEB-2012 00:09:27; Dark ; 42.0; 10; Bet Cen ; 0.61; 28000;occ; 84; 0;52243
3; 698.9; 25-FEB-2012 00:13:06; Dark ; 57.0; 26; Gam Cru ; 1.62; 2900;occ; 114; 0;52243
/nas3/ENVISAT/GOMOS/GOM_NL__0P/GOM_NL__0PNPDK20120224_071620_000009073112_00063_52232_5669.N1
1; -167.7; 24-FEB-2012 07:16:20; Dark ; 29.0; 40; The Sco ; 1.86; 7100;occ; 58; 0;52232
2; 474.2; 24-FEB-2012 07:27:02; Dark ; 50.0; 10; Bet Cen ; 0.61; 28000;occ; 100; 0;52233
3; 693.9; 24-FEB-2012 07:30:42; Dark ; 46.0; 26; Gam Cru ; 1.62; 2900;occ; 92; 0;52233
/nas3/ENVISAT/GOMOS/GOM_NL__0P/GOM_NL__0PNPDK20120224_085635_000009083112_00064_52233_5670.N1
1; -167.0; 24-FEB-2012 08:56:35; Dark ; 25.0; 40; The Sco ; 1.86; 7100;occ; 50; 0;52233
2; 474.8; 24-FEB-2012 09:07:16; Dark ; 42.0; 10; Bet Cen ; 0.61; 28000;occ; 84; 0;52234
3; 694.5; 24-FEB-2012 09:10:56; Dark ; 47.0; 26; Gam Cru ; 1.62; 2900;occ; 94; 0;52234
/nas3/ENVISAT/GOMOS/GOM_NL__0P/GOM_NL__0PNPDK20120224_103205_000011903112_00065_52234_5671.N1
1; -450.3; 24-FEB-2012 10:32:05; Dark ; 44.5; 116; 19Del Sgr ; 2.70; 4100;occ; 89; 0;52234
2; 475.4; 24-FEB-2012 10:47:31; Dark ; 51.5; 10; Bet Cen ; 0.61; 28000;occ; 103; 0;52235
3; 695.0; 24-FEB-2012 10:51:10; Dark ; 45.0; 26; Gam Cru ; 1.62; 2900;occ; 90; 0;52235
/nas3/ENVISAT/GOMOS/GOM_NL__0P/GOM_NL__0PNPDK20120224_121220_000011993112_00066_52235_5672.N1
1; -449.8; 24-FEB-2012 12:12:20; Dark ; 47.5; 116; 19Del Sgr ; 2.70; 4100;occ; 95; 0;52235
2; 476.0; 24-FEB-2012 12:27:45; Dark ; 44.0; 10; Bet Cen ; 0.61; 28000;occ; 88; 0;52236
3; 695.5; 24-FEB-2012 12:31:25; Dark ; 54.0; 26; Gam Cru ; 1.62; 2900;occ; 108; 0;52236
/nas3/ENVISAT/GOMOS/GOM_NL__0P/GOM_NL__0PNPDK20120224_135234_000012023112_00067_52236_5673.N1
1; -449.1; 24-FEB-2012 13:52:34; Dark ; 46.0; 116; 19Del Sgr ; 2.70; 4100;occ; 92; 0;52236
2; 476.5; 24-FEB-2012 14:08:00; Dark ; 41.5; 10; Bet Cen ; 0.61; 28000;occ; 83; 0;52237
3; 696.0; 24-FEB-2012 14:11:39; Dark ; 57.0; 26; Gam Cru ; 1.62; 2900;occ; 114; 0;52237
/nas3/ENVISAT/GOMOS/GOM_NL__0P/GOM_NL__0PNPDK20120224_153249_000012023112_00068_52237_5674.N1
1; -448.6; 24-FEB-2012 15:32:49; Dark ; 41.5; 116; 19Del Sgr ; 2.70; 4100;occ; 83; 0;52237
2; 477.0; 24-FEB-2012 15:48:14; Dark ; 48.0; 10; Bet Cen ; 0.61; 28000;occ; 96; 0;52238
3; 696.6; 24-FEB-2012 15:51:54; Dark ; 57.5; 26; Gam Cru ; 1.62; 2900;occ; 115; 0;52238
/nas3/ENVISAT/GOMOS/GOM_NL__0P/GOM_NL__0PNPDK20120224_171303_000012003112_00069_52238_5675.N1
1; -447.9; 24-FEB-2012 17:13:03; Dark ; 44.5; 116; 19Del Sgr ; 2.70; 4100;occ; 89; 0;52238
2; 477.7; 24-FEB-2012 17:28:29; Dark ; 44.0; 10; Bet Cen ; 0.61; 28000;occ; 88; 0;52239
3; 697.0; 24-FEB-2012 17:32:08; Dark ; 56.0; 26; Gam Cru ; 1.62; 2900;occ; 112; 0;52239
/nas3/ENVISAT/GOMOS/GOM_NL__0P/GOM_NL__0PNPDK20120224_185318_000011923112_00070_52239_5676.N1
1; -447.4; 24-FEB-2012 18:53:18; Dark ; 47.0; 116; 19Del Sgr ; 2.70; 4100;occ; 94; 0;52239
2; 478.2; 24-FEB-2012 19:08:44; Dark ; 44.5; 10; Bet Cen ; 0.61; 28000;occ; 89; 0;52240
3; 697.5; 24-FEB-2012 19:12:23; Dark ; 48.0; 26; Gam Cru ; 1.62; 2900;occ; 96; 0;52240
/nas3/ENVISAT/GOMOS/GOM_NL__0P/GOM_NL__0PNPDK20120224_203333_000011993112_00071_52240_5677.N1
1; -446.8; 24-FEB-2012 20:33:33; Dark ; 47.5; 116; 19Del Sgr ; 2.70; 4100;occ; 95; 0;52240
2; 478.8; 24-FEB-2012 20:48:58; Dark ; 51.5; 10; Bet Cen ; 0.61; 28000;occ; 103; 0;52241
3; 698.0; 24-FEB-2012 20:52:37; Dark ; 54.5; 26; Gam Cru ; 1.62; 2900;occ; 109; 0;52241
/nas3/ENVISAT/GOMOS/GOM_NL__0P/GOM_NL__0PNPDE20120225_013416_000072163112_00074_52243_6663.N1
1; -444.9; 25-FEB-2012 01:34:16; Dark ; 45.5; 116; 19Del Sgr ; 2.70; 4100;occ; 91; 0;52243
2; 480.5; 25-FEB-2012 01:49:42; Dark ; 45.5; 10; Bet Cen ; 0.61; 28000;occ; 91; 0;52244
3; 699.5; 25-FEB-2012 01:53:21; Dark ; 55.0; 26; Gam Cru ; 1.62; 2900;occ; 110; 0;52244
4; 5569.5; 25-FEB-2012 03:14:31; Dark ; 42.0; 116; 19Del Sgr ; 2.70; 4100;occ; 84; 0;52244
5; 6495.1; 25-FEB-2012 03:29:56; Dark ; 42.5; 10; Bet Cen ; 0.61; 28000;occ; 85; 0;52245
6; 6714.0; 25-FEB-2012 03:33:35; Dark ; 57.5; 26; Gam Cru ; 1.62; 2900;occ; 115; 0;52245
/nas3/ENVISAT/GOMOS/GOM_NL__0P/GOM_NL__0PNPDE20120225_045445_000011923112_00076_52245_6664.N1
1; -443.8; 25-FEB-2012 04:54:45; Dark ; 37.0; 116; 19Del Sgr ; 2.70; 4100;occ; 74; 0;52245
2; 481.7; 25-FEB-2012 05:10:11; Dark ; 41.0; 10; Bet Cen ; 0.61; 28000;occ; 82; 0;52246
3; 700.7; 25-FEB-2012 05:13:50; Dark ; 48.0; 26; Gam Cru ; 1.62; 2900;occ; 96; 0;52246

```

/nas3/ENVISAT/GOMOS/GOM_NL__0P/GOM_NL__0PNPDE20120225_215236_000002673112_00087_52256_6665.N1
1; 487.7; 25-FEB-2012 21:52:36; Dark ; 45.0; 10; Bet Cen ; 0.61; 28000;occ; 90; 0;52256
2; 705.9; 25-FEB-2012 21:56:14; Dark ; 49.0; 26; Gam Cru ; 1.62; 2900;occ; 98; 0;52256
/nas3/ENVISAT/GOMOS/GOM_NL__0P/GOM_NL__0PNPDE20120225_233251_000002743112_00088_52257_6666.N1
1; 488.4; 25-FEB-2012 23:32:51; Dark ; 42.5; 10; Bet Cen ; 0.61; 28000;occ; 85; 0;52257
2; 706.4; 25-FEB-2012 23:36:29; Dark ; 56.5; 26; Gam Cru ; 1.62; 2900;occ; 113; 0;52257
/nas3/ENVISAT/GOMOS/GOM_NL__0P/GOM_NL__0PNPDK20120225_063500_000011923112_00077_52246_5678.N1
1; -443.1; 25-FEB-2012 06:35:00; Dark ; 31.0; 116; 19Del Sgr ; 2.70; 4100;occ; 62; 0;52246
2; 482.5; 25-FEB-2012 06:50:25; Dark ; 48.0; 10; Bet Cen ; 0.61; 28000;occ; 96; 0;52247
3; 701.2; 25-FEB-2012 06:54:04; Dark ; 48.5; 26; Gam Cru ; 1.62; 2900;occ; 97; 0;52247
/nas3/ENVISAT/GOMOS/GOM_NL__0P/GOM_NL__0PNPDK20120225_081514_000012003112_00078_52247_5679.N1
1; -442.5; 25-FEB-2012 08:15:14; Dark ; 25.0; 116; 19Del Sgr ; 2.70; 4100;occ; 50; 0;52247
2; 483.1; 25-FEB-2012 08:30:40; Dark ; 51.0; 10; Bet Cen ; 0.61; 28000;occ; 102; 0;52248
3; 701.7; 25-FEB-2012 08:34:19; Dark ; 56.5; 26; Gam Cru ; 1.62; 2900;occ; 113; 0;52248
/nas3/ENVISAT/GOMOS/GOM_NL__0P/GOM_NL__0PNPDK20120225_101054_000002733112_00080_52249_5680.N1
1; 483.6; 25-FEB-2012 10:10:54; Dark ; 50.5; 10; Bet Cen ; 0.61; 28000;occ; 101; 0;52249
2; 702.2; 25-FEB-2012 10:14:33; Dark ; 55.0; 26; Gam Cru ; 1.62; 2900;occ; 110; 0;52249
/nas3/ENVISAT/GOMOS/GOM_NL__0P/GOM_NL__0PNPDK20120225_115109_000002673112_00081_52250_5681.N1
1; 484.2; 25-FEB-2012 11:51:09; Dark ; 41.0; 10; Bet Cen ; 0.61; 28000;occ; 82; 0;52250
2; 702.8; 25-FEB-2012 11:54:48; Dark ; 48.5; 26; Gam Cru ; 1.62; 2900;occ; 97; 0;52250
/nas3/ENVISAT/GOMOS/GOM_NL__0P/GOM_NL__0PNPDK20120225_133123_000002743112_00082_52251_5682.N1
1; 484.8; 25-FEB-2012 13:31:23; Dark ; 46.0; 10; Bet Cen ; 0.61; 28000;occ; 92; 0;52251
2; 703.2; 25-FEB-2012 13:35:02; Dark ; 56.5; 26; Gam Cru ; 1.62; 2900;occ; 113; 0;52251
/nas3/ENVISAT/GOMOS/GOM_NL__0P/GOM_NL__0PNPDK20120225_151138_000002743112_00083_52252_5683.N1
1; 485.4; 25-FEB-2012 15:11:38; Dark ; 44.0; 10; Bet Cen ; 0.61; 28000;occ; 88; 0;52252
2; 703.8; 25-FEB-2012 15:15:16; Dark ; 56.0; 26; Gam Cru ; 1.62; 2900;occ; 112; 0;52252
/nas3/ENVISAT/GOMOS/GOM_NL__0P/GOM_NL__0PNPDK20120225_165153_000002613112_00084_52253_5684.N1
1; 486.1; 25-FEB-2012 16:51:53; Dark ; 43.5; 10; Bet Cen ; 0.61; 28000;occ; 87; 0;52253
2; 704.3; 25-FEB-2012 16:55:31; Dark ; 43.0; 26; Gam Cru ; 1.62; 2900;occ; 86; 0;52253
/nas3/ENVISAT/GOMOS/GOM_NL__0P/GOM_NL__0PNPDK20120225_201222_000002693112_00086_52255_5686.N1
1; 487.2; 25-FEB-2012 20:12:22; Dark ; 52.5; 10; Bet Cen ; 0.61; 28000;occ; 105; 0;52255
2; 705.5; 25-FEB-2012 20:16:00; Dark ; 51.5; 26; Gam Cru ; 1.62; 2900;occ; 103; 0;52255
/nas3/ENVISAT/GOMOS/GOM_NL__0P/GOM_NL__0PNPDK20120225_183207_000002613112_00085_52254_5685.N1
1; 486.6; 25-FEB-2012 18:32:07; Dark ; 42.5; 10; Bet Cen ; 0.61; 28000;occ; 85; 0;52254
2; 704.8; 25-FEB-2012 18:35:45; Dark ; 43.0; 26; Gam Cru ; 1.62; 2900;occ; 86; 0;52254
/nas3/ENVISAT/GOMOS/GOM_NL__0P/GOM_NL__0PNPDE20120226_011305_000002713112_00089_52258_6667.N1
1; 488.9; 26-FEB-2012 01:13:05; Dark ; 45.5; 10; Bet Cen ; 0.61; 28000;occ; 91; 0;52258
2; 706.9; 26-FEB-2012 01:16:43; Dark ; 53.5; 26; Gam Cru ; 1.62; 2900;occ; 107; 0;52258
/nas3/ENVISAT/GOMOS/GOM_NL__0P/GOM_NL__0PNPDE20120226_025320_000002743112_00090_52259_6668.N1
1; 489.6; 26-FEB-2012 02:53:20; Dark ; 45.0; 10; Bet Cen ; 0.61; 28000;occ; 90; 0;52259
2; 709.0; 26-FEB-2012 02:56:59; Dark ; 55.5; 26; Gam Cru ; 1.62; 2900;occ; 111; 0;52259
/nas3/ENVISAT/GOMOS/GOM_NL__0P/GOM_NL__0PNPDE20120226_043334_00000403112_00091_52260_6669.N1
1; 490.2; 26-FEB-2012 04:33:34; Dark ; 40.5; 10; Bet Cen ; 0.61; 28000;occ; 81; 0;52260
/nas3/ENVISAT/GOMOS/GOM_NL__0P/GOM_NL__0PNPDE20120226_061349_00000473112_00092_52261_6670.N1
1; 490.7; 26-FEB-2012 06:13:49; Dark ; 47.5; 10; Bet Cen ; 0.61; 28000;occ; 95; 0;52261
/nas3/ENVISAT/GOMOS/GOM_NL__0P/GOM_NL__0PNPDE20120226_211600_00000503112_00101_52270_6671.N1
1; 495.9; 26-FEB-2012 21:16:00; Dark ; 50.5; 10; Bet Cen ; 0.61; 28000;occ; 101; 0;52270
/nas3/ENVISAT/GOMOS/GOM_NL__0P/GOM_NL__0PNPDE20120226_225614_00000413112_00102_52271_6672.N1
1; 496.4; 26-FEB-2012 22:56:14; Dark ; 42.0; 10; Bet Cen ; 0.61; 28000;occ; 84; 0;52271
/nas3/ENVISAT/GOMOS/GOM_NL__0P/GOM_NL__0PNPDK20120226_075403_00000513112_00093_52262_5688.N1
1; 491.3; 26-FEB-2012 07:54:03; Dark ; 51.5; 10; Bet Cen ; 0.61; 28000;occ; 103; 0;52262
/nas3/ENVISAT/GOMOS/GOM_NL__0P/GOM_NL__0PNPDK20120226_093418_00000453112_00094_52263_5689.N1
1; 491.9; 26-FEB-2012 09:34:18; Dark ; 45.5; 10; Bet Cen ; 0.61; 28000;occ; 91; 0;52263
/nas3/ENVISAT/GOMOS/GOM_NL__0P/GOM_NL__0PNPDK20120226_111432_00000523112_00095_52264_5690.N1
1; 492.4; 26-FEB-2012 11:14:32; Dark ; 53.0; 10; Bet Cen ; 0.61; 28000;occ; 106; 0;52264
/nas3/ENVISAT/GOMOS/GOM_NL__0P/GOM_NL__0PNPDK20120226_125447_00000503112_00096_52265_5691.N1
1; 493.1; 26-FEB-2012 12:54:47; Dark ; 50.5; 10; Bet Cen ; 0.61; 28000;occ; 101; 0;52265
/nas3/ENVISAT/GOMOS/GOM_NL__0P/GOM_NL__0PNPDK20120226_143501_00000403112_00097_52266_5692.N1
1; 493.7; 26-FEB-2012 14:35:01; Dark ; 41.0; 10; Bet Cen ; 0.61; 28000;occ; 82; 0;52266
/nas3/ENVISAT/GOMOS/GOM_NL__0P/GOM_NL__0PNPDK20120226_161516_00000403112_00098_52267_5693.N1
1; 494.3; 26-FEB-2012 16:15:16; Dark ; 41.0; 10; Bet Cen ; 0.61; 28000;occ; 82; 0;52267
/nas3/ENVISAT/GOMOS/GOM_NL__0P/GOM_NL__0PNPDK20120226_175531_00000413112_00099_52268_5694.N1
1; 494.8; 26-FEB-2012 17:55:31; Dark ; 42.0; 10; Bet Cen ; 0.61; 28000;occ; 84; 0;52268
/nas3/ENVISAT/GOMOS/GOM_NL__0P/GOM_NL__0PNPDK20120226_193545_00000463112_00100_52269_5695.N1
1; 495.4; 26-FEB-2012 19:35:45; Dark ; 47.0; 10; Bet Cen ; 0.61; 28000;occ; 94; 0;52269
/nas3/ENVISAT/GOMOS/GOM_NL__0P/GOM_NL__0PNPDE20120227_003629_00000403112_00103_52272_6673.N1
1; 497.0; 27-FEB-2012 00:36:29; Dark ; 41.0; 10; Bet Cen ; 0.61; 28000;occ; 82; 0;52272
/nas3/ENVISAT/GOMOS/GOM_NL__0P/GOM_NL__0PNPDE20120227_021643_00000443112_00104_52273_6674.N1

1; 497.7; 27-FEB-2012 02:16:43; Dark ; 44.5; 10; Bet Cen ; 0.61; 28000;occ; 89; 0;52273
/nas3/ENVISAT/GOMOS/GOM_NL__0P/GOM_NL__0PNPDE20120227_035658_000000443112_00105_52274_6675.N1
1; 498.4; 27-FEB-2012 03:56:58; Dark ; 44.5; 10; Bet Cen ; 0.61; 28000;occ; 89; 0;52274
/nas3/ENVISAT/GOMOS/GOM_NL__0P/GOM_NL__0PNPDE20120227_053712_000000413112_00106_52275_6676.N1
1; 499.0; 27-FEB-2012 05:37:12; Dark ; 41.5; 10; Bet Cen ; 0.61; 28000;occ; 83; 0;52275
/nas3/ENVISAT/GOMOS/GOM_NL__0P/GOM_NL__0PNPDE20120227_220513_000009093112_00115_52284_6677.N1
1; -360.3; 27-FEB-2012 22:05:13; Dark ; 42.0; 38; 20Eps Sgr ; 1.84; 11000;occ; 84; 0;52284
2; 504.6; 27-FEB-2012 22:19:38; Dark ; 44.5; 10; Bet Cen ; 0.61; 28000;occ; 89; 0;52285
/nas3/ENVISAT/GOMOS/GOM_NL__0P/GOM_NL__0PNPDE20120227_234527_000009083112_00116_52285_6678.N1
1; -359.7; 27-FEB-2012 23:45:27; Dark ; 44.5; 38; 20Eps Sgr ; 1.84; 11000;occ; 89; 0;52285
2; 505.2; 27-FEB-2012 23:59:52; Dark ; 43.5; 10; Bet Cen ; 0.61; 28000;occ; 87; 0;52286
/nas3/ENVISAT/GOMOS/GOM_NL__0P/GOM_NL__0PNPDK20120227_071727_000000423112_00107_52276_5696.N1
1; 499.6; 27-FEB-2012 07:17:27; Dark ; 43.0; 10; Bet Cen ; 0.61; 28000;occ; 86; 0;52276
/nas3/ENVISAT/GOMOS/GOM_NL__0P/GOM_NL__0PNPDK20120227_103756_000000473112_00109_52278_5697.N1
1; 500.7; 27-FEB-2012 10:37:56; Dark ; 47.5; 10; Bet Cen ; 0.61; 28000;occ; 95; 0;52278
/nas3/ENVISAT/GOMOS/GOM_NL__0P/GOM_NL__0PNPDK20120227_121810_000000403112_00110_52279_5698.N1
1; 501.3; 27-FEB-2012 12:18:10; Dark ; 40.5; 10; Bet Cen ; 0.61; 28000;occ; 81; 0;52279
/nas3/ENVISAT/GOMOS/GOM_NL__0P/GOM_NL__0PNPDK20120227_135825_000000423112_00111_52280_5699.N1
1; 501.9; 27-FEB-2012 13:58:25; Dark ; 43.0; 10; Bet Cen ; 0.61; 28000;occ; 86; 0;52280
/nas3/ENVISAT/GOMOS/GOM_NL__0P/GOM_NL__0PNPDK20120227_153839_000000423112_00112_52281_5700.N1
1; 502.4; 27-FEB-2012 15:38:39; Dark ; 43.0; 10; Bet Cen ; 0.61; 28000;occ; 86; 0;52281
/nas3/ENVISAT/GOMOS/GOM_NL__0P/GOM_NL__0PNPDK20120227_171854_000000423112_00113_52282_5701.N1
1; 503.0; 27-FEB-2012 17:18:54; Dark ; 43.0; 10; Bet Cen ; 0.61; 28000;occ; 86; 0;52282
/nas3/ENVISAT/GOMOS/GOM_NL__0P/GOM_NL__0PNPDK20120227_184444_000009073112_00113_52282_5702.N1
1; -361.3; 27-FEB-2012 18:44:44; Dark ; 42.0; 38; 20Eps Sgr ; 1.84; 11000;occ; 84; 0;52282
2; 503.5; 27-FEB-2012 18:59:09; Dark ; 42.5; 10; Bet Cen ; 0.61; 28000;occ; 85; 0;52283
/nas3/ENVISAT/GOMOS/GOM_NL__0P/GOM_NL__0PNPDK20120227_202458_000009063112_00114_52283_5703.N1
1; -360.6; 27-FEB-2012 20:24:58; Dark ; 46.5; 38; 20Eps Sgr ; 1.84; 11000;occ; 93; 0;52283
2; 504.1; 27-FEB-2012 20:39:23; Dark ; 41.5; 10; Bet Cen ; 0.61; 28000;occ; 83; 0;52284
/nas3/ENVISAT/GOMOS/GOM_NL__0P/GOM_NL__0PNPDE20120228_012542_000069203112_00117_52286_6679.N1
1; -359.0; 28-FEB-2012 01:25:42; Dark ; 45.5; 38; 20Eps Sgr ; 1.84; 11000;occ; 91; 0;52286
2; 505.8; 28-FEB-2012 01:40:07; Dark ; 45.0; 10; Bet Cen ; 0.61; 28000;occ; 90; 0;52287
3; 5655.6; 28-FEB-2012 03:05:56; Dark ; 45.0; 38; 20Eps Sgr ; 1.84; 11000;occ; 90; 0;52287
4; 6520.5; 28-FEB-2012 03:20:21; Dark ; 41.0; 10; Bet Cen ; 0.61; 28000;occ; 82; 0;52288
/nas3/ENVISAT/GOMOS/GOM_NL__0P/GOM_NL__0PNPDE20120228_044611_000009153112_00119_52288_6680.N1
1; -357.7; 28-FEB-2012 04:46:11; Dark ; 45.5; 38; 20Eps Sgr ; 1.84; 11000;occ; 91; 0;52288
2; 507.1; 28-FEB-2012 05:00:36; Dark ; 50.5; 10; Bet Cen ; 0.61; 28000;occ; 101; 0;52289
/nas3/ENVISAT/GOMOS/GOM_NL__0P/GOM_NL__0PNPDE20120228_062626_000009123112_00120_52289_6681.N1
1; -357.1; 28-FEB-2012 06:26:26; Dark ; 43.5; 38; 20Eps Sgr ; 1.84; 11000;occ; 87; 0;52289
2; 507.6; 28-FEB-2012 06:40:50; Dark ; 47.5; 10; Bet Cen ; 0.61; 28000;occ; 95; 0;52290
/nas3/ENVISAT/GOMOS/GOM_NL__0P/GOM_NL__0PNPDE20120228_212837_000009063112_00129_52298_6682.N1
1; -351.4; 28-FEB-2012 21:28:37; Dark ; 32.0; 38; 20Eps Sgr ; 1.84; 11000;occ; 64; 0;52298
2; 512.9; 28-FEB-2012 21:43:01; Dark ; 42.5; 10; Bet Cen ; 0.61; 28000;occ; 85; 0;52299
/nas3/ENVISAT/GOMOS/GOM_NL__0P/GOM_NL__0PNPDK20120228_080640_000009053112_00121_52290_5704.N1
1; -356.5; 28-FEB-2012 08:06:40; Dark ; 46.0; 38; 20Eps Sgr ; 1.84; 11000;occ; 92; 0;52290
2; 508.3; 28-FEB-2012 08:21:05; Dark ; 41.0; 10; Bet Cen ; 0.61; 28000;occ; 82; 0;52291
/nas3/ENVISAT/GOMOS/GOM_NL__0P/GOM_NL__0PNPDK20120228_094655_000009173112_00122_52291_5705.N1
1; -355.8; 28-FEB-2012 09:46:55; Dark ; 44.5; 38; 20Eps Sgr ; 1.84; 11000;occ; 89; 0;52291
2; 508.8; 28-FEB-2012 10:01:19; Dark ; 52.5; 10; Bet Cen ; 0.61; 28000;occ; 105; 0;52292
/nas3/ENVISAT/GOMOS/GOM_NL__0P/GOM_NL__0PNPDK20120228_112709_000009153112_00123_52292_5706.N1
1; -355.2; 28-FEB-2012 11:27:09; Dark ; 43.0; 38; 20Eps Sgr ; 1.84; 11000;occ; 86; 0;52292
2; 509.4; 28-FEB-2012 11:41:34; Dark ; 51.0; 10; Bet Cen ; 0.61; 28000;occ; 102; 0;52293
/nas3/ENVISAT/GOMOS/GOM_NL__0P/GOM_NL__0PNPDK20120228_144738_000009063112_00125_52294_5707.N1
1; -354.0; 28-FEB-2012 14:47:38; Dark ; 46.5; 38; 20Eps Sgr ; 1.84; 11000;occ; 93; 0;52294
2; 510.5; 28-FEB-2012 15:02:03; Dark ; 42.0; 10; Bet Cen ; 0.61; 28000;occ; 84; 0;52295
/nas3/ENVISAT/GOMOS/GOM_NL__0P/GOM_NL__0PNPDK20120228_162753_000009063112_00126_52295_5708.N1
1; -353.3; 28-FEB-2012 16:27:53; Dark ; 47.0; 38; 20Eps Sgr ; 1.84; 11000;occ; 94; 0;52295
2; 511.2; 28-FEB-2012 16:42:17; Dark ; 42.0; 10; Bet Cen ; 0.61; 28000;occ; 84; 0;52296
/nas3/ENVISAT/GOMOS/GOM_NL__0P/GOM_NL__0PNPDK20120228_180808_000009073112_00127_52296_5709.N1
1; -352.7; 28-FEB-2012 18:08:08; Dark ; 42.0; 38; 20Eps Sgr ; 1.84; 11000;occ; 84; 0;52296
2; 511.7; 28-FEB-2012 18:22:32; Dark ; 43.0; 10; Bet Cen ; 0.61; 28000;occ; 86; 0;52297
/nas3/ENVISAT/GOMOS/GOM_NL__0P/GOM_NL__0PNPDK20120228_194822_000009083112_00128_52297_5710.N1
1; -352.1; 28-FEB-2012 19:48:22; Dark ; 37.0; 38; 20Eps Sgr ; 1.84; 11000;occ; 74; 0;52297
2; 512.3; 28-FEB-2012 20:02:47; Dark ; 44.0; 10; Bet Cen ; 0.61; 28000;occ; 88; 0;52298
/nas3/ENVISAT/GOMOS/GOM_NL__0P/GOM_NL__0PNPDK20120228_130724_000009053112_00124_52293_6008.N1
1; -354.6; 28-FEB-2012 13:07:24; Dark ; 42.0; 38; 20Eps Sgr ; 1.84; 11000;occ; 84; 0;52293
2; 510.0; 28-FEB-2012 13:21:48; Dark ; 40.5; 10; Bet Cen ; 0.61; 28000;occ; 81; 0;52294
/nas3/ENVISAT/GOMOS/GOM_NL__0P/GOM_NL__0PNPDE20120229_010330_000000443112_00132_52301_6684.N1

1; 514.0; 29-FEB-2012 01:03:30; Dark ; 44.5; 10; Bet Cen ; 0.61; 28000;occ; 89; 0;52301
/nas3/ENVISAT/GOMOS/GOM_NL__0P/GOM_NL__0PNPDE20120229_024344_000000443112_00133_52302_6685.N1
1; 514.7; 29-FEB-2012 02:43:44; Dark ; 44.5; 10; Bet Cen ; 0.61; 28000;occ; 89; 0;52302
/nas3/ENVISAT/GOMOS/GOM_NL__0P/GOM_NL__0PNPDE20120229_042359_000000453112_00134_52303_6686.N1
1; 515.2; 29-FEB-2012 04:23:59; Dark ; 45.5; 10; Bet Cen ; 0.61; 28000;occ; 91; 0;52303
/nas3/ENVISAT/GOMOS/GOM_NL__0P/GOM_NL__0PNPDE20120229_060414_000000463112_00135_52304_6687.N1
1; 515.8; 29-FEB-2012 06:04:14; Dark ; 46.5; 10; Bet Cen ; 0.61; 28000;occ; 93; 0;52304
/nas3/ENVISAT/GOMOS/GOM_NL__0P/GOM_NL__0PNPDE20120229_224639_000000443112_00145_52314_6688.N1
1; 521.3; 29-FEB-2012 22:46:39; Dark ; 45.0; 10; Bet Cen ; 0.61; 28000;occ; 90; 0;52314
/nas3/ENVISAT/GOMOS/GOM_NL__0P/GOM_NL__0PNPDK20120229_074428_000000393112_00136_52305_5711.N1
1; 516.4; 29-FEB-2012 07:44:28; Dark ; 39.5; 10; Bet Cen ; 0.61; 28000;occ; 79; 0;52305
/nas3/ENVISAT/GOMOS/GOM_NL__0P/GOM_NL__0PNPDK20120229_110457_000000503112_00138_52307_5713.N1
1; 517.5; 29-FEB-2012 11:04:57; Dark ; 51.0; 10; Bet Cen ; 0.61; 28000;occ; 102; 0;52307
/nas3/ENVISAT/GOMOS/GOM_NL__0P/GOM_NL__0PNPDK20120229_124512_000000413112_00139_52308_5714.N1
1; 518.1; 29-FEB-2012 12:45:12; Dark ; 42.0; 10; Bet Cen ; 0.61; 28000;occ; 84; 0;52308
/nas3/ENVISAT/GOMOS/GOM_NL__0P/GOM_NL__0PNPDK20120229_142526_000000443112_00140_52309_5715.N1
1; 518.7; 29-FEB-2012 14:25:26; Dark ; 45.0; 10; Bet Cen ; 0.61; 28000;occ; 90; 0;52309
/nas3/ENVISAT/GOMOS/GOM_NL__0P/GOM_NL__0PNPDK20120229_160541_000000433112_00141_52310_5716.N1
1; 519.2; 29-FEB-2012 16:05:41; Dark ; 43.5; 10; Bet Cen ; 0.61; 28000;occ; 87; 0;52310
/nas3/ENVISAT/GOMOS/GOM_NL__0P/GOM_NL__0PNPDK20120229_174555_000000463112_00142_52311_5717.N1
1; 519.8; 29-FEB-2012 17:45:55; Dark ; 47.0; 10; Bet Cen ; 0.61; 28000;occ; 94; 0;52311
/nas3/ENVISAT/GOMOS/GOM_NL__0P/GOM_NL__0PNPDK20120229_192610_000000443112_00143_52312_5718.N1
1; 520.2; 29-FEB-2012 19:26:10; Dark ; 44.5; 10; Bet Cen ; 0.61; 28000;occ; 89; 0;52312
/nas3/ENVISAT/GOMOS/GOM_NL__0P/GOM_NL__0PNPDK20120229_210624_000000403112_00144_52313_5719.N1
1; 520.7; 29-FEB-2012 21:06:24; Dark ; 41.0; 10; Bet Cen ; 0.61; 28000;occ; 82; 0;52313