

GOMOS Daily Report 27-JAN-2012

Level 0 and Level 1 products

SUMMARY

[1. General Info](#)

[2. Summary of products arrived in PCF \(Product Control Facility\)](#)

[2.1 Level 0: products arrived in PCF during current month \(see template here\)](#)

[2.2 Level 0: plot of mission plan versus production during reporting period](#)

[2.3 Level 0: summary of missing occultations with respect to the plan](#)

[2.4 Level 1: products arrived in PCF during reporting period](#)

[3. Plot of Spectrometers and Photometers temperatures](#)

[4. Dark Charge monitoring](#)

[4.1 Products that did not use the Dark Sky Area observation for DC computation](#)

[4.2 Plot of Dark Charge](#)

[5. Demodulation correction and quality product information monitoring](#)

[5.1 Percentage of products with some flags set](#)

[5.2 Plot of quality information per product \(time dependant\)](#)

[5.3 Plot of quality information per product \(world map\)](#)

[6. Star tangent altitude lost](#)

[6.1 Statistics on star tangent altitude lost](#)

[6.2 Plot of star tangent altitude lost: DARK products](#)

[6.3 Plot of star tangent altitude lost: BRIGHT products](#)

[6.3 Plot of star tangent altitude lost: TWILIGHT products](#)

[7. Star Acquisition and Tracking Unit \(SATU\)](#)

[7.1 SATU plots \(dark limb\): 'X' and 'Y' axis](#)

[7.2 SATU Noise Equivalent Angle statistics](#)

[7.2.1 SATU NEA Statistics \(table\)](#)

[7.2.2 Daily SATU NEA STD \(dark limb\) - trend since 1st April 2006](#)

[8. Auxiliary Data Files used for the production reported in section 2.4](#)

[Level 2 products](#)

This report presents the daily analysis on parameters extracted from GOMOS level 1b data (GOM_TRA_1P). It is intended to monitor some important parameters that will impact the quality of the level 2 products as the Spectrometers and Photometers CCD Temperatures and Dark Charge, SATU noise equivalent angle... A list of level 0 products (and content) that have arrived during the actual month to the PCF is also given.

| Item | Value |
|---------------------------|--------------------|
| Time of report generation | 29JAN2012 07:00:46 |
| Data source version | GOMOS/6.01 |
| Start time of products | 27JAN2012 01:02:12 |
| Stop time of products | 27JAN2012 21:05:08 |
| Store outputs in DB | Yes |
| Nb of level 1b prods | 25 |
| Nb of prods with errors | 0 |

2. Summary of products arrived in PCF (Product Control Facility)

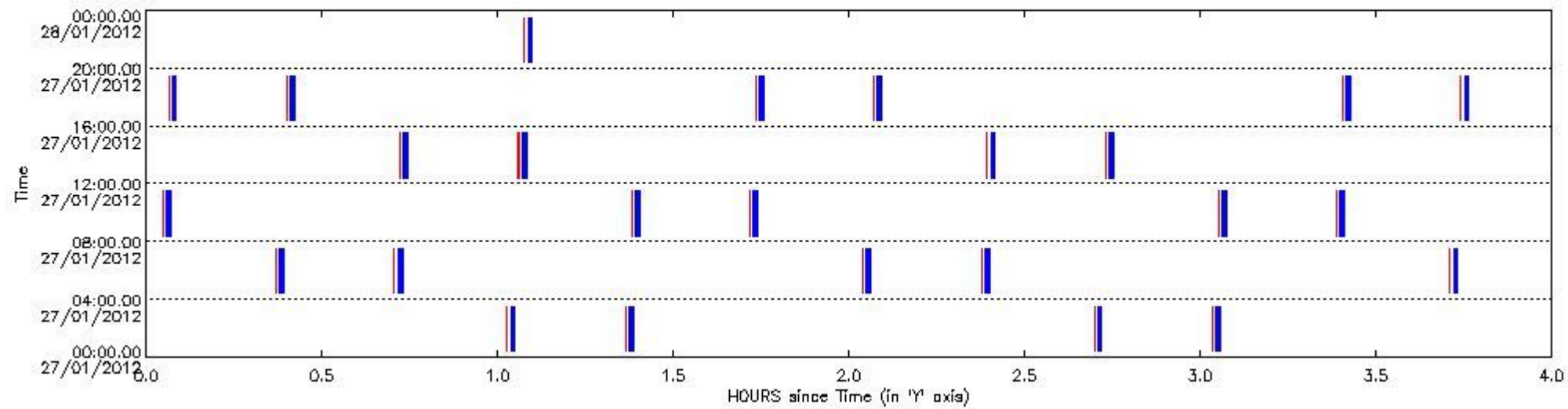
2.1 Level 0 products arrived in PCF (see template [here](#))

2.2 Plot of mission plan versus Level 0 production arrived in PCF during reporting period

Red segments are missing products.

Blue segments are available products.

Green segments are calibration measurements (not available products to users).



2.3 Summary of missing occultations (red segments in previous plot)

| UTC start time | Star name | Star ID | Orbit |
|----------------------|-----------|---------|-------|
| 27-JAN-2012 01:01:36 | GamLup | 0 | 51840 |
| 27-JAN-2012 01:21:50 | LamVel | 0 | 51840 |
| 27-JAN-2012 02:41:51 | GamLup | 0 | 51841 |
| 27-JAN-2012 03:02:04 | LamVel | 0 | 51841 |
| 27-JAN-2012 04:22:06 | GamLup | 0 | 51842 |
| 27-JAN-2012 04:42:19 | LamVel | 0 | 51842 |
| 27-JAN-2012 06:02:20 | GamLup | 0 | 51843 |
| 27-JAN-2012 06:22:33 | LamVel | 0 | 51843 |
| 27-JAN-2012 07:42:35 | GamLup | 0 | 51844 |
| 27-JAN-2012 08:02:47 | LamVel | 0 | 51844 |
| 27-JAN-2012 09:22:50 | GamLup | 0 | 51845 |
| 27-JAN-2012 09:43:02 | LamVel | 0 | 51845 |
| 27-JAN-2012 11:03:04 | GamLup | 0 | 51846 |
| 27-JAN-2012 11:23:16 | LamVel | 0 | 51846 |
| 27-JAN-2012 12:43:19 | GamLup | 0 | 51847 |

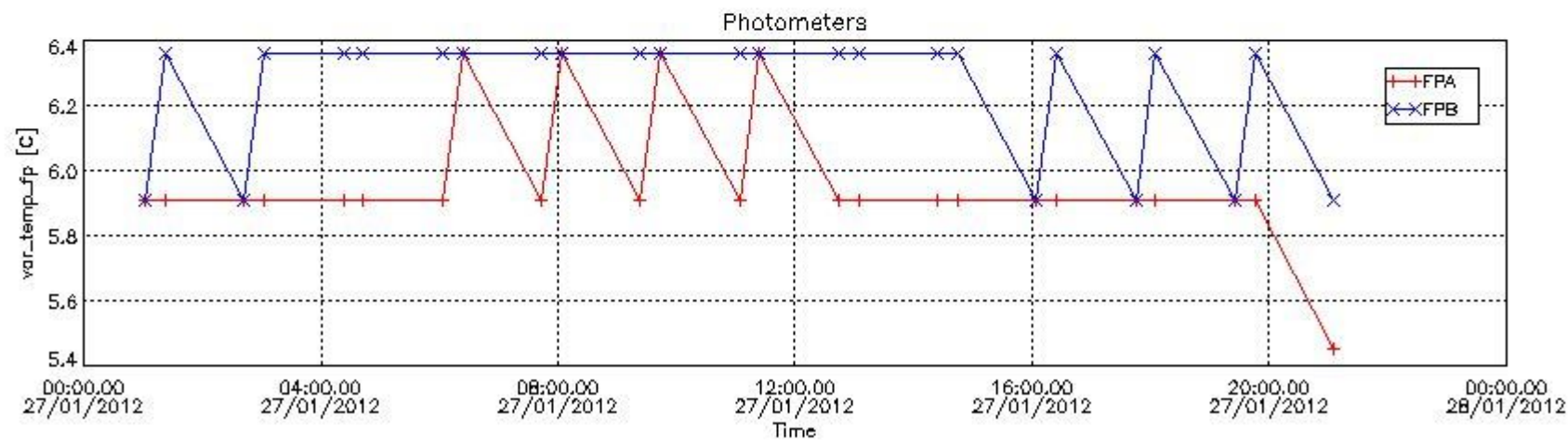
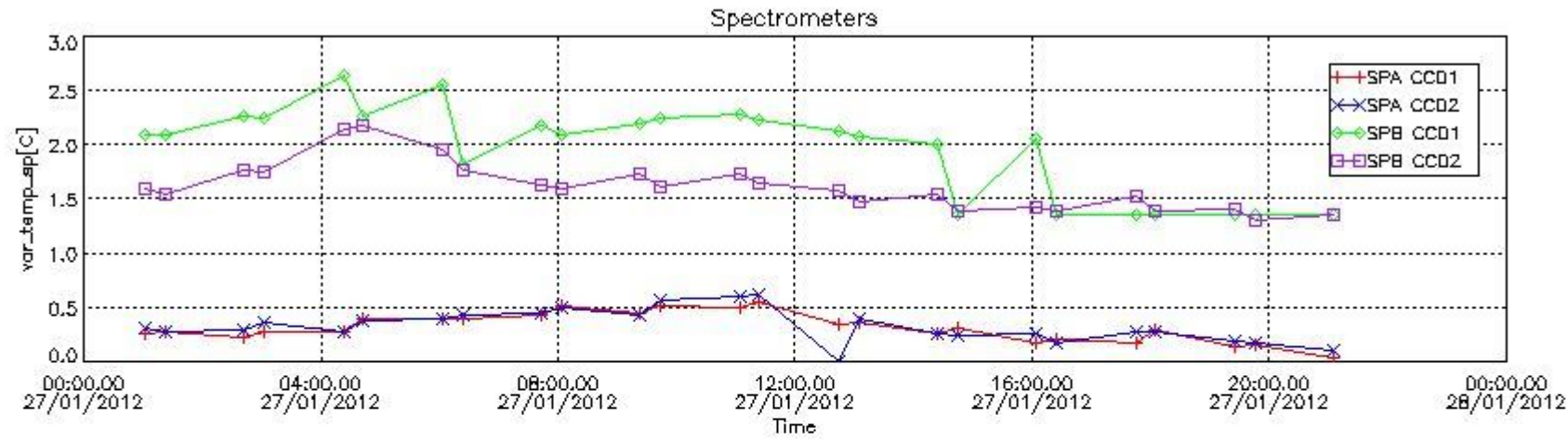
| | | | |
|----------------------|--------|---|-------|
| 27-JAN-2012 13:03:30 | LamVel | 0 | 51847 |
| 27-JAN-2012 14:23:34 | GamLup | 0 | 51848 |
| 27-JAN-2012 14:43:45 | LamVel | 0 | 51848 |
| 27-JAN-2012 16:03:48 | GamLup | 0 | 51849 |
| 27-JAN-2012 16:23:59 | LamVel | 0 | 51849 |
| 27-JAN-2012 17:44:03 | GamLup | 0 | 51850 |
| 27-JAN-2012 18:04:13 | LamVel | 0 | 51850 |
| 27-JAN-2012 19:24:18 | GamLup | 0 | 51851 |
| 27-JAN-2012 19:44:27 | LamVel | 0 | 51851 |
| 27-JAN-2012 21:04:32 | GamLup | 0 | 51852 |

2.4 Summary of processed GOM_TRA_1P products

!Warning: No products without errors in BRIGHT limb contitions found

| Nr | Filename | UTC Start time | Limb | Duration | Star Id | Star Name | Star Mag | Star Temp | Nb Meas | Orbit | Prod. error |
|----|--|----------------------|------|----------|---------|-----------|----------|-----------|---------|-------|-------------|
| 1 | GOM_TRA_1PNPDE20120127_010212_000000423111_00088_51826_7773.N1 | 27-JAN-2012 01:02:12 | Dark | 41.500 | 131 | Gam Lup | 2.8000 | 26000. | 83 | 51826 | No |
| 2 | GOM_TRA_1PNPDE20120127_012226_000000463111_00089_51827_7774.N1 | 27-JAN-2012 01:22:26 | Dark | 45.500 | 65 | Lam Vel | 2.2040 | 4400.0 | 91 | 51827 | No |
| 3 | GOM_TRA_1PNPDE20120127_024227_000000413111_00089_51827_7810.N1 | 27-JAN-2012 02:42:27 | Dark | 41.000 | 131 | Gam Lup | 2.8000 | 26000. | 82 | 51827 | No |
| 4 | GOM_TRA_1PNPDE20120127_030240_000000463111_00090_51828_7811.N1 | 27-JAN-2012 03:02:40 | Dark | 45.500 | 65 | Lam Vel | 2.2040 | 4400.0 | 91 | 51828 | No |
| 5 | GOM_TRA_1PNPDE20120127_042242_000000423111_00090_51828_7864.N1 | 27-JAN-2012 04:22:42 | Dark | 42.000 | 131 | Gam Lup | 2.8000 | 26000. | 84 | 51828 | No |
| 6 | GOM_TRA_1PNPDE20120127_044254_000000493111_00091_51829_7865.N1 | 27-JAN-2012 04:42:54 | Dark | 49.000 | 65 | Lam Vel | 2.2040 | 4400.0 | 98 | 51829 | No |
| 7 | GOM_TRA_1PNPDE20120127_060256_000000433111_00091_51829_7921.N1 | 27-JAN-2012 06:02:56 | Dark | 42.500 | 131 | Gam Lup | 2.8000 | 26000. | 85 | 51829 | No |
| 8 | GOM_TRA_1PNPDE20120127_062309_000000473111_00092_51830_7922.N1 | 27-JAN-2012 06:23:09 | Dark | 46.500 | 65 | Lam Vel | 2.2040 | 4400.0 | 93 | 51830 | No |
| 9 | GOM_TRA_1PNPDK20120127_074311_000000443111_00092_51830_5456.N1 | 27-JAN-2012 07:43:11 | Dark | 44.000 | 131 | Gam Lup | 2.8000 | 26000. | 88 | 51830 | No |
| 10 | GOM_TRA_1PNPDK20120127_080323_000000463111_00093_51831_5457.N1 | 27-JAN-2012 08:03:23 | Dark | 45.500 | 65 | Lam Vel | 2.2040 | 4400.0 | 91 | 51831 | No |
| 11 | GOM_TRA_1PNPDK20120127_092326_000000443111_00093_51831_5456.N1 | 27-JAN-2012 09:23:26 | Dark | 43.500 | 131 | Gam Lup | 2.8000 | 26000. | 87 | 51831 | No |
| 12 | GOM_TRA_1PNPDK20120127_094337_000000473111_00094_51832_5457.N1 | 27-JAN-2012 09:43:37 | Dark | 47.000 | 65 | Lam Vel | 2.2040 | 4400.0 | 94 | 51832 | No |
| 13 | GOM_TRA_1PNPDK20120127_110340_000000443111_00094_51832_5456.N1 | 27-JAN-2012 11:03:40 | Dark | 43.500 | 131 | Gam Lup | 2.8000 | 26000. | 87 | 51832 | No |
| 14 | GOM_TRA_1PNPDK20120127_112352_000000493111_00095_51833_5457.N1 | 27-JAN-2012 11:23:52 | Dark | 48.500 | 65 | Lam Vel | 2.2040 | 4400.0 | 97 | 51833 | No |
| 15 | GOM_TRA_1PNPDK20120127_124355_000000443111_00095_51833_5456.N1 | 27-JAN-2012 12:43:55 | Dark | 43.500 | 131 | Gam Lup | 2.8000 | 26000. | 87 | 51833 | No |
| 16 | GOM_TRA_1PNPDK20120127_130406_000000483111_00096_51834_5457.N1 | 27-JAN-2012 13:04:06 | Dark | 47.500 | 65 | Lam Vel | 2.2040 | 4400.0 | 95 | 51834 | No |
| 17 | GOM_TRA_1PNPDK20120127_142410_000000423111_00096_51834_5456.N1 | 27-JAN-2012 14:24:10 | Dark | 42.000 | 131 | Gam Lup | 2.8000 | 26000. | 84 | 51834 | No |
| 18 | GOM_TRA_1PNPDK20120127_144420_000000473111_00097_51835_5457.N1 | 27-JAN-2012 14:44:20 | Dark | 47.000 | 65 | Lam Vel | 2.2040 | 4400.0 | 94 | 51835 | No |
| 19 | GOM_TRA_1PNPDK20120127_160424_000000433111_00097_51835_5456.N1 | 27-JAN-2012 16:04:24 | Dark | 42.500 | 131 | Gam Lup | 2.8000 | 26000. | 85 | 51835 | No |
| 20 | GOM_TRA_1PNPDK20120127_162435_000000493111_00098_51836_5457.N1 | 27-JAN-2012 16:24:35 | Dark | 48.500 | 65 | Lam Vel | 2.2040 | 4400.0 | 97 | 51836 | No |
| 21 | GOM_TRA_1PNPDK20120127_174439_000000443111_00098_51836_5456.N1 | 27-JAN-2012 17:44:39 | Dark | 44.000 | 131 | Gam Lup | 2.8000 | 26000. | 88 | 51836 | No |
| 22 | GOM_TRA_1PNPDK20120127_180449_000000473111_00099_51837_5456.N1 | 27-JAN-2012 18:04:49 | Dark | 47.000 | 65 | Lam Vel | 2.2040 | 4400.0 | 94 | 51837 | No |
| 23 | GOM_TRA_1PNPDK20120127_192454_000000423111_00099_51837_5457.N1 | 27-JAN-2012 19:24:54 | Dark | 41.500 | 131 | Gam Lup | 2.8000 | 26000. | 83 | 51837 | No |
| 24 | GOM_TRA_1PNPDE20120127_194503_000000473111_00100_51838_8133.N1 | 27-JAN-2012 19:45:03 | Dark | 47.000 | 65 | Lam Vel | 2.2040 | 4400.0 | 94 | 51838 | No |
| 25 | GOM_TRA_1PNPDE20120127_210508_000000433111_00100_51838_8159.N1 | 27-JAN-2012 21:05:08 | Dark | 42.500 | 131 | Gam Lup | 2.8000 | 26000. | 85 | 51838 | No |

3. Plot of GOMOS spectrometers and photometers temperatures from level 1b data



4. Overview of dark signal processing per product

The Dark Charge (DC) is a temperature-dependant signal added to the useful measurements and it is therefore subtracted from them during the processing. There are two phenomena that produce a continuous increase of the DC: the "hot pixels" (a pixel is "hot" when its DC exceeds by a significant amount its value measured on ground at the same temperature) and the "Random Telegraphic Signal" (abrupt change positive or negative of the CCD pixel signal, random in time, affecting only the DC part of the signal and not the photon generated signal).

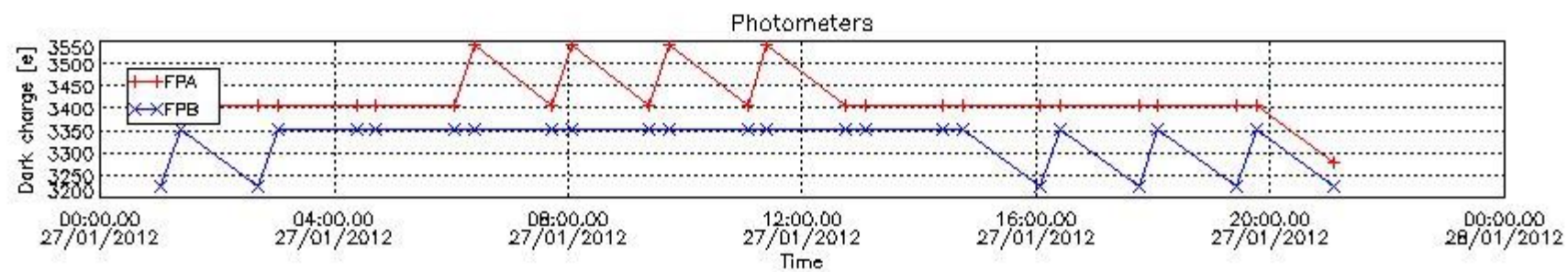
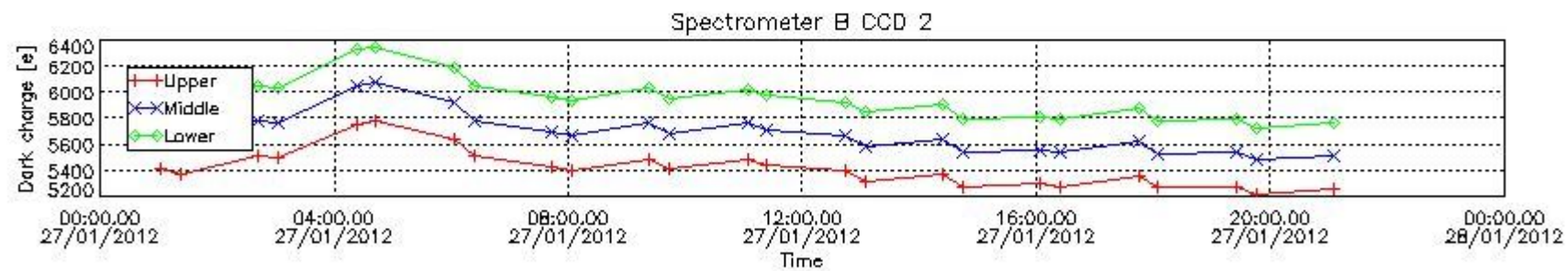
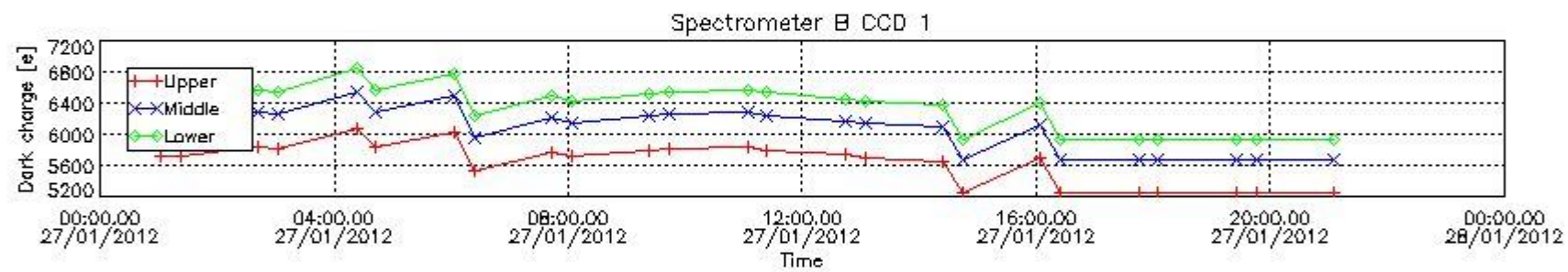
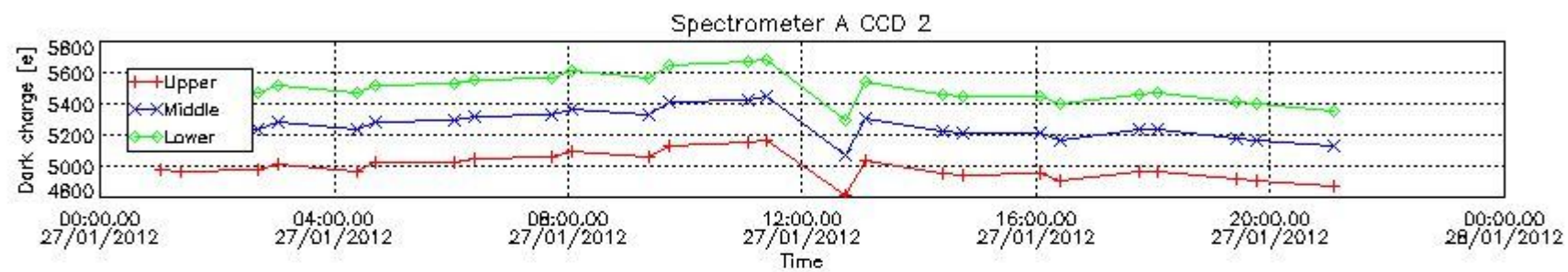
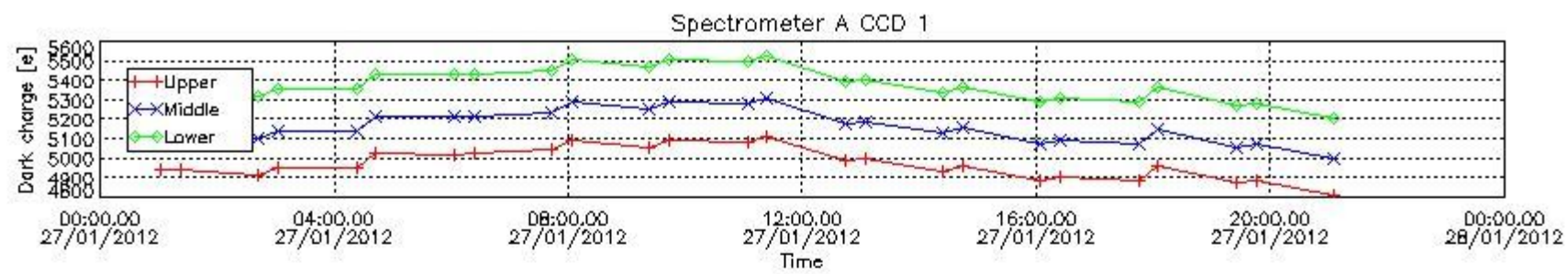
In this section a list of products that did not use the Dark Sky Area (DSA) observation for the DC computation is given. It is also provided the mean DC plot per product for dark limb products with no error flag set.

4.1 These products did not use the DSA observation for DC computation:

| Product name | DC information |
|--|----------------|
| GOM_TRA_1PNPDE20120127_010212_000000423111_00088_51826_7773.N1 | DC map used |
| GOM_TRA_1PNPDE20120127_012226_000000463111_00089_51827_7774.N1 | DC map used |
| GOM_TRA_1PNPDE20120127_024227_000000413111_00089_51827_7810.N1 | DC map used |
| GOM_TRA_1PNPDE20120127_030240_000000463111_00090_51828_7811.N1 | DC map used |
| GOM_TRA_1PNPDE20120127_042242_000000423111_00090_51828_7864.N1 | DC map used |
| GOM_TRA_1PNPDE20120127_044254_000000493111_00091_51829_7865.N1 | DC map used |
| GOM_TRA_1PNPDE20120127_060256_000000433111_00091_51829_7921.N1 | DC map used |
| GOM_TRA_1PNPDE20120127_062309_000000473111_00092_51830_7922.N1 | DC map used |
| GOM_TRA_1PNPDK20120127_074311_000000443111_00092_51830_5456.N1 | DC map used |
| GOM_TRA_1PNPDK20120127_080323_000000463111_00093_51831_5457.N1 | DC map used |
| GOM_TRA_1PNPDK20120127_092326_000000443111_00093_51831_5456.N1 | DC map used |
| GOM_TRA_1PNPDK20120127_094337_000000473111_00094_51832_5457.N1 | DC map used |
| GOM_TRA_1PNPDK20120127_110340_000000443111_00094_51832_5456.N1 | DC map used |
| GOM_TRA_1PNPDK20120127_112352_000000493111_00095_51833_5457.N1 | DC map used |

| | |
|--|-------------|
| GOM_TRA_1PNPDK20120127_124355_000000443111_00095_51833_5456.N1 | DC map used |
| GOM_TRA_1PNPDK20120127_130406_000000483111_00096_51834_5457.N1 | DC map used |
| GOM_TRA_1PNPDK20120127_142410_000000423111_00096_51834_5456.N1 | DC map used |
| GOM_TRA_1PNPDK20120127_144420_000000473111_00097_51835_5457.N1 | DC map used |
| GOM_TRA_1PNPDK20120127_160424_000000433111_00097_51835_5456.N1 | DC map used |
| GOM_TRA_1PNPDK20120127_162435_000000493111_00098_51836_5457.N1 | DC map used |
| GOM_TRA_1PNPDK20120127_174439_000000443111_00098_51836_5456.N1 | DC map used |
| GOM_TRA_1PNPDK20120127_180449_000000473111_00099_51837_5456.N1 | DC map used |
| GOM_TRA_1PNPDK20120127_192454_000000423111_00099_51837_5457.N1 | DC map used |
| GOM_TRA_1PNPDE20120127_194503_000000473111_00100_51838_8133.N1 | DC map used |
| GOM_TRA_1PNPDE20120127_210508_000000433111_00100_51838_8159.N1 | DC map used |

4.2 Plot of mean dark charges per product: only products in DARK limb conditions without errors are used



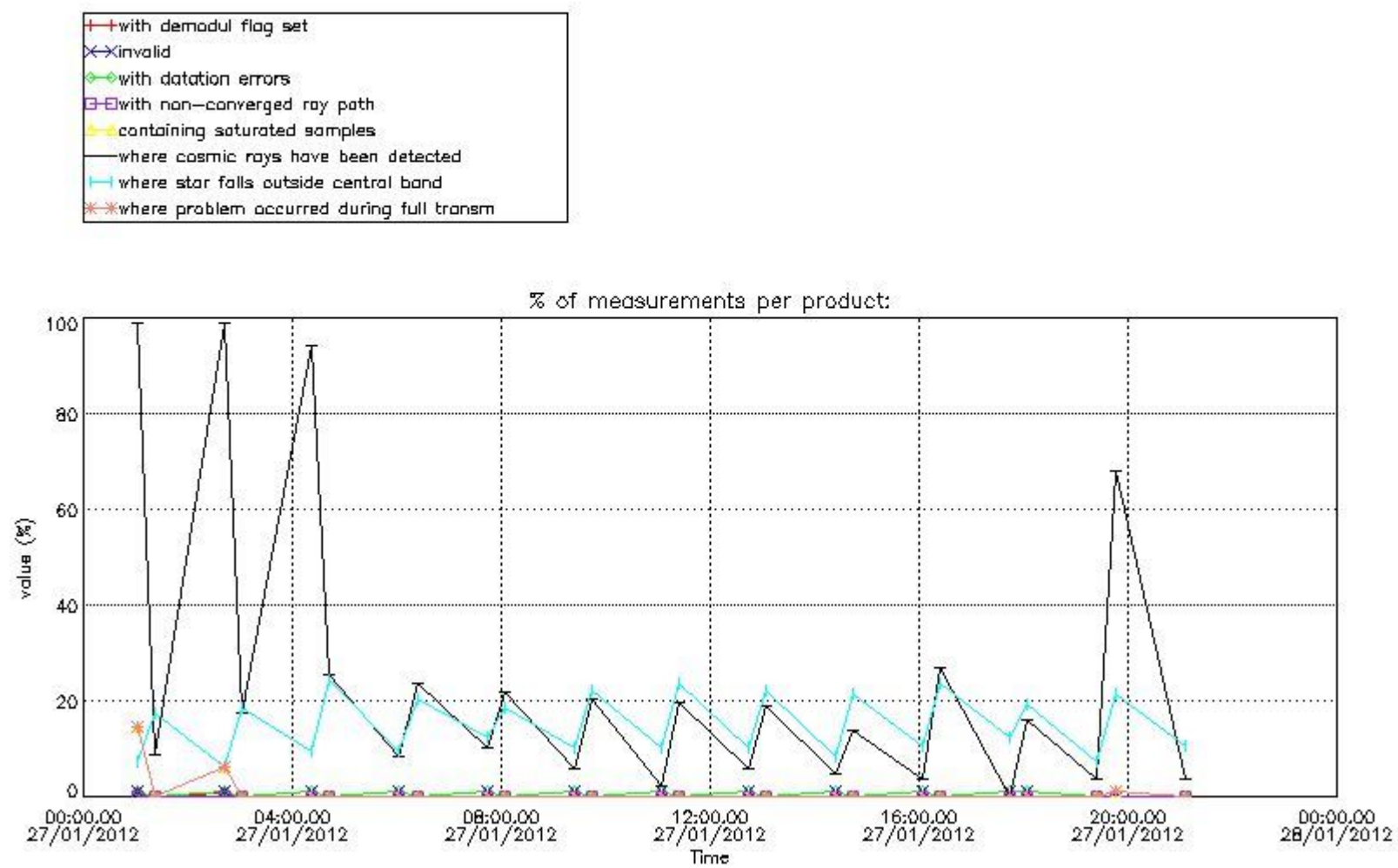
5. Demodulation flag and quality information monitoring

In this section it is presented the modulation information extracted from the pcd (product confidence data) at measurement level and information extracted from the Quality Summary dataset. Only products without errors (error flag in the MPH set to "0") are used.

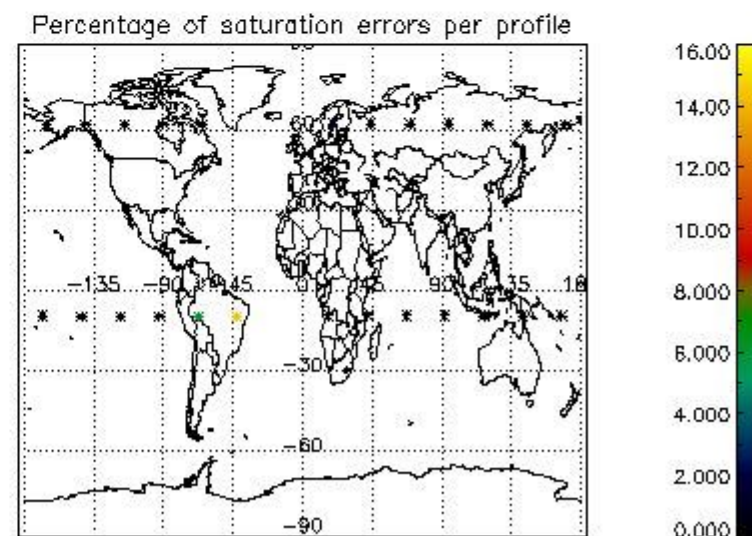
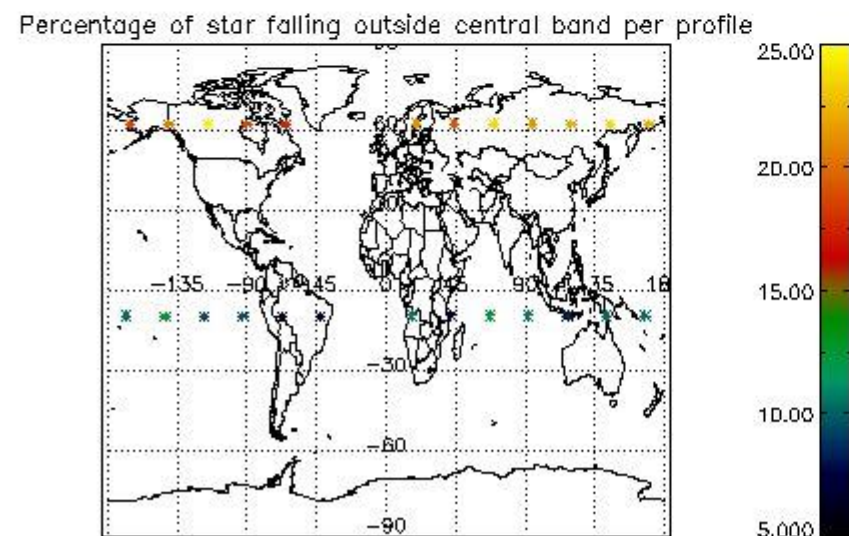
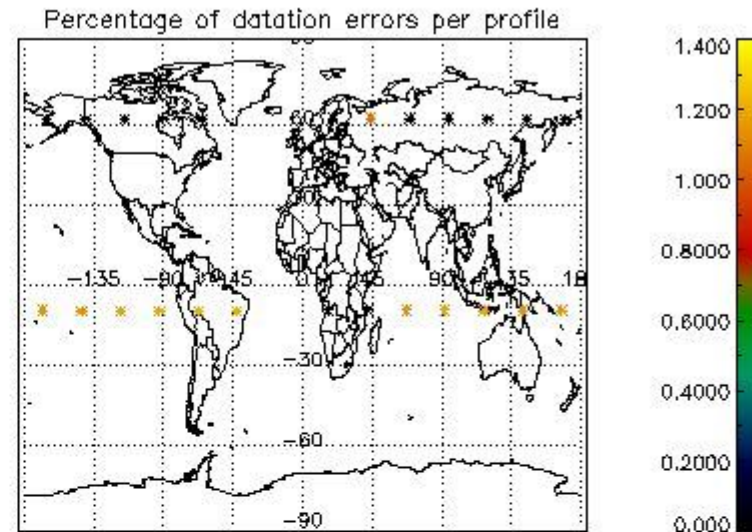
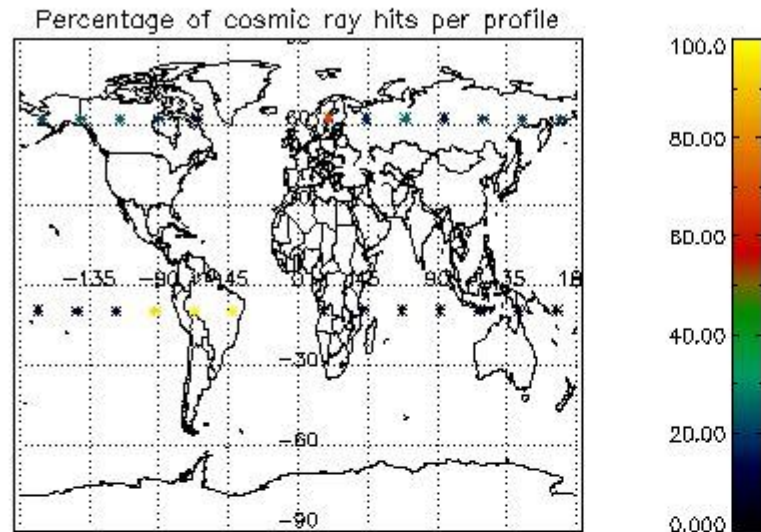
5.1 Percentage of products during reporting period with:

| | |
|---|-----------|
| At least one measurement with demodulation flag set: | 84.0000 % |
| Reference spectrum computed from DB: | 0.00000 % |
| Reference spectrum with small number of measurements: | 0.00000 % |
| SATU data not used: | 0.00000 % |

5.2 Plot quality information per product (time dependant)



5.3 Plot quality information per product (world map)



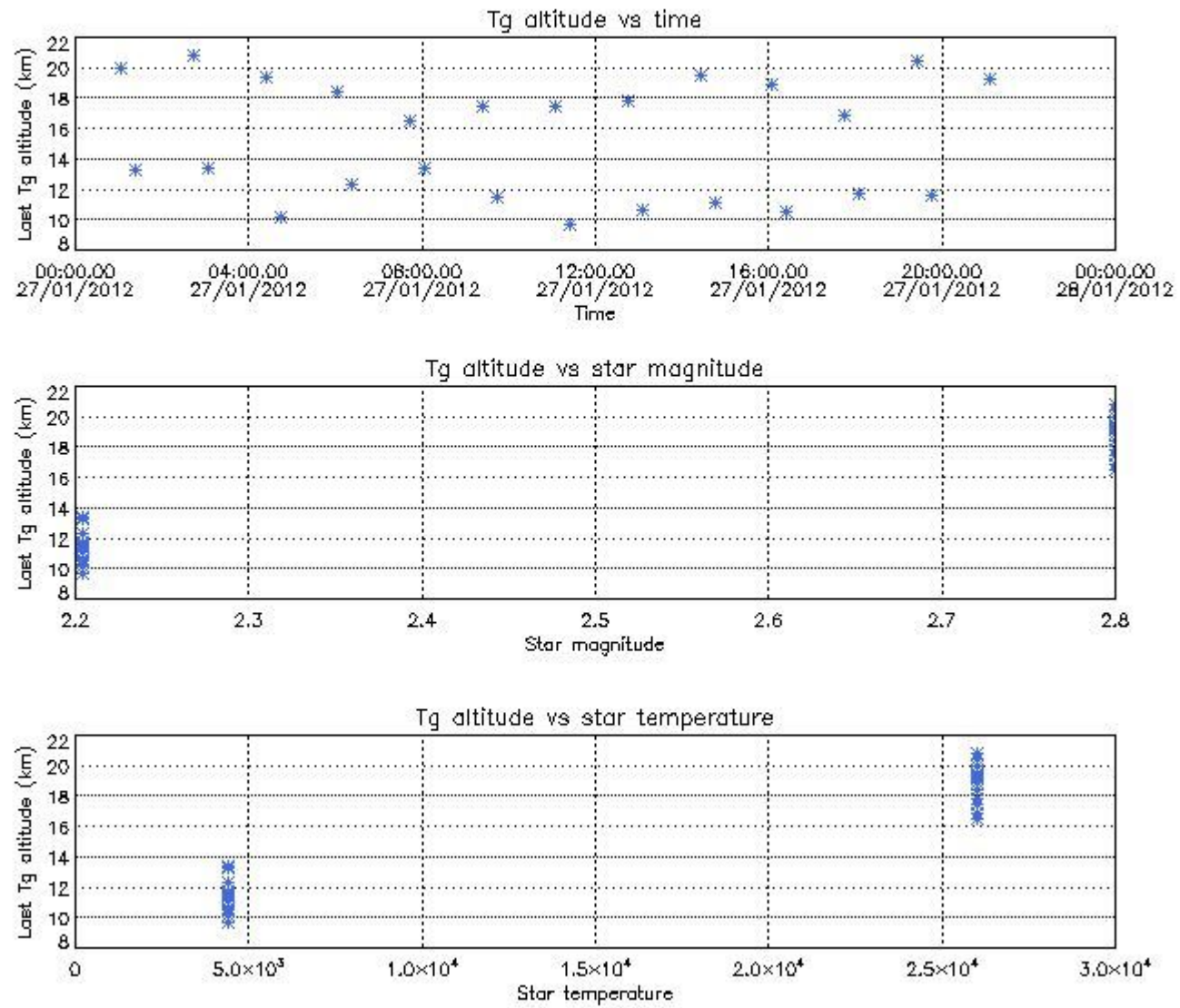
6. Statistics and plot of tangent altitude of the last measurement (DARK & BRIGHT products without errors)

6.1 Statistics on tangent altitude lost:

| Statistics | DARK | BRIGHT | TWILIGHT |
|-----------------|--------|--------|----------|
| Mean: | 15.289 | NaN | NaN |
| St. deviation: | 3.8290 | NaN | NaN |
| Maximum: | 20.809 | NaN | NaN |
| Minimum: | 9.7271 | NaN | NaN |
| Number of data: | 25.000 | NaN | NaN |

6.2 Plot for DARK limb products

Tangent altitude at which the star is lost

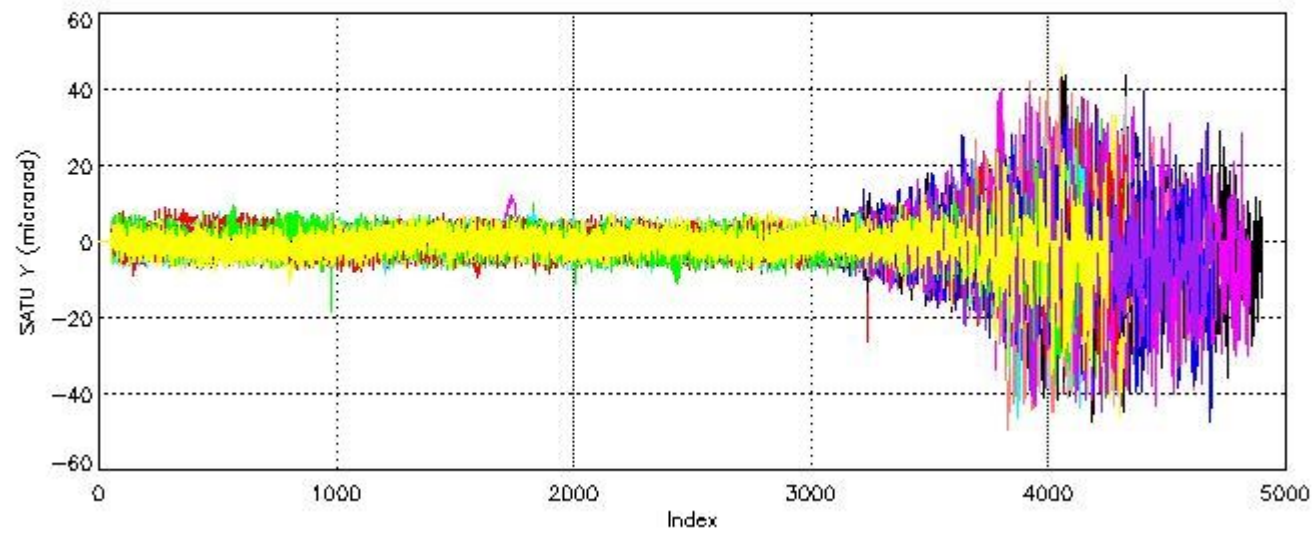
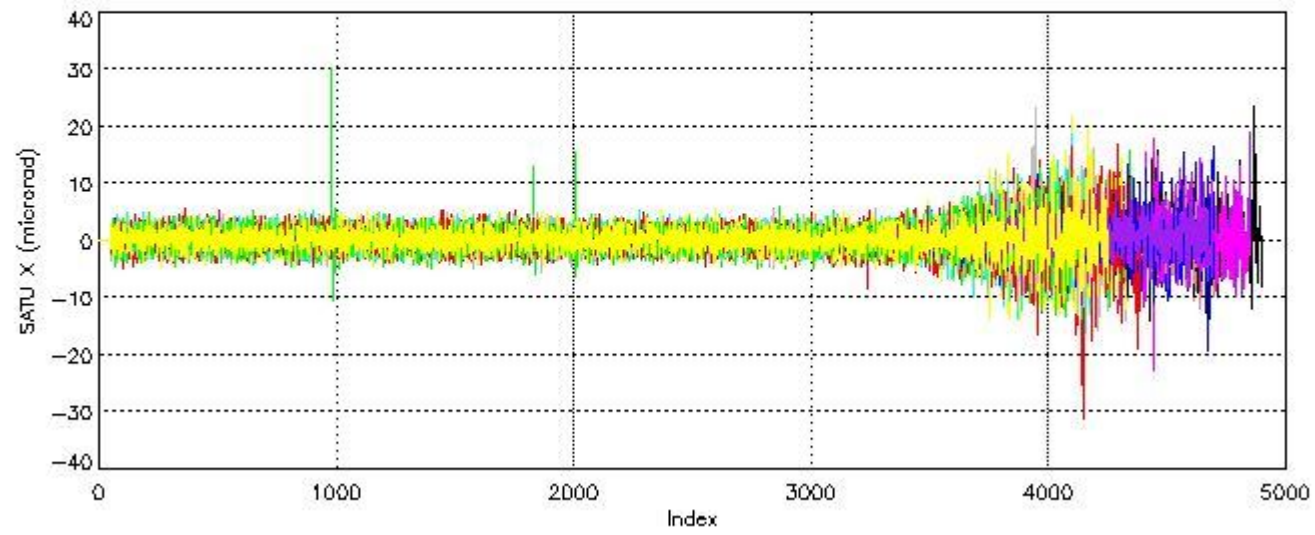


7. Star Acquisition and Tracking Unit (SATU)

The Star Acquisition and Tracking Unit (SATU) analyses the position of the tracked star beam collected by the GOMOS telescope and deflected by the optical beam dispatcher. The main function of the SATU is to detect a star, provide its image position to the science data electronics and to help the pointing function to keep the star image at a fixed position. In tracking mode the SATU data is recorded with a frequency of 100 Hz.

7.1 SATU 'X' and 'Y' axis plots (dark limb)

SATU CCD 'X' and 'Y' axis plots are provided in order to detect any abnormal behaviour of the tracking system. For every occultation (color) the plot should remain stable (with some noise) until we are deep in the atmosphere where big fluctuations are registered due to the refractive effects.



7.2 Statistics on SATU Noise Equivalent Angle (NEA) for DARK (D) and BRIGHT (B) products above 105 kms

The Star Acquisition and Tracking Unit (it is the CCD that tracks the star while it is occulted) Noise Equivalent Angle consists of the statistical angular variation of the SATU data above the atmosphere.

Statistics (in microradians) above 105 km are computed for every occultation, giving four values per occultation: one in the 'X' direction and one in the 'Y' direction for dark and bright limbs. A mean value per day in every direction and limb is calculated and monitored in order to assess instrument performance in terms of star pointing.

7.2.1 SATU NEA Statistics (table)

| Statistics | SATU X (D) | SATU Y (D) | SATU X (B) | SATU Y (B) |
|----------------|------------|------------|------------|------------|
| Mean: | 0.24257 | -0.20825 | NaN | NaN |
| St. deviation: | 0.90414 | 1.8323 | NaN | NaN |
| Maximum: | 30.100 | 9.5000 | NaN | NaN |
| Minimum: | -10.700 | -18.200 | NaN | NaN |

| | | | | |
|-----------------|--------|--------|-----|-----|
| Number of data: | 24400. | 24400. | NaN | NaN |
| 90Percentile: | 1.6000 | 2.7000 | NaN | NaN |

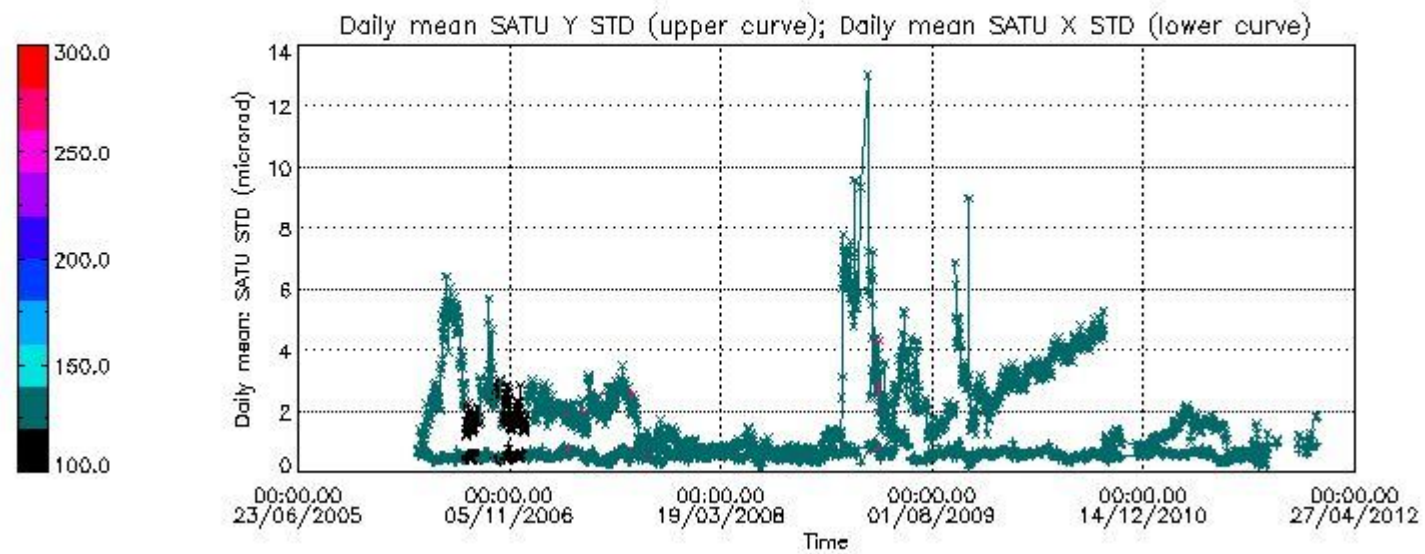
7.2.2 Trend of daily SATU NEA St. deviation since 1st April 2006 (dark limb) and of daily SATU NEA 90th percentile since May 2011

The long term trend of the SATU 'X' and 'Y' standard deviations should be constant during the whole mission.

The colorbar represents the start tangent altitude (km) of the occultations.

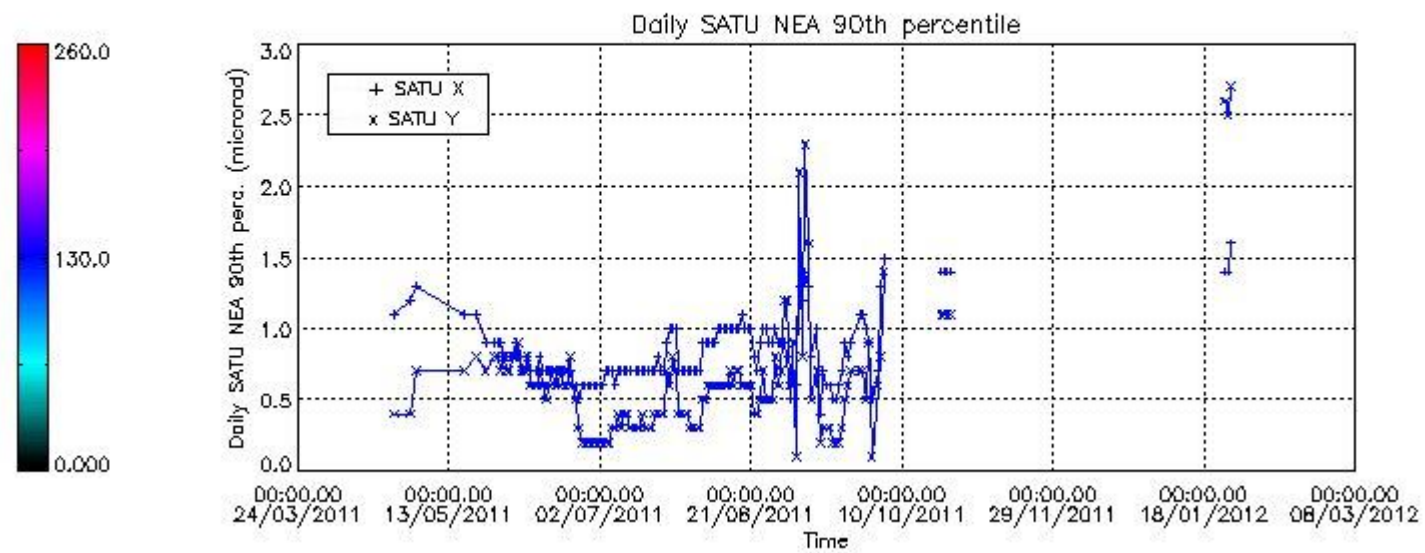
Upper curve: STD of SATU Y axis

Lower curve: STD of SATU X axis



Lower curve: 90th percentile of SATU Y axis

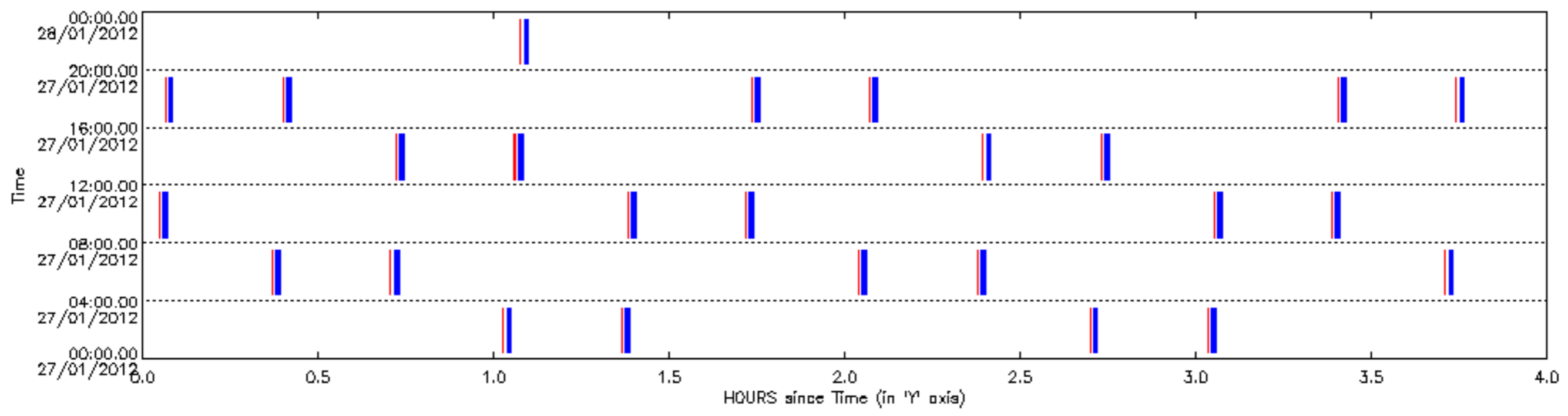
Upper curve: 90th percentile of SATU X axis

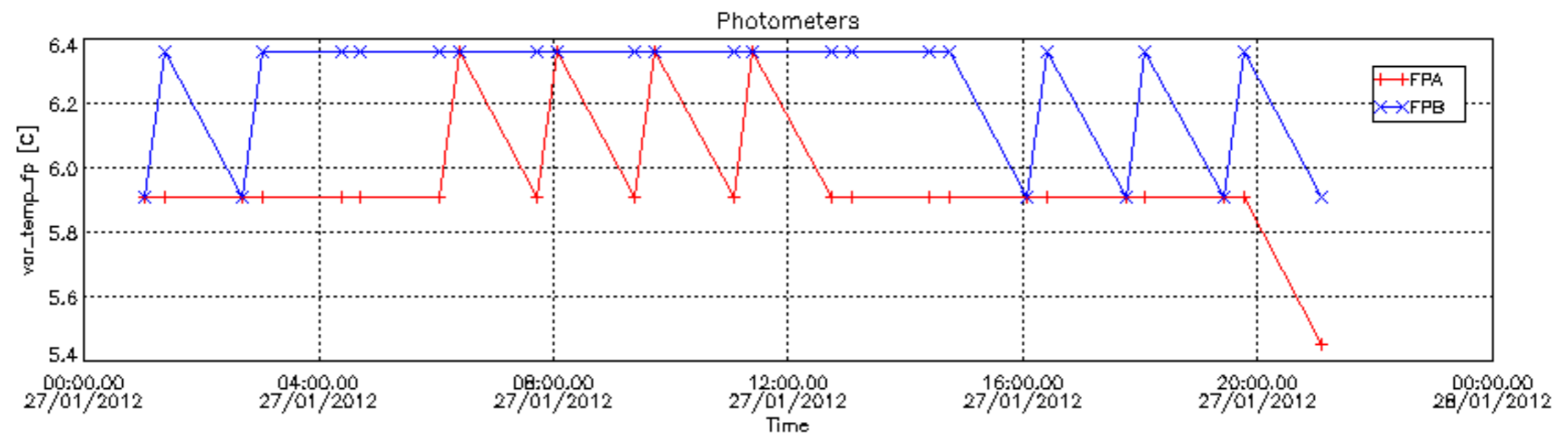
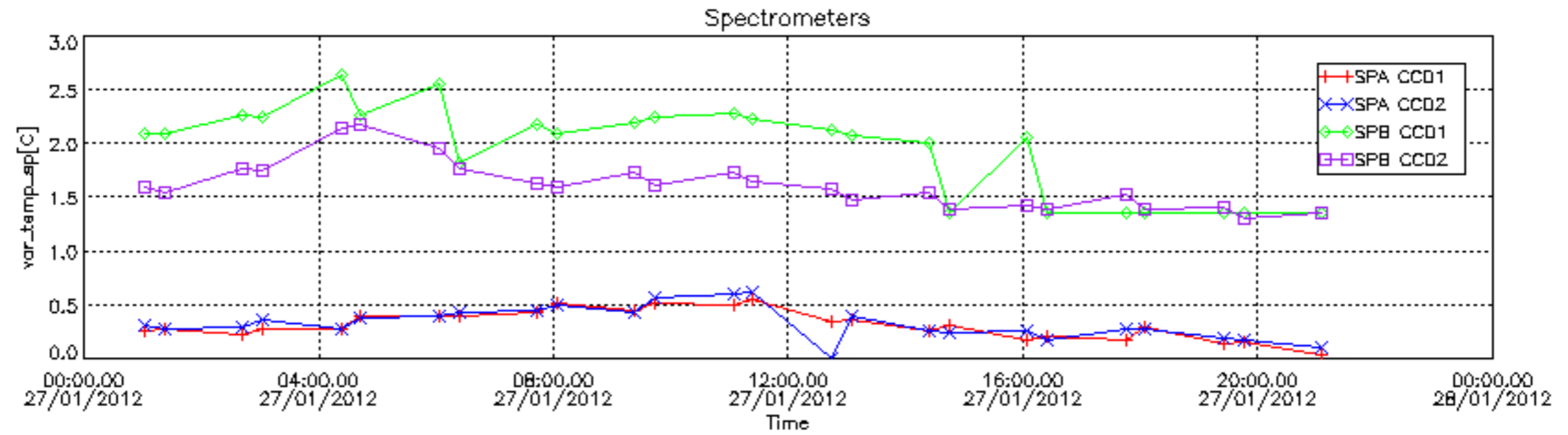


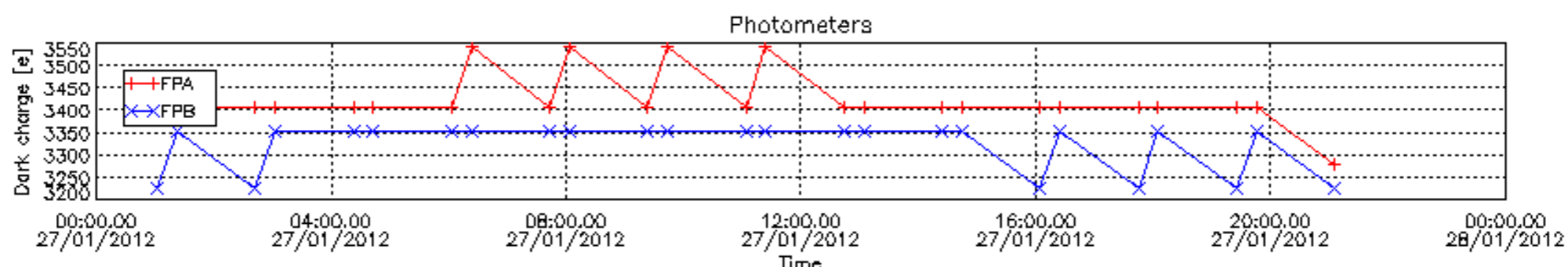
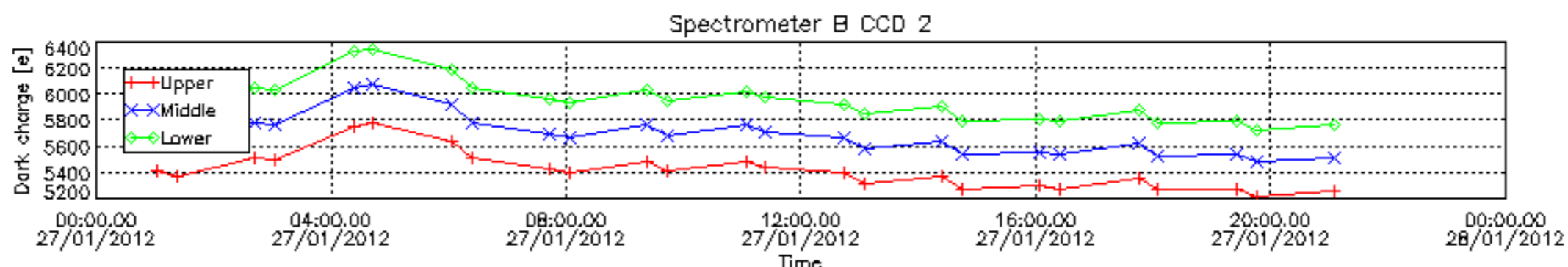
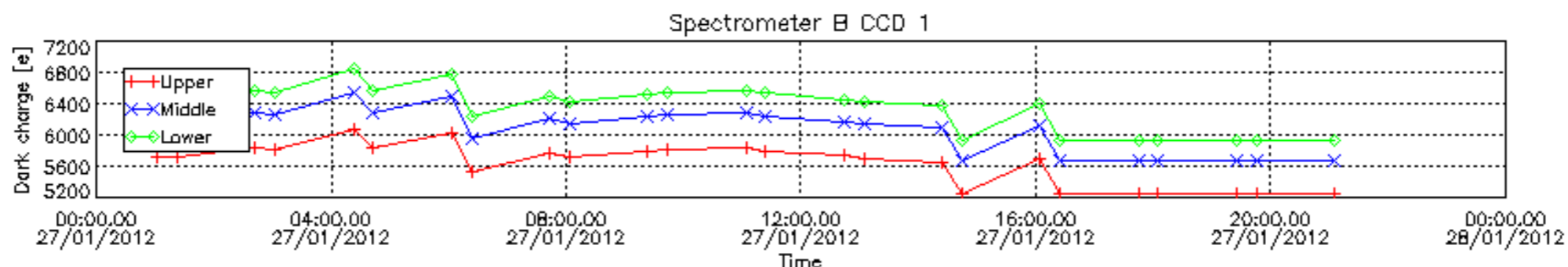
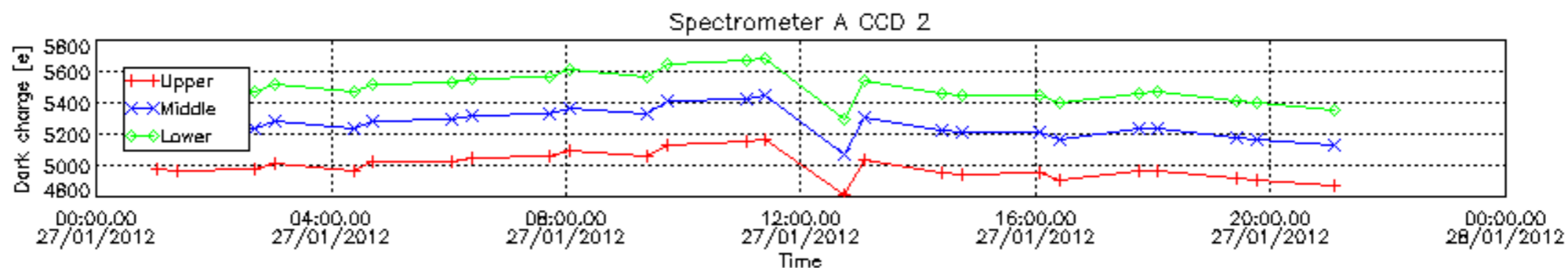
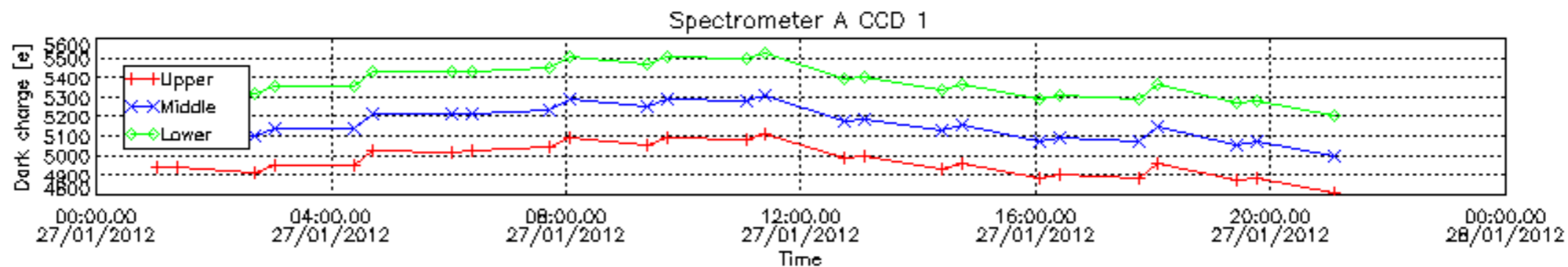
8. Auxiliary Data Files used for the production reported in section 2.4

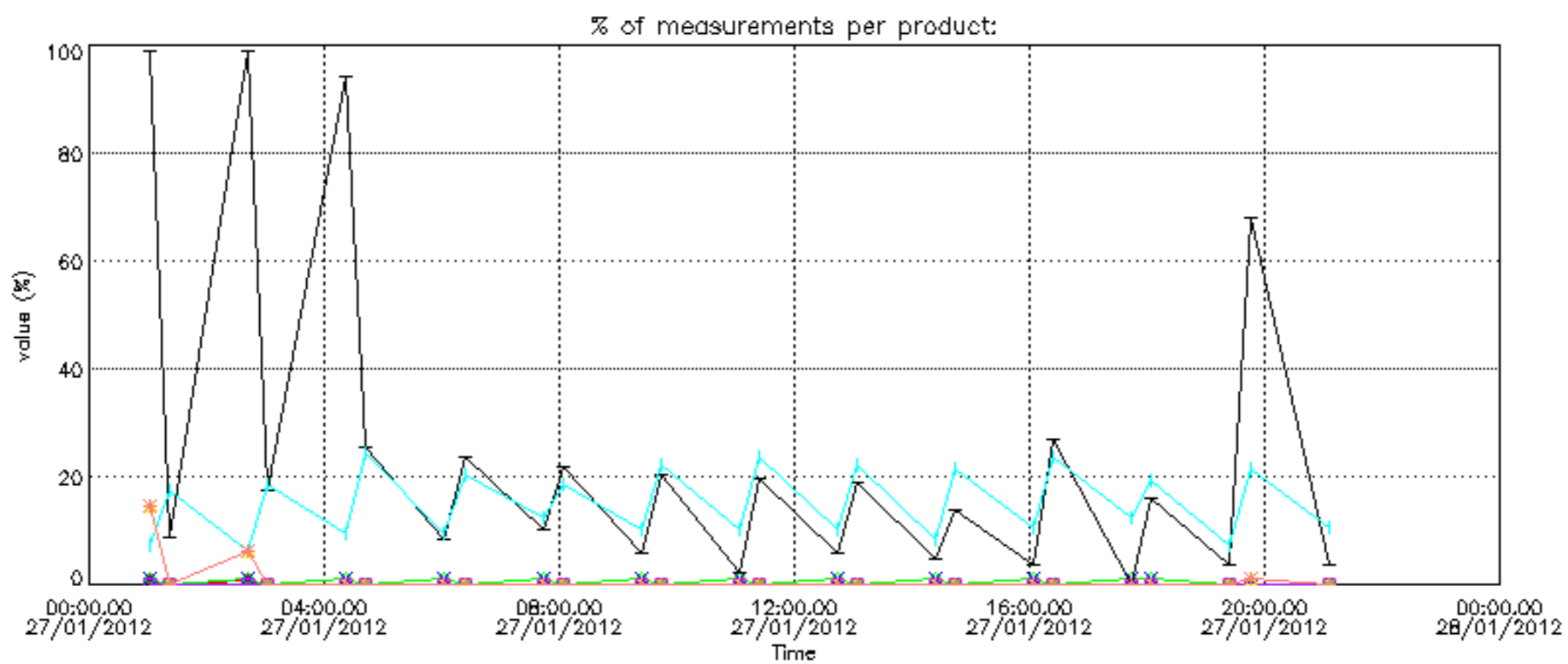
The number reported in the third column indicates since which file (see list in section 2.4) the corresponding auxiliary file has been used. The fourth column is the date of those product files.

| Type | Auxiliary Filename | Used since product | Used since product date |
|---------------------------|---|--------------------|-------------------------|
| INST_PHYS_CHARACTERISTICS | GOM_INS_AXVIEC20111213_163131_20111215_000000_20500101_000000 | 1 | 27-JAN-2012 01:02:12 |
| CALIBRATION_DATABASE | GOM_CAL_AXVIEC20120113_084220_20120102_000000_20500101_000000 | 1 | 27-JAN-2012 01:02:12 |
| LEVEL-1B_PROC_CONFIG | GOM_PR1_AXVIEC20110513_081743_20020301_000000_20500101_000000 | 1 | 27-JAN-2012 01:02:12 |
| STAR_CATALOGUE | GOM_CAT_AXVIEC20020121_161009_20020101_000000_20200101_000000 | 1 | 27-JAN-2012 01:02:12 |
| STELLAR_SPECTRA_DATABANK | GOM_STS_AXVIEC20091111_151504_20020101_160000_20500101_000000 | 1 | 27-JAN-2012 01:02:12 |
| ECMWF_FILE | AUX_ECF_AXNECM20120126_062116_20120126_210000_20120127_090000 | 1 | 27-JAN-2012 01:02:12 |
| ECMWF_FILE | AUX_ECF_AXNECM20120126_182115_20120127_030000_20120127_150000 | 5 | 27-JAN-2012 04:22:42 |
| ECMWF_FILE | AUX_ECA_AXNECM20120127_062115_20120126_210000_20120127_090000 | 7 | 27-JAN-2012 06:02:56 |
| ECMWF_FILE | AUX_ECA_AXNECM20120127_180914_20120127_030000_20120127_150000 | 9 | 27-JAN-2012 07:43:11 |
| ECMWF_FILE | AUX_ECA_AXNECM20120127_180915_20120127_090000_20120127_210000 | 15 | 27-JAN-2012 12:43:55 |
| ECMWF_FILE | AUX_ECF_AXNECM20120127_062116_20120127_210000_20120128_090000 | 25 | 27-JAN-2012 21:05:08 |
| OPTIONAL_ECMWF_FILE | MISSING | 1 | 27-JAN-2012 01:02:12 |
| OPTIONAL_ECMWF_FILE | AUX_ECA_AXNECM20120127_180915_20120127_090000_20120127_210000 | 11 | 27-JAN-2012 09:23:26 |
| ORBIT_DATA_FILE | AUX_FPO_AXVPDS20120126_112113_20120125_190045_20120204_211424 | 1 | 27-JAN-2012 01:02:12 |
| ORBIT_DATA_FILE | AUX_FPO_AXVPDS20120127_232914_20120126_182400_20120205_203739 | 9 | 27-JAN-2012 07:43:11 |

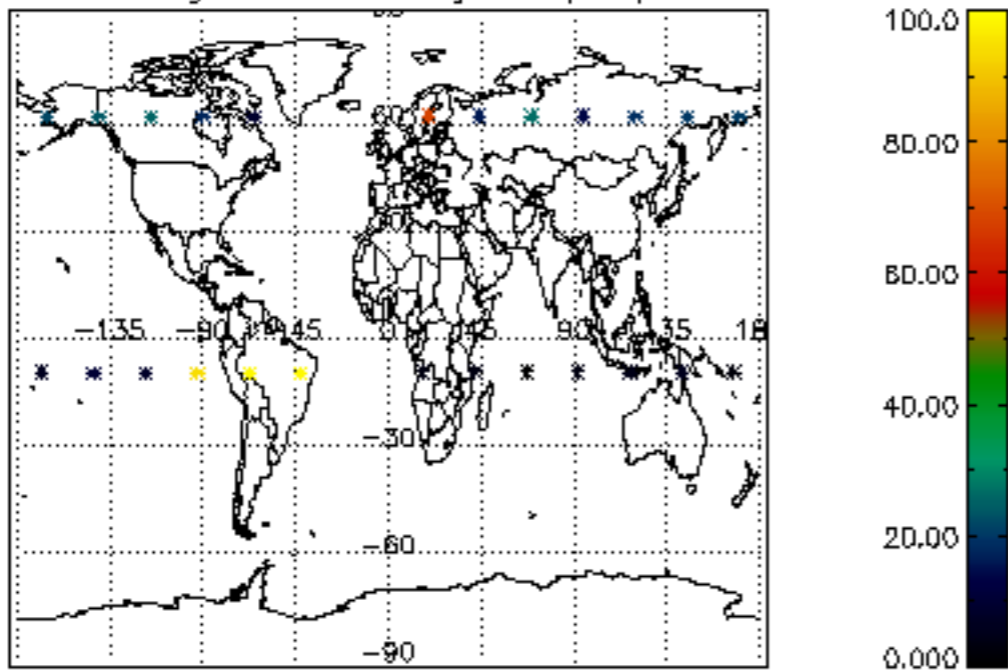




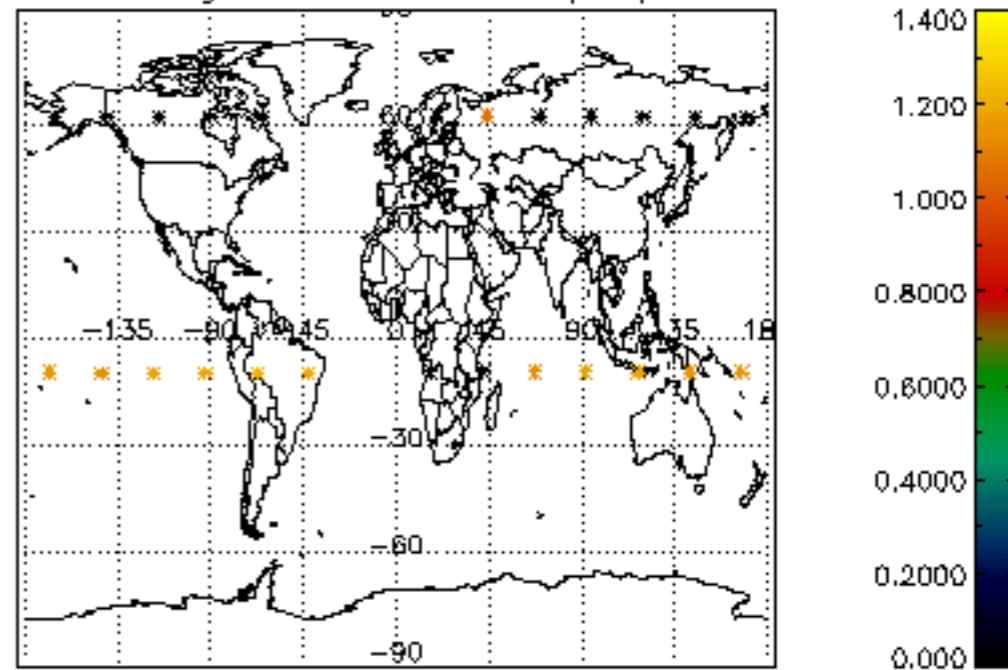




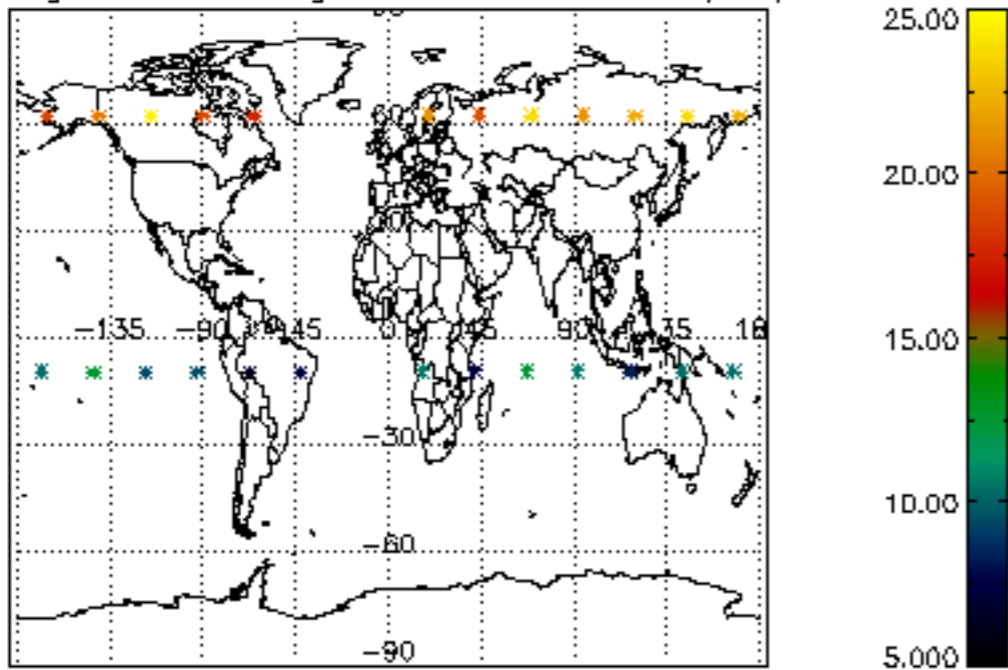
Percentage of cosmic ray hits per profile



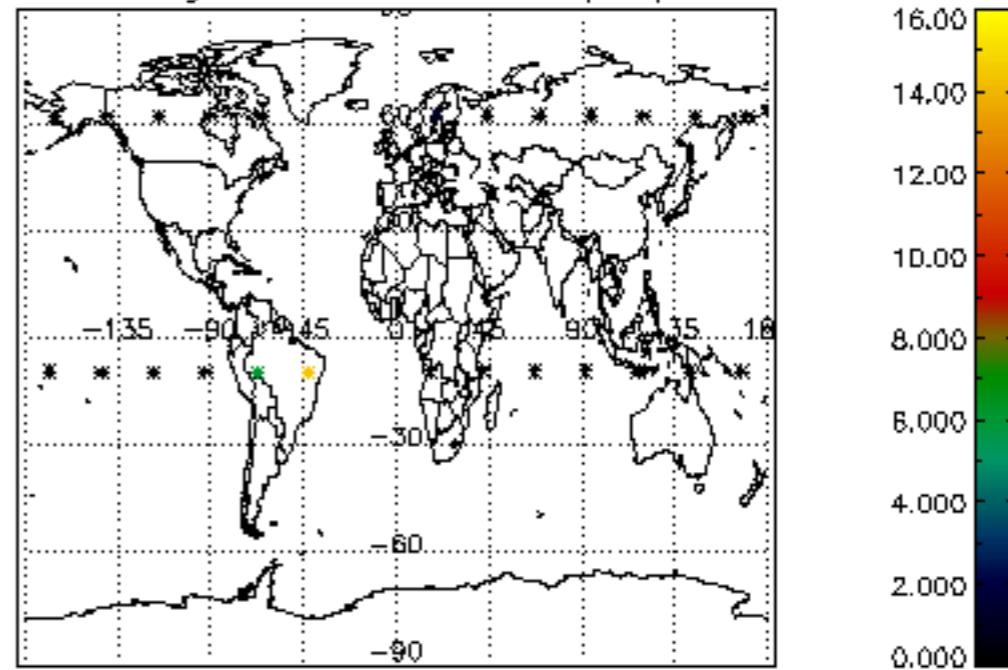
Percentage of datation errors per profile



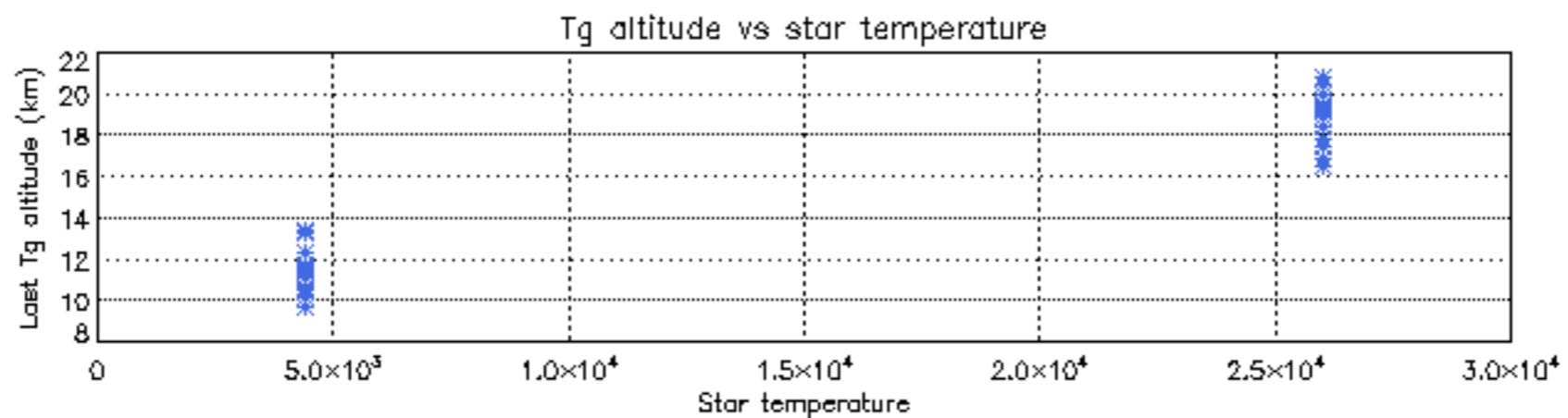
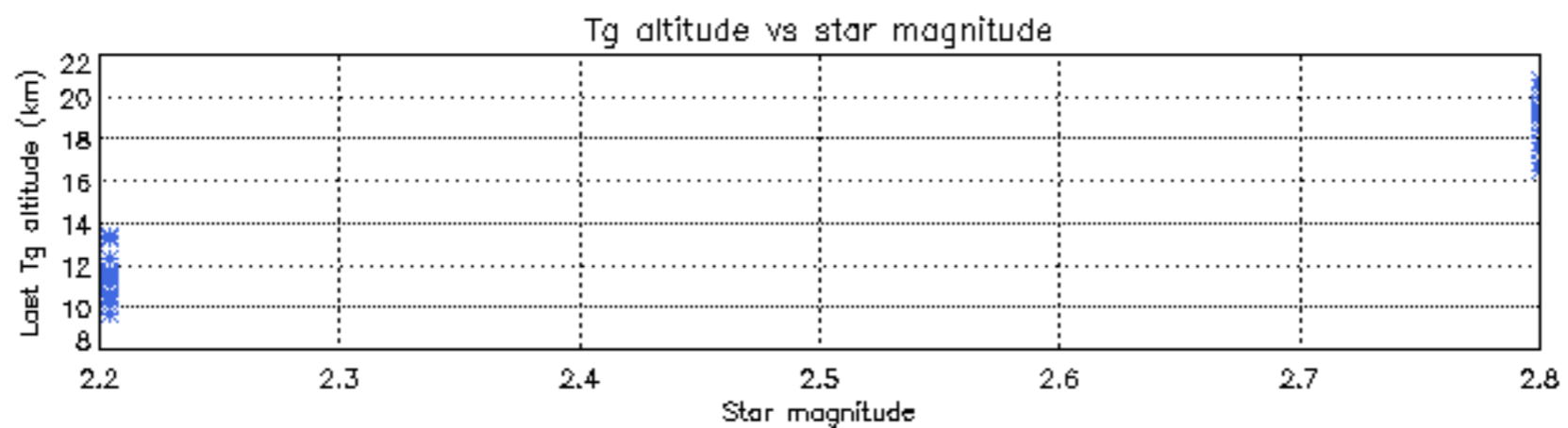
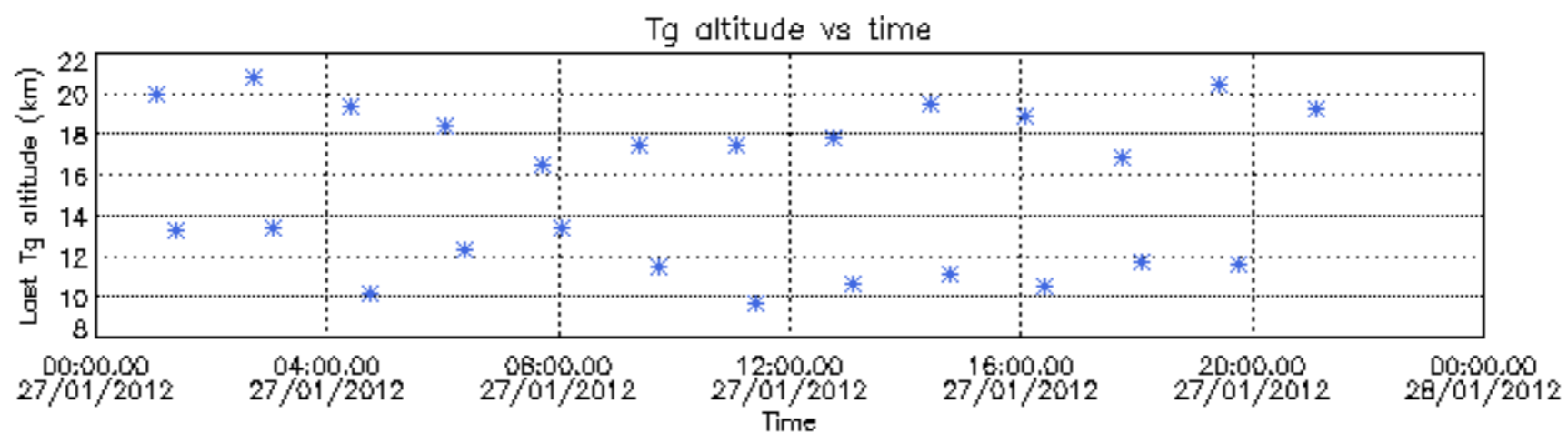
Percentage of star falling outside central band per profile

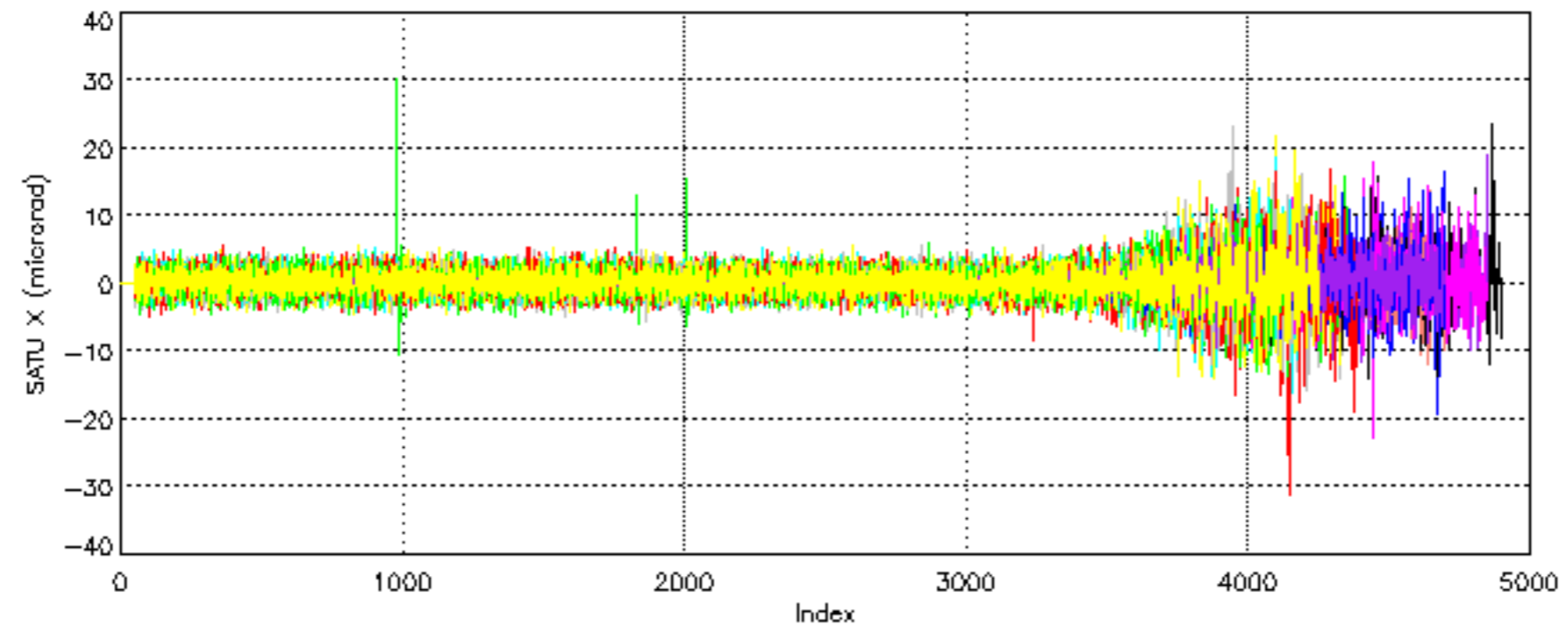


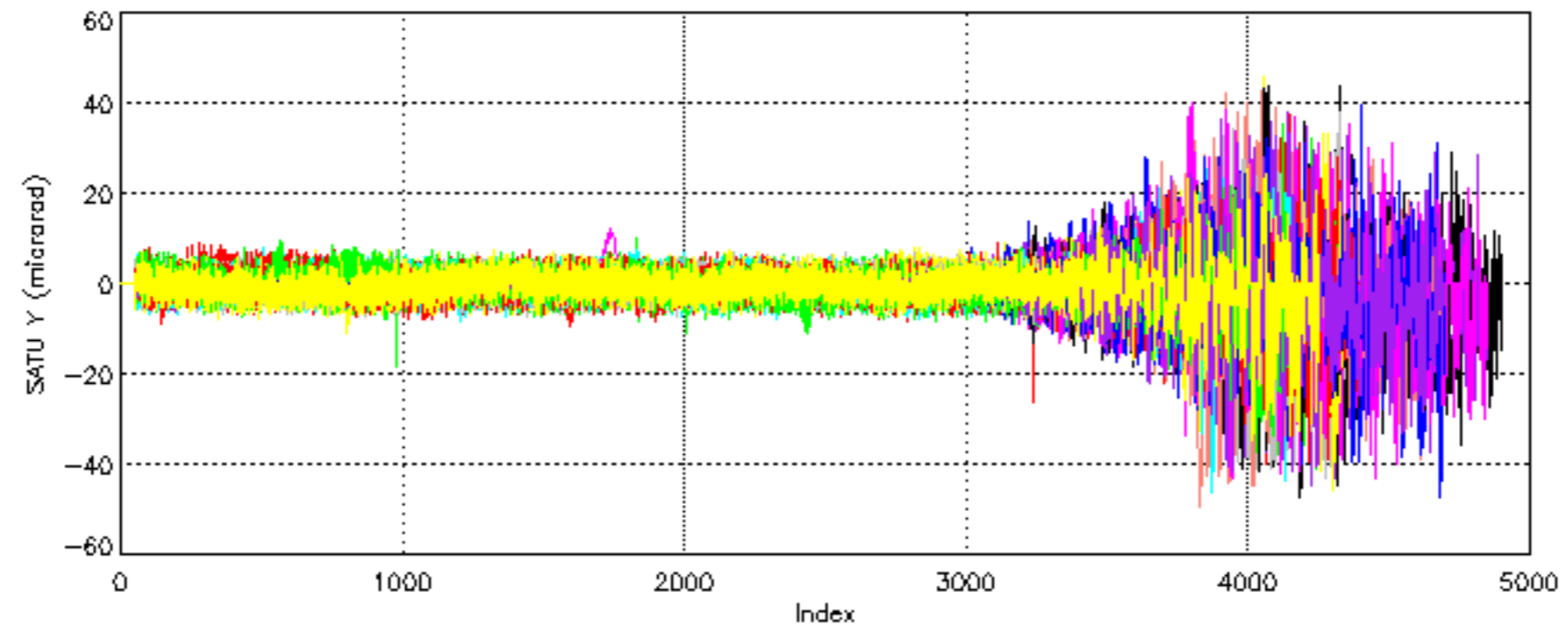
Percentage of saturation errors per profile

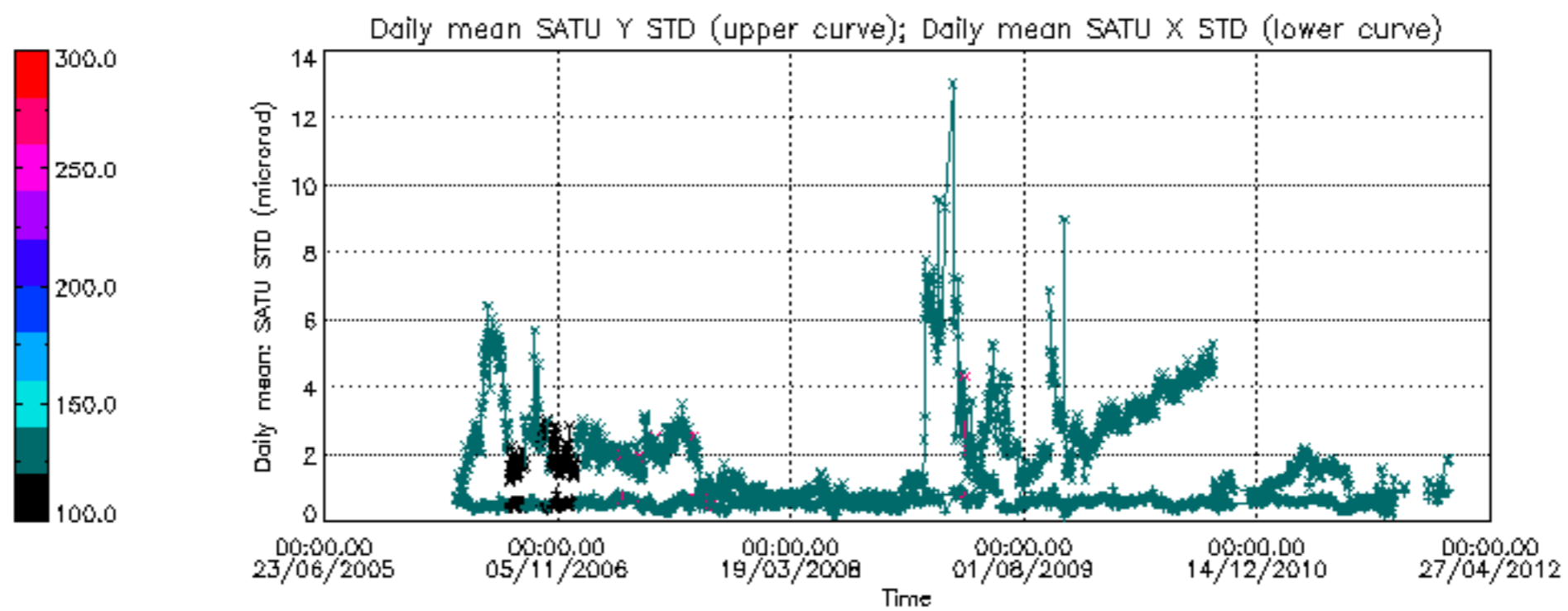


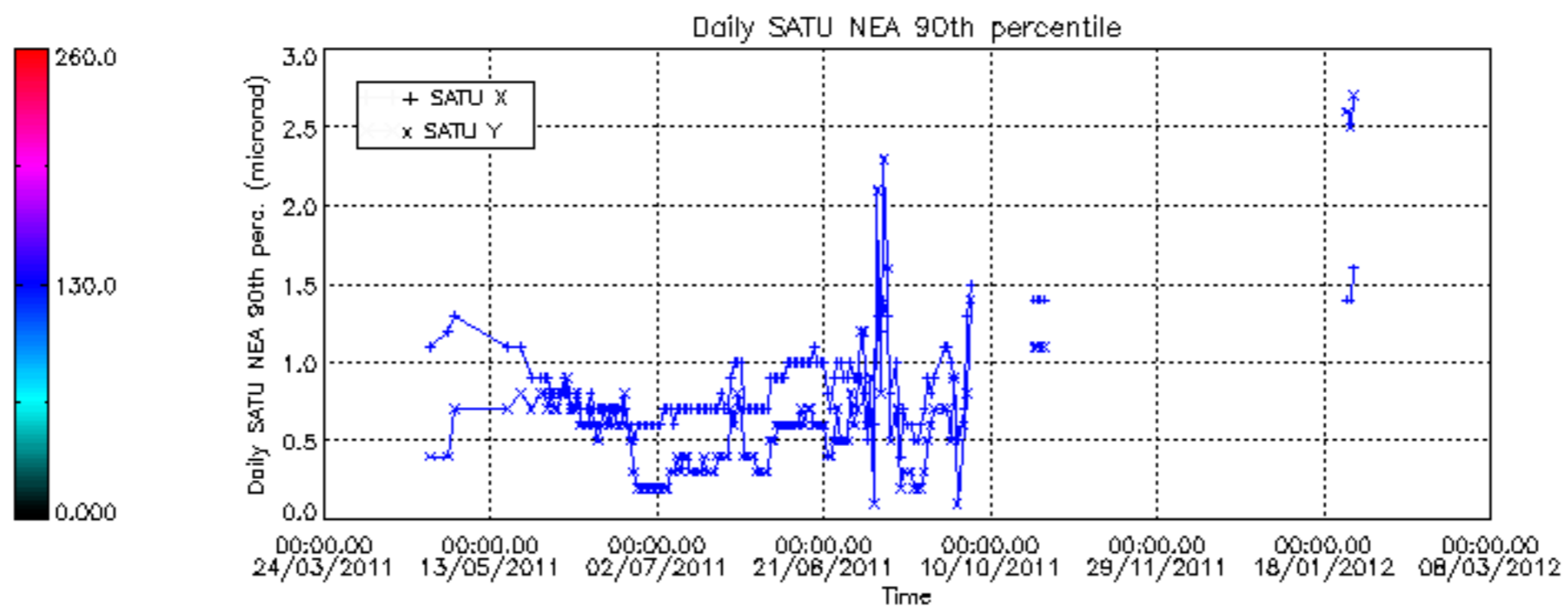
Tangent altitude at which the star is lost











/nas3/ENVISAT/GOMOS/GOM_NL__0P/GOM_NL__0PNPDE20120102_013403_000060733110_00161_51468_3712.N1
1; 749.3; 02-JAN-2012 01:34:03; Dark ; 59.0; 0; ; 0.00; 0;occ; 118; 0;51468
2; 6763.8; 02-JAN-2012 03:14:17; Dark ; 59.0; 0; ; 0.00; 0;occ; 118; 0;51469
/nas3/ENVISAT/GOMOS/GOM_NL__0P/GOM_NL__0PNPDK20120102_081755_00000433110_00165_51472_5504.N1
1; 925.9; 02-JAN-2012 08:17:55; Dark ; 43.5; 34; Gam2Vel ; 1.79; 23000;occ; 87; 0;51472
/nas3/ENVISAT/GOMOS/GOM_NL__0P/GOM_NL__0PNPDK20120102_095810_00000403110_00166_51473_5505.N1
1; 926.1; 02-JAN-2012 09:58:10; Dark ; 41.0; 34; Gam2Vel ; 1.79; 23000;occ; 82; 0;51473
/nas3/ENVISAT/GOMOS/GOM_NL__0P/GOM_NL__0PNPDK20120102_113824_00000413110_00167_51474_5506.N1
1; 926.6; 02-JAN-2012 11:38:24; Dark ; 41.5; 34; Gam2Vel ; 1.79; 23000;occ; 83; 0;51474
/nas3/ENVISAT/GOMOS/GOM_NL__0P/GOM_NL__0PNPDK20120102_131838_00000423110_00168_51475_5507.N1
1; 927.2; 02-JAN-2012 13:18:38; Dark ; 43.0; 34; Gam2Vel ; 1.79; 23000;occ; 86; 0;51475
/nas3/ENVISAT/GOMOS/GOM_NL__0P/GOM_NL__0PNPDK20120102_145853_00000443110_00169_51476_5508.N1
1; 927.7; 02-JAN-2012 14:58:53; Dark ; 44.5; 34; Gam2Vel ; 1.79; 23000;occ; 89; 0;51476
/nas3/ENVISAT/GOMOS/GOM_NL__0P/GOM_NL__0PNPDK20120102_163907_00000463110_00170_51477_5509.N1
1; 928.1; 02-JAN-2012 16:39:07; Dark ; 46.5; 34; Gam2Vel ; 1.79; 23000;occ; 93; 0;51477
/nas3/ENVISAT/GOMOS/GOM_NL__0P/GOM_NL__0PNPDK20120103_074117_00000413110_00179_51486_5510.N1
1; 932.5; 03-JAN-2012 07:41:17; Dark ; 42.0; 34; Gam2Vel ; 1.79; 23000;occ; 84; 0;51486
/nas3/ENVISAT/GOMOS/GOM_NL__0P/GOM_NL__0PNPDK20120103_092132_00000403110_00180_51487_5511.N1
1; 933.0; 03-JAN-2012 09:21:32; Dark ; 41.0; 34; Gam2Vel ; 1.79; 23000;occ; 82; 0;51487
/nas3/ENVISAT/GOMOS/GOM_NL__0P/GOM_NL__0PNPDK20120103_110146_00000413110_00181_51488_5512.N1
1; 933.4; 03-JAN-2012 11:01:46; Dark ; 41.5; 34; Gam2Vel ; 1.79; 23000;occ; 83; 0;51488
/nas3/ENVISAT/GOMOS/GOM_NL__0P/GOM_NL__0PNPDK20120103_124200_00000463110_00182_51489_5513.N1
1; 933.9; 03-JAN-2012 12:42:00; Dark ; 47.0; 34; Gam2Vel ; 1.79; 23000;occ; 94; 0;51489
/nas3/ENVISAT/GOMOS/GOM_NL__0P/GOM_NL__0PNPDK20120103_142215_00000443110_00183_51490_5514.N1
1; 934.4; 03-JAN-2012 14:22:15; Dark ; 45.0; 34; Gam2Vel ; 1.79; 23000;occ; 90; 0;51490
/nas3/ENVISAT/GOMOS/GOM_NL__0P/GOM_NL__0PNPDK20120103_160229_00000443110_00184_51491_5515.N1
1; 934.8; 03-JAN-2012 16:02:29; Dark ; 44.5; 34; Gam2Vel ; 1.79; 23000;occ; 89; 0;51491
/nas3/ENVISAT/GOMOS/GOM_NL__0P/GOM_NL__0PNPDK20120103_174244_00000453110_00185_51492_5516.N1
1; 935.2; 03-JAN-2012 17:42:44; Dark ; 45.5; 34; Gam2Vel ; 1.79; 23000;occ; 91; 0;51492
/nas3/ENVISAT/GOMOS/GOM_NL__0P/GOM_NL__0PNPDE20120104_052425_00000413110_00192_51499_3713.N1
1; 938.7; 04-JAN-2012 05:24:25; Dark ; 42.0; 34; Gam2Vel ; 1.79; 23000;occ; 84; 0;51499
/nas3/ENVISAT/GOMOS/GOM_NL__0P/GOM_NL__0PNPDK20120104_070439_00000413110_00193_51500_5517.N1
1; 939.1; 04-JAN-2012 07:04:39; Dark ; 42.0; 34; Gam2Vel ; 1.79; 23000;occ; 84; 0;51500
/nas3/ENVISAT/GOMOS/GOM_NL__0P/GOM_NL__0PNPDK20120104_084453_00000413110_00194_51501_5518.N1
1; 939.6; 04-JAN-2012 08:44:53; Dark ; 41.5; 34; Gam2Vel ; 1.79; 23000;occ; 83; 0;51501
/nas3/ENVISAT/GOMOS/GOM_NL__0P/GOM_NL__0PNPDK20120104_102508_00000473110_00195_51502_5519.N1
1; 940.1; 04-JAN-2012 10:25:08; Dark ; 47.5; 34; Gam2Vel ; 1.79; 23000;occ; 95; 0;51502
/nas3/ENVISAT/GOMOS/GOM_NL__0P/GOM_NL__0PNPDK20120104_120522_00000423110_00196_51503_5520.N1
1; 940.3; 04-JAN-2012 12:05:22; Dark ; 43.0; 34; Gam2Vel ; 1.79; 23000;occ; 86; 0;51503
/nas3/ENVISAT/GOMOS/GOM_NL__0P/GOM_NL__0PNPDK20120104_134536_00000453110_00197_51504_5521.N1
1; 940.9; 04-JAN-2012 13:45:36; Dark ; 45.5; 34; Gam2Vel ; 1.79; 23000;occ; 91; 0;51504
/nas3/ENVISAT/GOMOS/GOM_NL__0P/GOM_NL__0PNPDK20120104_152551_00000453110_00198_51505_5522.N1
1; 941.4; 04-JAN-2012 15:25:51; Dark ; 46.0; 34; Gam2Vel ; 1.79; 23000;occ; 92; 0;51505
/nas3/ENVISAT/GOMOS/GOM_NL__0P/GOM_NL__0PNPDK20120104_170605_00000433110_00199_51506_5523.N1
1; 941.9; 04-JAN-2012 17:06:05; Dark ; 44.0; 34; Gam2Vel ; 1.79; 23000;occ; 88; 0;51506
/nas3/ENVISAT/GOMOS/GOM_NL__0P/GOM_NL__0PNPDE20120105_062800_00000433110_00207_51514_3714.N1
1; 945.5; 05-JAN-2012 06:28:00; Dark ; 44.0; 34; Gam2Vel ; 1.79; 23000;occ; 88; 0;51514
/nas3/ENVISAT/GOMOS/GOM_NL__0P/GOM_NL__0PNPDK20120105_080815_00000423110_00208_51515_5524.N1
1; 946.0; 05-JAN-2012 08:08:15; Dark ; 43.0; 34; Gam2Vel ; 1.79; 23000;occ; 86; 0;51515
/nas3/ENVISAT/GOMOS/GOM_NL__0P/GOM_NL__0PNPDK20120105_090323_000027483110_00208_51515_5525.N1
1; -1759.9; 05-JAN-2012 09:03:23; Dark ; 57.5; 0; ; 0.00; 0;occ; 115; 0;51515
2; -1159.9; 05-JAN-2012 09:13:23; Dark ; 57.5; 0; ; 0.00; 0;occ; 115; 0;51515
3; -559.9; 05-JAN-2012 09:23:23; Dark ; 57.5; 0; ; 0.00; 0;occ; 115; 0;51515
4; 40.1; 05-JAN-2012 09:33:23; Dark ; 57.5; 0; ; 0.00; 0;occ; 115; 0;51516
5; 946.3; 05-JAN-2012 09:48:29; Dark ; 42.5; 34; Gam2Vel ; 1.79; 23000;occ; 85; 0;51516
/nas3/ENVISAT/GOMOS/GOM_NL__0P/GOM_NL__0PNPDK20120105_100323_000051633110_00209_51516_5526.N1
1; 1840.1; 05-JAN-2012 10:03:23; Dark ; 57.5; 0; ; 0.00; 0;occ; 115; 0;51516
2; 2440.1; 05-JAN-2012 10:13:23; Dark ; 57.5; 0; ; 0.00; 0;occ; 115; 0;51516
3; 3040.1; 05-JAN-2012 10:23:23; Dark ; 57.5; 0; ; 0.00; 0;occ; 115; 0;51516
4; 3640.1; 05-JAN-2012 10:33:23; Dark ; 57.0; 0; ; 0.00; 0;occ; 114; 0;51516
5; 4254.5; 05-JAN-2012 10:43:37; Dark ; 57.5; 0; ; 0.00; 0;occ; 115; 0;51516
6; 4854.5; 05-JAN-2012 10:53:37; Dark ; 57.5; 0; ; 0.00; 0;occ; 115; 0;51516
7; 5454.5; 05-JAN-2012 11:03:37; Dark ; 57.5; 0; ; 0.00; 0;occ; 115; 0;51516
8; 6054.5; 05-JAN-2012 11:13:37; Dark ; 57.5; 0; ; 0.00; 0;occ; 115; 0;51517
9; 6960.8; 05-JAN-2012 11:28:44; Dark ; 42.5; 34; Gam2Vel ; 1.79; 23000;occ; 85; 0;51517
/nas3/ENVISAT/GOMOS/GOM_NL__0P/GOM_NL__0PNPDK20120105_114337_000051653110_00210_51517_5527.N1
1; 1840.6; 05-JAN-2012 11:43:37; Dark ; 57.5; 0; ; 0.00; 0;occ; 115; 0;51517
2; 2440.6; 05-JAN-2012 11:53:37; Dark ; 57.5; 0; ; 0.00; 0;occ; 115; 0;51517

```

3; 3040.6; 05-JAN-2012 12:03:37; Dark ; 57.5; 0; ; 0.00; 0;occ; 115; 0;51517
4; 3640.6; 05-JAN-2012 12:13:37; Dark ; 57.0; 0; ; 0.00; 0;occ; 114; 0;51517
5; 4254.9; 05-JAN-2012 12:23:52; Dark ; 57.5; 0; ; 0.00; 0;occ; 115; 0;51517
6; 4854.9; 05-JAN-2012 12:33:52; Dark ; 57.5; 0; ; 0.00; 0;occ; 115; 0;51517
7; 5454.9; 05-JAN-2012 12:43:52; Dark ; 57.5; 0; ; 0.00; 0;occ; 115; 0;51517
8; 6054.9; 05-JAN-2012 12:53:52; Dark ; 57.5; 0; ; 0.00; 0;occ; 115; 0;51518
9; 6961.1; 05-JAN-2012 13:08:58; Dark ; 44.5; 34; Gam2Vel ; 1.79; 23000;occ; 89; 0;51518
/nas3/ENVISAT/GOMOS/GOM_NL__0P/GOM_NL__0PNPDK20120105_132352_000051643110_00211_51518_5528.N1
1; 1841.1; 05-JAN-2012 13:23:52; Dark ; 57.5; 0; ; 0.00; 0;occ; 115; 0;51518
2; 2441.1; 05-JAN-2012 13:33:52; Dark ; 57.5; 0; ; 0.00; 0;occ; 115; 0;51518
3; 3041.1; 05-JAN-2012 13:43:52; Dark ; 57.5; 0; ; 0.00; 0;occ; 115; 0;51518
4; 3641.1; 05-JAN-2012 13:53:52; Dark ; 57.0; 0; ; 0.00; 0;occ; 114; 0;51518
5; 6961.8; 05-JAN-2012 14:49:12; Dark ; 43.5; 34; Gam2Vel ; 1.79; 23000;occ; 87; 0;51519
/nas3/ENVISAT/GOMOS/GOM_NL__0P/GOM_NL__0PNPDK20120105_162927_000000423110_00213_51520_5529.N1
1; 948.2; 05-JAN-2012 16:29:27; Dark ; 42.5; 34; Gam2Vel ; 1.79; 23000;occ; 85; 0;51520
/nas3/ENVISAT/GOMOS/GOM_NL__0P/GOM_NL__0PNPDK20120109_070702_000015573110_00265_51572_5530.N1
1; 78.9; 09-JAN-2012 07:07:02; Dark ; 42.5; 77; Eps Cen ; 2.30; 28000;occ; 85; 0;51572
2; 970.8; 09-JAN-2012 07:21:54; Dark ; 44.0; 34; Gam2Vel ; 1.79; 23000;occ; 88; 0;51572
3; 1100.3; 09-JAN-2012 07:24:03; Dark ; 46.0; 70; Zet Pup ; 2.25; 39000;occ; 92; 0;51572
4; 1588.0; 09-JAN-2012 07:32:11; Dark ; 48.5; 1; 9Alp CMA ; -1.44; 11000;occ; 97; 0;51572
/nas3/ENVISAT/GOMOS/GOM_NL__0P/GOM_NL__0PNPDK20120109_084716_000015573110_00266_51573_5531.N1
1; 79.4; 09-JAN-2012 08:47:16; Dark ; 40.0; 77; Eps Cen ; 2.30; 28000;occ; 80; 0;51573
2; 971.2; 09-JAN-2012 09:02:08; Dark ; 40.0; 34; Gam2Vel ; 1.79; 23000;occ; 80; 0;51573
3; 1100.6; 09-JAN-2012 09:04:17; Dark ; 41.0; 70; Zet Pup ; 2.25; 39000;occ; 82; 0;51573
4; 1588.1; 09-JAN-2012 09:12:25; Dark ; 48.5; 1; 9Alp CMA ; -1.44; 11000;occ; 97; 0;51573
/nas3/ENVISAT/GOMOS/GOM_NL__0P/GOM_NL__0PNPDK20120109_123253_000055703110_00268_51575_5534.N1
1; 1588.4; 09-JAN-2012 12:32:53; Dark ; 47.0; 1; 9Alp CMA ; -1.44; 11000;occ; 94; 0;51575
2; 6095.4; 09-JAN-2012 13:48:00; Dark ; 41.5; 77; Eps Cen ; 2.30; 28000;occ; 83; 0;51576
3; 6986.3; 09-JAN-2012 14:02:51; Dark ; 40.5; 34; Gam2Vel ; 1.79; 23000;occ; 81; 0;51576
4; 7115.7; 09-JAN-2012 14:05:00; Dark ; 43.0; 70; Zet Pup ; 2.25; 39000;occ; 86; 0;51576
/nas3/ENVISAT/GOMOS/GOM_NL__0P/GOM_NL__0PNPDK20120109_105239_000055703110_00267_51574_5533.N1
1; 1588.1; 09-JAN-2012 10:52:39; Dark ; 47.5; 1; 9Alp CMA ; -1.44; 11000;occ; 95; 0;51574
2; 6094.6; 09-JAN-2012 12:07:45; Dark ; 42.0; 77; Eps Cen ; 2.30; 28000;occ; 84; 0;51575
3; 6985.8; 09-JAN-2012 12:22:37; Dark ; 44.0; 34; Gam2Vel ; 1.79; 23000;occ; 88; 0;51575
4; 7115.4; 09-JAN-2012 12:24:46; Dark ; 43.0; 70; Zet Pup ; 2.25; 39000;occ; 86; 0;51575
/nas3/ENVISAT/GOMOS/GOM_NL__0P/GOM_NL__0PNPDK20120109_141307_000055713110_00269_51576_5535.N1
1; 1588.9; 09-JAN-2012 14:13:07; Dark ; 46.5; 1; 9Alp CMA ; -1.44; 11000;occ; 93; 0;51576
2; 6096.1; 09-JAN-2012 15:28:15; Dark ; 41.5; 77; Eps Cen ; 2.30; 28000;occ; 83; 0;51577
3; 6986.9; 09-JAN-2012 15:43:05; Dark ; 41.5; 34; Gam2Vel ; 1.79; 23000;occ; 83; 0;51577
4; 7116.0; 09-JAN-2012 15:45:14; Dark ; 44.0; 70; Zet Pup ; 2.25; 39000;occ; 88; 0;51577
/nas3/ENVISAT/GOMOS/GOM_NL__0P/GOM_NL__0PNPDK20120109_155321_000054433110_00270_51577_5536.N1
1; 1588.7; 09-JAN-2012 15:53:21; Dark ; 46.0; 1; 9Alp CMA ; -1.44; 11000;occ; 92; 0;51577
2; 6096.7; 09-JAN-2012 17:08:29; Dark ; 41.0; 77; Eps Cen ; 2.30; 28000;occ; 82; 0;51578
3; 6987.3; 09-JAN-2012 17:23:20; Dark ; 44.5; 34; Gam2Vel ; 1.79; 23000;occ; 89; 0;51578
/nas3/ENVISAT/GOMOS/GOM_NL__0P/GOM_NL__0PNPDK20120109_172529_000005323110_00271_51578_5537.N1
1; 1102.4; 09-JAN-2012 17:25:29; Dark ; 43.0; 70; Zet Pup ; 2.25; 39000;occ; 86; 0;51578
2; 1588.7; 09-JAN-2012 17:33:35; Dark ; 46.5; 1; 9Alp CMA ; -1.44; 11000;occ; 93; 0;51578
/nas3/ENVISAT/GOMOS/GOM_NL__0P/GOM_NL__0PNPDK20120110_081041_000010593110_00280_51587_5538.N1
1; 88.7; 10-JAN-2012 08:10:41; Dark ; 42.0; 77; Eps Cen ; 2.30; 28000;occ; 84; 0;51587
2; 977.0; 10-JAN-2012 08:25:29; Dark ; 41.0; 34; Gam2Vel ; 1.79; 23000;occ; 82; 0;51587
3; 1106.0; 10-JAN-2012 08:27:38; Dark ; 42.0; 70; Zet Pup ; 2.25; 39000;occ; 84; 0;51587
/nas3/ENVISAT/GOMOS/GOM_NL__0P/GOM_NL__0PNPDK20120110_095055_000010613110_00281_51588_5539.N1
1; 89.3; 10-JAN-2012 09:50:55; Dark ; 42.5; 77; Eps Cen ; 2.30; 28000;occ; 85; 0;51588
2; 977.4; 10-JAN-2012 10:05:43; Dark ; 42.0; 34; Gam2Vel ; 1.79; 23000;occ; 84; 0;51588
3; 1106.3; 10-JAN-2012 10:07:52; Dark ; 44.5; 70; Zet Pup ; 2.25; 39000;occ; 89; 0;51588
/nas3/ENVISAT/GOMOS/GOM_NL__0P/GOM_NL__0PNPDK20120110_113110_000010603110_00282_51589_5540.N1
1; 90.0; 10-JAN-2012 11:31:10; Dark ; 40.5; 77; Eps Cen ; 2.30; 28000;occ; 81; 0;51589
2; 977.7; 10-JAN-2012 11:45:57; Dark ; 44.5; 34; Gam2Vel ; 1.79; 23000;occ; 89; 0;51589
3; 1106.8; 10-JAN-2012 11:48:07; Dark ; 43.5; 70; Zet Pup ; 2.25; 39000;occ; 87; 0;51589
/nas3/ENVISAT/GOMOS/GOM_NL__0P/GOM_NL__0PNPDK20120110_131124_000010603110_00283_51590_5541.N1
1; 90.6; 10-JAN-2012 13:11:24; Dark ; 42.5; 77; Eps Cen ; 2.30; 28000;occ; 85; 0;51590
2; 978.1; 10-JAN-2012 13:26:12; Dark ; 42.5; 34; Gam2Vel ; 1.79; 23000;occ; 85; 0;51590
3; 1107.3; 10-JAN-2012 13:28:21; Dark ; 43.5; 70; Zet Pup ; 2.25; 39000;occ; 87; 0;51590
/nas3/ENVISAT/GOMOS/GOM_NL__0P/GOM_NL__0PNPDK20120110_145139_000010603110_00284_51591_5542.N1
1; 91.4; 10-JAN-2012 14:51:39; Dark ; 41.5; 77; Eps Cen ; 2.30; 28000;occ; 83; 0;51591
2; 978.6; 10-JAN-2012 15:06:26; Dark ; 38.0; 34; Gam2Vel ; 1.79; 23000;occ; 76; 0;51591
3; 1107.5; 10-JAN-2012 15:08:35; Dark ; 44.0; 70; Zet Pup ; 2.25; 39000;occ; 88; 0;51591
/nas3/ENVISAT/GOMOS/GOM_NL__0P/GOM_NL__0PNPDK20120110_163153_000010593110_00285_51592_5543.N1

```



```

1; 92.0; 10-JAN-2012 16:31:53; Dark ; 40.0; 77; Eps Cen ; 2.30; 28000;occ; 80; 0;51592
2; 979.0; 10-JAN-2012 16:46:40; Dark ; 45.0; 34; Gam2Vel ; 1.79; 23000;occ; 90; 0;51592
3; 1107.9; 10-JAN-2012 16:48:49; Dark ; 44.0; 70; Zet Pup ; 2.25; 39000;occ; 88; 0;51592
/nas3/ENVISAT/GOMOS/GOM_NL__0P/GOM_NL__0PNPDK20120110_164923_000000103110_00285_51592_5544.N1
1; 1141.4; 10-JAN-2012 16:49:23; Dark ; 44.5; 70; Zet Pup ; 2.25; 39000;occ; 89; 67;51592
/nas3/ENVISAT/GOMOS/GOM_NL__0P/GOM_NL__0PNPDK20120111_073405_000010563110_00294_51601_5545.N1
1; 98.1; 11-JAN-2012 07:34:05; Dark ; 41.0; 77; Eps Cen ; 2.30; 28000;occ; 82; 0;51601
2; 982.6; 11-JAN-2012 07:48:49; Dark ; 42.5; 34; Gam2Vel ; 1.79; 23000;occ; 85; 0;51601
3; 1111.5; 11-JAN-2012 07:50:58; Dark ; 43.5; 70; Zet Pup ; 2.25; 39000;occ; 87; 0;51601
/nas3/ENVISAT/GOMOS/GOM_NL__0P/GOM_NL__0PNPDK20120111_091419_000009273110_00295_51602_5546.N1
1; 98.7; 11-JAN-2012 09:14:19; Dark ; 41.5; 77; Eps Cen ; 2.30; 28000;occ; 83; 0;51602
2; 983.0; 11-JAN-2012 09:29:04; Dark ; 43.0; 34; Gam2Vel ; 1.79; 23000;occ; 86; 0;51602
/nas3/ENVISAT/GOMOS/GOM_NL__0P/GOM_NL__0PNPDK20120111_105434_000009293110_00296_51603_5547.N1
1; 99.4; 11-JAN-2012 10:54:34; Dark ; 41.0; 77; Eps Cen ; 2.30; 28000;occ; 82; 0;51603
2; 983.4; 11-JAN-2012 11:09:18; Dark ; 46.0; 34; Gam2Vel ; 1.79; 23000;occ; 92; 0;51603
/nas3/ENVISAT/GOMOS/GOM_NL__0P/GOM_NL__0PNPDK20120111_123449_000009263110_00297_51604_5548.N1
1; 100.2; 11-JAN-2012 12:34:49; Dark ; 40.5; 77; Eps Cen ; 2.30; 28000;occ; 81; 0;51604
2; 983.8; 11-JAN-2012 12:49:32; Dark ; 43.0; 34; Gam2Vel ; 1.79; 23000;occ; 86; 0;51604
/nas3/ENVISAT/GOMOS/GOM_NL__0P/GOM_NL__0PNPDK20120111_141503_000010563110_00298_51605_5549.N1
1; 100.8; 11-JAN-2012 14:15:03; Dark ; 40.5; 77; Eps Cen ; 2.30; 28000;occ; 81; 0;51605
2; 984.1; 11-JAN-2012 14:29:47; Dark ; 43.5; 34; Gam2Vel ; 1.79; 23000;occ; 87; 0;51605
3; 1113.1; 11-JAN-2012 14:31:56; Dark ; 44.0; 70; Zet Pup ; 2.25; 39000;occ; 88; 0;51605
/nas3/ENVISAT/GOMOS/GOM_NL__0P/GOM_NL__0PNPDK20120111_155518_000010563110_00299_51606_5550.N1
1; 101.4; 11-JAN-2012 15:55:18; Dark ; 40.0; 77; Eps Cen ; 2.30; 28000;occ; 80; 0;51606
2; 984.4; 11-JAN-2012 16:10:01; Dark ; 42.5; 34; Gam2Vel ; 1.79; 23000;occ; 85; 0;51606
3; 1113.3; 11-JAN-2012 16:12:10; Dark ; 44.5; 70; Zet Pup ; 2.25; 39000;occ; 89; 0;51606
/nas3/ENVISAT/GOMOS/GOM_NL__0P/GOM_NL__0PNPDK20120111_173532_000009273110_00300_51607_5551.N1
1; 102.1; 11-JAN-2012 17:35:32; Dark ; 41.5; 77; Eps Cen ; 2.30; 28000;occ; 83; 0;51607
2; 984.8; 11-JAN-2012 17:50:15; Dark ; 45.0; 34; Gam2Vel ; 1.79; 23000;occ; 90; 0;51607
/nas3/ENVISAT/GOMOS/GOM_NL__0P/GOM_NL__0PNPDK20120111_175224_000000453110_00300_51607_5552.N1
1; 1113.8; 11-JAN-2012 17:52:24; Dark ; 45.5; 70; Zet Pup ; 2.25; 39000;occ; 91; 0;51607
/nas3/ENVISAT/GOMOS/GOM_NL__0P/GOM_NL__0PNPDK20120112_065729_000010493110_00308_51615_5553.N1
1; 107.5; 12-JAN-2012 06:57:29; Dark ; 41.0; 77; Eps Cen ; 2.30; 28000;occ; 82; 0;51615
2; 1116.6; 12-JAN-2012 07:14:18; Dark ; 40.5; 70; Zet Pup ; 2.25; 39000;occ; 81; 0;51615
/nas3/ENVISAT/GOMOS/GOM_NL__0P/GOM_NL__0PNPDK20120112_083744_000010503110_00309_51616_5554.N1
1; 108.3; 12-JAN-2012 08:37:44; Dark ; 42.5; 77; Eps Cen ; 2.30; 28000;occ; 85; 0;51616
2; 1117.1; 12-JAN-2012 08:54:33; Dark ; 42.0; 70; Zet Pup ; 2.25; 39000;occ; 84; 0;51616
/nas3/ENVISAT/GOMOS/GOM_NL__0P/GOM_NL__0PNPDK20120112_101759_000010493110_00310_51617_5555.N1
1; 108.9; 12-JAN-2012 10:17:59; Dark ; 41.0; 77; Eps Cen ; 2.30; 28000;occ; 82; 0;51617
2; 1117.6; 12-JAN-2012 10:34:47; Dark ; 41.0; 70; Zet Pup ; 2.25; 39000;occ; 82; 0;51617
/nas3/ENVISAT/GOMOS/GOM_NL__0P/GOM_NL__0PNPDK20120112_115813_000010523110_00311_51618_5556.N1
1; 109.5; 12-JAN-2012 11:58:13; Dark ; 41.5; 77; Eps Cen ; 2.30; 28000;occ; 83; 0;51618
2; 1117.7; 12-JAN-2012 12:15:01; Dark ; 44.0; 70; Zet Pup ; 2.25; 39000;occ; 88; 0;51618
/nas3/ENVISAT/GOMOS/GOM_NL__0P/GOM_NL__0PNPDK20120112_133828_000010513110_00312_51619_5557.N1
1; 110.3; 12-JAN-2012 13:38:28; Dark ; 40.5; 77; Eps Cen ; 2.30; 28000;occ; 81; 0;51619
2; 1118.3; 12-JAN-2012 13:55:16; Dark ; 43.5; 70; Zet Pup ; 2.25; 39000;occ; 87; 0;51619
/nas3/ENVISAT/GOMOS/GOM_NL__0P/GOM_NL__0PNPDK20120112_151842_000010513110_00313_51620_5558.N1
1; 110.9; 12-JAN-2012 15:18:42; Dark ; 40.5; 77; Eps Cen ; 2.30; 28000;occ; 81; 0;51620
2; 1118.5; 12-JAN-2012 15:35:30; Dark ; 44.0; 70; Zet Pup ; 2.25; 39000;occ; 88; 0;51620
/nas3/ENVISAT/GOMOS/GOM_NL__0P/GOM_NL__0PNPDK20120112_165857_000010503110_00314_51621_5559.N1
1; 111.6; 12-JAN-2012 16:58:57; Dark ; 41.5; 77; Eps Cen ; 2.30; 28000;occ; 83; 0;51621
2; 1118.7; 12-JAN-2012 17:15:44; Dark ; 43.0; 70; Zet Pup ; 2.25; 39000;occ; 86; 0;51621
/nas3/ENVISAT/GOMOS/GOM_NL__0P/GOM_NL__0PNPDK20120112_171614_000000133110_00314_51621_5560.N1
1; 1148.7; 12-JAN-2012 17:16:14; Dark ; 43.5; 70; Zet Pup ; 2.25; 39000;occ; 87; 60;51621
/nas3/ENVISAT/GOMOS/GOM_NL__0P/GOM_NL__0PNPDE20120113_062054_000010473110_00322_51629_3716.N1
1; 117.1; 13-JAN-2012 06:20:54; Dark ; 42.0; 77; Eps Cen ; 2.30; 28000;occ; 84; 0;51629
2; 1121.8; 13-JAN-2012 06:37:39; Dark ; 43.0; 70; Zet Pup ; 2.25; 39000;occ; 86; 0;51629
/nas3/ENVISAT/GOMOS/GOM_NL__0P/GOM_NL__0PNPDK20120113_080108_000010463110_00323_51630_5561.N1
1; 117.8; 13-JAN-2012 08:01:08; Dark ; 42.5; 77; Eps Cen ; 2.30; 28000;occ; 85; 0;51630
2; 1122.3; 13-JAN-2012 08:17:53; Dark ; 41.5; 70; Zet Pup ; 2.25; 39000;occ; 83; 0;51630
/nas3/ENVISAT/GOMOS/GOM_NL__0P/GOM_NL__0PNPDK20120113_094123_000010453110_00324_51631_5562.N1
1; 118.5; 13-JAN-2012 09:41:23; Dark ; 41.5; 77; Eps Cen ; 2.30; 28000;occ; 83; 0;51631
2; 1122.6; 13-JAN-2012 09:58:07; Dark ; 41.5; 70; Zet Pup ; 2.25; 39000;occ; 83; 0;51631
/nas3/ENVISAT/GOMOS/GOM_NL__0P/GOM_NL__0PNPDK20120113_112138_000010433110_00325_51632_5563.N1
1; 119.2; 13-JAN-2012 11:21:38; Dark ; 42.0; 77; Eps Cen ; 2.30; 28000;occ; 84; 0;51632
2; 1122.9; 13-JAN-2012 11:38:21; Dark ; 39.5; 70; Zet Pup ; 2.25; 39000;occ; 79; 0;51632
/nas3/ENVISAT/GOMOS/GOM_NL__0P/GOM_NL__0PNPDK20120113_130152_000010483110_00326_51633_5564.N1
1; 119.7; 13-JAN-2012 13:01:52; Dark ; 42.5; 77; Eps Cen ; 2.30; 28000;occ; 85; 0;51633

```


2; 1123.1; 13-JAN-2012 13:18:35; Dark ; 45.0; 70; Zet Pup ; 2.25; 39000;occ; 90; 0;51633
/nas3/ENVISAT/GOMOS/GOM_NL__0P/GOM_NL__0PNPDK20120113_144207_000010453110_00327_51634_5565.N1
1; 120.7; 13-JAN-2012 14:42:07; Dark ; 40.5; 77; Eps Cen ; 2.30; 28000;occ; 81; 0;51634
2; 1123.6; 13-JAN-2012 14:58:50; Dark ; 42.5; 70; Zet Pup ; 2.25; 39000;occ; 85; 0;51634
/nas3/ENVISAT/GOMOS/GOM_NL__0P/GOM_NL__0PNPDK20120113_162221_000010463110_00328_51635_5566.N1
1; 121.2; 13-JAN-2012 16:22:21; Dark ; 41.5; 77; Eps Cen ; 2.30; 28000;occ; 83; 0;51635
2; 1124.0; 13-JAN-2012 16:39:04; Dark ; 44.0; 70; Zet Pup ; 2.25; 39000;occ; 88; 0;51635
/nas3/ENVISAT/GOMOS/GOM_NL__0P/GOM_NL__0PNPDE20120125_205823_000000483111_00072_51810_3719.N1
1; 1043.9; 25-JAN-2012 20:58:23; Dark ; 48.5; 65; Lam Vel ; 2.20; 4400;occ; 97; 0;51810
/nas3/ENVISAT/GOMOS/GOM_NL__0P/GOM_NL__0PNPDE20120125_221818_000012663111_00072_51810_3720.N1
1; -174.4; 25-JAN-2012 22:18:18; Dark ; 41.0; 131; Gam Lup ; 2.80; 26000;occ; 82; 0;51810
2; 1044.4; 25-JAN-2012 22:38:37; Dark ; 47.5; 65; Lam Vel ; 2.20; 4400;occ; 95; 0;51811
/nas3/ENVISAT/GOMOS/GOM_NL__0P/GOM_NL__0PNPDE20120125_235832_000012643111_00073_51811_3721.N1
1; -173.9; 25-JAN-2012 23:58:32; Dark ; 41.0; 131; Gam Lup ; 2.80; 26000;occ; 82; 0;51811
2; 1044.6; 26-JAN-2012 00:18:51; Dark ; 46.0; 65; Lam Vel ; 2.20; 4400;occ; 92; 0;51812
/nas3/ENVISAT/GOMOS/GOM_NL__0P/GOM_NL__0PNPDK20120125_072000_000000573111_00064_51802_5567.N1
1; 53.2; 25-JAN-2012 07:20:00; Dark ; 58.0; 0; ; 0.00; 0;occ; 116; 0;51802
/nas3/ENVISAT/GOMOS/GOM_NL__0P/GOM_NL__0PNPDK20120125_090015_000000573111_00065_51803_5568.N1
1; 53.8; 25-JAN-2012 09:00:15; Dark ; 58.0; 0; ; 0.00; 0;occ; 116; 0;51803
/nas3/ENVISAT/GOMOS/GOM_NL__0P/GOM_NL__0PNPDK20120125_105657_000000493111_00066_51804_5569.N1
1; 1041.6; 25-JAN-2012 10:56:57; Dark ; 49.5; 65; Lam Vel ; 2.20; 4400;occ; 99; 0;51804
/nas3/ENVISAT/GOMOS/GOM_NL__0P/GOM_NL__0PNPDK20120125_121650_000012693111_00066_51804_5570.N1
1; -178.8; 25-JAN-2012 12:16:50; Dark ; 42.5; 131; Gam Lup ; 2.80; 26000;occ; 85; 0;51804
2; 1041.9; 25-JAN-2012 12:37:11; Dark ; 49.0; 65; Lam Vel ; 2.20; 4400;occ; 98; 0;51805
/nas3/ENVISAT/GOMOS/GOM_NL__0P/GOM_NL__0PNPDK20120125_135705_000012713111_00067_51805_5571.N1
1; -178.1; 25-JAN-2012 13:57:05; Dark ; 40.5; 131; Gam Lup ; 2.80; 26000;occ; 81; 0;51805
2; 1042.5; 25-JAN-2012 14:17:25; Dark ; 51.0; 65; Lam Vel ; 2.20; 4400;occ; 102; 0;51806
/nas3/ENVISAT/GOMOS/GOM_NL__0P/GOM_NL__0PNPDK20120125_171734_000012673111_00069_51807_5573.N1
1; -176.5; 25-JAN-2012 17:17:34; Dark ; 41.5; 131; Gam Lup ; 2.80; 26000;occ; 83; 0;51807
2; 1043.2; 25-JAN-2012 17:37:54; Dark ; 48.0; 65; Lam Vel ; 2.20; 4400;occ; 96; 0;51808
/nas3/ENVISAT/GOMOS/GOM_NL__0P/GOM_NL__0PNPDK20120125_173754_000048363111_00070_51808_5574.N1
1; 1043.2; 25-JAN-2012 17:37:54; Dark ; 52.0; 65; Lam Vel ; 2.20; 4400;occ; 104; 0;51808
2; 5838.2; 25-JAN-2012 18:57:49; Dark ; 41.0; 131; Gam Lup ; 2.80; 26000;occ; 82; 0;51808
/nas3/ENVISAT/GOMOS/GOM_NL__0P/GOM_NL__0PNPDK20120125_191808_000048353111_00071_51809_5575.N1
1; 1043.6; 25-JAN-2012 19:18:08; Dark ; 42.5; 65; Lam Vel ; 2.20; 4400;occ; 85; 0;51809
2; 5838.6; 25-JAN-2012 20:38:03; Dark ; 40.5; 131; Gam Lup ; 2.80; 26000;occ; 81; 0;51809
/nas3/ENVISAT/GOMOS/GOM_NL__0P/GOM_NL__0PNPDE20120126_013847_000072803111_00074_51812_3722.N1
1; -173.2; 26-JAN-2012 01:38:47; Dark ; 42.0; 131; Gam Lup ; 2.80; 26000;occ; 84; 0;51812
2; 1045.2; 26-JAN-2012 01:59:05; Dark ; 46.0; 65; Lam Vel ; 2.20; 4400;occ; 92; 0;51813
3; 5841.5; 26-JAN-2012 03:19:02; Dark ; 42.5; 131; Gam Lup ; 2.80; 26000;occ; 85; 0;51813
4; 7059.4; 26-JAN-2012 03:39:20; Dark ; 47.5; 65; Lam Vel ; 2.20; 4400;occ; 95; 0;51814
/nas3/ENVISAT/GOMOS/GOM_NL__0P/GOM_NL__0PNPDE20120126_045917_000012673111_00076_51814_3723.N1
1; -171.5; 26-JAN-2012 04:59:17; Dark ; 41.5; 131; Gam Lup ; 2.80; 26000;occ; 83; 0;51814
2; 1045.9; 26-JAN-2012 05:19:34; Dark ; 50.0; 65; Lam Vel ; 2.20; 4400;occ; 100; 0;51815
/nas3/ENVISAT/GOMOS/GOM_NL__0P/GOM_NL__0PNPDE20120126_202143_000000473111_00086_51824_3724.N1
1; 1049.6; 26-JAN-2012 20:21:43; Dark ; 47.5; 65; Lam Vel ; 2.20; 4400;occ; 95; 0;51824
/nas3/ENVISAT/GOMOS/GOM_NL__0P/GOM_NL__0PNPDE20120126_214143_000012583111_00086_51824_3725.N1
1; -164.2; 26-JAN-2012 21:41:43; Dark ; 42.5; 131; Gam Lup ; 2.80; 26000;occ; 85; 0;51824
2; 1049.8; 26-JAN-2012 22:01:57; Dark ; 44.5; 65; Lam Vel ; 2.20; 4400;occ; 89; 0;51825
/nas3/ENVISAT/GOMOS/GOM_NL__0P/GOM_NL__0PNPDE20120126_232158_000012593111_00087_51825_3726.N1
1; -163.6; 26-JAN-2012 23:21:58; Dark ; 43.0; 131; Gam Lup ; 2.80; 26000;occ; 86; 0;51825
2; 1050.2; 26-JAN-2012 23:42:11; Dark ; 46.0; 65; Lam Vel ; 2.20; 4400;occ; 92; 0;51826
/nas3/ENVISAT/GOMOS/GOM_NL__0P/GOM_NL__0PNPDK20120126_063931_000012643111_00077_51815_5576.N1
1; -170.8; 26-JAN-2012 06:39:31; Dark ; 42.0; 131; Gam Lup ; 2.80; 26000;occ; 84; 0;51815
2; 1046.4; 26-JAN-2012 06:59:48; Dark ; 47.0; 65; Lam Vel ; 2.20; 4400;occ; 94; 0;51816
/nas3/ENVISAT/GOMOS/GOM_NL__0P/GOM_NL__0PNPDK20120126_081946_000012653111_00078_51816_5577.N1
1; -170.3; 26-JAN-2012 08:19:46; Dark ; 41.5; 131; Gam Lup ; 2.80; 26000;occ; 83; 0;51816
2; 1046.8; 26-JAN-2012 08:40:03; Dark ; 48.5; 65; Lam Vel ; 2.20; 4400;occ; 97; 0;51817
/nas3/ENVISAT/GOMOS/GOM_NL__0P/GOM_NL__0PNPDK20120126_100001_000012653111_00079_51817_5578.N1
1; -169.4; 26-JAN-2012 10:00:01; Dark ; 42.0; 131; Gam Lup ; 2.80; 26000;occ; 84; 0;51817
2; 1047.3; 26-JAN-2012 10:20:17; Dark ; 49.0; 65; Lam Vel ; 2.20; 4400;occ; 98; 0;51818
/nas3/ENVISAT/GOMOS/GOM_NL__0P/GOM_NL__0PNPDK20120126_114015_000012653111_00080_51818_5579.N1
1; -168.8; 26-JAN-2012 11:40:15; Dark ; 43.0; 131; Gam Lup ; 2.80; 26000;occ; 86; 0;51818
2; 1047.6; 26-JAN-2012 12:00:31; Dark ; 49.0; 65; Lam Vel ; 2.20; 4400;occ; 98; 0;51819
/nas3/ENVISAT/GOMOS/GOM_NL__0P/GOM_NL__0PNPDK20120126_132030_000012633111_00081_51819_5580.N1
1; -168.1; 26-JAN-2012 13:20:30; Dark ; 42.0; 131; Gam Lup ; 2.80; 26000;occ; 84; 0;51819
2; 1048.0; 26-JAN-2012 13:40:46; Dark ; 47.5; 65; Lam Vel ; 2.20; 4400;occ; 95; 0;51820
/nas3/ENVISAT/GOMOS/GOM_NL__0P/GOM_NL__0PNPDK20120126_150044_000012633111_00082_51820_5581.N1

1; -167.3; 26-JAN-2012 15:00:44; Dark ; 41.0; 131; Gam Lup ; 2.80; 26000;occ; 82; 0;51820
2; 1048.3; 26-JAN-2012 15:21:00; Dark ; 48.0; 65; Lam Vel ; 2.20; 4400;occ; 96; 0;51821
/nas3/ENVISAT/GOMOS/GOM_NL__0P/GOM_NL__0PNPDK20120126_164059_000012623111_00083_51821_5582.N1
1; -166.5; 26-JAN-2012 16:40:59; Dark ; 41.5; 131; Gam Lup ; 2.80; 26000;occ; 83; 0;51821
2; 1048.7; 26-JAN-2012 17:01:14; Dark ; 47.0; 65; Lam Vel ; 2.20; 4400;occ; 94; 0;51822
/nas3/ENVISAT/GOMOS/GOM_NL__0P/GOM_NL__0PNPDK20120126_182114_000012573111_00084_51822_5583.N1
1; -165.6; 26-JAN-2012 18:21:14; Dark ; 40.5; 131; Gam Lup ; 2.80; 26000;occ; 81; 0;51822
2; 1049.1; 26-JAN-2012 18:41:29; Dark ; 43.0; 65; Lam Vel ; 2.20; 4400;occ; 86; 0;51823
/nas3/ENVISAT/GOMOS/GOM_NL__0P/GOM_NL__0PNPDK20120126_184129_000048413111_00085_51823_5584.N1
1; 1049.1; 26-JAN-2012 18:41:29; Dark ; 47.0; 65; Lam Vel ; 2.20; 4400;occ; 94; 0;51823
2; 5848.7; 26-JAN-2012 20:01:28; Dark ; 42.0; 131; Gam Lup ; 2.80; 26000;occ; 84; 0;51823
/nas3/ENVISAT/GOMOS/GOM_NL__0P/GOM_NL__0PNPDE20120127_010212_000012583111_00088_51826_3727.N1
1; -162.8; 27-JAN-2012 01:02:12; Dark ; 41.5; 131; Gam Lup ; 2.80; 26000;occ; 83; 0;51826
2; 1050.6; 27-JAN-2012 01:22:26; Dark ; 45.5; 65; Lam Vel ; 2.20; 4400;occ; 91; 0;51827
/nas3/ENVISAT/GOMOS/GOM_NL__0P/GOM_NL__0PNPDE20120127_024227_000012583111_00089_51827_3728.N1
1; -162.1; 27-JAN-2012 02:42:27; Dark ; 41.0; 131; Gam Lup ; 2.80; 26000;occ; 82; 0;51827
2; 1051.0; 27-JAN-2012 03:02:40; Dark ; 45.5; 65; Lam Vel ; 2.20; 4400;occ; 91; 0;51828
/nas3/ENVISAT/GOMOS/GOM_NL__0P/GOM_NL__0PNPDE20120127_042242_000012613111_00090_51828_3729.N1
1; -161.3; 27-JAN-2012 04:22:42; Dark ; 42.0; 131; Gam Lup ; 2.80; 26000;occ; 84; 0;51828
2; 1051.5; 27-JAN-2012 04:42:54; Dark ; 49.0; 65; Lam Vel ; 2.20; 4400;occ; 98; 0;51829
/nas3/ENVISAT/GOMOS/GOM_NL__0P/GOM_NL__0PNPDE20120127_060256_000012583111_00091_51829_3730.N1
1; -160.6; 27-JAN-2012 06:02:56; Dark ; 42.5; 131; Gam Lup ; 2.80; 26000;occ; 85; 0;51829
2; 1051.8; 27-JAN-2012 06:23:09; Dark ; 46.5; 65; Lam Vel ; 2.20; 4400;occ; 93; 0;51830
/nas3/ENVISAT/GOMOS/GOM_NL__0P/GOM_NL__0PNPDE20120127_194503_000000463111_00100_51838_3731.N1
1; 1054.9; 27-JAN-2012 19:45:03; Dark ; 47.0; 65; Lam Vel ; 2.20; 4400;occ; 94; 0;51838
/nas3/ENVISAT/GOMOS/GOM_NL__0P/GOM_NL__0PNPDE20120127_210508_000000423111_00100_51838_3732.N1
1; -154.1; 27-JAN-2012 21:05:08; Dark ; 42.5; 131; Gam Lup ; 2.80; 26000;occ; 85; 0;51838
/nas3/ENVISAT/GOMOS/GOM_NL__0P/GOM_NL__0PNPDK20120127_074311_000012573111_00092_51830_5585.N1
1; -159.8; 27-JAN-2012 07:43:11; Dark ; 44.0; 131; Gam Lup ; 2.80; 26000;occ; 88; 0;51830
2; 1052.3; 27-JAN-2012 08:03:23; Dark ; 45.5; 65; Lam Vel ; 2.20; 4400;occ; 91; 0;51831
/nas3/ENVISAT/GOMOS/GOM_NL__0P/GOM_NL__0PNPDK20120127_092326_000012583111_00093_51831_5586.N1
1; -159.2; 27-JAN-2012 09:23:26; Dark ; 43.5; 131; Gam Lup ; 2.80; 26000;occ; 87; 0;51831
2; 1052.6; 27-JAN-2012 09:43:37; Dark ; 47.0; 65; Lam Vel ; 2.20; 4400;occ; 94; 0;51832
/nas3/ENVISAT/GOMOS/GOM_NL__0P/GOM_NL__0PNPDK20120127_110340_000012593111_00094_51832_5587.N1
1; -158.4; 27-JAN-2012 11:03:40; Dark ; 43.5; 131; Gam Lup ; 2.80; 26000;occ; 87; 0;51832
2; 1053.0; 27-JAN-2012 11:23:52; Dark ; 48.5; 65; Lam Vel ; 2.20; 4400;occ; 97; 0;51833
/nas3/ENVISAT/GOMOS/GOM_NL__0P/GOM_NL__0PNPDK20120127_124355_000012583111_00095_51833_5588.N1
1; -157.8; 27-JAN-2012 12:43:55; Dark ; 43.5; 131; Gam Lup ; 2.80; 26000;occ; 87; 0;51833
2; 1053.4; 27-JAN-2012 13:04:06; Dark ; 47.5; 65; Lam Vel ; 2.20; 4400;occ; 95; 0;51834
/nas3/ENVISAT/GOMOS/GOM_NL__0P/GOM_NL__0PNPDK20120127_142410_000012573111_00096_51834_5589.N1
1; -156.9; 27-JAN-2012 14:24:10; Dark ; 42.0; 131; Gam Lup ; 2.80; 26000;occ; 84; 0;51834
2; 1053.9; 27-JAN-2012 14:44:20; Dark ; 47.0; 65; Lam Vel ; 2.20; 4400;occ; 94; 0;51835
/nas3/ENVISAT/GOMOS/GOM_NL__0P/GOM_NL__0PNPDK20120127_160424_000012583111_00097_51835_5590.N1
1; -156.1; 27-JAN-2012 16:04:24; Dark ; 42.5; 131; Gam Lup ; 2.80; 26000;occ; 85; 0;51835
2; 1054.2; 27-JAN-2012 16:24:35; Dark ; 48.5; 65; Lam Vel ; 2.20; 4400;occ; 97; 0;51836
/nas3/ENVISAT/GOMOS/GOM_NL__0P/GOM_NL__0PNPDK20120127_174439_000012563111_00098_51836_5591.N1
1; -155.4; 27-JAN-2012 17:44:39; Dark ; 44.0; 131; Gam Lup ; 2.80; 26000;occ; 88; 0;51836
2; 1054.6; 27-JAN-2012 18:04:49; Dark ; 46.5; 65; Lam Vel ; 2.20; 4400;occ; 93; 0;51837
/nas3/ENVISAT/GOMOS/GOM_NL__0P/GOM_NL__0PNPDK20120127_180449_000048463111_00099_51837_5592.N1
1; 1054.6; 27-JAN-2012 18:04:49; Dark ; 47.0; 65; Lam Vel ; 2.20; 4400;occ; 94; 0;51837
2; 5859.2; 27-JAN-2012 19:24:54; Dark ; 41.5; 131; Gam Lup ; 2.80; 26000;occ; 83; 0;51837