

GOMOS Daily Report 26-JAN-2012

Level 0 and Level 1 products

SUMMARY

[1. General Info](#)

[2. Summary of products arrived in PCF \(Product Control Facility\)](#)

[2.1 Level 0: products arrived in PCF during current month \(see template here\)](#)

[2.2 Level 0: plot of mission plan versus production during reporting period](#)

[2.3 Level 0: summary of missing occultations with respect to the plan](#)

[2.4 Level 1: products arrived in PCF during reporting period](#)

[3. Plot of Spectrometers and Photometers temperatures](#)

[4. Dark Charge monitoring](#)

[4.1 Products that did not use the Dark Sky Area observation for DC computation](#)

[4.2 Plot of Dark Charge](#)

[5. Demodulation correction and quality product information monitoring](#)

[5.1 Percentage of products with some flags set](#)

[5.2 Plot of quality information per product \(time dependant\)](#)

[5.3 Plot of quality information per product \(world map\)](#)

[6. Star tangent altitude lost](#)

[6.1 Statistics on star tangent altitude lost](#)

[6.2 Plot of star tangent altitude lost: DARK products](#)

[6.3 Plot of star tangent altitude lost: BRIGHT products](#)

[6.3 Plot of star tangent altitude lost: TWILIGHT products](#)

[7. Star Acquisition and Tracking Unit \(SATU\)](#)

[7.1 SATU plots \(dark limb\): 'X' and 'Y' axis](#)

[7.2 SATU Noise Equivalent Angle statistics](#)

[7.2.1 SATU NEA Statistics \(table\)](#)

[7.2.2 Daily SATU NEA STD \(dark limb\) - trend since 1st April 2006](#)

[8. Auxiliary Data Files used for the production reported in section 2.4](#)

[Level 2 products](#)

This report presents the daily analysis on parameters extracted from GOMOS level 1b data (GOM_TRA_1P). It is intended to monitor some important parameters that will impact the quality of the level 2 products as the Spectrometers and Photometers CCD Temperatures and Dark Charge, SATU noise equivalent angle... A list of level 0 products (and content) that have arrived during the actual month to the PCF is also given.

Item	Value
Time of report generation	28JAN2012 07:00:52
Data source version	GOMOS/6.01
Start time of products	26JAN2012 00:18:51
Stop time of products	26JAN2012 23:42:11
Store outputs in DB	Yes
Nb of level 1b prods	29
Nb of prods with errors	0

2. Summary of products arrived in PCF (Product Control Facility)

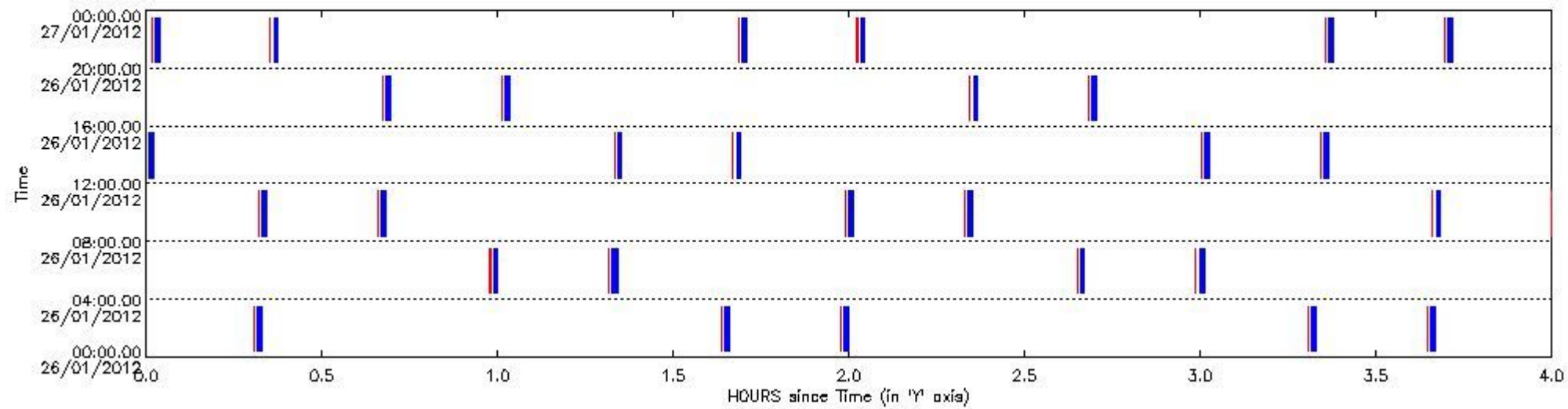
2.1 Level 0 products arrived in PCF (see template [here](#))

2.2 Plot of mission plan versus Level 0 production arrived in PCF during reporting period

Red segments are missing products.

Blue segments are available products.

Green segments are calibration measurements (not available products to users).



2.3 Summary of missing occultations (red segments in previous plot)

UTC start time	Star name	Star ID	Orbit
26-JAN-2012 00:18:15	LamVel	0	51825
26-JAN-2012 01:38:11	GamLup	0	51826
26-JAN-2012 01:58:29	LamVel	0	51826
26-JAN-2012 03:18:26	GamLup	0	51827
26-JAN-2012 03:38:44	LamVel	0	51827
26-JAN-2012 04:58:40	GamLup	0	51828
26-JAN-2012 05:18:58	LamVel	0	51828
26-JAN-2012 06:38:55	GamLup	0	51829
26-JAN-2012 06:59:12	LamVel	0	51829
26-JAN-2012 08:19:10	GamLup	0	51830
26-JAN-2012 08:39:27	LamVel	0	51830
26-JAN-2012 09:59:24	GamLup	0	51831
26-JAN-2012 10:19:41	LamVel	0	51831
26-JAN-2012 11:39:39	GamLup	0	51832
26-JAN-2012 11:59:55	LamVel	0	51832

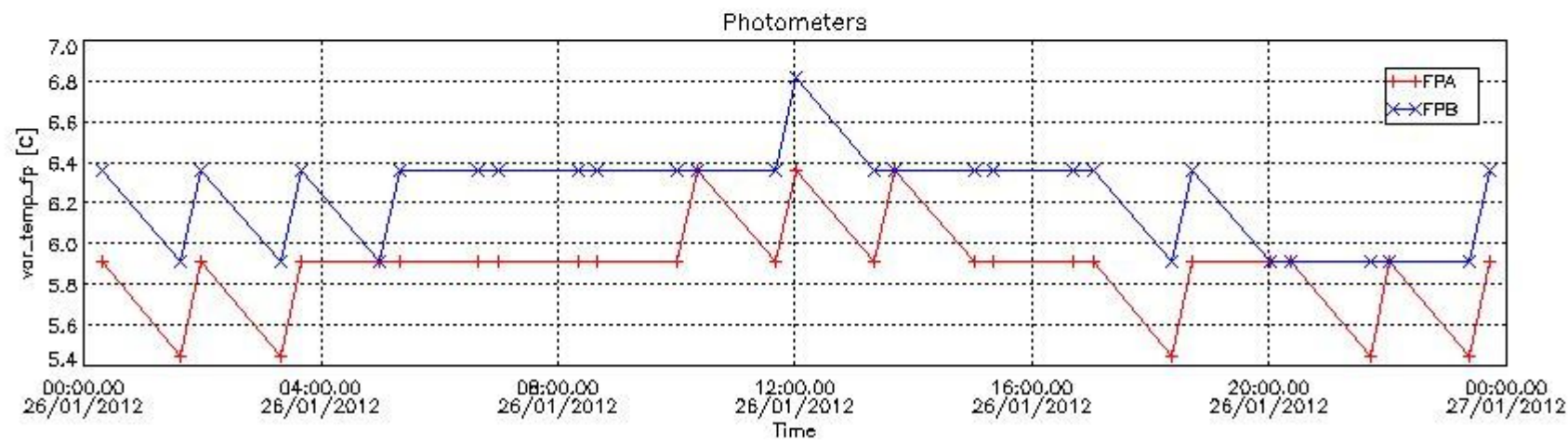
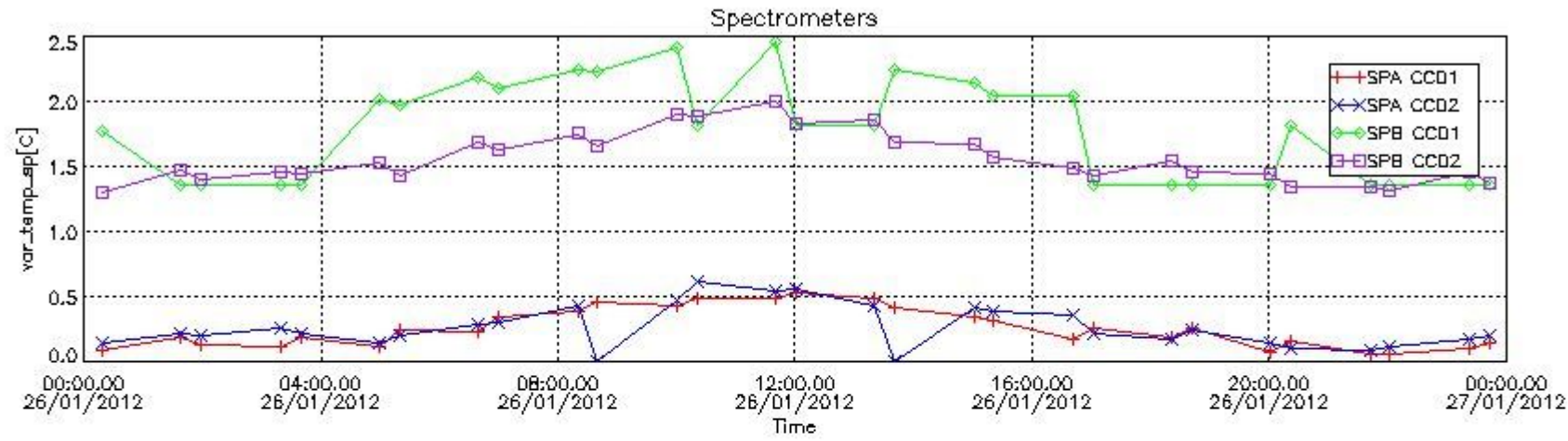
26-JAN-2012 13:19:54	GamLup	0	51833
26-JAN-2012 13:40:10	LamVel	0	51833
26-JAN-2012 15:00:08	GamLup	0	51834
26-JAN-2012 15:20:24	LamVel	0	51834
26-JAN-2012 16:40:23	GamLup	0	51835
26-JAN-2012 17:00:38	LamVel	0	51835
26-JAN-2012 18:20:38	GamLup	0	51836
26-JAN-2012 18:40:53	LamVel	0	51836
26-JAN-2012 20:00:52	GamLup	0	51837
26-JAN-2012 20:21:07	LamVel	0	51837
26-JAN-2012 21:41:07	GamLup	0	51838
26-JAN-2012 22:01:21	LamVel	0	51838
26-JAN-2012 23:21:22	GamLup	0	51839
26-JAN-2012 23:41:36	LamVel	0	51839

2.4 Summary of processed GOM_TRA_1P products

!Warning: No products without errors in BRIGHT limb contitions found

Nr	Filename	UTC Start time	Limb	Duration	Star Id	Star Name	Star Mag	Star Temp	Nb Meas	Orbit	Prod. error
1	GOM_TRA_1PNPDE20120126_001851_000000463111_00074_51812_7412.N1	26-JAN-2012 00:18:51	Dark	46.000	65	Lam Vel	2.2040	4400.0	92	51812	No
2	GOM_TRA_1PNPDE20120126_013847_000000423111_00074_51812_7449.N1	26-JAN-2012 01:38:47	Dark	42.000	131	Gam Lup	2.8000	26000.	84	51812	No
3	GOM_TRA_1PNPDE20120126_015905_000000463111_00075_51813_7450.N1	26-JAN-2012 01:59:05	Dark	46.000	65	Lam Vel	2.2040	4400.0	92	51813	No
4	GOM_TRA_1PNPDE20120126_031902_000000433111_00075_51813_7451.N1	26-JAN-2012 03:19:02	Dark	42.500	131	Gam Lup	2.8000	26000.	85	51813	No
5	GOM_TRA_1PNPDE20120126_033920_000000483111_00076_51814_7452.N1	26-JAN-2012 03:39:20	Dark	47.500	65	Lam Vel	2.2040	4400.0	95	51814	No
6	GOM_TRA_1PNPDE20120126_045917_000000423111_00076_51814_7501.N1	26-JAN-2012 04:59:17	Dark	41.500	131	Gam Lup	2.8000	26000.	83	51814	No
7	GOM_TRA_1PNPDE20120126_051934_000000503111_00077_51815_7502.N1	26-JAN-2012 05:19:34	Dark	50.000	65	Lam Vel	2.2040	4400.0	100	51815	No
8	GOM_TRA_1PNPDK20120126_063931_000000423111_00077_51815_4741.N1	26-JAN-2012 06:39:31	Dark	42.000	131	Gam Lup	2.8000	26000.	84	51815	No
9	GOM_TRA_1PNPDK20120126_065948_000000473111_00078_51816_4742.N1	26-JAN-2012 06:59:48	Dark	47.000	65	Lam Vel	2.2040	4400.0	94	51816	No
10	GOM_TRA_1PNPDK20120126_081946_000000423111_00078_51816_4774.N1	26-JAN-2012 08:19:46	Dark	41.500	131	Gam Lup	2.8000	26000.	83	51816	No
11	GOM_TRA_1PNPDK20120126_084003_000000493111_00079_51817_4775.N1	26-JAN-2012 08:40:03	Dark	48.500	65	Lam Vel	2.2040	4400.0	97	51817	No
12	GOM_TRA_1PNPDK20120126_100001_000000423111_00079_51817_4801.N1	26-JAN-2012 10:00:01	Dark	42.000	131	Gam Lup	2.8000	26000.	84	51817	No
13	GOM_TRA_1PNPDK20120126_102017_000000493111_00080_51818_4802.N1	26-JAN-2012 10:20:17	Dark	49.000	65	Lam Vel	2.2040	4400.0	98	51818	No
14	GOM_TRA_1PNPDK20120126_114015_000000433111_00080_51818_4831.N1	26-JAN-2012 11:40:15	Dark	43.000	131	Gam Lup	2.8000	26000.	86	51818	No
15	GOM_TRA_1PNPDK20120126_120031_000000493111_00081_51819_4832.N1	26-JAN-2012 12:00:31	Dark	49.000	65	Lam Vel	2.2040	4400.0	98	51819	No
16	GOM_TRA_1PNPDK20120126_132030_000000423111_00081_51819_4898.N1	26-JAN-2012 13:20:30	Dark	42.000	131	Gam Lup	2.8000	26000.	84	51819	No
17	GOM_TRA_1PNPDK20120126_134046_000000483111_00082_51820_4899.N1	26-JAN-2012 13:40:46	Dark	47.500	65	Lam Vel	2.2040	4400.0	95	51820	No
18	GOM_TRA_1PNPDK20120126_150044_000000413111_00082_51820_4946.N1	26-JAN-2012 15:00:44	Dark	41.000	131	Gam Lup	2.8000	26000.	82	51820	No
19	GOM_TRA_1PNPDK20120126_152100_000000483111_00083_51821_4947.N1	26-JAN-2012 15:21:00	Dark	48.000	65	Lam Vel	2.2040	4400.0	96	51821	No
20	GOM_TRA_1PNPDK20120126_164059_000000423111_00083_51821_4979.N1	26-JAN-2012 16:40:59	Dark	41.500	131	Gam Lup	2.8000	26000.	83	51821	No
21	GOM_TRA_1PNPDK20120126_170114_000000473111_00084_51822_4980.N1	26-JAN-2012 17:01:14	Dark	47.000	65	Lam Vel	2.2040	4400.0	94	51822	No
22	GOM_TRA_1PNPDK20120126_182114_000000413111_00084_51822_5010.N1	26-JAN-2012 18:21:14	Dark	40.500	131	Gam Lup	2.8000	26000.	81	51822	No
23	GOM_TRA_1PNPDK20120126_184129_000000473111_00085_51823_5046.N1	26-JAN-2012 18:41:29	Dark	47.000	65	Lam Vel	2.2040	4400.0	94	51823	No
24	GOM_TRA_1PNPDK20120126_200128_000000423111_00085_51823_5047.N1	26-JAN-2012 20:01:28	Dark	42.000	131	Gam Lup	2.8000	26000.	84	51823	No
25	GOM_TRA_1PNPDE20120126_202143_000000483111_00086_51824_7676.N1	26-JAN-2012 20:21:43	Dark	47.500	65	Lam Vel	2.2040	4400.0	95	51824	No
26	GOM_TRA_1PNPDE20120126_214143_000000433111_00086_51824_7706.N1	26-JAN-2012 21:41:43	Dark	42.500	131	Gam Lup	2.8000	26000.	85	51824	No
27	GOM_TRA_1PNPDE20120126_220157_000000453111_00087_51825_7707.N1	26-JAN-2012 22:01:57	Dark	44.500	65	Lam Vel	2.2040	4400.0	89	51825	No
28	GOM_TRA_1PNPDE20120126_232158_000000433111_00087_51825_7733.N1	26-JAN-2012 23:21:58	Dark	43.000	131	Gam Lup	2.8000	26000.	86	51825	No
29	GOM_TRA_1PNPDE20120126_234211_000000463111_00088_51826_7734.N1	26-JAN-2012 23:42:11	Dark	46.000	65	Lam Vel	2.2040	4400.0	92	51826	No

3. Plot of GOMOS spectrometers and photometers temperatures from level 1b data



4. Overview of dark signal processing per product

The Dark Charge (DC) is a temperature-dependant signal added to the useful measurements and it is therefore subtracted from them during the processing. There are two phenomena that produce a continuous increase of the DC: the "hot pixels" (a pixel is "hot" when its DC exceeds by a significant amount its value measured on ground at the same temperature) and the "Random Telegraphic Signal" (abrupt change positive or negative of the CCD pixel signal, random in time, affecting only the DC part of the signal and not the photon generated signal).

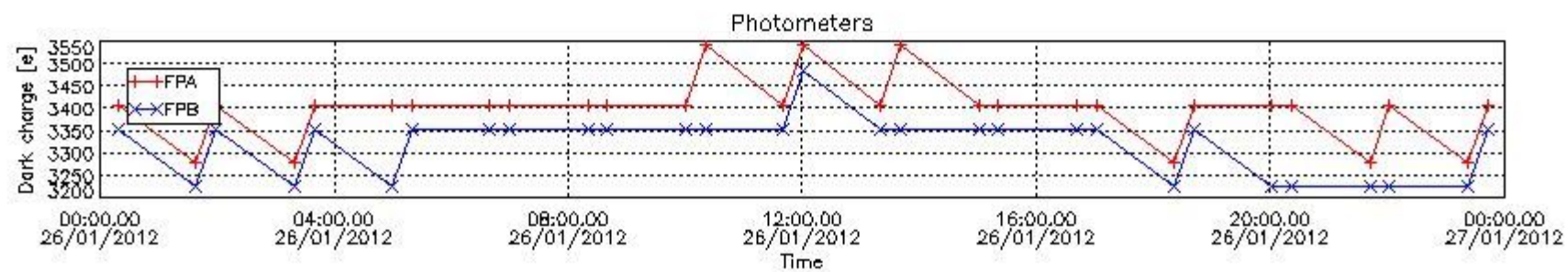
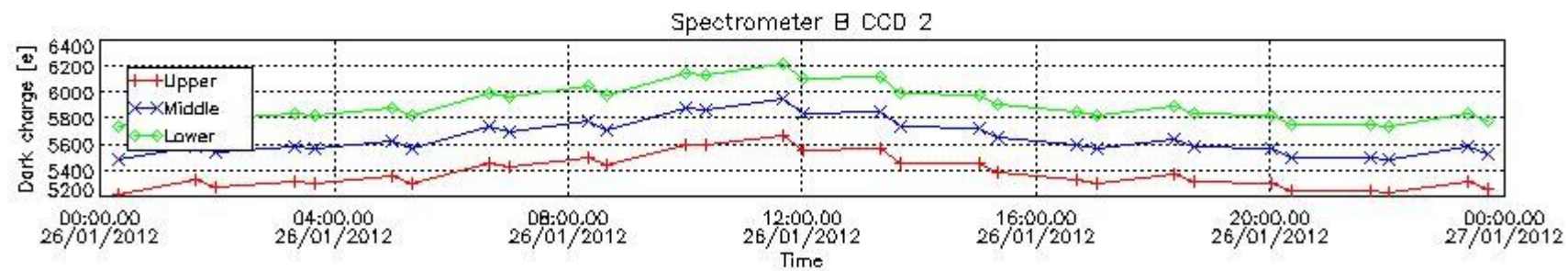
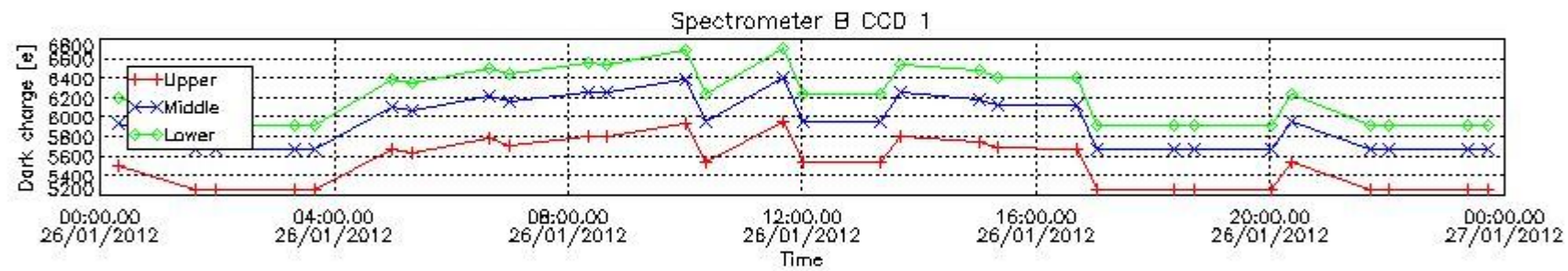
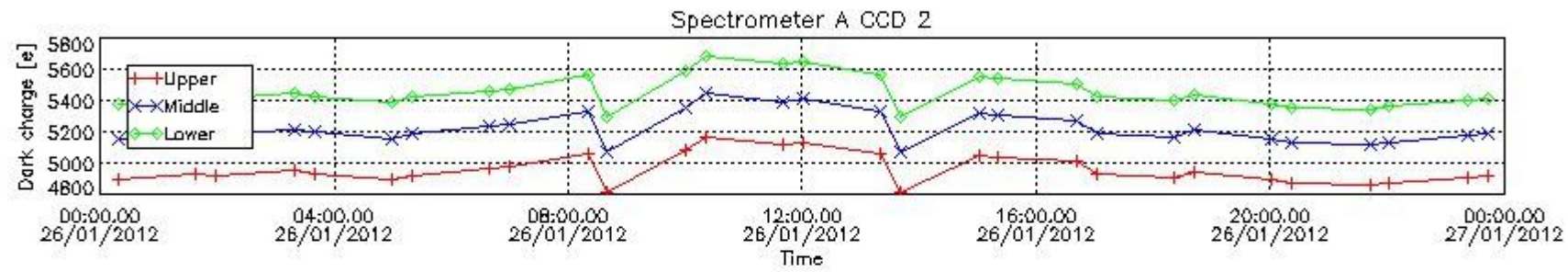
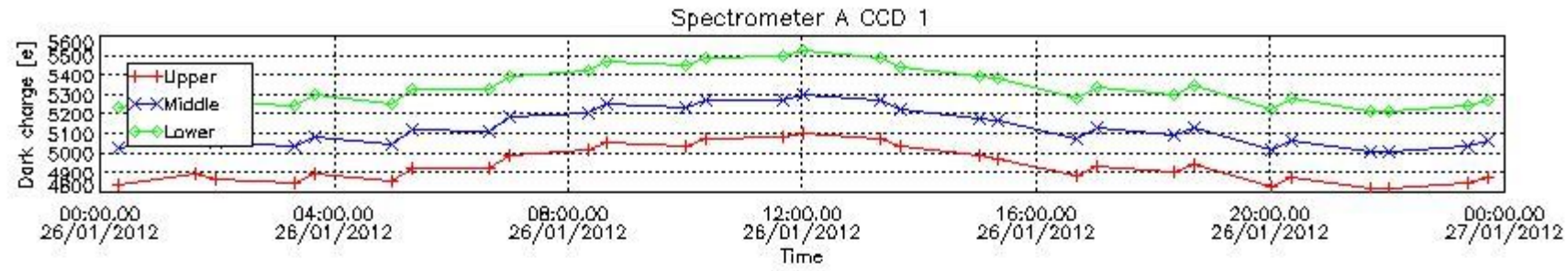
In this section a list of products that did not use the Dark Sky Area (DSA) observation for the DC computation is given. It is also provided the mean DC plot per product for dark limb products with no error flag set.

4.1 These products did not use the DSA observation for DC computation:

Product name	DC information
GOM_TRA_1PNPDE20120126_001851_000000463111_00074_51812_7412.N1	DC map used
GOM_TRA_1PNPDE20120126_013847_000000423111_00074_51812_7449.N1	DC map used
GOM_TRA_1PNPDE20120126_015905_000000463111_00075_51813_7450.N1	DC map used
GOM_TRA_1PNPDE20120126_031902_000000433111_00075_51813_7451.N1	DC map used
GOM_TRA_1PNPDE20120126_033920_000000483111_00076_51814_7452.N1	DC map used
GOM_TRA_1PNPDE20120126_045917_000000423111_00076_51814_7501.N1	DC map used
GOM_TRA_1PNPDE20120126_051934_000000503111_00077_51815_7502.N1	DC map used
GOM_TRA_1PNPDK20120126_063931_000000423111_00077_51815_4741.N1	DC map used
GOM_TRA_1PNPDK20120126_065948_000000473111_00078_51816_4742.N1	DC map used
GOM_TRA_1PNPDK20120126_081946_000000423111_00078_51816_4774.N1	DC map used
GOM_TRA_1PNPDK20120126_084003_000000493111_00079_51817_4775.N1	DC map used
GOM_TRA_1PNPDK20120126_100001_000000423111_00079_51817_4801.N1	DC map used
GOM_TRA_1PNPDK20120126_102017_000000493111_00080_51818_4802.N1	DC map used
GOM_TRA_1PNPDK20120126_114015_000000433111_00080_51818_4831.N1	DC map used

GOM_TRA_1PNPDK20120126_120031_000000493111_00081_51819_4832.N1	DC map used
GOM_TRA_1PNPDK20120126_132030_000000423111_00081_51819_4898.N1	DC map used
GOM_TRA_1PNPDK20120126_134046_000000483111_00082_51820_4899.N1	DC map used
GOM_TRA_1PNPDK20120126_150044_000000413111_00082_51820_4946.N1	DC map used
GOM_TRA_1PNPDK20120126_152100_000000483111_00083_51821_4947.N1	DC map used
GOM_TRA_1PNPDK20120126_164059_000000423111_00083_51821_4979.N1	DC map used
GOM_TRA_1PNPDK20120126_170114_000000473111_00084_51822_4980.N1	DC map used
GOM_TRA_1PNPDK20120126_182114_000000413111_00084_51822_5010.N1	DC map used
GOM_TRA_1PNPDK20120126_184129_000000473111_00085_51823_5046.N1	DC map used
GOM_TRA_1PNPDK20120126_200128_000000423111_00085_51823_5047.N1	DC map used
GOM_TRA_1PNPDE20120126_202143_000000483111_00086_51824_7676.N1	DC map used
GOM_TRA_1PNPDE20120126_214143_000000433111_00086_51824_7706.N1	DC map used
GOM_TRA_1PNPDE20120126_220157_000000453111_00087_51825_7707.N1	DC map used
GOM_TRA_1PNPDE20120126_232158_000000433111_00087_51825_7733.N1	DC map used
GOM_TRA_1PNPDE20120126_234211_000000463111_00088_51826_7734.N1	DC map used

4.2 Plot of mean dark charges per product: only products in DARK limb conditions without errors are used



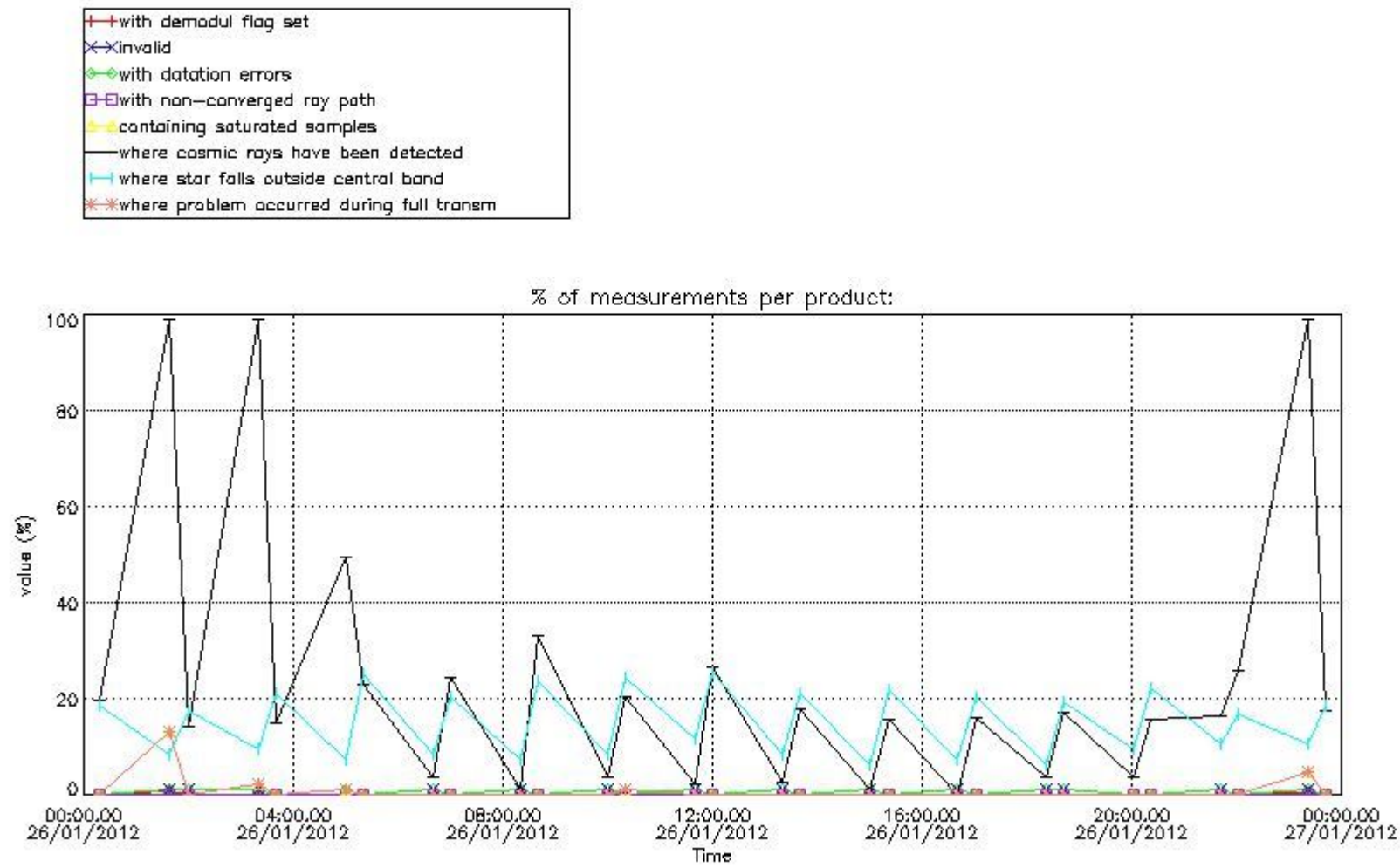
5. Demodulation flag and quality information monitoring

In this section it is presented the modulation information extracted from the pcd (product confidence data) at measurement level and information extracted from the Quality Summary dataset. Only products without errors (error flag in the MPH set to "0") are used.

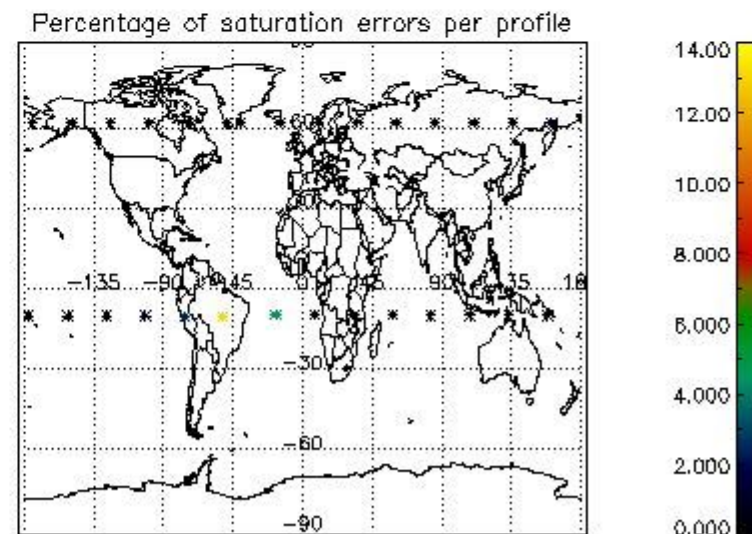
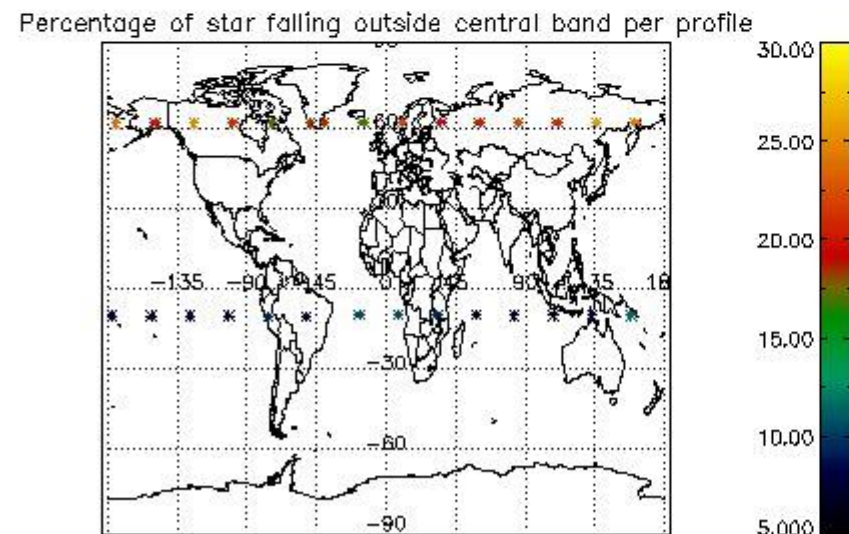
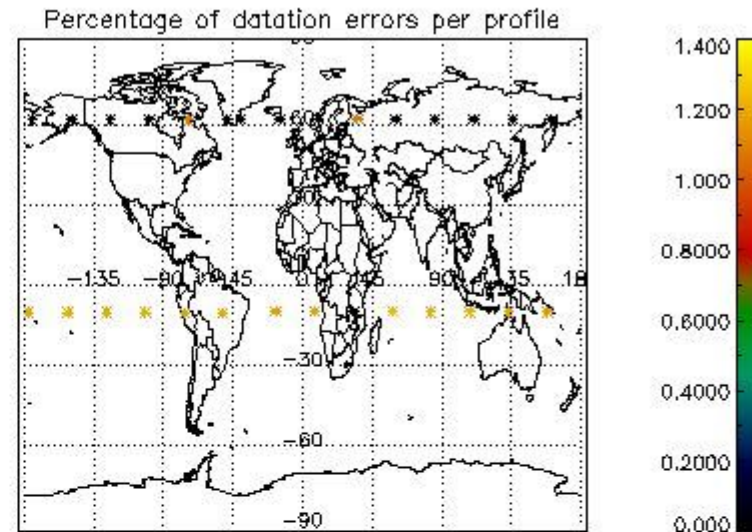
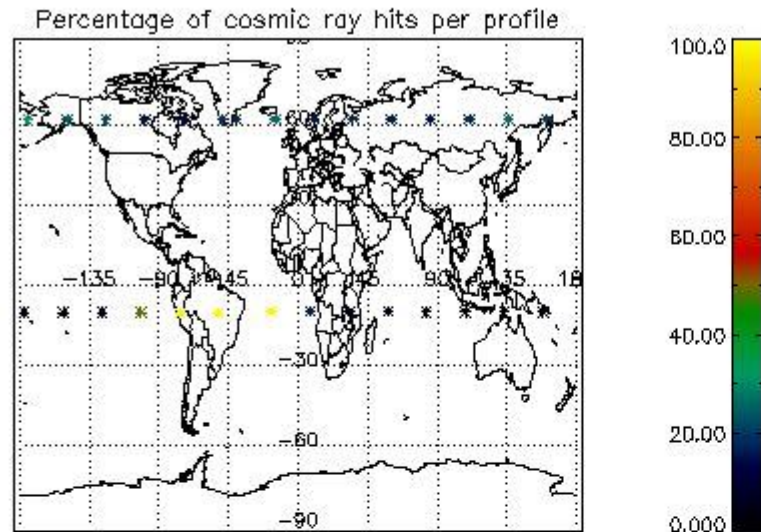
5.1 Percentage of products during reporting period with:

At least one measurement with demodulation flag set:	93.1034 %
Reference spectrum computed from DB:	0.00000 %
Reference spectrum with small number of measurements:	0.00000 %
SATU data not used:	0.00000 %

5.2 Plot quality information per product (time dependant)



5.3 Plot quality information per product (world map)



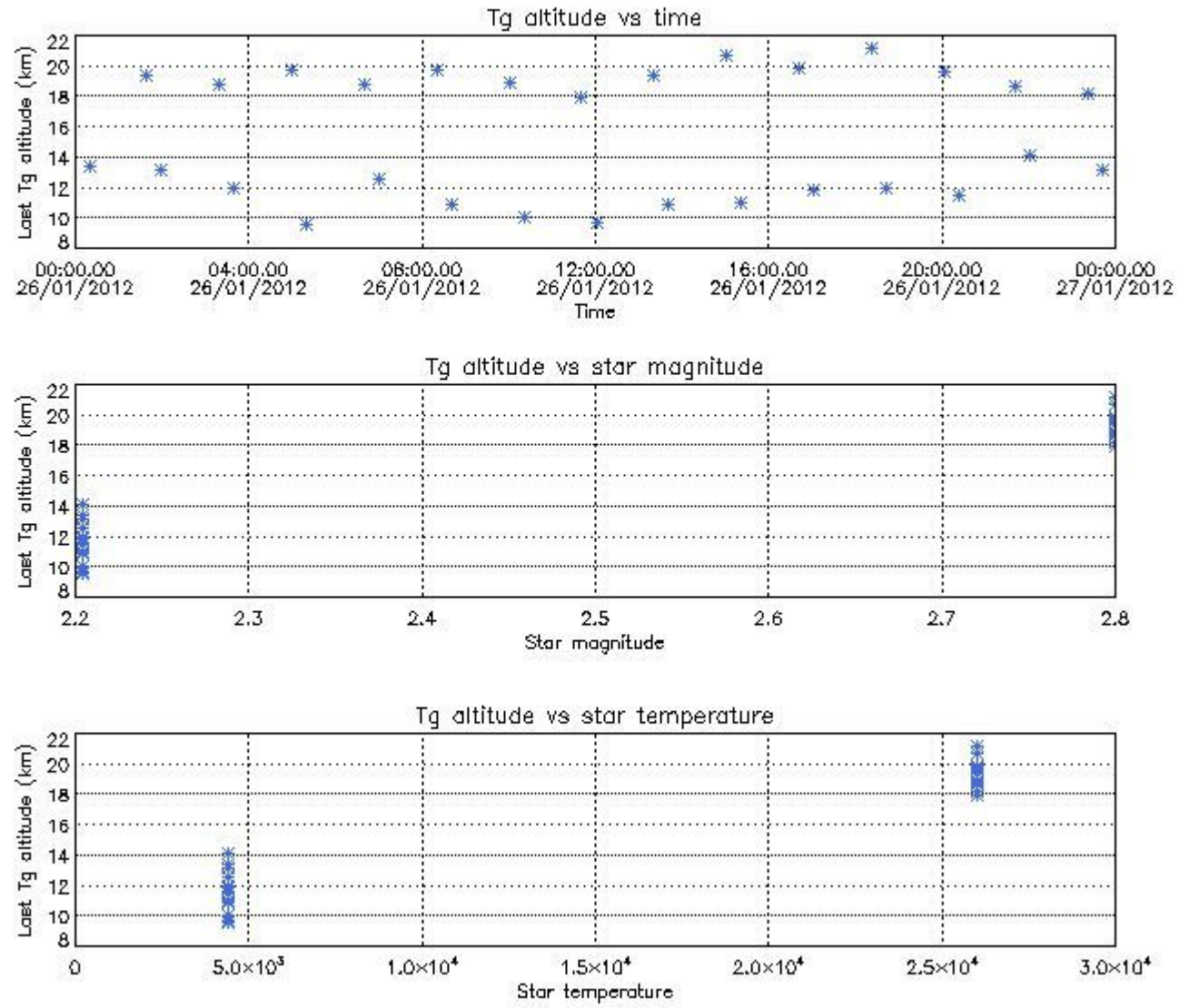
6. Statistics and plot of tangent altitude of the last measurement (DARK & BRIGHT products without errors)

6.1 Statistics on tangent altitude lost:

Statistics	DARK	BRIGHT	TWILIGHT
Mean:	15.381	NaN	NaN
St. deviation:	4.0585	NaN	NaN
Maximum:	21.165	NaN	NaN
Minimum:	9.5620	NaN	NaN
Number of data:	29.000	NaN	NaN

6.2 Plot for DARK limb products

Tangent altitude at which the star is lost

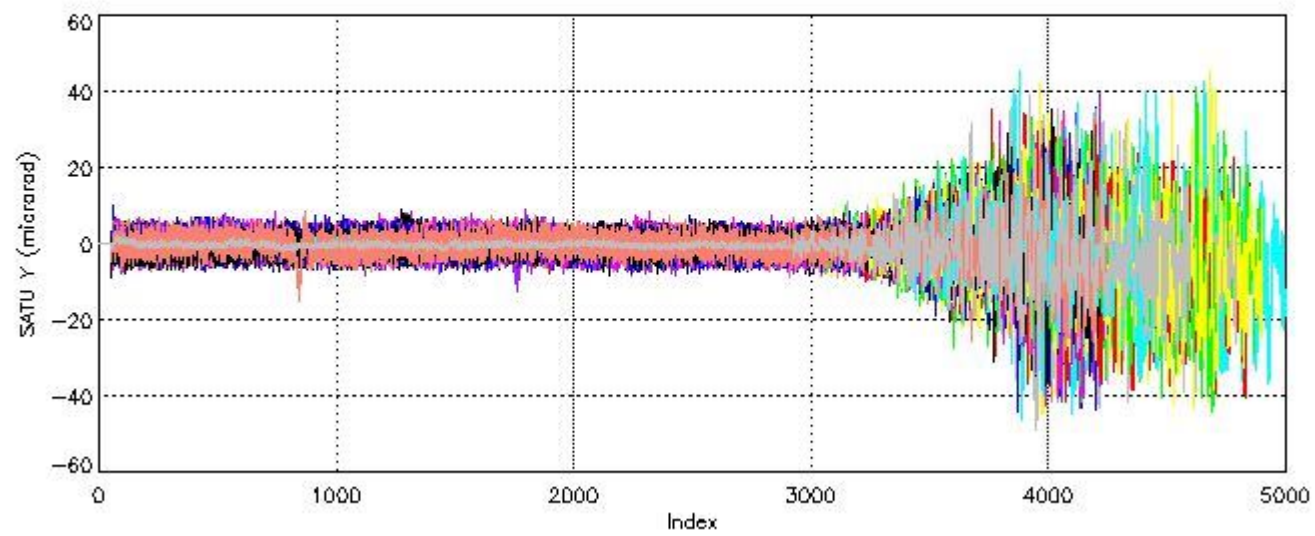
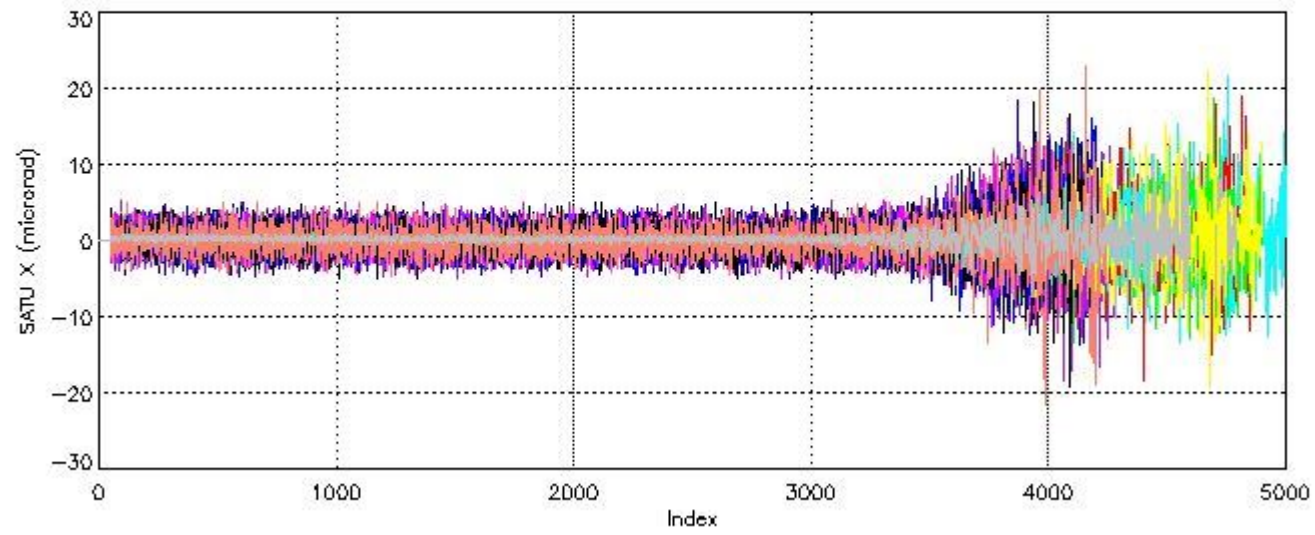


7. Star Acquisition and Tracking Unit (SATU)

The Star Acquisition and Tracking Unit (SATU) analyses the position of the tracked star beam collected by the GOMOS telescope and deflected by the optical beam dispatcher. The main function of the SATU is to detect a star, provide its image position to the science data electronics and to help the pointing function to keep the star image at a fixed position. In tracking mode the SATU data is recorded with a frequency of 100 Hz.

7.1 SATU 'X' and 'Y' axis plots (dark limb)

SATU CCD 'X' and 'Y' axis plots are provided in order to detect any abnormal behaviour of the tracking system. For every occultation (color) the plot should remain stable (with some noise) until we are deep in the atmosphere where big fluctuations are registered due to the refractive effects.



7.2 Statistics on SATU Noise Equivalent Angle (NEA) for DARK (D) and BRIGHT (B) products above 105 kms

The Star Acquisition and Tracking Unit (it is the CCD that tracks the star while it is occulted) Noise Equivalent Angle consists of the statistical angular variation of the SATU data above the atmosphere.

Statistics (in microradians) above 105 km are computed for every occultation, giving four values per occultation: one in the 'X' direction and one in the 'Y' direction for dark and bright limbs. A mean value per day in every direction and limb is calculated and monitored in order to assess instrument performance in terms of star pointing.

7.2.1 SATU NEA Statistics (table)

Statistics	SATU X (D)	SATU Y (D)	SATU X (B)	SATU Y (B)
Mean:	0.17090	-0.26364	NaN	NaN
St. deviation:	0.83321	1.7776	NaN	NaN
Maximum:	5.3000	9.9000	NaN	NaN
Minimum:	-4.8000	-15.500	NaN	NaN

Number of data:	28250.	28250.	NaN	NaN
90Percentile:	1.4000	2.5000	NaN	NaN

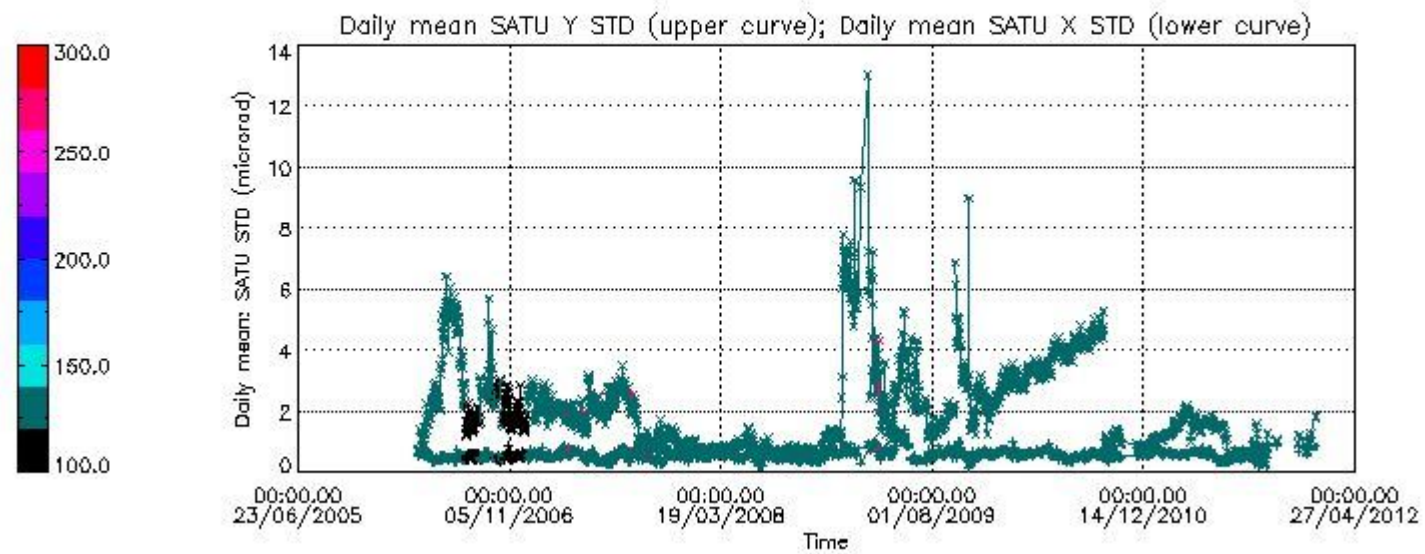
7.2.2 Trend of daily SATU NEA St. deviation since 1st April 2006 (dark limb) and of daily SATU NEA 90th percentile since May 2011

The long term trend of the SATU 'X' and 'Y' standard deviations should be constant during the whole mission.

The colorbar represents the start tangent altitude (km) of the occultations.

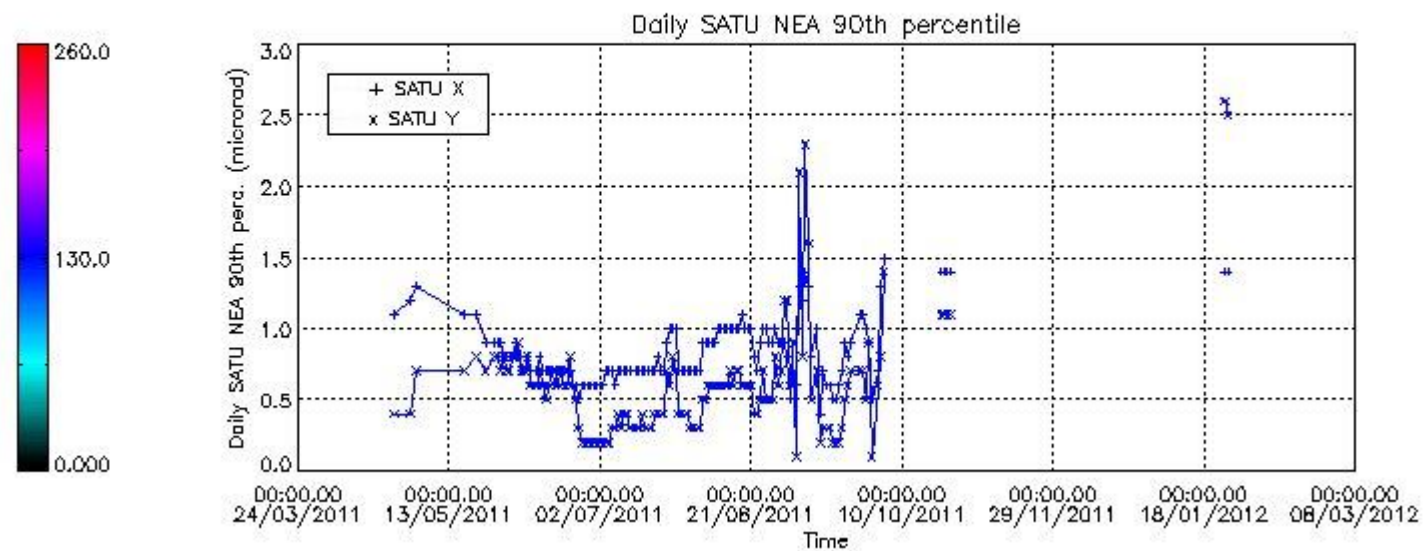
Upper curve: STD of SATU Y axis

Lower curve: STD of SATU X axis



Lower curve: 90th percentile of SATU Y axis

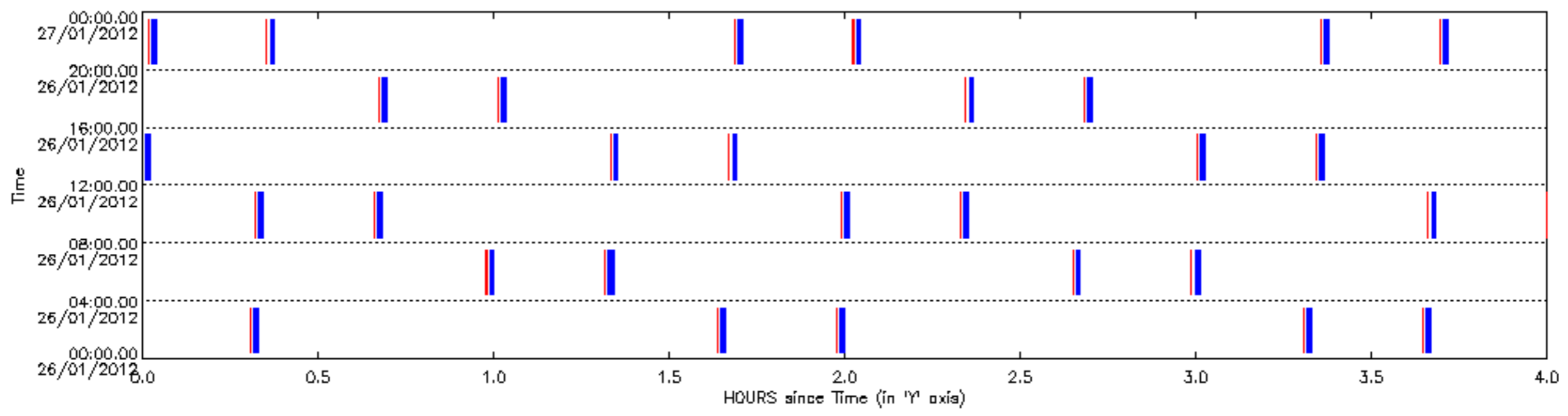
Upper curve: 90th percentile of SATU X axis

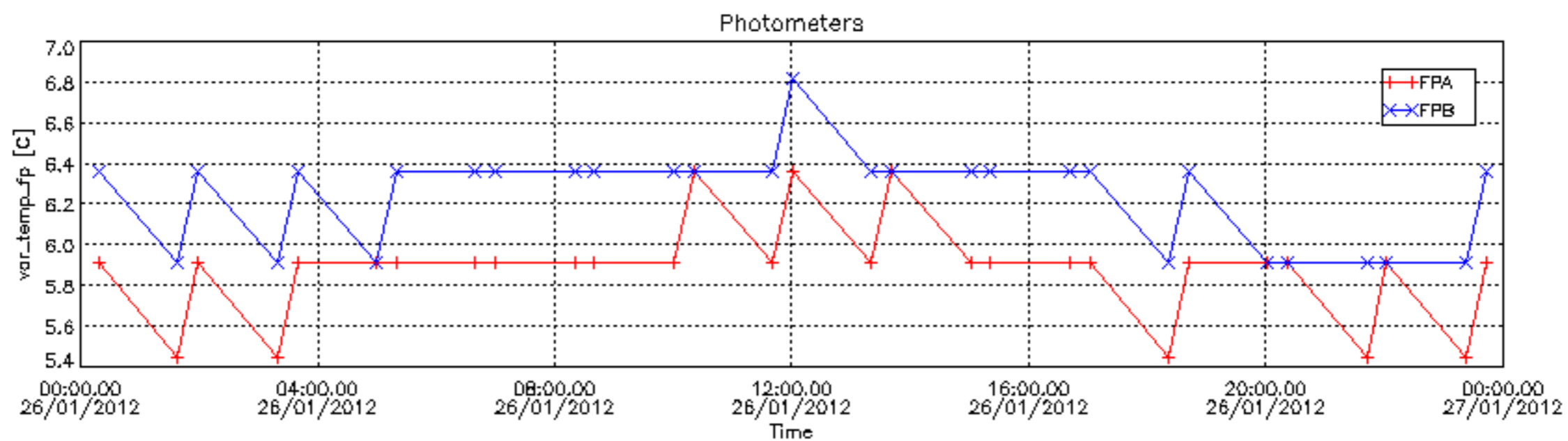
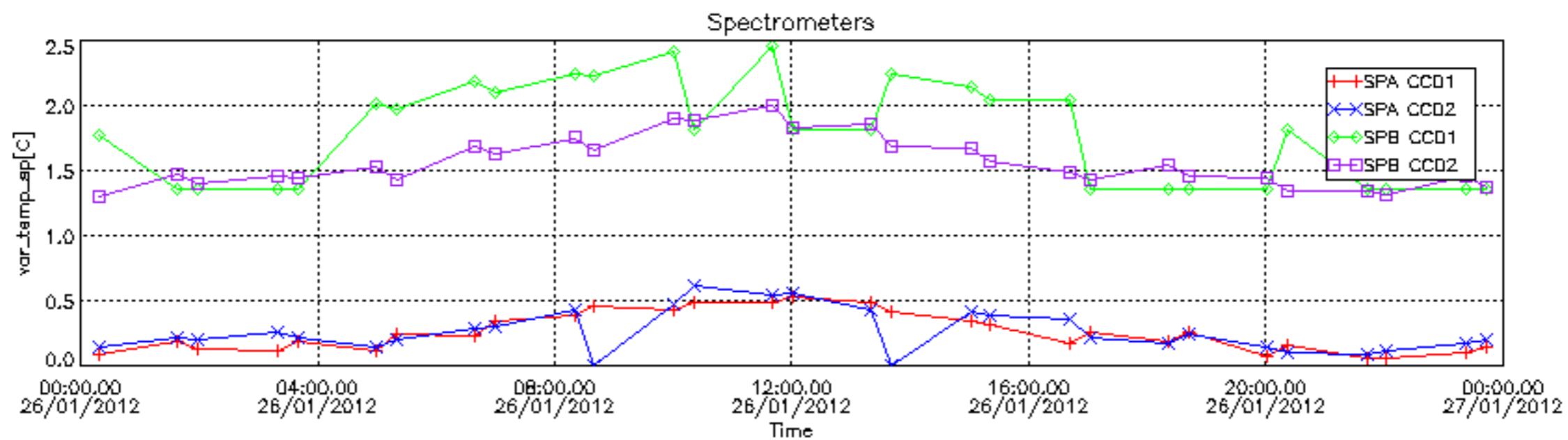


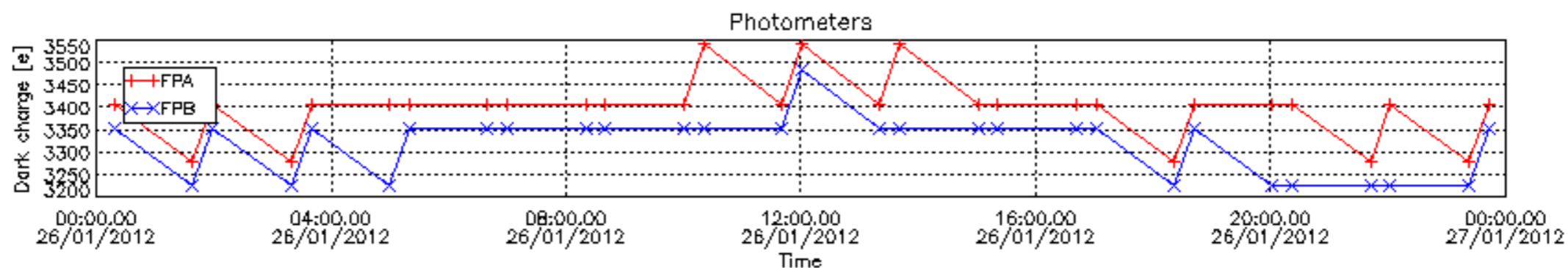
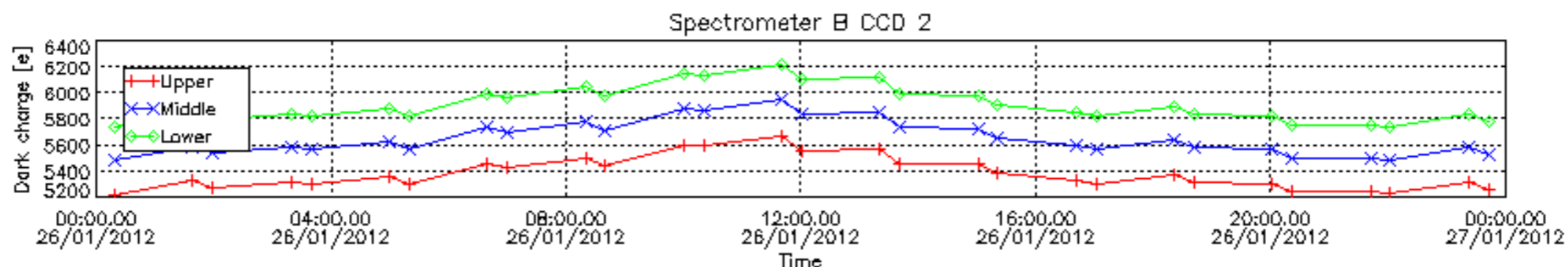
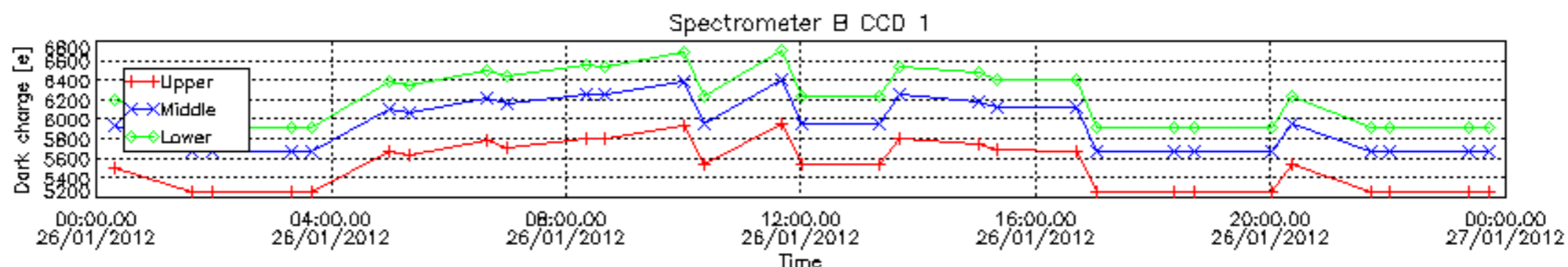
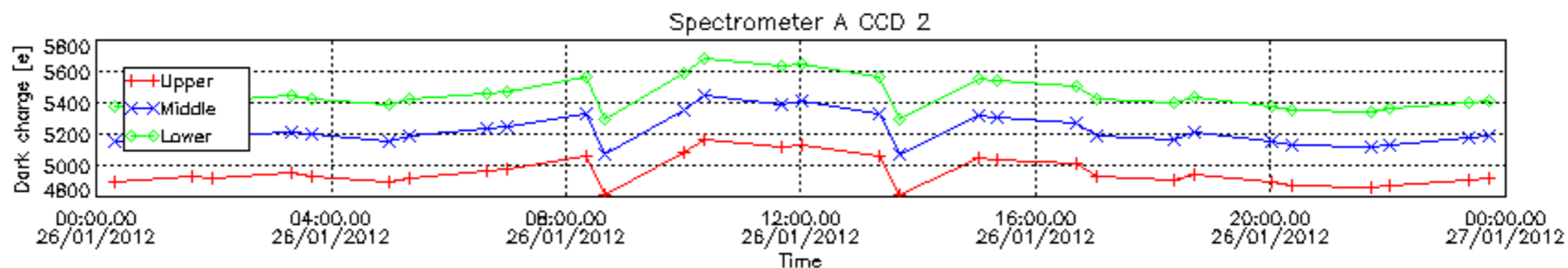
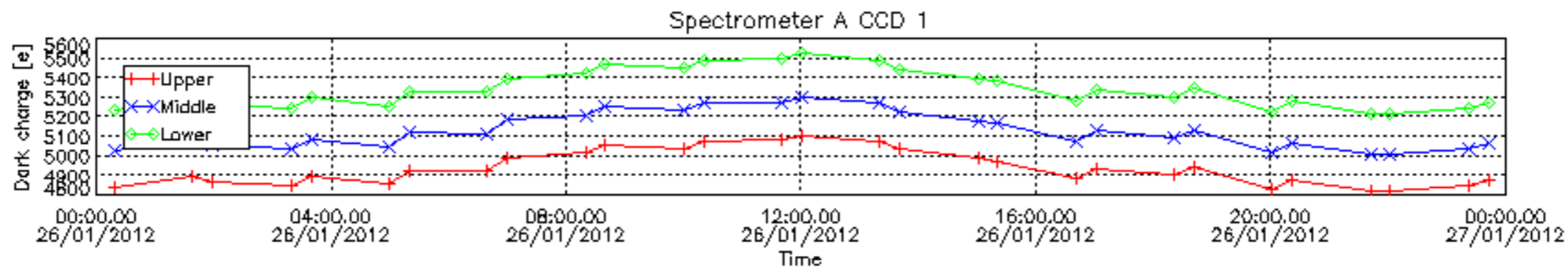
8. Auxiliary Data Files used for the production reported in section 2.4

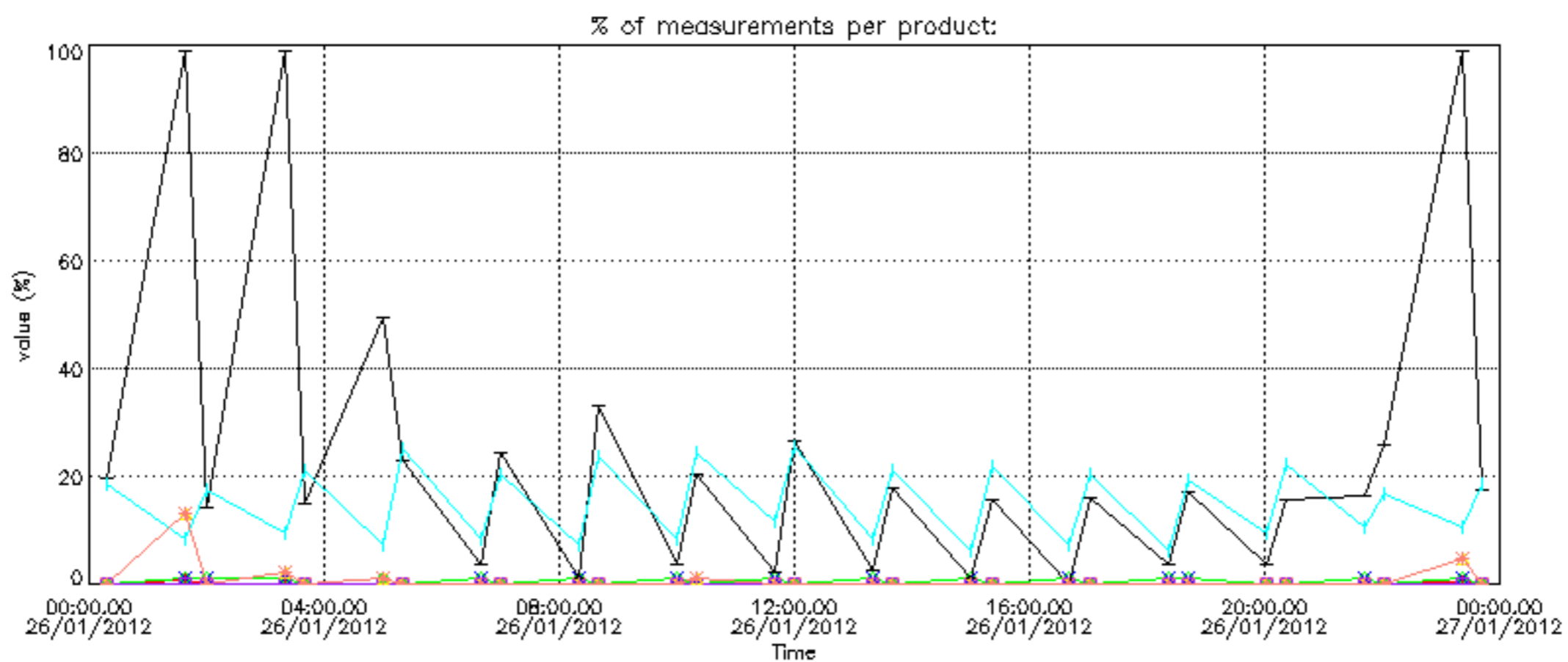
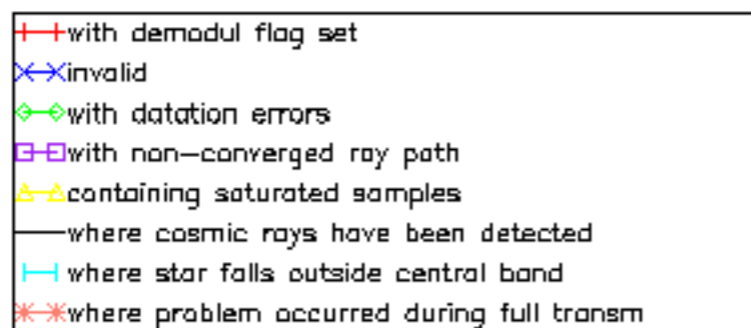
The number reported in the third column indicates since which file (see list in section 2.4) the corresponding auxiliary file has been used. The fourth column is the date of those product files.

Type	Auxiliary Filename	Used since product	Used since product date
INST_PHYS_CHARACTERISTICS	GOM_INS_AXVIEC20111213_163131_20111215_000000_20500101_000000	1	26-JAN-2012 00:18:51
CALIBRATION_DATABASE	GOM_CAL_AXVIEC20120113_084220_20120102_000000_20500101_000000	1	26-JAN-2012 00:18:51
LEVEL-1B_PROC_CONFIG	GOM_PR1_AXVIEC20110513_081743_20020301_000000_20500101_000000	1	26-JAN-2012 00:18:51
STAR_CATALOGUE	GOM_CAT_AXVIEC20020121_161009_20020101_000000_20200101_000000	1	26-JAN-2012 00:18:51
STELLAR_SPECTRA_DATABANK	GOM_STS_AXVIEC20091111_151504_20020101_160000_20500101_000000	1	26-JAN-2012 00:18:51
ECMWF_FILE	AUX_ECF_AXNECM20120125_062116_20120125_210000_20120126_090000	1	26-JAN-2012 00:18:51
ECMWF_FILE	AUX_ECF_AXNECM20120125_181938_20120126_030000_20120126_150000	6	26-JAN-2012 04:59:17
ECMWF_FILE	AUX_ECA_AXNECM20120126_062115_20120125_210000_20120126_090000	8	26-JAN-2012 06:39:31
ECMWF_FILE	AUX_ECF_AXNECM20120126_062115_20120126_090000_20120126_210000	12	26-JAN-2012 10:00:01
ECMWF_FILE	AUX_ECF_AXNECM20120126_062116_20120126_150000_20120127_030000	18	26-JAN-2012 15:00:44
ECMWF_FILE	AUX_ECA_AXNECM20120126_182115_20120126_090000_20120126_210000	23	26-JAN-2012 18:41:29
ECMWF_FILE	AUX_ECF_AXNECM20120126_062116_20120126_210000_20120127_090000	26	26-JAN-2012 21:41:43
OPTIONAL_ECMWF_FILE	MISSING	1	26-JAN-2012 00:18:51
ORBIT_DATA_FILE	AUX_FPO_AXVPDS20120124_232114_20120124_193730_20120203_201054	1	26-JAN-2012 00:18:51
ORBIT_DATA_FILE	AUX_FPO_AXVPDS20120126_112113_20120125_190045_20120204_211424	14	26-JAN-2012 11:40:15

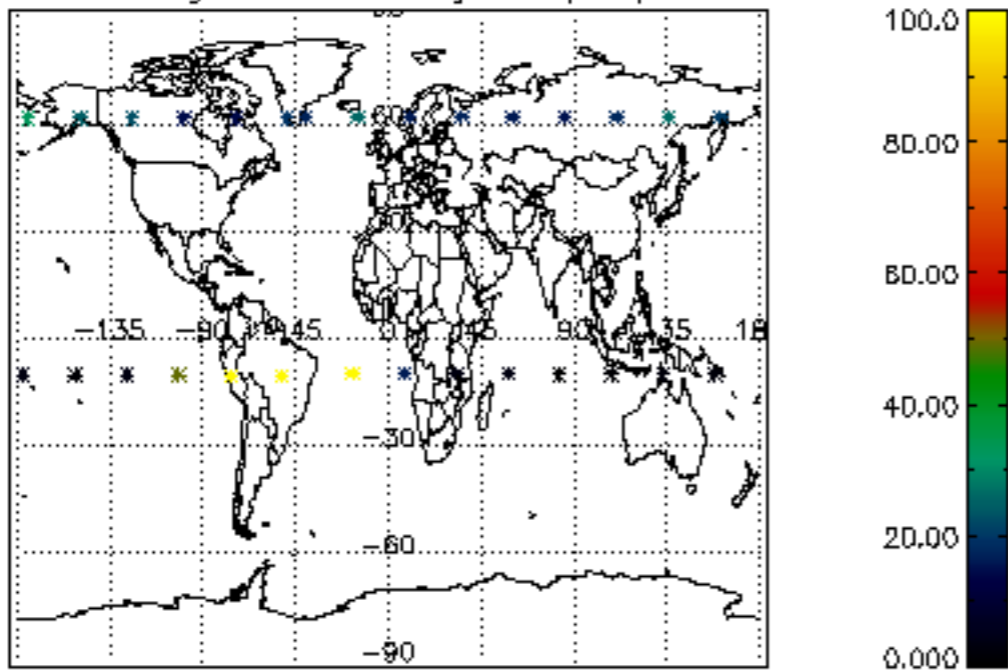




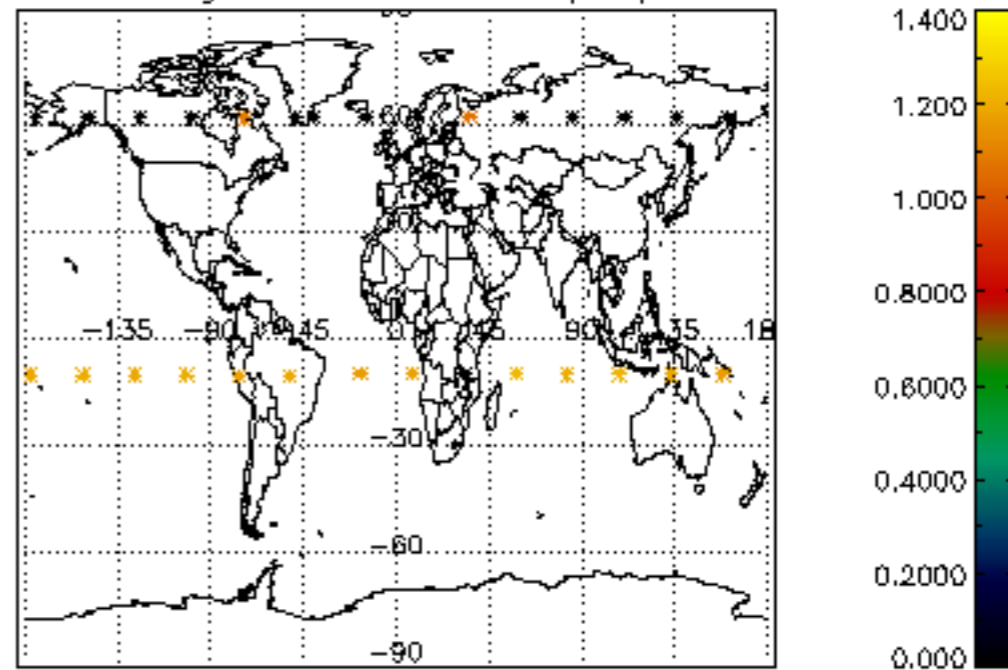




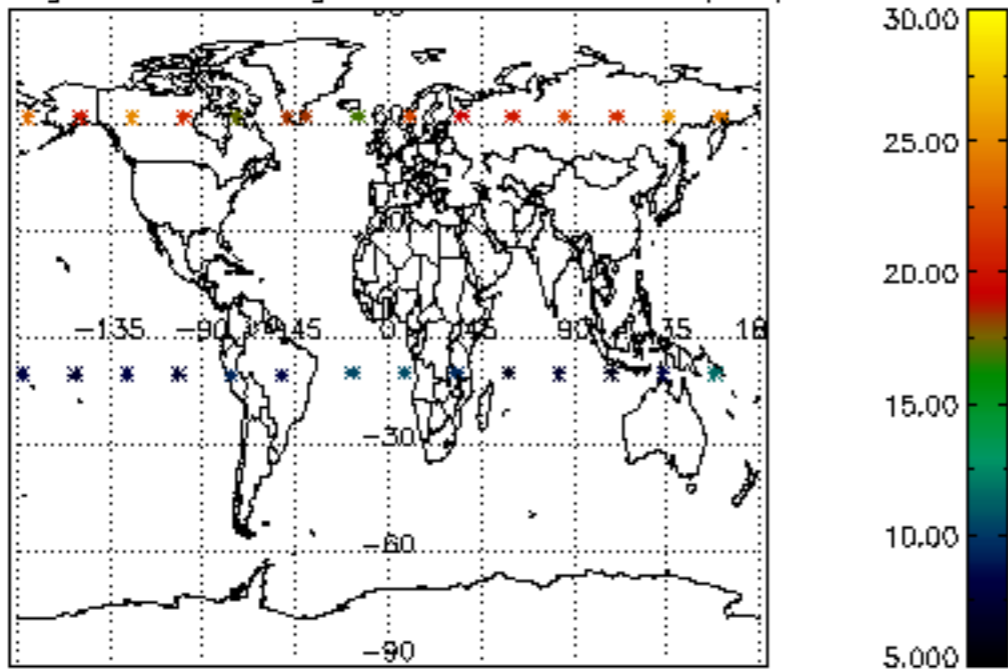
Percentage of cosmic ray hits per profile



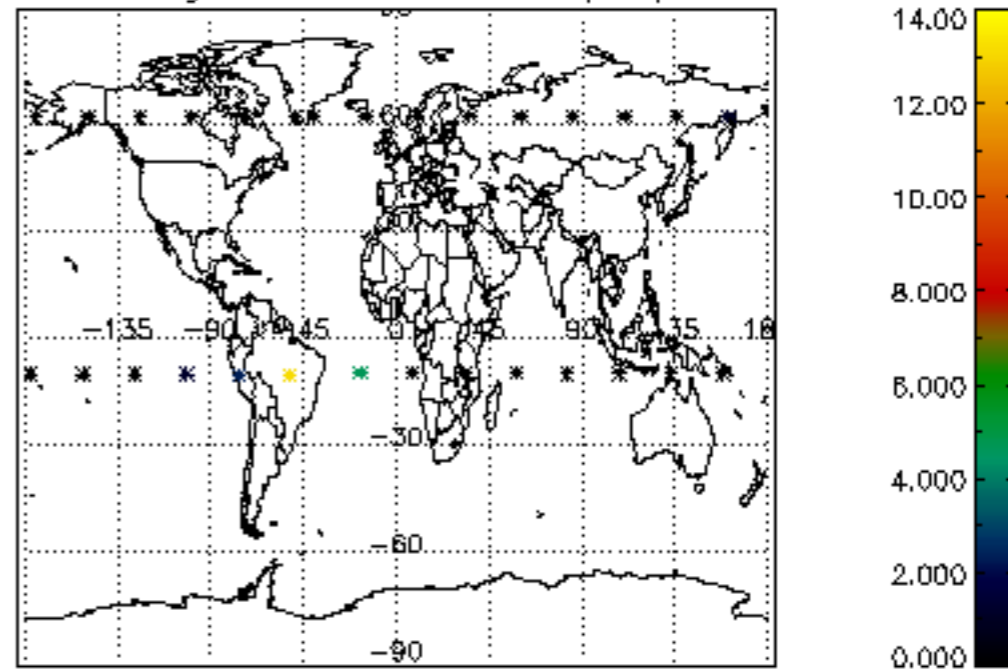
Percentage of datation errors per profile



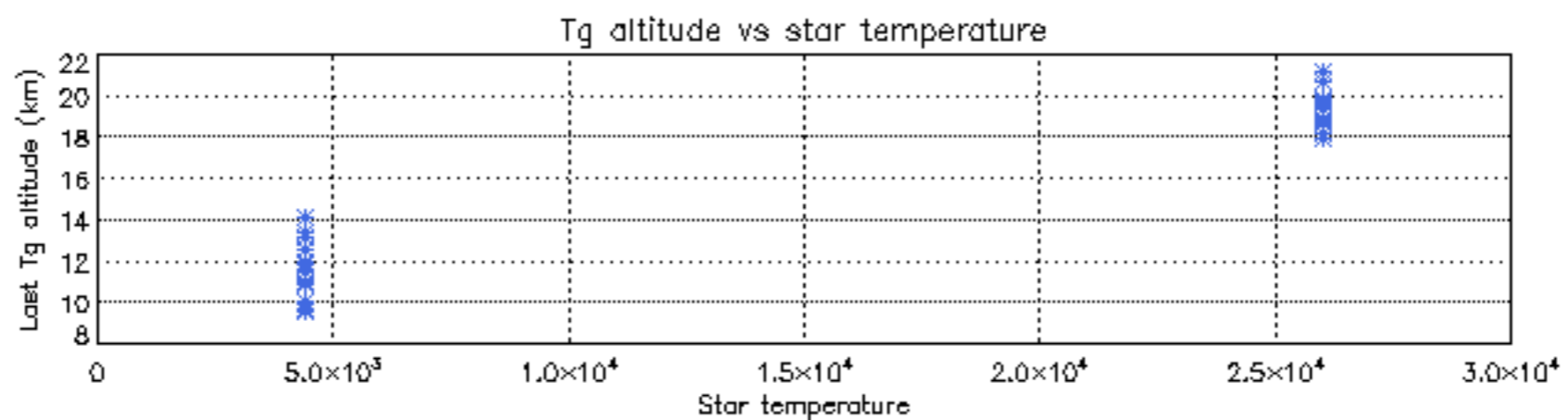
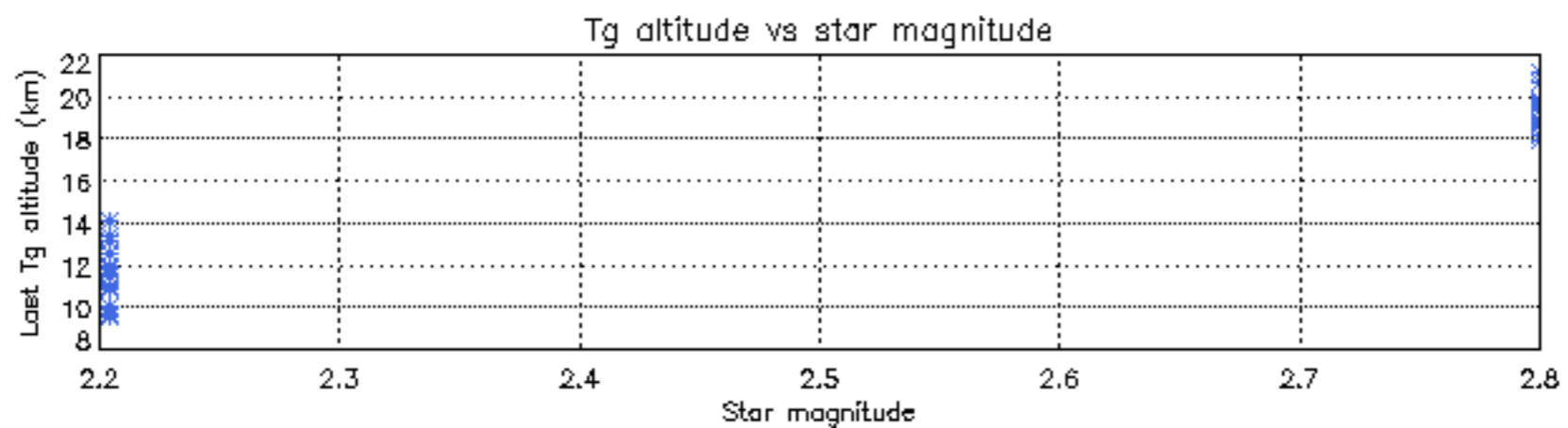
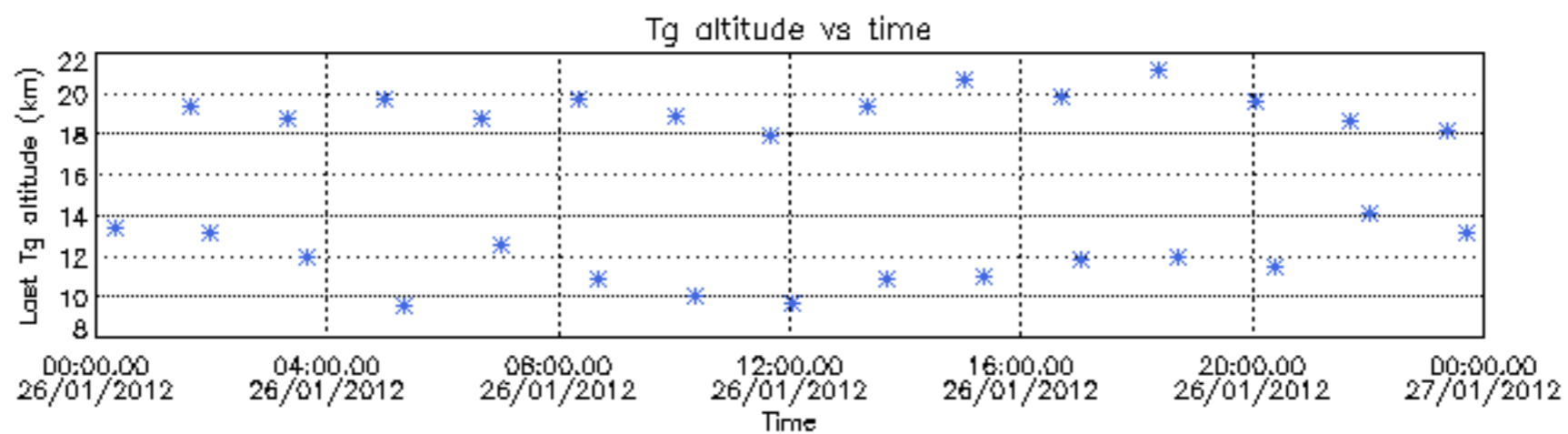
Percentage of star falling outside central band per profile

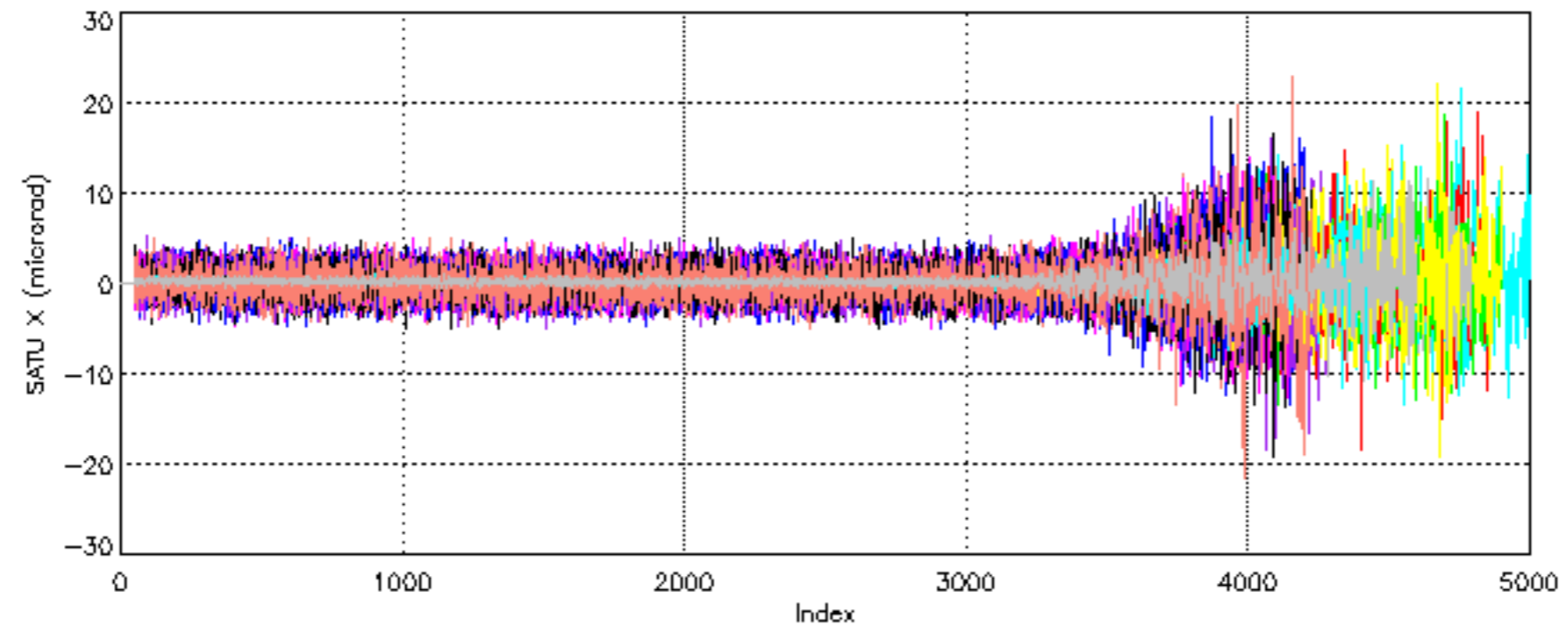


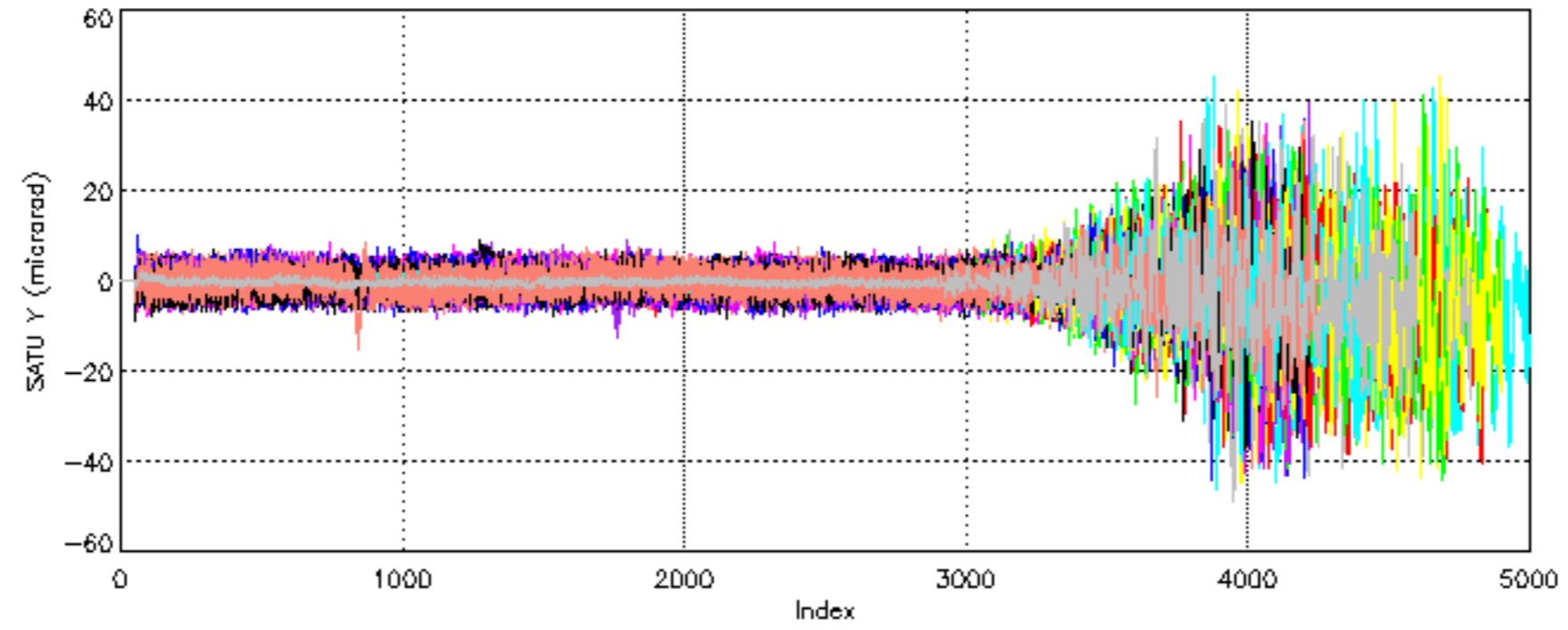
Percentage of saturation errors per profile

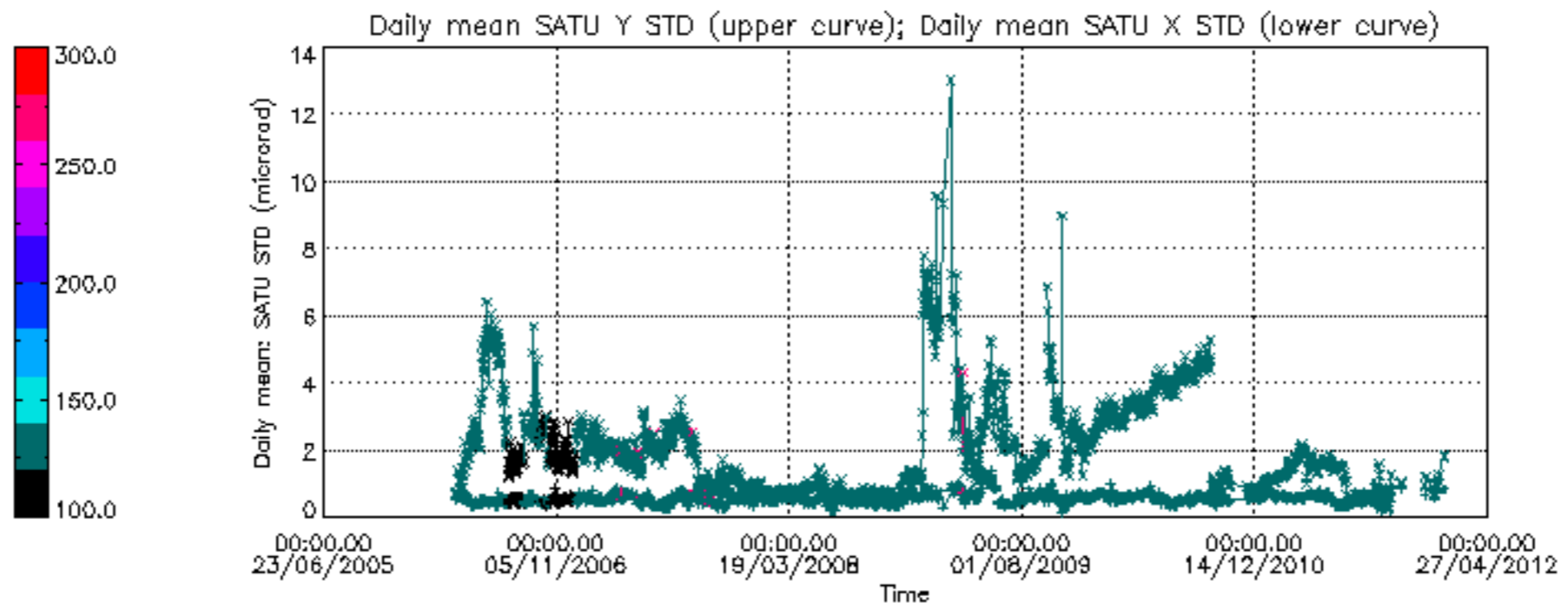


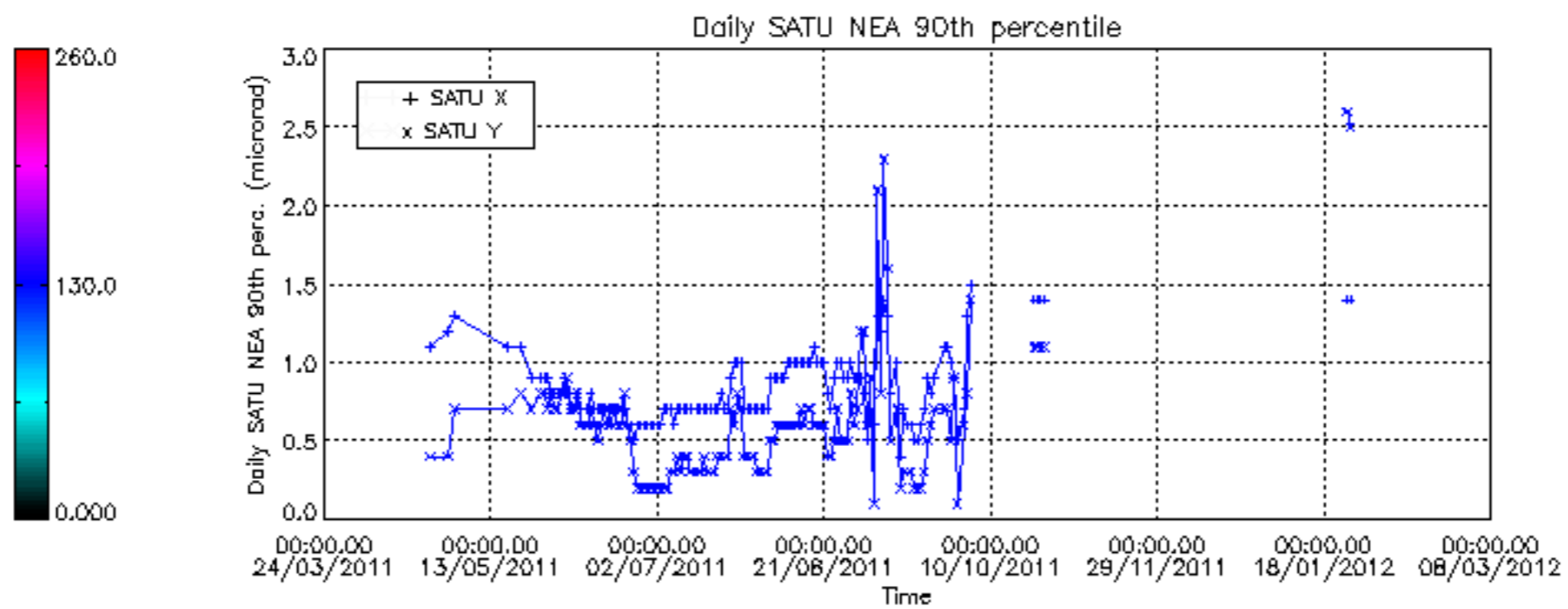
Tangent altitude at which the star is lost











/nas3/ENVISAT/GOMOS/GOM_NL__0P/GOM_NL__0PNPDE20120102_013403_000060733110_00161_51468_3712.N1
1; 749.3; 02-JAN-2012 01:34:03; Dark ; 59.0; 0; ; 0.00; 0;occ; 118; 0;51468
2; 6763.8; 02-JAN-2012 03:14:17; Dark ; 59.0; 0; ; 0.00; 0;occ; 118; 0;51469
/nas3/ENVISAT/GOMOS/GOM_NL__0P/GOM_NL__0PNPDK20120102_081755_00000433110_00165_51472_5504.N1
1; 925.9; 02-JAN-2012 08:17:55; Dark ; 43.5; 34; Gam2Vel ; 1.79; 23000;occ; 87; 0;51472
/nas3/ENVISAT/GOMOS/GOM_NL__0P/GOM_NL__0PNPDK20120102_095810_00000403110_00166_51473_5505.N1
1; 926.1; 02-JAN-2012 09:58:10; Dark ; 41.0; 34; Gam2Vel ; 1.79; 23000;occ; 82; 0;51473
/nas3/ENVISAT/GOMOS/GOM_NL__0P/GOM_NL__0PNPDK20120102_113824_00000413110_00167_51474_5506.N1
1; 926.6; 02-JAN-2012 11:38:24; Dark ; 41.5; 34; Gam2Vel ; 1.79; 23000;occ; 83; 0;51474
/nas3/ENVISAT/GOMOS/GOM_NL__0P/GOM_NL__0PNPDK20120102_131838_00000423110_00168_51475_5507.N1
1; 927.2; 02-JAN-2012 13:18:38; Dark ; 43.0; 34; Gam2Vel ; 1.79; 23000;occ; 86; 0;51475
/nas3/ENVISAT/GOMOS/GOM_NL__0P/GOM_NL__0PNPDK20120102_145853_00000443110_00169_51476_5508.N1
1; 927.7; 02-JAN-2012 14:58:53; Dark ; 44.5; 34; Gam2Vel ; 1.79; 23000;occ; 89; 0;51476
/nas3/ENVISAT/GOMOS/GOM_NL__0P/GOM_NL__0PNPDK20120102_163907_00000463110_00170_51477_5509.N1
1; 928.1; 02-JAN-2012 16:39:07; Dark ; 46.5; 34; Gam2Vel ; 1.79; 23000;occ; 93; 0;51477
/nas3/ENVISAT/GOMOS/GOM_NL__0P/GOM_NL__0PNPDK20120103_074117_00000413110_00179_51486_5510.N1
1; 932.5; 03-JAN-2012 07:41:17; Dark ; 42.0; 34; Gam2Vel ; 1.79; 23000;occ; 84; 0;51486
/nas3/ENVISAT/GOMOS/GOM_NL__0P/GOM_NL__0PNPDK20120103_092132_00000403110_00180_51487_5511.N1
1; 933.0; 03-JAN-2012 09:21:32; Dark ; 41.0; 34; Gam2Vel ; 1.79; 23000;occ; 82; 0;51487
/nas3/ENVISAT/GOMOS/GOM_NL__0P/GOM_NL__0PNPDK20120103_110146_00000413110_00181_51488_5512.N1
1; 933.4; 03-JAN-2012 11:01:46; Dark ; 41.5; 34; Gam2Vel ; 1.79; 23000;occ; 83; 0;51488
/nas3/ENVISAT/GOMOS/GOM_NL__0P/GOM_NL__0PNPDK20120103_124200_00000463110_00182_51489_5513.N1
1; 933.9; 03-JAN-2012 12:42:00; Dark ; 47.0; 34; Gam2Vel ; 1.79; 23000;occ; 94; 0;51489
/nas3/ENVISAT/GOMOS/GOM_NL__0P/GOM_NL__0PNPDK20120103_142215_00000443110_00183_51490_5514.N1
1; 934.4; 03-JAN-2012 14:22:15; Dark ; 45.0; 34; Gam2Vel ; 1.79; 23000;occ; 90; 0;51490
/nas3/ENVISAT/GOMOS/GOM_NL__0P/GOM_NL__0PNPDK20120103_160229_00000443110_00184_51491_5515.N1
1; 934.8; 03-JAN-2012 16:02:29; Dark ; 44.5; 34; Gam2Vel ; 1.79; 23000;occ; 89; 0;51491
/nas3/ENVISAT/GOMOS/GOM_NL__0P/GOM_NL__0PNPDK20120103_174244_00000453110_00185_51492_5516.N1
1; 935.2; 03-JAN-2012 17:42:44; Dark ; 45.5; 34; Gam2Vel ; 1.79; 23000;occ; 91; 0;51492
/nas3/ENVISAT/GOMOS/GOM_NL__0P/GOM_NL__0PNPDE20120104_052425_00000413110_00192_51499_3713.N1
1; 938.7; 04-JAN-2012 05:24:25; Dark ; 42.0; 34; Gam2Vel ; 1.79; 23000;occ; 84; 0;51499
/nas3/ENVISAT/GOMOS/GOM_NL__0P/GOM_NL__0PNPDK20120104_070439_00000413110_00193_51500_5517.N1
1; 939.1; 04-JAN-2012 07:04:39; Dark ; 42.0; 34; Gam2Vel ; 1.79; 23000;occ; 84; 0;51500
/nas3/ENVISAT/GOMOS/GOM_NL__0P/GOM_NL__0PNPDK20120104_084453_00000413110_00194_51501_5518.N1
1; 939.6; 04-JAN-2012 08:44:53; Dark ; 41.5; 34; Gam2Vel ; 1.79; 23000;occ; 83; 0;51501
/nas3/ENVISAT/GOMOS/GOM_NL__0P/GOM_NL__0PNPDK20120104_102508_00000473110_00195_51502_5519.N1
1; 940.1; 04-JAN-2012 10:25:08; Dark ; 47.5; 34; Gam2Vel ; 1.79; 23000;occ; 95; 0;51502
/nas3/ENVISAT/GOMOS/GOM_NL__0P/GOM_NL__0PNPDK20120104_120522_00000423110_00196_51503_5520.N1
1; 940.3; 04-JAN-2012 12:05:22; Dark ; 43.0; 34; Gam2Vel ; 1.79; 23000;occ; 86; 0;51503
/nas3/ENVISAT/GOMOS/GOM_NL__0P/GOM_NL__0PNPDK20120104_134536_00000453110_00197_51504_5521.N1
1; 940.9; 04-JAN-2012 13:45:36; Dark ; 45.5; 34; Gam2Vel ; 1.79; 23000;occ; 91; 0;51504
/nas3/ENVISAT/GOMOS/GOM_NL__0P/GOM_NL__0PNPDK20120104_152551_00000453110_00198_51505_5522.N1
1; 941.4; 04-JAN-2012 15:25:51; Dark ; 46.0; 34; Gam2Vel ; 1.79; 23000;occ; 92; 0;51505
/nas3/ENVISAT/GOMOS/GOM_NL__0P/GOM_NL__0PNPDK20120104_170605_00000433110_00199_51506_5523.N1
1; 941.9; 04-JAN-2012 17:06:05; Dark ; 44.0; 34; Gam2Vel ; 1.79; 23000;occ; 88; 0;51506
/nas3/ENVISAT/GOMOS/GOM_NL__0P/GOM_NL__0PNPDE20120105_062800_00000433110_00207_51514_3714.N1
1; 945.5; 05-JAN-2012 06:28:00; Dark ; 44.0; 34; Gam2Vel ; 1.79; 23000;occ; 88; 0;51514
/nas3/ENVISAT/GOMOS/GOM_NL__0P/GOM_NL__0PNPDK20120105_080815_00000423110_00208_51515_5524.N1
1; 946.0; 05-JAN-2012 08:08:15; Dark ; 43.0; 34; Gam2Vel ; 1.79; 23000;occ; 86; 0;51515
/nas3/ENVISAT/GOMOS/GOM_NL__0P/GOM_NL__0PNPDK20120105_090323_000027483110_00208_51515_5525.N1
1; -1759.9; 05-JAN-2012 09:03:23; Dark ; 57.5; 0; ; 0.00; 0;occ; 115; 0;51515
2; -1159.9; 05-JAN-2012 09:13:23; Dark ; 57.5; 0; ; 0.00; 0;occ; 115; 0;51515
3; -559.9; 05-JAN-2012 09:23:23; Dark ; 57.5; 0; ; 0.00; 0;occ; 115; 0;51515
4; 40.1; 05-JAN-2012 09:33:23; Dark ; 57.5; 0; ; 0.00; 0;occ; 115; 0;51516
5; 946.3; 05-JAN-2012 09:48:29; Dark ; 42.5; 34; Gam2Vel ; 1.79; 23000;occ; 85; 0;51516
/nas3/ENVISAT/GOMOS/GOM_NL__0P/GOM_NL__0PNPDK20120105_100323_000051633110_00209_51516_5526.N1
1; 1840.1; 05-JAN-2012 10:03:23; Dark ; 57.5; 0; ; 0.00; 0;occ; 115; 0;51516
2; 2440.1; 05-JAN-2012 10:13:23; Dark ; 57.5; 0; ; 0.00; 0;occ; 115; 0;51516
3; 3040.1; 05-JAN-2012 10:23:23; Dark ; 57.5; 0; ; 0.00; 0;occ; 115; 0;51516
4; 3640.1; 05-JAN-2012 10:33:23; Dark ; 57.0; 0; ; 0.00; 0;occ; 114; 0;51516
5; 4254.5; 05-JAN-2012 10:43:37; Dark ; 57.5; 0; ; 0.00; 0;occ; 115; 0;51516
6; 4854.5; 05-JAN-2012 10:53:37; Dark ; 57.5; 0; ; 0.00; 0;occ; 115; 0;51516
7; 5454.5; 05-JAN-2012 11:03:37; Dark ; 57.5; 0; ; 0.00; 0;occ; 115; 0;51516
8; 6054.5; 05-JAN-2012 11:13:37; Dark ; 57.5; 0; ; 0.00; 0;occ; 115; 0;51517
9; 6960.8; 05-JAN-2012 11:28:44; Dark ; 42.5; 34; Gam2Vel ; 1.79; 23000;occ; 85; 0;51517
/nas3/ENVISAT/GOMOS/GOM_NL__0P/GOM_NL__0PNPDK20120105_114337_000051653110_00210_51517_5527.N1
1; 1840.6; 05-JAN-2012 11:43:37; Dark ; 57.5; 0; ; 0.00; 0;occ; 115; 0;51517
2; 2440.6; 05-JAN-2012 11:53:37; Dark ; 57.5; 0; ; 0.00; 0;occ; 115; 0;51517

```

3; 3040.6; 05-JAN-2012 12:03:37; Dark ; 57.5; 0; ; 0.00; 0;occ; 115; 0;51517
4; 3640.6; 05-JAN-2012 12:13:37; Dark ; 57.0; 0; ; 0.00; 0;occ; 114; 0;51517
5; 4254.9; 05-JAN-2012 12:23:52; Dark ; 57.5; 0; ; 0.00; 0;occ; 115; 0;51517
6; 4854.9; 05-JAN-2012 12:33:52; Dark ; 57.5; 0; ; 0.00; 0;occ; 115; 0;51517
7; 5454.9; 05-JAN-2012 12:43:52; Dark ; 57.5; 0; ; 0.00; 0;occ; 115; 0;51517
8; 6054.9; 05-JAN-2012 12:53:52; Dark ; 57.5; 0; ; 0.00; 0;occ; 115; 0;51518
9; 6961.1; 05-JAN-2012 13:08:58; Dark ; 44.5; 34; Gam2Vel ; 1.79; 23000;occ; 89; 0;51518
/nas3/ENVISAT/GOMOS/GOM_NL__0P/GOM_NL__0PNPDK20120105_132352_000051643110_00211_51518_5528.N1
1; 1841.1; 05-JAN-2012 13:23:52; Dark ; 57.5; 0; ; 0.00; 0;occ; 115; 0;51518
2; 2441.1; 05-JAN-2012 13:33:52; Dark ; 57.5; 0; ; 0.00; 0;occ; 115; 0;51518
3; 3041.1; 05-JAN-2012 13:43:52; Dark ; 57.5; 0; ; 0.00; 0;occ; 115; 0;51518
4; 3641.1; 05-JAN-2012 13:53:52; Dark ; 57.0; 0; ; 0.00; 0;occ; 114; 0;51518
5; 6961.8; 05-JAN-2012 14:49:12; Dark ; 43.5; 34; Gam2Vel ; 1.79; 23000;occ; 87; 0;51519
/nas3/ENVISAT/GOMOS/GOM_NL__0P/GOM_NL__0PNPDK20120105_162927_000000423110_00213_51520_5529.N1
1; 948.2; 05-JAN-2012 16:29:27; Dark ; 42.5; 34; Gam2Vel ; 1.79; 23000;occ; 85; 0;51520
/nas3/ENVISAT/GOMOS/GOM_NL__0P/GOM_NL__0PNPDK20120109_070702_000015573110_00265_51572_5530.N1
1; 78.9; 09-JAN-2012 07:07:02; Dark ; 42.5; 77; Eps Cen ; 2.30; 28000;occ; 85; 0;51572
2; 970.8; 09-JAN-2012 07:21:54; Dark ; 44.0; 34; Gam2Vel ; 1.79; 23000;occ; 88; 0;51572
3; 1100.3; 09-JAN-2012 07:24:03; Dark ; 46.0; 70; Zet Pup ; 2.25; 39000;occ; 92; 0;51572
4; 1588.0; 09-JAN-2012 07:32:11; Dark ; 48.5; 1; 9Alp CMA ; -1.44; 11000;occ; 97; 0;51572
/nas3/ENVISAT/GOMOS/GOM_NL__0P/GOM_NL__0PNPDK20120109_084716_000015573110_00266_51573_5531.N1
1; 79.4; 09-JAN-2012 08:47:16; Dark ; 40.0; 77; Eps Cen ; 2.30; 28000;occ; 80; 0;51573
2; 971.2; 09-JAN-2012 09:02:08; Dark ; 40.0; 34; Gam2Vel ; 1.79; 23000;occ; 80; 0;51573
3; 1100.6; 09-JAN-2012 09:04:17; Dark ; 41.0; 70; Zet Pup ; 2.25; 39000;occ; 82; 0;51573
4; 1588.1; 09-JAN-2012 09:12:25; Dark ; 48.5; 1; 9Alp CMA ; -1.44; 11000;occ; 97; 0;51573
/nas3/ENVISAT/GOMOS/GOM_NL__0P/GOM_NL__0PNPDK20120109_123253_000055703110_00268_51575_5534.N1
1; 1588.4; 09-JAN-2012 12:32:53; Dark ; 47.0; 1; 9Alp CMA ; -1.44; 11000;occ; 94; 0;51575
2; 6095.4; 09-JAN-2012 13:48:00; Dark ; 41.5; 77; Eps Cen ; 2.30; 28000;occ; 83; 0;51576
3; 6986.3; 09-JAN-2012 14:02:51; Dark ; 40.5; 34; Gam2Vel ; 1.79; 23000;occ; 81; 0;51576
4; 7115.7; 09-JAN-2012 14:05:00; Dark ; 43.0; 70; Zet Pup ; 2.25; 39000;occ; 86; 0;51576
/nas3/ENVISAT/GOMOS/GOM_NL__0P/GOM_NL__0PNPDK20120109_105239_000055703110_00267_51574_5533.N1
1; 1588.1; 09-JAN-2012 10:52:39; Dark ; 47.5; 1; 9Alp CMA ; -1.44; 11000;occ; 95; 0;51574
2; 6094.6; 09-JAN-2012 12:07:45; Dark ; 42.0; 77; Eps Cen ; 2.30; 28000;occ; 84; 0;51575
3; 6985.8; 09-JAN-2012 12:22:37; Dark ; 44.0; 34; Gam2Vel ; 1.79; 23000;occ; 88; 0;51575
4; 7115.4; 09-JAN-2012 12:24:46; Dark ; 43.0; 70; Zet Pup ; 2.25; 39000;occ; 86; 0;51575
/nas3/ENVISAT/GOMOS/GOM_NL__0P/GOM_NL__0PNPDK20120109_141307_000055713110_00269_51576_5535.N1
1; 1588.9; 09-JAN-2012 14:13:07; Dark ; 46.5; 1; 9Alp CMA ; -1.44; 11000;occ; 93; 0;51576
2; 6096.1; 09-JAN-2012 15:28:15; Dark ; 41.5; 77; Eps Cen ; 2.30; 28000;occ; 83; 0;51577
3; 6986.9; 09-JAN-2012 15:43:05; Dark ; 41.5; 34; Gam2Vel ; 1.79; 23000;occ; 83; 0;51577
4; 7116.0; 09-JAN-2012 15:45:14; Dark ; 44.0; 70; Zet Pup ; 2.25; 39000;occ; 88; 0;51577
/nas3/ENVISAT/GOMOS/GOM_NL__0P/GOM_NL__0PNPDK20120109_155321_000054433110_00270_51577_5536.N1
1; 1588.7; 09-JAN-2012 15:53:21; Dark ; 46.0; 1; 9Alp CMA ; -1.44; 11000;occ; 92; 0;51577
2; 6096.7; 09-JAN-2012 17:08:29; Dark ; 41.0; 77; Eps Cen ; 2.30; 28000;occ; 82; 0;51578
3; 6987.3; 09-JAN-2012 17:23:20; Dark ; 44.5; 34; Gam2Vel ; 1.79; 23000;occ; 89; 0;51578
/nas3/ENVISAT/GOMOS/GOM_NL__0P/GOM_NL__0PNPDK20120109_172529_000005323110_00271_51578_5537.N1
1; 1102.4; 09-JAN-2012 17:25:29; Dark ; 43.0; 70; Zet Pup ; 2.25; 39000;occ; 86; 0;51578
2; 1588.7; 09-JAN-2012 17:33:35; Dark ; 46.5; 1; 9Alp CMA ; -1.44; 11000;occ; 93; 0;51578
/nas3/ENVISAT/GOMOS/GOM_NL__0P/GOM_NL__0PNPDK20120110_081041_000010593110_00280_51587_5538.N1
1; 88.7; 10-JAN-2012 08:10:41; Dark ; 42.0; 77; Eps Cen ; 2.30; 28000;occ; 84; 0;51587
2; 977.0; 10-JAN-2012 08:25:29; Dark ; 41.0; 34; Gam2Vel ; 1.79; 23000;occ; 82; 0;51587
3; 1106.0; 10-JAN-2012 08:27:38; Dark ; 42.0; 70; Zet Pup ; 2.25; 39000;occ; 84; 0;51587
/nas3/ENVISAT/GOMOS/GOM_NL__0P/GOM_NL__0PNPDK20120110_095055_000010613110_00281_51588_5539.N1
1; 89.3; 10-JAN-2012 09:50:55; Dark ; 42.5; 77; Eps Cen ; 2.30; 28000;occ; 85; 0;51588
2; 977.4; 10-JAN-2012 10:05:43; Dark ; 42.0; 34; Gam2Vel ; 1.79; 23000;occ; 84; 0;51588
3; 1106.3; 10-JAN-2012 10:07:52; Dark ; 44.5; 70; Zet Pup ; 2.25; 39000;occ; 89; 0;51588
/nas3/ENVISAT/GOMOS/GOM_NL__0P/GOM_NL__0PNPDK20120110_113110_000010603110_00282_51589_5540.N1
1; 90.0; 10-JAN-2012 11:31:10; Dark ; 40.5; 77; Eps Cen ; 2.30; 28000;occ; 81; 0;51589
2; 977.7; 10-JAN-2012 11:45:57; Dark ; 44.5; 34; Gam2Vel ; 1.79; 23000;occ; 89; 0;51589
3; 1106.8; 10-JAN-2012 11:48:07; Dark ; 43.5; 70; Zet Pup ; 2.25; 39000;occ; 87; 0;51589
/nas3/ENVISAT/GOMOS/GOM_NL__0P/GOM_NL__0PNPDK20120110_131124_000010603110_00283_51590_5541.N1
1; 90.6; 10-JAN-2012 13:11:24; Dark ; 42.5; 77; Eps Cen ; 2.30; 28000;occ; 85; 0;51590
2; 978.1; 10-JAN-2012 13:26:12; Dark ; 42.5; 34; Gam2Vel ; 1.79; 23000;occ; 85; 0;51590
3; 1107.3; 10-JAN-2012 13:28:21; Dark ; 43.5; 70; Zet Pup ; 2.25; 39000;occ; 87; 0;51590
/nas3/ENVISAT/GOMOS/GOM_NL__0P/GOM_NL__0PNPDK20120110_145139_000010603110_00284_51591_5542.N1
1; 91.4; 10-JAN-2012 14:51:39; Dark ; 41.5; 77; Eps Cen ; 2.30; 28000;occ; 83; 0;51591
2; 978.6; 10-JAN-2012 15:06:26; Dark ; 38.0; 34; Gam2Vel ; 1.79; 23000;occ; 76; 0;51591
3; 1107.5; 10-JAN-2012 15:08:35; Dark ; 44.0; 70; Zet Pup ; 2.25; 39000;occ; 88; 0;51591
/nas3/ENVISAT/GOMOS/GOM_NL__0P/GOM_NL__0PNPDK20120110_163153_000010593110_00285_51592_5543.N1

```



```

1; 92.0; 10-JAN-2012 16:31:53; Dark ; 40.0; 77; Eps Cen ; 2.30; 28000;occ; 80; 0;51592
2; 979.0; 10-JAN-2012 16:46:40; Dark ; 45.0; 34; Gam2Vel ; 1.79; 23000;occ; 90; 0;51592
3; 1107.9; 10-JAN-2012 16:48:49; Dark ; 44.0; 70; Zet Pup ; 2.25; 39000;occ; 88; 0;51592
/nas3/ENVISAT/GOMOS/GOM_NL__0P/GOM_NL__0PNPDK20120110_164923_000000103110_00285_51592_5544.N1
1; 1141.4; 10-JAN-2012 16:49:23; Dark ; 44.5; 70; Zet Pup ; 2.25; 39000;occ; 89; 67;51592
/nas3/ENVISAT/GOMOS/GOM_NL__0P/GOM_NL__0PNPDK20120111_073405_000010563110_00294_51601_5545.N1
1; 98.1; 11-JAN-2012 07:34:05; Dark ; 41.0; 77; Eps Cen ; 2.30; 28000;occ; 82; 0;51601
2; 982.6; 11-JAN-2012 07:48:49; Dark ; 42.5; 34; Gam2Vel ; 1.79; 23000;occ; 85; 0;51601
3; 1111.5; 11-JAN-2012 07:50:58; Dark ; 43.5; 70; Zet Pup ; 2.25; 39000;occ; 87; 0;51601
/nas3/ENVISAT/GOMOS/GOM_NL__0P/GOM_NL__0PNPDK20120111_091419_000009273110_00295_51602_5546.N1
1; 98.7; 11-JAN-2012 09:14:19; Dark ; 41.5; 77; Eps Cen ; 2.30; 28000;occ; 83; 0;51602
2; 983.0; 11-JAN-2012 09:29:04; Dark ; 43.0; 34; Gam2Vel ; 1.79; 23000;occ; 86; 0;51602
/nas3/ENVISAT/GOMOS/GOM_NL__0P/GOM_NL__0PNPDK20120111_105434_000009293110_00296_51603_5547.N1
1; 99.4; 11-JAN-2012 10:54:34; Dark ; 41.0; 77; Eps Cen ; 2.30; 28000;occ; 82; 0;51603
2; 983.4; 11-JAN-2012 11:09:18; Dark ; 46.0; 34; Gam2Vel ; 1.79; 23000;occ; 92; 0;51603
/nas3/ENVISAT/GOMOS/GOM_NL__0P/GOM_NL__0PNPDK20120111_123449_000009263110_00297_51604_5548.N1
1; 100.2; 11-JAN-2012 12:34:49; Dark ; 40.5; 77; Eps Cen ; 2.30; 28000;occ; 81; 0;51604
2; 983.8; 11-JAN-2012 12:49:32; Dark ; 43.0; 34; Gam2Vel ; 1.79; 23000;occ; 86; 0;51604
/nas3/ENVISAT/GOMOS/GOM_NL__0P/GOM_NL__0PNPDK20120111_141503_000010563110_00298_51605_5549.N1
1; 100.8; 11-JAN-2012 14:15:03; Dark ; 40.5; 77; Eps Cen ; 2.30; 28000;occ; 81; 0;51605
2; 984.1; 11-JAN-2012 14:29:47; Dark ; 43.5; 34; Gam2Vel ; 1.79; 23000;occ; 87; 0;51605
3; 1113.1; 11-JAN-2012 14:31:56; Dark ; 44.0; 70; Zet Pup ; 2.25; 39000;occ; 88; 0;51605
/nas3/ENVISAT/GOMOS/GOM_NL__0P/GOM_NL__0PNPDK20120111_155518_000010563110_00299_51606_5550.N1
1; 101.4; 11-JAN-2012 15:55:18; Dark ; 40.0; 77; Eps Cen ; 2.30; 28000;occ; 80; 0;51606
2; 984.4; 11-JAN-2012 16:10:01; Dark ; 42.5; 34; Gam2Vel ; 1.79; 23000;occ; 85; 0;51606
3; 1113.3; 11-JAN-2012 16:12:10; Dark ; 44.5; 70; Zet Pup ; 2.25; 39000;occ; 89; 0;51606
/nas3/ENVISAT/GOMOS/GOM_NL__0P/GOM_NL__0PNPDK20120111_173532_000009273110_00300_51607_5551.N1
1; 102.1; 11-JAN-2012 17:35:32; Dark ; 41.5; 77; Eps Cen ; 2.30; 28000;occ; 83; 0;51607
2; 984.8; 11-JAN-2012 17:50:15; Dark ; 45.0; 34; Gam2Vel ; 1.79; 23000;occ; 90; 0;51607
/nas3/ENVISAT/GOMOS/GOM_NL__0P/GOM_NL__0PNPDK20120111_175224_000000453110_00300_51607_5552.N1
1; 1113.8; 11-JAN-2012 17:52:24; Dark ; 45.5; 70; Zet Pup ; 2.25; 39000;occ; 91; 0;51607
/nas3/ENVISAT/GOMOS/GOM_NL__0P/GOM_NL__0PNPDK20120112_065729_000010493110_00308_51615_5553.N1
1; 107.5; 12-JAN-2012 06:57:29; Dark ; 41.0; 77; Eps Cen ; 2.30; 28000;occ; 82; 0;51615
2; 1116.6; 12-JAN-2012 07:14:18; Dark ; 40.5; 70; Zet Pup ; 2.25; 39000;occ; 81; 0;51615
/nas3/ENVISAT/GOMOS/GOM_NL__0P/GOM_NL__0PNPDK20120112_083744_000010503110_00309_51616_5554.N1
1; 108.3; 12-JAN-2012 08:37:44; Dark ; 42.5; 77; Eps Cen ; 2.30; 28000;occ; 85; 0;51616
2; 1117.1; 12-JAN-2012 08:54:33; Dark ; 42.0; 70; Zet Pup ; 2.25; 39000;occ; 84; 0;51616
/nas3/ENVISAT/GOMOS/GOM_NL__0P/GOM_NL__0PNPDK20120112_101759_000010493110_00310_51617_5555.N1
1; 108.9; 12-JAN-2012 10:17:59; Dark ; 41.0; 77; Eps Cen ; 2.30; 28000;occ; 82; 0;51617
2; 1117.6; 12-JAN-2012 10:34:47; Dark ; 41.0; 70; Zet Pup ; 2.25; 39000;occ; 82; 0;51617
/nas3/ENVISAT/GOMOS/GOM_NL__0P/GOM_NL__0PNPDK20120112_115813_000010523110_00311_51618_5556.N1
1; 109.5; 12-JAN-2012 11:58:13; Dark ; 41.5; 77; Eps Cen ; 2.30; 28000;occ; 83; 0;51618
2; 1117.7; 12-JAN-2012 12:15:01; Dark ; 44.0; 70; Zet Pup ; 2.25; 39000;occ; 88; 0;51618
/nas3/ENVISAT/GOMOS/GOM_NL__0P/GOM_NL__0PNPDK20120112_133828_000010513110_00312_51619_5557.N1
1; 110.3; 12-JAN-2012 13:38:28; Dark ; 40.5; 77; Eps Cen ; 2.30; 28000;occ; 81; 0;51619
2; 1118.3; 12-JAN-2012 13:55:16; Dark ; 43.5; 70; Zet Pup ; 2.25; 39000;occ; 87; 0;51619
/nas3/ENVISAT/GOMOS/GOM_NL__0P/GOM_NL__0PNPDK20120112_151842_000010513110_00313_51620_5558.N1
1; 110.9; 12-JAN-2012 15:18:42; Dark ; 40.5; 77; Eps Cen ; 2.30; 28000;occ; 81; 0;51620
2; 1118.5; 12-JAN-2012 15:35:30; Dark ; 44.0; 70; Zet Pup ; 2.25; 39000;occ; 88; 0;51620
/nas3/ENVISAT/GOMOS/GOM_NL__0P/GOM_NL__0PNPDK20120112_165857_000010503110_00314_51621_5559.N1
1; 111.6; 12-JAN-2012 16:58:57; Dark ; 41.5; 77; Eps Cen ; 2.30; 28000;occ; 83; 0;51621
2; 1118.7; 12-JAN-2012 17:15:44; Dark ; 43.0; 70; Zet Pup ; 2.25; 39000;occ; 86; 0;51621
/nas3/ENVISAT/GOMOS/GOM_NL__0P/GOM_NL__0PNPDK20120112_171614_000000133110_00314_51621_5560.N1
1; 1148.7; 12-JAN-2012 17:16:14; Dark ; 43.5; 70; Zet Pup ; 2.25; 39000;occ; 87; 60;51621
/nas3/ENVISAT/GOMOS/GOM_NL__0P/GOM_NL__0PNPDE20120113_062054_000010473110_00322_51629_3716.N1
1; 117.1; 13-JAN-2012 06:20:54; Dark ; 42.0; 77; Eps Cen ; 2.30; 28000;occ; 84; 0;51629
2; 1121.8; 13-JAN-2012 06:37:39; Dark ; 43.0; 70; Zet Pup ; 2.25; 39000;occ; 86; 0;51629
/nas3/ENVISAT/GOMOS/GOM_NL__0P/GOM_NL__0PNPDK20120113_080108_000010463110_00323_51630_5561.N1
1; 117.8; 13-JAN-2012 08:01:08; Dark ; 42.5; 77; Eps Cen ; 2.30; 28000;occ; 85; 0;51630
2; 1122.3; 13-JAN-2012 08:17:53; Dark ; 41.5; 70; Zet Pup ; 2.25; 39000;occ; 83; 0;51630
/nas3/ENVISAT/GOMOS/GOM_NL__0P/GOM_NL__0PNPDK20120113_094123_000010453110_00324_51631_5562.N1
1; 118.5; 13-JAN-2012 09:41:23; Dark ; 41.5; 77; Eps Cen ; 2.30; 28000;occ; 83; 0;51631
2; 1122.6; 13-JAN-2012 09:58:07; Dark ; 41.5; 70; Zet Pup ; 2.25; 39000;occ; 83; 0;51631
/nas3/ENVISAT/GOMOS/GOM_NL__0P/GOM_NL__0PNPDK20120113_112138_000010433110_00325_51632_5563.N1
1; 119.2; 13-JAN-2012 11:21:38; Dark ; 42.0; 77; Eps Cen ; 2.30; 28000;occ; 84; 0;51632
2; 1122.9; 13-JAN-2012 11:38:21; Dark ; 39.5; 70; Zet Pup ; 2.25; 39000;occ; 79; 0;51632
/nas3/ENVISAT/GOMOS/GOM_NL__0P/GOM_NL__0PNPDK20120113_130152_000010483110_00326_51633_5564.N1
1; 119.7; 13-JAN-2012 13:01:52; Dark ; 42.5; 77; Eps Cen ; 2.30; 28000;occ; 85; 0;51633

```

2; 1123.1; 13-JAN-2012 13:18:35; Dark ; 45.0; 70; Zet Pup ; 2.25; 39000;occ; 90; 0;51633
/nas3/ENVISAT/GOMOS/GOM_NL__0P/GOM_NL__0PNPDK20120113_144207_000010453110_00327_51634_5565.N1
1; 120.7; 13-JAN-2012 14:42:07; Dark ; 40.5; 77; Eps Cen ; 2.30; 28000;occ; 81; 0;51634
2; 1123.6; 13-JAN-2012 14:58:50; Dark ; 42.5; 70; Zet Pup ; 2.25; 39000;occ; 85; 0;51634
/nas3/ENVISAT/GOMOS/GOM_NL__0P/GOM_NL__0PNPDK20120113_162221_000010463110_00328_51635_5566.N1
1; 121.2; 13-JAN-2012 16:22:21; Dark ; 41.5; 77; Eps Cen ; 2.30; 28000;occ; 83; 0;51635
2; 1124.0; 13-JAN-2012 16:39:04; Dark ; 44.0; 70; Zet Pup ; 2.25; 39000;occ; 88; 0;51635
/nas3/ENVISAT/GOMOS/GOM_NL__0P/GOM_NL__0PNPDE20120125_205823_000000483111_00072_51810_3719.N1
1; 1043.9; 25-JAN-2012 20:58:23; Dark ; 48.5; 65; Lam Vel ; 2.20; 4400;occ; 97; 0;51810
/nas3/ENVISAT/GOMOS/GOM_NL__0P/GOM_NL__0PNPDE20120125_221818_000012663111_00072_51810_3720.N1
1; -174.4; 25-JAN-2012 22:18:18; Dark ; 41.0; 131; Gam Lup ; 2.80; 26000;occ; 82; 0;51810
2; 1044.4; 25-JAN-2012 22:38:37; Dark ; 47.5; 65; Lam Vel ; 2.20; 4400;occ; 95; 0;51811
/nas3/ENVISAT/GOMOS/GOM_NL__0P/GOM_NL__0PNPDE20120125_235832_000012643111_00073_51811_3721.N1
1; -173.9; 25-JAN-2012 23:58:32; Dark ; 41.0; 131; Gam Lup ; 2.80; 26000;occ; 82; 0;51811
2; 1044.6; 26-JAN-2012 00:18:51; Dark ; 46.0; 65; Lam Vel ; 2.20; 4400;occ; 92; 0;51812
/nas3/ENVISAT/GOMOS/GOM_NL__0P/GOM_NL__0PNPDK20120125_072000_000000573111_00064_51802_5567.N1
1; 53.2; 25-JAN-2012 07:20:00; Dark ; 58.0; 0; ; 0.00; 0;occ; 116; 0;51802
/nas3/ENVISAT/GOMOS/GOM_NL__0P/GOM_NL__0PNPDK20120125_090015_000000573111_00065_51803_5568.N1
1; 53.8; 25-JAN-2012 09:00:15; Dark ; 58.0; 0; ; 0.00; 0;occ; 116; 0;51803
/nas3/ENVISAT/GOMOS/GOM_NL__0P/GOM_NL__0PNPDK20120125_105657_000000493111_00066_51804_5569.N1
1; 1041.6; 25-JAN-2012 10:56:57; Dark ; 49.5; 65; Lam Vel ; 2.20; 4400;occ; 99; 0;51804
/nas3/ENVISAT/GOMOS/GOM_NL__0P/GOM_NL__0PNPDK20120125_121650_000012693111_00066_51804_5570.N1
1; -178.8; 25-JAN-2012 12:16:50; Dark ; 42.5; 131; Gam Lup ; 2.80; 26000;occ; 85; 0;51804
2; 1041.9; 25-JAN-2012 12:37:11; Dark ; 49.0; 65; Lam Vel ; 2.20; 4400;occ; 98; 0;51805
/nas3/ENVISAT/GOMOS/GOM_NL__0P/GOM_NL__0PNPDK20120125_135705_000012713111_00067_51805_5571.N1
1; -178.1; 25-JAN-2012 13:57:05; Dark ; 40.5; 131; Gam Lup ; 2.80; 26000;occ; 81; 0;51805
2; 1042.5; 25-JAN-2012 14:17:25; Dark ; 51.0; 65; Lam Vel ; 2.20; 4400;occ; 102; 0;51806
/nas3/ENVISAT/GOMOS/GOM_NL__0P/GOM_NL__0PNPDK20120125_171734_000012673111_00069_51807_5573.N1
1; -176.5; 25-JAN-2012 17:17:34; Dark ; 41.5; 131; Gam Lup ; 2.80; 26000;occ; 83; 0;51807
2; 1043.2; 25-JAN-2012 17:37:54; Dark ; 48.0; 65; Lam Vel ; 2.20; 4400;occ; 96; 0;51808
/nas3/ENVISAT/GOMOS/GOM_NL__0P/GOM_NL__0PNPDK20120125_173754_000048363111_00070_51808_5574.N1
1; 1043.2; 25-JAN-2012 17:37:54; Dark ; 52.0; 65; Lam Vel ; 2.20; 4400;occ; 104; 0;51808
2; 5838.2; 25-JAN-2012 18:57:49; Dark ; 41.0; 131; Gam Lup ; 2.80; 26000;occ; 82; 0;51808
/nas3/ENVISAT/GOMOS/GOM_NL__0P/GOM_NL__0PNPDK20120125_191808_000048353111_00071_51809_5575.N1
1; 1043.6; 25-JAN-2012 19:18:08; Dark ; 42.5; 65; Lam Vel ; 2.20; 4400;occ; 85; 0;51809
2; 5838.6; 25-JAN-2012 20:38:03; Dark ; 40.5; 131; Gam Lup ; 2.80; 26000;occ; 81; 0;51809
/nas3/ENVISAT/GOMOS/GOM_NL__0P/GOM_NL__0PNPDE20120126_013847_000072803111_00074_51812_3722.N1
1; -173.2; 26-JAN-2012 01:38:47; Dark ; 42.0; 131; Gam Lup ; 2.80; 26000;occ; 84; 0;51812
2; 1045.2; 26-JAN-2012 01:59:05; Dark ; 46.0; 65; Lam Vel ; 2.20; 4400;occ; 92; 0;51813
3; 5841.5; 26-JAN-2012 03:19:02; Dark ; 42.5; 131; Gam Lup ; 2.80; 26000;occ; 85; 0;51813
4; 7059.4; 26-JAN-2012 03:39:20; Dark ; 47.5; 65; Lam Vel ; 2.20; 4400;occ; 95; 0;51814
/nas3/ENVISAT/GOMOS/GOM_NL__0P/GOM_NL__0PNPDE20120126_045917_000012673111_00076_51814_3723.N1
1; -171.5; 26-JAN-2012 04:59:17; Dark ; 41.5; 131; Gam Lup ; 2.80; 26000;occ; 83; 0;51814
2; 1045.9; 26-JAN-2012 05:19:34; Dark ; 50.0; 65; Lam Vel ; 2.20; 4400;occ; 100; 0;51815
/nas3/ENVISAT/GOMOS/GOM_NL__0P/GOM_NL__0PNPDE20120126_202143_000000473111_00086_51824_3724.N1
1; 1049.6; 26-JAN-2012 20:21:43; Dark ; 47.5; 65; Lam Vel ; 2.20; 4400;occ; 95; 0;51824
/nas3/ENVISAT/GOMOS/GOM_NL__0P/GOM_NL__0PNPDE20120126_214143_000012583111_00086_51824_3725.N1
1; -164.2; 26-JAN-2012 21:41:43; Dark ; 42.5; 131; Gam Lup ; 2.80; 26000;occ; 85; 0;51824
2; 1049.8; 26-JAN-2012 22:01:57; Dark ; 44.5; 65; Lam Vel ; 2.20; 4400;occ; 89; 0;51825
/nas3/ENVISAT/GOMOS/GOM_NL__0P/GOM_NL__0PNPDE20120126_232158_000012593111_00087_51825_3726.N1
1; -163.6; 26-JAN-2012 23:21:58; Dark ; 43.0; 131; Gam Lup ; 2.80; 26000;occ; 86; 0;51825
2; 1050.2; 26-JAN-2012 23:42:11; Dark ; 46.0; 65; Lam Vel ; 2.20; 4400;occ; 92; 0;51826
/nas3/ENVISAT/GOMOS/GOM_NL__0P/GOM_NL__0PNPDK20120126_063931_000012643111_00077_51815_5576.N1
1; -170.8; 26-JAN-2012 06:39:31; Dark ; 42.0; 131; Gam Lup ; 2.80; 26000;occ; 84; 0;51815
2; 1046.4; 26-JAN-2012 06:59:48; Dark ; 47.0; 65; Lam Vel ; 2.20; 4400;occ; 94; 0;51816
/nas3/ENVISAT/GOMOS/GOM_NL__0P/GOM_NL__0PNPDK20120126_081946_000012653111_00078_51816_5577.N1
1; -170.3; 26-JAN-2012 08:19:46; Dark ; 41.5; 131; Gam Lup ; 2.80; 26000;occ; 83; 0;51816
2; 1046.8; 26-JAN-2012 08:40:03; Dark ; 48.5; 65; Lam Vel ; 2.20; 4400;occ; 97; 0;51817
/nas3/ENVISAT/GOMOS/GOM_NL__0P/GOM_NL__0PNPDK20120126_100001_000012653111_00079_51817_5578.N1
1; -169.4; 26-JAN-2012 10:00:01; Dark ; 42.0; 131; Gam Lup ; 2.80; 26000;occ; 84; 0;51817
2; 1047.3; 26-JAN-2012 10:20:17; Dark ; 49.0; 65; Lam Vel ; 2.20; 4400;occ; 98; 0;51818
/nas3/ENVISAT/GOMOS/GOM_NL__0P/GOM_NL__0PNPDK20120126_114015_000012653111_00080_51818_5579.N1
1; -168.8; 26-JAN-2012 11:40:15; Dark ; 43.0; 131; Gam Lup ; 2.80; 26000;occ; 86; 0;51818
2; 1047.6; 26-JAN-2012 12:00:31; Dark ; 49.0; 65; Lam Vel ; 2.20; 4400;occ; 98; 0;51819
/nas3/ENVISAT/GOMOS/GOM_NL__0P/GOM_NL__0PNPDK20120126_132030_000012633111_00081_51819_5580.N1
1; -168.1; 26-JAN-2012 13:20:30; Dark ; 42.0; 131; Gam Lup ; 2.80; 26000;occ; 84; 0;51819
2; 1048.0; 26-JAN-2012 13:40:46; Dark ; 47.5; 65; Lam Vel ; 2.20; 4400;occ; 95; 0;51820
/nas3/ENVISAT/GOMOS/GOM_NL__0P/GOM_NL__0PNPDK20120126_150044_000012633111_00082_51820_5581.N1

1; -167.3; 26-JAN-2012 15:00:44; Dark ; 41.0; 131; Gam Lup ; 2.80; 26000;occ; 82; 0;51820
2; 1048.3; 26-JAN-2012 15:21:00; Dark ; 48.0; 65; Lam Vel ; 2.20; 4400;occ; 96; 0;51821
/nas3/ENVISAT/GOMOS/GOM_NL__0P/GOM_NL__0PNPDK20120126_164059_000012623111_00083_51821_5582.N1
1; -166.5; 26-JAN-2012 16:40:59; Dark ; 41.5; 131; Gam Lup ; 2.80; 26000;occ; 83; 0;51821
2; 1048.7; 26-JAN-2012 17:01:14; Dark ; 47.0; 65; Lam Vel ; 2.20; 4400;occ; 94; 0;51822
/nas3/ENVISAT/GOMOS/GOM_NL__0P/GOM_NL__0PNPDK20120126_182114_000012573111_00084_51822_5583.N1
1; -165.6; 26-JAN-2012 18:21:14; Dark ; 40.5; 131; Gam Lup ; 2.80; 26000;occ; 81; 0;51822
2; 1049.1; 26-JAN-2012 18:41:29; Dark ; 43.0; 65; Lam Vel ; 2.20; 4400;occ; 86; 0;51823
/nas3/ENVISAT/GOMOS/GOM_NL__0P/GOM_NL__0PNPDK20120126_184129_000048413111_00085_51823_5584.N1
1; 1049.1; 26-JAN-2012 18:41:29; Dark ; 47.0; 65; Lam Vel ; 2.20; 4400;occ; 94; 0;51823
2; 5848.7; 26-JAN-2012 20:01:28; Dark ; 42.0; 131; Gam Lup ; 2.80; 26000;occ; 84; 0;51823
/nas3/ENVISAT/GOMOS/GOM_NL__0P/GOM_NL__0PNPDE20120127_010212_000012583111_00088_51826_3727.N1
1; -162.8; 27-JAN-2012 01:02:12; Dark ; 41.5; 131; Gam Lup ; 2.80; 26000;occ; 83; 0;51826
2; 1050.6; 27-JAN-2012 01:22:26; Dark ; 45.5; 65; Lam Vel ; 2.20; 4400;occ; 91; 0;51827
/nas3/ENVISAT/GOMOS/GOM_NL__0P/GOM_NL__0PNPDE20120127_024227_000012583111_00089_51827_3728.N1
1; -162.1; 27-JAN-2012 02:42:27; Dark ; 41.0; 131; Gam Lup ; 2.80; 26000;occ; 82; 0;51827
2; 1051.0; 27-JAN-2012 03:02:40; Dark ; 45.5; 65; Lam Vel ; 2.20; 4400;occ; 91; 0;51828
/nas3/ENVISAT/GOMOS/GOM_NL__0P/GOM_NL__0PNPDE20120127_042242_000012613111_00090_51828_3729.N1
1; -161.3; 27-JAN-2012 04:22:42; Dark ; 42.0; 131; Gam Lup ; 2.80; 26000;occ; 84; 0;51828
2; 1051.5; 27-JAN-2012 04:42:54; Dark ; 49.0; 65; Lam Vel ; 2.20; 4400;occ; 98; 0;51829
/nas3/ENVISAT/GOMOS/GOM_NL__0P/GOM_NL__0PNPDE20120127_060256_000012583111_00091_51829_3730.N1
1; -160.6; 27-JAN-2012 06:02:56; Dark ; 42.5; 131; Gam Lup ; 2.80; 26000;occ; 85; 0;51829
2; 1051.8; 27-JAN-2012 06:23:09; Dark ; 46.5; 65; Lam Vel ; 2.20; 4400;occ; 93; 0;51830
/nas3/ENVISAT/GOMOS/GOM_NL__0P/GOM_NL__0PNPDE20120127_194503_000000463111_00100_51838_3731.N1
1; 1054.9; 27-JAN-2012 19:45:03; Dark ; 47.0; 65; Lam Vel ; 2.20; 4400;occ; 94; 0;51838
/nas3/ENVISAT/GOMOS/GOM_NL__0P/GOM_NL__0PNPDE20120127_210508_000000423111_00100_51838_3732.N1
1; -154.1; 27-JAN-2012 21:05:08; Dark ; 42.5; 131; Gam Lup ; 2.80; 26000;occ; 85; 0;51838
/nas3/ENVISAT/GOMOS/GOM_NL__0P/GOM_NL__0PNPDK20120127_074311_000012573111_00092_51830_5585.N1
1; -159.8; 27-JAN-2012 07:43:11; Dark ; 44.0; 131; Gam Lup ; 2.80; 26000;occ; 88; 0;51830
2; 1052.3; 27-JAN-2012 08:03:23; Dark ; 45.5; 65; Lam Vel ; 2.20; 4400;occ; 91; 0;51831
/nas3/ENVISAT/GOMOS/GOM_NL__0P/GOM_NL__0PNPDK20120127_092326_000012583111_00093_51831_5586.N1
1; -159.2; 27-JAN-2012 09:23:26; Dark ; 43.5; 131; Gam Lup ; 2.80; 26000;occ; 87; 0;51831
2; 1052.6; 27-JAN-2012 09:43:37; Dark ; 47.0; 65; Lam Vel ; 2.20; 4400;occ; 94; 0;51832
/nas3/ENVISAT/GOMOS/GOM_NL__0P/GOM_NL__0PNPDK20120127_110340_000012593111_00094_51832_5587.N1
1; -158.4; 27-JAN-2012 11:03:40; Dark ; 43.5; 131; Gam Lup ; 2.80; 26000;occ; 87; 0;51832
2; 1053.0; 27-JAN-2012 11:23:52; Dark ; 48.5; 65; Lam Vel ; 2.20; 4400;occ; 97; 0;51833
/nas3/ENVISAT/GOMOS/GOM_NL__0P/GOM_NL__0PNPDK20120127_124355_000012583111_00095_51833_5588.N1
1; -157.8; 27-JAN-2012 12:43:55; Dark ; 43.5; 131; Gam Lup ; 2.80; 26000;occ; 87; 0;51833
2; 1053.4; 27-JAN-2012 13:04:06; Dark ; 47.5; 65; Lam Vel ; 2.20; 4400;occ; 95; 0;51834
/nas3/ENVISAT/GOMOS/GOM_NL__0P/GOM_NL__0PNPDK20120127_142410_000012573111_00096_51834_5589.N1
1; -156.9; 27-JAN-2012 14:24:10; Dark ; 42.0; 131; Gam Lup ; 2.80; 26000;occ; 84; 0;51834
2; 1053.9; 27-JAN-2012 14:44:20; Dark ; 47.0; 65; Lam Vel ; 2.20; 4400;occ; 94; 0;51835
/nas3/ENVISAT/GOMOS/GOM_NL__0P/GOM_NL__0PNPDK20120127_160424_000012583111_00097_51835_5590.N1
1; -156.1; 27-JAN-2012 16:04:24; Dark ; 42.5; 131; Gam Lup ; 2.80; 26000;occ; 85; 0;51835
2; 1054.2; 27-JAN-2012 16:24:35; Dark ; 48.5; 65; Lam Vel ; 2.20; 4400;occ; 97; 0;51836
/nas3/ENVISAT/GOMOS/GOM_NL__0P/GOM_NL__0PNPDK20120127_174439_000012563111_00098_51836_5591.N1
1; -155.4; 27-JAN-2012 17:44:39; Dark ; 44.0; 131; Gam Lup ; 2.80; 26000;occ; 88; 0;51836
2; 1054.6; 27-JAN-2012 18:04:49; Dark ; 46.5; 65; Lam Vel ; 2.20; 4400;occ; 93; 0;51837
/nas3/ENVISAT/GOMOS/GOM_NL__0P/GOM_NL__0PNPDK20120127_180449_000048463111_00099_51837_5592.N1
1; 1054.6; 27-JAN-2012 18:04:49; Dark ; 47.0; 65; Lam Vel ; 2.20; 4400;occ; 94; 0;51837
2; 5859.2; 27-JAN-2012 19:24:54; Dark ; 41.5; 131; Gam Lup ; 2.80; 26000;occ; 83; 0;51837