

GOMOS Daily Report 10-JAN-2012

Level 0 and Level 1 products

SUMMARY

[1. General Info](#)

[2. Summary of products arrived in PCF \(Product Control Facility\)](#)

[2.1 Level 0: products arrived in PCF during current month \(see template here\)](#)

[2.2 Level 0: plot of mission plan versus production during reporting period](#)

[2.3 Level 0: summary of missing occultations with respect to the plan](#)

[2.4 Level 1: products arrived in PCF during reporting period](#)

[3. Plot of Spectrometers and Photometers temperatures](#)

[4. Dark Charge monitoring](#)

[4.1 Products that did not use the Dark Sky Area observation for DC computation](#)

[4.2 Plot of Dark Charge](#)

[5. Demodulation correction and quality product information monitoring](#)

[5.1 Percentage of products with some flags set](#)

[5.2 Plot of quality information per product \(time dependant\)](#)

[5.3 Plot of quality information per product \(world map\)](#)

[6. Star tangent altitude lost](#)

[6.1 Statistics on star tangent altitude lost](#)

[6.2 Plot of star tangent altitude lost: DARK products](#)

[6.3 Plot of star tangent altitude lost: BRIGHT products](#)

[6.3 Plot of star tangent altitude lost: TWILIGHT products](#)

[7. Star Acquisition and Tracking Unit \(SATU\)](#)

[7.1 SATU plots \(dark limb\): 'X' and 'Y' axis](#)

[7.2 SATU Noise Equivalent Angle statistics](#)

[7.2.1 SATU NEA Statistics \(table\)](#)

[7.2.2 Daily SATU NEA STD \(dark limb\) - trend since 1st April 2006](#)

[8. Auxiliary Data Files used for the production reported in section 2.4](#)

[Level 2 products](#)

This report presents the daily analysis on parameters extracted from GOMOS level 1b data (GOM_TRA_1P). It is intended to monitor some important parameters that will impact the quality of the level 2 products as the Spectrometers and Photometers CCD Temperatures and Dark Charge, SATU noise equivalent angle... A list of level 0 products (and content) that have arrived during the actual month to the PCF is also given.

Item	Value
Time of report generation	16JAN2012 07:01:29
Data source version	GOMOS/6.01
Start time of products	10JAN2012 06:30:26
Stop time of products	10JAN2012 16:48:49
Store outputs in DB	Yes
Nb of level 1b prods	21
Nb of prods with errors	1

2. Summary of products arrived in PCF (Product Control Facility)

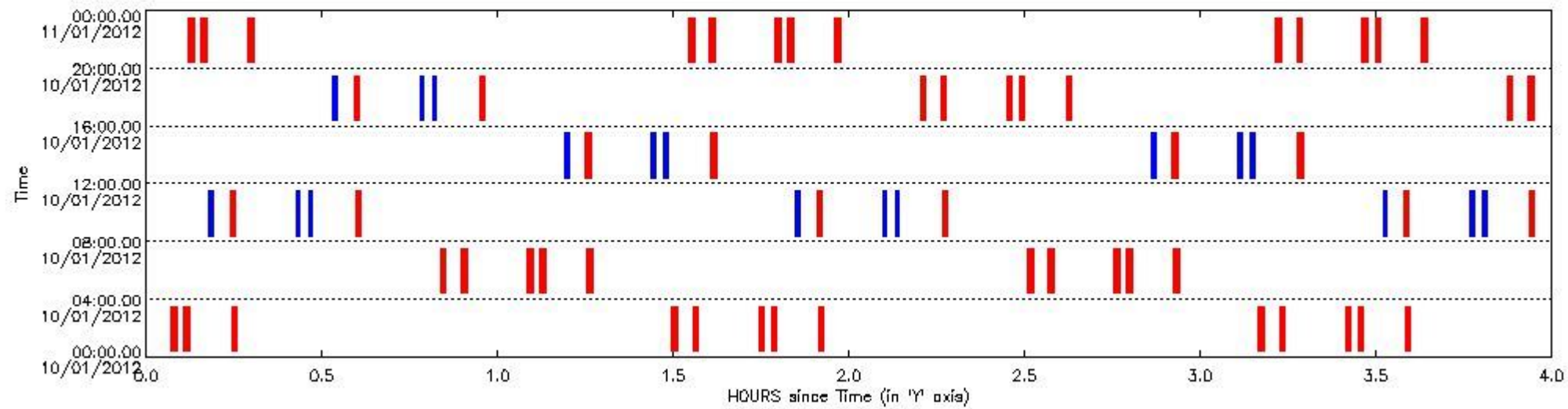
2.1 Level 0 products arrived in PCF (see template [here](#))

2.2 Plot of mission plan versus Level 0 production arrived in PCF during reporting period

Red segments are missing products.

Blue segments are available products.

Green segments are calibration measurements (not available products to users).



2.3 Summary of missing occultations (red segments in previous plot)

UTC start time	Star name	Star ID	Orbit
10-JAN-2012 00:04:17	Gam2Vel	34	51595
10-JAN-2012 00:06:26	ZetPup	70	51595
10-JAN-2012 00:14:31	9AlpCMa	1	51595
10-JAN-2012 01:29:42	EpsCen	77	51596
10-JAN-2012 01:33:17	Alp1Cru	12	51596
10-JAN-2012 01:44:31	Gam2Vel	34	51596
10-JAN-2012 01:46:41	ZetPup	70	51596
10-JAN-2012 01:54:46	9AlpCMa	1	51596
10-JAN-2012 03:09:57	EpsCen	77	51597
10-JAN-2012 03:13:31	Alp1Cru	12	51597
10-JAN-2012 03:24:46	Gam2Vel	34	51597
10-JAN-2012 03:26:55	ZetPup	70	51597
10-JAN-2012 03:35:00	9AlpCMa	1	51597
10-JAN-2012 04:50:11	EpsCen	77	51598
10-JAN-2012 04:53:46	Alp1Cru	12	51598

10-JAN-2012 05:05:00	Gam2Vel	34	51598
10-JAN-2012 05:07:09	ZetPup	70	51598
10-JAN-2012 05:15:14	9AlpCMa	1	51598
10-JAN-2012 06:30:26	EpsCen	77	51599
10-JAN-2012 06:34:00	Alp1Cru	12	51599
10-JAN-2012 06:45:14	Gam2Vel	34	51599
10-JAN-2012 06:47:23	ZetPup	70	51599
10-JAN-2012 06:55:28	9AlpCMa	1	51599
10-JAN-2012 08:14:15	Alp1Cru	12	51600
10-JAN-2012 08:35:42	9AlpCMa	1	51600
10-JAN-2012 09:54:29	Alp1Cru	12	51601
10-JAN-2012 10:15:56	9AlpCMa	1	51601
10-JAN-2012 11:34:44	Alp1Cru	12	51602
10-JAN-2012 11:56:10	9AlpCMa	1	51602
10-JAN-2012 13:14:58	Alp1Cru	12	51603
10-JAN-2012 13:36:24	9AlpCMa	1	51603
10-JAN-2012 14:55:13	Alp1Cru	12	51604
10-JAN-2012 15:16:38	9AlpCMa	1	51604
10-JAN-2012 16:35:27	Alp1Cru	12	51605
10-JAN-2012 16:56:52	9AlpCMa	1	51605
10-JAN-2012 18:12:08	EpsCen	77	51606
10-JAN-2012 18:15:42	Alp1Cru	12	51606
10-JAN-2012 18:26:55	Gam2Vel	34	51606
10-JAN-2012 18:29:04	ZetPup	70	51606
10-JAN-2012 18:37:06	9AlpCMa	1	51606
10-JAN-2012 19:52:23	EpsCen	77	51607
10-JAN-2012 19:55:56	Alp1Cru	12	51607
10-JAN-2012 20:07:09	Gam2Vel	34	51607
10-JAN-2012 20:09:18	ZetPup	70	51607
10-JAN-2012 20:17:20	9AlpCMa	1	51607
10-JAN-2012 21:32:37	EpsCen	77	51608
10-JAN-2012 21:36:11	Alp1Cru	12	51608
10-JAN-2012 21:47:23	Gam2Vel	34	51608
10-JAN-2012 21:49:32	ZetPup	70	51608
10-JAN-2012 21:57:34	9AlpCMa	1	51608
10-JAN-2012 23:12:52	EpsCen	77	51609
10-JAN-2012 23:16:25	Alp1Cru	12	51609
10-JAN-2012 23:27:38	Gam2Vel	34	51609
10-JAN-2012 23:29:47	ZetPup	70	51609
10-JAN-2012 23:37:48	9AlpCMa	1	51609

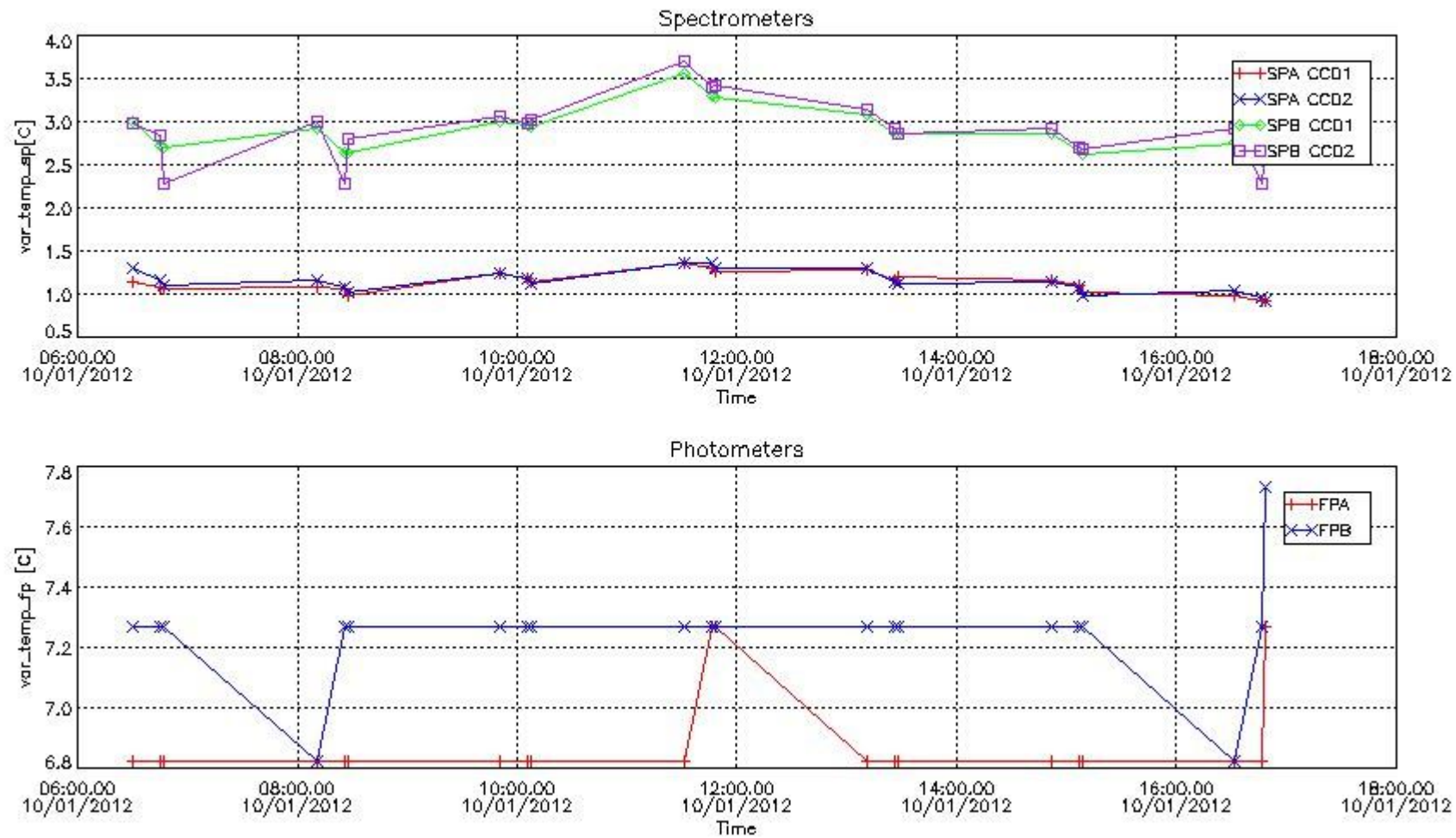
2.4 Summary of processed GOM_TRA_1P products

!Warning: No products without errors in BRIGHT limb conditions found

Nr	Filename	UTC Start time	Limb	Duration	Star Id	Star Name	Star Mag	Star Temp	Nb Meas	Orbit	Prod. error
1	GOM_TRA_1PNPDE20120110_063026_000000413110_00279_51586_2177.N1	10-JAN-2012 06:30:26	Dark	41.000	77	Eps Cen	2.3030	28000.	82	51586	No
2	GOM_TRA_1PNPDE20120110_064514_000000443110_00279_51586_2178.N1	10-JAN-2012 06:45:14	Dark	43.500	34	Gam2Vel	1.7930	23000.	87	51586	No
3	GOM_TRA_1PNPDE20120110_064724_000000443110_00279_51586_2179.N1	10-JAN-2012 06:47:24	Dark	43.500	70	Zet Pup	2.2460	39000.	87	51586	No
4	GOM_TRA_1PNPDK20120110_081041_000000423110_00280_51587_9487.N1	10-JAN-2012 08:10:41	Dark	42.000	77	Eps Cen	2.3030	28000.	84	51587	No
5	GOM_TRA_1PNPDK20120110_082529_000000413110_00280_51587_9488.N1	10-JAN-2012 08:25:29	Dark	41.000	34	Gam2Vel	1.7930	23000.	82	51587	No
6	GOM_TRA_1PNPDK20120110_082738_000000423110_00280_51587_9489.N1	10-JAN-2012 08:27:38	Dark	42.000	70	Zet Pup	2.2460	39000.	84	51587	No
7	GOM_TRA_1PNPDK20120110_095055_000000433110_00281_51588_9527.N1	10-JAN-2012 09:50:55	Dark	42.500	77	Eps Cen	2.3030	28000.	85	51588	No
8	GOM_TRA_1PNPDK20120110_100543_000000423110_00281_51588_9528.N1	10-JAN-2012 10:05:43	Dark	42.000	34	Gam2Vel	1.7930	23000.	84	51588	No
9	GOM_TRA_1PNPDK20120110_100752_000000453110_00281_51588_9529.N1	10-JAN-2012 10:07:52	Dark	44.500	70	Zet Pup	2.2460	39000.	89	51588	No
10	GOM_TRA_1PNPDK20120110_113110_000000413110_00282_51589_9554.N1	10-JAN-2012 11:31:10	Dark	40.500	77	Eps Cen	2.3030	28000.	81	51589	No
11	GOM_TRA_1PNPDK20120110_114557_000000453110_00282_51589_9555.N1	10-JAN-2012 11:45:57	Dark	44.500	34	Gam2Vel	1.7930	23000.	89	51589	No
12	GOM_TRA_1PNPDK20120110_114807_000000443110_00282_51589_9556.N1	10-JAN-2012 11:48:07	Dark	43.500	70	Zet Pup	2.2460	39000.	87	51589	No
13	GOM_TRA_1PNPDK20120110_131124_000000433110_00283_51590_9586.N1	10-JAN-2012 13:11:24	Dark	42.500	77	Eps Cen	2.3030	28000.	85	51590	No
14	GOM_TRA_1PNPDK20120110_132612_000000433110_00283_51590_9587.N1	10-JAN-2012 13:26:12	Dark	42.500	34	Gam2Vel	1.7930	23000.	85	51590	No

15	GOM_TRA_1PNPDK20120110_132821_000000443110_00283_51590_9588.N1	10-JAN-2012 13:28:21	Dark	43.500	70	Zet Pup	2.2460	39000.	87	51590	No
16	GOM_TRA_1PNPDK20120110_145139_000000423110_00284_51591_9612.N1	10-JAN-2012 14:51:39	Dark	41.500	77	Eps Cen	2.3030	28000.	83	51591	No
17	GOM_TRA_1PNPDK20120110_150626_000000383110_00284_51591_9613.N1	10-JAN-2012 15:06:26	Dark	38.000	34	Gam2Vel	1.7930	23000.	76	51591	No
18	GOM_TRA_1PNPDK20120110_150835_000000443110_00284_51591_9614.N1	10-JAN-2012 15:08:35	Dark	44.000	70	Zet Pup	2.2460	39000.	88	51591	No
19	GOM_TRA_1PNPDK20120110_163153_000000403110_00285_51592_9643.N1	10-JAN-2012 16:31:53	Dark	40.000	77	Eps Cen	2.3030	28000.	80	51592	No
20	GOM_TRA_1PNPDK20120110_164640_000000453110_00285_51592_9644.N1	10-JAN-2012 16:46:40	Dark	45.000	34	Gam2Vel	1.7930	23000.	90	51592	No
21	GOM_TRA_1PNPDK20120110_164849_000000453110_00285_51592_9671.N1	10-JAN-2012 16:48:49	Dark	44.500	70	Zet Pup	2.2460	39000.	89	51592	Yes

3. Plot of GOMOS spectrometers and photometers temperatures from level 1b data



4. Overview of dark signal processing per product

The Dark Charge (DC) is a temperature-dependant signal added to the useful measurements and it is therefore subtracted from them during the processing. There are two phenomena that produce a continuous increase of the DC: the "hot pixels" (a pixel is "hot" when its DC exceeds by a significant amount its value measured on ground at the same temperature) and the "Random Telegraphic Signal" (abrupt change positive or negative of the CCD pixel signal, random in time, affecting only the DC part of the signal and not the photon generated signal).

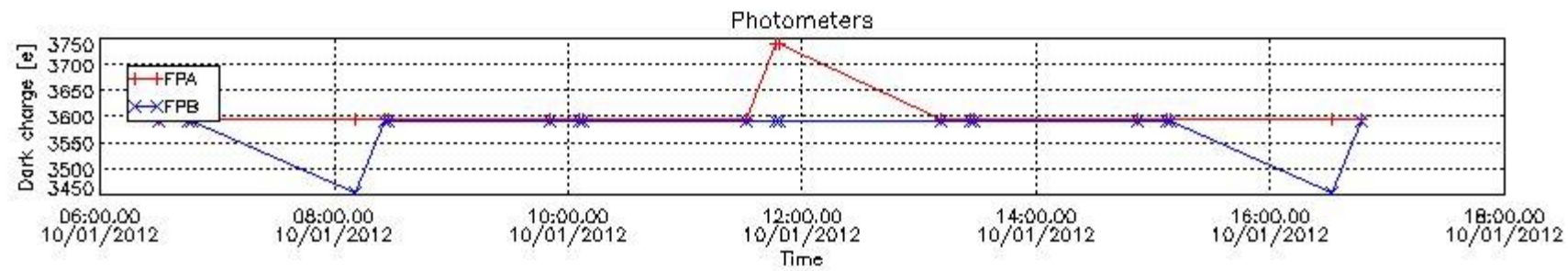
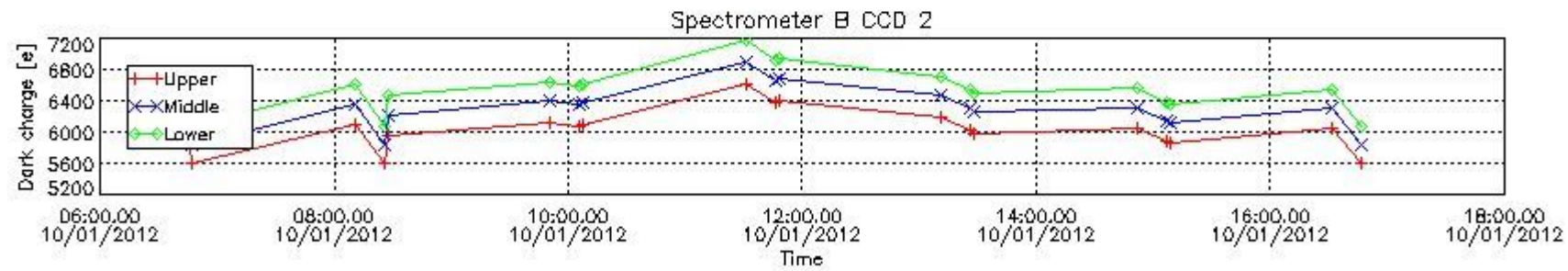
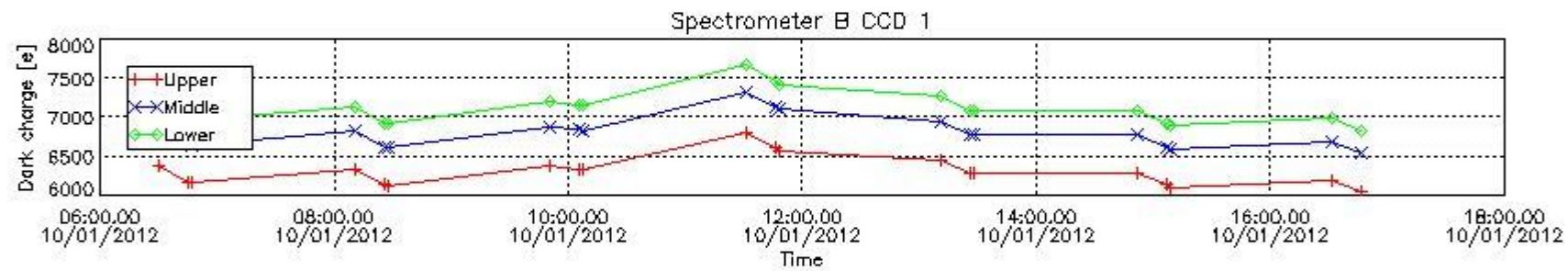
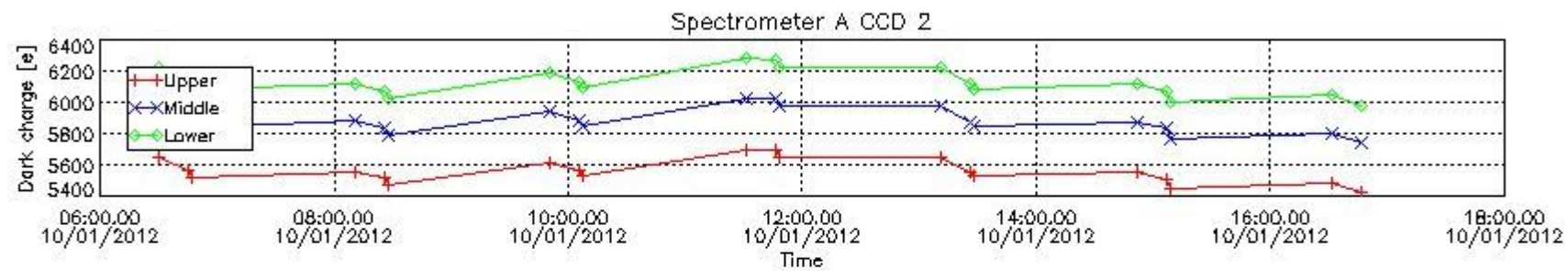
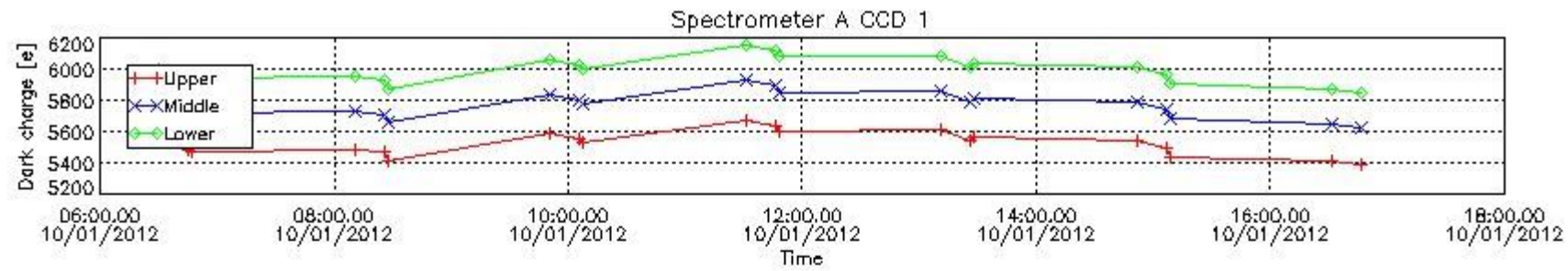
In this section a list of products that did not use the Dark Sky Area (DSA) observation for the DC computation is given. It is also provided the mean DC plot per product for dark limb products with no error flag set.

4.1 These products did not use the DSA observation for DC computation:

Product name	DC information
GOM_TRA_1PNPDE20120110_063026_000000413110_00279_51586_2177.N1	DC map used
GOM_TRA_1PNPDE20120110_064514_000000443110_00279_51586_2178.N1	DC map used
GOM_TRA_1PNPDE20120110_064724_000000443110_00279_51586_2179.N1	DC map used

GOM_TRA_1PNPDK20120110_081041_000000423110_00280_51587_9487.N1	DC map used
GOM_TRA_1PNPDK20120110_082529_000000413110_00280_51587_9488.N1	DC map used
GOM_TRA_1PNPDK20120110_082738_000000423110_00280_51587_9489.N1	DC map used
GOM_TRA_1PNPDK20120110_095055_000000433110_00281_51588_9527.N1	DC map used
GOM_TRA_1PNPDK20120110_100543_000000423110_00281_51588_9528.N1	DC map used
GOM_TRA_1PNPDK20120110_100752_000000453110_00281_51588_9529.N1	DC map used
GOM_TRA_1PNPDK20120110_113110_000000413110_00282_51589_9554.N1	DC map used
GOM_TRA_1PNPDK20120110_114557_000000453110_00282_51589_9555.N1	DC map used
GOM_TRA_1PNPDK20120110_114807_000000443110_00282_51589_9556.N1	DC map used
GOM_TRA_1PNPDK20120110_131124_000000433110_00283_51590_9586.N1	DC map used
GOM_TRA_1PNPDK20120110_132612_000000433110_00283_51590_9587.N1	DC map used
GOM_TRA_1PNPDK20120110_132821_000000443110_00283_51590_9588.N1	DC map used
GOM_TRA_1PNPDK20120110_145139_000000423110_00284_51591_9612.N1	DC map used
GOM_TRA_1PNPDK20120110_150626_000000383110_00284_51591_9613.N1	DC map used
GOM_TRA_1PNPDK20120110_150835_000000443110_00284_51591_9614.N1	DC map used
GOM_TRA_1PNPDK20120110_163153_000000403110_00285_51592_9643.N1	DC map used
GOM_TRA_1PNPDK20120110_164640_000000453110_00285_51592_9644.N1	DC map used
GOM_TRA_1PNPDK20120110_164849_000000453110_00285_51592_9671.N1	DC map with no T dep.

4.2 Plot of mean dark charges per product: only products in DARK limb conditions without errors are used



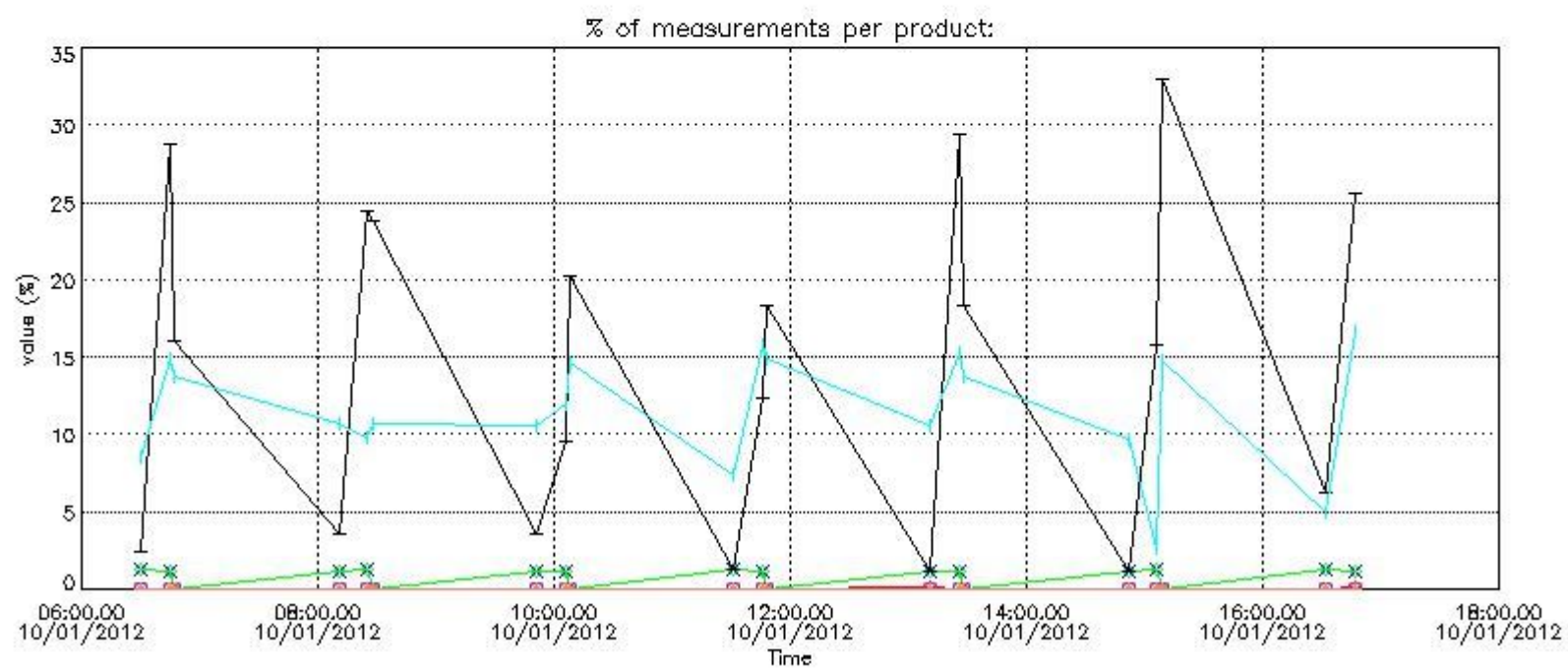
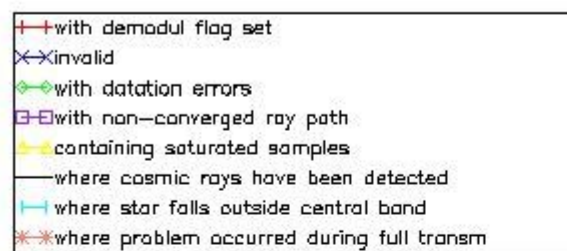
5. Demodulation flag and quality information monitoring

In this section it is presented the modulation information extracted from the pcd (product confidence data) at measurement level and information extracted from the Quality Summary dataset. Only products without errors (error flag in the MPH set to "0") are used.

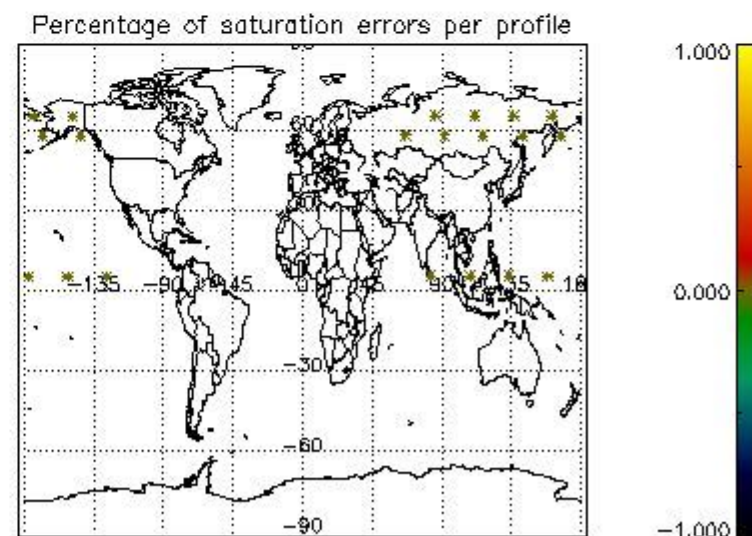
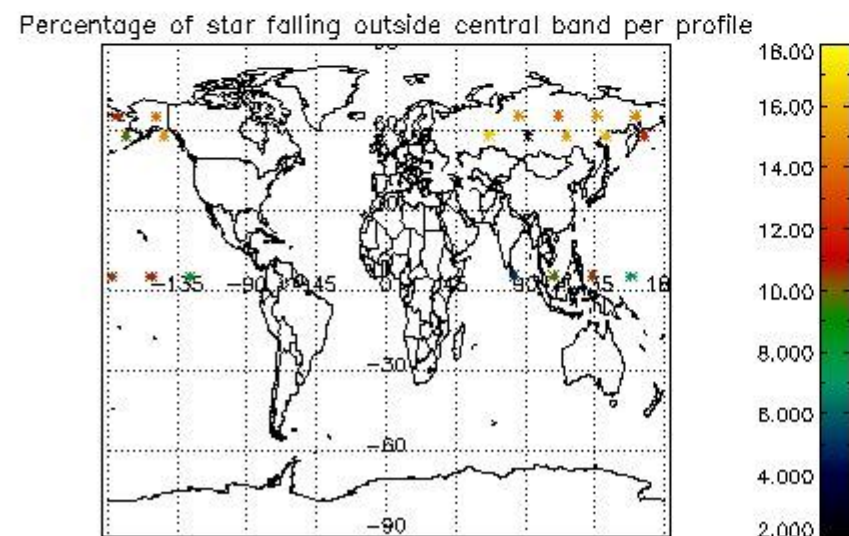
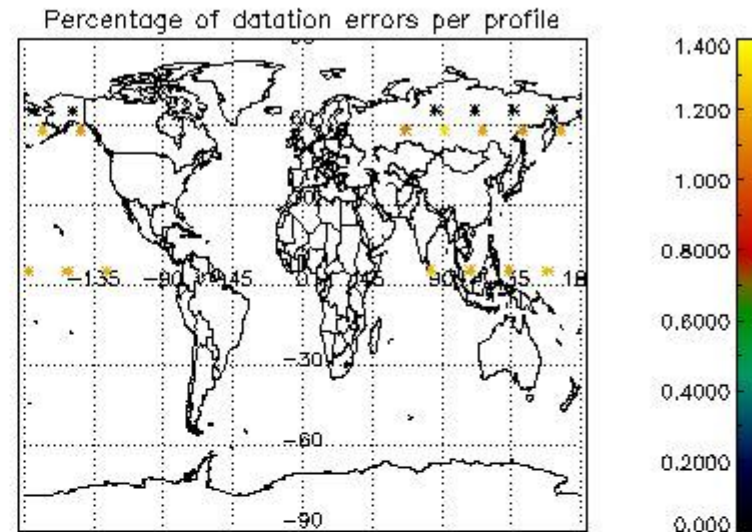
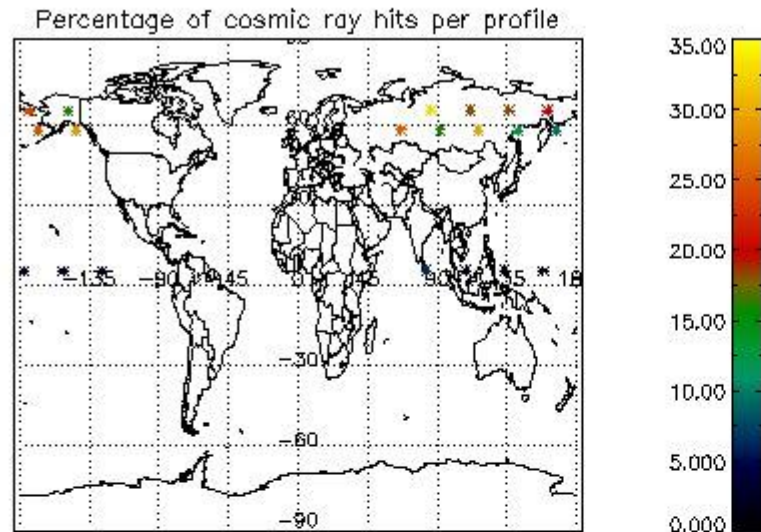
5.1 Percentage of products during reporting period with:

At least one measurement with demodulation flag set:	100.000 %
Reference spectrum computed from DB:	0.00000 %
Reference spectrum with small number of measurements:	0.00000 %
SATU data not used:	0.00000 %

5.2 Plot quality information per product (time dependant)



5.3 Plot quality information per product (world map)



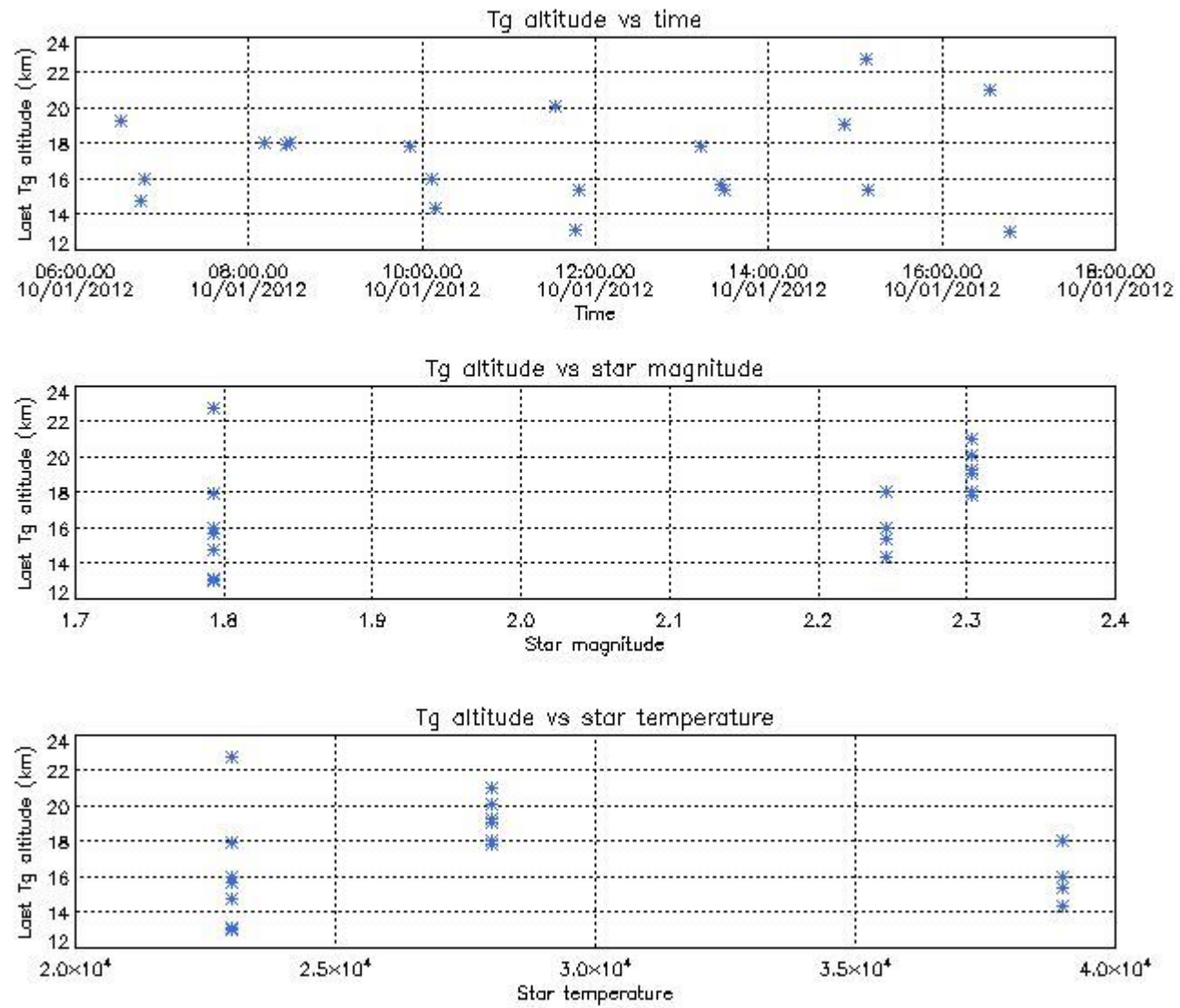
6. Statistics and plot of tangent altitude of the last measurement (DARK & BRIGHT products without errors)

6.1 Statistics on tangent altitude lost:

Statistics	DARK	BRIGHT	TWILIGHT
Mean:	17.063	NaN	NaN
St. deviation:	2.5819	NaN	NaN
Maximum:	22.721	NaN	NaN
Minimum:	13.074	NaN	NaN
Number of data:	20.000	NaN	NaN

6.2 Plot for DARK limb products

Tangent altitude at which the star is lost

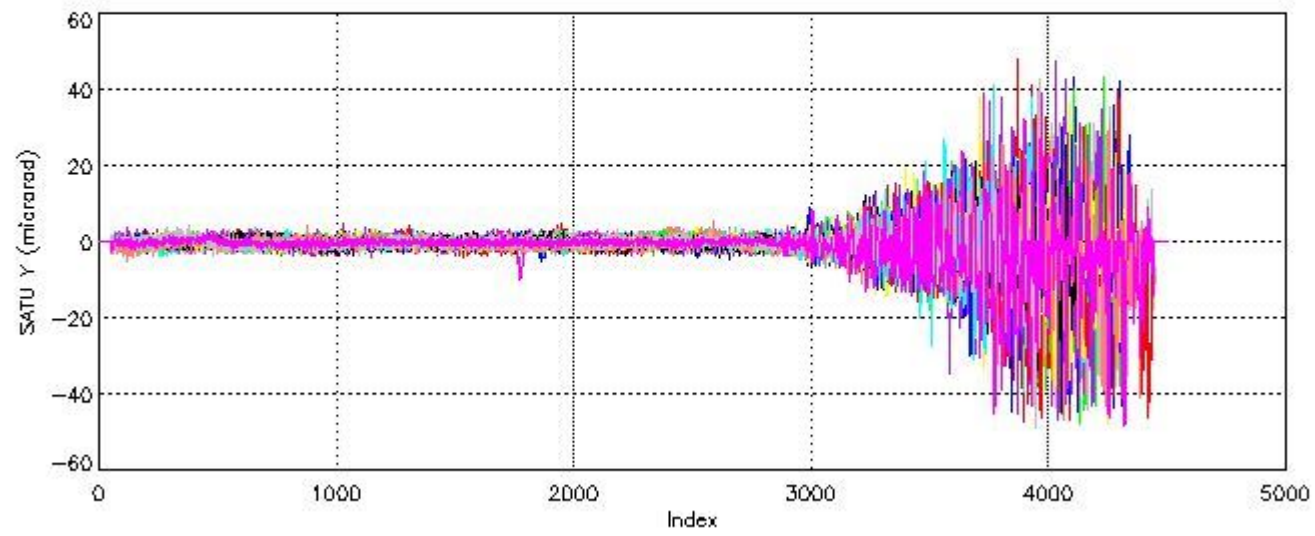
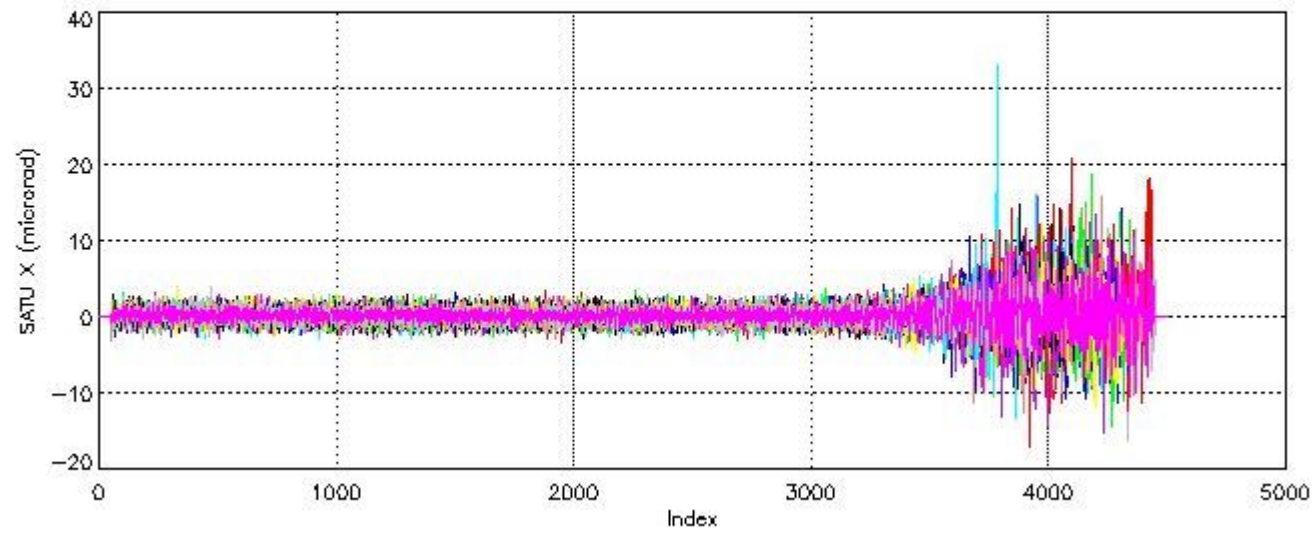


7. Star Acquisition and Tracking Unit (SATU)

The Star Acquisition and Tracking Unit (SATU) analyses the position of the tracked star beam collected by the GOMOS telescope and deflected by the optical beam dispatcher. The main function of the SATU is to detect a star, provide its image position to the science data electronics and to help the pointing function to keep the star image at a fixed position. In tracking mode the SATU data is recorded with a frequency of 100 Hz.

7.1 SATU 'X' and 'Y' axis plots (dark limb)

SATU CCD 'X' and 'Y' axis plots are provided in order to detect any abnormal behaviour of the tracking system. For every occultation (color) the plot should remain stable (with some noise) until we are deep in the atmosphere where big fluctuations are registered due to the refractive effects.



7.2 Statistics on SATU Noise Equivalent Angle (NEA) for DARK (D) and BRIGHT (B) products above 105 kms

The Star Acquisition and Tracking Unit (it is the CCD that tracks the star while it is occulted) Noise Equivalent Angle consists of the statistical angular variation of the SATU data above the atmosphere.

Statistics (in microradians) above 105 km are computed for every occultation, giving four values per occultation: one in the 'X' direction and one in the 'Y' direction for dark and bright limbs. A mean value per day in every direction and limb is calculated and monitored in order to assess instrument performance in terms of star pointing.

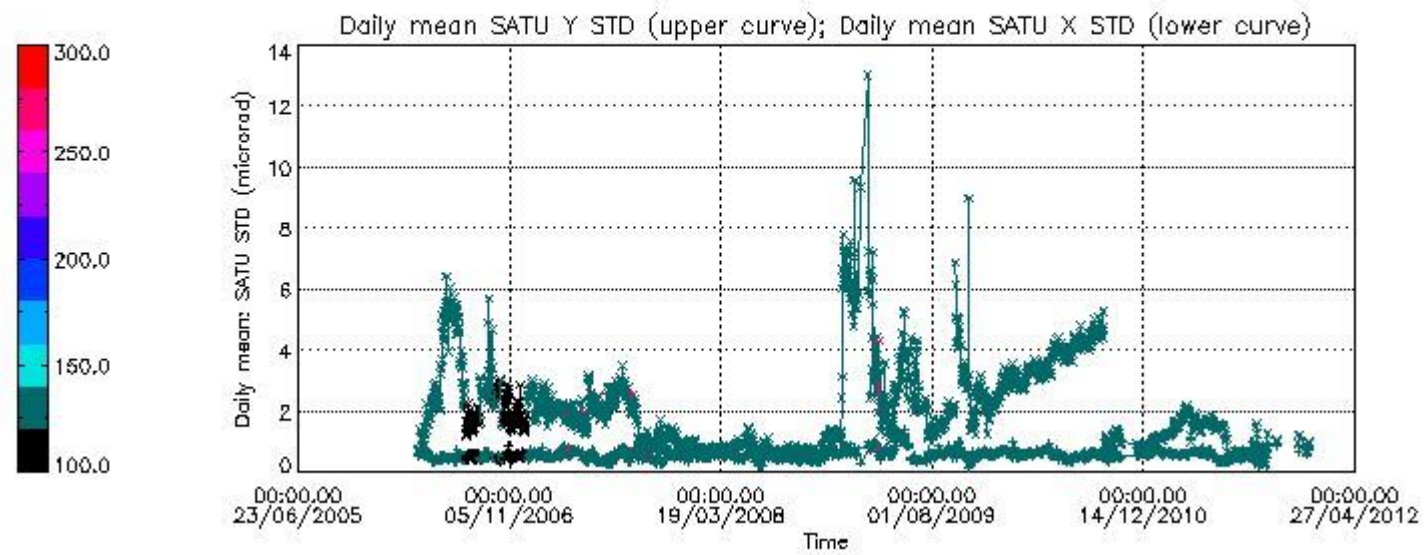
7.2.1 SATU NEA Statistics (table)

7.2.2 Trend of daily SATU NEA St. deviation since 1st April 2006 (dark limb) and of daily SATU NEA 90th percentile since May 2011

The long term trend of the SATU 'X' and 'Y' standard deviations should be constant during the whole mission.

The colorbar represents the start tangent altitude (km) of the occultations.

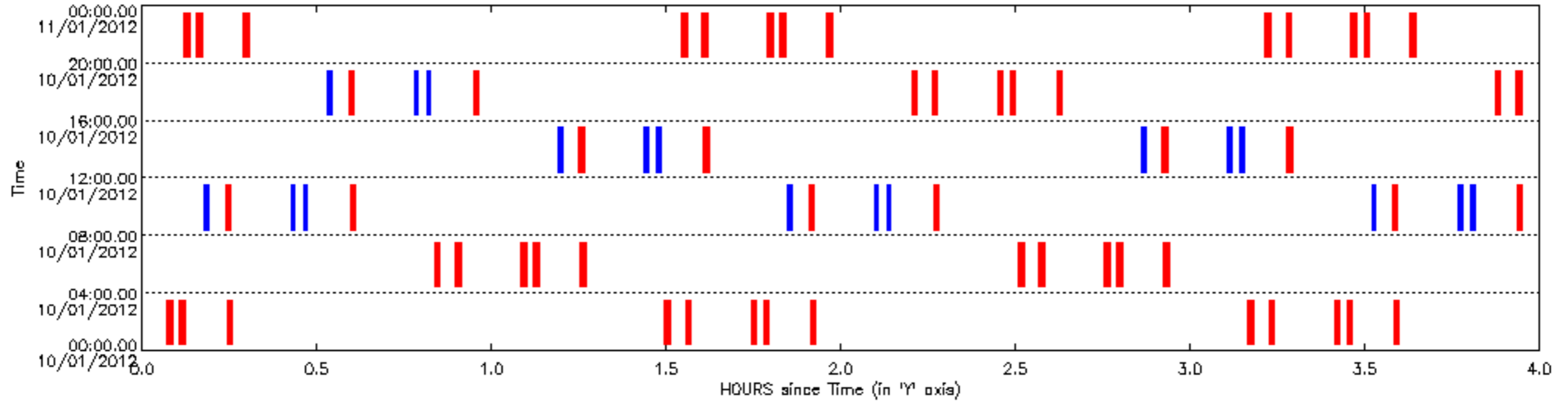
Upper curve: STD of SATU Y axis
Lower curve: STD of SATU X axis

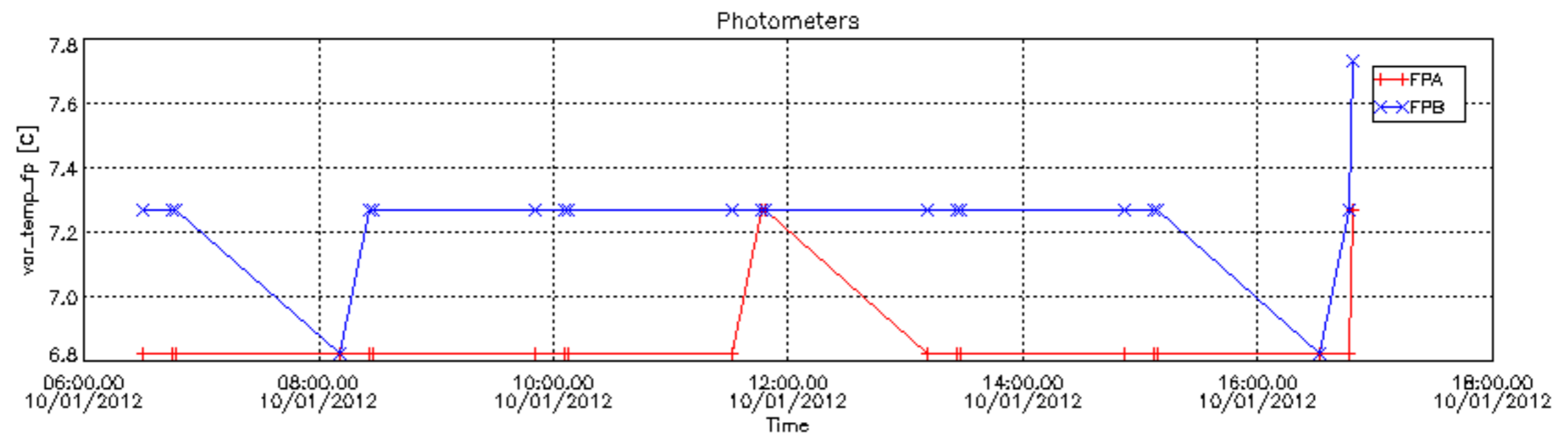
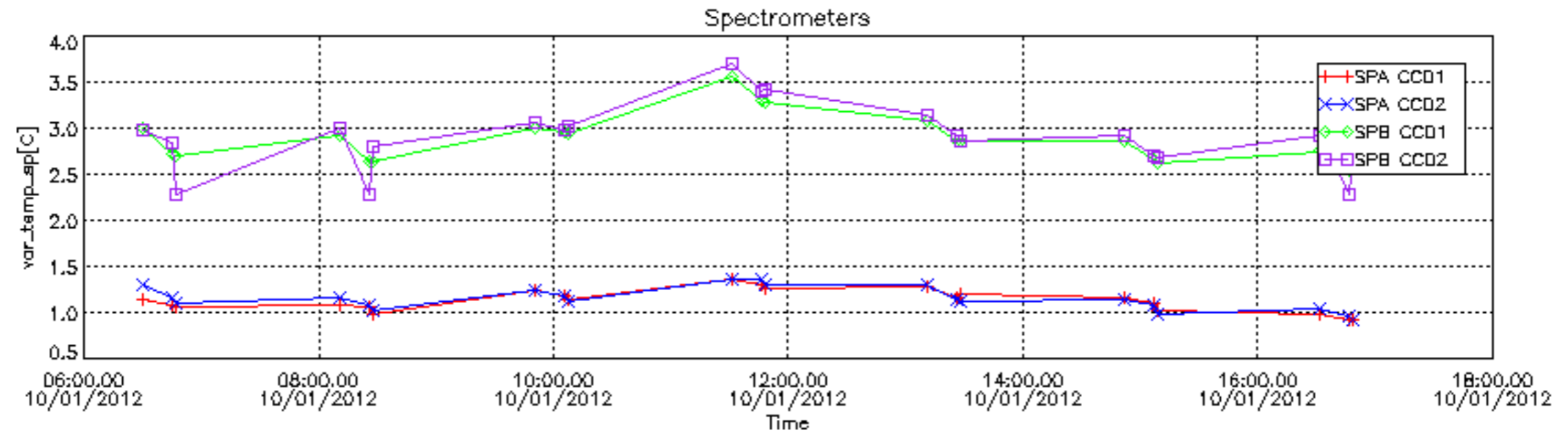


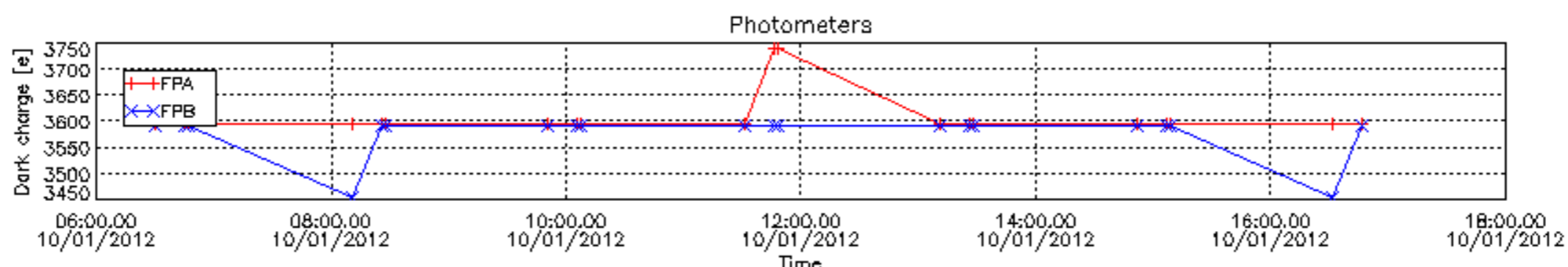
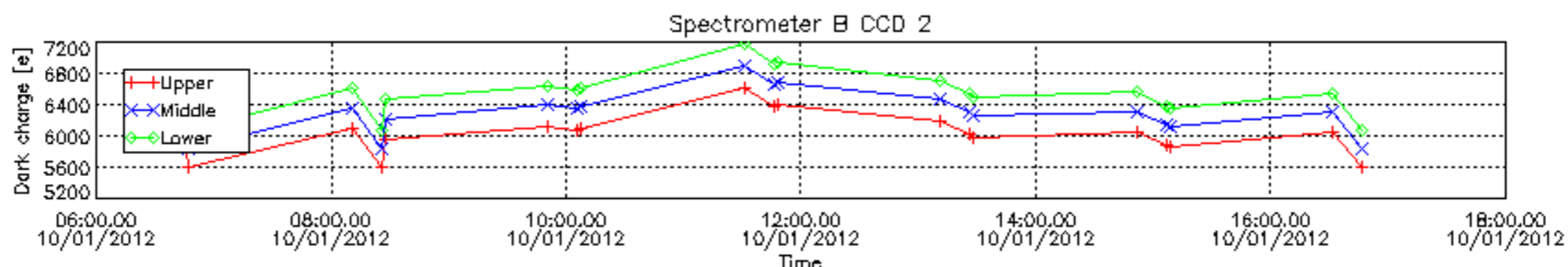
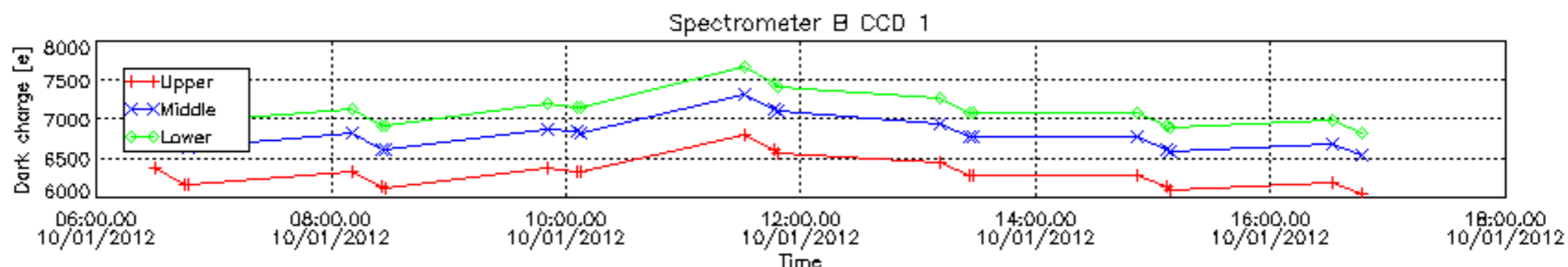
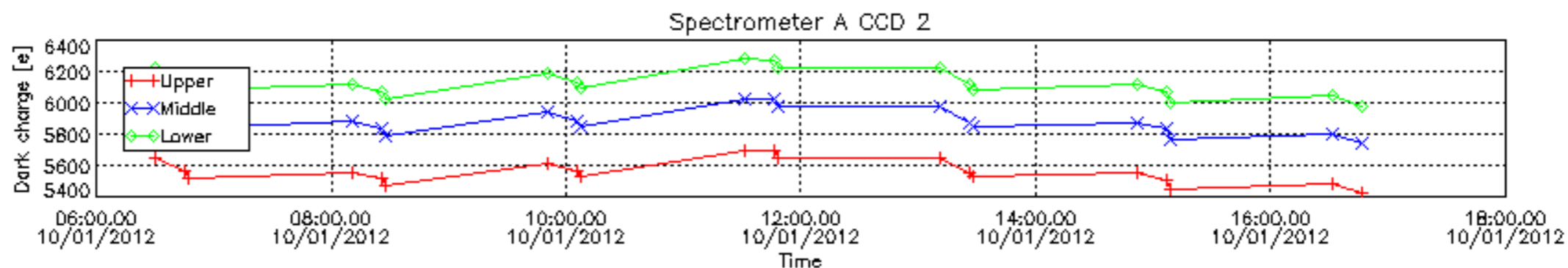
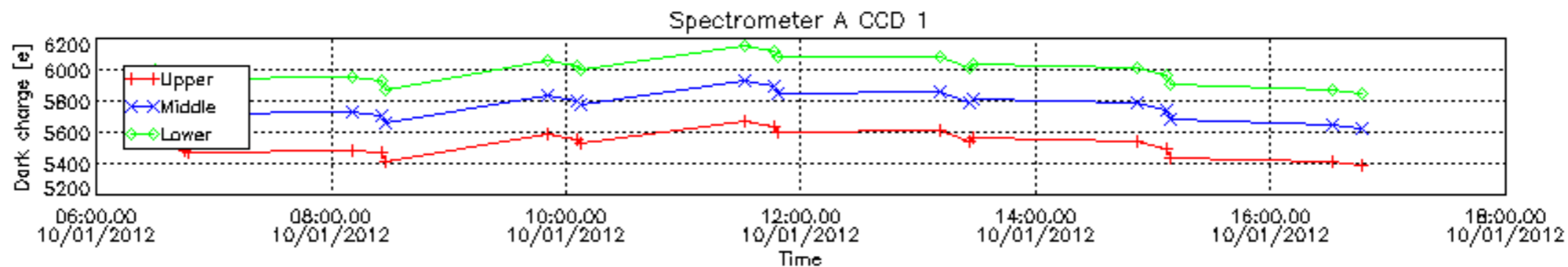
8. Auxiliary Data Files used for the production reported in section 2.4

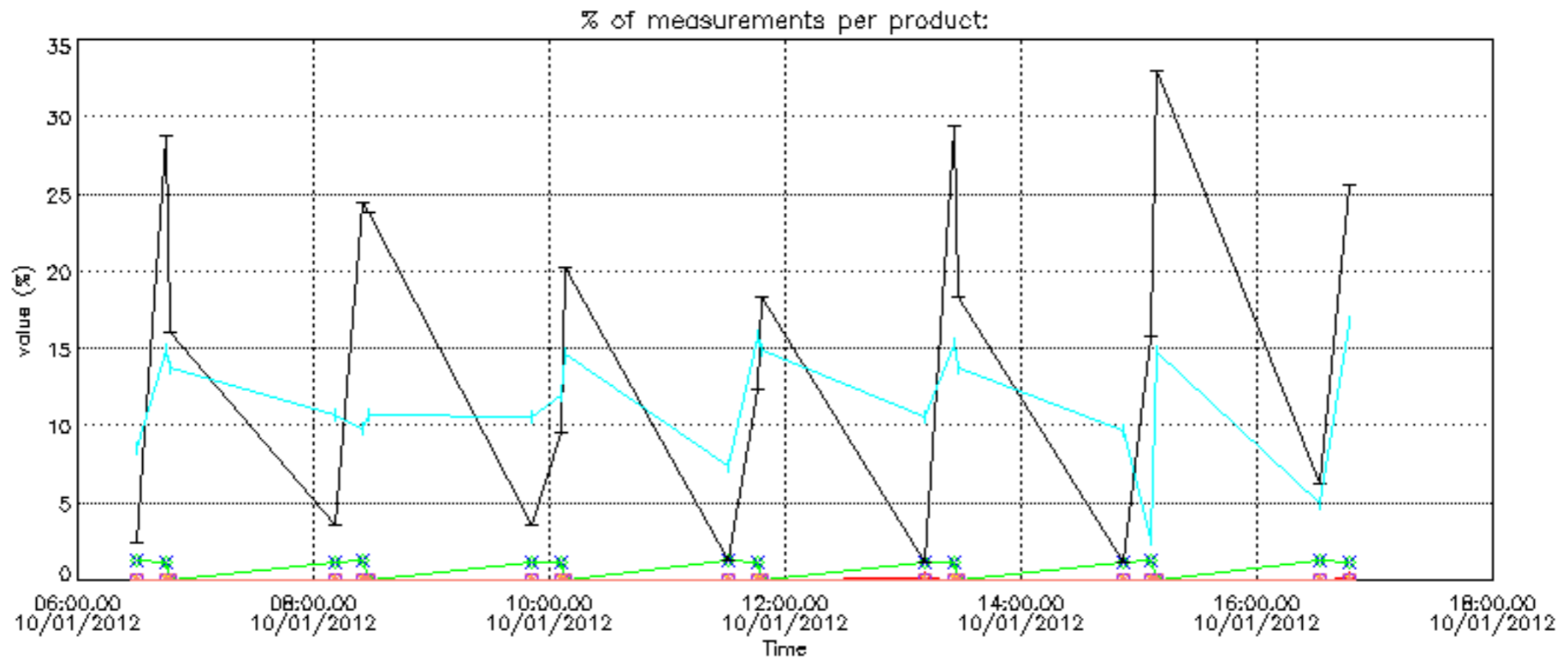
The number reported in the third column indicates since which file (see list in section 2.4) the corresponding auxiliary file has been used. The fourth column is the date of those product files.

Type	Auxiliary Filename	Used since product	Used since product date
INST_PHYS_CHARACTERISTICS	GOM_INS_AXVIEC20111213_163131_20111215_000000_20500101_000000	1	10-JAN-2012 06:30:26
CALIBRATION_DATABASE	GOM_CAL_AXVIEC20111021_144853_20111020_000000_20500101_000000	1	10-JAN-2012 06:30:26
LEVEL-1B_PROC_CONFIG	GOM_PR1_AXVIEC20110513_081743_20020301_000000_20500101_000000	1	10-JAN-2012 06:30:26
STAR_CATALOGUE	GOM_CAT_AXVIEC20020121_161009_20020101_000000_20200101_000000	1	10-JAN-2012 06:30:26
STELLAR_SPECTRA_DATABANK	GOM_STS_AXVIEC20091111_151504_20020101_160000_20500101_000000	1	10-JAN-2012 06:30:26
ECMWF_FILE	AUX_ECA_AXNECM20120110_062114_20120109_210000_20120110_090000	1	10-JAN-2012 06:30:26
ECMWF_FILE	AUX_ECF_AXNECM20120110_062114_20120110_090000_20120110_210000	7	10-JAN-2012 09:50:55
ECMWF_FILE	AUX_ECF_AXNECM20120110_062115_20120110_150000_20120111_030000	19	10-JAN-2012 16:31:53
OPTIONAL_ECMWF_FILE	MISSING	1	10-JAN-2012 06:30:26
ORBIT_DATA_FILE	AUX_FPO_AXVPDS20120108_232113_20120108_192406_20120118_213745	1	10-JAN-2012 06:30:26
ORBIT_DATA_FILE	AUX_FPO_AXVPDS20120110_112346_20120109_184721_20120119_210101	10	10-JAN-2012 11:31:10

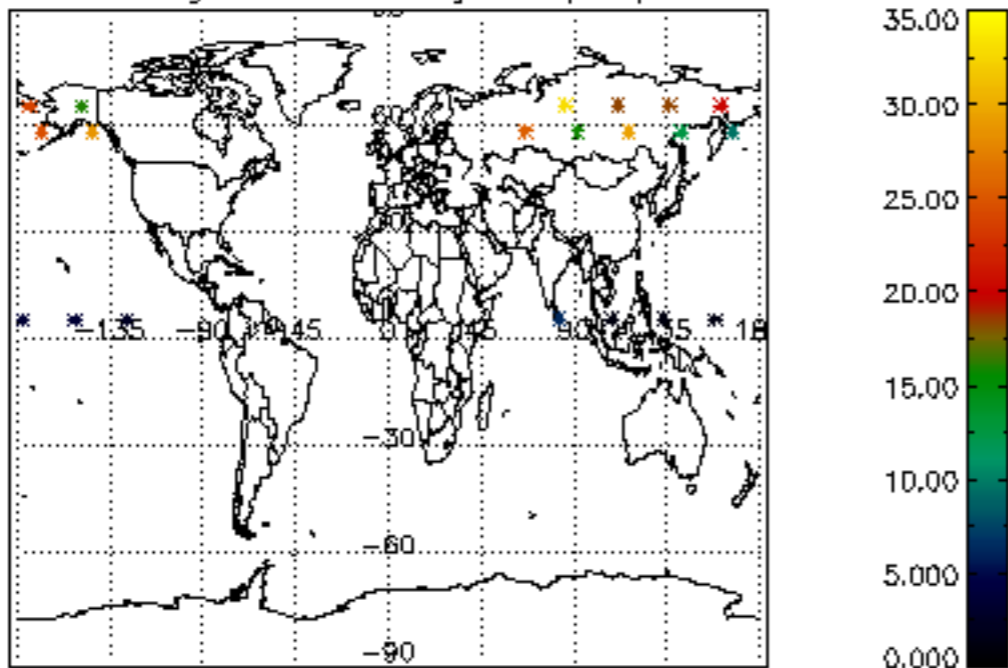




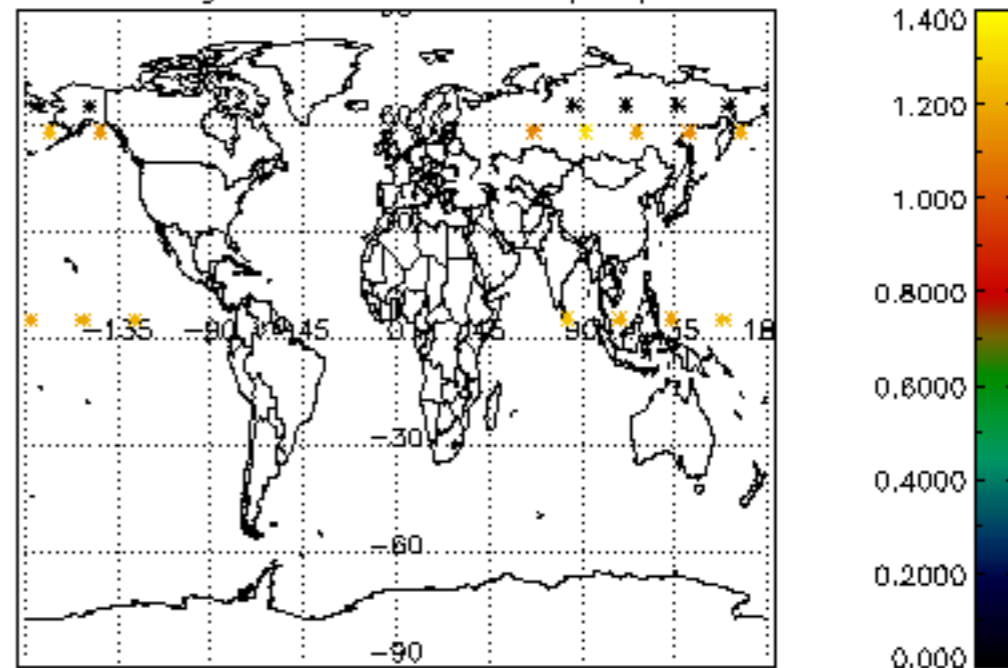




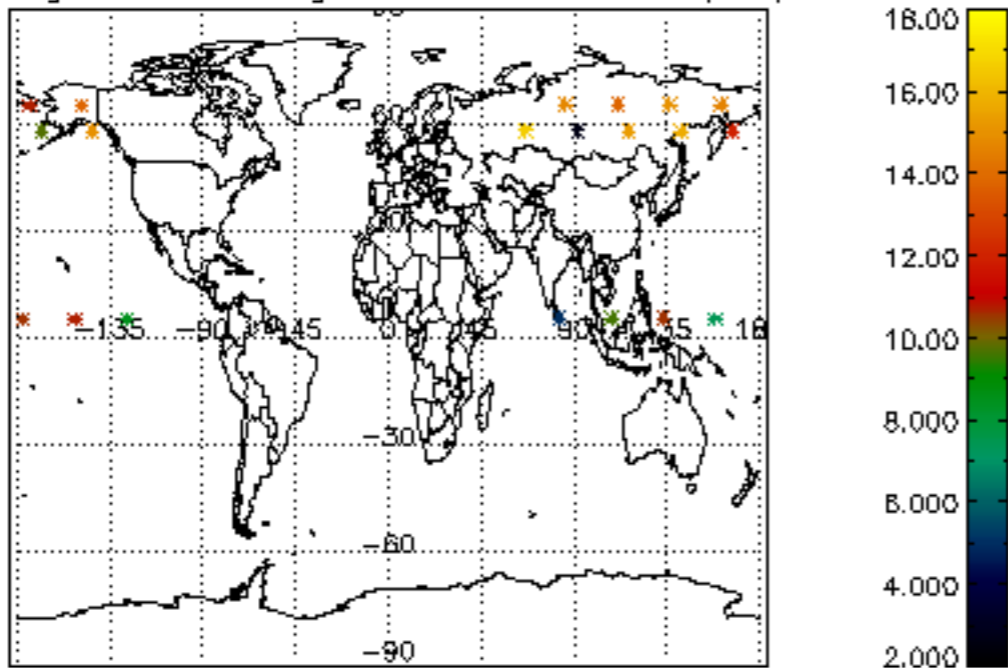
Percentage of cosmic ray hits per profile



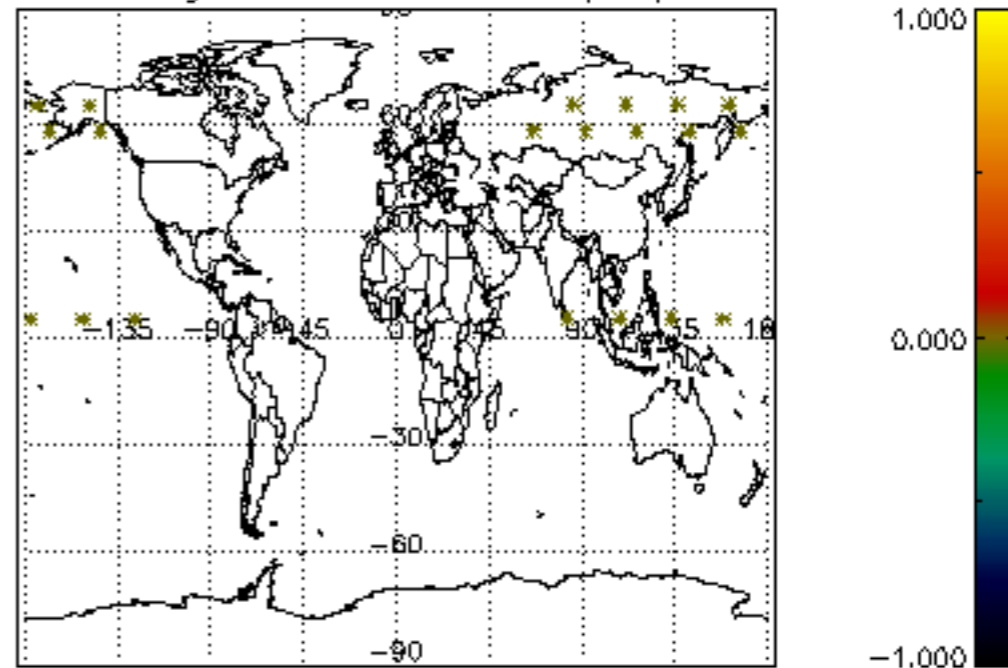
Percentage of datation errors per profile



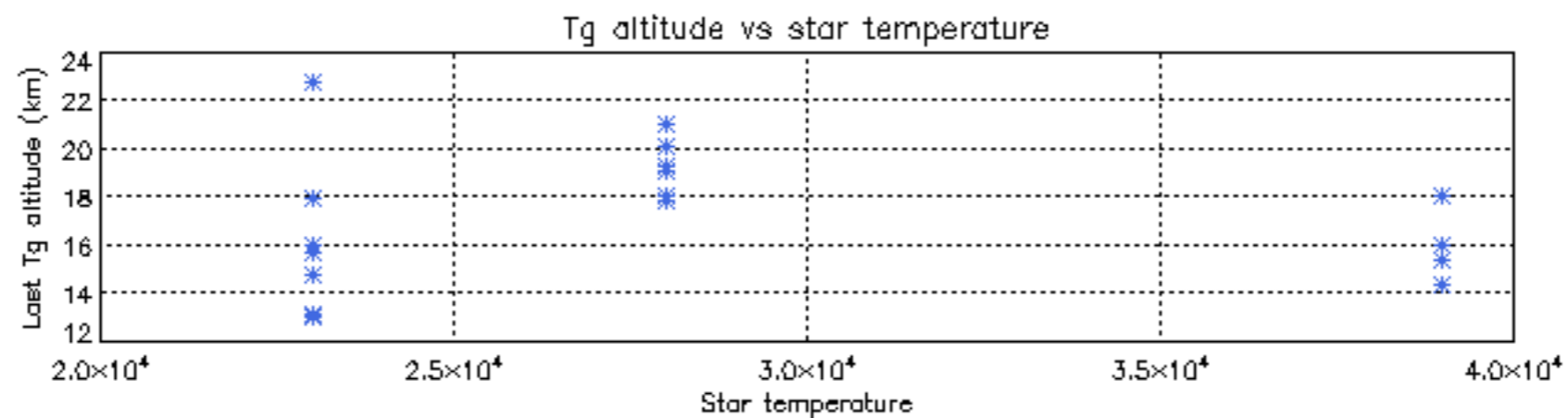
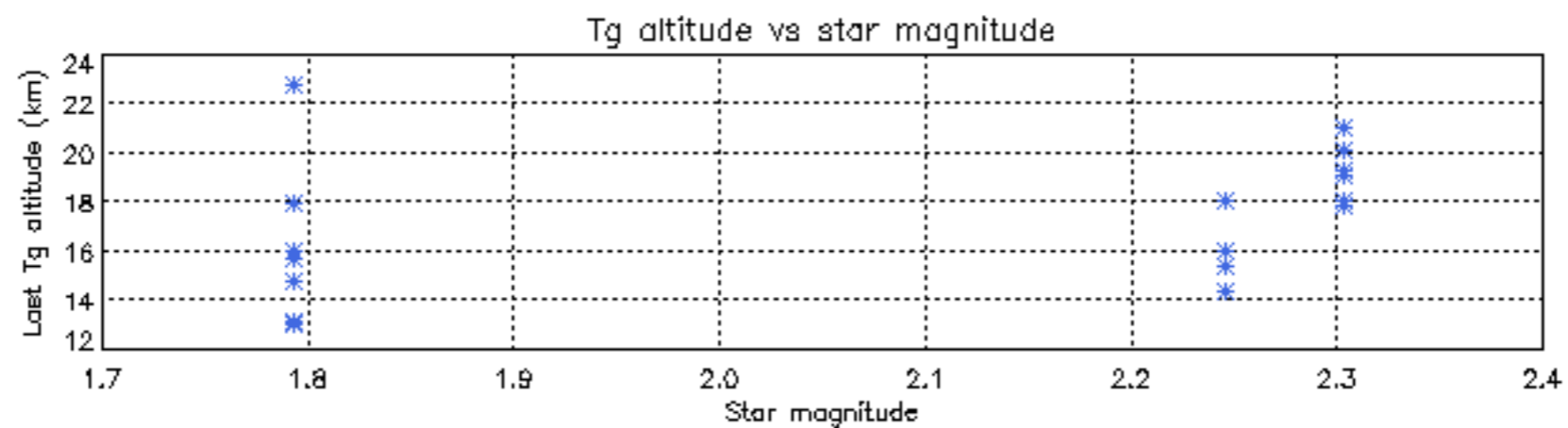
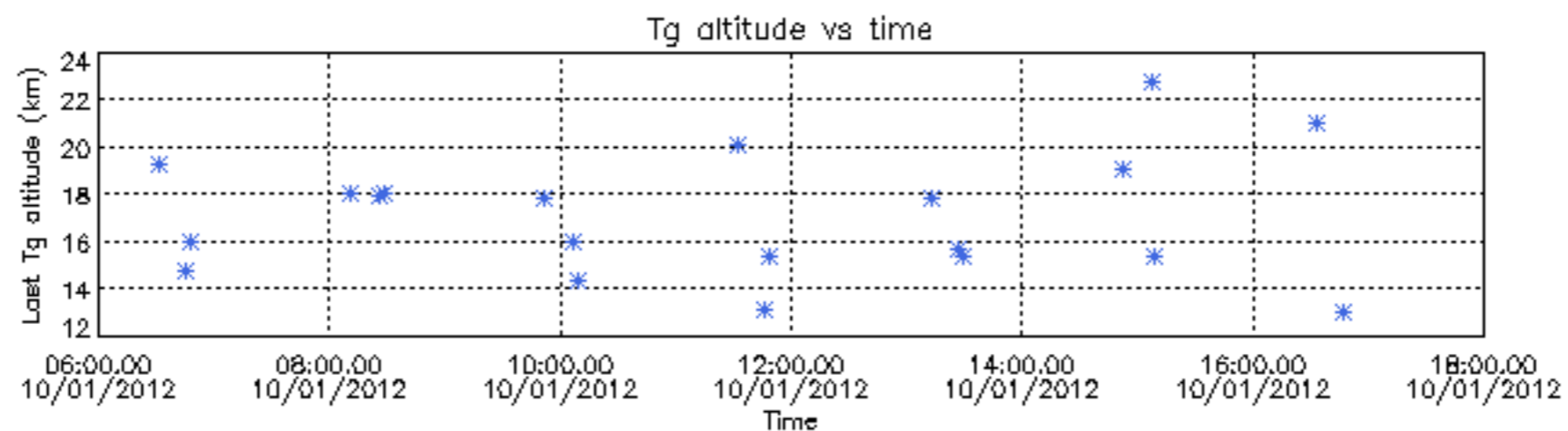
Percentage of star falling outside central band per profile

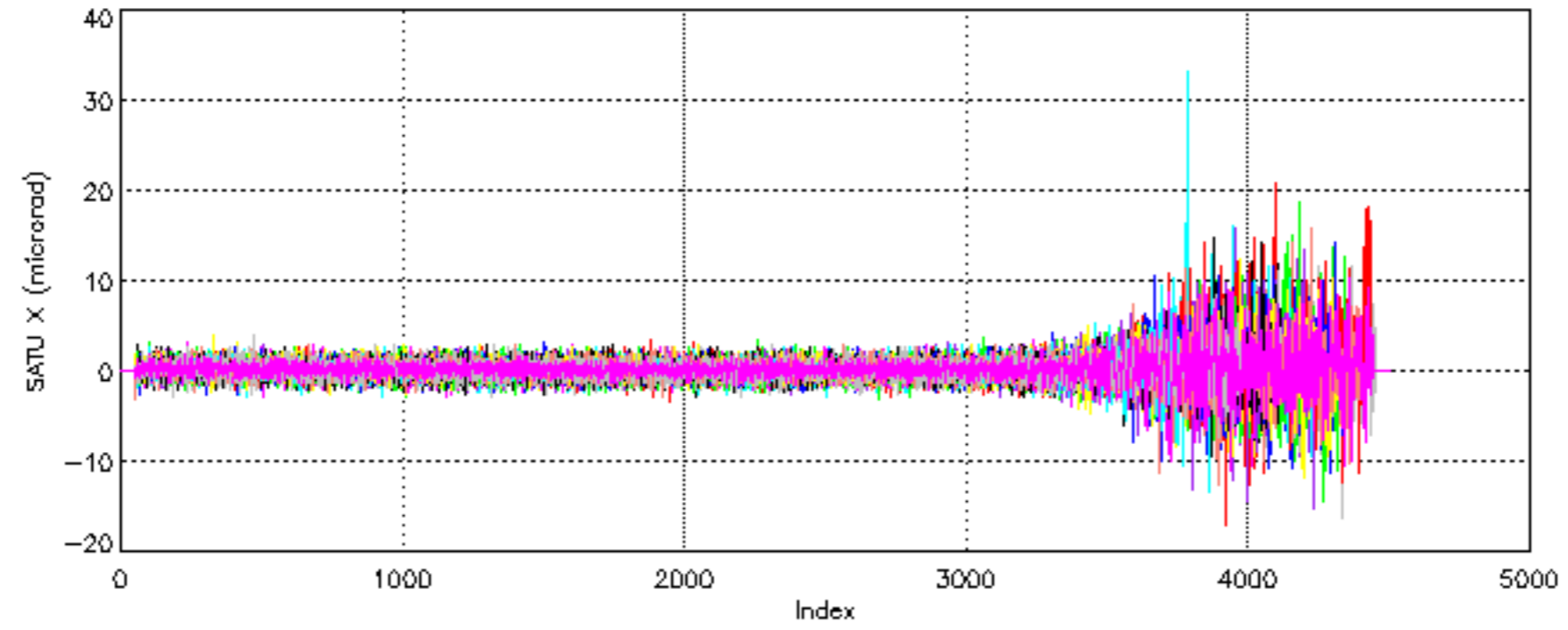


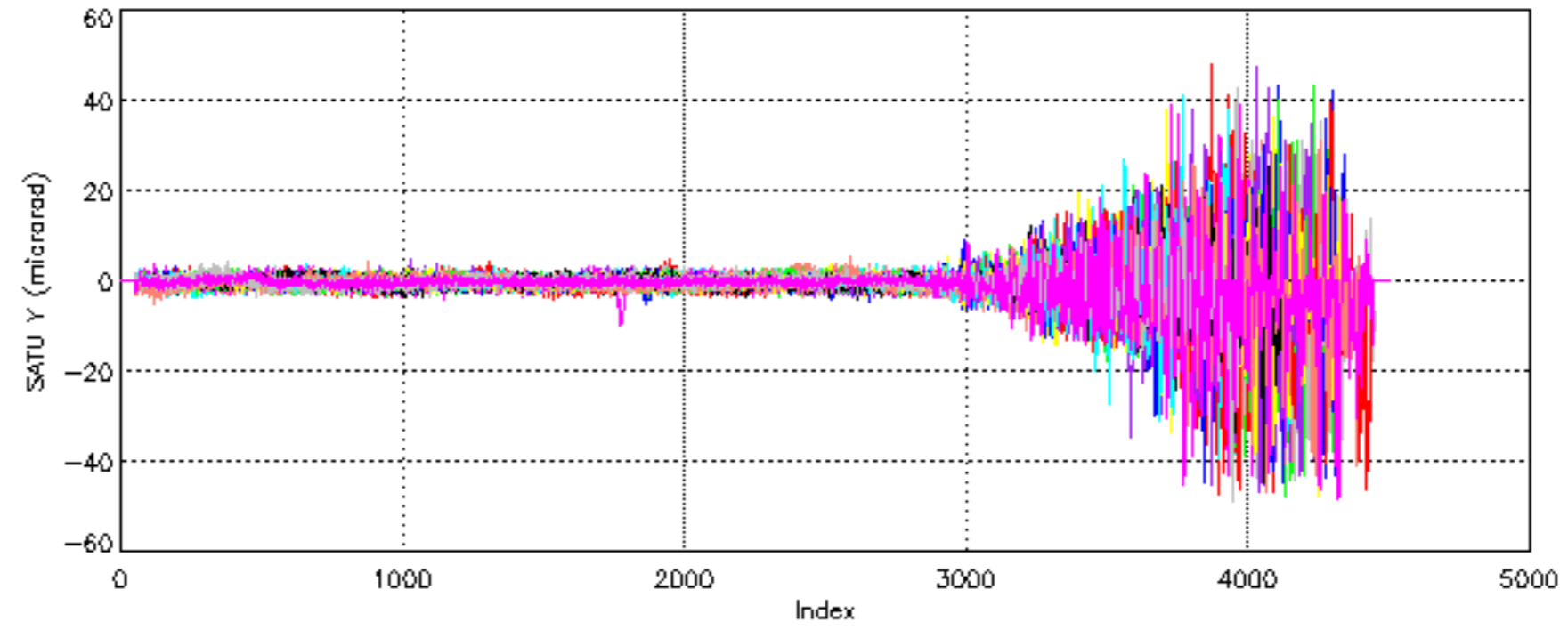
Percentage of saturation errors per profile

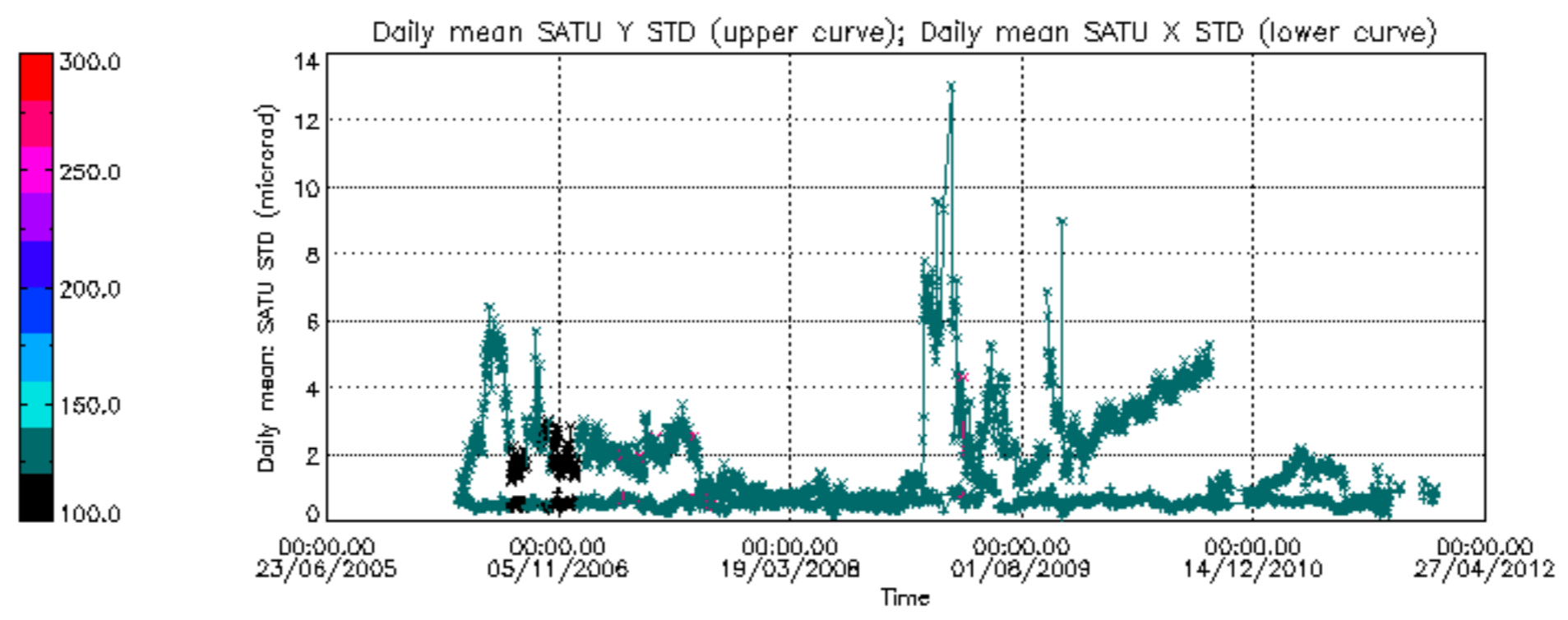


Tangent altitude at which the star is lost









/nas3/ENVISAT/GOMOS/GOM_NL__0P/GOM_NL__0PNPDE20120102_013403_000060733110_00161_51468_3712.N1
1; 749.3; 02-JAN-2012 01:34:03; Dark ; 59.0; 0; ; 0.00; 0;occ; 118; 0;51468
2; 6763.8; 02-JAN-2012 03:14:17; Dark ; 59.0; 0; ; 0.00; 0;occ; 118; 0;51469
/nas3/ENVISAT/GOMOS/GOM_NL__0P/GOM_NL__0PNPDK20120102_081755_00000433110_00165_51472_5504.N1
1; 925.9; 02-JAN-2012 08:17:55; Dark ; 43.5; 34; Gam2Vel ; 1.79; 23000;occ; 87; 0;51472
/nas3/ENVISAT/GOMOS/GOM_NL__0P/GOM_NL__0PNPDK20120102_095810_00000403110_00166_51473_5505.N1
1; 926.1; 02-JAN-2012 09:58:10; Dark ; 41.0; 34; Gam2Vel ; 1.79; 23000;occ; 82; 0;51473
/nas3/ENVISAT/GOMOS/GOM_NL__0P/GOM_NL__0PNPDK20120102_113824_00000413110_00167_51474_5506.N1
1; 926.6; 02-JAN-2012 11:38:24; Dark ; 41.5; 34; Gam2Vel ; 1.79; 23000;occ; 83; 0;51474
/nas3/ENVISAT/GOMOS/GOM_NL__0P/GOM_NL__0PNPDK20120102_131838_00000423110_00168_51475_5507.N1
1; 927.2; 02-JAN-2012 13:18:38; Dark ; 43.0; 34; Gam2Vel ; 1.79; 23000;occ; 86; 0;51475
/nas3/ENVISAT/GOMOS/GOM_NL__0P/GOM_NL__0PNPDK20120102_145853_00000443110_00169_51476_5508.N1
1; 927.7; 02-JAN-2012 14:58:53; Dark ; 44.5; 34; Gam2Vel ; 1.79; 23000;occ; 89; 0;51476
/nas3/ENVISAT/GOMOS/GOM_NL__0P/GOM_NL__0PNPDK20120102_163907_00000463110_00170_51477_5509.N1
1; 928.1; 02-JAN-2012 16:39:07; Dark ; 46.5; 34; Gam2Vel ; 1.79; 23000;occ; 93; 0;51477
/nas3/ENVISAT/GOMOS/GOM_NL__0P/GOM_NL__0PNPDK20120103_074117_00000413110_00179_51486_5510.N1
1; 932.5; 03-JAN-2012 07:41:17; Dark ; 42.0; 34; Gam2Vel ; 1.79; 23000;occ; 84; 0;51486
/nas3/ENVISAT/GOMOS/GOM_NL__0P/GOM_NL__0PNPDK20120103_092132_00000403110_00180_51487_5511.N1
1; 933.0; 03-JAN-2012 09:21:32; Dark ; 41.0; 34; Gam2Vel ; 1.79; 23000;occ; 82; 0;51487
/nas3/ENVISAT/GOMOS/GOM_NL__0P/GOM_NL__0PNPDK20120103_110146_00000413110_00181_51488_5512.N1
1; 933.4; 03-JAN-2012 11:01:46; Dark ; 41.5; 34; Gam2Vel ; 1.79; 23000;occ; 83; 0;51488
/nas3/ENVISAT/GOMOS/GOM_NL__0P/GOM_NL__0PNPDK20120103_124200_00000463110_00182_51489_5513.N1
1; 933.9; 03-JAN-2012 12:42:00; Dark ; 47.0; 34; Gam2Vel ; 1.79; 23000;occ; 94; 0;51489
/nas3/ENVISAT/GOMOS/GOM_NL__0P/GOM_NL__0PNPDK20120103_142215_00000443110_00183_51490_5514.N1
1; 934.4; 03-JAN-2012 14:22:15; Dark ; 45.0; 34; Gam2Vel ; 1.79; 23000;occ; 90; 0;51490
/nas3/ENVISAT/GOMOS/GOM_NL__0P/GOM_NL__0PNPDK20120103_160229_00000443110_00184_51491_5515.N1
1; 934.8; 03-JAN-2012 16:02:29; Dark ; 44.5; 34; Gam2Vel ; 1.79; 23000;occ; 89; 0;51491
/nas3/ENVISAT/GOMOS/GOM_NL__0P/GOM_NL__0PNPDK20120103_174244_00000453110_00185_51492_5516.N1
1; 935.2; 03-JAN-2012 17:42:44; Dark ; 45.5; 34; Gam2Vel ; 1.79; 23000;occ; 91; 0;51492
/nas3/ENVISAT/GOMOS/GOM_NL__0P/GOM_NL__0PNPDE20120104_052425_00000413110_00192_51499_3713.N1
1; 938.7; 04-JAN-2012 05:24:25; Dark ; 42.0; 34; Gam2Vel ; 1.79; 23000;occ; 84; 0;51499
/nas3/ENVISAT/GOMOS/GOM_NL__0P/GOM_NL__0PNPDK20120104_070439_00000413110_00193_51500_5517.N1
1; 939.1; 04-JAN-2012 07:04:39; Dark ; 42.0; 34; Gam2Vel ; 1.79; 23000;occ; 84; 0;51500
/nas3/ENVISAT/GOMOS/GOM_NL__0P/GOM_NL__0PNPDK20120104_084453_00000413110_00194_51501_5518.N1
1; 939.6; 04-JAN-2012 08:44:53; Dark ; 41.5; 34; Gam2Vel ; 1.79; 23000;occ; 83; 0;51501
/nas3/ENVISAT/GOMOS/GOM_NL__0P/GOM_NL__0PNPDK20120104_102508_00000473110_00195_51502_5519.N1
1; 940.1; 04-JAN-2012 10:25:08; Dark ; 47.5; 34; Gam2Vel ; 1.79; 23000;occ; 95; 0;51502
/nas3/ENVISAT/GOMOS/GOM_NL__0P/GOM_NL__0PNPDK20120104_120522_00000423110_00196_51503_5520.N1
1; 940.3; 04-JAN-2012 12:05:22; Dark ; 43.0; 34; Gam2Vel ; 1.79; 23000;occ; 86; 0;51503
/nas3/ENVISAT/GOMOS/GOM_NL__0P/GOM_NL__0PNPDK20120104_134536_00000453110_00197_51504_5521.N1
1; 940.9; 04-JAN-2012 13:45:36; Dark ; 45.5; 34; Gam2Vel ; 1.79; 23000;occ; 91; 0;51504
/nas3/ENVISAT/GOMOS/GOM_NL__0P/GOM_NL__0PNPDK20120104_152551_00000453110_00198_51505_5522.N1
1; 941.4; 04-JAN-2012 15:25:51; Dark ; 46.0; 34; Gam2Vel ; 1.79; 23000;occ; 92; 0;51505
/nas3/ENVISAT/GOMOS/GOM_NL__0P/GOM_NL__0PNPDK20120104_170605_00000433110_00199_51506_5523.N1
1; 941.9; 04-JAN-2012 17:06:05; Dark ; 44.0; 34; Gam2Vel ; 1.79; 23000;occ; 88; 0;51506
/nas3/ENVISAT/GOMOS/GOM_NL__0P/GOM_NL__0PNPDE20120105_062800_00000433110_00207_51514_3714.N1
1; 945.5; 05-JAN-2012 06:28:00; Dark ; 44.0; 34; Gam2Vel ; 1.79; 23000;occ; 88; 0;51514
/nas3/ENVISAT/GOMOS/GOM_NL__0P/GOM_NL__0PNPDK20120105_080815_00000423110_00208_51515_5524.N1
1; 946.0; 05-JAN-2012 08:08:15; Dark ; 43.0; 34; Gam2Vel ; 1.79; 23000;occ; 86; 0;51515
/nas3/ENVISAT/GOMOS/GOM_NL__0P/GOM_NL__0PNPDK20120105_090323_000027483110_00208_51515_5525.N1
1; -1759.9; 05-JAN-2012 09:03:23; Dark ; 57.5; 0; ; 0.00; 0;occ; 115; 0;51515
2; -1159.9; 05-JAN-2012 09:13:23; Dark ; 57.5; 0; ; 0.00; 0;occ; 115; 0;51515
3; -559.9; 05-JAN-2012 09:23:23; Dark ; 57.5; 0; ; 0.00; 0;occ; 115; 0;51515
4; 40.1; 05-JAN-2012 09:33:23; Dark ; 57.5; 0; ; 0.00; 0;occ; 115; 0;51516
5; 946.3; 05-JAN-2012 09:48:29; Dark ; 42.5; 34; Gam2Vel ; 1.79; 23000;occ; 85; 0;51516
/nas3/ENVISAT/GOMOS/GOM_NL__0P/GOM_NL__0PNPDK20120105_100323_000051633110_00209_51516_5526.N1
1; 1840.1; 05-JAN-2012 10:03:23; Dark ; 57.5; 0; ; 0.00; 0;occ; 115; 0;51516
2; 2440.1; 05-JAN-2012 10:13:23; Dark ; 57.5; 0; ; 0.00; 0;occ; 115; 0;51516
3; 3040.1; 05-JAN-2012 10:23:23; Dark ; 57.5; 0; ; 0.00; 0;occ; 115; 0;51516
4; 3640.1; 05-JAN-2012 10:33:23; Dark ; 57.0; 0; ; 0.00; 0;occ; 114; 0;51516
5; 4254.5; 05-JAN-2012 10:43:37; Dark ; 57.5; 0; ; 0.00; 0;occ; 115; 0;51516
6; 4854.5; 05-JAN-2012 10:53:37; Dark ; 57.5; 0; ; 0.00; 0;occ; 115; 0;51516
7; 5454.5; 05-JAN-2012 11:03:37; Dark ; 57.5; 0; ; 0.00; 0;occ; 115; 0;51516
8; 6054.5; 05-JAN-2012 11:13:37; Dark ; 57.5; 0; ; 0.00; 0;occ; 115; 0;51517
9; 6960.8; 05-JAN-2012 11:28:44; Dark ; 42.5; 34; Gam2Vel ; 1.79; 23000;occ; 85; 0;51517
/nas3/ENVISAT/GOMOS/GOM_NL__0P/GOM_NL__0PNPDK20120105_114337_000051653110_00210_51517_5527.N1
1; 1840.6; 05-JAN-2012 11:43:37; Dark ; 57.5; 0; ; 0.00; 0;occ; 115; 0;51517
2; 2440.6; 05-JAN-2012 11:53:37; Dark ; 57.5; 0; ; 0.00; 0;occ; 115; 0;51517

```

3; 3040.6; 05-JAN-2012 12:03:37; Dark ; 57.5; 0; ; 0.00; 0;occ; 115; 0;51517
4; 3640.6; 05-JAN-2012 12:13:37; Dark ; 57.0; 0; ; 0.00; 0;occ; 114; 0;51517
5; 4254.9; 05-JAN-2012 12:23:52; Dark ; 57.5; 0; ; 0.00; 0;occ; 115; 0;51517
6; 4854.9; 05-JAN-2012 12:33:52; Dark ; 57.5; 0; ; 0.00; 0;occ; 115; 0;51517
7; 5454.9; 05-JAN-2012 12:43:52; Dark ; 57.5; 0; ; 0.00; 0;occ; 115; 0;51517
8; 6054.9; 05-JAN-2012 12:53:52; Dark ; 57.5; 0; ; 0.00; 0;occ; 115; 0;51518
9; 6961.1; 05-JAN-2012 13:08:58; Dark ; 44.5; 34; Gam2Vel ; 1.79; 23000;occ; 89; 0;51518
/nas3/ENVISAT/GOMOS/GOM_NL__0P/GOM_NL__0PNPDK20120105_132352_000051643110_00211_51518_5528.N1
1; 1841.1; 05-JAN-2012 13:23:52; Dark ; 57.5; 0; ; 0.00; 0;occ; 115; 0;51518
2; 2441.1; 05-JAN-2012 13:33:52; Dark ; 57.5; 0; ; 0.00; 0;occ; 115; 0;51518
3; 3041.1; 05-JAN-2012 13:43:52; Dark ; 57.5; 0; ; 0.00; 0;occ; 115; 0;51518
4; 3641.1; 05-JAN-2012 13:53:52; Dark ; 57.0; 0; ; 0.00; 0;occ; 114; 0;51518
5; 6961.8; 05-JAN-2012 14:49:12; Dark ; 43.5; 34; Gam2Vel ; 1.79; 23000;occ; 87; 0;51519
/nas3/ENVISAT/GOMOS/GOM_NL__0P/GOM_NL__0PNPDK20120105_162927_000000423110_00213_51520_5529.N1
1; 948.2; 05-JAN-2012 16:29:27; Dark ; 42.5; 34; Gam2Vel ; 1.79; 23000;occ; 85; 0;51520
/nas3/ENVISAT/GOMOS/GOM_NL__0P/GOM_NL__0PNPDK20120109_070702_000015573110_00265_51572_5530.N1
1; 78.9; 09-JAN-2012 07:07:02; Dark ; 42.5; 77; Eps Cen ; 2.30; 28000;occ; 85; 0;51572
2; 970.8; 09-JAN-2012 07:21:54; Dark ; 44.0; 34; Gam2Vel ; 1.79; 23000;occ; 88; 0;51572
3; 1100.3; 09-JAN-2012 07:24:03; Dark ; 46.0; 70; Zet Pup ; 2.25; 39000;occ; 92; 0;51572
4; 1588.0; 09-JAN-2012 07:32:11; Dark ; 48.5; 1; 9Alp CMA ; -1.44; 11000;occ; 97; 0;51572
/nas3/ENVISAT/GOMOS/GOM_NL__0P/GOM_NL__0PNPDK20120109_084716_000015573110_00266_51573_5531.N1
1; 79.4; 09-JAN-2012 08:47:16; Dark ; 40.0; 77; Eps Cen ; 2.30; 28000;occ; 80; 0;51573
2; 971.2; 09-JAN-2012 09:02:08; Dark ; 40.0; 34; Gam2Vel ; 1.79; 23000;occ; 80; 0;51573
3; 1100.6; 09-JAN-2012 09:04:17; Dark ; 41.0; 70; Zet Pup ; 2.25; 39000;occ; 82; 0;51573
4; 1588.1; 09-JAN-2012 09:12:25; Dark ; 48.5; 1; 9Alp CMA ; -1.44; 11000;occ; 97; 0;51573
/nas3/ENVISAT/GOMOS/GOM_NL__0P/GOM_NL__0PNPDK20120109_123253_000055703110_00268_51575_5534.N1
1; 1588.4; 09-JAN-2012 12:32:53; Dark ; 47.0; 1; 9Alp CMA ; -1.44; 11000;occ; 94; 0;51575
2; 6095.4; 09-JAN-2012 13:48:00; Dark ; 41.5; 77; Eps Cen ; 2.30; 28000;occ; 83; 0;51576
3; 6986.3; 09-JAN-2012 14:02:51; Dark ; 40.5; 34; Gam2Vel ; 1.79; 23000;occ; 81; 0;51576
4; 7115.7; 09-JAN-2012 14:05:00; Dark ; 43.0; 70; Zet Pup ; 2.25; 39000;occ; 86; 0;51576
/nas3/ENVISAT/GOMOS/GOM_NL__0P/GOM_NL__0PNPDK20120109_105239_000055703110_00267_51574_5533.N1
1; 1588.1; 09-JAN-2012 10:52:39; Dark ; 47.5; 1; 9Alp CMA ; -1.44; 11000;occ; 95; 0;51574
2; 6094.6; 09-JAN-2012 12:07:45; Dark ; 42.0; 77; Eps Cen ; 2.30; 28000;occ; 84; 0;51575
3; 6985.8; 09-JAN-2012 12:22:37; Dark ; 44.0; 34; Gam2Vel ; 1.79; 23000;occ; 88; 0;51575
4; 7115.4; 09-JAN-2012 12:24:46; Dark ; 43.0; 70; Zet Pup ; 2.25; 39000;occ; 86; 0;51575
/nas3/ENVISAT/GOMOS/GOM_NL__0P/GOM_NL__0PNPDK20120109_141307_000055713110_00269_51576_5535.N1
1; 1588.9; 09-JAN-2012 14:13:07; Dark ; 46.5; 1; 9Alp CMA ; -1.44; 11000;occ; 93; 0;51576
2; 6096.1; 09-JAN-2012 15:28:15; Dark ; 41.5; 77; Eps Cen ; 2.30; 28000;occ; 83; 0;51577
3; 6986.9; 09-JAN-2012 15:43:05; Dark ; 41.5; 34; Gam2Vel ; 1.79; 23000;occ; 83; 0;51577
4; 7116.0; 09-JAN-2012 15:45:14; Dark ; 44.0; 70; Zet Pup ; 2.25; 39000;occ; 88; 0;51577
/nas3/ENVISAT/GOMOS/GOM_NL__0P/GOM_NL__0PNPDK20120109_155321_000054433110_00270_51577_5536.N1
1; 1588.7; 09-JAN-2012 15:53:21; Dark ; 46.0; 1; 9Alp CMA ; -1.44; 11000;occ; 92; 0;51577
2; 6096.7; 09-JAN-2012 17:08:29; Dark ; 41.0; 77; Eps Cen ; 2.30; 28000;occ; 82; 0;51578
3; 6987.3; 09-JAN-2012 17:23:20; Dark ; 44.5; 34; Gam2Vel ; 1.79; 23000;occ; 89; 0;51578
/nas3/ENVISAT/GOMOS/GOM_NL__0P/GOM_NL__0PNPDK20120109_172529_000005323110_00271_51578_5537.N1
1; 1102.4; 09-JAN-2012 17:25:29; Dark ; 43.0; 70; Zet Pup ; 2.25; 39000;occ; 86; 0;51578
2; 1588.7; 09-JAN-2012 17:33:35; Dark ; 46.5; 1; 9Alp CMA ; -1.44; 11000;occ; 93; 0;51578
/nas3/ENVISAT/GOMOS/GOM_NL__0P/GOM_NL__0PNPDK20120110_081041_000010593110_00280_51587_5538.N1
1; 88.7; 10-JAN-2012 08:10:41; Dark ; 42.0; 77; Eps Cen ; 2.30; 28000;occ; 84; 0;51587
2; 977.0; 10-JAN-2012 08:25:29; Dark ; 41.0; 34; Gam2Vel ; 1.79; 23000;occ; 82; 0;51587
3; 1106.0; 10-JAN-2012 08:27:38; Dark ; 42.0; 70; Zet Pup ; 2.25; 39000;occ; 84; 0;51587
/nas3/ENVISAT/GOMOS/GOM_NL__0P/GOM_NL__0PNPDK20120110_095055_000010613110_00281_51588_5539.N1
1; 89.3; 10-JAN-2012 09:50:55; Dark ; 42.5; 77; Eps Cen ; 2.30; 28000;occ; 85; 0;51588
2; 977.4; 10-JAN-2012 10:05:43; Dark ; 42.0; 34; Gam2Vel ; 1.79; 23000;occ; 84; 0;51588
3; 1106.3; 10-JAN-2012 10:07:52; Dark ; 44.5; 70; Zet Pup ; 2.25; 39000;occ; 89; 0;51588
/nas3/ENVISAT/GOMOS/GOM_NL__0P/GOM_NL__0PNPDK20120110_113110_000010603110_00282_51589_5540.N1
1; 90.0; 10-JAN-2012 11:31:10; Dark ; 40.5; 77; Eps Cen ; 2.30; 28000;occ; 81; 0;51589
2; 977.7; 10-JAN-2012 11:45:57; Dark ; 44.5; 34; Gam2Vel ; 1.79; 23000;occ; 89; 0;51589
3; 1106.8; 10-JAN-2012 11:48:07; Dark ; 43.5; 70; Zet Pup ; 2.25; 39000;occ; 87; 0;51589
/nas3/ENVISAT/GOMOS/GOM_NL__0P/GOM_NL__0PNPDK20120110_131124_000010603110_00283_51590_5541.N1
1; 90.6; 10-JAN-2012 13:11:24; Dark ; 42.5; 77; Eps Cen ; 2.30; 28000;occ; 85; 0;51590
2; 978.1; 10-JAN-2012 13:26:12; Dark ; 42.5; 34; Gam2Vel ; 1.79; 23000;occ; 85; 0;51590
3; 1107.3; 10-JAN-2012 13:28:21; Dark ; 43.5; 70; Zet Pup ; 2.25; 39000;occ; 87; 0;51590
/nas3/ENVISAT/GOMOS/GOM_NL__0P/GOM_NL__0PNPDK20120110_145139_000010603110_00284_51591_5542.N1
1; 91.4; 10-JAN-2012 14:51:39; Dark ; 41.5; 77; Eps Cen ; 2.30; 28000;occ; 83; 0;51591
2; 978.6; 10-JAN-2012 15:06:26; Dark ; 38.0; 34; Gam2Vel ; 1.79; 23000;occ; 76; 0;51591
3; 1107.5; 10-JAN-2012 15:08:35; Dark ; 44.0; 70; Zet Pup ; 2.25; 39000;occ; 88; 0;51591
/nas3/ENVISAT/GOMOS/GOM_NL__0P/GOM_NL__0PNPDK20120110_163153_000010593110_00285_51592_5543.N1

```

```

1; 92.0; 10-JAN-2012 16:31:53; Dark ; 40.0; 77; Eps Cen ; 2.30; 28000;occ; 80; 0;51592
2; 979.0; 10-JAN-2012 16:46:40; Dark ; 45.0; 34; Gam2Vel ; 1.79; 23000;occ; 90; 0;51592
3; 1107.9; 10-JAN-2012 16:48:49; Dark ; 44.0; 70; Zet Pup ; 2.25; 39000;occ; 88; 0;51592
/nas3/ENVISAT/GOMOS/GOM_NL__0P/GOM_NL__0PNPDK20120110_164923_000000103110_00285_51592_5544.N1
1; 1141.4; 10-JAN-2012 16:49:23; Dark ; 44.5; 70; Zet Pup ; 2.25; 39000;occ; 89; 67;51592
/nas3/ENVISAT/GOMOS/GOM_NL__0P/GOM_NL__0PNPDK20120111_073405_000010563110_00294_51601_5545.N1
1; 98.1; 11-JAN-2012 07:34:05; Dark ; 41.0; 77; Eps Cen ; 2.30; 28000;occ; 82; 0;51601
2; 982.6; 11-JAN-2012 07:48:49; Dark ; 42.5; 34; Gam2Vel ; 1.79; 23000;occ; 85; 0;51601
3; 1111.5; 11-JAN-2012 07:50:58; Dark ; 43.5; 70; Zet Pup ; 2.25; 39000;occ; 87; 0;51601
/nas3/ENVISAT/GOMOS/GOM_NL__0P/GOM_NL__0PNPDK20120111_091419_000009273110_00295_51602_5546.N1
1; 98.7; 11-JAN-2012 09:14:19; Dark ; 41.5; 77; Eps Cen ; 2.30; 28000;occ; 83; 0;51602
2; 983.0; 11-JAN-2012 09:29:04; Dark ; 43.0; 34; Gam2Vel ; 1.79; 23000;occ; 86; 0;51602
/nas3/ENVISAT/GOMOS/GOM_NL__0P/GOM_NL__0PNPDK20120111_105434_000009293110_00296_51603_5547.N1
1; 99.4; 11-JAN-2012 10:54:34; Dark ; 41.0; 77; Eps Cen ; 2.30; 28000;occ; 82; 0;51603
2; 983.4; 11-JAN-2012 11:09:18; Dark ; 46.0; 34; Gam2Vel ; 1.79; 23000;occ; 92; 0;51603
/nas3/ENVISAT/GOMOS/GOM_NL__0P/GOM_NL__0PNPDK20120111_123449_000009263110_00297_51604_5548.N1
1; 100.2; 11-JAN-2012 12:34:49; Dark ; 40.5; 77; Eps Cen ; 2.30; 28000;occ; 81; 0;51604
2; 983.8; 11-JAN-2012 12:49:32; Dark ; 43.0; 34; Gam2Vel ; 1.79; 23000;occ; 86; 0;51604
/nas3/ENVISAT/GOMOS/GOM_NL__0P/GOM_NL__0PNPDK20120111_141503_000010563110_00298_51605_5549.N1
1; 100.8; 11-JAN-2012 14:15:03; Dark ; 40.5; 77; Eps Cen ; 2.30; 28000;occ; 81; 0;51605
2; 984.1; 11-JAN-2012 14:29:47; Dark ; 43.5; 34; Gam2Vel ; 1.79; 23000;occ; 87; 0;51605
3; 1113.1; 11-JAN-2012 14:31:56; Dark ; 44.0; 70; Zet Pup ; 2.25; 39000;occ; 88; 0;51605
/nas3/ENVISAT/GOMOS/GOM_NL__0P/GOM_NL__0PNPDK20120111_155518_000010563110_00299_51606_5550.N1
1; 101.4; 11-JAN-2012 15:55:18; Dark ; 40.0; 77; Eps Cen ; 2.30; 28000;occ; 80; 0;51606
2; 984.4; 11-JAN-2012 16:10:01; Dark ; 42.5; 34; Gam2Vel ; 1.79; 23000;occ; 85; 0;51606
3; 1113.3; 11-JAN-2012 16:12:10; Dark ; 44.5; 70; Zet Pup ; 2.25; 39000;occ; 89; 0;51606
/nas3/ENVISAT/GOMOS/GOM_NL__0P/GOM_NL__0PNPDK20120111_173532_000009273110_00300_51607_5551.N1
1; 102.1; 11-JAN-2012 17:35:32; Dark ; 41.5; 77; Eps Cen ; 2.30; 28000;occ; 83; 0;51607
2; 984.8; 11-JAN-2012 17:50:15; Dark ; 45.0; 34; Gam2Vel ; 1.79; 23000;occ; 90; 0;51607
/nas3/ENVISAT/GOMOS/GOM_NL__0P/GOM_NL__0PNPDK20120111_175224_000000453110_00300_51607_5552.N1
1; 1113.8; 11-JAN-2012 17:52:24; Dark ; 45.5; 70; Zet Pup ; 2.25; 39000;occ; 91; 0;51607
/nas3/ENVISAT/GOMOS/GOM_NL__0P/GOM_NL__0PNPDK20120112_065729_000010493110_00308_51615_5553.N1
1; 107.5; 12-JAN-2012 06:57:29; Dark ; 41.0; 77; Eps Cen ; 2.30; 28000;occ; 82; 0;51615
2; 1116.6; 12-JAN-2012 07:14:18; Dark ; 40.5; 70; Zet Pup ; 2.25; 39000;occ; 81; 0;51615
/nas3/ENVISAT/GOMOS/GOM_NL__0P/GOM_NL__0PNPDK20120112_083744_000010503110_00309_51616_5554.N1
1; 108.3; 12-JAN-2012 08:37:44; Dark ; 42.5; 77; Eps Cen ; 2.30; 28000;occ; 85; 0;51616
2; 1117.1; 12-JAN-2012 08:54:33; Dark ; 42.0; 70; Zet Pup ; 2.25; 39000;occ; 84; 0;51616
/nas3/ENVISAT/GOMOS/GOM_NL__0P/GOM_NL__0PNPDK20120112_101759_000010493110_00310_51617_5555.N1
1; 108.9; 12-JAN-2012 10:17:59; Dark ; 41.0; 77; Eps Cen ; 2.30; 28000;occ; 82; 0;51617
2; 1117.6; 12-JAN-2012 10:34:47; Dark ; 41.0; 70; Zet Pup ; 2.25; 39000;occ; 82; 0;51617
/nas3/ENVISAT/GOMOS/GOM_NL__0P/GOM_NL__0PNPDK20120112_115813_000010523110_00311_51618_5556.N1
1; 109.5; 12-JAN-2012 11:58:13; Dark ; 41.5; 77; Eps Cen ; 2.30; 28000;occ; 83; 0;51618
2; 1117.7; 12-JAN-2012 12:15:01; Dark ; 44.0; 70; Zet Pup ; 2.25; 39000;occ; 88; 0;51618
/nas3/ENVISAT/GOMOS/GOM_NL__0P/GOM_NL__0PNPDK20120112_133828_000010513110_00312_51619_5557.N1
1; 110.3; 12-JAN-2012 13:38:28; Dark ; 40.5; 77; Eps Cen ; 2.30; 28000;occ; 81; 0;51619
2; 1118.3; 12-JAN-2012 13:55:16; Dark ; 43.5; 70; Zet Pup ; 2.25; 39000;occ; 87; 0;51619
/nas3/ENVISAT/GOMOS/GOM_NL__0P/GOM_NL__0PNPDK20120112_151842_000010513110_00313_51620_5558.N1
1; 110.9; 12-JAN-2012 15:18:42; Dark ; 40.5; 77; Eps Cen ; 2.30; 28000;occ; 81; 0;51620
2; 1118.5; 12-JAN-2012 15:35:30; Dark ; 44.0; 70; Zet Pup ; 2.25; 39000;occ; 88; 0;51620
/nas3/ENVISAT/GOMOS/GOM_NL__0P/GOM_NL__0PNPDK20120112_165857_000010503110_00314_51621_5559.N1
1; 111.6; 12-JAN-2012 16:58:57; Dark ; 41.5; 77; Eps Cen ; 2.30; 28000;occ; 83; 0;51621
2; 1118.7; 12-JAN-2012 17:15:44; Dark ; 43.0; 70; Zet Pup ; 2.25; 39000;occ; 86; 0;51621
/nas3/ENVISAT/GOMOS/GOM_NL__0P/GOM_NL__0PNPDK20120112_171614_000000133110_00314_51621_5560.N1
1; 1148.7; 12-JAN-2012 17:16:14; Dark ; 43.5; 70; Zet Pup ; 2.25; 39000;occ; 87; 60;51621
/nas3/ENVISAT/GOMOS/GOM_NL__0P/GOM_NL__0PNPDE20120113_062054_000010473110_00322_51629_3716.N1
1; 117.1; 13-JAN-2012 06:20:54; Dark ; 42.0; 77; Eps Cen ; 2.30; 28000;occ; 84; 0;51629
2; 1121.8; 13-JAN-2012 06:37:39; Dark ; 43.0; 70; Zet Pup ; 2.25; 39000;occ; 86; 0;51629
/nas3/ENVISAT/GOMOS/GOM_NL__0P/GOM_NL__0PNPDK20120113_080108_000010463110_00323_51630_5561.N1
1; 117.8; 13-JAN-2012 08:01:08; Dark ; 42.5; 77; Eps Cen ; 2.30; 28000;occ; 85; 0;51630
2; 1122.3; 13-JAN-2012 08:17:53; Dark ; 41.5; 70; Zet Pup ; 2.25; 39000;occ; 83; 0;51630
/nas3/ENVISAT/GOMOS/GOM_NL__0P/GOM_NL__0PNPDK20120113_094123_000010453110_00324_51631_5562.N1
1; 118.5; 13-JAN-2012 09:41:23; Dark ; 41.5; 77; Eps Cen ; 2.30; 28000;occ; 83; 0;51631
2; 1122.6; 13-JAN-2012 09:58:07; Dark ; 41.5; 70; Zet Pup ; 2.25; 39000;occ; 83; 0;51631
/nas3/ENVISAT/GOMOS/GOM_NL__0P/GOM_NL__0PNPDK20120113_112138_000010433110_00325_51632_5563.N1
1; 119.2; 13-JAN-2012 11:21:38; Dark ; 42.0; 77; Eps Cen ; 2.30; 28000;occ; 84; 0;51632
2; 1122.9; 13-JAN-2012 11:38:21; Dark ; 39.5; 70; Zet Pup ; 2.25; 39000;occ; 79; 0;51632
/nas3/ENVISAT/GOMOS/GOM_NL__0P/GOM_NL__0PNPDK20120113_130152_000010483110_00326_51633_5564.N1
1; 119.7; 13-JAN-2012 13:01:52; Dark ; 42.5; 77; Eps Cen ; 2.30; 28000;occ; 85; 0;51633

```


2; 1123.1; 13-JAN-2012 13:18:35; Dark ; 45.0; 70; Zet Pup ; 2.25; 39000;occ; 90; 0;51633
/nas3/ENVISAT/GOMOS/GOM_NL__0P/GOM_NL__0PNPDK20120113_144207_000010453110_00327_51634_5565.N1
1; 120.7; 13-JAN-2012 14:42:07; Dark ; 40.5; 77; Eps Cen ; 2.30; 28000;occ; 81; 0;51634
2; 1123.6; 13-JAN-2012 14:58:50; Dark ; 42.5; 70; Zet Pup ; 2.25; 39000;occ; 85; 0;51634
/nas3/ENVISAT/GOMOS/GOM_NL__0P/GOM_NL__0PNPDK20120113_162221_000010463110_00328_51635_5566.N1
1; 121.2; 13-JAN-2012 16:22:21; Dark ; 41.5; 77; Eps Cen ; 2.30; 28000;occ; 83; 0;51635
2; 1124.0; 13-JAN-2012 16:39:04; Dark ; 44.0; 70; Zet Pup ; 2.25; 39000;occ; 88; 0;51635
/nas3/ENVISAT/GOMOS/GOM_NL__0P/GOM_NL__0PNPDE20120125_205823_000000483111_00072_51810_3719.N1
1; 1043.9; 25-JAN-2012 20:58:23; Dark ; 48.5; 65; Lam Vel ; 2.20; 4400;occ; 97; 0;51810
/nas3/ENVISAT/GOMOS/GOM_NL__0P/GOM_NL__0PNPDE20120125_221818_000012663111_00072_51810_3720.N1
1; -174.4; 25-JAN-2012 22:18:18; Dark ; 41.0; 131; Gam Lup ; 2.80; 26000;occ; 82; 0;51810
2; 1044.4; 25-JAN-2012 22:38:37; Dark ; 47.5; 65; Lam Vel ; 2.20; 4400;occ; 95; 0;51811
/nas3/ENVISAT/GOMOS/GOM_NL__0P/GOM_NL__0PNPDE20120125_235832_000012643111_00073_51811_3721.N1
1; -173.9; 25-JAN-2012 23:58:32; Dark ; 41.0; 131; Gam Lup ; 2.80; 26000;occ; 82; 0;51811
2; 1044.6; 26-JAN-2012 00:18:51; Dark ; 46.0; 65; Lam Vel ; 2.20; 4400;occ; 92; 0;51812
/nas3/ENVISAT/GOMOS/GOM_NL__0P/GOM_NL__0PNPDK20120125_072000_000000573111_00064_51802_5567.N1
1; 53.2; 25-JAN-2012 07:20:00; Dark ; 58.0; 0; ; 0.00; 0;occ; 116; 0;51802
/nas3/ENVISAT/GOMOS/GOM_NL__0P/GOM_NL__0PNPDK20120125_090015_000000573111_00065_51803_5568.N1
1; 53.8; 25-JAN-2012 09:00:15; Dark ; 58.0; 0; ; 0.00; 0;occ; 116; 0;51803
/nas3/ENVISAT/GOMOS/GOM_NL__0P/GOM_NL__0PNPDK20120125_105657_000000493111_00066_51804_5569.N1
1; 1041.6; 25-JAN-2012 10:56:57; Dark ; 49.5; 65; Lam Vel ; 2.20; 4400;occ; 99; 0;51804
/nas3/ENVISAT/GOMOS/GOM_NL__0P/GOM_NL__0PNPDK20120125_121650_000012693111_00066_51804_5570.N1
1; -178.8; 25-JAN-2012 12:16:50; Dark ; 42.5; 131; Gam Lup ; 2.80; 26000;occ; 85; 0;51804
2; 1041.9; 25-JAN-2012 12:37:11; Dark ; 49.0; 65; Lam Vel ; 2.20; 4400;occ; 98; 0;51805
/nas3/ENVISAT/GOMOS/GOM_NL__0P/GOM_NL__0PNPDK20120125_135705_000012713111_00067_51805_5571.N1
1; -178.1; 25-JAN-2012 13:57:05; Dark ; 40.5; 131; Gam Lup ; 2.80; 26000;occ; 81; 0;51805
2; 1042.5; 25-JAN-2012 14:17:25; Dark ; 51.0; 65; Lam Vel ; 2.20; 4400;occ; 102; 0;51806
/nas3/ENVISAT/GOMOS/GOM_NL__0P/GOM_NL__0PNPDK20120125_171734_000012673111_00069_51807_5573.N1
1; -176.5; 25-JAN-2012 17:17:34; Dark ; 41.5; 131; Gam Lup ; 2.80; 26000;occ; 83; 0;51807
2; 1043.2; 25-JAN-2012 17:37:54; Dark ; 48.0; 65; Lam Vel ; 2.20; 4400;occ; 96; 0;51808
/nas3/ENVISAT/GOMOS/GOM_NL__0P/GOM_NL__0PNPDK20120125_173754_000048363111_00070_51808_5574.N1
1; 1043.2; 25-JAN-2012 17:37:54; Dark ; 52.0; 65; Lam Vel ; 2.20; 4400;occ; 104; 0;51808
2; 5838.2; 25-JAN-2012 18:57:49; Dark ; 41.0; 131; Gam Lup ; 2.80; 26000;occ; 82; 0;51808
/nas3/ENVISAT/GOMOS/GOM_NL__0P/GOM_NL__0PNPDK20120125_191808_000048353111_00071_51809_5575.N1
1; 1043.6; 25-JAN-2012 19:18:08; Dark ; 42.5; 65; Lam Vel ; 2.20; 4400;occ; 85; 0;51809
2; 5838.6; 25-JAN-2012 20:38:03; Dark ; 40.5; 131; Gam Lup ; 2.80; 26000;occ; 81; 0;51809
/nas3/ENVISAT/GOMOS/GOM_NL__0P/GOM_NL__0PNPDE20120126_013847_000072803111_00074_51812_3722.N1
1; -173.2; 26-JAN-2012 01:38:47; Dark ; 42.0; 131; Gam Lup ; 2.80; 26000;occ; 84; 0;51812
2; 1045.2; 26-JAN-2012 01:59:05; Dark ; 46.0; 65; Lam Vel ; 2.20; 4400;occ; 92; 0;51813
3; 5841.5; 26-JAN-2012 03:19:02; Dark ; 42.5; 131; Gam Lup ; 2.80; 26000;occ; 85; 0;51813
4; 7059.4; 26-JAN-2012 03:39:20; Dark ; 47.5; 65; Lam Vel ; 2.20; 4400;occ; 95; 0;51814
/nas3/ENVISAT/GOMOS/GOM_NL__0P/GOM_NL__0PNPDE20120126_045917_000012673111_00076_51814_3723.N1
1; -171.5; 26-JAN-2012 04:59:17; Dark ; 41.5; 131; Gam Lup ; 2.80; 26000;occ; 83; 0;51814
2; 1045.9; 26-JAN-2012 05:19:34; Dark ; 50.0; 65; Lam Vel ; 2.20; 4400;occ; 100; 0;51815
/nas3/ENVISAT/GOMOS/GOM_NL__0P/GOM_NL__0PNPDE20120126_202143_000000473111_00086_51824_3724.N1
1; 1049.6; 26-JAN-2012 20:21:43; Dark ; 47.5; 65; Lam Vel ; 2.20; 4400;occ; 95; 0;51824
/nas3/ENVISAT/GOMOS/GOM_NL__0P/GOM_NL__0PNPDE20120126_214143_000012583111_00086_51824_3725.N1
1; -164.2; 26-JAN-2012 21:41:43; Dark ; 42.5; 131; Gam Lup ; 2.80; 26000;occ; 85; 0;51824
2; 1049.8; 26-JAN-2012 22:01:57; Dark ; 44.5; 65; Lam Vel ; 2.20; 4400;occ; 89; 0;51825
/nas3/ENVISAT/GOMOS/GOM_NL__0P/GOM_NL__0PNPDE20120126_232158_000012593111_00087_51825_3726.N1
1; -163.6; 26-JAN-2012 23:21:58; Dark ; 43.0; 131; Gam Lup ; 2.80; 26000;occ; 86; 0;51825
2; 1050.2; 26-JAN-2012 23:42:11; Dark ; 46.0; 65; Lam Vel ; 2.20; 4400;occ; 92; 0;51826
/nas3/ENVISAT/GOMOS/GOM_NL__0P/GOM_NL__0PNPDK20120126_063931_000012643111_00077_51815_5576.N1
1; -170.8; 26-JAN-2012 06:39:31; Dark ; 42.0; 131; Gam Lup ; 2.80; 26000;occ; 84; 0;51815
2; 1046.4; 26-JAN-2012 06:59:48; Dark ; 47.0; 65; Lam Vel ; 2.20; 4400;occ; 94; 0;51816
/nas3/ENVISAT/GOMOS/GOM_NL__0P/GOM_NL__0PNPDK20120126_081946_000012653111_00078_51816_5577.N1
1; -170.3; 26-JAN-2012 08:19:46; Dark ; 41.5; 131; Gam Lup ; 2.80; 26000;occ; 83; 0;51816
2; 1046.8; 26-JAN-2012 08:40:03; Dark ; 48.5; 65; Lam Vel ; 2.20; 4400;occ; 97; 0;51817
/nas3/ENVISAT/GOMOS/GOM_NL__0P/GOM_NL__0PNPDK20120126_100001_000012653111_00079_51817_5578.N1
1; -169.4; 26-JAN-2012 10:00:01; Dark ; 42.0; 131; Gam Lup ; 2.80; 26000;occ; 84; 0;51817
2; 1047.3; 26-JAN-2012 10:20:17; Dark ; 49.0; 65; Lam Vel ; 2.20; 4400;occ; 98; 0;51818
/nas3/ENVISAT/GOMOS/GOM_NL__0P/GOM_NL__0PNPDK20120126_114015_000012653111_00080_51818_5579.N1
1; -168.8; 26-JAN-2012 11:40:15; Dark ; 43.0; 131; Gam Lup ; 2.80; 26000;occ; 86; 0;51818
2; 1047.6; 26-JAN-2012 12:00:31; Dark ; 49.0; 65; Lam Vel ; 2.20; 4400;occ; 98; 0;51819
/nas3/ENVISAT/GOMOS/GOM_NL__0P/GOM_NL__0PNPDK20120126_132030_000012633111_00081_51819_5580.N1
1; -168.1; 26-JAN-2012 13:20:30; Dark ; 42.0; 131; Gam Lup ; 2.80; 26000;occ; 84; 0;51819
2; 1048.0; 26-JAN-2012 13:40:46; Dark ; 47.5; 65; Lam Vel ; 2.20; 4400;occ; 95; 0;51820
/nas3/ENVISAT/GOMOS/GOM_NL__0P/GOM_NL__0PNPDK20120126_150044_000012633111_00082_51820_5581.N1

1; -167.3; 26-JAN-2012 15:00:44; Dark ; 41.0; 131; Gam Lup ; 2.80; 26000;occ; 82; 0;51820
2; 1048.3; 26-JAN-2012 15:21:00; Dark ; 48.0; 65; Lam Vel ; 2.20; 4400;occ; 96; 0;51821
/nas3/ENVISAT/GOMOS/GOM_NL__0P/GOM_NL__0PNPDK20120126_164059_000012623111_00083_51821_5582.N1
1; -166.5; 26-JAN-2012 16:40:59; Dark ; 41.5; 131; Gam Lup ; 2.80; 26000;occ; 83; 0;51821
2; 1048.7; 26-JAN-2012 17:01:14; Dark ; 47.0; 65; Lam Vel ; 2.20; 4400;occ; 94; 0;51822
/nas3/ENVISAT/GOMOS/GOM_NL__0P/GOM_NL__0PNPDK20120126_182114_000012573111_00084_51822_5583.N1
1; -165.6; 26-JAN-2012 18:21:14; Dark ; 40.5; 131; Gam Lup ; 2.80; 26000;occ; 81; 0;51822
2; 1049.1; 26-JAN-2012 18:41:29; Dark ; 43.0; 65; Lam Vel ; 2.20; 4400;occ; 86; 0;51823
/nas3/ENVISAT/GOMOS/GOM_NL__0P/GOM_NL__0PNPDK20120126_184129_000048413111_00085_51823_5584.N1
1; 1049.1; 26-JAN-2012 18:41:29; Dark ; 47.0; 65; Lam Vel ; 2.20; 4400;occ; 94; 0;51823
2; 5848.7; 26-JAN-2012 20:01:28; Dark ; 42.0; 131; Gam Lup ; 2.80; 26000;occ; 84; 0;51823
/nas3/ENVISAT/GOMOS/GOM_NL__0P/GOM_NL__0PNPDE20120127_010212_000012583111_00088_51826_3727.N1
1; -162.8; 27-JAN-2012 01:02:12; Dark ; 41.5; 131; Gam Lup ; 2.80; 26000;occ; 83; 0;51826
2; 1050.6; 27-JAN-2012 01:22:26; Dark ; 45.5; 65; Lam Vel ; 2.20; 4400;occ; 91; 0;51827
/nas3/ENVISAT/GOMOS/GOM_NL__0P/GOM_NL__0PNPDE20120127_024227_000012583111_00089_51827_3728.N1
1; -162.1; 27-JAN-2012 02:42:27; Dark ; 41.0; 131; Gam Lup ; 2.80; 26000;occ; 82; 0;51827
2; 1051.0; 27-JAN-2012 03:02:40; Dark ; 45.5; 65; Lam Vel ; 2.20; 4400;occ; 91; 0;51828
/nas3/ENVISAT/GOMOS/GOM_NL__0P/GOM_NL__0PNPDE20120127_042242_000012613111_00090_51828_3729.N1
1; -161.3; 27-JAN-2012 04:22:42; Dark ; 42.0; 131; Gam Lup ; 2.80; 26000;occ; 84; 0;51828
2; 1051.5; 27-JAN-2012 04:42:54; Dark ; 49.0; 65; Lam Vel ; 2.20; 4400;occ; 98; 0;51829
/nas3/ENVISAT/GOMOS/GOM_NL__0P/GOM_NL__0PNPDE20120127_060256_000012583111_00091_51829_3730.N1
1; -160.6; 27-JAN-2012 06:02:56; Dark ; 42.5; 131; Gam Lup ; 2.80; 26000;occ; 85; 0;51829
2; 1051.8; 27-JAN-2012 06:23:09; Dark ; 46.5; 65; Lam Vel ; 2.20; 4400;occ; 93; 0;51830
/nas3/ENVISAT/GOMOS/GOM_NL__0P/GOM_NL__0PNPDE20120127_194503_000000463111_00100_51838_3731.N1
1; 1054.9; 27-JAN-2012 19:45:03; Dark ; 47.0; 65; Lam Vel ; 2.20; 4400;occ; 94; 0;51838
/nas3/ENVISAT/GOMOS/GOM_NL__0P/GOM_NL__0PNPDE20120127_210508_000000423111_00100_51838_3732.N1
1; -154.1; 27-JAN-2012 21:05:08; Dark ; 42.5; 131; Gam Lup ; 2.80; 26000;occ; 85; 0;51838
/nas3/ENVISAT/GOMOS/GOM_NL__0P/GOM_NL__0PNPDK20120127_074311_000012573111_00092_51830_5585.N1
1; -159.8; 27-JAN-2012 07:43:11; Dark ; 44.0; 131; Gam Lup ; 2.80; 26000;occ; 88; 0;51830
2; 1052.3; 27-JAN-2012 08:03:23; Dark ; 45.5; 65; Lam Vel ; 2.20; 4400;occ; 91; 0;51831
/nas3/ENVISAT/GOMOS/GOM_NL__0P/GOM_NL__0PNPDK20120127_092326_000012583111_00093_51831_5586.N1
1; -159.2; 27-JAN-2012 09:23:26; Dark ; 43.5; 131; Gam Lup ; 2.80; 26000;occ; 87; 0;51831
2; 1052.6; 27-JAN-2012 09:43:37; Dark ; 47.0; 65; Lam Vel ; 2.20; 4400;occ; 94; 0;51832
/nas3/ENVISAT/GOMOS/GOM_NL__0P/GOM_NL__0PNPDK20120127_110340_000012593111_00094_51832_5587.N1
1; -158.4; 27-JAN-2012 11:03:40; Dark ; 43.5; 131; Gam Lup ; 2.80; 26000;occ; 87; 0;51832
2; 1053.0; 27-JAN-2012 11:23:52; Dark ; 48.5; 65; Lam Vel ; 2.20; 4400;occ; 97; 0;51833
/nas3/ENVISAT/GOMOS/GOM_NL__0P/GOM_NL__0PNPDK20120127_124355_000012583111_00095_51833_5588.N1
1; -157.8; 27-JAN-2012 12:43:55; Dark ; 43.5; 131; Gam Lup ; 2.80; 26000;occ; 87; 0;51833
2; 1053.4; 27-JAN-2012 13:04:06; Dark ; 47.5; 65; Lam Vel ; 2.20; 4400;occ; 95; 0;51834
/nas3/ENVISAT/GOMOS/GOM_NL__0P/GOM_NL__0PNPDK20120127_142410_000012573111_00096_51834_5589.N1
1; -156.9; 27-JAN-2012 14:24:10; Dark ; 42.0; 131; Gam Lup ; 2.80; 26000;occ; 84; 0;51834
2; 1053.9; 27-JAN-2012 14:44:20; Dark ; 47.0; 65; Lam Vel ; 2.20; 4400;occ; 94; 0;51835
/nas3/ENVISAT/GOMOS/GOM_NL__0P/GOM_NL__0PNPDK20120127_160424_000012583111_00097_51835_5590.N1
1; -156.1; 27-JAN-2012 16:04:24; Dark ; 42.5; 131; Gam Lup ; 2.80; 26000;occ; 85; 0;51835
2; 1054.2; 27-JAN-2012 16:24:35; Dark ; 48.5; 65; Lam Vel ; 2.20; 4400;occ; 97; 0;51836
/nas3/ENVISAT/GOMOS/GOM_NL__0P/GOM_NL__0PNPDK20120127_174439_000012563111_00098_51836_5591.N1
1; -155.4; 27-JAN-2012 17:44:39; Dark ; 44.0; 131; Gam Lup ; 2.80; 26000;occ; 88; 0;51836
2; 1054.6; 27-JAN-2012 18:04:49; Dark ; 46.5; 65; Lam Vel ; 2.20; 4400;occ; 93; 0;51837
/nas3/ENVISAT/GOMOS/GOM_NL__0P/GOM_NL__0PNPDK20120127_180449_000048463111_00099_51837_5592.N1
1; 1054.6; 27-JAN-2012 18:04:49; Dark ; 47.0; 65; Lam Vel ; 2.20; 4400;occ; 94; 0;51837
2; 5859.2; 27-JAN-2012 19:24:54; Dark ; 41.5; 131; Gam Lup ; 2.80; 26000;occ; 83; 0;51837