

GOMOS Daily Report 25-OCT-2011

Level 0 and Level 1 products

SUMMARY

[1. General Info](#)

[2. Summary of products arrived in PCF \(Product Control Facility\)](#)

[2.1 Level 0: products arrived in PCF during current month \(see template here\)](#)

[2.2 Level 0: plot of mission plan versus production during reporting period](#)

[2.3 Level 0: summary of missing occultations with respect to the plan](#)

[2.4 Level 1: products arrived in PCF during reporting period](#)

[3. Plot of Spectrometers and Photometers temperatures](#)

[4. Dark Charge monitoring](#)

[4.1 Products that did not use the Dark Sky Area observation for DC computation](#)

[4.2 Plot of Dark Charge](#)

[5. Demodulation correction and quality product information monitoring](#)

[5.1 Percentage of products with some flags set](#)

[5.2 Plot of quality information per product \(time dependant\)](#)

[5.3 Plot of quality information per product \(world map\)](#)

[6. Star tangent altitude lost](#)

[6.1 Statistics on star tangent altitude lost](#)

[6.2 Plot of star tangent altitude lost: DARK products](#)

[6.3 Plot of star tangent altitude lost: BRIGHT products](#)

[6.3 Plot of star tangent altitude lost: TWILIGHT products](#)

[7. Star Acquisition and Tracking Unit \(SATU\)](#)

[7.1 SATU plots \(dark limb\): 'X' and 'Y' axis](#)

[7.2 SATU Noise Equivalent Angle statistics](#)

[7.2.1 SATU NEA Statistics \(table\)](#)

[7.2.2 Daily SATU NEA STD \(dark limb\) - trend since 1st April 2006](#)

[8. Auxiliary Data Files used for the production reported in section 2.4](#)

[Level 2 products](#)

This report presents the daily analysis on parameters extracted from GOMOS level 1b data (GOM_TRA_1P). It is intended to monitor some important parameters that will impact the quality of the level 2 products as the Spectrometers and Photometers CCD Temperatures and Dark Charge, SATU noise equivalent angle... A list of level 0 products (and content) that have arrived during the actual month to the PCF is also given.

Item	Value
Time of report generation	27OCT2011 07:00:57
Data source version	GOMOS/6.01
Start time of products	25OCT2011 00:10:47
Stop time of products	25OCT2011 23:47:57
Store outputs in DB	Yes
Nb of level 1b prods	53
Nb of prods with errors	0

2. Summary of products arrived in PCF (Product Control Facility)

2.1 Level 0 products arrived in PCF (see template [here](#))

2.2 Plot of mission plan versus Level 0 production arrived in PCF during reporting period

Red segments are missing products.

Blue segments are available products.

Green segments are calibration measurements (not available products to users).

! DMOP (mission plan) file not available for current day: plot NOT generated.

2.3 Summary of missing occultations (red segments in previous plot)

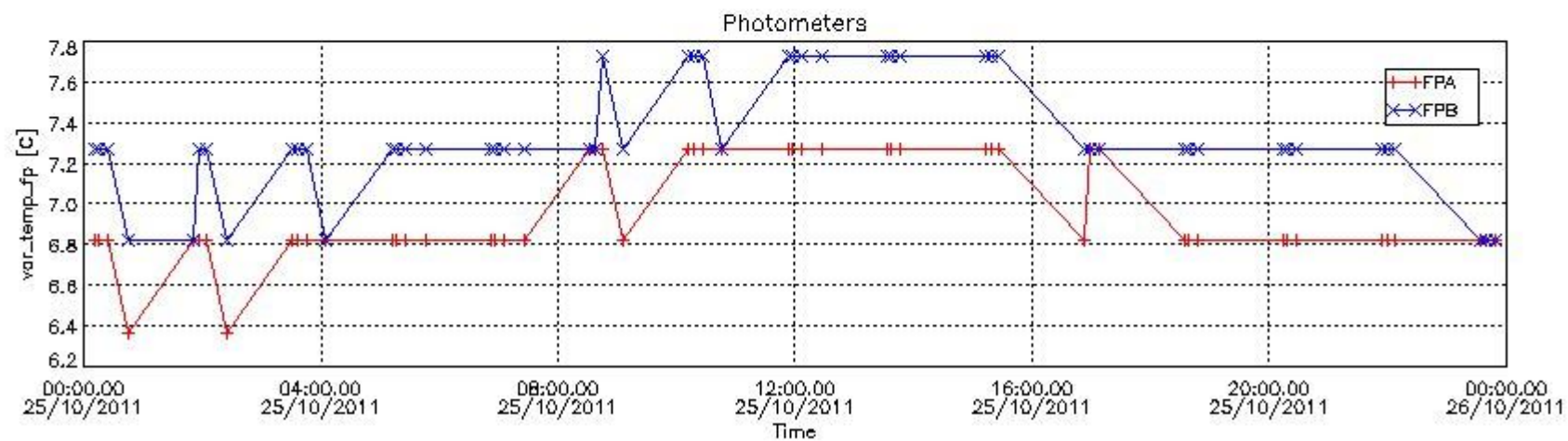
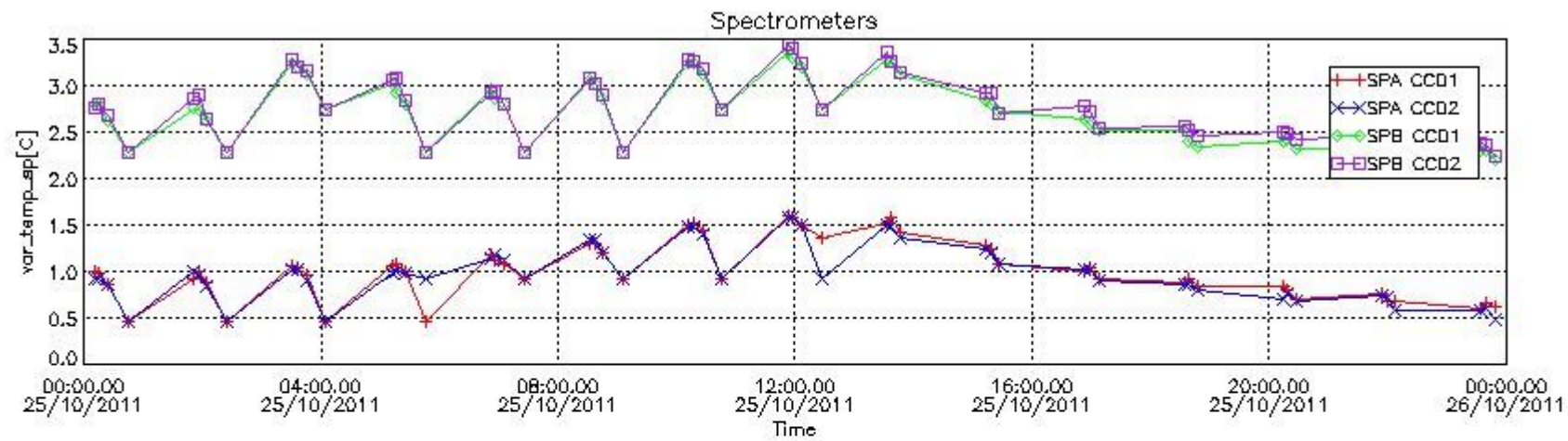
! DMOP (mission plan) file not available for current day: information on missing products NOT generated.

2.4 Summary of processed GOM_TRA_1P products

Nr	Filename	UTC Start time	Limb	Duration	Star Id	Star Name	Star Mag	Star Temp	Nb Meas	Orbit	Prod. error
1	GOM_TRA_1PNPDE20111025_001047_000000633108_00030_50475_8976.N1	25-OCT-2011 00:10:47	Dark	63.000	132	15Rho Pup	2.8030	6900.0	126	50475	No
2	GOM_TRA_1PNPDE20111025_001537_000000683108_00031_50476_8977.N1	25-OCT-2011 00:15:37	Dark	67.500	88	31Eta CMa	2.4480	20000.	135	50476	No
3	GOM_TRA_1PNPDE20111025_002426_000000653108_00031_50476_8978.N1	25-OCT-2011 00:24:26	Dark	64.500	108	Alp Col	2.6520	15200.	129	50476	No
4	GOM_TRA_1PNPDE20111025_004448_000000623108_00031_50476_8979.N1	25-OCT-2011 00:44:48	Bright	62.000	94	92Alp Cet	2.5260	3100.0	124	50476	No
5	GOM_TRA_1PNPDE20111025_015103_000000663108_00031_50476_9029.N1	25-OCT-2011 01:51:03	Dark	66.000	132	15Rho Pup	2.8030	6900.0	132	50476	No
6	GOM_TRA_1PNPDE20111025_015553_000000683108_00032_50477_9030.N1	25-OCT-2011 01:55:53	Dark	67.500	88	31Eta CMa	2.4480	20000.	135	50477	No
7	GOM_TRA_1PNPDE20111025_020441_000000643108_00032_50477_9031.N1	25-OCT-2011 02:04:41	Dark	64.000	108	Alp Col	2.6520	15200.	128	50477	No
8	GOM_TRA_1PNPDE20111025_022501_000000633108_00032_50477_9032.N1	25-OCT-2011 02:25:01	Bright	62.500	94	92Alp Cet	2.5260	3100.0	125	50477	No
9	GOM_TRA_1PNPDE20111025_033118_000000673108_00032_50477_9058.N1	25-OCT-2011 03:31:18	Dark	67.000	132	15Rho Pup	2.8030	6900.0	134	50477	No
10	GOM_TRA_1PNPDE20111025_033608_000000693108_00033_50478_9059.N1	25-OCT-2011 03:36:08	Dark	69.000	88	31Eta CMa	2.4480	20000.	138	50478	No
11	GOM_TRA_1PNPDE20111025_034456_000000643108_00033_50478_9060.N1	25-OCT-2011 03:44:56	Dark	63.500	108	Alp Col	2.6520	15200.	127	50478	No
12	GOM_TRA_1PNPDE20111025_040515_000000603108_00033_50478_9061.N1	25-OCT-2011 04:05:15	Bright	59.500	94	92Alp Cet	2.5260	3100.0	119	50478	No
13	GOM_TRA_1PNPDE20111025_051134_000000663108_00033_50478_9079.N1	25-OCT-2011 05:11:34	Dark	66.000	132	15Rho Pup	2.8030	6900.0	132	50478	No
14	GOM_TRA_1PNPDE20111025_051624_000000683108_00034_50479_9080.N1	25-OCT-2011 05:16:24	Dark	68.000	88	31Eta CMa	2.4480	20000.	136	50479	No
15	GOM_TRA_1PNPDE20111025_052512_000000653108_00034_50479_9081.N1	25-OCT-2011 05:25:12	Dark	64.500	108	Alp Col	2.6520	15200.	129	50479	No
16	GOM_TRA_1PNPDE20111025_054528_000000733108_00034_50479_9082.N1	25-OCT-2011 05:45:28	Bright	73.000	94	92Alp Cet	2.5260	3100.0	146	50479	No
17	GOM_TRA_1PNPDK20111025_065150_000000673108_00034_50479_1192.N1	25-OCT-2011 06:51:50	Dark	66.500	132	15Rho Pup	2.8030	6900.0	133	50479	No
18	GOM_TRA_1PNPDK20111025_065640_000000703108_00035_50480_1193.N1	25-OCT-2011 06:56:40	Dark	69.500	88	31Eta CMa	2.4480	20000.	139	50480	No
19	GOM_TRA_1PNPDK20111025_070527_000000643108_00035_50480_1194.N1	25-OCT-2011 07:05:27	Dark	64.000	108	Alp Col	2.6520	15200.	128	50480	No
20	GOM_TRA_1PNPDK20111025_072542_000000643108_00035_50480_1227.N1	25-OCT-2011 07:25:42	Bright	64.000	94	92Alp Cet	2.5260	3100.0	128	50480	No
21	GOM_TRA_1PNPDK20111025_083206_000000673108_00035_50480_1228.N1	25-OCT-2011 08:32:06	Dark	67.000	132	15Rho Pup	2.8030	6900.0	134	50480	No
22	GOM_TRA_1PNPDK20111025_083656_000000703108_00036_50481_1229.N1	25-OCT-2011 08:36:56	Dark	69.500	88	31Eta CMa	2.4480	20000.	139	50481	No
23	GOM_TRA_1PNPDK20111025_084542_000000623108_00036_50481_1230.N1	25-OCT-2011 08:45:42	Dark	61.500	108	Alp Col	2.6520	15200.	123	50481	No
24	GOM_TRA_1PNPDK20111025_090555_000000603108_00036_50481_1264.N1	25-OCT-2011 09:05:55	Bright	60.000	94	92Alp Cet	2.5260	3100.0	120	50481	No
25	GOM_TRA_1PNPDK20111025_101221_000000663108_00036_50481_1265.N1	25-OCT-2011 10:12:21	Dark	66.000	132	15Rho Pup	2.8030	6900.0	132	50481	No
26	GOM_TRA_1PNPDK20111025_101711_000000723108_00037_50482_1266.N1	25-OCT-2011 10:17:11	Dark	71.500	88	31Eta CMa	2.4480	20000.	143	50482	No
27	GOM_TRA_1PNPDK20111025_102557_000000633108_00037_50482_1267.N1	25-OCT-2011 10:25:57	Dark	63.000	108	Alp Col	2.6520	15200.	126	50482	No
28	GOM_TRA_1PNPDK20111025_104609_000000573108_00037_50482_1303.N1	25-OCT-2011 10:46:09	Bright	56.500	94	92Alp Cet	2.5260	3100.0	113	50482	No
29	GOM_TRA_1PNPDK20111025_115237_000000673108_00037_50482_1304.N1	25-OCT-2011 11:52:37	Dark	66.500	132	15Rho Pup	2.8030	6900.0	133	50482	No
30	GOM_TRA_1PNPDK20111025_115727_000000673108_00038_50483_1305.N1	25-OCT-2011 11:57:27	Dark	66.500	88	31Eta CMa	2.4480	20000.	133	50483	No

31	GOM_TRA_1PNPDK20111025_120612_000000633108_00038_50483_1306.N1	25-OCT-2011 12:06:12	Dark	63.000	108	Alp Col	2.6520	15200.	126	50483	No
32	GOM_TRA_1PNPDK20111025_122622_000000633108_00038_50483_1343.N1	25-OCT-2011 12:26:22	Bright	63.000	94	92Alp Cet	2.5260	3100.0	126	50483	No
33	GOM_TRA_1PNPDK20111025_133253_000000663108_00039_50484_1344.N1	25-OCT-2011 13:32:53	Dark	65.500	132	15Rho Pup	2.8030	6900.0	131	50484	No
34	GOM_TRA_1PNPDK20111025_133743_000000693108_00039_50484_1345.N1	25-OCT-2011 13:37:43	Dark	69.000	88	31Eta CMa	2.4480	20000.	138	50484	No
35	GOM_TRA_1PNPDK20111025_134627_000000633108_00039_50484_1346.N1	25-OCT-2011 13:46:27	Dark	62.500	108	Alp Col	2.6520	15200.	125	50484	No
36	GOM_TRA_1PNPDK20111025_151308_000000663108_00040_50485_1391.N1	25-OCT-2011 15:13:08	Dark	66.000	132	15Rho Pup	2.8030	6900.0	132	50485	No
37	GOM_TRA_1PNPDK20111025_151758_000000713108_00040_50485_1392.N1	25-OCT-2011 15:17:58	Dark	70.500	88	31Eta CMa	2.4480	20000.	141	50485	No
38	GOM_TRA_1PNPDK20111025_152642_000000643108_00040_50485_1393.N1	25-OCT-2011 15:26:42	Dark	64.000	108	Alp Col	2.6520	15200.	128	50485	No
39	GOM_TRA_1PNPDK20111025_165324_000000673108_00041_50486_1414.N1	25-OCT-2011 16:53:24	Dark	66.500	132	15Rho Pup	2.8030	6900.0	133	50486	No
40	GOM_TRA_1PNPDK20111025_165814_000000703108_00041_50486_1415.N1	25-OCT-2011 16:58:14	Dark	69.500	88	31Eta CMa	2.4480	20000.	139	50486	No
41	GOM_TRA_1PNPDK20111025_170657_000000623108_00041_50486_1416.N1	25-OCT-2011 17:06:57	Dark	62.000	108	Alp Col	2.6520	15200.	124	50486	No
42	GOM_TRA_1PNPDK20111025_183340_000000663108_00042_50487_1443.N1	25-OCT-2011 18:33:40	Dark	66.000	132	15Rho Pup	2.8030	6900.0	132	50487	No
43	GOM_TRA_1PNPDK20111025_183830_000000713108_00042_50487_1444.N1	25-OCT-2011 18:38:30	Dark	70.500	88	31Eta CMa	2.4480	20000.	141	50487	No
44	GOM_TRA_1PNPDK20111025_184712_000000643108_00042_50487_1445.N1	25-OCT-2011 18:47:12	Dark	63.500	108	Alp Col	2.6520	15200.	127	50487	No
45	GOM_TRA_1PNPDK20111025_201356_000000643108_00043_50488_1479.N1	25-OCT-2011 20:13:56	Dark	64.000	132	15Rho Pup	2.8030	6900.0	128	50488	No
46	GOM_TRA_1PNPDK20111025_201846_000000683108_00043_50488_1480.N1	25-OCT-2011 20:18:46	Dark	68.000	88	31Eta CMa	2.4480	20000.	136	50488	No
47	GOM_TRA_1PNPDK20111025_202727_000000623108_00043_50488_1481.N1	25-OCT-2011 20:27:27	Dark	62.000	108	Alp Col	2.6520	15200.	124	50488	No
48	GOM_TRA_1PNPDE20111025_215411_000000643108_00044_50489_9324.N1	25-OCT-2011 21:54:11	Dark	63.500	132	15Rho Pup	2.8030	6900.0	127	50489	No
49	GOM_TRA_1PNPDE20111025_215901_000000683108_00044_50489_9325.N1	25-OCT-2011 21:59:01	Dark	68.000	88	31Eta CMa	2.4480	20000.	136	50489	No
50	GOM_TRA_1PNPDE20111025_220743_000000633108_00044_50489_9326.N1	25-OCT-2011 22:07:43	Dark	62.500	108	Alp Col	2.6520	15200.	125	50489	No
51	GOM_TRA_1PNPDE20111025_233427_000000653108_00045_50490_9355.N1	25-OCT-2011 23:34:27	Dark	65.000	132	15Rho Pup	2.8030	6900.0	130	50490	No
52	GOM_TRA_1PNPDE20111025_233917_000000713108_00045_50490_9356.N1	25-OCT-2011 23:39:17	Dark	70.500	88	31Eta CMa	2.4480	20000.	141	50490	No
53	GOM_TRA_1PNPDE20111025_234757_000000623108_00045_50490_9357.N1	25-OCT-2011 23:47:57	Dark	62.000	108	Alp Col	2.6520	15200.	124	50490	No

3. Plot of GOMOS spectrometers and photometers temperatures from level 1b data



4. Overview of dark signal processing per product

The Dark Charge (DC) is a temperature-dependant signal added to the useful measurements and it is therefore subtracted from them during the processing. There are two phenomena that produce a continuous increase of the DC: the "hot pixels" (a pixel is "hot" when its DC exceeds by a significant amount its value measured on ground at the same temperature) and the "Random Telegraphic Signal" (abrupt change positive or negative of the CCD pixel signal, random in time, affecting only the DC part of the signal and not the photon generated signal).

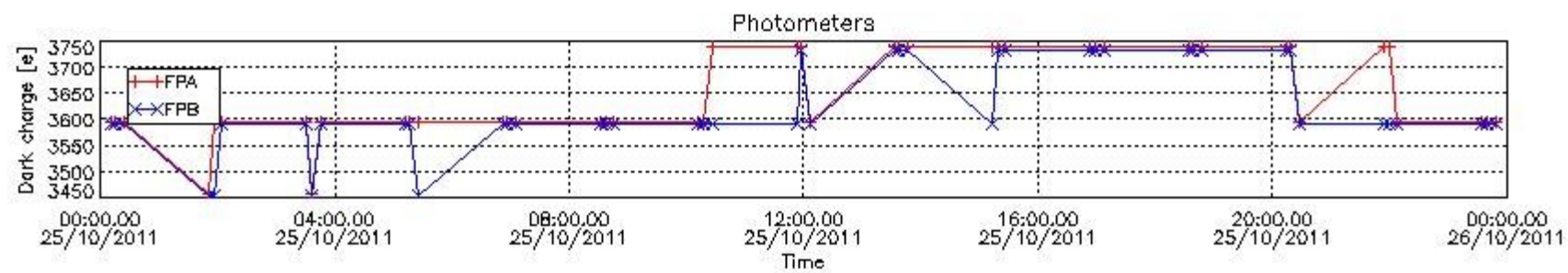
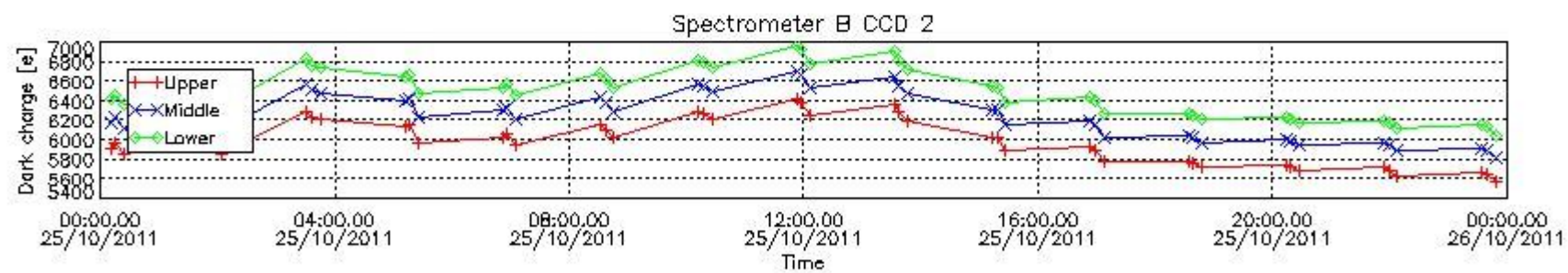
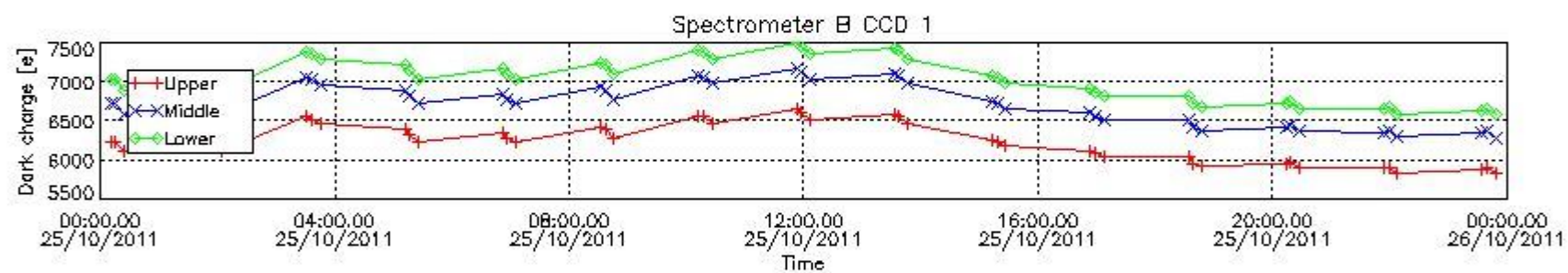
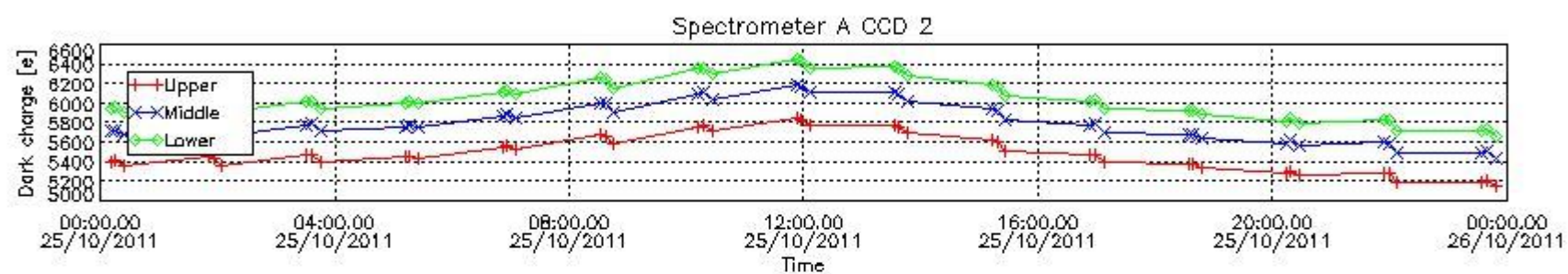
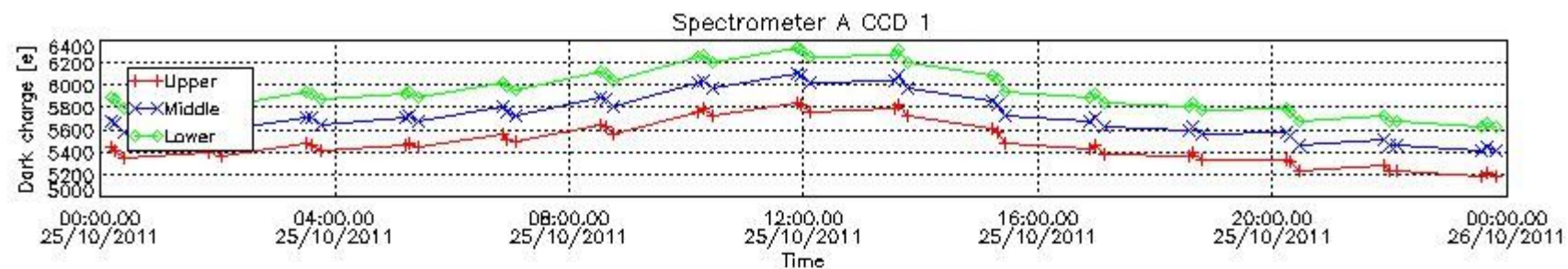
In this section a list of products that did not use the Dark Sky Area (DSA) observation for the DC computation is given. It is also provided the mean DC plot per product for dark limb products with no error flag set.

4.1 These products did not use the DSA observation for DC computation:

Product name	DC information
GOM_TRA_1PNPDE20111025_001047_000000633108_00030_50475_8976.N1	DC map used
GOM_TRA_1PNPDE20111025_001537_000000683108_00031_50476_8977.N1	DC map used
GOM_TRA_1PNPDE20111025_002426_000000653108_00031_50476_8978.N1	DC map used
GOM_TRA_1PNPDE20111025_004448_000000623108_00031_50476_8979.N1	DC map used
GOM_TRA_1PNPDE20111025_015103_000000663108_00031_50476_9029.N1	DC map used
GOM_TRA_1PNPDE20111025_015553_000000683108_00032_50477_9030.N1	DC map used
GOM_TRA_1PNPDE20111025_020441_000000643108_00032_50477_9031.N1	DC map used
GOM_TRA_1PNPDE20111025_022501_000000633108_00032_50477_9032.N1	DC map used
GOM_TRA_1PNPDE20111025_033118_000000673108_00032_50477_9058.N1	DC map used
GOM_TRA_1PNPDE20111025_033608_000000693108_00033_50478_9059.N1	DC map used
GOM_TRA_1PNPDE20111025_034456_000000643108_00033_50478_9060.N1	DC map used
GOM_TRA_1PNPDE20111025_040515_000000603108_00033_50478_9061.N1	DC map used
GOM_TRA_1PNPDE20111025_051134_000000663108_00033_50478_9079.N1	DC map used
GOM_TRA_1PNPDE20111025_051624_000000683108_00034_50479_9080.N1	DC map used
GOM_TRA_1PNPDE20111025_052512_000000653108_00034_50479_9081.N1	DC map used
GOM_TRA_1PNPDE20111025_054528_000000733108_00034_50479_9082.N1	DC map used
GOM_TRA_1PNPDK20111025_065150_000000673108_00034_50479_1192.N1	DC map used
GOM_TRA_1PNPDK20111025_065640_000000703108_00035_50480_1193.N1	DC map used
GOM_TRA_1PNPDK20111025_070527_000000643108_00035_50480_1194.N1	DC map used
GOM_TRA_1PNPDK20111025_072542_000000643108_00035_50480_1227.N1	DC map used
GOM_TRA_1PNPDK20111025_083206_000000673108_00035_50480_1228.N1	DC map used
GOM_TRA_1PNPDK20111025_083656_000000703108_00036_50481_1229.N1	DC map used
GOM_TRA_1PNPDK20111025_084542_000000623108_00036_50481_1230.N1	DC map used
GOM_TRA_1PNPDK20111025_090555_000000603108_00036_50481_1264.N1	DC map used
GOM_TRA_1PNPDK20111025_101221_000000663108_00036_50481_1265.N1	DC map used
GOM_TRA_1PNPDK20111025_101711_000000723108_00037_50482_1266.N1	DC map used
GOM_TRA_1PNPDK20111025_102557_000000633108_00037_50482_1267.N1	DC map used
GOM_TRA_1PNPDK20111025_104609_000000573108_00037_50482_1303.N1	DC map used
GOM_TRA_1PNPDK20111025_115237_000000673108_00037_50482_1304.N1	DC map used
GOM_TRA_1PNPDK20111025_115727_000000673108_00038_50483_1305.N1	DC map used
GOM_TRA_1PNPDK20111025_120612_000000633108_00038_50483_1306.N1	DC map used
GOM_TRA_1PNPDK20111025_122622_000000633108_00038_50483_1343.N1	DC map used
GOM_TRA_1PNPDK20111025_133253_000000663108_00039_50484_1344.N1	DC map used
GOM_TRA_1PNPDK20111025_133743_000000693108_00039_50484_1345.N1	DC map used
GOM_TRA_1PNPDK20111025_134627_000000633108_00039_50484_1346.N1	DC map used
GOM_TRA_1PNPDK20111025_151308_000000663108_00040_50485_1391.N1	DC map used
GOM_TRA_1PNPDK20111025_151758_000000713108_00040_50485_1392.N1	DC map used
GOM_TRA_1PNPDK20111025_152642_000000643108_00040_50485_1393.N1	DC map used
GOM_TRA_1PNPDK20111025_165324_000000673108_00041_50486_1414.N1	DC map used
GOM_TRA_1PNPDK20111025_165814_000000703108_00041_50486_1415.N1	DC map used
GOM_TRA_1PNPDK20111025_170657_000000623108_00041_50486_1416.N1	DC map used
GOM_TRA_1PNPDK20111025_183340_000000663108_00042_50487_1443.N1	DC map used
GOM_TRA_1PNPDK20111025_183830_000000713108_00042_50487_1444.N1	DC map used
GOM_TRA_1PNPDK20111025_184712_000000643108_00042_50487_1445.N1	DC map used
GOM_TRA_1PNPDK20111025_201356_000000643108_00043_50488_1479.N1	DC map used
GOM_TRA_1PNPDK20111025_201846_000000683108_00043_50488_1480.N1	DC map used

GOM_TRA_1PNPDK20111025_202727_000000623108_00043_50488_1481.N1	DC map used
GOM_TRA_1PNPDE20111025_215411_000000643108_00044_50489_9324.N1	DC map used
GOM_TRA_1PNPDE20111025_215901_000000683108_00044_50489_9325.N1	DC map used
GOM_TRA_1PNPDE20111025_220743_000000633108_00044_50489_9326.N1	DC map used
GOM_TRA_1PNPDE20111025_233427_000000653108_00045_50490_9355.N1	DC map used
GOM_TRA_1PNPDE20111025_233917_000000713108_00045_50490_9356.N1	DC map used
GOM_TRA_1PNPDE20111025_234757_000000623108_00045_50490_9357.N1	DC map used

4.2 Plot of mean dark charges per product: only products in DARK limb conditions without errors are used



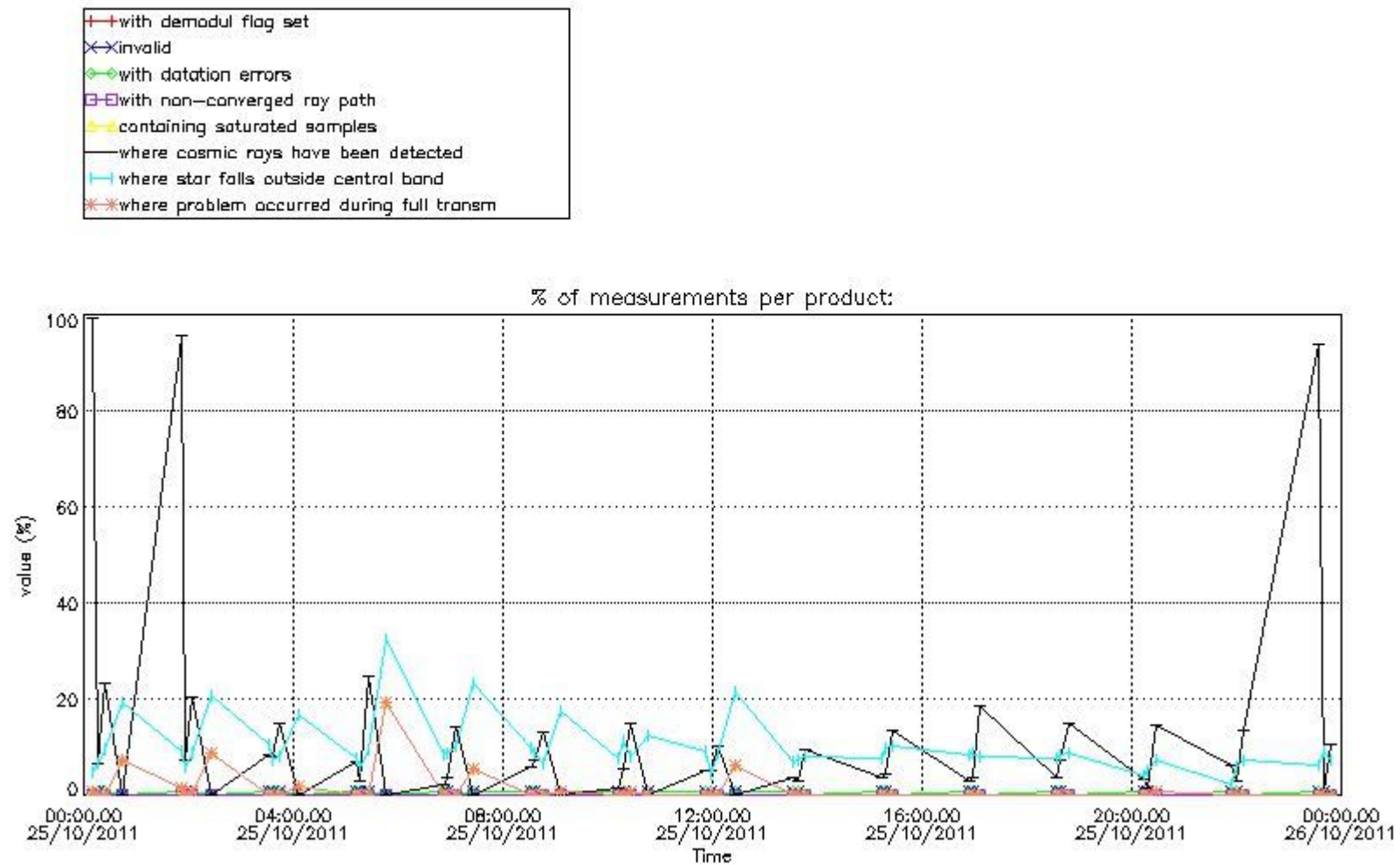
5. Demodulation flag and quality information monitoring

In this section it is presented the modulation information extracted from the pcd (product confidence data) at measurement level and information extracted from the Quality Summary dataset. Only products without errors (error flag in the MPH set to "0") are used.

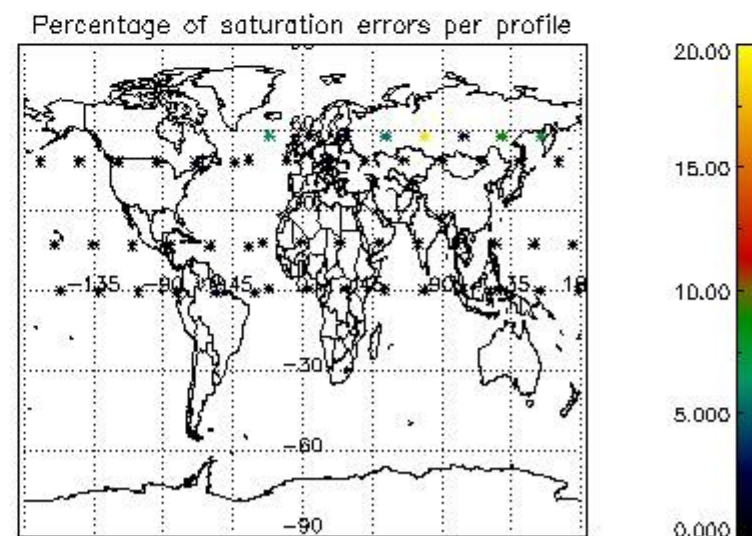
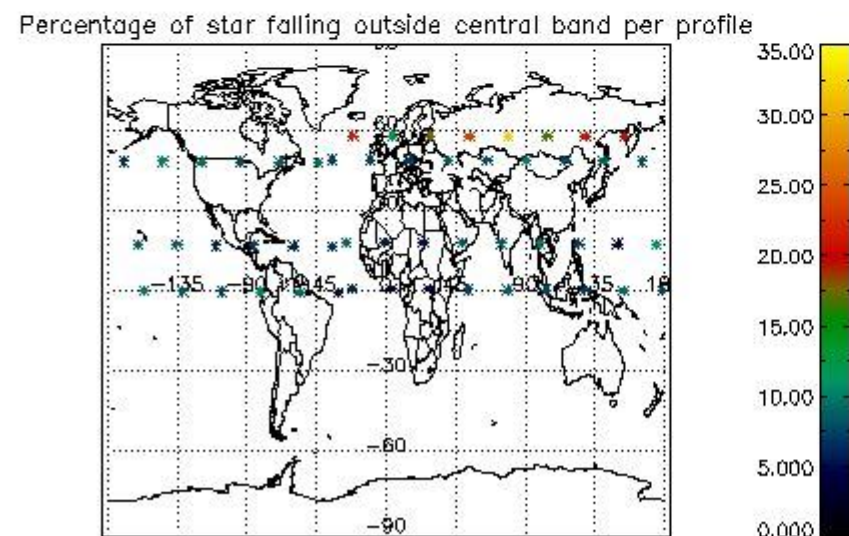
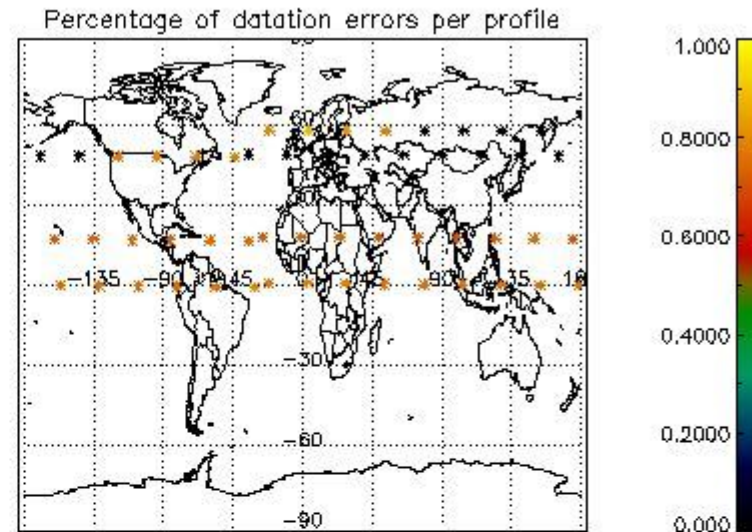
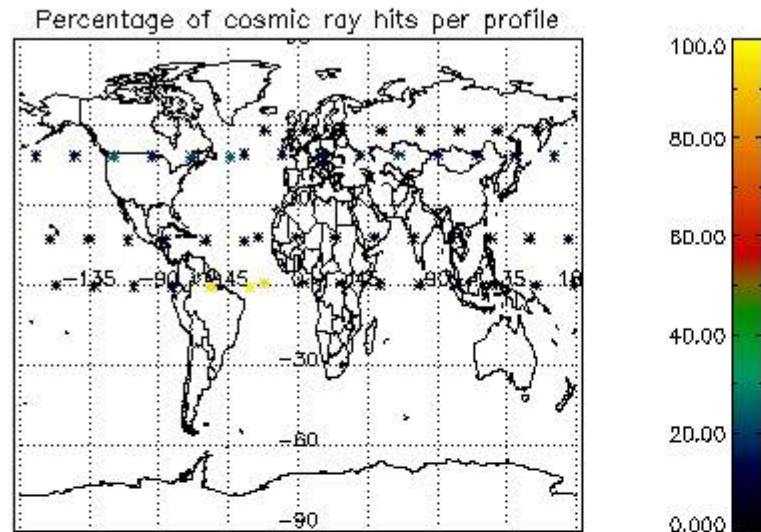
5.1 Percentage of products during reporting period with:

At least one measurement with demodulation flag set:	84.9057 %
Reference spectrum computed from DB:	0.00000 %
Reference spectrum with small number of measurements:	0.00000 %
SATU data not used:	15.0943 %

5.2 Plot quality information per product (time dependant)



5.3 Plot quality information per product (world map)



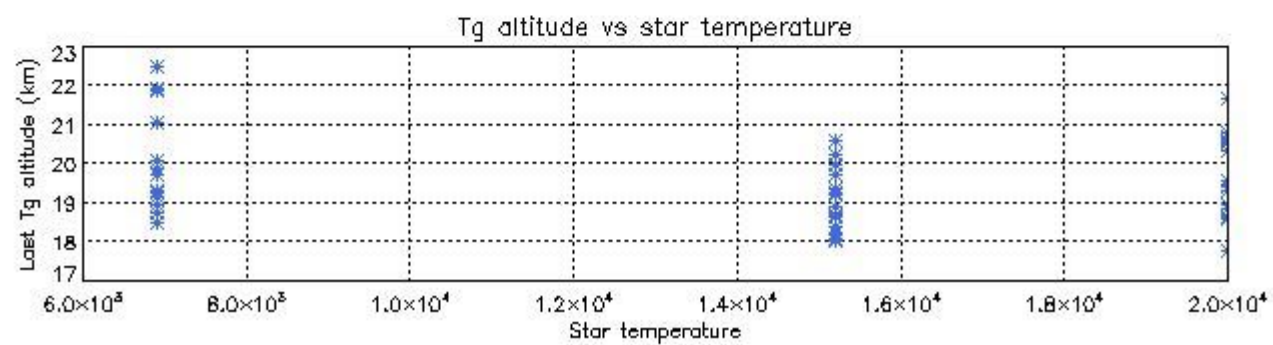
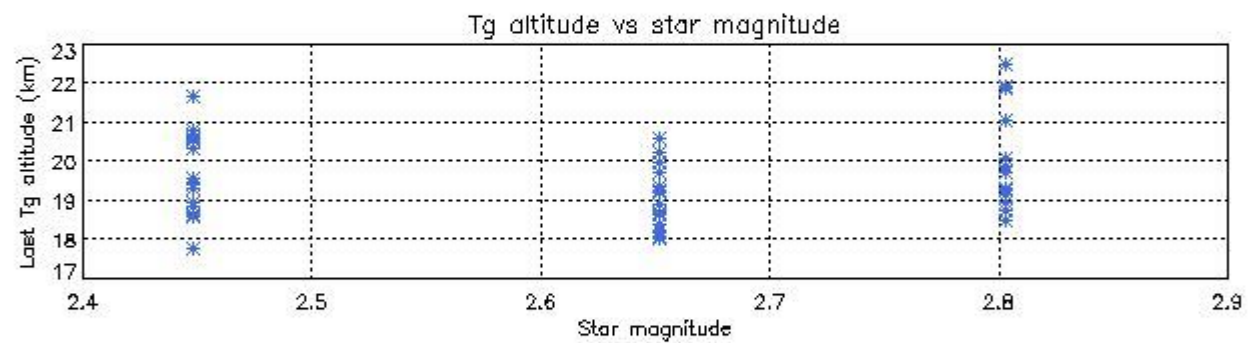
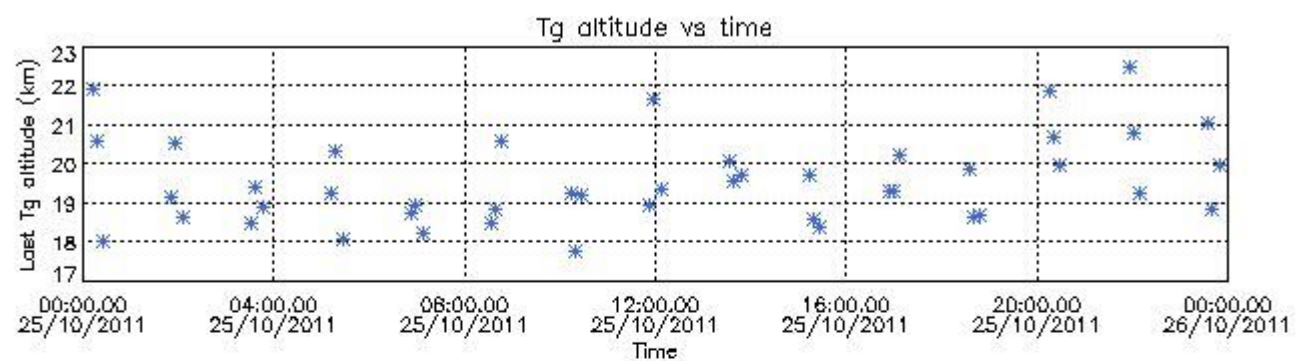
6. Statistics and plot of tangent altitude of the last measurement (DARK & BRIGHT products without errors)

6.1 Statistics on tangent altitude lost:

Statistics	DARK	BRIGHT	TWILIGHT
Mean:	19.568	11.475	NaN
St. deviation:	1.1088	2.9539	NaN
Maximum:	22.488	15.379	NaN
Minimum:	17.752	5.2757	NaN
Number of data:	45.000	8.0000	NaN

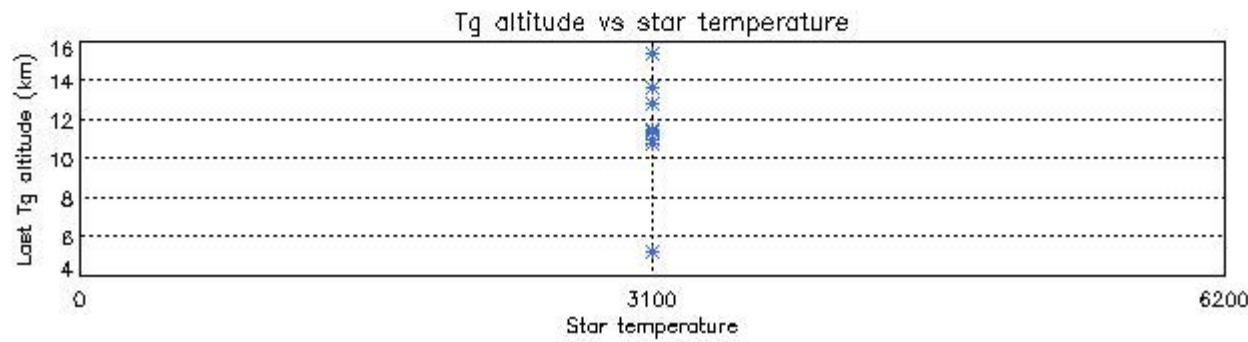
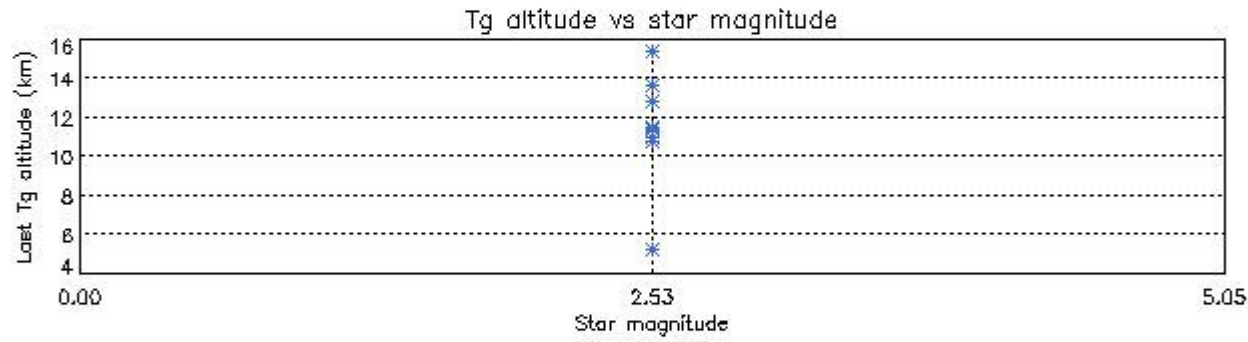
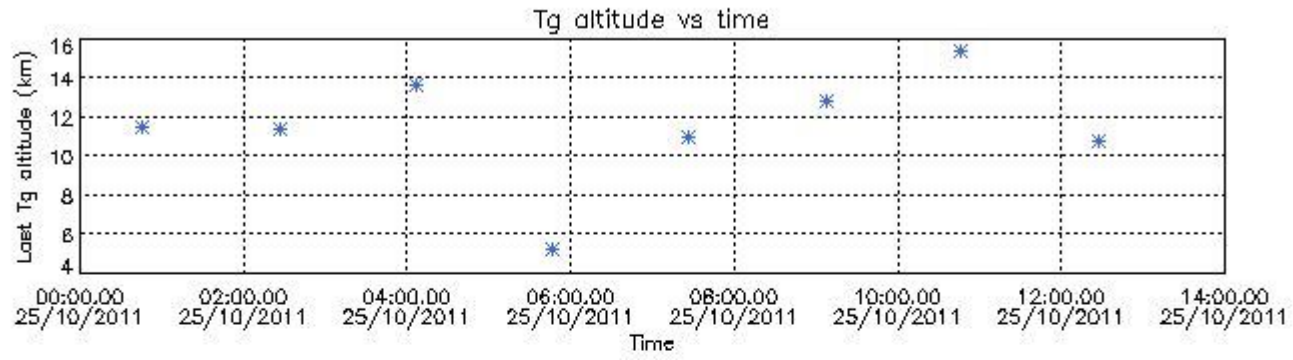
6.2 Plot for DARK limb products

Tangent altitude at which the star is lost



6.3 Plot for BRIGHT limb products

Tangent altitude at which the star is lost

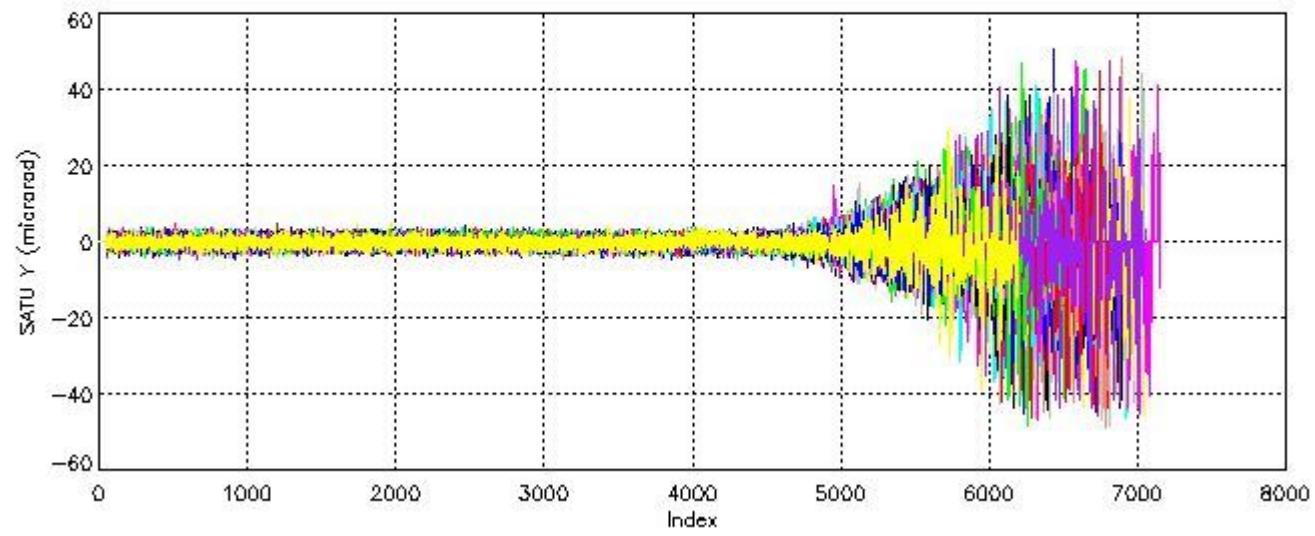
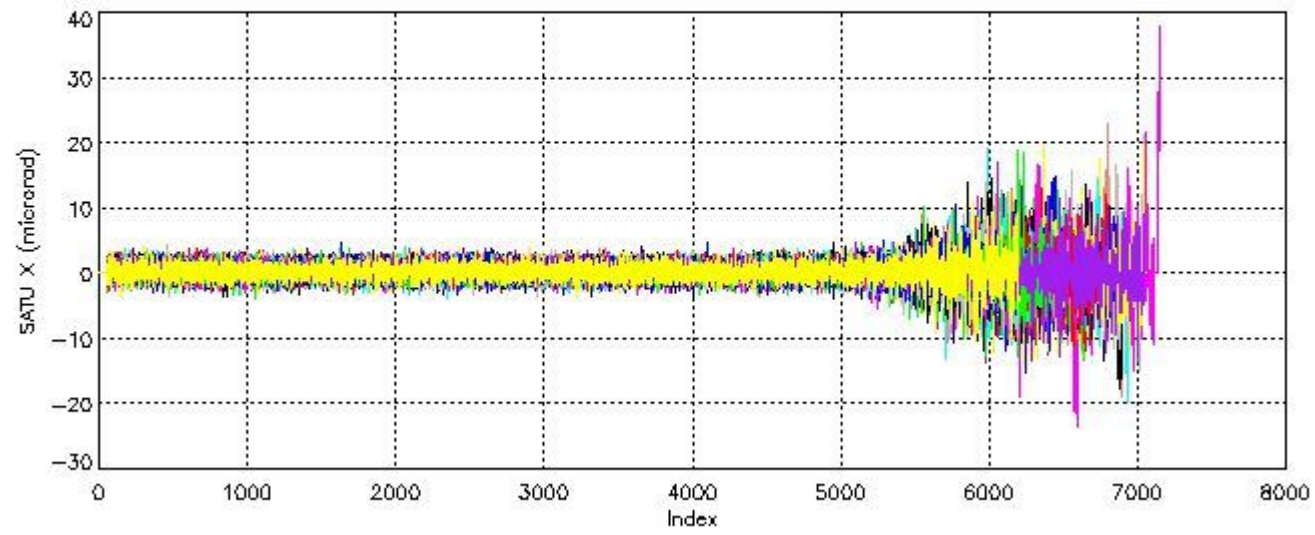


7. Star Acquisition and Tracking Unit (SATU)

The Star Acquisition and Tracking Unit (SATU) analyses the position of the tracked star beam collected by the GOMOS telescope and deflected by the optical beam dispatcher. The main function of the SATU is to detect a star, provide its image position to the science data electronics and to help the pointing function to keep the star image at a fixed position. In tracking mode the SATU data is recorded with a frequency of 100 Hz.

7.1 SATU 'X' and 'Y' axis plots (dark limb)

SATU CCD 'X' and 'Y' axis plots are provided in order to detect any abnormal behaviour of the tracking system. For every occultation (color) the plot should remain stable (with some noise) until we are deep in the atmosphere where big fluctuations are registered due to the refractive effects.



7.2 Statistics on SATU Noise Equivalent Angle (NEA) for DARK (D) and BRIGHT (B) products above 105 kms

The Star Acquisition and Tracking Unit (it is the CCD that tracks the star while it is occulted) Noise Equivalent Angle consists of the statistical angular variation of the SATU data above the atmosphere.

Statistics (in microradians) above 105 km are computed for every occultation, giving four values per occultation: one in the 'X' direction and one in the 'Y' direction for dark and bright limbs. A mean value per day in every direction and limb is calculated and monitored in order to assess instrument performance in terms of star pointing.

7.2.1 SATU NEA Statistics (table)

Statistics	SATU X (D)	SATU Y (D)	SATU X (B)	SATU Y (B)
Mean:	0.28965	-0.18004	0.31123	-0.16189
St. deviation:	0.86443	0.98739	0.28286	0.40108
Maximum:	4.3000	4.6000	1.3000	1.6000
Minimum:	-3.9000	-5.0000	-1.0000	-2.6000

Number of data:	71700.	71700.	10000.	10000.
90Percentile:	1.4000	1.1000	0.70000	0.40000

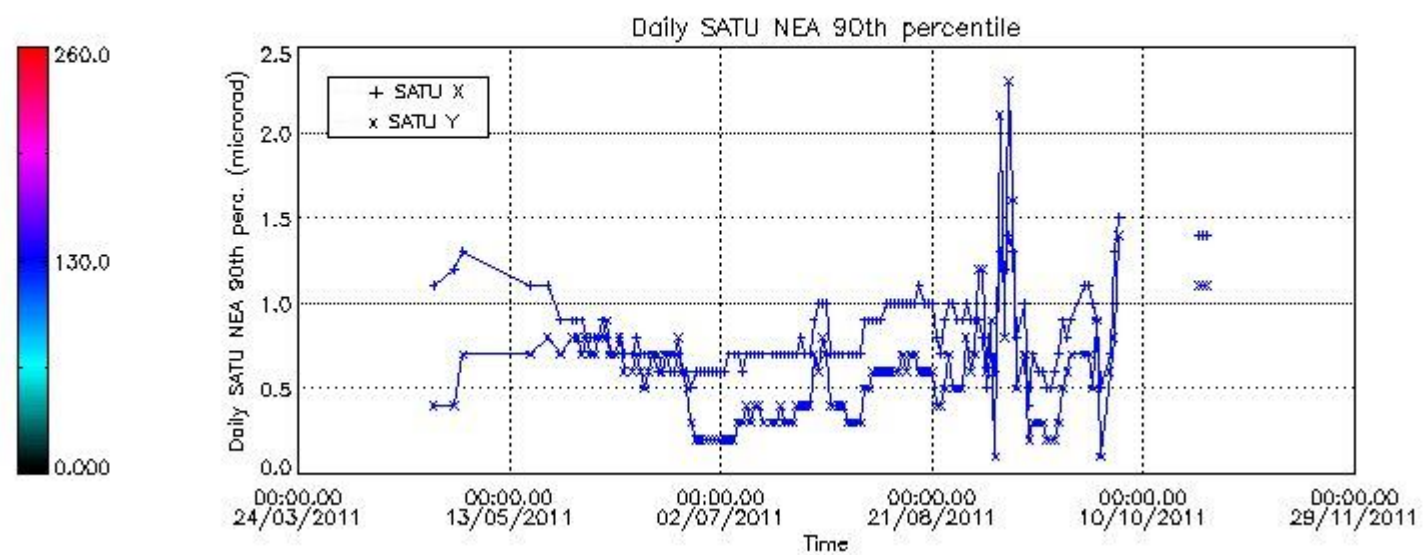
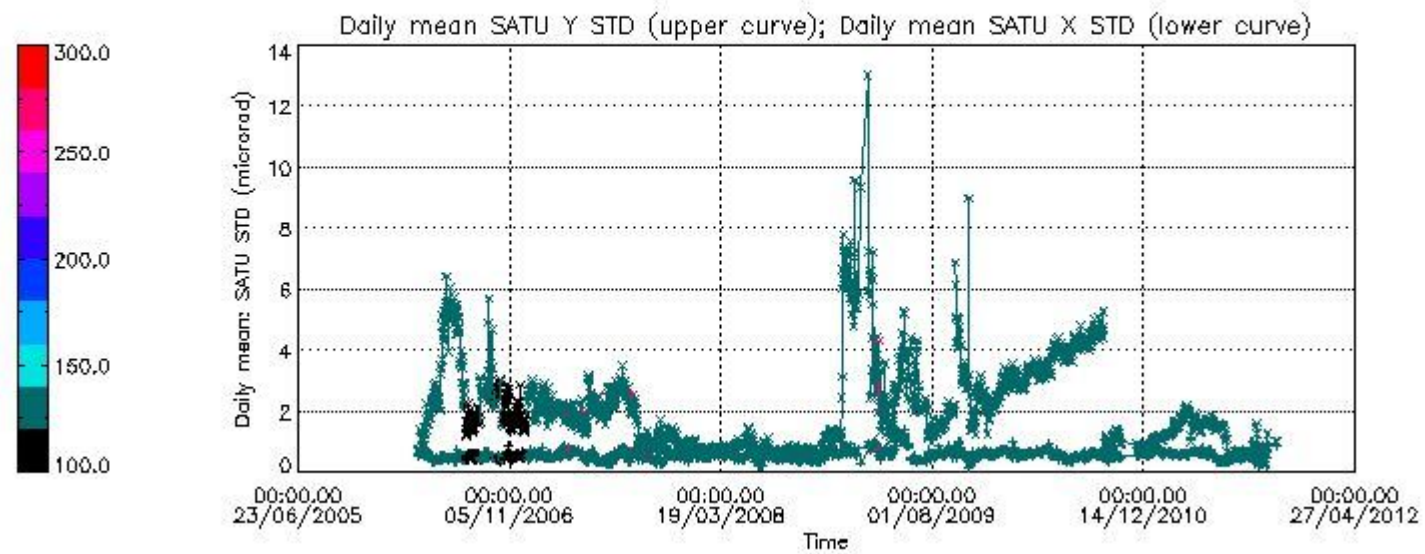
7.2.2 Trend of daily SATU NEA St. deviation since 1st April 2006 (dark limb) and of daily SATU NEA 90th percentile since May 2011

The long term trend of the SATU 'X' and 'Y' standard deviations should be constant during the whole mission.

The colorbar represents the start tangent altitude (km) of the occultations.

Upper curve: STD of SATU Y axis

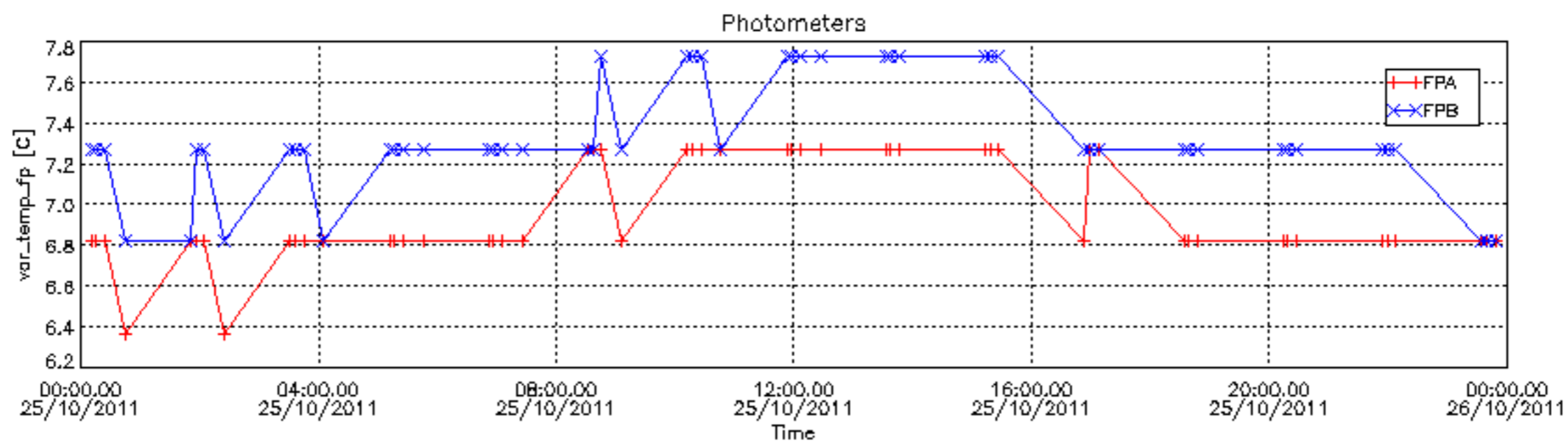
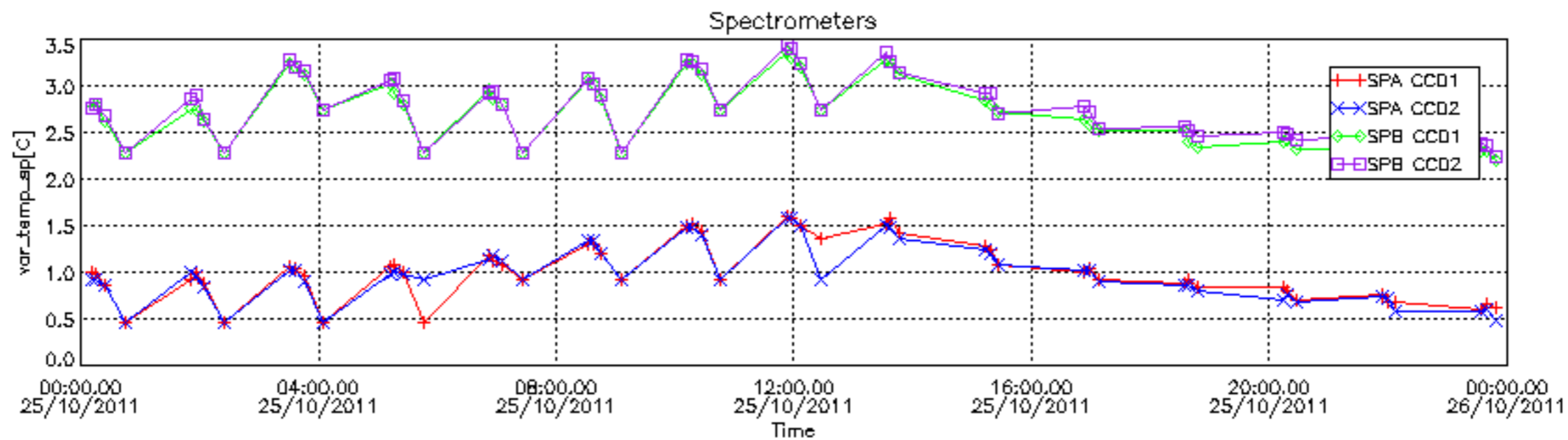
Lower curve: STD of SATU X axis

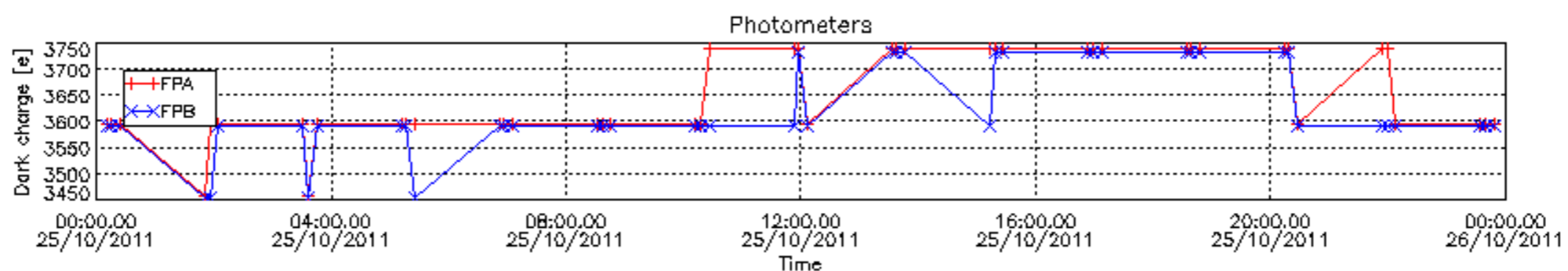
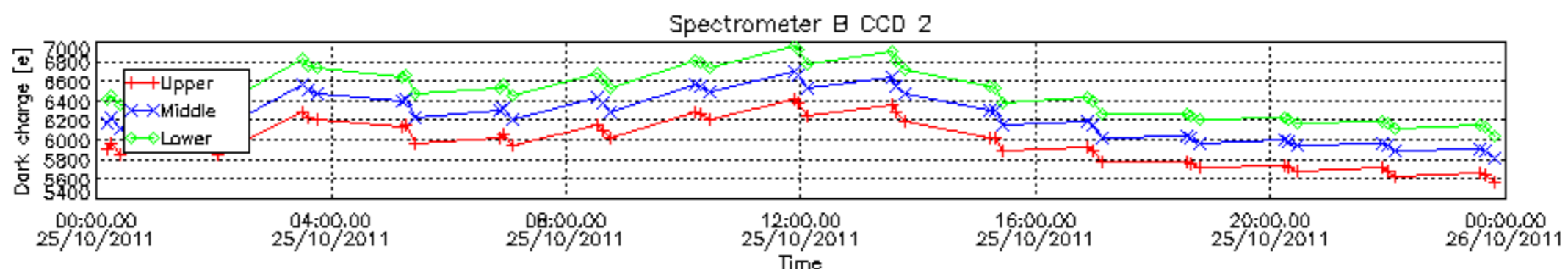
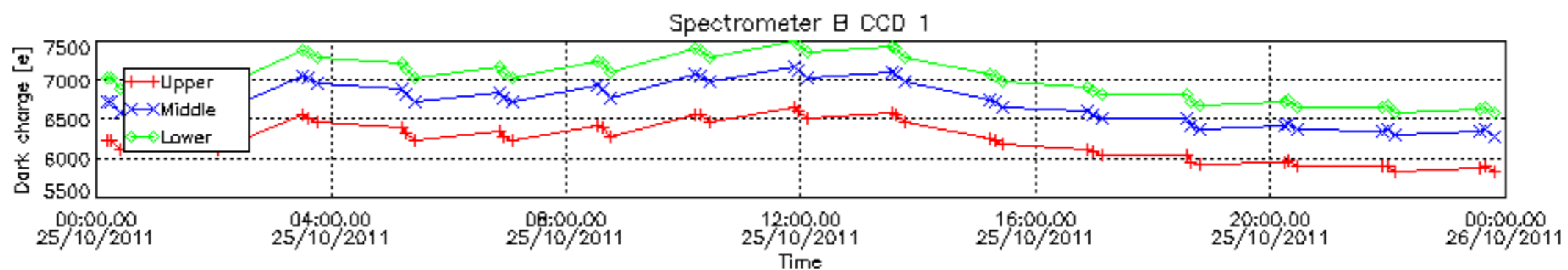
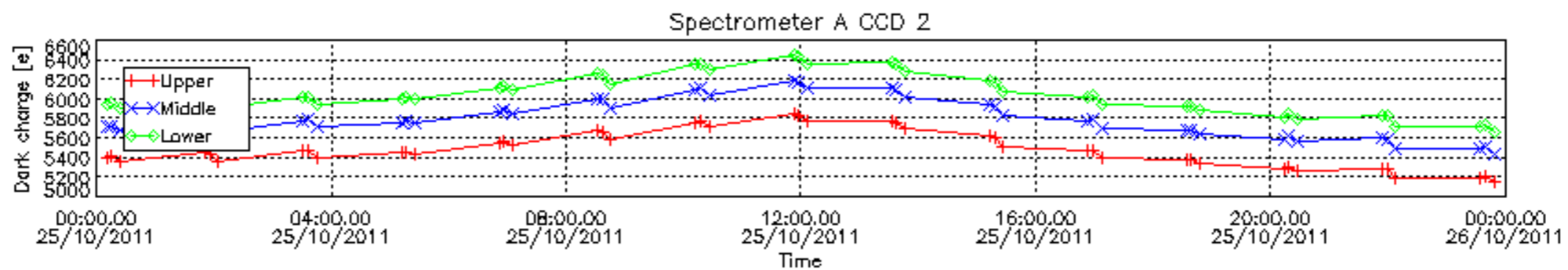
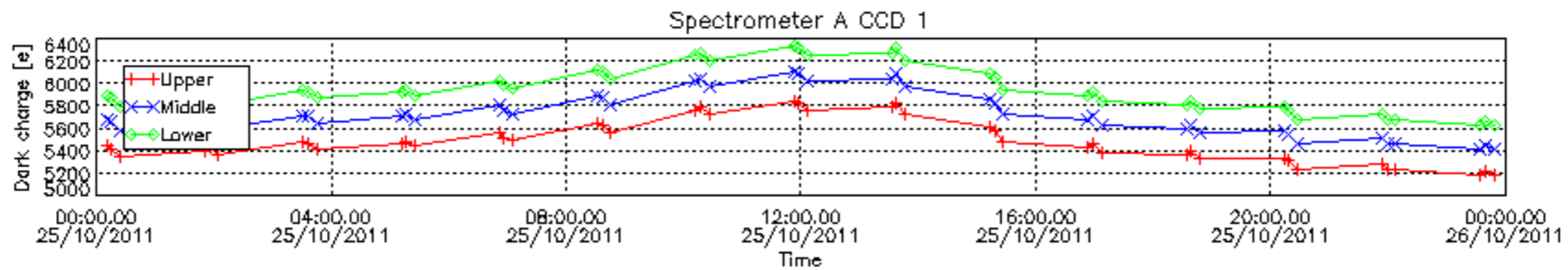


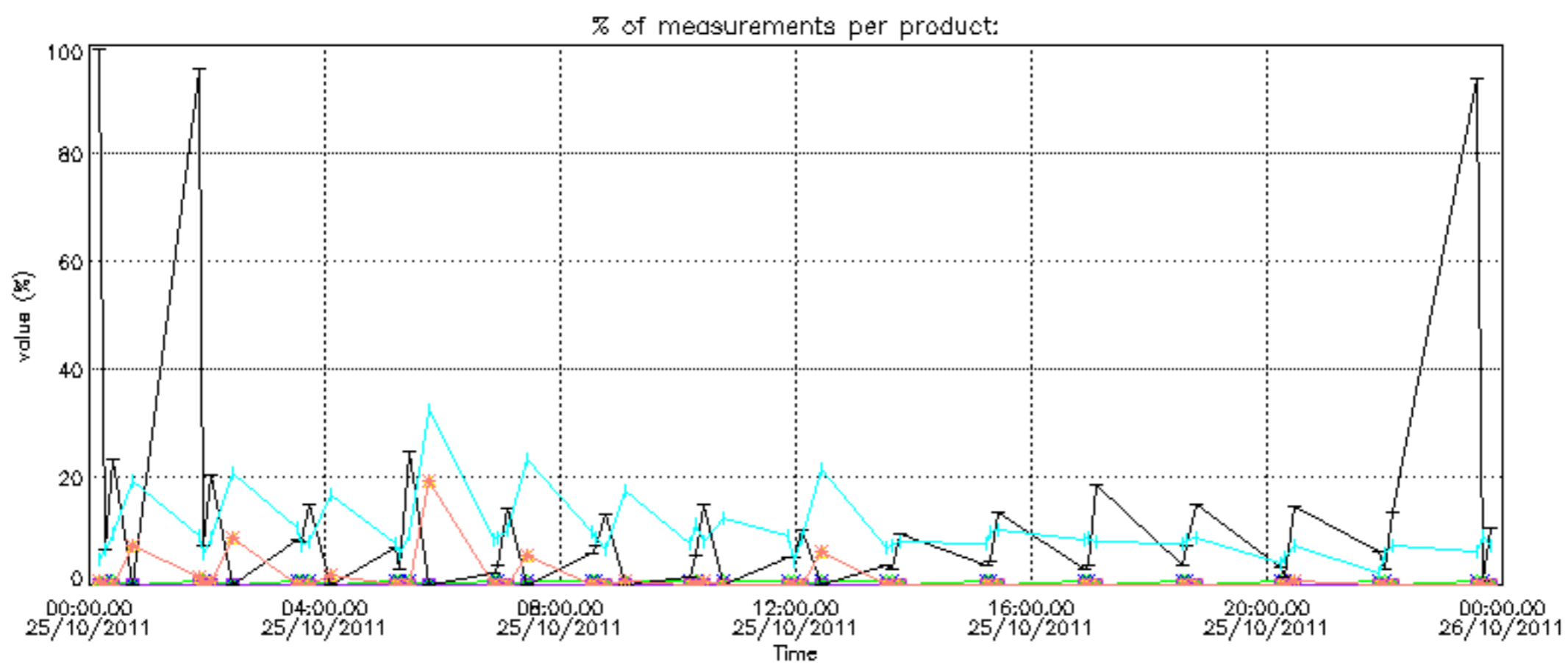
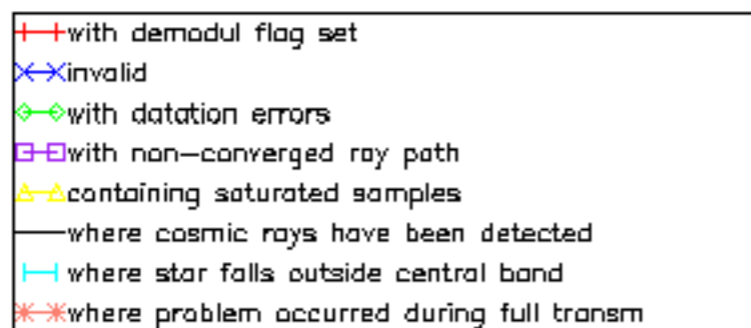
8. Auxiliary Data Files used for the production reported in section 2.4

The number reported in the third column indicates since which file (see list in section 2.4) the corresponding auxiliary file has been used. The fourth column is the date of those product files.

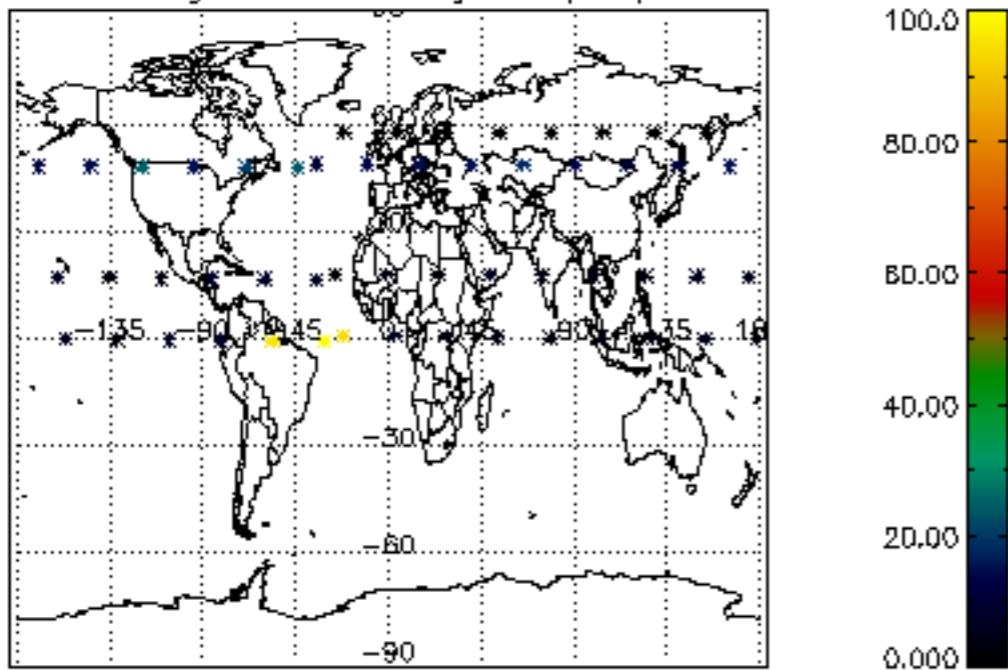
Type	Auxiliary Filename	Used since product	Used since product date
INST_PHYS_CHARACTERISTICS	GOM_INS_AXVIEC20091111_143220_20030716_120000_20500101_000000	1	25-OCT-2011 00:10:47
CALIBRATION_DATABASE	GOM_CAL_AXVIEC20111021_144853_20111020_000000_20500101_000000	1	25-OCT-2011 00:10:47
LEVEL-1B_PROC_CONFIG	GOM_PR1_AXVIEC20110513_081743_20020301_000000_20500101_000000	1	25-OCT-2011 00:10:47
STAR_CATALOGUE	GOM_CAT_AXVIEC20020121_161009_20020101_000000_20200101_000000	1	25-OCT-2011 00:10:47
STELLAR_SPECTRA_DATABANK	GOM_STS_AXVIEC20091111_151504_20020101_160000_20500101_000000	1	25-OCT-2011 00:10:47
ECMWF_FILE	AUX_ECF_AXNECM20111024_062115_20111024_210000_20111025_090000	1	25-OCT-2011 00:10:47
ECMWF_FILE	AUX_ECF_AXNECM20111024_182747_20111025_030000_20111025_150000	9	25-OCT-2011 03:31:18
ECMWF_FILE	AUX_ECA_AXNECM20111025_060346_20111024_210000_20111025_090000	17	25-OCT-2011 06:51:50
ECMWF_FILE	AUX_ECF_AXNECM20111025_060346_20111025_090000_20111025_210000	24	25-OCT-2011 09:05:55
ECMWF_FILE	AUX_ECF_AXNECM20111025_060347_20111025_150000_20111026_030000	36	25-OCT-2011 15:13:08
ECMWF_FILE	AUX_ECA_AXNECM20111025_181150_20111025_090000_20111025_210000	42	25-OCT-2011 18:33:40
ECMWF_FILE	AUX_ECF_AXNECM20111025_060347_20111025_210000_20111026_090000	48	25-OCT-2011 21:54:11
OPTIONAL_ECMWF_FILE	MISSING	1	25-OCT-2011 00:10:47
ORBIT_DATA_FILE	AUX_FPO_AXVPDS20111024_101536_20111023_194703_20111102_202032	1	25-OCT-2011 00:10:47
ORBIT_DATA_FILE	AUX_FPO_AXVPDS20111025_103150_20111024_191018_20111103_212401	28	25-OCT-2011 10:46:09



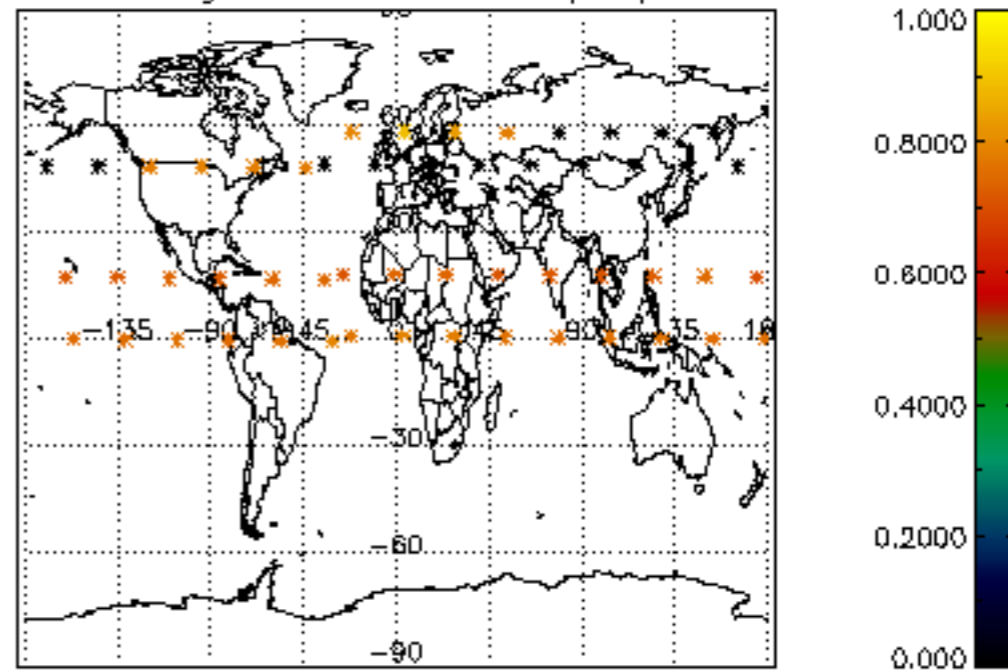




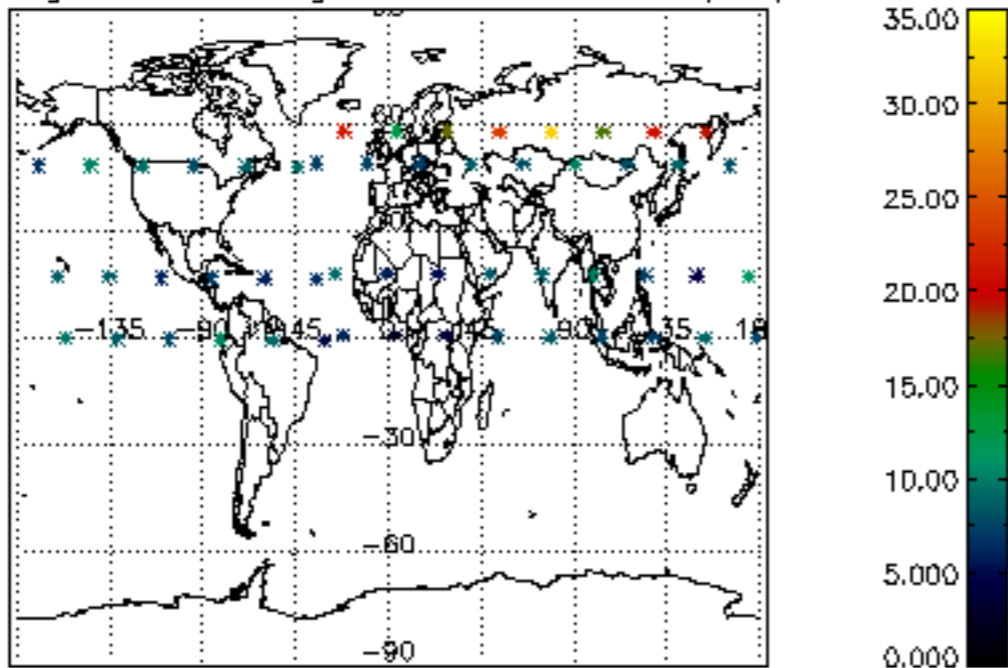
Percentage of cosmic ray hits per profile



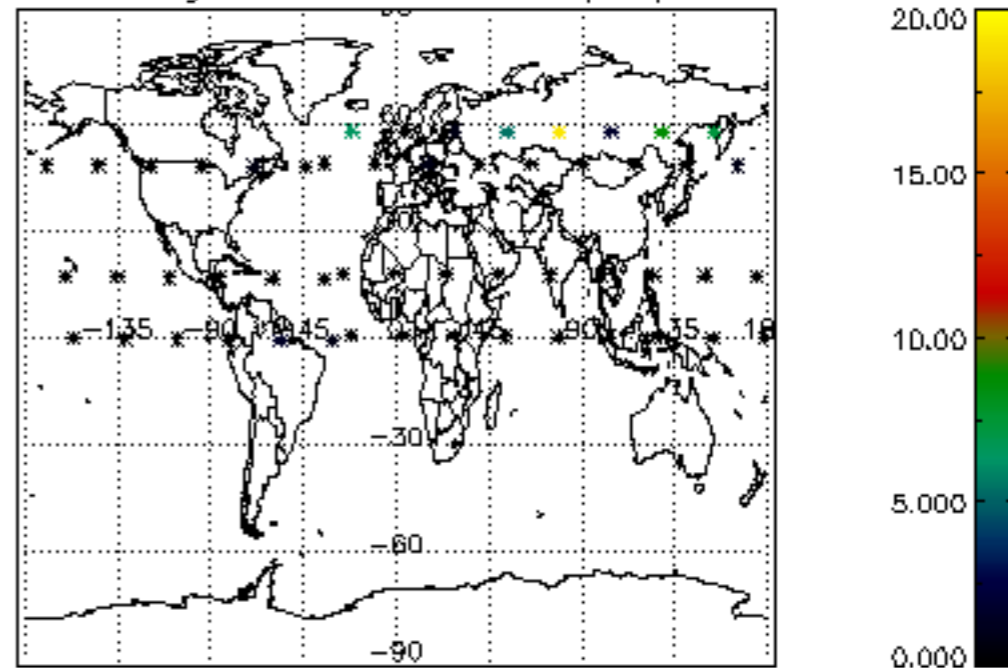
Percentage of datation errors per profile



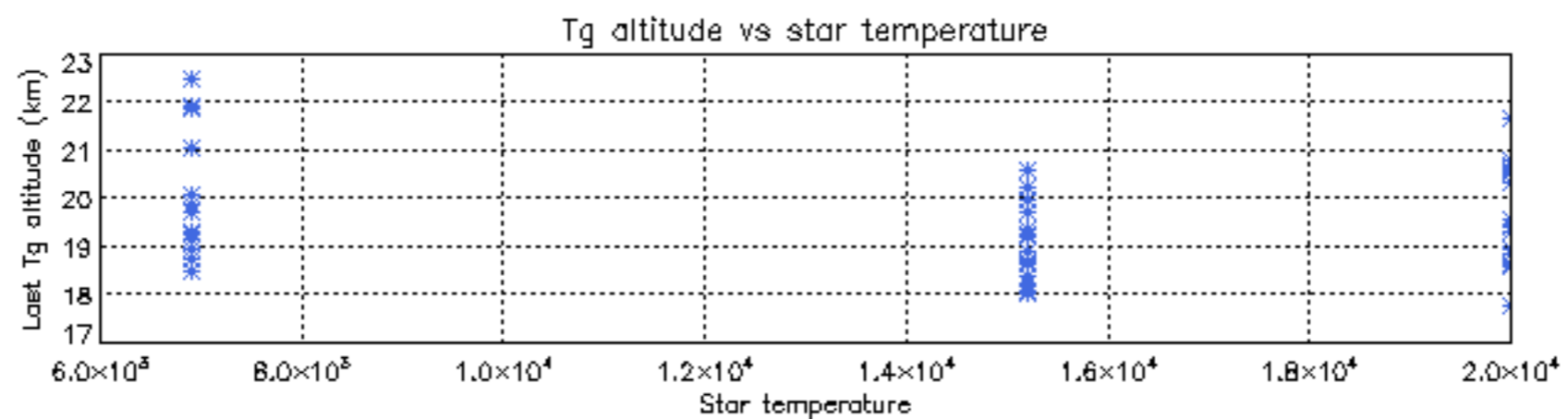
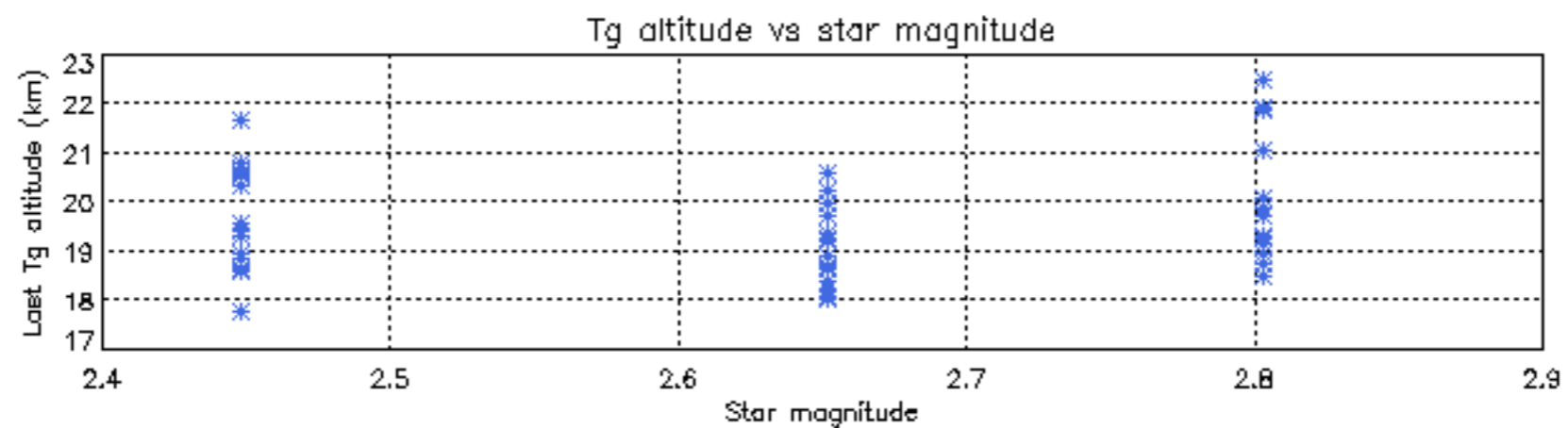
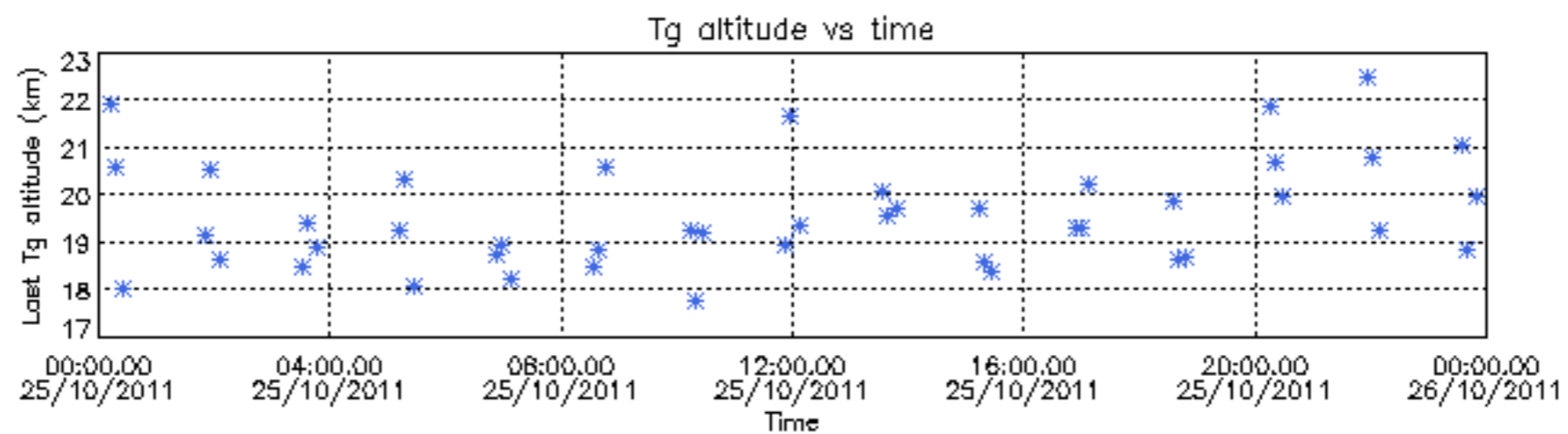
Percentage of star falling outside central band per profile



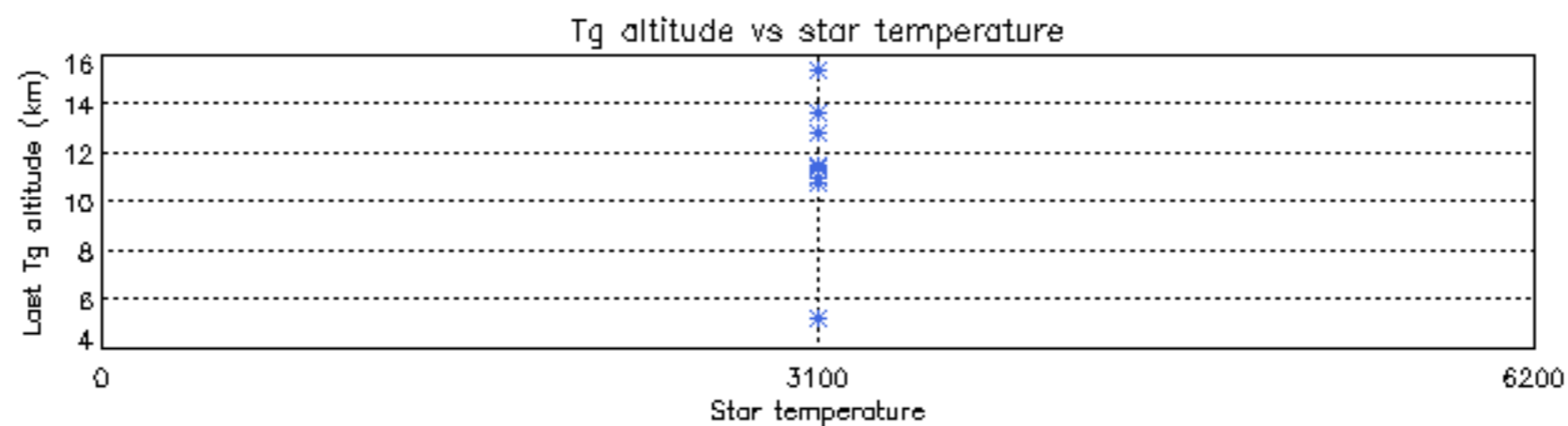
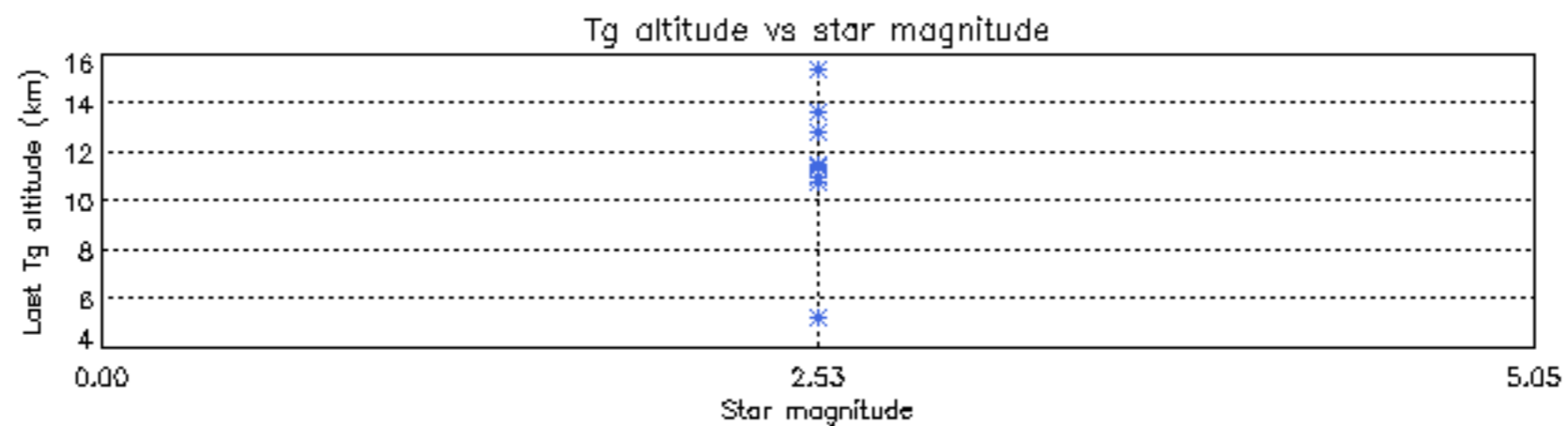
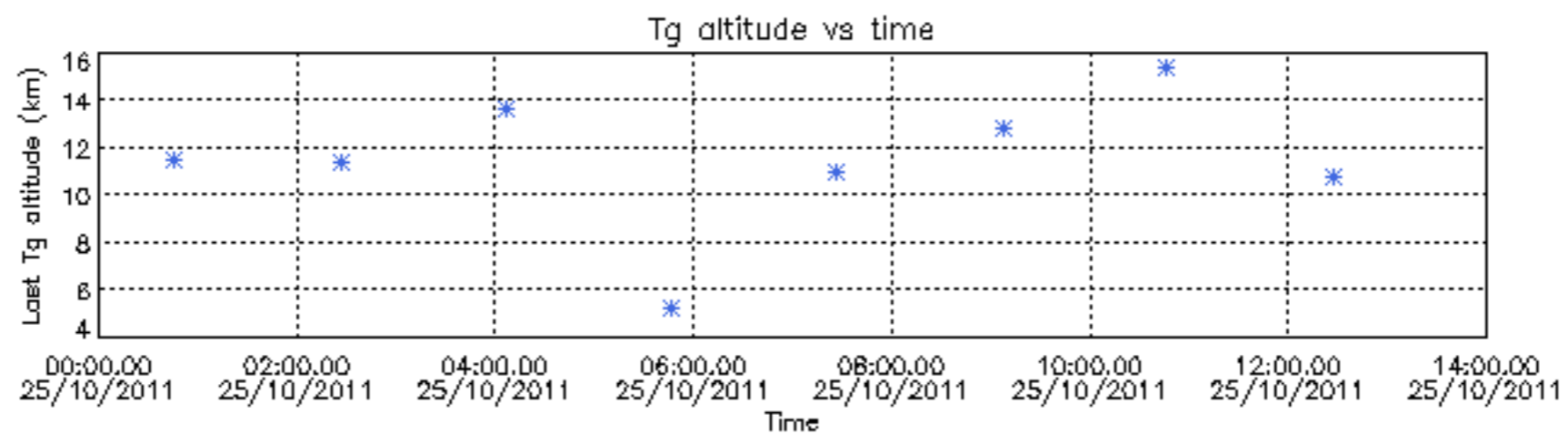
Percentage of saturation errors per profile

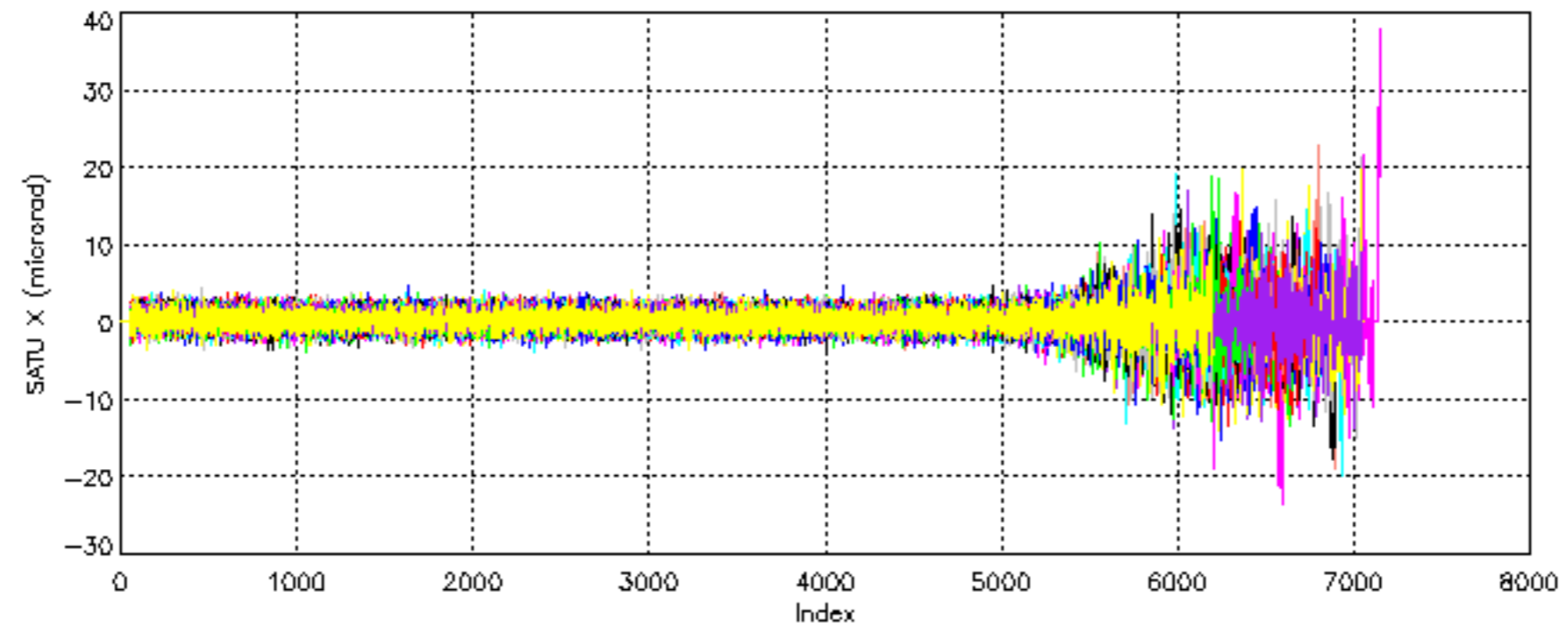


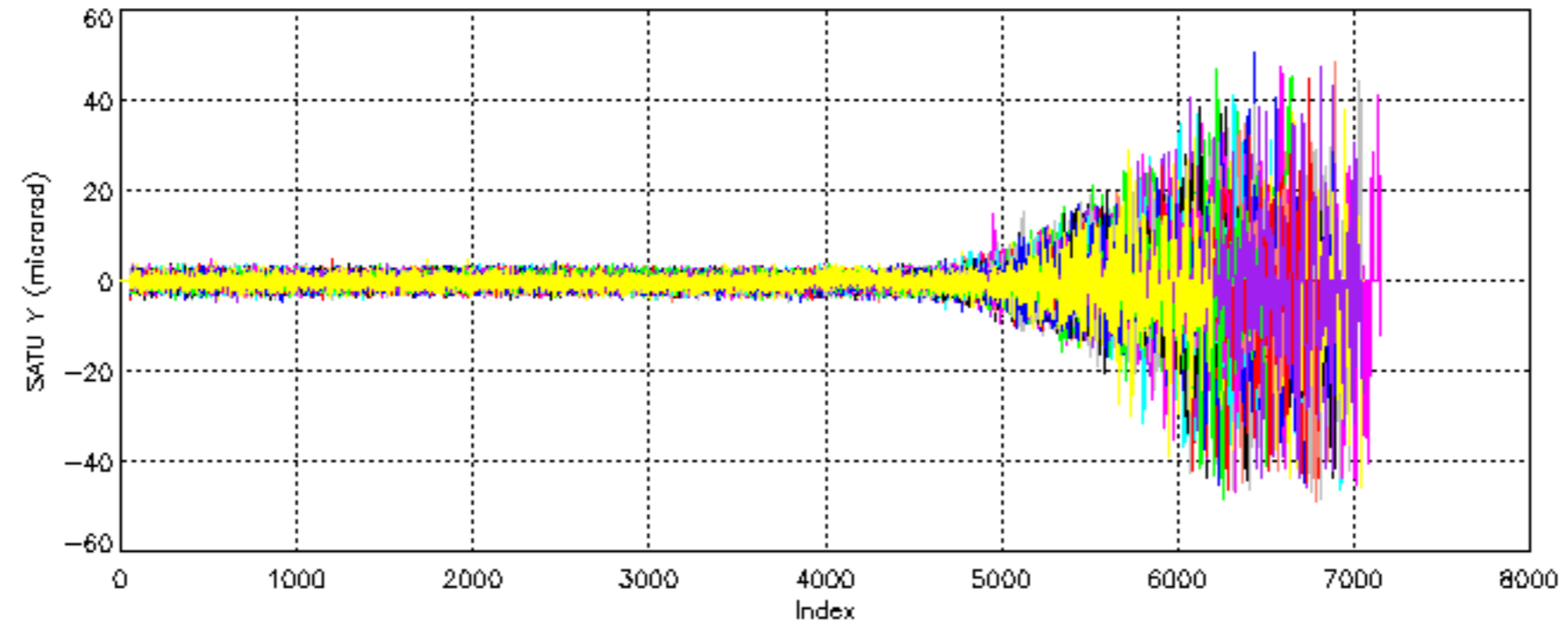
Tangent altitude at which the star is lost

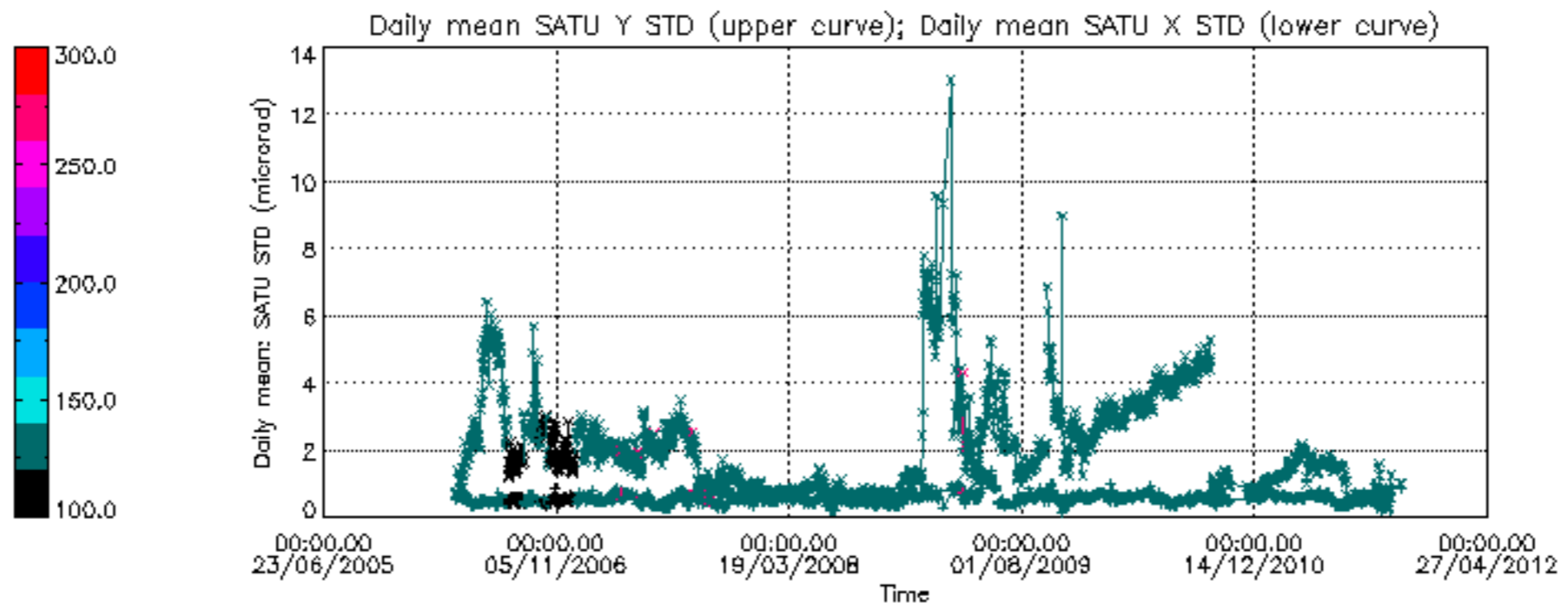


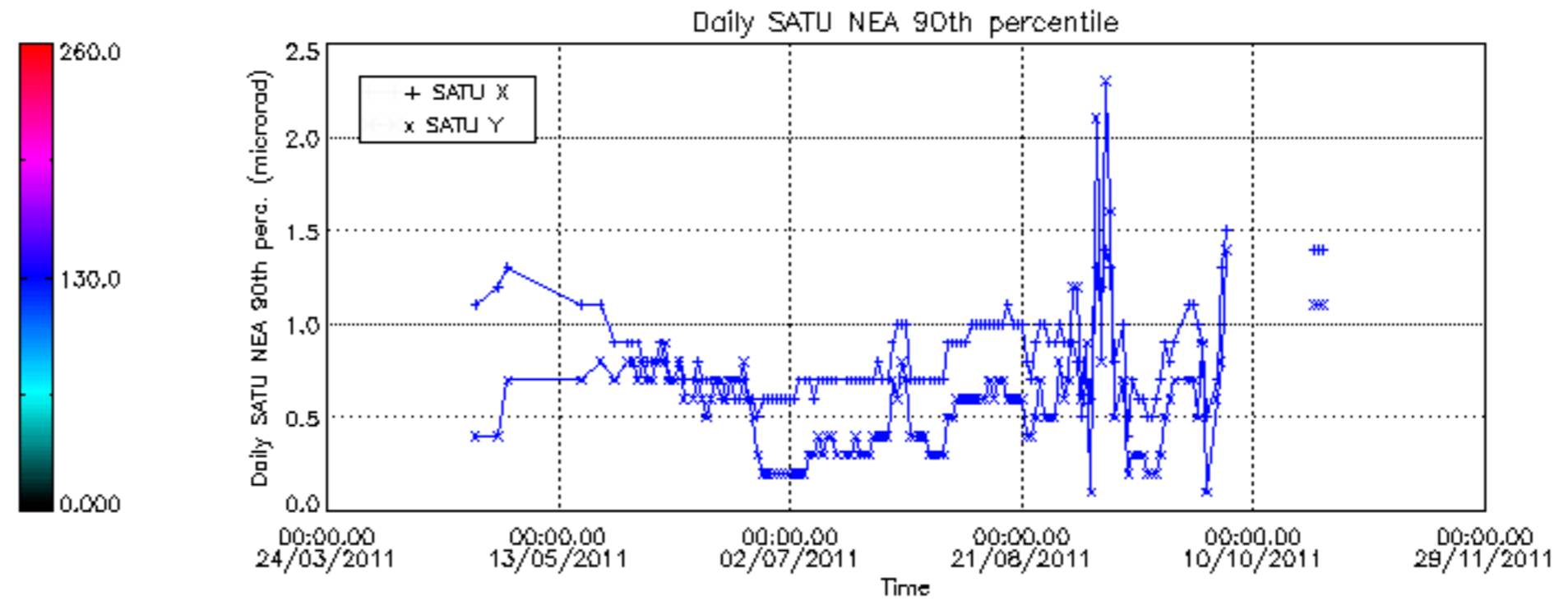
Tangent altitude at which the star is lost











/nas3/ENVISAT/GOMOS/GOM_NL__0P/GOM_NL__0PNPDE20111002_214039_00000423107_00144_50158_6530.N1
1; 2617.1; 02-OCT-2011 21:40:39; Bright; 42.5; 53; 43Bet And ; 2.05; 3300;occ; 85; 0;50158
/nas3/ENVISAT/GOMOS/GOM_NL__0P/GOM_NL__0PNPDE20111002_223444_000011363107_00144_50158_6531.N1
1; -151.2; 02-OCT-2011 22:34:44; Dark ; 54.5; 37; 25Del CMA ; 1.83; 5900;occ; 109; 0;50158
2; 936.0; 02-OCT-2011 22:52:51; Dark ; 49.5; 157; The1Eri ; 2.91; 9300;occ; 99; 0;50159
/nas3/ENVISAT/GOMOS/GOM_NL__0P/GOM_NL__0PNPDK20111002_182012_000033093107_00142_50156_5389.N1
1; 2618.4; 02-OCT-2011 18:20:12; Bright; 47.5; 53; 43Bet And ; 2.05; 3300;occ; 95; 0;50156
2; 3035.8; 02-OCT-2011 18:27:09; Bright; 41.0; 110; 37Del Cas ; 2.68; 8900;occ; 82; 0;50156
3; 3212.6; 02-OCT-2011 18:30:06; Bright; 51.0; 160; 23Gam Per ; 2.93; 4700;occ; 102; 0;50156
4; 5594.7; 02-OCT-2011 19:09:48; Dark ; 47.0; 132; 15Rho Pup ; 2.80; 6900;occ; 94; 0;50156
5; 5860.2; 02-OCT-2011 19:14:14; Dark ; 68.0; 37; 25Del CMA ; 1.83; 5900;occ; 136; 0;50156
/nas3/ENVISAT/GOMOS/GOM_NL__0P/GOM_NL__0PNPDK20111002_200025_000033093107_00143_50157_5390.N1
1; 2617.7; 02-OCT-2011 20:00:25; Bright; 45.5; 53; 43Bet And ; 2.05; 3300;occ; 91; 0;50157
2; 3035.2; 02-OCT-2011 20:07:23; Bright; 41.5; 110; 37Del Cas ; 2.68; 8900;occ; 83; 0;50157
3; 5861.4; 02-OCT-2011 20:54:29; Dark ; 66.0; 37; 25Del CMA ; 1.83; 5900;occ; 132; 0;50157
/nas3/ENVISAT/GOMOS/GOM_NL__0P/GOM_NL__0PNPDE20111003_002332_00000553107_00146_50160_6532.N1
1; 363.1; 03-OCT-2011 00:23:32; Dark ; 56.0; 108; Alp Col ; 2.65; 15200;occ; 112; 0;50160
/nas3/ENVISAT/GOMOS/GOM_NL__0P/GOM_NL__0PNPDE20111003_220654_000028643107_00159_50173_6535.N1
1; 382.9; 03-OCT-2011 22:06:54; Dark ; 61.0; 108; Alp Col ; 2.65; 15200;occ; 122; 0;50173
2; 2608.3; 03-OCT-2011 22:43:59; Bright; 45.5; 53; 43Bet And ; 2.05; 3300;occ; 91; 0;50173
3; 3196.6; 03-OCT-2011 22:53:47; Bright; 50.5; 160; 23Gam Per ; 2.93; 4700;occ; 101; 0;50173
/nas3/ENVISAT/GOMOS/GOM_NL__0P/GOM_NL__0PNPDK20111003_065601_000005743107_00149_50163_5391.N1
1; -144.3; 03-OCT-2011 06:56:01; Dark ; 72.5; 37; 25Del CMA ; 1.83; 5900;occ; 145; 0;50163
2; 369.2; 03-OCT-2011 07:04:34; Dark ; 61.5; 108; Alp Col ; 2.65; 15200;occ; 123; 0;50164
/nas3/ENVISAT/GOMOS/GOM_NL__0P/GOM_NL__0PNPDK20111003_075150_000032393107_00150_50164_5392.N1
1; -2808.7; 03-OCT-2011 07:51:50; Bright; 49.0; 160; 23Gam Per ; 2.93; 4700;occ; 98; 0;50164
2; -142.9; 03-OCT-2011 08:36:16; Dark ; 68.0; 37; 25Del CMA ; 1.83; 5900;occ; 136; 0;50164
3; 370.9; 03-OCT-2011 08:44:50; Dark ; 60.0; 108; Alp Col ; 2.65; 15200;occ; 120; 0;50165
/nas3/ENVISAT/GOMOS/GOM_NL__0P/GOM_NL__0PNPDK20111003_093203_000032423107_00151_50165_5393.N1
1; -2809.7; 03-OCT-2011 09:32:03; Bright; 50.5; 160; 23Gam Per ; 2.93; 4700;occ; 101; 0;50165
2; -141.5; 03-OCT-2011 10:16:32; Dark ; 61.5; 37; 25Del CMA ; 1.83; 5900;occ; 123; 0;50165
3; 372.5; 03-OCT-2011 10:25:06; Dark ; 60.0; 108; Alp Col ; 2.65; 15200;occ; 120; 0;50166
/nas3/ENVISAT/GOMOS/GOM_NL__0P/GOM_NL__0PNPDK20111003_110225_000038363107_00152_50166_5394.N1
1; 2612.3; 03-OCT-2011 11:02:25; Bright; 47.0; 53; 43Bet And ; 2.05; 3300;occ; 94; 0;50166
2; 3203.1; 03-OCT-2011 11:12:16; Bright; 50.0; 160; 23Gam Per ; 2.93; 4700;occ; 100; 0;50166
3; 5873.7; 03-OCT-2011 11:56:47; Dark ; 55.5; 37; 25Del CMA ; 1.83; 5900;occ; 111; 0;50166
4; 6387.7; 03-OCT-2011 12:05:21; Dark ; 61.5; 108; Alp Col ; 2.65; 15200;occ; 123; 0;50167
/nas3/ENVISAT/GOMOS/GOM_NL__0P/GOM_NL__0PNPDK20111003_124239_000038403107_00153_50167_5395.N1
1; 2611.8; 03-OCT-2011 12:42:39; Bright; 45.0; 53; 43Bet And ; 2.05; 3300;occ; 90; 0;50167
2; 3202.2; 03-OCT-2011 12:52:29; Bright; 49.5; 160; 23Gam Per ; 2.93; 4700;occ; 99; 0;50167
3; 5875.1; 03-OCT-2011 13:37:02; Dark ; 66.5; 37; 25Del CMA ; 1.83; 5900;occ; 133; 0;50167
4; 6173.3; 03-OCT-2011 13:42:00; Dark ; 59.5; 0; ; 0.00; 0;occ; 119; 0;50168
5; 6389.3; 03-OCT-2011 13:45:36; Dark ; 62.5; 108; Alp Col ; 2.65; 15200;occ; 125; 0;50168
/nas3/ENVISAT/GOMOS/GOM_NL__0P/GOM_NL__0PNPDK20111003_142252_000038413107_00154_50168_5396.N1
1; 2611.2; 03-OCT-2011 14:22:52; Bright; 44.0; 53; 43Bet And ; 2.05; 3300;occ; 88; 0;50168
2; 3201.4; 03-OCT-2011 14:32:42; Bright; 48.0; 160; 23Gam Per ; 2.93; 4700;occ; 96; 0;50168
3; 5948.9; 03-OCT-2011 15:18:30; Dark ; 55.0; 23; 21Eps CMA ; 1.50; 26000;occ; 110; 0;50168
4; 6174.6; 03-OCT-2011 15:22:15; Dark ; 59.5; 0; ; 0.00; 0;occ; 119; 0;50169
5; 6390.9; 03-OCT-2011 15:25:52; Dark ; 61.5; 108; Alp Col ; 2.65; 15200;occ; 123; 0;50169
/nas3/ENVISAT/GOMOS/GOM_NL__0P/GOM_NL__0PNPDK20111003_160306_000038403107_00155_50169_5397.N1
1; 2610.6; 03-OCT-2011 16:03:06; Bright; 47.0; 53; 43Bet And ; 2.05; 3300;occ; 94; 0;50169
2; 3200.5; 03-OCT-2011 16:12:55; Bright; 51.5; 160; 23Gam Per ; 2.93; 4700;occ; 103; 0;50169
3; 5950.3; 03-OCT-2011 16:58:45; Dark ; 55.0; 23; 21Eps CMA ; 1.50; 26000;occ; 110; 0;50169
4; 6175.9; 03-OCT-2011 17:02:31; Dark ; 59.5; 0; ; 0.00; 0;occ; 119; 0;50170
5; 6392.6; 03-OCT-2011 17:06:07; Dark ; 59.0; 108; Alp Col ; 2.65; 15200;occ; 118; 0;50170
/nas3/ENVISAT/GOMOS/GOM_NL__0P/GOM_NL__0PNPDK20111003_202301_000002793107_00158_50172_5399.N1
1; 164.2; 03-OCT-2011 20:23:01; Dark ; 59.5; 0; ; 0.00; 0;occ; 119; 0;50172
2; 381.4; 03-OCT-2011 20:26:38; Dark ; 62.0; 108; Alp Col ; 2.65; 15200;occ; 124; 0;50172
/nas3/ENVISAT/GOMOS/GOM_NL__0P/GOM_NL__0PNPDE20111003_051546_000034033107_00148_50162_6533.N1
1; -145.7; 03-OCT-2011 05:15:46; Dark ; 59.5; 37; 25Del CMA ; 1.83; 5900;occ; 119; 0;50162
2; 367.8; 03-OCT-2011 05:24:19; Dark ; 60.0; 108; Alp Col ; 2.65; 15200;occ; 120; 0;50163
3; 2614.2; 03-OCT-2011 06:01:45; Bright; 43.5; 53; 43Bet And ; 2.05; 3300;occ; 87; 0;50163
4; 3206.2; 03-OCT-2011 06:11:37; Bright; 51.5; 160; 23Gam Per ; 2.93; 4700;occ; 103; 0;50163
/nas3/ENVISAT/GOMOS/GOM_NL__0P/GOM_NL__0PNPDE20111004_030402_000024833107_00162_50176_6536.N1
1; 169.1; 04-OCT-2011 03:04:02; Dark ; 59.5; 0; ; 0.00; 0;occ; 119; 0;50176
2; 387.5; 04-OCT-2011 03:07:40; Dark ; 61.5; 108; Alp Col ; 2.65; 15200;occ; 123; 0;50176
3; 2606.5; 04-OCT-2011 03:44:39; Bright; 46.0; 53; 43Bet And ; 2.05; 3300;occ; 92; 0;50176
/nas3/ENVISAT/GOMOS/GOM_NL__0P/GOM_NL__0PNPDE20111004_044756_000022613107_00163_50177_6537.N1

1; 389.0; 04-OCT-2011 04:47:56; Dark ; 62.0; 108; Alp Col ; 2.65; 15200;occ; 124; 0;50177
2; 2605.9; 04-OCT-2011 05:24:53; Bright; 44.5; 53; 43Bet And ; 2.05; 3300;occ; 89; 0;50177
/nas3/ENVISAT/GOMOS/GOM_NL__0P/GOM_NL__0PNPDE20111004_062811_000028523107_00164_50178_6538.N1
1; 390.5; 04-OCT-2011 06:28:11; Dark ; 62.0; 108; Alp Col ; 2.65; 15200;occ; 124; 0;50178
2; 2605.5; 04-OCT-2011 07:05:06; Bright; 47.5; 53; 43Bet And ; 2.05; 3300;occ; 95; 0;50178
3; 3192.0; 04-OCT-2011 07:14:53; Bright; 51.0; 160; 23Gam Per ; 2.93; 4700;occ; 102; 0;50178
/nas3/ENVISAT/GOMOS/GOM_NL__0P/GOM_NL__0PNPDK20111004_080827_000000613107_00165_50179_5403.N1
1; 391.9; 04-OCT-2011 08:08:27; Dark ; 62.0; 108; Alp Col ; 2.65; 15200;occ; 124; 0;50179
/nas3/ENVISAT/GOMOS/GOM_NL__0P/GOM_NL__0PNPDK20111004_084520_000038633107_00165_50179_5404.N1
1; 2604.9; 04-OCT-2011 08:45:20; Bright; 47.5; 53; 43Bet And ; 2.05; 3300;occ; 95; 0;50179
2; 3191.1; 04-OCT-2011 08:55:06; Bright; 49.0; 160; 23Gam Per ; 2.93; 4700;occ; 98; 0;50179
3; 6407.5; 04-OCT-2011 09:48:42; Dark ; 61.0; 108; Alp Col ; 2.65; 15200;occ; 122; 0;50180
/nas3/ENVISAT/GOMOS/GOM_NL__0P/GOM_NL__0PNPDK20111004_102533_000034163107_00166_50180_5405.N1
1; 2604.3; 04-OCT-2011 10:25:33; Bright; 47.5; 53; 43Bet And ; 2.05; 3300;occ; 95; 0;50180
2; 3190.0; 04-OCT-2011 10:35:19; Bright; 51.5; 160; 23Gam Per ; 2.93; 4700;occ; 103; 0;50180
3; 5965.3; 04-OCT-2011 11:21:34; Dark ; 55.0; 23; 21Eps CMa ; 1.50; 26000;occ; 110; 0;50180
/nas3/ENVISAT/GOMOS/GOM_NL__0P/GOM_NL__0PNPDK20111004_130533_000002823107_00168_50182_5406.N1
1; 176.4; 04-OCT-2011 13:05:33; Dark ; 59.5; 0; ; 0.00; 0;occ; 119; 0;50182
2; 396.5; 04-OCT-2011 13:09:13; Dark ; 62.0; 108; Alp Col ; 2.65; 15200;occ; 124; 0;50182
/nas3/ENVISAT/GOMOS/GOM_NL__0P/GOM_NL__0PNPDK20111004_134600_000038713107_00168_50182_5407.N1
1; 2603.1; 04-OCT-2011 13:46:00; Bright; 42.5; 53; 43Bet And ; 2.05; 3300;occ; 85; 0;50182
2; 3188.2; 04-OCT-2011 13:55:45; Bright; 47.5; 160; 23Gam Per ; 2.93; 4700;occ; 95; 0;50182
3; 6412.1; 04-OCT-2011 14:49:28; Dark ; 62.5; 108; Alp Col ; 2.65; 15200;occ; 125; 0;50183
/nas3/ENVISAT/GOMOS/GOM_NL__0P/GOM_NL__0PNPDK20111004_153558_000000483107_00169_50183_5408.N1
1;-2826.7; 04-OCT-2011 15:35:58; Bright; 48.5; 160; 23Gam Per ; 2.93; 4700;occ; 97; 0;50183
/nas3/ENVISAT/GOMOS/GOM_NL__0P/GOM_NL__0PNPDE20111012_213220_000026983107_00288_50302_6539.N1
1; 109.0; 12-OCT-2011 21:32:20; Dark ; 59.5; 0; ; 0.00; 0;occ; 119; 0;50302
2; 2765.0; 12-OCT-2011 22:16:36; Bright; 42.5; 73; 57Gam1And ; 2.26; 13100;occ; 85; 0;50302
/nas3/ENVISAT/GOMOS/GOM_NL__0P/GOM_NL__0PNPDE20111012_231235_000027003107_00289_50303_6540.N1
1; 109.9; 12-OCT-2011 23:12:35; Dark ; 59.5; 0; ; 0.00; 0;occ; 119; 0;50303
2; 2764.3; 12-OCT-2011 23:56:49; Bright; 46.0; 73; 57Gam1And ; 2.26; 13100;occ; 92; 0;50303
/nas3/ENVISAT/GOMOS/GOM_NL__0P/GOM_NL__0PNPDK20111012_145121_000000593107_00284_50298_5411.N1
1; 105.5; 12-OCT-2011 14:51:21; Dark ; 59.5; 0; ; 0.00; 0;occ; 119; 0;50298
/nas3/ENVISAT/GOMOS/GOM_NL__0P/GOM_NL__0PNPDK20111012_153543_000034123107_00284_50298_5412.N1
1; 2767.9; 12-OCT-2011 15:35:43; Bright; 45.5; 73; 57Gam1And ; 2.26; 13100;occ; 91; 0;50298
2; 6120.4; 12-OCT-2011 16:31:36; Dark ; 59.5; 0; ; 0.00; 0;occ; 119; 0;50299
/nas3/ENVISAT/GOMOS/GOM_NL__0P/GOM_NL__0PNPDE20111013_005250_000026963107_00290_50304_6541.N1
1; 110.8; 13-OCT-2011 00:52:50; Dark ; 59.5; 0; ; 0.00; 0;occ; 119; 0;50304
2; 2763.5; 13-OCT-2011 01:37:02; Bright; 44.0; 73; 57Gam1And ; 2.26; 13100;occ; 88; 0;50304
/nas3/ENVISAT/GOMOS/GOM_NL__0P/GOM_NL__0PNPDE20111013_023304_000026973107_00291_50305_6542.N1
1; 111.7; 13-OCT-2011 02:33:04; Dark ; 59.5; 0; ; 0.00; 0;occ; 119; 0;50305
2; 2762.8; 13-OCT-2011 03:17:16; Bright; 46.5; 73; 57Gam1And ; 2.26; 13100;occ; 93; 0;50305
/nas3/ENVISAT/GOMOS/GOM_NL__0P/GOM_NL__0PNPDE20111013_041319_000026963107_00292_50306_6543.N1
1; 112.5; 13-OCT-2011 04:13:19; Dark ; 59.5; 0; ; 0.00; 0;occ; 119; 0;50306
2; 2762.6; 13-OCT-2011 04:57:29; Bright; 46.0; 73; 57Gam1And ; 2.26; 13100;occ; 92; 0;50306
/nas3/ENVISAT/GOMOS/GOM_NL__0P/GOM_NL__0PNPDE20111013_055334_000000593107_00293_50307_6544.N1
1; 113.4; 13-OCT-2011 05:53:34; Dark ; 59.5; 0; ; 0.00; 0;occ; 119; 0;50307
/nas3/ENVISAT/GOMOS/GOM_NL__0P/GOM_NL__0PNPDE20111013_213942_000003503107_00302_50316_6545.N1
1; 2755.8; 13-OCT-2011 21:39:42; Bright; 46.0; 73; 57Gam1And ; 2.26; 13100;occ; 92; 0;50316
2; 3073.9; 13-OCT-2011 21:45:00; Bright; 32.5; 160; 23Gam Per ; 2.93; 4700;occ; 65; 0;50316
/nas3/ENVISAT/GOMOS/GOM_NL__0P/GOM_NL__0PNPDE20111013_231955_000003503107_00303_50317_6546.N1
1; 2755.1; 13-OCT-2011 23:19:55; Bright; 47.5; 73; 57Gam1And ; 2.26; 13100;occ; 95; 0;50317
2; 3073.0; 13-OCT-2011 23:25:13; Bright; 32.5; 160; 23Gam Per ; 2.93; 4700;occ; 65; 0;50317
/nas3/ENVISAT/GOMOS/GOM_NL__0P/GOM_NL__0PNPDK20111013_073349_000000593107_00294_50308_5413.N1
1; 114.3; 13-OCT-2011 07:33:49; Dark ; 59.5; 0; ; 0.00; 0;occ; 119; 0;50308
/nas3/ENVISAT/GOMOS/GOM_NL__0P/GOM_NL__0PNPDK20111013_081756_000034273107_00294_50308_5414.N1
1; 2761.2; 13-OCT-2011 08:17:56; Bright; 47.5; 73; 57Gam1And ; 2.26; 13100;occ; 95; 0;50308
2; 6129.1; 13-OCT-2011 09:14:04; Dark ; 59.5; 0; ; 0.00; 0;occ; 119; 0;50309
/nas3/ENVISAT/GOMOS/GOM_NL__0P/GOM_NL__0PNPDK20111013_113822_000000513107_00296_50310_5415.N1
1; 2759.8; 13-OCT-2011 11:38:22; Bright; 51.5; 73; 57Gam1And ; 2.26; 13100;occ; 103; 0;50310
/nas3/ENVISAT/GOMOS/GOM_NL__0P/GOM_NL__0PNPDK20111013_131836_000000463107_00297_50311_5416.N1
1; 2759.1; 13-OCT-2011 13:18:36; Bright; 46.5; 73; 57Gam1And ; 2.26; 13100;occ; 93; 0;50311
/nas3/ENVISAT/GOMOS/GOM_NL__0P/GOM_NL__0PNPDK20111013_145516_000005563107_00298_50312_5417.N1
1; 2545.3; 13-OCT-2011 14:55:16; Bright; 39.0; 53; 43Bet And ; 2.05; 3300;occ; 78; 0;50312
2; 2758.5; 13-OCT-2011 14:58:49; Bright; 45.0; 73; 57Gam1And ; 2.26; 13100;occ; 90; 0;50312
3; 3077.0; 13-OCT-2011 15:04:07; Bright; 24.5; 160; 23Gam Per ; 2.93; 4700;occ; 49; 0;50312
/nas3/ENVISAT/GOMOS/GOM_NL__0P/GOM_NL__0PNPDK20111013_163902_000003423107_00299_50313_5418.N1
1; 2757.8; 13-OCT-2011 16:39:02; Bright; 46.5; 73; 57Gam1And ; 2.26; 13100;occ; 93; 0;50313

2; 3076.2; 13-OCT-2011 16:44:21; Bright; 24.5; 160; 23Gam Per ; 2.93; 4700;occ; 49; 0;50313
/nas3/ENVISAT/GOMOS/GOM_NL__0P/GOM_NL__0PNPDK20111013_181916_000003463107_00300_50314_5419.N1
1; 2757.1; 13-OCT-2011 18:19:16; Bright; 45.5; 73; 57Gam1And ; 2.26; 13100;occ; 91; 0;50314
2; 3075.4; 13-OCT-2011 18:24:34; Bright; 28.5; 160; 23Gam Per ; 2.93; 4700;occ; 57; 0;50314
/nas3/ENVISAT/GOMOS/GOM_NL__0P/GOM_NL__0PNPDE20111014_205557_000007713107_00316_50330_6547.N1
1; 2334.7; 14-OCT-2011 20:55:57; Bright; 46.0; 105; 6Bet Ari ; 2.64; 8900;occ; 92; 0;50330
2; 2635.6; 14-OCT-2011 21:00:57; Bright; 45.0; 173; 4Bet Tri ; 3.00; 8900;occ; 90; 0;50330
3; 2747.2; 14-OCT-2011 21:02:49; Bright; 46.0; 73; 57Gam1And ; 2.26; 13100;occ; 92; 0;50330
4; 3063.1; 14-OCT-2011 21:08:05; Bright; 43.5; 160; 23Gam Per ; 2.93; 4700;occ; 87; 0;50330
/nas3/ENVISAT/GOMOS/GOM_NL__0P/GOM_NL__0PNPDE20111014_223610_000007753107_00317_50331_6548.N1
1; 2334.1; 14-OCT-2011 22:36:10; Bright; 47.0; 105; 6Bet Ari ; 2.64; 8900;occ; 94; 0;50331
2; 2634.8; 14-OCT-2011 22:41:11; Bright; 44.5; 173; 4Bet Tri ; 3.00; 8900;occ; 89; 0;50331
3; 3062.3; 14-OCT-2011 22:48:18; Bright; 47.0; 160; 23Gam Per ; 2.93; 4700;occ; 94; 0;50331
/nas3/ENVISAT/GOMOS/GOM_NL__0P/GOM_NL__0PNPDK20111014_010526_000180793107_00304_50318_5421.N1
1;-2941.6; 14-OCT-2011 01:05:26; Bright; 37.0; 160; 23Gam Per ; 2.93; 4700;occ; 74; 0;50318
2;14671.1; 14-OCT-2011 05:58:59; Bright; 26.0; 173; 4Bet Tri ; 3.00; 8900;occ; 52; 0;50321
3;15098.8; 14-OCT-2011 06:06:07; Bright; 39.5; 160; 23Gam Per ; 2.93; 4700;occ; 79; 0;50321
/nas3/ENVISAT/GOMOS/GOM_NL__0P/GOM_NL__0PNPDK20111014_073912_000004713107_00308_50322_5422.N1
1; 2642.2; 14-OCT-2011 07:39:12; Bright; 32.0; 173; 4Bet Tri ; 3.00; 8900;occ; 64; 0;50322
2; 3070.1; 14-OCT-2011 07:46:20; Bright; 43.5; 160; 23Gam Per ; 2.93; 4700;occ; 87; 0;50322
/nas3/ENVISAT/GOMOS/GOM_NL__0P/GOM_NL__0PNPDK20111014_091926_000004713107_00309_50323_5423.N1
1; 2641.5; 14-OCT-2011 09:19:26; Bright; 32.0; 173; 4Bet Tri ; 3.00; 8900;occ; 64; 0;50323
2; 3069.3; 14-OCT-2011 09:26:33; Bright; 43.5; 160; 23Gam Per ; 2.93; 4700;occ; 87; 0;50323
/nas3/ENVISAT/GOMOS/GOM_NL__0P/GOM_NL__0PNPDK20111014_142712_00000433107_00312_50326_5424.N1
1;-2947.7; 14-OCT-2011 14:27:12; Bright; 43.5; 160; 23Gam Per ; 2.93; 4700;occ; 87; 0;50326
/nas3/ENVISAT/GOMOS/GOM_NL__0P/GOM_NL__0PNPDK20111014_155516_000007753107_00313_50327_5425.N1
1; 2336.3; 14-OCT-2011 15:55:16; Bright; 47.0; 105; 6Bet Ari ; 2.64; 8900;occ; 94; 0;50327
2; 2637.8; 14-OCT-2011 16:00:18; Bright; 45.0; 173; 4Bet Tri ; 3.00; 8900;occ; 90; 0;50327
3; 3065.4; 14-OCT-2011 16:07:25; Bright; 46.5; 160; 23Gam Per ; 2.93; 4700;occ; 93; 0;50327
/nas3/ENVISAT/GOMOS/GOM_NL__0P/GOM_NL__0PNPDK20111014_173530_000007763107_00314_50328_5426.N1
1; 2335.8; 14-OCT-2011 17:35:30; Bright; 48.5; 105; 6Bet Ari ; 2.64; 8900;occ; 97; 0;50328
2; 2637.1; 14-OCT-2011 17:40:31; Bright; 45.0; 173; 4Bet Tri ; 3.00; 8900;occ; 90; 0;50328
3; 3064.6; 14-OCT-2011 17:47:38; Bright; 47.5; 160; 23Gam Per ; 2.93; 4700;occ; 95; 0;50328
/nas3/ENVISAT/GOMOS/GOM_NL__0P/GOM_NL__0PNPDK20111014_191543_000007763107_00315_50329_5427.N1
1; 2335.2; 14-OCT-2011 19:15:43; Bright; 47.5; 105; 6Bet Ari ; 2.64; 8900;occ; 95; 0;50329
2; 2636.3; 14-OCT-2011 19:20:44; Bright; 46.5; 173; 4Bet Tri ; 3.00; 8900;occ; 93; 0;50329
3; 3063.8; 14-OCT-2011 19:27:52; Bright; 48.0; 160; 23Gam Per ; 2.93; 4700;occ; 96; 0;50329
/nas3/ENVISAT/GOMOS/GOM_NL__0P/GOM_NL__0PNPDE20111015_001623_000007743107_00318_50332_6549.N1
1; 2333.6; 15-OCT-2011 00:16:23; Bright; 47.0; 105; 6Bet Ari ; 2.64; 8900;occ; 94; 0;50332
2; 2634.1; 15-OCT-2011 00:21:24; Bright; 46.5; 173; 4Bet Tri ; 3.00; 8900;occ; 93; 0;50332
3; 3061.6; 15-OCT-2011 00:28:31; Bright; 47.0; 160; 23Gam Per ; 2.93; 4700;occ; 94; 0;50332
/nas3/ENVISAT/GOMOS/GOM_NL__0P/GOM_NL__0PNPDE20111015_015637_000067863107_00319_50333_6550.N1
1; 2333.1; 15-OCT-2011 01:56:37; Bright; 47.0; 105; 6Bet Ari ; 2.64; 8900;occ; 94; 0;50333
2; 2633.3; 15-OCT-2011 02:01:37; Bright; 47.0; 173; 4Bet Tri ; 3.00; 8900;occ; 94; 0;50333
3; 3060.7; 15-OCT-2011 02:08:44; Bright; 44.5; 160; 23Gam Per ; 2.93; 4700;occ; 89; 0;50333
4; 8346.5; 15-OCT-2011 03:36:50; Bright; 47.0; 105; 6Bet Ari ; 2.64; 8900;occ; 94; 0;50334
5; 8646.8; 15-OCT-2011 03:41:50; Bright; 47.0; 173; 4Bet Tri ; 3.00; 8900;occ; 94; 0;50334
6; 9074.0; 15-OCT-2011 03:48:58; Bright; 46.0; 160; 23Gam Per ; 2.93; 4700;occ; 92; 0;50334
/nas3/ENVISAT/GOMOS/GOM_NL__0P/GOM_NL__0PNPDE20111015_051704_000007743107_00321_50335_6551.N1
1; 2332.2; 15-OCT-2011 05:17:04; Bright; 45.5; 105; 6Bet Ari ; 2.64; 8900;occ; 91; 0;50335
2; 2632.2; 15-OCT-2011 05:22:04; Bright; 46.5; 173; 4Bet Tri ; 3.00; 8900;occ; 93; 0;50335
3; 3059.3; 15-OCT-2011 05:29:11; Bright; 47.0; 160; 23Gam Per ; 2.93; 4700;occ; 94; 0;50335
/nas3/ENVISAT/GOMOS/GOM_NL__0P/GOM_NL__0PNPDE20111015_065717_000007743107_00322_50336_6552.N1
1; 2331.6; 15-OCT-2011 06:57:17; Bright; 46.5; 105; 6Bet Ari ; 2.64; 8900;occ; 93; 0;50336
2; 2631.5; 15-OCT-2011 07:02:17; Bright; 46.0; 173; 4Bet Tri ; 3.00; 8900;occ; 92; 0;50336
3; 3058.6; 15-OCT-2011 07:09:24; Bright; 47.0; 160; 23Gam Per ; 2.93; 4700;occ; 94; 0;50336
/nas3/ENVISAT/GOMOS/GOM_NL__0P/GOM_NL__0PNPDE20111015_202403_000004733107_00330_50344_6553.N1
1; 2625.9; 15-OCT-2011 20:24:03; Bright; 45.5; 173; 4Bet Tri ; 3.00; 8900;occ; 91; 0;50344
2; 3052.3; 15-OCT-2011 20:31:10; Bright; 47.0; 160; 23Gam Per ; 2.93; 4700;occ; 94; 0;50344
/nas3/ENVISAT/GOMOS/GOM_NL__0P/GOM_NL__0PNPDE20111015_220416_000004733107_00331_50345_6554.N1
1; 2625.1; 15-OCT-2011 22:04:16; Bright; 45.5; 173; 4Bet Tri ; 3.00; 8900;occ; 91; 0;50345
2; 3051.6; 15-OCT-2011 22:11:23; Bright; 47.0; 160; 23Gam Per ; 2.93; 4700;occ; 94; 0;50345
/nas3/ENVISAT/GOMOS/GOM_NL__0P/GOM_NL__0PNPDE20111015_234430_000004693107_00332_50346_6555.N1
1; 2624.6; 15-OCT-2011 23:44:30; Bright; 45.0; 173; 4Bet Tri ; 3.00; 8900;occ; 90; 0;50346
2; 3050.7; 15-OCT-2011 23:51:36; Bright; 43.5; 160; 23Gam Per ; 2.93; 4700;occ; 87; 0;50346
/nas3/ENVISAT/GOMOS/GOM_NL__0P/GOM_NL__0PNPDK20111015_083731_000007723107_00323_50337_5428.N1
1; 2331.1; 15-OCT-2011 08:37:31; Bright; 46.0; 105; 6Bet Ari ; 2.64; 8900;occ; 92; 0;50337
2; 2630.8; 15-OCT-2011 08:42:30; Bright; 46.0; 173; 4Bet Tri ; 3.00; 8900;occ; 92; 0;50337

3; 3057.7; 15-OCT-2011 08:49:37; Bright; 45.5; 160; 23Gam Per ; 2.93; 4700;occ; 91; 0;50337
/nas3/ENVISAT/GOMOS/GOM_NL__0P/GOM_NL__0PNPDK20111015_115757_000007733107_00325_50339_5429.N1
1; 2329.9; 15-OCT-2011 11:57:57; Bright; 46.0; 105; 6Bet Ari ; 2.64; 8900;occ; 92; 0;50339
2; 2629.5; 15-OCT-2011 12:02:57; Bright; 46.0; 173; 4Bet Tri ; 3.00; 8900;occ; 92; 0;50339
3; 3056.3; 15-OCT-2011 12:10:04; Bright; 47.0; 160; 23Gam Per ; 2.93; 4700;occ; 94; 0;50339
/nas3/ENVISAT/GOMOS/GOM_NL__0P/GOM_NL__0PNPDK20111015_133811_000007733107_00326_50340_5430.N1
1; 2329.6; 15-OCT-2011 13:38:11; Bright; 46.0; 105; 6Bet Ari ; 2.64; 8900;occ; 92; 0;50340
2; 2628.6; 15-OCT-2011 13:43:10; Bright; 47.5; 173; 4Bet Tri ; 3.00; 8900;occ; 95; 0;50340
3; 3055.6; 15-OCT-2011 13:50:17; Bright; 47.5; 160; 23Gam Per ; 2.93; 4700;occ; 95; 0;50340
/nas3/ENVISAT/GOMOS/GOM_NL__0P/GOM_NL__0PNPDK20111015_152323_000004723107_00327_50341_5431.N1
1; 2628.1; 15-OCT-2011 15:23:23; Bright; 45.5; 173; 4Bet Tri ; 3.00; 8900;occ; 91; 0;50341
2; 3055.0; 15-OCT-2011 15:30:30; Bright; 46.0; 160; 23Gam Per ; 2.93; 4700;occ; 92; 0;50341
/nas3/ENVISAT/GOMOS/GOM_NL__0P/GOM_NL__0PNPDK20111015_170337_000004723107_00328_50342_5432.N1
1; 2627.3; 15-OCT-2011 17:03:37; Bright; 46.0; 173; 4Bet Tri ; 3.00; 8900;occ; 92; 0;50342
2; 3054.1; 15-OCT-2011 17:10:43; Bright; 45.5; 160; 23Gam Per ; 2.93; 4700;occ; 91; 0;50342
/nas3/ENVISAT/GOMOS/GOM_NL__0P/GOM_NL__0PNPDK20111015_184350_000004723107_00329_50343_5433.N1
1; 2626.5; 15-OCT-2011 18:43:50; Bright; 46.0; 173; 4Bet Tri ; 3.00; 8900;occ; 92; 0;50343
2; 3053.3; 15-OCT-2011 18:50:57; Bright; 46.0; 160; 23Gam Per ; 2.93; 4700;occ; 92; 0;50343
/nas3/ENVISAT/GOMOS/GOM_NL__0P/GOM_NL__0PNPDE20111016_012443_000004713107_00333_50347_6556.N1
1; 2623.8; 16-OCT-2011 01:24:43; Bright; 45.0; 173; 4Bet Tri ; 3.00; 8900;occ; 90; 0;50347
2; 3050.0; 16-OCT-2011 01:31:49; Bright; 45.0; 160; 23Gam Per ; 2.93; 4700;occ; 90; 0;50347
/nas3/ENVISAT/GOMOS/GOM_NL__0P/GOM_NL__0PNPDE20111016_030456_000004703107_00334_50348_6557.N1
1; 2623.2; 16-OCT-2011 03:04:56; Bright; 46.5; 173; 4Bet Tri ; 3.00; 8900;occ; 93; 0;50348
2; 3049.3; 16-OCT-2011 03:12:02; Bright; 44.0; 160; 23Gam Per ; 2.93; 4700;occ; 88; 0;50348
/nas3/ENVISAT/GOMOS/GOM_NL__0P/GOM_NL__0PNPDE20111016_044510_000004723107_00335_50349_6558.N1
1; 2622.6; 16-OCT-2011 04:45:10; Bright; 45.5; 173; 4Bet Tri ; 3.00; 8900;occ; 91; 0;50349
2; 3048.7; 16-OCT-2011 04:52:16; Bright; 46.5; 160; 23Gam Per ; 2.93; 4700;occ; 93; 0;50349
/nas3/ENVISAT/GOMOS/GOM_NL__0P/GOM_NL__0PNPDE20111016_062523_000004723107_00336_50350_6559.N1
1; 2622.0; 16-OCT-2011 06:25:23; Bright; 45.0; 173; 4Bet Tri ; 3.00; 8900;occ; 90; 0;50350
2; 3048.0; 16-OCT-2011 06:32:29; Bright; 46.5; 160; 23Gam Per ; 2.93; 4700;occ; 93; 0;50350
/nas3/ENVISAT/GOMOS/GOM_NL__0P/GOM_NL__0PNPDE20111016_213428_00000453107_00345_50359_6560.N1
1;-2972.6; 16-OCT-2011 21:34:28; Bright; 46.0; 160; 23Gam Per ; 2.93; 4700;occ; 92; 0;50359
/nas3/ENVISAT/GOMOS/GOM_NL__0P/GOM_NL__0PNPDE20111016_231441_00000453107_00346_50360_6561.N1
1;-2973.2; 16-OCT-2011 23:14:41; Bright; 46.0; 160; 23Gam Per ; 2.93; 4700;occ; 92; 0;50360
/nas3/ENVISAT/GOMOS/GOM_NL__0P/GOM_NL__0PNPDK20111016_080537_000004693107_00337_50351_5434.N1
1; 2621.4; 16-OCT-2011 08:05:37; Bright; 45.5; 173; 4Bet Tri ; 3.00; 8900;occ; 91; 0;50351
2; 3047.2; 16-OCT-2011 08:12:42; Bright; 44.0; 160; 23Gam Per ; 2.93; 4700;occ; 88; 0;50351
/nas3/ENVISAT/GOMOS/GOM_NL__0P/GOM_NL__0PNPDK20111016_094550_000004713107_00338_50352_5435.N1
1; 2620.8; 16-OCT-2011 09:45:50; Bright; 46.5; 173; 4Bet Tri ; 3.00; 8900;occ; 93; 0;50352
2; 3046.6; 16-OCT-2011 09:52:56; Bright; 45.5; 160; 23Gam Per ; 2.93; 4700;occ; 91; 0;50352
/nas3/ENVISAT/GOMOS/GOM_NL__0P/GOM_NL__0PNPDK20111016_112603_000004723107_00339_50353_5436.N1
1; 2620.2; 16-OCT-2011 11:26:03; Bright; 45.5; 173; 4Bet Tri ; 3.00; 8900;occ; 91; 0;50353
2; 3045.8; 16-OCT-2011 11:33:09; Bright; 46.5; 160; 23Gam Per ; 2.93; 4700;occ; 93; 0;50353
/nas3/ENVISAT/GOMOS/GOM_NL__0P/GOM_NL__0PNPDK20111016_130616_000004723107_00340_50354_5437.N1
1; 2619.4; 16-OCT-2011 13:06:16; Bright; 45.0; 173; 4Bet Tri ; 3.00; 8900;occ; 90; 0;50354
2; 3045.1; 16-OCT-2011 13:13:22; Bright; 47.0; 160; 23Gam Per ; 2.93; 4700;occ; 94; 0;50354
/nas3/ENVISAT/GOMOS/GOM_NL__0P/GOM_NL__0PNPDK20111016_144630_000004713107_00341_50355_5438.N1
1; 2618.8; 16-OCT-2011 14:46:30; Bright; 44.5; 173; 4Bet Tri ; 3.00; 8900;occ; 89; 0;50355
2; 3044.4; 16-OCT-2011 14:53:35; Bright; 46.0; 160; 23Gam Per ; 2.93; 4700;occ; 92; 0;50355
/nas3/ENVISAT/GOMOS/GOM_NL__0P/GOM_NL__0PNPDK20111016_162643_000004723107_00342_50356_5439.N1
1; 2618.3; 16-OCT-2011 16:26:43; Bright; 45.0; 173; 4Bet Tri ; 3.00; 8900;occ; 90; 0;50356
2; 3043.6; 16-OCT-2011 16:33:48; Bright; 47.0; 160; 23Gam Per ; 2.93; 4700;occ; 94; 0;50356
/nas3/ENVISAT/GOMOS/GOM_NL__0P/GOM_NL__0PNPDK20111016_180656_000004723107_00343_50357_5440.N1
1; 2617.5; 16-OCT-2011 18:06:56; Bright; 46.5; 173; 4Bet Tri ; 3.00; 8900;occ; 93; 0;50357
2; 3042.9; 16-OCT-2011 18:14:02; Bright; 47.0; 160; 23Gam Per ; 2.93; 4700;occ; 94; 0;50357
/nas3/ENVISAT/GOMOS/GOM_NL__0P/GOM_NL__0PNPDK20111016_195415_00000463107_00344_50358_5441.N1
1;-2971.9; 16-OCT-2011 19:54:15; Bright; 46.5; 160; 23Gam Per ; 2.93; 4700;occ; 93; 0;50358
/nas3/ENVISAT/GOMOS/GOM_NL__0P/GOM_NL__0PNPDE20111017_005455_00000463107_00347_50361_6562.N1
1;-2974.0; 17-OCT-2011 00:54:55; Bright; 46.5; 160; 23Gam Per ; 2.93; 4700;occ; 93; 0;50361
/nas3/ENVISAT/GOMOS/GOM_NL__0P/GOM_NL__0PNPDE20111017_023508_00000423107_00348_50362_6563.N1
1;-2974.7; 17-OCT-2011 02:35:08; Bright; 43.0; 160; 23Gam Per ; 2.93; 4700;occ; 86; 0;50362
/nas3/ENVISAT/GOMOS/GOM_NL__0P/GOM_NL__0PNPDE20111017_041521_00000453107_00349_50363_6564.N1
1;-2975.5; 17-OCT-2011 04:15:21; Bright; 45.5; 160; 23Gam Per ; 2.93; 4700;occ; 91; 0;50363
/nas3/ENVISAT/GOMOS/GOM_NL__0P/GOM_NL__0PNPDE20111017_055534_00000453107_00350_50364_6565.N1
1;-2976.2; 17-OCT-2011 05:55:34; Bright; 45.5; 160; 23Gam Per ; 2.93; 4700;occ; 91; 0;50364
/nas3/ENVISAT/GOMOS/GOM_NL__0P/GOM_NL__0PNPDE20111017_223747_00000453107_00360_50374_6567.N1
1;-2983.4; 17-OCT-2011 22:37:47; Bright; 45.5; 160; 23Gam Per ; 2.93; 4700;occ; 91; 0;50374
/nas3/ENVISAT/GOMOS/GOM_NL__0P/GOM_NL__0PNPDK20111017_073548_00000453107_00351_50365_5442.N1

1;-2976.8; 17-OCT-2011 07:35:48; Bright; 46.0; 160; 23Gam Per ; 2.93; 4700;occ; 92; 0;50365
/nas3/ENVISAT/GOMOS/GOM_NL__0P/GOM_NL__0PNPDK20111017_091601_000000453107_00352_50366_5443.N1
1;-2977.5; 17-OCT-2011 09:16:01; Bright; 45.5; 160; 23Gam Per ; 2.93; 4700;occ; 91; 0;50366
/nas3/ENVISAT/GOMOS/GOM_NL__0P/GOM_NL__0PNPDK20111017_105614_000000463107_00353_50367_5444.N1
1;-2978.3; 17-OCT-2011 10:56:14; Bright; 46.5; 160; 23Gam Per ; 2.93; 4700;occ; 93; 0;50367
/nas3/ENVISAT/GOMOS/GOM_NL__0P/GOM_NL__0PNPDK20111017_123627_000000463107_00354_50368_5445.N1
1;-2979.1; 17-OCT-2011 12:36:27; Bright; 46.5; 160; 23Gam Per ; 2.93; 4700;occ; 93; 0;50368
/nas3/ENVISAT/GOMOS/GOM_NL__0P/GOM_NL__0PNPDK20111017_141641_000000453107_00355_50369_5446.N1
1;-2979.8; 17-OCT-2011 14:16:41; Bright; 46.0; 160; 23Gam Per ; 2.93; 4700;occ; 92; 0;50369
/nas3/ENVISAT/GOMOS/GOM_NL__0P/GOM_NL__0PNPDK20111017_155654_000000453107_00356_50370_5447.N1
1;-2980.6; 17-OCT-2011 15:56:54; Bright; 45.5; 160; 23Gam Per ; 2.93; 4700;occ; 91; 0;50370
/nas3/ENVISAT/GOMOS/GOM_NL__0P/GOM_NL__0PNPDK20111017_173707_000000453107_00357_50371_5448.N1
1;-2981.4; 17-OCT-2011 17:37:07; Bright; 45.5; 160; 23Gam Per ; 2.93; 4700;occ; 91; 0;50371
/nas3/ENVISAT/GOMOS/GOM_NL__0P/GOM_NL__0PNPDK20111017_191720_000000463107_00358_50372_5449.N1
1;-2982.0; 17-OCT-2011 19:17:20; Bright; 46.5; 160; 23Gam Per ; 2.93; 4700;occ; 93; 0;50372
/nas3/ENVISAT/GOMOS/GOM_NL__0P/GOM_NL__0PNPDE20111018_001800_000000443107_00361_50375_6568.N1
1;-2984.0; 18-OCT-2011 00:18:00; Bright; 45.0; 160; 23Gam Per ; 2.93; 4700;occ; 90; 0;50375
/nas3/ENVISAT/GOMOS/GOM_NL__0P/GOM_NL__0PNPDE20111018_015813_000000453107_00362_50376_6569.N1
1;-2984.8; 18-OCT-2011 01:58:13; Bright; 46.0; 160; 23Gam Per ; 2.93; 4700;occ; 92; 0;50376
/nas3/ENVISAT/GOMOS/GOM_NL__0P/GOM_NL__0PNPDE20111018_033827_000000443107_00363_50377_6570.N1
1;-2985.5; 18-OCT-2011 03:38:27; Bright; 45.0; 160; 23Gam Per ; 2.93; 4700;occ; 90; 0;50377
/nas3/ENVISAT/GOMOS/GOM_NL__0P/GOM_NL__0PNPDE20111018_051840_000000453107_00364_50378_6571.N1
1;-2986.3; 18-OCT-2011 05:18:40; Bright; 45.5; 160; 23Gam Per ; 2.93; 4700;occ; 91; 0;50378
/nas3/ENVISAT/GOMOS/GOM_NL__0P/GOM_NL__0PNPDE20111018_065853_000000443107_00365_50379_6572.N1
1;-2986.9; 18-OCT-2011 06:58:53; Bright; 45.0; 160; 23Gam Per ; 2.93; 4700;occ; 90; 0;50379
/nas3/ENVISAT/GOMOS/GOM_NL__0P/GOM_NL__0PNPDK20111018_083906_000000443107_00366_50380_5450.N1
1;-2987.6; 18-OCT-2011 08:39:06; Bright; 44.5; 160; 23Gam Per ; 2.93; 4700;occ; 89; 0;50380
/nas3/ENVISAT/GOMOS/GOM_NL__0P/GOM_NL__0PNPDK20111018_115933_000000673107_00368_50382_5451.N1
1;-2988.9; 18-OCT-2011 11:59:33; Bright; 67.5; 160; 23Gam Per ; 2.93; 4700;occ; 135; 0;50382
/nas3/ENVISAT/GOMOS/GOM_NL__0P/GOM_NL__0PNPDK20111018_133946_000000453107_00369_50383_5452.N1
1;-2989.7; 18-OCT-2011 13:39:46; Bright; 45.5; 160; 23Gam Per ; 2.93; 4700;occ; 91; 0;50383
/nas3/ENVISAT/GOMOS/GOM_NL__0P/GOM_NL__0PNPDK20111018_101920_000000433107_00367_50381_5454.N1
1;-2988.3; 18-OCT-2011 10:19:20; Bright; 44.0; 160; 23Gam Per ; 2.93; 4700;occ; 88; 0;50381
/nas3/ENVISAT/GOMOS/GOM_NL__0P/GOM_NL__0PNPDK20111018_101920_000000433107_00367_50381_5739.N1
1;-2988.3; 18-OCT-2011 10:19:20; Bright; 44.0; 160; 23Gam Per ; 2.93; 4700;occ; 88; 0;50381
/nas3/ENVISAT/GOMOS/GOM_NL__0P/GOM_NL__0PNPDE20111023_202058_000000603108_00014_50459_6573.N1
1; 2035.9; 23-OCT-2011 20:20:58; Bright; 60.5; 94; 92Alp Cet ; 2.53; 3100;occ; 121; 0;50459
/nas3/ENVISAT/GOMOS/GOM_NL__0P/GOM_NL__0PNPDE20111023_212637_000021363108_00014_50459_6574.N1
1; -39.8; 23-OCT-2011 21:26:37; Dark ; 65.5; 132; 15Rho Pup ; 2.80; 6900;occ; 131; 0;50459
2; 249.2; 23-OCT-2011 21:31:26; Dark ; 69.0; 88; 31Eta Cma ; 2.45; 20000;occ; 138; 0;50460
3; 787.7; 23-OCT-2011 21:40:24; Dark ; 61.5; 108; Alp Col ; 2.65; 15200;occ; 123; 0;50460
4; 2035.6; 23-OCT-2011 22:01:12; Bright; 61.0; 94; 92Alp Cet ; 2.53; 3100;occ; 122; 0;50460
/nas3/ENVISAT/GOMOS/GOM_NL__0P/GOM_NL__0PNPDE20111023_230652_000021333108_00015_50460_6575.N1
1; -38.1; 23-OCT-2011 23:06:52; Dark ; 63.0; 132; 15Rho Pup ; 2.80; 6900;occ; 126; 0;50460
2; 251.0; 23-OCT-2011 23:11:41; Dark ; 65.5; 88; 31Eta Cma ; 2.45; 20000;occ; 131; 0;50461
3; 788.8; 23-OCT-2011 23:20:39; Dark ; 64.5; 108; Alp Col ; 2.65; 15200;occ; 129; 0;50461
4; 2034.9; 23-OCT-2011 23:41:25; Bright; 61.0; 94; 92Alp Cet ; 2.53; 3100;occ; 122; 0;50461
/nas3/ENVISAT/GOMOS/GOM_NL__0P/GOM_NL__0PNPDK20111023_094936_000000603108_00008_50453_5455.N1
1; 237.1; 23-OCT-2011 09:49:36; Dark ; 63.5; 88; 31Eta Cma ; 2.45; 20000;occ; 127; 0;50453
2; 779.1; 23-OCT-2011 09:58:38; Dark ; 64.5; 108; Alp Col ; 2.65; 15200;occ; 129; 0;50453
/nas3/ENVISAT/GOMOS/GOM_NL__0P/GOM_NL__0PNPDK20111023_101938_000000583108_00008_50453_5456.N1
1; 2039.2; 23-OCT-2011 10:19:38; Bright; 58.5; 94; 92Alp Cet ; 2.53; 3100;occ; 117; 0;50453
/nas3/ENVISAT/GOMOS/GOM_NL__0P/GOM_NL__0PNPDK20111023_145023_0000006033108_00011_50456_5458.N1
1; 242.4; 23-OCT-2011 14:50:23; Dark ; 66.5; 88; 31Eta Cma ; 2.45; 20000;occ; 133; 0;50456
2; 782.9; 23-OCT-2011 14:59:23; Dark ; 62.5; 108; Alp Col ; 2.65; 15200;occ; 125; 0;50456
/nas3/ENVISAT/GOMOS/GOM_NL__0P/GOM_NL__0PNPDK20111023_152018_000048233108_00011_50456_5459.N1
1; 2037.7; 23-OCT-2011 15:20:18; Bright; 59.0; 94; 92Alp Cet ; 2.53; 3100;occ; 118; 0;50456
2; 5969.5; 23-OCT-2011 16:25:50; Dark ; 64.0; 132; 15Rho Pup ; 2.80; 6900;occ; 128; 0;50456
3; 6258.1; 23-OCT-2011 16:30:39; Dark ; 69.0; 88; 31Eta Cma ; 2.45; 20000;occ; 138; 0;50457
4; 6798.2; 23-OCT-2011 16:39:39; Dark ; 63.0; 108; Alp Col ; 2.65; 15200;occ; 126; 0;50457
/nas3/ENVISAT/GOMOS/GOM_NL__0P/GOM_NL__0PNPDK20111023_170032_000048253108_00012_50457_5460.N1
1; 2037.1; 23-OCT-2011 17:00:32; Bright; 59.5; 94; 92Alp Cet ; 2.53; 3100;occ; 119; 0;50457
2; 5971.1; 23-OCT-2011 18:06:06; Dark ; 61.5; 132; 15Rho Pup ; 2.80; 6900;occ; 123; 0;50457
3; 6259.9; 23-OCT-2011 18:10:54; Dark ; 66.5; 88; 31Eta Cma ; 2.45; 20000;occ; 133; 0;50458
4; 6799.2; 23-OCT-2011 18:19:54; Dark ; 63.0; 108; Alp Col ; 2.65; 15200;occ; 126; 0;50458
/nas3/ENVISAT/GOMOS/GOM_NL__0P/GOM_NL__0PNPDK20111023_184045_000048273108_00013_50458_5461.N1
1; 2036.5; 23-OCT-2011 18:40:45; Bright; 59.5; 94; 92Alp Cet ; 2.53; 3100;occ; 119; 0;50458
2; 5972.7; 23-OCT-2011 19:46:21; Dark ; 62.0; 132; 15Rho Pup ; 2.80; 6900;occ; 124; 0;50458

```

3; 6261.5; 23-OCT-2011 19:51:10; Dark ; 68.0; 88; 31Eta CMA ; 2.45; 20000;occ; 136; 0;50459
4; 6800.7; 23-OCT-2011 20:00:09; Dark ; 63.0; 108; Alp Col ; 2.65; 15200;occ; 126; 0;50459
/nas3/ENVISAT/GOMOS/GOM_NL__0P/GOM_NL__0PNPDE20111024_004708_000021313108_00016_50461_6576.N1
1; -36.4; 24-OCT-2011 00:47:08; Dark ; 62.0; 132; 15Rho Pup ; 2.80; 6900;occ; 124; 0;50461
2; 252.7; 24-OCT-2011 00:51:57; Dark ; 66.0; 88; 31Eta CMA ; 2.45; 20000;occ; 132; 0;50462
3; 790.0; 24-OCT-2011 01:00:54; Dark ; 64.5; 108; Alp Col ; 2.65; 15200;occ; 129; 0;50462
4; 2034.5; 24-OCT-2011 01:21:39; Bright; 61.0; 94; 92Alp Cet ; 2.53; 3100;occ; 122; 0;50462
/nas3/ENVISAT/GOMOS/GOM_NL__0P/GOM_NL__0PNPDE20111024_040739_000021233108_00018_50463_6578.N1
1; -32.8; 24-OCT-2011 04:07:39; Dark ; 64.5; 132; 15Rho Pup ; 2.80; 6900;occ; 129; 0;50463
2; 256.4; 24-OCT-2011 04:12:29; Dark ; 69.0; 88; 31Eta CMA ; 2.45; 20000;occ; 138; 0;50464
3; 792.5; 24-OCT-2011 04:21:25; Dark ; 63.0; 108; Alp Col ; 2.65; 15200;occ; 126; 0;50464
4; 2033.8; 24-OCT-2011 04:42:06; Bright; 57.0; 94; 92Alp Cet ; 2.53; 3100;occ; 114; 0;50464
/nas3/ENVISAT/GOMOS/GOM_NL__0P/GOM_NL__0PNPDE20111024_054755_000021243108_00019_50464_6579.N1
1; -31.2; 24-OCT-2011 05:47:55; Dark ; 63.5; 132; 15Rho Pup ; 2.80; 6900;occ; 127; 0;50464
2; 258.1; 24-OCT-2011 05:52:44; Dark ; 67.0; 88; 31Eta CMA ; 2.45; 20000;occ; 134; 0;50465
3; 793.6; 24-OCT-2011 06:01:40; Dark ; 64.0; 108; Alp Col ; 2.65; 15200;occ; 128; 0;50465
4; 2033.3; 24-OCT-2011 06:22:19; Bright; 59.5; 94; 92Alp Cet ; 2.53; 3100;occ; 119; 0;50465
/nas3/ENVISAT/GOMOS/GOM_NL__0P/GOM_NL__0PNPDE20111024_210453_000012273108_00029_50474_6580.N1
1; 861.2; 24-OCT-2011 21:04:53; Dark ; 65.5; 108; Alp Col ; 2.65; 15200;occ; 131; 114;50474
2; 2029.1; 24-OCT-2011 21:24:21; Bright; 60.0; 94; 92Alp Cet ; 2.53; 3100;occ; 120; 0;50474
/nas3/ENVISAT/GOMOS/GOM_NL__0P/GOM_NL__0PNPDE20111024_223031_000021013108_00029_50474_6581.N1
1; -14.2; 24-OCT-2011 22:30:31; Dark ; 64.0; 132; 15Rho Pup ; 2.80; 6900;occ; 128; 0;50474
2; 275.7; 24-OCT-2011 22:35:21; Dark ; 69.5; 88; 31Eta CMA ; 2.45; 20000;occ; 139; 0;50475
3; 805.3; 24-OCT-2011 22:44:11; Dark ; 64.0; 108; Alp Col ; 2.65; 15200;occ; 128; 0;50475
4; 2028.6; 24-OCT-2011 23:04:34; Bright; 58.5; 94; 92Alp Cet ; 2.53; 3100;occ; 117; 0;50475
/nas3/ENVISAT/GOMOS/GOM_NL__0P/GOM_NL__0PNPDK20111024_072811_000008863108_00020_50465_5462.N1
1; -29.5; 24-OCT-2011 07:28:11; Dark ; 64.5; 132; 15Rho Pup ; 2.80; 6900;occ; 129; 0;50465
2; 259.9; 24-OCT-2011 07:33:00; Dark ; 68.0; 88; 31Eta CMA ; 2.45; 20000;occ; 136; 0;50466
3; 794.7; 24-OCT-2011 07:41:55; Dark ; 62.5; 108; Alp Col ; 2.65; 15200;occ; 125; 0;50466
/nas3/ENVISAT/GOMOS/GOM_NL__0P/GOM_NL__0PNPDK20111024_080233_000048383108_00021_50466_5463.N1
1; 2032.8; 24-OCT-2011 08:02:33; Bright; 59.5; 94; 92Alp Cet ; 2.53; 3100;occ; 119; 0;50466
2; 5986.1; 24-OCT-2011 09:08:26; Dark ; 65.5; 132; 15Rho Pup ; 2.80; 6900;occ; 131; 0;50466
3; 6275.6; 24-OCT-2011 09:13:16; Dark ; 68.5; 88; 31Eta CMA ; 2.45; 20000;occ; 137; 0;50467
4; 6810.1; 24-OCT-2011 09:22:10; Dark ; 61.5; 108; Alp Col ; 2.65; 15200;occ; 123; 0;50467
/nas3/ENVISAT/GOMOS/GOM_NL__0P/GOM_NL__0PNPDK20111024_094246_000048433108_00022_50467_5464.N1
1; 2032.3; 24-OCT-2011 09:42:46; Bright; 60.0; 94; 92Alp Cet ; 2.53; 3100;occ; 120; 0;50467
2; 5987.7; 24-OCT-2011 10:48:42; Dark ; 63.0; 132; 15Rho Pup ; 2.80; 6900;occ; 126; 0;50467
3; 6277.4; 24-OCT-2011 10:53:31; Dark ; 68.0; 88; 31Eta CMA ; 2.45; 20000;occ; 136; 0;50468
4; 6811.1; 24-OCT-2011 11:02:25; Dark ; 64.5; 108; Alp Col ; 2.65; 15200;occ; 129; 0;50468
/nas3/ENVISAT/GOMOS/GOM_NL__0P/GOM_NL__0PNPDK20111024_112300_000048453108_00023_50468_5465.N1
1; 2031.8; 24-OCT-2011 11:23:00; Bright; 59.5; 94; 92Alp Cet ; 2.53; 3100;occ; 119; 0;50468
2; 5989.5; 24-OCT-2011 12:28:57; Dark ; 66.5; 132; 15Rho Pup ; 2.80; 6900;occ; 133; 0;50468
3; 6278.9; 24-OCT-2011 12:33:47; Dark ; 68.5; 88; 31Eta CMA ; 2.45; 20000;occ; 137; 0;50469
4; 6812.4; 24-OCT-2011 12:42:40; Dark ; 64.5; 108; Alp Col ; 2.65; 15200;occ; 129; 0;50469
/nas3/ENVISAT/GOMOS/GOM_NL__0P/GOM_NL__0PNPDK20111024_130313_000048433108_00024_50469_5466.N1
1; 2031.4; 24-OCT-2011 13:03:13; Bright; 60.5; 94; 92Alp Cet ; 2.53; 3100;occ; 121; 0;50469
2; 5991.3; 24-OCT-2011 14:09:13; Dark ; 63.5; 132; 15Rho Pup ; 2.80; 6900;occ; 127; 0;50469
3; 6280.7; 24-OCT-2011 14:14:03; Dark ; 66.0; 88; 31Eta CMA ; 2.45; 20000;occ; 132; 0;50470
4; 6813.6; 24-OCT-2011 14:22:55; Dark ; 61.5; 108; Alp Col ; 2.65; 15200;occ; 123; 0;50470
/nas3/ENVISAT/GOMOS/GOM_NL__0P/GOM_NL__0PNPDK20111024_144327_000048463108_00025_50470_5467.N1
1; 2031.0; 24-OCT-2011 14:43:27; Bright; 59.0; 94; 92Alp Cet ; 2.53; 3100;occ; 118; 0;50470
2; 5993.0; 24-OCT-2011 15:49:29; Dark ; 66.5; 132; 15Rho Pup ; 2.80; 6900;occ; 133; 0;50470
3; 6282.7; 24-OCT-2011 15:54:18; Dark ; 63.5; 88; 31Eta CMA ; 2.45; 20000;occ; 127; 0;50471
4; 6814.8; 24-OCT-2011 16:03:11; Dark ; 62.5; 108; Alp Col ; 2.65; 15200;occ; 125; 0;50471
/nas3/ENVISAT/GOMOS/GOM_NL__0P/GOM_NL__0PNPDK20111024_162341_000048483108_00026_50471_5468.N1
1; 2030.8; 24-OCT-2011 16:23:41; Bright; 60.0; 94; 92Alp Cet ; 2.53; 3100;occ; 120; 0;50471
2; 5994.7; 24-OCT-2011 17:29:45; Dark ; 65.0; 132; 15Rho Pup ; 2.80; 6900;occ; 130; 0;50471
3; 6284.6; 24-OCT-2011 17:34:34; Dark ; 65.5; 88; 31Eta CMA ; 2.45; 20000;occ; 131; 0;50472
4; 6816.1; 24-OCT-2011 17:43:26; Dark ; 63.0; 108; Alp Col ; 2.65; 15200;occ; 126; 0;50472
/nas3/ENVISAT/GOMOS/GOM_NL__0P/GOM_NL__0PNPDK20111024_180354_000048493108_00027_50472_5469.N1
1; 2030.1; 24-OCT-2011 18:03:54; Bright; 60.0; 94; 92Alp Cet ; 2.53; 3100;occ; 120; 0;50472
2; 5996.4; 24-OCT-2011 19:10:00; Dark ; 65.0; 132; 15Rho Pup ; 2.80; 6900;occ; 130; 0;50472
3; 6286.3; 24-OCT-2011 19:14:50; Dark ; 69.0; 88; 31Eta CMA ; 2.45; 20000;occ; 138; 0;50473
4; 6817.1; 24-OCT-2011 19:23:41; Dark ; 62.5; 108; Alp Col ; 2.65; 15200;occ; 125; 0;50473
/nas3/ENVISAT/GOMOS/GOM_NL__0P/GOM_NL__0PNPDK20111024_194407_000048533108_00028_50473_5470.N1
1; 2029.6; 24-OCT-2011 19:44:07; Bright; 62.5; 94; 92Alp Cet ; 2.53; 3100;occ; 125; 0;50473
2; 5998.0; 24-OCT-2011 20:50:16; Dark ; 65.0; 132; 15Rho Pup ; 2.80; 6900;occ; 130; 0;50473
3; 6287.8; 24-OCT-2011 20:55:06; Dark ; 70.0; 88; 31Eta CMA ; 2.45; 20000;occ; 140; 0;50474

```

```

4; 6818.2; 24-OCT-2011 21:03:56; Dark ; 65.0; 108; Alp Col ; 2.65; 15200;occ; 130; 0;50474
/nas3/ENVISAT/GOMOS/GOM_NL__0P/GOM_NL__0PNPDE20111025_001047_000021023108_00030_50475_6582.N1
1; -12.4; 25-OCT-2011 00:10:47; Dark ; 63.0; 132; 15Rho Pup ; 2.80; 6900;occ; 126; 0;50475
2; 277.4; 25-OCT-2011 00:15:37; Dark ; 67.5; 88; 31Eta CMA ; 2.45; 20000;occ; 135; 0;50476
3; 806.4; 25-OCT-2011 00:24:26; Dark ; 64.5; 108; Alp Col ; 2.65; 15200;occ; 129; 0;50476
4; 2028.1; 25-OCT-2011 00:44:48; Bright; 62.0; 94; 92Alp Cet ; 2.53; 3100;occ; 124; 0;50476
/nas3/ENVISAT/GOMOS/GOM_NL__0P/GOM_NL__0PNPDE20111025_015103_000021003108_00031_50476_6583.N1
1; -10.7; 25-OCT-2011 01:51:03; Dark ; 66.0; 132; 15Rho Pup ; 2.80; 6900;occ; 132; 0;50476
2; 279.2; 25-OCT-2011 01:55:53; Dark ; 67.5; 88; 31Eta CMA ; 2.45; 20000;occ; 135; 0;50477
3; 807.8; 25-OCT-2011 02:04:41; Dark ; 64.0; 108; Alp Col ; 2.65; 15200;occ; 128; 0;50477
4; 2027.7; 25-OCT-2011 02:25:01; Bright; 62.5; 94; 92Alp Cet ; 2.53; 3100;occ; 125; 0;50477
/nas3/ENVISAT/GOMOS/GOM_NL__0P/GOM_NL__0PNPDE20111025_033118_000020953108_00032_50477_6584.N1
1; -8.9; 25-OCT-2011 03:31:18; Dark ; 67.0; 132; 15Rho Pup ; 2.80; 6900;occ; 134; 0;50477
2; 281.0; 25-OCT-2011 03:36:08; Dark ; 69.0; 88; 31Eta CMA ; 2.45; 20000;occ; 138; 0;50478
3; 809.0; 25-OCT-2011 03:44:56; Dark ; 63.5; 108; Alp Col ; 2.65; 15200;occ; 127; 0;50478
4; 2027.2; 25-OCT-2011 04:05:15; Bright; 59.5; 94; 92Alp Cet ; 2.53; 3100;occ; 119; 0;50478
/nas3/ENVISAT/GOMOS/GOM_NL__0P/GOM_NL__0PNPDE20111025_051134_000021073108_00033_50478_6585.N1
1; -7.2; 25-OCT-2011 05:11:34; Dark ; 66.0; 132; 15Rho Pup ; 2.80; 6900;occ; 132; 0;50478
2; 282.6; 25-OCT-2011 05:16:24; Dark ; 68.0; 88; 31Eta CMA ; 2.45; 20000;occ; 136; 0;50479
3; 810.2; 25-OCT-2011 05:25:12; Dark ; 64.5; 108; Alp Col ; 2.65; 15200;occ; 129; 0;50479
4; 2026.8; 25-OCT-2011 05:45:28; Bright; 73.0; 94; 92Alp Cet ; 2.53; 3100;occ; 146; 0;50479
/nas3/ENVISAT/GOMOS/GOM_NL__0P/GOM_NL__0PNPDE20111025_215411_000008733108_00044_50489_6586.N1
1; 10.4; 25-OCT-2011 21:54:11; Dark ; 63.5; 132; 15Rho Pup ; 2.80; 6900;occ; 127; 0;50489
2; 300.5; 25-OCT-2011 21:59:01; Dark ; 68.0; 88; 31Eta CMA ; 2.45; 20000;occ; 136; 0;50489
3; 821.7; 25-OCT-2011 22:07:43; Dark ; 62.5; 108; Alp Col ; 2.65; 15200;occ; 125; 0;50489
/nas3/ENVISAT/GOMOS/GOM_NL__0P/GOM_NL__0PNPDE20111025_233427_000008723108_00045_50490_6587.N1
1; 12.1; 25-OCT-2011 23:34:27; Dark ; 65.0; 132; 15Rho Pup ; 2.80; 6900;occ; 130; 0;50490
2; 302.3; 25-OCT-2011 23:39:17; Dark ; 70.5; 88; 31Eta CMA ; 2.45; 20000;occ; 141; 0;50490
3; 822.6; 25-OCT-2011 23:47:57; Dark ; 62.0; 108; Alp Col ; 2.65; 15200;occ; 124; 0;50490
/nas3/ENVISAT/GOMOS/GOM_NL__0P/GOM_NL__0PNPDK20111025_065150_000008803108_00034_50479_5471.N1
1; -5.4; 25-OCT-2011 06:51:50; Dark ; 66.5; 132; 15Rho Pup ; 2.80; 6900;occ; 133; 0;50479
2; 284.6; 25-OCT-2011 06:56:40; Dark ; 69.5; 88; 31Eta CMA ; 2.45; 20000;occ; 139; 0;50480
3; 811.4; 25-OCT-2011 07:05:27; Dark ; 64.0; 108; Alp Col ; 2.65; 15200;occ; 128; 0;50480
/nas3/ENVISAT/GOMOS/GOM_NL__0P/GOM_NL__0PNPDK20111025_072542_000048613108_00035_50480_5472.N1
1; 2026.4; 25-OCT-2011 07:25:42; Bright; 64.0; 94; 92Alp Cet ; 2.53; 3100;occ; 128; 0;50480
2; 6010.4; 25-OCT-2011 08:32:06; Dark ; 67.0; 132; 15Rho Pup ; 2.80; 6900;occ; 134; 0;50480
3; 6300.4; 25-OCT-2011 08:36:56; Dark ; 69.5; 88; 31Eta CMA ; 2.45; 20000;occ; 139; 0;50481
4; 6826.4; 25-OCT-2011 08:45:42; Dark ; 61.5; 108; Alp Col ; 2.65; 15200;occ; 123; 0;50481
/nas3/ENVISAT/GOMOS/GOM_NL__0P/GOM_NL__0PNPDK20111025_090555_000048643108_00036_50481_5473.N1
1; 2026.1; 25-OCT-2011 09:05:55; Bright; 60.0; 94; 92Alp Cet ; 2.53; 3100;occ; 120; 0;50481
2; 6012.1; 25-OCT-2011 10:12:21; Dark ; 66.0; 132; 15Rho Pup ; 2.80; 6900;occ; 132; 0;50481
3; 6302.1; 25-OCT-2011 10:17:11; Dark ; 71.5; 88; 31Eta CMA ; 2.45; 20000;occ; 143; 0;50482
4; 6827.4; 25-OCT-2011 10:25:57; Dark ; 63.0; 108; Alp Col ; 2.65; 15200;occ; 126; 0;50482
/nas3/ENVISAT/GOMOS/GOM_NL__0P/GOM_NL__0PNPDK20111025_104609_000048653108_00037_50482_5474.N1
1; 2025.6; 25-OCT-2011 10:46:09; Bright; 56.5; 94; 92Alp Cet ; 2.53; 3100;occ; 113; 0;50482
2; 6013.8; 25-OCT-2011 11:52:37; Dark ; 66.5; 132; 15Rho Pup ; 2.80; 6900;occ; 133; 0;50482
3; 6303.9; 25-OCT-2011 11:57:27; Dark ; 66.5; 88; 31Eta CMA ; 2.45; 20000;occ; 133; 0;50483
4; 6828.5; 25-OCT-2011 12:06:12; Dark ; 63.0; 108; Alp Col ; 2.65; 15200;occ; 126; 0;50483
/nas3/ENVISAT/GOMOS/GOM_NL__0P/GOM_NL__0PNPDK20111025_122622_000048673108_00038_50483_5475.N1
1; 2025.2; 25-OCT-2011 12:26:22; Bright; 63.0; 94; 92Alp Cet ; 2.53; 3100;occ; 126; 0;50483
2; 6015.4; 25-OCT-2011 13:32:53; Dark ; 65.5; 132; 15Rho Pup ; 2.80; 6900;occ; 131; 0;50484
3; 6305.7; 25-OCT-2011 13:37:43; Dark ; 69.0; 88; 31Eta CMA ; 2.45; 20000;occ; 138; 0;50484
4; 6829.8; 25-OCT-2011 13:46:27; Dark ; 62.5; 108; Alp Col ; 2.65; 15200;occ; 125; 0;50484
/nas3/ENVISAT/GOMOS/GOM_NL__0P/GOM_NL__0PNPDK20111025_151308_000008773108_00040_50485_5476.N1
1; 3.3; 25-OCT-2011 15:13:08; Dark ; 66.0; 132; 15Rho Pup ; 2.80; 6900;occ; 132; 0;50485
2; 293.4; 25-OCT-2011 15:17:58; Dark ; 70.5; 88; 31Eta CMA ; 2.45; 20000;occ; 141; 0;50485
3; 816.9; 25-OCT-2011 15:26:42; Dark ; 64.0; 108; Alp Col ; 2.65; 15200;occ; 128; 0;50485
/nas3/ENVISAT/GOMOS/GOM_NL__0P/GOM_NL__0PNPDK20111025_165324_000008753108_00041_50486_5477.N1
1; 5.0; 25-OCT-2011 16:53:24; Dark ; 66.5; 132; 15Rho Pup ; 2.80; 6900;occ; 133; 0;50486
2; 295.3; 25-OCT-2011 16:58:14; Dark ; 69.5; 88; 31Eta CMA ; 2.45; 20000;occ; 139; 0;50486
3; 818.2; 25-OCT-2011 17:06:57; Dark ; 62.0; 108; Alp Col ; 2.65; 15200;occ; 124; 0;50486
/nas3/ENVISAT/GOMOS/GOM_NL__0P/GOM_NL__0PNPDK20111025_183340_000008763108_00042_50487_5478.N1
1; 6.7; 25-OCT-2011 18:33:40; Dark ; 66.0; 132; 15Rho Pup ; 2.80; 6900;occ; 132; 0;50487
2; 297.0; 25-OCT-2011 18:38:30; Dark ; 70.5; 88; 31Eta CMA ; 2.45; 20000;occ; 141; 0;50487
3; 819.3; 25-OCT-2011 18:47:12; Dark ; 63.5; 108; Alp Col ; 2.65; 15200;occ; 127; 0;50487
/nas3/ENVISAT/GOMOS/GOM_NL__0P/GOM_NL__0PNPDK20111025_201356_000008733108_00043_50488_5479.N1
1; 8.6; 25-OCT-2011 20:13:56; Dark ; 64.0; 132; 15Rho Pup ; 2.80; 6900;occ; 128; 0;50488
2; 298.8; 25-OCT-2011 20:18:46; Dark ; 68.0; 88; 31Eta CMA ; 2.45; 20000;occ; 136; 0;50488

```

3; 820.5; 25-OCT-2011 20:27:27; Dark ; 62.0; 108; Alp Col ; 2.65; 15200;occ; 124; 0;50488
/nas3/ENVISAT/GOMOS/GOM_NL__0P/GOM_NL__0PNPDE20111026_011443_000068873108_00046_50491_6588.N1
1; 14.0; 26-OCT-2011 01:14:43; Dark ; 67.0; 132; 15Rho Pup ; 2.80; 6900;occ; 134; 0;50491
2; 304.1; 26-OCT-2011 01:19:33; Dark ; 68.0; 88; 31Eta CMA ; 2.45; 20000;occ; 136; 0;50491
3; 823.7; 26-OCT-2011 01:28:12; Dark ; 64.0; 108; Alp Col ; 2.65; 15200;occ; 128; 0;50491
4; 6029.7; 26-OCT-2011 02:54:58; Dark ; 66.0; 132; 15Rho Pup ; 2.80; 6900;occ; 132; 0;50492
5; 6319.8; 26-OCT-2011 02:59:48; Dark ; 66.5; 88; 31Eta CMA ; 2.45; 20000;occ; 133; 0;50492
6; 6838.9; 26-OCT-2011 03:08:28; Dark ; 63.0; 108; Alp Col ; 2.65; 15200;occ; 126; 0;50492
/nas3/ENVISAT/GOMOS/GOM_NL__0P/GOM_NL__0PNPDE20111026_043514_000008713108_00048_50493_6589.N1
1; 17.5; 26-OCT-2011 04:35:14; Dark ; 64.0; 132; 15Rho Pup ; 2.80; 6900;occ; 128; 0;50493
2; 307.7; 26-OCT-2011 04:40:04; Dark ; 71.0; 88; 31Eta CMA ; 2.45; 20000;occ; 142; 0;50493
3; 826.1; 26-OCT-2011 04:48:43; Dark ; 62.5; 108; Alp Col ; 2.65; 15200;occ; 125; 0;50493
/nas3/ENVISAT/GOMOS/GOM_NL__0P/GOM_NL__0PNPDE20111026_061530_000008693108_00049_50494_6590.N1
1; 19.4; 26-OCT-2011 06:15:30; Dark ; 67.5; 132; 15Rho Pup ; 2.80; 6900;occ; 135; 0;50494
2; 309.5; 26-OCT-2011 06:20:20; Dark ; 68.0; 88; 31Eta CMA ; 2.45; 20000;occ; 136; 0;50494
3; 827.3; 26-OCT-2011 06:28:58; Dark ; 62.0; 108; Alp Col ; 2.65; 15200;occ; 124; 0;50494
/nas3/ENVISAT/GOMOS/GOM_NL__0P/GOM_NL__0PNPDK20111026_093601_000008683108_00051_50496_5481.N1
1; 22.9; 26-OCT-2011 09:36:01; Dark ; 66.0; 132; 15Rho Pup ; 2.80; 6900;occ; 132; 0;50496
2; 313.0; 26-OCT-2011 09:40:51; Dark ; 66.0; 88; 31Eta CMA ; 2.45; 20000;occ; 132; 0;50496
3; 829.7; 26-OCT-2011 09:49:28; Dark ; 62.0; 108; Alp Col ; 2.65; 15200;occ; 124; 0;50496
/nas3/ENVISAT/GOMOS/GOM_NL__0P/GOM_NL__0PNPDK20111026_111617_000008683108_00052_50497_5482.N1
1; 24.7; 26-OCT-2011 11:16:17; Dark ; 66.0; 132; 15Rho Pup ; 2.80; 6900;occ; 132; 0;50497
2; 314.8; 26-OCT-2011 11:21:07; Dark ; 66.0; 88; 31Eta CMA ; 2.45; 20000;occ; 132; 0;50497
3; 830.8; 26-OCT-2011 11:29:43; Dark ; 62.0; 108; Alp Col ; 2.65; 15200;occ; 124; 0;50497
/nas3/ENVISAT/GOMOS/GOM_NL__0P/GOM_NL__0PNPDK20111026_130123_000005773108_00053_50498_5483.N1
1; 316.7; 26-OCT-2011 13:01:23; Dark ; 63.0; 88; 31Eta CMA ; 2.45; 20000;occ; 126; 0;50498
2; 831.9; 26-OCT-2011 13:09:58; Dark ; 62.0; 108; Alp Col ; 2.65; 15200;occ; 124; 0;50498
/nas3/ENVISAT/GOMOS/GOM_NL__0P/GOM_NL__0PNPDK20111026_143648_000008663108_00054_50499_5484.N1
1; 28.3; 26-OCT-2011 14:36:48; Dark ; 67.5; 132; 15Rho Pup ; 2.80; 6900;occ; 135; 0;50499
2; 318.4; 26-OCT-2011 14:41:38; Dark ; 63.0; 88; 31Eta CMA ; 2.45; 20000;occ; 126; 0;50499
3; 832.9; 26-OCT-2011 14:50:13; Dark ; 62.0; 108; Alp Col ; 2.65; 15200;occ; 124; 0;50499
/nas3/ENVISAT/GOMOS/GOM_NL__0P/GOM_NL__0PNPDK20111026_161704_000008653108_00055_50500_5485.N1
1; 30.0; 26-OCT-2011 16:17:04; Dark ; 70.0; 132; 15Rho Pup ; 2.80; 6900;occ; 140; 0;50500
2; 320.4; 26-OCT-2011 16:21:54; Dark ; 61.0; 88; 31Eta CMA ; 2.45; 20000;occ; 122; 0;50500
3; 833.9; 26-OCT-2011 16:30:28; Dark ; 62.0; 108; Alp Col ; 2.65; 15200;occ; 124; 0;50500
/nas3/ENVISAT/GOMOS/GOM_NL__0P/GOM_NL__0PNPDK20111026_175720_000008643108_00056_50501_5486.N1
1; 31.9; 26-OCT-2011 17:57:20; Dark ; 67.0; 132; 15Rho Pup ; 2.80; 6900;occ; 134; 0;50501
2; 322.1; 26-OCT-2011 18:02:10; Dark ; 61.0; 88; 31Eta CMA ; 2.45; 20000;occ; 122; 0;50501
3; 835.1; 26-OCT-2011 18:10:43; Dark ; 61.5; 108; Alp Col ; 2.65; 15200;occ; 123; 0;50501
/nas3/ENVISAT/GOMOS/GOM_NL__0P/GOM_NL__0PNPDK20111027_125307_000000193108_00067_50512_5487.N1
1; 2026.2; 27-OCT-2011 12:53:07; Dark ; 19.5; 9; Alp Eri ; 0.45; 24000;occ; 39; 0;50512