

GOMOS Daily Report 24-OCT-2011

Level 0 and Level 1 products

SUMMARY

[1. General Info](#)

[2. Summary of products arrived in PCF \(Product Control Facility\)](#)

[2.1 Level 0: products arrived in PCF during current month \(see template here\)](#)

[2.2 Level 0: plot of mission plan versus production during reporting period](#)

[2.3 Level 0: summary of missing occultations with respect to the plan](#)

[2.4 Level 1: products arrived in PCF during reporting period](#)

[3. Plot of Spectrometers and Photometers temperatures](#)

[4. Dark Charge monitoring](#)

[4.1 Products that did not use the Dark Sky Area observation for DC computation](#)

[4.2 Plot of Dark Charge](#)

[5. Demodulation correction and quality product information monitoring](#)

[5.1 Percentage of products with some flags set](#)

[5.2 Plot of quality information per product \(time dependant\)](#)

[5.3 Plot of quality information per product \(world map\)](#)

[6. Star tangent altitude lost](#)

[6.1 Statistics on star tangent altitude lost](#)

[6.2 Plot of star tangent altitude lost: DARK products](#)

[6.3 Plot of star tangent altitude lost: BRIGHT products](#)

[6.3 Plot of star tangent altitude lost: TWILIGHT products](#)

[7. Star Acquisition and Tracking Unit \(SATU\)](#)

[7.1 SATU plots \(dark limb\): 'X' and 'Y' axis](#)

[7.2 SATU Noise Equivalent Angle statistics](#)

[7.2.1 SATU NEA Statistics \(table\)](#)

[7.2.2 Daily SATU NEA STD \(dark limb\) - trend since 1st April 2006](#)

[8. Auxiliary Data Files used for the production reported in section 2.4](#)

[Level 2 products](#)

This report presents the daily analysis on parameters extracted from GOMOS level 1b data (GOM_TRA_1P). It is intended to monitor some important parameters that will impact the quality of the level 2 products as the Spectrometers and Photometers CCD Temperatures and Dark Charge, SATU noise equivalent angle... A list of level 0 products (and content) that have arrived during the actual month to the PCF is also given.

Item	Value
Time of report generation	27OCT2011 07:02:05
Data source version	GOMOS/6.01
Start time of products	24OCT2011 00:47:08
Stop time of products	24OCT2011 23:04:34
Store outputs in DB	Yes
Nb of level 1b prods	56
Nb of prods with errors	1

2. Summary of products arrived in PCF (Product Control Facility)

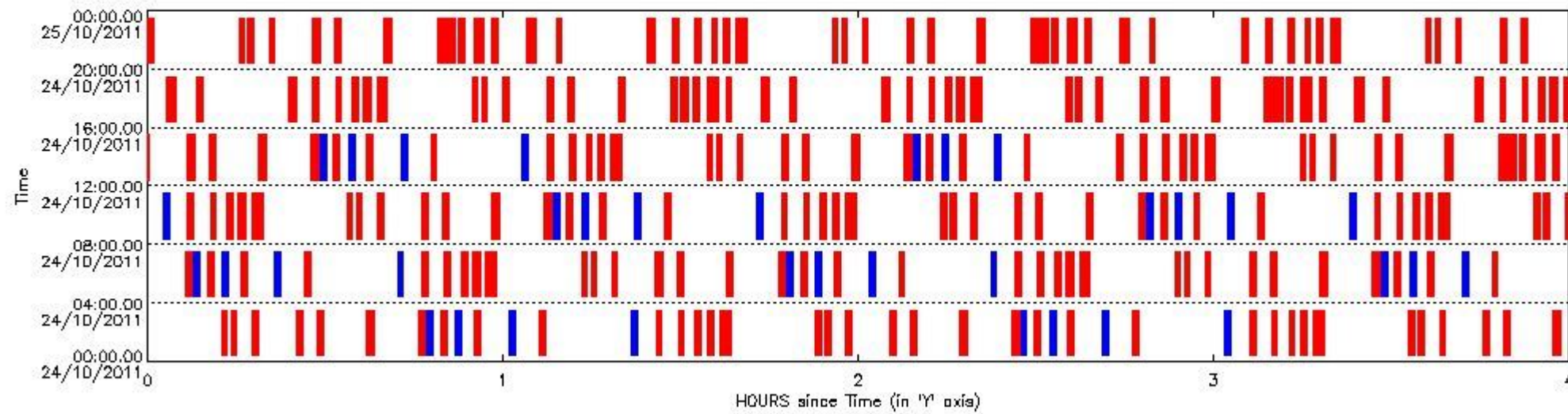
2.1 Level 0 products arrived in PCF (see template [here](#))

2.2 Plot of mission plan versus Level 0 production arrived in PCF during reporting period

Red segments are missing products.

Blue segments are available products.

Green segments are calibration measurements (not available products to users).



2.3 Summary of missing occultations (red segments in previous plot)

UTC start time	Star name	Star ID	Orbit
24-OCT-2011 00:12:31	50AlpUMa	36	50461
24-OCT-2011 00:14:05	48BetUMa	82	50461
24-OCT-2011 00:17:37	52PsiUMa	174	50461
24-OCT-2011 00:25:00	17EpsLeo	166	50461
24-OCT-2011 00:28:32	32AlpLeo	22	50461
24-OCT-2011 00:36:51	30AlpHya	48	50461
24-OCT-2011 00:45:42	DSA1057	0	50461
24-OCT-2011 00:46:02	LamVel	65	50461
24-OCT-2011 00:49:29	Gam2Vel	34	50462
24-OCT-2011 00:55:05	AlpCar	2	50462
24-OCT-2011 01:06:02	The1Eri	157	50462
24-OCT-2011 01:25:48	6BetAri	105	50462
24-OCT-2011 01:29:35	43BetAnd	53	50462
24-OCT-2011 01:32:26	57Gam1And	73	50462
24-OCT-2011 01:34:24	26BetPer	79	50462

24-OCT-2011 01:36:36	27GamCas	76	50462
24-OCT-2011 01:37:19	33AlpPer	35	50462
24-OCT-2011 01:52:45	50AlpUMa	36	50462
24-OCT-2011 01:54:19	48BetUMa	82	50462
24-OCT-2011 01:57:51	52PsiUMa	174	50462
24-OCT-2011 02:05:14	17EpsLeo	166	50462
24-OCT-2011 02:08:46	32AlpLeo	22	50462
24-OCT-2011 02:17:06	30AlpHya	48	50462
24-OCT-2011 02:25:58	DSA1057	0	50462
24-OCT-2011 02:26:16	LamVel	65	50462
24-OCT-2011 02:29:44	Gam2Vel	34	50463
24-OCT-2011 02:35:20	AlpCar	2	50463
24-OCT-2011 02:46:16	The1Eri	157	50463
24-OCT-2011 03:06:01	6BetAri	105	50463
24-OCT-2011 03:09:49	43BetAnd	53	50463
24-OCT-2011 03:12:39	57Gam1And	73	50463
24-OCT-2011 03:14:37	26BetPer	79	50463
24-OCT-2011 03:16:50	27GamCas	76	50463
24-OCT-2011 03:17:32	33AlpPer	35	50463
24-OCT-2011 03:32:58	50AlpUMa	36	50463
24-OCT-2011 03:34:33	48BetUMa	82	50463
24-OCT-2011 03:38:05	52PsiUMa	174	50463
24-OCT-2011 03:45:29	17EpsLeo	166	50463
24-OCT-2011 03:49:01	32AlpLeo	22	50463
24-OCT-2011 03:57:21	30AlpHya	48	50463
24-OCT-2011 04:06:13	DSA1057	0	50463
24-OCT-2011 04:06:31	LamVel	65	50463
24-OCT-2011 04:09:59	Gam2Vel	34	50464
24-OCT-2011 04:15:35	AlpCar	2	50464
24-OCT-2011 04:26:31	The1Eri	157	50464
24-OCT-2011 04:46:15	6BetAri	105	50464
24-OCT-2011 04:50:02	43BetAnd	53	50464
24-OCT-2011 04:52:53	57Gam1And	73	50464
24-OCT-2011 04:54:50	26BetPer	79	50464
24-OCT-2011 04:57:03	27GamCas	76	50464
24-OCT-2011 04:57:45	33AlpPer	35	50464
24-OCT-2011 05:13:12	50AlpUMa	36	50464
24-OCT-2011 05:14:47	48BetUMa	82	50464
24-OCT-2011 05:18:19	52PsiUMa	174	50464
24-OCT-2011 05:25:43	17EpsLeo	166	50464
24-OCT-2011 05:29:15	32AlpLeo	22	50464
24-OCT-2011 05:37:36	30AlpHya	48	50464
24-OCT-2011 05:46:28	DSA1057	0	50464
24-OCT-2011 05:46:46	LamVel	65	50464
24-OCT-2011 05:50:13	Gam2Vel	34	50465
24-OCT-2011 05:55:49	AlpCar	2	50465
24-OCT-2011 06:06:45	The1Eri	157	50465
24-OCT-2011 06:26:29	6BetAri	105	50465
24-OCT-2011 06:30:16	43BetAnd	53	50465
24-OCT-2011 06:33:06	57Gam1And	73	50465
24-OCT-2011 06:35:03	26BetPer	79	50465
24-OCT-2011 06:37:17	27GamCas	76	50465
24-OCT-2011 06:37:58	33AlpPer	35	50465
24-OCT-2011 06:53:26	50AlpUMa	36	50465
24-OCT-2011 06:55:01	48BetUMa	82	50465
24-OCT-2011 06:58:33	52PsiUMa	174	50465
24-OCT-2011 07:05:57	17EpsLeo	166	50465
24-OCT-2011 07:09:29	32AlpLeo	22	50465
24-OCT-2011 07:17:51	30AlpHya	48	50465

24-OCT-2011 07:26:44	DSA1057	0	50465
24-OCT-2011 07:27:00	LamVel	65	50465
24-OCT-2011 07:30:28	Gam2Vel	34	50466
24-OCT-2011 07:36:04	AlpCar	2	50466
24-OCT-2011 07:46:59	The1Eri	157	50466
24-OCT-2011 08:06:42	6BetAri	105	50466
24-OCT-2011 08:10:30	43BetAnd	53	50466
24-OCT-2011 08:13:20	57Gam1And	73	50466
24-OCT-2011 08:15:16	26BetPer	79	50466
24-OCT-2011 08:17:31	27GamCas	76	50466
24-OCT-2011 08:18:11	33AlpPer	35	50466
24-OCT-2011 08:33:40	50AlpUMa	36	50466
24-OCT-2011 08:35:15	48BetUMa	82	50466
24-OCT-2011 08:38:47	52PsiUMa	174	50466
24-OCT-2011 08:46:12	17EpsLeo	166	50466
24-OCT-2011 08:49:44	32AlpLeo	22	50466
24-OCT-2011 08:58:06	30AlpHya	48	50466
24-OCT-2011 09:06:59	DSA1057	0	50466
24-OCT-2011 09:07:15	LamVel	65	50466
24-OCT-2011 09:10:43	Gam2Vel	34	50467
24-OCT-2011 09:16:19	AlpCar	2	50467
24-OCT-2011 09:27:14	The1Eri	157	50467
24-OCT-2011 09:46:56	6BetAri	105	50467
24-OCT-2011 09:50:44	43BetAnd	53	50467
24-OCT-2011 09:53:33	57Gam1And	73	50467
24-OCT-2011 09:55:30	26BetPer	79	50467
24-OCT-2011 09:57:45	27GamCas	76	50467
24-OCT-2011 09:58:25	33AlpPer	35	50467
24-OCT-2011 10:13:54	50AlpUMa	36	50467
24-OCT-2011 10:15:29	48BetUMa	82	50467
24-OCT-2011 10:19:01	52PsiUMa	174	50467
24-OCT-2011 10:26:26	17EpsLeo	166	50467
24-OCT-2011 10:29:58	32AlpLeo	22	50467
24-OCT-2011 10:38:21	30AlpHya	48	50467
24-OCT-2011 10:47:15	DSA1057	0	50467
24-OCT-2011 10:47:30	LamVel	65	50467
24-OCT-2011 10:50:58	Gam2Vel	34	50468
24-OCT-2011 10:56:34	AlpCar	2	50468
24-OCT-2011 11:07:28	The1Eri	157	50468
24-OCT-2011 11:27:10	6BetAri	105	50468
24-OCT-2011 11:30:58	43BetAnd	53	50468
24-OCT-2011 11:33:47	57Gam1And	73	50468
24-OCT-2011 11:35:43	26BetPer	79	50468
24-OCT-2011 11:37:59	27GamCas	76	50468
24-OCT-2011 11:38:38	33AlpPer	35	50468
24-OCT-2011 11:54:08	50AlpUMa	36	50468
24-OCT-2011 11:55:43	48BetUMa	82	50468
24-OCT-2011 11:59:15	52PsiUMa	174	50468
24-OCT-2011 12:06:40	17EpsLeo	166	50468
24-OCT-2011 12:10:13	32AlpLeo	22	50468
24-OCT-2011 12:18:36	30AlpHya	48	50468
24-OCT-2011 12:27:30	DSA1057	0	50468
24-OCT-2011 12:27:45	LamVel	65	50468
24-OCT-2011 12:31:13	Gam2Vel	34	50469
24-OCT-2011 12:36:48	AlpCar	2	50469
24-OCT-2011 12:47:42	The1Eri	157	50469
24-OCT-2011 13:07:23	6BetAri	105	50469
24-OCT-2011 13:11:12	43BetAnd	53	50469
24-OCT-2011 13:14:00	57Gam1And	73	50469

24-OCT-2011 13:15:56	26BetPer	79	50469
24-OCT-2011 13:18:13	27GamCas	76	50469
24-OCT-2011 13:18:51	33AlpPer	35	50469
24-OCT-2011 13:34:22	50AlpUMa	36	50469
24-OCT-2011 13:35:57	48BetUMa	82	50469
24-OCT-2011 13:39:29	52PsiUMa	174	50469
24-OCT-2011 13:46:54	17EpsLeo	166	50469
24-OCT-2011 13:50:27	32AlpLeo	22	50469
24-OCT-2011 13:58:51	30AlpHya	48	50469
24-OCT-2011 14:07:46	DSA1057	0	50469
24-OCT-2011 14:07:59	LamVel	65	50469
24-OCT-2011 14:11:27	Gam2Vel	34	50470
24-OCT-2011 14:17:03	AlpCar	2	50470
24-OCT-2011 14:27:57	The1Eri	157	50470
24-OCT-2011 14:43:29	92AlpCet	94	50470
24-OCT-2011 14:47:37	6BetAri	105	50470
24-OCT-2011 14:51:25	43BetAnd	53	50470
24-OCT-2011 14:54:14	57Gam1And	73	50470
24-OCT-2011 14:56:09	26BetPer	79	50470
24-OCT-2011 14:58:26	27GamCas	76	50470
24-OCT-2011 14:59:04	33AlpPer	35	50470
24-OCT-2011 15:14:36	50AlpUMa	36	50470
24-OCT-2011 15:16:11	48BetUMa	82	50470
24-OCT-2011 15:19:43	52PsiUMa	174	50470
24-OCT-2011 15:27:09	17EpsLeo	166	50470
24-OCT-2011 15:30:42	32AlpLeo	22	50470
24-OCT-2011 15:39:06	30AlpHya	48	50470
24-OCT-2011 15:48:01	DSA1057	0	50470
24-OCT-2011 15:48:14	LamVel	65	50470
24-OCT-2011 15:49:31	15RhoPup	132	50470
24-OCT-2011 15:51:42	Gam2Vel	34	50471
24-OCT-2011 15:54:14	DSA1055	0	50471
24-OCT-2011 15:54:20	31EtaCMa	88	50471
24-OCT-2011 15:57:18	AlpCar	2	50471
24-OCT-2011 16:03:12	AlpCol	108	50471
24-OCT-2011 16:08:11	The1Eri	157	50471
24-OCT-2011 16:23:42	92AlpCet	94	50471
24-OCT-2011 16:27:51	6BetAri	105	50471
24-OCT-2011 16:31:39	43BetAnd	53	50471
24-OCT-2011 16:34:27	57Gam1And	73	50471
24-OCT-2011 16:36:22	26BetPer	79	50471
24-OCT-2011 16:38:40	27GamCas	76	50471
24-OCT-2011 16:39:17	33AlpPer	35	50471
24-OCT-2011 16:54:50	50AlpUMa	36	50471
24-OCT-2011 16:56:25	48BetUMa	82	50471
24-OCT-2011 16:59:57	52PsiUMa	174	50471
24-OCT-2011 17:07:23	17EpsLeo	166	50471
24-OCT-2011 17:10:56	32AlpLeo	22	50471
24-OCT-2011 17:19:21	30AlpHya	48	50471
24-OCT-2011 17:28:17	DSA1057	0	50471
24-OCT-2011 17:28:29	LamVel	65	50471
24-OCT-2011 17:29:46	15RhoPup	132	50471
24-OCT-2011 17:31:57	Gam2Vel	34	50472
24-OCT-2011 17:34:29	DSA1055	0	50472
24-OCT-2011 17:34:36	31EtaCMa	88	50472
24-OCT-2011 17:37:33	AlpCar	2	50472
24-OCT-2011 17:43:28	AlpCol	108	50472
24-OCT-2011 17:48:25	The1Eri	157	50472
24-OCT-2011 18:03:56	92AlpCet	94	50472

24-OCT-2011 18:08:04	6BetAri	105	50472
24-OCT-2011 18:11:53	43BetAnd	53	50472
24-OCT-2011 18:14:41	57Gam1And	73	50472
24-OCT-2011 18:16:35	26BetPer	79	50472
24-OCT-2011 18:18:54	27GamCas	76	50472
24-OCT-2011 18:19:31	33AlpPer	35	50472
24-OCT-2011 18:35:04	50AlpUMa	36	50472
24-OCT-2011 18:36:39	48BetUMa	82	50472
24-OCT-2011 18:40:11	52PsiUMa	174	50472
24-OCT-2011 18:47:37	17EpsLeo	166	50472
24-OCT-2011 18:51:10	32AlpLeo	22	50472
24-OCT-2011 18:59:36	30AlpHya	48	50472
24-OCT-2011 19:08:32	DSA1057	0	50472
24-OCT-2011 19:08:43	LamVel	65	50472
24-OCT-2011 19:10:02	15RhoPup	132	50472
24-OCT-2011 19:12:12	Gam2Vel	34	50473
24-OCT-2011 19:14:44	DSA1055	0	50473
24-OCT-2011 19:14:52	31EtaCMa	88	50473
24-OCT-2011 19:17:47	AlpCar	2	50473
24-OCT-2011 19:23:43	AlpCol	108	50473
24-OCT-2011 19:28:40	The1Eri	157	50473
24-OCT-2011 19:44:09	92AlpCet	94	50473
24-OCT-2011 19:48:18	6BetAri	105	50473
24-OCT-2011 19:52:07	43BetAnd	53	50473
24-OCT-2011 19:54:55	57Gam1And	73	50473
24-OCT-2011 19:56:48	26BetPer	79	50473
24-OCT-2011 19:59:08	27GamCas	76	50473
24-OCT-2011 19:59:44	33AlpPer	35	50473
24-OCT-2011 20:15:18	50AlpUMa	36	50473
24-OCT-2011 20:16:52	48BetUMa	82	50473
24-OCT-2011 20:20:25	52PsiUMa	174	50473
24-OCT-2011 20:27:51	17EpsLeo	166	50473
24-OCT-2011 20:31:25	32AlpLeo	22	50473
24-OCT-2011 20:39:51	30AlpHya	48	50473
24-OCT-2011 20:48:48	DSA1057	0	50473
24-OCT-2011 20:48:58	LamVel	65	50473
24-OCT-2011 20:50:18	15RhoPup	132	50473
24-OCT-2011 20:52:27	Gam2Vel	34	50474
24-OCT-2011 20:54:59	DSA1055	0	50474
24-OCT-2011 20:55:08	31EtaCMa	88	50474
24-OCT-2011 20:58:02	AlpCar	2	50474
24-OCT-2011 21:03:58	AlpCol	108	50474
24-OCT-2011 21:08:54	The1Eri	157	50474
24-OCT-2011 21:24:23	92AlpCet	94	50474
24-OCT-2011 21:28:32	6BetAri	105	50474
24-OCT-2011 21:32:21	43BetAnd	53	50474
24-OCT-2011 21:35:08	57Gam1And	73	50474
24-OCT-2011 21:37:02	26BetPer	79	50474
24-OCT-2011 21:39:22	27GamCas	76	50474
24-OCT-2011 21:39:57	33AlpPer	35	50474
24-OCT-2011 21:55:31	50AlpUMa	36	50474
24-OCT-2011 21:57:06	48BetUMa	82	50474
24-OCT-2011 22:00:39	52PsiUMa	174	50474
24-OCT-2011 22:08:06	17EpsLeo	166	50474
24-OCT-2011 22:11:39	32AlpLeo	22	50474
24-OCT-2011 22:20:06	30AlpHya	48	50474
24-OCT-2011 22:29:03	DSA1057	0	50474
24-OCT-2011 22:29:13	LamVel	65	50474
24-OCT-2011 22:30:33	15RhoPup	132	50474

24-OCT-2011 22:32:42	Gam2Vel	34	50475
24-OCT-2011 22:35:14	DSA1055	0	50475
24-OCT-2011 22:35:23	31EtaCMa	88	50475
24-OCT-2011 22:38:17	AlpCar	2	50475
24-OCT-2011 22:44:13	AlpCol	108	50475
24-OCT-2011 22:49:08	The1Eri	157	50475
24-OCT-2011 23:04:36	92AlpCet	94	50475
24-OCT-2011 23:08:45	6BetAri	105	50475
24-OCT-2011 23:12:34	43BetAnd	53	50475
24-OCT-2011 23:15:22	57Gam1And	73	50475
24-OCT-2011 23:17:15	26BetPer	79	50475
24-OCT-2011 23:19:36	27GamCas	76	50475
24-OCT-2011 23:20:10	33AlpPer	35	50475
24-OCT-2011 23:35:45	50AlpUMa	36	50475
24-OCT-2011 23:37:20	48BetUMa	82	50475
24-OCT-2011 23:40:53	52PsiUMa	174	50475
24-OCT-2011 23:48:20	17EpsLeo	166	50475
24-OCT-2011 23:51:54	32AlpLeo	22	50475

2.4 Summary of processed GOM_TRA_1P products

Nr	Filename	UTC Start time	Limb	Duration	Star Id	Star Name	Star Mag	Star Temp	Nb Meas	Orbit	Prod. error
1	GOM_TRA_1PNPDE20111024_004708_000000623108_00016_50461_8605.N1	24-OCT-2011 00:47:08	Dark	62.000	132	15Rho Pup	2.8030	6900.0	124	50461	No
2	GOM_TRA_1PNPDE20111024_005157_000000663108_00017_50462_8606.N1	24-OCT-2011 00:51:57	Dark	66.000	88	31Eta CMa	2.4480	20000.	132	50462	No
3	GOM_TRA_1PNPDE20111024_010054_000000653108_00017_50462_8607.N1	24-OCT-2011 01:00:54	Dark	64.500	108	Alp Col	2.6520	15200.	129	50462	No
4	GOM_TRA_1PNPDE20111024_012139_000000613108_00017_50462_8608.N1	24-OCT-2011 01:21:39	Bright	61.000	94	92Alp Cet	2.5260	3100.0	122	50462	No
5	GOM_TRA_1PNPDE20111024_022723_000000623108_00017_50462_8633.N1	24-OCT-2011 02:27:23	Dark	61.500	132	15Rho Pup	2.8030	6900.0	123	50462	No
6	GOM_TRA_1PNPDE20111024_023213_000000683108_00018_50463_8634.N1	24-OCT-2011 02:32:13	Dark	67.500	88	31Eta CMa	2.4480	20000.	135	50463	No
7	GOM_TRA_1PNPDE20111024_024109_000000643108_00018_50463_8635.N1	24-OCT-2011 02:41:09	Dark	63.500	108	Alp Col	2.6520	15200.	127	50463	No
8	GOM_TRA_1PNPDE20111024_030152_000000613108_00018_50463_8636.N1	24-OCT-2011 03:01:52	Bright	60.500	94	92Alp Cet	2.5260	3100.0	121	50463	No
9	GOM_TRA_1PNPDE20111024_040739_000000653108_00018_50463_8672.N1	24-OCT-2011 04:07:39	Dark	64.500	132	15Rho Pup	2.8030	6900.0	129	50463	No
10	GOM_TRA_1PNPDE20111024_041229_000000693108_00019_50464_8673.N1	24-OCT-2011 04:12:29	Dark	69.000	88	31Eta CMa	2.4480	20000.	138	50464	No
11	GOM_TRA_1PNPDE20111024_042125_000000633108_00019_50464_8674.N1	24-OCT-2011 04:21:25	Dark	63.000	108	Alp Col	2.6520	15200.	126	50464	No
12	GOM_TRA_1PNPDE20111024_044206_000000573108_00019_50464_8675.N1	24-OCT-2011 04:42:06	Bright	57.000	94	92Alp Cet	2.5260	3100.0	114	50464	No
13	GOM_TRA_1PNPDE20111024_054755_000000643108_00019_50464_8706.N1	24-OCT-2011 05:47:55	Dark	63.500	132	15Rho Pup	2.8030	6900.0	127	50464	No
14	GOM_TRA_1PNPDE20111024_055244_000000673108_00020_50465_8707.N1	24-OCT-2011 05:52:44	Dark	67.000	88	31Eta CMa	2.4480	20000.	134	50465	No
15	GOM_TRA_1PNPDE20111024_060140_000000643108_00020_50465_8708.N1	24-OCT-2011 06:01:40	Dark	64.000	108	Alp Col	2.6520	15200.	128	50465	No
16	GOM_TRA_1PNPDE20111024_062219_000000603108_00020_50465_8709.N1	24-OCT-2011 06:22:19	Bright	59.500	94	92Alp Cet	2.5260	3100.0	119	50465	No
17	GOM_TRA_1PNPDK20111024_072811_000000653108_00020_50465_0790.N1	24-OCT-2011 07:28:11	Dark	64.500	132	15Rho Pup	2.8030	6900.0	129	50465	No
18	GOM_TRA_1PNPDK20111024_073300_000000683108_00021_50466_0791.N1	24-OCT-2011 07:33:00	Dark	68.000	88	31Eta CMa	2.4480	20000.	136	50466	No
19	GOM_TRA_1PNPDK20111024_074155_000000633108_00021_50466_0792.N1	24-OCT-2011 07:41:55	Dark	62.500	108	Alp Col	2.6520	15200.	125	50466	No
20	GOM_TRA_1PNPDK20111024_080233_000000603108_00021_50466_0836.N1	24-OCT-2011 08:02:33	Bright	59.500	94	92Alp Cet	2.5260	3100.0	119	50466	No
21	GOM_TRA_1PNPDK20111024_090826_000000663108_00021_50466_0837.N1	24-OCT-2011 09:08:26	Dark	65.500	132	15Rho Pup	2.8030	6900.0	131	50466	No
22	GOM_TRA_1PNPDK20111024_091316_000000693108_00022_50467_0838.N1	24-OCT-2011 09:13:16	Dark	68.500	88	31Eta CMa	2.4480	20000.	137	50467	No
23	GOM_TRA_1PNPDK20111024_092210_000000623108_00022_50467_0839.N1	24-OCT-2011 09:22:10	Dark	61.500	108	Alp Col	2.6520	15200.	123	50467	No
24	GOM_TRA_1PNPDK20111024_094246_000000603108_00022_50467_0872.N1	24-OCT-2011 09:42:46	Bright	60.000	94	92Alp Cet	2.5260	3100.0	120	50467	No
25	GOM_TRA_1PNPDK20111024_104842_000000633108_00022_50467_0873.N1	24-OCT-2011 10:48:42	Dark	63.000	132	15Rho Pup	2.8030	6900.0	126	50467	No
26	GOM_TRA_1PNPDK20111024_105331_000000683108_00023_50468_0874.N1	24-OCT-2011 10:53:31	Dark	68.000	88	31Eta CMa	2.4480	20000.	136	50468	No
27	GOM_TRA_1PNPDK20111024_110225_000000653108_00023_50468_0875.N1	24-OCT-2011 11:02:25	Dark	64.500	108	Alp Col	2.6520	15200.	129	50468	No
28	GOM_TRA_1PNPDK20111024_112300_000000603108_00023_50468_0922.N1	24-OCT-2011 11:23:00	Bright	59.500	94	92Alp Cet	2.5260	3100.0	119	50468	No
29	GOM_TRA_1PNPDK20111024_122857_000000673108_00023_50468_0923.N1	24-OCT-2011 12:28:57	Dark	66.500	132	15Rho Pup	2.8030	6900.0	133	50468	No
30	GOM_TRA_1PNPDK20111024_123347_000000693108_00024_50469_0924.N1	24-OCT-2011 12:33:47	Dark	68.500	88	31Eta CMa	2.4480	20000.	137	50469	No
31	GOM_TRA_1PNPDK20111024_124240_000000653108_00024_50469_0925.N1	24-OCT-2011 12:42:40	Dark	64.500	108	Alp Col	2.6520	15200.	129	50469	No
32	GOM_TRA_1PNPDK20111024_130313_000000613108_00024_50469_0959.N1	24-OCT-2011 13:03:13	Bright	60.500	94	92Alp Cet	2.5260	3100.0	121	50469	No
33	GOM_TRA_1PNPDK20111024_140913_000000643108_00024_50469_0960.N1	24-OCT-2011 14:09:13	Dark	63.500	132	15Rho Pup	2.8030	6900.0	127	50469	No
34	GOM_TRA_1PNPDK20111024_141403_000000663108_00025_50470_0961.N1	24-OCT-2011 14:14:03	Dark	66.000	88	31Eta CMa	2.4480	20000.	132	50470	No
35	GOM_TRA_1PNPDK20111024_142255_000000623108_00025_50470_0962.N1	24-OCT-2011 14:22:55	Dark	61.500	108	Alp Col	2.6520	15200.	123	50470	No
36	GOM_TRA_1PNPDK20111024_144327_000000593108_00025_50470_1009.N1	24-OCT-2011 14:43:27	Bright	59.000	94	92Alp Cet	2.5260	3100.0	118	50470	No

37	GOM_TRA_1PNPDK20111024_154929_000000673108_00025_50470_1010.N1	24-OCT-2011 15:49:29	Dark	66.500	132	15Rho Pup	2.8030	6900.0	133	50470	No
38	GOM_TRA_1PNPDK20111024_155418_000000643108_00026_50471_1011.N1	24-OCT-2011 15:54:18	Dark	63.500	88	31Eta CMa	2.4480	20000.	127	50471	No
39	GOM_TRA_1PNPDK20111024_160311_000000633108_00026_50471_1012.N1	24-OCT-2011 16:03:11	Dark	62.500	108	Alp Col	2.6520	15200.	125	50471	No
40	GOM_TRA_1PNPDK20111024_162341_000000603108_00026_50471_1034.N1	24-OCT-2011 16:23:41	Bright	60.000	94	92Alp Cet	2.5260	3100.0	120	50471	No
41	GOM_TRA_1PNPDK20111024_172945_000000653108_00026_50471_1035.N1	24-OCT-2011 17:29:45	Dark	65.000	132	15Rho Pup	2.8030	6900.0	130	50471	No
42	GOM_TRA_1PNPDK20111024_173434_000000663108_00027_50472_1036.N1	24-OCT-2011 17:34:34	Dark	65.500	88	31Eta CMa	2.4480	20000.	131	50472	No
43	GOM_TRA_1PNPDK20111024_174326_000000633108_00027_50472_1037.N1	24-OCT-2011 17:43:26	Dark	63.000	108	Alp Col	2.6520	15200.	126	50472	No
44	GOM_TRA_1PNPDK20111024_180354_000000603108_00027_50472_1069.N1	24-OCT-2011 18:03:54	Bright	60.000	94	92Alp Cet	2.5260	3100.0	120	50472	No
45	GOM_TRA_1PNPDK20111024_191000_000000653108_00027_50472_1070.N1	24-OCT-2011 19:10:00	Dark	65.000	132	15Rho Pup	2.8030	6900.0	130	50472	No
46	GOM_TRA_1PNPDK20111024_191450_000000693108_00028_50473_1071.N1	24-OCT-2011 19:14:50	Dark	69.000	88	31Eta CMa	2.4480	20000.	138	50473	No
47	GOM_TRA_1PNPDK20111024_192341_000000633108_00028_50473_1072.N1	24-OCT-2011 19:23:41	Dark	62.500	108	Alp Col	2.6520	15200.	125	50473	No
48	GOM_TRA_1PNPDK20111024_194407_000000633108_00028_50473_1101.N1	24-OCT-2011 19:44:07	Bright	62.500	94	92Alp Cet	2.5260	3100.0	125	50473	No
49	GOM_TRA_1PNPDK20111024_205016_000000653108_00028_50473_1102.N1	24-OCT-2011 20:50:16	Dark	65.000	132	15Rho Pup	2.8030	6900.0	130	50473	No
50	GOM_TRA_1PNPDK20111024_205506_000000703108_00029_50474_1103.N1	24-OCT-2011 20:55:06	Dark	70.000	88	31Eta CMa	2.4480	20000.	140	50474	No
51	GOM_TRA_1PNPDE20111024_210356_000000663108_00029_50474_8891.N1	24-OCT-2011 21:03:56	Dark	65.500	108	Alp Col	2.6520	15200.	131	50474	Yes
52	GOM_TRA_1PNPDE20111024_212421_000000603108_00029_50474_8892.N1	24-OCT-2011 21:24:21	Bright	60.000	94	92Alp Cet	2.5260	3100.0	120	50474	No
53	GOM_TRA_1PNPDE20111024_223031_000000643108_00029_50474_8946.N1	24-OCT-2011 22:30:31	Dark	64.000	132	15Rho Pup	2.8030	6900.0	128	50474	No
54	GOM_TRA_1PNPDE20111024_223521_000000703108_00030_50475_8947.N1	24-OCT-2011 22:35:21	Dark	69.500	88	31Eta CMa	2.4480	20000.	139	50475	No
55	GOM_TRA_1PNPDE20111024_224411_000000643108_00030_50475_8948.N1	24-OCT-2011 22:44:11	Dark	64.000	108	Alp Col	2.6520	15200.	128	50475	No
56	GOM_TRA_1PNPDE20111024_230434_000000593108_00030_50475_8949.N1	24-OCT-2011 23:04:34	Bright	58.500	94	92Alp Cet	2.5260	3100.0	117	50475	No

3. Plot of GOMOS spectrometers and photometers temperatures from level 1b data



4. Overview of dark signal processing per product

The Dark Charge (DC) is a temperature-dependant signal added to the useful measurements and it is therefore subtracted from them during the processing. There are two phenomena that produce a continuous increase of the DC: the "hot pixels" (a pixel is "hot" when its DC exceeds by a significant amount its value measured on ground at the same temperature) and the "Random Telegraphic Signal" (abrupt change positive or negative of the CCD pixel signal, random in time, affecting only the DC part of the signal and not the photon generated signal).

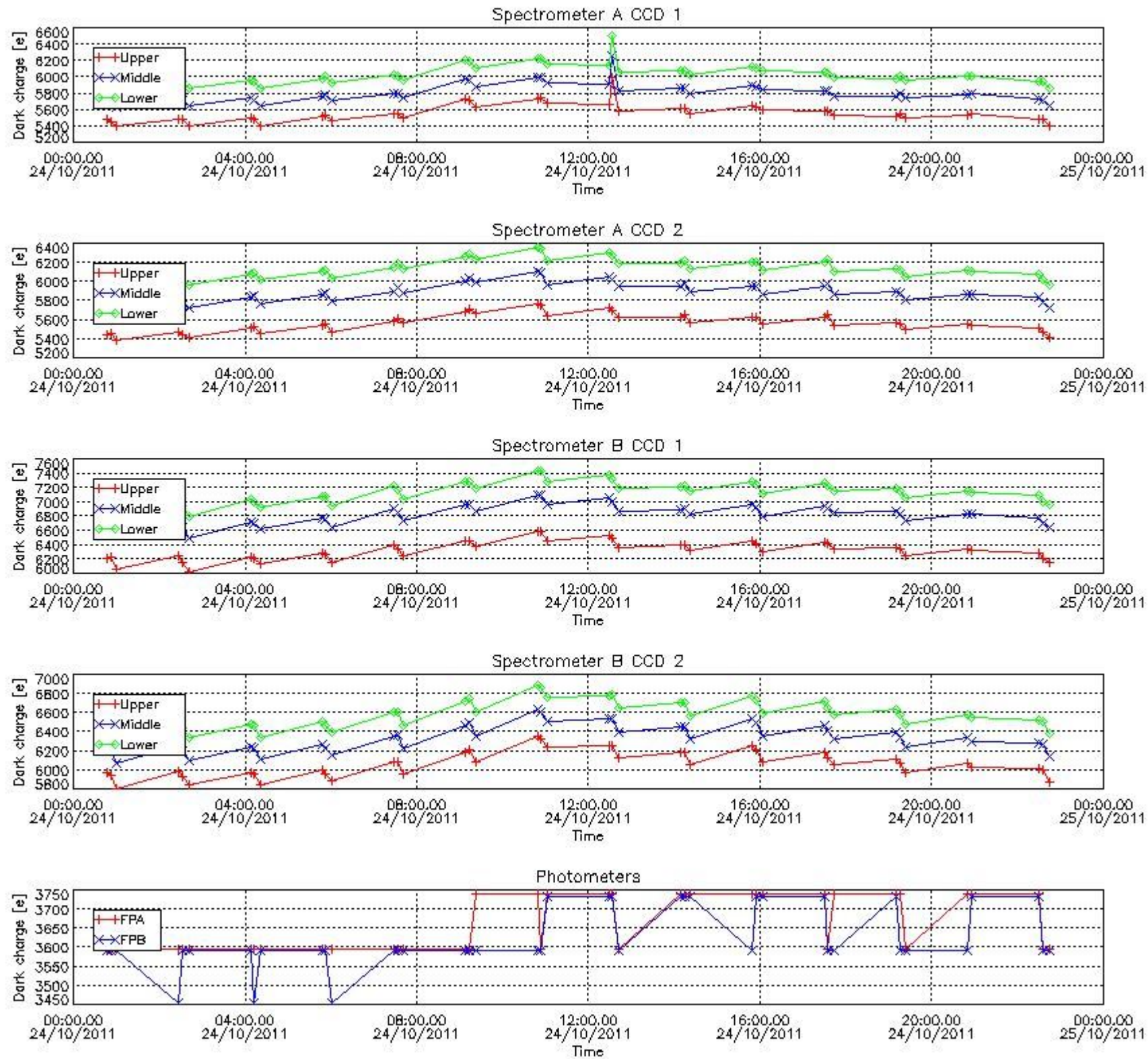
In this section a list of products that did not use the Dark Sky Area (DSA) observation for the DC computation is given. It is also provided the mean DC plot per product for dark limb products with no error flag set.

4.1 These products did not use the DSA observation for DC computation:

Product name	DC information
GOM_TRA_1PNPDE20111024_004708_000000623108_00016_50461_8605.N1	DC map used
GOM_TRA_1PNPDE20111024_005157_000000663108_00017_50462_8606.N1	DC map used
GOM_TRA_1PNPDE20111024_010054_000000653108_00017_50462_8607.N1	DC map used
GOM_TRA_1PNPDE20111024_012139_000000613108_00017_50462_8608.N1	DC map used
GOM_TRA_1PNPDE20111024_022723_000000623108_00017_50462_8633.N1	DC map used
GOM_TRA_1PNPDE20111024_023213_000000683108_00018_50463_8634.N1	DC map used
GOM_TRA_1PNPDE20111024_024109_000000643108_00018_50463_8635.N1	DC map used
GOM_TRA_1PNPDE20111024_030152_000000613108_00018_50463_8636.N1	DC map used
GOM_TRA_1PNPDE20111024_040739_000000653108_00018_50463_8672.N1	DC map used
GOM_TRA_1PNPDE20111024_041229_000000693108_00019_50464_8673.N1	DC map used
GOM_TRA_1PNPDE20111024_042125_000000633108_00019_50464_8674.N1	DC map used
GOM_TRA_1PNPDE20111024_044206_000000573108_00019_50464_8675.N1	DC map used
GOM_TRA_1PNPDE20111024_054755_000000643108_00019_50464_8706.N1	DC map used
GOM_TRA_1PNPDE20111024_055244_000000673108_00020_50465_8707.N1	DC map used
GOM_TRA_1PNPDE20111024_060140_000000643108_00020_50465_8708.N1	DC map used
GOM_TRA_1PNPDE20111024_062219_000000603108_00020_50465_8709.N1	DC map used
GOM_TRA_1PNPDK20111024_072811_000000653108_00020_50465_0790.N1	DC map used
GOM_TRA_1PNPDK20111024_073300_000000683108_00021_50466_0791.N1	DC map used
GOM_TRA_1PNPDK20111024_074155_000000633108_00021_50466_0792.N1	DC map used
GOM_TRA_1PNPDK20111024_080233_000000603108_00021_50466_0836.N1	DC map used

GOM_TRA_1PNPDK20111024_090826_000000663108_00021_50466_0837.N1	DC map used
GOM_TRA_1PNPDK20111024_091316_000000693108_00022_50467_0838.N1	DC map used
GOM_TRA_1PNPDK20111024_092210_000000623108_00022_50467_0839.N1	DC map used
GOM_TRA_1PNPDK20111024_094246_000000603108_00022_50467_0872.N1	DC map used
GOM_TRA_1PNPDK20111024_104842_000000633108_00022_50467_0873.N1	DC map used
GOM_TRA_1PNPDK20111024_105331_000000683108_00023_50468_0874.N1	DC map used
GOM_TRA_1PNPDK20111024_110225_000000653108_00023_50468_0875.N1	DC map used
GOM_TRA_1PNPDK20111024_112300_000000603108_00023_50468_0922.N1	DC map used
GOM_TRA_1PNPDK20111024_122857_000000673108_00023_50468_0923.N1	DC map used
GOM_TRA_1PNPDK20111024_123347_000000693108_00024_50469_0924.N1	DC map used
GOM_TRA_1PNPDK20111024_124240_000000653108_00024_50469_0925.N1	DC map used
GOM_TRA_1PNPDK20111024_130313_000000613108_00024_50469_0959.N1	DC map used
GOM_TRA_1PNPDK20111024_140913_000000643108_00024_50469_0960.N1	DC map used
GOM_TRA_1PNPDK20111024_141403_000000663108_00025_50470_0961.N1	DC map used
GOM_TRA_1PNPDK20111024_142255_000000623108_00025_50470_0962.N1	DC map used
GOM_TRA_1PNPDK20111024_144327_000000593108_00025_50470_1009.N1	DC map used
GOM_TRA_1PNPDK20111024_154929_000000673108_00025_50470_1010.N1	DC map used
GOM_TRA_1PNPDK20111024_155418_000000643108_00026_50471_1011.N1	DC map used
GOM_TRA_1PNPDK20111024_160311_000000633108_00026_50471_1012.N1	DC map used
GOM_TRA_1PNPDK20111024_162341_000000603108_00026_50471_1034.N1	DC map used
GOM_TRA_1PNPDK20111024_172945_000000653108_00026_50471_1035.N1	DC map used
GOM_TRA_1PNPDK20111024_173434_000000663108_00027_50472_1036.N1	DC map used
GOM_TRA_1PNPDK20111024_174326_000000633108_00027_50472_1037.N1	DC map used
GOM_TRA_1PNPDK20111024_180354_000000603108_00027_50472_1069.N1	DC map used
GOM_TRA_1PNPDK20111024_191000_000000653108_00027_50472_1070.N1	DC map used
GOM_TRA_1PNPDK20111024_191450_000000693108_00028_50473_1071.N1	DC map used
GOM_TRA_1PNPDK20111024_192341_000000633108_00028_50473_1072.N1	DC map used
GOM_TRA_1PNPDK20111024_194407_000000633108_00028_50473_1101.N1	DC map used
GOM_TRA_1PNPDK20111024_205016_000000653108_00028_50473_1102.N1	DC map used
GOM_TRA_1PNPDK20111024_205506_000000703108_00029_50474_1103.N1	DC map used
GOM_TRA_1PNPDE20111024_210356_000000663108_00029_50474_8891.N1	DC map with no T dep.
GOM_TRA_1PNPDE20111024_212421_000000603108_00029_50474_8892.N1	DC map used
GOM_TRA_1PNPDE20111024_223031_000000643108_00029_50474_8946.N1	DC map used
GOM_TRA_1PNPDE20111024_223521_000000703108_00030_50475_8947.N1	DC map used
GOM_TRA_1PNPDE20111024_224411_000000643108_00030_50475_8948.N1	DC map used
GOM_TRA_1PNPDE20111024_230434_000000593108_00030_50475_8949.N1	DC map used

4.2 Plot of mean dark charges per product: only products in DARK limb conditions without errors are used



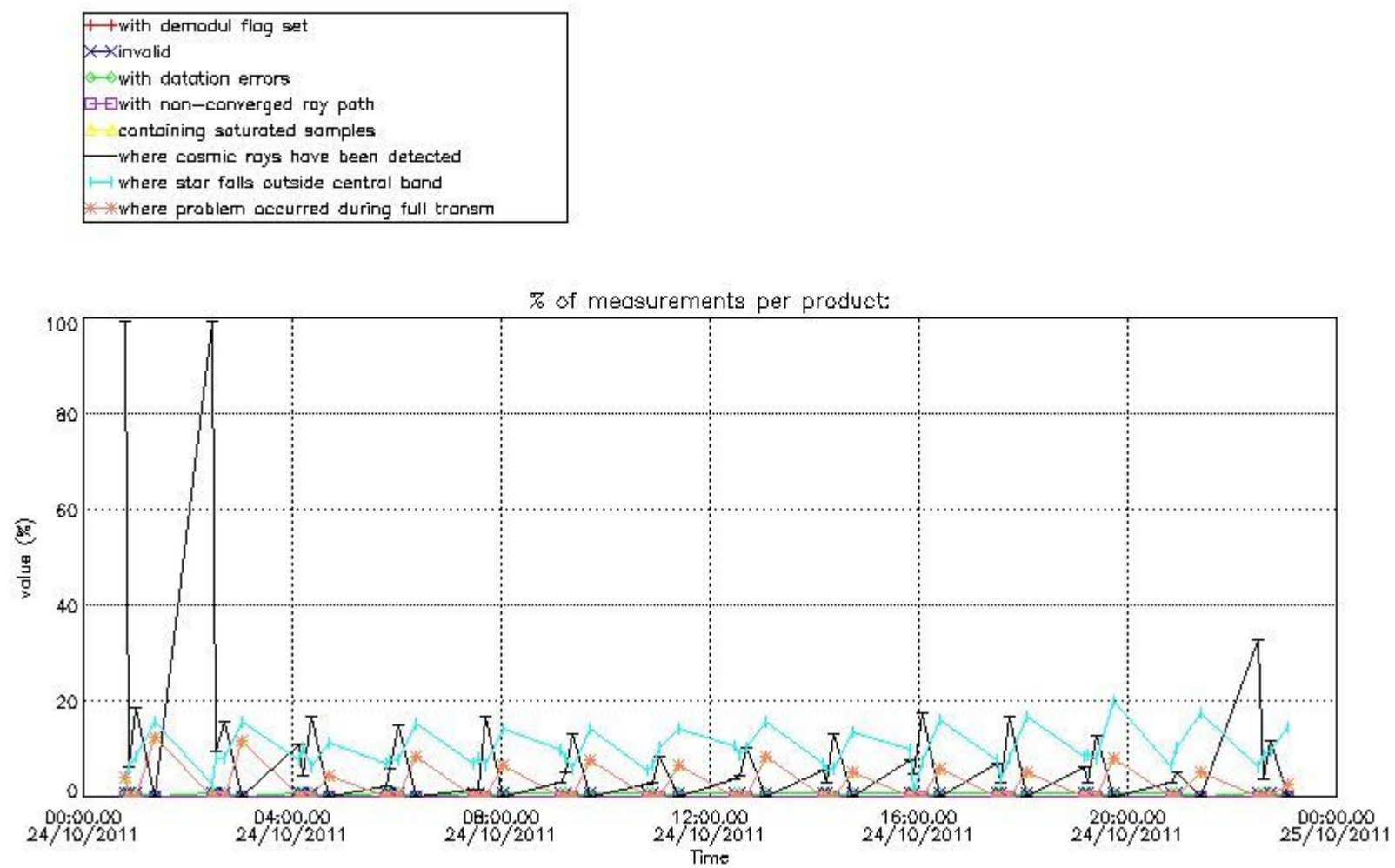
5. Demodulation flag and quality information monitoring

In this section it is presented the modulation information extracted from the pcd (product confidence data) at measurement level and information extracted from the Quality Summary dataset. Only products without errors (error flag in the MPH set to "0") are used.

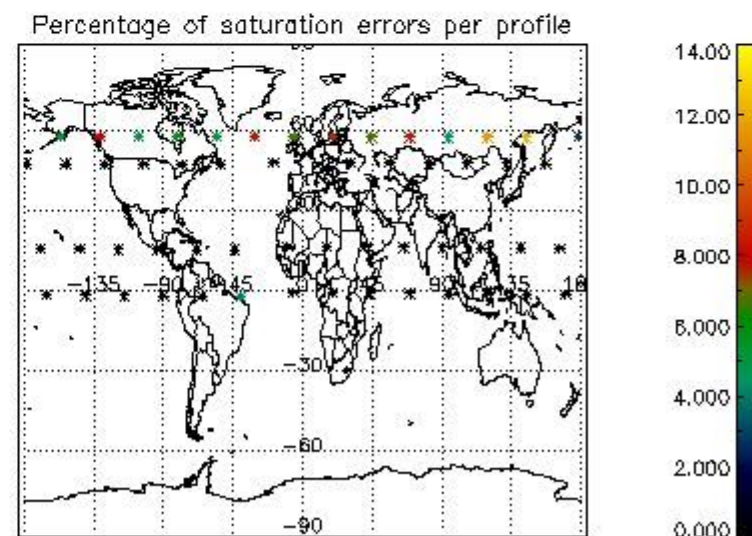
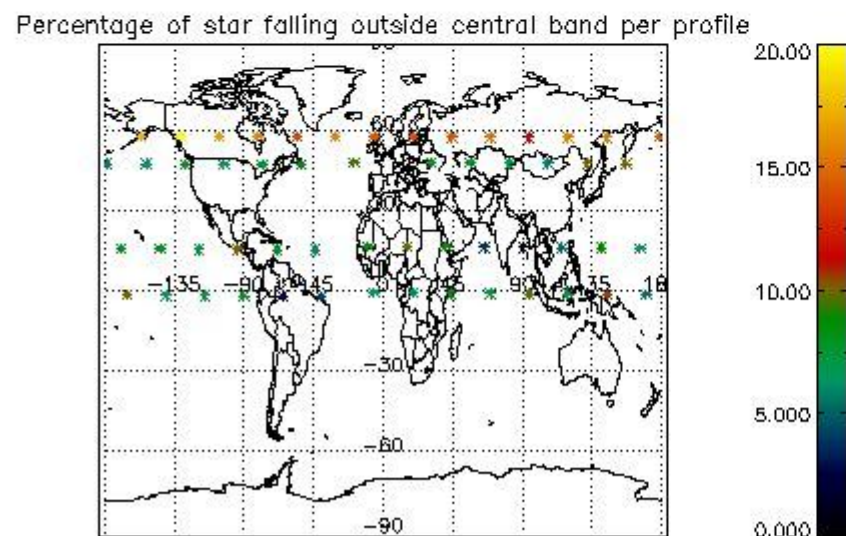
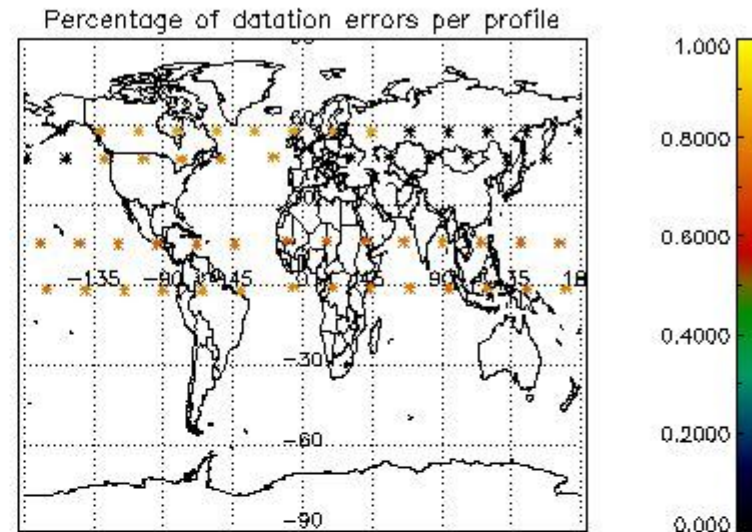
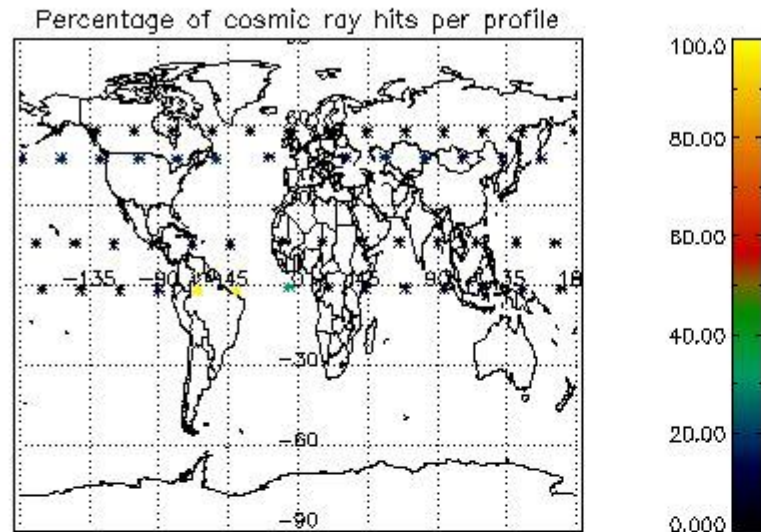
5.1 Percentage of products during reporting period with:

At least one measurement with demodulation flag set:	74.5455 %
Reference spectrum computed from DB:	0.00000 %
Reference spectrum with small number of measurements:	0.00000 %
SATU data not used:	25.4545 %

5.2 Plot quality information per product (time dependant)



5.3 Plot quality information per product (world map)



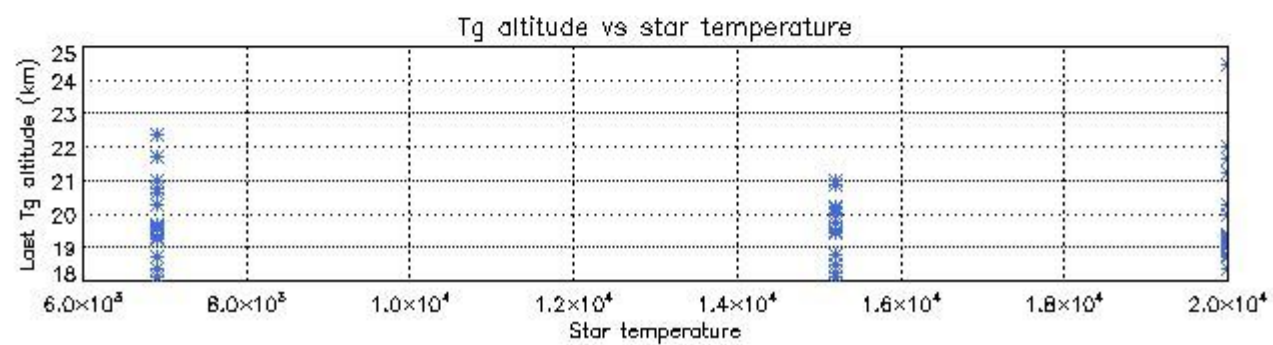
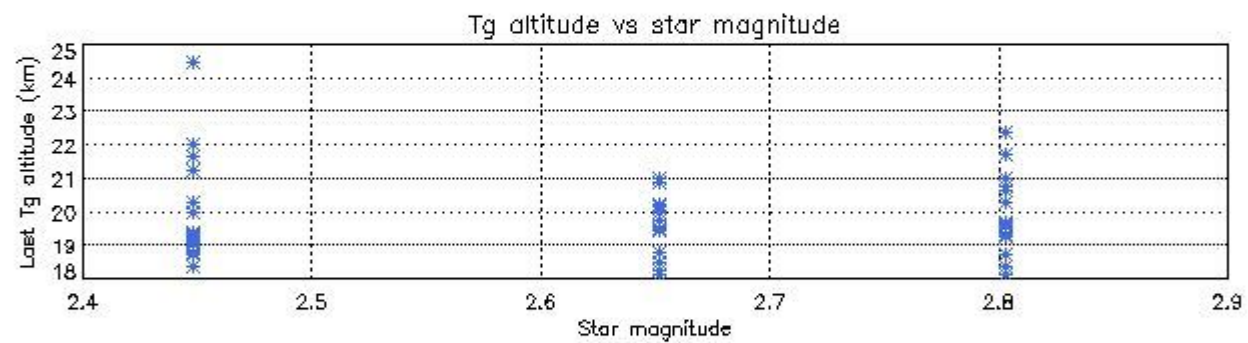
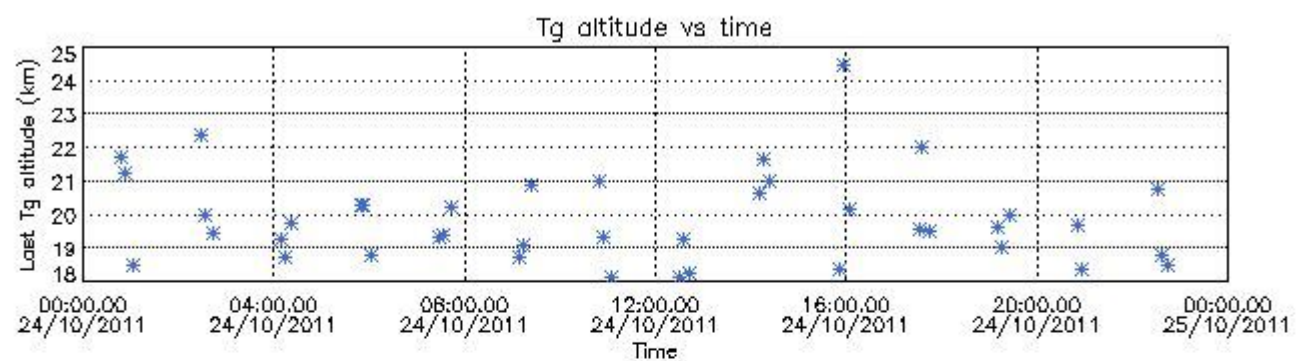
6. Statistics and plot of tangent altitude of the last measurement (DARK & BRIGHT products without errors)

6.1 Statistics on tangent altitude lost:

Statistics	DARK	BRIGHT	TWILIGHT
Mean:	19.853	13.826	NaN
St. deviation:	1.3349	1.1404	NaN
Maximum:	24.464	16.869	NaN
Minimum:	18.099	11.659	NaN
Number of data:	41.000	14.000	NaN

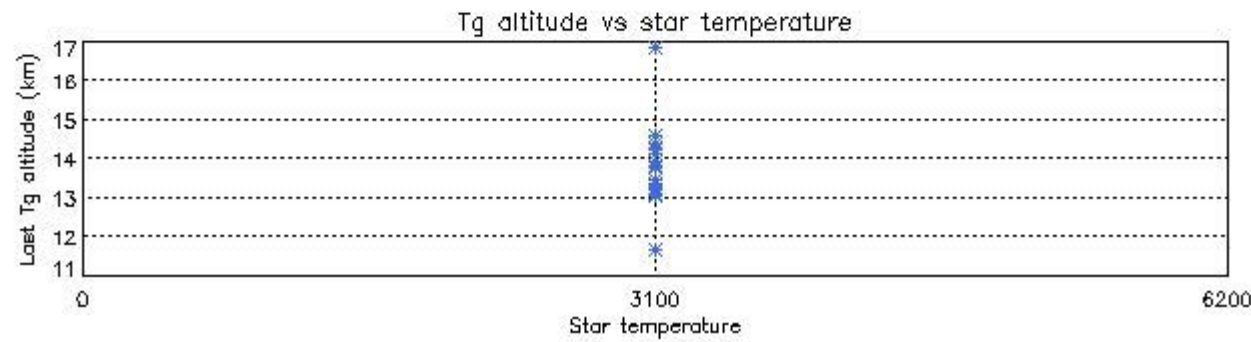
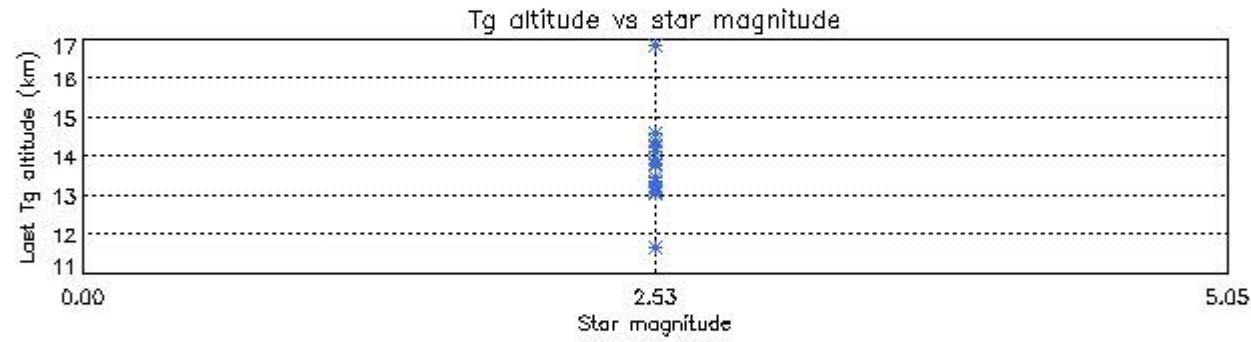
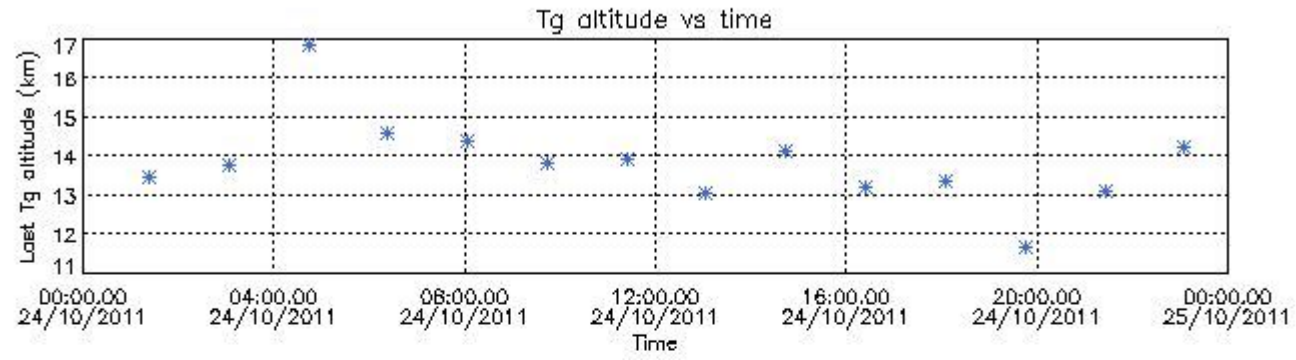
6.2 Plot for DARK limb products

Tangent altitude at which the star is lost



6.3 Plot for BRIGHT limb products

Tangent altitude at which the star is lost

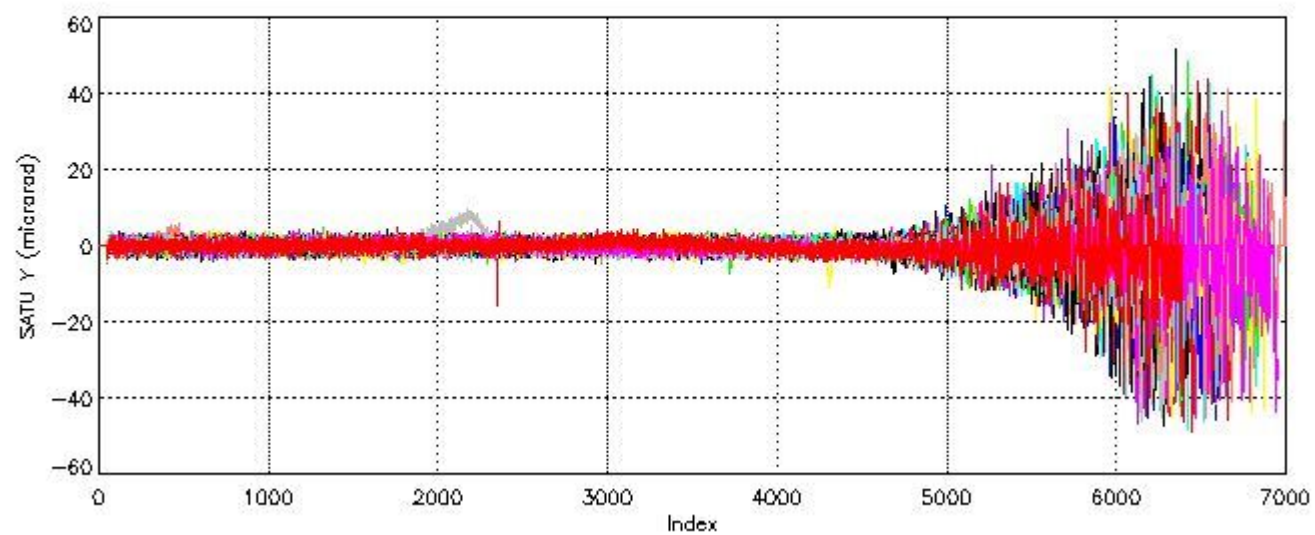
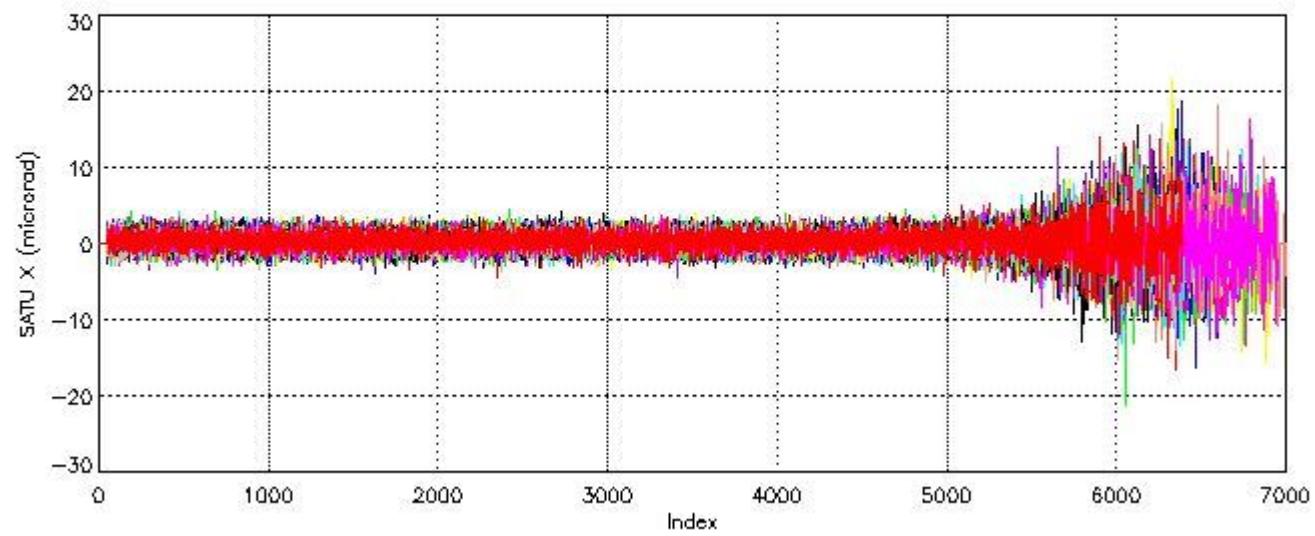


7. Star Acquisition and Tracking Unit (SATU)

The Star Acquisition and Tracking Unit (SATU) analyses the position of the tracked star beam collected by the GOMOS telescope and deflected by the optical beam dispatcher. The main function of the SATU is to detect a star, provide its image position to the science data electronics and to help the pointing function to keep the star image at a fixed position. In tracking mode the SATU data is recorded with a frequency of 100 Hz.

7.1 SATU 'X' and 'Y' axis plots (dark limb)

SATU CCD 'X' and 'Y' axis plots are provided in order to detect any abnormal behaviour of the tracking system. For every occultation (color) the plot should remain stable (with some noise) until we are deep in the atmosphere where big fluctuations are registered due to the refractive effects.



7.2 Statistics on SATU Noise Equivalent Angle (NEA) for DARK (D) and BRIGHT (B) products above 105 kms

The Star Acquisition and Tracking Unit (it is the CCD that tracks the star while it is occulted) Noise Equivalent Angle consists of the statistical angular variation of the SATU data above the atmosphere.

Statistics (in microradians) above 105 km are computed for every occultation, giving four values per occultation: one in the 'X' direction and one in the 'Y' direction for dark and bright limbs. A mean value per day in every direction and limb is calculated and monitored in order to assess instrument performance in terms of star pointing.

7.2.1 SATU NEA Statistics (table)

Statistics	SATU X (D)	SATU Y (D)	SATU X (B)	SATU Y (B)
Mean:	0.28849	-0.15403	0.25147	-0.12392
St. deviation:	0.86231	1.0010	0.28494	0.41582
Maximum:	4.2000	5.6000	1.4000	2.2000
Minimum:	-3.5000	-4.9000	-1.0000	-1.9000

Number of data:	64600.	64600.	17850.	17850.
90Percentile:	1.4000	1.1000	0.60000	0.40000

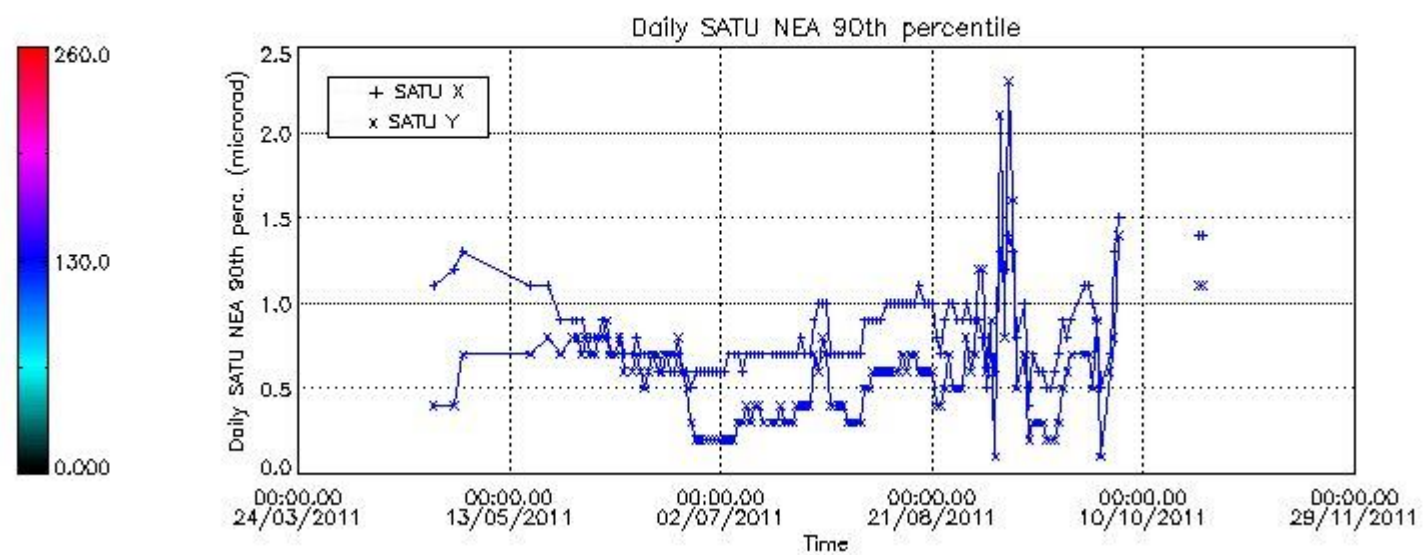
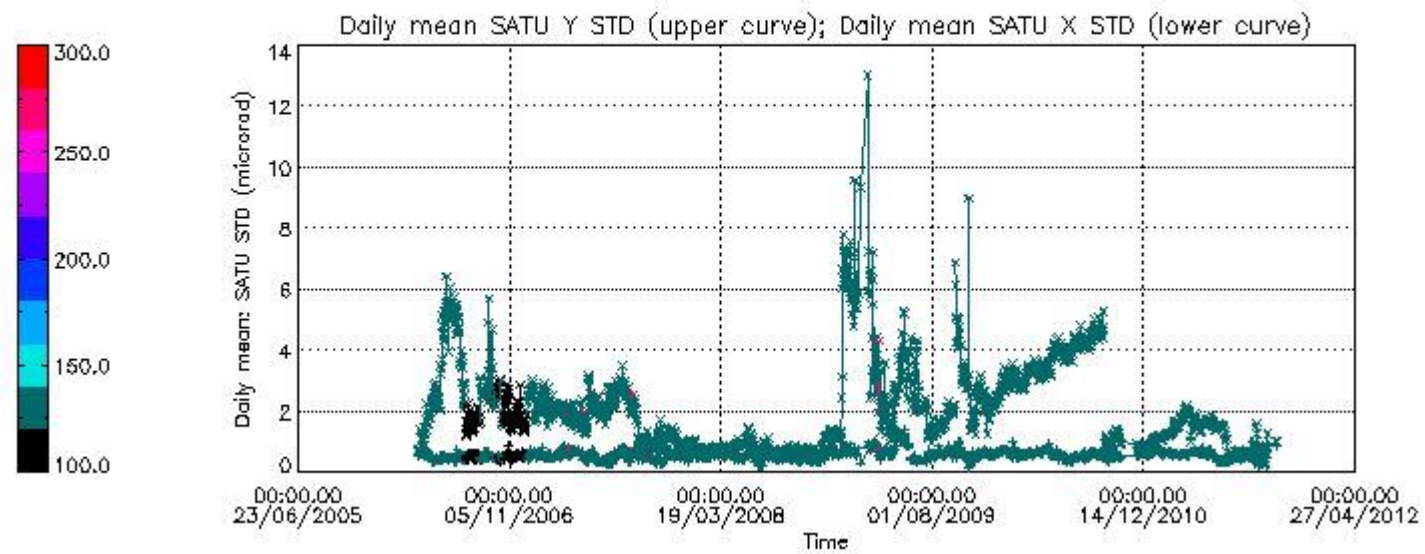
7.2.2 Trend of daily SATU NEA St. deviation since 1st April 2006 (dark limb) and of daily SATU NEA 90th percentile since May 2011

The long term trend of the SATU 'X' and 'Y' standard deviations should be constant during the whole mission.

The colorbar represents the start tangent altitude (km) of the occultations.

Upper curve: STD of SATU Y axis

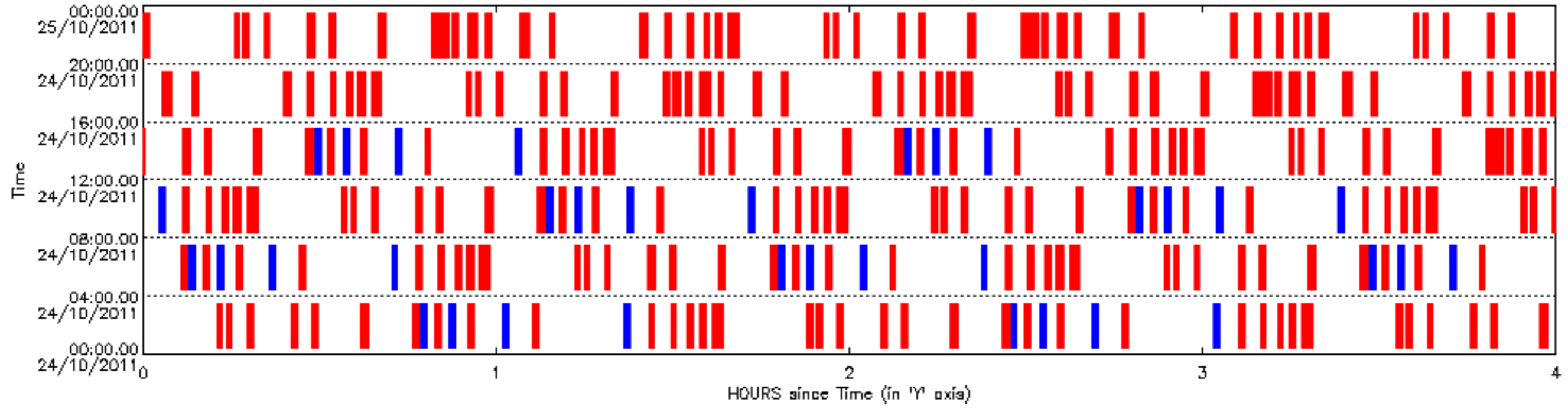
Lower curve: STD of SATU X axis

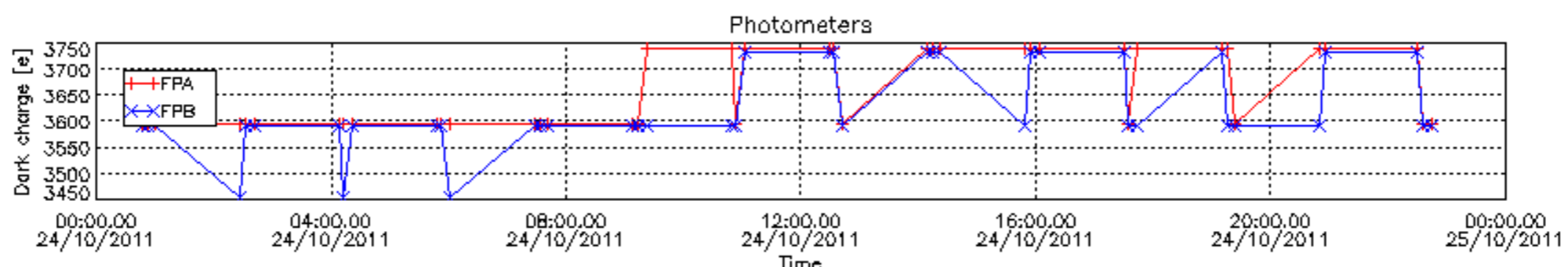
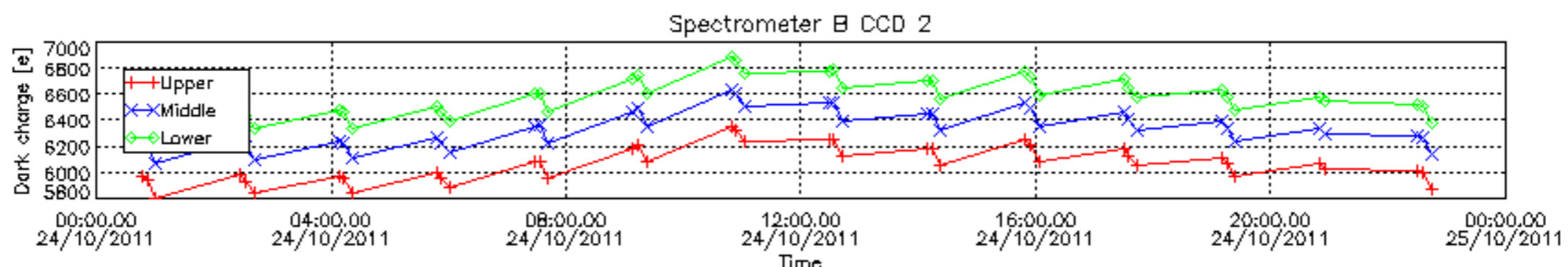
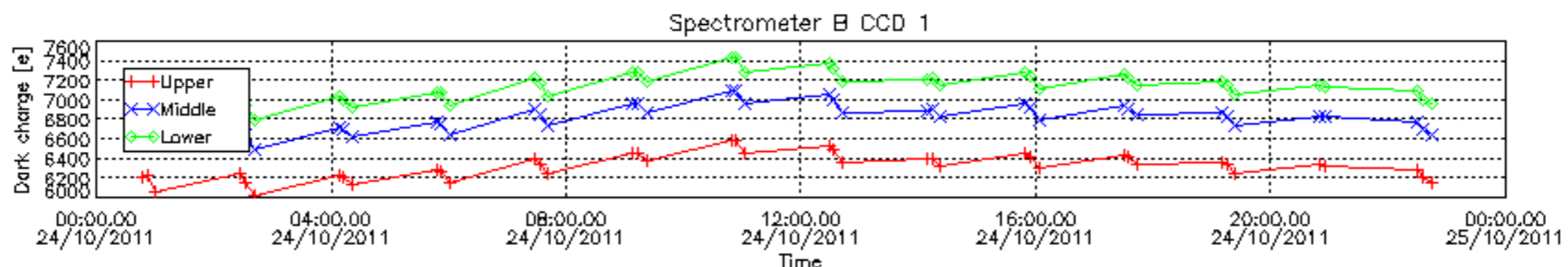
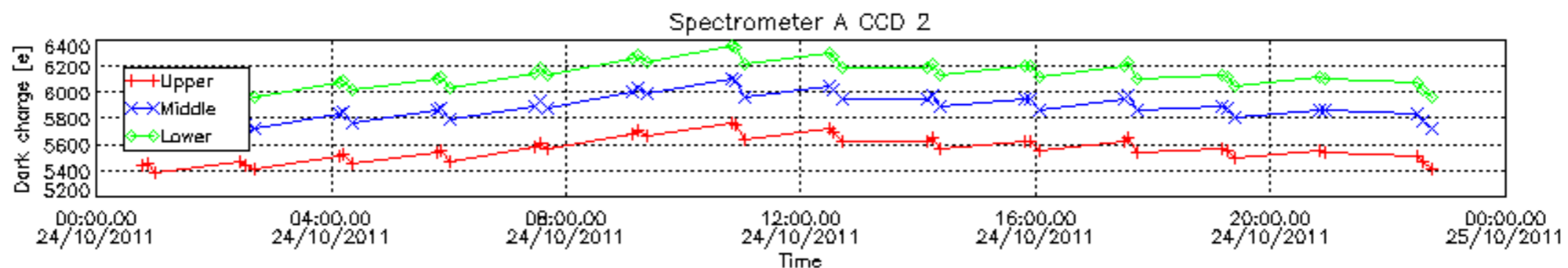
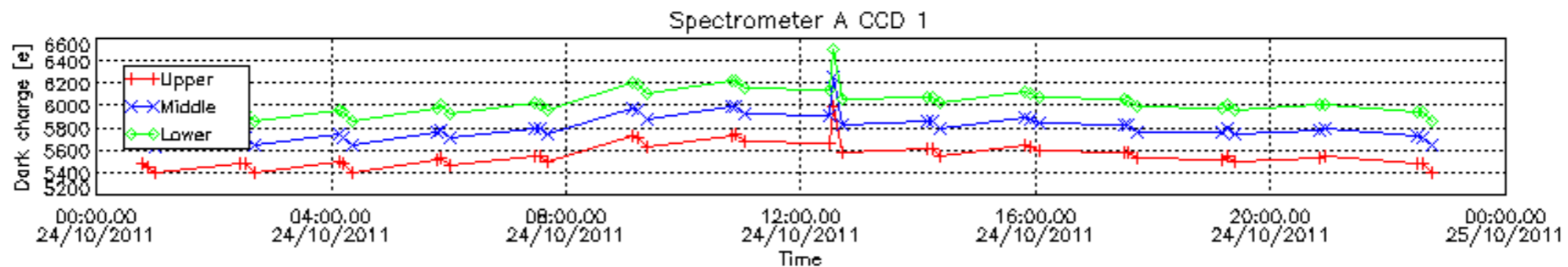


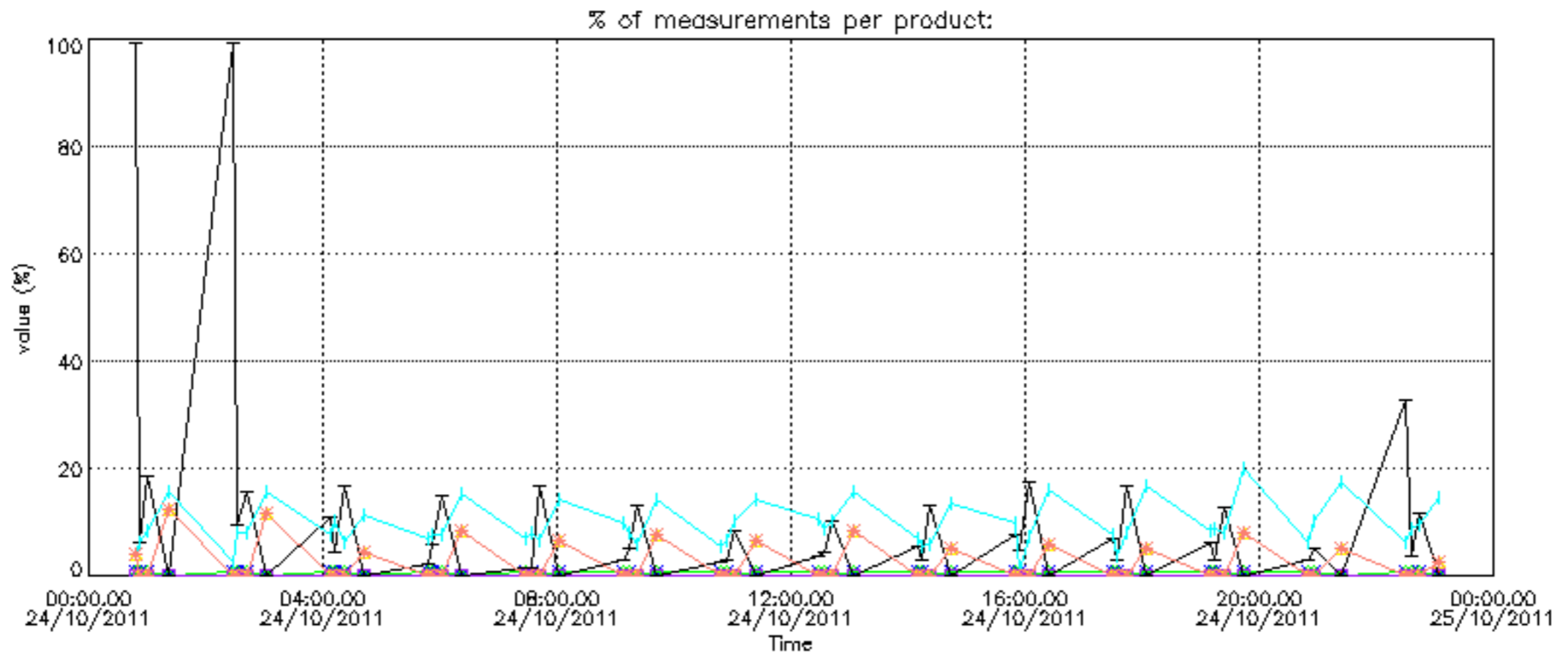
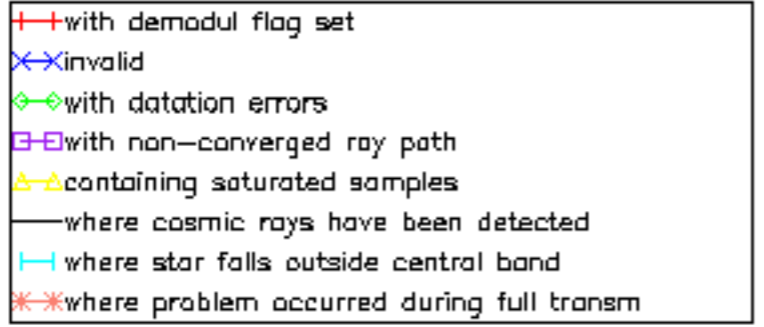
8. Auxiliary Data Files used for the production reported in section 2.4

The number reported in the third column indicates since which file (see list in section 2.4) the corresponding auxiliary file has been used. The fourth column is the date of those product files.

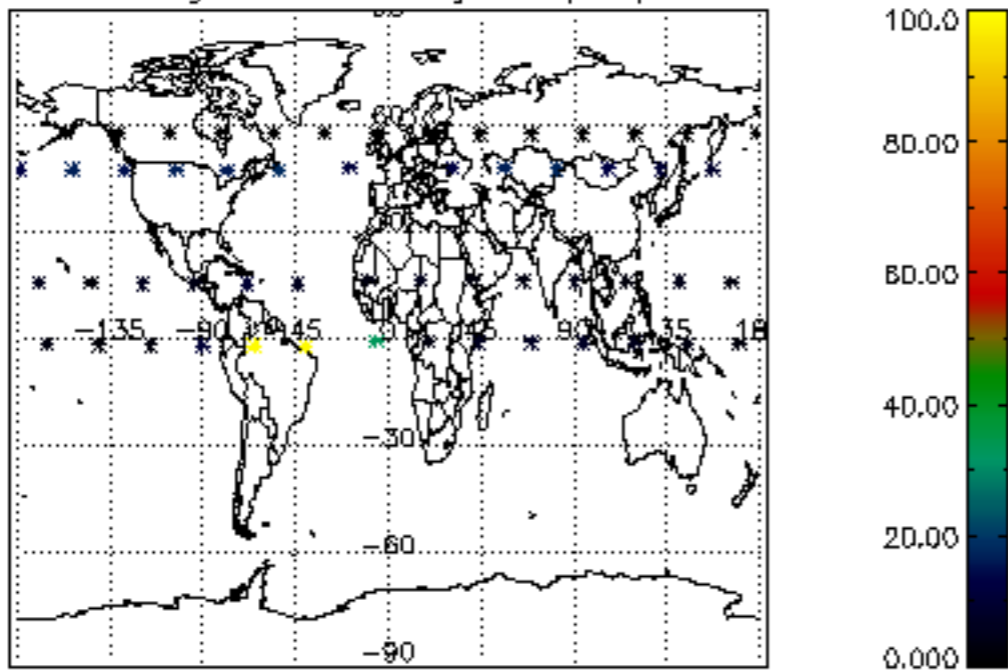
Type	Auxiliary Filename	Used since product	Used since product date
INST_PHYS_CHARACTERISTICS	GOM_INS_AXVIEC20091111_143220_20030716_120000_20500101_000000	1	24-OCT-2011 00:47:08
CALIBRATION_DATABASE	GOM_CAL_AXVIEC20111021_144853_20111020_000000_20500101_000000	1	24-OCT-2011 00:47:08
LEVEL-1B_PROC_CONFIG	GOM_PR1_AXVIEC20110513_081743_20020301_000000_20500101_000000	1	24-OCT-2011 00:47:08
STAR_CATALOGUE	GOM_CAT_AXVIEC20020121_161009_20020101_000000_20200101_000000	1	24-OCT-2011 00:47:08
STELLAR_SPECTRA_DATABANK	GOM_STS_AXVIEC20091111_151504_20020101_160000_20500101_000000	1	24-OCT-2011 00:47:08
ECMWF_FILE	AUX_ECF_AXNECM20111023_062454_20111023_210000_20111024_090000	1	24-OCT-2011 00:47:08
ECMWF_FILE	AUX_ECF_AXNECM20111023_181323_20111024_030000_20111024_150000	9	24-OCT-2011 04:07:39
ECMWF_FILE	AUX_ECA_AXNECM20111024_062114_20111023_210000_20111024_090000	13	24-OCT-2011 05:47:55
ECMWF_FILE	AUX_ECF_AXNECM20111023_181323_20111024_030000_20111024_150000	20	24-OCT-2011 08:02:33
ECMWF_FILE	AUX_ECF_AXNECM20111024_062115_20111024_090000_20111024_210000	24	24-OCT-2011 09:42:46
ECMWF_FILE	AUX_ECF_AXNECM20111024_062115_20111024_150000_20111025_030000	40	24-OCT-2011 16:23:41
ECMWF_FILE	AUX_ECA_AXNECM20111024_180746_20111024_090000_20111024_210000	44	24-OCT-2011 18:03:54
ECMWF_FILE	AUX_ECF_AXNECM20111024_062115_20111024_150000_20111025_030000	48	24-OCT-2011 19:44:07
ECMWF_FILE	AUX_ECF_AXNECM20111024_062115_20111024_210000_20111025_090000	51	24-OCT-2011 21:03:56
OPTIONAL_ECMWF_FILE	MISSING	1	24-OCT-2011 00:47:08
ORBIT_DATA_FILE	AUX_FPO_AXVPDS20111023_102451_20111022_184333_20111101_205716	1	24-OCT-2011 00:47:08
ORBIT_DATA_FILE	AUX_FPO_AXVPDS20111024_101536_20111023_194703_20111102_202032	24	24-OCT-2011 09:42:46



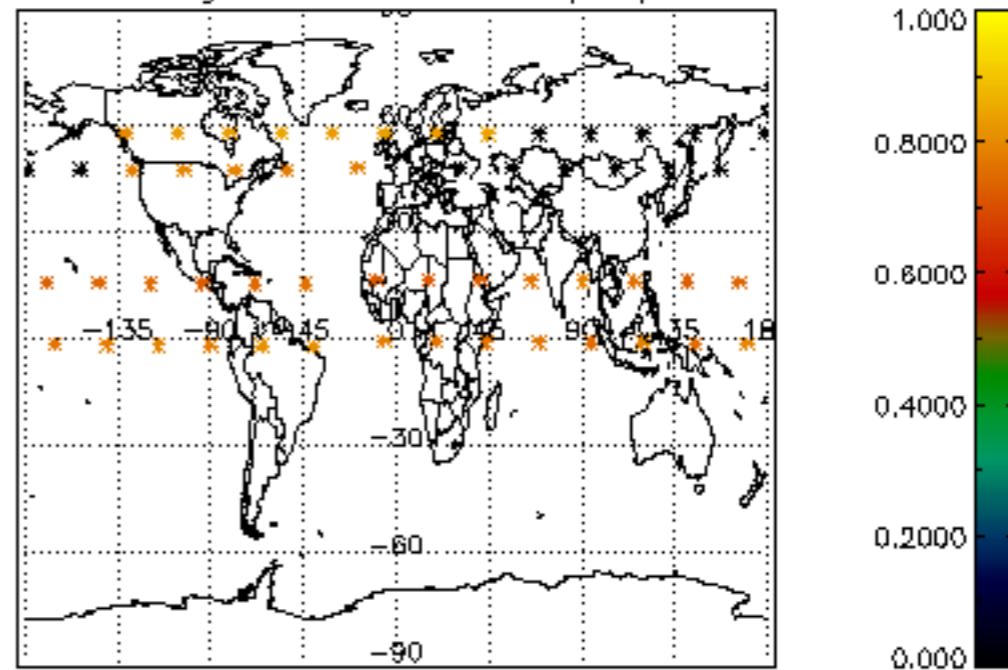




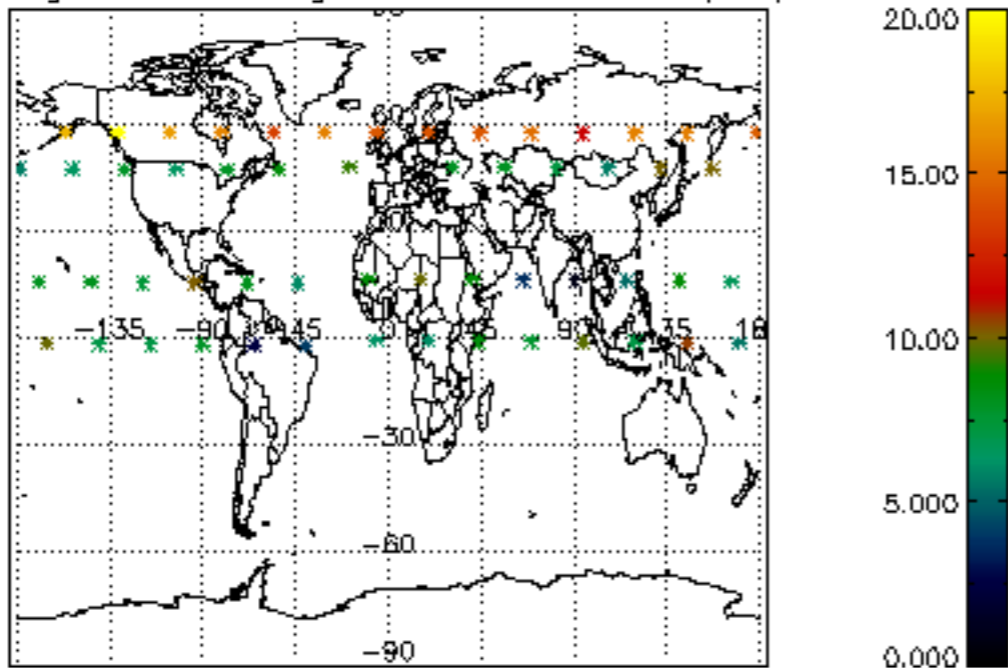
Percentage of cosmic ray hits per profile



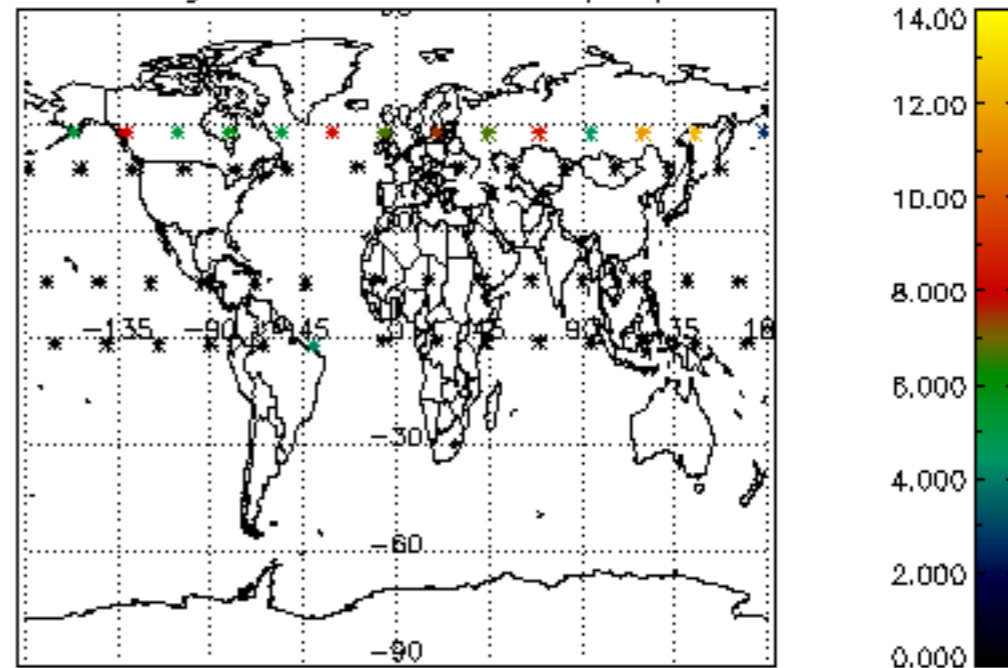
Percentage of datation errors per profile



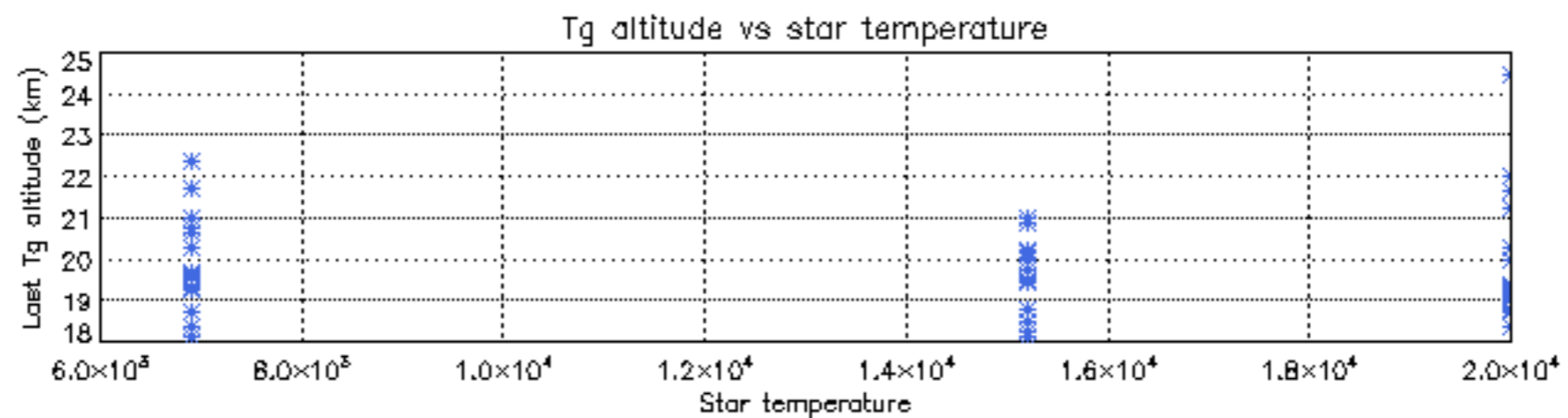
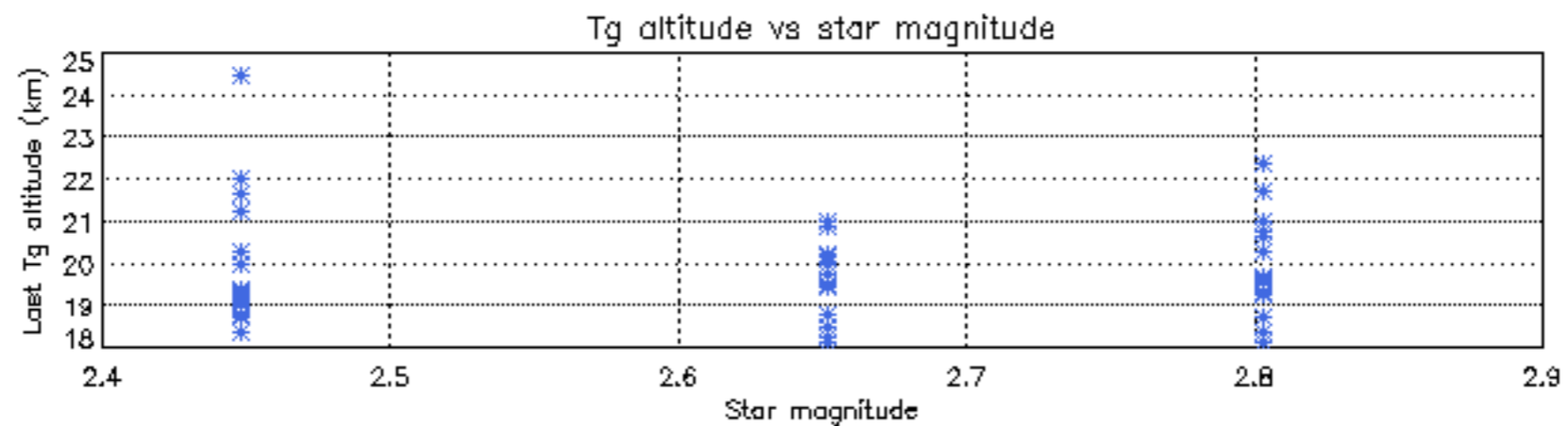
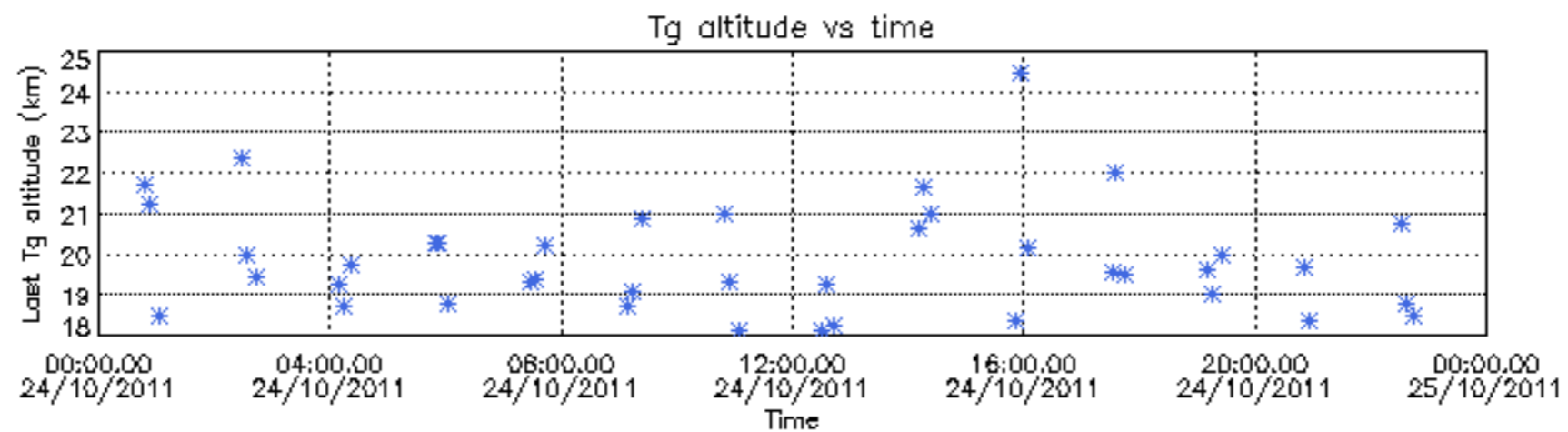
Percentage of star falling outside central band per profile



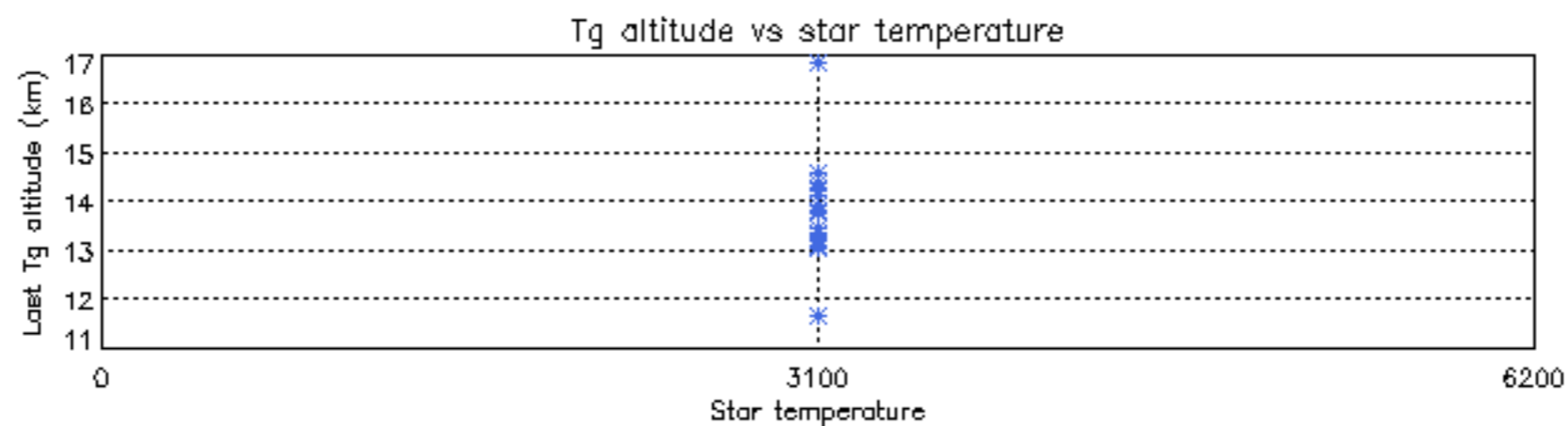
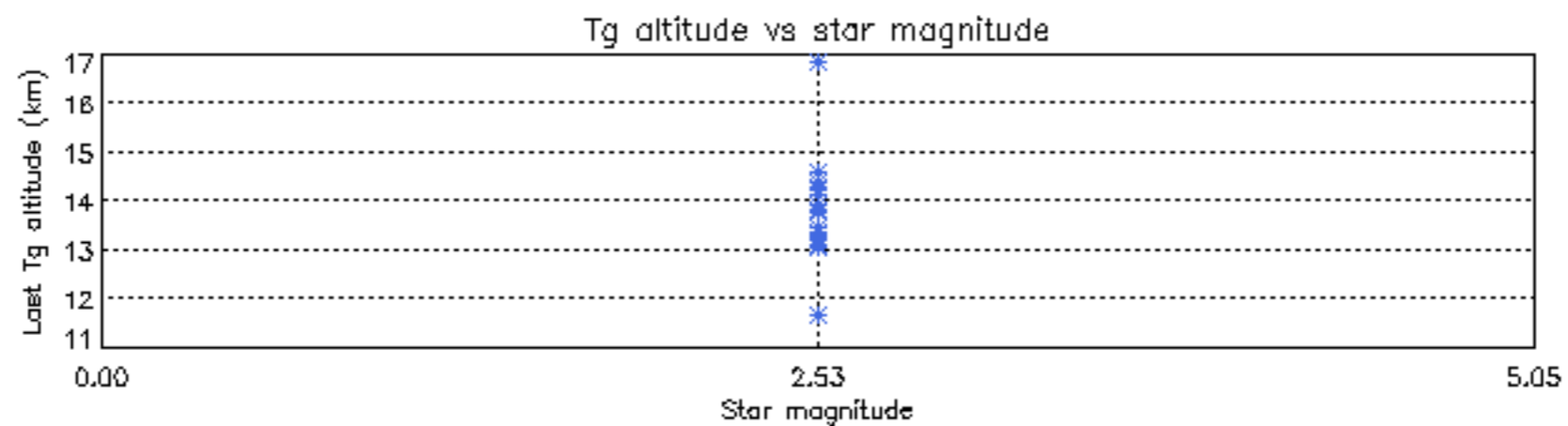
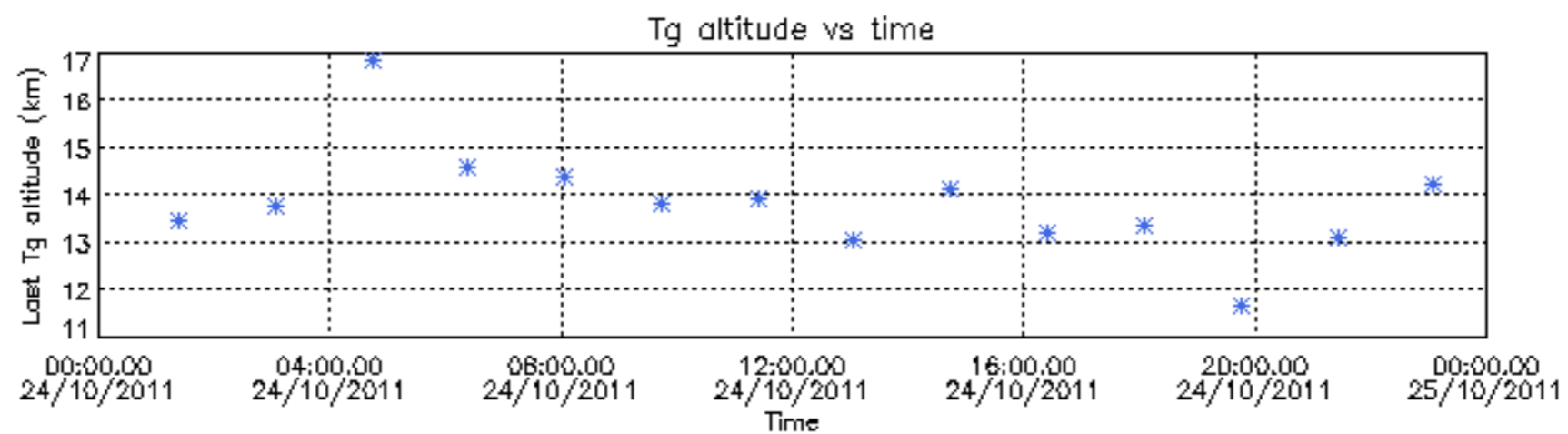
Percentage of saturation errors per profile

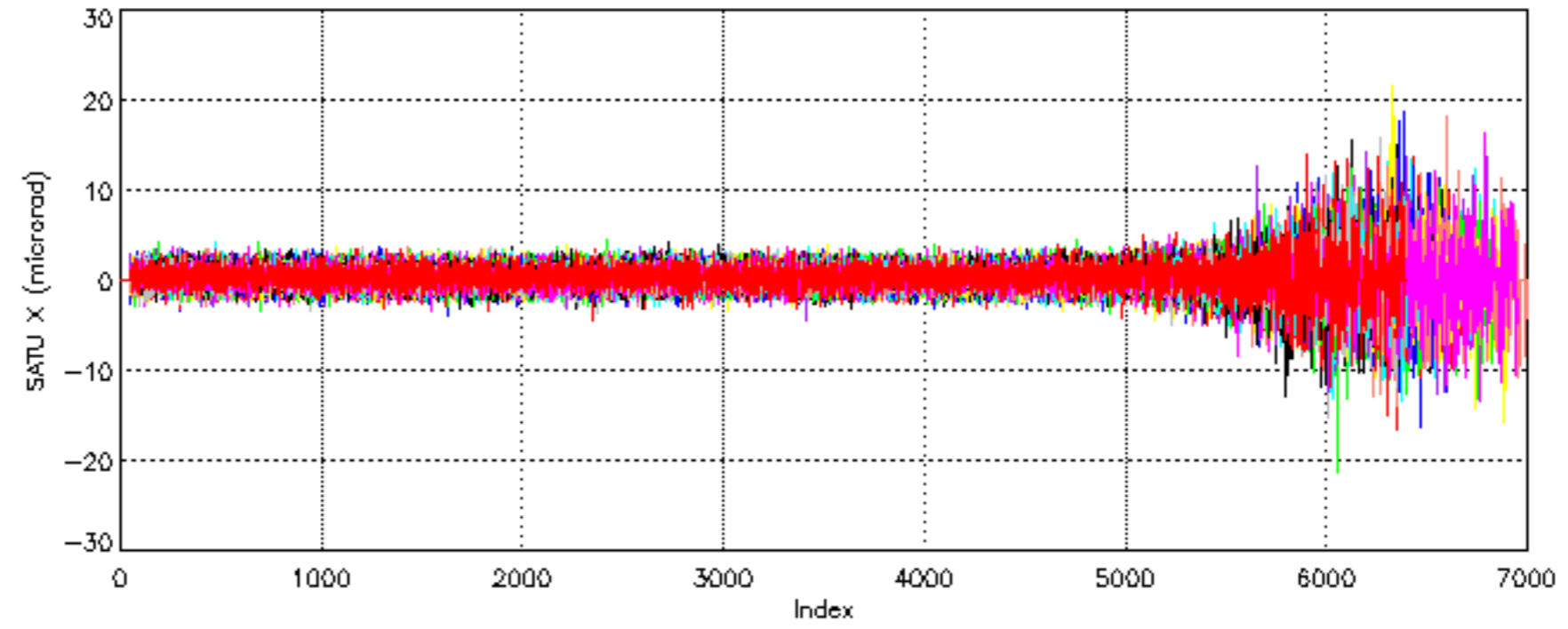


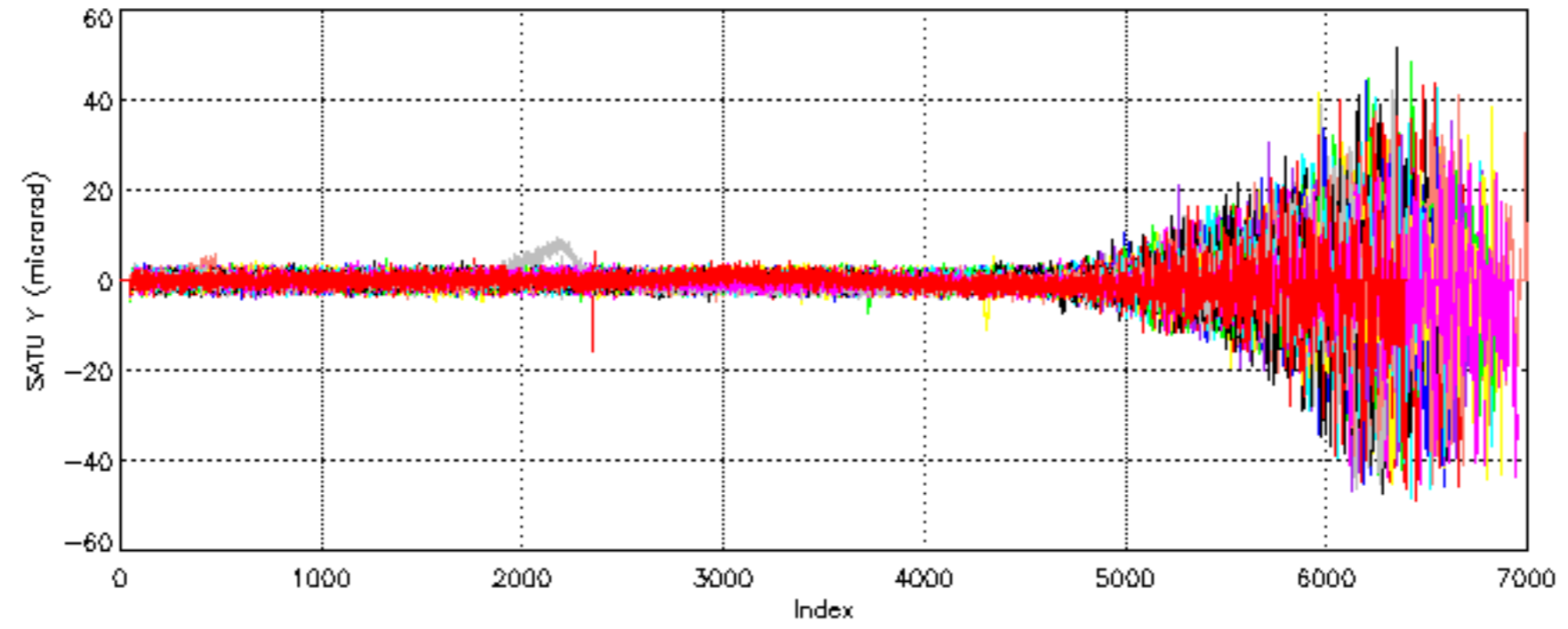
Tangent altitude at which the star is lost

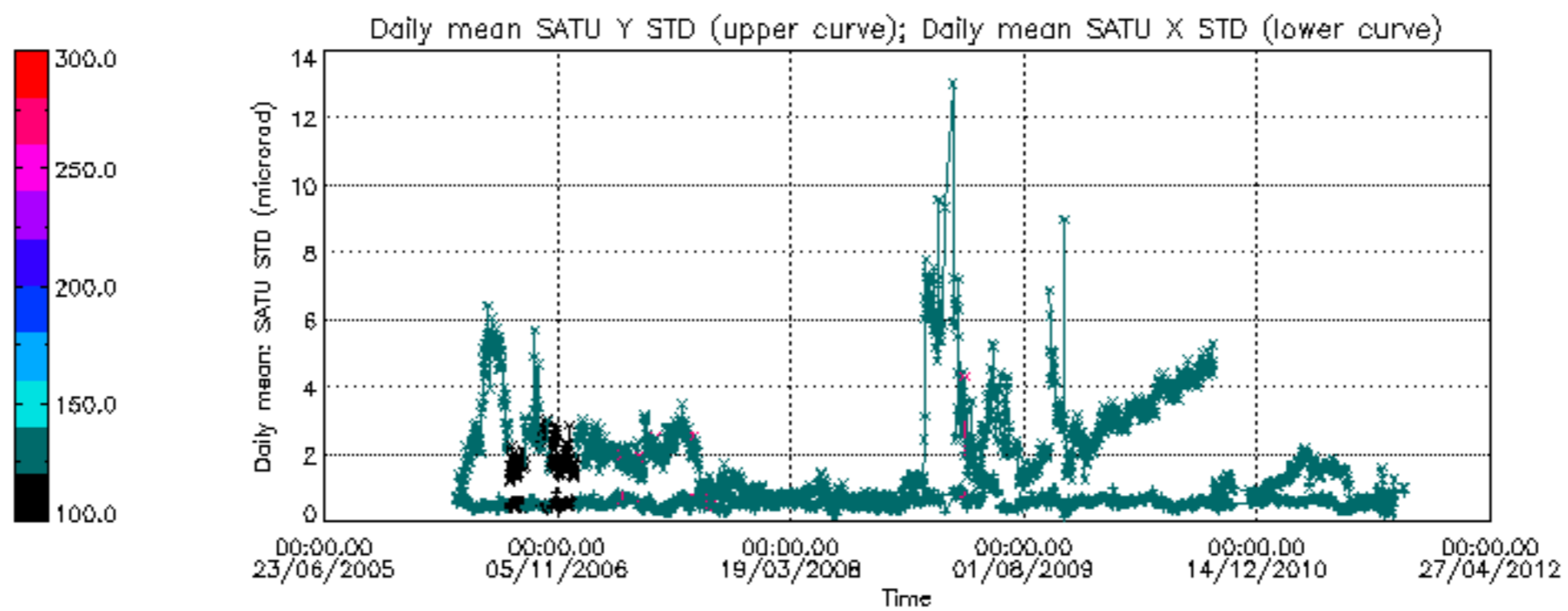


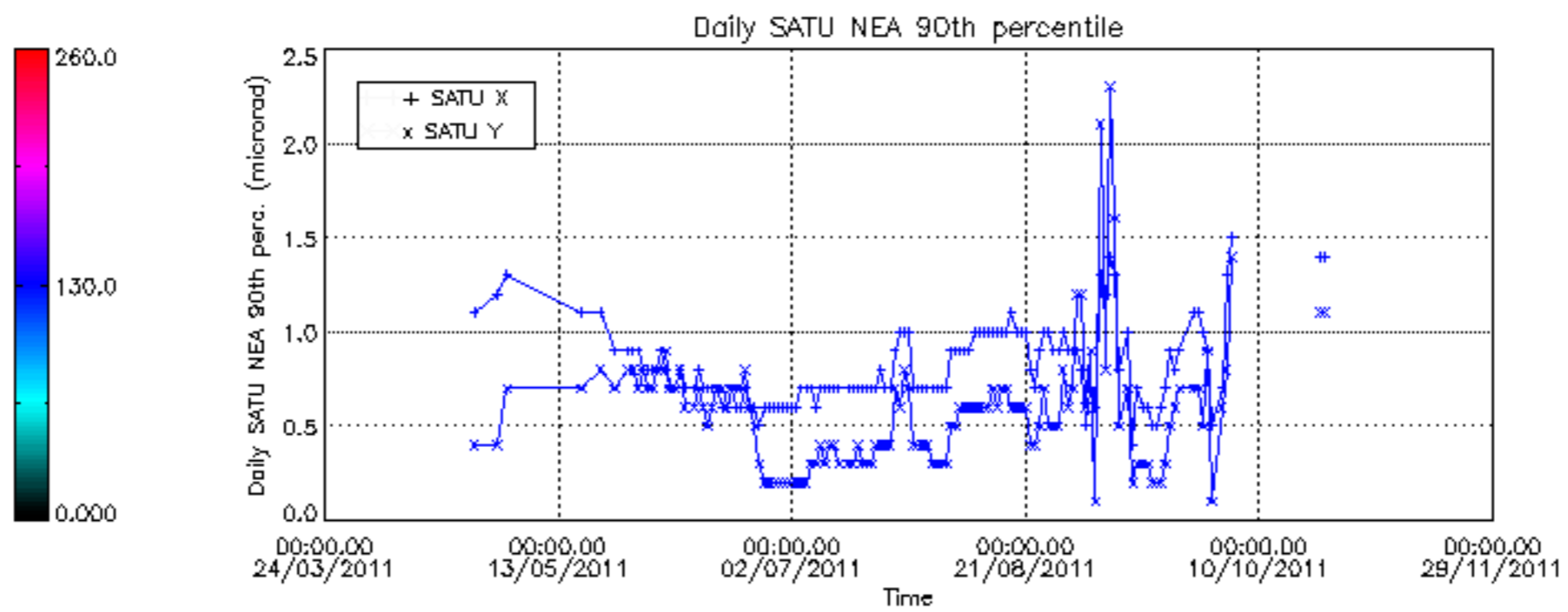
Tangent altitude at which the star is lost











/nas3/ENVISAT/GOMOS/GOM_NL__0P/GOM_NL__0PNPDE20111002_214039_00000423107_00144_50158_6530.N1
1; 2617.1; 02-OCT-2011 21:40:39; Bright; 42.5; 53; 43Bet And ; 2.05; 3300;occ; 85; 0;50158
/nas3/ENVISAT/GOMOS/GOM_NL__0P/GOM_NL__0PNPDE20111002_223444_000011363107_00144_50158_6531.N1
1; -151.2; 02-OCT-2011 22:34:44; Dark ; 54.5; 37; 25Del CMA ; 1.83; 5900;occ; 109; 0;50158
2; 936.0; 02-OCT-2011 22:52:51; Dark ; 49.5; 157; The1Eri ; 2.91; 9300;occ; 99; 0;50159
/nas3/ENVISAT/GOMOS/GOM_NL__0P/GOM_NL__0PNPDK20111002_182012_000033093107_00142_50156_5389.N1
1; 2618.4; 02-OCT-2011 18:20:12; Bright; 47.5; 53; 43Bet And ; 2.05; 3300;occ; 95; 0;50156
2; 3035.8; 02-OCT-2011 18:27:09; Bright; 41.0; 110; 37Del Cas ; 2.68; 8900;occ; 82; 0;50156
3; 3212.6; 02-OCT-2011 18:30:06; Bright; 51.0; 160; 23Gam Per ; 2.93; 4700;occ; 102; 0;50156
4; 5594.7; 02-OCT-2011 19:09:48; Dark ; 47.0; 132; 15Rho Pup ; 2.80; 6900;occ; 94; 0;50156
5; 5860.2; 02-OCT-2011 19:14:14; Dark ; 68.0; 37; 25Del CMA ; 1.83; 5900;occ; 136; 0;50156
/nas3/ENVISAT/GOMOS/GOM_NL__0P/GOM_NL__0PNPDK20111002_200025_000033093107_00143_50157_5390.N1
1; 2617.7; 02-OCT-2011 20:00:25; Bright; 45.5; 53; 43Bet And ; 2.05; 3300;occ; 91; 0;50157
2; 3035.2; 02-OCT-2011 20:07:23; Bright; 41.5; 110; 37Del Cas ; 2.68; 8900;occ; 83; 0;50157
3; 5861.4; 02-OCT-2011 20:54:29; Dark ; 66.0; 37; 25Del CMA ; 1.83; 5900;occ; 132; 0;50157
/nas3/ENVISAT/GOMOS/GOM_NL__0P/GOM_NL__0PNPDE20111003_002332_00000553107_00146_50160_6532.N1
1; 363.1; 03-OCT-2011 00:23:32; Dark ; 56.0; 108; Alp Col ; 2.65; 15200;occ; 112; 0;50160
/nas3/ENVISAT/GOMOS/GOM_NL__0P/GOM_NL__0PNPDE20111003_220654_000028643107_00159_50173_6535.N1
1; 382.9; 03-OCT-2011 22:06:54; Dark ; 61.0; 108; Alp Col ; 2.65; 15200;occ; 122; 0;50173
2; 2608.3; 03-OCT-2011 22:43:59; Bright; 45.5; 53; 43Bet And ; 2.05; 3300;occ; 91; 0;50173
3; 3196.6; 03-OCT-2011 22:53:47; Bright; 50.5; 160; 23Gam Per ; 2.93; 4700;occ; 101; 0;50173
/nas3/ENVISAT/GOMOS/GOM_NL__0P/GOM_NL__0PNPDK20111003_065601_000005743107_00149_50163_5391.N1
1; -144.3; 03-OCT-2011 06:56:01; Dark ; 72.5; 37; 25Del CMA ; 1.83; 5900;occ; 145; 0;50163
2; 369.2; 03-OCT-2011 07:04:34; Dark ; 61.5; 108; Alp Col ; 2.65; 15200;occ; 123; 0;50164
/nas3/ENVISAT/GOMOS/GOM_NL__0P/GOM_NL__0PNPDK20111003_075150_000032393107_00150_50164_5392.N1
1; -2808.7; 03-OCT-2011 07:51:50; Bright; 49.0; 160; 23Gam Per ; 2.93; 4700;occ; 98; 0;50164
2; -142.9; 03-OCT-2011 08:36:16; Dark ; 68.0; 37; 25Del CMA ; 1.83; 5900;occ; 136; 0;50164
3; 370.9; 03-OCT-2011 08:44:50; Dark ; 60.0; 108; Alp Col ; 2.65; 15200;occ; 120; 0;50165
/nas3/ENVISAT/GOMOS/GOM_NL__0P/GOM_NL__0PNPDK20111003_093203_000032423107_00151_50165_5393.N1
1; -2809.7; 03-OCT-2011 09:32:03; Bright; 50.5; 160; 23Gam Per ; 2.93; 4700;occ; 101; 0;50165
2; -141.5; 03-OCT-2011 10:16:32; Dark ; 61.5; 37; 25Del CMA ; 1.83; 5900;occ; 123; 0;50165
3; 372.5; 03-OCT-2011 10:25:06; Dark ; 60.0; 108; Alp Col ; 2.65; 15200;occ; 120; 0;50166
/nas3/ENVISAT/GOMOS/GOM_NL__0P/GOM_NL__0PNPDK20111003_110225_000038363107_00152_50166_5394.N1
1; 2612.3; 03-OCT-2011 11:02:25; Bright; 47.0; 53; 43Bet And ; 2.05; 3300;occ; 94; 0;50166
2; 3203.1; 03-OCT-2011 11:12:16; Bright; 50.0; 160; 23Gam Per ; 2.93; 4700;occ; 100; 0;50166
3; 5873.7; 03-OCT-2011 11:56:47; Dark ; 55.5; 37; 25Del CMA ; 1.83; 5900;occ; 111; 0;50166
4; 6387.7; 03-OCT-2011 12:05:21; Dark ; 61.5; 108; Alp Col ; 2.65; 15200;occ; 123; 0;50167
/nas3/ENVISAT/GOMOS/GOM_NL__0P/GOM_NL__0PNPDK20111003_124239_000038403107_00153_50167_5395.N1
1; 2611.8; 03-OCT-2011 12:42:39; Bright; 45.0; 53; 43Bet And ; 2.05; 3300;occ; 90; 0;50167
2; 3202.2; 03-OCT-2011 12:52:29; Bright; 49.5; 160; 23Gam Per ; 2.93; 4700;occ; 99; 0;50167
3; 5875.1; 03-OCT-2011 13:37:02; Dark ; 66.5; 37; 25Del CMA ; 1.83; 5900;occ; 133; 0;50167
4; 6173.3; 03-OCT-2011 13:42:00; Dark ; 59.5; 0; ; 0.00; 0;occ; 119; 0;50168
5; 6389.3; 03-OCT-2011 13:45:36; Dark ; 62.5; 108; Alp Col ; 2.65; 15200;occ; 125; 0;50168
/nas3/ENVISAT/GOMOS/GOM_NL__0P/GOM_NL__0PNPDK20111003_142252_000038413107_00154_50168_5396.N1
1; 2611.2; 03-OCT-2011 14:22:52; Bright; 44.0; 53; 43Bet And ; 2.05; 3300;occ; 88; 0;50168
2; 3201.4; 03-OCT-2011 14:32:42; Bright; 48.0; 160; 23Gam Per ; 2.93; 4700;occ; 96; 0;50168
3; 5948.9; 03-OCT-2011 15:18:30; Dark ; 55.0; 23; 21Eps CMA ; 1.50; 26000;occ; 110; 0;50168
4; 6174.6; 03-OCT-2011 15:22:15; Dark ; 59.5; 0; ; 0.00; 0;occ; 119; 0;50169
5; 6390.9; 03-OCT-2011 15:25:52; Dark ; 61.5; 108; Alp Col ; 2.65; 15200;occ; 123; 0;50169
/nas3/ENVISAT/GOMOS/GOM_NL__0P/GOM_NL__0PNPDK20111003_160306_000038403107_00155_50169_5397.N1
1; 2610.6; 03-OCT-2011 16:03:06; Bright; 47.0; 53; 43Bet And ; 2.05; 3300;occ; 94; 0;50169
2; 3200.5; 03-OCT-2011 16:12:55; Bright; 51.5; 160; 23Gam Per ; 2.93; 4700;occ; 103; 0;50169
3; 5950.3; 03-OCT-2011 16:58:45; Dark ; 55.0; 23; 21Eps CMA ; 1.50; 26000;occ; 110; 0;50169
4; 6175.9; 03-OCT-2011 17:02:31; Dark ; 59.5; 0; ; 0.00; 0;occ; 119; 0;50170
5; 6392.6; 03-OCT-2011 17:06:07; Dark ; 59.0; 108; Alp Col ; 2.65; 15200;occ; 118; 0;50170
/nas3/ENVISAT/GOMOS/GOM_NL__0P/GOM_NL__0PNPDK20111003_202301_000002793107_00158_50172_5399.N1
1; 164.2; 03-OCT-2011 20:23:01; Dark ; 59.5; 0; ; 0.00; 0;occ; 119; 0;50172
2; 381.4; 03-OCT-2011 20:26:38; Dark ; 62.0; 108; Alp Col ; 2.65; 15200;occ; 124; 0;50172
/nas3/ENVISAT/GOMOS/GOM_NL__0P/GOM_NL__0PNPDE20111003_051546_000034033107_00148_50162_6533.N1
1; -145.7; 03-OCT-2011 05:15:46; Dark ; 59.5; 37; 25Del CMA ; 1.83; 5900;occ; 119; 0;50162
2; 367.8; 03-OCT-2011 05:24:19; Dark ; 60.0; 108; Alp Col ; 2.65; 15200;occ; 120; 0;50163
3; 2614.2; 03-OCT-2011 06:01:45; Bright; 43.5; 53; 43Bet And ; 2.05; 3300;occ; 87; 0;50163
4; 3206.2; 03-OCT-2011 06:11:37; Bright; 51.5; 160; 23Gam Per ; 2.93; 4700;occ; 103; 0;50163
/nas3/ENVISAT/GOMOS/GOM_NL__0P/GOM_NL__0PNPDE20111004_030402_000024833107_00162_50176_6536.N1
1; 169.1; 04-OCT-2011 03:04:02; Dark ; 59.5; 0; ; 0.00; 0;occ; 119; 0;50176
2; 387.5; 04-OCT-2011 03:07:40; Dark ; 61.5; 108; Alp Col ; 2.65; 15200;occ; 123; 0;50176
3; 2606.5; 04-OCT-2011 03:44:39; Bright; 46.0; 53; 43Bet And ; 2.05; 3300;occ; 92; 0;50176
/nas3/ENVISAT/GOMOS/GOM_NL__0P/GOM_NL__0PNPDE20111004_044756_000022613107_00163_50177_6537.N1

1; 389.0; 04-OCT-2011 04:47:56; Dark ; 62.0; 108; Alp Col ; 2.65; 15200;occ; 124; 0;50177
2; 2605.9; 04-OCT-2011 05:24:53; Bright; 44.5; 53; 43Bet And ; 2.05; 3300;occ; 89; 0;50177
/nas3/ENVISAT/GOMOS/GOM_NL__0P/GOM_NL__0PNPDE20111004_062811_000028523107_00164_50178_6538.N1
1; 390.5; 04-OCT-2011 06:28:11; Dark ; 62.0; 108; Alp Col ; 2.65; 15200;occ; 124; 0;50178
2; 2605.5; 04-OCT-2011 07:05:06; Bright; 47.5; 53; 43Bet And ; 2.05; 3300;occ; 95; 0;50178
3; 3192.0; 04-OCT-2011 07:14:53; Bright; 51.0; 160; 23Gam Per ; 2.93; 4700;occ; 102; 0;50178
/nas3/ENVISAT/GOMOS/GOM_NL__0P/GOM_NL__0PNPDK20111004_080827_000000613107_00165_50179_5403.N1
1; 391.9; 04-OCT-2011 08:08:27; Dark ; 62.0; 108; Alp Col ; 2.65; 15200;occ; 124; 0;50179
/nas3/ENVISAT/GOMOS/GOM_NL__0P/GOM_NL__0PNPDK20111004_084520_000038633107_00165_50179_5404.N1
1; 2604.9; 04-OCT-2011 08:45:20; Bright; 47.5; 53; 43Bet And ; 2.05; 3300;occ; 95; 0;50179
2; 3191.1; 04-OCT-2011 08:55:06; Bright; 49.0; 160; 23Gam Per ; 2.93; 4700;occ; 98; 0;50179
3; 6407.5; 04-OCT-2011 09:48:42; Dark ; 61.0; 108; Alp Col ; 2.65; 15200;occ; 122; 0;50180
/nas3/ENVISAT/GOMOS/GOM_NL__0P/GOM_NL__0PNPDK20111004_102533_000034163107_00166_50180_5405.N1
1; 2604.3; 04-OCT-2011 10:25:33; Bright; 47.5; 53; 43Bet And ; 2.05; 3300;occ; 95; 0;50180
2; 3190.0; 04-OCT-2011 10:35:19; Bright; 51.5; 160; 23Gam Per ; 2.93; 4700;occ; 103; 0;50180
3; 5965.3; 04-OCT-2011 11:21:34; Dark ; 55.0; 23; 21Eps CMa ; 1.50; 26000;occ; 110; 0;50180
/nas3/ENVISAT/GOMOS/GOM_NL__0P/GOM_NL__0PNPDK20111004_130533_000002823107_00168_50182_5406.N1
1; 176.4; 04-OCT-2011 13:05:33; Dark ; 59.5; 0; ; 0.00; 0;occ; 119; 0;50182
2; 396.5; 04-OCT-2011 13:09:13; Dark ; 62.0; 108; Alp Col ; 2.65; 15200;occ; 124; 0;50182
/nas3/ENVISAT/GOMOS/GOM_NL__0P/GOM_NL__0PNPDK20111004_134600_000038713107_00168_50182_5407.N1
1; 2603.1; 04-OCT-2011 13:46:00; Bright; 42.5; 53; 43Bet And ; 2.05; 3300;occ; 85; 0;50182
2; 3188.2; 04-OCT-2011 13:55:45; Bright; 47.5; 160; 23Gam Per ; 2.93; 4700;occ; 95; 0;50182
3; 6412.1; 04-OCT-2011 14:49:28; Dark ; 62.5; 108; Alp Col ; 2.65; 15200;occ; 125; 0;50183
/nas3/ENVISAT/GOMOS/GOM_NL__0P/GOM_NL__0PNPDK20111004_153558_000000483107_00169_50183_5408.N1
1;-2826.7; 04-OCT-2011 15:35:58; Bright; 48.5; 160; 23Gam Per ; 2.93; 4700;occ; 97; 0;50183
/nas3/ENVISAT/GOMOS/GOM_NL__0P/GOM_NL__0PNPDE20111012_213220_000026983107_00288_50302_6539.N1
1; 109.0; 12-OCT-2011 21:32:20; Dark ; 59.5; 0; ; 0.00; 0;occ; 119; 0;50302
2; 2765.0; 12-OCT-2011 22:16:36; Bright; 42.5; 73; 57Gam1And ; 2.26; 13100;occ; 85; 0;50302
/nas3/ENVISAT/GOMOS/GOM_NL__0P/GOM_NL__0PNPDE20111012_231235_000027003107_00289_50303_6540.N1
1; 109.9; 12-OCT-2011 23:12:35; Dark ; 59.5; 0; ; 0.00; 0;occ; 119; 0;50303
2; 2764.3; 12-OCT-2011 23:56:49; Bright; 46.0; 73; 57Gam1And ; 2.26; 13100;occ; 92; 0;50303
/nas3/ENVISAT/GOMOS/GOM_NL__0P/GOM_NL__0PNPDK20111012_145121_000000593107_00284_50298_5411.N1
1; 105.5; 12-OCT-2011 14:51:21; Dark ; 59.5; 0; ; 0.00; 0;occ; 119; 0;50298
/nas3/ENVISAT/GOMOS/GOM_NL__0P/GOM_NL__0PNPDK20111012_153543_000034123107_00284_50298_5412.N1
1; 2767.9; 12-OCT-2011 15:35:43; Bright; 45.5; 73; 57Gam1And ; 2.26; 13100;occ; 91; 0;50298
2; 6120.4; 12-OCT-2011 16:31:36; Dark ; 59.5; 0; ; 0.00; 0;occ; 119; 0;50299
/nas3/ENVISAT/GOMOS/GOM_NL__0P/GOM_NL__0PNPDE20111013_005250_000026963107_00290_50304_6541.N1
1; 110.8; 13-OCT-2011 00:52:50; Dark ; 59.5; 0; ; 0.00; 0;occ; 119; 0;50304
2; 2763.5; 13-OCT-2011 01:37:02; Bright; 44.0; 73; 57Gam1And ; 2.26; 13100;occ; 88; 0;50304
/nas3/ENVISAT/GOMOS/GOM_NL__0P/GOM_NL__0PNPDE20111013_023304_000026973107_00291_50305_6542.N1
1; 111.7; 13-OCT-2011 02:33:04; Dark ; 59.5; 0; ; 0.00; 0;occ; 119; 0;50305
2; 2762.8; 13-OCT-2011 03:17:16; Bright; 46.5; 73; 57Gam1And ; 2.26; 13100;occ; 93; 0;50305
/nas3/ENVISAT/GOMOS/GOM_NL__0P/GOM_NL__0PNPDE20111013_041319_000026963107_00292_50306_6543.N1
1; 112.5; 13-OCT-2011 04:13:19; Dark ; 59.5; 0; ; 0.00; 0;occ; 119; 0;50306
2; 2762.6; 13-OCT-2011 04:57:29; Bright; 46.0; 73; 57Gam1And ; 2.26; 13100;occ; 92; 0;50306
/nas3/ENVISAT/GOMOS/GOM_NL__0P/GOM_NL__0PNPDE20111013_055334_000000593107_00293_50307_6544.N1
1; 113.4; 13-OCT-2011 05:53:34; Dark ; 59.5; 0; ; 0.00; 0;occ; 119; 0;50307
/nas3/ENVISAT/GOMOS/GOM_NL__0P/GOM_NL__0PNPDE20111013_213942_000003503107_00302_50316_6545.N1
1; 2755.8; 13-OCT-2011 21:39:42; Bright; 46.0; 73; 57Gam1And ; 2.26; 13100;occ; 92; 0;50316
2; 3073.9; 13-OCT-2011 21:45:00; Bright; 32.5; 160; 23Gam Per ; 2.93; 4700;occ; 65; 0;50316
/nas3/ENVISAT/GOMOS/GOM_NL__0P/GOM_NL__0PNPDE20111013_231955_000003503107_00303_50317_6546.N1
1; 2755.1; 13-OCT-2011 23:19:55; Bright; 47.5; 73; 57Gam1And ; 2.26; 13100;occ; 95; 0;50317
2; 3073.0; 13-OCT-2011 23:25:13; Bright; 32.5; 160; 23Gam Per ; 2.93; 4700;occ; 65; 0;50317
/nas3/ENVISAT/GOMOS/GOM_NL__0P/GOM_NL__0PNPDK20111013_073349_000000593107_00294_50308_5413.N1
1; 114.3; 13-OCT-2011 07:33:49; Dark ; 59.5; 0; ; 0.00; 0;occ; 119; 0;50308
/nas3/ENVISAT/GOMOS/GOM_NL__0P/GOM_NL__0PNPDK20111013_081756_000034273107_00294_50308_5414.N1
1; 2761.2; 13-OCT-2011 08:17:56; Bright; 47.5; 73; 57Gam1And ; 2.26; 13100;occ; 95; 0;50308
2; 6129.1; 13-OCT-2011 09:14:04; Dark ; 59.5; 0; ; 0.00; 0;occ; 119; 0;50309
/nas3/ENVISAT/GOMOS/GOM_NL__0P/GOM_NL__0PNPDK20111013_113822_000000513107_00296_50310_5415.N1
1; 2759.8; 13-OCT-2011 11:38:22; Bright; 51.5; 73; 57Gam1And ; 2.26; 13100;occ; 103; 0;50310
/nas3/ENVISAT/GOMOS/GOM_NL__0P/GOM_NL__0PNPDK20111013_131836_000000463107_00297_50311_5416.N1
1; 2759.1; 13-OCT-2011 13:18:36; Bright; 46.5; 73; 57Gam1And ; 2.26; 13100;occ; 93; 0;50311
/nas3/ENVISAT/GOMOS/GOM_NL__0P/GOM_NL__0PNPDK20111013_145516_000005563107_00298_50312_5417.N1
1; 2545.3; 13-OCT-2011 14:55:16; Bright; 39.0; 53; 43Bet And ; 2.05; 3300;occ; 78; 0;50312
2; 2758.5; 13-OCT-2011 14:58:49; Bright; 45.0; 73; 57Gam1And ; 2.26; 13100;occ; 90; 0;50312
3; 3077.0; 13-OCT-2011 15:04:07; Bright; 24.5; 160; 23Gam Per ; 2.93; 4700;occ; 49; 0;50312
/nas3/ENVISAT/GOMOS/GOM_NL__0P/GOM_NL__0PNPDK20111013_163902_000003423107_00299_50313_5418.N1
1; 2757.8; 13-OCT-2011 16:39:02; Bright; 46.5; 73; 57Gam1And ; 2.26; 13100;occ; 93; 0;50313

2; 3076.2; 13-OCT-2011 16:44:21; Bright; 24.5; 160; 23Gam Per ; 2.93; 4700;occ; 49; 0;50313
/nas3/ENVISAT/GOMOS/GOM_NL__0P/GOM_NL__0PNPDK20111013_181916_000003463107_00300_50314_5419.N1
1; 2757.1; 13-OCT-2011 18:19:16; Bright; 45.5; 73; 57Gam1And ; 2.26; 13100;occ; 91; 0;50314
2; 3075.4; 13-OCT-2011 18:24:34; Bright; 28.5; 160; 23Gam Per ; 2.93; 4700;occ; 57; 0;50314
/nas3/ENVISAT/GOMOS/GOM_NL__0P/GOM_NL__0PNPDE20111014_205557_000007713107_00316_50330_6547.N1
1; 2334.7; 14-OCT-2011 20:55:57; Bright; 46.0; 105; 6Bet Ari ; 2.64; 8900;occ; 92; 0;50330
2; 2635.6; 14-OCT-2011 21:00:57; Bright; 45.0; 173; 4Bet Tri ; 3.00; 8900;occ; 90; 0;50330
3; 2747.2; 14-OCT-2011 21:02:49; Bright; 46.0; 73; 57Gam1And ; 2.26; 13100;occ; 92; 0;50330
4; 3063.1; 14-OCT-2011 21:08:05; Bright; 43.5; 160; 23Gam Per ; 2.93; 4700;occ; 87; 0;50330
/nas3/ENVISAT/GOMOS/GOM_NL__0P/GOM_NL__0PNPDE20111014_223610_000007753107_00317_50331_6548.N1
1; 2334.1; 14-OCT-2011 22:36:10; Bright; 47.0; 105; 6Bet Ari ; 2.64; 8900;occ; 94; 0;50331
2; 2634.8; 14-OCT-2011 22:41:11; Bright; 44.5; 173; 4Bet Tri ; 3.00; 8900;occ; 89; 0;50331
3; 3062.3; 14-OCT-2011 22:48:18; Bright; 47.0; 160; 23Gam Per ; 2.93; 4700;occ; 94; 0;50331
/nas3/ENVISAT/GOMOS/GOM_NL__0P/GOM_NL__0PNPDK20111014_010526_000180793107_00304_50318_5421.N1
1;-2941.6; 14-OCT-2011 01:05:26; Bright; 37.0; 160; 23Gam Per ; 2.93; 4700;occ; 74; 0;50318
2;14671.1; 14-OCT-2011 05:58:59; Bright; 26.0; 173; 4Bet Tri ; 3.00; 8900;occ; 52; 0;50321
3;15098.8; 14-OCT-2011 06:06:07; Bright; 39.5; 160; 23Gam Per ; 2.93; 4700;occ; 79; 0;50321
/nas3/ENVISAT/GOMOS/GOM_NL__0P/GOM_NL__0PNPDK20111014_073912_000004713107_00308_50322_5422.N1
1; 2642.2; 14-OCT-2011 07:39:12; Bright; 32.0; 173; 4Bet Tri ; 3.00; 8900;occ; 64; 0;50322
2; 3070.1; 14-OCT-2011 07:46:20; Bright; 43.5; 160; 23Gam Per ; 2.93; 4700;occ; 87; 0;50322
/nas3/ENVISAT/GOMOS/GOM_NL__0P/GOM_NL__0PNPDK20111014_091926_000004713107_00309_50323_5423.N1
1; 2641.5; 14-OCT-2011 09:19:26; Bright; 32.0; 173; 4Bet Tri ; 3.00; 8900;occ; 64; 0;50323
2; 3069.3; 14-OCT-2011 09:26:33; Bright; 43.5; 160; 23Gam Per ; 2.93; 4700;occ; 87; 0;50323
/nas3/ENVISAT/GOMOS/GOM_NL__0P/GOM_NL__0PNPDK20111014_142712_00000433107_00312_50326_5424.N1
1;-2947.7; 14-OCT-2011 14:27:12; Bright; 43.5; 160; 23Gam Per ; 2.93; 4700;occ; 87; 0;50326
/nas3/ENVISAT/GOMOS/GOM_NL__0P/GOM_NL__0PNPDK20111014_155516_000007753107_00313_50327_5425.N1
1; 2336.3; 14-OCT-2011 15:55:16; Bright; 47.0; 105; 6Bet Ari ; 2.64; 8900;occ; 94; 0;50327
2; 2637.8; 14-OCT-2011 16:00:18; Bright; 45.0; 173; 4Bet Tri ; 3.00; 8900;occ; 90; 0;50327
3; 3065.4; 14-OCT-2011 16:07:25; Bright; 46.5; 160; 23Gam Per ; 2.93; 4700;occ; 93; 0;50327
/nas3/ENVISAT/GOMOS/GOM_NL__0P/GOM_NL__0PNPDK20111014_173530_000007763107_00314_50328_5426.N1
1; 2335.8; 14-OCT-2011 17:35:30; Bright; 48.5; 105; 6Bet Ari ; 2.64; 8900;occ; 97; 0;50328
2; 2637.1; 14-OCT-2011 17:40:31; Bright; 45.0; 173; 4Bet Tri ; 3.00; 8900;occ; 90; 0;50328
3; 3064.6; 14-OCT-2011 17:47:38; Bright; 47.5; 160; 23Gam Per ; 2.93; 4700;occ; 95; 0;50328
/nas3/ENVISAT/GOMOS/GOM_NL__0P/GOM_NL__0PNPDK20111014_191543_000007763107_00315_50329_5427.N1
1; 2335.2; 14-OCT-2011 19:15:43; Bright; 47.5; 105; 6Bet Ari ; 2.64; 8900;occ; 95; 0;50329
2; 2636.3; 14-OCT-2011 19:20:44; Bright; 46.5; 173; 4Bet Tri ; 3.00; 8900;occ; 93; 0;50329
3; 3063.8; 14-OCT-2011 19:27:52; Bright; 48.0; 160; 23Gam Per ; 2.93; 4700;occ; 96; 0;50329
/nas3/ENVISAT/GOMOS/GOM_NL__0P/GOM_NL__0PNPDE20111015_001623_000007743107_00318_50332_6549.N1
1; 2333.6; 15-OCT-2011 00:16:23; Bright; 47.0; 105; 6Bet Ari ; 2.64; 8900;occ; 94; 0;50332
2; 2634.1; 15-OCT-2011 00:21:24; Bright; 46.5; 173; 4Bet Tri ; 3.00; 8900;occ; 93; 0;50332
3; 3061.6; 15-OCT-2011 00:28:31; Bright; 47.0; 160; 23Gam Per ; 2.93; 4700;occ; 94; 0;50332
/nas3/ENVISAT/GOMOS/GOM_NL__0P/GOM_NL__0PNPDE20111015_015637_000067863107_00319_50333_6550.N1
1; 2333.1; 15-OCT-2011 01:56:37; Bright; 47.0; 105; 6Bet Ari ; 2.64; 8900;occ; 94; 0;50333
2; 2633.3; 15-OCT-2011 02:01:37; Bright; 47.0; 173; 4Bet Tri ; 3.00; 8900;occ; 94; 0;50333
3; 3060.7; 15-OCT-2011 02:08:44; Bright; 44.5; 160; 23Gam Per ; 2.93; 4700;occ; 89; 0;50333
4; 8346.5; 15-OCT-2011 03:36:50; Bright; 47.0; 105; 6Bet Ari ; 2.64; 8900;occ; 94; 0;50334
5; 8646.8; 15-OCT-2011 03:41:50; Bright; 47.0; 173; 4Bet Tri ; 3.00; 8900;occ; 94; 0;50334
6; 9074.0; 15-OCT-2011 03:48:58; Bright; 46.0; 160; 23Gam Per ; 2.93; 4700;occ; 92; 0;50334
/nas3/ENVISAT/GOMOS/GOM_NL__0P/GOM_NL__0PNPDE20111015_051704_000007743107_00321_50335_6551.N1
1; 2332.2; 15-OCT-2011 05:17:04; Bright; 45.5; 105; 6Bet Ari ; 2.64; 8900;occ; 91; 0;50335
2; 2632.2; 15-OCT-2011 05:22:04; Bright; 46.5; 173; 4Bet Tri ; 3.00; 8900;occ; 93; 0;50335
3; 3059.3; 15-OCT-2011 05:29:11; Bright; 47.0; 160; 23Gam Per ; 2.93; 4700;occ; 94; 0;50335
/nas3/ENVISAT/GOMOS/GOM_NL__0P/GOM_NL__0PNPDE20111015_065717_000007743107_00322_50336_6552.N1
1; 2331.6; 15-OCT-2011 06:57:17; Bright; 46.5; 105; 6Bet Ari ; 2.64; 8900;occ; 93; 0;50336
2; 2631.5; 15-OCT-2011 07:02:17; Bright; 46.0; 173; 4Bet Tri ; 3.00; 8900;occ; 92; 0;50336
3; 3058.6; 15-OCT-2011 07:09:24; Bright; 47.0; 160; 23Gam Per ; 2.93; 4700;occ; 94; 0;50336
/nas3/ENVISAT/GOMOS/GOM_NL__0P/GOM_NL__0PNPDE20111015_202403_000004733107_00330_50344_6553.N1
1; 2625.9; 15-OCT-2011 20:24:03; Bright; 45.5; 173; 4Bet Tri ; 3.00; 8900;occ; 91; 0;50344
2; 3052.3; 15-OCT-2011 20:31:10; Bright; 47.0; 160; 23Gam Per ; 2.93; 4700;occ; 94; 0;50344
/nas3/ENVISAT/GOMOS/GOM_NL__0P/GOM_NL__0PNPDE20111015_220416_000004733107_00331_50345_6554.N1
1; 2625.1; 15-OCT-2011 22:04:16; Bright; 45.5; 173; 4Bet Tri ; 3.00; 8900;occ; 91; 0;50345
2; 3051.6; 15-OCT-2011 22:11:23; Bright; 47.0; 160; 23Gam Per ; 2.93; 4700;occ; 94; 0;50345
/nas3/ENVISAT/GOMOS/GOM_NL__0P/GOM_NL__0PNPDE20111015_234430_000004693107_00332_50346_6555.N1
1; 2624.6; 15-OCT-2011 23:44:30; Bright; 45.0; 173; 4Bet Tri ; 3.00; 8900;occ; 90; 0;50346
2; 3050.7; 15-OCT-2011 23:51:36; Bright; 43.5; 160; 23Gam Per ; 2.93; 4700;occ; 87; 0;50346
/nas3/ENVISAT/GOMOS/GOM_NL__0P/GOM_NL__0PNPDK20111015_083731_000007723107_00323_50337_5428.N1
1; 2331.1; 15-OCT-2011 08:37:31; Bright; 46.0; 105; 6Bet Ari ; 2.64; 8900;occ; 92; 0;50337
2; 2630.8; 15-OCT-2011 08:42:30; Bright; 46.0; 173; 4Bet Tri ; 3.00; 8900;occ; 92; 0;50337

3; 3057.7; 15-OCT-2011 08:49:37; Bright; 45.5; 160; 23Gam Per ; 2.93; 4700;occ; 91; 0;50337
/nas3/ENVISAT/GOMOS/GOM_NL__0P/GOM_NL__0PNPDK20111015_115757_000007733107_00325_50339_5429.N1
1; 2329.9; 15-OCT-2011 11:57:57; Bright; 46.0; 105; 6Bet Ari ; 2.64; 8900;occ; 92; 0;50339
2; 2629.5; 15-OCT-2011 12:02:57; Bright; 46.0; 173; 4Bet Tri ; 3.00; 8900;occ; 92; 0;50339
3; 3056.3; 15-OCT-2011 12:10:04; Bright; 47.0; 160; 23Gam Per ; 2.93; 4700;occ; 94; 0;50339
/nas3/ENVISAT/GOMOS/GOM_NL__0P/GOM_NL__0PNPDK20111015_133811_000007733107_00326_50340_5430.N1
1; 2329.6; 15-OCT-2011 13:38:11; Bright; 46.0; 105; 6Bet Ari ; 2.64; 8900;occ; 92; 0;50340
2; 2628.6; 15-OCT-2011 13:43:10; Bright; 47.5; 173; 4Bet Tri ; 3.00; 8900;occ; 95; 0;50340
3; 3055.6; 15-OCT-2011 13:50:17; Bright; 47.5; 160; 23Gam Per ; 2.93; 4700;occ; 95; 0;50340
/nas3/ENVISAT/GOMOS/GOM_NL__0P/GOM_NL__0PNPDK20111015_152323_000004723107_00327_50341_5431.N1
1; 2628.1; 15-OCT-2011 15:23:23; Bright; 45.5; 173; 4Bet Tri ; 3.00; 8900;occ; 91; 0;50341
2; 3055.0; 15-OCT-2011 15:30:30; Bright; 46.0; 160; 23Gam Per ; 2.93; 4700;occ; 92; 0;50341
/nas3/ENVISAT/GOMOS/GOM_NL__0P/GOM_NL__0PNPDK20111015_170337_000004723107_00328_50342_5432.N1
1; 2627.3; 15-OCT-2011 17:03:37; Bright; 46.0; 173; 4Bet Tri ; 3.00; 8900;occ; 92; 0;50342
2; 3054.1; 15-OCT-2011 17:10:43; Bright; 45.5; 160; 23Gam Per ; 2.93; 4700;occ; 91; 0;50342
/nas3/ENVISAT/GOMOS/GOM_NL__0P/GOM_NL__0PNPDK20111015_184350_000004723107_00329_50343_5433.N1
1; 2626.5; 15-OCT-2011 18:43:50; Bright; 46.0; 173; 4Bet Tri ; 3.00; 8900;occ; 92; 0;50343
2; 3053.3; 15-OCT-2011 18:50:57; Bright; 46.0; 160; 23Gam Per ; 2.93; 4700;occ; 92; 0;50343
/nas3/ENVISAT/GOMOS/GOM_NL__0P/GOM_NL__0PNPDE20111016_012443_000004713107_00333_50347_6556.N1
1; 2623.8; 16-OCT-2011 01:24:43; Bright; 45.0; 173; 4Bet Tri ; 3.00; 8900;occ; 90; 0;50347
2; 3050.0; 16-OCT-2011 01:31:49; Bright; 45.0; 160; 23Gam Per ; 2.93; 4700;occ; 90; 0;50347
/nas3/ENVISAT/GOMOS/GOM_NL__0P/GOM_NL__0PNPDE20111016_030456_000004703107_00334_50348_6557.N1
1; 2623.2; 16-OCT-2011 03:04:56; Bright; 46.5; 173; 4Bet Tri ; 3.00; 8900;occ; 93; 0;50348
2; 3049.3; 16-OCT-2011 03:12:02; Bright; 44.0; 160; 23Gam Per ; 2.93; 4700;occ; 88; 0;50348
/nas3/ENVISAT/GOMOS/GOM_NL__0P/GOM_NL__0PNPDE20111016_044510_000004723107_00335_50349_6558.N1
1; 2622.6; 16-OCT-2011 04:45:10; Bright; 45.5; 173; 4Bet Tri ; 3.00; 8900;occ; 91; 0;50349
2; 3048.7; 16-OCT-2011 04:52:16; Bright; 46.5; 160; 23Gam Per ; 2.93; 4700;occ; 93; 0;50349
/nas3/ENVISAT/GOMOS/GOM_NL__0P/GOM_NL__0PNPDE20111016_062523_000004723107_00336_50350_6559.N1
1; 2622.0; 16-OCT-2011 06:25:23; Bright; 45.0; 173; 4Bet Tri ; 3.00; 8900;occ; 90; 0;50350
2; 3048.0; 16-OCT-2011 06:32:29; Bright; 46.5; 160; 23Gam Per ; 2.93; 4700;occ; 93; 0;50350
/nas3/ENVISAT/GOMOS/GOM_NL__0P/GOM_NL__0PNPDE20111016_213428_00000453107_00345_50359_6560.N1
1;-2972.6; 16-OCT-2011 21:34:28; Bright; 46.0; 160; 23Gam Per ; 2.93; 4700;occ; 92; 0;50359
/nas3/ENVISAT/GOMOS/GOM_NL__0P/GOM_NL__0PNPDE20111016_231441_00000453107_00346_50360_6561.N1
1;-2973.2; 16-OCT-2011 23:14:41; Bright; 46.0; 160; 23Gam Per ; 2.93; 4700;occ; 92; 0;50360
/nas3/ENVISAT/GOMOS/GOM_NL__0P/GOM_NL__0PNPDK20111016_080537_000004693107_00337_50351_5434.N1
1; 2621.4; 16-OCT-2011 08:05:37; Bright; 45.5; 173; 4Bet Tri ; 3.00; 8900;occ; 91; 0;50351
2; 3047.2; 16-OCT-2011 08:12:42; Bright; 44.0; 160; 23Gam Per ; 2.93; 4700;occ; 88; 0;50351
/nas3/ENVISAT/GOMOS/GOM_NL__0P/GOM_NL__0PNPDK20111016_094550_000004713107_00338_50352_5435.N1
1; 2620.8; 16-OCT-2011 09:45:50; Bright; 46.5; 173; 4Bet Tri ; 3.00; 8900;occ; 93; 0;50352
2; 3046.6; 16-OCT-2011 09:52:56; Bright; 45.5; 160; 23Gam Per ; 2.93; 4700;occ; 91; 0;50352
/nas3/ENVISAT/GOMOS/GOM_NL__0P/GOM_NL__0PNPDK20111016_112603_000004723107_00339_50353_5436.N1
1; 2620.2; 16-OCT-2011 11:26:03; Bright; 45.5; 173; 4Bet Tri ; 3.00; 8900;occ; 91; 0;50353
2; 3045.8; 16-OCT-2011 11:33:09; Bright; 46.5; 160; 23Gam Per ; 2.93; 4700;occ; 93; 0;50353
/nas3/ENVISAT/GOMOS/GOM_NL__0P/GOM_NL__0PNPDK20111016_130616_000004723107_00340_50354_5437.N1
1; 2619.4; 16-OCT-2011 13:06:16; Bright; 45.0; 173; 4Bet Tri ; 3.00; 8900;occ; 90; 0;50354
2; 3045.1; 16-OCT-2011 13:13:22; Bright; 47.0; 160; 23Gam Per ; 2.93; 4700;occ; 94; 0;50354
/nas3/ENVISAT/GOMOS/GOM_NL__0P/GOM_NL__0PNPDK20111016_144630_000004713107_00341_50355_5438.N1
1; 2618.8; 16-OCT-2011 14:46:30; Bright; 44.5; 173; 4Bet Tri ; 3.00; 8900;occ; 89; 0;50355
2; 3044.4; 16-OCT-2011 14:53:35; Bright; 46.0; 160; 23Gam Per ; 2.93; 4700;occ; 92; 0;50355
/nas3/ENVISAT/GOMOS/GOM_NL__0P/GOM_NL__0PNPDK20111016_162643_000004723107_00342_50356_5439.N1
1; 2618.3; 16-OCT-2011 16:26:43; Bright; 45.0; 173; 4Bet Tri ; 3.00; 8900;occ; 90; 0;50356
2; 3043.6; 16-OCT-2011 16:33:48; Bright; 47.0; 160; 23Gam Per ; 2.93; 4700;occ; 94; 0;50356
/nas3/ENVISAT/GOMOS/GOM_NL__0P/GOM_NL__0PNPDK20111016_180656_000004723107_00343_50357_5440.N1
1; 2617.5; 16-OCT-2011 18:06:56; Bright; 46.5; 173; 4Bet Tri ; 3.00; 8900;occ; 93; 0;50357
2; 3042.9; 16-OCT-2011 18:14:02; Bright; 47.0; 160; 23Gam Per ; 2.93; 4700;occ; 94; 0;50357
/nas3/ENVISAT/GOMOS/GOM_NL__0P/GOM_NL__0PNPDK20111016_195415_00000463107_00344_50358_5441.N1
1;-2971.9; 16-OCT-2011 19:54:15; Bright; 46.5; 160; 23Gam Per ; 2.93; 4700;occ; 93; 0;50358
/nas3/ENVISAT/GOMOS/GOM_NL__0P/GOM_NL__0PNPDE20111017_005455_00000463107_00347_50361_6562.N1
1;-2974.0; 17-OCT-2011 00:54:55; Bright; 46.5; 160; 23Gam Per ; 2.93; 4700;occ; 93; 0;50361
/nas3/ENVISAT/GOMOS/GOM_NL__0P/GOM_NL__0PNPDE20111017_023508_00000423107_00348_50362_6563.N1
1;-2974.7; 17-OCT-2011 02:35:08; Bright; 43.0; 160; 23Gam Per ; 2.93; 4700;occ; 86; 0;50362
/nas3/ENVISAT/GOMOS/GOM_NL__0P/GOM_NL__0PNPDE20111017_041521_00000453107_00349_50363_6564.N1
1;-2975.5; 17-OCT-2011 04:15:21; Bright; 45.5; 160; 23Gam Per ; 2.93; 4700;occ; 91; 0;50363
/nas3/ENVISAT/GOMOS/GOM_NL__0P/GOM_NL__0PNPDE20111017_055534_00000453107_00350_50364_6565.N1
1;-2976.2; 17-OCT-2011 05:55:34; Bright; 45.5; 160; 23Gam Per ; 2.93; 4700;occ; 91; 0;50364
/nas3/ENVISAT/GOMOS/GOM_NL__0P/GOM_NL__0PNPDE20111017_223747_00000453107_00360_50374_6567.N1
1;-2983.4; 17-OCT-2011 22:37:47; Bright; 45.5; 160; 23Gam Per ; 2.93; 4700;occ; 91; 0;50374
/nas3/ENVISAT/GOMOS/GOM_NL__0P/GOM_NL__0PNPDK20111017_073548_00000453107_00351_50365_5442.N1

1;-2976.8; 17-OCT-2011 07:35:48; Bright; 46.0; 160; 23Gam Per ; 2.93; 4700;occ; 92; 0;50365
/nas3/ENVISAT/GOMOS/GOM_NL__0P/GOM_NL__0PNPDK20111017_091601_000000453107_00352_50366_5443.N1
1;-2977.5; 17-OCT-2011 09:16:01; Bright; 45.5; 160; 23Gam Per ; 2.93; 4700;occ; 91; 0;50366
/nas3/ENVISAT/GOMOS/GOM_NL__0P/GOM_NL__0PNPDK20111017_105614_000000463107_00353_50367_5444.N1
1;-2978.3; 17-OCT-2011 10:56:14; Bright; 46.5; 160; 23Gam Per ; 2.93; 4700;occ; 93; 0;50367
/nas3/ENVISAT/GOMOS/GOM_NL__0P/GOM_NL__0PNPDK20111017_123627_000000463107_00354_50368_5445.N1
1;-2979.1; 17-OCT-2011 12:36:27; Bright; 46.5; 160; 23Gam Per ; 2.93; 4700;occ; 93; 0;50368
/nas3/ENVISAT/GOMOS/GOM_NL__0P/GOM_NL__0PNPDK20111017_141641_000000453107_00355_50369_5446.N1
1;-2979.8; 17-OCT-2011 14:16:41; Bright; 46.0; 160; 23Gam Per ; 2.93; 4700;occ; 92; 0;50369
/nas3/ENVISAT/GOMOS/GOM_NL__0P/GOM_NL__0PNPDK20111017_155654_000000453107_00356_50370_5447.N1
1;-2980.6; 17-OCT-2011 15:56:54; Bright; 45.5; 160; 23Gam Per ; 2.93; 4700;occ; 91; 0;50370
/nas3/ENVISAT/GOMOS/GOM_NL__0P/GOM_NL__0PNPDK20111017_173707_000000453107_00357_50371_5448.N1
1;-2981.4; 17-OCT-2011 17:37:07; Bright; 45.5; 160; 23Gam Per ; 2.93; 4700;occ; 91; 0;50371
/nas3/ENVISAT/GOMOS/GOM_NL__0P/GOM_NL__0PNPDK20111017_191720_000000463107_00358_50372_5449.N1
1;-2982.0; 17-OCT-2011 19:17:20; Bright; 46.5; 160; 23Gam Per ; 2.93; 4700;occ; 93; 0;50372
/nas3/ENVISAT/GOMOS/GOM_NL__0P/GOM_NL__0PNPDE20111018_001800_000000443107_00361_50375_6568.N1
1;-2984.0; 18-OCT-2011 00:18:00; Bright; 45.0; 160; 23Gam Per ; 2.93; 4700;occ; 90; 0;50375
/nas3/ENVISAT/GOMOS/GOM_NL__0P/GOM_NL__0PNPDE20111018_015813_000000453107_00362_50376_6569.N1
1;-2984.8; 18-OCT-2011 01:58:13; Bright; 46.0; 160; 23Gam Per ; 2.93; 4700;occ; 92; 0;50376
/nas3/ENVISAT/GOMOS/GOM_NL__0P/GOM_NL__0PNPDE20111018_033827_000000443107_00363_50377_6570.N1
1;-2985.5; 18-OCT-2011 03:38:27; Bright; 45.0; 160; 23Gam Per ; 2.93; 4700;occ; 90; 0;50377
/nas3/ENVISAT/GOMOS/GOM_NL__0P/GOM_NL__0PNPDE20111018_051840_000000453107_00364_50378_6571.N1
1;-2986.3; 18-OCT-2011 05:18:40; Bright; 45.5; 160; 23Gam Per ; 2.93; 4700;occ; 91; 0;50378
/nas3/ENVISAT/GOMOS/GOM_NL__0P/GOM_NL__0PNPDE20111018_065853_000000443107_00365_50379_6572.N1
1;-2986.9; 18-OCT-2011 06:58:53; Bright; 45.0; 160; 23Gam Per ; 2.93; 4700;occ; 90; 0;50379
/nas3/ENVISAT/GOMOS/GOM_NL__0P/GOM_NL__0PNPDK20111018_083906_000000443107_00366_50380_5450.N1
1;-2987.6; 18-OCT-2011 08:39:06; Bright; 44.5; 160; 23Gam Per ; 2.93; 4700;occ; 89; 0;50380
/nas3/ENVISAT/GOMOS/GOM_NL__0P/GOM_NL__0PNPDK20111018_115933_000000673107_00368_50382_5451.N1
1;-2988.9; 18-OCT-2011 11:59:33; Bright; 67.5; 160; 23Gam Per ; 2.93; 4700;occ; 135; 0;50382
/nas3/ENVISAT/GOMOS/GOM_NL__0P/GOM_NL__0PNPDK20111018_133946_000000453107_00369_50383_5452.N1
1;-2989.7; 18-OCT-2011 13:39:46; Bright; 45.5; 160; 23Gam Per ; 2.93; 4700;occ; 91; 0;50383
/nas3/ENVISAT/GOMOS/GOM_NL__0P/GOM_NL__0PNPDK20111018_101920_000000433107_00367_50381_5454.N1
1;-2988.3; 18-OCT-2011 10:19:20; Bright; 44.0; 160; 23Gam Per ; 2.93; 4700;occ; 88; 0;50381
/nas3/ENVISAT/GOMOS/GOM_NL__0P/GOM_NL__0PNPDK20111018_101920_000000433107_00367_50381_5739.N1
1;-2988.3; 18-OCT-2011 10:19:20; Bright; 44.0; 160; 23Gam Per ; 2.93; 4700;occ; 88; 0;50381
/nas3/ENVISAT/GOMOS/GOM_NL__0P/GOM_NL__0PNPDE20111023_202058_000000603108_00014_50459_6573.N1
1; 2035.9; 23-OCT-2011 20:20:58; Bright; 60.5; 94; 92Alp Cet ; 2.53; 3100;occ; 121; 0;50459
/nas3/ENVISAT/GOMOS/GOM_NL__0P/GOM_NL__0PNPDE20111023_212637_000021363108_00014_50459_6574.N1
1; -39.8; 23-OCT-2011 21:26:37; Dark ; 65.5; 132; 15Rho Pup ; 2.80; 6900;occ; 131; 0;50459
2; 249.2; 23-OCT-2011 21:31:26; Dark ; 69.0; 88; 31Eta Cma ; 2.45; 20000;occ; 138; 0;50460
3; 787.7; 23-OCT-2011 21:40:24; Dark ; 61.5; 108; Alp Col ; 2.65; 15200;occ; 123; 0;50460
4; 2035.6; 23-OCT-2011 22:01:12; Bright; 61.0; 94; 92Alp Cet ; 2.53; 3100;occ; 122; 0;50460
/nas3/ENVISAT/GOMOS/GOM_NL__0P/GOM_NL__0PNPDE20111023_230652_000021333108_00015_50460_6575.N1
1; -38.1; 23-OCT-2011 23:06:52; Dark ; 63.0; 132; 15Rho Pup ; 2.80; 6900;occ; 126; 0;50460
2; 251.0; 23-OCT-2011 23:11:41; Dark ; 65.5; 88; 31Eta Cma ; 2.45; 20000;occ; 131; 0;50461
3; 788.8; 23-OCT-2011 23:20:39; Dark ; 64.5; 108; Alp Col ; 2.65; 15200;occ; 129; 0;50461
4; 2034.9; 23-OCT-2011 23:41:25; Bright; 61.0; 94; 92Alp Cet ; 2.53; 3100;occ; 122; 0;50461
/nas3/ENVISAT/GOMOS/GOM_NL__0P/GOM_NL__0PNPDK20111023_094936_000000603108_00008_50453_5455.N1
1; 237.1; 23-OCT-2011 09:49:36; Dark ; 63.5; 88; 31Eta Cma ; 2.45; 20000;occ; 127; 0;50453
2; 779.1; 23-OCT-2011 09:58:38; Dark ; 64.5; 108; Alp Col ; 2.65; 15200;occ; 129; 0;50453
/nas3/ENVISAT/GOMOS/GOM_NL__0P/GOM_NL__0PNPDK20111023_101938_000000583108_00008_50453_5456.N1
1; 2039.2; 23-OCT-2011 10:19:38; Bright; 58.5; 94; 92Alp Cet ; 2.53; 3100;occ; 117; 0;50453
/nas3/ENVISAT/GOMOS/GOM_NL__0P/GOM_NL__0PNPDK20111023_145023_0000006033108_00011_50456_5458.N1
1; 242.4; 23-OCT-2011 14:50:23; Dark ; 66.5; 88; 31Eta Cma ; 2.45; 20000;occ; 133; 0;50456
2; 782.9; 23-OCT-2011 14:59:23; Dark ; 62.5; 108; Alp Col ; 2.65; 15200;occ; 125; 0;50456
/nas3/ENVISAT/GOMOS/GOM_NL__0P/GOM_NL__0PNPDK20111023_152018_000048233108_00011_50456_5459.N1
1; 2037.7; 23-OCT-2011 15:20:18; Bright; 59.0; 94; 92Alp Cet ; 2.53; 3100;occ; 118; 0;50456
2; 5969.5; 23-OCT-2011 16:25:50; Dark ; 64.0; 132; 15Rho Pup ; 2.80; 6900;occ; 128; 0;50456
3; 6258.1; 23-OCT-2011 16:30:39; Dark ; 69.0; 88; 31Eta Cma ; 2.45; 20000;occ; 138; 0;50457
4; 6798.2; 23-OCT-2011 16:39:39; Dark ; 63.0; 108; Alp Col ; 2.65; 15200;occ; 126; 0;50457
/nas3/ENVISAT/GOMOS/GOM_NL__0P/GOM_NL__0PNPDK20111023_170032_000048253108_00012_50457_5460.N1
1; 2037.1; 23-OCT-2011 17:00:32; Bright; 59.5; 94; 92Alp Cet ; 2.53; 3100;occ; 119; 0;50457
2; 5971.1; 23-OCT-2011 18:06:06; Dark ; 61.5; 132; 15Rho Pup ; 2.80; 6900;occ; 123; 0;50457
3; 6259.9; 23-OCT-2011 18:10:54; Dark ; 66.5; 88; 31Eta Cma ; 2.45; 20000;occ; 133; 0;50458
4; 6799.2; 23-OCT-2011 18:19:54; Dark ; 63.0; 108; Alp Col ; 2.65; 15200;occ; 126; 0;50458
/nas3/ENVISAT/GOMOS/GOM_NL__0P/GOM_NL__0PNPDK20111023_184045_000048273108_00013_50458_5461.N1
1; 2036.5; 23-OCT-2011 18:40:45; Bright; 59.5; 94; 92Alp Cet ; 2.53; 3100;occ; 119; 0;50458
2; 5972.7; 23-OCT-2011 19:46:21; Dark ; 62.0; 132; 15Rho Pup ; 2.80; 6900;occ; 124; 0;50458


```

3; 6261.5; 23-OCT-2011 19:51:10; Dark ; 68.0; 88; 31Eta CMA ; 2.45; 20000;occ; 136; 0;50459
4; 6800.7; 23-OCT-2011 20:00:09; Dark ; 63.0; 108; Alp Col ; 2.65; 15200;occ; 126; 0;50459
/nas3/ENVISAT/GOMOS/GOM_NL__0P/GOM_NL__0PNPDE20111024_004708_000021313108_00016_50461_6576.N1
1; -36.4; 24-OCT-2011 00:47:08; Dark ; 62.0; 132; 15Rho Pup ; 2.80; 6900;occ; 124; 0;50461
2; 252.7; 24-OCT-2011 00:51:57; Dark ; 66.0; 88; 31Eta CMA ; 2.45; 20000;occ; 132; 0;50462
3; 790.0; 24-OCT-2011 01:00:54; Dark ; 64.5; 108; Alp Col ; 2.65; 15200;occ; 129; 0;50462
4; 2034.5; 24-OCT-2011 01:21:39; Bright; 61.0; 94; 92Alp Cet ; 2.53; 3100;occ; 122; 0;50462
/nas3/ENVISAT/GOMOS/GOM_NL__0P/GOM_NL__0PNPDE20111024_040739_000021233108_00018_50463_6578.N1
1; -32.8; 24-OCT-2011 04:07:39; Dark ; 64.5; 132; 15Rho Pup ; 2.80; 6900;occ; 129; 0;50463
2; 256.4; 24-OCT-2011 04:12:29; Dark ; 69.0; 88; 31Eta CMA ; 2.45; 20000;occ; 138; 0;50464
3; 792.5; 24-OCT-2011 04:21:25; Dark ; 63.0; 108; Alp Col ; 2.65; 15200;occ; 126; 0;50464
4; 2033.8; 24-OCT-2011 04:42:06; Bright; 57.0; 94; 92Alp Cet ; 2.53; 3100;occ; 114; 0;50464
/nas3/ENVISAT/GOMOS/GOM_NL__0P/GOM_NL__0PNPDE20111024_054755_000021243108_00019_50464_6579.N1
1; -31.2; 24-OCT-2011 05:47:55; Dark ; 63.5; 132; 15Rho Pup ; 2.80; 6900;occ; 127; 0;50464
2; 258.1; 24-OCT-2011 05:52:44; Dark ; 67.0; 88; 31Eta CMA ; 2.45; 20000;occ; 134; 0;50465
3; 793.6; 24-OCT-2011 06:01:40; Dark ; 64.0; 108; Alp Col ; 2.65; 15200;occ; 128; 0;50465
4; 2033.3; 24-OCT-2011 06:22:19; Bright; 59.5; 94; 92Alp Cet ; 2.53; 3100;occ; 119; 0;50465
/nas3/ENVISAT/GOMOS/GOM_NL__0P/GOM_NL__0PNPDE20111024_210453_000012273108_00029_50474_6580.N1
1; 861.2; 24-OCT-2011 21:04:53; Dark ; 65.5; 108; Alp Col ; 2.65; 15200;occ; 131; 114;50474
2; 2029.1; 24-OCT-2011 21:24:21; Bright; 60.0; 94; 92Alp Cet ; 2.53; 3100;occ; 120; 0;50474
/nas3/ENVISAT/GOMOS/GOM_NL__0P/GOM_NL__0PNPDE20111024_223031_000021013108_00029_50474_6581.N1
1; -14.2; 24-OCT-2011 22:30:31; Dark ; 64.0; 132; 15Rho Pup ; 2.80; 6900;occ; 128; 0;50474
2; 275.7; 24-OCT-2011 22:35:21; Dark ; 69.5; 88; 31Eta CMA ; 2.45; 20000;occ; 139; 0;50475
3; 805.3; 24-OCT-2011 22:44:11; Dark ; 64.0; 108; Alp Col ; 2.65; 15200;occ; 128; 0;50475
4; 2028.6; 24-OCT-2011 23:04:34; Bright; 58.5; 94; 92Alp Cet ; 2.53; 3100;occ; 117; 0;50475
/nas3/ENVISAT/GOMOS/GOM_NL__0P/GOM_NL__0PNPDK20111024_072811_000008863108_00020_50465_5462.N1
1; -29.5; 24-OCT-2011 07:28:11; Dark ; 64.5; 132; 15Rho Pup ; 2.80; 6900;occ; 129; 0;50465
2; 259.9; 24-OCT-2011 07:33:00; Dark ; 68.0; 88; 31Eta CMA ; 2.45; 20000;occ; 136; 0;50466
3; 794.7; 24-OCT-2011 07:41:55; Dark ; 62.5; 108; Alp Col ; 2.65; 15200;occ; 125; 0;50466
/nas3/ENVISAT/GOMOS/GOM_NL__0P/GOM_NL__0PNPDK20111024_080233_000048383108_00021_50466_5463.N1
1; 2032.8; 24-OCT-2011 08:02:33; Bright; 59.5; 94; 92Alp Cet ; 2.53; 3100;occ; 119; 0;50466
2; 5986.1; 24-OCT-2011 09:08:26; Dark ; 65.5; 132; 15Rho Pup ; 2.80; 6900;occ; 131; 0;50466
3; 6275.6; 24-OCT-2011 09:13:16; Dark ; 68.5; 88; 31Eta CMA ; 2.45; 20000;occ; 137; 0;50467
4; 6810.1; 24-OCT-2011 09:22:10; Dark ; 61.5; 108; Alp Col ; 2.65; 15200;occ; 123; 0;50467
/nas3/ENVISAT/GOMOS/GOM_NL__0P/GOM_NL__0PNPDK20111024_094246_000048433108_00022_50467_5464.N1
1; 2032.3; 24-OCT-2011 09:42:46; Bright; 60.0; 94; 92Alp Cet ; 2.53; 3100;occ; 120; 0;50467
2; 5987.7; 24-OCT-2011 10:48:42; Dark ; 63.0; 132; 15Rho Pup ; 2.80; 6900;occ; 126; 0;50467
3; 6277.4; 24-OCT-2011 10:53:31; Dark ; 68.0; 88; 31Eta CMA ; 2.45; 20000;occ; 136; 0;50468
4; 6811.1; 24-OCT-2011 11:02:25; Dark ; 64.5; 108; Alp Col ; 2.65; 15200;occ; 129; 0;50468
/nas3/ENVISAT/GOMOS/GOM_NL__0P/GOM_NL__0PNPDK20111024_112300_000048453108_00023_50468_5465.N1
1; 2031.8; 24-OCT-2011 11:23:00; Bright; 59.5; 94; 92Alp Cet ; 2.53; 3100;occ; 119; 0;50468
2; 5989.5; 24-OCT-2011 12:28:57; Dark ; 66.5; 132; 15Rho Pup ; 2.80; 6900;occ; 133; 0;50468
3; 6278.9; 24-OCT-2011 12:33:47; Dark ; 68.5; 88; 31Eta CMA ; 2.45; 20000;occ; 137; 0;50469
4; 6812.4; 24-OCT-2011 12:42:40; Dark ; 64.5; 108; Alp Col ; 2.65; 15200;occ; 129; 0;50469
/nas3/ENVISAT/GOMOS/GOM_NL__0P/GOM_NL__0PNPDK20111024_130313_000048433108_00024_50469_5466.N1
1; 2031.4; 24-OCT-2011 13:03:13; Bright; 60.5; 94; 92Alp Cet ; 2.53; 3100;occ; 121; 0;50469
2; 5991.3; 24-OCT-2011 14:09:13; Dark ; 63.5; 132; 15Rho Pup ; 2.80; 6900;occ; 127; 0;50469
3; 6280.7; 24-OCT-2011 14:14:03; Dark ; 66.0; 88; 31Eta CMA ; 2.45; 20000;occ; 132; 0;50470
4; 6813.6; 24-OCT-2011 14:22:55; Dark ; 61.5; 108; Alp Col ; 2.65; 15200;occ; 123; 0;50470
/nas3/ENVISAT/GOMOS/GOM_NL__0P/GOM_NL__0PNPDK20111024_144327_000048463108_00025_50470_5467.N1
1; 2031.0; 24-OCT-2011 14:43:27; Bright; 59.0; 94; 92Alp Cet ; 2.53; 3100;occ; 118; 0;50470
2; 5993.0; 24-OCT-2011 15:49:29; Dark ; 66.5; 132; 15Rho Pup ; 2.80; 6900;occ; 133; 0;50470
3; 6282.7; 24-OCT-2011 15:54:18; Dark ; 63.5; 88; 31Eta CMA ; 2.45; 20000;occ; 127; 0;50471
4; 6814.8; 24-OCT-2011 16:03:11; Dark ; 62.5; 108; Alp Col ; 2.65; 15200;occ; 125; 0;50471
/nas3/ENVISAT/GOMOS/GOM_NL__0P/GOM_NL__0PNPDK20111024_162341_000048483108_00026_50471_5468.N1
1; 2030.8; 24-OCT-2011 16:23:41; Bright; 60.0; 94; 92Alp Cet ; 2.53; 3100;occ; 120; 0;50471
2; 5994.7; 24-OCT-2011 17:29:45; Dark ; 65.0; 132; 15Rho Pup ; 2.80; 6900;occ; 130; 0;50471
3; 6284.6; 24-OCT-2011 17:34:34; Dark ; 65.5; 88; 31Eta CMA ; 2.45; 20000;occ; 131; 0;50472
4; 6816.1; 24-OCT-2011 17:43:26; Dark ; 63.0; 108; Alp Col ; 2.65; 15200;occ; 126; 0;50472
/nas3/ENVISAT/GOMOS/GOM_NL__0P/GOM_NL__0PNPDK20111024_180354_000048493108_00027_50472_5469.N1
1; 2030.1; 24-OCT-2011 18:03:54; Bright; 60.0; 94; 92Alp Cet ; 2.53; 3100;occ; 120; 0;50472
2; 5996.4; 24-OCT-2011 19:10:00; Dark ; 65.0; 132; 15Rho Pup ; 2.80; 6900;occ; 130; 0;50472
3; 6286.3; 24-OCT-2011 19:14:50; Dark ; 69.0; 88; 31Eta CMA ; 2.45; 20000;occ; 138; 0;50473
4; 6817.1; 24-OCT-2011 19:23:41; Dark ; 62.5; 108; Alp Col ; 2.65; 15200;occ; 125; 0;50473
/nas3/ENVISAT/GOMOS/GOM_NL__0P/GOM_NL__0PNPDK20111024_194407_000048533108_00028_50473_5470.N1
1; 2029.6; 24-OCT-2011 19:44:07; Bright; 62.5; 94; 92Alp Cet ; 2.53; 3100;occ; 125; 0;50473
2; 5998.0; 24-OCT-2011 20:50:16; Dark ; 65.0; 132; 15Rho Pup ; 2.80; 6900;occ; 130; 0;50473
3; 6287.8; 24-OCT-2011 20:55:06; Dark ; 70.0; 88; 31Eta CMA ; 2.45; 20000;occ; 140; 0;50474

```

```

4; 6818.2; 24-OCT-2011 21:03:56; Dark ; 65.0; 108; Alp Col ; 2.65; 15200;occ; 130; 0;50474
/nas3/ENVISAT/GOMOS/GOM_NL__0P/GOM_NL__0PNPDE20111025_001047_000021023108_00030_50475_6582.N1
1; -12.4; 25-OCT-2011 00:10:47; Dark ; 63.0; 132; 15Rho Pup ; 2.80; 6900;occ; 126; 0;50475
2; 277.4; 25-OCT-2011 00:15:37; Dark ; 67.5; 88; 31Eta CMA ; 2.45; 20000;occ; 135; 0;50476
3; 806.4; 25-OCT-2011 00:24:26; Dark ; 64.5; 108; Alp Col ; 2.65; 15200;occ; 129; 0;50476
4; 2028.1; 25-OCT-2011 00:44:48; Bright; 62.0; 94; 92Alp Cet ; 2.53; 3100;occ; 124; 0;50476
/nas3/ENVISAT/GOMOS/GOM_NL__0P/GOM_NL__0PNPDE20111025_015103_000021003108_00031_50476_6583.N1
1; -10.7; 25-OCT-2011 01:51:03; Dark ; 66.0; 132; 15Rho Pup ; 2.80; 6900;occ; 132; 0;50476
2; 279.2; 25-OCT-2011 01:55:53; Dark ; 67.5; 88; 31Eta CMA ; 2.45; 20000;occ; 135; 0;50477
3; 807.8; 25-OCT-2011 02:04:41; Dark ; 64.0; 108; Alp Col ; 2.65; 15200;occ; 128; 0;50477
4; 2027.7; 25-OCT-2011 02:25:01; Bright; 62.5; 94; 92Alp Cet ; 2.53; 3100;occ; 125; 0;50477
/nas3/ENVISAT/GOMOS/GOM_NL__0P/GOM_NL__0PNPDE20111025_033118_000020953108_00032_50477_6584.N1
1; -8.9; 25-OCT-2011 03:31:18; Dark ; 67.0; 132; 15Rho Pup ; 2.80; 6900;occ; 134; 0;50477
2; 281.0; 25-OCT-2011 03:36:08; Dark ; 69.0; 88; 31Eta CMA ; 2.45; 20000;occ; 138; 0;50478
3; 809.0; 25-OCT-2011 03:44:56; Dark ; 63.5; 108; Alp Col ; 2.65; 15200;occ; 127; 0;50478
4; 2027.2; 25-OCT-2011 04:05:15; Bright; 59.5; 94; 92Alp Cet ; 2.53; 3100;occ; 119; 0;50478
/nas3/ENVISAT/GOMOS/GOM_NL__0P/GOM_NL__0PNPDE20111025_051134_000021073108_00033_50478_6585.N1
1; -7.2; 25-OCT-2011 05:11:34; Dark ; 66.0; 132; 15Rho Pup ; 2.80; 6900;occ; 132; 0;50478
2; 282.6; 25-OCT-2011 05:16:24; Dark ; 68.0; 88; 31Eta CMA ; 2.45; 20000;occ; 136; 0;50479
3; 810.2; 25-OCT-2011 05:25:12; Dark ; 64.5; 108; Alp Col ; 2.65; 15200;occ; 129; 0;50479
4; 2026.8; 25-OCT-2011 05:45:28; Bright; 73.0; 94; 92Alp Cet ; 2.53; 3100;occ; 146; 0;50479
/nas3/ENVISAT/GOMOS/GOM_NL__0P/GOM_NL__0PNPDE20111025_215411_000008733108_00044_50489_6586.N1
1; 10.4; 25-OCT-2011 21:54:11; Dark ; 63.5; 132; 15Rho Pup ; 2.80; 6900;occ; 127; 0;50489
2; 300.5; 25-OCT-2011 21:59:01; Dark ; 68.0; 88; 31Eta CMA ; 2.45; 20000;occ; 136; 0;50489
3; 821.7; 25-OCT-2011 22:07:43; Dark ; 62.5; 108; Alp Col ; 2.65; 15200;occ; 125; 0;50489
/nas3/ENVISAT/GOMOS/GOM_NL__0P/GOM_NL__0PNPDE20111025_233427_000008723108_00045_50490_6587.N1
1; 12.1; 25-OCT-2011 23:34:27; Dark ; 65.0; 132; 15Rho Pup ; 2.80; 6900;occ; 130; 0;50490
2; 302.3; 25-OCT-2011 23:39:17; Dark ; 70.5; 88; 31Eta CMA ; 2.45; 20000;occ; 141; 0;50490
3; 822.6; 25-OCT-2011 23:47:57; Dark ; 62.0; 108; Alp Col ; 2.65; 15200;occ; 124; 0;50490
/nas3/ENVISAT/GOMOS/GOM_NL__0P/GOM_NL__0PNPDK20111025_065150_000008803108_00034_50479_5471.N1
1; -5.4; 25-OCT-2011 06:51:50; Dark ; 66.5; 132; 15Rho Pup ; 2.80; 6900;occ; 133; 0;50479
2; 284.6; 25-OCT-2011 06:56:40; Dark ; 69.5; 88; 31Eta CMA ; 2.45; 20000;occ; 139; 0;50480
3; 811.4; 25-OCT-2011 07:05:27; Dark ; 64.0; 108; Alp Col ; 2.65; 15200;occ; 128; 0;50480
/nas3/ENVISAT/GOMOS/GOM_NL__0P/GOM_NL__0PNPDK20111025_072542_000048613108_00035_50480_5472.N1
1; 2026.4; 25-OCT-2011 07:25:42; Bright; 64.0; 94; 92Alp Cet ; 2.53; 3100;occ; 128; 0;50480
2; 6010.4; 25-OCT-2011 08:32:06; Dark ; 67.0; 132; 15Rho Pup ; 2.80; 6900;occ; 134; 0;50480
3; 6300.4; 25-OCT-2011 08:36:56; Dark ; 69.5; 88; 31Eta CMA ; 2.45; 20000;occ; 139; 0;50481
4; 6826.4; 25-OCT-2011 08:45:42; Dark ; 61.5; 108; Alp Col ; 2.65; 15200;occ; 123; 0;50481
/nas3/ENVISAT/GOMOS/GOM_NL__0P/GOM_NL__0PNPDK20111025_090555_000048643108_00036_50481_5473.N1
1; 2026.1; 25-OCT-2011 09:05:55; Bright; 60.0; 94; 92Alp Cet ; 2.53; 3100;occ; 120; 0;50481
2; 6012.1; 25-OCT-2011 10:12:21; Dark ; 66.0; 132; 15Rho Pup ; 2.80; 6900;occ; 132; 0;50481
3; 6302.1; 25-OCT-2011 10:17:11; Dark ; 71.5; 88; 31Eta CMA ; 2.45; 20000;occ; 143; 0;50482
4; 6827.4; 25-OCT-2011 10:25:57; Dark ; 63.0; 108; Alp Col ; 2.65; 15200;occ; 126; 0;50482
/nas3/ENVISAT/GOMOS/GOM_NL__0P/GOM_NL__0PNPDK20111025_104609_000048653108_00037_50482_5474.N1
1; 2025.6; 25-OCT-2011 10:46:09; Bright; 56.5; 94; 92Alp Cet ; 2.53; 3100;occ; 113; 0;50482
2; 6013.8; 25-OCT-2011 11:52:37; Dark ; 66.5; 132; 15Rho Pup ; 2.80; 6900;occ; 133; 0;50482
3; 6303.9; 25-OCT-2011 11:57:27; Dark ; 66.5; 88; 31Eta CMA ; 2.45; 20000;occ; 133; 0;50483
4; 6828.5; 25-OCT-2011 12:06:12; Dark ; 63.0; 108; Alp Col ; 2.65; 15200;occ; 126; 0;50483
/nas3/ENVISAT/GOMOS/GOM_NL__0P/GOM_NL__0PNPDK20111025_122622_000048673108_00038_50483_5475.N1
1; 2025.2; 25-OCT-2011 12:26:22; Bright; 63.0; 94; 92Alp Cet ; 2.53; 3100;occ; 126; 0;50483
2; 6015.4; 25-OCT-2011 13:32:53; Dark ; 65.5; 132; 15Rho Pup ; 2.80; 6900;occ; 131; 0;50484
3; 6305.7; 25-OCT-2011 13:37:43; Dark ; 69.0; 88; 31Eta CMA ; 2.45; 20000;occ; 138; 0;50484
4; 6829.8; 25-OCT-2011 13:46:27; Dark ; 62.5; 108; Alp Col ; 2.65; 15200;occ; 125; 0;50484
/nas3/ENVISAT/GOMOS/GOM_NL__0P/GOM_NL__0PNPDK20111025_151308_000008773108_00040_50485_5476.N1
1; 3.3; 25-OCT-2011 15:13:08; Dark ; 66.0; 132; 15Rho Pup ; 2.80; 6900;occ; 132; 0;50485
2; 293.4; 25-OCT-2011 15:17:58; Dark ; 70.5; 88; 31Eta CMA ; 2.45; 20000;occ; 141; 0;50485
3; 816.9; 25-OCT-2011 15:26:42; Dark ; 64.0; 108; Alp Col ; 2.65; 15200;occ; 128; 0;50485
/nas3/ENVISAT/GOMOS/GOM_NL__0P/GOM_NL__0PNPDK20111025_165324_000008753108_00041_50486_5477.N1
1; 5.0; 25-OCT-2011 16:53:24; Dark ; 66.5; 132; 15Rho Pup ; 2.80; 6900;occ; 133; 0;50486
2; 295.3; 25-OCT-2011 16:58:14; Dark ; 69.5; 88; 31Eta CMA ; 2.45; 20000;occ; 139; 0;50486
3; 818.2; 25-OCT-2011 17:06:57; Dark ; 62.0; 108; Alp Col ; 2.65; 15200;occ; 124; 0;50486
/nas3/ENVISAT/GOMOS/GOM_NL__0P/GOM_NL__0PNPDK20111025_183340_000008763108_00042_50487_5478.N1
1; 6.7; 25-OCT-2011 18:33:40; Dark ; 66.0; 132; 15Rho Pup ; 2.80; 6900;occ; 132; 0;50487
2; 297.0; 25-OCT-2011 18:38:30; Dark ; 70.5; 88; 31Eta CMA ; 2.45; 20000;occ; 141; 0;50487
3; 819.3; 25-OCT-2011 18:47:12; Dark ; 63.5; 108; Alp Col ; 2.65; 15200;occ; 127; 0;50487
/nas3/ENVISAT/GOMOS/GOM_NL__0P/GOM_NL__0PNPDK20111025_201356_000008733108_00043_50488_5479.N1
1; 8.6; 25-OCT-2011 20:13:56; Dark ; 64.0; 132; 15Rho Pup ; 2.80; 6900;occ; 128; 0;50488
2; 298.8; 25-OCT-2011 20:18:46; Dark ; 68.0; 88; 31Eta CMA ; 2.45; 20000;occ; 136; 0;50488

```

```

3; 820.5; 25-OCT-2011 20:27:27; Dark ; 62.0; 108; Alp Col ; 2.65; 15200;occ; 124; 0;50488
/nas3/ENVISAT/GOMOS/GOM_NL__0P/GOM_NL__0PNPDE20111026_011443_000068873108_00046_50491_6588.N1
1; 14.0; 26-OCT-2011 01:14:43; Dark ; 67.0; 132; 15Rho Pup ; 2.80; 6900;occ; 134; 0;50491
2; 304.1; 26-OCT-2011 01:19:33; Dark ; 68.0; 88; 31Eta CMA ; 2.45; 20000;occ; 136; 0;50491
3; 823.7; 26-OCT-2011 01:28:12; Dark ; 64.0; 108; Alp Col ; 2.65; 15200;occ; 128; 0;50491
4; 6029.7; 26-OCT-2011 02:54:58; Dark ; 66.0; 132; 15Rho Pup ; 2.80; 6900;occ; 132; 0;50492
5; 6319.8; 26-OCT-2011 02:59:48; Dark ; 66.5; 88; 31Eta CMA ; 2.45; 20000;occ; 133; 0;50492
6; 6838.9; 26-OCT-2011 03:08:28; Dark ; 63.0; 108; Alp Col ; 2.65; 15200;occ; 126; 0;50492
/nas3/ENVISAT/GOMOS/GOM_NL__0P/GOM_NL__0PNPDE20111026_043514_000008713108_00048_50493_6589.N1
1; 17.5; 26-OCT-2011 04:35:14; Dark ; 64.0; 132; 15Rho Pup ; 2.80; 6900;occ; 128; 0;50493
2; 307.7; 26-OCT-2011 04:40:04; Dark ; 71.0; 88; 31Eta CMA ; 2.45; 20000;occ; 142; 0;50493
3; 826.1; 26-OCT-2011 04:48:43; Dark ; 62.5; 108; Alp Col ; 2.65; 15200;occ; 125; 0;50493
/nas3/ENVISAT/GOMOS/GOM_NL__0P/GOM_NL__0PNPDE20111026_061530_000008693108_00049_50494_6590.N1
1; 19.4; 26-OCT-2011 06:15:30; Dark ; 67.5; 132; 15Rho Pup ; 2.80; 6900;occ; 135; 0;50494
2; 309.5; 26-OCT-2011 06:20:20; Dark ; 68.0; 88; 31Eta CMA ; 2.45; 20000;occ; 136; 0;50494
3; 827.3; 26-OCT-2011 06:28:58; Dark ; 62.0; 108; Alp Col ; 2.65; 15200;occ; 124; 0;50494
/nas3/ENVISAT/GOMOS/GOM_NL__0P/GOM_NL__0PNPDK20111026_093601_000008683108_00051_50496_5481.N1
1; 22.9; 26-OCT-2011 09:36:01; Dark ; 66.0; 132; 15Rho Pup ; 2.80; 6900;occ; 132; 0;50496
2; 313.0; 26-OCT-2011 09:40:51; Dark ; 66.0; 88; 31Eta CMA ; 2.45; 20000;occ; 132; 0;50496
3; 829.7; 26-OCT-2011 09:49:28; Dark ; 62.0; 108; Alp Col ; 2.65; 15200;occ; 124; 0;50496
/nas3/ENVISAT/GOMOS/GOM_NL__0P/GOM_NL__0PNPDK20111026_111617_000008683108_00052_50497_5482.N1
1; 24.7; 26-OCT-2011 11:16:17; Dark ; 66.0; 132; 15Rho Pup ; 2.80; 6900;occ; 132; 0;50497
2; 314.8; 26-OCT-2011 11:21:07; Dark ; 66.0; 88; 31Eta CMA ; 2.45; 20000;occ; 132; 0;50497
3; 830.8; 26-OCT-2011 11:29:43; Dark ; 62.0; 108; Alp Col ; 2.65; 15200;occ; 124; 0;50497
/nas3/ENVISAT/GOMOS/GOM_NL__0P/GOM_NL__0PNPDK20111026_130123_000005773108_00053_50498_5483.N1
1; 316.7; 26-OCT-2011 13:01:23; Dark ; 63.0; 88; 31Eta CMA ; 2.45; 20000;occ; 126; 0;50498
2; 831.9; 26-OCT-2011 13:09:58; Dark ; 62.0; 108; Alp Col ; 2.65; 15200;occ; 124; 0;50498
/nas3/ENVISAT/GOMOS/GOM_NL__0P/GOM_NL__0PNPDK20111026_143648_000008663108_00054_50499_5484.N1
1; 28.3; 26-OCT-2011 14:36:48; Dark ; 67.5; 132; 15Rho Pup ; 2.80; 6900;occ; 135; 0;50499
2; 318.4; 26-OCT-2011 14:41:38; Dark ; 63.0; 88; 31Eta CMA ; 2.45; 20000;occ; 126; 0;50499
3; 832.9; 26-OCT-2011 14:50:13; Dark ; 62.0; 108; Alp Col ; 2.65; 15200;occ; 124; 0;50499
/nas3/ENVISAT/GOMOS/GOM_NL__0P/GOM_NL__0PNPDK20111026_161704_000008653108_00055_50500_5485.N1
1; 30.0; 26-OCT-2011 16:17:04; Dark ; 70.0; 132; 15Rho Pup ; 2.80; 6900;occ; 140; 0;50500
2; 320.4; 26-OCT-2011 16:21:54; Dark ; 61.0; 88; 31Eta CMA ; 2.45; 20000;occ; 122; 0;50500
3; 833.9; 26-OCT-2011 16:30:28; Dark ; 62.0; 108; Alp Col ; 2.65; 15200;occ; 124; 0;50500
/nas3/ENVISAT/GOMOS/GOM_NL__0P/GOM_NL__0PNPDK20111026_175720_000008643108_00056_50501_5486.N1
1; 31.9; 26-OCT-2011 17:57:20; Dark ; 67.0; 132; 15Rho Pup ; 2.80; 6900;occ; 134; 0;50501
2; 322.1; 26-OCT-2011 18:02:10; Dark ; 61.0; 88; 31Eta CMA ; 2.45; 20000;occ; 122; 0;50501
3; 835.1; 26-OCT-2011 18:10:43; Dark ; 61.5; 108; Alp Col ; 2.65; 15200;occ; 123; 0;50501
/nas3/ENVISAT/GOMOS/GOM_NL__0P/GOM_NL__0PNPDK20111027_125307_000000193108_00067_50512_5487.N1
1; 2026.2; 27-OCT-2011 12:53:07; Dark ; 19.5; 9; Alp Eri ; 0.45; 24000;occ; 39; 0;50512

```