

GOMOS Daily Report 18-OCT-2011

Level 0 and Level 1 products

SUMMARY

[1. General Info](#)

[2. Summary of products arrived in PCF \(Product Control Facility\)](#)

[2.1 Level 0: products arrived in PCF during current month \(see template here\)](#)

[2.2 Level 0: plot of mission plan versus production during reporting period](#)

[2.3 Level 0: summary of missing occultations with respect to the plan](#)

[2.4 Level 1: products arrived in PCF during reporting period](#)

[3. Plot of Spectrometers and Photometers temperatures](#)

[4. Dark Charge monitoring](#)

[4.1 Products that did not use the Dark Sky Area observation for DC computation](#)

[4.2 Plot of Dark Charge](#)

[5. Demodulation correction and quality product information monitoring](#)

[5.1 Percentage of products with some flags set](#)

[5.2 Plot of quality information per product \(time dependant\)](#)

[5.3 Plot of quality information per product \(world map\)](#)

[6. Star tangent altitude lost](#)

[6.1 Statistics on star tangent altitude lost](#)

[6.2 Plot of star tangent altitude lost: DARK products](#)

[6.3 Plot of star tangent altitude lost: BRIGHT products](#)

[6.3 Plot of star tangent altitude lost: TWILIGHT products](#)

[7. Star Acquisition and Tracking Unit \(SATU\)](#)

[7.1 SATU plots \(dark limb\): 'X' and 'Y' axis](#)

[7.2 SATU Noise Equivalent Angle statistics](#)

[7.2.1 SATU NEA Statistics \(table\)](#)

[7.2.2 Daily SATU NEA STD \(dark limb\) - trend since 1st April 2006](#)

[8. Auxiliary Data Files used for the production reported in section 2.4](#)

[Level 2 products](#)

This report presents the daily analysis on parameters extracted from GOMOS level 1b data (GOM_TRA_1P). It is intended to monitor some important parameters that will impact the quality of the level 2 products as the Spectrometers and Photometers CCD Temperatures and Dark Charge, SATU noise equivalent angle... A list of level 0 products (and content) that have arrived during the actual month to the PCF is also given.

Item	Value
Time of report generation	21OCT2011 07:00:30
Data source version	GOMOS/6.01
Start time of products	18OCT2011 00:18:00
Stop time of products	18OCT2011 13:39:46
Store outputs in DB	Yes
Nb of level 1b prods	5
Nb of prods with errors	0

2. Summary of products arrived in PCF (Product Control Facility)

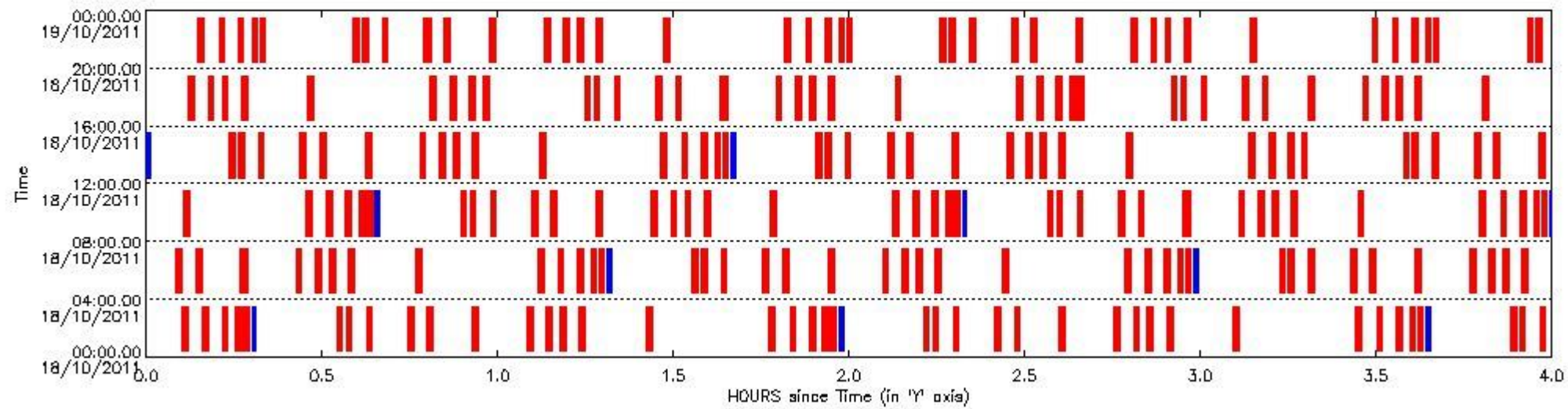
2.1 Level 0 products arrived in PCF (see template [here](#))

2.2 Plot of mission plan versus Level 0 production arrived in PCF during reporting period

Red segments are missing products.

Blue segments are available products.

Green segments are calibration measurements (not available products to users).



2.3 Summary of missing occultations (red segments in previous plot)

UTC start time	Star name	Star ID	Orbit
18-OCT-2011 00:06:05	6BetAri	105	50375
18-OCT-2011 00:09:38	43BetAnd	53	50375
18-OCT-2011 00:12:53	57Gam1And	73	50375
18-OCT-2011 00:15:15	18AlpCas	68	50375
18-OCT-2011 00:16:34	27GamCas	76	50375
18-OCT-2011 00:32:32	50AlpUMa	36	50375
18-OCT-2011 00:34:06	48BetUMa	82	50375
18-OCT-2011 00:37:32	52PsiUMa	174	50375
18-OCT-2011 00:44:35	17EpsLeo	166	50375
18-OCT-2011 00:47:56	32AlpLeo	22	50375
18-OCT-2011 00:55:35	30AlpHya	48	50375
18-OCT-2011 01:05:01	LamVel	65	50375
18-OCT-2011 01:08:18	Gam2Vel	34	50376
18-OCT-2011 01:10:41	DSA1055	0	50376
18-OCT-2011 01:13:56	AlpCar	2	50376

18-OCT-2011 01:25:25	The1Eri	157	50376
18-OCT-2011 01:46:18	6BetAri	105	50376
18-OCT-2011 01:49:52	43BetAnd	53	50376
18-OCT-2011 01:53:06	57Gam1And	73	50376
18-OCT-2011 01:55:28	18AlpCas	68	50376
18-OCT-2011 01:56:48	27GamCas	76	50376
18-OCT-2011 02:12:46	50AlpUMa	36	50376
18-OCT-2011 02:14:20	48BetUMa	82	50376
18-OCT-2011 02:17:46	52PsiUMa	174	50376
18-OCT-2011 02:24:49	17EpsLeo	166	50376
18-OCT-2011 02:28:10	32AlpLeo	22	50376
18-OCT-2011 02:35:50	30AlpHya	48	50376
18-OCT-2011 02:45:16	LamVel	65	50376
18-OCT-2011 02:48:32	Gam2Vel	34	50377
18-OCT-2011 02:50:56	DSA1055	0	50377
18-OCT-2011 02:54:10	AlpCar	2	50377
18-OCT-2011 03:05:39	The1Eri	157	50377
18-OCT-2011 03:26:32	6BetAri	105	50377
18-OCT-2011 03:30:06	43BetAnd	53	50377
18-OCT-2011 03:33:20	57Gam1And	73	50377
18-OCT-2011 03:35:42	18AlpCas	68	50377
18-OCT-2011 03:37:02	27GamCas	76	50377
18-OCT-2011 03:53:00	50AlpUMa	36	50377
18-OCT-2011 03:54:34	48BetUMa	82	50377
18-OCT-2011 03:58:00	52PsiUMa	174	50377
18-OCT-2011 04:05:03	17EpsLeo	166	50377
18-OCT-2011 04:08:24	32AlpLeo	22	50377
18-OCT-2011 04:16:05	30AlpHya	48	50377
18-OCT-2011 04:25:30	LamVel	65	50377
18-OCT-2011 04:28:47	Gam2Vel	34	50378
18-OCT-2011 04:31:11	DSA1055	0	50378
18-OCT-2011 04:34:25	AlpCar	2	50378
18-OCT-2011 04:45:53	The1Eri	157	50378
18-OCT-2011 05:06:45	6BetAri	105	50378
18-OCT-2011 05:10:19	43BetAnd	53	50378
18-OCT-2011 05:13:33	57Gam1And	73	50378
18-OCT-2011 05:15:56	18AlpCas	68	50378
18-OCT-2011 05:17:15	27GamCas	76	50378
18-OCT-2011 05:33:14	50AlpUMa	36	50378
18-OCT-2011 05:34:48	48BetUMa	82	50378
18-OCT-2011 05:38:14	52PsiUMa	174	50378
18-OCT-2011 05:45:18	17EpsLeo	166	50378
18-OCT-2011 05:48:39	32AlpLeo	22	50378
18-OCT-2011 05:56:19	30AlpHya	48	50378
18-OCT-2011 06:05:45	LamVel	65	50378
18-OCT-2011 06:09:02	Gam2Vel	34	50379
18-OCT-2011 06:11:26	DSA1055	0	50379
18-OCT-2011 06:14:40	AlpCar	2	50379
18-OCT-2011 06:26:08	The1Eri	157	50379
18-OCT-2011 06:46:59	6BetAri	105	50379
18-OCT-2011 06:50:33	43BetAnd	53	50379
18-OCT-2011 06:53:47	57Gam1And	73	50379
18-OCT-2011 06:56:10	18AlpCas	68	50379
18-OCT-2011 06:57:29	27GamCas	76	50379
18-OCT-2011 07:13:28	50AlpUMa	36	50379
18-OCT-2011 07:15:02	48BetUMa	82	50379
18-OCT-2011 07:18:28	52PsiUMa	174	50379
18-OCT-2011 07:25:32	17EpsLeo	166	50379
18-OCT-2011 07:28:53	32AlpLeo	22	50379

18-OCT-2011 07:36:34	30AlpHya	48	50379
18-OCT-2011 07:46:00	LamVel	65	50379
18-OCT-2011 07:49:17	Gam2Vel	34	50380
18-OCT-2011 07:51:40	DSA1055	0	50380
18-OCT-2011 07:54:55	AlpCar	2	50380
18-OCT-2011 08:06:22	The1Eri	157	50380
18-OCT-2011 08:27:13	6BetAri	105	50380
18-OCT-2011 08:30:47	43BetAnd	53	50380
18-OCT-2011 08:34:00	57Gam1And	73	50380
18-OCT-2011 08:36:24	18AlpCas	68	50380
18-OCT-2011 08:37:43	27GamCas	76	50380
18-OCT-2011 08:53:42	50AlpUMa	36	50380
18-OCT-2011 08:55:16	48BetUMa	82	50380
18-OCT-2011 08:58:42	52PsiUMa	174	50380
18-OCT-2011 09:05:46	17EpsLeo	166	50380
18-OCT-2011 09:09:07	32AlpLeo	22	50380
18-OCT-2011 09:16:49	30AlpHya	48	50380
18-OCT-2011 09:26:14	LamVel	65	50380
18-OCT-2011 09:29:31	Gam2Vel	34	50381
18-OCT-2011 09:31:55	DSA1055	0	50381
18-OCT-2011 09:35:09	AlpCar	2	50381
18-OCT-2011 09:46:37	The1Eri	157	50381
18-OCT-2011 10:07:26	6BetAri	105	50381
18-OCT-2011 10:11:00	43BetAnd	53	50381
18-OCT-2011 10:14:13	57Gam1And	73	50381
18-OCT-2011 10:16:38	18AlpCas	68	50381
18-OCT-2011 10:17:57	27GamCas	76	50381
18-OCT-2011 10:33:56	50AlpUMa	36	50381
18-OCT-2011 10:35:30	48BetUMa	82	50381
18-OCT-2011 10:38:56	52PsiUMa	174	50381
18-OCT-2011 10:46:00	17EpsLeo	166	50381
18-OCT-2011 10:49:22	32AlpLeo	22	50381
18-OCT-2011 10:57:03	30AlpHya	48	50381
18-OCT-2011 11:06:29	LamVel	65	50381
18-OCT-2011 11:09:46	Gam2Vel	34	50382
18-OCT-2011 11:12:10	DSA1055	0	50382
18-OCT-2011 11:15:24	AlpCar	2	50382
18-OCT-2011 11:26:51	The1Eri	157	50382
18-OCT-2011 11:47:40	6BetAri	105	50382
18-OCT-2011 11:51:14	43BetAnd	53	50382
18-OCT-2011 11:54:27	57Gam1And	73	50382
18-OCT-2011 11:56:51	18AlpCas	68	50382
18-OCT-2011 11:58:10	27GamCas	76	50382
18-OCT-2011 12:14:10	50AlpUMa	36	50382
18-OCT-2011 12:15:44	48BetUMa	82	50382
18-OCT-2011 12:19:10	52PsiUMa	174	50382
18-OCT-2011 12:26:15	17EpsLeo	166	50382
18-OCT-2011 12:29:36	32AlpLeo	22	50382
18-OCT-2011 12:37:18	30AlpHya	48	50382
18-OCT-2011 12:46:43	LamVel	65	50382
18-OCT-2011 12:50:01	Gam2Vel	34	50383
18-OCT-2011 12:52:25	DSA1055	0	50383
18-OCT-2011 12:55:39	AlpCar	2	50383
18-OCT-2011 13:07:06	The1Eri	157	50383
18-OCT-2011 13:27:53	6BetAri	105	50383
18-OCT-2011 13:31:28	43BetAnd	53	50383
18-OCT-2011 13:34:40	57Gam1And	73	50383
18-OCT-2011 13:37:05	18AlpCas	68	50383
18-OCT-2011 13:38:24	27GamCas	76	50383

18-OCT-2011 13:54:24	50AlpUMa	36	50383
18-OCT-2011 13:55:58	48BetUMa	82	50383
18-OCT-2011 13:59:24	52PsiUMa	174	50383
18-OCT-2011 14:06:29	17EpsLeo	166	50383
18-OCT-2011 14:09:50	32AlpLeo	22	50383
18-OCT-2011 14:17:33	30AlpHya	48	50383
18-OCT-2011 14:26:58	LamVel	65	50383
18-OCT-2011 14:30:16	Gam2Vel	34	50384
18-OCT-2011 14:32:40	DSA1055	0	50384
18-OCT-2011 14:35:54	AlpCar	2	50384
18-OCT-2011 14:47:20	The1Eri	157	50384
18-OCT-2011 15:08:07	6BetAri	105	50384
18-OCT-2011 15:11:42	43BetAnd	53	50384
18-OCT-2011 15:14:54	57Gam1And	73	50384
18-OCT-2011 15:17:19	18AlpCas	68	50384
18-OCT-2011 15:34:38	50AlpUMa	36	50384
18-OCT-2011 15:36:12	48BetUMa	82	50384
18-OCT-2011 15:39:38	52PsiUMa	174	50384
18-OCT-2011 15:46:43	17EpsLeo	166	50384
18-OCT-2011 15:50:05	32AlpLeo	22	50384
18-OCT-2011 15:57:48	30AlpHya	48	50384
18-OCT-2011 16:07:13	LamVel	65	50384
18-OCT-2011 16:10:30	Gam2Vel	34	50385
18-OCT-2011 16:12:55	DSA1055	0	50385
18-OCT-2011 16:16:08	AlpCar	2	50385
18-OCT-2011 16:27:34	The1Eri	157	50385
18-OCT-2011 16:48:20	6BetAri	105	50385
18-OCT-2011 16:51:55	43BetAnd	53	50385
18-OCT-2011 16:55:07	57Gam1And	73	50385
18-OCT-2011 16:57:33	18AlpCas	68	50385
18-OCT-2011 17:14:52	50AlpUMa	36	50385
18-OCT-2011 17:16:26	48BetUMa	82	50385
18-OCT-2011 17:19:52	52PsiUMa	174	50385
18-OCT-2011 17:26:57	17EpsLeo	166	50385
18-OCT-2011 17:30:19	32AlpLeo	22	50385
18-OCT-2011 17:38:03	30AlpHya	48	50385
18-OCT-2011 17:47:27	LamVel	65	50385
18-OCT-2011 17:50:45	Gam2Vel	34	50386
18-OCT-2011 17:53:10	DSA1055	0	50386
18-OCT-2011 17:56:23	AlpCar	2	50386
18-OCT-2011 18:07:49	The1Eri	157	50386
18-OCT-2011 18:28:34	6BetAri	105	50386
18-OCT-2011 18:32:09	43BetAnd	53	50386
18-OCT-2011 18:35:20	57Gam1And	73	50386
18-OCT-2011 18:37:47	18AlpCas	68	50386
18-OCT-2011 18:39:06	27GamCas	76	50386
18-OCT-2011 18:55:06	50AlpUMa	36	50386
18-OCT-2011 18:56:40	48BetUMa	82	50386
18-OCT-2011 19:00:06	52PsiUMa	174	50386
18-OCT-2011 19:07:12	17EpsLeo	166	50386
18-OCT-2011 19:10:33	32AlpLeo	22	50386
18-OCT-2011 19:18:17	30AlpHya	48	50386
18-OCT-2011 19:27:42	LamVel	65	50386
18-OCT-2011 19:31:00	Gam2Vel	34	50387
18-OCT-2011 19:33:24	DSA1055	0	50387
18-OCT-2011 19:36:38	AlpCar	2	50387
18-OCT-2011 19:48:03	The1Eri	157	50387
18-OCT-2011 20:08:47	6BetAri	105	50387
18-OCT-2011 20:12:23	43BetAnd	53	50387

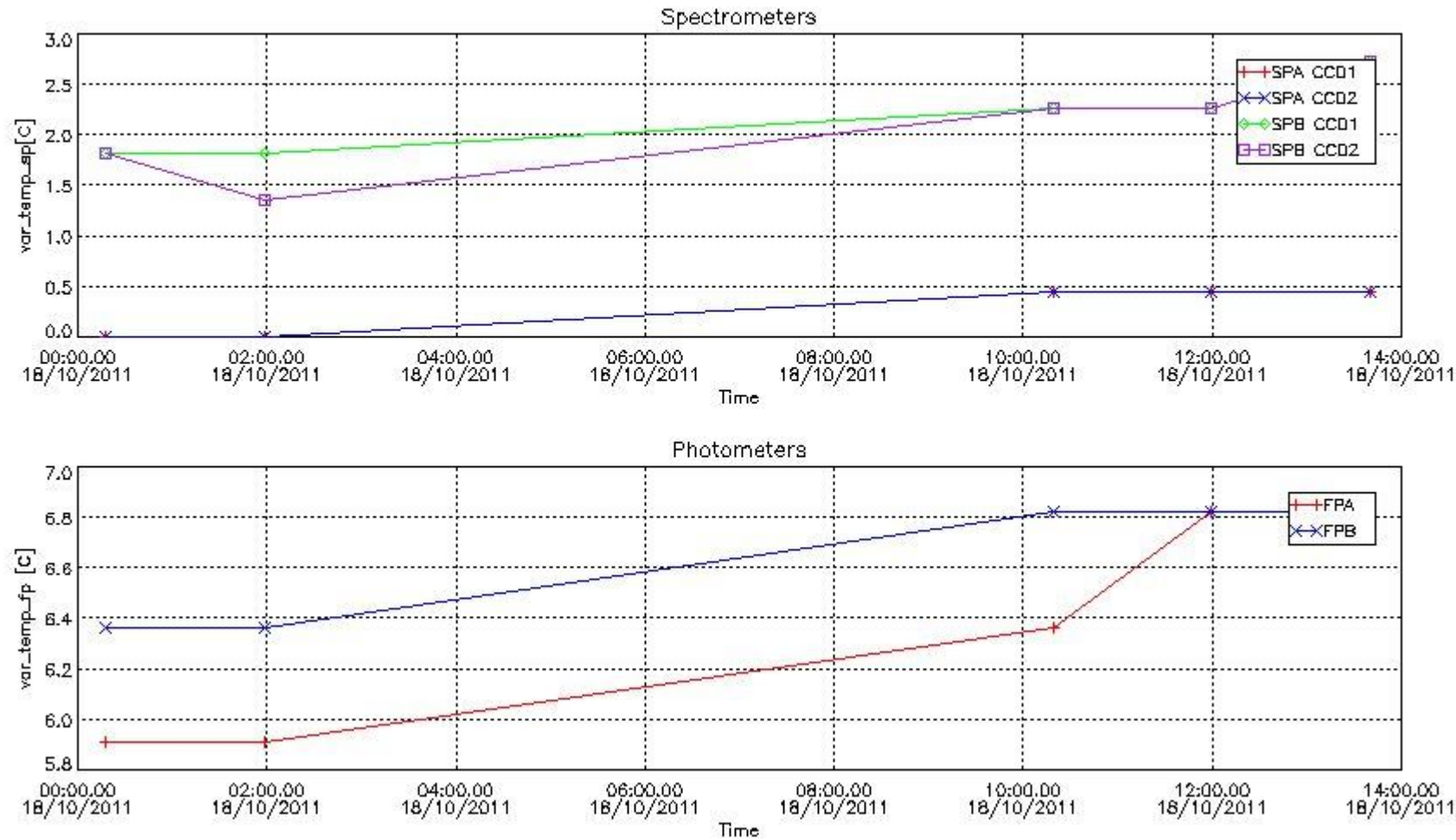
18-OCT-2011 20:15:34	57Gam1And	73	50387
18-OCT-2011 20:18:01	18AlpCas	68	50387
18-OCT-2011 20:19:19	27GamCas	76	50387
18-OCT-2011 20:35:20	50AlpUMa	36	50387
18-OCT-2011 20:36:54	48BetUMa	82	50387
18-OCT-2011 20:40:20	52PsiUMa	174	50387
18-OCT-2011 20:47:26	17EpsLeo	166	50387
18-OCT-2011 20:50:48	32AlpLeo	22	50387
18-OCT-2011 20:58:32	30AlpHya	48	50387
18-OCT-2011 21:07:57	LamVel	65	50387
18-OCT-2011 21:11:15	Gam2Vel	34	50388
18-OCT-2011 21:13:39	DSA1055	0	50388
18-OCT-2011 21:16:53	AlpCar	2	50388
18-OCT-2011 21:28:18	The1Eri	157	50388
18-OCT-2011 21:49:01	6BetAri	105	50388
18-OCT-2011 21:52:36	43BetAnd	53	50388
18-OCT-2011 21:55:47	57Gam1And	73	50388
18-OCT-2011 21:58:14	18AlpCas	68	50388
18-OCT-2011 21:59:33	27GamCas	76	50388
18-OCT-2011 22:15:34	50AlpUMa	36	50388
18-OCT-2011 22:17:08	48BetUMa	82	50388
18-OCT-2011 22:20:34	52PsiUMa	174	50388
18-OCT-2011 22:27:40	17EpsLeo	166	50388
18-OCT-2011 22:31:02	32AlpLeo	22	50388
18-OCT-2011 22:38:47	30AlpHya	48	50388
18-OCT-2011 22:48:11	LamVel	65	50388
18-OCT-2011 22:51:29	Gam2Vel	34	50389
18-OCT-2011 22:53:54	DSA1055	0	50389
18-OCT-2011 22:57:08	AlpCar	2	50389
18-OCT-2011 23:08:32	The1Eri	157	50389
18-OCT-2011 23:29:14	6BetAri	105	50389
18-OCT-2011 23:32:50	43BetAnd	53	50389
18-OCT-2011 23:36:01	57Gam1And	73	50389
18-OCT-2011 23:38:28	18AlpCas	68	50389
18-OCT-2011 23:39:47	27GamCas	76	50389
18-OCT-2011 23:55:48	50AlpUMa	36	50389
18-OCT-2011 23:57:21	48BetUMa	82	50389

2.4 Summary of processed GOM_TRA_1P products

!Warning: No products without errors in DARK limb contitions found

Nr	Filename	UTC Start time	Limb	Duration	Star Id	Star Name	Star Mag	Star Temp	Nb Meas	Orbit	Prod. error
1	GOM_TRA_1PNPDE20111018_001800_000000453107_00361_50375_8850.N1	18-OCT-2011 00:18:00	Bright	45.000	160	23Gam Per	2.9300	4700.0	90	50375	No
2	GOM_TRA_1PNPDE20111018_015813_000000463107_00362_50376_8867.N1	18-OCT-2011 01:58:13	Bright	46.000	160	23Gam Per	2.9300	4700.0	92	50376	No
3	GOM_TRA_1PNPDK20111018_101920_000000443107_00367_50381_8828.N1	18-OCT-2011 10:19:20	Bright	44.000	160	23Gam Per	2.9300	4700.0	88	50381	No
4	GOM_TRA_1PNPDK20111018_115933_000000683107_00368_50382_8598.N1	18-OCT-2011 11:59:33	Bright	67.500	160	23Gam Per	2.9300	4700.0	135	50382	No
5	GOM_TRA_1PNPDK20111018_133946_000000463107_00369_50383_8634.N1	18-OCT-2011 13:39:46	Bright	45.500	160	23Gam Per	2.9300	4700.0	91	50383	No

3. Plot of GOMOS spectrometers and photometers temperatures from level 1b data



4. Overview of dark signal processing per product

The Dark Charge (DC) is a temperature-dependant signal added to the useful measurements and it is therefore subtracted from them during the processing. There are two phenomena that produce a continuous increase of the DC: the "hot pixels" (a pixel is "hot" when its DC exceeds by a significant amount its value measured on ground at the same temperature) and the "Random Telegraphic Signal" (abrupt change positive or negative of the CCD pixel signal, random in time, affecting only the DC part of the signal and not the photon generated signal).

In this section a list of products that did not use the Dark Sky Area (DSA) observation for the DC computation is given. It is also provided the mean DC plot per product for dark limb products with no error flag set.

4.1 These products did not use the DSA observation for DC computation:

Product name	DC information
GOM_TRA_1PNPDE20111018_001800_000000453107_00361_50375_8850.N1	DC map used
GOM_TRA_1PNPDE20111018_015813_000000463107_00362_50376_8867.N1	DC map used
GOM_TRA_1PNPDK20111018_101920_000000443107_00367_50381_8828.N1	DC map used
GOM_TRA_1PNPDK20111018_115933_000000683107_00368_50382_8598.N1	DC map used
GOM_TRA_1PNPDK20111018_133946_000000463107_00369_50383_8634.N1	DC map used

4.2 Plot of mean dark charges per product: only products in DARK limb conditions without errors are used

No products without errors in DARK limb conditions found. No plot performed.

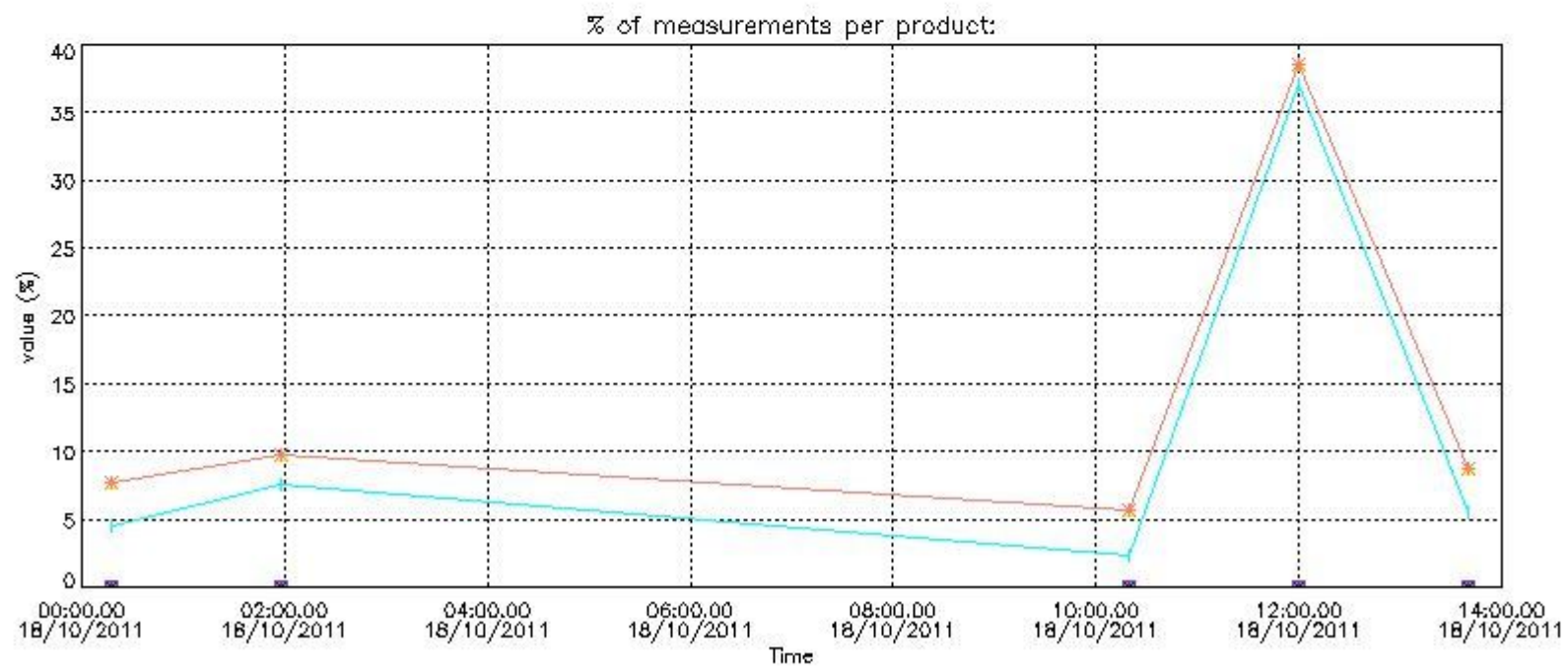
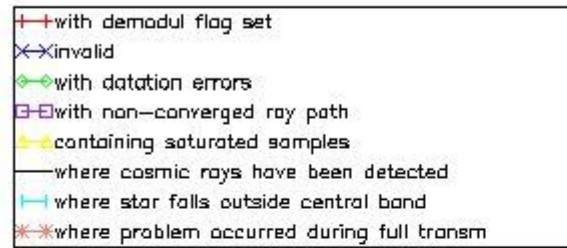
5. Demodulation flag and quality information monitoring

In this section it is presented the modulation information extracted from the pcd (product confidence data) at measurement level and information extracted from the Quality Summary dataset. Only products without errors (error flag in the MPH set to "0") are used.

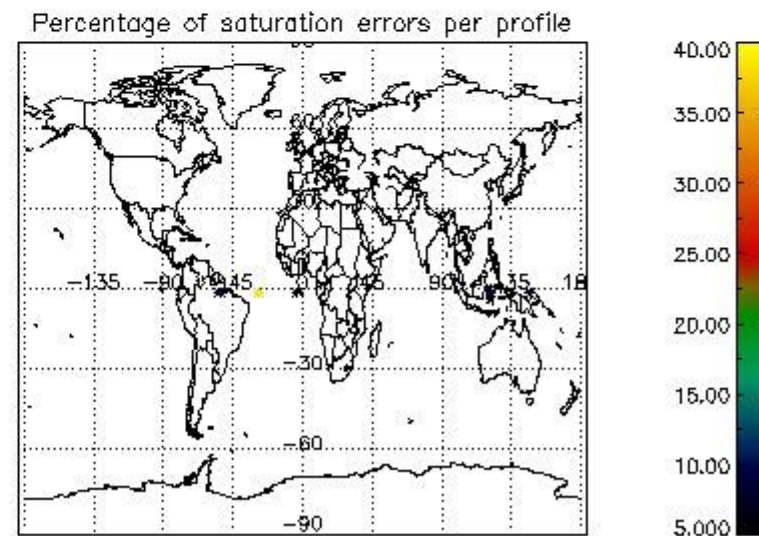
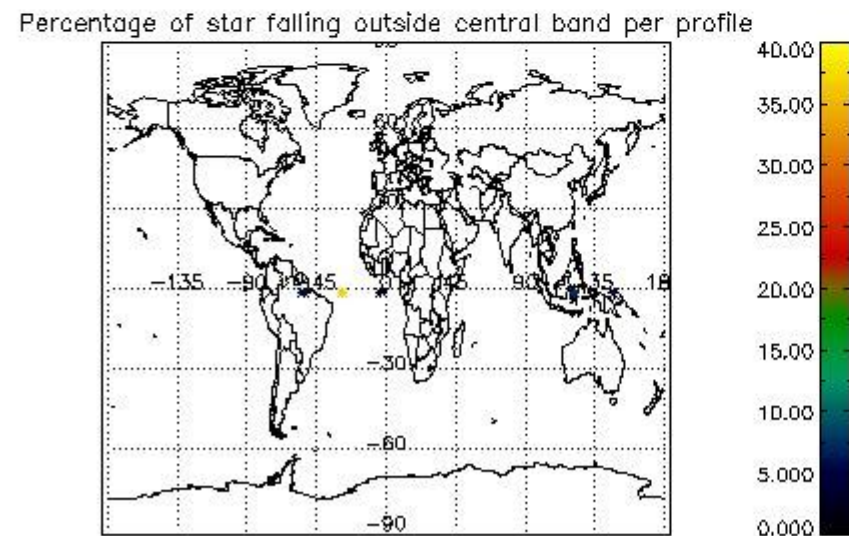
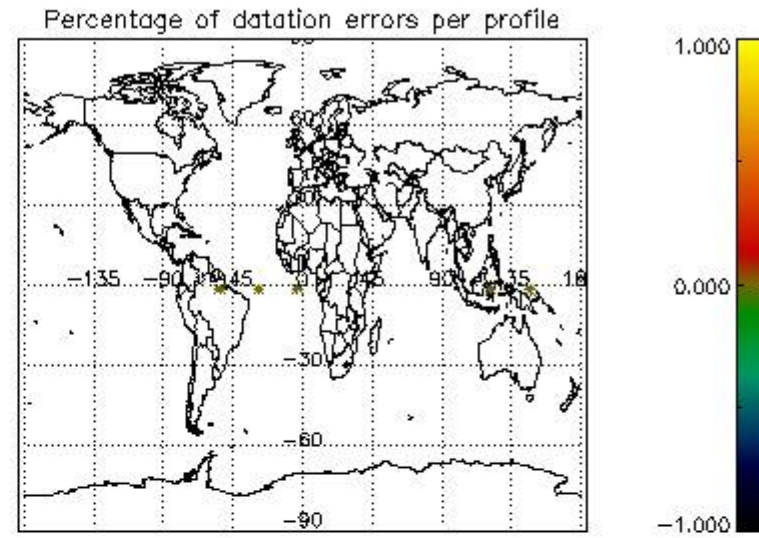
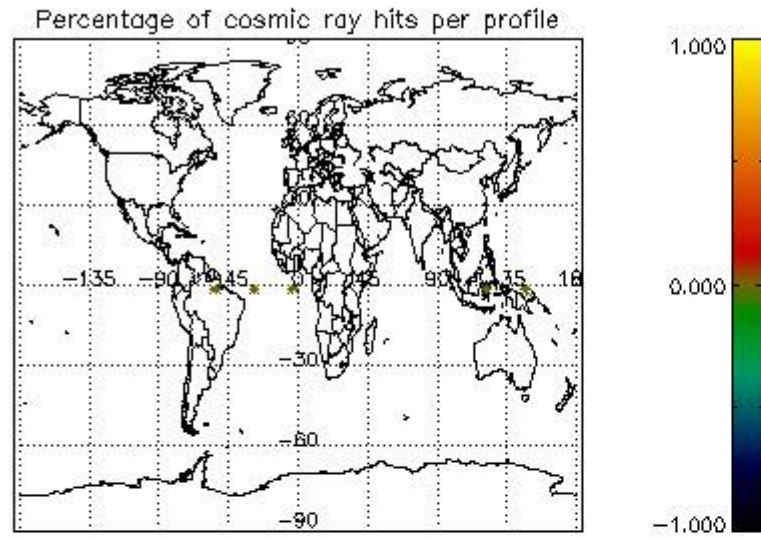
5.1 Percentage of products during reporting period with:

At least one measurement with demodulation flag set:	0.00000 %
Reference spectrum computed from DB:	0.00000 %
Reference spectrum with small number of measurements:	0.00000 %
SATU data not used:	100.000 %

5.2 Plot quality information per product (time dependant)



5.3 Plot quality information per product (world map)



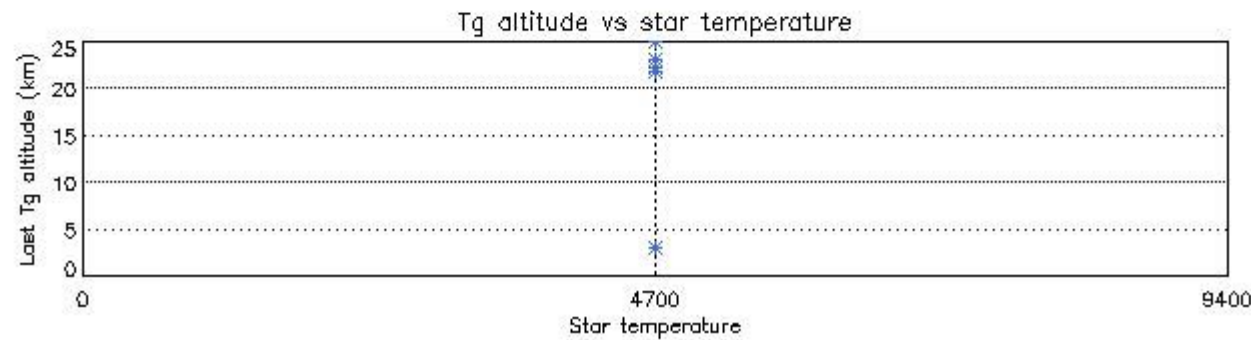
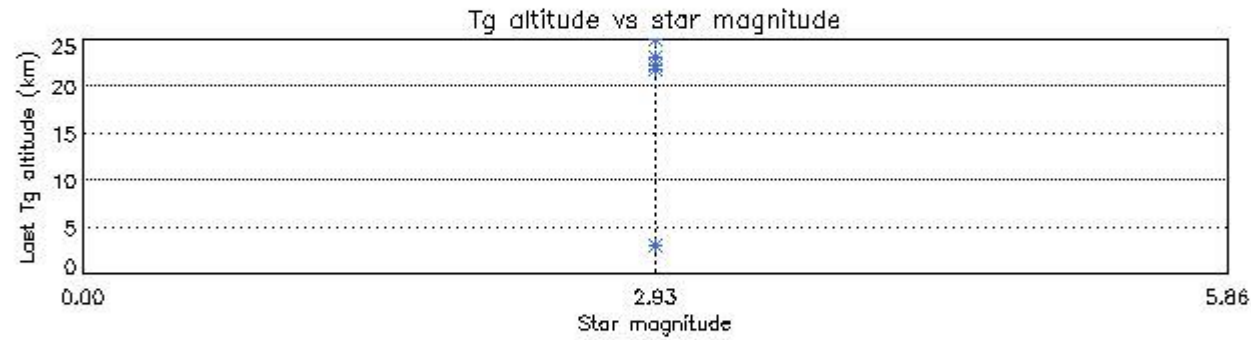
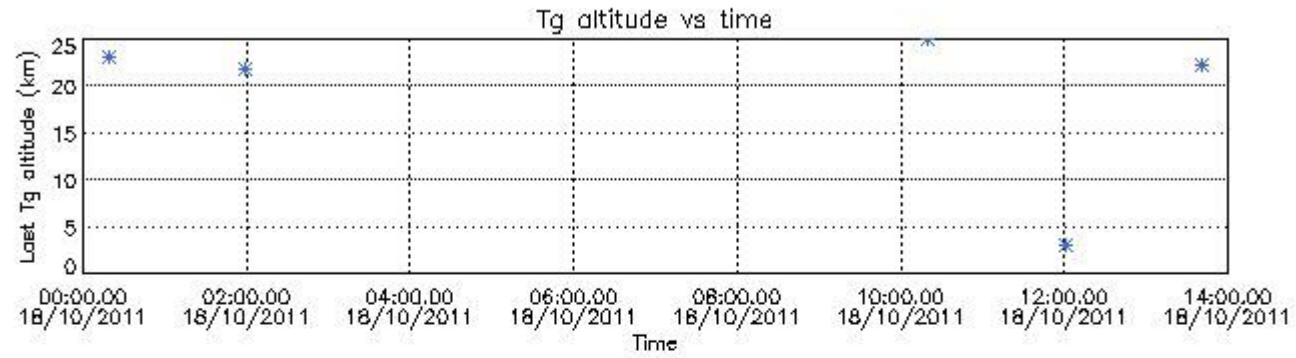
6. Statistics and plot of tangent altitude of the last measurement (DARK & BRIGHT products without errors)

6.1 Statistics on tangent altitude lost:

Statistics	DARK	BRIGHT	TWILIGHT
Mean:	NaN	19.011	NaN
St. deviation:	NaN	9.0154	NaN
Maximum:	NaN	24.927	NaN
Minimum:	NaN	3.0313	NaN
Number of data:	NaN	5.0000	NaN

6.3 Plot for BRIGHT limb products

Tangent altitude at which the star is lost



7. Star Acquisition and Tracking Unit (SATU)

The Star Acquisition and Tracking Unit (SATU) analyses the position of the tracked star beam collected by the GOMOS telescope and deflected by the optical beam dispatcher. The main function of the SATU is to detect a star, provide its image position to the science data electronics and to help the pointing function to keep the star image at a fixed position. In tracking mode the SATU data is recorded with a frequency of 100 Hz.

7.1 SATU 'X' and 'Y' axis plots (dark limb)

SATU CCD 'X' and 'Y' axis plots are provided in order to detect any abnormal behaviour of the tracking system. For every occultation (color) the plot should remain stable (with some noise) until we are deep in the atmosphere where big fluctuations are registered due to the refractive effects.

7.2 Statistics on SATU Noise Equivalent Angle (NEA) for DARK (D) and BRIGHT (B) products above 105 kms

The Star Acquisition and Tracking Unit (it is the CCD that tracks the star while it is occulted) Noise Equivalent Angle consists of the statistical angular variation of the SATU data above the atmosphere. Statistics (in microradians) above 105 km are computed for every occultation, giving four values per occultation: one in the 'X' direction and one in the 'Y' direction for dark and bright limbs. A mean value per day in every direction and limb is calculated and monitored in order to assess instrument performance in terms of star pointing.

7.2.1 SATU NEA Statistics (table)

Statistics	SATU X (D)	SATU Y (D)	SATU X (B)	SATU Y (B)
Mean:	NaN	NaN	0.20822	-0.26717
St. deviation:	NaN	NaN	0.93522	1.0143
Maximum:	NaN	NaN	3.4000	3.8000
Minimum:	NaN	NaN	-3.4000	-3.9000
Number of data:	NaN	NaN	5650.0	5650.0
90Percentile:	NaN	NaN	1.4000	1.0000

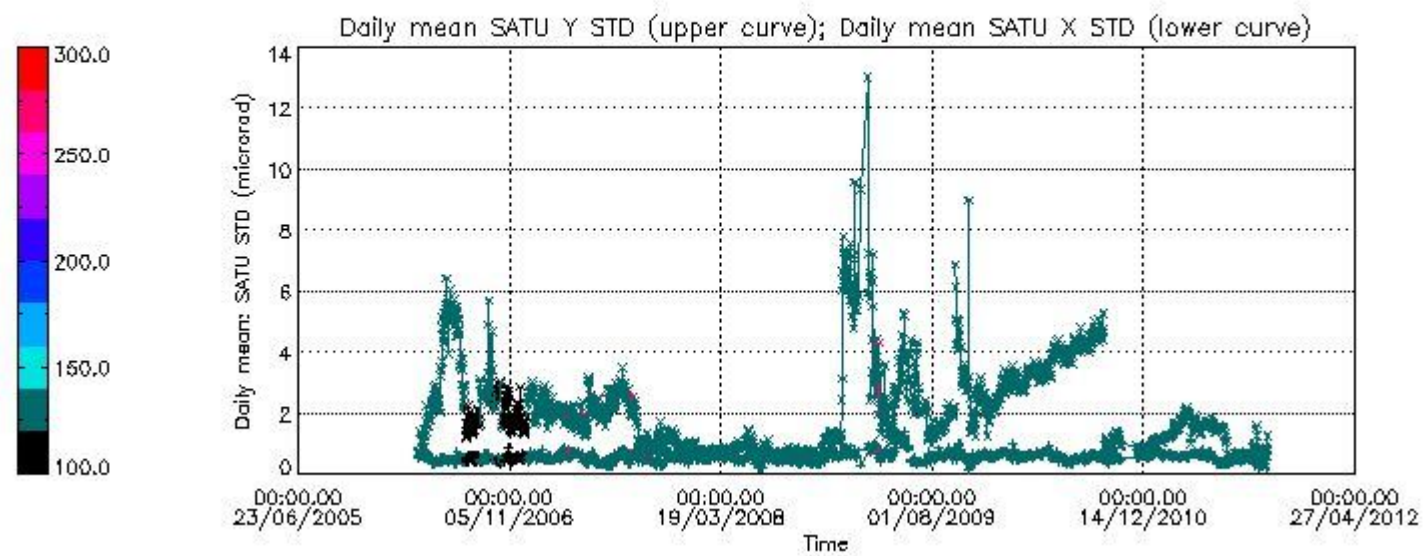
7.2.2 Trend of daily SATU NEA St. deviation since 1st April 2006 (dark limb) and of daily SATU NEA 90th percentile since May 2011

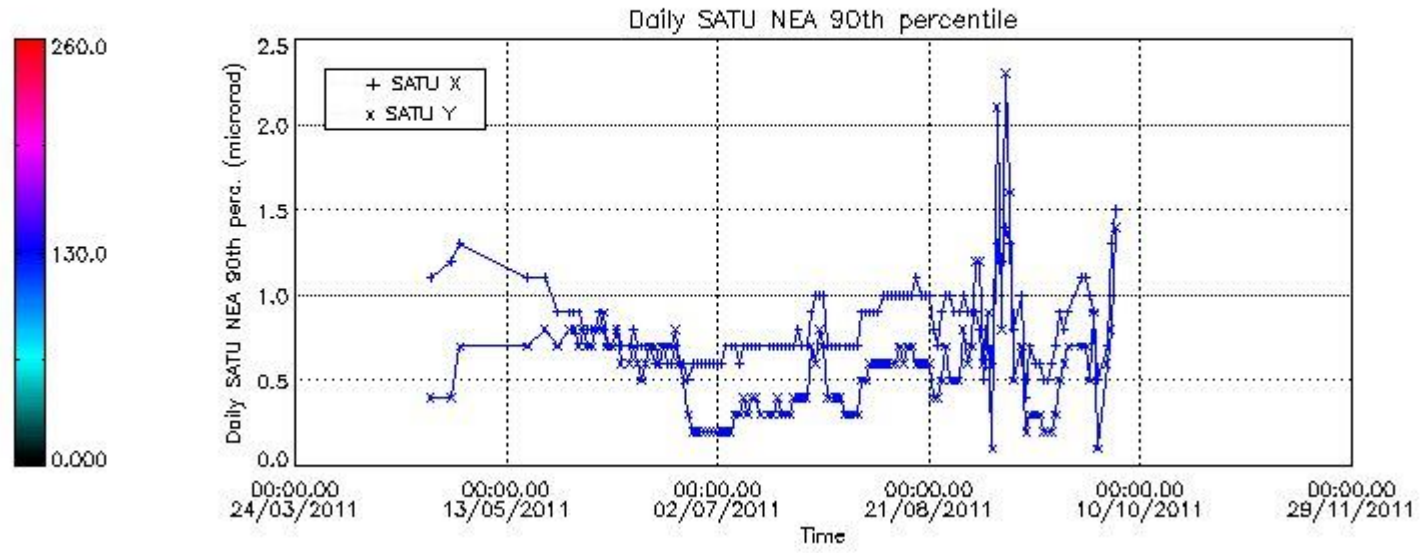
The long term trend of the SATU 'X' and 'Y' standard deviations should be constant during the whole mission.

The colorbar represents the start tangent altitude (km) of the occultations.

Upper curve: STD of SATU Y axis

Lower curve: STD of SATU X axis

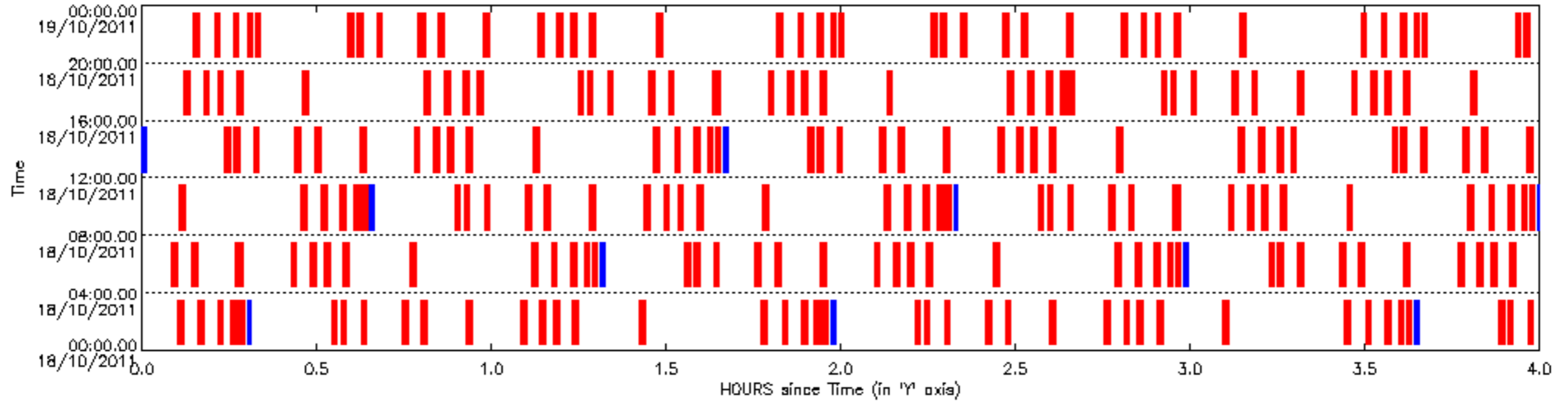


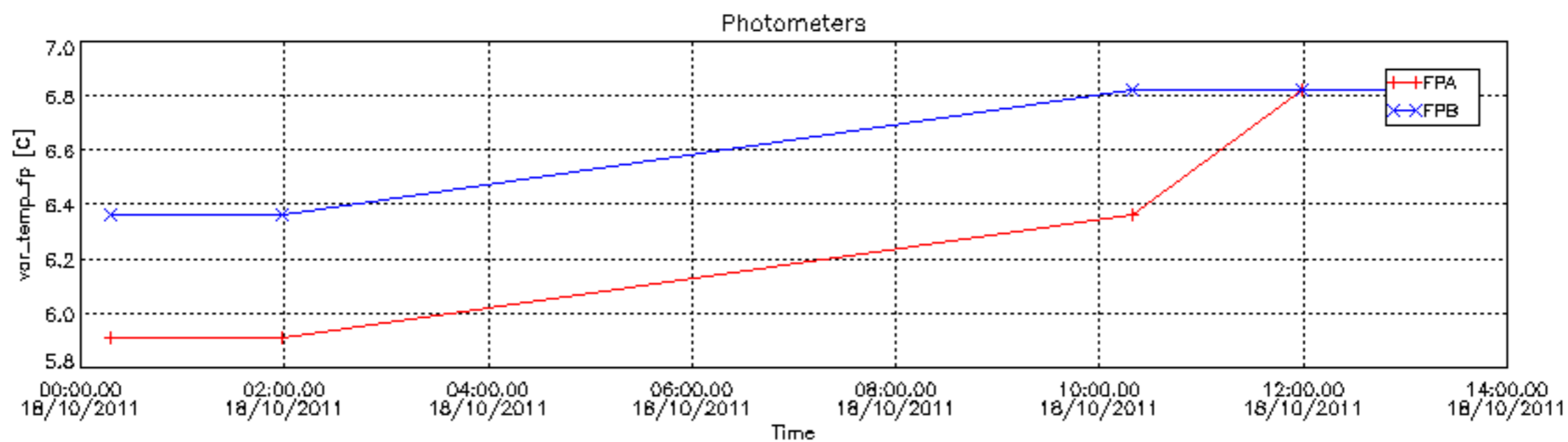
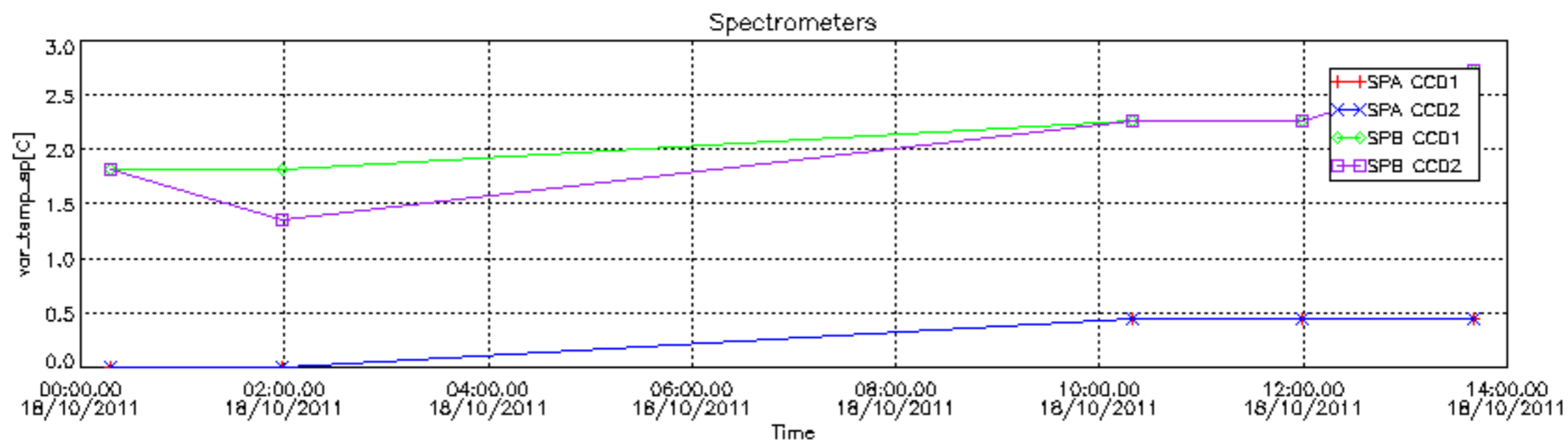


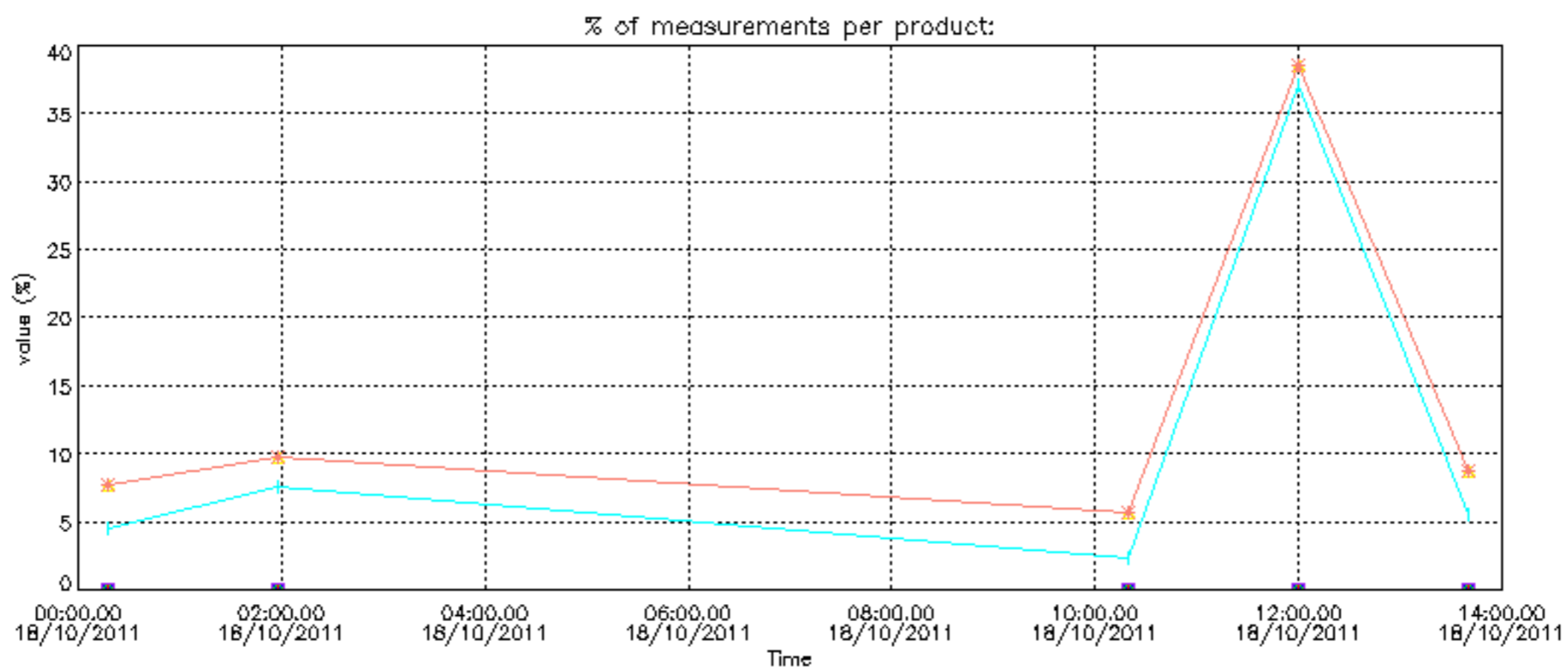
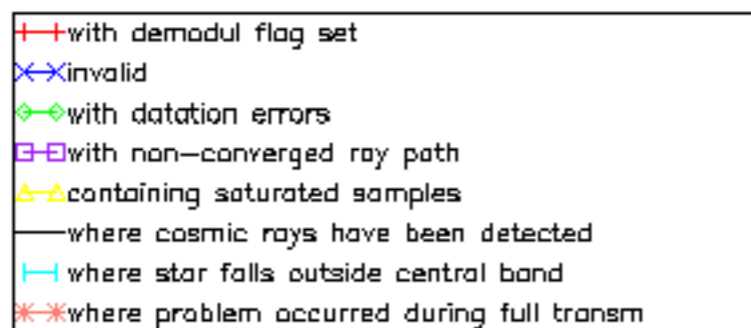
8. Auxiliary Data Files used for the production reported in section 2.4

The number reported in the third column indicates since which file (see list in section 2.4) the corresponding auxiliary file has been used. The fourth column is the date of those product files.

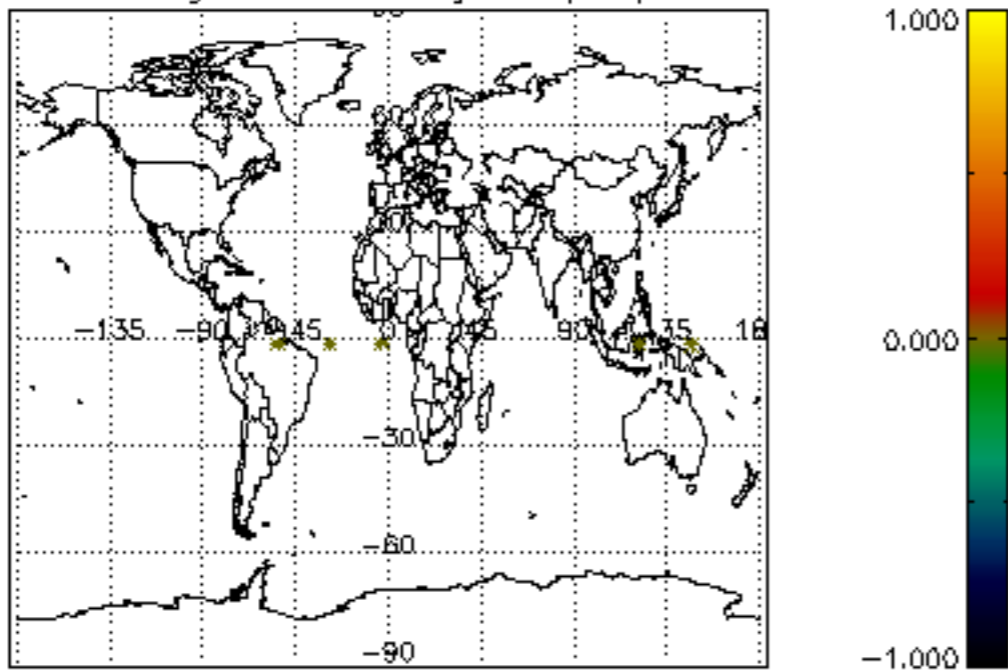
Type	Auxiliary Filename	Used since product	Used since product date
INST_PHYS_CHARACTERISTICS	GOM_INS_AXVIEC20091111_143220_20030716_120000_20500101_000000	1	18-OCT-2011 00:18:00
CALIBRATION_DATABASE	GOM_CAL_AXVIEC20111004_085053_20111003_000000_20500101_000000	1	18-OCT-2011 00:18:00
LEVEL-1B_PROC_CONFIG	GOM_PR1_AXVIEC20110513_081743_20020301_000000_20500101_000000	1	18-OCT-2011 00:18:00
STAR_CATALOGUE	GOM_CAT_AXVIEC20020121_161009_20020101_000000_20200101_000000	1	18-OCT-2011 00:18:00
STELLAR_SPECTRA_DATABANK	GOM_STS_AXVIEC20091111_151504_20020101_160000_20500101_000000	1	18-OCT-2011 00:18:00
ECMWF_FILE	AUX_ECF_AXNECM20111017_063446_20111017_210000_20111018_090000	1	18-OCT-2011 00:18:00
ECMWF_FILE	AUX_ECF_AXNECM20111018_061239_20111018_090000_20111018_210000	3	18-OCT-2011 10:19:20
OPTIONAL_ECMWF_FILE	MISSING	1	18-OCT-2011 00:18:00
ORBIT_DATA_FILE	AUX_FPO_AXVPDS20111017_101444_20111016_190333_20111026_211717	1	18-OCT-2011 00:18:00
ORBIT_DATA_FILE	AUX_FPO_AXVPDS20111018_103237_20111017_182648_20111027_204032	3	18-OCT-2011 10:19:20



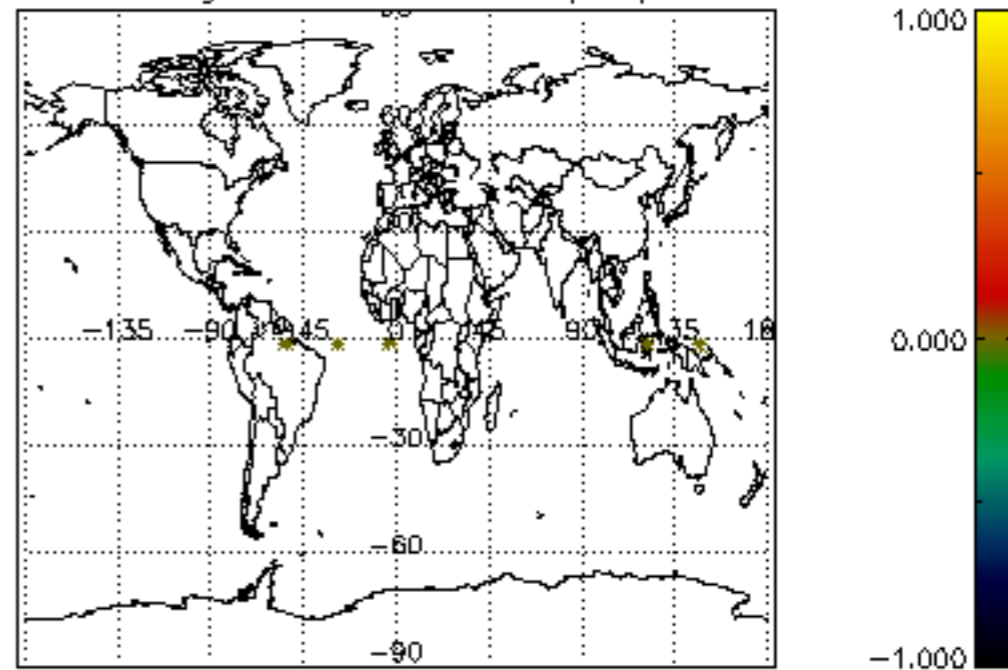




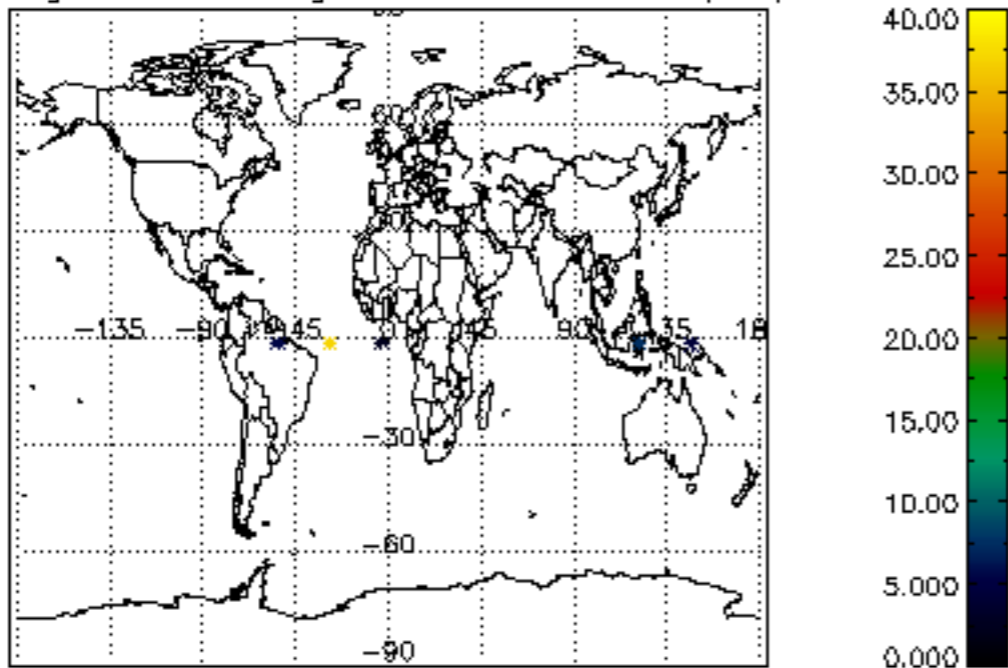
Percentage of cosmic ray hits per profile



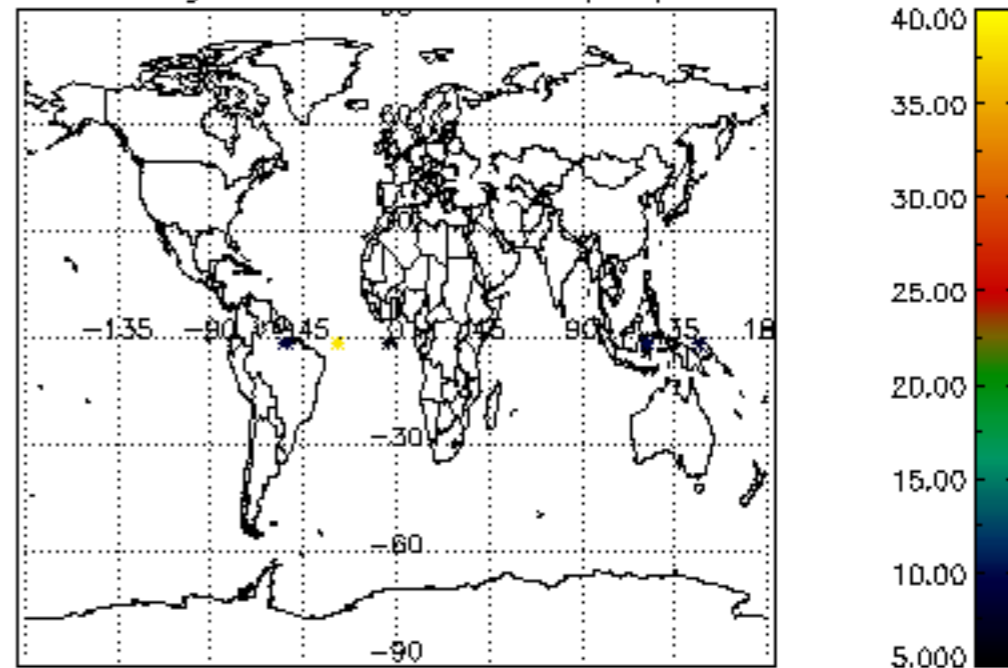
Percentage of datation errors per profile



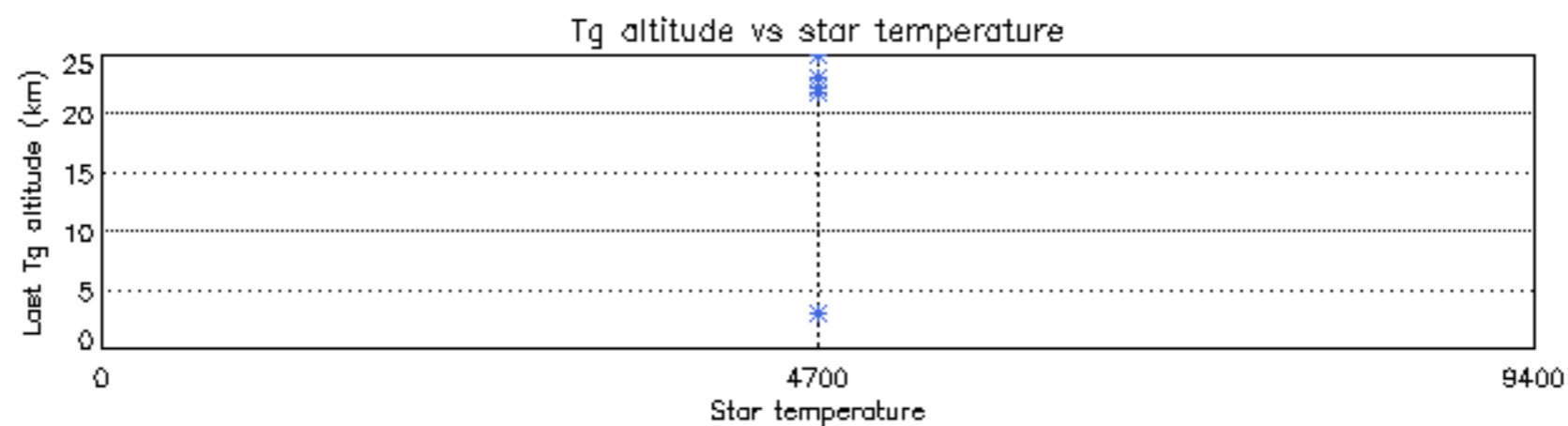
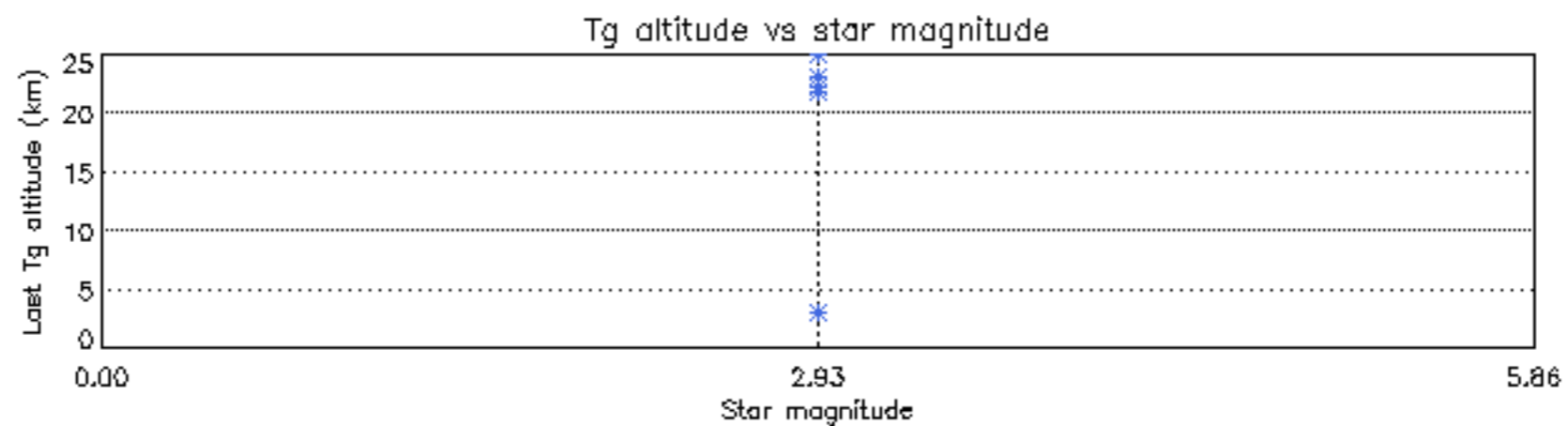
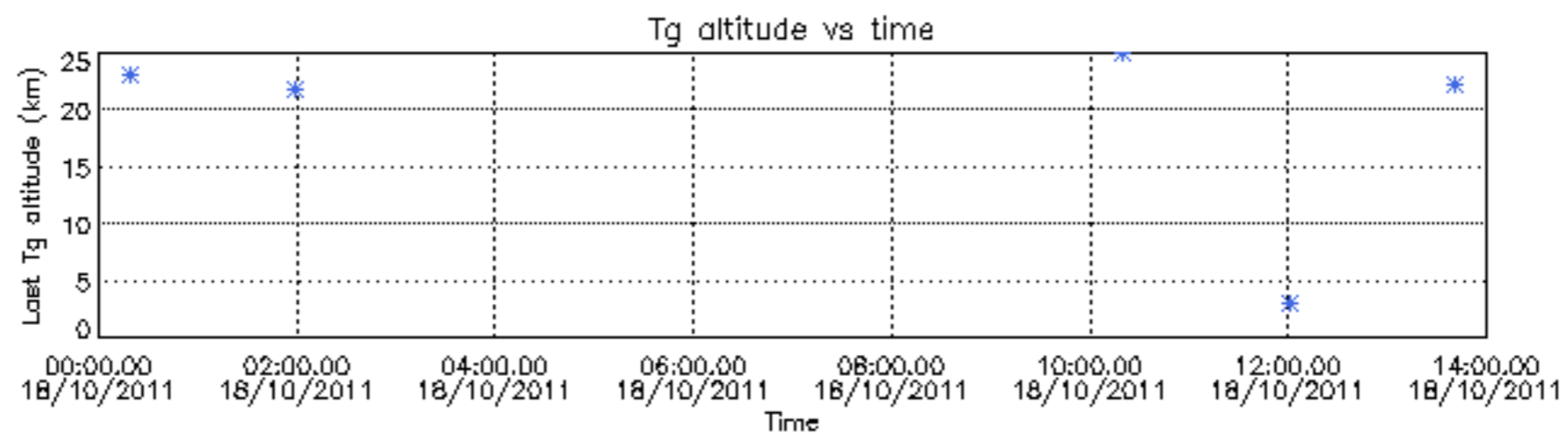
Percentage of star falling outside central band per profile

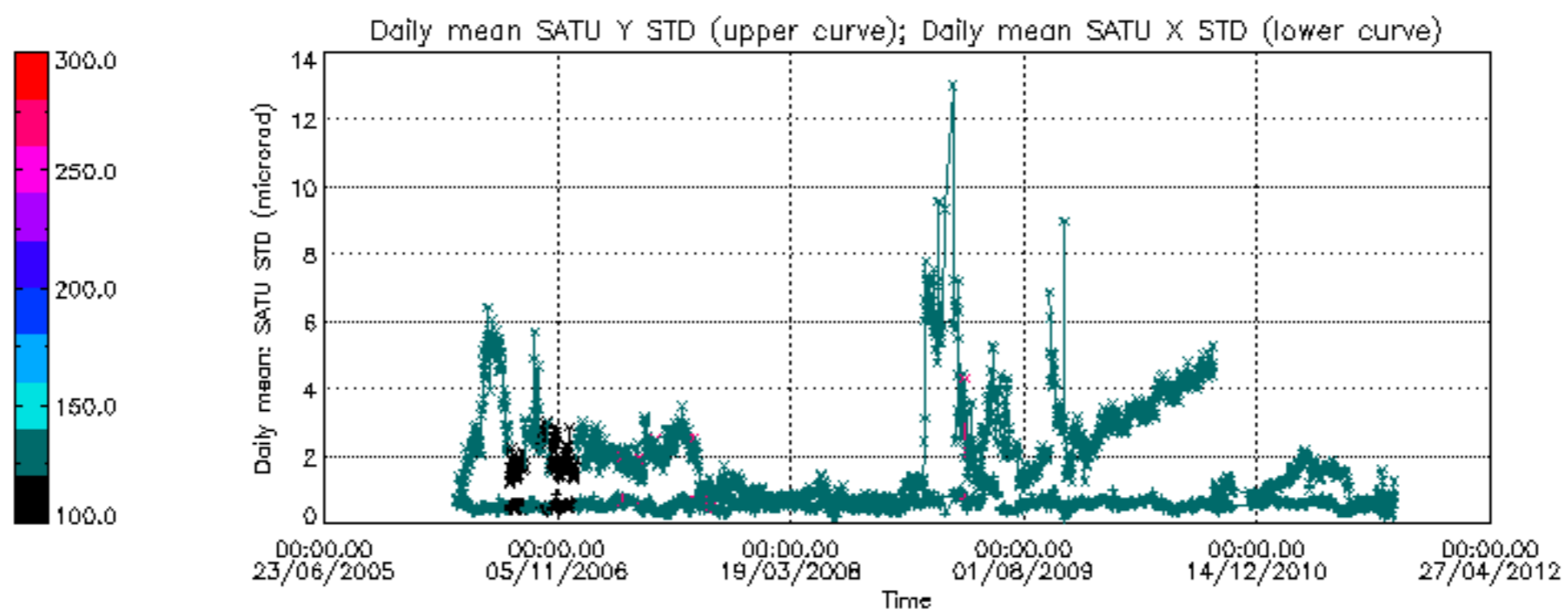


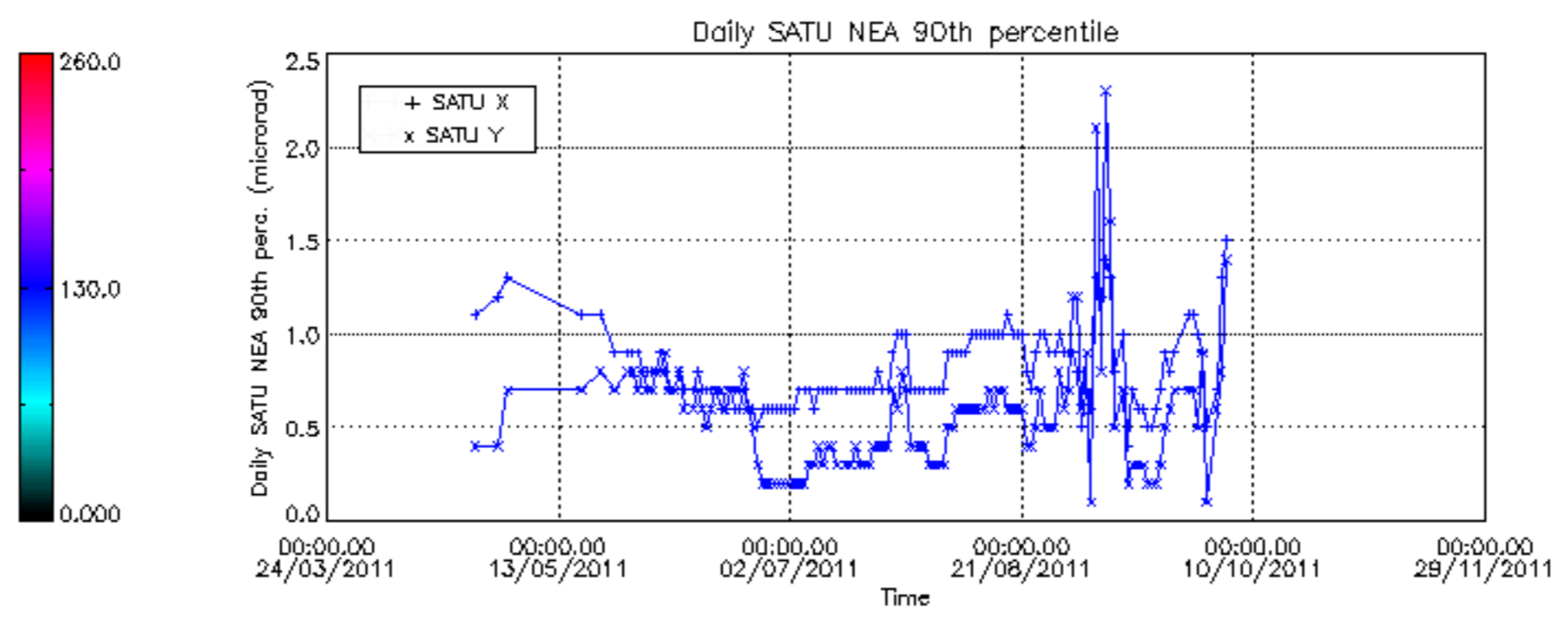
Percentage of saturation errors per profile



Tangent altitude at which the star is lost







```

/nas3/ENVISAT/GOMOS/GOM_NL__0P/GOM_NL__0PNPDE20111002_214039_00000423107_00144_50158_6530.N1
  1; 2617.1; 02-OCT-2011 21:40:39; Bright; 42.5; 53; 43Bet And ; 2.05; 3300;occ; 85; 0;50158
/nas3/ENVISAT/GOMOS/GOM_NL__0P/GOM_NL__0PNPDE20111002_223444_000011363107_00144_50158_6531.N1
  1; -151.2; 02-OCT-2011 22:34:44; Dark ; 54.5; 37; 25Del CMA ; 1.83; 5900;occ; 109; 0;50158
  2; 936.0; 02-OCT-2011 22:52:51; Dark ; 49.5; 157; The1Eri ; 2.91; 9300;occ; 99; 0;50159
/nas3/ENVISAT/GOMOS/GOM_NL__0P/GOM_NL__0PNPDK20111002_182012_000033093107_00142_50156_5389.N1
  1; 2618.4; 02-OCT-2011 18:20:12; Bright; 47.5; 53; 43Bet And ; 2.05; 3300;occ; 95; 0;50156
  2; 3035.8; 02-OCT-2011 18:27:09; Bright; 41.0; 110; 37Del Cas ; 2.68; 8900;occ; 82; 0;50156
  3; 3212.6; 02-OCT-2011 18:30:06; Bright; 51.0; 160; 23Gam Per ; 2.93; 4700;occ; 102; 0;50156
  4; 5594.7; 02-OCT-2011 19:09:48; Dark ; 47.0; 132; 15Rho Pup ; 2.80; 6900;occ; 94; 0;50156
  5; 5860.2; 02-OCT-2011 19:14:14; Dark ; 68.0; 37; 25Del CMA ; 1.83; 5900;occ; 136; 0;50156
/nas3/ENVISAT/GOMOS/GOM_NL__0P/GOM_NL__0PNPDK20111002_200025_000033093107_00143_50157_5390.N1
  1; 2617.7; 02-OCT-2011 20:00:25; Bright; 45.5; 53; 43Bet And ; 2.05; 3300;occ; 91; 0;50157
  2; 3035.2; 02-OCT-2011 20:07:23; Bright; 41.5; 110; 37Del Cas ; 2.68; 8900;occ; 83; 0;50157
  3; 5861.4; 02-OCT-2011 20:54:29; Dark ; 66.0; 37; 25Del CMA ; 1.83; 5900;occ; 132; 0;50157
/nas3/ENVISAT/GOMOS/GOM_NL__0P/GOM_NL__0PNPDE20111003_002332_00000553107_00146_50160_6532.N1
  1; 363.1; 03-OCT-2011 00:23:32; Dark ; 56.0; 108; Alp Col ; 2.65; 15200;occ; 112; 0;50160
/nas3/ENVISAT/GOMOS/GOM_NL__0P/GOM_NL__0PNPDE20111003_220654_000028643107_00159_50173_6535.N1
  1; 382.9; 03-OCT-2011 22:06:54; Dark ; 61.0; 108; Alp Col ; 2.65; 15200;occ; 122; 0;50173
  2; 2608.3; 03-OCT-2011 22:43:59; Bright; 45.5; 53; 43Bet And ; 2.05; 3300;occ; 91; 0;50173
  3; 3196.6; 03-OCT-2011 22:53:47; Bright; 50.5; 160; 23Gam Per ; 2.93; 4700;occ; 101; 0;50173
/nas3/ENVISAT/GOMOS/GOM_NL__0P/GOM_NL__0PNPDK20111003_065601_000005743107_00149_50163_5391.N1
  1; -144.3; 03-OCT-2011 06:56:01; Dark ; 72.5; 37; 25Del CMA ; 1.83; 5900;occ; 145; 0;50163
  2; 369.2; 03-OCT-2011 07:04:34; Dark ; 61.5; 108; Alp Col ; 2.65; 15200;occ; 123; 0;50164
/nas3/ENVISAT/GOMOS/GOM_NL__0P/GOM_NL__0PNPDK20111003_075150_000032393107_00150_50164_5392.N1
  1; -2808.7; 03-OCT-2011 07:51:50; Bright; 49.0; 160; 23Gam Per ; 2.93; 4700;occ; 98; 0;50164
  2; -142.9; 03-OCT-2011 08:36:16; Dark ; 68.0; 37; 25Del CMA ; 1.83; 5900;occ; 136; 0;50164
  3; 370.9; 03-OCT-2011 08:44:50; Dark ; 60.0; 108; Alp Col ; 2.65; 15200;occ; 120; 0;50165
/nas3/ENVISAT/GOMOS/GOM_NL__0P/GOM_NL__0PNPDK20111003_093203_000032423107_00151_50165_5393.N1
  1; -2809.7; 03-OCT-2011 09:32:03; Bright; 50.5; 160; 23Gam Per ; 2.93; 4700;occ; 101; 0;50165
  2; -141.5; 03-OCT-2011 10:16:32; Dark ; 61.5; 37; 25Del CMA ; 1.83; 5900;occ; 123; 0;50165
  3; 372.5; 03-OCT-2011 10:25:06; Dark ; 60.0; 108; Alp Col ; 2.65; 15200;occ; 120; 0;50166
/nas3/ENVISAT/GOMOS/GOM_NL__0P/GOM_NL__0PNPDK20111003_110225_000038363107_00152_50166_5394.N1
  1; 2612.3; 03-OCT-2011 11:02:25; Bright; 47.0; 53; 43Bet And ; 2.05; 3300;occ; 94; 0;50166
  2; 3203.1; 03-OCT-2011 11:12:16; Bright; 50.0; 160; 23Gam Per ; 2.93; 4700;occ; 100; 0;50166
  3; 5873.7; 03-OCT-2011 11:56:47; Dark ; 55.5; 37; 25Del CMA ; 1.83; 5900;occ; 111; 0;50166
  4; 6387.7; 03-OCT-2011 12:05:21; Dark ; 61.5; 108; Alp Col ; 2.65; 15200;occ; 123; 0;50167
/nas3/ENVISAT/GOMOS/GOM_NL__0P/GOM_NL__0PNPDK20111003_124239_000038403107_00153_50167_5395.N1
  1; 2611.8; 03-OCT-2011 12:42:39; Bright; 45.0; 53; 43Bet And ; 2.05; 3300;occ; 90; 0;50167
  2; 3202.2; 03-OCT-2011 12:52:29; Bright; 49.5; 160; 23Gam Per ; 2.93; 4700;occ; 99; 0;50167
  3; 5875.1; 03-OCT-2011 13:37:02; Dark ; 66.5; 37; 25Del CMA ; 1.83; 5900;occ; 133; 0;50167
  4; 6173.3; 03-OCT-2011 13:42:00; Dark ; 59.5; 0; ; 0.00; 0;occ; 119; 0;50168
  5; 6389.3; 03-OCT-2011 13:45:36; Dark ; 62.5; 108; Alp Col ; 2.65; 15200;occ; 125; 0;50168
/nas3/ENVISAT/GOMOS/GOM_NL__0P/GOM_NL__0PNPDK20111003_142252_000038413107_00154_50168_5396.N1
  1; 2611.2; 03-OCT-2011 14:22:52; Bright; 44.0; 53; 43Bet And ; 2.05; 3300;occ; 88; 0;50168
  2; 3201.4; 03-OCT-2011 14:32:42; Bright; 48.0; 160; 23Gam Per ; 2.93; 4700;occ; 96; 0;50168
  3; 5948.9; 03-OCT-2011 15:18:30; Dark ; 55.0; 23; 21Eps CMA ; 1.50; 26000;occ; 110; 0;50168
  4; 6174.6; 03-OCT-2011 15:22:15; Dark ; 59.5; 0; ; 0.00; 0;occ; 119; 0;50169
  5; 6390.9; 03-OCT-2011 15:25:52; Dark ; 61.5; 108; Alp Col ; 2.65; 15200;occ; 123; 0;50169
/nas3/ENVISAT/GOMOS/GOM_NL__0P/GOM_NL__0PNPDK20111003_160306_000038403107_00155_50169_5397.N1
  1; 2610.6; 03-OCT-2011 16:03:06; Bright; 47.0; 53; 43Bet And ; 2.05; 3300;occ; 94; 0;50169
  2; 3200.5; 03-OCT-2011 16:12:55; Bright; 51.5; 160; 23Gam Per ; 2.93; 4700;occ; 103; 0;50169
  3; 5950.3; 03-OCT-2011 16:58:45; Dark ; 55.0; 23; 21Eps CMA ; 1.50; 26000;occ; 110; 0;50169
  4; 6175.9; 03-OCT-2011 17:02:31; Dark ; 59.5; 0; ; 0.00; 0;occ; 119; 0;50170
  5; 6392.6; 03-OCT-2011 17:06:07; Dark ; 59.0; 108; Alp Col ; 2.65; 15200;occ; 118; 0;50170
/nas3/ENVISAT/GOMOS/GOM_NL__0P/GOM_NL__0PNPDK20111003_202301_000002793107_00158_50172_5399.N1
  1; 164.2; 03-OCT-2011 20:23:01; Dark ; 59.5; 0; ; 0.00; 0;occ; 119; 0;50172
  2; 381.4; 03-OCT-2011 20:26:38; Dark ; 62.0; 108; Alp Col ; 2.65; 15200;occ; 124; 0;50172
/nas3/ENVISAT/GOMOS/GOM_NL__0P/GOM_NL__0PNPDE20111003_051546_000034033107_00148_50162_6533.N1
  1; -145.7; 03-OCT-2011 05:15:46; Dark ; 59.5; 37; 25Del CMA ; 1.83; 5900;occ; 119; 0;50162
  2; 367.8; 03-OCT-2011 05:24:19; Dark ; 60.0; 108; Alp Col ; 2.65; 15200;occ; 120; 0;50163
  3; 2614.2; 03-OCT-2011 06:01:45; Bright; 43.5; 53; 43Bet And ; 2.05; 3300;occ; 87; 0;50163
  4; 3206.2; 03-OCT-2011 06:11:37; Bright; 51.5; 160; 23Gam Per ; 2.93; 4700;occ; 103; 0;50163
/nas3/ENVISAT/GOMOS/GOM_NL__0P/GOM_NL__0PNPDE20111004_030402_000024833107_00162_50176_6536.N1
  1; 169.1; 04-OCT-2011 03:04:02; Dark ; 59.5; 0; ; 0.00; 0;occ; 119; 0;50176
  2; 387.5; 04-OCT-2011 03:07:40; Dark ; 61.5; 108; Alp Col ; 2.65; 15200;occ; 123; 0;50176
  3; 2606.5; 04-OCT-2011 03:44:39; Bright; 46.0; 53; 43Bet And ; 2.05; 3300;occ; 92; 0;50176
/nas3/ENVISAT/GOMOS/GOM_NL__0P/GOM_NL__0PNPDE20111004_044756_000022613107_00163_50177_6537.N1

```

```

1; 389.0; 04-OCT-2011 04:47:56; Dark ; 62.0; 108; Alp Col ; 2.65; 15200;occ; 124; 0;50177
2; 2605.9; 04-OCT-2011 05:24:53; Bright; 44.5; 53; 43Bet And ; 2.05; 3300;occ; 89; 0;50177
/nas3/ENVISAT/GOMOS/GOM_NL__0P/GOM_NL__0PNPDE20111004_062811_000028523107_00164_50178_6538.N1
1; 390.5; 04-OCT-2011 06:28:11; Dark ; 62.0; 108; Alp Col ; 2.65; 15200;occ; 124; 0;50178
2; 2605.5; 04-OCT-2011 07:05:06; Bright; 47.5; 53; 43Bet And ; 2.05; 3300;occ; 95; 0;50178
3; 3192.0; 04-OCT-2011 07:14:53; Bright; 51.0; 160; 23Gam Per ; 2.93; 4700;occ; 102; 0;50178
/nas3/ENVISAT/GOMOS/GOM_NL__0P/GOM_NL__0PNPDK20111004_080827_000000613107_00165_50179_5403.N1
1; 391.9; 04-OCT-2011 08:08:27; Dark ; 62.0; 108; Alp Col ; 2.65; 15200;occ; 124; 0;50179
/nas3/ENVISAT/GOMOS/GOM_NL__0P/GOM_NL__0PNPDK20111004_084520_000038633107_00165_50179_5404.N1
1; 2604.9; 04-OCT-2011 08:45:20; Bright; 47.5; 53; 43Bet And ; 2.05; 3300;occ; 95; 0;50179
2; 3191.1; 04-OCT-2011 08:55:06; Bright; 49.0; 160; 23Gam Per ; 2.93; 4700;occ; 98; 0;50179
3; 6407.5; 04-OCT-2011 09:48:42; Dark ; 61.0; 108; Alp Col ; 2.65; 15200;occ; 122; 0;50180
/nas3/ENVISAT/GOMOS/GOM_NL__0P/GOM_NL__0PNPDK20111004_102533_000034163107_00166_50180_5405.N1
1; 2604.3; 04-OCT-2011 10:25:33; Bright; 47.5; 53; 43Bet And ; 2.05; 3300;occ; 95; 0;50180
2; 3190.0; 04-OCT-2011 10:35:19; Bright; 51.5; 160; 23Gam Per ; 2.93; 4700;occ; 103; 0;50180
3; 5965.3; 04-OCT-2011 11:21:34; Dark ; 55.0; 23; 21Eps CMa ; 1.50; 26000;occ; 110; 0;50180
/nas3/ENVISAT/GOMOS/GOM_NL__0P/GOM_NL__0PNPDK20111004_130533_000002823107_00168_50182_5406.N1
1; 176.4; 04-OCT-2011 13:05:33; Dark ; 59.5; 0; ; 0.00; 0;occ; 119; 0;50182
2; 396.5; 04-OCT-2011 13:09:13; Dark ; 62.0; 108; Alp Col ; 2.65; 15200;occ; 124; 0;50182
/nas3/ENVISAT/GOMOS/GOM_NL__0P/GOM_NL__0PNPDK20111004_134600_000038713107_00168_50182_5407.N1
1; 2603.1; 04-OCT-2011 13:46:00; Bright; 42.5; 53; 43Bet And ; 2.05; 3300;occ; 85; 0;50182
2; 3188.2; 04-OCT-2011 13:55:45; Bright; 47.5; 160; 23Gam Per ; 2.93; 4700;occ; 95; 0;50182
3; 6412.1; 04-OCT-2011 14:49:28; Dark ; 62.5; 108; Alp Col ; 2.65; 15200;occ; 125; 0;50183
/nas3/ENVISAT/GOMOS/GOM_NL__0P/GOM_NL__0PNPDK20111004_153558_000000483107_00169_50183_5408.N1
1;-2826.7; 04-OCT-2011 15:35:58; Bright; 48.5; 160; 23Gam Per ; 2.93; 4700;occ; 97; 0;50183
/nas3/ENVISAT/GOMOS/GOM_NL__0P/GOM_NL__0PNPDE20111012_213220_000026983107_00288_50302_6539.N1
1; 109.0; 12-OCT-2011 21:32:20; Dark ; 59.5; 0; ; 0.00; 0;occ; 119; 0;50302
2; 2765.0; 12-OCT-2011 22:16:36; Bright; 42.5; 73; 57Gam1And ; 2.26; 13100;occ; 85; 0;50302
/nas3/ENVISAT/GOMOS/GOM_NL__0P/GOM_NL__0PNPDE20111012_231235_000027003107_00289_50303_6540.N1
1; 109.9; 12-OCT-2011 23:12:35; Dark ; 59.5; 0; ; 0.00; 0;occ; 119; 0;50303
2; 2764.3; 12-OCT-2011 23:56:49; Bright; 46.0; 73; 57Gam1And ; 2.26; 13100;occ; 92; 0;50303
/nas3/ENVISAT/GOMOS/GOM_NL__0P/GOM_NL__0PNPDK20111012_145121_000000593107_00284_50298_5411.N1
1; 105.5; 12-OCT-2011 14:51:21; Dark ; 59.5; 0; ; 0.00; 0;occ; 119; 0;50298
/nas3/ENVISAT/GOMOS/GOM_NL__0P/GOM_NL__0PNPDK20111012_153543_000034123107_00284_50298_5412.N1
1; 2767.9; 12-OCT-2011 15:35:43; Bright; 45.5; 73; 57Gam1And ; 2.26; 13100;occ; 91; 0;50298
2; 6120.4; 12-OCT-2011 16:31:36; Dark ; 59.5; 0; ; 0.00; 0;occ; 119; 0;50299
/nas3/ENVISAT/GOMOS/GOM_NL__0P/GOM_NL__0PNPDE20111013_005250_000026963107_00290_50304_6541.N1
1; 110.8; 13-OCT-2011 00:52:50; Dark ; 59.5; 0; ; 0.00; 0;occ; 119; 0;50304
2; 2763.5; 13-OCT-2011 01:37:02; Bright; 44.0; 73; 57Gam1And ; 2.26; 13100;occ; 88; 0;50304
/nas3/ENVISAT/GOMOS/GOM_NL__0P/GOM_NL__0PNPDE20111013_023304_000026973107_00291_50305_6542.N1
1; 111.7; 13-OCT-2011 02:33:04; Dark ; 59.5; 0; ; 0.00; 0;occ; 119; 0;50305
2; 2762.8; 13-OCT-2011 03:17:16; Bright; 46.5; 73; 57Gam1And ; 2.26; 13100;occ; 93; 0;50305
/nas3/ENVISAT/GOMOS/GOM_NL__0P/GOM_NL__0PNPDE20111013_041319_000026963107_00292_50306_6543.N1
1; 112.5; 13-OCT-2011 04:13:19; Dark ; 59.5; 0; ; 0.00; 0;occ; 119; 0;50306
2; 2762.6; 13-OCT-2011 04:57:29; Bright; 46.0; 73; 57Gam1And ; 2.26; 13100;occ; 92; 0;50306
/nas3/ENVISAT/GOMOS/GOM_NL__0P/GOM_NL__0PNPDE20111013_055334_000000593107_00293_50307_6544.N1
1; 113.4; 13-OCT-2011 05:53:34; Dark ; 59.5; 0; ; 0.00; 0;occ; 119; 0;50307
/nas3/ENVISAT/GOMOS/GOM_NL__0P/GOM_NL__0PNPDE20111013_213942_000003503107_00302_50316_6545.N1
1; 2755.8; 13-OCT-2011 21:39:42; Bright; 46.0; 73; 57Gam1And ; 2.26; 13100;occ; 92; 0;50316
2; 3073.9; 13-OCT-2011 21:45:00; Bright; 32.5; 160; 23Gam Per ; 2.93; 4700;occ; 65; 0;50316
/nas3/ENVISAT/GOMOS/GOM_NL__0P/GOM_NL__0PNPDE20111013_231955_000003503107_00303_50317_6546.N1
1; 2755.1; 13-OCT-2011 23:19:55; Bright; 47.5; 73; 57Gam1And ; 2.26; 13100;occ; 95; 0;50317
2; 3073.0; 13-OCT-2011 23:25:13; Bright; 32.5; 160; 23Gam Per ; 2.93; 4700;occ; 65; 0;50317
/nas3/ENVISAT/GOMOS/GOM_NL__0P/GOM_NL__0PNPDK20111013_073349_000000593107_00294_50308_5413.N1
1; 114.3; 13-OCT-2011 07:33:49; Dark ; 59.5; 0; ; 0.00; 0;occ; 119; 0;50308
/nas3/ENVISAT/GOMOS/GOM_NL__0P/GOM_NL__0PNPDK20111013_081756_000034273107_00294_50308_5414.N1
1; 2761.2; 13-OCT-2011 08:17:56; Bright; 47.5; 73; 57Gam1And ; 2.26; 13100;occ; 95; 0;50308
2; 6129.1; 13-OCT-2011 09:14:04; Dark ; 59.5; 0; ; 0.00; 0;occ; 119; 0;50309
/nas3/ENVISAT/GOMOS/GOM_NL__0P/GOM_NL__0PNPDK20111013_113822_000000513107_00296_50310_5415.N1
1; 2759.8; 13-OCT-2011 11:38:22; Bright; 51.5; 73; 57Gam1And ; 2.26; 13100;occ; 103; 0;50310
/nas3/ENVISAT/GOMOS/GOM_NL__0P/GOM_NL__0PNPDK20111013_131836_000000463107_00297_50311_5416.N1
1; 2759.1; 13-OCT-2011 13:18:36; Bright; 46.5; 73; 57Gam1And ; 2.26; 13100;occ; 93; 0;50311
/nas3/ENVISAT/GOMOS/GOM_NL__0P/GOM_NL__0PNPDK20111013_145516_000005563107_00298_50312_5417.N1
1; 2545.3; 13-OCT-2011 14:55:16; Bright; 39.0; 53; 43Bet And ; 2.05; 3300;occ; 78; 0;50312
2; 2758.5; 13-OCT-2011 14:58:49; Bright; 45.0; 73; 57Gam1And ; 2.26; 13100;occ; 90; 0;50312
3; 3077.0; 13-OCT-2011 15:04:07; Bright; 24.5; 160; 23Gam Per ; 2.93; 4700;occ; 49; 0;50312
/nas3/ENVISAT/GOMOS/GOM_NL__0P/GOM_NL__0PNPDK20111013_163902_000003423107_00299_50313_5418.N1
1; 2757.8; 13-OCT-2011 16:39:02; Bright; 46.5; 73; 57Gam1And ; 2.26; 13100;occ; 93; 0;50313

```

2; 3076.2; 13-OCT-2011 16:44:21; Bright; 24.5; 160; 23Gam Per ; 2.93; 4700;occ; 49; 0;50313
/nas3/ENVISAT/GOMOS/GOM_NL__0P/GOM_NL__0PNPDK20111013_181916_000003463107_00300_50314_5419.N1
1; 2757.1; 13-OCT-2011 18:19:16; Bright; 45.5; 73; 57Gam1And ; 2.26; 13100;occ; 91; 0;50314
2; 3075.4; 13-OCT-2011 18:24:34; Bright; 28.5; 160; 23Gam Per ; 2.93; 4700;occ; 57; 0;50314
/nas3/ENVISAT/GOMOS/GOM_NL__0P/GOM_NL__0PNPDE20111014_205557_000007713107_00316_50330_6547.N1
1; 2334.7; 14-OCT-2011 20:55:57; Bright; 46.0; 105; 6Bet Ari ; 2.64; 8900;occ; 92; 0;50330
2; 2635.6; 14-OCT-2011 21:00:57; Bright; 45.0; 173; 4Bet Tri ; 3.00; 8900;occ; 90; 0;50330
3; 2747.2; 14-OCT-2011 21:02:49; Bright; 46.0; 73; 57Gam1And ; 2.26; 13100;occ; 92; 0;50330
4; 3063.1; 14-OCT-2011 21:08:05; Bright; 43.5; 160; 23Gam Per ; 2.93; 4700;occ; 87; 0;50330
/nas3/ENVISAT/GOMOS/GOM_NL__0P/GOM_NL__0PNPDE20111014_223610_000007753107_00317_50331_6548.N1
1; 2334.1; 14-OCT-2011 22:36:10; Bright; 47.0; 105; 6Bet Ari ; 2.64; 8900;occ; 94; 0;50331
2; 2634.8; 14-OCT-2011 22:41:11; Bright; 44.5; 173; 4Bet Tri ; 3.00; 8900;occ; 89; 0;50331
3; 3062.3; 14-OCT-2011 22:48:18; Bright; 47.0; 160; 23Gam Per ; 2.93; 4700;occ; 94; 0;50331
/nas3/ENVISAT/GOMOS/GOM_NL__0P/GOM_NL__0PNPDK20111014_010526_000180793107_00304_50318_5421.N1
1;-2941.6; 14-OCT-2011 01:05:26; Bright; 37.0; 160; 23Gam Per ; 2.93; 4700;occ; 74; 0;50318
2;14671.1; 14-OCT-2011 05:58:59; Bright; 26.0; 173; 4Bet Tri ; 3.00; 8900;occ; 52; 0;50321
3;15098.8; 14-OCT-2011 06:06:07; Bright; 39.5; 160; 23Gam Per ; 2.93; 4700;occ; 79; 0;50321
/nas3/ENVISAT/GOMOS/GOM_NL__0P/GOM_NL__0PNPDK20111014_073912_000004713107_00308_50322_5422.N1
1; 2642.2; 14-OCT-2011 07:39:12; Bright; 32.0; 173; 4Bet Tri ; 3.00; 8900;occ; 64; 0;50322
2; 3070.1; 14-OCT-2011 07:46:20; Bright; 43.5; 160; 23Gam Per ; 2.93; 4700;occ; 87; 0;50322
/nas3/ENVISAT/GOMOS/GOM_NL__0P/GOM_NL__0PNPDK20111014_091926_000004713107_00309_50323_5423.N1
1; 2641.5; 14-OCT-2011 09:19:26; Bright; 32.0; 173; 4Bet Tri ; 3.00; 8900;occ; 64; 0;50323
2; 3069.3; 14-OCT-2011 09:26:33; Bright; 43.5; 160; 23Gam Per ; 2.93; 4700;occ; 87; 0;50323
/nas3/ENVISAT/GOMOS/GOM_NL__0P/GOM_NL__0PNPDK20111014_142712_00000433107_00312_50326_5424.N1
1;-2947.7; 14-OCT-2011 14:27:12; Bright; 43.5; 160; 23Gam Per ; 2.93; 4700;occ; 87; 0;50326
/nas3/ENVISAT/GOMOS/GOM_NL__0P/GOM_NL__0PNPDK20111014_155516_000007753107_00313_50327_5425.N1
1; 2336.3; 14-OCT-2011 15:55:16; Bright; 47.0; 105; 6Bet Ari ; 2.64; 8900;occ; 94; 0;50327
2; 2637.8; 14-OCT-2011 16:00:18; Bright; 45.0; 173; 4Bet Tri ; 3.00; 8900;occ; 90; 0;50327
3; 3065.4; 14-OCT-2011 16:07:25; Bright; 46.5; 160; 23Gam Per ; 2.93; 4700;occ; 93; 0;50327
/nas3/ENVISAT/GOMOS/GOM_NL__0P/GOM_NL__0PNPDK20111014_173530_000007763107_00314_50328_5426.N1
1; 2335.8; 14-OCT-2011 17:35:30; Bright; 48.5; 105; 6Bet Ari ; 2.64; 8900;occ; 97; 0;50328
2; 2637.1; 14-OCT-2011 17:40:31; Bright; 45.0; 173; 4Bet Tri ; 3.00; 8900;occ; 90; 0;50328
3; 3064.6; 14-OCT-2011 17:47:38; Bright; 47.5; 160; 23Gam Per ; 2.93; 4700;occ; 95; 0;50328
/nas3/ENVISAT/GOMOS/GOM_NL__0P/GOM_NL__0PNPDK20111014_191543_000007763107_00315_50329_5427.N1
1; 2335.2; 14-OCT-2011 19:15:43; Bright; 47.5; 105; 6Bet Ari ; 2.64; 8900;occ; 95; 0;50329
2; 2636.3; 14-OCT-2011 19:20:44; Bright; 46.5; 173; 4Bet Tri ; 3.00; 8900;occ; 93; 0;50329
3; 3063.8; 14-OCT-2011 19:27:52; Bright; 48.0; 160; 23Gam Per ; 2.93; 4700;occ; 96; 0;50329
/nas3/ENVISAT/GOMOS/GOM_NL__0P/GOM_NL__0PNPDE20111015_001623_000007743107_00318_50332_6549.N1
1; 2333.6; 15-OCT-2011 00:16:23; Bright; 47.0; 105; 6Bet Ari ; 2.64; 8900;occ; 94; 0;50332
2; 2634.1; 15-OCT-2011 00:21:24; Bright; 46.5; 173; 4Bet Tri ; 3.00; 8900;occ; 93; 0;50332
3; 3061.6; 15-OCT-2011 00:28:31; Bright; 47.0; 160; 23Gam Per ; 2.93; 4700;occ; 94; 0;50332
/nas3/ENVISAT/GOMOS/GOM_NL__0P/GOM_NL__0PNPDE20111015_015637_000067863107_00319_50333_6550.N1
1; 2333.1; 15-OCT-2011 01:56:37; Bright; 47.0; 105; 6Bet Ari ; 2.64; 8900;occ; 94; 0;50333
2; 2633.3; 15-OCT-2011 02:01:37; Bright; 47.0; 173; 4Bet Tri ; 3.00; 8900;occ; 94; 0;50333
3; 3060.7; 15-OCT-2011 02:08:44; Bright; 44.5; 160; 23Gam Per ; 2.93; 4700;occ; 89; 0;50333
4; 8346.5; 15-OCT-2011 03:36:50; Bright; 47.0; 105; 6Bet Ari ; 2.64; 8900;occ; 94; 0;50334
5; 8646.8; 15-OCT-2011 03:41:50; Bright; 47.0; 173; 4Bet Tri ; 3.00; 8900;occ; 94; 0;50334
6; 9074.0; 15-OCT-2011 03:48:58; Bright; 46.0; 160; 23Gam Per ; 2.93; 4700;occ; 92; 0;50334
/nas3/ENVISAT/GOMOS/GOM_NL__0P/GOM_NL__0PNPDE20111015_051704_000007743107_00321_50335_6551.N1
1; 2332.2; 15-OCT-2011 05:17:04; Bright; 45.5; 105; 6Bet Ari ; 2.64; 8900;occ; 91; 0;50335
2; 2632.2; 15-OCT-2011 05:22:04; Bright; 46.5; 173; 4Bet Tri ; 3.00; 8900;occ; 93; 0;50335
3; 3059.3; 15-OCT-2011 05:29:11; Bright; 47.0; 160; 23Gam Per ; 2.93; 4700;occ; 94; 0;50335
/nas3/ENVISAT/GOMOS/GOM_NL__0P/GOM_NL__0PNPDE20111015_065717_000007743107_00322_50336_6552.N1
1; 2331.6; 15-OCT-2011 06:57:17; Bright; 46.5; 105; 6Bet Ari ; 2.64; 8900;occ; 93; 0;50336
2; 2631.5; 15-OCT-2011 07:02:17; Bright; 46.0; 173; 4Bet Tri ; 3.00; 8900;occ; 92; 0;50336
3; 3058.6; 15-OCT-2011 07:09:24; Bright; 47.0; 160; 23Gam Per ; 2.93; 4700;occ; 94; 0;50336
/nas3/ENVISAT/GOMOS/GOM_NL__0P/GOM_NL__0PNPDE20111015_202403_000004733107_00330_50344_6553.N1
1; 2625.9; 15-OCT-2011 20:24:03; Bright; 45.5; 173; 4Bet Tri ; 3.00; 8900;occ; 91; 0;50344
2; 3052.3; 15-OCT-2011 20:31:10; Bright; 47.0; 160; 23Gam Per ; 2.93; 4700;occ; 94; 0;50344
/nas3/ENVISAT/GOMOS/GOM_NL__0P/GOM_NL__0PNPDE20111015_220416_000004733107_00331_50345_6554.N1
1; 2625.1; 15-OCT-2011 22:04:16; Bright; 45.5; 173; 4Bet Tri ; 3.00; 8900;occ; 91; 0;50345
2; 3051.6; 15-OCT-2011 22:11:23; Bright; 47.0; 160; 23Gam Per ; 2.93; 4700;occ; 94; 0;50345
/nas3/ENVISAT/GOMOS/GOM_NL__0P/GOM_NL__0PNPDE20111015_234430_000004693107_00332_50346_6555.N1
1; 2624.6; 15-OCT-2011 23:44:30; Bright; 45.0; 173; 4Bet Tri ; 3.00; 8900;occ; 90; 0;50346
2; 3050.7; 15-OCT-2011 23:51:36; Bright; 43.5; 160; 23Gam Per ; 2.93; 4700;occ; 87; 0;50346
/nas3/ENVISAT/GOMOS/GOM_NL__0P/GOM_NL__0PNPDK20111015_083731_000007723107_00323_50337_5428.N1
1; 2331.1; 15-OCT-2011 08:37:31; Bright; 46.0; 105; 6Bet Ari ; 2.64; 8900;occ; 92; 0;50337
2; 2630.8; 15-OCT-2011 08:42:30; Bright; 46.0; 173; 4Bet Tri ; 3.00; 8900;occ; 92; 0;50337

3; 3057.7; 15-OCT-2011 08:49:37; Bright; 45.5; 160; 23Gam Per ; 2.93; 4700;occ; 91; 0;50337
/nas3/ENVISAT/GOMOS/GOM_NL__0P/GOM_NL__0PNPDK20111015_115757_000007733107_00325_50339_5429.N1
1; 2329.9; 15-OCT-2011 11:57:57; Bright; 46.0; 105; 6Bet Ari ; 2.64; 8900;occ; 92; 0;50339
2; 2629.5; 15-OCT-2011 12:02:57; Bright; 46.0; 173; 4Bet Tri ; 3.00; 8900;occ; 92; 0;50339
3; 3056.3; 15-OCT-2011 12:10:04; Bright; 47.0; 160; 23Gam Per ; 2.93; 4700;occ; 94; 0;50339
/nas3/ENVISAT/GOMOS/GOM_NL__0P/GOM_NL__0PNPDK20111015_133811_000007733107_00326_50340_5430.N1
1; 2329.6; 15-OCT-2011 13:38:11; Bright; 46.0; 105; 6Bet Ari ; 2.64; 8900;occ; 92; 0;50340
2; 2628.6; 15-OCT-2011 13:43:10; Bright; 47.5; 173; 4Bet Tri ; 3.00; 8900;occ; 95; 0;50340
3; 3055.6; 15-OCT-2011 13:50:17; Bright; 47.5; 160; 23Gam Per ; 2.93; 4700;occ; 95; 0;50340
/nas3/ENVISAT/GOMOS/GOM_NL__0P/GOM_NL__0PNPDK20111015_152323_000004723107_00327_50341_5431.N1
1; 2628.1; 15-OCT-2011 15:23:23; Bright; 45.5; 173; 4Bet Tri ; 3.00; 8900;occ; 91; 0;50341
2; 3055.0; 15-OCT-2011 15:30:30; Bright; 46.0; 160; 23Gam Per ; 2.93; 4700;occ; 92; 0;50341
/nas3/ENVISAT/GOMOS/GOM_NL__0P/GOM_NL__0PNPDK20111015_170337_000004723107_00328_50342_5432.N1
1; 2627.3; 15-OCT-2011 17:03:37; Bright; 46.0; 173; 4Bet Tri ; 3.00; 8900;occ; 92; 0;50342
2; 3054.1; 15-OCT-2011 17:10:43; Bright; 45.5; 160; 23Gam Per ; 2.93; 4700;occ; 91; 0;50342
/nas3/ENVISAT/GOMOS/GOM_NL__0P/GOM_NL__0PNPDK20111015_184350_000004723107_00329_50343_5433.N1
1; 2626.5; 15-OCT-2011 18:43:50; Bright; 46.0; 173; 4Bet Tri ; 3.00; 8900;occ; 92; 0;50343
2; 3053.3; 15-OCT-2011 18:50:57; Bright; 46.0; 160; 23Gam Per ; 2.93; 4700;occ; 92; 0;50343
/nas3/ENVISAT/GOMOS/GOM_NL__0P/GOM_NL__0PNPDE20111016_012443_000004713107_00333_50347_6556.N1
1; 2623.8; 16-OCT-2011 01:24:43; Bright; 45.0; 173; 4Bet Tri ; 3.00; 8900;occ; 90; 0;50347
2; 3050.0; 16-OCT-2011 01:31:49; Bright; 45.0; 160; 23Gam Per ; 2.93; 4700;occ; 90; 0;50347
/nas3/ENVISAT/GOMOS/GOM_NL__0P/GOM_NL__0PNPDE20111016_030456_000004703107_00334_50348_6557.N1
1; 2623.2; 16-OCT-2011 03:04:56; Bright; 46.5; 173; 4Bet Tri ; 3.00; 8900;occ; 93; 0;50348
2; 3049.3; 16-OCT-2011 03:12:02; Bright; 44.0; 160; 23Gam Per ; 2.93; 4700;occ; 88; 0;50348
/nas3/ENVISAT/GOMOS/GOM_NL__0P/GOM_NL__0PNPDE20111016_044510_000004723107_00335_50349_6558.N1
1; 2622.6; 16-OCT-2011 04:45:10; Bright; 45.5; 173; 4Bet Tri ; 3.00; 8900;occ; 91; 0;50349
2; 3048.7; 16-OCT-2011 04:52:16; Bright; 46.5; 160; 23Gam Per ; 2.93; 4700;occ; 93; 0;50349
/nas3/ENVISAT/GOMOS/GOM_NL__0P/GOM_NL__0PNPDE20111016_062523_000004723107_00336_50350_6559.N1
1; 2622.0; 16-OCT-2011 06:25:23; Bright; 45.0; 173; 4Bet Tri ; 3.00; 8900;occ; 90; 0;50350
2; 3048.0; 16-OCT-2011 06:32:29; Bright; 46.5; 160; 23Gam Per ; 2.93; 4700;occ; 93; 0;50350
/nas3/ENVISAT/GOMOS/GOM_NL__0P/GOM_NL__0PNPDE20111016_213428_00000453107_00345_50359_6560.N1
1;-2972.6; 16-OCT-2011 21:34:28; Bright; 46.0; 160; 23Gam Per ; 2.93; 4700;occ; 92; 0;50359
/nas3/ENVISAT/GOMOS/GOM_NL__0P/GOM_NL__0PNPDE20111016_231441_00000453107_00346_50360_6561.N1
1;-2973.2; 16-OCT-2011 23:14:41; Bright; 46.0; 160; 23Gam Per ; 2.93; 4700;occ; 92; 0;50360
/nas3/ENVISAT/GOMOS/GOM_NL__0P/GOM_NL__0PNPDK20111016_080537_000004693107_00337_50351_5434.N1
1; 2621.4; 16-OCT-2011 08:05:37; Bright; 45.5; 173; 4Bet Tri ; 3.00; 8900;occ; 91; 0;50351
2; 3047.2; 16-OCT-2011 08:12:42; Bright; 44.0; 160; 23Gam Per ; 2.93; 4700;occ; 88; 0;50351
/nas3/ENVISAT/GOMOS/GOM_NL__0P/GOM_NL__0PNPDK20111016_094550_000004713107_00338_50352_5435.N1
1; 2620.8; 16-OCT-2011 09:45:50; Bright; 46.5; 173; 4Bet Tri ; 3.00; 8900;occ; 93; 0;50352
2; 3046.6; 16-OCT-2011 09:52:56; Bright; 45.5; 160; 23Gam Per ; 2.93; 4700;occ; 91; 0;50352
/nas3/ENVISAT/GOMOS/GOM_NL__0P/GOM_NL__0PNPDK20111016_112603_000004723107_00339_50353_5436.N1
1; 2620.2; 16-OCT-2011 11:26:03; Bright; 45.5; 173; 4Bet Tri ; 3.00; 8900;occ; 91; 0;50353
2; 3045.8; 16-OCT-2011 11:33:09; Bright; 46.5; 160; 23Gam Per ; 2.93; 4700;occ; 93; 0;50353
/nas3/ENVISAT/GOMOS/GOM_NL__0P/GOM_NL__0PNPDK20111016_130616_000004723107_00340_50354_5437.N1
1; 2619.4; 16-OCT-2011 13:06:16; Bright; 45.0; 173; 4Bet Tri ; 3.00; 8900;occ; 90; 0;50354
2; 3045.1; 16-OCT-2011 13:13:22; Bright; 47.0; 160; 23Gam Per ; 2.93; 4700;occ; 94; 0;50354
/nas3/ENVISAT/GOMOS/GOM_NL__0P/GOM_NL__0PNPDK20111016_144630_000004713107_00341_50355_5438.N1
1; 2618.8; 16-OCT-2011 14:46:30; Bright; 44.5; 173; 4Bet Tri ; 3.00; 8900;occ; 89; 0;50355
2; 3044.4; 16-OCT-2011 14:53:35; Bright; 46.0; 160; 23Gam Per ; 2.93; 4700;occ; 92; 0;50355
/nas3/ENVISAT/GOMOS/GOM_NL__0P/GOM_NL__0PNPDK20111016_162643_000004723107_00342_50356_5439.N1
1; 2618.3; 16-OCT-2011 16:26:43; Bright; 45.0; 173; 4Bet Tri ; 3.00; 8900;occ; 90; 0;50356
2; 3043.6; 16-OCT-2011 16:33:48; Bright; 47.0; 160; 23Gam Per ; 2.93; 4700;occ; 94; 0;50356
/nas3/ENVISAT/GOMOS/GOM_NL__0P/GOM_NL__0PNPDK20111016_180656_000004723107_00343_50357_5440.N1
1; 2617.5; 16-OCT-2011 18:06:56; Bright; 46.5; 173; 4Bet Tri ; 3.00; 8900;occ; 93; 0;50357
2; 3042.9; 16-OCT-2011 18:14:02; Bright; 47.0; 160; 23Gam Per ; 2.93; 4700;occ; 94; 0;50357
/nas3/ENVISAT/GOMOS/GOM_NL__0P/GOM_NL__0PNPDK20111016_195415_00000463107_00344_50358_5441.N1
1;-2971.9; 16-OCT-2011 19:54:15; Bright; 46.5; 160; 23Gam Per ; 2.93; 4700;occ; 93; 0;50358
/nas3/ENVISAT/GOMOS/GOM_NL__0P/GOM_NL__0PNPDE20111017_005455_00000463107_00347_50361_6562.N1
1;-2974.0; 17-OCT-2011 00:54:55; Bright; 46.5; 160; 23Gam Per ; 2.93; 4700;occ; 93; 0;50361
/nas3/ENVISAT/GOMOS/GOM_NL__0P/GOM_NL__0PNPDE20111017_023508_00000423107_00348_50362_6563.N1
1;-2974.7; 17-OCT-2011 02:35:08; Bright; 43.0; 160; 23Gam Per ; 2.93; 4700;occ; 86; 0;50362
/nas3/ENVISAT/GOMOS/GOM_NL__0P/GOM_NL__0PNPDE20111017_041521_00000453107_00349_50363_6564.N1
1;-2975.5; 17-OCT-2011 04:15:21; Bright; 45.5; 160; 23Gam Per ; 2.93; 4700;occ; 91; 0;50363
/nas3/ENVISAT/GOMOS/GOM_NL__0P/GOM_NL__0PNPDE20111017_055534_00000453107_00350_50364_6565.N1
1;-2976.2; 17-OCT-2011 05:55:34; Bright; 45.5; 160; 23Gam Per ; 2.93; 4700;occ; 91; 0;50364
/nas3/ENVISAT/GOMOS/GOM_NL__0P/GOM_NL__0PNPDE20111017_223747_00000453107_00360_50374_6567.N1
1;-2983.4; 17-OCT-2011 22:37:47; Bright; 45.5; 160; 23Gam Per ; 2.93; 4700;occ; 91; 0;50374
/nas3/ENVISAT/GOMOS/GOM_NL__0P/GOM_NL__0PNPDK20111017_073548_00000453107_00351_50365_5442.N1

1;-2976.8; 17-OCT-2011 07:35:48; Bright; 46.0; 160; 23Gam Per ; 2.93; 4700;occ; 92; 0;50365
 /nas3/ENVISAT/GOMOS/GOM_NL__0P/GOM_NL__0PNPDK20111017_091601_000000453107_00352_50366_5443.N1
 1;-2977.5; 17-OCT-2011 09:16:01; Bright; 45.5; 160; 23Gam Per ; 2.93; 4700;occ; 91; 0;50366
 /nas3/ENVISAT/GOMOS/GOM_NL__0P/GOM_NL__0PNPDK20111017_105614_000000463107_00353_50367_5444.N1
 1;-2978.3; 17-OCT-2011 10:56:14; Bright; 46.5; 160; 23Gam Per ; 2.93; 4700;occ; 93; 0;50367
 /nas3/ENVISAT/GOMOS/GOM_NL__0P/GOM_NL__0PNPDK20111017_123627_000000463107_00354_50368_5445.N1
 1;-2979.1; 17-OCT-2011 12:36:27; Bright; 46.5; 160; 23Gam Per ; 2.93; 4700;occ; 93; 0;50368
 /nas3/ENVISAT/GOMOS/GOM_NL__0P/GOM_NL__0PNPDK20111017_141641_000000453107_00355_50369_5446.N1
 1;-2979.8; 17-OCT-2011 14:16:41; Bright; 46.0; 160; 23Gam Per ; 2.93; 4700;occ; 92; 0;50369
 /nas3/ENVISAT/GOMOS/GOM_NL__0P/GOM_NL__0PNPDK20111017_155654_000000453107_00356_50370_5447.N1
 1;-2980.6; 17-OCT-2011 15:56:54; Bright; 45.5; 160; 23Gam Per ; 2.93; 4700;occ; 91; 0;50370
 /nas3/ENVISAT/GOMOS/GOM_NL__0P/GOM_NL__0PNPDK20111017_173707_000000453107_00357_50371_5448.N1
 1;-2981.4; 17-OCT-2011 17:37:07; Bright; 45.5; 160; 23Gam Per ; 2.93; 4700;occ; 91; 0;50371
 /nas3/ENVISAT/GOMOS/GOM_NL__0P/GOM_NL__0PNPDK20111017_191720_000000463107_00358_50372_5449.N1
 1;-2982.0; 17-OCT-2011 19:17:20; Bright; 46.5; 160; 23Gam Per ; 2.93; 4700;occ; 93; 0;50372
 /nas3/ENVISAT/GOMOS/GOM_NL__0P/GOM_NL__0PNPDE20111018_001800_000000443107_00361_50375_6568.N1
 1;-2984.0; 18-OCT-2011 00:18:00; Bright; 45.0; 160; 23Gam Per ; 2.93; 4700;occ; 90; 0;50375
 /nas3/ENVISAT/GOMOS/GOM_NL__0P/GOM_NL__0PNPDE20111018_015813_000000453107_00362_50376_6569.N1
 1;-2984.8; 18-OCT-2011 01:58:13; Bright; 46.0; 160; 23Gam Per ; 2.93; 4700;occ; 92; 0;50376
 /nas3/ENVISAT/GOMOS/GOM_NL__0P/GOM_NL__0PNPDE20111018_033827_000000443107_00363_50377_6570.N1
 1;-2985.5; 18-OCT-2011 03:38:27; Bright; 45.0; 160; 23Gam Per ; 2.93; 4700;occ; 90; 0;50377
 /nas3/ENVISAT/GOMOS/GOM_NL__0P/GOM_NL__0PNPDE20111018_051840_000000453107_00364_50378_6571.N1
 1;-2986.3; 18-OCT-2011 05:18:40; Bright; 45.5; 160; 23Gam Per ; 2.93; 4700;occ; 91; 0;50378
 /nas3/ENVISAT/GOMOS/GOM_NL__0P/GOM_NL__0PNPDE20111018_065853_000000443107_00365_50379_6572.N1
 1;-2986.9; 18-OCT-2011 06:58:53; Bright; 45.0; 160; 23Gam Per ; 2.93; 4700;occ; 90; 0;50379
 /nas3/ENVISAT/GOMOS/GOM_NL__0P/GOM_NL__0PNPDK20111018_083906_000000443107_00366_50380_5450.N1
 1;-2987.6; 18-OCT-2011 08:39:06; Bright; 44.5; 160; 23Gam Per ; 2.93; 4700;occ; 89; 0;50380
 /nas3/ENVISAT/GOMOS/GOM_NL__0P/GOM_NL__0PNPDK20111018_115933_000000673107_00368_50382_5451.N1
 1;-2988.9; 18-OCT-2011 11:59:33; Bright; 67.5; 160; 23Gam Per ; 2.93; 4700;occ; 135; 0;50382
 /nas3/ENVISAT/GOMOS/GOM_NL__0P/GOM_NL__0PNPDK20111018_133946_000000453107_00369_50383_5452.N1
 1;-2989.7; 18-OCT-2011 13:39:46; Bright; 45.5; 160; 23Gam Per ; 2.93; 4700;occ; 91; 0;50383
 /nas3/ENVISAT/GOMOS/GOM_NL__0P/GOM_NL__0PNPDK20111018_101920_000000433107_00367_50381_5454.N1
 1;-2988.3; 18-OCT-2011 10:19:20; Bright; 44.0; 160; 23Gam Per ; 2.93; 4700;occ; 88; 0;50381
 /nas3/ENVISAT/GOMOS/GOM_NL__0P/GOM_NL__0PNPDK20111018_101920_000000433107_00367_50381_5739.N1
 1;-2988.3; 18-OCT-2011 10:19:20; Bright; 44.0; 160; 23Gam Per ; 2.93; 4700;occ; 88; 0;50381
 /nas3/ENVISAT/GOMOS/GOM_NL__0P/GOM_NL__0PNPDE20111023_202058_000000603108_00014_50459_6573.N1
 1; 2035.9; 23-OCT-2011 20:20:58; Bright; 60.5; 94; 92Alp Cet ; 2.53; 3100;occ; 121; 0;50459
 /nas3/ENVISAT/GOMOS/GOM_NL__0P/GOM_NL__0PNPDE20111023_212637_000021363108_00014_50459_6574.N1
 1; -39.8; 23-OCT-2011 21:26:37; Dark ; 65.5; 132; 15Rho Pup ; 2.80; 6900;occ; 131; 0;50459
 2; 249.2; 23-OCT-2011 21:31:26; Dark ; 69.0; 88; 31Eta Cma ; 2.45; 20000;occ; 138; 0;50460
 3; 787.7; 23-OCT-2011 21:40:24; Dark ; 61.5; 108; Alp Col ; 2.65; 15200;occ; 123; 0;50460
 4; 2035.6; 23-OCT-2011 22:01:12; Bright; 61.0; 94; 92Alp Cet ; 2.53; 3100;occ; 122; 0;50460
 /nas3/ENVISAT/GOMOS/GOM_NL__0P/GOM_NL__0PNPDE20111023_230652_000021333108_00015_50460_6575.N1
 1; -38.1; 23-OCT-2011 23:06:52; Dark ; 63.0; 132; 15Rho Pup ; 2.80; 6900;occ; 126; 0;50460
 2; 251.0; 23-OCT-2011 23:11:41; Dark ; 65.5; 88; 31Eta CMA ; 2.45; 20000;occ; 131; 0;50461
 3; 788.8; 23-OCT-2011 23:20:39; Dark ; 64.5; 108; Alp Col ; 2.65; 15200;occ; 129; 0;50461
 4; 2034.9; 23-OCT-2011 23:41:25; Bright; 61.0; 94; 92Alp Cet ; 2.53; 3100;occ; 122; 0;50461
 /nas3/ENVISAT/GOMOS/GOM_NL__0P/GOM_NL__0PNPDK20111023_094936_000000603108_00008_50453_5455.N1
 1; 237.1; 23-OCT-2011 09:49:36; Dark ; 63.5; 88; 31Eta CMA ; 2.45; 20000;occ; 127; 0;50453
 2; 779.1; 23-OCT-2011 09:58:38; Dark ; 64.5; 108; Alp Col ; 2.65; 15200;occ; 129; 0;50453
 /nas3/ENVISAT/GOMOS/GOM_NL__0P/GOM_NL__0PNPDK20111023_101938_000000583108_00008_50453_5456.N1
 1; 2039.2; 23-OCT-2011 10:19:38; Bright; 58.5; 94; 92Alp Cet ; 2.53; 3100;occ; 117; 0;50453
 /nas3/ENVISAT/GOMOS/GOM_NL__0P/GOM_NL__0PNPDK20111023_145023_0000006033108_00011_50456_5458.N1
 1; 242.4; 23-OCT-2011 14:50:23; Dark ; 66.5; 88; 31Eta CMA ; 2.45; 20000;occ; 133; 0;50456
 2; 782.9; 23-OCT-2011 14:59:23; Dark ; 62.5; 108; Alp Col ; 2.65; 15200;occ; 125; 0;50456
 /nas3/ENVISAT/GOMOS/GOM_NL__0P/GOM_NL__0PNPDK20111023_152018_000048233108_00011_50456_5459.N1
 1; 2037.7; 23-OCT-2011 15:20:18; Bright; 59.0; 94; 92Alp Cet ; 2.53; 3100;occ; 118; 0;50456
 2; 5969.5; 23-OCT-2011 16:25:50; Dark ; 64.0; 132; 15Rho Pup ; 2.80; 6900;occ; 128; 0;50456
 3; 6258.1; 23-OCT-2011 16:30:39; Dark ; 69.0; 88; 31Eta CMA ; 2.45; 20000;occ; 138; 0;50457
 4; 6798.2; 23-OCT-2011 16:39:39; Dark ; 63.0; 108; Alp Col ; 2.65; 15200;occ; 126; 0;50457
 /nas3/ENVISAT/GOMOS/GOM_NL__0P/GOM_NL__0PNPDK20111023_170032_000048253108_00012_50457_5460.N1
 1; 2037.1; 23-OCT-2011 17:00:32; Bright; 59.5; 94; 92Alp Cet ; 2.53; 3100;occ; 119; 0;50457
 2; 5971.1; 23-OCT-2011 18:06:06; Dark ; 61.5; 132; 15Rho Pup ; 2.80; 6900;occ; 123; 0;50457
 3; 6259.9; 23-OCT-2011 18:10:54; Dark ; 66.5; 88; 31Eta CMA ; 2.45; 20000;occ; 133; 0;50458
 4; 6799.2; 23-OCT-2011 18:19:54; Dark ; 63.0; 108; Alp Col ; 2.65; 15200;occ; 126; 0;50458
 /nas3/ENVISAT/GOMOS/GOM_NL__0P/GOM_NL__0PNPDK20111023_184045_000048273108_00013_50458_5461.N1
 1; 2036.5; 23-OCT-2011 18:40:45; Bright; 59.5; 94; 92Alp Cet ; 2.53; 3100;occ; 119; 0;50458
 2; 5972.7; 23-OCT-2011 19:46:21; Dark ; 62.0; 132; 15Rho Pup ; 2.80; 6900;occ; 124; 0;50458


```

3; 6261.5; 23-OCT-2011 19:51:10; Dark ; 68.0; 88; 31Eta CMA ; 2.45; 20000;occ; 136; 0;50459
4; 6800.7; 23-OCT-2011 20:00:09; Dark ; 63.0; 108; Alp Col ; 2.65; 15200;occ; 126; 0;50459
/nas3/ENVISAT/GOMOS/GOM_NL__0P/GOM_NL__0PNPDE20111024_004708_000021313108_00016_50461_6576.N1
1; -36.4; 24-OCT-2011 00:47:08; Dark ; 62.0; 132; 15Rho Pup ; 2.80; 6900;occ; 124; 0;50461
2; 252.7; 24-OCT-2011 00:51:57; Dark ; 66.0; 88; 31Eta CMA ; 2.45; 20000;occ; 132; 0;50462
3; 790.0; 24-OCT-2011 01:00:54; Dark ; 64.5; 108; Alp Col ; 2.65; 15200;occ; 129; 0;50462
4; 2034.5; 24-OCT-2011 01:21:39; Bright; 61.0; 94; 92Alp Cet ; 2.53; 3100;occ; 122; 0;50462
/nas3/ENVISAT/GOMOS/GOM_NL__0P/GOM_NL__0PNPDE20111024_040739_000021233108_00018_50463_6578.N1
1; -32.8; 24-OCT-2011 04:07:39; Dark ; 64.5; 132; 15Rho Pup ; 2.80; 6900;occ; 129; 0;50463
2; 256.4; 24-OCT-2011 04:12:29; Dark ; 69.0; 88; 31Eta CMA ; 2.45; 20000;occ; 138; 0;50464
3; 792.5; 24-OCT-2011 04:21:25; Dark ; 63.0; 108; Alp Col ; 2.65; 15200;occ; 126; 0;50464
4; 2033.8; 24-OCT-2011 04:42:06; Bright; 57.0; 94; 92Alp Cet ; 2.53; 3100;occ; 114; 0;50464
/nas3/ENVISAT/GOMOS/GOM_NL__0P/GOM_NL__0PNPDE20111024_054755_000021243108_00019_50464_6579.N1
1; -31.2; 24-OCT-2011 05:47:55; Dark ; 63.5; 132; 15Rho Pup ; 2.80; 6900;occ; 127; 0;50464
2; 258.1; 24-OCT-2011 05:52:44; Dark ; 67.0; 88; 31Eta CMA ; 2.45; 20000;occ; 134; 0;50465
3; 793.6; 24-OCT-2011 06:01:40; Dark ; 64.0; 108; Alp Col ; 2.65; 15200;occ; 128; 0;50465
4; 2033.3; 24-OCT-2011 06:22:19; Bright; 59.5; 94; 92Alp Cet ; 2.53; 3100;occ; 119; 0;50465
/nas3/ENVISAT/GOMOS/GOM_NL__0P/GOM_NL__0PNPDE20111024_210453_000012273108_00029_50474_6580.N1
1; 861.2; 24-OCT-2011 21:04:53; Dark ; 65.5; 108; Alp Col ; 2.65; 15200;occ; 131; 114;50474
2; 2029.1; 24-OCT-2011 21:24:21; Bright; 60.0; 94; 92Alp Cet ; 2.53; 3100;occ; 120; 0;50474
/nas3/ENVISAT/GOMOS/GOM_NL__0P/GOM_NL__0PNPDE20111024_223031_000021013108_00029_50474_6581.N1
1; -14.2; 24-OCT-2011 22:30:31; Dark ; 64.0; 132; 15Rho Pup ; 2.80; 6900;occ; 128; 0;50474
2; 275.7; 24-OCT-2011 22:35:21; Dark ; 69.5; 88; 31Eta CMA ; 2.45; 20000;occ; 139; 0;50475
3; 805.3; 24-OCT-2011 22:44:11; Dark ; 64.0; 108; Alp Col ; 2.65; 15200;occ; 128; 0;50475
4; 2028.6; 24-OCT-2011 23:04:34; Bright; 58.5; 94; 92Alp Cet ; 2.53; 3100;occ; 117; 0;50475
/nas3/ENVISAT/GOMOS/GOM_NL__0P/GOM_NL__0PNPDK20111024_072811_000008863108_00020_50465_5462.N1
1; -29.5; 24-OCT-2011 07:28:11; Dark ; 64.5; 132; 15Rho Pup ; 2.80; 6900;occ; 129; 0;50465
2; 259.9; 24-OCT-2011 07:33:00; Dark ; 68.0; 88; 31Eta CMA ; 2.45; 20000;occ; 136; 0;50466
3; 794.7; 24-OCT-2011 07:41:55; Dark ; 62.5; 108; Alp Col ; 2.65; 15200;occ; 125; 0;50466
/nas3/ENVISAT/GOMOS/GOM_NL__0P/GOM_NL__0PNPDK20111024_080233_000048383108_00021_50466_5463.N1
1; 2032.8; 24-OCT-2011 08:02:33; Bright; 59.5; 94; 92Alp Cet ; 2.53; 3100;occ; 119; 0;50466
2; 5986.1; 24-OCT-2011 09:08:26; Dark ; 65.5; 132; 15Rho Pup ; 2.80; 6900;occ; 131; 0;50466
3; 6275.6; 24-OCT-2011 09:13:16; Dark ; 68.5; 88; 31Eta CMA ; 2.45; 20000;occ; 137; 0;50467
4; 6810.1; 24-OCT-2011 09:22:10; Dark ; 61.5; 108; Alp Col ; 2.65; 15200;occ; 123; 0;50467
/nas3/ENVISAT/GOMOS/GOM_NL__0P/GOM_NL__0PNPDK20111024_094246_000048433108_00022_50467_5464.N1
1; 2032.3; 24-OCT-2011 09:42:46; Bright; 60.0; 94; 92Alp Cet ; 2.53; 3100;occ; 120; 0;50467
2; 5987.7; 24-OCT-2011 10:48:42; Dark ; 63.0; 132; 15Rho Pup ; 2.80; 6900;occ; 126; 0;50467
3; 6277.4; 24-OCT-2011 10:53:31; Dark ; 68.0; 88; 31Eta CMA ; 2.45; 20000;occ; 136; 0;50468
4; 6811.1; 24-OCT-2011 11:02:25; Dark ; 64.5; 108; Alp Col ; 2.65; 15200;occ; 129; 0;50468
/nas3/ENVISAT/GOMOS/GOM_NL__0P/GOM_NL__0PNPDK20111024_112300_000048453108_00023_50468_5465.N1
1; 2031.8; 24-OCT-2011 11:23:00; Bright; 59.5; 94; 92Alp Cet ; 2.53; 3100;occ; 119; 0;50468
2; 5989.5; 24-OCT-2011 12:28:57; Dark ; 66.5; 132; 15Rho Pup ; 2.80; 6900;occ; 133; 0;50468
3; 6278.9; 24-OCT-2011 12:33:47; Dark ; 68.5; 88; 31Eta CMA ; 2.45; 20000;occ; 137; 0;50469
4; 6812.4; 24-OCT-2011 12:42:40; Dark ; 64.5; 108; Alp Col ; 2.65; 15200;occ; 129; 0;50469
/nas3/ENVISAT/GOMOS/GOM_NL__0P/GOM_NL__0PNPDK20111024_130313_000048433108_00024_50469_5466.N1
1; 2031.4; 24-OCT-2011 13:03:13; Bright; 60.5; 94; 92Alp Cet ; 2.53; 3100;occ; 121; 0;50469
2; 5991.3; 24-OCT-2011 14:09:13; Dark ; 63.5; 132; 15Rho Pup ; 2.80; 6900;occ; 127; 0;50469
3; 6280.7; 24-OCT-2011 14:14:03; Dark ; 66.0; 88; 31Eta CMA ; 2.45; 20000;occ; 132; 0;50470
4; 6813.6; 24-OCT-2011 14:22:55; Dark ; 61.5; 108; Alp Col ; 2.65; 15200;occ; 123; 0;50470
/nas3/ENVISAT/GOMOS/GOM_NL__0P/GOM_NL__0PNPDK20111024_144327_000048463108_00025_50470_5467.N1
1; 2031.0; 24-OCT-2011 14:43:27; Bright; 59.0; 94; 92Alp Cet ; 2.53; 3100;occ; 118; 0;50470
2; 5993.0; 24-OCT-2011 15:49:29; Dark ; 66.5; 132; 15Rho Pup ; 2.80; 6900;occ; 133; 0;50470
3; 6282.7; 24-OCT-2011 15:54:18; Dark ; 63.5; 88; 31Eta CMA ; 2.45; 20000;occ; 127; 0;50471
4; 6814.8; 24-OCT-2011 16:03:11; Dark ; 62.5; 108; Alp Col ; 2.65; 15200;occ; 125; 0;50471
/nas3/ENVISAT/GOMOS/GOM_NL__0P/GOM_NL__0PNPDK20111024_162341_000048483108_00026_50471_5468.N1
1; 2030.8; 24-OCT-2011 16:23:41; Bright; 60.0; 94; 92Alp Cet ; 2.53; 3100;occ; 120; 0;50471
2; 5994.7; 24-OCT-2011 17:29:45; Dark ; 65.0; 132; 15Rho Pup ; 2.80; 6900;occ; 130; 0;50471
3; 6284.6; 24-OCT-2011 17:34:34; Dark ; 65.5; 88; 31Eta CMA ; 2.45; 20000;occ; 131; 0;50472
4; 6816.1; 24-OCT-2011 17:43:26; Dark ; 63.0; 108; Alp Col ; 2.65; 15200;occ; 126; 0;50472
/nas3/ENVISAT/GOMOS/GOM_NL__0P/GOM_NL__0PNPDK20111024_180354_000048493108_00027_50472_5469.N1
1; 2030.1; 24-OCT-2011 18:03:54; Bright; 60.0; 94; 92Alp Cet ; 2.53; 3100;occ; 120; 0;50472
2; 5996.4; 24-OCT-2011 19:10:00; Dark ; 65.0; 132; 15Rho Pup ; 2.80; 6900;occ; 130; 0;50472
3; 6286.3; 24-OCT-2011 19:14:50; Dark ; 69.0; 88; 31Eta CMA ; 2.45; 20000;occ; 138; 0;50473
4; 6817.1; 24-OCT-2011 19:23:41; Dark ; 62.5; 108; Alp Col ; 2.65; 15200;occ; 125; 0;50473
/nas3/ENVISAT/GOMOS/GOM_NL__0P/GOM_NL__0PNPDK20111024_194407_000048533108_00028_50473_5470.N1
1; 2029.6; 24-OCT-2011 19:44:07; Bright; 62.5; 94; 92Alp Cet ; 2.53; 3100;occ; 125; 0;50473
2; 5998.0; 24-OCT-2011 20:50:16; Dark ; 65.0; 132; 15Rho Pup ; 2.80; 6900;occ; 130; 0;50473
3; 6287.8; 24-OCT-2011 20:55:06; Dark ; 70.0; 88; 31Eta CMA ; 2.45; 20000;occ; 140; 0;50474

```

4; 6818.2; 24-OCT-2011 21:03:56; Dark ; 65.0; 108; Alp Col ; 2.65; 15200;occ; 130; 0;50474
/nas3/ENVISAT/GOMOS/GOM_NL__0P/GOM_NL__0PNPDE20111025_001047_000021023108_00030_50475_6582.N1
1; -12.4; 25-OCT-2011 00:10:47; Dark ; 63.0; 132; 15Rho Pup ; 2.80; 6900;occ; 126; 0;50475
2; 277.4; 25-OCT-2011 00:15:37; Dark ; 67.5; 88; 31Eta CMA ; 2.45; 20000;occ; 135; 0;50476
3; 806.4; 25-OCT-2011 00:24:26; Dark ; 64.5; 108; Alp Col ; 2.65; 15200;occ; 129; 0;50476
4; 2028.1; 25-OCT-2011 00:44:48; Bright; 62.0; 94; 92Alp Cet ; 2.53; 3100;occ; 124; 0;50476
/nas3/ENVISAT/GOMOS/GOM_NL__0P/GOM_NL__0PNPDE20111025_015103_000021003108_00031_50476_6583.N1
1; -10.7; 25-OCT-2011 01:51:03; Dark ; 66.0; 132; 15Rho Pup ; 2.80; 6900;occ; 132; 0;50476
2; 279.2; 25-OCT-2011 01:55:53; Dark ; 67.5; 88; 31Eta CMA ; 2.45; 20000;occ; 135; 0;50477
3; 807.8; 25-OCT-2011 02:04:41; Dark ; 64.0; 108; Alp Col ; 2.65; 15200;occ; 128; 0;50477
4; 2027.7; 25-OCT-2011 02:25:01; Bright; 62.5; 94; 92Alp Cet ; 2.53; 3100;occ; 125; 0;50477
/nas3/ENVISAT/GOMOS/GOM_NL__0P/GOM_NL__0PNPDE20111025_033118_000020953108_00032_50477_6584.N1
1; -8.9; 25-OCT-2011 03:31:18; Dark ; 67.0; 132; 15Rho Pup ; 2.80; 6900;occ; 134; 0;50477
2; 281.0; 25-OCT-2011 03:36:08; Dark ; 69.0; 88; 31Eta CMA ; 2.45; 20000;occ; 138; 0;50478
3; 809.0; 25-OCT-2011 03:44:56; Dark ; 63.5; 108; Alp Col ; 2.65; 15200;occ; 127; 0;50478
4; 2027.2; 25-OCT-2011 04:05:15; Bright; 59.5; 94; 92Alp Cet ; 2.53; 3100;occ; 119; 0;50478
/nas3/ENVISAT/GOMOS/GOM_NL__0P/GOM_NL__0PNPDE20111025_051134_000021073108_00033_50478_6585.N1
1; -7.2; 25-OCT-2011 05:11:34; Dark ; 66.0; 132; 15Rho Pup ; 2.80; 6900;occ; 132; 0;50478
2; 282.6; 25-OCT-2011 05:16:24; Dark ; 68.0; 88; 31Eta CMA ; 2.45; 20000;occ; 136; 0;50479
3; 810.2; 25-OCT-2011 05:25:12; Dark ; 64.5; 108; Alp Col ; 2.65; 15200;occ; 129; 0;50479
4; 2026.8; 25-OCT-2011 05:45:28; Bright; 73.0; 94; 92Alp Cet ; 2.53; 3100;occ; 146; 0;50479
/nas3/ENVISAT/GOMOS/GOM_NL__0P/GOM_NL__0PNPDE20111025_215411_000008733108_00044_50489_6586.N1
1; 10.4; 25-OCT-2011 21:54:11; Dark ; 63.5; 132; 15Rho Pup ; 2.80; 6900;occ; 127; 0;50489
2; 300.5; 25-OCT-2011 21:59:01; Dark ; 68.0; 88; 31Eta CMA ; 2.45; 20000;occ; 136; 0;50489
3; 821.7; 25-OCT-2011 22:07:43; Dark ; 62.5; 108; Alp Col ; 2.65; 15200;occ; 125; 0;50489
/nas3/ENVISAT/GOMOS/GOM_NL__0P/GOM_NL__0PNPDE20111025_233427_000008723108_00045_50490_6587.N1
1; 12.1; 25-OCT-2011 23:34:27; Dark ; 65.0; 132; 15Rho Pup ; 2.80; 6900;occ; 130; 0;50490
2; 302.3; 25-OCT-2011 23:39:17; Dark ; 70.5; 88; 31Eta CMA ; 2.45; 20000;occ; 141; 0;50490
3; 822.6; 25-OCT-2011 23:47:57; Dark ; 62.0; 108; Alp Col ; 2.65; 15200;occ; 124; 0;50490
/nas3/ENVISAT/GOMOS/GOM_NL__0P/GOM_NL__0PNPDK20111025_065150_000008803108_00034_50479_5471.N1
1; -5.4; 25-OCT-2011 06:51:50; Dark ; 66.5; 132; 15Rho Pup ; 2.80; 6900;occ; 133; 0;50479
2; 284.6; 25-OCT-2011 06:56:40; Dark ; 69.5; 88; 31Eta CMA ; 2.45; 20000;occ; 139; 0;50480
3; 811.4; 25-OCT-2011 07:05:27; Dark ; 64.0; 108; Alp Col ; 2.65; 15200;occ; 128; 0;50480
/nas3/ENVISAT/GOMOS/GOM_NL__0P/GOM_NL__0PNPDK20111025_072542_000048613108_00035_50480_5472.N1
1; 2026.4; 25-OCT-2011 07:25:42; Bright; 64.0; 94; 92Alp Cet ; 2.53; 3100;occ; 128; 0;50480
2; 6010.4; 25-OCT-2011 08:32:06; Dark ; 67.0; 132; 15Rho Pup ; 2.80; 6900;occ; 134; 0;50480
3; 6300.4; 25-OCT-2011 08:36:56; Dark ; 69.5; 88; 31Eta CMA ; 2.45; 20000;occ; 139; 0;50481
4; 6826.4; 25-OCT-2011 08:45:42; Dark ; 61.5; 108; Alp Col ; 2.65; 15200;occ; 123; 0;50481
/nas3/ENVISAT/GOMOS/GOM_NL__0P/GOM_NL__0PNPDK20111025_090555_000048643108_00036_50481_5473.N1
1; 2026.1; 25-OCT-2011 09:05:55; Bright; 60.0; 94; 92Alp Cet ; 2.53; 3100;occ; 120; 0;50481
2; 6012.1; 25-OCT-2011 10:12:21; Dark ; 66.0; 132; 15Rho Pup ; 2.80; 6900;occ; 132; 0;50481
3; 6302.1; 25-OCT-2011 10:17:11; Dark ; 71.5; 88; 31Eta CMA ; 2.45; 20000;occ; 143; 0;50482
4; 6827.4; 25-OCT-2011 10:25:57; Dark ; 63.0; 108; Alp Col ; 2.65; 15200;occ; 126; 0;50482
/nas3/ENVISAT/GOMOS/GOM_NL__0P/GOM_NL__0PNPDK20111025_104609_000048653108_00037_50482_5474.N1
1; 2025.6; 25-OCT-2011 10:46:09; Bright; 56.5; 94; 92Alp Cet ; 2.53; 3100;occ; 113; 0;50482
2; 6013.8; 25-OCT-2011 11:52:37; Dark ; 66.5; 132; 15Rho Pup ; 2.80; 6900;occ; 133; 0;50482
3; 6303.9; 25-OCT-2011 11:57:27; Dark ; 66.5; 88; 31Eta CMA ; 2.45; 20000;occ; 133; 0;50483
4; 6828.5; 25-OCT-2011 12:06:12; Dark ; 63.0; 108; Alp Col ; 2.65; 15200;occ; 126; 0;50483
/nas3/ENVISAT/GOMOS/GOM_NL__0P/GOM_NL__0PNPDK20111025_122622_000048673108_00038_50483_5475.N1
1; 2025.2; 25-OCT-2011 12:26:22; Bright; 63.0; 94; 92Alp Cet ; 2.53; 3100;occ; 126; 0;50483
2; 6015.4; 25-OCT-2011 13:32:53; Dark ; 65.5; 132; 15Rho Pup ; 2.80; 6900;occ; 131; 0;50484
3; 6305.7; 25-OCT-2011 13:37:43; Dark ; 69.0; 88; 31Eta CMA ; 2.45; 20000;occ; 138; 0;50484
4; 6829.8; 25-OCT-2011 13:46:27; Dark ; 62.5; 108; Alp Col ; 2.65; 15200;occ; 125; 0;50484
/nas3/ENVISAT/GOMOS/GOM_NL__0P/GOM_NL__0PNPDK20111025_151308_000008773108_00040_50485_5476.N1
1; 3.3; 25-OCT-2011 15:13:08; Dark ; 66.0; 132; 15Rho Pup ; 2.80; 6900;occ; 132; 0;50485
2; 293.4; 25-OCT-2011 15:17:58; Dark ; 70.5; 88; 31Eta CMA ; 2.45; 20000;occ; 141; 0;50485
3; 816.9; 25-OCT-2011 15:26:42; Dark ; 64.0; 108; Alp Col ; 2.65; 15200;occ; 128; 0;50485
/nas3/ENVISAT/GOMOS/GOM_NL__0P/GOM_NL__0PNPDK20111025_165324_000008753108_00041_50486_5477.N1
1; 5.0; 25-OCT-2011 16:53:24; Dark ; 66.5; 132; 15Rho Pup ; 2.80; 6900;occ; 133; 0;50486
2; 295.3; 25-OCT-2011 16:58:14; Dark ; 69.5; 88; 31Eta CMA ; 2.45; 20000;occ; 139; 0;50486
3; 818.2; 25-OCT-2011 17:06:57; Dark ; 62.0; 108; Alp Col ; 2.65; 15200;occ; 124; 0;50486
/nas3/ENVISAT/GOMOS/GOM_NL__0P/GOM_NL__0PNPDK20111025_183340_000008763108_00042_50487_5478.N1
1; 6.7; 25-OCT-2011 18:33:40; Dark ; 66.0; 132; 15Rho Pup ; 2.80; 6900;occ; 132; 0;50487
2; 297.0; 25-OCT-2011 18:38:30; Dark ; 70.5; 88; 31Eta CMA ; 2.45; 20000;occ; 141; 0;50487
3; 819.3; 25-OCT-2011 18:47:12; Dark ; 63.5; 108; Alp Col ; 2.65; 15200;occ; 127; 0;50487
/nas3/ENVISAT/GOMOS/GOM_NL__0P/GOM_NL__0PNPDK20111025_201356_000008733108_00043_50488_5479.N1
1; 8.6; 25-OCT-2011 20:13:56; Dark ; 64.0; 132; 15Rho Pup ; 2.80; 6900;occ; 128; 0;50488
2; 298.8; 25-OCT-2011 20:18:46; Dark ; 68.0; 88; 31Eta CMA ; 2.45; 20000;occ; 136; 0;50488

3; 820.5; 25-OCT-2011 20:27:27; Dark ; 62.0; 108; Alp Col ; 2.65; 15200;occ; 124; 0;50488
/nas3/ENVISAT/GOMOS/GOM_NL__0P/GOM_NL__0PNPDE20111026_011443_000068873108_00046_50491_6588.N1
1; 14.0; 26-OCT-2011 01:14:43; Dark ; 67.0; 132; 15Rho Pup ; 2.80; 6900;occ; 134; 0;50491
2; 304.1; 26-OCT-2011 01:19:33; Dark ; 68.0; 88; 31Eta CMA ; 2.45; 20000;occ; 136; 0;50491
3; 823.7; 26-OCT-2011 01:28:12; Dark ; 64.0; 108; Alp Col ; 2.65; 15200;occ; 128; 0;50491
4; 6029.7; 26-OCT-2011 02:54:58; Dark ; 66.0; 132; 15Rho Pup ; 2.80; 6900;occ; 132; 0;50492
5; 6319.8; 26-OCT-2011 02:59:48; Dark ; 66.5; 88; 31Eta CMA ; 2.45; 20000;occ; 133; 0;50492
6; 6838.9; 26-OCT-2011 03:08:28; Dark ; 63.0; 108; Alp Col ; 2.65; 15200;occ; 126; 0;50492
/nas3/ENVISAT/GOMOS/GOM_NL__0P/GOM_NL__0PNPDE20111026_043514_000008713108_00048_50493_6589.N1
1; 17.5; 26-OCT-2011 04:35:14; Dark ; 64.0; 132; 15Rho Pup ; 2.80; 6900;occ; 128; 0;50493
2; 307.7; 26-OCT-2011 04:40:04; Dark ; 71.0; 88; 31Eta CMA ; 2.45; 20000;occ; 142; 0;50493
3; 826.1; 26-OCT-2011 04:48:43; Dark ; 62.5; 108; Alp Col ; 2.65; 15200;occ; 125; 0;50493
/nas3/ENVISAT/GOMOS/GOM_NL__0P/GOM_NL__0PNPDE20111026_061530_000008693108_00049_50494_6590.N1
1; 19.4; 26-OCT-2011 06:15:30; Dark ; 67.5; 132; 15Rho Pup ; 2.80; 6900;occ; 135; 0;50494
2; 309.5; 26-OCT-2011 06:20:20; Dark ; 68.0; 88; 31Eta CMA ; 2.45; 20000;occ; 136; 0;50494
3; 827.3; 26-OCT-2011 06:28:58; Dark ; 62.0; 108; Alp Col ; 2.65; 15200;occ; 124; 0;50494
/nas3/ENVISAT/GOMOS/GOM_NL__0P/GOM_NL__0PNPDK20111026_093601_000008683108_00051_50496_5481.N1
1; 22.9; 26-OCT-2011 09:36:01; Dark ; 66.0; 132; 15Rho Pup ; 2.80; 6900;occ; 132; 0;50496
2; 313.0; 26-OCT-2011 09:40:51; Dark ; 66.0; 88; 31Eta CMA ; 2.45; 20000;occ; 132; 0;50496
3; 829.7; 26-OCT-2011 09:49:28; Dark ; 62.0; 108; Alp Col ; 2.65; 15200;occ; 124; 0;50496
/nas3/ENVISAT/GOMOS/GOM_NL__0P/GOM_NL__0PNPDK20111026_111617_000008683108_00052_50497_5482.N1
1; 24.7; 26-OCT-2011 11:16:17; Dark ; 66.0; 132; 15Rho Pup ; 2.80; 6900;occ; 132; 0;50497
2; 314.8; 26-OCT-2011 11:21:07; Dark ; 66.0; 88; 31Eta CMA ; 2.45; 20000;occ; 132; 0;50497
3; 830.8; 26-OCT-2011 11:29:43; Dark ; 62.0; 108; Alp Col ; 2.65; 15200;occ; 124; 0;50497
/nas3/ENVISAT/GOMOS/GOM_NL__0P/GOM_NL__0PNPDK20111026_130123_000005773108_00053_50498_5483.N1
1; 316.7; 26-OCT-2011 13:01:23; Dark ; 63.0; 88; 31Eta CMA ; 2.45; 20000;occ; 126; 0;50498
2; 831.9; 26-OCT-2011 13:09:58; Dark ; 62.0; 108; Alp Col ; 2.65; 15200;occ; 124; 0;50498
/nas3/ENVISAT/GOMOS/GOM_NL__0P/GOM_NL__0PNPDK20111026_143648_000008663108_00054_50499_5484.N1
1; 28.3; 26-OCT-2011 14:36:48; Dark ; 67.5; 132; 15Rho Pup ; 2.80; 6900;occ; 135; 0;50499
2; 318.4; 26-OCT-2011 14:41:38; Dark ; 63.0; 88; 31Eta CMA ; 2.45; 20000;occ; 126; 0;50499
3; 832.9; 26-OCT-2011 14:50:13; Dark ; 62.0; 108; Alp Col ; 2.65; 15200;occ; 124; 0;50499
/nas3/ENVISAT/GOMOS/GOM_NL__0P/GOM_NL__0PNPDK20111026_161704_000008653108_00055_50500_5485.N1
1; 30.0; 26-OCT-2011 16:17:04; Dark ; 70.0; 132; 15Rho Pup ; 2.80; 6900;occ; 140; 0;50500
2; 320.4; 26-OCT-2011 16:21:54; Dark ; 61.0; 88; 31Eta CMA ; 2.45; 20000;occ; 122; 0;50500
3; 833.9; 26-OCT-2011 16:30:28; Dark ; 62.0; 108; Alp Col ; 2.65; 15200;occ; 124; 0;50500
/nas3/ENVISAT/GOMOS/GOM_NL__0P/GOM_NL__0PNPDK20111026_175720_000008643108_00056_50501_5486.N1
1; 31.9; 26-OCT-2011 17:57:20; Dark ; 67.0; 132; 15Rho Pup ; 2.80; 6900;occ; 134; 0;50501
2; 322.1; 26-OCT-2011 18:02:10; Dark ; 61.0; 88; 31Eta CMA ; 2.45; 20000;occ; 122; 0;50501
3; 835.1; 26-OCT-2011 18:10:43; Dark ; 61.5; 108; Alp Col ; 2.65; 15200;occ; 123; 0;50501
/nas3/ENVISAT/GOMOS/GOM_NL__0P/GOM_NL__0PNPDK20111027_125307_000000193108_00067_50512_5487.N1
1; 2026.2; 27-OCT-2011 12:53:07; Dark ; 19.5; 9; Alp Eri ; 0.45; 24000;occ; 39; 0;50512