

GOMOS Daily Report 17-OCT-2011

Level 0 and Level 1 products

SUMMARY

[1. General Info](#)

[2. Summary of products arrived in PCF \(Product Control Facility\)](#)

[2.1 Level 0: products arrived in PCF during current month \(see template here\)](#)

[2.2 Level 0: plot of mission plan versus production during reporting period](#)

[2.3 Level 0: summary of missing occultations with respect to the plan](#)

[2.4 Level 1: products arrived in PCF during reporting period](#)

[3. Plot of Spectrometers and Photometers temperatures](#)

[4. Dark Charge monitoring](#)

[4.1 Products that did not use the Dark Sky Area observation for DC computation](#)

[4.2 Plot of Dark Charge](#)

[5. Demodulation correction and quality product information monitoring](#)

[5.1 Percentage of products with some flags set](#)

[5.2 Plot of quality information per product \(time dependant\)](#)

[5.3 Plot of quality information per product \(world map\)](#)

[6. Star tangent altitude lost](#)

[6.1 Statistics on star tangent altitude lost](#)

[6.2 Plot of star tangent altitude lost: DARK products](#)

[6.3 Plot of star tangent altitude lost: BRIGHT products](#)

[6.3 Plot of star tangent altitude lost: TWILIGHT products](#)

[7. Star Acquisition and Tracking Unit \(SATU\)](#)

[7.1 SATU plots \(dark limb\): 'X' and 'Y' axis](#)

[7.2 SATU Noise Equivalent Angle statistics](#)

[7.2.1 SATU NEA Statistics \(table\)](#)

[7.2.2 Daily SATU NEA STD \(dark limb\) - trend since 1st April 2006](#)

[8. Auxiliary Data Files used for the production reported in section 2.4](#)

[Level 2 products](#)

This report presents the daily analysis on parameters extracted from GOMOS level 1b data (GOM_TRA_1P). It is intended to monitor some important parameters that will impact the quality of the level 2 products as the Spectrometers and Photometers CCD Temperatures and Dark Charge, SATU noise equivalent angle... A list of level 0 products (and content) that have arrived during the actual month to the PCF is also given.

Item	Value
Time of report generation	19OCT2011 07:00:42
Data source version	GOMOS/6.01
Start time of products	17OCT2011 00:54:55
Stop time of products	17OCT2011 22:37:47
Store outputs in DB	Yes
Nb of level 1b prods	14
Nb of prods with errors	0

2. Summary of products arrived in PCF (Product Control Facility)

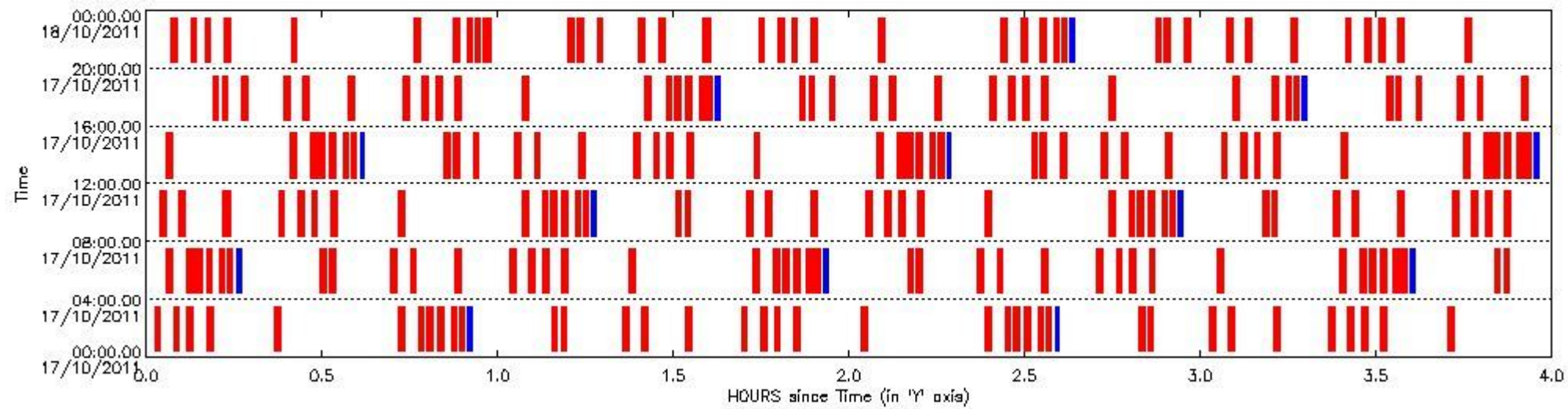
2.1 Level 0 products arrived in PCF (see template [here](#))

2.2 Plot of mission plan versus Level 0 production arrived in PCF during reporting period

Red segments are missing products.

Blue segments are available products.

Green segments are calibration measurements (not available products to users).



2.3 Summary of missing occultations (red segments in previous plot)

UTC start time	Star name	Star ID	Orbit
17-OCT-2011 00:01:22	LamVel	65	50360
17-OCT-2011 00:04:37	Gam2Vel	34	50361
17-OCT-2011 00:06:58	DSA1055	0	50361
17-OCT-2011 00:10:14	AlpCar	2	50361
17-OCT-2011 00:21:48	The1Eri	157	50361
17-OCT-2011 00:42:56	6BetAri	105	50361
17-OCT-2011 00:46:26	43BetAnd	53	50361
17-OCT-2011 00:47:51	4BetTri	173	50361
17-OCT-2011 00:49:45	57Gam1And	73	50361
17-OCT-2011 00:52:01	18AlpCas	68	50361
17-OCT-2011 00:53:21	27GamCas	76	50361
17-OCT-2011 01:09:17	50AlpUMa	36	50361
17-OCT-2011 01:10:50	48BetUMa	82	50361
17-OCT-2011 01:21:16	17EpsLeo	166	50361
17-OCT-2011 01:24:35	32AlpLeo	22	50361

17-OCT-2011 01:32:09	30AlpHya	48	50361
17-OCT-2011 01:41:37	LamVel	65	50361
17-OCT-2011 01:44:51	Gam2Vel	34	50362
17-OCT-2011 01:47:13	DSA1055	0	50362
17-OCT-2011 01:50:29	AlpCar	2	50362
17-OCT-2011 02:02:03	The1Eri	157	50362
17-OCT-2011 02:23:09	6BetAri	105	50362
17-OCT-2011 02:26:40	43BetAnd	53	50362
17-OCT-2011 02:28:05	4BetTri	173	50362
17-OCT-2011 02:29:59	57Gam1And	73	50362
17-OCT-2011 02:32:15	18AlpCas	68	50362
17-OCT-2011 02:33:35	27GamCas	76	50362
17-OCT-2011 02:49:31	50AlpUMa	36	50362
17-OCT-2011 02:51:04	48BetUMa	82	50362
17-OCT-2011 03:01:30	17EpsLeo	166	50362
17-OCT-2011 03:04:49	32AlpLeo	22	50362
17-OCT-2011 03:12:24	30AlpHya	48	50362
17-OCT-2011 03:21:51	LamVel	65	50362
17-OCT-2011 03:25:06	Gam2Vel	34	50363
17-OCT-2011 03:27:28	DSA1055	0	50363
17-OCT-2011 03:30:44	AlpCar	2	50363
17-OCT-2011 03:42:17	The1Eri	157	50363
17-OCT-2011 04:03:23	6BetAri	105	50363
17-OCT-2011 04:06:54	43BetAnd	53	50363
17-OCT-2011 04:08:18	4BetTri	173	50363
17-OCT-2011 04:10:12	57Gam1And	73	50363
17-OCT-2011 04:12:29	18AlpCas	68	50363
17-OCT-2011 04:13:49	27GamCas	76	50363
17-OCT-2011 04:29:45	50AlpUMa	36	50363
17-OCT-2011 04:31:18	48BetUMa	82	50363
17-OCT-2011 04:41:44	17EpsLeo	166	50363
17-OCT-2011 04:45:04	32AlpLeo	22	50363
17-OCT-2011 04:52:38	30AlpHya	48	50363
17-OCT-2011 05:02:06	LamVel	65	50363
17-OCT-2011 05:05:21	Gam2Vel	34	50364
17-OCT-2011 05:07:43	DSA1055	0	50364
17-OCT-2011 05:10:58	AlpCar	2	50364
17-OCT-2011 05:22:32	The1Eri	157	50364
17-OCT-2011 05:43:36	6BetAri	105	50364
17-OCT-2011 05:47:08	43BetAnd	53	50364
17-OCT-2011 05:48:31	4BetTri	173	50364
17-OCT-2011 05:50:25	57Gam1And	73	50364
17-OCT-2011 05:52:43	18AlpCas	68	50364
17-OCT-2011 05:54:02	27GamCas	76	50364
17-OCT-2011 06:09:59	50AlpUMa	36	50364
17-OCT-2011 06:11:32	48BetUMa	82	50364
17-OCT-2011 06:21:59	17EpsLeo	166	50364
17-OCT-2011 06:25:18	32AlpLeo	22	50364
17-OCT-2011 06:32:53	30AlpHya	48	50364
17-OCT-2011 06:42:21	LamVel	65	50364
17-OCT-2011 06:45:35	Gam2Vel	34	50365
17-OCT-2011 06:47:57	DSA1055	0	50365
17-OCT-2011 06:51:13	AlpCar	2	50365
17-OCT-2011 07:02:46	The1Eri	157	50365
17-OCT-2011 07:23:50	6BetAri	105	50365
17-OCT-2011 07:27:21	43BetAnd	53	50365
17-OCT-2011 07:28:45	4BetTri	173	50365
17-OCT-2011 07:30:39	57Gam1And	73	50365
17-OCT-2011 07:32:57	18AlpCas	68	50365

17-OCT-2011 07:34:16	27GamCas	76	50365
17-OCT-2011 07:50:13	50AlpUMa	36	50365
17-OCT-2011 07:51:46	48BetUMa	82	50365
17-OCT-2011 08:02:13	17EpsLeo	166	50365
17-OCT-2011 08:05:32	32AlpLeo	22	50365
17-OCT-2011 08:13:08	30AlpHya	48	50365
17-OCT-2011 08:22:35	LamVel	65	50365
17-OCT-2011 08:25:50	Gam2Vel	34	50366
17-OCT-2011 08:28:12	DSA1055	0	50366
17-OCT-2011 08:31:28	AlpCar	2	50366
17-OCT-2011 08:43:00	The1Eri	157	50366
17-OCT-2011 09:04:03	6BetAri	105	50366
17-OCT-2011 09:07:35	43BetAnd	53	50366
17-OCT-2011 09:08:58	4BetTri	173	50366
17-OCT-2011 09:10:52	57Gam1And	73	50366
17-OCT-2011 09:13:10	18AlpCas	68	50366
17-OCT-2011 09:14:30	27GamCas	76	50366
17-OCT-2011 09:30:27	50AlpUMa	36	50366
17-OCT-2011 09:32:00	48BetUMa	82	50366
17-OCT-2011 09:42:27	17EpsLeo	166	50366
17-OCT-2011 09:45:47	32AlpLeo	22	50366
17-OCT-2011 09:53:22	30AlpHya	48	50366
17-OCT-2011 10:02:50	LamVel	65	50366
17-OCT-2011 10:06:05	Gam2Vel	34	50367
17-OCT-2011 10:08:27	DSA1055	0	50367
17-OCT-2011 10:11:43	AlpCar	2	50367
17-OCT-2011 10:23:15	The1Eri	157	50367
17-OCT-2011 10:44:17	6BetAri	105	50367
17-OCT-2011 10:47:49	43BetAnd	53	50367
17-OCT-2011 10:49:11	4BetTri	173	50367
17-OCT-2011 10:51:06	57Gam1And	73	50367
17-OCT-2011 10:53:24	18AlpCas	68	50367
17-OCT-2011 10:54:44	27GamCas	76	50367
17-OCT-2011 11:10:41	50AlpUMa	36	50367
17-OCT-2011 11:12:14	48BetUMa	82	50367
17-OCT-2011 11:22:41	17EpsLeo	166	50367
17-OCT-2011 11:26:01	32AlpLeo	22	50367
17-OCT-2011 11:33:37	30AlpHya	48	50367
17-OCT-2011 11:43:04	LamVel	65	50367
17-OCT-2011 11:46:20	Gam2Vel	34	50368
17-OCT-2011 11:48:42	DSA1055	0	50368
17-OCT-2011 11:51:57	AlpCar	2	50368
17-OCT-2011 12:03:29	The1Eri	157	50368
17-OCT-2011 12:24:30	6BetAri	105	50368
17-OCT-2011 12:28:02	43BetAnd	53	50368
17-OCT-2011 12:29:25	4BetTri	173	50368
17-OCT-2011 12:31:19	57Gam1And	73	50368
17-OCT-2011 12:33:38	18AlpCas	68	50368
17-OCT-2011 12:34:58	27GamCas	76	50368
17-OCT-2011 12:50:55	50AlpUMa	36	50368
17-OCT-2011 12:52:28	48BetUMa	82	50368
17-OCT-2011 12:55:53	52PsiUMa	174	50368
17-OCT-2011 13:02:55	17EpsLeo	166	50368
17-OCT-2011 13:06:15	32AlpLeo	22	50368
17-OCT-2011 13:13:52	30AlpHya	48	50368
17-OCT-2011 13:23:19	LamVel	65	50368
17-OCT-2011 13:26:34	Gam2Vel	34	50369
17-OCT-2011 13:28:57	DSA1055	0	50369
17-OCT-2011 13:32:12	AlpCar	2	50369

17-OCT-2011 13:43:44	The1Eri	157	50369
17-OCT-2011 14:04:44	6BetAri	105	50369
17-OCT-2011 14:08:16	43BetAnd	53	50369
17-OCT-2011 14:09:38	4BetTri	173	50369
17-OCT-2011 14:11:32	57Gam1And	73	50369
17-OCT-2011 14:13:52	18AlpCas	68	50369
17-OCT-2011 14:15:11	27GamCas	76	50369
17-OCT-2011 14:31:09	50AlpUMa	36	50369
17-OCT-2011 14:32:42	48BetUMa	82	50369
17-OCT-2011 14:36:07	52PsiUMa	174	50369
17-OCT-2011 14:43:10	17EpsLeo	166	50369
17-OCT-2011 14:46:30	32AlpLeo	22	50369
17-OCT-2011 14:54:07	30AlpHya	48	50369
17-OCT-2011 15:03:34	LamVel	65	50369
17-OCT-2011 15:06:49	Gam2Vel	34	50370
17-OCT-2011 15:09:12	DSA1055	0	50370
17-OCT-2011 15:12:27	AlpCar	2	50370
17-OCT-2011 15:23:58	The1Eri	157	50370
17-OCT-2011 15:44:57	6BetAri	105	50370
17-OCT-2011 15:48:30	43BetAnd	53	50370
17-OCT-2011 15:49:51	4BetTri	173	50370
17-OCT-2011 15:51:46	57Gam1And	73	50370
17-OCT-2011 15:54:06	18AlpCas	68	50370
17-OCT-2011 15:55:25	27GamCas	76	50370
17-OCT-2011 16:11:23	50AlpUMa	36	50370
17-OCT-2011 16:12:56	48BetUMa	82	50370
17-OCT-2011 16:16:22	52PsiUMa	174	50370
17-OCT-2011 16:23:24	17EpsLeo	166	50370
17-OCT-2011 16:26:44	32AlpLeo	22	50370
17-OCT-2011 16:34:21	30AlpHya	48	50370
17-OCT-2011 16:43:48	LamVel	65	50370
17-OCT-2011 16:47:04	Gam2Vel	34	50371
17-OCT-2011 16:49:27	DSA1055	0	50371
17-OCT-2011 16:52:42	AlpCar	2	50371
17-OCT-2011 17:04:13	The1Eri	157	50371
17-OCT-2011 17:25:11	6BetAri	105	50371
17-OCT-2011 17:28:43	43BetAnd	53	50371
17-OCT-2011 17:30:05	4BetTri	173	50371
17-OCT-2011 17:31:59	57Gam1And	73	50371
17-OCT-2011 17:34:19	18AlpCas	68	50371
17-OCT-2011 17:35:39	27GamCas	76	50371
17-OCT-2011 17:51:37	50AlpUMa	36	50371
17-OCT-2011 17:53:10	48BetUMa	82	50371
17-OCT-2011 17:56:36	52PsiUMa	174	50371
17-OCT-2011 18:03:38	17EpsLeo	166	50371
17-OCT-2011 18:06:58	32AlpLeo	22	50371
17-OCT-2011 18:14:36	30AlpHya	48	50371
17-OCT-2011 18:24:03	LamVel	65	50371
17-OCT-2011 18:27:19	Gam2Vel	34	50372
17-OCT-2011 18:29:41	DSA1055	0	50372
17-OCT-2011 18:32:57	AlpCar	2	50372
17-OCT-2011 18:44:27	The1Eri	157	50372
17-OCT-2011 19:05:24	6BetAri	105	50372
17-OCT-2011 19:12:13	57Gam1And	73	50372
17-OCT-2011 19:14:33	18AlpCas	68	50372
17-OCT-2011 19:15:53	27GamCas	76	50372
17-OCT-2011 19:31:50	50AlpUMa	36	50372
17-OCT-2011 19:33:24	48BetUMa	82	50372
17-OCT-2011 19:36:50	52PsiUMa	174	50372

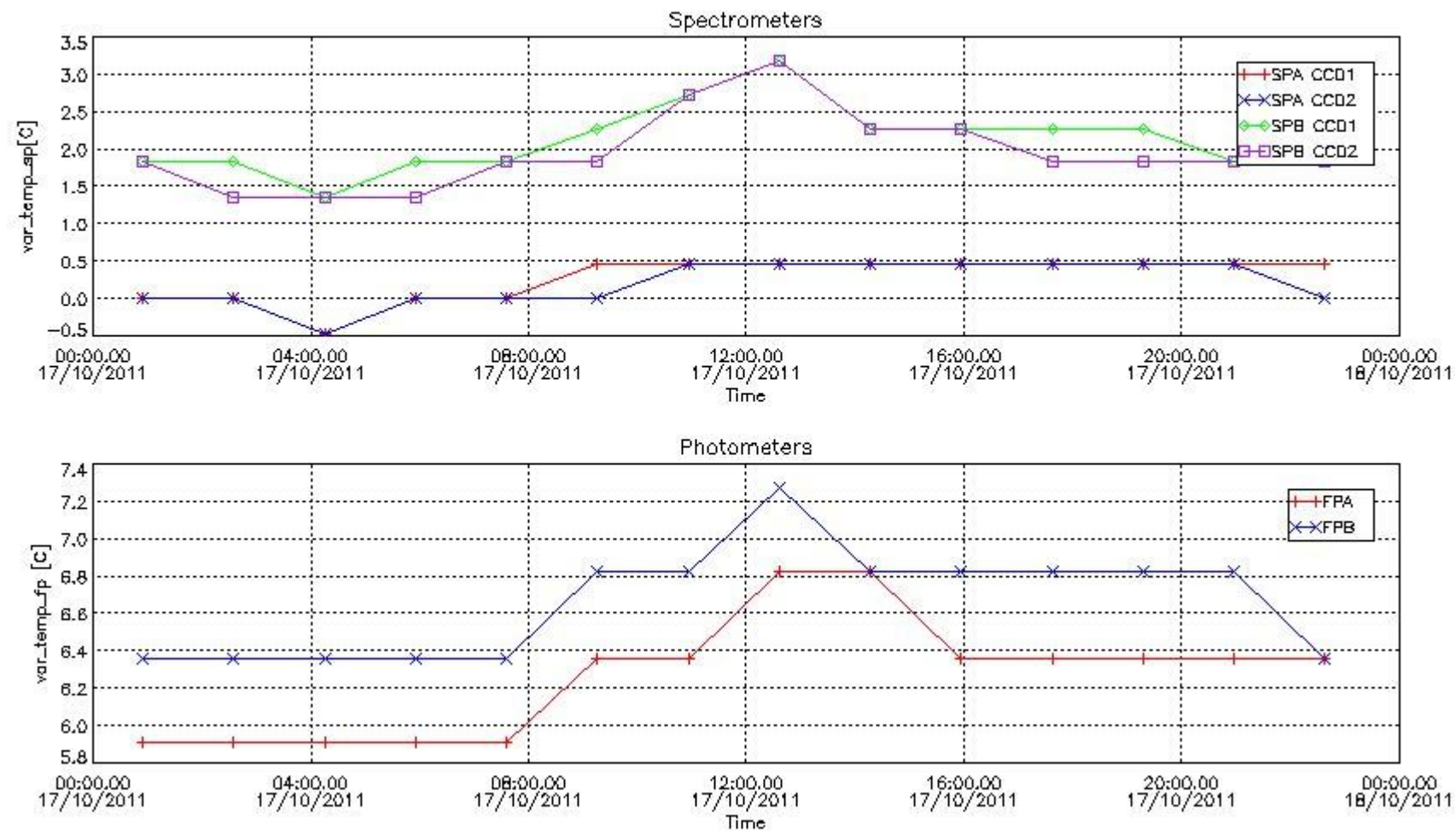
17-OCT-2011 19:43:52	17EpsLeo	166	50372
17-OCT-2011 19:47:13	32AlpLeo	22	50372
17-OCT-2011 19:54:51	30AlpHya	48	50372
17-OCT-2011 20:04:17	LamVel	65	50372
17-OCT-2011 20:07:33	Gam2Vel	34	50373
17-OCT-2011 20:09:56	DSA1055	0	50373
17-OCT-2011 20:13:11	AlpCar	2	50373
17-OCT-2011 20:24:41	The1Eri	157	50373
17-OCT-2011 20:45:38	6BetAri	105	50373
17-OCT-2011 20:52:26	57Gam1And	73	50373
17-OCT-2011 20:54:47	18AlpCas	68	50373
17-OCT-2011 20:56:06	27GamCas	76	50373
17-OCT-2011 20:57:35	23GamPer	160	50373
17-OCT-2011 21:12:04	50AlpUMa	36	50373
17-OCT-2011 21:13:38	48BetUMa	82	50373
17-OCT-2011 21:17:04	52PsiUMa	174	50373
17-OCT-2011 21:24:07	17EpsLeo	166	50373
17-OCT-2011 21:27:27	32AlpLeo	22	50373
17-OCT-2011 21:35:06	30AlpHya	48	50373
17-OCT-2011 21:44:32	LamVel	65	50373
17-OCT-2011 21:47:48	Gam2Vel	34	50374
17-OCT-2011 21:50:11	DSA1055	0	50374
17-OCT-2011 21:53:26	AlpCar	2	50374
17-OCT-2011 22:04:56	The1Eri	157	50374
17-OCT-2011 22:25:51	6BetAri	105	50374
17-OCT-2011 22:29:24	43BetAnd	53	50374
17-OCT-2011 22:32:39	57Gam1And	73	50374
17-OCT-2011 22:35:01	18AlpCas	68	50374
17-OCT-2011 22:36:20	27GamCas	76	50374
17-OCT-2011 22:52:18	50AlpUMa	36	50374
17-OCT-2011 22:53:52	48BetUMa	82	50374
17-OCT-2011 22:57:18	52PsiUMa	174	50374
17-OCT-2011 23:04:21	17EpsLeo	166	50374
17-OCT-2011 23:07:41	32AlpLeo	22	50374
17-OCT-2011 23:15:20	30AlpHya	48	50374
17-OCT-2011 23:24:47	LamVel	65	50374
17-OCT-2011 23:28:03	Gam2Vel	34	50375
17-OCT-2011 23:30:26	DSA1055	0	50375
17-OCT-2011 23:33:41	AlpCar	2	50375
17-OCT-2011 23:45:10	The1Eri	157	50375

2.4 Summary of processed GOM_TRA_1P products

!Warning: No products without errors in DARK limb contitions found

Nr	Filename	UTC Start time	Limb	Duration	Star Id	Star Name	Star Mag	Star Temp	Nb Meas	Orbit	Prod. error
1	GOM_TRA_1PNPDE20111017_005455_000000473107_00347_50361_8512.N1	17-OCT-2011 00:54:55	Bright	46.500	160	23Gam Per	2.9300	4700.0	93	50361	No
2	GOM_TRA_1PNPDE20111017_023508_000000433107_00348_50362_8549.N1	17-OCT-2011 02:35:08	Bright	43.000	160	23Gam Per	2.9300	4700.0	86	50362	No
3	GOM_TRA_1PNPDE20111017_041521_000000463107_00349_50363_8573.N1	17-OCT-2011 04:15:21	Bright	45.500	160	23Gam Per	2.9300	4700.0	91	50363	No
4	GOM_TRA_1PNPDE20111017_055534_000000463107_00350_50364_8616.N1	17-OCT-2011 05:55:34	Bright	45.500	160	23Gam Per	2.9300	4700.0	91	50364	No
5	GOM_TRA_1PNPDK20111017_073548_000000463107_00351_50365_8173.N1	17-OCT-2011 07:35:48	Bright	46.000	160	23Gam Per	2.9300	4700.0	92	50365	No
6	GOM_TRA_1PNPDK20111017_091601_000000463107_00352_50366_8214.N1	17-OCT-2011 09:16:01	Bright	45.500	160	23Gam Per	2.9300	4700.0	91	50366	No
7	GOM_TRA_1PNPDK20111017_105614_000000473107_00353_50367_8242.N1	17-OCT-2011 10:56:14	Bright	46.500	160	23Gam Per	2.9300	4700.0	93	50367	No
8	GOM_TRA_1PNPDK20111017_123627_000000473107_00354_50368_8277.N1	17-OCT-2011 12:36:27	Bright	46.500	160	23Gam Per	2.9300	4700.0	93	50368	No
9	GOM_TRA_1PNPDK20111017_141641_000000463107_00355_50369_8311.N1	17-OCT-2011 14:16:41	Bright	46.000	160	23Gam Per	2.9300	4700.0	92	50369	No
10	GOM_TRA_1PNPDK20111017_155654_000000463107_00356_50370_8344.N1	17-OCT-2011 15:56:54	Bright	45.500	160	23Gam Per	2.9300	4700.0	91	50370	No
11	GOM_TRA_1PNPDK20111017_173707_000000463107_00357_50371_8377.N1	17-OCT-2011 17:37:07	Bright	45.500	160	23Gam Per	2.9300	4700.0	91	50371	No
12	GOM_TRA_1PNPDK20111017_191720_000000473107_00358_50372_8400.N1	17-OCT-2011 19:17:20	Bright	46.500	160	23Gam Per	2.9300	4700.0	93	50372	No
13	GOM_TRA_1PNPDE20111017_205734_000000473107_00359_50373_8788.N1	17-OCT-2011 20:57:34	Bright	46.500	160	23Gam Per	2.9300	4700.0	93	50373	No
14	GOM_TRA_1PNPDE20111017_223747_000000463107_00360_50374_8811.N1	17-OCT-2011 22:37:47	Bright	45.500	160	23Gam Per	2.9300	4700.0	91	50374	No

3. Plot of GOMOS spectrometers and photometers temperatures from level 1b data



4. Overview of dark signal processing per product

The Dark Charge (DC) is a temperature-dependant signal added to the useful measurements and it is therefore subtracted from them during the processing. There are two phenomena that produce a continuous increase of the DC: the "hot pixels" (a pixel is "hot" when its DC exceeds by a significant amount its value measured on ground at the same temperature) and the "Random Telegraphic Signal" (abrupt change positive or negative of the CCD pixel signal, random in time, affecting only the DC part of the signal and not the photon generated signal).

In this section a list of products that did not use the Dark Sky Area (DSA) observation for the DC computation is given. It is also provided the mean DC plot per product for dark limb products with no error flag set.

4.1 These products did not use the DSA observation for DC computation:

Product name	DC information
GOM_TRA_1PNPDE20111017_005455_000000473107_00347_50361_8512.N1	DC map used
GOM_TRA_1PNPDE20111017_023508_000000433107_00348_50362_8549.N1	DC map used
GOM_TRA_1PNPDE20111017_041521_000000463107_00349_50363_8573.N1	DC map used
GOM_TRA_1PNPDE20111017_055534_000000463107_00350_50364_8616.N1	DC map used
GOM_TRA_1PNPDK20111017_073548_000000463107_00351_50365_8173.N1	DC map used
GOM_TRA_1PNPDK20111017_091601_000000463107_00352_50366_8214.N1	DC map used
GOM_TRA_1PNPDK20111017_105614_000000473107_00353_50367_8242.N1	DC map used
GOM_TRA_1PNPDK20111017_123627_000000473107_00354_50368_8277.N1	DC map used
GOM_TRA_1PNPDK20111017_141641_000000463107_00355_50369_8311.N1	DC map used
GOM_TRA_1PNPDK20111017_155654_000000463107_00356_50370_8344.N1	DC map used

GOM_TRA_1PNPDK20111017_173707_000000463107_00357_50371_8377.N1	DC map used
GOM_TRA_1PNPDK20111017_191720_000000473107_00358_50372_8400.N1	DC map used
GOM_TRA_1PNPDE20111017_205734_000000473107_00359_50373_8788.N1	DC map used
GOM_TRA_1PNPDE20111017_223747_000000463107_00360_50374_8811.N1	DC map used

4.2 Plot of mean dark charges per product: only products in DARK limb conditions without errors are used

No products without errors in DARK limb conditions found. No plot performed.

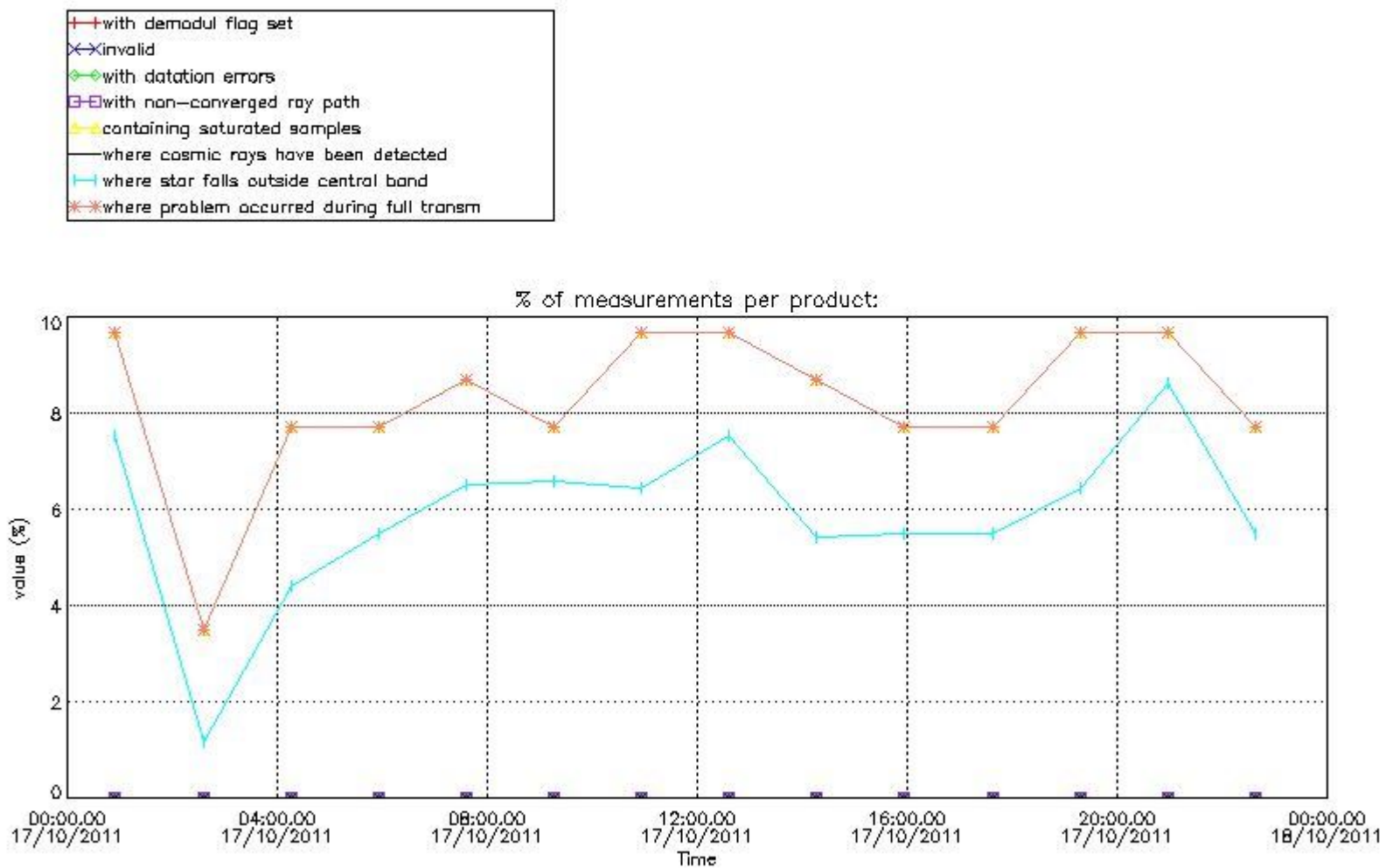
5. Demodulation flag and quality information monitoring

In this section it is presented the modulation information extracted from the pcd (product confidence data) at measurement level and information extracted from the Quality Summary dataset. Only products without errors (error flag in the MPH set to "0") are used.

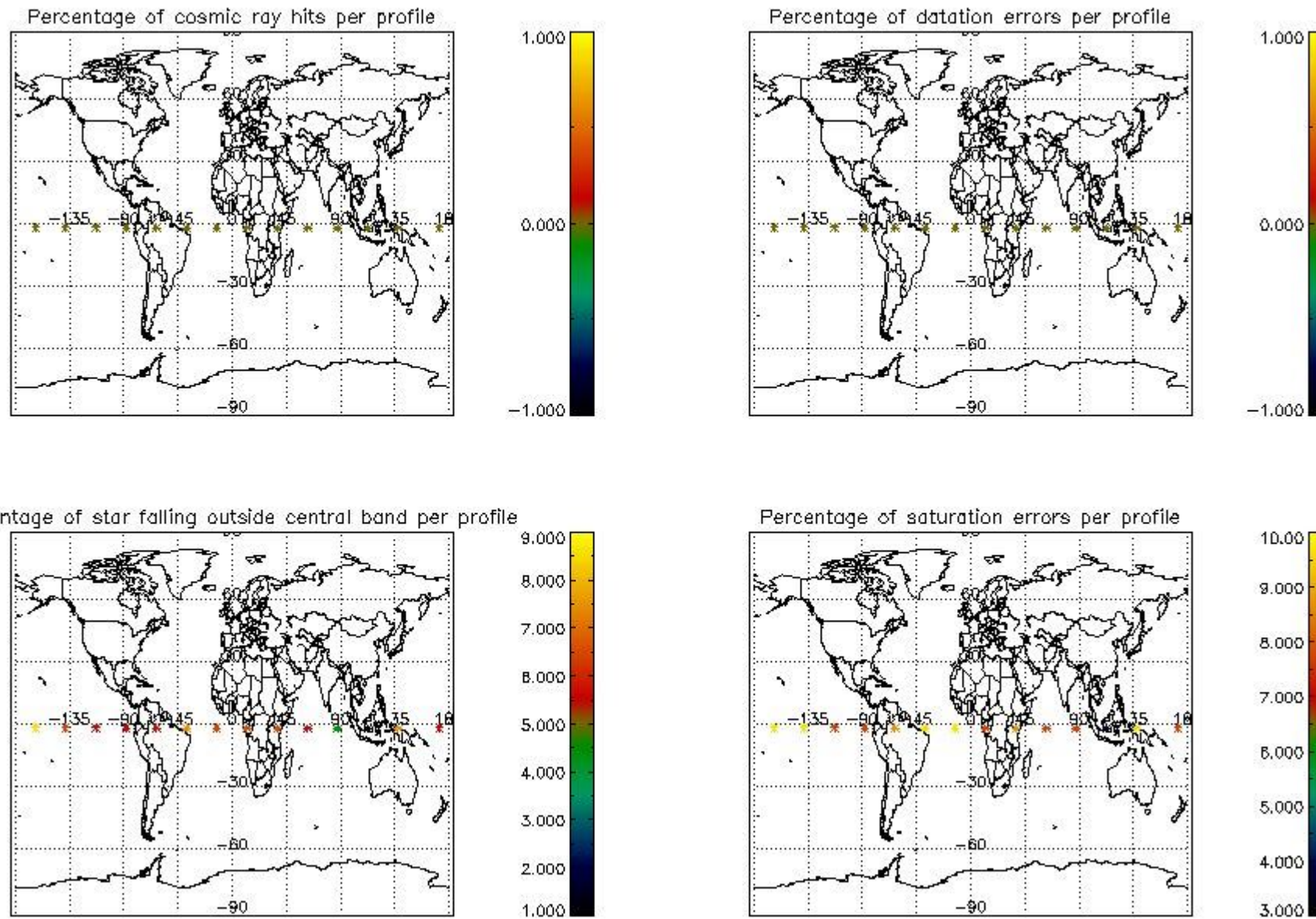
5.1 Percentage of products during reporting period with:

At least one measurement with demodulation flag set:	0.00000 %
Reference spectrum computed from DB:	0.00000 %
Reference spectrum with small number of measurements:	0.00000 %
SATU data not used:	100.000 %

5.2 Plot quality information per product (time dependant)



5.3 Plot quality information per product (world map)



6. Statistics and plot of tangent altitude of the last measurement (DARK & BRIGHT products without errors)

6.1 Statistics on tangent altitude lost:

Statistics	DARK	BRIGHT	TWILIGHT
Mean:	NaN	22.539	NaN
St. deviation:	NaN	1.6364	NaN
Maximum:	NaN	27.682	NaN
Minimum:	NaN	21.192	NaN
Number of data:	NaN	14.000	NaN

6.3 Plot for BRIGHT limb products

7.2.1 SATU NEA Statistics (table)

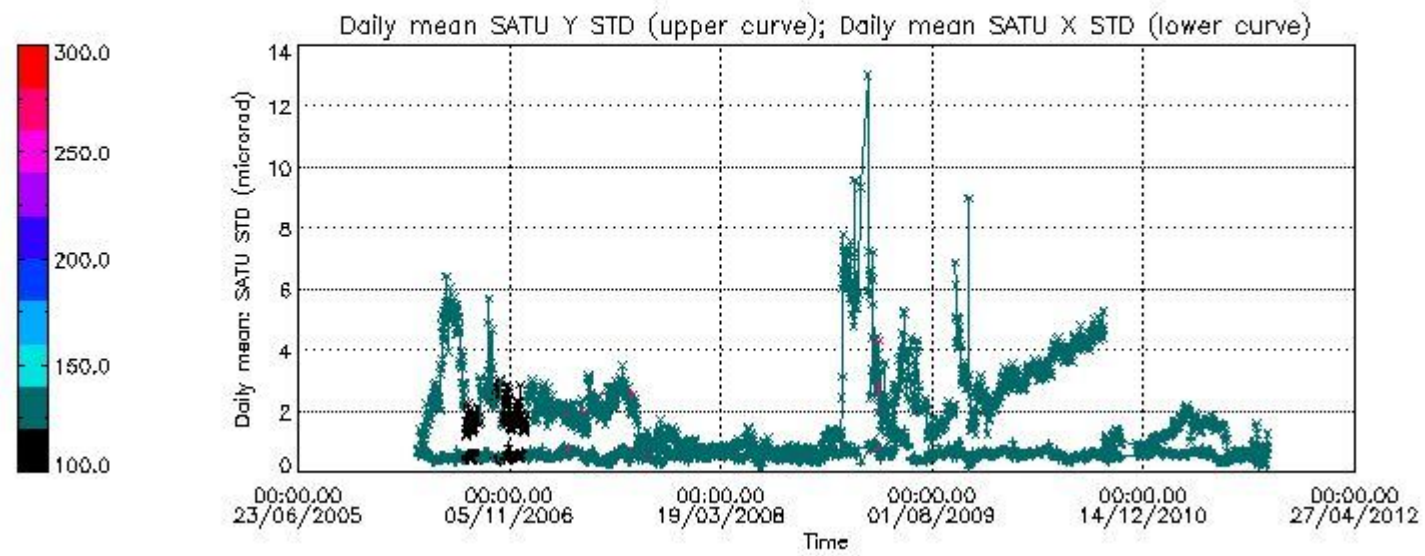
Statistics	SATU X (D)	SATU Y (D)	SATU X (B)	SATU Y (B)
Mean:	NaN	NaN	0.28385	-0.17123
St. deviation:	NaN	NaN	0.90528	1.0358
Maximum:	NaN	NaN	7.7000	4.4000
Minimum:	NaN	NaN	-3.5000	-6.7000
Number of data:	NaN	NaN	16100.	16100.
90Percentile:	NaN	NaN	1.5000	1.2000

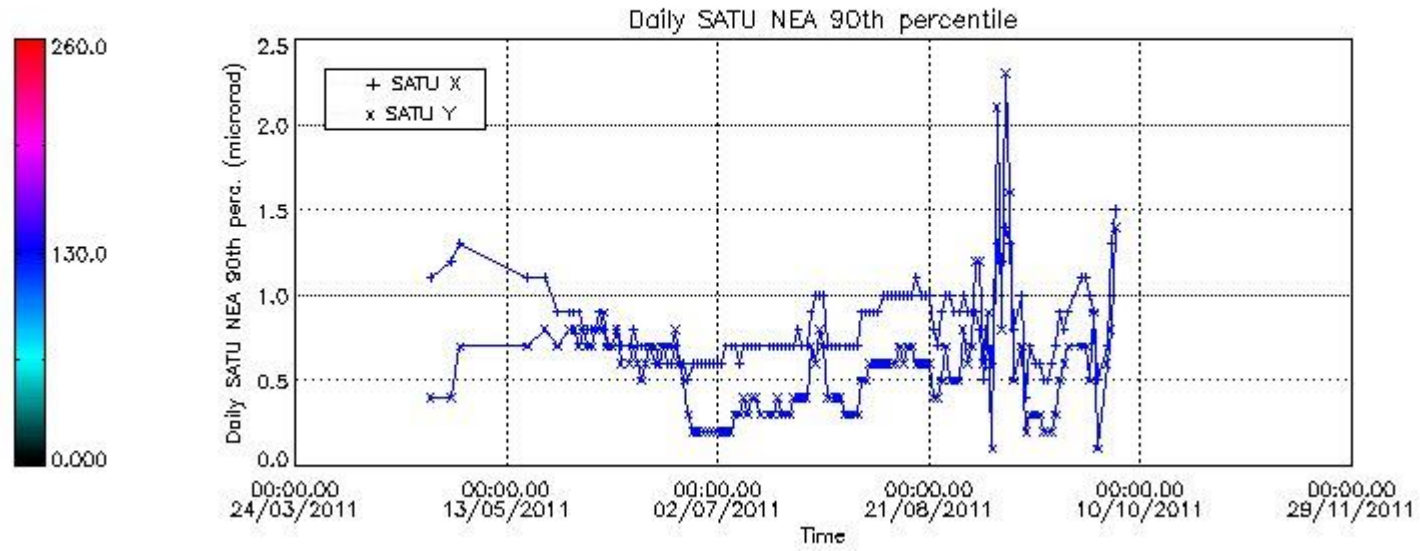
7.2.2 Trend of daily SATU NEA St. deviation since 1st April 2006 (dark limb) and of daily SATU NEA 90th percentile since May 2011

The long term trend of the SATU 'X' and 'Y' standard deviations should be constant during the whole mission.

The colorbar represents the start tangent altitude (km) of the occultations.

Upper curve: STD of SATU Y axis
 Lower curve: STD of SATU X axis

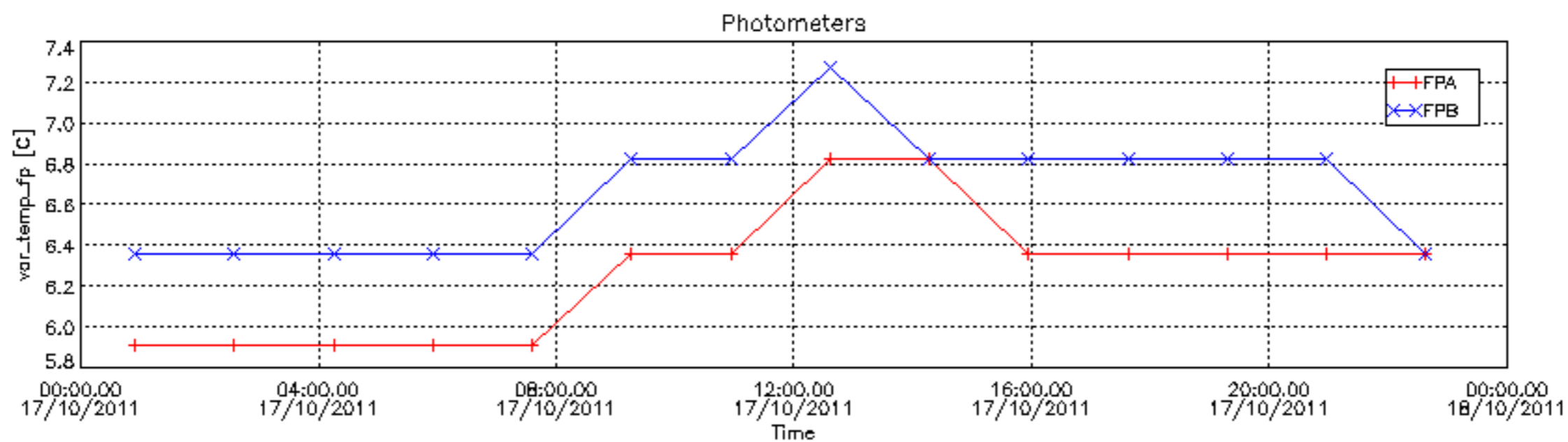
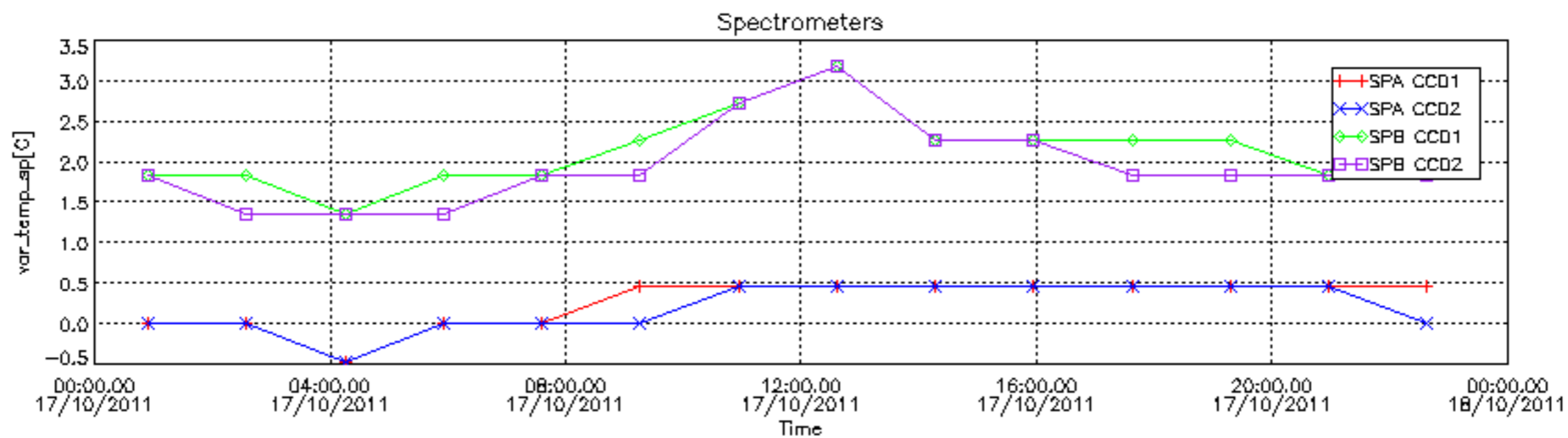


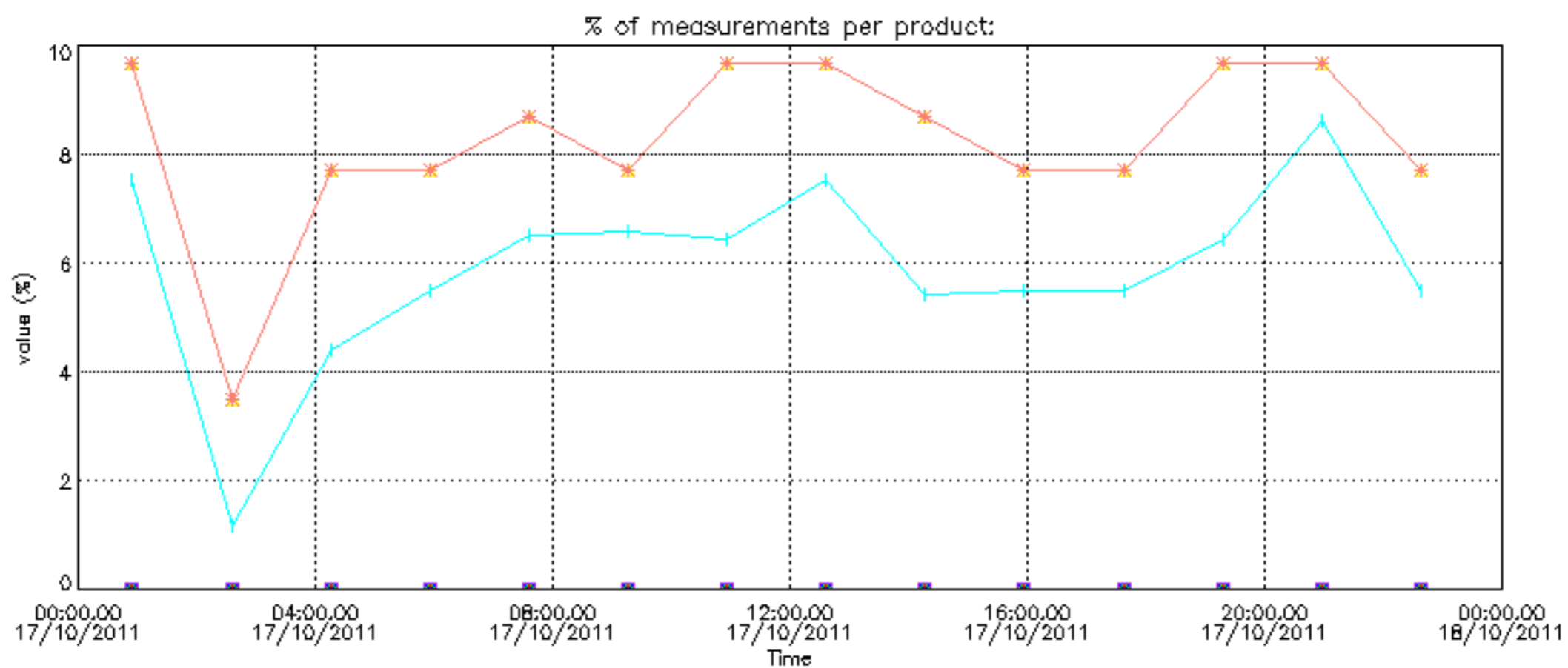
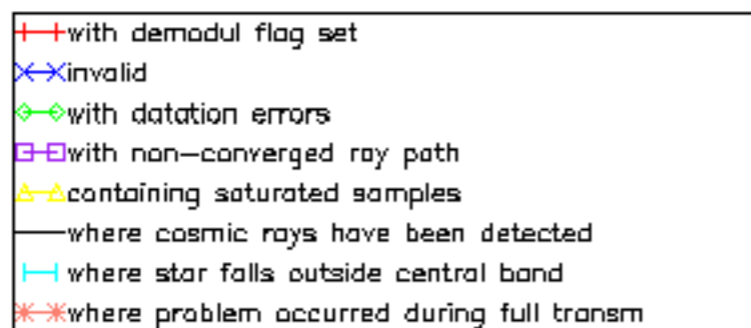


8. Auxiliary Data Files used for the production reported in section 2.4

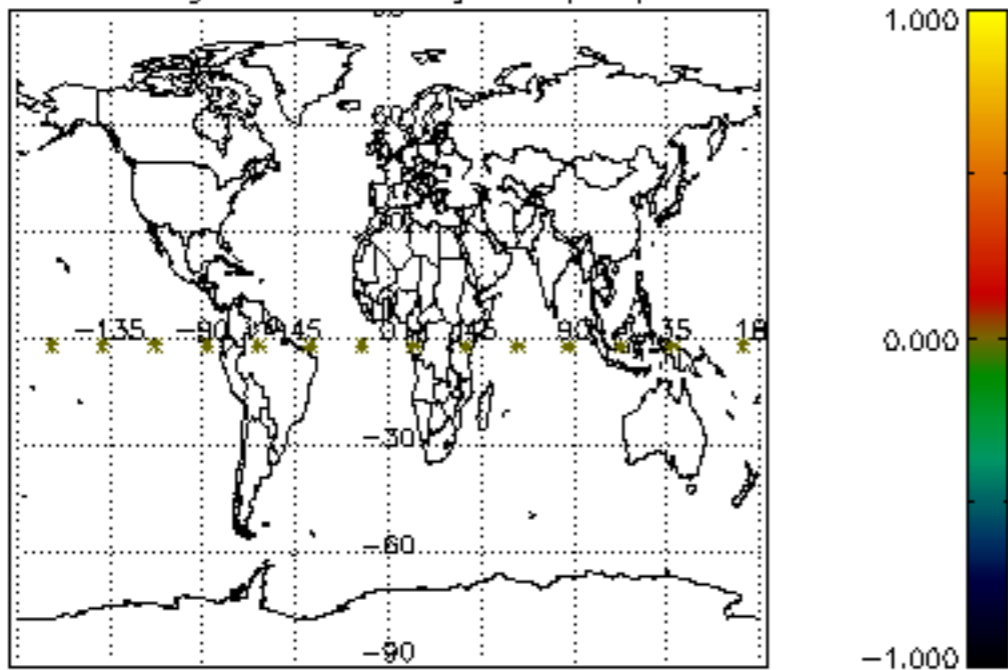
The number reported in the third column indicates since which file (see list in section 2.4) the corresponding auxiliary file has been used. The fourth column is the date of those product files.

Type	Auxiliary Filename	Used since product	Used since product date
INST_PHYS_CHARACTERISTICS	GOM_INS_AXVIEC20091111_143220_20030716_120000_20500101_000000	1	17-OCT-2011 00:54:55
CALIBRATION_DATABASE	GOM_CAL_AXVIEC20111004_085053_20111003_000000_20500101_000000	1	17-OCT-2011 00:54:55
LEVEL-1B_PROC_CONFIG	GOM_PR1_AXVIEC20110513_081743_20020301_000000_20500101_000000	1	17-OCT-2011 00:54:55
STAR_CATALOGUE	GOM_CAT_AXVIEC20020121_161009_20020101_000000_20200101_000000	1	17-OCT-2011 00:54:55
STELLAR_SPECTRA_DATABANK	GOM_STS_AXVIEC20091111_151504_20020101_160000_20500101_000000	1	17-OCT-2011 00:54:55
ECMWF_FILE	AUX_ECF_AXNECM20111016_062116_20111016_210000_20111017_090000	1	17-OCT-2011 00:54:55
ECMWF_FILE	AUX_ECF_AXNECM20111016_182116_20111017_030000_20111017_150000	3	17-OCT-2011 04:15:21
ECMWF_FILE	AUX_ECA_AXNECM20111017_063444_20111016_210000_20111017_090000	5	17-OCT-2011 07:35:48
ECMWF_FILE	AUX_ECF_AXNECM20111017_063445_20111017_090000_20111017_210000	6	17-OCT-2011 09:16:01
ECMWF_FILE	AUX_ECF_AXNECM20111017_063446_20111017_150000_20111018_030000	10	17-OCT-2011 15:56:54
ECMWF_FILE	AUX_ECA_AXNECM20111017_175443_20111017_090000_20111017_210000	11	17-OCT-2011 17:37:07
ECMWF_FILE	AUX_ECF_AXNECM20111017_063446_20111017_210000_20111018_090000	14	17-OCT-2011 22:37:47
OPTIONAL_ECMWF_FILE	MISSING	1	17-OCT-2011 00:54:55
ORBIT_DATA_FILE	AUX_FPO_AXVPDS20111016_102113_20111015_194017_20111025_201348	1	17-OCT-2011 00:54:55
ORBIT_DATA_FILE	AUX_FPO_AXVPDS20111017_101444_20111016_190333_20111026_211717	6	17-OCT-2011 09:16:01

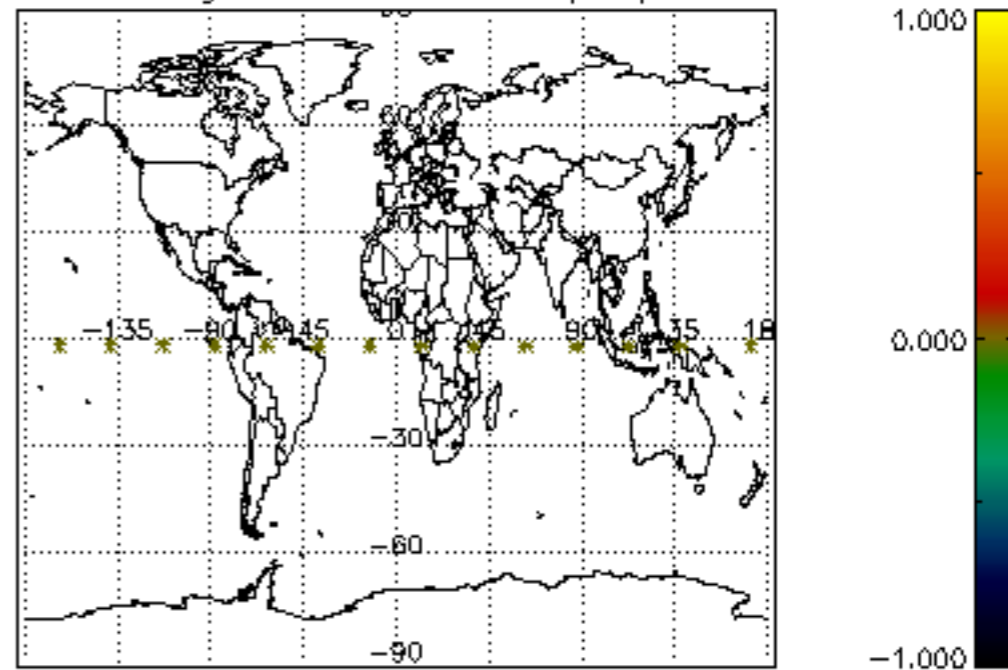




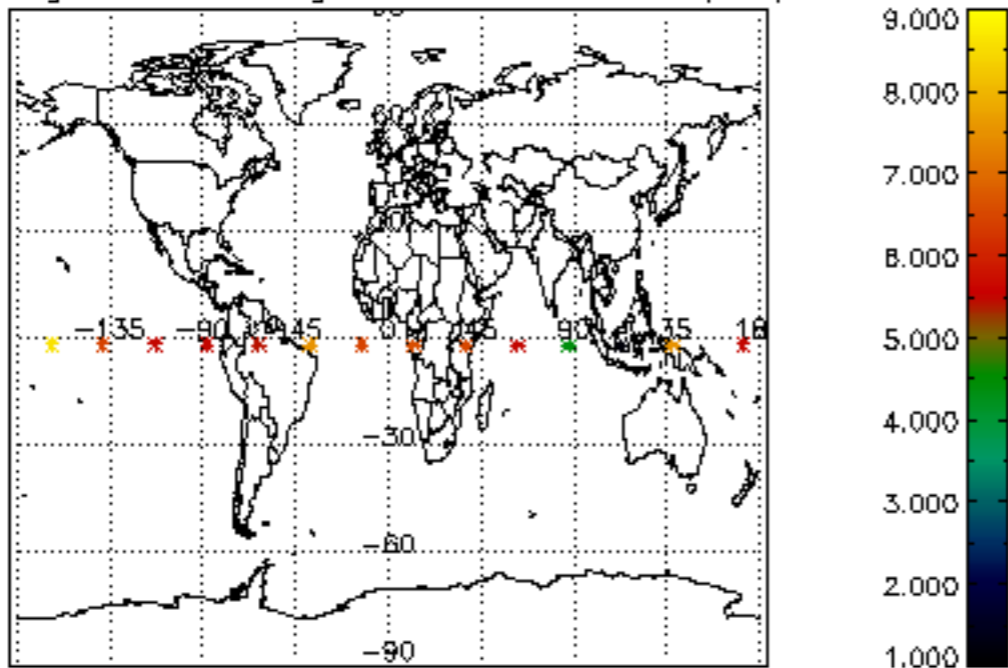
Percentage of cosmic ray hits per profile



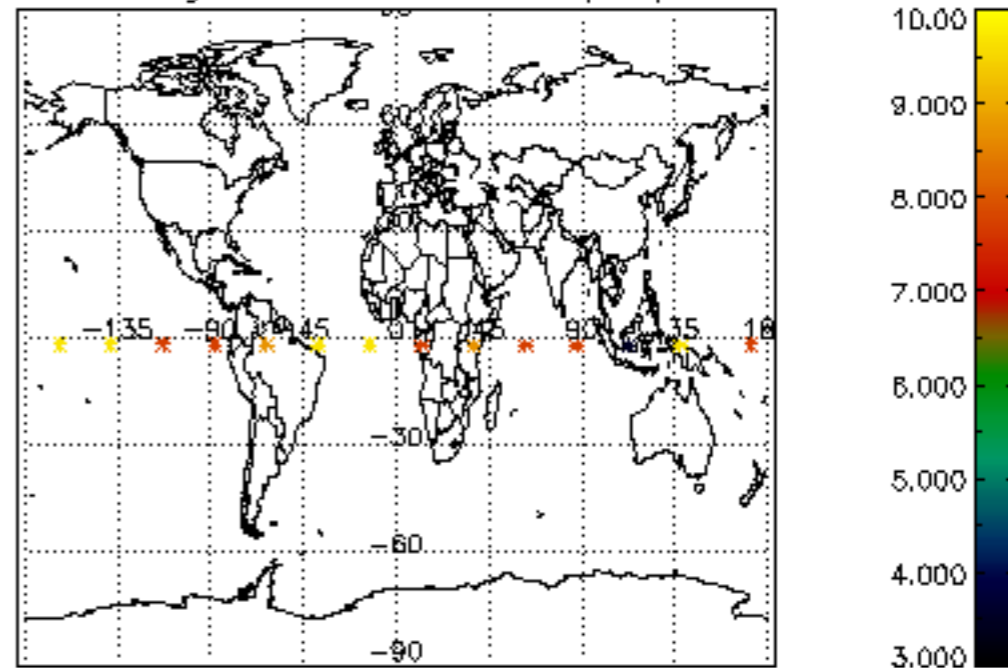
Percentage of datation errors per profile



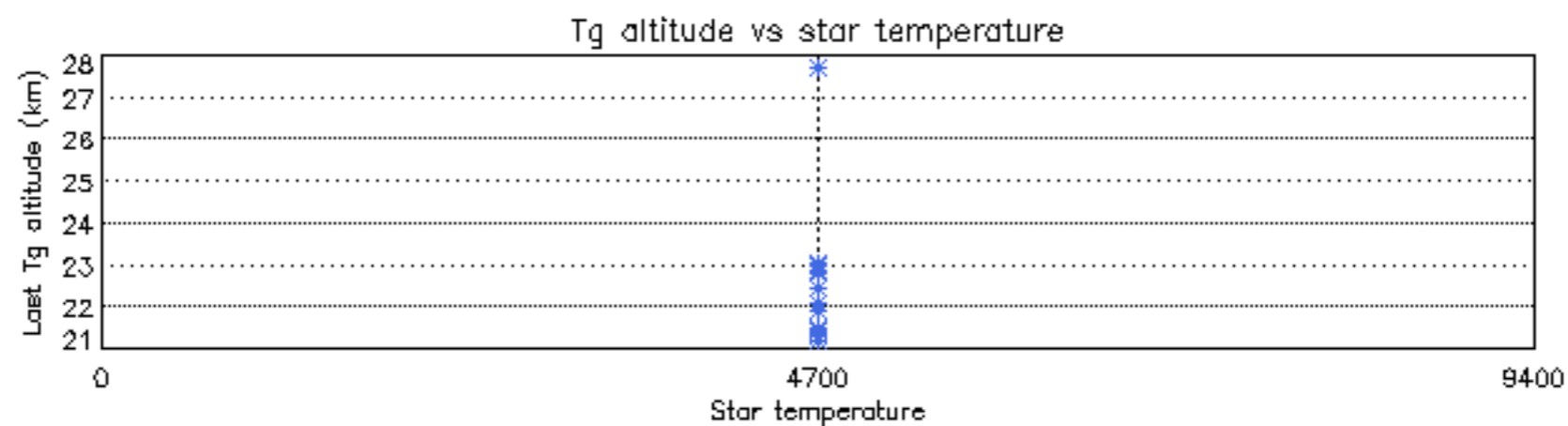
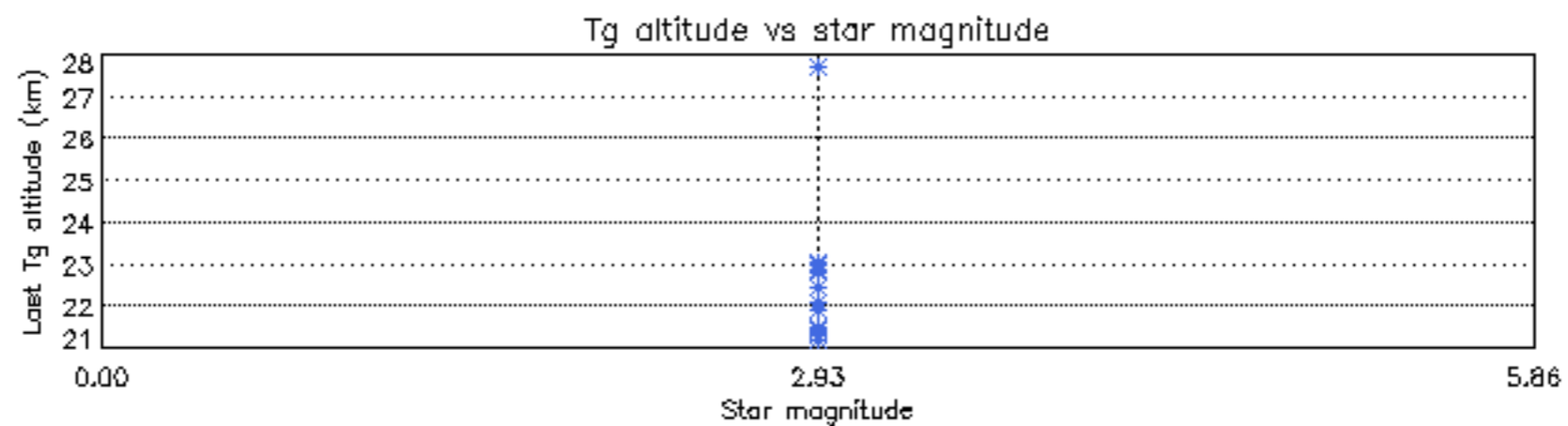
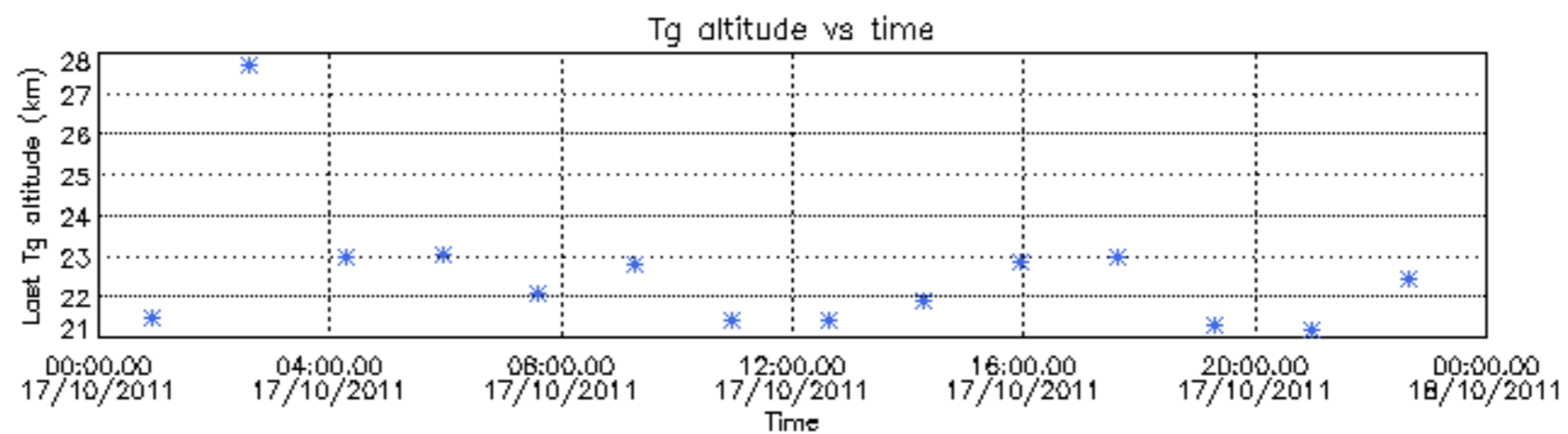
Percentage of star falling outside central band per profile

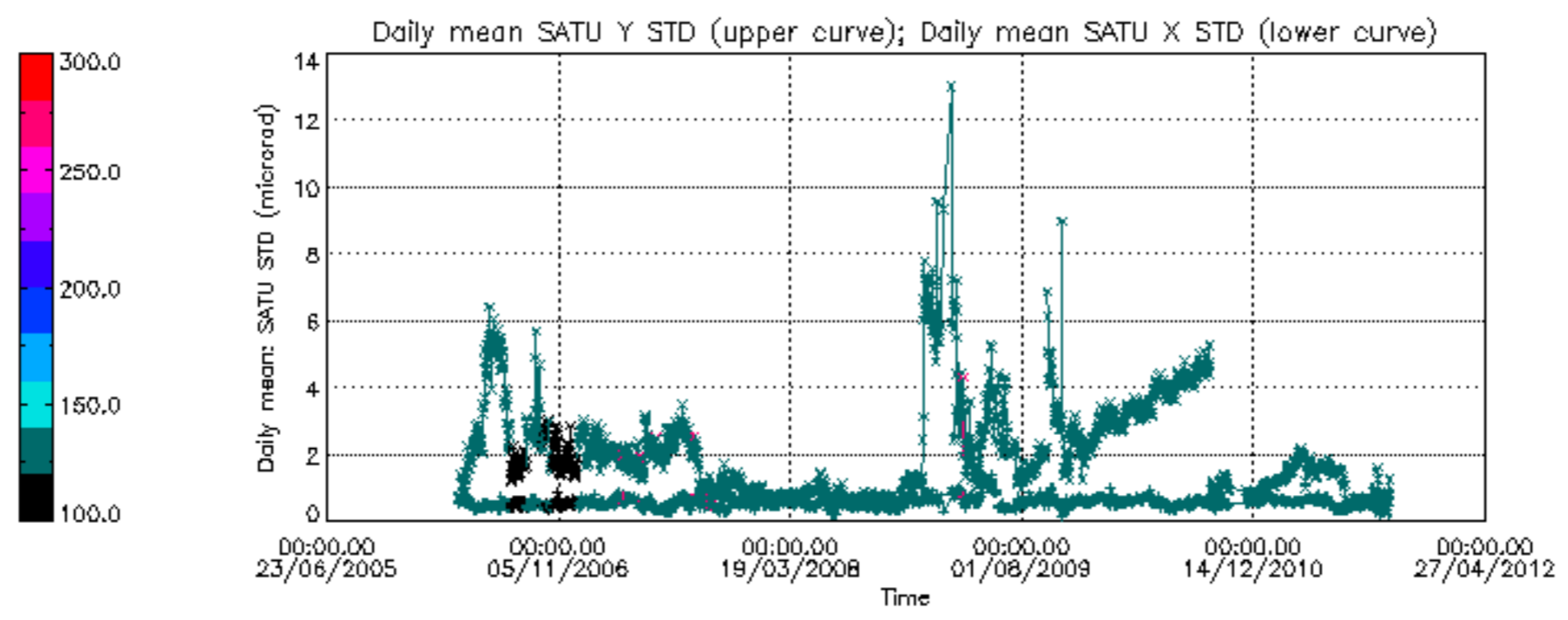


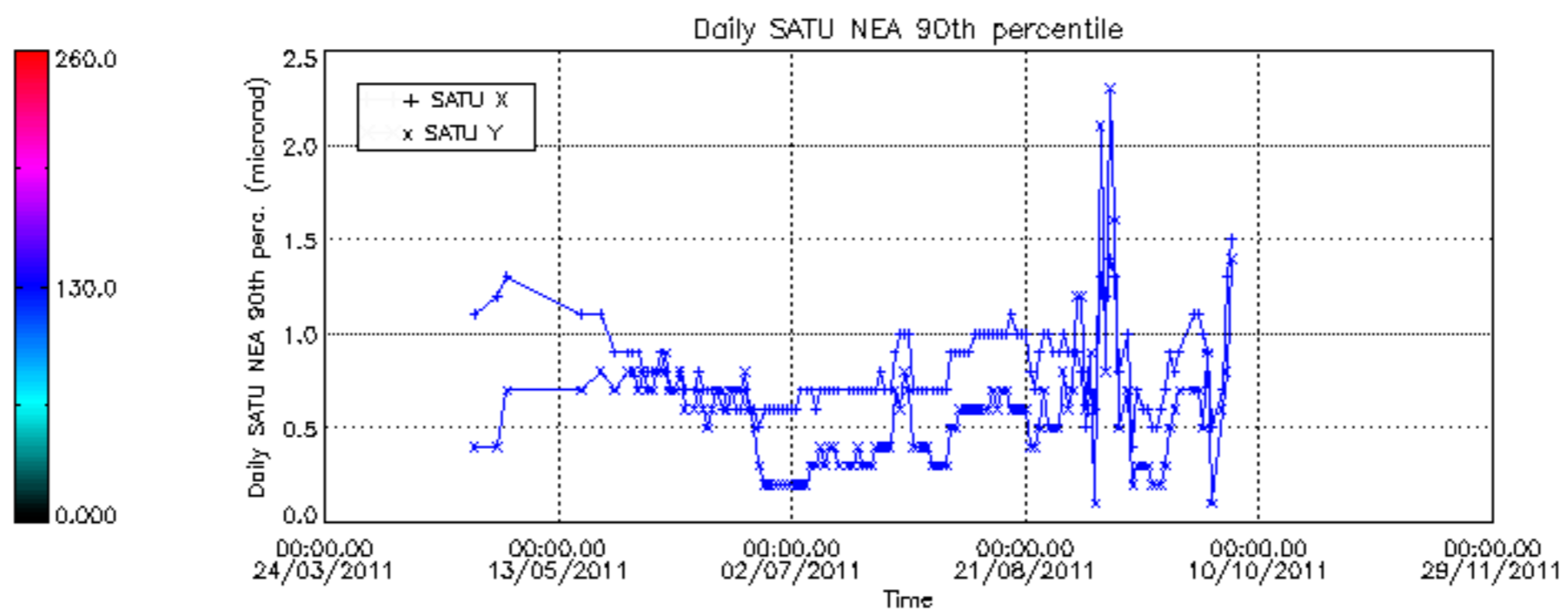
Percentage of saturation errors per profile



Tangent altitude at which the star is lost







/nas3/ENVISAT/GOMOS/GOM_NL__0P/GOM_NL__0PNPDE20111002_214039_00000423107_00144_50158_6530.N1
1; 2617.1; 02-OCT-2011 21:40:39; Bright; 42.5; 53; 43Bet And ; 2.05; 3300;occ; 85; 0;50158
/nas3/ENVISAT/GOMOS/GOM_NL__0P/GOM_NL__0PNPDE20111002_223444_000011363107_00144_50158_6531.N1
1; -151.2; 02-OCT-2011 22:34:44; Dark ; 54.5; 37; 25Del CMA ; 1.83; 5900;occ; 109; 0;50158
2; 936.0; 02-OCT-2011 22:52:51; Dark ; 49.5; 157; The1Eri ; 2.91; 9300;occ; 99; 0;50159
/nas3/ENVISAT/GOMOS/GOM_NL__0P/GOM_NL__0PNPDK20111002_182012_000033093107_00142_50156_5389.N1
1; 2618.4; 02-OCT-2011 18:20:12; Bright; 47.5; 53; 43Bet And ; 2.05; 3300;occ; 95; 0;50156
2; 3035.8; 02-OCT-2011 18:27:09; Bright; 41.0; 110; 37Del Cas ; 2.68; 8900;occ; 82; 0;50156
3; 3212.6; 02-OCT-2011 18:30:06; Bright; 51.0; 160; 23Gam Per ; 2.93; 4700;occ; 102; 0;50156
4; 5594.7; 02-OCT-2011 19:09:48; Dark ; 47.0; 132; 15Rho Pup ; 2.80; 6900;occ; 94; 0;50156
5; 5860.2; 02-OCT-2011 19:14:14; Dark ; 68.0; 37; 25Del CMA ; 1.83; 5900;occ; 136; 0;50156
/nas3/ENVISAT/GOMOS/GOM_NL__0P/GOM_NL__0PNPDK20111002_200025_000033093107_00143_50157_5390.N1
1; 2617.7; 02-OCT-2011 20:00:25; Bright; 45.5; 53; 43Bet And ; 2.05; 3300;occ; 91; 0;50157
2; 3035.2; 02-OCT-2011 20:07:23; Bright; 41.5; 110; 37Del Cas ; 2.68; 8900;occ; 83; 0;50157
3; 5861.4; 02-OCT-2011 20:54:29; Dark ; 66.0; 37; 25Del CMA ; 1.83; 5900;occ; 132; 0;50157
/nas3/ENVISAT/GOMOS/GOM_NL__0P/GOM_NL__0PNPDE20111003_002332_00000553107_00146_50160_6532.N1
1; 363.1; 03-OCT-2011 00:23:32; Dark ; 56.0; 108; Alp Col ; 2.65; 15200;occ; 112; 0;50160
/nas3/ENVISAT/GOMOS/GOM_NL__0P/GOM_NL__0PNPDE20111003_220654_000028643107_00159_50173_6535.N1
1; 382.9; 03-OCT-2011 22:06:54; Dark ; 61.0; 108; Alp Col ; 2.65; 15200;occ; 122; 0;50173
2; 2608.3; 03-OCT-2011 22:43:59; Bright; 45.5; 53; 43Bet And ; 2.05; 3300;occ; 91; 0;50173
3; 3196.6; 03-OCT-2011 22:53:47; Bright; 50.5; 160; 23Gam Per ; 2.93; 4700;occ; 101; 0;50173
/nas3/ENVISAT/GOMOS/GOM_NL__0P/GOM_NL__0PNPDK20111003_065601_000005743107_00149_50163_5391.N1
1; -144.3; 03-OCT-2011 06:56:01; Dark ; 72.5; 37; 25Del CMA ; 1.83; 5900;occ; 145; 0;50163
2; 369.2; 03-OCT-2011 07:04:34; Dark ; 61.5; 108; Alp Col ; 2.65; 15200;occ; 123; 0;50164
/nas3/ENVISAT/GOMOS/GOM_NL__0P/GOM_NL__0PNPDK20111003_075150_000032393107_00150_50164_5392.N1
1; -2808.7; 03-OCT-2011 07:51:50; Bright; 49.0; 160; 23Gam Per ; 2.93; 4700;occ; 98; 0;50164
2; -142.9; 03-OCT-2011 08:36:16; Dark ; 68.0; 37; 25Del CMA ; 1.83; 5900;occ; 136; 0;50164
3; 370.9; 03-OCT-2011 08:44:50; Dark ; 60.0; 108; Alp Col ; 2.65; 15200;occ; 120; 0;50165
/nas3/ENVISAT/GOMOS/GOM_NL__0P/GOM_NL__0PNPDK20111003_093203_000032423107_00151_50165_5393.N1
1; -2809.7; 03-OCT-2011 09:32:03; Bright; 50.5; 160; 23Gam Per ; 2.93; 4700;occ; 101; 0;50165
2; -141.5; 03-OCT-2011 10:16:32; Dark ; 61.5; 37; 25Del CMA ; 1.83; 5900;occ; 123; 0;50165
3; 372.5; 03-OCT-2011 10:25:06; Dark ; 60.0; 108; Alp Col ; 2.65; 15200;occ; 120; 0;50166
/nas3/ENVISAT/GOMOS/GOM_NL__0P/GOM_NL__0PNPDK20111003_110225_000038363107_00152_50166_5394.N1
1; 2612.3; 03-OCT-2011 11:02:25; Bright; 47.0; 53; 43Bet And ; 2.05; 3300;occ; 94; 0;50166
2; 3203.1; 03-OCT-2011 11:12:16; Bright; 50.0; 160; 23Gam Per ; 2.93; 4700;occ; 100; 0;50166
3; 5873.7; 03-OCT-2011 11:56:47; Dark ; 55.5; 37; 25Del CMA ; 1.83; 5900;occ; 111; 0;50166
4; 6387.7; 03-OCT-2011 12:05:21; Dark ; 61.5; 108; Alp Col ; 2.65; 15200;occ; 123; 0;50167
/nas3/ENVISAT/GOMOS/GOM_NL__0P/GOM_NL__0PNPDK20111003_124239_000038403107_00153_50167_5395.N1
1; 2611.8; 03-OCT-2011 12:42:39; Bright; 45.0; 53; 43Bet And ; 2.05; 3300;occ; 90; 0;50167
2; 3202.2; 03-OCT-2011 12:52:29; Bright; 49.5; 160; 23Gam Per ; 2.93; 4700;occ; 99; 0;50167
3; 5875.1; 03-OCT-2011 13:37:02; Dark ; 66.5; 37; 25Del CMA ; 1.83; 5900;occ; 133; 0;50167
4; 6173.3; 03-OCT-2011 13:42:00; Dark ; 59.5; 0; ; 0.00; 0;occ; 119; 0;50168
5; 6389.3; 03-OCT-2011 13:45:36; Dark ; 62.5; 108; Alp Col ; 2.65; 15200;occ; 125; 0;50168
/nas3/ENVISAT/GOMOS/GOM_NL__0P/GOM_NL__0PNPDK20111003_142252_000038413107_00154_50168_5396.N1
1; 2611.2; 03-OCT-2011 14:22:52; Bright; 44.0; 53; 43Bet And ; 2.05; 3300;occ; 88; 0;50168
2; 3201.4; 03-OCT-2011 14:32:42; Bright; 48.0; 160; 23Gam Per ; 2.93; 4700;occ; 96; 0;50168
3; 5948.9; 03-OCT-2011 15:18:30; Dark ; 55.0; 23; 21Eps CMA ; 1.50; 26000;occ; 110; 0;50168
4; 6174.6; 03-OCT-2011 15:22:15; Dark ; 59.5; 0; ; 0.00; 0;occ; 119; 0;50169
5; 6390.9; 03-OCT-2011 15:25:52; Dark ; 61.5; 108; Alp Col ; 2.65; 15200;occ; 123; 0;50169
/nas3/ENVISAT/GOMOS/GOM_NL__0P/GOM_NL__0PNPDK20111003_160306_000038403107_00155_50169_5397.N1
1; 2610.6; 03-OCT-2011 16:03:06; Bright; 47.0; 53; 43Bet And ; 2.05; 3300;occ; 94; 0;50169
2; 3200.5; 03-OCT-2011 16:12:55; Bright; 51.5; 160; 23Gam Per ; 2.93; 4700;occ; 103; 0;50169
3; 5950.3; 03-OCT-2011 16:58:45; Dark ; 55.0; 23; 21Eps CMA ; 1.50; 26000;occ; 110; 0;50169
4; 6175.9; 03-OCT-2011 17:02:31; Dark ; 59.5; 0; ; 0.00; 0;occ; 119; 0;50170
5; 6392.6; 03-OCT-2011 17:06:07; Dark ; 59.0; 108; Alp Col ; 2.65; 15200;occ; 118; 0;50170
/nas3/ENVISAT/GOMOS/GOM_NL__0P/GOM_NL__0PNPDK20111003_202301_000002793107_00158_50172_5399.N1
1; 164.2; 03-OCT-2011 20:23:01; Dark ; 59.5; 0; ; 0.00; 0;occ; 119; 0;50172
2; 381.4; 03-OCT-2011 20:26:38; Dark ; 62.0; 108; Alp Col ; 2.65; 15200;occ; 124; 0;50172
/nas3/ENVISAT/GOMOS/GOM_NL__0P/GOM_NL__0PNPDE20111003_051546_000034033107_00148_50162_6533.N1
1; -145.7; 03-OCT-2011 05:15:46; Dark ; 59.5; 37; 25Del CMA ; 1.83; 5900;occ; 119; 0;50162
2; 367.8; 03-OCT-2011 05:24:19; Dark ; 60.0; 108; Alp Col ; 2.65; 15200;occ; 120; 0;50163
3; 2614.2; 03-OCT-2011 06:01:45; Bright; 43.5; 53; 43Bet And ; 2.05; 3300;occ; 87; 0;50163
4; 3206.2; 03-OCT-2011 06:11:37; Bright; 51.5; 160; 23Gam Per ; 2.93; 4700;occ; 103; 0;50163
/nas3/ENVISAT/GOMOS/GOM_NL__0P/GOM_NL__0PNPDE20111004_030402_000024833107_00162_50176_6536.N1
1; 169.1; 04-OCT-2011 03:04:02; Dark ; 59.5; 0; ; 0.00; 0;occ; 119; 0;50176
2; 387.5; 04-OCT-2011 03:07:40; Dark ; 61.5; 108; Alp Col ; 2.65; 15200;occ; 123; 0;50176
3; 2606.5; 04-OCT-2011 03:44:39; Bright; 46.0; 53; 43Bet And ; 2.05; 3300;occ; 92; 0;50176
/nas3/ENVISAT/GOMOS/GOM_NL__0P/GOM_NL__0PNPDE20111004_044756_000022613107_00163_50177_6537.N1

```

1; 389.0; 04-OCT-2011 04:47:56; Dark ; 62.0; 108; Alp Col ; 2.65; 15200;occ; 124; 0;50177
2; 2605.9; 04-OCT-2011 05:24:53; Bright; 44.5; 53; 43Bet And ; 2.05; 3300;occ; 89; 0;50177
/nas3/ENVISAT/GOMOS/GOM_NL__0P/GOM_NL__0PNPDE20111004_062811_000028523107_00164_50178_6538.N1
1; 390.5; 04-OCT-2011 06:28:11; Dark ; 62.0; 108; Alp Col ; 2.65; 15200;occ; 124; 0;50178
2; 2605.5; 04-OCT-2011 07:05:06; Bright; 47.5; 53; 43Bet And ; 2.05; 3300;occ; 95; 0;50178
3; 3192.0; 04-OCT-2011 07:14:53; Bright; 51.0; 160; 23Gam Per ; 2.93; 4700;occ; 102; 0;50178
/nas3/ENVISAT/GOMOS/GOM_NL__0P/GOM_NL__0PNPDK20111004_080827_000000613107_00165_50179_5403.N1
1; 391.9; 04-OCT-2011 08:08:27; Dark ; 62.0; 108; Alp Col ; 2.65; 15200;occ; 124; 0;50179
/nas3/ENVISAT/GOMOS/GOM_NL__0P/GOM_NL__0PNPDK20111004_084520_000038633107_00165_50179_5404.N1
1; 2604.9; 04-OCT-2011 08:45:20; Bright; 47.5; 53; 43Bet And ; 2.05; 3300;occ; 95; 0;50179
2; 3191.1; 04-OCT-2011 08:55:06; Bright; 49.0; 160; 23Gam Per ; 2.93; 4700;occ; 98; 0;50179
3; 6407.5; 04-OCT-2011 09:48:42; Dark ; 61.0; 108; Alp Col ; 2.65; 15200;occ; 122; 0;50180
/nas3/ENVISAT/GOMOS/GOM_NL__0P/GOM_NL__0PNPDK20111004_102533_000034163107_00166_50180_5405.N1
1; 2604.3; 04-OCT-2011 10:25:33; Bright; 47.5; 53; 43Bet And ; 2.05; 3300;occ; 95; 0;50180
2; 3190.0; 04-OCT-2011 10:35:19; Bright; 51.5; 160; 23Gam Per ; 2.93; 4700;occ; 103; 0;50180
3; 5965.3; 04-OCT-2011 11:21:34; Dark ; 55.0; 23; 21Eps CMa ; 1.50; 26000;occ; 110; 0;50180
/nas3/ENVISAT/GOMOS/GOM_NL__0P/GOM_NL__0PNPDK20111004_130533_000002823107_00168_50182_5406.N1
1; 176.4; 04-OCT-2011 13:05:33; Dark ; 59.5; 0; ; 0.00; 0;occ; 119; 0;50182
2; 396.5; 04-OCT-2011 13:09:13; Dark ; 62.0; 108; Alp Col ; 2.65; 15200;occ; 124; 0;50182
/nas3/ENVISAT/GOMOS/GOM_NL__0P/GOM_NL__0PNPDK20111004_134600_000038713107_00168_50182_5407.N1
1; 2603.1; 04-OCT-2011 13:46:00; Bright; 42.5; 53; 43Bet And ; 2.05; 3300;occ; 85; 0;50182
2; 3188.2; 04-OCT-2011 13:55:45; Bright; 47.5; 160; 23Gam Per ; 2.93; 4700;occ; 95; 0;50182
3; 6412.1; 04-OCT-2011 14:49:28; Dark ; 62.5; 108; Alp Col ; 2.65; 15200;occ; 125; 0;50183
/nas3/ENVISAT/GOMOS/GOM_NL__0P/GOM_NL__0PNPDK20111004_153558_000000483107_00169_50183_5408.N1
1;-2826.7; 04-OCT-2011 15:35:58; Bright; 48.5; 160; 23Gam Per ; 2.93; 4700;occ; 97; 0;50183
/nas3/ENVISAT/GOMOS/GOM_NL__0P/GOM_NL__0PNPDE20111012_213220_000026983107_00288_50302_6539.N1
1; 109.0; 12-OCT-2011 21:32:20; Dark ; 59.5; 0; ; 0.00; 0;occ; 119; 0;50302
2; 2765.0; 12-OCT-2011 22:16:36; Bright; 42.5; 73; 57Gam1And ; 2.26; 13100;occ; 85; 0;50302
/nas3/ENVISAT/GOMOS/GOM_NL__0P/GOM_NL__0PNPDE20111012_231235_000027003107_00289_50303_6540.N1
1; 109.9; 12-OCT-2011 23:12:35; Dark ; 59.5; 0; ; 0.00; 0;occ; 119; 0;50303
2; 2764.3; 12-OCT-2011 23:56:49; Bright; 46.0; 73; 57Gam1And ; 2.26; 13100;occ; 92; 0;50303
/nas3/ENVISAT/GOMOS/GOM_NL__0P/GOM_NL__0PNPDK20111012_145121_000000593107_00284_50298_5411.N1
1; 105.5; 12-OCT-2011 14:51:21; Dark ; 59.5; 0; ; 0.00; 0;occ; 119; 0;50298
/nas3/ENVISAT/GOMOS/GOM_NL__0P/GOM_NL__0PNPDK20111012_153543_000034123107_00284_50298_5412.N1
1; 2767.9; 12-OCT-2011 15:35:43; Bright; 45.5; 73; 57Gam1And ; 2.26; 13100;occ; 91; 0;50298
2; 6120.4; 12-OCT-2011 16:31:36; Dark ; 59.5; 0; ; 0.00; 0;occ; 119; 0;50299
/nas3/ENVISAT/GOMOS/GOM_NL__0P/GOM_NL__0PNPDE20111013_005250_000026963107_00290_50304_6541.N1
1; 110.8; 13-OCT-2011 00:52:50; Dark ; 59.5; 0; ; 0.00; 0;occ; 119; 0;50304
2; 2763.5; 13-OCT-2011 01:37:02; Bright; 44.0; 73; 57Gam1And ; 2.26; 13100;occ; 88; 0;50304
/nas3/ENVISAT/GOMOS/GOM_NL__0P/GOM_NL__0PNPDE20111013_023304_000026973107_00291_50305_6542.N1
1; 111.7; 13-OCT-2011 02:33:04; Dark ; 59.5; 0; ; 0.00; 0;occ; 119; 0;50305
2; 2762.8; 13-OCT-2011 03:17:16; Bright; 46.5; 73; 57Gam1And ; 2.26; 13100;occ; 93; 0;50305
/nas3/ENVISAT/GOMOS/GOM_NL__0P/GOM_NL__0PNPDE20111013_041319_000026963107_00292_50306_6543.N1
1; 112.5; 13-OCT-2011 04:13:19; Dark ; 59.5; 0; ; 0.00; 0;occ; 119; 0;50306
2; 2762.6; 13-OCT-2011 04:57:29; Bright; 46.0; 73; 57Gam1And ; 2.26; 13100;occ; 92; 0;50306
/nas3/ENVISAT/GOMOS/GOM_NL__0P/GOM_NL__0PNPDE20111013_055334_000000593107_00293_50307_6544.N1
1; 113.4; 13-OCT-2011 05:53:34; Dark ; 59.5; 0; ; 0.00; 0;occ; 119; 0;50307
/nas3/ENVISAT/GOMOS/GOM_NL__0P/GOM_NL__0PNPDE20111013_213942_000003503107_00302_50316_6545.N1
1; 2755.8; 13-OCT-2011 21:39:42; Bright; 46.0; 73; 57Gam1And ; 2.26; 13100;occ; 92; 0;50316
2; 3073.9; 13-OCT-2011 21:45:00; Bright; 32.5; 160; 23Gam Per ; 2.93; 4700;occ; 65; 0;50316
/nas3/ENVISAT/GOMOS/GOM_NL__0P/GOM_NL__0PNPDE20111013_231955_000003503107_00303_50317_6546.N1
1; 2755.1; 13-OCT-2011 23:19:55; Bright; 47.5; 73; 57Gam1And ; 2.26; 13100;occ; 95; 0;50317
2; 3073.0; 13-OCT-2011 23:25:13; Bright; 32.5; 160; 23Gam Per ; 2.93; 4700;occ; 65; 0;50317
/nas3/ENVISAT/GOMOS/GOM_NL__0P/GOM_NL__0PNPDK20111013_073349_000000593107_00294_50308_5413.N1
1; 114.3; 13-OCT-2011 07:33:49; Dark ; 59.5; 0; ; 0.00; 0;occ; 119; 0;50308
/nas3/ENVISAT/GOMOS/GOM_NL__0P/GOM_NL__0PNPDK20111013_081756_000034273107_00294_50308_5414.N1
1; 2761.2; 13-OCT-2011 08:17:56; Bright; 47.5; 73; 57Gam1And ; 2.26; 13100;occ; 95; 0;50308
2; 6129.1; 13-OCT-2011 09:14:04; Dark ; 59.5; 0; ; 0.00; 0;occ; 119; 0;50309
/nas3/ENVISAT/GOMOS/GOM_NL__0P/GOM_NL__0PNPDK20111013_113822_000000513107_00296_50310_5415.N1
1; 2759.8; 13-OCT-2011 11:38:22; Bright; 51.5; 73; 57Gam1And ; 2.26; 13100;occ; 103; 0;50310
/nas3/ENVISAT/GOMOS/GOM_NL__0P/GOM_NL__0PNPDK20111013_131836_000000463107_00297_50311_5416.N1
1; 2759.1; 13-OCT-2011 13:18:36; Bright; 46.5; 73; 57Gam1And ; 2.26; 13100;occ; 93; 0;50311
/nas3/ENVISAT/GOMOS/GOM_NL__0P/GOM_NL__0PNPDK20111013_145516_000005563107_00298_50312_5417.N1
1; 2545.3; 13-OCT-2011 14:55:16; Bright; 39.0; 53; 43Bet And ; 2.05; 3300;occ; 78; 0;50312
2; 2758.5; 13-OCT-2011 14:58:49; Bright; 45.0; 73; 57Gam1And ; 2.26; 13100;occ; 90; 0;50312
3; 3077.0; 13-OCT-2011 15:04:07; Bright; 24.5; 160; 23Gam Per ; 2.93; 4700;occ; 49; 0;50312
/nas3/ENVISAT/GOMOS/GOM_NL__0P/GOM_NL__0PNPDK20111013_163902_000003423107_00299_50313_5418.N1
1; 2757.8; 13-OCT-2011 16:39:02; Bright; 46.5; 73; 57Gam1And ; 2.26; 13100;occ; 93; 0;50313

```

2; 3076.2; 13-OCT-2011 16:44:21; Bright; 24.5; 160; 23Gam Per ; 2.93; 4700;occ; 49; 0;50313
/nas3/ENVISAT/GOMOS/GOM_NL__0P/GOM_NL__0PNPDK20111013_181916_000003463107_00300_50314_5419.N1
1; 2757.1; 13-OCT-2011 18:19:16; Bright; 45.5; 73; 57Gam1And ; 2.26; 13100;occ; 91; 0;50314
2; 3075.4; 13-OCT-2011 18:24:34; Bright; 28.5; 160; 23Gam Per ; 2.93; 4700;occ; 57; 0;50314
/nas3/ENVISAT/GOMOS/GOM_NL__0P/GOM_NL__0PNPDE20111014_205557_000007713107_00316_50330_6547.N1
1; 2334.7; 14-OCT-2011 20:55:57; Bright; 46.0; 105; 6Bet Ari ; 2.64; 8900;occ; 92; 0;50330
2; 2635.6; 14-OCT-2011 21:00:57; Bright; 45.0; 173; 4Bet Tri ; 3.00; 8900;occ; 90; 0;50330
3; 2747.2; 14-OCT-2011 21:02:49; Bright; 46.0; 73; 57Gam1And ; 2.26; 13100;occ; 92; 0;50330
4; 3063.1; 14-OCT-2011 21:08:05; Bright; 43.5; 160; 23Gam Per ; 2.93; 4700;occ; 87; 0;50330
/nas3/ENVISAT/GOMOS/GOM_NL__0P/GOM_NL__0PNPDE20111014_223610_000007753107_00317_50331_6548.N1
1; 2334.1; 14-OCT-2011 22:36:10; Bright; 47.0; 105; 6Bet Ari ; 2.64; 8900;occ; 94; 0;50331
2; 2634.8; 14-OCT-2011 22:41:11; Bright; 44.5; 173; 4Bet Tri ; 3.00; 8900;occ; 89; 0;50331
3; 3062.3; 14-OCT-2011 22:48:18; Bright; 47.0; 160; 23Gam Per ; 2.93; 4700;occ; 94; 0;50331
/nas3/ENVISAT/GOMOS/GOM_NL__0P/GOM_NL__0PNPDK20111014_010526_000180793107_00304_50318_5421.N1
1;-2941.6; 14-OCT-2011 01:05:26; Bright; 37.0; 160; 23Gam Per ; 2.93; 4700;occ; 74; 0;50318
2;14671.1; 14-OCT-2011 05:58:59; Bright; 26.0; 173; 4Bet Tri ; 3.00; 8900;occ; 52; 0;50321
3;15098.8; 14-OCT-2011 06:06:07; Bright; 39.5; 160; 23Gam Per ; 2.93; 4700;occ; 79; 0;50321
/nas3/ENVISAT/GOMOS/GOM_NL__0P/GOM_NL__0PNPDK20111014_073912_000004713107_00308_50322_5422.N1
1; 2642.2; 14-OCT-2011 07:39:12; Bright; 32.0; 173; 4Bet Tri ; 3.00; 8900;occ; 64; 0;50322
2; 3070.1; 14-OCT-2011 07:46:20; Bright; 43.5; 160; 23Gam Per ; 2.93; 4700;occ; 87; 0;50322
/nas3/ENVISAT/GOMOS/GOM_NL__0P/GOM_NL__0PNPDK20111014_091926_000004713107_00309_50323_5423.N1
1; 2641.5; 14-OCT-2011 09:19:26; Bright; 32.0; 173; 4Bet Tri ; 3.00; 8900;occ; 64; 0;50323
2; 3069.3; 14-OCT-2011 09:26:33; Bright; 43.5; 160; 23Gam Per ; 2.93; 4700;occ; 87; 0;50323
/nas3/ENVISAT/GOMOS/GOM_NL__0P/GOM_NL__0PNPDK20111014_142712_00000433107_00312_50326_5424.N1
1;-2947.7; 14-OCT-2011 14:27:12; Bright; 43.5; 160; 23Gam Per ; 2.93; 4700;occ; 87; 0;50326
/nas3/ENVISAT/GOMOS/GOM_NL__0P/GOM_NL__0PNPDK20111014_155516_000007753107_00313_50327_5425.N1
1; 2336.3; 14-OCT-2011 15:55:16; Bright; 47.0; 105; 6Bet Ari ; 2.64; 8900;occ; 94; 0;50327
2; 2637.8; 14-OCT-2011 16:00:18; Bright; 45.0; 173; 4Bet Tri ; 3.00; 8900;occ; 90; 0;50327
3; 3065.4; 14-OCT-2011 16:07:25; Bright; 46.5; 160; 23Gam Per ; 2.93; 4700;occ; 93; 0;50327
/nas3/ENVISAT/GOMOS/GOM_NL__0P/GOM_NL__0PNPDK20111014_173530_000007763107_00314_50328_5426.N1
1; 2335.8; 14-OCT-2011 17:35:30; Bright; 48.5; 105; 6Bet Ari ; 2.64; 8900;occ; 97; 0;50328
2; 2637.1; 14-OCT-2011 17:40:31; Bright; 45.0; 173; 4Bet Tri ; 3.00; 8900;occ; 90; 0;50328
3; 3064.6; 14-OCT-2011 17:47:38; Bright; 47.5; 160; 23Gam Per ; 2.93; 4700;occ; 95; 0;50328
/nas3/ENVISAT/GOMOS/GOM_NL__0P/GOM_NL__0PNPDK20111014_191543_000007763107_00315_50329_5427.N1
1; 2335.2; 14-OCT-2011 19:15:43; Bright; 47.5; 105; 6Bet Ari ; 2.64; 8900;occ; 95; 0;50329
2; 2636.3; 14-OCT-2011 19:20:44; Bright; 46.5; 173; 4Bet Tri ; 3.00; 8900;occ; 93; 0;50329
3; 3063.8; 14-OCT-2011 19:27:52; Bright; 48.0; 160; 23Gam Per ; 2.93; 4700;occ; 96; 0;50329
/nas3/ENVISAT/GOMOS/GOM_NL__0P/GOM_NL__0PNPDE20111015_001623_000007743107_00318_50332_6549.N1
1; 2333.6; 15-OCT-2011 00:16:23; Bright; 47.0; 105; 6Bet Ari ; 2.64; 8900;occ; 94; 0;50332
2; 2634.1; 15-OCT-2011 00:21:24; Bright; 46.5; 173; 4Bet Tri ; 3.00; 8900;occ; 93; 0;50332
3; 3061.6; 15-OCT-2011 00:28:31; Bright; 47.0; 160; 23Gam Per ; 2.93; 4700;occ; 94; 0;50332
/nas3/ENVISAT/GOMOS/GOM_NL__0P/GOM_NL__0PNPDE20111015_015637_000067863107_00319_50333_6550.N1
1; 2333.1; 15-OCT-2011 01:56:37; Bright; 47.0; 105; 6Bet Ari ; 2.64; 8900;occ; 94; 0;50333
2; 2633.3; 15-OCT-2011 02:01:37; Bright; 47.0; 173; 4Bet Tri ; 3.00; 8900;occ; 94; 0;50333
3; 3060.7; 15-OCT-2011 02:08:44; Bright; 44.5; 160; 23Gam Per ; 2.93; 4700;occ; 89; 0;50333
4; 8346.5; 15-OCT-2011 03:36:50; Bright; 47.0; 105; 6Bet Ari ; 2.64; 8900;occ; 94; 0;50334
5; 8646.8; 15-OCT-2011 03:41:50; Bright; 47.0; 173; 4Bet Tri ; 3.00; 8900;occ; 94; 0;50334
6; 9074.0; 15-OCT-2011 03:48:58; Bright; 46.0; 160; 23Gam Per ; 2.93; 4700;occ; 92; 0;50334
/nas3/ENVISAT/GOMOS/GOM_NL__0P/GOM_NL__0PNPDE20111015_051704_000007743107_00321_50335_6551.N1
1; 2332.2; 15-OCT-2011 05:17:04; Bright; 45.5; 105; 6Bet Ari ; 2.64; 8900;occ; 91; 0;50335
2; 2632.2; 15-OCT-2011 05:22:04; Bright; 46.5; 173; 4Bet Tri ; 3.00; 8900;occ; 93; 0;50335
3; 3059.3; 15-OCT-2011 05:29:11; Bright; 47.0; 160; 23Gam Per ; 2.93; 4700;occ; 94; 0;50335
/nas3/ENVISAT/GOMOS/GOM_NL__0P/GOM_NL__0PNPDE20111015_065717_000007743107_00322_50336_6552.N1
1; 2331.6; 15-OCT-2011 06:57:17; Bright; 46.5; 105; 6Bet Ari ; 2.64; 8900;occ; 93; 0;50336
2; 2631.5; 15-OCT-2011 07:02:17; Bright; 46.0; 173; 4Bet Tri ; 3.00; 8900;occ; 92; 0;50336
3; 3058.6; 15-OCT-2011 07:09:24; Bright; 47.0; 160; 23Gam Per ; 2.93; 4700;occ; 94; 0;50336
/nas3/ENVISAT/GOMOS/GOM_NL__0P/GOM_NL__0PNPDE20111015_202403_000004733107_00330_50344_6553.N1
1; 2625.9; 15-OCT-2011 20:24:03; Bright; 45.5; 173; 4Bet Tri ; 3.00; 8900;occ; 91; 0;50344
2; 3052.3; 15-OCT-2011 20:31:10; Bright; 47.0; 160; 23Gam Per ; 2.93; 4700;occ; 94; 0;50344
/nas3/ENVISAT/GOMOS/GOM_NL__0P/GOM_NL__0PNPDE20111015_220416_000004733107_00331_50345_6554.N1
1; 2625.1; 15-OCT-2011 22:04:16; Bright; 45.5; 173; 4Bet Tri ; 3.00; 8900;occ; 91; 0;50345
2; 3051.6; 15-OCT-2011 22:11:23; Bright; 47.0; 160; 23Gam Per ; 2.93; 4700;occ; 94; 0;50345
/nas3/ENVISAT/GOMOS/GOM_NL__0P/GOM_NL__0PNPDE20111015_234430_000004693107_00332_50346_6555.N1
1; 2624.6; 15-OCT-2011 23:44:30; Bright; 45.0; 173; 4Bet Tri ; 3.00; 8900;occ; 90; 0;50346
2; 3050.7; 15-OCT-2011 23:51:36; Bright; 43.5; 160; 23Gam Per ; 2.93; 4700;occ; 87; 0;50346
/nas3/ENVISAT/GOMOS/GOM_NL__0P/GOM_NL__0PNPDK20111015_083731_000007723107_00323_50337_5428.N1
1; 2331.1; 15-OCT-2011 08:37:31; Bright; 46.0; 105; 6Bet Ari ; 2.64; 8900;occ; 92; 0;50337
2; 2630.8; 15-OCT-2011 08:42:30; Bright; 46.0; 173; 4Bet Tri ; 3.00; 8900;occ; 92; 0;50337

3; 3057.7; 15-OCT-2011 08:49:37; Bright; 45.5; 160; 23Gam Per ; 2.93; 4700;occ; 91; 0;50337
/nas3/ENVISAT/GOMOS/GOM_NL__0P/GOM_NL__0PNPDK20111015_115757_000007733107_00325_50339_5429.N1
1; 2329.9; 15-OCT-2011 11:57:57; Bright; 46.0; 105; 6Bet Ari ; 2.64; 8900;occ; 92; 0;50339
2; 2629.5; 15-OCT-2011 12:02:57; Bright; 46.0; 173; 4Bet Tri ; 3.00; 8900;occ; 92; 0;50339
3; 3056.3; 15-OCT-2011 12:10:04; Bright; 47.0; 160; 23Gam Per ; 2.93; 4700;occ; 94; 0;50339
/nas3/ENVISAT/GOMOS/GOM_NL__0P/GOM_NL__0PNPDK20111015_133811_000007733107_00326_50340_5430.N1
1; 2329.6; 15-OCT-2011 13:38:11; Bright; 46.0; 105; 6Bet Ari ; 2.64; 8900;occ; 92; 0;50340
2; 2628.6; 15-OCT-2011 13:43:10; Bright; 47.5; 173; 4Bet Tri ; 3.00; 8900;occ; 95; 0;50340
3; 3055.6; 15-OCT-2011 13:50:17; Bright; 47.5; 160; 23Gam Per ; 2.93; 4700;occ; 95; 0;50340
/nas3/ENVISAT/GOMOS/GOM_NL__0P/GOM_NL__0PNPDK20111015_152323_000004723107_00327_50341_5431.N1
1; 2628.1; 15-OCT-2011 15:23:23; Bright; 45.5; 173; 4Bet Tri ; 3.00; 8900;occ; 91; 0;50341
2; 3055.0; 15-OCT-2011 15:30:30; Bright; 46.0; 160; 23Gam Per ; 2.93; 4700;occ; 92; 0;50341
/nas3/ENVISAT/GOMOS/GOM_NL__0P/GOM_NL__0PNPDK20111015_170337_000004723107_00328_50342_5432.N1
1; 2627.3; 15-OCT-2011 17:03:37; Bright; 46.0; 173; 4Bet Tri ; 3.00; 8900;occ; 92; 0;50342
2; 3054.1; 15-OCT-2011 17:10:43; Bright; 45.5; 160; 23Gam Per ; 2.93; 4700;occ; 91; 0;50342
/nas3/ENVISAT/GOMOS/GOM_NL__0P/GOM_NL__0PNPDK20111015_184350_000004723107_00329_50343_5433.N1
1; 2626.5; 15-OCT-2011 18:43:50; Bright; 46.0; 173; 4Bet Tri ; 3.00; 8900;occ; 92; 0;50343
2; 3053.3; 15-OCT-2011 18:50:57; Bright; 46.0; 160; 23Gam Per ; 2.93; 4700;occ; 92; 0;50343
/nas3/ENVISAT/GOMOS/GOM_NL__0P/GOM_NL__0PNPDE20111016_012443_000004713107_00333_50347_6556.N1
1; 2623.8; 16-OCT-2011 01:24:43; Bright; 45.0; 173; 4Bet Tri ; 3.00; 8900;occ; 90; 0;50347
2; 3050.0; 16-OCT-2011 01:31:49; Bright; 45.0; 160; 23Gam Per ; 2.93; 4700;occ; 90; 0;50347
/nas3/ENVISAT/GOMOS/GOM_NL__0P/GOM_NL__0PNPDE20111016_030456_000004703107_00334_50348_6557.N1
1; 2623.2; 16-OCT-2011 03:04:56; Bright; 46.5; 173; 4Bet Tri ; 3.00; 8900;occ; 93; 0;50348
2; 3049.3; 16-OCT-2011 03:12:02; Bright; 44.0; 160; 23Gam Per ; 2.93; 4700;occ; 88; 0;50348
/nas3/ENVISAT/GOMOS/GOM_NL__0P/GOM_NL__0PNPDE20111016_044510_000004723107_00335_50349_6558.N1
1; 2622.6; 16-OCT-2011 04:45:10; Bright; 45.5; 173; 4Bet Tri ; 3.00; 8900;occ; 91; 0;50349
2; 3048.7; 16-OCT-2011 04:52:16; Bright; 46.5; 160; 23Gam Per ; 2.93; 4700;occ; 93; 0;50349
/nas3/ENVISAT/GOMOS/GOM_NL__0P/GOM_NL__0PNPDE20111016_062523_000004723107_00336_50350_6559.N1
1; 2622.0; 16-OCT-2011 06:25:23; Bright; 45.0; 173; 4Bet Tri ; 3.00; 8900;occ; 90; 0;50350
2; 3048.0; 16-OCT-2011 06:32:29; Bright; 46.5; 160; 23Gam Per ; 2.93; 4700;occ; 93; 0;50350
/nas3/ENVISAT/GOMOS/GOM_NL__0P/GOM_NL__0PNPDE20111016_213428_00000453107_00345_50359_6560.N1
1;-2972.6; 16-OCT-2011 21:34:28; Bright; 46.0; 160; 23Gam Per ; 2.93; 4700;occ; 92; 0;50359
/nas3/ENVISAT/GOMOS/GOM_NL__0P/GOM_NL__0PNPDE20111016_231441_00000453107_00346_50360_6561.N1
1;-2973.2; 16-OCT-2011 23:14:41; Bright; 46.0; 160; 23Gam Per ; 2.93; 4700;occ; 92; 0;50360
/nas3/ENVISAT/GOMOS/GOM_NL__0P/GOM_NL__0PNPDK20111016_080537_000004693107_00337_50351_5434.N1
1; 2621.4; 16-OCT-2011 08:05:37; Bright; 45.5; 173; 4Bet Tri ; 3.00; 8900;occ; 91; 0;50351
2; 3047.2; 16-OCT-2011 08:12:42; Bright; 44.0; 160; 23Gam Per ; 2.93; 4700;occ; 88; 0;50351
/nas3/ENVISAT/GOMOS/GOM_NL__0P/GOM_NL__0PNPDK20111016_094550_000004713107_00338_50352_5435.N1
1; 2620.8; 16-OCT-2011 09:45:50; Bright; 46.5; 173; 4Bet Tri ; 3.00; 8900;occ; 93; 0;50352
2; 3046.6; 16-OCT-2011 09:52:56; Bright; 45.5; 160; 23Gam Per ; 2.93; 4700;occ; 91; 0;50352
/nas3/ENVISAT/GOMOS/GOM_NL__0P/GOM_NL__0PNPDK20111016_112603_000004723107_00339_50353_5436.N1
1; 2620.2; 16-OCT-2011 11:26:03; Bright; 45.5; 173; 4Bet Tri ; 3.00; 8900;occ; 91; 0;50353
2; 3045.8; 16-OCT-2011 11:33:09; Bright; 46.5; 160; 23Gam Per ; 2.93; 4700;occ; 93; 0;50353
/nas3/ENVISAT/GOMOS/GOM_NL__0P/GOM_NL__0PNPDK20111016_130616_000004723107_00340_50354_5437.N1
1; 2619.4; 16-OCT-2011 13:06:16; Bright; 45.0; 173; 4Bet Tri ; 3.00; 8900;occ; 90; 0;50354
2; 3045.1; 16-OCT-2011 13:13:22; Bright; 47.0; 160; 23Gam Per ; 2.93; 4700;occ; 94; 0;50354
/nas3/ENVISAT/GOMOS/GOM_NL__0P/GOM_NL__0PNPDK20111016_144630_000004713107_00341_50355_5438.N1
1; 2618.8; 16-OCT-2011 14:46:30; Bright; 44.5; 173; 4Bet Tri ; 3.00; 8900;occ; 89; 0;50355
2; 3044.4; 16-OCT-2011 14:53:35; Bright; 46.0; 160; 23Gam Per ; 2.93; 4700;occ; 92; 0;50355
/nas3/ENVISAT/GOMOS/GOM_NL__0P/GOM_NL__0PNPDK20111016_162643_000004723107_00342_50356_5439.N1
1; 2618.3; 16-OCT-2011 16:26:43; Bright; 45.0; 173; 4Bet Tri ; 3.00; 8900;occ; 90; 0;50356
2; 3043.6; 16-OCT-2011 16:33:48; Bright; 47.0; 160; 23Gam Per ; 2.93; 4700;occ; 94; 0;50356
/nas3/ENVISAT/GOMOS/GOM_NL__0P/GOM_NL__0PNPDK20111016_180656_000004723107_00343_50357_5440.N1
1; 2617.5; 16-OCT-2011 18:06:56; Bright; 46.5; 173; 4Bet Tri ; 3.00; 8900;occ; 93; 0;50357
2; 3042.9; 16-OCT-2011 18:14:02; Bright; 47.0; 160; 23Gam Per ; 2.93; 4700;occ; 94; 0;50357
/nas3/ENVISAT/GOMOS/GOM_NL__0P/GOM_NL__0PNPDK20111016_195415_00000463107_00344_50358_5441.N1
1;-2971.9; 16-OCT-2011 19:54:15; Bright; 46.5; 160; 23Gam Per ; 2.93; 4700;occ; 93; 0;50358
/nas3/ENVISAT/GOMOS/GOM_NL__0P/GOM_NL__0PNPDE20111017_005455_00000463107_00347_50361_6562.N1
1;-2974.0; 17-OCT-2011 00:54:55; Bright; 46.5; 160; 23Gam Per ; 2.93; 4700;occ; 93; 0;50361
/nas3/ENVISAT/GOMOS/GOM_NL__0P/GOM_NL__0PNPDE20111017_023508_00000423107_00348_50362_6563.N1
1;-2974.7; 17-OCT-2011 02:35:08; Bright; 43.0; 160; 23Gam Per ; 2.93; 4700;occ; 86; 0;50362
/nas3/ENVISAT/GOMOS/GOM_NL__0P/GOM_NL__0PNPDE20111017_041521_00000453107_00349_50363_6564.N1
1;-2975.5; 17-OCT-2011 04:15:21; Bright; 45.5; 160; 23Gam Per ; 2.93; 4700;occ; 91; 0;50363
/nas3/ENVISAT/GOMOS/GOM_NL__0P/GOM_NL__0PNPDE20111017_055534_00000453107_00350_50364_6565.N1
1;-2976.2; 17-OCT-2011 05:55:34; Bright; 45.5; 160; 23Gam Per ; 2.93; 4700;occ; 91; 0;50364
/nas3/ENVISAT/GOMOS/GOM_NL__0P/GOM_NL__0PNPDE20111017_223747_00000453107_00360_50374_6567.N1
1;-2983.4; 17-OCT-2011 22:37:47; Bright; 45.5; 160; 23Gam Per ; 2.93; 4700;occ; 91; 0;50374
/nas3/ENVISAT/GOMOS/GOM_NL__0P/GOM_NL__0PNPDK20111017_073548_00000453107_00351_50365_5442.N1

1;-2976.8; 17-OCT-2011 07:35:48; Bright; 46.0; 160; 23Gam Per ; 2.93; 4700;occ; 92; 0;50365
/nas3/ENVISAT/GOMOS/GOM_NL__0P/GOM_NL__0PNPDK20111017_091601_000000453107_00352_50366_5443.N1
1;-2977.5; 17-OCT-2011 09:16:01; Bright; 45.5; 160; 23Gam Per ; 2.93; 4700;occ; 91; 0;50366
/nas3/ENVISAT/GOMOS/GOM_NL__0P/GOM_NL__0PNPDK20111017_105614_000000463107_00353_50367_5444.N1
1;-2978.3; 17-OCT-2011 10:56:14; Bright; 46.5; 160; 23Gam Per ; 2.93; 4700;occ; 93; 0;50367
/nas3/ENVISAT/GOMOS/GOM_NL__0P/GOM_NL__0PNPDK20111017_123627_000000463107_00354_50368_5445.N1
1;-2979.1; 17-OCT-2011 12:36:27; Bright; 46.5; 160; 23Gam Per ; 2.93; 4700;occ; 93; 0;50368
/nas3/ENVISAT/GOMOS/GOM_NL__0P/GOM_NL__0PNPDK20111017_141641_000000453107_00355_50369_5446.N1
1;-2979.8; 17-OCT-2011 14:16:41; Bright; 46.0; 160; 23Gam Per ; 2.93; 4700;occ; 92; 0;50369
/nas3/ENVISAT/GOMOS/GOM_NL__0P/GOM_NL__0PNPDK20111017_155654_000000453107_00356_50370_5447.N1
1;-2980.6; 17-OCT-2011 15:56:54; Bright; 45.5; 160; 23Gam Per ; 2.93; 4700;occ; 91; 0;50370
/nas3/ENVISAT/GOMOS/GOM_NL__0P/GOM_NL__0PNPDK20111017_173707_000000453107_00357_50371_5448.N1
1;-2981.4; 17-OCT-2011 17:37:07; Bright; 45.5; 160; 23Gam Per ; 2.93; 4700;occ; 91; 0;50371
/nas3/ENVISAT/GOMOS/GOM_NL__0P/GOM_NL__0PNPDK20111017_191720_000000463107_00358_50372_5449.N1
1;-2982.0; 17-OCT-2011 19:17:20; Bright; 46.5; 160; 23Gam Per ; 2.93; 4700;occ; 93; 0;50372
/nas3/ENVISAT/GOMOS/GOM_NL__0P/GOM_NL__0PNPDE20111018_001800_000000443107_00361_50375_6568.N1
1;-2984.0; 18-OCT-2011 00:18:00; Bright; 45.0; 160; 23Gam Per ; 2.93; 4700;occ; 90; 0;50375
/nas3/ENVISAT/GOMOS/GOM_NL__0P/GOM_NL__0PNPDE20111018_015813_000000453107_00362_50376_6569.N1
1;-2984.8; 18-OCT-2011 01:58:13; Bright; 46.0; 160; 23Gam Per ; 2.93; 4700;occ; 92; 0;50376
/nas3/ENVISAT/GOMOS/GOM_NL__0P/GOM_NL__0PNPDE20111018_033827_000000443107_00363_50377_6570.N1
1;-2985.5; 18-OCT-2011 03:38:27; Bright; 45.0; 160; 23Gam Per ; 2.93; 4700;occ; 90; 0;50377
/nas3/ENVISAT/GOMOS/GOM_NL__0P/GOM_NL__0PNPDE20111018_051840_000000453107_00364_50378_6571.N1
1;-2986.3; 18-OCT-2011 05:18:40; Bright; 45.5; 160; 23Gam Per ; 2.93; 4700;occ; 91; 0;50378
/nas3/ENVISAT/GOMOS/GOM_NL__0P/GOM_NL__0PNPDE20111018_065853_000000443107_00365_50379_6572.N1
1;-2986.9; 18-OCT-2011 06:58:53; Bright; 45.0; 160; 23Gam Per ; 2.93; 4700;occ; 90; 0;50379
/nas3/ENVISAT/GOMOS/GOM_NL__0P/GOM_NL__0PNPDK20111018_083906_000000443107_00366_50380_5450.N1
1;-2987.6; 18-OCT-2011 08:39:06; Bright; 44.5; 160; 23Gam Per ; 2.93; 4700;occ; 89; 0;50380
/nas3/ENVISAT/GOMOS/GOM_NL__0P/GOM_NL__0PNPDK20111018_115933_000000673107_00368_50382_5451.N1
1;-2988.9; 18-OCT-2011 11:59:33; Bright; 67.5; 160; 23Gam Per ; 2.93; 4700;occ; 135; 0;50382
/nas3/ENVISAT/GOMOS/GOM_NL__0P/GOM_NL__0PNPDK20111018_133946_000000453107_00369_50383_5452.N1
1;-2989.7; 18-OCT-2011 13:39:46; Bright; 45.5; 160; 23Gam Per ; 2.93; 4700;occ; 91; 0;50383
/nas3/ENVISAT/GOMOS/GOM_NL__0P/GOM_NL__0PNPDK20111018_101920_000000433107_00367_50381_5454.N1
1;-2988.3; 18-OCT-2011 10:19:20; Bright; 44.0; 160; 23Gam Per ; 2.93; 4700;occ; 88; 0;50381
/nas3/ENVISAT/GOMOS/GOM_NL__0P/GOM_NL__0PNPDK20111018_101920_000000433107_00367_50381_5739.N1
1;-2988.3; 18-OCT-2011 10:19:20; Bright; 44.0; 160; 23Gam Per ; 2.93; 4700;occ; 88; 0;50381
/nas3/ENVISAT/GOMOS/GOM_NL__0P/GOM_NL__0PNPDE20111023_202058_000000603108_00014_50459_6573.N1
1; 2035.9; 23-OCT-2011 20:20:58; Bright; 60.5; 94; 92Alp Cet ; 2.53; 3100;occ; 121; 0;50459
/nas3/ENVISAT/GOMOS/GOM_NL__0P/GOM_NL__0PNPDE20111023_212637_000021363108_00014_50459_6574.N1
1; -39.8; 23-OCT-2011 21:26:37; Dark ; 65.5; 132; 15Rho Pup ; 2.80; 6900;occ; 131; 0;50459
2; 249.2; 23-OCT-2011 21:31:26; Dark ; 69.0; 88; 31Eta Cma ; 2.45; 20000;occ; 138; 0;50460
3; 787.7; 23-OCT-2011 21:40:24; Dark ; 61.5; 108; Alp Col ; 2.65; 15200;occ; 123; 0;50460
4; 2035.6; 23-OCT-2011 22:01:12; Bright; 61.0; 94; 92Alp Cet ; 2.53; 3100;occ; 122; 0;50460
/nas3/ENVISAT/GOMOS/GOM_NL__0P/GOM_NL__0PNPDE20111023_230652_000021333108_00015_50460_6575.N1
1; -38.1; 23-OCT-2011 23:06:52; Dark ; 63.0; 132; 15Rho Pup ; 2.80; 6900;occ; 126; 0;50460
2; 251.0; 23-OCT-2011 23:11:41; Dark ; 65.5; 88; 31Eta Cma ; 2.45; 20000;occ; 131; 0;50461
3; 788.8; 23-OCT-2011 23:20:39; Dark ; 64.5; 108; Alp Col ; 2.65; 15200;occ; 129; 0;50461
4; 2034.9; 23-OCT-2011 23:41:25; Bright; 61.0; 94; 92Alp Cet ; 2.53; 3100;occ; 122; 0;50461
/nas3/ENVISAT/GOMOS/GOM_NL__0P/GOM_NL__0PNPDK20111023_094936_000000603108_00008_50453_5455.N1
1; 237.1; 23-OCT-2011 09:49:36; Dark ; 63.5; 88; 31Eta Cma ; 2.45; 20000;occ; 127; 0;50453
2; 779.1; 23-OCT-2011 09:58:38; Dark ; 64.5; 108; Alp Col ; 2.65; 15200;occ; 129; 0;50453
/nas3/ENVISAT/GOMOS/GOM_NL__0P/GOM_NL__0PNPDK20111023_101938_000000583108_00008_50453_5456.N1
1; 2039.2; 23-OCT-2011 10:19:38; Bright; 58.5; 94; 92Alp Cet ; 2.53; 3100;occ; 117; 0;50453
/nas3/ENVISAT/GOMOS/GOM_NL__0P/GOM_NL__0PNPDK20111023_145023_0000006033108_00011_50456_5458.N1
1; 242.4; 23-OCT-2011 14:50:23; Dark ; 66.5; 88; 31Eta Cma ; 2.45; 20000;occ; 133; 0;50456
2; 782.9; 23-OCT-2011 14:59:23; Dark ; 62.5; 108; Alp Col ; 2.65; 15200;occ; 125; 0;50456
/nas3/ENVISAT/GOMOS/GOM_NL__0P/GOM_NL__0PNPDK20111023_152018_000048233108_00011_50456_5459.N1
1; 2037.7; 23-OCT-2011 15:20:18; Bright; 59.0; 94; 92Alp Cet ; 2.53; 3100;occ; 118; 0;50456
2; 5969.5; 23-OCT-2011 16:25:50; Dark ; 64.0; 132; 15Rho Pup ; 2.80; 6900;occ; 128; 0;50456
3; 6258.1; 23-OCT-2011 16:30:39; Dark ; 69.0; 88; 31Eta Cma ; 2.45; 20000;occ; 138; 0;50457
4; 6798.2; 23-OCT-2011 16:39:39; Dark ; 63.0; 108; Alp Col ; 2.65; 15200;occ; 126; 0;50457
/nas3/ENVISAT/GOMOS/GOM_NL__0P/GOM_NL__0PNPDK20111023_170032_000048253108_00012_50457_5460.N1
1; 2037.1; 23-OCT-2011 17:00:32; Bright; 59.5; 94; 92Alp Cet ; 2.53; 3100;occ; 119; 0;50457
2; 5971.1; 23-OCT-2011 18:06:06; Dark ; 61.5; 132; 15Rho Pup ; 2.80; 6900;occ; 123; 0;50457
3; 6259.9; 23-OCT-2011 18:10:54; Dark ; 66.5; 88; 31Eta Cma ; 2.45; 20000;occ; 133; 0;50458
4; 6799.2; 23-OCT-2011 18:19:54; Dark ; 63.0; 108; Alp Col ; 2.65; 15200;occ; 126; 0;50458
/nas3/ENVISAT/GOMOS/GOM_NL__0P/GOM_NL__0PNPDK20111023_184045_000048273108_00013_50458_5461.N1
1; 2036.5; 23-OCT-2011 18:40:45; Bright; 59.5; 94; 92Alp Cet ; 2.53; 3100;occ; 119; 0;50458
2; 5972.7; 23-OCT-2011 19:46:21; Dark ; 62.0; 132; 15Rho Pup ; 2.80; 6900;occ; 124; 0;50458

3; 6261.5; 23-OCT-2011 19:51:10; Dark ; 68.0; 88; 31Eta CMA ; 2.45; 20000;occ; 136; 0;50459
4; 6800.7; 23-OCT-2011 20:00:09; Dark ; 63.0; 108; Alp Col ; 2.65; 15200;occ; 126; 0;50459
/nas3/ENVISAT/GOMOS/GOM_NL__0P/GOM_NL__0PNPDE20111024_004708_000021313108_00016_50461_6576.N1
1; -36.4; 24-OCT-2011 00:47:08; Dark ; 62.0; 132; 15Rho Pup ; 2.80; 6900;occ; 124; 0;50461
2; 252.7; 24-OCT-2011 00:51:57; Dark ; 66.0; 88; 31Eta CMA ; 2.45; 20000;occ; 132; 0;50462
3; 790.0; 24-OCT-2011 01:00:54; Dark ; 64.5; 108; Alp Col ; 2.65; 15200;occ; 129; 0;50462
4; 2034.5; 24-OCT-2011 01:21:39; Bright; 61.0; 94; 92Alp Cet ; 2.53; 3100;occ; 122; 0;50462
/nas3/ENVISAT/GOMOS/GOM_NL__0P/GOM_NL__0PNPDE20111024_040739_000021233108_00018_50463_6578.N1
1; -32.8; 24-OCT-2011 04:07:39; Dark ; 64.5; 132; 15Rho Pup ; 2.80; 6900;occ; 129; 0;50463
2; 256.4; 24-OCT-2011 04:12:29; Dark ; 69.0; 88; 31Eta CMA ; 2.45; 20000;occ; 138; 0;50464
3; 792.5; 24-OCT-2011 04:21:25; Dark ; 63.0; 108; Alp Col ; 2.65; 15200;occ; 126; 0;50464
4; 2033.8; 24-OCT-2011 04:42:06; Bright; 57.0; 94; 92Alp Cet ; 2.53; 3100;occ; 114; 0;50464
/nas3/ENVISAT/GOMOS/GOM_NL__0P/GOM_NL__0PNPDE20111024_054755_000021243108_00019_50464_6579.N1
1; -31.2; 24-OCT-2011 05:47:55; Dark ; 63.5; 132; 15Rho Pup ; 2.80; 6900;occ; 127; 0;50464
2; 258.1; 24-OCT-2011 05:52:44; Dark ; 67.0; 88; 31Eta CMA ; 2.45; 20000;occ; 134; 0;50465
3; 793.6; 24-OCT-2011 06:01:40; Dark ; 64.0; 108; Alp Col ; 2.65; 15200;occ; 128; 0;50465
4; 2033.3; 24-OCT-2011 06:22:19; Bright; 59.5; 94; 92Alp Cet ; 2.53; 3100;occ; 119; 0;50465
/nas3/ENVISAT/GOMOS/GOM_NL__0P/GOM_NL__0PNPDE20111024_210453_000012273108_00029_50474_6580.N1
1; 861.2; 24-OCT-2011 21:04:53; Dark ; 65.5; 108; Alp Col ; 2.65; 15200;occ; 131; 114;50474
2; 2029.1; 24-OCT-2011 21:24:21; Bright; 60.0; 94; 92Alp Cet ; 2.53; 3100;occ; 120; 0;50474
/nas3/ENVISAT/GOMOS/GOM_NL__0P/GOM_NL__0PNPDE20111024_223031_000021013108_00029_50474_6581.N1
1; -14.2; 24-OCT-2011 22:30:31; Dark ; 64.0; 132; 15Rho Pup ; 2.80; 6900;occ; 128; 0;50474
2; 275.7; 24-OCT-2011 22:35:21; Dark ; 69.5; 88; 31Eta CMA ; 2.45; 20000;occ; 139; 0;50475
3; 805.3; 24-OCT-2011 22:44:11; Dark ; 64.0; 108; Alp Col ; 2.65; 15200;occ; 128; 0;50475
4; 2028.6; 24-OCT-2011 23:04:34; Bright; 58.5; 94; 92Alp Cet ; 2.53; 3100;occ; 117; 0;50475
/nas3/ENVISAT/GOMOS/GOM_NL__0P/GOM_NL__0PNPDK20111024_072811_000008863108_00020_50465_5462.N1
1; -29.5; 24-OCT-2011 07:28:11; Dark ; 64.5; 132; 15Rho Pup ; 2.80; 6900;occ; 129; 0;50465
2; 259.9; 24-OCT-2011 07:33:00; Dark ; 68.0; 88; 31Eta CMA ; 2.45; 20000;occ; 136; 0;50466
3; 794.7; 24-OCT-2011 07:41:55; Dark ; 62.5; 108; Alp Col ; 2.65; 15200;occ; 125; 0;50466
/nas3/ENVISAT/GOMOS/GOM_NL__0P/GOM_NL__0PNPDK20111024_080233_000048383108_00021_50466_5463.N1
1; 2032.8; 24-OCT-2011 08:02:33; Bright; 59.5; 94; 92Alp Cet ; 2.53; 3100;occ; 119; 0;50466
2; 5986.1; 24-OCT-2011 09:08:26; Dark ; 65.5; 132; 15Rho Pup ; 2.80; 6900;occ; 131; 0;50466
3; 6275.6; 24-OCT-2011 09:13:16; Dark ; 68.5; 88; 31Eta CMA ; 2.45; 20000;occ; 137; 0;50467
4; 6810.1; 24-OCT-2011 09:22:10; Dark ; 61.5; 108; Alp Col ; 2.65; 15200;occ; 123; 0;50467
/nas3/ENVISAT/GOMOS/GOM_NL__0P/GOM_NL__0PNPDK20111024_094246_000048433108_00022_50467_5464.N1
1; 2032.3; 24-OCT-2011 09:42:46; Bright; 60.0; 94; 92Alp Cet ; 2.53; 3100;occ; 120; 0;50467
2; 5987.7; 24-OCT-2011 10:48:42; Dark ; 63.0; 132; 15Rho Pup ; 2.80; 6900;occ; 126; 0;50467
3; 6277.4; 24-OCT-2011 10:53:31; Dark ; 68.0; 88; 31Eta CMA ; 2.45; 20000;occ; 136; 0;50468
4; 6811.1; 24-OCT-2011 11:02:25; Dark ; 64.5; 108; Alp Col ; 2.65; 15200;occ; 129; 0;50468
/nas3/ENVISAT/GOMOS/GOM_NL__0P/GOM_NL__0PNPDK20111024_112300_000048453108_00023_50468_5465.N1
1; 2031.8; 24-OCT-2011 11:23:00; Bright; 59.5; 94; 92Alp Cet ; 2.53; 3100;occ; 119; 0;50468
2; 5989.5; 24-OCT-2011 12:28:57; Dark ; 66.5; 132; 15Rho Pup ; 2.80; 6900;occ; 133; 0;50468
3; 6278.9; 24-OCT-2011 12:33:47; Dark ; 68.5; 88; 31Eta CMA ; 2.45; 20000;occ; 137; 0;50469
4; 6812.4; 24-OCT-2011 12:42:40; Dark ; 64.5; 108; Alp Col ; 2.65; 15200;occ; 129; 0;50469
/nas3/ENVISAT/GOMOS/GOM_NL__0P/GOM_NL__0PNPDK20111024_130313_000048433108_00024_50469_5466.N1
1; 2031.4; 24-OCT-2011 13:03:13; Bright; 60.5; 94; 92Alp Cet ; 2.53; 3100;occ; 121; 0;50469
2; 5991.3; 24-OCT-2011 14:09:13; Dark ; 63.5; 132; 15Rho Pup ; 2.80; 6900;occ; 127; 0;50469
3; 6280.7; 24-OCT-2011 14:14:03; Dark ; 66.0; 88; 31Eta CMA ; 2.45; 20000;occ; 132; 0;50470
4; 6813.6; 24-OCT-2011 14:22:55; Dark ; 61.5; 108; Alp Col ; 2.65; 15200;occ; 123; 0;50470
/nas3/ENVISAT/GOMOS/GOM_NL__0P/GOM_NL__0PNPDK20111024_144327_000048463108_00025_50470_5467.N1
1; 2031.0; 24-OCT-2011 14:43:27; Bright; 59.0; 94; 92Alp Cet ; 2.53; 3100;occ; 118; 0;50470
2; 5993.0; 24-OCT-2011 15:49:29; Dark ; 66.5; 132; 15Rho Pup ; 2.80; 6900;occ; 133; 0;50470
3; 6282.7; 24-OCT-2011 15:54:18; Dark ; 63.5; 88; 31Eta CMA ; 2.45; 20000;occ; 127; 0;50471
4; 6814.8; 24-OCT-2011 16:03:11; Dark ; 62.5; 108; Alp Col ; 2.65; 15200;occ; 125; 0;50471
/nas3/ENVISAT/GOMOS/GOM_NL__0P/GOM_NL__0PNPDK20111024_162341_000048483108_00026_50471_5468.N1
1; 2030.8; 24-OCT-2011 16:23:41; Bright; 60.0; 94; 92Alp Cet ; 2.53; 3100;occ; 120; 0;50471
2; 5994.7; 24-OCT-2011 17:29:45; Dark ; 65.0; 132; 15Rho Pup ; 2.80; 6900;occ; 130; 0;50471
3; 6284.6; 24-OCT-2011 17:34:34; Dark ; 65.5; 88; 31Eta CMA ; 2.45; 20000;occ; 131; 0;50472
4; 6816.1; 24-OCT-2011 17:43:26; Dark ; 63.0; 108; Alp Col ; 2.65; 15200;occ; 126; 0;50472
/nas3/ENVISAT/GOMOS/GOM_NL__0P/GOM_NL__0PNPDK20111024_180354_000048493108_00027_50472_5469.N1
1; 2030.1; 24-OCT-2011 18:03:54; Bright; 60.0; 94; 92Alp Cet ; 2.53; 3100;occ; 120; 0;50472
2; 5996.4; 24-OCT-2011 19:10:00; Dark ; 65.0; 132; 15Rho Pup ; 2.80; 6900;occ; 130; 0;50472
3; 6286.3; 24-OCT-2011 19:14:50; Dark ; 69.0; 88; 31Eta CMA ; 2.45; 20000;occ; 138; 0;50473
4; 6817.1; 24-OCT-2011 19:23:41; Dark ; 62.5; 108; Alp Col ; 2.65; 15200;occ; 125; 0;50473
/nas3/ENVISAT/GOMOS/GOM_NL__0P/GOM_NL__0PNPDK20111024_194407_000048533108_00028_50473_5470.N1
1; 2029.6; 24-OCT-2011 19:44:07; Bright; 62.5; 94; 92Alp Cet ; 2.53; 3100;occ; 125; 0;50473
2; 5998.0; 24-OCT-2011 20:50:16; Dark ; 65.0; 132; 15Rho Pup ; 2.80; 6900;occ; 130; 0;50473
3; 6287.8; 24-OCT-2011 20:55:06; Dark ; 70.0; 88; 31Eta CMA ; 2.45; 20000;occ; 140; 0;50474

4; 6818.2; 24-OCT-2011 21:03:56; Dark ; 65.0; 108; Alp Col ; 2.65; 15200;occ; 130; 0;50474
/nas3/ENVISAT/GOMOS/GOM_NL__0P/GOM_NL__0PNPDE20111025_001047_000021023108_00030_50475_6582.N1
1; -12.4; 25-OCT-2011 00:10:47; Dark ; 63.0; 132; 15Rho Pup ; 2.80; 6900;occ; 126; 0;50475
2; 277.4; 25-OCT-2011 00:15:37; Dark ; 67.5; 88; 31Eta CMA ; 2.45; 20000;occ; 135; 0;50476
3; 806.4; 25-OCT-2011 00:24:26; Dark ; 64.5; 108; Alp Col ; 2.65; 15200;occ; 129; 0;50476
4; 2028.1; 25-OCT-2011 00:44:48; Bright; 62.0; 94; 92Alp Cet ; 2.53; 3100;occ; 124; 0;50476
/nas3/ENVISAT/GOMOS/GOM_NL__0P/GOM_NL__0PNPDE20111025_015103_000021003108_00031_50476_6583.N1
1; -10.7; 25-OCT-2011 01:51:03; Dark ; 66.0; 132; 15Rho Pup ; 2.80; 6900;occ; 132; 0;50476
2; 279.2; 25-OCT-2011 01:55:53; Dark ; 67.5; 88; 31Eta CMA ; 2.45; 20000;occ; 135; 0;50477
3; 807.8; 25-OCT-2011 02:04:41; Dark ; 64.0; 108; Alp Col ; 2.65; 15200;occ; 128; 0;50477
4; 2027.7; 25-OCT-2011 02:25:01; Bright; 62.5; 94; 92Alp Cet ; 2.53; 3100;occ; 125; 0;50477
/nas3/ENVISAT/GOMOS/GOM_NL__0P/GOM_NL__0PNPDE20111025_033118_000020953108_00032_50477_6584.N1
1; -8.9; 25-OCT-2011 03:31:18; Dark ; 67.0; 132; 15Rho Pup ; 2.80; 6900;occ; 134; 0;50477
2; 281.0; 25-OCT-2011 03:36:08; Dark ; 69.0; 88; 31Eta CMA ; 2.45; 20000;occ; 138; 0;50478
3; 809.0; 25-OCT-2011 03:44:56; Dark ; 63.5; 108; Alp Col ; 2.65; 15200;occ; 127; 0;50478
4; 2027.2; 25-OCT-2011 04:05:15; Bright; 59.5; 94; 92Alp Cet ; 2.53; 3100;occ; 119; 0;50478
/nas3/ENVISAT/GOMOS/GOM_NL__0P/GOM_NL__0PNPDE20111025_051134_000021073108_00033_50478_6585.N1
1; -7.2; 25-OCT-2011 05:11:34; Dark ; 66.0; 132; 15Rho Pup ; 2.80; 6900;occ; 132; 0;50478
2; 282.6; 25-OCT-2011 05:16:24; Dark ; 68.0; 88; 31Eta CMA ; 2.45; 20000;occ; 136; 0;50479
3; 810.2; 25-OCT-2011 05:25:12; Dark ; 64.5; 108; Alp Col ; 2.65; 15200;occ; 129; 0;50479
4; 2026.8; 25-OCT-2011 05:45:28; Bright; 73.0; 94; 92Alp Cet ; 2.53; 3100;occ; 146; 0;50479
/nas3/ENVISAT/GOMOS/GOM_NL__0P/GOM_NL__0PNPDE20111025_215411_000008733108_00044_50489_6586.N1
1; 10.4; 25-OCT-2011 21:54:11; Dark ; 63.5; 132; 15Rho Pup ; 2.80; 6900;occ; 127; 0;50489
2; 300.5; 25-OCT-2011 21:59:01; Dark ; 68.0; 88; 31Eta CMA ; 2.45; 20000;occ; 136; 0;50489
3; 821.7; 25-OCT-2011 22:07:43; Dark ; 62.5; 108; Alp Col ; 2.65; 15200;occ; 125; 0;50489
/nas3/ENVISAT/GOMOS/GOM_NL__0P/GOM_NL__0PNPDE20111025_233427_000008723108_00045_50490_6587.N1
1; 12.1; 25-OCT-2011 23:34:27; Dark ; 65.0; 132; 15Rho Pup ; 2.80; 6900;occ; 130; 0;50490
2; 302.3; 25-OCT-2011 23:39:17; Dark ; 70.5; 88; 31Eta CMA ; 2.45; 20000;occ; 141; 0;50490
3; 822.6; 25-OCT-2011 23:47:57; Dark ; 62.0; 108; Alp Col ; 2.65; 15200;occ; 124; 0;50490
/nas3/ENVISAT/GOMOS/GOM_NL__0P/GOM_NL__0PNPDK20111025_065150_000008803108_00034_50479_5471.N1
1; -5.4; 25-OCT-2011 06:51:50; Dark ; 66.5; 132; 15Rho Pup ; 2.80; 6900;occ; 133; 0;50479
2; 284.6; 25-OCT-2011 06:56:40; Dark ; 69.5; 88; 31Eta CMA ; 2.45; 20000;occ; 139; 0;50480
3; 811.4; 25-OCT-2011 07:05:27; Dark ; 64.0; 108; Alp Col ; 2.65; 15200;occ; 128; 0;50480
/nas3/ENVISAT/GOMOS/GOM_NL__0P/GOM_NL__0PNPDK20111025_072542_000048613108_00035_50480_5472.N1
1; 2026.4; 25-OCT-2011 07:25:42; Bright; 64.0; 94; 92Alp Cet ; 2.53; 3100;occ; 128; 0;50480
2; 6010.4; 25-OCT-2011 08:32:06; Dark ; 67.0; 132; 15Rho Pup ; 2.80; 6900;occ; 134; 0;50480
3; 6300.4; 25-OCT-2011 08:36:56; Dark ; 69.5; 88; 31Eta CMA ; 2.45; 20000;occ; 139; 0;50481
4; 6826.4; 25-OCT-2011 08:45:42; Dark ; 61.5; 108; Alp Col ; 2.65; 15200;occ; 123; 0;50481
/nas3/ENVISAT/GOMOS/GOM_NL__0P/GOM_NL__0PNPDK20111025_090555_000048643108_00036_50481_5473.N1
1; 2026.1; 25-OCT-2011 09:05:55; Bright; 60.0; 94; 92Alp Cet ; 2.53; 3100;occ; 120; 0;50481
2; 6012.1; 25-OCT-2011 10:12:21; Dark ; 66.0; 132; 15Rho Pup ; 2.80; 6900;occ; 132; 0;50481
3; 6302.1; 25-OCT-2011 10:17:11; Dark ; 71.5; 88; 31Eta CMA ; 2.45; 20000;occ; 143; 0;50482
4; 6827.4; 25-OCT-2011 10:25:57; Dark ; 63.0; 108; Alp Col ; 2.65; 15200;occ; 126; 0;50482
/nas3/ENVISAT/GOMOS/GOM_NL__0P/GOM_NL__0PNPDK20111025_104609_000048653108_00037_50482_5474.N1
1; 2025.6; 25-OCT-2011 10:46:09; Bright; 56.5; 94; 92Alp Cet ; 2.53; 3100;occ; 113; 0;50482
2; 6013.8; 25-OCT-2011 11:52:37; Dark ; 66.5; 132; 15Rho Pup ; 2.80; 6900;occ; 133; 0;50482
3; 6303.9; 25-OCT-2011 11:57:27; Dark ; 66.5; 88; 31Eta CMA ; 2.45; 20000;occ; 133; 0;50483
4; 6828.5; 25-OCT-2011 12:06:12; Dark ; 63.0; 108; Alp Col ; 2.65; 15200;occ; 126; 0;50483
/nas3/ENVISAT/GOMOS/GOM_NL__0P/GOM_NL__0PNPDK20111025_122622_000048673108_00038_50483_5475.N1
1; 2025.2; 25-OCT-2011 12:26:22; Bright; 63.0; 94; 92Alp Cet ; 2.53; 3100;occ; 126; 0;50483
2; 6015.4; 25-OCT-2011 13:32:53; Dark ; 65.5; 132; 15Rho Pup ; 2.80; 6900;occ; 131; 0;50484
3; 6305.7; 25-OCT-2011 13:37:43; Dark ; 69.0; 88; 31Eta CMA ; 2.45; 20000;occ; 138; 0;50484
4; 6829.8; 25-OCT-2011 13:46:27; Dark ; 62.5; 108; Alp Col ; 2.65; 15200;occ; 125; 0;50484
/nas3/ENVISAT/GOMOS/GOM_NL__0P/GOM_NL__0PNPDK20111025_151308_000008773108_00040_50485_5476.N1
1; 3.3; 25-OCT-2011 15:13:08; Dark ; 66.0; 132; 15Rho Pup ; 2.80; 6900;occ; 132; 0;50485
2; 293.4; 25-OCT-2011 15:17:58; Dark ; 70.5; 88; 31Eta CMA ; 2.45; 20000;occ; 141; 0;50485
3; 816.9; 25-OCT-2011 15:26:42; Dark ; 64.0; 108; Alp Col ; 2.65; 15200;occ; 128; 0;50485
/nas3/ENVISAT/GOMOS/GOM_NL__0P/GOM_NL__0PNPDK20111025_165324_000008753108_00041_50486_5477.N1
1; 5.0; 25-OCT-2011 16:53:24; Dark ; 66.5; 132; 15Rho Pup ; 2.80; 6900;occ; 133; 0;50486
2; 295.3; 25-OCT-2011 16:58:14; Dark ; 69.5; 88; 31Eta CMA ; 2.45; 20000;occ; 139; 0;50486
3; 818.2; 25-OCT-2011 17:06:57; Dark ; 62.0; 108; Alp Col ; 2.65; 15200;occ; 124; 0;50486
/nas3/ENVISAT/GOMOS/GOM_NL__0P/GOM_NL__0PNPDK20111025_183340_000008763108_00042_50487_5478.N1
1; 6.7; 25-OCT-2011 18:33:40; Dark ; 66.0; 132; 15Rho Pup ; 2.80; 6900;occ; 132; 0;50487
2; 297.0; 25-OCT-2011 18:38:30; Dark ; 70.5; 88; 31Eta CMA ; 2.45; 20000;occ; 141; 0;50487
3; 819.3; 25-OCT-2011 18:47:12; Dark ; 63.5; 108; Alp Col ; 2.65; 15200;occ; 127; 0;50487
/nas3/ENVISAT/GOMOS/GOM_NL__0P/GOM_NL__0PNPDK20111025_201356_000008733108_00043_50488_5479.N1
1; 8.6; 25-OCT-2011 20:13:56; Dark ; 64.0; 132; 15Rho Pup ; 2.80; 6900;occ; 128; 0;50488
2; 298.8; 25-OCT-2011 20:18:46; Dark ; 68.0; 88; 31Eta CMA ; 2.45; 20000;occ; 136; 0;50488

3; 820.5; 25-OCT-2011 20:27:27; Dark ; 62.0; 108; Alp Col ; 2.65; 15200;occ; 124; 0;50488
/nas3/ENVISAT/GOMOS/GOM_NL__0P/GOM_NL__0PNPDE20111026_011443_000068873108_00046_50491_6588.N1
1; 14.0; 26-OCT-2011 01:14:43; Dark ; 67.0; 132; 15Rho Pup ; 2.80; 6900;occ; 134; 0;50491
2; 304.1; 26-OCT-2011 01:19:33; Dark ; 68.0; 88; 31Eta CMA ; 2.45; 20000;occ; 136; 0;50491
3; 823.7; 26-OCT-2011 01:28:12; Dark ; 64.0; 108; Alp Col ; 2.65; 15200;occ; 128; 0;50491
4; 6029.7; 26-OCT-2011 02:54:58; Dark ; 66.0; 132; 15Rho Pup ; 2.80; 6900;occ; 132; 0;50492
5; 6319.8; 26-OCT-2011 02:59:48; Dark ; 66.5; 88; 31Eta CMA ; 2.45; 20000;occ; 133; 0;50492
6; 6838.9; 26-OCT-2011 03:08:28; Dark ; 63.0; 108; Alp Col ; 2.65; 15200;occ; 126; 0;50492
/nas3/ENVISAT/GOMOS/GOM_NL__0P/GOM_NL__0PNPDE20111026_043514_000008713108_00048_50493_6589.N1
1; 17.5; 26-OCT-2011 04:35:14; Dark ; 64.0; 132; 15Rho Pup ; 2.80; 6900;occ; 128; 0;50493
2; 307.7; 26-OCT-2011 04:40:04; Dark ; 71.0; 88; 31Eta CMA ; 2.45; 20000;occ; 142; 0;50493
3; 826.1; 26-OCT-2011 04:48:43; Dark ; 62.5; 108; Alp Col ; 2.65; 15200;occ; 125; 0;50493
/nas3/ENVISAT/GOMOS/GOM_NL__0P/GOM_NL__0PNPDE20111026_061530_000008693108_00049_50494_6590.N1
1; 19.4; 26-OCT-2011 06:15:30; Dark ; 67.5; 132; 15Rho Pup ; 2.80; 6900;occ; 135; 0;50494
2; 309.5; 26-OCT-2011 06:20:20; Dark ; 68.0; 88; 31Eta CMA ; 2.45; 20000;occ; 136; 0;50494
3; 827.3; 26-OCT-2011 06:28:58; Dark ; 62.0; 108; Alp Col ; 2.65; 15200;occ; 124; 0;50494
/nas3/ENVISAT/GOMOS/GOM_NL__0P/GOM_NL__0PNPDK20111026_093601_000008683108_00051_50496_5481.N1
1; 22.9; 26-OCT-2011 09:36:01; Dark ; 66.0; 132; 15Rho Pup ; 2.80; 6900;occ; 132; 0;50496
2; 313.0; 26-OCT-2011 09:40:51; Dark ; 66.0; 88; 31Eta CMA ; 2.45; 20000;occ; 132; 0;50496
3; 829.7; 26-OCT-2011 09:49:28; Dark ; 62.0; 108; Alp Col ; 2.65; 15200;occ; 124; 0;50496
/nas3/ENVISAT/GOMOS/GOM_NL__0P/GOM_NL__0PNPDK20111026_111617_000008683108_00052_50497_5482.N1
1; 24.7; 26-OCT-2011 11:16:17; Dark ; 66.0; 132; 15Rho Pup ; 2.80; 6900;occ; 132; 0;50497
2; 314.8; 26-OCT-2011 11:21:07; Dark ; 66.0; 88; 31Eta CMA ; 2.45; 20000;occ; 132; 0;50497
3; 830.8; 26-OCT-2011 11:29:43; Dark ; 62.0; 108; Alp Col ; 2.65; 15200;occ; 124; 0;50497
/nas3/ENVISAT/GOMOS/GOM_NL__0P/GOM_NL__0PNPDK20111026_130123_000005773108_00053_50498_5483.N1
1; 316.7; 26-OCT-2011 13:01:23; Dark ; 63.0; 88; 31Eta CMA ; 2.45; 20000;occ; 126; 0;50498
2; 831.9; 26-OCT-2011 13:09:58; Dark ; 62.0; 108; Alp Col ; 2.65; 15200;occ; 124; 0;50498
/nas3/ENVISAT/GOMOS/GOM_NL__0P/GOM_NL__0PNPDK20111026_143648_000008663108_00054_50499_5484.N1
1; 28.3; 26-OCT-2011 14:36:48; Dark ; 67.5; 132; 15Rho Pup ; 2.80; 6900;occ; 135; 0;50499
2; 318.4; 26-OCT-2011 14:41:38; Dark ; 63.0; 88; 31Eta CMA ; 2.45; 20000;occ; 126; 0;50499
3; 832.9; 26-OCT-2011 14:50:13; Dark ; 62.0; 108; Alp Col ; 2.65; 15200;occ; 124; 0;50499
/nas3/ENVISAT/GOMOS/GOM_NL__0P/GOM_NL__0PNPDK20111026_161704_000008653108_00055_50500_5485.N1
1; 30.0; 26-OCT-2011 16:17:04; Dark ; 70.0; 132; 15Rho Pup ; 2.80; 6900;occ; 140; 0;50500
2; 320.4; 26-OCT-2011 16:21:54; Dark ; 61.0; 88; 31Eta CMA ; 2.45; 20000;occ; 122; 0;50500
3; 833.9; 26-OCT-2011 16:30:28; Dark ; 62.0; 108; Alp Col ; 2.65; 15200;occ; 124; 0;50500
/nas3/ENVISAT/GOMOS/GOM_NL__0P/GOM_NL__0PNPDK20111026_175720_000008643108_00056_50501_5486.N1
1; 31.9; 26-OCT-2011 17:57:20; Dark ; 67.0; 132; 15Rho Pup ; 2.80; 6900;occ; 134; 0;50501
2; 322.1; 26-OCT-2011 18:02:10; Dark ; 61.0; 88; 31Eta CMA ; 2.45; 20000;occ; 122; 0;50501
3; 835.1; 26-OCT-2011 18:10:43; Dark ; 61.5; 108; Alp Col ; 2.65; 15200;occ; 123; 0;50501
/nas3/ENVISAT/GOMOS/GOM_NL__0P/GOM_NL__0PNPDK20111027_125307_000000193108_00067_50512_5487.N1
1; 2026.2; 27-OCT-2011 12:53:07; Dark ; 19.5; 9; Alp Eri ; 0.45; 24000;occ; 39; 0;50512