

# GOMOS Daily Report 16-OCT-2011

## Level 0 and Level 1 products

### SUMMARY

#### [1. General Info](#)

#### [2. Summary of products arrived in PCF \(Product Control Facility\)](#)

[2.1 Level 0: products arrived in PCF during current month \(see template here\)](#)

[2.2 Level 0: plot of mission plan versus production during reporting period](#)

[2.3 Level 0: summary of missing occultations with respect to the plan](#)

[2.4 Level 1: products arrived in PCF during reporting period](#)

#### [3. Plot of Spectrometers and Photometers temperatures](#)

#### [4. Dark Charge monitoring](#)

[4.1 Products that did not use the Dark Sky Area observation for DC computation](#)

[4.2 Plot of Dark Charge](#)

#### [5. Demodulation correction and quality product information monitoring](#)

[5.1 Percentage of products with some flags set](#)

[5.2 Plot of quality information per product \(time dependant\)](#)

[5.3 Plot of quality information per product \(world map\)](#)

#### [6. Star tangent altitude lost](#)

[6.1 Statistics on star tangent altitude lost](#)

[6.2 Plot of star tangent altitude lost: DARK products](#)

[6.3 Plot of star tangent altitude lost: BRIGHT products](#)

[6.3 Plot of star tangent altitude lost: TWILIGHT products](#)

#### [7. Star Acquisition and Tracking Unit \(SATU\)](#)

[7.1 SATU plots \(dark limb\): 'X' and 'Y' axis](#)

[7.2 SATU Noise Equivalent Angle statistics](#)

[7.2.1 SATU NEA Statistics \(table\)](#)

[7.2.2 Daily SATU NEA STD \(dark limb\) - trend since 1st April 2006](#)

[8. Auxiliary Data Files used for the production reported in section 2.4](#)

## [Level 2 products](#)

---

This report presents the daily analysis on parameters extracted from GOMOS level 1b data (GOM\_TRA\_1P). It is intended to monitor some important parameters that will impact the quality of the level 2 products as the Spectrometers and Photometers CCD Temperatures and Dark Charge, SATU noise equivalent angle... A list of level 0 products (and content) that have arrived during the actual month to the PCF is also given.

Item	Value
Time of report generation	18OCT2011 07:00:43
Data source version	GOMOS/6.01
Start time of products	16OCT2011 01:24:43
Stop time of products	16OCT2011 23:14:41
Store outputs in DB	Yes
Nb of level 1b prods	25
Nb of prods with errors	0

## 2. Summary of products arrived in PCF (Product Control Facility)

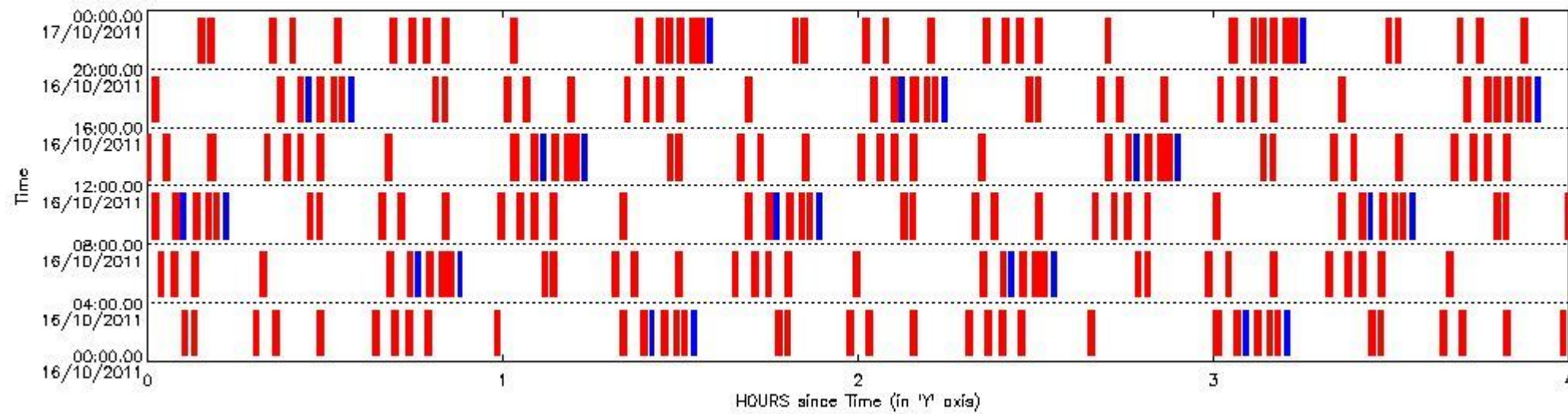
### 2.1 Level 0 products arrived in PCF (see template [here](#))

### 2.2 Plot of mission plan versus Level 0 production arrived in PCF during reporting period

Red segments are missing products.

Blue segments are available products.

Green segments are calibration measurements (not available products to users).



### 2.3 Summary of missing occultations (red segments in previous plot)

UTC start time	Star name	Star ID	Orbit
16-OCT-2011 00:05:47	50AlpUMa	36	50346
16-OCT-2011 00:07:21	48BetUMa	82	50346
16-OCT-2011 00:17:43	17EpsLeo	166	50346
16-OCT-2011 00:21:00	32AlpLeo	22	50346
16-OCT-2011 00:28:28	30AlpHya	48	50346
16-OCT-2011 00:37:58	LamVel	65	50346
16-OCT-2011 00:41:10	Gam2Vel	34	50347
16-OCT-2011 00:43:30	DSA1055	0	50347
16-OCT-2011 00:46:47	AlpCar	2	50347
16-OCT-2011 00:58:26	The1Eri	157	50347
16-OCT-2011 01:19:47	6BetAri	105	50347
16-OCT-2011 01:23:15	43BetAnd	53	50347
16-OCT-2011 01:26:38	57Gam1And	73	50347
16-OCT-2011 01:28:48	18AlpCas	68	50347
16-OCT-2011 01:30:08	27GamCas	76	50347

16-OCT-2011 01:46:01	50AlpUMa	36	50347
16-OCT-2011 01:47:35	48BetUMa	82	50347
16-OCT-2011 01:57:57	17EpsLeo	166	50347
16-OCT-2011 02:01:15	32AlpLeo	22	50347
16-OCT-2011 02:08:43	30AlpHya	48	50347
16-OCT-2011 02:18:13	LamVel	65	50347
16-OCT-2011 02:21:25	Gam2Vel	34	50348
16-OCT-2011 02:23:45	DSA1055	0	50348
16-OCT-2011 02:27:02	AlpCar	2	50348
16-OCT-2011 02:38:41	The1Eri	157	50348
16-OCT-2011 03:00:01	6BetAri	105	50348
16-OCT-2011 03:03:29	43BetAnd	53	50348
16-OCT-2011 03:06:51	57Gam1And	73	50348
16-OCT-2011 03:09:02	18AlpCas	68	50348
16-OCT-2011 03:10:22	27GamCas	76	50348
16-OCT-2011 03:26:15	50AlpUMa	36	50348
16-OCT-2011 03:27:49	48BetUMa	82	50348
16-OCT-2011 03:38:11	17EpsLeo	166	50348
16-OCT-2011 03:41:29	32AlpLeo	22	50348
16-OCT-2011 03:48:58	30AlpHya	48	50348
16-OCT-2011 03:58:27	LamVel	65	50348
16-OCT-2011 04:01:40	Gam2Vel	34	50349
16-OCT-2011 04:04:00	DSA1055	0	50349
16-OCT-2011 04:07:17	AlpCar	2	50349
16-OCT-2011 04:18:55	The1Eri	157	50349
16-OCT-2011 04:40:14	6BetAri	105	50349
16-OCT-2011 04:43:42	43BetAnd	53	50349
16-OCT-2011 04:47:05	57Gam1And	73	50349
16-OCT-2011 04:49:16	18AlpCas	68	50349
16-OCT-2011 04:50:36	27GamCas	76	50349
16-OCT-2011 05:06:29	50AlpUMa	36	50349
16-OCT-2011 05:08:03	48BetUMa	82	50349
16-OCT-2011 05:18:25	17EpsLeo	166	50349
16-OCT-2011 05:21:43	32AlpLeo	22	50349
16-OCT-2011 05:29:13	30AlpHya	48	50349
16-OCT-2011 05:38:42	LamVel	65	50349
16-OCT-2011 05:41:54	Gam2Vel	34	50350
16-OCT-2011 05:44:15	DSA1055	0	50350
16-OCT-2011 05:47:32	AlpCar	2	50350
16-OCT-2011 05:59:09	The1Eri	157	50350
16-OCT-2011 06:20:27	6BetAri	105	50350
16-OCT-2011 06:23:56	43BetAnd	53	50350
16-OCT-2011 06:27:18	57Gam1And	73	50350
16-OCT-2011 06:29:29	18AlpCas	68	50350
16-OCT-2011 06:30:50	27GamCas	76	50350
16-OCT-2011 06:46:43	50AlpUMa	36	50350
16-OCT-2011 06:48:17	48BetUMa	82	50350
16-OCT-2011 06:58:40	17EpsLeo	166	50350
16-OCT-2011 07:01:58	32AlpLeo	22	50350
16-OCT-2011 07:09:27	30AlpHya	48	50350
16-OCT-2011 07:18:56	LamVel	65	50350
16-OCT-2011 07:22:09	Gam2Vel	34	50351
16-OCT-2011 07:24:29	DSA1055	0	50351
16-OCT-2011 07:27:46	AlpCar	2	50351
16-OCT-2011 07:39:24	The1Eri	157	50351
16-OCT-2011 08:00:41	6BetAri	105	50351
16-OCT-2011 08:04:10	43BetAnd	53	50351
16-OCT-2011 08:07:31	57Gam1And	73	50351
16-OCT-2011 08:09:43	18AlpCas	68	50351

16-OCT-2011 08:11:04	27GamCas	76	50351
16-OCT-2011 08:26:57	50AlpUMa	36	50351
16-OCT-2011 08:28:31	48BetUMa	82	50351
16-OCT-2011 08:38:54	17EpsLeo	166	50351
16-OCT-2011 08:42:12	32AlpLeo	22	50351
16-OCT-2011 08:49:42	30AlpHya	48	50351
16-OCT-2011 08:59:11	LamVel	65	50351
16-OCT-2011 09:02:24	Gam2Vel	34	50352
16-OCT-2011 09:04:44	DSA1055	0	50352
16-OCT-2011 09:08:01	AlpCar	2	50352
16-OCT-2011 09:19:38	The1Eri	157	50352
16-OCT-2011 09:40:54	6BetAri	105	50352
16-OCT-2011 09:44:23	43BetAnd	53	50352
16-OCT-2011 09:47:45	57Gam1And	73	50352
16-OCT-2011 09:49:57	18AlpCas	68	50352
16-OCT-2011 09:51:17	27GamCas	76	50352
16-OCT-2011 10:07:11	50AlpUMa	36	50352
16-OCT-2011 10:08:45	48BetUMa	82	50352
16-OCT-2011 10:19:08	17EpsLeo	166	50352
16-OCT-2011 10:22:26	32AlpLeo	22	50352
16-OCT-2011 10:29:57	30AlpHya	48	50352
16-OCT-2011 10:39:25	LamVel	65	50352
16-OCT-2011 10:42:39	Gam2Vel	34	50353
16-OCT-2011 10:44:59	DSA1055	0	50353
16-OCT-2011 10:48:16	AlpCar	2	50353
16-OCT-2011 10:59:53	The1Eri	157	50353
16-OCT-2011 11:21:08	6BetAri	105	50353
16-OCT-2011 11:24:37	43BetAnd	53	50353
16-OCT-2011 11:27:58	57Gam1And	73	50353
16-OCT-2011 11:30:11	18AlpCas	68	50353
16-OCT-2011 11:31:31	27GamCas	76	50353
16-OCT-2011 11:47:25	50AlpUMa	36	50353
16-OCT-2011 11:48:58	48BetUMa	82	50353
16-OCT-2011 11:59:22	17EpsLeo	166	50353
16-OCT-2011 12:02:41	32AlpLeo	22	50353
16-OCT-2011 12:10:11	30AlpHya	48	50353
16-OCT-2011 12:19:40	LamVel	65	50353
16-OCT-2011 12:22:53	Gam2Vel	34	50354
16-OCT-2011 12:25:14	DSA1055	0	50354
16-OCT-2011 12:28:31	AlpCar	2	50354
16-OCT-2011 12:40:07	The1Eri	157	50354
16-OCT-2011 13:01:21	6BetAri	105	50354
16-OCT-2011 13:04:51	43BetAnd	53	50354
16-OCT-2011 13:08:12	57Gam1And	73	50354
16-OCT-2011 13:10:25	18AlpCas	68	50354
16-OCT-2011 13:11:45	27GamCas	76	50354
16-OCT-2011 13:27:39	50AlpUMa	36	50354
16-OCT-2011 13:29:12	48BetUMa	82	50354
16-OCT-2011 13:39:36	17EpsLeo	166	50354
16-OCT-2011 13:42:55	32AlpLeo	22	50354
16-OCT-2011 13:50:26	30AlpHya	48	50354
16-OCT-2011 13:59:55	LamVel	65	50354
16-OCT-2011 14:03:08	Gam2Vel	34	50355
16-OCT-2011 14:05:29	DSA1055	0	50355
16-OCT-2011 14:08:45	AlpCar	2	50355
16-OCT-2011 14:20:22	The1Eri	157	50355
16-OCT-2011 14:41:35	6BetAri	105	50355
16-OCT-2011 14:45:04	43BetAnd	53	50355
16-OCT-2011 14:48:25	57Gam1And	73	50355

16-OCT-2011 14:50:38	18AlpCas	68	50355
16-OCT-2011 14:51:59	27GamCas	76	50355
16-OCT-2011 15:07:53	50AlpUMa	36	50355
16-OCT-2011 15:09:26	48BetUMa	82	50355
16-OCT-2011 15:19:51	17EpsLeo	166	50355
16-OCT-2011 15:23:09	32AlpLeo	22	50355
16-OCT-2011 15:30:41	30AlpHya	48	50355
16-OCT-2011 15:40:09	LamVel	65	50355
16-OCT-2011 15:43:23	Gam2Vel	34	50356
16-OCT-2011 15:45:44	DSA1055	0	50356
16-OCT-2011 15:49:00	AlpCar	2	50356
16-OCT-2011 16:00:36	The1Eri	157	50356
16-OCT-2011 16:21:48	6BetAri	105	50356
16-OCT-2011 16:25:18	43BetAnd	53	50356
16-OCT-2011 16:28:38	57Gam1And	73	50356
16-OCT-2011 16:30:52	18AlpCas	68	50356
16-OCT-2011 16:32:12	27GamCas	76	50356
16-OCT-2011 16:48:07	50AlpUMa	36	50356
16-OCT-2011 16:49:40	48BetUMa	82	50356
16-OCT-2011 17:00:05	17EpsLeo	166	50356
16-OCT-2011 17:03:23	32AlpLeo	22	50356
16-OCT-2011 17:10:55	30AlpHya	48	50356
16-OCT-2011 17:20:24	LamVel	65	50356
16-OCT-2011 17:23:38	Gam2Vel	34	50357
16-OCT-2011 17:25:59	DSA1055	0	50357
16-OCT-2011 17:29:15	AlpCar	2	50357
16-OCT-2011 17:40:50	The1Eri	157	50357
16-OCT-2011 18:02:02	6BetAri	105	50357
16-OCT-2011 18:05:32	43BetAnd	53	50357
16-OCT-2011 18:08:52	57Gam1And	73	50357
16-OCT-2011 18:11:06	18AlpCas	68	50357
16-OCT-2011 18:12:26	27GamCas	76	50357
16-OCT-2011 18:28:21	50AlpUMa	36	50357
16-OCT-2011 18:29:54	48BetUMa	82	50357
16-OCT-2011 18:40:19	17EpsLeo	166	50357
16-OCT-2011 18:43:38	32AlpLeo	22	50357
16-OCT-2011 18:51:10	30AlpHya	48	50357
16-OCT-2011 19:00:38	LamVel	65	50357
16-OCT-2011 19:03:52	Gam2Vel	34	50358
16-OCT-2011 19:06:13	DSA1055	0	50358
16-OCT-2011 19:09:30	AlpCar	2	50358
16-OCT-2011 19:21:05	The1Eri	157	50358
16-OCT-2011 19:42:15	6BetAri	105	50358
16-OCT-2011 19:45:45	43BetAnd	53	50358
16-OCT-2011 19:47:11	4BetTri	173	50358
16-OCT-2011 19:49:05	57Gam1And	73	50358
16-OCT-2011 19:51:20	18AlpCas	68	50358
16-OCT-2011 19:52:40	27GamCas	76	50358
16-OCT-2011 20:08:35	50AlpUMa	36	50358
16-OCT-2011 20:10:08	48BetUMa	82	50358
16-OCT-2011 20:20:33	17EpsLeo	166	50358
16-OCT-2011 20:23:52	32AlpLeo	22	50358
16-OCT-2011 20:31:25	30AlpHya	48	50358
16-OCT-2011 20:40:53	LamVel	65	50358
16-OCT-2011 20:44:07	Gam2Vel	34	50359
16-OCT-2011 20:46:28	DSA1055	0	50359
16-OCT-2011 20:49:45	AlpCar	2	50359
16-OCT-2011 21:01:19	The1Eri	157	50359
16-OCT-2011 21:22:29	6BetAri	105	50359

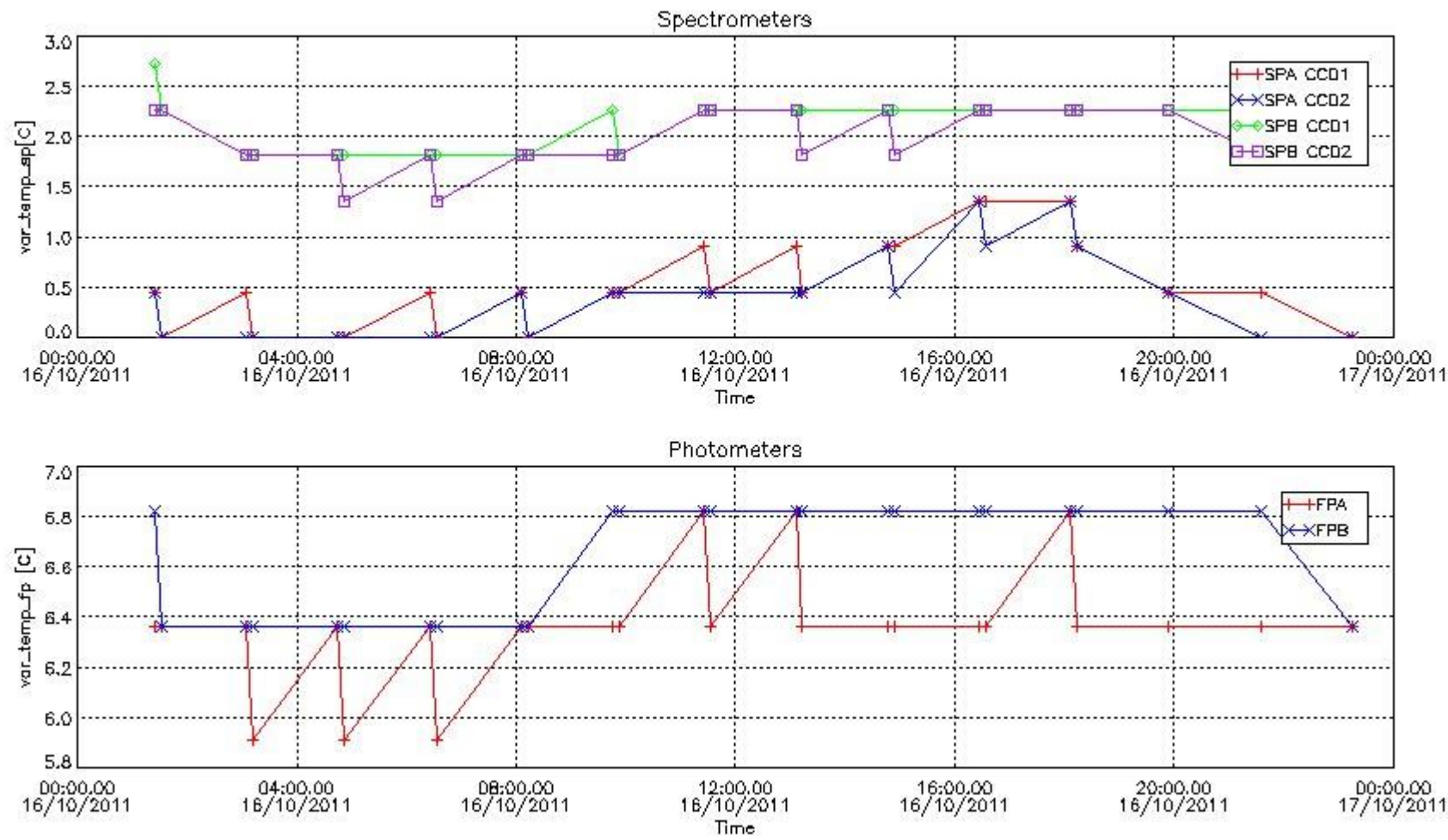
16-OCT-2011 21:25:59	43BetAnd	53	50359
16-OCT-2011 21:27:25	4BetTri	173	50359
16-OCT-2011 21:29:18	57Gam1And	73	50359
16-OCT-2011 21:31:34	18AlpCas	68	50359
16-OCT-2011 21:32:54	27GamCas	76	50359
16-OCT-2011 21:48:49	50AlpUMa	36	50359
16-OCT-2011 21:50:22	48BetUMa	82	50359
16-OCT-2011 22:00:47	17EpsLeo	166	50359
16-OCT-2011 22:04:06	32AlpLeo	22	50359
16-OCT-2011 22:11:39	30AlpHya	48	50359
16-OCT-2011 22:21:08	LamVel	65	50359
16-OCT-2011 22:24:22	Gam2Vel	34	50360
16-OCT-2011 22:26:43	DSA1055	0	50360
16-OCT-2011 22:29:59	AlpCar	2	50360
16-OCT-2011 22:41:34	The1Eri	157	50360
16-OCT-2011 23:02:42	6BetAri	105	50360
16-OCT-2011 23:06:13	43BetAnd	53	50360
16-OCT-2011 23:07:38	4BetTri	173	50360
16-OCT-2011 23:09:32	57Gam1And	73	50360
16-OCT-2011 23:11:47	18AlpCas	68	50360
16-OCT-2011 23:13:07	27GamCas	76	50360
16-OCT-2011 23:29:03	50AlpUMa	36	50360
16-OCT-2011 23:30:36	48BetUMa	82	50360
16-OCT-2011 23:41:02	17EpsLeo	166	50360
16-OCT-2011 23:44:21	32AlpLeo	22	50360
16-OCT-2011 23:51:54	30AlpHya	48	50360

#### 2.4 Summary of processed GOM\_TRA\_1P products

**!Warning: No products without errors in DARK limb contitions found**

Nr	Filename	UTC Start time	Limb	Duration	Star Id	Star Name	Star Mag	Star Temp	Nb Meas	Orbit	Prod. error
1	GOM_TRA_1PNPDE20111016_012443_000000453107_00333_50347_8200.N1	16-OCT-2011 01:24:43	Bright	45.000	173	4Bet Tri	3.0040	8900.0	90	50347	No
2	GOM_TRA_1PNPDE20111016_013149_000000453107_00333_50347_8201.N1	16-OCT-2011 01:31:49	Bright	45.000	160	23Gam Per	2.9300	4700.0	90	50347	No
3	GOM_TRA_1PNPDE20111016_030456_000000473107_00334_50348_8226.N1	16-OCT-2011 03:04:56	Bright	46.500	173	4Bet Tri	3.0040	8900.0	93	50348	No
4	GOM_TRA_1PNPDE20111016_031202_000000443107_00334_50348_8227.N1	16-OCT-2011 03:12:02	Bright	44.000	160	23Gam Per	2.9300	4700.0	88	50348	No
5	GOM_TRA_1PNPDE20111016_044510_000000463107_00335_50349_8267.N1	16-OCT-2011 04:45:10	Bright	45.500	173	4Bet Tri	3.0040	8900.0	91	50349	No
6	GOM_TRA_1PNPDE20111016_045216_000000473107_00335_50349_8268.N1	16-OCT-2011 04:52:16	Bright	46.500	160	23Gam Per	2.9300	4700.0	93	50349	No
7	GOM_TRA_1PNPDE20111016_062523_000000453107_00336_50350_8302.N1	16-OCT-2011 06:25:23	Bright	45.000	173	4Bet Tri	3.0040	8900.0	90	50350	No
8	GOM_TRA_1PNPDE20111016_063229_000000473107_00336_50350_8303.N1	16-OCT-2011 06:32:29	Bright	46.500	160	23Gam Per	2.9300	4700.0	93	50350	No
9	GOM_TRA_1PNPDK20111016_080537_000000463107_00337_50351_7748.N1	16-OCT-2011 08:05:37	Bright	45.500	173	4Bet Tri	3.0040	8900.0	91	50351	No
10	GOM_TRA_1PNPDK20111016_081242_000000443107_00337_50351_7749.N1	16-OCT-2011 08:12:42	Bright	44.000	160	23Gam Per	2.9300	4700.0	88	50351	No
11	GOM_TRA_1PNPDK20111016_094550_000000473107_00338_50352_7790.N1	16-OCT-2011 09:45:50	Bright	46.500	173	4Bet Tri	3.0040	8900.0	93	50352	No
12	GOM_TRA_1PNPDK20111016_095256_000000463107_00338_50352_7791.N1	16-OCT-2011 09:52:56	Bright	45.500	160	23Gam Per	2.9300	4700.0	91	50352	No
13	GOM_TRA_1PNPDK20111016_112603_000000463107_00339_50353_7838.N1	16-OCT-2011 11:26:03	Bright	45.500	173	4Bet Tri	3.0040	8900.0	91	50353	No
14	GOM_TRA_1PNPDK20111016_113309_000000473107_00339_50353_7839.N1	16-OCT-2011 11:33:09	Bright	46.500	160	23Gam Per	2.9300	4700.0	93	50353	No
15	GOM_TRA_1PNPDK20111016_130616_000000453107_00340_50354_7874.N1	16-OCT-2011 13:06:16	Bright	45.000	173	4Bet Tri	3.0040	8900.0	90	50354	No
16	GOM_TRA_1PNPDK20111016_131322_000000473107_00340_50354_7875.N1	16-OCT-2011 13:13:22	Bright	47.000	160	23Gam Per	2.9300	4700.0	94	50354	No
17	GOM_TRA_1PNPDK20111016_144630_000000453107_00341_50355_7914.N1	16-OCT-2011 14:46:30	Bright	44.500	173	4Bet Tri	3.0040	8900.0	89	50355	No
18	GOM_TRA_1PNPDK20111016_145335_000000463107_00341_50355_7915.N1	16-OCT-2011 14:53:35	Bright	46.000	160	23Gam Per	2.9300	4700.0	92	50355	No
19	GOM_TRA_1PNPDK20111016_162643_000000453107_00342_50356_7940.N1	16-OCT-2011 16:26:43	Bright	45.000	173	4Bet Tri	3.0040	8900.0	90	50356	No
20	GOM_TRA_1PNPDK20111016_163348_000000473107_00342_50356_7941.N1	16-OCT-2011 16:33:48	Bright	47.000	160	23Gam Per	2.9300	4700.0	94	50356	No
21	GOM_TRA_1PNPDK20111016_180656_000000473107_00343_50357_7975.N1	16-OCT-2011 18:06:56	Bright	46.500	173	4Bet Tri	3.0040	8900.0	93	50357	No
22	GOM_TRA_1PNPDK20111016_181402_000000473107_00343_50357_7976.N1	16-OCT-2011 18:14:02	Bright	47.000	160	23Gam Per	2.9300	4700.0	94	50357	No
23	GOM_TRA_1PNPDK20111016_195415_000000473107_00344_50358_8035.N1	16-OCT-2011 19:54:15	Bright	46.500	160	23Gam Per	2.9300	4700.0	93	50358	No
24	GOM_TRA_1PNPDE20111016_213428_000000463107_00345_50359_8440.N1	16-OCT-2011 21:34:28	Bright	46.000	160	23Gam Per	2.9300	4700.0	92	50359	No
25	GOM_TRA_1PNPDE20111016_231441_000000463107_00346_50360_8475.N1	16-OCT-2011 23:14:41	Bright	46.000	160	23Gam Per	2.9300	4700.0	92	50360	No

### 3. Plot of GOMOS spectrometers and photometers temperatures from level 1b data



### 4. Overview of dark signal processing per product

The Dark Charge (DC) is a temperature-dependant signal added to the useful measurements and it is therefore subtracted from them during the processing. There are two phenomena that produce a continuous increase of the DC: the "hot pixels" (a pixel is "hot" when its DC exceeds by a significant amount its value measured on ground at the same temperature) and the "Random Telegraphic Signal" (abrupt change positive or negative of the CCD pixel signal, random in time, affecting only the DC part of the signal and not the photon generated signal).

In this section a list of products that did not use the Dark Sky Area (DSA) observation for the DC computation is given. It is also provided the mean DC plot per product for dark limb products with no error flag set.

#### 4.1 These products did not use the DSA observation for DC computation:

Product name	DC information
GOM_TRA_1PNPDE20111016_012443_000000453107_00333_50347_8200.N1	DC map used
GOM_TRA_1PNPDE20111016_013149_000000453107_00333_50347_8201.N1	DC map used
GOM_TRA_1PNPDE20111016_030456_000000473107_00334_50348_8226.N1	DC map used
GOM_TRA_1PNPDE20111016_031202_000000443107_00334_50348_8227.N1	DC map used
GOM_TRA_1PNPDE20111016_044510_000000463107_00335_50349_8267.N1	DC map used
GOM_TRA_1PNPDE20111016_045216_000000473107_00335_50349_8268.N1	DC map used
GOM_TRA_1PNPDE20111016_062523_000000453107_00336_50350_8302.N1	DC map used
GOM_TRA_1PNPDE20111016_063229_000000473107_00336_50350_8303.N1	DC map used
GOM_TRA_1PNPDK20111016_080537_000000463107_00337_50351_7748.N1	DC map used
GOM_TRA_1PNPDK20111016_081242_000000443107_00337_50351_7749.N1	DC map used
GOM_TRA_1PNPDK20111016_094550_000000473107_00338_50352_7790.N1	DC map used
GOM_TRA_1PNPDK20111016_095256_000000463107_00338_50352_7791.N1	DC map used

GOM_TRA_1PNPDK20111016_112603_000000463107_00339_50353_7838.N1	DC map used
GOM_TRA_1PNPDK20111016_113309_000000473107_00339_50353_7839.N1	DC map used
GOM_TRA_1PNPDK20111016_130616_000000453107_00340_50354_7874.N1	DC map used
GOM_TRA_1PNPDK20111016_131322_000000473107_00340_50354_7875.N1	DC map used
GOM_TRA_1PNPDK20111016_144630_000000453107_00341_50355_7914.N1	DC map used
GOM_TRA_1PNPDK20111016_145335_000000463107_00341_50355_7915.N1	DC map used
GOM_TRA_1PNPDK20111016_162643_000000453107_00342_50356_7940.N1	DC map used
GOM_TRA_1PNPDK20111016_163348_000000473107_00342_50356_7941.N1	DC map used
GOM_TRA_1PNPDK20111016_180656_000000473107_00343_50357_7975.N1	DC map used
GOM_TRA_1PNPDK20111016_181402_000000473107_00343_50357_7976.N1	DC map used
GOM_TRA_1PNPDK20111016_195415_000000473107_00344_50358_8035.N1	DC map used
GOM_TRA_1PNPDE20111016_213428_000000463107_00345_50359_8440.N1	DC map used
GOM_TRA_1PNPDE20111016_231441_000000463107_00346_50360_8475.N1	DC map used

*4.2 Plot of mean dark charges per product: only products in DARK limb conditions without errors are used*

No products without errors in DARK limb conditions found. No plot performed.

## 5. Demodulation flag and quality information monitoring

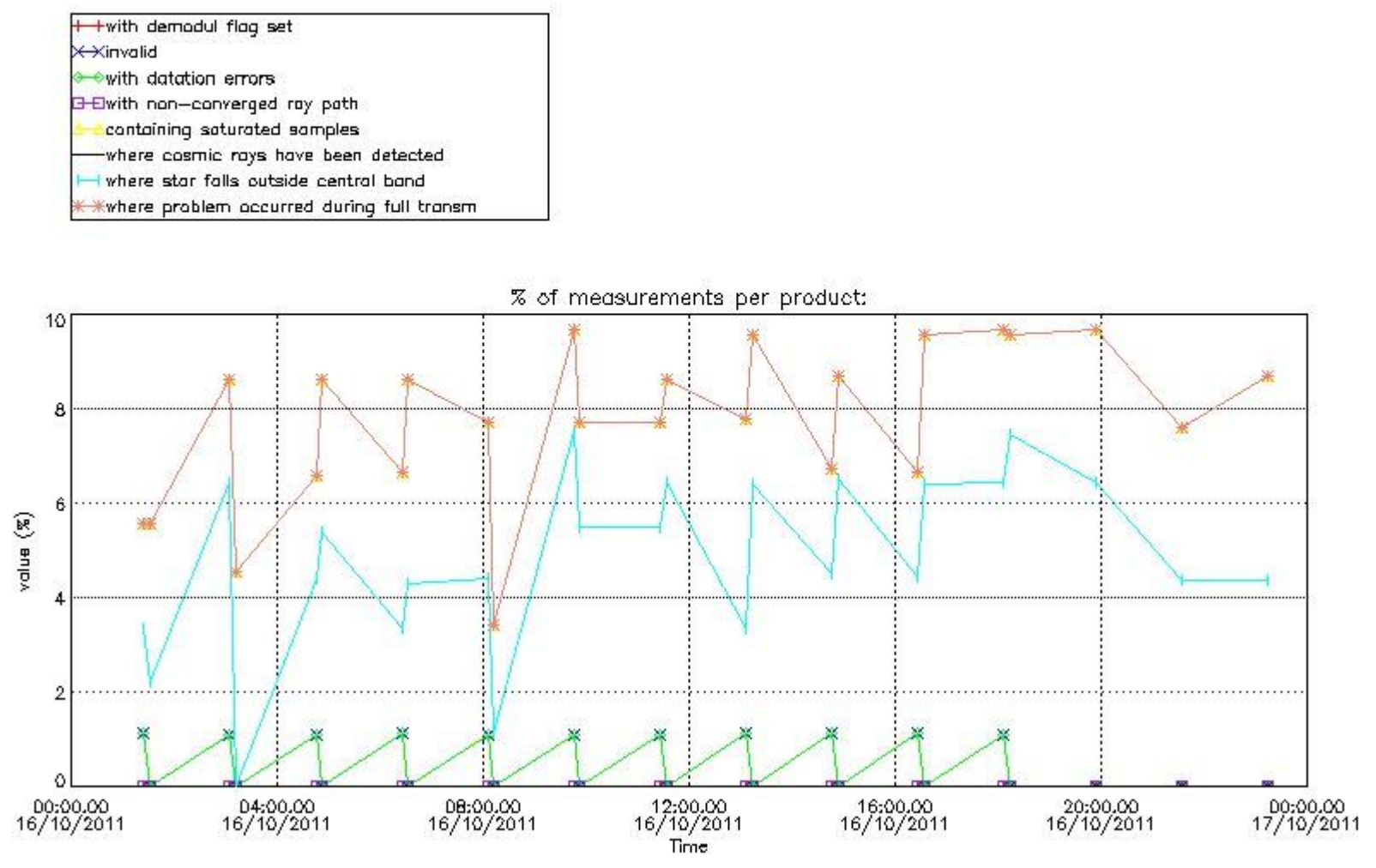
In this section it is presented the modulation information extracted from the pcd (product confidence data) at measurement level and information extracted from the Quality Summary dataset. Only products without errors (error flag in the MPH set to "0") are used.

*5.1 Percentage of products during reporting period with:*

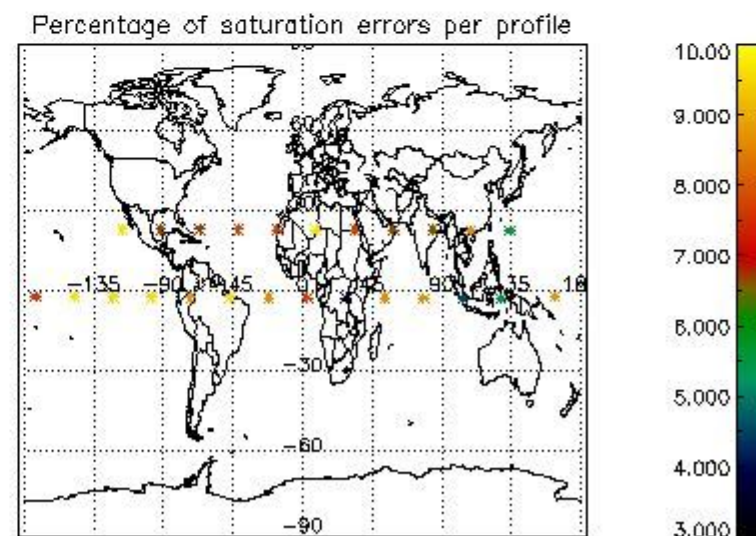
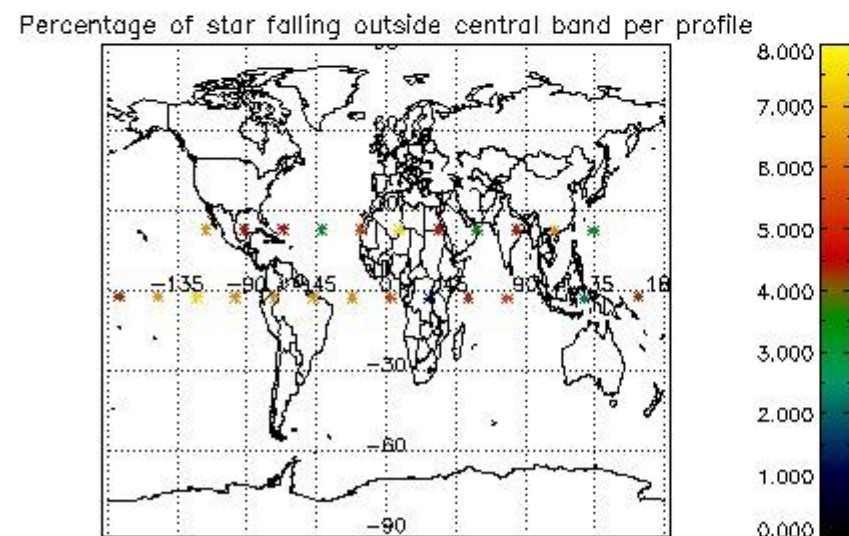
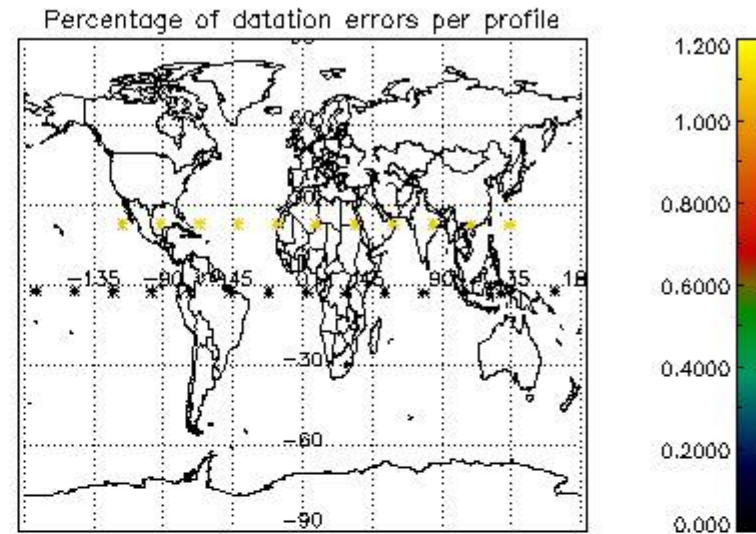
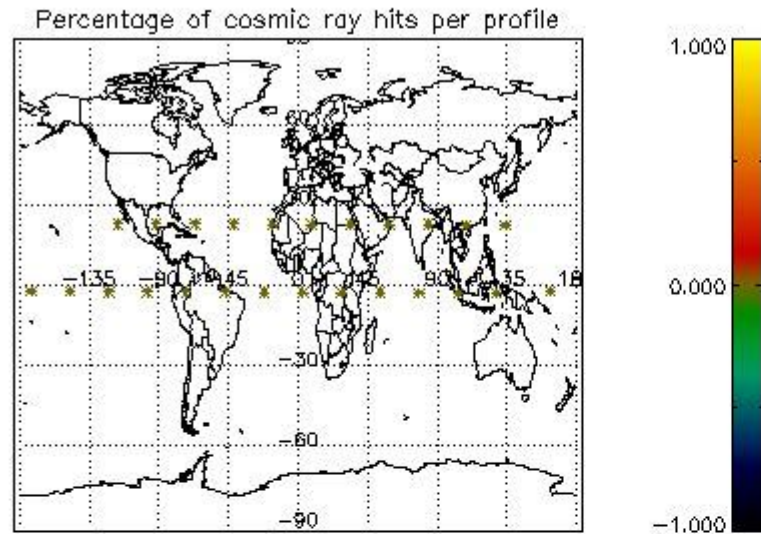
At least one measurement with demodulation flag set:	0.00000 %
Reference spectrum computed from DB:	0.00000 %
Reference spectrum with small number of measurements:	0.00000 %
SATU data not used:	100.000 %

*5.2 Plot quality information per product (time dependant)*





5.3 Plot quality information per product (world map)



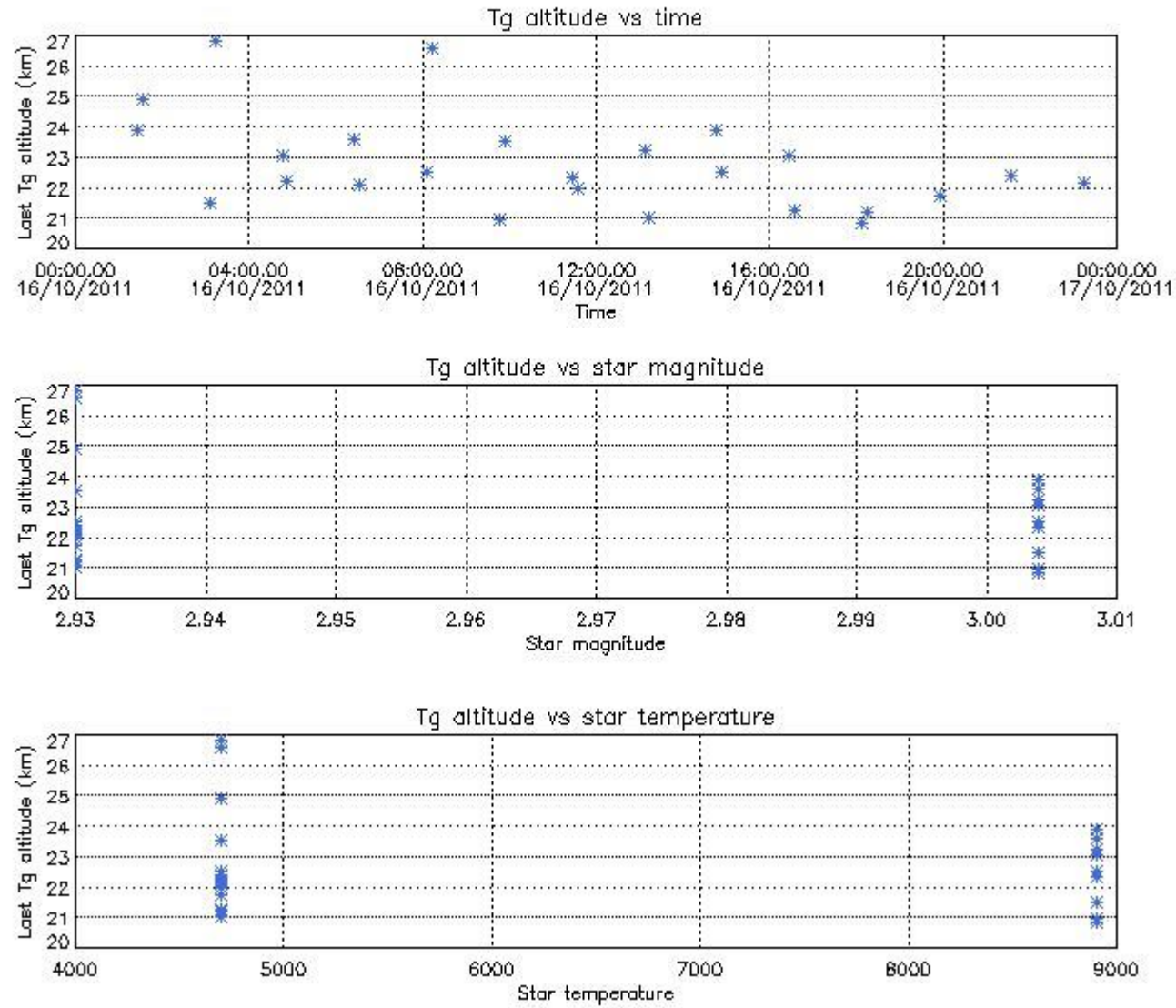
## 6. Statistics and plot of tangent altitude of the last measurement (DARK & BRIGHT products without errors)

### 6.1 Statistics on tangent altitude lost:

Statistics	DARK	BRIGHT	TWILIGHT
Mean:	NaN	22.771	NaN
St. deviation:	NaN	1.5738	NaN
Maximum:	NaN	26.835	NaN
Minimum:	NaN	20.812	NaN
Number of data:	NaN	25.000	NaN

### 6.3 Plot for BRIGHT limb products

## Tangent altitude at which the star is lost



## 7. Star Acquisition and Tracking Unit (SATU)

The Star Acquisition and Tracking Unit (SATU) analyses the position of the tracked star beam collected by the GOMOS telescope and deflected by the optical beam dispatcher. The main function of the SATU is to detect a star, provide its image position to the science data electronics and to help the pointing function to keep the star image at a fixed position. In tracking mode the SATU data is recorded with a frequency of 100 Hz.

### 7.1 SATU 'X' and 'Y' axis plots (dark limb)

SATU CCD 'X' and 'Y' axis plots are provided in order to detect any abnormal behaviour of the tracking system. For every occultation (color) the plot should remain stable (with some noise) until we are deep in the atmosphere where big fluctuations are registered due to the refractive effects.

### 7.2 Statistics on SATU Noise Equivalent Angle (NEA) for DARK (D) and BRIGHT (B) products above 105 kms

The Star Acquisition and Tracking Unit (it is the CCD that tracks the star while it is occulted) Noise Equivalent Angle consists of the statistical angular variation of the SATU data above the atmosphere. Statistics (in microradians) above 105 km are computed for every occultation, giving four values per occultation: one in the 'X' direction and one in the 'Y' direction for dark and bright limbs. A mean value per day in every direction and limb is calculated and monitored in order to assess instrument performance in terms of star pointing.

### 7.2.1 SATU NEA Statistics (table)

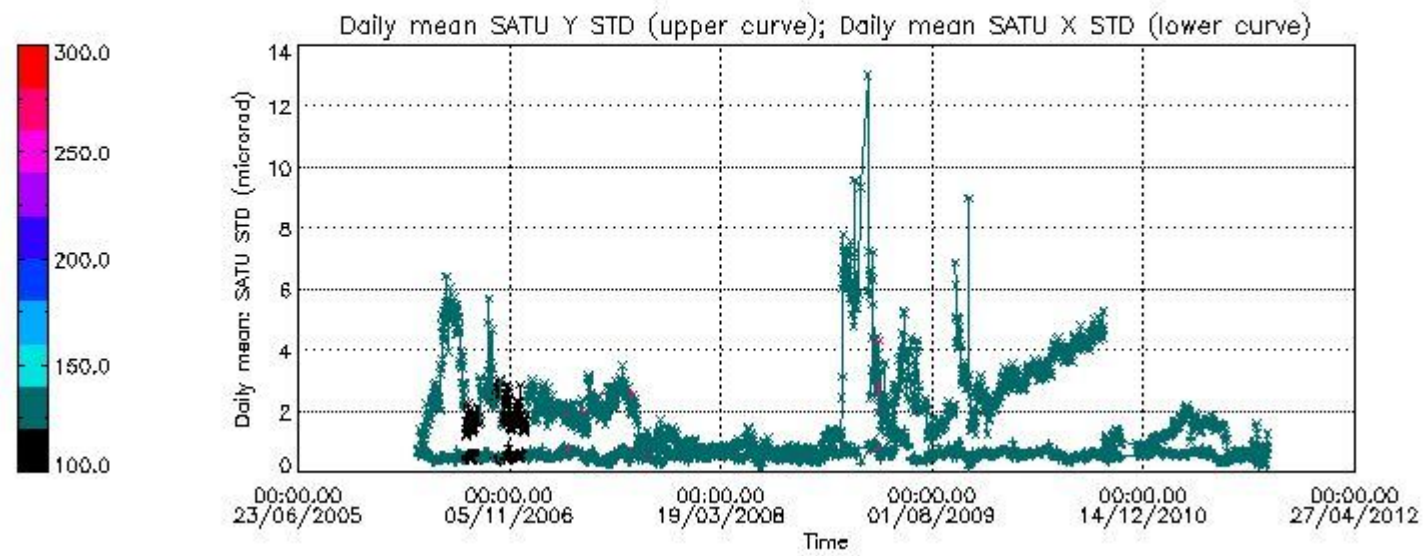
Statistics	SATU X (D)	SATU Y (D)	SATU X (B)	SATU Y (B)
Mean:	NaN	NaN	0.28382	-0.17021
St. deviation:	NaN	NaN	1.1697	1.3289
Maximum:	NaN	NaN	6.2000	6.1000
Minimum:	NaN	NaN	-5.9000	-6.6000
Number of data:	NaN	NaN	28700.	28700.
90Percentile:	NaN	NaN	1.8000	1.5000

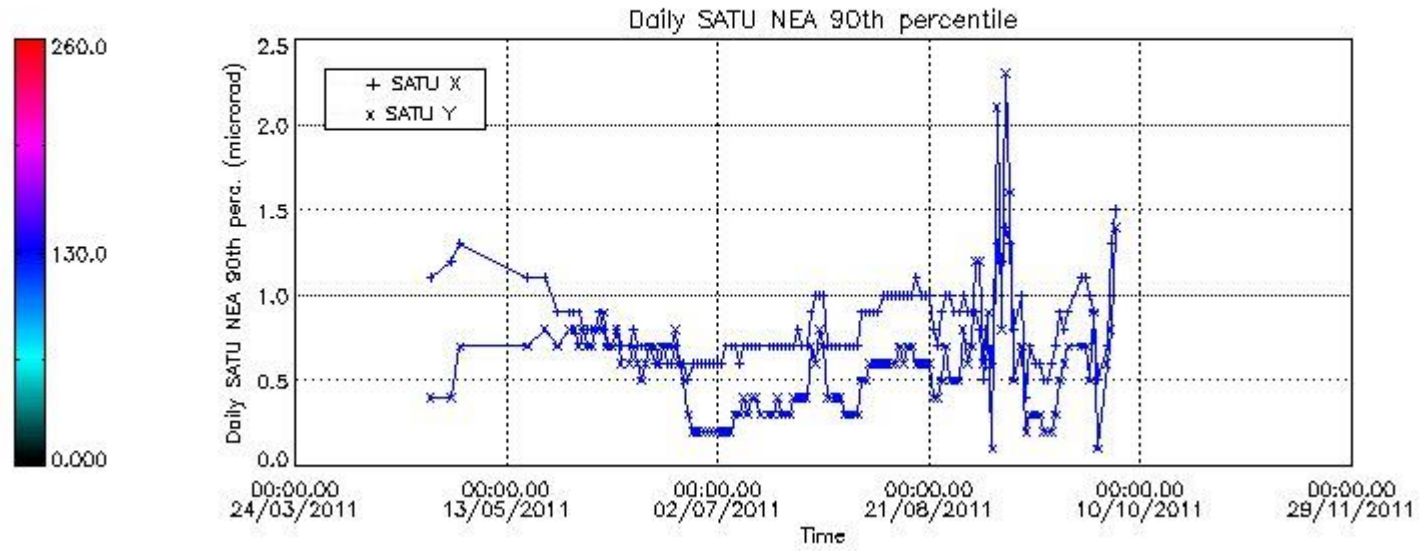
### 7.2.2 Trend of daily SATU NEA St. deviation since 1st April 2006 (dark limb) and of daily SATU NEA 90th percentile since May 2011

The long term trend of the SATU 'X' and 'Y' standard deviations should be constant during the whole mission.

The colorbar represents the start tangent altitude (km) of the occultations.

Upper curve: STD of SATU Y axis  
Lower curve: STD of SATU X axis

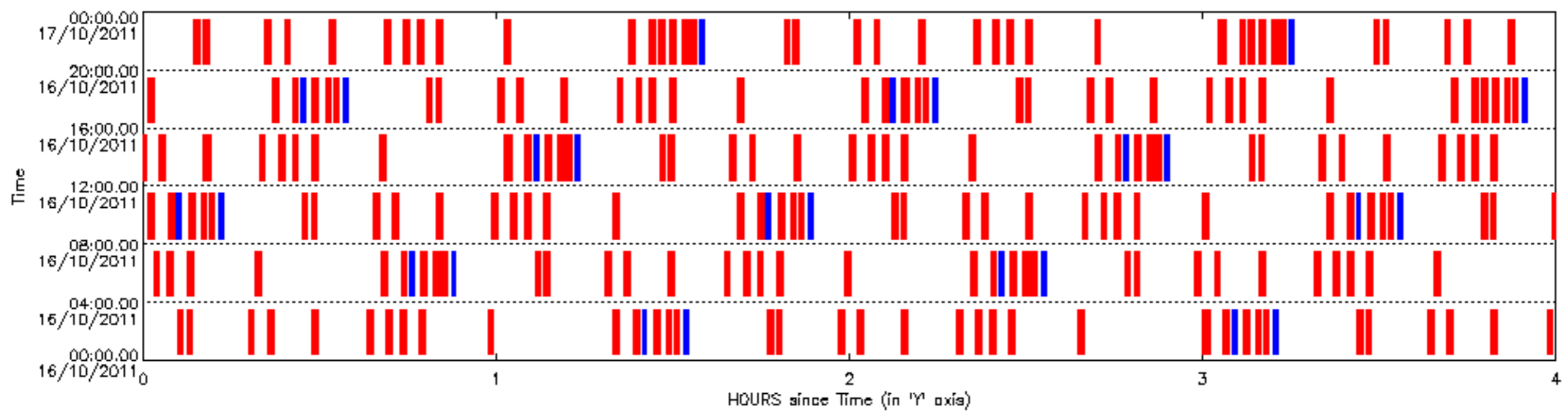


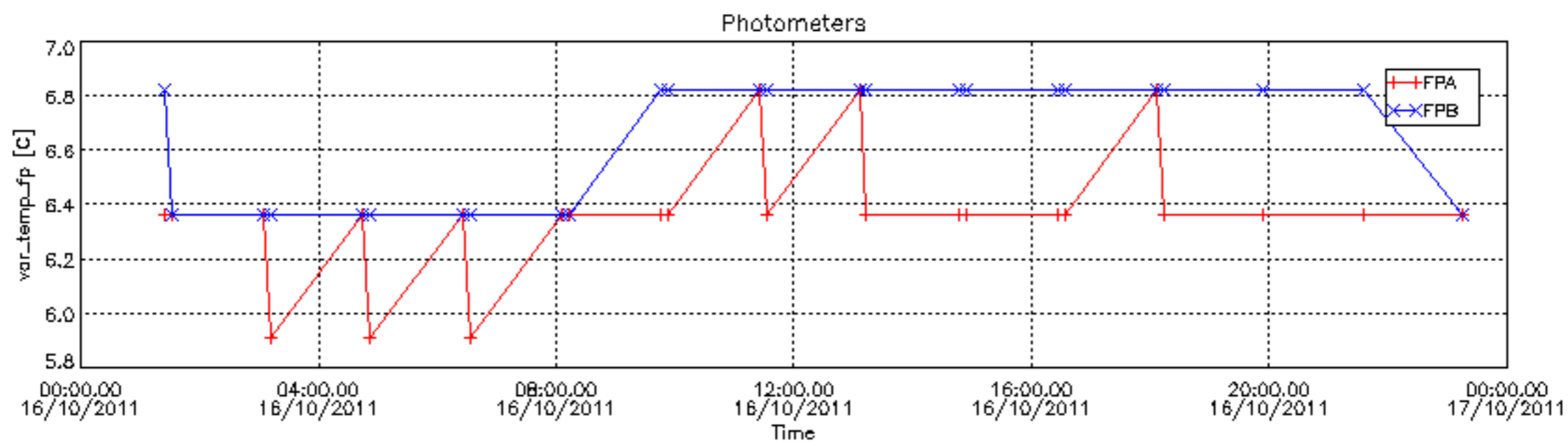
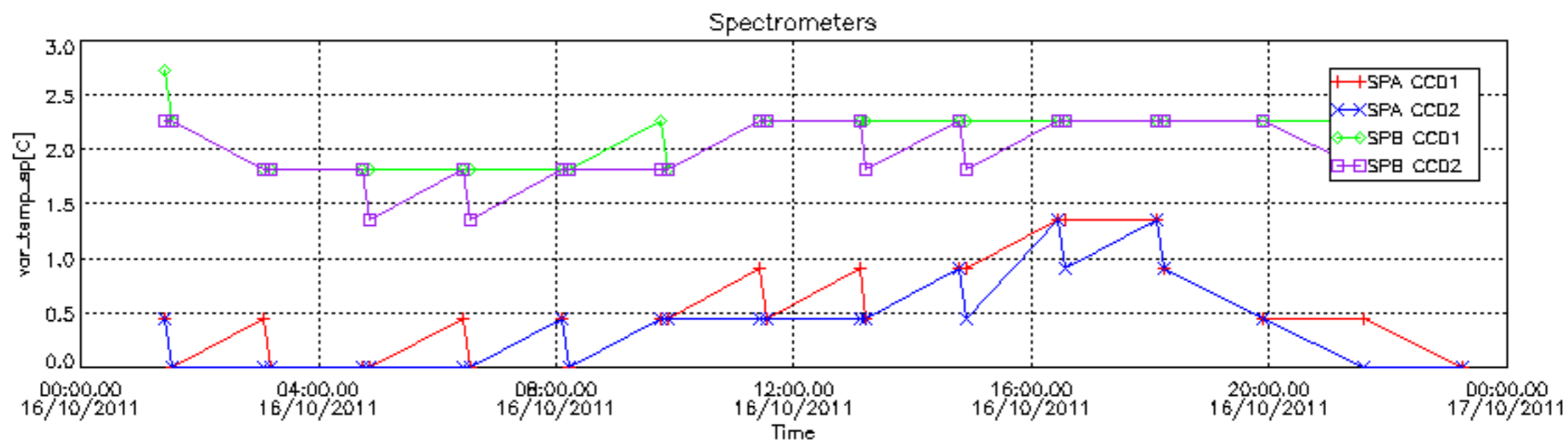


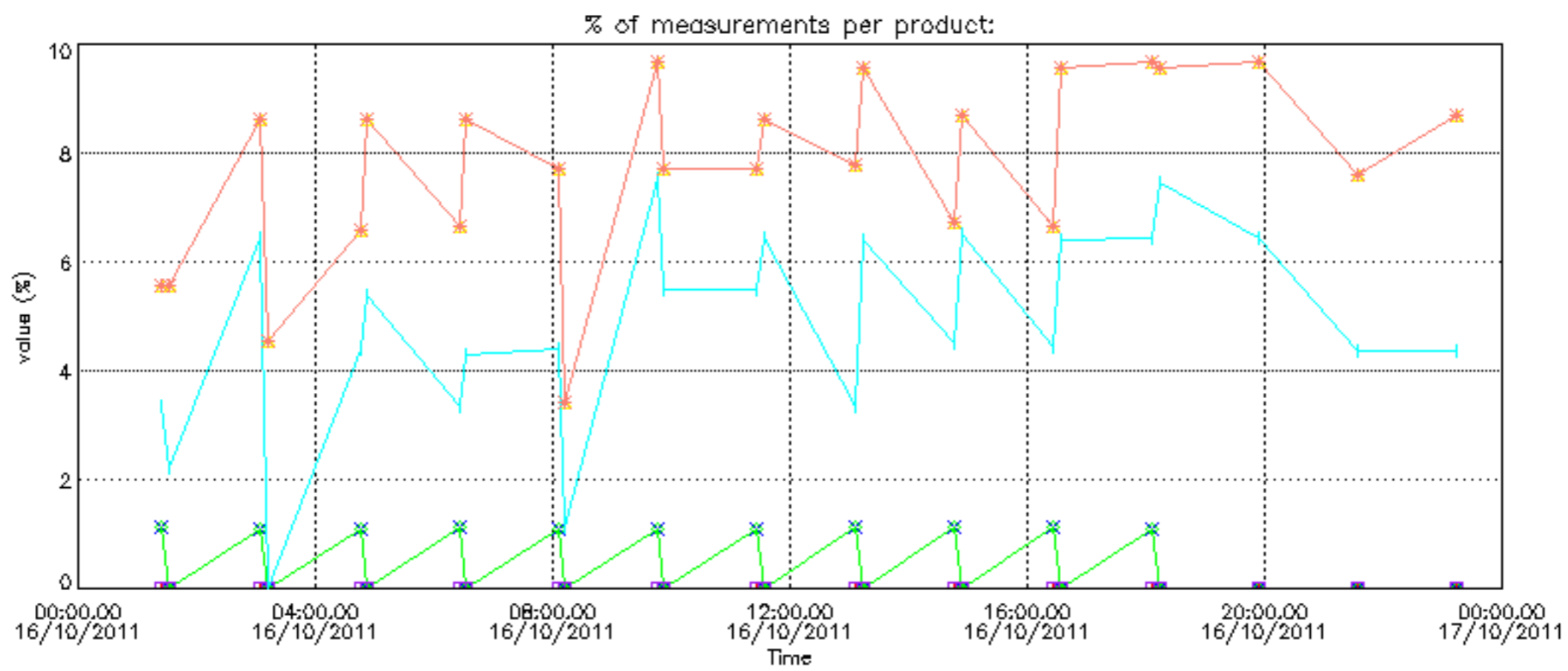
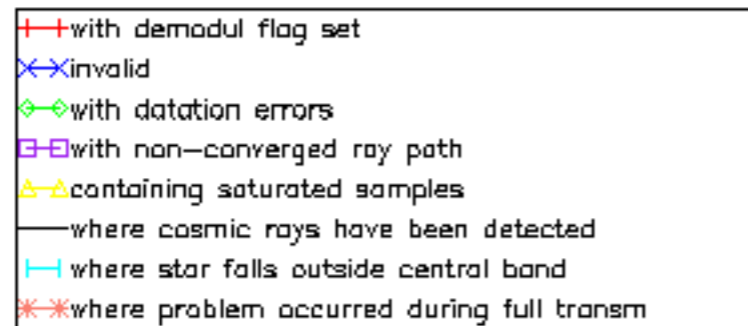
### 8. Auxiliary Data Files used for the production reported in section 2.4

The number reported in the third column indicates since which file (see list in section 2.4) the corresponding auxiliary file has been used. The fourth column is the date of those product files.

Type	Auxiliary Filename	Used since product	Used since product date
INST_PHYS_CHARACTERISTICS	GOM_INS_AXVIEC20091111_143220_20030716_120000_20500101_000000	1	16-OCT-2011 01:24:43
CALIBRATION_DATABASE	GOM_CAL_AXVIEC20111004_085053_20111003_000000_20500101_000000	1	16-OCT-2011 01:24:43
LEVEL-1B_PROC_CONFIG	GOM_PR1_AXVIEC20110513_081743_20020301_000000_20500101_000000	1	16-OCT-2011 01:24:43
STAR_CATALOGUE	GOM_CAT_AXVIEC20020121_161009_20020101_000000_20200101_000000	1	16-OCT-2011 01:24:43
STELLAR_SPECTRA_DATABANK	GOM_STS_AXVIEC20091111_151504_20020101_160000_20500101_000000	1	16-OCT-2011 01:24:43
ECMWF_FILE	AUX_ECF_AXNECM20111015_062116_20111015_210000_20111016_090000	1	16-OCT-2011 01:24:43
ECMWF_FILE	AUX_ECF_AXNECM20111015_182116_20111016_030000_20111016_150000	3	16-OCT-2011 03:04:56
ECMWF_FILE	AUX_ECA_AXNECM20111016_062115_20111015_210000_20111016_090000	9	16-OCT-2011 08:05:37
ECMWF_FILE	AUX_ECF_AXNECM20111016_062115_20111016_090000_20111016_210000	11	16-OCT-2011 09:45:50
ECMWF_FILE	AUX_ECF_AXNECM20111016_062116_20111016_150000_20111017_030000	19	16-OCT-2011 16:26:43
ECMWF_FILE	AUX_ECA_AXNECM20111016_182115_20111016_090000_20111016_210000	21	16-OCT-2011 18:06:56
ECMWF_FILE	AUX_ECF_AXNECM20111016_062116_20111016_210000_20111017_090000	24	16-OCT-2011 21:34:28
OPTIONAL_ECMWF_FILE	MISSING	1	16-OCT-2011 01:24:43
ORBIT_DATA_FILE	AUX_FPO_AXVPDS20111015_102115_20111014_183648_20111024_205032	1	16-OCT-2011 01:24:43
ORBIT_DATA_FILE	AUX_FPO_AXVPDS20111016_102113_20111015_194017_20111025_201348	11	16-OCT-2011 09:45:50

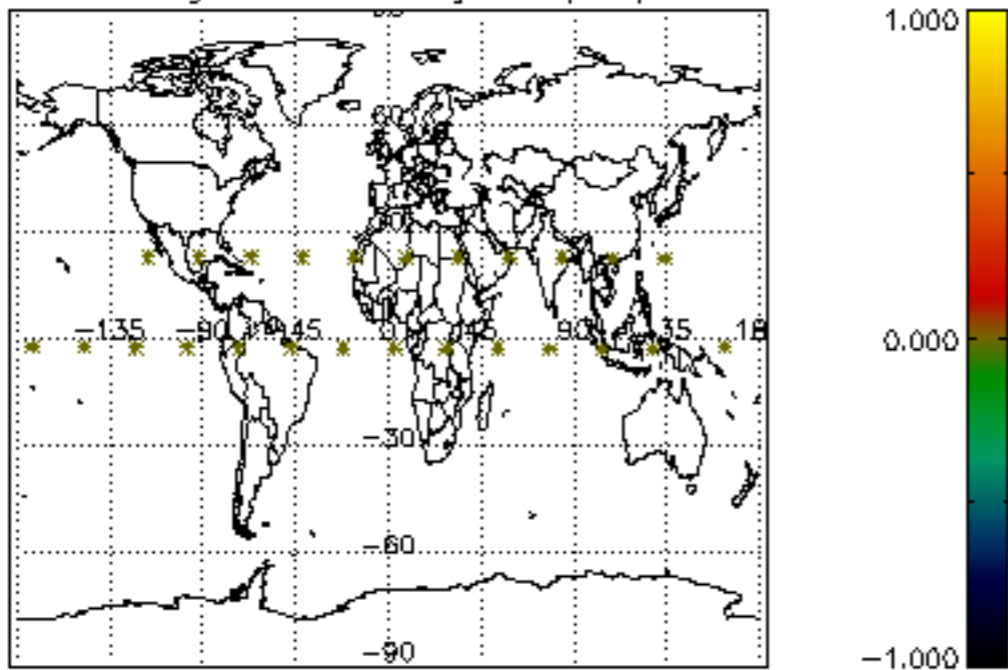




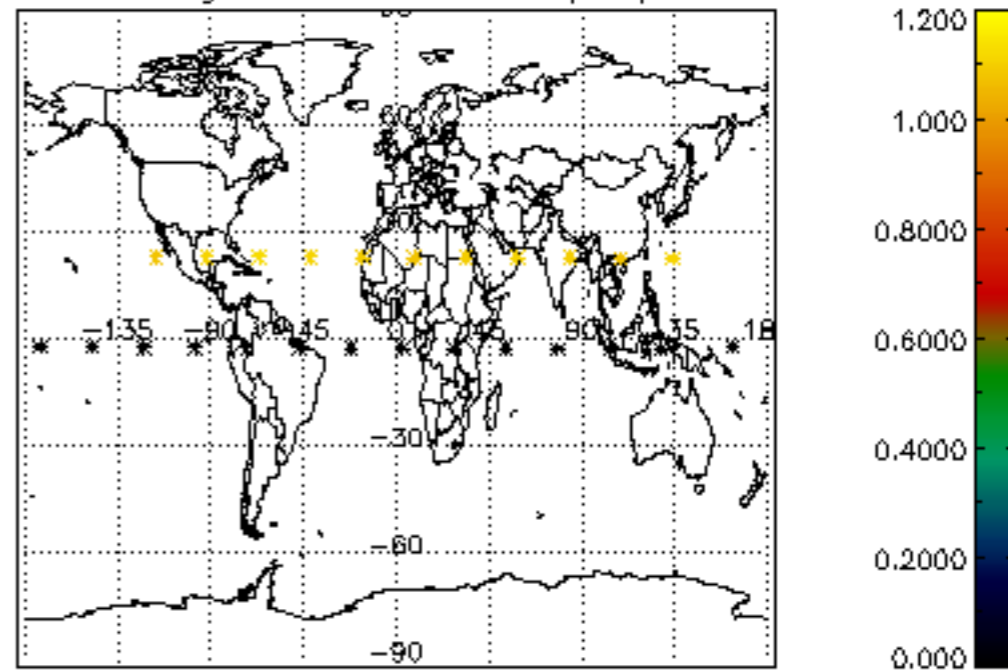




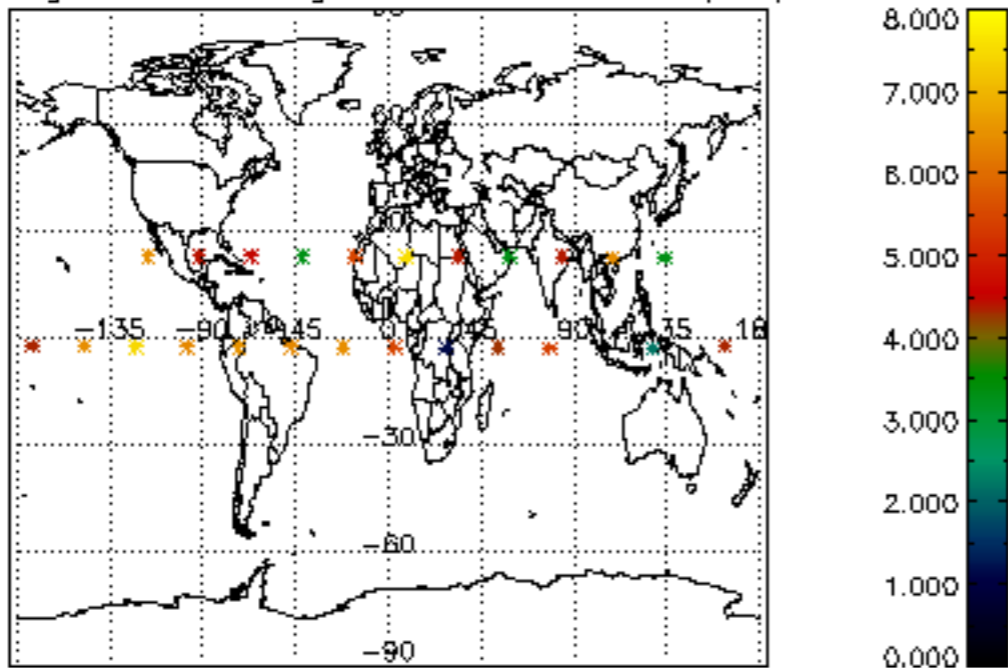
Percentage of cosmic ray hits per profile



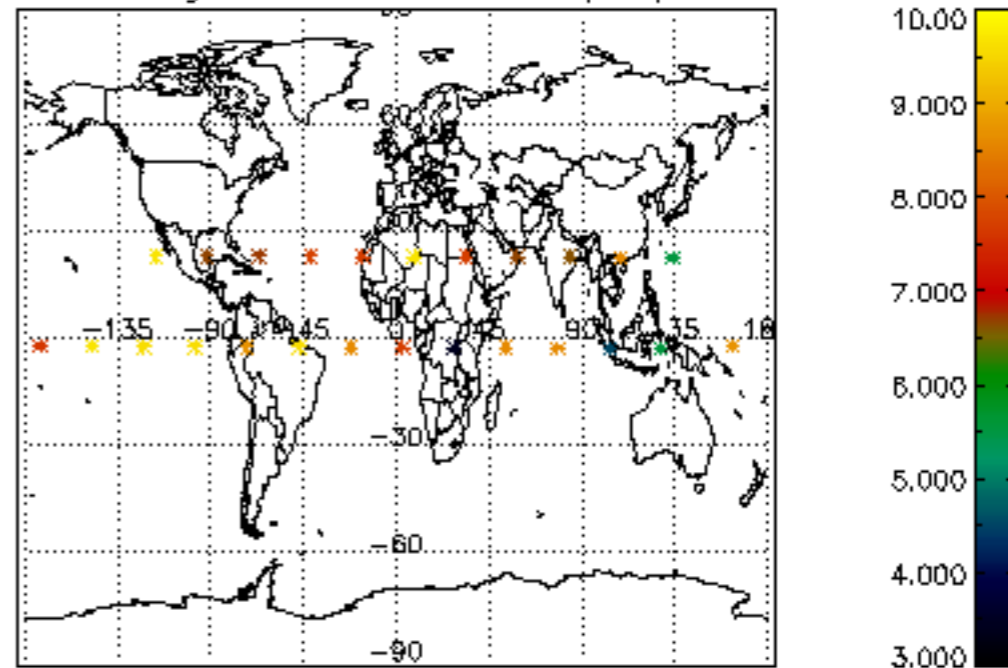
Percentage of datation errors per profile



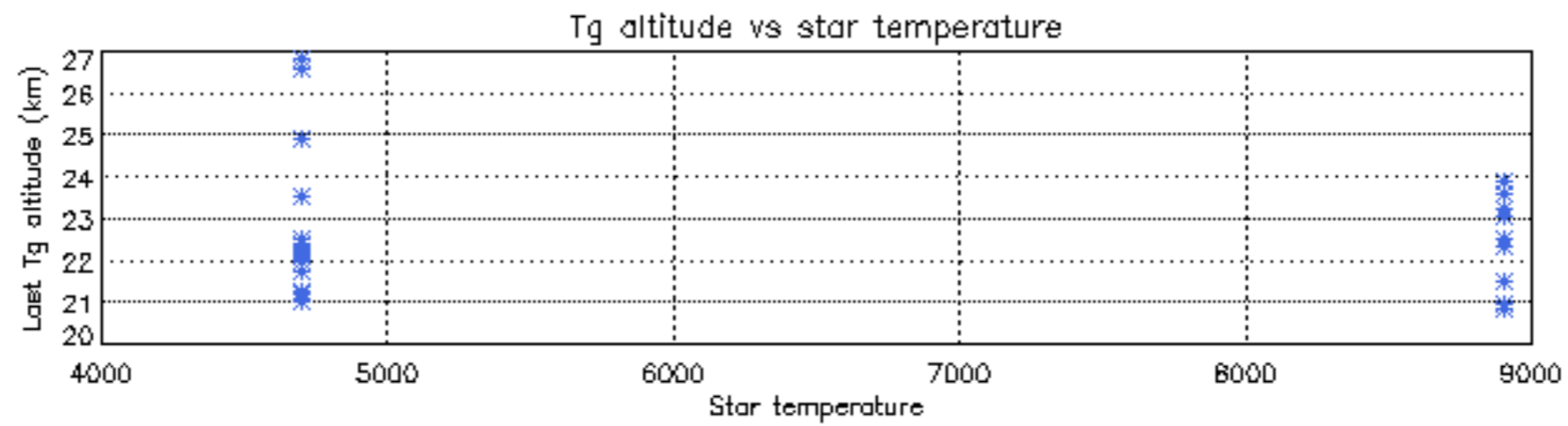
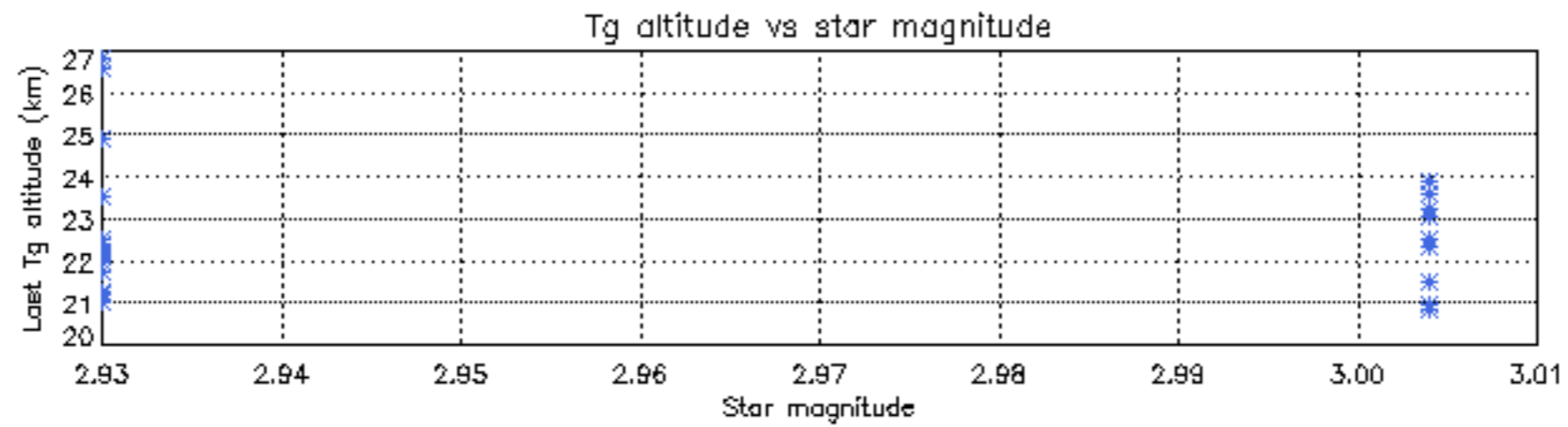
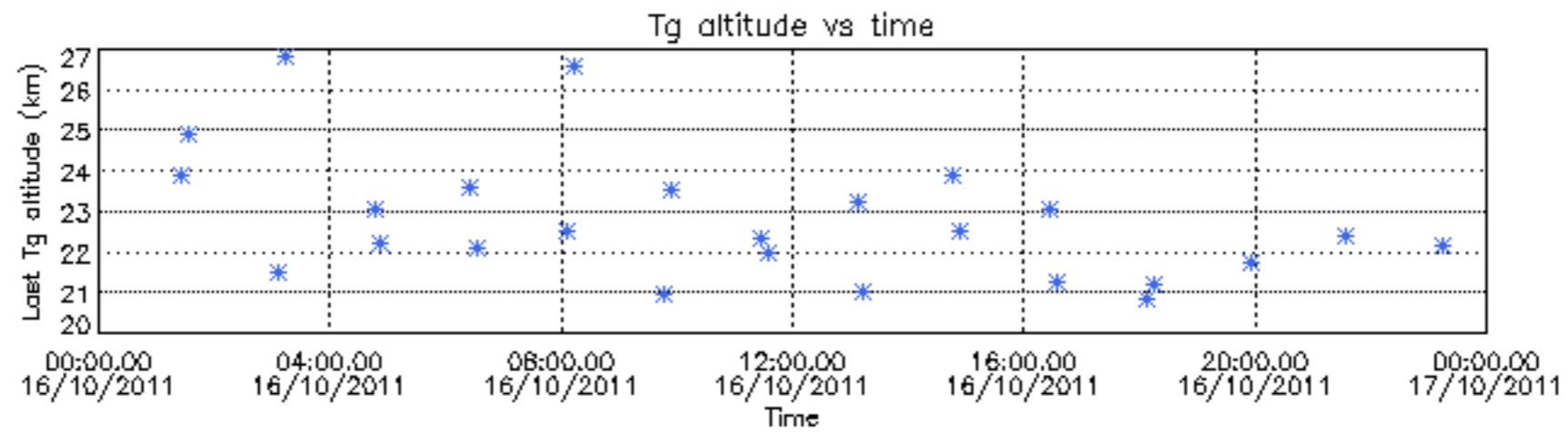
Percentage of star falling outside central band per profile

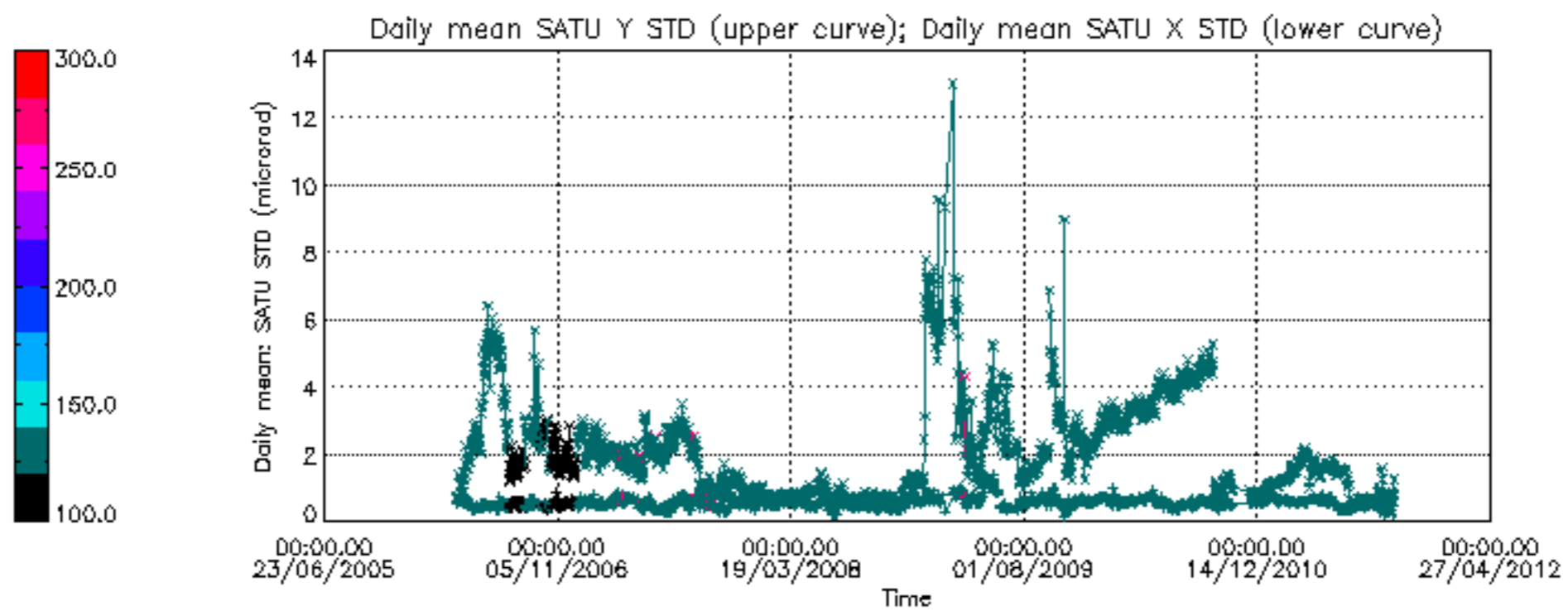


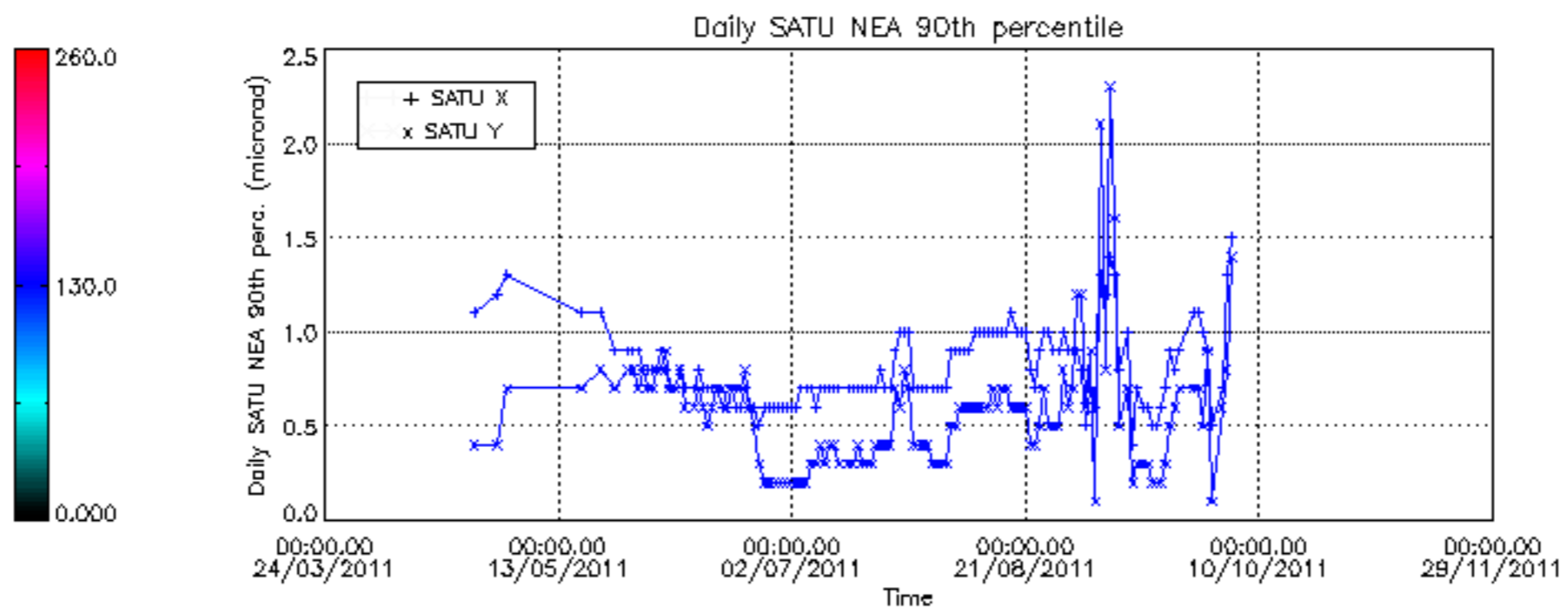
Percentage of saturation errors per profile



Tangent altitude at which the star is lost







/nas3/ENVISAT/GOMOS/GOM\_NL\_\_0P/GOM\_NL\_\_0PNPDE20111002\_214039\_00000423107\_00144\_50158\_6530.N1  
1; 2617.1; 02-OCT-2011 21:40:39; Bright; 42.5; 53; 43Bet And ; 2.05; 3300;occ; 85; 0;50158  
/nas3/ENVISAT/GOMOS/GOM\_NL\_\_0P/GOM\_NL\_\_0PNPDE20111002\_223444\_000011363107\_00144\_50158\_6531.N1  
1; -151.2; 02-OCT-2011 22:34:44; Dark ; 54.5; 37; 25Del CMA ; 1.83; 5900;occ; 109; 0;50158  
2; 936.0; 02-OCT-2011 22:52:51; Dark ; 49.5; 157; The1Eri ; 2.91; 9300;occ; 99; 0;50159  
/nas3/ENVISAT/GOMOS/GOM\_NL\_\_0P/GOM\_NL\_\_0PNPDK20111002\_182012\_000033093107\_00142\_50156\_5389.N1  
1; 2618.4; 02-OCT-2011 18:20:12; Bright; 47.5; 53; 43Bet And ; 2.05; 3300;occ; 95; 0;50156  
2; 3035.8; 02-OCT-2011 18:27:09; Bright; 41.0; 110; 37Del Cas ; 2.68; 8900;occ; 82; 0;50156  
3; 3212.6; 02-OCT-2011 18:30:06; Bright; 51.0; 160; 23Gam Per ; 2.93; 4700;occ; 102; 0;50156  
4; 5594.7; 02-OCT-2011 19:09:48; Dark ; 47.0; 132; 15Rho Pup ; 2.80; 6900;occ; 94; 0;50156  
5; 5860.2; 02-OCT-2011 19:14:14; Dark ; 68.0; 37; 25Del CMA ; 1.83; 5900;occ; 136; 0;50156  
/nas3/ENVISAT/GOMOS/GOM\_NL\_\_0P/GOM\_NL\_\_0PNPDK20111002\_200025\_000033093107\_00143\_50157\_5390.N1  
1; 2617.7; 02-OCT-2011 20:00:25; Bright; 45.5; 53; 43Bet And ; 2.05; 3300;occ; 91; 0;50157  
2; 3035.2; 02-OCT-2011 20:07:23; Bright; 41.5; 110; 37Del Cas ; 2.68; 8900;occ; 83; 0;50157  
3; 5861.4; 02-OCT-2011 20:54:29; Dark ; 66.0; 37; 25Del CMA ; 1.83; 5900;occ; 132; 0;50157  
/nas3/ENVISAT/GOMOS/GOM\_NL\_\_0P/GOM\_NL\_\_0PNPDE20111003\_002332\_00000553107\_00146\_50160\_6532.N1  
1; 363.1; 03-OCT-2011 00:23:32; Dark ; 56.0; 108; Alp Col ; 2.65; 15200;occ; 112; 0;50160  
/nas3/ENVISAT/GOMOS/GOM\_NL\_\_0P/GOM\_NL\_\_0PNPDE20111003\_220654\_000028643107\_00159\_50173\_6535.N1  
1; 382.9; 03-OCT-2011 22:06:54; Dark ; 61.0; 108; Alp Col ; 2.65; 15200;occ; 122; 0;50173  
2; 2608.3; 03-OCT-2011 22:43:59; Bright; 45.5; 53; 43Bet And ; 2.05; 3300;occ; 91; 0;50173  
3; 3196.6; 03-OCT-2011 22:53:47; Bright; 50.5; 160; 23Gam Per ; 2.93; 4700;occ; 101; 0;50173  
/nas3/ENVISAT/GOMOS/GOM\_NL\_\_0P/GOM\_NL\_\_0PNPDK20111003\_065601\_000005743107\_00149\_50163\_5391.N1  
1; -144.3; 03-OCT-2011 06:56:01; Dark ; 72.5; 37; 25Del CMA ; 1.83; 5900;occ; 145; 0;50163  
2; 369.2; 03-OCT-2011 07:04:34; Dark ; 61.5; 108; Alp Col ; 2.65; 15200;occ; 123; 0;50164  
/nas3/ENVISAT/GOMOS/GOM\_NL\_\_0P/GOM\_NL\_\_0PNPDK20111003\_075150\_000032393107\_00150\_50164\_5392.N1  
1; -2808.7; 03-OCT-2011 07:51:50; Bright; 49.0; 160; 23Gam Per ; 2.93; 4700;occ; 98; 0;50164  
2; -142.9; 03-OCT-2011 08:36:16; Dark ; 68.0; 37; 25Del CMA ; 1.83; 5900;occ; 136; 0;50164  
3; 370.9; 03-OCT-2011 08:44:50; Dark ; 60.0; 108; Alp Col ; 2.65; 15200;occ; 120; 0;50165  
/nas3/ENVISAT/GOMOS/GOM\_NL\_\_0P/GOM\_NL\_\_0PNPDK20111003\_093203\_000032423107\_00151\_50165\_5393.N1  
1; -2809.7; 03-OCT-2011 09:32:03; Bright; 50.5; 160; 23Gam Per ; 2.93; 4700;occ; 101; 0;50165  
2; -141.5; 03-OCT-2011 10:16:32; Dark ; 61.5; 37; 25Del CMA ; 1.83; 5900;occ; 123; 0;50165  
3; 372.5; 03-OCT-2011 10:25:06; Dark ; 60.0; 108; Alp Col ; 2.65; 15200;occ; 120; 0;50166  
/nas3/ENVISAT/GOMOS/GOM\_NL\_\_0P/GOM\_NL\_\_0PNPDK20111003\_110225\_000038363107\_00152\_50166\_5394.N1  
1; 2612.3; 03-OCT-2011 11:02:25; Bright; 47.0; 53; 43Bet And ; 2.05; 3300;occ; 94; 0;50166  
2; 3203.1; 03-OCT-2011 11:12:16; Bright; 50.0; 160; 23Gam Per ; 2.93; 4700;occ; 100; 0;50166  
3; 5873.7; 03-OCT-2011 11:56:47; Dark ; 55.5; 37; 25Del CMA ; 1.83; 5900;occ; 111; 0;50166  
4; 6387.7; 03-OCT-2011 12:05:21; Dark ; 61.5; 108; Alp Col ; 2.65; 15200;occ; 123; 0;50167  
/nas3/ENVISAT/GOMOS/GOM\_NL\_\_0P/GOM\_NL\_\_0PNPDK20111003\_124239\_000038403107\_00153\_50167\_5395.N1  
1; 2611.8; 03-OCT-2011 12:42:39; Bright; 45.0; 53; 43Bet And ; 2.05; 3300;occ; 90; 0;50167  
2; 3202.2; 03-OCT-2011 12:52:29; Bright; 49.5; 160; 23Gam Per ; 2.93; 4700;occ; 99; 0;50167  
3; 5875.1; 03-OCT-2011 13:37:02; Dark ; 66.5; 37; 25Del CMA ; 1.83; 5900;occ; 133; 0;50167  
4; 6173.3; 03-OCT-2011 13:42:00; Dark ; 59.5; 0; ; 0.00; 0;occ; 119; 0;50168  
5; 6389.3; 03-OCT-2011 13:45:36; Dark ; 62.5; 108; Alp Col ; 2.65; 15200;occ; 125; 0;50168  
/nas3/ENVISAT/GOMOS/GOM\_NL\_\_0P/GOM\_NL\_\_0PNPDK20111003\_142252\_000038413107\_00154\_50168\_5396.N1  
1; 2611.2; 03-OCT-2011 14:22:52; Bright; 44.0; 53; 43Bet And ; 2.05; 3300;occ; 88; 0;50168  
2; 3201.4; 03-OCT-2011 14:32:42; Bright; 48.0; 160; 23Gam Per ; 2.93; 4700;occ; 96; 0;50168  
3; 5948.9; 03-OCT-2011 15:18:30; Dark ; 55.0; 23; 21Eps CMA ; 1.50; 26000;occ; 110; 0;50168  
4; 6174.6; 03-OCT-2011 15:22:15; Dark ; 59.5; 0; ; 0.00; 0;occ; 119; 0;50169  
5; 6390.9; 03-OCT-2011 15:25:52; Dark ; 61.5; 108; Alp Col ; 2.65; 15200;occ; 123; 0;50169  
/nas3/ENVISAT/GOMOS/GOM\_NL\_\_0P/GOM\_NL\_\_0PNPDK20111003\_160306\_000038403107\_00155\_50169\_5397.N1  
1; 2610.6; 03-OCT-2011 16:03:06; Bright; 47.0; 53; 43Bet And ; 2.05; 3300;occ; 94; 0;50169  
2; 3200.5; 03-OCT-2011 16:12:55; Bright; 51.5; 160; 23Gam Per ; 2.93; 4700;occ; 103; 0;50169  
3; 5950.3; 03-OCT-2011 16:58:45; Dark ; 55.0; 23; 21Eps CMA ; 1.50; 26000;occ; 110; 0;50169  
4; 6175.9; 03-OCT-2011 17:02:31; Dark ; 59.5; 0; ; 0.00; 0;occ; 119; 0;50170  
5; 6392.6; 03-OCT-2011 17:06:07; Dark ; 59.0; 108; Alp Col ; 2.65; 15200;occ; 118; 0;50170  
/nas3/ENVISAT/GOMOS/GOM\_NL\_\_0P/GOM\_NL\_\_0PNPDK20111003\_202301\_000002793107\_00158\_50172\_5399.N1  
1; 164.2; 03-OCT-2011 20:23:01; Dark ; 59.5; 0; ; 0.00; 0;occ; 119; 0;50172  
2; 381.4; 03-OCT-2011 20:26:38; Dark ; 62.0; 108; Alp Col ; 2.65; 15200;occ; 124; 0;50172  
/nas3/ENVISAT/GOMOS/GOM\_NL\_\_0P/GOM\_NL\_\_0PNPDE20111003\_051546\_000034033107\_00148\_50162\_6533.N1  
1; -145.7; 03-OCT-2011 05:15:46; Dark ; 59.5; 37; 25Del CMA ; 1.83; 5900;occ; 119; 0;50162  
2; 367.8; 03-OCT-2011 05:24:19; Dark ; 60.0; 108; Alp Col ; 2.65; 15200;occ; 120; 0;50163  
3; 2614.2; 03-OCT-2011 06:01:45; Bright; 43.5; 53; 43Bet And ; 2.05; 3300;occ; 87; 0;50163  
4; 3206.2; 03-OCT-2011 06:11:37; Bright; 51.5; 160; 23Gam Per ; 2.93; 4700;occ; 103; 0;50163  
/nas3/ENVISAT/GOMOS/GOM\_NL\_\_0P/GOM\_NL\_\_0PNPDE20111004\_030402\_000024833107\_00162\_50176\_6536.N1  
1; 169.1; 04-OCT-2011 03:04:02; Dark ; 59.5; 0; ; 0.00; 0;occ; 119; 0;50176  
2; 387.5; 04-OCT-2011 03:07:40; Dark ; 61.5; 108; Alp Col ; 2.65; 15200;occ; 123; 0;50176  
3; 2606.5; 04-OCT-2011 03:44:39; Bright; 46.0; 53; 43Bet And ; 2.05; 3300;occ; 92; 0;50176  
/nas3/ENVISAT/GOMOS/GOM\_NL\_\_0P/GOM\_NL\_\_0PNPDE20111004\_044756\_000022613107\_00163\_50177\_6537.N1

```

1; 389.0; 04-OCT-2011 04:47:56; Dark ; 62.0; 108; Alp Col ; 2.65; 15200;occ; 124; 0;50177
2; 2605.9; 04-OCT-2011 05:24:53; Bright; 44.5; 53; 43Bet And ; 2.05; 3300;occ; 89; 0;50177
/nas3/ENVISAT/GOMOS/GOM_NL__0P/GOM_NL__0PNPDE20111004_062811_000028523107_00164_50178_6538.N1
1; 390.5; 04-OCT-2011 06:28:11; Dark ; 62.0; 108; Alp Col ; 2.65; 15200;occ; 124; 0;50178
2; 2605.5; 04-OCT-2011 07:05:06; Bright; 47.5; 53; 43Bet And ; 2.05; 3300;occ; 95; 0;50178
3; 3192.0; 04-OCT-2011 07:14:53; Bright; 51.0; 160; 23Gam Per ; 2.93; 4700;occ; 102; 0;50178
/nas3/ENVISAT/GOMOS/GOM_NL__0P/GOM_NL__0PNPDK20111004_080827_000000613107_00165_50179_5403.N1
1; 391.9; 04-OCT-2011 08:08:27; Dark ; 62.0; 108; Alp Col ; 2.65; 15200;occ; 124; 0;50179
/nas3/ENVISAT/GOMOS/GOM_NL__0P/GOM_NL__0PNPDK20111004_084520_000038633107_00165_50179_5404.N1
1; 2604.9; 04-OCT-2011 08:45:20; Bright; 47.5; 53; 43Bet And ; 2.05; 3300;occ; 95; 0;50179
2; 3191.1; 04-OCT-2011 08:55:06; Bright; 49.0; 160; 23Gam Per ; 2.93; 4700;occ; 98; 0;50179
3; 6407.5; 04-OCT-2011 09:48:42; Dark ; 61.0; 108; Alp Col ; 2.65; 15200;occ; 122; 0;50180
/nas3/ENVISAT/GOMOS/GOM_NL__0P/GOM_NL__0PNPDK20111004_102533_000034163107_00166_50180_5405.N1
1; 2604.3; 04-OCT-2011 10:25:33; Bright; 47.5; 53; 43Bet And ; 2.05; 3300;occ; 95; 0;50180
2; 3190.0; 04-OCT-2011 10:35:19; Bright; 51.5; 160; 23Gam Per ; 2.93; 4700;occ; 103; 0;50180
3; 5965.3; 04-OCT-2011 11:21:34; Dark ; 55.0; 23; 21Eps CMa ; 1.50; 26000;occ; 110; 0;50180
/nas3/ENVISAT/GOMOS/GOM_NL__0P/GOM_NL__0PNPDK20111004_130533_000002823107_00168_50182_5406.N1
1; 176.4; 04-OCT-2011 13:05:33; Dark ; 59.5; 0; ; 0.00; 0;occ; 119; 0;50182
2; 396.5; 04-OCT-2011 13:09:13; Dark ; 62.0; 108; Alp Col ; 2.65; 15200;occ; 124; 0;50182
/nas3/ENVISAT/GOMOS/GOM_NL__0P/GOM_NL__0PNPDK20111004_134600_000038713107_00168_50182_5407.N1
1; 2603.1; 04-OCT-2011 13:46:00; Bright; 42.5; 53; 43Bet And ; 2.05; 3300;occ; 85; 0;50182
2; 3188.2; 04-OCT-2011 13:55:45; Bright; 47.5; 160; 23Gam Per ; 2.93; 4700;occ; 95; 0;50182
3; 6412.1; 04-OCT-2011 14:49:28; Dark ; 62.5; 108; Alp Col ; 2.65; 15200;occ; 125; 0;50183
/nas3/ENVISAT/GOMOS/GOM_NL__0P/GOM_NL__0PNPDK20111004_153558_000000483107_00169_50183_5408.N1
1;-2826.7; 04-OCT-2011 15:35:58; Bright; 48.5; 160; 23Gam Per ; 2.93; 4700;occ; 97; 0;50183
/nas3/ENVISAT/GOMOS/GOM_NL__0P/GOM_NL__0PNPDE20111012_213220_000026983107_00288_50302_6539.N1
1; 109.0; 12-OCT-2011 21:32:20; Dark ; 59.5; 0; ; 0.00; 0;occ; 119; 0;50302
2; 2765.0; 12-OCT-2011 22:16:36; Bright; 42.5; 73; 57Gam1And ; 2.26; 13100;occ; 85; 0;50302
/nas3/ENVISAT/GOMOS/GOM_NL__0P/GOM_NL__0PNPDE20111012_231235_000027003107_00289_50303_6540.N1
1; 109.9; 12-OCT-2011 23:12:35; Dark ; 59.5; 0; ; 0.00; 0;occ; 119; 0;50303
2; 2764.3; 12-OCT-2011 23:56:49; Bright; 46.0; 73; 57Gam1And ; 2.26; 13100;occ; 92; 0;50303
/nas3/ENVISAT/GOMOS/GOM_NL__0P/GOM_NL__0PNPDK20111012_145121_000000593107_00284_50298_5411.N1
1; 105.5; 12-OCT-2011 14:51:21; Dark ; 59.5; 0; ; 0.00; 0;occ; 119; 0;50298
/nas3/ENVISAT/GOMOS/GOM_NL__0P/GOM_NL__0PNPDK20111012_153543_000034123107_00284_50298_5412.N1
1; 2767.9; 12-OCT-2011 15:35:43; Bright; 45.5; 73; 57Gam1And ; 2.26; 13100;occ; 91; 0;50298
2; 6120.4; 12-OCT-2011 16:31:36; Dark ; 59.5; 0; ; 0.00; 0;occ; 119; 0;50299
/nas3/ENVISAT/GOMOS/GOM_NL__0P/GOM_NL__0PNPDE20111013_005250_000026963107_00290_50304_6541.N1
1; 110.8; 13-OCT-2011 00:52:50; Dark ; 59.5; 0; ; 0.00; 0;occ; 119; 0;50304
2; 2763.5; 13-OCT-2011 01:37:02; Bright; 44.0; 73; 57Gam1And ; 2.26; 13100;occ; 88; 0;50304
/nas3/ENVISAT/GOMOS/GOM_NL__0P/GOM_NL__0PNPDE20111013_023304_000026973107_00291_50305_6542.N1
1; 111.7; 13-OCT-2011 02:33:04; Dark ; 59.5; 0; ; 0.00; 0;occ; 119; 0;50305
2; 2762.8; 13-OCT-2011 03:17:16; Bright; 46.5; 73; 57Gam1And ; 2.26; 13100;occ; 93; 0;50305
/nas3/ENVISAT/GOMOS/GOM_NL__0P/GOM_NL__0PNPDE20111013_041319_000026963107_00292_50306_6543.N1
1; 112.5; 13-OCT-2011 04:13:19; Dark ; 59.5; 0; ; 0.00; 0;occ; 119; 0;50306
2; 2762.6; 13-OCT-2011 04:57:29; Bright; 46.0; 73; 57Gam1And ; 2.26; 13100;occ; 92; 0;50306
/nas3/ENVISAT/GOMOS/GOM_NL__0P/GOM_NL__0PNPDE20111013_055334_000000593107_00293_50307_6544.N1
1; 113.4; 13-OCT-2011 05:53:34; Dark ; 59.5; 0; ; 0.00; 0;occ; 119; 0;50307
/nas3/ENVISAT/GOMOS/GOM_NL__0P/GOM_NL__0PNPDE20111013_213942_000003503107_00302_50316_6545.N1
1; 2755.8; 13-OCT-2011 21:39:42; Bright; 46.0; 73; 57Gam1And ; 2.26; 13100;occ; 92; 0;50316
2; 3073.9; 13-OCT-2011 21:45:00; Bright; 32.5; 160; 23Gam Per ; 2.93; 4700;occ; 65; 0;50316
/nas3/ENVISAT/GOMOS/GOM_NL__0P/GOM_NL__0PNPDE20111013_231955_000003503107_00303_50317_6546.N1
1; 2755.1; 13-OCT-2011 23:19:55; Bright; 47.5; 73; 57Gam1And ; 2.26; 13100;occ; 95; 0;50317
2; 3073.0; 13-OCT-2011 23:25:13; Bright; 32.5; 160; 23Gam Per ; 2.93; 4700;occ; 65; 0;50317
/nas3/ENVISAT/GOMOS/GOM_NL__0P/GOM_NL__0PNPDK20111013_073349_000000593107_00294_50308_5413.N1
1; 114.3; 13-OCT-2011 07:33:49; Dark ; 59.5; 0; ; 0.00; 0;occ; 119; 0;50308
/nas3/ENVISAT/GOMOS/GOM_NL__0P/GOM_NL__0PNPDK20111013_081756_000034273107_00294_50308_5414.N1
1; 2761.2; 13-OCT-2011 08:17:56; Bright; 47.5; 73; 57Gam1And ; 2.26; 13100;occ; 95; 0;50308
2; 6129.1; 13-OCT-2011 09:14:04; Dark ; 59.5; 0; ; 0.00; 0;occ; 119; 0;50309
/nas3/ENVISAT/GOMOS/GOM_NL__0P/GOM_NL__0PNPDK20111013_113822_000000513107_00296_50310_5415.N1
1; 2759.8; 13-OCT-2011 11:38:22; Bright; 51.5; 73; 57Gam1And ; 2.26; 13100;occ; 103; 0;50310
/nas3/ENVISAT/GOMOS/GOM_NL__0P/GOM_NL__0PNPDK20111013_131836_000000463107_00297_50311_5416.N1
1; 2759.1; 13-OCT-2011 13:18:36; Bright; 46.5; 73; 57Gam1And ; 2.26; 13100;occ; 93; 0;50311
/nas3/ENVISAT/GOMOS/GOM_NL__0P/GOM_NL__0PNPDK20111013_145516_000005563107_00298_50312_5417.N1
1; 2545.3; 13-OCT-2011 14:55:16; Bright; 39.0; 53; 43Bet And ; 2.05; 3300;occ; 78; 0;50312
2; 2758.5; 13-OCT-2011 14:58:49; Bright; 45.0; 73; 57Gam1And ; 2.26; 13100;occ; 90; 0;50312
3; 3077.0; 13-OCT-2011 15:04:07; Bright; 24.5; 160; 23Gam Per ; 2.93; 4700;occ; 49; 0;50312
/nas3/ENVISAT/GOMOS/GOM_NL__0P/GOM_NL__0PNPDK20111013_163902_000003423107_00299_50313_5418.N1
1; 2757.8; 13-OCT-2011 16:39:02; Bright; 46.5; 73; 57Gam1And ; 2.26; 13100;occ; 93; 0;50313

```

2; 3076.2; 13-OCT-2011 16:44:21; Bright; 24.5; 160; 23Gam Per ; 2.93; 4700;occ; 49; 0;50313  
/nas3/ENVISAT/GOMOS/GOM\_NL\_\_0P/GOM\_NL\_\_0PNPDK20111013\_181916\_000003463107\_00300\_50314\_5419.N1  
1; 2757.1; 13-OCT-2011 18:19:16; Bright; 45.5; 73; 57Gam1And ; 2.26; 13100;occ; 91; 0;50314  
2; 3075.4; 13-OCT-2011 18:24:34; Bright; 28.5; 160; 23Gam Per ; 2.93; 4700;occ; 57; 0;50314  
/nas3/ENVISAT/GOMOS/GOM\_NL\_\_0P/GOM\_NL\_\_0PNPDE20111014\_205557\_000007713107\_00316\_50330\_6547.N1  
1; 2334.7; 14-OCT-2011 20:55:57; Bright; 46.0; 105; 6Bet Ari ; 2.64; 8900;occ; 92; 0;50330  
2; 2635.6; 14-OCT-2011 21:00:57; Bright; 45.0; 173; 4Bet Tri ; 3.00; 8900;occ; 90; 0;50330  
3; 2747.2; 14-OCT-2011 21:02:49; Bright; 46.0; 73; 57Gam1And ; 2.26; 13100;occ; 92; 0;50330  
4; 3063.1; 14-OCT-2011 21:08:05; Bright; 43.5; 160; 23Gam Per ; 2.93; 4700;occ; 87; 0;50330  
/nas3/ENVISAT/GOMOS/GOM\_NL\_\_0P/GOM\_NL\_\_0PNPDE20111014\_223610\_000007753107\_00317\_50331\_6548.N1  
1; 2334.1; 14-OCT-2011 22:36:10; Bright; 47.0; 105; 6Bet Ari ; 2.64; 8900;occ; 94; 0;50331  
2; 2634.8; 14-OCT-2011 22:41:11; Bright; 44.5; 173; 4Bet Tri ; 3.00; 8900;occ; 89; 0;50331  
3; 3062.3; 14-OCT-2011 22:48:18; Bright; 47.0; 160; 23Gam Per ; 2.93; 4700;occ; 94; 0;50331  
/nas3/ENVISAT/GOMOS/GOM\_NL\_\_0P/GOM\_NL\_\_0PNPDK20111014\_010526\_000180793107\_00304\_50318\_5421.N1  
1;-2941.6; 14-OCT-2011 01:05:26; Bright; 37.0; 160; 23Gam Per ; 2.93; 4700;occ; 74; 0;50318  
2;14671.1; 14-OCT-2011 05:58:59; Bright; 26.0; 173; 4Bet Tri ; 3.00; 8900;occ; 52; 0;50321  
3;15098.8; 14-OCT-2011 06:06:07; Bright; 39.5; 160; 23Gam Per ; 2.93; 4700;occ; 79; 0;50321  
/nas3/ENVISAT/GOMOS/GOM\_NL\_\_0P/GOM\_NL\_\_0PNPDK20111014\_073912\_000004713107\_00308\_50322\_5422.N1  
1; 2642.2; 14-OCT-2011 07:39:12; Bright; 32.0; 173; 4Bet Tri ; 3.00; 8900;occ; 64; 0;50322  
2; 3070.1; 14-OCT-2011 07:46:20; Bright; 43.5; 160; 23Gam Per ; 2.93; 4700;occ; 87; 0;50322  
/nas3/ENVISAT/GOMOS/GOM\_NL\_\_0P/GOM\_NL\_\_0PNPDK20111014\_091926\_000004713107\_00309\_50323\_5423.N1  
1; 2641.5; 14-OCT-2011 09:19:26; Bright; 32.0; 173; 4Bet Tri ; 3.00; 8900;occ; 64; 0;50323  
2; 3069.3; 14-OCT-2011 09:26:33; Bright; 43.5; 160; 23Gam Per ; 2.93; 4700;occ; 87; 0;50323  
/nas3/ENVISAT/GOMOS/GOM\_NL\_\_0P/GOM\_NL\_\_0PNPDK20111014\_142712\_00000433107\_00312\_50326\_5424.N1  
1;-2947.7; 14-OCT-2011 14:27:12; Bright; 43.5; 160; 23Gam Per ; 2.93; 4700;occ; 87; 0;50326  
/nas3/ENVISAT/GOMOS/GOM\_NL\_\_0P/GOM\_NL\_\_0PNPDK20111014\_155516\_000007753107\_00313\_50327\_5425.N1  
1; 2336.3; 14-OCT-2011 15:55:16; Bright; 47.0; 105; 6Bet Ari ; 2.64; 8900;occ; 94; 0;50327  
2; 2637.8; 14-OCT-2011 16:00:18; Bright; 45.0; 173; 4Bet Tri ; 3.00; 8900;occ; 90; 0;50327  
3; 3065.4; 14-OCT-2011 16:07:25; Bright; 46.5; 160; 23Gam Per ; 2.93; 4700;occ; 93; 0;50327  
/nas3/ENVISAT/GOMOS/GOM\_NL\_\_0P/GOM\_NL\_\_0PNPDK20111014\_173530\_000007763107\_00314\_50328\_5426.N1  
1; 2335.8; 14-OCT-2011 17:35:30; Bright; 48.5; 105; 6Bet Ari ; 2.64; 8900;occ; 97; 0;50328  
2; 2637.1; 14-OCT-2011 17:40:31; Bright; 45.0; 173; 4Bet Tri ; 3.00; 8900;occ; 90; 0;50328  
3; 3064.6; 14-OCT-2011 17:47:38; Bright; 47.5; 160; 23Gam Per ; 2.93; 4700;occ; 95; 0;50328  
/nas3/ENVISAT/GOMOS/GOM\_NL\_\_0P/GOM\_NL\_\_0PNPDK20111014\_191543\_000007763107\_00315\_50329\_5427.N1  
1; 2335.2; 14-OCT-2011 19:15:43; Bright; 47.5; 105; 6Bet Ari ; 2.64; 8900;occ; 95; 0;50329  
2; 2636.3; 14-OCT-2011 19:20:44; Bright; 46.5; 173; 4Bet Tri ; 3.00; 8900;occ; 93; 0;50329  
3; 3063.8; 14-OCT-2011 19:27:52; Bright; 48.0; 160; 23Gam Per ; 2.93; 4700;occ; 96; 0;50329  
/nas3/ENVISAT/GOMOS/GOM\_NL\_\_0P/GOM\_NL\_\_0PNPDE20111015\_001623\_000007743107\_00318\_50332\_6549.N1  
1; 2333.6; 15-OCT-2011 00:16:23; Bright; 47.0; 105; 6Bet Ari ; 2.64; 8900;occ; 94; 0;50332  
2; 2634.1; 15-OCT-2011 00:21:24; Bright; 46.5; 173; 4Bet Tri ; 3.00; 8900;occ; 93; 0;50332  
3; 3061.6; 15-OCT-2011 00:28:31; Bright; 47.0; 160; 23Gam Per ; 2.93; 4700;occ; 94; 0;50332  
/nas3/ENVISAT/GOMOS/GOM\_NL\_\_0P/GOM\_NL\_\_0PNPDE20111015\_015637\_000067863107\_00319\_50333\_6550.N1  
1; 2333.1; 15-OCT-2011 01:56:37; Bright; 47.0; 105; 6Bet Ari ; 2.64; 8900;occ; 94; 0;50333  
2; 2633.3; 15-OCT-2011 02:01:37; Bright; 47.0; 173; 4Bet Tri ; 3.00; 8900;occ; 94; 0;50333  
3; 3060.7; 15-OCT-2011 02:08:44; Bright; 44.5; 160; 23Gam Per ; 2.93; 4700;occ; 89; 0;50333  
4; 8346.5; 15-OCT-2011 03:36:50; Bright; 47.0; 105; 6Bet Ari ; 2.64; 8900;occ; 94; 0;50334  
5; 8646.8; 15-OCT-2011 03:41:50; Bright; 47.0; 173; 4Bet Tri ; 3.00; 8900;occ; 94; 0;50334  
6; 9074.0; 15-OCT-2011 03:48:58; Bright; 46.0; 160; 23Gam Per ; 2.93; 4700;occ; 92; 0;50334  
/nas3/ENVISAT/GOMOS/GOM\_NL\_\_0P/GOM\_NL\_\_0PNPDE20111015\_051704\_000007743107\_00321\_50335\_6551.N1  
1; 2332.2; 15-OCT-2011 05:17:04; Bright; 45.5; 105; 6Bet Ari ; 2.64; 8900;occ; 91; 0;50335  
2; 2632.2; 15-OCT-2011 05:22:04; Bright; 46.5; 173; 4Bet Tri ; 3.00; 8900;occ; 93; 0;50335  
3; 3059.3; 15-OCT-2011 05:29:11; Bright; 47.0; 160; 23Gam Per ; 2.93; 4700;occ; 94; 0;50335  
/nas3/ENVISAT/GOMOS/GOM\_NL\_\_0P/GOM\_NL\_\_0PNPDE20111015\_065717\_000007743107\_00322\_50336\_6552.N1  
1; 2331.6; 15-OCT-2011 06:57:17; Bright; 46.5; 105; 6Bet Ari ; 2.64; 8900;occ; 93; 0;50336  
2; 2631.5; 15-OCT-2011 07:02:17; Bright; 46.0; 173; 4Bet Tri ; 3.00; 8900;occ; 92; 0;50336  
3; 3058.6; 15-OCT-2011 07:09:24; Bright; 47.0; 160; 23Gam Per ; 2.93; 4700;occ; 94; 0;50336  
/nas3/ENVISAT/GOMOS/GOM\_NL\_\_0P/GOM\_NL\_\_0PNPDE20111015\_202403\_000004733107\_00330\_50344\_6553.N1  
1; 2625.9; 15-OCT-2011 20:24:03; Bright; 45.5; 173; 4Bet Tri ; 3.00; 8900;occ; 91; 0;50344  
2; 3052.3; 15-OCT-2011 20:31:10; Bright; 47.0; 160; 23Gam Per ; 2.93; 4700;occ; 94; 0;50344  
/nas3/ENVISAT/GOMOS/GOM\_NL\_\_0P/GOM\_NL\_\_0PNPDE20111015\_220416\_000004733107\_00331\_50345\_6554.N1  
1; 2625.1; 15-OCT-2011 22:04:16; Bright; 45.5; 173; 4Bet Tri ; 3.00; 8900;occ; 91; 0;50345  
2; 3051.6; 15-OCT-2011 22:11:23; Bright; 47.0; 160; 23Gam Per ; 2.93; 4700;occ; 94; 0;50345  
/nas3/ENVISAT/GOMOS/GOM\_NL\_\_0P/GOM\_NL\_\_0PNPDE20111015\_234430\_000004693107\_00332\_50346\_6555.N1  
1; 2624.6; 15-OCT-2011 23:44:30; Bright; 45.0; 173; 4Bet Tri ; 3.00; 8900;occ; 90; 0;50346  
2; 3050.7; 15-OCT-2011 23:51:36; Bright; 43.5; 160; 23Gam Per ; 2.93; 4700;occ; 87; 0;50346  
/nas3/ENVISAT/GOMOS/GOM\_NL\_\_0P/GOM\_NL\_\_0PNPDK20111015\_083731\_000007723107\_00323\_50337\_5428.N1  
1; 2331.1; 15-OCT-2011 08:37:31; Bright; 46.0; 105; 6Bet Ari ; 2.64; 8900;occ; 92; 0;50337  
2; 2630.8; 15-OCT-2011 08:42:30; Bright; 46.0; 173; 4Bet Tri ; 3.00; 8900;occ; 92; 0;50337

3; 3057.7; 15-OCT-2011 08:49:37; Bright; 45.5; 160; 23Gam Per ; 2.93; 4700;occ; 91; 0;50337  
/nas3/ENVISAT/GOMOS/GOM\_NL\_\_0P/GOM\_NL\_\_0PNPDK20111015\_115757\_000007733107\_00325\_50339\_5429.N1  
1; 2329.9; 15-OCT-2011 11:57:57; Bright; 46.0; 105; 6Bet Ari ; 2.64; 8900;occ; 92; 0;50339  
2; 2629.5; 15-OCT-2011 12:02:57; Bright; 46.0; 173; 4Bet Tri ; 3.00; 8900;occ; 92; 0;50339  
3; 3056.3; 15-OCT-2011 12:10:04; Bright; 47.0; 160; 23Gam Per ; 2.93; 4700;occ; 94; 0;50339  
/nas3/ENVISAT/GOMOS/GOM\_NL\_\_0P/GOM\_NL\_\_0PNPDK20111015\_133811\_000007733107\_00326\_50340\_5430.N1  
1; 2329.6; 15-OCT-2011 13:38:11; Bright; 46.0; 105; 6Bet Ari ; 2.64; 8900;occ; 92; 0;50340  
2; 2628.6; 15-OCT-2011 13:43:10; Bright; 47.5; 173; 4Bet Tri ; 3.00; 8900;occ; 95; 0;50340  
3; 3055.6; 15-OCT-2011 13:50:17; Bright; 47.5; 160; 23Gam Per ; 2.93; 4700;occ; 95; 0;50340  
/nas3/ENVISAT/GOMOS/GOM\_NL\_\_0P/GOM\_NL\_\_0PNPDK20111015\_152323\_000004723107\_00327\_50341\_5431.N1  
1; 2628.1; 15-OCT-2011 15:23:23; Bright; 45.5; 173; 4Bet Tri ; 3.00; 8900;occ; 91; 0;50341  
2; 3055.0; 15-OCT-2011 15:30:30; Bright; 46.0; 160; 23Gam Per ; 2.93; 4700;occ; 92; 0;50341  
/nas3/ENVISAT/GOMOS/GOM\_NL\_\_0P/GOM\_NL\_\_0PNPDK20111015\_170337\_000004723107\_00328\_50342\_5432.N1  
1; 2627.3; 15-OCT-2011 17:03:37; Bright; 46.0; 173; 4Bet Tri ; 3.00; 8900;occ; 92; 0;50342  
2; 3054.1; 15-OCT-2011 17:10:43; Bright; 45.5; 160; 23Gam Per ; 2.93; 4700;occ; 91; 0;50342  
/nas3/ENVISAT/GOMOS/GOM\_NL\_\_0P/GOM\_NL\_\_0PNPDK20111015\_184350\_000004723107\_00329\_50343\_5433.N1  
1; 2626.5; 15-OCT-2011 18:43:50; Bright; 46.0; 173; 4Bet Tri ; 3.00; 8900;occ; 92; 0;50343  
2; 3053.3; 15-OCT-2011 18:50:57; Bright; 46.0; 160; 23Gam Per ; 2.93; 4700;occ; 92; 0;50343  
/nas3/ENVISAT/GOMOS/GOM\_NL\_\_0P/GOM\_NL\_\_0PNPDE20111016\_012443\_000004713107\_00333\_50347\_6556.N1  
1; 2623.8; 16-OCT-2011 01:24:43; Bright; 45.0; 173; 4Bet Tri ; 3.00; 8900;occ; 90; 0;50347  
2; 3050.0; 16-OCT-2011 01:31:49; Bright; 45.0; 160; 23Gam Per ; 2.93; 4700;occ; 90; 0;50347  
/nas3/ENVISAT/GOMOS/GOM\_NL\_\_0P/GOM\_NL\_\_0PNPDE20111016\_030456\_000004703107\_00334\_50348\_6557.N1  
1; 2623.2; 16-OCT-2011 03:04:56; Bright; 46.5; 173; 4Bet Tri ; 3.00; 8900;occ; 93; 0;50348  
2; 3049.3; 16-OCT-2011 03:12:02; Bright; 44.0; 160; 23Gam Per ; 2.93; 4700;occ; 88; 0;50348  
/nas3/ENVISAT/GOMOS/GOM\_NL\_\_0P/GOM\_NL\_\_0PNPDE20111016\_044510\_000004723107\_00335\_50349\_6558.N1  
1; 2622.6; 16-OCT-2011 04:45:10; Bright; 45.5; 173; 4Bet Tri ; 3.00; 8900;occ; 91; 0;50349  
2; 3048.7; 16-OCT-2011 04:52:16; Bright; 46.5; 160; 23Gam Per ; 2.93; 4700;occ; 93; 0;50349  
/nas3/ENVISAT/GOMOS/GOM\_NL\_\_0P/GOM\_NL\_\_0PNPDE20111016\_062523\_000004723107\_00336\_50350\_6559.N1  
1; 2622.0; 16-OCT-2011 06:25:23; Bright; 45.0; 173; 4Bet Tri ; 3.00; 8900;occ; 90; 0;50350  
2; 3048.0; 16-OCT-2011 06:32:29; Bright; 46.5; 160; 23Gam Per ; 2.93; 4700;occ; 93; 0;50350  
/nas3/ENVISAT/GOMOS/GOM\_NL\_\_0P/GOM\_NL\_\_0PNPDE20111016\_213428\_00000453107\_00345\_50359\_6560.N1  
1;-2972.6; 16-OCT-2011 21:34:28; Bright; 46.0; 160; 23Gam Per ; 2.93; 4700;occ; 92; 0;50359  
/nas3/ENVISAT/GOMOS/GOM\_NL\_\_0P/GOM\_NL\_\_0PNPDE20111016\_231441\_00000453107\_00346\_50360\_6561.N1  
1;-2973.2; 16-OCT-2011 23:14:41; Bright; 46.0; 160; 23Gam Per ; 2.93; 4700;occ; 92; 0;50360  
/nas3/ENVISAT/GOMOS/GOM\_NL\_\_0P/GOM\_NL\_\_0PNPDK20111016\_080537\_000004693107\_00337\_50351\_5434.N1  
1; 2621.4; 16-OCT-2011 08:05:37; Bright; 45.5; 173; 4Bet Tri ; 3.00; 8900;occ; 91; 0;50351  
2; 3047.2; 16-OCT-2011 08:12:42; Bright; 44.0; 160; 23Gam Per ; 2.93; 4700;occ; 88; 0;50351  
/nas3/ENVISAT/GOMOS/GOM\_NL\_\_0P/GOM\_NL\_\_0PNPDK20111016\_094550\_000004713107\_00338\_50352\_5435.N1  
1; 2620.8; 16-OCT-2011 09:45:50; Bright; 46.5; 173; 4Bet Tri ; 3.00; 8900;occ; 93; 0;50352  
2; 3046.6; 16-OCT-2011 09:52:56; Bright; 45.5; 160; 23Gam Per ; 2.93; 4700;occ; 91; 0;50352  
/nas3/ENVISAT/GOMOS/GOM\_NL\_\_0P/GOM\_NL\_\_0PNPDK20111016\_112603\_000004723107\_00339\_50353\_5436.N1  
1; 2620.2; 16-OCT-2011 11:26:03; Bright; 45.5; 173; 4Bet Tri ; 3.00; 8900;occ; 91; 0;50353  
2; 3045.8; 16-OCT-2011 11:33:09; Bright; 46.5; 160; 23Gam Per ; 2.93; 4700;occ; 93; 0;50353  
/nas3/ENVISAT/GOMOS/GOM\_NL\_\_0P/GOM\_NL\_\_0PNPDK20111016\_130616\_000004723107\_00340\_50354\_5437.N1  
1; 2619.4; 16-OCT-2011 13:06:16; Bright; 45.0; 173; 4Bet Tri ; 3.00; 8900;occ; 90; 0;50354  
2; 3045.1; 16-OCT-2011 13:13:22; Bright; 47.0; 160; 23Gam Per ; 2.93; 4700;occ; 94; 0;50354  
/nas3/ENVISAT/GOMOS/GOM\_NL\_\_0P/GOM\_NL\_\_0PNPDK20111016\_144630\_000004713107\_00341\_50355\_5438.N1  
1; 2618.8; 16-OCT-2011 14:46:30; Bright; 44.5; 173; 4Bet Tri ; 3.00; 8900;occ; 89; 0;50355  
2; 3044.4; 16-OCT-2011 14:53:35; Bright; 46.0; 160; 23Gam Per ; 2.93; 4700;occ; 92; 0;50355  
/nas3/ENVISAT/GOMOS/GOM\_NL\_\_0P/GOM\_NL\_\_0PNPDK20111016\_162643\_000004723107\_00342\_50356\_5439.N1  
1; 2618.3; 16-OCT-2011 16:26:43; Bright; 45.0; 173; 4Bet Tri ; 3.00; 8900;occ; 90; 0;50356  
2; 3043.6; 16-OCT-2011 16:33:48; Bright; 47.0; 160; 23Gam Per ; 2.93; 4700;occ; 94; 0;50356  
/nas3/ENVISAT/GOMOS/GOM\_NL\_\_0P/GOM\_NL\_\_0PNPDK20111016\_180656\_000004723107\_00343\_50357\_5440.N1  
1; 2617.5; 16-OCT-2011 18:06:56; Bright; 46.5; 173; 4Bet Tri ; 3.00; 8900;occ; 93; 0;50357  
2; 3042.9; 16-OCT-2011 18:14:02; Bright; 47.0; 160; 23Gam Per ; 2.93; 4700;occ; 94; 0;50357  
/nas3/ENVISAT/GOMOS/GOM\_NL\_\_0P/GOM\_NL\_\_0PNPDK20111016\_195415\_00000463107\_00344\_50358\_5441.N1  
1;-2971.9; 16-OCT-2011 19:54:15; Bright; 46.5; 160; 23Gam Per ; 2.93; 4700;occ; 93; 0;50358  
/nas3/ENVISAT/GOMOS/GOM\_NL\_\_0P/GOM\_NL\_\_0PNPDE20111017\_005455\_00000463107\_00347\_50361\_6562.N1  
1;-2974.0; 17-OCT-2011 00:54:55; Bright; 46.5; 160; 23Gam Per ; 2.93; 4700;occ; 93; 0;50361  
/nas3/ENVISAT/GOMOS/GOM\_NL\_\_0P/GOM\_NL\_\_0PNPDE20111017\_023508\_00000423107\_00348\_50362\_6563.N1  
1;-2974.7; 17-OCT-2011 02:35:08; Bright; 43.0; 160; 23Gam Per ; 2.93; 4700;occ; 86; 0;50362  
/nas3/ENVISAT/GOMOS/GOM\_NL\_\_0P/GOM\_NL\_\_0PNPDE20111017\_041521\_00000453107\_00349\_50363\_6564.N1  
1;-2975.5; 17-OCT-2011 04:15:21; Bright; 45.5; 160; 23Gam Per ; 2.93; 4700;occ; 91; 0;50363  
/nas3/ENVISAT/GOMOS/GOM\_NL\_\_0P/GOM\_NL\_\_0PNPDE20111017\_055534\_00000453107\_00350\_50364\_6565.N1  
1;-2976.2; 17-OCT-2011 05:55:34; Bright; 45.5; 160; 23Gam Per ; 2.93; 4700;occ; 91; 0;50364  
/nas3/ENVISAT/GOMOS/GOM\_NL\_\_0P/GOM\_NL\_\_0PNPDE20111017\_223747\_00000453107\_00360\_50374\_6567.N1  
1;-2983.4; 17-OCT-2011 22:37:47; Bright; 45.5; 160; 23Gam Per ; 2.93; 4700;occ; 91; 0;50374  
/nas3/ENVISAT/GOMOS/GOM\_NL\_\_0P/GOM\_NL\_\_0PNPDK20111017\_073548\_00000453107\_00351\_50365\_5442.N1



1;-2976.8; 17-OCT-2011 07:35:48; Bright; 46.0; 160; 23Gam Per ; 2.93; 4700;occ; 92; 0;50365  
/nas3/ENVISAT/GOMOS/GOM\_NL\_\_0P/GOM\_NL\_\_0PNPDK20111017\_091601\_000000453107\_00352\_50366\_5443.N1  
1;-2977.5; 17-OCT-2011 09:16:01; Bright; 45.5; 160; 23Gam Per ; 2.93; 4700;occ; 91; 0;50366  
/nas3/ENVISAT/GOMOS/GOM\_NL\_\_0P/GOM\_NL\_\_0PNPDK20111017\_105614\_000000463107\_00353\_50367\_5444.N1  
1;-2978.3; 17-OCT-2011 10:56:14; Bright; 46.5; 160; 23Gam Per ; 2.93; 4700;occ; 93; 0;50367  
/nas3/ENVISAT/GOMOS/GOM\_NL\_\_0P/GOM\_NL\_\_0PNPDK20111017\_123627\_000000463107\_00354\_50368\_5445.N1  
1;-2979.1; 17-OCT-2011 12:36:27; Bright; 46.5; 160; 23Gam Per ; 2.93; 4700;occ; 93; 0;50368  
/nas3/ENVISAT/GOMOS/GOM\_NL\_\_0P/GOM\_NL\_\_0PNPDK20111017\_141641\_000000453107\_00355\_50369\_5446.N1  
1;-2979.8; 17-OCT-2011 14:16:41; Bright; 46.0; 160; 23Gam Per ; 2.93; 4700;occ; 92; 0;50369  
/nas3/ENVISAT/GOMOS/GOM\_NL\_\_0P/GOM\_NL\_\_0PNPDK20111017\_155654\_000000453107\_00356\_50370\_5447.N1  
1;-2980.6; 17-OCT-2011 15:56:54; Bright; 45.5; 160; 23Gam Per ; 2.93; 4700;occ; 91; 0;50370  
/nas3/ENVISAT/GOMOS/GOM\_NL\_\_0P/GOM\_NL\_\_0PNPDK20111017\_173707\_000000453107\_00357\_50371\_5448.N1  
1;-2981.4; 17-OCT-2011 17:37:07; Bright; 45.5; 160; 23Gam Per ; 2.93; 4700;occ; 91; 0;50371  
/nas3/ENVISAT/GOMOS/GOM\_NL\_\_0P/GOM\_NL\_\_0PNPDK20111017\_191720\_000000463107\_00358\_50372\_5449.N1  
1;-2982.0; 17-OCT-2011 19:17:20; Bright; 46.5; 160; 23Gam Per ; 2.93; 4700;occ; 93; 0;50372  
/nas3/ENVISAT/GOMOS/GOM\_NL\_\_0P/GOM\_NL\_\_0PNPDE20111018\_001800\_000000443107\_00361\_50375\_6568.N1  
1;-2984.0; 18-OCT-2011 00:18:00; Bright; 45.0; 160; 23Gam Per ; 2.93; 4700;occ; 90; 0;50375  
/nas3/ENVISAT/GOMOS/GOM\_NL\_\_0P/GOM\_NL\_\_0PNPDE20111018\_015813\_000000453107\_00362\_50376\_6569.N1  
1;-2984.8; 18-OCT-2011 01:58:13; Bright; 46.0; 160; 23Gam Per ; 2.93; 4700;occ; 92; 0;50376  
/nas3/ENVISAT/GOMOS/GOM\_NL\_\_0P/GOM\_NL\_\_0PNPDE20111018\_033827\_000000443107\_00363\_50377\_6570.N1  
1;-2985.5; 18-OCT-2011 03:38:27; Bright; 45.0; 160; 23Gam Per ; 2.93; 4700;occ; 90; 0;50377  
/nas3/ENVISAT/GOMOS/GOM\_NL\_\_0P/GOM\_NL\_\_0PNPDE20111018\_051840\_000000453107\_00364\_50378\_6571.N1  
1;-2986.3; 18-OCT-2011 05:18:40; Bright; 45.5; 160; 23Gam Per ; 2.93; 4700;occ; 91; 0;50378  
/nas3/ENVISAT/GOMOS/GOM\_NL\_\_0P/GOM\_NL\_\_0PNPDE20111018\_065853\_000000443107\_00365\_50379\_6572.N1  
1;-2986.9; 18-OCT-2011 06:58:53; Bright; 45.0; 160; 23Gam Per ; 2.93; 4700;occ; 90; 0;50379  
/nas3/ENVISAT/GOMOS/GOM\_NL\_\_0P/GOM\_NL\_\_0PNPDK20111018\_083906\_000000443107\_00366\_50380\_5450.N1  
1;-2987.6; 18-OCT-2011 08:39:06; Bright; 44.5; 160; 23Gam Per ; 2.93; 4700;occ; 89; 0;50380  
/nas3/ENVISAT/GOMOS/GOM\_NL\_\_0P/GOM\_NL\_\_0PNPDK20111018\_115933\_000000673107\_00368\_50382\_5451.N1  
1;-2988.9; 18-OCT-2011 11:59:33; Bright; 67.5; 160; 23Gam Per ; 2.93; 4700;occ; 135; 0;50382  
/nas3/ENVISAT/GOMOS/GOM\_NL\_\_0P/GOM\_NL\_\_0PNPDK20111018\_133946\_000000453107\_00369\_50383\_5452.N1  
1;-2989.7; 18-OCT-2011 13:39:46; Bright; 45.5; 160; 23Gam Per ; 2.93; 4700;occ; 91; 0;50383  
/nas3/ENVISAT/GOMOS/GOM\_NL\_\_0P/GOM\_NL\_\_0PNPDK20111018\_101920\_000000433107\_00367\_50381\_5454.N1  
1;-2988.3; 18-OCT-2011 10:19:20; Bright; 44.0; 160; 23Gam Per ; 2.93; 4700;occ; 88; 0;50381  
/nas3/ENVISAT/GOMOS/GOM\_NL\_\_0P/GOM\_NL\_\_0PNPDK20111018\_101920\_000000433107\_00367\_50381\_5739.N1  
1;-2988.3; 18-OCT-2011 10:19:20; Bright; 44.0; 160; 23Gam Per ; 2.93; 4700;occ; 88; 0;50381  
/nas3/ENVISAT/GOMOS/GOM\_NL\_\_0P/GOM\_NL\_\_0PNPDE20111023\_202058\_000000603108\_00014\_50459\_6573.N1  
1; 2035.9; 23-OCT-2011 20:20:58; Bright; 60.5; 94; 92Alp Cet ; 2.53; 3100;occ; 121; 0;50459  
/nas3/ENVISAT/GOMOS/GOM\_NL\_\_0P/GOM\_NL\_\_0PNPDE20111023\_212637\_000021363108\_00014\_50459\_6574.N1  
1; -39.8; 23-OCT-2011 21:26:37; Dark ; 65.5; 132; 15Rho Pup ; 2.80; 6900;occ; 131; 0;50459  
2; 249.2; 23-OCT-2011 21:31:26; Dark ; 69.0; 88; 31Eta Cma ; 2.45; 20000;occ; 138; 0;50460  
3; 787.7; 23-OCT-2011 21:40:24; Dark ; 61.5; 108; Alp Col ; 2.65; 15200;occ; 123; 0;50460  
4; 2035.6; 23-OCT-2011 22:01:12; Bright; 61.0; 94; 92Alp Cet ; 2.53; 3100;occ; 122; 0;50460  
/nas3/ENVISAT/GOMOS/GOM\_NL\_\_0P/GOM\_NL\_\_0PNPDE20111023\_230652\_000021333108\_00015\_50460\_6575.N1  
1; -38.1; 23-OCT-2011 23:06:52; Dark ; 63.0; 132; 15Rho Pup ; 2.80; 6900;occ; 126; 0;50460  
2; 251.0; 23-OCT-2011 23:11:41; Dark ; 65.5; 88; 31Eta Cma ; 2.45; 20000;occ; 131; 0;50461  
3; 788.8; 23-OCT-2011 23:20:39; Dark ; 64.5; 108; Alp Col ; 2.65; 15200;occ; 129; 0;50461  
4; 2034.9; 23-OCT-2011 23:41:25; Bright; 61.0; 94; 92Alp Cet ; 2.53; 3100;occ; 122; 0;50461  
/nas3/ENVISAT/GOMOS/GOM\_NL\_\_0P/GOM\_NL\_\_0PNPDK20111023\_094936\_000000603108\_00008\_50453\_5455.N1  
1; 237.1; 23-OCT-2011 09:49:36; Dark ; 63.5; 88; 31Eta Cma ; 2.45; 20000;occ; 127; 0;50453  
2; 779.1; 23-OCT-2011 09:58:38; Dark ; 64.5; 108; Alp Col ; 2.65; 15200;occ; 129; 0;50453  
/nas3/ENVISAT/GOMOS/GOM\_NL\_\_0P/GOM\_NL\_\_0PNPDK20111023\_101938\_000000583108\_00008\_50453\_5456.N1  
1; 2039.2; 23-OCT-2011 10:19:38; Bright; 58.5; 94; 92Alp Cet ; 2.53; 3100;occ; 117; 0;50453  
/nas3/ENVISAT/GOMOS/GOM\_NL\_\_0P/GOM\_NL\_\_0PNPDK20111023\_145023\_0000006033108\_00011\_50456\_5458.N1  
1; 242.4; 23-OCT-2011 14:50:23; Dark ; 66.5; 88; 31Eta Cma ; 2.45; 20000;occ; 133; 0;50456  
2; 782.9; 23-OCT-2011 14:59:23; Dark ; 62.5; 108; Alp Col ; 2.65; 15200;occ; 125; 0;50456  
/nas3/ENVISAT/GOMOS/GOM\_NL\_\_0P/GOM\_NL\_\_0PNPDK20111023\_152018\_000048233108\_00011\_50456\_5459.N1  
1; 2037.7; 23-OCT-2011 15:20:18; Bright; 59.0; 94; 92Alp Cet ; 2.53; 3100;occ; 118; 0;50456  
2; 5969.5; 23-OCT-2011 16:25:50; Dark ; 64.0; 132; 15Rho Pup ; 2.80; 6900;occ; 128; 0;50456  
3; 6258.1; 23-OCT-2011 16:30:39; Dark ; 69.0; 88; 31Eta Cma ; 2.45; 20000;occ; 138; 0;50457  
4; 6798.2; 23-OCT-2011 16:39:39; Dark ; 63.0; 108; Alp Col ; 2.65; 15200;occ; 126; 0;50457  
/nas3/ENVISAT/GOMOS/GOM\_NL\_\_0P/GOM\_NL\_\_0PNPDK20111023\_170032\_000048253108\_00012\_50457\_5460.N1  
1; 2037.1; 23-OCT-2011 17:00:32; Bright; 59.5; 94; 92Alp Cet ; 2.53; 3100;occ; 119; 0;50457  
2; 5971.1; 23-OCT-2011 18:06:06; Dark ; 61.5; 132; 15Rho Pup ; 2.80; 6900;occ; 123; 0;50457  
3; 6259.9; 23-OCT-2011 18:10:54; Dark ; 66.5; 88; 31Eta Cma ; 2.45; 20000;occ; 133; 0;50458  
4; 6799.2; 23-OCT-2011 18:19:54; Dark ; 63.0; 108; Alp Col ; 2.65; 15200;occ; 126; 0;50458  
/nas3/ENVISAT/GOMOS/GOM\_NL\_\_0P/GOM\_NL\_\_0PNPDK20111023\_184045\_000048273108\_00013\_50458\_5461.N1  
1; 2036.5; 23-OCT-2011 18:40:45; Bright; 59.5; 94; 92Alp Cet ; 2.53; 3100;occ; 119; 0;50458  
2; 5972.7; 23-OCT-2011 19:46:21; Dark ; 62.0; 132; 15Rho Pup ; 2.80; 6900;occ; 124; 0;50458

```

3; 6261.5; 23-OCT-2011 19:51:10; Dark ; 68.0; 88; 31Eta CMA ; 2.45; 20000;occ; 136; 0;50459
4; 6800.7; 23-OCT-2011 20:00:09; Dark ; 63.0; 108; Alp Col ; 2.65; 15200;occ; 126; 0;50459
/nas3/ENVISAT/GOMOS/GOM_NL__0P/GOM_NL__0PNPDE20111024_004708_000021313108_00016_50461_6576.N1
1; -36.4; 24-OCT-2011 00:47:08; Dark ; 62.0; 132; 15Rho Pup ; 2.80; 6900;occ; 124; 0;50461
2; 252.7; 24-OCT-2011 00:51:57; Dark ; 66.0; 88; 31Eta CMA ; 2.45; 20000;occ; 132; 0;50462
3; 790.0; 24-OCT-2011 01:00:54; Dark ; 64.5; 108; Alp Col ; 2.65; 15200;occ; 129; 0;50462
4; 2034.5; 24-OCT-2011 01:21:39; Bright; 61.0; 94; 92Alp Cet ; 2.53; 3100;occ; 122; 0;50462
/nas3/ENVISAT/GOMOS/GOM_NL__0P/GOM_NL__0PNPDE20111024_040739_000021233108_00018_50463_6578.N1
1; -32.8; 24-OCT-2011 04:07:39; Dark ; 64.5; 132; 15Rho Pup ; 2.80; 6900;occ; 129; 0;50463
2; 256.4; 24-OCT-2011 04:12:29; Dark ; 69.0; 88; 31Eta CMA ; 2.45; 20000;occ; 138; 0;50464
3; 792.5; 24-OCT-2011 04:21:25; Dark ; 63.0; 108; Alp Col ; 2.65; 15200;occ; 126; 0;50464
4; 2033.8; 24-OCT-2011 04:42:06; Bright; 57.0; 94; 92Alp Cet ; 2.53; 3100;occ; 114; 0;50464
/nas3/ENVISAT/GOMOS/GOM_NL__0P/GOM_NL__0PNPDE20111024_054755_000021243108_00019_50464_6579.N1
1; -31.2; 24-OCT-2011 05:47:55; Dark ; 63.5; 132; 15Rho Pup ; 2.80; 6900;occ; 127; 0;50464
2; 258.1; 24-OCT-2011 05:52:44; Dark ; 67.0; 88; 31Eta CMA ; 2.45; 20000;occ; 134; 0;50465
3; 793.6; 24-OCT-2011 06:01:40; Dark ; 64.0; 108; Alp Col ; 2.65; 15200;occ; 128; 0;50465
4; 2033.3; 24-OCT-2011 06:22:19; Bright; 59.5; 94; 92Alp Cet ; 2.53; 3100;occ; 119; 0;50465
/nas3/ENVISAT/GOMOS/GOM_NL__0P/GOM_NL__0PNPDE20111024_210453_000012273108_00029_50474_6580.N1
1; 861.2; 24-OCT-2011 21:04:53; Dark ; 65.5; 108; Alp Col ; 2.65; 15200;occ; 131; 114;50474
2; 2029.1; 24-OCT-2011 21:24:21; Bright; 60.0; 94; 92Alp Cet ; 2.53; 3100;occ; 120; 0;50474
/nas3/ENVISAT/GOMOS/GOM_NL__0P/GOM_NL__0PNPDE20111024_223031_000021013108_00029_50474_6581.N1
1; -14.2; 24-OCT-2011 22:30:31; Dark ; 64.0; 132; 15Rho Pup ; 2.80; 6900;occ; 128; 0;50474
2; 275.7; 24-OCT-2011 22:35:21; Dark ; 69.5; 88; 31Eta CMA ; 2.45; 20000;occ; 139; 0;50475
3; 805.3; 24-OCT-2011 22:44:11; Dark ; 64.0; 108; Alp Col ; 2.65; 15200;occ; 128; 0;50475
4; 2028.6; 24-OCT-2011 23:04:34; Bright; 58.5; 94; 92Alp Cet ; 2.53; 3100;occ; 117; 0;50475
/nas3/ENVISAT/GOMOS/GOM_NL__0P/GOM_NL__0PNPDK20111024_072811_000008863108_00020_50465_5462.N1
1; -29.5; 24-OCT-2011 07:28:11; Dark ; 64.5; 132; 15Rho Pup ; 2.80; 6900;occ; 129; 0;50465
2; 259.9; 24-OCT-2011 07:33:00; Dark ; 68.0; 88; 31Eta CMA ; 2.45; 20000;occ; 136; 0;50466
3; 794.7; 24-OCT-2011 07:41:55; Dark ; 62.5; 108; Alp Col ; 2.65; 15200;occ; 125; 0;50466
/nas3/ENVISAT/GOMOS/GOM_NL__0P/GOM_NL__0PNPDK20111024_080233_000048383108_00021_50466_5463.N1
1; 2032.8; 24-OCT-2011 08:02:33; Bright; 59.5; 94; 92Alp Cet ; 2.53; 3100;occ; 119; 0;50466
2; 5986.1; 24-OCT-2011 09:08:26; Dark ; 65.5; 132; 15Rho Pup ; 2.80; 6900;occ; 131; 0;50466
3; 6275.6; 24-OCT-2011 09:13:16; Dark ; 68.5; 88; 31Eta CMA ; 2.45; 20000;occ; 137; 0;50467
4; 6810.1; 24-OCT-2011 09:22:10; Dark ; 61.5; 108; Alp Col ; 2.65; 15200;occ; 123; 0;50467
/nas3/ENVISAT/GOMOS/GOM_NL__0P/GOM_NL__0PNPDK20111024_094246_000048433108_00022_50467_5464.N1
1; 2032.3; 24-OCT-2011 09:42:46; Bright; 60.0; 94; 92Alp Cet ; 2.53; 3100;occ; 120; 0;50467
2; 5987.7; 24-OCT-2011 10:48:42; Dark ; 63.0; 132; 15Rho Pup ; 2.80; 6900;occ; 126; 0;50467
3; 6277.4; 24-OCT-2011 10:53:31; Dark ; 68.0; 88; 31Eta CMA ; 2.45; 20000;occ; 136; 0;50468
4; 6811.1; 24-OCT-2011 11:02:25; Dark ; 64.5; 108; Alp Col ; 2.65; 15200;occ; 129; 0;50468
/nas3/ENVISAT/GOMOS/GOM_NL__0P/GOM_NL__0PNPDK20111024_112300_000048453108_00023_50468_5465.N1
1; 2031.8; 24-OCT-2011 11:23:00; Bright; 59.5; 94; 92Alp Cet ; 2.53; 3100;occ; 119; 0;50468
2; 5989.5; 24-OCT-2011 12:28:57; Dark ; 66.5; 132; 15Rho Pup ; 2.80; 6900;occ; 133; 0;50468
3; 6278.9; 24-OCT-2011 12:33:47; Dark ; 68.5; 88; 31Eta CMA ; 2.45; 20000;occ; 137; 0;50469
4; 6812.4; 24-OCT-2011 12:42:40; Dark ; 64.5; 108; Alp Col ; 2.65; 15200;occ; 129; 0;50469
/nas3/ENVISAT/GOMOS/GOM_NL__0P/GOM_NL__0PNPDK20111024_130313_000048433108_00024_50469_5466.N1
1; 2031.4; 24-OCT-2011 13:03:13; Bright; 60.5; 94; 92Alp Cet ; 2.53; 3100;occ; 121; 0;50469
2; 5991.3; 24-OCT-2011 14:09:13; Dark ; 63.5; 132; 15Rho Pup ; 2.80; 6900;occ; 127; 0;50469
3; 6280.7; 24-OCT-2011 14:14:03; Dark ; 66.0; 88; 31Eta CMA ; 2.45; 20000;occ; 132; 0;50470
4; 6813.6; 24-OCT-2011 14:22:55; Dark ; 61.5; 108; Alp Col ; 2.65; 15200;occ; 123; 0;50470
/nas3/ENVISAT/GOMOS/GOM_NL__0P/GOM_NL__0PNPDK20111024_144327_000048463108_00025_50470_5467.N1
1; 2031.0; 24-OCT-2011 14:43:27; Bright; 59.0; 94; 92Alp Cet ; 2.53; 3100;occ; 118; 0;50470
2; 5993.0; 24-OCT-2011 15:49:29; Dark ; 66.5; 132; 15Rho Pup ; 2.80; 6900;occ; 133; 0;50470
3; 6282.7; 24-OCT-2011 15:54:18; Dark ; 63.5; 88; 31Eta CMA ; 2.45; 20000;occ; 127; 0;50471
4; 6814.8; 24-OCT-2011 16:03:11; Dark ; 62.5; 108; Alp Col ; 2.65; 15200;occ; 125; 0;50471
/nas3/ENVISAT/GOMOS/GOM_NL__0P/GOM_NL__0PNPDK20111024_162341_000048483108_00026_50471_5468.N1
1; 2030.8; 24-OCT-2011 16:23:41; Bright; 60.0; 94; 92Alp Cet ; 2.53; 3100;occ; 120; 0;50471
2; 5994.7; 24-OCT-2011 17:29:45; Dark ; 65.0; 132; 15Rho Pup ; 2.80; 6900;occ; 130; 0;50471
3; 6284.6; 24-OCT-2011 17:34:34; Dark ; 65.5; 88; 31Eta CMA ; 2.45; 20000;occ; 131; 0;50472
4; 6816.1; 24-OCT-2011 17:43:26; Dark ; 63.0; 108; Alp Col ; 2.65; 15200;occ; 126; 0;50472
/nas3/ENVISAT/GOMOS/GOM_NL__0P/GOM_NL__0PNPDK20111024_180354_000048493108_00027_50472_5469.N1
1; 2030.1; 24-OCT-2011 18:03:54; Bright; 60.0; 94; 92Alp Cet ; 2.53; 3100;occ; 120; 0;50472
2; 5996.4; 24-OCT-2011 19:10:00; Dark ; 65.0; 132; 15Rho Pup ; 2.80; 6900;occ; 130; 0;50472
3; 6286.3; 24-OCT-2011 19:14:50; Dark ; 69.0; 88; 31Eta CMA ; 2.45; 20000;occ; 138; 0;50473
4; 6817.1; 24-OCT-2011 19:23:41; Dark ; 62.5; 108; Alp Col ; 2.65; 15200;occ; 125; 0;50473
/nas3/ENVISAT/GOMOS/GOM_NL__0P/GOM_NL__0PNPDK20111024_194407_000048533108_00028_50473_5470.N1
1; 2029.6; 24-OCT-2011 19:44:07; Bright; 62.5; 94; 92Alp Cet ; 2.53; 3100;occ; 125; 0;50473
2; 5998.0; 24-OCT-2011 20:50:16; Dark ; 65.0; 132; 15Rho Pup ; 2.80; 6900;occ; 130; 0;50473
3; 6287.8; 24-OCT-2011 20:55:06; Dark ; 70.0; 88; 31Eta CMA ; 2.45; 20000;occ; 140; 0;50474

```

4; 6818.2; 24-OCT-2011 21:03:56; Dark ; 65.0; 108; Alp Col ; 2.65; 15200;occ; 130; 0;50474  
/nas3/ENVISAT/GOMOS/GOM\_NL\_\_0P/GOM\_NL\_\_0PNPDE20111025\_001047\_000021023108\_00030\_50475\_6582.N1  
1; -12.4; 25-OCT-2011 00:10:47; Dark ; 63.0; 132; 15Rho Pup ; 2.80; 6900;occ; 126; 0;50475  
2; 277.4; 25-OCT-2011 00:15:37; Dark ; 67.5; 88; 31Eta CMA ; 2.45; 20000;occ; 135; 0;50476  
3; 806.4; 25-OCT-2011 00:24:26; Dark ; 64.5; 108; Alp Col ; 2.65; 15200;occ; 129; 0;50476  
4; 2028.1; 25-OCT-2011 00:44:48; Bright; 62.0; 94; 92Alp Cet ; 2.53; 3100;occ; 124; 0;50476  
/nas3/ENVISAT/GOMOS/GOM\_NL\_\_0P/GOM\_NL\_\_0PNPDE20111025\_015103\_000021003108\_00031\_50476\_6583.N1  
1; -10.7; 25-OCT-2011 01:51:03; Dark ; 66.0; 132; 15Rho Pup ; 2.80; 6900;occ; 132; 0;50476  
2; 279.2; 25-OCT-2011 01:55:53; Dark ; 67.5; 88; 31Eta CMA ; 2.45; 20000;occ; 135; 0;50477  
3; 807.8; 25-OCT-2011 02:04:41; Dark ; 64.0; 108; Alp Col ; 2.65; 15200;occ; 128; 0;50477  
4; 2027.7; 25-OCT-2011 02:25:01; Bright; 62.5; 94; 92Alp Cet ; 2.53; 3100;occ; 125; 0;50477  
/nas3/ENVISAT/GOMOS/GOM\_NL\_\_0P/GOM\_NL\_\_0PNPDE20111025\_033118\_000020953108\_00032\_50477\_6584.N1  
1; -8.9; 25-OCT-2011 03:31:18; Dark ; 67.0; 132; 15Rho Pup ; 2.80; 6900;occ; 134; 0;50477  
2; 281.0; 25-OCT-2011 03:36:08; Dark ; 69.0; 88; 31Eta CMA ; 2.45; 20000;occ; 138; 0;50478  
3; 809.0; 25-OCT-2011 03:44:56; Dark ; 63.5; 108; Alp Col ; 2.65; 15200;occ; 127; 0;50478  
4; 2027.2; 25-OCT-2011 04:05:15; Bright; 59.5; 94; 92Alp Cet ; 2.53; 3100;occ; 119; 0;50478  
/nas3/ENVISAT/GOMOS/GOM\_NL\_\_0P/GOM\_NL\_\_0PNPDE20111025\_051134\_000021073108\_00033\_50478\_6585.N1  
1; -7.2; 25-OCT-2011 05:11:34; Dark ; 66.0; 132; 15Rho Pup ; 2.80; 6900;occ; 132; 0;50478  
2; 282.6; 25-OCT-2011 05:16:24; Dark ; 68.0; 88; 31Eta CMA ; 2.45; 20000;occ; 136; 0;50479  
3; 810.2; 25-OCT-2011 05:25:12; Dark ; 64.5; 108; Alp Col ; 2.65; 15200;occ; 129; 0;50479  
4; 2026.8; 25-OCT-2011 05:45:28; Bright; 73.0; 94; 92Alp Cet ; 2.53; 3100;occ; 146; 0;50479  
/nas3/ENVISAT/GOMOS/GOM\_NL\_\_0P/GOM\_NL\_\_0PNPDE20111025\_215411\_000008733108\_00044\_50489\_6586.N1  
1; 10.4; 25-OCT-2011 21:54:11; Dark ; 63.5; 132; 15Rho Pup ; 2.80; 6900;occ; 127; 0;50489  
2; 300.5; 25-OCT-2011 21:59:01; Dark ; 68.0; 88; 31Eta CMA ; 2.45; 20000;occ; 136; 0;50489  
3; 821.7; 25-OCT-2011 22:07:43; Dark ; 62.5; 108; Alp Col ; 2.65; 15200;occ; 125; 0;50489  
/nas3/ENVISAT/GOMOS/GOM\_NL\_\_0P/GOM\_NL\_\_0PNPDE20111025\_233427\_000008723108\_00045\_50490\_6587.N1  
1; 12.1; 25-OCT-2011 23:34:27; Dark ; 65.0; 132; 15Rho Pup ; 2.80; 6900;occ; 130; 0;50490  
2; 302.3; 25-OCT-2011 23:39:17; Dark ; 70.5; 88; 31Eta CMA ; 2.45; 20000;occ; 141; 0;50490  
3; 822.6; 25-OCT-2011 23:47:57; Dark ; 62.0; 108; Alp Col ; 2.65; 15200;occ; 124; 0;50490  
/nas3/ENVISAT/GOMOS/GOM\_NL\_\_0P/GOM\_NL\_\_0PNPDK20111025\_065150\_000008803108\_00034\_50479\_5471.N1  
1; -5.4; 25-OCT-2011 06:51:50; Dark ; 66.5; 132; 15Rho Pup ; 2.80; 6900;occ; 133; 0;50479  
2; 284.6; 25-OCT-2011 06:56:40; Dark ; 69.5; 88; 31Eta CMA ; 2.45; 20000;occ; 139; 0;50480  
3; 811.4; 25-OCT-2011 07:05:27; Dark ; 64.0; 108; Alp Col ; 2.65; 15200;occ; 128; 0;50480  
/nas3/ENVISAT/GOMOS/GOM\_NL\_\_0P/GOM\_NL\_\_0PNPDK20111025\_072542\_000048613108\_00035\_50480\_5472.N1  
1; 2026.4; 25-OCT-2011 07:25:42; Bright; 64.0; 94; 92Alp Cet ; 2.53; 3100;occ; 128; 0;50480  
2; 6010.4; 25-OCT-2011 08:32:06; Dark ; 67.0; 132; 15Rho Pup ; 2.80; 6900;occ; 134; 0;50480  
3; 6300.4; 25-OCT-2011 08:36:56; Dark ; 69.5; 88; 31Eta CMA ; 2.45; 20000;occ; 139; 0;50481  
4; 6826.4; 25-OCT-2011 08:45:42; Dark ; 61.5; 108; Alp Col ; 2.65; 15200;occ; 123; 0;50481  
/nas3/ENVISAT/GOMOS/GOM\_NL\_\_0P/GOM\_NL\_\_0PNPDK20111025\_090555\_000048643108\_00036\_50481\_5473.N1  
1; 2026.1; 25-OCT-2011 09:05:55; Bright; 60.0; 94; 92Alp Cet ; 2.53; 3100;occ; 120; 0;50481  
2; 6012.1; 25-OCT-2011 10:12:21; Dark ; 66.0; 132; 15Rho Pup ; 2.80; 6900;occ; 132; 0;50481  
3; 6302.1; 25-OCT-2011 10:17:11; Dark ; 71.5; 88; 31Eta CMA ; 2.45; 20000;occ; 143; 0;50482  
4; 6827.4; 25-OCT-2011 10:25:57; Dark ; 63.0; 108; Alp Col ; 2.65; 15200;occ; 126; 0;50482  
/nas3/ENVISAT/GOMOS/GOM\_NL\_\_0P/GOM\_NL\_\_0PNPDK20111025\_104609\_000048653108\_00037\_50482\_5474.N1  
1; 2025.6; 25-OCT-2011 10:46:09; Bright; 56.5; 94; 92Alp Cet ; 2.53; 3100;occ; 113; 0;50482  
2; 6013.8; 25-OCT-2011 11:52:37; Dark ; 66.5; 132; 15Rho Pup ; 2.80; 6900;occ; 133; 0;50482  
3; 6303.9; 25-OCT-2011 11:57:27; Dark ; 66.5; 88; 31Eta CMA ; 2.45; 20000;occ; 133; 0;50483  
4; 6828.5; 25-OCT-2011 12:06:12; Dark ; 63.0; 108; Alp Col ; 2.65; 15200;occ; 126; 0;50483  
/nas3/ENVISAT/GOMOS/GOM\_NL\_\_0P/GOM\_NL\_\_0PNPDK20111025\_122622\_000048673108\_00038\_50483\_5475.N1  
1; 2025.2; 25-OCT-2011 12:26:22; Bright; 63.0; 94; 92Alp Cet ; 2.53; 3100;occ; 126; 0;50483  
2; 6015.4; 25-OCT-2011 13:32:53; Dark ; 65.5; 132; 15Rho Pup ; 2.80; 6900;occ; 131; 0;50484  
3; 6305.7; 25-OCT-2011 13:37:43; Dark ; 69.0; 88; 31Eta CMA ; 2.45; 20000;occ; 138; 0;50484  
4; 6829.8; 25-OCT-2011 13:46:27; Dark ; 62.5; 108; Alp Col ; 2.65; 15200;occ; 125; 0;50484  
/nas3/ENVISAT/GOMOS/GOM\_NL\_\_0P/GOM\_NL\_\_0PNPDK20111025\_151308\_000008773108\_00040\_50485\_5476.N1  
1; 3.3; 25-OCT-2011 15:13:08; Dark ; 66.0; 132; 15Rho Pup ; 2.80; 6900;occ; 132; 0;50485  
2; 293.4; 25-OCT-2011 15:17:58; Dark ; 70.5; 88; 31Eta CMA ; 2.45; 20000;occ; 141; 0;50485  
3; 816.9; 25-OCT-2011 15:26:42; Dark ; 64.0; 108; Alp Col ; 2.65; 15200;occ; 128; 0;50485  
/nas3/ENVISAT/GOMOS/GOM\_NL\_\_0P/GOM\_NL\_\_0PNPDK20111025\_165324\_000008753108\_00041\_50486\_5477.N1  
1; 5.0; 25-OCT-2011 16:53:24; Dark ; 66.5; 132; 15Rho Pup ; 2.80; 6900;occ; 133; 0;50486  
2; 295.3; 25-OCT-2011 16:58:14; Dark ; 69.5; 88; 31Eta CMA ; 2.45; 20000;occ; 139; 0;50486  
3; 818.2; 25-OCT-2011 17:06:57; Dark ; 62.0; 108; Alp Col ; 2.65; 15200;occ; 124; 0;50486  
/nas3/ENVISAT/GOMOS/GOM\_NL\_\_0P/GOM\_NL\_\_0PNPDK20111025\_183340\_000008763108\_00042\_50487\_5478.N1  
1; 6.7; 25-OCT-2011 18:33:40; Dark ; 66.0; 132; 15Rho Pup ; 2.80; 6900;occ; 132; 0;50487  
2; 297.0; 25-OCT-2011 18:38:30; Dark ; 70.5; 88; 31Eta CMA ; 2.45; 20000;occ; 141; 0;50487  
3; 819.3; 25-OCT-2011 18:47:12; Dark ; 63.5; 108; Alp Col ; 2.65; 15200;occ; 127; 0;50487  
/nas3/ENVISAT/GOMOS/GOM\_NL\_\_0P/GOM\_NL\_\_0PNPDK20111025\_201356\_000008733108\_00043\_50488\_5479.N1  
1; 8.6; 25-OCT-2011 20:13:56; Dark ; 64.0; 132; 15Rho Pup ; 2.80; 6900;occ; 128; 0;50488  
2; 298.8; 25-OCT-2011 20:18:46; Dark ; 68.0; 88; 31Eta CMA ; 2.45; 20000;occ; 136; 0;50488

3; 820.5; 25-OCT-2011 20:27:27; Dark ; 62.0; 108; Alp Col ; 2.65; 15200;occ; 124; 0;50488  
/nas3/ENVISAT/GOMOS/GOM\_NL\_\_0P/GOM\_NL\_\_0PNPDE20111026\_011443\_000068873108\_00046\_50491\_6588.N1  
1; 14.0; 26-OCT-2011 01:14:43; Dark ; 67.0; 132; 15Rho Pup ; 2.80; 6900;occ; 134; 0;50491  
2; 304.1; 26-OCT-2011 01:19:33; Dark ; 68.0; 88; 31Eta CMA ; 2.45; 20000;occ; 136; 0;50491  
3; 823.7; 26-OCT-2011 01:28:12; Dark ; 64.0; 108; Alp Col ; 2.65; 15200;occ; 128; 0;50491  
4; 6029.7; 26-OCT-2011 02:54:58; Dark ; 66.0; 132; 15Rho Pup ; 2.80; 6900;occ; 132; 0;50492  
5; 6319.8; 26-OCT-2011 02:59:48; Dark ; 66.5; 88; 31Eta CMA ; 2.45; 20000;occ; 133; 0;50492  
6; 6838.9; 26-OCT-2011 03:08:28; Dark ; 63.0; 108; Alp Col ; 2.65; 15200;occ; 126; 0;50492  
/nas3/ENVISAT/GOMOS/GOM\_NL\_\_0P/GOM\_NL\_\_0PNPDE20111026\_043514\_000008713108\_00048\_50493\_6589.N1  
1; 17.5; 26-OCT-2011 04:35:14; Dark ; 64.0; 132; 15Rho Pup ; 2.80; 6900;occ; 128; 0;50493  
2; 307.7; 26-OCT-2011 04:40:04; Dark ; 71.0; 88; 31Eta CMA ; 2.45; 20000;occ; 142; 0;50493  
3; 826.1; 26-OCT-2011 04:48:43; Dark ; 62.5; 108; Alp Col ; 2.65; 15200;occ; 125; 0;50493  
/nas3/ENVISAT/GOMOS/GOM\_NL\_\_0P/GOM\_NL\_\_0PNPDE20111026\_061530\_000008693108\_00049\_50494\_6590.N1  
1; 19.4; 26-OCT-2011 06:15:30; Dark ; 67.5; 132; 15Rho Pup ; 2.80; 6900;occ; 135; 0;50494  
2; 309.5; 26-OCT-2011 06:20:20; Dark ; 68.0; 88; 31Eta CMA ; 2.45; 20000;occ; 136; 0;50494  
3; 827.3; 26-OCT-2011 06:28:58; Dark ; 62.0; 108; Alp Col ; 2.65; 15200;occ; 124; 0;50494  
/nas3/ENVISAT/GOMOS/GOM\_NL\_\_0P/GOM\_NL\_\_0PNPDK20111026\_093601\_000008683108\_00051\_50496\_5481.N1  
1; 22.9; 26-OCT-2011 09:36:01; Dark ; 66.0; 132; 15Rho Pup ; 2.80; 6900;occ; 132; 0;50496  
2; 313.0; 26-OCT-2011 09:40:51; Dark ; 66.0; 88; 31Eta CMA ; 2.45; 20000;occ; 132; 0;50496  
3; 829.7; 26-OCT-2011 09:49:28; Dark ; 62.0; 108; Alp Col ; 2.65; 15200;occ; 124; 0;50496  
/nas3/ENVISAT/GOMOS/GOM\_NL\_\_0P/GOM\_NL\_\_0PNPDK20111026\_111617\_000008683108\_00052\_50497\_5482.N1  
1; 24.7; 26-OCT-2011 11:16:17; Dark ; 66.0; 132; 15Rho Pup ; 2.80; 6900;occ; 132; 0;50497  
2; 314.8; 26-OCT-2011 11:21:07; Dark ; 66.0; 88; 31Eta CMA ; 2.45; 20000;occ; 132; 0;50497  
3; 830.8; 26-OCT-2011 11:29:43; Dark ; 62.0; 108; Alp Col ; 2.65; 15200;occ; 124; 0;50497  
/nas3/ENVISAT/GOMOS/GOM\_NL\_\_0P/GOM\_NL\_\_0PNPDK20111026\_130123\_000005773108\_00053\_50498\_5483.N1  
1; 316.7; 26-OCT-2011 13:01:23; Dark ; 63.0; 88; 31Eta CMA ; 2.45; 20000;occ; 126; 0;50498  
2; 831.9; 26-OCT-2011 13:09:58; Dark ; 62.0; 108; Alp Col ; 2.65; 15200;occ; 124; 0;50498  
/nas3/ENVISAT/GOMOS/GOM\_NL\_\_0P/GOM\_NL\_\_0PNPDK20111026\_143648\_000008663108\_00054\_50499\_5484.N1  
1; 28.3; 26-OCT-2011 14:36:48; Dark ; 67.5; 132; 15Rho Pup ; 2.80; 6900;occ; 135; 0;50499  
2; 318.4; 26-OCT-2011 14:41:38; Dark ; 63.0; 88; 31Eta CMA ; 2.45; 20000;occ; 126; 0;50499  
3; 832.9; 26-OCT-2011 14:50:13; Dark ; 62.0; 108; Alp Col ; 2.65; 15200;occ; 124; 0;50499  
/nas3/ENVISAT/GOMOS/GOM\_NL\_\_0P/GOM\_NL\_\_0PNPDK20111026\_161704\_000008653108\_00055\_50500\_5485.N1  
1; 30.0; 26-OCT-2011 16:17:04; Dark ; 70.0; 132; 15Rho Pup ; 2.80; 6900;occ; 140; 0;50500  
2; 320.4; 26-OCT-2011 16:21:54; Dark ; 61.0; 88; 31Eta CMA ; 2.45; 20000;occ; 122; 0;50500  
3; 833.9; 26-OCT-2011 16:30:28; Dark ; 62.0; 108; Alp Col ; 2.65; 15200;occ; 124; 0;50500  
/nas3/ENVISAT/GOMOS/GOM\_NL\_\_0P/GOM\_NL\_\_0PNPDK20111026\_175720\_000008643108\_00056\_50501\_5486.N1  
1; 31.9; 26-OCT-2011 17:57:20; Dark ; 67.0; 132; 15Rho Pup ; 2.80; 6900;occ; 134; 0;50501  
2; 322.1; 26-OCT-2011 18:02:10; Dark ; 61.0; 88; 31Eta CMA ; 2.45; 20000;occ; 122; 0;50501  
3; 835.1; 26-OCT-2011 18:10:43; Dark ; 61.5; 108; Alp Col ; 2.65; 15200;occ; 123; 0;50501  
/nas3/ENVISAT/GOMOS/GOM\_NL\_\_0P/GOM\_NL\_\_0PNPDK20111027\_125307\_000000193108\_00067\_50512\_5487.N1  
1; 2026.2; 27-OCT-2011 12:53:07; Dark ; 19.5; 9; Alp Eri ; 0.45; 24000;occ; 39; 0;50512