

GOMOS Daily Report 15-OCT-2011

Level 0 and Level 1 products

SUMMARY

[1. General Info](#)

[2. Summary of products arrived in PCF \(Product Control Facility\)](#)

[2.1 Level 0: products arrived in PCF during current month \(see template here\)](#)

[2.2 Level 0: plot of mission plan versus production during reporting period](#)

[2.3 Level 0: summary of missing occultations with respect to the plan](#)

[2.4 Level 1: products arrived in PCF during reporting period](#)

[3. Plot of Spectrometers and Photometers temperatures](#)

[4. Dark Charge monitoring](#)

[4.1 Products that did not use the Dark Sky Area observation for DC computation](#)

[4.2 Plot of Dark Charge](#)

[5. Demodulation correction and quality product information monitoring](#)

[5.1 Percentage of products with some flags set](#)

[5.2 Plot of quality information per product \(time dependant\)](#)

[5.3 Plot of quality information per product \(world map\)](#)

[6. Star tangent altitude lost](#)

[6.1 Statistics on star tangent altitude lost](#)

[6.2 Plot of star tangent altitude lost: DARK products](#)

[6.3 Plot of star tangent altitude lost: BRIGHT products](#)

[6.3 Plot of star tangent altitude lost: TWILIGHT products](#)

[7. Star Acquisition and Tracking Unit \(SATU\)](#)

[7.1 SATU plots \(dark limb\): 'X' and 'Y' axis](#)

[7.2 SATU Noise Equivalent Angle statistics](#)

[7.2.1 SATU NEA Statistics \(table\)](#)

[7.2.2 Daily SATU NEA STD \(dark limb\) - trend since 1st April 2006](#)

[8. Auxiliary Data Files used for the production reported in section 2.4](#)

[Level 2 products](#)

This report presents the daily analysis on parameters extracted from GOMOS level 1b data (GOM_TRA_1P). It is intended to monitor some important parameters that will impact the quality of the level 2 products as the Spectrometers and Photometers CCD Temperatures and Dark Charge, SATU noise equivalent angle... A list of level 0 products (and content) that have arrived during the actual month to the PCF is also given.

Item	Value
Time of report generation	17OCT2011 07:00:47
Data source version	GOMOS/6.01
Start time of products	15OCT2011 00:16:23
Stop time of products	15OCT2011 23:51:36
Store outputs in DB	Yes
Nb of level 1b prods	36
Nb of prods with errors	0

2. Summary of products arrived in PCF (Product Control Facility)

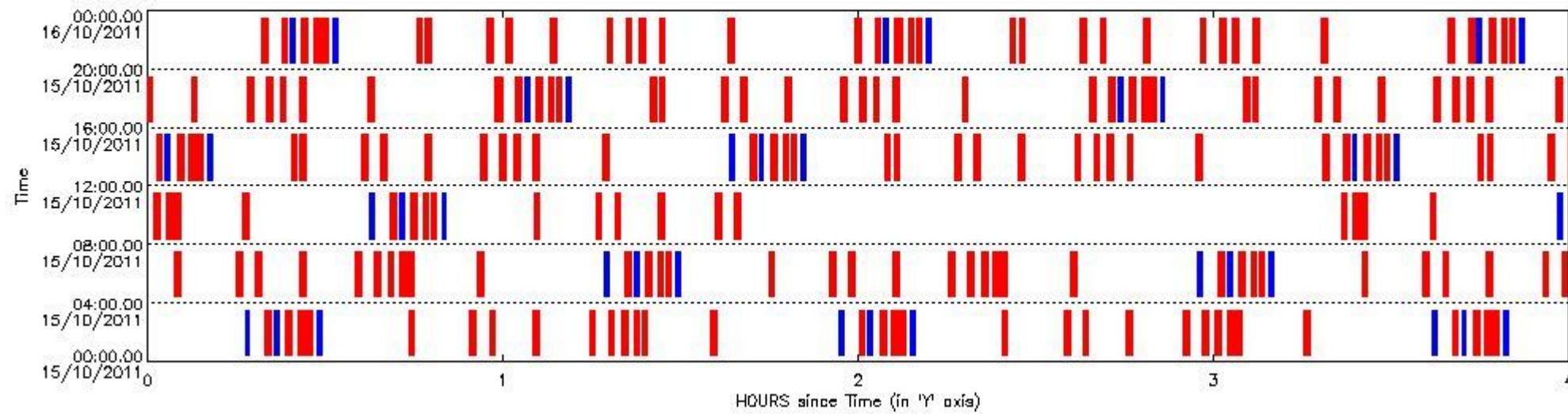
2.1 Level 0 products arrived in PCF (see template [here](#))

2.2 Plot of mission plan versus Level 0 production arrived in PCF during reporting period

Red segments are missing products.

Blue segments are available products.

Green segments are calibration measurements (not available products to users).



2.3 Summary of missing occultations (red segments in previous plot)

UTC start time	Star name	Star ID	Orbit
15-OCT-2011 00:19:50	43BetAnd	53	50332
15-OCT-2011 00:23:18	57Gam1And	73	50332
15-OCT-2011 00:25:21	18AlpCas	68	50332
15-OCT-2011 00:26:42	27GamCas	76	50332
15-OCT-2011 00:44:05	48BetUMa	82	50332
15-OCT-2011 00:54:24	17EpsLeo	166	50332
15-OCT-2011 00:57:40	32AlpLeo	22	50332
15-OCT-2011 01:05:03	30AlpHya	48	50332
15-OCT-2011 01:14:34	LamVel	65	50332
15-OCT-2011 01:17:44	Gam2Vel	34	50332
15-OCT-2011 01:20:02	DSA1055	0	50333
15-OCT-2011 01:22:00	TauPup	161	50333
15-OCT-2011 01:23:21	AlpCar	2	50333
15-OCT-2011 01:35:04	The1Eri	157	50333
15-OCT-2011 02:00:04	43BetAnd	53	50333

15-OCT-2011 02:03:31	57Gam1And	73	50333
15-OCT-2011 02:05:35	18AlpCas	68	50333
15-OCT-2011 02:06:56	27GamCas	76	50333
15-OCT-2011 02:24:19	48BetUMa	82	50333
15-OCT-2011 02:34:38	17EpsLeo	166	50333
15-OCT-2011 02:37:54	32AlpLeo	22	50333
15-OCT-2011 02:45:18	30AlpHya	48	50333
15-OCT-2011 02:54:49	LamVel	65	50333
15-OCT-2011 02:57:59	Gam2Vel	34	50333
15-OCT-2011 03:00:17	DSA1055	0	50334
15-OCT-2011 03:02:15	TauPup	161	50334
15-OCT-2011 03:03:35	AlpCar	2	50334
15-OCT-2011 03:15:18	The1Eri	157	50334
15-OCT-2011 03:40:18	43BetAnd	53	50334
15-OCT-2011 03:43:44	57Gam1And	73	50334
15-OCT-2011 03:45:49	18AlpCas	68	50334
15-OCT-2011 03:47:10	27GamCas	76	50334
15-OCT-2011 04:04:33	48BetUMa	82	50334
15-OCT-2011 04:14:52	17EpsLeo	166	50334
15-OCT-2011 04:18:09	32AlpLeo	22	50334
15-OCT-2011 04:25:32	30AlpHya	48	50334
15-OCT-2011 04:35:03	LamVel	65	50334
15-OCT-2011 04:38:14	Gam2Vel	34	50334
15-OCT-2011 04:40:32	DSA1055	0	50335
15-OCT-2011 04:42:30	TauPup	161	50335
15-OCT-2011 04:43:50	AlpCar	2	50335
15-OCT-2011 04:55:33	The1Eri	157	50335
15-OCT-2011 05:20:31	43BetAnd	53	50335
15-OCT-2011 05:23:58	57Gam1And	73	50335
15-OCT-2011 05:26:03	18AlpCas	68	50335
15-OCT-2011 05:27:23	27GamCas	76	50335
15-OCT-2011 05:44:47	48BetUMa	82	50335
15-OCT-2011 05:55:06	17EpsLeo	166	50335
15-OCT-2011 05:58:23	32AlpLeo	22	50335
15-OCT-2011 06:05:47	30AlpHya	48	50335
15-OCT-2011 06:15:18	LamVel	65	50335
15-OCT-2011 06:18:28	Gam2Vel	34	50335
15-OCT-2011 06:20:47	DSA1055	0	50336
15-OCT-2011 06:22:45	TauPup	161	50336
15-OCT-2011 06:24:05	AlpCar	2	50336
15-OCT-2011 06:35:47	The1Eri	157	50336
15-OCT-2011 07:00:45	43BetAnd	53	50336
15-OCT-2011 07:04:11	57Gam1And	73	50336
15-OCT-2011 07:06:16	18AlpCas	68	50336
15-OCT-2011 07:07:37	27GamCas	76	50336
15-OCT-2011 07:25:01	48BetUMa	82	50336
15-OCT-2011 07:35:21	17EpsLeo	166	50336
15-OCT-2011 07:38:37	32AlpLeo	22	50336
15-OCT-2011 07:46:02	30AlpHya	48	50336
15-OCT-2011 07:55:32	LamVel	65	50336
15-OCT-2011 07:58:43	Gam2Vel	34	50336
15-OCT-2011 08:01:02	DSA1055	0	50337
15-OCT-2011 08:03:00	TauPup	161	50337
15-OCT-2011 08:04:20	AlpCar	2	50337
15-OCT-2011 08:16:02	The1Eri	157	50337
15-OCT-2011 08:40:59	43BetAnd	53	50337
15-OCT-2011 08:44:24	57Gam1And	73	50337
15-OCT-2011 08:46:30	18AlpCas	68	50337
15-OCT-2011 08:47:51	27GamCas	76	50337

15-OCT-2011 09:05:15	48BetUMa	82	50337
15-OCT-2011 09:15:35	17EpsLeo	166	50337
15-OCT-2011 09:18:52	32AlpLeo	22	50337
15-OCT-2011 09:26:16	30AlpHya	48	50337
15-OCT-2011 09:35:47	LamVel	65	50337
15-OCT-2011 09:38:58	Gam2Vel	34	50337
15-OCT-2011 11:21:31	DSA1055	0	50339
15-OCT-2011 11:23:29	TauPup	161	50339
15-OCT-2011 11:24:49	AlpCar	2	50339
15-OCT-2011 11:36:31	The1Eri	157	50339
15-OCT-2011 12:01:26	43BetAnd	53	50339
15-OCT-2011 12:04:51	57Gam1And	73	50339
15-OCT-2011 12:06:58	18AlpCas	68	50339
15-OCT-2011 12:08:18	27GamCas	76	50339
15-OCT-2011 12:24:10	50AlpUMa	36	50339
15-OCT-2011 12:25:43	48BetUMa	82	50339
15-OCT-2011 12:36:03	17EpsLeo	166	50339
15-OCT-2011 12:39:20	32AlpLeo	22	50339
15-OCT-2011 12:46:46	30AlpHya	48	50339
15-OCT-2011 12:56:16	LamVel	65	50339
15-OCT-2011 12:59:27	Gam2Vel	34	50339
15-OCT-2011 13:01:46	DSA1055	0	50340
15-OCT-2011 13:05:04	AlpCar	2	50340
15-OCT-2011 13:16:45	The1Eri	157	50340
15-OCT-2011 13:41:39	43BetAnd	53	50340
15-OCT-2011 13:45:04	57Gam1And	73	50340
15-OCT-2011 13:47:12	18AlpCas	68	50340
15-OCT-2011 13:48:32	27GamCas	76	50340
15-OCT-2011 14:04:24	50AlpUMa	36	50340
15-OCT-2011 14:05:57	48BetUMa	82	50340
15-OCT-2011 14:16:17	17EpsLeo	166	50340
15-OCT-2011 14:19:34	32AlpLeo	22	50340
15-OCT-2011 14:27:00	30AlpHya	48	50340
15-OCT-2011 14:36:31	LamVel	65	50340
15-OCT-2011 14:39:42	Gam2Vel	34	50340
15-OCT-2011 14:42:01	DSA1055	0	50341
15-OCT-2011 14:45:19	AlpCar	2	50341
15-OCT-2011 14:56:59	The1Eri	157	50341
15-OCT-2011 15:18:26	6BetAri	105	50341
15-OCT-2011 15:21:53	43BetAnd	53	50341
15-OCT-2011 15:25:18	57Gam1And	73	50341
15-OCT-2011 15:27:25	18AlpCas	68	50341
15-OCT-2011 15:28:46	27GamCas	76	50341
15-OCT-2011 15:44:38	50AlpUMa	36	50341
15-OCT-2011 15:46:11	48BetUMa	82	50341
15-OCT-2011 15:56:32	17EpsLeo	166	50341
15-OCT-2011 15:59:49	32AlpLeo	22	50341
15-OCT-2011 16:07:15	30AlpHya	48	50341
15-OCT-2011 16:16:45	LamVel	65	50341
15-OCT-2011 16:19:57	Gam2Vel	34	50341
15-OCT-2011 16:22:16	DSA1055	0	50342
15-OCT-2011 16:25:34	AlpCar	2	50342
15-OCT-2011 16:37:14	The1Eri	157	50342
15-OCT-2011 16:58:40	6BetAri	105	50342
15-OCT-2011 17:02:07	43BetAnd	53	50342
15-OCT-2011 17:05:31	57Gam1And	73	50342
15-OCT-2011 17:07:39	18AlpCas	68	50342
15-OCT-2011 17:09:00	27GamCas	76	50342
15-OCT-2011 17:24:52	50AlpUMa	36	50342

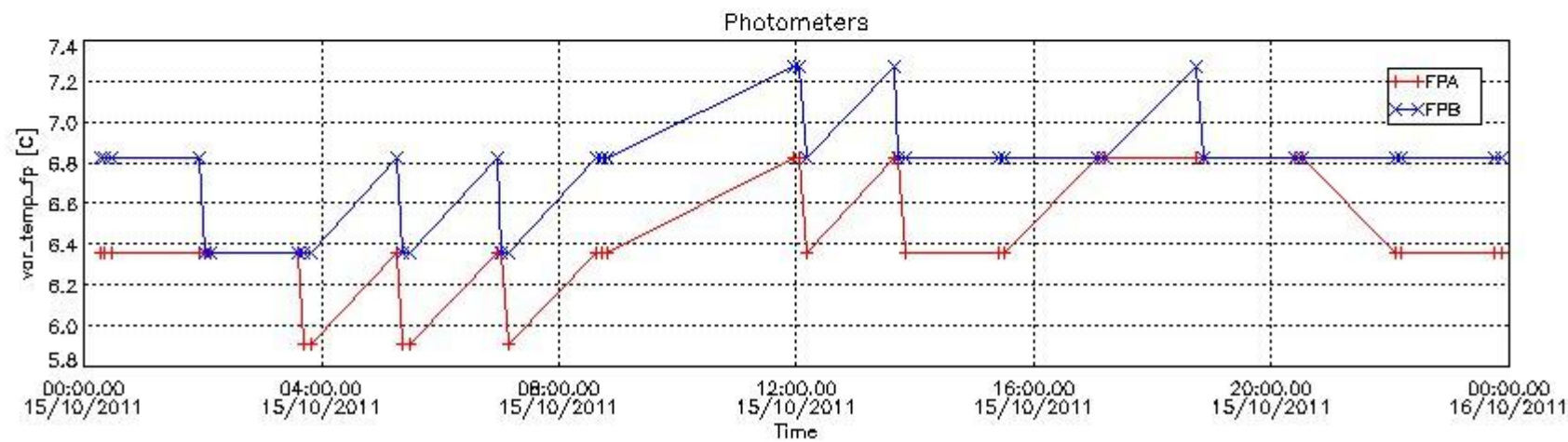
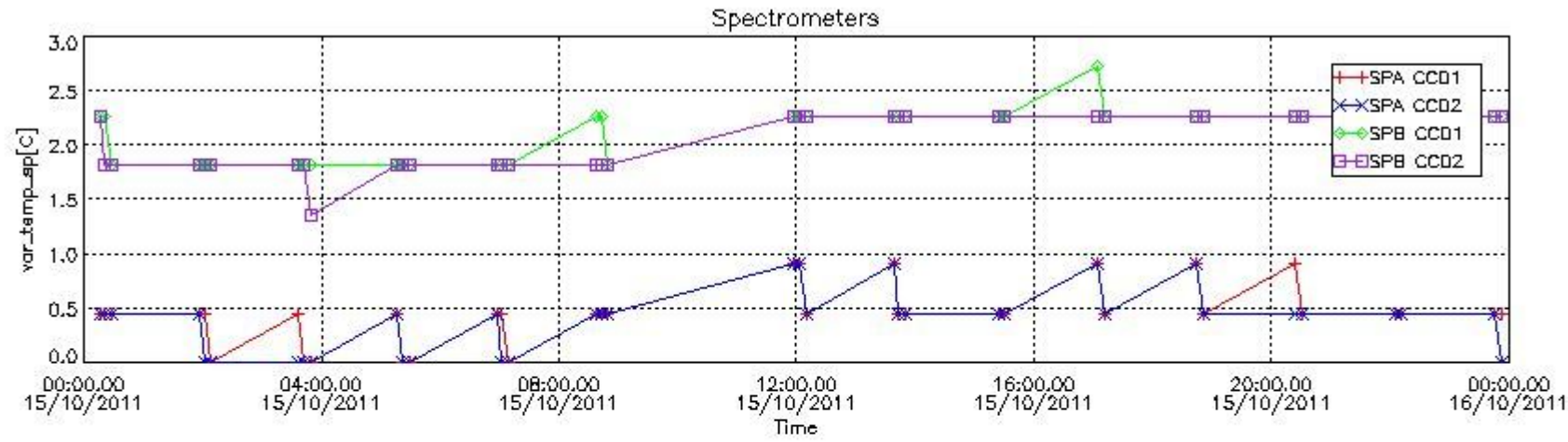
15-OCT-2011 17:26:25	48BetUMa	82	50342
15-OCT-2011 17:36:46	17EpsLeo	166	50342
15-OCT-2011 17:40:03	32AlpLeo	22	50342
15-OCT-2011 17:47:30	30AlpHya	48	50342
15-OCT-2011 17:57:00	LamVel	65	50342
15-OCT-2011 18:00:11	Gam2Vel	34	50342
15-OCT-2011 18:02:31	DSA1055	0	50343
15-OCT-2011 18:05:48	AlpCar	2	50343
15-OCT-2011 18:17:28	The1Eri	157	50343
15-OCT-2011 18:38:53	6BetAri	105	50343
15-OCT-2011 18:42:20	43BetAnd	53	50343
15-OCT-2011 18:45:44	57Gam1And	73	50343
15-OCT-2011 18:47:53	18AlpCas	68	50343
15-OCT-2011 18:49:13	27GamCas	76	50343
15-OCT-2011 19:05:06	50AlpUMa	36	50343
15-OCT-2011 19:06:39	48BetUMa	82	50343
15-OCT-2011 19:17:00	17EpsLeo	166	50343
15-OCT-2011 19:20:17	32AlpLeo	22	50343
15-OCT-2011 19:27:44	30AlpHya	48	50343
15-OCT-2011 19:37:14	LamVel	65	50343
15-OCT-2011 19:40:26	Gam2Vel	34	50343
15-OCT-2011 19:42:45	DSA1055	0	50344
15-OCT-2011 19:46:03	AlpCar	2	50344
15-OCT-2011 19:57:43	The1Eri	157	50344
15-OCT-2011 20:19:07	6BetAri	105	50344
15-OCT-2011 20:22:34	43BetAnd	53	50344
15-OCT-2011 20:25:58	57Gam1And	73	50344
15-OCT-2011 20:28:07	18AlpCas	68	50344
15-OCT-2011 20:29:27	27GamCas	76	50344
15-OCT-2011 20:45:20	50AlpUMa	36	50344
15-OCT-2011 20:46:53	48BetUMa	82	50344
15-OCT-2011 20:57:14	17EpsLeo	166	50344
15-OCT-2011 21:00:32	32AlpLeo	22	50344
15-OCT-2011 21:07:59	30AlpHya	48	50344
15-OCT-2011 21:17:29	LamVel	65	50344
15-OCT-2011 21:20:41	Gam2Vel	34	50345
15-OCT-2011 21:23:00	DSA1055	0	50345
15-OCT-2011 21:26:18	AlpCar	2	50345
15-OCT-2011 21:37:57	The1Eri	157	50345
15-OCT-2011 21:59:20	6BetAri	105	50345
15-OCT-2011 22:02:48	43BetAnd	53	50345
15-OCT-2011 22:06:11	57Gam1And	73	50345
15-OCT-2011 22:08:21	18AlpCas	68	50345
15-OCT-2011 22:09:41	27GamCas	76	50345
15-OCT-2011 22:25:33	50AlpUMa	36	50345
15-OCT-2011 22:27:07	48BetUMa	82	50345
15-OCT-2011 22:37:28	17EpsLeo	166	50345
15-OCT-2011 22:40:46	32AlpLeo	22	50345
15-OCT-2011 22:48:14	30AlpHya	48	50345
15-OCT-2011 22:57:43	LamVel	65	50345
15-OCT-2011 23:00:56	Gam2Vel	34	50346
15-OCT-2011 23:03:15	DSA1055	0	50346
15-OCT-2011 23:06:33	AlpCar	2	50346
15-OCT-2011 23:18:12	The1Eri	157	50346
15-OCT-2011 23:39:34	6BetAri	105	50346
15-OCT-2011 23:43:01	43BetAnd	53	50346
15-OCT-2011 23:46:25	57Gam1And	73	50346
15-OCT-2011 23:48:34	18AlpCas	68	50346
15-OCT-2011 23:49:55	27GamCas	76	50346

2.4 Summary of processed GOM_TRA_1P products

!Warning: No products without errors in DARK limb contitions found

Nr	Filename	UTC Start time	Limb	Duration	Star Id	Star Name	Star Mag	Star Temp	Nb Meas	Orbit	Prod. error
1	GOM_TRA_1PNPDE20111015_001623_000000473107_00318_50332_7822.N1	15-OCT-2011 00:16:23	Bright	47.000	105	6Bet Ari	2.6450	8900.0	94	50332	No
2	GOM_TRA_1PNPDE20111015_002124_000000473107_00318_50332_7823.N1	15-OCT-2011 00:21:24	Bright	46.500	173	4Bet Tri	3.0040	8900.0	93	50332	No
3	GOM_TRA_1PNPDE20111015_002831_000000473107_00318_50332_7824.N1	15-OCT-2011 00:28:31	Bright	47.000	160	23Gam Per	2.9300	4700.0	94	50332	No
4	GOM_TRA_1PNPDE20111015_015637_000000473107_00319_50333_7883.N1	15-OCT-2011 01:56:37	Bright	47.000	105	6Bet Ari	2.6450	8900.0	94	50333	No
5	GOM_TRA_1PNPDE20111015_020137_000000473107_00319_50333_7884.N1	15-OCT-2011 02:01:37	Bright	47.000	173	4Bet Tri	3.0040	8900.0	94	50333	No
6	GOM_TRA_1PNPDE20111015_020844_000000453107_00319_50333_7885.N1	15-OCT-2011 02:08:44	Bright	44.500	160	23Gam Per	2.9300	4700.0	89	50333	No
7	GOM_TRA_1PNPDE20111015_033650_000000473107_00320_50334_7886.N1	15-OCT-2011 03:36:50	Bright	47.000	105	6Bet Ari	2.6450	8900.0	94	50334	No
8	GOM_TRA_1PNPDE20111015_034150_000000473107_00320_50334_7887.N1	15-OCT-2011 03:41:50	Bright	47.000	173	4Bet Tri	3.0040	8900.0	94	50334	No
9	GOM_TRA_1PNPDE20111015_034858_000000463107_00320_50334_7888.N1	15-OCT-2011 03:48:58	Bright	46.000	160	23Gam Per	2.9300	4700.0	92	50334	No
10	GOM_TRA_1PNPDE20111015_051704_000000463107_00321_50335_7917.N1	15-OCT-2011 05:17:04	Bright	45.500	105	6Bet Ari	2.6450	8900.0	91	50335	No
11	GOM_TRA_1PNPDE20111015_052204_000000473107_00321_50335_7918.N1	15-OCT-2011 05:22:04	Bright	46.500	173	4Bet Tri	3.0040	8900.0	93	50335	No
12	GOM_TRA_1PNPDE20111015_052911_000000473107_00321_50335_7919.N1	15-OCT-2011 05:29:11	Bright	47.000	160	23Gam Per	2.9300	4700.0	94	50335	No
13	GOM_TRA_1PNPDE20111015_065717_000000473107_00322_50336_7962.N1	15-OCT-2011 06:57:17	Bright	46.500	105	6Bet Ari	2.6450	8900.0	93	50336	No
14	GOM_TRA_1PNPDE20111015_070217_000000463107_00322_50336_7963.N1	15-OCT-2011 07:02:17	Bright	46.000	173	4Bet Tri	3.0040	8900.0	92	50336	No
15	GOM_TRA_1PNPDE20111015_070924_000000473107_00322_50336_7964.N1	15-OCT-2011 07:09:24	Bright	47.000	160	23Gam Per	2.9300	4700.0	94	50336	No
16	GOM_TRA_1PNPDK20111015_083731_000000463107_00323_50337_7373.N1	15-OCT-2011 08:37:31	Bright	46.000	105	6Bet Ari	2.6450	8900.0	92	50337	No
17	GOM_TRA_1PNPDK20111015_084230_000000463107_00323_50337_7374.N1	15-OCT-2011 08:42:30	Bright	46.000	173	4Bet Tri	3.0040	8900.0	92	50337	No
18	GOM_TRA_1PNPDK20111015_084937_000000463107_00323_50337_7375.N1	15-OCT-2011 08:49:37	Bright	45.500	160	23Gam Per	2.9300	4700.0	91	50337	No
19	GOM_TRA_1PNPDK20111015_115757_000000463107_00325_50339_7452.N1	15-OCT-2011 11:57:57	Bright	46.000	105	6Bet Ari	2.6450	8900.0	92	50339	No
20	GOM_TRA_1PNPDK20111015_120257_000000463107_00325_50339_7453.N1	15-OCT-2011 12:02:57	Bright	46.000	173	4Bet Tri	3.0040	8900.0	92	50339	No
21	GOM_TRA_1PNPDK20111015_121004_000000473107_00325_50339_7454.N1	15-OCT-2011 12:10:04	Bright	47.000	160	23Gam Per	2.9300	4700.0	94	50339	No
22	GOM_TRA_1PNPDK20111015_133811_000000463107_00326_50340_7504.N1	15-OCT-2011 13:38:11	Bright	46.000	105	6Bet Ari	2.6450	8900.0	92	50340	No
23	GOM_TRA_1PNPDK20111015_134310_000000483107_00326_50340_7505.N1	15-OCT-2011 13:43:10	Bright	47.500	173	4Bet Tri	3.0040	8900.0	95	50340	No
24	GOM_TRA_1PNPDK20111015_135017_000000483107_00326_50340_7506.N1	15-OCT-2011 13:50:17	Bright	47.500	160	23Gam Per	2.9300	4700.0	95	50340	No
25	GOM_TRA_1PNPDK20111015_152323_000000463107_00327_50341_7525.N1	15-OCT-2011 15:23:23	Bright	45.500	173	4Bet Tri	3.0040	8900.0	91	50341	No
26	GOM_TRA_1PNPDK20111015_153030_000000463107_00327_50341_7526.N1	15-OCT-2011 15:30:30	Bright	46.000	160	23Gam Per	2.9300	4700.0	92	50341	No
27	GOM_TRA_1PNPDK20111015_170337_000000463107_00328_50342_7551.N1	15-OCT-2011 17:03:37	Bright	46.000	173	4Bet Tri	3.0040	8900.0	92	50342	No
28	GOM_TRA_1PNPDK20111015_171043_000000463107_00328_50342_7552.N1	15-OCT-2011 17:10:43	Bright	45.500	160	23Gam Per	2.9300	4700.0	91	50342	No
29	GOM_TRA_1PNPDK20111015_184350_000000463107_00329_50343_7580.N1	15-OCT-2011 18:43:50	Bright	46.000	173	4Bet Tri	3.0040	8900.0	92	50343	No
30	GOM_TRA_1PNPDK20111015_185057_000000463107_00329_50343_7581.N1	15-OCT-2011 18:50:57	Bright	46.000	160	23Gam Per	2.9300	4700.0	92	50343	No
31	GOM_TRA_1PNPDE20111015_202403_000000463107_00330_50344_8100.N1	15-OCT-2011 20:24:03	Bright	45.500	173	4Bet Tri	3.0040	8900.0	91	50344	No
32	GOM_TRA_1PNPDE20111015_203110_000000473107_00330_50344_8101.N1	15-OCT-2011 20:31:10	Bright	47.000	160	23Gam Per	2.9300	4700.0	94	50344	No
33	GOM_TRA_1PNPDE20111015_220416_000000463107_00331_50345_8129.N1	15-OCT-2011 22:04:16	Bright	45.500	173	4Bet Tri	3.0040	8900.0	91	50345	No
34	GOM_TRA_1PNPDE20111015_221123_000000473107_00331_50345_8130.N1	15-OCT-2011 22:11:23	Bright	47.000	160	23Gam Per	2.9300	4700.0	94	50345	No
35	GOM_TRA_1PNPDE20111015_234430_000000453107_00332_50346_8164.N1	15-OCT-2011 23:44:30	Bright	45.000	173	4Bet Tri	3.0040	8900.0	90	50346	No
36	GOM_TRA_1PNPDE20111015_235136_000000443107_00332_50346_8165.N1	15-OCT-2011 23:51:36	Bright	43.500	160	23Gam Per	2.9300	4700.0	87	50346	No

3. Plot of GOMOS spectrometers and photometers temperatures from level 1b data



4. Overview of dark signal processing per product

The Dark Charge (DC) is a temperature-dependant signal added to the useful measurements and it is therefore subtracted from them during the processing. There are two phenomena that produce a continuous increase of the DC: the "hot pixels" (a pixel is "hot" when its DC exceeds by a significant amount its value measured on ground at the same temperature) and the "Random Telegraphic Signal" (abrupt change positive or negative of the CCD pixel signal, random in time, affecting only the DC part of the signal and not the photon generated signal).

In this section a list of products that did not use the Dark Sky Area (DSA) observation for the DC computation is given. It is also provided the mean DC plot per product for dark limb products with no error flag set.

4.1 These products did not use the DSA observation for DC computation:

Product name	DC information
GOM_TRA_1PNPDE20111015_001623_000000473107_00318_50332_7822.N1	DC map used
GOM_TRA_1PNPDE20111015_002124_000000473107_00318_50332_7823.N1	DC map used
GOM_TRA_1PNPDE20111015_002831_000000473107_00318_50332_7824.N1	DC map used
GOM_TRA_1PNPDE20111015_015637_000000473107_00319_50333_7883.N1	DC map used
GOM_TRA_1PNPDE20111015_020137_000000473107_00319_50333_7884.N1	DC map used
GOM_TRA_1PNPDE20111015_020844_000000453107_00319_50333_7885.N1	DC map used
GOM_TRA_1PNPDE20111015_033650_000000473107_00320_50334_7886.N1	DC map used
GOM_TRA_1PNPDE20111015_034150_000000473107_00320_50334_7887.N1	DC map used
GOM_TRA_1PNPDE20111015_034858_000000463107_00320_50334_7888.N1	DC map used
GOM_TRA_1PNPDE20111015_051704_000000463107_00321_50335_7917.N1	DC map used
GOM_TRA_1PNPDE20111015_052204_000000473107_00321_50335_7918.N1	DC map used
GOM_TRA_1PNPDE20111015_052911_000000473107_00321_50335_7919.N1	DC map used
GOM_TRA_1PNPDE20111015_065717_000000473107_00322_50336_7962.N1	DC map used
GOM_TRA_1PNPDE20111015_070217_000000463107_00322_50336_7963.N1	DC map used

GOM_TRA_1PNPDE20111015_070924_000000473107_00322_50336_7964.N1	DC map used
GOM_TRA_1PNPDK20111015_083731_000000463107_00323_50337_7373.N1	DC map used
GOM_TRA_1PNPDK20111015_084230_000000463107_00323_50337_7374.N1	DC map used
GOM_TRA_1PNPDK20111015_084937_000000463107_00323_50337_7375.N1	DC map used
GOM_TRA_1PNPDK20111015_115757_000000463107_00325_50339_7452.N1	DC map used
GOM_TRA_1PNPDK20111015_120257_000000463107_00325_50339_7453.N1	DC map used
GOM_TRA_1PNPDK20111015_121004_000000473107_00325_50339_7454.N1	DC map used
GOM_TRA_1PNPDK20111015_133811_000000463107_00326_50340_7504.N1	DC map used
GOM_TRA_1PNPDK20111015_134310_000000483107_00326_50340_7505.N1	DC map used
GOM_TRA_1PNPDK20111015_135017_000000483107_00326_50340_7506.N1	DC map used
GOM_TRA_1PNPDK20111015_152323_000000463107_00327_50341_7525.N1	DC map used
GOM_TRA_1PNPDK20111015_153030_000000463107_00327_50341_7526.N1	DC map used
GOM_TRA_1PNPDK20111015_170337_000000463107_00328_50342_7551.N1	DC map used
GOM_TRA_1PNPDK20111015_171043_000000463107_00328_50342_7552.N1	DC map used
GOM_TRA_1PNPDK20111015_184350_000000463107_00329_50343_7580.N1	DC map used
GOM_TRA_1PNPDK20111015_185057_000000463107_00329_50343_7581.N1	DC map used
GOM_TRA_1PNPDE20111015_202403_000000463107_00330_50344_8100.N1	DC map used
GOM_TRA_1PNPDE20111015_203110_000000473107_00330_50344_8101.N1	DC map used
GOM_TRA_1PNPDE20111015_220416_000000463107_00331_50345_8129.N1	DC map used
GOM_TRA_1PNPDE20111015_221123_000000473107_00331_50345_8130.N1	DC map used
GOM_TRA_1PNPDE20111015_234430_000000453107_00332_50346_8164.N1	DC map used
GOM_TRA_1PNPDE20111015_235136_000000443107_00332_50346_8165.N1	DC map used

4.2 Plot of mean dark charges per product: only products in DARK limb conditions without errors are used

No products without errors in DARK limb conditions found. No plot performed.

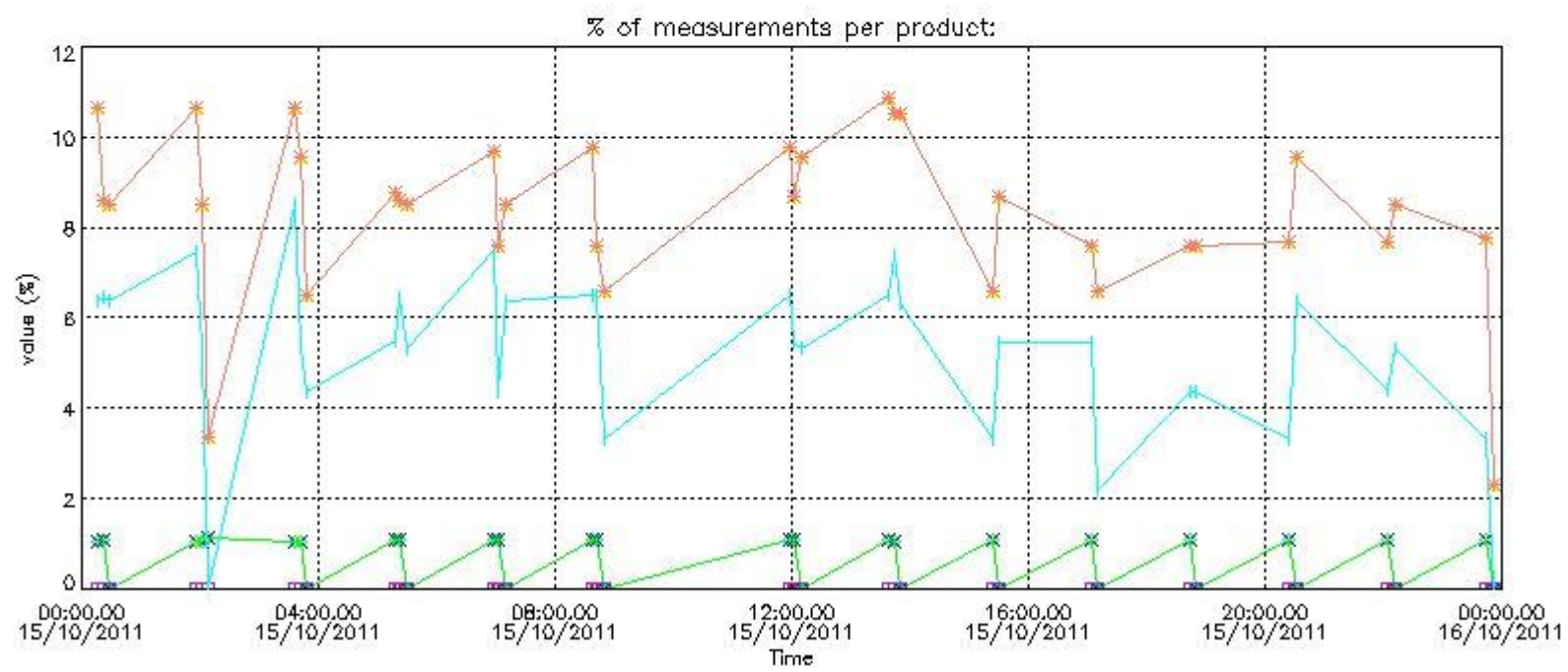
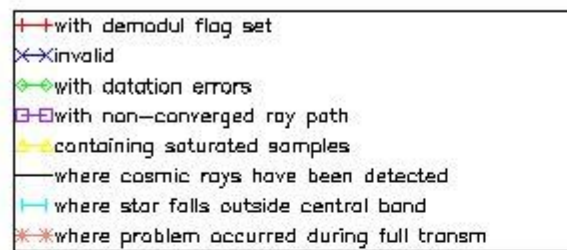
5. Demodulation flag and quality information monitoring

In this section it is presented the modulation information extracted from the pcd (product confidence data) at measurement level and information extracted from the Quality Summary dataset. Only products without errors (error flag in the MPH set to "0") are used.

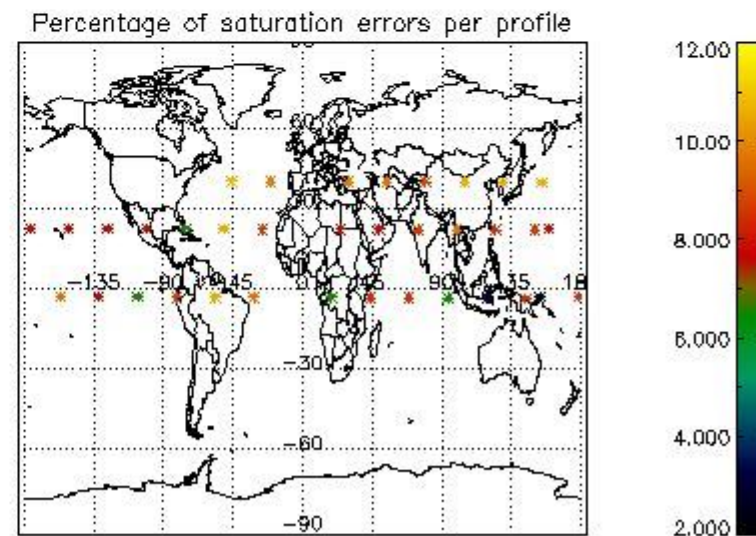
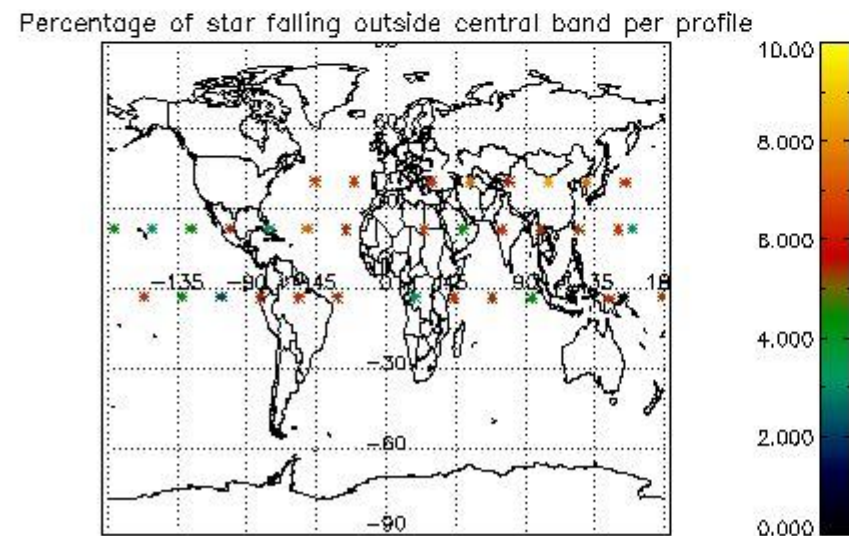
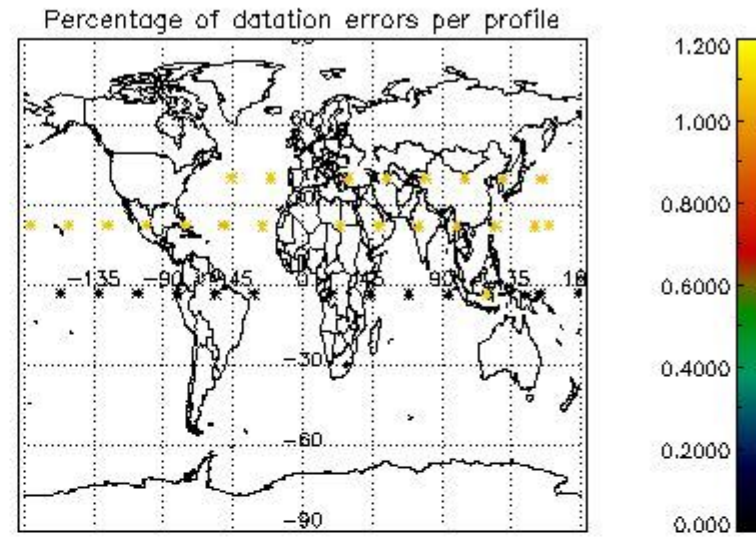
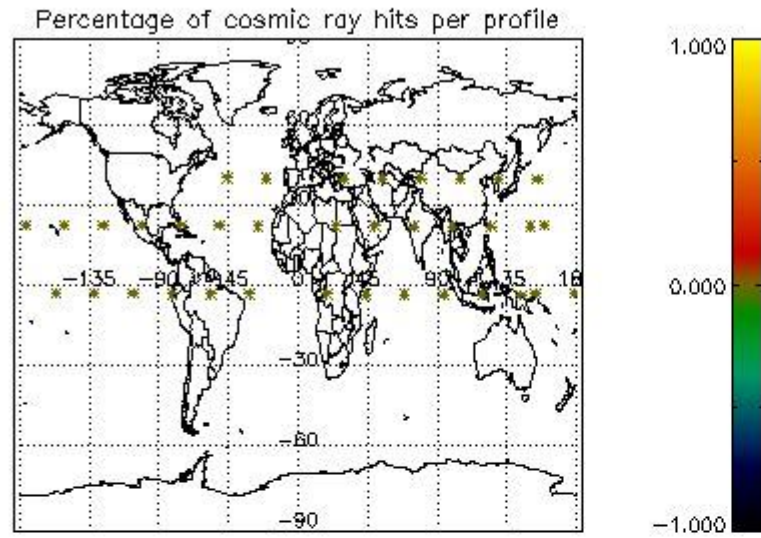
5.1 Percentage of products during reporting period with:

At least one measurement with demodulation flag set:	0.00000 %
Reference spectrum computed from DB:	0.00000 %
Reference spectrum with small number of measurements:	0.00000 %
SATU data not used:	100.000 %

5.2 Plot quality information per product (time dependant)



5.3 Plot quality information per product (world map)



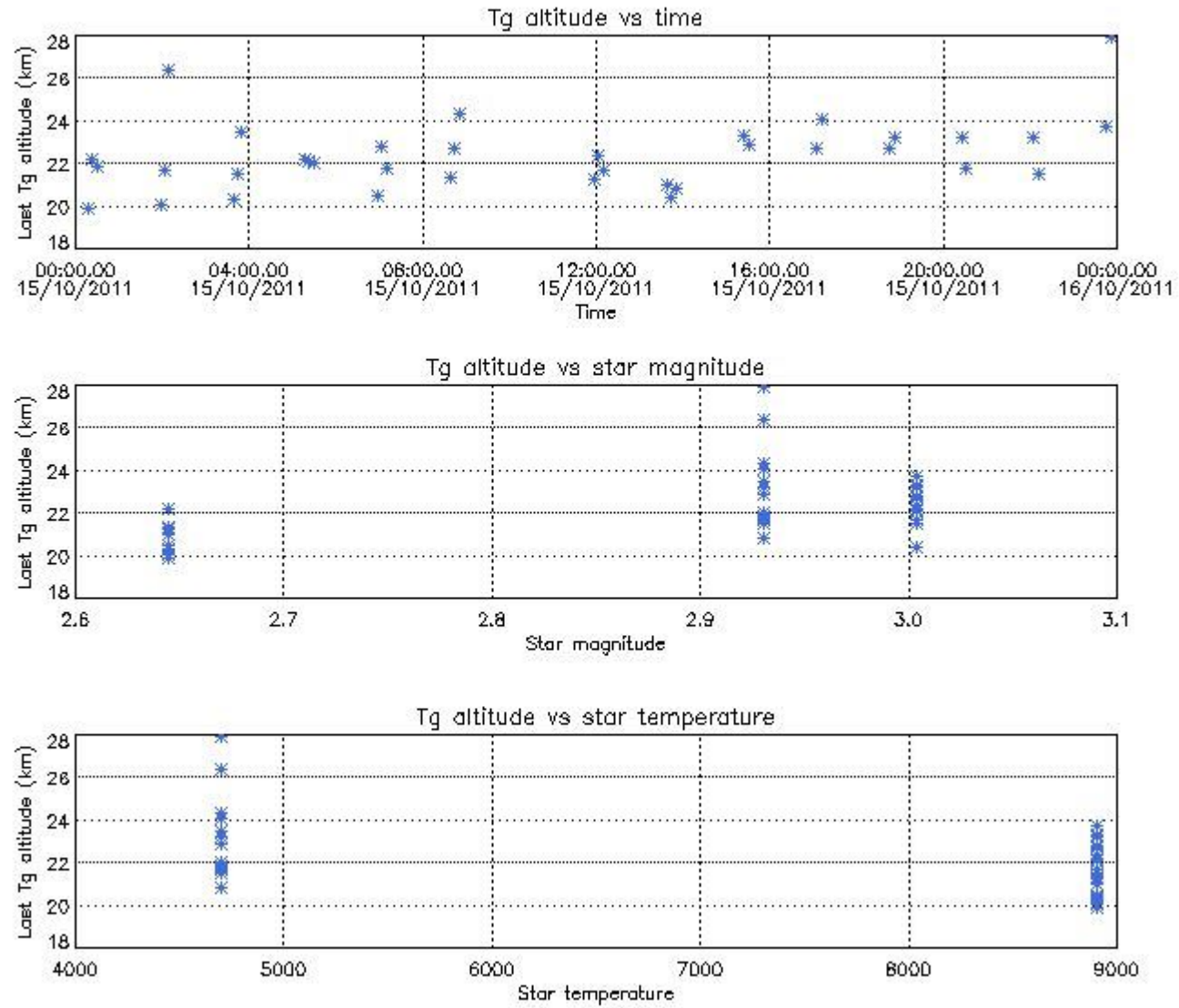
6. Statistics and plot of tangent altitude of the last measurement (DARK & BRIGHT products without errors)

6.1 Statistics on tangent altitude lost:

Statistics	DARK	BRIGHT	TWILIGHT
Mean:	NaN	22.349	NaN
St. deviation:	NaN	1.6375	NaN
Maximum:	NaN	27.881	NaN
Minimum:	NaN	19.903	NaN
Number of data:	NaN	36.000	NaN

6.3 Plot for BRIGHT limb products

Tangent altitude at which the star is lost



7. Star Acquisition and Tracking Unit (SATU)

The Star Acquisition and Tracking Unit (SATU) analyses the position of the tracked star beam collected by the GOMOS telescope and deflected by the optical beam dispatcher. The main function of the SATU is to detect a star, provide its image position to the science data electronics and to help the pointing function to keep the star image at a fixed position. In tracking mode the SATU data is recorded with a frequency of 100 Hz.

7.1 SATU 'X' and 'Y' axis plots (dark limb)

SATU CCD 'X' and 'Y' axis plots are provided in order to detect any abnormal behaviour of the tracking system. For every occultation (color) the plot should remain stable (with some noise) until we are deep in the atmosphere where big fluctuations are registered due to the refractive effects.

7.2 Statistics on SATU Noise Equivalent Angle (NEA) for DARK (D) and BRIGHT (B) products above 105 kms

The Star Acquisition and Tracking Unit (it is the CCD that tracks the star while it is occulted) Noise Equivalent Angle consists of the statistical angular variation of the SATU data above the atmosphere. Statistics (in microradians) above 105 km are computed for every occultation, giving four values per occultation: one in the 'X' direction and one in the 'Y' direction for dark and bright limbs. A mean value per day in every direction and limb is calculated and monitored in order to assess instrument performance in terms of star pointing.

7.2.1 SATU NEA Statistics (table)

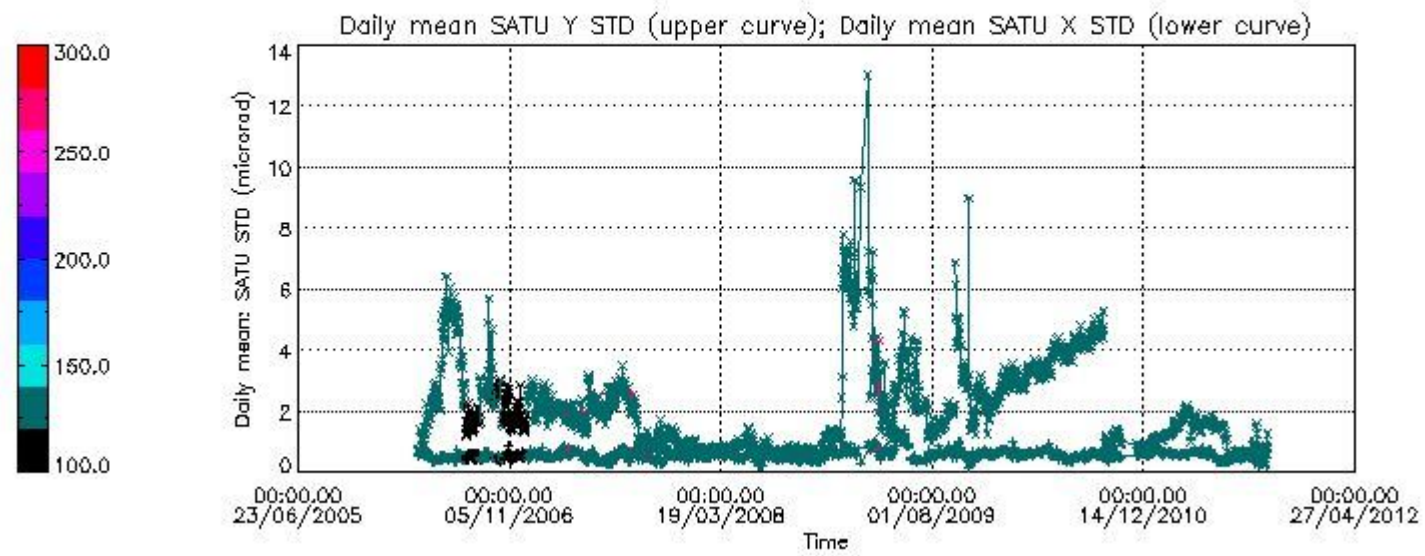
Statistics	SATU X (D)	SATU Y (D)	SATU X (B)	SATU Y (B)
Mean:	NaN	NaN	0.28782	-0.18965
St. deviation:	NaN	NaN	1.1965	1.3601
Maximum:	NaN	NaN	10.800	10.400
Minimum:	NaN	NaN	-5.4000	-6.9000
Number of data:	NaN	NaN	41300.	41300.
90Percentile:	NaN	NaN	1.8000	1.6000

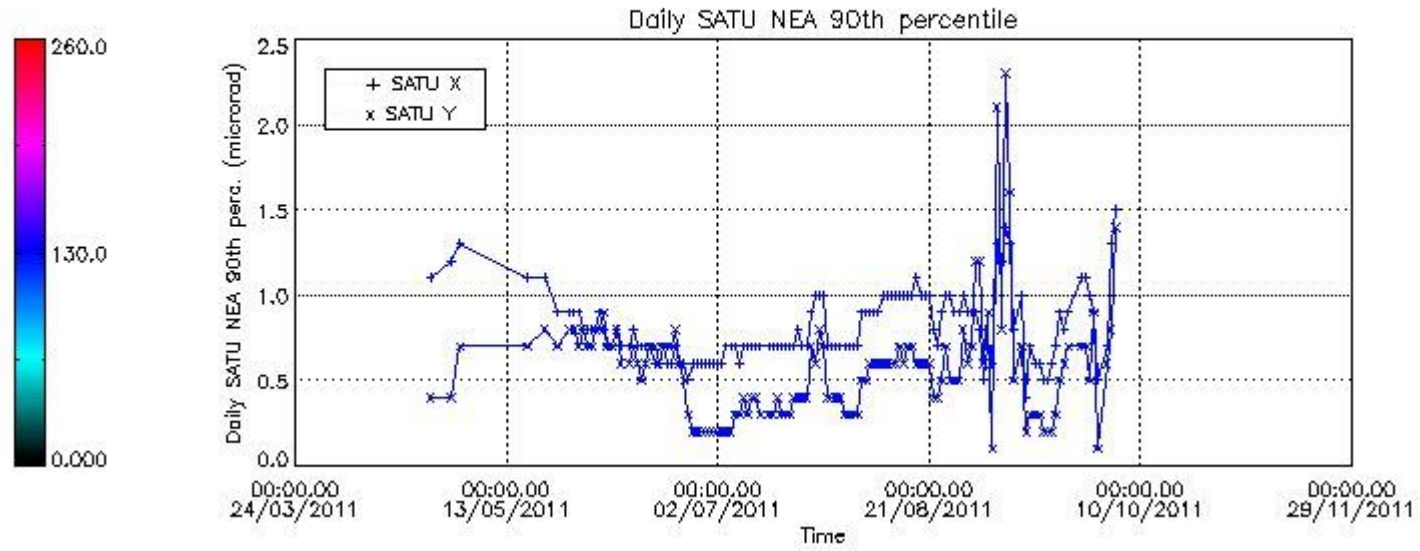
7.2.2 Trend of daily SATU NEA St. deviation since 1st April 2006 (dark limb) and of daily SATU NEA 90th percentile since May 2011

The long term trend of the SATU 'X' and 'Y' standard deviations should be constant during the whole mission.

The colorbar represents the start tangent altitude (km) of the occultations.

Upper curve: STD of SATU Y axis
Lower curve: STD of SATU X axis

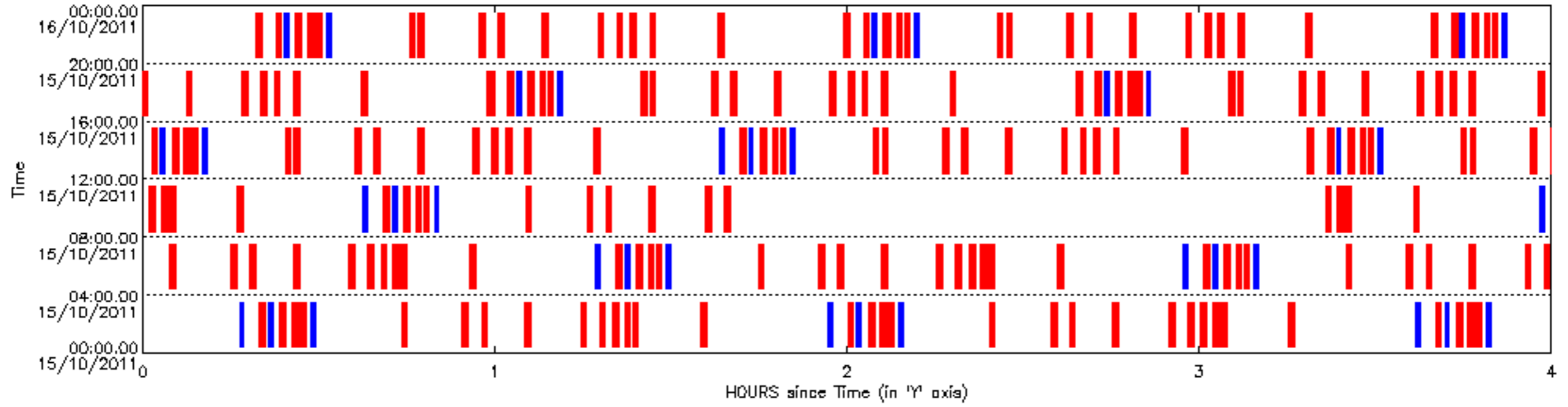


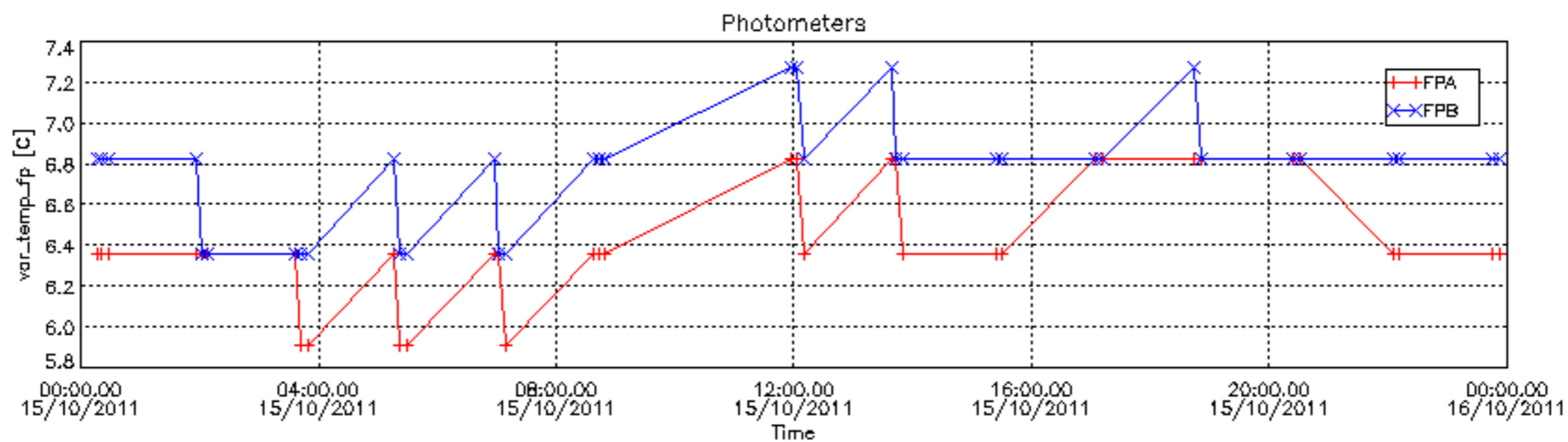
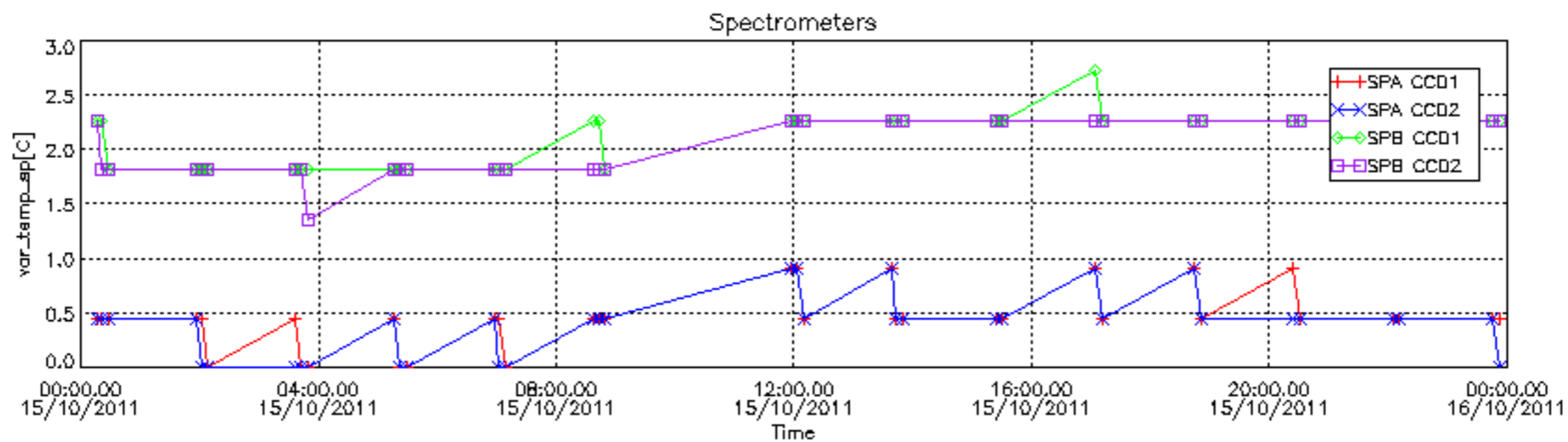


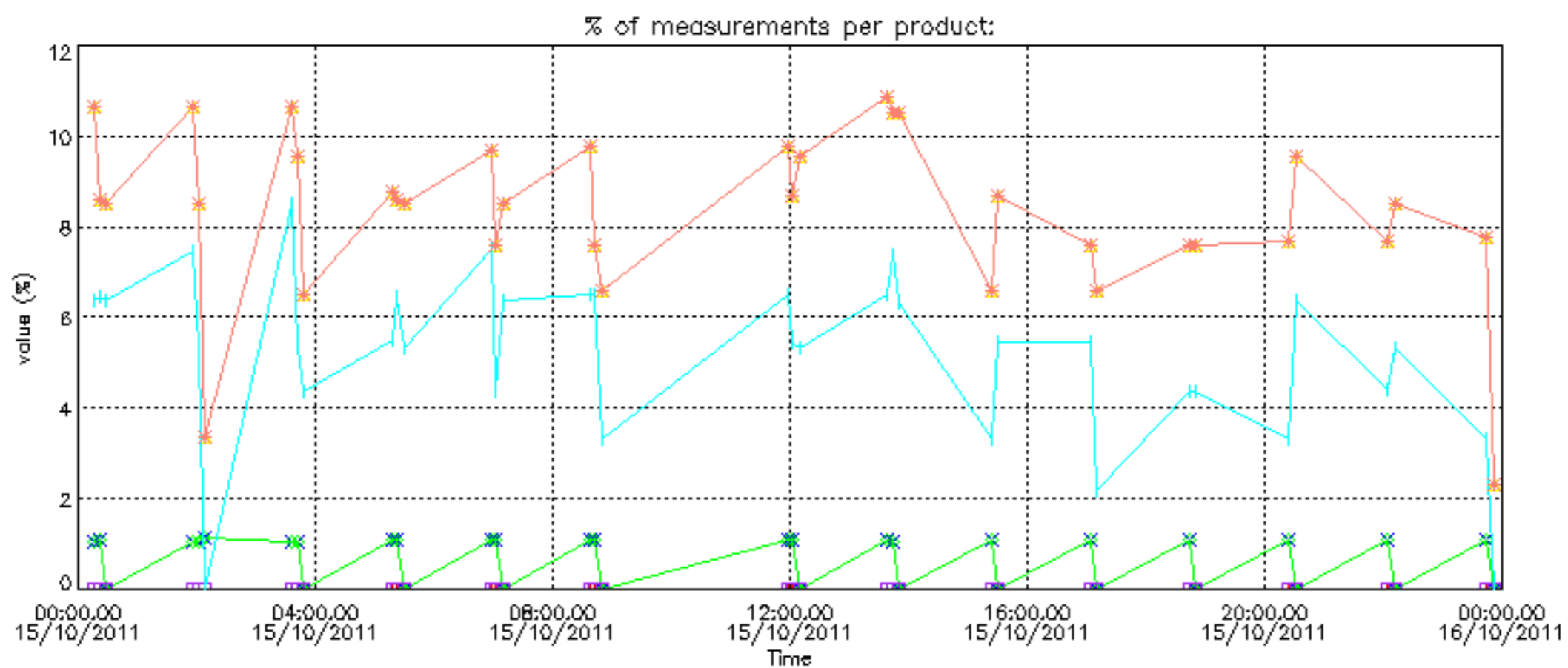
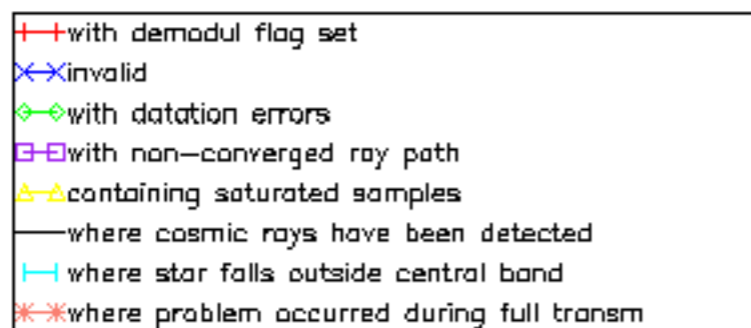
8. Auxiliary Data Files used for the production reported in section 2.4

The number reported in the third column indicates since which file (see list in section 2.4) the corresponding auxiliary file has been used. The fourth column is the date of those product files.

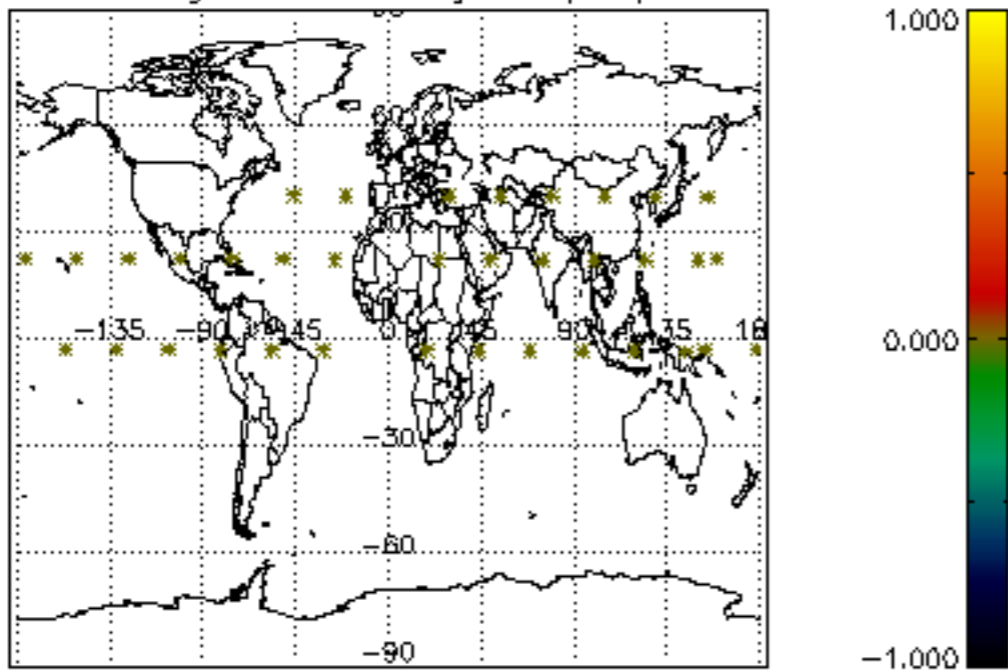
Type	Auxiliary Filename	Used since product	Used since product date
INST_PHYS_CHARACTERISTICS	GOM_INS_AXVIEC20091111_143220_20030716_120000_20500101_000000	1	15-OCT-2011 00:16:23
CALIBRATION_DATABASE	GOM_CAL_AXVIEC20111004_085053_20111003_000000_20500101_000000	1	15-OCT-2011 00:16:23
LEVEL-1B_PROC_CONFIG	GOM_PR1_AXVIEC20110513_081743_20020301_000000_20500101_000000	1	15-OCT-2011 00:16:23
STAR_CATALOGUE	GOM_CAT_AXVIEC20020121_161009_20020101_000000_20200101_000000	1	15-OCT-2011 00:16:23
STELLAR_SPECTRA_DATABANK	GOM_STS_AXVIEC20091111_151504_20020101_160000_20500101_000000	1	15-OCT-2011 00:16:23
ECMWF_FILE	AUX_ECF_AXNECM20111014_063548_20111014_210000_20111015_090000	1	15-OCT-2011 00:16:23
ECMWF_FILE	AUX_ECF_AXNECM20111014_182012_20111015_030000_20111015_150000	10	15-OCT-2011 05:17:04
ECMWF_FILE	AUX_ECA_AXNECM20111015_062115_20111014_210000_20111015_090000	13	15-OCT-2011 06:57:17
ECMWF_FILE	AUX_ECF_AXNECM20111015_062115_20111015_090000_20111015_210000	19	15-OCT-2011 11:57:57
ECMWF_FILE	AUX_ECF_AXNECM20111015_062116_20111015_150000_20111016_030000	25	15-OCT-2011 15:23:23
ECMWF_FILE	AUX_ECA_AXNECM20111015_182116_20111015_090000_20111015_210000	29	15-OCT-2011 18:43:50
ECMWF_FILE	AUX_ECF_AXNECM20111015_062116_20111015_210000_20111016_090000	33	15-OCT-2011 22:04:16
OPTIONAL_ECMWF_FILE	MISSING	1	15-OCT-2011 00:16:23
ORBIT_DATA_FILE	AUX_FPO_AXVPDS20111014_101546_20111013_191332_20111023_212717	1	15-OCT-2011 00:16:23
ORBIT_DATA_FILE	AUX_FPO_AXVPDS20111015_102115_20111014_183648_20111024_205032	19	15-OCT-2011 11:57:57



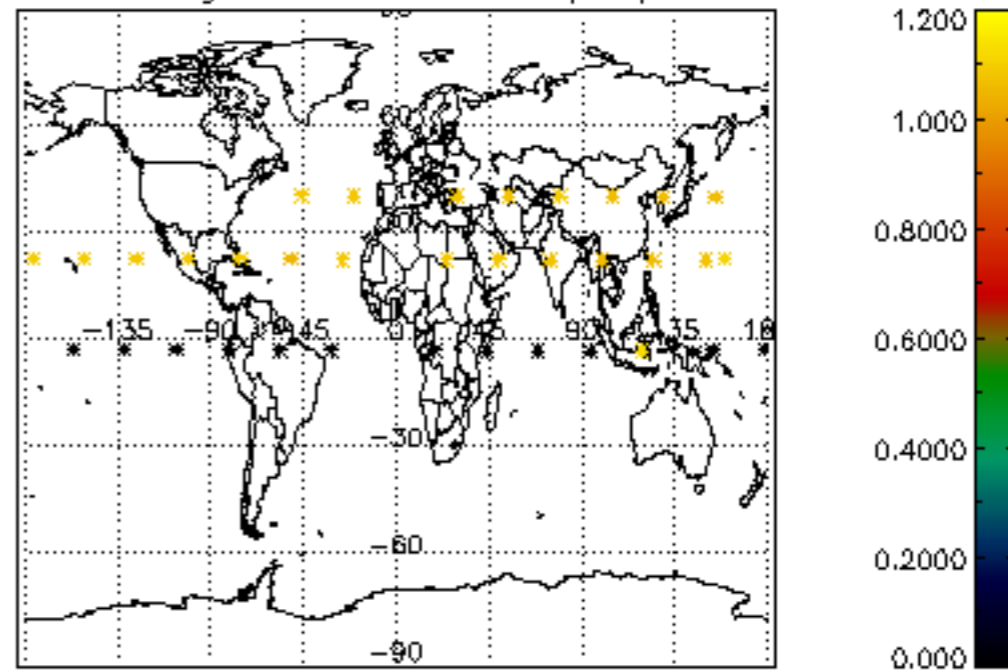




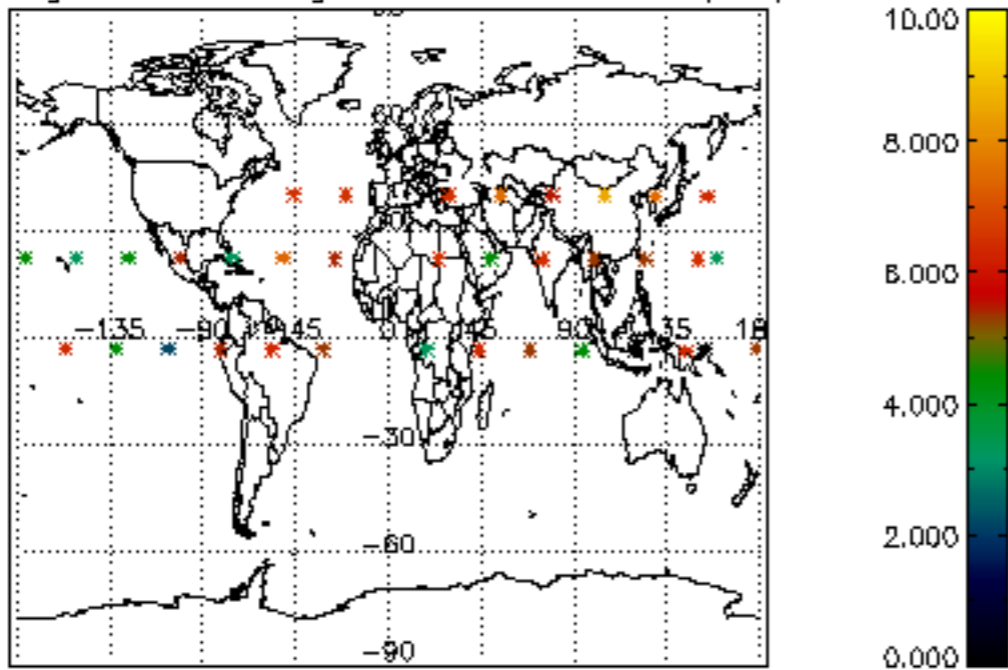
Percentage of cosmic ray hits per profile



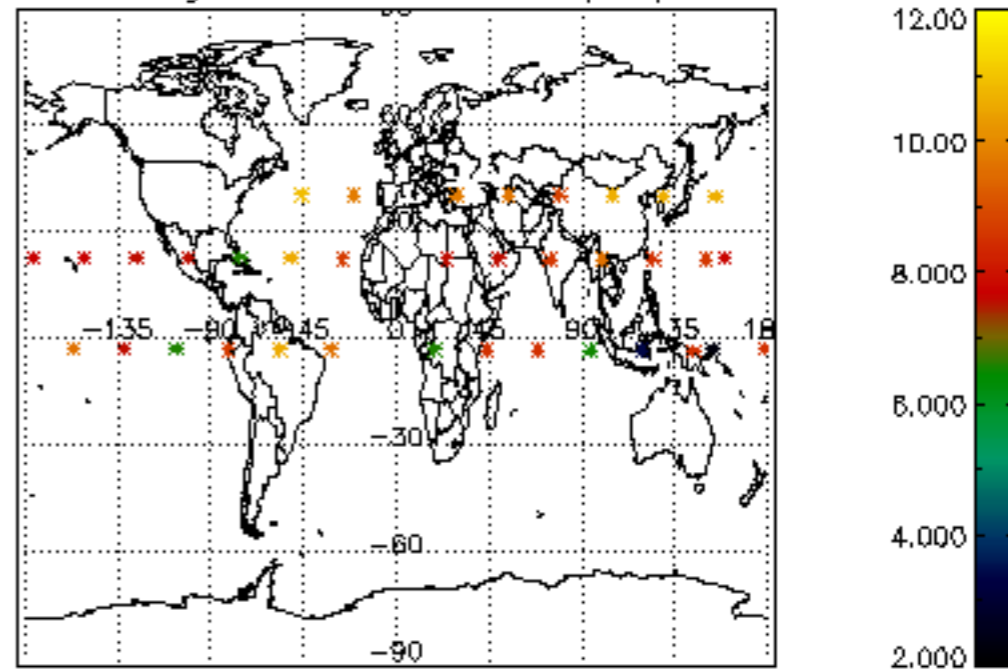
Percentage of datation errors per profile



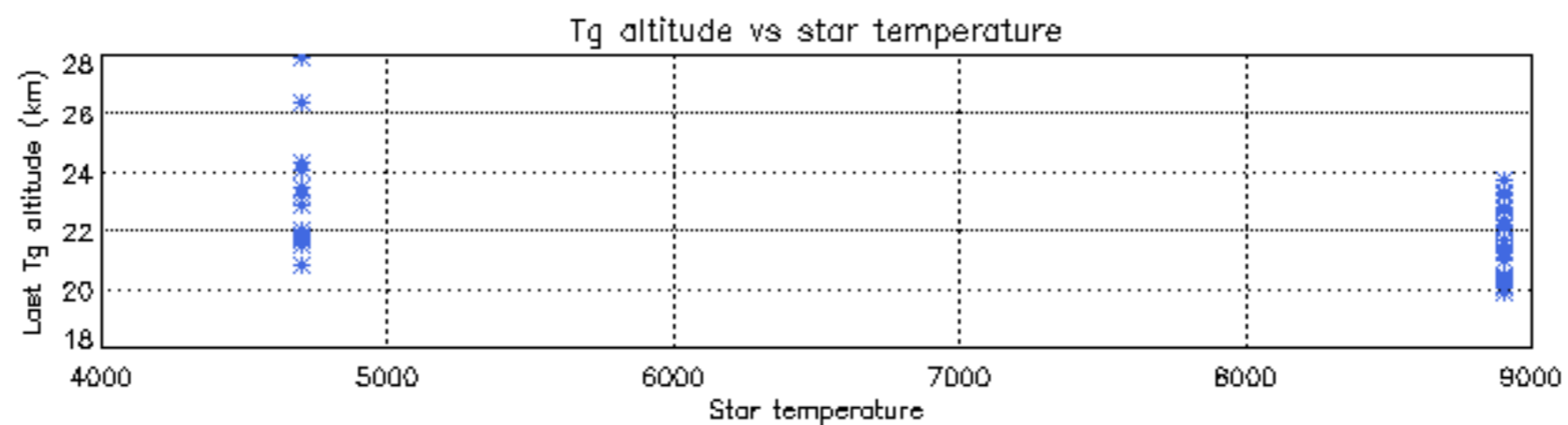
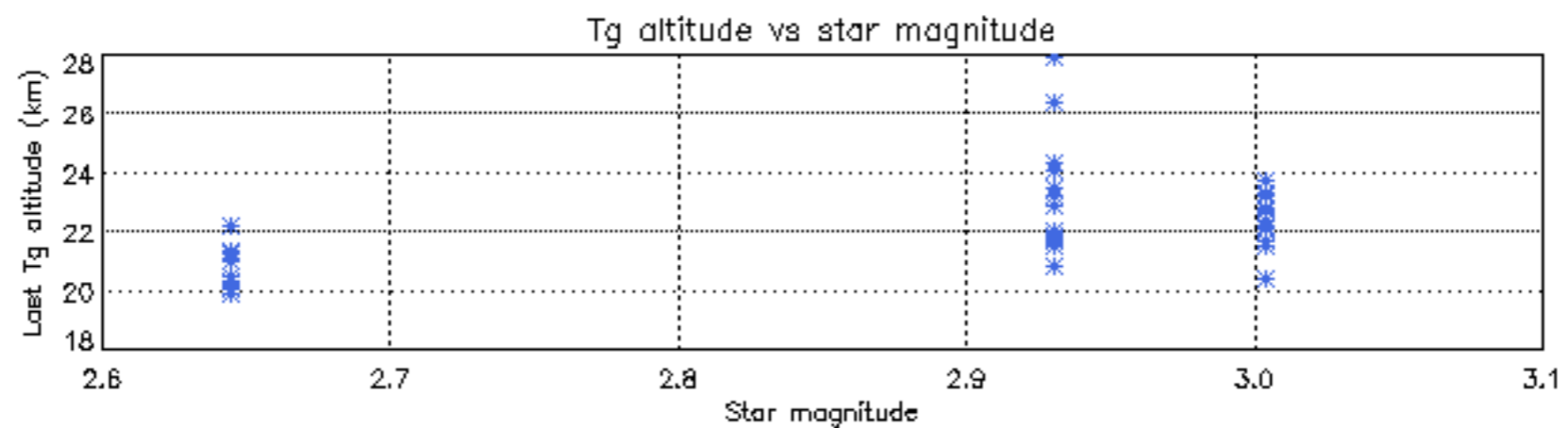
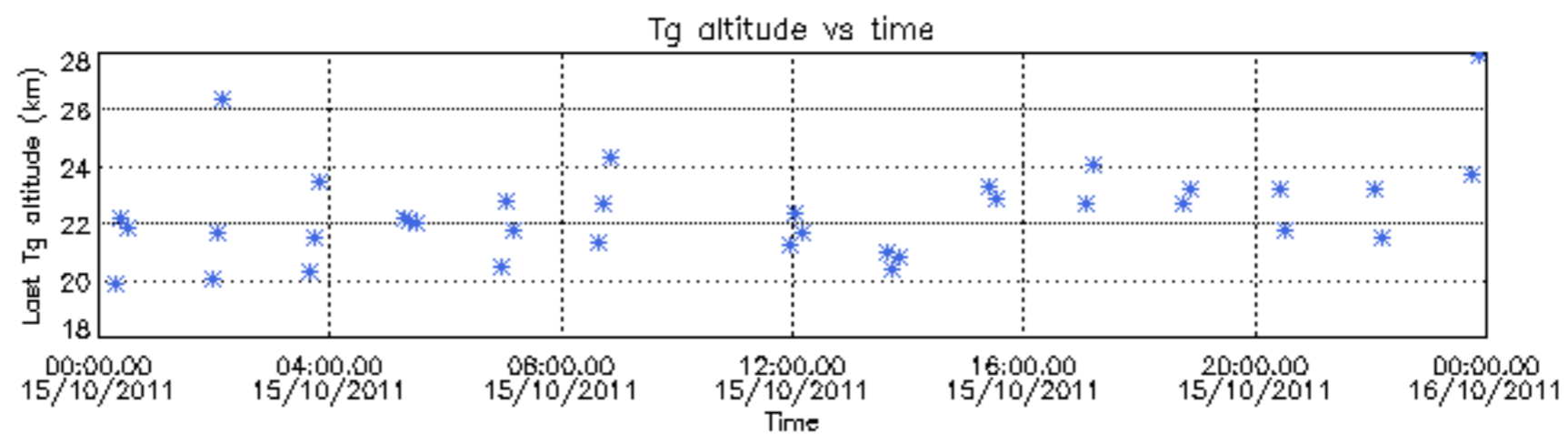
Percentage of star falling outside central band per profile

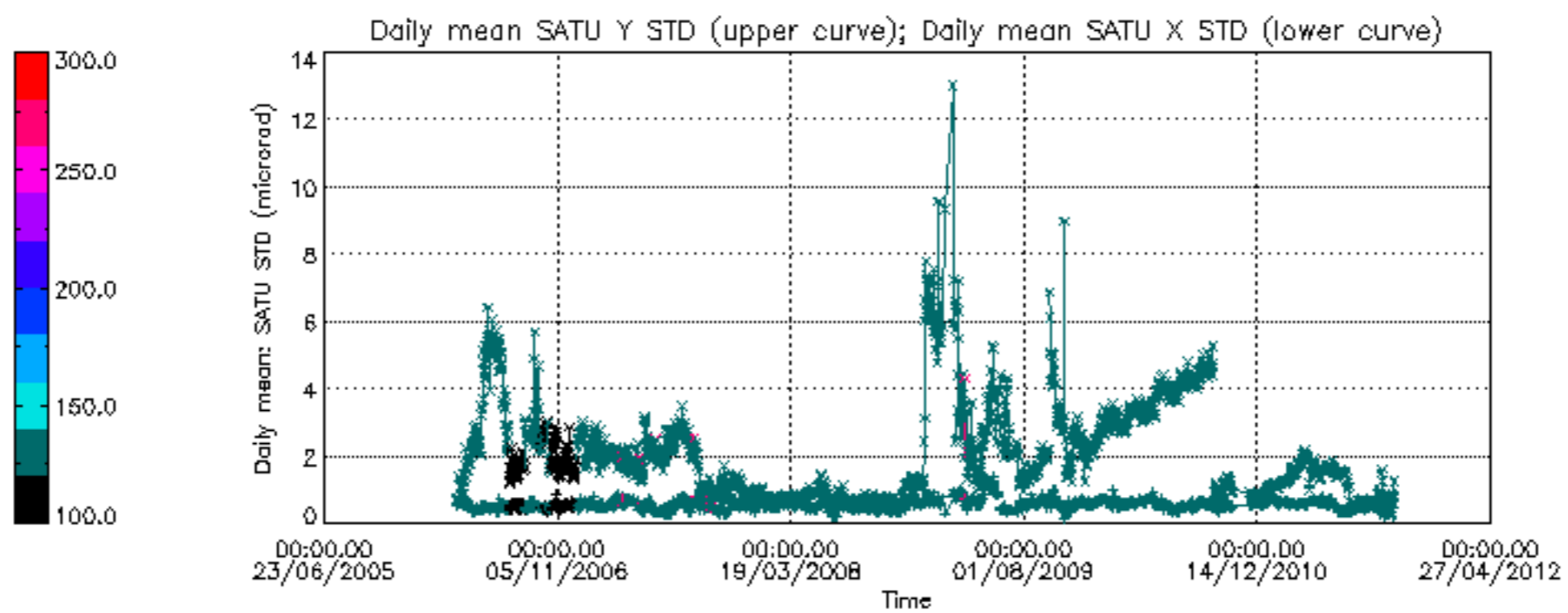


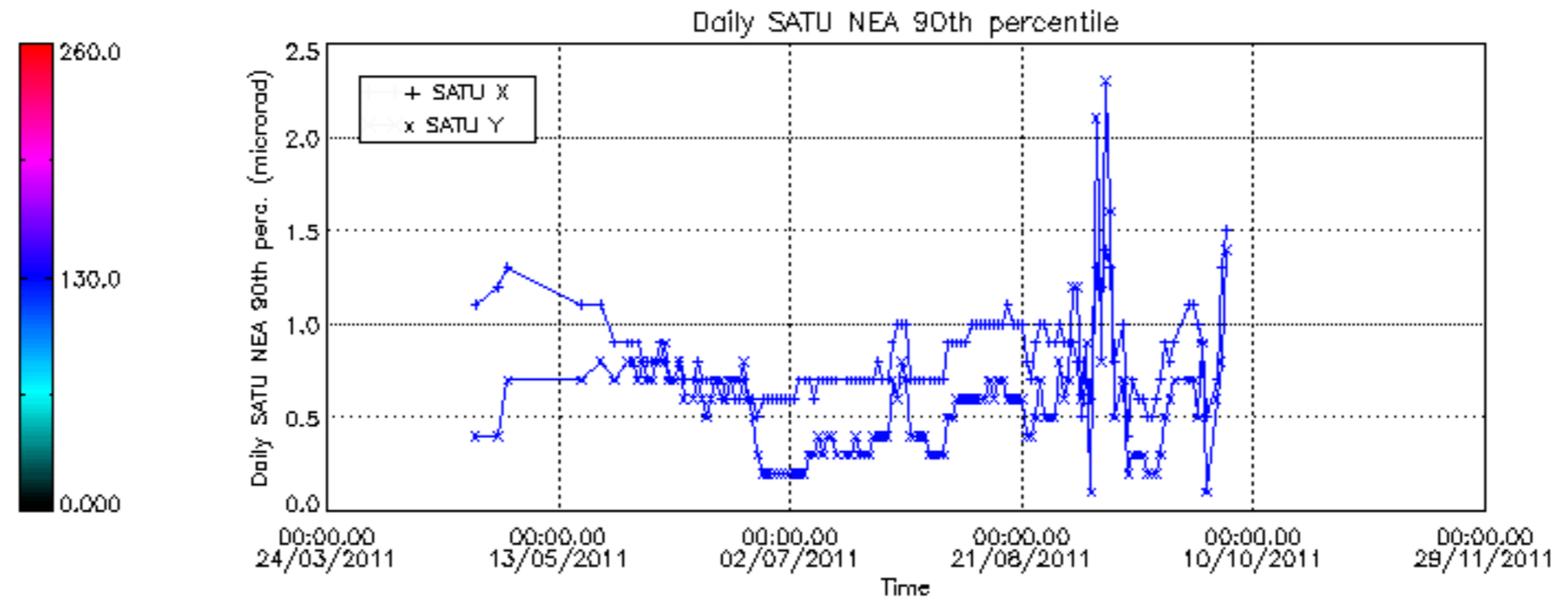
Percentage of saturation errors per profile



Tangent altitude at which the star is lost







/nas3/ENVISAT/GOMOS/GOM_NL__0P/GOM_NL__0PNPDE20111002_214039_00000423107_00144_50158_6530.N1
1; 2617.1; 02-OCT-2011 21:40:39; Bright; 42.5; 53; 43Bet And ; 2.05; 3300;occ; 85; 0;50158
/nas3/ENVISAT/GOMOS/GOM_NL__0P/GOM_NL__0PNPDE20111002_223444_000011363107_00144_50158_6531.N1
1; -151.2; 02-OCT-2011 22:34:44; Dark ; 54.5; 37; 25Del CMA ; 1.83; 5900;occ; 109; 0;50158
2; 936.0; 02-OCT-2011 22:52:51; Dark ; 49.5; 157; The1Eri ; 2.91; 9300;occ; 99; 0;50159
/nas3/ENVISAT/GOMOS/GOM_NL__0P/GOM_NL__0PNPDK20111002_182012_000033093107_00142_50156_5389.N1
1; 2618.4; 02-OCT-2011 18:20:12; Bright; 47.5; 53; 43Bet And ; 2.05; 3300;occ; 95; 0;50156
2; 3035.8; 02-OCT-2011 18:27:09; Bright; 41.0; 110; 37Del Cas ; 2.68; 8900;occ; 82; 0;50156
3; 3212.6; 02-OCT-2011 18:30:06; Bright; 51.0; 160; 23Gam Per ; 2.93; 4700;occ; 102; 0;50156
4; 5594.7; 02-OCT-2011 19:09:48; Dark ; 47.0; 132; 15Rho Pup ; 2.80; 6900;occ; 94; 0;50156
5; 5860.2; 02-OCT-2011 19:14:14; Dark ; 68.0; 37; 25Del CMA ; 1.83; 5900;occ; 136; 0;50156
/nas3/ENVISAT/GOMOS/GOM_NL__0P/GOM_NL__0PNPDK20111002_200025_000033093107_00143_50157_5390.N1
1; 2617.7; 02-OCT-2011 20:00:25; Bright; 45.5; 53; 43Bet And ; 2.05; 3300;occ; 91; 0;50157
2; 3035.2; 02-OCT-2011 20:07:23; Bright; 41.5; 110; 37Del Cas ; 2.68; 8900;occ; 83; 0;50157
3; 5861.4; 02-OCT-2011 20:54:29; Dark ; 66.0; 37; 25Del CMA ; 1.83; 5900;occ; 132; 0;50157
/nas3/ENVISAT/GOMOS/GOM_NL__0P/GOM_NL__0PNPDE20111003_002332_00000553107_00146_50160_6532.N1
1; 363.1; 03-OCT-2011 00:23:32; Dark ; 56.0; 108; Alp Col ; 2.65; 15200;occ; 112; 0;50160
/nas3/ENVISAT/GOMOS/GOM_NL__0P/GOM_NL__0PNPDE20111003_220654_000028643107_00159_50173_6535.N1
1; 382.9; 03-OCT-2011 22:06:54; Dark ; 61.0; 108; Alp Col ; 2.65; 15200;occ; 122; 0;50173
2; 2608.3; 03-OCT-2011 22:43:59; Bright; 45.5; 53; 43Bet And ; 2.05; 3300;occ; 91; 0;50173
3; 3196.6; 03-OCT-2011 22:53:47; Bright; 50.5; 160; 23Gam Per ; 2.93; 4700;occ; 101; 0;50173
/nas3/ENVISAT/GOMOS/GOM_NL__0P/GOM_NL__0PNPDK20111003_065601_000005743107_00149_50163_5391.N1
1; -144.3; 03-OCT-2011 06:56:01; Dark ; 72.5; 37; 25Del CMA ; 1.83; 5900;occ; 145; 0;50163
2; 369.2; 03-OCT-2011 07:04:34; Dark ; 61.5; 108; Alp Col ; 2.65; 15200;occ; 123; 0;50164
/nas3/ENVISAT/GOMOS/GOM_NL__0P/GOM_NL__0PNPDK20111003_075150_000032393107_00150_50164_5392.N1
1; -2808.7; 03-OCT-2011 07:51:50; Bright; 49.0; 160; 23Gam Per ; 2.93; 4700;occ; 98; 0;50164
2; -142.9; 03-OCT-2011 08:36:16; Dark ; 68.0; 37; 25Del CMA ; 1.83; 5900;occ; 136; 0;50164
3; 370.9; 03-OCT-2011 08:44:50; Dark ; 60.0; 108; Alp Col ; 2.65; 15200;occ; 120; 0;50165
/nas3/ENVISAT/GOMOS/GOM_NL__0P/GOM_NL__0PNPDK20111003_093203_000032423107_00151_50165_5393.N1
1; -2809.7; 03-OCT-2011 09:32:03; Bright; 50.5; 160; 23Gam Per ; 2.93; 4700;occ; 101; 0;50165
2; -141.5; 03-OCT-2011 10:16:32; Dark ; 61.5; 37; 25Del CMA ; 1.83; 5900;occ; 123; 0;50165
3; 372.5; 03-OCT-2011 10:25:06; Dark ; 60.0; 108; Alp Col ; 2.65; 15200;occ; 120; 0;50166
/nas3/ENVISAT/GOMOS/GOM_NL__0P/GOM_NL__0PNPDK20111003_110225_000038363107_00152_50166_5394.N1
1; 2612.3; 03-OCT-2011 11:02:25; Bright; 47.0; 53; 43Bet And ; 2.05; 3300;occ; 94; 0;50166
2; 3203.1; 03-OCT-2011 11:12:16; Bright; 50.0; 160; 23Gam Per ; 2.93; 4700;occ; 100; 0;50166
3; 5873.7; 03-OCT-2011 11:56:47; Dark ; 55.5; 37; 25Del CMA ; 1.83; 5900;occ; 111; 0;50166
4; 6387.7; 03-OCT-2011 12:05:21; Dark ; 61.5; 108; Alp Col ; 2.65; 15200;occ; 123; 0;50167
/nas3/ENVISAT/GOMOS/GOM_NL__0P/GOM_NL__0PNPDK20111003_124239_000038403107_00153_50167_5395.N1
1; 2611.8; 03-OCT-2011 12:42:39; Bright; 45.0; 53; 43Bet And ; 2.05; 3300;occ; 90; 0;50167
2; 3202.2; 03-OCT-2011 12:52:29; Bright; 49.5; 160; 23Gam Per ; 2.93; 4700;occ; 99; 0;50167
3; 5875.1; 03-OCT-2011 13:37:02; Dark ; 66.5; 37; 25Del CMA ; 1.83; 5900;occ; 133; 0;50167
4; 6173.3; 03-OCT-2011 13:42:00; Dark ; 59.5; 0; ; 0.00; 0;occ; 119; 0;50168
5; 6389.3; 03-OCT-2011 13:45:36; Dark ; 62.5; 108; Alp Col ; 2.65; 15200;occ; 125; 0;50168
/nas3/ENVISAT/GOMOS/GOM_NL__0P/GOM_NL__0PNPDK20111003_142252_000038413107_00154_50168_5396.N1
1; 2611.2; 03-OCT-2011 14:22:52; Bright; 44.0; 53; 43Bet And ; 2.05; 3300;occ; 88; 0;50168
2; 3201.4; 03-OCT-2011 14:32:42; Bright; 48.0; 160; 23Gam Per ; 2.93; 4700;occ; 96; 0;50168
3; 5948.9; 03-OCT-2011 15:18:30; Dark ; 55.0; 23; 21Eps CMA ; 1.50; 26000;occ; 110; 0;50168
4; 6174.6; 03-OCT-2011 15:22:15; Dark ; 59.5; 0; ; 0.00; 0;occ; 119; 0;50169
5; 6390.9; 03-OCT-2011 15:25:52; Dark ; 61.5; 108; Alp Col ; 2.65; 15200;occ; 123; 0;50169
/nas3/ENVISAT/GOMOS/GOM_NL__0P/GOM_NL__0PNPDK20111003_160306_000038403107_00155_50169_5397.N1
1; 2610.6; 03-OCT-2011 16:03:06; Bright; 47.0; 53; 43Bet And ; 2.05; 3300;occ; 94; 0;50169
2; 3200.5; 03-OCT-2011 16:12:55; Bright; 51.5; 160; 23Gam Per ; 2.93; 4700;occ; 103; 0;50169
3; 5950.3; 03-OCT-2011 16:58:45; Dark ; 55.0; 23; 21Eps CMA ; 1.50; 26000;occ; 110; 0;50169
4; 6175.9; 03-OCT-2011 17:02:31; Dark ; 59.5; 0; ; 0.00; 0;occ; 119; 0;50170
5; 6392.6; 03-OCT-2011 17:06:07; Dark ; 59.0; 108; Alp Col ; 2.65; 15200;occ; 118; 0;50170
/nas3/ENVISAT/GOMOS/GOM_NL__0P/GOM_NL__0PNPDK20111003_202301_000002793107_00158_50172_5399.N1
1; 164.2; 03-OCT-2011 20:23:01; Dark ; 59.5; 0; ; 0.00; 0;occ; 119; 0;50172
2; 381.4; 03-OCT-2011 20:26:38; Dark ; 62.0; 108; Alp Col ; 2.65; 15200;occ; 124; 0;50172
/nas3/ENVISAT/GOMOS/GOM_NL__0P/GOM_NL__0PNPDE20111003_051546_000034033107_00148_50162_6533.N1
1; -145.7; 03-OCT-2011 05:15:46; Dark ; 59.5; 37; 25Del CMA ; 1.83; 5900;occ; 119; 0;50162
2; 367.8; 03-OCT-2011 05:24:19; Dark ; 60.0; 108; Alp Col ; 2.65; 15200;occ; 120; 0;50163
3; 2614.2; 03-OCT-2011 06:01:45; Bright; 43.5; 53; 43Bet And ; 2.05; 3300;occ; 87; 0;50163
4; 3206.2; 03-OCT-2011 06:11:37; Bright; 51.5; 160; 23Gam Per ; 2.93; 4700;occ; 103; 0;50163
/nas3/ENVISAT/GOMOS/GOM_NL__0P/GOM_NL__0PNPDE20111004_030402_000024833107_00162_50176_6536.N1
1; 169.1; 04-OCT-2011 03:04:02; Dark ; 59.5; 0; ; 0.00; 0;occ; 119; 0;50176
2; 387.5; 04-OCT-2011 03:07:40; Dark ; 61.5; 108; Alp Col ; 2.65; 15200;occ; 123; 0;50176
3; 2606.5; 04-OCT-2011 03:44:39; Bright; 46.0; 53; 43Bet And ; 2.05; 3300;occ; 92; 0;50176
/nas3/ENVISAT/GOMOS/GOM_NL__0P/GOM_NL__0PNPDE20111004_044756_000022613107_00163_50177_6537.N1

```

1; 389.0; 04-OCT-2011 04:47:56; Dark ; 62.0; 108; Alp Col ; 2.65; 15200;occ; 124; 0;50177
2; 2605.9; 04-OCT-2011 05:24:53; Bright; 44.5; 53; 43Bet And ; 2.05; 3300;occ; 89; 0;50177
/nas3/ENVISAT/GOMOS/GOM_NL__0P/GOM_NL__0PNPDE20111004_062811_000028523107_00164_50178_6538.N1
1; 390.5; 04-OCT-2011 06:28:11; Dark ; 62.0; 108; Alp Col ; 2.65; 15200;occ; 124; 0;50178
2; 2605.5; 04-OCT-2011 07:05:06; Bright; 47.5; 53; 43Bet And ; 2.05; 3300;occ; 95; 0;50178
3; 3192.0; 04-OCT-2011 07:14:53; Bright; 51.0; 160; 23Gam Per ; 2.93; 4700;occ; 102; 0;50178
/nas3/ENVISAT/GOMOS/GOM_NL__0P/GOM_NL__0PNPDK20111004_080827_000000613107_00165_50179_5403.N1
1; 391.9; 04-OCT-2011 08:08:27; Dark ; 62.0; 108; Alp Col ; 2.65; 15200;occ; 124; 0;50179
/nas3/ENVISAT/GOMOS/GOM_NL__0P/GOM_NL__0PNPDK20111004_084520_000038633107_00165_50179_5404.N1
1; 2604.9; 04-OCT-2011 08:45:20; Bright; 47.5; 53; 43Bet And ; 2.05; 3300;occ; 95; 0;50179
2; 3191.1; 04-OCT-2011 08:55:06; Bright; 49.0; 160; 23Gam Per ; 2.93; 4700;occ; 98; 0;50179
3; 6407.5; 04-OCT-2011 09:48:42; Dark ; 61.0; 108; Alp Col ; 2.65; 15200;occ; 122; 0;50180
/nas3/ENVISAT/GOMOS/GOM_NL__0P/GOM_NL__0PNPDK20111004_102533_000034163107_00166_50180_5405.N1
1; 2604.3; 04-OCT-2011 10:25:33; Bright; 47.5; 53; 43Bet And ; 2.05; 3300;occ; 95; 0;50180
2; 3190.0; 04-OCT-2011 10:35:19; Bright; 51.5; 160; 23Gam Per ; 2.93; 4700;occ; 103; 0;50180
3; 5965.3; 04-OCT-2011 11:21:34; Dark ; 55.0; 23; 21Eps CMa ; 1.50; 26000;occ; 110; 0;50180
/nas3/ENVISAT/GOMOS/GOM_NL__0P/GOM_NL__0PNPDK20111004_130533_000002823107_00168_50182_5406.N1
1; 176.4; 04-OCT-2011 13:05:33; Dark ; 59.5; 0; ; 0.00; 0;occ; 119; 0;50182
2; 396.5; 04-OCT-2011 13:09:13; Dark ; 62.0; 108; Alp Col ; 2.65; 15200;occ; 124; 0;50182
/nas3/ENVISAT/GOMOS/GOM_NL__0P/GOM_NL__0PNPDK20111004_134600_000038713107_00168_50182_5407.N1
1; 2603.1; 04-OCT-2011 13:46:00; Bright; 42.5; 53; 43Bet And ; 2.05; 3300;occ; 85; 0;50182
2; 3188.2; 04-OCT-2011 13:55:45; Bright; 47.5; 160; 23Gam Per ; 2.93; 4700;occ; 95; 0;50182
3; 6412.1; 04-OCT-2011 14:49:28; Dark ; 62.5; 108; Alp Col ; 2.65; 15200;occ; 125; 0;50183
/nas3/ENVISAT/GOMOS/GOM_NL__0P/GOM_NL__0PNPDK20111004_153558_000000483107_00169_50183_5408.N1
1;-2826.7; 04-OCT-2011 15:35:58; Bright; 48.5; 160; 23Gam Per ; 2.93; 4700;occ; 97; 0;50183
/nas3/ENVISAT/GOMOS/GOM_NL__0P/GOM_NL__0PNPDE20111012_213220_000026983107_00288_50302_6539.N1
1; 109.0; 12-OCT-2011 21:32:20; Dark ; 59.5; 0; ; 0.00; 0;occ; 119; 0;50302
2; 2765.0; 12-OCT-2011 22:16:36; Bright; 42.5; 73; 57Gam1And ; 2.26; 13100;occ; 85; 0;50302
/nas3/ENVISAT/GOMOS/GOM_NL__0P/GOM_NL__0PNPDE20111012_231235_000027003107_00289_50303_6540.N1
1; 109.9; 12-OCT-2011 23:12:35; Dark ; 59.5; 0; ; 0.00; 0;occ; 119; 0;50303
2; 2764.3; 12-OCT-2011 23:56:49; Bright; 46.0; 73; 57Gam1And ; 2.26; 13100;occ; 92; 0;50303
/nas3/ENVISAT/GOMOS/GOM_NL__0P/GOM_NL__0PNPDK20111012_145121_000000593107_00284_50298_5411.N1
1; 105.5; 12-OCT-2011 14:51:21; Dark ; 59.5; 0; ; 0.00; 0;occ; 119; 0;50298
/nas3/ENVISAT/GOMOS/GOM_NL__0P/GOM_NL__0PNPDK20111012_153543_000034123107_00284_50298_5412.N1
1; 2767.9; 12-OCT-2011 15:35:43; Bright; 45.5; 73; 57Gam1And ; 2.26; 13100;occ; 91; 0;50298
2; 6120.4; 12-OCT-2011 16:31:36; Dark ; 59.5; 0; ; 0.00; 0;occ; 119; 0;50299
/nas3/ENVISAT/GOMOS/GOM_NL__0P/GOM_NL__0PNPDE20111013_005250_000026963107_00290_50304_6541.N1
1; 110.8; 13-OCT-2011 00:52:50; Dark ; 59.5; 0; ; 0.00; 0;occ; 119; 0;50304
2; 2763.5; 13-OCT-2011 01:37:02; Bright; 44.0; 73; 57Gam1And ; 2.26; 13100;occ; 88; 0;50304
/nas3/ENVISAT/GOMOS/GOM_NL__0P/GOM_NL__0PNPDE20111013_023304_000026973107_00291_50305_6542.N1
1; 111.7; 13-OCT-2011 02:33:04; Dark ; 59.5; 0; ; 0.00; 0;occ; 119; 0;50305
2; 2762.8; 13-OCT-2011 03:17:16; Bright; 46.5; 73; 57Gam1And ; 2.26; 13100;occ; 93; 0;50305
/nas3/ENVISAT/GOMOS/GOM_NL__0P/GOM_NL__0PNPDE20111013_041319_000026963107_00292_50306_6543.N1
1; 112.5; 13-OCT-2011 04:13:19; Dark ; 59.5; 0; ; 0.00; 0;occ; 119; 0;50306
2; 2762.6; 13-OCT-2011 04:57:29; Bright; 46.0; 73; 57Gam1And ; 2.26; 13100;occ; 92; 0;50306
/nas3/ENVISAT/GOMOS/GOM_NL__0P/GOM_NL__0PNPDE20111013_055334_000000593107_00293_50307_6544.N1
1; 113.4; 13-OCT-2011 05:53:34; Dark ; 59.5; 0; ; 0.00; 0;occ; 119; 0;50307
/nas3/ENVISAT/GOMOS/GOM_NL__0P/GOM_NL__0PNPDE20111013_213942_000003503107_00302_50316_6545.N1
1; 2755.8; 13-OCT-2011 21:39:42; Bright; 46.0; 73; 57Gam1And ; 2.26; 13100;occ; 92; 0;50316
2; 3073.9; 13-OCT-2011 21:45:00; Bright; 32.5; 160; 23Gam Per ; 2.93; 4700;occ; 65; 0;50316
/nas3/ENVISAT/GOMOS/GOM_NL__0P/GOM_NL__0PNPDE20111013_231955_000003503107_00303_50317_6546.N1
1; 2755.1; 13-OCT-2011 23:19:55; Bright; 47.5; 73; 57Gam1And ; 2.26; 13100;occ; 95; 0;50317
2; 3073.0; 13-OCT-2011 23:25:13; Bright; 32.5; 160; 23Gam Per ; 2.93; 4700;occ; 65; 0;50317
/nas3/ENVISAT/GOMOS/GOM_NL__0P/GOM_NL__0PNPDK20111013_073349_000000593107_00294_50308_5413.N1
1; 114.3; 13-OCT-2011 07:33:49; Dark ; 59.5; 0; ; 0.00; 0;occ; 119; 0;50308
/nas3/ENVISAT/GOMOS/GOM_NL__0P/GOM_NL__0PNPDK20111013_081756_000034273107_00294_50308_5414.N1
1; 2761.2; 13-OCT-2011 08:17:56; Bright; 47.5; 73; 57Gam1And ; 2.26; 13100;occ; 95; 0;50308
2; 6129.1; 13-OCT-2011 09:14:04; Dark ; 59.5; 0; ; 0.00; 0;occ; 119; 0;50309
/nas3/ENVISAT/GOMOS/GOM_NL__0P/GOM_NL__0PNPDK20111013_113822_000000513107_00296_50310_5415.N1
1; 2759.8; 13-OCT-2011 11:38:22; Bright; 51.5; 73; 57Gam1And ; 2.26; 13100;occ; 103; 0;50310
/nas3/ENVISAT/GOMOS/GOM_NL__0P/GOM_NL__0PNPDK20111013_131836_000000463107_00297_50311_5416.N1
1; 2759.1; 13-OCT-2011 13:18:36; Bright; 46.5; 73; 57Gam1And ; 2.26; 13100;occ; 93; 0;50311
/nas3/ENVISAT/GOMOS/GOM_NL__0P/GOM_NL__0PNPDK20111013_145516_000005563107_00298_50312_5417.N1
1; 2545.3; 13-OCT-2011 14:55:16; Bright; 39.0; 53; 43Bet And ; 2.05; 3300;occ; 78; 0;50312
2; 2758.5; 13-OCT-2011 14:58:49; Bright; 45.0; 73; 57Gam1And ; 2.26; 13100;occ; 90; 0;50312
3; 3077.0; 13-OCT-2011 15:04:07; Bright; 24.5; 160; 23Gam Per ; 2.93; 4700;occ; 49; 0;50312
/nas3/ENVISAT/GOMOS/GOM_NL__0P/GOM_NL__0PNPDK20111013_163902_000003423107_00299_50313_5418.N1
1; 2757.8; 13-OCT-2011 16:39:02; Bright; 46.5; 73; 57Gam1And ; 2.26; 13100;occ; 93; 0;50313

```

2; 3076.2; 13-OCT-2011 16:44:21; Bright; 24.5; 160; 23Gam Per ; 2.93; 4700;occ; 49; 0;50313
/nas3/ENVISAT/GOMOS/GOM_NL__0P/GOM_NL__0PNPDK20111013_181916_000003463107_00300_50314_5419.N1
1; 2757.1; 13-OCT-2011 18:19:16; Bright; 45.5; 73; 57Gam1And ; 2.26; 13100;occ; 91; 0;50314
2; 3075.4; 13-OCT-2011 18:24:34; Bright; 28.5; 160; 23Gam Per ; 2.93; 4700;occ; 57; 0;50314
/nas3/ENVISAT/GOMOS/GOM_NL__0P/GOM_NL__0PNPDE20111014_205557_000007713107_00316_50330_6547.N1
1; 2334.7; 14-OCT-2011 20:55:57; Bright; 46.0; 105; 6Bet Ari ; 2.64; 8900;occ; 92; 0;50330
2; 2635.6; 14-OCT-2011 21:00:57; Bright; 45.0; 173; 4Bet Tri ; 3.00; 8900;occ; 90; 0;50330
3; 2747.2; 14-OCT-2011 21:02:49; Bright; 46.0; 73; 57Gam1And ; 2.26; 13100;occ; 92; 0;50330
4; 3063.1; 14-OCT-2011 21:08:05; Bright; 43.5; 160; 23Gam Per ; 2.93; 4700;occ; 87; 0;50330
/nas3/ENVISAT/GOMOS/GOM_NL__0P/GOM_NL__0PNPDE20111014_223610_000007753107_00317_50331_6548.N1
1; 2334.1; 14-OCT-2011 22:36:10; Bright; 47.0; 105; 6Bet Ari ; 2.64; 8900;occ; 94; 0;50331
2; 2634.8; 14-OCT-2011 22:41:11; Bright; 44.5; 173; 4Bet Tri ; 3.00; 8900;occ; 89; 0;50331
3; 3062.3; 14-OCT-2011 22:48:18; Bright; 47.0; 160; 23Gam Per ; 2.93; 4700;occ; 94; 0;50331
/nas3/ENVISAT/GOMOS/GOM_NL__0P/GOM_NL__0PNPDK20111014_010526_000180793107_00304_50318_5421.N1
1;-2941.6; 14-OCT-2011 01:05:26; Bright; 37.0; 160; 23Gam Per ; 2.93; 4700;occ; 74; 0;50318
2;14671.1; 14-OCT-2011 05:58:59; Bright; 26.0; 173; 4Bet Tri ; 3.00; 8900;occ; 52; 0;50321
3;15098.8; 14-OCT-2011 06:06:07; Bright; 39.5; 160; 23Gam Per ; 2.93; 4700;occ; 79; 0;50321
/nas3/ENVISAT/GOMOS/GOM_NL__0P/GOM_NL__0PNPDK20111014_073912_000004713107_00308_50322_5422.N1
1; 2642.2; 14-OCT-2011 07:39:12; Bright; 32.0; 173; 4Bet Tri ; 3.00; 8900;occ; 64; 0;50322
2; 3070.1; 14-OCT-2011 07:46:20; Bright; 43.5; 160; 23Gam Per ; 2.93; 4700;occ; 87; 0;50322
/nas3/ENVISAT/GOMOS/GOM_NL__0P/GOM_NL__0PNPDK20111014_091926_000004713107_00309_50323_5423.N1
1; 2641.5; 14-OCT-2011 09:19:26; Bright; 32.0; 173; 4Bet Tri ; 3.00; 8900;occ; 64; 0;50323
2; 3069.3; 14-OCT-2011 09:26:33; Bright; 43.5; 160; 23Gam Per ; 2.93; 4700;occ; 87; 0;50323
/nas3/ENVISAT/GOMOS/GOM_NL__0P/GOM_NL__0PNPDK20111014_142712_00000433107_00312_50326_5424.N1
1;-2947.7; 14-OCT-2011 14:27:12; Bright; 43.5; 160; 23Gam Per ; 2.93; 4700;occ; 87; 0;50326
/nas3/ENVISAT/GOMOS/GOM_NL__0P/GOM_NL__0PNPDK20111014_155516_000007753107_00313_50327_5425.N1
1; 2336.3; 14-OCT-2011 15:55:16; Bright; 47.0; 105; 6Bet Ari ; 2.64; 8900;occ; 94; 0;50327
2; 2637.8; 14-OCT-2011 16:00:18; Bright; 45.0; 173; 4Bet Tri ; 3.00; 8900;occ; 90; 0;50327
3; 3065.4; 14-OCT-2011 16:07:25; Bright; 46.5; 160; 23Gam Per ; 2.93; 4700;occ; 93; 0;50327
/nas3/ENVISAT/GOMOS/GOM_NL__0P/GOM_NL__0PNPDK20111014_173530_000007763107_00314_50328_5426.N1
1; 2335.8; 14-OCT-2011 17:35:30; Bright; 48.5; 105; 6Bet Ari ; 2.64; 8900;occ; 97; 0;50328
2; 2637.1; 14-OCT-2011 17:40:31; Bright; 45.0; 173; 4Bet Tri ; 3.00; 8900;occ; 90; 0;50328
3; 3064.6; 14-OCT-2011 17:47:38; Bright; 47.5; 160; 23Gam Per ; 2.93; 4700;occ; 95; 0;50328
/nas3/ENVISAT/GOMOS/GOM_NL__0P/GOM_NL__0PNPDK20111014_191543_000007763107_00315_50329_5427.N1
1; 2335.2; 14-OCT-2011 19:15:43; Bright; 47.5; 105; 6Bet Ari ; 2.64; 8900;occ; 95; 0;50329
2; 2636.3; 14-OCT-2011 19:20:44; Bright; 46.5; 173; 4Bet Tri ; 3.00; 8900;occ; 93; 0;50329
3; 3063.8; 14-OCT-2011 19:27:52; Bright; 48.0; 160; 23Gam Per ; 2.93; 4700;occ; 96; 0;50329
/nas3/ENVISAT/GOMOS/GOM_NL__0P/GOM_NL__0PNPDE20111015_001623_000007743107_00318_50332_6549.N1
1; 2333.6; 15-OCT-2011 00:16:23; Bright; 47.0; 105; 6Bet Ari ; 2.64; 8900;occ; 94; 0;50332
2; 2634.1; 15-OCT-2011 00:21:24; Bright; 46.5; 173; 4Bet Tri ; 3.00; 8900;occ; 93; 0;50332
3; 3061.6; 15-OCT-2011 00:28:31; Bright; 47.0; 160; 23Gam Per ; 2.93; 4700;occ; 94; 0;50332
/nas3/ENVISAT/GOMOS/GOM_NL__0P/GOM_NL__0PNPDE20111015_015637_000067863107_00319_50333_6550.N1
1; 2333.1; 15-OCT-2011 01:56:37; Bright; 47.0; 105; 6Bet Ari ; 2.64; 8900;occ; 94; 0;50333
2; 2633.3; 15-OCT-2011 02:01:37; Bright; 47.0; 173; 4Bet Tri ; 3.00; 8900;occ; 94; 0;50333
3; 3060.7; 15-OCT-2011 02:08:44; Bright; 44.5; 160; 23Gam Per ; 2.93; 4700;occ; 89; 0;50333
4; 8346.5; 15-OCT-2011 03:36:50; Bright; 47.0; 105; 6Bet Ari ; 2.64; 8900;occ; 94; 0;50334
5; 8646.8; 15-OCT-2011 03:41:50; Bright; 47.0; 173; 4Bet Tri ; 3.00; 8900;occ; 94; 0;50334
6; 9074.0; 15-OCT-2011 03:48:58; Bright; 46.0; 160; 23Gam Per ; 2.93; 4700;occ; 92; 0;50334
/nas3/ENVISAT/GOMOS/GOM_NL__0P/GOM_NL__0PNPDE20111015_051704_000007743107_00321_50335_6551.N1
1; 2332.2; 15-OCT-2011 05:17:04; Bright; 45.5; 105; 6Bet Ari ; 2.64; 8900;occ; 91; 0;50335
2; 2632.2; 15-OCT-2011 05:22:04; Bright; 46.5; 173; 4Bet Tri ; 3.00; 8900;occ; 93; 0;50335
3; 3059.3; 15-OCT-2011 05:29:11; Bright; 47.0; 160; 23Gam Per ; 2.93; 4700;occ; 94; 0;50335
/nas3/ENVISAT/GOMOS/GOM_NL__0P/GOM_NL__0PNPDE20111015_065717_000007743107_00322_50336_6552.N1
1; 2331.6; 15-OCT-2011 06:57:17; Bright; 46.5; 105; 6Bet Ari ; 2.64; 8900;occ; 93; 0;50336
2; 2631.5; 15-OCT-2011 07:02:17; Bright; 46.0; 173; 4Bet Tri ; 3.00; 8900;occ; 92; 0;50336
3; 3058.6; 15-OCT-2011 07:09:24; Bright; 47.0; 160; 23Gam Per ; 2.93; 4700;occ; 94; 0;50336
/nas3/ENVISAT/GOMOS/GOM_NL__0P/GOM_NL__0PNPDE20111015_202403_000004733107_00330_50344_6553.N1
1; 2625.9; 15-OCT-2011 20:24:03; Bright; 45.5; 173; 4Bet Tri ; 3.00; 8900;occ; 91; 0;50344
2; 3052.3; 15-OCT-2011 20:31:10; Bright; 47.0; 160; 23Gam Per ; 2.93; 4700;occ; 94; 0;50344
/nas3/ENVISAT/GOMOS/GOM_NL__0P/GOM_NL__0PNPDE20111015_220416_000004733107_00331_50345_6554.N1
1; 2625.1; 15-OCT-2011 22:04:16; Bright; 45.5; 173; 4Bet Tri ; 3.00; 8900;occ; 91; 0;50345
2; 3051.6; 15-OCT-2011 22:11:23; Bright; 47.0; 160; 23Gam Per ; 2.93; 4700;occ; 94; 0;50345
/nas3/ENVISAT/GOMOS/GOM_NL__0P/GOM_NL__0PNPDE20111015_234430_000004693107_00332_50346_6555.N1
1; 2624.6; 15-OCT-2011 23:44:30; Bright; 45.0; 173; 4Bet Tri ; 3.00; 8900;occ; 90; 0;50346
2; 3050.7; 15-OCT-2011 23:51:36; Bright; 43.5; 160; 23Gam Per ; 2.93; 4700;occ; 87; 0;50346
/nas3/ENVISAT/GOMOS/GOM_NL__0P/GOM_NL__0PNPDK20111015_083731_000007723107_00323_50337_5428.N1
1; 2331.1; 15-OCT-2011 08:37:31; Bright; 46.0; 105; 6Bet Ari ; 2.64; 8900;occ; 92; 0;50337
2; 2630.8; 15-OCT-2011 08:42:30; Bright; 46.0; 173; 4Bet Tri ; 3.00; 8900;occ; 92; 0;50337

3; 3057.7; 15-OCT-2011 08:49:37; Bright; 45.5; 160; 23Gam Per ; 2.93; 4700;occ; 91; 0;50337
/nas3/ENVISAT/GOMOS/GOM_NL__0P/GOM_NL__0PNPDK20111015_115757_000007733107_00325_50339_5429.N1
1; 2329.9; 15-OCT-2011 11:57:57; Bright; 46.0; 105; 6Bet Ari ; 2.64; 8900;occ; 92; 0;50339
2; 2629.5; 15-OCT-2011 12:02:57; Bright; 46.0; 173; 4Bet Tri ; 3.00; 8900;occ; 92; 0;50339
3; 3056.3; 15-OCT-2011 12:10:04; Bright; 47.0; 160; 23Gam Per ; 2.93; 4700;occ; 94; 0;50339
/nas3/ENVISAT/GOMOS/GOM_NL__0P/GOM_NL__0PNPDK20111015_133811_000007733107_00326_50340_5430.N1
1; 2329.6; 15-OCT-2011 13:38:11; Bright; 46.0; 105; 6Bet Ari ; 2.64; 8900;occ; 92; 0;50340
2; 2628.6; 15-OCT-2011 13:43:10; Bright; 47.5; 173; 4Bet Tri ; 3.00; 8900;occ; 95; 0;50340
3; 3055.6; 15-OCT-2011 13:50:17; Bright; 47.5; 160; 23Gam Per ; 2.93; 4700;occ; 95; 0;50340
/nas3/ENVISAT/GOMOS/GOM_NL__0P/GOM_NL__0PNPDK20111015_152323_000004723107_00327_50341_5431.N1
1; 2628.1; 15-OCT-2011 15:23:23; Bright; 45.5; 173; 4Bet Tri ; 3.00; 8900;occ; 91; 0;50341
2; 3055.0; 15-OCT-2011 15:30:30; Bright; 46.0; 160; 23Gam Per ; 2.93; 4700;occ; 92; 0;50341
/nas3/ENVISAT/GOMOS/GOM_NL__0P/GOM_NL__0PNPDK20111015_170337_000004723107_00328_50342_5432.N1
1; 2627.3; 15-OCT-2011 17:03:37; Bright; 46.0; 173; 4Bet Tri ; 3.00; 8900;occ; 92; 0;50342
2; 3054.1; 15-OCT-2011 17:10:43; Bright; 45.5; 160; 23Gam Per ; 2.93; 4700;occ; 91; 0;50342
/nas3/ENVISAT/GOMOS/GOM_NL__0P/GOM_NL__0PNPDK20111015_184350_000004723107_00329_50343_5433.N1
1; 2626.5; 15-OCT-2011 18:43:50; Bright; 46.0; 173; 4Bet Tri ; 3.00; 8900;occ; 92; 0;50343
2; 3053.3; 15-OCT-2011 18:50:57; Bright; 46.0; 160; 23Gam Per ; 2.93; 4700;occ; 92; 0;50343
/nas3/ENVISAT/GOMOS/GOM_NL__0P/GOM_NL__0PNPDE20111016_012443_000004713107_00333_50347_6556.N1
1; 2623.8; 16-OCT-2011 01:24:43; Bright; 45.0; 173; 4Bet Tri ; 3.00; 8900;occ; 90; 0;50347
2; 3050.0; 16-OCT-2011 01:31:49; Bright; 45.0; 160; 23Gam Per ; 2.93; 4700;occ; 90; 0;50347
/nas3/ENVISAT/GOMOS/GOM_NL__0P/GOM_NL__0PNPDE20111016_030456_000004703107_00334_50348_6557.N1
1; 2623.2; 16-OCT-2011 03:04:56; Bright; 46.5; 173; 4Bet Tri ; 3.00; 8900;occ; 93; 0;50348
2; 3049.3; 16-OCT-2011 03:12:02; Bright; 44.0; 160; 23Gam Per ; 2.93; 4700;occ; 88; 0;50348
/nas3/ENVISAT/GOMOS/GOM_NL__0P/GOM_NL__0PNPDE20111016_044510_000004723107_00335_50349_6558.N1
1; 2622.6; 16-OCT-2011 04:45:10; Bright; 45.5; 173; 4Bet Tri ; 3.00; 8900;occ; 91; 0;50349
2; 3048.7; 16-OCT-2011 04:52:16; Bright; 46.5; 160; 23Gam Per ; 2.93; 4700;occ; 93; 0;50349
/nas3/ENVISAT/GOMOS/GOM_NL__0P/GOM_NL__0PNPDE20111016_062523_000004723107_00336_50350_6559.N1
1; 2622.0; 16-OCT-2011 06:25:23; Bright; 45.0; 173; 4Bet Tri ; 3.00; 8900;occ; 90; 0;50350
2; 3048.0; 16-OCT-2011 06:32:29; Bright; 46.5; 160; 23Gam Per ; 2.93; 4700;occ; 93; 0;50350
/nas3/ENVISAT/GOMOS/GOM_NL__0P/GOM_NL__0PNPDE20111016_213428_00000453107_00345_50359_6560.N1
1;-2972.6; 16-OCT-2011 21:34:28; Bright; 46.0; 160; 23Gam Per ; 2.93; 4700;occ; 92; 0;50359
/nas3/ENVISAT/GOMOS/GOM_NL__0P/GOM_NL__0PNPDE20111016_231441_00000453107_00346_50360_6561.N1
1;-2973.2; 16-OCT-2011 23:14:41; Bright; 46.0; 160; 23Gam Per ; 2.93; 4700;occ; 92; 0;50360
/nas3/ENVISAT/GOMOS/GOM_NL__0P/GOM_NL__0PNPDK20111016_080537_000004693107_00337_50351_5434.N1
1; 2621.4; 16-OCT-2011 08:05:37; Bright; 45.5; 173; 4Bet Tri ; 3.00; 8900;occ; 91; 0;50351
2; 3047.2; 16-OCT-2011 08:12:42; Bright; 44.0; 160; 23Gam Per ; 2.93; 4700;occ; 88; 0;50351
/nas3/ENVISAT/GOMOS/GOM_NL__0P/GOM_NL__0PNPDK20111016_094550_000004713107_00338_50352_5435.N1
1; 2620.8; 16-OCT-2011 09:45:50; Bright; 46.5; 173; 4Bet Tri ; 3.00; 8900;occ; 93; 0;50352
2; 3046.6; 16-OCT-2011 09:52:56; Bright; 45.5; 160; 23Gam Per ; 2.93; 4700;occ; 91; 0;50352
/nas3/ENVISAT/GOMOS/GOM_NL__0P/GOM_NL__0PNPDK20111016_112603_000004723107_00339_50353_5436.N1
1; 2620.2; 16-OCT-2011 11:26:03; Bright; 45.5; 173; 4Bet Tri ; 3.00; 8900;occ; 91; 0;50353
2; 3045.8; 16-OCT-2011 11:33:09; Bright; 46.5; 160; 23Gam Per ; 2.93; 4700;occ; 93; 0;50353
/nas3/ENVISAT/GOMOS/GOM_NL__0P/GOM_NL__0PNPDK20111016_130616_000004723107_00340_50354_5437.N1
1; 2619.4; 16-OCT-2011 13:06:16; Bright; 45.0; 173; 4Bet Tri ; 3.00; 8900;occ; 90; 0;50354
2; 3045.1; 16-OCT-2011 13:13:22; Bright; 47.0; 160; 23Gam Per ; 2.93; 4700;occ; 94; 0;50354
/nas3/ENVISAT/GOMOS/GOM_NL__0P/GOM_NL__0PNPDK20111016_144630_000004713107_00341_50355_5438.N1
1; 2618.8; 16-OCT-2011 14:46:30; Bright; 44.5; 173; 4Bet Tri ; 3.00; 8900;occ; 89; 0;50355
2; 3044.4; 16-OCT-2011 14:53:35; Bright; 46.0; 160; 23Gam Per ; 2.93; 4700;occ; 92; 0;50355
/nas3/ENVISAT/GOMOS/GOM_NL__0P/GOM_NL__0PNPDK20111016_162643_000004723107_00342_50356_5439.N1
1; 2618.3; 16-OCT-2011 16:26:43; Bright; 45.0; 173; 4Bet Tri ; 3.00; 8900;occ; 90; 0;50356
2; 3043.6; 16-OCT-2011 16:33:48; Bright; 47.0; 160; 23Gam Per ; 2.93; 4700;occ; 94; 0;50356
/nas3/ENVISAT/GOMOS/GOM_NL__0P/GOM_NL__0PNPDK20111016_180656_000004723107_00343_50357_5440.N1
1; 2617.5; 16-OCT-2011 18:06:56; Bright; 46.5; 173; 4Bet Tri ; 3.00; 8900;occ; 93; 0;50357
2; 3042.9; 16-OCT-2011 18:14:02; Bright; 47.0; 160; 23Gam Per ; 2.93; 4700;occ; 94; 0;50357
/nas3/ENVISAT/GOMOS/GOM_NL__0P/GOM_NL__0PNPDK20111016_195415_00000463107_00344_50358_5441.N1
1;-2971.9; 16-OCT-2011 19:54:15; Bright; 46.5; 160; 23Gam Per ; 2.93; 4700;occ; 93; 0;50358
/nas3/ENVISAT/GOMOS/GOM_NL__0P/GOM_NL__0PNPDE20111017_005455_00000463107_00347_50361_6562.N1
1;-2974.0; 17-OCT-2011 00:54:55; Bright; 46.5; 160; 23Gam Per ; 2.93; 4700;occ; 93; 0;50361
/nas3/ENVISAT/GOMOS/GOM_NL__0P/GOM_NL__0PNPDE20111017_023508_00000423107_00348_50362_6563.N1
1;-2974.7; 17-OCT-2011 02:35:08; Bright; 43.0; 160; 23Gam Per ; 2.93; 4700;occ; 86; 0;50362
/nas3/ENVISAT/GOMOS/GOM_NL__0P/GOM_NL__0PNPDE20111017_041521_00000453107_00349_50363_6564.N1
1;-2975.5; 17-OCT-2011 04:15:21; Bright; 45.5; 160; 23Gam Per ; 2.93; 4700;occ; 91; 0;50363
/nas3/ENVISAT/GOMOS/GOM_NL__0P/GOM_NL__0PNPDE20111017_055534_00000453107_00350_50364_6565.N1
1;-2976.2; 17-OCT-2011 05:55:34; Bright; 45.5; 160; 23Gam Per ; 2.93; 4700;occ; 91; 0;50364
/nas3/ENVISAT/GOMOS/GOM_NL__0P/GOM_NL__0PNPDE20111017_223747_00000453107_00360_50374_6567.N1
1;-2983.4; 17-OCT-2011 22:37:47; Bright; 45.5; 160; 23Gam Per ; 2.93; 4700;occ; 91; 0;50374
/nas3/ENVISAT/GOMOS/GOM_NL__0P/GOM_NL__0PNPDK20111017_073548_00000453107_00351_50365_5442.N1

1;-2976.8; 17-OCT-2011 07:35:48; Bright; 46.0; 160; 23Gam Per ; 2.93; 4700;occ; 92; 0;50365
/nas3/ENVISAT/GOMOS/GOM_NL__0P/GOM_NL__0PNPDK20111017_091601_000000453107_00352_50366_5443.N1
1;-2977.5; 17-OCT-2011 09:16:01; Bright; 45.5; 160; 23Gam Per ; 2.93; 4700;occ; 91; 0;50366
/nas3/ENVISAT/GOMOS/GOM_NL__0P/GOM_NL__0PNPDK20111017_105614_000000463107_00353_50367_5444.N1
1;-2978.3; 17-OCT-2011 10:56:14; Bright; 46.5; 160; 23Gam Per ; 2.93; 4700;occ; 93; 0;50367
/nas3/ENVISAT/GOMOS/GOM_NL__0P/GOM_NL__0PNPDK20111017_123627_000000463107_00354_50368_5445.N1
1;-2979.1; 17-OCT-2011 12:36:27; Bright; 46.5; 160; 23Gam Per ; 2.93; 4700;occ; 93; 0;50368
/nas3/ENVISAT/GOMOS/GOM_NL__0P/GOM_NL__0PNPDK20111017_141641_000000453107_00355_50369_5446.N1
1;-2979.8; 17-OCT-2011 14:16:41; Bright; 46.0; 160; 23Gam Per ; 2.93; 4700;occ; 92; 0;50369
/nas3/ENVISAT/GOMOS/GOM_NL__0P/GOM_NL__0PNPDK20111017_155654_000000453107_00356_50370_5447.N1
1;-2980.6; 17-OCT-2011 15:56:54; Bright; 45.5; 160; 23Gam Per ; 2.93; 4700;occ; 91; 0;50370
/nas3/ENVISAT/GOMOS/GOM_NL__0P/GOM_NL__0PNPDK20111017_173707_000000453107_00357_50371_5448.N1
1;-2981.4; 17-OCT-2011 17:37:07; Bright; 45.5; 160; 23Gam Per ; 2.93; 4700;occ; 91; 0;50371
/nas3/ENVISAT/GOMOS/GOM_NL__0P/GOM_NL__0PNPDK20111017_191720_000000463107_00358_50372_5449.N1
1;-2982.0; 17-OCT-2011 19:17:20; Bright; 46.5; 160; 23Gam Per ; 2.93; 4700;occ; 93; 0;50372
/nas3/ENVISAT/GOMOS/GOM_NL__0P/GOM_NL__0PNPDE20111018_001800_000000443107_00361_50375_6568.N1
1;-2984.0; 18-OCT-2011 00:18:00; Bright; 45.0; 160; 23Gam Per ; 2.93; 4700;occ; 90; 0;50375
/nas3/ENVISAT/GOMOS/GOM_NL__0P/GOM_NL__0PNPDE20111018_015813_000000453107_00362_50376_6569.N1
1;-2984.8; 18-OCT-2011 01:58:13; Bright; 46.0; 160; 23Gam Per ; 2.93; 4700;occ; 92; 0;50376
/nas3/ENVISAT/GOMOS/GOM_NL__0P/GOM_NL__0PNPDE20111018_033827_000000443107_00363_50377_6570.N1
1;-2985.5; 18-OCT-2011 03:38:27; Bright; 45.0; 160; 23Gam Per ; 2.93; 4700;occ; 90; 0;50377
/nas3/ENVISAT/GOMOS/GOM_NL__0P/GOM_NL__0PNPDE20111018_051840_000000453107_00364_50378_6571.N1
1;-2986.3; 18-OCT-2011 05:18:40; Bright; 45.5; 160; 23Gam Per ; 2.93; 4700;occ; 91; 0;50378
/nas3/ENVISAT/GOMOS/GOM_NL__0P/GOM_NL__0PNPDE20111018_065853_000000443107_00365_50379_6572.N1
1;-2986.9; 18-OCT-2011 06:58:53; Bright; 45.0; 160; 23Gam Per ; 2.93; 4700;occ; 90; 0;50379
/nas3/ENVISAT/GOMOS/GOM_NL__0P/GOM_NL__0PNPDK20111018_083906_000000443107_00366_50380_5450.N1
1;-2987.6; 18-OCT-2011 08:39:06; Bright; 44.5; 160; 23Gam Per ; 2.93; 4700;occ; 89; 0;50380
/nas3/ENVISAT/GOMOS/GOM_NL__0P/GOM_NL__0PNPDK20111018_115933_000000673107_00368_50382_5451.N1
1;-2988.9; 18-OCT-2011 11:59:33; Bright; 67.5; 160; 23Gam Per ; 2.93; 4700;occ; 135; 0;50382
/nas3/ENVISAT/GOMOS/GOM_NL__0P/GOM_NL__0PNPDK20111018_133946_000000453107_00369_50383_5452.N1
1;-2989.7; 18-OCT-2011 13:39:46; Bright; 45.5; 160; 23Gam Per ; 2.93; 4700;occ; 91; 0;50383
/nas3/ENVISAT/GOMOS/GOM_NL__0P/GOM_NL__0PNPDK20111018_101920_000000433107_00367_50381_5454.N1
1;-2988.3; 18-OCT-2011 10:19:20; Bright; 44.0; 160; 23Gam Per ; 2.93; 4700;occ; 88; 0;50381
/nas3/ENVISAT/GOMOS/GOM_NL__0P/GOM_NL__0PNPDK20111018_101920_000000433107_00367_50381_5739.N1
1;-2988.3; 18-OCT-2011 10:19:20; Bright; 44.0; 160; 23Gam Per ; 2.93; 4700;occ; 88; 0;50381
/nas3/ENVISAT/GOMOS/GOM_NL__0P/GOM_NL__0PNPDE20111023_202058_000000603108_00014_50459_6573.N1
1; 2035.9; 23-OCT-2011 20:20:58; Bright; 60.5; 94; 92Alp Cet ; 2.53; 3100;occ; 121; 0;50459
/nas3/ENVISAT/GOMOS/GOM_NL__0P/GOM_NL__0PNPDE20111023_212637_000021363108_00014_50459_6574.N1
1; -39.8; 23-OCT-2011 21:26:37; Dark ; 65.5; 132; 15Rho Pup ; 2.80; 6900;occ; 131; 0;50459
2; 249.2; 23-OCT-2011 21:31:26; Dark ; 69.0; 88; 31Eta Cma ; 2.45; 20000;occ; 138; 0;50460
3; 787.7; 23-OCT-2011 21:40:24; Dark ; 61.5; 108; Alp Col ; 2.65; 15200;occ; 123; 0;50460
4; 2035.6; 23-OCT-2011 22:01:12; Bright; 61.0; 94; 92Alp Cet ; 2.53; 3100;occ; 122; 0;50460
/nas3/ENVISAT/GOMOS/GOM_NL__0P/GOM_NL__0PNPDE20111023_230652_000021333108_00015_50460_6575.N1
1; -38.1; 23-OCT-2011 23:06:52; Dark ; 63.0; 132; 15Rho Pup ; 2.80; 6900;occ; 126; 0;50460
2; 251.0; 23-OCT-2011 23:11:41; Dark ; 65.5; 88; 31Eta Cma ; 2.45; 20000;occ; 131; 0;50461
3; 788.8; 23-OCT-2011 23:20:39; Dark ; 64.5; 108; Alp Col ; 2.65; 15200;occ; 129; 0;50461
4; 2034.9; 23-OCT-2011 23:41:25; Bright; 61.0; 94; 92Alp Cet ; 2.53; 3100;occ; 122; 0;50461
/nas3/ENVISAT/GOMOS/GOM_NL__0P/GOM_NL__0PNPDK20111023_094936_000000603108_00008_50453_5455.N1
1; 237.1; 23-OCT-2011 09:49:36; Dark ; 63.5; 88; 31Eta Cma ; 2.45; 20000;occ; 127; 0;50453
2; 779.1; 23-OCT-2011 09:58:38; Dark ; 64.5; 108; Alp Col ; 2.65; 15200;occ; 129; 0;50453
/nas3/ENVISAT/GOMOS/GOM_NL__0P/GOM_NL__0PNPDK20111023_101938_000000583108_00008_50453_5456.N1
1; 2039.2; 23-OCT-2011 10:19:38; Bright; 58.5; 94; 92Alp Cet ; 2.53; 3100;occ; 117; 0;50453
/nas3/ENVISAT/GOMOS/GOM_NL__0P/GOM_NL__0PNPDK20111023_145023_0000006033108_00011_50456_5458.N1
1; 242.4; 23-OCT-2011 14:50:23; Dark ; 66.5; 88; 31Eta Cma ; 2.45; 20000;occ; 133; 0;50456
2; 782.9; 23-OCT-2011 14:59:23; Dark ; 62.5; 108; Alp Col ; 2.65; 15200;occ; 125; 0;50456
/nas3/ENVISAT/GOMOS/GOM_NL__0P/GOM_NL__0PNPDK20111023_152018_000048233108_00011_50456_5459.N1
1; 2037.7; 23-OCT-2011 15:20:18; Bright; 59.0; 94; 92Alp Cet ; 2.53; 3100;occ; 118; 0;50456
2; 5969.5; 23-OCT-2011 16:25:50; Dark ; 64.0; 132; 15Rho Pup ; 2.80; 6900;occ; 128; 0;50456
3; 6258.1; 23-OCT-2011 16:30:39; Dark ; 69.0; 88; 31Eta Cma ; 2.45; 20000;occ; 138; 0;50457
4; 6798.2; 23-OCT-2011 16:39:39; Dark ; 63.0; 108; Alp Col ; 2.65; 15200;occ; 126; 0;50457
/nas3/ENVISAT/GOMOS/GOM_NL__0P/GOM_NL__0PNPDK20111023_170032_000048253108_00012_50457_5460.N1
1; 2037.1; 23-OCT-2011 17:00:32; Bright; 59.5; 94; 92Alp Cet ; 2.53; 3100;occ; 119; 0;50457
2; 5971.1; 23-OCT-2011 18:06:06; Dark ; 61.5; 132; 15Rho Pup ; 2.80; 6900;occ; 123; 0;50457
3; 6259.9; 23-OCT-2011 18:10:54; Dark ; 66.5; 88; 31Eta Cma ; 2.45; 20000;occ; 133; 0;50458
4; 6799.2; 23-OCT-2011 18:19:54; Dark ; 63.0; 108; Alp Col ; 2.65; 15200;occ; 126; 0;50458
/nas3/ENVISAT/GOMOS/GOM_NL__0P/GOM_NL__0PNPDK20111023_184045_000048273108_00013_50458_5461.N1
1; 2036.5; 23-OCT-2011 18:40:45; Bright; 59.5; 94; 92Alp Cet ; 2.53; 3100;occ; 119; 0;50458
2; 5972.7; 23-OCT-2011 19:46:21; Dark ; 62.0; 132; 15Rho Pup ; 2.80; 6900;occ; 124; 0;50458

```

3; 6261.5; 23-OCT-2011 19:51:10; Dark ; 68.0; 88; 31Eta CMA ; 2.45; 20000;occ; 136; 0;50459
4; 6800.7; 23-OCT-2011 20:00:09; Dark ; 63.0; 108; Alp Col ; 2.65; 15200;occ; 126; 0;50459
/nas3/ENVISAT/GOMOS/GOM_NL__0P/GOM_NL__0PNPDE20111024_004708_000021313108_00016_50461_6576.N1
1; -36.4; 24-OCT-2011 00:47:08; Dark ; 62.0; 132; 15Rho Pup ; 2.80; 6900;occ; 124; 0;50461
2; 252.7; 24-OCT-2011 00:51:57; Dark ; 66.0; 88; 31Eta CMA ; 2.45; 20000;occ; 132; 0;50462
3; 790.0; 24-OCT-2011 01:00:54; Dark ; 64.5; 108; Alp Col ; 2.65; 15200;occ; 129; 0;50462
4; 2034.5; 24-OCT-2011 01:21:39; Bright; 61.0; 94; 92Alp Cet ; 2.53; 3100;occ; 122; 0;50462
/nas3/ENVISAT/GOMOS/GOM_NL__0P/GOM_NL__0PNPDE20111024_040739_000021233108_00018_50463_6578.N1
1; -32.8; 24-OCT-2011 04:07:39; Dark ; 64.5; 132; 15Rho Pup ; 2.80; 6900;occ; 129; 0;50463
2; 256.4; 24-OCT-2011 04:12:29; Dark ; 69.0; 88; 31Eta CMA ; 2.45; 20000;occ; 138; 0;50464
3; 792.5; 24-OCT-2011 04:21:25; Dark ; 63.0; 108; Alp Col ; 2.65; 15200;occ; 126; 0;50464
4; 2033.8; 24-OCT-2011 04:42:06; Bright; 57.0; 94; 92Alp Cet ; 2.53; 3100;occ; 114; 0;50464
/nas3/ENVISAT/GOMOS/GOM_NL__0P/GOM_NL__0PNPDE20111024_054755_000021243108_00019_50464_6579.N1
1; -31.2; 24-OCT-2011 05:47:55; Dark ; 63.5; 132; 15Rho Pup ; 2.80; 6900;occ; 127; 0;50464
2; 258.1; 24-OCT-2011 05:52:44; Dark ; 67.0; 88; 31Eta CMA ; 2.45; 20000;occ; 134; 0;50465
3; 793.6; 24-OCT-2011 06:01:40; Dark ; 64.0; 108; Alp Col ; 2.65; 15200;occ; 128; 0;50465
4; 2033.3; 24-OCT-2011 06:22:19; Bright; 59.5; 94; 92Alp Cet ; 2.53; 3100;occ; 119; 0;50465
/nas3/ENVISAT/GOMOS/GOM_NL__0P/GOM_NL__0PNPDE20111024_210453_000012273108_00029_50474_6580.N1
1; 861.2; 24-OCT-2011 21:04:53; Dark ; 65.5; 108; Alp Col ; 2.65; 15200;occ; 131; 114;50474
2; 2029.1; 24-OCT-2011 21:24:21; Bright; 60.0; 94; 92Alp Cet ; 2.53; 3100;occ; 120; 0;50474
/nas3/ENVISAT/GOMOS/GOM_NL__0P/GOM_NL__0PNPDE20111024_223031_000021013108_00029_50474_6581.N1
1; -14.2; 24-OCT-2011 22:30:31; Dark ; 64.0; 132; 15Rho Pup ; 2.80; 6900;occ; 128; 0;50474
2; 275.7; 24-OCT-2011 22:35:21; Dark ; 69.5; 88; 31Eta CMA ; 2.45; 20000;occ; 139; 0;50475
3; 805.3; 24-OCT-2011 22:44:11; Dark ; 64.0; 108; Alp Col ; 2.65; 15200;occ; 128; 0;50475
4; 2028.6; 24-OCT-2011 23:04:34; Bright; 58.5; 94; 92Alp Cet ; 2.53; 3100;occ; 117; 0;50475
/nas3/ENVISAT/GOMOS/GOM_NL__0P/GOM_NL__0PNPDK20111024_072811_000008863108_00020_50465_5462.N1
1; -29.5; 24-OCT-2011 07:28:11; Dark ; 64.5; 132; 15Rho Pup ; 2.80; 6900;occ; 129; 0;50465
2; 259.9; 24-OCT-2011 07:33:00; Dark ; 68.0; 88; 31Eta CMA ; 2.45; 20000;occ; 136; 0;50466
3; 794.7; 24-OCT-2011 07:41:55; Dark ; 62.5; 108; Alp Col ; 2.65; 15200;occ; 125; 0;50466
/nas3/ENVISAT/GOMOS/GOM_NL__0P/GOM_NL__0PNPDK20111024_080233_000048383108_00021_50466_5463.N1
1; 2032.8; 24-OCT-2011 08:02:33; Bright; 59.5; 94; 92Alp Cet ; 2.53; 3100;occ; 119; 0;50466
2; 5986.1; 24-OCT-2011 09:08:26; Dark ; 65.5; 132; 15Rho Pup ; 2.80; 6900;occ; 131; 0;50466
3; 6275.6; 24-OCT-2011 09:13:16; Dark ; 68.5; 88; 31Eta CMA ; 2.45; 20000;occ; 137; 0;50467
4; 6810.1; 24-OCT-2011 09:22:10; Dark ; 61.5; 108; Alp Col ; 2.65; 15200;occ; 123; 0;50467
/nas3/ENVISAT/GOMOS/GOM_NL__0P/GOM_NL__0PNPDK20111024_094246_000048433108_00022_50467_5464.N1
1; 2032.3; 24-OCT-2011 09:42:46; Bright; 60.0; 94; 92Alp Cet ; 2.53; 3100;occ; 120; 0;50467
2; 5987.7; 24-OCT-2011 10:48:42; Dark ; 63.0; 132; 15Rho Pup ; 2.80; 6900;occ; 126; 0;50467
3; 6277.4; 24-OCT-2011 10:53:31; Dark ; 68.0; 88; 31Eta CMA ; 2.45; 20000;occ; 136; 0;50468
4; 6811.1; 24-OCT-2011 11:02:25; Dark ; 64.5; 108; Alp Col ; 2.65; 15200;occ; 129; 0;50468
/nas3/ENVISAT/GOMOS/GOM_NL__0P/GOM_NL__0PNPDK20111024_112300_000048453108_00023_50468_5465.N1
1; 2031.8; 24-OCT-2011 11:23:00; Bright; 59.5; 94; 92Alp Cet ; 2.53; 3100;occ; 119; 0;50468
2; 5989.5; 24-OCT-2011 12:28:57; Dark ; 66.5; 132; 15Rho Pup ; 2.80; 6900;occ; 133; 0;50468
3; 6278.9; 24-OCT-2011 12:33:47; Dark ; 68.5; 88; 31Eta CMA ; 2.45; 20000;occ; 137; 0;50469
4; 6812.4; 24-OCT-2011 12:42:40; Dark ; 64.5; 108; Alp Col ; 2.65; 15200;occ; 129; 0;50469
/nas3/ENVISAT/GOMOS/GOM_NL__0P/GOM_NL__0PNPDK20111024_130313_000048433108_00024_50469_5466.N1
1; 2031.4; 24-OCT-2011 13:03:13; Bright; 60.5; 94; 92Alp Cet ; 2.53; 3100;occ; 121; 0;50469
2; 5991.3; 24-OCT-2011 14:09:13; Dark ; 63.5; 132; 15Rho Pup ; 2.80; 6900;occ; 127; 0;50469
3; 6280.7; 24-OCT-2011 14:14:03; Dark ; 66.0; 88; 31Eta CMA ; 2.45; 20000;occ; 132; 0;50470
4; 6813.6; 24-OCT-2011 14:22:55; Dark ; 61.5; 108; Alp Col ; 2.65; 15200;occ; 123; 0;50470
/nas3/ENVISAT/GOMOS/GOM_NL__0P/GOM_NL__0PNPDK20111024_144327_000048463108_00025_50470_5467.N1
1; 2031.0; 24-OCT-2011 14:43:27; Bright; 59.0; 94; 92Alp Cet ; 2.53; 3100;occ; 118; 0;50470
2; 5993.0; 24-OCT-2011 15:49:29; Dark ; 66.5; 132; 15Rho Pup ; 2.80; 6900;occ; 133; 0;50470
3; 6282.7; 24-OCT-2011 15:54:18; Dark ; 63.5; 88; 31Eta CMA ; 2.45; 20000;occ; 127; 0;50471
4; 6814.8; 24-OCT-2011 16:03:11; Dark ; 62.5; 108; Alp Col ; 2.65; 15200;occ; 125; 0;50471
/nas3/ENVISAT/GOMOS/GOM_NL__0P/GOM_NL__0PNPDK20111024_162341_000048483108_00026_50471_5468.N1
1; 2030.8; 24-OCT-2011 16:23:41; Bright; 60.0; 94; 92Alp Cet ; 2.53; 3100;occ; 120; 0;50471
2; 5994.7; 24-OCT-2011 17:29:45; Dark ; 65.0; 132; 15Rho Pup ; 2.80; 6900;occ; 130; 0;50471
3; 6284.6; 24-OCT-2011 17:34:34; Dark ; 65.5; 88; 31Eta CMA ; 2.45; 20000;occ; 131; 0;50472
4; 6816.1; 24-OCT-2011 17:43:26; Dark ; 63.0; 108; Alp Col ; 2.65; 15200;occ; 126; 0;50472
/nas3/ENVISAT/GOMOS/GOM_NL__0P/GOM_NL__0PNPDK20111024_180354_000048493108_00027_50472_5469.N1
1; 2030.1; 24-OCT-2011 18:03:54; Bright; 60.0; 94; 92Alp Cet ; 2.53; 3100;occ; 120; 0;50472
2; 5996.4; 24-OCT-2011 19:10:00; Dark ; 65.0; 132; 15Rho Pup ; 2.80; 6900;occ; 130; 0;50472
3; 6286.3; 24-OCT-2011 19:14:50; Dark ; 69.0; 88; 31Eta CMA ; 2.45; 20000;occ; 138; 0;50473
4; 6817.1; 24-OCT-2011 19:23:41; Dark ; 62.5; 108; Alp Col ; 2.65; 15200;occ; 125; 0;50473
/nas3/ENVISAT/GOMOS/GOM_NL__0P/GOM_NL__0PNPDK20111024_194407_000048533108_00028_50473_5470.N1
1; 2029.6; 24-OCT-2011 19:44:07; Bright; 62.5; 94; 92Alp Cet ; 2.53; 3100;occ; 125; 0;50473
2; 5998.0; 24-OCT-2011 20:50:16; Dark ; 65.0; 132; 15Rho Pup ; 2.80; 6900;occ; 130; 0;50473
3; 6287.8; 24-OCT-2011 20:55:06; Dark ; 70.0; 88; 31Eta CMA ; 2.45; 20000;occ; 140; 0;50474

```

```

4; 6818.2; 24-OCT-2011 21:03:56; Dark ; 65.0; 108; Alp Col ; 2.65; 15200;occ; 130; 0;50474
/nas3/ENVISAT/GOMOS/GOM_NL__0P/GOM_NL__0PNPDE20111025_001047_000021023108_00030_50475_6582.N1
1; -12.4; 25-OCT-2011 00:10:47; Dark ; 63.0; 132; 15Rho Pup ; 2.80; 6900;occ; 126; 0;50475
2; 277.4; 25-OCT-2011 00:15:37; Dark ; 67.5; 88; 31Eta CMA ; 2.45; 20000;occ; 135; 0;50476
3; 806.4; 25-OCT-2011 00:24:26; Dark ; 64.5; 108; Alp Col ; 2.65; 15200;occ; 129; 0;50476
4; 2028.1; 25-OCT-2011 00:44:48; Bright; 62.0; 94; 92Alp Cet ; 2.53; 3100;occ; 124; 0;50476
/nas3/ENVISAT/GOMOS/GOM_NL__0P/GOM_NL__0PNPDE20111025_015103_000021003108_00031_50476_6583.N1
1; -10.7; 25-OCT-2011 01:51:03; Dark ; 66.0; 132; 15Rho Pup ; 2.80; 6900;occ; 132; 0;50476
2; 279.2; 25-OCT-2011 01:55:53; Dark ; 67.5; 88; 31Eta CMA ; 2.45; 20000;occ; 135; 0;50477
3; 807.8; 25-OCT-2011 02:04:41; Dark ; 64.0; 108; Alp Col ; 2.65; 15200;occ; 128; 0;50477
4; 2027.7; 25-OCT-2011 02:25:01; Bright; 62.5; 94; 92Alp Cet ; 2.53; 3100;occ; 125; 0;50477
/nas3/ENVISAT/GOMOS/GOM_NL__0P/GOM_NL__0PNPDE20111025_033118_000020953108_00032_50477_6584.N1
1; -8.9; 25-OCT-2011 03:31:18; Dark ; 67.0; 132; 15Rho Pup ; 2.80; 6900;occ; 134; 0;50477
2; 281.0; 25-OCT-2011 03:36:08; Dark ; 69.0; 88; 31Eta CMA ; 2.45; 20000;occ; 138; 0;50478
3; 809.0; 25-OCT-2011 03:44:56; Dark ; 63.5; 108; Alp Col ; 2.65; 15200;occ; 127; 0;50478
4; 2027.2; 25-OCT-2011 04:05:15; Bright; 59.5; 94; 92Alp Cet ; 2.53; 3100;occ; 119; 0;50478
/nas3/ENVISAT/GOMOS/GOM_NL__0P/GOM_NL__0PNPDE20111025_051134_000021073108_00033_50478_6585.N1
1; -7.2; 25-OCT-2011 05:11:34; Dark ; 66.0; 132; 15Rho Pup ; 2.80; 6900;occ; 132; 0;50478
2; 282.6; 25-OCT-2011 05:16:24; Dark ; 68.0; 88; 31Eta CMA ; 2.45; 20000;occ; 136; 0;50479
3; 810.2; 25-OCT-2011 05:25:12; Dark ; 64.5; 108; Alp Col ; 2.65; 15200;occ; 129; 0;50479
4; 2026.8; 25-OCT-2011 05:45:28; Bright; 73.0; 94; 92Alp Cet ; 2.53; 3100;occ; 146; 0;50479
/nas3/ENVISAT/GOMOS/GOM_NL__0P/GOM_NL__0PNPDE20111025_215411_000008733108_00044_50489_6586.N1
1; 10.4; 25-OCT-2011 21:54:11; Dark ; 63.5; 132; 15Rho Pup ; 2.80; 6900;occ; 127; 0;50489
2; 300.5; 25-OCT-2011 21:59:01; Dark ; 68.0; 88; 31Eta CMA ; 2.45; 20000;occ; 136; 0;50489
3; 821.7; 25-OCT-2011 22:07:43; Dark ; 62.5; 108; Alp Col ; 2.65; 15200;occ; 125; 0;50489
/nas3/ENVISAT/GOMOS/GOM_NL__0P/GOM_NL__0PNPDE20111025_233427_000008723108_00045_50490_6587.N1
1; 12.1; 25-OCT-2011 23:34:27; Dark ; 65.0; 132; 15Rho Pup ; 2.80; 6900;occ; 130; 0;50490
2; 302.3; 25-OCT-2011 23:39:17; Dark ; 70.5; 88; 31Eta CMA ; 2.45; 20000;occ; 141; 0;50490
3; 822.6; 25-OCT-2011 23:47:57; Dark ; 62.0; 108; Alp Col ; 2.65; 15200;occ; 124; 0;50490
/nas3/ENVISAT/GOMOS/GOM_NL__0P/GOM_NL__0PNPDK20111025_065150_000008803108_00034_50479_5471.N1
1; -5.4; 25-OCT-2011 06:51:50; Dark ; 66.5; 132; 15Rho Pup ; 2.80; 6900;occ; 133; 0;50479
2; 284.6; 25-OCT-2011 06:56:40; Dark ; 69.5; 88; 31Eta CMA ; 2.45; 20000;occ; 139; 0;50480
3; 811.4; 25-OCT-2011 07:05:27; Dark ; 64.0; 108; Alp Col ; 2.65; 15200;occ; 128; 0;50480
/nas3/ENVISAT/GOMOS/GOM_NL__0P/GOM_NL__0PNPDK20111025_072542_000048613108_00035_50480_5472.N1
1; 2026.4; 25-OCT-2011 07:25:42; Bright; 64.0; 94; 92Alp Cet ; 2.53; 3100;occ; 128; 0;50480
2; 6010.4; 25-OCT-2011 08:32:06; Dark ; 67.0; 132; 15Rho Pup ; 2.80; 6900;occ; 134; 0;50480
3; 6300.4; 25-OCT-2011 08:36:56; Dark ; 69.5; 88; 31Eta CMA ; 2.45; 20000;occ; 139; 0;50481
4; 6826.4; 25-OCT-2011 08:45:42; Dark ; 61.5; 108; Alp Col ; 2.65; 15200;occ; 123; 0;50481
/nas3/ENVISAT/GOMOS/GOM_NL__0P/GOM_NL__0PNPDK20111025_090555_000048643108_00036_50481_5473.N1
1; 2026.1; 25-OCT-2011 09:05:55; Bright; 60.0; 94; 92Alp Cet ; 2.53; 3100;occ; 120; 0;50481
2; 6012.1; 25-OCT-2011 10:12:21; Dark ; 66.0; 132; 15Rho Pup ; 2.80; 6900;occ; 132; 0;50481
3; 6302.1; 25-OCT-2011 10:17:11; Dark ; 71.5; 88; 31Eta CMA ; 2.45; 20000;occ; 143; 0;50482
4; 6827.4; 25-OCT-2011 10:25:57; Dark ; 63.0; 108; Alp Col ; 2.65; 15200;occ; 126; 0;50482
/nas3/ENVISAT/GOMOS/GOM_NL__0P/GOM_NL__0PNPDK20111025_104609_000048653108_00037_50482_5474.N1
1; 2025.6; 25-OCT-2011 10:46:09; Bright; 56.5; 94; 92Alp Cet ; 2.53; 3100;occ; 113; 0;50482
2; 6013.8; 25-OCT-2011 11:52:37; Dark ; 66.5; 132; 15Rho Pup ; 2.80; 6900;occ; 133; 0;50482
3; 6303.9; 25-OCT-2011 11:57:27; Dark ; 66.5; 88; 31Eta CMA ; 2.45; 20000;occ; 133; 0;50483
4; 6828.5; 25-OCT-2011 12:06:12; Dark ; 63.0; 108; Alp Col ; 2.65; 15200;occ; 126; 0;50483
/nas3/ENVISAT/GOMOS/GOM_NL__0P/GOM_NL__0PNPDK20111025_122622_000048673108_00038_50483_5475.N1
1; 2025.2; 25-OCT-2011 12:26:22; Bright; 63.0; 94; 92Alp Cet ; 2.53; 3100;occ; 126; 0;50483
2; 6015.4; 25-OCT-2011 13:32:53; Dark ; 65.5; 132; 15Rho Pup ; 2.80; 6900;occ; 131; 0;50484
3; 6305.7; 25-OCT-2011 13:37:43; Dark ; 69.0; 88; 31Eta CMA ; 2.45; 20000;occ; 138; 0;50484
4; 6829.8; 25-OCT-2011 13:46:27; Dark ; 62.5; 108; Alp Col ; 2.65; 15200;occ; 125; 0;50484
/nas3/ENVISAT/GOMOS/GOM_NL__0P/GOM_NL__0PNPDK20111025_151308_000008773108_00040_50485_5476.N1
1; 3.3; 25-OCT-2011 15:13:08; Dark ; 66.0; 132; 15Rho Pup ; 2.80; 6900;occ; 132; 0;50485
2; 293.4; 25-OCT-2011 15:17:58; Dark ; 70.5; 88; 31Eta CMA ; 2.45; 20000;occ; 141; 0;50485
3; 816.9; 25-OCT-2011 15:26:42; Dark ; 64.0; 108; Alp Col ; 2.65; 15200;occ; 128; 0;50485
/nas3/ENVISAT/GOMOS/GOM_NL__0P/GOM_NL__0PNPDK20111025_165324_000008753108_00041_50486_5477.N1
1; 5.0; 25-OCT-2011 16:53:24; Dark ; 66.5; 132; 15Rho Pup ; 2.80; 6900;occ; 133; 0;50486
2; 295.3; 25-OCT-2011 16:58:14; Dark ; 69.5; 88; 31Eta CMA ; 2.45; 20000;occ; 139; 0;50486
3; 818.2; 25-OCT-2011 17:06:57; Dark ; 62.0; 108; Alp Col ; 2.65; 15200;occ; 124; 0;50486
/nas3/ENVISAT/GOMOS/GOM_NL__0P/GOM_NL__0PNPDK20111025_183340_000008763108_00042_50487_5478.N1
1; 6.7; 25-OCT-2011 18:33:40; Dark ; 66.0; 132; 15Rho Pup ; 2.80; 6900;occ; 132; 0;50487
2; 297.0; 25-OCT-2011 18:38:30; Dark ; 70.5; 88; 31Eta CMA ; 2.45; 20000;occ; 141; 0;50487
3; 819.3; 25-OCT-2011 18:47:12; Dark ; 63.5; 108; Alp Col ; 2.65; 15200;occ; 127; 0;50487
/nas3/ENVISAT/GOMOS/GOM_NL__0P/GOM_NL__0PNPDK20111025_201356_000008733108_00043_50488_5479.N1
1; 8.6; 25-OCT-2011 20:13:56; Dark ; 64.0; 132; 15Rho Pup ; 2.80; 6900;occ; 128; 0;50488
2; 298.8; 25-OCT-2011 20:18:46; Dark ; 68.0; 88; 31Eta CMA ; 2.45; 20000;occ; 136; 0;50488

```

3; 820.5; 25-OCT-2011 20:27:27; Dark ; 62.0; 108; Alp Col ; 2.65; 15200;occ; 124; 0;50488
/nas3/ENVISAT/GOMOS/GOM_NL__0P/GOM_NL__0PNPDE20111026_011443_000068873108_00046_50491_6588.N1
1; 14.0; 26-OCT-2011 01:14:43; Dark ; 67.0; 132; 15Rho Pup ; 2.80; 6900;occ; 134; 0;50491
2; 304.1; 26-OCT-2011 01:19:33; Dark ; 68.0; 88; 31Eta CMA ; 2.45; 20000;occ; 136; 0;50491
3; 823.7; 26-OCT-2011 01:28:12; Dark ; 64.0; 108; Alp Col ; 2.65; 15200;occ; 128; 0;50491
4; 6029.7; 26-OCT-2011 02:54:58; Dark ; 66.0; 132; 15Rho Pup ; 2.80; 6900;occ; 132; 0;50492
5; 6319.8; 26-OCT-2011 02:59:48; Dark ; 66.5; 88; 31Eta CMA ; 2.45; 20000;occ; 133; 0;50492
6; 6838.9; 26-OCT-2011 03:08:28; Dark ; 63.0; 108; Alp Col ; 2.65; 15200;occ; 126; 0;50492
/nas3/ENVISAT/GOMOS/GOM_NL__0P/GOM_NL__0PNPDE20111026_043514_000008713108_00048_50493_6589.N1
1; 17.5; 26-OCT-2011 04:35:14; Dark ; 64.0; 132; 15Rho Pup ; 2.80; 6900;occ; 128; 0;50493
2; 307.7; 26-OCT-2011 04:40:04; Dark ; 71.0; 88; 31Eta CMA ; 2.45; 20000;occ; 142; 0;50493
3; 826.1; 26-OCT-2011 04:48:43; Dark ; 62.5; 108; Alp Col ; 2.65; 15200;occ; 125; 0;50493
/nas3/ENVISAT/GOMOS/GOM_NL__0P/GOM_NL__0PNPDE20111026_061530_000008693108_00049_50494_6590.N1
1; 19.4; 26-OCT-2011 06:15:30; Dark ; 67.5; 132; 15Rho Pup ; 2.80; 6900;occ; 135; 0;50494
2; 309.5; 26-OCT-2011 06:20:20; Dark ; 68.0; 88; 31Eta CMA ; 2.45; 20000;occ; 136; 0;50494
3; 827.3; 26-OCT-2011 06:28:58; Dark ; 62.0; 108; Alp Col ; 2.65; 15200;occ; 124; 0;50494
/nas3/ENVISAT/GOMOS/GOM_NL__0P/GOM_NL__0PNPDK20111026_093601_000008683108_00051_50496_5481.N1
1; 22.9; 26-OCT-2011 09:36:01; Dark ; 66.0; 132; 15Rho Pup ; 2.80; 6900;occ; 132; 0;50496
2; 313.0; 26-OCT-2011 09:40:51; Dark ; 66.0; 88; 31Eta CMA ; 2.45; 20000;occ; 132; 0;50496
3; 829.7; 26-OCT-2011 09:49:28; Dark ; 62.0; 108; Alp Col ; 2.65; 15200;occ; 124; 0;50496
/nas3/ENVISAT/GOMOS/GOM_NL__0P/GOM_NL__0PNPDK20111026_111617_000008683108_00052_50497_5482.N1
1; 24.7; 26-OCT-2011 11:16:17; Dark ; 66.0; 132; 15Rho Pup ; 2.80; 6900;occ; 132; 0;50497
2; 314.8; 26-OCT-2011 11:21:07; Dark ; 66.0; 88; 31Eta CMA ; 2.45; 20000;occ; 132; 0;50497
3; 830.8; 26-OCT-2011 11:29:43; Dark ; 62.0; 108; Alp Col ; 2.65; 15200;occ; 124; 0;50497
/nas3/ENVISAT/GOMOS/GOM_NL__0P/GOM_NL__0PNPDK20111026_130123_000005773108_00053_50498_5483.N1
1; 316.7; 26-OCT-2011 13:01:23; Dark ; 63.0; 88; 31Eta CMA ; 2.45; 20000;occ; 126; 0;50498
2; 831.9; 26-OCT-2011 13:09:58; Dark ; 62.0; 108; Alp Col ; 2.65; 15200;occ; 124; 0;50498
/nas3/ENVISAT/GOMOS/GOM_NL__0P/GOM_NL__0PNPDK20111026_143648_000008663108_00054_50499_5484.N1
1; 28.3; 26-OCT-2011 14:36:48; Dark ; 67.5; 132; 15Rho Pup ; 2.80; 6900;occ; 135; 0;50499
2; 318.4; 26-OCT-2011 14:41:38; Dark ; 63.0; 88; 31Eta CMA ; 2.45; 20000;occ; 126; 0;50499
3; 832.9; 26-OCT-2011 14:50:13; Dark ; 62.0; 108; Alp Col ; 2.65; 15200;occ; 124; 0;50499
/nas3/ENVISAT/GOMOS/GOM_NL__0P/GOM_NL__0PNPDK20111026_161704_000008653108_00055_50500_5485.N1
1; 30.0; 26-OCT-2011 16:17:04; Dark ; 70.0; 132; 15Rho Pup ; 2.80; 6900;occ; 140; 0;50500
2; 320.4; 26-OCT-2011 16:21:54; Dark ; 61.0; 88; 31Eta CMA ; 2.45; 20000;occ; 122; 0;50500
3; 833.9; 26-OCT-2011 16:30:28; Dark ; 62.0; 108; Alp Col ; 2.65; 15200;occ; 124; 0;50500
/nas3/ENVISAT/GOMOS/GOM_NL__0P/GOM_NL__0PNPDK20111026_175720_000008643108_00056_50501_5486.N1
1; 31.9; 26-OCT-2011 17:57:20; Dark ; 67.0; 132; 15Rho Pup ; 2.80; 6900;occ; 134; 0;50501
2; 322.1; 26-OCT-2011 18:02:10; Dark ; 61.0; 88; 31Eta CMA ; 2.45; 20000;occ; 122; 0;50501
3; 835.1; 26-OCT-2011 18:10:43; Dark ; 61.5; 108; Alp Col ; 2.65; 15200;occ; 123; 0;50501
/nas3/ENVISAT/GOMOS/GOM_NL__0P/GOM_NL__0PNPDK20111027_125307_000000193108_00067_50512_5487.N1
1; 2026.2; 27-OCT-2011 12:53:07; Dark ; 19.5; 9; Alp Eri ; 0.45; 24000;occ; 39; 0;50512