

# GOMOS Daily Report 04-OCT-2011

## Level 0 and Level 1 products

### SUMMARY

#### [1. General Info](#)

#### [2. Summary of products arrived in PCF \(Product Control Facility\)](#)

[2.1 Level 0: products arrived in PCF during current month \(see template here\)](#)

[2.2 Level 0: plot of mission plan versus production during reporting period](#)

[2.3 Level 0: summary of missing occultations with respect to the plan](#)

[2.4 Level 1: products arrived in PCF during reporting period](#)

#### [3. Plot of Spectrometers and Photometers temperatures](#)

#### [4. Dark Charge monitoring](#)

[4.1 Products that did not use the Dark Sky Area observation for DC computation](#)

[4.2 Plot of Dark Charge](#)

#### [5. Demodulation correction and quality product information monitoring](#)

[5.1 Percentage of products with some flags set](#)

[5.2 Plot of quality information per product \(time dependant\)](#)

[5.3 Plot of quality information per product \(world map\)](#)

#### [6. Star tangent altitude lost](#)

[6.1 Statistics on star tangent altitude lost](#)

[6.2 Plot of star tangent altitude lost: DARK products](#)

[6.3 Plot of star tangent altitude lost: BRIGHT products](#)

[6.3 Plot of star tangent altitude lost: TWILIGHT products](#)

#### [7. Star Acquisition and Tracking Unit \(SATU\)](#)

[7.1 SATU plots \(dark limb\): 'X' and 'Y' axis](#)

[7.2 SATU Noise Equivalent Angle statistics](#)

[7.2.1 SATU NEA Statistics \(table\)](#)

[7.2.2 Daily SATU NEA STD \(dark limb\) - trend since 1st April 2006](#)

[8. Auxiliary Data Files used for the production reported in section 2.4](#)

## [Level 2 products](#)

---

This report presents the daily analysis on parameters extracted from GOMOS level 1b data (GOM\_TRA\_1P). It is intended to monitor some important parameters that will impact the quality of the level 2 products as the Spectrometers and Photometers CCD Temperatures and Dark Charge, SATU noise equivalent angle... A list of level 0 products (and content) that have arrived during the actual month to the PCF is also given.

Item	Value
Time of report generation	06OCT2011 07:00:36
Data source version	GOMOS/6.01
Start time of products	04OCT2011 03:07:40
Stop time of products	04OCT2011 15:35:58
Store outputs in DB	Yes
Nb of level 1b prods	19
Nb of prods with errors	0

## 2. Summary of products arrived in PCF (Product Control Facility)

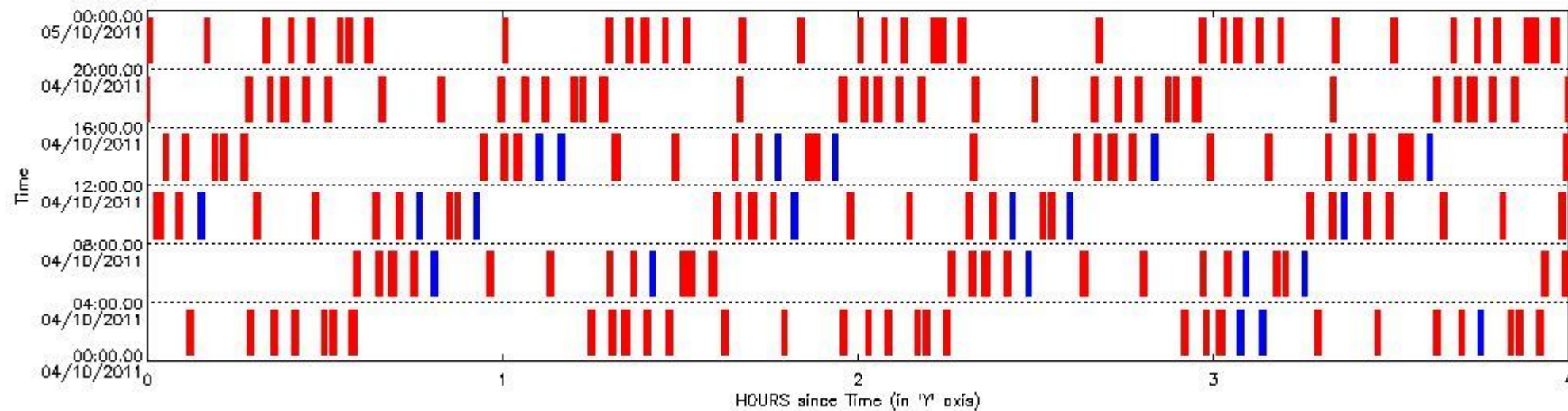
### 2.1 Level 0 products arrived in PCF (see template [here](#))

### 2.2 Plot of mission plan versus Level 0 production arrived in PCF during reporting period

Red segments are missing products.

Blue segments are available products.

Green segments are calibration measurements (not available products to users).



### 2.3 Summary of missing occultations (red segments in previous plot)

UTC start time	Star name	Star ID	Orbit
04-OCT-2011 00:06:41	16BetCet	52	50174
04-OCT-2011 00:16:48	88GamPeg	140	50174
04-OCT-2011 00:20:53	21AlpAnd	58	50174
04-OCT-2011 00:24:14	43BetAnd	53	50174
04-OCT-2011 00:29:15	18AlpCas	68	50174
04-OCT-2011 00:30:40	27GamCas	76	50174
04-OCT-2011 00:34:02	23GamPer	160	50174
04-OCT-2011 01:14:17	15RhoPup	132	50174
04-OCT-2011 01:17:57	ZetPup	70	50174
04-OCT-2011 01:20:04	21EpsCMa	23	50174
04-OCT-2011 01:23:49	DSA1059	0	50175
04-OCT-2011 01:27:27	AlpCol	108	50175
04-OCT-2011 01:36:47	The1Eri	157	50175
04-OCT-2011 01:46:55	16BetCet	52	50175
04-OCT-2011 01:57:02	88GamPeg	140	50175

04-OCT-2011 02:01:07	21AlpAnd	58	50175
04-OCT-2011 02:04:28	43BetAnd	53	50175
04-OCT-2011 02:09:29	18AlpCas	68	50175
04-OCT-2011 02:10:54	27GamCas	76	50175
04-OCT-2011 02:14:15	23GamPer	160	50175
04-OCT-2011 02:54:32	15RhoPup	132	50175
04-OCT-2011 02:58:11	ZetPup	70	50175
04-OCT-2011 03:00:19	21EpsCMA	23	50175
04-OCT-2011 03:17:02	The1Eri	157	50176
04-OCT-2011 03:27:09	16BetCet	52	50176
04-OCT-2011 03:37:16	88GamPeg	140	50176
04-OCT-2011 03:41:21	21AlpAnd	58	50176
04-OCT-2011 03:49:43	18AlpCas	68	50176
04-OCT-2011 03:51:08	27GamCas	76	50176
04-OCT-2011 03:54:28	23GamPer	160	50176
04-OCT-2011 04:34:47	15RhoPup	132	50176
04-OCT-2011 04:38:26	ZetPup	70	50176
04-OCT-2011 04:40:34	21EpsCMA	23	50176
04-OCT-2011 04:44:19	DSA1059	0	50177
04-OCT-2011 04:57:17	The1Eri	157	50177
04-OCT-2011 05:07:23	16BetCet	52	50177
04-OCT-2011 05:17:30	88GamPeg	140	50177
04-OCT-2011 05:21:34	21AlpAnd	58	50177
04-OCT-2011 05:29:56	18AlpCas	68	50177
04-OCT-2011 05:31:21	27GamCas	76	50177
04-OCT-2011 05:34:41	23GamPer	160	50177
04-OCT-2011 06:15:02	15RhoPup	132	50177
04-OCT-2011 06:18:41	ZetPup	70	50177
04-OCT-2011 06:20:50	21EpsCMA	23	50177
04-OCT-2011 06:24:34	DSA1059	0	50178
04-OCT-2011 06:37:31	The1Eri	157	50178
04-OCT-2011 06:47:38	16BetCet	52	50178
04-OCT-2011 06:57:44	88GamPeg	140	50178
04-OCT-2011 07:01:48	21AlpAnd	58	50178
04-OCT-2011 07:10:10	18AlpCas	68	50178
04-OCT-2011 07:11:35	27GamCas	76	50178
04-OCT-2011 07:55:17	15RhoPup	132	50178
04-OCT-2011 07:58:55	ZetPup	70	50178
04-OCT-2011 08:01:05	21EpsCMA	23	50178
04-OCT-2011 08:04:49	DSA1059	0	50179
04-OCT-2011 08:17:46	The1Eri	157	50179
04-OCT-2011 08:27:52	16BetCet	52	50179
04-OCT-2011 08:37:58	88GamPeg	140	50179
04-OCT-2011 08:42:02	21AlpAnd	58	50179
04-OCT-2011 08:50:24	18AlpCas	68	50179
04-OCT-2011 08:51:49	27GamCas	76	50179
04-OCT-2011 09:35:32	15RhoPup	132	50179
04-OCT-2011 09:39:10	ZetPup	70	50179
04-OCT-2011 09:41:20	21EpsCMA	23	50179
04-OCT-2011 09:45:04	DSA1059	0	50180
04-OCT-2011 09:58:00	The1Eri	157	50180
04-OCT-2011 10:08:06	16BetCet	52	50180
04-OCT-2011 10:18:11	88GamPeg	140	50180
04-OCT-2011 10:22:16	21AlpAnd	58	50180
04-OCT-2011 10:30:37	18AlpCas	68	50180
04-OCT-2011 10:32:02	27GamCas	76	50180
04-OCT-2011 11:15:47	15RhoPup	132	50180
04-OCT-2011 11:19:25	ZetPup	70	50180
04-OCT-2011 11:25:20	DSA1059	0	50181

04-OCT-2011 11:28:59	AlpCol	108	50181
04-OCT-2011 11:38:15	The1Eri	157	50181
04-OCT-2011 11:48:20	16BetCet	52	50181
04-OCT-2011 11:58:25	88GamPeg	140	50181
04-OCT-2011 12:02:29	21AlpAnd	58	50181
04-OCT-2011 12:05:48	43BetAnd	53	50181
04-OCT-2011 12:10:51	18AlpCas	68	50181
04-OCT-2011 12:12:16	27GamCas	76	50181
04-OCT-2011 12:15:34	23GamPer	160	50181
04-OCT-2011 12:56:02	15RhoPup	132	50181
04-OCT-2011 12:59:40	ZetPup	70	50181
04-OCT-2011 13:01:51	21EpsCMa	23	50181
04-OCT-2011 13:18:30	The1Eri	157	50182
04-OCT-2011 13:28:34	16BetCet	52	50182
04-OCT-2011 13:38:39	88GamPeg	140	50182
04-OCT-2011 13:42:43	21AlpAnd	58	50182
04-OCT-2011 13:51:05	18AlpCas	68	50182
04-OCT-2011 13:52:29	27GamCas	76	50182
04-OCT-2011 14:18:57	17EpsLeo	166	50182
04-OCT-2011 14:36:17	15RhoPup	132	50182
04-OCT-2011 14:39:54	ZetPup	70	50182
04-OCT-2011 14:42:07	21EpsCMa	23	50182
04-OCT-2011 14:45:50	DSA1059	0	50183
04-OCT-2011 14:58:44	The1Eri	157	50183
04-OCT-2011 15:08:48	16BetCet	52	50183
04-OCT-2011 15:18:53	88GamPeg	140	50183
04-OCT-2011 15:22:57	21AlpAnd	58	50183
04-OCT-2011 15:26:15	43BetAnd	53	50183
04-OCT-2011 15:31:18	18AlpCas	68	50183
04-OCT-2011 15:32:43	27GamCas	76	50183
04-OCT-2011 15:59:11	17EpsLeo	166	50183
04-OCT-2011 16:16:31	15RhoPup	132	50183
04-OCT-2011 16:20:09	ZetPup	70	50183
04-OCT-2011 16:22:22	21EpsCMa	23	50183
04-OCT-2011 16:26:05	DSA1059	0	50184
04-OCT-2011 16:29:46	AlpCol	108	50184
04-OCT-2011 16:38:59	The1Eri	157	50184
04-OCT-2011 16:49:02	16BetCet	52	50184
04-OCT-2011 16:59:07	88GamPeg	140	50184
04-OCT-2011 17:03:11	21AlpAnd	58	50184
04-OCT-2011 17:06:28	43BetAnd	53	50184
04-OCT-2011 17:11:32	18AlpCas	68	50184
04-OCT-2011 17:12:57	27GamCas	76	50184
04-OCT-2011 17:16:13	23GamPer	160	50184
04-OCT-2011 17:39:25	17EpsLeo	166	50184
04-OCT-2011 17:56:46	15RhoPup	132	50184
04-OCT-2011 18:00:24	ZetPup	70	50184
04-OCT-2011 18:02:37	21EpsCMa	23	50184
04-OCT-2011 18:06:20	DSA1059	0	50185
04-OCT-2011 18:10:01	AlpCol	108	50185
04-OCT-2011 18:19:14	The1Eri	157	50185
04-OCT-2011 18:29:16	16BetCet	52	50185
04-OCT-2011 18:39:21	88GamPeg	140	50185
04-OCT-2011 18:43:24	21AlpAnd	58	50185
04-OCT-2011 18:46:42	43BetAnd	53	50185
04-OCT-2011 18:51:45	18AlpCas	68	50185
04-OCT-2011 18:53:10	27GamCas	76	50185
04-OCT-2011 18:56:26	23GamPer	160	50185
04-OCT-2011 19:19:39	17EpsLeo	166	50185

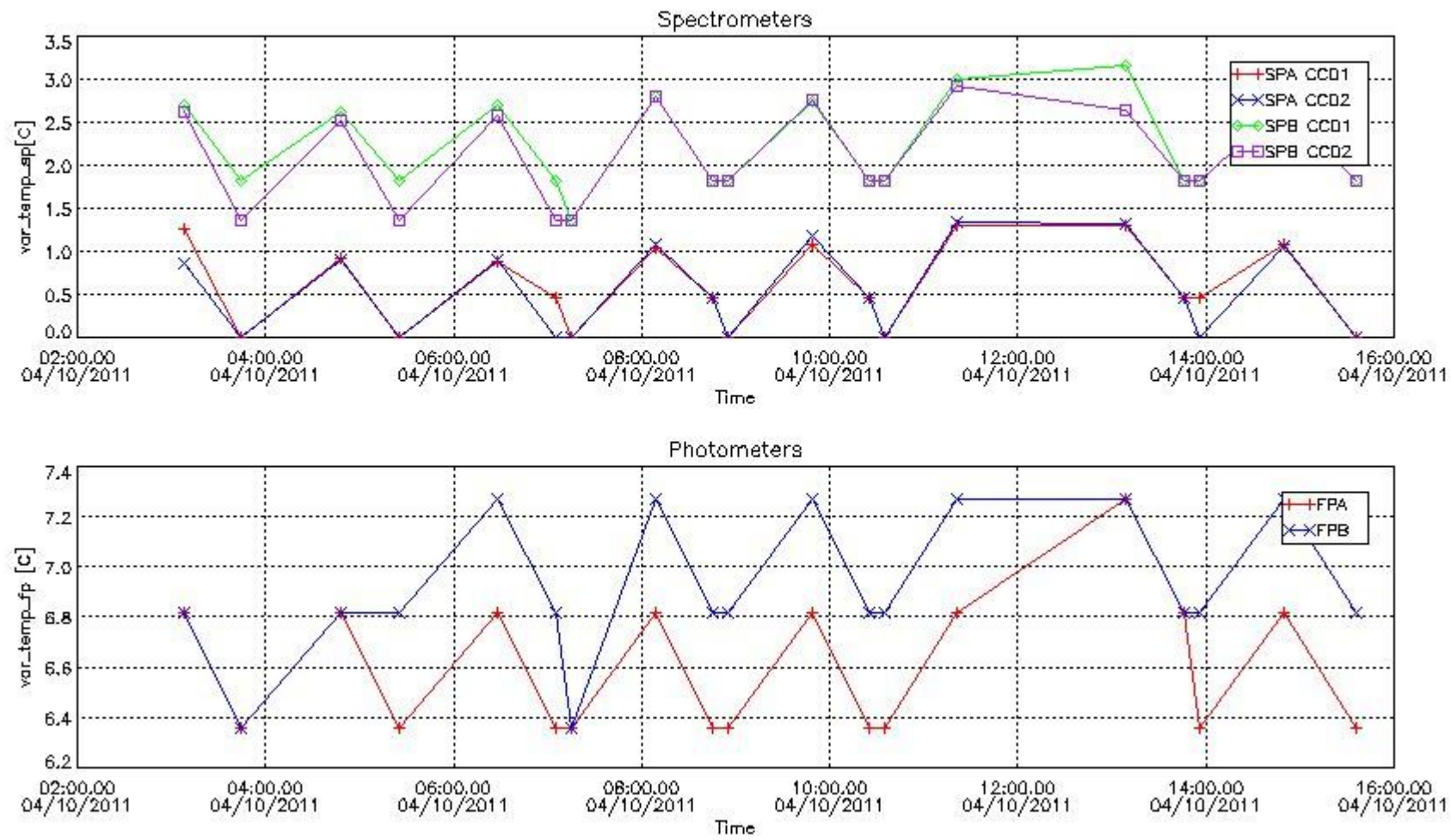
04-OCT-2011 19:37:01	15RhoPup	132	50185
04-OCT-2011 19:40:38	ZetPup	70	50185
04-OCT-2011 19:42:53	21EpsCMa	23	50185
04-OCT-2011 19:46:35	DSA1059	0	50186
04-OCT-2011 19:50:17	AlpCol	108	50186
04-OCT-2011 19:59:28	The1Eri	157	50186
04-OCT-2011 20:09:30	16BetCet	52	50186
04-OCT-2011 20:19:34	88GamPeg	140	50186
04-OCT-2011 20:23:38	21AlpAnd	58	50186
04-OCT-2011 20:26:55	43BetAnd	53	50186
04-OCT-2011 20:31:59	18AlpCas	68	50186
04-OCT-2011 20:33:24	27GamCas	76	50186
04-OCT-2011 20:36:39	23GamPer	160	50186
04-OCT-2011 20:59:53	17EpsLeo	166	50186
04-OCT-2011 21:17:16	15RhoPup	132	50186
04-OCT-2011 21:20:53	ZetPup	70	50186
04-OCT-2011 21:23:08	21EpsCMa	23	50186
04-OCT-2011 21:26:51	DSA1059	0	50187
04-OCT-2011 21:30:32	AlpCol	108	50187
04-OCT-2011 21:39:43	The1Eri	157	50187
04-OCT-2011 21:49:44	16BetCet	52	50187
04-OCT-2011 21:59:48	88GamPeg	140	50187
04-OCT-2011 22:03:52	21AlpAnd	58	50187
04-OCT-2011 22:07:08	43BetAnd	53	50187
04-OCT-2011 22:12:13	18AlpCas	68	50187
04-OCT-2011 22:13:38	27GamCas	76	50187
04-OCT-2011 22:16:52	23GamPer	160	50187
04-OCT-2011 22:40:08	17EpsLeo	166	50187
04-OCT-2011 22:57:31	15RhoPup	132	50187
04-OCT-2011 23:01:08	ZetPup	70	50187
04-OCT-2011 23:03:23	21EpsCMa	23	50187
04-OCT-2011 23:07:06	DSA1059	0	50188
04-OCT-2011 23:10:48	AlpCol	108	50188
04-OCT-2011 23:19:57	The1Eri	157	50188
04-OCT-2011 23:29:58	16BetCet	52	50188
04-OCT-2011 23:40:02	88GamPeg	140	50188
04-OCT-2011 23:44:06	21AlpAnd	58	50188
04-OCT-2011 23:47:22	43BetAnd	53	50188
04-OCT-2011 23:52:26	18AlpCas	68	50188
04-OCT-2011 23:53:51	27GamCas	76	50188
04-OCT-2011 23:57:05	23GamPer	160	50188

#### 2.4 Summary of processed GOM\_TRA\_1P products

Nr	Filename	UTC Start time	Limb	Duration	Star Id	Star Name	Star Mag	Star Temp	Nb Meas	Orbit	Prod. error
1	GOM_TRA_1PNPDE20111004_030740_000000623107_00162_50176_4124.N1	04-OCT-2011 03:07:40	Dark	61.500	108	Alp Col	2.6520	15200.	123	50176	No
2	GOM_TRA_1PNPDE20111004_034439_000000463107_00162_50176_4125.N1	04-OCT-2011 03:44:39	Bright	46.000	53	43Bet And	2.0480	3300.0	92	50176	No
3	GOM_TRA_1PNPDE20111004_044756_000000623107_00163_50177_4149.N1	04-OCT-2011 04:47:56	Dark	62.000	108	Alp Col	2.6520	15200.	124	50177	No
4	GOM_TRA_1PNPDE20111004_052453_000000453107_00163_50177_4150.N1	04-OCT-2011 05:24:53	Bright	44.500	53	43Bet And	2.0480	3300.0	89	50177	No
5	GOM_TRA_1PNPDE20111004_062811_000000623107_00164_50178_4172.N1	04-OCT-2011 06:28:11	Dark	62.000	108	Alp Col	2.6520	15200.	124	50178	No
6	GOM_TRA_1PNPDE20111004_070506_000000483107_00164_50178_4173.N1	04-OCT-2011 07:05:06	Bright	47.500	53	43Bet And	2.0480	3300.0	95	50178	No
7	GOM_TRA_1PNPDE20111004_071453_000000513107_00164_50178_4174.N1	04-OCT-2011 07:14:53	Bright	51.000	160	23Gam Per	2.9300	4700.0	102	50178	No
8	GOM_TRA_1PNPDK20111004_080827_000000623107_00165_50179_3070.N1	04-OCT-2011 08:08:27	Dark	62.000	108	Alp Col	2.6520	15200.	124	50179	No
9	GOM_TRA_1PNPDK20111004_084520_000000483107_00165_50179_3114.N1	04-OCT-2011 08:45:20	Bright	47.500	53	43Bet And	2.0480	3300.0	95	50179	No
10	GOM_TRA_1PNPDK20111004_085506_000000493107_00165_50179_3115.N1	04-OCT-2011 08:55:06	Bright	49.000	160	23Gam Per	2.9300	4700.0	98	50179	No
11	GOM_TRA_1PNPDK20111004_094842_000000613107_00166_50180_3116.N1	04-OCT-2011 09:48:42	Dark	61.000	108	Alp Col	2.6520	15200.	122	50180	No
12	GOM_TRA_1PNPDK20111004_102533_000000483107_00166_50180_3154.N1	04-OCT-2011 10:25:33	Bright	47.500	53	43Bet And	2.0480	3300.0	95	50180	No
13	GOM_TRA_1PNPDK20111004_103519_000000523107_00166_50180_3155.N1	04-OCT-2011 10:35:19	Bright	51.500	160	23Gam Per	2.9300	4700.0	103	50180	No

14	GOM_TRA_1PNPDK20111004_112134_000000553107_00166_50180_3156.N1	04-OCT-2011 11:21:34	Dark	55.000	23	21Eps CMa	1.5020	26000.	110	50180	No
15	GOM_TRA_1PNPDK20111004_130913_000000623107_00168_50182_3200.N1	04-OCT-2011 13:09:13	Dark	62.000	108	Alp Col	2.6520	15200.	124	50182	No
16	GOM_TRA_1PNPDK20111004_134600_000000433107_00168_50182_3240.N1	04-OCT-2011 13:46:00	Bright	42.500	53	43Bet And	2.0480	3300.0	85	50182	No
17	GOM_TRA_1PNPDK20111004_135545_000000483107_00168_50182_3241.N1	04-OCT-2011 13:55:45	Bright	47.500	160	23Gam Per	2.9300	4700.0	95	50182	No
18	GOM_TRA_1PNPDK20111004_144928_000000633107_00169_50183_3242.N1	04-OCT-2011 14:49:28	Dark	62.500	108	Alp Col	2.6520	15200.	125	50183	No
19	GOM_TRA_1PNPDK20111004_153558_000000493107_00169_50183_3262.N1	04-OCT-2011 15:35:58	Bright	48.500	160	23Gam Per	2.9300	4700.0	97	50183	No

### 3. Plot of GOMOS spectrometers and photometers temperatures from level 1b data



### 4. Overview of dark signal processing per product

The Dark Charge (DC) is a temperature-dependant signal added to the useful measurements and it is therefore subtracted from them during the processing. There are two phenomena that produce a continuous increase of the DC: the "hot pixels" (a pixel is "hot" when its DC exceeds by a significant amount its value measured on ground at the same temperature) and the "Random Telegraphic Signal" (abrupt change positive or negative of the CCD pixel signal, random in time, affecting only the DC part of the signal and not the photon generated signal).

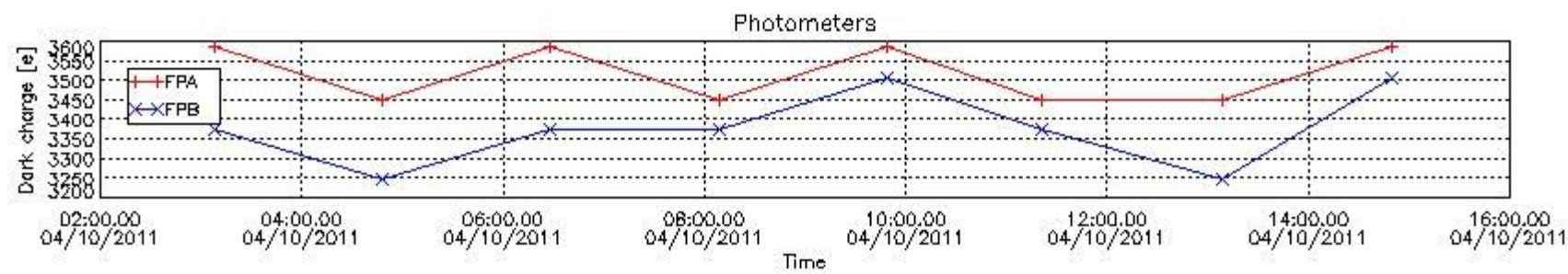
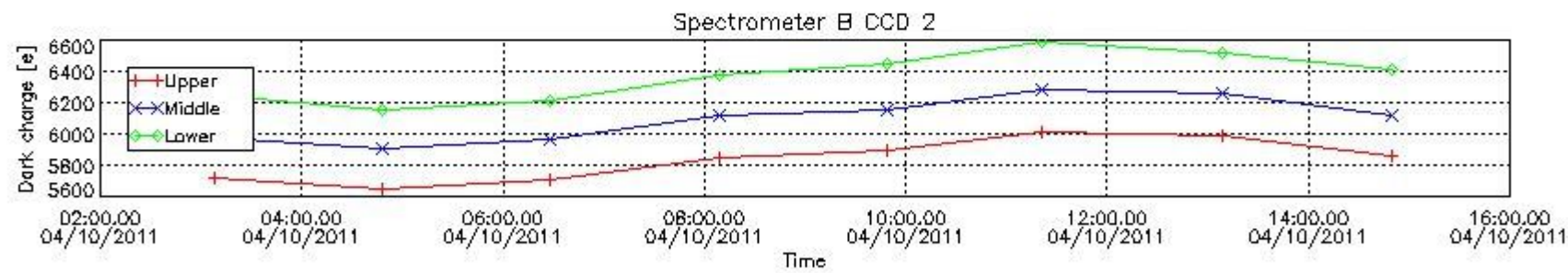
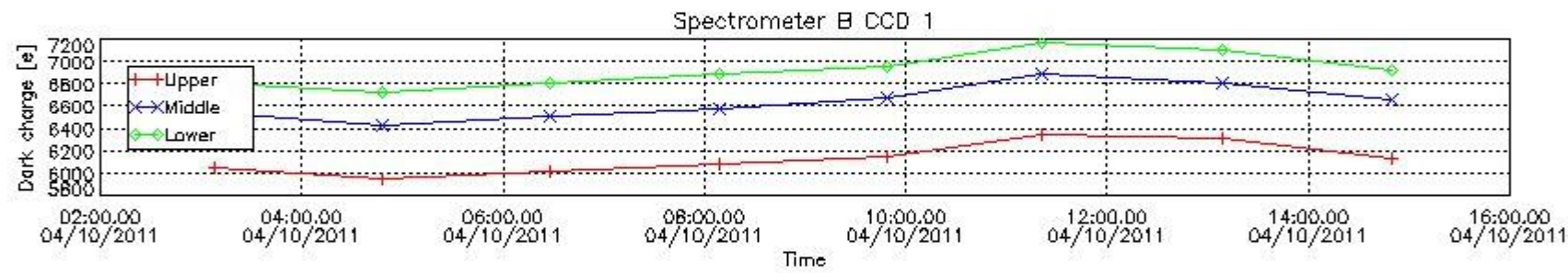
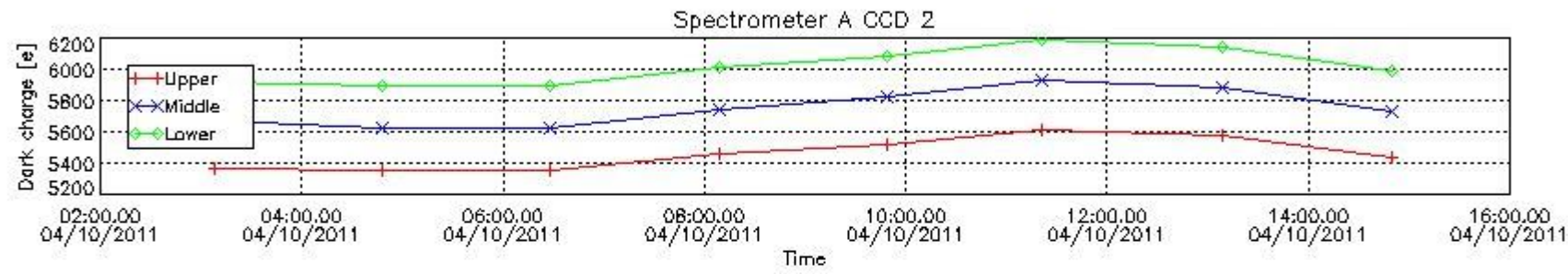
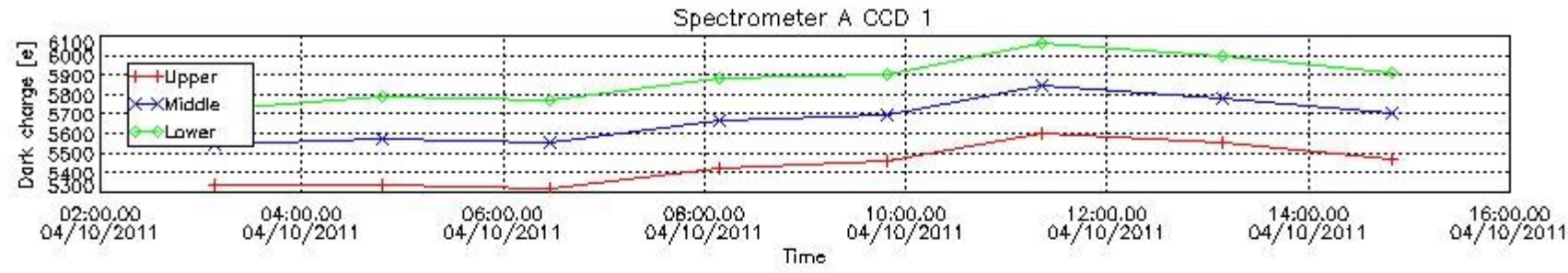
In this section a list of products that did not use the Dark Sky Area (DSA) observation for the DC computation is given. It is also provided the mean DC plot per product for dark limb products with no error flag set.

#### 4.1 These products did not use the DSA observation for DC computation:

Product name	DC information
GOM_TRA_1PNPDE20111004_044756_000000623107_00163_50177_4149.N1	DC map used
GOM_TRA_1PNPDE20111004_052453_000000453107_00163_50177_4150.N1	DC map used
GOM_TRA_1PNPDE20111004_062811_000000623107_00164_50178_4172.N1	DC map used
GOM_TRA_1PNPDE20111004_070506_000000483107_00164_50178_4173.N1	DC map used

GOM_TRA_1PNPDE20111004_071453_000000513107_00164_50178_4174.N1	DC map used
GOM_TRA_1PNPDK20111004_080827_000000623107_00165_50179_3070.N1	DC map used
GOM_TRA_1PNPDK20111004_084520_000000483107_00165_50179_3114.N1	DC map used
GOM_TRA_1PNPDK20111004_085506_000000493107_00165_50179_3115.N1	DC map used
GOM_TRA_1PNPDK20111004_094842_000000613107_00166_50180_3116.N1	DC map used
GOM_TRA_1PNPDK20111004_102533_000000483107_00166_50180_3154.N1	DC map used
GOM_TRA_1PNPDK20111004_103519_000000523107_00166_50180_3155.N1	DC map used
GOM_TRA_1PNPDK20111004_112134_000000553107_00166_50180_3156.N1	DC map used
GOM_TRA_1PNPDK20111004_134600_000000433107_00168_50182_3240.N1	DC map used
GOM_TRA_1PNPDK20111004_135545_000000483107_00168_50182_3241.N1	DC map used
GOM_TRA_1PNPDK20111004_144928_000000633107_00169_50183_3242.N1	DC map used
GOM_TRA_1PNPDK20111004_153558_000000493107_00169_50183_3262.N1	DC map used

*4.2 Plot of mean dark charges per product: only products in DARK limb conditions without errors are used*



## 5. Demodulation flag and quality information monitoring

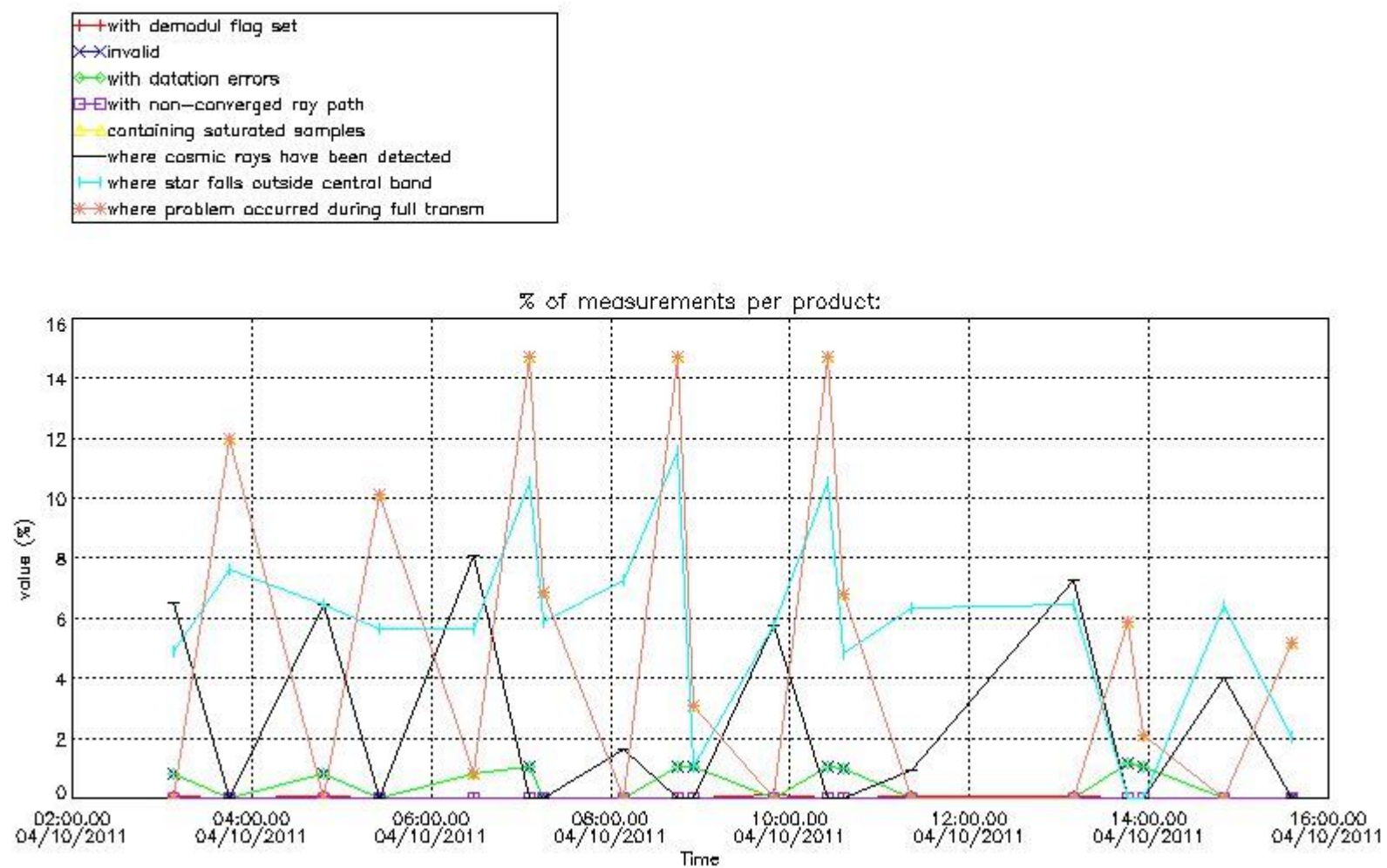
In this section it is presented the modulation information extracted from the pcd (product confidence data) at measurement level and information extracted from the Quality Summary dataset. Only products without errors (error flag in the MPH set to "0") are used.

### 5.1 Percentage of products during reporting period with:

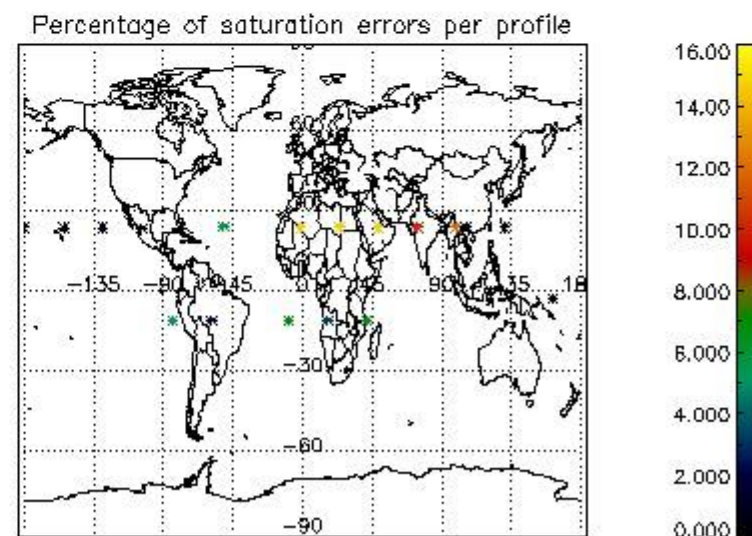
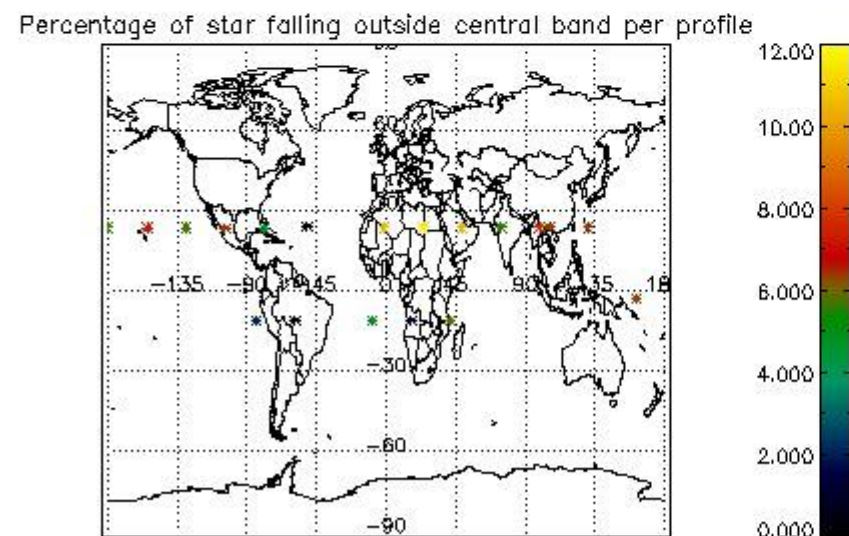
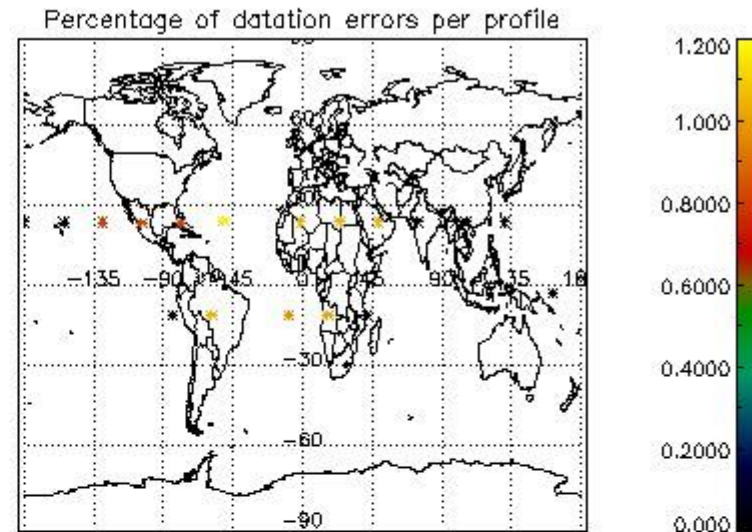
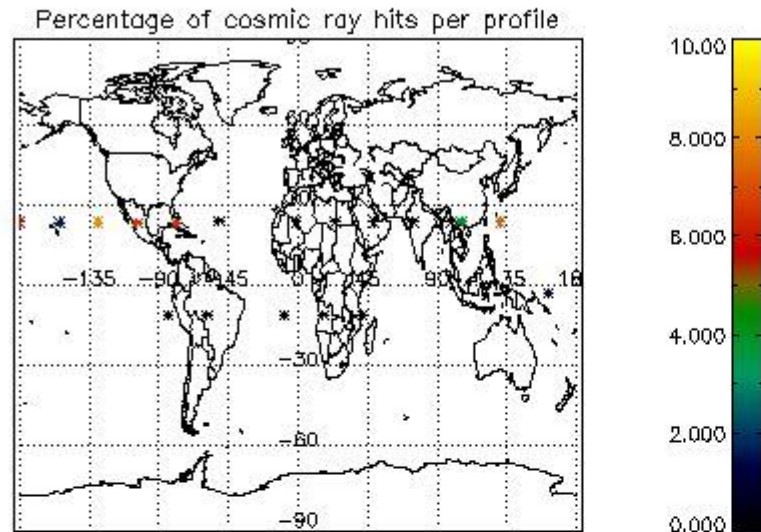


At least one measurement with demodulation flag set:	36.8421 %
Reference spectrum computed from DB:	0.00000 %
Reference spectrum with small number of measurements:	0.00000 %
SATU data not used:	57.8947 %

### 5.2 Plot quality information per product (time dependant)



### 5.3 Plot quality information per product (world map)



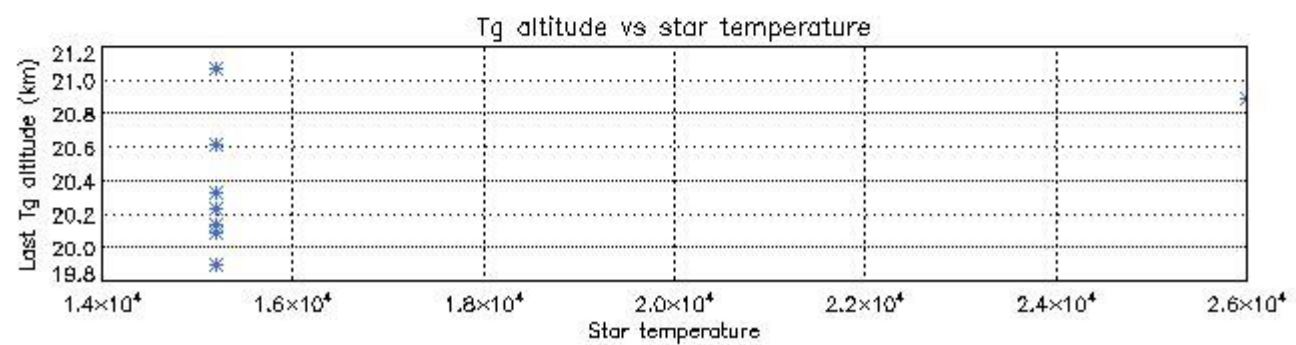
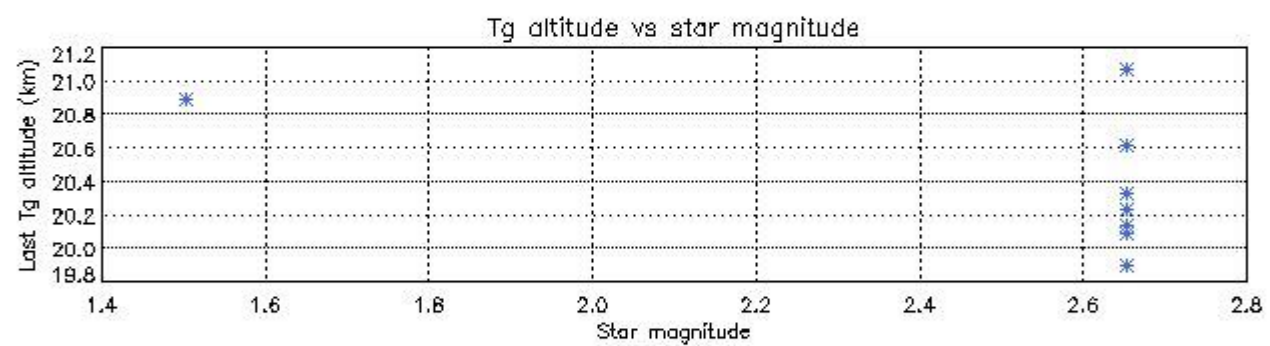
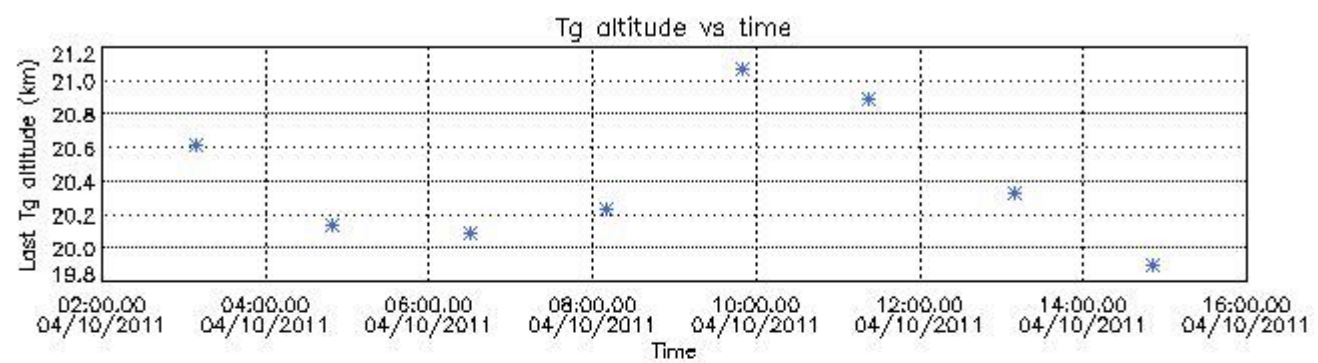
## 6. Statistics and plot of tangent altitude of the last measurement (DARK & BRIGHT products without errors)

### 6.1 Statistics on tangent altitude lost:

Statistics	DARK	BRIGHT	TWILIGHT
Mean:	20.406	21.971	NaN
St. deviation:	0.41022	3.7802	NaN
Maximum:	21.070	27.948	NaN
Minimum:	19.895	17.291	NaN
Number of data:	8.0000	11.000	NaN

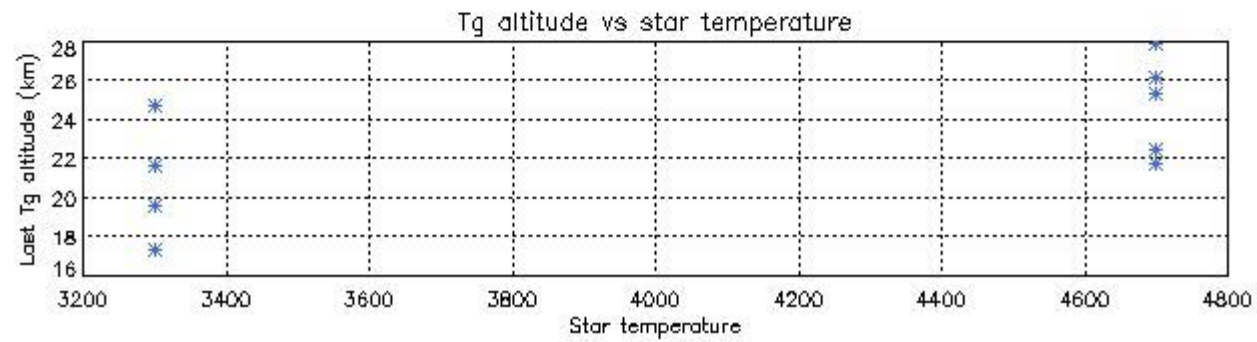
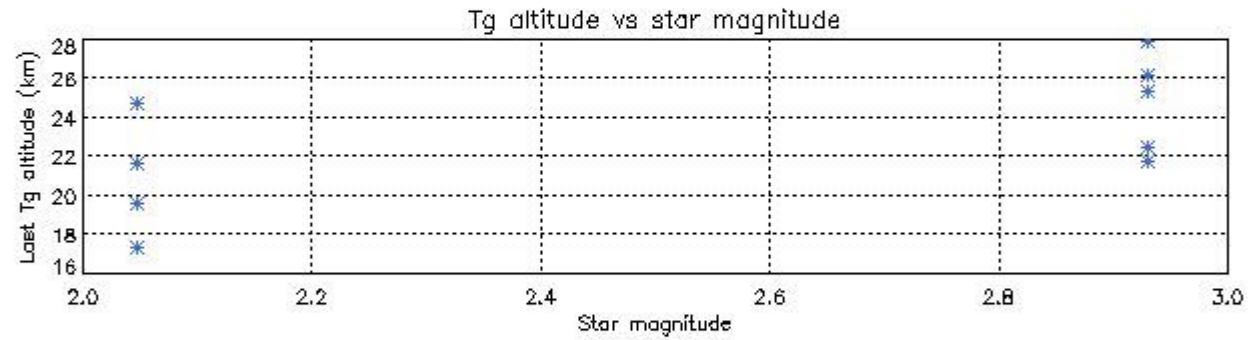
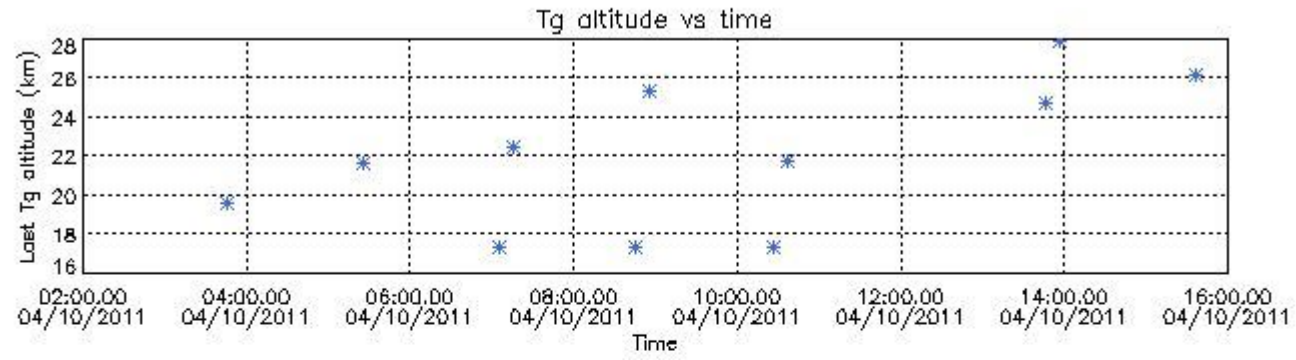
### 6.2 Plot for DARK limb products

Tangent altitude at which the star is lost



6.3 Plot for BRIGHT limb products

## Tangent altitude at which the star is lost

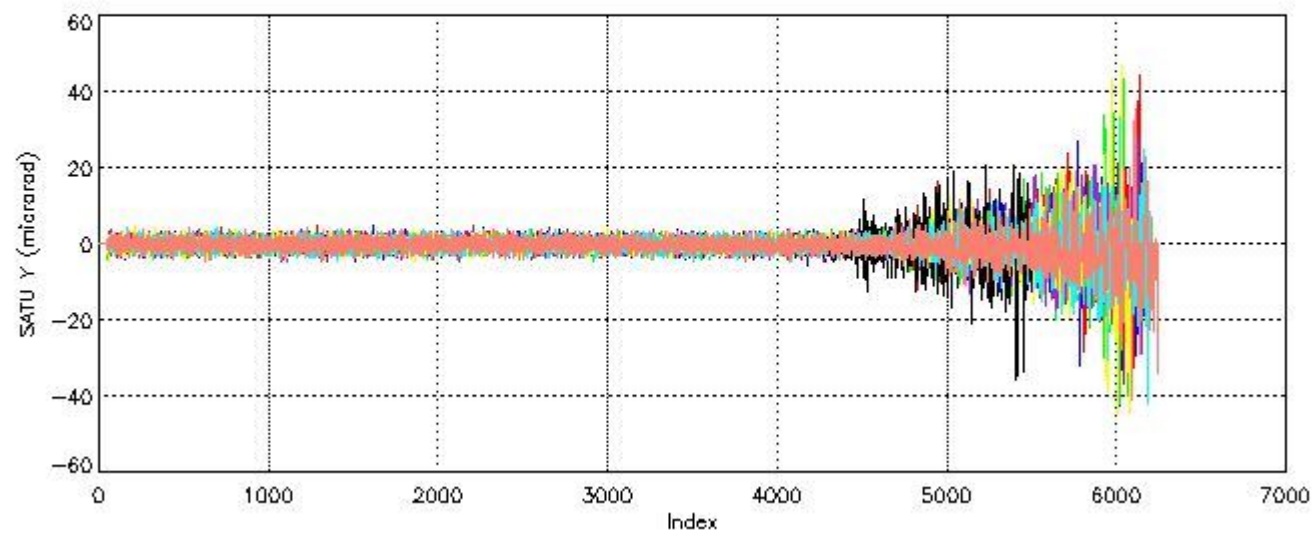
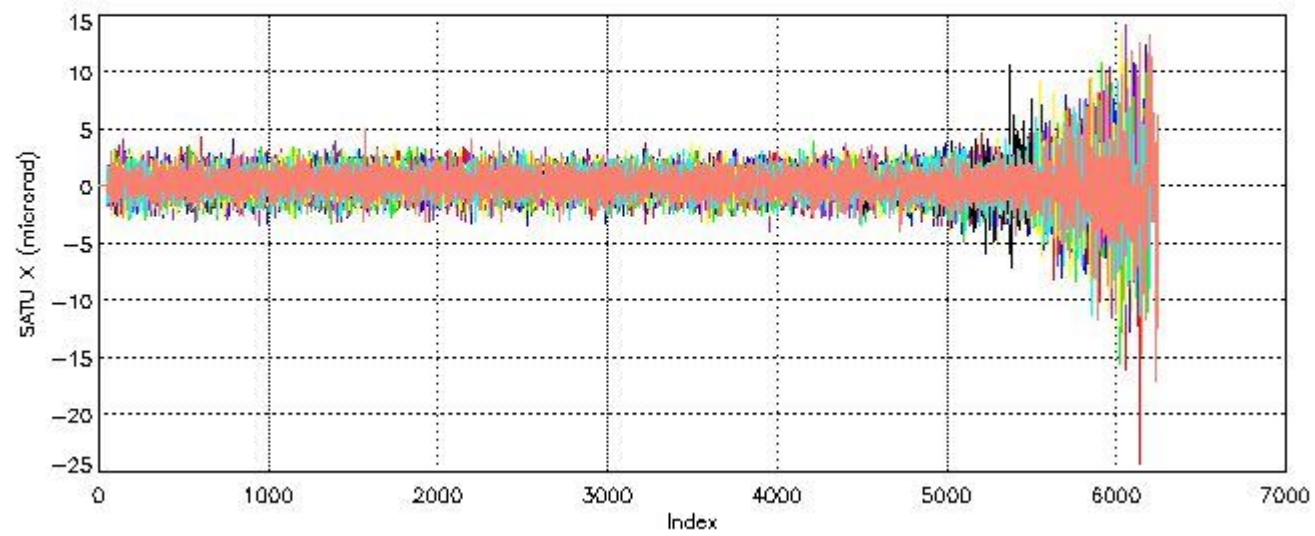


## 7. Star Acquisition and Tracking Unit (SATU)

The Star Acquisition and Tracking Unit (SATU) analyses the position of the tracked star beam collected by the GOMOS telescope and deflected by the optical beam dispatcher. The main function of the SATU is to detect a star, provide its image position to the science data electronics and to help the pointing function to keep the star image at a fixed position. In tracking mode the SATU data is recorded with a frequency of 100 Hz.

### 7.1 SATU 'X' and 'Y' axis plots (dark limb)

SATU CCD 'X' and 'Y' axis plots are provided in order to detect any abnormal behaviour of the tracking system. For every occultation (color) the plot should remain stable (with some noise) until we are deep in the atmosphere where big fluctuations are registered due to the refractive effects.



## 7.2 Statistics on SATU Noise Equivalent Angle (NEA) for DARK (D) and BRIGHT (B) products above 105 kms

The Star Acquisition and Tracking Unit (it is the CCD that tracks the star while it is occulted) Noise Equivalent Angle consists of the statistical angular variation of the SATU data above the atmosphere.

Statistics (in microradians) above 105 km are computed for every occultation, giving four values per occultation: one in the 'X' direction and one in the 'Y' direction for dark and bright limbs. A mean value per day in every direction and limb is calculated and monitored in order to assess instrument performance in terms of star pointing.

### 7.2.1 SATU NEA Statistics (table)

Statistics	SATU X (D)	SATU Y (D)	SATU X (B)	SATU Y (B)
Mean:	0.29046	-0.21790	0.21992	-0.19771
St. deviation:	0.94555	1.2514	0.58762	0.65875
Maximum:	4.3000	4.9000	8.9000	4.6000
Minimum:	-3.4000	-5.0000	-20.000	-4.7000

Number of data:	11850.	11850.	13100.	13100.
90Percentile:	1.5000	1.4000	1.0000	0.70000

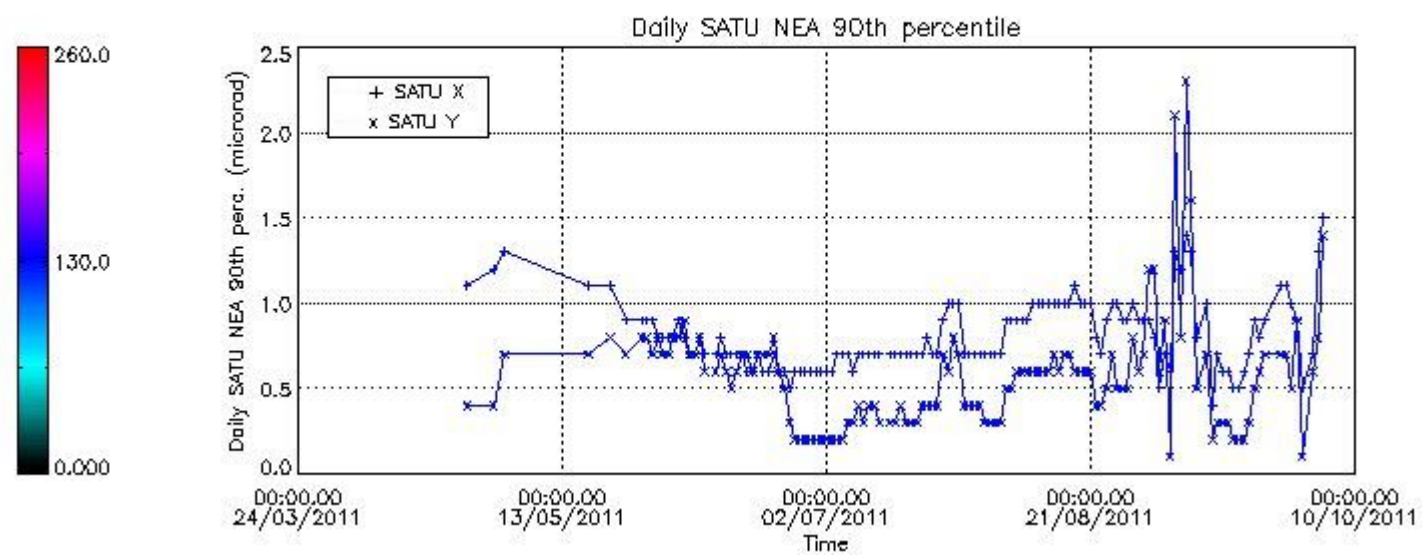
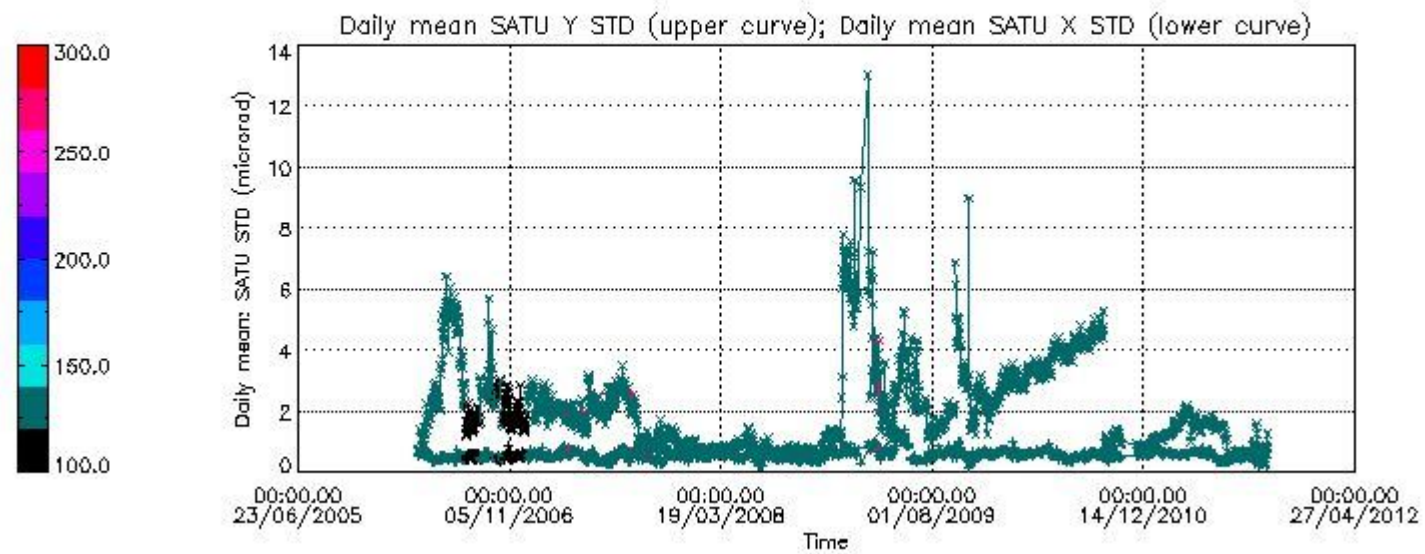
### 7.2.2 Trend of daily SATU NEA St. deviation since 1st April 2006 (dark limb) and of daily SATU NEA 90th percentile since May 2011

The long term trend of the SATU 'X' and 'Y' standard deviations should be constant during the whole mission.

The colorbar represents the start tangent altitude (km) of the occultations.

Upper curve: STD of SATU Y axis

Lower curve: STD of SATU X axis



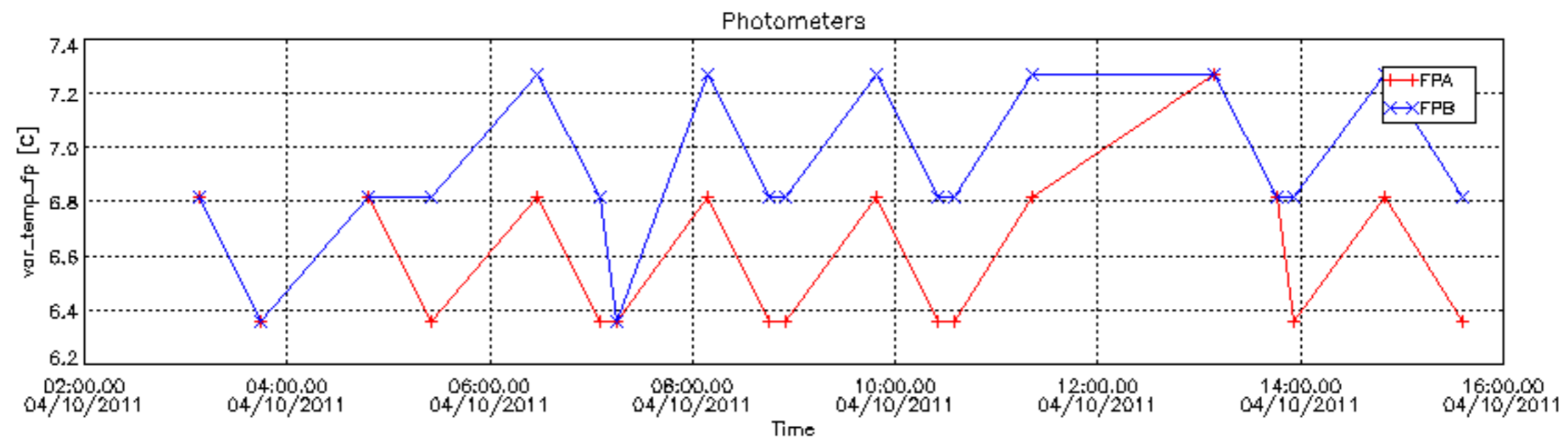
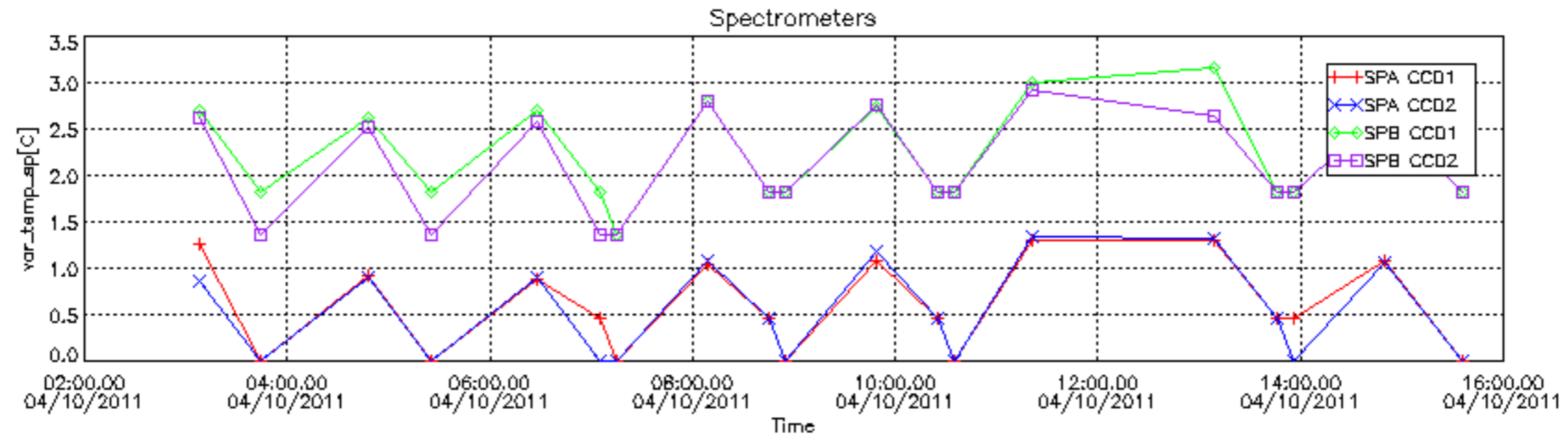
### 8. Auxiliary Data Files used for the production reported in section 2.4

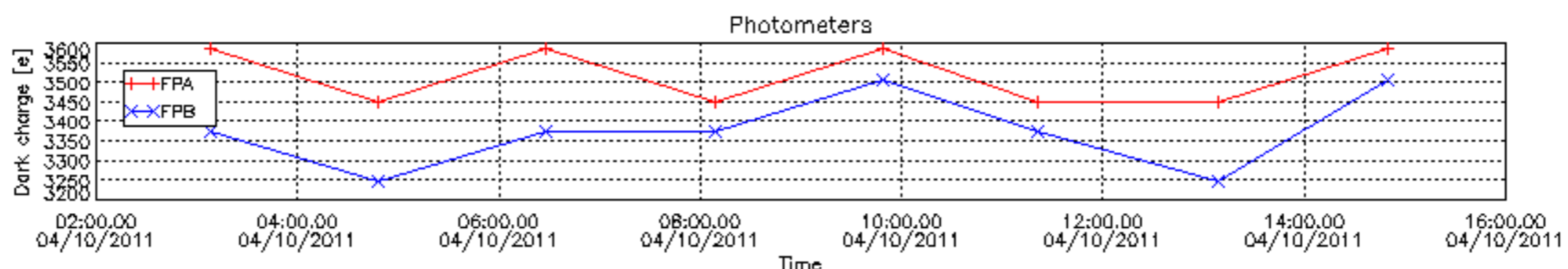
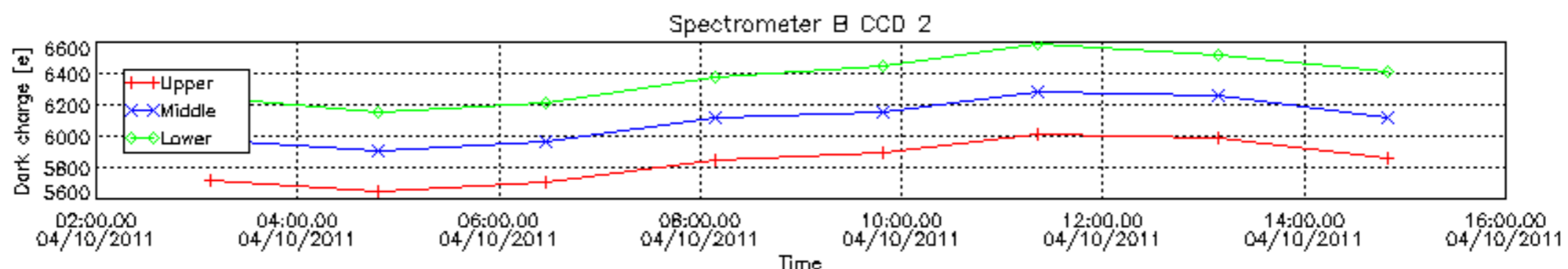
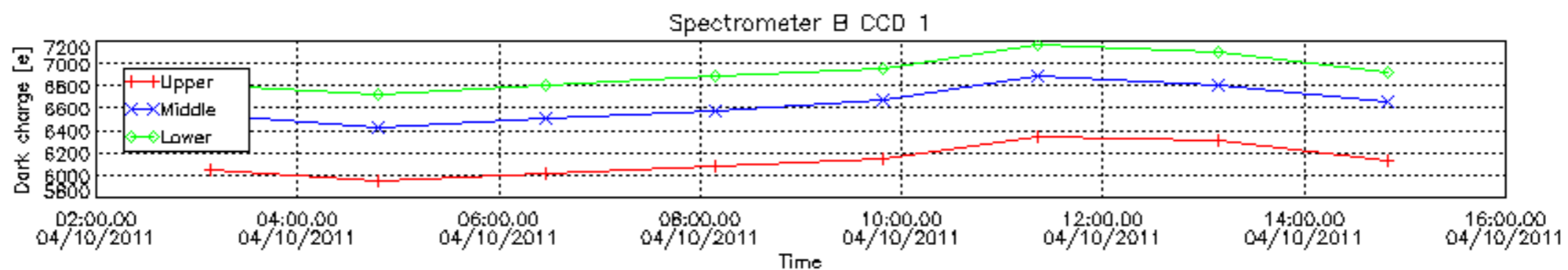
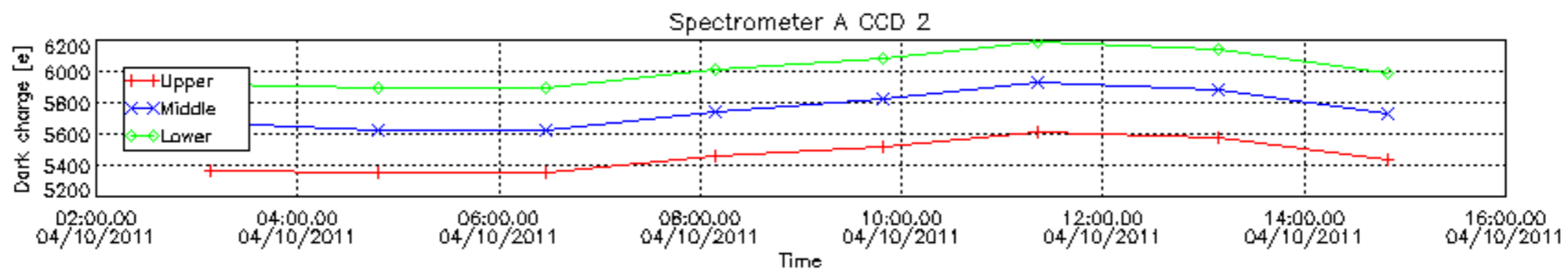
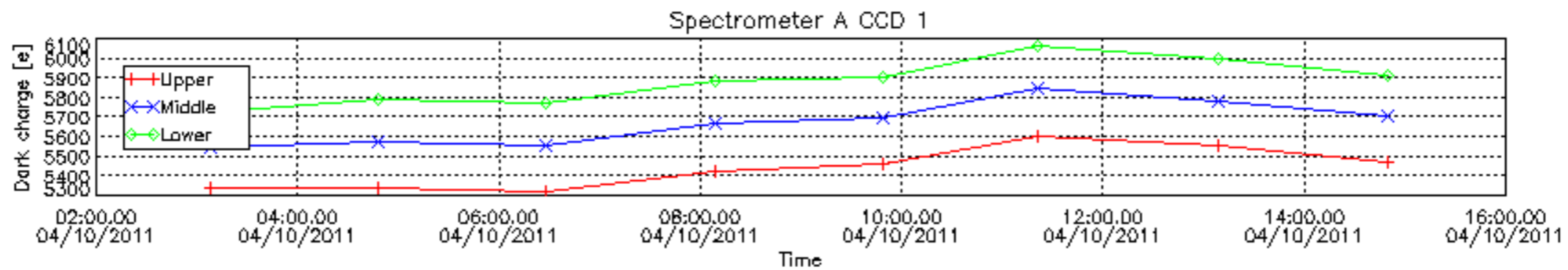
The number reported in the third column indicates since which file (see list in section 2.4) the corresponding auxiliary file has been used. The fourth column is the date of those product files.

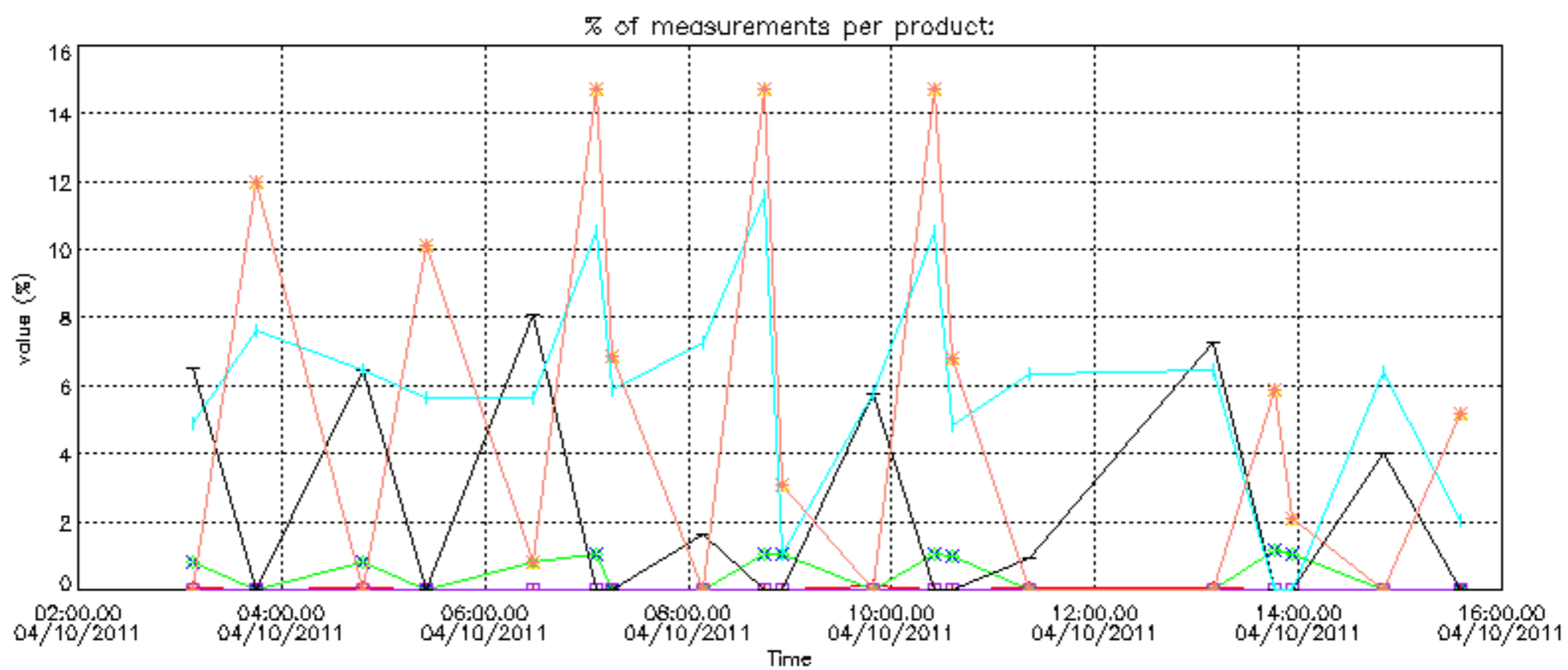
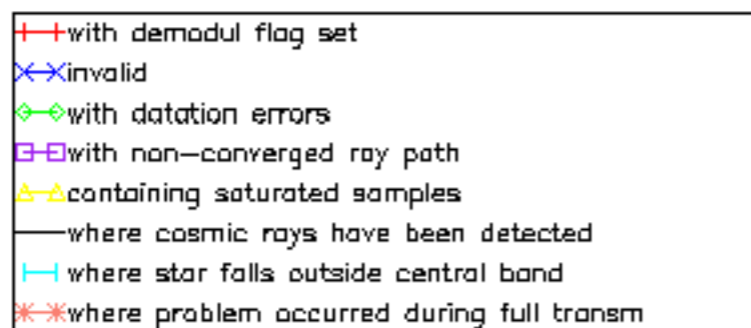
Type	Auxiliary Filename	Used since product	Used since product date
INST_PHYS_CHARACTERISTICS	GOM_INS_AXVIEC20091111_143220_20030716_120000_20500101_000000	1	04-OCT-2011 03:07:40
CALIBRATION_DATABASE	GOM_CAL_AXVIEC20110923_090428_20110920_000000_20500101_000000	1	04-OCT-2011 03:07:40
CALIBRATION_DATABASE	GOM_CAL_AXVIEC20111004_085053_20111003_000000_20500101_000000	9	04-OCT-2011 08:45:20
LEVEL-1B_PROC_CONFIG	GOM_PR1_AXVIEC20110513_081743_20020301_000000_20500101_000000	1	04-OCT-2011 03:07:40
STAR_CATALOGUE	GOM_CAT_AXVIEC20020121_161009_20020101_000000_20200101_000000	1	04-OCT-2011 03:07:40
STELLAR_SPECTRA_DATABANK	GOM_STS_AXVIEC20091111_151504_20020101_160000_20500101_000000	1	04-OCT-2011 03:07:40
ECMWF_FILE	AUX_ECF_AXNECM20111003_182307_20111004_030000_20111004_150000	1	04-OCT-2011 03:07:40
ECMWF_FILE	AUX_ECA_AXNECM20111004_063854_20111003_210000_20111004_090000	5	04-OCT-2011 06:28:11
ECMWF_FILE	AUX_ECF_AXNECM20111003_182307_20111004_030000_20111004_150000	9	04-OCT-2011 08:45:20
ECMWF_FILE	AUX_ECF_AXNECM20111004_063854_20111004_090000_20111004_210000	12	04-OCT-2011 10:25:33
ECMWF_FILE	AUX_ECF_AXNECM20111004_063854_20111004_150000_20111005_030000	19	04-OCT-2011 15:35:58
OPTIONAL_ECMWF_FILE	MISSING	1	04-OCT-2011 03:07:40
ORBIT_DATA_FILE	AUX_FPO_AXVPDS20111003_102306_20111002_191648_20111012_213031	1	04-OCT-2011 03:07:40
ORBIT_DATA_FILE	AUX_FPO_AXVPDS20111004_101853_20111003_184003_20111013_205347	12	04-OCT-2011 10:25:33



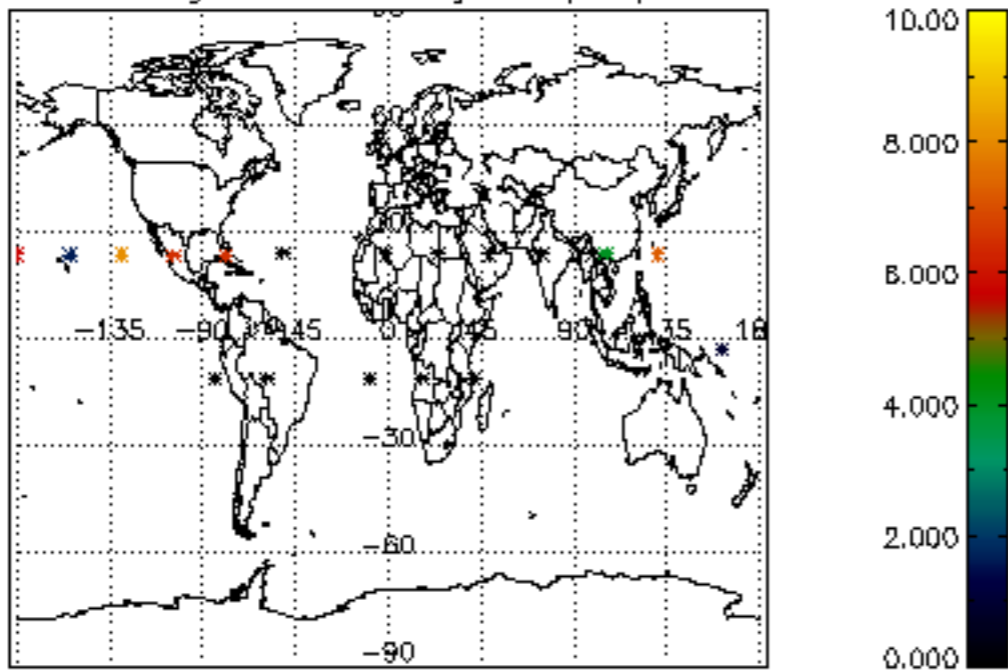




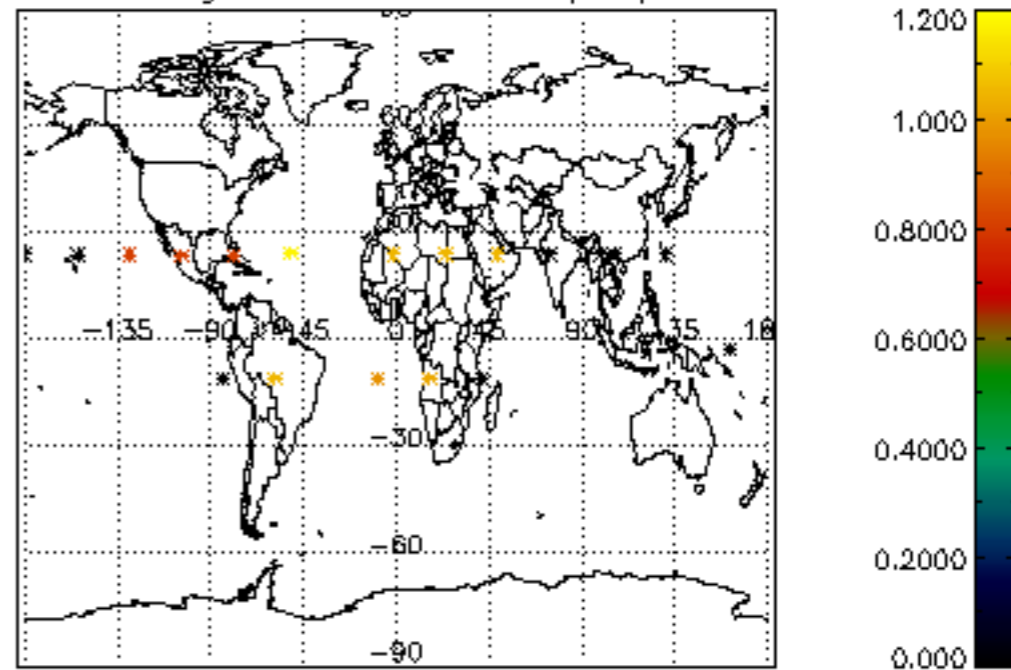




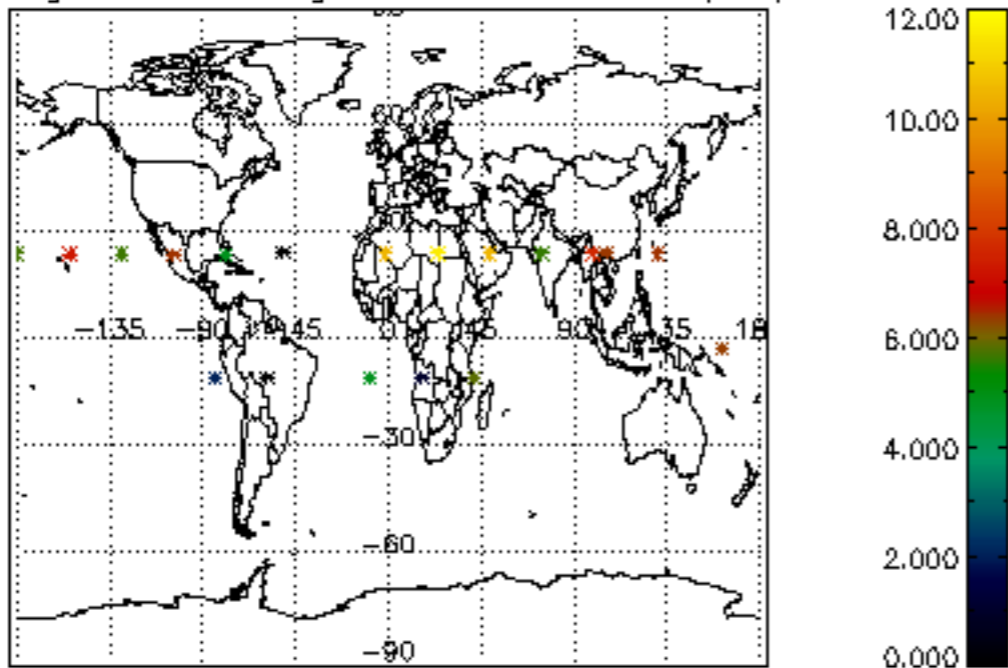
Percentage of cosmic ray hits per profile



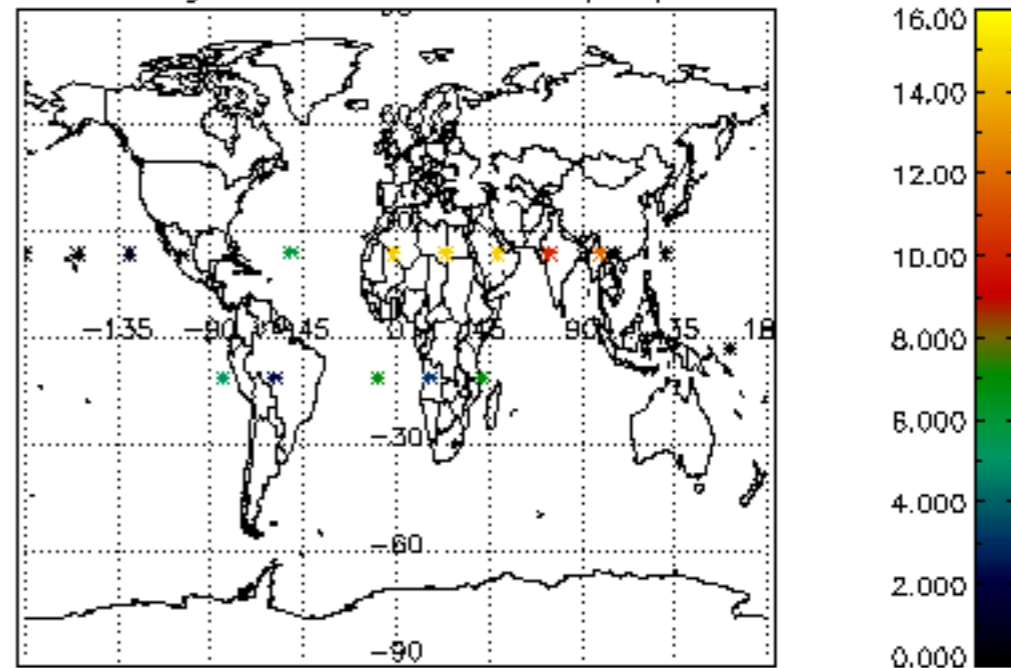
Percentage of datation errors per profile



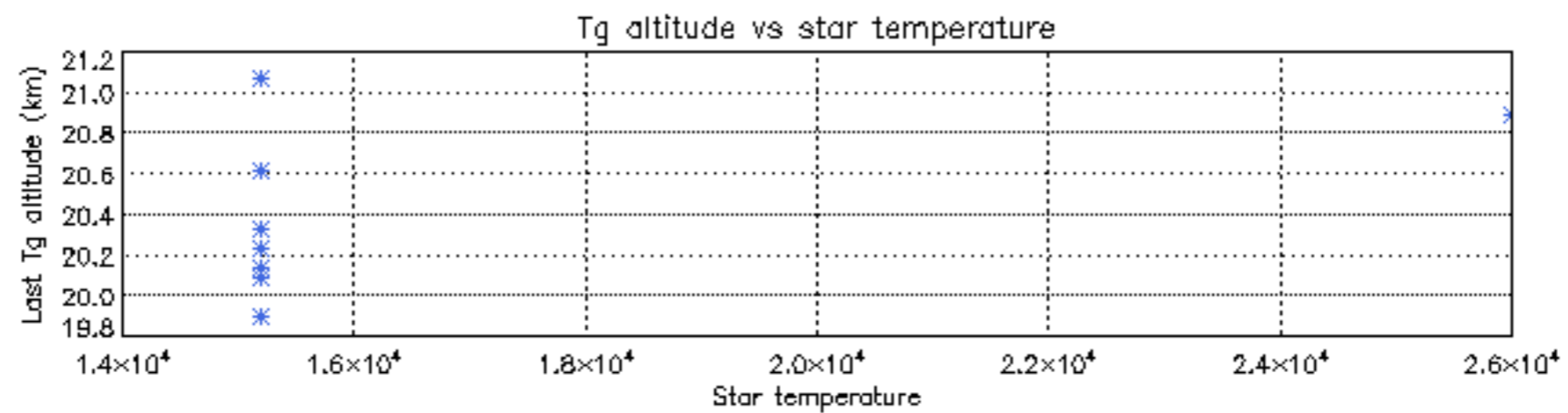
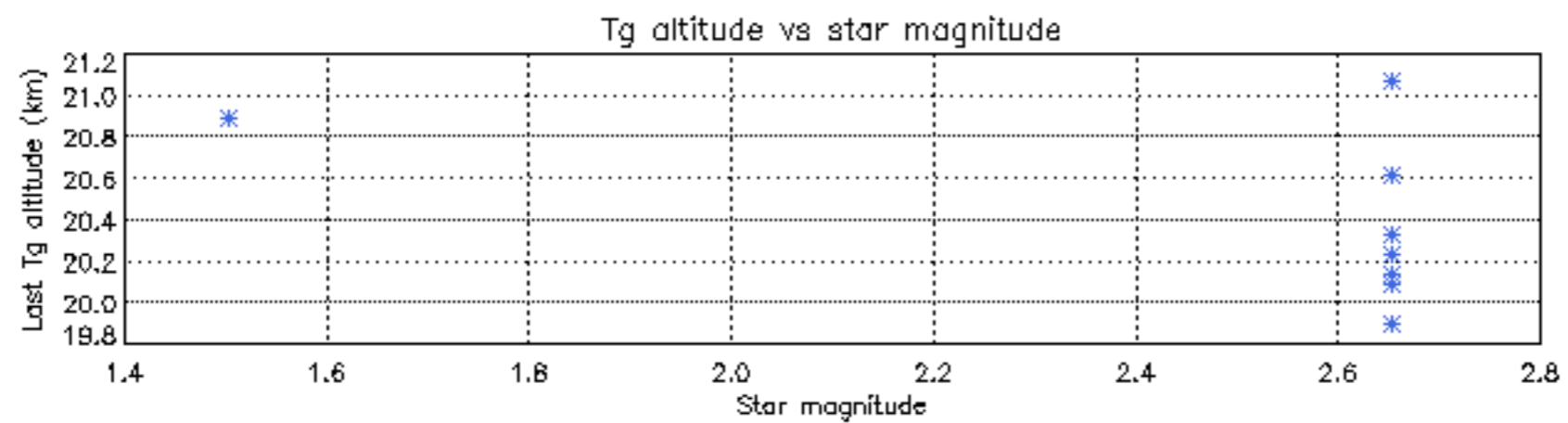
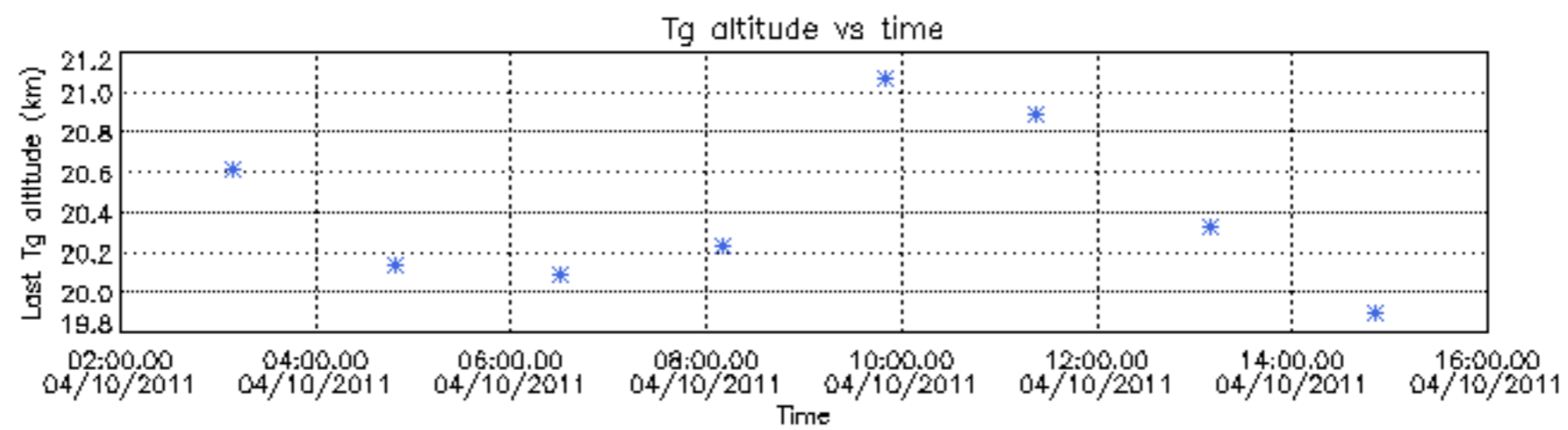
Percentage of star falling outside central band per profile



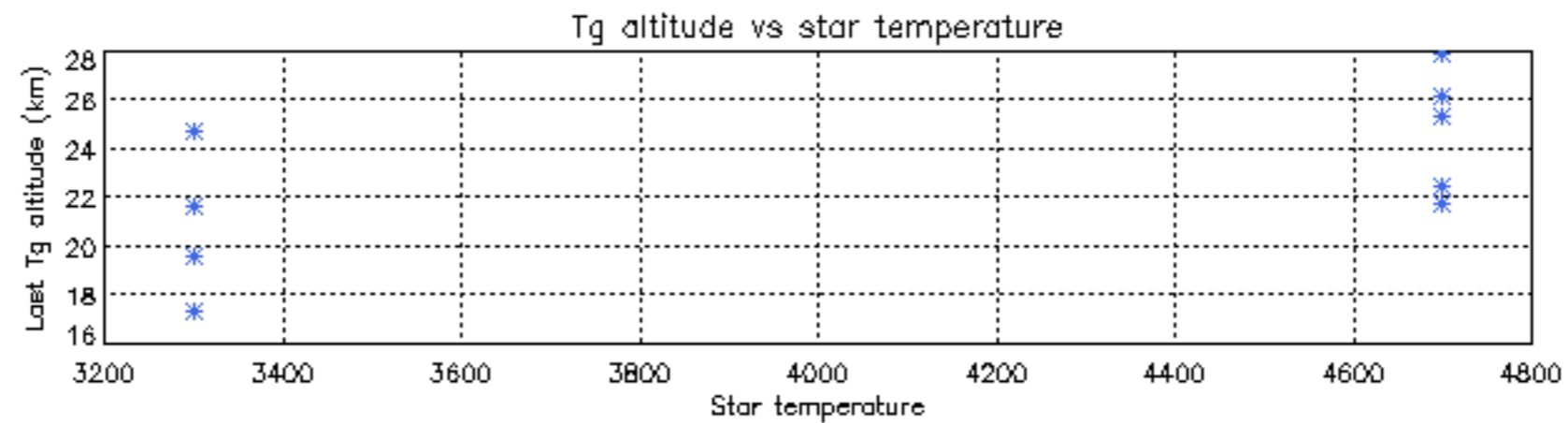
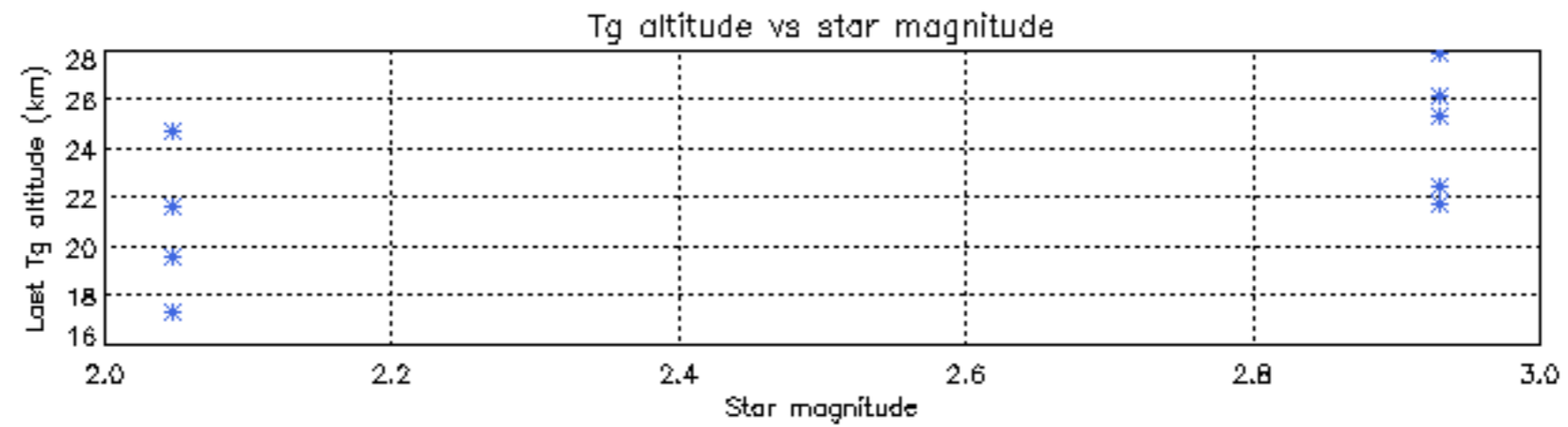
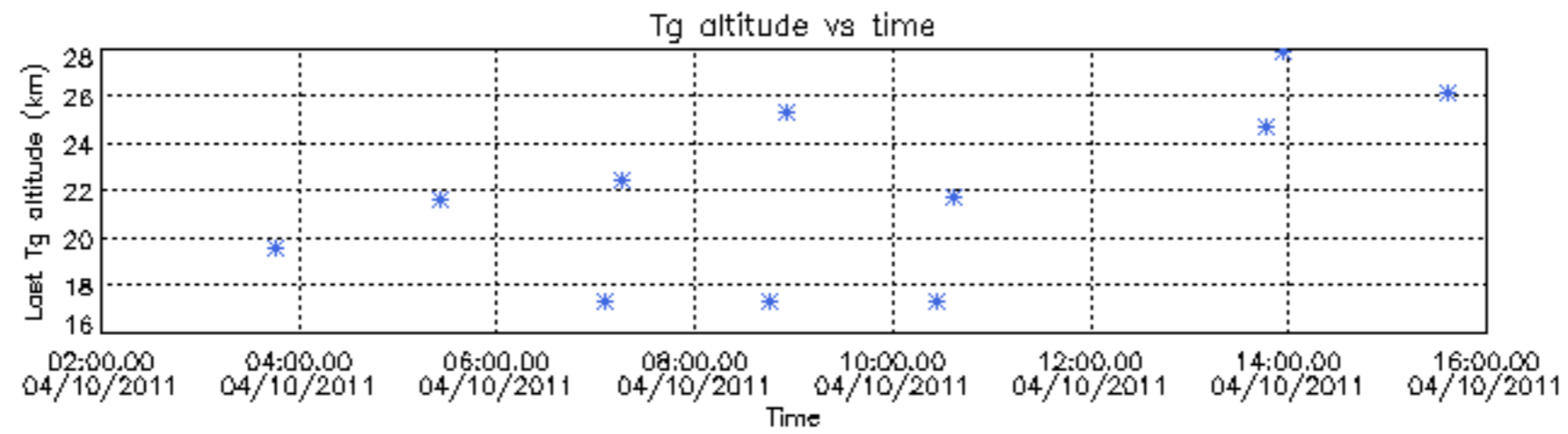
Percentage of saturation errors per profile

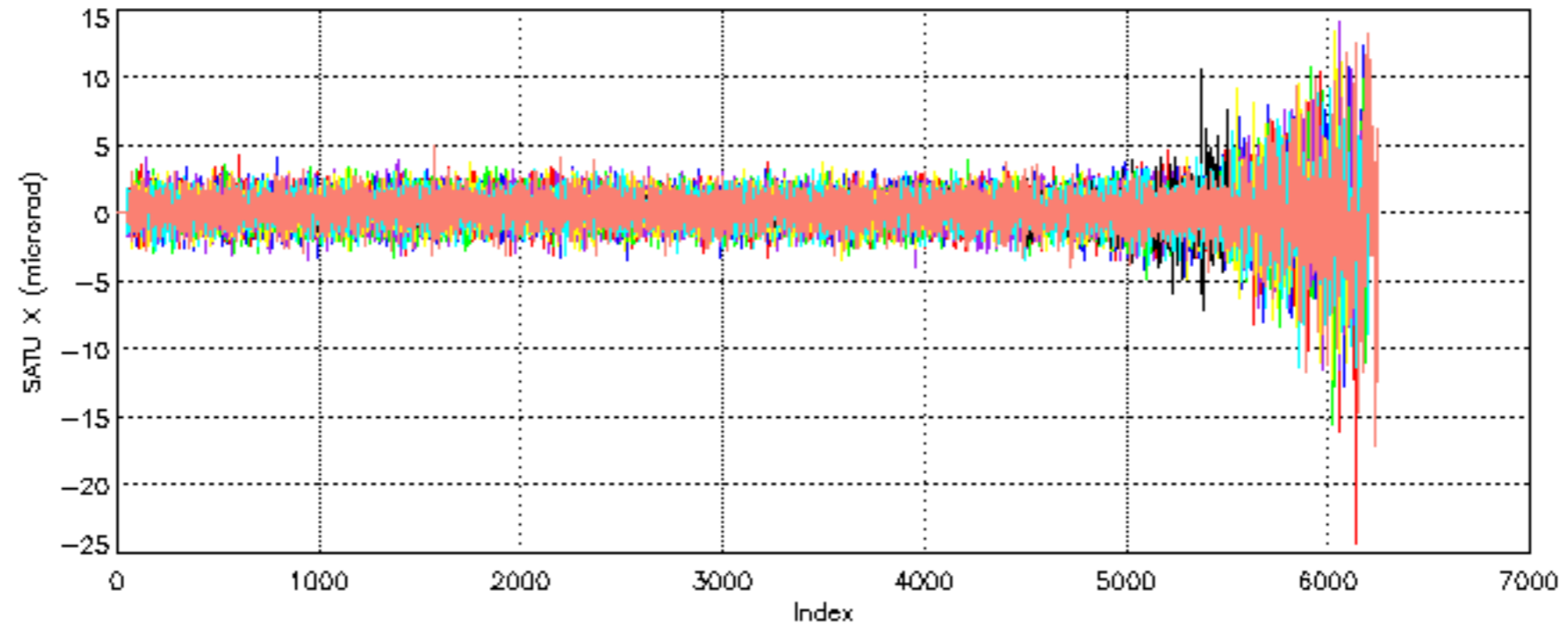


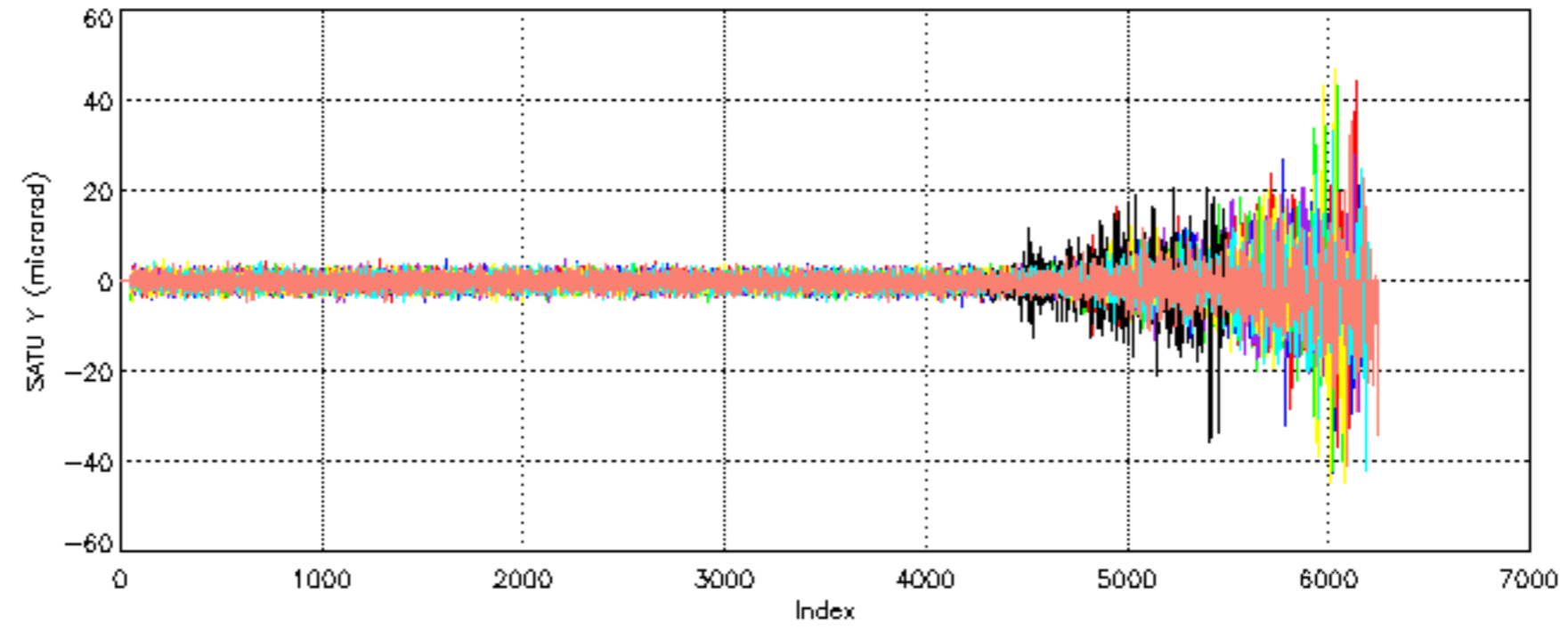
Tangent altitude at which the star is lost



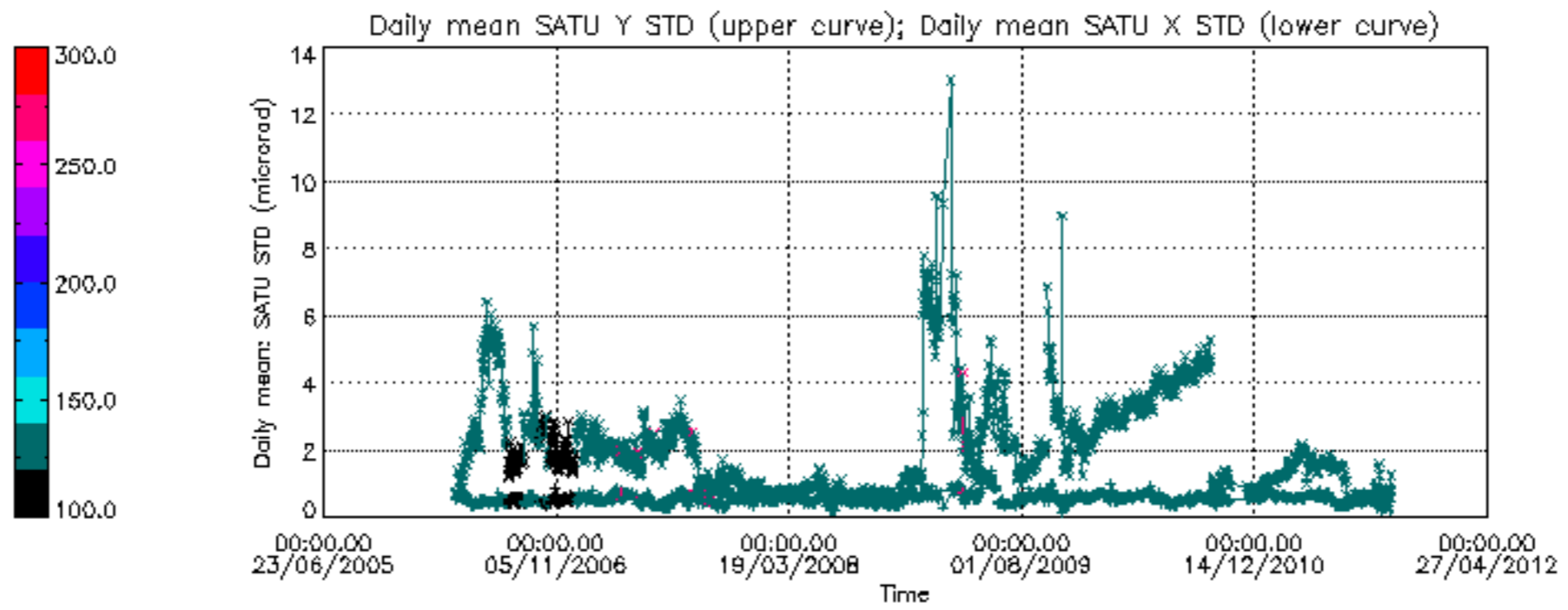
Tangent altitude at which the star is lost

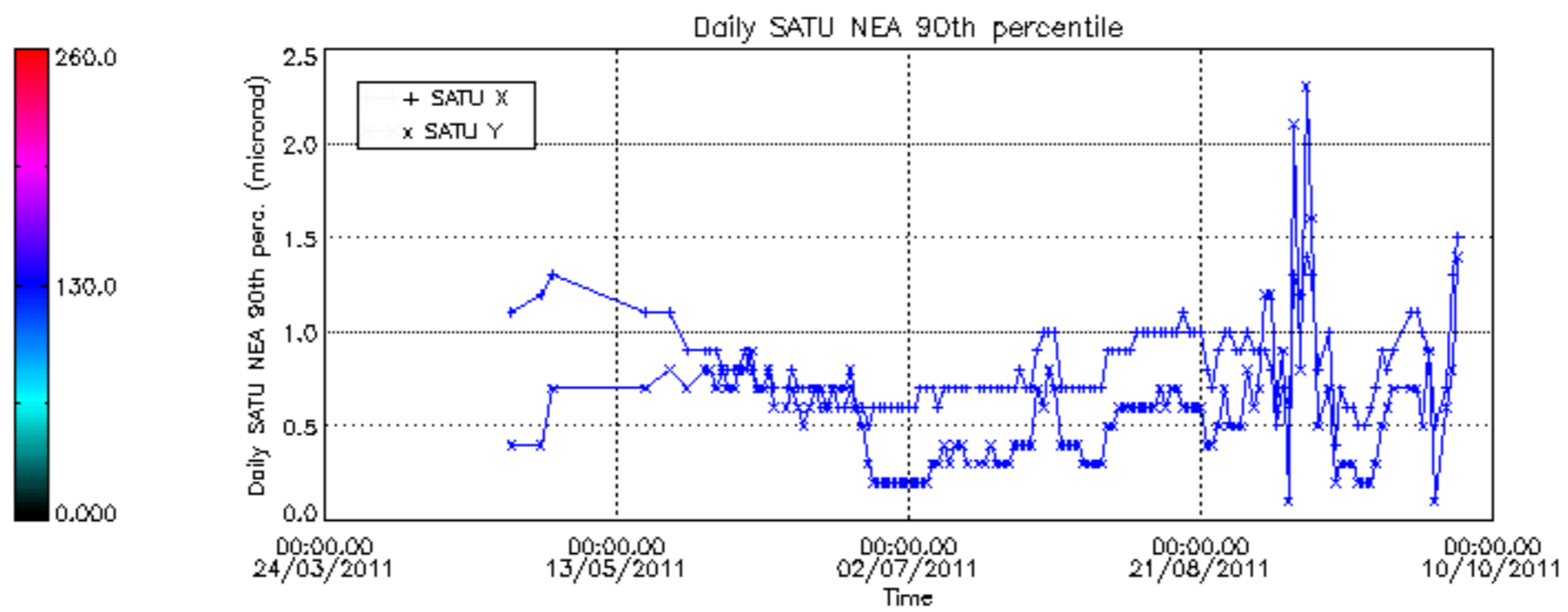












/nas3/ENVISAT/GOMOS/GOM\_NL\_\_0P/GOM\_NL\_\_0PNPDE20111002\_214039\_00000423107\_00144\_50158\_6530.N1  
1; 2617.1; 02-OCT-2011 21:40:39; Bright; 42.5; 53; 43Bet And ; 2.05; 3300;occ; 85; 0;50158  
/nas3/ENVISAT/GOMOS/GOM\_NL\_\_0P/GOM\_NL\_\_0PNPDE20111002\_223444\_000011363107\_00144\_50158\_6531.N1  
1; -151.2; 02-OCT-2011 22:34:44; Dark ; 54.5; 37; 25Del CMA ; 1.83; 5900;occ; 109; 0;50158  
2; 936.0; 02-OCT-2011 22:52:51; Dark ; 49.5; 157; The1Eri ; 2.91; 9300;occ; 99; 0;50159  
/nas3/ENVISAT/GOMOS/GOM\_NL\_\_0P/GOM\_NL\_\_0PNPDK20111002\_182012\_000033093107\_00142\_50156\_5389.N1  
1; 2618.4; 02-OCT-2011 18:20:12; Bright; 47.5; 53; 43Bet And ; 2.05; 3300;occ; 95; 0;50156  
2; 3035.8; 02-OCT-2011 18:27:09; Bright; 41.0; 110; 37Del Cas ; 2.68; 8900;occ; 82; 0;50156  
3; 3212.6; 02-OCT-2011 18:30:06; Bright; 51.0; 160; 23Gam Per ; 2.93; 4700;occ; 102; 0;50156  
4; 5594.7; 02-OCT-2011 19:09:48; Dark ; 47.0; 132; 15Rho Pup ; 2.80; 6900;occ; 94; 0;50156  
5; 5860.2; 02-OCT-2011 19:14:14; Dark ; 68.0; 37; 25Del CMA ; 1.83; 5900;occ; 136; 0;50156  
/nas3/ENVISAT/GOMOS/GOM\_NL\_\_0P/GOM\_NL\_\_0PNPDK20111002\_200025\_000033093107\_00143\_50157\_5390.N1  
1; 2617.7; 02-OCT-2011 20:00:25; Bright; 45.5; 53; 43Bet And ; 2.05; 3300;occ; 91; 0;50157  
2; 3035.2; 02-OCT-2011 20:07:23; Bright; 41.5; 110; 37Del Cas ; 2.68; 8900;occ; 83; 0;50157  
3; 5861.4; 02-OCT-2011 20:54:29; Dark ; 66.0; 37; 25Del CMA ; 1.83; 5900;occ; 132; 0;50157  
/nas3/ENVISAT/GOMOS/GOM\_NL\_\_0P/GOM\_NL\_\_0PNPDE20111003\_002332\_00000553107\_00146\_50160\_6532.N1  
1; 363.1; 03-OCT-2011 00:23:32; Dark ; 56.0; 108; Alp Col ; 2.65; 15200;occ; 112; 0;50160  
/nas3/ENVISAT/GOMOS/GOM\_NL\_\_0P/GOM\_NL\_\_0PNPDE20111003\_220654\_000028643107\_00159\_50173\_6535.N1  
1; 382.9; 03-OCT-2011 22:06:54; Dark ; 61.0; 108; Alp Col ; 2.65; 15200;occ; 122; 0;50173  
2; 2608.3; 03-OCT-2011 22:43:59; Bright; 45.5; 53; 43Bet And ; 2.05; 3300;occ; 91; 0;50173  
3; 3196.6; 03-OCT-2011 22:53:47; Bright; 50.5; 160; 23Gam Per ; 2.93; 4700;occ; 101; 0;50173  
/nas3/ENVISAT/GOMOS/GOM\_NL\_\_0P/GOM\_NL\_\_0PNPDK20111003\_065601\_000005743107\_00149\_50163\_5391.N1  
1; -144.3; 03-OCT-2011 06:56:01; Dark ; 72.5; 37; 25Del CMA ; 1.83; 5900;occ; 145; 0;50163  
2; 369.2; 03-OCT-2011 07:04:34; Dark ; 61.5; 108; Alp Col ; 2.65; 15200;occ; 123; 0;50164  
/nas3/ENVISAT/GOMOS/GOM\_NL\_\_0P/GOM\_NL\_\_0PNPDK20111003\_075150\_000032393107\_00150\_50164\_5392.N1  
1; -2808.7; 03-OCT-2011 07:51:50; Bright; 49.0; 160; 23Gam Per ; 2.93; 4700;occ; 98; 0;50164  
2; -142.9; 03-OCT-2011 08:36:16; Dark ; 68.0; 37; 25Del CMA ; 1.83; 5900;occ; 136; 0;50164  
3; 370.9; 03-OCT-2011 08:44:50; Dark ; 60.0; 108; Alp Col ; 2.65; 15200;occ; 120; 0;50165  
/nas3/ENVISAT/GOMOS/GOM\_NL\_\_0P/GOM\_NL\_\_0PNPDK20111003\_093203\_000032423107\_00151\_50165\_5393.N1  
1; -2809.7; 03-OCT-2011 09:32:03; Bright; 50.5; 160; 23Gam Per ; 2.93; 4700;occ; 101; 0;50165  
2; -141.5; 03-OCT-2011 10:16:32; Dark ; 61.5; 37; 25Del CMA ; 1.83; 5900;occ; 123; 0;50165  
3; 372.5; 03-OCT-2011 10:25:06; Dark ; 60.0; 108; Alp Col ; 2.65; 15200;occ; 120; 0;50166  
/nas3/ENVISAT/GOMOS/GOM\_NL\_\_0P/GOM\_NL\_\_0PNPDK20111003\_110225\_000038363107\_00152\_50166\_5394.N1  
1; 2612.3; 03-OCT-2011 11:02:25; Bright; 47.0; 53; 43Bet And ; 2.05; 3300;occ; 94; 0;50166  
2; 3203.1; 03-OCT-2011 11:12:16; Bright; 50.0; 160; 23Gam Per ; 2.93; 4700;occ; 100; 0;50166  
3; 5873.7; 03-OCT-2011 11:56:47; Dark ; 55.5; 37; 25Del CMA ; 1.83; 5900;occ; 111; 0;50166  
4; 6387.7; 03-OCT-2011 12:05:21; Dark ; 61.5; 108; Alp Col ; 2.65; 15200;occ; 123; 0;50167  
/nas3/ENVISAT/GOMOS/GOM\_NL\_\_0P/GOM\_NL\_\_0PNPDK20111003\_124239\_000038403107\_00153\_50167\_5395.N1  
1; 2611.8; 03-OCT-2011 12:42:39; Bright; 45.0; 53; 43Bet And ; 2.05; 3300;occ; 90; 0;50167  
2; 3202.2; 03-OCT-2011 12:52:29; Bright; 49.5; 160; 23Gam Per ; 2.93; 4700;occ; 99; 0;50167  
3; 5875.1; 03-OCT-2011 13:37:02; Dark ; 66.5; 37; 25Del CMA ; 1.83; 5900;occ; 133; 0;50167  
4; 6173.3; 03-OCT-2011 13:42:00; Dark ; 59.5; 0; ; 0.00; 0;occ; 119; 0;50168  
5; 6389.3; 03-OCT-2011 13:45:36; Dark ; 62.5; 108; Alp Col ; 2.65; 15200;occ; 125; 0;50168  
/nas3/ENVISAT/GOMOS/GOM\_NL\_\_0P/GOM\_NL\_\_0PNPDK20111003\_142252\_000038413107\_00154\_50168\_5396.N1  
1; 2611.2; 03-OCT-2011 14:22:52; Bright; 44.0; 53; 43Bet And ; 2.05; 3300;occ; 88; 0;50168  
2; 3201.4; 03-OCT-2011 14:32:42; Bright; 48.0; 160; 23Gam Per ; 2.93; 4700;occ; 96; 0;50168  
3; 5948.9; 03-OCT-2011 15:18:30; Dark ; 55.0; 23; 21Eps CMA ; 1.50; 26000;occ; 110; 0;50168  
4; 6174.6; 03-OCT-2011 15:22:15; Dark ; 59.5; 0; ; 0.00; 0;occ; 119; 0;50169  
5; 6390.9; 03-OCT-2011 15:25:52; Dark ; 61.5; 108; Alp Col ; 2.65; 15200;occ; 123; 0;50169  
/nas3/ENVISAT/GOMOS/GOM\_NL\_\_0P/GOM\_NL\_\_0PNPDK20111003\_160306\_000038403107\_00155\_50169\_5397.N1  
1; 2610.6; 03-OCT-2011 16:03:06; Bright; 47.0; 53; 43Bet And ; 2.05; 3300;occ; 94; 0;50169  
2; 3200.5; 03-OCT-2011 16:12:55; Bright; 51.5; 160; 23Gam Per ; 2.93; 4700;occ; 103; 0;50169  
3; 5950.3; 03-OCT-2011 16:58:45; Dark ; 55.0; 23; 21Eps CMA ; 1.50; 26000;occ; 110; 0;50169  
4; 6175.9; 03-OCT-2011 17:02:31; Dark ; 59.5; 0; ; 0.00; 0;occ; 119; 0;50170  
5; 6392.6; 03-OCT-2011 17:06:07; Dark ; 59.0; 108; Alp Col ; 2.65; 15200;occ; 118; 0;50170  
/nas3/ENVISAT/GOMOS/GOM\_NL\_\_0P/GOM\_NL\_\_0PNPDK20111003\_202301\_000002793107\_00158\_50172\_5399.N1  
1; 164.2; 03-OCT-2011 20:23:01; Dark ; 59.5; 0; ; 0.00; 0;occ; 119; 0;50172  
2; 381.4; 03-OCT-2011 20:26:38; Dark ; 62.0; 108; Alp Col ; 2.65; 15200;occ; 124; 0;50172  
/nas3/ENVISAT/GOMOS/GOM\_NL\_\_0P/GOM\_NL\_\_0PNPDE20111003\_051546\_000034033107\_00148\_50162\_6533.N1  
1; -145.7; 03-OCT-2011 05:15:46; Dark ; 59.5; 37; 25Del CMA ; 1.83; 5900;occ; 119; 0;50162  
2; 367.8; 03-OCT-2011 05:24:19; Dark ; 60.0; 108; Alp Col ; 2.65; 15200;occ; 120; 0;50163  
3; 2614.2; 03-OCT-2011 06:01:45; Bright; 43.5; 53; 43Bet And ; 2.05; 3300;occ; 87; 0;50163  
4; 3206.2; 03-OCT-2011 06:11:37; Bright; 51.5; 160; 23Gam Per ; 2.93; 4700;occ; 103; 0;50163  
/nas3/ENVISAT/GOMOS/GOM\_NL\_\_0P/GOM\_NL\_\_0PNPDE20111004\_030402\_000024833107\_00162\_50176\_6536.N1  
1; 169.1; 04-OCT-2011 03:04:02; Dark ; 59.5; 0; ; 0.00; 0;occ; 119; 0;50176  
2; 387.5; 04-OCT-2011 03:07:40; Dark ; 61.5; 108; Alp Col ; 2.65; 15200;occ; 123; 0;50176  
3; 2606.5; 04-OCT-2011 03:44:39; Bright; 46.0; 53; 43Bet And ; 2.05; 3300;occ; 92; 0;50176  
/nas3/ENVISAT/GOMOS/GOM\_NL\_\_0P/GOM\_NL\_\_0PNPDE20111004\_044756\_000022613107\_00163\_50177\_6537.N1

```

1; 389.0; 04-OCT-2011 04:47:56; Dark ; 62.0; 108; Alp Col ; 2.65; 15200;occ; 124; 0;50177
2; 2605.9; 04-OCT-2011 05:24:53; Bright; 44.5; 53; 43Bet And ; 2.05; 3300;occ; 89; 0;50177
/nas3/ENVISAT/GOMOS/GOM_NL__0P/GOM_NL__0PNPDE20111004_062811_000028523107_00164_50178_6538.N1
1; 390.5; 04-OCT-2011 06:28:11; Dark ; 62.0; 108; Alp Col ; 2.65; 15200;occ; 124; 0;50178
2; 2605.5; 04-OCT-2011 07:05:06; Bright; 47.5; 53; 43Bet And ; 2.05; 3300;occ; 95; 0;50178
3; 3192.0; 04-OCT-2011 07:14:53; Bright; 51.0; 160; 23Gam Per ; 2.93; 4700;occ; 102; 0;50178
/nas3/ENVISAT/GOMOS/GOM_NL__0P/GOM_NL__0PNPDK20111004_080827_000000613107_00165_50179_5403.N1
1; 391.9; 04-OCT-2011 08:08:27; Dark ; 62.0; 108; Alp Col ; 2.65; 15200;occ; 124; 0;50179
/nas3/ENVISAT/GOMOS/GOM_NL__0P/GOM_NL__0PNPDK20111004_084520_000038633107_00165_50179_5404.N1
1; 2604.9; 04-OCT-2011 08:45:20; Bright; 47.5; 53; 43Bet And ; 2.05; 3300;occ; 95; 0;50179
2; 3191.1; 04-OCT-2011 08:55:06; Bright; 49.0; 160; 23Gam Per ; 2.93; 4700;occ; 98; 0;50179
3; 6407.5; 04-OCT-2011 09:48:42; Dark ; 61.0; 108; Alp Col ; 2.65; 15200;occ; 122; 0;50180
/nas3/ENVISAT/GOMOS/GOM_NL__0P/GOM_NL__0PNPDK20111004_102533_000034163107_00166_50180_5405.N1
1; 2604.3; 04-OCT-2011 10:25:33; Bright; 47.5; 53; 43Bet And ; 2.05; 3300;occ; 95; 0;50180
2; 3190.0; 04-OCT-2011 10:35:19; Bright; 51.5; 160; 23Gam Per ; 2.93; 4700;occ; 103; 0;50180
3; 5965.3; 04-OCT-2011 11:21:34; Dark ; 55.0; 23; 21Eps CMa ; 1.50; 26000;occ; 110; 0;50180
/nas3/ENVISAT/GOMOS/GOM_NL__0P/GOM_NL__0PNPDK20111004_130533_000002823107_00168_50182_5406.N1
1; 176.4; 04-OCT-2011 13:05:33; Dark ; 59.5; 0; ; 0.00; 0;occ; 119; 0;50182
2; 396.5; 04-OCT-2011 13:09:13; Dark ; 62.0; 108; Alp Col ; 2.65; 15200;occ; 124; 0;50182
/nas3/ENVISAT/GOMOS/GOM_NL__0P/GOM_NL__0PNPDK20111004_134600_000038713107_00168_50182_5407.N1
1; 2603.1; 04-OCT-2011 13:46:00; Bright; 42.5; 53; 43Bet And ; 2.05; 3300;occ; 85; 0;50182
2; 3188.2; 04-OCT-2011 13:55:45; Bright; 47.5; 160; 23Gam Per ; 2.93; 4700;occ; 95; 0;50182
3; 6412.1; 04-OCT-2011 14:49:28; Dark ; 62.5; 108; Alp Col ; 2.65; 15200;occ; 125; 0;50183
/nas3/ENVISAT/GOMOS/GOM_NL__0P/GOM_NL__0PNPDK20111004_153558_000000483107_00169_50183_5408.N1
1;-2826.7; 04-OCT-2011 15:35:58; Bright; 48.5; 160; 23Gam Per ; 2.93; 4700;occ; 97; 0;50183
/nas3/ENVISAT/GOMOS/GOM_NL__0P/GOM_NL__0PNPDE20111012_213220_000026983107_00288_50302_6539.N1
1; 109.0; 12-OCT-2011 21:32:20; Dark ; 59.5; 0; ; 0.00; 0;occ; 119; 0;50302
2; 2765.0; 12-OCT-2011 22:16:36; Bright; 42.5; 73; 57Gam1And ; 2.26; 13100;occ; 85; 0;50302
/nas3/ENVISAT/GOMOS/GOM_NL__0P/GOM_NL__0PNPDE20111012_231235_000027003107_00289_50303_6540.N1
1; 109.9; 12-OCT-2011 23:12:35; Dark ; 59.5; 0; ; 0.00; 0;occ; 119; 0;50303
2; 2764.3; 12-OCT-2011 23:56:49; Bright; 46.0; 73; 57Gam1And ; 2.26; 13100;occ; 92; 0;50303
/nas3/ENVISAT/GOMOS/GOM_NL__0P/GOM_NL__0PNPDK20111012_145121_000000593107_00284_50298_5411.N1
1; 105.5; 12-OCT-2011 14:51:21; Dark ; 59.5; 0; ; 0.00; 0;occ; 119; 0;50298
/nas3/ENVISAT/GOMOS/GOM_NL__0P/GOM_NL__0PNPDK20111012_153543_000034123107_00284_50298_5412.N1
1; 2767.9; 12-OCT-2011 15:35:43; Bright; 45.5; 73; 57Gam1And ; 2.26; 13100;occ; 91; 0;50298
2; 6120.4; 12-OCT-2011 16:31:36; Dark ; 59.5; 0; ; 0.00; 0;occ; 119; 0;50299
/nas3/ENVISAT/GOMOS/GOM_NL__0P/GOM_NL__0PNPDE20111013_005250_000026963107_00290_50304_6541.N1
1; 110.8; 13-OCT-2011 00:52:50; Dark ; 59.5; 0; ; 0.00; 0;occ; 119; 0;50304
2; 2763.5; 13-OCT-2011 01:37:02; Bright; 44.0; 73; 57Gam1And ; 2.26; 13100;occ; 88; 0;50304
/nas3/ENVISAT/GOMOS/GOM_NL__0P/GOM_NL__0PNPDE20111013_023304_000026973107_00291_50305_6542.N1
1; 111.7; 13-OCT-2011 02:33:04; Dark ; 59.5; 0; ; 0.00; 0;occ; 119; 0;50305
2; 2762.8; 13-OCT-2011 03:17:16; Bright; 46.5; 73; 57Gam1And ; 2.26; 13100;occ; 93; 0;50305
/nas3/ENVISAT/GOMOS/GOM_NL__0P/GOM_NL__0PNPDE20111013_041319_000026963107_00292_50306_6543.N1
1; 112.5; 13-OCT-2011 04:13:19; Dark ; 59.5; 0; ; 0.00; 0;occ; 119; 0;50306
2; 2762.6; 13-OCT-2011 04:57:29; Bright; 46.0; 73; 57Gam1And ; 2.26; 13100;occ; 92; 0;50306
/nas3/ENVISAT/GOMOS/GOM_NL__0P/GOM_NL__0PNPDE20111013_055334_000000593107_00293_50307_6544.N1
1; 113.4; 13-OCT-2011 05:53:34; Dark ; 59.5; 0; ; 0.00; 0;occ; 119; 0;50307
/nas3/ENVISAT/GOMOS/GOM_NL__0P/GOM_NL__0PNPDE20111013_213942_000003503107_00302_50316_6545.N1
1; 2755.8; 13-OCT-2011 21:39:42; Bright; 46.0; 73; 57Gam1And ; 2.26; 13100;occ; 92; 0;50316
2; 3073.9; 13-OCT-2011 21:45:00; Bright; 32.5; 160; 23Gam Per ; 2.93; 4700;occ; 65; 0;50316
/nas3/ENVISAT/GOMOS/GOM_NL__0P/GOM_NL__0PNPDE20111013_231955_000003503107_00303_50317_6546.N1
1; 2755.1; 13-OCT-2011 23:19:55; Bright; 47.5; 73; 57Gam1And ; 2.26; 13100;occ; 95; 0;50317
2; 3073.0; 13-OCT-2011 23:25:13; Bright; 32.5; 160; 23Gam Per ; 2.93; 4700;occ; 65; 0;50317
/nas3/ENVISAT/GOMOS/GOM_NL__0P/GOM_NL__0PNPDK20111013_073349_000000593107_00294_50308_5413.N1
1; 114.3; 13-OCT-2011 07:33:49; Dark ; 59.5; 0; ; 0.00; 0;occ; 119; 0;50308
/nas3/ENVISAT/GOMOS/GOM_NL__0P/GOM_NL__0PNPDK20111013_081756_000034273107_00294_50308_5414.N1
1; 2761.2; 13-OCT-2011 08:17:56; Bright; 47.5; 73; 57Gam1And ; 2.26; 13100;occ; 95; 0;50308
2; 6129.1; 13-OCT-2011 09:14:04; Dark ; 59.5; 0; ; 0.00; 0;occ; 119; 0;50309
/nas3/ENVISAT/GOMOS/GOM_NL__0P/GOM_NL__0PNPDK20111013_113822_000000513107_00296_50310_5415.N1
1; 2759.8; 13-OCT-2011 11:38:22; Bright; 51.5; 73; 57Gam1And ; 2.26; 13100;occ; 103; 0;50310
/nas3/ENVISAT/GOMOS/GOM_NL__0P/GOM_NL__0PNPDK20111013_131836_000000463107_00297_50311_5416.N1
1; 2759.1; 13-OCT-2011 13:18:36; Bright; 46.5; 73; 57Gam1And ; 2.26; 13100;occ; 93; 0;50311
/nas3/ENVISAT/GOMOS/GOM_NL__0P/GOM_NL__0PNPDK20111013_145516_000005563107_00298_50312_5417.N1
1; 2545.3; 13-OCT-2011 14:55:16; Bright; 39.0; 53; 43Bet And ; 2.05; 3300;occ; 78; 0;50312
2; 2758.5; 13-OCT-2011 14:58:49; Bright; 45.0; 73; 57Gam1And ; 2.26; 13100;occ; 90; 0;50312
3; 3077.0; 13-OCT-2011 15:04:07; Bright; 24.5; 160; 23Gam Per ; 2.93; 4700;occ; 49; 0;50312
/nas3/ENVISAT/GOMOS/GOM_NL__0P/GOM_NL__0PNPDK20111013_163902_000003423107_00299_50313_5418.N1
1; 2757.8; 13-OCT-2011 16:39:02; Bright; 46.5; 73; 57Gam1And ; 2.26; 13100;occ; 93; 0;50313

```

2; 3076.2; 13-OCT-2011 16:44:21; Bright; 24.5; 160; 23Gam Per ; 2.93; 4700;occ; 49; 0;50313  
/nas3/ENVISAT/GOMOS/GOM\_NL\_\_0P/GOM\_NL\_\_0PNPDK20111013\_181916\_000003463107\_00300\_50314\_5419.N1  
1; 2757.1; 13-OCT-2011 18:19:16; Bright; 45.5; 73; 57Gam1And ; 2.26; 13100;occ; 91; 0;50314  
2; 3075.4; 13-OCT-2011 18:24:34; Bright; 28.5; 160; 23Gam Per ; 2.93; 4700;occ; 57; 0;50314  
/nas3/ENVISAT/GOMOS/GOM\_NL\_\_0P/GOM\_NL\_\_0PNPDE20111014\_205557\_000007713107\_00316\_50330\_6547.N1  
1; 2334.7; 14-OCT-2011 20:55:57; Bright; 46.0; 105; 6Bet Ari ; 2.64; 8900;occ; 92; 0;50330  
2; 2635.6; 14-OCT-2011 21:00:57; Bright; 45.0; 173; 4Bet Tri ; 3.00; 8900;occ; 90; 0;50330  
3; 2747.2; 14-OCT-2011 21:02:49; Bright; 46.0; 73; 57Gam1And ; 2.26; 13100;occ; 92; 0;50330  
4; 3063.1; 14-OCT-2011 21:08:05; Bright; 43.5; 160; 23Gam Per ; 2.93; 4700;occ; 87; 0;50330  
/nas3/ENVISAT/GOMOS/GOM\_NL\_\_0P/GOM\_NL\_\_0PNPDE20111014\_223610\_000007753107\_00317\_50331\_6548.N1  
1; 2334.1; 14-OCT-2011 22:36:10; Bright; 47.0; 105; 6Bet Ari ; 2.64; 8900;occ; 94; 0;50331  
2; 2634.8; 14-OCT-2011 22:41:11; Bright; 44.5; 173; 4Bet Tri ; 3.00; 8900;occ; 89; 0;50331  
3; 3062.3; 14-OCT-2011 22:48:18; Bright; 47.0; 160; 23Gam Per ; 2.93; 4700;occ; 94; 0;50331  
/nas3/ENVISAT/GOMOS/GOM\_NL\_\_0P/GOM\_NL\_\_0PNPDK20111014\_010526\_000180793107\_00304\_50318\_5421.N1  
1;-2941.6; 14-OCT-2011 01:05:26; Bright; 37.0; 160; 23Gam Per ; 2.93; 4700;occ; 74; 0;50318  
2;14671.1; 14-OCT-2011 05:58:59; Bright; 26.0; 173; 4Bet Tri ; 3.00; 8900;occ; 52; 0;50321  
3;15098.8; 14-OCT-2011 06:06:07; Bright; 39.5; 160; 23Gam Per ; 2.93; 4700;occ; 79; 0;50321  
/nas3/ENVISAT/GOMOS/GOM\_NL\_\_0P/GOM\_NL\_\_0PNPDK20111014\_073912\_000004713107\_00308\_50322\_5422.N1  
1; 2642.2; 14-OCT-2011 07:39:12; Bright; 32.0; 173; 4Bet Tri ; 3.00; 8900;occ; 64; 0;50322  
2; 3070.1; 14-OCT-2011 07:46:20; Bright; 43.5; 160; 23Gam Per ; 2.93; 4700;occ; 87; 0;50322  
/nas3/ENVISAT/GOMOS/GOM\_NL\_\_0P/GOM\_NL\_\_0PNPDK20111014\_091926\_000004713107\_00309\_50323\_5423.N1  
1; 2641.5; 14-OCT-2011 09:19:26; Bright; 32.0; 173; 4Bet Tri ; 3.00; 8900;occ; 64; 0;50323  
2; 3069.3; 14-OCT-2011 09:26:33; Bright; 43.5; 160; 23Gam Per ; 2.93; 4700;occ; 87; 0;50323  
/nas3/ENVISAT/GOMOS/GOM\_NL\_\_0P/GOM\_NL\_\_0PNPDK20111014\_142712\_00000433107\_00312\_50326\_5424.N1  
1;-2947.7; 14-OCT-2011 14:27:12; Bright; 43.5; 160; 23Gam Per ; 2.93; 4700;occ; 87; 0;50326  
/nas3/ENVISAT/GOMOS/GOM\_NL\_\_0P/GOM\_NL\_\_0PNPDK20111014\_155516\_000007753107\_00313\_50327\_5425.N1  
1; 2336.3; 14-OCT-2011 15:55:16; Bright; 47.0; 105; 6Bet Ari ; 2.64; 8900;occ; 94; 0;50327  
2; 2637.8; 14-OCT-2011 16:00:18; Bright; 45.0; 173; 4Bet Tri ; 3.00; 8900;occ; 90; 0;50327  
3; 3065.4; 14-OCT-2011 16:07:25; Bright; 46.5; 160; 23Gam Per ; 2.93; 4700;occ; 93; 0;50327  
/nas3/ENVISAT/GOMOS/GOM\_NL\_\_0P/GOM\_NL\_\_0PNPDK20111014\_173530\_000007763107\_00314\_50328\_5426.N1  
1; 2335.8; 14-OCT-2011 17:35:30; Bright; 48.5; 105; 6Bet Ari ; 2.64; 8900;occ; 97; 0;50328  
2; 2637.1; 14-OCT-2011 17:40:31; Bright; 45.0; 173; 4Bet Tri ; 3.00; 8900;occ; 90; 0;50328  
3; 3064.6; 14-OCT-2011 17:47:38; Bright; 47.5; 160; 23Gam Per ; 2.93; 4700;occ; 95; 0;50328  
/nas3/ENVISAT/GOMOS/GOM\_NL\_\_0P/GOM\_NL\_\_0PNPDK20111014\_191543\_000007763107\_00315\_50329\_5427.N1  
1; 2335.2; 14-OCT-2011 19:15:43; Bright; 47.5; 105; 6Bet Ari ; 2.64; 8900;occ; 95; 0;50329  
2; 2636.3; 14-OCT-2011 19:20:44; Bright; 46.5; 173; 4Bet Tri ; 3.00; 8900;occ; 93; 0;50329  
3; 3063.8; 14-OCT-2011 19:27:52; Bright; 48.0; 160; 23Gam Per ; 2.93; 4700;occ; 96; 0;50329  
/nas3/ENVISAT/GOMOS/GOM\_NL\_\_0P/GOM\_NL\_\_0PNPDE20111015\_001623\_000007743107\_00318\_50332\_6549.N1  
1; 2333.6; 15-OCT-2011 00:16:23; Bright; 47.0; 105; 6Bet Ari ; 2.64; 8900;occ; 94; 0;50332  
2; 2634.1; 15-OCT-2011 00:21:24; Bright; 46.5; 173; 4Bet Tri ; 3.00; 8900;occ; 93; 0;50332  
3; 3061.6; 15-OCT-2011 00:28:31; Bright; 47.0; 160; 23Gam Per ; 2.93; 4700;occ; 94; 0;50332  
/nas3/ENVISAT/GOMOS/GOM\_NL\_\_0P/GOM\_NL\_\_0PNPDE20111015\_015637\_000067863107\_00319\_50333\_6550.N1  
1; 2333.1; 15-OCT-2011 01:56:37; Bright; 47.0; 105; 6Bet Ari ; 2.64; 8900;occ; 94; 0;50333  
2; 2633.3; 15-OCT-2011 02:01:37; Bright; 47.0; 173; 4Bet Tri ; 3.00; 8900;occ; 94; 0;50333  
3; 3060.7; 15-OCT-2011 02:08:44; Bright; 44.5; 160; 23Gam Per ; 2.93; 4700;occ; 89; 0;50333  
4; 8346.5; 15-OCT-2011 03:36:50; Bright; 47.0; 105; 6Bet Ari ; 2.64; 8900;occ; 94; 0;50334  
5; 8646.8; 15-OCT-2011 03:41:50; Bright; 47.0; 173; 4Bet Tri ; 3.00; 8900;occ; 94; 0;50334  
6; 9074.0; 15-OCT-2011 03:48:58; Bright; 46.0; 160; 23Gam Per ; 2.93; 4700;occ; 92; 0;50334  
/nas3/ENVISAT/GOMOS/GOM\_NL\_\_0P/GOM\_NL\_\_0PNPDE20111015\_051704\_000007743107\_00321\_50335\_6551.N1  
1; 2332.2; 15-OCT-2011 05:17:04; Bright; 45.5; 105; 6Bet Ari ; 2.64; 8900;occ; 91; 0;50335  
2; 2632.2; 15-OCT-2011 05:22:04; Bright; 46.5; 173; 4Bet Tri ; 3.00; 8900;occ; 93; 0;50335  
3; 3059.3; 15-OCT-2011 05:29:11; Bright; 47.0; 160; 23Gam Per ; 2.93; 4700;occ; 94; 0;50335  
/nas3/ENVISAT/GOMOS/GOM\_NL\_\_0P/GOM\_NL\_\_0PNPDE20111015\_065717\_000007743107\_00322\_50336\_6552.N1  
1; 2331.6; 15-OCT-2011 06:57:17; Bright; 46.5; 105; 6Bet Ari ; 2.64; 8900;occ; 93; 0;50336  
2; 2631.5; 15-OCT-2011 07:02:17; Bright; 46.0; 173; 4Bet Tri ; 3.00; 8900;occ; 92; 0;50336  
3; 3058.6; 15-OCT-2011 07:09:24; Bright; 47.0; 160; 23Gam Per ; 2.93; 4700;occ; 94; 0;50336  
/nas3/ENVISAT/GOMOS/GOM\_NL\_\_0P/GOM\_NL\_\_0PNPDE20111015\_202403\_000004733107\_00330\_50344\_6553.N1  
1; 2625.9; 15-OCT-2011 20:24:03; Bright; 45.5; 173; 4Bet Tri ; 3.00; 8900;occ; 91; 0;50344  
2; 3052.3; 15-OCT-2011 20:31:10; Bright; 47.0; 160; 23Gam Per ; 2.93; 4700;occ; 94; 0;50344  
/nas3/ENVISAT/GOMOS/GOM\_NL\_\_0P/GOM\_NL\_\_0PNPDE20111015\_220416\_000004733107\_00331\_50345\_6554.N1  
1; 2625.1; 15-OCT-2011 22:04:16; Bright; 45.5; 173; 4Bet Tri ; 3.00; 8900;occ; 91; 0;50345  
2; 3051.6; 15-OCT-2011 22:11:23; Bright; 47.0; 160; 23Gam Per ; 2.93; 4700;occ; 94; 0;50345  
/nas3/ENVISAT/GOMOS/GOM\_NL\_\_0P/GOM\_NL\_\_0PNPDE20111015\_234430\_000004693107\_00332\_50346\_6555.N1  
1; 2624.6; 15-OCT-2011 23:44:30; Bright; 45.0; 173; 4Bet Tri ; 3.00; 8900;occ; 90; 0;50346  
2; 3050.7; 15-OCT-2011 23:51:36; Bright; 43.5; 160; 23Gam Per ; 2.93; 4700;occ; 87; 0;50346  
/nas3/ENVISAT/GOMOS/GOM\_NL\_\_0P/GOM\_NL\_\_0PNPDK20111015\_083731\_000007723107\_00323\_50337\_5428.N1  
1; 2331.1; 15-OCT-2011 08:37:31; Bright; 46.0; 105; 6Bet Ari ; 2.64; 8900;occ; 92; 0;50337  
2; 2630.8; 15-OCT-2011 08:42:30; Bright; 46.0; 173; 4Bet Tri ; 3.00; 8900;occ; 92; 0;50337

3; 3057.7; 15-OCT-2011 08:49:37; Bright; 45.5; 160; 23Gam Per ; 2.93; 4700;occ; 91; 0;50337  
/nas3/ENVISAT/GOMOS/GOM\_NL\_\_0P/GOM\_NL\_\_0PNPDK20111015\_115757\_000007733107\_00325\_50339\_5429.N1  
1; 2329.9; 15-OCT-2011 11:57:57; Bright; 46.0; 105; 6Bet Ari ; 2.64; 8900;occ; 92; 0;50339  
2; 2629.5; 15-OCT-2011 12:02:57; Bright; 46.0; 173; 4Bet Tri ; 3.00; 8900;occ; 92; 0;50339  
3; 3056.3; 15-OCT-2011 12:10:04; Bright; 47.0; 160; 23Gam Per ; 2.93; 4700;occ; 94; 0;50339  
/nas3/ENVISAT/GOMOS/GOM\_NL\_\_0P/GOM\_NL\_\_0PNPDK20111015\_133811\_000007733107\_00326\_50340\_5430.N1  
1; 2329.6; 15-OCT-2011 13:38:11; Bright; 46.0; 105; 6Bet Ari ; 2.64; 8900;occ; 92; 0;50340  
2; 2628.6; 15-OCT-2011 13:43:10; Bright; 47.5; 173; 4Bet Tri ; 3.00; 8900;occ; 95; 0;50340  
3; 3055.6; 15-OCT-2011 13:50:17; Bright; 47.5; 160; 23Gam Per ; 2.93; 4700;occ; 95; 0;50340  
/nas3/ENVISAT/GOMOS/GOM\_NL\_\_0P/GOM\_NL\_\_0PNPDK20111015\_152323\_000004723107\_00327\_50341\_5431.N1  
1; 2628.1; 15-OCT-2011 15:23:23; Bright; 45.5; 173; 4Bet Tri ; 3.00; 8900;occ; 91; 0;50341  
2; 3055.0; 15-OCT-2011 15:30:30; Bright; 46.0; 160; 23Gam Per ; 2.93; 4700;occ; 92; 0;50341  
/nas3/ENVISAT/GOMOS/GOM\_NL\_\_0P/GOM\_NL\_\_0PNPDK20111015\_170337\_000004723107\_00328\_50342\_5432.N1  
1; 2627.3; 15-OCT-2011 17:03:37; Bright; 46.0; 173; 4Bet Tri ; 3.00; 8900;occ; 92; 0;50342  
2; 3054.1; 15-OCT-2011 17:10:43; Bright; 45.5; 160; 23Gam Per ; 2.93; 4700;occ; 91; 0;50342  
/nas3/ENVISAT/GOMOS/GOM\_NL\_\_0P/GOM\_NL\_\_0PNPDK20111015\_184350\_000004723107\_00329\_50343\_5433.N1  
1; 2626.5; 15-OCT-2011 18:43:50; Bright; 46.0; 173; 4Bet Tri ; 3.00; 8900;occ; 92; 0;50343  
2; 3053.3; 15-OCT-2011 18:50:57; Bright; 46.0; 160; 23Gam Per ; 2.93; 4700;occ; 92; 0;50343  
/nas3/ENVISAT/GOMOS/GOM\_NL\_\_0P/GOM\_NL\_\_0PNPDE20111016\_012443\_000004713107\_00333\_50347\_6556.N1  
1; 2623.8; 16-OCT-2011 01:24:43; Bright; 45.0; 173; 4Bet Tri ; 3.00; 8900;occ; 90; 0;50347  
2; 3050.0; 16-OCT-2011 01:31:49; Bright; 45.0; 160; 23Gam Per ; 2.93; 4700;occ; 90; 0;50347  
/nas3/ENVISAT/GOMOS/GOM\_NL\_\_0P/GOM\_NL\_\_0PNPDE20111016\_030456\_000004703107\_00334\_50348\_6557.N1  
1; 2623.2; 16-OCT-2011 03:04:56; Bright; 46.5; 173; 4Bet Tri ; 3.00; 8900;occ; 93; 0;50348  
2; 3049.3; 16-OCT-2011 03:12:02; Bright; 44.0; 160; 23Gam Per ; 2.93; 4700;occ; 88; 0;50348  
/nas3/ENVISAT/GOMOS/GOM\_NL\_\_0P/GOM\_NL\_\_0PNPDE20111016\_044510\_000004723107\_00335\_50349\_6558.N1  
1; 2622.6; 16-OCT-2011 04:45:10; Bright; 45.5; 173; 4Bet Tri ; 3.00; 8900;occ; 91; 0;50349  
2; 3048.7; 16-OCT-2011 04:52:16; Bright; 46.5; 160; 23Gam Per ; 2.93; 4700;occ; 93; 0;50349  
/nas3/ENVISAT/GOMOS/GOM\_NL\_\_0P/GOM\_NL\_\_0PNPDE20111016\_062523\_000004723107\_00336\_50350\_6559.N1  
1; 2622.0; 16-OCT-2011 06:25:23; Bright; 45.0; 173; 4Bet Tri ; 3.00; 8900;occ; 90; 0;50350  
2; 3048.0; 16-OCT-2011 06:32:29; Bright; 46.5; 160; 23Gam Per ; 2.93; 4700;occ; 93; 0;50350  
/nas3/ENVISAT/GOMOS/GOM\_NL\_\_0P/GOM\_NL\_\_0PNPDE20111016\_213428\_00000453107\_00345\_50359\_6560.N1  
1;-2972.6; 16-OCT-2011 21:34:28; Bright; 46.0; 160; 23Gam Per ; 2.93; 4700;occ; 92; 0;50359  
/nas3/ENVISAT/GOMOS/GOM\_NL\_\_0P/GOM\_NL\_\_0PNPDE20111016\_231441\_00000453107\_00346\_50360\_6561.N1  
1;-2973.2; 16-OCT-2011 23:14:41; Bright; 46.0; 160; 23Gam Per ; 2.93; 4700;occ; 92; 0;50360  
/nas3/ENVISAT/GOMOS/GOM\_NL\_\_0P/GOM\_NL\_\_0PNPDK20111016\_080537\_000004693107\_00337\_50351\_5434.N1  
1; 2621.4; 16-OCT-2011 08:05:37; Bright; 45.5; 173; 4Bet Tri ; 3.00; 8900;occ; 91; 0;50351  
2; 3047.2; 16-OCT-2011 08:12:42; Bright; 44.0; 160; 23Gam Per ; 2.93; 4700;occ; 88; 0;50351  
/nas3/ENVISAT/GOMOS/GOM\_NL\_\_0P/GOM\_NL\_\_0PNPDK20111016\_094550\_000004713107\_00338\_50352\_5435.N1  
1; 2620.8; 16-OCT-2011 09:45:50; Bright; 46.5; 173; 4Bet Tri ; 3.00; 8900;occ; 93; 0;50352  
2; 3046.6; 16-OCT-2011 09:52:56; Bright; 45.5; 160; 23Gam Per ; 2.93; 4700;occ; 91; 0;50352  
/nas3/ENVISAT/GOMOS/GOM\_NL\_\_0P/GOM\_NL\_\_0PNPDK20111016\_112603\_000004723107\_00339\_50353\_5436.N1  
1; 2620.2; 16-OCT-2011 11:26:03; Bright; 45.5; 173; 4Bet Tri ; 3.00; 8900;occ; 91; 0;50353  
2; 3045.8; 16-OCT-2011 11:33:09; Bright; 46.5; 160; 23Gam Per ; 2.93; 4700;occ; 93; 0;50353  
/nas3/ENVISAT/GOMOS/GOM\_NL\_\_0P/GOM\_NL\_\_0PNPDK20111016\_130616\_000004723107\_00340\_50354\_5437.N1  
1; 2619.4; 16-OCT-2011 13:06:16; Bright; 45.0; 173; 4Bet Tri ; 3.00; 8900;occ; 90; 0;50354  
2; 3045.1; 16-OCT-2011 13:13:22; Bright; 47.0; 160; 23Gam Per ; 2.93; 4700;occ; 94; 0;50354  
/nas3/ENVISAT/GOMOS/GOM\_NL\_\_0P/GOM\_NL\_\_0PNPDK20111016\_144630\_000004713107\_00341\_50355\_5438.N1  
1; 2618.8; 16-OCT-2011 14:46:30; Bright; 44.5; 173; 4Bet Tri ; 3.00; 8900;occ; 89; 0;50355  
2; 3044.4; 16-OCT-2011 14:53:35; Bright; 46.0; 160; 23Gam Per ; 2.93; 4700;occ; 92; 0;50355  
/nas3/ENVISAT/GOMOS/GOM\_NL\_\_0P/GOM\_NL\_\_0PNPDK20111016\_162643\_000004723107\_00342\_50356\_5439.N1  
1; 2618.3; 16-OCT-2011 16:26:43; Bright; 45.0; 173; 4Bet Tri ; 3.00; 8900;occ; 90; 0;50356  
2; 3043.6; 16-OCT-2011 16:33:48; Bright; 47.0; 160; 23Gam Per ; 2.93; 4700;occ; 94; 0;50356  
/nas3/ENVISAT/GOMOS/GOM\_NL\_\_0P/GOM\_NL\_\_0PNPDK20111016\_180656\_000004723107\_00343\_50357\_5440.N1  
1; 2617.5; 16-OCT-2011 18:06:56; Bright; 46.5; 173; 4Bet Tri ; 3.00; 8900;occ; 93; 0;50357  
2; 3042.9; 16-OCT-2011 18:14:02; Bright; 47.0; 160; 23Gam Per ; 2.93; 4700;occ; 94; 0;50357  
/nas3/ENVISAT/GOMOS/GOM\_NL\_\_0P/GOM\_NL\_\_0PNPDK20111016\_195415\_00000463107\_00344\_50358\_5441.N1  
1;-2971.9; 16-OCT-2011 19:54:15; Bright; 46.5; 160; 23Gam Per ; 2.93; 4700;occ; 93; 0;50358  
/nas3/ENVISAT/GOMOS/GOM\_NL\_\_0P/GOM\_NL\_\_0PNPDE20111017\_005455\_00000463107\_00347\_50361\_6562.N1  
1;-2974.0; 17-OCT-2011 00:54:55; Bright; 46.5; 160; 23Gam Per ; 2.93; 4700;occ; 93; 0;50361  
/nas3/ENVISAT/GOMOS/GOM\_NL\_\_0P/GOM\_NL\_\_0PNPDE20111017\_023508\_00000423107\_00348\_50362\_6563.N1  
1;-2974.7; 17-OCT-2011 02:35:08; Bright; 43.0; 160; 23Gam Per ; 2.93; 4700;occ; 86; 0;50362  
/nas3/ENVISAT/GOMOS/GOM\_NL\_\_0P/GOM\_NL\_\_0PNPDE20111017\_041521\_00000453107\_00349\_50363\_6564.N1  
1;-2975.5; 17-OCT-2011 04:15:21; Bright; 45.5; 160; 23Gam Per ; 2.93; 4700;occ; 91; 0;50363  
/nas3/ENVISAT/GOMOS/GOM\_NL\_\_0P/GOM\_NL\_\_0PNPDE20111017\_055534\_00000453107\_00350\_50364\_6565.N1  
1;-2976.2; 17-OCT-2011 05:55:34; Bright; 45.5; 160; 23Gam Per ; 2.93; 4700;occ; 91; 0;50364  
/nas3/ENVISAT/GOMOS/GOM\_NL\_\_0P/GOM\_NL\_\_0PNPDE20111017\_223747\_00000453107\_00360\_50374\_6567.N1  
1;-2983.4; 17-OCT-2011 22:37:47; Bright; 45.5; 160; 23Gam Per ; 2.93; 4700;occ; 91; 0;50374  
/nas3/ENVISAT/GOMOS/GOM\_NL\_\_0P/GOM\_NL\_\_0PNPDK20111017\_073548\_00000453107\_00351\_50365\_5442.N1

1;-2976.8; 17-OCT-2011 07:35:48; Bright; 46.0; 160; 23Gam Per ; 2.93; 4700;occ; 92; 0;50365  
/nas3/ENVISAT/GOMOS/GOM\_NL\_\_0P/GOM\_NL\_\_0PNPDK20111017\_091601\_000000453107\_00352\_50366\_5443.N1  
1;-2977.5; 17-OCT-2011 09:16:01; Bright; 45.5; 160; 23Gam Per ; 2.93; 4700;occ; 91; 0;50366  
/nas3/ENVISAT/GOMOS/GOM\_NL\_\_0P/GOM\_NL\_\_0PNPDK20111017\_105614\_000000463107\_00353\_50367\_5444.N1  
1;-2978.3; 17-OCT-2011 10:56:14; Bright; 46.5; 160; 23Gam Per ; 2.93; 4700;occ; 93; 0;50367  
/nas3/ENVISAT/GOMOS/GOM\_NL\_\_0P/GOM\_NL\_\_0PNPDK20111017\_123627\_000000463107\_00354\_50368\_5445.N1  
1;-2979.1; 17-OCT-2011 12:36:27; Bright; 46.5; 160; 23Gam Per ; 2.93; 4700;occ; 93; 0;50368  
/nas3/ENVISAT/GOMOS/GOM\_NL\_\_0P/GOM\_NL\_\_0PNPDK20111017\_141641\_000000453107\_00355\_50369\_5446.N1  
1;-2979.8; 17-OCT-2011 14:16:41; Bright; 46.0; 160; 23Gam Per ; 2.93; 4700;occ; 92; 0;50369  
/nas3/ENVISAT/GOMOS/GOM\_NL\_\_0P/GOM\_NL\_\_0PNPDK20111017\_155654\_000000453107\_00356\_50370\_5447.N1  
1;-2980.6; 17-OCT-2011 15:56:54; Bright; 45.5; 160; 23Gam Per ; 2.93; 4700;occ; 91; 0;50370  
/nas3/ENVISAT/GOMOS/GOM\_NL\_\_0P/GOM\_NL\_\_0PNPDK20111017\_173707\_000000453107\_00357\_50371\_5448.N1  
1;-2981.4; 17-OCT-2011 17:37:07; Bright; 45.5; 160; 23Gam Per ; 2.93; 4700;occ; 91; 0;50371  
/nas3/ENVISAT/GOMOS/GOM\_NL\_\_0P/GOM\_NL\_\_0PNPDK20111017\_191720\_000000463107\_00358\_50372\_5449.N1  
1;-2982.0; 17-OCT-2011 19:17:20; Bright; 46.5; 160; 23Gam Per ; 2.93; 4700;occ; 93; 0;50372  
/nas3/ENVISAT/GOMOS/GOM\_NL\_\_0P/GOM\_NL\_\_0PNPDE20111018\_001800\_000000443107\_00361\_50375\_6568.N1  
1;-2984.0; 18-OCT-2011 00:18:00; Bright; 45.0; 160; 23Gam Per ; 2.93; 4700;occ; 90; 0;50375  
/nas3/ENVISAT/GOMOS/GOM\_NL\_\_0P/GOM\_NL\_\_0PNPDE20111018\_015813\_000000453107\_00362\_50376\_6569.N1  
1;-2984.8; 18-OCT-2011 01:58:13; Bright; 46.0; 160; 23Gam Per ; 2.93; 4700;occ; 92; 0;50376  
/nas3/ENVISAT/GOMOS/GOM\_NL\_\_0P/GOM\_NL\_\_0PNPDE20111018\_033827\_000000443107\_00363\_50377\_6570.N1  
1;-2985.5; 18-OCT-2011 03:38:27; Bright; 45.0; 160; 23Gam Per ; 2.93; 4700;occ; 90; 0;50377  
/nas3/ENVISAT/GOMOS/GOM\_NL\_\_0P/GOM\_NL\_\_0PNPDE20111018\_051840\_000000453107\_00364\_50378\_6571.N1  
1;-2986.3; 18-OCT-2011 05:18:40; Bright; 45.5; 160; 23Gam Per ; 2.93; 4700;occ; 91; 0;50378  
/nas3/ENVISAT/GOMOS/GOM\_NL\_\_0P/GOM\_NL\_\_0PNPDE20111018\_065853\_000000443107\_00365\_50379\_6572.N1  
1;-2986.9; 18-OCT-2011 06:58:53; Bright; 45.0; 160; 23Gam Per ; 2.93; 4700;occ; 90; 0;50379  
/nas3/ENVISAT/GOMOS/GOM\_NL\_\_0P/GOM\_NL\_\_0PNPDK20111018\_083906\_000000443107\_00366\_50380\_5450.N1  
1;-2987.6; 18-OCT-2011 08:39:06; Bright; 44.5; 160; 23Gam Per ; 2.93; 4700;occ; 89; 0;50380  
/nas3/ENVISAT/GOMOS/GOM\_NL\_\_0P/GOM\_NL\_\_0PNPDK20111018\_115933\_000000673107\_00368\_50382\_5451.N1  
1;-2988.9; 18-OCT-2011 11:59:33; Bright; 67.5; 160; 23Gam Per ; 2.93; 4700;occ; 135; 0;50382  
/nas3/ENVISAT/GOMOS/GOM\_NL\_\_0P/GOM\_NL\_\_0PNPDK20111018\_133946\_000000453107\_00369\_50383\_5452.N1  
1;-2989.7; 18-OCT-2011 13:39:46; Bright; 45.5; 160; 23Gam Per ; 2.93; 4700;occ; 91; 0;50383  
/nas3/ENVISAT/GOMOS/GOM\_NL\_\_0P/GOM\_NL\_\_0PNPDK20111018\_101920\_000000433107\_00367\_50381\_5454.N1  
1;-2988.3; 18-OCT-2011 10:19:20; Bright; 44.0; 160; 23Gam Per ; 2.93; 4700;occ; 88; 0;50381  
/nas3/ENVISAT/GOMOS/GOM\_NL\_\_0P/GOM\_NL\_\_0PNPDK20111018\_101920\_000000433107\_00367\_50381\_5739.N1  
1;-2988.3; 18-OCT-2011 10:19:20; Bright; 44.0; 160; 23Gam Per ; 2.93; 4700;occ; 88; 0;50381  
/nas3/ENVISAT/GOMOS/GOM\_NL\_\_0P/GOM\_NL\_\_0PNPDE20111023\_202058\_000000603108\_00014\_50459\_6573.N1  
1; 2035.9; 23-OCT-2011 20:20:58; Bright; 60.5; 94; 92Alp Cet ; 2.53; 3100;occ; 121; 0;50459  
/nas3/ENVISAT/GOMOS/GOM\_NL\_\_0P/GOM\_NL\_\_0PNPDE20111023\_212637\_000021363108\_00014\_50459\_6574.N1  
1; -39.8; 23-OCT-2011 21:26:37; Dark ; 65.5; 132; 15Rho Pup ; 2.80; 6900;occ; 131; 0;50459  
2; 249.2; 23-OCT-2011 21:31:26; Dark ; 69.0; 88; 31Eta Cma ; 2.45; 20000;occ; 138; 0;50460  
3; 787.7; 23-OCT-2011 21:40:24; Dark ; 61.5; 108; Alp Col ; 2.65; 15200;occ; 123; 0;50460  
4; 2035.6; 23-OCT-2011 22:01:12; Bright; 61.0; 94; 92Alp Cet ; 2.53; 3100;occ; 122; 0;50460  
/nas3/ENVISAT/GOMOS/GOM\_NL\_\_0P/GOM\_NL\_\_0PNPDE20111023\_230652\_000021333108\_00015\_50460\_6575.N1  
1; -38.1; 23-OCT-2011 23:06:52; Dark ; 63.0; 132; 15Rho Pup ; 2.80; 6900;occ; 126; 0;50460  
2; 251.0; 23-OCT-2011 23:11:41; Dark ; 65.5; 88; 31Eta Cma ; 2.45; 20000;occ; 131; 0;50461  
3; 788.8; 23-OCT-2011 23:20:39; Dark ; 64.5; 108; Alp Col ; 2.65; 15200;occ; 129; 0;50461  
4; 2034.9; 23-OCT-2011 23:41:25; Bright; 61.0; 94; 92Alp Cet ; 2.53; 3100;occ; 122; 0;50461  
/nas3/ENVISAT/GOMOS/GOM\_NL\_\_0P/GOM\_NL\_\_0PNPDK20111023\_094936\_000000603108\_00008\_50453\_5455.N1  
1; 237.1; 23-OCT-2011 09:49:36; Dark ; 63.5; 88; 31Eta Cma ; 2.45; 20000;occ; 127; 0;50453  
2; 779.1; 23-OCT-2011 09:58:38; Dark ; 64.5; 108; Alp Col ; 2.65; 15200;occ; 129; 0;50453  
/nas3/ENVISAT/GOMOS/GOM\_NL\_\_0P/GOM\_NL\_\_0PNPDK20111023\_101938\_000000583108\_00008\_50453\_5456.N1  
1; 2039.2; 23-OCT-2011 10:19:38; Bright; 58.5; 94; 92Alp Cet ; 2.53; 3100;occ; 117; 0;50453  
/nas3/ENVISAT/GOMOS/GOM\_NL\_\_0P/GOM\_NL\_\_0PNPDK20111023\_145023\_0000006033108\_00011\_50456\_5458.N1  
1; 242.4; 23-OCT-2011 14:50:23; Dark ; 66.5; 88; 31Eta Cma ; 2.45; 20000;occ; 133; 0;50456  
2; 782.9; 23-OCT-2011 14:59:23; Dark ; 62.5; 108; Alp Col ; 2.65; 15200;occ; 125; 0;50456  
/nas3/ENVISAT/GOMOS/GOM\_NL\_\_0P/GOM\_NL\_\_0PNPDK20111023\_152018\_000048233108\_00011\_50456\_5459.N1  
1; 2037.7; 23-OCT-2011 15:20:18; Bright; 59.0; 94; 92Alp Cet ; 2.53; 3100;occ; 118; 0;50456  
2; 5969.5; 23-OCT-2011 16:25:50; Dark ; 64.0; 132; 15Rho Pup ; 2.80; 6900;occ; 128; 0;50456  
3; 6258.1; 23-OCT-2011 16:30:39; Dark ; 69.0; 88; 31Eta Cma ; 2.45; 20000;occ; 138; 0;50457  
4; 6798.2; 23-OCT-2011 16:39:39; Dark ; 63.0; 108; Alp Col ; 2.65; 15200;occ; 126; 0;50457  
/nas3/ENVISAT/GOMOS/GOM\_NL\_\_0P/GOM\_NL\_\_0PNPDK20111023\_170032\_000048253108\_00012\_50457\_5460.N1  
1; 2037.1; 23-OCT-2011 17:00:32; Bright; 59.5; 94; 92Alp Cet ; 2.53; 3100;occ; 119; 0;50457  
2; 5971.1; 23-OCT-2011 18:06:06; Dark ; 61.5; 132; 15Rho Pup ; 2.80; 6900;occ; 123; 0;50457  
3; 6259.9; 23-OCT-2011 18:10:54; Dark ; 66.5; 88; 31Eta Cma ; 2.45; 20000;occ; 133; 0;50458  
4; 6799.2; 23-OCT-2011 18:19:54; Dark ; 63.0; 108; Alp Col ; 2.65; 15200;occ; 126; 0;50458  
/nas3/ENVISAT/GOMOS/GOM\_NL\_\_0P/GOM\_NL\_\_0PNPDK20111023\_184045\_000048273108\_00013\_50458\_5461.N1  
1; 2036.5; 23-OCT-2011 18:40:45; Bright; 59.5; 94; 92Alp Cet ; 2.53; 3100;occ; 119; 0;50458  
2; 5972.7; 23-OCT-2011 19:46:21; Dark ; 62.0; 132; 15Rho Pup ; 2.80; 6900;occ; 124; 0;50458

```

3; 6261.5; 23-OCT-2011 19:51:10; Dark ; 68.0; 88; 31Eta CMA ; 2.45; 20000;occ; 136; 0;50459
4; 6800.7; 23-OCT-2011 20:00:09; Dark ; 63.0; 108; Alp Col ; 2.65; 15200;occ; 126; 0;50459
/nas3/ENVISAT/GOMOS/GOM_NL__0P/GOM_NL__0PNPDE20111024_004708_000021313108_00016_50461_6576.N1
1; -36.4; 24-OCT-2011 00:47:08; Dark ; 62.0; 132; 15Rho Pup ; 2.80; 6900;occ; 124; 0;50461
2; 252.7; 24-OCT-2011 00:51:57; Dark ; 66.0; 88; 31Eta CMA ; 2.45; 20000;occ; 132; 0;50462
3; 790.0; 24-OCT-2011 01:00:54; Dark ; 64.5; 108; Alp Col ; 2.65; 15200;occ; 129; 0;50462
4; 2034.5; 24-OCT-2011 01:21:39; Bright; 61.0; 94; 92Alp Cet ; 2.53; 3100;occ; 122; 0;50462
/nas3/ENVISAT/GOMOS/GOM_NL__0P/GOM_NL__0PNPDE20111024_040739_000021233108_00018_50463_6578.N1
1; -32.8; 24-OCT-2011 04:07:39; Dark ; 64.5; 132; 15Rho Pup ; 2.80; 6900;occ; 129; 0;50463
2; 256.4; 24-OCT-2011 04:12:29; Dark ; 69.0; 88; 31Eta CMA ; 2.45; 20000;occ; 138; 0;50464
3; 792.5; 24-OCT-2011 04:21:25; Dark ; 63.0; 108; Alp Col ; 2.65; 15200;occ; 126; 0;50464
4; 2033.8; 24-OCT-2011 04:42:06; Bright; 57.0; 94; 92Alp Cet ; 2.53; 3100;occ; 114; 0;50464
/nas3/ENVISAT/GOMOS/GOM_NL__0P/GOM_NL__0PNPDE20111024_054755_000021243108_00019_50464_6579.N1
1; -31.2; 24-OCT-2011 05:47:55; Dark ; 63.5; 132; 15Rho Pup ; 2.80; 6900;occ; 127; 0;50464
2; 258.1; 24-OCT-2011 05:52:44; Dark ; 67.0; 88; 31Eta CMA ; 2.45; 20000;occ; 134; 0;50465
3; 793.6; 24-OCT-2011 06:01:40; Dark ; 64.0; 108; Alp Col ; 2.65; 15200;occ; 128; 0;50465
4; 2033.3; 24-OCT-2011 06:22:19; Bright; 59.5; 94; 92Alp Cet ; 2.53; 3100;occ; 119; 0;50465
/nas3/ENVISAT/GOMOS/GOM_NL__0P/GOM_NL__0PNPDE20111024_210453_000012273108_00029_50474_6580.N1
1; 861.2; 24-OCT-2011 21:04:53; Dark ; 65.5; 108; Alp Col ; 2.65; 15200;occ; 131; 114;50474
2; 2029.1; 24-OCT-2011 21:24:21; Bright; 60.0; 94; 92Alp Cet ; 2.53; 3100;occ; 120; 0;50474
/nas3/ENVISAT/GOMOS/GOM_NL__0P/GOM_NL__0PNPDE20111024_223031_000021013108_00029_50474_6581.N1
1; -14.2; 24-OCT-2011 22:30:31; Dark ; 64.0; 132; 15Rho Pup ; 2.80; 6900;occ; 128; 0;50474
2; 275.7; 24-OCT-2011 22:35:21; Dark ; 69.5; 88; 31Eta CMA ; 2.45; 20000;occ; 139; 0;50475
3; 805.3; 24-OCT-2011 22:44:11; Dark ; 64.0; 108; Alp Col ; 2.65; 15200;occ; 128; 0;50475
4; 2028.6; 24-OCT-2011 23:04:34; Bright; 58.5; 94; 92Alp Cet ; 2.53; 3100;occ; 117; 0;50475
/nas3/ENVISAT/GOMOS/GOM_NL__0P/GOM_NL__0PNPDK20111024_072811_000008863108_00020_50465_5462.N1
1; -29.5; 24-OCT-2011 07:28:11; Dark ; 64.5; 132; 15Rho Pup ; 2.80; 6900;occ; 129; 0;50465
2; 259.9; 24-OCT-2011 07:33:00; Dark ; 68.0; 88; 31Eta CMA ; 2.45; 20000;occ; 136; 0;50466
3; 794.7; 24-OCT-2011 07:41:55; Dark ; 62.5; 108; Alp Col ; 2.65; 15200;occ; 125; 0;50466
/nas3/ENVISAT/GOMOS/GOM_NL__0P/GOM_NL__0PNPDK20111024_080233_000048383108_00021_50466_5463.N1
1; 2032.8; 24-OCT-2011 08:02:33; Bright; 59.5; 94; 92Alp Cet ; 2.53; 3100;occ; 119; 0;50466
2; 5986.1; 24-OCT-2011 09:08:26; Dark ; 65.5; 132; 15Rho Pup ; 2.80; 6900;occ; 131; 0;50466
3; 6275.6; 24-OCT-2011 09:13:16; Dark ; 68.5; 88; 31Eta CMA ; 2.45; 20000;occ; 137; 0;50467
4; 6810.1; 24-OCT-2011 09:22:10; Dark ; 61.5; 108; Alp Col ; 2.65; 15200;occ; 123; 0;50467
/nas3/ENVISAT/GOMOS/GOM_NL__0P/GOM_NL__0PNPDK20111024_094246_000048433108_00022_50467_5464.N1
1; 2032.3; 24-OCT-2011 09:42:46; Bright; 60.0; 94; 92Alp Cet ; 2.53; 3100;occ; 120; 0;50467
2; 5987.7; 24-OCT-2011 10:48:42; Dark ; 63.0; 132; 15Rho Pup ; 2.80; 6900;occ; 126; 0;50467
3; 6277.4; 24-OCT-2011 10:53:31; Dark ; 68.0; 88; 31Eta CMA ; 2.45; 20000;occ; 136; 0;50468
4; 6811.1; 24-OCT-2011 11:02:25; Dark ; 64.5; 108; Alp Col ; 2.65; 15200;occ; 129; 0;50468
/nas3/ENVISAT/GOMOS/GOM_NL__0P/GOM_NL__0PNPDK20111024_112300_000048453108_00023_50468_5465.N1
1; 2031.8; 24-OCT-2011 11:23:00; Bright; 59.5; 94; 92Alp Cet ; 2.53; 3100;occ; 119; 0;50468
2; 5989.5; 24-OCT-2011 12:28:57; Dark ; 66.5; 132; 15Rho Pup ; 2.80; 6900;occ; 133; 0;50468
3; 6278.9; 24-OCT-2011 12:33:47; Dark ; 68.5; 88; 31Eta CMA ; 2.45; 20000;occ; 137; 0;50469
4; 6812.4; 24-OCT-2011 12:42:40; Dark ; 64.5; 108; Alp Col ; 2.65; 15200;occ; 129; 0;50469
/nas3/ENVISAT/GOMOS/GOM_NL__0P/GOM_NL__0PNPDK20111024_130313_000048433108_00024_50469_5466.N1
1; 2031.4; 24-OCT-2011 13:03:13; Bright; 60.5; 94; 92Alp Cet ; 2.53; 3100;occ; 121; 0;50469
2; 5991.3; 24-OCT-2011 14:09:13; Dark ; 63.5; 132; 15Rho Pup ; 2.80; 6900;occ; 127; 0;50469
3; 6280.7; 24-OCT-2011 14:14:03; Dark ; 66.0; 88; 31Eta CMA ; 2.45; 20000;occ; 132; 0;50470
4; 6813.6; 24-OCT-2011 14:22:55; Dark ; 61.5; 108; Alp Col ; 2.65; 15200;occ; 123; 0;50470
/nas3/ENVISAT/GOMOS/GOM_NL__0P/GOM_NL__0PNPDK20111024_144327_000048463108_00025_50470_5467.N1
1; 2031.0; 24-OCT-2011 14:43:27; Bright; 59.0; 94; 92Alp Cet ; 2.53; 3100;occ; 118; 0;50470
2; 5993.0; 24-OCT-2011 15:49:29; Dark ; 66.5; 132; 15Rho Pup ; 2.80; 6900;occ; 133; 0;50470
3; 6282.7; 24-OCT-2011 15:54:18; Dark ; 63.5; 88; 31Eta CMA ; 2.45; 20000;occ; 127; 0;50471
4; 6814.8; 24-OCT-2011 16:03:11; Dark ; 62.5; 108; Alp Col ; 2.65; 15200;occ; 125; 0;50471
/nas3/ENVISAT/GOMOS/GOM_NL__0P/GOM_NL__0PNPDK20111024_162341_000048483108_00026_50471_5468.N1
1; 2030.8; 24-OCT-2011 16:23:41; Bright; 60.0; 94; 92Alp Cet ; 2.53; 3100;occ; 120; 0;50471
2; 5994.7; 24-OCT-2011 17:29:45; Dark ; 65.0; 132; 15Rho Pup ; 2.80; 6900;occ; 130; 0;50471
3; 6284.6; 24-OCT-2011 17:34:34; Dark ; 65.5; 88; 31Eta CMA ; 2.45; 20000;occ; 131; 0;50472
4; 6816.1; 24-OCT-2011 17:43:26; Dark ; 63.0; 108; Alp Col ; 2.65; 15200;occ; 126; 0;50472
/nas3/ENVISAT/GOMOS/GOM_NL__0P/GOM_NL__0PNPDK20111024_180354_000048493108_00027_50472_5469.N1
1; 2030.1; 24-OCT-2011 18:03:54; Bright; 60.0; 94; 92Alp Cet ; 2.53; 3100;occ; 120; 0;50472
2; 5996.4; 24-OCT-2011 19:10:00; Dark ; 65.0; 132; 15Rho Pup ; 2.80; 6900;occ; 130; 0;50472
3; 6286.3; 24-OCT-2011 19:14:50; Dark ; 69.0; 88; 31Eta CMA ; 2.45; 20000;occ; 138; 0;50473
4; 6817.1; 24-OCT-2011 19:23:41; Dark ; 62.5; 108; Alp Col ; 2.65; 15200;occ; 125; 0;50473
/nas3/ENVISAT/GOMOS/GOM_NL__0P/GOM_NL__0PNPDK20111024_194407_000048533108_00028_50473_5470.N1
1; 2029.6; 24-OCT-2011 19:44:07; Bright; 62.5; 94; 92Alp Cet ; 2.53; 3100;occ; 125; 0;50473
2; 5998.0; 24-OCT-2011 20:50:16; Dark ; 65.0; 132; 15Rho Pup ; 2.80; 6900;occ; 130; 0;50473
3; 6287.8; 24-OCT-2011 20:55:06; Dark ; 70.0; 88; 31Eta CMA ; 2.45; 20000;occ; 140; 0;50474

```



4; 6818.2; 24-OCT-2011 21:03:56; Dark ; 65.0; 108; Alp Col ; 2.65; 15200;occ; 130; 0;50474  
/nas3/ENVISAT/GOMOS/GOM\_NL\_\_0P/GOM\_NL\_\_0PNPDE20111025\_001047\_000021023108\_00030\_50475\_6582.N1  
1; -12.4; 25-OCT-2011 00:10:47; Dark ; 63.0; 132; 15Rho Pup ; 2.80; 6900;occ; 126; 0;50475  
2; 277.4; 25-OCT-2011 00:15:37; Dark ; 67.5; 88; 31Eta CMA ; 2.45; 20000;occ; 135; 0;50476  
3; 806.4; 25-OCT-2011 00:24:26; Dark ; 64.5; 108; Alp Col ; 2.65; 15200;occ; 129; 0;50476  
4; 2028.1; 25-OCT-2011 00:44:48; Bright; 62.0; 94; 92Alp Cet ; 2.53; 3100;occ; 124; 0;50476  
/nas3/ENVISAT/GOMOS/GOM\_NL\_\_0P/GOM\_NL\_\_0PNPDE20111025\_015103\_000021003108\_00031\_50476\_6583.N1  
1; -10.7; 25-OCT-2011 01:51:03; Dark ; 66.0; 132; 15Rho Pup ; 2.80; 6900;occ; 132; 0;50476  
2; 279.2; 25-OCT-2011 01:55:53; Dark ; 67.5; 88; 31Eta CMA ; 2.45; 20000;occ; 135; 0;50477  
3; 807.8; 25-OCT-2011 02:04:41; Dark ; 64.0; 108; Alp Col ; 2.65; 15200;occ; 128; 0;50477  
4; 2027.7; 25-OCT-2011 02:25:01; Bright; 62.5; 94; 92Alp Cet ; 2.53; 3100;occ; 125; 0;50477  
/nas3/ENVISAT/GOMOS/GOM\_NL\_\_0P/GOM\_NL\_\_0PNPDE20111025\_033118\_000020953108\_00032\_50477\_6584.N1  
1; -8.9; 25-OCT-2011 03:31:18; Dark ; 67.0; 132; 15Rho Pup ; 2.80; 6900;occ; 134; 0;50477  
2; 281.0; 25-OCT-2011 03:36:08; Dark ; 69.0; 88; 31Eta CMA ; 2.45; 20000;occ; 138; 0;50478  
3; 809.0; 25-OCT-2011 03:44:56; Dark ; 63.5; 108; Alp Col ; 2.65; 15200;occ; 127; 0;50478  
4; 2027.2; 25-OCT-2011 04:05:15; Bright; 59.5; 94; 92Alp Cet ; 2.53; 3100;occ; 119; 0;50478  
/nas3/ENVISAT/GOMOS/GOM\_NL\_\_0P/GOM\_NL\_\_0PNPDE20111025\_051134\_000021073108\_00033\_50478\_6585.N1  
1; -7.2; 25-OCT-2011 05:11:34; Dark ; 66.0; 132; 15Rho Pup ; 2.80; 6900;occ; 132; 0;50478  
2; 282.6; 25-OCT-2011 05:16:24; Dark ; 68.0; 88; 31Eta CMA ; 2.45; 20000;occ; 136; 0;50479  
3; 810.2; 25-OCT-2011 05:25:12; Dark ; 64.5; 108; Alp Col ; 2.65; 15200;occ; 129; 0;50479  
4; 2026.8; 25-OCT-2011 05:45:28; Bright; 73.0; 94; 92Alp Cet ; 2.53; 3100;occ; 146; 0;50479  
/nas3/ENVISAT/GOMOS/GOM\_NL\_\_0P/GOM\_NL\_\_0PNPDE20111025\_215411\_000008733108\_00044\_50489\_6586.N1  
1; 10.4; 25-OCT-2011 21:54:11; Dark ; 63.5; 132; 15Rho Pup ; 2.80; 6900;occ; 127; 0;50489  
2; 300.5; 25-OCT-2011 21:59:01; Dark ; 68.0; 88; 31Eta CMA ; 2.45; 20000;occ; 136; 0;50489  
3; 821.7; 25-OCT-2011 22:07:43; Dark ; 62.5; 108; Alp Col ; 2.65; 15200;occ; 125; 0;50489  
/nas3/ENVISAT/GOMOS/GOM\_NL\_\_0P/GOM\_NL\_\_0PNPDE20111025\_233427\_000008723108\_00045\_50490\_6587.N1  
1; 12.1; 25-OCT-2011 23:34:27; Dark ; 65.0; 132; 15Rho Pup ; 2.80; 6900;occ; 130; 0;50490  
2; 302.3; 25-OCT-2011 23:39:17; Dark ; 70.5; 88; 31Eta CMA ; 2.45; 20000;occ; 141; 0;50490  
3; 822.6; 25-OCT-2011 23:47:57; Dark ; 62.0; 108; Alp Col ; 2.65; 15200;occ; 124; 0;50490  
/nas3/ENVISAT/GOMOS/GOM\_NL\_\_0P/GOM\_NL\_\_0PNPDK20111025\_065150\_000008803108\_00034\_50479\_5471.N1  
1; -5.4; 25-OCT-2011 06:51:50; Dark ; 66.5; 132; 15Rho Pup ; 2.80; 6900;occ; 133; 0;50479  
2; 284.6; 25-OCT-2011 06:56:40; Dark ; 69.5; 88; 31Eta CMA ; 2.45; 20000;occ; 139; 0;50480  
3; 811.4; 25-OCT-2011 07:05:27; Dark ; 64.0; 108; Alp Col ; 2.65; 15200;occ; 128; 0;50480  
/nas3/ENVISAT/GOMOS/GOM\_NL\_\_0P/GOM\_NL\_\_0PNPDK20111025\_072542\_000048613108\_00035\_50480\_5472.N1  
1; 2026.4; 25-OCT-2011 07:25:42; Bright; 64.0; 94; 92Alp Cet ; 2.53; 3100;occ; 128; 0;50480  
2; 6010.4; 25-OCT-2011 08:32:06; Dark ; 67.0; 132; 15Rho Pup ; 2.80; 6900;occ; 134; 0;50480  
3; 6300.4; 25-OCT-2011 08:36:56; Dark ; 69.5; 88; 31Eta CMA ; 2.45; 20000;occ; 139; 0;50481  
4; 6826.4; 25-OCT-2011 08:45:42; Dark ; 61.5; 108; Alp Col ; 2.65; 15200;occ; 123; 0;50481  
/nas3/ENVISAT/GOMOS/GOM\_NL\_\_0P/GOM\_NL\_\_0PNPDK20111025\_090555\_000048643108\_00036\_50481\_5473.N1  
1; 2026.1; 25-OCT-2011 09:05:55; Bright; 60.0; 94; 92Alp Cet ; 2.53; 3100;occ; 120; 0;50481  
2; 6012.1; 25-OCT-2011 10:12:21; Dark ; 66.0; 132; 15Rho Pup ; 2.80; 6900;occ; 132; 0;50481  
3; 6302.1; 25-OCT-2011 10:17:11; Dark ; 71.5; 88; 31Eta CMA ; 2.45; 20000;occ; 143; 0;50482  
4; 6827.4; 25-OCT-2011 10:25:57; Dark ; 63.0; 108; Alp Col ; 2.65; 15200;occ; 126; 0;50482  
/nas3/ENVISAT/GOMOS/GOM\_NL\_\_0P/GOM\_NL\_\_0PNPDK20111025\_104609\_000048653108\_00037\_50482\_5474.N1  
1; 2025.6; 25-OCT-2011 10:46:09; Bright; 56.5; 94; 92Alp Cet ; 2.53; 3100;occ; 113; 0;50482  
2; 6013.8; 25-OCT-2011 11:52:37; Dark ; 66.5; 132; 15Rho Pup ; 2.80; 6900;occ; 133; 0;50482  
3; 6303.9; 25-OCT-2011 11:57:27; Dark ; 66.5; 88; 31Eta CMA ; 2.45; 20000;occ; 133; 0;50483  
4; 6828.5; 25-OCT-2011 12:06:12; Dark ; 63.0; 108; Alp Col ; 2.65; 15200;occ; 126; 0;50483  
/nas3/ENVISAT/GOMOS/GOM\_NL\_\_0P/GOM\_NL\_\_0PNPDK20111025\_122622\_000048673108\_00038\_50483\_5475.N1  
1; 2025.2; 25-OCT-2011 12:26:22; Bright; 63.0; 94; 92Alp Cet ; 2.53; 3100;occ; 126; 0;50483  
2; 6015.4; 25-OCT-2011 13:32:53; Dark ; 65.5; 132; 15Rho Pup ; 2.80; 6900;occ; 131; 0;50484  
3; 6305.7; 25-OCT-2011 13:37:43; Dark ; 69.0; 88; 31Eta CMA ; 2.45; 20000;occ; 138; 0;50484  
4; 6829.8; 25-OCT-2011 13:46:27; Dark ; 62.5; 108; Alp Col ; 2.65; 15200;occ; 125; 0;50484  
/nas3/ENVISAT/GOMOS/GOM\_NL\_\_0P/GOM\_NL\_\_0PNPDK20111025\_151308\_000008773108\_00040\_50485\_5476.N1  
1; 3.3; 25-OCT-2011 15:13:08; Dark ; 66.0; 132; 15Rho Pup ; 2.80; 6900;occ; 132; 0;50485  
2; 293.4; 25-OCT-2011 15:17:58; Dark ; 70.5; 88; 31Eta CMA ; 2.45; 20000;occ; 141; 0;50485  
3; 816.9; 25-OCT-2011 15:26:42; Dark ; 64.0; 108; Alp Col ; 2.65; 15200;occ; 128; 0;50485  
/nas3/ENVISAT/GOMOS/GOM\_NL\_\_0P/GOM\_NL\_\_0PNPDK20111025\_165324\_000008753108\_00041\_50486\_5477.N1  
1; 5.0; 25-OCT-2011 16:53:24; Dark ; 66.5; 132; 15Rho Pup ; 2.80; 6900;occ; 133; 0;50486  
2; 295.3; 25-OCT-2011 16:58:14; Dark ; 69.5; 88; 31Eta CMA ; 2.45; 20000;occ; 139; 0;50486  
3; 818.2; 25-OCT-2011 17:06:57; Dark ; 62.0; 108; Alp Col ; 2.65; 15200;occ; 124; 0;50486  
/nas3/ENVISAT/GOMOS/GOM\_NL\_\_0P/GOM\_NL\_\_0PNPDK20111025\_183340\_000008763108\_00042\_50487\_5478.N1  
1; 6.7; 25-OCT-2011 18:33:40; Dark ; 66.0; 132; 15Rho Pup ; 2.80; 6900;occ; 132; 0;50487  
2; 297.0; 25-OCT-2011 18:38:30; Dark ; 70.5; 88; 31Eta CMA ; 2.45; 20000;occ; 141; 0;50487  
3; 819.3; 25-OCT-2011 18:47:12; Dark ; 63.5; 108; Alp Col ; 2.65; 15200;occ; 127; 0;50487  
/nas3/ENVISAT/GOMOS/GOM\_NL\_\_0P/GOM\_NL\_\_0PNPDK20111025\_201356\_000008733108\_00043\_50488\_5479.N1  
1; 8.6; 25-OCT-2011 20:13:56; Dark ; 64.0; 132; 15Rho Pup ; 2.80; 6900;occ; 128; 0;50488  
2; 298.8; 25-OCT-2011 20:18:46; Dark ; 68.0; 88; 31Eta CMA ; 2.45; 20000;occ; 136; 0;50488

3; 820.5; 25-OCT-2011 20:27:27; Dark ; 62.0; 108; Alp Col ; 2.65; 15200;occ; 124; 0;50488  
/nas3/ENVISAT/GOMOS/GOM\_NL\_\_0P/GOM\_NL\_\_0PNPDE20111026\_011443\_000068873108\_00046\_50491\_6588.N1  
1; 14.0; 26-OCT-2011 01:14:43; Dark ; 67.0; 132; 15Rho Pup ; 2.80; 6900;occ; 134; 0;50491  
2; 304.1; 26-OCT-2011 01:19:33; Dark ; 68.0; 88; 31Eta CMA ; 2.45; 20000;occ; 136; 0;50491  
3; 823.7; 26-OCT-2011 01:28:12; Dark ; 64.0; 108; Alp Col ; 2.65; 15200;occ; 128; 0;50491  
4; 6029.7; 26-OCT-2011 02:54:58; Dark ; 66.0; 132; 15Rho Pup ; 2.80; 6900;occ; 132; 0;50492  
5; 6319.8; 26-OCT-2011 02:59:48; Dark ; 66.5; 88; 31Eta CMA ; 2.45; 20000;occ; 133; 0;50492  
6; 6838.9; 26-OCT-2011 03:08:28; Dark ; 63.0; 108; Alp Col ; 2.65; 15200;occ; 126; 0;50492  
/nas3/ENVISAT/GOMOS/GOM\_NL\_\_0P/GOM\_NL\_\_0PNPDE20111026\_043514\_000008713108\_00048\_50493\_6589.N1  
1; 17.5; 26-OCT-2011 04:35:14; Dark ; 64.0; 132; 15Rho Pup ; 2.80; 6900;occ; 128; 0;50493  
2; 307.7; 26-OCT-2011 04:40:04; Dark ; 71.0; 88; 31Eta CMA ; 2.45; 20000;occ; 142; 0;50493  
3; 826.1; 26-OCT-2011 04:48:43; Dark ; 62.5; 108; Alp Col ; 2.65; 15200;occ; 125; 0;50493  
/nas3/ENVISAT/GOMOS/GOM\_NL\_\_0P/GOM\_NL\_\_0PNPDE20111026\_061530\_000008693108\_00049\_50494\_6590.N1  
1; 19.4; 26-OCT-2011 06:15:30; Dark ; 67.5; 132; 15Rho Pup ; 2.80; 6900;occ; 135; 0;50494  
2; 309.5; 26-OCT-2011 06:20:20; Dark ; 68.0; 88; 31Eta CMA ; 2.45; 20000;occ; 136; 0;50494  
3; 827.3; 26-OCT-2011 06:28:58; Dark ; 62.0; 108; Alp Col ; 2.65; 15200;occ; 124; 0;50494  
/nas3/ENVISAT/GOMOS/GOM\_NL\_\_0P/GOM\_NL\_\_0PNPDK20111026\_093601\_000008683108\_00051\_50496\_5481.N1  
1; 22.9; 26-OCT-2011 09:36:01; Dark ; 66.0; 132; 15Rho Pup ; 2.80; 6900;occ; 132; 0;50496  
2; 313.0; 26-OCT-2011 09:40:51; Dark ; 66.0; 88; 31Eta CMA ; 2.45; 20000;occ; 132; 0;50496  
3; 829.7; 26-OCT-2011 09:49:28; Dark ; 62.0; 108; Alp Col ; 2.65; 15200;occ; 124; 0;50496  
/nas3/ENVISAT/GOMOS/GOM\_NL\_\_0P/GOM\_NL\_\_0PNPDK20111026\_111617\_000008683108\_00052\_50497\_5482.N1  
1; 24.7; 26-OCT-2011 11:16:17; Dark ; 66.0; 132; 15Rho Pup ; 2.80; 6900;occ; 132; 0;50497  
2; 314.8; 26-OCT-2011 11:21:07; Dark ; 66.0; 88; 31Eta CMA ; 2.45; 20000;occ; 132; 0;50497  
3; 830.8; 26-OCT-2011 11:29:43; Dark ; 62.0; 108; Alp Col ; 2.65; 15200;occ; 124; 0;50497  
/nas3/ENVISAT/GOMOS/GOM\_NL\_\_0P/GOM\_NL\_\_0PNPDK20111026\_130123\_000005773108\_00053\_50498\_5483.N1  
1; 316.7; 26-OCT-2011 13:01:23; Dark ; 63.0; 88; 31Eta CMA ; 2.45; 20000;occ; 126; 0;50498  
2; 831.9; 26-OCT-2011 13:09:58; Dark ; 62.0; 108; Alp Col ; 2.65; 15200;occ; 124; 0;50498  
/nas3/ENVISAT/GOMOS/GOM\_NL\_\_0P/GOM\_NL\_\_0PNPDK20111026\_143648\_000008663108\_00054\_50499\_5484.N1  
1; 28.3; 26-OCT-2011 14:36:48; Dark ; 67.5; 132; 15Rho Pup ; 2.80; 6900;occ; 135; 0;50499  
2; 318.4; 26-OCT-2011 14:41:38; Dark ; 63.0; 88; 31Eta CMA ; 2.45; 20000;occ; 126; 0;50499  
3; 832.9; 26-OCT-2011 14:50:13; Dark ; 62.0; 108; Alp Col ; 2.65; 15200;occ; 124; 0;50499  
/nas3/ENVISAT/GOMOS/GOM\_NL\_\_0P/GOM\_NL\_\_0PNPDK20111026\_161704\_000008653108\_00055\_50500\_5485.N1  
1; 30.0; 26-OCT-2011 16:17:04; Dark ; 70.0; 132; 15Rho Pup ; 2.80; 6900;occ; 140; 0;50500  
2; 320.4; 26-OCT-2011 16:21:54; Dark ; 61.0; 88; 31Eta CMA ; 2.45; 20000;occ; 122; 0;50500  
3; 833.9; 26-OCT-2011 16:30:28; Dark ; 62.0; 108; Alp Col ; 2.65; 15200;occ; 124; 0;50500  
/nas3/ENVISAT/GOMOS/GOM\_NL\_\_0P/GOM\_NL\_\_0PNPDK20111026\_175720\_000008643108\_00056\_50501\_5486.N1  
1; 31.9; 26-OCT-2011 17:57:20; Dark ; 67.0; 132; 15Rho Pup ; 2.80; 6900;occ; 134; 0;50501  
2; 322.1; 26-OCT-2011 18:02:10; Dark ; 61.0; 88; 31Eta CMA ; 2.45; 20000;occ; 122; 0;50501  
3; 835.1; 26-OCT-2011 18:10:43; Dark ; 61.5; 108; Alp Col ; 2.65; 15200;occ; 123; 0;50501  
/nas3/ENVISAT/GOMOS/GOM\_NL\_\_0P/GOM\_NL\_\_0PNPDK20111027\_125307\_000000193108\_00067\_50512\_5487.N1  
1; 2026.2; 27-OCT-2011 12:53:07; Dark ; 19.5; 9; Alp Eri ; 0.45; 24000;occ; 39; 0;50512