

# GOMOS Daily Report 03-OCT-2011

## Level 0 and Level 1 products

### SUMMARY

#### [1. General Info](#)

#### [2. Summary of products arrived in PCF \(Product Control Facility\)](#)

[2.1 Level 0: products arrived in PCF during current month \(see template here\)](#)

[2.2 Level 0: plot of mission plan versus production during reporting period](#)

[2.3 Level 0: summary of missing occultations with respect to the plan](#)

[2.4 Level 1: products arrived in PCF during reporting period](#)

#### [3. Plot of Spectrometers and Photometers temperatures](#)

#### [4. Dark Charge monitoring](#)

[4.1 Products that did not use the Dark Sky Area observation for DC computation](#)

[4.2 Plot of Dark Charge](#)

#### [5. Demodulation correction and quality product information monitoring](#)

[5.1 Percentage of products with some flags set](#)

[5.2 Plot of quality information per product \(time dependant\)](#)

[5.3 Plot of quality information per product \(world map\)](#)

#### [6. Star tangent altitude lost](#)

[6.1 Statistics on star tangent altitude lost](#)

[6.2 Plot of star tangent altitude lost: DARK products](#)

[6.3 Plot of star tangent altitude lost: BRIGHT products](#)

[6.3 Plot of star tangent altitude lost: TWILIGHT products](#)

#### [7. Star Acquisition and Tracking Unit \(SATU\)](#)

[7.1 SATU plots \(dark limb\): 'X' and 'Y' axis](#)

[7.2 SATU Noise Equivalent Angle statistics](#)

[7.2.1 SATU NEA Statistics \(table\)](#)

[7.2.2 Daily SATU NEA STD \(dark limb\) - trend since 1st April 2006](#)

[8. Auxiliary Data Files used for the production reported in section 2.4](#)

## [Level 2 products](#)

---

This report presents the daily analysis on parameters extracted from GOMOS level 1b data (GOM\_TRA\_1P). It is intended to monitor some important parameters that will impact the quality of the level 2 products as the Spectrometers and Photometers CCD Temperatures and Dark Charge, SATU noise equivalent angle... A list of level 0 products (and content) that have arrived during the actual month to the PCF is also given.

Item	Value
Time of report generation	06OCT2011 07:01:12
Data source version	GOMOS/6.01
Start time of products	03OCT2011 00:23:32
Stop time of products	03OCT2011 22:53:47
Store outputs in DB	Yes
Nb of level 1b prods	37
Nb of prods with errors	0

## 2. Summary of products arrived in PCF (Product Control Facility)

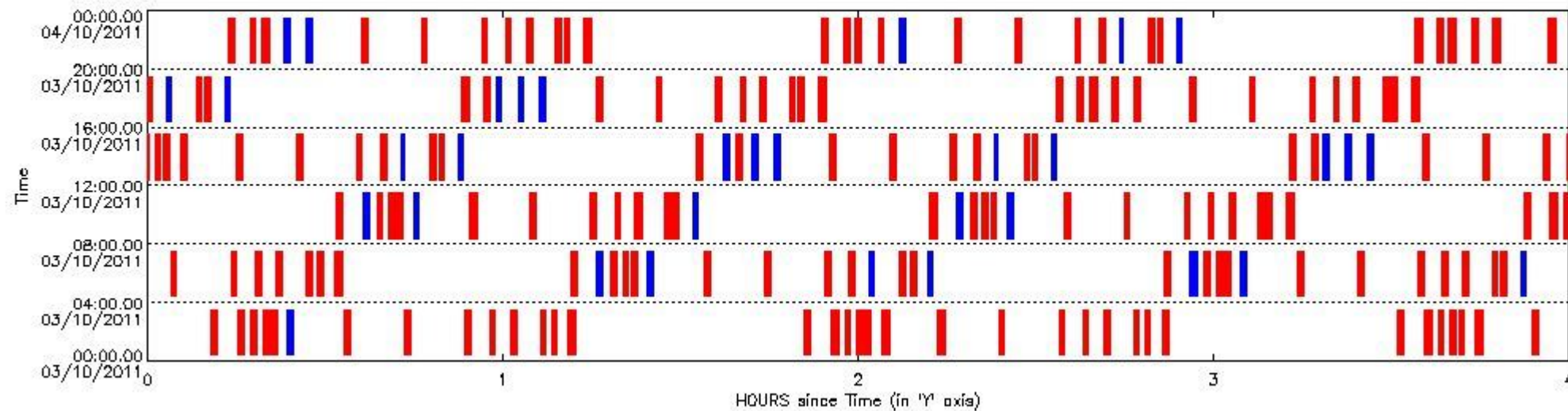
### 2.1 Level 0 products arrived in PCF (see template [here](#))

### 2.2 Plot of mission plan versus Level 0 production arrived in PCF during reporting period

Red segments are missing products.

Blue segments are available products.

Green segments are calibration measurements (not available products to users).



### 2.3 Summary of missing occultations (red segments in previous plot)

UTC start time	Star name	Star ID	Orbit
03-OCT-2011 00:10:34	15RhoPup	132	50159
03-OCT-2011 00:15:01	25DelCMa	37	50159
03-OCT-2011 00:17:23	DSA1055	0	50159
03-OCT-2011 00:19:25	TauPup	161	50160
03-OCT-2011 00:20:49	AlpCar	2	50160
03-OCT-2011 00:33:08	The1Eri	157	50160
03-OCT-2011 00:43:24	16BetCet	52	50160
03-OCT-2011 00:53:35	88GamPeg	140	50160
03-OCT-2011 00:57:41	21AlpAnd	58	50160
03-OCT-2011 01:01:07	43BetAnd	53	50160
03-OCT-2011 01:06:16	11BetCas	74	50160
03-OCT-2011 01:08:05	37DelCas	110	50160
03-OCT-2011 01:11:00	23GamPer	160	50160
03-OCT-2011 01:50:49	15RhoPup	132	50160
03-OCT-2011 01:55:17	25DelCMa	37	50160

03-OCT-2011 01:57:38	DSA1055	0	50160
03-OCT-2011 01:59:40	TauPup	161	50161
03-OCT-2011 02:01:04	AlpCar	2	50161
03-OCT-2011 02:03:50	AlpCol	108	50161
03-OCT-2011 02:13:23	The1Eri	157	50161
03-OCT-2011 02:23:38	16BetCet	52	50161
03-OCT-2011 02:33:49	88GamPeg	140	50161
03-OCT-2011 02:37:54	21AlpAnd	58	50161
03-OCT-2011 02:41:20	43BetAnd	53	50161
03-OCT-2011 02:46:29	11BetCas	74	50161
03-OCT-2011 02:48:19	37DelCas	110	50161
03-OCT-2011 02:51:13	23GamPer	160	50161
03-OCT-2011 03:31:04	15RhoPup	132	50161
03-OCT-2011 03:35:32	25DelCMa	37	50161
03-OCT-2011 03:37:52	DSA1055	0	50161
03-OCT-2011 03:39:54	TauPup	161	50162
03-OCT-2011 03:41:18	AlpCar	2	50162
03-OCT-2011 03:44:05	AlpCol	108	50162
03-OCT-2011 03:53:37	The1Eri	157	50162
03-OCT-2011 04:03:52	16BetCet	52	50162
03-OCT-2011 04:14:03	88GamPeg	140	50162
03-OCT-2011 04:18:08	21AlpAnd	58	50162
03-OCT-2011 04:21:34	43BetAnd	53	50162
03-OCT-2011 04:26:43	11BetCas	74	50162
03-OCT-2011 04:28:32	37DelCas	110	50162
03-OCT-2011 04:31:26	23GamPer	160	50162
03-OCT-2011 05:11:19	15RhoPup	132	50162
03-OCT-2011 05:18:07	DSA1055	0	50162
03-OCT-2011 05:20:09	TauPup	161	50163
03-OCT-2011 05:21:33	AlpCar	2	50163
03-OCT-2011 05:33:52	The1Eri	157	50163
03-OCT-2011 05:44:06	16BetCet	52	50163
03-OCT-2011 05:54:17	88GamPeg	140	50163
03-OCT-2011 05:58:22	21AlpAnd	58	50163
03-OCT-2011 06:06:57	11BetCas	74	50163
03-OCT-2011 06:08:46	37DelCas	110	50163
03-OCT-2011 06:51:34	15RhoPup	132	50163
03-OCT-2011 06:58:22	DSA1055	0	50163
03-OCT-2011 07:00:24	TauPup	161	50164
03-OCT-2011 07:01:48	AlpCar	2	50164
03-OCT-2011 07:14:07	The1Eri	157	50164
03-OCT-2011 07:24:20	16BetCet	52	50164
03-OCT-2011 07:34:30	88GamPeg	140	50164
03-OCT-2011 07:38:36	21AlpAnd	58	50164
03-OCT-2011 07:42:01	43BetAnd	53	50164
03-OCT-2011 07:46:59	18AlpCas	68	50164
03-OCT-2011 07:48:24	27GamCas	76	50164
03-OCT-2011 08:31:49	15RhoPup	132	50164
03-OCT-2011 08:38:37	DSA1055	0	50164
03-OCT-2011 08:40:39	TauPup	161	50165
03-OCT-2011 08:42:03	AlpCar	2	50165
03-OCT-2011 08:54:21	The1Eri	157	50165
03-OCT-2011 09:04:34	16BetCet	52	50165
03-OCT-2011 09:14:44	88GamPeg	140	50165
03-OCT-2011 09:18:49	21AlpAnd	58	50165
03-OCT-2011 09:22:14	43BetAnd	53	50165
03-OCT-2011 09:27:13	18AlpCas	68	50165
03-OCT-2011 09:28:38	27GamCas	76	50165
03-OCT-2011 10:12:04	15RhoPup	132	50165

03-OCT-2011 10:18:51	DSA1055	0	50165
03-OCT-2011 10:20:53	TauPup	161	50166
03-OCT-2011 10:22:17	AlpCar	2	50166
03-OCT-2011 10:34:36	The1Eri	157	50166
03-OCT-2011 10:44:48	16BetCet	52	50166
03-OCT-2011 10:54:58	88GamPeg	140	50166
03-OCT-2011 10:59:03	21AlpAnd	58	50166
03-OCT-2011 11:02:27	43BetAnd	53	50166
03-OCT-2011 11:07:26	18AlpCas	68	50166
03-OCT-2011 11:08:52	27GamCas	76	50166
03-OCT-2011 11:12:18	23GamPer	160	50166
03-OCT-2011 11:52:18	15RhoPup	132	50166
03-OCT-2011 11:56:49	25DelCMa	37	50166
03-OCT-2011 11:59:06	DSA1055	0	50166
03-OCT-2011 12:01:08	TauPup	161	50167
03-OCT-2011 12:02:32	AlpCar	2	50167
03-OCT-2011 12:05:23	AlpCol	108	50167
03-OCT-2011 12:14:50	The1Eri	157	50167
03-OCT-2011 12:25:02	16BetCet	52	50167
03-OCT-2011 12:35:12	88GamPeg	140	50167
03-OCT-2011 12:39:17	21AlpAnd	58	50167
03-OCT-2011 12:47:40	18AlpCas	68	50167
03-OCT-2011 12:49:05	27GamCas	76	50167
03-OCT-2011 13:32:33	15RhoPup	132	50167
03-OCT-2011 13:39:21	DSA1055	0	50167
03-OCT-2011 13:55:05	The1Eri	157	50168
03-OCT-2011 14:05:17	16BetCet	52	50168
03-OCT-2011 14:15:26	88GamPeg	140	50168
03-OCT-2011 14:19:31	21AlpAnd	58	50168
03-OCT-2011 14:27:54	18AlpCas	68	50168
03-OCT-2011 14:29:19	27GamCas	76	50168
03-OCT-2011 15:12:48	15RhoPup	132	50168
03-OCT-2011 15:16:28	ZetPup	70	50168
03-OCT-2011 15:35:20	The1Eri	157	50169
03-OCT-2011 15:45:31	16BetCet	52	50169
03-OCT-2011 15:55:39	88GamPeg	140	50169
03-OCT-2011 15:59:44	21AlpAnd	58	50169
03-OCT-2011 16:08:07	18AlpCas	68	50169
03-OCT-2011 16:09:32	27GamCas	76	50169
03-OCT-2011 16:53:03	15RhoPup	132	50169
03-OCT-2011 16:56:43	ZetPup	70	50169
03-OCT-2011 17:15:34	The1Eri	157	50170
03-OCT-2011 17:25:45	16BetCet	52	50170
03-OCT-2011 17:35:53	88GamPeg	140	50170
03-OCT-2011 17:39:58	21AlpAnd	58	50170
03-OCT-2011 17:43:21	43BetAnd	53	50170
03-OCT-2011 17:48:21	18AlpCas	68	50170
03-OCT-2011 17:49:46	27GamCas	76	50170
03-OCT-2011 17:53:10	23GamPer	160	50170
03-OCT-2011 18:33:18	15RhoPup	132	50170
03-OCT-2011 18:36:58	ZetPup	70	50170
03-OCT-2011 18:39:02	21EpsCMa	23	50170
03-OCT-2011 18:42:48	DSA1059	0	50171
03-OCT-2011 18:46:25	AlpCol	108	50171
03-OCT-2011 18:55:49	The1Eri	157	50171
03-OCT-2011 19:05:59	16BetCet	52	50171
03-OCT-2011 19:16:07	88GamPeg	140	50171
03-OCT-2011 19:20:12	21AlpAnd	58	50171
03-OCT-2011 19:23:34	43BetAnd	53	50171

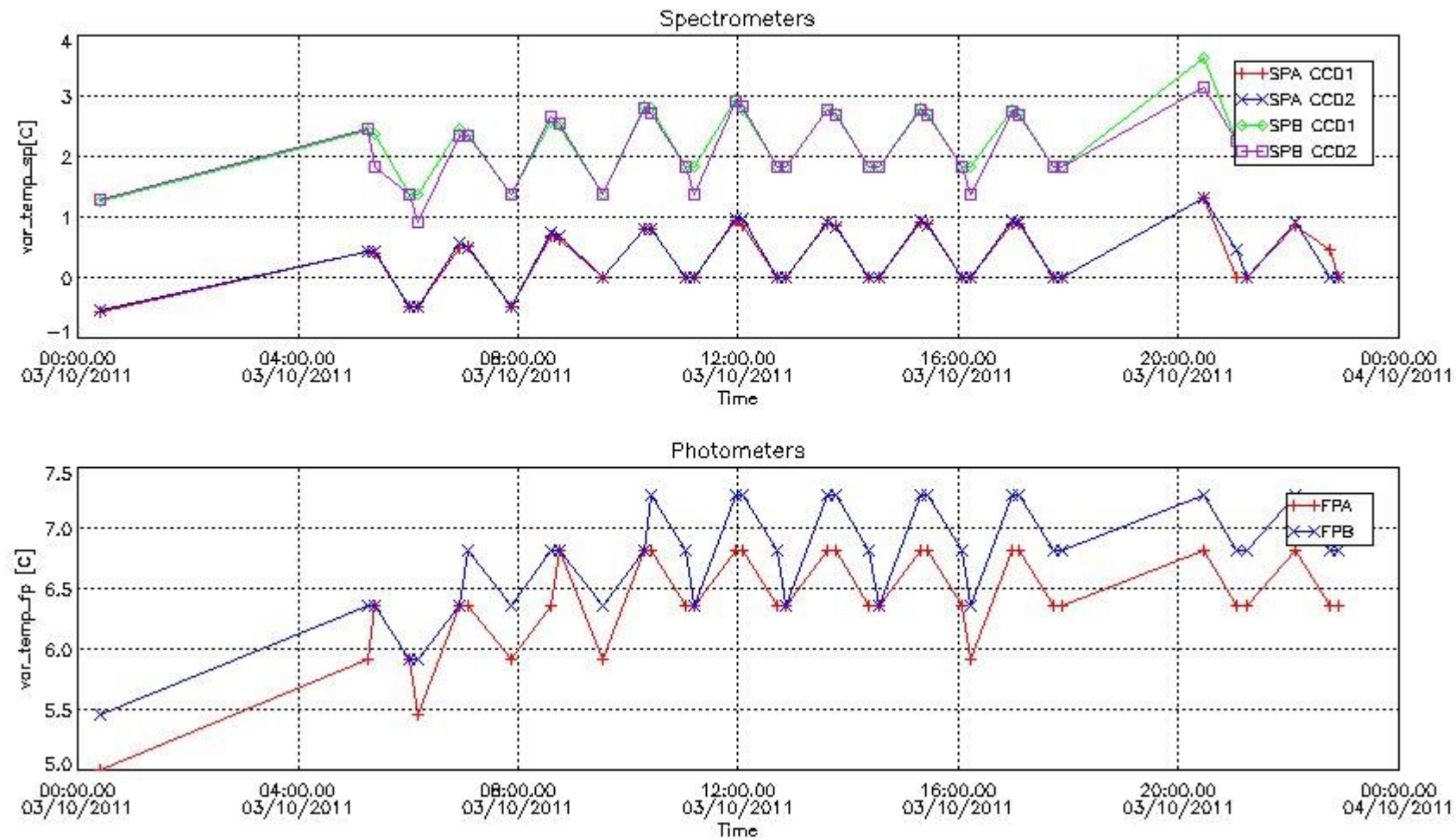
03-OCT-2011 19:28:35	18AlpCas	68	50171
03-OCT-2011 19:30:00	27GamCas	76	50171
03-OCT-2011 19:33:23	23GamPer	160	50171
03-OCT-2011 20:13:33	15RhoPup	132	50171
03-OCT-2011 20:17:13	ZetPup	70	50171
03-OCT-2011 20:19:18	21EpsCMa	23	50171
03-OCT-2011 20:36:04	The1Eri	157	50172
03-OCT-2011 20:46:13	16BetCet	52	50172
03-OCT-2011 20:56:21	88GamPeg	140	50172
03-OCT-2011 21:00:26	21AlpAnd	58	50172
03-OCT-2011 21:03:47	43BetAnd	53	50172
03-OCT-2011 21:08:48	18AlpCas	68	50172
03-OCT-2011 21:10:13	27GamCas	76	50172
03-OCT-2011 21:13:36	23GamPer	160	50172
03-OCT-2011 21:53:48	15RhoPup	132	50172
03-OCT-2011 21:57:27	ZetPup	70	50172
03-OCT-2011 21:59:23	PIPup	117	50172
03-OCT-2011 22:03:18	DSA1059	0	50173
03-OCT-2011 22:16:18	The1Eri	157	50173
03-OCT-2011 22:26:27	16BetCet	52	50173
03-OCT-2011 22:36:35	88GamPeg	140	50173
03-OCT-2011 22:40:39	21AlpAnd	58	50173
03-OCT-2011 22:49:02	18AlpCas	68	50173
03-OCT-2011 22:50:27	27GamCas	76	50173
03-OCT-2011 23:34:03	15RhoPup	132	50173
03-OCT-2011 23:37:42	ZetPup	70	50173
03-OCT-2011 23:39:38	PIPup	117	50173
03-OCT-2011 23:43:33	DSA1059	0	50174
03-OCT-2011 23:47:11	AlpCol	108	50174
03-OCT-2011 23:56:33	The1Eri	157	50174

#### 2.4 Summary of processed GOM\_TRA\_1P products

Nr	Filename	UTC Start time	Limb	Duration	Star Id	Star Name	Star Mag	Star Temp	Nb Meas	Orbit	Prod. error
1	GOM_TRA_1PNPDE20111003_002332_000000563107_00146_50160_3728.N1	03-OCT-2011 00:23:32	Dark	56.000	108	Alp Col	2.6520	15200.	112	50160	No
2	GOM_TRA_1PNPDE20111003_051546_000000603107_00148_50162_3799.N1	03-OCT-2011 05:15:46	Dark	59.500	37	25Del CMa	1.8300	5900.0	119	50162	No
3	GOM_TRA_1PNPDE20111003_052419_000000603107_00149_50163_3800.N1	03-OCT-2011 05:24:19	Dark	60.000	108	Alp Col	2.6520	15200.	120	50163	No
4	GOM_TRA_1PNPDE20111003_060145_000000443107_00149_50163_3801.N1	03-OCT-2011 06:01:45	Bright	43.500	53	43Bet And	2.0480	3300.0	87	50163	No
5	GOM_TRA_1PNPDE20111003_061137_000000523107_00149_50163_3802.N1	03-OCT-2011 06:11:37	Bright	51.500	160	23Gam Per	2.9300	4700.0	103	50163	No
6	GOM_TRA_1PNPDK20111003_065601_000000733107_00149_50163_2651.N1	03-OCT-2011 06:56:01	Dark	72.500	37	25Del CMa	1.8300	5900.0	145	50163	No
7	GOM_TRA_1PNPDK20111003_070434_000000623107_00150_50164_2652.N1	03-OCT-2011 07:04:34	Dark	61.500	108	Alp Col	2.6520	15200.	123	50164	No
8	GOM_TRA_1PNPDK20111003_075150_000000493107_00150_50164_2686.N1	03-OCT-2011 07:51:50	Bright	49.000	160	23Gam Per	2.9300	4700.0	98	50164	No
9	GOM_TRA_1PNPDK20111003_083616_000000683107_00150_50164_2687.N1	03-OCT-2011 08:36:16	Dark	68.000	37	25Del CMa	1.8300	5900.0	136	50164	No
10	GOM_TRA_1PNPDK20111003_084450_000000603107_00151_50165_2688.N1	03-OCT-2011 08:44:50	Dark	60.000	108	Alp Col	2.6520	15200.	120	50165	No
11	GOM_TRA_1PNPDK20111003_093203_000000513107_00151_50165_2711.N1	03-OCT-2011 09:32:03	Bright	50.500	160	23Gam Per	2.9300	4700.0	101	50165	No
12	GOM_TRA_1PNPDK20111003_101632_000000623107_00151_50165_2712.N1	03-OCT-2011 10:16:32	Dark	61.500	37	25Del CMa	1.8300	5900.0	123	50165	No
13	GOM_TRA_1PNPDK20111003_102506_000000603107_00152_50166_2713.N1	03-OCT-2011 10:25:06	Dark	60.000	108	Alp Col	2.6520	15200.	120	50166	No
14	GOM_TRA_1PNPDK20111003_110225_000000473107_00152_50166_2736.N1	03-OCT-2011 11:02:25	Bright	47.000	53	43Bet And	2.0480	3300.0	94	50166	No
15	GOM_TRA_1PNPDK20111003_111216_000000503107_00152_50166_2737.N1	03-OCT-2011 11:12:16	Bright	50.000	160	23Gam Per	2.9300	4700.0	100	50166	No
16	GOM_TRA_1PNPDK20111003_115647_000000563107_00152_50166_2738.N1	03-OCT-2011 11:56:47	Dark	55.500	37	25Del CMa	1.8300	5900.0	111	50166	No
17	GOM_TRA_1PNPDK20111003_120521_000000623107_00153_50167_2739.N1	03-OCT-2011 12:05:21	Dark	61.500	108	Alp Col	2.6520	15200.	123	50167	No
18	GOM_TRA_1PNPDK20111003_124239_000000453107_00153_50167_2771.N1	03-OCT-2011 12:42:39	Bright	45.000	53	43Bet And	2.0480	3300.0	90	50167	No
19	GOM_TRA_1PNPDK20111003_125229_000000503107_00153_50167_2772.N1	03-OCT-2011 12:52:29	Bright	49.500	160	23Gam Per	2.9300	4700.0	99	50167	No
20	GOM_TRA_1PNPDK20111003_133702_000000673107_00153_50167_2773.N1	03-OCT-2011 13:37:02	Dark	66.500	37	25Del CMa	1.8300	5900.0	133	50167	No
21	GOM_TRA_1PNPDK20111003_134536_000000633107_00154_50168_2774.N1	03-OCT-2011 13:45:36	Dark	62.500	108	Alp Col	2.6520	15200.	125	50168	No
22	GOM_TRA_1PNPDK20111003_142252_000000443107_00154_50168_2805.N1	03-OCT-2011 14:22:52	Bright	44.000	53	43Bet And	2.0480	3300.0	88	50168	No
23	GOM_TRA_1PNPDK20111003_143242_000000483107_00154_50168_2806.N1	03-OCT-2011 14:32:42	Bright	48.000	160	23Gam Per	2.9300	4700.0	96	50168	No
24	GOM_TRA_1PNPDK20111003_151830_000000553107_00154_50168_2807.N1	03-OCT-2011 15:18:30	Dark	55.000	23	21Eps CMa	1.5020	26000.	110	50168	No

25	GOM_TRA_1PNPDK20111003_152552_00000623107_00155_50169_2808.N1	03-OCT-2011 15:25:52	Dark	61.500	108	Alp Col	2.6520	15200.	123	50169	No
26	GOM_TRA_1PNPDK20111003_160306_00000473107_00155_50169_2877.N1	03-OCT-2011 16:03:06	Bright	47.000	53	43Bet And	2.0480	3300.0	94	50169	No
27	GOM_TRA_1PNPDK20111003_161255_00000523107_00155_50169_2878.N1	03-OCT-2011 16:12:55	Bright	51.500	160	23Gam Per	2.9300	4700.0	103	50169	No
28	GOM_TRA_1PNPDK20111003_165845_00000553107_00155_50169_2879.N1	03-OCT-2011 16:58:45	Dark	55.000	23	21Eps CMa	1.5020	26000.	110	50169	No
29	GOM_TRA_1PNPDK20111003_170607_00000593107_00156_50170_2880.N1	03-OCT-2011 17:06:07	Dark	59.000	108	Alp Col	2.6520	15200.	118	50170	No
30	GOM_TRA_1PNPDK20111003_174319_00000473107_00156_50170_2918.N1	03-OCT-2011 17:43:19	Bright	47.000	53	43Bet And	2.0480	3300.0	94	50170	No
31	GOM_TRA_1PNPDK20111003_175309_00000483107_00156_50170_2919.N1	03-OCT-2011 17:53:09	Bright	48.000	160	23Gam Per	2.9300	4700.0	96	50170	No
32	GOM_TRA_1PNPDK20111003_202638_00000623107_00158_50172_2956.N1	03-OCT-2011 20:26:38	Dark	62.000	108	Alp Col	2.6520	15200.	124	50172	No
33	GOM_TRA_1PNPDE20111003_210346_00000443107_00158_50172_4011.N1	03-OCT-2011 21:03:46	Bright	44.000	53	43Bet And	2.0480	3300.0	88	50172	No
34	GOM_TRA_1PNPDE20111003_211335_00000503107_00158_50172_4012.N1	03-OCT-2011 21:13:35	Bright	49.500	160	23Gam Per	2.9300	4700.0	99	50172	No
35	GOM_TRA_1PNPDE20111003_220654_00000613107_00159_50173_4038.N1	03-OCT-2011 22:06:54	Dark	61.000	108	Alp Col	2.6520	15200.	122	50173	No
36	GOM_TRA_1PNPDE20111003_224359_00000463107_00159_50173_4039.N1	03-OCT-2011 22:43:59	Bright	45.500	53	43Bet And	2.0480	3300.0	91	50173	No
37	GOM_TRA_1PNPDE20111003_225347_00000513107_00159_50173_4040.N1	03-OCT-2011 22:53:47	Bright	50.500	160	23Gam Per	2.9300	4700.0	101	50173	No

### 3. Plot of GOMOS spectrometers and photometers temperatures from level 1b data



### 4. Overview of dark signal processing per product

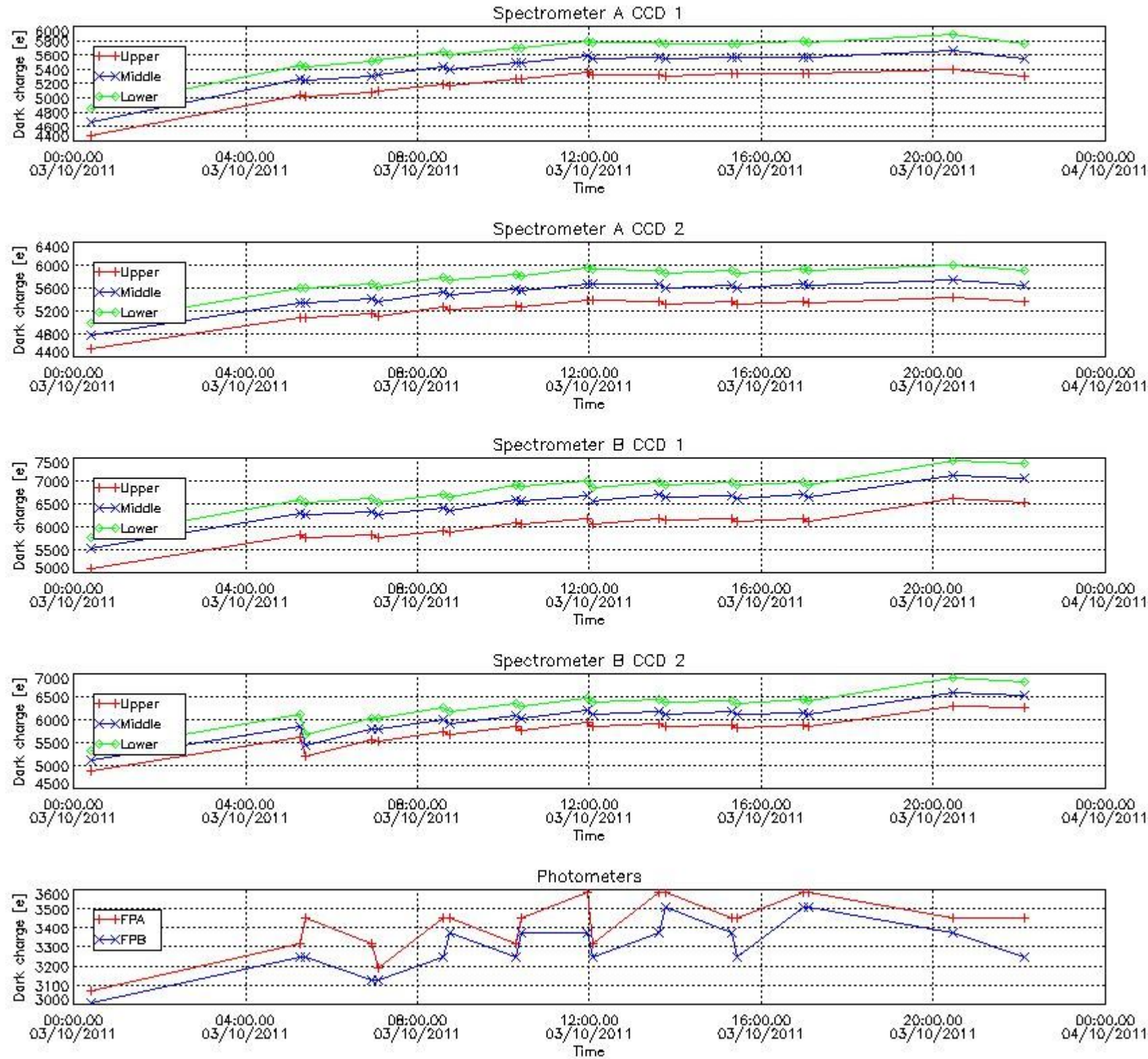
The Dark Charge (DC) is a temperature-dependant signal added to the useful measurements and it is therefore subtracted from them during the processing. There are two phenomena that produce a continuous increase of the DC: the "hot pixels" (a pixel is "hot" when its DC exceeds by a significant amount its value measured on ground at the same temperature) and the "Random Telegraphic Signal" (abrupt change positive or negative of the CCD pixel signal, random in time, affecting only the DC part of the signal and not the photon generated signal).

In this section a list of products that did not use the Dark Sky Area (DSA) observation for the DC computation is given. It is also provided the mean DC plot per product for dark limb products with no error flag set.

*4.1 These products did not use the DSA observation for DC computation:*

Product name	DC information
GOM_TRA_1PNPDE20111003_002332_000000563107_00146_50160_3728.N1	DC map used
GOM_TRA_1PNPDE20111003_051546_000000603107_00148_50162_3799.N1	DC map used
GOM_TRA_1PNPDE20111003_052419_000000603107_00149_50163_3800.N1	DC map used
GOM_TRA_1PNPDE20111003_060145_000000443107_00149_50163_3801.N1	DC map used
GOM_TRA_1PNPDE20111003_061137_000000523107_00149_50163_3802.N1	DC map used
GOM_TRA_1PNPDK20111003_065601_000000733107_00149_50163_2651.N1	DC map used
GOM_TRA_1PNPDK20111003_070434_000000623107_00150_50164_2652.N1	DC map used
GOM_TRA_1PNPDK20111003_075150_000000493107_00150_50164_2686.N1	DC map used
GOM_TRA_1PNPDK20111003_083616_000000683107_00150_50164_2687.N1	DC map used
GOM_TRA_1PNPDK20111003_084450_000000603107_00151_50165_2688.N1	DC map used
GOM_TRA_1PNPDK20111003_093203_000000513107_00151_50165_2711.N1	DC map used
GOM_TRA_1PNPDK20111003_101632_000000623107_00151_50165_2712.N1	DC map used
GOM_TRA_1PNPDK20111003_102506_000000603107_00152_50166_2713.N1	DC map used
GOM_TRA_1PNPDK20111003_110225_000000473107_00152_50166_2736.N1	DC map used
GOM_TRA_1PNPDK20111003_111216_000000503107_00152_50166_2737.N1	DC map used
GOM_TRA_1PNPDK20111003_115647_000000563107_00152_50166_2738.N1	DC map used
GOM_TRA_1PNPDK20111003_120521_000000623107_00153_50167_2739.N1	DC map used
GOM_TRA_1PNPDK20111003_174319_000000473107_00156_50170_2918.N1	DC map used
GOM_TRA_1PNPDK20111003_175309_000000483107_00156_50170_2919.N1	DC map used
GOM_TRA_1PNPDE20111003_210346_000000443107_00158_50172_4011.N1	DC map used
GOM_TRA_1PNPDE20111003_211335_000000503107_00158_50172_4012.N1	DC map used
GOM_TRA_1PNPDE20111003_220654_000000613107_00159_50173_4038.N1	DC map used
GOM_TRA_1PNPDE20111003_224359_000000463107_00159_50173_4039.N1	DC map used
GOM_TRA_1PNPDE20111003_225347_000000513107_00159_50173_4040.N1	DC map used

*4.2 Plot of mean dark charges per product: only products in DARK limb conditions without errors are used*



## 5. Demodulation flag and quality information monitoring

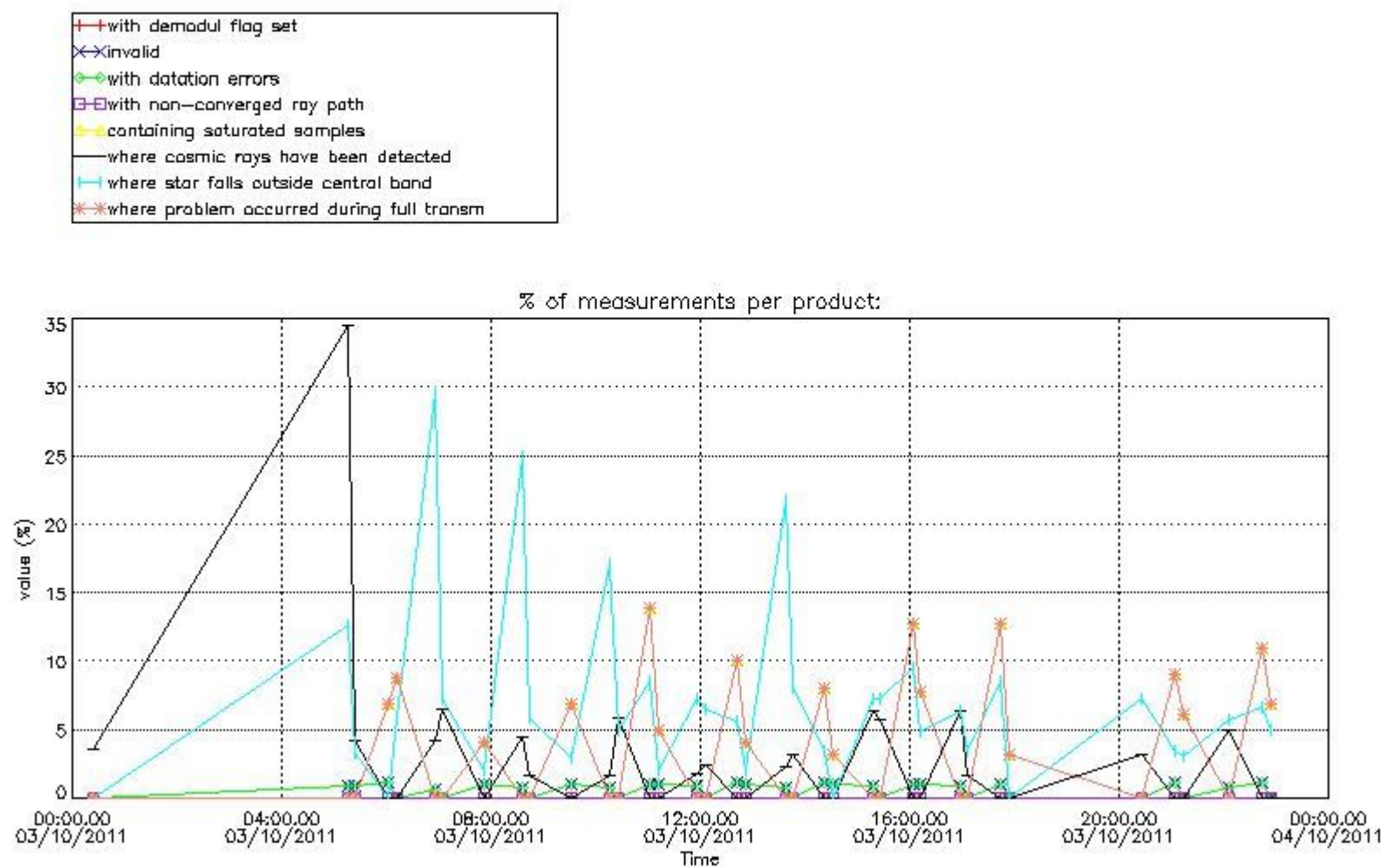
In this section it is presented the modulation information extracted from the pcd (product confidence data) at measurement level and information extracted from the Quality Summary dataset. Only products without errors (error flag in the MPH set to "0") are used.

### 5.1 Percentage of products during reporting period with:

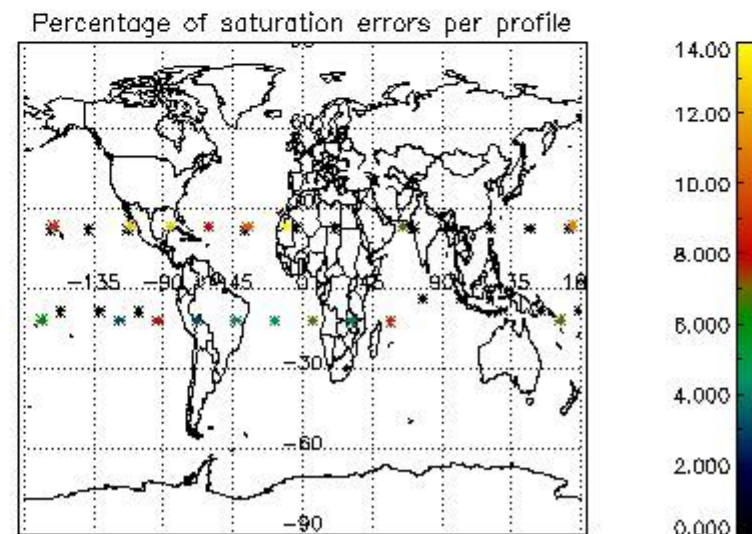
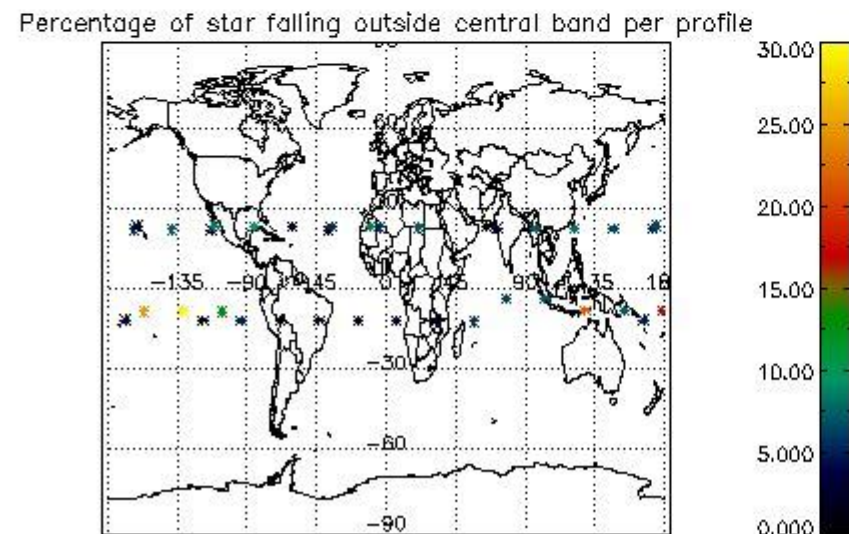
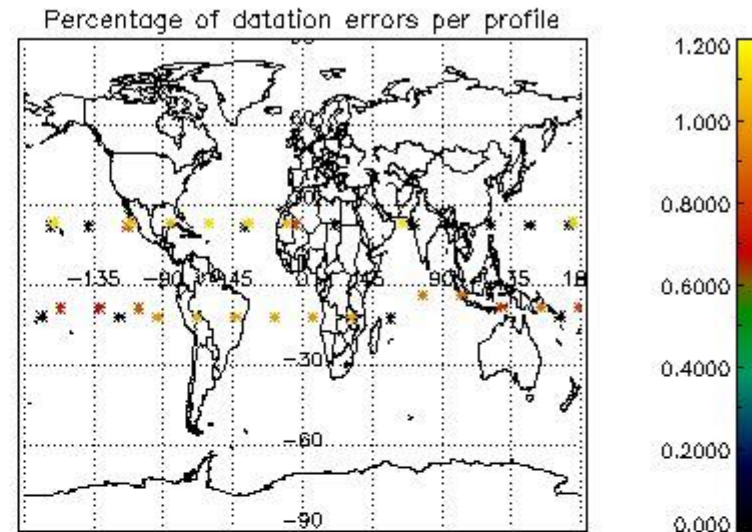
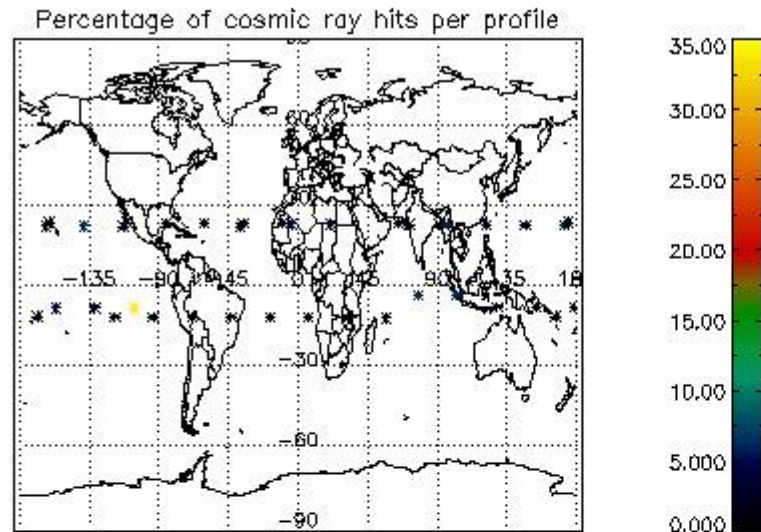


At least one measurement with demodulation flag set:	48.6487 %
Reference spectrum computed from DB:	0.00000 %
Reference spectrum with small number of measurements:	0.00000 %
SATU data not used:	48.6487 %

### 5.2 Plot quality information per product (time dependant)



### 5.3 Plot quality information per product (world map)



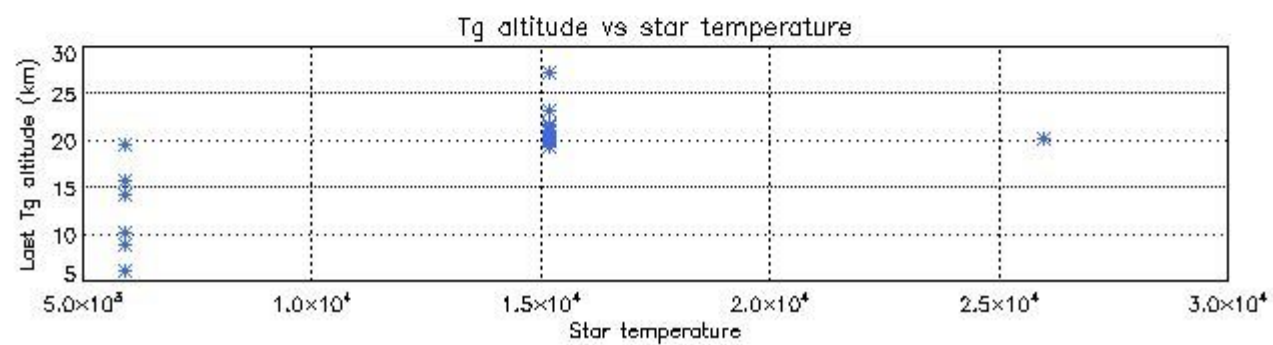
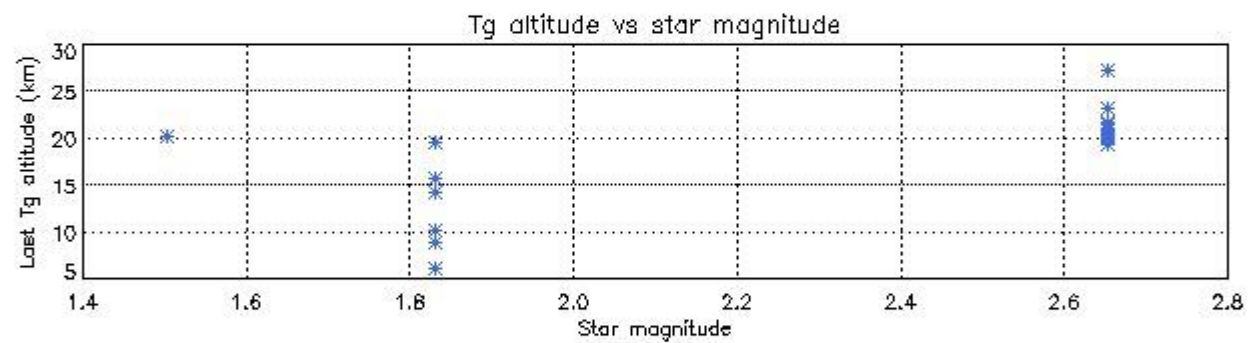
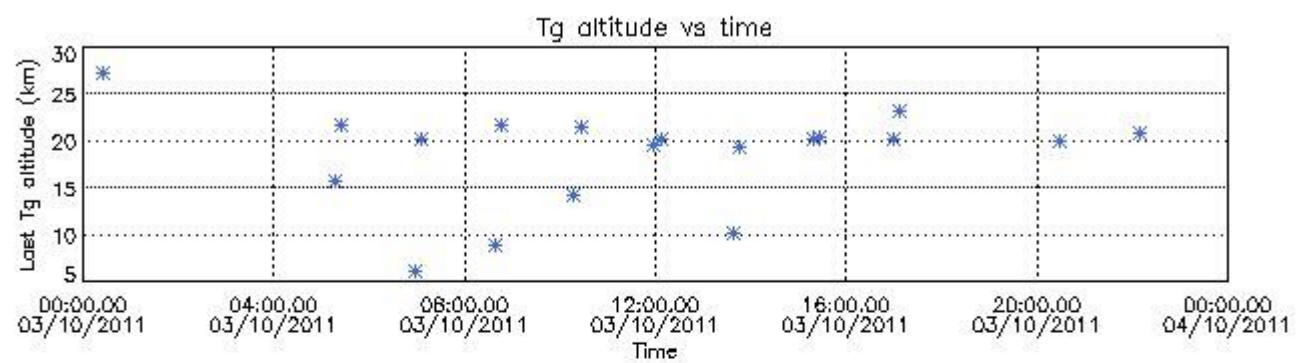
## 6. Statistics and plot of tangent altitude of the last measurement (DARK & BRIGHT products without errors)

### 6.1 Statistics on tangent altitude lost:

Statistics	DARK	BRIGHT	TWILIGHT
Mean:	18.455	22.861	NaN
St. deviation:	5.2217	2.8346	NaN
Maximum:	27.151	27.532	NaN
Minimum:	6.1523	18.184	NaN
Number of data:	19.000	18.000	NaN

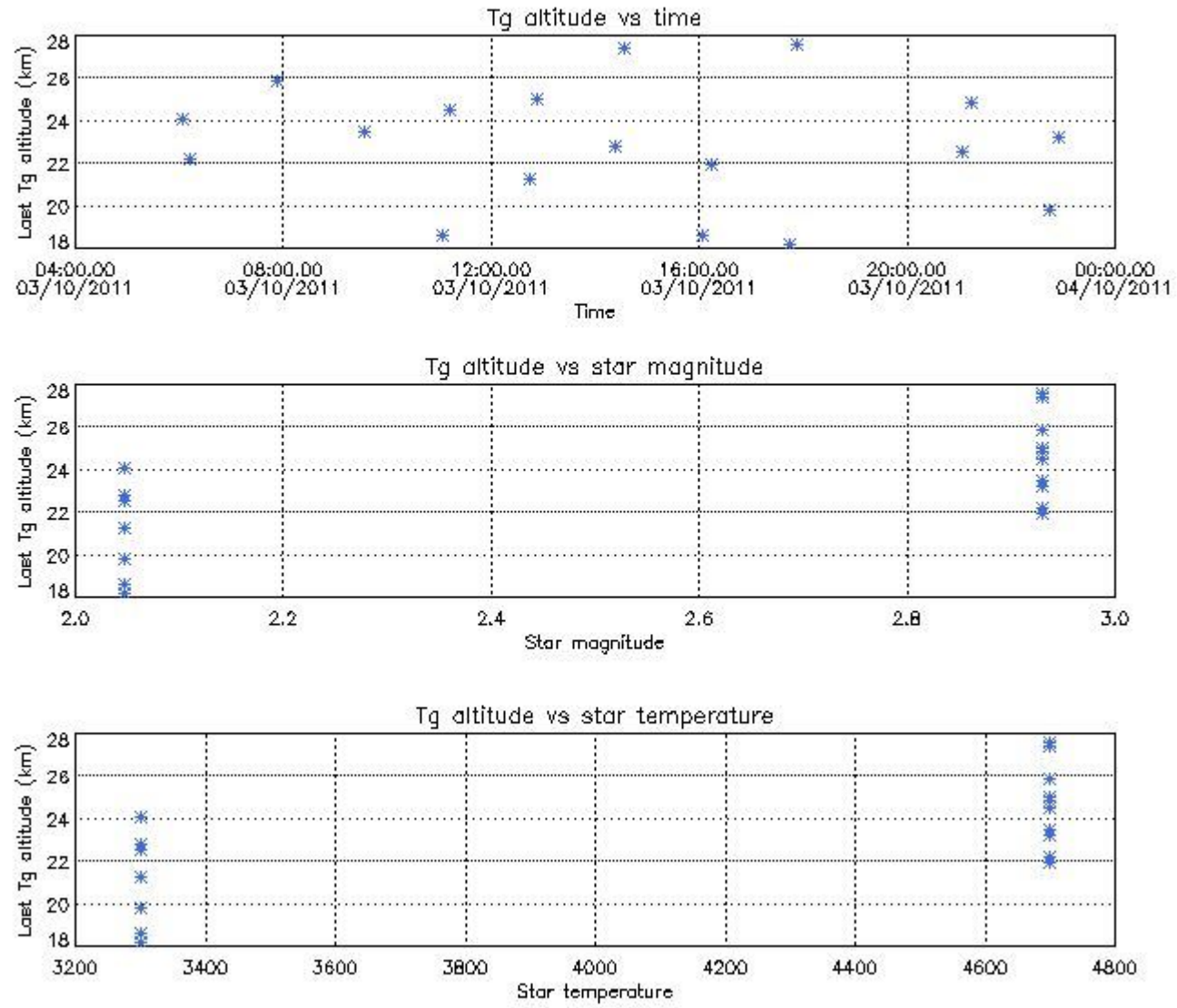
### 6.2 Plot for DARK limb products

Tangent altitude at which the star is lost



6.3 Plot for BRIGHT limb products

## Tangent altitude at which the star is lost

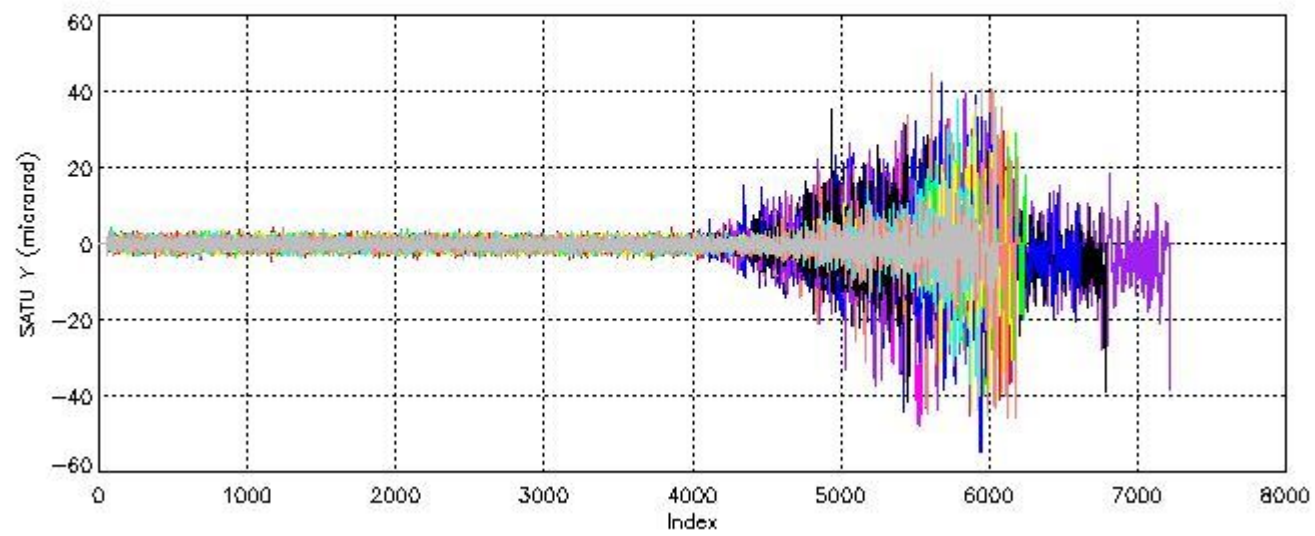
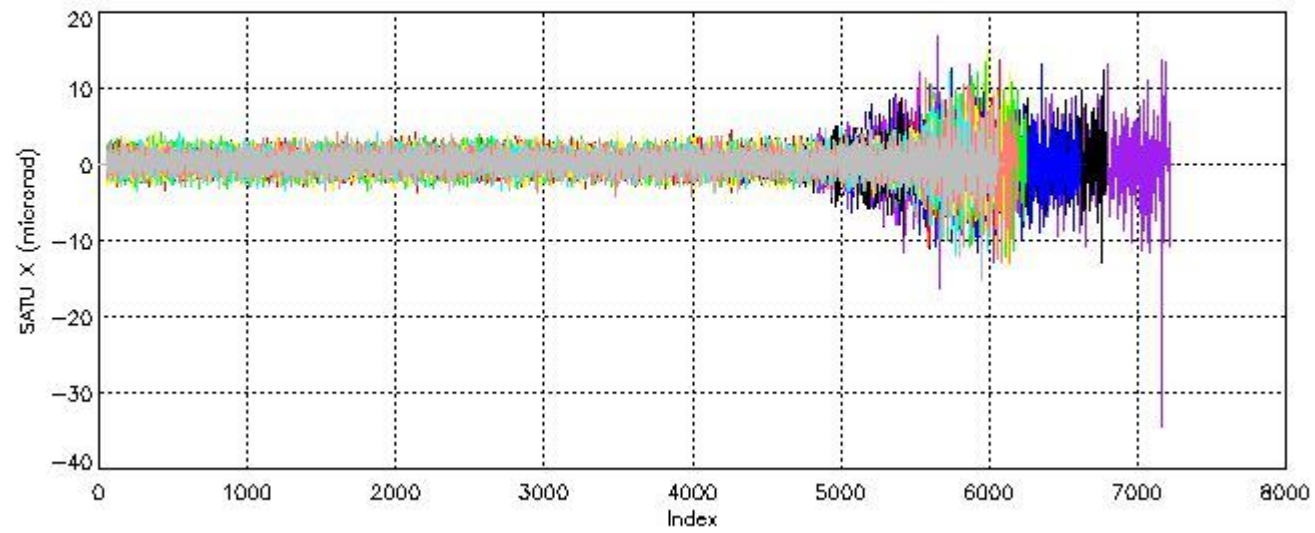


## 7. Star Acquisition and Tracking Unit (SATU)

The Star Acquisition and Tracking Unit (SATU) analyses the position of the tracked star beam collected by the GOMOS telescope and deflected by the optical beam dispatcher. The main function of the SATU is to detect a star, provide its image position to the science data electronics and to help the pointing function to keep the star image at a fixed position. In tracking mode the SATU data is recorded with a frequency of 100 Hz.

### 7.1 SATU 'X' and 'Y' axis plots (dark limb)

SATU CCD 'X' and 'Y' axis plots are provided in order to detect any abnormal behaviour of the tracking system. For every occultation (color) the plot should remain stable (with some noise) until we are deep in the atmosphere where big fluctuations are registered due to the refractive effects.



## 7.2 Statistics on SATU Noise Equivalent Angle (NEA) for DARK (D) and BRIGHT (B) products above 105 kms

The Star Acquisition and Tracking Unit (it is the CCD that tracks the star while it is occulted) Noise Equivalent Angle consists of the statistical angular variation of the SATU data above the atmosphere.

Statistics (in microradians) above 105 km are computed for every occultation, giving four values per occultation: one in the 'X' direction and one in the 'Y' direction for dark and bright limbs. A mean value per day in every direction and limb is calculated and monitored in order to assess instrument performance in terms of star pointing.

### 7.2.1 SATU NEA Statistics (table)

Statistics	SATU X (D)	SATU Y (D)	SATU X (B)	SATU Y (B)
Mean:	0.22625	-0.20086	0.19698	-0.23778
St. deviation:	0.74219	0.76632	0.64838	0.69816
Maximum:	4.3000	4.2000	16.200	22.800
Minimum:	-3.4000	-4.5000	-6.6000	-15.000

Number of data:	27300.	27300.	21800.	21800.
90Percentile:	1.3000	0.80000	1.1000	0.70000

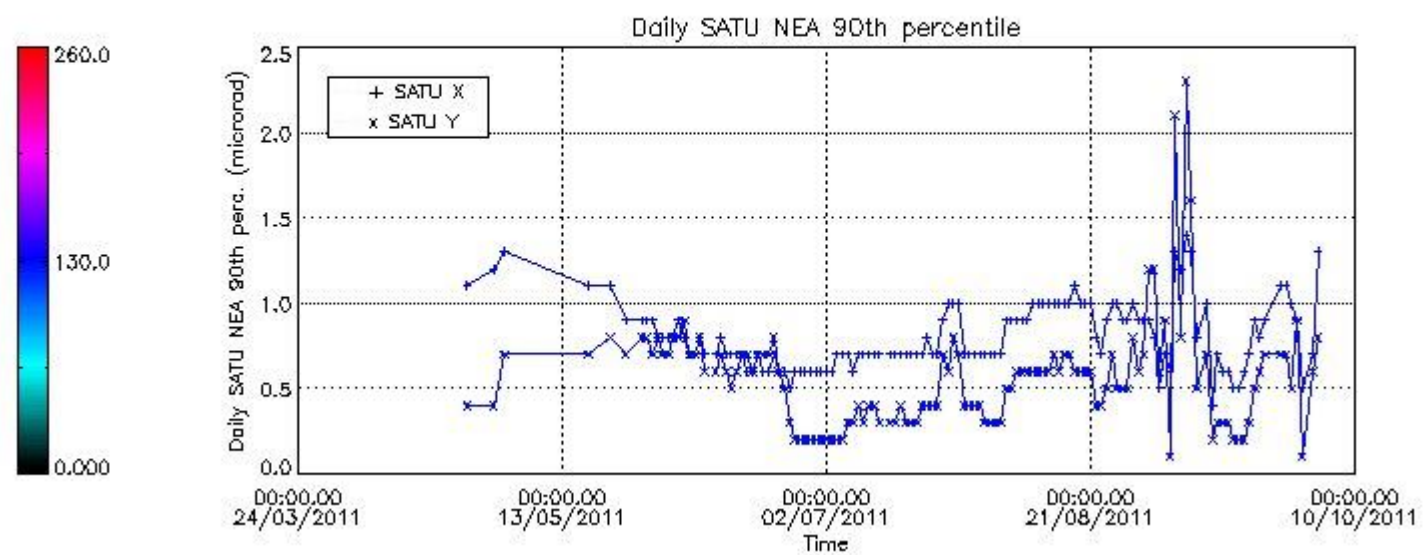
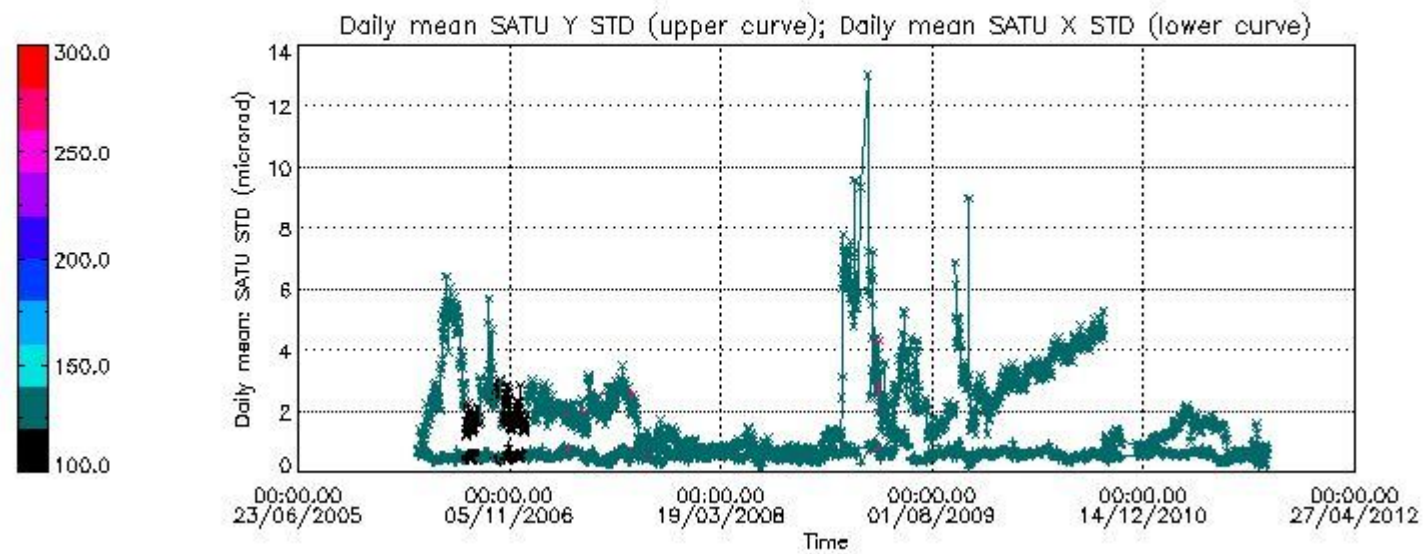
### 7.2.2 Trend of daily SATU NEA St. deviation since 1st April 2006 (dark limb) and of daily SATU NEA 90th percentile since May 2011

The long term trend of the SATU 'X' and 'Y' standard deviations should be constant during the whole mission.

The colorbar represents the start tangent altitude (km) of the occultations.

Upper curve: STD of SATU Y axis

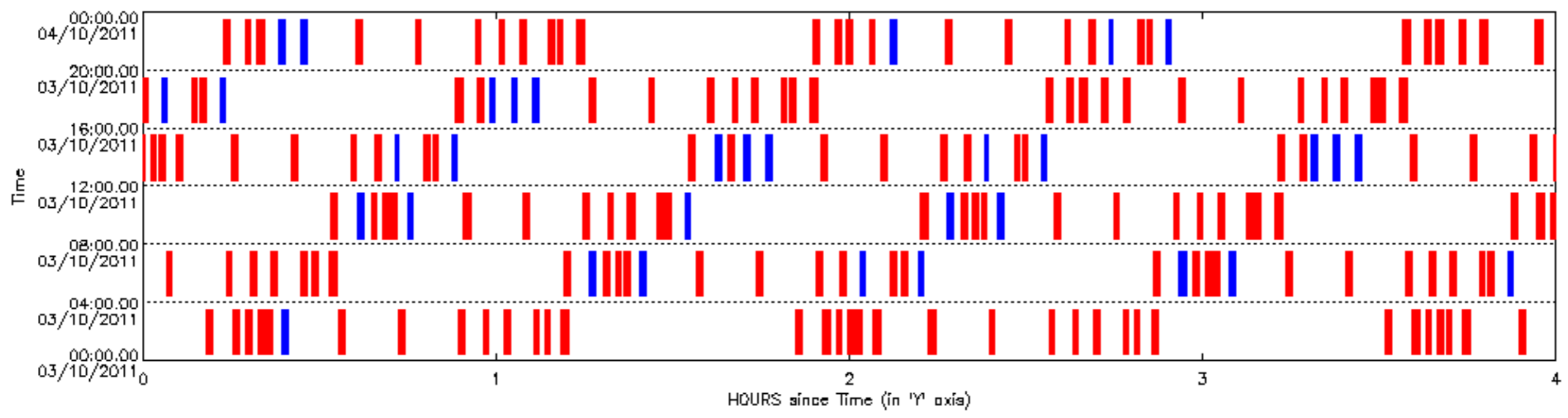
Lower curve: STD of SATU X axis



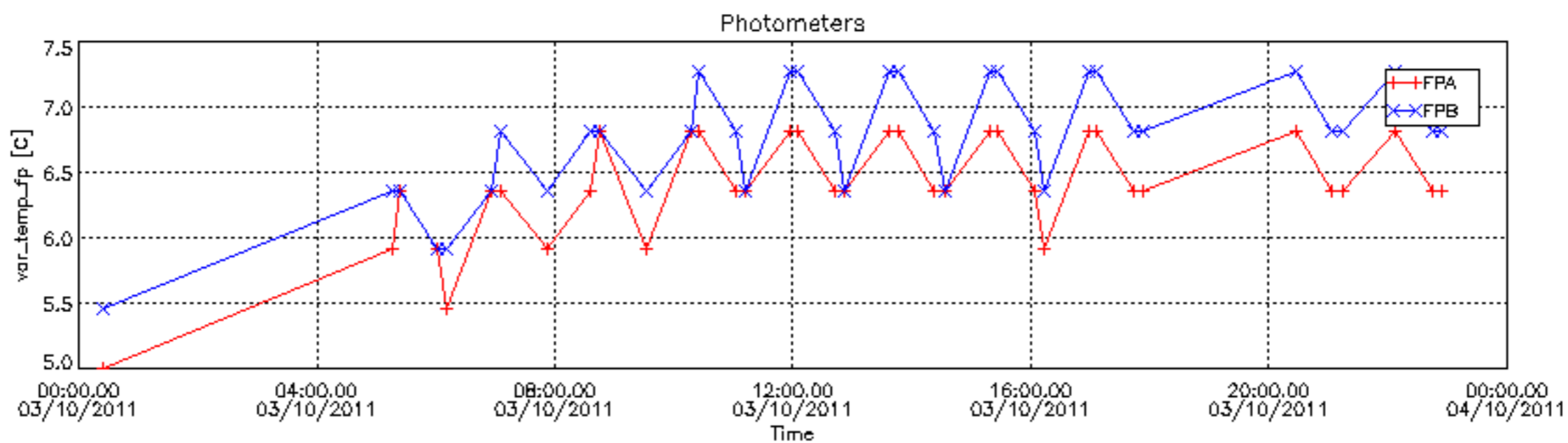
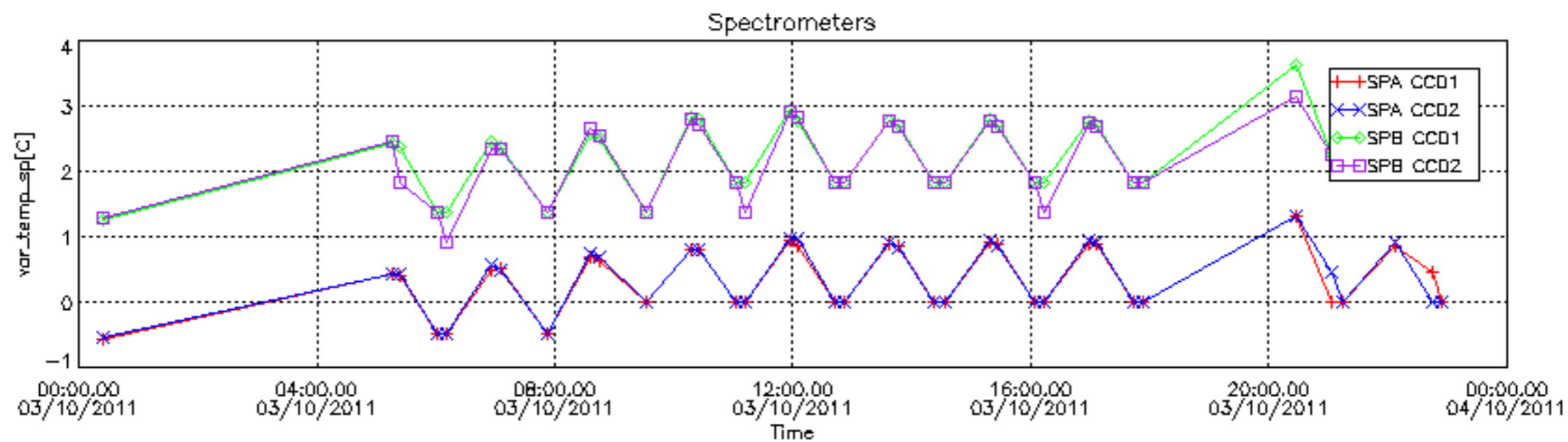
### 8. Auxiliary Data Files used for the production reported in section 2.4

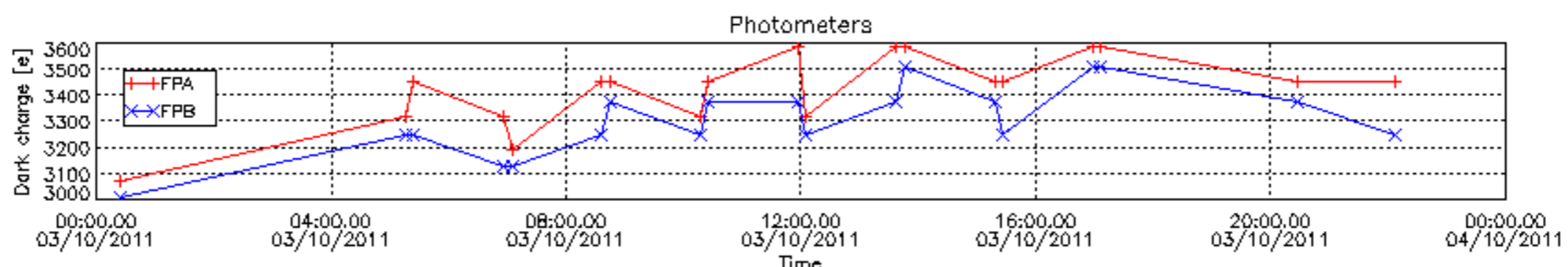
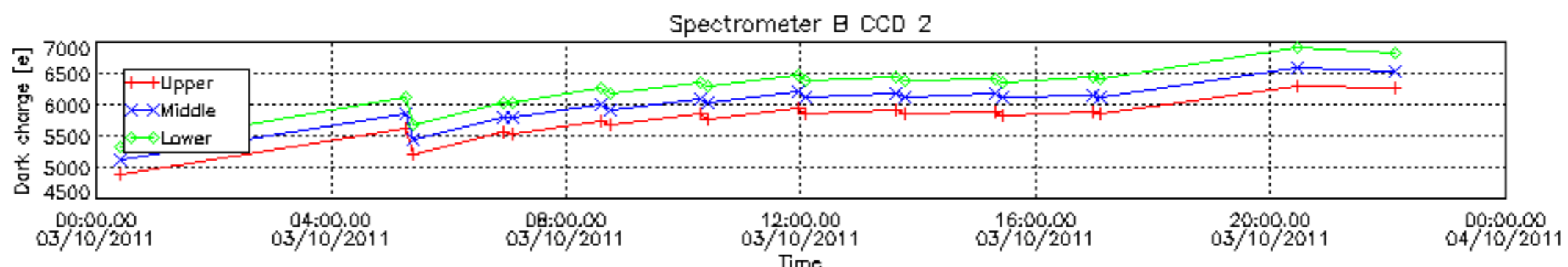
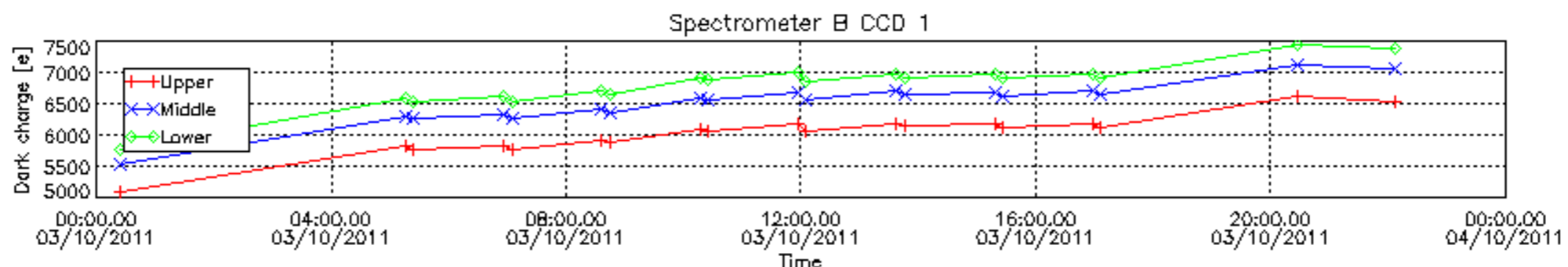
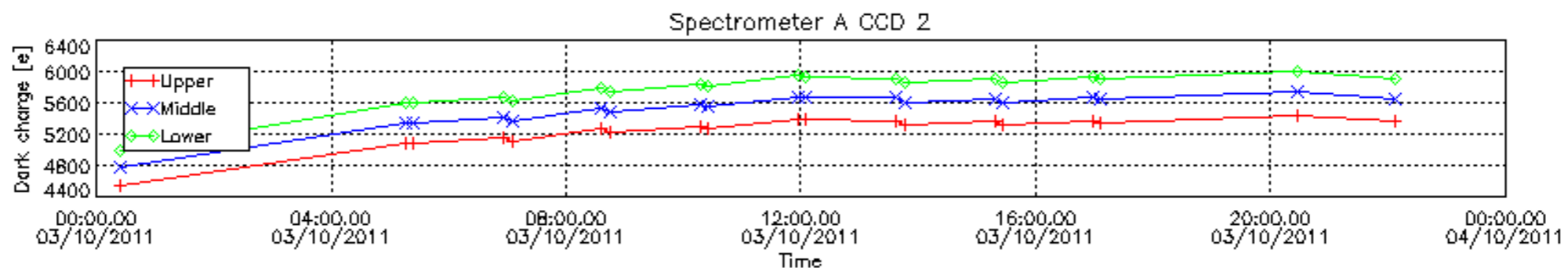
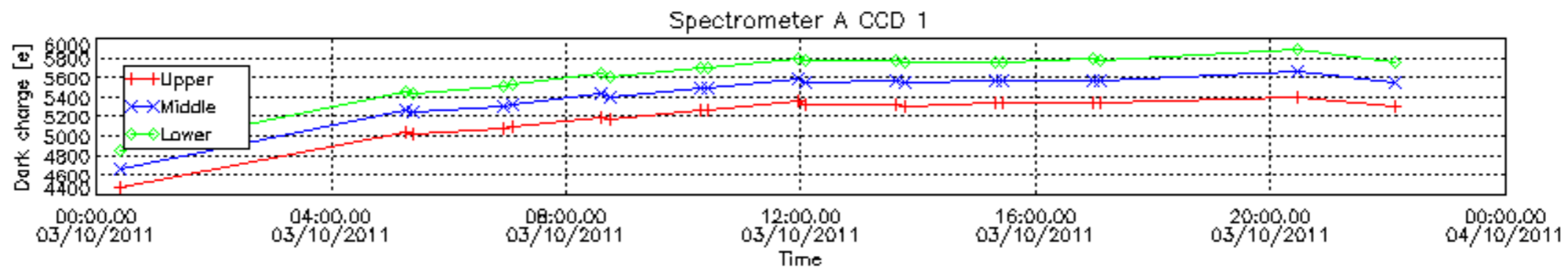
The number reported in the third column indicates since which file (see list in section 2.4) the corresponding auxiliary file has been used. The fourth column is the date of those product files.

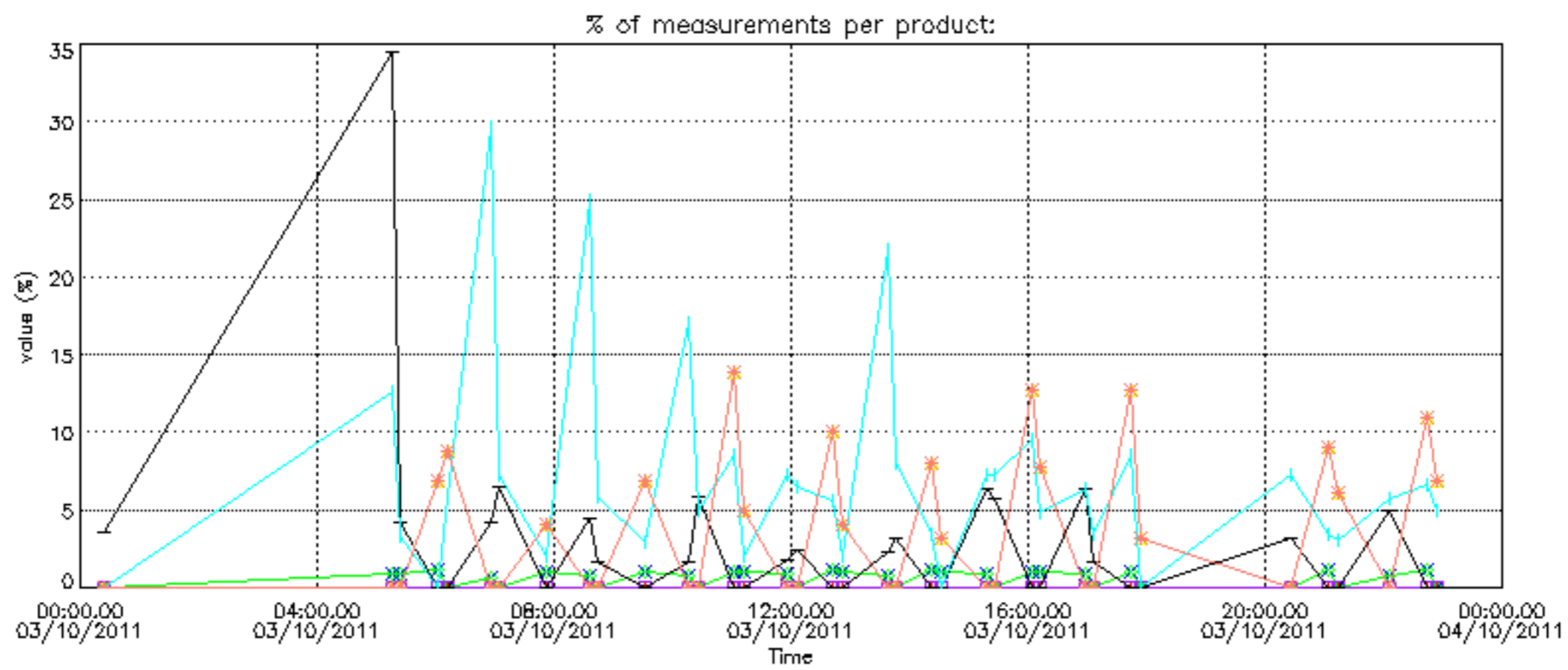
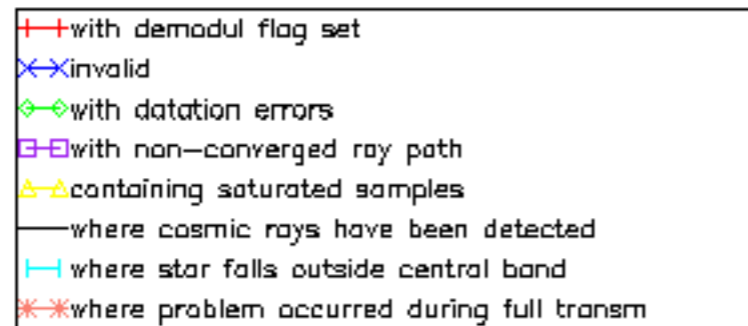
Type	Auxiliary Filename	Used since product	Used since product date
INST_PHYS_CHARACTERISTICS	GOM_INS_AXVIEC20091111_143220_20030716_120000_20500101_000000	1	03-OCT-2011 00:23:32
CALIBRATION_DATABASE	GOM_CAL_AXVIEC20110923_090428_20110920_000000_20500101_000000	1	03-OCT-2011 00:23:32
LEVEL-1B_PROC_CONFIG	GOM_PR1_AXVIEC20110513_081743_20020301_000000_20500101_000000	1	03-OCT-2011 00:23:32
STAR_CATALOGUE	GOM_CAT_AXVIEC20020121_161009_20020101_000000_20200101_000000	1	03-OCT-2011 00:23:32
STELLAR_SPECTRA_DATABANK	GOM_STS_AXVIEC20091111_151504_20020101_160000_20500101_000000	1	03-OCT-2011 00:23:32
ECMWF_FILE	AUX_ECF_AXNECM20111002_062116_20111002_210000_20111003_090000	1	03-OCT-2011 00:23:32
ECMWF_FILE	AUX_ECF_AXNECM20111002_181031_20111003_030000_20111003_150000	2	03-OCT-2011 05:15:46
ECMWF_FILE	AUX_ECA_AXNECM20111003_062305_20111002_210000_20111003_090000	6	03-OCT-2011 06:56:01
ECMWF_FILE	AUX_ECF_AXNECM20111003_062306_20111003_090000_20111003_210000	11	03-OCT-2011 09:32:03
ECMWF_FILE	AUX_ECF_AXNECM20111003_062306_20111003_150000_20111004_030000	26	03-OCT-2011 16:03:06
ECMWF_FILE	AUX_ECA_AXNECM20111003_180306_20111003_090000_20111003_210000	30	03-OCT-2011 17:43:19
ECMWF_FILE	AUX_ECF_AXNECM20111003_062307_20111003_210000_20111004_090000	33	03-OCT-2011 21:03:46
OPTIONAL_ECMWF_FILE	MISSING	1	03-OCT-2011 00:23:32
ORBIT_DATA_FILE	AUX_FPO_AXVPDS20111001_102114_20110930_185003_20111010_210347	1	03-OCT-2011 00:23:32
ORBIT_DATA_FILE	AUX_FPO_AXVPDS20111003_102306_20111002_191648_20111012_213031	14	03-OCT-2011 11:02:25



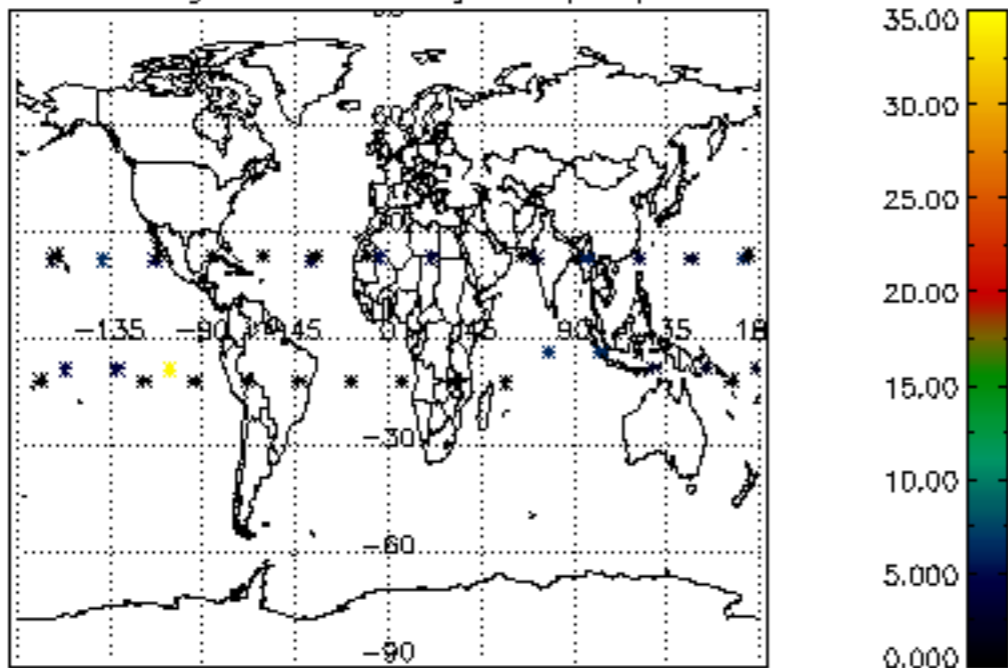




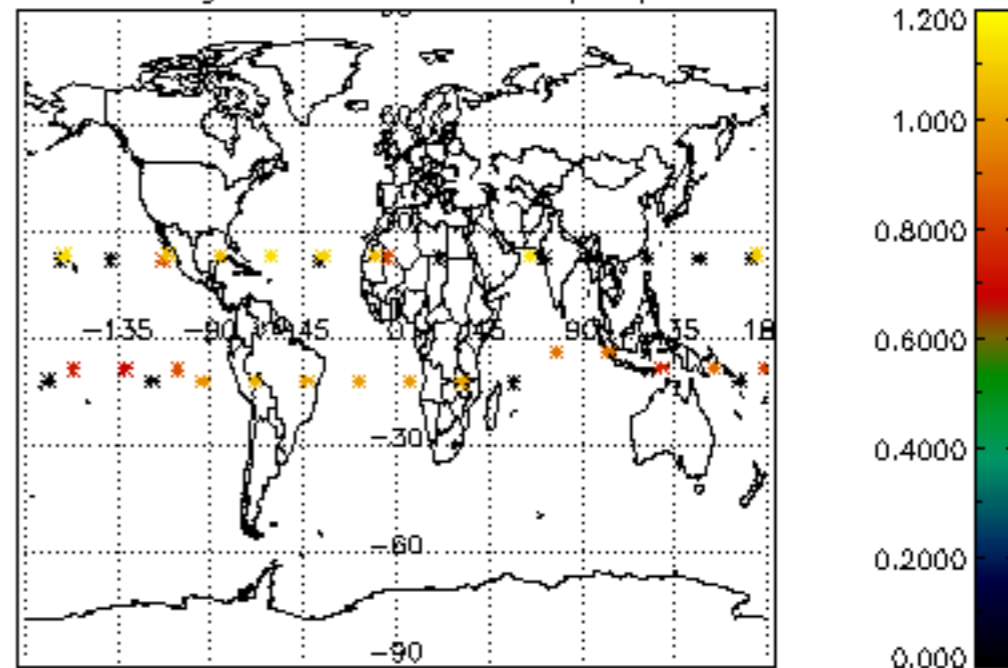




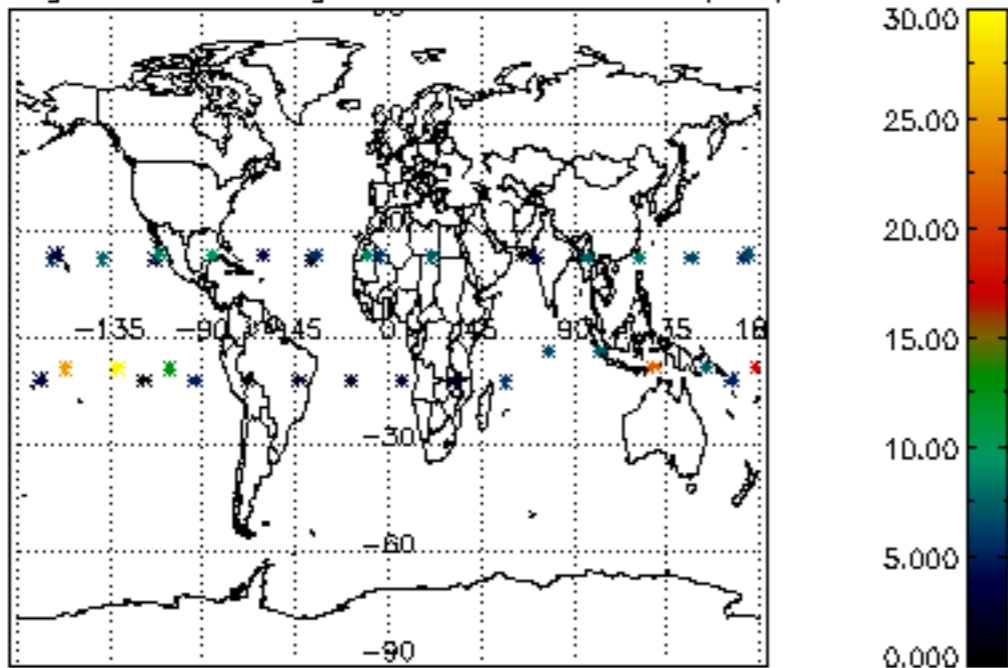
Percentage of cosmic ray hits per profile



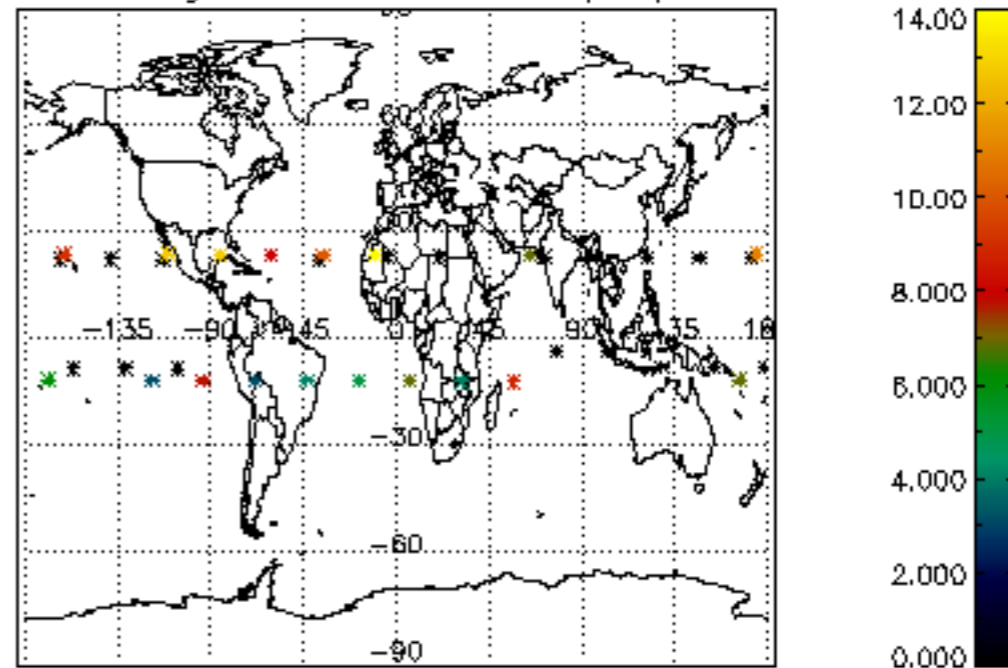
Percentage of datation errors per profile



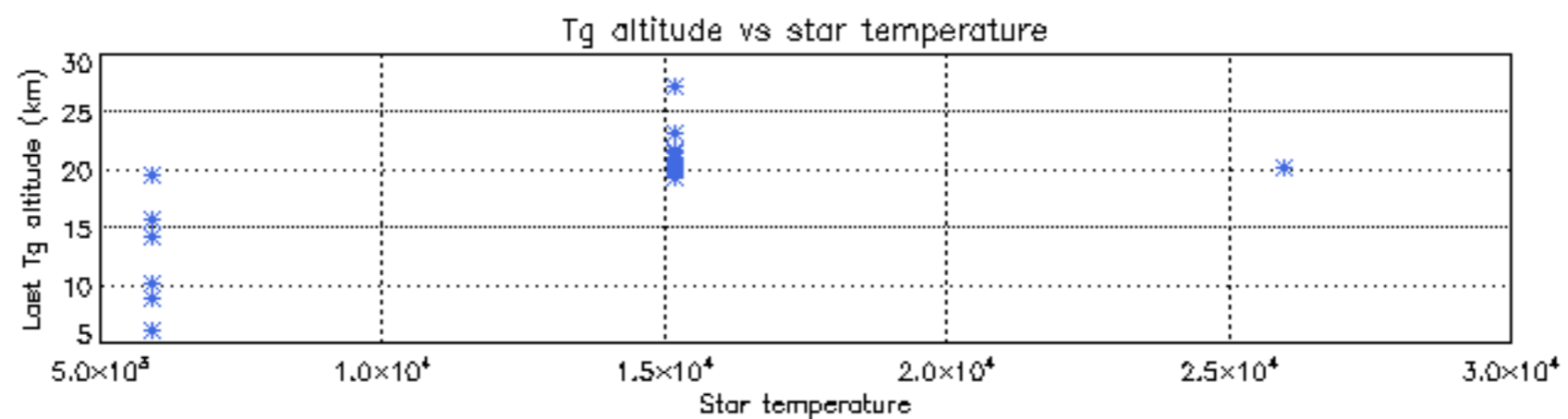
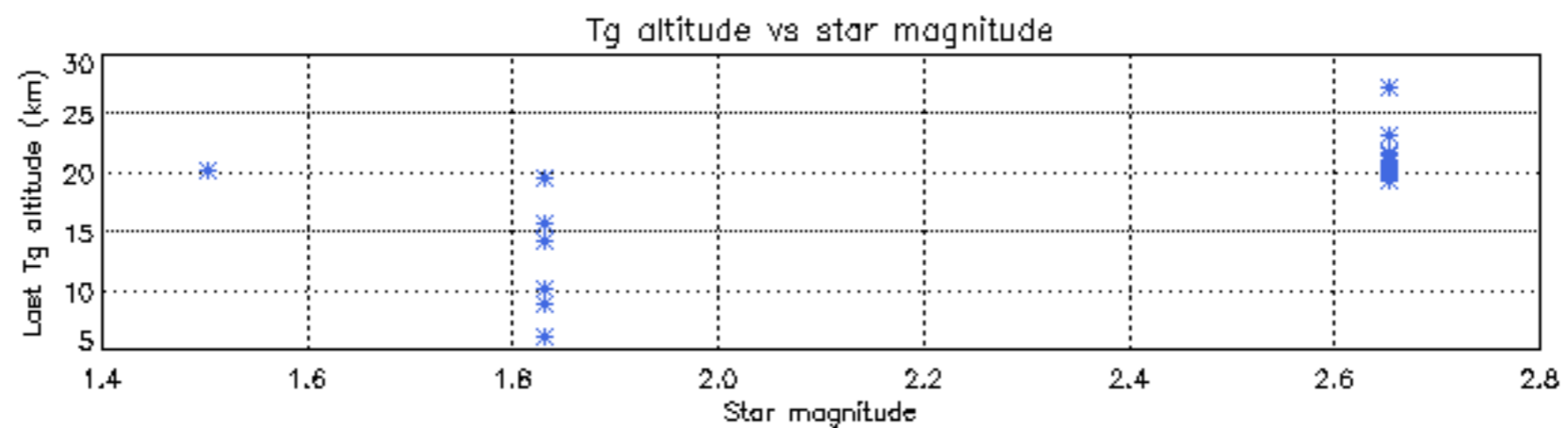
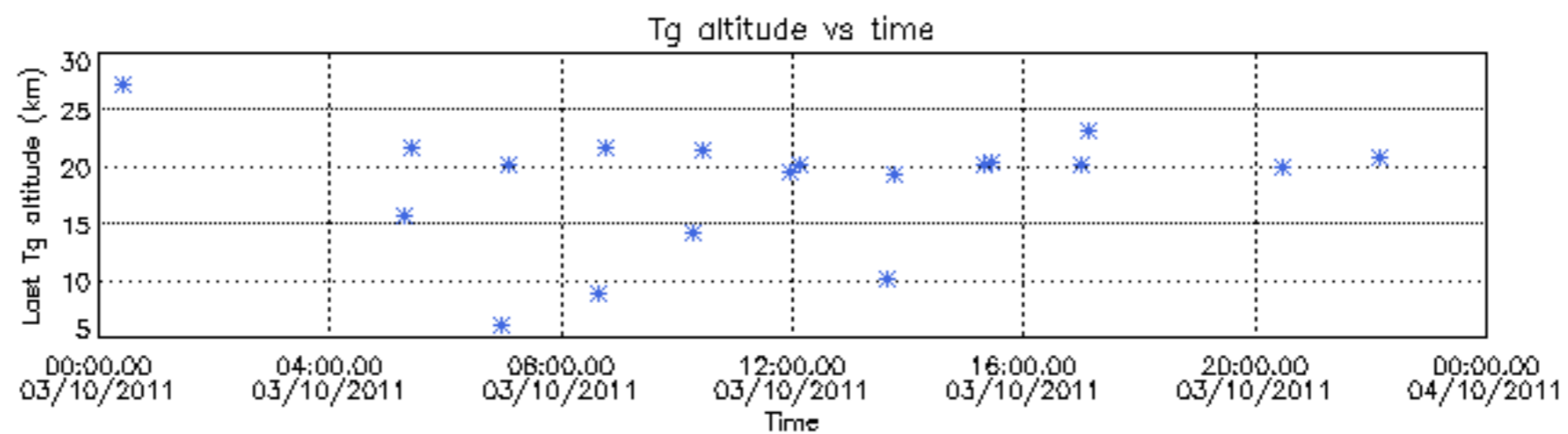
Percentage of star falling outside central band per profile



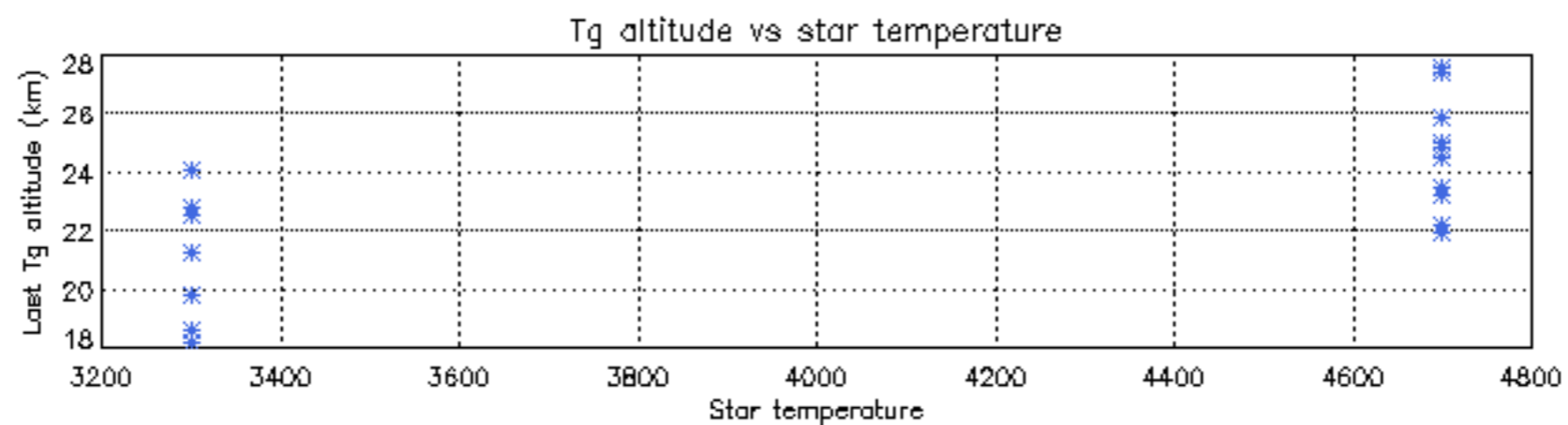
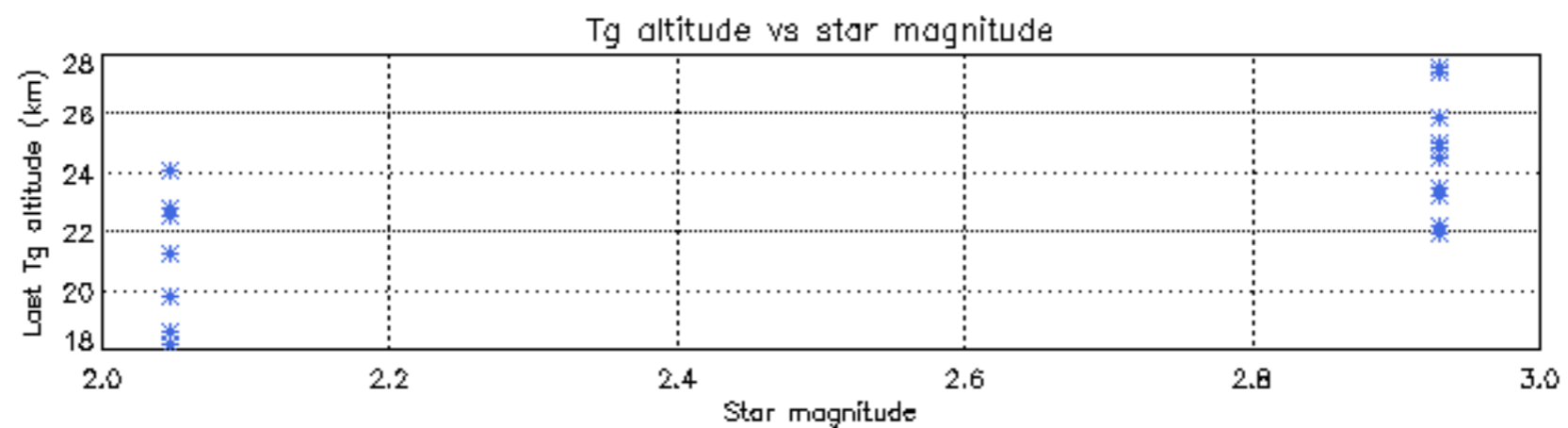
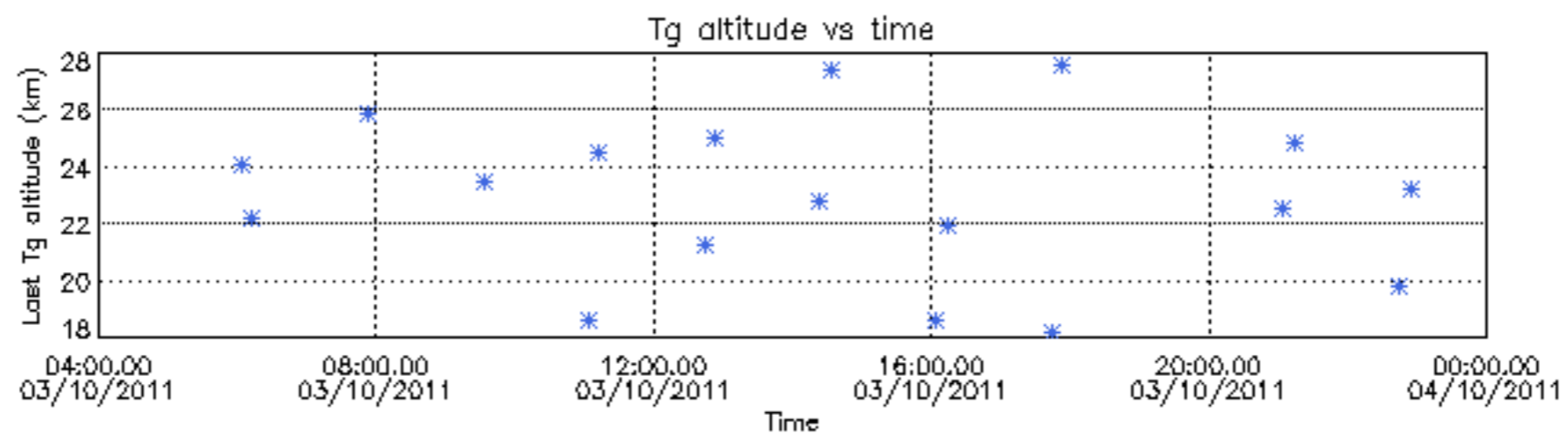
Percentage of saturation errors per profile

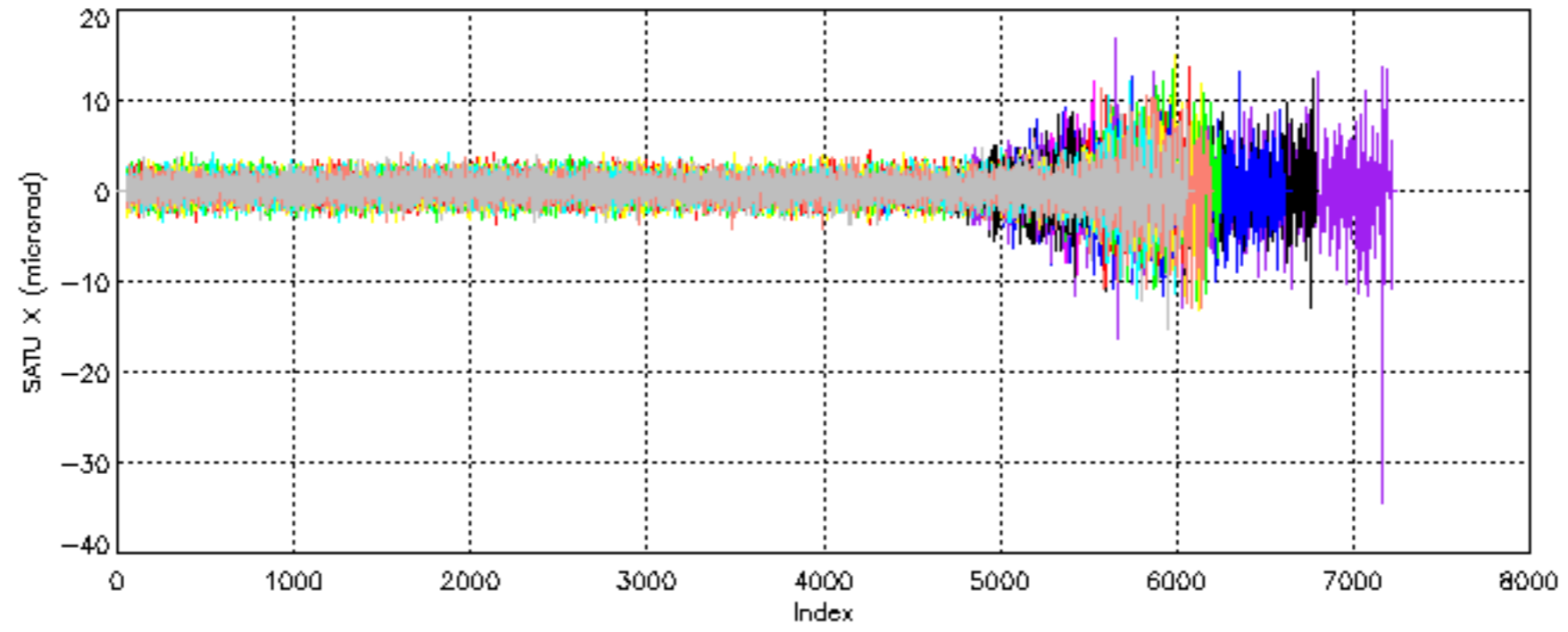


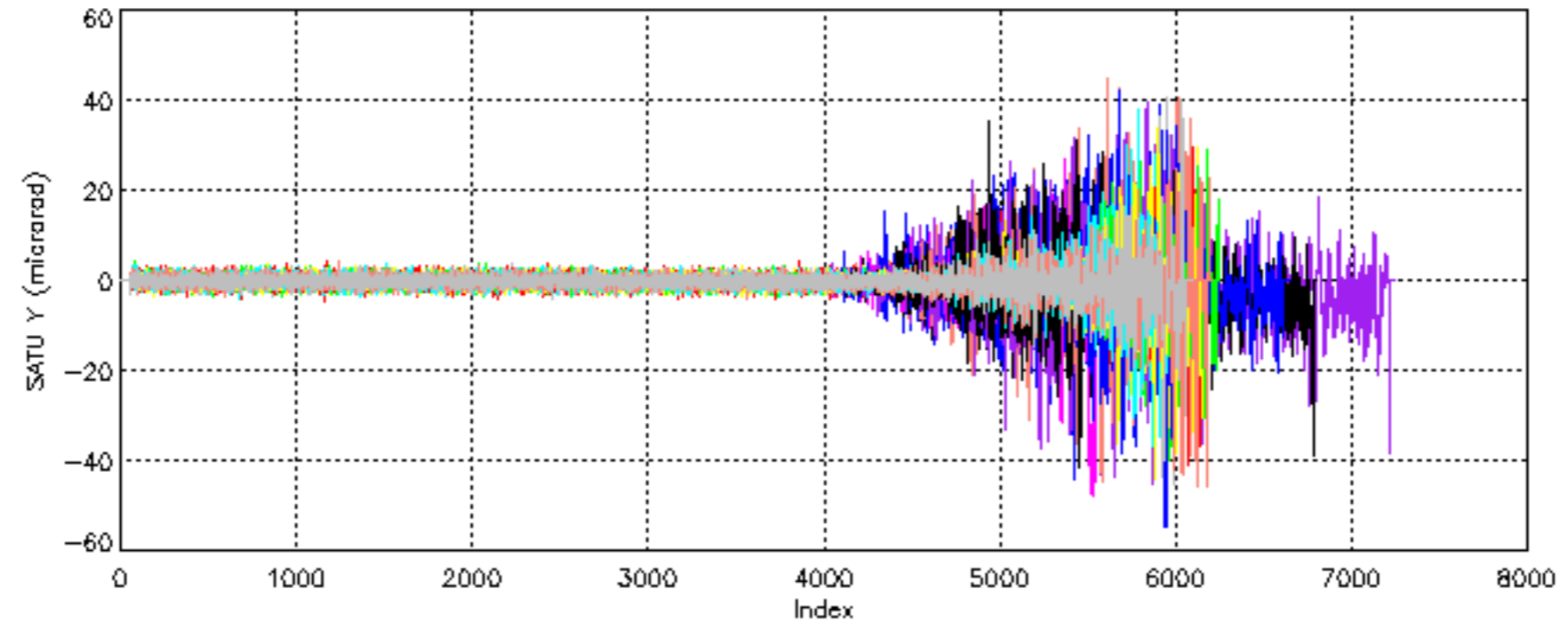
Tangent altitude at which the star is lost



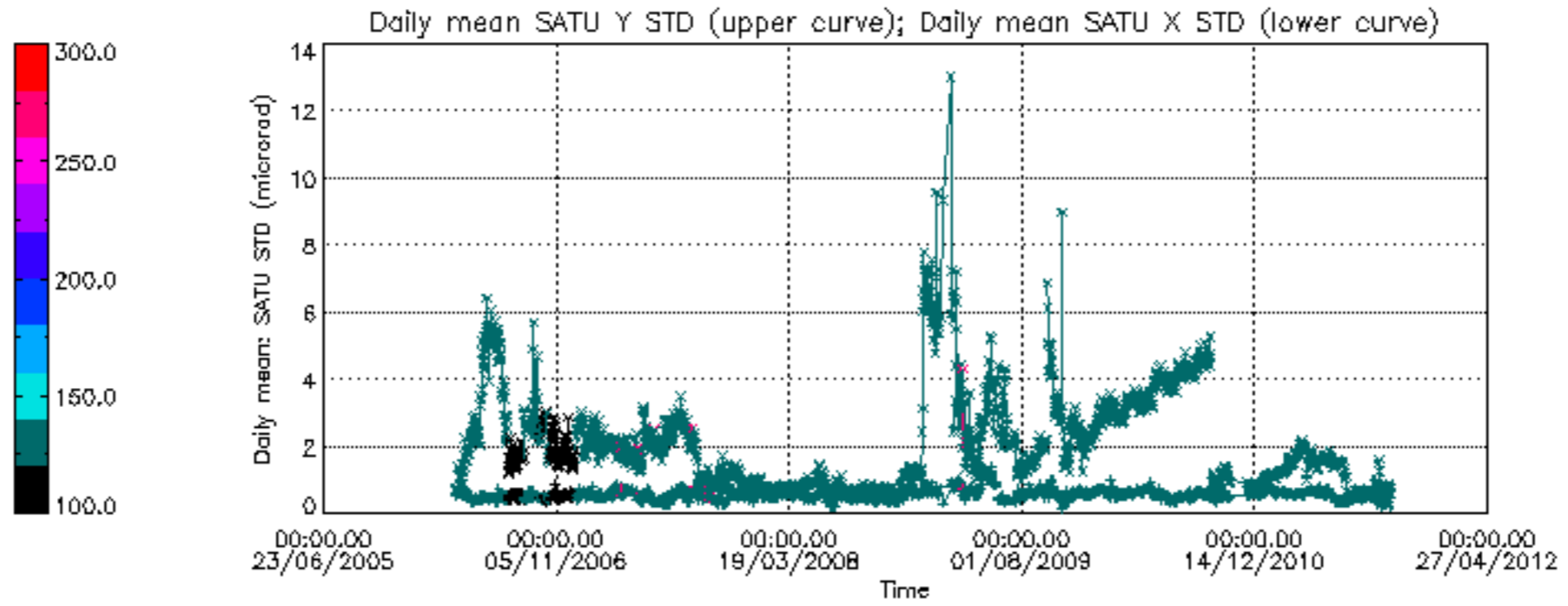
Tangent altitude at which the star is lost

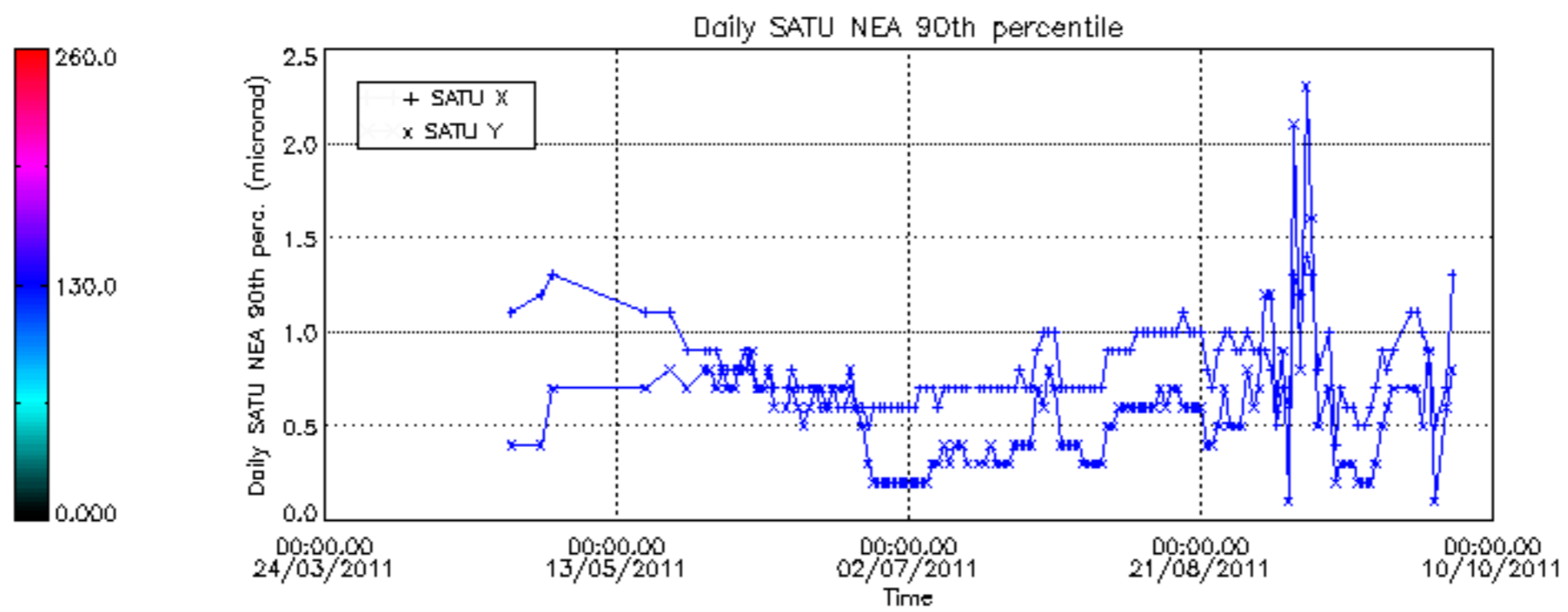












/nas3/ENVISAT/GOMOS/GOM\_NL\_\_0P/GOM\_NL\_\_0PNPDE20111002\_214039\_00000423107\_00144\_50158\_6530.N1  
1; 2617.1; 02-OCT-2011 21:40:39; Bright; 42.5; 53; 43Bet And ; 2.05; 3300;occ; 85; 0;50158  
/nas3/ENVISAT/GOMOS/GOM\_NL\_\_0P/GOM\_NL\_\_0PNPDE20111002\_223444\_000011363107\_00144\_50158\_6531.N1  
1; -151.2; 02-OCT-2011 22:34:44; Dark ; 54.5; 37; 25Del CMA ; 1.83; 5900;occ; 109; 0;50158  
2; 936.0; 02-OCT-2011 22:52:51; Dark ; 49.5; 157; The1Eri ; 2.91; 9300;occ; 99; 0;50159  
/nas3/ENVISAT/GOMOS/GOM\_NL\_\_0P/GOM\_NL\_\_0PNPDK20111002\_182012\_000033093107\_00142\_50156\_5389.N1  
1; 2618.4; 02-OCT-2011 18:20:12; Bright; 47.5; 53; 43Bet And ; 2.05; 3300;occ; 95; 0;50156  
2; 3035.8; 02-OCT-2011 18:27:09; Bright; 41.0; 110; 37Del Cas ; 2.68; 8900;occ; 82; 0;50156  
3; 3212.6; 02-OCT-2011 18:30:06; Bright; 51.0; 160; 23Gam Per ; 2.93; 4700;occ; 102; 0;50156  
4; 5594.7; 02-OCT-2011 19:09:48; Dark ; 47.0; 132; 15Rho Pup ; 2.80; 6900;occ; 94; 0;50156  
5; 5860.2; 02-OCT-2011 19:14:14; Dark ; 68.0; 37; 25Del CMA ; 1.83; 5900;occ; 136; 0;50156  
/nas3/ENVISAT/GOMOS/GOM\_NL\_\_0P/GOM\_NL\_\_0PNPDK20111002\_200025\_000033093107\_00143\_50157\_5390.N1  
1; 2617.7; 02-OCT-2011 20:00:25; Bright; 45.5; 53; 43Bet And ; 2.05; 3300;occ; 91; 0;50157  
2; 3035.2; 02-OCT-2011 20:07:23; Bright; 41.5; 110; 37Del Cas ; 2.68; 8900;occ; 83; 0;50157  
3; 5861.4; 02-OCT-2011 20:54:29; Dark ; 66.0; 37; 25Del CMA ; 1.83; 5900;occ; 132; 0;50157  
/nas3/ENVISAT/GOMOS/GOM\_NL\_\_0P/GOM\_NL\_\_0PNPDE20111003\_002332\_00000553107\_00146\_50160\_6532.N1  
1; 363.1; 03-OCT-2011 00:23:32; Dark ; 56.0; 108; Alp Col ; 2.65; 15200;occ; 112; 0;50160  
/nas3/ENVISAT/GOMOS/GOM\_NL\_\_0P/GOM\_NL\_\_0PNPDE20111003\_220654\_000028643107\_00159\_50173\_6535.N1  
1; 382.9; 03-OCT-2011 22:06:54; Dark ; 61.0; 108; Alp Col ; 2.65; 15200;occ; 122; 0;50173  
2; 2608.3; 03-OCT-2011 22:43:59; Bright; 45.5; 53; 43Bet And ; 2.05; 3300;occ; 91; 0;50173  
3; 3196.6; 03-OCT-2011 22:53:47; Bright; 50.5; 160; 23Gam Per ; 2.93; 4700;occ; 101; 0;50173  
/nas3/ENVISAT/GOMOS/GOM\_NL\_\_0P/GOM\_NL\_\_0PNPDK20111003\_065601\_000005743107\_00149\_50163\_5391.N1  
1; -144.3; 03-OCT-2011 06:56:01; Dark ; 72.5; 37; 25Del CMA ; 1.83; 5900;occ; 145; 0;50163  
2; 369.2; 03-OCT-2011 07:04:34; Dark ; 61.5; 108; Alp Col ; 2.65; 15200;occ; 123; 0;50164  
/nas3/ENVISAT/GOMOS/GOM\_NL\_\_0P/GOM\_NL\_\_0PNPDK20111003\_075150\_000032393107\_00150\_50164\_5392.N1  
1; -2808.7; 03-OCT-2011 07:51:50; Bright; 49.0; 160; 23Gam Per ; 2.93; 4700;occ; 98; 0;50164  
2; -142.9; 03-OCT-2011 08:36:16; Dark ; 68.0; 37; 25Del CMA ; 1.83; 5900;occ; 136; 0;50164  
3; 370.9; 03-OCT-2011 08:44:50; Dark ; 60.0; 108; Alp Col ; 2.65; 15200;occ; 120; 0;50165  
/nas3/ENVISAT/GOMOS/GOM\_NL\_\_0P/GOM\_NL\_\_0PNPDK20111003\_093203\_000032423107\_00151\_50165\_5393.N1  
1; -2809.7; 03-OCT-2011 09:32:03; Bright; 50.5; 160; 23Gam Per ; 2.93; 4700;occ; 101; 0;50165  
2; -141.5; 03-OCT-2011 10:16:32; Dark ; 61.5; 37; 25Del CMA ; 1.83; 5900;occ; 123; 0;50165  
3; 372.5; 03-OCT-2011 10:25:06; Dark ; 60.0; 108; Alp Col ; 2.65; 15200;occ; 120; 0;50166  
/nas3/ENVISAT/GOMOS/GOM\_NL\_\_0P/GOM\_NL\_\_0PNPDK20111003\_110225\_000038363107\_00152\_50166\_5394.N1  
1; 2612.3; 03-OCT-2011 11:02:25; Bright; 47.0; 53; 43Bet And ; 2.05; 3300;occ; 94; 0;50166  
2; 3203.1; 03-OCT-2011 11:12:16; Bright; 50.0; 160; 23Gam Per ; 2.93; 4700;occ; 100; 0;50166  
3; 5873.7; 03-OCT-2011 11:56:47; Dark ; 55.5; 37; 25Del CMA ; 1.83; 5900;occ; 111; 0;50166  
4; 6387.7; 03-OCT-2011 12:05:21; Dark ; 61.5; 108; Alp Col ; 2.65; 15200;occ; 123; 0;50167  
/nas3/ENVISAT/GOMOS/GOM\_NL\_\_0P/GOM\_NL\_\_0PNPDK20111003\_124239\_000038403107\_00153\_50167\_5395.N1  
1; 2611.8; 03-OCT-2011 12:42:39; Bright; 45.0; 53; 43Bet And ; 2.05; 3300;occ; 90; 0;50167  
2; 3202.2; 03-OCT-2011 12:52:29; Bright; 49.5; 160; 23Gam Per ; 2.93; 4700;occ; 99; 0;50167  
3; 5875.1; 03-OCT-2011 13:37:02; Dark ; 66.5; 37; 25Del CMA ; 1.83; 5900;occ; 133; 0;50167  
4; 6173.3; 03-OCT-2011 13:42:00; Dark ; 59.5; 0; ; 0.00; 0;occ; 119; 0;50168  
5; 6389.3; 03-OCT-2011 13:45:36; Dark ; 62.5; 108; Alp Col ; 2.65; 15200;occ; 125; 0;50168  
/nas3/ENVISAT/GOMOS/GOM\_NL\_\_0P/GOM\_NL\_\_0PNPDK20111003\_142252\_000038413107\_00154\_50168\_5396.N1  
1; 2611.2; 03-OCT-2011 14:22:52; Bright; 44.0; 53; 43Bet And ; 2.05; 3300;occ; 88; 0;50168  
2; 3201.4; 03-OCT-2011 14:32:42; Bright; 48.0; 160; 23Gam Per ; 2.93; 4700;occ; 96; 0;50168  
3; 5948.9; 03-OCT-2011 15:18:30; Dark ; 55.0; 23; 21Eps CMA ; 1.50; 26000;occ; 110; 0;50168  
4; 6174.6; 03-OCT-2011 15:22:15; Dark ; 59.5; 0; ; 0.00; 0;occ; 119; 0;50169  
5; 6390.9; 03-OCT-2011 15:25:52; Dark ; 61.5; 108; Alp Col ; 2.65; 15200;occ; 123; 0;50169  
/nas3/ENVISAT/GOMOS/GOM\_NL\_\_0P/GOM\_NL\_\_0PNPDK20111003\_160306\_000038403107\_00155\_50169\_5397.N1  
1; 2610.6; 03-OCT-2011 16:03:06; Bright; 47.0; 53; 43Bet And ; 2.05; 3300;occ; 94; 0;50169  
2; 3200.5; 03-OCT-2011 16:12:55; Bright; 51.5; 160; 23Gam Per ; 2.93; 4700;occ; 103; 0;50169  
3; 5950.3; 03-OCT-2011 16:58:45; Dark ; 55.0; 23; 21Eps CMA ; 1.50; 26000;occ; 110; 0;50169  
4; 6175.9; 03-OCT-2011 17:02:31; Dark ; 59.5; 0; ; 0.00; 0;occ; 119; 0;50170  
5; 6392.6; 03-OCT-2011 17:06:07; Dark ; 59.0; 108; Alp Col ; 2.65; 15200;occ; 118; 0;50170  
/nas3/ENVISAT/GOMOS/GOM\_NL\_\_0P/GOM\_NL\_\_0PNPDK20111003\_202301\_000002793107\_00158\_50172\_5399.N1  
1; 164.2; 03-OCT-2011 20:23:01; Dark ; 59.5; 0; ; 0.00; 0;occ; 119; 0;50172  
2; 381.4; 03-OCT-2011 20:26:38; Dark ; 62.0; 108; Alp Col ; 2.65; 15200;occ; 124; 0;50172  
/nas3/ENVISAT/GOMOS/GOM\_NL\_\_0P/GOM\_NL\_\_0PNPDE20111003\_051546\_000034033107\_00148\_50162\_6533.N1  
1; -145.7; 03-OCT-2011 05:15:46; Dark ; 59.5; 37; 25Del CMA ; 1.83; 5900;occ; 119; 0;50162  
2; 367.8; 03-OCT-2011 05:24:19; Dark ; 60.0; 108; Alp Col ; 2.65; 15200;occ; 120; 0;50163  
3; 2614.2; 03-OCT-2011 06:01:45; Bright; 43.5; 53; 43Bet And ; 2.05; 3300;occ; 87; 0;50163  
4; 3206.2; 03-OCT-2011 06:11:37; Bright; 51.5; 160; 23Gam Per ; 2.93; 4700;occ; 103; 0;50163  
/nas3/ENVISAT/GOMOS/GOM\_NL\_\_0P/GOM\_NL\_\_0PNPDE20111004\_030402\_000024833107\_00162\_50176\_6536.N1  
1; 169.1; 04-OCT-2011 03:04:02; Dark ; 59.5; 0; ; 0.00; 0;occ; 119; 0;50176  
2; 387.5; 04-OCT-2011 03:07:40; Dark ; 61.5; 108; Alp Col ; 2.65; 15200;occ; 123; 0;50176  
3; 2606.5; 04-OCT-2011 03:44:39; Bright; 46.0; 53; 43Bet And ; 2.05; 3300;occ; 92; 0;50176  
/nas3/ENVISAT/GOMOS/GOM\_NL\_\_0P/GOM\_NL\_\_0PNPDE20111004\_044756\_000022613107\_00163\_50177\_6537.N1

1; 389.0; 04-OCT-2011 04:47:56; Dark ; 62.0; 108; Alp Col ; 2.65; 15200;occ; 124; 0;50177  
 2; 2605.9; 04-OCT-2011 05:24:53; Bright; 44.5; 53; 43Bet And ; 2.05; 3300;occ; 89; 0;50177  
 /nas3/ENVISAT/GOMOS/GOM\_NL\_\_0P/GOM\_NL\_\_0PNPDE20111004\_062811\_000028523107\_00164\_50178\_6538.N1  
 1; 390.5; 04-OCT-2011 06:28:11; Dark ; 62.0; 108; Alp Col ; 2.65; 15200;occ; 124; 0;50178  
 2; 2605.5; 04-OCT-2011 07:05:06; Bright; 47.5; 53; 43Bet And ; 2.05; 3300;occ; 95; 0;50178  
 3; 3192.0; 04-OCT-2011 07:14:53; Bright; 51.0; 160; 23Gam Per ; 2.93; 4700;occ; 102; 0;50178  
 /nas3/ENVISAT/GOMOS/GOM\_NL\_\_0P/GOM\_NL\_\_0PNPDK20111004\_080827\_000000613107\_00165\_50179\_5403.N1  
 1; 391.9; 04-OCT-2011 08:08:27; Dark ; 62.0; 108; Alp Col ; 2.65; 15200;occ; 124; 0;50179  
 /nas3/ENVISAT/GOMOS/GOM\_NL\_\_0P/GOM\_NL\_\_0PNPDK20111004\_084520\_000038633107\_00165\_50179\_5404.N1  
 1; 2604.9; 04-OCT-2011 08:45:20; Bright; 47.5; 53; 43Bet And ; 2.05; 3300;occ; 95; 0;50179  
 2; 3191.1; 04-OCT-2011 08:55:06; Bright; 49.0; 160; 23Gam Per ; 2.93; 4700;occ; 98; 0;50179  
 3; 6407.5; 04-OCT-2011 09:48:42; Dark ; 61.0; 108; Alp Col ; 2.65; 15200;occ; 122; 0;50180  
 /nas3/ENVISAT/GOMOS/GOM\_NL\_\_0P/GOM\_NL\_\_0PNPDK20111004\_102533\_000034163107\_00166\_50180\_5405.N1  
 1; 2604.3; 04-OCT-2011 10:25:33; Bright; 47.5; 53; 43Bet And ; 2.05; 3300;occ; 95; 0;50180  
 2; 3190.0; 04-OCT-2011 10:35:19; Bright; 51.5; 160; 23Gam Per ; 2.93; 4700;occ; 103; 0;50180  
 3; 5965.3; 04-OCT-2011 11:21:34; Dark ; 55.0; 23; 21Eps CMa ; 1.50; 26000;occ; 110; 0;50180  
 /nas3/ENVISAT/GOMOS/GOM\_NL\_\_0P/GOM\_NL\_\_0PNPDK20111004\_130533\_000002823107\_00168\_50182\_5406.N1  
 1; 176.4; 04-OCT-2011 13:05:33; Dark ; 59.5; 0; ; 0.00; 0;occ; 119; 0;50182  
 2; 396.5; 04-OCT-2011 13:09:13; Dark ; 62.0; 108; Alp Col ; 2.65; 15200;occ; 124; 0;50182  
 /nas3/ENVISAT/GOMOS/GOM\_NL\_\_0P/GOM\_NL\_\_0PNPDK20111004\_134600\_000038713107\_00168\_50182\_5407.N1  
 1; 2603.1; 04-OCT-2011 13:46:00; Bright; 42.5; 53; 43Bet And ; 2.05; 3300;occ; 85; 0;50182  
 2; 3188.2; 04-OCT-2011 13:55:45; Bright; 47.5; 160; 23Gam Per ; 2.93; 4700;occ; 95; 0;50182  
 3; 6412.1; 04-OCT-2011 14:49:28; Dark ; 62.5; 108; Alp Col ; 2.65; 15200;occ; 125; 0;50183  
 /nas3/ENVISAT/GOMOS/GOM\_NL\_\_0P/GOM\_NL\_\_0PNPDK20111004\_153558\_000000483107\_00169\_50183\_5408.N1  
 1;-2826.7; 04-OCT-2011 15:35:58; Bright; 48.5; 160; 23Gam Per ; 2.93; 4700;occ; 97; 0;50183  
 /nas3/ENVISAT/GOMOS/GOM\_NL\_\_0P/GOM\_NL\_\_0PNPDE20111012\_213220\_000026983107\_00288\_50302\_6539.N1  
 1; 109.0; 12-OCT-2011 21:32:20; Dark ; 59.5; 0; ; 0.00; 0;occ; 119; 0;50302  
 2; 2765.0; 12-OCT-2011 22:16:36; Bright; 42.5; 73; 57Gam1And ; 2.26; 13100;occ; 85; 0;50302  
 /nas3/ENVISAT/GOMOS/GOM\_NL\_\_0P/GOM\_NL\_\_0PNPDE20111012\_231235\_000027003107\_00289\_50303\_6540.N1  
 1; 109.9; 12-OCT-2011 23:12:35; Dark ; 59.5; 0; ; 0.00; 0;occ; 119; 0;50303  
 2; 2764.3; 12-OCT-2011 23:56:49; Bright; 46.0; 73; 57Gam1And ; 2.26; 13100;occ; 92; 0;50303  
 /nas3/ENVISAT/GOMOS/GOM\_NL\_\_0P/GOM\_NL\_\_0PNPDK20111012\_145121\_000000593107\_00284\_50298\_5411.N1  
 1; 105.5; 12-OCT-2011 14:51:21; Dark ; 59.5; 0; ; 0.00; 0;occ; 119; 0;50298  
 /nas3/ENVISAT/GOMOS/GOM\_NL\_\_0P/GOM\_NL\_\_0PNPDK20111012\_153543\_000034123107\_00284\_50298\_5412.N1  
 1; 2767.9; 12-OCT-2011 15:35:43; Bright; 45.5; 73; 57Gam1And ; 2.26; 13100;occ; 91; 0;50298  
 2; 6120.4; 12-OCT-2011 16:31:36; Dark ; 59.5; 0; ; 0.00; 0;occ; 119; 0;50299  
 /nas3/ENVISAT/GOMOS/GOM\_NL\_\_0P/GOM\_NL\_\_0PNPDE20111013\_005250\_000026963107\_00290\_50304\_6541.N1  
 1; 110.8; 13-OCT-2011 00:52:50; Dark ; 59.5; 0; ; 0.00; 0;occ; 119; 0;50304  
 2; 2763.5; 13-OCT-2011 01:37:02; Bright; 44.0; 73; 57Gam1And ; 2.26; 13100;occ; 88; 0;50304  
 /nas3/ENVISAT/GOMOS/GOM\_NL\_\_0P/GOM\_NL\_\_0PNPDE20111013\_023304\_000026973107\_00291\_50305\_6542.N1  
 1; 111.7; 13-OCT-2011 02:33:04; Dark ; 59.5; 0; ; 0.00; 0;occ; 119; 0;50305  
 2; 2762.8; 13-OCT-2011 03:17:16; Bright; 46.5; 73; 57Gam1And ; 2.26; 13100;occ; 93; 0;50305  
 /nas3/ENVISAT/GOMOS/GOM\_NL\_\_0P/GOM\_NL\_\_0PNPDE20111013\_041319\_000026963107\_00292\_50306\_6543.N1  
 1; 112.5; 13-OCT-2011 04:13:19; Dark ; 59.5; 0; ; 0.00; 0;occ; 119; 0;50306  
 2; 2762.6; 13-OCT-2011 04:57:29; Bright; 46.0; 73; 57Gam1And ; 2.26; 13100;occ; 92; 0;50306  
 /nas3/ENVISAT/GOMOS/GOM\_NL\_\_0P/GOM\_NL\_\_0PNPDE20111013\_055334\_000000593107\_00293\_50307\_6544.N1  
 1; 113.4; 13-OCT-2011 05:53:34; Dark ; 59.5; 0; ; 0.00; 0;occ; 119; 0;50307  
 /nas3/ENVISAT/GOMOS/GOM\_NL\_\_0P/GOM\_NL\_\_0PNPDE20111013\_213942\_000003503107\_00302\_50316\_6545.N1  
 1; 2755.8; 13-OCT-2011 21:39:42; Bright; 46.0; 73; 57Gam1And ; 2.26; 13100;occ; 92; 0;50316  
 2; 3073.9; 13-OCT-2011 21:45:00; Bright; 32.5; 160; 23Gam Per ; 2.93; 4700;occ; 65; 0;50316  
 /nas3/ENVISAT/GOMOS/GOM\_NL\_\_0P/GOM\_NL\_\_0PNPDE20111013\_231955\_000003503107\_00303\_50317\_6546.N1  
 1; 2755.1; 13-OCT-2011 23:19:55; Bright; 47.5; 73; 57Gam1And ; 2.26; 13100;occ; 95; 0;50317  
 2; 3073.0; 13-OCT-2011 23:25:13; Bright; 32.5; 160; 23Gam Per ; 2.93; 4700;occ; 65; 0;50317  
 /nas3/ENVISAT/GOMOS/GOM\_NL\_\_0P/GOM\_NL\_\_0PNPDK20111013\_073349\_000000593107\_00294\_50308\_5413.N1  
 1; 114.3; 13-OCT-2011 07:33:49; Dark ; 59.5; 0; ; 0.00; 0;occ; 119; 0;50308  
 /nas3/ENVISAT/GOMOS/GOM\_NL\_\_0P/GOM\_NL\_\_0PNPDK20111013\_081756\_000034273107\_00294\_50308\_5414.N1  
 1; 2761.2; 13-OCT-2011 08:17:56; Bright; 47.5; 73; 57Gam1And ; 2.26; 13100;occ; 95; 0;50308  
 2; 6129.1; 13-OCT-2011 09:14:04; Dark ; 59.5; 0; ; 0.00; 0;occ; 119; 0;50309  
 /nas3/ENVISAT/GOMOS/GOM\_NL\_\_0P/GOM\_NL\_\_0PNPDK20111013\_113822\_000000513107\_00296\_50310\_5415.N1  
 1; 2759.8; 13-OCT-2011 11:38:22; Bright; 51.5; 73; 57Gam1And ; 2.26; 13100;occ; 103; 0;50310  
 /nas3/ENVISAT/GOMOS/GOM\_NL\_\_0P/GOM\_NL\_\_0PNPDK20111013\_131836\_000000463107\_00297\_50311\_5416.N1  
 1; 2759.1; 13-OCT-2011 13:18:36; Bright; 46.5; 73; 57Gam1And ; 2.26; 13100;occ; 93; 0;50311  
 /nas3/ENVISAT/GOMOS/GOM\_NL\_\_0P/GOM\_NL\_\_0PNPDK20111013\_145516\_000005563107\_00298\_50312\_5417.N1  
 1; 2545.3; 13-OCT-2011 14:55:16; Bright; 39.0; 53; 43Bet And ; 2.05; 3300;occ; 78; 0;50312  
 2; 2758.5; 13-OCT-2011 14:58:49; Bright; 45.0; 73; 57Gam1And ; 2.26; 13100;occ; 90; 0;50312  
 3; 3077.0; 13-OCT-2011 15:04:07; Bright; 24.5; 160; 23Gam Per ; 2.93; 4700;occ; 49; 0;50312  
 /nas3/ENVISAT/GOMOS/GOM\_NL\_\_0P/GOM\_NL\_\_0PNPDK20111013\_163902\_000003423107\_00299\_50313\_5418.N1  
 1; 2757.8; 13-OCT-2011 16:39:02; Bright; 46.5; 73; 57Gam1And ; 2.26; 13100;occ; 93; 0;50313

2; 3076.2; 13-OCT-2011 16:44:21; Bright; 24.5; 160; 23Gam Per ; 2.93; 4700;occ; 49; 0;50313  
/nas3/ENVISAT/GOMOS/GOM\_NL\_\_0P/GOM\_NL\_\_0PNPDK20111013\_181916\_000003463107\_00300\_50314\_5419.N1  
1; 2757.1; 13-OCT-2011 18:19:16; Bright; 45.5; 73; 57Gam1And ; 2.26; 13100;occ; 91; 0;50314  
2; 3075.4; 13-OCT-2011 18:24:34; Bright; 28.5; 160; 23Gam Per ; 2.93; 4700;occ; 57; 0;50314  
/nas3/ENVISAT/GOMOS/GOM\_NL\_\_0P/GOM\_NL\_\_0PNPDE20111014\_205557\_000007713107\_00316\_50330\_6547.N1  
1; 2334.7; 14-OCT-2011 20:55:57; Bright; 46.0; 105; 6Bet Ari ; 2.64; 8900;occ; 92; 0;50330  
2; 2635.6; 14-OCT-2011 21:00:57; Bright; 45.0; 173; 4Bet Tri ; 3.00; 8900;occ; 90; 0;50330  
3; 2747.2; 14-OCT-2011 21:02:49; Bright; 46.0; 73; 57Gam1And ; 2.26; 13100;occ; 92; 0;50330  
4; 3063.1; 14-OCT-2011 21:08:05; Bright; 43.5; 160; 23Gam Per ; 2.93; 4700;occ; 87; 0;50330  
/nas3/ENVISAT/GOMOS/GOM\_NL\_\_0P/GOM\_NL\_\_0PNPDE20111014\_223610\_000007753107\_00317\_50331\_6548.N1  
1; 2334.1; 14-OCT-2011 22:36:10; Bright; 47.0; 105; 6Bet Ari ; 2.64; 8900;occ; 94; 0;50331  
2; 2634.8; 14-OCT-2011 22:41:11; Bright; 44.5; 173; 4Bet Tri ; 3.00; 8900;occ; 89; 0;50331  
3; 3062.3; 14-OCT-2011 22:48:18; Bright; 47.0; 160; 23Gam Per ; 2.93; 4700;occ; 94; 0;50331  
/nas3/ENVISAT/GOMOS/GOM\_NL\_\_0P/GOM\_NL\_\_0PNPDK20111014\_010526\_000180793107\_00304\_50318\_5421.N1  
1;-2941.6; 14-OCT-2011 01:05:26; Bright; 37.0; 160; 23Gam Per ; 2.93; 4700;occ; 74; 0;50318  
2;14671.1; 14-OCT-2011 05:58:59; Bright; 26.0; 173; 4Bet Tri ; 3.00; 8900;occ; 52; 0;50321  
3;15098.8; 14-OCT-2011 06:06:07; Bright; 39.5; 160; 23Gam Per ; 2.93; 4700;occ; 79; 0;50321  
/nas3/ENVISAT/GOMOS/GOM\_NL\_\_0P/GOM\_NL\_\_0PNPDK20111014\_073912\_000004713107\_00308\_50322\_5422.N1  
1; 2642.2; 14-OCT-2011 07:39:12; Bright; 32.0; 173; 4Bet Tri ; 3.00; 8900;occ; 64; 0;50322  
2; 3070.1; 14-OCT-2011 07:46:20; Bright; 43.5; 160; 23Gam Per ; 2.93; 4700;occ; 87; 0;50322  
/nas3/ENVISAT/GOMOS/GOM\_NL\_\_0P/GOM\_NL\_\_0PNPDK20111014\_091926\_000004713107\_00309\_50323\_5423.N1  
1; 2641.5; 14-OCT-2011 09:19:26; Bright; 32.0; 173; 4Bet Tri ; 3.00; 8900;occ; 64; 0;50323  
2; 3069.3; 14-OCT-2011 09:26:33; Bright; 43.5; 160; 23Gam Per ; 2.93; 4700;occ; 87; 0;50323  
/nas3/ENVISAT/GOMOS/GOM\_NL\_\_0P/GOM\_NL\_\_0PNPDK20111014\_142712\_00000433107\_00312\_50326\_5424.N1  
1;-2947.7; 14-OCT-2011 14:27:12; Bright; 43.5; 160; 23Gam Per ; 2.93; 4700;occ; 87; 0;50326  
/nas3/ENVISAT/GOMOS/GOM\_NL\_\_0P/GOM\_NL\_\_0PNPDK20111014\_155516\_000007753107\_00313\_50327\_5425.N1  
1; 2336.3; 14-OCT-2011 15:55:16; Bright; 47.0; 105; 6Bet Ari ; 2.64; 8900;occ; 94; 0;50327  
2; 2637.8; 14-OCT-2011 16:00:18; Bright; 45.0; 173; 4Bet Tri ; 3.00; 8900;occ; 90; 0;50327  
3; 3065.4; 14-OCT-2011 16:07:25; Bright; 46.5; 160; 23Gam Per ; 2.93; 4700;occ; 93; 0;50327  
/nas3/ENVISAT/GOMOS/GOM\_NL\_\_0P/GOM\_NL\_\_0PNPDK20111014\_173530\_000007763107\_00314\_50328\_5426.N1  
1; 2335.8; 14-OCT-2011 17:35:30; Bright; 48.5; 105; 6Bet Ari ; 2.64; 8900;occ; 97; 0;50328  
2; 2637.1; 14-OCT-2011 17:40:31; Bright; 45.0; 173; 4Bet Tri ; 3.00; 8900;occ; 90; 0;50328  
3; 3064.6; 14-OCT-2011 17:47:38; Bright; 47.5; 160; 23Gam Per ; 2.93; 4700;occ; 95; 0;50328  
/nas3/ENVISAT/GOMOS/GOM\_NL\_\_0P/GOM\_NL\_\_0PNPDK20111014\_191543\_000007763107\_00315\_50329\_5427.N1  
1; 2335.2; 14-OCT-2011 19:15:43; Bright; 47.5; 105; 6Bet Ari ; 2.64; 8900;occ; 95; 0;50329  
2; 2636.3; 14-OCT-2011 19:20:44; Bright; 46.5; 173; 4Bet Tri ; 3.00; 8900;occ; 93; 0;50329  
3; 3063.8; 14-OCT-2011 19:27:52; Bright; 48.0; 160; 23Gam Per ; 2.93; 4700;occ; 96; 0;50329  
/nas3/ENVISAT/GOMOS/GOM\_NL\_\_0P/GOM\_NL\_\_0PNPDE20111015\_001623\_000007743107\_00318\_50332\_6549.N1  
1; 2333.6; 15-OCT-2011 00:16:23; Bright; 47.0; 105; 6Bet Ari ; 2.64; 8900;occ; 94; 0;50332  
2; 2634.1; 15-OCT-2011 00:21:24; Bright; 46.5; 173; 4Bet Tri ; 3.00; 8900;occ; 93; 0;50332  
3; 3061.6; 15-OCT-2011 00:28:31; Bright; 47.0; 160; 23Gam Per ; 2.93; 4700;occ; 94; 0;50332  
/nas3/ENVISAT/GOMOS/GOM\_NL\_\_0P/GOM\_NL\_\_0PNPDE20111015\_015637\_000067863107\_00319\_50333\_6550.N1  
1; 2333.1; 15-OCT-2011 01:56:37; Bright; 47.0; 105; 6Bet Ari ; 2.64; 8900;occ; 94; 0;50333  
2; 2633.3; 15-OCT-2011 02:01:37; Bright; 47.0; 173; 4Bet Tri ; 3.00; 8900;occ; 94; 0;50333  
3; 3060.7; 15-OCT-2011 02:08:44; Bright; 44.5; 160; 23Gam Per ; 2.93; 4700;occ; 89; 0;50333  
4; 8346.5; 15-OCT-2011 03:36:50; Bright; 47.0; 105; 6Bet Ari ; 2.64; 8900;occ; 94; 0;50334  
5; 8646.8; 15-OCT-2011 03:41:50; Bright; 47.0; 173; 4Bet Tri ; 3.00; 8900;occ; 94; 0;50334  
6; 9074.0; 15-OCT-2011 03:48:58; Bright; 46.0; 160; 23Gam Per ; 2.93; 4700;occ; 92; 0;50334  
/nas3/ENVISAT/GOMOS/GOM\_NL\_\_0P/GOM\_NL\_\_0PNPDE20111015\_051704\_000007743107\_00321\_50335\_6551.N1  
1; 2332.2; 15-OCT-2011 05:17:04; Bright; 45.5; 105; 6Bet Ari ; 2.64; 8900;occ; 91; 0;50335  
2; 2632.2; 15-OCT-2011 05:22:04; Bright; 46.5; 173; 4Bet Tri ; 3.00; 8900;occ; 93; 0;50335  
3; 3059.3; 15-OCT-2011 05:29:11; Bright; 47.0; 160; 23Gam Per ; 2.93; 4700;occ; 94; 0;50335  
/nas3/ENVISAT/GOMOS/GOM\_NL\_\_0P/GOM\_NL\_\_0PNPDE20111015\_065717\_000007743107\_00322\_50336\_6552.N1  
1; 2331.6; 15-OCT-2011 06:57:17; Bright; 46.5; 105; 6Bet Ari ; 2.64; 8900;occ; 93; 0;50336  
2; 2631.5; 15-OCT-2011 07:02:17; Bright; 46.0; 173; 4Bet Tri ; 3.00; 8900;occ; 92; 0;50336  
3; 3058.6; 15-OCT-2011 07:09:24; Bright; 47.0; 160; 23Gam Per ; 2.93; 4700;occ; 94; 0;50336  
/nas3/ENVISAT/GOMOS/GOM\_NL\_\_0P/GOM\_NL\_\_0PNPDE20111015\_202403\_000004733107\_00330\_50344\_6553.N1  
1; 2625.9; 15-OCT-2011 20:24:03; Bright; 45.5; 173; 4Bet Tri ; 3.00; 8900;occ; 91; 0;50344  
2; 3052.3; 15-OCT-2011 20:31:10; Bright; 47.0; 160; 23Gam Per ; 2.93; 4700;occ; 94; 0;50344  
/nas3/ENVISAT/GOMOS/GOM\_NL\_\_0P/GOM\_NL\_\_0PNPDE20111015\_220416\_000004733107\_00331\_50345\_6554.N1  
1; 2625.1; 15-OCT-2011 22:04:16; Bright; 45.5; 173; 4Bet Tri ; 3.00; 8900;occ; 91; 0;50345  
2; 3051.6; 15-OCT-2011 22:11:23; Bright; 47.0; 160; 23Gam Per ; 2.93; 4700;occ; 94; 0;50345  
/nas3/ENVISAT/GOMOS/GOM\_NL\_\_0P/GOM\_NL\_\_0PNPDE20111015\_234430\_000004693107\_00332\_50346\_6555.N1  
1; 2624.6; 15-OCT-2011 23:44:30; Bright; 45.0; 173; 4Bet Tri ; 3.00; 8900;occ; 90; 0;50346  
2; 3050.7; 15-OCT-2011 23:51:36; Bright; 43.5; 160; 23Gam Per ; 2.93; 4700;occ; 87; 0;50346  
/nas3/ENVISAT/GOMOS/GOM\_NL\_\_0P/GOM\_NL\_\_0PNPDK20111015\_083731\_000007723107\_00323\_50337\_5428.N1  
1; 2331.1; 15-OCT-2011 08:37:31; Bright; 46.0; 105; 6Bet Ari ; 2.64; 8900;occ; 92; 0;50337  
2; 2630.8; 15-OCT-2011 08:42:30; Bright; 46.0; 173; 4Bet Tri ; 3.00; 8900;occ; 92; 0;50337

3; 3057.7; 15-OCT-2011 08:49:37; Bright; 45.5; 160; 23Gam Per ; 2.93; 4700;occ; 91; 0;50337  
/nas3/ENVISAT/GOMOS/GOM\_NL\_\_0P/GOM\_NL\_\_0PNPDK20111015\_115757\_000007733107\_00325\_50339\_5429.N1  
1; 2329.9; 15-OCT-2011 11:57:57; Bright; 46.0; 105; 6Bet Ari ; 2.64; 8900;occ; 92; 0;50339  
2; 2629.5; 15-OCT-2011 12:02:57; Bright; 46.0; 173; 4Bet Tri ; 3.00; 8900;occ; 92; 0;50339  
3; 3056.3; 15-OCT-2011 12:10:04; Bright; 47.0; 160; 23Gam Per ; 2.93; 4700;occ; 94; 0;50339  
/nas3/ENVISAT/GOMOS/GOM\_NL\_\_0P/GOM\_NL\_\_0PNPDK20111015\_133811\_000007733107\_00326\_50340\_5430.N1  
1; 2329.6; 15-OCT-2011 13:38:11; Bright; 46.0; 105; 6Bet Ari ; 2.64; 8900;occ; 92; 0;50340  
2; 2628.6; 15-OCT-2011 13:43:10; Bright; 47.5; 173; 4Bet Tri ; 3.00; 8900;occ; 95; 0;50340  
3; 3055.6; 15-OCT-2011 13:50:17; Bright; 47.5; 160; 23Gam Per ; 2.93; 4700;occ; 95; 0;50340  
/nas3/ENVISAT/GOMOS/GOM\_NL\_\_0P/GOM\_NL\_\_0PNPDK20111015\_152323\_000004723107\_00327\_50341\_5431.N1  
1; 2628.1; 15-OCT-2011 15:23:23; Bright; 45.5; 173; 4Bet Tri ; 3.00; 8900;occ; 91; 0;50341  
2; 3055.0; 15-OCT-2011 15:30:30; Bright; 46.0; 160; 23Gam Per ; 2.93; 4700;occ; 92; 0;50341  
/nas3/ENVISAT/GOMOS/GOM\_NL\_\_0P/GOM\_NL\_\_0PNPDK20111015\_170337\_000004723107\_00328\_50342\_5432.N1  
1; 2627.3; 15-OCT-2011 17:03:37; Bright; 46.0; 173; 4Bet Tri ; 3.00; 8900;occ; 92; 0;50342  
2; 3054.1; 15-OCT-2011 17:10:43; Bright; 45.5; 160; 23Gam Per ; 2.93; 4700;occ; 91; 0;50342  
/nas3/ENVISAT/GOMOS/GOM\_NL\_\_0P/GOM\_NL\_\_0PNPDK20111015\_184350\_000004723107\_00329\_50343\_5433.N1  
1; 2626.5; 15-OCT-2011 18:43:50; Bright; 46.0; 173; 4Bet Tri ; 3.00; 8900;occ; 92; 0;50343  
2; 3053.3; 15-OCT-2011 18:50:57; Bright; 46.0; 160; 23Gam Per ; 2.93; 4700;occ; 92; 0;50343  
/nas3/ENVISAT/GOMOS/GOM\_NL\_\_0P/GOM\_NL\_\_0PNPDE20111016\_012443\_000004713107\_00333\_50347\_6556.N1  
1; 2623.8; 16-OCT-2011 01:24:43; Bright; 45.0; 173; 4Bet Tri ; 3.00; 8900;occ; 90; 0;50347  
2; 3050.0; 16-OCT-2011 01:31:49; Bright; 45.0; 160; 23Gam Per ; 2.93; 4700;occ; 90; 0;50347  
/nas3/ENVISAT/GOMOS/GOM\_NL\_\_0P/GOM\_NL\_\_0PNPDE20111016\_030456\_000004703107\_00334\_50348\_6557.N1  
1; 2623.2; 16-OCT-2011 03:04:56; Bright; 46.5; 173; 4Bet Tri ; 3.00; 8900;occ; 93; 0;50348  
2; 3049.3; 16-OCT-2011 03:12:02; Bright; 44.0; 160; 23Gam Per ; 2.93; 4700;occ; 88; 0;50348  
/nas3/ENVISAT/GOMOS/GOM\_NL\_\_0P/GOM\_NL\_\_0PNPDE20111016\_044510\_000004723107\_00335\_50349\_6558.N1  
1; 2622.6; 16-OCT-2011 04:45:10; Bright; 45.5; 173; 4Bet Tri ; 3.00; 8900;occ; 91; 0;50349  
2; 3048.7; 16-OCT-2011 04:52:16; Bright; 46.5; 160; 23Gam Per ; 2.93; 4700;occ; 93; 0;50349  
/nas3/ENVISAT/GOMOS/GOM\_NL\_\_0P/GOM\_NL\_\_0PNPDE20111016\_062523\_000004723107\_00336\_50350\_6559.N1  
1; 2622.0; 16-OCT-2011 06:25:23; Bright; 45.0; 173; 4Bet Tri ; 3.00; 8900;occ; 90; 0;50350  
2; 3048.0; 16-OCT-2011 06:32:29; Bright; 46.5; 160; 23Gam Per ; 2.93; 4700;occ; 93; 0;50350  
/nas3/ENVISAT/GOMOS/GOM\_NL\_\_0P/GOM\_NL\_\_0PNPDE20111016\_213428\_00000453107\_00345\_50359\_6560.N1  
1;-2972.6; 16-OCT-2011 21:34:28; Bright; 46.0; 160; 23Gam Per ; 2.93; 4700;occ; 92; 0;50359  
/nas3/ENVISAT/GOMOS/GOM\_NL\_\_0P/GOM\_NL\_\_0PNPDE20111016\_231441\_00000453107\_00346\_50360\_6561.N1  
1;-2973.2; 16-OCT-2011 23:14:41; Bright; 46.0; 160; 23Gam Per ; 2.93; 4700;occ; 92; 0;50360  
/nas3/ENVISAT/GOMOS/GOM\_NL\_\_0P/GOM\_NL\_\_0PNPDK20111016\_080537\_000004693107\_00337\_50351\_5434.N1  
1; 2621.4; 16-OCT-2011 08:05:37; Bright; 45.5; 173; 4Bet Tri ; 3.00; 8900;occ; 91; 0;50351  
2; 3047.2; 16-OCT-2011 08:12:42; Bright; 44.0; 160; 23Gam Per ; 2.93; 4700;occ; 88; 0;50351  
/nas3/ENVISAT/GOMOS/GOM\_NL\_\_0P/GOM\_NL\_\_0PNPDK20111016\_094550\_000004713107\_00338\_50352\_5435.N1  
1; 2620.8; 16-OCT-2011 09:45:50; Bright; 46.5; 173; 4Bet Tri ; 3.00; 8900;occ; 93; 0;50352  
2; 3046.6; 16-OCT-2011 09:52:56; Bright; 45.5; 160; 23Gam Per ; 2.93; 4700;occ; 91; 0;50352  
/nas3/ENVISAT/GOMOS/GOM\_NL\_\_0P/GOM\_NL\_\_0PNPDK20111016\_112603\_000004723107\_00339\_50353\_5436.N1  
1; 2620.2; 16-OCT-2011 11:26:03; Bright; 45.5; 173; 4Bet Tri ; 3.00; 8900;occ; 91; 0;50353  
2; 3045.8; 16-OCT-2011 11:33:09; Bright; 46.5; 160; 23Gam Per ; 2.93; 4700;occ; 93; 0;50353  
/nas3/ENVISAT/GOMOS/GOM\_NL\_\_0P/GOM\_NL\_\_0PNPDK20111016\_130616\_000004723107\_00340\_50354\_5437.N1  
1; 2619.4; 16-OCT-2011 13:06:16; Bright; 45.0; 173; 4Bet Tri ; 3.00; 8900;occ; 90; 0;50354  
2; 3045.1; 16-OCT-2011 13:13:22; Bright; 47.0; 160; 23Gam Per ; 2.93; 4700;occ; 94; 0;50354  
/nas3/ENVISAT/GOMOS/GOM\_NL\_\_0P/GOM\_NL\_\_0PNPDK20111016\_144630\_000004713107\_00341\_50355\_5438.N1  
1; 2618.8; 16-OCT-2011 14:46:30; Bright; 44.5; 173; 4Bet Tri ; 3.00; 8900;occ; 89; 0;50355  
2; 3044.4; 16-OCT-2011 14:53:35; Bright; 46.0; 160; 23Gam Per ; 2.93; 4700;occ; 92; 0;50355  
/nas3/ENVISAT/GOMOS/GOM\_NL\_\_0P/GOM\_NL\_\_0PNPDK20111016\_162643\_000004723107\_00342\_50356\_5439.N1  
1; 2618.3; 16-OCT-2011 16:26:43; Bright; 45.0; 173; 4Bet Tri ; 3.00; 8900;occ; 90; 0;50356  
2; 3043.6; 16-OCT-2011 16:33:48; Bright; 47.0; 160; 23Gam Per ; 2.93; 4700;occ; 94; 0;50356  
/nas3/ENVISAT/GOMOS/GOM\_NL\_\_0P/GOM\_NL\_\_0PNPDK20111016\_180656\_000004723107\_00343\_50357\_5440.N1  
1; 2617.5; 16-OCT-2011 18:06:56; Bright; 46.5; 173; 4Bet Tri ; 3.00; 8900;occ; 93; 0;50357  
2; 3042.9; 16-OCT-2011 18:14:02; Bright; 47.0; 160; 23Gam Per ; 2.93; 4700;occ; 94; 0;50357  
/nas3/ENVISAT/GOMOS/GOM\_NL\_\_0P/GOM\_NL\_\_0PNPDK20111016\_195415\_00000463107\_00344\_50358\_5441.N1  
1;-2971.9; 16-OCT-2011 19:54:15; Bright; 46.5; 160; 23Gam Per ; 2.93; 4700;occ; 93; 0;50358  
/nas3/ENVISAT/GOMOS/GOM\_NL\_\_0P/GOM\_NL\_\_0PNPDE20111017\_005455\_00000463107\_00347\_50361\_6562.N1  
1;-2974.0; 17-OCT-2011 00:54:55; Bright; 46.5; 160; 23Gam Per ; 2.93; 4700;occ; 93; 0;50361  
/nas3/ENVISAT/GOMOS/GOM\_NL\_\_0P/GOM\_NL\_\_0PNPDE20111017\_023508\_00000423107\_00348\_50362\_6563.N1  
1;-2974.7; 17-OCT-2011 02:35:08; Bright; 43.0; 160; 23Gam Per ; 2.93; 4700;occ; 86; 0;50362  
/nas3/ENVISAT/GOMOS/GOM\_NL\_\_0P/GOM\_NL\_\_0PNPDE20111017\_041521\_00000453107\_00349\_50363\_6564.N1  
1;-2975.5; 17-OCT-2011 04:15:21; Bright; 45.5; 160; 23Gam Per ; 2.93; 4700;occ; 91; 0;50363  
/nas3/ENVISAT/GOMOS/GOM\_NL\_\_0P/GOM\_NL\_\_0PNPDE20111017\_055534\_00000453107\_00350\_50364\_6565.N1  
1;-2976.2; 17-OCT-2011 05:55:34; Bright; 45.5; 160; 23Gam Per ; 2.93; 4700;occ; 91; 0;50364  
/nas3/ENVISAT/GOMOS/GOM\_NL\_\_0P/GOM\_NL\_\_0PNPDE20111017\_223747\_00000453107\_00360\_50374\_6567.N1  
1;-2983.4; 17-OCT-2011 22:37:47; Bright; 45.5; 160; 23Gam Per ; 2.93; 4700;occ; 91; 0;50374  
/nas3/ENVISAT/GOMOS/GOM\_NL\_\_0P/GOM\_NL\_\_0PNPDK20111017\_073548\_00000453107\_00351\_50365\_5442.N1

1;-2976.8; 17-OCT-2011 07:35:48; Bright; 46.0; 160; 23Gam Per ; 2.93; 4700;occ; 92; 0;50365  
/nas3/ENVISAT/GOMOS/GOM\_NL\_\_0P/GOM\_NL\_\_0PNPDK20111017\_091601\_000000453107\_00352\_50366\_5443.N1  
1;-2977.5; 17-OCT-2011 09:16:01; Bright; 45.5; 160; 23Gam Per ; 2.93; 4700;occ; 91; 0;50366  
/nas3/ENVISAT/GOMOS/GOM\_NL\_\_0P/GOM\_NL\_\_0PNPDK20111017\_105614\_000000463107\_00353\_50367\_5444.N1  
1;-2978.3; 17-OCT-2011 10:56:14; Bright; 46.5; 160; 23Gam Per ; 2.93; 4700;occ; 93; 0;50367  
/nas3/ENVISAT/GOMOS/GOM\_NL\_\_0P/GOM\_NL\_\_0PNPDK20111017\_123627\_000000463107\_00354\_50368\_5445.N1  
1;-2979.1; 17-OCT-2011 12:36:27; Bright; 46.5; 160; 23Gam Per ; 2.93; 4700;occ; 93; 0;50368  
/nas3/ENVISAT/GOMOS/GOM\_NL\_\_0P/GOM\_NL\_\_0PNPDK20111017\_141641\_000000453107\_00355\_50369\_5446.N1  
1;-2979.8; 17-OCT-2011 14:16:41; Bright; 46.0; 160; 23Gam Per ; 2.93; 4700;occ; 92; 0;50369  
/nas3/ENVISAT/GOMOS/GOM\_NL\_\_0P/GOM\_NL\_\_0PNPDK20111017\_155654\_000000453107\_00356\_50370\_5447.N1  
1;-2980.6; 17-OCT-2011 15:56:54; Bright; 45.5; 160; 23Gam Per ; 2.93; 4700;occ; 91; 0;50370  
/nas3/ENVISAT/GOMOS/GOM\_NL\_\_0P/GOM\_NL\_\_0PNPDK20111017\_173707\_000000453107\_00357\_50371\_5448.N1  
1;-2981.4; 17-OCT-2011 17:37:07; Bright; 45.5; 160; 23Gam Per ; 2.93; 4700;occ; 91; 0;50371  
/nas3/ENVISAT/GOMOS/GOM\_NL\_\_0P/GOM\_NL\_\_0PNPDK20111017\_191720\_000000463107\_00358\_50372\_5449.N1  
1;-2982.0; 17-OCT-2011 19:17:20; Bright; 46.5; 160; 23Gam Per ; 2.93; 4700;occ; 93; 0;50372  
/nas3/ENVISAT/GOMOS/GOM\_NL\_\_0P/GOM\_NL\_\_0PNPDE20111018\_001800\_000000443107\_00361\_50375\_6568.N1  
1;-2984.0; 18-OCT-2011 00:18:00; Bright; 45.0; 160; 23Gam Per ; 2.93; 4700;occ; 90; 0;50375  
/nas3/ENVISAT/GOMOS/GOM\_NL\_\_0P/GOM\_NL\_\_0PNPDE20111018\_015813\_000000453107\_00362\_50376\_6569.N1  
1;-2984.8; 18-OCT-2011 01:58:13; Bright; 46.0; 160; 23Gam Per ; 2.93; 4700;occ; 92; 0;50376  
/nas3/ENVISAT/GOMOS/GOM\_NL\_\_0P/GOM\_NL\_\_0PNPDE20111018\_033827\_000000443107\_00363\_50377\_6570.N1  
1;-2985.5; 18-OCT-2011 03:38:27; Bright; 45.0; 160; 23Gam Per ; 2.93; 4700;occ; 90; 0;50377  
/nas3/ENVISAT/GOMOS/GOM\_NL\_\_0P/GOM\_NL\_\_0PNPDE20111018\_051840\_000000453107\_00364\_50378\_6571.N1  
1;-2986.3; 18-OCT-2011 05:18:40; Bright; 45.5; 160; 23Gam Per ; 2.93; 4700;occ; 91; 0;50378  
/nas3/ENVISAT/GOMOS/GOM\_NL\_\_0P/GOM\_NL\_\_0PNPDE20111018\_065853\_000000443107\_00365\_50379\_6572.N1  
1;-2986.9; 18-OCT-2011 06:58:53; Bright; 45.0; 160; 23Gam Per ; 2.93; 4700;occ; 90; 0;50379  
/nas3/ENVISAT/GOMOS/GOM\_NL\_\_0P/GOM\_NL\_\_0PNPDK20111018\_083906\_000000443107\_00366\_50380\_5450.N1  
1;-2987.6; 18-OCT-2011 08:39:06; Bright; 44.5; 160; 23Gam Per ; 2.93; 4700;occ; 89; 0;50380  
/nas3/ENVISAT/GOMOS/GOM\_NL\_\_0P/GOM\_NL\_\_0PNPDK20111018\_115933\_000000673107\_00368\_50382\_5451.N1  
1;-2988.9; 18-OCT-2011 11:59:33; Bright; 67.5; 160; 23Gam Per ; 2.93; 4700;occ; 135; 0;50382  
/nas3/ENVISAT/GOMOS/GOM\_NL\_\_0P/GOM\_NL\_\_0PNPDK20111018\_133946\_000000453107\_00369\_50383\_5452.N1  
1;-2989.7; 18-OCT-2011 13:39:46; Bright; 45.5; 160; 23Gam Per ; 2.93; 4700;occ; 91; 0;50383  
/nas3/ENVISAT/GOMOS/GOM\_NL\_\_0P/GOM\_NL\_\_0PNPDK20111018\_101920\_000000433107\_00367\_50381\_5454.N1  
1;-2988.3; 18-OCT-2011 10:19:20; Bright; 44.0; 160; 23Gam Per ; 2.93; 4700;occ; 88; 0;50381  
/nas3/ENVISAT/GOMOS/GOM\_NL\_\_0P/GOM\_NL\_\_0PNPDK20111018\_101920\_000000433107\_00367\_50381\_5739.N1  
1;-2988.3; 18-OCT-2011 10:19:20; Bright; 44.0; 160; 23Gam Per ; 2.93; 4700;occ; 88; 0;50381  
/nas3/ENVISAT/GOMOS/GOM\_NL\_\_0P/GOM\_NL\_\_0PNPDE20111023\_202058\_000000603108\_00014\_50459\_6573.N1  
1; 2035.9; 23-OCT-2011 20:20:58; Bright; 60.5; 94; 92Alp Cet ; 2.53; 3100;occ; 121; 0;50459  
/nas3/ENVISAT/GOMOS/GOM\_NL\_\_0P/GOM\_NL\_\_0PNPDE20111023\_212637\_000021363108\_00014\_50459\_6574.N1  
1; -39.8; 23-OCT-2011 21:26:37; Dark ; 65.5; 132; 15Rho Pup ; 2.80; 6900;occ; 131; 0;50459  
2; 249.2; 23-OCT-2011 21:31:26; Dark ; 69.0; 88; 31Eta Cma ; 2.45; 20000;occ; 138; 0;50460  
3; 787.7; 23-OCT-2011 21:40:24; Dark ; 61.5; 108; Alp Col ; 2.65; 15200;occ; 123; 0;50460  
4; 2035.6; 23-OCT-2011 22:01:12; Bright; 61.0; 94; 92Alp Cet ; 2.53; 3100;occ; 122; 0;50460  
/nas3/ENVISAT/GOMOS/GOM\_NL\_\_0P/GOM\_NL\_\_0PNPDE20111023\_230652\_000021333108\_00015\_50460\_6575.N1  
1; -38.1; 23-OCT-2011 23:06:52; Dark ; 63.0; 132; 15Rho Pup ; 2.80; 6900;occ; 126; 0;50460  
2; 251.0; 23-OCT-2011 23:11:41; Dark ; 65.5; 88; 31Eta Cma ; 2.45; 20000;occ; 131; 0;50461  
3; 788.8; 23-OCT-2011 23:20:39; Dark ; 64.5; 108; Alp Col ; 2.65; 15200;occ; 129; 0;50461  
4; 2034.9; 23-OCT-2011 23:41:25; Bright; 61.0; 94; 92Alp Cet ; 2.53; 3100;occ; 122; 0;50461  
/nas3/ENVISAT/GOMOS/GOM\_NL\_\_0P/GOM\_NL\_\_0PNPDK20111023\_094936\_000000603108\_00008\_50453\_5455.N1  
1; 237.1; 23-OCT-2011 09:49:36; Dark ; 63.5; 88; 31Eta Cma ; 2.45; 20000;occ; 127; 0;50453  
2; 779.1; 23-OCT-2011 09:58:38; Dark ; 64.5; 108; Alp Col ; 2.65; 15200;occ; 129; 0;50453  
/nas3/ENVISAT/GOMOS/GOM\_NL\_\_0P/GOM\_NL\_\_0PNPDK20111023\_101938\_000000583108\_00008\_50453\_5456.N1  
1; 2039.2; 23-OCT-2011 10:19:38; Bright; 58.5; 94; 92Alp Cet ; 2.53; 3100;occ; 117; 0;50453  
/nas3/ENVISAT/GOMOS/GOM\_NL\_\_0P/GOM\_NL\_\_0PNPDK20111023\_145023\_0000006033108\_00011\_50456\_5458.N1  
1; 242.4; 23-OCT-2011 14:50:23; Dark ; 66.5; 88; 31Eta Cma ; 2.45; 20000;occ; 133; 0;50456  
2; 782.9; 23-OCT-2011 14:59:23; Dark ; 62.5; 108; Alp Col ; 2.65; 15200;occ; 125; 0;50456  
/nas3/ENVISAT/GOMOS/GOM\_NL\_\_0P/GOM\_NL\_\_0PNPDK20111023\_152018\_000048233108\_00011\_50456\_5459.N1  
1; 2037.7; 23-OCT-2011 15:20:18; Bright; 59.0; 94; 92Alp Cet ; 2.53; 3100;occ; 118; 0;50456  
2; 5969.5; 23-OCT-2011 16:25:50; Dark ; 64.0; 132; 15Rho Pup ; 2.80; 6900;occ; 128; 0;50456  
3; 6258.1; 23-OCT-2011 16:30:39; Dark ; 69.0; 88; 31Eta Cma ; 2.45; 20000;occ; 138; 0;50457  
4; 6798.2; 23-OCT-2011 16:39:39; Dark ; 63.0; 108; Alp Col ; 2.65; 15200;occ; 126; 0;50457  
/nas3/ENVISAT/GOMOS/GOM\_NL\_\_0P/GOM\_NL\_\_0PNPDK20111023\_170032\_000048253108\_00012\_50457\_5460.N1  
1; 2037.1; 23-OCT-2011 17:00:32; Bright; 59.5; 94; 92Alp Cet ; 2.53; 3100;occ; 119; 0;50457  
2; 5971.1; 23-OCT-2011 18:06:06; Dark ; 61.5; 132; 15Rho Pup ; 2.80; 6900;occ; 123; 0;50457  
3; 6259.9; 23-OCT-2011 18:10:54; Dark ; 66.5; 88; 31Eta Cma ; 2.45; 20000;occ; 133; 0;50458  
4; 6799.2; 23-OCT-2011 18:19:54; Dark ; 63.0; 108; Alp Col ; 2.65; 15200;occ; 126; 0;50458  
/nas3/ENVISAT/GOMOS/GOM\_NL\_\_0P/GOM\_NL\_\_0PNPDK20111023\_184045\_000048273108\_00013\_50458\_5461.N1  
1; 2036.5; 23-OCT-2011 18:40:45; Bright; 59.5; 94; 92Alp Cet ; 2.53; 3100;occ; 119; 0;50458  
2; 5972.7; 23-OCT-2011 19:46:21; Dark ; 62.0; 132; 15Rho Pup ; 2.80; 6900;occ; 124; 0;50458

```

3; 6261.5; 23-OCT-2011 19:51:10; Dark ; 68.0; 88; 31Eta CMA ; 2.45; 20000;occ; 136; 0;50459
4; 6800.7; 23-OCT-2011 20:00:09; Dark ; 63.0; 108; Alp Col ; 2.65; 15200;occ; 126; 0;50459
/nas3/ENVISAT/GOMOS/GOM_NL__0P/GOM_NL__0PNPDE20111024_004708_000021313108_00016_50461_6576.N1
1; -36.4; 24-OCT-2011 00:47:08; Dark ; 62.0; 132; 15Rho Pup ; 2.80; 6900;occ; 124; 0;50461
2; 252.7; 24-OCT-2011 00:51:57; Dark ; 66.0; 88; 31Eta CMA ; 2.45; 20000;occ; 132; 0;50462
3; 790.0; 24-OCT-2011 01:00:54; Dark ; 64.5; 108; Alp Col ; 2.65; 15200;occ; 129; 0;50462
4; 2034.5; 24-OCT-2011 01:21:39; Bright; 61.0; 94; 92Alp Cet ; 2.53; 3100;occ; 122; 0;50462
/nas3/ENVISAT/GOMOS/GOM_NL__0P/GOM_NL__0PNPDE20111024_040739_000021233108_00018_50463_6578.N1
1; -32.8; 24-OCT-2011 04:07:39; Dark ; 64.5; 132; 15Rho Pup ; 2.80; 6900;occ; 129; 0;50463
2; 256.4; 24-OCT-2011 04:12:29; Dark ; 69.0; 88; 31Eta CMA ; 2.45; 20000;occ; 138; 0;50464
3; 792.5; 24-OCT-2011 04:21:25; Dark ; 63.0; 108; Alp Col ; 2.65; 15200;occ; 126; 0;50464
4; 2033.8; 24-OCT-2011 04:42:06; Bright; 57.0; 94; 92Alp Cet ; 2.53; 3100;occ; 114; 0;50464
/nas3/ENVISAT/GOMOS/GOM_NL__0P/GOM_NL__0PNPDE20111024_054755_000021243108_00019_50464_6579.N1
1; -31.2; 24-OCT-2011 05:47:55; Dark ; 63.5; 132; 15Rho Pup ; 2.80; 6900;occ; 127; 0;50464
2; 258.1; 24-OCT-2011 05:52:44; Dark ; 67.0; 88; 31Eta CMA ; 2.45; 20000;occ; 134; 0;50465
3; 793.6; 24-OCT-2011 06:01:40; Dark ; 64.0; 108; Alp Col ; 2.65; 15200;occ; 128; 0;50465
4; 2033.3; 24-OCT-2011 06:22:19; Bright; 59.5; 94; 92Alp Cet ; 2.53; 3100;occ; 119; 0;50465
/nas3/ENVISAT/GOMOS/GOM_NL__0P/GOM_NL__0PNPDE20111024_210453_000012273108_00029_50474_6580.N1
1; 861.2; 24-OCT-2011 21:04:53; Dark ; 65.5; 108; Alp Col ; 2.65; 15200;occ; 131; 114;50474
2; 2029.1; 24-OCT-2011 21:24:21; Bright; 60.0; 94; 92Alp Cet ; 2.53; 3100;occ; 120; 0;50474
/nas3/ENVISAT/GOMOS/GOM_NL__0P/GOM_NL__0PNPDE20111024_223031_000021013108_00029_50474_6581.N1
1; -14.2; 24-OCT-2011 22:30:31; Dark ; 64.0; 132; 15Rho Pup ; 2.80; 6900;occ; 128; 0;50474
2; 275.7; 24-OCT-2011 22:35:21; Dark ; 69.5; 88; 31Eta CMA ; 2.45; 20000;occ; 139; 0;50475
3; 805.3; 24-OCT-2011 22:44:11; Dark ; 64.0; 108; Alp Col ; 2.65; 15200;occ; 128; 0;50475
4; 2028.6; 24-OCT-2011 23:04:34; Bright; 58.5; 94; 92Alp Cet ; 2.53; 3100;occ; 117; 0;50475
/nas3/ENVISAT/GOMOS/GOM_NL__0P/GOM_NL__0PNPDK20111024_072811_000008863108_00020_50465_5462.N1
1; -29.5; 24-OCT-2011 07:28:11; Dark ; 64.5; 132; 15Rho Pup ; 2.80; 6900;occ; 129; 0;50465
2; 259.9; 24-OCT-2011 07:33:00; Dark ; 68.0; 88; 31Eta CMA ; 2.45; 20000;occ; 136; 0;50466
3; 794.7; 24-OCT-2011 07:41:55; Dark ; 62.5; 108; Alp Col ; 2.65; 15200;occ; 125; 0;50466
/nas3/ENVISAT/GOMOS/GOM_NL__0P/GOM_NL__0PNPDK20111024_080233_000048383108_00021_50466_5463.N1
1; 2032.8; 24-OCT-2011 08:02:33; Bright; 59.5; 94; 92Alp Cet ; 2.53; 3100;occ; 119; 0;50466
2; 5986.1; 24-OCT-2011 09:08:26; Dark ; 65.5; 132; 15Rho Pup ; 2.80; 6900;occ; 131; 0;50466
3; 6275.6; 24-OCT-2011 09:13:16; Dark ; 68.5; 88; 31Eta CMA ; 2.45; 20000;occ; 137; 0;50467
4; 6810.1; 24-OCT-2011 09:22:10; Dark ; 61.5; 108; Alp Col ; 2.65; 15200;occ; 123; 0;50467
/nas3/ENVISAT/GOMOS/GOM_NL__0P/GOM_NL__0PNPDK20111024_094246_000048433108_00022_50467_5464.N1
1; 2032.3; 24-OCT-2011 09:42:46; Bright; 60.0; 94; 92Alp Cet ; 2.53; 3100;occ; 120; 0;50467
2; 5987.7; 24-OCT-2011 10:48:42; Dark ; 63.0; 132; 15Rho Pup ; 2.80; 6900;occ; 126; 0;50467
3; 6277.4; 24-OCT-2011 10:53:31; Dark ; 68.0; 88; 31Eta CMA ; 2.45; 20000;occ; 136; 0;50468
4; 6811.1; 24-OCT-2011 11:02:25; Dark ; 64.5; 108; Alp Col ; 2.65; 15200;occ; 129; 0;50468
/nas3/ENVISAT/GOMOS/GOM_NL__0P/GOM_NL__0PNPDK20111024_112300_000048453108_00023_50468_5465.N1
1; 2031.8; 24-OCT-2011 11:23:00; Bright; 59.5; 94; 92Alp Cet ; 2.53; 3100;occ; 119; 0;50468
2; 5989.5; 24-OCT-2011 12:28:57; Dark ; 66.5; 132; 15Rho Pup ; 2.80; 6900;occ; 133; 0;50468
3; 6278.9; 24-OCT-2011 12:33:47; Dark ; 68.5; 88; 31Eta CMA ; 2.45; 20000;occ; 137; 0;50469
4; 6812.4; 24-OCT-2011 12:42:40; Dark ; 64.5; 108; Alp Col ; 2.65; 15200;occ; 129; 0;50469
/nas3/ENVISAT/GOMOS/GOM_NL__0P/GOM_NL__0PNPDK20111024_130313_000048433108_00024_50469_5466.N1
1; 2031.4; 24-OCT-2011 13:03:13; Bright; 60.5; 94; 92Alp Cet ; 2.53; 3100;occ; 121; 0;50469
2; 5991.3; 24-OCT-2011 14:09:13; Dark ; 63.5; 132; 15Rho Pup ; 2.80; 6900;occ; 127; 0;50469
3; 6280.7; 24-OCT-2011 14:14:03; Dark ; 66.0; 88; 31Eta CMA ; 2.45; 20000;occ; 132; 0;50470
4; 6813.6; 24-OCT-2011 14:22:55; Dark ; 61.5; 108; Alp Col ; 2.65; 15200;occ; 123; 0;50470
/nas3/ENVISAT/GOMOS/GOM_NL__0P/GOM_NL__0PNPDK20111024_144327_000048463108_00025_50470_5467.N1
1; 2031.0; 24-OCT-2011 14:43:27; Bright; 59.0; 94; 92Alp Cet ; 2.53; 3100;occ; 118; 0;50470
2; 5993.0; 24-OCT-2011 15:49:29; Dark ; 66.5; 132; 15Rho Pup ; 2.80; 6900;occ; 133; 0;50470
3; 6282.7; 24-OCT-2011 15:54:18; Dark ; 63.5; 88; 31Eta CMA ; 2.45; 20000;occ; 127; 0;50471
4; 6814.8; 24-OCT-2011 16:03:11; Dark ; 62.5; 108; Alp Col ; 2.65; 15200;occ; 125; 0;50471
/nas3/ENVISAT/GOMOS/GOM_NL__0P/GOM_NL__0PNPDK20111024_162341_000048483108_00026_50471_5468.N1
1; 2030.8; 24-OCT-2011 16:23:41; Bright; 60.0; 94; 92Alp Cet ; 2.53; 3100;occ; 120; 0;50471
2; 5994.7; 24-OCT-2011 17:29:45; Dark ; 65.0; 132; 15Rho Pup ; 2.80; 6900;occ; 130; 0;50471
3; 6284.6; 24-OCT-2011 17:34:34; Dark ; 65.5; 88; 31Eta CMA ; 2.45; 20000;occ; 131; 0;50472
4; 6816.1; 24-OCT-2011 17:43:26; Dark ; 63.0; 108; Alp Col ; 2.65; 15200;occ; 126; 0;50472
/nas3/ENVISAT/GOMOS/GOM_NL__0P/GOM_NL__0PNPDK20111024_180354_000048493108_00027_50472_5469.N1
1; 2030.1; 24-OCT-2011 18:03:54; Bright; 60.0; 94; 92Alp Cet ; 2.53; 3100;occ; 120; 0;50472
2; 5996.4; 24-OCT-2011 19:10:00; Dark ; 65.0; 132; 15Rho Pup ; 2.80; 6900;occ; 130; 0;50472
3; 6286.3; 24-OCT-2011 19:14:50; Dark ; 69.0; 88; 31Eta CMA ; 2.45; 20000;occ; 138; 0;50473
4; 6817.1; 24-OCT-2011 19:23:41; Dark ; 62.5; 108; Alp Col ; 2.65; 15200;occ; 125; 0;50473
/nas3/ENVISAT/GOMOS/GOM_NL__0P/GOM_NL__0PNPDK20111024_194407_000048533108_00028_50473_5470.N1
1; 2029.6; 24-OCT-2011 19:44:07; Bright; 62.5; 94; 92Alp Cet ; 2.53; 3100;occ; 125; 0;50473
2; 5998.0; 24-OCT-2011 20:50:16; Dark ; 65.0; 132; 15Rho Pup ; 2.80; 6900;occ; 130; 0;50473
3; 6287.8; 24-OCT-2011 20:55:06; Dark ; 70.0; 88; 31Eta CMA ; 2.45; 20000;occ; 140; 0;50474

```



```

4; 6818.2; 24-OCT-2011 21:03:56; Dark ; 65.0; 108; Alp Col ; 2.65; 15200;occ; 130; 0;50474
/nas3/ENVISAT/GOMOS/GOM_NL__0P/GOM_NL__0PNPDE20111025_001047_000021023108_00030_50475_6582.N1
1; -12.4; 25-OCT-2011 00:10:47; Dark ; 63.0; 132; 15Rho Pup ; 2.80; 6900;occ; 126; 0;50475
2; 277.4; 25-OCT-2011 00:15:37; Dark ; 67.5; 88; 31Eta CMA ; 2.45; 20000;occ; 135; 0;50476
3; 806.4; 25-OCT-2011 00:24:26; Dark ; 64.5; 108; Alp Col ; 2.65; 15200;occ; 129; 0;50476
4; 2028.1; 25-OCT-2011 00:44:48; Bright; 62.0; 94; 92Alp Cet ; 2.53; 3100;occ; 124; 0;50476
/nas3/ENVISAT/GOMOS/GOM_NL__0P/GOM_NL__0PNPDE20111025_015103_000021003108_00031_50476_6583.N1
1; -10.7; 25-OCT-2011 01:51:03; Dark ; 66.0; 132; 15Rho Pup ; 2.80; 6900;occ; 132; 0;50476
2; 279.2; 25-OCT-2011 01:55:53; Dark ; 67.5; 88; 31Eta CMA ; 2.45; 20000;occ; 135; 0;50477
3; 807.8; 25-OCT-2011 02:04:41; Dark ; 64.0; 108; Alp Col ; 2.65; 15200;occ; 128; 0;50477
4; 2027.7; 25-OCT-2011 02:25:01; Bright; 62.5; 94; 92Alp Cet ; 2.53; 3100;occ; 125; 0;50477
/nas3/ENVISAT/GOMOS/GOM_NL__0P/GOM_NL__0PNPDE20111025_033118_000020953108_00032_50477_6584.N1
1; -8.9; 25-OCT-2011 03:31:18; Dark ; 67.0; 132; 15Rho Pup ; 2.80; 6900;occ; 134; 0;50477
2; 281.0; 25-OCT-2011 03:36:08; Dark ; 69.0; 88; 31Eta CMA ; 2.45; 20000;occ; 138; 0;50478
3; 809.0; 25-OCT-2011 03:44:56; Dark ; 63.5; 108; Alp Col ; 2.65; 15200;occ; 127; 0;50478
4; 2027.2; 25-OCT-2011 04:05:15; Bright; 59.5; 94; 92Alp Cet ; 2.53; 3100;occ; 119; 0;50478
/nas3/ENVISAT/GOMOS/GOM_NL__0P/GOM_NL__0PNPDE20111025_051134_000021073108_00033_50478_6585.N1
1; -7.2; 25-OCT-2011 05:11:34; Dark ; 66.0; 132; 15Rho Pup ; 2.80; 6900;occ; 132; 0;50478
2; 282.6; 25-OCT-2011 05:16:24; Dark ; 68.0; 88; 31Eta CMA ; 2.45; 20000;occ; 136; 0;50479
3; 810.2; 25-OCT-2011 05:25:12; Dark ; 64.5; 108; Alp Col ; 2.65; 15200;occ; 129; 0;50479
4; 2026.8; 25-OCT-2011 05:45:28; Bright; 73.0; 94; 92Alp Cet ; 2.53; 3100;occ; 146; 0;50479
/nas3/ENVISAT/GOMOS/GOM_NL__0P/GOM_NL__0PNPDE20111025_215411_000008733108_00044_50489_6586.N1
1; 10.4; 25-OCT-2011 21:54:11; Dark ; 63.5; 132; 15Rho Pup ; 2.80; 6900;occ; 127; 0;50489
2; 300.5; 25-OCT-2011 21:59:01; Dark ; 68.0; 88; 31Eta CMA ; 2.45; 20000;occ; 136; 0;50489
3; 821.7; 25-OCT-2011 22:07:43; Dark ; 62.5; 108; Alp Col ; 2.65; 15200;occ; 125; 0;50489
/nas3/ENVISAT/GOMOS/GOM_NL__0P/GOM_NL__0PNPDE20111025_233427_000008723108_00045_50490_6587.N1
1; 12.1; 25-OCT-2011 23:34:27; Dark ; 65.0; 132; 15Rho Pup ; 2.80; 6900;occ; 130; 0;50490
2; 302.3; 25-OCT-2011 23:39:17; Dark ; 70.5; 88; 31Eta CMA ; 2.45; 20000;occ; 141; 0;50490
3; 822.6; 25-OCT-2011 23:47:57; Dark ; 62.0; 108; Alp Col ; 2.65; 15200;occ; 124; 0;50490
/nas3/ENVISAT/GOMOS/GOM_NL__0P/GOM_NL__0PNPDK20111025_065150_000008803108_00034_50479_5471.N1
1; -5.4; 25-OCT-2011 06:51:50; Dark ; 66.5; 132; 15Rho Pup ; 2.80; 6900;occ; 133; 0;50479
2; 284.6; 25-OCT-2011 06:56:40; Dark ; 69.5; 88; 31Eta CMA ; 2.45; 20000;occ; 139; 0;50480
3; 811.4; 25-OCT-2011 07:05:27; Dark ; 64.0; 108; Alp Col ; 2.65; 15200;occ; 128; 0;50480
/nas3/ENVISAT/GOMOS/GOM_NL__0P/GOM_NL__0PNPDK20111025_072542_000048613108_00035_50480_5472.N1
1; 2026.4; 25-OCT-2011 07:25:42; Bright; 64.0; 94; 92Alp Cet ; 2.53; 3100;occ; 128; 0;50480
2; 6010.4; 25-OCT-2011 08:32:06; Dark ; 67.0; 132; 15Rho Pup ; 2.80; 6900;occ; 134; 0;50480
3; 6300.4; 25-OCT-2011 08:36:56; Dark ; 69.5; 88; 31Eta CMA ; 2.45; 20000;occ; 139; 0;50481
4; 6826.4; 25-OCT-2011 08:45:42; Dark ; 61.5; 108; Alp Col ; 2.65; 15200;occ; 123; 0;50481
/nas3/ENVISAT/GOMOS/GOM_NL__0P/GOM_NL__0PNPDK20111025_090555_000048643108_00036_50481_5473.N1
1; 2026.1; 25-OCT-2011 09:05:55; Bright; 60.0; 94; 92Alp Cet ; 2.53; 3100;occ; 120; 0;50481
2; 6012.1; 25-OCT-2011 10:12:21; Dark ; 66.0; 132; 15Rho Pup ; 2.80; 6900;occ; 132; 0;50481
3; 6302.1; 25-OCT-2011 10:17:11; Dark ; 71.5; 88; 31Eta CMA ; 2.45; 20000;occ; 143; 0;50482
4; 6827.4; 25-OCT-2011 10:25:57; Dark ; 63.0; 108; Alp Col ; 2.65; 15200;occ; 126; 0;50482
/nas3/ENVISAT/GOMOS/GOM_NL__0P/GOM_NL__0PNPDK20111025_104609_000048653108_00037_50482_5474.N1
1; 2025.6; 25-OCT-2011 10:46:09; Bright; 56.5; 94; 92Alp Cet ; 2.53; 3100;occ; 113; 0;50482
2; 6013.8; 25-OCT-2011 11:52:37; Dark ; 66.5; 132; 15Rho Pup ; 2.80; 6900;occ; 133; 0;50482
3; 6303.9; 25-OCT-2011 11:57:27; Dark ; 66.5; 88; 31Eta CMA ; 2.45; 20000;occ; 133; 0;50483
4; 6828.5; 25-OCT-2011 12:06:12; Dark ; 63.0; 108; Alp Col ; 2.65; 15200;occ; 126; 0;50483
/nas3/ENVISAT/GOMOS/GOM_NL__0P/GOM_NL__0PNPDK20111025_122622_000048673108_00038_50483_5475.N1
1; 2025.2; 25-OCT-2011 12:26:22; Bright; 63.0; 94; 92Alp Cet ; 2.53; 3100;occ; 126; 0;50483
2; 6015.4; 25-OCT-2011 13:32:53; Dark ; 65.5; 132; 15Rho Pup ; 2.80; 6900;occ; 131; 0;50484
3; 6305.7; 25-OCT-2011 13:37:43; Dark ; 69.0; 88; 31Eta CMA ; 2.45; 20000;occ; 138; 0;50484
4; 6829.8; 25-OCT-2011 13:46:27; Dark ; 62.5; 108; Alp Col ; 2.65; 15200;occ; 125; 0;50484
/nas3/ENVISAT/GOMOS/GOM_NL__0P/GOM_NL__0PNPDK20111025_151308_000008773108_00040_50485_5476.N1
1; 3.3; 25-OCT-2011 15:13:08; Dark ; 66.0; 132; 15Rho Pup ; 2.80; 6900;occ; 132; 0;50485
2; 293.4; 25-OCT-2011 15:17:58; Dark ; 70.5; 88; 31Eta CMA ; 2.45; 20000;occ; 141; 0;50485
3; 816.9; 25-OCT-2011 15:26:42; Dark ; 64.0; 108; Alp Col ; 2.65; 15200;occ; 128; 0;50485
/nas3/ENVISAT/GOMOS/GOM_NL__0P/GOM_NL__0PNPDK20111025_165324_000008753108_00041_50486_5477.N1
1; 5.0; 25-OCT-2011 16:53:24; Dark ; 66.5; 132; 15Rho Pup ; 2.80; 6900;occ; 133; 0;50486
2; 295.3; 25-OCT-2011 16:58:14; Dark ; 69.5; 88; 31Eta CMA ; 2.45; 20000;occ; 139; 0;50486
3; 818.2; 25-OCT-2011 17:06:57; Dark ; 62.0; 108; Alp Col ; 2.65; 15200;occ; 124; 0;50486
/nas3/ENVISAT/GOMOS/GOM_NL__0P/GOM_NL__0PNPDK20111025_183340_000008763108_00042_50487_5478.N1
1; 6.7; 25-OCT-2011 18:33:40; Dark ; 66.0; 132; 15Rho Pup ; 2.80; 6900;occ; 132; 0;50487
2; 297.0; 25-OCT-2011 18:38:30; Dark ; 70.5; 88; 31Eta CMA ; 2.45; 20000;occ; 141; 0;50487
3; 819.3; 25-OCT-2011 18:47:12; Dark ; 63.5; 108; Alp Col ; 2.65; 15200;occ; 127; 0;50487
/nas3/ENVISAT/GOMOS/GOM_NL__0P/GOM_NL__0PNPDK20111025_201356_000008733108_00043_50488_5479.N1
1; 8.6; 25-OCT-2011 20:13:56; Dark ; 64.0; 132; 15Rho Pup ; 2.80; 6900;occ; 128; 0;50488
2; 298.8; 25-OCT-2011 20:18:46; Dark ; 68.0; 88; 31Eta CMA ; 2.45; 20000;occ; 136; 0;50488

```

3; 820.5; 25-OCT-2011 20:27:27; Dark ; 62.0; 108; Alp Col ; 2.65; 15200;occ; 124; 0;50488  
/nas3/ENVISAT/GOMOS/GOM\_NL\_\_0P/GOM\_NL\_\_0PNPDE20111026\_011443\_000068873108\_00046\_50491\_6588.N1  
1; 14.0; 26-OCT-2011 01:14:43; Dark ; 67.0; 132; 15Rho Pup ; 2.80; 6900;occ; 134; 0;50491  
2; 304.1; 26-OCT-2011 01:19:33; Dark ; 68.0; 88; 31Eta CMA ; 2.45; 20000;occ; 136; 0;50491  
3; 823.7; 26-OCT-2011 01:28:12; Dark ; 64.0; 108; Alp Col ; 2.65; 15200;occ; 128; 0;50491  
4; 6029.7; 26-OCT-2011 02:54:58; Dark ; 66.0; 132; 15Rho Pup ; 2.80; 6900;occ; 132; 0;50492  
5; 6319.8; 26-OCT-2011 02:59:48; Dark ; 66.5; 88; 31Eta CMA ; 2.45; 20000;occ; 133; 0;50492  
6; 6838.9; 26-OCT-2011 03:08:28; Dark ; 63.0; 108; Alp Col ; 2.65; 15200;occ; 126; 0;50492  
/nas3/ENVISAT/GOMOS/GOM\_NL\_\_0P/GOM\_NL\_\_0PNPDE20111026\_043514\_000008713108\_00048\_50493\_6589.N1  
1; 17.5; 26-OCT-2011 04:35:14; Dark ; 64.0; 132; 15Rho Pup ; 2.80; 6900;occ; 128; 0;50493  
2; 307.7; 26-OCT-2011 04:40:04; Dark ; 71.0; 88; 31Eta CMA ; 2.45; 20000;occ; 142; 0;50493  
3; 826.1; 26-OCT-2011 04:48:43; Dark ; 62.5; 108; Alp Col ; 2.65; 15200;occ; 125; 0;50493  
/nas3/ENVISAT/GOMOS/GOM\_NL\_\_0P/GOM\_NL\_\_0PNPDE20111026\_061530\_000008693108\_00049\_50494\_6590.N1  
1; 19.4; 26-OCT-2011 06:15:30; Dark ; 67.5; 132; 15Rho Pup ; 2.80; 6900;occ; 135; 0;50494  
2; 309.5; 26-OCT-2011 06:20:20; Dark ; 68.0; 88; 31Eta CMA ; 2.45; 20000;occ; 136; 0;50494  
3; 827.3; 26-OCT-2011 06:28:58; Dark ; 62.0; 108; Alp Col ; 2.65; 15200;occ; 124; 0;50494  
/nas3/ENVISAT/GOMOS/GOM\_NL\_\_0P/GOM\_NL\_\_0PNPDK20111026\_093601\_000008683108\_00051\_50496\_5481.N1  
1; 22.9; 26-OCT-2011 09:36:01; Dark ; 66.0; 132; 15Rho Pup ; 2.80; 6900;occ; 132; 0;50496  
2; 313.0; 26-OCT-2011 09:40:51; Dark ; 66.0; 88; 31Eta CMA ; 2.45; 20000;occ; 132; 0;50496  
3; 829.7; 26-OCT-2011 09:49:28; Dark ; 62.0; 108; Alp Col ; 2.65; 15200;occ; 124; 0;50496  
/nas3/ENVISAT/GOMOS/GOM\_NL\_\_0P/GOM\_NL\_\_0PNPDK20111026\_111617\_000008683108\_00052\_50497\_5482.N1  
1; 24.7; 26-OCT-2011 11:16:17; Dark ; 66.0; 132; 15Rho Pup ; 2.80; 6900;occ; 132; 0;50497  
2; 314.8; 26-OCT-2011 11:21:07; Dark ; 66.0; 88; 31Eta CMA ; 2.45; 20000;occ; 132; 0;50497  
3; 830.8; 26-OCT-2011 11:29:43; Dark ; 62.0; 108; Alp Col ; 2.65; 15200;occ; 124; 0;50497  
/nas3/ENVISAT/GOMOS/GOM\_NL\_\_0P/GOM\_NL\_\_0PNPDK20111026\_130123\_000005773108\_00053\_50498\_5483.N1  
1; 316.7; 26-OCT-2011 13:01:23; Dark ; 63.0; 88; 31Eta CMA ; 2.45; 20000;occ; 126; 0;50498  
2; 831.9; 26-OCT-2011 13:09:58; Dark ; 62.0; 108; Alp Col ; 2.65; 15200;occ; 124; 0;50498  
/nas3/ENVISAT/GOMOS/GOM\_NL\_\_0P/GOM\_NL\_\_0PNPDK20111026\_143648\_000008663108\_00054\_50499\_5484.N1  
1; 28.3; 26-OCT-2011 14:36:48; Dark ; 67.5; 132; 15Rho Pup ; 2.80; 6900;occ; 135; 0;50499  
2; 318.4; 26-OCT-2011 14:41:38; Dark ; 63.0; 88; 31Eta CMA ; 2.45; 20000;occ; 126; 0;50499  
3; 832.9; 26-OCT-2011 14:50:13; Dark ; 62.0; 108; Alp Col ; 2.65; 15200;occ; 124; 0;50499  
/nas3/ENVISAT/GOMOS/GOM\_NL\_\_0P/GOM\_NL\_\_0PNPDK20111026\_161704\_000008653108\_00055\_50500\_5485.N1  
1; 30.0; 26-OCT-2011 16:17:04; Dark ; 70.0; 132; 15Rho Pup ; 2.80; 6900;occ; 140; 0;50500  
2; 320.4; 26-OCT-2011 16:21:54; Dark ; 61.0; 88; 31Eta CMA ; 2.45; 20000;occ; 122; 0;50500  
3; 833.9; 26-OCT-2011 16:30:28; Dark ; 62.0; 108; Alp Col ; 2.65; 15200;occ; 124; 0;50500  
/nas3/ENVISAT/GOMOS/GOM\_NL\_\_0P/GOM\_NL\_\_0PNPDK20111026\_175720\_000008643108\_00056\_50501\_5486.N1  
1; 31.9; 26-OCT-2011 17:57:20; Dark ; 67.0; 132; 15Rho Pup ; 2.80; 6900;occ; 134; 0;50501  
2; 322.1; 26-OCT-2011 18:02:10; Dark ; 61.0; 88; 31Eta CMA ; 2.45; 20000;occ; 122; 0;50501  
3; 835.1; 26-OCT-2011 18:10:43; Dark ; 61.5; 108; Alp Col ; 2.65; 15200;occ; 123; 0;50501  
/nas3/ENVISAT/GOMOS/GOM\_NL\_\_0P/GOM\_NL\_\_0PNPDK20111027\_125307\_000000193108\_00067\_50512\_5487.N1  
1; 2026.2; 27-OCT-2011 12:53:07; Dark ; 19.5; 9; Alp Eri ; 0.45; 24000;occ; 39; 0;50512