

GOMOS Daily Report 29-NOV-2010

Level 0 and Level 1 products

SUMMARY

[1. General Info](#)

[2. Summary of products arrived in PCF \(Product Control Facility\)](#)

[2.1 Level 0: products arrived in PCF during current month \(see template here\)](#)

[2.2 Level 0: plot of mission plan versus production during reporting period](#)

[2.3 Level 0: summary of missing occultations with respect to the plan](#)

[2.4 Level 1: products arrived in PCF during reporting period](#)

[3. Plot of Spectrometers and Photometers temperatures](#)

[4. Dark Charge monitoring](#)

[4.1 Products that did not use the Dark Sky Area observation for DC computation](#)

[4.2 Plot of Dark Charge](#)

[5. Demodulation correction and quality product information monitoring](#)

[5.1 Percentage of products with some flags set](#)

[5.2 Plot of quality information per product \(time dependant\)](#)

[5.3 Plot of quality information per product \(world map\)](#)

[6. Star tangent altitude lost](#)

[6.1 Statistics on star tangent altitude lost](#)

[6.2 Plot of star tangent altitude lost: DARK products](#)

[6.3 Plot of star tangent altitude lost: BRIGHT products](#)

[6.3 Plot of star tangent altitude lost: TWILIGHT products](#)

[7. Star Acquisition and Tracking Unit \(SATU\)](#)

[7.1 SATU plots \(dark limb\): 'X' and 'Y' axis](#)

[7.2 SATU Noise Equivalent Angle statistics](#)

[7.2.1 SATU NEA Statistics \(table\)](#)

[7.2.2 Daily SATU NEA STD \(dark limb\) - trend since 1st April 2006](#)

[8. Auxiliary Data Files used for the production reported in section 2.4](#)

[Level 2 products](#)

This report presents the daily analysis on parameters extracted from GOMOS level 1b data (GOM_TRA_1P). It is intended to monitor some important parameters that will impact the quality of the level 2 products as the Spectrometers and Photometers CCD Temperatures and Dark Charge, SATU noise equivalent angle... A list of level 0 products (and content) that have arrived during the actual month to the PCF is also given.

Item	Value
Time of report generation	14DEC2010 16:17:52
Data source version	GOMOS/5.01
Start time of products	29NOV2010 08:27:42
Stop time of products	29NOV2010 23:57:47
Store outputs in DB	No
Nb of level 1b prods	221
Nb of prods with errors	0

2. Summary of products arrived in PCF (Product Control Facility)

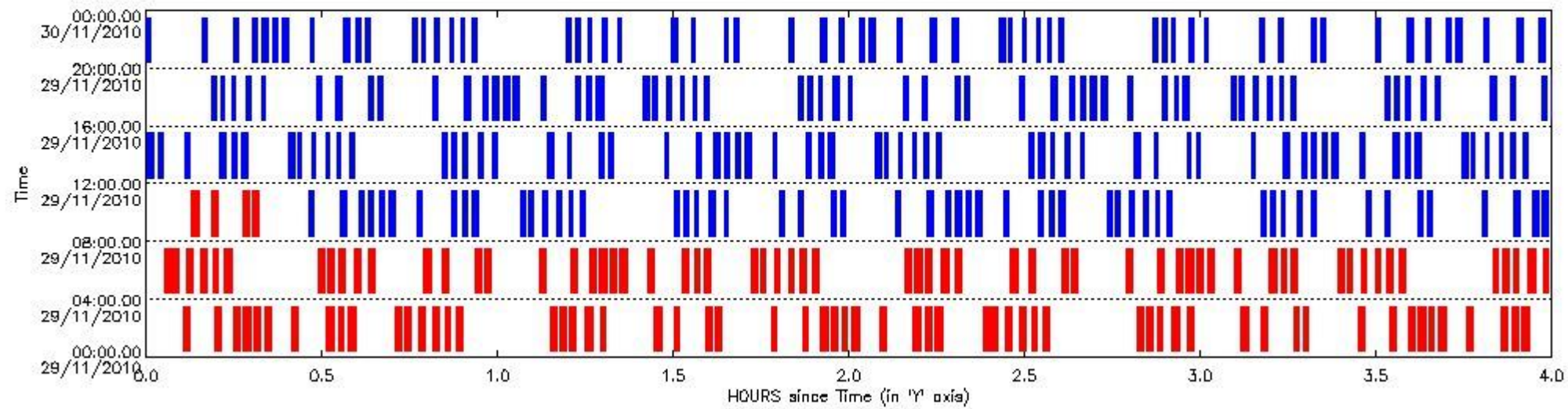
2.1 Level 0 products arrived in PCF (see template [here](#))

2.2 Plot of mission plan versus Level 0 production arrived in PCF during reporting period

Red segments are missing products.

Blue segments are available products.

Green segments are calibration measurements (not available products to users).



2.3 Summary of missing occultations (red segments in previous plot)

UTC start time	Star name	Star ID	Orbit
29-NOV-2010 00:06:25	MuVel	113	45735
29-NOV-2010 00:11:47	DSA1030	0	45735
29-NOV-2010 00:14:56	Gam2Vel	34	45735
29-NOV-2010 00:16:35	ZetPup	70	45735
29-NOV-2010 00:18:29	AlpCar	2	45735
29-NOV-2010 00:20:09	PiPup	117	45735
29-NOV-2010 00:24:56	AlpCol	108	45735
29-NOV-2010 00:30:45	11AlpLep	101	45735
29-NOV-2010 00:32:51	34GamEri	165	45735
29-NOV-2010 00:34:28	19BetOri	7	45735
29-NOV-2010 00:42:35	87AlpTau	13	45735
29-NOV-2010 00:44:06	25EtaTau	146	45735
29-NOV-2010 00:46:30	44ZetPer	150	45735
29-NOV-2010 00:48:56	45EpsPer	149	45735
29-NOV-2010 00:50:55	39DelPer	175	45735

29-NOV-2010 00:52:58	13AlpAur	6	45735
29-NOV-2010 01:08:58	50AlpUMa	36	45735
29-NOV-2010 01:10:34	48BetUMa	82	45735
29-NOV-2010 01:12:17	64GamUMa	87	45735
29-NOV-2010 01:14:58	52PsiUMa	174	45735
29-NOV-2010 01:17:31	12Alp2CVn	152	45735
29-NOV-2010 01:26:44	94BetLeo	62	45735
29-NOV-2010 01:30:06	29GamVir	121	45735
29-NOV-2010 01:35:38	4GamCrv	100	45735
29-NOV-2010 01:37:13	2EpsCrv	171	45735
29-NOV-2010 01:46:40	MuVel	113	45736
29-NOV-2010 01:52:01	DSA1030	0	45736
29-NOV-2010 01:55:11	Gam2Vel	34	45736
29-NOV-2010 01:56:51	ZetPup	70	45736
29-NOV-2010 01:58:43	AlpCar	2	45736
29-NOV-2010 02:00:24	PIPup	117	45736
29-NOV-2010 02:05:10	AlpCol	108	45736
29-NOV-2010 02:11:00	11AlpLep	101	45736
29-NOV-2010 02:13:05	34GamEri	165	45736
29-NOV-2010 02:14:42	19BetOri	7	45736
29-NOV-2010 02:22:49	87AlpTau	13	45736
29-NOV-2010 02:24:20	25EtaTau	146	45736
29-NOV-2010 02:26:43	44ZetPer	150	45736
29-NOV-2010 02:29:10	45EpsPer	149	45736
29-NOV-2010 02:31:09	39DelPer	175	45736
29-NOV-2010 02:33:11	13AlpAur	6	45736
29-NOV-2010 02:49:11	50AlpUMa	36	45736
29-NOV-2010 02:50:48	48BetUMa	82	45736
29-NOV-2010 02:52:40	79ZetUMa	55	45736
29-NOV-2010 02:55:12	52PsiUMa	174	45736
29-NOV-2010 02:57:45	12Alp2CVn	152	45736
29-NOV-2010 03:06:59	94BetLeo	62	45736
29-NOV-2010 03:10:20	29GamVir	121	45736
29-NOV-2010 03:15:53	4GamCrv	100	45736
29-NOV-2010 03:17:27	2EpsCrv	171	45736
29-NOV-2010 03:26:55	MuVel	113	45737
29-NOV-2010 03:32:16	DSA1030	0	45737
29-NOV-2010 03:35:26	Gam2Vel	34	45737
29-NOV-2010 03:37:06	ZetPup	70	45737
29-NOV-2010 03:38:58	AlpCar	2	45737
29-NOV-2010 03:40:39	PIPup	117	45737
29-NOV-2010 03:45:25	AlpCol	108	45737
29-NOV-2010 03:51:14	11AlpLep	101	45737
29-NOV-2010 03:53:19	34GamEri	165	45737
29-NOV-2010 03:54:56	19BetOri	7	45737
29-NOV-2010 04:03:03	87AlpTau	13	45737
29-NOV-2010 04:04:34	25EtaTau	146	45737
29-NOV-2010 04:06:57	44ZetPer	150	45737
29-NOV-2010 04:09:23	45EpsPer	149	45737
29-NOV-2010 04:11:23	39DelPer	175	45737
29-NOV-2010 04:13:25	13AlpAur	6	45737
29-NOV-2010 04:29:25	50AlpUMa	36	45737
29-NOV-2010 04:31:01	48BetUMa	82	45737
29-NOV-2010 04:32:54	79ZetUMa	55	45737
29-NOV-2010 04:35:26	52PsiUMa	174	45737
29-NOV-2010 04:37:59	12Alp2CVn	152	45737
29-NOV-2010 04:47:13	94BetLeo	62	45737
29-NOV-2010 04:50:35	29GamVir	121	45737
29-NOV-2010 04:56:07	4GamCrv	100	45737

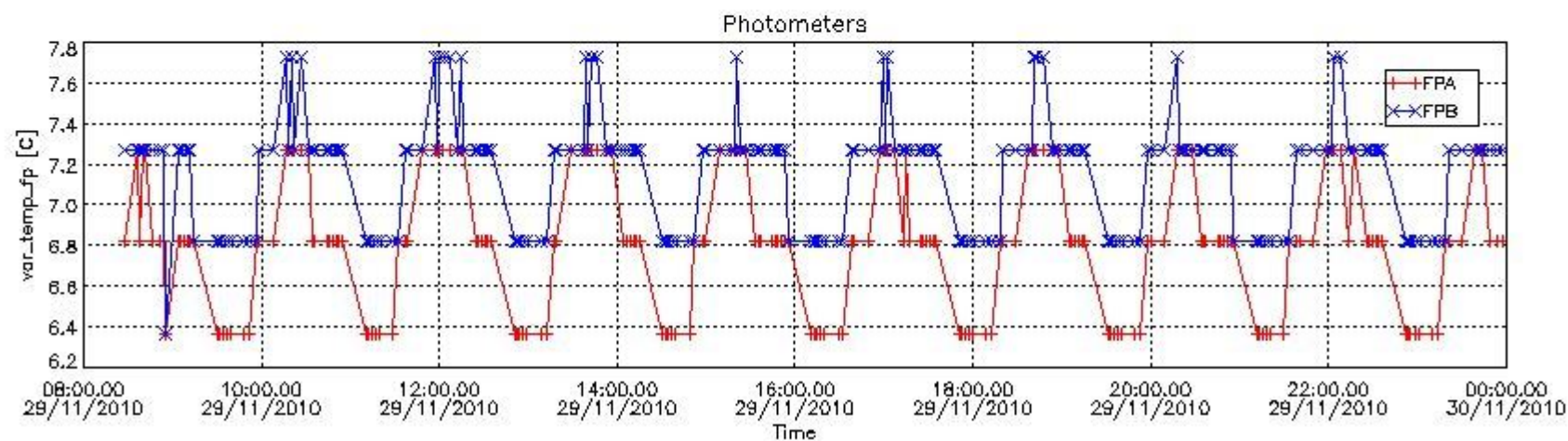
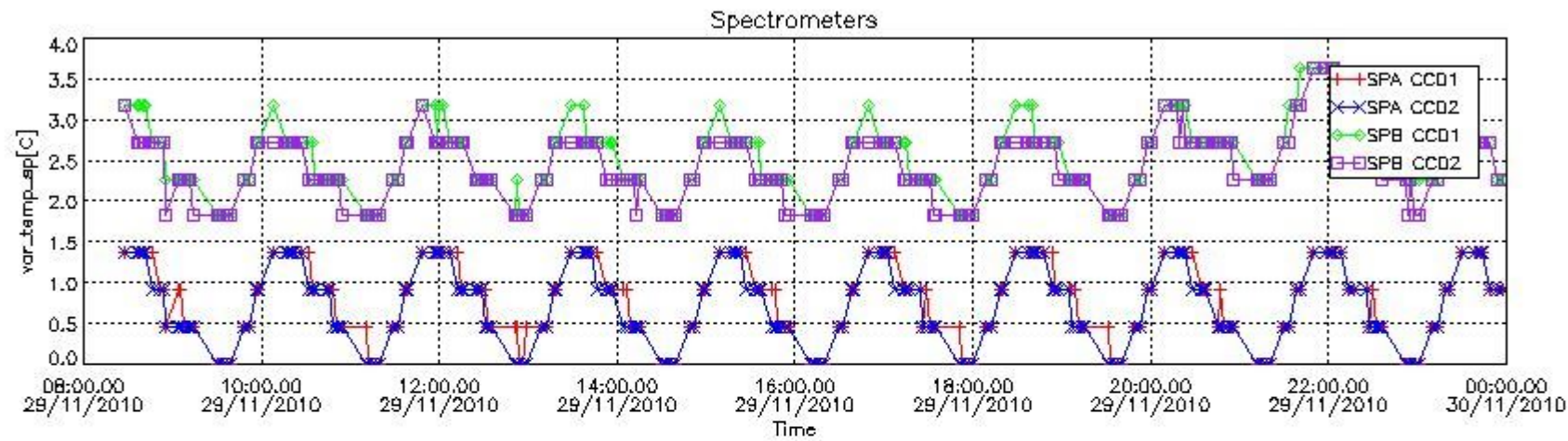
29-NOV-2010 04:57:42	2EpsCrv	171	45737
29-NOV-2010 05:07:09	MuVel	113	45738
29-NOV-2010 05:12:31	DSA1030	0	45738
29-NOV-2010 05:15:41	Gam2Vel	34	45738
29-NOV-2010 05:17:21	ZetPup	70	45738
29-NOV-2010 05:19:13	AlpCar	2	45738
29-NOV-2010 05:20:54	PIPup	117	45738
29-NOV-2010 05:25:39	AlpCol	108	45738
29-NOV-2010 05:31:28	11AlpLep	101	45738
29-NOV-2010 05:33:33	34GamEri	165	45738
29-NOV-2010 05:35:10	19BetOri	7	45738
29-NOV-2010 05:43:16	87AlpTau	13	45738
29-NOV-2010 05:44:48	25EtaTau	146	45738
29-NOV-2010 05:47:11	44ZetPer	150	45738
29-NOV-2010 05:49:37	45EpsPer	149	45738
29-NOV-2010 05:51:36	39DelPer	175	45738
29-NOV-2010 05:53:38	13AlpAur	6	45738
29-NOV-2010 06:09:39	50AlpUMa	36	45738
29-NOV-2010 06:11:15	48BetUMa	82	45738
29-NOV-2010 06:13:08	79ZetUMa	55	45738
29-NOV-2010 06:15:40	52PsiUMa	174	45738
29-NOV-2010 06:18:13	12Alp2CVn	152	45738
29-NOV-2010 06:27:28	94BetLeo	62	45738
29-NOV-2010 06:30:49	29GamVir	121	45738
29-NOV-2010 06:36:22	4GamCrv	100	45738
29-NOV-2010 06:37:57	2EpsCrv	171	45738
29-NOV-2010 06:47:24	MuVel	113	45739
29-NOV-2010 06:52:46	DSA1030	0	45739
29-NOV-2010 06:55:56	Gam2Vel	34	45739
29-NOV-2010 06:57:36	ZetPup	70	45739
29-NOV-2010 06:59:27	AlpCar	2	45739
29-NOV-2010 07:01:09	PIPup	117	45739
29-NOV-2010 07:05:54	AlpCol	108	45739
29-NOV-2010 07:11:42	11AlpLep	101	45739
29-NOV-2010 07:13:47	34GamEri	165	45739
29-NOV-2010 07:15:24	19BetOri	7	45739
29-NOV-2010 07:23:30	87AlpTau	13	45739
29-NOV-2010 07:25:01	25EtaTau	146	45739
29-NOV-2010 07:27:25	44ZetPer	150	45739
29-NOV-2010 07:29:51	45EpsPer	149	45739
29-NOV-2010 07:31:50	39DelPer	175	45739
29-NOV-2010 07:33:51	13AlpAur	6	45739
29-NOV-2010 07:49:52	50AlpUMa	36	45739
29-NOV-2010 07:51:29	48BetUMa	82	45739
29-NOV-2010 07:53:22	79ZetUMa	55	45739
29-NOV-2010 07:55:54	52PsiUMa	174	45739
29-NOV-2010 07:58:27	12Alp2CVn	152	45739
29-NOV-2010 08:07:43	94BetLeo	62	45739
29-NOV-2010 08:11:04	29GamVir	121	45739
29-NOV-2010 08:16:37	4GamCrv	100	45739
29-NOV-2010 08:18:12	2EpsCrv	171	45739

2.4 Summary of processed GOM_TRA_1P products

Nr	Filename	UTC Start time	Limb	Duration	Star Id	Star Name	Star Mag	Star Temp	Nb Meas	Orbit	Prod. error
1	GOM_TRA_1PNPDK20101129_082742_000000453097_00036_45740_0450.N1	29-NOV-2010 08:27:42	Dark	45.000	113	Mu Vel	2.6920	5000.0	90	45740	No
2	GOM_TRA_1PNPDK20101129_083614_000000503097_00036_45740_0451.N1	29-NOV-2010 08:36:14	Dark	50.000	34	Gam2Vel	1.7930	23000.	100	45740	No
3	GOM_TRA_1PNPDK20101129_083754_000000563097_00036_45740_0452.N1	29-NOV-2010 08:37:54	Dark	56.000	70	Zet Pup	2.2460	39000.	112	45740	No

181	GOM_TRA_1PNPDE20101129_205144_000000393097_00043_45747_1558.N1	29-NOV-2010 20:51:44	Bright	38.500	149	45Eps Per	2.8880	30000.	77	45747	No
182	GOM_TRA_1PNPDE20101129_205344_000000383097_00043_45747_1559.N1	29-NOV-2010 20:53:44	Bright	37.500	175	39Del Per	3.0100	19400.	75	45747	No
183	GOM_TRA_1PNPDE20101129_205542_000000483097_00043_45747_1560.N1	29-NOV-2010 20:55:42	Bright	47.500	6	13Alp Aur	0.080000	3400.0	95	45747	No
184	GOM_TRA_1PNPDE20101129_211145_000000463097_00043_45747_1561.N1	29-NOV-2010 21:11:45	Bright	46.000	36	50Alp UMa	1.8000	6300.0	92	45747	No
185	GOM_TRA_1PNPDE20101129_211321_000000453097_00043_45747_1562.N1	29-NOV-2010 21:13:21	Bright	45.000	82	48Bet UMa	2.3650	10600.	90	45747	No
186	GOM_TRA_1PNPDE20101129_211518_000000373097_00043_45747_1563.N1	29-NOV-2010 21:15:18	Bright	36.500	55	79Zet UMa	2.0600	10200.	73	45747	No
187	GOM_TRA_1PNPDE20101129_211747_000000533097_00043_45747_1564.N1	29-NOV-2010 21:17:47	Bright	52.500	174	52Psi UMa	3.0040	4400.0	105	45747	No
188	GOM_TRA_1PNPDE20101129_212024_000000403097_00043_45747_1565.N1	29-NOV-2010 21:20:24	Bright	40.000	152	12Alp2CVn	2.8900	11000.	80	45747	No
189	GOM_TRA_1PNPDE20101129_212943_000000543097_00043_45747_1566.N1	29-NOV-2010 21:29:43	Bright	54.000	62	94Bet Leo	2.1360	9700.0	108	45747	No
190	GOM_TRA_1PNPDE20101129_213304_000000433097_00043_45747_1567.N1	29-NOV-2010 21:33:04	Bright	43.000	121	29Gam Vir	2.7400	7200.0	86	45747	No
191	GOM_TRA_1PNPDE20101129_213839_000000463097_00043_45747_1920.N1	29-NOV-2010 21:38:39	Twilight	45.500	100	4Gam Crv	2.5800	13100.	91	45747	No
192	GOM_TRA_1PNPDE20101129_214014_000000503097_00043_45747_1921.N1	29-NOV-2010 21:40:14	Dark	49.500	171	2Eps Crv	3.0010	4250.0	99	45747	No
193	GOM_TRA_1PNPDE20101129_214941_000000453097_00044_45748_1922.N1	29-NOV-2010 21:49:41	Dark	44.500	113	Mu Vel	2.6920	5000.0	89	45748	No
194	GOM_TRA_1PNPDE20101129_215814_000000503097_00044_45748_1923.N1	29-NOV-2010 21:58:14	Dark	49.500	34	Gam2Vel	1.7930	23000.	99	45748	No
195	GOM_TRA_1PNPDE20101129_220142_000000483097_00044_45748_1924.N1	29-NOV-2010 22:01:42	Dark	48.000	2	Alp Car	-0.73600	7000.0	96	45748	No
196	GOM_TRA_1PNPDE20101129_220326_000000613097_00044_45748_1925.N1	29-NOV-2010 22:03:26	Dark	61.000	117	Pi Pup	2.7060	3800.0	122	45748	No
197	GOM_TRA_1PNPDE20101129_220807_000000473097_00044_45748_1926.N1	29-NOV-2010 22:08:07	Dark	46.500	108	Alp Col	2.6520	15200.	93	45748	No
198	GOM_TRA_1PNPDE20101129_221353_000000563097_00044_45748_1927.N1	29-NOV-2010 22:13:53	Straylight	55.500	101	11Alp Lep	2.5820	7000.0	111	45748	No
199	GOM_TRA_1PNPDE20101129_221733_000000633097_00044_45748_1928.N1	29-NOV-2010 22:17:33	Straylight	63.000	7	19Bet Ori	0.10000	14000.	126	45748	No
200	GOM_TRA_1PNPDE20101129_222536_000000643097_00044_45748_1929.N1	29-NOV-2010 22:25:36	Bright	64.000	13	87Alp Tau	0.86700	3800.0	128	45748	No
201	GOM_TRA_1PNPDE20101129_222710_000000373097_00044_45748_1930.N1	29-NOV-2010 22:27:10	Bright	37.000	146	25Eta Tau	2.8730	15200.	74	45748	No
202	GOM_TRA_1PNPDE20101129_222932_000000403097_00044_45748_1931.N1	29-NOV-2010 22:29:32	Bright	39.500	150	44Zet Per	2.8900	28000.	79	45748	No
203	GOM_TRA_1PNPDE20101129_223158_000000383097_00044_45748_1932.N1	29-NOV-2010 22:31:58	Bright	37.500	149	45Eps Per	2.8880	30000.	75	45748	No
204	GOM_TRA_1PNPDE20101129_223358_000000373097_00044_45748_1933.N1	29-NOV-2010 22:33:58	Bright	36.500	175	39Del Per	3.0100	19400.	73	45748	No
205	GOM_TRA_1PNPDE20101129_223555_000000503097_00044_45748_1934.N1	29-NOV-2010 22:35:55	Bright	49.500	6	13Alp Aur	0.080000	3400.0	99	45748	No
206	GOM_TRA_1PNPDE20101129_225159_000000463097_00044_45748_1935.N1	29-NOV-2010 22:51:59	Bright	46.000	36	50Alp UMa	1.8000	6300.0	92	45748	No
207	GOM_TRA_1PNPDE20101129_225335_000000463097_00044_45748_1936.N1	29-NOV-2010 22:53:35	Bright	45.500	82	48Bet UMa	2.3650	10600.	91	45748	No
208	GOM_TRA_1PNPDE20101129_225508_000000373097_00044_45748_1937.N1	29-NOV-2010 22:55:08	Bright	36.500	32	77Eps UMa	1.7630	11000.	73	45748	No
209	GOM_TRA_1PNPDE20101129_225801_000000523097_00044_45748_1938.N1	29-NOV-2010 22:58:01	Bright	51.500	174	52Psi UMa	3.0040	4400.0	103	45748	No
210	GOM_TRA_1PNPDE20101129_230038_000000393097_00044_45748_1939.N1	29-NOV-2010 23:00:38	Bright	39.000	152	12Alp2CVn	2.8900	11000.	78	45748	No
211	GOM_TRA_1PNPDE20101129_230958_000000573097_00044_45748_1940.N1	29-NOV-2010 23:09:58	Bright	56.500	62	94Bet Leo	2.1360	9700.0	113	45748	No
212	GOM_TRA_1PNPDE20101129_231318_000000423097_00044_45748_1941.N1	29-NOV-2010 23:13:18	Bright	42.000	121	29Gam Vir	2.7400	7200.0	84	45748	No
213	GOM_TRA_1PNPDE20101129_231853_000000473097_00044_45748_1914.N1	29-NOV-2010 23:18:53	Twilight	46.500	100	4Gam Crv	2.5800	13100.	93	45748	No
214	GOM_TRA_1PNPDE20101129_232028_000000473097_00044_45748_1915.N1	29-NOV-2010 23:20:28	Dark	46.500	171	2Eps Crv	3.0010	4250.0	93	45748	No
215	GOM_TRA_1PNPDE20101129_232956_000000433097_00045_45749_1916.N1	29-NOV-2010 23:29:56	Dark	43.000	113	Mu Vel	2.6920	5000.0	86	45749	No
216	GOM_TRA_1PNPDE20101129_233829_000000493097_00045_45749_1917.N1	29-NOV-2010 23:38:29	Dark	49.000	34	Gam2Vel	1.7930	23000.	98	45749	No
217	GOM_TRA_1PNPDE20101129_234156_000000483097_00045_45749_1918.N1	29-NOV-2010 23:41:56	Dark	48.000	2	Alp Car	-0.73600	7000.0	96	45749	No
218	GOM_TRA_1PNPDE20101129_234341_000000653097_00045_45749_1919.N1	29-NOV-2010 23:43:41	Dark	64.500	117	Pi Pup	2.7060	3800.0	129	45749	No
219	GOM_TRA_1PNPDE20101129_234822_000000483097_00045_45749_1920.N1	29-NOV-2010 23:48:22	Dark	48.000	108	Alp Col	2.6520	15200.	96	45749	No
220	GOM_TRA_1PNPDE20101129_235407_000000543097_00045_45749_1921.N1	29-NOV-2010 23:54:07	Straylight	54.000	101	11Alp Lep	2.5820	7000.0	108	45749	No
221	GOM_TRA_1PNPDE20101129_235747_000000613097_00045_45749_1922.N1	29-NOV-2010 23:57:47	Straylight	60.500	7	19Bet Ori	0.10000	14000.	121	45749	No

3. Plot of GOMOS spectrometers and photometers temperatures from level 1b data



4. Overview of dark signal processing per product

The Dark Charge (DC) is a temperature-dependant signal added to the useful measurements and it is therefore subtracted from them during the processing. There are two phenomena that produce a continuous increase of the DC: the "hot pixels" (a pixel is "hot" when its DC exceeds by a significant amount its value measured on ground at the same temperature) and the "Random Telegraphic Signal" (abrupt change positive or negative of the CCD pixel signal, random in time, affecting only the DC part of the signal and not the photon generated signal).

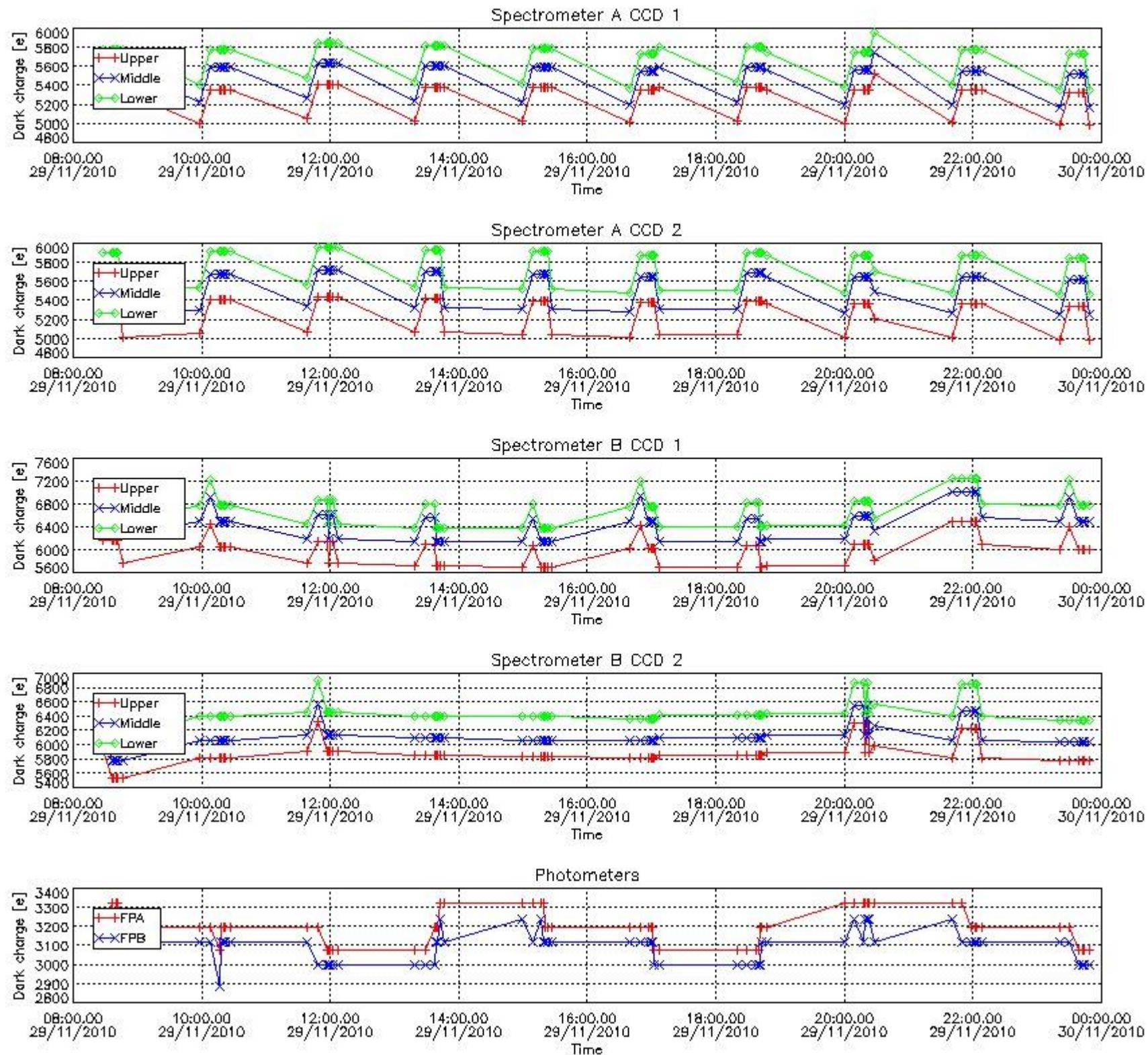
In this section a list of products that did not use the Dark Sky Area (DSA) observation for the DC computation is given. It is also provided the mean DC plot per product for dark limb products with no error flag set.

4.1 These products did not use the DSA observation for DC computation:

Product name	DC information
GOM_TRA_1PNPDE20101129_202753_000000493097_00043_45747_1551.N1	DC map used
GOM_TRA_1PNPDE20101129_203339_000000563097_00043_45747_1552.N1	DC map used
GOM_TRA_1PNPDE20101129_203548_000000433097_00043_45747_1553.N1	DC map used
GOM_TRA_1PNPDE20101129_203719_000000613097_00043_45747_1554.N1	DC map used
GOM_TRA_1PNPDE20101129_204523_000000553097_00043_45747_1555.N1	DC map used
GOM_TRA_1PNPDE20101129_204656_000000393097_00043_45747_1556.N1	DC map used
GOM_TRA_1PNPDE20101129_204918_000000403097_00043_45747_1557.N1	DC map used
GOM_TRA_1PNPDE20101129_205144_000000393097_00043_45747_1558.N1	DC map used
GOM_TRA_1PNPDE20101129_205344_000000383097_00043_45747_1559.N1	DC map used
GOM_TRA_1PNPDE20101129_205542_000000483097_00043_45747_1560.N1	DC map used
GOM_TRA_1PNPDE20101129_211145_000000463097_00043_45747_1561.N1	DC map used
GOM_TRA_1PNPDE20101129_211321_000000453097_00043_45747_1562.N1	DC map used
GOM_TRA_1PNPDE20101129_211518_000000373097_00043_45747_1563.N1	DC map used
GOM_TRA_1PNPDE20101129_211747_000000533097_00043_45747_1564.N1	DC map used

GOM_TRA_1PNPDE20101129_212024_000000403097_00043_45747_1565.N1	DC map used
GOM_TRA_1PNPDE20101129_212943_000000543097_00043_45747_1566.N1	DC map used
GOM_TRA_1PNPDE20101129_213304_000000433097_00043_45747_1567.N1	DC map used

4.2 Plot of mean dark charges per product: only products in DARK limb conditions without errors are used



5. Demodulation flag and quality information monitoring

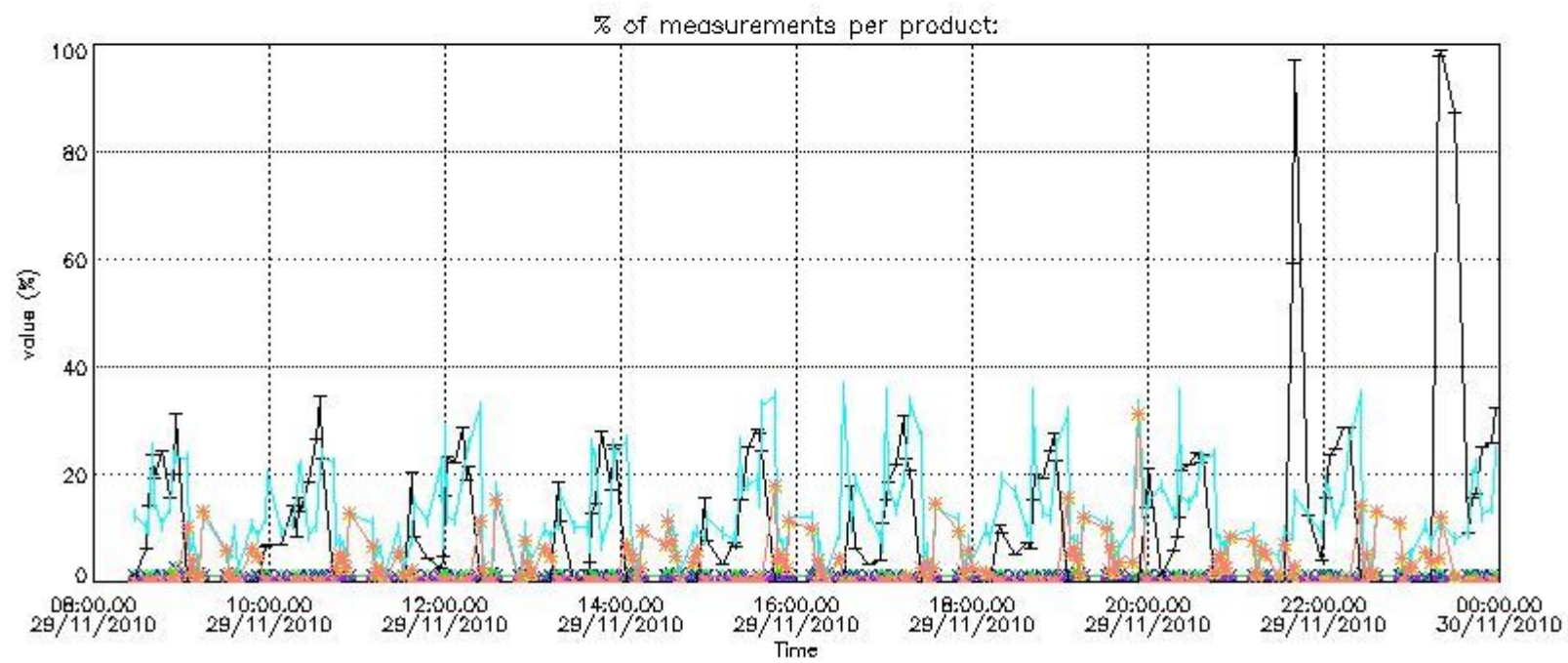
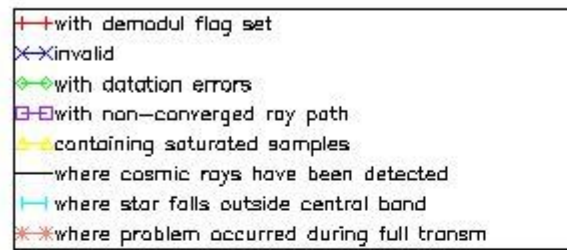
In this section it is presented the modulation information extracted from the pcd (product confidence data) at measurement level and information extracted from the Quality Summary dataset. Only products without errors

(error flag in the MPH set to "0") are used.

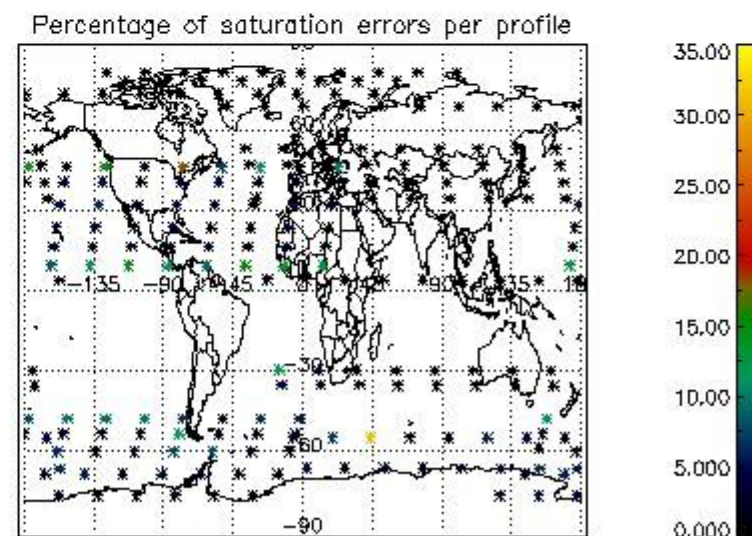
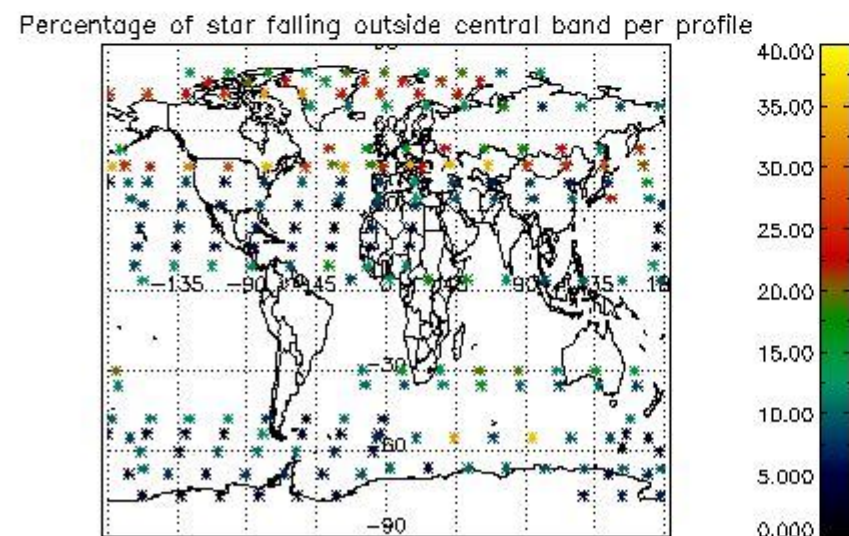
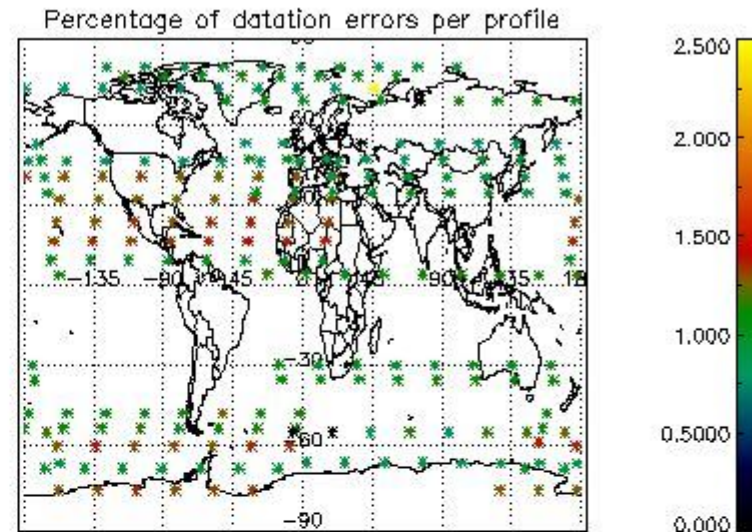
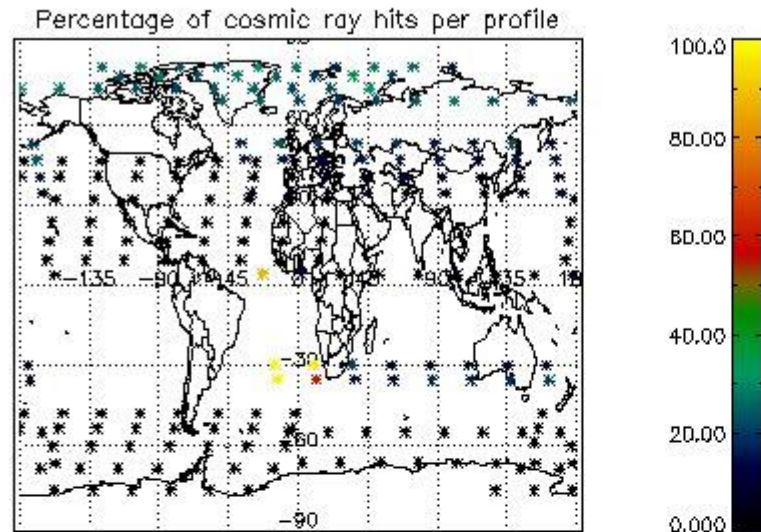
5.1 Percentage of products during reporting period with:

At least one measurement with demodulation flag set:	45.7014 %
Reference spectrum computed from DB:	0.00000 %
Reference spectrum with small number of measurements:	0.00000 %
SATU data not used:	0.00000 %

5.2 Plot quality information per product (time dependant)



5.3 Plot quality information per product (world map)



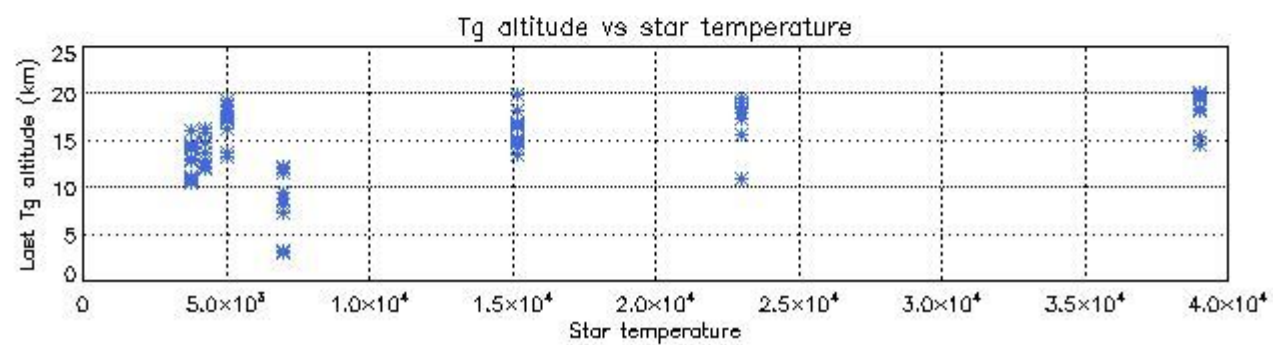
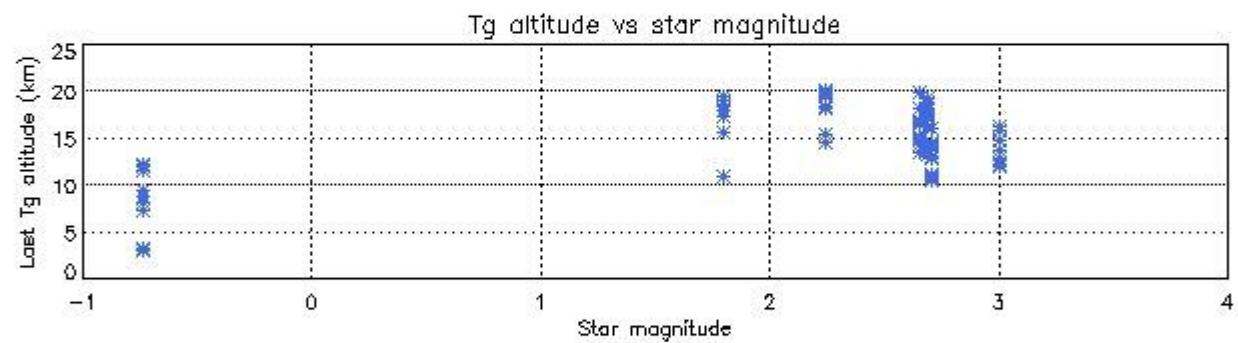
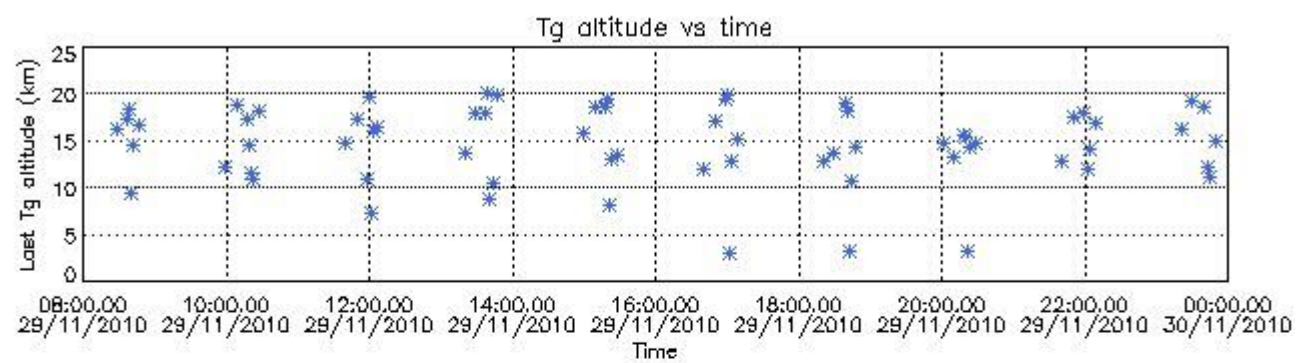
6. Statistics and plot of tangent altitude of the last measurement (DARK & BRIGHT products without errors)

6.1 Statistics on tangent altitude lost:

Statistics	DARK	BRIGHT	TWILIGHT
Mean:	14.628	19.613	16.107
St. deviation:	4.0384	4.9925	1.1128
Maximum:	20.023	28.368	17.501
Minimum:	3.0365	3.9125	14.916
Number of data:	67.000	117.00	4.0000

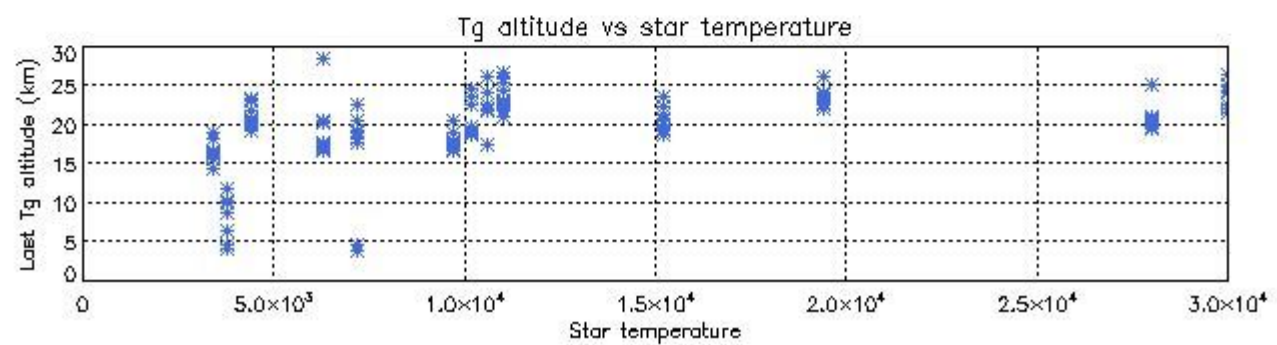
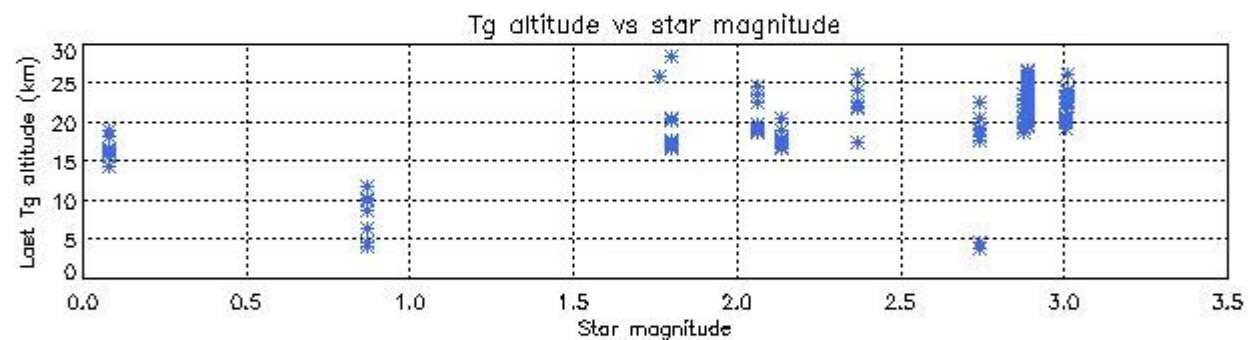
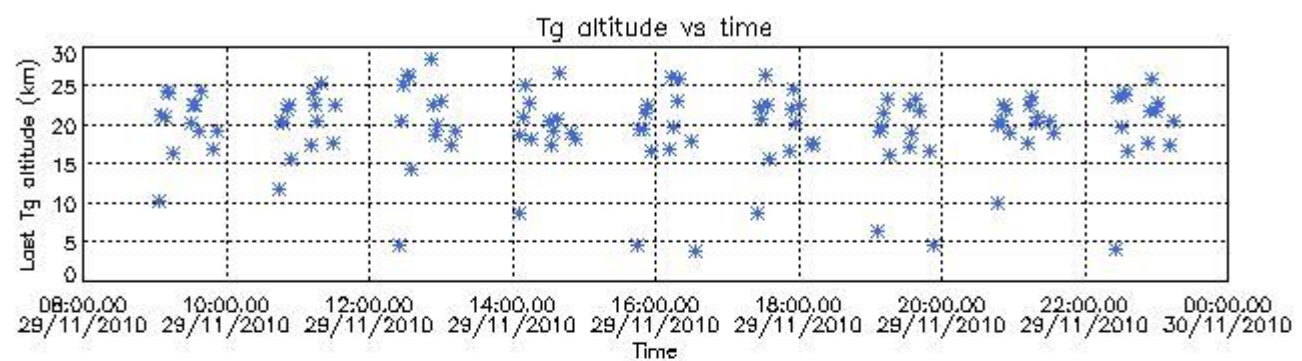
6.2 Plot for DARK limb products

Tangent altitude at which the star is lost



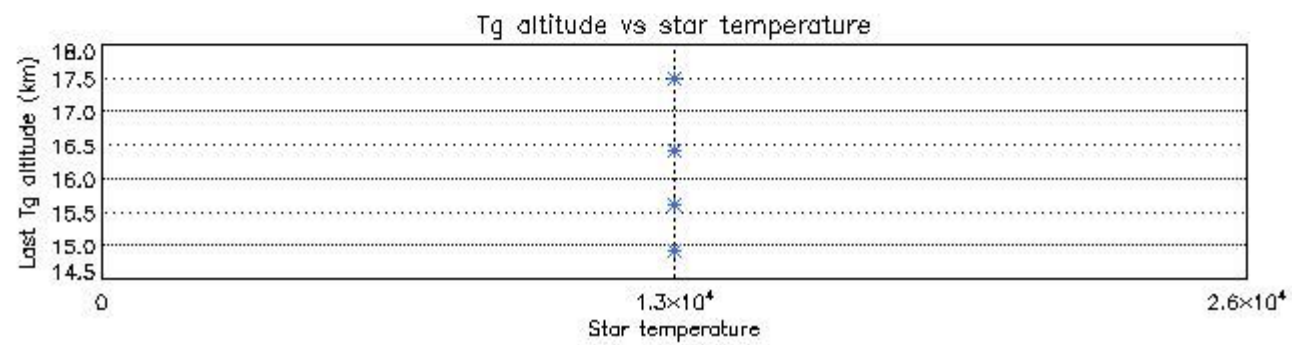
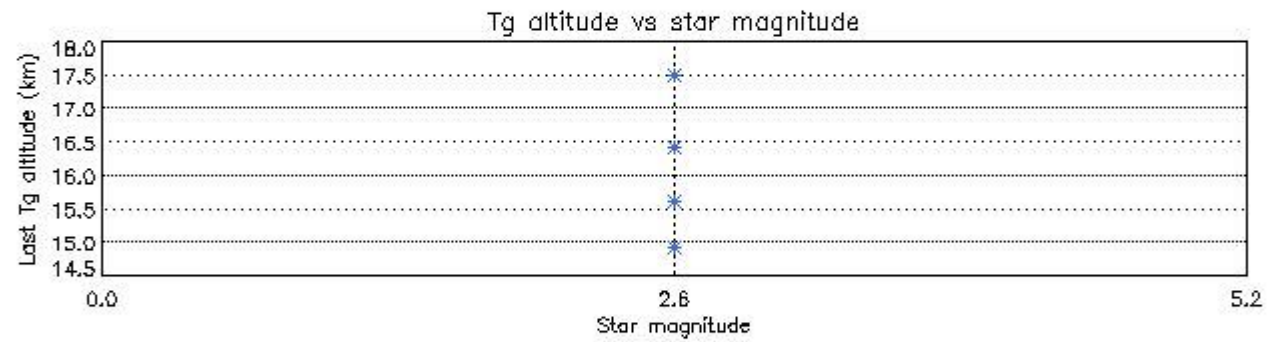
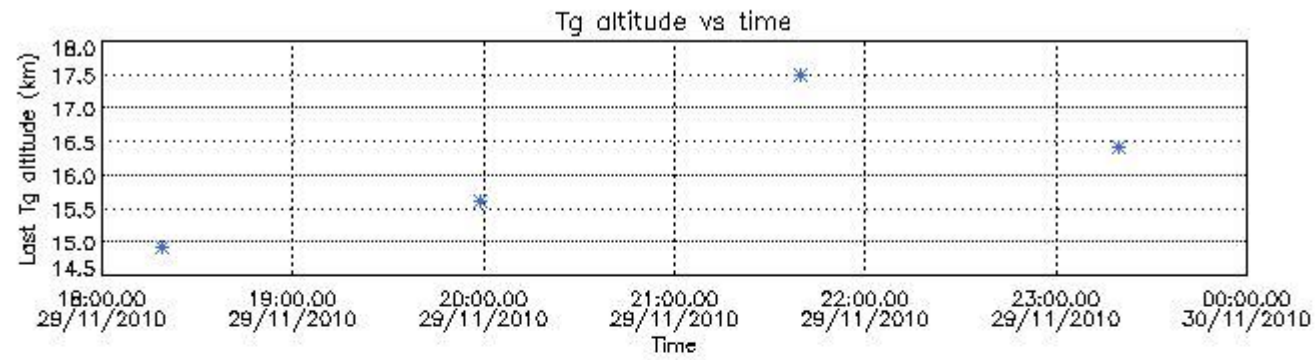
6.3 Plot for BRIGHT limb products

Tangent altitude at which the star is lost



6.3 Plot for TWILIGHT limb products

Tangent altitude at which the star is lost

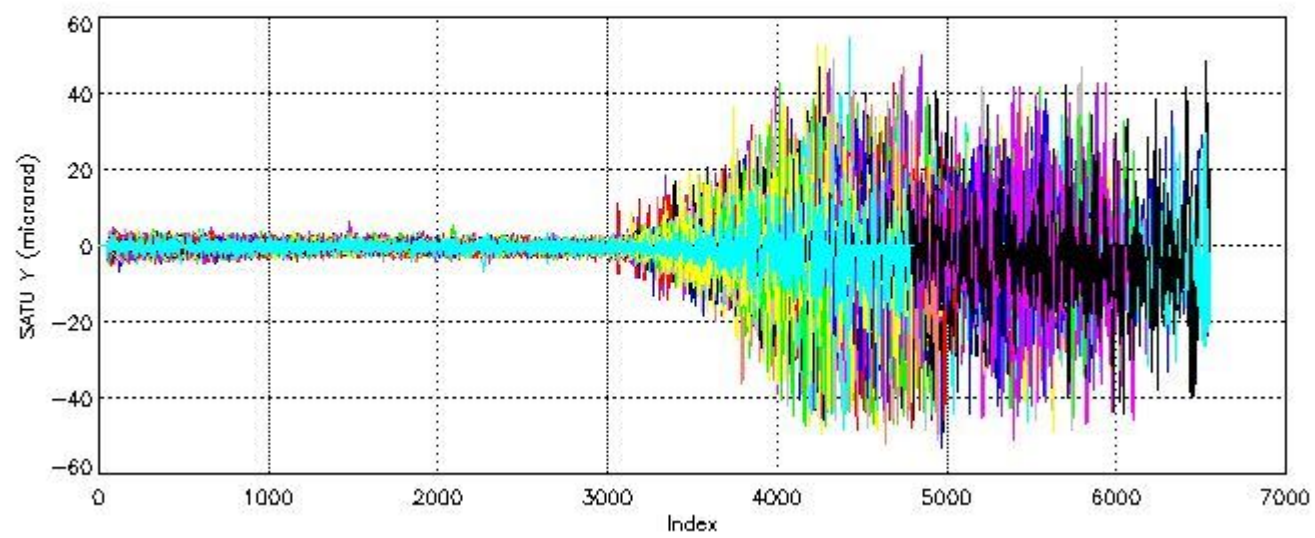
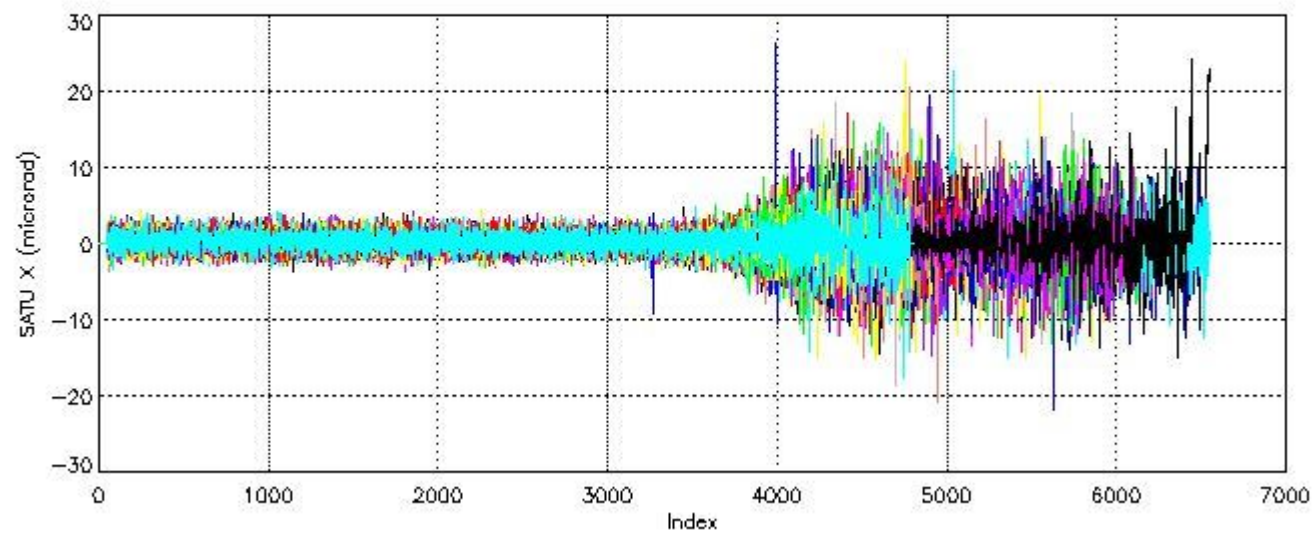


7. Star Acquisition and Tracking Unit (SATU)

The Star Acquisition and Tracking Unit (SATU) analyses the position of the tracked star beam collected by the GOMOS telescope and deflected by the optical beam dispatcher. The main function of the SATU is to detect a star, provide its image position to the science data electronics and to help the pointing function to keep the star image at a fixed position. In tracking mode the SATU data is recorded with a frequency of 100 Hz.

7.1 SATU 'X' and 'Y' axis plots (dark limb)

SATU CCD 'X' and 'Y' axis plots are provided in order to detect any abnormal behaviour of the tracking system. For every occultation (color) the plot should remain stable (with some noise) until we are deep in the atmosphere where big fluctuations are registered due to the refractive effects.



7.2 Statistics on SATU Noise Equivalent Angle (NEA) for DARK (D) and BRIGHT (B) products above 105 kms

The Star Acquisition and Tracking Unit (it is the CCD that tracks the star while it is occulted) Noise Equivalent Angle consists of the statistical angular variation of the SATU data above the atmosphere.

Statistics (in microradians) above 105 km are computed for every occultation, giving four values per occultation: one in the 'X' direction and one in the 'Y' direction for dark and bright limbs. A mean value per day in every direction and limb is calculated and monitored in order to assess instrument performance in terms of star pointing.

7.2.1 SATU NEA Statistics (table)

Statistics	SATU X (D)	SATU Y (D)	SATU X (B)	SATU Y (B)
Mean:	0.26432	-0.34141	0.16225	-0.31879
St. deviation:	0.55422	0.92904	0.96374	1.2159
Maximum:	4.4000	4.9000	8.0000	7.0000
Minimum:	-3.6000	-6.6000	-6.7000	-8.2000

Number of data:	76600.	76600.	1.1905E+05	1.1905E+05
-----------------	--------	--------	------------	------------

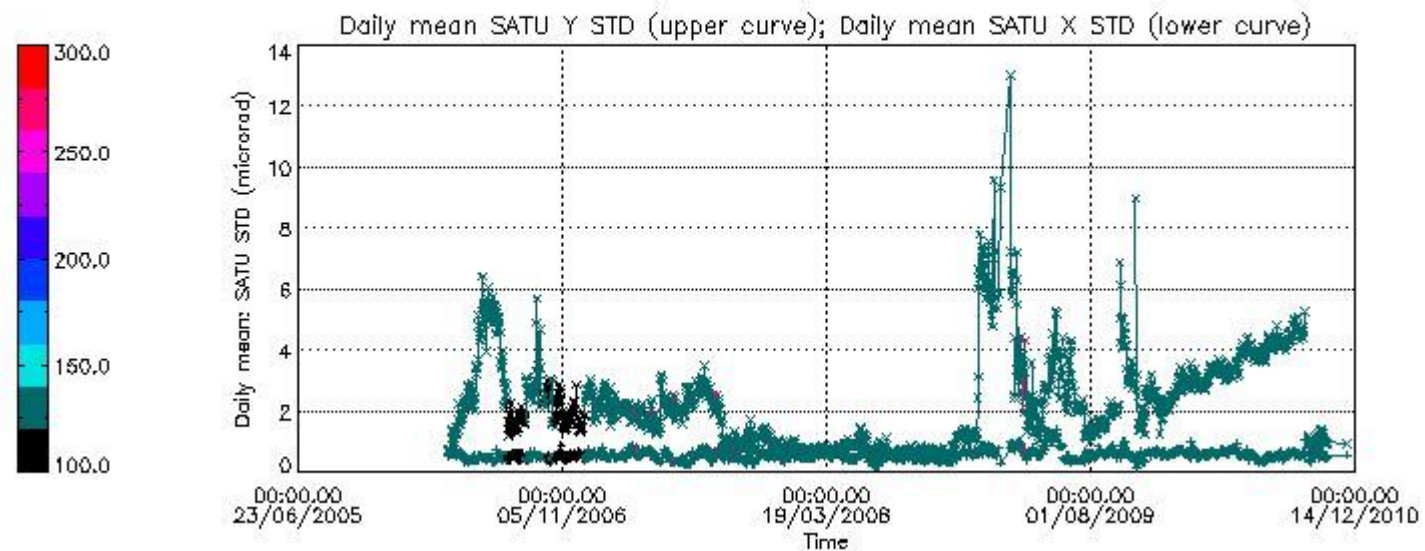
7.2.2 Trend of daily SATU NEA St. deviation since 1st April 2006 (dark limb)

The long term trend of the SATU 'X' and 'Y' standard deviations should be constant during the whole mission.

The colorbar represents the start tangent altitude (km) of the occultations.

Upper curve: STD of SATU Y axis

Lower curve: STD of SATU X axis

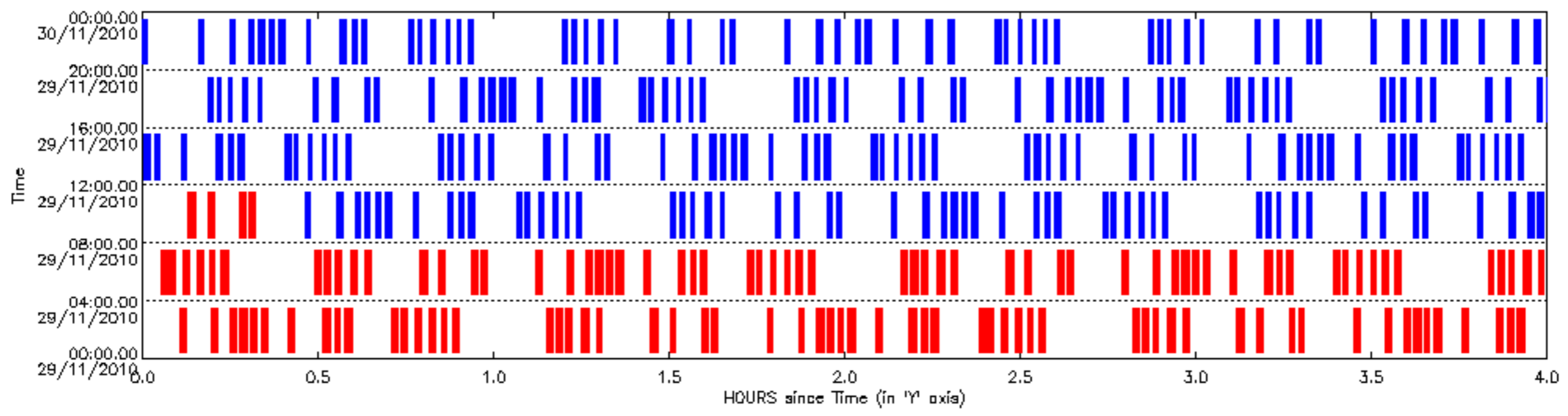


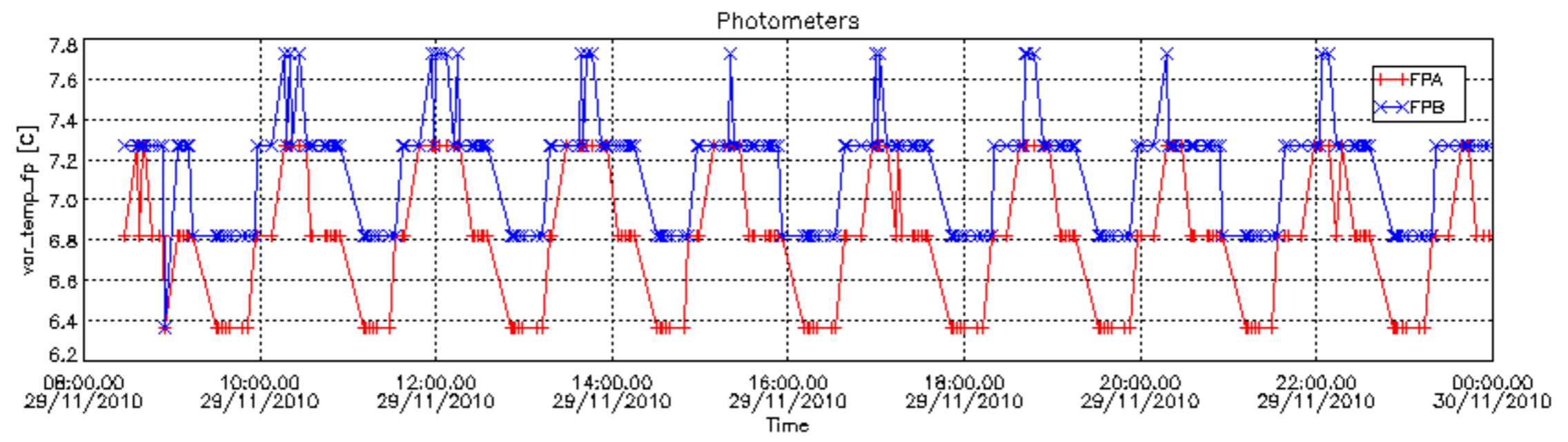
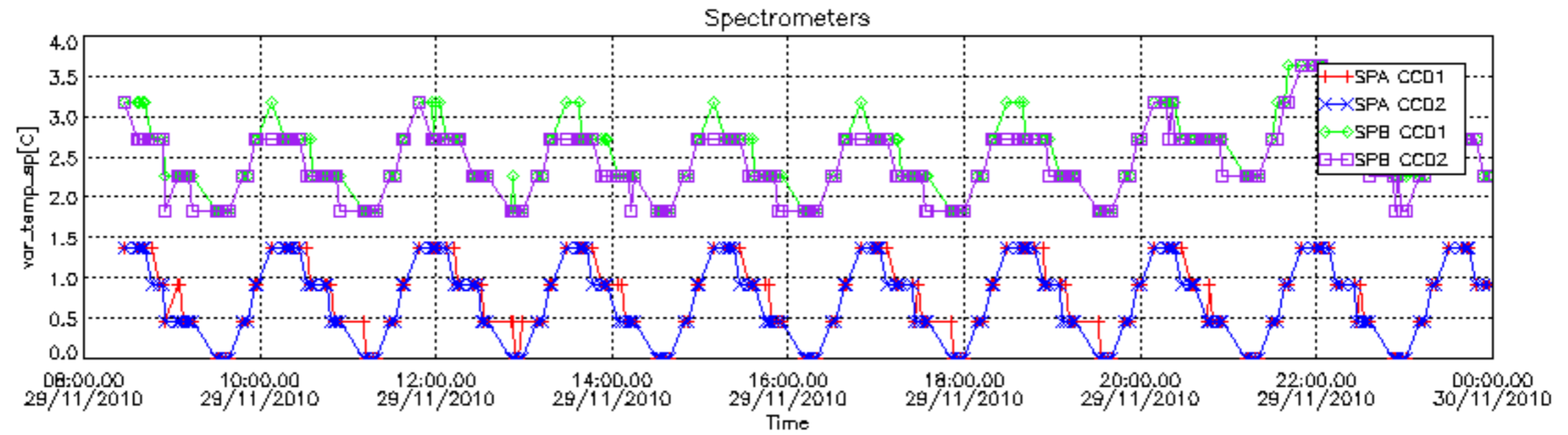
8. Auxiliary Data Files used for the production reported in section 2.4

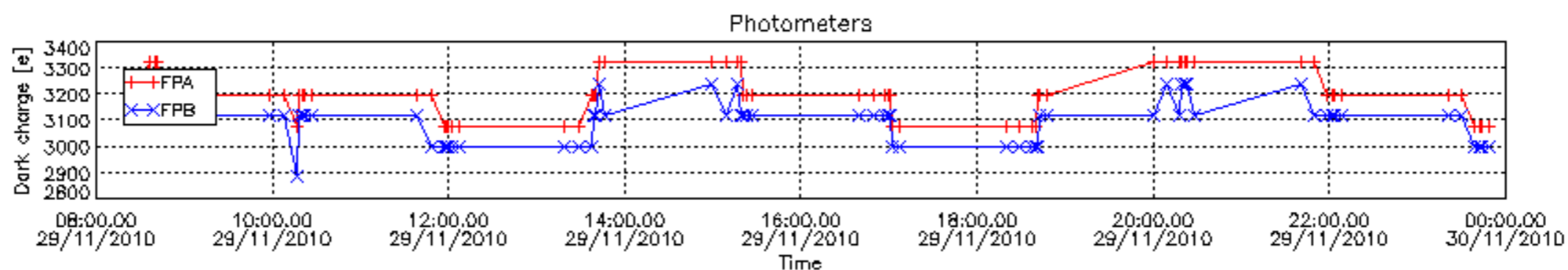
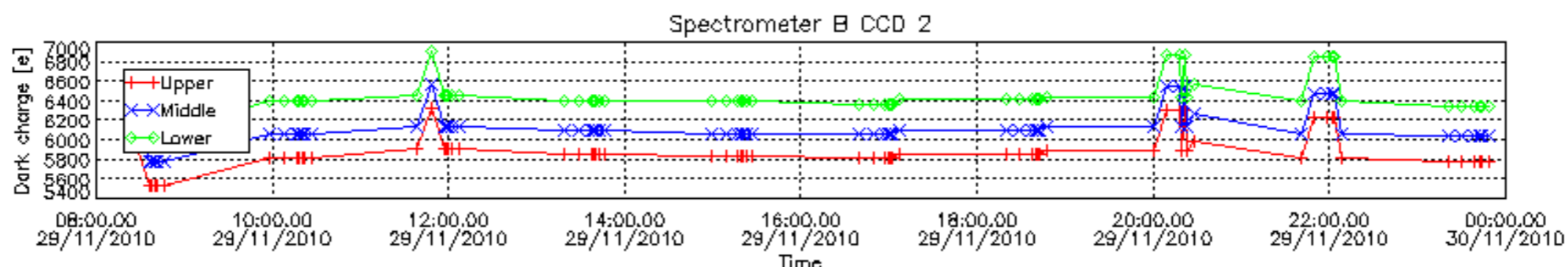
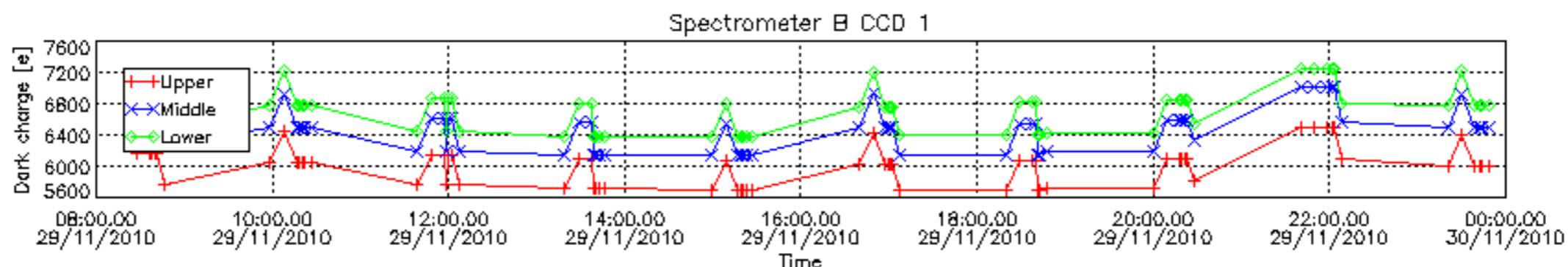
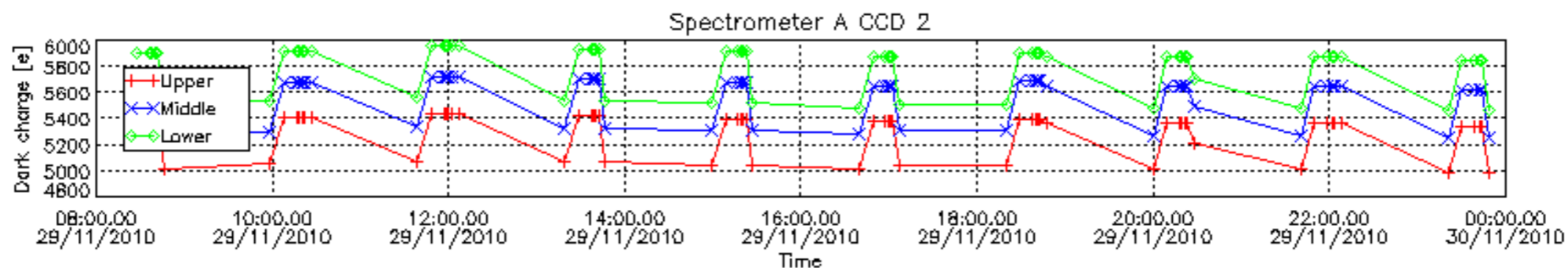
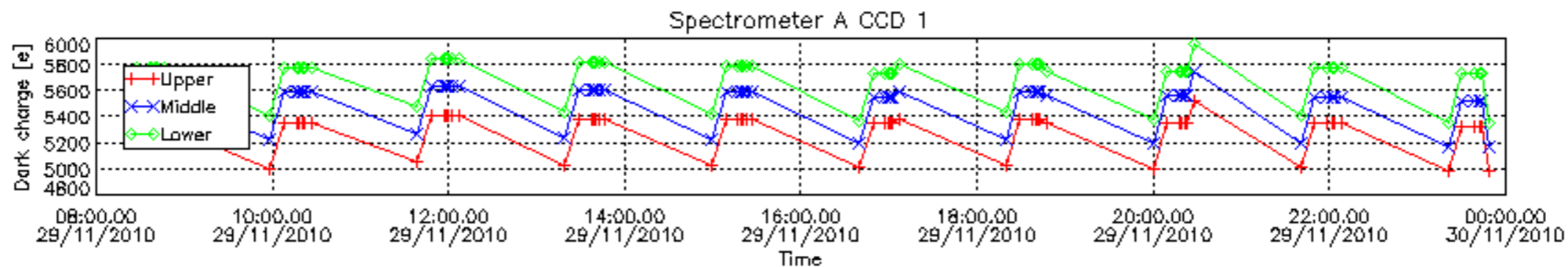
The number reported in the third column indicates since which file (see list in section 2.4) the corresponding auxiliary file has been used. The fourth column is the date of those product files.

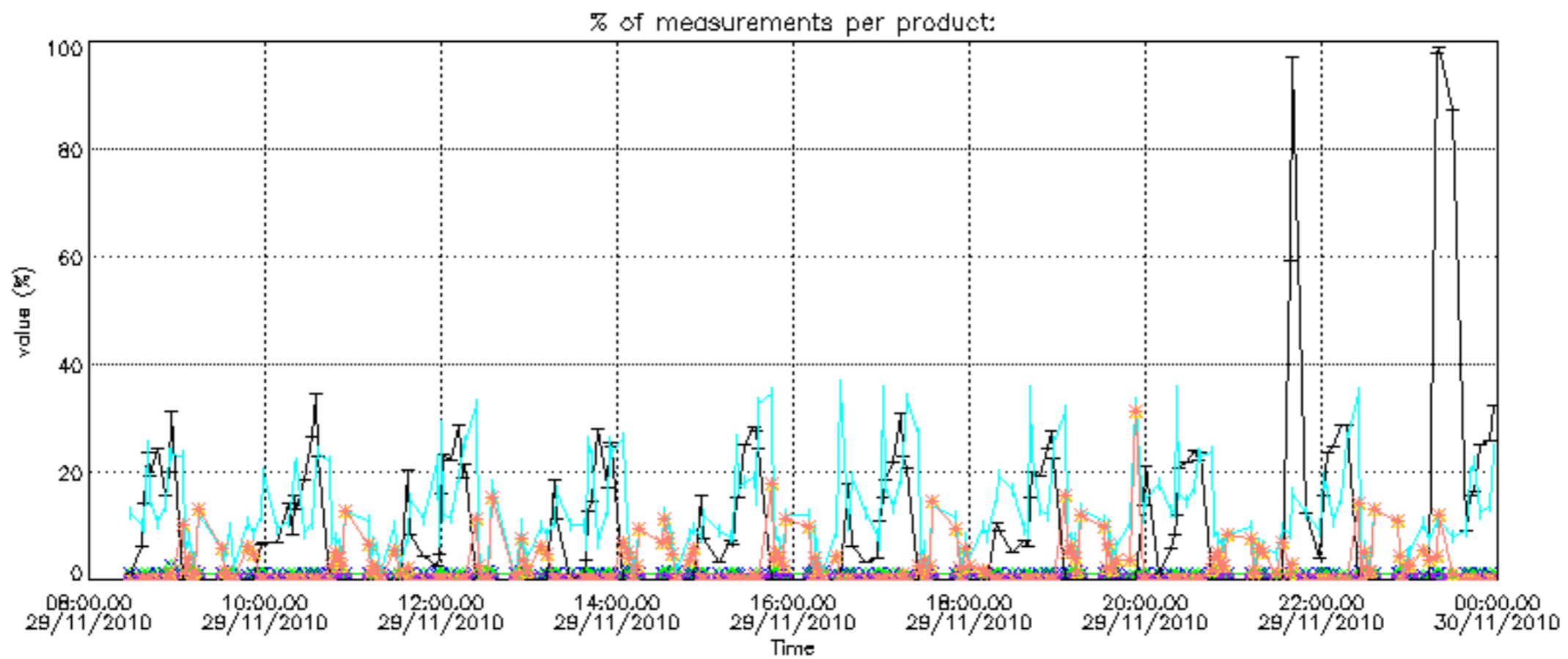
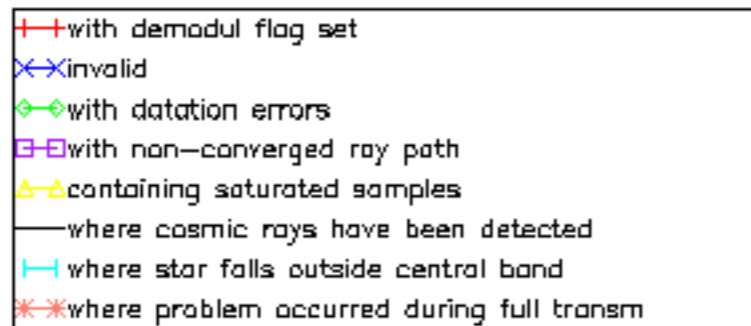
Type	Auxiliary Filename	Used since product	Used since product date
INST_PHYS_CHARACTERISTICS	GOM_INS_AXVIEC20091111_143220_20030716_120000_20500101_000000	1	29-NOV-2010 08:27:42
CALIBRATION_DATABASE	GOM_CAL_AXVIEC20101020_091716_20101018_000000_20500101_000000	1	29-NOV-2010 08:27:42
LEVEL-1B_PROC_CONFIG	GOM_PR1_AXVIEC20091111_145255_20020301_000000_20500101_000000	1	29-NOV-2010 08:27:42
STAR_CATALOGUE	GOM_CAT_AXVIEC20020121_161009_20020101_000000_20200101_000000	1	29-NOV-2010 08:27:42
STELLAR_SPECTRA_DATABANK	GOM_STS_AXVIEC20091111_151504_20020101_160000_20500101_000000	1	29-NOV-2010 08:27:42
ECMWF_FILE	AUX_ECA_AXNECM20101129_052115_20101128_210000_20101129_090000	1	29-NOV-2010 08:27:42
ECMWF_FILE	AUX_ECF_AXNECM20101128_174116_20101129_030000_20101129_150000	9	29-NOV-2010 08:55:41
ECMWF_FILE	AUX_ECF_AXNECM20101129_052115_20101129_090000_20101129_210000	32	29-NOV-2010 10:34:19
ECMWF_FILE	AUX_ECF_AXNECM20101129_054116_20101129_150000_20101130_030000	103	29-NOV-2010 15:32:56
ECMWF_FILE	AUX_ECA_AXNECM20101129_172116_20101129_090000_20101129_210000	126	29-NOV-2010 17:07:24
ECMWF_FILE	AUX_ECF_AXNECM20101129_054116_20101129_150000_20101130_030000	174	29-NOV-2010 20:27:53
ECMWF_FILE	AUX_ECA_AXNECM20101130_052115_20101129_210000_20101130_090000	191	29-NOV-2010 21:38:39
OPTIONAL_ECMWF_FILE	MISSING	1	29-NOV-2010 08:27:42
ORBIT_DATA_FILE	DOR_NAV_OPNPDK20101129_070959_000060573097_00035_45739_3127.N1	1	29-NOV-2010 08:27:42
ORBIT_DATA_FILE	DOR_NAV_OPNPDK20101129_085056_000057383097_00036_45740_3128.N1	9	29-NOV-2010 08:55:41
ORBIT_DATA_FILE	DOR_NAV_OPNPDK20101129_103153_000054193097_00037_45741_3129.N1	32	29-NOV-2010 10:34:19
ORBIT_DATA_FILE	DOR_NAV_OPNPDK20101129_120732_000057383097_00038_45742_3130.N1	55	29-NOV-2010 12:12:28
ORBIT_DATA_FILE	DOR_NAV_OPNPDK20101129_134829_000057383097_00039_45743_3131.N1	79	29-NOV-2010 13:52:42
ORBIT_DATA_FILE	DOR_NAV_OPNPDK20101129_152926_000054193097_00040_45744_3132.N1	103	29-NOV-2010 15:32:56
ORBIT_DATA_FILE	DOR_NAV_OPNPDK20101129_170504_000054193097_00041_45745_3133.N1	126	29-NOV-2010 17:07:24

ORBIT_DATA_FILE	DOR_NAV_OPNPK20101129_184042_000057383097_00042_45746_3134.N1	150	29-NOV-2010 18:47:38
ORBIT_DATA_FILE	DOR_NAV_OPNPDE20101129_202139_000038253097_00043_45747_2024.N1	174	29-NOV-2010 20:27:53
ORBIT_DATA_FILE	DOR_NAV_OPNPDE20101129_213043_000060573097_00043_45747_2029.N1	191	29-NOV-2010 21:38:39
ORBIT_DATA_FILE	DOR_NAV_OPNPDE20101129_231659_000054193097_00044_45748_2028.N1	213	29-NOV-2010 23:18:53

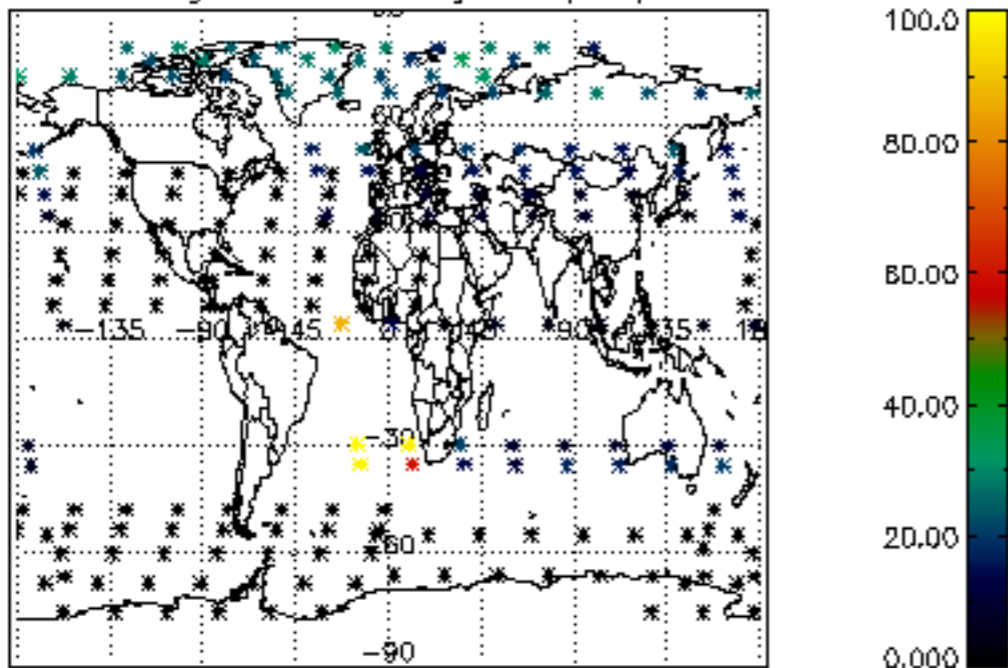




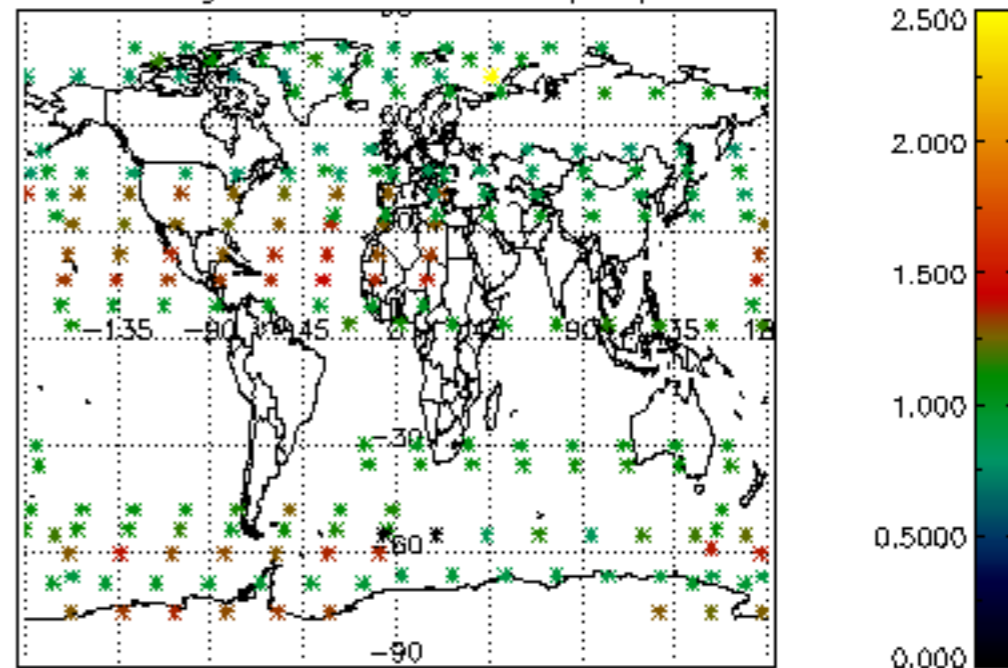




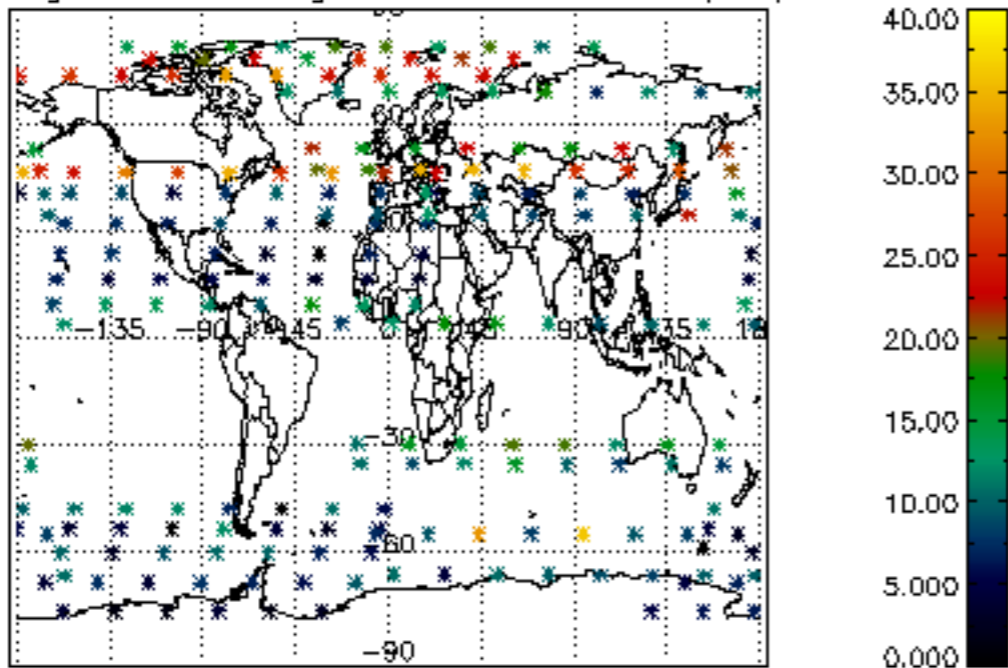
Percentage of cosmic ray hits per profile



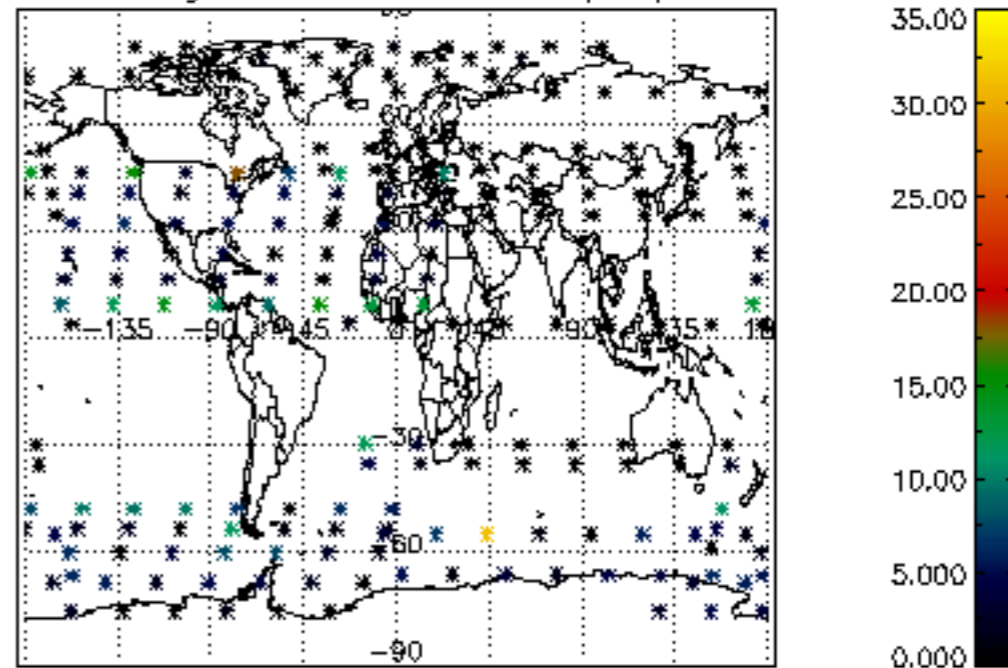
Percentage of datation errors per profile



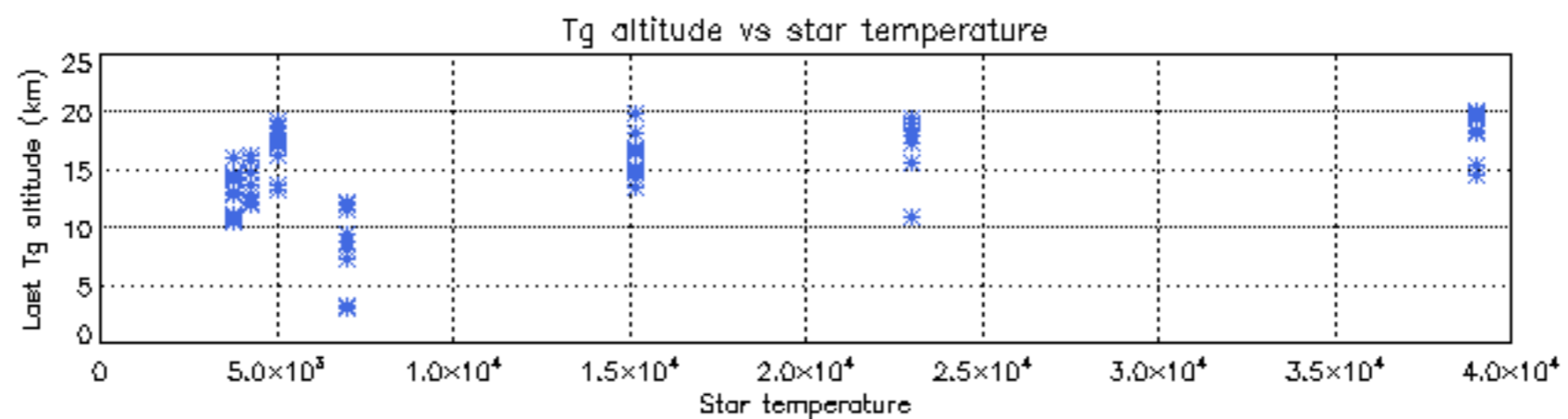
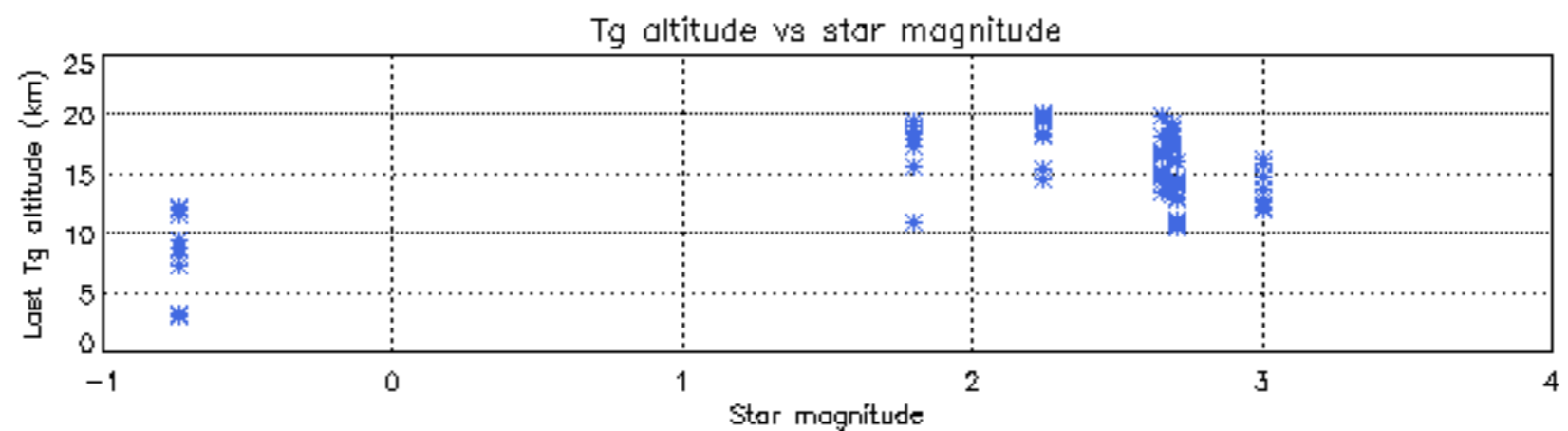
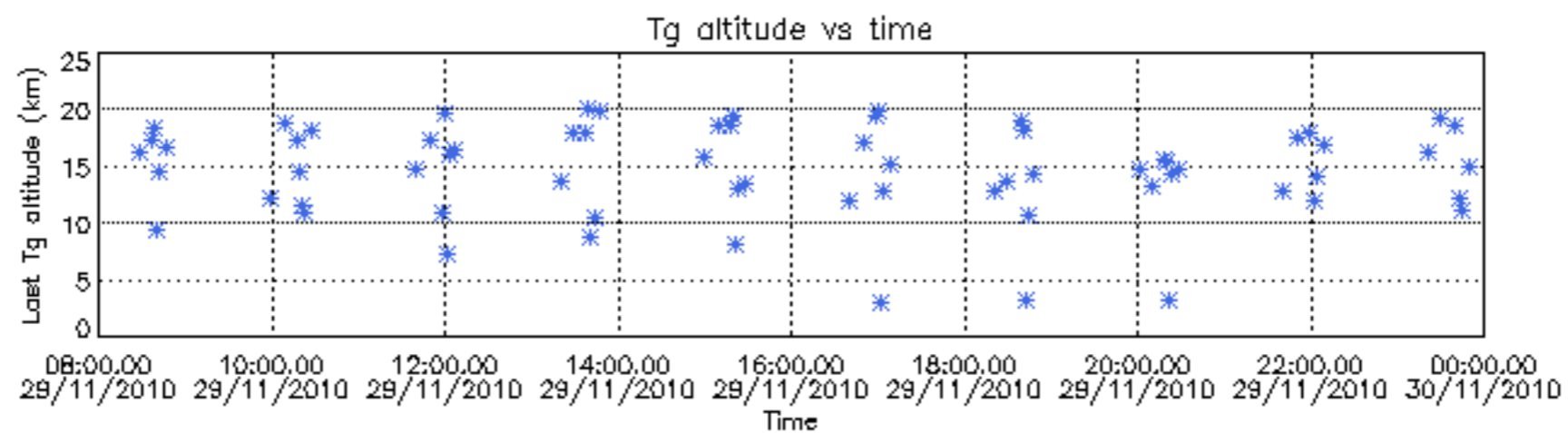
Percentage of star falling outside central band per profile



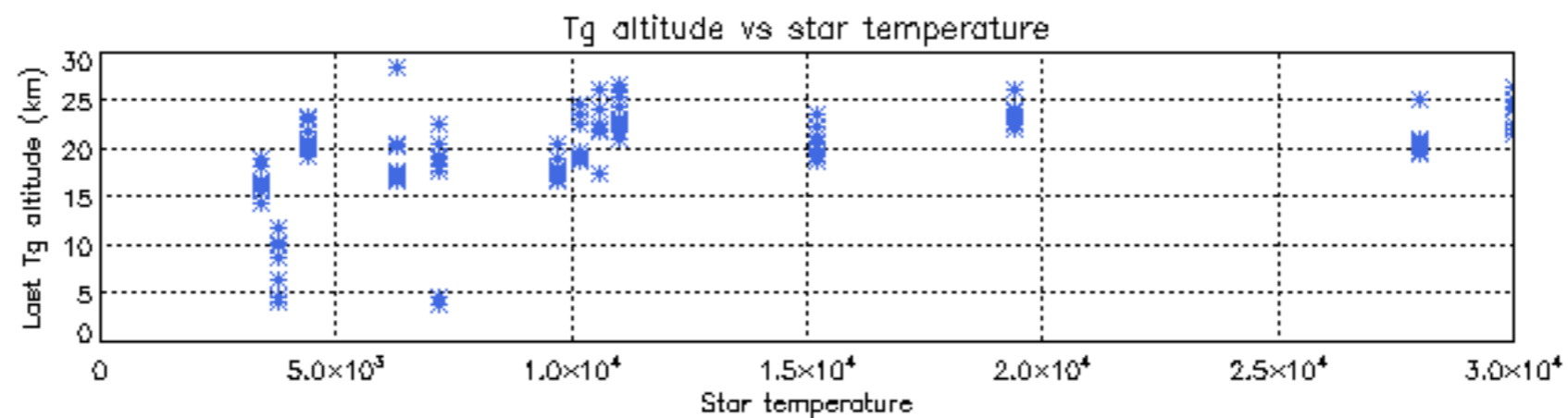
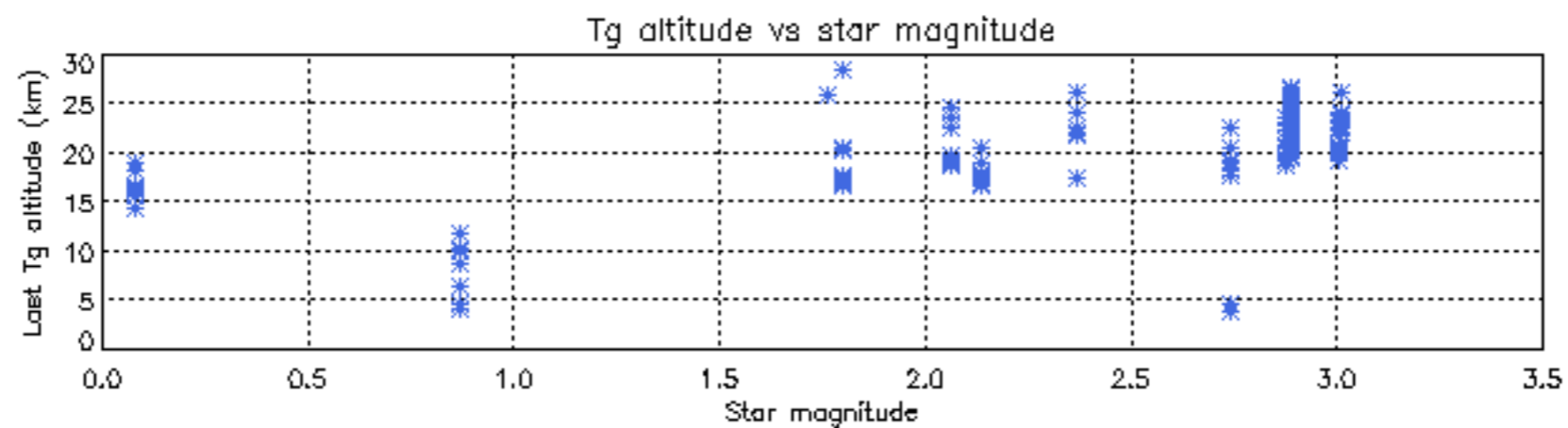
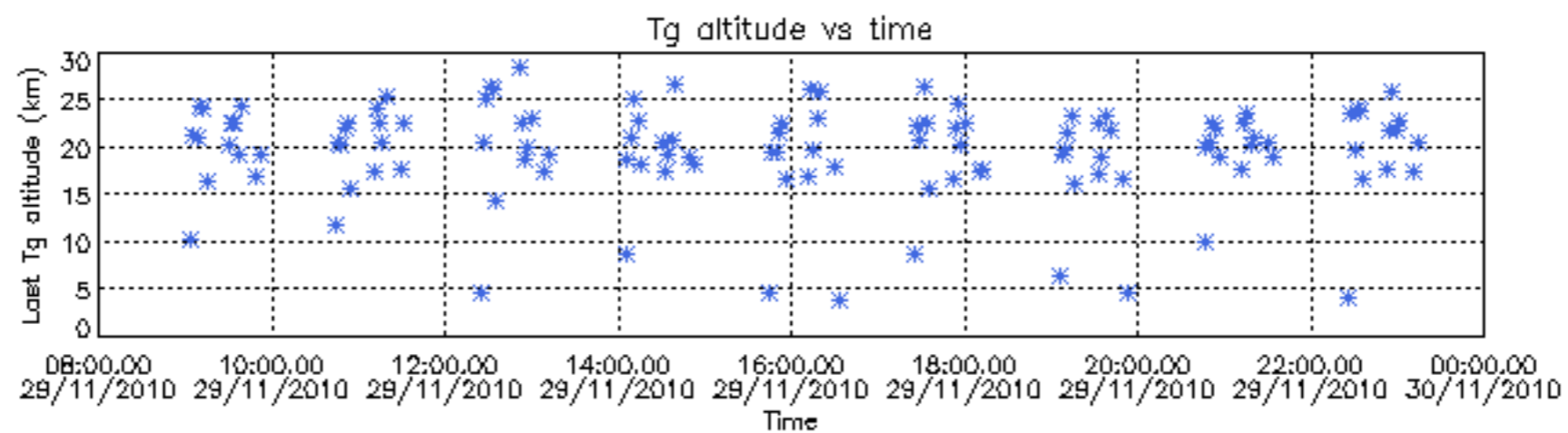
Percentage of saturation errors per profile



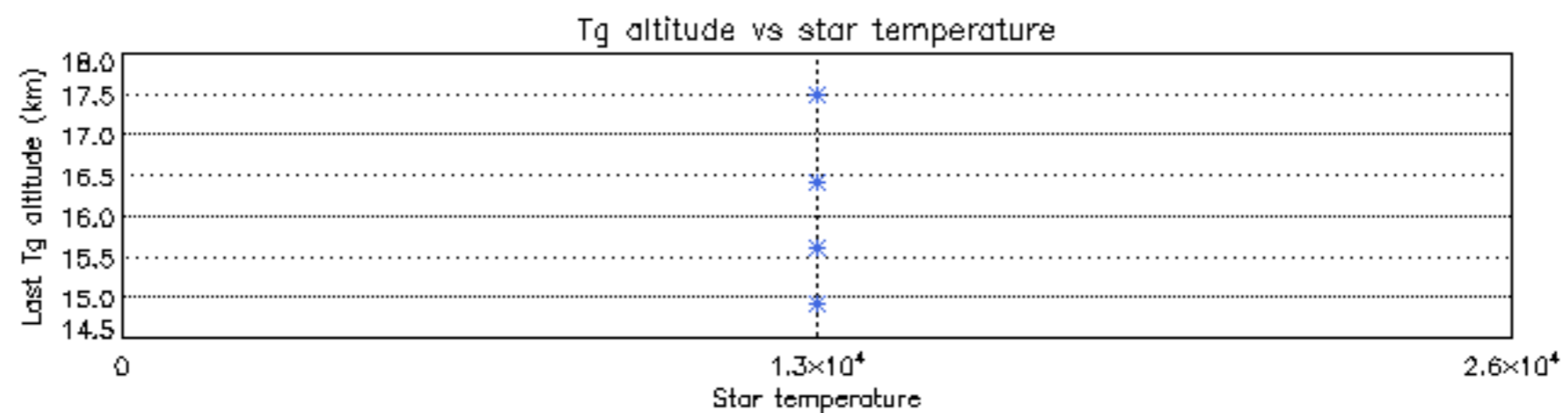
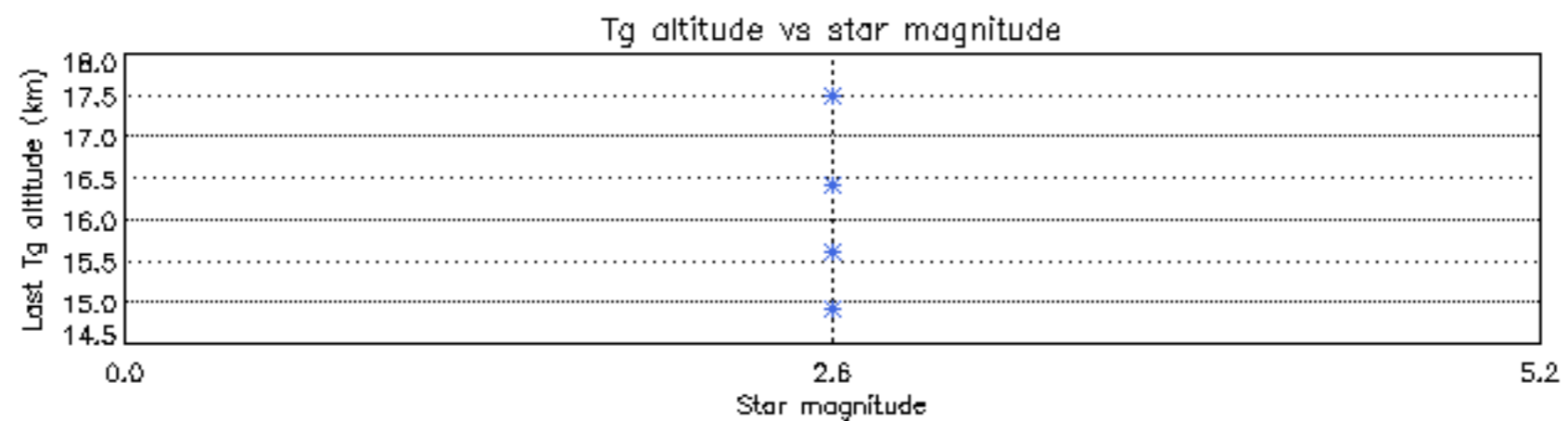
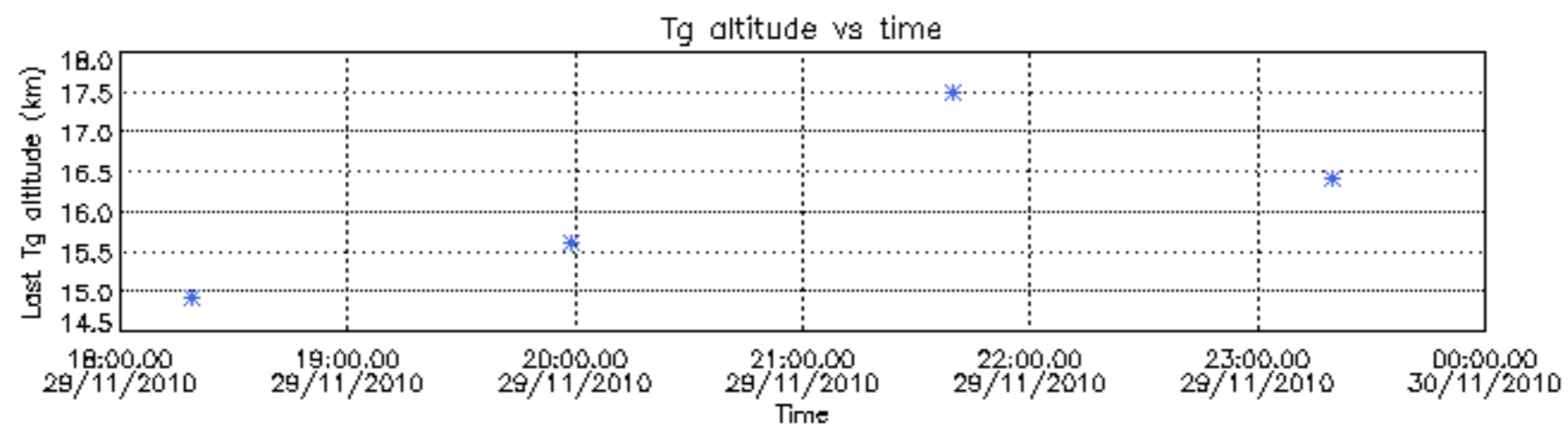
Tangent altitude at which the star is lost

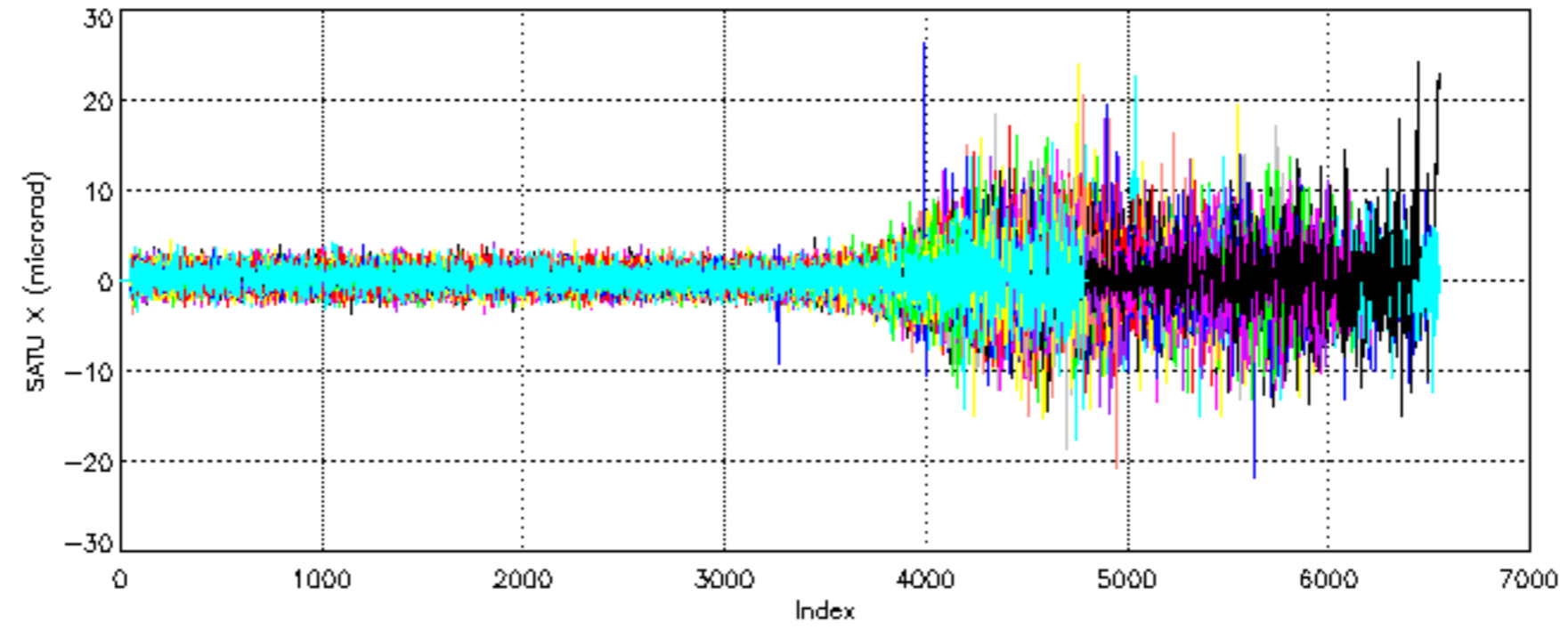


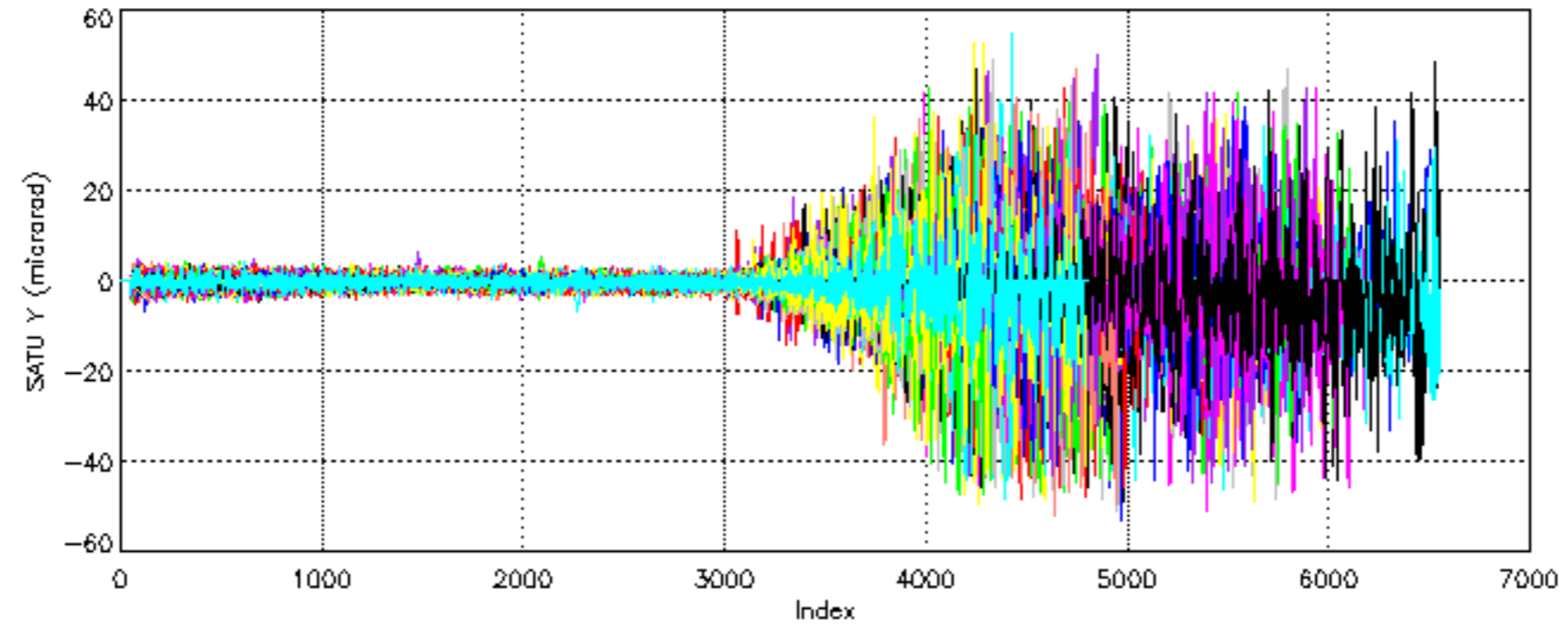
Tangent altitude at which the star is lost

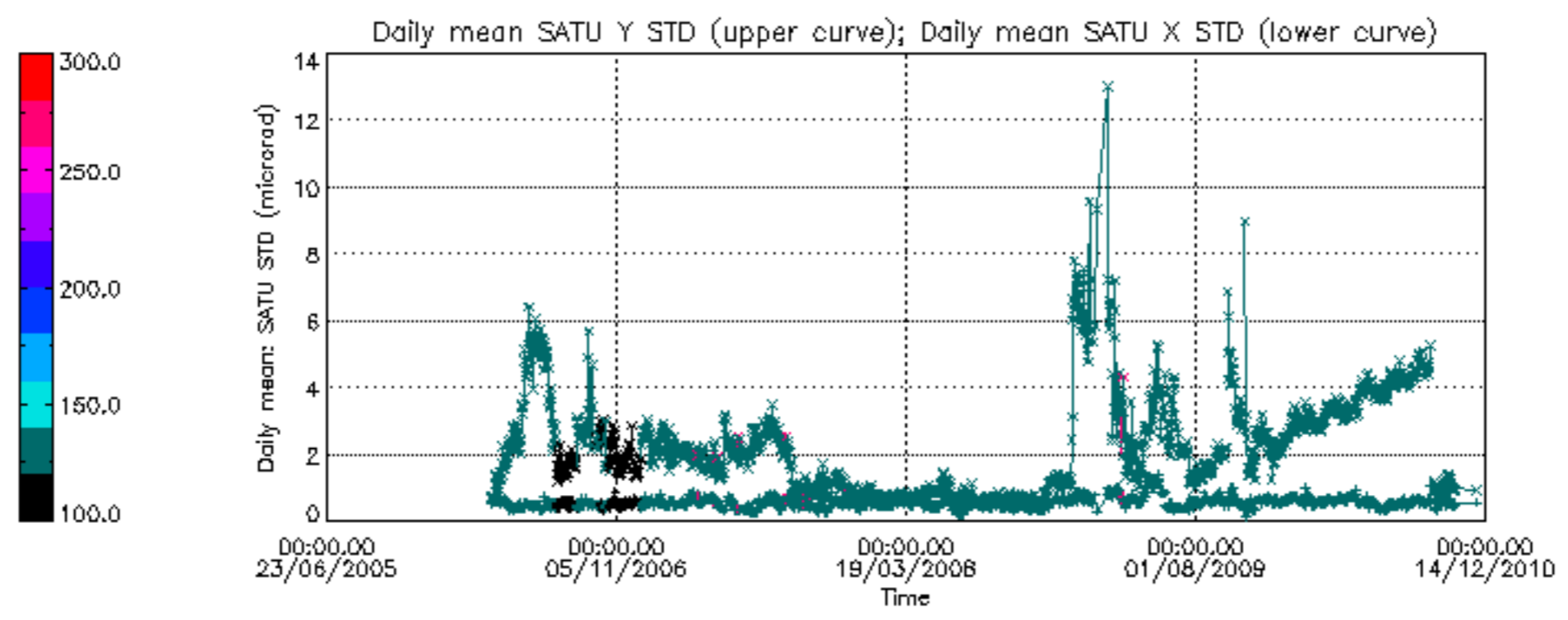


Tangent altitude at which the star is lost









```

/data4_2/GOMOS/data_tmp/GOM_NL__0PNPDK20101129_082742_000017393097_00036_45740_2770.N1
 1; 62.5; 29-NOV-2010 08:27:42; Dark ; 45.0; 113; Mu Vel ; 2.69; 5000;occ; 90; 0;45740
 2; 384.5; 29-NOV-2010 08:33:04; Dark ; 59.5; 0; ; 0.00; 0;occ; 119; 0;45740
 3; 574.4; 29-NOV-2010 08:36:14; Dark ; 50.0; 34; Gam2Vel ; 1.79; 23000;occ; 100; 0;45740
 4; 674.5; 29-NOV-2010 08:37:54; Dark ; 56.0; 70; Zet Pup ; 2.25; 39000;occ; 112; 0;45740
 5; 785.4; 29-NOV-2010 08:39:45; Dark ; 50.5; 2; Alp Car ;-0.74; 7000;occ; 101; 0;45740
 6; 887.1; 29-NOV-2010 08:41:27; Dark ; 60.0; 117; Pi Pup ; 2.71; 3800;occ; 120; 0;45740
 7; 1171.7; 29-NOV-2010 08:46:12; Dark ; 47.0; 108; Alp Col ; 2.65; 15200;occ; 94; 0;45740
 8; 1520.0; 29-NOV-2010 08:52:00; Dark ; 54.5; 101; 11Alp Lep ; 2.58; 7000;occ; 109; 0;45740
 9; 1645.2; 29-NOV-2010 08:54:05; Dark ; 47.5; 165; 34Gam Eri ; 2.95; 3200;occ; 95; 0;45740
10; 1741.5; 29-NOV-2010 08:55:41; Dark ; 60.0; 7; 19Bet Ori ; 0.10; 14000;occ; 120; 0;45740
/nas3/ENVISAT/GOMOS/GOM_NL__0P/GOM_NL__0PNPDE20101129_202358_000041893097_00043_45747_1787.N1
 1; 939.5; 29-NOV-2010 20:23:58; Dark ; 60.5; 117; Pi Pup ; 2.71; 3800;occ; 121; 93;45747
 2; 1174.7; 29-NOV-2010 20:27:53; Dark ; 48.5; 108; Alp Col ; 2.65; 15200;occ; 97; 0;45747
 3; 1520.9; 29-NOV-2010 20:33:39; Dark ; 56.0; 101; 11Alp Lep ; 2.58; 7000;occ; 112; 0;45747
 4; 1649.4; 29-NOV-2010 20:35:48; Dark ; 43.0; 165; 34Gam Eri ; 2.95; 3200;occ; 86; 0;45747
 5; 1740.8; 29-NOV-2010 20:37:19; Dark ; 61.0; 7; 19Bet Ori ; 0.10; 14000;occ; 122; 0;45747
 6; 2224.3; 29-NOV-2010 20:45:23; Bright; 55.0; 13; 87Alp Tau ; 0.87; 3800;occ; 110; 0;45747
 7; 2317.8; 29-NOV-2010 20:46:56; Bright; 39.0; 146; 25Eta Tau ; 2.87; 15200;occ; 78; 0;45747
 8; 2460.2; 29-NOV-2010 20:49:18; Bright; 39.5; 150; 44Zet Per ; 2.89; 28000;occ; 79; 0;45747
 9; 2606.0; 29-NOV-2010 20:51:44; Bright; 38.5; 149; 45Eps Per ; 2.89; 30000;occ; 77; 0;45747
10; 2726.2; 29-NOV-2010 20:53:44; Bright; 37.5; 175; 39Del Per ; 3.01; 19400;occ; 75; 0;45747
11; 2843.3; 29-NOV-2010 20:55:42; Bright; 47.5; 6; 13Alp Aur ; 0.08; 3400;occ; 95; 0;45747
12; 3807.2; 29-NOV-2010 21:11:45; Bright; 46.0; 36; 50Alp UMa ; 1.80; 6300;occ; 92; 0;45747
13; 3903.3; 29-NOV-2010 21:13:21; Bright; 45.0; 82; 48Bet UMa ; 2.37; 10600;occ; 90; 0;45747
14; 4019.7; 29-NOV-2010 21:15:18; Bright; 36.5; 55; 79Zet UMa ; 2.06; 10200;occ; 73; 0;45747
15; 4169.2; 29-NOV-2010 21:17:47; Bright; 52.5; 174; 52Psi UMa ; 3.00; 4400;occ; 105; 0;45747
16; 4325.3; 29-NOV-2010 21:20:24; Bright; 40.0; 152; 12Alp2CVn ; 2.89; 11000;occ; 80; 0;45747
17; 4885.2; 29-NOV-2010 21:29:43; Bright; 54.0; 62; 94Bet Leo ; 2.14; 9700;occ; 108; 0;45747
18; 5085.7; 29-NOV-2010 21:33:04; Bright; 43.0; 121; 29Gam Vir ; 2.74; 7200;occ; 86; 0;45747
/nas3/ENVISAT/GOMOS/GOM_NL__0P/GOM_NL__0PNPDK20101129_085542_000059273097_00036_45740_2771.N1
 1; 1742.5; 29-NOV-2010 08:55:42; Dark ; 60.5; 7; 19Bet Ori ; 0.10; 14000;occ; 121; 2;45740
 2; 2227.1; 29-NOV-2010 09:03:47; Bright; 55.0; 13; 87Alp Tau ; 0.87; 3800;occ; 110; 0;45740
 3; 2319.0; 29-NOV-2010 09:05:19; Bright; 38.5; 146; 25Eta Tau ; 2.87; 15200;occ; 77; 0;45740
 4; 2462.3; 29-NOV-2010 09:07:42; Bright; 39.0; 150; 44Zet Per ; 2.89; 28000;occ; 78; 0;45740
 5; 2608.2; 29-NOV-2010 09:10:08; Bright; 37.5; 149; 45Eps Per ; 2.89; 30000;occ; 75; 0;45740
 6; 2727.8; 29-NOV-2010 09:12:08; Bright; 36.5; 175; 39Del Per ; 3.01; 19400;occ; 73; 0;45740
 7; 2848.1; 29-NOV-2010 09:14:08; Bright; 50.0; 6; 13Alp Aur ; 0.08; 3400;occ; 100; 0;45740
 8; 3809.6; 29-NOV-2010 09:30:10; Bright; 44.0; 36; 50Alp UMa ; 1.80; 6300;occ; 88; 0;45740
 9; 3905.7; 29-NOV-2010 09:31:46; Bright; 45.0; 82; 48Bet UMa ; 2.37; 10600;occ; 90; 0;45740
10; 4019.8; 29-NOV-2010 09:33:40; Bright; 37.0; 55; 79Zet UMa ; 2.06; 10200;occ; 74; 0;45740
11; 4170.9; 29-NOV-2010 09:36:11; Bright; 53.0; 174; 52Psi UMa ; 3.00; 4400;occ; 106; 0;45740
12; 4325.0; 29-NOV-2010 09:38:45; Bright; 38.0; 152; 12Alp2CVn ; 2.89; 11000;occ; 76; 0;45740
13; 4880.9; 29-NOV-2010 09:48:01; Bright; 56.0; 62; 94Bet Leo ; 2.14; 9700;occ; 112; 0;45740
14; 5081.9; 29-NOV-2010 09:51:22; Bright; 42.5; 121; 29Gam Vir ; 2.74; 7200;occ; 85; 0;45740
15; 5415.3; 29-NOV-2010 09:56:55; Dark ; 46.0; 100; 4Gam Crv ; 2.58; 13100;occ; 92; 0;45740
16; 5510.2; 29-NOV-2010 09:58:30; Dark ; 50.5; 171; 2Eps Crv ; 3.00; 4250;occ; 101; 0;45740
17; 6077.4; 29-NOV-2010 10:07:57; Dark ; 43.0; 113; Mu Vel ; 2.69; 5000;occ; 86; 0;45741
18; 6399.3; 29-NOV-2010 10:13:19; Dark ; 59.5; 0; ; 0.00; 0;occ; 119; 0;45741
19; 6589.3; 29-NOV-2010 10:16:29; Dark ; 50.0; 34; Gam2Vel ; 1.79; 23000;occ; 100; 0;45741
20; 6689.7; 29-NOV-2010 10:18:10; Dark ; 60.0; 70; Zet Pup ; 2.25; 39000;occ; 120; 0;45741
21; 6799.8; 29-NOV-2010 10:20:00; Dark ; 48.5; 2; Alp Car ;-0.74; 7000;occ; 97; 0;45741
22; 6901.9; 29-NOV-2010 10:21:42; Dark ; 65.0; 117; Pi Pup ; 2.71; 3800;occ; 130; 0;45741
23; 7186.0; 29-NOV-2010 10:26:26; Dark ; 46.0; 108; Alp Col ; 2.65; 15200;occ; 92; 0;45741
24; 7534.0; 29-NOV-2010 10:32:14; Dark ; 52.5; 101; 11Alp Lep ; 2.58; 7000;occ; 105; 0;45741
25; 7659.3; 29-NOV-2010 10:34:19; Dark ; 10.5; 165; 34Gam Eri ; 2.95; 3200;occ; 21; 0;45741
/nas3/ENVISAT/GOMOS/GOM_NL__0P/GOM_NL__0PNPDK20101129_103419_000059083097_00037_45741_2772.N1
 1; 1645.3; 29-NOV-2010 10:34:19; Dark ; 46.5; 165; 34Gam Eri ; 2.95; 3200;occ; 93; 0;45741
 2; 1741.3; 29-NOV-2010 10:35:55; Dark ; 61.0; 7; 19Bet Ori ; 0.10; 14000;occ; 122; 0;45741
 3; 2226.7; 29-NOV-2010 10:44:01; Bright; 53.0; 13; 87Alp Tau ; 0.87; 3800;occ; 106; 0;45741
 4; 2318.8; 29-NOV-2010 10:45:33; Bright; 39.0; 146; 25Eta Tau ; 2.87; 15200;occ; 78; 0;45741
 5; 2462.0; 29-NOV-2010 10:47:56; Bright; 39.5; 150; 44Zet Per ; 2.89; 28000;occ; 79; 0;45741
 6; 2607.9; 29-NOV-2010 10:50:22; Bright; 38.5; 149; 45Eps Per ; 2.89; 30000;occ; 77; 0;45741
 7; 2727.8; 29-NOV-2010 10:52:22; Bright; 37.0; 175; 39Del Per ; 3.01; 19400;occ; 74; 0;45741
 8; 2847.3; 29-NOV-2010 10:54:21; Bright; 50.5; 6; 13Alp Aur ; 0.08; 3400;occ; 101; 0;45741
 9; 3809.1; 29-NOV-2010 11:10:23; Bright; 46.5; 36; 50Alp UMa ; 1.80; 6300;occ; 93; 0;45741
10; 3905.4; 29-NOV-2010 11:11:59; Bright; 44.0; 82; 48Bet UMa ; 2.37; 10600;occ; 88; 0;45741
11; 4019.8; 29-NOV-2010 11:13:54; Bright; 37.0; 55; 79Zet UMa ; 2.06; 10200;occ; 74; 0;45741

```

```

12; 4170.6; 29-NOV-2010 11:16:25; Bright; 52.0; 174; 52Psi UMA ; 3.00; 4400;occ; 104; 0;45741
13; 4325.1; 29-NOV-2010 11:18:59; Bright; 37.5; 152; 12Alp2CVn ; 2.89; 11000;occ; 75; 0;45741
14; 4881.5; 29-NOV-2010 11:28:15; Bright; 55.5; 62; 94Bet Leo ; 2.14; 9700;occ; 111; 0;45741
15; 5082.6; 29-NOV-2010 11:31:37; Bright; 40.5; 121; 29Gam Vir ; 2.74; 7200;occ; 81; 0;45741
16; 5415.9; 29-NOV-2010 11:37:10; Dark ; 44.5; 100; 4Gam Crv ; 2.58; 13100;occ; 89; 0;45741
17; 5511.0; 29-NOV-2010 11:38:45; Dark ; 47.5; 171; 2Eps Crv ; 3.00; 4250;occ; 95; 0;45741
18; 6078.0; 29-NOV-2010 11:48:12; Dark ; 44.5; 113; Mu Vel ; 2.69; 5000;occ; 89; 0;45742
19; 6400.2; 29-NOV-2010 11:53:34; Dark ; 59.5; 0; ; 0.00; 0;occ; 119; 0;45742
20; 6590.1; 29-NOV-2010 11:56:44; Dark ; 56.5; 34; Gam2Vel ; 1.79; 23000;occ; 113; 0;45742
21; 6690.6; 29-NOV-2010 11:58:25; Dark ; 55.0; 70; Zet Pup ; 2.25; 39000;occ; 110; 0;45742
22; 6800.4; 29-NOV-2010 12:00:14; Dark ; 53.0; 2; Alp Car ; -0.74; 7000;occ; 106; 0;45742
23; 6902.8; 29-NOV-2010 12:01:57; Dark ; 58.0; 117; Pi Pup ; 2.71; 3800;occ; 116; 0;45742
24; 7186.4; 29-NOV-2010 12:06:40; Dark ; 47.0; 108; Alp Col ; 2.65; 15200;occ; 94; 0;45742
25; 7534.2; 29-NOV-2010 12:12:28; Dark ; 19.5; 101; 11Alp Lep ; 2.58; 7000;occ; 39; 0;45742
/nas3/ENVISAT/GOMOS/GOM_NL__0P/GOM_NL__0PNPDK20101129_121228_000060213097_00038_45742_2773.N1
1; 1520.3; 29-NOV-2010 12:12:28; Dark ; 57.5; 101; 11Alp Lep ; 2.58; 7000;occ; 115; 0;45742
2; 1645.3; 29-NOV-2010 12:14:33; Dark ; 48.0; 165; 34Gam Eri ; 2.95; 3200;occ; 96; 0;45742
3; 1741.4; 29-NOV-2010 12:16:09; Dark ; 62.5; 7; 19Bet Ori ; 0.10; 14000;occ; 125; 0;45742
4; 2226.3; 29-NOV-2010 12:24:14; Bright; 63.0; 13; 87Alp Tau ; 0.87; 3800;occ; 126; 0;45742
5; 2318.6; 29-NOV-2010 12:25:46; Bright; 39.0; 146; 25Eta Tau ; 2.87; 15200;occ; 78; 0;45742
6; 2461.8; 29-NOV-2010 12:28:10; Bright; 37.0; 150; 44Zet Per ; 2.89; 28000;occ; 74; 0;45742
7; 2607.7; 29-NOV-2010 12:30:36; Bright; 36.5; 149; 45Eps Per ; 2.89; 30000;occ; 73; 0;45742
8; 2727.5; 29-NOV-2010 12:32:35; Bright; 35.5; 175; 39Del Per ; 3.01; 19400;occ; 71; 0;45742
9; 2846.7; 29-NOV-2010 12:34:35; Bright; 52.0; 6; 13Alp Aur ; 0.08; 3400;occ; 104; 0;45742
10; 3808.9; 29-NOV-2010 12:50:37; Bright; 39.5; 36; 50Alp UMA ; 1.80; 6300;occ; 79; 0;45742
11; 3905.0; 29-NOV-2010 12:52:13; Bright; 45.0; 82; 48Bet UMA ; 2.37; 10600;occ; 90; 0;45742
12; 4019.9; 29-NOV-2010 12:54:08; Bright; 39.0; 55; 79Zet UMA ; 2.06; 10200;occ; 78; 0;45742
13; 4170.4; 29-NOV-2010 12:56:38; Bright; 52.5; 174; 52Psi UMA ; 3.00; 4400;occ; 105; 0;45742
14; 4325.2; 29-NOV-2010 12:59:13; Bright; 38.5; 152; 12Alp2CVn ; 2.89; 11000;occ; 77; 0;45742
15; 4882.2; 29-NOV-2010 13:08:30; Bright; 56.0; 62; 94Bet Leo ; 2.14; 9700;occ; 112; 0;45742
16; 5083.1; 29-NOV-2010 13:11:51; Bright; 42.5; 121; 29Gam Vir ; 2.74; 7200;occ; 85; 0;45742
17; 5416.7; 29-NOV-2010 13:17:25; Dark ; 46.0; 100; 4Gam Crv ; 2.58; 13100;occ; 92; 0;45742
18; 5511.9; 29-NOV-2010 13:19:00; Dark ; 48.5; 171; 2Eps Crv ; 3.00; 4250;occ; 97; 0;45742
19; 6078.8; 29-NOV-2010 13:28:27; Dark ; 44.0; 113; Mu Vel ; 2.69; 5000;occ; 88; 0;45743
20; 6401.0; 29-NOV-2010 13:33:49; Dark ; 59.5; 0; ; 0.00; 0;occ; 119; 0;45743
21; 6591.3; 29-NOV-2010 13:36:59; Dark ; 49.5; 34; Gam2Vel ; 1.79; 23000;occ; 99; 0;45743
22; 6691.8; 29-NOV-2010 13:38:40; Dark ; 54.5; 70; Zet Pup ; 2.25; 39000;occ; 109; 0;45743
23; 6801.0; 29-NOV-2010 13:40:29; Dark ; 51.0; 2; Alp Car ; -0.74; 7000;occ; 102; 0;45743
24; 6903.6; 29-NOV-2010 13:42:11; Dark ; 65.5; 117; Pi Pup ; 2.71; 3800;occ; 131; 0;45743
25; 7186.8; 29-NOV-2010 13:46:55; Dark ; 44.5; 108; Alp Col ; 2.65; 15200;occ; 89; 0;45743
26; 7534.3; 29-NOV-2010 13:52:42; Dark ; 7.5; 101; 11Alp Lep ; 2.58; 7000;occ; 15; 0;45743
/nas3/ENVISAT/GOMOS/GOM_NL__0P/GOM_NL__0PNPDK20101129_135242_000057173097_00039_45743_2774.N1
1; 1520.3; 29-NOV-2010 13:52:42; Dark ; 53.0; 101; 11Alp Lep ; 2.58; 7000;occ; 106; 0;45743
2; 1645.6; 29-NOV-2010 13:54:47; Dark ; 49.0; 165; 34Gam Eri ; 2.95; 3200;occ; 98; 0;45743
3; 1741.2; 29-NOV-2010 13:56:23; Dark ; 61.0; 7; 19Bet Ori ; 0.10; 14000;occ; 122; 0;45743
4; 2225.8; 29-NOV-2010 14:04:28; Bright; 57.5; 13; 87Alp Tau ; 0.87; 3800;occ; 115; 0;45743
5; 2318.3; 29-NOV-2010 14:06:00; Bright; 40.0; 146; 25Eta Tau ; 2.87; 15200;occ; 80; 0;45743
6; 2461.6; 29-NOV-2010 14:08:23; Bright; 39.0; 150; 44Zet Per ; 2.89; 28000;occ; 78; 0;45743
7; 2607.5; 29-NOV-2010 14:10:49; Bright; 37.0; 149; 45Eps Per ; 2.89; 30000;occ; 74; 0;45743
8; 2727.3; 29-NOV-2010 14:12:49; Bright; 37.0; 175; 39Del Per ; 3.01; 19400;occ; 74; 0;45743
9; 2845.9; 29-NOV-2010 14:14:48; Bright; 48.5; 6; 13Alp Aur ; 0.08; 3400;occ; 97; 0;45743
10; 3808.4; 29-NOV-2010 14:30:50; Bright; 44.0; 36; 50Alp UMA ; 1.80; 6300;occ; 88; 0;45743
11; 3904.7; 29-NOV-2010 14:32:27; Bright; 49.0; 82; 48Bet UMA ; 2.37; 10600;occ; 98; 0;45743
12; 4020.1; 29-NOV-2010 14:34:22; Bright; 38.5; 55; 79Zet UMA ; 2.06; 10200;occ; 77; 0;45743
13; 4170.2; 29-NOV-2010 14:36:52; Bright; 52.0; 174; 52Psi UMA ; 3.00; 4400;occ; 104; 0;45743
14; 4325.2; 29-NOV-2010 14:39:27; Bright; 37.0; 152; 12Alp2CVn ; 2.89; 11000;occ; 74; 0;45743
15; 4883.0; 29-NOV-2010 14:48:45; Bright; 54.5; 62; 94Bet Leo ; 2.14; 9700;occ; 109; 0;45743
16; 5083.7; 29-NOV-2010 14:52:06; Bright; 43.0; 121; 29Gam Vir ; 2.74; 7200;occ; 86; 0;45743
17; 5417.6; 29-NOV-2010 14:57:40; Dark ; 44.5; 100; 4Gam Crv ; 2.58; 13100;occ; 89; 0;45743
18; 5512.7; 29-NOV-2010 14:59:15; Dark ; 46.5; 171; 2Eps Crv ; 3.00; 4250;occ; 93; 0;45743
19; 6079.6; 29-NOV-2010 15:08:42; Dark ; 43.5; 113; Mu Vel ; 2.69; 5000;occ; 87; 0;45744
20; 6402.0; 29-NOV-2010 15:14:04; Dark ; 59.5; 0; ; 0.00; 0;occ; 119; 0;45744
21; 6592.1; 29-NOV-2010 15:17:14; Dark ; 49.0; 34; Gam2Vel ; 1.79; 23000;occ; 98; 0;45744
22; 6693.0; 29-NOV-2010 15:18:55; Dark ; 55.0; 70; Zet Pup ; 2.25; 39000;occ; 110; 0;45744
23; 6801.5; 29-NOV-2010 15:20:43; Dark ; 52.0; 2; Alp Car ; -0.74; 7000;occ; 104; 0;45744
24; 6904.5; 29-NOV-2010 15:22:26; Dark ; 61.5; 117; Pi Pup ; 2.71; 3800;occ; 123; 0;45744
25; 7187.4; 29-NOV-2010 15:27:09; Dark ; 50.0; 108; Alp Col ; 2.65; 15200;occ; 100; 0;45744
/nas3/ENVISAT/GOMOS/GOM_NL__0P/GOM_NL__0PNPDK20101129_153256_000057153097_00040_45744_2775.N1

```

```

1; 1520.5; 29-NOV-2010 15:32:56; Dark ; 58.0; 101; 11Alp Lep ; 2.58; 7000;occ; 116; 0;45744
2; 1645.4; 29-NOV-2010 15:35:01; Dark ; 43.5; 165; 34Gam Eri ; 2.95; 3200;occ; 87; 0;45744
3; 1741.1; 29-NOV-2010 15:36:37; Dark ; 70.0; 7; 19Bet Ori ; 0.10; 14000;occ; 140; 0;45744
4; 2225.6; 29-NOV-2010 15:44:42; Bright; 64.0; 13; 87Alp Tau ; 0.87; 3800;occ; 128; 0;45744
5; 2318.2; 29-NOV-2010 15:46:14; Bright; 39.5; 146; 25Eta Tau ; 2.87; 15200;occ; 79; 0;45744
6; 2461.2; 29-NOV-2010 15:48:37; Bright; 40.0; 150; 44Zet Per ; 2.89; 28000;occ; 80; 0;45744
7; 2607.0; 29-NOV-2010 15:51:03; Bright; 39.0; 149; 45Eps Per ; 2.89; 30000;occ; 78; 0;45744
8; 2726.8; 29-NOV-2010 15:53:03; Bright; 37.5; 175; 39Del Per ; 3.01; 19400;occ; 75; 0;45744
9; 2845.4; 29-NOV-2010 15:55:01; Bright; 49.5; 6; 13Alp Aur ; 0.08; 3400;occ; 99; 0;45744
10; 3808.4; 29-NOV-2010 16:11:04; Bright; 46.5; 36; 50Alp UMa ; 1.80; 6300;occ; 93; 0;45744
11; 3904.3; 29-NOV-2010 16:12:40; Bright; 43.0; 82; 48Bet UMa ; 2.37; 10600;occ; 86; 0;45744
12; 4020.0; 29-NOV-2010 16:14:36; Bright; 38.5; 55; 79Zet UMa ; 2.06; 10200;occ; 77; 0;45744
13; 4169.9; 29-NOV-2010 16:17:06; Bright; 50.5; 174; 52Psi UMa ; 3.00; 4400;occ; 101; 0;45744
14; 4325.3; 29-NOV-2010 16:19:41; Bright; 37.5; 152; 12Alp2CVn ; 2.89; 11000;occ; 75; 0;45744
15; 4883.5; 29-NOV-2010 16:28:59; Bright; 55.5; 62; 94Bet Leo ; 2.14; 9700;occ; 111; 0;45744
16; 5084.2; 29-NOV-2010 16:32:20; Bright; 61.0; 121; 29Gam Vir ; 2.74; 7200;occ; 122; 0;45744
17; 5418.4; 29-NOV-2010 16:37:54; Dark ; 45.0; 100; 4Gam Crv ; 2.58; 13100;occ; 90; 0;45744
18; 5513.4; 29-NOV-2010 16:39:29; Dark ; 50.0; 171; 2Eps Crv ; 3.00; 4250;occ; 100; 0;45744
19; 6080.5; 29-NOV-2010 16:48:56; Dark ; 45.0; 113; Mu Vel ; 2.69; 5000;occ; 90; 0;45745
20; 6402.9; 29-NOV-2010 16:54:19; Dark ; 59.5; 0; ; 0.00; 0;occ; 119; 0;45745
21; 6593.3; 29-NOV-2010 16:57:29; Dark ; 48.0; 34; Gam2Vel ; 1.79; 23000;occ; 96; 0;45745
22; 6693.9; 29-NOV-2010 16:59:10; Dark ; 55.0; 70; Zet Pup ; 2.25; 39000;occ; 110; 0;45745
23; 6802.2; 29-NOV-2010 17:00:58; Dark ; 59.0; 2; Alp Car ; -0.74; 7000;occ; 118; 0;45745
24; 6905.5; 29-NOV-2010 17:02:41; Dark ; 62.5; 117; Pi Pup ; 2.71; 3800;occ; 125; 0;45745
25; 7187.8; 29-NOV-2010 17:07:24; Dark ; 48.0; 108; Alp Col ; 2.65; 15200;occ; 96; 0;45745
/nas3/ENVISAT/GOMOS/GOM_NL__0P/GOM_NL__0PNPDK20101129_170724_000057983097_00041_45745_2776.N1
1; 1173.7; 29-NOV-2010 17:07:24; Dark ; 48.5; 108; Alp Col ; 2.65; 15200;occ; 97; 0;45745
2; 1520.6; 29-NOV-2010 17:13:11; Dark ; 58.5; 101; 11Alp Lep ; 2.58; 7000;occ; 117; 0;45745
3; 1645.5; 29-NOV-2010 17:15:16; Dark ; 48.0; 165; 34Gam Eri ; 2.95; 3200;occ; 96; 0;45745
4; 1741.1; 29-NOV-2010 17:16:51; Dark ; 70.0; 7; 19Bet Ori ; 0.10; 14000;occ; 140; 0;45745
5; 2225.3; 29-NOV-2010 17:24:55; Bright; 57.5; 13; 87Alp Tau ; 0.87; 3800;occ; 115; 0;45745
6; 2318.1; 29-NOV-2010 17:26:28; Bright; 38.0; 146; 25Eta Tau ; 2.87; 15200;occ; 76; 0;45745
7; 2460.8; 29-NOV-2010 17:28:51; Bright; 39.5; 150; 44Zet Per ; 2.89; 28000;occ; 79; 0;45745
8; 2606.5; 29-NOV-2010 17:31:17; Bright; 37.0; 149; 45Eps Per ; 2.89; 30000;occ; 74; 0;45745
9; 2726.5; 29-NOV-2010 17:33:17; Bright; 37.5; 175; 39Del Per ; 3.01; 19400;occ; 75; 0;45745
10; 2844.6; 29-NOV-2010 17:35:15; Bright; 51.0; 6; 13Alp Aur ; 0.08; 3400;occ; 102; 0;45745
11; 3807.9; 29-NOV-2010 17:51:18; Bright; 47.0; 36; 50Alp UMa ; 1.80; 6300;occ; 94; 0;45745
12; 3903.9; 29-NOV-2010 17:52:54; Bright; 45.5; 82; 48Bet UMa ; 2.37; 10600;occ; 91; 0;45745
13; 4019.9; 29-NOV-2010 17:54:50; Bright; 36.0; 55; 79Zet UMa ; 2.06; 10200;occ; 72; 0;45745
14; 4169.6; 29-NOV-2010 17:57:20; Bright; 52.5; 174; 52Psi UMa ; 3.00; 4400;occ; 105; 0;45745
15; 4325.4; 29-NOV-2010 17:59:55; Bright; 39.0; 152; 12Alp2CVn ; 2.89; 11000;occ; 78; 0;45745
16; 4884.3; 29-NOV-2010 18:09:14; Bright; 56.0; 62; 94Bet Leo ; 2.14; 9700;occ; 112; 0;45745
17; 5084.8; 29-NOV-2010 18:12:35; Bright; 43.5; 121; 29Gam Vir ; 2.74; 7200;occ; 87; 0;45745
18; 5419.2; 29-NOV-2010 18:18:09; Dark ; 47.5; 100; 4Gam Crv ; 2.58; 13100;occ; 95; 0;45745
19; 5514.3; 29-NOV-2010 18:19:44; Dark ; 49.5; 171; 2Eps Crv ; 3.00; 4250;occ; 99; 0;45745
20; 6081.3; 29-NOV-2010 18:29:11; Dark ; 47.5; 113; Mu Vel ; 2.69; 5000;occ; 95; 0;45746
21; 6403.7; 29-NOV-2010 18:34:34; Dark ; 59.5; 0; ; 0.00; 0;occ; 119; 0;45746
22; 6594.1; 29-NOV-2010 18:37:44; Dark ; 48.5; 34; Gam2Vel ; 1.79; 23000;occ; 97; 0;45746
23; 6694.9; 29-NOV-2010 18:39:25; Dark ; 56.5; 70; Zet Pup ; 2.25; 39000;occ; 113; 0;45746
24; 6802.7; 29-NOV-2010 18:41:13; Dark ; 59.0; 2; Alp Car ; -0.74; 7000;occ; 118; 0;45746
25; 6906.3; 29-NOV-2010 18:42:56; Dark ; 65.5; 117; Pi Pup ; 2.71; 3800;occ; 131; 0;45746
/nas3/ENVISAT/GOMOS/GOM_NL__0P/GOM_NL__0PNPDK20101129_184738_000057923097_00042_45746_2777.N1
1; 1174.1; 29-NOV-2010 18:47:38; Dark ; 49.0; 108; Alp Col ; 2.65; 15200;occ; 98; 0;45746
2; 1520.6; 29-NOV-2010 18:53:25; Dark ; 53.5; 101; 11Alp Lep ; 2.58; 7000;occ; 107; 0;45746
3; 1645.7; 29-NOV-2010 18:55:30; Dark ; 45.5; 165; 34Gam Eri ; 2.95; 3200;occ; 91; 0;45746
4; 1741.0; 29-NOV-2010 18:57:05; Dark ; 62.5; 7; 19Bet Ori ; 0.10; 14000;occ; 125; 0;45746
5; 2224.9; 29-NOV-2010 19:05:09; Bright; 61.0; 13; 87Alp Tau ; 0.87; 3800;occ; 122; 0;45746
6; 2317.9; 29-NOV-2010 19:06:42; Bright; 39.5; 146; 25Eta Tau ; 2.87; 15200;occ; 79; 0;45746
7; 2460.5; 29-NOV-2010 19:09:05; Bright; 40.0; 150; 44Zet Per ; 2.89; 28000;occ; 80; 0;45746
8; 2606.4; 29-NOV-2010 19:11:31; Bright; 39.0; 149; 45Eps Per ; 2.89; 30000;occ; 78; 0;45746
9; 2726.4; 29-NOV-2010 19:13:31; Bright; 37.0; 175; 39Del Per ; 3.01; 19400;occ; 74; 0;45746
10; 2844.0; 29-NOV-2010 19:15:28; Bright; 50.0; 6; 13Alp Aur ; 0.08; 3400;occ; 100; 0;45746
11; 3807.6; 29-NOV-2010 19:31:32; Bright; 46.5; 36; 50Alp UMa ; 1.80; 6300;occ; 93; 0;45746
12; 3903.6; 29-NOV-2010 19:33:08; Bright; 45.0; 82; 48Bet UMa ; 2.37; 10600;occ; 90; 0;45746
13; 4019.7; 29-NOV-2010 19:35:04; Bright; 39.0; 55; 79Zet UMa ; 2.06; 10200;occ; 78; 0;45746
14; 4169.4; 29-NOV-2010 19:37:34; Bright; 50.5; 174; 52Psi UMa ; 3.00; 4400;occ; 101; 0;45746
15; 4325.3; 29-NOV-2010 19:40:09; Bright; 39.5; 152; 12Alp2CVn ; 2.89; 11000;occ; 79; 0;45746
16; 4884.9; 29-NOV-2010 19:49:29; Bright; 57.0; 62; 94Bet Leo ; 2.14; 9700;occ; 114; 0;45746

```



```

17; 5085.3; 29-NOV-2010 19:52:49; Bright; 59.5; 121; 29Gam Vir ; 2.74; 7200;occ; 119; 0;45746
18; 5420.0; 29-NOV-2010 19:58:24; Dark ; 47.0; 100; 4Gam Crv ; 2.58; 13100;occ; 94; 0;45746
19; 5515.0; 29-NOV-2010 19:59:59; Dark ; 47.5; 171; 2Eps Crv ; 3.00; 4250;occ; 95; 0;45746
20; 6081.9; 29-NOV-2010 20:09:26; Dark ; 48.0; 113; Mu Vel ; 2.69; 5000;occ; 96; 0;45747
21; 6404.5; 29-NOV-2010 20:14:49; Dark ; 59.5; 0; ; 0.00; 0;occ; 119; 0;45747
22; 6594.8; 29-NOV-2010 20:17:59; Dark ; 51.5; 34; Gam2Vel ; 1.79; 23000;occ; 103; 0;45747
23; 6696.2; 29-NOV-2010 20:19:40; Dark ; 59.0; 70; Zet Pup ; 2.25; 39000;occ; 118; 0;45747
24; 6803.2; 29-NOV-2010 20:21:27; Dark ; 59.0; 2; Alp Car ; -0.74; 7000;occ; 118; 0;45747
25; 6907.1; 29-NOV-2010 20:23:11; Dark ; 60.0; 117; Pi Pup ; 2.71; 3800;occ; 120; 0;45747
/nas3/ENVISAT/GOMOS/GOM_NL__0P/GOM_NL__0PNPDE20101130_035240_000051013097_00047_45751_1788.N1
 1; -2208.2; 30-NOV-2010 03:52:40; Bright; 44.0; 36; 50Alp UMA ; 1.80; 6300;occ; 88; 0;45751
 2; -2112.3; 30-NOV-2010 03:54:16; Bright; 47.5; 82; 48Bet UMA ; 2.37; 10600;occ; 95; 0;45751
 3; -2018.5; 30-NOV-2010 03:55:50; Bright; 40.0; 32; 77Eps UMA ; 1.76; 11000;occ; 80; 0;45751
 4; -1845.9; 30-NOV-2010 03:58:42; Bright; 51.5; 174; 52Psi UMA ; 3.00; 4400;occ; 103; 0;45751
 5; -1688.6; 30-NOV-2010 04:01:20; Bright; 52.5; 152; 12Alp2CVn ; 2.89; 11000;occ; 105; 0;45751
 6; -1182.4; 30-NOV-2010 04:09:46; Bright; 41.5; 138; 47Eps Vir ; 2.83; 4700;occ; 83; 0;45751
 7; -926.1; 30-NOV-2010 04:14:02; Bright; 43.0; 121; 29Gam Vir ; 2.74; 7200;occ; 86; 0;45751
 8; -590.3; 30-NOV-2010 04:19:38; Dark ; 50.5; 100; 4Gam Crv ; 2.58; 13100;occ; 101; 0;45751
 9; -495.4; 30-NOV-2010 04:21:13; Dark ; 54.5; 171; 2Eps Crv ; 3.00; 4250;occ; 109; 0;45751
10; 71.6; 30-NOV-2010 04:30:40; Dark ; 44.5; 113; Mu Vel ; 2.69; 5000;occ; 89; 0;45752
11; 394.7; 30-NOV-2010 04:36:03; Dark ; 59.5; 0; ; 0.00; 0;occ; 119; 0;45752
12; 585.0; 30-NOV-2010 04:39:13; Dark ; 47.5; 34; Gam2Vel ; 1.79; 23000;occ; 95; 0;45752
13; 791.7; 30-NOV-2010 04:42:40; Dark ; 57.0; 2; Alp Car ; -0.74; 7000;occ; 114; 0;45752
14; 897.5; 30-NOV-2010 04:44:26; Dark ; 61.0; 117; Pi Pup ; 2.71; 3800;occ; 122; 0;45752
15; 1176.8; 30-NOV-2010 04:49:05; Dark ; 48.5; 108; Alp Col ; 2.65; 15200;occ; 97; 0;45752
16; 1521.5; 30-NOV-2010 04:54:50; Dark ; 54.5; 101; 11Alp Lep ; 2.58; 7000;occ; 109; 0;45752
17; 1740.6; 30-NOV-2010 04:58:29; Dark ; 61.0; 7; 19Bet Ori ; 0.10; 14000;occ; 122; 0;45752
18; 2222.6; 30-NOV-2010 05:06:31; Bright; 58.0; 13; 87Alp Tau ; 0.87; 3800;occ; 116; 0;45752
19; 2316.9; 30-NOV-2010 05:08:05; Bright; 40.0; 146; 25Eta Tau ; 2.87; 15200;occ; 80; 0;45752
20; 2459.1; 30-NOV-2010 05:10:27; Bright; 39.0; 150; 44Zet Per ; 2.89; 28000;occ; 78; 0;45752
21; 2604.9; 30-NOV-2010 05:12:53; Bright; 38.5; 149; 45Eps Per ; 2.89; 30000;occ; 77; 0;45752
22; 2725.1; 30-NOV-2010 05:14:53; Bright; 37.0; 175; 39Del Per ; 3.01; 19400;occ; 74; 0;45752
23; 2840.0; 30-NOV-2010 05:16:48; Bright; 53.0; 6; 13Alp Aur ; 0.08; 3400;occ; 106; 0;45752
/nas3/ENVISAT/GOMOS/GOM_NL__0P/GOM_NL__0PNPDE20101130_053254_000050953097_00048_45752_1789.N1
 1; -2208.5; 30-NOV-2010 05:32:54; Bright; 44.0; 36; 50Alp UMA ; 1.80; 6300;occ; 88; 0;45752
 2; -2112.6; 30-NOV-2010 05:34:30; Bright; 46.5; 82; 48Bet UMA ; 2.37; 10600;occ; 93; 0;45752
 3; -2018.7; 30-NOV-2010 05:36:04; Bright; 40.0; 32; 77Eps UMA ; 1.76; 11000;occ; 80; 0;45752
 4; -1846.1; 30-NOV-2010 05:38:56; Bright; 50.0; 174; 52Psi UMA ; 3.00; 4400;occ; 100; 0;45752
 5; -1688.5; 30-NOV-2010 05:41:34; Bright; 58.0; 152; 12Alp2CVn ; 2.89; 11000;occ; 116; 0;45752
 6; -1125.4; 30-NOV-2010 05:50:57; Bright; 57.0; 62; 94Bet Leo ; 2.14; 9700;occ; 114; 0;45752
 7; -925.5; 30-NOV-2010 05:54:17; Bright; 44.5; 121; 29Gam Vir ; 2.74; 7200;occ; 89; 0;45752
 8; -589.6; 30-NOV-2010 05:59:53; Dark ; 48.5; 100; 4Gam Crv ; 2.58; 13100;occ; 97; 0;45752
 9; -494.5; 30-NOV-2010 06:01:28; Dark ; 49.0; 171; 2Eps Crv ; 3.00; 4250;occ; 98; 0;45752
10; 72.3; 30-NOV-2010 06:10:55; Dark ; 45.5; 113; Mu Vel ; 2.69; 5000;occ; 91; 0;45753
11; 395.5; 30-NOV-2010 06:16:18; Dark ; 59.5; 0; ; 0.00; 0;occ; 119; 0;45753
12; 586.1; 30-NOV-2010 06:19:28; Dark ; 49.5; 34; Gam2Vel ; 1.79; 23000;occ; 99; 0;45753
13; 792.3; 30-NOV-2010 06:22:55; Dark ; 59.0; 2; Alp Car ; -0.74; 7000;occ; 118; 0;45753
14; 898.3; 30-NOV-2010 06:24:41; Dark ; 61.5; 117; Pi Pup ; 2.71; 3800;occ; 123; 0;45753
15; 1177.2; 30-NOV-2010 06:29:20; Dark ; 47.5; 108; Alp Col ; 2.65; 15200;occ; 95; 0;45753
16; 1521.7; 30-NOV-2010 06:35:04; Dark ; 54.5; 101; 11Alp Lep ; 2.58; 7000;occ; 109; 0;45753
17; 1740.6; 30-NOV-2010 06:38:43; Dark ; 62.5; 7; 19Bet Ori ; 0.10; 14000;occ; 125; 0;45753
18; 2222.2; 30-NOV-2010 06:46:45; Bright; 63.0; 13; 87Alp Tau ; 0.87; 3800;occ; 126; 0;45753
19; 2316.9; 30-NOV-2010 06:48:19; Bright; 40.0; 146; 25Eta Tau ; 2.87; 15200;occ; 80; 0;45753
20; 2459.0; 30-NOV-2010 06:50:41; Bright; 38.0; 150; 44Zet Per ; 2.89; 28000;occ; 76; 0;45753
21; 2604.4; 30-NOV-2010 06:53:07; Bright; 38.5; 149; 45Eps Per ; 2.89; 30000;occ; 77; 0;45753
22; 2724.9; 30-NOV-2010 06:55:07; Bright; 37.0; 175; 39Del Per ; 3.01; 19400;occ; 74; 0;45753
23; 2839.3; 30-NOV-2010 06:57:02; Bright; 47.5; 6; 13Alp Aur ; 0.08; 3400;occ; 95; 0;45753
/nas3/ENVISAT/GOMOS/GOM_NL__0P/GOM_NL__0PNPDE20101130_194734_000039903097_00057_45761_1792.N1
 1; 959.6; 30-NOV-2010 19:47:34; Dark ; 61.0; 117; Pi Pup ; 2.71; 3800;occ; 122; 109;45761
 2; 1180.6; 30-NOV-2010 19:51:15; Dark ; 45.0; 108; Alp Col ; 2.65; 15200;occ; 90; 0;45761
 3; 1522.8; 30-NOV-2010 19:56:58; Dark ; 54.5; 101; 11Alp Lep ; 2.58; 7000;occ; 109; 0;45761
 4; 1739.6; 30-NOV-2010 20:00:34; Dark ; 61.0; 7; 19Bet Ori ; 0.10; 14000;occ; 122; 0;45761
 5; 2219.4; 30-NOV-2010 20:08:34; Bright; 60.0; 13; 87Alp Tau ; 0.87; 3800;occ; 120; 0;45761
 6; 2315.1; 30-NOV-2010 20:10:10; Bright; 39.0; 146; 25Eta Tau ; 2.87; 15200;occ; 78; 0;45761
 7; 2457.1; 30-NOV-2010 20:12:32; Bright; 37.5; 150; 44Zet Per ; 2.89; 28000;occ; 75; 0;45761
 8; 2602.3; 30-NOV-2010 20:14:57; Bright; 37.5; 149; 45Eps Per ; 2.89; 30000;occ; 75; 0;45761
 9; 2723.2; 30-NOV-2010 20:16:58; Bright; 37.0; 175; 39Del Per ; 3.01; 19400;occ; 74; 0;45761
10; 2833.6; 30-NOV-2010 20:18:48; Bright; 50.5; 6; 13Alp Aur ; 0.08; 3400;occ; 101; 0;45761

```

```

11; 2943.3; 30-NOV-2010 20:20:38; Bright; 33.0; 42; 34Bet Aur ; 1.90; 10200;occ; 66; 0;45761
12; 3802.3; 30-NOV-2010 20:34:57; Bright; 45.0; 36; 50Alp UMa ; 1.80; 6300;occ; 90; 0;45761
13; 3898.1; 30-NOV-2010 20:36:33; Bright; 46.0; 82; 48Bet UMa ; 2.37; 10600;occ; 92; 0;45761
14; 3994.6; 30-NOV-2010 20:38:09; Bright; 37.0; 32; 77Eps UMa ; 1.76; 11000;occ; 74; 0;45761
15; 4165.7; 30-NOV-2010 20:41:00; Bright; 52.0; 174; 52Psi UMa ; 3.00; 4400;occ; 104; 0;45761
16; 4326.2; 30-NOV-2010 20:43:41; Bright; 44.0; 152; 12Alp2CVn ; 2.89; 11000;occ; 88; 0;45761
17; 4894.6; 30-NOV-2010 20:53:09; Bright; 55.5; 62; 94Bet Leo ; 2.14; 9700;occ; 111; 0;45761
/nas3/ENVISAT/GOMOS/GOM_NL__0P/GOM_NL__0PNPDK20101130_071307_000037213097_00049_45753_2778.N1
 1;-2209.0; 30-NOV-2010 07:13:07; Bright; 45.0; 36; 50Alp UMa ; 1.80; 6300;occ; 90; 0;45753
 2;-2113.0; 30-NOV-2010 07:14:43; Bright; 46.5; 82; 48Bet UMa ; 2.37; 10600;occ; 93; 0;45753
 3;-2018.8; 30-NOV-2010 07:16:18; Bright; 41.0; 32; 77Eps UMa ; 1.76; 11000;occ; 82; 0;45753
 4;-1846.3; 30-NOV-2010 07:19:10; Bright; 52.0; 174; 52Psi UMa ; 3.00; 4400;occ; 104; 0;45753
 5;-1688.3; 30-NOV-2010 07:21:48; Bright; 39.5; 152; 12Alp2CVn ; 2.89; 11000;occ; 79; 0;45753
 6;-1124.8; 30-NOV-2010 07:31:12; Bright; 56.0; 62; 94Bet Leo ; 2.14; 9700;occ; 112; 0;45753
 7; -924.9; 30-NOV-2010 07:34:32; Bright; 61.0; 121; 29Gam Vir ; 2.74; 7200;occ; 122; 0;45753
 8; -588.9; 30-NOV-2010 07:40:08; Dark ; 48.0; 100; 4Gam Crv ; 2.58; 13100;occ; 96; 0;45753
 9; -493.7; 30-NOV-2010 07:41:43; Dark ; 49.0; 171; 2Eps Crv ; 3.00; 4250;occ; 98; 0;45753
10; 73.2; 30-NOV-2010 07:51:10; Dark ; 45.0; 113; Mu Vel ; 2.69; 5000;occ; 90; 0;45754
11; 396.3; 30-NOV-2010 07:56:33; Dark ; 59.5; 0; ; 0.00; 0;occ; 119; 0;45754
12; 586.9; 30-NOV-2010 07:59:43; Dark ; 47.0; 34; Gam2Vel ; 1.79; 23000;occ; 94; 0;45754
13; 792.9; 30-NOV-2010 08:03:09; Dark ; 57.0; 2; Alp Car ; -0.74; 7000;occ; 114; 0;45754
14; 899.2; 30-NOV-2010 08:04:56; Dark ; 62.0; 117; Pi Pup ; 2.71; 3800;occ; 124; 0;45754
15; 1177.7; 30-NOV-2010 08:09:34; Dark ; 47.0; 108; Alp Col ; 2.65; 15200;occ; 94; 0;45754
16; 1460.4; 30-NOV-2010 08:14:17; Dark ; 52.0; 139; 9Bet Lep ; 2.83; 5600;occ; 104; 0;45754
/nas3/ENVISAT/GOMOS/GOM_NL__0P/GOM_NL__0PNPDK20101130_081857_000057853097_00050_45754_2779.N1
 1; 1740.4; 30-NOV-2010 08:18:57; Dark ; 60.5; 7; 19Bet Ori ; 0.10; 14000;occ; 121; 0;45754
 2; 2221.8; 30-NOV-2010 08:26:58; Bright; 64.0; 13; 87Alp Tau ; 0.87; 3800;occ; 128; 0;45754
 3; 2316.7; 30-NOV-2010 08:28:33; Bright; 39.0; 146; 25Eta Tau ; 2.87; 15200;occ; 78; 0;45754
 4; 2458.6; 30-NOV-2010 08:30:55; Bright; 39.0; 150; 44Zet Per ; 2.89; 28000;occ; 78; 0;45754
 5; 2604.3; 30-NOV-2010 08:33:21; Bright; 38.5; 149; 45Eps Per ; 2.89; 30000;occ; 77; 0;45754
 6; 2724.7; 30-NOV-2010 08:35:21; Bright; 36.5; 175; 39Del Per ; 3.01; 19400;occ; 73; 0;45754
 7; 2838.6; 30-NOV-2010 08:37:15; Bright; 48.0; 6; 13Alp Aur ; 0.08; 3400;occ; 96; 0;45754
 8; 3804.8; 30-NOV-2010 08:53:21; Bright; 44.0; 36; 50Alp UMa ; 1.80; 6300;occ; 88; 0;45754
 9; 3900.6; 30-NOV-2010 08:54:57; Bright; 46.5; 82; 48Bet UMa ; 2.37; 10600;occ; 93; 0;45754
10; 3995.3; 30-NOV-2010 08:56:32; Bright; 37.5; 32; 77Eps UMa ; 1.76; 11000;occ; 75; 0;45754
11; 4167.5; 30-NOV-2010 08:59:24; Bright; 76.0; 174; 52Psi UMa ; 3.00; 4400;occ; 152; 0;45754
12; 4325.8; 30-NOV-2010 09:02:02; Bright; 38.0; 152; 12Alp2CVn ; 2.89; 11000;occ; 76; 0;45754
13; 4890.0; 30-NOV-2010 09:11:26; Bright; 79.0; 62; 94Bet Leo ; 2.14; 9700;occ; 158; 0;45754
14; 5089.6; 30-NOV-2010 09:14:46; Bright; 43.0; 121; 29Gam Vir ; 2.74; 7200;occ; 86; 0;45754
15; 5426.0; 30-NOV-2010 09:20:22; Dark ; 47.0; 100; 4Gam Crv ; 2.58; 13100;occ; 94; 0;45754
16; 5521.1; 30-NOV-2010 09:21:57; Dark ; 48.0; 171; 2Eps Crv ; 3.00; 4250;occ; 96; 0;45754
17; 6088.0; 30-NOV-2010 09:31:24; Dark ; 44.5; 113; Mu Vel ; 2.69; 5000;occ; 89; 0;45755
18; 6411.2; 30-NOV-2010 09:36:48; Dark ; 59.5; 0; ; 0.00; 0;occ; 119; 0;45755
19; 6602.0; 30-NOV-2010 09:39:58; Dark ; 50.5; 34; Gam2Vel ; 1.79; 23000;occ; 101; 0;45755
20; 6807.3; 30-NOV-2010 09:43:24; Dark ; 47.5; 2; Alp Car ; -0.74; 7000;occ; 95; 0;45755
21; 6914.1; 30-NOV-2010 09:45:11; Dark ; 62.5; 117; Pi Pup ; 2.71; 3800;occ; 125; 0;45755
22; 7192.1; 30-NOV-2010 09:49:49; Dark ; 45.0; 108; Alp Col ; 2.65; 15200;occ; 90; 0;45755
23; 7474.5; 30-NOV-2010 09:54:31; Dark ; 51.5; 139; 9Bet Lep ; 2.83; 5600;occ; 103; 0;45755
/nas3/ENVISAT/GOMOS/GOM_NL__0P/GOM_NL__0PNPDK20101130_095911_000057833097_00051_45755_2780.N1
 1; 1740.2; 30-NOV-2010 09:59:11; Dark ; 62.0; 7; 19Bet Ori ; 0.10; 14000;occ; 124; 0;45755
 2; 2221.5; 30-NOV-2010 10:07:12; Bright; 49.5; 13; 87Alp Tau ; 0.87; 3800;occ; 99; 0;45755
 3; 2316.3; 30-NOV-2010 10:08:47; Bright; 38.0; 146; 25Eta Tau ; 2.87; 15200;occ; 76; 0;45755
 4; 2458.4; 30-NOV-2010 10:11:09; Bright; 39.5; 150; 44Zet Per ; 2.89; 28000;occ; 79; 0;45755
 5; 2603.9; 30-NOV-2010 10:13:34; Bright; 38.0; 149; 45Eps Per ; 2.89; 30000;occ; 76; 0;45755
 6; 2724.6; 30-NOV-2010 10:15:35; Bright; 37.0; 175; 39Del Per ; 3.01; 19400;occ; 74; 0;45755
 7; 2838.0; 30-NOV-2010 10:17:28; Bright; 50.0; 6; 13Alp Aur ; 0.08; 3400;occ; 100; 0;45755
 8; 3804.5; 30-NOV-2010 10:33:35; Bright; 45.0; 36; 50Alp UMa ; 1.80; 6300;occ; 90; 0;45755
 9; 3900.2; 30-NOV-2010 10:35:11; Bright; 45.5; 82; 48Bet UMa ; 2.37; 10600;occ; 91; 0;45755
10; 3995.2; 30-NOV-2010 10:36:46; Bright; 50.5; 32; 77Eps UMa ; 1.76; 11000;occ; 101; 0;45755
11; 4167.2; 30-NOV-2010 10:39:38; Bright; 51.0; 174; 52Psi UMa ; 3.00; 4400;occ; 102; 0;45755
12; 4325.8; 30-NOV-2010 10:42:16; Bright; 38.0; 152; 12Alp2CVn ; 2.89; 11000;occ; 76; 0;45755
13; 4890.6; 30-NOV-2010 10:51:41; Bright; 54.0; 62; 94Bet Leo ; 2.14; 9700;occ; 108; 0;45755
14; 5090.3; 30-NOV-2010 10:55:01; Bright; 44.5; 121; 29Gam Vir ; 2.74; 7200;occ; 89; 0;45755
15; 5426.6; 30-NOV-2010 11:00:37; Dark ; 46.5; 100; 4Gam Crv ; 2.58; 13100;occ; 93; 0;45755
16; 5521.9; 30-NOV-2010 11:02:12; Dark ; 48.0; 171; 2Eps Crv ; 3.00; 4250;occ; 96; 0;45755
17; 6088.7; 30-NOV-2010 11:11:39; Dark ; 45.0; 113; Mu Vel ; 2.69; 5000;occ; 90; 0;45756
18; 6412.0; 30-NOV-2010 11:17:02; Dark ; 59.5; 0; ; 0.00; 0;occ; 119; 0;45756
19; 6602.7; 30-NOV-2010 11:20:13; Dark ; 47.0; 34; Gam2Vel ; 1.79; 23000;occ; 94; 0;45756

```

```

20; 6807.8; 30-NOV-2010 11:23:38; Dark ; 53.5; 2; Alp Car ; -0.74; 7000;occ; 107; 0;45756
21; 6914.9; 30-NOV-2010 11:25:25; Dark ; 65.5; 117; Pi Pup ; 2.71; 3800;occ; 131; 0;45756
22; 7192.5; 30-NOV-2010 11:30:03; Dark ; 46.0; 108; Alp Col ; 2.65; 15200;occ; 92; 0;45756
23; 7474.7; 30-NOV-2010 11:34:45; Dark ; 49.0; 139; 9Bet Lep ; 2.83; 5600;occ; 98; 0;45756
/nas3/ENVISAT/GOMOS/GOM_NL__0P/GOM_NL__0PNPDK20101130_113925_000057873097_00052_45756_2781.N1
1; 1740.3; 30-NOV-2010 11:39:25; Dark ; 67.5; 7; 19Bet Ori ; 0.10; 14000;occ; 135; 0;45756
2; 2221.2; 30-NOV-2010 11:47:26; Bright; 53.0; 13; 87Alp Tau ; 0.87; 3800;occ; 106; 0;45756
3; 2316.1; 30-NOV-2010 11:49:01; Bright; 37.5; 146; 25Eta Tau ; 2.87; 15200;occ; 75; 0;45756
4; 2458.0; 30-NOV-2010 11:51:22; Bright; 39.0; 150; 44Zet Per ; 2.89; 28000;occ; 78; 0;45756
5; 2603.7; 30-NOV-2010 11:53:48; Bright; 37.5; 149; 45Eps Per ; 2.89; 30000;occ; 75; 0;45756
6; 2724.3; 30-NOV-2010 11:55:49; Bright; 36.5; 175; 39Del Per ; 3.01; 19400;occ; 73; 0;45756
7; 2837.3; 30-NOV-2010 11:57:42; Bright; 50.5; 6; 13Alp Aur ; 0.08; 3400;occ; 101; 0;45756
8; 3804.2; 30-NOV-2010 12:13:49; Bright; 42.0; 36; 50Alp UMa ; 1.80; 6300;occ; 84; 0;45756
9; 3900.0; 30-NOV-2010 12:15:24; Bright; 46.5; 82; 48Bet UMa ; 2.37; 10600;occ; 93; 0;45756
10; 3995.1; 30-NOV-2010 12:16:59; Bright; 40.5; 32; 77Eps UMa ; 1.76; 11000;occ; 81; 0;45756
11; 4166.9; 30-NOV-2010 12:19:51; Bright; 51.5; 174; 52Psi UMa ; 3.00; 4400;occ; 103; 0;45756
12; 4325.8; 30-NOV-2010 12:22:30; Bright; 38.5; 152; 12Alp2CVn ; 2.89; 11000;occ; 77; 0;45756
13; 4891.2; 30-NOV-2010 12:31:56; Bright; 56.5; 62; 94Bet Leo ; 2.14; 9700;occ; 113; 0;45756
14; 5090.8; 30-NOV-2010 12:35:15; Bright; 47.5; 121; 29Gam Vir ; 2.74; 7200;occ; 95; 0;45756
15; 5427.5; 30-NOV-2010 12:40:52; Dark ; 48.5; 100; 4Gam Crv ; 2.58; 13100;occ; 97; 0;45756
16; 5522.6; 30-NOV-2010 12:42:27; Dark ; 51.0; 171; 2Eps Crv ; 3.00; 4250;occ; 102; 0;45756
17; 6089.4; 30-NOV-2010 12:51:54; Dark ; 44.0; 113; Mu Vel ; 2.69; 5000;occ; 88; 0;45757
18; 6412.8; 30-NOV-2010 12:57:17; Dark ; 59.5; 0; ; 0.00; 0;occ; 119; 0;45757
19; 6603.6; 30-NOV-2010 13:00:28; Dark ; 49.5; 34; Gam2Vel ; 1.79; 23000;occ; 99; 0;45757
20; 6808.3; 30-NOV-2010 13:03:53; Dark ; 51.0; 2; Alp Car ; -0.74; 7000;occ; 102; 0;45757
21; 6915.8; 30-NOV-2010 13:05:40; Dark ; 68.0; 117; Pi Pup ; 2.71; 3800;occ; 136; 0;45757
22; 7192.9; 30-NOV-2010 13:10:17; Dark ; 46.5; 108; Alp Col ; 2.65; 15200;occ; 93; 0;45757
23; 7474.9; 30-NOV-2010 13:14:59; Dark ; 53.0; 139; 9Bet Lep ; 2.83; 5600;occ; 106; 0;45757
/nas3/ENVISAT/GOMOS/GOM_NL__0P/GOM_NL__0PNPDK20101130_131514_000057643097_00053_45757_2782.N1
1; 1475.4; 30-NOV-2010 13:15:14; Dark ; 53.5; 139; 9Bet Lep ; 2.83; 5600;occ; 107; 29;45757
2; 1740.0; 30-NOV-2010 13:19:38; Dark ; 58.5; 7; 19Bet Ori ; 0.10; 14000;occ; 117; 0;45757
3; 2220.9; 30-NOV-2010 13:27:39; Bright; 56.5; 13; 87Alp Tau ; 0.87; 3800;occ; 113; 0;45757
4; 2316.0; 30-NOV-2010 13:29:14; Bright; 40.0; 146; 25Eta Tau ; 2.87; 15200;occ; 80; 0;45757
5; 2457.8; 30-NOV-2010 13:31:36; Bright; 39.5; 150; 44Zet Per ; 2.89; 28000;occ; 79; 0;45757
6; 2603.5; 30-NOV-2010 13:34:02; Bright; 38.5; 149; 45Eps Per ; 2.89; 30000;occ; 77; 0;45757
7; 2724.2; 30-NOV-2010 13:36:03; Bright; 36.0; 175; 39Del Per ; 3.01; 19400;occ; 72; 0;45757
8; 2836.7; 30-NOV-2010 13:37:55; Bright; 51.0; 6; 13Alp Aur ; 0.08; 3400;occ; 102; 0;45757
9; 3803.8; 30-NOV-2010 13:54:02; Bright; 44.0; 36; 50Alp UMa ; 1.80; 6300;occ; 88; 0;45757
10; 3899.8; 30-NOV-2010 13:55:38; Bright; 46.5; 82; 48Bet UMa ; 2.37; 10600;occ; 93; 0;45757
11; 3995.2; 30-NOV-2010 13:57:14; Bright; 37.5; 32; 77Eps UMa ; 1.76; 11000;occ; 75; 0;45757
12; 4166.6; 30-NOV-2010 14:00:05; Bright; 52.0; 174; 52Psi UMa ; 3.00; 4400;occ; 104; 0;45757
13; 4326.0; 30-NOV-2010 14:02:44; Bright; 40.5; 152; 12Alp2CVn ; 2.89; 11000;occ; 81; 0;45757
14; 4892.0; 30-NOV-2010 14:12:10; Bright; 57.0; 62; 94Bet Leo ; 2.14; 9700;occ; 114; 0;45757
15; 5091.6; 30-NOV-2010 14:15:30; Bright; 41.0; 121; 29Gam Vir ; 2.74; 7200;occ; 82; 0;45757
16; 5428.4; 30-NOV-2010 14:21:07; Dark ; 44.0; 100; 4Gam Crv ; 2.58; 13100;occ; 88; 0;45757
17; 5523.5; 30-NOV-2010 14:22:42; Dark ; 47.5; 171; 2Eps Crv ; 3.00; 4250;occ; 95; 0;45757
18; 6090.4; 30-NOV-2010 14:32:09; Dark ; 45.5; 113; Mu Vel ; 2.69; 5000;occ; 91; 0;45758
19; 6413.7; 30-NOV-2010 14:37:32; Dark ; 59.5; 0; ; 0.00; 0;occ; 119; 0;45758
20; 6604.6; 30-NOV-2010 14:40:43; Dark ; 48.5; 34; Gam2Vel ; 1.79; 23000;occ; 97; 0;45758
21; 6808.8; 30-NOV-2010 14:44:07; Dark ; 56.0; 2; Alp Car ; -0.74; 7000;occ; 112; 0;45758
22; 6916.8; 30-NOV-2010 14:45:55; Dark ; 60.0; 117; Pi Pup ; 2.71; 3800;occ; 120; 0;45758
23; 7193.4; 30-NOV-2010 14:50:32; Dark ; 47.0; 108; Alp Col ; 2.65; 15200;occ; 94; 0;45758
/nas3/ENVISAT/GOMOS/GOM_NL__0P/GOM_NL__0PNPDK20101130_145615_000056983097_00054_45758_2783.N1
1; 1522.4; 30-NOV-2010 14:56:15; Dark ; 57.0; 101; 11Alp Lep ; 2.58; 7000;occ; 114; 0;45758
2; 1739.9; 30-NOV-2010 14:59:52; Dark ; 60.5; 7; 19Bet Ori ; 0.10; 14000;occ; 121; 0;45758
3; 2220.5; 30-NOV-2010 15:07:53; Bright; 55.0; 13; 87Alp Tau ; 0.87; 3800;occ; 110; 0;45758
4; 2315.8; 30-NOV-2010 15:09:28; Bright; 40.0; 146; 25Eta Tau ; 2.87; 15200;occ; 80; 0;45758
5; 2457.8; 30-NOV-2010 15:11:50; Bright; 38.0; 150; 44Zet Per ; 2.89; 28000;occ; 76; 0;45758
6; 2603.4; 30-NOV-2010 15:14:16; Bright; 37.0; 149; 45Eps Per ; 2.89; 30000;occ; 74; 0;45758
7; 2724.0; 30-NOV-2010 15:16:16; Bright; 36.0; 175; 39Del Per ; 3.01; 19400;occ; 72; 0;45758
8; 2836.2; 30-NOV-2010 15:18:09; Bright; 47.5; 6; 13Alp Aur ; 0.08; 3400;occ; 95; 0;45758
9; 2946.5; 30-NOV-2010 15:19:59; Bright; 28.0; 42; 34Bet Aur ; 1.90; 10200;occ; 56; 0;45758
10; 3803.4; 30-NOV-2010 15:34:16; Bright; 45.5; 36; 50Alp UMa ; 1.80; 6300;occ; 91; 0;45758
11; 3899.2; 30-NOV-2010 15:35:52; Bright; 46.0; 82; 48Bet UMa ; 2.37; 10600;occ; 92; 0;45758
12; 3995.1; 30-NOV-2010 15:37:27; Bright; 41.0; 32; 77Eps UMa ; 1.76; 11000;occ; 82; 0;45758
13; 4166.6; 30-NOV-2010 15:40:19; Bright; 53.5; 174; 52Psi UMa ; 3.00; 4400;occ; 107; 0;45758
14; 4326.1; 30-NOV-2010 15:42:59; Bright; 38.0; 152; 12Alp2CVn ; 2.89; 11000;occ; 76; 0;45758
15; 4892.6; 30-NOV-2010 15:52:25; Bright; 64.5; 62; 94Bet Leo ; 2.14; 9700;occ; 129; 0;45758

```

16; 5091.9; 30-NOV-2010 15:55:44; Bright; 44.0; 121; 29Gam Vir ; 2.74; 7200;occ; 88; 0;45758
 17; 5429.2; 30-NOV-2010 16:01:22; Dark ; 45.5; 100; 4Gam Crv ; 2.58; 13100;occ; 91; 0;45758
 18; 5524.3; 30-NOV-2010 16:02:57; Dark ; 50.0; 171; 2Eps Crv ; 3.00; 4250;occ; 100; 0;45758
 19; 6091.2; 30-NOV-2010 16:12:24; Dark ; 43.0; 113; Mu Vel ; 2.69; 5000;occ; 86; 0;45759
 20; 6414.7; 30-NOV-2010 16:17:47; Dark ; 59.5; 0; ; 0.00; 0;occ; 119; 0;45759
 21; 6605.6; 30-NOV-2010 16:20:58; Dark ; 47.5; 34; Gam2Vel ; 1.79; 23000;occ; 95; 0;45759
 22; 6809.5; 30-NOV-2010 16:24:22; Dark ; 55.5; 2; Alp Car ; -0.74; 7000;occ; 111; 0;45759
 23; 6917.5; 30-NOV-2010 16:26:10; Dark ; 56.5; 117; Pi Pup ; 2.71; 3800;occ; 113; 0;45759
 24; 7193.7; 30-NOV-2010 16:30:46; Dark ; 27.5; 108; Alp Col ; 2.65; 15200;occ; 55; 0;45759

/nas3/ENVISAT/GOMOS/GOM_NL__0P/GOM_NL__0PNPDK20101130_163046_000058003097_00055_45759_2784.N1

1; 1179.6; 30-NOV-2010 16:30:46; Dark ; 47.5; 108; Alp Col ; 2.65; 15200;occ; 95; 0;45759
 2; 1522.7; 30-NOV-2010 16:36:29; Dark ; 54.5; 101; 11Alp Lep ; 2.58; 7000;occ; 109; 0;45759
 3; 1740.1; 30-NOV-2010 16:40:07; Dark ; 61.5; 7; 19Bet Ori ; 0.10; 14000;occ; 123; 0;45759
 4; 2220.0; 30-NOV-2010 16:48:07; Bright; 57.0; 13; 87Alp Tau ; 0.87; 3800;occ; 114; 0;45759
 5; 2315.7; 30-NOV-2010 16:49:42; Bright; 39.5; 146; 25Eta Tau ; 2.87; 15200;occ; 79; 0;45759
 6; 2457.5; 30-NOV-2010 16:52:04; Bright; 39.0; 150; 44Zet Per ; 2.89; 28000;occ; 78; 0;45759
 7; 2602.9; 30-NOV-2010 16:54:29; Bright; 37.5; 149; 45Eps Per ; 2.89; 30000;occ; 75; 0;45759
 8; 2723.7; 30-NOV-2010 16:56:30; Bright; 37.5; 175; 39Del Per ; 3.01; 19400;occ; 75; 0;45759
 9; 2835.3; 30-NOV-2010 16:58:22; Bright; 51.0; 6; 13Alp Aur ; 0.08; 3400;occ; 102; 0;45759
 10; 2945.2; 30-NOV-2010 17:00:12; Bright; 28.0; 42; 34Bet Aur ; 1.90; 10200;occ; 56; 0;45759
 11; 3803.1; 30-NOV-2010 17:14:30; Bright; 47.5; 36; 50Alp UMa ; 1.80; 6300;occ; 95; 0;45759
 12; 3898.9; 30-NOV-2010 17:16:05; Bright; 46.0; 82; 48Bet UMa ; 2.37; 10600;occ; 92; 0;45759
 13; 3994.8; 30-NOV-2010 17:17:41; Bright; 42.0; 32; 77Eps UMa ; 1.76; 11000;occ; 84; 0;45759
 14; 4166.4; 30-NOV-2010 17:20:33; Bright; 52.5; 174; 52Psi UMa ; 3.00; 4400;occ; 105; 0;45759
 15; 4326.0; 30-NOV-2010 17:23:13; Bright; 39.5; 152; 12Alp2CVn ; 2.89; 11000;occ; 79; 0;45759
 16; 4893.3; 30-NOV-2010 17:32:40; Bright; 59.5; 62; 94Bet Leo ; 2.14; 9700;occ; 119; 0;45759
 17; 5092.5; 30-NOV-2010 17:35:59; Bright; 44.5; 121; 29Gam Vir ; 2.74; 7200;occ; 89; 0;45759
 18; 5429.9; 30-NOV-2010 17:41:36; Dark ; 47.0; 100; 4Gam Crv ; 2.58; 13100;occ; 94; 0;45759
 19; 5525.1; 30-NOV-2010 17:43:12; Dark ; 50.0; 171; 2Eps Crv ; 3.00; 4250;occ; 100; 0;45759
 20; 6092.0; 30-NOV-2010 17:52:39; Dark ; 43.5; 113; Mu Vel ; 2.69; 5000;occ; 87; 0;45760
 21; 6415.5; 30-NOV-2010 17:58:02; Dark ; 59.5; 0; ; 0.00; 0;occ; 119; 0;45760
 22; 6606.5; 30-NOV-2010 18:01:13; Dark ; 49.5; 34; Gam2Vel ; 1.79; 23000;occ; 99; 0;45760
 23; 6810.1; 30-NOV-2010 18:04:37; Dark ; 59.0; 2; Alp Car ; -0.74; 7000;occ; 118; 0;45760
 24; 6918.4; 30-NOV-2010 18:06:25; Dark ; 61.5; 117; Pi Pup ; 2.71; 3800;occ; 123; 0;45760

/nas3/ENVISAT/GOMOS/GOM_NL__0P/GOM_NL__0PNPDK20101130_181101_000057993097_00056_45760_2785.N1

1; 1180.1; 30-NOV-2010 18:11:01; Dark ; 48.5; 108; Alp Col ; 2.65; 15200;occ; 97; 0;45760
 2; 1522.7; 30-NOV-2010 18:16:43; Dark ; 56.0; 101; 11Alp Lep ; 2.58; 7000;occ; 112; 0;45760
 3; 1739.8; 30-NOV-2010 18:20:20; Dark ; 59.0; 7; 19Bet Ori ; 0.10; 14000;occ; 118; 0;45760
 4; 2219.7; 30-NOV-2010 18:28:20; Bright; 54.5; 13; 87Alp Tau ; 0.87; 3800;occ; 109; 0;45760
 5; 2315.4; 30-NOV-2010 18:29:56; Bright; 39.0; 146; 25Eta Tau ; 2.87; 15200;occ; 78; 0;45760
 6; 2457.2; 30-NOV-2010 18:32:18; Bright; 38.5; 150; 44Zet Per ; 2.89; 28000;occ; 77; 0;45760
 7; 2602.4; 30-NOV-2010 18:34:43; Bright; 37.5; 149; 45Eps Per ; 2.89; 30000;occ; 75; 0;45760
 8; 2723.4; 30-NOV-2010 18:36:44; Bright; 37.5; 175; 39Del Per ; 3.01; 19400;occ; 75; 0;45760
 9; 2834.4; 30-NOV-2010 18:38:35; Bright; 50.0; 6; 13Alp Aur ; 0.08; 3400;occ; 100; 0;45760
 10; 2944.3; 30-NOV-2010 18:40:25; Bright; 33.0; 42; 34Bet Aur ; 1.90; 10200;occ; 66; 0;45760
 11; 3802.7; 30-NOV-2010 18:54:43; Bright; 45.0; 36; 50Alp UMa ; 1.80; 6300;occ; 90; 0;45760
 12; 3898.5; 30-NOV-2010 18:56:19; Bright; 48.0; 82; 48Bet UMa ; 2.37; 10600;occ; 96; 0;45760
 13; 3994.7; 30-NOV-2010 18:57:55; Bright; 41.5; 32; 77Eps UMa ; 1.76; 11000;occ; 83; 0;45760
 14; 4166.1; 30-NOV-2010 19:00:47; Bright; 53.5; 174; 52Psi UMa ; 3.00; 4400;occ; 107; 0;45760
 15; 4326.2; 30-NOV-2010 19:03:27; Bright; 40.0; 152; 12Alp2CVn ; 2.89; 11000;occ; 80; 0;45760
 16; 4893.9; 30-NOV-2010 19:12:55; Bright; 58.5; 62; 94Bet Leo ; 2.14; 9700;occ; 117; 0;45760
 17; 5093.0; 30-NOV-2010 19:16:14; Bright; 42.0; 121; 29Gam Vir ; 2.74; 7200;occ; 84; 0;45760
 18; 5430.8; 30-NOV-2010 19:21:51; Dark ; 47.0; 100; 4Gam Crv ; 2.58; 13100;occ; 94; 0;45760
 19; 5525.9; 30-NOV-2010 19:23:27; Dark ; 47.5; 171; 2Eps Crv ; 3.00; 4250;occ; 95; 0;45760
 20; 6092.7; 30-NOV-2010 19:32:53; Dark ; 48.0; 113; Mu Vel ; 2.69; 5000;occ; 96; 0;45761
 21; 6416.3; 30-NOV-2010 19:38:17; Dark ; 59.5; 0; ; 0.00; 0;occ; 119; 0;45761
 22; 6607.1; 30-NOV-2010 19:41:28; Dark ; 48.5; 34; Gam2Vel ; 1.79; 23000;occ; 97; 0;45761
 23; 6810.5; 30-NOV-2010 19:44:51; Dark ; 59.0; 2; Alp Car ; -0.74; 7000;occ; 118; 0;45761
 24; 6919.2; 30-NOV-2010 19:46:40; Dark ; 60.5; 117; Pi Pup ; 2.71; 3800;occ; 121; 0;45761