

GOMOS Daily Report 03-MAR-2005

Level 0 and Level 1 products

SUMMARY

[1. General Info](#)

[2. Summary of products arrived in PCF \(Product Control Facility\)](#)

[2.1 Level 0 products arrived in PCF during actual month \(see template here\)](#)

[2.2 Level 1 products arrived in PCF during reporting period](#)

[3. Plot of Spectrometers and Photometers temperatures](#)

[4. Dark Charge monitoring](#)

[4.1 Products that did not use the Dark Sky Area observation for DC computation](#)

[4.2 Plot of Dark Charge](#)

[5. Demodulation correction and quality product information monitoring](#)

[5.1 Percentage of products with some flags set](#)

[5.2 Plot of quality information per product \(time dependant\)](#)

[5.3 Plot of quality information per product \(world map\)](#)

[6. Star tangent altitude lost](#)

[6.1 Statistics on star tangent altitude lost](#)

[6.2 Plot of star tangent altitude lost: DARK products](#)

[6.3 Plot of star tangent altitude lost: BRIGHT products](#)

[6.3 Plot of star tangent altitude lost: TWILIGHT products](#)

[7. Statistics on SATU Noise Equivalent Angle](#)

[8. Auxiliary Data Files used for the production reported in section 2.2](#)

[Level 2 products](#)

1. General Info

This report presents the daily analysis on parameters extracted from GOMOS level 1b data (GOM_TRA_1P). It is intended to monitor some important parameters that will impact the quality of the level 2 products as the Spectrometers and Photometers CCD Temperatures and Dark Charge, SATU noise equivalent angle... A list of level 0 products (and content) that have arrived during the actual month to the PCF is also given.

Item	Value
Time of report generation	05MAR2005 05:00:48

Data source version	GOMOS/4.02
Start time of products	QDS_YESTERDAY(/START)-1D (03MAR2005 00:00:00)
Stop time of products	QDS_YESTERDAY(/STOP)-1D (04MAR2005 00:00:00)
Store outputs in DB	Yes
Nb of level 1b prods	11
Nb of prods with errors	0

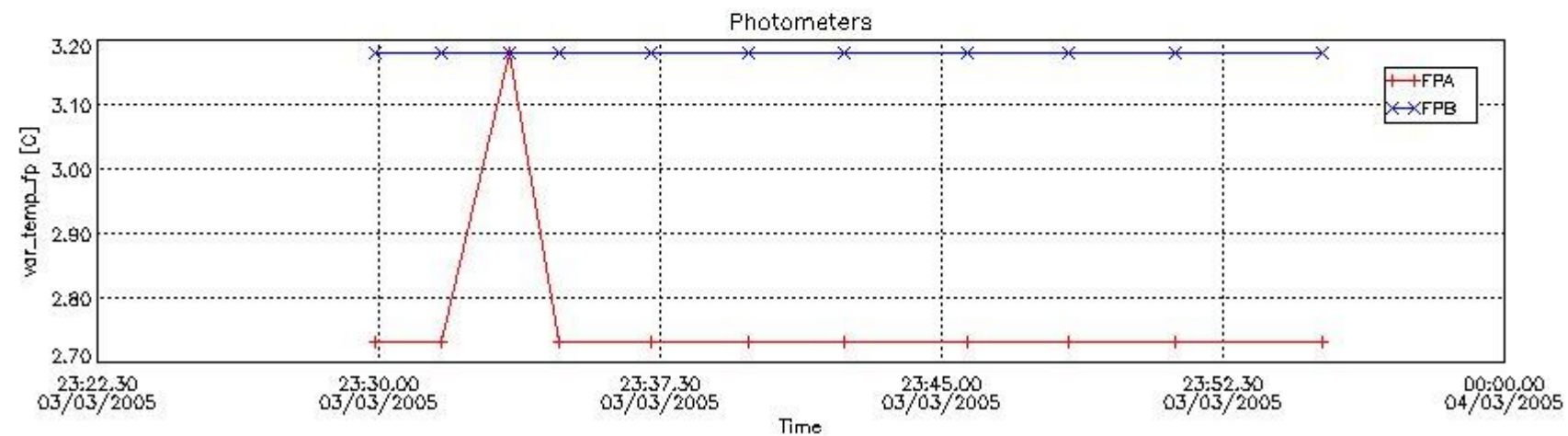
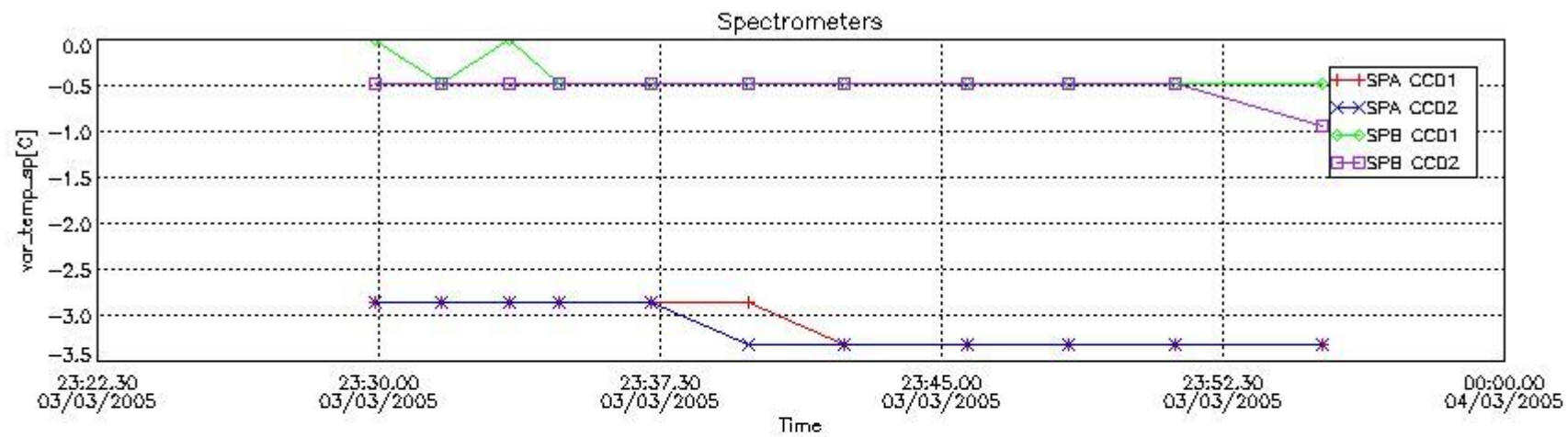
2. Summary of products arrived in PCF (Product Control Facility)

2.1 Level 0 products arrived in PCF (see template [here](#))

2.2 Summary of processed GOM_TRA_1P products

Nr	Filename	UTC Start time	Limb	Duration	Star Id	Star Name	Star Mag	Star Temp	Nb Meas	Orbit	Prod. error
1	GOM_TRA_1PNPDE20050303_232953_000000402035_00145_15730_0000.N1	03-MAR-2005 23:29:53	Dark	39.500	43	Alp TrA	1.9100	4250.0	79	15730	No
2	GOM_TRA_1PNPDE20050303_233139_000000532035_00145_15730_0001.N1	03-MAR-2005 23:31:39	Dark	53.000	131	Gam Lup	2.8000	26000.	106	15730	No
3	GOM_TRA_1PNPDE20050303_233329_000000522035_00145_15730_0002.N1	03-MAR-2005 23:33:29	Dark	51.500	4	Alp1Cen	-0.010000	5800.0	103	15730	No
4	GOM_TRA_1PNPDE20050303_233448_000000492035_00145_15730_0003.N1	03-MAR-2005 23:34:48	Dark	48.500	10	Bet Cen	0.61000	28000.	97	15730	No
5	GOM_TRA_1PNPDE20050303_233715_000000452035_00145_15730_0004.N1	03-MAR-2005 23:37:15	Dark	44.500	12	Alp1Cru	0.77500	30000.	89	15730	No
6	GOM_TRA_1PNPDE20050303_233949_000000462035_00145_15730_0005.N1	03-MAR-2005 23:39:49	Dark	46.000	64	Gam Cen	2.2000	10600.	92	15730	No
7	GOM_TRA_1PNPDE20050303_234222_000000392035_00145_15730_0006.N1	03-MAR-2005 23:42:22	Dark	38.500	91	Kap Vel	2.4900	26000.	77	15730	No
8	GOM_TRA_1PNPDE20050303_234541_000000442035_00145_15730_0007.N1	03-MAR-2005 23:45:41	Twilight	44.000	65	Lam Vel	2.2040	4400.0	88	15730	No
9	GOM_TRA_1PNPDE20050303_234822_000000662035_00145_15730_0008.N1	03-MAR-2005 23:48:22	Bright	66.000	106	9Bet Crv	2.6480	5600.0	132	15730	No
10	GOM_TRA_1PNPDE20050303_235114_000000632035_00145_15730_0009.N1	03-MAR-2005 23:51:14	Bright	62.500	100	4Gam Crv	2.5800	13100.	125	15730	No
11	GOM_TRA_1PNPDE20050303_235509_000000462035_00145_15730_0010.N1	03-MAR-2005 23:55:09	Bright	45.500	48	30Alp Hya	1.9770	4100.0	91	15730	No

3. Plot of GOMOS spectrometers and photometers temperatures from level 1b data



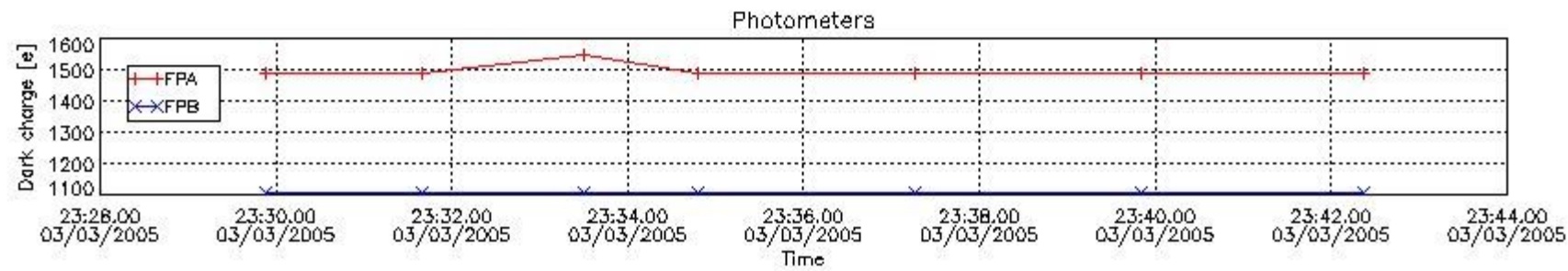
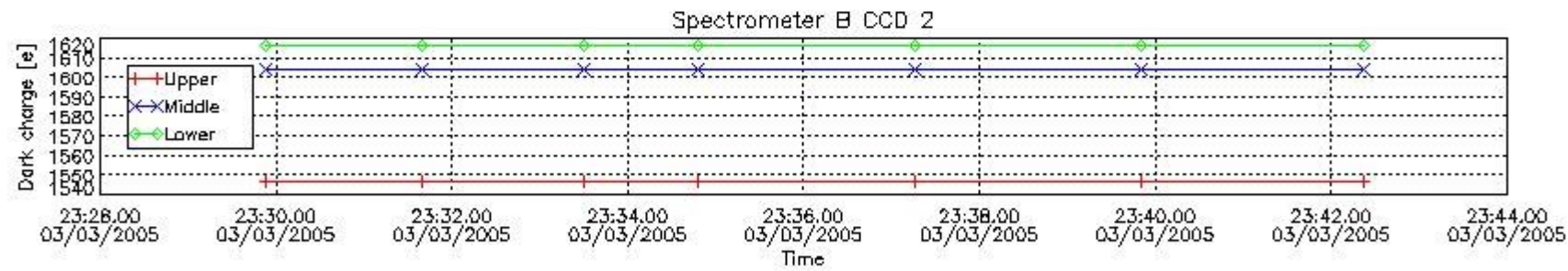
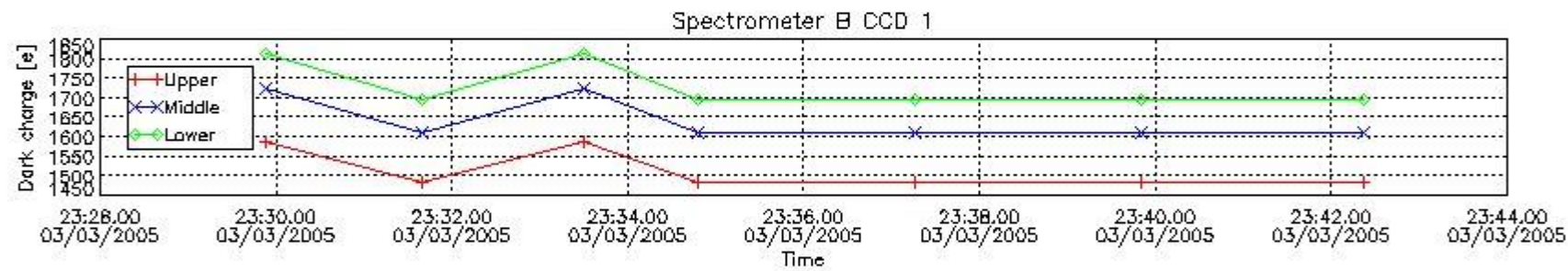
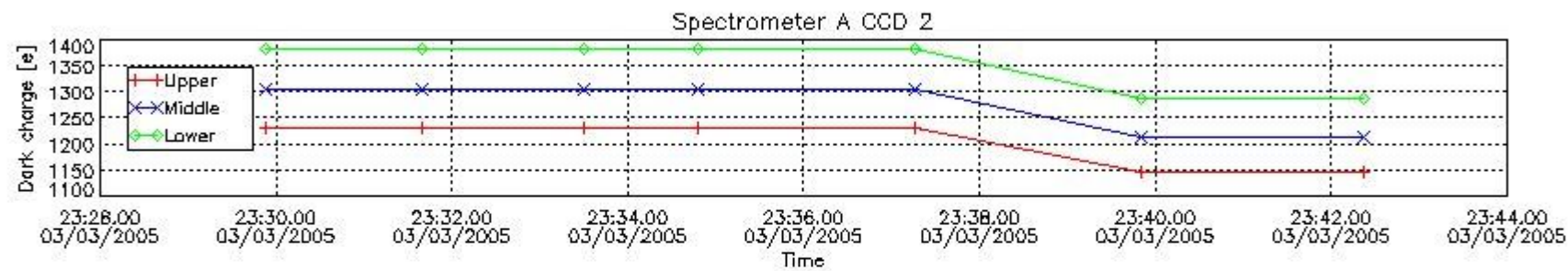
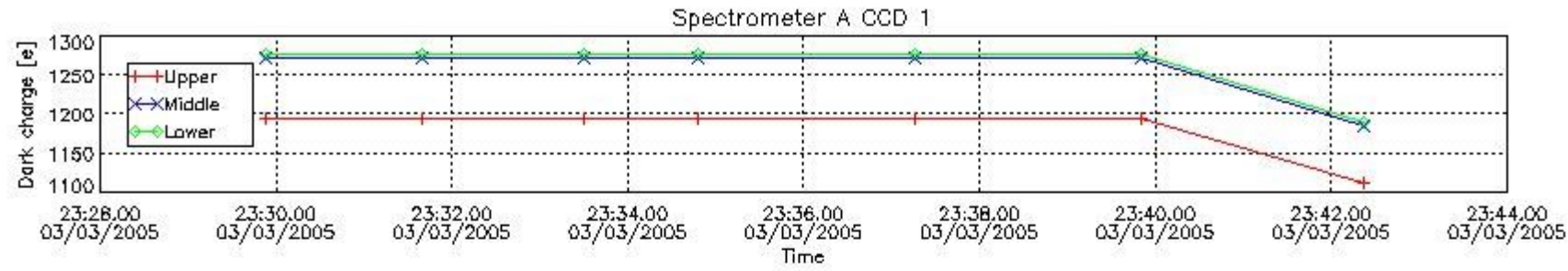
4. Overview of dark signal processing per product

The Dark Charge (DC) is a temperature-dependant signal added to the useful measurements and it is therefore subtracted from them during the processing. There are two phenomena that produce a continuous increase of the DC: the "hot pixels" (a pixel is "hot" when its DC exceeds by a significant amount its value measured on ground at the same temperature) and the "Random Telegraphic Signal" (abrupt change positive or negative of the CCD pixel signal, random in time, affecting only the DC part of the signal and not the photon generated signal).

In this section a list of products that did not use the Dark Sky Area (DSA) observation for the DC computation is given. It is also provided the mean DC plot per product for dark limb products with no error flag set.

4.1 All products used the DSA observation for the DC computation

4.2 Plot of mean dark charges per product: only products in DARK limb conditions without errors are used



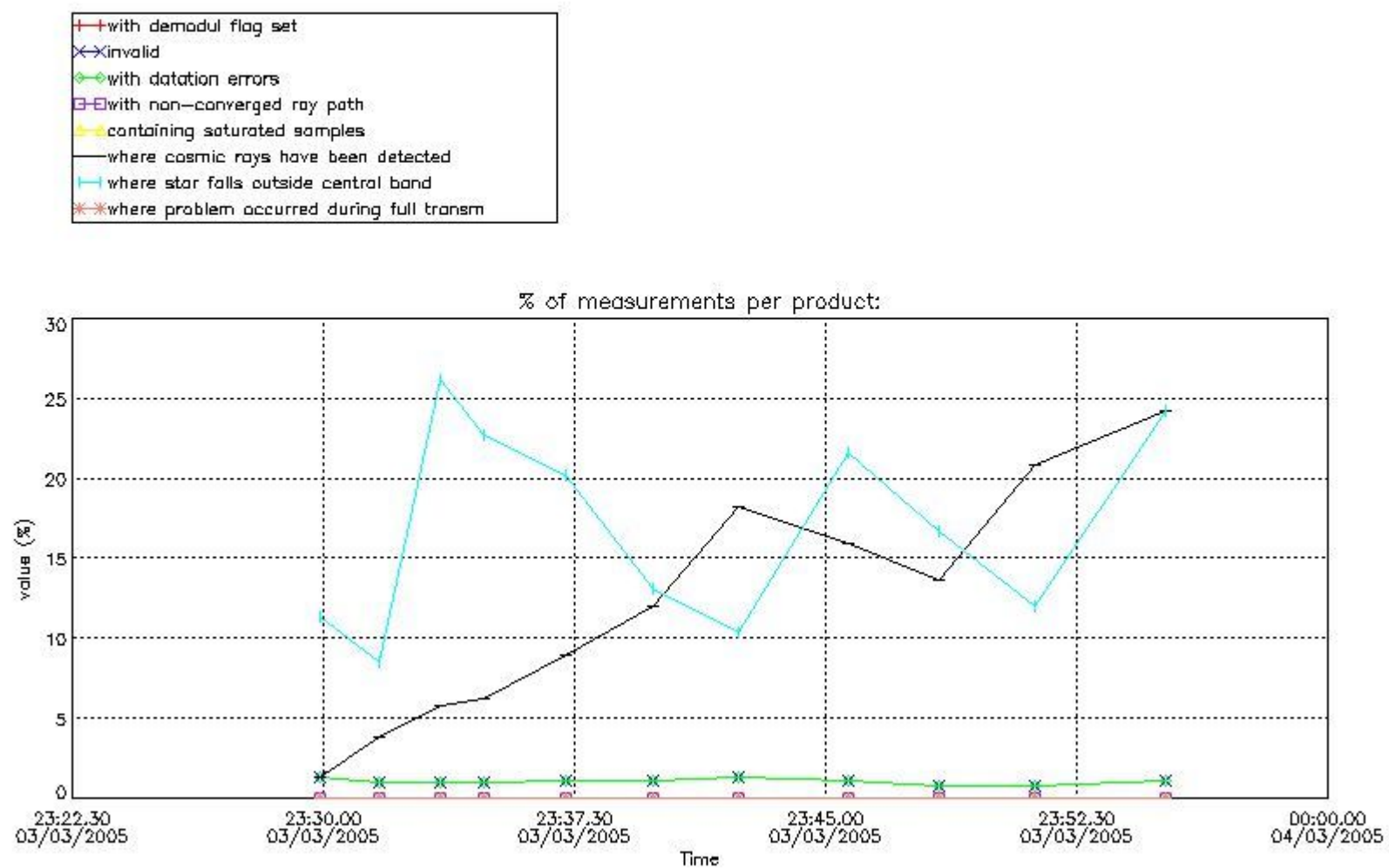
5. Demodulation flag and quality information monitoring

In this section it is presented the modulation information extracted from the pcd (product confidence data) at measurement level and information extracted from the Quality Summary dataset. Only products without errors (error flag in the MPH set to "0") are used.

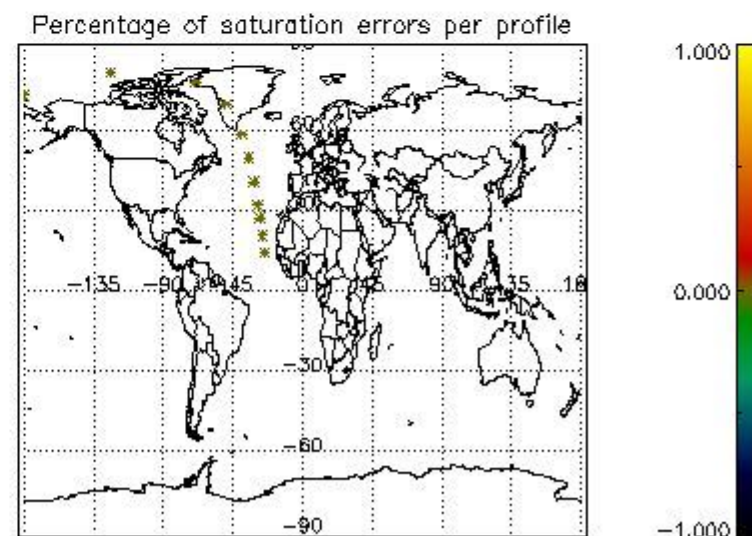
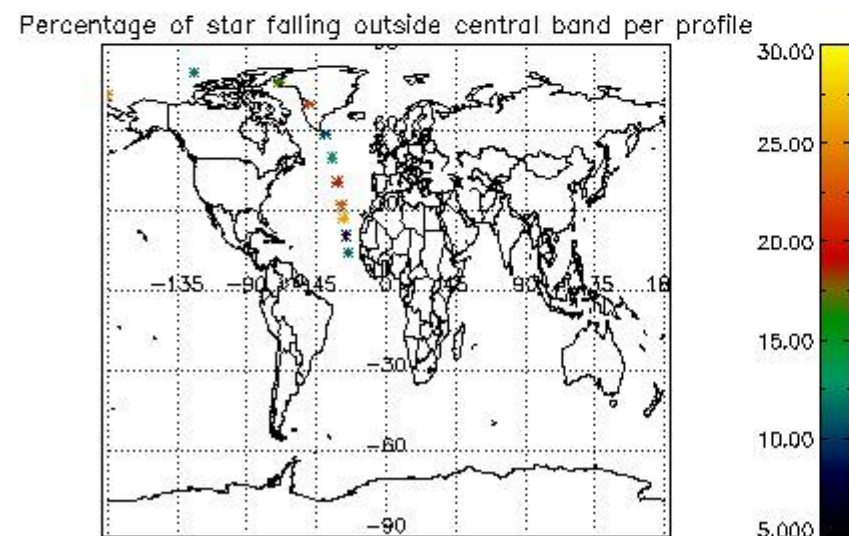
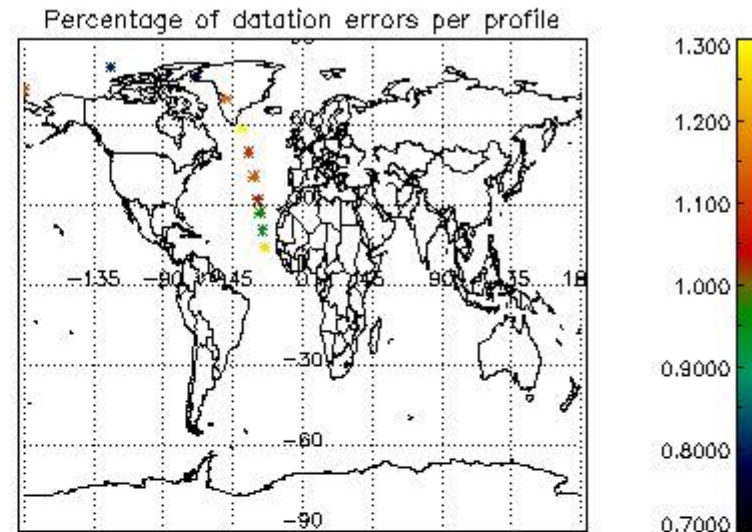
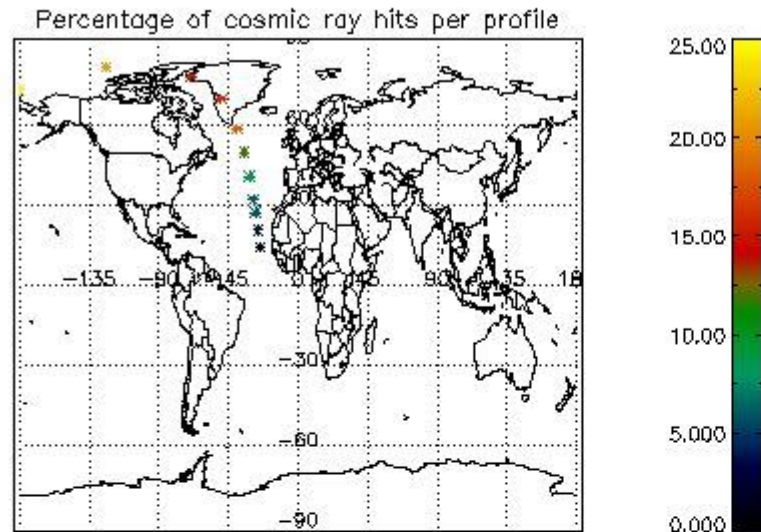
5.1 Percentage of products during reporting period with:

At least one measurement with demodulation flag set:	0.00000 %
Reference spectrum computed from DB:	0.00000 %
Reference spectrum with small number of measurements:	0.00000 %
SATU data not used:	0.00000 %

5.2 Plot quality information per product (time dependant)



5.3 Plot quality information per product (world map)



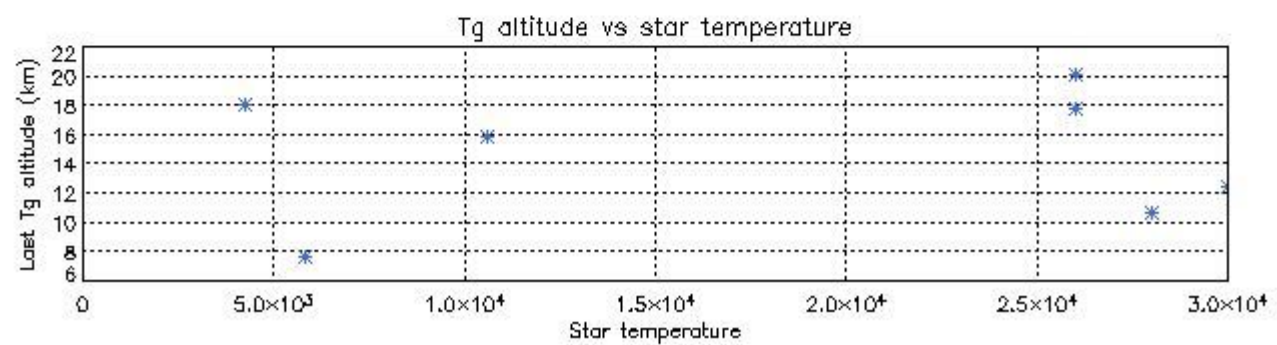
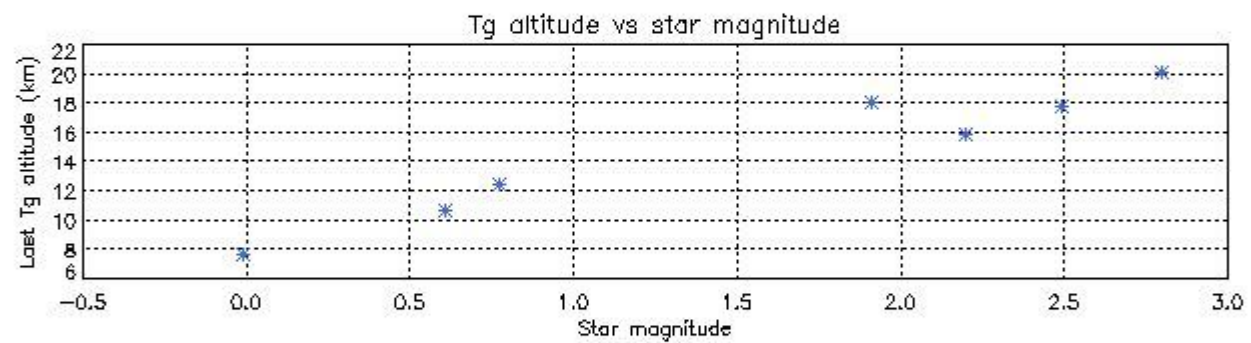
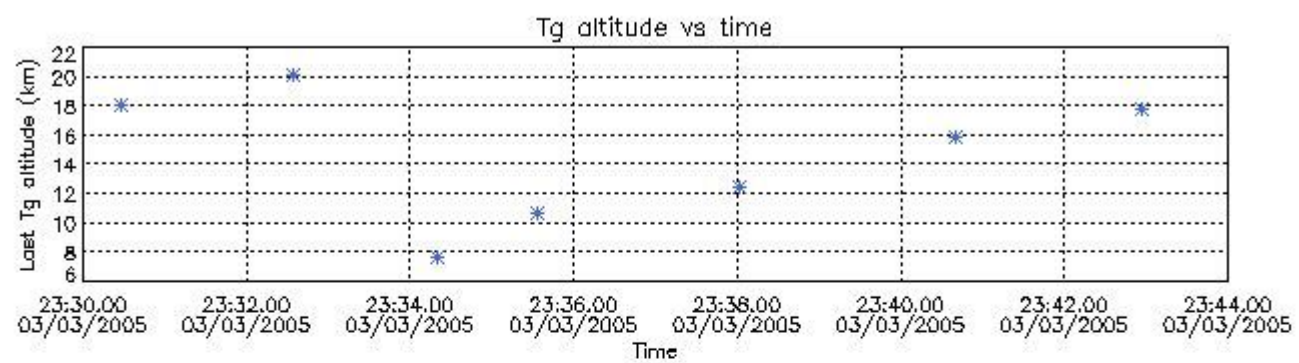
6. Statistics and plot of tangent altitude of the last measurement (DARK & BRIGHT products without errors)

6.1 Statistics on tangent altitude lost:

Statistics	DARK	BRIGHT	TWILIGHT
Mean:	14.613	12.623	11.596
St. deviation:	4.4862	2.8459	0.0000
Maximum:	20.051	15.171	11.596
Minimum:	7.6628	9.5520	11.596
Number of data:	7.0000	3.0000	1.0000

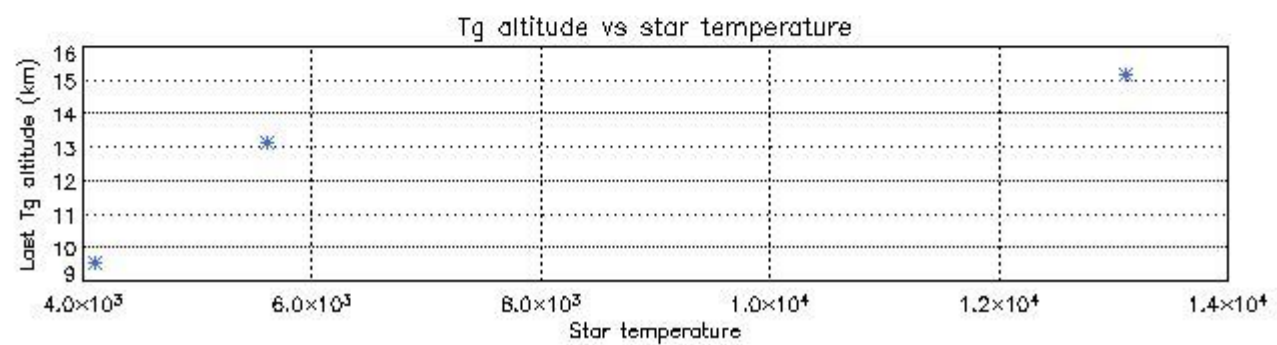
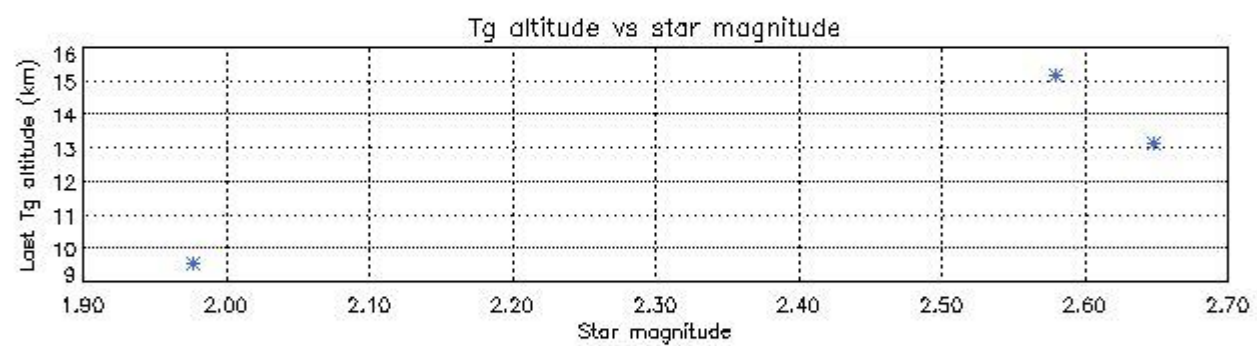
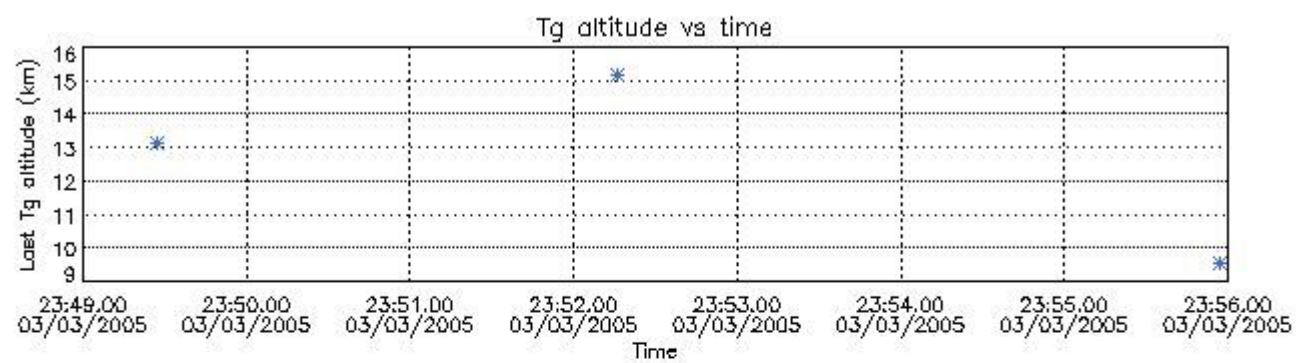
6.2 Plot for DARK limb products

Tangent altitude at which the star is lost



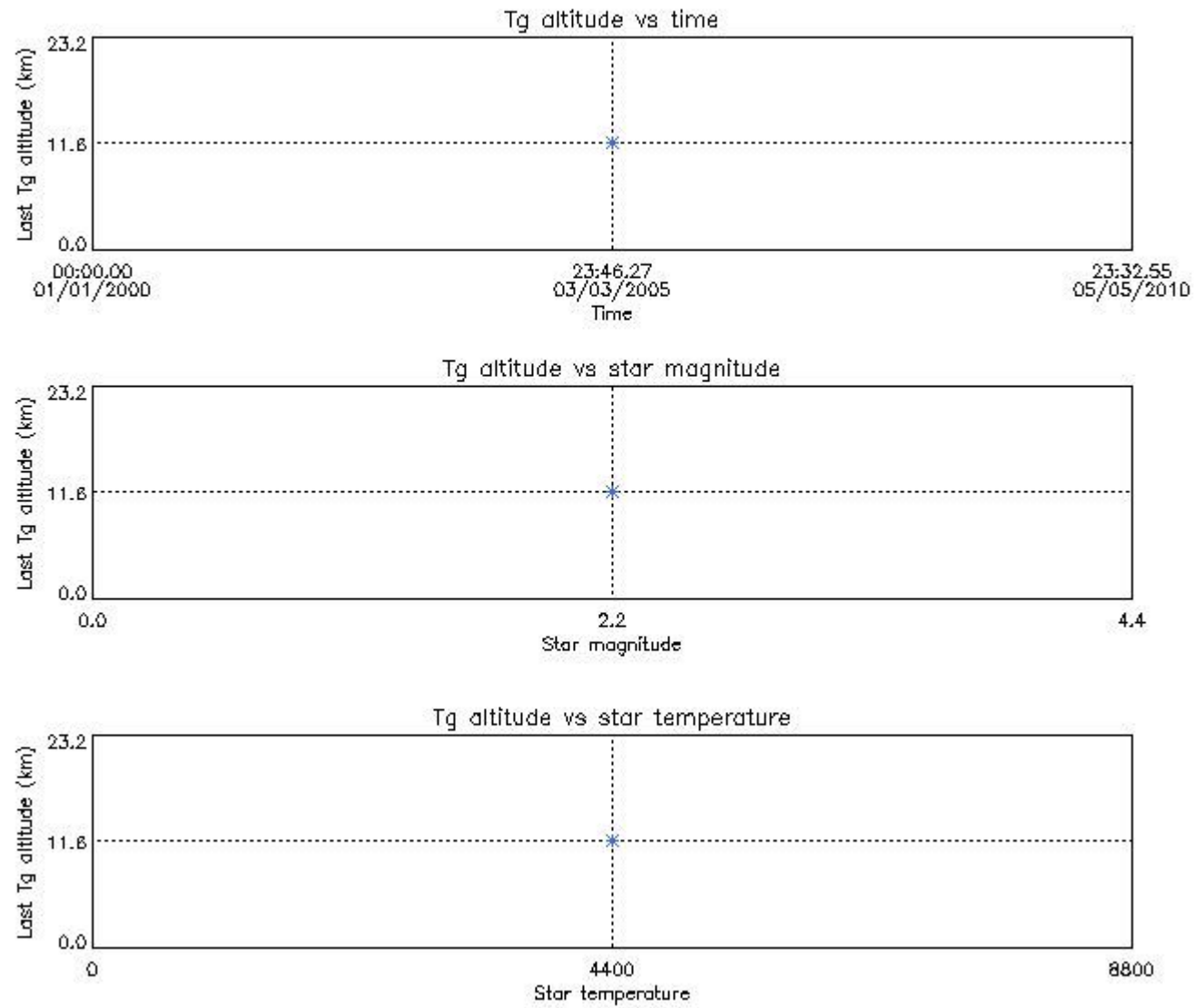
6.3 Plot for BRIGHT limb products

Tangent altitude at which the star is lost



6.3 Plot for TWILIGHT limb products

Tangent altitude at which the star is lost



7. Statistics on SATU Noise Equivalent Angle (NEA) for DARK (D) and BRIGHT (B) products above 105 kms

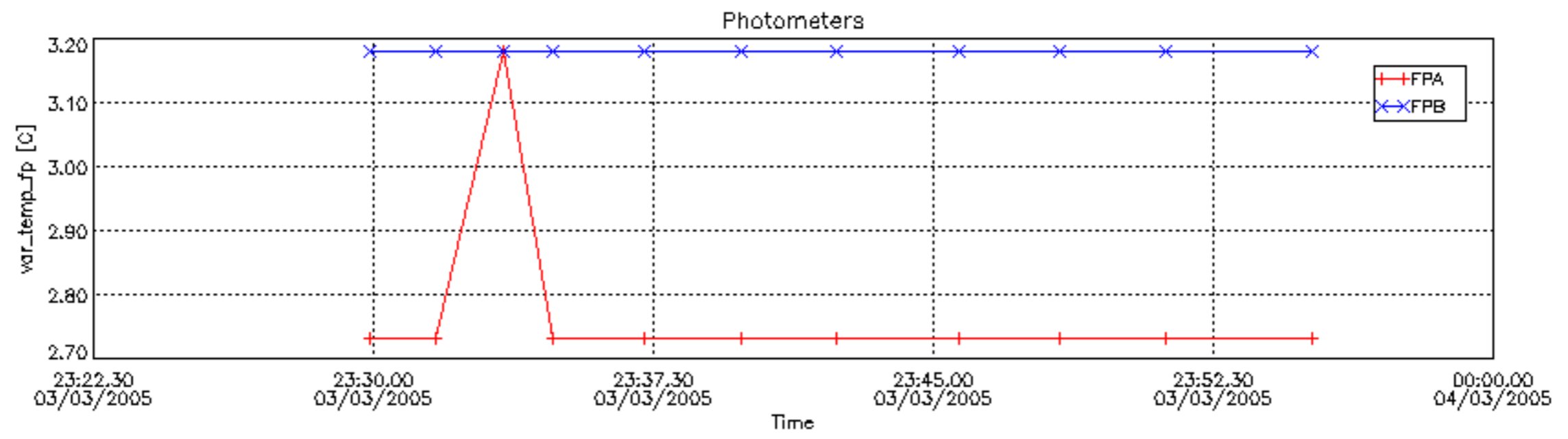
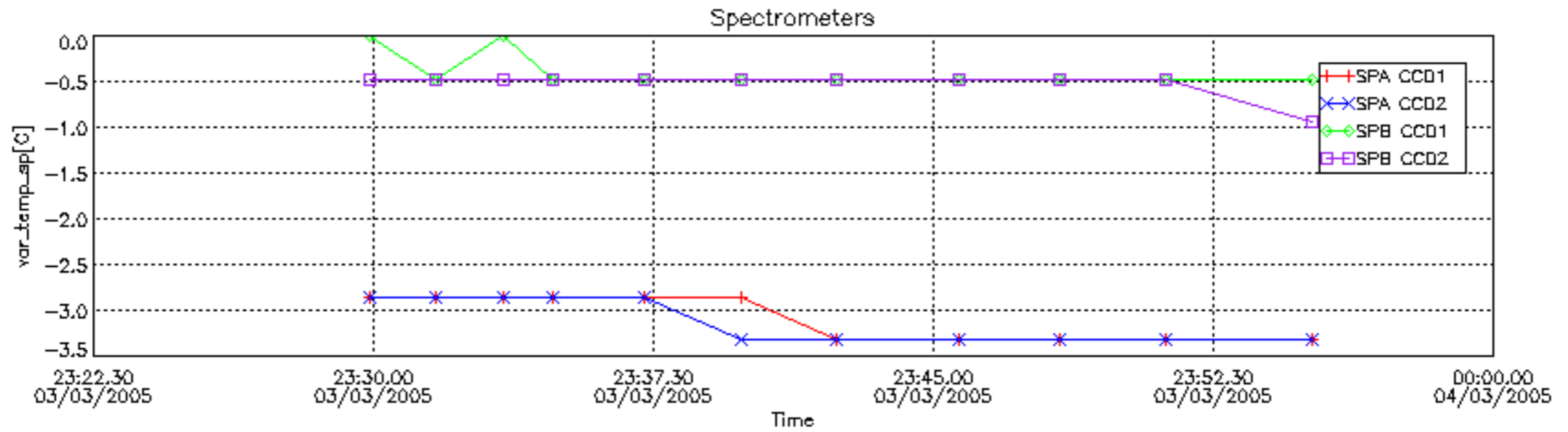
The Star Acquisition and Tracking Unit (it is the CCD that tracks the star while it is occulted) Noise Equivalent Angle consists of the statistical angular variation of the SATU data above the atmosphere. Statistics above 105 km are computed for every occultation, giving four values per occultation: one in the 'X' direction and one in the 'Y' direction for dark and bright limbs. A mean value per day in every direction and limb is calculated and monitored in order to assess instrument performance in terms of star pointing.

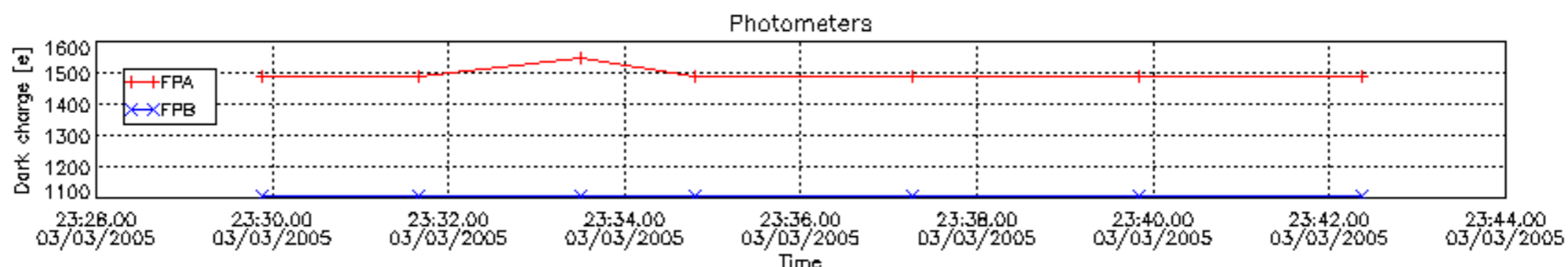
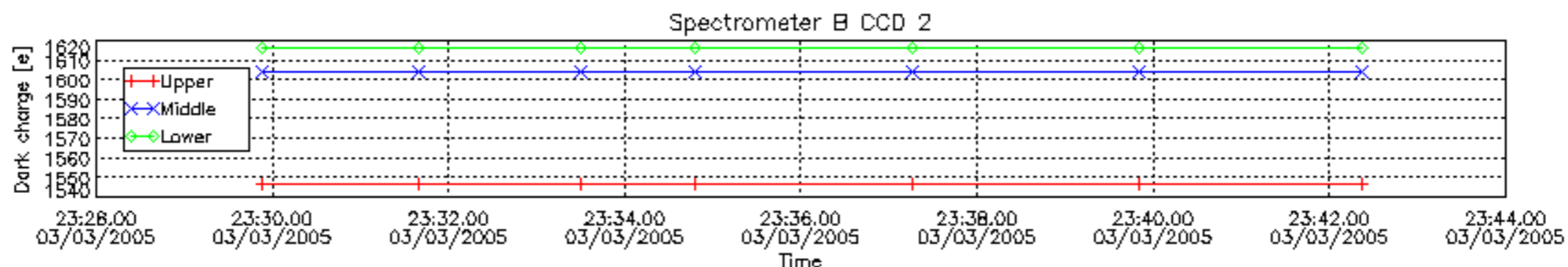
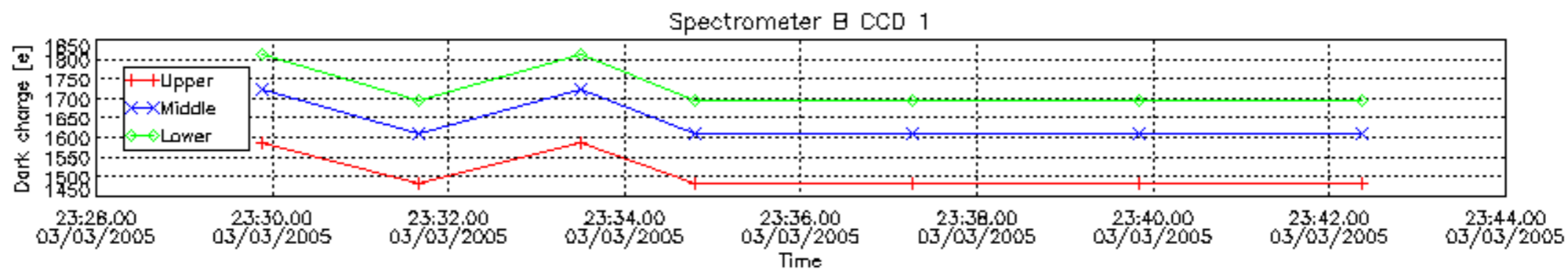
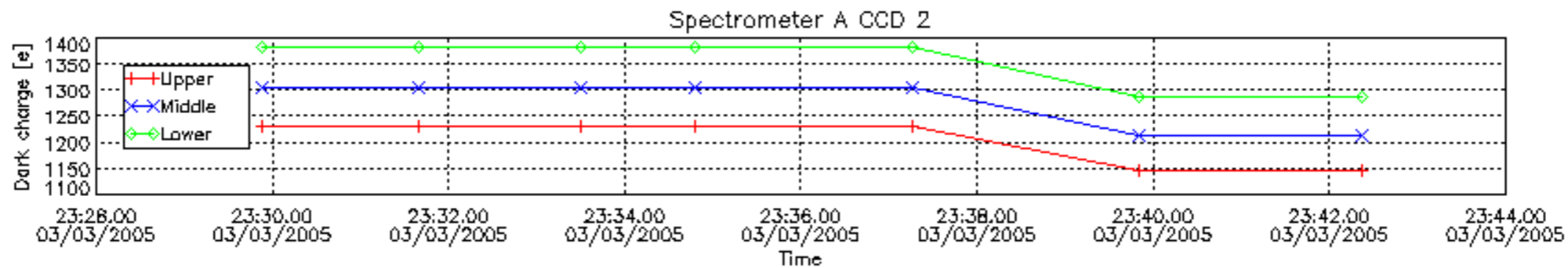
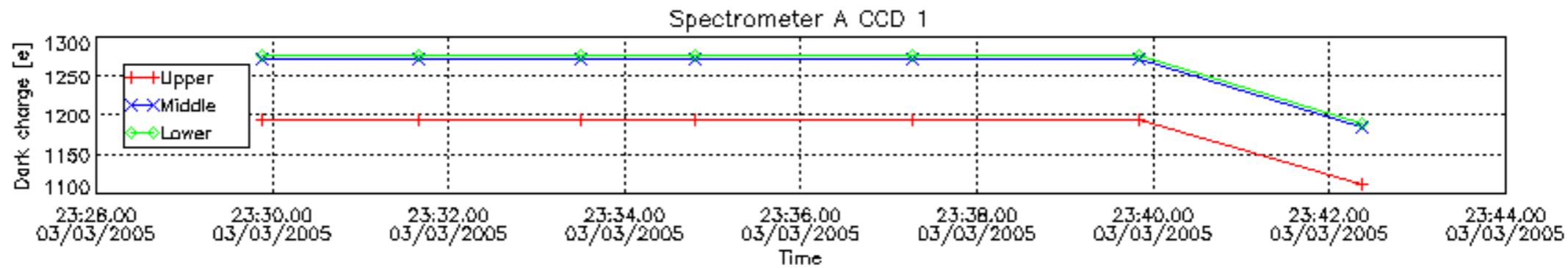
Statistics	SATU X (D)	SATU Y (D)	SATU X (B)	SATU Y (B)
Mean:	1461.4	1447.0	1462.8	1448.2
St. deviation:	4.7852	6.3351	5.4593	6.3498
Maximum:	1499.0	1482.0	1496.0	1479.0
Minimum:	1432.0	1414.0	1454.0	1428.0
Number of data:	7400.0	7400.0	3700.0	3700.0

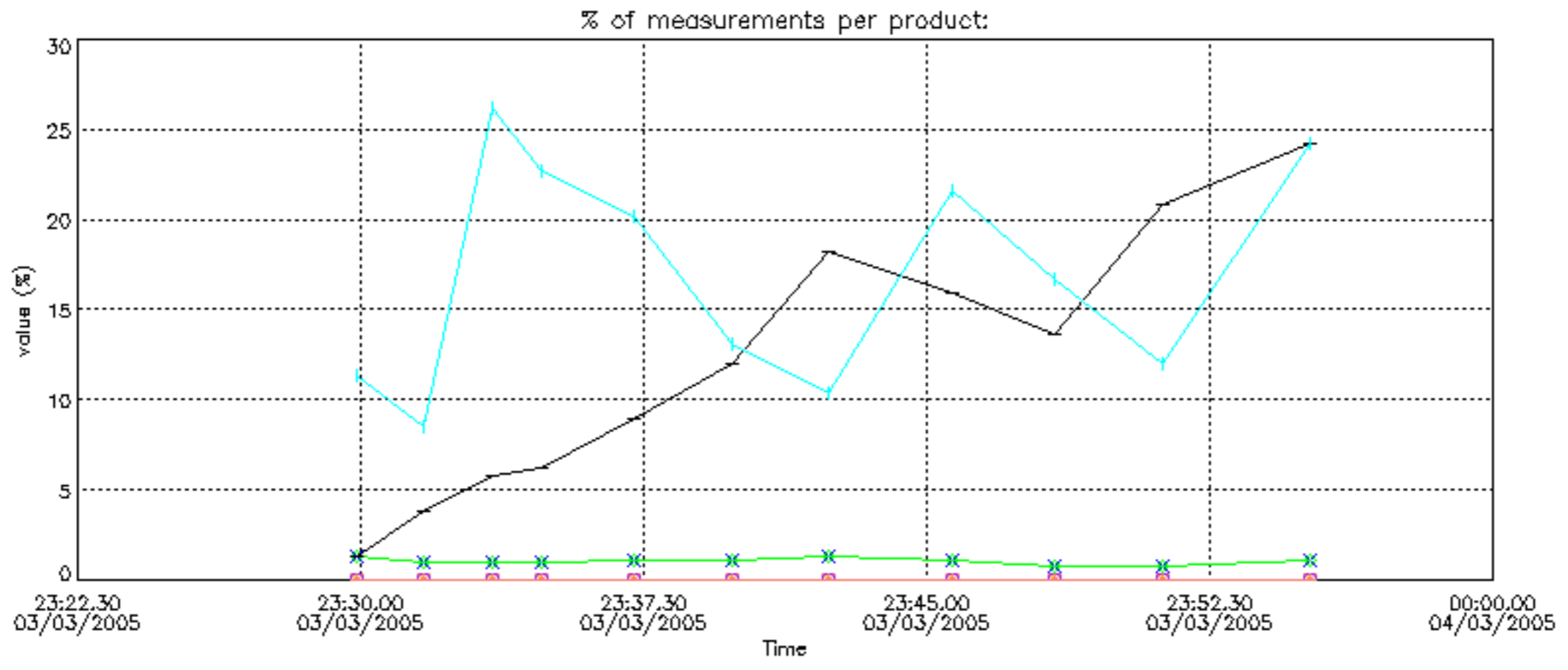
8. Auxiliary Data Files used for the production reported in section 2.2

The number reported in the third column indicates since which file (see list in section 2.2) the corresponding auxiliary file has been used. The fourth column is the date of those product files.

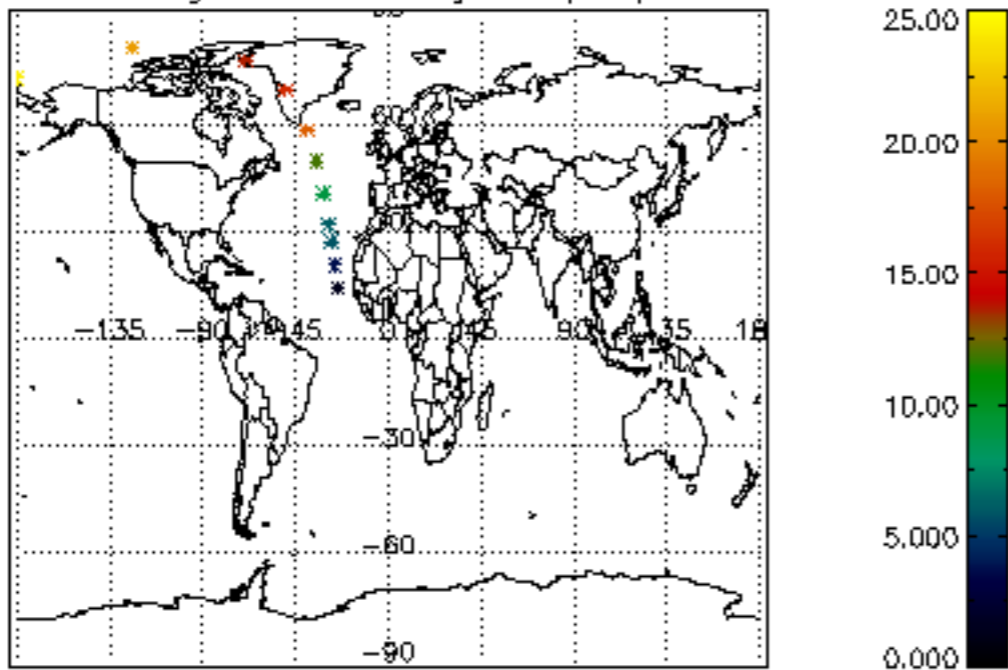
Type	Auxiliary Filename	Used since product	Used since product date
INST_PHYS_CHARACTERISTICS	GOM_INS_AXVIEC20030716_105425_20030716_120000_20100101_000000	1	03-MAR-2005 23:29:53
CALIBRATION_DATABASE	GOM_CAL_AXVIEC20050126_111922_20050123_000000_20100101_000000	1	03-MAR-2005 23:29:53
LEVEL-1B_PROC_CONFIG	GOM_PR1_AXVIEC20040401_083133_20020324_200000_20100101_000000	1	03-MAR-2005 23:29:53
STAR_CATALOGUE	GOM_CAT_AXVIEC20020121_161009_20020101_000000_20200101_000000	1	03-MAR-2005 23:29:53
STELLAR_SPECTRA_DATABANK	GOM_STS_AXVIEC20020121_165822_20020101_000000_20200101_000000	1	03-MAR-2005 23:29:53
ECMWF_FILE	AUX_ECF_AXNECM20050303_061258_20050303_210000_20050304_090000	1	03-MAR-2005 23:29:53
OPTIONAL_ECMWF_FILE	NOT USED	1	03-MAR-2005 23:29:53
ORBIT_DATA_FILE	AUX_FPO_AXVPDS20050303_232233_20050303_182403_20050313_213052	1	03-MAR-2005 23:29:53



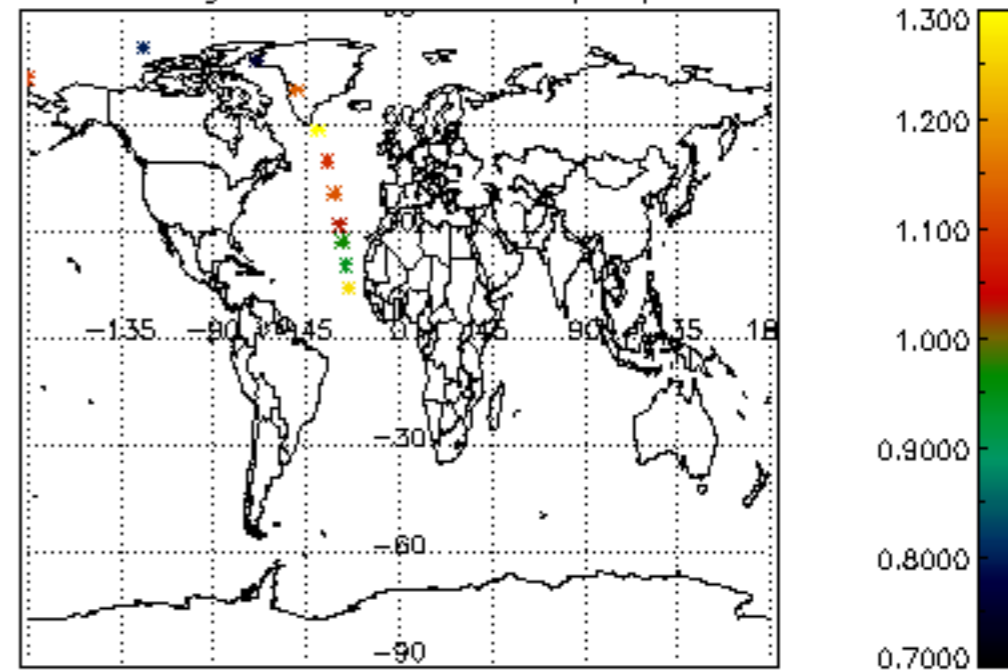




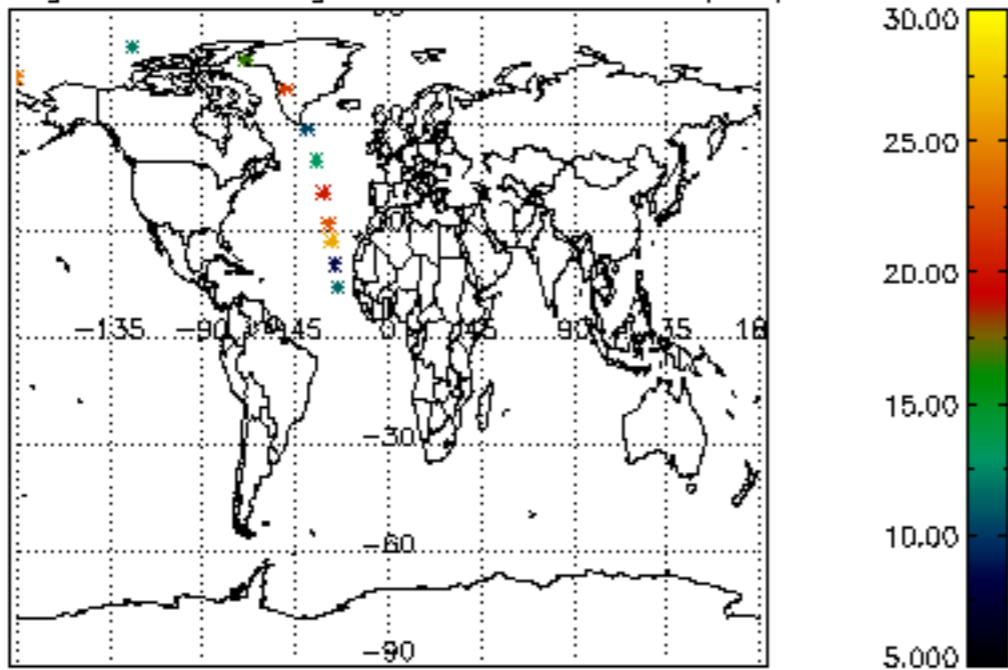
Percentage of cosmic ray hits per profile



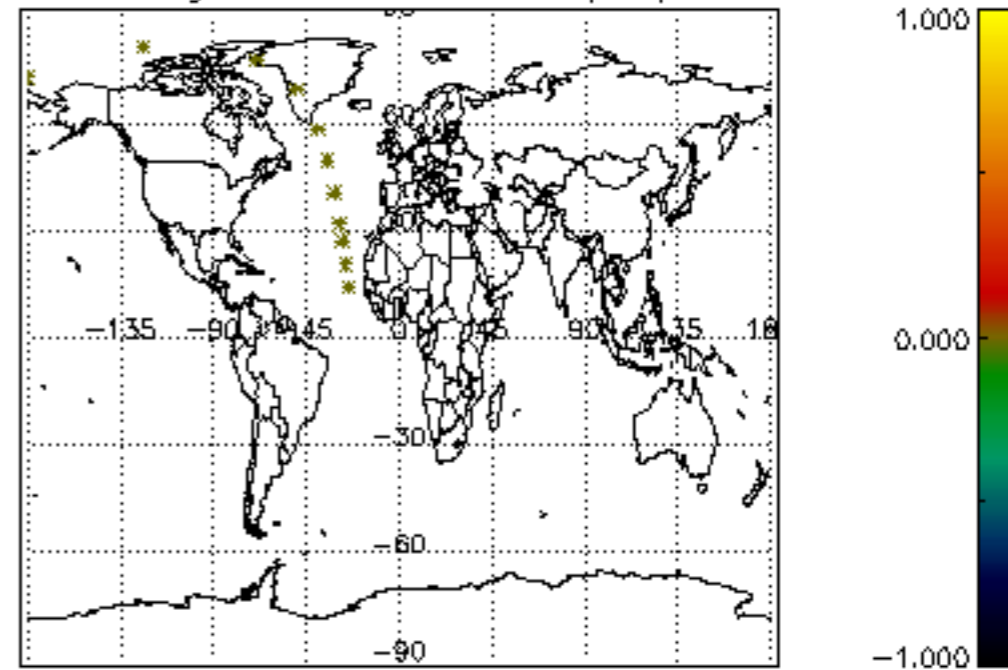
Percentage of datation errors per profile



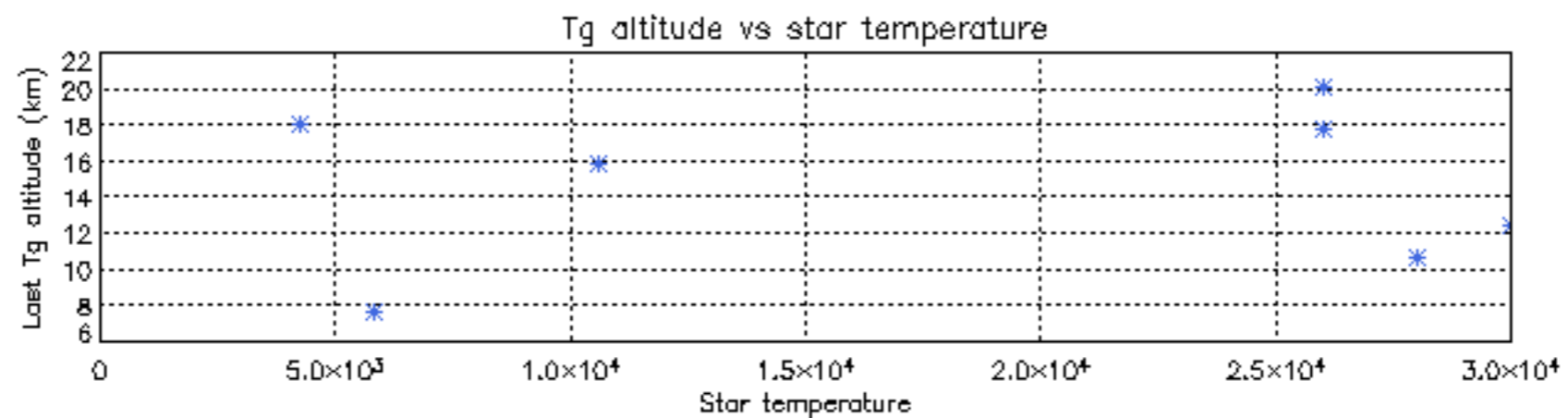
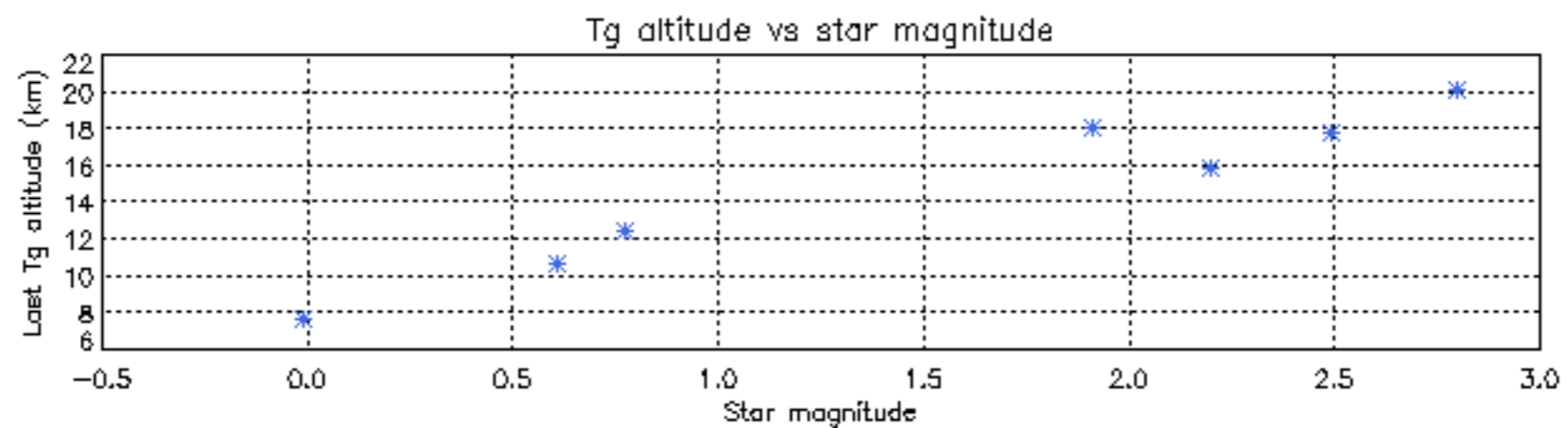
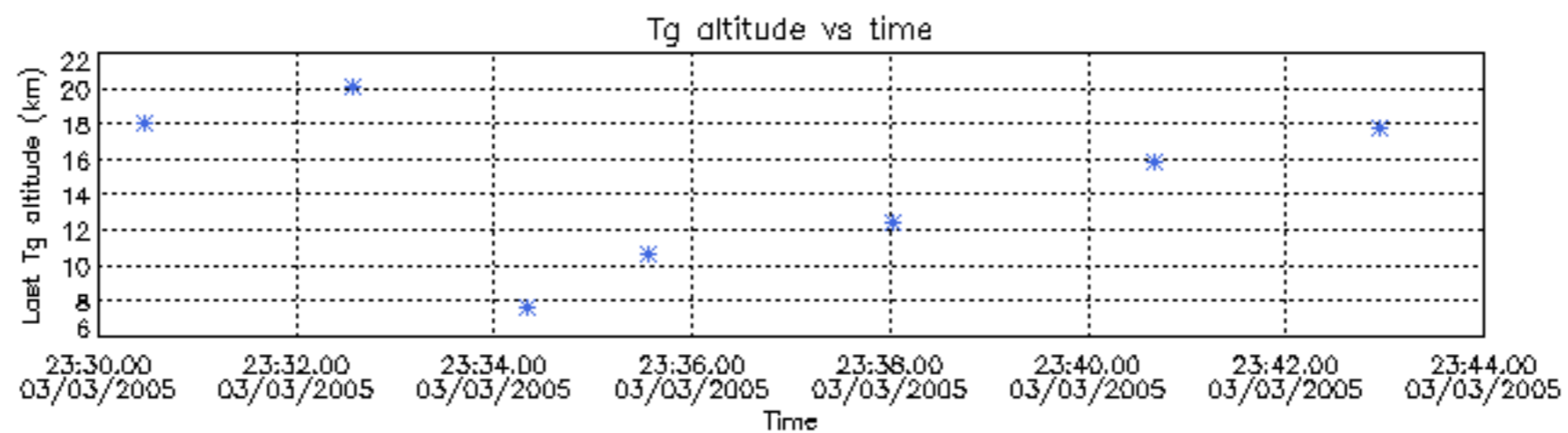
Percentage of star falling outside central band per profile



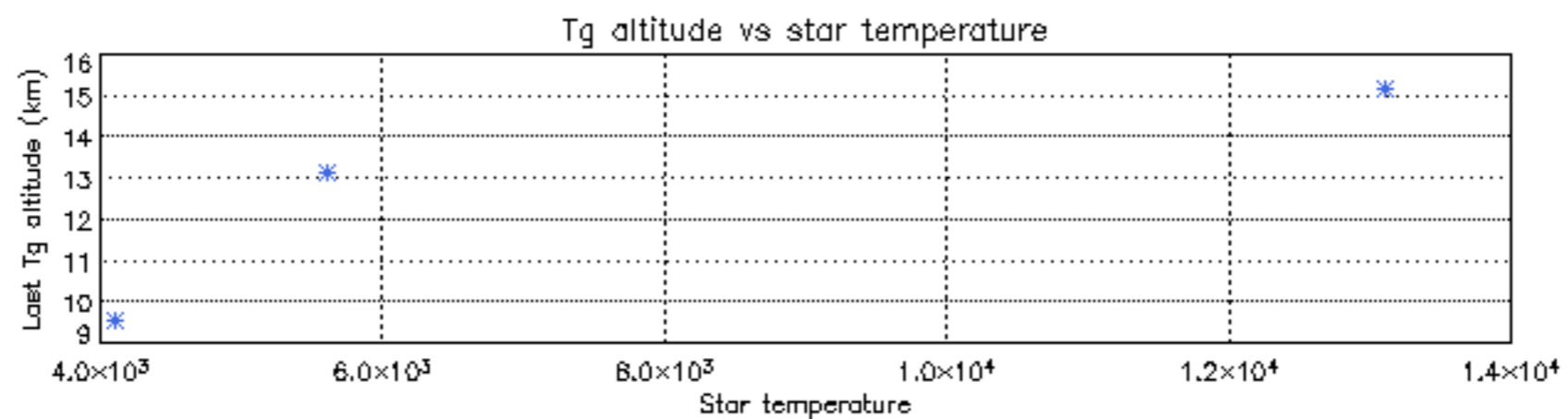
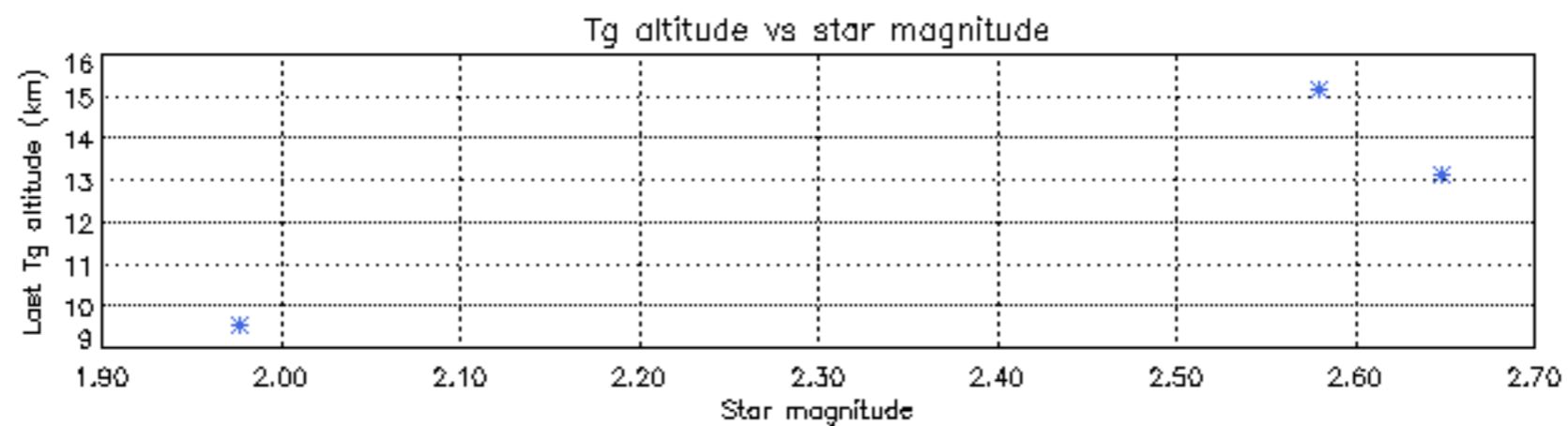
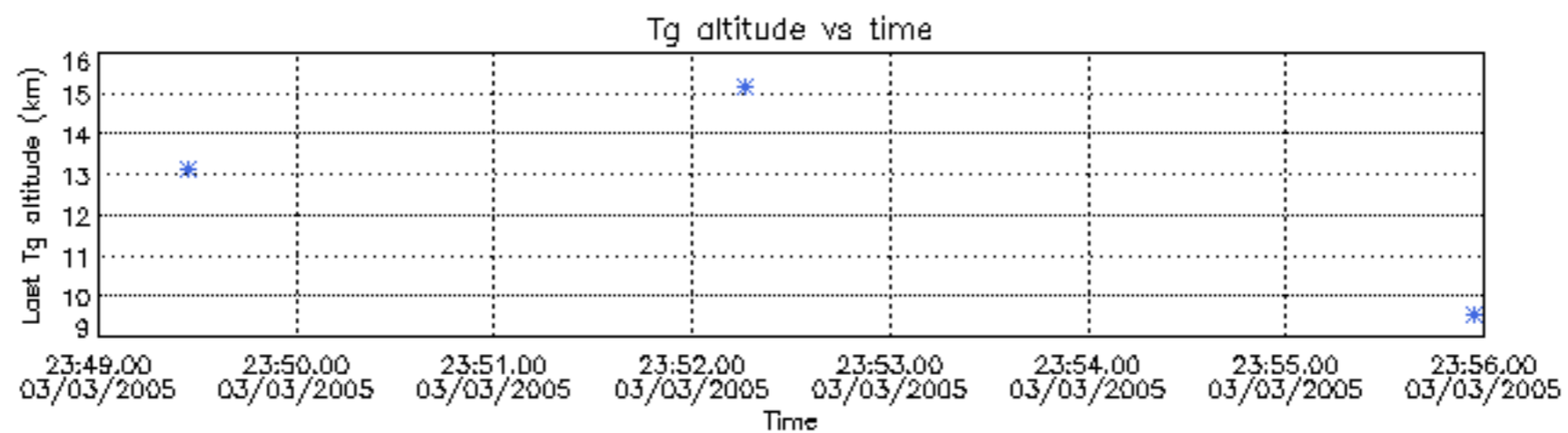
Percentage of saturation errors per profile



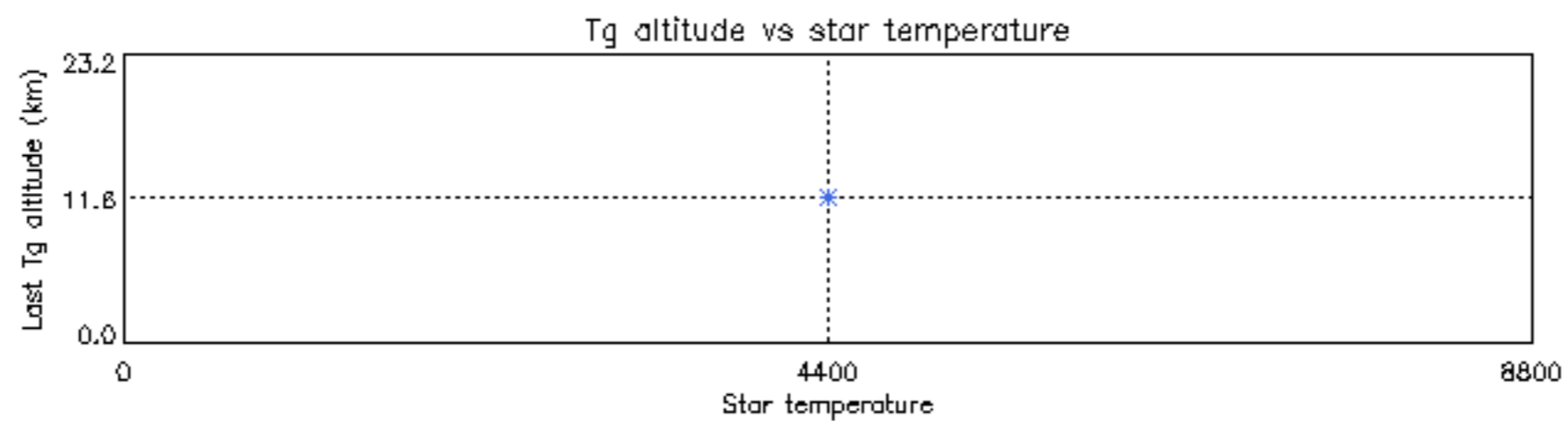
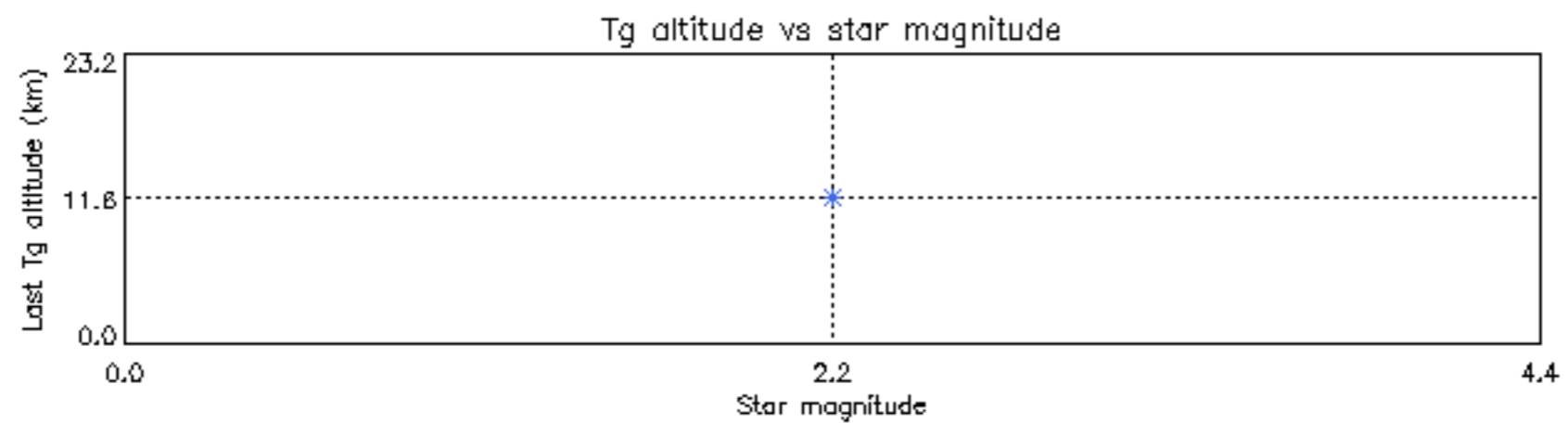
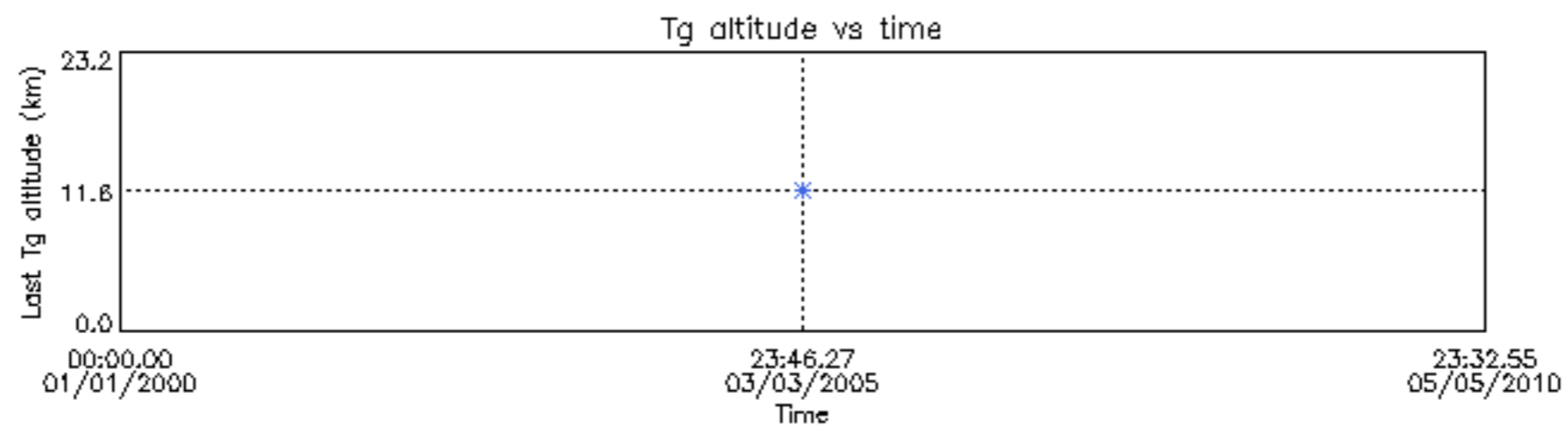
Tangent altitude at which the star is lost



Tangent altitude at which the star is lost



Tangent altitude at which the star is lost



/nas1/ENVISAT/GOMOS/from_DDS/GOM_NL__0PNPDE20050303_232638_000053762035_00145_15730_1918.N1

1;	47.7;	03-MAR-2005	23:26:38;	Dark	;	59.5;	0;		;	0.00;	0;	occ;	119;	0;	15730
2;	242.0;	03-MAR-2005	23:29:53;	Dark	;	39.5;	43;	Alp TrA	;	1.91;	4250;	occ;	79;	0;	15730
3;	348.1;	03-MAR-2005	23:31:39;	Dark	;	53.0;	131;	Gam Lup	;	2.80;	26000;	occ;	106;	0;	15730
4;	458.7;	03-MAR-2005	23:33:29;	Dark	;	51.5;	4;	Alp1Cen	;	-0.01;	5800;	occ;	103;	0;	15730
5;	537.2;	03-MAR-2005	23:34:48;	Dark	;	48.5;	10;	Bet Cen	;	0.61;	28000;	occ;	97;	0;	15730
6;	684.5;	03-MAR-2005	23:37:15;	Dark	;	44.5;	12;	Alp1Cru	;	0.77;	30000;	occ;	89;	0;	15730
7;	838.9;	03-MAR-2005	23:39:49;	Dark	;	46.0;	64;	Gam Cen	;	2.20;	10600;	occ;	92;	0;	15730
8;	991.6;	03-MAR-2005	23:42:22;	Dark	;	38.5;	91;	Kap Vel	;	2.49;	26000;	occ;	77;	0;	15730
9;	1190.2;	03-MAR-2005	23:45:41;	Dark	;	44.0;	65;	Lam Vel	;	2.20;	4400;	occ;	88;	0;	15730
10;	1351.8;	03-MAR-2005	23:48:22;	Dark	;	66.0;	106;	9Bet Crv	;	2.65;	5600;	occ;	132;	0;	15730
11;	1523.6;	03-MAR-2005	23:51:14;	Dark	;	62.5;	100;	4Gam Crv	;	2.58;	13100;	occ;	125;	0;	15730
12;	1758.3;	03-MAR-2005	23:55:09;	Dark	;	45.5;	48;	30Alp Hya	;	1.98;	4100;	occ;	91;	0;	15730
13;	2117.5;	04-MAR-2005	00:01:08;	Bright;		41.0;	22;	32Alp Leo	;	1.36;	15200;	occ;	82;	0;	15730
14;	2269.4;	04-MAR-2005	00:03:40;	Bright;		41.5;	51;	41Gam1Leo	;	2.01;	4500;	occ;	83;	0;	15730
15;	2364.2;	04-MAR-2005	00:05:15;	Bright;		48.5;	96;	68Del Leo	;	2.56;	9300;	occ;	97;	0;	15730
16;	2513.2;	04-MAR-2005	00:07:44;	Bright;		40.0;	24;	66Alp Gem	;	1.58;	10200;	occ;	80;	0;	15730
17;	2790.5;	04-MAR-2005	00:12:21;	Bright;		43.0;	174;	52Psi UMa	;	3.00;	4400;	occ;	86;	0;	15730
18;	2962.5;	04-MAR-2005	00:15:13;	Bright;		39.0;	82;	48Bet UMa	;	2.37;	10600;	occ;	78;	0;	15730
19;	3044.7;	04-MAR-2005	00:16:35;	Bright;		41.5;	36;	50Alp UMa	;	1.80;	6300;	occ;	83;	0;	15730
20;	3219.4;	04-MAR-2005	00:19:30;	Bright;		49.5;	32;	77Eps UMa	;	1.76;	11000;	occ;	99;	0;	15730
21;	3312.8;	04-MAR-2005	00:21:03;	Bright;		51.5;	55;	79Zet UMa	;	2.06;	10200;	occ;	103;	0;	15730
22;	3433.9;	04-MAR-2005	00:23:04;	Bright;		35.5;	49;	1Alp UMi	;	1.99;	6300;	occ;	71;	0;	15730
23;	3753.8;	04-MAR-2005	00:28:24;	Bright;		46.0;	119;	14Eta Dra	;	2.73;	4700;	occ;	92;	0;	15730
24;	3888.7;	04-MAR-2005	00:30:39;	Bright;		34.0;	89;	5Alp Cep	;	2.45;	8000;	occ;	68;	0;	15730
25;	4024.9;	04-MAR-2005	00:32:56;	Bright;		45.5;	130;	23Bet Dra	;	2.80;	5800;	occ;	91;	0;	15730
26;	4194.3;	04-MAR-2005	00:35:45;	Bright;		37.0;	19;	50Alp Cyg	;	1.25;	10500;	occ;	74;	0;	15730
27;	4288.1;	04-MAR-2005	00:37:19;	Bright;		36.5;	66;	37Gam Cyg	;	2.21;	5900;	occ;	73;	0;	15730
28;	4382.2;	04-MAR-2005	00:38:53;	Bright;		36.0;	92;	53Eps Cyg	;	2.50;	4500;	occ;	72;	0;	15730
29;	4567.0;	04-MAR-2005	00:41:58;	Dark	;	92.5;	133;	40Zet Her	;	2.81;	6000;	occ;	185;	0;	15730
30;	4812.2;	04-MAR-2005	00:46:03;	Bright;		41.5;	168;	17Zet Aql	;	2.99;	11000;	occ;	83;	0;	15730
31;	5038.2;	04-MAR-2005	00:49:49;	Dark	;	79.5;	59;	55Alp Oph	;	2.08;	8900;	occ;	159;	0;	15730
32;	5194.8;	04-MAR-2005	00:52:25;	Dark	;	65.0;	126;	60Bet Oph	;	2.77;	4250;	occ;	130;	0;	15730
33;	5406.4;	04-MAR-2005	00:55:57;	Dark	;	18.0;	155;	41Pi Sgr	;	2.90;	6600;	occ;	36;	0;	15730

/nas1/ENVISAT/GOMOS/from_DDS/GOM_NL__0PNPDE20050304_005557_000040982035_00145_15730_1919.N1

1;	-629.5;	04-MAR-2005	00:55:57;	Dark	;	42.0;	155;	41Pi Sgr	;	2.90;	6600;	occ;	84;	0;	15730
2;	-517.9;	04-MAR-2005	00:57:49;	Dark	;	45.5;	57;	34Sig Sgr	;	2.07;	26000;	occ;	91;	0;	15730
3;	-326.9;	04-MAR-2005	01:01:00;	Dark	;	49.5;	38;	20Eps Sgr	;	1.84;	11000;	occ;	99;	0;	15730
4;	-93.3;	04-MAR-2005	01:04:53;	Dark	;	45.0;	40;	The Sco	;	1.86;	7100;	occ;	90;	0;	15730
5;	48.9;	04-MAR-2005	01:07:15;	Dark	;	59.5;	0;		;	0.00;	0;	occ;	119;	0;	15731
6;	242.3;	04-MAR-2005	01:10:29;	Dark	;	42.5;	43;	Alp TrA	;	1.91;	4250;	occ;	85;	0;	15731
7;	349.2;	04-MAR-2005	01:12:16;	Dark	;	51.0;	131;	Gam Lup	;	2.80;	26000;	occ;	102;	0;	15731
8;	459.1;	04-MAR-2005	01:14:06;	Dark	;	46.5;	4;	Alp1Cen	;	-0.01;	5800;	occ;	93;	0;	15731
9;	537.7;	04-MAR-2005	01:15:24;	Dark	;	43.0;	10;	Bet Cen	;	0.61;	28000;	occ;	86;	0;	15731
10;	684.8;	04-MAR-2005	01:17:51;	Dark	;	51.0;	12;	Alp1Cru	;	0.77;	30000;	occ;	102;	0;	15731
11;	839.4;	04-MAR-2005	01:20:26;	Dark	;	44.0;	64;	Gam Cen	;	2.20;	10600;	occ;	88;	0;	15731
12;	991.4;	04-MAR-2005	01:22:58;	Dark	;	36.5;	91;	Kap Vel	;	2.49;	26000;	occ;	73;	0;	15731
13;	1190.3;	04-MAR-2005	01:26:17;	Dark	;	47.5;	65;	Lam Vel	;	2.20;	4400;	occ;	95;	0;	15731
14;	1352.3;	04-MAR-2005	01:28:59;	Dark	;	63.0;	106;	9Bet Crv	;	2.65;	5600;	occ;	126;	0;	15731
15;	1523.7;	04-MAR-2005	01:31:50;	Dark	;	63.0;	100;	4Gam Crv	;	2.58;	13100;	occ;	126;	0;	15731
16;	1758.2;	04-MAR-2005	01:35:45;	Dark	;	47.5;	48;	30Alp Hya	;	1.98;	4100;	occ;	95;	0;	15731
17;	2117.3;	04-MAR-2005	01:41:44;	Bright;		41.0;	22;	32Alp Leo	;	1.36;	15200;	occ;	82;	0;	15731
18;	2269.1;	04-MAR-2005	01:44:16;	Bright;		43.5;	51;	41Gam1Leo	;	2.01;	4500;	occ;	87;	0;	15731
19;	2363.5;	04-MAR-2005	01:45:50;	Bright;		47.5;	96;	68Del Leo	;	2.56;	9300;	occ;	95;	0;	15731
20;	2513.6;	04-MAR-2005	01:48:20;	Bright;		38.5;	24;	66Alp Gem	;	1.58;	10200;	occ;	77;	0;	15731
21;	2789.9;	04-MAR-2005	01:52:56;	Bright;		44.5;	174;	52Psi UMa	;	3.00;	4400;	occ;	89;	0;	15731
22;	2962.1;	04-MAR-2005	01:55:49;	Bright;		39.0;	82;	48Bet UMa	;	2.37;	10600;	occ;	78;	0;	15731
23;	3044.3;	04-MAR-2005	01:57:11;	Bright;		39.0;	36;	50Alp UMa	;	1.80;	6300;	occ;	78;	0;	15731
24;	3218.5;	04-MAR-2005	02:00:05;	Bright;		49.5;	32;	77Eps UMa	;	1.76;	11000;	occ;	99;	0;	15731
25;	3311.7;	04-MAR-2005	02:01:38;	Bright;		48.0;	55;	79Zet UMa	;	2.06;	10200;	occ;	96;	0;	15731
26;	3433.7;	04-MAR-2005	02:03:40;	Bright;		35.5;	49;	1Alp UMi	;	1.99;	6300;	occ;	71;	0;	15731

/nas1/ENVISAT/GOMOS/from_DDS/GOM_NL__0PNPDK20050304_071046_000038702035_00149_15734_2421.N1

1;	-2284.3;	04-MAR-2005	07:10:46;	Bright;		47.0;	119;	14Eta Dra	;	2.73;	4700;	occ;	94;	0;	15734
2;	-2146.9;	04-MAR-2005	07:13:03;	Bright;		36.0;	89;	5Alp Cep	;	2.45;	8000;	occ;	72;	0;	15734
3;	-2012.2;	04-MAR-2005	07:15:18;	Bright;		47.5;	130;	23Bet Dra	;	2.80;	5800;	occ;	95;	0;	15734
4;	-1841.4;	04-MAR-2005	07:18:09;	Bright;		35.5;	19;	50Alp Cyg	;	1.25;	10500;	occ;	71;	0;	15734
5;	-1747.6;	04-MAR-2005	07:19:43;	Bright;		34.0;	66;	37Gam Cyg	;	2.21;	5900;	occ;	68;	0;	15734
6;	-1653.3;	04-MAR-2005	07:21:17;	Bright;		35.5;	92;	53Eps Cyg	;	2.50;	4500;	occ;	71;	0;	15734

```

7;-1467.6; 04-MAR-2005 07:24:23; Dark ; 93.0; 133; 40Zet Her ; 2.81; 6000;occ; 186; 0;15734
8;-1222.4; 04-MAR-2005 07:28:28; Bright; 42.5; 168; 17Zet Aql ; 2.99; 11000;occ; 85; 0;15734
9; -993.8; 04-MAR-2005 07:32:17; Dark ; 76.0; 59; 55Alp Oph ; 2.08; 8900;occ; 152; 0;15734
10; -836.7; 04-MAR-2005 07:34:54; Dark ; 68.5; 126; 60Bet Oph ; 2.77; 4250;occ; 137; 0;15734
11; -627.5; 04-MAR-2005 07:38:23; Dark ; 45.5; 155; 41Pi Sgr ; 2.90; 6600;occ; 91; 0;15734
12; -515.7; 04-MAR-2005 07:40:15; Dark ; 44.5; 57; 34Sig Sgr ; 2.07; 26000;occ; 89; 0;15734
13; -324.2; 04-MAR-2005 07:43:26; Dark ; 46.5; 38; 20Eps Sgr ; 1.84; 11000;occ; 93; 0;15734
14; -90.0; 04-MAR-2005 07:47:20; Dark ; 45.0; 40; The Sco ; 1.86; 7100;occ; 90; 0;15734
15; 53.2; 04-MAR-2005 07:49:44; Dark ; 59.5; 0; ; 0.00; 0;occ; 119; 0;15735
16; 244.0; 04-MAR-2005 07:52:54; Dark ; 38.5; 43; Alp TrA ; 1.91; 4250;occ; 77; 0;15735
17; 354.1; 04-MAR-2005 07:54:44; Dark ; 52.5; 131; Gam Lup ; 2.80; 26000;occ; 105; 0;15735
18; 461.7; 04-MAR-2005 07:56:32; Dark ; 50.5; 4; Alp1Cen ;-0.01; 5800;occ; 101; 0;15735
19; 540.2; 04-MAR-2005 07:57:51; Dark ; 43.5; 10; Bet Cen ; 0.61; 28000;occ; 87; 0;15735
20; 686.6; 04-MAR-2005 08:00:17; Dark ; 47.0; 12; Alp1Cru ; 0.77; 30000;occ; 94; 0;15735
21; 789.4; 04-MAR-2005 08:02:00; Dark ; 69.5; 54; 5The Cen ; 2.06; 4500;occ; 139; 0;15735
22; 924.8; 04-MAR-2005 08:04:15; Dark ; 42.5; 71; Iot Car ; 2.25; 7700;occ; 85; 0;15735
23; 1013.9; 04-MAR-2005 08:05:44; Dark ; 41.5; 113; Mu Vel ; 2.69; 5000;occ; 83; 0;15735
24; 1191.1; 04-MAR-2005 08:08:41; Dark ; 45.5; 65; Lam Vel ; 2.20; 4400;occ; 91; 0;15735
25; 1353.8; 04-MAR-2005 08:11:24; Dark ; 69.0; 106; 9Bet Crv ; 2.65; 5600;occ; 138; 0;15735
26; 1524.4; 04-MAR-2005 08:14:15; Dark ; 62.5; 100; 4Gam Crv ; 2.58; 13100;occ; 125; 0;15735
/nas1/ENVISAT/GOMOS/from_DDS/GOM_NL__0PNPDK20050304_081510_000062182035_00150_15735_2422.N1
1;-4456.5; 04-MAR-2005 08:15:10; Dark ; 63.0; 100; 4Gam Crv ; 2.58; 13100;occ; 126; 110;15735
2;-4277.2; 04-MAR-2005 08:18:09; Dark ; 47.5; 48; 30Alp Hya ; 1.98; 4100;occ; 95; 0;15735
3;-3918.9; 04-MAR-2005 08:24:07; Bright; 41.5; 22; 32Alp Leo ; 1.36; 15200;occ; 83; 0;15735
4;-3767.7; 04-MAR-2005 08:26:39; Bright; 43.5; 51; 41Gam1Leo ; 2.01; 4500;occ; 87; 0;15735
5;-3674.8; 04-MAR-2005 08:28:11; Bright; 48.5; 96; 68Del Leo ; 2.56; 9300;occ; 97; 0;15735
6;-3520.7; 04-MAR-2005 08:30:46; Bright; 36.5; 24; 66Alp Gem ; 1.58; 10200;occ; 73; 0;15735
7;-3248.3; 04-MAR-2005 08:35:18; Bright; 42.0; 174; 52Psi UMA ; 3.00; 4400;occ; 84; 0;15735
8;-3075.7; 04-MAR-2005 08:38:11; Bright; 38.5; 82; 48Bet UMA ; 2.37; 10600;occ; 77; 0;15735
9;-2993.0; 04-MAR-2005 08:39:33; Bright; 39.0; 36; 50Alp UMA ; 1.80; 6300;occ; 78; 0;15735
10;-2820.8; 04-MAR-2005 08:42:25; Bright; 48.0; 32; 77Eps UMA ; 1.76; 11000;occ; 96; 0;15735
11;-2727.9; 04-MAR-2005 08:43:58; Bright; 47.0; 55; 79Zet UMA ; 2.06; 10200;occ; 94; 0;15735
12;-2602.2; 04-MAR-2005 08:46:04; Bright; 36.5; 49; 1Alp UMi ; 1.99; 6300;occ; 73; 0;15735
13;-2284.5; 04-MAR-2005 08:51:22; Bright; 45.5; 119; 14Eta Dra ; 2.73; 4700;occ; 91; 0;15735
14;-2146.9; 04-MAR-2005 08:53:39; Bright; 36.5; 89; 5Alp Cep ; 2.45; 8000;occ; 73; 0;15735
15;-2012.6; 04-MAR-2005 08:55:54; Bright; 44.5; 130; 23Bet Dra ; 2.80; 5800;occ; 89; 0;15735
16;-1841.3; 04-MAR-2005 08:58:45; Bright; 34.0; 19; 50Alp Cyg ; 1.25; 10500;occ; 68; 0;15735
17;-1747.5; 04-MAR-2005 09:00:19; Bright; 36.0; 66; 37Gam Cyg ; 2.21; 5900;occ; 72; 0;15735
18;-1653.1; 04-MAR-2005 09:01:53; Bright; 35.0; 92; 53Eps Cyg ; 2.50; 4500;occ; 70; 0;15735
19;-1467.2; 04-MAR-2005 09:04:59; Dark ; 101.0; 133; 40Zet Her ; 2.81; 6000;occ; 202; 0;15735
20;-1222.1; 04-MAR-2005 09:09:04; Bright; 43.5; 168; 17Zet Aql ; 2.99; 11000;occ; 87; 0;15735
21; -992.6; 04-MAR-2005 09:12:54; Dark ; 78.0; 59; 55Alp Oph ; 2.08; 8900;occ; 156; 0;15735
22; -835.7; 04-MAR-2005 09:15:31; Dark ; 68.5; 126; 60Bet Oph ; 2.77; 4250;occ; 137; 0;15735
23; -626.9; 04-MAR-2005 09:18:59; Dark ; 43.0; 155; 41Pi Sgr ; 2.90; 6600;occ; 86; 0;15735
24; -515.1; 04-MAR-2005 09:20:51; Dark ; 44.5; 57; 34Sig Sgr ; 2.07; 26000;occ; 89; 0;15735
25; -379.7; 04-MAR-2005 09:23:07; Dark ; 52.0; 116; 19Del Sgr ; 2.70; 4100;occ; 104; 0;15735
26; -288.6; 04-MAR-2005 09:24:38; Dark ; 64.0; 86; 35Eta Oph ; 2.43; 10200;occ; 128; 0;15735
27; -89.3; 04-MAR-2005 09:27:57; Dark ; 46.0; 40; The Sco ; 1.86; 7100;occ; 92; 0;15735
28; 54.3; 04-MAR-2005 09:30:21; Dark ; 59.5; 0; ; 0.00; 0;occ; 119; 0;15736
29; 244.3; 04-MAR-2005 09:33:31; Dark ; 40.5; 43; Alp TrA ; 1.91; 4250;occ; 81; 0;15736
30; 355.1; 04-MAR-2005 09:35:21; Dark ; 52.5; 131; Gam Lup ; 2.80; 26000;occ; 105; 0;15736
31; 462.2; 04-MAR-2005 09:37:08; Dark ; 43.5; 4; Alp1Cen ;-0.01; 5800;occ; 87; 0;15736
32; 540.7; 04-MAR-2005 09:38:27; Dark ; 43.5; 10; Bet Cen ; 0.61; 28000;occ; 87; 0;15736
33; 687.0; 04-MAR-2005 09:40:53; Dark ; 46.0; 12; Alp1Cru ; 0.77; 30000;occ; 92; 0;15736
34; 790.5; 04-MAR-2005 09:42:37; Dark ; 66.5; 54; 5The Cen ; 2.06; 4500;occ; 133; 0;15736
35; 924.9; 04-MAR-2005 09:44:51; Dark ; 41.5; 71; Iot Car ; 2.25; 7700;occ; 83; 0;15736
36; 1014.2; 04-MAR-2005 09:46:20; Dark ; 44.5; 113; Mu Vel ; 2.69; 5000;occ; 89; 0;15736
37; 1191.2; 04-MAR-2005 09:49:17; Dark ; 45.5; 65; Lam Vel ; 2.20; 4400;occ; 91; 0;15736
38; 1354.1; 04-MAR-2005 09:52:00; Dark ; 68.0; 106; 9Bet Crv ; 2.65; 5600;occ; 136; 0;15736
39; 1524.5; 04-MAR-2005 09:54:51; Dark ; 60.5; 100; 4Gam Crv ; 2.58; 13100;occ; 121; 0;15736
40; 1758.8; 04-MAR-2005 09:58:45; Dark ; 3.5; 48; 30Alp Hya ; 1.98; 4100;occ; 7; 0;15736
/nas1/ENVISAT/GOMOS/from_DDS/GOM_NL__0PNPDK20050304_095845_000058432035_00151_15736_2423.N1
1;-4277.0; 04-MAR-2005 09:58:45; Dark ; 46.5; 48; 30Alp Hya ; 1.98; 4100;occ; 93; 0;15736
2;-3919.0; 04-MAR-2005 10:04:43; Bright; 41.5; 22; 32Alp Leo ; 1.36; 15200;occ; 83; 0;15736
3;-3767.9; 04-MAR-2005 10:07:14; Bright; 42.0; 51; 41Gam1Leo ; 2.01; 4500;occ; 84; 0;15736
4;-3675.4; 04-MAR-2005 10:08:47; Bright; 47.5; 96; 68Del Leo ; 2.56; 9300;occ; 95; 0;15736
5;-3520.3; 04-MAR-2005 10:11:22; Bright; 38.0; 24; 66Alp Gem ; 1.58; 10200;occ; 76; 0;15736
6;-3248.9; 04-MAR-2005 10:15:53; Bright; 43.5; 174; 52Psi UMA ; 3.00; 4400;occ; 87; 0;15736

```

```

7;-3076.1; 04-MAR-2005 10:18:46; Bright; 39.0; 82; 48Bet UMA ; 2.37; 10600;occ; 78; 0;15736
8;-2993.5; 04-MAR-2005 10:20:09; Bright; 40.0; 36; 50Alp UMA ; 1.80; 6300;occ; 80; 0;15736
9;-2821.5; 04-MAR-2005 10:23:01; Bright; 48.0; 32; 77Eps UMA ; 1.76; 11000;occ; 96; 0;15736
10;-2728.8; 04-MAR-2005 10:24:33; Bright; 51.5; 55; 79Zet UMA ; 2.06; 10200;occ; 103; 0;15736
11;-2602.4; 04-MAR-2005 10:26:40; Bright; 37.0; 49; 1Alp UMi ; 1.99; 6300;occ; 74; 0;15736
12;-2285.1; 04-MAR-2005 10:31:57; Bright; 46.5; 119; 14Eta Dra ; 2.73; 4700;occ; 93; 0;15736
13;-2146.8; 04-MAR-2005 10:34:15; Bright; 37.5; 89; 5Alp Cep ; 2.45; 8000;occ; 75; 0;15736
14;-2012.8; 04-MAR-2005 10:36:29; Bright; 47.5; 130; 23Bet Dra ; 2.80; 5800;occ; 95; 0;15736
15;-1841.3; 04-MAR-2005 10:39:21; Bright; 37.0; 19; 50Alp Cyg ; 1.25; 10500;occ; 74; 0;15736
16;-1747.5; 04-MAR-2005 10:40:55; Bright; 36.5; 66; 37Gam Cyg ; 2.21; 5900;occ; 73; 0;15736
17;-1653.0; 04-MAR-2005 10:42:29; Bright; 34.5; 92; 53Eps Cyg ; 2.50; 4500;occ; 69; 0;15736
18;-1466.8; 04-MAR-2005 10:45:35; Dark ; 93.0; 133; 40Zet Her ; 2.81; 6000;occ; 186; 0;15736
19;-1221.6; 04-MAR-2005 10:49:40; Bright; 42.5; 168; 17Zet Aql ; 2.99; 11000;occ; 85; 0;15736
20;-991.6; 04-MAR-2005 10:53:30; Dark ; 75.0; 59; 55Alp Oph ; 2.08; 8900;occ; 150; 0;15736
21;-834.5; 04-MAR-2005 10:56:08; Dark ; 70.0; 126; 60Bet Oph ; 2.77; 4250;occ; 140; 0;15736
22;-626.4; 04-MAR-2005 10:59:36; Dark ; 43.0; 155; 41Pi Sgr ; 2.90; 6600;occ; 86; 0;15736
23;-514.5; 04-MAR-2005 11:01:28; Dark ; 43.0; 57; 34Sig Sgr ; 2.07; 26000;occ; 86; 0;15736
24;-379.0; 04-MAR-2005 11:03:43; Dark ; 46.0; 116; 19Del Sgr ; 2.70; 4100;occ; 92; 0;15736
25;-287.0; 04-MAR-2005 11:05:15; Dark ; 67.0; 86; 35Eta Oph ; 2.43; 10200;occ; 134; 0;15736
26;-88.7; 04-MAR-2005 11:08:33; Dark ; 44.5; 40; The Sco ; 1.86; 7100;occ; 89; 0;15736
27; 55.4; 04-MAR-2005 11:10:58; Dark ; 59.5; 0; ; 0.00; 0;occ; 119; 0;15737
28; 244.7; 04-MAR-2005 11:14:07; Dark ; 39.5; 43; Alp TrA ; 1.91; 4250;occ; 79; 0;15737
29; 356.3; 04-MAR-2005 11:15:58; Dark ; 52.0; 131; Gam Lup ; 2.80; 26000;occ; 104; 0;15737
30; 462.7; 04-MAR-2005 11:17:45; Dark ; 45.0; 4; Alp1Cen ;-0.01; 5800;occ; 90; 0;15737
31; 541.2; 04-MAR-2005 11:19:03; Dark ; 44.5; 10; Bet Cen ; 0.61; 28000;occ; 89; 0;15737
32; 687.3; 04-MAR-2005 11:21:29; Dark ; 39.5; 12; Alp1Cru ; 0.77; 30000;occ; 79; 0;15737
33; 791.5; 04-MAR-2005 11:23:14; Dark ; 68.0; 54; 5The Cen ; 2.06; 4500;occ; 136; 0;15737
34; 925.0; 04-MAR-2005 11:25:27; Dark ; 43.0; 71; Iot Car ; 2.25; 7700;occ; 86; 0;15737
35; 1014.5; 04-MAR-2005 11:26:57; Dark ; 44.0; 113; Mu Vel ; 2.69; 5000;occ; 88; 0;15737
36; 1191.3; 04-MAR-2005 11:29:53; Dark ; 44.5; 65; Lam Vel ; 2.20; 4400;occ; 89; 0;15737
37; 1354.4; 04-MAR-2005 11:32:36; Dark ; 64.0; 106; 9Bet Crv ; 2.65; 5600;occ; 128; 0;15737
38; 1524.7; 04-MAR-2005 11:35:27; Dark ; 42.5; 100; 4Gam Crv ; 2.58; 13100;occ; 85; 0;15737
/nas1/ENVISAT/GOMOS/from_DDS/GOM_NL__0PNPDK20050304_113527_000060912035_00152_15737_2424.N1
1;-4511.2; 04-MAR-2005 11:35:27; Dark ; 62.0; 100; 4Gam Crv ; 2.58; 13100;occ; 124; 0;15737
2;-4277.1; 04-MAR-2005 11:39:21; Dark ; 46.0; 48; 30Alp Hya ; 1.98; 4100;occ; 92; 0;15737
3;-3919.3; 04-MAR-2005 11:45:19; Bright; 42.0; 22; 32Alp Leo ; 1.36; 15200;occ; 84; 0;15737
4;-3768.2; 04-MAR-2005 11:47:50; Bright; 42.5; 51; 41Gam1Leo ; 2.01; 4500;occ; 85; 0;15737
5;-3676.3; 04-MAR-2005 11:49:22; Bright; 49.0; 96; 68Del Leo ; 2.56; 9300;occ; 98; 0;15737
6;-3520.0; 04-MAR-2005 11:51:58; Bright; 39.5; 24; 66Alp Gem ; 1.58; 10200;occ; 79; 0;15737
7;-3249.5; 04-MAR-2005 11:56:28; Bright; 43.5; 174; 52Psi UMA ; 3.00; 4400;occ; 87; 0;15737
8;-3076.7; 04-MAR-2005 11:59:21; Bright; 40.5; 82; 48Bet UMA ; 2.37; 10600;occ; 81; 0;15737
9;-2994.0; 04-MAR-2005 12:00:44; Bright; 40.5; 36; 50Alp UMA ; 1.80; 6300;occ; 81; 0;15737
10;-2822.3; 04-MAR-2005 12:03:36; Bright; 48.5; 32; 77Eps UMA ; 1.76; 11000;occ; 97; 0;15737
11;-2729.9; 04-MAR-2005 12:05:08; Bright; 50.5; 55; 79Zet UMA ; 2.06; 10200;occ; 101; 0;15737
12;-2602.2; 04-MAR-2005 12:07:16; Bright; 33.0; 49; 1Alp UMi ; 1.99; 6300;occ; 66; 0;15737
13;-2285.7; 04-MAR-2005 12:12:32; Bright; 47.0; 119; 14Eta Dra ; 2.73; 4700;occ; 94; 0;15737
14;-2146.8; 04-MAR-2005 12:14:51; Bright; 33.5; 89; 5Alp Cep ; 2.45; 8000;occ; 67; 0;15737
15;-2013.3; 04-MAR-2005 12:17:05; Bright; 48.0; 130; 23Bet Dra ; 2.80; 5800;occ; 96; 0;15737
16;-1841.1; 04-MAR-2005 12:19:57; Bright; 35.0; 19; 50Alp Cyg ; 1.25; 10500;occ; 70; 0;15737
17;-1747.3; 04-MAR-2005 12:21:31; Bright; 34.0; 66; 37Gam Cyg ; 2.21; 5900;occ; 68; 0;15737
18;-1652.9; 04-MAR-2005 12:23:05; Bright; 33.5; 92; 53Eps Cyg ; 2.50; 4500;occ; 67; 0;15737
19;-1466.6; 04-MAR-2005 12:26:11; Dark ; 95.0; 133; 40Zet Her ; 2.81; 6000;occ; 190; 0;15737
20;-1221.5; 04-MAR-2005 12:30:16; Bright; 42.5; 168; 17Zet Aql ; 2.99; 11000;occ; 85; 0;15737
21;-990.6; 04-MAR-2005 12:34:07; Dark ; 73.5; 59; 55Alp Oph ; 2.08; 8900;occ; 147; 0;15737
22;-833.4; 04-MAR-2005 12:36:45; Dark ; 70.5; 126; 60Bet Oph ; 2.77; 4250;occ; 141; 0;15737
23;-626.0; 04-MAR-2005 12:40:12; Dark ; 42.0; 155; 41Pi Sgr ; 2.90; 6600;occ; 84; 0;15737
24;-514.1; 04-MAR-2005 12:42:04; Dark ; 42.0; 57; 34Sig Sgr ; 2.07; 26000;occ; 84; 0;15737
25;-378.3; 04-MAR-2005 12:44:20; Dark ; 52.0; 116; 19Del Sgr ; 2.70; 4100;occ; 104; 0;15737
26;-285.5; 04-MAR-2005 12:45:52; Dark ; 66.5; 86; 35Eta Oph ; 2.43; 10200;occ; 133; 0;15737
27;-88.0; 04-MAR-2005 12:49:10; Dark ; 50.5; 40; The Sco ; 1.86; 7100;occ; 101; 0;15737
28; 56.5; 04-MAR-2005 12:51:34; Dark ; 59.5; 0; ; 0.00; 0;occ; 119; 0;15738
29; 245.0; 04-MAR-2005 12:54:43; Dark ; 40.5; 43; Alp TrA ; 1.91; 4250;occ; 81; 0;15738
30; 357.6; 04-MAR-2005 12:56:36; Dark ; 53.5; 131; Gam Lup ; 2.80; 26000;occ; 107; 0;15738
31; 463.4; 04-MAR-2005 12:58:21; Dark ; 45.5; 4; Alp1Cen ;-0.01; 5800;occ; 91; 0;15738
32; 541.8; 04-MAR-2005 12:59:40; Dark ; 52.0; 10; Bet Cen ; 0.61; 28000;occ; 104; 0;15738
33; 687.7; 04-MAR-2005 13:02:06; Dark ; 48.0; 12; Alp1Cru ; 0.77; 30000;occ; 96; 0;15738
34; 792.5; 04-MAR-2005 13:03:50; Dark ; 69.0; 54; 5The Cen ; 2.06; 4500;occ; 138; 0;15738
35; 925.0; 04-MAR-2005 13:06:03; Dark ; 43.0; 71; Iot Car ; 2.25; 7700;occ; 86; 0;15738

```



```

36; 1014.8; 04-MAR-2005 13:07:33; Dark ; 41.0; 113; Mu Vel ; 2.69; 5000;occ; 82; 0;15738
37; 1191.5; 04-MAR-2005 13:10:29; Dark ; 44.0; 65; Lam Vel ; 2.20; 4400;occ; 88; 0;15738
38; 1354.9; 04-MAR-2005 13:13:13; Dark ; 64.0; 106; 9Bet Crv ; 2.65; 5600;occ; 128; 0;15738
39; 1524.8; 04-MAR-2005 13:16:03; Dark ; 55.5; 100; 4Gam Crv ; 2.58; 13100;occ; 111; 0;15738
/nas1/ENVISAT/GOMOS/from_DDS/GOM_NL__0PNPDK20050304_131603_000059282035_00153_15738_2425.N1
1;-4511.1; 04-MAR-2005 13:16:03; Dark ; 62.5; 100; 4Gam Crv ; 2.58; 13100;occ; 125; 0;15738
2;-4276.9; 04-MAR-2005 13:19:57; Dark ; 51.5; 48; 30Alp Hya ; 1.98; 4100;occ; 103; 0;15738
3;-3919.3; 04-MAR-2005 13:25:55; Bright; 41.0; 22; 32Alp Leo ; 1.36; 15200;occ; 82; 0;15738
4;-3768.4; 04-MAR-2005 13:28:25; Bright; 41.5; 51; 41Gam1Leo ; 2.01; 4500;occ; 83; 0;15738
5;-3676.9; 04-MAR-2005 13:29:57; Bright; 48.5; 96; 68Del Leo ; 2.56; 9300;occ; 97; 0;15738
6;-3519.8; 04-MAR-2005 13:32:34; Bright; 38.5; 24; 66Alp Gem ; 1.58; 10200;occ; 77; 0;15738
7;-3250.1; 04-MAR-2005 13:37:04; Bright; 43.5; 174; 52Psi UMa ; 3.00; 4400;occ; 87; 0;15738
8;-3077.2; 04-MAR-2005 13:39:57; Bright; 41.5; 82; 48Bet UMa ; 2.37; 10600;occ; 83; 0;15738
9;-2994.3; 04-MAR-2005 13:41:20; Bright; 41.0; 36; 50Alp UMa ; 1.80; 6300;occ; 82; 0;15738
10;-2823.3; 04-MAR-2005 13:44:11; Bright; 46.0; 32; 77Eps UMa ; 1.76; 11000;occ; 92; 0;15738
11;-2730.9; 04-MAR-2005 13:45:43; Bright; 48.0; 55; 79Zet UMa ; 2.06; 10200;occ; 96; 0;15738
12;-2602.2; 04-MAR-2005 13:47:52; Bright; 36.5; 49; 1Alp UMi ; 1.99; 6300;occ; 73; 0;15738
13;-2286.0; 04-MAR-2005 13:53:08; Bright; 45.0; 119; 14Eta Dra ; 2.73; 4700;occ; 90; 0;15738
14;-2146.7; 04-MAR-2005 13:55:27; Bright; 35.5; 89; 5Alp Cep ; 2.45; 8000;occ; 71; 0;15738
15;-2013.3; 04-MAR-2005 13:57:41; Bright; 47.0; 130; 23Bet Dra ; 2.80; 5800;occ; 94; 0;15738
16;-1841.1; 04-MAR-2005 14:00:33; Bright; 36.5; 19; 50Alp Cyg ; 1.25; 10500;occ; 73; 0;15738
17;-1747.3; 04-MAR-2005 14:02:07; Bright; 38.0; 66; 37Gam Cyg ; 2.21; 5900;occ; 76; 0;15738
18;-1652.8; 04-MAR-2005 14:03:41; Bright; 36.0; 92; 53Eps Cyg ; 2.50; 4500;occ; 72; 0;15738
19;-1466.4; 04-MAR-2005 14:06:47; Dark ; 101.5; 133; 40Zet Her ; 2.81; 6000;occ; 203; 0;15738
20;-1220.8; 04-MAR-2005 14:10:53; Bright; 42.0; 168; 17Zet Aql ; 2.99; 11000;occ; 84; 0;15738
21;-989.2; 04-MAR-2005 14:14:45; Dark ; 71.0; 59; 55Alp Oph ; 2.08; 8900;occ; 142; 0;15738
22;-832.3; 04-MAR-2005 14:17:22; Dark ; 64.5; 126; 60Bet Oph ; 2.77; 4250;occ; 129; 0;15738
23;-625.4; 04-MAR-2005 14:20:48; Dark ; 44.0; 155; 41Pi Sgr ; 2.90; 6600;occ; 88; 0;15738
24;-513.4; 04-MAR-2005 14:22:40; Dark ; 46.0; 57; 34Sig Sgr ; 2.07; 26000;occ; 92; 0;15738
25;-377.5; 04-MAR-2005 14:24:56; Dark ; 49.5; 116; 19Del Sgr ; 2.70; 4100;occ; 99; 0;15738
26;-283.7; 04-MAR-2005 14:26:30; Dark ; 66.0; 86; 35Eta Oph ; 2.43; 10200;occ; 132; 0;15738
27;-87.0; 04-MAR-2005 14:29:47; Dark ; 54.0; 40; The Sco ; 1.86; 7100;occ; 108; 0;15738
28; 57.6; 04-MAR-2005 14:32:11; Dark ; 59.5; 0; ; 0.00; 0;occ; 119; 0;15739
29; 245.5; 04-MAR-2005 14:35:19; Dark ; 38.5; 43; Alp TrA ; 1.91; 4250;occ; 77; 0;15739
30; 358.7; 04-MAR-2005 14:37:13; Dark ; 53.5; 131; Gam Lup ; 2.80; 26000;occ; 107; 0;15739
31; 464.0; 04-MAR-2005 14:38:58; Dark ; 41.5; 4; Alp1Cen ; -0.01; 5800;occ; 83; 0;15739
32; 542.4; 04-MAR-2005 14:40:16; Dark ; 51.5; 10; Bet Cen ; 0.61; 28000;occ; 103; 0;15739
33; 688.2; 04-MAR-2005 14:42:42; Dark ; 40.5; 12; Alp1Cru ; 0.77; 30000;occ; 81; 0;15739
34; 793.8; 04-MAR-2005 14:44:28; Dark ; 66.5; 54; 5The Cen ; 2.06; 4500;occ; 133; 0;15739
35; 925.3; 04-MAR-2005 14:46:39; Dark ; 39.5; 71; Iot Car ; 2.25; 7700;occ; 79; 0;15739
36; 1015.1; 04-MAR-2005 14:48:09; Dark ; 43.5; 113; Mu Vel ; 2.69; 5000;occ; 87; 0;15739
37; 1191.8; 04-MAR-2005 14:51:06; Dark ; 50.0; 65; Lam Vel ; 2.20; 4400;occ; 100; 0;15739
38; 1355.4; 04-MAR-2005 14:53:49; Dark ; 62.0; 106; 9Bet Crv ; 2.65; 5600;occ; 124; 0;15739
/nas1/ENVISAT/GOMOS/from_DDS/GOM_NL__0PNPDK20050304_145416_000057112035_00154_15739_2426.N1
1;-4654.0; 04-MAR-2005 14:54:16; Dark ; 62.5; 106; 9Bet Crv ; 2.65; 5600;occ; 125; 53;15739
2;-4510.8; 04-MAR-2005 14:56:39; Dark ; 61.5; 100; 4Gam Crv ; 2.58; 13100;occ; 123; 0;15739
3;-4276.7; 04-MAR-2005 15:00:33; Dark ; 47.5; 48; 30Alp Hya ; 1.98; 4100;occ; 95; 0;15739
4;-3919.5; 04-MAR-2005 15:06:30; Bright; 42.0; 22; 32Alp Leo ; 1.36; 15200;occ; 84; 0;15739
5;-3768.5; 04-MAR-2005 15:09:01; Bright; 42.0; 51; 41Gam1Leo ; 2.01; 4500;occ; 84; 0;15739
6;-3677.3; 04-MAR-2005 15:10:33; Bright; 48.5; 96; 68Del Leo ; 2.56; 9300;occ; 97; 0;15739
7;-3519.2; 04-MAR-2005 15:13:11; Bright; 36.5; 24; 66Alp Gem ; 1.58; 10200;occ; 73; 0;15739
8;-3250.4; 04-MAR-2005 15:17:39; Bright; 44.5; 174; 52Psi UMa ; 3.00; 4400;occ; 89; 0;15739
9;-3077.5; 04-MAR-2005 15:20:32; Bright; 40.5; 82; 48Bet UMa ; 2.37; 10600;occ; 81; 0;15739
10;-2994.6; 04-MAR-2005 15:21:55; Bright; 58.0; 36; 50Alp UMa ; 1.80; 6300;occ; 116; 0;15739
11;-2824.0; 04-MAR-2005 15:24:46; Bright; 49.0; 32; 77Eps UMa ; 1.76; 11000;occ; 98; 0;15739
12;-2602.1; 04-MAR-2005 15:28:28; Bright; 36.5; 49; 1Alp UMi ; 1.99; 6300;occ; 73; 0;15739
13;-2286.5; 04-MAR-2005 15:33:43; Bright; 47.0; 119; 14Eta Dra ; 2.73; 4700;occ; 94; 0;15739
14;-2146.4; 04-MAR-2005 15:36:03; Bright; 36.0; 89; 5Alp Cep ; 2.45; 8000;occ; 72; 0;15739
15;-2013.6; 04-MAR-2005 15:38:16; Bright; 48.5; 130; 23Bet Dra ; 2.80; 5800;occ; 97; 0;15739
16;-1840.7; 04-MAR-2005 15:41:09; Bright; 34.5; 19; 50Alp Cyg ; 1.25; 10500;occ; 69; 0;15739
17;-1747.0; 04-MAR-2005 15:42:43; Bright; 35.0; 66; 37Gam Cyg ; 2.21; 5900;occ; 70; 0;15739
18;-1652.5; 04-MAR-2005 15:44:17; Bright; 35.0; 92; 53Eps Cyg ; 2.50; 4500;occ; 70; 0;15739
19;-1466.3; 04-MAR-2005 15:47:24; Dark ; 94.0; 133; 40Zet Her ; 2.81; 6000;occ; 188; 0;15739
20;-1220.3; 04-MAR-2005 15:51:30; Bright; 42.0; 168; 17Zet Aql ; 2.99; 11000;occ; 84; 0;15739
21;-988.5; 04-MAR-2005 15:55:21; Dark ; 78.0; 59; 55Alp Oph ; 2.08; 8900;occ; 156; 0;15739
22;-831.0; 04-MAR-2005 15:57:59; Dark ; 70.5; 126; 60Bet Oph ; 2.77; 4250;occ; 141; 0;15739
23;-624.8; 04-MAR-2005 16:01:25; Dark ; 43.0; 155; 41Pi Sgr ; 2.90; 6600;occ; 86; 0;15739
24;-512.7; 04-MAR-2005 16:03:17; Dark ; 43.0; 57; 34Sig Sgr ; 2.07; 26000;occ; 86; 0;15739

```

```

25; -376.6; 04-MAR-2005 16:05:33; Dark ; 47.5; 116; 19Del Sgr ; 2.70; 4100;occ; 95; 0;15739
26; -282.0; 04-MAR-2005 16:07:08; Dark ; 64.5; 86; 35Eta Oph ; 2.43; 10200;occ; 129; 0;15739
27; -86.1; 04-MAR-2005 16:10:24; Dark ; 55.0; 40; The Sco ; 1.86; 7100;occ; 110; 0;15739
28; 58.7; 04-MAR-2005 16:12:49; Dark ; 59.5; 0; ; 0.00; 0;occ; 119; 0;15740
29; 245.9; 04-MAR-2005 16:15:56; Dark ; 48.0; 43; Alp TrA ; 1.91; 4250;occ; 96; 0;15740
30; 378.3; 04-MAR-2005 16:18:08; Dark ; 37.5; 145; Gam TrA ; 2.87; 10600;occ; 75; 0;15740
31; 464.6; 04-MAR-2005 16:19:34; Dark ; 51.5; 4; Alp1Cen ;-0.01; 5800;occ; 103; 0;15740
32; 543.1; 04-MAR-2005 16:20:53; Dark ; 42.5; 10; Bet Cen ; 0.61; 28000;occ; 85; 0;15740
33; 688.6; 04-MAR-2005 16:23:18; Dark ; 47.5; 12; Alp1Cru ; 0.77; 30000;occ; 95; 0;15740
34; 788.9; 04-MAR-2005 16:24:59; Dark ; 38.0; 124; The Car ; 2.76; 30000;occ; 76; 0;15740
35; 925.4; 04-MAR-2005 16:27:15; Dark ; 42.0; 71; Iot Car ; 2.25; 7700;occ; 84; 0;15740
36; 1015.5; 04-MAR-2005 16:28:45; Dark ; 42.0; 113; Mu Vel ; 2.69; 5000;occ; 84; 0;15740
/nas1/ENVISAT/GOMOS/from_DDS/GOM_NL__0PNPDK20050304_162922_000059492035_00155_15740_2427.N1
1; -4983.5; 04-MAR-2005 16:29:22; Dark ; 42.5; 113; Mu Vel ; 2.69; 5000;occ; 85; 74;15740
2; -4844.1; 04-MAR-2005 16:31:42; Dark ; 44.5; 65; Lam Vel ; 2.20; 4400;occ; 89; 0;15740
3; -4680.1; 04-MAR-2005 16:34:26; Dark ; 68.0; 106; 9Bet Crv ; 2.65; 5600;occ; 136; 0;15740
4; -4511.1; 04-MAR-2005 16:37:15; Dark ; 62.5; 100; 4Gam Crv ; 2.58; 13100;occ; 125; 0;15740
5; -4276.6; 04-MAR-2005 16:41:09; Dark ; 48.5; 48; 30Alp Hya ; 1.98; 4100;occ; 97; 0;15740
6; -3919.9; 04-MAR-2005 16:47:06; Bright; 42.0; 22; 32Alp Leo ; 1.36; 15200;occ; 84; 0;15740
7; -3768.9; 04-MAR-2005 16:49:37; Bright; 42.0; 51; 41Gam1Leo ; 2.01; 4500;occ; 84; 0;15740
8; -3678.1; 04-MAR-2005 16:51:08; Bright; 48.0; 96; 68Del Leo ; 2.56; 9300;occ; 96; 0;15740
9; -3519.0; 04-MAR-2005 16:53:47; Bright; 39.5; 24; 66Alp Gem ; 1.58; 10200;occ; 79; 0;15740
10; -3251.2; 04-MAR-2005 16:58:15; Bright; 44.0; 174; 52Psi UMa ; 3.00; 4400;occ; 88; 0;15740
11; -3078.0; 04-MAR-2005 17:01:08; Bright; 39.5; 82; 48Bet UMa ; 2.37; 10600;occ; 79; 0;15740
12; -2995.1; 04-MAR-2005 17:02:31; Bright; 37.5; 36; 50Alp UMa ; 1.80; 6300;occ; 75; 0;15740
13; -2824.7; 04-MAR-2005 17:05:21; Bright; 45.5; 32; 77Eps UMa ; 1.76; 11000;occ; 91; 0;15740
14; -2732.7; 04-MAR-2005 17:06:53; Bright; 51.0; 55; 79Zet UMa ; 2.06; 10200;occ; 102; 0;15740
15; -2602.3; 04-MAR-2005 17:09:04; Bright; 37.0; 49; 1Alp UMi ; 1.99; 6300;occ; 74; 0;15740
16; -2287.1; 04-MAR-2005 17:14:19; Bright; 44.5; 119; 14Eta Dra ; 2.73; 4700;occ; 89; 0;15740
17; -2146.4; 04-MAR-2005 17:16:40; Bright; 33.5; 89; 5Alp Cep ; 2.45; 8000;occ; 67; 0;15740
18; -2014.0; 04-MAR-2005 17:18:52; Bright; 47.0; 130; 23Bet Dra ; 2.80; 5800;occ; 94; 0;15740
19; -1840.5; 04-MAR-2005 17:21:45; Bright; 34.0; 19; 50Alp Cyg ; 1.25; 10500;occ; 68; 0;15740
20; -1747.0; 04-MAR-2005 17:23:19; Bright; 34.5; 66; 37Gam Cyg ; 2.21; 5900;occ; 69; 0;15740
21; -1652.4; 04-MAR-2005 17:24:53; Bright; 35.0; 92; 53Eps Cyg ; 2.50; 4500;occ; 70; 0;15740
22; -1465.8; 04-MAR-2005 17:28:00; Dark ; 98.5; 133; 40Zet Her ; 2.81; 6000;occ; 197; 0;15740
23; -1220.0; 04-MAR-2005 17:32:06; Bright; 42.5; 168; 17Zet Aql ; 2.99; 11000;occ; 85; 0;15740
24; -987.4; 04-MAR-2005 17:35:58; Dark ; 77.0; 59; 55Alp Oph ; 2.08; 8900;occ; 154; 0;15740
25; -829.9; 04-MAR-2005 17:38:36; Dark ; 73.0; 126; 60Bet Oph ; 2.77; 4250;occ; 146; 0;15740
26; -624.3; 04-MAR-2005 17:42:02; Dark ; 42.0; 155; 41Pi Sgr ; 2.90; 6600;occ; 84; 0;15740
27; -512.1; 04-MAR-2005 17:43:54; Dark ; 42.0; 57; 34Sig Sgr ; 2.07; 26000;occ; 84; 0;15740
28; -375.9; 04-MAR-2005 17:46:10; Dark ; 53.0; 116; 19Del Sgr ; 2.70; 4100;occ; 106; 0;15740
29; -280.4; 04-MAR-2005 17:47:46; Dark ; 65.5; 86; 35Eta Oph ; 2.43; 10200;occ; 131; 0;15740
30; -137.4; 04-MAR-2005 17:50:08; Dark ; 47.5; 25; 35Lam Sco ; 1.62; 28000;occ; 95; 0;15740
31; 59.8; 04-MAR-2005 17:53:26; Dark ; 59.5; 0; ; 0.00; 0;occ; 119; 0;15741
32; 246.3; 04-MAR-2005 17:56:32; Dark ; 40.0; 43; Alp TrA ; 1.91; 4250;occ; 80; 0;15741
33; 378.7; 04-MAR-2005 17:58:45; Dark ; 37.5; 145; Gam TrA ; 2.87; 10600;occ; 75; 0;15741
34; 465.2; 04-MAR-2005 18:00:11; Dark ; 57.0; 4; Alp1Cen ;-0.01; 5800;occ; 114; 0;15741
35; 543.7; 04-MAR-2005 18:01:30; Dark ; 42.0; 10; Bet Cen ; 0.61; 28000;occ; 84; 0;15741
36; 689.0; 04-MAR-2005 18:03:55; Dark ; 38.5; 12; Alp1Cru ; 0.77; 30000;occ; 77; 0;15741
37; 789.3; 04-MAR-2005 18:05:35; Dark ; 36.5; 124; The Car ; 2.76; 30000;occ; 73; 0;15741
38; 925.7; 04-MAR-2005 18:07:52; Dark ; 41.0; 71; Iot Car ; 2.25; 7700;occ; 82; 0;15741
/nas1/ENVISAT/GOMOS/from_DDS/GOM_NL__0PNPDK20050304_180830_000060002035_00156_15741_2428.N1
1; -5072.3; 04-MAR-2005 18:08:30; Dark ; 41.5; 71; Iot Car ; 2.25; 7700;occ; 83; 76;15741
2; -5020.2; 04-MAR-2005 18:09:22; Dark ; 39.5; 113; Mu Vel ; 2.69; 5000;occ; 79; 0;15741
3; -4843.9; 04-MAR-2005 18:12:18; Dark ; 42.5; 65; Lam Vel ; 2.20; 4400;occ; 85; 0;15741
4; -4679.9; 04-MAR-2005 18:15:02; Dark ; 68.5; 106; 9Bet Crv ; 2.65; 5600;occ; 137; 0;15741
5; -4510.7; 04-MAR-2005 18:17:51; Dark ; 65.0; 100; 4Gam Crv ; 2.58; 13100;occ; 130; 0;15741
6; -4276.5; 04-MAR-2005 18:21:45; Dark ; 47.0; 48; 30Alp Hya ; 1.98; 4100;occ; 94; 0;15741
7; -3919.8; 04-MAR-2005 18:27:42; Bright; 41.5; 22; 32Alp Leo ; 1.36; 15200;occ; 83; 0;15741
8; -3769.1; 04-MAR-2005 18:30:13; Bright; 43.0; 51; 41Gam1Leo ; 2.01; 4500;occ; 86; 0;15741
9; -3678.6; 04-MAR-2005 18:31:43; Bright; 47.0; 96; 68Del Leo ; 2.56; 9300;occ; 94; 0;15741
10; -3518.4; 04-MAR-2005 18:34:23; Bright; 37.5; 24; 66Alp Gem ; 1.58; 10200;occ; 75; 0;15741
11; -3251.8; 04-MAR-2005 18:38:50; Bright; 42.5; 174; 52Psi UMa ; 3.00; 4400;occ; 85; 0;15741
12; -3078.4; 04-MAR-2005 18:41:43; Bright; 41.0; 82; 48Bet UMa ; 2.37; 10600;occ; 82; 0;15741
13; -2995.4; 04-MAR-2005 18:43:06; Bright; 41.0; 36; 50Alp UMa ; 1.80; 6300;occ; 82; 0;15741
14; -2825.7; 04-MAR-2005 18:45:56; Bright; 45.5; 32; 77Eps UMa ; 1.76; 11000;occ; 91; 0;15741
15; -2733.8; 04-MAR-2005 18:47:28; Bright; 50.5; 55; 79Zet UMa ; 2.06; 10200;occ; 101; 0;15741
16; -2602.0; 04-MAR-2005 18:49:40; Bright; 36.5; 49; 1Alp UMi ; 1.99; 6300;occ; 73; 0;15741

```

17;	-2287.4;	04-MAR-2005	18:54:54;	Bright;	44.0;	119;	14Eta Dra	;	2.73;	4700;occ;	88;	0;	15741	
18;	-2146.2;	04-MAR-2005	18:57:16;	Bright;	33.5;	89;	5Alp Cep	;	2.45;	8000;occ;	67;	0;	15741	
19;	-2014.1;	04-MAR-2005	18:59:28;	Bright;	47.0;	130;	23Bet Dra	;	2.80;	5800;occ;	94;	0;	15741	
20;	-1840.3;	04-MAR-2005	19:02:22;	Bright;	36.0;	19;	50Alp Cyg	;	1.25;	10500;occ;	72;	0;	15741	
21;	-1746.9;	04-MAR-2005	19:03:55;	Bright;	36.5;	66;	37Gam Cyg	;	2.21;	5900;occ;	73;	0;	15741	
22;	-1652.1;	04-MAR-2005	19:05:30;	Bright;	35.5;	92;	53Eps Cyg	;	2.50;	4500;occ;	71;	0;	15741	
23;	-1465.8;	04-MAR-2005	19:08:36;	Dark	;	93.5;	133;	40Zet Her	;	2.81;	6000;occ;	187;	0;	15741
24;	-1219.5;	04-MAR-2005	19:12:42;	Bright;	43.0;	168;	17Zet Aql	;	2.99;	11000;occ;	86;	0;	15741	
25;	-986.3;	04-MAR-2005	19:16:36;	Dark	;	73.5;	59;	55Alp Oph	;	2.08;	8900;occ;	147;	0;	15741
26;	-828.7;	04-MAR-2005	19:19:13;	Dark	;	70.0;	126;	60Bet Oph	;	2.77;	4250;occ;	140;	0;	15741
27;	-623.7;	04-MAR-2005	19:22:38;	Dark	;	43.5;	155;	41Pi Sgr	;	2.90;	6600;occ;	87;	0;	15741
28;	-511.5;	04-MAR-2005	19:24:30;	Dark	;	43.0;	57;	34Sig Sgr	;	2.07;	26000;occ;	86;	0;	15741
29;	-375.2;	04-MAR-2005	19:26:47;	Dark	;	50.0;	116;	19Del Sgr	;	2.70;	4100;occ;	100;	0;	15741
30;	-278.6;	04-MAR-2005	19:28:23;	Dark	;	67.0;	86;	35Eta Oph	;	2.43;	10200;occ;	134;	0;	15741
31;	-136.6;	04-MAR-2005	19:30:45;	Dark	;	45.5;	25;	35Lam Sco	;	1.62;	28000;occ;	91;	0;	15741
32;	60.8;	04-MAR-2005	19:34:03;	Dark	;	59.5;	0;		;	0.00;	0;occ;	119;	0;	15742
33;	246.6;	04-MAR-2005	19:37:08;	Dark	;	41.0;	43;	Alp TrA	;	1.91;	4250;occ;	82;	0;	15742
34;	379.1;	04-MAR-2005	19:39:21;	Dark	;	37.0;	145;	Gam TrA	;	2.87;	10600;occ;	74;	0;	15742
35;	465.8;	04-MAR-2005	19:40:48;	Dark	;	44.5;	4;	Alp1Cen	;	-0.01;	5800;occ;	89;	0;	15742
36;	544.2;	04-MAR-2005	19:42:06;	Dark	;	41.5;	10;	Bet Cen	;	0.61;	28000;occ;	83;	0;	15742
37;	689.3;	04-MAR-2005	19:44:31;	Dark	;	46.5;	12;	Alp1Cru	;	0.77;	30000;occ;	93;	0;	15742
38;	789.3;	04-MAR-2005	19:46:11;	Dark	;	37.5;	124;	The Car	;	2.76;	30000;occ;	75;	0;	15742
39;	925.8;	04-MAR-2005	19:48:28;	Dark	;	3.0;	71;	Iot Car	;	2.25;	7700;occ;	6;	0;	15742