

GOMOS Daily Report 08-DEC-2003

SUMMARY

[1. General Info](#)

[2. Summary of products arrived in PCF \(Product Control Facility\)](#)

[2.1 Level 0 products arrived in PCF during actual month \(see template \[here\]\(#\)\)](#)

[2.2 Level 1 products arrived in PCF during reporting period](#)

[3. Plot of Spectrometers and Photometers temperatures](#)

[4. Dark Charge monitoring](#)

[4.1 Products that did not use the Dark Sky Area observation for DC computation](#)

[4.2 Plot of Dark Charge](#)

[5. Demodulation correction and quality product information monitoring](#)

[5.1 Percentage of products with some flags set](#)

[5.2 Plot of quality information per product](#)

[6. Star tangent altitude lost](#)

[6.1 Statistics on star tangent altitude lost](#)

[6.2 Plot of star tangent altitude lost: DARK products](#)

[6.3 Plot of star tangent altitude lost: BRIGHT products](#)

[7. Statistics on SATU Noise Equivalent Angle](#)

1. General Info

This report presents the daily analysis on parameters extracted from GOMOS level 1b data (GOM_TRA_1P). It is intended to monitor some important parameters that will impact the quality of the level 2 products as the Spectrometers and Photometers CCD Temperatures and Dark Charge, SATU noise equivalent angle... A list of level 0 products (and content) that have arrived during the actual month to the PCF is also given.

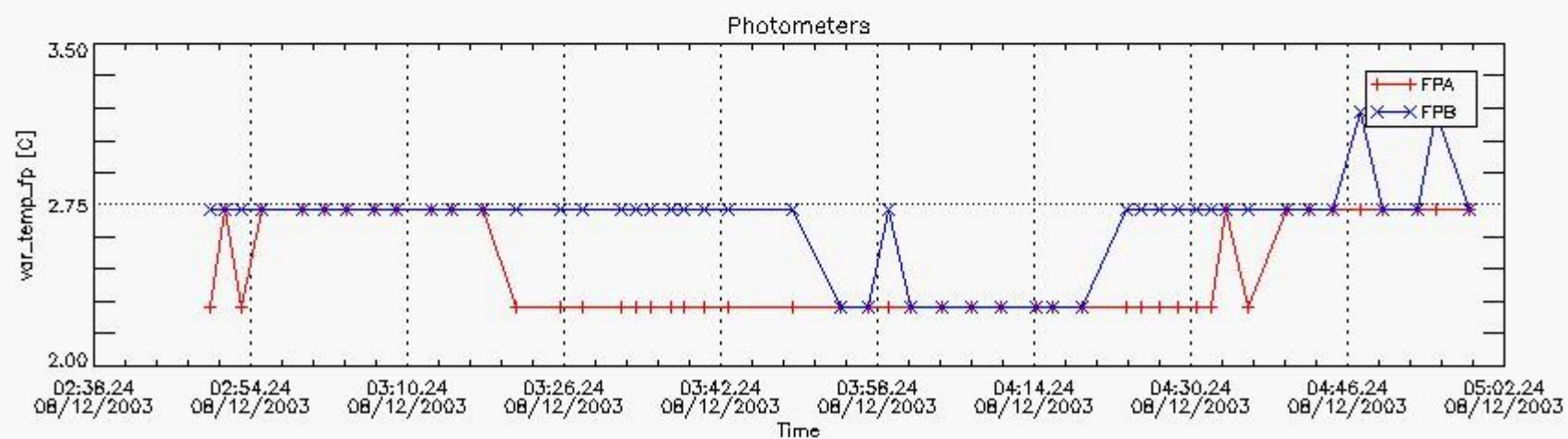
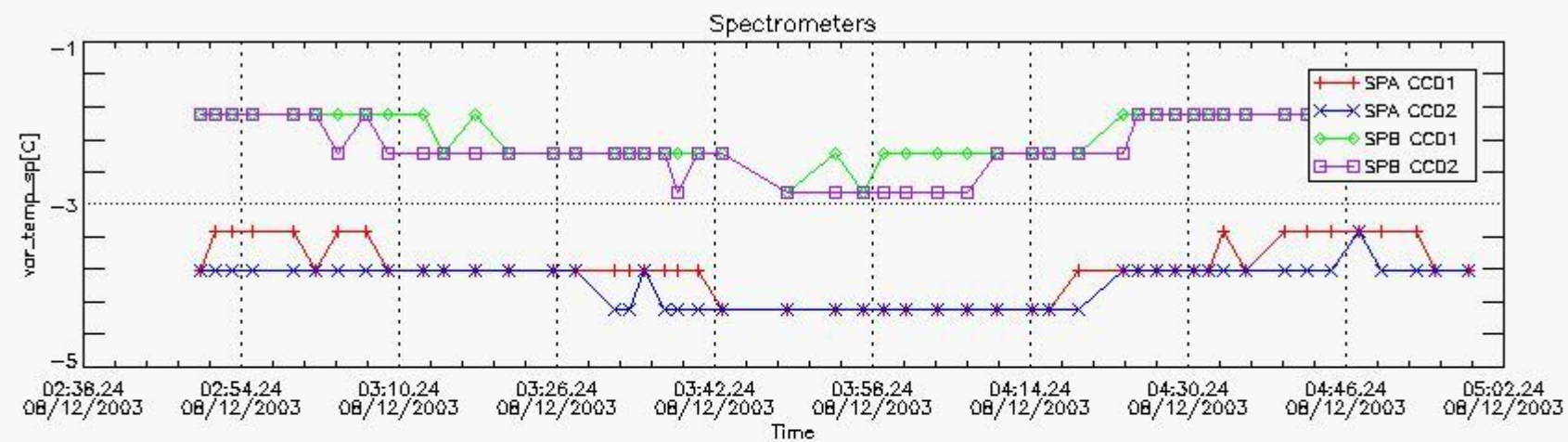
Item	Value
Time of report generation	09DEC2003 06:49:43
Data source version	<Any version>
Start time of products	08-DEC-2003 (08DEC2003 00:00:00)
Stop time of products	09-DEC-2003 (09DEC2003 00:00:00)
Store outputs flag	1
Nb of level 1b prods	49
Nb of prods with errors	0

2. Summary of products arrived in PCF

[2.1 Level 0 products arrived in PCF \(see template \[here\]\(#\)\)](#)

[2.2 Summary of processed GOM_TRA_1P products.](#)

Filename	UTC Start time	Limb	Duration	Star Id	Star Name	Star Mag	Star Temp	Nb Meas	Orbit	Prod. error
----------	----------------	------	----------	---------	-----------	----------	-----------	---------	-------	-------------



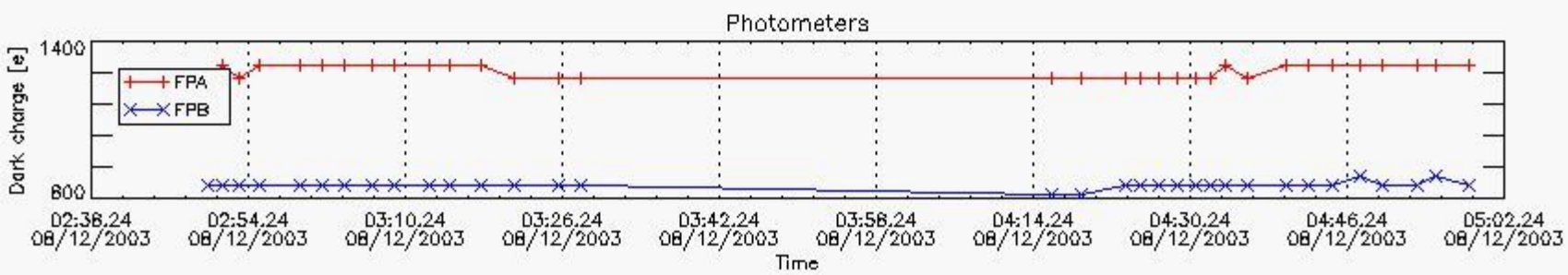
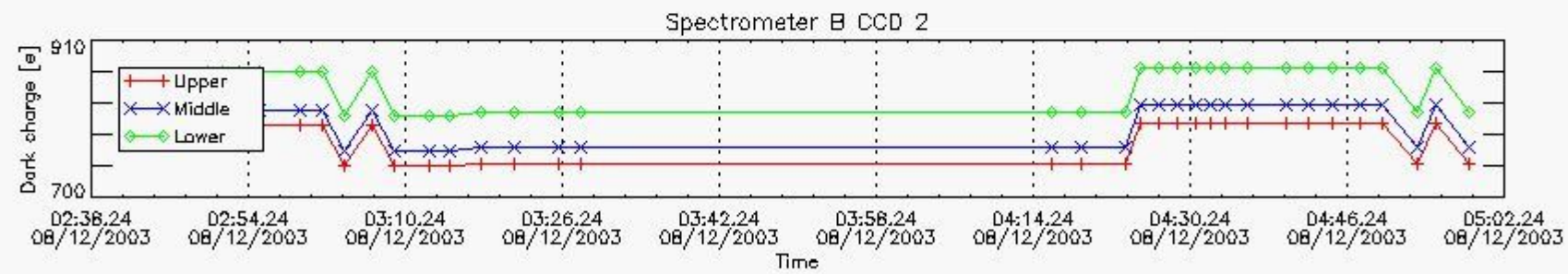
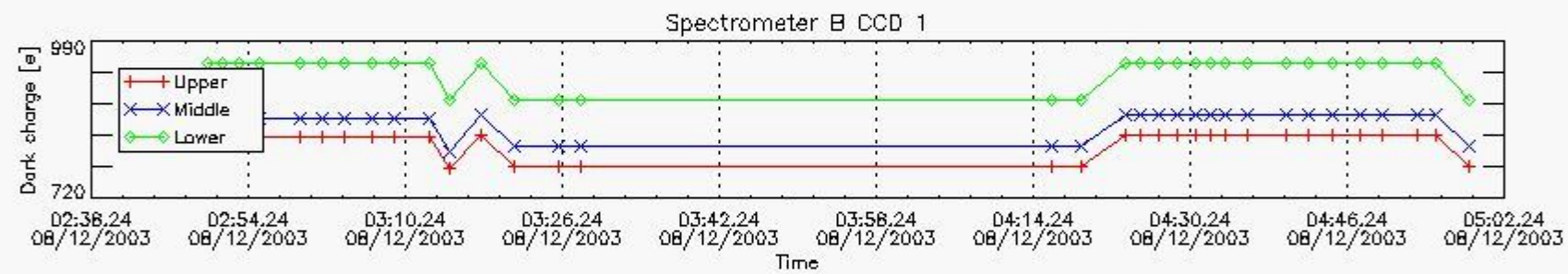
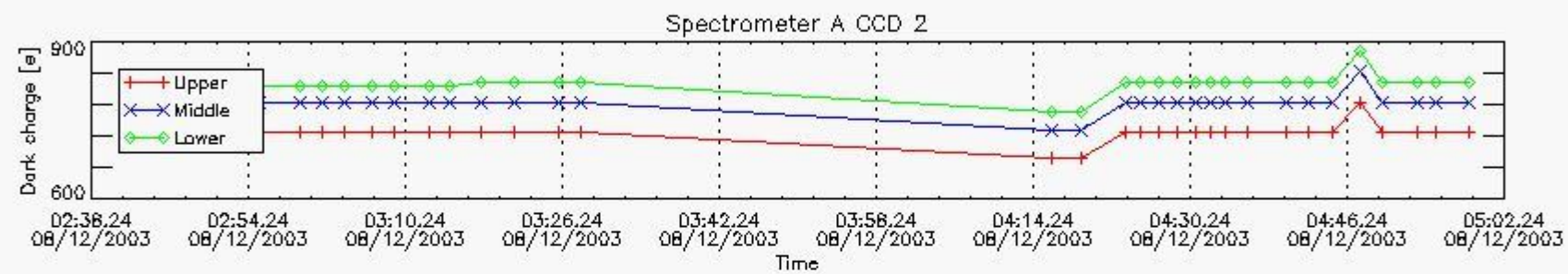
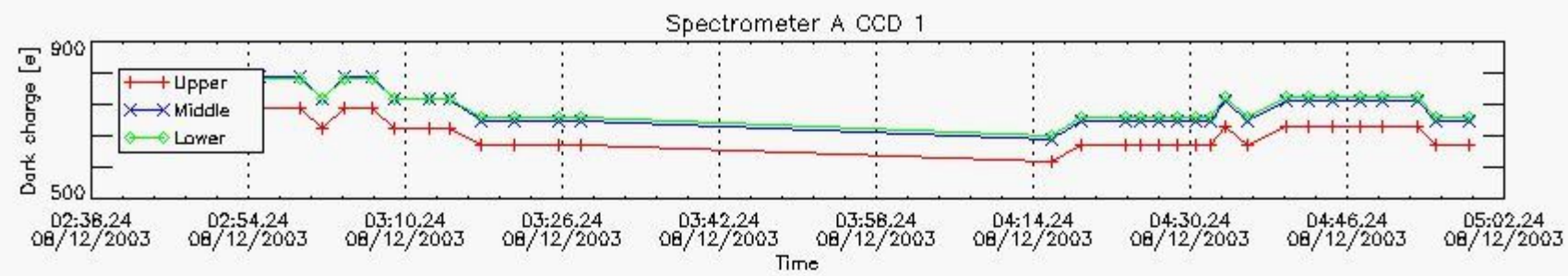
4. Overview of dark signal processing per product

The Dark Charge (DC) is a temperature-dependant signal added to the useful measurements and it is therefore subtracted from them during the processing. There are two phenomena that produce a continuous increase of the DC: the "hot pixels" (a pixel is "hot" when its DC exceeds by a significant amount its value measured on ground at the same temperature) and the "Random Telegraphic Signal" (abrupt change positive or negative of the CCD pixel signal, random in time, affecting only the DC part of the signal and not the photon generated signal).

In this section a list of products that did not use the Dark Sky Area (DSA) observation for the DC computation is given. It is also provided the mean DC plot per product for dark limb products with no error flag set.

4.1 All products used the DSA observation for the DC computation

4.2 Plot of mean dark charges per product: only products in DARK limb conditions without errors are used



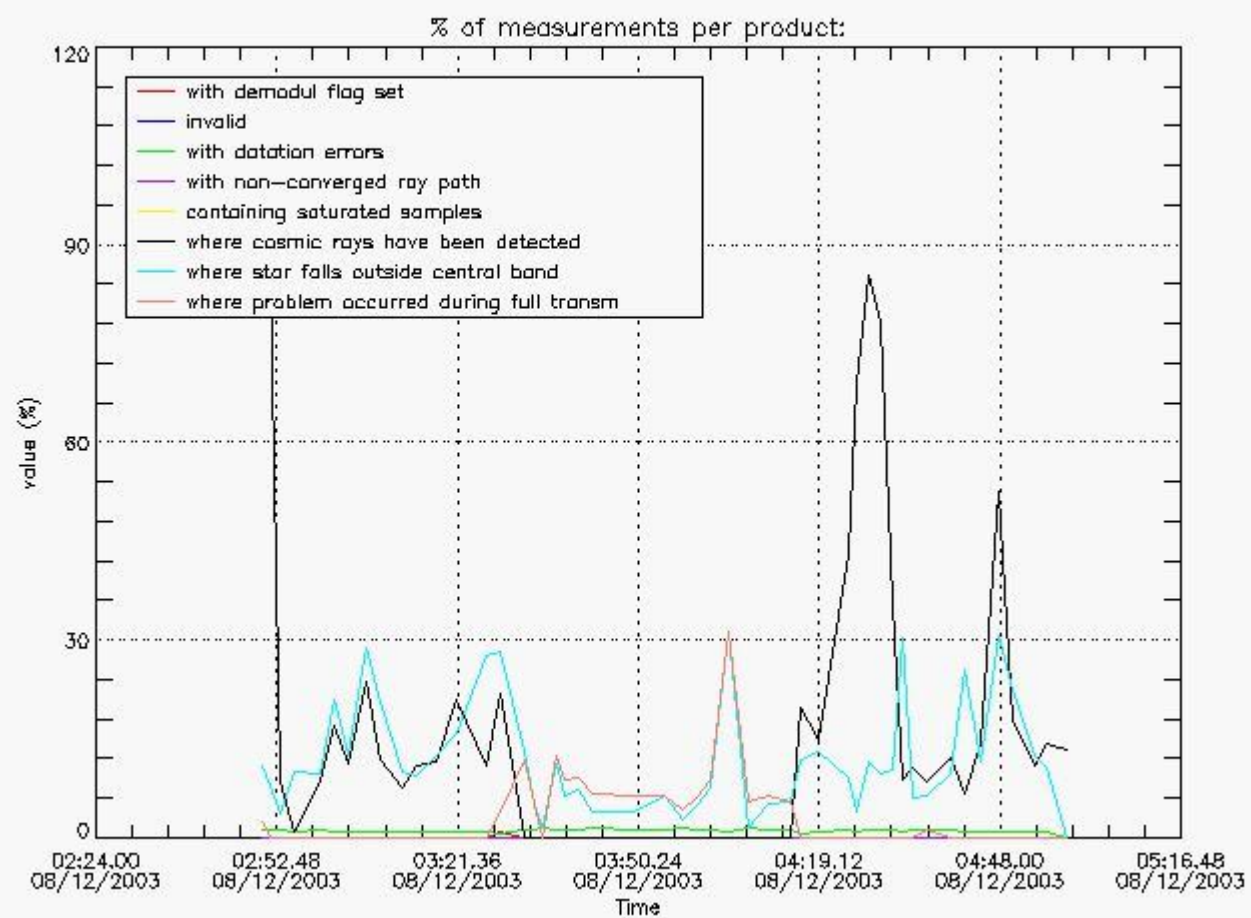
5. Demodulation flag and quality information monitoring

5.1 Percentage of products during reporting period with:

At least one measurement with demodulation flag set:	12.2449 %
Reference spectrum computed from DB:	0.00000 %
Reference spectrum with small number of measurements:	0.00000 %
SATU data not used:	0.00000 %



5.2 Plot quality information per product



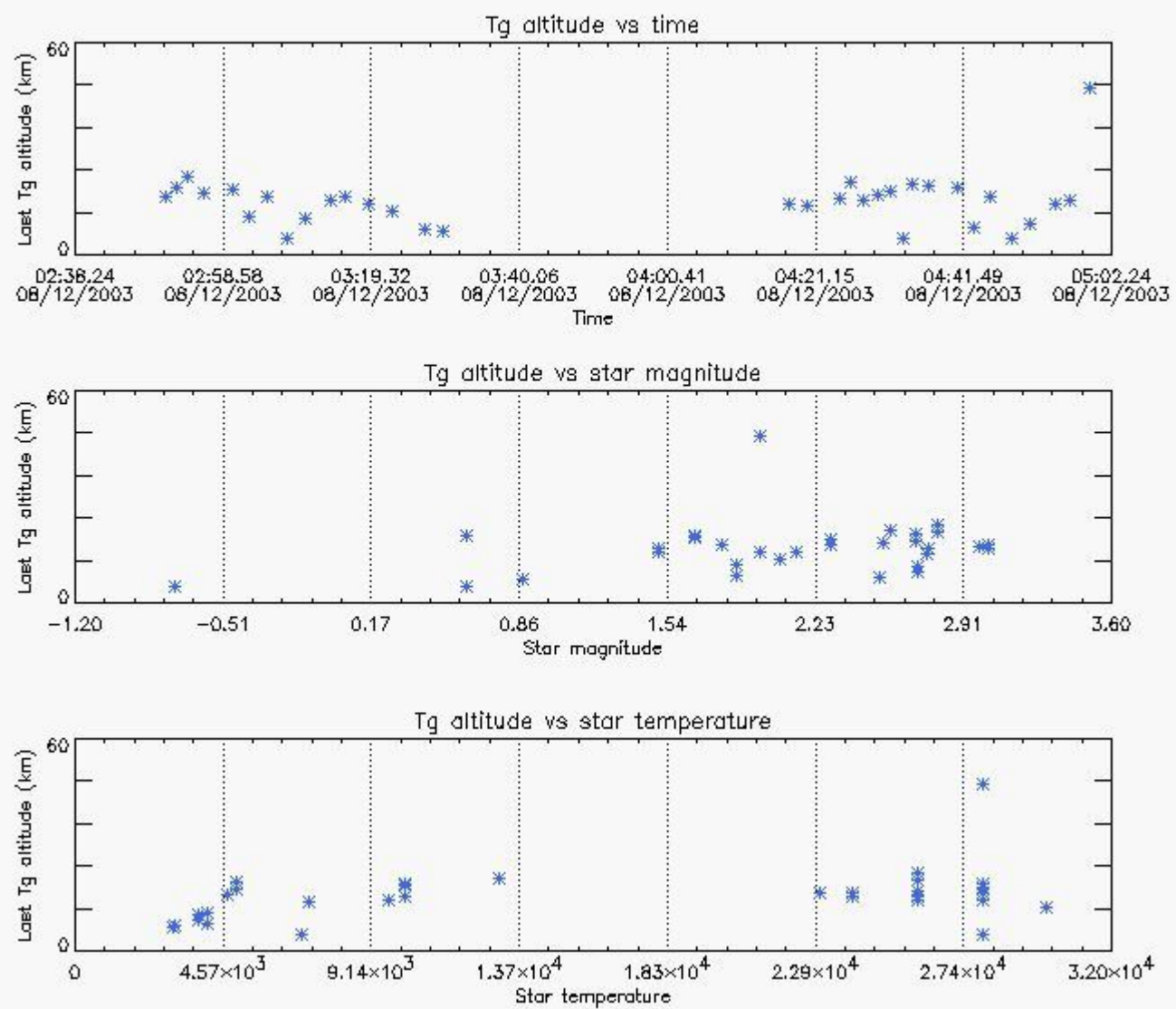
6. Statistics and plot of tangent altitude of the last measurement (DARK & BRIGHT products without errors)

6.1 Statistics on tangent altitude lost:

Statistics	DARK	BRIGHT
Mean:	15.143	19.700
St. deviation:	7.6044	4.4665
Maximum:	47.423	25.725
Minimum:	4.4740	5.6327
Number of data:	33.000	16.000

6.2 Plot for DARK limb products

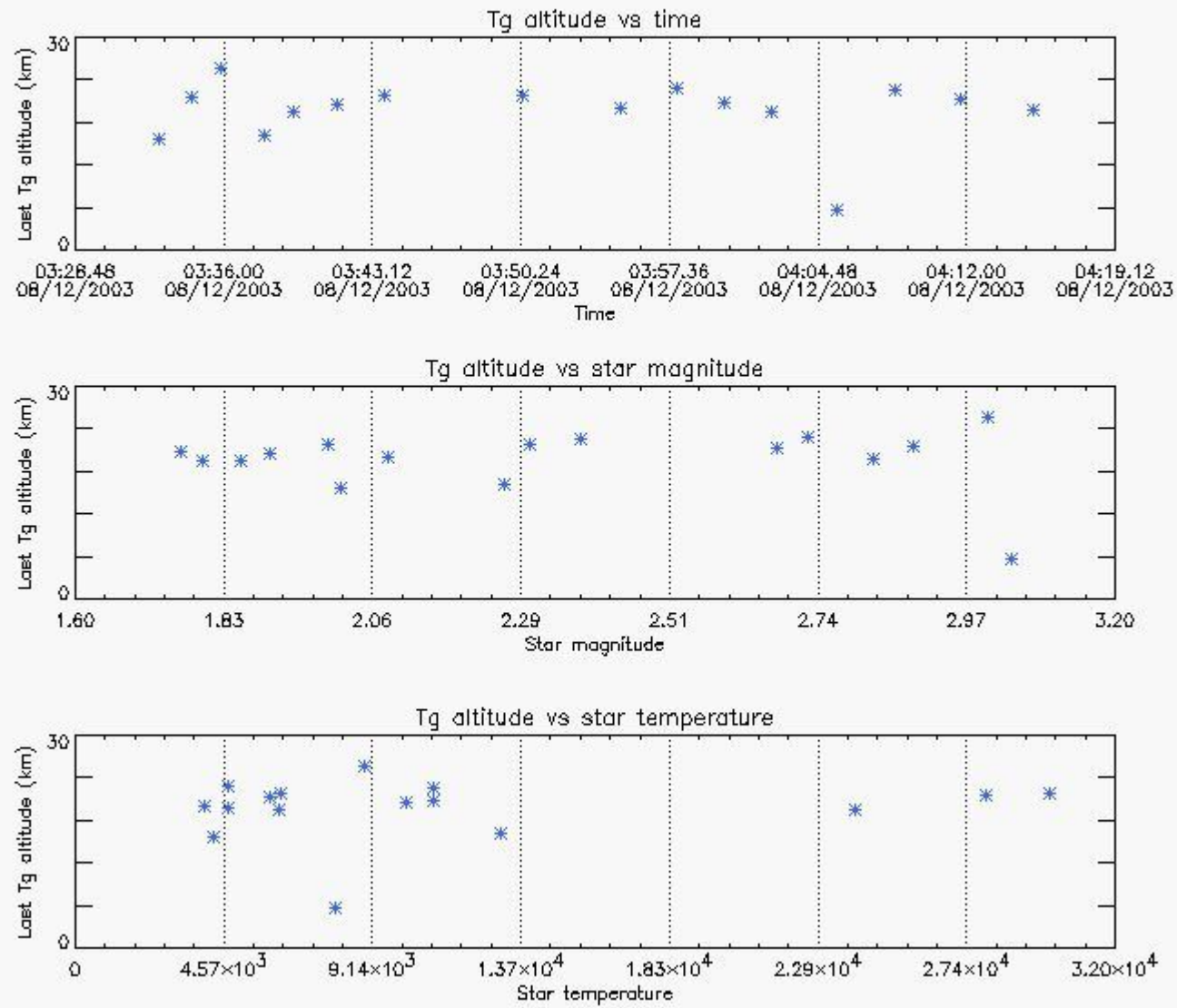
Tangent altitude at which the star is lost



6.3 Plot for BRIGHT limb products



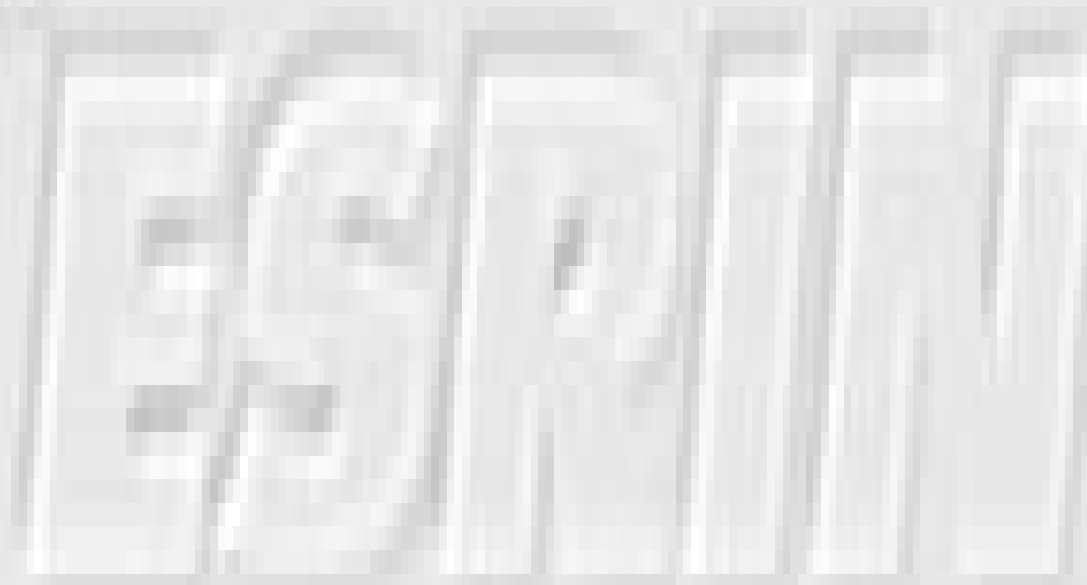
Tangent altitude at which the star is lost



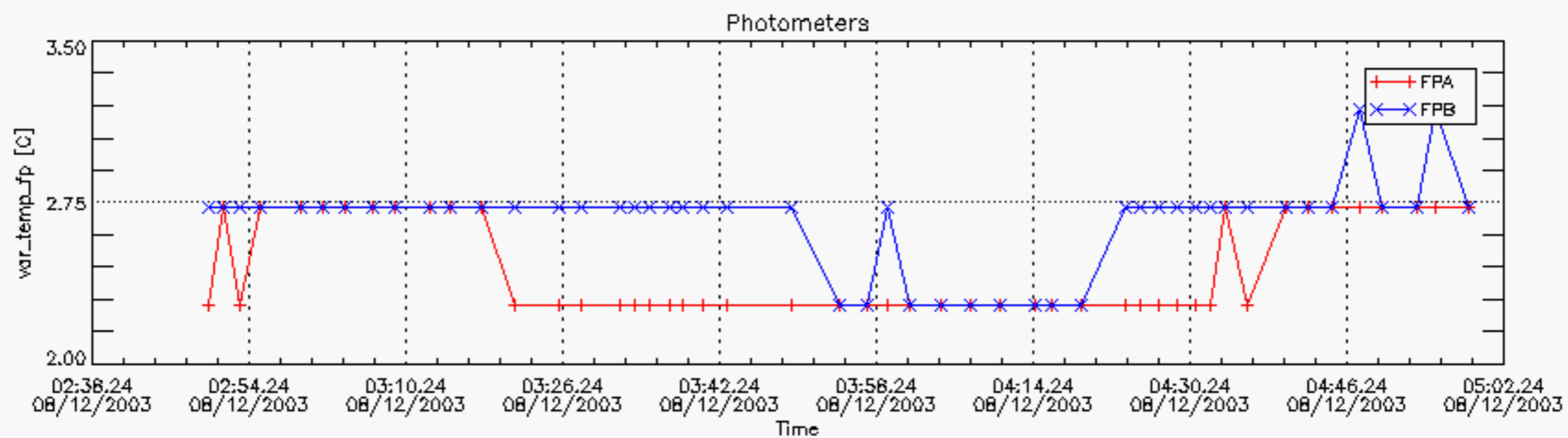
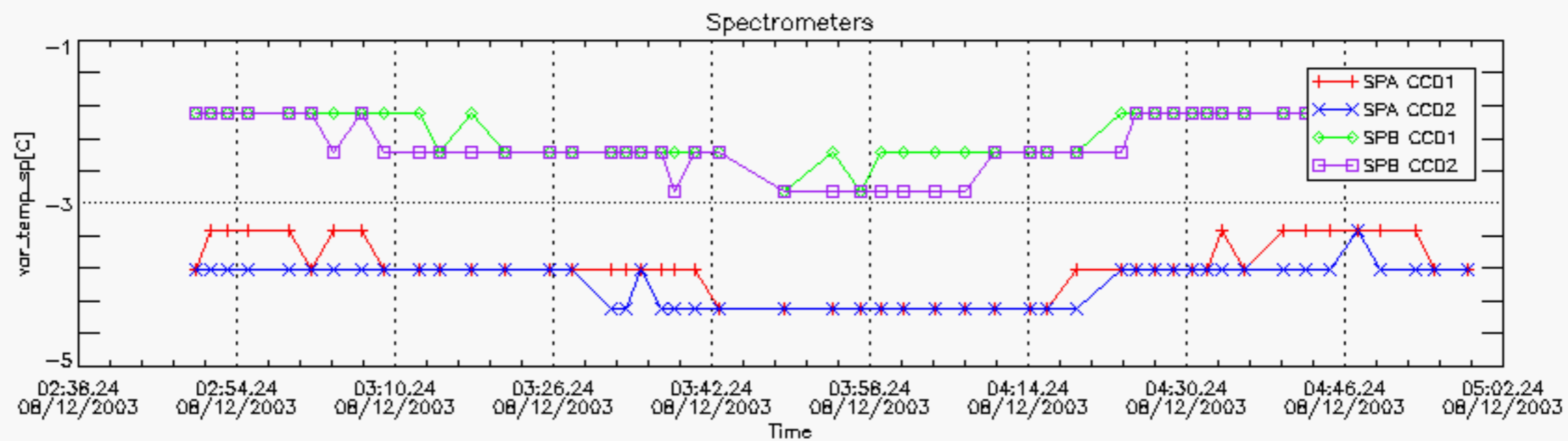
7. Statistics on SATU Noise Equivalent Angle (NEA) for DARK (D) and BRIGHT (B) products above 105 kms

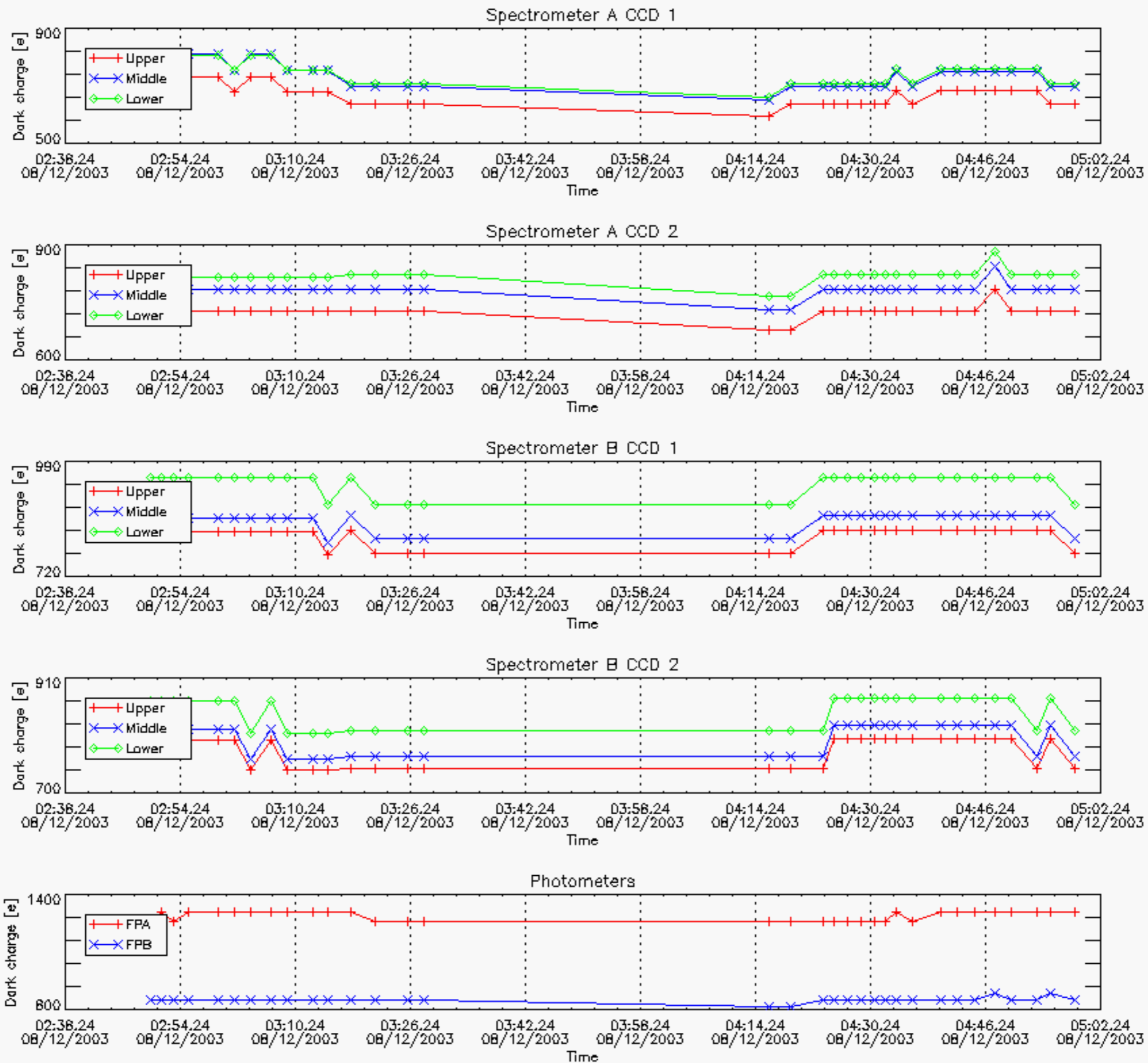
The Star Acquisition and Tracking Unit (it is the CCD that tracks the star while it is occulted) Noise Equivalent Angle consists of the statistical angular variation of the SATU data above the atmosphere. Statistics above 105 km are computed for every occultation, giving four values per occultation: one in the 'X' direction and one in the 'Y' direction for dark and bright limbs. A mean value per day in every direction and limb is calculated and monitored in order to assess instrument performance in terms of star pointing.

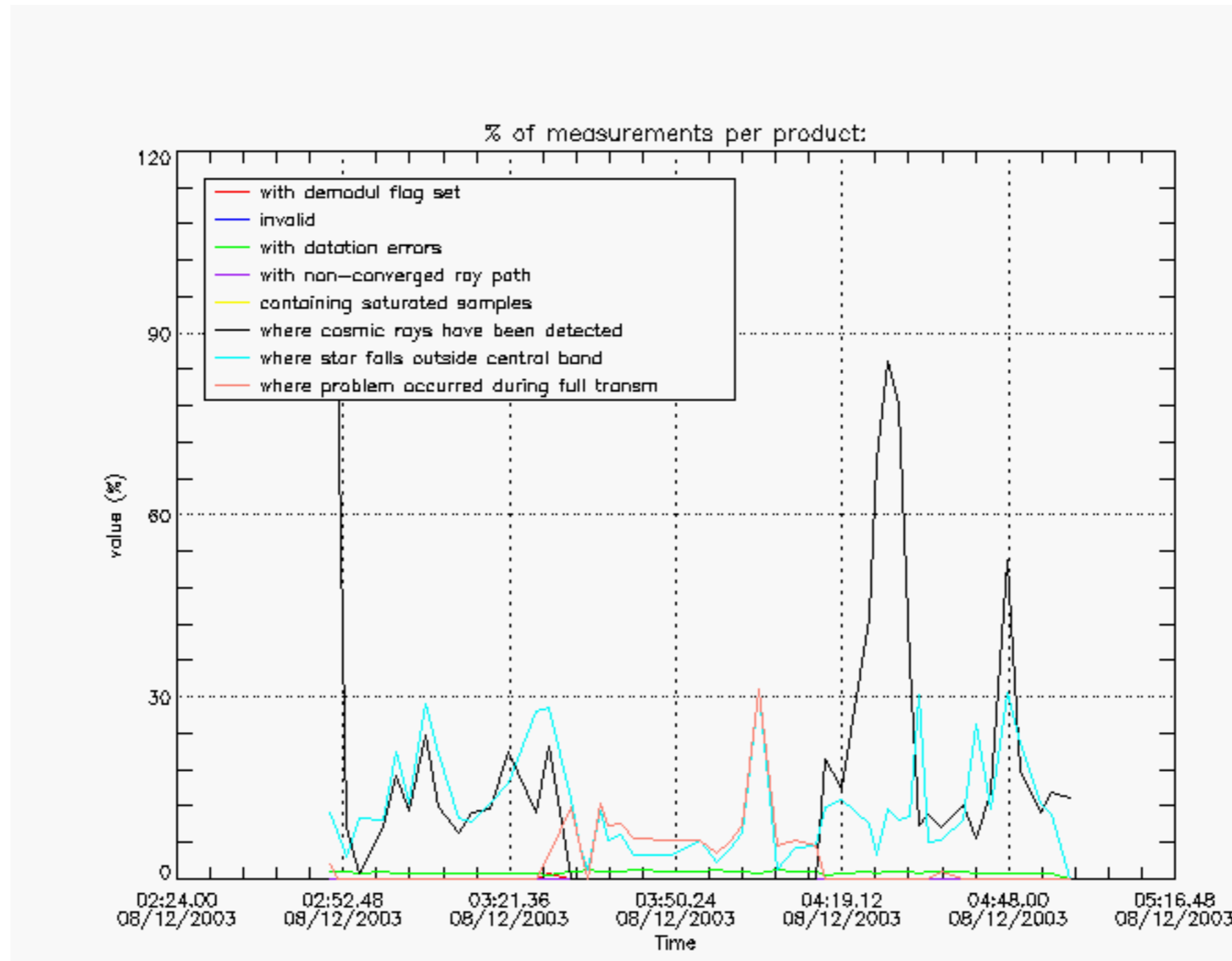
Statistics	SATU X (D)	SATU Y (D)	SATU X (B)	SATU Y (B)
Mean:	1462.2	1448.0	1460.3	1447.4
St. deviation:	5.6949	6.6023	7.1841	8.3082
Maximum:	1510.0	1494.0	1516.0	1502.0
Minimum:	1446.0	1425.0	1440.0	1425.0
Number of data:	43400.	43400.	17600.	17600.



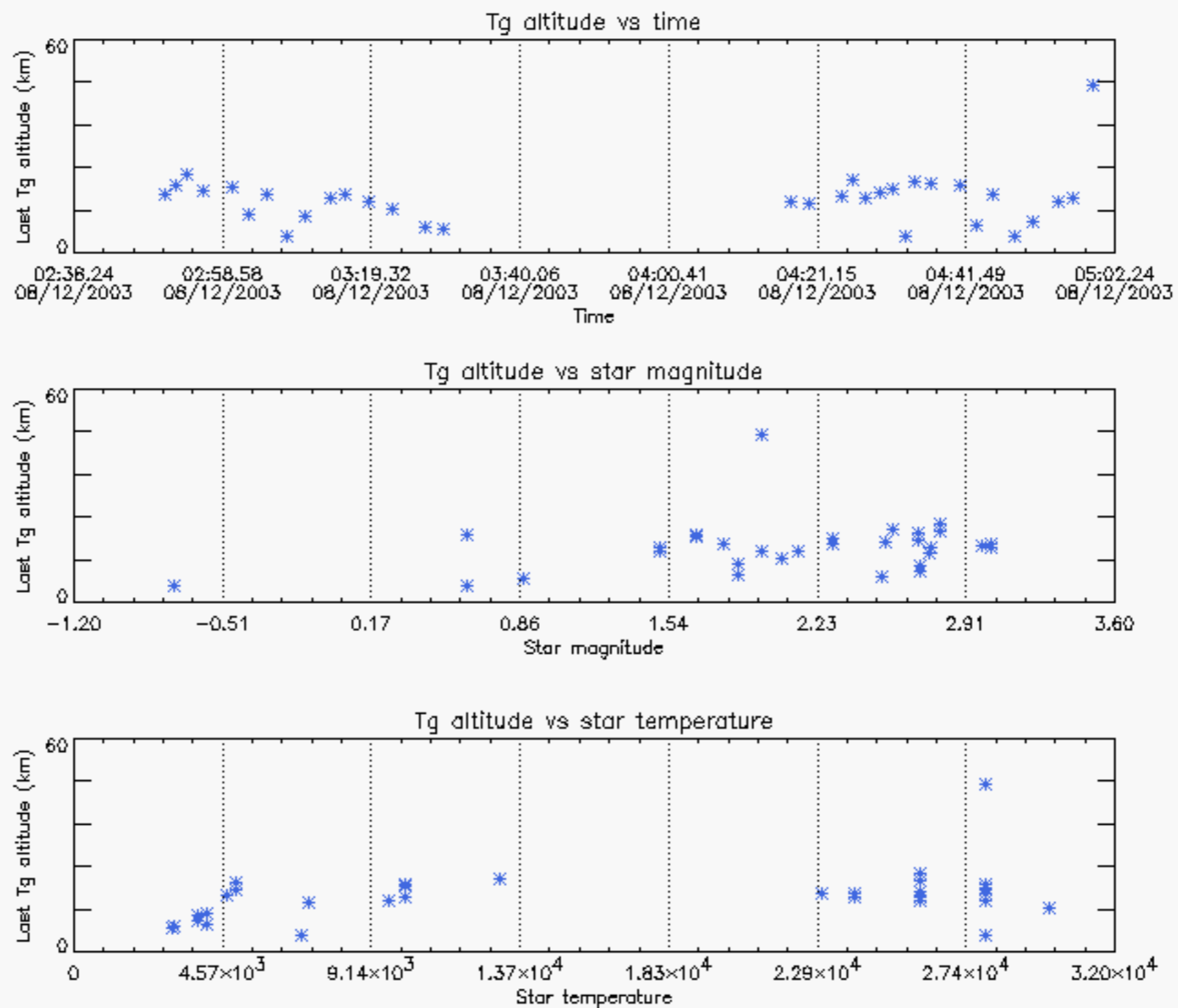




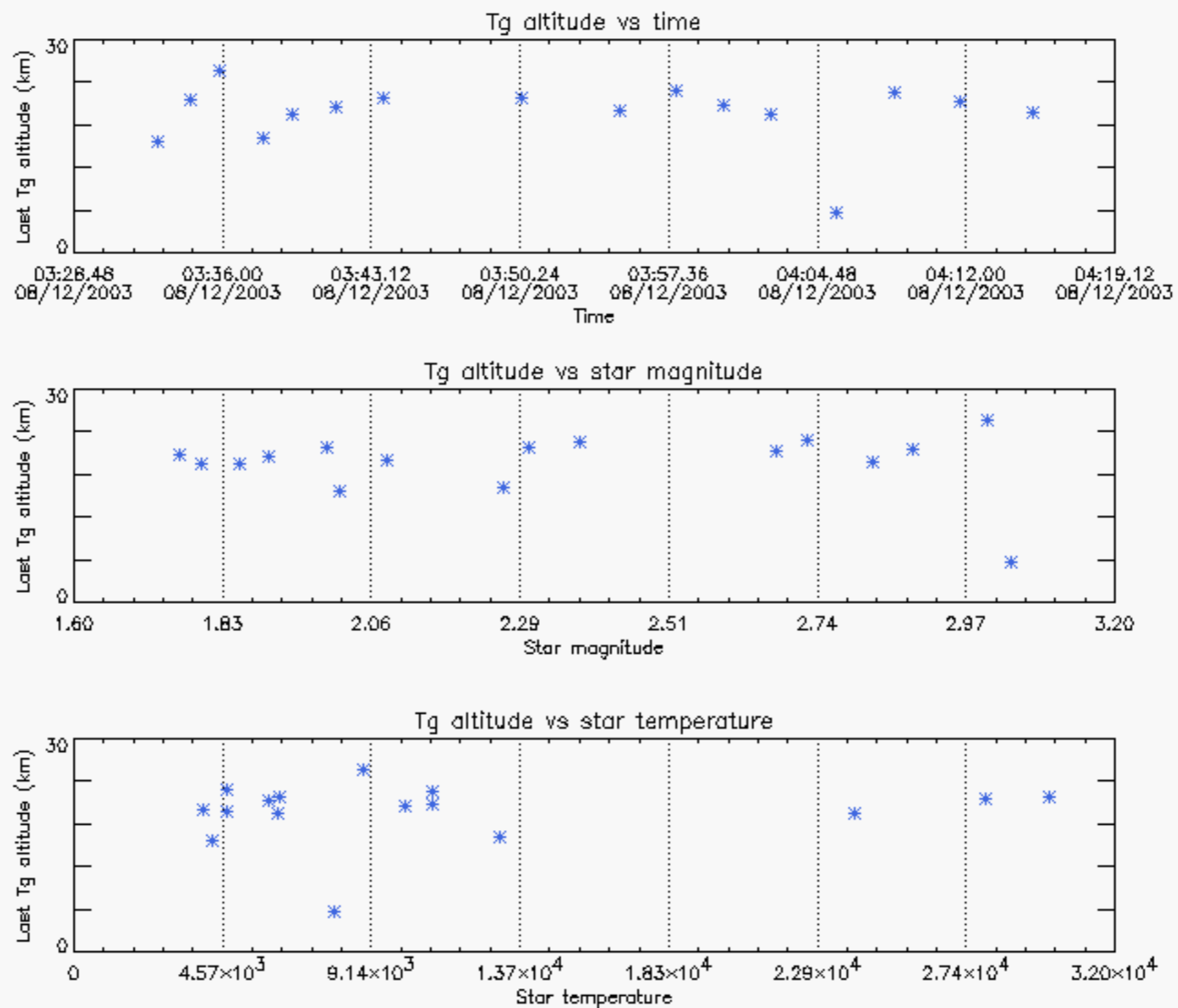




Tangent altitude at which the star is lost



Tangent altitude at which the star is lost



```

/data4_2/GOMOS/level0/GOM_NL_0PNPDK20031201_052111_000061942022_00091_09163_0248.N1
 1;-4379.2; 01-DEC-2003 05:21:11; Dark ; 45.0; 165; 34Gam Eri ; 2.95; 3200;occ; 90; 0; 9163
 2;-4285.0; 01-DEC-2003 05:22:45; Dark ; 62.5; 7; 19Bet Ori ; 0.10; 14000;occ; 125; 0; 9163
 3;-4102.1; 01-DEC-2003 05:25:48; Dark ; 64.0; 30; 46Eps Ori ; 1.69; 30000;occ; 128; 0; 9163
 4;-3938.0; 01-DEC-2003 05:28:32; Dark ; 63.0; 27; 24Gam Ori ; 1.64; 26000;occ; 126; 0; 9163
 5;-3804.3; 01-DEC-2003 05:30:46; Bright; 52.0; 13; 87Alp Tau ; 0.87; 3800;occ; 104; 0; 9163
 6;-3708.7; 01-DEC-2003 05:32:21; Bright; 40.5; 146; 25Eta Tau ; 2.87; 15200;occ; 81; 0; 9163
 7;-3567.0; 01-DEC-2003 05:34:43; Bright; 41.5; 150; 44Zet Per ; 2.89; 28000;occ; 83; 0; 9163
 8;-3433.2; 01-DEC-2003 05:36:57; Bright; 39.0; 79; 26Bet Per ; 2.31; 13100;occ; 78; 0; 9163
 9;-3299.9; 01-DEC-2003 05:39:10; Bright; 38.5; 175; 39Del Per ; 3.01; 19400;occ; 77; 0; 9163
10;-3219.4; 01-DEC-2003 05:40:31; Bright; 37.5; 160; 23Gam Per ; 2.93; 4700;occ; 75; 0; 9163
11;-3080.2; 01-DEC-2003 05:42:50; Bright; 36.0; 110; 37Del Cas ; 2.68; 8900;occ; 72; 0; 9163
12;-2616.4; 01-DEC-2003 05:50:34; Bright; 39.0; 49; 1Alp UMi ; 1.99; 6300;occ; 78; 0; 9163
13;-2335.8; 01-DEC-2003 05:55:14; Bright; 35.0; 60; 7Bet UMi ; 2.08; 3950;occ; 70; 0; 9163
14;-2215.0; 01-DEC-2003 05:57:15; Bright; 45.5; 36; 50Alp UMa ; 1.80; 6300;occ; 91; 0; 9163
15;-2118.3; 01-DEC-2003 05:58:52; Bright; 47.0; 82; 48Bet UMa ; 2.37; 10600;occ; 94; 0; 9163
16;-2022.8; 01-DEC-2003 06:00:27; Bright; 56.0; 32; 77Eps UMa ; 1.76; 11000;occ; 112; 0; 9163
17;-1898.7; 01-DEC-2003 06:02:31; Bright; 53.0; 39; 85Eta UMa ; 1.85; 24000;occ; 106; 0; 9163
18;-1724.9; 01-DEC-2003 06:05:25; Bright; 52.0; 180; 27Gam Boo ; 3.04; 8000;occ; 104; 0; 9163
19;-1544.0; 01-DEC-2003 06:08:26; Bright; 35.5; 83; ; 2.38; 11000;occ; 71; 0; 9163
20;-1392.6; 01-DEC-2003 06:10:57; Bright; 35.5; 3; 16Alp Boo ; -0.05; 4250;occ; 71; 0; 9163
21;-1177.5; 01-DEC-2003 06:14:32; Bright; 72.0; 96; 68Del Leo ; 2.56; 9300;occ; 144; 0; 9163
22;-919.6; 01-DEC-2003 06:18:50; Bright; 44.5; 121; 29Gam Vir ; 2.74; 7200;occ; 89; 0; 9163
23;-832.0; 01-DEC-2003 06:20:18; Bright; 40.0; 15; 67Alp Vir ; 0.98; 28000;occ; 80; 0; 9163
24;-635.0; 01-DEC-2003 06:23:35; Dark ; 48.0; 163; 7Del Crv ; 2.94; 11000;occ; 96; 0; 9163
25;-537.6; 01-DEC-2003 06:25:12; Dark ; 50.0; 106; 9Bet Crv ; 2.65; 5600;occ; 100; 0; 9163
26;-416.6; 01-DEC-2003 06:27:13; Dark ; 42.0; 123; Iot Cen ; 2.75; 10200;occ; 84; 0; 9163
27;-174.4; 01-DEC-2003 06:31:16; Dark ; 40.0; 77; Eps Cen ; 2.30; 28000;occ; 80; 0; 9163
28;-75.6; 01-DEC-2003 06:32:54; Dark ; 39.5; 10; Bet Cen ; 0.61; 28000;occ; 79; 0; 9163
29; 39.6; 01-DEC-2003 06:34:50; Dark ; 44.0; 12; Alp1Cru ; 0.77; 30000;occ; 88; 0; 9164
30; 202.1; 01-DEC-2003 06:37:32; Dark ; 39.0; 124; The Car ; 2.76; 30000;occ; 78; 0; 9164
31; 335.6; 01-DEC-2003 06:39:46; Dark ; 59.5; 0; ; 0.00; 0;occ; 119; 0; 9164
32; 481.9; 01-DEC-2003 06:42:12; Dark ; 43.5; 41; Eps Car ; 1.86; 4100;occ; 87; 0; 9164
33; 601.1; 01-DEC-2003 06:44:11; Dark ; 52.5; 34; Gam2Vel ; 1.79; 23000;occ; 105; 0; 9164
34; 803.4; 01-DEC-2003 06:47:33; Dark ; 51.0; 2; Alp Car ; -0.74; 7000;occ; 102; 0; 9164
35; 914.2; 01-DEC-2003 06:49:24; Dark ; 66.0; 117; Pi Pup ; 2.71; 3800;occ; 132; 0; 9164
36; 1144.0; 01-DEC-2003 06:53:14; Dark ; 67.0; 23; 21Eps CMa ; 1.50; 26000;occ; 134; 0; 9164
37; 1273.4; 01-DEC-2003 06:55:23; Dark ; 75.5; 179; 24Omi2CMa ; 3.03; 24000;occ; 151; 0; 9164
38; 1503.1; 01-DEC-2003 06:59:13; Dark ; 67.0; 47; 2Bet CMa ; 1.98; 28000;occ; 134; 0; 9164
39; 1657.2; 01-DEC-2003 07:01:47; Dark ; 47.0; 165; 34Gam Eri ; 2.95; 3200;occ; 94; 0; 9164
40; 1751.2; 01-DEC-2003 07:03:21; Dark ; 65.0; 7; 19Bet Ori ; 0.10; 14000;occ; 130; 0; 9164
/data4_2/GOMOS/level0/GOM_NL_0PNPDK20031201_070624_000057312022_00092_09164_0249.N1
 1;-4102.2; 01-DEC-2003 07:06:24; Dark ; 63.5; 30; 46Eps Ori ; 1.69; 30000;occ; 127; 0; 9164
 2;-3938.5; 01-DEC-2003 07:09:07; Dark ; 61.5; 27; 24Gam Ori ; 1.64; 26000;occ; 123; 0; 9164
 3;-3804.3; 01-DEC-2003 07:11:22; Bright; 57.0; 13; 87Alp Tau ; 0.87; 3800;occ; 114; 0; 9164
 4;-3709.0; 01-DEC-2003 07:12:57; Bright; 39.0; 146; 25Eta Tau ; 2.87; 15200;occ; 78; 0; 9164
 5;-3566.6; 01-DEC-2003 07:15:19; Bright; 40.5; 150; 44Zet Per ; 2.89; 28000;occ; 81; 0; 9164
 6;-3432.6; 01-DEC-2003 07:17:33; Bright; 38.5; 79; 26Bet Per ; 2.31; 13100;occ; 77; 0; 9164
 7;-3299.5; 01-DEC-2003 07:19:46; Bright; 38.0; 175; 39Del Per ; 3.01; 19400;occ; 76; 0; 9164
 8;-3219.4; 01-DEC-2003 07:21:06; Bright; 37.0; 160; 23Gam Per ; 2.93; 4700;occ; 74; 0; 9164
 9;-3079.8; 01-DEC-2003 07:23:26; Bright; 36.0; 110; 37Del Cas ; 2.68; 8900;occ; 72; 0; 9164
10;-2615.7; 01-DEC-2003 07:31:10; Bright; 37.5; 49; 1Alp UMi ; 1.99; 6300;occ; 75; 0; 9164
11;-2335.5; 01-DEC-2003 07:35:50; Bright; 35.0; 60; 7Bet UMi ; 2.08; 3950;occ; 70; 0; 9164
12;-2215.1; 01-DEC-2003 07:37:51; Bright; 45.0; 36; 50Alp UMa ; 1.80; 6300;occ; 90; 0; 9164
13;-2118.5; 01-DEC-2003 07:39:27; Bright; 45.5; 82; 48Bet UMa ; 2.37; 10600;occ; 91; 0; 9164
14;-2022.4; 01-DEC-2003 07:41:03; Bright; 40.5; 32; 77Eps UMa ; 1.76; 11000;occ; 81; 0; 9164
15;-1898.4; 01-DEC-2003 07:43:07; Bright; 39.5; 39; 85Eta UMa ; 1.85; 24000;occ; 79; 0; 9164
16;-1724.6; 01-DEC-2003 07:46:01; Bright; 35.0; 180; 27Gam Boo ; 3.04; 8000;occ; 70; 0; 9164
17;-1543.4; 01-DEC-2003 07:49:02; Bright; 36.0; 83; ; 2.38; 11000;occ; 72; 0; 9164
18;-1392.2; 01-DEC-2003 07:51:34; Bright; 36.5; 3; 16Alp Boo ; -0.05; 4250;occ; 73; 0; 9164
19;-1176.6; 01-DEC-2003 07:55:09; Bright; 76.0; 96; 68Del Leo ; 2.56; 9300;occ; 152; 0; 9164
20;-918.5; 01-DEC-2003 07:59:27; Bright; 45.5; 121; 29Gam Vir ; 2.74; 7200;occ; 91; 0; 9164
21;-831.0; 01-DEC-2003 08:00:55; Bright; 41.0; 15; 67Alp Vir ; 0.98; 28000;occ; 82; 0; 9164
22;-634.1; 01-DEC-2003 08:04:12; Dark ; 48.0; 163; 7Del Crv ; 2.94; 11000;occ; 96; 0; 9164
23;-536.5; 01-DEC-2003 08:05:49; Dark ; 49.0; 106; 9Bet Crv ; 2.65; 5600;occ; 98; 0; 9164
24;-416.0; 01-DEC-2003 08:07:50; Dark ; 42.5; 123; Iot Cen ; 2.75; 10200;occ; 85; 0; 9164
25;-173.7; 01-DEC-2003 08:11:52; Dark ; 41.0; 77; Eps Cen ; 2.30; 28000;occ; 82; 0; 9164
26; -75.4; 01-DEC-2003 08:13:30; Dark ; 46.5; 10; Bet Cen ; 0.61; 28000;occ; 93; 0; 9164

```

27; 40.3; 01-DEC-2003 08:15:26; Dark ; 46.5; 12; Alp1Cru ; 0.77; 30000;occ; 93; 0; 9165
 28; 202.5; 01-DEC-2003 08:18:08; Dark ; 39.5; 124; The Car ; 2.76; 30000;occ; 79; 0; 9165
 29; 338.5; 01-DEC-2003 08:20:24; Dark ; 59.5; 0; ; 0.00; 0;occ; 119; 0; 9165
 30; 482.5; 01-DEC-2003 08:22:48; Dark ; 45.5; 41; Eps Car ; 1.86; 4100;occ; 91; 0; 9165
 31; 602.2; 01-DEC-2003 08:24:48; Dark ; 53.0; 34; Gam2Vel ; 1.79; 23000;occ; 106; 0; 9165
 32; 803.4; 01-DEC-2003 08:28:09; Dark ; 51.0; 2; Alp Car ; -0.74; 7000;occ; 102; 0; 9165
 33; 915.6; 01-DEC-2003 08:30:02; Dark ; 63.5; 117; Pi Pup ; 2.71; 3800;occ; 127; 0; 9165
 34; 1144.7; 01-DEC-2003 08:33:51; Dark ; 69.0; 23; 21Eps CMa ; 1.50; 26000;occ; 138; 0; 9165
 35; 1274.4; 01-DEC-2003 08:36:00; Dark ; 73.5; 179; 240mi2CMa ; 3.03; 24000;occ; 147; 0; 9165
 36; 1529.7; 01-DEC-2003 08:40:16; Dark ; 100.5; 1; 9Alp CMa ; -1.44; 11000;occ; 201; 0; 9165

/data4_2/GOMOS/level0/GOM_NL_0PNPDK20031201_084113_000062212022_00093_09165_0250.N1
 1;-4449.2; 01-DEC-2003 08:41:13; Dark ; 101.0; 1; 9Alp CMa ; -1.44; 11000;occ; 202; 114; 9165
 2;-4284.8; 01-DEC-2003 08:43:57; Dark ; 67.0; 7; 19Bet Ori ; 0.10; 14000;occ; 134; 0; 9165
 3;-4102.6; 01-DEC-2003 08:46:59; Dark ; 64.5; 30; 46Eps Ori ; 1.69; 30000;occ; 129; 0; 9165
 4;-3939.3; 01-DEC-2003 08:49:43; Dark ; 62.0; 27; 24Gam Ori ; 1.64; 26000;occ; 124; 0; 9165
 5;-3804.6; 01-DEC-2003 08:51:57; Bright; 56.0; 13; 87Alp Tau ; 0.87; 3800;occ; 112; 0; 9165
 6;-3709.0; 01-DEC-2003 08:53:33; Bright; 40.5; 146; 25Eta Tau ; 2.87; 15200;occ; 81; 0; 9165
 7;-3566.9; 01-DEC-2003 08:55:55; Bright; 39.5; 150; 44Zet Per ; 2.89; 28000;occ; 79; 0; 9165
 8;-3433.3; 01-DEC-2003 08:58:08; Bright; 39.0; 79; 26Bet Per ; 2.31; 13100;occ; 78; 0; 9165
 9;-3299.9; 01-DEC-2003 09:00:22; Bright; 39.5; 175; 39Del Per ; 3.01; 19400;occ; 79; 0; 9165
 10;-3219.5; 01-DEC-2003 09:01:42; Bright; 39.0; 160; 23Gam Per ; 2.93; 4700;occ; 78; 0; 9165
 11;-3079.6; 01-DEC-2003 09:04:02; Bright; 37.0; 110; 37Del Cas ; 2.68; 8900;occ; 74; 0; 9165
 12;-2615.7; 01-DEC-2003 09:11:46; Bright; 35.5; 49; 1Alp UMi ; 1.99; 6300;occ; 71; 0; 9165
 13;-2335.5; 01-DEC-2003 09:16:26; Bright; 38.0; 60; 7Bet UMi ; 2.08; 3950;occ; 76; 0; 9165
 14;-2215.4; 01-DEC-2003 09:18:26; Bright; 46.5; 36; 50Alp UMA ; 1.80; 6300;occ; 93; 0; 9165
 15;-2119.1; 01-DEC-2003 09:20:03; Bright; 67.0; 82; 48Bet UMA ; 2.37; 10600;occ; 134; 0; 9165
 16;-2022.4; 01-DEC-2003 09:21:39; Bright; 43.0; 32; 77Eps UMA ; 1.76; 11000;occ; 86; 0; 9165
 17;-1898.1; 01-DEC-2003 09:23:44; Bright; 37.0; 39; 85Eta UMA ; 1.85; 24000;occ; 74; 0; 9165
 18;-1724.6; 01-DEC-2003 09:26:37; Bright; 36.0; 180; 27Gam Boo ; 3.04; 8000;occ; 72; 0; 9165
 19;-1543.4; 01-DEC-2003 09:29:38; Bright; 35.0; 83; ; 2.38; 11000;occ; 70; 0; 9165
 20;-1392.0; 01-DEC-2003 09:32:10; Bright; 34.5; 3; 16Alp Boo ; -0.05; 4250;occ; 69; 0; 9165
 21;-1175.7; 01-DEC-2003 09:35:46; Bright; 73.0; 96; 68Del Leo ; 2.56; 9300;occ; 146; 0; 9165
 22; -633.3; 01-DEC-2003 09:44:48; Dark ; 46.0; 163; 7Del Crv ; 2.94; 11000;occ; 92; 0; 9165
 23; -535.5; 01-DEC-2003 09:46:26; Dark ; 49.0; 106; 9Bet Crv ; 2.65; 5600;occ; 98; 0; 9165
 24; -415.7; 01-DEC-2003 09:48:26; Dark ; 40.5; 123; Iot Cen ; 2.75; 10200;occ; 81; 0; 9165
 25; -173.8; 01-DEC-2003 09:52:28; Dark ; 40.5; 77; Eps Cen ; 2.30; 28000;occ; 81; 0; 9165
 26; -75.5; 01-DEC-2003 09:54:06; Dark ; 47.0; 10; Bet Cen ; 0.61; 28000;occ; 94; 0; 9165
 27; 40.6; 01-DEC-2003 09:56:02; Dark ; 43.5; 12; Alp1Cru ; 0.77; 30000;occ; 87; 0; 9166
 28; 203.1; 01-DEC-2003 09:58:45; Dark ; 40.0; 124; The Car ; 2.76; 30000;occ; 80; 0; 9166
 29; 341.4; 01-DEC-2003 10:01:03; Dark ; 59.5; 0; ; 0.00; 0;occ; 119; 0; 9166
 30; 483.4; 01-DEC-2003 10:03:25; Dark ; 47.5; 41; Eps Car ; 1.86; 4100;occ; 95; 0; 9166
 31; 603.1; 01-DEC-2003 10:05:25; Dark ; 51.0; 34; Gam2Vel ; 1.79; 23000;occ; 102; 0; 9166
 32; 803.8; 01-DEC-2003 10:08:46; Dark ; 49.5; 2; Alp Car ; -0.74; 7000;occ; 99; 0; 9166
 33; 916.9; 01-DEC-2003 10:10:39; Dark ; 65.5; 117; Pi Pup ; 2.71; 3800;occ; 131; 0; 9166
 34; 1145.2; 01-DEC-2003 10:14:27; Dark ; 69.5; 23; 21Eps CMa ; 1.50; 26000;occ; 139; 0; 9166
 35; 1275.0; 01-DEC-2003 10:16:37; Dark ; 75.5; 179; 240mi2CMa ; 3.03; 24000;occ; 151; 0; 9166
 36; 1530.0; 01-DEC-2003 10:20:52; Dark ; 93.0; 1; 9Alp CMa ; -1.44; 11000;occ; 186; 0; 9166
 37; 1751.3; 01-DEC-2003 10:24:33; Dark ; 21.0; 7; 19Bet Ori ; 0.10; 14000;occ; 42; 0; 9166

/data4_2/GOMOS/level0/GOM_NL_0PNPDK20031201_102433_000059132022_00094_09166_0251.N1
 1;-4284.6; 01-DEC-2003 10:24:33; Dark ; 59.5; 7; 19Bet Ori ; 0.10; 14000;occ; 119; 0; 9166
 2;-4103.0; 01-DEC-2003 10:27:35; Dark ; 63.5; 30; 46Eps Ori ; 1.69; 30000;occ; 127; 0; 9166
 3;-3939.5; 01-DEC-2003 10:30:18; Dark ; 65.5; 27; 24Gam Ori ; 1.64; 26000;occ; 131; 0; 9166
 4;-3804.7; 01-DEC-2003 10:32:33; Bright; 53.5; 13; 87Alp Tau ; 0.87; 3800;occ; 107; 0; 9166
 5;-3708.7; 01-DEC-2003 10:34:09; Bright; 40.0; 146; 25Eta Tau ; 2.87; 15200;occ; 80; 0; 9166
 6;-3566.5; 01-DEC-2003 10:36:31; Bright; 40.0; 150; 44Zet Per ; 2.89; 28000;occ; 80; 0; 9166
 7;-3432.4; 01-DEC-2003 10:38:45; Bright; 38.0; 79; 26Bet Per ; 2.31; 13100;occ; 76; 0; 9166
 8;-3299.6; 01-DEC-2003 10:40:58; Bright; 39.5; 175; 39Del Per ; 3.01; 19400;occ; 79; 0; 9166
 9;-3219.3; 01-DEC-2003 10:42:18; Bright; 38.5; 160; 23Gam Per ; 2.93; 4700;occ; 77; 0; 9166
 10;-3079.1; 01-DEC-2003 10:44:39; Bright; 36.5; 110; 37Del Cas ; 2.68; 8900;occ; 73; 0; 9166
 11;-2615.4; 01-DEC-2003 10:52:22; Bright; 37.5; 49; 1Alp UMi ; 1.99; 6300;occ; 75; 0; 9166
 12;-2335.2; 01-DEC-2003 10:57:02; Bright; 39.0; 60; 7Bet UMi ; 2.08; 3950;occ; 78; 0; 9166
 13;-2215.6; 01-DEC-2003 10:59:02; Bright; 45.5; 36; 50Alp UMA ; 1.80; 6300;occ; 91; 0; 9166
 14;-2119.2; 01-DEC-2003 11:00:38; Bright; 43.5; 82; 48Bet UMA ; 2.37; 10600;occ; 87; 0; 9166
 15;-2022.3; 01-DEC-2003 11:02:15; Bright; 39.5; 32; 77Eps UMA ; 1.76; 11000;occ; 79; 0; 9166
 16;-1897.9; 01-DEC-2003 11:04:20; Bright; 36.5; 39; 85Eta UMA ; 1.85; 24000;occ; 73; 0; 9166
 17;-1723.8; 01-DEC-2003 11:07:14; Bright; 35.0; 180; 27Gam Boo ; 3.04; 8000;occ; 70; 0; 9166
 18;-1542.9; 01-DEC-2003 11:10:15; Bright; 34.5; 83; ; 2.38; 11000;occ; 69; 0; 9166
 19;-1391.6; 01-DEC-2003 11:12:46; Bright; 35.0; 3; 16Alp Boo ; -0.05; 4250;occ; 70; 0; 9166

```

20;-1174.7; 01-DEC-2003 11:16:23; Bright; 75.0; 96; 68Del Leo ; 2.56; 9300;occ; 150; 0; 9166
21; -632.5; 01-DEC-2003 11:25:25; Dark ; 47.5; 163; 7Del Crv ; 2.94; 11000;occ; 95; 0; 9166
22; -534.9; 01-DEC-2003 11:27:03; Dark ; 46.0; 106; 9Bet Crv ; 2.65; 5600;occ; 92; 0; 9166
23; -414.9; 01-DEC-2003 11:29:03; Dark ; 40.5; 123; Iot Cen ; 2.75; 10200;occ; 81; 0; 9166
24; -173.0; 01-DEC-2003 11:33:05; Dark ; 39.5; 77; Eps Cen ; 2.30; 28000;occ; 79; 0; 9166
25; -74.9; 01-DEC-2003 11:34:43; Dark ; 48.5; 10; Bet Cen ; 0.61; 28000;occ; 97; 0; 9166
26; 41.4; 01-DEC-2003 11:36:39; Dark ; 39.0; 12; Alp1Cru ; 0.77; 30000;occ; 78; 0; 9167
27; 203.9; 01-DEC-2003 11:39:22; Dark ; 39.5; 124; The Car ; 2.76; 30000;occ; 79; 0; 9167
28; 344.4; 01-DEC-2003 11:41:42; Dark ; 59.5; 0; ; 0.00; 0;occ; 119; 0; 9167
29; 484.2; 01-DEC-2003 11:44:02; Dark ; 45.0; 41; Eps Car ; 1.86; 4100;occ; 90; 0; 9167
30; 604.2; 01-DEC-2003 11:46:02; Dark ; 50.5; 34; Gam2Vel ; 1.79; 23000;occ; 101; 0; 9167
31; 805.5; 01-DEC-2003 11:49:23; Dark ; 58.0; 2; Alp Car ;-0.74; 7000;occ; 116; 0; 9167
32; 918.0; 01-DEC-2003 11:51:16; Dark ; 63.0; 117; Pi Pup ; 2.71; 3800;occ; 126; 0; 9167
33; 1146.2; 01-DEC-2003 11:55:04; Dark ; 68.0; 23; 21Eps CMA ; 1.50; 26000;occ; 136; 0; 9167
34; 1275.4; 01-DEC-2003 11:57:13; Dark ; 75.0; 179; 240mi2CMA ; 3.03; 24000;occ; 150; 0; 9167
35; 1530.0; 01-DEC-2003 12:01:28; Dark ; 99.0; 1; 9Alp CMA ;-1.44; 11000;occ; 198; 0; 9167
/data4_2/GOMOS/level0/GOM_NL_0PNPDK20031201_134213_000058382022_00096_09168_0253.N1
1;-4496.1; 01-DEC-2003 13:42:13; Dark ; 94.5; 1; 9Alp CMA ;-1.44; 11000;occ; 189; 19; 9168
2;-4284.2; 01-DEC-2003 13:45:45; Dark ; 60.0; 7; 19Bet Ori ; 0.10; 14000;occ; 120; 0; 9168
3;-4103.3; 01-DEC-2003 13:48:46; Dark ; 61.5; 30; 46Eps Ori ; 1.69; 30000;occ; 123; 0; 9168
4;-3940.1; 01-DEC-2003 13:51:29; Dark ; 59.5; 27; 24Gam Ori ; 1.64; 26000;occ; 119; 0; 9168
5;-3804.7; 01-DEC-2003 13:53:45; Bright; 54.5; 13; 87Alp Tau ; 0.87; 3800;occ; 109; 0; 9168
6;-3708.1; 01-DEC-2003 13:55:21; Bright; 39.5; 146; 25Eta Tau ; 2.87; 15200;occ; 79; 0; 9168
7;-3566.3; 01-DEC-2003 13:57:43; Bright; 40.0; 150; 44Zet Per ; 2.89; 28000;occ; 80; 0; 9168
8;-3432.2; 01-DEC-2003 13:59:57; Bright; 38.0; 79; 26Bet Per ; 2.31; 13100;occ; 76; 0; 9168
9;-3299.7; 01-DEC-2003 14:02:10; Bright; 37.5; 175; 39Del Per ; 3.01; 19400;occ; 75; 0; 9168
10;-3219.5; 01-DEC-2003 14:03:30; Bright; 38.0; 160; 23Gam Per ; 2.93; 4700;occ; 76; 0; 9168
11;-3079.0; 01-DEC-2003 14:05:50; Bright; 37.5; 110; 37Del Cas ; 2.68; 8900;occ; 75; 0; 9168
12;-2616.2; 01-DEC-2003 14:13:33; Bright; 39.0; 49; 1Alp UMi ; 1.99; 6300;occ; 78; 0; 9168
13;-2336.6; 01-DEC-2003 14:18:13; Bright; 39.5; 60; 7Bet UMi ; 2.08; 3950;occ; 79; 0; 9168
14;-2216.6; 01-DEC-2003 14:20:13; Bright; 47.0; 36; 50Alp UMa ; 1.80; 6300;occ; 94; 0; 9168
15;-2120.6; 01-DEC-2003 14:21:49; Bright; 50.0; 82; 48Bet UMa ; 2.37; 10600;occ; 100; 0; 9168
16;-2023.5; 01-DEC-2003 14:23:26; Bright; 42.5; 32; 77Eps UMa ; 1.76; 11000;occ; 85; 0; 9168
17;-1898.7; 01-DEC-2003 14:25:31; Bright; 37.0; 39; 85Eta UMa ; 1.85; 24000;occ; 74; 0; 9168
18;-1724.6; 01-DEC-2003 14:28:25; Bright; 37.0; 180; 27Gam Boo ; 3.04; 8000;occ; 74; 0; 9168
19;-1546.1; 01-DEC-2003 14:31:23; Bright; 40.0; 83; ; 2.38; 11000;occ; 80; 0; 9168
20;-1391.5; 01-DEC-2003 14:33:58; Bright; 35.5; 3; 16Alp Boo ;-0.05; 4250;occ; 71; 0; 9168
21;-1173.7; 01-DEC-2003 14:37:36; Bright; 73.0; 96; 68Del Leo ; 2.56; 9300;occ; 146; 0; 9168
22; -631.4; 01-DEC-2003 14:46:38; Dark ; 47.0; 163; 7Del Crv ; 2.94; 11000;occ; 94; 0; 9168
23; -533.7; 01-DEC-2003 14:48:16; Dark ; 48.5; 106; 9Bet Crv ; 2.65; 5600;occ; 97; 0; 9168
24; -414.9; 01-DEC-2003 14:50:15; Dark ; 42.5; 123; Iot Cen ; 2.75; 10200;occ; 85; 0; 9168
25; -173.6; 01-DEC-2003 14:54:16; Dark ; 42.5; 77; Eps Cen ; 2.30; 28000;occ; 85; 0; 9168
26; -75.0; 01-DEC-2003 14:55:54; Dark ; 44.0; 10; Bet Cen ; 0.61; 28000;occ; 88; 0; 9168
27; 41.0; 01-DEC-2003 14:57:50; Dark ; 48.0; 12; Alp1Cru ; 0.77; 30000;occ; 96; 0; 9169
28; 204.7; 01-DEC-2003 15:00:34; Dark ; 39.5; 124; The Car ; 2.76; 30000;occ; 79; 0; 9169
29; 350.2; 01-DEC-2003 15:03:00; Dark ; 59.5; 0; ; 0.00; 0;occ; 119; 0; 9169
30; 485.5; 01-DEC-2003 15:05:15; Dark ; 45.5; 41; Eps Car ; 1.86; 4100;occ; 91; 0; 9169
31; 605.9; 01-DEC-2003 15:07:15; Dark ; 54.0; 34; Gam2Vel ; 1.79; 23000;occ; 108; 0; 9169
32; 807.0; 01-DEC-2003 15:10:36; Dark ; 58.0; 2; Alp Car ;-0.74; 7000;occ; 116; 0; 9169
33; 918.6; 01-DEC-2003 15:12:28; Dark ; 65.0; 117; Pi Pup ; 2.71; 3800;occ; 130; 0; 9169
34; 1146.3; 01-DEC-2003 15:16:16; Dark ; 65.5; 23; 21Eps CMA ; 1.50; 26000;occ; 131; 0; 9169
35; 1276.3; 01-DEC-2003 15:18:26; Dark ; 67.0; 179; 240mi2CMA ; 3.03; 24000;occ; 134; 0; 9169
/data4_2/GOMOS/level0/GOM_NL_0PNPDK20031205_063004_000061032022_00149_09221_0282.N1
1;-4729.2; 05-DEC-2003 06:30:04; Dark ; 70.0; 179; 240mi2CMA ; 3.03; 24000;occ; 140; 4; 9221
2;-4499.9; 05-DEC-2003 06:33:54; Dark ; 82.0; 1; 9Alp CMA ;-1.44; 11000;occ; 164; 0; 9221
3;-4287.6; 05-DEC-2003 06:37:26; Dark ; 55.5; 7; 19Bet Ori ; 0.10; 14000;occ; 111; 0; 9221
4;-4050.0; 05-DEC-2003 06:41:24; Dark ; 47.0; 94; 92Alp Cet ; 2.53; 3100;occ; 94; 0; 9221
5;-3822.0; 05-DEC-2003 06:45:12; Dark ; 60.0; 13; 87Alp Tau ; 0.87; 3800;occ; 120; 0; 9221
6;-3715.3; 05-DEC-2003 06:46:58; Bright; 53.5; 146; 25Eta Tau ; 2.87; 15200;occ; 107; 0; 9221
7;-3577.3; 05-DEC-2003 06:49:16; Bright; 40.5; 150; 44Zet Per ; 2.89; 28000;occ; 81; 0; 9221
8;-3433.8; 05-DEC-2003 06:51:40; Bright; 38.0; 79; 26Bet Per ; 2.31; 13100;occ; 76; 0; 9221
9;-3308.7; 05-DEC-2003 06:53:45; Bright; 38.0; 175; 39Del Per ; 3.01; 19400;occ; 76; 0; 9221
10;-3221.4; 05-DEC-2003 06:55:12; Bright; 37.5; 160; 23Gam Per ; 2.93; 4700;occ; 75; 0; 9221
11;-3068.3; 05-DEC-2003 06:57:45; Bright; 37.5; 110; 37Del Cas ; 2.68; 8900;occ; 75; 0; 9221
12;-2989.0; 05-DEC-2003 06:59:05; Bright; 39.0; 74; 11Bet Cas ; 2.27; 6600;occ; 78; 0; 9221
13;-2616.2; 05-DEC-2003 07:05:17; Bright; 38.0; 49; 1Alp UMi ; 1.99; 6300;occ; 76; 0; 9221
14;-2334.8; 05-DEC-2003 07:09:59; Bright; 38.5; 60; 7Bet UMi ; 2.08; 3950;occ; 77; 0; 9221
15;-2236.0; 05-DEC-2003 07:11:38; Bright; 47.0; 36; 50Alp UMa ; 1.80; 6300;occ; 94; 0; 9221

```



```

6; 1195.9; 06-DEC-2003 14:19:36; Dark ; 59.5; 0; ; 0.00; 0;occ; 119; 0; 9240
7; 1284.9; 06-DEC-2003 14:21:05; Dark ; 59.5; 0; ; 0.00; 0;occ; 119; 0; 9240
/data4_2/GOMOS/level0/GOM_NL_0PNPDK20031206_142555_000057832022_00168_09240_0292.N1
1;-4460.8; 06-DEC-2003 14:25:55; Dark ; 59.5; 0; ; 0.00; 0;occ; 119; 0; 9240
2;-4291.8; 06-DEC-2003 14:28:44; Dark ; 59.5; 0; ; 0.00; 0;occ; 119; 0; 9240
3;-4120.1; 06-DEC-2003 14:31:36; Dark ; 59.5; 0; ; 0.00; 0;occ; 119; 0; 9240
4;-3968.0; 06-DEC-2003 14:34:08; Dark ; 59.5; 0; ; 0.00; 0;occ; 119; 0; 9240
5;-3784.9; 06-DEC-2003 14:37:11; Bright; 59.5; 0; ; 0.00; 0;occ; 119; 0; 9240
6;-3643.5; 06-DEC-2003 14:39:32; Bright; 59.5; 0; ; 0.00; 0;occ; 119; 0; 9240
7;-3550.6; 06-DEC-2003 14:41:05; Bright; 59.5; 0; ; 0.00; 0;occ; 119; 0; 9240
8;-3250.0; 06-DEC-2003 14:46:06; Bright; 59.5; 0; ; 0.00; 0;occ; 119; 0; 9240
9;-3034.6; 06-DEC-2003 14:49:41; Bright; 59.5; 0; ; 0.00; 0;occ; 119; 0; 9240
10;-2825.6; 06-DEC-2003 14:53:10; Bright; 59.5; 0; ; 0.00; 0;occ; 119; 0; 9240
11;-2661.2; 06-DEC-2003 14:55:55; Bright; 59.5; 0; ; 0.00; 0;occ; 119; 0; 9240
12;-2552.5; 06-DEC-2003 14:57:43; Bright; 59.5; 0; ; 0.00; 0;occ; 119; 0; 9240
13;-2432.3; 06-DEC-2003 14:59:44; Bright; 59.5; 0; ; 0.00; 0;occ; 119; 0; 9240
14;-2280.1; 06-DEC-2003 15:02:16; Bright; 59.5; 0; ; 0.00; 0;occ; 119; 0; 9240
15;-2145.8; 06-DEC-2003 15:04:30; Bright; 59.5; 0; ; 0.00; 0;occ; 119; 0; 9240
16;-2034.8; 06-DEC-2003 15:06:21; Bright; 59.5; 0; ; 0.00; 0;occ; 119; 0; 9240
17;-1917.1; 06-DEC-2003 15:08:19; Bright; 59.5; 0; ; 0.00; 0;occ; 119; 0; 9240
18;-1825.6; 06-DEC-2003 15:09:50; Bright; 59.5; 0; ; 0.00; 0;occ; 119; 0; 9240
19;-1691.5; 06-DEC-2003 15:12:04; Bright; 59.5; 0; ; 0.00; 0;occ; 119; 0; 9240
20;-1517.4; 06-DEC-2003 15:14:59; Bright; 59.5; 0; ; 0.00; 0;occ; 119; 0; 9240
21;-1300.1; 06-DEC-2003 15:18:36; Bright; 59.5; 0; ; 0.00; 0;occ; 119; 0; 9240
22;-1133.2; 06-DEC-2003 15:21:23; Dark ; 59.5; 0; ; 0.00; 0;occ; 119; 0; 9240
23; -714.1; 06-DEC-2003 15:28:22; Dark ; 59.5; 0; ; 0.00; 0;occ; 119; 0; 9240
24; -575.9; 06-DEC-2003 15:30:40; Dark ; 59.5; 0; ; 0.00; 0;occ; 119; 0; 9240
25; -93.4; 06-DEC-2003 15:38:43; Dark ; 59.0; 0; ; 0.00; 0;occ; 118; 0; 9240
26; 156.4; 06-DEC-2003 15:42:52; Dark ; 32.5; 0; ; 0.00; 0;occ; 65; 0; 9241
27; 290.0; 06-DEC-2003 15:45:06; Dark ; 33.5; 0; ; 0.00; 0;occ; 67; 0; 9241
28; 605.2; 06-DEC-2003 15:50:21; Dark ; 33.5; 0; ; 0.00; 0;occ; 67; 0; 9241
29; 761.5; 06-DEC-2003 15:52:57; Dark ; 39.5; 0; ; 0.00; 0;occ; 79; 0; 9241
30; 962.8; 06-DEC-2003 15:56:19; Dark ; 34.5; 0; ; 0.00; 0;occ; 69; 0; 9241
31; 1196.1; 06-DEC-2003 16:00:12; Dark ; 34.5; 0; ; 0.00; 0;occ; 69; 0; 9241
32; 1285.2; 06-DEC-2003 16:01:41; Dark ; 38.5; 0; ; 0.00; 0;occ; 77; 0; 9241
/data4_2/GOMOS/level0/GOM_NL_0PNPDK20031206_160631_000055062022_00169_09241_0293.N1
1;-4460.8; 06-DEC-2003 16:06:31; Dark ; 59.5; 0; ; 0.00; 0;occ; 119; 0; 9241
2;-4291.7; 06-DEC-2003 16:09:20; Dark ; 35.5; 0; ; 0.00; 0;occ; 71; 0; 9241
3;-4121.2; 06-DEC-2003 16:12:11; Dark ; 39.5; 0; ; 0.00; 0;occ; 79; 0; 9241
4;-3967.8; 06-DEC-2003 16:14:44; Dark ; 33.5; 0; ; 0.00; 0;occ; 67; 0; 9241
5;-3786.6; 06-DEC-2003 16:17:45; Bright; 50.5; 0; ; 0.00; 0;occ; 101; 0; 9241
6;-3644.0; 06-DEC-2003 16:20:08; Bright; 42.5; 0; ; 0.00; 0;occ; 85; 0; 9241
7;-3549.9; 06-DEC-2003 16:21:42; Bright; 36.5; 0; ; 0.00; 0;occ; 73; 0; 9241
8;-3251.7; 06-DEC-2003 16:26:40; Bright; 44.5; 0; ; 0.00; 0;occ; 89; 0; 9241
9;-3038.0; 06-DEC-2003 16:30:14; Bright; 59.5; 0; ; 0.00; 0;occ; 119; 0; 9241
10;-2827.0; 06-DEC-2003 16:33:45; Bright; 59.5; 0; ; 0.00; 0;occ; 119; 0; 9241
11;-2660.8; 06-DEC-2003 16:36:31; Bright; 35.5; 0; ; 0.00; 0;occ; 71; 0; 9241
12;-2554.3; 06-DEC-2003 16:38:18; Bright; 53.5; 0; ; 0.00; 0;occ; 107; 0; 9241
13;-2432.1; 06-DEC-2003 16:40:20; Bright; 35.5; 0; ; 0.00; 0;occ; 71; 0; 9241
14;-2280.3; 06-DEC-2003 16:42:52; Bright; 39.5; 0; ; 0.00; 0;occ; 79; 0; 9241
15;-2145.7; 06-DEC-2003 16:45:06; Bright; 36.5; 0; ; 0.00; 0;occ; 73; 0; 9241
16;-2036.1; 06-DEC-2003 16:46:56; Bright; 59.5; 0; ; 0.00; 0;occ; 119; 0; 9241
17;-1917.0; 06-DEC-2003 16:48:55; Bright; 35.5; 0; ; 0.00; 0;occ; 71; 0; 9241
18;-1825.6; 06-DEC-2003 16:50:26; Bright; 40.5; 0; ; 0.00; 0;occ; 81; 0; 9241
19;-1691.6; 06-DEC-2003 16:52:40; Bright; 56.5; 0; ; 0.00; 0;occ; 113; 0; 9241
20;-1517.2; 06-DEC-2003 16:55:35; Bright; 35.5; 0; ; 0.00; 0;occ; 71; 0; 9241
21;-1299.8; 06-DEC-2003 16:59:12; Bright; 38.5; 0; ; 0.00; 0;occ; 77; 0; 9241
22;-1132.0; 06-DEC-2003 17:02:00; Dark ; 59.5; 0; ; 0.00; 0;occ; 119; 0; 9241
23; -847.2; 06-DEC-2003 17:06:45; Dark ; 59.5; 0; ; 0.00; 0;occ; 119; 0; 9241
24; -713.7; 06-DEC-2003 17:08:58; Dark ; 37.5; 0; ; 0.00; 0;occ; 75; 0; 9241
25; -574.9; 06-DEC-2003 17:11:17; Dark ; 48.5; 0; ; 0.00; 0;occ; 97; 0; 9241
26; -416.9; 06-DEC-2003 17:13:55; Dark ; 38.5; 0; ; 0.00; 0;occ; 77; 0; 9241
27; -238.2; 06-DEC-2003 17:16:54; Dark ; 33.5; 0; ; 0.00; 0;occ; 67; 0; 9241
28; -92.7; 06-DEC-2003 17:19:19; Dark ; 36.0; 0; ; 0.00; 0;occ; 72; 0; 9241
29; 130.5; 06-DEC-2003 17:23:02; Dark ; 39.5; 112; Alp Mus ; 2.69; 26000;occ; 79; 0; 9242
30; 290.3; 06-DEC-2003 17:25:42; Dark ; 59.5; 0; ; 0.00; 0;occ; 119; 0; 9242
31; 400.1; 06-DEC-2003 17:27:32; Dark ; 41.5; 29; Bet Car ; 1.67; 10200;occ; 83; 0; 9242
32; 529.1; 06-DEC-2003 17:29:41; Dark ; 57.0; 41; Eps Car ; 1.86; 4100;occ; 114; 0; 9242

```



```

15;-2153.6; 07-DEC-2003 06:09:46; Bright; 46.5; 82; 48Bet UMa ; 2.37; 10600;occ; 93; 0; 9249
16;-2032.1; 07-DEC-2003 06:11:47; Bright; 41.0; 32; 77Eps UMa ; 1.76; 11000;occ; 82; 0; 9249
17;-1896.9; 07-DEC-2003 06:14:02; Bright; 40.0; 39; 85Eta UMa ; 1.85; 24000;occ; 80; 0; 9249
18;-1713.7; 07-DEC-2003 06:17:06; Bright; 35.5; 180; 27Gam Boo ; 3.04; 8000;occ; 71; 0; 9249
19;-1530.1; 07-DEC-2003 06:20:09; Bright; 37.0; 83; ; 2.38; 11000;occ; 74; 0; 9249
20;-1343.8; 07-DEC-2003 06:23:15; Bright; 37.5; 111; 8Eta Boo ; 2.68; 6000;occ; 75; 0; 9249
21;-1091.3; 07-DEC-2003 06:27:28; Dark ; 102.5; 96; 68Del Leo ; 2.56; 9300;occ; 205; 0; 9249
22; -863.1; 07-DEC-2003 06:31:16; Dark ; 53.0; 121; 29Gam Vir ; 2.74; 7200;occ; 106; 0; 9249
23; -567.8; 07-DEC-2003 06:36:11; Dark ; 50.0; 163; 7Del Crv ; 2.94; 11000;occ; 100; 0; 9249
24; -477.5; 07-DEC-2003 06:37:42; Dark ; 53.5; 106; 9Bet Crv ; 2.65; 5600;occ; 107; 0; 9249
25; -381.0; 07-DEC-2003 06:39:18; Dark ; 42.0; 123; Iot Cen ; 2.75; 10200;occ; 84; 0; 9249
26; -265.9; 07-DEC-2003 06:41:13; Dark ; 40.5; 95; Zet Cen ; 2.55; 26000;occ; 81; 0; 9249
27; -154.0; 07-DEC-2003 06:43:05; Dark ; 41.0; 77; Eps Cen ; 2.30; 28000;occ; 82; 0; 9249
28; -71.9; 07-DEC-2003 06:44:27; Dark ; 43.0; 4; Alp1Cen ;-0.01; 5800;occ; 86; 0; 9249
29; 31.7; 07-DEC-2003 06:46:11; Dark ; 41.0; 129; Del Cru ; 2.79; 26000;occ; 82; 0; 9250
30; 153.0; 07-DEC-2003 06:48:12; Dark ; 45.5; 113; Mu Vel ; 2.69; 5000;occ; 91; 0; 9250
31; 292.6; 07-DEC-2003 06:50:32; Dark ; 59.5; 0; ; 0.00; 0;occ; 119; 0; 9250
32; 401.5; 07-DEC-2003 06:52:21; Dark ; 44.5; 29; Bet Car ; 1.67; 10200;occ; 89; 0; 9250
33; 534.5; 07-DEC-2003 06:54:34; Dark ; 47.0; 41; Eps Car ; 1.86; 4100;occ; 94; 0; 9250
34; 674.5; 07-DEC-2003 06:56:54; Dark ; 52.5; 34; Gam2Vel ; 1.79; 23000;occ; 105; 0; 9250
35; 791.7; 07-DEC-2003 06:58:51; Dark ; 57.5; 70; Zet Pup ; 2.25; 39000;occ; 115; 0; 9250
36; 981.7; 07-DEC-2003 07:02:01; Dark ; 65.0; 117; Pi Pup ; 2.71; 3800;occ; 130; 0; 9250
37; 1198.2; 07-DEC-2003 07:05:37; Dark ; 61.5; 23; 21Eps CMa ; 1.50; 26000;occ; 123; 0; 9250
38; 1319.1; 07-DEC-2003 07:07:38; Dark ; 63.5; 179; 240mi2CMa ; 3.03; 24000;occ; 127; 0; 9250
39; 1539.1; 07-DEC-2003 07:11:18; Dark ; 83.5; 1; 9Alp CMa ;-1.44; 11000;occ; 167; 0; 9250
40; 1747.5; 07-DEC-2003 07:14:47; Dark ; 61.5; 7; 19Bet Ori ; 0.10; 14000;occ; 123; 0; 9250
/data4_2/GOMOS/level0/GOM_NL_0PNPDK20031207_071517_000058822022_00178_09250_0298.N1
1;-4258.4; 07-DEC-2003 07:15:17; Dark ; 62.0; 7; 19Bet Ori ; 0.10; 14000;occ; 124; 60; 9250
2;-4046.8; 07-DEC-2003 07:18:48; Dark ; 47.5; 94; 92Alp Cet ; 2.53; 3100;occ; 95; 0; 9250
3;-3829.1; 07-DEC-2003 07:22:26; Dark ; 58.0; 13; 87Alp Tau ; 0.87; 3800;occ; 116; 0; 9250
4;-3680.8; 07-DEC-2003 07:24:54; Bright; 40.5; 50; 13Alp Ari ; 2.01; 4250;occ; 81; 0; 9250
5;-3581.1; 07-DEC-2003 07:26:34; Bright; 40.5; 150; 44Zet Per ; 2.89; 28000;occ; 81; 0; 9250
6;-3497.2; 07-DEC-2003 07:27:58; Bright; 37.5; 173; 4Bet Tri ; 3.00; 8900;occ; 75; 0; 9250
7;-3375.9; 07-DEC-2003 07:29:59; Bright; 41.0; 73; 57Gam1And ; 2.26; 13100;occ; 82; 0; 9250
8;-3284.9; 07-DEC-2003 07:31:30; Bright; 43.0; 35; 33Alp Per ; 1.79; 6250;occ; 86; 0; 9250
9;-3152.5; 07-DEC-2003 07:33:43; Bright; 48.5; 42; 34Bet Aur ; 1.90; 10200;occ; 97; 0; 9250
10;-3022.6; 07-DEC-2003 07:35:53; Bright; 38.0; 76; 27Gam Cas ; 2.30; 30000;occ; 76; 0; 9250
11;-2616.9; 07-DEC-2003 07:42:38; Bright; 38.5; 49; 1Alp UMi ; 1.99; 6300;occ; 77; 0; 9250
12;-2333.9; 07-DEC-2003 07:47:21; Bright; 40.5; 60; 7Bet UMi ; 2.08; 3950;occ; 81; 0; 9250
13;-2247.5; 07-DEC-2003 07:48:48; Bright; 46.0; 36; 50Alp UMa ; 1.80; 6300;occ; 92; 0; 9250
14;-2154.6; 07-DEC-2003 07:50:21; Bright; 47.5; 82; 48Bet UMa ; 2.37; 10600;occ; 95; 0; 9250
15;-2032.5; 07-DEC-2003 07:52:23; Bright; 58.0; 32; 77Eps UMa ; 1.76; 11000;occ; 116; 0; 9250
16;-1896.9; 07-DEC-2003 07:54:38; Bright; 38.5; 39; 85Eta UMa ; 1.85; 24000;occ; 77; 0; 9250
17;-1713.4; 07-DEC-2003 07:57:42; Bright; 35.5; 180; 27Gam Boo ; 3.04; 8000;occ; 71; 0; 9250
18;-1529.8; 07-DEC-2003 08:00:45; Bright; 36.5; 83; ; 2.38; 11000;occ; 73; 0; 9250
19;-1343.7; 07-DEC-2003 08:03:52; Bright; 39.0; 111; 8Eta Boo ; 2.68; 6000;occ; 78; 0; 9250
20;-1090.1; 07-DEC-2003 08:08:05; Dark ; 100.0; 96; 68Del Leo ; 2.56; 9300;occ; 200; 0; 9250
21; -862.1; 07-DEC-2003 08:11:53; Dark ; 55.0; 121; 29Gam Vir ; 2.74; 7200;occ; 110; 0; 9250
22; -585.6; 07-DEC-2003 08:16:30; Dark ; 47.5; 169; 46Gam Hya ; 2.99; 4700;occ; 95; 0; 9250
23; -503.1; 07-DEC-2003 08:17:52; Dark ; 53.0; 100; 4Gam Crv ; 2.58; 13100;occ; 106; 0; 9250
24; -380.5; 07-DEC-2003 08:19:55; Dark ; 44.5; 123; Iot Cen ; 2.75; 10200;occ; 89; 0; 9250
25; -265.6; 07-DEC-2003 08:21:50; Dark ; 41.5; 95; Zet Cen ; 2.55; 26000;occ; 83; 0; 9250
26; -154.3; 07-DEC-2003 08:23:41; Dark ; 41.5; 77; Eps Cen ; 2.30; 28000;occ; 83; 0; 9250
27; -72.2; 07-DEC-2003 08:25:03; Dark ; 42.5; 4; Alp1Cen ;-0.01; 5800;occ; 85; 0; 9250
28; 153.9; 07-DEC-2003 08:28:49; Dark ; 46.5; 113; Mu Vel ; 2.69; 5000;occ; 93; 0; 9251
29; 292.9; 07-DEC-2003 08:31:08; Dark ; 59.5; 0; ; 0.00; 0;occ; 119; 0; 9251
30; 403.7; 07-DEC-2003 08:32:59; Dark ; 41.0; 29; Bet Car ; 1.67; 10200;occ; 82; 0; 9251
31; 534.8; 07-DEC-2003 08:35:10; Dark ; 54.0; 41; Eps Car ; 1.86; 4100;occ; 108; 0; 9251
32; 674.2; 07-DEC-2003 08:37:29; Dark ; 49.5; 34; Gam2Vel ; 1.79; 23000;occ; 99; 0; 9251
33; 792.4; 07-DEC-2003 08:39:28; Dark ; 56.0; 70; Zet Pup ; 2.25; 39000;occ; 112; 0; 9251
34; 982.5; 07-DEC-2003 08:42:38; Dark ; 64.5; 117; Pi Pup ; 2.71; 3800;occ; 129; 0; 9251
35; 1198.3; 07-DEC-2003 08:46:14; Dark ; 66.0; 23; 21Eps CMa ; 1.50; 26000;occ; 132; 0; 9251
36; 1319.5; 07-DEC-2003 08:48:15; Dark ; 66.0; 179; 240mi2CMa ; 3.03; 24000;occ; 132; 0; 9251
37; 1539.4; 07-DEC-2003 08:51:55; Dark ; 85.5; 1; 9Alp CMa ;-1.44; 11000;occ; 171; 0; 9251
/data4_2/GOMOS/level0/GOM_NL_0PNPDK20031207_085246_000060342022_00179_09251_0299.N1
1;-4445.0; 07-DEC-2003 08:52:46; Dark ; 86.0; 1; 9Alp CMa ;-1.44; 11000;occ; 172; 103; 9251
2;-4288.5; 07-DEC-2003 08:55:23; Dark ; 51.0; 7; 19Bet Ori ; 0.10; 14000;occ; 102; 0; 9251
3;-4046.5; 07-DEC-2003 08:59:25; Dark ; 49.5; 94; 92Alp Cet ; 2.53; 3100;occ; 99; 0; 9251

```

```

4;-3829.3; 07-DEC-2003 09:03:02; Dark ; 58.0; 13; 87Alp Tau ; 0.87; 3800;occ; 116; 0; 9251
5;-3680.1; 07-DEC-2003 09:05:31; Bright; 40.5; 50; 13Alp Ari ; 2.01; 4250;occ; 81; 0; 9251
6;-3581.2; 07-DEC-2003 09:07:10; Bright; 39.0; 150; 44Zet Per ; 2.89; 28000;occ; 78; 0; 9251
7;-3496.9; 07-DEC-2003 09:08:34; Bright; 36.5; 173; 4Bet Tri ; 3.00; 8900;occ; 73; 0; 9251
8;-3375.6; 07-DEC-2003 09:10:35; Bright; 39.0; 73; 57Gam1And ; 2.26; 13100;occ; 78; 0; 9251
9;-3285.0; 07-DEC-2003 09:12:06; Bright; 42.0; 35; 33Alp Per ; 1.79; 6250;occ; 84; 0; 9251
10;-3153.3; 07-DEC-2003 09:14:18; Bright; 46.0; 42; 34Bet Aur ; 1.90; 10200;occ; 92; 0; 9251
11;-3022.3; 07-DEC-2003 09:16:29; Bright; 38.5; 76; 27Gam Cas ; 2.30; 30000;occ; 77; 0; 9251
12;-2616.9; 07-DEC-2003 09:23:14; Bright; 35.5; 49; 1Alp UMi ; 1.99; 6300;occ; 71; 0; 9251
13;-2333.3; 07-DEC-2003 09:27:58; Bright; 38.5; 60; 7Bet UMi ; 2.08; 3950;occ; 77; 0; 9251
14;-2248.1; 07-DEC-2003 09:29:23; Bright; 47.0; 36; 50Alp UMa ; 1.80; 6300;occ; 94; 0; 9251
15;-2155.0; 07-DEC-2003 09:30:56; Bright; 48.0; 82; 48Bet UMa ; 2.37; 10600;occ; 96; 0; 9251
16;-2032.3; 07-DEC-2003 09:32:59; Bright; 39.5; 32; 77Eps UMa ; 1.76; 11000;occ; 79; 0; 9251
17;-1897.3; 07-DEC-2003 09:35:14; Bright; 37.0; 39; 85Eta UMa ; 1.85; 24000;occ; 74; 0; 9251
18;-1713.6; 07-DEC-2003 09:38:17; Bright; 49.0; 180; 27Gam Boo ; 3.04; 8000;occ; 98; 0; 9251
19;-1529.3; 07-DEC-2003 09:41:22; Bright; 36.0; 83; ; 2.38; 11000;occ; 72; 0; 9251
20;-1343.2; 07-DEC-2003 09:44:28; Bright; 38.5; 111; 8Eta Boo ; 2.68; 6000;occ; 77; 0; 9251
21;-1088.9; 07-DEC-2003 09:48:42; Dark ; 100.0; 96; 68Del Leo ; 2.56; 9300;occ; 200; 0; 9251
22; -861.3; 07-DEC-2003 09:52:30; Dark ; 56.0; 121; 29Gam Vir ; 2.74; 7200;occ; 112; 0; 9251
23; -585.1; 07-DEC-2003 09:57:06; Dark ; 44.5; 169; 46Gam Hya ; 2.99; 4700;occ; 89; 0; 9251
24; -502.4; 07-DEC-2003 09:58:29; Dark ; 54.0; 100; 4Gam Crv ; 2.58; 13100;occ; 108; 0; 9251
25; -380.5; 07-DEC-2003 10:00:31; Dark ; 42.5; 123; Iot Cen ; 2.75; 10200;occ; 85; 0; 9251
26; -265.3; 07-DEC-2003 10:02:26; Dark ; 40.5; 95; Zet Cen ; 2.55; 26000;occ; 81; 0; 9251
27; -153.9; 07-DEC-2003 10:04:17; Dark ; 41.0; 77; Eps Cen ; 2.30; 28000;occ; 82; 0; 9251
28; -72.1; 07-DEC-2003 10:05:39; Dark ; 43.0; 4; Alp1Cen ; -0.01; 5800;occ; 86; 0; 9251
29; 154.0; 07-DEC-2003 10:09:25; Dark ; 48.5; 113; Mu Vel ; 2.69; 5000;occ; 97; 0; 9252
30; 293.2; 07-DEC-2003 10:11:44; Dark ; 59.5; 0; ; 0.00; 0;occ; 119; 0; 9252
31; 402.3; 07-DEC-2003 10:13:33; Dark ; 42.0; 29; Bet Car ; 1.67; 10200;occ; 84; 0; 9252
32; 535.0; 07-DEC-2003 10:15:46; Dark ; 46.0; 41; Eps Car ; 1.86; 4100;occ; 92; 0; 9252
33; 675.7; 07-DEC-2003 10:18:07; Dark ; 57.0; 34; Gam2Vel ; 1.79; 23000;occ; 114; 0; 9252
34; 793.3; 07-DEC-2003 10:20:04; Dark ; 54.0; 70; Zet Pup ; 2.25; 39000;occ; 108; 0; 9252
35; 981.3; 07-DEC-2003 10:23:12; Dark ; 64.5; 117; Pi Pup ; 2.71; 3800;occ; 129; 0; 9252
36; 1199.3; 07-DEC-2003 10:26:50; Dark ; 66.0; 23; 21Eps CMa ; 1.50; 26000;occ; 132; 0; 9252
37; 1319.5; 07-DEC-2003 10:28:51; Dark ; 65.0; 179; 240mi2CMa ; 3.03; 24000;occ; 130; 0; 9252
38; 1539.0; 07-DEC-2003 10:32:30; Dark ; 51.5; 1; 9Alp CMa ; -1.44; 11000;occ; 103; 0; 9252
/data4_2/GOMOS/level0/GOM_NL_0PNPDK20031207_103230_000060932022_00180_09252_0300.N1
1;-4496.8; 07-DEC-2003 10:32:30; Dark ; 79.0; 1; 9Alp CMa ; -1.44; 11000;occ; 158; 0; 9252
2;-4288.9; 07-DEC-2003 10:35:58; Dark ; 55.0; 7; 19Bet Ori ; 0.10; 14000;occ; 110; 0; 9252
3;-4045.7; 07-DEC-2003 10:40:01; Dark ; 46.0; 94; 92Alp Cet ; 2.53; 3100;occ; 92; 0; 9252
4;-3829.4; 07-DEC-2003 10:43:37; Dark ; 58.0; 13; 87Alp Tau ; 0.87; 3800;occ; 116; 0; 9252
5;-3679.7; 07-DEC-2003 10:46:07; Bright; 40.5; 50; 13Alp Ari ; 2.01; 4250;occ; 81; 0; 9252
6;-3581.0; 07-DEC-2003 10:47:46; Bright; 37.5; 150; 44Zet Per ; 2.89; 28000;occ; 75; 0; 9252
7;-3497.0; 07-DEC-2003 10:49:10; Bright; 37.0; 173; 4Bet Tri ; 3.00; 8900;occ; 74; 0; 9252
8;-3374.7; 07-DEC-2003 10:51:12; Bright; 40.0; 73; 57Gam1And ; 2.26; 13100;occ; 80; 0; 9252
9;-3283.4; 07-DEC-2003 10:52:44; Bright; 40.0; 35; 33Alp Per ; 1.79; 6250;occ; 80; 0; 9252
10;-3153.8; 07-DEC-2003 10:54:53; Bright; 47.0; 42; 34Bet Aur ; 1.90; 10200;occ; 94; 0; 9252
11;-3021.9; 07-DEC-2003 10:57:05; Bright; 36.0; 76; 27Gam Cas ; 2.30; 30000;occ; 72; 0; 9252
12;-2616.9; 07-DEC-2003 11:03:50; Bright; 39.0; 49; 1Alp UMi ; 1.99; 6300;occ; 78; 0; 9252
13;-2334.0; 07-DEC-2003 11:08:33; Bright; 41.0; 60; 7Bet UMi ; 2.08; 3950;occ; 82; 0; 9252
14;-2248.5; 07-DEC-2003 11:09:58; Bright; 43.0; 36; 50Alp UMa ; 1.80; 6300;occ; 86; 0; 9252
15;-2155.5; 07-DEC-2003 11:11:31; Bright; 49.0; 82; 48Bet UMa ; 2.37; 10600;occ; 98; 0; 9252
16;-2032.4; 07-DEC-2003 11:13:35; Bright; 42.0; 32; 77Eps UMa ; 1.76; 11000;occ; 84; 0; 9252
17;-1896.9; 07-DEC-2003 11:15:50; Bright; 40.0; 39; 85Eta UMa ; 1.85; 24000;occ; 80; 0; 9252
18;-1713.1; 07-DEC-2003 11:18:54; Bright; 36.0; 180; 27Gam Boo ; 3.04; 8000;occ; 72; 0; 9252
19;-1529.5; 07-DEC-2003 11:21:57; Bright; 36.0; 83; ; 2.38; 11000;occ; 72; 0; 9252
20;-1343.2; 07-DEC-2003 11:25:04; Bright; 39.0; 111; 8Eta Boo ; 2.68; 6000;occ; 78; 0; 9252
21;-1087.6; 07-DEC-2003 11:29:19; Dark ; 102.5; 96; 68Del Leo ; 2.56; 9300;occ; 205; 0; 9252
22; -861.0; 07-DEC-2003 11:33:06; Dark ; 54.5; 121; 29Gam Vir ; 2.74; 7200;occ; 109; 0; 9252
23; -584.4; 07-DEC-2003 11:37:42; Dark ; 45.0; 169; 46Gam Hya ; 2.99; 4700;occ; 90; 0; 9252
24; -500.9; 07-DEC-2003 11:39:06; Dark ; 53.5; 100; 4Gam Crv ; 2.58; 13100;occ; 107; 0; 9252
25; -379.0; 07-DEC-2003 11:41:08; Dark ; 42.5; 123; Iot Cen ; 2.75; 10200;occ; 85; 0; 9252
26; -264.4; 07-DEC-2003 11:43:03; Dark ; 39.5; 95; Zet Cen ; 2.55; 26000;occ; 79; 0; 9252
27; -153.1; 07-DEC-2003 11:44:54; Dark ; 41.5; 77; Eps Cen ; 2.30; 28000;occ; 83; 0; 9252
28; -71.5; 07-DEC-2003 11:46:15; Dark ; 44.5; 4; Alp1Cen ; -0.01; 5800;occ; 89; 0; 9252
29; 155.6; 07-DEC-2003 11:50:03; Dark ; 46.5; 113; Mu Vel ; 2.69; 5000;occ; 93; 0; 9253
30; 293.5; 07-DEC-2003 11:52:20; Dark ; 59.5; 0; ; 0.00; 0;occ; 119; 0; 9253
31; 404.4; 07-DEC-2003 11:54:11; Dark ; 42.5; 29; Bet Car ; 1.67; 10200;occ; 85; 0; 9253
32; 536.3; 07-DEC-2003 11:56:23; Dark ; 45.0; 41; Eps Car ; 1.86; 4100;occ; 90; 0; 9253

```

33; 675.9; 07-DEC-2003 11:58:43; Dark ; 49.5; 34; Gam2Vel ; 1.79; 23000;occ; 99; 0; 9253
34; 794.3; 07-DEC-2003 12:00:41; Dark ; 55.0; 70; Zet Pup ; 2.25; 39000;occ; 110; 0; 9253
35; 983.8; 07-DEC-2003 12:03:51; Dark ; 55.5; 117; Pi Pup ; 2.71; 3800;occ; 111; 0; 9253
36; 1199.5; 07-DEC-2003 12:07:26; Dark ; 63.5; 23; 21Eps CMa ; 1.50; 26000;occ; 127; 0; 9253
37; 1320.3; 07-DEC-2003 12:09:27; Dark ; 64.5; 179; 24Omi2CMa ; 3.03; 24000;occ; 129; 0; 9253
38; 1539.4; 07-DEC-2003 12:13:06; Dark ; 58.0; 1; 9Alp CMa ; -1.44; 11000;occ; 116; 0; 9253