

GOMOS Daily Report 05-DEC-2003

SUMMARY

[1. General Info](#)

[2. Summary of products arrived in PCF \(Product Control Facility\)](#)

[2.1 Level 0 products arrived in PCF during actual month \(see template \[here\]\(#\)\)](#)

[2.2 Level 1 products arrived in PCF during reporting period](#)

[3. Plot of Spectrometers and Photometers temperatures](#)

[4. Dark Charge monitoring](#)

[4.1 Products that did not use the Dark Sky Area observation for DC computation](#)

[4.2 Plot of Dark Charge](#)

[5. Demodulation correction and quality product information monitoring](#)

[5.1 Percentage of products with some flags set](#)

[5.2 Plot of quality information per product](#)

[6. Star tangent altitude lost](#)

[6.1 Statistics on star tangent altitude lost](#)

[6.2 Plot of star tangent altitude lost: DARK products](#)

[6.3 Plot of star tangent altitude lost: BRIGHT products](#)

[7. Statistics on SATU Noise Equivalent Angle](#)

1. General Info

This report presents the daily analysis on parameters extracted from GOMOS level 1b data (GOM_TRA_1P). It is intended to monitor some important parameters that will impact the quality of the level 2 products as the Spectrometers and Photometers CCD Temperatures and Dark Charge, SATU noise equivalent angle... A list of level 0 products (and content) that have arrived during the actual month to the PCF is also given.

Item	Value
Time of report generation	09DEC2003 08:46:38
Data source version	<Any version>
Start time of products	05-DEC-2003 (05DEC2003 00:00:00)
Stop time of products	06-DEC-2003 (06DEC2003 00:00:00)
Store outputs flag	1
Nb of level 1b prods	55
Nb of prods with errors	1

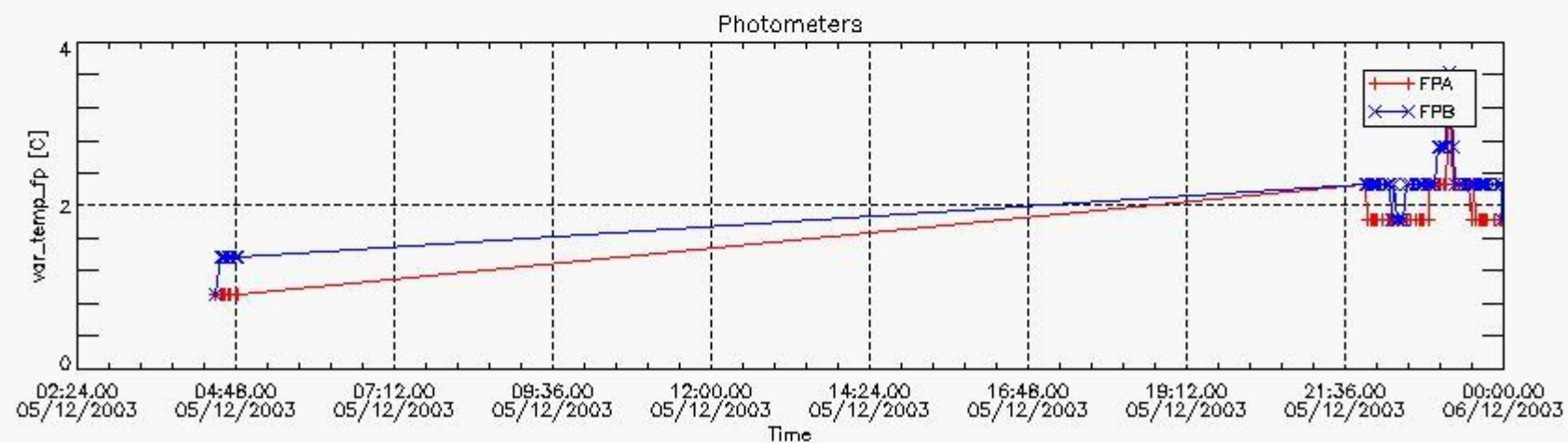
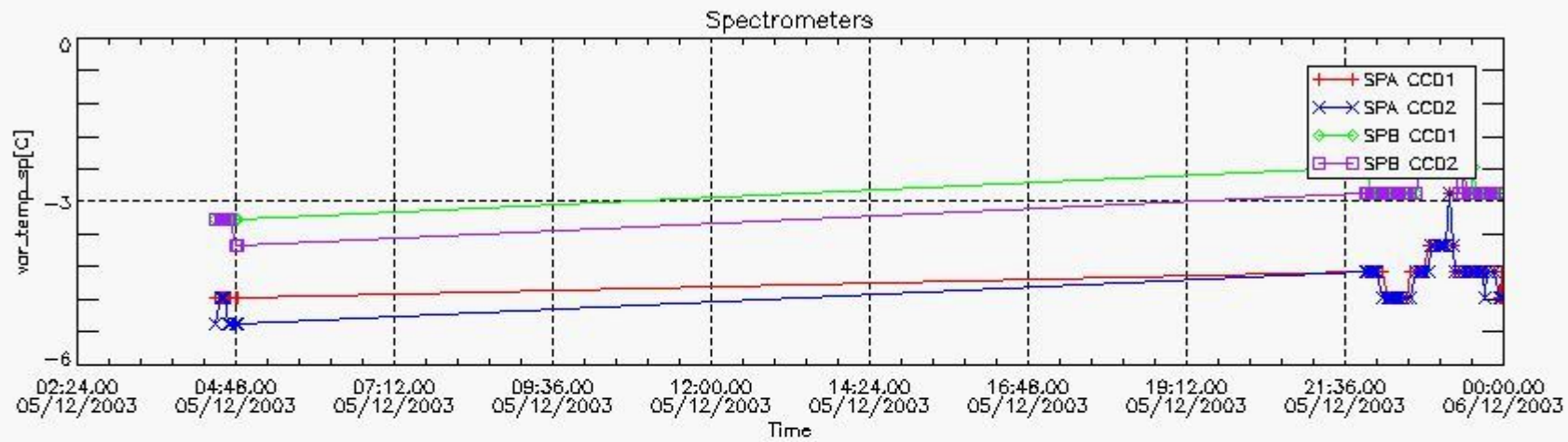
2. Summary of products arrived in PCF

[2.1 Level 0 products arrived in PCF \(see template \[here\]\(#\)\)](#)

[2.2 Summary of processed GOM_TRA_1P products.](#)

Filename	UTC Start time	Limb	Duration	Star Id	Star Name	Star Mag	Star Temp	Nb Meas	Orbit	Prod. error
----------	----------------	------	----------	---------	-----------	----------	-----------	---------	-------	-------------

GOM_TRA_1PNPDE20031205_042950_000000462022_00148_09220_0000.N1	05-DEC-2003 04:29:50	Dark	46.000	113	Mu Vel	2.6920	5000.0	92	9220	No
GOM_TRA_1PNPDE20031205_043414_000000412022_00148_09220_0001.N1	05-DEC-2003 04:34:14	Dark	40.500	29	Bet Car	1.6720	10200.	81	9220	No
GOM_TRA_1PNPDE20031205_043618_000000522022_00148_09220_0002.N1	05-DEC-2003 04:36:18	Dark	51.500	41	Eps Car	1.8600	4100.0	103	9220	No
GOM_TRA_1PNPDE20031205_043831_000000512022_00148_09220_0003.N1	05-DEC-2003 04:38:31	Dark	50.500	34	Gam2Vel	1.7930	23000.	101	9220	No
GOM_TRA_1PNPDE20031205_044134_000000482022_00148_09220_0004.N1	05-DEC-2003 04:41:34	Dark	48.000	2	Alp Car	-0.73600	7000.0	96	9220	No
GOM_TRA_1PNPDE20031205_044342_000000592022_00148_09220_0005.N1	05-DEC-2003 04:43:42	Dark	58.500	117	Pi Pup	2.7060	3800.0	117	9220	No
GOM_TRA_1PNPDE20031205_044722_000000632022_00148_09220_0006.N1	05-DEC-2003 04:47:22	Dark	63.000	23	21Eps CMa	1.5020	26000.	126	9220	No
GOM_TRA_1PNPDE20031205_044926_000000642022_00148_09220_0007.N1	05-DEC-2003 04:49:26	Dark	64.000	179	24Omi2CMa	3.0320	24000.	128	9220	No
GOM_TRA_1PNPDE20031205_215439_000000382022_00158_09230_0009.N1	05-DEC-2003 21:54:39	Bright	38.000	150	44Zet Per	2.8900	28000.	76	9230	No
GOM_TRA_1PNPDE20031205_215704_000000362022_00158_09230_0010.N1	05-DEC-2003 21:57:04	Bright	36.000	79	26Bet Per	2.3100	13100.	72	9230	No
GOM_TRA_1PNPDE20031205_215907_000000372022_00158_09230_0011.N1	05-DEC-2003 21:59:07	Bright	36.500	175	39Del Per	3.0100	19400.	73	9230	No
GOM_TRA_1PNPDE20031205_220036_000000372022_00158_09230_0012.N1	05-DEC-2003 22:00:36	Bright	37.000	160	23Gam Per	2.9300	4700.0	74	9230	No
GOM_TRA_1PNPDE20031205_220312_000000382022_00158_09230_0013.N1	05-DEC-2003 22:03:12	Bright	37.500	110	37Del Cas	2.6780	8900.0	75	9230	No
GOM_TRA_1PNPDE20031205_220433_000000392022_00158_09230_0014.N1	05-DEC-2003 22:04:33	Bright	39.000	74	11Bet Cas	2.2680	6600.0	78	9230	No
GOM_TRA_1PNPDE20031205_221041_000000392022_00158_09230_0015.N1	05-DEC-2003 22:10:41	Bright	38.500	49	1Alp UMi	1.9900	6300.0	77	9230	No
GOM_TRA_1PNPDE20031205_221523_000000382022_00158_09230_0016.N1	05-DEC-2003 22:15:23	Bright	38.000	60	7Bet UMi	2.0810	3950.0	76	9230	No
GOM_TRA_1PNPDE20031205_221657_000000422022_00158_09230_0017.N1	05-DEC-2003 22:16:57	Bright	41.500	36	50Alp UMa	1.8000	6300.0	83	9230	No
GOM_TRA_1PNPDE20031205_221831_000000462022_00158_09230_0018.N1	05-DEC-2003 22:18:31	Bright	46.000	82	48Bet UMa	2.3650	10600.	92	9230	No
GOM_TRA_1PNPDE20031205_222027_000000402022_00158_09230_0019.N1	05-DEC-2003 22:20:27	Bright	40.000	32	77Eps UMa	1.7630	11000.	80	9230	No
GOM_TRA_1PNPDE20031205_222240_000000542022_00158_09230_0020.N1	05-DEC-2003 22:22:40	Bright	54.000	39	85Eta UMa	1.8540	24000.	108	9230	No
GOM_TRA_1PNPDE20031205_222540_000000372022_00158_09230_0021.N1	05-DEC-2003 22:25:40	Bright	37.000	180	27Gam Boo	3.0400	8000.0	74	9230	No
GOM_TRA_1PNPDE20031205_222844_000000362022_00158_09230_0022.N1	05-DEC-2003 22:28:44	Bright	35.500	83		2.3780	11000.	71	9230	No
GOM_TRA_1PNPDE20031205_223118_000000372022_00158_09230_0023.N1	05-DEC-2003 22:31:18	Bright	37.000	3	16Alp Boo	-0.050000	4250.0	74	9230	No
GOM_TRA_1PNPDE20031205_223543_000000972022_00158_09230_0024.N1	05-DEC-2003 22:35:43	Dark	97.000	96	68Del Leo	2.5600	9300.0	194	9230	No
GOM_TRA_1PNPDE20031205_223940_000000482022_00158_09230_0025.N1	05-DEC-2003 22:39:40	Dark	48.000	121	29Gam Vir	2.7400	7200.0	96	9230	No
GOM_TRA_1PNPDE20031205_224433_000000482022_00158_09230_0026.N1	05-DEC-2003 22:44:33	Dark	48.000	163	7Del Crv	2.9450	11000.	96	9230	No
GOM_TRA_1PNPDE20031205_224607_000000462022_00158_09230_0027.N1	05-DEC-2003 22:46:07	Dark	46.000	106	9Bet Crv	2.6480	5600.0	92	9230	No
GOM_TRA_1PNPDE20031205_224748_000000412022_00158_09230_0028.N1	05-DEC-2003 22:47:48	Dark	40.500	123	lot Cen	2.7500	10200.	81	9230	No
GOM_TRA_1PNPDE20031205_225138_000000402022_00158_09230_0029.N1	05-DEC-2003 22:51:38	Dark	40.000	77	Eps Cen	2.3030	28000.	80	9230	No
GOM_TRA_1PNPDE20031205_225304_000000442022_00158_09230_0030.N1	05-DEC-2003 22:53:04	Dark	43.500	4	Alp1Cen	-0.010000	5800.0	87	9230	No
GOM_TRA_1PNPDE20031205_225441_000000412022_00159_09231_0031.N1	05-DEC-2003 22:54:41	Dark	40.500	129	Del Cru	2.7930	26000.	81	9231	No
GOM_TRA_1PNPDE20031205_225635_000000472022_00159_09231_0032.N1	05-DEC-2003 22:56:35	Dark	47.000	113	Mu Vel	2.6920	5000.0	94	9231	No
GOM_TRA_1PNPDE20031205_230053_000000422022_00159_09231_0033.N1	05-DEC-2003 23:00:53	Dark	41.500	29	Bet Car	1.6720	10200.	83	9231	No
GOM_TRA_1PNPDE20031205_230259_000000452022_00159_09231_0034.N1	05-DEC-2003 23:02:59	Dark	44.500	41	Eps Car	1.8600	4100.0	89	9231	No
GOM_TRA_1PNPDE20031205_230515_000000512022_00159_09231_0035.N1	05-DEC-2003 23:05:15	Dark	50.500	34	Gam2Vel	1.7930	23000.	101	9231	No
GOM_TRA_1PNPDE20031205_230814_000000572022_00159_09231_0036.N1	05-DEC-2003 23:08:14	Dark	57.000	2	Alp Car	-0.73600	7000.0	114	9231	No
GOM_TRA_1PNPDE20031205_231025_000000612022_00159_09231_0000.N1	05-DEC-2003 23:10:25	Dark	61.000	117	Pi Pup	2.7060	3800.0	122	9231	Yes
GOM_TRA_1PNPDE20031205_231404_000000622022_00159_09231_0001.N1	05-DEC-2003 23:14:04	Dark	62.000	23	21Eps CMa	1.5020	26000.	124	9231	No
GOM_TRA_1PNPDE20031205_231607_000000692022_00159_09231_0002.N1	05-DEC-2003 23:16:07	Dark	68.500	179	24Omi2CMa	3.0320	24000.	137	9231	No
GOM_TRA_1PNPDE20031205_231930_000000652022_00159_09231_0003.N1	05-DEC-2003 23:19:30	Dark	65.000	47	2Bet CMa	1.9760	28000.	130	9231	No
GOM_TRA_1PNPDE20031205_232202_000000472022_00159_09231_0004.N1	05-DEC-2003 23:22:02	Dark	46.500	165	34Gam Eri	2.9500	3200.0	93	9231	No
GOM_TRA_1PNPDE20031205_232324_000000602022_00159_09231_0005.N1	05-DEC-2003 23:23:24	Dark	60.000	7	19Bet Ori	0.10000	14000.	120	9231	No
GOM_TRA_1PNPDE20031205_232724_000000472022_00159_09231_0006.N1	05-DEC-2003 23:27:24	Dark	47.000	94	92Alp Cet	2.5260	3100.0	94	9231	No
GOM_TRA_1PNPDE20031205_233109_000000592022_00159_09231_0007.N1	05-DEC-2003 23:31:09	Dark	59.000	13	87Alp Tau	0.86700	3800.0	118	9231	No
GOM_TRA_1PNPDE20031205_233259_000000382022_00159_09231_0008.N1	05-DEC-2003 23:32:59	Bright	37.500	105	6Bet Ari	2.6450	8900.0	75	9231	No
GOM_TRA_1PNPDE20031205_233514_000000402022_00159_09231_0009.N1	05-DEC-2003 23:35:14	Bright	39.500	150	44Zet Per	2.8900	28000.	79	9231	No
GOM_TRA_1PNPDE20031205_233739_000000372022_00159_09231_0010.N1	05-DEC-2003 23:37:39	Bright	37.000	79	26Bet Per	2.3100	13100.	74	9231	No
GOM_TRA_1PNPDE20031205_233943_000000372022_00159_09231_0011.N1	05-DEC-2003 23:39:43	Bright	37.000	175	39Del Per	3.0100	19400.	74	9231	No
GOM_TRA_1PNPDE20031205_234111_000000382022_00159_09231_0012.N1	05-DEC-2003 23:41:11	Bright	38.000	160	23Gam Per	2.9300	4700.0	76	9231	No
GOM_TRA_1PNPDE20031205_234348_000000382022_00159_09231_0013.N1	05-DEC-2003 23:43:48	Bright	37.500	110	37Del Cas	2.6780	8900.0	75	9231	No
GOM_TRA_1PNPDE20031205_234508_000000422022_00159_09231_0014.N1	05-DEC-2003 23:45:08	Bright	41.500	74	11Bet Cas	2.2680	6600.0	83	9231	No
GOM_TRA_1PNPDE20031205_235116_000000372022_00159_09231_0015.N1	05-DEC-2003 23:51:16	Bright	37.000	49	1Alp UMi	1.9900	6300.0	74	9231	No
GOM_TRA_1PNPDE20031205_235558_000000392022_00159_09231_0016.N1	05-DEC-2003 23:55:58	Bright	39.000	60	7Bet UMi	2.0810	3950.0	78	9231	No
GOM_TRA_1PNPDE20031205_235733_000000472022_00159_09231_0017.N1	05-DEC-2003 23:57:33	Bright	47.000	36	50Alp UMa	1.8000	6300.0	94	9231	No
GOM_TRA_1PNPDE20031205_235906_000000492022_00159_09231_0018.N1	05-DEC-2003 23:59:06	Bright	48.500	82	48Bet UMa	2.3650	10600.	97	9231	No



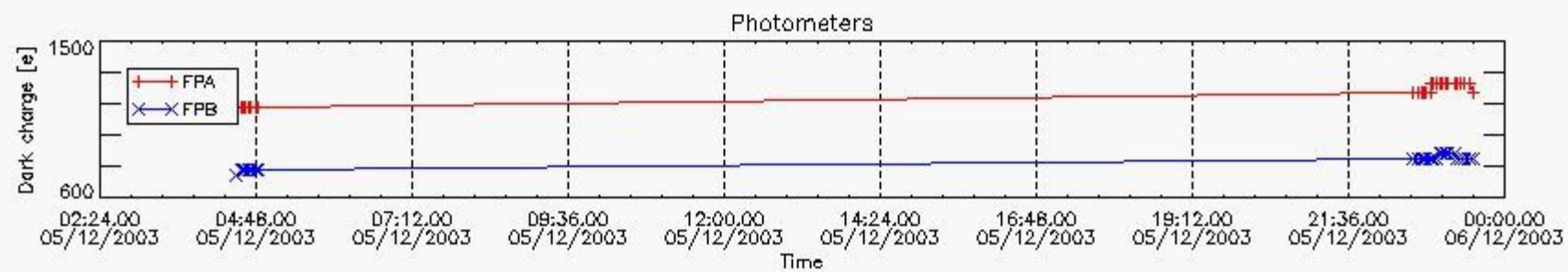
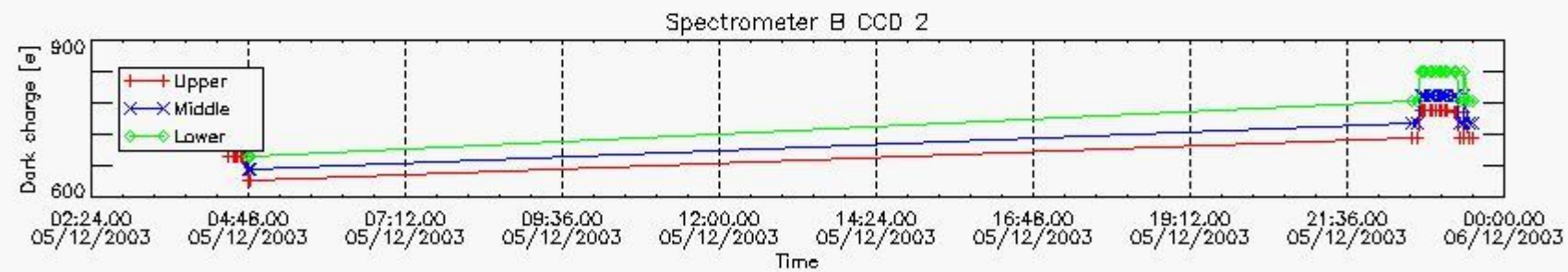
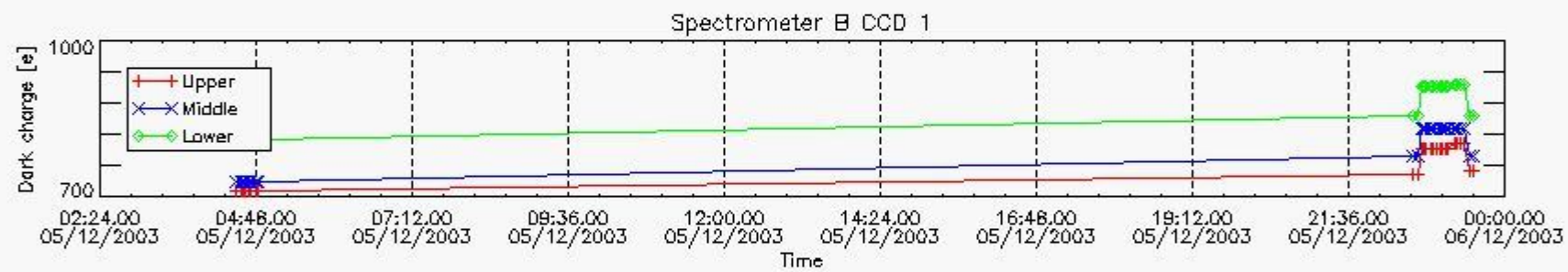
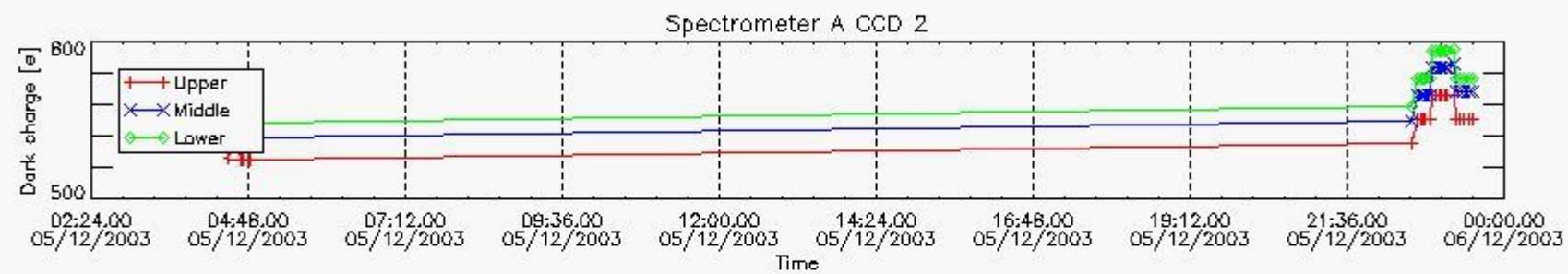
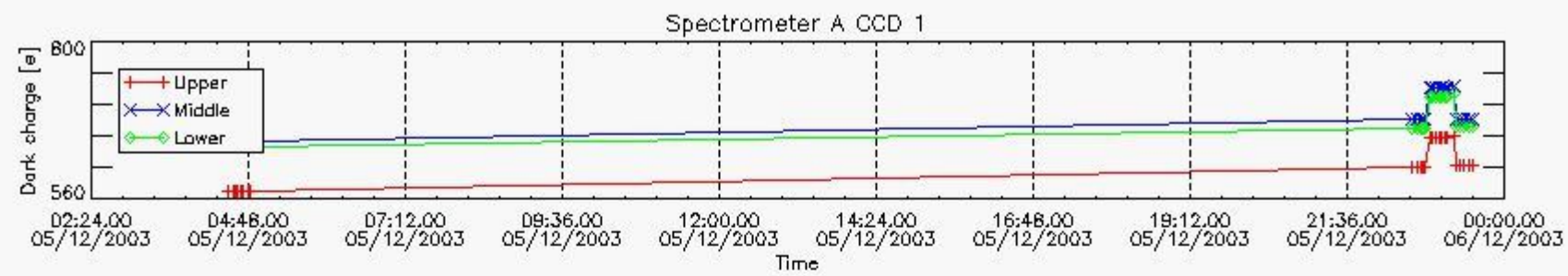
4. Overview of dark signal processing per product

The Dark Charge (DC) is a temperature-dependant signal added to the useful measurements and it is therefore subtracted from them during the processing. There are two phenomena that produce a continuous increase of the DC: the "hot pixels" (a pixel is "hot" when its DC exceeds by a significant amount its value measured on ground at the same temperature) and the "Random Telegraphic Signal" (abrupt change positive or negative of the CCD pixel signal, random in time, affecting only the DC part of the signal and not the photon generated signal).

In this section a list of products that did not use the Dark Sky Area (DSA) observation for the DC computation is given. It is also provided the mean DC plot per product for dark limb products with no error flag set.

4.1 All products used the DSA observation for the DC computation

4.2 Plot of mean dark charges per product: only products in DARK limb conditions without errors are used



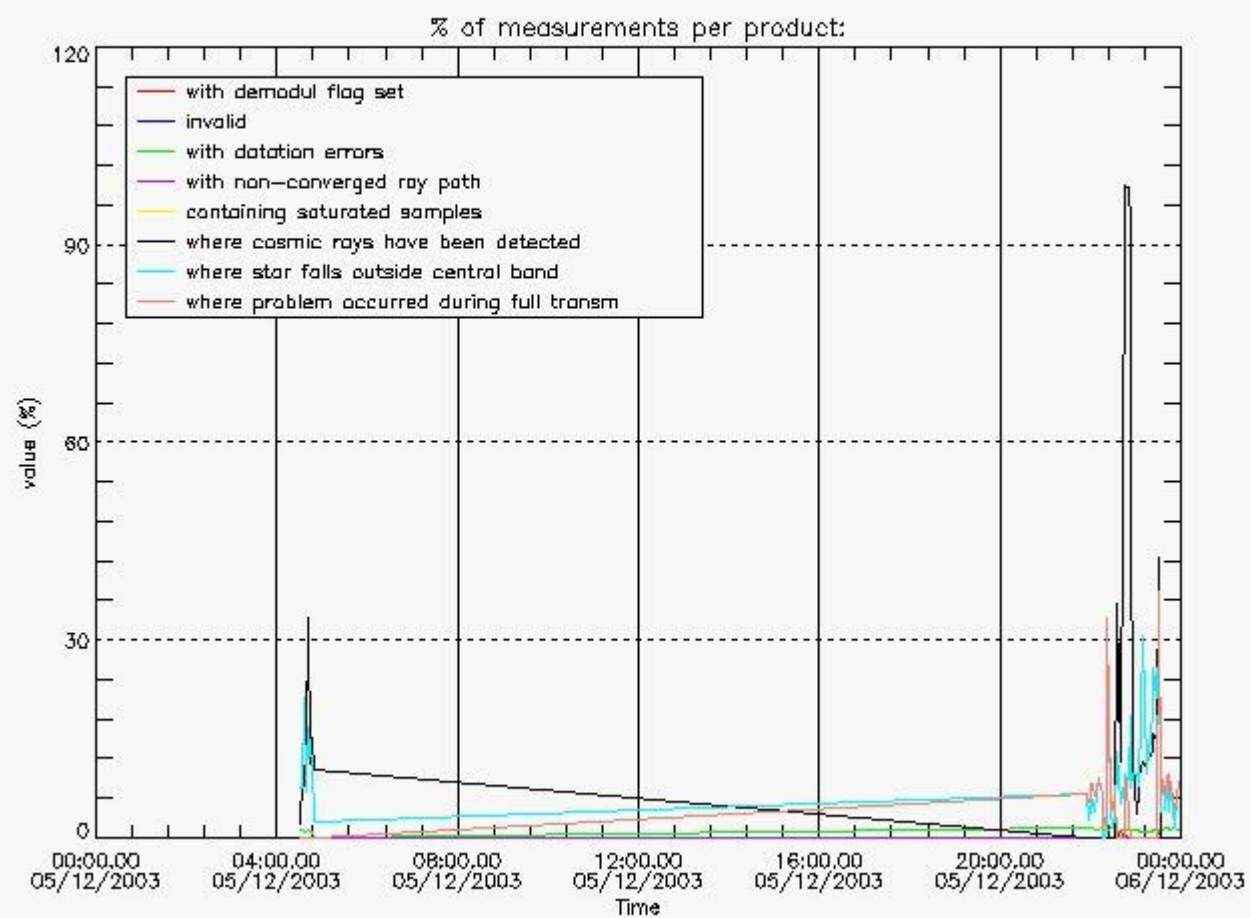
5. Demodulation flag and quality information monitoring

5.1 Percentage of products during reporting period with:

At least one measurement with demodulation flag set:	14.8148 %
Reference spectrum computed from DB:	0.00000 %
Reference spectrum with small number of measurements:	0.00000 %
SATU data not used:	0.00000 %



5.2 Plot quality information per product



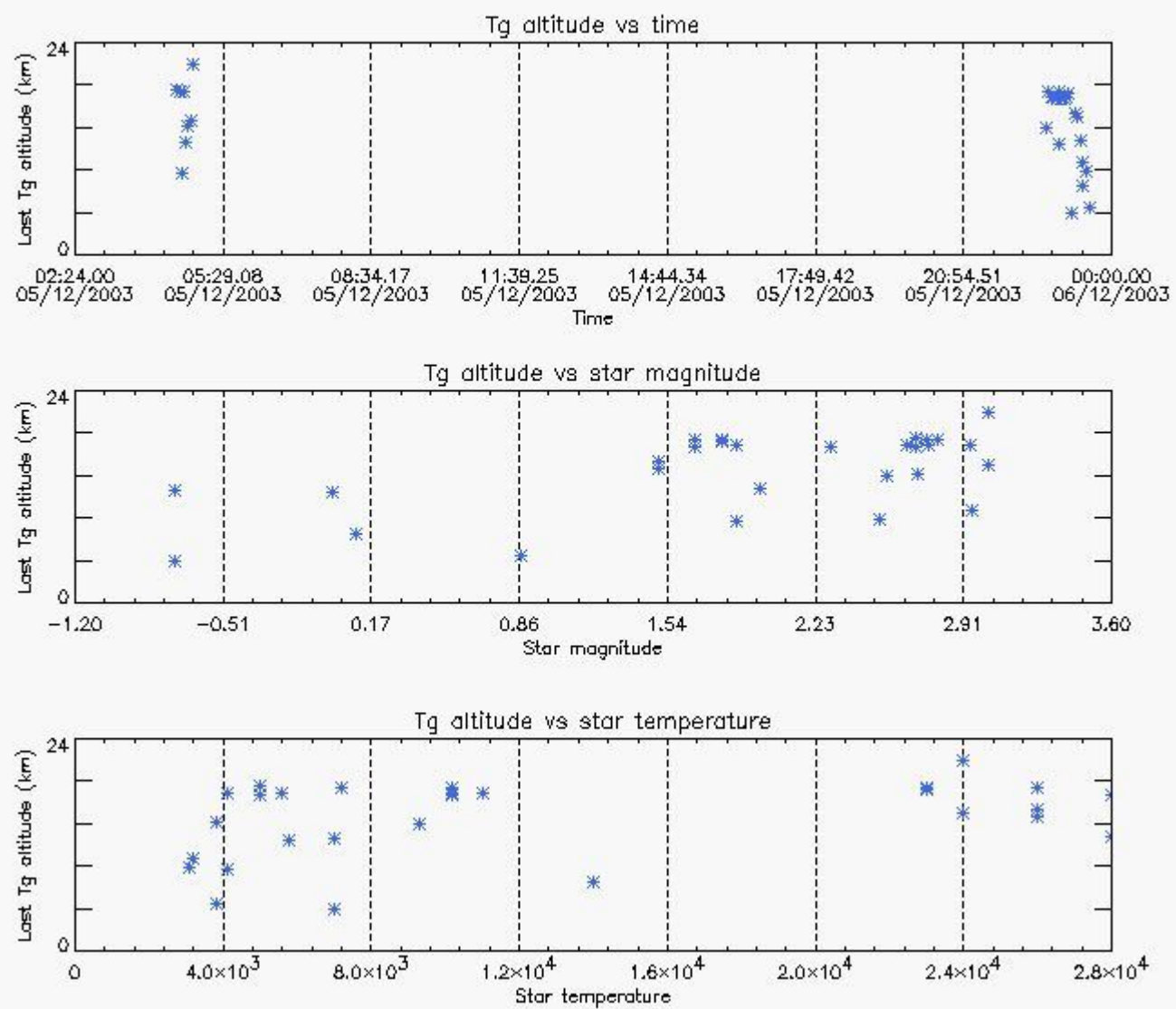
6. Statistics and plot of tangent altitude of the last measurement (DARK & BRIGHT products without errors)

6.1 Statistics on tangent altitude lost:

Statistics	DARK	BRIGHT
Mean:	14.928	21.291
St. deviation:	4.3860	3.9797
Maximum:	21.518	28.330
Minimum:	4.7499	4.9642
Number of data:	28.000	26.000

6.2 Plot for DARK limb products

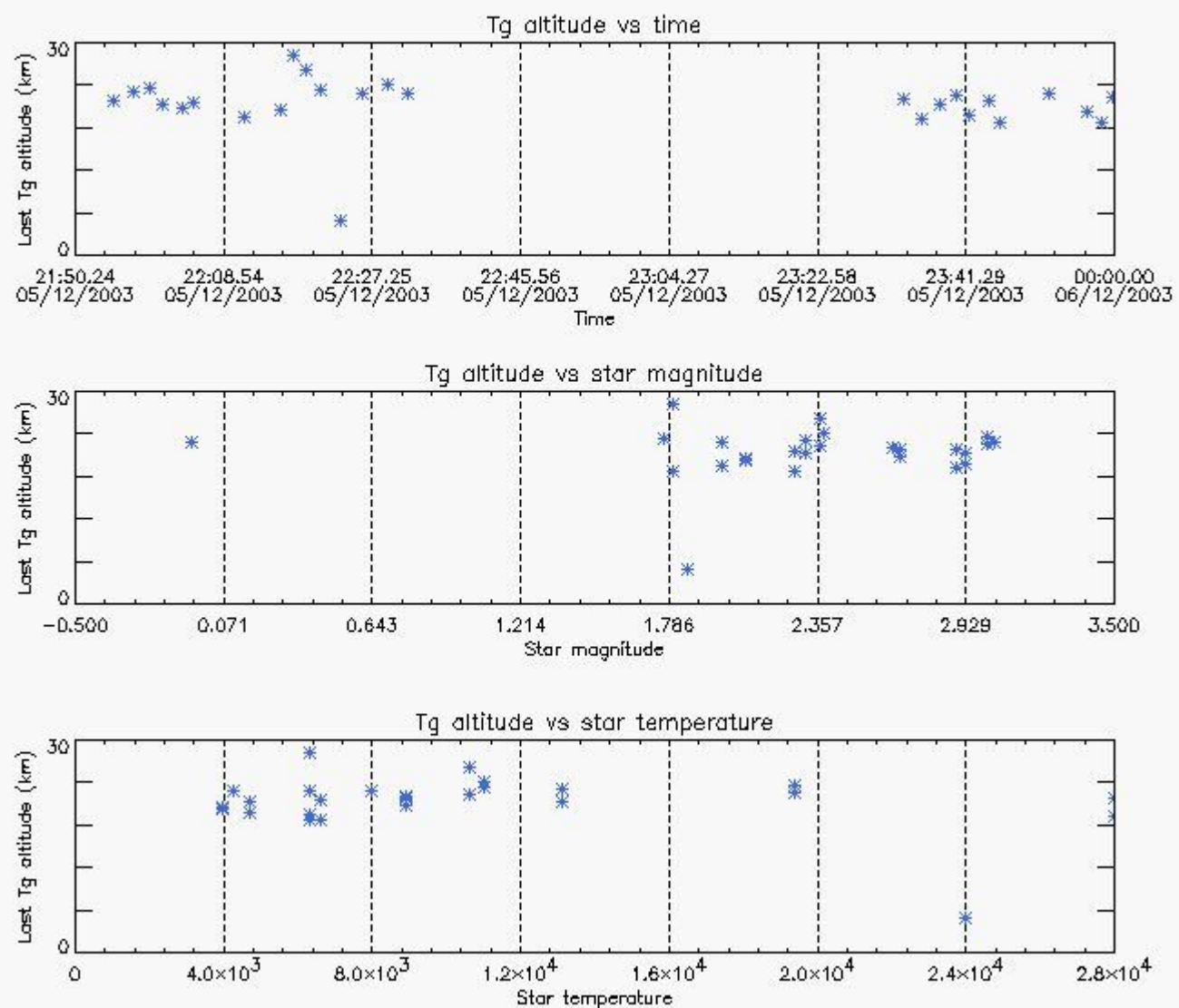
Tangent altitude at which the star is lost



6.3 Plot for BRIGHT limb products



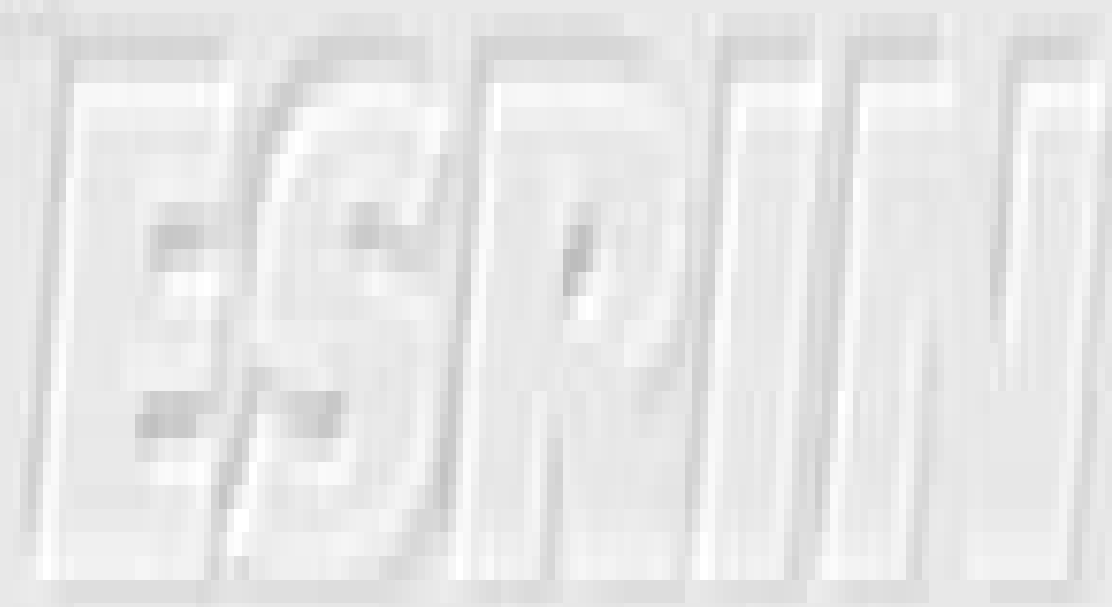
Tangent altitude at which the star is lost



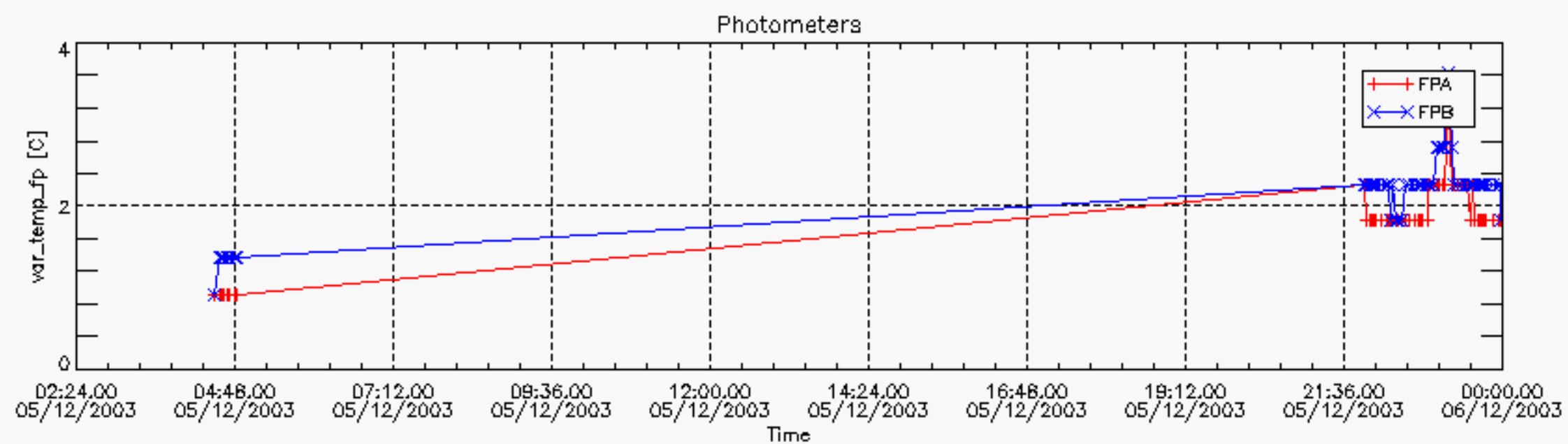
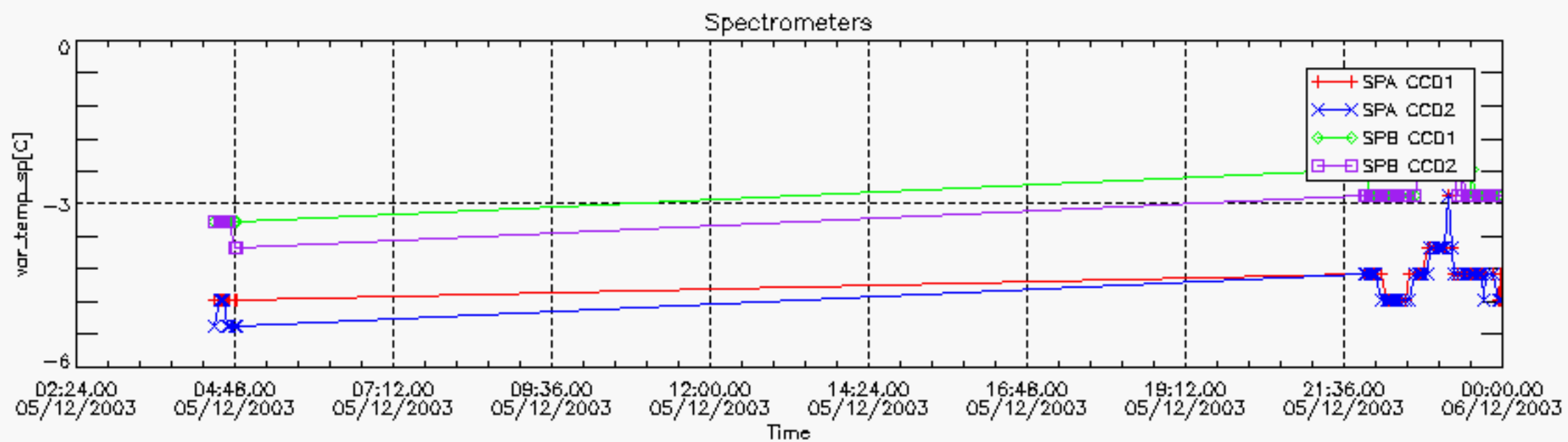
7. Statistics on SATU Noise Equivalent Angle (NEA) for DARK (D) and BRIGHT (B) products above 105 kms

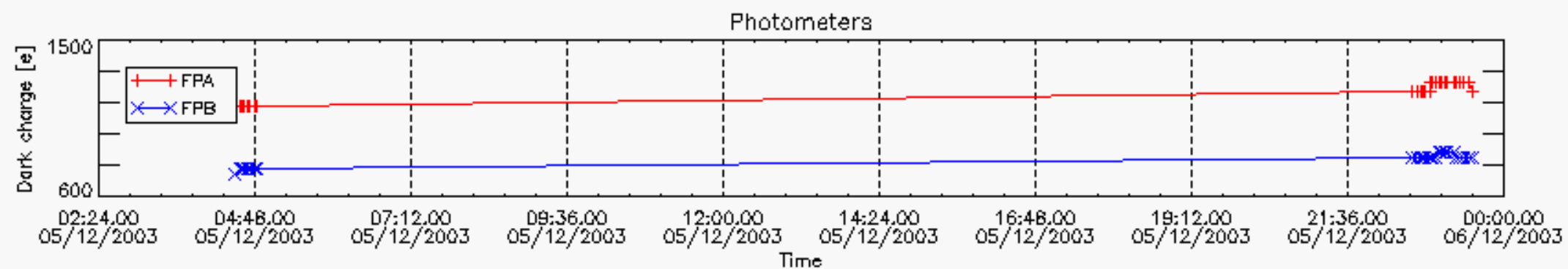
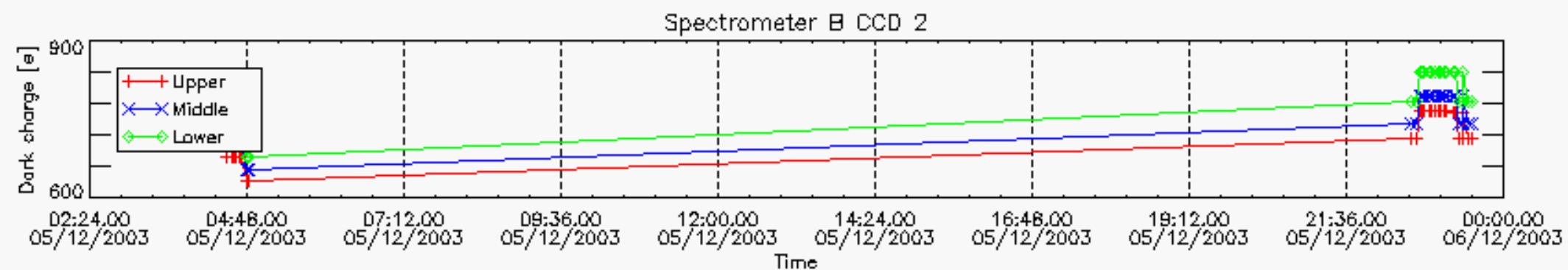
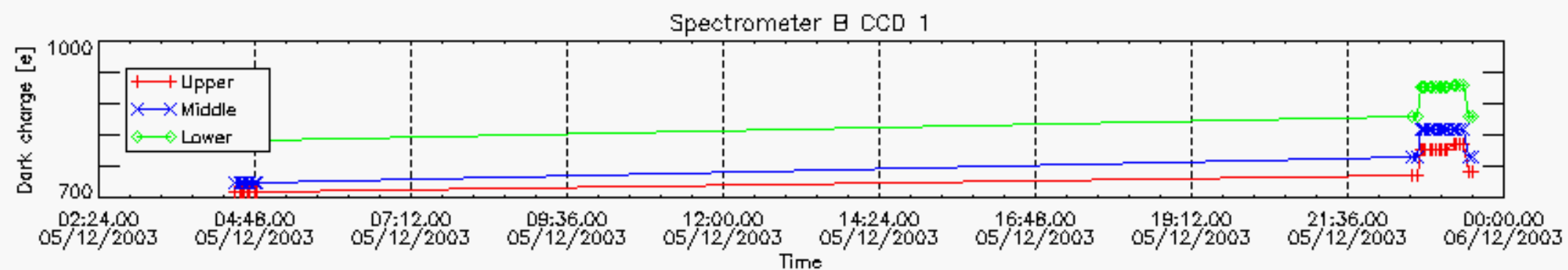
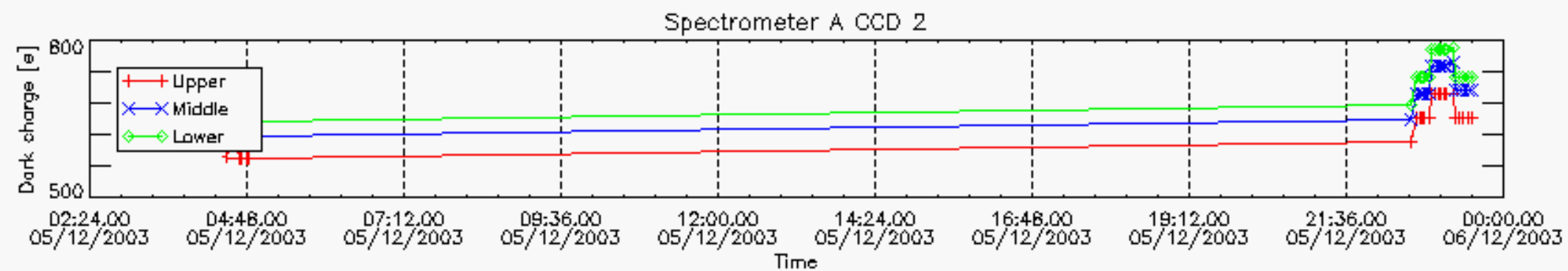
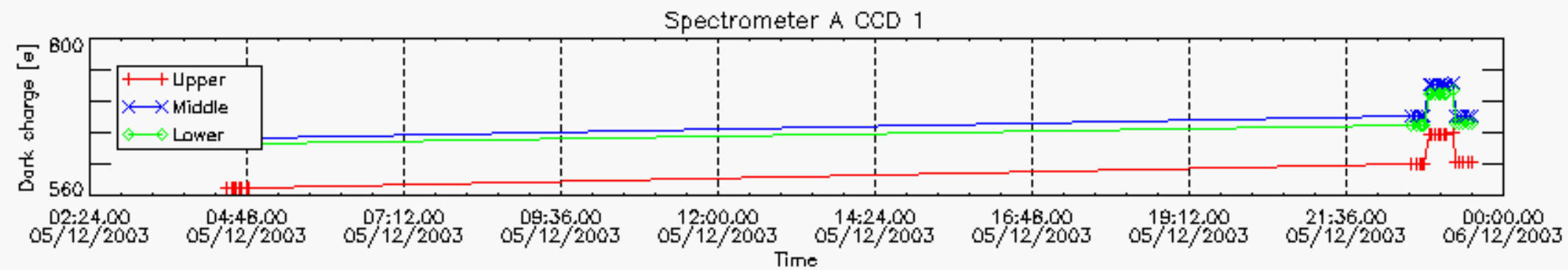
The Star Acquisition and Tracking Unit (it is the CCD that tracks the star while it is occulted) Noise Equivalent Angle consists of the statistical angular variation of the SATU data above the atmosphere. Statistics above 105 km are computed for every occultation, giving four values per occultation: one in the 'X' direction and one in the 'Y' direction for dark and bright limbs. A mean value per day in every direction and limb is calculated and monitored in order to assess instrument performance in terms of star pointing.

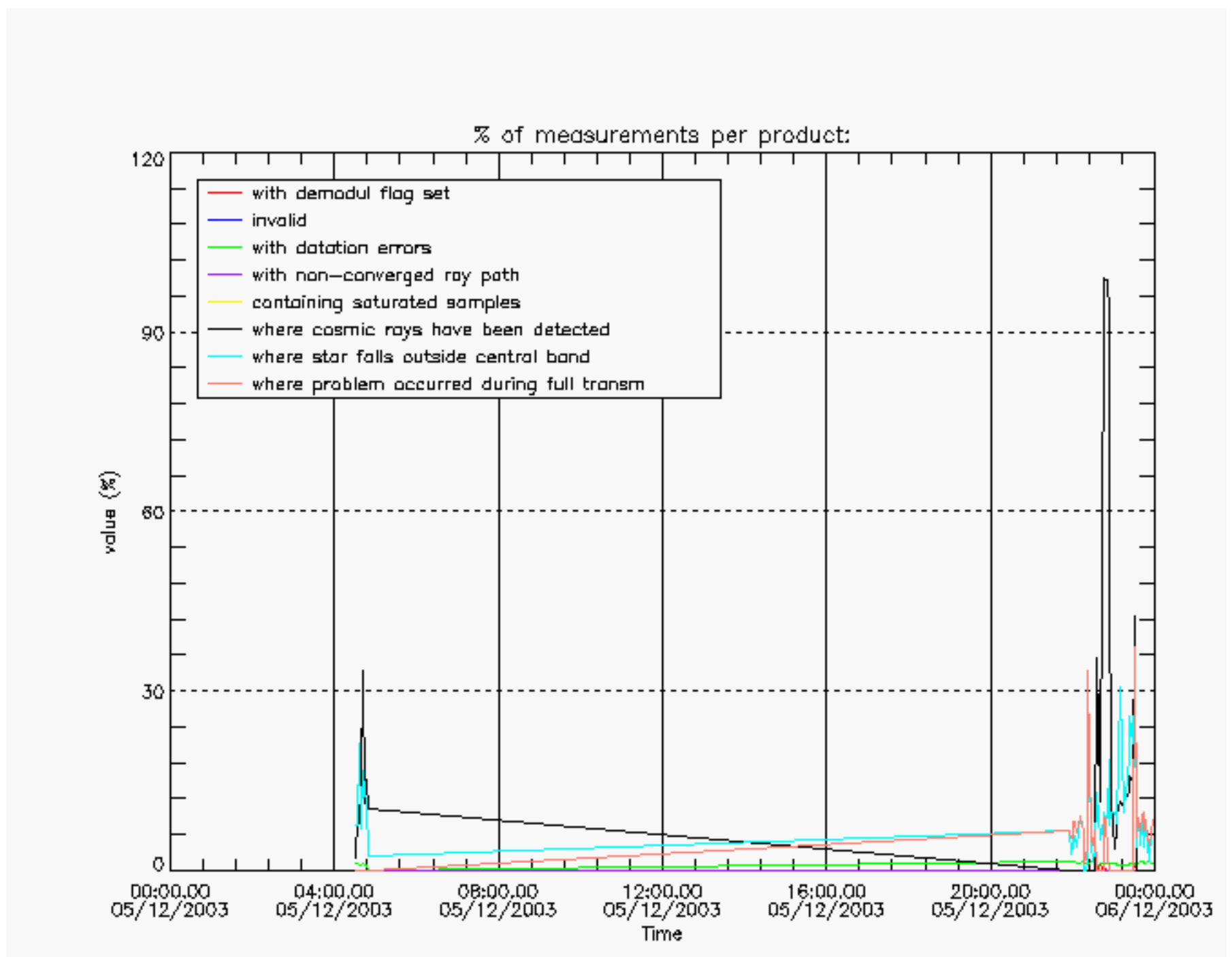
Statistics	SATU X (D)	SATU Y (D)	SATU X (B)	SATU Y (B)
Mean:	1462.3	1447.7	1460.6	1446.9
St. deviation:	5.2887	6.5217	8.0507	9.1699
Maximum:	1507.0	1504.0	1514.0	1507.0
Minimum:	1459.0	1430.0	1429.0	1413.0
Number of data:	35950.	35950.	27050.	27050.



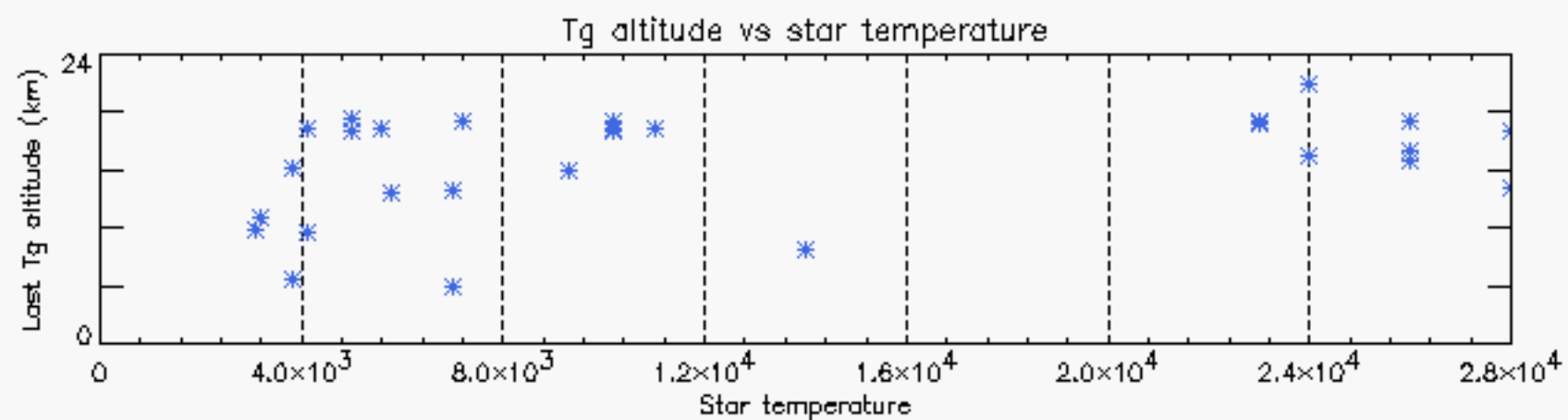
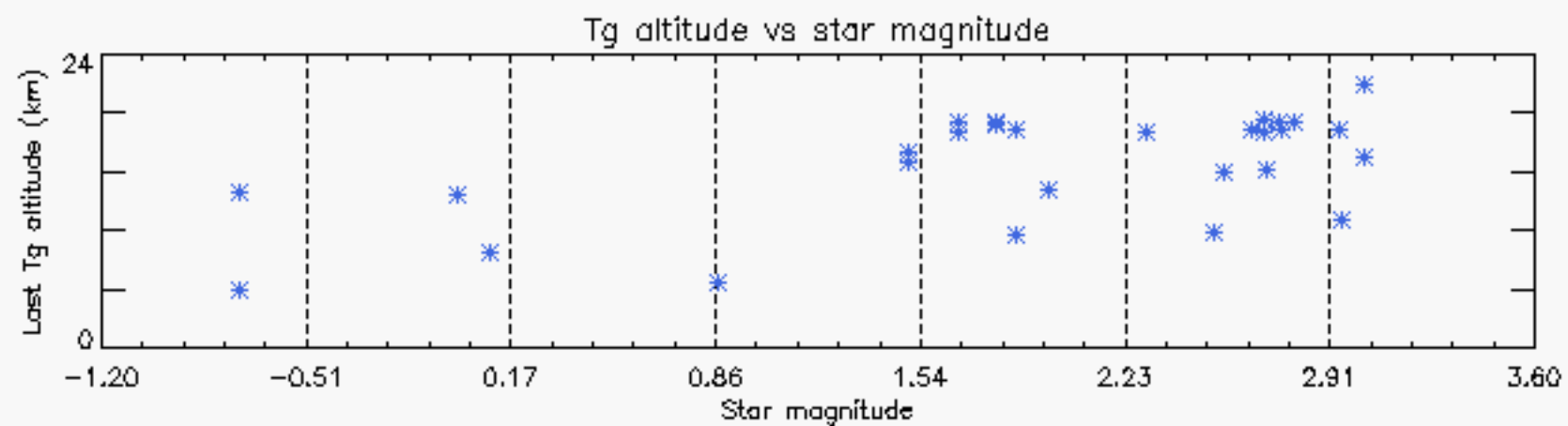
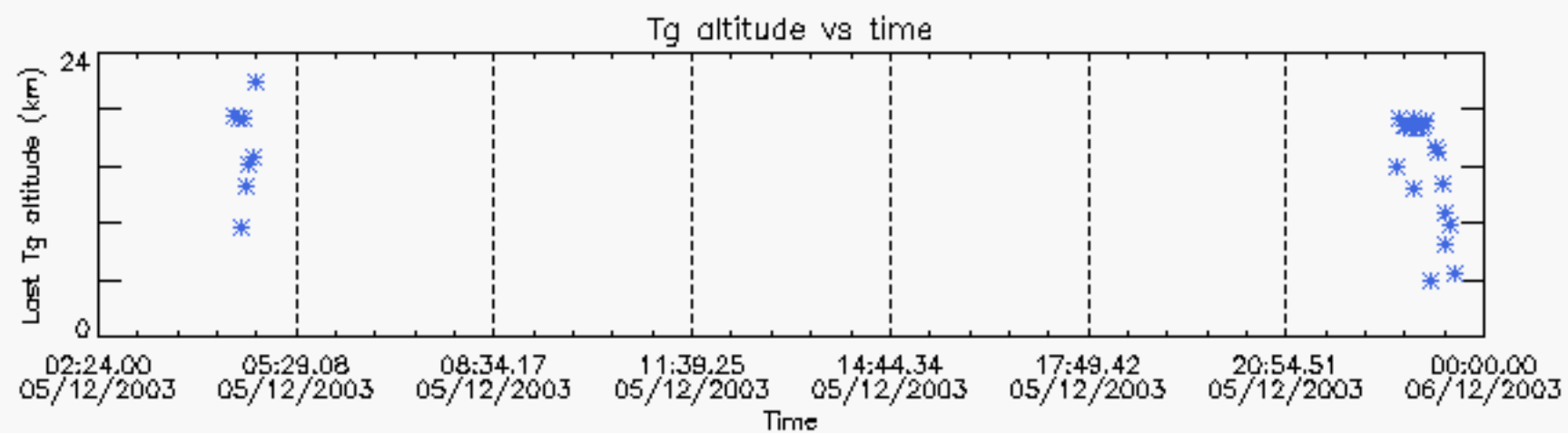




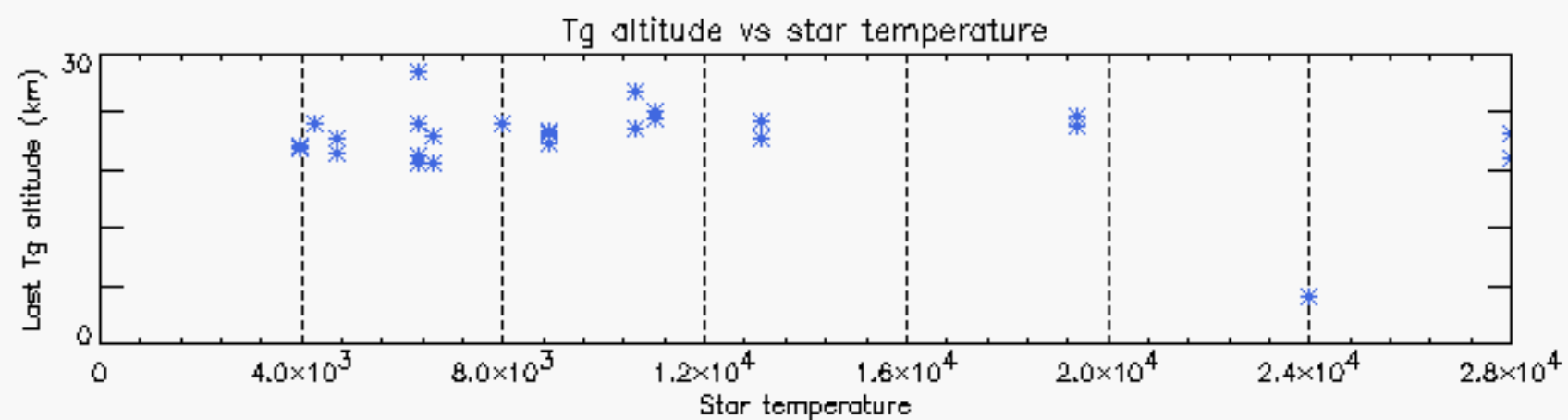
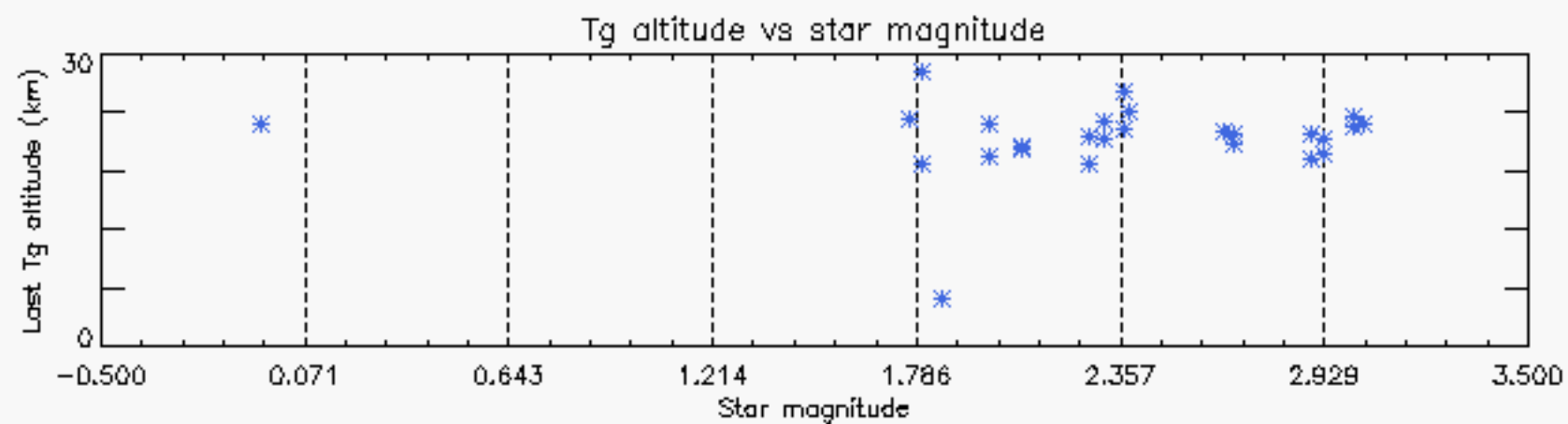
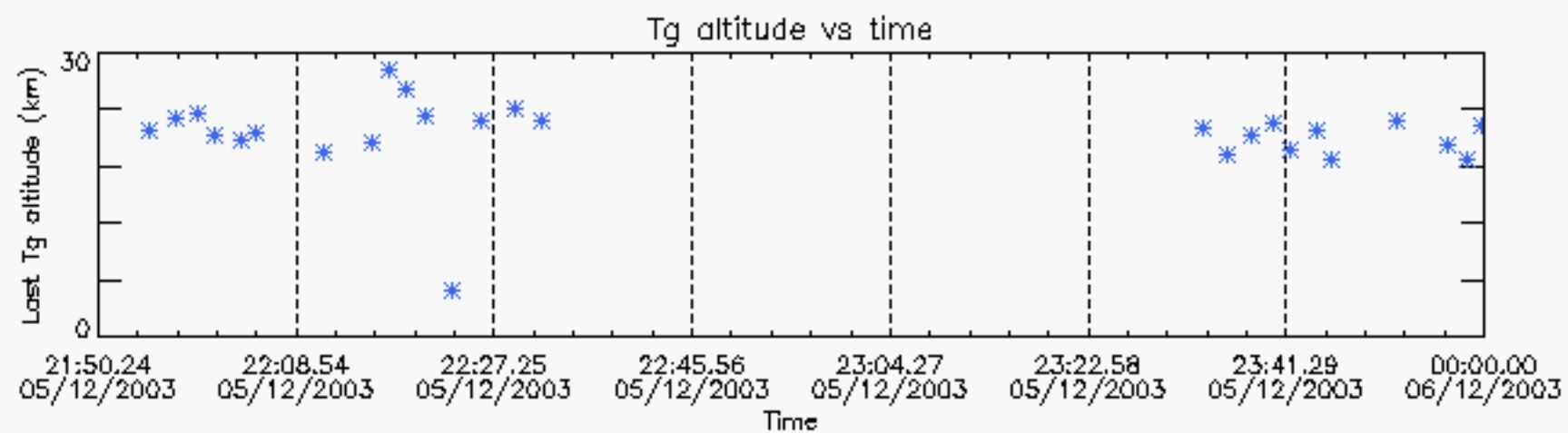




Tangent altitude at which the star is lost



Tangent altitude at which the star is lost



/data4_2/GOMOS/level0/GOM_NL_0PNPDK20031201_052111_000061942022_00091_09163_0248.N1

1;-4379.2; 01-DEC-2003 05:21:11; Dark ; 45.0; 165; 34Gam Eri ; 2.95; 3200;occ; 90; 0; 9163
 2;-4285.0; 01-DEC-2003 05:22:45; Dark ; 62.5; 7; 19Bet Ori ; 0.10; 14000;occ; 125; 0; 9163
 3;-4102.1; 01-DEC-2003 05:25:48; Dark ; 64.0; 30; 46Eps Ori ; 1.69; 30000;occ; 128; 0; 9163
 4;-3938.0; 01-DEC-2003 05:28:32; Dark ; 63.0; 27; 24Gam Ori ; 1.64; 26000;occ; 126; 0; 9163
 5;-3804.3; 01-DEC-2003 05:30:46; Bright; 52.0; 13; 87Alp Tau ; 0.87; 3800;occ; 104; 0; 9163
 6;-3708.7; 01-DEC-2003 05:32:21; Bright; 40.5; 146; 25Eta Tau ; 2.87; 15200;occ; 81; 0; 9163
 7;-3567.0; 01-DEC-2003 05:34:43; Bright; 41.5; 150; 44Zet Per ; 2.89; 28000;occ; 83; 0; 9163
 8;-3433.2; 01-DEC-2003 05:36:57; Bright; 39.0; 79; 26Bet Per ; 2.31; 13100;occ; 78; 0; 9163
 9;-3299.9; 01-DEC-2003 05:39:10; Bright; 38.5; 175; 39Del Per ; 3.01; 19400;occ; 77; 0; 9163
 10;-3219.4; 01-DEC-2003 05:40:31; Bright; 37.5; 160; 23Gam Per ; 2.93; 4700;occ; 75; 0; 9163
 11;-3080.2; 01-DEC-2003 05:42:50; Bright; 36.0; 110; 37Del Cas ; 2.68; 8900;occ; 72; 0; 9163
 12;-2616.4; 01-DEC-2003 05:50:34; Bright; 39.0; 49; 1Alp UMi ; 1.99; 6300;occ; 78; 0; 9163
 13;-2335.8; 01-DEC-2003 05:55:14; Bright; 35.0; 60; 7Bet UMi ; 2.08; 3950;occ; 70; 0; 9163
 14;-2215.0; 01-DEC-2003 05:57:15; Bright; 45.5; 36; 50Alp UMa ; 1.80; 6300;occ; 91; 0; 9163
 15;-2118.3; 01-DEC-2003 05:58:52; Bright; 47.0; 82; 48Bet UMa ; 2.37; 10600;occ; 94; 0; 9163
 16;-2022.8; 01-DEC-2003 06:00:27; Bright; 56.0; 32; 77Eps UMa ; 1.76; 11000;occ; 112; 0; 9163
 17;-1898.7; 01-DEC-2003 06:02:31; Bright; 53.0; 39; 85Eta UMa ; 1.85; 24000;occ; 106; 0; 9163
 18;-1724.9; 01-DEC-2003 06:05:25; Bright; 52.0; 180; 27Gam Boo ; 3.04; 8000;occ; 104; 0; 9163
 19;-1544.0; 01-DEC-2003 06:08:26; Bright; 35.5; 83; ; 2.38; 11000;occ; 71; 0; 9163
 20;-1392.6; 01-DEC-2003 06:10:57; Bright; 35.5; 3; 16Alp Boo ; -0.05; 4250;occ; 71; 0; 9163
 21;-1177.5; 01-DEC-2003 06:14:32; Bright; 72.0; 96; 68Del Leo ; 2.56; 9300;occ; 144; 0; 9163
 22; -919.6; 01-DEC-2003 06:18:50; Bright; 44.5; 121; 29Gam Vir ; 2.74; 7200;occ; 89; 0; 9163
 23; -832.0; 01-DEC-2003 06:20:18; Bright; 40.0; 15; 67Alp Vir ; 0.98; 28000;occ; 80; 0; 9163
 24; -635.0; 01-DEC-2003 06:23:35; Dark ; 48.0; 163; 7Del Crv ; 2.94; 11000;occ; 96; 0; 9163
 25; -537.6; 01-DEC-2003 06:25:12; Dark ; 50.0; 106; 9Bet Crv ; 2.65; 5600;occ; 100; 0; 9163
 26; -416.6; 01-DEC-2003 06:27:13; Dark ; 42.0; 123; Iot Cen ; 2.75; 10200;occ; 84; 0; 9163
 27; -174.4; 01-DEC-2003 06:31:16; Dark ; 40.0; 77; Eps Cen ; 2.30; 28000;occ; 80; 0; 9163
 28; -75.6; 01-DEC-2003 06:32:54; Dark ; 39.5; 10; Bet Cen ; 0.61; 28000;occ; 79; 0; 9163
 29; 39.6; 01-DEC-2003 06:34:50; Dark ; 44.0; 12; Alp1Cru ; 0.77; 30000;occ; 88; 0; 9164
 30; 202.1; 01-DEC-2003 06:37:32; Dark ; 39.0; 124; The Car ; 2.76; 30000;occ; 78; 0; 9164
 31; 335.6; 01-DEC-2003 06:39:46; Dark ; 59.5; 0; ; 0.00; 0;occ; 119; 0; 9164
 32; 481.9; 01-DEC-2003 06:42:12; Dark ; 43.5; 41; Eps Car ; 1.86; 4100;occ; 87; 0; 9164
 33; 601.1; 01-DEC-2003 06:44:11; Dark ; 52.5; 34; Gam2Vel ; 1.79; 23000;occ; 105; 0; 9164
 34; 803.4; 01-DEC-2003 06:47:33; Dark ; 51.0; 2; Alp Car ; -0.74; 7000;occ; 102; 0; 9164
 35; 914.2; 01-DEC-2003 06:49:24; Dark ; 66.0; 117; Pi Pup ; 2.71; 3800;occ; 132; 0; 9164
 36; 1144.0; 01-DEC-2003 06:53:14; Dark ; 67.0; 23; 21Eps CMa ; 1.50; 26000;occ; 134; 0; 9164
 37; 1273.4; 01-DEC-2003 06:55:23; Dark ; 75.5; 179; 240mi2CMa ; 3.03; 24000;occ; 151; 0; 9164
 38; 1503.1; 01-DEC-2003 06:59:13; Dark ; 67.0; 47; 2Bet CMa ; 1.98; 28000;occ; 134; 0; 9164
 39; 1657.2; 01-DEC-2003 07:01:47; Dark ; 47.0; 165; 34Gam Eri ; 2.95; 3200;occ; 94; 0; 9164
 40; 1751.2; 01-DEC-2003 07:03:21; Dark ; 65.0; 7; 19Bet Ori ; 0.10; 14000;occ; 130; 0; 9164

/data4_2/GOMOS/level0/GOM_NL_0PNPDK20031201_070624_000057312022_00092_09164_0249.N1

1;-4102.2; 01-DEC-2003 07:06:24; Dark ; 63.5; 30; 46Eps Ori ; 1.69; 30000;occ; 127; 0; 9164
 2;-3938.5; 01-DEC-2003 07:09:07; Dark ; 61.5; 27; 24Gam Ori ; 1.64; 26000;occ; 123; 0; 9164
 3;-3804.3; 01-DEC-2003 07:11:22; Bright; 57.0; 13; 87Alp Tau ; 0.87; 3800;occ; 114; 0; 9164
 4;-3709.0; 01-DEC-2003 07:12:57; Bright; 39.0; 146; 25Eta Tau ; 2.87; 15200;occ; 78; 0; 9164
 5;-3566.6; 01-DEC-2003 07:15:19; Bright; 40.5; 150; 44Zet Per ; 2.89; 28000;occ; 81; 0; 9164
 6;-3432.6; 01-DEC-2003 07:17:33; Bright; 38.5; 79; 26Bet Per ; 2.31; 13100;occ; 77; 0; 9164
 7;-3299.5; 01-DEC-2003 07:19:46; Bright; 38.0; 175; 39Del Per ; 3.01; 19400;occ; 76; 0; 9164
 8;-3219.4; 01-DEC-2003 07:21:06; Bright; 37.0; 160; 23Gam Per ; 2.93; 4700;occ; 74; 0; 9164
 9;-3079.8; 01-DEC-2003 07:23:26; Bright; 36.0; 110; 37Del Cas ; 2.68; 8900;occ; 72; 0; 9164
 10;-2615.7; 01-DEC-2003 07:31:10; Bright; 37.5; 49; 1Alp UMi ; 1.99; 6300;occ; 75; 0; 9164
 11;-2335.5; 01-DEC-2003 07:35:50; Bright; 35.0; 60; 7Bet UMi ; 2.08; 3950;occ; 70; 0; 9164
 12;-2215.1; 01-DEC-2003 07:37:51; Bright; 45.0; 36; 50Alp UMa ; 1.80; 6300;occ; 90; 0; 9164
 13;-2118.5; 01-DEC-2003 07:39:27; Bright; 45.5; 82; 48Bet UMa ; 2.37; 10600;occ; 91; 0; 9164
 14;-2022.4; 01-DEC-2003 07:41:03; Bright; 40.5; 32; 77Eps UMa ; 1.76; 11000;occ; 81; 0; 9164
 15;-1898.4; 01-DEC-2003 07:43:07; Bright; 39.5; 39; 85Eta UMa ; 1.85; 24000;occ; 79; 0; 9164
 16;-1724.6; 01-DEC-2003 07:46:01; Bright; 35.0; 180; 27Gam Boo ; 3.04; 8000;occ; 70; 0; 9164
 17;-1543.4; 01-DEC-2003 07:49:02; Bright; 36.0; 83; ; 2.38; 11000;occ; 72; 0; 9164
 18;-1392.2; 01-DEC-2003 07:51:34; Bright; 36.5; 3; 16Alp Boo ; -0.05; 4250;occ; 73; 0; 9164
 19;-1176.6; 01-DEC-2003 07:55:09; Bright; 76.0; 96; 68Del Leo ; 2.56; 9300;occ; 152; 0; 9164
 20; -918.5; 01-DEC-2003 07:59:27; Bright; 45.5; 121; 29Gam Vir ; 2.74; 7200;occ; 91; 0; 9164
 21; -831.0; 01-DEC-2003 08:00:55; Bright; 41.0; 15; 67Alp Vir ; 0.98; 28000;occ; 82; 0; 9164
 22; -634.1; 01-DEC-2003 08:04:12; Dark ; 48.0; 163; 7Del Crv ; 2.94; 11000;occ; 96; 0; 9164
 23; -536.5; 01-DEC-2003 08:05:49; Dark ; 49.0; 106; 9Bet Crv ; 2.65; 5600;occ; 98; 0; 9164
 24; -416.0; 01-DEC-2003 08:07:50; Dark ; 42.5; 123; Iot Cen ; 2.75; 10200;occ; 85; 0; 9164
 25; -173.7; 01-DEC-2003 08:11:52; Dark ; 41.0; 77; Eps Cen ; 2.30; 28000;occ; 82; 0; 9164
 26; -75.4; 01-DEC-2003 08:13:30; Dark ; 46.5; 10; Bet Cen ; 0.61; 28000;occ; 93; 0; 9164

27; 40.3; 01-DEC-2003 08:15:26; Dark ; 46.5; 12; Alp1Cru ; 0.77; 30000;occ; 93; 0; 9165
 28; 202.5; 01-DEC-2003 08:18:08; Dark ; 39.5; 124; The Car ; 2.76; 30000;occ; 79; 0; 9165
 29; 338.5; 01-DEC-2003 08:20:24; Dark ; 59.5; 0; ; 0.00; 0;occ; 119; 0; 9165
 30; 482.5; 01-DEC-2003 08:22:48; Dark ; 45.5; 41; Eps Car ; 1.86; 4100;occ; 91; 0; 9165
 31; 602.2; 01-DEC-2003 08:24:48; Dark ; 53.0; 34; Gam2Vel ; 1.79; 23000;occ; 106; 0; 9165
 32; 803.4; 01-DEC-2003 08:28:09; Dark ; 51.0; 2; Alp Car ; -0.74; 7000;occ; 102; 0; 9165
 33; 915.6; 01-DEC-2003 08:30:02; Dark ; 63.5; 117; Pi Pup ; 2.71; 3800;occ; 127; 0; 9165
 34; 1144.7; 01-DEC-2003 08:33:51; Dark ; 69.0; 23; 21Eps CMa ; 1.50; 26000;occ; 138; 0; 9165
 35; 1274.4; 01-DEC-2003 08:36:00; Dark ; 73.5; 179; 240mi2CMa ; 3.03; 24000;occ; 147; 0; 9165
 36; 1529.7; 01-DEC-2003 08:40:16; Dark ; 100.5; 1; 9Alp CMa ; -1.44; 11000;occ; 201; 0; 9165

/data4_2/GOMOS/level0/GOM_NL_0PNPDK20031201_084113_000062212022_00093_09165_0250.N1

1; -4449.2; 01-DEC-2003 08:41:13; Dark ; 101.0; 1; 9Alp CMa ; -1.44; 11000;occ; 202; 114; 9165
 2; -4284.8; 01-DEC-2003 08:43:57; Dark ; 67.0; 7; 19Bet Ori ; 0.10; 14000;occ; 134; 0; 9165
 3; -4102.6; 01-DEC-2003 08:46:59; Dark ; 64.5; 30; 46Eps Ori ; 1.69; 30000;occ; 129; 0; 9165
 4; -3939.3; 01-DEC-2003 08:49:43; Dark ; 62.0; 27; 24Gam Ori ; 1.64; 26000;occ; 124; 0; 9165
 5; -3804.6; 01-DEC-2003 08:51:57; Bright; 56.0; 13; 87Alp Tau ; 0.87; 3800;occ; 112; 0; 9165
 6; -3709.0; 01-DEC-2003 08:53:33; Bright; 40.5; 146; 25Eta Tau ; 2.87; 15200;occ; 81; 0; 9165
 7; -3566.9; 01-DEC-2003 08:55:55; Bright; 39.5; 150; 44Zet Per ; 2.89; 28000;occ; 79; 0; 9165
 8; -3433.3; 01-DEC-2003 08:58:08; Bright; 39.0; 79; 26Bet Per ; 2.31; 13100;occ; 78; 0; 9165
 9; -3299.9; 01-DEC-2003 09:00:22; Bright; 39.5; 175; 39Del Per ; 3.01; 19400;occ; 79; 0; 9165
 10; -3219.5; 01-DEC-2003 09:01:42; Bright; 39.0; 160; 23Gam Per ; 2.93; 4700;occ; 78; 0; 9165
 11; -3079.6; 01-DEC-2003 09:04:02; Bright; 37.0; 110; 37Del Cas ; 2.68; 8900;occ; 74; 0; 9165
 12; -2615.7; 01-DEC-2003 09:11:46; Bright; 35.5; 49; 1Alp UMi ; 1.99; 6300;occ; 71; 0; 9165
 13; -2335.5; 01-DEC-2003 09:16:26; Bright; 38.0; 60; 7Bet UMi ; 2.08; 3950;occ; 76; 0; 9165
 14; -2215.4; 01-DEC-2003 09:18:26; Bright; 46.5; 36; 50Alp UMA ; 1.80; 6300;occ; 93; 0; 9165
 15; -2119.1; 01-DEC-2003 09:20:03; Bright; 67.0; 82; 48Bet UMA ; 2.37; 10600;occ; 134; 0; 9165
 16; -2022.4; 01-DEC-2003 09:21:39; Bright; 43.0; 32; 77Eps UMA ; 1.76; 11000;occ; 86; 0; 9165
 17; -1898.1; 01-DEC-2003 09:23:44; Bright; 37.0; 39; 85Eta UMA ; 1.85; 24000;occ; 74; 0; 9165
 18; -1724.6; 01-DEC-2003 09:26:37; Bright; 36.0; 180; 27Gam Boo ; 3.04; 8000;occ; 72; 0; 9165
 19; -1543.4; 01-DEC-2003 09:29:38; Bright; 35.0; 83; ; 2.38; 11000;occ; 70; 0; 9165
 20; -1392.0; 01-DEC-2003 09:32:10; Bright; 34.5; 3; 16Alp Boo ; -0.05; 4250;occ; 69; 0; 9165
 21; -1175.7; 01-DEC-2003 09:35:46; Bright; 73.0; 96; 68Del Leo ; 2.56; 9300;occ; 146; 0; 9165
 22; -633.3; 01-DEC-2003 09:44:48; Dark ; 46.0; 163; 7Del Crv ; 2.94; 11000;occ; 92; 0; 9165
 23; -535.5; 01-DEC-2003 09:46:26; Dark ; 49.0; 106; 9Bet Crv ; 2.65; 5600;occ; 98; 0; 9165
 24; -415.7; 01-DEC-2003 09:48:26; Dark ; 40.5; 123; Iot Cen ; 2.75; 10200;occ; 81; 0; 9165
 25; -173.8; 01-DEC-2003 09:52:28; Dark ; 40.5; 77; Eps Cen ; 2.30; 28000;occ; 81; 0; 9165
 26; -75.5; 01-DEC-2003 09:54:06; Dark ; 47.0; 10; Bet Cen ; 0.61; 28000;occ; 94; 0; 9165
 27; 40.6; 01-DEC-2003 09:56:02; Dark ; 43.5; 12; Alp1Cru ; 0.77; 30000;occ; 87; 0; 9166
 28; 203.1; 01-DEC-2003 09:58:45; Dark ; 40.0; 124; The Car ; 2.76; 30000;occ; 80; 0; 9166
 29; 341.4; 01-DEC-2003 10:01:03; Dark ; 59.5; 0; ; 0.00; 0;occ; 119; 0; 9166
 30; 483.4; 01-DEC-2003 10:03:25; Dark ; 47.5; 41; Eps Car ; 1.86; 4100;occ; 95; 0; 9166
 31; 603.1; 01-DEC-2003 10:05:25; Dark ; 51.0; 34; Gam2Vel ; 1.79; 23000;occ; 102; 0; 9166
 32; 803.8; 01-DEC-2003 10:08:46; Dark ; 49.5; 2; Alp Car ; -0.74; 7000;occ; 99; 0; 9166
 33; 916.9; 01-DEC-2003 10:10:39; Dark ; 65.5; 117; Pi Pup ; 2.71; 3800;occ; 131; 0; 9166
 34; 1145.2; 01-DEC-2003 10:14:27; Dark ; 69.5; 23; 21Eps CMa ; 1.50; 26000;occ; 139; 0; 9166
 35; 1275.0; 01-DEC-2003 10:16:37; Dark ; 75.5; 179; 240mi2CMa ; 3.03; 24000;occ; 151; 0; 9166
 36; 1530.0; 01-DEC-2003 10:20:52; Dark ; 93.0; 1; 9Alp CMa ; -1.44; 11000;occ; 186; 0; 9166
 37; 1751.3; 01-DEC-2003 10:24:33; Dark ; 21.0; 7; 19Bet Ori ; 0.10; 14000;occ; 42; 0; 9166

/data4_2/GOMOS/level0/GOM_NL_0PNPDK20031201_102433_000059132022_00094_09166_0251.N1

1; -4284.6; 01-DEC-2003 10:24:33; Dark ; 59.5; 7; 19Bet Ori ; 0.10; 14000;occ; 119; 0; 9166
 2; -4103.0; 01-DEC-2003 10:27:35; Dark ; 63.5; 30; 46Eps Ori ; 1.69; 30000;occ; 127; 0; 9166
 3; -3939.5; 01-DEC-2003 10:30:18; Dark ; 65.5; 27; 24Gam Ori ; 1.64; 26000;occ; 131; 0; 9166
 4; -3804.7; 01-DEC-2003 10:32:33; Bright; 53.5; 13; 87Alp Tau ; 0.87; 3800;occ; 107; 0; 9166
 5; -3708.7; 01-DEC-2003 10:34:09; Bright; 40.0; 146; 25Eta Tau ; 2.87; 15200;occ; 80; 0; 9166
 6; -3566.5; 01-DEC-2003 10:36:31; Bright; 40.0; 150; 44Zet Per ; 2.89; 28000;occ; 80; 0; 9166
 7; -3432.4; 01-DEC-2003 10:38:45; Bright; 38.0; 79; 26Bet Per ; 2.31; 13100;occ; 76; 0; 9166
 8; -3299.6; 01-DEC-2003 10:40:58; Bright; 39.5; 175; 39Del Per ; 3.01; 19400;occ; 79; 0; 9166
 9; -3219.3; 01-DEC-2003 10:42:18; Bright; 38.5; 160; 23Gam Per ; 2.93; 4700;occ; 77; 0; 9166
 10; -3079.1; 01-DEC-2003 10:44:39; Bright; 36.5; 110; 37Del Cas ; 2.68; 8900;occ; 73; 0; 9166
 11; -2615.4; 01-DEC-2003 10:52:22; Bright; 37.5; 49; 1Alp UMi ; 1.99; 6300;occ; 75; 0; 9166
 12; -2335.2; 01-DEC-2003 10:57:02; Bright; 39.0; 60; 7Bet UMi ; 2.08; 3950;occ; 78; 0; 9166
 13; -2215.6; 01-DEC-2003 10:59:02; Bright; 45.5; 36; 50Alp UMA ; 1.80; 6300;occ; 91; 0; 9166
 14; -2119.2; 01-DEC-2003 11:00:38; Bright; 43.5; 82; 48Bet UMA ; 2.37; 10600;occ; 87; 0; 9166
 15; -2022.3; 01-DEC-2003 11:02:15; Bright; 39.5; 32; 77Eps UMA ; 1.76; 11000;occ; 79; 0; 9166
 16; -1897.9; 01-DEC-2003 11:04:20; Bright; 36.5; 39; 85Eta UMA ; 1.85; 24000;occ; 73; 0; 9166
 17; -1723.8; 01-DEC-2003 11:07:14; Bright; 35.0; 180; 27Gam Boo ; 3.04; 8000;occ; 70; 0; 9166
 18; -1542.9; 01-DEC-2003 11:10:15; Bright; 34.5; 83; ; 2.38; 11000;occ; 69; 0; 9166
 19; -1391.6; 01-DEC-2003 11:12:46; Bright; 35.0; 3; 16Alp Boo ; -0.05; 4250;occ; 70; 0; 9166

```

20;-1174.7; 01-DEC-2003 11:16:23; Bright; 75.0; 96; 68Del Leo ; 2.56; 9300;occ; 150; 0; 9166
21; -632.5; 01-DEC-2003 11:25:25; Dark ; 47.5; 163; 7Del Crv ; 2.94; 11000;occ; 95; 0; 9166
22; -534.9; 01-DEC-2003 11:27:03; Dark ; 46.0; 106; 9Bet Crv ; 2.65; 5600;occ; 92; 0; 9166
23; -414.9; 01-DEC-2003 11:29:03; Dark ; 40.5; 123; Iot Cen ; 2.75; 10200;occ; 81; 0; 9166
24; -173.0; 01-DEC-2003 11:33:05; Dark ; 39.5; 77; Eps Cen ; 2.30; 28000;occ; 79; 0; 9166
25; -74.9; 01-DEC-2003 11:34:43; Dark ; 48.5; 10; Bet Cen ; 0.61; 28000;occ; 97; 0; 9166
26; 41.4; 01-DEC-2003 11:36:39; Dark ; 39.0; 12; Alp1Cru ; 0.77; 30000;occ; 78; 0; 9167
27; 203.9; 01-DEC-2003 11:39:22; Dark ; 39.5; 124; The Car ; 2.76; 30000;occ; 79; 0; 9167
28; 344.4; 01-DEC-2003 11:41:42; Dark ; 59.5; 0; ; 0.00; 0;occ; 119; 0; 9167
29; 484.2; 01-DEC-2003 11:44:02; Dark ; 45.0; 41; Eps Car ; 1.86; 4100;occ; 90; 0; 9167
30; 604.2; 01-DEC-2003 11:46:02; Dark ; 50.5; 34; Gam2Vel ; 1.79; 23000;occ; 101; 0; 9167
31; 805.5; 01-DEC-2003 11:49:23; Dark ; 58.0; 2; Alp Car ; -0.74; 7000;occ; 116; 0; 9167
32; 918.0; 01-DEC-2003 11:51:16; Dark ; 63.0; 117; Pi Pup ; 2.71; 3800;occ; 126; 0; 9167
33; 1146.2; 01-DEC-2003 11:55:04; Dark ; 68.0; 23; 21Eps CMA ; 1.50; 26000;occ; 136; 0; 9167
34; 1275.4; 01-DEC-2003 11:57:13; Dark ; 75.0; 179; 240mi2CMA ; 3.03; 24000;occ; 150; 0; 9167
35; 1530.0; 01-DEC-2003 12:01:28; Dark ; 99.0; 1; 9Alp CMA ; -1.44; 11000;occ; 198; 0; 9167
/data4_2/GOMOS/level0/GOM_NL_0PNPDK20031201_134213_000058382022_00096_09168_0253.N1
1;-4496.1; 01-DEC-2003 13:42:13; Dark ; 94.5; 1; 9Alp CMA ; -1.44; 11000;occ; 189; 19; 9168
2;-4284.2; 01-DEC-2003 13:45:45; Dark ; 60.0; 7; 19Bet Ori ; 0.10; 14000;occ; 120; 0; 9168
3;-4103.3; 01-DEC-2003 13:48:46; Dark ; 61.5; 30; 46Eps Ori ; 1.69; 30000;occ; 123; 0; 9168
4;-3940.1; 01-DEC-2003 13:51:29; Dark ; 59.5; 27; 24Gam Ori ; 1.64; 26000;occ; 119; 0; 9168
5;-3804.7; 01-DEC-2003 13:53:45; Bright; 54.5; 13; 87Alp Tau ; 0.87; 3800;occ; 109; 0; 9168
6;-3708.1; 01-DEC-2003 13:55:21; Bright; 39.5; 146; 25Eta Tau ; 2.87; 15200;occ; 79; 0; 9168
7;-3566.3; 01-DEC-2003 13:57:43; Bright; 40.0; 150; 44Zet Per ; 2.89; 28000;occ; 80; 0; 9168
8;-3432.2; 01-DEC-2003 13:59:57; Bright; 38.0; 79; 26Bet Per ; 2.31; 13100;occ; 76; 0; 9168
9;-3299.7; 01-DEC-2003 14:02:10; Bright; 37.5; 175; 39Del Per ; 3.01; 19400;occ; 75; 0; 9168
10;-3219.5; 01-DEC-2003 14:03:30; Bright; 38.0; 160; 23Gam Per ; 2.93; 4700;occ; 76; 0; 9168
11;-3079.0; 01-DEC-2003 14:05:50; Bright; 37.5; 110; 37Del Cas ; 2.68; 8900;occ; 75; 0; 9168
12;-2616.2; 01-DEC-2003 14:13:33; Bright; 39.0; 49; 1Alp UMi ; 1.99; 6300;occ; 78; 0; 9168
13;-2336.6; 01-DEC-2003 14:18:13; Bright; 39.5; 60; 7Bet UMi ; 2.08; 3950;occ; 79; 0; 9168
14;-2216.6; 01-DEC-2003 14:20:13; Bright; 47.0; 36; 50Alp UMA ; 1.80; 6300;occ; 94; 0; 9168
15;-2120.6; 01-DEC-2003 14:21:49; Bright; 50.0; 82; 48Bet UMA ; 2.37; 10600;occ; 100; 0; 9168
16;-2023.5; 01-DEC-2003 14:23:26; Bright; 42.5; 32; 77Eps UMA ; 1.76; 11000;occ; 85; 0; 9168
17;-1898.7; 01-DEC-2003 14:25:31; Bright; 37.0; 39; 85Eta UMA ; 1.85; 24000;occ; 74; 0; 9168
18;-1724.6; 01-DEC-2003 14:28:25; Bright; 37.0; 180; 27Gam Boo ; 3.04; 8000;occ; 74; 0; 9168
19;-1546.1; 01-DEC-2003 14:31:23; Bright; 40.0; 83; ; 2.38; 11000;occ; 80; 0; 9168
20;-1391.5; 01-DEC-2003 14:33:58; Bright; 35.5; 3; 16Alp Boo ; -0.05; 4250;occ; 71; 0; 9168
21;-1173.7; 01-DEC-2003 14:37:36; Bright; 73.0; 96; 68Del Leo ; 2.56; 9300;occ; 146; 0; 9168
22; -631.4; 01-DEC-2003 14:46:38; Dark ; 47.0; 163; 7Del Crv ; 2.94; 11000;occ; 94; 0; 9168
23; -533.7; 01-DEC-2003 14:48:16; Dark ; 48.5; 106; 9Bet Crv ; 2.65; 5600;occ; 97; 0; 9168
24; -414.9; 01-DEC-2003 14:50:15; Dark ; 42.5; 123; Iot Cen ; 2.75; 10200;occ; 85; 0; 9168
25; -173.6; 01-DEC-2003 14:54:16; Dark ; 42.5; 77; Eps Cen ; 2.30; 28000;occ; 85; 0; 9168
26; -75.0; 01-DEC-2003 14:55:54; Dark ; 44.0; 10; Bet Cen ; 0.61; 28000;occ; 88; 0; 9168
27; 41.0; 01-DEC-2003 14:57:50; Dark ; 48.0; 12; Alp1Cru ; 0.77; 30000;occ; 96; 0; 9169
28; 204.7; 01-DEC-2003 15:00:34; Dark ; 39.5; 124; The Car ; 2.76; 30000;occ; 79; 0; 9169
29; 350.2; 01-DEC-2003 15:03:00; Dark ; 59.5; 0; ; 0.00; 0;occ; 119; 0; 9169
30; 485.5; 01-DEC-2003 15:05:15; Dark ; 45.5; 41; Eps Car ; 1.86; 4100;occ; 91; 0; 9169
31; 605.9; 01-DEC-2003 15:07:15; Dark ; 54.0; 34; Gam2Vel ; 1.79; 23000;occ; 108; 0; 9169
32; 807.0; 01-DEC-2003 15:10:36; Dark ; 58.0; 2; Alp Car ; -0.74; 7000;occ; 116; 0; 9169
33; 918.6; 01-DEC-2003 15:12:28; Dark ; 65.0; 117; Pi Pup ; 2.71; 3800;occ; 130; 0; 9169
34; 1146.3; 01-DEC-2003 15:16:16; Dark ; 65.5; 23; 21Eps CMA ; 1.50; 26000;occ; 131; 0; 9169
35; 1276.3; 01-DEC-2003 15:18:26; Dark ; 67.0; 179; 240mi2CMA ; 3.03; 24000;occ; 134; 0; 9169
/data4_2/GOMOS/level0/GOM_NL_0PNPDK20031205_063004_000061032022_00149_09221_0282.N1
1;-4729.2; 05-DEC-2003 06:30:04; Dark ; 70.0; 179; 240mi2CMA ; 3.03; 24000;occ; 140; 4; 9221
2;-4499.9; 05-DEC-2003 06:33:54; Dark ; 82.0; 1; 9Alp CMA ; -1.44; 11000;occ; 164; 0; 9221
3;-4287.6; 05-DEC-2003 06:37:26; Dark ; 55.5; 7; 19Bet Ori ; 0.10; 14000;occ; 111; 0; 9221
4;-4050.0; 05-DEC-2003 06:41:24; Dark ; 47.0; 94; 92Alp Cet ; 2.53; 3100;occ; 94; 0; 9221
5;-3822.0; 05-DEC-2003 06:45:12; Dark ; 60.0; 13; 87Alp Tau ; 0.87; 3800;occ; 120; 0; 9221
6;-3715.3; 05-DEC-2003 06:46:58; Bright; 53.5; 146; 25Eta Tau ; 2.87; 15200;occ; 107; 0; 9221
7;-3577.3; 05-DEC-2003 06:49:16; Bright; 40.5; 150; 44Zet Per ; 2.89; 28000;occ; 81; 0; 9221
8;-3433.8; 05-DEC-2003 06:51:40; Bright; 38.0; 79; 26Bet Per ; 2.31; 13100;occ; 76; 0; 9221
9;-3308.7; 05-DEC-2003 06:53:45; Bright; 38.0; 175; 39Del Per ; 3.01; 19400;occ; 76; 0; 9221
10;-3221.4; 05-DEC-2003 06:55:12; Bright; 37.5; 160; 23Gam Per ; 2.93; 4700;occ; 75; 0; 9221
11;-3068.3; 05-DEC-2003 06:57:45; Bright; 37.5; 110; 37Del Cas ; 2.68; 8900;occ; 75; 0; 9221
12;-2989.0; 05-DEC-2003 06:59:05; Bright; 39.0; 74; 11Bet Cas ; 2.27; 6600;occ; 78; 0; 9221
13;-2616.2; 05-DEC-2003 07:05:17; Bright; 38.0; 49; 1Alp UMi ; 1.99; 6300;occ; 76; 0; 9221
14;-2334.8; 05-DEC-2003 07:09:59; Bright; 38.5; 60; 7Bet UMi ; 2.08; 3950;occ; 77; 0; 9221
15;-2236.0; 05-DEC-2003 07:11:38; Bright; 47.0; 36; 50Alp UMA ; 1.80; 6300;occ; 94; 0; 9221

```



```

16;-2141.8; 05-DEC-2003 07:13:12; Bright; 48.0; 82; 48Bet UMa ; 2.37; 10600;occ; 96; 0; 9221
17;-2028.4; 05-DEC-2003 07:15:05; Bright; 40.5; 32; 77Eps UMa ; 1.76; 11000;occ; 81; 0; 9221
18;-1897.1; 05-DEC-2003 07:17:17; Bright; 39.0; 39; 85Eta UMa ; 1.85; 24000;occ; 78; 0; 9221
19;-1719.8; 05-DEC-2003 07:20:14; Bright; 39.0; 180; 27Gam Boo ; 3.04; 8000;occ; 78; 0; 9221
20;-1535.3; 05-DEC-2003 07:23:18; Bright; 37.0; 83; ; 2.38; 11000;occ; 74; 0; 9221
21;-1381.4; 05-DEC-2003 07:25:52; Bright; 38.0; 3; 16Alp Boo ;-0.05; 4250;occ; 76; 0; 9221
22;-1123.9; 05-DEC-2003 07:30:10; Bright; 84.0; 96; 68Del Leo ; 2.56; 9300;occ; 168; 0; 9221
23; -883.1; 05-DEC-2003 07:34:10; Bright; 49.5; 121; 29Gam Vir ; 2.74; 7200;occ; 99; 0; 9221
24; -592.3; 05-DEC-2003 07:39:01; Dark ; 50.0; 163; 7Del Crv ; 2.94; 11000;occ; 100; 0; 9221
25; -496.9; 05-DEC-2003 07:40:37; Dark ; 51.0; 106; 9Bet Crv ; 2.65; 5600;occ; 102; 0; 9221
26; -394.1; 05-DEC-2003 07:42:19; Dark ; 42.0; 123; Iot Cen ; 2.75; 10200;occ; 84; 0; 9221
27; -272.4; 05-DEC-2003 07:44:21; Dark ; 41.0; 95; Zet Cen ; 2.55; 26000;occ; 82; 0; 9221
28; -163.8; 05-DEC-2003 07:46:10; Dark ; 44.0; 77; Eps Cen ; 2.30; 28000;occ; 88; 0; 9221
29; -69.5; 05-DEC-2003 07:47:44; Dark ; 43.5; 10; Bet Cen ; 0.61; 28000;occ; 87; 0; 9221
30; 17.6; 05-DEC-2003 07:49:11; Dark ; 43.0; 129; Del Cru ; 2.79; 26000;occ; 86; 0; 9222
31; 130.3; 05-DEC-2003 07:51:04; Dark ; 45.5; 113; Mu Vel ; 2.69; 5000;occ; 91; 0; 9222
32; 284.4; 05-DEC-2003 07:53:38; Dark ; 59.5; 0; ; 0.00; 0;occ; 119; 0; 9222
33; 392.8; 05-DEC-2003 07:55:26; Dark ; 40.0; 29; Bet Car ; 1.67; 10200;occ; 80; 0; 9222
34; 517.1; 05-DEC-2003 07:57:31; Dark ; 48.0; 41; Eps Car ; 1.86; 4100;occ; 96; 0; 9222
35; 650.8; 05-DEC-2003 07:59:44; Dark ; 49.5; 34; Gam2Vel ; 1.79; 23000;occ; 99; 0; 9222
36; 833.2; 05-DEC-2003 08:02:47; Dark ; 49.5; 2; Alp Car ;-0.74; 7000;occ; 99; 0; 9222
37; 961.4; 05-DEC-2003 08:04:55; Dark ; 61.5; 117; Pi Pup ; 2.71; 3800;occ; 123; 0; 9222
38; 1180.7; 05-DEC-2003 08:08:34; Dark ; 70.0; 23; 21Eps CMA ; 1.50; 26000;occ; 140; 0; 9222
39; 1304.9; 05-DEC-2003 08:10:38; Dark ; 69.5; 179; 240mi2CMA ; 3.03; 24000;occ; 139; 0; 9222
/data4_2/GOMOS/level0/GOM_NL_0PNPDK20031205_081431_000058692022_00150_09222_0283.N1
1;-4498.1; 05-DEC-2003 08:14:31; Dark ; 86.0; 1; 9Alp CMA ;-1.44; 11000;occ; 172; 4; 9222
2;-4287.8; 05-DEC-2003 08:18:02; Dark ; 57.5; 7; 19Bet Ori ; 0.10; 14000;occ; 115; 0; 9222
3;-4050.0; 05-DEC-2003 08:21:59; Dark ; 47.5; 94; 92Alp Cet ; 2.53; 3100;occ; 95; 0; 9222
4;-3822.3; 05-DEC-2003 08:25:47; Dark ; 60.0; 13; 87Alp Tau ; 0.87; 3800;occ; 120; 0; 9222
5;-3715.6; 05-DEC-2003 08:27:34; Bright; 54.0; 146; 25Eta Tau ; 2.87; 15200;occ; 108; 0; 9222
6;-3578.0; 05-DEC-2003 08:29:51; Bright; 39.5; 150; 44Zet Per ; 2.89; 28000;occ; 79; 0; 9222
7;-3433.8; 05-DEC-2003 08:32:16; Bright; 38.5; 79; 26Bet Per ; 2.31; 13100;occ; 77; 0; 9222
8;-3308.7; 05-DEC-2003 08:34:21; Bright; 37.5; 175; 39Del Per ; 3.01; 19400;occ; 75; 0; 9222
9;-3221.8; 05-DEC-2003 08:35:48; Bright; 37.5; 160; 23Gam Per ; 2.93; 4700;occ; 75; 0; 9222
10;-3069.9; 05-DEC-2003 08:38:20; Bright; 40.5; 110; 37Del Cas ; 2.68; 8900;occ; 81; 0; 9222
11;-2987.9; 05-DEC-2003 08:39:42; Bright; 37.5; 74; 11Bet Cas ; 2.27; 6600;occ; 75; 0; 9222
12;-2616.4; 05-DEC-2003 08:45:53; Bright; 39.0; 49; 1Alp UMi ; 1.99; 6300;occ; 78; 0; 9222
13;-2336.5; 05-DEC-2003 08:50:33; Bright; 41.5; 60; 7Bet UMi ; 2.08; 3950;occ; 83; 0; 9222
14;-2236.2; 05-DEC-2003 08:52:13; Bright; 46.5; 36; 50Alp UMa ; 1.80; 6300;occ; 93; 0; 9222
15;-2142.4; 05-DEC-2003 08:53:47; Bright; 46.5; 82; 48Bet UMa ; 2.37; 10600;occ; 93; 0; 9222
16;-2028.8; 05-DEC-2003 08:55:41; Bright; 58.0; 32; 77Eps UMa ; 1.76; 11000;occ; 116; 0; 9222
17;-1896.9; 05-DEC-2003 08:57:53; Bright; 38.0; 39; 85Eta UMa ; 1.85; 24000;occ; 76; 0; 9222
18;-1719.7; 05-DEC-2003 09:00:50; Bright; 44.0; 180; 27Gam Boo ; 3.04; 8000;occ; 88; 0; 9222
19;-1535.3; 05-DEC-2003 09:03:54; Bright; 37.0; 83; ; 2.38; 11000;occ; 74; 0; 9222
20;-1380.9; 05-DEC-2003 09:06:29; Bright; 37.0; 3; 16Alp Boo ;-0.05; 4250;occ; 74; 0; 9222
21;-1123.1; 05-DEC-2003 09:10:46; Bright; 89.0; 96; 68Del Leo ; 2.56; 9300;occ; 178; 0; 9222
22; -882.2; 05-DEC-2003 09:14:47; Bright; 48.5; 121; 29Gam Vir ; 2.74; 7200;occ; 97; 0; 9222
23; -590.5; 05-DEC-2003 09:19:39; Dark ; 47.5; 163; 7Del Crv ; 2.94; 11000;occ; 95; 0; 9222
24; -495.8; 05-DEC-2003 09:21:14; Dark ; 51.0; 106; 9Bet Crv ; 2.65; 5600;occ; 102; 0; 9222
25; -393.7; 05-DEC-2003 09:22:56; Dark ; 44.5; 123; Iot Cen ; 2.75; 10200;occ; 89; 0; 9222
26; -274.5; 05-DEC-2003 09:24:55; Dark ; 43.5; 95; Zet Cen ; 2.55; 26000;occ; 87; 0; 9222
27; -161.8; 05-DEC-2003 09:26:48; Dark ; 43.0; 77; Eps Cen ; 2.30; 28000;occ; 86; 0; 9222
28; -69.4; 05-DEC-2003 09:28:20; Dark ; 45.5; 10; Bet Cen ; 0.61; 28000;occ; 91; 0; 9222
29; 18.0; 05-DEC-2003 09:29:47; Dark ; 42.5; 129; Del Cru ; 2.79; 26000;occ; 85; 0; 9223
30; 130.0; 05-DEC-2003 09:31:39; Dark ; 54.5; 113; Mu Vel ; 2.69; 5000;occ; 109; 0; 9223
31; 284.7; 05-DEC-2003 09:34:14; Dark ; 59.5; 0; ; 0.00; 0;occ; 119; 0; 9223
32; 392.8; 05-DEC-2003 09:36:02; Dark ; 42.5; 29; Bet Car ; 1.67; 10200;occ; 85; 0; 9223
33; 518.2; 05-DEC-2003 09:38:08; Dark ; 47.0; 41; Eps Car ; 1.86; 4100;occ; 94; 0; 9223
34; 652.2; 05-DEC-2003 09:40:22; Dark ; 48.5; 34; Gam2Vel ; 1.79; 23000;occ; 97; 0; 9223
35; 833.2; 05-DEC-2003 09:43:23; Dark ; 57.0; 2; Alp Car ;-0.74; 7000;occ; 114; 0; 9223
36; 962.5; 05-DEC-2003 09:45:32; Dark ; 63.5; 117; Pi Pup ; 2.71; 3800;occ; 127; 0; 9223
37; 1182.3; 05-DEC-2003 09:49:12; Dark ; 66.0; 23; 21Eps CMA ; 1.50; 26000;occ; 132; 0; 9223
38; 1305.8; 05-DEC-2003 09:51:15; Dark ; 66.0; 179; 240mi2CMA ; 3.03; 24000;occ; 132; 0; 9223
/data4_2/GOMOS/level0/GOM_NL_0PNPDK20031205_095505_000057042022_00151_09223_0284.N1
1;-4500.0; 05-DEC-2003 09:55:05; Dark ; 84.5; 1; 9Alp CMA ;-1.44; 11000;occ; 169; 0; 9223
2;-4287.8; 05-DEC-2003 09:58:37; Dark ; 57.5; 7; 19Bet Ori ; 0.10; 14000;occ; 115; 0; 9223
3;-4049.8; 05-DEC-2003 10:02:36; Dark ; 50.0; 94; 92Alp Cet ; 2.53; 3100;occ; 100; 0; 9223
4;-3822.6; 05-DEC-2003 10:06:23; Dark ; 52.5; 13; 87Alp Tau ; 0.87; 3800;occ; 105; 0; 9223

```

```

5;-3715.8; 05-DEC-2003 10:08:10; Bright; 38.5; 146; 25Eta Tau ; 2.87; 15200;occ; 77; 0; 9223
6;-3579.9; 05-DEC-2003 10:10:25; Bright; 42.5; 150; 44Zet Per ; 2.89; 28000;occ; 85; 0; 9223
7;-3433.9; 05-DEC-2003 10:12:51; Bright; 37.5; 79; 26Bet Per ; 2.31; 13100;occ; 75; 0; 9223
8;-3309.2; 05-DEC-2003 10:14:56; Bright; 37.0; 175; 39Del Per ; 3.01; 19400;occ; 74; 0; 9223
9;-3224.3; 05-DEC-2003 10:16:21; Bright; 40.0; 160; 23Gam Per ; 2.93; 4700;occ; 80; 0; 9223
10;-3067.9; 05-DEC-2003 10:18:57; Bright; 37.5; 110; 37Del Cas ; 2.68; 8900;occ; 75; 0; 9223
11;-2987.9; 05-DEC-2003 10:20:17; Bright; 40.5; 74; 11Bet Cas ; 2.27; 6600;occ; 81; 0; 9223
12;-2616.3; 05-DEC-2003 10:26:29; Bright; 38.5; 49; 1Alp UMi ; 1.99; 6300;occ; 77; 0; 9223
13;-2334.8; 05-DEC-2003 10:31:11; Bright; 40.5; 60; 7Bet UMi ; 2.08; 3950;occ; 81; 0; 9223
14;-2236.6; 05-DEC-2003 10:32:49; Bright; 46.5; 36; 50Alp UMa ; 1.80; 6300;occ; 93; 0; 9223
15;-2142.4; 05-DEC-2003 10:34:23; Bright; 49.0; 82; 48Bet UMa ; 2.37; 10600;occ; 98; 0; 9223
16;-2028.7; 05-DEC-2003 10:36:17; Bright; 43.5; 32; 77Eps UMa ; 1.76; 11000;occ; 87; 0; 9223
17;-1896.7; 05-DEC-2003 10:38:29; Bright; 37.0; 39; 85Eta UMa ; 1.85; 24000;occ; 74; 0; 9223
18;-1717.4; 05-DEC-2003 10:41:28; Bright; 37.5; 180; 27Gam Boo ; 3.04; 8000;occ; 75; 0; 9223
19;-1535.2; 05-DEC-2003 10:44:30; Bright; 37.0; 83; ; 2.38; 11000;occ; 74; 0; 9223
20;-1380.4; 05-DEC-2003 10:47:05; Bright; 36.5; 3; 16Alp Boo ;-0.05; 4250;occ; 73; 0; 9223
21;-1121.8; 05-DEC-2003 10:51:24; Bright; 90.0; 96; 68Del Leo ; 2.56; 9300;occ; 180; 0; 9223
22;-881.3; 05-DEC-2003 10:55:24; Bright; 50.0; 121; 29Gam Vir ; 2.74; 7200;occ; 100; 0; 9223
23;-590.0; 05-DEC-2003 11:00:15; Dark ; 48.0; 163; 7Del Crv ; 2.94; 11000;occ; 96; 0; 9223
24;-495.5; 05-DEC-2003 11:01:50; Dark ; 49.5; 106; 9Bet Crv ; 2.65; 5600;occ; 99; 0; 9223
25;-395.1; 05-DEC-2003 11:03:30; Dark ; 44.5; 123; Iot Cen ; 2.75; 10200;occ; 89; 0; 9223
26;-272.4; 05-DEC-2003 11:05:33; Dark ; 39.0; 95; Zet Cen ; 2.55; 26000;occ; 78; 0; 9223
27;-161.0; 05-DEC-2003 11:07:24; Dark ; 40.5; 77; Eps Cen ; 2.30; 28000;occ; 81; 0; 9223
28;-69.2; 05-DEC-2003 11:08:56; Dark ; 42.0; 10; Bet Cen ; 0.61; 28000;occ; 84; 0; 9223
29; 20.2; 05-DEC-2003 11:10:25; Dark ; 40.0; 129; Del Cru ; 2.79; 26000;occ; 80; 0; 9224
30; 131.5; 05-DEC-2003 11:12:17; Dark ; 46.0; 113; Mu Vel ; 2.69; 5000;occ; 92; 0; 9224
31; 285.1; 05-DEC-2003 11:14:50; Dark ; 59.5; 0; ; 0.00; 0;occ; 119; 0; 9224
32; 393.2; 05-DEC-2003 11:16:39; Dark ; 44.5; 29; Bet Car ; 1.67; 10200;occ; 89; 0; 9224
33; 518.9; 05-DEC-2003 11:18:44; Dark ; 46.0; 41; Eps Car ; 1.86; 4100;occ; 92; 0; 9224
34; 652.8; 05-DEC-2003 11:20:58; Dark ; 49.5; 34; Gam2Vel ; 1.79; 23000;occ; 99; 0; 9224
35; 834.1; 05-DEC-2003 11:23:59; Dark ; 57.0; 2; Alp Car ;-0.74; 7000;occ; 114; 0; 9224
36; 963.3; 05-DEC-2003 11:26:09; Dark ; 61.0; 117; Pi Pup ; 2.71; 3800;occ; 122; 0; 9224
37; 1183.0; 05-DEC-2003 11:29:48; Dark ; 22.0; 23; 21Eps CMa ; 1.50; 26000;occ; 44; 0; 9224
/data4_2/GOMOS/level0/GOM_NL_0PNPDK20031205_113154_000060992022_00152_09224_0285.N1
1;-4727.6; 05-DEC-2003 11:31:54; Dark ; 67.0; 179; 240mi2CMa ; 3.03; 24000;occ; 134; 3; 9224
2;-4499.4; 05-DEC-2003 11:35:42; Dark ; 93.5; 1; 9Alp CMa ;-1.44; 11000;occ; 187; 0; 9224
3;-4287.8; 05-DEC-2003 11:39:13; Dark ; 62.5; 7; 19Bet Ori ; 0.10; 14000;occ; 125; 0; 9224
4;-4050.0; 05-DEC-2003 11:43:11; Dark ; 44.0; 94; 92Alp Cet ; 2.53; 3100;occ; 88; 0; 9224
5;-3822.4; 05-DEC-2003 11:46:59; Dark ; 54.5; 13; 87Alp Tau ; 0.87; 3800;occ; 109; 0; 9224
6;-3715.6; 05-DEC-2003 11:48:46; Bright; 37.5; 146; 25Eta Tau ; 2.87; 15200;occ; 75; 0; 9224
7;-3578.0; 05-DEC-2003 11:51:03; Bright; 39.5; 150; 44Zet Per ; 2.89; 28000;occ; 79; 0; 9224
8;-3433.8; 05-DEC-2003 11:53:27; Bright; 37.5; 79; 26Bet Per ; 2.31; 13100;occ; 75; 0; 9224
9;-3309.1; 05-DEC-2003 11:55:32; Bright; 37.0; 175; 39Del Per ; 3.01; 19400;occ; 74; 0; 9224
10;-3221.9; 05-DEC-2003 11:56:59; Bright; 38.5; 160; 23Gam Per ; 2.93; 4700;occ; 77; 0; 9224
11;-3066.6; 05-DEC-2003 11:59:35; Bright; 38.5; 110; 37Del Cas ; 2.68; 8900;occ; 77; 0; 9224
12;-2986.3; 05-DEC-2003 12:00:55; Bright; 41.0; 74; 11Bet Cas ; 2.27; 6600;occ; 82; 0; 9224
13;-2616.0; 05-DEC-2003 12:07:05; Bright; 37.0; 49; 1Alp UMi ; 1.99; 6300;occ; 74; 0; 9224
14;-2333.4; 05-DEC-2003 12:11:48; Bright; 36.0; 60; 7Bet UMi ; 2.08; 3950;occ; 72; 0; 9224
15;-2236.9; 05-DEC-2003 12:13:24; Bright; 40.5; 36; 50Alp UMa ; 1.80; 6300;occ; 81; 0; 9224
16;-2142.9; 05-DEC-2003 12:14:58; Bright; 48.0; 82; 48Bet UMa ; 2.37; 10600;occ; 96; 0; 9224
17;-2028.6; 05-DEC-2003 12:16:53; Bright; 40.0; 32; 77Eps UMa ; 1.76; 11000;occ; 80; 0; 9224
18;-1896.9; 05-DEC-2003 12:19:04; Bright; 38.5; 39; 85Eta UMa ; 1.85; 24000;occ; 77; 0; 9224
19;-1716.7; 05-DEC-2003 12:22:05; Bright; 36.5; 180; 27Gam Boo ; 3.04; 8000;occ; 73; 0; 9224
20;-1533.9; 05-DEC-2003 12:25:07; Bright; 36.0; 83; ; 2.38; 11000;occ; 72; 0; 9224
21;-1380.0; 05-DEC-2003 12:27:41; Bright; 37.5; 3; 16Alp Boo ;-0.05; 4250;occ; 75; 0; 9224
22;-1120.4; 05-DEC-2003 12:32:01; Bright; 89.0; 96; 68Del Leo ; 2.56; 9300;occ; 178; 0; 9224
23;-880.6; 05-DEC-2003 12:36:01; Bright; 49.0; 121; 29Gam Vir ; 2.74; 7200;occ; 98; 0; 9224
24;-588.3; 05-DEC-2003 12:40:53; Dark ; 48.5; 163; 7Del Crv ; 2.94; 11000;occ; 97; 0; 9224
25;-493.8; 05-DEC-2003 12:42:27; Dark ; 49.0; 106; 9Bet Crv ; 2.65; 5600;occ; 98; 0; 9224
26;-392.4; 05-DEC-2003 12:44:09; Dark ; 42.0; 123; Iot Cen ; 2.75; 10200;occ; 84; 0; 9224
27;-271.3; 05-DEC-2003 12:46:10; Dark ; 40.0; 95; Zet Cen ; 2.55; 26000;occ; 80; 0; 9224
28;-160.1; 05-DEC-2003 12:48:01; Dark ; 38.5; 77; Eps Cen ; 2.30; 28000;occ; 77; 0; 9224
29;-68.7; 05-DEC-2003 12:49:32; Dark ; 45.0; 10; Bet Cen ; 0.61; 28000;occ; 90; 0; 9224
30; 21.6; 05-DEC-2003 12:51:03; Dark ; 39.0; 129; Del Cru ; 2.79; 26000;occ; 78; 0; 9225
31; 131.6; 05-DEC-2003 12:52:53; Dark ; 45.0; 113; Mu Vel ; 2.69; 5000;occ; 90; 0; 9225
32; 285.4; 05-DEC-2003 12:55:27; Dark ; 59.5; 0; ; 0.00; 0;occ; 119; 0; 9225
33; 393.0; 05-DEC-2003 12:57:14; Dark ; 43.5; 29; Bet Car ; 1.67; 10200;occ; 87; 0; 9225
34; 519.2; 05-DEC-2003 12:59:20; Dark ; 56.0; 41; Eps Car ; 1.86; 4100;occ; 112; 0; 9225

```

```

35; 654.1; 05-DEC-2003 13:01:35; Dark ; 50.0; 34; Gam2Vel ; 1.79; 23000;occ; 100; 0; 9225
36; 834.9; 05-DEC-2003 13:04:36; Dark ; 57.0; 2; Alp Car ; -0.74; 7000;occ; 114; 0; 9225
37; 964.2; 05-DEC-2003 13:06:45; Dark ; 64.0; 117; Pi Pup ; 2.71; 3800;occ; 128; 0; 9225
38; 1183.6; 05-DEC-2003 13:10:25; Dark ; 63.0; 23; 21Eps CMa ; 1.50; 26000;occ; 126; 0; 9225
39; 1307.0; 05-DEC-2003 13:12:28; Dark ; 65.0; 179; 240mi2CMA ; 3.03; 24000;occ; 130; 0; 9225
/data4_2/GOMOS/level0/GOM_NL_0PNPDK20031205_131304_000060532022_00153_09225_0286.N1
1;-4692.9; 05-DEC-2003 13:13:04; Dark ; 65.5; 179; 240mi2CMA ; 3.03; 24000;occ; 131; 72; 9225
2;-4499.1; 05-DEC-2003 13:16:18; Dark ; 89.0; 1; 9Alp CMA ; -1.44; 11000;occ; 178; 0; 9225
3;-4287.6; 05-DEC-2003 13:19:49; Dark ; 59.5; 7; 19Bet Ori ; 0.10; 14000;occ; 119; 0; 9225
4;-4049.6; 05-DEC-2003 13:23:48; Dark ; 46.5; 94; 92Alp Cet ; 2.53; 3100;occ; 93; 0; 9225
5;-3822.7; 05-DEC-2003 13:27:34; Dark ; 56.5; 13; 87Alp Tau ; 0.87; 3800;occ; 113; 0; 9225
6;-3715.6; 05-DEC-2003 13:29:22; Bright; 37.5; 146; 25Eta Tau ; 2.87; 15200;occ; 75; 0; 9225
7;-3577.7; 05-DEC-2003 13:31:39; Bright; 40.0; 150; 44Zet Per ; 2.89; 28000;occ; 80; 0; 9225
8;-3433.6; 05-DEC-2003 13:34:04; Bright; 36.5; 79; 26Bet Per ; 2.31; 13100;occ; 73; 0; 9225
9;-3308.8; 05-DEC-2003 13:36:08; Bright; 37.0; 175; 39Del Per ; 3.01; 19400;occ; 74; 0; 9225
10;-3221.7; 05-DEC-2003 13:37:35; Bright; 38.5; 160; 23Gam Per ; 2.93; 4700;occ; 77; 0; 9225
11;-3066.2; 05-DEC-2003 13:40:11; Bright; 37.0; 110; 37Del Cas ; 2.68; 8900;occ; 74; 0; 9225
12;-2985.8; 05-DEC-2003 13:41:31; Bright; 38.5; 74; 11Bet Cas ; 2.27; 6600;occ; 77; 0; 9225
13;-2615.9; 05-DEC-2003 13:47:41; Bright; 38.0; 49; 1Alp UMi ; 1.99; 6300;occ; 76; 0; 9225
14;-2333.4; 05-DEC-2003 13:52:24; Bright; 38.0; 60; 7Bet UMi ; 2.08; 3950;occ; 76; 0; 9225
15;-2237.1; 05-DEC-2003 13:54:00; Bright; 45.5; 36; 50Alp UMa ; 1.80; 6300;occ; 91; 0; 9225
16;-2142.9; 05-DEC-2003 13:55:34; Bright; 47.0; 82; 48Bet UMa ; 2.37; 10600;occ; 94; 0; 9225
17;-2028.8; 05-DEC-2003 13:57:28; Bright; 58.0; 32; 77Eps UMa ; 1.76; 11000;occ; 116; 0; 9225
18;-1896.9; 05-DEC-2003 13:59:40; Bright; 38.0; 39; 85Eta UMa ; 1.85; 24000;occ; 76; 0; 9225
19;-1716.2; 05-DEC-2003 14:02:41; Bright; 36.0; 180; 27Gam Boo ; 3.04; 8000;occ; 72; 0; 9225
20;-1533.6; 05-DEC-2003 14:05:43; Bright; 35.0; 83; ; 2.38; 11000;occ; 70; 0; 9225
21;-1380.0; 05-DEC-2003 14:08:17; Bright; 36.5; 3; 16Alp Boo ; -0.05; 4250;occ; 73; 0; 9225
22;-1119.2; 05-DEC-2003 14:12:38; Bright; 89.0; 96; 68Del Leo ; 2.56; 9300;occ; 178; 0; 9225
23; -879.8; 05-DEC-2003 14:16:37; Bright; 48.5; 121; 29Gam Vir ; 2.74; 7200;occ; 97; 0; 9225
24; -587.8; 05-DEC-2003 14:21:29; Dark ; 48.5; 163; 7Del Crv ; 2.94; 11000;occ; 97; 0; 9225
25; -493.0; 05-DEC-2003 14:23:04; Dark ; 49.5; 106; 9Bet Crv ; 2.65; 5600;occ; 99; 0; 9225
26; -391.3; 05-DEC-2003 14:24:46; Dark ; 41.5; 123; Iot Cen ; 2.75; 10200;occ; 83; 0; 9225
27; -270.5; 05-DEC-2003 14:26:47; Dark ; 40.0; 95; Zet Cen ; 2.55; 26000;occ; 80; 0; 9225
28; -159.6; 05-DEC-2003 14:28:38; Dark ; 42.0; 77; Eps Cen ; 2.30; 28000;occ; 84; 0; 9225
29; -68.3; 05-DEC-2003 14:30:09; Dark ; 46.0; 10; Bet Cen ; 0.61; 28000;occ; 92; 0; 9225
30; 134.0; 05-DEC-2003 14:33:31; Dark ; 45.5; 113; Mu Vel ; 2.69; 5000;occ; 91; 0; 9226
31; 285.7; 05-DEC-2003 14:36:03; Dark ; 59.5; 0; ; 0.00; 0;occ; 119; 0; 9226
32; 394.9; 05-DEC-2003 14:37:52; Dark ; 40.5; 29; Bet Car ; 1.67; 10200;occ; 81; 0; 9226
33; 520.3; 05-DEC-2003 14:39:57; Dark ; 44.5; 41; Eps Car ; 1.86; 4100;occ; 89; 0; 9226
34; 655.1; 05-DEC-2003 14:42:12; Dark ; 48.5; 34; Gam2Vel ; 1.79; 23000;occ; 97; 0; 9226
35; 835.9; 05-DEC-2003 14:45:13; Dark ; 56.0; 2; Alp Car ; -0.74; 7000;occ; 112; 0; 9226
36; 965.2; 05-DEC-2003 14:47:22; Dark ; 62.0; 117; Pi Pup ; 2.71; 3800;occ; 124; 0; 9226
37; 1184.8; 05-DEC-2003 14:51:02; Dark ; 65.5; 23; 21Eps CMA ; 1.50; 26000;occ; 131; 0; 9226
38; 1307.9; 05-DEC-2003 14:53:05; Dark ; 53.5; 179; 240mi2CMA ; 3.03; 24000;occ; 107; 0; 9226
/data4_2/GOMOS/level0/GOM_NL_0PNPDK20031205_145305_000059392022_00154_09226_0287.N1
1;-4728.1; 05-DEC-2003 14:53:05; Dark ; 67.0; 179; 240mi2CMA ; 3.03; 24000;occ; 134; 0; 9226
2;-4498.8; 05-DEC-2003 14:56:54; Dark ; 80.5; 1; 9Alp CMA ; -1.44; 11000;occ; 161; 0; 9226
3;-4287.5; 05-DEC-2003 15:00:26; Dark ; 64.0; 7; 19Bet Ori ; 0.10; 14000;occ; 128; 0; 9226
4;-4048.8; 05-DEC-2003 15:04:24; Dark ; 44.0; 94; 92Alp Cet ; 2.53; 3100;occ; 88; 0; 9226
5;-3822.7; 05-DEC-2003 15:08:10; Dark ; 59.0; 13; 87Alp Tau ; 0.87; 3800;occ; 118; 0; 9226
6;-3715.4; 05-DEC-2003 15:09:58; Bright; 38.0; 146; 25Eta Tau ; 2.87; 15200;occ; 76; 0; 9226
7;-3578.0; 05-DEC-2003 15:12:15; Bright; 40.0; 150; 44Zet Per ; 2.89; 28000;occ; 80; 0; 9226
8;-3432.9; 05-DEC-2003 15:14:40; Bright; 37.0; 79; 26Bet Per ; 2.31; 13100;occ; 74; 0; 9226
9;-3308.8; 05-DEC-2003 15:16:44; Bright; 36.0; 175; 39Del Per ; 3.01; 19400;occ; 72; 0; 9226
10;-3220.8; 05-DEC-2003 15:18:12; Bright; 36.5; 160; 23Gam Per ; 2.93; 4700;occ; 73; 0; 9226
11;-3065.5; 05-DEC-2003 15:20:48; Bright; 37.0; 110; 37Del Cas ; 2.68; 8900;occ; 74; 0; 9226
12;-2985.1; 05-DEC-2003 15:22:08; Bright; 36.0; 74; 11Bet Cas ; 2.27; 6600;occ; 72; 0; 9226
13;-2615.3; 05-DEC-2003 15:28:18; Bright; 37.5; 49; 1Alp UMi ; 1.99; 6300;occ; 75; 0; 9226
14;-2333.2; 05-DEC-2003 15:33:00; Bright; 37.5; 60; 7Bet UMi ; 2.08; 3950;occ; 75; 0; 9226
15;-2237.9; 05-DEC-2003 15:34:35; Bright; 47.0; 36; 50Alp UMa ; 1.80; 6300;occ; 94; 0; 9226
16;-2143.9; 05-DEC-2003 15:36:09; Bright; 50.0; 82; 48Bet UMa ; 2.37; 10600;occ; 100; 0; 9226
17;-2029.1; 05-DEC-2003 15:38:04; Bright; 43.0; 32; 77Eps UMa ; 1.76; 11000;occ; 86; 0; 9226
18;-1896.8; 05-DEC-2003 15:40:16; Bright; 39.0; 39; 85Eta UMa ; 1.85; 24000;occ; 78; 0; 9226
19;-1716.2; 05-DEC-2003 15:43:17; Bright; 37.5; 180; 27Gam Boo ; 3.04; 8000;occ; 75; 0; 9226
20;-1533.0; 05-DEC-2003 15:46:20; Bright; 35.0; 83; ; 2.38; 11000;occ; 70; 0; 9226
21;-1380.1; 05-DEC-2003 15:48:53; Bright; 37.0; 3; 16Alp Boo ; -0.05; 4250;occ; 74; 0; 9226
22;-1118.9; 05-DEC-2003 15:53:14; Bright; 91.0; 96; 68Del Leo ; 2.56; 9300;occ; 182; 0; 9226
23; -879.5; 05-DEC-2003 15:57:14; Bright; 49.5; 121; 29Gam Vir ; 2.74; 7200;occ; 99; 0; 9226

```



```

24; -586.4; 05-DEC-2003 16:02:07; Dark ; 46.5; 163; 7Del Crv ; 2.94; 11000;occ; 93; 0; 9226
25; -492.2; 05-DEC-2003 16:03:41; Dark ; 46.0; 106; 9Bet Crv ; 2.65; 5600;occ; 92; 0; 9226
26; -390.2; 05-DEC-2003 16:05:23; Dark ; 39.5; 123; Iot Cen ; 2.75; 10200;occ; 79; 0; 9226
27; -270.0; 05-DEC-2003 16:07:23; Dark ; 38.0; 95; Zet Cen ; 2.55; 26000;occ; 76; 0; 9226
28; -159.3; 05-DEC-2003 16:09:14; Dark ; 42.0; 77; Eps Cen ; 2.30; 28000;occ; 84; 0; 9226
29; -67.7; 05-DEC-2003 16:10:45; Dark ; 40.5; 10; Bet Cen ; 0.61; 28000;occ; 81; 0; 9226
30; 134.6; 05-DEC-2003 16:14:08; Dark ; 45.5; 113; Mu Vel ; 2.69; 5000;occ; 91; 0; 9227
31; 286.0; 05-DEC-2003 16:16:39; Dark ; 59.5; 0; ; 0.00; 0;occ; 119; 0; 9227
32; 395.3; 05-DEC-2003 16:18:28; Dark ; 40.0; 29; Bet Car ; 1.67; 10200;occ; 80; 0; 9227
33; 520.6; 05-DEC-2003 16:20:34; Dark ; 44.0; 41; Eps Car ; 1.86; 4100;occ; 88; 0; 9227
34; 655.8; 05-DEC-2003 16:22:49; Dark ; 54.5; 34; Gam2Vel ; 1.79; 23000;occ; 109; 0; 9227
35; 836.1; 05-DEC-2003 16:25:49; Dark ; 51.0; 2; Alp Car ; -0.74; 7000;occ; 102; 0; 9227
36; 965.8; 05-DEC-2003 16:27:59; Dark ; 61.0; 117; Pi Pup ; 2.71; 3800;occ; 122; 0; 9227
37; 1183.9; 05-DEC-2003 16:31:37; Dark ; 28.5; 23; 21Eps CMA ; 1.50; 26000;occ; 57; 0; 9227
/data4_2/GOMOS/level0/GOM_NL_0PNPDK20031205_163137_000058772022_00155_09227_0288.N1
1; -4852.1; 05-DEC-2003 16:31:37; Dark ; 66.5; 23; 21Eps CMA ; 1.50; 26000;occ; 133; 0; 9227
2; -4728.7; 05-DEC-2003 16:33:40; Dark ; 69.0; 179; 240mi2CMA ; 3.03; 24000;occ; 138; 0; 9227
3; -4500.2; 05-DEC-2003 16:37:29; Dark ; 87.0; 1; 9Alp CMA ; -1.44; 11000;occ; 174; 0; 9227
4; -4288.2; 05-DEC-2003 16:41:01; Dark ; 64.0; 7; 19Bet Ori ; 0.10; 14000;occ; 128; 0; 9227
5; -4049.6; 05-DEC-2003 16:44:59; Dark ; 43.0; 94; 92Alp Cet ; 2.53; 3100;occ; 86; 0; 9227
6; -3824.1; 05-DEC-2003 16:48:45; Dark ; 56.0; 13; 87Alp Tau ; 0.87; 3800;occ; 112; 0; 9227
7; -3716.0; 05-DEC-2003 16:50:33; Bright; 38.5; 146; 25Eta Tau ; 2.87; 15200;occ; 77; 0; 9227
8; -3577.5; 05-DEC-2003 16:52:52; Bright; 38.0; 150; 44Zet Per ; 2.89; 28000;occ; 76; 0; 9227
9; -3433.1; 05-DEC-2003 16:55:16; Bright; 36.0; 79; 26Bet Per ; 2.31; 13100;occ; 72; 0; 9227
10; -3309.0; 05-DEC-2003 16:57:20; Bright; 36.0; 175; 39Del Per ; 3.01; 19400;occ; 72; 0; 9227
11; -3221.2; 05-DEC-2003 16:58:48; Bright; 37.0; 160; 23Gam Per ; 2.93; 4700;occ; 74; 0; 9227
12; -3065.8; 05-DEC-2003 17:01:23; Bright; 37.0; 110; 37Del Cas ; 2.68; 8900;occ; 74; 0; 9227
13; -2985.2; 05-DEC-2003 17:02:44; Bright; 39.5; 74; 11Bet Cas ; 2.27; 6600;occ; 79; 0; 9227
14; -2615.6; 05-DEC-2003 17:08:54; Bright; 37.5; 49; 1Alp UMi ; 1.99; 6300;occ; 75; 0; 9227
15; -2333.5; 05-DEC-2003 17:13:36; Bright; 38.0; 60; 7Bet UMi ; 2.08; 3950;occ; 76; 0; 9227
16; -2238.8; 05-DEC-2003 17:15:10; Bright; 44.0; 36; 50Alp UMa ; 1.80; 6300;occ; 88; 0; 9227
17; -2144.8; 05-DEC-2003 17:16:44; Bright; 46.0; 82; 48Bet UMa ; 2.37; 10600;occ; 92; 0; 9227
18; -2029.7; 05-DEC-2003 17:18:39; Bright; 39.5; 32; 77Eps UMa ; 1.76; 11000;occ; 79; 0; 9227
19; -1897.4; 05-DEC-2003 17:20:52; Bright; 54.0; 39; 85Eta UMa ; 1.85; 24000;occ; 108; 0; 9227
20; -1716.8; 05-DEC-2003 17:23:52; Bright; 37.0; 180; 27Gam Boo ; 3.04; 8000;occ; 74; 0; 9227
21; -1533.1; 05-DEC-2003 17:26:56; Bright; 36.5; 83; ; 2.38; 11000;occ; 73; 0; 9227
22; -1380.5; 05-DEC-2003 17:29:29; Bright; 38.0; 3; 16Alp Boo ; -0.05; 4250;occ; 76; 0; 9227
23; -1117.5; 05-DEC-2003 17:33:52; Bright; 88.5; 96; 68Del Leo ; 2.56; 9300;occ; 177; 0; 9227
24; -878.6; 05-DEC-2003 17:37:51; Bright; 51.0; 121; 29Gam Vir ; 2.74; 7200;occ; 102; 0; 9227
25; -586.4; 05-DEC-2003 17:42:43; Dark ; 49.5; 163; 7Del Crv ; 2.94; 11000;occ; 99; 0; 9227
26; -491.6; 05-DEC-2003 17:44:17; Dark ; 49.0; 106; 9Bet Crv ; 2.65; 5600;occ; 98; 0; 9227
27; -389.9; 05-DEC-2003 17:45:59; Dark ; 39.5; 123; Iot Cen ; 2.75; 10200;occ; 79; 0; 9227
28; -270.2; 05-DEC-2003 17:47:59; Dark ; 39.5; 95; Zet Cen ; 2.55; 26000;occ; 79; 0; 9227
29; -159.4; 05-DEC-2003 17:49:50; Dark ; 39.5; 77; Eps Cen ; 2.30; 28000;occ; 79; 0; 9227
30; -67.8; 05-DEC-2003 17:51:21; Dark ; 46.0; 10; Bet Cen ; 0.61; 28000;occ; 92; 0; 9227
31; 135.3; 05-DEC-2003 17:54:44; Dark ; 46.5; 113; Mu Vel ; 2.69; 5000;occ; 93; 0; 9228
32; 286.2; 05-DEC-2003 17:57:15; Dark ; 59.5; 0; ; 0.00; 0;occ; 119; 0; 9228
33; 395.4; 05-DEC-2003 17:59:04; Dark ; 42.5; 29; Bet Car ; 1.67; 10200;occ; 85; 0; 9228
34; 521.2; 05-DEC-2003 18:01:10; Dark ; 46.5; 41; Eps Car ; 1.86; 4100;occ; 93; 0; 9228
35; 656.3; 05-DEC-2003 18:03:25; Dark ; 52.5; 34; Gam2Vel ; 1.79; 23000;occ; 105; 0; 9228
36; 836.2; 05-DEC-2003 18:06:25; Dark ; 43.0; 2; Alp Car ; -0.74; 7000;occ; 86; 0; 9228
37; 966.5; 05-DEC-2003 18:08:36; Dark ; 59.5; 117; Pi Pup ; 2.71; 3800;occ; 119; 0; 9228
/data4_2/GOMOS/level0/GOM_NL_0PNPDK20031205_180836_000059152022_00156_09228_0289.N1
1; -5069.4; 05-DEC-2003 18:08:36; Dark ; 65.5; 117; Pi Pup ; 2.71; 3800;occ; 131; 0; 9228
2; -4851.0; 05-DEC-2003 18:12:14; Dark ; 62.0; 23; 21Eps CMA ; 1.50; 26000;occ; 124; 0; 9228
3; -4728.2; 05-DEC-2003 18:14:17; Dark ; 67.0; 179; 240mi2CMA ; 3.03; 24000;occ; 134; 0; 9228
4; -4499.7; 05-DEC-2003 18:18:05; Dark ; 80.5; 1; 9Alp CMA ; -1.44; 11000;occ; 161; 0; 9228
5; -4288.2; 05-DEC-2003 18:21:37; Dark ; 62.0; 7; 19Bet Ori ; 0.10; 14000;occ; 124; 0; 9228
6; -4050.0; 05-DEC-2003 18:25:35; Dark ; 45.5; 94; 92Alp Cet ; 2.53; 3100;occ; 91; 0; 9228
7; -3823.8; 05-DEC-2003 18:29:21; Dark ; 56.5; 13; 87Alp Tau ; 0.87; 3800;occ; 113; 0; 9228
8; -3716.2; 05-DEC-2003 18:31:09; Bright; 38.5; 146; 25Eta Tau ; 2.87; 15200;occ; 77; 0; 9228
9; -3577.9; 05-DEC-2003 18:33:27; Bright; 39.0; 150; 44Zet Per ; 2.89; 28000;occ; 78; 0; 9228
10; -3433.4; 05-DEC-2003 18:35:52; Bright; 37.5; 79; 26Bet Per ; 2.31; 13100;occ; 75; 0; 9228
11; -3309.1; 05-DEC-2003 18:37:56; Bright; 36.5; 175; 39Del Per ; 3.01; 19400;occ; 73; 0; 9228
12; -3221.2; 05-DEC-2003 18:39:24; Bright; 37.5; 160; 23Gam Per ; 2.93; 4700;occ; 75; 0; 9228
13; -3065.5; 05-DEC-2003 18:42:00; Bright; 37.0; 110; 37Del Cas ; 2.68; 8900;occ; 74; 0; 9228
14; -2984.8; 05-DEC-2003 18:43:20; Bright; 39.5; 74; 11Bet Cas ; 2.27; 6600;occ; 79; 0; 9228
15; -2615.6; 05-DEC-2003 18:49:29; Bright; 39.0; 49; 1Alp UMi ; 1.99; 6300;occ; 78; 0; 9228

```


16;-2333.8; 05-DEC-2003 18:54:11; Bright; 39.5; 60; 7Bet UMi ; 2.08; 3950;occ; 79; 0; 9228
 17;-2238.6; 05-DEC-2003 18:55:46; Bright; 45.0; 36; 50Alp UMA ; 1.80; 6300;occ; 90; 0; 9228
 18;-2145.0; 05-DEC-2003 18:57:20; Bright; 49.5; 82; 48Bet UMA ; 2.37; 10600;occ; 99; 0; 9228
 19;-2029.8; 05-DEC-2003 18:59:15; Bright; 53.5; 32; 77Eps UMA ; 1.76; 11000;occ; 107; 0; 9228
 20;-1896.9; 05-DEC-2003 19:01:28; Bright; 39.5; 39; 85Eta UMA ; 1.85; 24000;occ; 79; 0; 9228
 21;-1716.5; 05-DEC-2003 19:04:29; Bright; 38.0; 180; 27Gam Boo ; 3.04; 8000;occ; 76; 0; 9228
 22;-1533.2; 05-DEC-2003 19:07:32; Bright; 37.0; 83; ; 2.38; 11000;occ; 74; 0; 9228
 23;-1380.0; 05-DEC-2003 19:10:05; Bright; 37.5; 3; 16Alp Boo ;-0.05; 4250;occ; 75; 0; 9228
 24;-1116.6; 05-DEC-2003 19:14:28; Bright; 88.5; 96; 68Del Leo ; 2.56; 9300;occ; 177; 0; 9228
 25; -878.0; 05-DEC-2003 19:18:27; Bright; 48.0; 121; 29Gam Vir ; 2.74; 7200;occ; 96; 0; 9228
 26; -585.5; 05-DEC-2003 19:23:20; Dark ; 48.0; 163; 7Del Crv ; 2.94; 11000;occ; 96; 0; 9228
 27; -490.7; 05-DEC-2003 19:24:54; Dark ; 45.0; 106; 9Bet Crv ; 2.65; 5600;occ; 90; 0; 9228
 28; -389.8; 05-DEC-2003 19:26:35; Dark ; 41.0; 123; Iot Cen ; 2.75; 10200;occ; 82; 0; 9228
 29; -269.8; 05-DEC-2003 19:28:35; Dark ; 38.0; 95; Zet Cen ; 2.55; 26000;occ; 76; 0; 9228
 30; -159.0; 05-DEC-2003 19:30:26; Dark ; 38.5; 77; Eps Cen ; 2.30; 28000;occ; 77; 0; 9228
 31; -67.7; 05-DEC-2003 19:31:57; Dark ; 48.5; 10; Bet Cen ; 0.61; 28000;occ; 97; 0; 9228
 32; 135.7; 05-DEC-2003 19:35:21; Dark ; 46.0; 113; Mu Vel ; 2.69; 5000;occ; 92; 0; 9229
 33; 286.5; 05-DEC-2003 19:37:52; Dark ; 59.5; 0; ; 0.00; 0;occ; 119; 0; 9229
 34; 395.8; 05-DEC-2003 19:39:41; Dark ; 40.5; 29; Bet Car ; 1.67; 10200;occ; 81; 0; 9229
 35; 521.4; 05-DEC-2003 19:41:46; Dark ; 53.0; 41; Eps Car ; 1.86; 4100;occ; 106; 0; 9229
 36; 657.2; 05-DEC-2003 19:44:02; Dark ; 48.5; 34; Gam2Vel ; 1.79; 23000;occ; 97; 0; 9229
 37; 836.7; 05-DEC-2003 19:47:02; Dark ; 10.0; 2; Alp Car ;-0.74; 7000;occ; 20; 0; 9229

/data4_2/GOMOS/level0/GOM_NL_0PNPDK20031205_194702_000061942022_00157_09229_0290.N1

1;-5199.2; 05-DEC-2003 19:47:02; Dark ; 54.0; 2; Alp Car ;-0.74; 7000;occ; 108; 0; 9229
 2;-5068.6; 05-DEC-2003 19:49:12; Dark ; 70.5; 117; Pi Pup ; 2.71; 3800;occ; 141; 0; 9229
 3;-4850.3; 05-DEC-2003 19:52:51; Dark ; 68.0; 23; 21Eps CMA ; 1.50; 26000;occ; 136; 0; 9229
 4;-4727.3; 05-DEC-2003 19:54:54; Dark ; 66.0; 179; 240mi2CMA ; 3.03; 24000;occ; 132; 0; 9229
 5;-4499.5; 05-DEC-2003 19:58:41; Dark ; 80.5; 1; 9Alp CMA ;-1.44; 11000;occ; 161; 0; 9229
 6;-4288.6; 05-DEC-2003 20:02:12; Dark ; 56.0; 7; 19Bet Ori ; 0.10; 14000;occ; 112; 0; 9229
 7;-4049.7; 05-DEC-2003 20:06:11; Dark ; 48.0; 94; 92Alp Cet ; 2.53; 3100;occ; 96; 0; 9229
 8;-3824.6; 05-DEC-2003 20:09:56; Dark ; 58.0; 13; 87Alp Tau ; 0.87; 3800;occ; 116; 0; 9229
 9;-3716.1; 05-DEC-2003 20:11:45; Bright; 38.0; 146; 25Eta Tau ; 2.87; 15200;occ; 76; 0; 9229
 10;-3578.4; 05-DEC-2003 20:14:03; Bright; 39.0; 150; 44Zet Per ; 2.89; 28000;occ; 78; 0; 9229
 11;-3433.3; 05-DEC-2003 20:16:28; Bright; 38.5; 79; 26Bet Per ; 2.31; 13100;occ; 77; 0; 9229
 12;-3309.5; 05-DEC-2003 20:18:31; Bright; 37.0; 175; 39Del Per ; 3.01; 19400;occ; 74; 0; 9229
 13;-3221.4; 05-DEC-2003 20:20:00; Bright; 37.0; 160; 23Gam Per ; 2.93; 4700;occ; 74; 0; 9229
 14;-3065.6; 05-DEC-2003 20:22:35; Bright; 37.0; 110; 37Del Cas ; 2.68; 8900;occ; 74; 0; 9229
 15;-2984.3; 05-DEC-2003 20:23:57; Bright; 38.5; 74; 11Bet Cas ; 2.27; 6600;occ; 77; 0; 9229
 16;-2616.2; 05-DEC-2003 20:30:05; Bright; 37.5; 49; 1Alp UMi ; 1.99; 6300;occ; 75; 0; 9229
 17;-2333.8; 05-DEC-2003 20:34:47; Bright; 34.0; 60; 7Bet UMi ; 2.08; 3950;occ; 68; 0; 9229
 18;-2238.9; 05-DEC-2003 20:36:22; Bright; 46.0; 36; 50Alp UMA ; 1.80; 6300;occ; 92; 0; 9229
 19;-2145.4; 05-DEC-2003 20:37:56; Bright; 48.0; 82; 48Bet UMA ; 2.37; 10600;occ; 96; 0; 9229
 20;-2030.0; 05-DEC-2003 20:39:51; Bright; 58.0; 32; 77Eps UMA ; 1.76; 11000;occ; 116; 0; 9229
 21;-1897.1; 05-DEC-2003 20:42:04; Bright; 38.0; 39; 85Eta UMA ; 1.85; 24000;occ; 76; 0; 9229
 22;-1717.0; 05-DEC-2003 20:45:04; Bright; 36.0; 180; 27Gam Boo ; 3.04; 8000;occ; 72; 0; 9229
 23;-1533.3; 05-DEC-2003 20:48:08; Bright; 36.0; 83; ; 2.38; 11000;occ; 72; 0; 9229
 24;-1379.4; 05-DEC-2003 20:50:42; Bright; 37.0; 3; 16Alp Boo ;-0.05; 4250;occ; 74; 0; 9229
 25;-1115.2; 05-DEC-2003 20:55:06; Bright; 86.5; 96; 68Del Leo ; 2.56; 9300;occ; 173; 0; 9229
 26; -877.2; 05-DEC-2003 20:59:04; Bright; 48.0; 121; 29Gam Vir ; 2.74; 7200;occ; 96; 0; 9229
 27; -584.6; 05-DEC-2003 21:03:56; Dark ; 48.5; 163; 7Del Crv ; 2.94; 11000;occ; 97; 0; 9229
 28; -490.0; 05-DEC-2003 21:05:31; Dark ; 47.5; 106; 9Bet Crv ; 2.65; 5600;occ; 95; 0; 9229
 29; -389.1; 05-DEC-2003 21:07:12; Dark ; 41.0; 123; Iot Cen ; 2.75; 10200;occ; 82; 0; 9229
 30; -270.3; 05-DEC-2003 21:09:11; Dark ; 40.5; 95; Zet Cen ; 2.55; 26000;occ; 81; 0; 9229
 31; -159.8; 05-DEC-2003 21:11:01; Dark ; 39.5; 77; Eps Cen ; 2.30; 28000;occ; 79; 0; 9229
 32; -67.8; 05-DEC-2003 21:12:33; Dark ; 51.5; 10; Bet Cen ; 0.61; 28000;occ; 103; 0; 9229
 33; 136.9; 05-DEC-2003 21:15:58; Dark ; 47.5; 113; Mu Vel ; 2.69; 5000;occ; 95; 0; 9230
 34; 286.8; 05-DEC-2003 21:18:28; Dark ; 59.5; 0; ; 0.00; 0;occ; 119; 0; 9230
 35; 396.2; 05-DEC-2003 21:20:17; Dark ; 41.0; 29; Bet Car ; 1.67; 10200;occ; 82; 0; 9230
 36; 522.0; 05-DEC-2003 21:22:23; Dark ; 49.0; 41; Eps Car ; 1.86; 4100;occ; 98; 0; 9230
 37; 658.0; 05-DEC-2003 21:24:39; Dark ; 49.0; 34; Gam2Vel ; 1.79; 23000;occ; 98; 0; 9230
 38; 837.2; 05-DEC-2003 21:27:38; Dark ; 57.0; 2; Alp Car ;-0.74; 7000;occ; 114; 0; 9230
 39; 968.0; 05-DEC-2003 21:29:49; Dark ; 28.0; 117; Pi Pup ; 2.71; 3800;occ; 56; 0; 9230

/data4_2/GOMOS/level0/GOM_NL_0PNPDK20031206_140217_000011872022_00168_09240_0291.N1

1; 156.8; 06-DEC-2003 14:02:17; Dark ; 59.5; 0; ; 0.00; 0;occ; 119; 1; 9240
 2; 467.8; 06-DEC-2003 14:07:28; Dark ; 59.5; 0; ; 0.00; 0;occ; 119; 0; 9240
 3; 605.0; 06-DEC-2003 14:09:45; Dark ; 59.5; 0; ; 0.00; 0;occ; 119; 0; 9240
 4; 760.9; 06-DEC-2003 14:12:21; Dark ; 59.5; 0; ; 0.00; 0;occ; 119; 0; 9240
 5; 962.7; 06-DEC-2003 14:15:43; Dark ; 59.5; 0; ; 0.00; 0;occ; 119; 0; 9240

```

6; 1195.9; 06-DEC-2003 14:19:36; Dark ; 59.5; 0; ; 0.00; 0;occ; 119; 0; 9240
7; 1284.9; 06-DEC-2003 14:21:05; Dark ; 59.5; 0; ; 0.00; 0;occ; 119; 0; 9240
/data4_2/GOMOS/level0/GOM_NL_0PNPDK20031206_142555_000057832022_00168_09240_0292.N1
1; -4460.8; 06-DEC-2003 14:25:55; Dark ; 59.5; 0; ; 0.00; 0;occ; 119; 0; 9240
2; -4291.8; 06-DEC-2003 14:28:44; Dark ; 59.5; 0; ; 0.00; 0;occ; 119; 0; 9240
3; -4120.1; 06-DEC-2003 14:31:36; Dark ; 59.5; 0; ; 0.00; 0;occ; 119; 0; 9240
4; -3968.0; 06-DEC-2003 14:34:08; Dark ; 59.5; 0; ; 0.00; 0;occ; 119; 0; 9240
5; -3784.9; 06-DEC-2003 14:37:11; Bright; 59.5; 0; ; 0.00; 0;occ; 119; 0; 9240
6; -3643.5; 06-DEC-2003 14:39:32; Bright; 59.5; 0; ; 0.00; 0;occ; 119; 0; 9240
7; -3550.6; 06-DEC-2003 14:41:05; Bright; 59.5; 0; ; 0.00; 0;occ; 119; 0; 9240
8; -3250.0; 06-DEC-2003 14:46:06; Bright; 59.5; 0; ; 0.00; 0;occ; 119; 0; 9240
9; -3034.6; 06-DEC-2003 14:49:41; Bright; 59.5; 0; ; 0.00; 0;occ; 119; 0; 9240
10; -2825.6; 06-DEC-2003 14:53:10; Bright; 59.5; 0; ; 0.00; 0;occ; 119; 0; 9240
11; -2661.2; 06-DEC-2003 14:55:55; Bright; 59.5; 0; ; 0.00; 0;occ; 119; 0; 9240
12; -2552.5; 06-DEC-2003 14:57:43; Bright; 59.5; 0; ; 0.00; 0;occ; 119; 0; 9240
13; -2432.3; 06-DEC-2003 14:59:44; Bright; 59.5; 0; ; 0.00; 0;occ; 119; 0; 9240
14; -2280.1; 06-DEC-2003 15:02:16; Bright; 59.5; 0; ; 0.00; 0;occ; 119; 0; 9240
15; -2145.8; 06-DEC-2003 15:04:30; Bright; 59.5; 0; ; 0.00; 0;occ; 119; 0; 9240
16; -2034.8; 06-DEC-2003 15:06:21; Bright; 59.5; 0; ; 0.00; 0;occ; 119; 0; 9240
17; -1917.1; 06-DEC-2003 15:08:19; Bright; 59.5; 0; ; 0.00; 0;occ; 119; 0; 9240
18; -1825.6; 06-DEC-2003 15:09:50; Bright; 59.5; 0; ; 0.00; 0;occ; 119; 0; 9240
19; -1691.5; 06-DEC-2003 15:12:04; Bright; 59.5; 0; ; 0.00; 0;occ; 119; 0; 9240
20; -1517.4; 06-DEC-2003 15:14:59; Bright; 59.5; 0; ; 0.00; 0;occ; 119; 0; 9240
21; -1300.1; 06-DEC-2003 15:18:36; Bright; 59.5; 0; ; 0.00; 0;occ; 119; 0; 9240
22; -1133.2; 06-DEC-2003 15:21:23; Dark ; 59.5; 0; ; 0.00; 0;occ; 119; 0; 9240
23; -714.1; 06-DEC-2003 15:28:22; Dark ; 59.5; 0; ; 0.00; 0;occ; 119; 0; 9240
24; -575.9; 06-DEC-2003 15:30:40; Dark ; 59.5; 0; ; 0.00; 0;occ; 119; 0; 9240
25; -93.4; 06-DEC-2003 15:38:43; Dark ; 59.0; 0; ; 0.00; 0;occ; 118; 0; 9240
26; 156.4; 06-DEC-2003 15:42:52; Dark ; 32.5; 0; ; 0.00; 0;occ; 65; 0; 9241
27; 290.0; 06-DEC-2003 15:45:06; Dark ; 33.5; 0; ; 0.00; 0;occ; 67; 0; 9241
28; 605.2; 06-DEC-2003 15:50:21; Dark ; 33.5; 0; ; 0.00; 0;occ; 67; 0; 9241
29; 761.5; 06-DEC-2003 15:52:57; Dark ; 39.5; 0; ; 0.00; 0;occ; 79; 0; 9241
30; 962.8; 06-DEC-2003 15:56:19; Dark ; 34.5; 0; ; 0.00; 0;occ; 69; 0; 9241
31; 1196.1; 06-DEC-2003 16:00:12; Dark ; 34.5; 0; ; 0.00; 0;occ; 69; 0; 9241
32; 1285.2; 06-DEC-2003 16:01:41; Dark ; 38.5; 0; ; 0.00; 0;occ; 77; 0; 9241
/data4_2/GOMOS/level0/GOM_NL_0PNPDK20031206_160631_000055062022_00169_09241_0293.N1
1; -4460.8; 06-DEC-2003 16:06:31; Dark ; 59.5; 0; ; 0.00; 0;occ; 119; 0; 9241
2; -4291.7; 06-DEC-2003 16:09:20; Dark ; 35.5; 0; ; 0.00; 0;occ; 71; 0; 9241
3; -4121.2; 06-DEC-2003 16:12:11; Dark ; 39.5; 0; ; 0.00; 0;occ; 79; 0; 9241
4; -3967.8; 06-DEC-2003 16:14:44; Dark ; 33.5; 0; ; 0.00; 0;occ; 67; 0; 9241
5; -3786.6; 06-DEC-2003 16:17:45; Bright; 50.5; 0; ; 0.00; 0;occ; 101; 0; 9241
6; -3644.0; 06-DEC-2003 16:20:08; Bright; 42.5; 0; ; 0.00; 0;occ; 85; 0; 9241
7; -3549.9; 06-DEC-2003 16:21:42; Bright; 36.5; 0; ; 0.00; 0;occ; 73; 0; 9241
8; -3251.7; 06-DEC-2003 16:26:40; Bright; 44.5; 0; ; 0.00; 0;occ; 89; 0; 9241
9; -3038.0; 06-DEC-2003 16:30:14; Bright; 59.5; 0; ; 0.00; 0;occ; 119; 0; 9241
10; -2827.0; 06-DEC-2003 16:33:45; Bright; 59.5; 0; ; 0.00; 0;occ; 119; 0; 9241
11; -2660.8; 06-DEC-2003 16:36:31; Bright; 35.5; 0; ; 0.00; 0;occ; 71; 0; 9241
12; -2554.3; 06-DEC-2003 16:38:18; Bright; 53.5; 0; ; 0.00; 0;occ; 107; 0; 9241
13; -2432.1; 06-DEC-2003 16:40:20; Bright; 35.5; 0; ; 0.00; 0;occ; 71; 0; 9241
14; -2280.3; 06-DEC-2003 16:42:52; Bright; 39.5; 0; ; 0.00; 0;occ; 79; 0; 9241
15; -2145.7; 06-DEC-2003 16:45:06; Bright; 36.5; 0; ; 0.00; 0;occ; 73; 0; 9241
16; -2036.1; 06-DEC-2003 16:46:56; Bright; 59.5; 0; ; 0.00; 0;occ; 119; 0; 9241
17; -1917.0; 06-DEC-2003 16:48:55; Bright; 35.5; 0; ; 0.00; 0;occ; 71; 0; 9241
18; -1825.6; 06-DEC-2003 16:50:26; Bright; 40.5; 0; ; 0.00; 0;occ; 81; 0; 9241
19; -1691.6; 06-DEC-2003 16:52:40; Bright; 56.5; 0; ; 0.00; 0;occ; 113; 0; 9241
20; -1517.2; 06-DEC-2003 16:55:35; Bright; 35.5; 0; ; 0.00; 0;occ; 71; 0; 9241
21; -1299.8; 06-DEC-2003 16:59:12; Bright; 38.5; 0; ; 0.00; 0;occ; 77; 0; 9241
22; -1132.0; 06-DEC-2003 17:02:00; Dark ; 59.5; 0; ; 0.00; 0;occ; 119; 0; 9241
23; -847.2; 06-DEC-2003 17:06:45; Dark ; 59.5; 0; ; 0.00; 0;occ; 119; 0; 9241
24; -713.7; 06-DEC-2003 17:08:58; Dark ; 37.5; 0; ; 0.00; 0;occ; 75; 0; 9241
25; -574.9; 06-DEC-2003 17:11:17; Dark ; 48.5; 0; ; 0.00; 0;occ; 97; 0; 9241
26; -416.9; 06-DEC-2003 17:13:55; Dark ; 38.5; 0; ; 0.00; 0;occ; 77; 0; 9241
27; -238.2; 06-DEC-2003 17:16:54; Dark ; 33.5; 0; ; 0.00; 0;occ; 67; 0; 9241
28; -92.7; 06-DEC-2003 17:19:19; Dark ; 36.0; 0; ; 0.00; 0;occ; 72; 0; 9241
29; 130.5; 06-DEC-2003 17:23:02; Dark ; 39.5; 112; Alp Mus ; 2.69; 26000;occ; 79; 0; 9242
30; 290.3; 06-DEC-2003 17:25:42; Dark ; 59.5; 0; ; 0.00; 0;occ; 119; 0; 9242
31; 400.1; 06-DEC-2003 17:27:32; Dark ; 41.5; 29; Bet Car ; 1.67; 10200;occ; 83; 0; 9242
32; 529.1; 06-DEC-2003 17:29:41; Dark ; 57.0; 41; Eps Car ; 1.86; 4100;occ; 114; 0; 9242

```

```

33; 667.1; 06-DEC-2003 17:31:59; Dark ; 50.5; 34; Gam2Vel ; 1.79; 23000;occ; 101; 0; 9242
34; 841.9; 06-DEC-2003 17:34:54; Dark ; 57.0; 2; Alp Car ; -0.74; 7000;occ; 114; 0; 9242
35; 976.0; 06-DEC-2003 17:37:08; Dark ; 70.0; 117; Pi Pup ; 2.71; 3800;occ; 140; 0; 9242
/data4_2/GOMOS/level0/GOM_NL_0PNPDK20031206_173800_000060132022_00170_09242_0294.N1
1;-5007.5; 06-DEC-2003 17:38:00; Dark ; 70.5; 117; Pi Pup ; 2.71; 3800;occ; 141; 105; 9242
2;-4842.3; 06-DEC-2003 17:40:46; Dark ; 67.0; 23; 21Eps CMA ; 1.50; 26000;occ; 134; 0; 9242
3;-4720.6; 06-DEC-2003 17:42:47; Dark ; 64.5; 179; 240mi2CMA ; 3.03; 24000;occ; 129; 0; 9242
4;-4497.7; 06-DEC-2003 17:46:30; Dark ; 81.0; 1; 9Alp CMA ; -1.44; 11000;occ; 162; 0; 9242
5;-4289.1; 06-DEC-2003 17:49:59; Dark ; 57.5; 7; 19Bet Ori ; 0.10; 14000;occ; 115; 0; 9242
6;-4047.9; 06-DEC-2003 17:54:00; Dark ; 46.5; 94; 92Alp Cet ; 2.53; 3100;occ; 93; 0; 9242
7;-3826.8; 06-DEC-2003 17:57:41; Dark ; 59.0; 13; 87Alp Tau ; 0.87; 3800;occ; 118; 0; 9242
8;-3682.4; 06-DEC-2003 18:00:05; Bright; 41.0; 50; 13Alp Ari ; 2.01; 4250;occ; 82; 0; 9242
9;-3580.4; 06-DEC-2003 18:01:48; Bright; 39.0; 150; 44Zet Per ; 2.89; 28000;occ; 78; 0; 9242
10;-3492.4; 06-DEC-2003 18:03:16; Bright; 44.5; 114; 3Iot Aur ; 2.69; 4600;occ; 89; 0; 9242
11;-3379.6; 06-DEC-2003 18:05:08; Bright; 40.0; 73; 57Gam1And ; 2.26; 13100;occ; 80; 0; 9242
12;-3282.9; 06-DEC-2003 18:06:45; Bright; 38.0; 35; 33Alp Per ; 1.79; 6250;occ; 76; 0; 9242
13;-3145.6; 06-DEC-2003 18:09:02; Bright; 47.5; 42; 34Bet Aur ; 1.90; 10200;occ; 95; 0; 9242
14;-3024.7; 06-DEC-2003 18:11:03; Bright; 37.0; 76; 27Gam Cas ; 2.30; 30000;occ; 74; 0; 9242
15;-2617.0; 06-DEC-2003 18:17:51; Bright; 39.0; 49; 1Alp UMi ; 1.99; 6300;occ; 78; 0; 9242
16;-2335.9; 06-DEC-2003 18:22:32; Bright; 43.0; 60; 7Bet UMi ; 2.08; 3950;occ; 86; 0; 9242
17;-2244.3; 06-DEC-2003 18:24:04; Bright; 47.0; 36; 50Alp UMa ; 1.80; 6300;occ; 94; 0; 9242
18;-2150.9; 06-DEC-2003 18:25:37; Bright; 50.5; 82; 48Bet UMa ; 2.37; 10600;occ; 101; 0; 9242
19;-2032.3; 06-DEC-2003 18:27:36; Bright; 42.5; 32; 77Eps UMa ; 1.76; 11000;occ; 85; 0; 9242
20;-1897.3; 06-DEC-2003 18:29:51; Bright; 38.0; 39; 85Eta UMa ; 1.85; 24000;occ; 76; 0; 9242
21;-1714.7; 06-DEC-2003 18:32:53; Bright; 36.0; 180; 27Gam Boo ; 3.04; 8000;occ; 72; 0; 9242
22;-1531.9; 06-DEC-2003 18:35:56; Bright; 36.5; 83; ; 2.38; 11000;occ; 73; 0; 9242
23;-1345.7; 06-DEC-2003 18:39:02; Bright; 37.5; 111; 8Eta Boo ; 2.68; 6000;occ; 75; 0; 9242
24;-1099.9; 06-DEC-2003 18:43:08; Dark ; 97.0; 96; 68Del Leo ; 2.56; 9300;occ; 194; 0; 9242
25; -868.2; 06-DEC-2003 18:47:00; Dark ; 52.5; 121; 29Gam Vir ; 2.74; 7200;occ; 105; 0; 9242
26; -575.0; 06-DEC-2003 18:51:53; Dark ; 49.5; 163; 7Del Crv ; 2.94; 11000;occ; 99; 0; 9242
27; -480.3; 06-DEC-2003 18:53:28; Dark ; 48.5; 106; 9Bet Crv ; 2.65; 5600;occ; 97; 0; 9242
28; -384.6; 06-DEC-2003 18:55:03; Dark ; 41.5; 123; Iot Cen ; 2.75; 10200;occ; 83; 0; 9242
29; -267.4; 06-DEC-2003 18:57:00; Dark ; 41.0; 95; Zet Cen ; 2.55; 26000;occ; 82; 0; 9242
30; -158.3; 06-DEC-2003 18:58:50; Dark ; 43.0; 77; Eps Cen ; 2.30; 28000;occ; 86; 0; 9242
31; -6.3; 06-DEC-2003 19:01:22; Dark ; 48.0; 20; Bet Cru ; 1.25; 30000;occ; 96; 0; 9242
32; 130.7; 06-DEC-2003 19:03:39; Dark ; 40.0; 112; Alp Mus ; 2.69; 26000;occ; 80; 0; 9243
33; 290.6; 06-DEC-2003 19:06:18; Dark ; 59.5; 0; ; 0.00; 0;occ; 119; 0; 9243
34; 400.5; 06-DEC-2003 19:08:08; Dark ; 44.0; 29; Bet Car ; 1.67; 10200;occ; 88; 0; 9243
35; 529.0; 06-DEC-2003 19:10:17; Dark ; 49.0; 41; Eps Car ; 1.86; 4100;occ; 98; 0; 9243
36; 668.3; 06-DEC-2003 19:12:36; Dark ; 50.5; 34; Gam2Vel ; 1.79; 23000;occ; 101; 0; 9243
37; 842.4; 06-DEC-2003 19:15:30; Dark ; 57.0; 2; Alp Car ; -0.74; 7000;occ; 114; 0; 9243
38; 977.3; 06-DEC-2003 19:17:45; Dark ; 29.0; 117; Pi Pup ; 2.71; 3800;occ; 58; 0; 9243
/data4_2/GOMOS/level0/GOM_NL_0PNPDK20031206_191607_000061962022_00171_09243_0295.N1
1;-5157.1; 06-DEC-2003 19:16:07; Dark ; 57.0; 2; Alp Car ; -0.74; 7000;occ; 114; 73; 9243
2;-5058.6; 06-DEC-2003 19:17:45; Dark ; 64.5; 117; Pi Pup ; 2.71; 3800;occ; 129; 0; 9243
3;-4842.8; 06-DEC-2003 19:21:21; Dark ; 68.0; 23; 21Eps CMA ; 1.50; 26000;occ; 136; 0; 9243
4;-4720.4; 06-DEC-2003 19:23:23; Dark ; 63.5; 179; 240mi2CMA ; 3.03; 24000;occ; 127; 0; 9243
5;-4497.9; 06-DEC-2003 19:27:06; Dark ; 78.0; 1; 9Alp CMA ; -1.44; 11000;occ; 156; 0; 9243
6;-4289.1; 06-DEC-2003 19:30:35; Dark ; 63.0; 7; 19Bet Ori ; 0.10; 14000;occ; 126; 0; 9243
7;-4049.5; 06-DEC-2003 19:34:34; Dark ; 49.5; 94; 92Alp Cet ; 2.53; 3100;occ; 99; 0; 9243
8;-3827.5; 06-DEC-2003 19:38:16; Dark ; 50.0; 13; 87Alp Tau ; 0.87; 3800;occ; 100; 0; 9243
9;-3682.1; 06-DEC-2003 19:40:42; Bright; 40.0; 50; 13Alp Ari ; 2.01; 4250;occ; 80; 0; 9243
10;-3580.5; 06-DEC-2003 19:42:23; Bright; 39.5; 150; 44Zet Per ; 2.89; 28000;occ; 79; 0; 9243
11;-3492.8; 06-DEC-2003 19:43:51; Bright; 45.0; 114; 3Iot Aur ; 2.69; 4600;occ; 90; 0; 9243
12;-3376.9; 06-DEC-2003 19:45:47; Bright; 39.5; 73; 57Gam1And ; 2.26; 13100;occ; 79; 0; 9243
13;-3282.7; 06-DEC-2003 19:47:21; Bright; 40.0; 35; 33Alp Per ; 1.79; 6250;occ; 80; 0; 9243
14;-3147.1; 06-DEC-2003 19:49:37; Bright; 49.0; 42; 34Bet Aur ; 1.90; 10200;occ; 98; 0; 9243
15;-3024.2; 06-DEC-2003 19:51:40; Bright; 38.0; 76; 27Gam Cas ; 2.30; 30000;occ; 76; 0; 9243
16;-2616.4; 06-DEC-2003 19:58:27; Bright; 38.0; 49; 1Alp UMi ; 1.99; 6300;occ; 76; 0; 9243
17;-2334.0; 06-DEC-2003 20:03:10; Bright; 41.0; 60; 7Bet UMi ; 2.08; 3950;occ; 82; 0; 9243
18;-2244.7; 06-DEC-2003 20:04:39; Bright; 48.5; 36; 50Alp UMa ; 1.80; 6300;occ; 97; 0; 9243
19;-2151.9; 06-DEC-2003 20:06:12; Bright; 49.5; 82; 48Bet UMa ; 2.37; 10600;occ; 99; 0; 9243
20;-2031.7; 06-DEC-2003 20:08:12; Bright; 42.5; 32; 77Eps UMa ; 1.76; 11000;occ; 85; 0; 9243
21;-1898.0; 06-DEC-2003 20:10:26; Bright; 38.0; 39; 85Eta UMa ; 1.85; 24000;occ; 76; 0; 9243
22;-1717.3; 06-DEC-2003 20:13:27; Bright; 40.0; 180; 27Gam Boo ; 3.04; 8000;occ; 80; 0; 9243
23;-1533.5; 06-DEC-2003 20:16:30; Bright; 39.0; 83; ; 2.38; 11000;occ; 78; 0; 9243
24;-1346.1; 06-DEC-2003 20:19:38; Bright; 39.5; 111; 8Eta Boo ; 2.68; 6000;occ; 79; 0; 9243
25;-1099.0; 06-DEC-2003 20:23:45; Dark ; 96.5; 96; 68Del Leo ; 2.56; 9300;occ; 193; 0; 9243

```



```

26; -867.7; 06-DEC-2003 20:27:36; Dark ; 49.5; 121; 29Gam Vir ; 2.74; 7200;occ; 99; 0; 9243
27; -573.9; 06-DEC-2003 20:32:30; Dark ; 49.0; 163; 7Del Crv ; 2.94; 11000;occ; 98; 0; 9243
28; -479.4; 06-DEC-2003 20:34:04; Dark ; 46.5; 106; 9Bet Crv ; 2.65; 5600;occ; 93; 0; 9243
29; -383.2; 06-DEC-2003 20:35:41; Dark ; 39.5; 123; Iot Cen ; 2.75; 10200;occ; 79; 0; 9243
30; -266.7; 06-DEC-2003 20:37:37; Dark ; 40.5; 95; Zet Cen ; 2.55; 26000;occ; 81; 0; 9243
31; -156.1; 06-DEC-2003 20:39:28; Dark ; 40.0; 77; Eps Cen ; 2.30; 28000;occ; 80; 0; 9243
32; -5.5; 06-DEC-2003 20:41:58; Dark ; 41.5; 20; Bet Cru ; 1.25; 30000;occ; 83; 0; 9243
33; 131.0; 06-DEC-2003 20:44:15; Dark ; 41.5; 112; Alp Mus ; 2.69; 26000;occ; 83; 0; 9244
34; 290.9; 06-DEC-2003 20:46:55; Dark ; 59.5; 0; ; 0.00; 0;occ; 119; 0; 9244
35; 400.8; 06-DEC-2003 20:48:45; Dark ; 43.5; 29; Bet Car ; 1.67; 10200;occ; 87; 0; 9244
36; 530.7; 06-DEC-2003 20:50:55; Dark ; 46.5; 41; Eps Car ; 1.86; 4100;occ; 93; 0; 9244
37; 669.5; 06-DEC-2003 20:53:13; Dark ; 49.0; 34; Gam2Vel ; 1.79; 23000;occ; 98; 0; 9244
38; 843.7; 06-DEC-2003 20:56:08; Dark ; 57.0; 2; Alp Car ; -0.74; 7000;occ; 114; 0; 9244
39; 977.4; 06-DEC-2003 20:58:21; Dark ; 62.5; 117; Pi Pup ; 2.71; 3800;occ; 125; 0; 9244
/data4_2/GOMOS/level0/GOM_NL_0PNPDK20031206_205821_000062852022_00172_09244_0296.N1
1; -5058.4; 06-DEC-2003 20:58:21; Dark ; 63.0; 117; Pi Pup ; 2.71; 3800;occ; 126; 0; 9244
2; -4841.5; 06-DEC-2003 21:01:58; Dark ; 63.5; 23; 21Eps CMa ; 1.50; 26000;occ; 127; 0; 9244
3; -4719.7; 06-DEC-2003 21:04:00; Dark ; 66.0; 179; 240mi2CMA ; 3.03; 24000;occ; 132; 0; 9244
4; -4497.7; 06-DEC-2003 21:07:42; Dark ; 83.0; 1; 9Alp CMA ; -1.44; 11000;occ; 166; 0; 9244
5; -4288.4; 06-DEC-2003 21:11:11; Dark ; 57.0; 7; 19Bet Ori ; 0.10; 14000;occ; 114; 0; 9244
6; -4049.3; 06-DEC-2003 21:15:10; Dark ; 50.0; 94; 92Alp Cet ; 2.53; 3100;occ; 100; 0; 9244
7; -3827.5; 06-DEC-2003 21:18:52; Dark ; 59.0; 13; 87Alp Tau ; 0.87; 3800;occ; 118; 0; 9244
8; -3682.0; 06-DEC-2003 21:21:18; Bright; 39.5; 50; 13Alp Ari ; 2.01; 4250;occ; 79; 0; 9244
9; -3580.6; 06-DEC-2003 21:22:59; Bright; 38.5; 150; 44Zet Per ; 2.89; 28000;occ; 77; 0; 9244
10; -3493.2; 06-DEC-2003 21:24:27; Bright; 44.5; 114; 3Iot Aur ; 2.69; 4600;occ; 89; 0; 9244
11; -3377.3; 06-DEC-2003 21:26:22; Bright; 40.0; 73; 57Gam1And ; 2.26; 13100;occ; 80; 0; 9244
12; -3282.8; 06-DEC-2003 21:27:57; Bright; 38.5; 35; 33Alp Per ; 1.79; 6250;occ; 77; 0; 9244
13; -3147.6; 06-DEC-2003 21:30:12; Bright; 48.5; 42; 34Bet Aur ; 1.90; 10200;occ; 97; 0; 9244
14; -3024.6; 06-DEC-2003 21:32:15; Bright; 37.0; 76; 27Gam Cas ; 2.30; 30000;occ; 74; 0; 9244
15; -2616.2; 06-DEC-2003 21:39:04; Bright; 37.5; 49; 1Alp UMi ; 1.99; 6300;occ; 75; 0; 9244
16; -2333.4; 06-DEC-2003 21:43:46; Bright; 40.0; 60; 7Bet UMi ; 2.08; 3950;occ; 80; 0; 9244
17; -2245.3; 06-DEC-2003 21:45:14; Bright; 46.0; 36; 50Alp UMa ; 1.80; 6300;occ; 92; 0; 9244
18; -2152.2; 06-DEC-2003 21:46:47; Bright; 50.5; 82; 48Bet UMa ; 2.37; 10600;occ; 101; 0; 9244
19; -2031.9; 06-DEC-2003 21:48:48; Bright; 39.0; 32; 77Eps UMa ; 1.76; 11000;occ; 78; 0; 9244
20; -1897.4; 06-DEC-2003 21:51:02; Bright; 47.0; 39; 85Eta UMa ; 1.85; 24000;occ; 94; 0; 9244
21; -1715.2; 06-DEC-2003 21:54:04; Bright; 37.0; 180; 27Gam Boo ; 3.04; 8000;occ; 74; 0; 9244
22; -1531.6; 06-DEC-2003 21:57:08; Bright; 37.5; 83; ; 2.38; 11000;occ; 75; 0; 9244
23; -1345.5; 06-DEC-2003 22:00:14; Bright; 38.5; 111; 8Eta Boo ; 2.68; 6000;occ; 77; 0; 9244
24; -1097.7; 06-DEC-2003 22:04:22; Dark ; 95.0; 96; 68Del Leo ; 2.56; 9300;occ; 190; 0; 9244
25; -867.0; 06-DEC-2003 22:08:13; Dark ; 51.5; 121; 29Gam Vir ; 2.74; 7200;occ; 103; 0; 9244
26; -572.4; 06-DEC-2003 22:13:07; Dark ; 49.5; 163; 7Del Crv ; 2.94; 11000;occ; 99; 0; 9244
27; -478.6; 06-DEC-2003 22:14:41; Dark ; 44.0; 106; 9Bet Crv ; 2.65; 5600;occ; 88; 0; 9244
28; -266.3; 06-DEC-2003 22:18:13; Dark ; 38.0; 95; Zet Cen ; 2.55; 26000;occ; 76; 0; 9244
29; -155.8; 06-DEC-2003 22:20:04; Dark ; 41.0; 77; Eps Cen ; 2.30; 28000;occ; 82; 0; 9244
30; -5.7; 06-DEC-2003 22:22:34; Dark ; 41.0; 20; Bet Cru ; 1.25; 30000;occ; 82; 0; 9244
31; 132.0; 06-DEC-2003 22:24:52; Dark ; 38.0; 112; Alp Mus ; 2.69; 26000;occ; 76; 0; 9245
32; 291.2; 06-DEC-2003 22:27:31; Dark ; 59.5; 0; ; 0.00; 0;occ; 119; 0; 9245
33; 401.4; 06-DEC-2003 22:29:21; Dark ; 42.5; 29; Bet Car ; 1.67; 10200;occ; 85; 0; 9245
34; 531.0; 06-DEC-2003 22:31:31; Dark ; 54.0; 41; Eps Car ; 1.86; 4100;occ; 108; 0; 9245
35; 670.5; 06-DEC-2003 22:33:50; Dark ; 49.5; 34; Gam2Vel ; 1.79; 23000;occ; 99; 0; 9245
36; 844.2; 06-DEC-2003 22:36:44; Dark ; 47.5; 2; Alp Car ; -0.74; 7000;occ; 95; 0; 9245
37; 978.2; 06-DEC-2003 22:38:58; Dark ; 62.5; 117; Pi Pup ; 2.71; 3800;occ; 125; 0; 9245
38; 1194.3; 06-DEC-2003 22:42:34; Dark ; 33.5; 23; 21Eps CMA ; 1.50; 26000;occ; 67; 0; 9245
/data4_2/GOMOS/level0/GOM_NL_0PNPDK20031207_053116_000062712022_00177_09249_0297.N1
1; -4463.2; 07-DEC-2003 05:31:16; Dark ; 78.5; 1; 9Alp CMA ; -1.44; 11000;occ; 157; 69; 9249
2; -4316.3; 07-DEC-2003 05:33:43; Dark ; 59.0; 56; 53Kap Ori ; 2.07; 30000;occ; 118; 0; 9249
3; -4047.0; 07-DEC-2003 05:38:12; Dark ; 47.5; 94; 92Alp Cet ; 2.53; 3100;occ; 95; 0; 9249
4; -3829.3; 07-DEC-2003 05:41:50; Dark ; 59.0; 13; 87Alp Tau ; 0.87; 3800;occ; 118; 0; 9249
5; -3680.5; 07-DEC-2003 05:44:19; Bright; 41.0; 50; 13Alp Ari ; 2.01; 4250;occ; 82; 0; 9249
6; -3581.4; 07-DEC-2003 05:45:58; Bright; 40.0; 150; 44Zet Per ; 2.89; 28000;occ; 80; 0; 9249
7; -3495.0; 07-DEC-2003 05:47:24; Bright; 44.5; 114; 3Iot Aur ; 2.69; 4600;occ; 89; 0; 9249
8; -3376.1; 07-DEC-2003 05:49:23; Bright; 38.5; 73; 57Gam1And ; 2.26; 13100;occ; 77; 0; 9249
9; -3283.2; 07-DEC-2003 05:50:56; Bright; 39.0; 35; 33Alp Per ; 1.79; 6250;occ; 78; 0; 9249
10; -3151.3; 07-DEC-2003 05:53:08; Bright; 48.5; 42; 34Bet Aur ; 1.90; 10200;occ; 97; 0; 9249
11; -3022.9; 07-DEC-2003 05:55:16; Bright; 38.5; 76; 27Gam Cas ; 2.30; 30000;occ; 77; 0; 9249
12; -2617.0; 07-DEC-2003 06:02:02; Bright; 40.0; 49; 1Alp UMi ; 1.99; 6300;occ; 80; 0; 9249
13; -2333.0; 07-DEC-2003 06:06:46; Bright; 39.0; 60; 7Bet UMi ; 2.08; 3950;occ; 78; 0; 9249
14; -2247.1; 07-DEC-2003 06:08:12; Bright; 47.5; 36; 50Alp UMa ; 1.80; 6300;occ; 95; 0; 9249

```



```

15;-2153.6; 07-DEC-2003 06:09:46; Bright; 46.5; 82; 48Bet UMa ; 2.37; 10600;occ; 93; 0; 9249
16;-2032.1; 07-DEC-2003 06:11:47; Bright; 41.0; 32; 77Eps UMa ; 1.76; 11000;occ; 82; 0; 9249
17;-1896.9; 07-DEC-2003 06:14:02; Bright; 40.0; 39; 85Eta UMa ; 1.85; 24000;occ; 80; 0; 9249
18;-1713.7; 07-DEC-2003 06:17:06; Bright; 35.5; 180; 27Gam Boo ; 3.04; 8000;occ; 71; 0; 9249
19;-1530.1; 07-DEC-2003 06:20:09; Bright; 37.0; 83; ; 2.38; 11000;occ; 74; 0; 9249
20;-1343.8; 07-DEC-2003 06:23:15; Bright; 37.5; 111; 8Eta Boo ; 2.68; 6000;occ; 75; 0; 9249
21;-1091.3; 07-DEC-2003 06:27:28; Dark ; 102.5; 96; 68Del Leo ; 2.56; 9300;occ; 205; 0; 9249
22; -863.1; 07-DEC-2003 06:31:16; Dark ; 53.0; 121; 29Gam Vir ; 2.74; 7200;occ; 106; 0; 9249
23; -567.8; 07-DEC-2003 06:36:11; Dark ; 50.0; 163; 7Del Crv ; 2.94; 11000;occ; 100; 0; 9249
24; -477.5; 07-DEC-2003 06:37:42; Dark ; 53.5; 106; 9Bet Crv ; 2.65; 5600;occ; 107; 0; 9249
25; -381.0; 07-DEC-2003 06:39:18; Dark ; 42.0; 123; Iot Cen ; 2.75; 10200;occ; 84; 0; 9249
26; -265.9; 07-DEC-2003 06:41:13; Dark ; 40.5; 95; Zet Cen ; 2.55; 26000;occ; 81; 0; 9249
27; -154.0; 07-DEC-2003 06:43:05; Dark ; 41.0; 77; Eps Cen ; 2.30; 28000;occ; 82; 0; 9249
28; -71.9; 07-DEC-2003 06:44:27; Dark ; 43.0; 4; Alp1Cen ;-0.01; 5800;occ; 86; 0; 9249
29; 31.7; 07-DEC-2003 06:46:11; Dark ; 41.0; 129; Del Cru ; 2.79; 26000;occ; 82; 0; 9250
30; 153.0; 07-DEC-2003 06:48:12; Dark ; 45.5; 113; Mu Vel ; 2.69; 5000;occ; 91; 0; 9250
31; 292.6; 07-DEC-2003 06:50:32; Dark ; 59.5; 0; ; 0.00; 0;occ; 119; 0; 9250
32; 401.5; 07-DEC-2003 06:52:21; Dark ; 44.5; 29; Bet Car ; 1.67; 10200;occ; 89; 0; 9250
33; 534.5; 07-DEC-2003 06:54:34; Dark ; 47.0; 41; Eps Car ; 1.86; 4100;occ; 94; 0; 9250
34; 674.5; 07-DEC-2003 06:56:54; Dark ; 52.5; 34; Gam2Vel ; 1.79; 23000;occ; 105; 0; 9250
35; 791.7; 07-DEC-2003 06:58:51; Dark ; 57.5; 70; Zet Pup ; 2.25; 39000;occ; 115; 0; 9250
36; 981.7; 07-DEC-2003 07:02:01; Dark ; 65.0; 117; Pi Pup ; 2.71; 3800;occ; 130; 0; 9250
37; 1198.2; 07-DEC-2003 07:05:37; Dark ; 61.5; 23; 21Eps CMa ; 1.50; 26000;occ; 123; 0; 9250
38; 1319.1; 07-DEC-2003 07:07:38; Dark ; 63.5; 179; 240mi2CMa ; 3.03; 24000;occ; 127; 0; 9250
39; 1539.1; 07-DEC-2003 07:11:18; Dark ; 83.5; 1; 9Alp CMa ;-1.44; 11000;occ; 167; 0; 9250
40; 1747.5; 07-DEC-2003 07:14:47; Dark ; 61.5; 7; 19Bet Ori ; 0.10; 14000;occ; 123; 0; 9250
/data4_2/GOMOS/level0/GOM_NL_0PNPDK20031207_071517_000058822022_00178_09250_0298.N1
1;-4258.4; 07-DEC-2003 07:15:17; Dark ; 62.0; 7; 19Bet Ori ; 0.10; 14000;occ; 124; 60; 9250
2;-4046.8; 07-DEC-2003 07:18:48; Dark ; 47.5; 94; 92Alp Cet ; 2.53; 3100;occ; 95; 0; 9250
3;-3829.1; 07-DEC-2003 07:22:26; Dark ; 58.0; 13; 87Alp Tau ; 0.87; 3800;occ; 116; 0; 9250
4;-3680.8; 07-DEC-2003 07:24:54; Bright; 40.5; 50; 13Alp Ari ; 2.01; 4250;occ; 81; 0; 9250
5;-3581.1; 07-DEC-2003 07:26:34; Bright; 40.5; 150; 44Zet Per ; 2.89; 28000;occ; 81; 0; 9250
6;-3497.2; 07-DEC-2003 07:27:58; Bright; 37.5; 173; 4Bet Tri ; 3.00; 8900;occ; 75; 0; 9250
7;-3375.9; 07-DEC-2003 07:29:59; Bright; 41.0; 73; 57Gam1And ; 2.26; 13100;occ; 82; 0; 9250
8;-3284.9; 07-DEC-2003 07:31:30; Bright; 43.0; 35; 33Alp Per ; 1.79; 6250;occ; 86; 0; 9250
9;-3152.5; 07-DEC-2003 07:33:43; Bright; 48.5; 42; 34Bet Aur ; 1.90; 10200;occ; 97; 0; 9250
10;-3022.6; 07-DEC-2003 07:35:53; Bright; 38.0; 76; 27Gam Cas ; 2.30; 30000;occ; 76; 0; 9250
11;-2616.9; 07-DEC-2003 07:42:38; Bright; 38.5; 49; 1Alp UMi ; 1.99; 6300;occ; 77; 0; 9250
12;-2333.9; 07-DEC-2003 07:47:21; Bright; 40.5; 60; 7Bet UMi ; 2.08; 3950;occ; 81; 0; 9250
13;-2247.5; 07-DEC-2003 07:48:48; Bright; 46.0; 36; 50Alp UMa ; 1.80; 6300;occ; 92; 0; 9250
14;-2154.6; 07-DEC-2003 07:50:21; Bright; 47.5; 82; 48Bet UMa ; 2.37; 10600;occ; 95; 0; 9250
15;-2032.5; 07-DEC-2003 07:52:23; Bright; 58.0; 32; 77Eps UMa ; 1.76; 11000;occ; 116; 0; 9250
16;-1896.9; 07-DEC-2003 07:54:38; Bright; 38.5; 39; 85Eta UMa ; 1.85; 24000;occ; 77; 0; 9250
17;-1713.4; 07-DEC-2003 07:57:42; Bright; 35.5; 180; 27Gam Boo ; 3.04; 8000;occ; 71; 0; 9250
18;-1529.8; 07-DEC-2003 08:00:45; Bright; 36.5; 83; ; 2.38; 11000;occ; 73; 0; 9250
19;-1343.7; 07-DEC-2003 08:03:52; Bright; 39.0; 111; 8Eta Boo ; 2.68; 6000;occ; 78; 0; 9250
20;-1090.1; 07-DEC-2003 08:08:05; Dark ; 100.0; 96; 68Del Leo ; 2.56; 9300;occ; 200; 0; 9250
21; -862.1; 07-DEC-2003 08:11:53; Dark ; 55.0; 121; 29Gam Vir ; 2.74; 7200;occ; 110; 0; 9250
22; -585.6; 07-DEC-2003 08:16:30; Dark ; 47.5; 169; 46Gam Hya ; 2.99; 4700;occ; 95; 0; 9250
23; -503.1; 07-DEC-2003 08:17:52; Dark ; 53.0; 100; 4Gam Crv ; 2.58; 13100;occ; 106; 0; 9250
24; -380.5; 07-DEC-2003 08:19:55; Dark ; 44.5; 123; Iot Cen ; 2.75; 10200;occ; 89; 0; 9250
25; -265.6; 07-DEC-2003 08:21:50; Dark ; 41.5; 95; Zet Cen ; 2.55; 26000;occ; 83; 0; 9250
26; -154.3; 07-DEC-2003 08:23:41; Dark ; 41.5; 77; Eps Cen ; 2.30; 28000;occ; 83; 0; 9250
27; -72.2; 07-DEC-2003 08:25:03; Dark ; 42.5; 4; Alp1Cen ;-0.01; 5800;occ; 85; 0; 9250
28; 153.9; 07-DEC-2003 08:28:49; Dark ; 46.5; 113; Mu Vel ; 2.69; 5000;occ; 93; 0; 9251
29; 292.9; 07-DEC-2003 08:31:08; Dark ; 59.5; 0; ; 0.00; 0;occ; 119; 0; 9251
30; 403.7; 07-DEC-2003 08:32:59; Dark ; 41.0; 29; Bet Car ; 1.67; 10200;occ; 82; 0; 9251
31; 534.8; 07-DEC-2003 08:35:10; Dark ; 54.0; 41; Eps Car ; 1.86; 4100;occ; 108; 0; 9251
32; 674.2; 07-DEC-2003 08:37:29; Dark ; 49.5; 34; Gam2Vel ; 1.79; 23000;occ; 99; 0; 9251
33; 792.4; 07-DEC-2003 08:39:28; Dark ; 56.0; 70; Zet Pup ; 2.25; 39000;occ; 112; 0; 9251
34; 982.5; 07-DEC-2003 08:42:38; Dark ; 64.5; 117; Pi Pup ; 2.71; 3800;occ; 129; 0; 9251
35; 1198.3; 07-DEC-2003 08:46:14; Dark ; 66.0; 23; 21Eps CMa ; 1.50; 26000;occ; 132; 0; 9251
36; 1319.5; 07-DEC-2003 08:48:15; Dark ; 66.0; 179; 240mi2CMa ; 3.03; 24000;occ; 132; 0; 9251
37; 1539.4; 07-DEC-2003 08:51:55; Dark ; 85.5; 1; 9Alp CMa ;-1.44; 11000;occ; 171; 0; 9251
/data4_2/GOMOS/level0/GOM_NL_0PNPDK20031207_085246_000060342022_00179_09251_0299.N1
1;-4445.0; 07-DEC-2003 08:52:46; Dark ; 86.0; 1; 9Alp CMa ;-1.44; 11000;occ; 172; 103; 9251
2;-4288.5; 07-DEC-2003 08:55:23; Dark ; 51.0; 7; 19Bet Ori ; 0.10; 14000;occ; 102; 0; 9251
3;-4046.5; 07-DEC-2003 08:59:25; Dark ; 49.5; 94; 92Alp Cet ; 2.53; 3100;occ; 99; 0; 9251

```

```

4;-3829.3; 07-DEC-2003 09:03:02; Dark ; 58.0; 13; 87Alp Tau ; 0.87; 3800;occ; 116; 0; 9251
5;-3680.1; 07-DEC-2003 09:05:31; Bright; 40.5; 50; 13Alp Ari ; 2.01; 4250;occ; 81; 0; 9251
6;-3581.2; 07-DEC-2003 09:07:10; Bright; 39.0; 150; 44Zet Per ; 2.89; 28000;occ; 78; 0; 9251
7;-3496.9; 07-DEC-2003 09:08:34; Bright; 36.5; 173; 4Bet Tri ; 3.00; 8900;occ; 73; 0; 9251
8;-3375.6; 07-DEC-2003 09:10:35; Bright; 39.0; 73; 57Gam1And ; 2.26; 13100;occ; 78; 0; 9251
9;-3285.0; 07-DEC-2003 09:12:06; Bright; 42.0; 35; 33Alp Per ; 1.79; 6250;occ; 84; 0; 9251
10;-3153.3; 07-DEC-2003 09:14:18; Bright; 46.0; 42; 34Bet Aur ; 1.90; 10200;occ; 92; 0; 9251
11;-3022.3; 07-DEC-2003 09:16:29; Bright; 38.5; 76; 27Gam Cas ; 2.30; 30000;occ; 77; 0; 9251
12;-2616.9; 07-DEC-2003 09:23:14; Bright; 35.5; 49; 1Alp UMi ; 1.99; 6300;occ; 71; 0; 9251
13;-2333.3; 07-DEC-2003 09:27:58; Bright; 38.5; 60; 7Bet UMi ; 2.08; 3950;occ; 77; 0; 9251
14;-2248.1; 07-DEC-2003 09:29:23; Bright; 47.0; 36; 50Alp UMa ; 1.80; 6300;occ; 94; 0; 9251
15;-2155.0; 07-DEC-2003 09:30:56; Bright; 48.0; 82; 48Bet UMa ; 2.37; 10600;occ; 96; 0; 9251
16;-2032.3; 07-DEC-2003 09:32:59; Bright; 39.5; 32; 77Eps UMa ; 1.76; 11000;occ; 79; 0; 9251
17;-1897.3; 07-DEC-2003 09:35:14; Bright; 37.0; 39; 85Eta UMa ; 1.85; 24000;occ; 74; 0; 9251
18;-1713.6; 07-DEC-2003 09:38:17; Bright; 49.0; 180; 27Gam Boo ; 3.04; 8000;occ; 98; 0; 9251
19;-1529.3; 07-DEC-2003 09:41:22; Bright; 36.0; 83; ; 2.38; 11000;occ; 72; 0; 9251
20;-1343.2; 07-DEC-2003 09:44:28; Bright; 38.5; 111; 8Eta Boo ; 2.68; 6000;occ; 77; 0; 9251
21;-1088.9; 07-DEC-2003 09:48:42; Dark ; 100.0; 96; 68Del Leo ; 2.56; 9300;occ; 200; 0; 9251
22; -861.3; 07-DEC-2003 09:52:30; Dark ; 56.0; 121; 29Gam Vir ; 2.74; 7200;occ; 112; 0; 9251
23; -585.1; 07-DEC-2003 09:57:06; Dark ; 44.5; 169; 46Gam Hya ; 2.99; 4700;occ; 89; 0; 9251
24; -502.4; 07-DEC-2003 09:58:29; Dark ; 54.0; 100; 4Gam Crv ; 2.58; 13100;occ; 108; 0; 9251
25; -380.5; 07-DEC-2003 10:00:31; Dark ; 42.5; 123; Iot Cen ; 2.75; 10200;occ; 85; 0; 9251
26; -265.3; 07-DEC-2003 10:02:26; Dark ; 40.5; 95; Zet Cen ; 2.55; 26000;occ; 81; 0; 9251
27; -153.9; 07-DEC-2003 10:04:17; Dark ; 41.0; 77; Eps Cen ; 2.30; 28000;occ; 82; 0; 9251
28; -72.1; 07-DEC-2003 10:05:39; Dark ; 43.0; 4; Alp1Cen ; -0.01; 5800;occ; 86; 0; 9251
29; 154.0; 07-DEC-2003 10:09:25; Dark ; 48.5; 113; Mu Vel ; 2.69; 5000;occ; 97; 0; 9252
30; 293.2; 07-DEC-2003 10:11:44; Dark ; 59.5; 0; ; 0.00; 0;occ; 119; 0; 9252
31; 402.3; 07-DEC-2003 10:13:33; Dark ; 42.0; 29; Bet Car ; 1.67; 10200;occ; 84; 0; 9252
32; 535.0; 07-DEC-2003 10:15:46; Dark ; 46.0; 41; Eps Car ; 1.86; 4100;occ; 92; 0; 9252
33; 675.7; 07-DEC-2003 10:18:07; Dark ; 57.0; 34; Gam2Vel ; 1.79; 23000;occ; 114; 0; 9252
34; 793.3; 07-DEC-2003 10:20:04; Dark ; 54.0; 70; Zet Pup ; 2.25; 39000;occ; 108; 0; 9252
35; 981.3; 07-DEC-2003 10:23:12; Dark ; 64.5; 117; Pi Pup ; 2.71; 3800;occ; 129; 0; 9252
36; 1199.3; 07-DEC-2003 10:26:50; Dark ; 66.0; 23; 21Eps CMa ; 1.50; 26000;occ; 132; 0; 9252
37; 1319.5; 07-DEC-2003 10:28:51; Dark ; 65.0; 179; 240mi2CMa ; 3.03; 24000;occ; 130; 0; 9252
38; 1539.0; 07-DEC-2003 10:32:30; Dark ; 51.5; 1; 9Alp CMa ; -1.44; 11000;occ; 103; 0; 9252
/data4_2/GOMOS/level0/GOM_NL_0PNPDK20031207_103230_000060932022_00180_09252_0300.N1
1;-4496.8; 07-DEC-2003 10:32:30; Dark ; 79.0; 1; 9Alp CMa ; -1.44; 11000;occ; 158; 0; 9252
2;-4288.9; 07-DEC-2003 10:35:58; Dark ; 55.0; 7; 19Bet Ori ; 0.10; 14000;occ; 110; 0; 9252
3;-4045.7; 07-DEC-2003 10:40:01; Dark ; 46.0; 94; 92Alp Cet ; 2.53; 3100;occ; 92; 0; 9252
4;-3829.4; 07-DEC-2003 10:43:37; Dark ; 58.0; 13; 87Alp Tau ; 0.87; 3800;occ; 116; 0; 9252
5;-3679.7; 07-DEC-2003 10:46:07; Bright; 40.5; 50; 13Alp Ari ; 2.01; 4250;occ; 81; 0; 9252
6;-3581.0; 07-DEC-2003 10:47:46; Bright; 37.5; 150; 44Zet Per ; 2.89; 28000;occ; 75; 0; 9252
7;-3497.0; 07-DEC-2003 10:49:10; Bright; 37.0; 173; 4Bet Tri ; 3.00; 8900;occ; 74; 0; 9252
8;-3374.7; 07-DEC-2003 10:51:12; Bright; 40.0; 73; 57Gam1And ; 2.26; 13100;occ; 80; 0; 9252
9;-3283.4; 07-DEC-2003 10:52:44; Bright; 40.0; 35; 33Alp Per ; 1.79; 6250;occ; 80; 0; 9252
10;-3153.8; 07-DEC-2003 10:54:53; Bright; 47.0; 42; 34Bet Aur ; 1.90; 10200;occ; 94; 0; 9252
11;-3021.9; 07-DEC-2003 10:57:05; Bright; 36.0; 76; 27Gam Cas ; 2.30; 30000;occ; 72; 0; 9252
12;-2616.9; 07-DEC-2003 11:03:50; Bright; 39.0; 49; 1Alp UMi ; 1.99; 6300;occ; 78; 0; 9252
13;-2334.0; 07-DEC-2003 11:08:33; Bright; 41.0; 60; 7Bet UMi ; 2.08; 3950;occ; 82; 0; 9252
14;-2248.5; 07-DEC-2003 11:09:58; Bright; 43.0; 36; 50Alp UMa ; 1.80; 6300;occ; 86; 0; 9252
15;-2155.5; 07-DEC-2003 11:11:31; Bright; 49.0; 82; 48Bet UMa ; 2.37; 10600;occ; 98; 0; 9252
16;-2032.4; 07-DEC-2003 11:13:35; Bright; 42.0; 32; 77Eps UMa ; 1.76; 11000;occ; 84; 0; 9252
17;-1896.9; 07-DEC-2003 11:15:50; Bright; 40.0; 39; 85Eta UMa ; 1.85; 24000;occ; 80; 0; 9252
18;-1713.1; 07-DEC-2003 11:18:54; Bright; 36.0; 180; 27Gam Boo ; 3.04; 8000;occ; 72; 0; 9252
19;-1529.5; 07-DEC-2003 11:21:57; Bright; 36.0; 83; ; 2.38; 11000;occ; 72; 0; 9252
20;-1343.2; 07-DEC-2003 11:25:04; Bright; 39.0; 111; 8Eta Boo ; 2.68; 6000;occ; 78; 0; 9252
21;-1087.6; 07-DEC-2003 11:29:19; Dark ; 102.5; 96; 68Del Leo ; 2.56; 9300;occ; 205; 0; 9252
22; -861.0; 07-DEC-2003 11:33:06; Dark ; 54.5; 121; 29Gam Vir ; 2.74; 7200;occ; 109; 0; 9252
23; -584.4; 07-DEC-2003 11:37:42; Dark ; 45.0; 169; 46Gam Hya ; 2.99; 4700;occ; 90; 0; 9252
24; -500.9; 07-DEC-2003 11:39:06; Dark ; 53.5; 100; 4Gam Crv ; 2.58; 13100;occ; 107; 0; 9252
25; -379.0; 07-DEC-2003 11:41:08; Dark ; 42.5; 123; Iot Cen ; 2.75; 10200;occ; 85; 0; 9252
26; -264.4; 07-DEC-2003 11:43:03; Dark ; 39.5; 95; Zet Cen ; 2.55; 26000;occ; 79; 0; 9252
27; -153.1; 07-DEC-2003 11:44:54; Dark ; 41.5; 77; Eps Cen ; 2.30; 28000;occ; 83; 0; 9252
28; -71.5; 07-DEC-2003 11:46:15; Dark ; 44.5; 4; Alp1Cen ; -0.01; 5800;occ; 89; 0; 9252
29; 155.6; 07-DEC-2003 11:50:03; Dark ; 46.5; 113; Mu Vel ; 2.69; 5000;occ; 93; 0; 9253
30; 293.5; 07-DEC-2003 11:52:20; Dark ; 59.5; 0; ; 0.00; 0;occ; 119; 0; 9253
31; 404.4; 07-DEC-2003 11:54:11; Dark ; 42.5; 29; Bet Car ; 1.67; 10200;occ; 85; 0; 9253
32; 536.3; 07-DEC-2003 11:56:23; Dark ; 45.0; 41; Eps Car ; 1.86; 4100;occ; 90; 0; 9253

```

33; 675.9; 07-DEC-2003 11:58:43; Dark ; 49.5; 34; Gam2Vel ; 1.79; 23000;occ; 99; 0; 9253
34; 794.3; 07-DEC-2003 12:00:41; Dark ; 55.0; 70; Zet Pup ; 2.25; 39000;occ; 110; 0; 9253
35; 983.8; 07-DEC-2003 12:03:51; Dark ; 55.5; 117; Pi Pup ; 2.71; 3800;occ; 111; 0; 9253
36; 1199.5; 07-DEC-2003 12:07:26; Dark ; 63.5; 23; 21Eps CMa ; 1.50; 26000;occ; 127; 0; 9253
37; 1320.3; 07-DEC-2003 12:09:27; Dark ; 64.5; 179; 24Omi2CMa ; 3.03; 24000;occ; 129; 0; 9253
38; 1539.4; 07-DEC-2003 12:13:06; Dark ; 58.0; 1; 9Alp CMa ; -1.44; 11000;occ; 116; 0; 9253