

GOMOS Daily Report 01-DEC-2003

SUMMARY

[1. General Info](#)

[2. Summary of products arrived in PCF \(Product Control Facility\)](#)

[2.1 Level 0 products arrived in PCF during actual month \(see template \[here\]\(#\)\)](#)

[2.2 Level 1 products arrived in PCF during reporting period](#)

[3. Plot of Spectrometers and Photometers temperatures](#)

[4. Dark Charge monitoring](#)

[4.1 Products that did not use the Dark Sky Area observation for DC computation](#)

[4.2 Plot of Dark Charge](#)

[5. Demodulation correction and quality product information monitoring](#)

[5.1 Percentage of products with some flags set](#)

[5.2 Plot of quality information per product](#)

[6. Star tangent altitude lost](#)

[6.1 Statistics on star tangent altitude lost](#)

[6.2 Plot of star tangent altitude lost: DARK products](#)

[6.3 Plot of star tangent altitude lost: BRIGHT products](#)

[7. Statistics on SATU Noise Equivalent Angle](#)

1. General Info

This report presents the daily analysis on parameters extracted from GOMOS level 1b data (GOM_TRA_1P). It is intended to monitor some important parameters that will impact the quality of the level 2 products as the Spectrometers and Photometers CCD Temperatures and Dark Charge, SATU noise equivalent angle... A list of level 0 products (and content) that have arrived during the actual month to the PCF is also given.

Item	Value
Time of report generation	02DEC2003 09:05:06
Data source version	<Any version>
Start time of products	01-DEC-2003 (01DEC2003 00:00:00)
Stop time of products	02-DEC-2003 (02DEC2003 00:00:00)
Store outputs flag	1
Nb of level 1b prods	49
Nb of prods with errors	0

2. Summary of products arrived in PCF

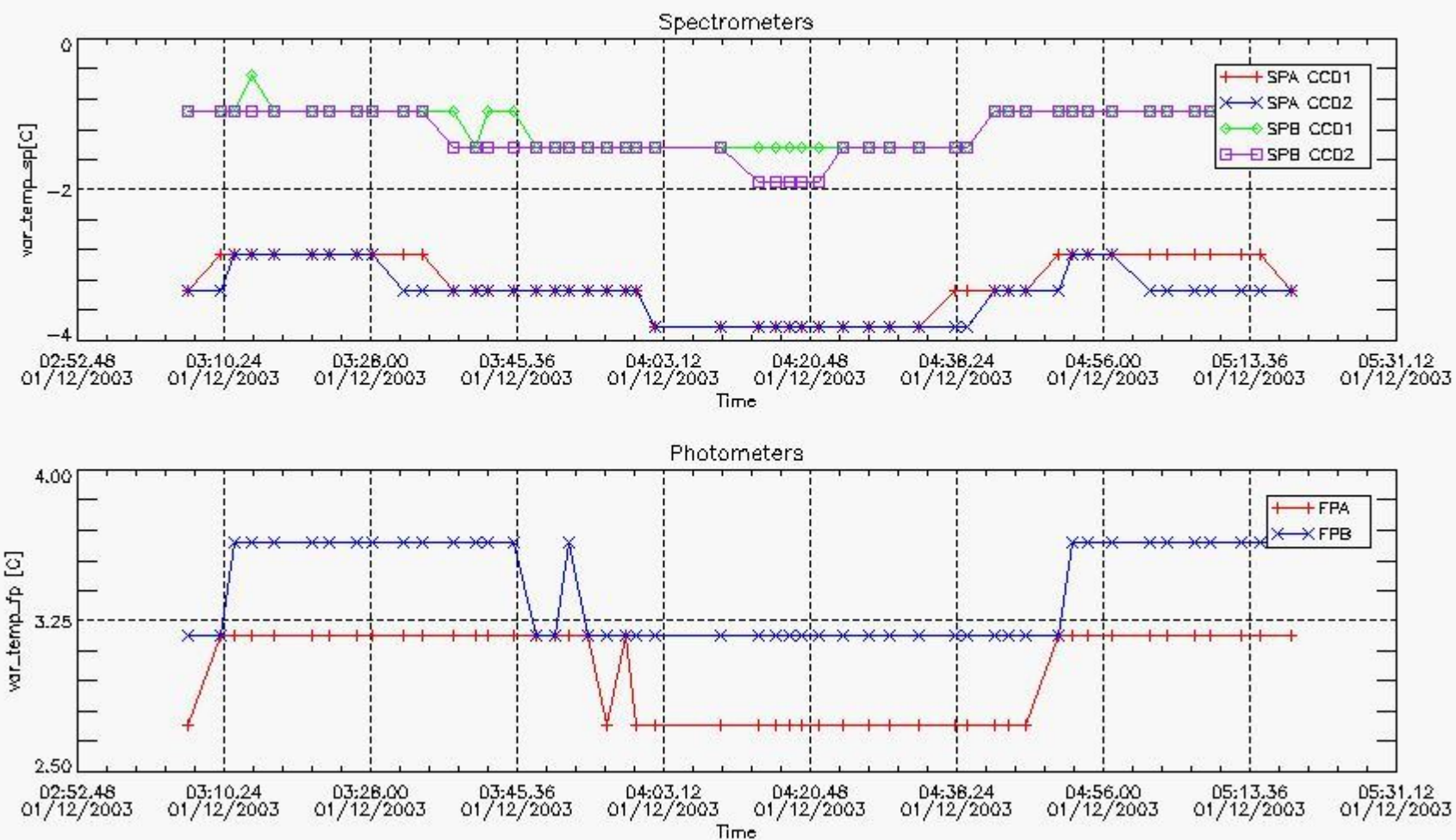
[2.1 Level 0 products arrived in PCF \(see template \[here\]\(#\)\)](#)

[2.2 Summary of processed GOM_TRA_1P products.](#)

Filename	UTC Start time	Limb	Duration	Star Id	Star Name	Star Mag	Star Temp	Nb Meas	Orbit	Prod. error
----------	----------------	------	----------	---------	-----------	----------	-----------	---------	-------	-------------

GOM_TRA_1PNPDE20031201_030600_000000422022_00089_09161_0026.N1	01-DEC-2003 03:06:00	Dark	42.000	123	lot Cen	2.7500	10200.	84	9161	No
GOM_TRA_1PNPDE20031201_031003_000000402022_00089_09161_0027.N1	01-DEC-2003 03:10:03	Dark	40.000	77	Eps Cen	2.3030	28000.	80	9161	No
GOM_TRA_1PNPDE20031201_031142_000000512022_00089_09161_0028.N1	01-DEC-2003 03:11:42	Dark	51.000	10	Bet Cen	0.61000	28000.	102	9161	No
GOM_TRA_1PNPDE20031201_031336_000000402022_00090_09162_0029.N1	01-DEC-2003 03:13:36	Dark	40.000	12	Alp1Cru	0.77500	30000.	80	9162	No
GOM_TRA_1PNPDE20031201_031619_000000412022_00090_09162_0030.N1	01-DEC-2003 03:16:19	Dark	40.500	124	The Car	2.7640	30000.	81	9162	No
GOM_TRA_1PNPDE20031201_032059_000000472022_00090_09162_0031.N1	01-DEC-2003 03:20:59	Dark	46.500	41	Eps Car	1.8600	4100.0	93	9162	No
GOM_TRA_1PNPDE20031201_032257_000000492022_00090_09162_0032.N1	01-DEC-2003 03:22:57	Dark	49.000	34	Gam2Vel	1.7930	23000.	98	9162	No
GOM_TRA_1PNPDE20031201_032620_000000582022_00090_09162_0033.N1	01-DEC-2003 03:26:20	Dark	58.000	2	Alp Car	-0.73600	7000.0	116	9162	No
GOM_TRA_1PNPDE20031201_032811_000000672022_00090_09162_0034.N1	01-DEC-2003 03:28:11	Dark	66.500	117	Pi Pup	2.7060	3800.0	133	9162	No
GOM_TRA_1PNPDE20031201_033201_000000732022_00090_09162_0035.N1	01-DEC-2003 03:32:01	Dark	73.000	23	21Eps CMa	1.5020	26000.	146	9162	No
GOM_TRA_1PNPDE20031201_033410_000000722022_00090_09162_0036.N1	01-DEC-2003 03:34:10	Dark	72.000	179	24Omi2CMa	3.0320	24000.	144	9162	No
GOM_TRA_1PNPDE20031201_033801_000000682022_00090_09162_0000.N1	01-DEC-2003 03:38:01	Dark	68.000	47	2Bet CMa	1.9760	28000.	136	9162	No
GOM_TRA_1PNPDE20031201_034035_000000482022_00090_09162_0001.N1	01-DEC-2003 03:40:35	Dark	47.500	165	34Gam Eri	2.9500	3200.0	95	9162	No
GOM_TRA_1PNPDE20031201_034209_000000692022_00090_09162_0002.N1	01-DEC-2003 03:42:09	Dark	69.000	7	19Bet Ori	0.10000	14000.	138	9162	No
GOM_TRA_1PNPDE20031201_034512_000000672022_00090_09162_0003.N1	01-DEC-2003 03:45:12	Dark	66.500	30	46Eps Ori	1.6940	30000.	133	9162	No
GOM_TRA_1PNPDE20031201_034756_000000622022_00090_09162_0004.N1	01-DEC-2003 03:47:56	Dark	61.500	27	24Gam Ori	1.6360	26000.	123	9162	No
GOM_TRA_1PNPDE20031201_035010_000000552022_00090_09162_0005.N1	01-DEC-2003 03:50:10	Bright	54.500	13	87Alp Tau	0.86700	3800.0	109	9162	No
GOM_TRA_1PNPDE20031201_035143_000000442022_00090_09162_0006.N1	01-DEC-2003 03:51:43	Bright	44.000	146	25Eta Tau	2.8730	15200.	88	9162	No
GOM_TRA_1PNPDE20031201_035407_000000412022_00090_09162_0007.N1	01-DEC-2003 03:54:07	Bright	40.500	150	44Zet Per	2.8900	28000.	81	9162	No
GOM_TRA_1PNPDE20031201_035622_000000392022_00090_09162_0008.N1	01-DEC-2003 03:56:22	Bright	38.500	79	26Bet Per	2.3100	13100.	77	9162	No
GOM_TRA_1PNPDE20031201_035835_000000392022_00090_09162_0009.N1	01-DEC-2003 03:58:35	Bright	39.000	175	39Del Per	3.0100	19400.	78	9162	No
GOM_TRA_1PNPDE20031201_035954_000000372022_00090_09162_0010.N1	01-DEC-2003 03:59:54	Bright	37.000	160	23Gam Per	2.9300	4700.0	74	9162	No
GOM_TRA_1PNPDE20031201_040213_000000382022_00090_09162_0011.N1	01-DEC-2003 04:02:13	Bright	37.500	110	37Del Cas	2.6780	8900.0	75	9162	No
GOM_TRA_1PNPDE20031201_040957_000000392022_00090_09162_0012.N1	01-DEC-2003 04:09:57	Bright	38.500	49	1Alp UMi	1.9900	6300.0	77	9162	No
GOM_TRA_1PNPDE20031201_041437_000000392022_00090_09162_0013.N1	01-DEC-2003 04:14:37	Bright	39.000	60	7Bet UMi	2.0810	3950.0	78	9162	No
GOM_TRA_1PNPDE20031201_041639_000000462022_00090_09162_0014.N1	01-DEC-2003 04:16:39	Bright	46.000	36	50Alp UMa	1.8000	6300.0	92	9162	No
GOM_TRA_1PNPDE20031201_041816_000000452022_00090_09162_0015.N1	01-DEC-2003 04:18:16	Bright	44.500	82	48Bet UMa	2.3650	10600.	89	9162	No
GOM_TRA_1PNPDE20031201_041951_000000392022_00090_09162_0016.N1	01-DEC-2003 04:19:51	Bright	38.500	32	77Eps UMa	1.7630	11000.	77	9162	No
GOM_TRA_1PNPDE20031201_042155_000000402022_00090_09162_0017.N1	01-DEC-2003 04:21:55	Bright	39.500	39	85Eta UMa	1.8540	24000.	79	9162	No
GOM_TRA_1PNPDE20031201_042449_000000362022_00090_09162_0018.N1	01-DEC-2003 04:24:49	Bright	35.500	180	27Gam Boo	3.0400	8000.0	71	9162	No
GOM_TRA_1PNPDE20031201_042749_000000372022_00090_09162_0019.N1	01-DEC-2003 04:27:49	Bright	36.500	83		2.3780	11000.	73	9162	No
GOM_TRA_1PNPDE20031201_043021_000000352022_00090_09162_0020.N1	01-DEC-2003 04:30:21	Bright	35.000	3	16Alp Boo	-0.050000	4250.0	70	9162	No
GOM_TRA_1PNPDE20031201_043356_000000702022_00090_09162_0021.N1	01-DEC-2003 04:33:56	Bright	70.000	96	68Del Leo	2.5600	9300.0	140	9162	No
GOM_TRA_1PNPDE20031201_043813_000000452022_00090_09162_0022.N1	01-DEC-2003 04:38:13	Bright	45.000	121	29Gam Vir	2.7400	7200.0	90	9162	No
GOM_TRA_1PNPDE20031201_043941_000000412022_00090_09162_0023.N1	01-DEC-2003 04:39:41	Bright	40.500	15	67Alp Vir	0.97600	28000.	81	9162	No
GOM_TRA_1PNPDE20031201_044258_000000482022_00090_09162_0024.N1	01-DEC-2003 04:42:58	Dark	48.000	163	7Del Crv	2.9450	11000.	96	9162	No
GOM_TRA_1PNPDE20031201_044436_000000502022_00090_09162_0025.N1	01-DEC-2003 04:44:36	Dark	49.500	106	9Bet Crv	2.6480	5600.0	99	9162	No
GOM_TRA_1PNPDE20031201_044637_000000422022_00090_09162_0026.N1	01-DEC-2003 04:46:37	Dark	42.000	123	lot Cen	2.7500	10200.	84	9162	No
GOM_TRA_1PNPDE20031201_045039_000000422022_00090_09162_0027.N1	01-DEC-2003 04:50:39	Dark	41.500	77	Eps Cen	2.3030	28000.	83	9162	No
GOM_TRA_1PNPDE20031201_045218_000000512022_00090_09162_0028.N1	01-DEC-2003 04:52:18	Dark	50.500	10	Bet Cen	0.61000	28000.	101	9162	No
GOM_TRA_1PNPDE20031201_045413_000000432022_00091_09163_0029.N1	01-DEC-2003 04:54:13	Dark	42.500	12	Alp1Cru	0.77500	30000.	85	9163	No
GOM_TRA_1PNPDE20031201_045656_000000402022_00091_09163_0030.N1	01-DEC-2003 04:56:56	Dark	39.500	124	The Car	2.7640	30000.	79	9163	No
GOM_TRA_1PNPDE20031201_050135_000000452022_00091_09163_0031.N1	01-DEC-2003 05:01:35	Dark	45.000	41	Eps Car	1.8600	4100.0	90	9163	No
GOM_TRA_1PNPDE20031201_050334_000000502022_00091_09163_0032.N1	01-DEC-2003 05:03:34	Dark	50.000	34	Gam2Vel	1.7930	23000.	100	9163	No
GOM_TRA_1PNPDE20031201_050657_000000572022_00091_09163_0033.N1	01-DEC-2003 05:06:57	Dark	57.000	2	Alp Car	-0.73600	7000.0	114	9163	No
GOM_TRA_1PNPDE20031201_050848_000000582022_00091_09163_0034.N1	01-DEC-2003 05:08:48	Dark	58.000	117	Pi Pup	2.7060	3800.0	116	9163	No
GOM_TRA_1PNPDE20031201_051237_000000682022_00091_09163_0035.N1	01-DEC-2003 05:12:37	Dark	67.500	23	21Eps CMa	1.5020	26000.	135	9163	No
GOM_TRA_1PNPDE20031201_051447_000000742022_00091_09163_0036.N1	01-DEC-2003 05:14:47	Dark	74.000	179	24Omi2CMa	3.0320	24000.	148	9163	No
GOM_TRA_1PNPDE20031201_051837_000000712022_00091_09163_0037.N1	01-DEC-2003 05:18:37	Dark	71.000	47	2Bet CMa	1.9760	28000.	142	9163	No

3. Plot of GOMOS spectrometers and photometers temperatures from level 1b data



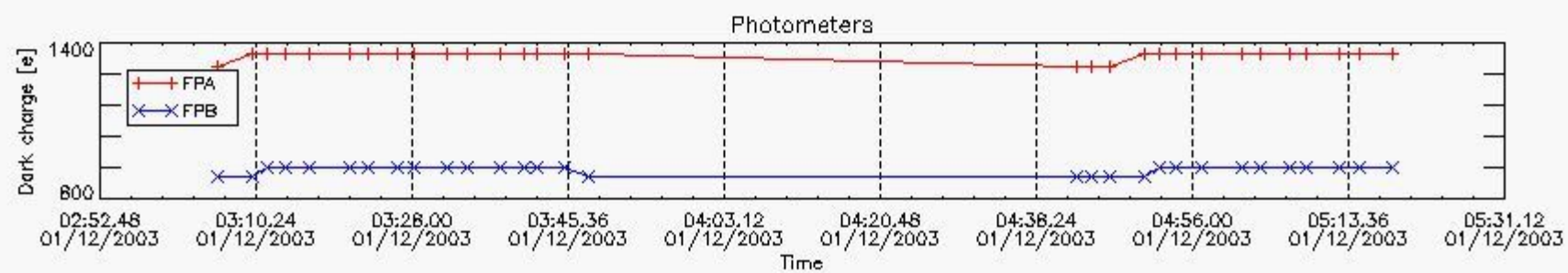
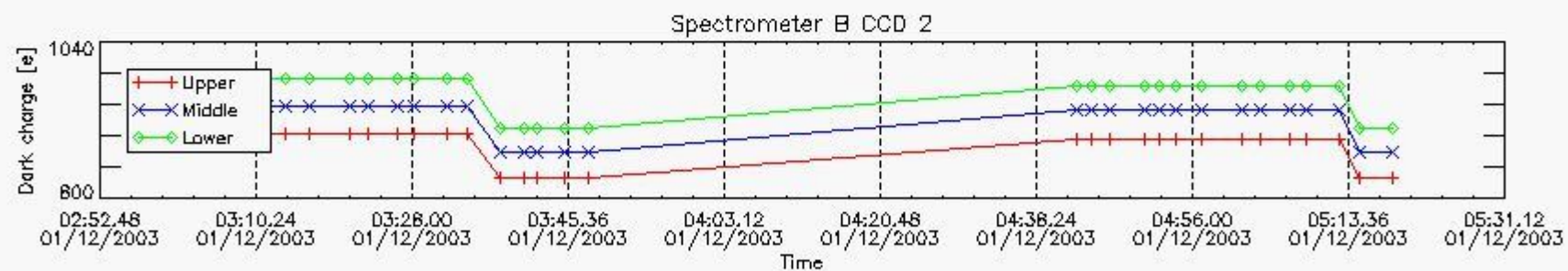
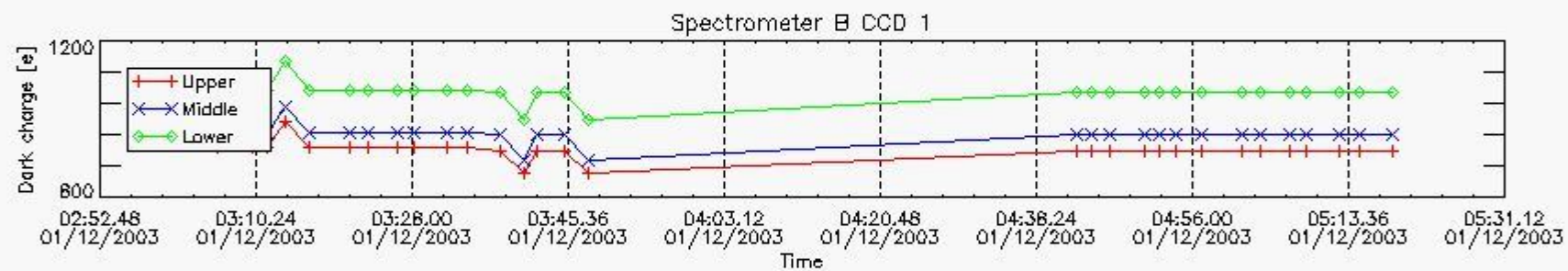
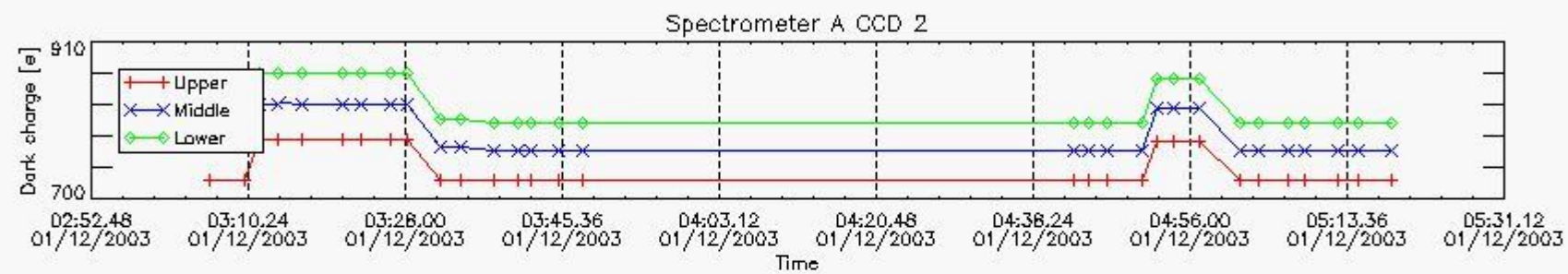
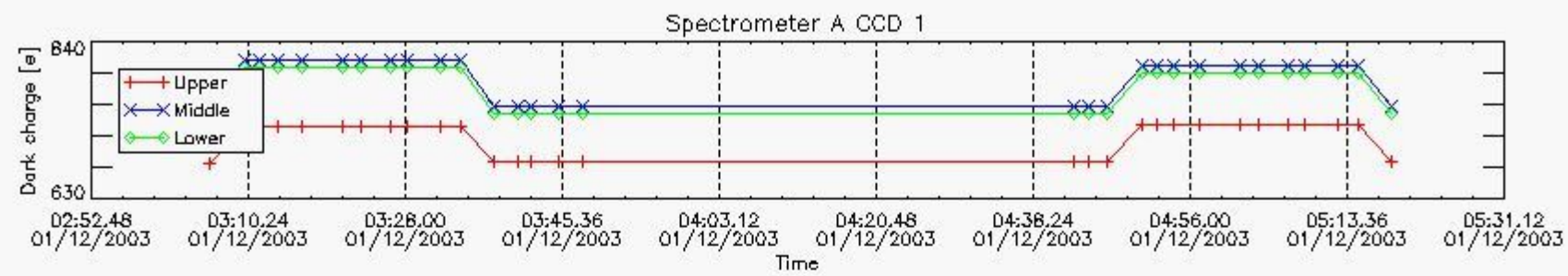
4. Overview of dark signal processing per product

The Dark Charge (DC) is a temperature-dependant signal added to the useful measurements and it is therefore subtracted from them during the processing. There are two phenomena that produce a continuous increase of the DC: the "hot pixels" (a pixel is "hot" when its DC exceeds by a significant amount its value measured on ground at the same temperature) and the "Random Telegraphic Signal" (abrupt change positive or negative of the CCD pixel signal, random in time, affecting only the DC part of the signal and not the photon generated signal).

In this chapter a list of products that did not use the Dark Sky Area (DSA) observation for the DC computation is given. It is also provided the mean DC plot per product for dark limb products with no error flag set.

4.1 All products used the DSA observation for the DC computation

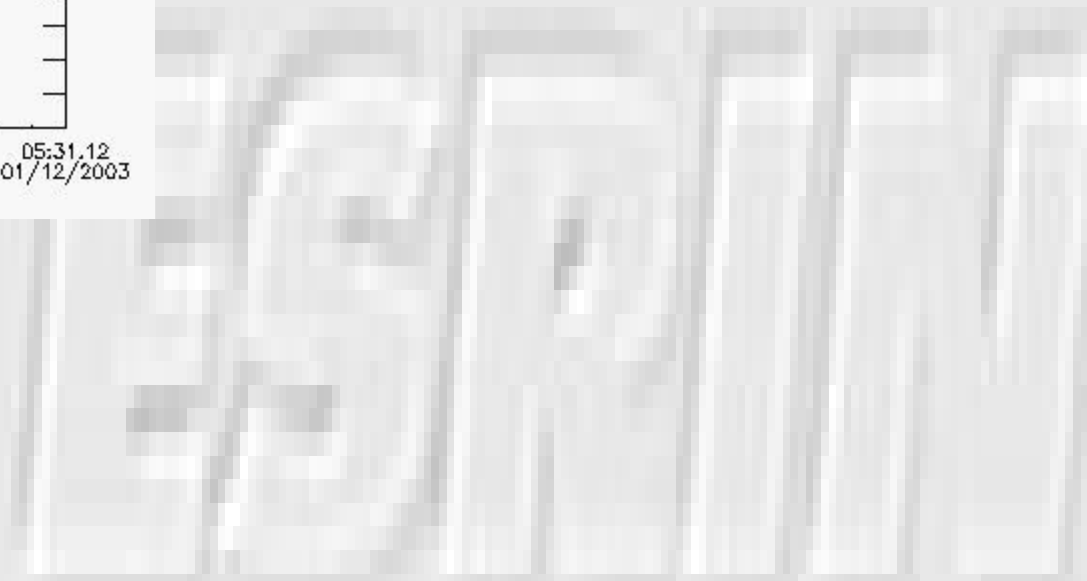
4.2 Plot of mean dark charges per product: only products in DARK limb conditions without errors are used



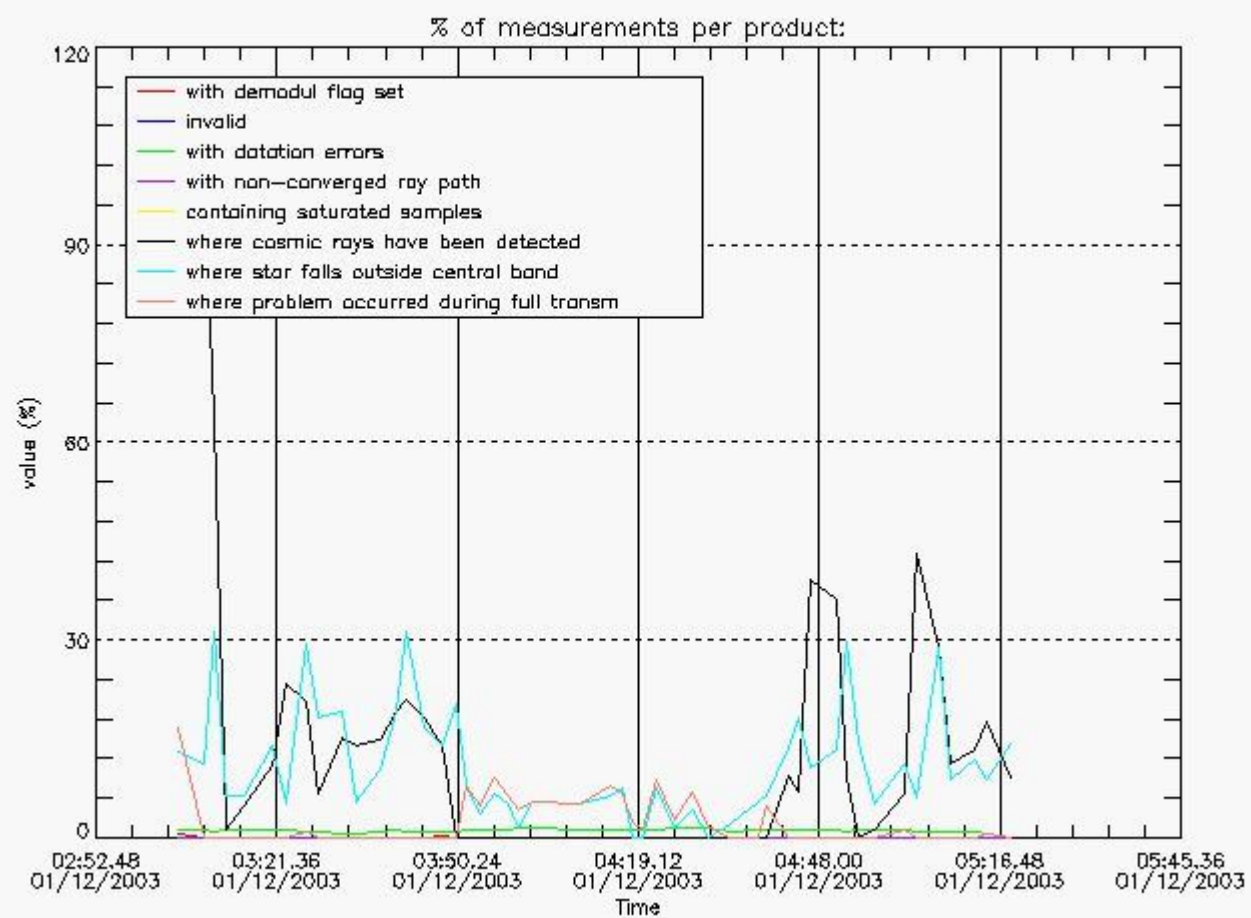
5. Demodulation flag and quality information monitoring

5.1 Percentage of products during reporting period with:

At least one measurement with demodulation flag set:	12.2449 %
Reference spectrum computed from DB:	0.00000 %
Reference spectrum with small number of measurements:	0.00000 %
SATU data not used:	0.00000 %



5.2 Plot quality information per product



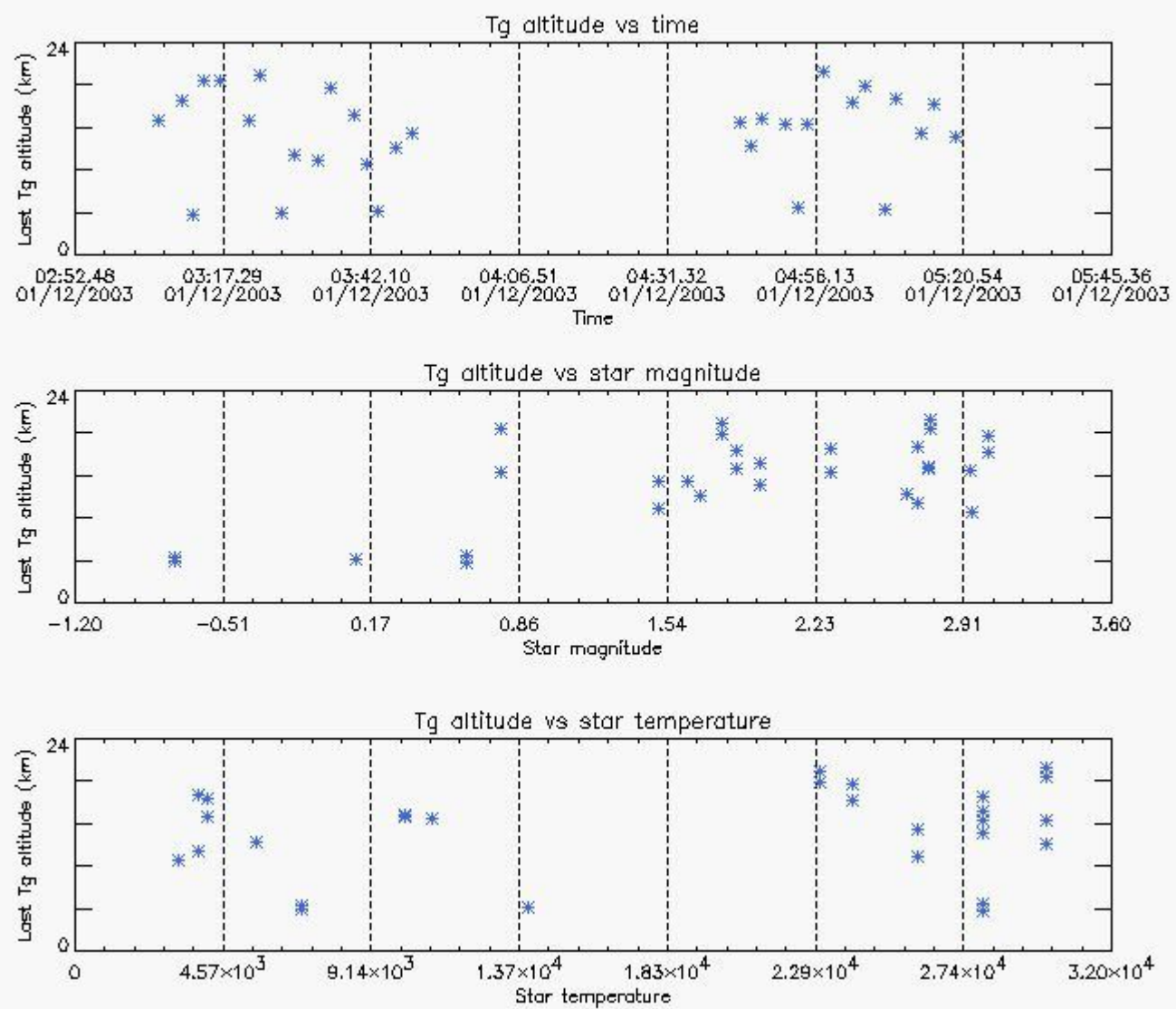
6. Statistics and plot of tangent altitude of the last measurement (DARK & BRIGHT products without errors)

6.1 Statistics on tangent altitude lost:

Statistics	DARK	BRIGHT
Mean:	13.862	21.183
St. deviation:	4.9190	3.5953
Maximum:	20.724	26.664
Minimum:	4.5565	11.031
Number of data:	30.000	19.000

6.2 Plot for DARK limb products

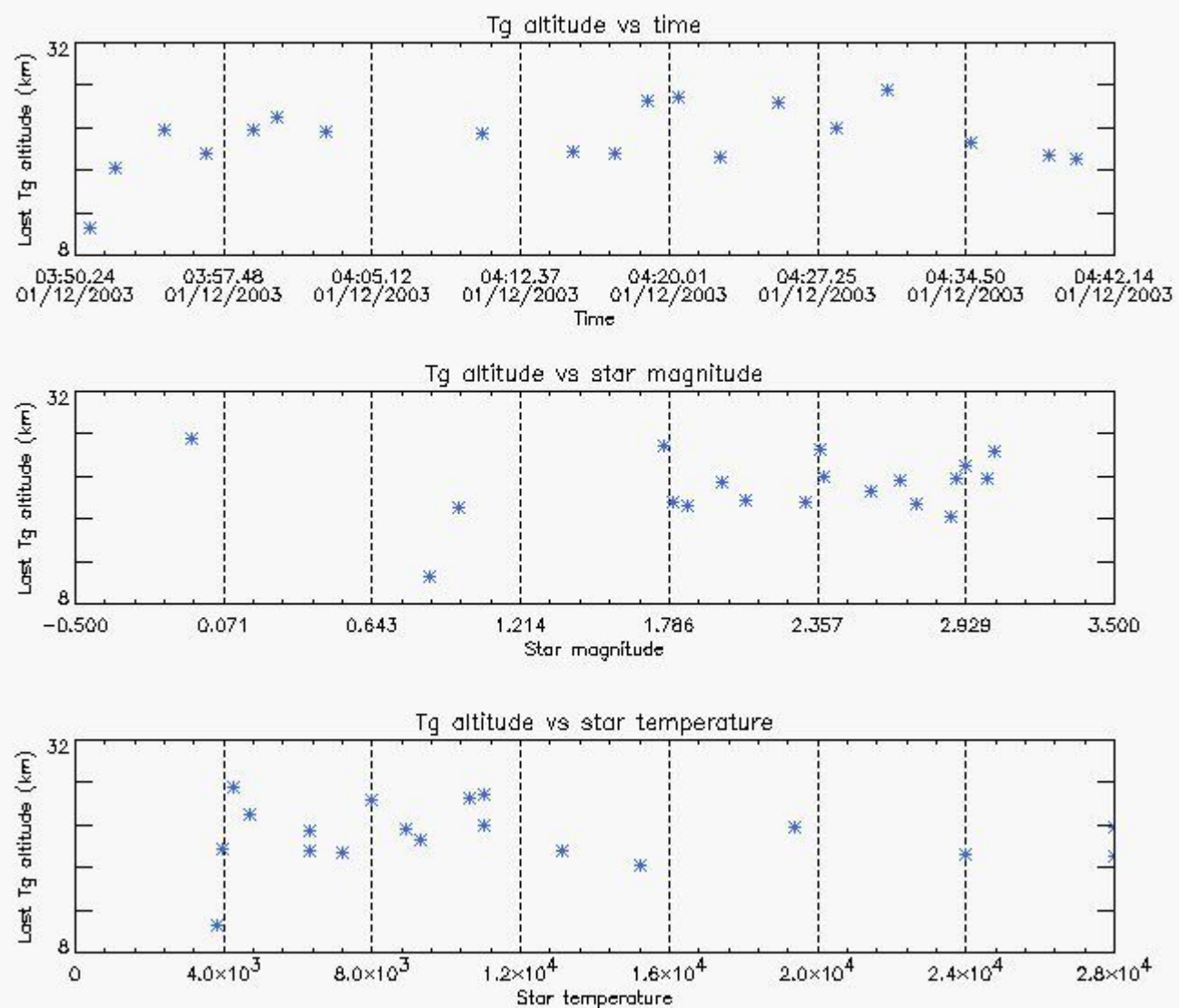
Tangent altitude at which the star is lost



6.3 Plot for BRIGHT limb products



Tangent altitude at which the star is lost



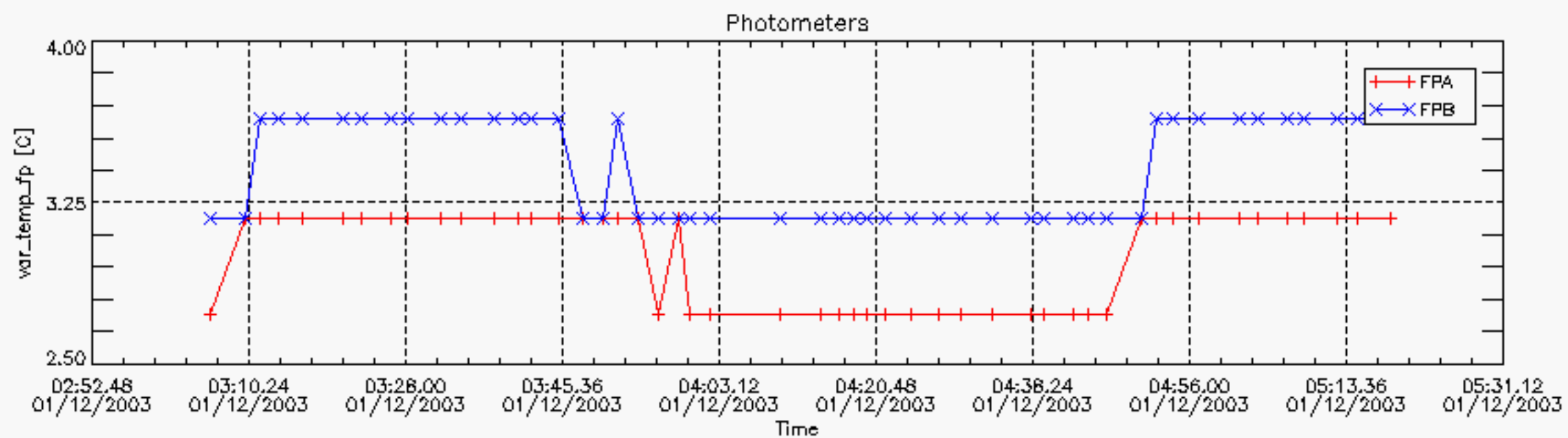
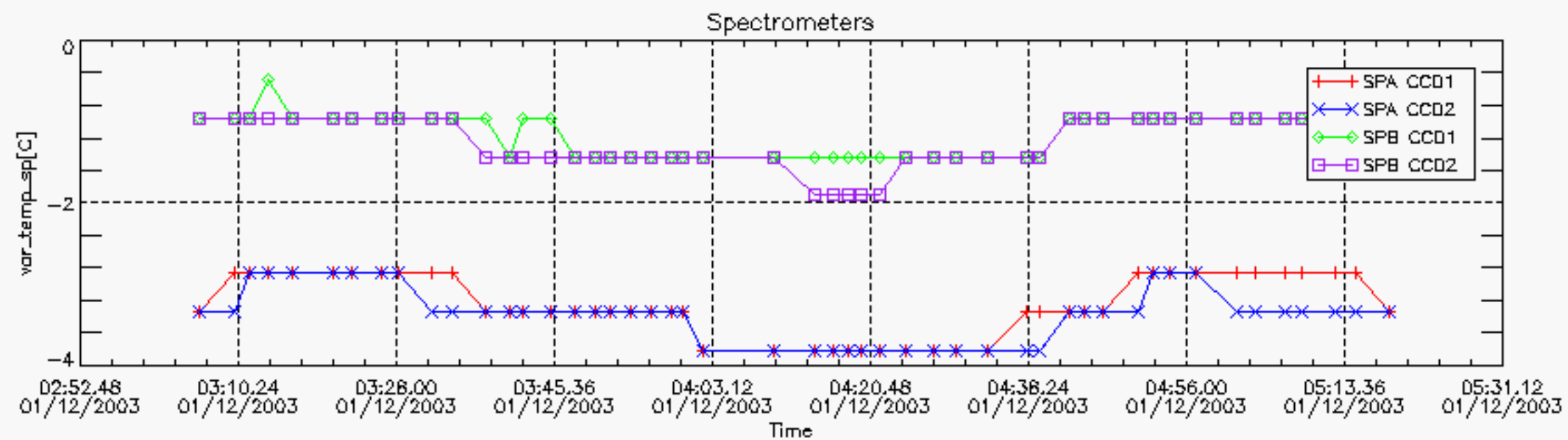
7. Statistics on SATU Noise Equivalent Angle (NEA) for DARK (D) and BRIGHT (B) products above 105 kms

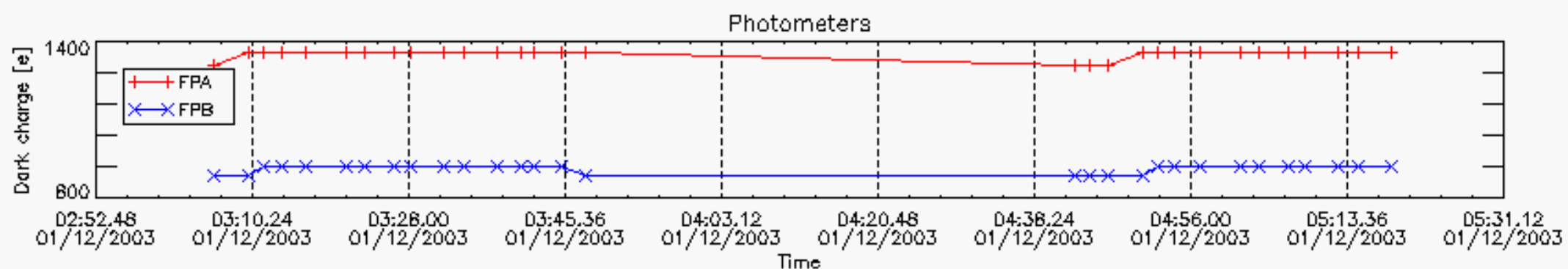
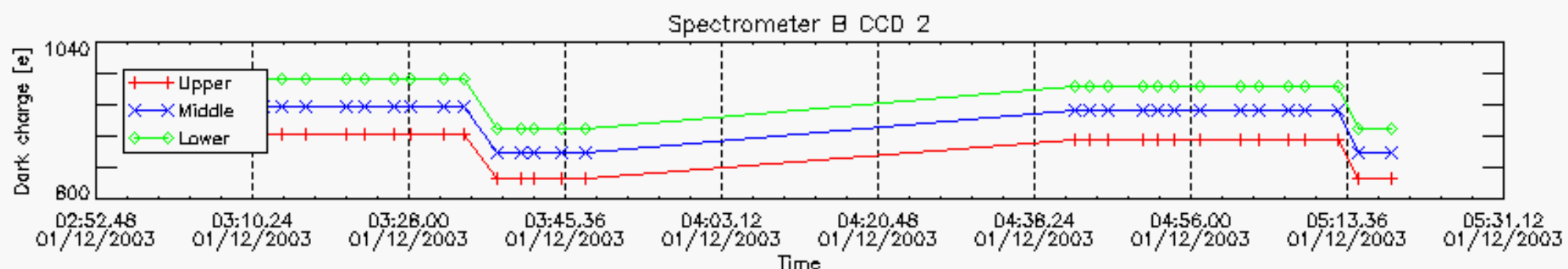
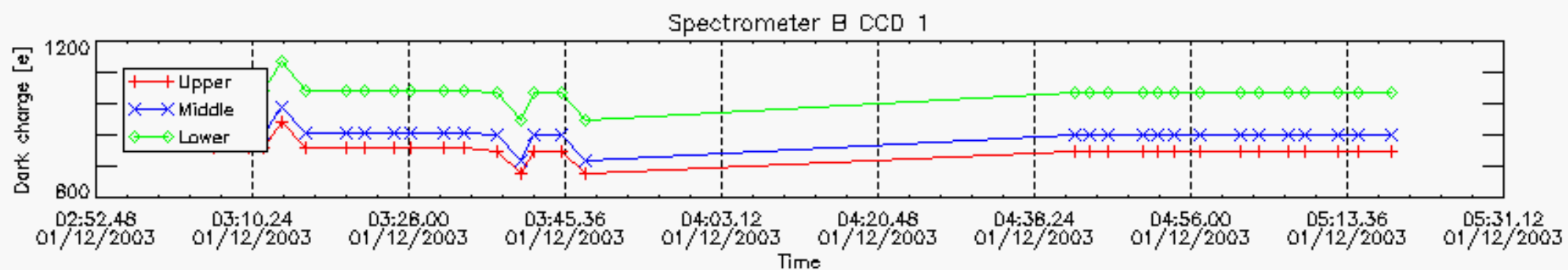
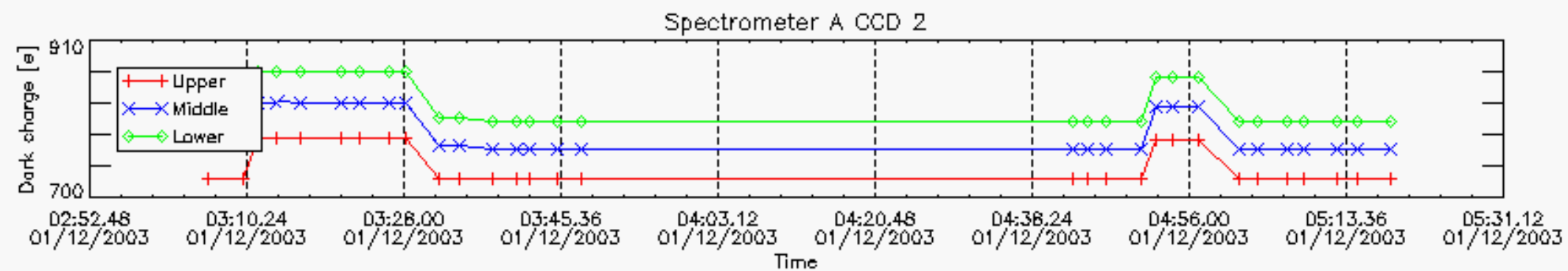
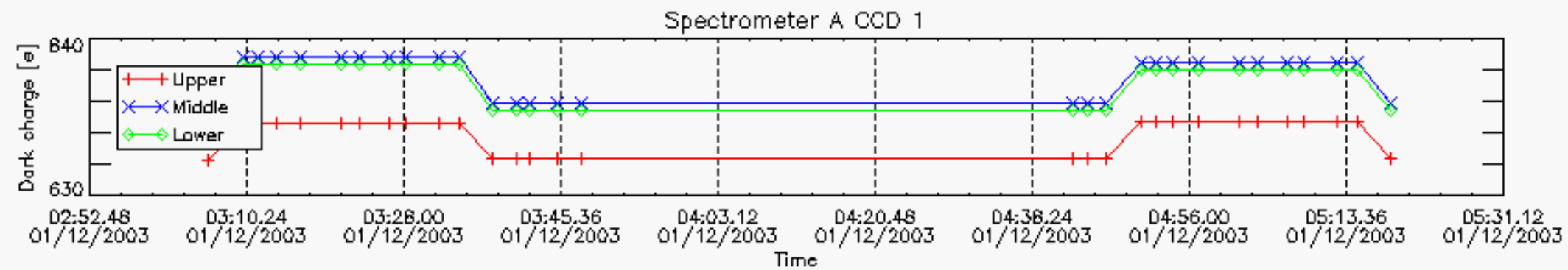
The Star Acquisition and Tracking Unit (it is the CCD that tracks the star while it is occulted) Noise Equivalent Angle consists of the statistical angular variation of the SATU data above the atmosphere. Statistics above 105 km are computed for every occultation, giving four values per occultation: one in the 'X' direction and one in the 'Y' direction for dark and bright limbs. A mean value per day in every direction and limb is calculated and monitored in order to assess instrument performance in terms of star pointing.

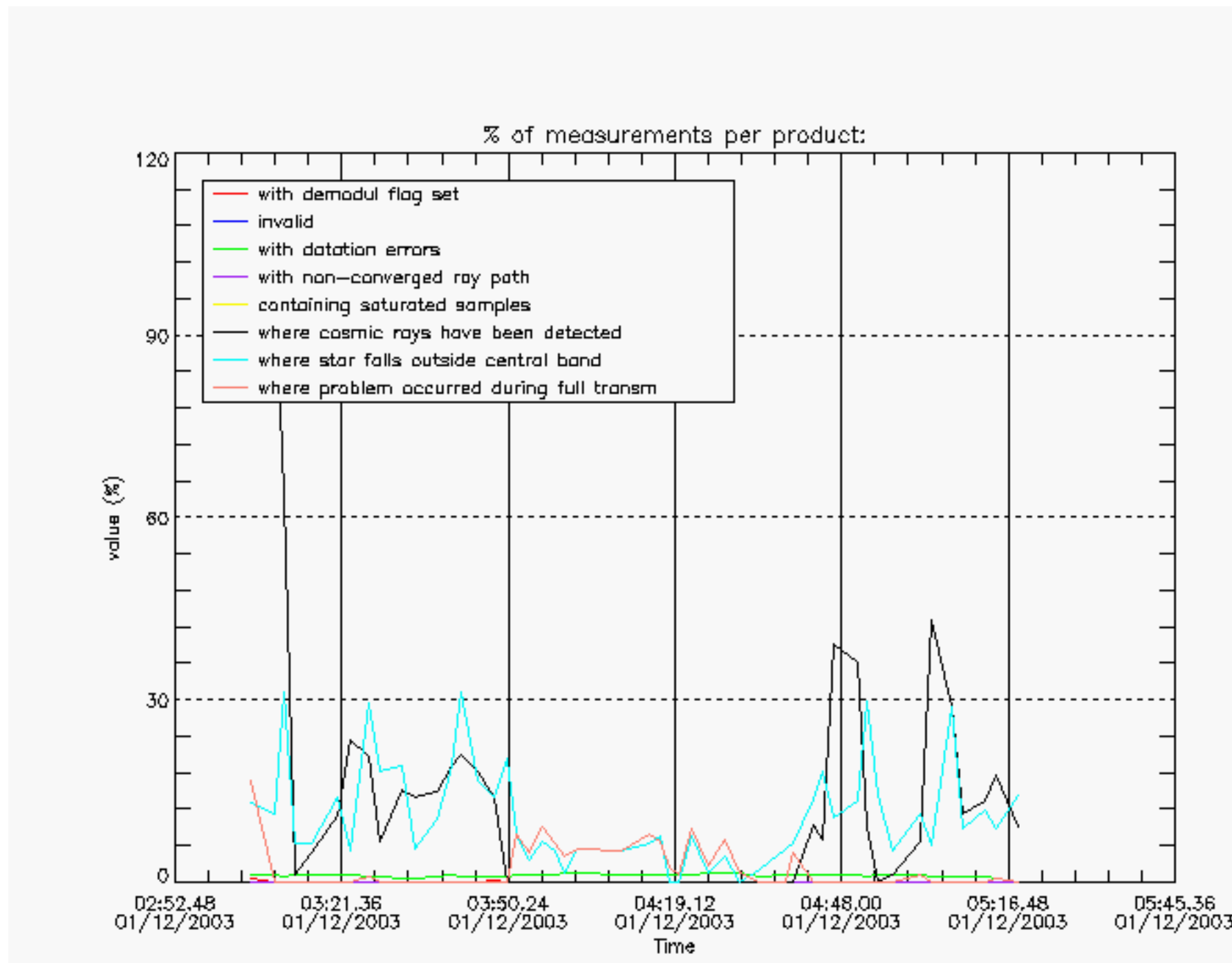
Statistics	SATU X (D)	SATU Y (D)	SATU X (B)	SATU Y (B)
Mean:	1462.2	1447.9	1461.0	1447.5
St. deviation:	5.4738	7.1814	7.6138	9.3770
Maximum:	1515.0	1501.0	1523.0	1501.0
Minimum:	1440.0	1428.0	1449.0	1433.0
Number of data:	38850.	38850.	21650.	21650.



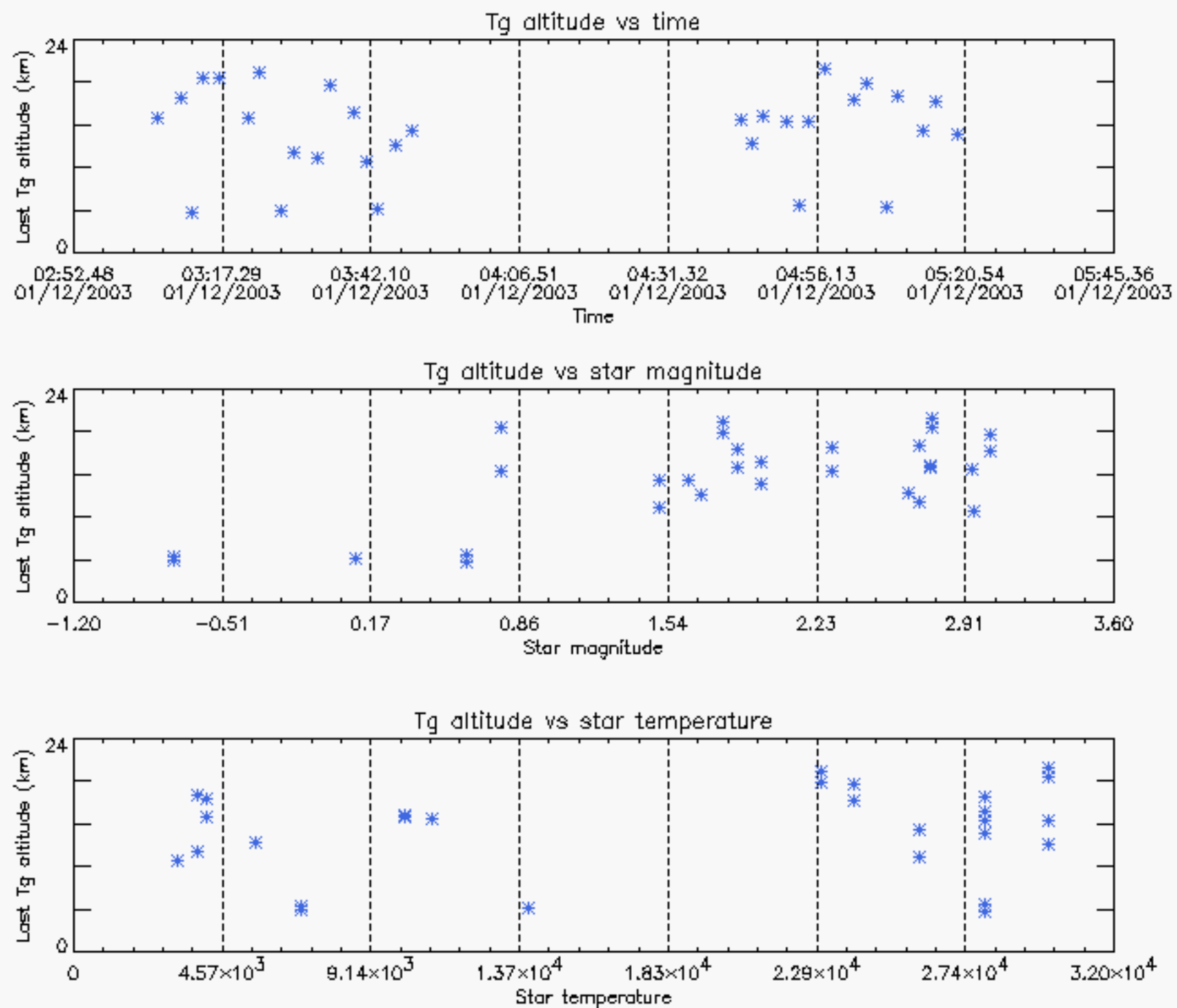




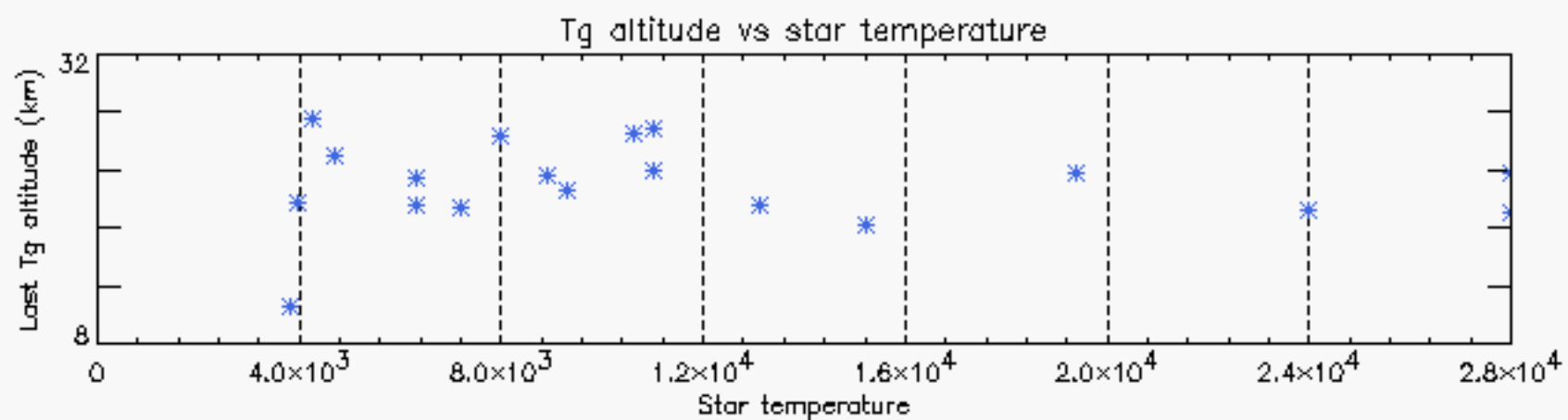
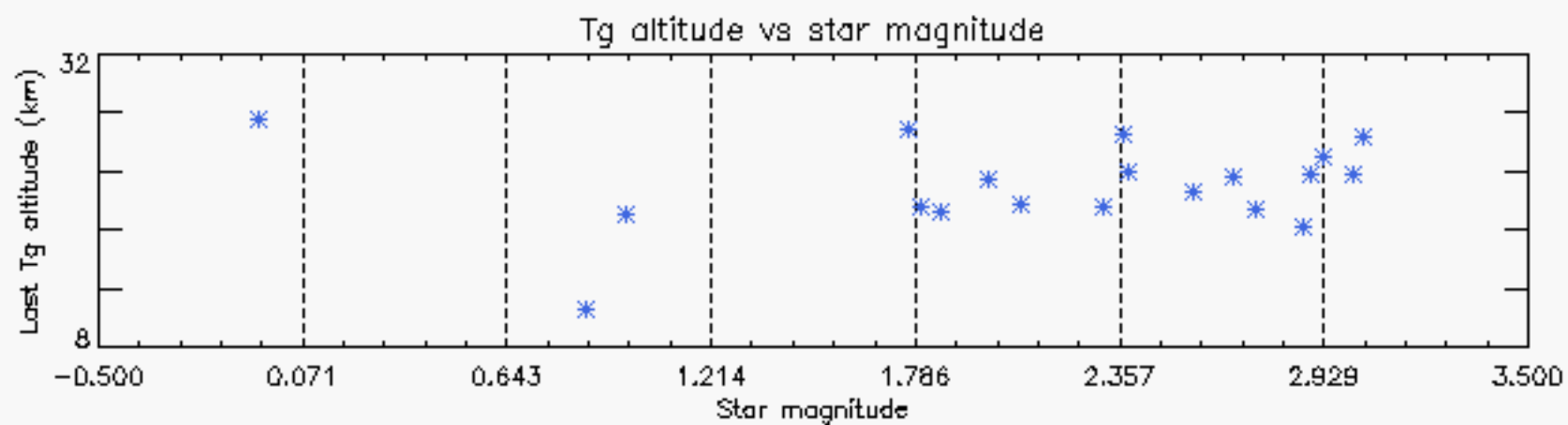
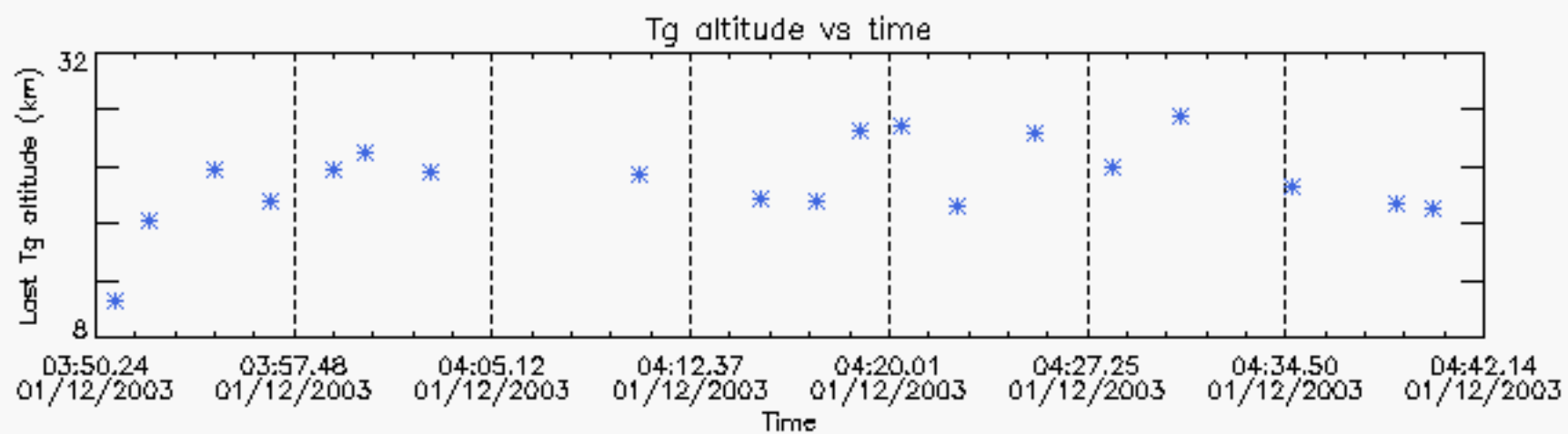




Tangent altitude at which the star is lost



Tangent altitude at which the star is lost



/data4_2/GOMOS/level0/GOM_NL_0PNPDK20031201_052111_000061942022_00091_09163_0248.N1

1;	-4379.2;	01-DEC-2003	05:21:11;	Dark	;	45.0;	165;	34Gam Eri	;	2.95;	3200;occ;	90;	0;	9163
2;	-4285.0;	01-DEC-2003	05:22:45;	Dark	;	62.5;	7;	19Bet Ori	;	0.10;	14000;occ;	125;	0;	9163
3;	-4102.1;	01-DEC-2003	05:25:48;	Dark	;	64.0;	30;	46Eps Ori	;	1.69;	30000;occ;	128;	0;	9163
4;	-3938.0;	01-DEC-2003	05:28:32;	Dark	;	63.0;	27;	24Gam Ori	;	1.64;	26000;occ;	126;	0;	9163
5;	-3804.3;	01-DEC-2003	05:30:46;	Bright;		52.0;	13;	87Alp Tau	;	0.87;	3800;occ;	104;	0;	9163
6;	-3708.7;	01-DEC-2003	05:32:21;	Bright;		40.5;	146;	25Eta Tau	;	2.87;	15200;occ;	81;	0;	9163
7;	-3567.0;	01-DEC-2003	05:34:43;	Bright;		41.5;	150;	44Zet Per	;	2.89;	28000;occ;	83;	0;	9163
8;	-3433.2;	01-DEC-2003	05:36:57;	Bright;		39.0;	79;	26Bet Per	;	2.31;	13100;occ;	78;	0;	9163
9;	-3299.9;	01-DEC-2003	05:39:10;	Bright;		38.5;	175;	39Del Per	;	3.01;	19400;occ;	77;	0;	9163
10;	-3219.4;	01-DEC-2003	05:40:31;	Bright;		37.5;	160;	23Gam Per	;	2.93;	4700;occ;	75;	0;	9163
11;	-3080.2;	01-DEC-2003	05:42:50;	Bright;		36.0;	110;	37Del Cas	;	2.68;	8900;occ;	72;	0;	9163
12;	-2616.4;	01-DEC-2003	05:50:34;	Bright;		39.0;	49;	1Alp UMi	;	1.99;	6300;occ;	78;	0;	9163
13;	-2335.8;	01-DEC-2003	05:55:14;	Bright;		35.0;	60;	7Bet UMi	;	2.08;	3950;occ;	70;	0;	9163
14;	-2215.0;	01-DEC-2003	05:57:15;	Bright;		45.5;	36;	50Alp UMa	;	1.80;	6300;occ;	91;	0;	9163
15;	-2118.3;	01-DEC-2003	05:58:52;	Bright;		47.0;	82;	48Bet UMa	;	2.37;	10600;occ;	94;	0;	9163
16;	-2022.8;	01-DEC-2003	06:00:27;	Bright;		56.0;	32;	77Eps UMa	;	1.76;	11000;occ;	112;	0;	9163
17;	-1898.7;	01-DEC-2003	06:02:31;	Bright;		53.0;	39;	85Eta UMa	;	1.85;	24000;occ;	106;	0;	9163
18;	-1724.9;	01-DEC-2003	06:05:25;	Bright;		52.0;	180;	27Gam Boo	;	3.04;	8000;occ;	104;	0;	9163
19;	-1544.0;	01-DEC-2003	06:08:26;	Bright;		35.5;	83;		;	2.38;	11000;occ;	71;	0;	9163
20;	-1392.6;	01-DEC-2003	06:10:57;	Bright;		35.5;	3;	16Alp Boo	;	-0.05;	4250;occ;	71;	0;	9163
21;	-1177.5;	01-DEC-2003	06:14:32;	Bright;		72.0;	96;	68Del Leo	;	2.56;	9300;occ;	144;	0;	9163
22;	-919.6;	01-DEC-2003	06:18:50;	Bright;		44.5;	121;	29Gam Vir	;	2.74;	7200;occ;	89;	0;	9163
23;	-832.0;	01-DEC-2003	06:20:18;	Bright;		40.0;	15;	67Alp Vir	;	0.98;	28000;occ;	80;	0;	9163
24;	-635.0;	01-DEC-2003	06:23:35;	Dark	;	48.0;	163;	7Del Crv	;	2.94;	11000;occ;	96;	0;	9163
25;	-537.6;	01-DEC-2003	06:25:12;	Dark	;	50.0;	106;	9Bet Crv	;	2.65;	5600;occ;	100;	0;	9163
26;	-416.6;	01-DEC-2003	06:27:13;	Dark	;	42.0;	123;	Iot Cen	;	2.75;	10200;occ;	84;	0;	9163
27;	-174.4;	01-DEC-2003	06:31:16;	Dark	;	40.0;	77;	Eps Cen	;	2.30;	28000;occ;	80;	0;	9163
28;	-75.6;	01-DEC-2003	06:32:54;	Dark	;	39.5;	10;	Bet Cen	;	0.61;	28000;occ;	79;	0;	9163
29;	39.6;	01-DEC-2003	06:34:50;	Dark	;	44.0;	12;	Alp1Cru	;	0.77;	30000;occ;	88;	0;	9164
30;	202.1;	01-DEC-2003	06:37:32;	Dark	;	39.0;	124;	The Car	;	2.76;	30000;occ;	78;	0;	9164
31;	335.6;	01-DEC-2003	06:39:46;	Dark	;	59.5;	0;		;	0.00;	0;occ;	119;	0;	9164
32;	481.9;	01-DEC-2003	06:42:12;	Dark	;	43.5;	41;	Eps Car	;	1.86;	4100;occ;	87;	0;	9164
33;	601.1;	01-DEC-2003	06:44:11;	Dark	;	52.5;	34;	Gam2Vel	;	1.79;	23000;occ;	105;	0;	9164
34;	803.4;	01-DEC-2003	06:47:33;	Dark	;	51.0;	2;	Alp Car	;	-0.74;	7000;occ;	102;	0;	9164
35;	914.2;	01-DEC-2003	06:49:24;	Dark	;	66.0;	117;	Pi Pup	;	2.71;	3800;occ;	132;	0;	9164
36;	1144.0;	01-DEC-2003	06:53:14;	Dark	;	67.0;	23;	21Eps CMa	;	1.50;	26000;occ;	134;	0;	9164
37;	1273.4;	01-DEC-2003	06:55:23;	Dark	;	75.5;	179;	240mi2CMa	;	3.03;	24000;occ;	151;	0;	9164
38;	1503.1;	01-DEC-2003	06:59:13;	Dark	;	67.0;	47;	2Bet CMa	;	1.98;	28000;occ;	134;	0;	9164
39;	1657.2;	01-DEC-2003	07:01:47;	Dark	;	47.0;	165;	34Gam Eri	;	2.95;	3200;occ;	94;	0;	9164
40;	1751.2;	01-DEC-2003	07:03:21;	Dark	;	65.0;	7;	19Bet Ori	;	0.10;	14000;occ;	130;	0;	9164

/data4_2/GOMOS/level0/GOM_NL_0PNPDK20031201_070624_000057312022_00092_09164_0249.N1

1;	-4102.2;	01-DEC-2003	07:06:24;	Dark	;	63.5;	30;	46Eps Ori	;	1.69;	30000;occ;	127;	0;	9164
2;	-3938.5;	01-DEC-2003	07:09:07;	Dark	;	61.5;	27;	24Gam Ori	;	1.64;	26000;occ;	123;	0;	9164
3;	-3804.3;	01-DEC-2003	07:11:22;	Bright;		57.0;	13;	87Alp Tau	;	0.87;	3800;occ;	114;	0;	9164
4;	-3709.0;	01-DEC-2003	07:12:57;	Bright;		39.0;	146;	25Eta Tau	;	2.87;	15200;occ;	78;	0;	9164
5;	-3566.6;	01-DEC-2003	07:15:19;	Bright;		40.5;	150;	44Zet Per	;	2.89;	28000;occ;	81;	0;	9164
6;	-3432.6;	01-DEC-2003	07:17:33;	Bright;		38.5;	79;	26Bet Per	;	2.31;	13100;occ;	77;	0;	9164
7;	-3299.5;	01-DEC-2003	07:19:46;	Bright;		38.0;	175;	39Del Per	;	3.01;	19400;occ;	76;	0;	9164
8;	-3219.4;	01-DEC-2003	07:21:06;	Bright;		37.0;	160;	23Gam Per	;	2.93;	4700;occ;	74;	0;	9164
9;	-3079.8;	01-DEC-2003	07:23:26;	Bright;		36.0;	110;	37Del Cas	;	2.68;	8900;occ;	72;	0;	9164
10;	-2615.7;	01-DEC-2003	07:31:10;	Bright;		37.5;	49;	1Alp UMi	;	1.99;	6300;occ;	75;	0;	9164
11;	-2335.5;	01-DEC-2003	07:35:50;	Bright;		35.0;	60;	7Bet UMi	;	2.08;	3950;occ;	70;	0;	9164
12;	-2215.1;	01-DEC-2003	07:37:51;	Bright;		45.0;	36;	50Alp UMa	;	1.80;	6300;occ;	90;	0;	9164
13;	-2118.5;	01-DEC-2003	07:39:27;	Bright;		45.5;	82;	48Bet UMa	;	2.37;	10600;occ;	91;	0;	9164
14;	-2022.4;	01-DEC-2003	07:41:03;	Bright;		40.5;	32;	77Eps UMa	;	1.76;	11000;occ;	81;	0;	9164
15;	-1898.4;	01-DEC-2003	07:43:07;	Bright;		39.5;	39;	85Eta UMa	;	1.85;	24000;occ;	79;	0;	9164
16;	-1724.6;	01-DEC-2003	07:46:01;	Bright;		35.0;	180;	27Gam Boo	;	3.04;	8000;occ;	70;	0;	9164
17;	-1543.4;	01-DEC-2003	07:49:02;	Bright;		36.0;	83;		;	2.38;	11000;occ;	72;	0;	9164
18;	-1392.2;	01-DEC-2003	07:51:34;	Bright;		36.5;	3;	16Alp Boo	;	-0.05;	4250;occ;	73;	0;	9164
19;	-1176.6;	01-DEC-2003	07:55:09;	Bright;		76.0;	96;	68Del Leo	;	2.56;	9300;occ;	152;	0;	9164
20;	-918.5;	01-DEC-2003	07:59:27;	Bright;		45.5;	121;	29Gam Vir	;	2.74;	7200;occ;	91;	0;	9164
21;	-831.0;	01-DEC-2003	08:00:55;	Bright;		41.0;	15;	67Alp Vir	;	0.98;	28000;occ;	82;	0;	9164
22;	-634.1;	01-DEC-2003	08:04:12;	Dark	;	48.0;	163;	7Del Crv	;	2.94;	11000;occ;	96;	0;	9164
23;	-536.5;	01-DEC-2003	08:05:49;	Dark	;	49.0;	106;	9Bet Crv	;	2.65;	5600;occ;	98;	0;	9164
24;	-416.0;	01-DEC-2003	08:07:50;	Dark	;	42.5;	123;	Iot Cen	;	2.75;	10200;occ;	85;	0;	9164
25;	-173.7;	01-DEC-2003	08:11:52;	Dark	;	41.0;	77;	Eps Cen	;	2.30;	28000;occ;	82;	0;	9164
26;	-75.4;	01-DEC-2003	08:13:30;	Dark	;	46.5;	10;	Bet Cen	;	0.61;	28000;occ;	93;	0;	9164

27; 40.3; 01-DEC-2003 08:15:26; Dark ; 46.5; 12; Alp1Cru ; 0.77; 30000;occ; 93; 0; 9165
 28; 202.5; 01-DEC-2003 08:18:08; Dark ; 39.5; 124; The Car ; 2.76; 30000;occ; 79; 0; 9165
 29; 338.5; 01-DEC-2003 08:20:24; Dark ; 59.5; 0; ; 0.00; 0;occ; 119; 0; 9165
 30; 482.5; 01-DEC-2003 08:22:48; Dark ; 45.5; 41; Eps Car ; 1.86; 4100;occ; 91; 0; 9165
 31; 602.2; 01-DEC-2003 08:24:48; Dark ; 53.0; 34; Gam2Vel ; 1.79; 23000;occ; 106; 0; 9165
 32; 803.4; 01-DEC-2003 08:28:09; Dark ; 51.0; 2; Alp Car ; -0.74; 7000;occ; 102; 0; 9165
 33; 915.6; 01-DEC-2003 08:30:02; Dark ; 63.5; 117; Pi Pup ; 2.71; 3800;occ; 127; 0; 9165
 34; 1144.7; 01-DEC-2003 08:33:51; Dark ; 69.0; 23; 21Eps CMa ; 1.50; 26000;occ; 138; 0; 9165
 35; 1274.4; 01-DEC-2003 08:36:00; Dark ; 73.5; 179; 240mi2CMa ; 3.03; 24000;occ; 147; 0; 9165
 36; 1529.7; 01-DEC-2003 08:40:16; Dark ; 100.5; 1; 9Alp CMa ; -1.44; 11000;occ; 201; 0; 9165

/data4_2/GOMOS/level0/GOM_NL_0PNPDK20031201_084113_000062212022_00093_09165_0250.N1

1; -4449.2; 01-DEC-2003 08:41:13; Dark ; 101.0; 1; 9Alp CMa ; -1.44; 11000;occ; 202; 114; 9165
 2; -4284.8; 01-DEC-2003 08:43:57; Dark ; 67.0; 7; 19Bet Ori ; 0.10; 14000;occ; 134; 0; 9165
 3; -4102.6; 01-DEC-2003 08:46:59; Dark ; 64.5; 30; 46Eps Ori ; 1.69; 30000;occ; 129; 0; 9165
 4; -3939.3; 01-DEC-2003 08:49:43; Dark ; 62.0; 27; 24Gam Ori ; 1.64; 26000;occ; 124; 0; 9165
 5; -3804.6; 01-DEC-2003 08:51:57; Bright; 56.0; 13; 87Alp Tau ; 0.87; 3800;occ; 112; 0; 9165
 6; -3709.0; 01-DEC-2003 08:53:33; Bright; 40.5; 146; 25Eta Tau ; 2.87; 15200;occ; 81; 0; 9165
 7; -3566.9; 01-DEC-2003 08:55:55; Bright; 39.5; 150; 44Zet Per ; 2.89; 28000;occ; 79; 0; 9165
 8; -3433.3; 01-DEC-2003 08:58:08; Bright; 39.0; 79; 26Bet Per ; 2.31; 13100;occ; 78; 0; 9165
 9; -3299.9; 01-DEC-2003 09:00:22; Bright; 39.5; 175; 39Del Per ; 3.01; 19400;occ; 79; 0; 9165
 10; -3219.5; 01-DEC-2003 09:01:42; Bright; 39.0; 160; 23Gam Per ; 2.93; 4700;occ; 78; 0; 9165
 11; -3079.6; 01-DEC-2003 09:04:02; Bright; 37.0; 110; 37Del Cas ; 2.68; 8900;occ; 74; 0; 9165
 12; -2615.7; 01-DEC-2003 09:11:46; Bright; 35.5; 49; 1Alp UMi ; 1.99; 6300;occ; 71; 0; 9165
 13; -2335.5; 01-DEC-2003 09:16:26; Bright; 38.0; 60; 7Bet UMi ; 2.08; 3950;occ; 76; 0; 9165
 14; -2215.4; 01-DEC-2003 09:18:26; Bright; 46.5; 36; 50Alp UMA ; 1.80; 6300;occ; 93; 0; 9165
 15; -2119.1; 01-DEC-2003 09:20:03; Bright; 67.0; 82; 48Bet UMA ; 2.37; 10600;occ; 134; 0; 9165
 16; -2022.4; 01-DEC-2003 09:21:39; Bright; 43.0; 32; 77Eps UMA ; 1.76; 11000;occ; 86; 0; 9165
 17; -1898.1; 01-DEC-2003 09:23:44; Bright; 37.0; 39; 85Eta UMA ; 1.85; 24000;occ; 74; 0; 9165
 18; -1724.6; 01-DEC-2003 09:26:37; Bright; 36.0; 180; 27Gam Boo ; 3.04; 8000;occ; 72; 0; 9165
 19; -1543.4; 01-DEC-2003 09:29:38; Bright; 35.0; 83; ; 2.38; 11000;occ; 70; 0; 9165
 20; -1392.0; 01-DEC-2003 09:32:10; Bright; 34.5; 3; 16Alp Boo ; -0.05; 4250;occ; 69; 0; 9165
 21; -1175.7; 01-DEC-2003 09:35:46; Bright; 73.0; 96; 68Del Leo ; 2.56; 9300;occ; 146; 0; 9165
 22; -633.3; 01-DEC-2003 09:44:48; Dark ; 46.0; 163; 7Del Crv ; 2.94; 11000;occ; 92; 0; 9165
 23; -535.5; 01-DEC-2003 09:46:26; Dark ; 49.0; 106; 9Bet Crv ; 2.65; 5600;occ; 98; 0; 9165
 24; -415.7; 01-DEC-2003 09:48:26; Dark ; 40.5; 123; Iot Cen ; 2.75; 10200;occ; 81; 0; 9165
 25; -173.8; 01-DEC-2003 09:52:28; Dark ; 40.5; 77; Eps Cen ; 2.30; 28000;occ; 81; 0; 9165
 26; -75.5; 01-DEC-2003 09:54:06; Dark ; 47.0; 10; Bet Cen ; 0.61; 28000;occ; 94; 0; 9165
 27; 40.6; 01-DEC-2003 09:56:02; Dark ; 43.5; 12; Alp1Cru ; 0.77; 30000;occ; 87; 0; 9166
 28; 203.1; 01-DEC-2003 09:58:45; Dark ; 40.0; 124; The Car ; 2.76; 30000;occ; 80; 0; 9166
 29; 341.4; 01-DEC-2003 10:01:03; Dark ; 59.5; 0; ; 0.00; 0;occ; 119; 0; 9166
 30; 483.4; 01-DEC-2003 10:03:25; Dark ; 47.5; 41; Eps Car ; 1.86; 4100;occ; 95; 0; 9166
 31; 603.1; 01-DEC-2003 10:05:25; Dark ; 51.0; 34; Gam2Vel ; 1.79; 23000;occ; 102; 0; 9166
 32; 803.8; 01-DEC-2003 10:08:46; Dark ; 49.5; 2; Alp Car ; -0.74; 7000;occ; 99; 0; 9166
 33; 916.9; 01-DEC-2003 10:10:39; Dark ; 65.5; 117; Pi Pup ; 2.71; 3800;occ; 131; 0; 9166
 34; 1145.2; 01-DEC-2003 10:14:27; Dark ; 69.5; 23; 21Eps CMa ; 1.50; 26000;occ; 139; 0; 9166
 35; 1275.0; 01-DEC-2003 10:16:37; Dark ; 75.5; 179; 240mi2CMa ; 3.03; 24000;occ; 151; 0; 9166
 36; 1530.0; 01-DEC-2003 10:20:52; Dark ; 93.0; 1; 9Alp CMa ; -1.44; 11000;occ; 186; 0; 9166
 37; 1751.3; 01-DEC-2003 10:24:33; Dark ; 21.0; 7; 19Bet Ori ; 0.10; 14000;occ; 42; 0; 9166

/data4_2/GOMOS/level0/GOM_NL_0PNPDK20031201_102433_000059132022_00094_09166_0251.N1

1; -4284.6; 01-DEC-2003 10:24:33; Dark ; 59.5; 7; 19Bet Ori ; 0.10; 14000;occ; 119; 0; 9166
 2; -4103.0; 01-DEC-2003 10:27:35; Dark ; 63.5; 30; 46Eps Ori ; 1.69; 30000;occ; 127; 0; 9166
 3; -3939.5; 01-DEC-2003 10:30:18; Dark ; 65.5; 27; 24Gam Ori ; 1.64; 26000;occ; 131; 0; 9166
 4; -3804.7; 01-DEC-2003 10:32:33; Bright; 53.5; 13; 87Alp Tau ; 0.87; 3800;occ; 107; 0; 9166
 5; -3708.7; 01-DEC-2003 10:34:09; Bright; 40.0; 146; 25Eta Tau ; 2.87; 15200;occ; 80; 0; 9166
 6; -3566.5; 01-DEC-2003 10:36:31; Bright; 40.0; 150; 44Zet Per ; 2.89; 28000;occ; 80; 0; 9166
 7; -3432.4; 01-DEC-2003 10:38:45; Bright; 38.0; 79; 26Bet Per ; 2.31; 13100;occ; 76; 0; 9166
 8; -3299.6; 01-DEC-2003 10:40:58; Bright; 39.5; 175; 39Del Per ; 3.01; 19400;occ; 79; 0; 9166
 9; -3219.3; 01-DEC-2003 10:42:18; Bright; 38.5; 160; 23Gam Per ; 2.93; 4700;occ; 77; 0; 9166
 10; -3079.1; 01-DEC-2003 10:44:39; Bright; 36.5; 110; 37Del Cas ; 2.68; 8900;occ; 73; 0; 9166
 11; -2615.4; 01-DEC-2003 10:52:22; Bright; 37.5; 49; 1Alp UMi ; 1.99; 6300;occ; 75; 0; 9166
 12; -2335.2; 01-DEC-2003 10:57:02; Bright; 39.0; 60; 7Bet UMi ; 2.08; 3950;occ; 78; 0; 9166
 13; -2215.6; 01-DEC-2003 10:59:02; Bright; 45.5; 36; 50Alp UMA ; 1.80; 6300;occ; 91; 0; 9166
 14; -2119.2; 01-DEC-2003 11:00:38; Bright; 43.5; 82; 48Bet UMA ; 2.37; 10600;occ; 87; 0; 9166
 15; -2022.3; 01-DEC-2003 11:02:15; Bright; 39.5; 32; 77Eps UMA ; 1.76; 11000;occ; 79; 0; 9166
 16; -1897.9; 01-DEC-2003 11:04:20; Bright; 36.5; 39; 85Eta UMA ; 1.85; 24000;occ; 73; 0; 9166
 17; -1723.8; 01-DEC-2003 11:07:14; Bright; 35.0; 180; 27Gam Boo ; 3.04; 8000;occ; 70; 0; 9166
 18; -1542.9; 01-DEC-2003 11:10:15; Bright; 34.5; 83; ; 2.38; 11000;occ; 69; 0; 9166
 19; -1391.6; 01-DEC-2003 11:12:46; Bright; 35.0; 3; 16Alp Boo ; -0.05; 4250;occ; 70; 0; 9166

```

20; -1174.7; 01-DEC-2003 11:16:23; Bright; 75.0; 96; 68Del Leo ; 2.56; 9300;occ; 150; 0; 9166
21; -632.5; 01-DEC-2003 11:25:25; Dark ; 47.5; 163; 7Del Crv ; 2.94; 11000;occ; 95; 0; 9166
22; -534.9; 01-DEC-2003 11:27:03; Dark ; 46.0; 106; 9Bet Crv ; 2.65; 5600;occ; 92; 0; 9166
23; -414.9; 01-DEC-2003 11:29:03; Dark ; 40.5; 123; Iot Cen ; 2.75; 10200;occ; 81; 0; 9166
24; -173.0; 01-DEC-2003 11:33:05; Dark ; 39.5; 77; Eps Cen ; 2.30; 28000;occ; 79; 0; 9166
25; -74.9; 01-DEC-2003 11:34:43; Dark ; 48.5; 10; Bet Cen ; 0.61; 28000;occ; 97; 0; 9166
26; 41.4; 01-DEC-2003 11:36:39; Dark ; 39.0; 12; Alp1Cru ; 0.77; 30000;occ; 78; 0; 9167
27; 203.9; 01-DEC-2003 11:39:22; Dark ; 39.5; 124; The Car ; 2.76; 30000;occ; 79; 0; 9167
28; 344.4; 01-DEC-2003 11:41:42; Dark ; 59.5; 0; ; 0.00; 0;occ; 119; 0; 9167
29; 484.2; 01-DEC-2003 11:44:02; Dark ; 45.0; 41; Eps Car ; 1.86; 4100;occ; 90; 0; 9167
30; 604.2; 01-DEC-2003 11:46:02; Dark ; 50.5; 34; Gam2Vel ; 1.79; 23000;occ; 101; 0; 9167
31; 805.5; 01-DEC-2003 11:49:23; Dark ; 58.0; 2; Alp Car ; -0.74; 7000;occ; 116; 0; 9167
32; 918.0; 01-DEC-2003 11:51:16; Dark ; 63.0; 117; Pi Pup ; 2.71; 3800;occ; 126; 0; 9167
33; 1146.2; 01-DEC-2003 11:55:04; Dark ; 68.0; 23; 21Eps CMA ; 1.50; 26000;occ; 136; 0; 9167
34; 1275.4; 01-DEC-2003 11:57:13; Dark ; 75.0; 179; 240mi2CMA ; 3.03; 24000;occ; 150; 0; 9167
35; 1530.0; 01-DEC-2003 12:01:28; Dark ; 99.0; 1; 9Alp CMA ; -1.44; 11000;occ; 198; 0; 9167
/data4_2/GOMOS/level0/GOM_NL__0PNPDK20031201_134213_000058382022_00096_09168_0253.N1
1; -4496.1; 01-DEC-2003 13:42:13; Dark ; 94.5; 1; 9Alp CMA ; -1.44; 11000;occ; 189; 19; 9168
2; -4284.2; 01-DEC-2003 13:45:45; Dark ; 60.0; 7; 19Bet Ori ; 0.10; 14000;occ; 120; 0; 9168
3; -4103.3; 01-DEC-2003 13:48:46; Dark ; 61.5; 30; 46Eps Ori ; 1.69; 30000;occ; 123; 0; 9168
4; -3940.1; 01-DEC-2003 13:51:29; Dark ; 59.5; 27; 24Gam Ori ; 1.64; 26000;occ; 119; 0; 9168
5; -3804.7; 01-DEC-2003 13:53:45; Bright; 54.5; 13; 87Alp Tau ; 0.87; 3800;occ; 109; 0; 9168
6; -3708.1; 01-DEC-2003 13:55:21; Bright; 39.5; 146; 25Eta Tau ; 2.87; 15200;occ; 79; 0; 9168
7; -3566.3; 01-DEC-2003 13:57:43; Bright; 40.0; 150; 44Zet Per ; 2.89; 28000;occ; 80; 0; 9168
8; -3432.2; 01-DEC-2003 13:59:57; Bright; 38.0; 79; 26Bet Per ; 2.31; 13100;occ; 76; 0; 9168
9; -3299.7; 01-DEC-2003 14:02:10; Bright; 37.5; 175; 39Del Per ; 3.01; 19400;occ; 75; 0; 9168
10; -3219.5; 01-DEC-2003 14:03:30; Bright; 38.0; 160; 23Gam Per ; 2.93; 4700;occ; 76; 0; 9168
11; -3079.0; 01-DEC-2003 14:05:50; Bright; 37.5; 110; 37Del Cas ; 2.68; 8900;occ; 75; 0; 9168
12; -2616.2; 01-DEC-2003 14:13:33; Bright; 39.0; 49; 1Alp UMi ; 1.99; 6300;occ; 78; 0; 9168
13; -2336.6; 01-DEC-2003 14:18:13; Bright; 39.5; 60; 7Bet UMi ; 2.08; 3950;occ; 79; 0; 9168
14; -2216.6; 01-DEC-2003 14:20:13; Bright; 47.0; 36; 50Alp UMa ; 1.80; 6300;occ; 94; 0; 9168
15; -2120.6; 01-DEC-2003 14:21:49; Bright; 50.0; 82; 48Bet UMa ; 2.37; 10600;occ; 100; 0; 9168
16; -2023.5; 01-DEC-2003 14:23:26; Bright; 42.5; 32; 77Eps UMa ; 1.76; 11000;occ; 85; 0; 9168
17; -1898.7; 01-DEC-2003 14:25:31; Bright; 37.0; 39; 85Eta UMa ; 1.85; 24000;occ; 74; 0; 9168
18; -1724.6; 01-DEC-2003 14:28:25; Bright; 37.0; 180; 27Gam Boo ; 3.04; 8000;occ; 74; 0; 9168
19; -1546.1; 01-DEC-2003 14:31:23; Bright; 40.0; 83; ; 2.38; 11000;occ; 80; 0; 9168
20; -1391.5; 01-DEC-2003 14:33:58; Bright; 35.5; 3; 16Alp Boo ; -0.05; 4250;occ; 71; 0; 9168
21; -1173.7; 01-DEC-2003 14:37:36; Bright; 73.0; 96; 68Del Leo ; 2.56; 9300;occ; 146; 0; 9168
22; -631.4; 01-DEC-2003 14:46:38; Dark ; 47.0; 163; 7Del Crv ; 2.94; 11000;occ; 94; 0; 9168
23; -533.7; 01-DEC-2003 14:48:16; Dark ; 48.5; 106; 9Bet Crv ; 2.65; 5600;occ; 97; 0; 9168
24; -414.9; 01-DEC-2003 14:50:15; Dark ; 42.5; 123; Iot Cen ; 2.75; 10200;occ; 85; 0; 9168
25; -173.6; 01-DEC-2003 14:54:16; Dark ; 42.5; 77; Eps Cen ; 2.30; 28000;occ; 85; 0; 9168
26; -75.0; 01-DEC-2003 14:55:54; Dark ; 44.0; 10; Bet Cen ; 0.61; 28000;occ; 88; 0; 9168
27; 41.0; 01-DEC-2003 14:57:50; Dark ; 48.0; 12; Alp1Cru ; 0.77; 30000;occ; 96; 0; 9169
28; 204.7; 01-DEC-2003 15:00:34; Dark ; 39.5; 124; The Car ; 2.76; 30000;occ; 79; 0; 9169
29; 350.2; 01-DEC-2003 15:03:00; Dark ; 59.5; 0; ; 0.00; 0;occ; 119; 0; 9169
30; 485.5; 01-DEC-2003 15:05:15; Dark ; 45.5; 41; Eps Car ; 1.86; 4100;occ; 91; 0; 9169
31; 605.9; 01-DEC-2003 15:07:15; Dark ; 54.0; 34; Gam2Vel ; 1.79; 23000;occ; 108; 0; 9169
32; 807.0; 01-DEC-2003 15:10:36; Dark ; 58.0; 2; Alp Car ; -0.74; 7000;occ; 116; 0; 9169
33; 918.6; 01-DEC-2003 15:12:28; Dark ; 65.0; 117; Pi Pup ; 2.71; 3800;occ; 130; 0; 9169
34; 1146.3; 01-DEC-2003 15:16:16; Dark ; 65.5; 23; 21Eps CMA ; 1.50; 26000;occ; 131; 0; 9169
35; 1276.3; 01-DEC-2003 15:18:26; Dark ; 67.0; 179; 240mi2CMA ; 3.03; 24000;occ; 134; 0; 9169

```