



Analysis from 25-OCT-2010 00:00:00 to 25-OCT-2010 23:59:59. Page generated on 27-OCT-2010 13:25:37.
View log file: ASAR_Daily_Report_20101027_1325.log. For any anomalies please contact emma.griffiths@vega.co.uk, kajal.haria@vega.co.uk.

This report is automatically generated every day, every 2 hours. No comments are provided on the results.

SUMMARY

1. DATA SUMMARY
 - 1.1 Summary tables
 - 1.2 Lists of products used
2. AUXILIARY FILES ANALYSIS
 - 2.1 IECF operational ADFs list
 - 2.2 Products with wrong ADFs
3. MODULE STEPPING PRODUCTS ANALYSIS
 - 3.1 V/V polarisation
 - 3.2 H/H polarisation
4. CALIBRATION PULSES ANALYSIS
 - 4.1 Analysis for WVS IS2 V/V
 - 4.1.1 Temporal Evolution Analysis for WVS IS2 V/V
 - 4.1.2 All Rows Analysis for WVS IS2 V/V
 - 4.2 Analysis for GM1 SS3 H/H
 - 4.2.1 Temporal Evolution Analysis for GM1 SS3 H/H
 - 4.2.2 All Rows Analysis for GM1 SS3 H/H
5. DOPPLER ANALYSIS
 - 5.1 Analysis for WVS IS2 V/V
 - 5.1.1 Doppler MAP Analysis for WVS IS2 V/V
 - 5.1.2 Doppler ANX Analysis for WVS IS2 V/V
 - 5.2 Analysis for GM1 SS1 H/H
 - 5.2.1 Doppler MAP Analysis for GM1 SS1 H/H
 - 5.2.2 Doppler ANX Analysis for GM1 SS1 H/H
 - 5.3 Doppler JUMPS Analysis for WSM
6. CHIRP ANALYSIS
 - 6.1 Analysis for WSM SS1 H/H
 - 6.1.1 ScaleFactor
 - 6.2 Analysis for WSM SS1 V/V
 - 6.2.1 ScaleFactor
7. RAW DATA ANALYSIS
 - 7.1 Analysis for WVS
 - 7.2 Analysis for IMM
8. TELEMETRY ANALYSIS
 - 8.1 Number of Missing Lines
 - 8.2 Number of Gaps

1 - DATA SUMMARY

1.1 - Summary tables

[\[BACK TO MENU \]](#)

WVS				GM1				APM				IMM				WSM				MS			
Center	Beam	Pol	#	Center	Beam	Pol	#	Center	Beam	Pol	#	Center	Beam	Pol	#	Center	Beam	Pol	#	Center	Time	Pol	Modules
PDK	IS1	V/V	2																				
PDK	IS2	V/V	11																				

1.2 - Lists of products used

[\[BACK TO MENU \]](#)

[\[TXT\]](#) [\[XLS\]](#) List_WVS_products_used

2 - AUXILIARY FILES ANALYSIS

2.1 - IECF operational ADFs list

[\[BACK TO MENU \]](#)

ADFs disseminated for ASAR
ASA_CON_AXVIEC20100608_125449_20100317_120410_20101231_000000
ASA_INS_AXVIEC20101018_101437_20101022_000000_20101231_235959
ASA_XCH_AXVIEC20091217_113006_20020301_000000_20101231_000000
ASA_XCA_AXVIEC20100608_123419_20100317_120410_20110101_000000

2.2 - Products with wrong ADFs

[\[BACK TO MENU \]](#)

Product	ASA_CON	ASA_INS	ASA_XCH	ASA_XCA
WVS	0	0	0	0

[\[TXT\]](#) [\[XLS\]](#) Check_ADFs_WVS

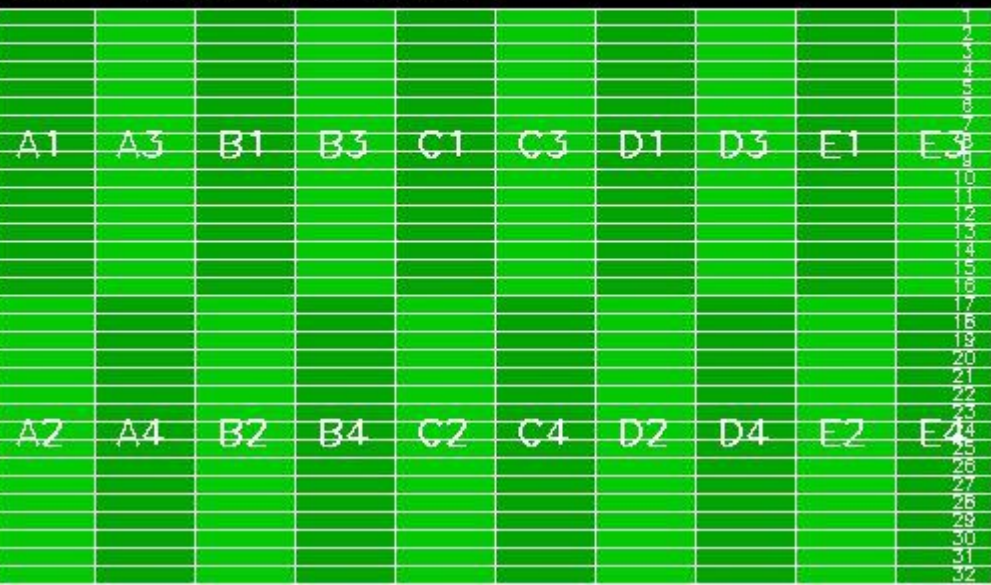
3 - MODULE STEPPING PRODUCTS ANALYSIS

SECOND FIXED REFERENCE	PREVIOUS PRODUCT REFERENCE
Pre-launch reference (2001-02-09)	Previous product in the same polarisation

Reference: 2001-02-09 14:08:23 V RxGain
 Test : 2010-10-20 17:01:37 V



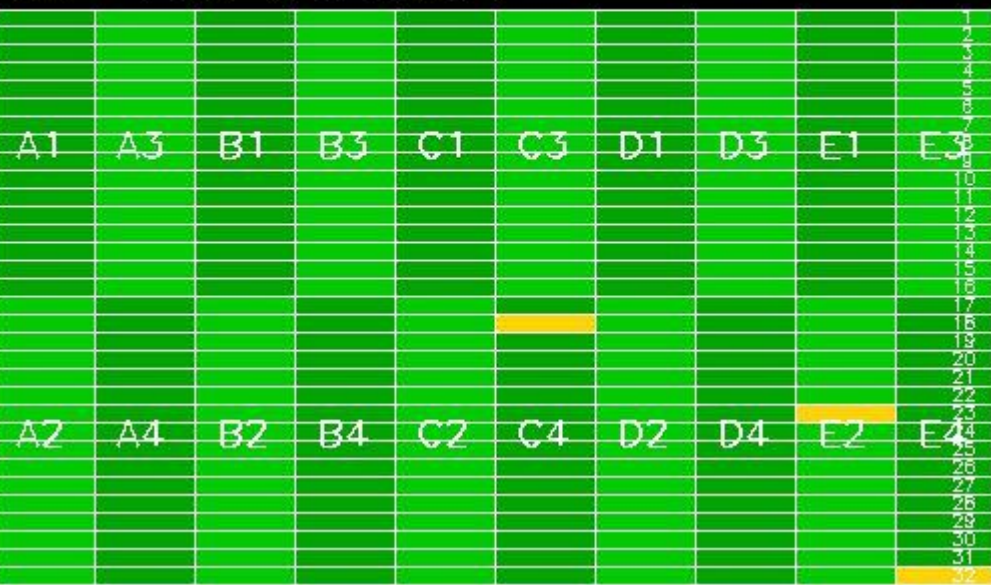
Reference: 2010-10-18 18:04:51 V RxGain
 Test : 2010-10-20 17:01:37 V



Reference: 2001-02-09 14:08:23 V RxPhase
 Test : 2010-10-20 17:01:37 V



Reference: 2010-10-18 18:04:51 V RxPhase
 Test : 2010-10-20 17:01:37 V



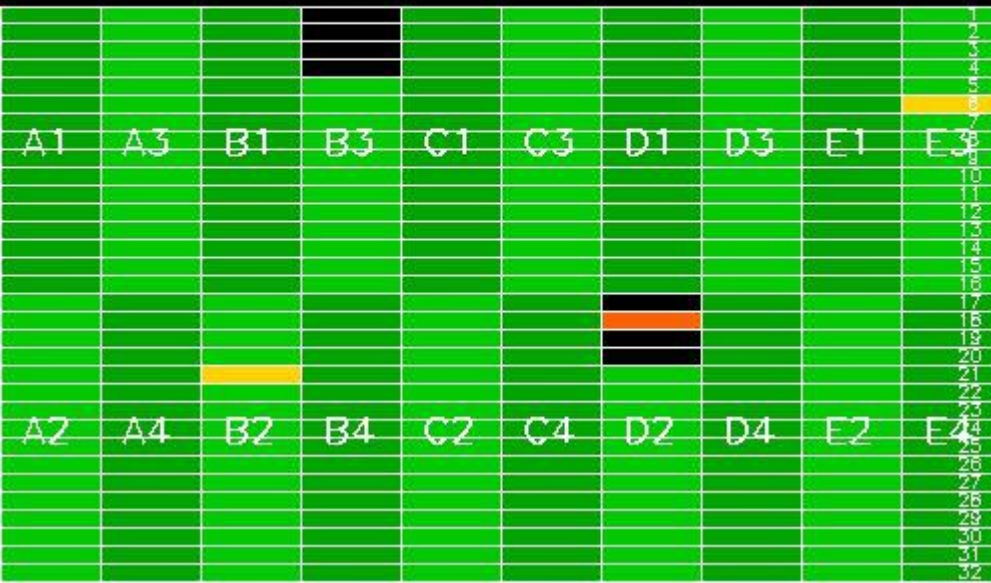


3.2 - H/H polarisation

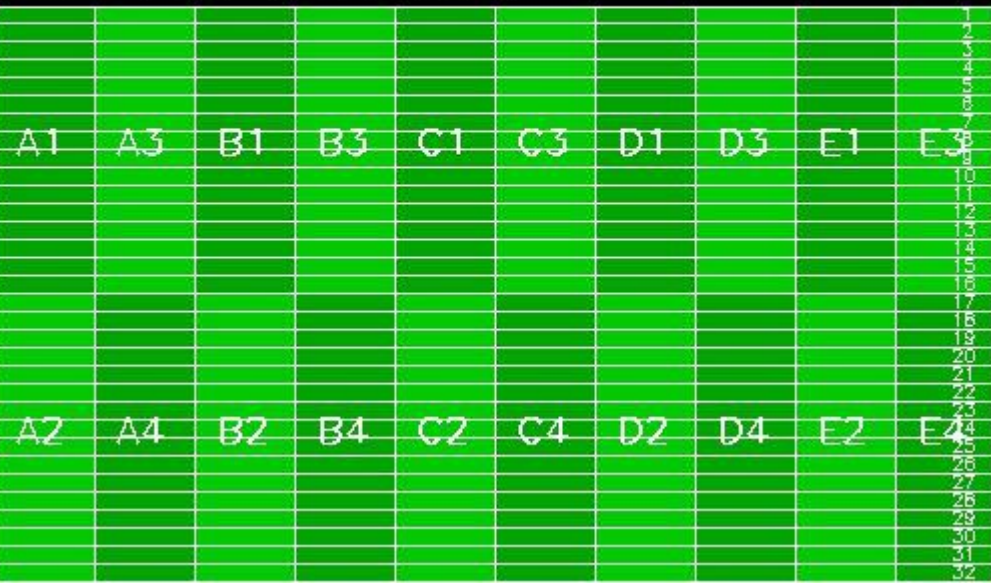
[[BACK TO MENU](#)]

SECOND FIXED REFERENCE	PREVIOUS PRODUCT REFERENCE
Pre-launch reference (2001-02-09)	Previous product in the same polarisation

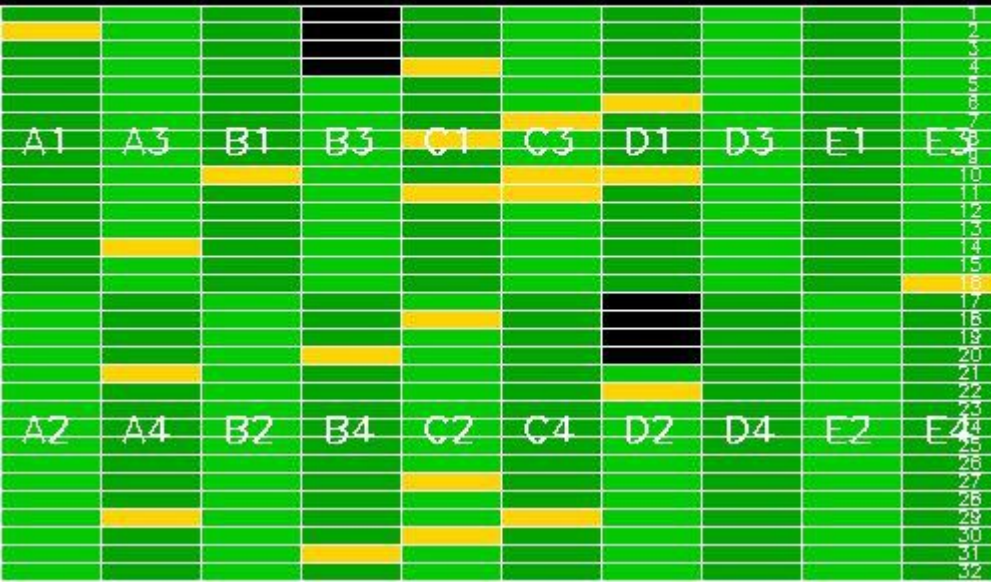
Reference: 2001-02-09 13:50:42 H RxGain
 Test : 2010-10-21 06:26:24 H



Reference: 2010-10-19 17:33:14 H RxGain
 Test : 2010-10-21 06:26:24 H

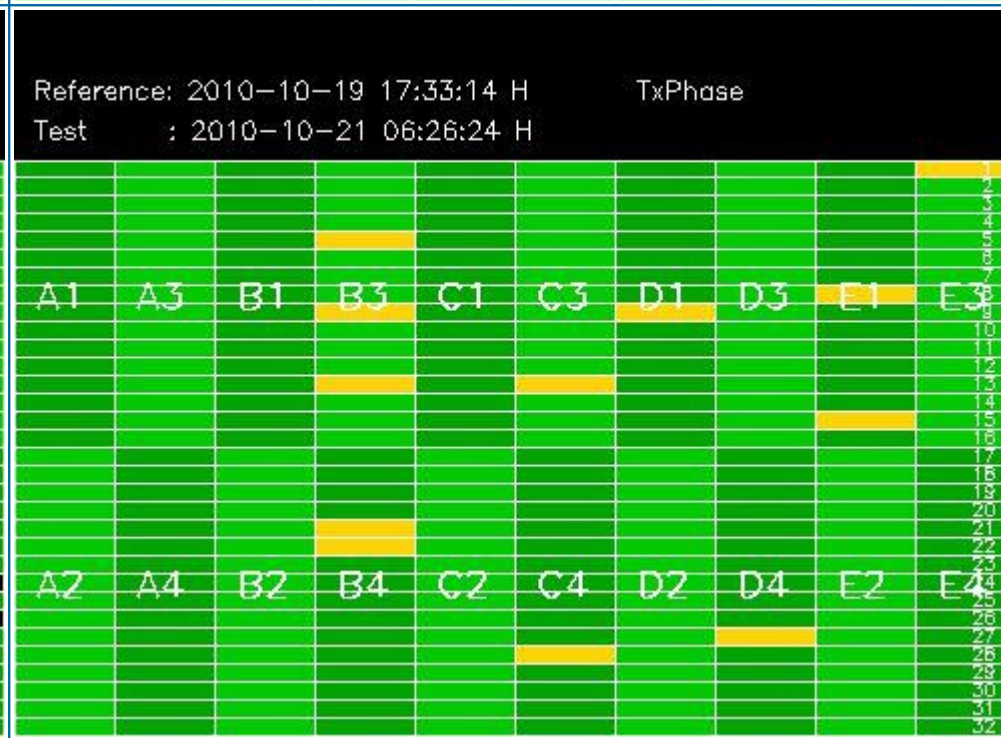
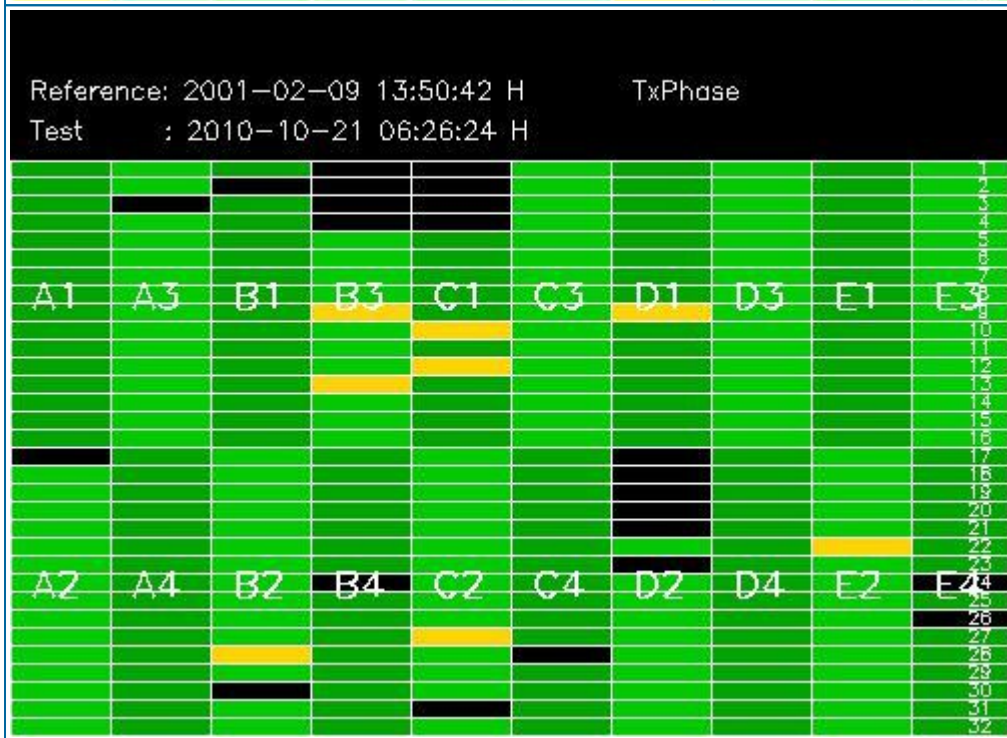
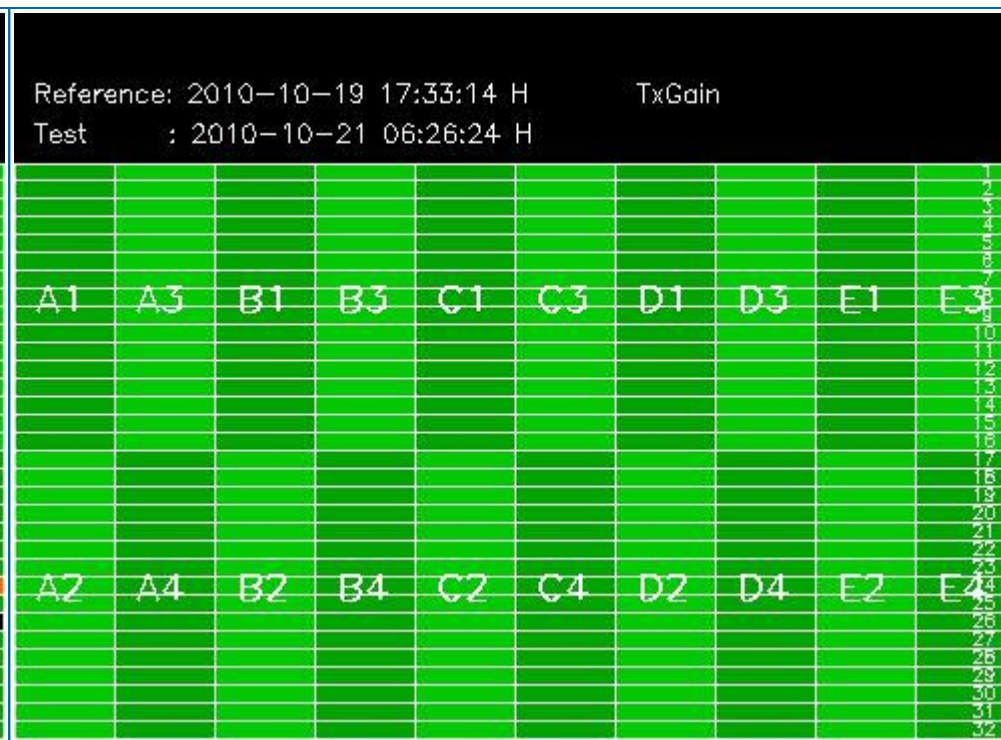
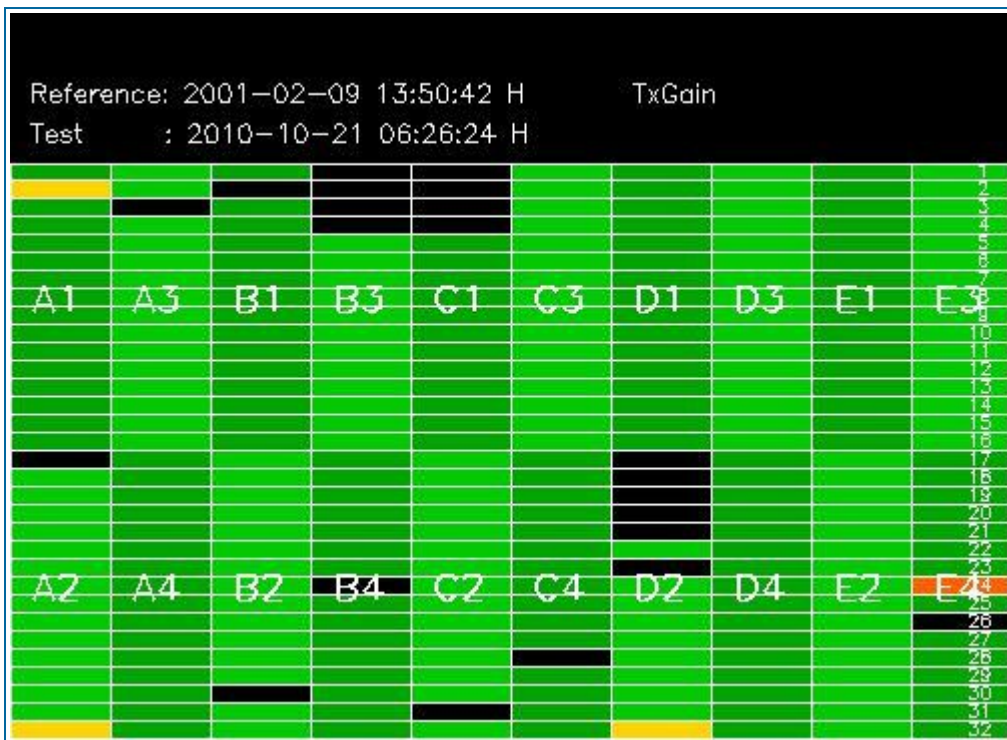


Reference: 2001-02-09 13:50:42 H RxPhase
 Test : 2010-10-21 06:26:24 H



Reference: 2010-10-19 17:33:14 H RxPhase
 Test : 2010-10-21 06:26:24 H





4 - CALIBRATION PULSES ANALYSIS

4.1 - Analysis for WVS IS2 V/V

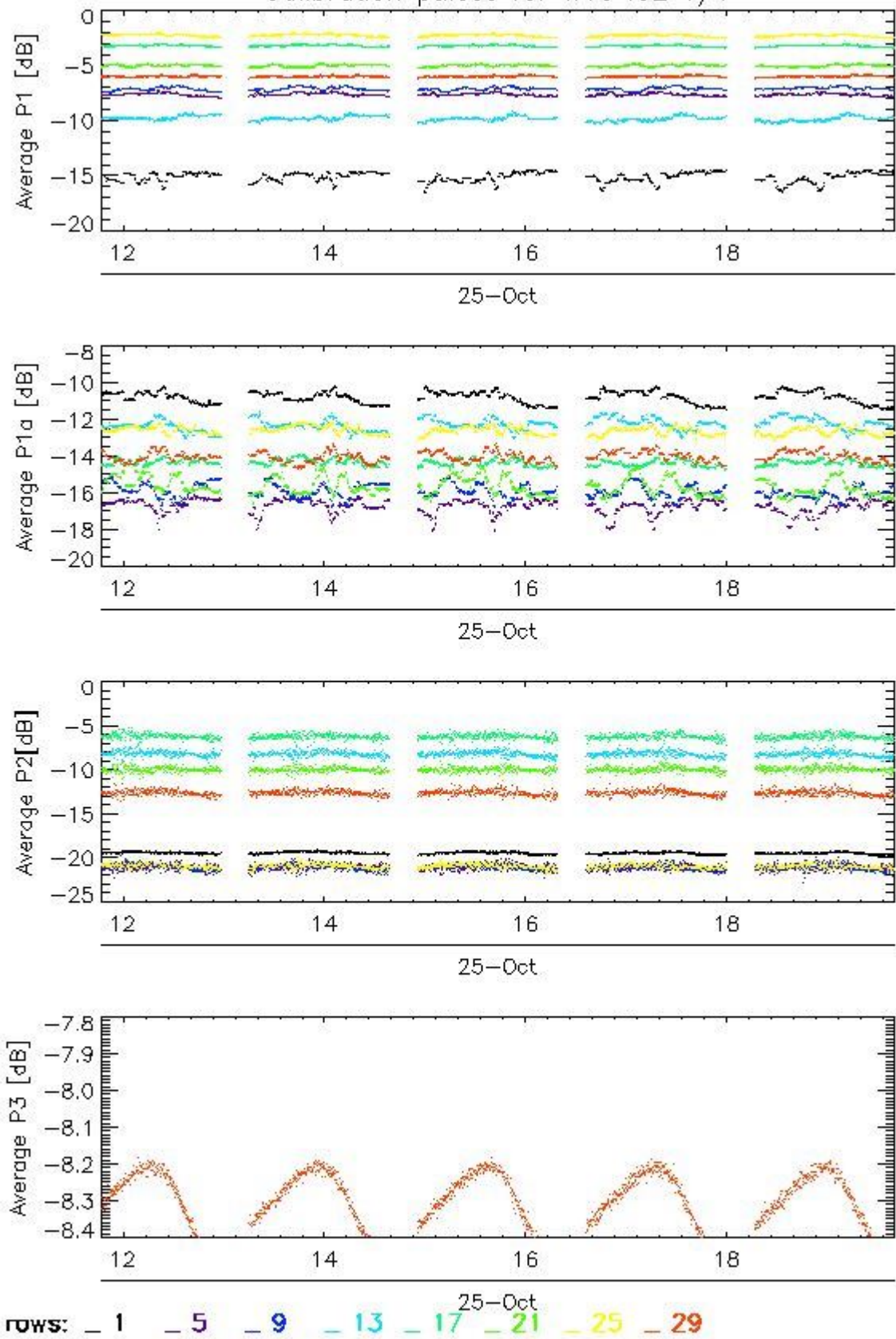
4.1.1 - Temporal Evolution Analysis for WVS IS2 V/V

[BACK TO MENU]

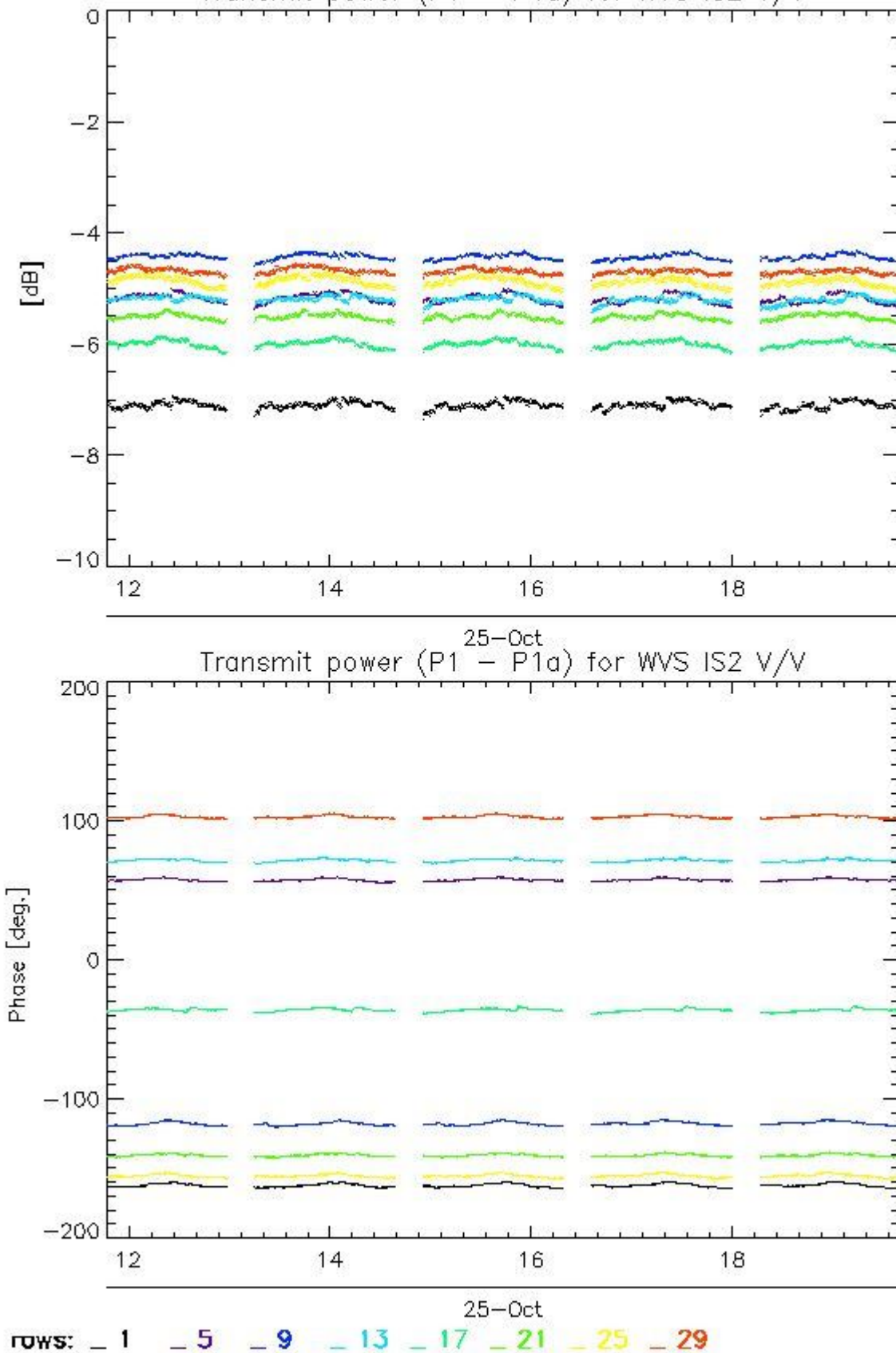
Rows: [2/6/10/14/18/22/26/30] [3/7/11/15/19/23/27/31] [4/8/12/16/20/24/28/32]

Rows: [2/6/10/14/18/22/26/30] [3/7/11/15/19/23/27/31] [4/8/12/16/20/24/28/32]

Calibration pulses for WVS IS2 V/V



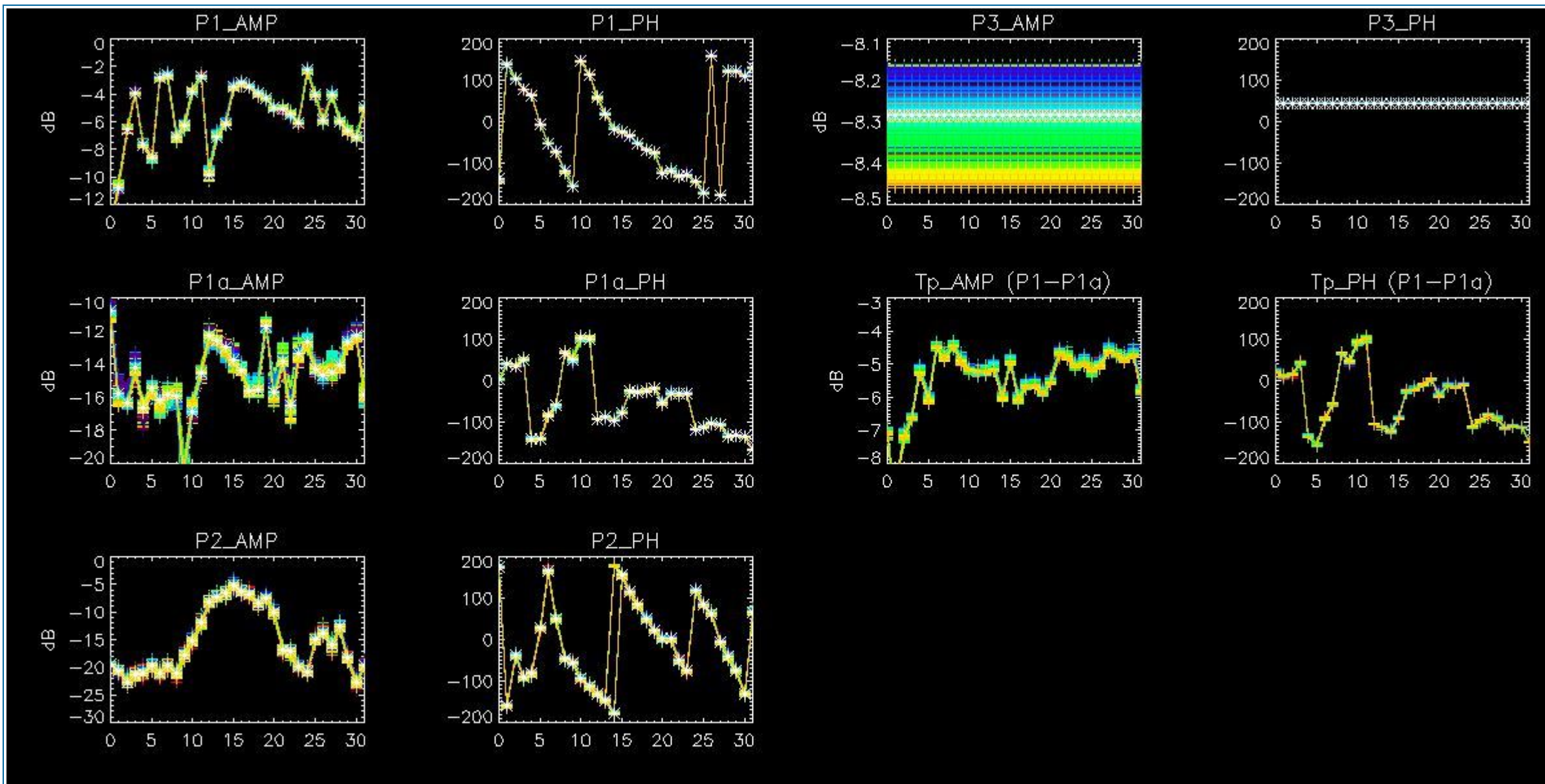
Transmit power (P1 - P1a) for WVS IS2 V/V



4.1.2 - All Rows Analysis for WVS IS2 V/V

[[BACK TO MENU](#)]





4.2 - Analysis for GM1 SS3 H/H

4.2.1 - Temporal Evolution Analysis for GM1 SS3 H/H

[BACK TO MENU]

Rows: [2/6/10/14/18/22/26/30] [3/7/11/15/19/23/27/31] [4/8/12/16/20/24/28/32]



Rows: [2/6/10/14/18/22/26/30] [3/7/11/15/19/23/27/31] [4/8/12/16/20/24/28/32]



4.2.2 - All Rows Analysis for GM1 SS3 H/H

[BACK TO MENU]

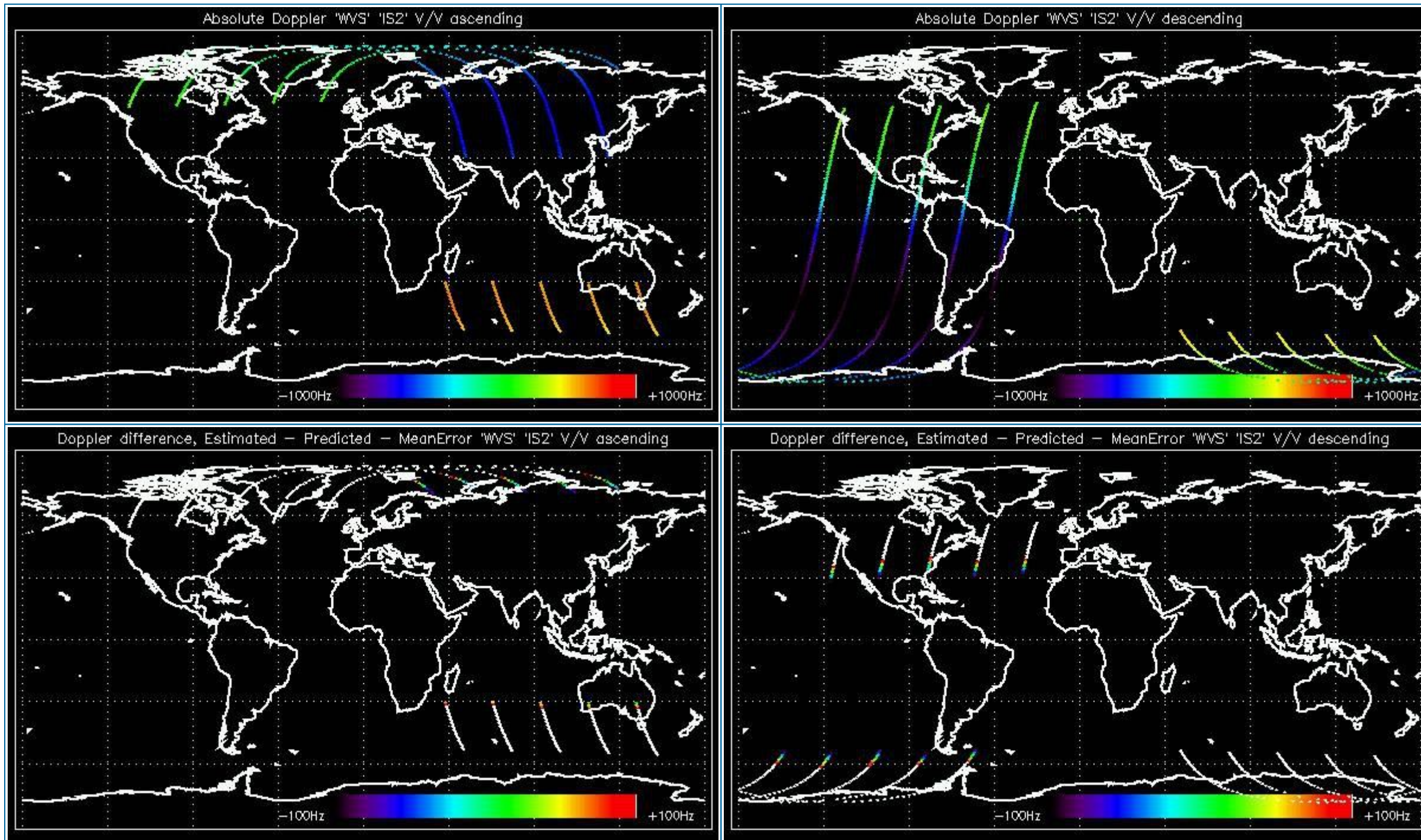


5 - DOPPLER ANALYSIS

5.1 - Analysis for WVS IS2 V/V

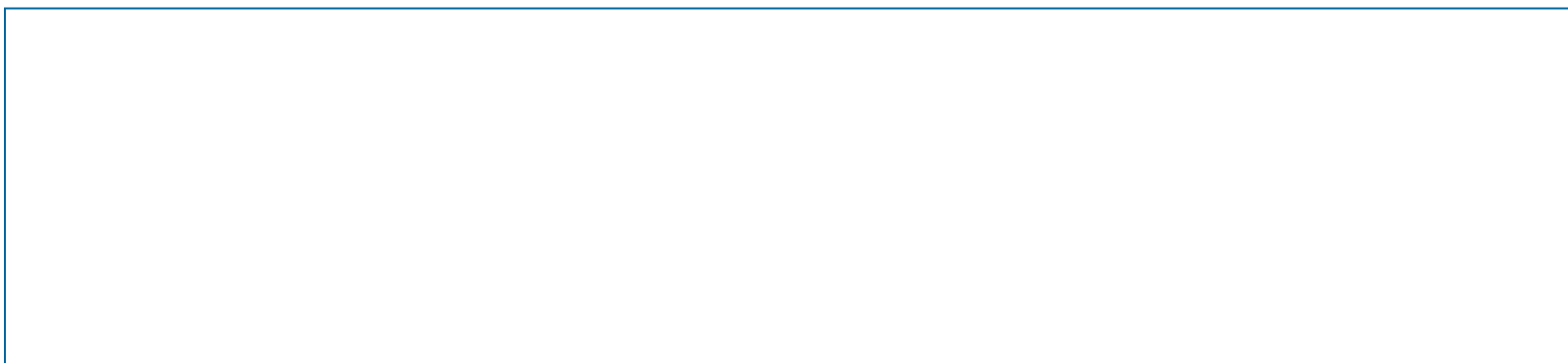
5.1.1 - Doppler MAP Analysis for WVS IS2 V/V

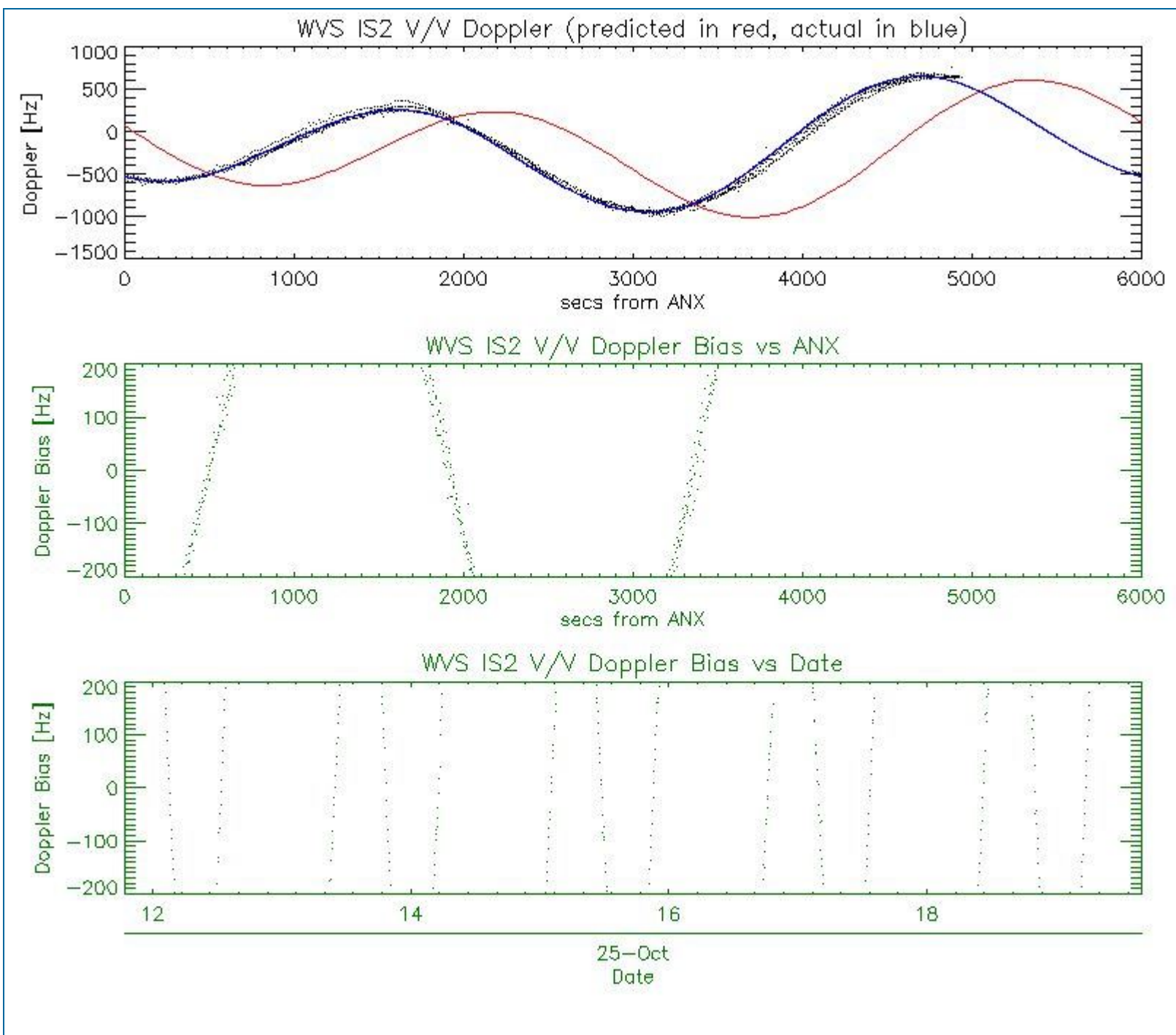
[[BACK TO MENU](#)]



5.1.2 - Doppler ANX Analysis for WVS IS2 V/V

[[BACK TO MENU](#)]





5.2 - Analysis for GM1 SS1 H/H

5.2.1 - Doppler MAP Analysis for GM1 SS1 H/H

[BACK TO MENU]



5.2.2 - Doppler ANX Analysis for GM1 SS1 H/H

[BACK TO MENU]



5.3 - Doppler JUMPS Analysis for WSM



6 - CHIRP ANALYSIS

6.1 - Analysis for WSM SS1 H/H

6.1.1 - ScaleFactor



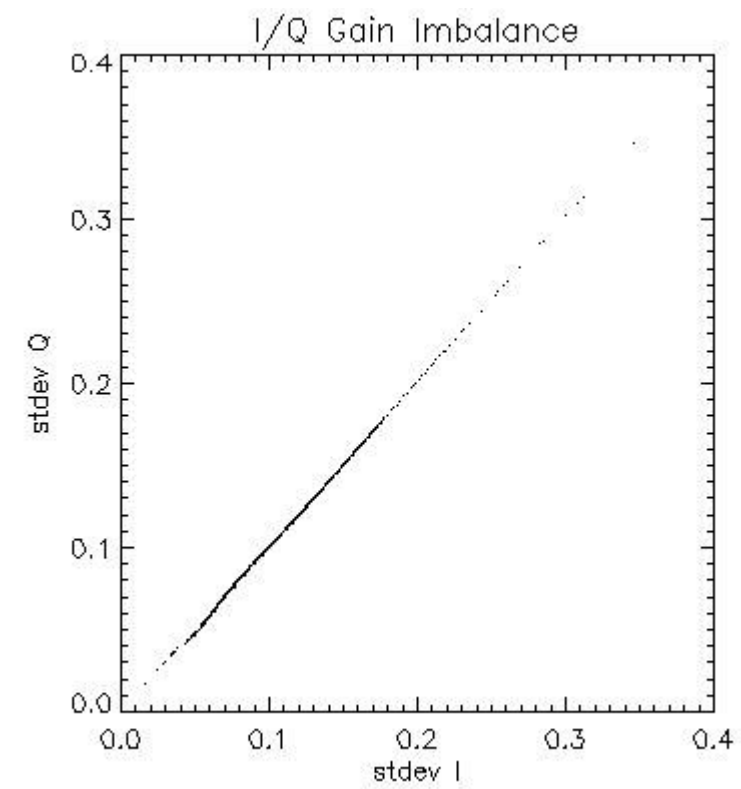
6.2 - Analysis for WSM SS1 V/V

6.2.1 - ScaleFactor

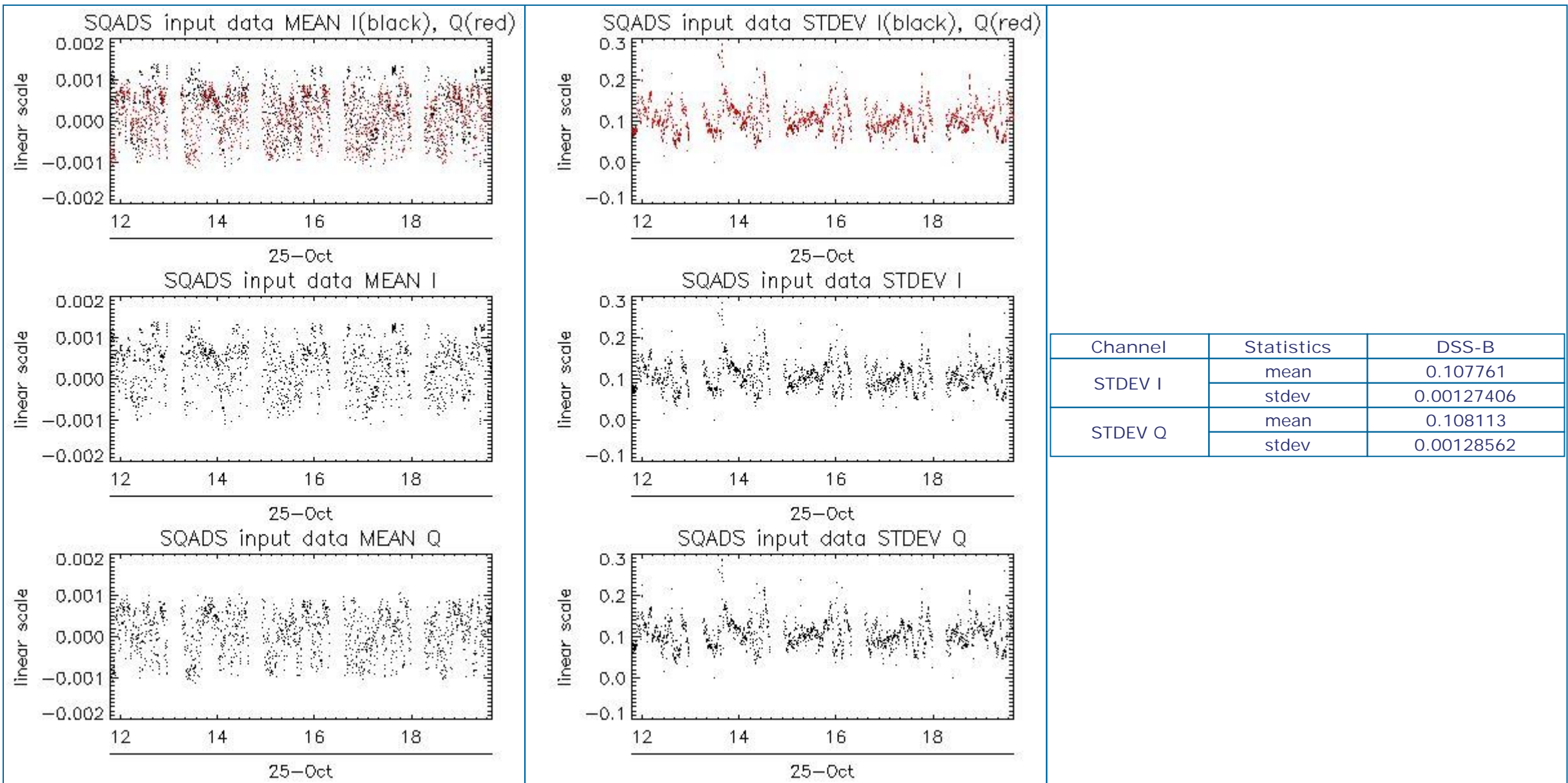


7 - RAW DATA ANALYSIS

7.1 - Analysis for WVS



Channel	Statistics	DSS-B
MEAN I	mean	0.000319102
	stdev	3.18301e-07
MEAN Q	mean	8.07578e-05
	stdev	2.74692e-07



Channel	Statistics	DSS-B
STDEV I	mean	0.107761
	stdev	0.00127406
STDEV Q	mean	0.108113
	stdev	0.00128562

7.2 - Analysis for IMM

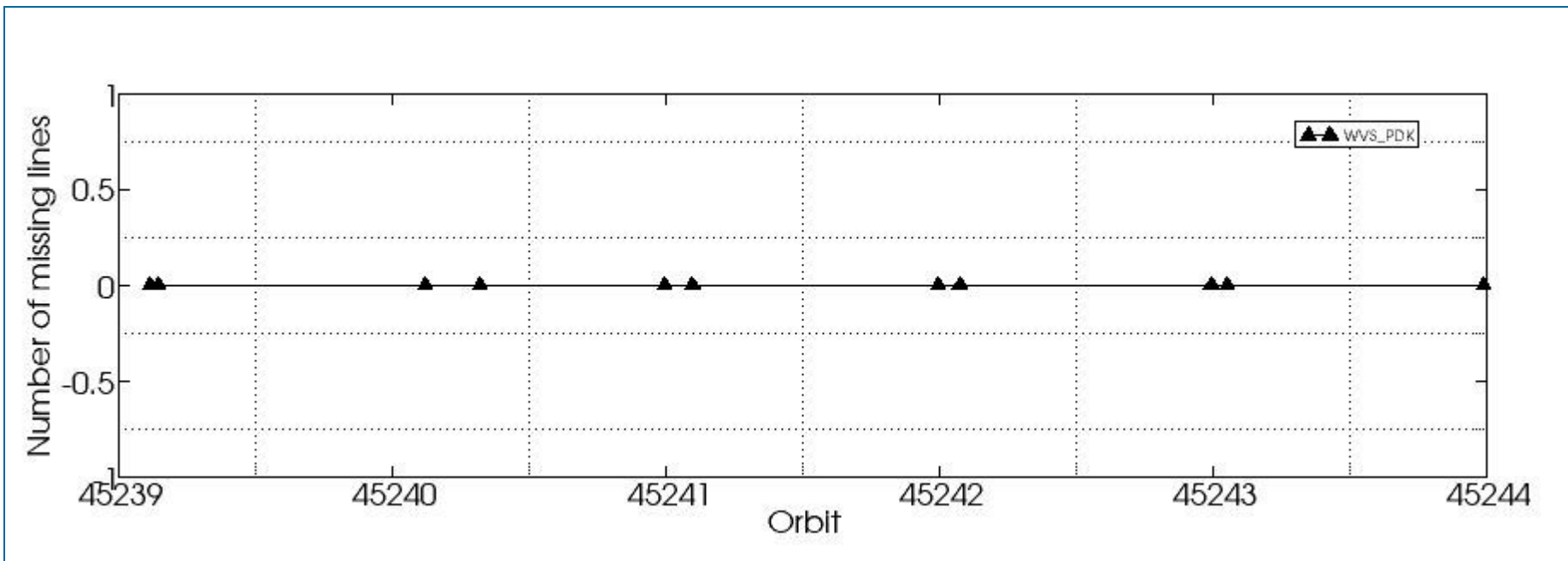
[BACK TO MENU]

Channel	Statistics	DSS-B
MEAN I	mean	
	stdev	
MEAN Q	mean	
	stdev	
Channel	Statistics	DSS-B
STDEV I	mean	
	stdev	
STDEV Q	mean	
	stdev	

8 - TELEMETRY ANALYSIS

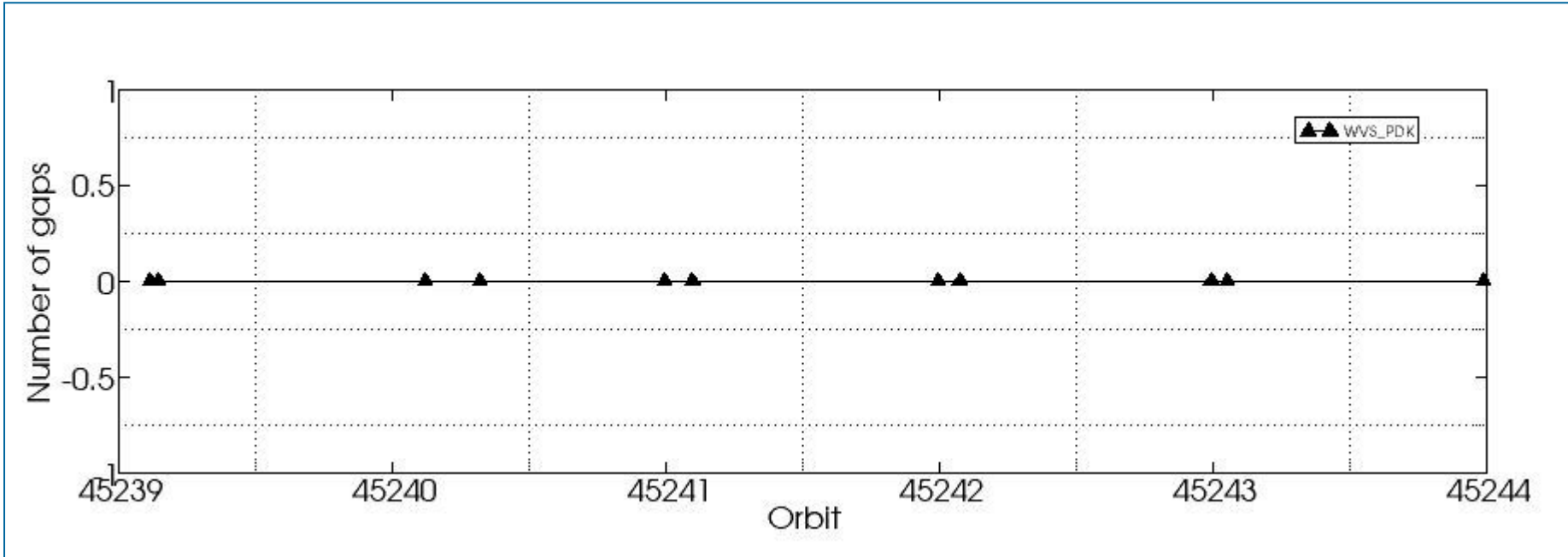
8.1 - Number of Missing lines

[BACK TO MENU]



8.2 - Number of Gaps

[[BACK TO MENU](#)]



ASAR DAILY REPORT for 101025
#####

MODE: DAILY
ANALYSIS: ALL
DATE: 2010-10-25

Analysis will be performed from 2010-10-25 00:00:00 to 2010-10-25 23:59:59
Results will be exported to the directory: ./RESULTS/DAILY/_101025/

DATA SUMMARY

Summary will be performed from 2010-10-25 00:00:00 to 2010-10-25 23:59:59
Results will be exported to the directory: ./RESULTS/DAILY/_101025/DATA_SUMMARY

Creating directory ./RESULTS/DAILY/_101025/DATA_SUMMARY...
Writing file ./RESULTS/DAILY/_101025/DATA_SUMMARY/Data_summary.html...

Getting WVS products list from 2010-10-25 00:00:00 to 2010-10-25 23:59:59...
Writing file ./RESULTS/DAILY/_101025/DATA_SUMMARY/List_WVS_products_used.xls...
Writing file ./RESULTS/DAILY/_101025/DATA_SUMMARY/List_WVS_products_used.txt...

Getting GM1 products list from 2010-10-25 00:00:00 to 2010-10-25 23:59:59...
Writing file ./RESULTS/DAILY/_101025/DATA_SUMMARY/List_GM1_products_used.xls...
Writing file ./RESULTS/DAILY/_101025/DATA_SUMMARY/List_GM1_products_used.txt...

Getting APM products list from 2010-10-25 00:00:00 to 2010-10-25 23:59:59...
Writing file ./RESULTS/DAILY/_101025/DATA_SUMMARY/List_APM_products_used.xls...
Writing file ./RESULTS/DAILY/_101025/DATA_SUMMARY/List_APM_products_used.txt...

Getting IMM products list from 2010-10-25 00:00:00 to 2010-10-25 23:59:59...
Writing file ./RESULTS/DAILY/_101025/DATA_SUMMARY/List_IMM_products_used.xls...
Writing file ./RESULTS/DAILY/_101025/DATA_SUMMARY/List_IMM_products_used.txt...

Getting WSM products list from 2010-10-25 00:00:00 to 2010-10-25 23:59:59...
Writing file ./RESULTS/DAILY/_101025/DATA_SUMMARY/List_WSM_products_used.xls...
Writing file ./RESULTS/DAILY/_101025/DATA_SUMMARY/List_WSM_products_used.txt...

Getting MS products list from 2010-10-25 00:00:00 to 2010-10-25 23:59:59...
Writing file ./RESULTS/DAILY/_101025/DATA_SUMMARY/List_MS_products_used.xls...
Writing file ./RESULTS/DAILY/_101025/DATA_SUMMARY/List_MS_products_used.txt...

DATA SUMMARY completed
#####

AUXILIARY FILES ANALYSIS

Analysis will be performed from 2010-10-25 00:00:00 to 2010-10-25 23:59:59
Results will be exported to the directory: ./RESULTS/DAILY/_101025/AUXILIARY

Creating directory ./RESULTS/DAILY/_101025/AUXILIARY...

Looking for the IECF operational ADFs list...



ADF filter 20101025*current_3_IECF_ADFs.txt
 Found list 20101025_030003_current_3_IECF_ADFs.txt...
 Extracting ADFs...

ASA_CON_AXVIEC20100608_125449_20100317_120410_20101231_000000
 ASA_INS_AXVIEC20101018_101437_20101022_000000_20101231_235959
 ASA_XCH_AXVIEC20091217_113006_20020301_000000_20101231_000000
 ASA_XCA_AXVIEC20100608_123419_20100317_120410_20110101_000000

Writing file ./RESULTS/DAILY/_101025/AUXILIARY/ASAR_ADFs_IECF_List3.html...
 Writing file ./RESULTS/DAILY/_101025/AUXILIARY/Auxiliary_files_summary.html...

Analysing WVS products...

Writing file ./RESULTS/DAILY/_101025/AUXILIARY/Check_ADFs_WVS.xls...
 Writing file ./RESULTS/DAILY/_101025/AUXILIARY/Check_ADFs_WVS.txt...

ASA_WVS_1PNPDK20101025_114704_000002403095_00397_45239_4774.N1	ASA_CON -> OKASA_INS -> OKASA_XCH -> OKASA_XCA -> OK
ASA_WVS_1PNPDK20101025_115004_000040813095_00397_45239_4788.N1	ASA_CON -> OKASA_INS -> OKASA_XCH -> OKASA_XCA -> OK
ASA_WVS_1PNPDK20101025_131512_000008553095_00398_45240_4789.N1	ASA_CON -> OKASA_INS -> OKASA_XCH -> OKASA_XCA -> OK
ASA_WVS_1PNPDK20101025_132813_000011703095_00398_45240_4802.N1	ASA_CON -> OKASA_INS -> OKASA_XCH -> OKASA_XCA -> OK
ASA_WVS_1PNPDK20101025_134813_000030153095_00398_45240_4803.N1	ASA_CON -> OKASA_INS -> OKASA_XCH -> OKASA_XCA -> OK
ASA_WVS_1PNPDK20101025_145536_000007203095_00399_45241_4804.N1	ASA_CON -> OKASA_INS -> OKASA_XCH -> OKASA_XCA -> OK
ASA_WVS_1PNPDK20101025_150636_000043363095_00399_45241_4819.N1	ASA_CON -> OKASA_INS -> OKASA_XCH -> OKASA_XCA -> OK
ASA_WVS_1PNPDK20101025_163605_000005853095_00400_45242_4820.N1	ASA_CON -> OKASA_INS -> OKASA_XCH -> OKASA_XCA -> OK
ASA_WVS_1PNPDK20101025_164450_000044713095_00400_45242_4833.N1	ASA_CON -> OKASA_INS -> OKASA_XCH -> OKASA_XCA -> OK
ASA_WVS_1PNPDK20101025_181629_000004643095_00401_45243_4834.N1	ASA_CON -> OKASA_INS -> OKASA_XCH -> OKASA_XCA -> OK
ASA_WVS_1PNPDK20101025_182259_000046063095_00401_45243_4849.N1	ASA_CON -> OKASA_INS -> OKASA_XCH -> OKASA_XCA -> OK

Analysing GM1 products...

No GM1 products available for the selected period...

Analysing APM products...

No APM products available for the selected period...

Analysing IMM products...

No IMM products available for the selected period...

Analysing WSM products...

No WSM products available for the selected period...

AUXILIARY FILES ANALYSIS completed
 #####

MODULE STEPPING ANALYSIS
 #####
 Analysis will be performed from 2010-10-25 00:00:00 to 2010-10-25 23:59:59
 Results will be exported to the directory: ./RESULTS/DAILY/_101025/MODULE_STEPPING



```

Creating directory ./RESULTS/DAILY/_101025/MODULE_STEPPING...
Creating directory ./RESULTS/DAILY/_101025/MODULE_STEPPING/FIRST_REFERENCE...
Creating directory ./RESULTS/DAILY/_101025/MODULE_STEPPING/SECOND_REFERENCE...
Creating directory ./RESULTS/DAILY/_101025/MODULE_STEPPING/PREVIOUS_PRODUCT_REFERENCE...
Deleting old files...

```

```

*****
*****
Creating images comparing with second reference...

```

```

Exporting results to the directory ../../RESULTS/DAILY/_101025/MODULE_STEPPING/SECOND_REFERENCE...

```

```

Polarization: H
Reference product: ASA_MS__0PNPDK20010209_135042_0000009A024_00180_11700_0052.N1
Test product: ASA_MS__0PNPDK20101021_062624_000000162094_00034_45178_0231.N1
  H
  H
../../RESULTS/DAILY/_101025/MODULE_STEPPING/SECOND_REFERENCE/TGH_20101021_062624-20010209_135042.png
../../RESULTS/DAILY/_101025/MODULE_STEPPING/SECOND_REFERENCE/TPH_20101021_062624-20010209_135042.png
../../RESULTS/DAILY/_101025/MODULE_STEPPING/SECOND_REFERENCE/RGH_20101021_062624-20010209_135042.png
../../RESULTS/DAILY/_101025/MODULE_STEPPING/SECOND_REFERENCE/RPH_20101021_062624-20010209_135042.png

```

```

Polarization: V
Reference product: ASA_MS__0PNPDK20010209_140823_0000009A024_00180_11700_0054.N1
Test product: ASA_MS__0PNPDK20101020_170137_000000162094_00026_45170_0230.N1
  V
  V
../../RESULTS/DAILY/_101025/MODULE_STEPPING/SECOND_REFERENCE/TGV_20101020_170137-20010209_140823.png
../../RESULTS/DAILY/_101025/MODULE_STEPPING/SECOND_REFERENCE/TPV_20101020_170137-20010209_140823.png
../../RESULTS/DAILY/_101025/MODULE_STEPPING/SECOND_REFERENCE/RGV_20101020_170137-20010209_140823.png
../../RESULTS/DAILY/_101025/MODULE_STEPPING/SECOND_REFERENCE/RPV_20101020_170137-20010209_140823.png

```

```

*****
*****
Creating images comparing with previous product reference...

```

```

Exporting results to the directory ../../RESULTS/DAILY/_101025/MODULE_STEPPING/PREVIOUS_PRODUCT_REFERENCE...

```

```

Polarization: H
Reference product: ASA_MS__0PNPDK20101019_173314_000000162094_00012_45156_0229.N1
Test product: ASA_MS__0PNPDK20101021_062624_000000162094_00034_45178_0231.N1
  H
  H
../../RESULTS/DAILY/_101025/MODULE_STEPPING/PREVIOUS_PRODUCT_REFERENCE/TGH_20101021_062624-20101019_173314.png
../../RESULTS/DAILY/_101025/MODULE_STEPPING/PREVIOUS_PRODUCT_REFERENCE/TPH_20101021_062624-20101019_173314.png
../../RESULTS/DAILY/_101025/MODULE_STEPPING/PREVIOUS_PRODUCT_REFERENCE/RGH_20101021_062624-20101019_173314.png
../../RESULTS/DAILY/_101025/MODULE_STEPPING/PREVIOUS_PRODUCT_REFERENCE/RPH_20101021_062624-20101019_173314.png

```

```

Polarization: V
Reference product: ASA_MS__0PNPDK20101018_180451_000000162093_00499_45142_0228.N1
Test product: ASA_MS__0PNPDK20101020_170137_000000162094_00026_45170_0230.N1
  V
  V
../../RESULTS/DAILY/_101025/MODULE_STEPPING/PREVIOUS_PRODUCT_REFERENCE/TGV_20101020_170137-20101018_180451.png
../../RESULTS/DAILY/_101025/MODULE_STEPPING/PREVIOUS_PRODUCT_REFERENCE/TPV_20101020_170137-20101018_180451.png
../../RESULTS/DAILY/_101025/MODULE_STEPPING/PREVIOUS_PRODUCT_REFERENCE/RGV_20101020_170137-20101018_180451.png
../../RESULTS/DAILY/_101025/MODULE_STEPPING/PREVIOUS_PRODUCT_REFERENCE/RPV_20101020_170137-20101018_180451.png

```

```

MODULE_STEPPING ANALYSIS completed
#####

```

```

CALIBRATION PULSES ANALYSIS
#####
Creating directory ./RESULTS/DAILY/_101025/CALIBRATION_PULSES...

```


ALL ROWS Analysis will be performed from 2010-10-25 00:00:00 to 2010-10-25 23:59:59

Analysing products WVS IS2 V/V

Writing image ../../RESULTS/DAILY/_101025//CALIBRATION_PULSES/Calibration_pulses_all_rows_WVS_IS2_VV.png...

Analysing products GM1 SS3 H/H

*** No Data ***

TEMPORAL EVOLUTION Analysis will be performed from 2010-10-25 00:00:00 to 2010-10-25 23:59:59

Analysing products WVS IS2 V/V

Getting calibration pulses data for WVS IS2 V/V from 2010-10-25 00:00:00 to 2010-10-25 23:59:59. Rows: 1/5/9/13/17/21/25/29

Writing file ../../RESULTS/DAILY/_101025/CALIBRATION_PULSES/Calibration_pulses_data_WVS_IS2_VV_2010-10-25_1.dat...

Writing ../../RESULTS/DAILY/_101025//CALIBRATION_PULSES/Average_P1_P1a_P2_P3_WVS_IS2_VV_1.png...

Writing ../../RESULTS/DAILY/_101025//CALIBRATION_PULSES/Transmit_Power_WVS_IS2_VV_1.png...

Getting calibration pulses data for WVS IS2 V/V from 2010-10-25 00:00:00 to 2010-10-25 23:59:59. Rows: 2/6/10/14/18/22/26/30

Writing file ../../RESULTS/DAILY/_101025/CALIBRATION_PULSES/Calibration_pulses_data_WVS_IS2_VV_2010-10-25_2.dat...

Writing ../../RESULTS/DAILY/_101025//CALIBRATION_PULSES/Average_P1_P1a_P2_P3_WVS_IS2_VV_2.png...

Writing ../../RESULTS/DAILY/_101025//CALIBRATION_PULSES/Transmit_Power_WVS_IS2_VV_2.png...

Getting calibration pulses data for WVS IS2 V/V from 2010-10-25 00:00:00 to 2010-10-25 23:59:59. Rows: 3/7/11/15/19/23/27/31

Writing file ../../RESULTS/DAILY/_101025/CALIBRATION_PULSES/Calibration_pulses_data_WVS_IS2_VV_2010-10-25_3.dat...

Writing ../../RESULTS/DAILY/_101025//CALIBRATION_PULSES/Average_P1_P1a_P2_P3_WVS_IS2_VV_3.png...

Writing ../../RESULTS/DAILY/_101025//CALIBRATION_PULSES/Transmit_Power_WVS_IS2_VV_3.png...

Getting calibration pulses data for WVS IS2 V/V from 2010-10-25 00:00:00 to 2010-10-25 23:59:59. Rows: 4/8/12/16/20/24/28/32

Writing file ../../RESULTS/DAILY/_101025/CALIBRATION_PULSES/Calibration_pulses_data_WVS_IS2_VV_2010-10-25_4.dat...

Writing ../../RESULTS/DAILY/_101025//CALIBRATION_PULSES/Average_P1_P1a_P2_P3_WVS_IS2_VV_4.png...

Writing ../../RESULTS/DAILY/_101025//CALIBRATION_PULSES/Transmit_Power_WVS_IS2_VV_4.png...

Analysing products GM1 SS3 H/H

Getting calibration pulses data for GM1 SS3 H/H from 2010-10-25 00:00:00 to 2010-10-25 23:59:59. Rows: 1/5/9/13/17/21/25/29

Writing file ../../RESULTS/DAILY/_101025/CALIBRATION_PULSES/Calibration_pulses_data_GM1_SS3_HH_2010-10-25_1.dat...

No data to be processed for GM1 SS3 H/H...

Getting calibration pulses data for GM1 SS3 H/H from 2010-10-25 00:00:00 to 2010-10-25 23:59:59. Rows: 2/6/10/14/18/22/26/30

Writing file ../../RESULTS/DAILY/_101025/CALIBRATION_PULSES/Calibration_pulses_data_GM1_SS3_HH_2010-10-25_2.dat...

No data to be processed for GM1 SS3 H/H...

Getting calibration pulses data for GM1 SS3 H/H from 2010-10-25 00:00:00 to 2010-10-25 23:59:59. Rows: 3/7/11/15/19/23/27/31

Writing file ../../RESULTS/DAILY/_101025/CALIBRATION_PULSES/Calibration_pulses_data_GM1_SS3_HH_2010-10-25_3.dat...

No data to be processed for GM1 SS3 H/H...

Getting calibration pulses data for GM1 SS3 H/H from 2010-10-25 00:00:00 to 2010-10-25 23:59:59. Rows: 4/8/12/16/20/24/28/32

Writing file ../../RESULTS/DAILY/_101025/CALIBRATION_PULSES/Calibration_pulses_data_GM1_SS3_HH_2010-10-25_4.dat...

No data to be processed for GM1 SS3 H/H...

CALIBRATION PULSES ANALYSIS completed

#####

DOPPLER ANALYSIS

#####

Creating directory ../../RESULTS/DAILY/_101025/DOPPLER...



DOPPLER ANX Analysis will be performed from 2010-10-25 00:00:00 to 2010-10-25 23:59:59

Analysing products WVS IS2 V/V
Getting doppler data for WVS IS2 V/V from 2010-10-25 00:00:00 to 2010-10-25 23:59:59...
Writing file ./RESULTS/DAILY/_101025/DOPPLER/Doppler_data_WVS_IS2_VV_2010-10-25.dat...
Running IDL program...
Writing file ../../RESULTS/DAILY/_101025/DOPPLER/DOPPLER_ANX_WVS_IS2_VV.png...

Analysing products GM1 SS1 H/H
Getting doppler data for GM1 SS1 H/H from 2010-10-25 00:00:00 to 2010-10-25 23:59:59...
Writing file ./RESULTS/DAILY/_101025/DOPPLER/Doppler_data_GM1_SS1_HH_2010-10-25.dat...
No data to be processed for GM1 SS1 H/H...

DOPPLER JUMPS Analysis will be performed on WSM products from 2010-10-25 00:00:00 to 2010-10-25 23:59:59

Analysing by default products WSM
Getting doppler jumps data for WSM from 2010-10-25 00:00:00 to 2010-10-25 23:59:59...
Writing file ./RESULTS/DAILY/_101025/DOPPLER/Doppler_Jumps_data_WSM_2010-10-25.dat...
No data to be processed for WSM...

DOPPLER MAP Analysis will be performed from 2010-10-25 00:00:00 to 2010-10-25 23:59:59

Analysing products WVS IS2 V/V
Loading predicted doppler values....
Phase: descending
Found data...
Computing mean error doppler estimated-predicted...
Mean error = 82.159643 Hz
Writing file ../../RESULTS/DAILY/_101025//DOPPLER/DOPPLER_Estimated-Predicted-MeanError_WVS_IS2_VV_desc.jpg...
Writing file ../../RESULTS/DAILY/_101025//DOPPLER/DOPPLER_Absolute_WVS_IS2_VV_desc.jpg...

Loading predicted doppler values....
Phase: ascending
Found data...
Computing mean error doppler estimated-predicted...
Mean error = 248.79564 Hz
Writing file ../../RESULTS/DAILY/_101025//DOPPLER/DOPPLER_Estimated-Predicted-MeanError_WVS_IS2_VV_asc.jpg...
Writing file ../../RESULTS/DAILY/_101025//DOPPLER/DOPPLER_Absolute_WVS_IS2_VV_asc.jpg...

Analysing products GM1 SS1 H/H
*** Insufficient Data to Plot ***
*** Insufficient Data to Plot ***

DOPPLER ANALYSIS completed
#####

CHIRP ANALYSIS

Creating directory ./RESULTS/DAILY/_101025/CHIRP...

CHIRP Analysis will be performed from 2010-10-25 00:00:00 to 2010-10-25 23:59:59

Analysing products WSM SS1 H/H

Getting ScaleFactor data for WSM SS1 H/H from 2010-10-25 00:00:00 to 2010-10-25 23:59:59...

Writing file ./RESULTS/DAILY/_101025/CHIRP/ScaleFactor_data_WSM_SS1_HH_2010-10-25.dat...

ScaleFactor: no data to be processed for WSM SS1 H/H...

Analysing products WSM SS1 V/V

Getting ScaleFactor data for WSM SS1 V/V from 2010-10-25 00:00:00 to 2010-10-25 23:59:59...

Writing file ./RESULTS/DAILY/_101025/CHIRP/ScaleFactor_data_WSM_SS1_VV_2010-10-25.dat...

ScaleFactor: no data to be processed for WSM SS1 V/V...

CHIRP ANALYSIS completed

#####

RAW DATA ANALYSIS

#####

Analysis will be performed from 2010-10-25 00:00:00 to 2010-10-25 23:59:59

Results will be exported to the directory: ./RESULTS/DAILY/_101025/RAW_DATA

Creating directory ./RESULTS/DAILY/_101025/RAW_DATA...

Getting raw data for WVS from 2010-10-25 00:00:00 to 2010-10-25 23:59:59...

Writing file ./RESULTS/DAILY/_101025/RAW_DATA/Raw_data_WVS_2010-10-25.dat...

Running IDL program to create graphs...

Creating image ../../RESULTS/DAILY/_101025/RAW_DATA/Raw_data_WVS_input_mean.png...

Creating image ../../RESULTS/DAILY/_101025/RAW_DATA/Raw_data_WVS_input_stdev.png...

Creating image ../../RESULTS/DAILY/_101025/RAW_DATA/Raw_data_WVS_gain_imbalance.png...

Getting raw data for IMM from 2010-10-25 00:00:00 to 2010-10-25 23:59:59...

Writing file ./RESULTS/DAILY/_101025/RAW_DATA/Raw_data_IMM_2010-10-25.dat...

No data to be processed for IMM...

RAW DATA ANALYSIS completed

#####

TELEMETRY ANALYSIS

#####

Analysis will be performed from 2010-10-25 00:00:00 to 2010-10-25 23:59:59

Results will be exported to the directory: ./RESULTS/DAILY/_101025/TELEMETRY

Creating directory ./RESULTS/DAILY/_101025/TELEMETRY...

Looking for gaps and missing lines in WVS products...

No products from PDE...

Checking 11 products from PDK...

Looking for gaps and missing lines in GM1 products...

No products from PDE...

No products from PDK...

Looking for gaps and missing lines in APM products...

No products from PDE...

No products from PDK...

Looking for gaps and missing lines in IMM products...

No products from PDE...

No products from PDK...

Looking for gaps and missing lines in WSM products...

No products from PDE...

No products from PDK...

Creating graph of missing lines and gaps...

Creating image: ./RESULTS/DAILY/_101025/TELEMETRY/TELEMETRY_Missing_lines.png...

Creating image: ./RESULTS/DAILY/_101025/TELEMETRY/TELEMETRY_Gaps.png...

TELEMETRY ANALYSIS completed

#####

HTML REPORT generation

#####

Building file ./RESULTS/DAILY/_101025/asarReport.html...

Building DATA SUMMARY section...

Building AUXILIARY FILES ANALYSIS section...

Building MODULE STEPPING ANALYSIS section...

Building CALIBRATION PULSES ANALYSIS section...

Building DOPPLER ANALYSIS section...

Building CHIRP ANALYSIS section...

Building RAW DATA ANALYSIS section...

Building TELEMETRY ANALYSIS section...

HTML REPORT generation completed

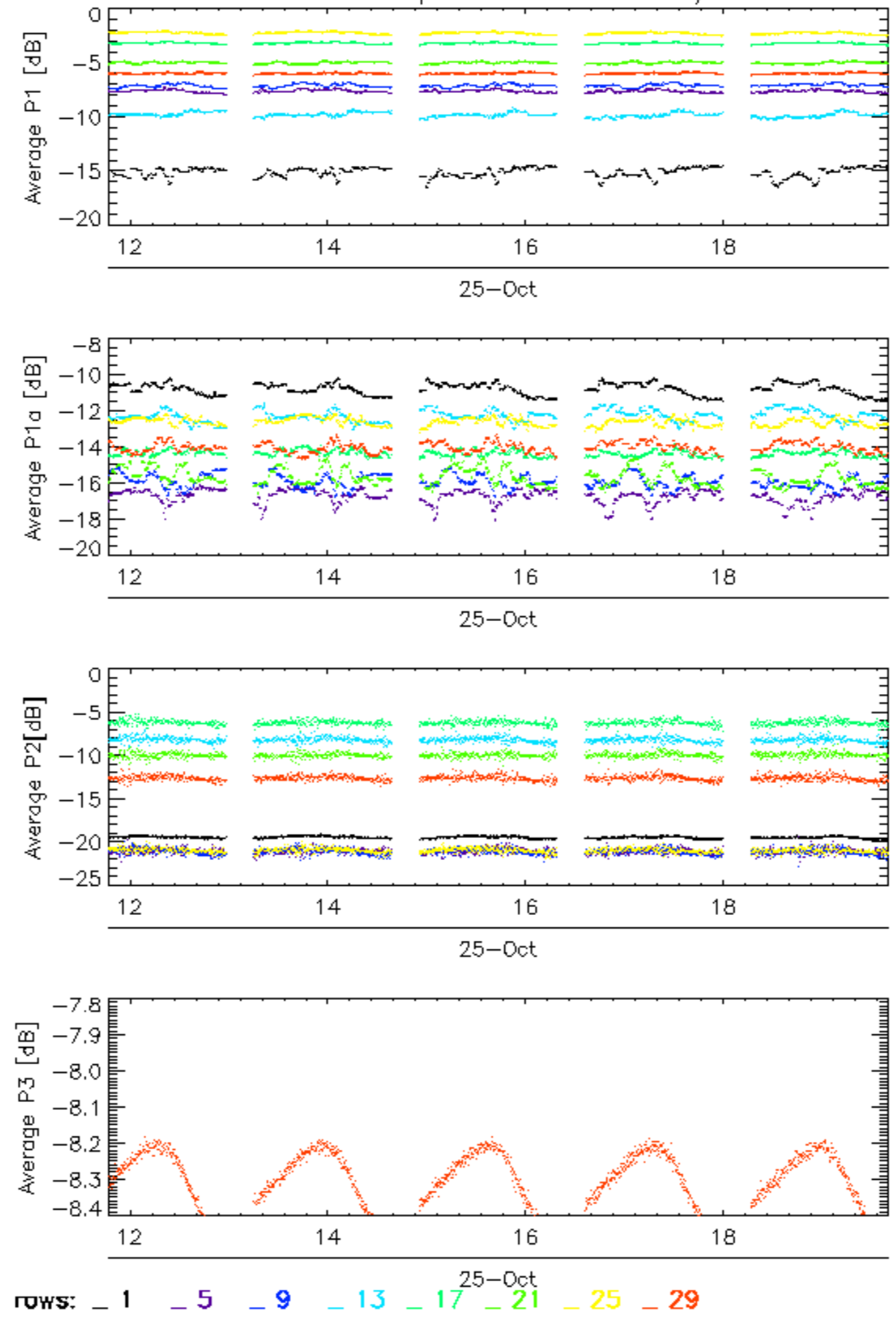
#####



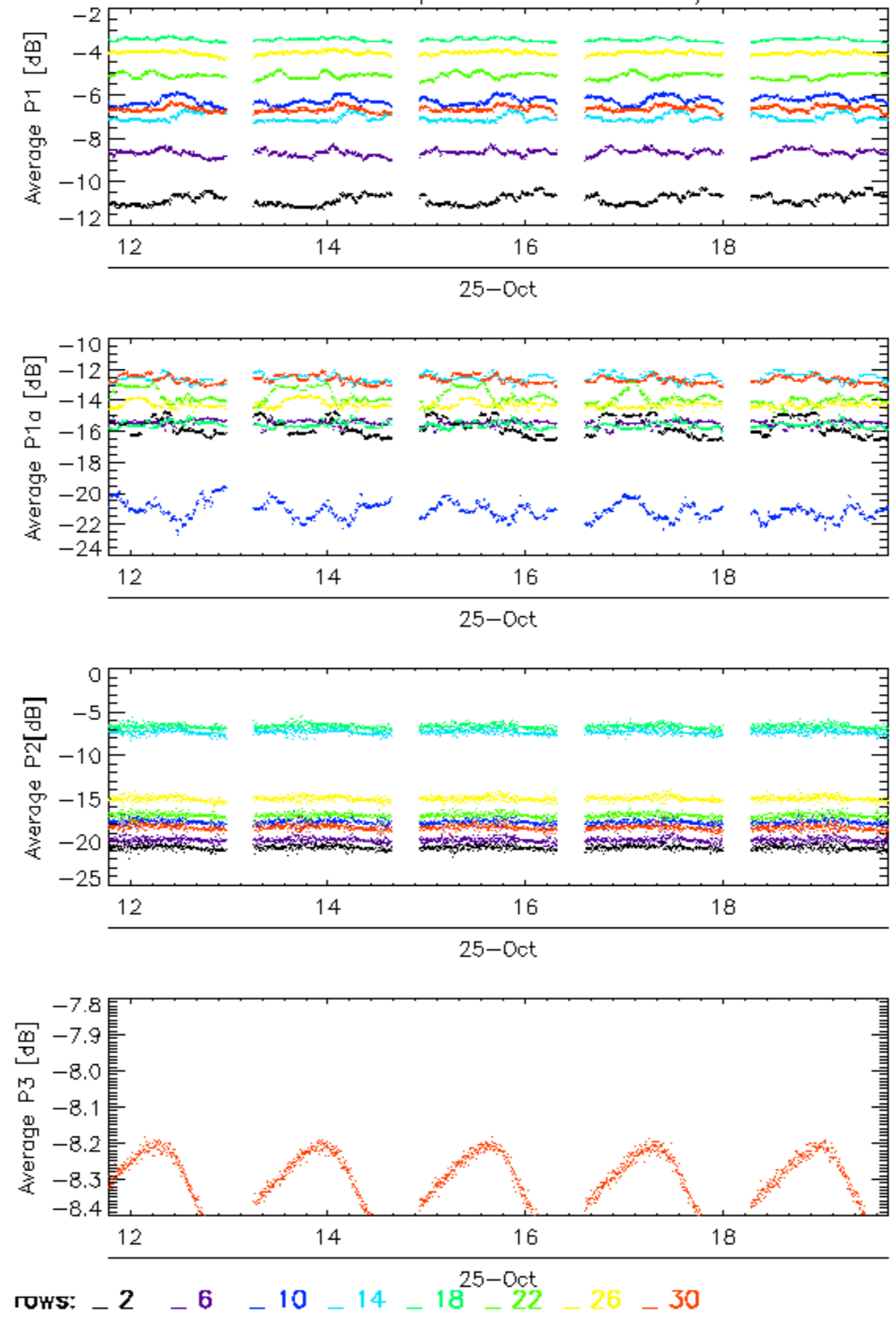
Differences with IECF operational ADFs list. If a wrong ADF is used, the filename is reported.

Product	ASA_CON	ASA_INS	ASA_XCH	ASA_XCA
ASA_WVS_1PNPDK20101025_114704_000002403095_00397_45239_4774.N1	OK	OK	OK	OK
ASA_WVS_1PNPDK20101025_115004_000040813095_00397_45239_4788.N1	OK	OK	OK	OK
ASA_WVS_1PNPDK20101025_131512_000008553095_00398_45240_4789.N1	OK	OK	OK	OK
ASA_WVS_1PNPDK20101025_132813_000011703095_00398_45240_4802.N1	OK	OK	OK	OK
ASA_WVS_1PNPDK20101025_134813_000030153095_00398_45240_4803.N1	OK	OK	OK	OK
ASA_WVS_1PNPDK20101025_145536_000007203095_00399_45241_4804.N1	OK	OK	OK	OK
ASA_WVS_1PNPDK20101025_150636_000043363095_00399_45241_4819.N1	OK	OK	OK	OK
ASA_WVS_1PNPDK20101025_163605_000005853095_00400_45242_4820.N1	OK	OK	OK	OK
ASA_WVS_1PNPDK20101025_164450_000044713095_00400_45242_4833.N1	OK	OK	OK	OK
ASA_WVS_1PNPDK20101025_181629_000004643095_00401_45243_4834.N1	OK	OK	OK	OK
ASA_WVS_1PNPDK20101025_182259_000046063095_00401_45243_4849.N1	OK	OK	OK	OK

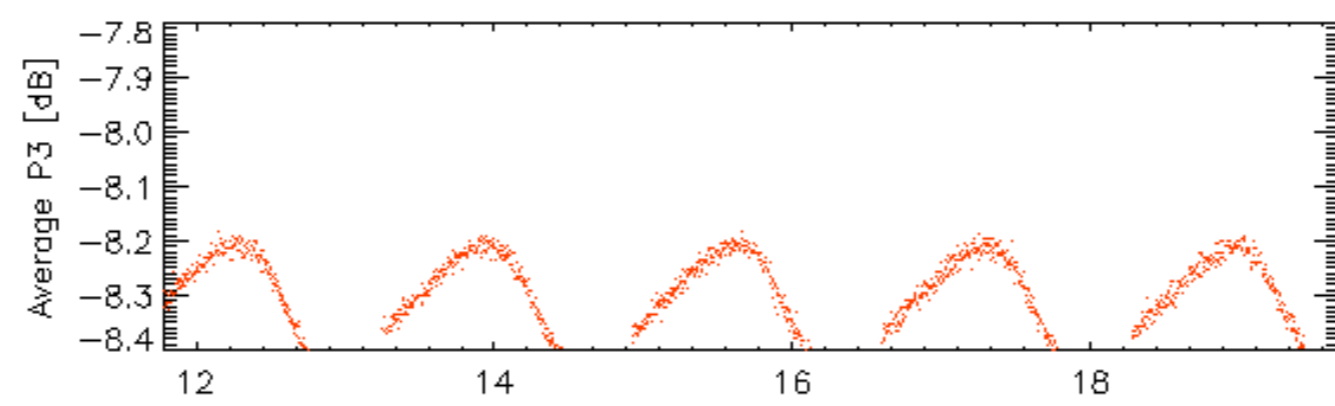
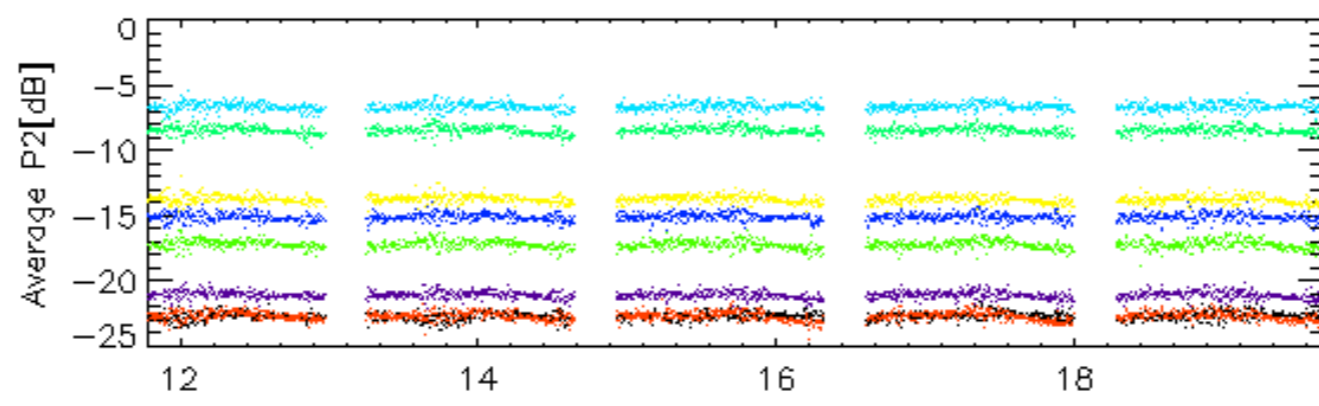
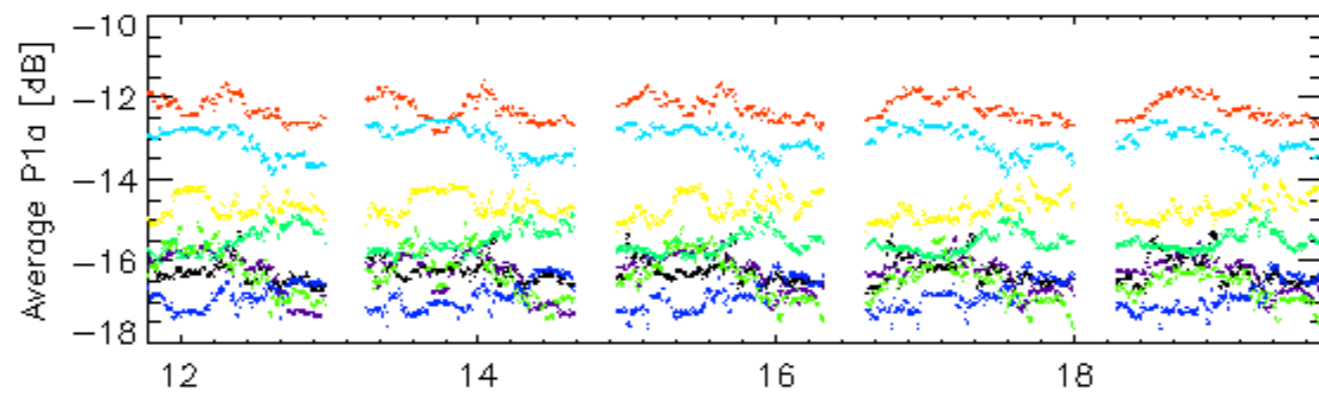
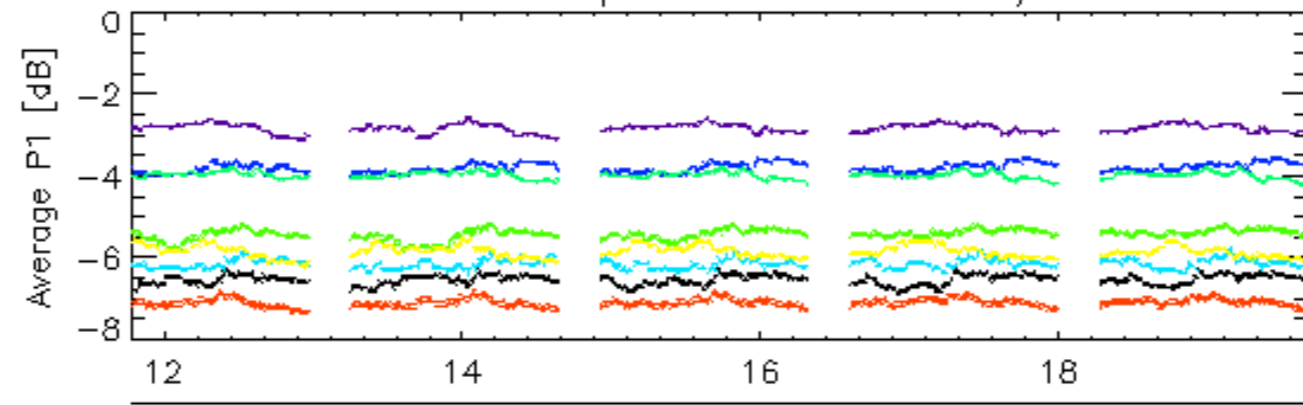
Calibration pulses for WVS IS2 V/V



Calibration pulses for WVS IS2 V/V

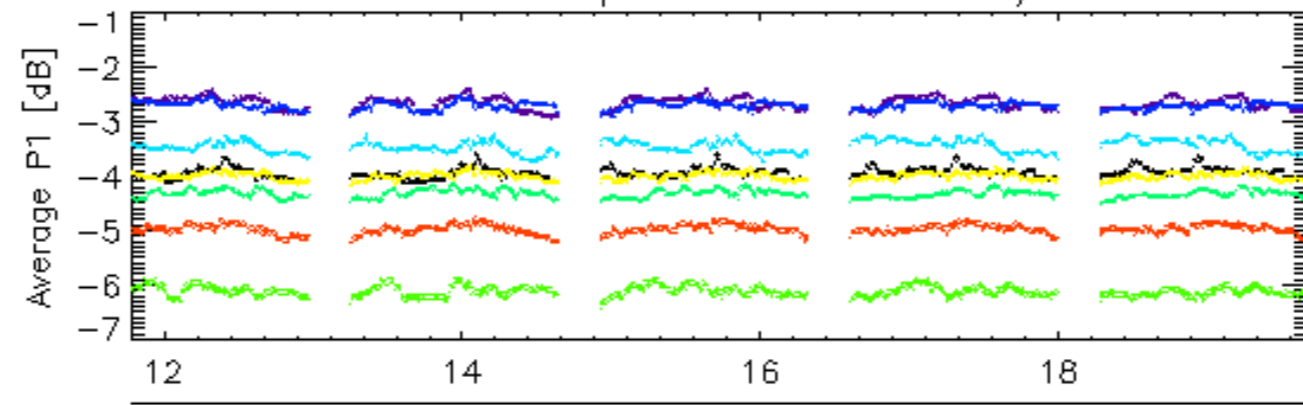


Calibration pulses for WVS IS2 V/V

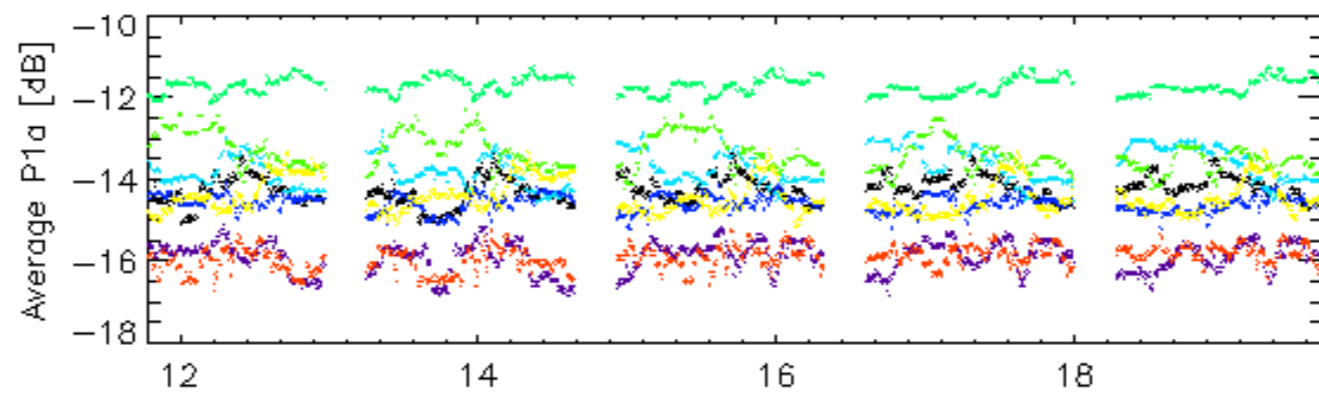


rows: _ 3 _ 7 _ 11 _ 15 _ 19 _ 23 _ 27 _ 31

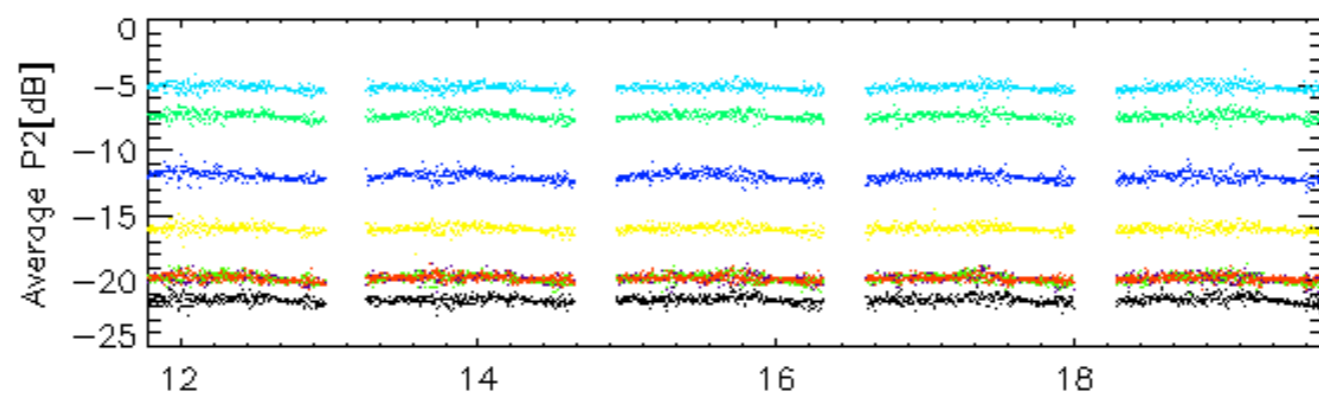
Calibration pulses for WVS IS2 V/V



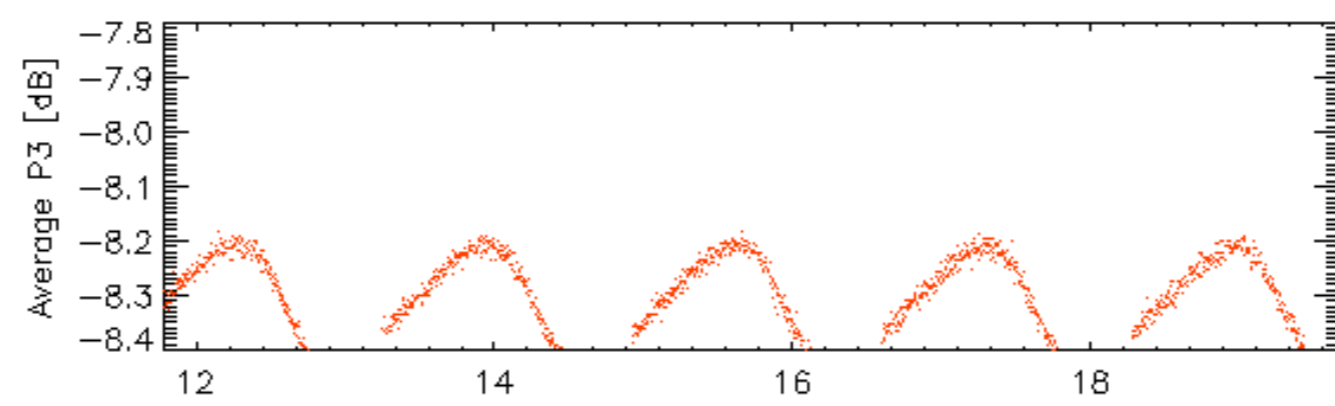
25-Oct



25-Oct

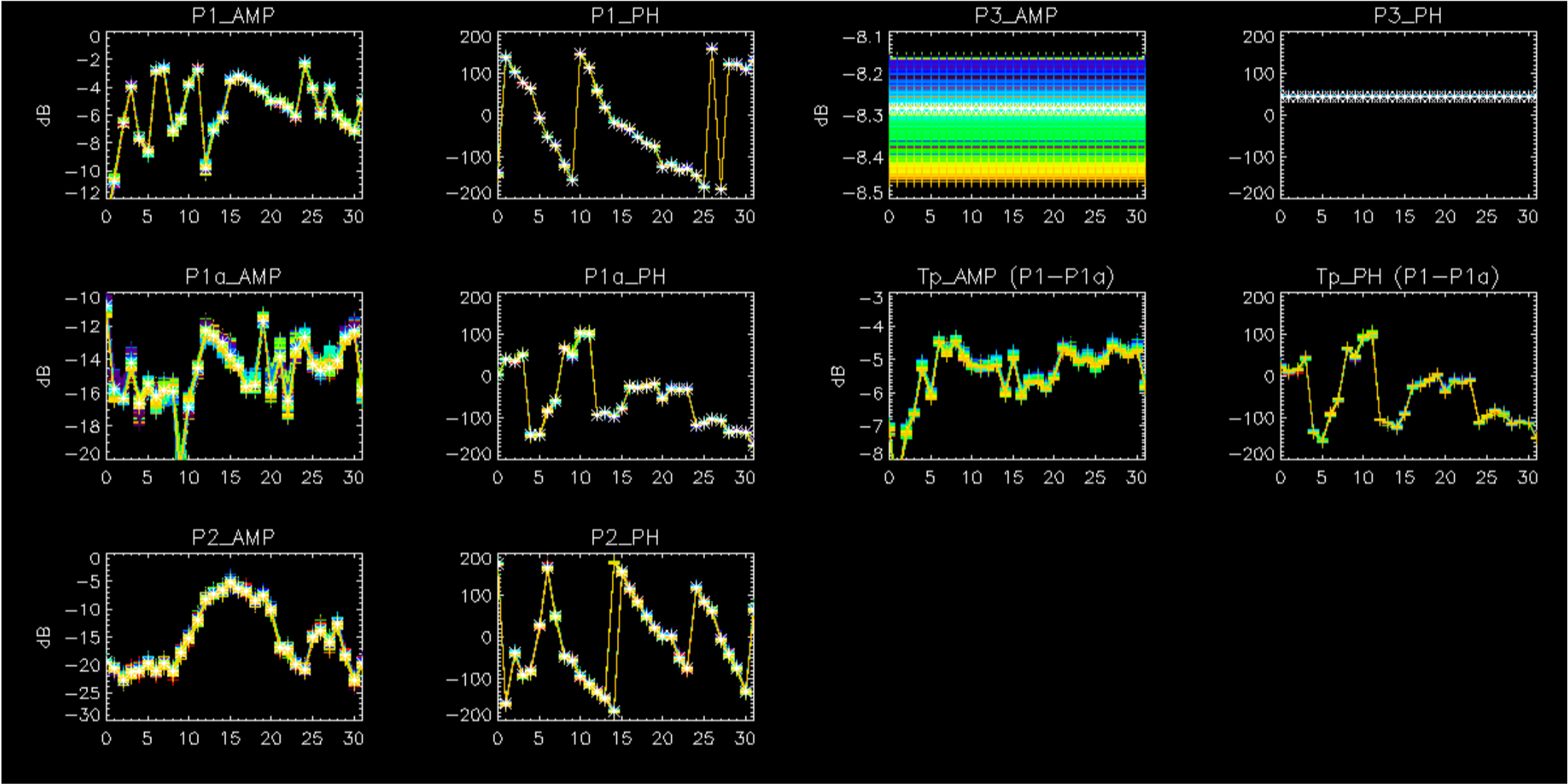


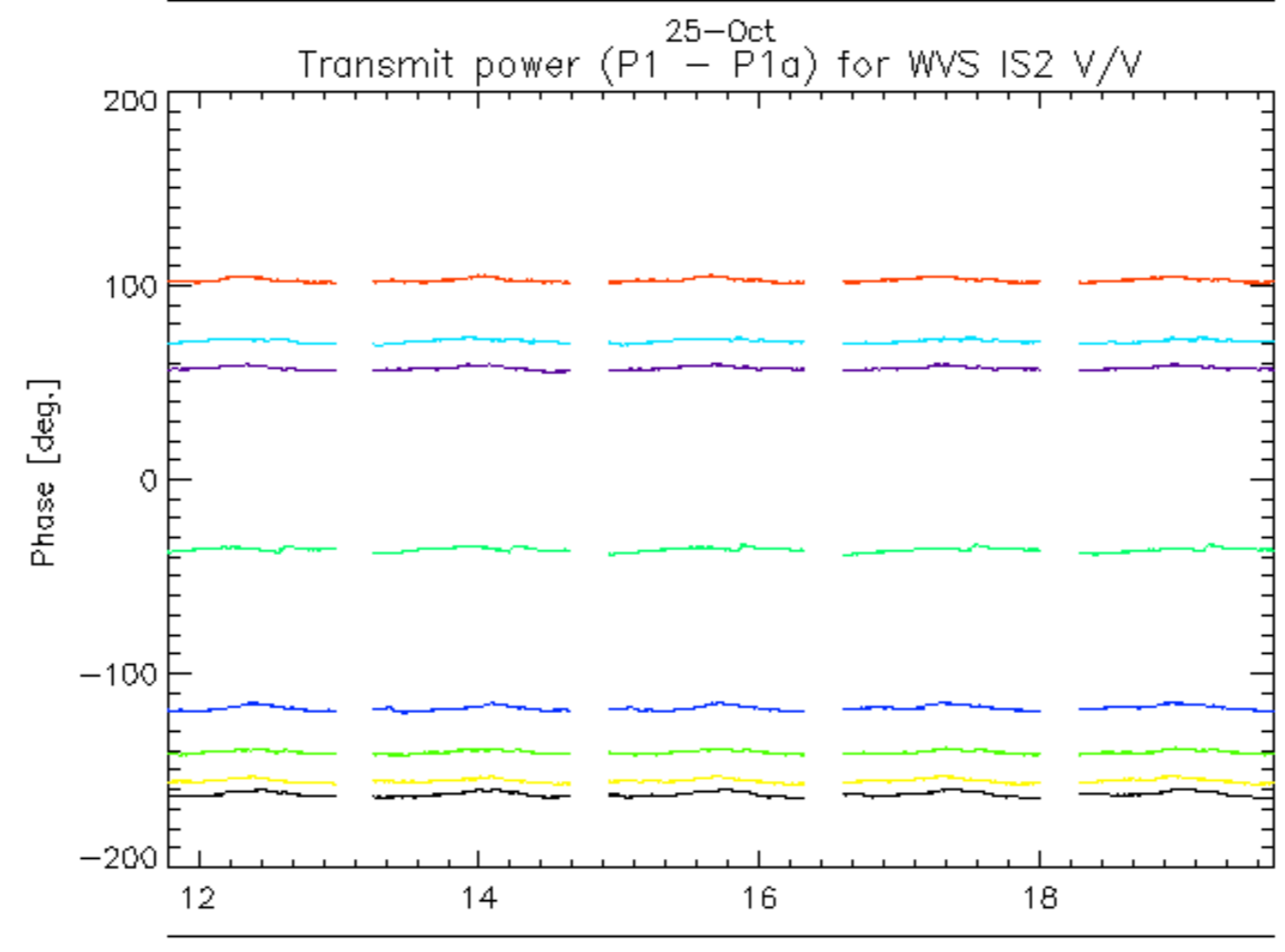
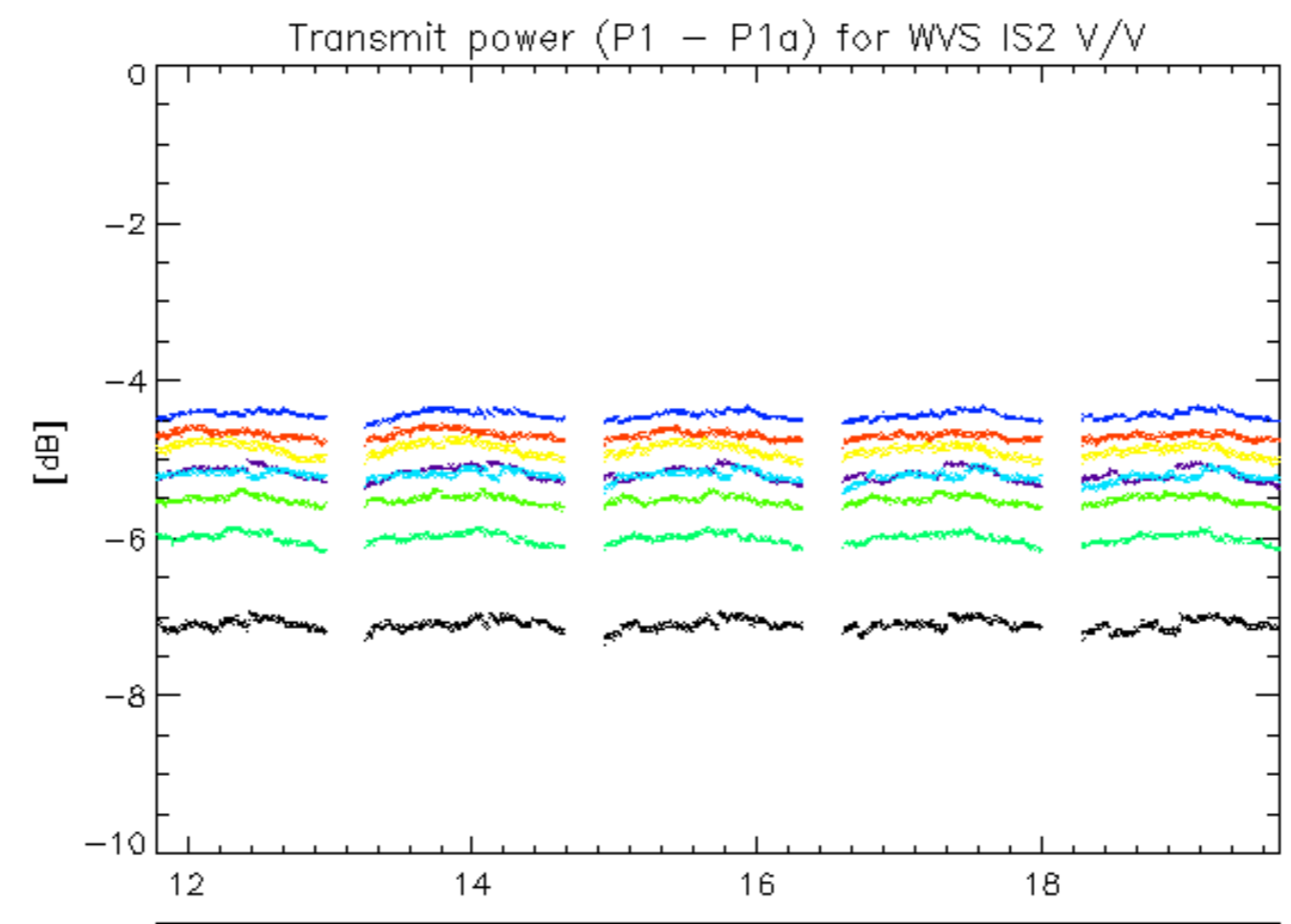
25-Oct



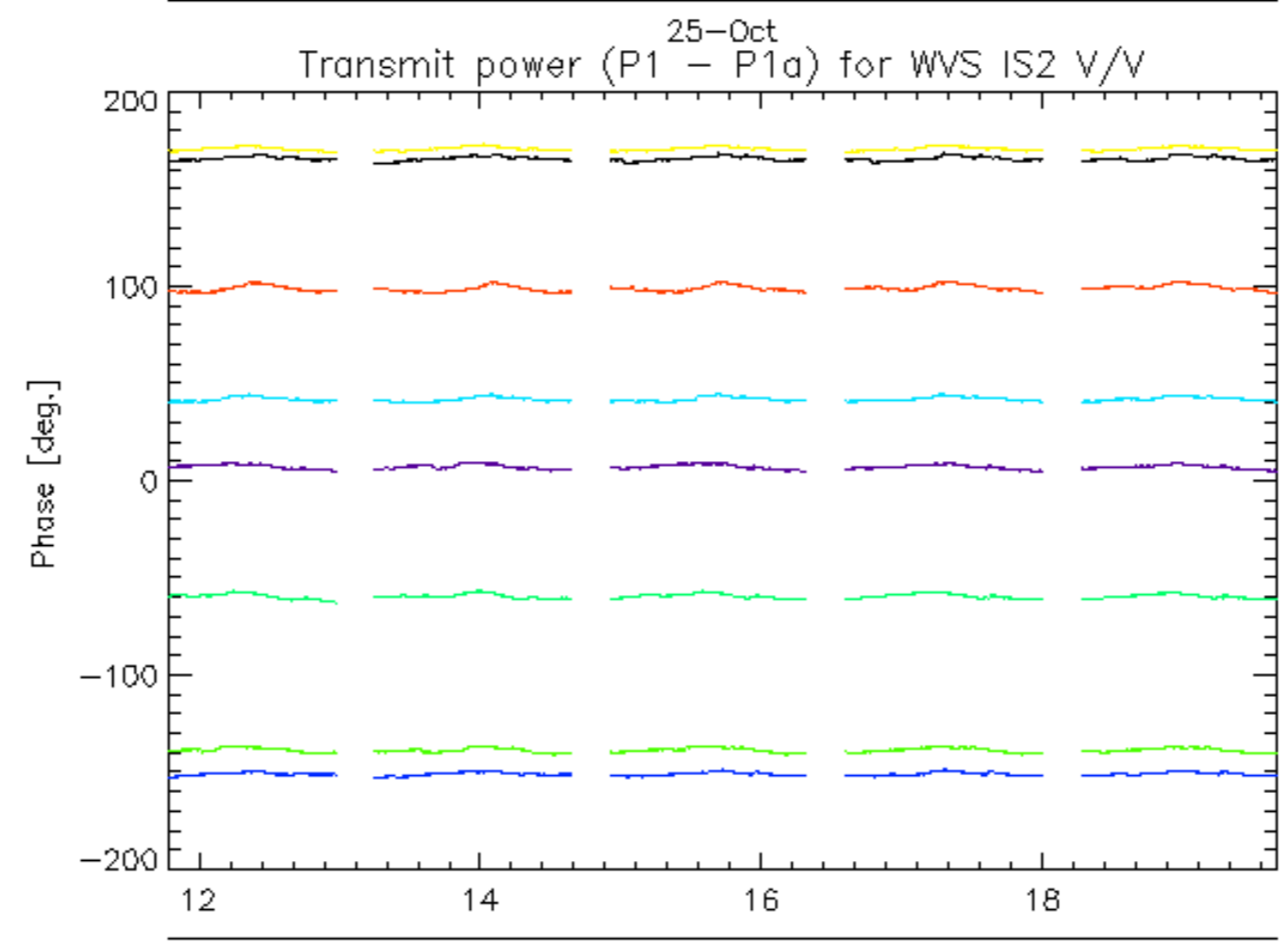
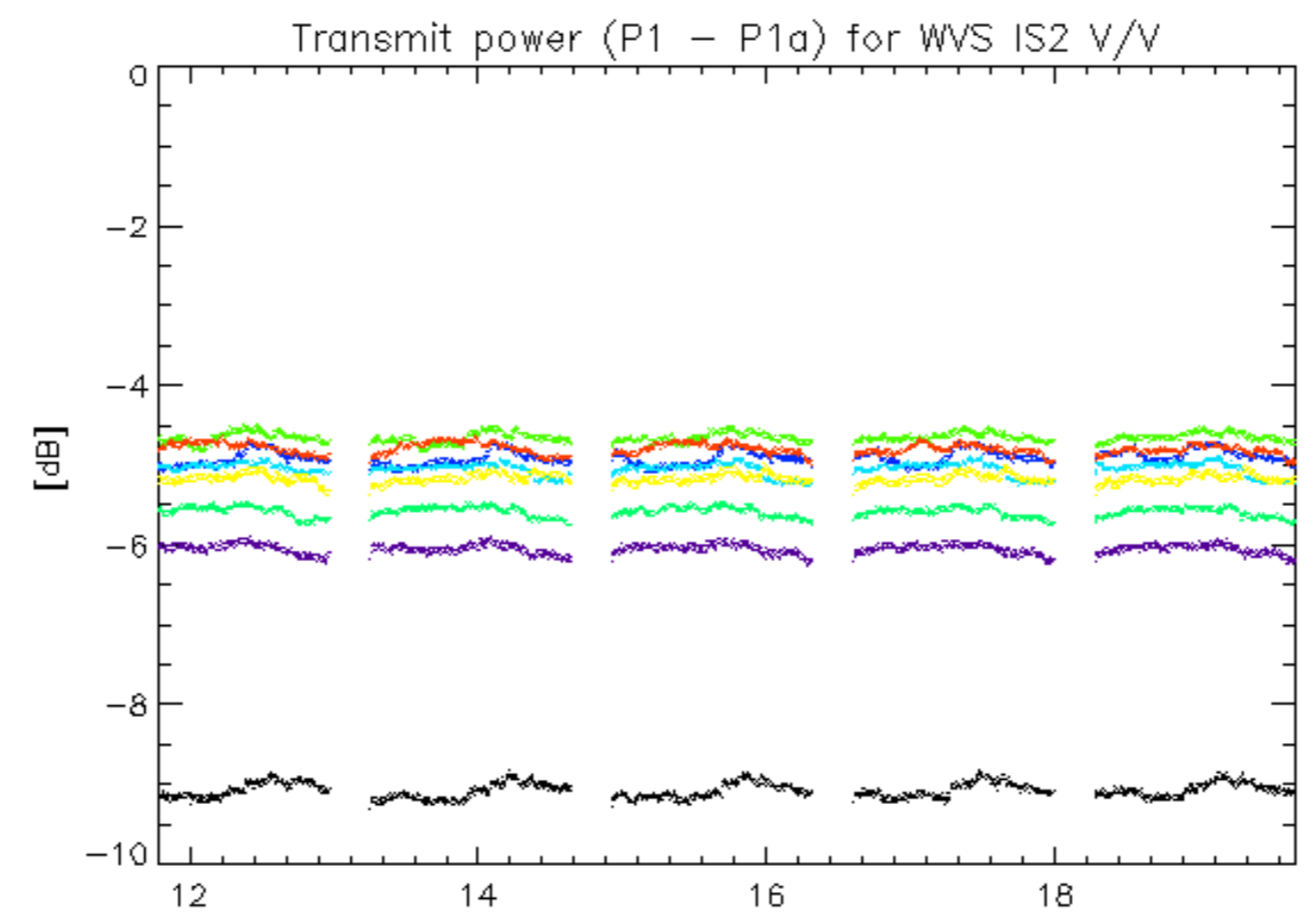
25-Oct

rows: _ 4 _ 8 _ 12 _ 16 _ 20 _ 24 _ 28 _ 32

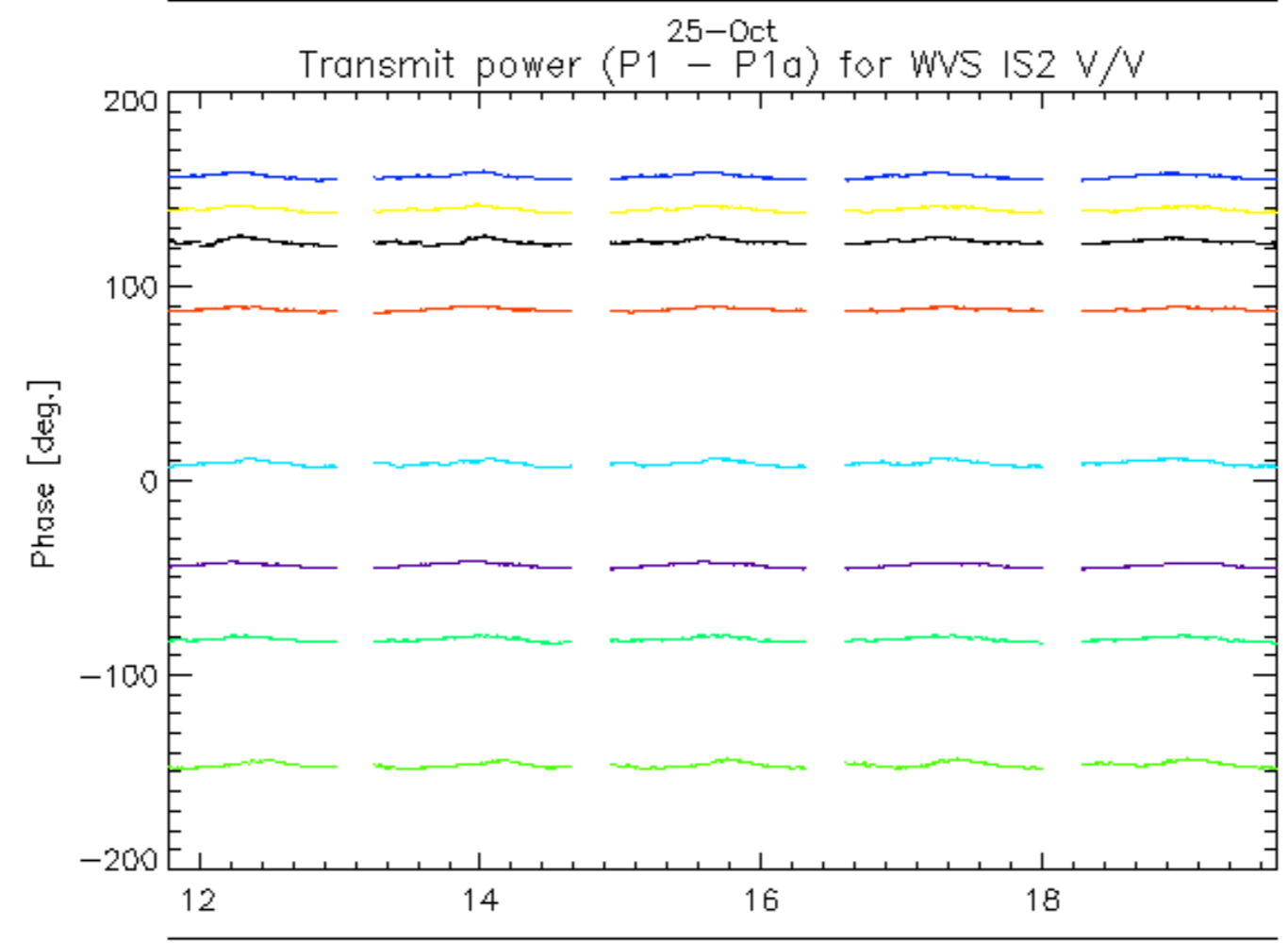
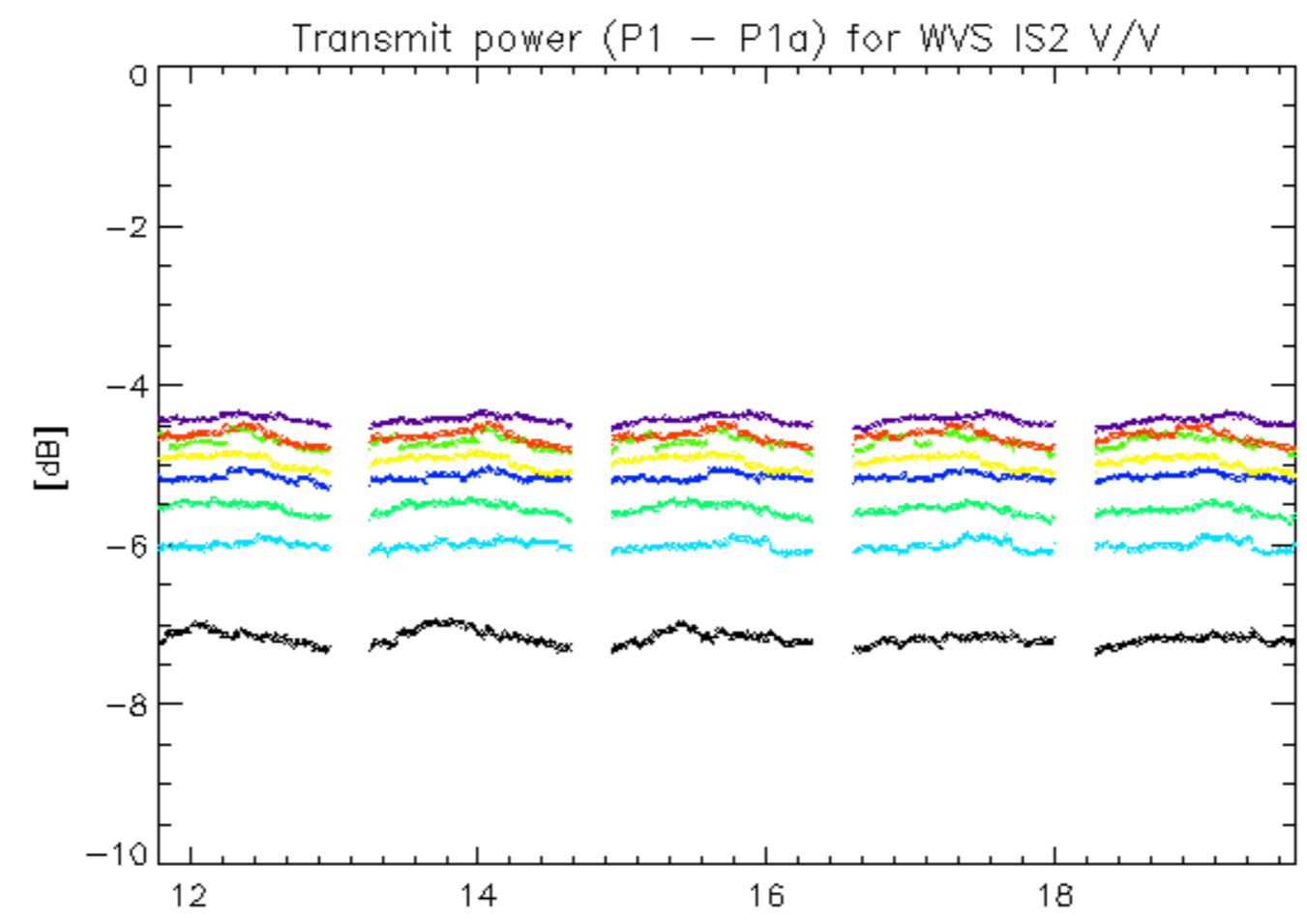




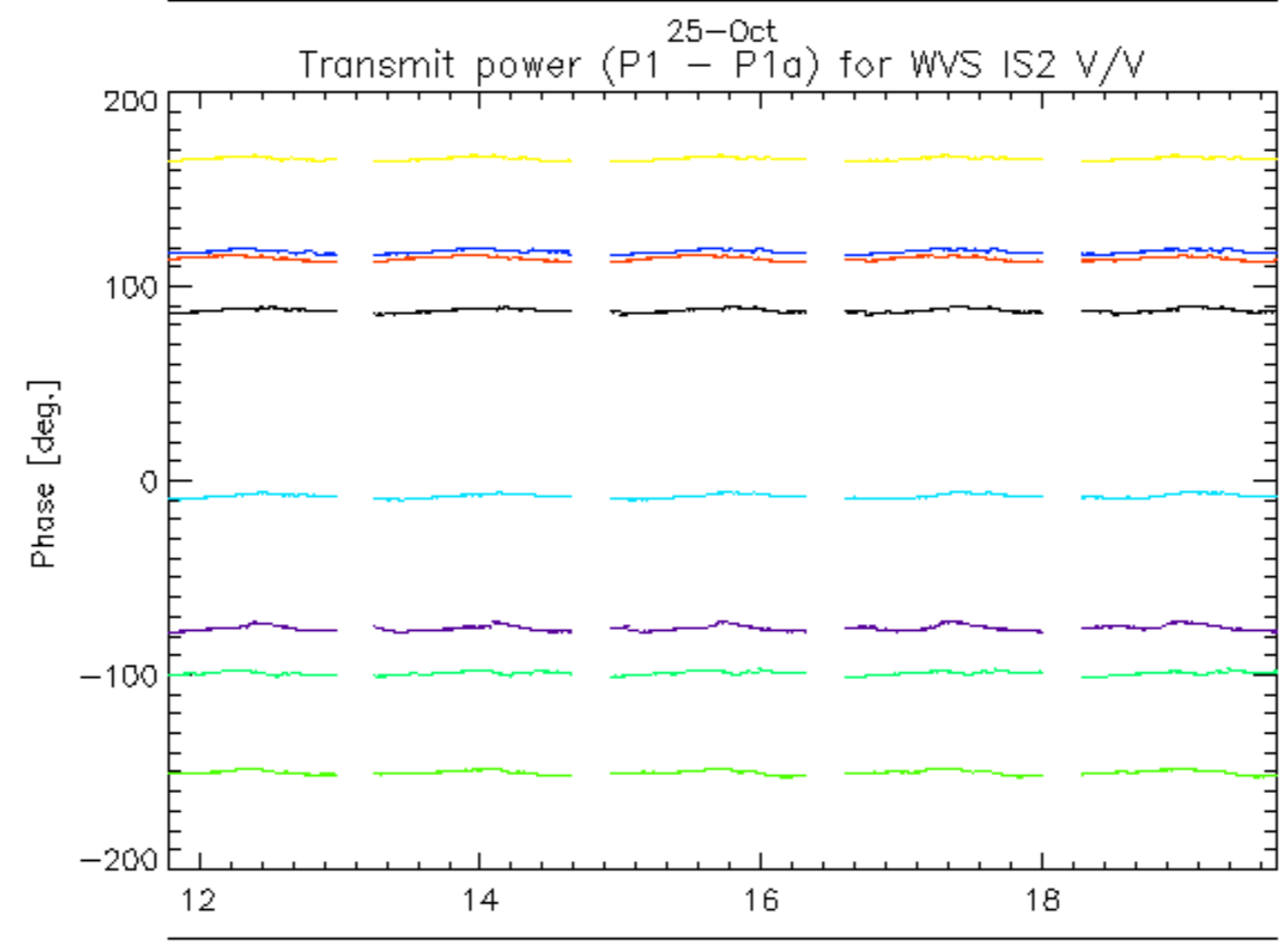
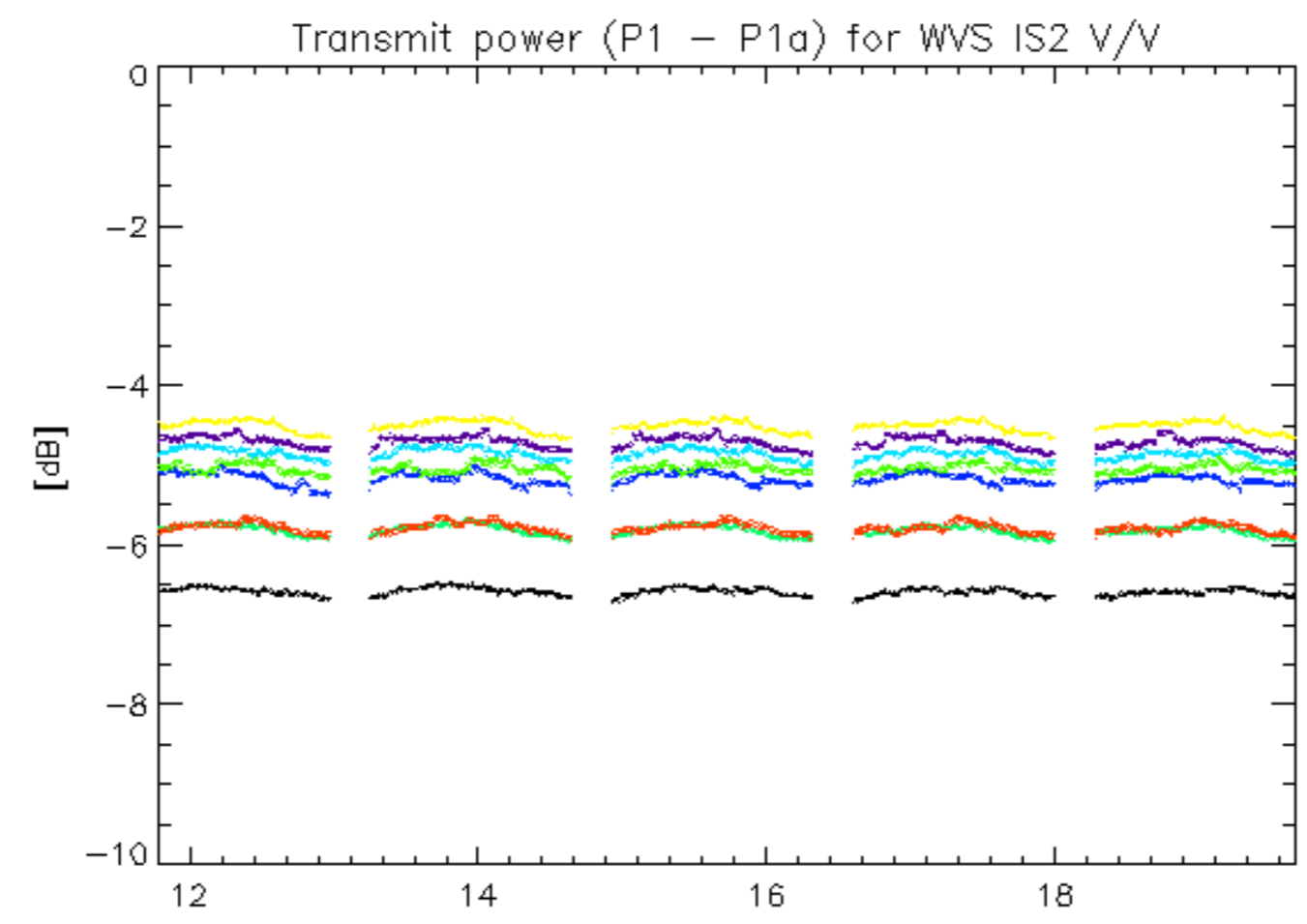
rows: _ 1 _ 5 _ 9 _ 13 _ 17 _ 21 _ 25 _ 29



rows: _ 2 _ 6 _ 10 _ 14 _ 18 _ 22 _ 26 _ 30

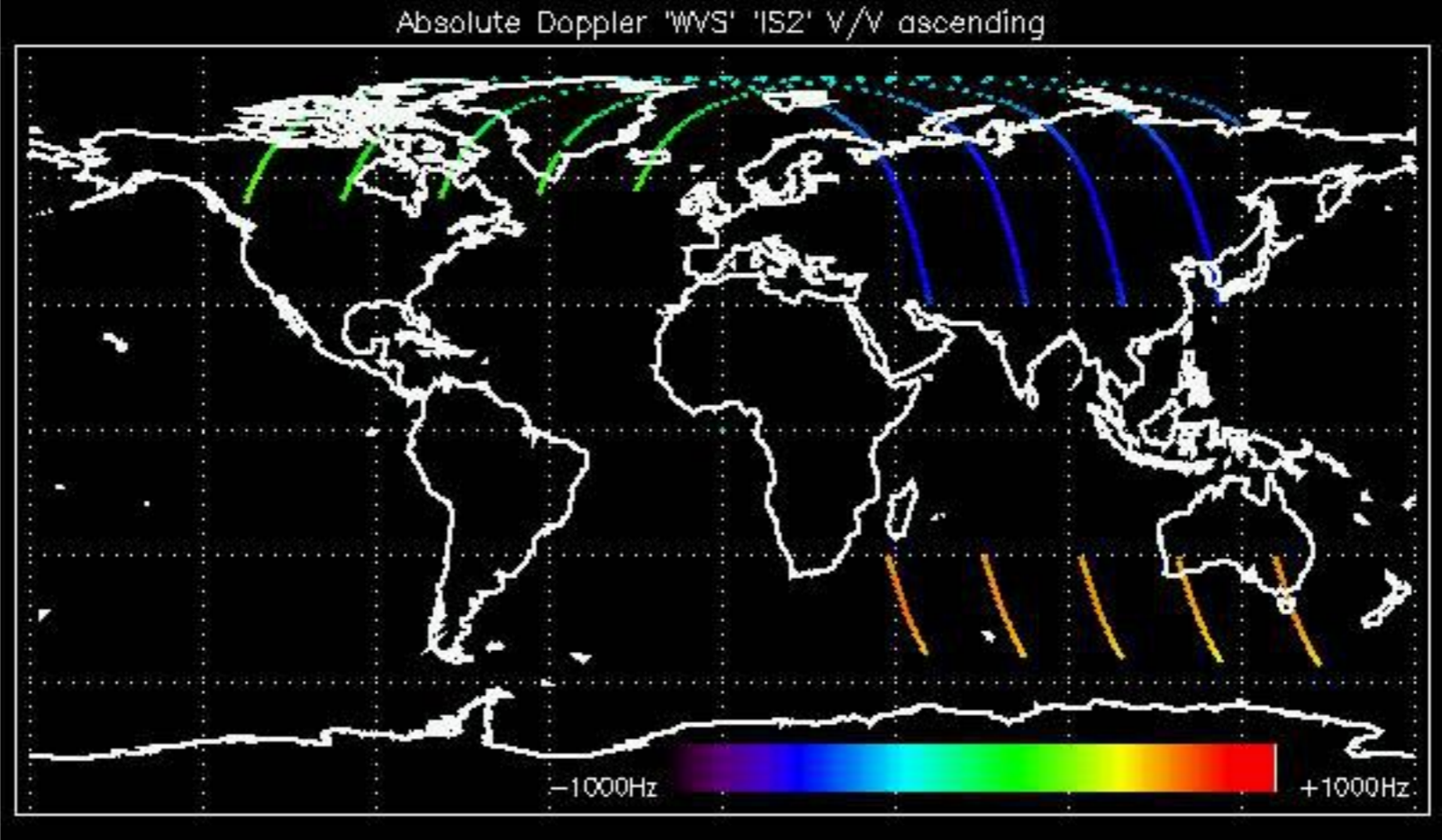


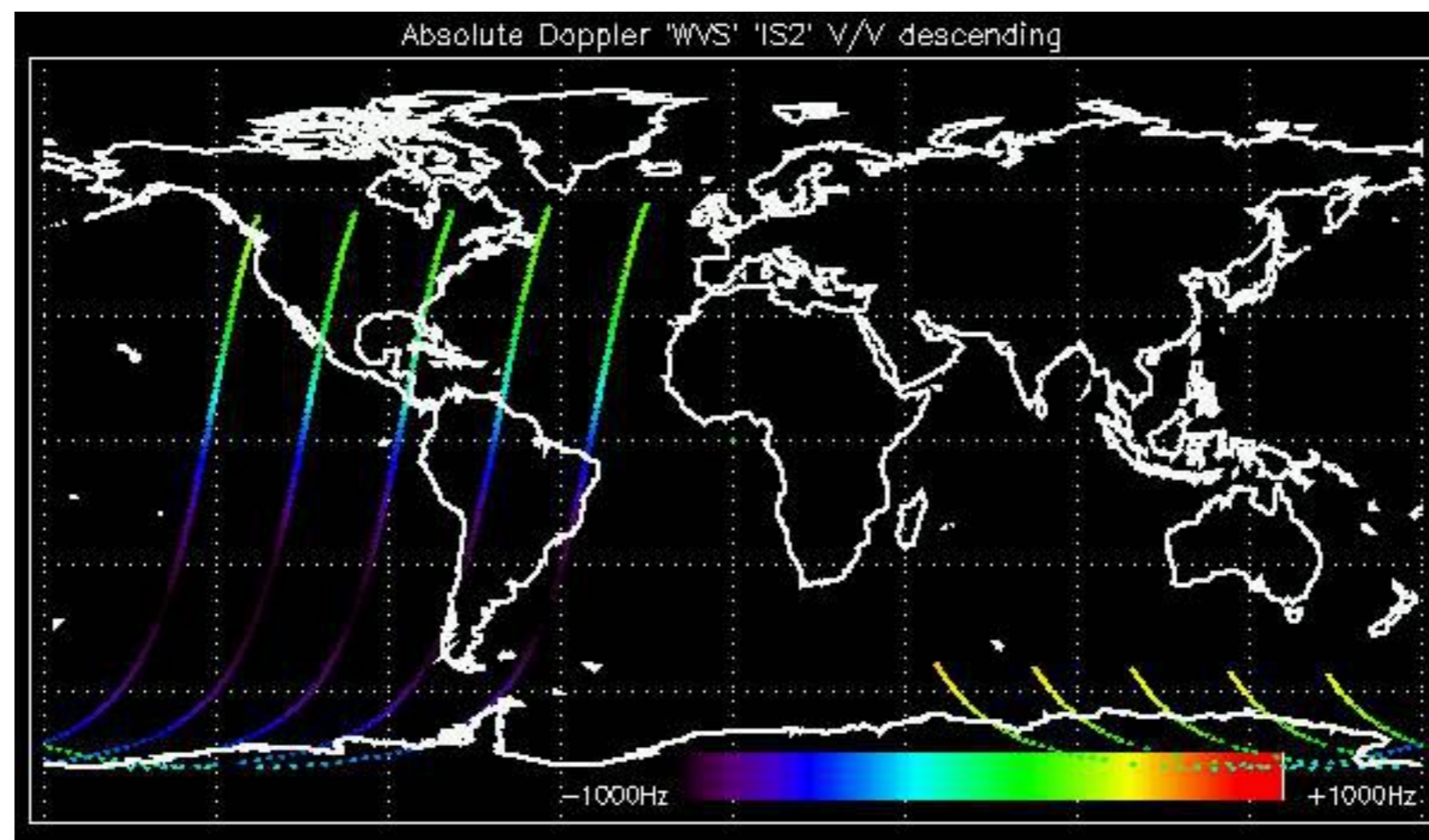
rows: _ 3 _ 7 _ 11 _ 15 _ 19 _ 23 _ 27 _ 31

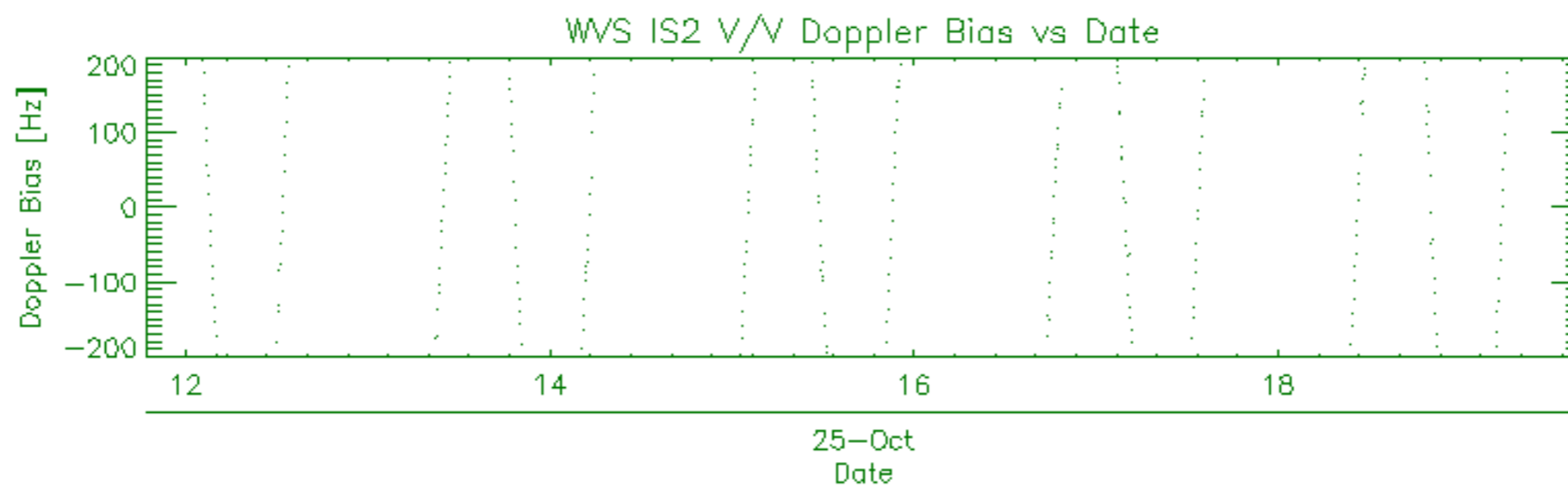
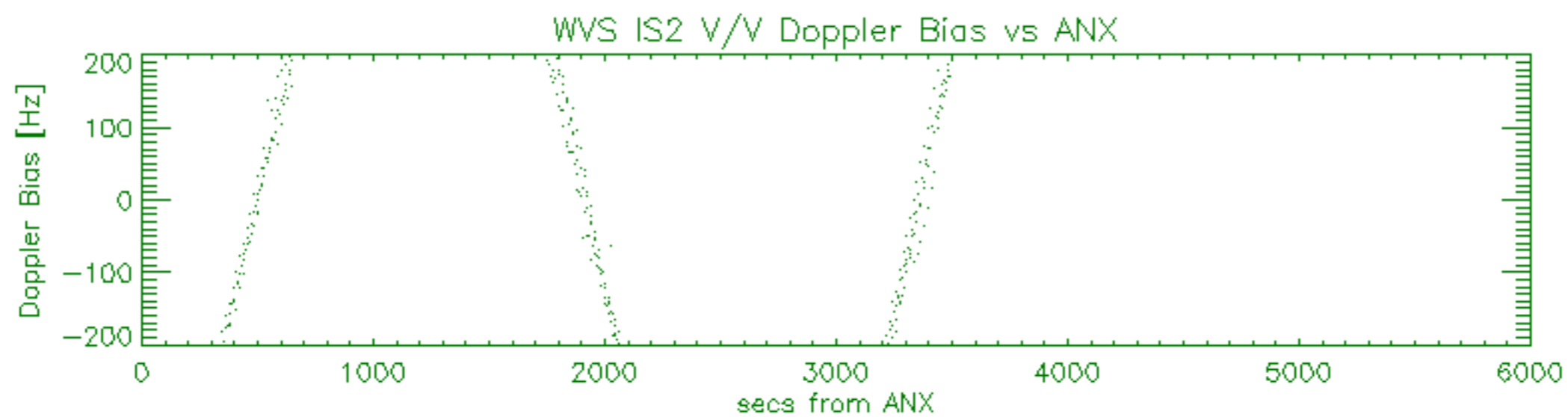
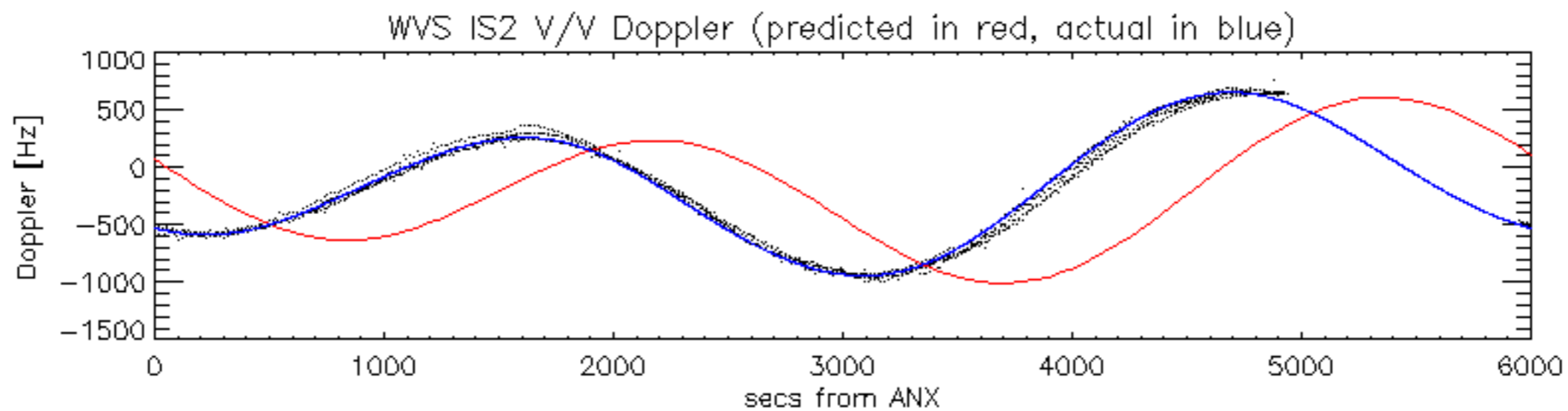


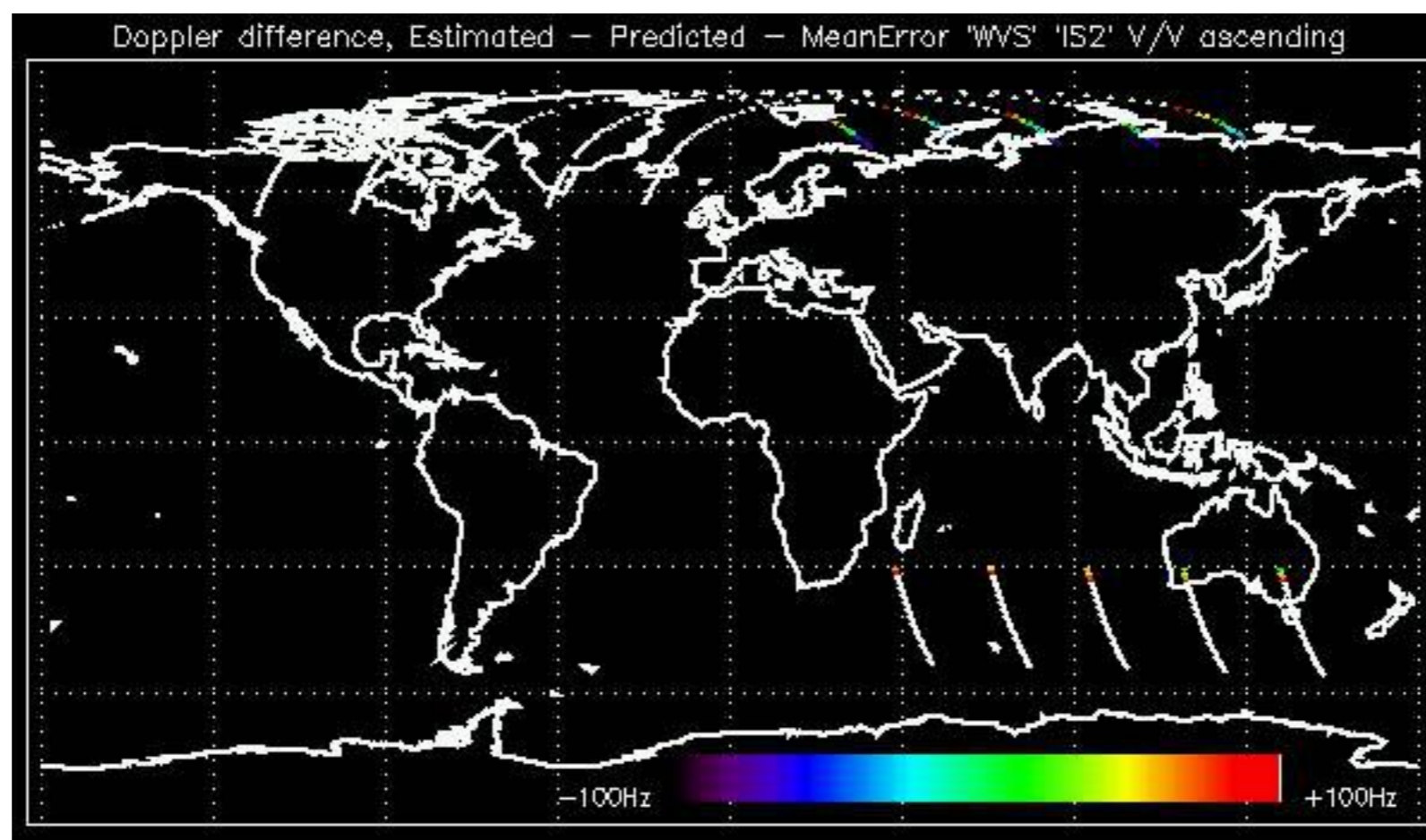
rows: _ 4 _ 8 _ 12 _ 16 _ 20 _ 24 _ 28 _ 32

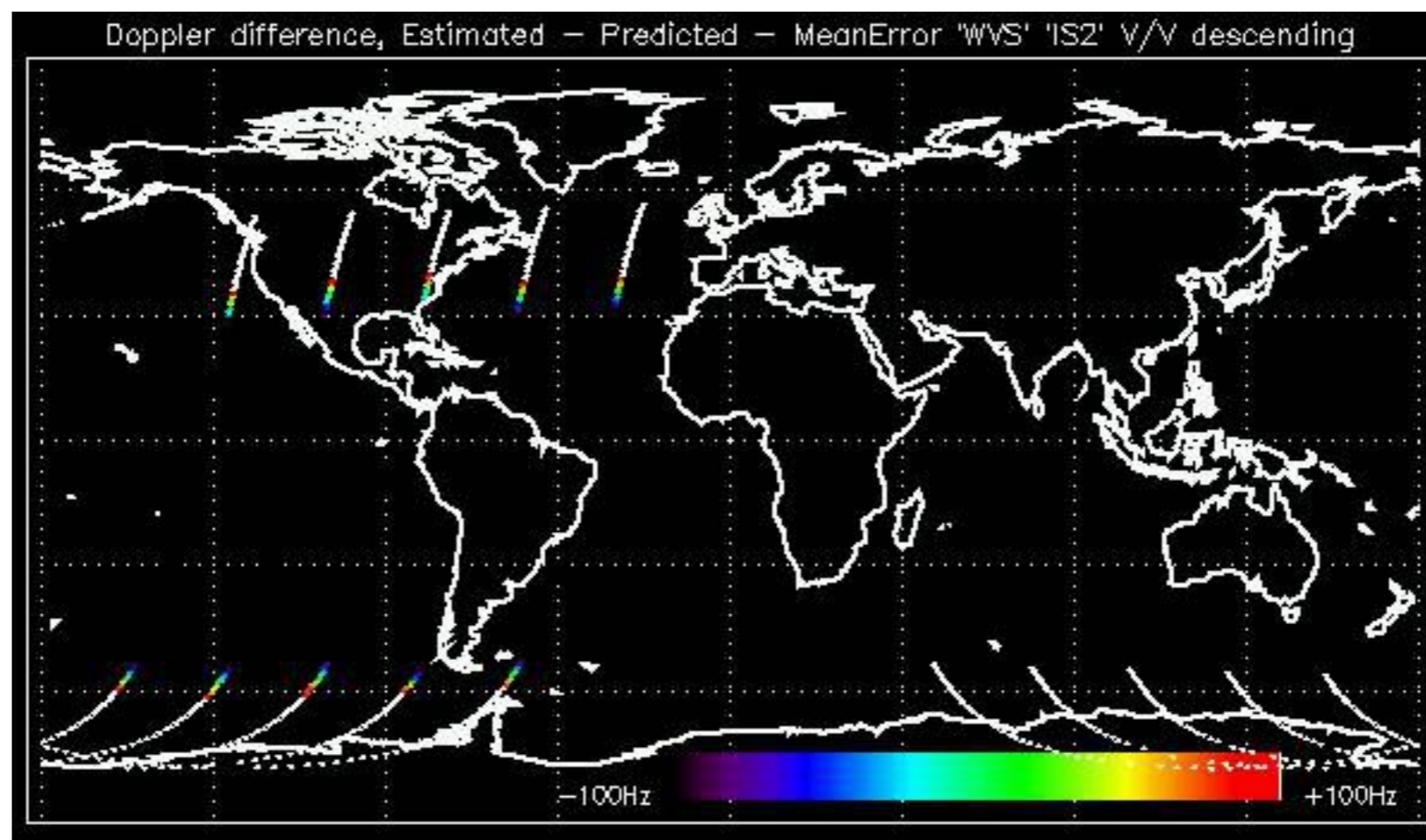
Filename	Beam	Pol	CycleNumber	absOrbit	relOrbit	procVersion					
ASA_WVS_1PNPDK20101025_114704_000002403095_00397_45239_4774.N1						IS2	V/V	95	45239	397	5.04
ASA_WVS_1PNPDK20101025_115004_000040813095_00397_45239_4788.N1						IS2	V/V	95	45239	397	5.04
ASA_WVS_1PNPDK20101025_131512_000008553095_00398_45240_4789.N1						IS2	V/V	95	45240	398	5.04
ASA_WVS_1PNPDK20101025_132813_000011703095_00398_45240_4802.N1						IS2	V/V	95	45240	398	5.04
ASA_WVS_1PNPDK20101025_131512_000008553095_00398_45240_4789.N1						IS1	V/V	95	45240	398	5.04
ASA_WVS_1PNPDK20101025_134813_000030153095_00398_45240_4803.N1						IS2	V/V	95	45240	398	5.04
ASA_WVS_1PNPDK20101025_145536_000007203095_00399_45241_4804.N1						IS2	V/V	95	45241	399	5.04
ASA_WVS_1PNPDK20101025_150636_000043363095_00399_45241_4819.N1						IS2	V/V	95	45241	399	5.04
ASA_WVS_1PNPDK20101025_163605_000005853095_00400_45242_4820.N1						IS2	V/V	95	45242	400	5.04
ASA_WVS_1PNPDK20101025_164450_000044713095_00400_45242_4833.N1						IS2	V/V	95	45242	400	5.04
ASA_WVS_1PNPDK20101025_181629_000004643095_00401_45243_4834.N1						IS2	V/V	95	45243	401	5.04
ASA_WVS_1PNPDK20101025_182259_000046063095_00401_45243_4849.N1						IS2	V/V	95	45243	401	5.04
ASA_WVS_1PNPDK20101025_181629_000004643095_00401_45243_4834.N1						IS1	V/V	95	45243	401	5.04

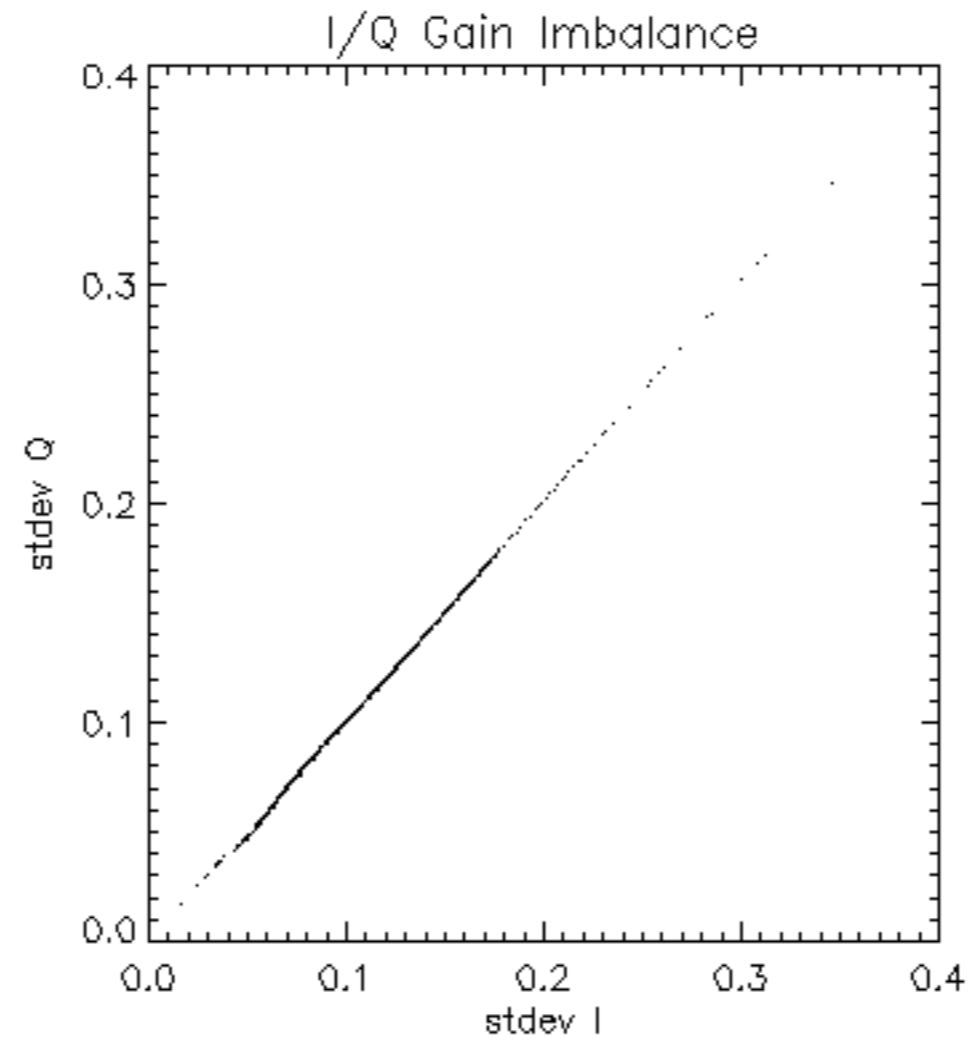


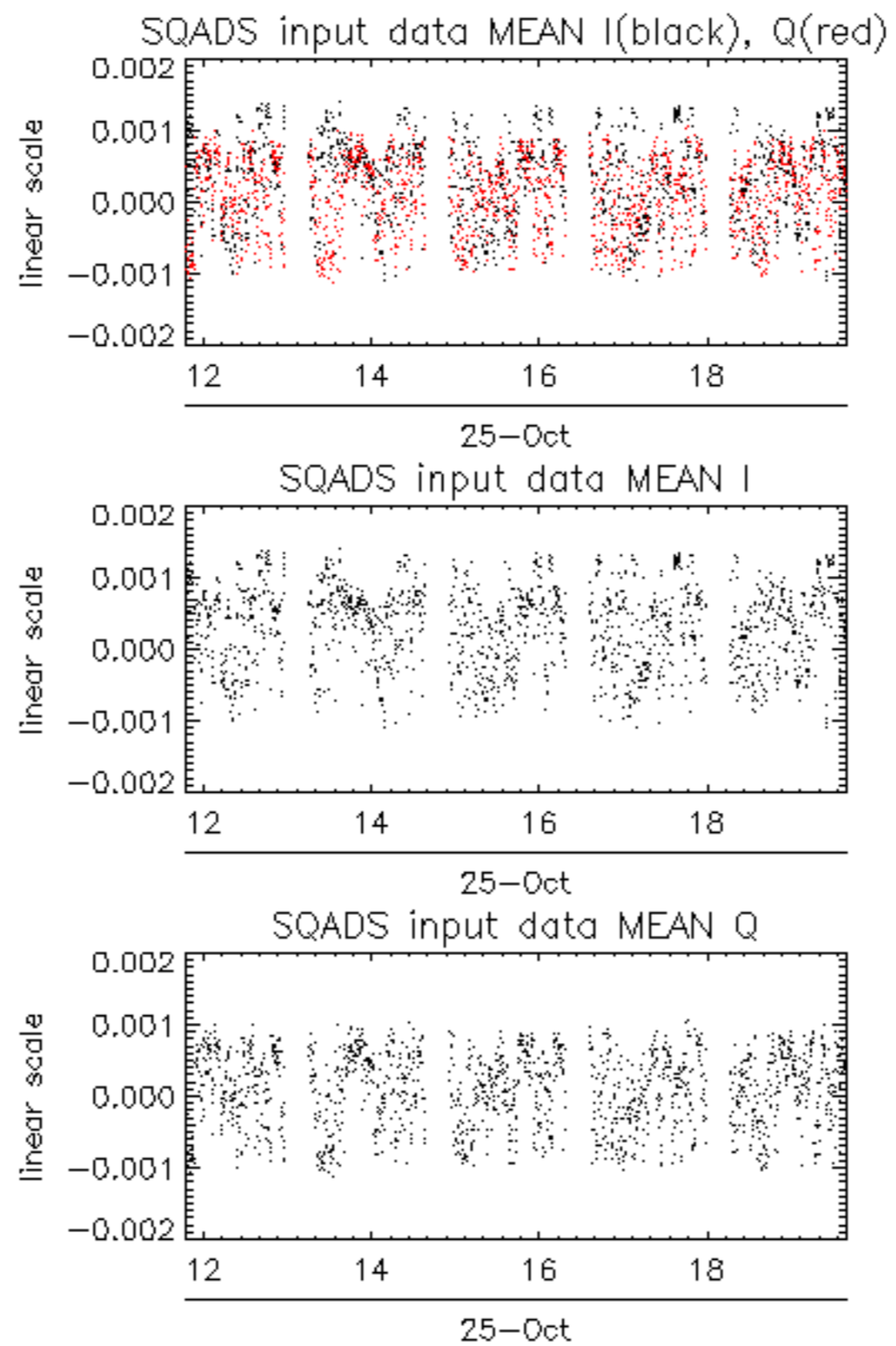


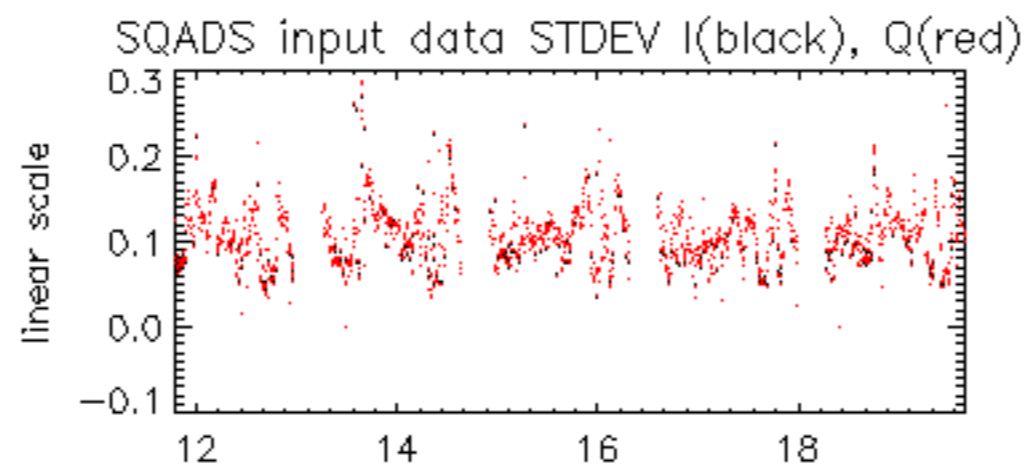




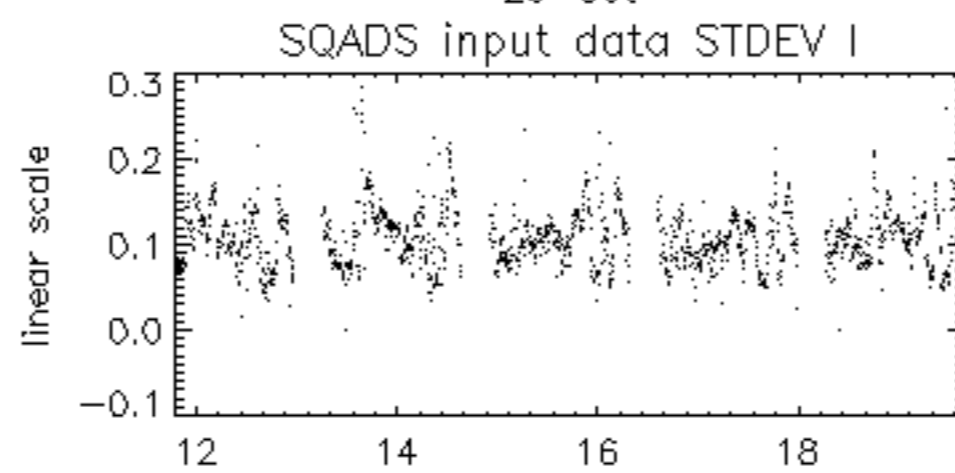




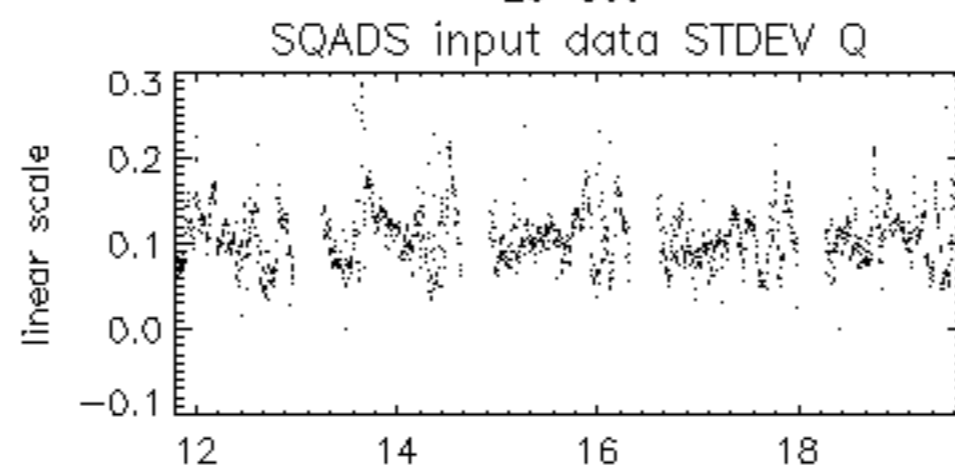




25-Oct



25-Oct



25-Oct

