



# ASAR Daily Report



Analysis from 30-SEP-2007 00:00:00 to 30-SEP-2007 23:59:59. Page generated on 01-OCT-2007 07:33:25.  
View log file: ASAR\_Daily\_Report\_20071001\_0730.log. For any anomalies please contact [msantuari@serco.it](mailto:msantuari@serco.it), [mtranfaglia@serco.it](mailto:mtranfaglia@serco.it), [gscarpino@serco.it](mailto:gscarpino@serco.it).

This report is automatically generated every day, every 2 hours. No comments are provided on the results.

## SUMMARY

1. DATA SUMMARY
  - 1.1 Summary tables
  - 1.2 Lists of products used
2. AUXILIARY FILES ANALYSIS
  - 2.1 IECF operational ADFs list
  - 2.2 Products with wrong ADFs
3. MODULE STEPPING PRODUCTS ANALYSIS
  - 3.1 V/V polarisation
  - 3.2 H/H polarisation
4. CALIBRATION PULSES ANALYSIS
  - 4.1 Analysis for WVS IS2 V/V
    - 4.1.1 Temporal Evolution Analysis for WVS IS2 V/V
    - 4.1.2 All Rows Analysis for WVS IS2 V/V
  - 4.2 Analysis for GM1 SS3 H/H
    - 4.2.1 Temporal Evolution Analysis for GM1 SS3 H/H
    - 4.2.2 All Rows Analysis for GM1 SS3 H/H
5. DOPPLER ANALYSIS
  - 5.1 Analysis for WVS IS2 V/V
    - 5.1.1 Doppler MAP Analysis for WVS IS2 V/V
    - 5.1.2 Doppler ANX Analysis for WVS IS2 V/V
  - 5.2 Analysis for GM1 SS1 H/H
    - 5.2.1 Doppler MAP Analysis for GM1 SS1 H/H
    - 5.2.2 Doppler ANX Analysis for GM1 SS1 H/H
  - 5.3 Doppler JUMPS Analysis for WSM
6. CHIRP ANALYSIS
  - 6.1 Analysis for WSM SS1 H/H
    - 6.1.1 ScaleFactor
  - 6.2 Analysis for WSM SS1 V/V
    - 6.2.1 ScaleFactor
7. RAW DATA ANALYSIS
  - 7.1 Analysis for WVS
  - 7.2 Analysis for IMM
8. TELEMETRY ANALYSIS
  - 8.1 Number of Missing Lines
  - 8.2 Number of Gaps

---

## 1 - DATA SUMMARY

### 1.1 - Summary tables

[ [BACK TO MENU](#) ]

WVS				GM1				APM				IMM				WSM				MS			
Center	Beam	Pol	#	Center	Beam	Pol	#	Center	Beam	Pol	#	Center	Beam	Pol	#	Center	Beam	Pol	#	Center	Time	Pol	Modules

### 1.2 - Lists of products used

[ BACK TO MENU ]

## 2 - AUXILIARY FILES ANALYSIS

### 2.1 - IECF operational ADFs list

[ BACK TO MENU ]

No IECF ADFs list available

### 2.2 - Products with wrong ADFs

[ BACK TO MENU ]

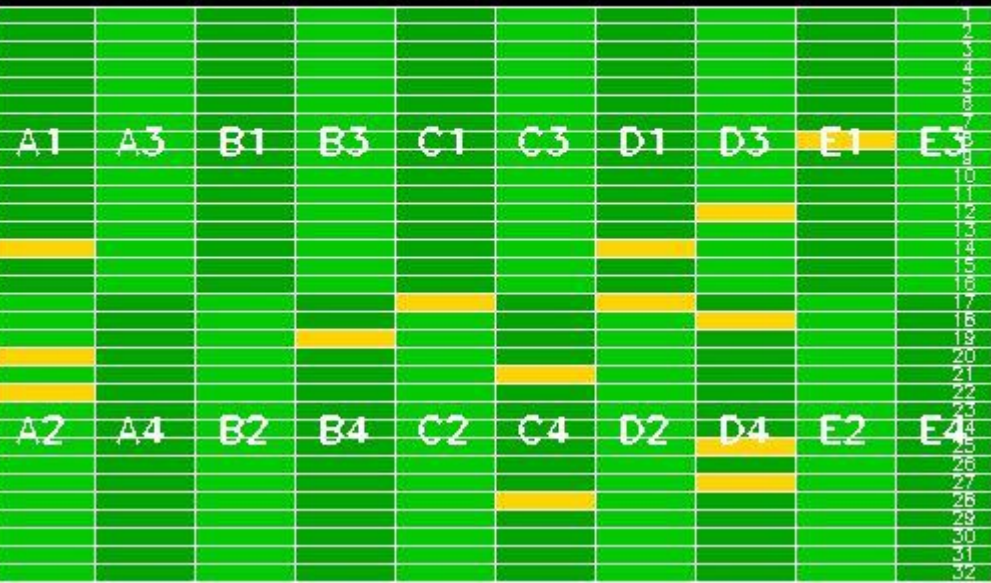
## 3 - MODULE STEPPING PRODUCTS ANALYSIS

SECOND FIXED REFERENCE										PREVIOUS PRODUCT REFERENCE																													
After antenna maintenance (2005-09-22/23)										Previous product in the same polarisation																													
Reference: 2005-09-23 05:55:14 V					RxGain					Reference: 2007-09-22 20:48:59 V					RxGain																								
Test : 2007-09-28 05:55:05 V										Test : 2007-09-28 05:55:05 V																													
A1	A3	B1	B3	C1	C3	D1	D3	E1	E3	A1	A3	B1	B3	C1	C3	D1	D3	E1	E3	A2	A4	B2	B4	C2	C4	D2	D4	E2	E4	A2	A4	B2	B4	C2	C4	D2	D4	E2	E4

Reference: 2005-09-23 05:55:14 V RxPhase  
 Test : 2007-09-28 05:55:05 V



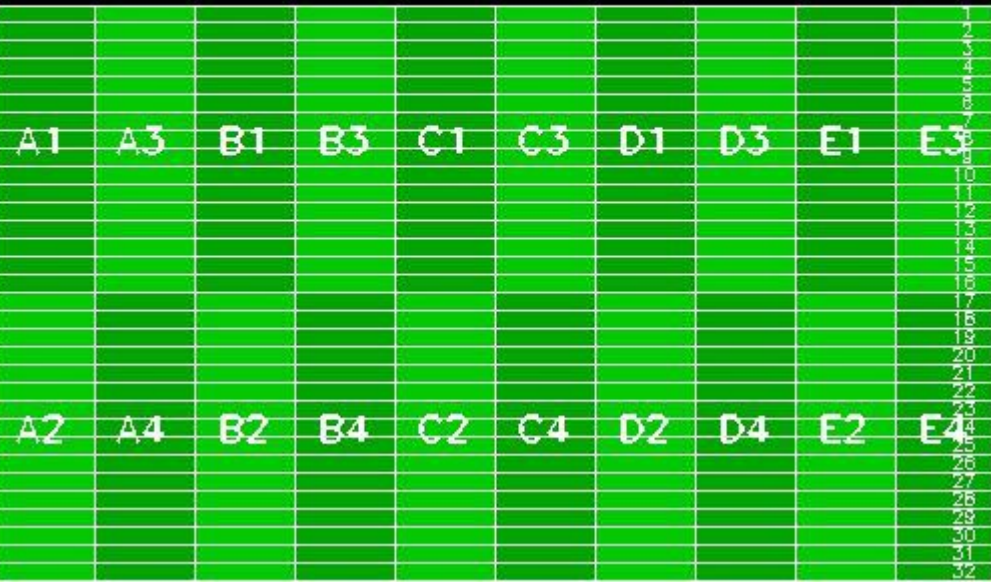
Reference: 2007-09-22 20:48:59 V RxPhase  
 Test : 2007-09-28 05:55:05 V



Reference: 2005-09-23 05:55:14 V TxGain  
 Test : 2007-09-28 05:55:05 V



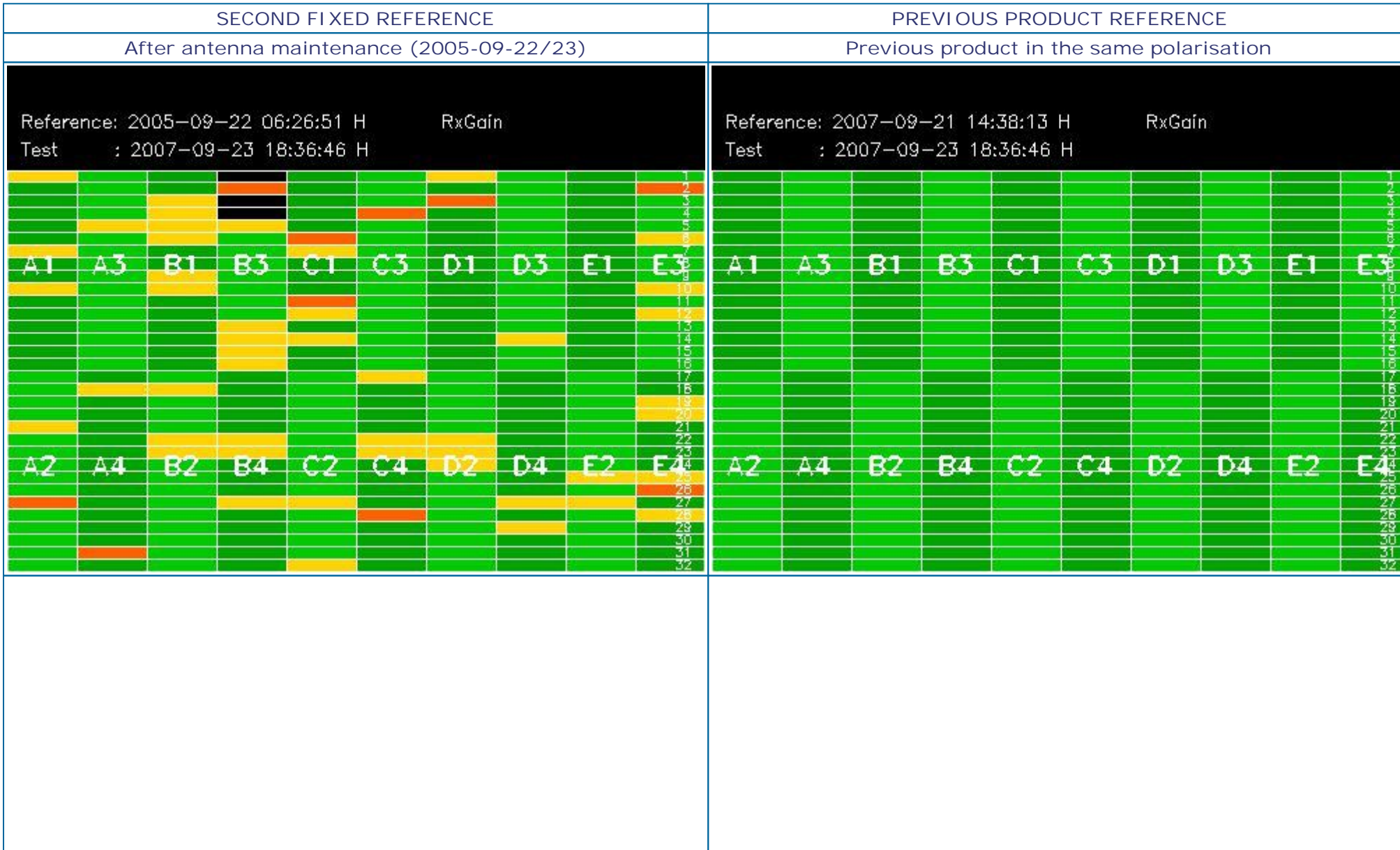
Reference: 2007-09-22 20:48:59 V TxGain  
 Test : 2007-09-28 05:55:05 V



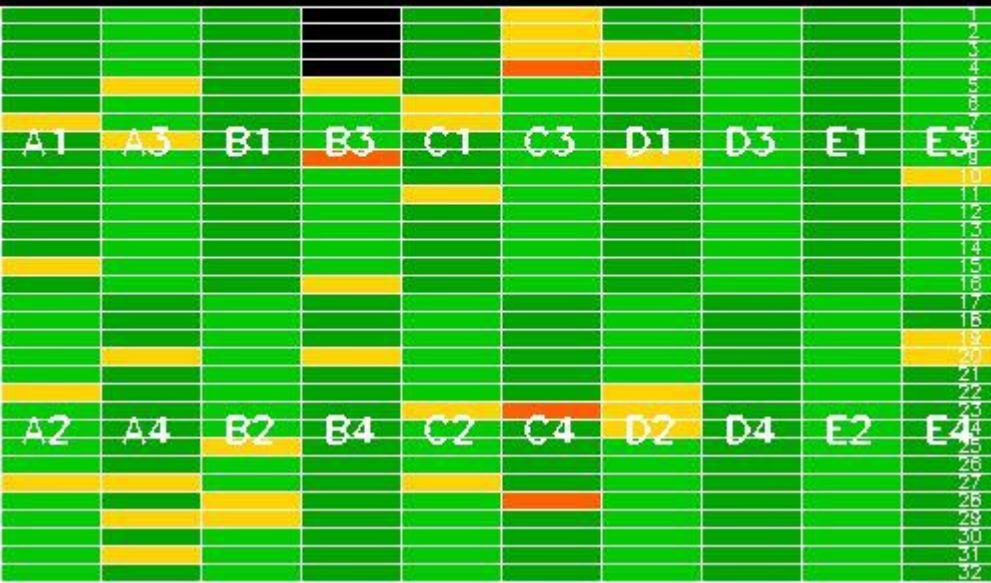


3.2 - H/H polarisation

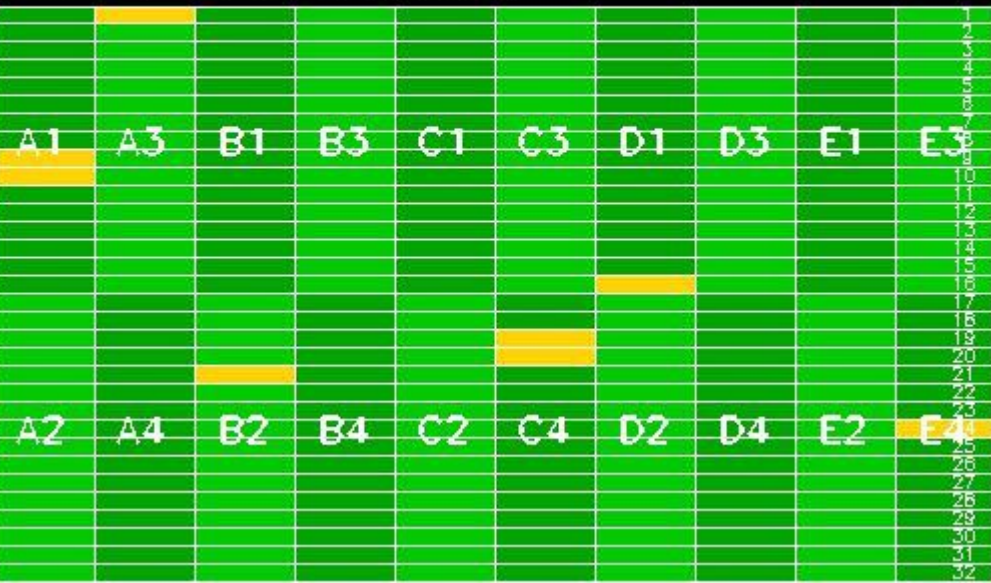
[ BACK TO MENU ]



Reference: 2005-09-22 06:26:51 H RxPhase  
 Test : 2007-09-23 18:36:46 H



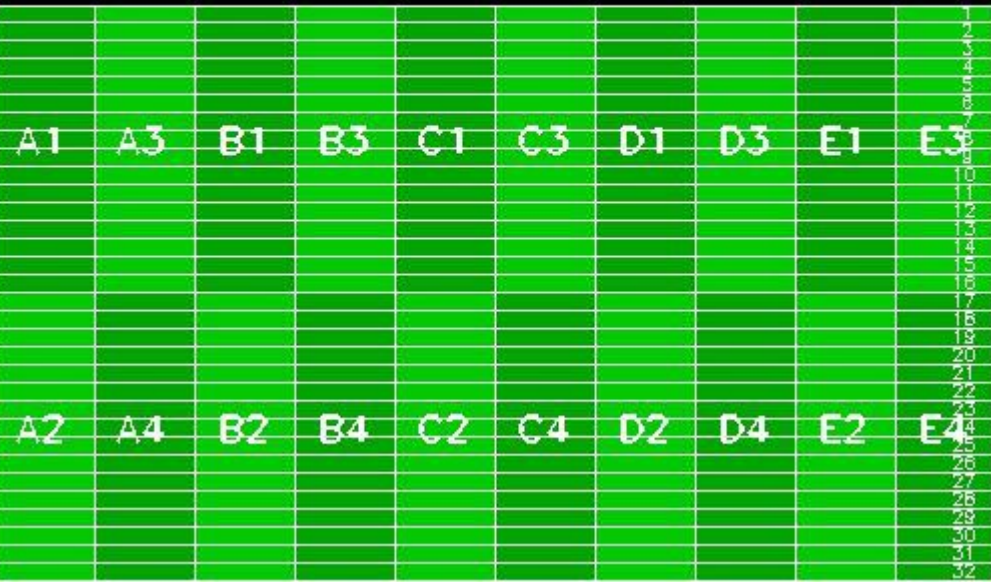
Reference: 2007-09-21 14:38:13 H RxPhase  
 Test : 2007-09-23 18:36:46 H



Reference: 2005-09-22 06:26:51 H TxGain  
 Test : 2007-09-23 18:36:46 H



Reference: 2007-09-21 14:38:13 H TxGain  
 Test : 2007-09-23 18:36:46 H





### 4 - CALIBRATION PULSES ANALYSIS

#### 4.1 - Analysis for WVS IS2 V/V

##### 4.1.1 - Temporal Evolution Analysis for WVS IS2 V/V

[ BACK TO MENU ]

Rows: [2/6/10/14/18/22/26/30] [3/7/11/15/19/23/27/31] [4/8/12/16/20/24/28/32]	Rows: [2/6/10/14/18/22/26/30] [3/7/11/15/19/23/27/31] [4/8/12/16/20/24/28/32]
---	---

##### 4.1.2 - All Rows Analysis for WVS IS2 V/V

[ BACK TO MENU ]



#### 4.2 - Analysis for GM1 SS3 H/H

##### 4.2.1 - Temporal Evolution Analysis for GM1 SS3 H/H

[ BACK TO MENU ]

Rows: [2/6/10/14/18/22/26/30] [3/7/11/15/19/23/27/31] [4/8/12/16/20/24/28/32]	Rows: [2/6/10/14/18/22/26/30] [3/7/11/15/19/23/27/31] [4/8/12/16/20/24/28/32]
---	---

##### 4.2.2 - All Rows Analysis for GM1 SS3 H/H

[ BACK TO MENU ]



---

## 5 - DOPPLER ANALYSIS

### 5.1 - Analysis for WVS IS2 V/V

#### 5.1.1 - Doppler MAP Analysis for WVS IS2 V/V

[ BACK TO MENU ]



#### 5.1.2 - Doppler ANX Analysis for WVS IS2 V/V

[ BACK TO MENU ]



### 5.2 - Analysis for GM1 SS1 H/H

#### 5.2.1 - Doppler MAP Analysis for GM1 SS1 H/H

[ BACK TO MENU ]



#### 5.2.2 - Doppler ANX Analysis for GM1 SS1 H/H

[ BACK TO MENU ]



### 5.3 - Doppler JUMPS Analysis for WSM

[ BACK TO MENU ]



---

## 6 - CHIRP ANALYSIS

### 6.1 - Analysis for WSM SS1 H/H

#### 6.1.1 - ScaleFactor

[ BACK TO MENU ]



### 6.2 - Analysis for WSM SS1 V/V

#### 6.2.1 - ScaleFactor

[ BACK TO MENU ]



## 7 - RAW DATA ANALYSIS

### 7.1 - Analysis for WVS

[ BACK TO MENU ]

⊗		
Channel	Statistics	DSS-B
MEAN I	mean	
	stdev	
MEAN Q	mean	
	stdev	
Channel	Statistics	DSS-B
STDEV I	mean	
	stdev	
STDEV Q	mean	
	stdev	

### 7.2 - Analysis for IMM

[ BACK TO MENU ]

⊗		
Channel	Statistics	DSS-B
MEAN I	mean	
	stdev	
MEAN Q	mean	
	stdev	
Channel	Statistics	DSS-B
STDEV I	mean	
	stdev	
STDEV Q	mean	
	stdev	

## 8 - TELEMETRY ANALYSIS

### 8.1 - Number of Missing lines

[ BACK TO MENU ]



### 8.2 - Number of Gaps

[ BACK TO MENU ]





In particular, but not limited to:

(a) Modification, reverse engineering or distribution is not permitted in any form.

(b) Usage is restricted to Serco S.p.A. employee belonging to the above Contract Reference.

Any deviation from above rules requires an explicit prior written authorisation of Serco S.p.A.

#####  
ASAR DAILY REPORT for 070930  
#####

MODE: DAILY  
ANALYSIS: ALL  
DATE: YESTERDAY

Analysis will be performed from 2007-09-30 00:00:00 to 2007-09-30 23:59:59  
Results will be exported to the directory: ./RESULTS/DAILY/070930/

DATA SUMMARY

#####  
Summary will be performed from 2007-09-30 00:00:00 to 2007-09-30 23:59:59  
Results will be exported to the directory: ./RESULTS/DAILY/070930/DATA\_SUMMARY

Creating directory ./RESULTS/DAILY/070930/DATA\_SUMMARY...  
Writing file ./RESULTS/DAILY/070930/DATA\_SUMMARY/Data\_summary.html...

\*\*\*\*\*  
Getting WVS products list from 2007-09-30 00:00:00 to 2007-09-30 23:59:59...  
Writing file ./RESULTS/DAILY/070930/DATA\_SUMMARY/List\_WVS\_products\_used.xls...  
Writing file ./RESULTS/DAILY/070930/DATA\_SUMMARY/List\_WVS\_products\_used.txt...

\*\*\*\*\*  
Getting GM1 products list from 2007-09-30 00:00:00 to 2007-09-30 23:59:59...  
Writing file ./RESULTS/DAILY/070930/DATA\_SUMMARY/List\_GM1\_products\_used.xls...  
Writing file ./RESULTS/DAILY/070930/DATA\_SUMMARY/List\_GM1\_products\_used.txt...

\*\*\*\*\*  
Getting APM products list from 2007-09-30 00:00:00 to 2007-09-30 23:59:59...  
Writing file ./RESULTS/DAILY/070930/DATA\_SUMMARY/List\_APM\_products\_used.xls...  
Writing file ./RESULTS/DAILY/070930/DATA\_SUMMARY/List\_APM\_products\_used.txt...

\*\*\*\*\*  
Getting IMM products list from 2007-09-30 00:00:00 to 2007-09-30 23:59:59...  
Writing file ./RESULTS/DAILY/070930/DATA\_SUMMARY/List\_IMM\_products\_used.xls...  
Writing file ./RESULTS/DAILY/070930/DATA\_SUMMARY/List\_IMM\_products\_used.txt...

\*\*\*\*\*  
Getting WSM products list from 2007-09-30 00:00:00 to 2007-09-30 23:59:59...  
Writing file ./RESULTS/DAILY/070930/DATA\_SUMMARY/List\_WSM\_products\_used.xls...  
Writing file ./RESULTS/DAILY/070930/DATA\_SUMMARY/List\_WSM\_products\_used.txt...

\*\*\*\*\*  
Getting MS products list from 2007-09-30 00:00:00 to 2007-09-30 23:59:59...  
Writing file ./RESULTS/DAILY/070930/DATA\_SUMMARY/List\_MS\_products\_used.xls...  
Writing file ./RESULTS/DAILY/070930/DATA\_SUMMARY/List\_MS\_products\_used.txt...

DATA SUMMARY completed  
#####

AUXILIARY FILES ANALYSIS

#####  
Analysis will be performed from 2007-09-30 00:00:00 to 2007-09-30 23:59:59  
Results will be exported to the directory: ./RESULTS/DAILY/070930/AUXILIARY

Creating directory ./RESULTS/DAILY/070930/AUXILIARY...

\*\*\*\*\*  
Looking for the IECF operational ADFs list...

No IECF ADFs list available for the selected period...

Writing file ./RESULTS/DAILY/070930/AUXILIARY/ASAR\_ADFs\_IECF\_List3.html...

AUXILIARY FILES ANALYSIS completed

#####

MODULE STEPPING ANALYSIS

#####

Analysis will be performed from 2007-09-30 00:00:00 to 2007-09-30 23:59:59

Results will be exported to the directory: ./RESULTS/DAILY/070930/MODULE\_STEPPING

Creating directory ./RESULTS/DAILY/070930/MODULE\_STEPPING...

Creating directory ./RESULTS/DAILY/070930/MODULE\_STEPPING/FIRST\_REFERENCE...

Creating directory ./RESULTS/DAILY/070930/MODULE\_STEPPING/SECOND\_REFERENCE...

Creating directory ./RESULTS/DAILY/070930/MODULE\_STEPPING/PREVIOUS\_PRODUCT\_REFERENCE...

Deleting old files...

\*\*\*\*\*  
\*\*\*\*\*

Creating images comparing with second reference...

Exporting results to the directory ../../RESULTS/DAILY/070930/MODULE\_STEPPING/SECOND\_REFERENCE...

Polarization: H

Reference product: ASA\_MS\_\_0PNPDK20050922\_062651\_000000152041\_00034\_18625\_0041.N1

Test product: ASA\_MS\_\_0PNPDK20070923\_183646\_000000162061\_00485\_29096\_0379.N1

H

H

../../RESULTS/DAILY/070930/MODULE\_STEPPING/SECOND\_REFERENCE/TGH\_20070923\_183646-20050922\_062651.png

../../RESULTS/DAILY/070930/MODULE\_STEPPING/SECOND\_REFERENCE/TPH\_20070923\_183646-20050922\_062651.png

../../RESULTS/DAILY/070930/MODULE\_STEPPING/SECOND\_REFERENCE/RGH\_20070923\_183646-20050922\_062651.png

../../RESULTS/DAILY/070930/MODULE\_STEPPING/SECOND\_REFERENCE/RPH\_20070923\_183646-20050922\_062651.png

Polarization: V

Reference product: ASA\_MS\_\_0PNPDK20050923\_055514\_000000152041\_00048\_18639\_0042.N1

Test product: ASA\_MS\_\_0PNPDK20070928\_055505\_000000162062\_00048\_29160\_0381.N1

V

V

../../RESULTS/DAILY/070930/MODULE\_STEPPING/SECOND\_REFERENCE/TGV\_20070928\_055505-20050923\_055514.png

../../RESULTS/DAILY/070930/MODULE\_STEPPING/SECOND\_REFERENCE/TPV\_20070928\_055505-20050923\_055514.png

../../RESULTS/DAILY/070930/MODULE\_STEPPING/SECOND\_REFERENCE/RGV\_20070928\_055505-20050923\_055514.png

../../RESULTS/DAILY/070930/MODULE\_STEPPING/SECOND\_REFERENCE/RPV\_20070928\_055505-20050923\_055514.png

\*\*\*\*\*  
\*\*\*\*\*

Creating images comparing with previous product reference...

Exporting results to the directory ../../RESULTS/DAILY/070930/MODULE\_STEPPING/PREVIOUS\_PRODUCT\_REFERENCE...

Polarization: H

Reference product: ASA\_MS\_\_0PNPDK20070921\_143813\_000000162061\_00454\_29065\_0378.N1

Test product: ASA\_MS\_\_0PNPDK20070923\_183646\_000000162061\_00485\_29096\_0379.N1

H

H

../../RESULTS/DAILY/070930/MODULE\_STEPPING/PREVIOUS\_PRODUCT\_REFERENCE/TGH\_20070923\_183646-20070921\_143813.png

../../RESULTS/DAILY/070930/MODULE\_STEPPING/PREVIOUS\_PRODUCT\_REFERENCE/TPH\_20070923\_183646-20070921\_143813.png

../../RESULTS/DAILY/070930/MODULE\_STEPPING/PREVIOUS\_PRODUCT\_REFERENCE/RGH\_20070923\_183646-20070921\_143813.png

../../RESULTS/DAILY/070930/MODULE\_STEPPING/PREVIOUS\_PRODUCT\_REFERENCE/RPH\_20070923\_183646-20070921\_143813.png

Polarization: V

Reference product: ASA\_MS\_\_0PNPDE20070922\_204859\_000000162061\_00472\_29083\_0215.N1

Test product: ASA\_MS\_\_0PNPDK20070928\_055505\_000000162062\_00048\_29160\_0381.N1

V

V

.././RESULTS/DAILY/070930/MODULE\_STEPPING/PREVIOUS\_PRODUCT\_REFERENCE/TGV\_20070928\_055505-20070922\_204859.png  
.././RESULTS/DAILY/070930/MODULE\_STEPPING/PREVIOUS\_PRODUCT\_REFERENCE/TPV\_20070928\_055505-20070922\_204859.png  
.././RESULTS/DAILY/070930/MODULE\_STEPPING/PREVIOUS\_PRODUCT\_REFERENCE/RGV\_20070928\_055505-20070922\_204859.png  
.././RESULTS/DAILY/070930/MODULE\_STEPPING/PREVIOUS\_PRODUCT\_REFERENCE/RPV\_20070928\_055505-20070922\_204859.png

MODULE\_STEPPING ANALYSIS completed

#####

CALIBRATION PULSES ANALYSIS

#####

Creating directory ./RESULTS/DAILY/070930/CALIBRATION\_PULSES...

\*\*\*\*\*  
\*\*\*\*\*

ALL ROWS Analysis will be performed from 2007-09-30 00:00:00 to 2007-09-30 23:59:59

Analysing products WVS IS2 V/V

\*\*\* No Data \*\*\*

Analysing products GM1 SS3 H/H

\*\*\* No Data \*\*\*

\*\*\*\*\*  
\*\*\*\*\*

TEMPORAL EVOLUTION Analysis will be performed from 2007-09-30 00:00:00 to 2007-09-30 23:59:59

Analysing products WVS IS2 V/V

Getting calibration pulses data for WVS IS2 V/V from 2007-09-30 00:00:00 to 2007-09-30 23:59:59. Rows: 1/5/9/13/17/21/25/29

Writing file ./RESULTS/DAILY/070930/CALIBRATION\_PULSES/Calibration\_pulses\_data\_WVS\_IS2\_VV\_2007-09-30\_1.dat...

No data to be processed for WVS IS2 V/V...

Getting calibration pulses data for WVS IS2 V/V from 2007-09-30 00:00:00 to 2007-09-30 23:59:59. Rows: 2/6/10/14/18/22/26/30

Writing file ./RESULTS/DAILY/070930/CALIBRATION\_PULSES/Calibration\_pulses\_data\_WVS\_IS2\_VV\_2007-09-30\_2.dat...

No data to be processed for WVS IS2 V/V...

Getting calibration pulses data for WVS IS2 V/V from 2007-09-30 00:00:00 to 2007-09-30 23:59:59. Rows: 3/7/11/15/19/23/27/31

Writing file ./RESULTS/DAILY/070930/CALIBRATION\_PULSES/Calibration\_pulses\_data\_WVS\_IS2\_VV\_2007-09-30\_3.dat...

No data to be processed for WVS IS2 V/V...

Getting calibration pulses data for WVS IS2 V/V from 2007-09-30 00:00:00 to 2007-09-30 23:59:59. Rows: 4/8/12/16/20/24/28/32

Writing file ./RESULTS/DAILY/070930/CALIBRATION\_PULSES/Calibration\_pulses\_data\_WVS\_IS2\_VV\_2007-09-30\_4.dat...

No data to be processed for WVS IS2 V/V...

Analysing products GM1 SS3 H/H

Getting calibration pulses data for GM1 SS3 H/H from 2007-09-30 00:00:00 to 2007-09-30 23:59:59. Rows: 1/5/9/13/17/21/25/29

Writing file ./RESULTS/DAILY/070930/CALIBRATION\_PULSES/Calibration\_pulses\_data\_GM1\_SS3\_HH\_2007-09-30\_1.dat...

No data to be processed for GM1 SS3 H/H...

Getting calibration pulses data for GM1 SS3 H/H from 2007-09-30 00:00:00 to 2007-09-30 23:59:59. Rows: 2/6/10/14/18/22/26/30

Writing file ./RESULTS/DAILY/070930/CALIBRATION\_PULSES/Calibration\_pulses\_data\_GM1\_SS3\_HH\_2007-09-30\_2.dat...

No data to be processed for GM1 SS3 H/H...

Getting calibration pulses data for GM1 SS3 H/H from 2007-09-30 00:00:00 to 2007-09-30 23:59:59. Rows: 3/7/11/15/19/23/27/31

Writing file ./RESULTS/DAILY/070930/CALIBRATION\_PULSES/Calibration\_pulses\_data\_GM1\_SS3\_HH\_2007-09-30\_3.dat...

No data to be processed for GM1 SS3 H/H...

Getting calibration pulses data for GM1 SS3 H/H from 2007-09-30 00:00:00 to 2007-09-30 23:59:59. Rows: 4/8/12/16/20/24/28/32

Writing file ./RESULTS/DAILY/070930/CALIBRATION\_PULSES/Calibration\_pulses\_data\_GM1\_SS3\_HH\_2007-09-30\_4.dat...

No data to be processed for GM1 SS3 H/H...

CALIBRATION PULSES ANALYSIS completed

#####

DOPPLER ANALYSIS

#####

Creating directory ./RESULTS/DAILY/070930/DOPPLER...

\*\*\*\*\*  
\*\*\*\*\*  
DOPPLER ANX Analysis will be performed from 2007-09-30 00:00:00 to 2007-09-30 23:59:59

Analysing products WVS IS2 V/V  
Getting doppler data for WVS IS2 V/V from 2007-09-30 00:00:00 to 2007-09-30 23:59:59...  
Writing file ./RESULTS/DAILY/070930/DOPPLER/Doppler\_data\_WVS\_IS2\_VV\_2007-09-30.dat...  
No data to be processed for WVS IS2 V/V...

Analysing products GM1 SS1 H/H  
Getting doppler data for GM1 SS1 H/H from 2007-09-30 00:00:00 to 2007-09-30 23:59:59...  
Writing file ./RESULTS/DAILY/070930/DOPPLER/Doppler\_data\_GM1\_SS1\_HH\_2007-09-30.dat...  
No data to be processed for GM1 SS1 H/H...

\*\*\*\*\*  
\*\*\*\*\*  
DOPPLER JUMPS Analysis will be performed on WSM products from 2007-09-30 00:00:00 to 2007-09-30 23:59:59

Analysing by default products WSM  
Getting doppler jumps data for WSM from 2007-09-30 00:00:00 to 2007-09-30 23:59:59...  
Writing file ./RESULTS/DAILY/070930/DOPPLER/Doppler\_Jumps\_data\_WSM\_2007-09-30.dat...  
No data to be processed for WSM...

\*\*\*\*\*  
\*\*\*\*\*  
DOPPLER MAP Analysis will be performed from 2007-09-30 00:00:00 to 2007-09-30 23:59:59

Analysing products WVS IS2 V/V  
\*\*\* Insufficient Data to Plot \*\*\*  
\*\*\* Insufficient Data to Plot \*\*\*

Analysing products GM1 SS1 H/H  
\*\*\* Insufficient Data to Plot \*\*\*  
\*\*\* Insufficient Data to Plot \*\*\*

DOPPLER ANALYSIS completed  
#####

CHIRP ANALYSIS

#####

Creating directory ./RESULTS/DAILY/070930/CHIRP...

\*\*\*\*\*  
\*\*\*\*\*  
CHIRP Analysis will be performed from 2007-09-30 00:00:00 to 2007-09-30 23:59:59

Analysing products WSM SS1 H/H

```
*****
Getting ScaleFactor data for WSM SS1 H/H from 2007-09-30 00:00:00 to 2007-09-30 23:59:59...
Writing file ./RESULTS/DAILY/070930/CHIRP/ScaleFactor_data_WSM_SS1_HH_2007-09-30.dat...
ScaleFactor: no data to be processed for WSM SS1 H/H...
```

```
Analysing products WSM SS1 V/V
*****
Getting ScaleFactor data for WSM SS1 V/V from 2007-09-30 00:00:00 to 2007-09-30 23:59:59...
Writing file ./RESULTS/DAILY/070930/CHIRP/ScaleFactor_data_WSM_SS1_VV_2007-09-30.dat...
ScaleFactor: no data to be processed for WSM SS1 V/V...
```

```
CHIRP ANALYSIS completed
#####
```

```
RAW DATA ANALYSIS
#####
Analysis will be performed from 2007-09-30 00:00:00 to 2007-09-30 23:59:59
Results will be exported to the directory: ./RESULTS/DAILY/070930/RAW_DATA
```

```
Creating directory ./RESULTS/DAILY/070930/RAW_DATA...
```

```
*****
Getting raw data for WVS from 2007-09-30 00:00:00 to 2007-09-30 23:59:59...
Writing file ./RESULTS/DAILY/070930/RAW_DATA/Raw_data_WVS_2007-09-30.dat...
No data to be processed for WVS...
```

```
*****
Getting raw data for IMM from 2007-09-30 00:00:00 to 2007-09-30 23:59:59...
Writing file ./RESULTS/DAILY/070930/RAW_DATA/Raw_data_IMM_2007-09-30.dat...
No data to be processed for IMM...
```

```
RAW DATA ANALYSIS completed
#####
```

```
TELEMETRY ANALYSIS
#####
Analysis will be performed from 2007-09-30 00:00:00 to 2007-09-30 23:59:59
Results will be exported to the directory: ./RESULTS/DAILY/070930/TELEMETRY
```

```
Creating directory ./RESULTS/DAILY/070930/TELEMETRY...
```

```
Looking for gaps and missing lines in WVS products...
*****
No products from PDE...
No products from PDK...
```

```
Looking for gaps and missing lines in GM1 products...
*****
No products from PDE...
No products from PDK...
```

```
Looking for gaps and missing lines in APM products...
*****
No products from PDE...
No products from PDK...
```

```
Looking for gaps and missing lines in IMM products...
```

\*\*\*\*\*

No products from PDE...  
No products from PDK...

Looking for gaps and missing lines in WSM products...

\*\*\*\*\*

No products from PDE...  
No products from PDK...

No data found...

\*\*\*\*\*

TELEMETRY ANALYSIS completed

#####

BROWSE PRODUCTS ANALYSIS

#####

Analysis will be performed on 2007-09-30

\*\*\*\*\*

Scanning directory /nas3/ENVISAT/ASAR//ASA\_GM\_\_BP...

Results will be exported to the directory: /nas3/ENVISAT/ASAR//ASA\_GM\_\_BP/JPG/20070930/

ANALYSIS COMPLETED: 0 GM browse products to see...

\*\*\*\*\*

\*\*\*\*\*

Scanning directory /nas3/ENVISAT/ASAR//ASA\_AP\_\_BP...

Results will be exported to the directory: /nas3/ENVISAT/ASAR//ASA\_AP\_\_BP/JPG/20070930/

ANALYSIS COMPLETED: 0 AP browse products to see...

\*\*\*\*\*

\*\*\*\*\*

Scanning directory /nas3/ENVISAT/ASAR//ASA\_IM\_\_BP...

Results will be exported to the directory: /nas3/ENVISAT/ASAR//ASA\_IM\_\_BP/JPG/20070930/

ANALYSIS COMPLETED: 0 IM browse products to see...

\*\*\*\*\*

\*\*\*\*\*

Scanning directory /nas3/ENVISAT/ASAR//ASA\_WS\_\_BP...

Results will be exported to the directory: /nas3/ENVISAT/ASAR//ASA\_WS\_\_BP/JPG/20070930/

ANALYSIS COMPLETED: 0 WS browse products to see...

\*\*\*\*\*

BROWSE PRODUCTS ANALYSIS completed

#####

HTML REPORT generation

#####

Building file ./RESULTS/DAILY/070930/asarReport.html...

Building DATA SUMMARY section...

Building AUXILIARY FILES ANALYSIS section...

Building MODULE STEPPING ANALYSIS section...  
Building CALIBRATION PULSES ANALYSIS section...  
Building DOPPLER ANALYSIS section...  
Building CHIRP ANALYSIS section...  
Building RAW DATA ANALYSIS section...  
Building TELEMETRY ANALYSIS section...

HTML REPORT generation completed

#####





# ASAR Daily Report





















