

PRELIMINARY REPORT OF 041209

ATTENTION: This report is automatically generated no comments are provided on data analysis

last update on Thu Dec 9 14:29:41 GMT 2004

1. [Introduction](#)
2. [Summary](#)
 - [Instrument Unavailability](#)
 - [Auxiliary files used](#)
 - [Browse Visual Inspection](#)
 - [Module Stepping Results](#)
 - [Data Analysis](#)
3. [Module Stepping](#)
4. [Internal Calibration pulses](#)
 - [Daily statistics](#)
 - [Cyclic statistics](#)
 - [cal pulses monitoring \(all rows\)](#)
5. [Raw Data Statistics](#)
 - [raw data mean I and Q](#)
 - [raw data stdev I and Q](#)
 - [raw gain imbalance](#)
6. [Wave Doppler analysis](#)
 - [Unbiased Doppler Error for WVS](#)
 - [Absolute Doppler for WVS](#)
 - [Doppler evolution versus ANX for WVS](#)
 - [Unbiased Doppler Error for GM1](#)
 - [Absolute Doppler for GM1](#)
 - [Doppler evolution versus ANX for GM1](#)

1 - Introduction

This report is based on the analysis of wave mode level-1 cross spectra (ASA_WVS_1P), global monitoring products (ASA_GM1_1P), which are the available few hours after the acquisition, on the browse (BP) products and on the Module Stepping (MS) product.

2 - Summary

2.1 - Instrument Unavailability

No unavailabilities during the reported period.

2.2 - Auxiliary files

Summary of the auxiliary files used from 2004-12-08 00:00:00 to 2004-12-09 14:29:41

PDHS-K					
AUXILIARY FILE	WVS	GM1	IMM	APM	WSM
ASA_CON_AXVIEC20041027_165251_20021017_130000_20051231_000000	40	34	4	3	0
ASA_INS_AXVIEC20040521_160843_20030211_000000_20041231_000000	40	34	4	3	0
ASA_XCA_AXVIEC20041027_164238_20040412_000000_20051231_000000	40	34	4	3	0
ASA_XCH_AXVIEC20031209_112947_20020301_000000_20041231_000000	40	34	4	3	0

PDHS-E					
AUXILIARY FILE	WVS	GM1	IMM	APM	WSM
ASA_CON_AXVIEC20041027_165251_20021017_130000_20051231_000000	33	27	0	0	0
ASA_INS_AXVIEC20040521_160843_20030211_000000_20041231_000000	33	27	0	0	0
ASA_XCA_AXVIEC20041027_164238_20040412_000000_20051231_000000	33	27	0	0	0
ASA_XCH_AXVIEC20031209_112947_20020301_000000_20041231_000000	33	27	0	0	0

2.3 - Browse Visual Inspection

No anomalies observed on available browse products

2.4 - Data Analysis

- Stable wave internal calibration pulses gain and phase.
- Stable raw data statistics.
- Nominal Doppler behavior.

3 - Module Stepping Mode

The MS mode provides an internal health check on an individual module basis. The purpose of this mode is to identify any malfunctioning modules and to identify modules for which calibration offsets are to be applied.

No anomalies observed on available MS products:

Polarisation	Start Time
V	20041207 042859
H	20041208 071834

MSM in V/V polarisation

Pre-launch Reference	DDS-B (2003-06-12) reference
⊗	⊗

⊗	
⊗	
⊗	

MSM in H/H polarisation

Pre-launch Reference	DDS-B (2003-06-12) reference
⊗	
⊗	
⊗	
⊗	

4 - Internal calibration Results

No anomalies observed.

4.1 - Daily statistics

4.1.1 - Evolution for WVS

Evolution of cal pulses for WVS
⊗
⊗

4.1.2 - Evolution for GM1

Evolution of cal pulses for GM1
⊗
⊗

4.2 - Cyclic statistics

4.2.1 - Evolution for WVS

Evolution of cal pulses for WVS

P1a Cyclic statistics

row	pulse	mean (dB)	stdev (dB)	slope(dB/cycle)
-----	-------	-----------	------------	-----------------

P1 Cyclic statistics

row	pulse	mean (dB)	stdev (dB)	slope(dB/cycle)
3	P1	-3.471832	0.029988	-0.040143
7	P1	-3.198538	0.041549	0.330177
11	P1	-4.624657	0.045543	-0.082692
15	P1	-5.660857	0.033039	-0.029318
19	P1	-3.626860	0.005261	-0.053630
22	P1	-4.580325	0.016064	0.000361
26	P1	-4.916364	0.016082	-0.031057
30	P1	-7.091179	0.014420	-0.041674
3	P1	-15.977052	0.117024	0.065346
7	P1	-14.980865	0.636786	-1.994683
11	P1	-20.682070	0.482714	0.037307
15	P1	-11.624923	0.089113	0.128701
19	P1	-14.109505	0.030375	-0.089157
22	P1	-16.171108	0.437218	0.070512
26	P1	-17.797302	0.254412	-0.007184
30	P1	-17.927185	0.295329	0.066131

P2 Cyclic statistics

row	pulse	mean (dB)	stdev (dB)	slope(dB/cycle)
3	P2	-22.371222	0.086568	0.006356
7	P2	-22.611906	0.139569	0.002901
11	P2	-15.001245	0.130965	0.134910
15	P2	-7.168710	0.108688	-0.022968
19	P2	-9.719911	0.132073	0.013230
22	P2	-17.216484	0.100326	0.049936

26	P2	-16.518496	0.106677	-0.007155
30	P2	-19.017593	0.082829	0.102440

P3 Cyclic statistics

row	pulse	mean (dB)	stdev (dB)	slope(dB/cycle)
3	P3	-8.207190	0.006949	-0.013306
7	P3	-8.207200	0.006949	-0.013240
11	P3	-8.207206	0.006950	-0.013215
15	P3	-8.207209	0.006950	-0.013210
19	P3	-8.207211	0.006950	-0.013207
22	P3	-8.207210	0.006950	-0.013212
26	P3	-8.207211	0.006949	-0.013217
30	P3	-8.207080	0.006948	-0.013219

4.2.2 - Evolution for GM1

Evolution of cal pulses for GM1
✕

P1a Cyclic statistics

row	pulse	mean (dB)	stdev (dB)	slope(dB/cycle)
-----	-------	-----------	------------	-----------------

P1 Cyclic statistics

row	pulse	mean (dB)	stdev (dB)	slope(dB/cycle)
3	P1	-2.835816	0.110575	-0.154573
7	P1	-2.981208	0.064881	-0.103675
11	P1	-3.925843	0.048896	-0.098496
15	P1	-3.507643	0.078167	-0.110320
19	P1	-3.596694	0.012637	-0.022355
22	P1	-5.602119	0.068301	0.011647
26	P1	-6.484827	0.022821	-0.053746
30	P1	-6.282214	0.042014	-0.063037
3	P1	-10.619074	0.058769	-0.067773
7	P1	-10.104170	0.153427	0.006234

11	P1	-12.373115	0.199193	0.043703
15	P1	-11.717234	0.104998	0.059160
19	P1	-15.626818	0.051042	-0.031240
22	P1	-24.097195	2.196789	-0.287268
26	P1	-15.139060	0.414219	0.039891
30	P1	-20.235186	1.010758	0.135649

P2 Cyclic statistics

row	pulse	mean (dB)	stdev (dB)	slope(dB/cycle)
3	P2	-18.053732	0.039073	0.002115
7	P2	-22.665850	0.028834	0.044836
11	P2	-10.795370	0.034641	0.144617
15	P2	-5.063264	0.025987	-0.024460
19	P2	-6.970459	0.034257	-0.028292
22	P2	-7.338154	0.028198	0.035681
26	P2	-23.958218	0.019727	-0.036649
30	P2	-22.074697	0.018622	0.057122

P3 Cyclic statistics

row	pulse	mean (dB)	stdev (dB)	slope(dB/cycle)
3	P3	-8.043830	0.003145	-0.002213
7	P3	-8.043867	0.003149	-0.002492
11	P3	-8.043947	0.003142	-0.002321
15	P3	-8.043739	0.003152	-0.002261
19	P3	-8.043874	0.003148	-0.002390
22	P3	-8.043876	0.003140	-0.002111
26	P3	-8.043905	0.003134	-0.002366
30	P3	-8.043810	0.003140	-0.002446

4.3 - cal pulses monitoring (all rows)

4.3.1 - Evolution for WVS



4.3.2 - Evolution for GM1



5 - RAW data statistics

No anomalies observed.

5.1 - Input mean I/Q

channel	stat	DSS-B
MEAN I	mean	0.000438960
	stdev	2.42073e-07
MEAN Q	mean	0.000499115
	stdev	2.55047e-07



5.2 - Input stdev I/Q

channel	stat	DSS-B
STDEV I	mean	0.125111
	stdev	0.000990476
STDEV Q	mean	0.125344
	stdev	0.000999037



5.3 - Gain imbalance I/Q



6 - Doppler Analysis

Preliminary report. The data is not yet controlled

6.1 - Unbiased Doppler Error for WVS

Evolution of unbiased Doppler error (Real - Expected)



Ascending

Descending

6.2 - Absolute Doppler for WVS

Evolution of Absolute Doppler

Ascending

Descending

6.3 - Doppler evolution versus ANX for WVS

Evolution Doppler error versus ANX

6.4 - Unbiased Doppler Error for GM1

Evolution of unbiased Doppler error (Real - Expected)

Ascending

Descending

6.5 - Absolute Doppler for GM1

Evolution of Absolute Doppler

Ascending

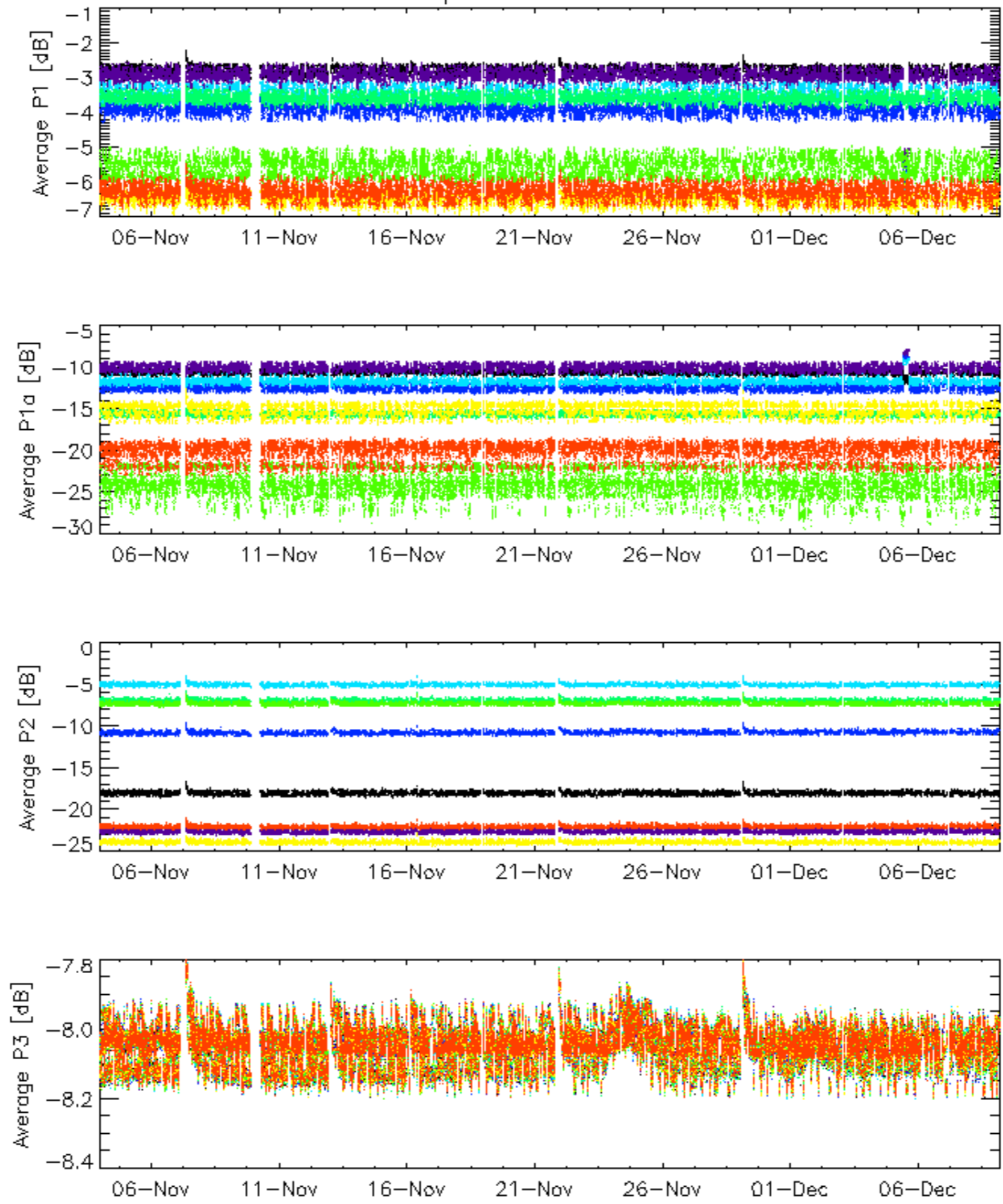
Descending

6.6 - Doppler evolution versus ANX for GM1

Evolution Doppler error versus ANX

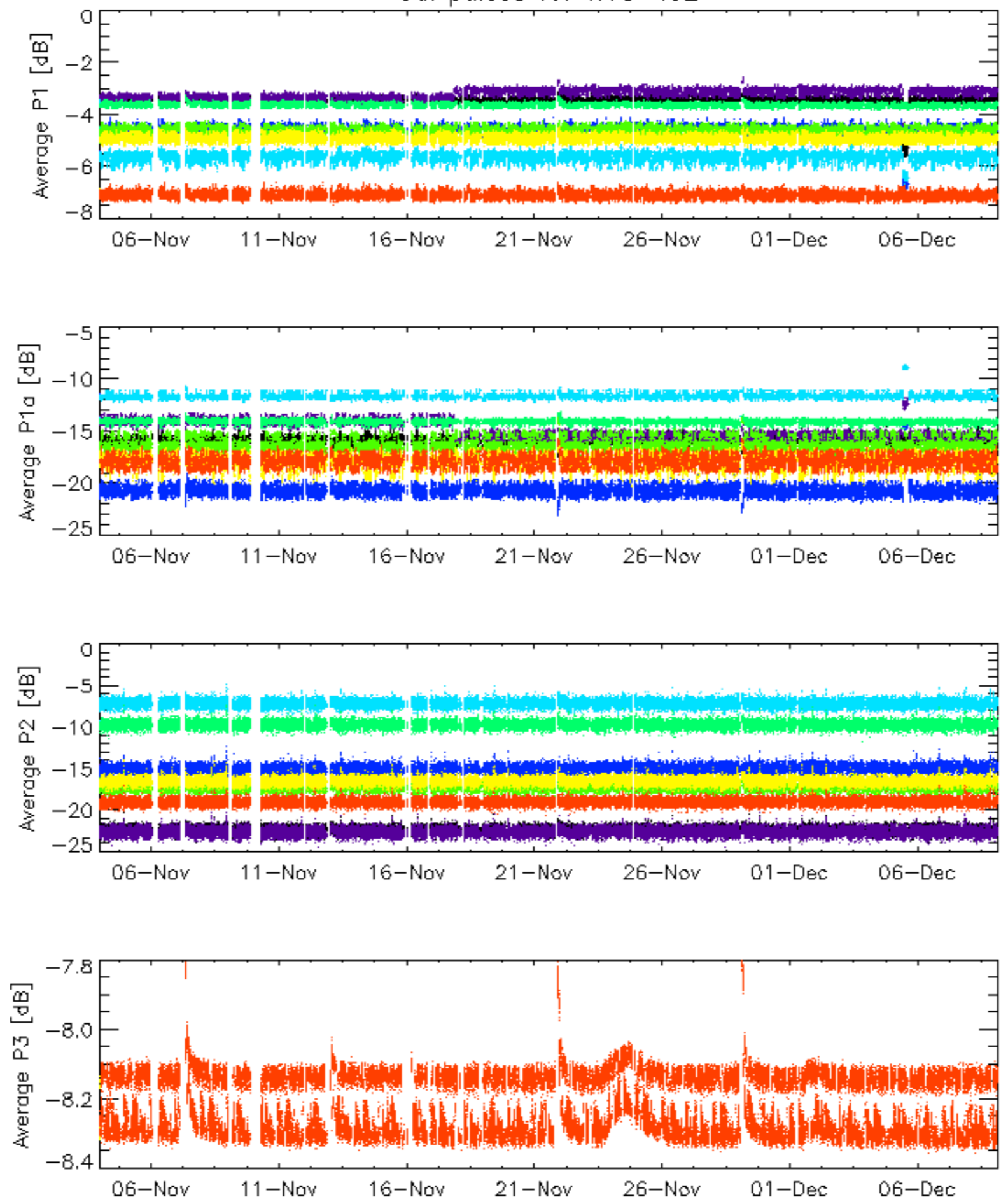


Cal pulses for GM1 SS3



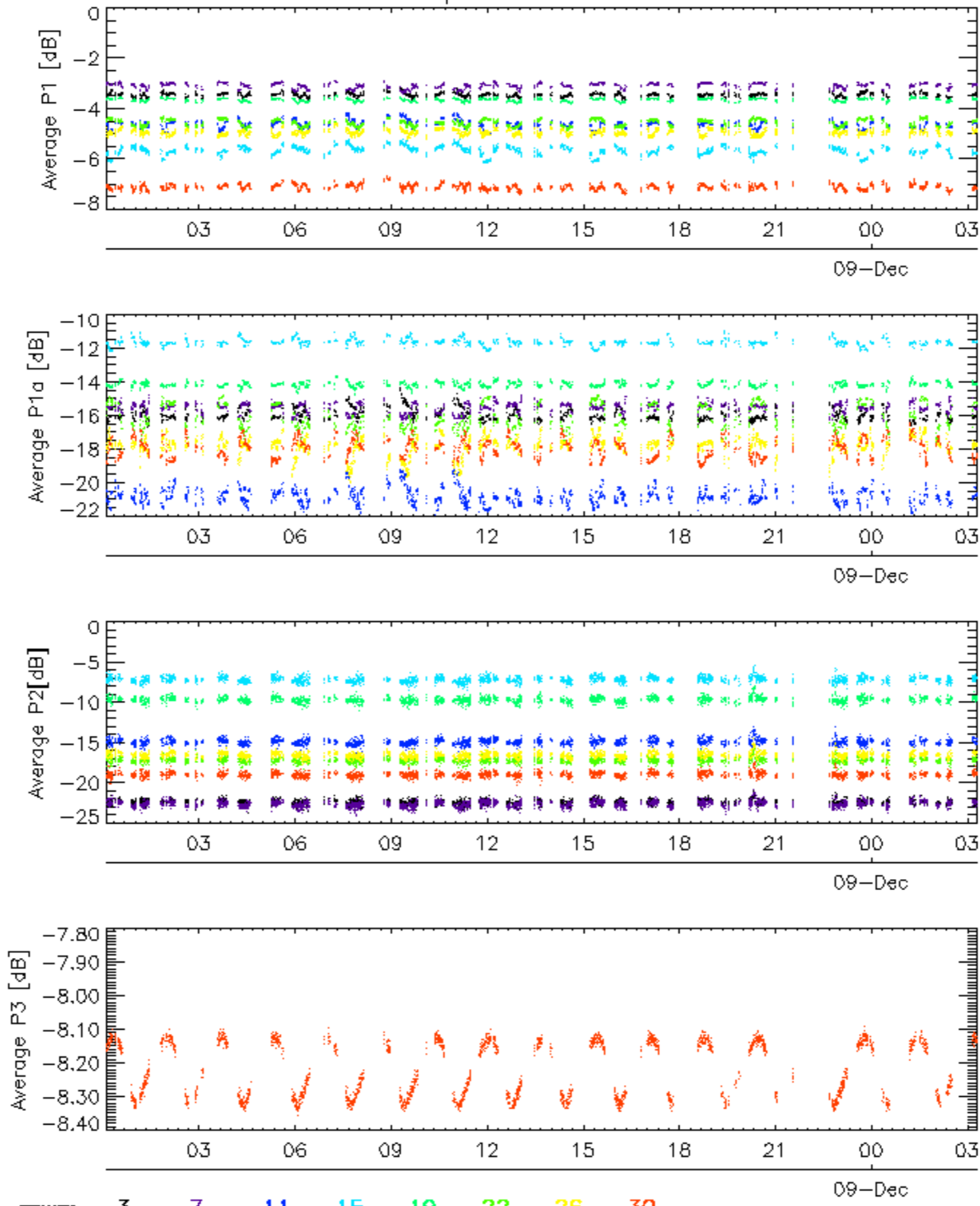
rows: _ 3 _ 7 _ 11 _ 15 _ 19 _ 22 _ 26 _ 30

Cal pulses for WVS IS2



rows: _ 3 _ 7 _ 11 _ 15 _ 19 _ 22 _ 26 _ 30

Cal pulses for WVS IS2

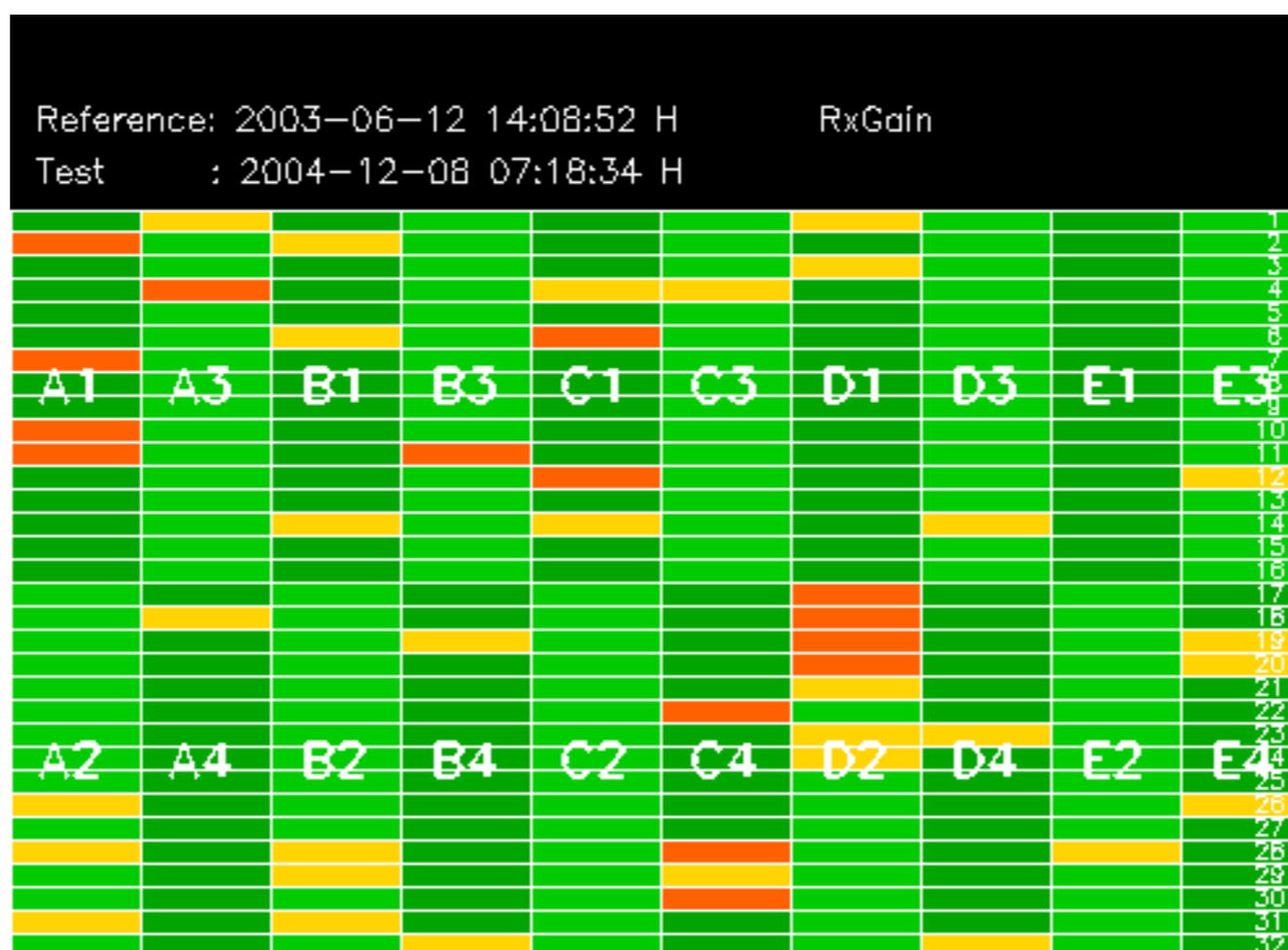


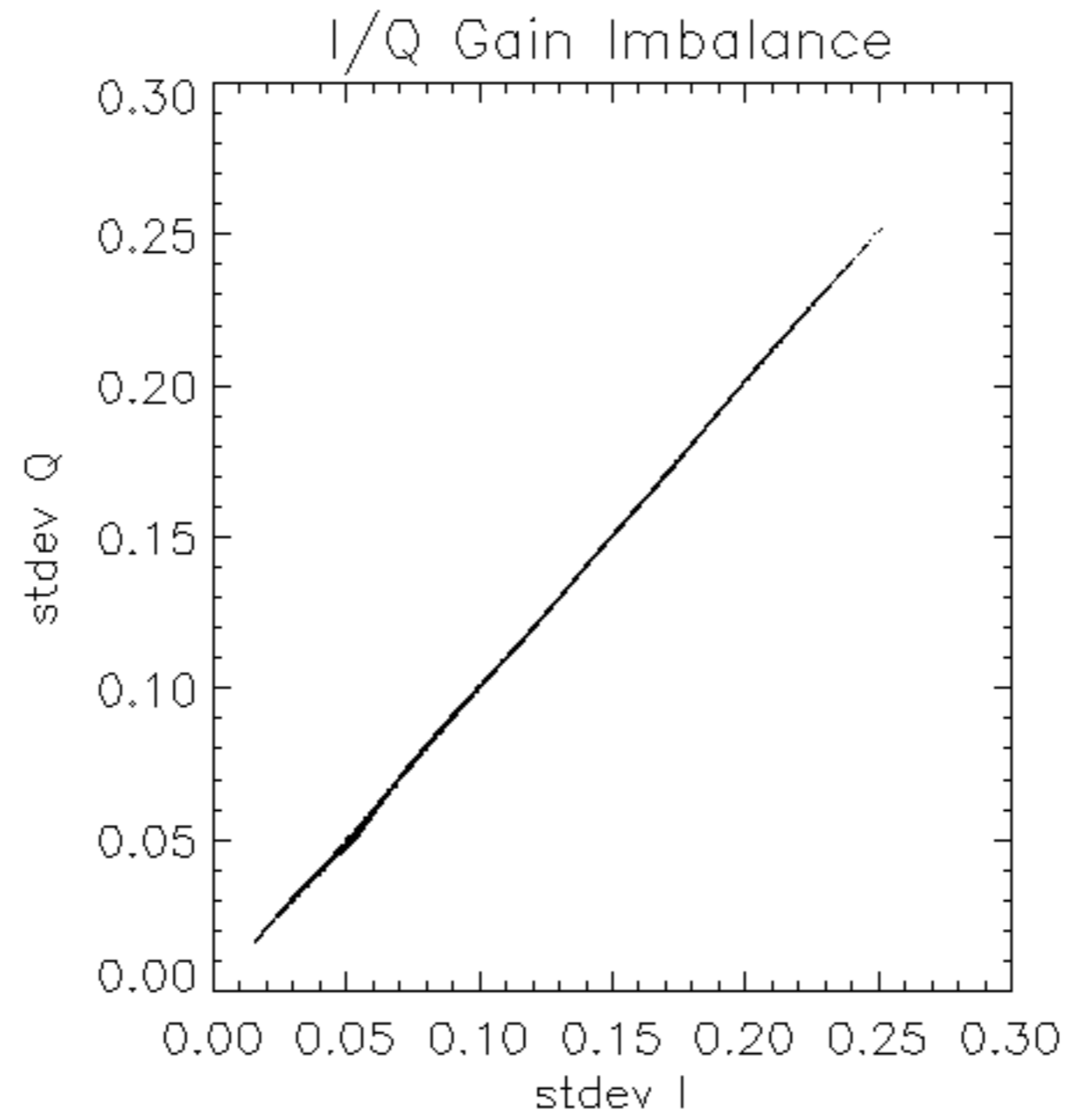
No anomalies observed on available browse products

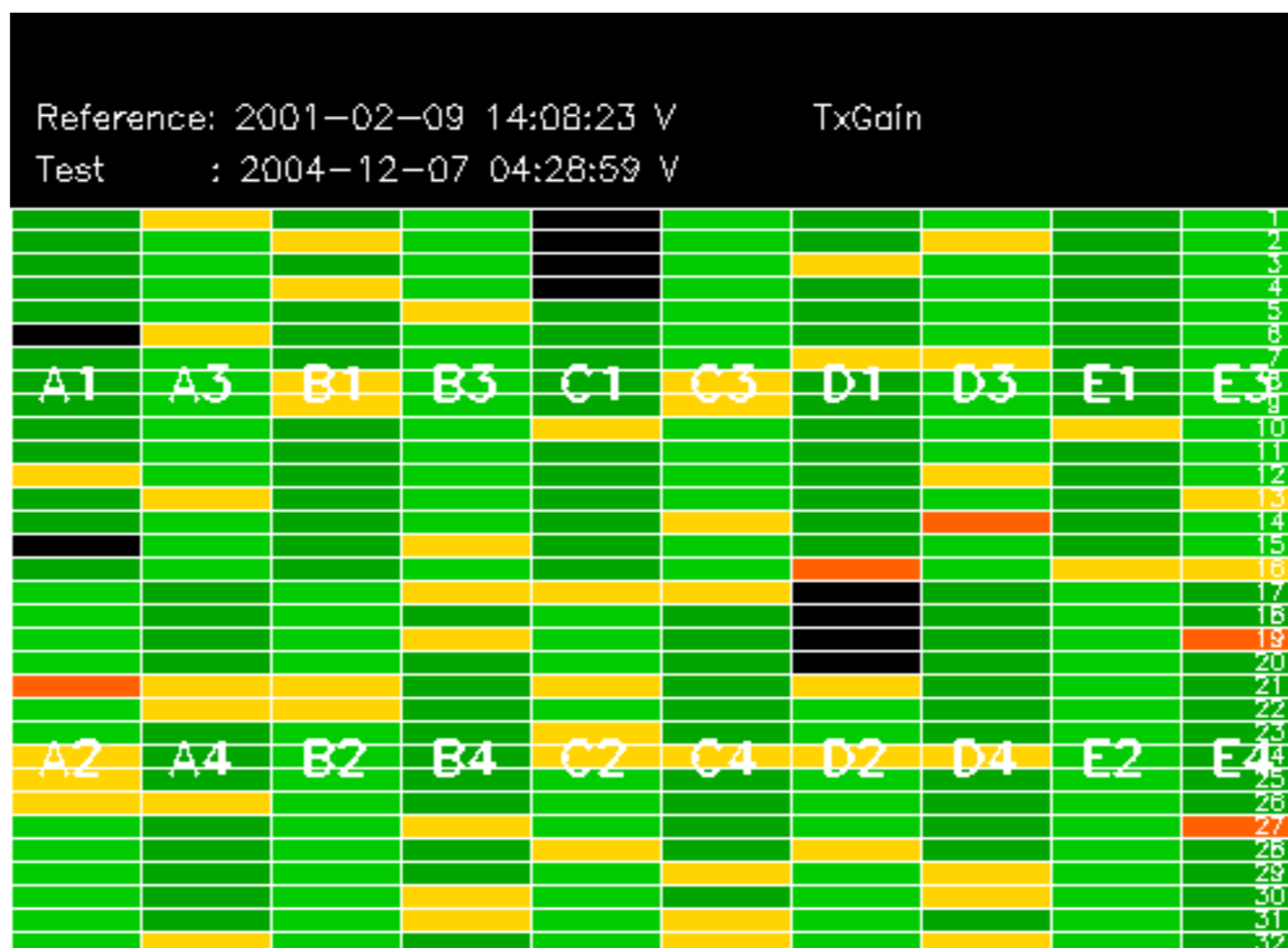
No anomalies observed.

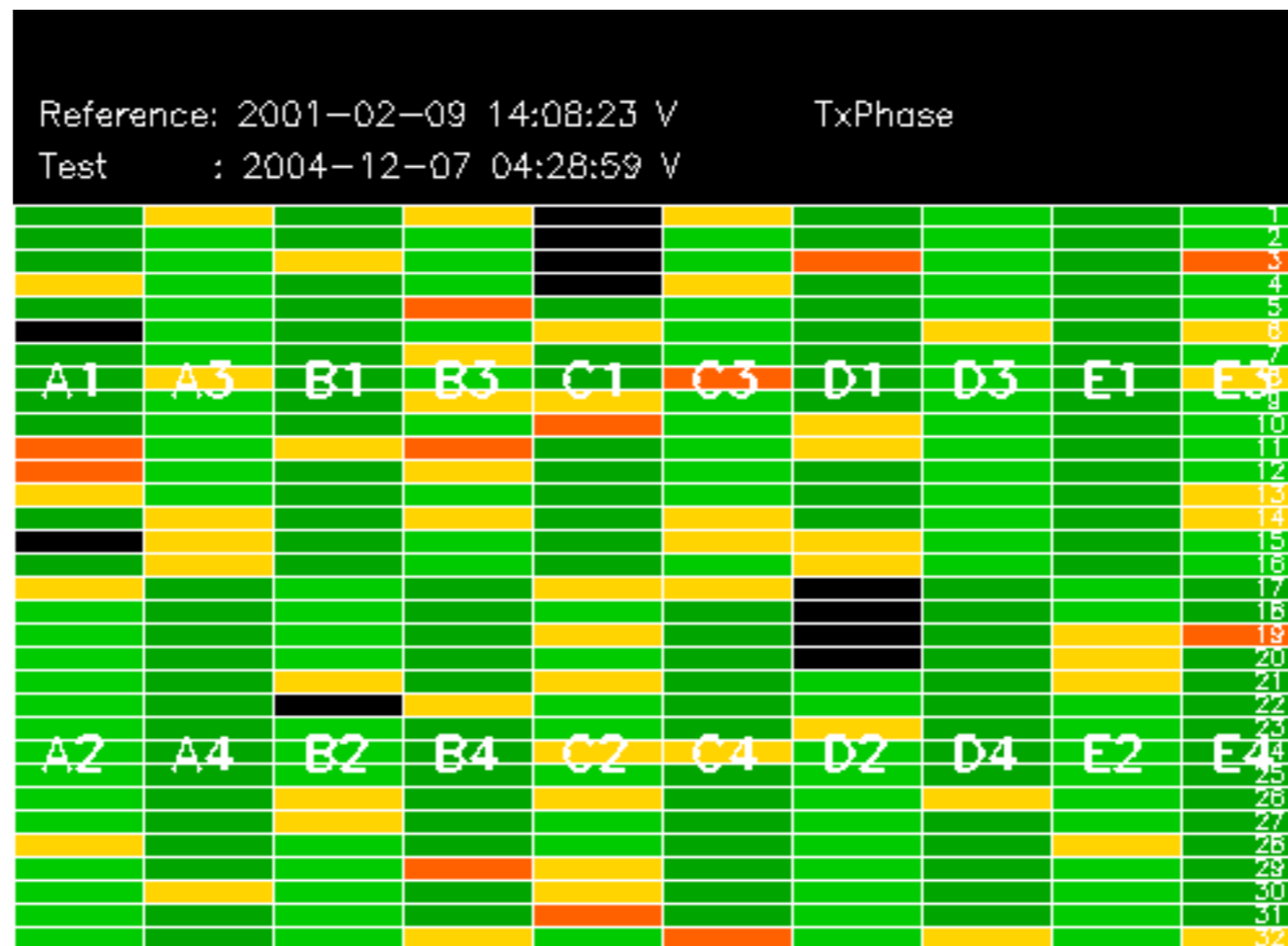
The MS mode provides an internal health check on an individual module basis.
The purpose of this mode is to identify any malfunctioning modules and to identify modules for which calibration offsets are to be applied.
No anomalies observed on available MS products:

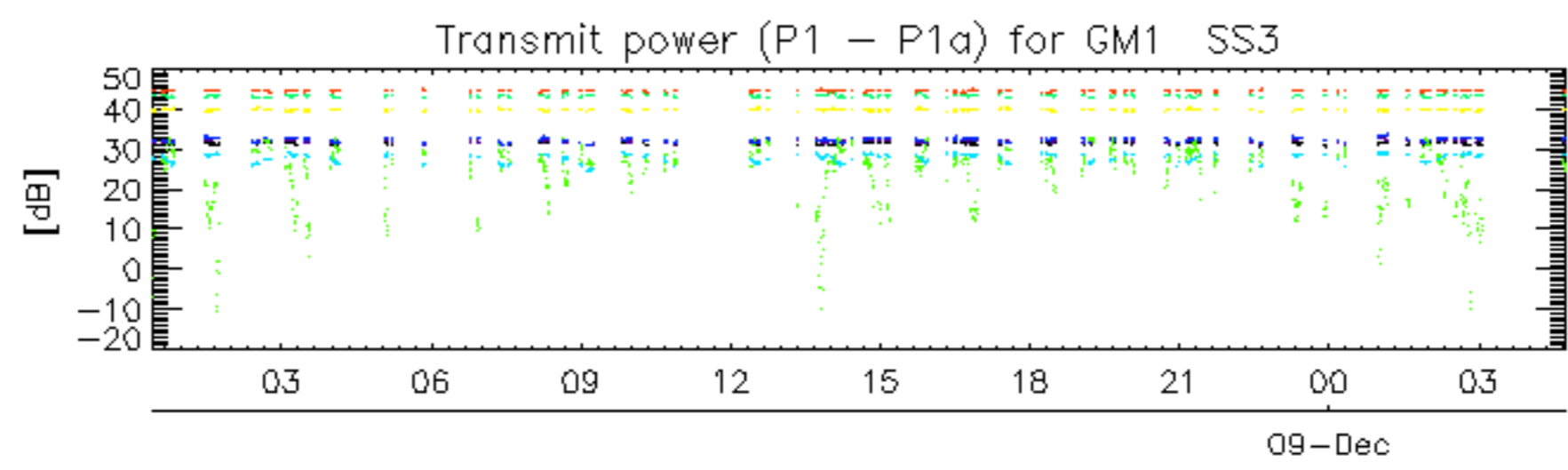
No anomalies observed.



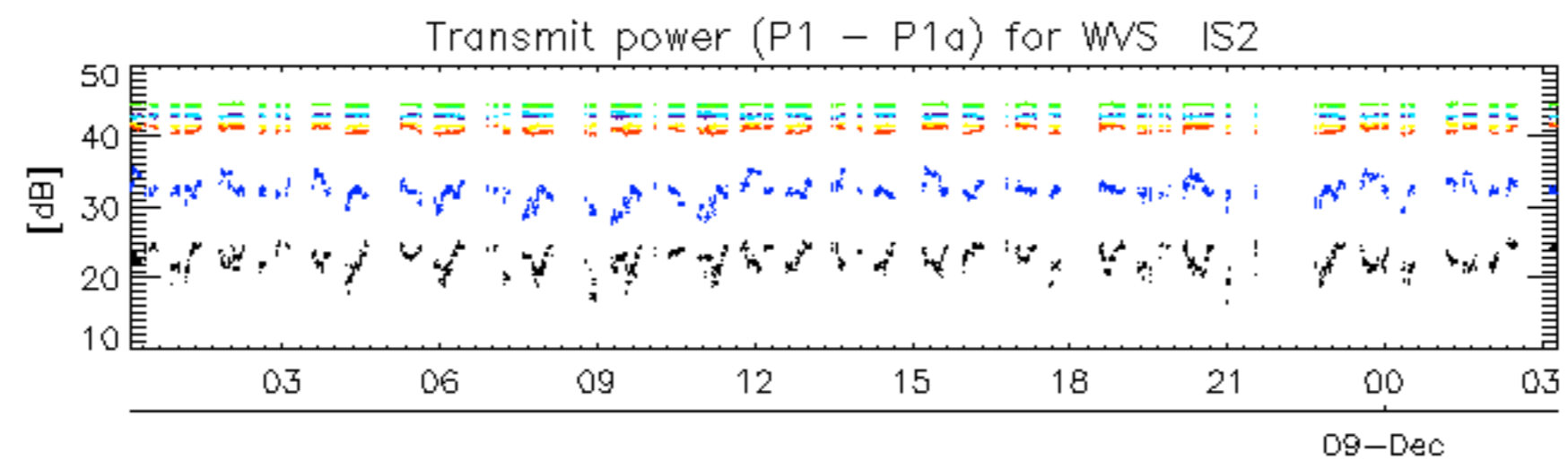








rows: _ 3 _ 7 _ 11 _ 15 _ 19 _ 22 _ 26 _ 30



rows: _ 3 _ 7 _ 11 _ 15 _ 19 _ 22 _ 26 _ 30

No unavailabilities during the reported period.