

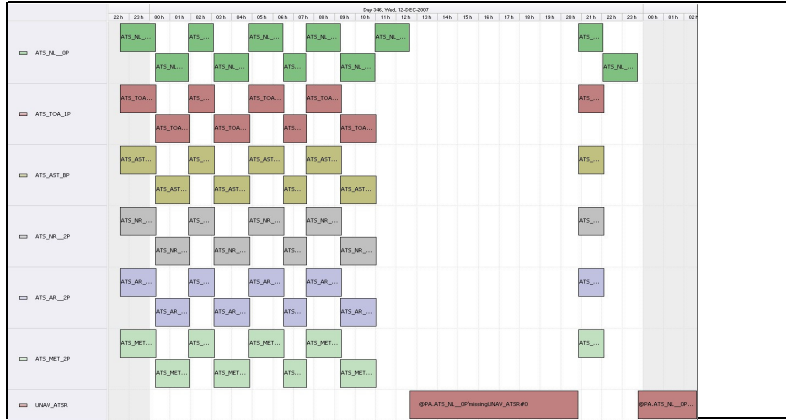
# DPQC Daily Check of AATSR Data 12-Dec-07 VEGA

DATA ACQUISITION DATE: 12-Dec-07  
 INSPECTION DATE: 13-Dec-07 -> Go to 'Product Generation' sheet to select date

Previous Instrument Operational Events	
07-Dec-07	Nothing planned
08-Dec-07	Nothing planned
09-Dec-07	Nothing planned
10-Dec-07	Nothing planned
11-Dec-07	Nothing planned

Upcoming Instrument Operational Events	
12-Dec-07	Nothing planned
13-Dec-07	AATSR Unavailable from 0644h for memory maintain
14-Dec-07	AATSR Available from 0630h
15-Dec-07	Nothing planned
16-Dec-07	Nothing planned

Daily Gantt Chart



**Comments** Missing LO data 1130h-1300h, missing LO data from 1630h

**FLAGS**  
FLAG

**Meteo Products**

Data acquisition date:	12-Dec-07	Inspection date:	13-Dec-07
Total # Products:	16		
Server Availability:	Nominal		
<b>Comments</b>	None		

**Browse Products**

Data acquisition date:	12-Dec-07	Inspection date:	13-Dec-07
<b>Source</b>	EDS		
<b>Comments</b>	None		

**Instrument Health**

**Daily**  
 Status is checked daily. If daily status is unknown, e.g. data in question table during a weekend, or no check was made, then data will revert to the 'Inspection Date'.

List of all QA orbit summary files deposited on:	12-Dec-07
Daily status from the RAL EDS web-site on:	13-Dec-07
<b>Current Instrument Status:</b>	Nominal
<b>Envisat Platform Status:</b>	Nominal

Orbit #	Acquired	Comments
30212	10-Dec-07	High Jitter, No Viscal Peak
30213	10-Dec-07	High Jitter
30220	11-Dec-07	High Jitter
30221	11-Dec-07	High Jitter, No Viscal Peak
30222	11-Dec-07	High Jitter, No Viscal Peak
30224	11-Dec-07	High Jitter, No Viscal Peak
30225	11-Dec-07	High Jitter, No Viscal Peak
30226	11-Dec-07	High Jitter, No Viscal Peak
30227	11-Dec-07	High Jitter, No Viscal Peak
30228	11-Dec-07	High Jitter
30229	11-Dec-07	High Jitter
30230	11-Dec-07	High Jitter
30231	12-Dec-07	High Jitter
30232	12-Dec-07	High Jitter
30233	12-Dec-07	High Jitter

FLAG  
FLAG  
FLAG  
FLAG  
FLAG  
FLAG  
FLAG  
FLAG  
FLAG  
FLAG  
FLAG  
FLAG  
FLAG  
FLAG

**Weekly**

Status is checked daily. If daily status is unknown, e.g. data in question table during a weekend, or no check was made, then data will revert to the 'Inspection Date'.

Latest version of the weekly RAL report on:	13-Dec-07	Out of date by:	45 days
<b>Report Date</b>	29-Oct-07		
<b>Anomalies</b>	Other: none BB: none over last scheduled for November 13-15. Jitter: none high - highly worse than last week. Jitter: Mean Jitter rate -420/orbit with some as high as -530/orbit		

Browse Map

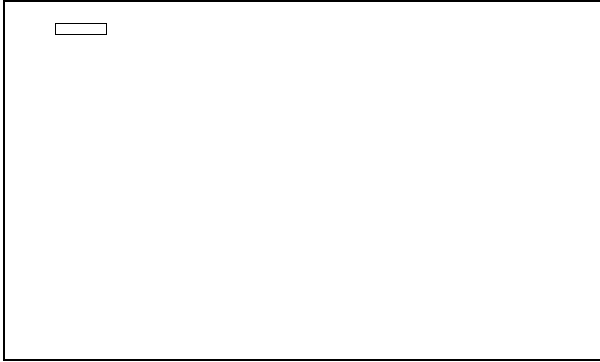
Map of browse products for: 12-Dec-07



Comments QUASAR Unavailable

Meteo Map

Map of meteo products for: 12-Dec-07



Comments QUASAR Unavailable

NB: METEO products are downloaded early morning, while their existence on the server is checked late morning which may explain inconsistencies between the above METEO map and the number of stated products