

# DPQC Daily Check of AATSR Data

23-Oct-07



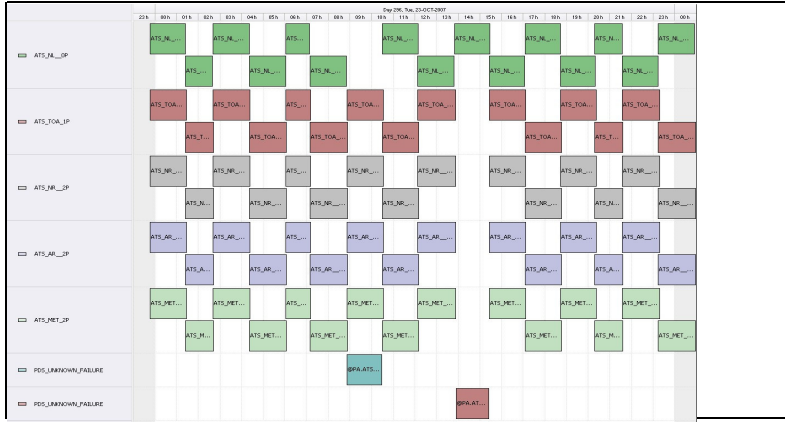
DATA ACQUISITION DATE: 23-Oct-07  
INSPECTION DATE: 24-Oct-07

-> Go to 'Product Generation' sheet to select data

Previous Instrument Operational Events	
18-Oct-07	Nothing planned
19-Oct-07	Nothing planned
20-Oct-07	Nothing planned
21-Oct-07	Nothing planned
22-Oct-07	Nothing planned

Upcoming Instrument Operational Events	
23-Oct-07	Nothing planned
24-Oct-07	Nothing planned
25-Oct-07	Nothing planned
26-Oct-07	Nothing planned
27-Oct-07	Nothing planned

## Daily Gantt Chart



Comments: Missing L1(01) and L0(01) Unknown Cause

## FLAGS

FLAG

## Meteo Products

Data acquisition date: 23-Oct-07 Inspection date: 24-Oct-07

Total # Products: 14  
Server Availability: Nominal

Comments: None

## Browse Products

Data acquisition date: 23-Oct-07 Inspection date: 24-Oct-07

Source: EDS

Comments: Missing Orbits 29523, 29526

FLAG

## Instrument Health

### Daily

Status is checked daily. If daily status is unknown, e.g. data in question table during a weekend, so no check was made, then data will revert to the Inspection Date.

List of all QA orbit summary files deposited on: 23-Oct-07

Daily status from the RAL EDS web-site on: 24-Oct-07

Current Instrument Status: Nominal  
Envisat Platform Status: Nominal

Orbit #	Acquired	Comments
29508	22-Oct-07	High jitter, No Viscal Peak
29506	22-Oct-07	High jitter
29507	22-Oct-07	High jitter, No Viscal Peak
29508	22-Oct-07	High jitter, No Viscal Peak
29510	22-Oct-07	High jitter, No Viscal Peak
29511	22-Oct-07	High jitter, No Viscal Peak
29512	22-Oct-07	High jitter
29513	22-Oct-07	High jitter
29514	22-Oct-07	High jitter
29515	22-Oct-07	High jitter
29516	22-Oct-07	High jitter
29517	23-Oct-07	High jitter

FLAG  
FLAG  
FLAG  
FLAG  
FLAG  
FLAG  
FLAG  
FLAG  
FLAG  
FLAG  
FLAG  
FLAG

## Weekly

Status is checked daily. If daily status is unknown, e.g. data in question table during a weekend, so no check was made, then data will revert to the Inspection Date.

Latest version of the weekly RAL report on: 24-Oct-07

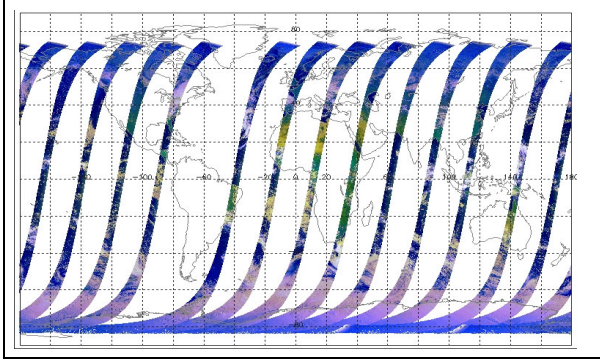
Out of date by: 65 days

Report Date: 20-Aug-07

Anomalies: (See 'Worst' plus data for several weeks. Most orbits above 200ypool with some as high as 340ypool)

Browse Map

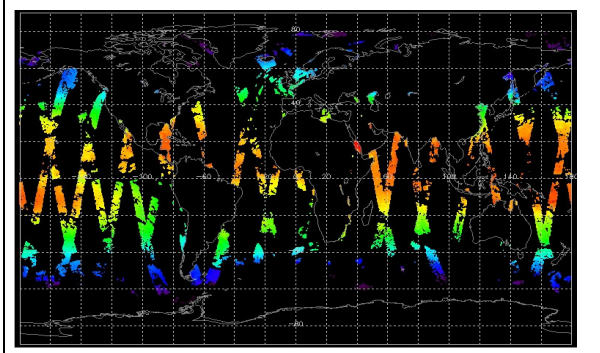
Map of browse products for: 23-Oct-07



Comments: None

Meteo Map

Map of meteo products for: 23-Oct-07



Comments: None

NB: METEO products are downloaded early morning, while their existence on the server is checked late morning which may explain inconsistencies between the above METEO map and the number of stated products