

DPQC Daily Check of AATSR Data

18-Oct-07



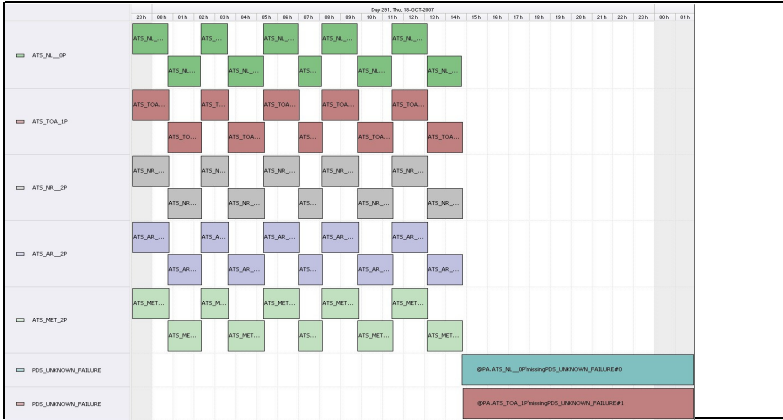
DATA ACQUISITION DATE: 18-Oct-07
INSPECTION DATE: 19-Oct-07

-> Go to 'Product Generation' sheet to select data

Previous Instrument Operational Events	
13-Oct-07	Nothing planned
14-Oct-07	Nothing planned
15-Oct-07	Nothing planned
16-Oct-07	Nothing planned
17-Oct-07	Nothing planned

Upcoming Instrument Operational Events	
18-Oct-07	Nothing planned
19-Oct-07	Nothing planned
20-Oct-07	Nothing planned
21-Oct-07	Nothing planned
22-Oct-07	Nothing planned

Daily Gantt Chart



Comments: All data missing after ~1500h

FLAGS

FLAG

Meteo Products

Data acquisition date: 18-Oct-07 Inspection date: 19-Oct-07

Total # Products: 15
Server Availability: Nominal

Comments: None

Browse Products

Data acquisition date: 18-Oct-07 Inspection date: 19-Oct-07

Source: EDS

Comments: Missing scan lines Orbit 29452

FLAG

Instrument Health

Daily
Status is checked daily. If daily status is unknown, e.g. due to a question table during a weekend, so no check was made, then data will revert to the Inspection Date.

List of all QA orbit summary files deposited on: 18-Oct-07

Orbit #	Acquired	Comments
29433	17-Oct-07	High Jitter
29434	17-Oct-07	High Jitter, No Viscal Peak
29435	17-Oct-07	High Jitter, No Viscal Peak
29437	17-Oct-07	High Jitter, No Viscal Peak
29438	17-Oct-07	High Jitter, No Viscal Peak
29439	17-Oct-07	High Jitter, No Viscal Peak
29440	17-Oct-07	High Jitter, No Viscal Peak
29441	17-Oct-07	High Jitter
29442	17-Oct-07	High Jitter
29443	17-Oct-07	High Jitter
29444	18-Oct-07	High Jitter
29445	18-Oct-07	High Jitter

Daily status from the RAL EDS web-site on: 19-Oct-07

Current Instrument Status: Nominal
Envisat Platform Status: Nominal

FLAG
FLAG
FLAG
FLAG
FLAG
FLAG
FLAG
FLAG
FLAG
FLAG
FLAG

Weekly

Status is checked daily. If daily status is unknown, e.g. due to a question table during a weekend, so no check was made, then data will revert to the Inspection Date.

Latest version of the weekly RAL report on: 19-Oct-07

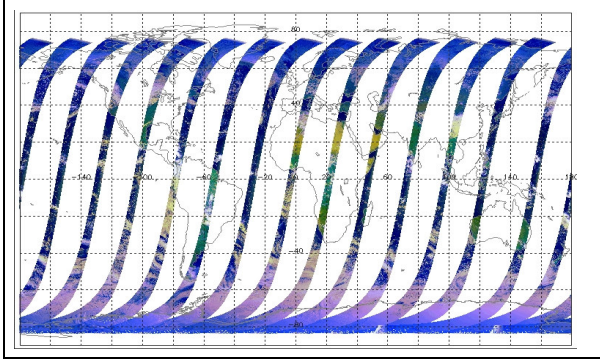
Out of date by: 60 days

Report Date: 20-Aug-07

Anomalies: (See 'Worst' plus data for several weeks. Most orbits above 200ypool with some as high as 340ypool)

Browse Map

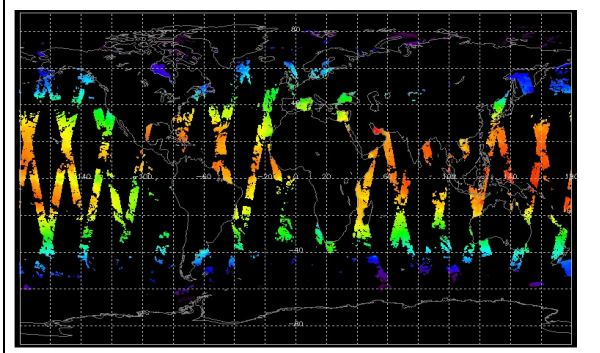
Map of browse products for: 18-Oct-07



Comments: None

Meteo Map

Map of meteo products for: 18-Oct-07



Comments: None

NB: METEO products are downloaded early morning, while their existence on the server is checked late morning which may explain inconsistencies between the above METEO map and the number of stated products