

1. Overview

Report Production Date:	12-Jul-2023
Processor Used:	CryoSat Ice Processor
Data Used:	L1B and L2 OFFLINE Data

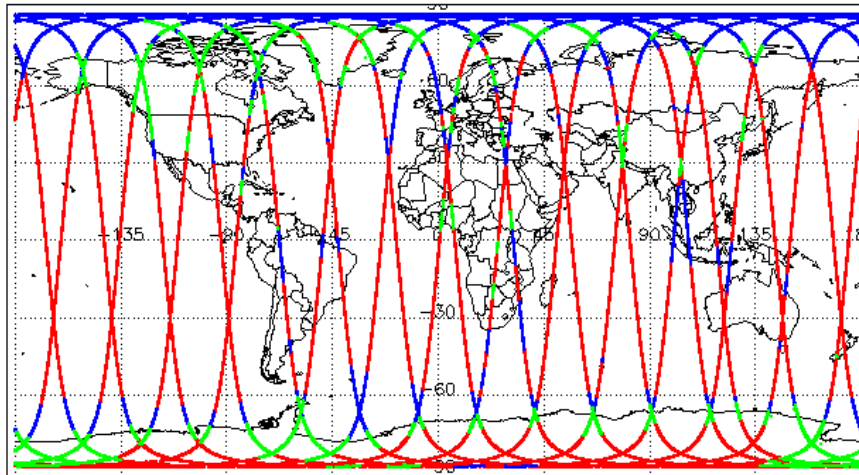
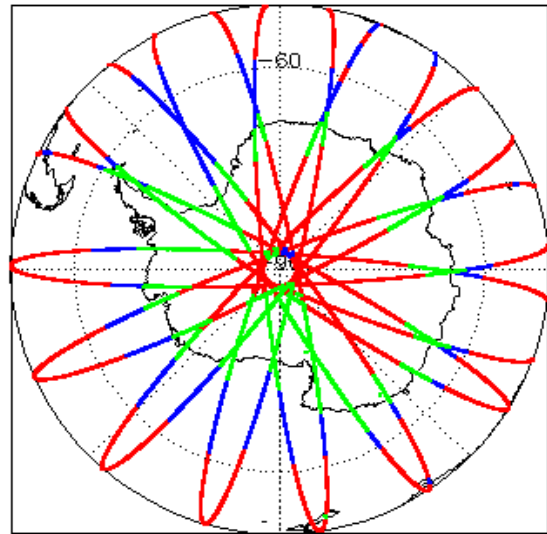
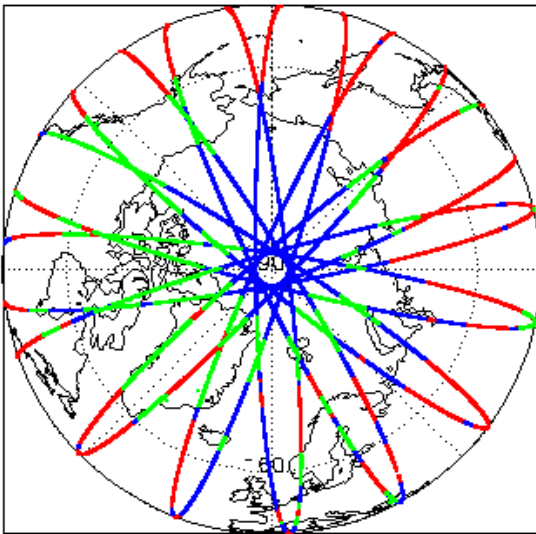
Check	Status
Server check: science-pds.cryosat.esa.int	Nominal
Server check: calval-pds.cryosat.esa.int	Nominal
Product Software Check	Nominal
Product Format Check	Nominal
Product Header Analysis	Nominal
Star Tracker Usage Check	Nominal
L1B Tracking Flag Check	See Section 4.4
L1B Calibration Usage Check	See Section 4.5
L1B & L2 Auxiliary Data File Usage Check	Nominal
L1B & L2 Auxiliary Correction Error Check	See Section 4.7 and 5.4
L1B & L2 Measurement Confidence Data Check	See Section 4.8 and 5.5
QCC Errors/ Warnings	See Section 6.1, 6.2 and 6.3

We would love to hear from you!
 Please let us know your feedback about these daily quality reports: What do you like/ dislike? What quality information do you need? Send your feedback to cs2_qc_team@telespazio.com

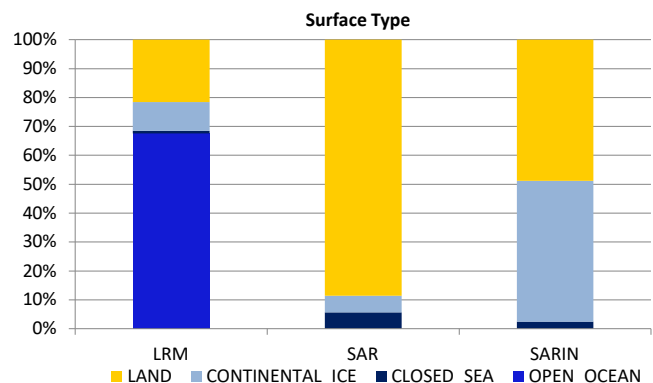
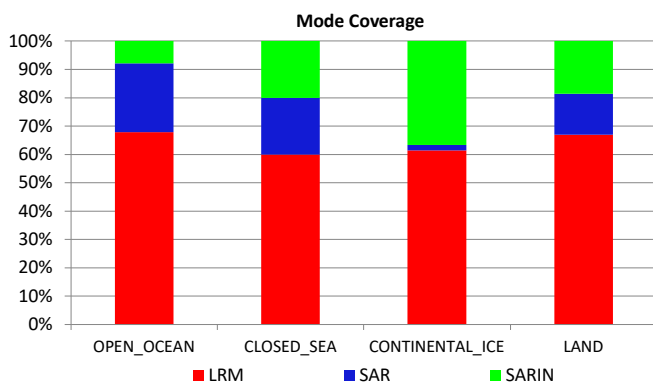
Mission / Instrument News

09-Jun-2023	None
10-Jun-2023	None
11-Jun-2023	Nothing planned

2. Global Coverage



Mode Coverage (%)		
	LRM	66.8
	SAR	19.8
	SARIn	13.4



3. Instrument Configuration

The SIRAL instrument configuration for the day of acquisition is provided below.

SIRAL instrument(s) in use:	SIRAL - A
-----------------------------	-----------

4. Level 1B Data Quality Check

4.1 L1B Product Format Check

Each product, retrieved and unpacked from the science server, is checked to ensure it consists of both an XML header file (.HDR) and a product file (.DBL).

Number of products with errors: 0

4.2 L1B Product Header Analysis

For all products, a series of pre-defined checks are carried out on the MPH and SPH in order to identify any inconsistencies and/or errors raised by the ground-segment processing chain.

Number of products with errors: 0

4.3 Star Tracker Usage Check

Each product is checked in order to ensure a valid star tracker file has been used in processing.

Number of products with errors: 0

4.4 L1B Tracking Flags Check

CryoSat L1B data includes a tracking flag for each measurement record. The bit value of this flag indicates any problems when set.

Loss of Echo Flag: This flag is currently set for some products over land, but this is to be expected.

Number of products with errors: 99

Product	Test Failed	Description
CS_OFFL_SIR_LRM_1B_20230610T003042_20230610T003159_E001	Loss of echo	The tracking echo is missing for one or more records
CS_OFFL_SIR_LRM_1B_20230610T003259_20230610T003415_E001	Loss of echo	The tracking echo is missing for one or more records
CS_OFFL_SIR_LRM_1B_20230610T003417_20230610T003433_E001	Loss of echo	The tracking echo is missing for one or more records
CS_OFFL_SIR_LRM_1B_20230610T003435_20230610T003640_E001	Loss of echo	The tracking echo is missing for one or more records
CS_OFFL_SIR_LRM_1B_20230610T003642_20230610T003828_E001	Loss of echo	The tracking echo is missing for one or more records
CS_OFFL_SIR_LRM_1B_20230610T003851_20230610T004502_E001	Loss of echo	The tracking echo is missing for one or more records
CS_OFFL_SIR_LRM_1B_20230610T010029_20230610T010611_E001	Loss of echo	The tracking echo is missing for one or more records
CS_OFFL_SIR_LRM_1B_20230610T010855_20230610T013219_E001	Loss of echo	The tracking echo is missing for one or more records
CS_OFFL_SIR_LRM_1B_20230610T013533_20230610T014406_E001	Loss of echo	The tracking echo is missing for one or more records
CS_OFFL_SIR_LRM_1B_20230610T014729_20230610T021158_E001	Loss of echo	The tracking echo is missing for one or more records
CS_OFFL_SIR_LRM_1B_20230610T021656_20230610T022023_E001	Loss of echo	The tracking echo is missing for one or more records
CS_OFFL_SIR_LRM_1B_20230610T023520_20230610T023607_E001	Loss of echo	The tracking echo is missing for one or more records
CS_OFFL_SIR_LRM_1B_20230610T023729_20230610T024131_E001	Loss of echo	The tracking echo is missing for one or more records
CS_OFFL_SIR_LRM_1B_20230610T024329_20230610T024347_E001	Loss of echo	The tracking echo is missing for one or more records
CS_OFFL_SIR_LRM_1B_20230610T024350_20230610T024456_E001	Loss of echo	The tracking echo is missing for one or more records
CS_OFFL_SIR_LRM_1B_20230610T024458_20230610T024507_E001	Loss of echo	The tracking echo is missing for one or more records
CS_OFFL_SIR_LRM_1B_20230610T024510_20230610T024546_E001	Loss of echo	The tracking echo is missing for one or more records
CS_OFFL_SIR_LRM_1B_20230610T024549_20230610T024556_E001	Loss of echo	The tracking echo is missing for one or more records
CS_OFFL_SIR_LRM_1B_20230610T024558_20230610T031112_E001	Loss of echo	The tracking echo is missing for one or more records
CS_OFFL_SIR_LRM_1B_20230610T032626_20230610T035207_E001	Loss of echo	The tracking echo is missing for one or more records
CS_OFFL_SIR_LRM_1B_20230610T035210_20230610T035519_E001	Loss of echo	The tracking echo is missing for one or more records
CS_OFFL_SIR_LRM_1B_20230610T035607_20230610T035822_E001	Loss of echo	The tracking echo is missing for one or more records
CS_OFFL_SIR_LRM_1B_20230610T035822_20230610T040052_E001	Loss of echo	The tracking echo is missing for one or more records
CS_OFFL_SIR_LRM_1B_20230610T051537_20230610T051937_E001	Loss of echo	The tracking echo is missing for one or more records
CS_OFFL_SIR_LRM_1B_20230610T052312_20230610T052327_E001	Loss of echo	The tracking echo is missing for one or more records
CS_OFFL_SIR_LRM_1B_20230610T052506_20230610T053050_E001	Loss of echo	The tracking echo is missing for one or more records
CS_OFFL_SIR_LRM_1B_20230610T053346_20230610T053351_E001	Loss of echo	The tracking echo is missing for one or more records
CS_OFFL_SIR_LRM_1B_20230610T053441_20230610T053610_E001	Loss of echo	The tracking echo is missing for one or more records
CS_OFFL_SIR_LRM_1B_20230610T053610_20230610T053802_E001	Loss of echo	The tracking echo is missing for one or more records
CS_OFFL_SIR_LRM_1B_20230610T055550_20230610T062917_E001	Loss of echo	The tracking echo is missing for one or more records
CS_OFFL_SIR_LRM_1B_20230610T070508_20230610T071140_E001	Loss of echo	The tracking echo is missing for one or more records
CS_OFFL_SIR_LRM_1B_20230610T071304_20230610T071314_E001	Loss of echo	The tracking echo is missing for one or more records
CS_OFFL_SIR_LRM_1B_20230610T071322_20230610T071502_E001	Loss of echo	The tracking echo is missing for one or more records
CS_OFFL_SIR_LRM_1B_20230610T073328_20230610T080306_E001	Loss of echo	The tracking echo is missing for one or more records
CS_OFFL_SIR_LRM_1B_20230610T080317_20230610T080805_E001	Loss of echo	The tracking echo is missing for one or more records
CS_OFFL_SIR_LRM_1B_20230610T081613_20230610T082027_E001	Loss of echo	The tracking echo is missing for one or more records
CS_OFFL_SIR_LRM_1B_20230610T091133_20230610T091743_E001	Loss of echo	The tracking echo is missing for one or more records
CS_OFFL_SIR_LRM_1B_20230610T091758_20230610T093345_E001	Loss of echo	The tracking echo is missing for one or more records
CS_OFFL_SIR_LRM_1B_20230610T093549_20230610T094059_E001	Loss of echo	The tracking echo is missing for one or more records
CS_OFFL_SIR_LRM_1B_20230610T094132_20230610T094724_E001	Loss of echo	The tracking echo is missing for one or more records
CS_OFFL_SIR_LRM_1B_20230610T095525_20230610T095739_E001	Loss of echo	The tracking echo is missing for one or more records

CS_OFFL_SIR_LRM_1B_20230610T100616_20230610T101654_E001	Loss of echo	The tracking echo is missing for one or more records
CS_OFFL_SIR_LRM_1B_20230610T101656_20230610T101842_E001	Loss of echo	The tracking echo is missing for one or more records
CS_OFFL_SIR_LRM_1B_20230610T105034_20230610T105614_E001	Loss of echo	The tracking echo is missing for one or more records
CS_OFFL_SIR_LRM_1B_20230610T105838_20230610T110741_E001	Loss of echo	The tracking echo is missing for one or more records
CS_OFFL_SIR_LRM_1B_20230610T110743_20230610T110941_E001	Loss of echo	The tracking echo is missing for one or more records
CS_OFFL_SIR_LRM_1B_20230610T111445_20230610T112622_E001	Loss of echo	The tracking echo is missing for one or more records
CS_OFFL_SIR_LRM_1B_20230610T114824_20230610T115152_E001	Loss of echo	The tracking echo is missing for one or more records
CS_OFFL_SIR_LRM_1B_20230610T115156_20230610T115209_E001	Loss of echo	The tracking echo is missing for one or more records
CS_OFFL_SIR_LRM_1B_20230610T115211_20230610T115245_E001	Loss of echo	The tracking echo is missing for one or more records
CS_OFFL_SIR_LRM_1B_20230610T115248_20230610T115443_E001	Loss of echo	The tracking echo is missing for one or more records
CS_OFFL_SIR_LRM_1B_20230610T120030_20230610T121307_E001	Loss of echo	The tracking echo is missing for one or more records
CS_OFFL_SIR_LRM_1B_20230610T121430_20230610T121530_E001	Loss of echo	The tracking echo is missing for one or more records
CS_OFFL_SIR_LRM_1B_20230610T122936_20230610T123406_E001	Loss of echo	The tracking echo is missing for one or more records
CS_OFFL_SIR_LRM_1B_20230610T123444_20230610T123452_E001	Loss of echo	The tracking echo is missing for one or more records
CS_OFFL_SIR_LRM_1B_20230610T123454_20230610T123500_E001	Loss of echo	The tracking echo is missing for one or more records
CS_OFFL_SIR_LRM_1B_20230610T123502_20230610T123508_E001	Loss of echo	The tracking echo is missing for one or more records
CS_OFFL_SIR_LRM_1B_20230610T123511_20230610T123518_E001	Loss of echo	The tracking echo is missing for one or more records
CS_OFFL_SIR_LRM_1B_20230610T123520_20230610T123951_E001	Loss of echo	The tracking echo is missing for one or more records
CS_OFFL_SIR_LRM_1B_20230610T123955_20230610T123956_E001	Loss of echo	The tracking echo is missing for one or more records
CS_OFFL_SIR_LRM_1B_20230610T123959_20230610T124001_E001	Loss of echo	The tracking echo is missing for one or more records
CS_OFFL_SIR_LRM_1B_20230610T124003_20230610T124029_E001	Loss of echo	The tracking echo is missing for one or more records
CS_OFFL_SIR_LRM_1B_20230610T124134_20230610T124247_E001	Loss of echo	The tracking echo is missing for one or more records
CS_OFFL_SIR_LRM_1B_20230610T131357_20230610T131515_E001	Loss of echo	The tracking echo is missing for one or more records
CS_OFFL_SIR_LRM_1B_20230610T132048_20230610T134636_E001	Loss of echo	The tracking echo is missing for one or more records
CS_OFFL_SIR_LRM_1B_20230610T134912_20230610T135428_E001	Loss of echo	The tracking echo is missing for one or more records
CS_OFFL_SIR_LRM_1B_20230610T140840_20230610T141531_E001	Loss of echo	The tracking echo is missing for one or more records
CS_OFFL_SIR_LRM_1B_20230610T141708_20230610T141742_E001	Loss of echo	The tracking echo is missing for one or more records
CS_OFFL_SIR_LRM_1B_20230610T141744_20230610T141748_E001	Loss of echo	The tracking echo is missing for one or more records
CS_OFFL_SIR_LRM_1B_20230610T142000_20230610T144027_E001	Loss of echo	The tracking echo is missing for one or more records
CS_OFFL_SIR_LRM_1B_20230610T154907_20230610T155611_E001	Loss of echo	The tracking echo is missing for one or more records
CS_OFFL_SIR_LRM_1B_20230610T155613_20230610T162418_E001	Loss of echo	The tracking echo is missing for one or more records
CS_OFFL_SIR_LRM_1B_20230610T163156_20230610T163526_E001	Loss of echo	The tracking echo is missing for one or more records
CS_OFFL_SIR_LRM_1B_20230610T163948_20230610T171324_E001	Loss of echo	The tracking echo is missing for one or more records
CS_OFFL_SIR_LRM_1B_20230610T172624_20230610T172851_E001	Loss of echo	The tracking echo is missing for one or more records
CS_OFFL_SIR_LRM_1B_20230610T173004_20230610T173217_E001	Loss of echo	The tracking echo is missing for one or more records
CS_OFFL_SIR_LRM_1B_20230610T173250_20230610T173343_E001	Loss of echo	The tracking echo is missing for one or more records
CS_OFFL_SIR_LRM_1B_20230610T173531_20230610T173629_E001	Loss of echo	The tracking echo is missing for one or more records
CS_OFFL_SIR_LRM_1B_20230610T173809_20230610T174625_E001	Loss of echo	The tracking echo is missing for one or more records
CS_OFFL_SIR_LRM_1B_20230610T174729_20230610T174941_E001	Loss of echo	The tracking echo is missing for one or more records
CS_OFFL_SIR_LRM_1B_20230610T174944_20230610T175059_E001	Loss of echo	The tracking echo is missing for one or more records
CS_OFFL_SIR_LRM_1B_20230610T175221_20230610T175558_E001	Loss of echo	The tracking echo is missing for one or more records
CS_OFFL_SIR_LRM_1B_20230610T180655_20230610T181220_E001	Loss of echo	The tracking echo is missing for one or more records
CS_OFFL_SIR_LRM_1B_20230610T190459_20230610T190814_E001	Loss of echo	The tracking echo is missing for one or more records
CS_OFFL_SIR_LRM_1B_20230610T191158_20230610T191305_E001	Loss of echo	The tracking echo is missing for one or more records
CS_OFFL_SIR_LRM_1B_20230610T191545_20230610T192114_E001	Loss of echo	The tracking echo is missing for one or more records
CS_OFFL_SIR_LRM_1B_20230610T194622_20230610T195119_E001	Loss of echo	The tracking echo is missing for one or more records
CS_OFFL_SIR_LRM_1B_20230610T195815_20230610T203017_E001	Loss of echo	The tracking echo is missing for one or more records
CS_OFFL_SIR_LRM_1B_20230610T203020_20230610T203112_E001	Loss of echo	The tracking echo is missing for one or more records
CS_OFFL_SIR_LRM_1B_20230610T203119_20230610T203432_E001	Loss of echo	The tracking echo is missing for one or more records
CS_OFFL_SIR_LRM_1B_20230610T212832_20230610T213025_E001	Loss of echo	The tracking echo is missing for one or more records
CS_OFFL_SIR_LRM_1B_20230610T213803_20230610T214425_E001	Loss of echo	The tracking echo is missing for one or more records
CS_OFFL_SIR_LRM_1B_20230610T214427_20230610T220729_E001	Loss of echo	The tracking echo is missing for one or more records
CS_OFFL_SIR_LRM_1B_20230610T220734_20230610T221349_E001	Loss of echo	The tracking echo is missing for one or more records
CS_OFFL_SIR_LRM_1B_20230610T224544_20230610T230031_E001	Loss of echo	The tracking echo is missing for one or more records
CS_OFFL_SIR_LRM_1B_20230610T230726_20230610T230938_E001	Loss of echo	The tracking echo is missing for one or more records
CS_OFFL_SIR_LRM_1B_20230610T231701_20230610T233118_E001	Loss of echo	The tracking echo is missing for one or more records
CS_OFFL_SIR_LRM_1B_20230610T233257_20230610T234924_E001	Loss of echo	The tracking echo is missing for one or more records
CS_OFFL_SIR_LRM_1B_20230610T234926_20230610T235335_E001	Loss of echo	The tracking echo is missing for one or more records

4.5 L1B Calibration Usage Check

Each product is checked in order to ensure that the necessary calibration files have been used in processing.

Number of products with errors: 1

Product	Test Failed	Description
CS_OFFL_SIR_SIN_1B_20230610T113436_20230610T113443_E001	Cal1 Correction missing	The Cal1 correction has not been applied for one or more records

4.6 L1B Auxiliary Data File Usage Check

Each product is checked for missing Data Set Descriptors with respect to a pre-determined baseline and also to check the validity of Auxiliary Data Files is correct.

Number of products with errors: 0

4.7 L1B Auxiliary Correction Error Check

CryoSat L1B data includes a correction error flag for each measurement record. The bit value of this flag indicates any problems when set.

Number of products with errors: 1

Product	Test Failed	Description
CS_OFFL_SIR_SAR_1B_20230610T071300_20230610T071303_E001	Dry tropospheric Correction Error, Wet tropospheric Correction Error, Inverse barometric Correction Error, Dynamic atmosphere Correction Error, Ocean equilibrium tide, Ocean long period tide, Ocean loading tide, Solid Earth tide, Geocentr. polar tide, Surface type flag	The auxiliary corrections are missing for one or more record; under investigation.

4.8 L1B Measurement Confidence Data Check

CryoSat L1B data includes a measurement confidence flag for each measurement record. The bit value of this flag indicates any problems when set.

Currently, there are several common error flags raised in the Level 1B products which are expected due to operational mode or surface type. All common flags are summarised in the list below, followed by a table of any additional issues arising from this test.

Block Degraded Flag: This flag is currently set for a number of individual records generally at the start or end of products (all modes), but this is to be expected.

Phase Perturbation Applied Flag: This flag is currently set for all L1B SARIn products, indicating that the ADC correction application is deactivated, but this is in line with the current configuration.

Number of products with errors: 3

Product	Test Failed	Description
CS_OFFL_SIR_LRM_1B_20230610T053610_20230610T053802_E001	Echo error, TRK echo error	The tracking echo has returned an error and the Rx1 Echo Error flag is set, indicating a degraded echo
CS_OFFL_SIR_LRM_1B_20230610T071322_20230610T071502_E001	Echo error, TRK echo error	The tracking echo has returned an error and the Rx1 Echo Error flag is set, indicating a degraded echo
CS_OFFL_SIR_LRM_1B_20230610T191158_20230610T191305_E001	Echo error, TRK echo error	The tracking echo has returned an error and the Rx1 Echo Error flag is set, indicating a degraded echo

5. Level 2 Data Quality Check

5.1 L2 Product Format Check

Each product, retrieved and unpacked from the science server, is checked to ensure it consists of both an XML header file (.HDR) and a product file (.DBL).

Number of products with errors: 0

5.2 L2 Product Header Analysis

For all products, a series of pre-defined checks are carried out on the MPH and SPH in order to identify any inconsistencies and/or errors raised by the ground-segment processing chain.

Number of products with errors: 0

5.3 L2 Auxiliary Data File Usage Check

Each product is checked for missing Data Set Descriptors with respect to a pre-determined baseline and also to check the validity of Auxiliary Data Files is correct.

Number of products with errors: 0

5.4 L2 Auxiliary Correction Error Check

CryoSat L2 data includes a correction error flag for each measurement record. The bit value of this flag indicates any problems when set.

Currently, there are several common error flags raised in the Level 2 products which are expected due to operational mode or surface type. All common flags are summarised in the list below, followed by a table of any additional issues arising from this test.

Sea State Bias error: This flag is currently set in all L2 LRM products over ocean, indicating a problem with the sea state bias. Due to a known anomaly, the sea state bias field is currently unfilled in all Baseline-E L2 LRM products. This anomaly will be resolved in the next IPF update.

Snow Depth Model error: This flag is currently set in all L2 SAR products over ocean, which fall outside of the extent of the current snow depth model. Currently the snow depth model is only available over the high-latitude Arctic. There is no model currently provided for the Antarctic or marginal Arctic regions. An updated model will be provided in the next IPF update.

Number of products with errors: 113

Product	Test Failed	Description
CS_OFFL_SIR_SAR_2_20230610T000646_20230610T000749_E001	Snow depth model	There is an error with the Snow Depth value, where one or more records falls outside of the extent of the current snow depth model
CS_OFFL_SIR_SAR_2_20230610T002152_20230610T002636_E001	Snow depth model	There is an error with the Snow Depth value, where one or more records falls outside of the extent of the current snow depth model
CS_OFFL_SIR_SAR_2_20230610T002636_20230610T002933_E001	Snow depth model	There is an error with the Snow Depth value, where one or more records falls outside of the extent of the current snow depth model
CS_OFFL_SIR_SAR_2_20230610T002935_20230610T003042_E001	Snow depth model	There is an error with the Snow Depth value, where one or more records falls outside of the extent of the current snow depth model
CS_OFFL_SIR_SAR_2_20230610T003828_20230610T003850_E001	Snow depth model	There is an error with the Snow Depth value, where one or more records falls outside of the extent of the current snow depth model
CS_OFFL_SIR_SAR_2_20230610T005325_20230610T005404_E001	Snow depth model	There is an error with the Snow Depth value, where one or more records falls outside of the extent of the current snow depth model
CS_OFFL_SIR_SAR_2_20230610T005548_20230610T005601_E001	Snow depth model	There is an error with the Snow Depth value, where one or more records falls outside of the extent of the current snow depth model
CS_OFFL_SIR_SAR_2_20230610T005638_20230610T005859_E001	Snow depth model	There is an error with the Snow Depth value, where one or more records falls outside of the extent of the current snow depth model
CS_OFFL_SIR_SAR_2_20230610T010022_20230610T010029_E001	Snow depth model	There is an error with the Snow Depth value, where one or more records falls outside of the extent of the current snow depth model
CS_OFFL_SIR_SAR_2_20230610T010611_20230610T010732_E001	Snow depth model	There is an error with the Snow Depth value, where one or more records falls outside of the extent of the current snow depth model
CS_OFFL_SIR_SAR_2_20230610T013219_20230610T013345_E001	Snow depth model	There is an error with the Snow Depth value, where one or more records falls outside of the extent of the current snow depth model

CS_OFFL_SIR_SIN_2_20230610T195119_20230610T195442_E001	Mean Sea Surface model	There is an error with the Mean Sea Surface for one or more records
CS_OFFL_SIR_SIN_2_20230610T212556_20230610T212832_E001	Mean Sea Surface model	There is an error with the Mean Sea Surface for one or more records
CS_OFFL_SIR_SIN_2_20230610T213025_20230610T213652_E001	Mean Sea Surface model	There is an error with the Mean Sea Surface for one or more records
CS_OFFL_SIR_SIN_2_20230610T230114_20230610T230725_E001	Mean Sea Surface model	There is an error with the Mean Sea Surface for one or more records

5.5 L2 Measurement Quality Flag Check

CryoSat L2 data includes a quality flag for each 20-Hz measurement record. The bit value of this flag indicates any problems when set.

Currently, there are several common error flags raised in the Level 2 products which are expected due to operational mode or surface type. All common flags are summarised in the list below, followed by a table of any additional issues arising from this test.

Height and Backscatter errors: These flags are currently set for products over land, but this is to be expected. Retracker 1 Height and Backscatter error flags are also set for products over sea-ice, but this is to be expected.

SSHA interpolation error: This flag is currently set for a number of SAR products occurring at surface type boundaries, but this is to be expected.

Freeboard error: This flag is correctly set in all L2 SAR products that are not discriminated as sea-ice, and for which freeboard cannot be calculated.

Peakiness error: This flag is currently set for products over sea-ice, but this is to be expected.

SARIn X-Track Angle Error: This flag is set when the difference between the computed surface elevation and the DEM is >50 m. The DEM is only available over Greenland and Antarctica and as a result this flag is set for L2 SARIn products in all other locations as expected.

Number of products with errors: 248

Product	Test Failed	Description
CS_OFFL_SIR_LRM_2_20230610T000749_20230610T002152_E001	Height Error (Retracker 2), Backscatter Error (Retracker 2)	There is a height and backscatter error for Retracker 2 for one or more records
CS_OFFL_SIR_LRM_2_20230610T003259_20230610T003415_E001	Surface Model Unavailable	No DEM or Slope Model was used for the location of one or more records
CS_OFFL_SIR_LRM_2_20230610T003435_20230610T003640_E001	Surface Model Unavailable	No DEM or Slope Model was used for the location of one or more records
CS_OFFL_SIR_LRM_2_20230610T010029_20230610T010611_E001	Height Error (Retracker 2), Backscatter Error (Retracker 2)	There is a height and backscatter error for Retracker 2 for one or more records
CS_OFFL_SIR_LRM_2_20230610T010855_20230610T013219_E001	Height Error (Retracker 2), Height Error (Retracker 3), Backscatter Error (Retracker 2)	There is a height and backscatter error for Retracker 2 and a height error for Retracker 3 for one or more records
CS_OFFL_SIR_LRM_2_20230610T014729_20230610T021158_E001	Height Error (Retracker 2), Backscatter Error (Retracker 2)	There is a height and backscatter error for Retracker 2 for one or more records
CS_OFFL_SIR_LRM_2_20230610T022146_20230610T022214_E001	Height Error (Retracker 2), Backscatter Error (Retracker 2)	There is a height and backscatter error for Retracker 2 for one or more records
CS_OFFL_SIR_LRM_2_20230610T024558_20230610T031112_E001	Height Error (Retracker 2), Backscatter Error (Retracker 2)	There is a height and backscatter error for Retracker 2 for one or more records
CS_OFFL_SIR_LRM_2_20230610T032626_20230610T035207_E001	Height Error (Retracker 2), Backscatter Error (Retracker 2)	There is a height and backscatter error for Retracker 2 for one or more records
CS_OFFL_SIR_LRM_2_20230610T040251_20230610T040315_E001	Height Error (Retracker 2), Backscatter Error (Retracker 2)	There is a height and backscatter error for Retracker 2 for one or more records
CS_OFFL_SIR_LRM_2_20230610T041832_20230610T044950_E001	Height Error (Retracker 2), Backscatter Error (Retracker 2)	There is a height and backscatter error for Retracker 2 for one or more records
CS_OFFL_SIR_LRM_2_20230610T052506_20230610T053050_E001	Height Error (Retracker 2), Backscatter Error (Retracker 2)	There is a height and backscatter error for Retracker 2 for one or more records
CS_OFFL_SIR_LRM_2_20230610T054151_20230610T054256_E001	Height Error (Retracker 2), Backscatter Error (Retracker 2)	There is a height and backscatter error for Retracker 2 for one or more records
CS_OFFL_SIR_LRM_2_20230610T055550_20230610T062917_E001	Height Error (Retracker 2), Height Error (Retracker 3), Backscatter Error (Retracker 2), Surface model unavailable	There is a height and backscatter error for Retracker 2, a height error for Retracker 3 and no DEM or Slope Model was used for the location of one or more records
CS_OFFL_SIR_LRM_2_20230610T064502_20230610T070234_E001	Height Error (Retracker 2), Backscatter Error (Retracker 2)	There is a height and backscatter error for Retracker 2 for one or more records
CS_OFFL_SIR_LRM_2_20230610T070508_20230610T071140_E001	Height Error (Retracker 2), Backscatter Error (Retracker 2)	There is a height and backscatter error for Retracker 2 for one or more records
CS_OFFL_SIR_LRM_2_20230610T072157_20230610T072214_E001	Height Error (Retracker 2), Backscatter Error (Retracker 2)	There is a height and backscatter error for Retracker 2 for one or more records
CS_OFFL_SIR_LRM_2_20230610T073328_20230610T080306_E001	Height Error (Retracker 2), Backscatter Error (Retracker 2), Surface model unavailable	There is a height and backscatter error for Retracker 2 and no DEM or Slope Model was used for the location of one or more records
CS_OFFL_SIR_LRM_2_20230610T080317_20230610T080805_E001	Height Error (Retracker 2), Backscatter Error (Retracker 2)	There is a height and backscatter error for Retracker 2 for one or more records
CS_OFFL_SIR_LRM_2_20230610T082505_20230610T084956_E001	Height Error (Retracker 2), Backscatter Error (Retracker 2)	There is a height and backscatter error for Retracker 2 for one or more records
CS_OFFL_SIR_LRM_2_20230610T085126_20230610T085814_E001	Height Error (Retracker 2), Backscatter Error (Retracker 2)	There is a height and backscatter error for Retracker 2 for one or more records
CS_OFFL_SIR_LRM_2_20230610T085814_20230610T085855_E001	Height Error (Retracker 2), Backscatter Error (Retracker 2)	There is a height and backscatter error for Retracker 2 for one or more records
CS_OFFL_SIR_LRM_2_20230610T091133_20230610T091743_E001	Height Error (Retracker 2), Height Error (Retracker 3), Backscatter Error (Retracker 2), Surface model unavailable	There is a height and backscatter error for Retracker 2, a height error for Retracker 3 and no DEM or Slope Model was used for the location of one or more records
CS_OFFL_SIR_LRM_2_20230610T091758_20230610T093345_E001	Height Error (Retracker 2), Height Error (Retracker 3), Backscatter Error (Retracker 2)	There is a height and backscatter error for Retracker 2 and a height error for Retracker 3 for one or more records

