

1. Overview

Report Production Date:	25-May-2023
Processor Used:	CryoSat Ice Processor
Data Used:	L1B and L2 OFFLINE Data

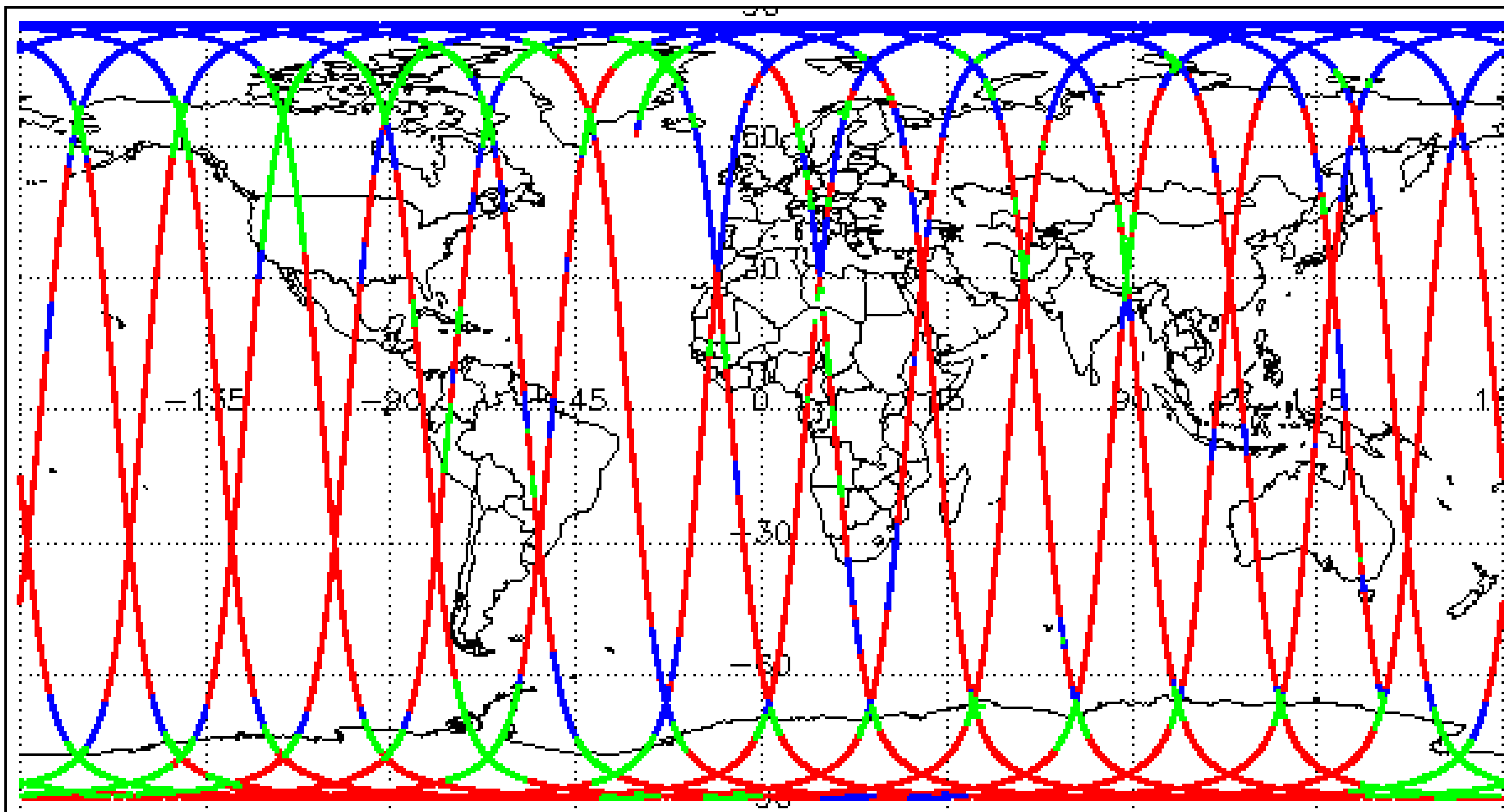
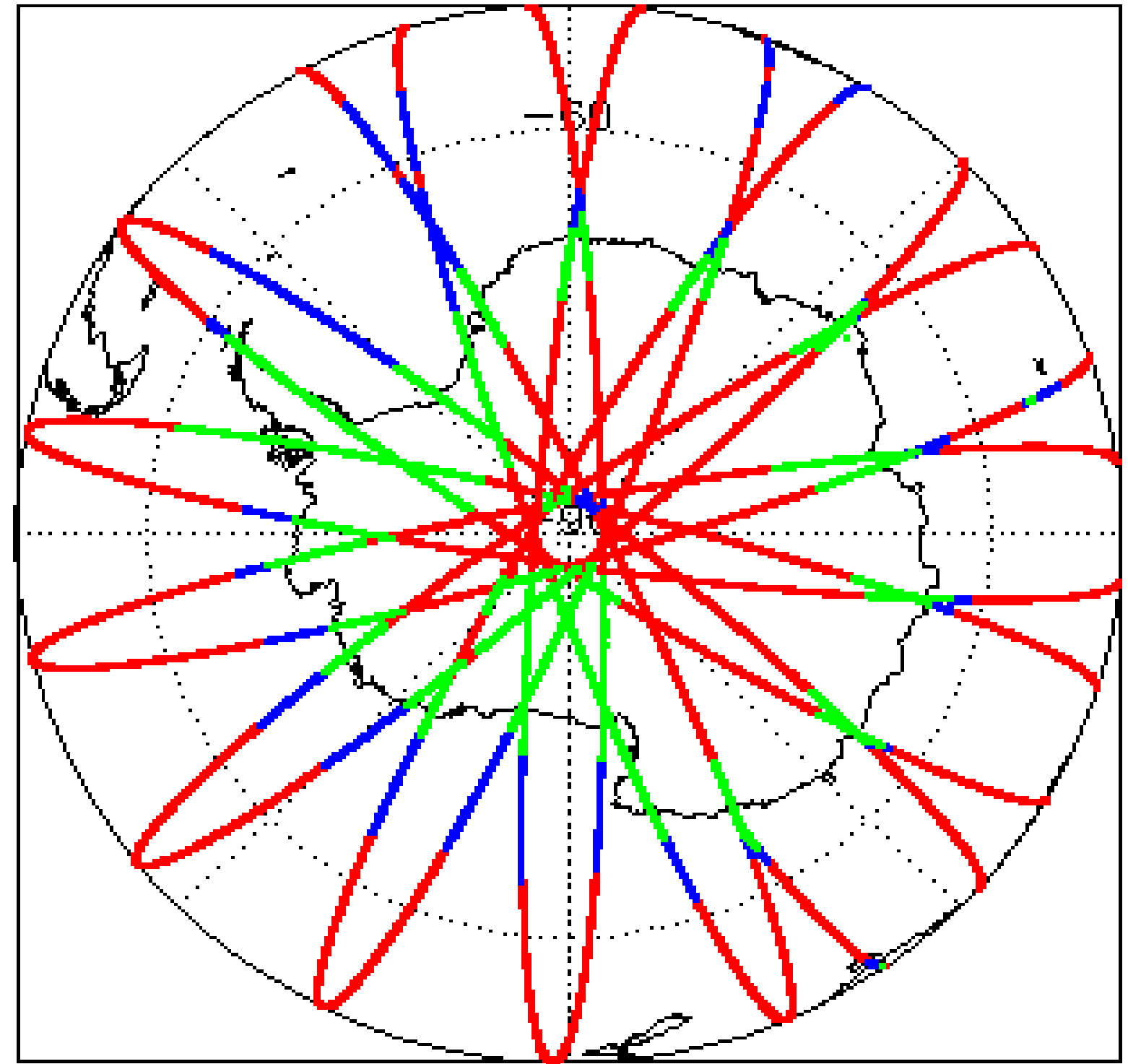
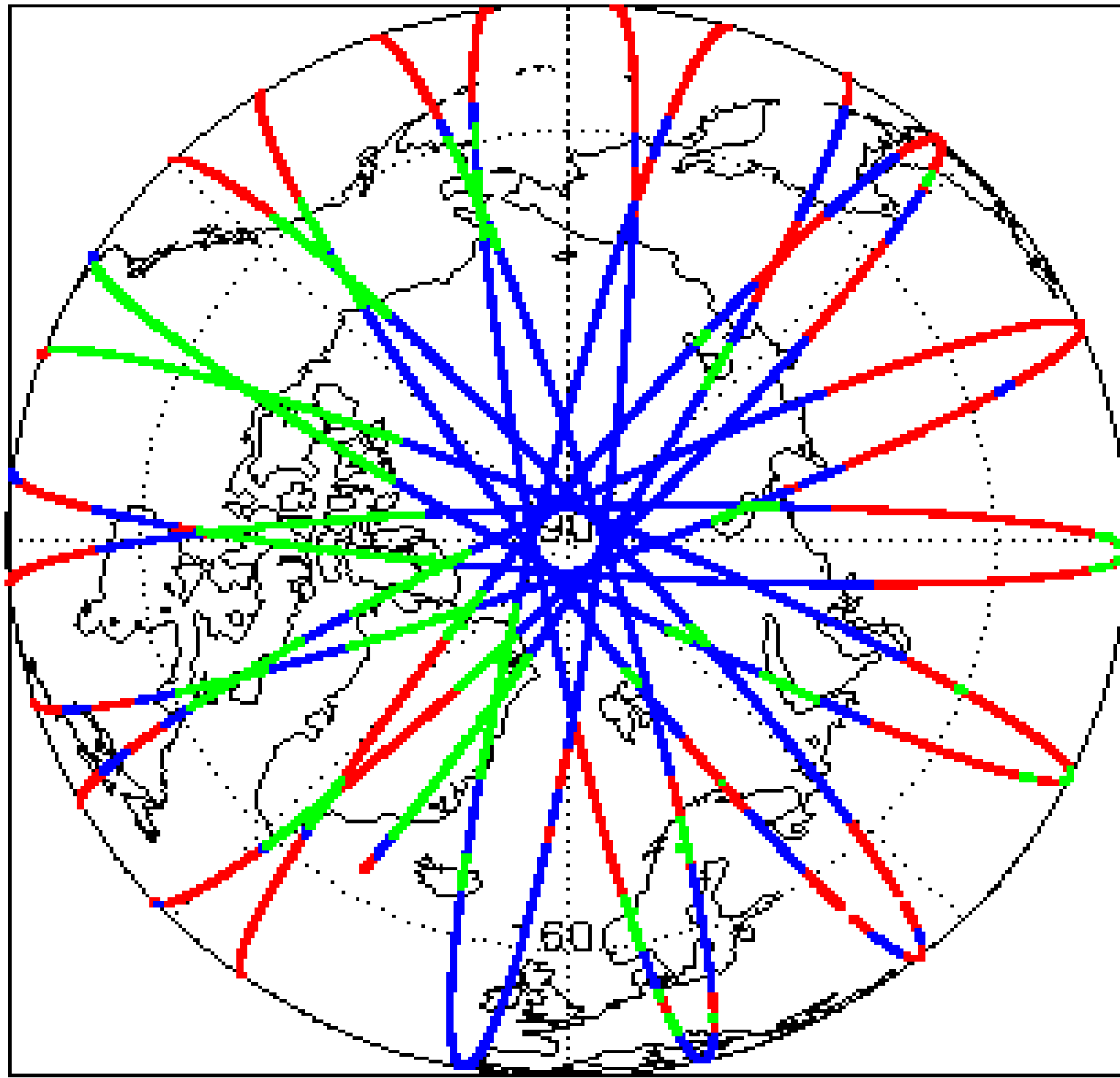
Check	Status
Server check: science-pds.cryosat.esa.int	Nominal
Server check: calval-pds.cryosat.esa.int	Nominal
Product Software Check	Nominal
Product Format Check	Nominal
Product Header Analysis	See Section 4.2
Star Tracker Usage Check	Nominal
L1B Tracking Flag Check	See Section 4.4
L1B Calibration Usage Check	See Section 4.5
L1B & L2 Auxiliary Data File Usage Check	Nominal
L1B & L2 Auxiliary Correction Error Check	See Section 4.7 and 5.4
L1B & L2 Measurement Confidence Data Check	See Section 4.8 and 5.5
QCC Errors/ Warnings	See Section 6.1, 6.2 and 6.3

**We would love to hear from you!** Please let us know your feedback about these daily quality reports: What do you like/ dislike? What quality information do you need? Send your feedback to [cs2\\_qc\\_team@telespazio.com](mailto:cs2_qc_team@telespazio.com)

Mission / Instrument News

25-Apr-2023	None
26-Apr-2023	None
27-Apr-2023	Nothing planned

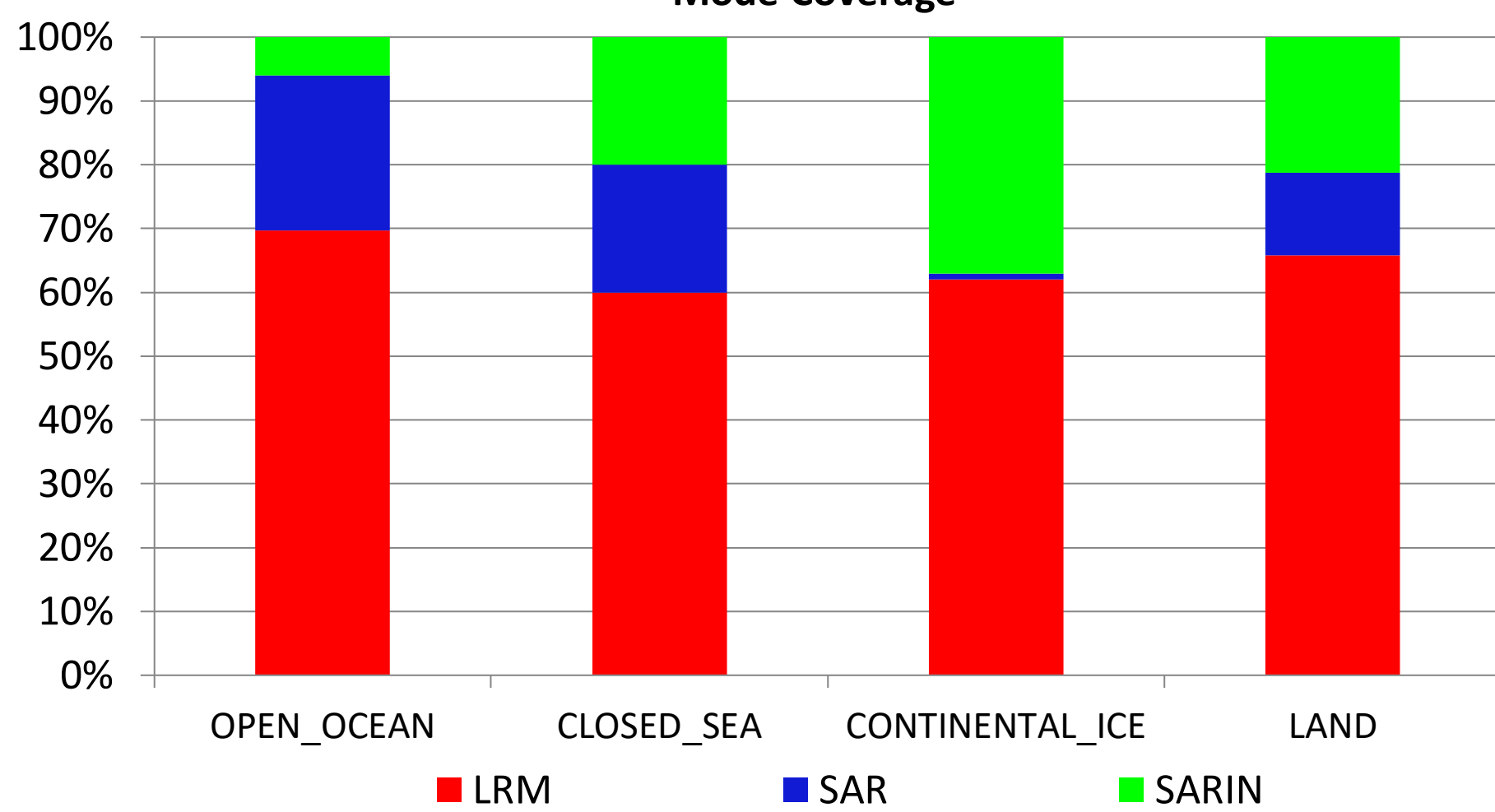
2. Global Coverage



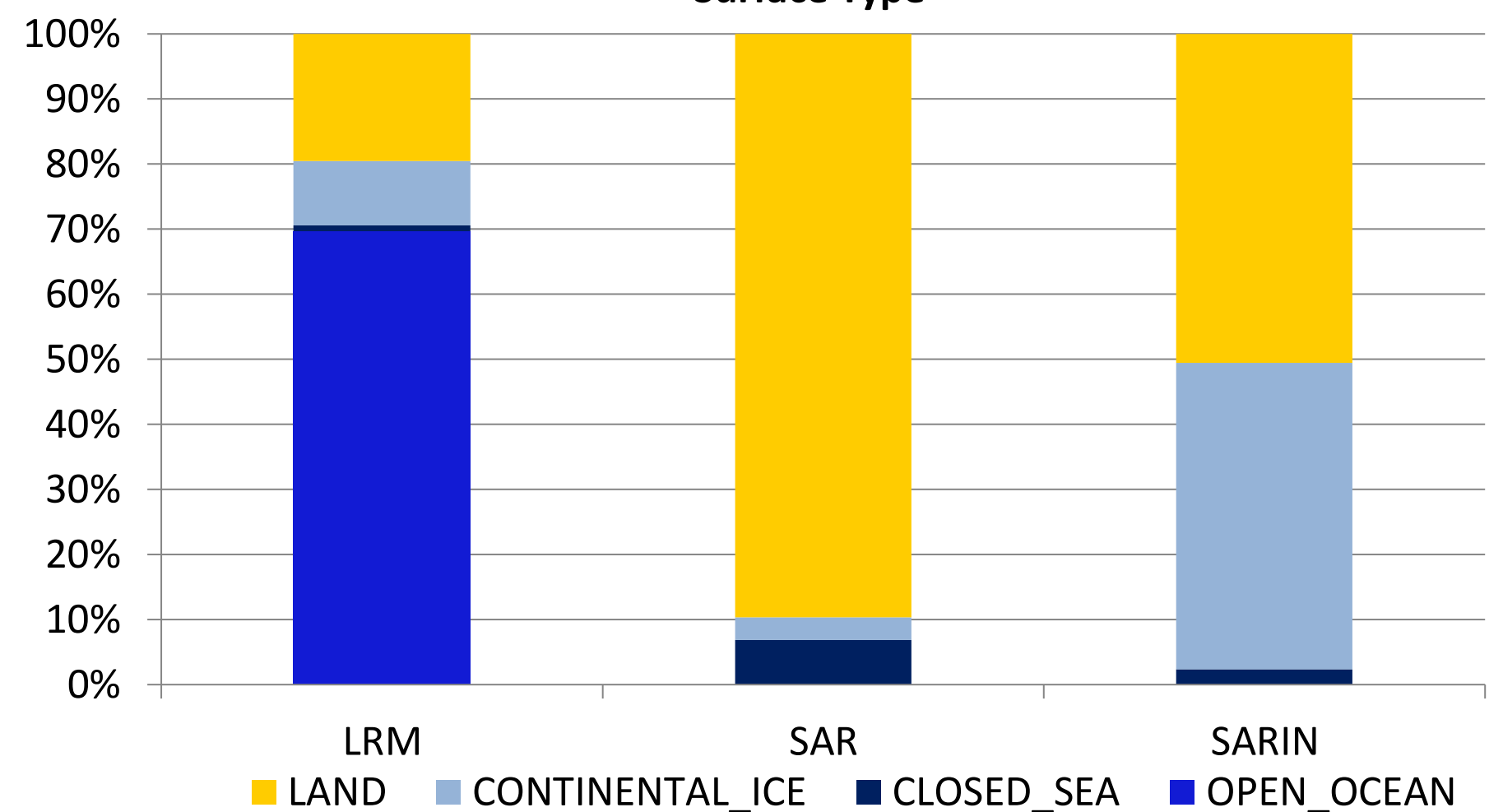
Mode Coverage (%)

	LRM	68.0
	SAR	19.5
	SARIn	12.5

Mode Coverage



Surface Type



### 3. Instrument Configuration

The SIRAL instrument configuration for the day of acquisition is provided below.

SIRAL instrument(s) in use:	SIRAL - A
-----------------------------	-----------

### 4. Level 1B Data Quality Check

#### 4.1 L1B Product Format Check

Each product, retrieved and unpacked from the science server, is checked to ensure it consists of both an XML header file (.HDR) and a product file (.DBL).

Number of products with errors: 0

#### 4.2 L1B Product Header Analysis

For all products, a series of pre-defined checks are carried out on the MPH and SPH in order to identify any inconsistencies and/or errors raised by the ground-segment processing chain.

Number of products with errors: 0

#### 4.3 Star Tracker Usage Check

Each product is checked in order to ensure a valid star tracker file has been used in processing.

Number of products with errors: 0

#### 4.4 L1B Tracking Flags Check

CryoSat L1B data includes a tracking flag for each measurement record. The bit value of this flag indicates any problems when set.

**Loss of Echo Flag:** This flag is currently set for some products over land, but this is to be expected.

Number of products with errors: 118

Product	Test Failed	Description
CS_OFFL_SIR_LRM_1B_20230426T000026_20230426T000631_E001	Loss of echo	The tracking echo is missing for one or more records
CS_OFFL_SIR_LRM_1B_20230426T000711_20230426T000821_E001	Loss of echo	The tracking echo is missing for one or more records
CS_OFFL_SIR_LRM_1B_20230426T000823_20230426T001616_E001	Loss of echo	The tracking echo is missing for one or more records
CS_OFFL_SIR_LRM_1B_20230426T001619_20230426T001750_E001	Loss of echo	The tracking echo is missing for one or more records
CS_OFFL_SIR_LRM_1B_20230426T002231_20230426T003001_E001	Loss of echo	The tracking echo is missing for one or more records
CS_OFFL_SIR_LRM_1B_20230426T003045_20230426T003123_E001	Loss of echo	The tracking echo is missing for one or more records
CS_OFFL_SIR_LRM_1B_20230426T003332_20230426T003517_E001	Loss of echo	The tracking echo is missing for one or more records
CS_OFFL_SIR_LRM_1B_20230426T003523_20230426T003524_E001	Loss of echo	The tracking echo is missing for one or more records
CS_OFFL_SIR_LRM_1B_20230426T003526_20230426T003557_E001	Loss of echo	The tracking echo is missing for one or more records
CS_OFFL_SIR_LRM_1B_20230426T003600_20230426T003627_E001	Loss of echo	The tracking echo is missing for one or more records
CS_OFFL_SIR_LRM_1B_20230426T003631_20230426T003650_E001	Loss of echo	The tracking echo is missing for one or more records
CS_OFFL_SIR_LRM_1B_20230426T010849_20230426T012347_E001	Loss of echo	The tracking echo is missing for one or more records
CS_OFFL_SIR_LRM_1B_20230426T013027_20230426T013242_E001	Loss of echo	The tracking echo is missing for one or more records
CS_OFFL_SIR_LRM_1B_20230426T013928_20230426T015419_E001	Loss of echo	The tracking echo is missing for one or more records
CS_OFFL_SIR_LRM_1B_20230426T015559_20230426T015759_E001	Loss of echo	The tracking echo is missing for one or more records
CS_OFFL_SIR_LRM_1B_20230426T015801_20230426T021038_E001	Loss of echo	The tracking echo is missing for one or more records
CS_OFFL_SIR_LRM_1B_20230426T021040_20230426T021158_E001	Loss of echo	The tracking echo is missing for one or more records
CS_OFFL_SIR_LRM_1B_20230426T021232_20230426T021644_E001	Loss of echo	The tracking echo is missing for one or more records
CS_OFFL_SIR_LRM_1B_20230426T021735_20230426T021750_E001	Loss of echo	The tracking echo is missing for one or more records
CS_OFFL_SIR_LRM_1B_20230426T023101_20230426T023259_E001	Loss of echo	The tracking echo is missing for one or more records
CS_OFFL_SIR_LRM_1B_20230426T023406_20230426T024004_E001	Loss of echo	The tracking echo is missing for one or more records
CS_OFFL_SIR_LRM_1B_20230426T024126_20230426T024402_E001	Loss of echo	The tracking echo is missing for one or more records
CS_OFFL_SIR_LRM_1B_20230426T024437_20230426T024606_E001	Loss of echo	The tracking echo is missing for one or more records
CS_OFFL_SIR_LRM_1B_20230426T030818_20230426T031647_E001	Loss of echo	The tracking echo is missing for one or more records
CS_OFFL_SIR_LRM_1B_20230426T034700_20230426T034742_E001	Loss of echo	The tracking echo is missing for one or more records
CS_OFFL_SIR_LRM_1B_20230426T034853_20230426T035531_E001	Loss of echo	The tracking echo is missing for one or more records
CS_OFFL_SIR_LRM_1B_20230426T041044_20230426T041520_E001	Loss of echo	The tracking echo is missing for one or more records
CS_OFFL_SIR_LRM_1B_20230426T041734_20230426T042051_E001	Loss of echo	The tracking echo is missing for one or more records
CS_OFFL_SIR_LRM_1B_20230426T042053_20230426T042055_E001	Loss of echo	The tracking echo is missing for one or more records
CS_OFFL_SIR_LRM_1B_20230426T042058_20230426T044440_E001	Loss of echo	The tracking echo is missing for one or more records
CS_OFFL_SIR_LRM_1B_20230426T050216_20230426T052406_E001	Loss of echo	The tracking echo is missing for one or more records
CS_OFFL_SIR_LRM_1B_20230426T052520_20230426T052749_E001	Loss of echo	The tracking echo is missing for one or more records
CS_OFFL_SIR_LRM_1B_20230426T052829_20230426T053155_E001	Loss of echo	The tracking echo is missing for one or more records
CS_OFFL_SIR_LRM_1B_20230426T053155_20230426T053345_E001	Loss of echo	The tracking echo is missing for one or more records
CS_OFFL_SIR_LRM_1B_20230426T055440_20230426T055442_E001	Loss of echo	The tracking echo is missing for one or more records
CS_OFFL_SIR_LRM_1B_20230426T062654_20230426T062715_E001	Loss of echo	The tracking echo is missing for one or more records
CS_OFFL_SIR_LRM_1B_20230426T063700_20230426T070557_E001	Loss of echo	The tracking echo is missing for one or more records
CS_OFFL_SIR_LRM_1B_20230426T070801_20230426T070859_E001	Loss of echo	The tracking echo is missing for one or more records
CS_OFFL_SIR_LRM_1B_20230426T070859_20230426T070912_E001	Loss of echo	The tracking echo is missing for one or more records
CS_OFFL_SIR_LRM_1B_20230426T071325_20230426T071413_E001	Loss of echo	The tracking echo is missing for one or more records
CS_OFFL_SIR_LRM_1B_20230426T082437_20230426T082834_E001	Loss of echo	The tracking echo is missing for one or more records



CS_OFFL_SIR_LRM_1B_20230426T220503_20230426T220548_E001	Loss of echo	The tracking echo is missing for one or more records
CS_OFFL_SIR_LRM_1B_20230426T220551_20230426T220631_E001	Loss of echo	The tracking echo is missing for one or more records
CS_OFFL_SIR_LRM_1B_20230426T222831_20230426T223308_E001	Loss of echo	The tracking echo is missing for one or more records
CS_OFFL_SIR_LRM_1B_20230426T223347_20230426T225138_E001	Loss of echo	The tracking echo is missing for one or more records
CS_OFFL_SIR_LRM_1B_20230426T234404_20230426T234415_E001	Loss of echo	The tracking echo is missing for one or more records
CS_OFFL_SIR_LRM_1B_20230426T234418_20230426T234423_E001	Loss of echo	The tracking echo is missing for one or more records
CS_OFFL_SIR_LRM_1B_20230426T234426_20230426T234439_E001	Loss of echo	The tracking echo is missing for one or more records
CS_OFFL_SIR_LRM_1B_20230426T234442_20230426T234448_E001	Loss of echo	The tracking echo is missing for one or more records
CS_OFFL_SIR_LRM_1B_20230426T234451_20230426T234523_E001	Loss of echo	The tracking echo is missing for one or more records
CS_OFFL_SIR_LRM_1B_20230426T234525_20230426T234527_E001	Loss of echo	The tracking echo is missing for one or more records
CS_OFFL_SIR_LRM_1B_20230426T234530_20230426T234532_E001	Loss of echo	The tracking echo is missing for one or more records
CS_OFFL_SIR_LRM_1B_20230426T234535_20230426T234627_E001	Loss of echo	The tracking echo is missing for one or more records

#### 4.5 L1B Calibration Usage Check

Each product is checked in order to ensure that the necessary calibration files have been used in processing.

**Number of products with errors:** 1

Product	Test Failed	Description
CS_OFFL_SIR_SIN_1B_20230426T130712_20230426T130719_E001	Cal1 Correction missing	The Cal1 correction has not been applied for one or more records

#### 4.6 L1B Auxiliary Data File Usage Check

Each product is checked for missing Data Set Descriptors with respect to a pre-determined baseline and also to check the validity of Auxiliary Data Files is correct.

**Number of products with errors:** 0

#### 4.7 L1B Auxiliary Correction Error Check

CryoSat L1B data includes a correction error flag for each measurement record. The bit value of this flag indicates any problems when set.

**Number of products with errors:** 7

Product	Test Failed	Description
CS_OFFL_SIR_SAR_1B_20230426T003132_20230426T003135_E001	Dry tropospheric Correction Error, Wet tropospheric Correction Error, Inverse barometric Correction Error, Dynamic atmosphere Correction Error, Ocean equilibrium tide, Ocean long period tide, Ocean loading tide, Solid Earth tide, Geocentr. polar tide, Surface type flag	Auxillary corrections missing due to short product length.
CS_OFFL_SIR_SAR_1B_20230426T003137_20230426T003139_E001	Dry tropospheric Correction Error, Wet tropospheric Correction Error, Inverse barometric Correction Error, Dynamic atmosphere Correction Error, Ocean equilibrium tide, Ocean long period tide, Ocean loading tide, Solid Earth tide, Geocentr. polar tide, Surface type flag	Auxillary corrections missing due to short product length.
CS_OFFL_SIR_SAR_1B_20230426T003203_20230426T003203_E001	Dry tropospheric Correction Error, Wet tropospheric Correction Error, Inverse barometric Correction Error, Dynamic atmosphere Correction Error, Ocean equilibrium tide, Ocean long period tide, Ocean loading tide, Solid Earth tide, Geocentr. polar tide, Surface type flag	Auxillary corrections missing due to short product length.
CS_OFFL_SIR_SAR_1B_20230426T003213_20230426T003214_E001	Dry tropospheric Correction Error, Wet tropospheric Correction Error, Inverse barometric Correction Error, Dynamic atmosphere Correction Error, Ocean equilibrium tide, Ocean long period tide, Ocean loading tide, Solid Earth tide, Geocentr. polar tide, Surface type flag	Auxillary corrections missing due to short product length.
CS_OFFL_SIR_SAR_1B_20230426T003230_20230426T003231_E001	Dry tropospheric Correction Error, Wet tropospheric Correction Error, Inverse barometric Correction Error, Dynamic atmosphere Correction Error, Ocean equilibrium tide, Ocean long period tide, Ocean loading tide, Solid Earth tide, Geocentr. polar tide, Surface type flag	Auxillary corrections missing due to short product length.
CS_OFFL_SIR_SAR_1B_20230426T003232_20230426T003232_E001	Dry tropospheric Correction Error, Wet tropospheric Correction Error, Inverse barometric Correction Error, Dynamic atmosphere Correction Error, Ocean equilibrium tide, Ocean long period tide, Ocean loading tide, Solid Earth tide, Geocentr. polar tide, Surface type flag	Auxillary corrections missing due to short product length.

CS_OFFL_SIR_SAR_1B_20230426T003305_20230426T003306_E001	Dry tropospheric Correction Error, Wet tropospheric Correction Error, Inverse barometric Correction Error, Dynamic atmosphere Correction Error, Ocean equilibrium tide, Ocean long period tide, Ocean loading tide, Solid Earth tide, Geocentr. polar tide, Surface type flag	Auxillary corrections missing due to short product length.
---	---	--

## 4.8 L1B Measurement Confidence Data Check

CryoSat L1B data includes a measurement confidence flag for each measurement record. The bit value of this flag indicates any problems when set.

Currently, there are several common error flags raised in the Level 1B products which are expected due to operational mode or surface type. All common flags are summarised in the list below, followed by a table of any additional issues arising from this test.

**Block Degraded Flag:** This flag is currently set for a number of individual records generally at the start or end of products (all modes), but this is to be expected.

**Phase Perturbation Applied Flag:** This flag is currently set for all L1B SARIn products, indicating that the ADC correction application is deactivated, but this is in line with the current configuration.

Number of products with errors: 0

## 5. Level 2 Data Quality Check

### 5.1 L2 Product Format Check

Each product, retrieved and unpacked from the science server, is checked to ensure it consists of both an XML header file (.HDR) and a product file (.DBL).

Number of products with errors: 0

### 5.2 L2 Product Header Analysis

For all products, a series of pre-defined checks are carried out on the MPH and SPH in order to identify any inconsistencies and/or errors raised by the ground-segment processing chain.

Number of products with errors: 0

### 5.3 L2 Auxiliary Data File Usage Check

Each product is checked for missing Data Set Descriptors with respect to a pre-determined baseline and also to check the validity of Auxiliary Data Files is correct.

Number of products with errors: 0

### 5.4 L2 Auxiliary Correction Error Check

CryoSat L2 data includes a correction error flag for each measurement record. The bit value of this flag indicates any problems when set.

Currently, there are several common error flags raised in the Level 2 products which are expected due to operational mode or surface type. All common flags are summarised in the list below, followed by a table of any additional issues arising from this test.

**Sea State Bias error:** This flag is currently set in all L2 LRM products over ocean, indicating a problem with the sea state bias. Due to a known anomaly, the sea state bias field is currently unfilled in all Baseline-E L2 LRM products. This anomaly will be resolved in the next IPF update.

**Snow Depth Model error:** This flag is currently set in all L2 SAR products over ocean, which fall outside of the extent of the current snow depth model. Currently the snow depth model is only available over the high-latitude Arctic. There is no model currently provided for the Antarctic or marginal Arctic regions. An updated model will be provided in the next IPF update.

Number of products with errors: 122

Product	Test Failed	Description
CS_OFFL_SIR_SAR_2__20230425T235955_20230426T000025_E001	Snow depth model	There is an error with the Snow Depth value, where one or more records falls outside of the extent of the current snow depth model
CS_OFFL_SIR_SAR_2__20230426T000631_20230426T000711_E001	Snow depth model	There is an error with the Snow Depth value, where one or more records falls outside of the extent of the current snow depth model
CS_OFFL_SIR_SAR_2__20230426T001750_20230426T002231_E001	Snow depth model	There is an error with the Snow Depth value, where one or more records falls outside of the extent of the current snow depth model
CS_OFFL_SIR_SAR_2__20230426T003124_20230426T003125_E001	Snow depth model	There is an error with the Snow Depth value, where one or more records falls outside of the extent of the current snow depth model
CS_OFFL_SIR_SAR_2__20230426T003127_20230426T003130_E001	Snow depth model	There is an error with the Snow Depth value, where one or more records falls outside of the extent of the current snow depth model
CS_OFFL_SIR_SAR_2__20230426T003132_20230426T003135_E001	Dry tropospheric corr, Wet tropospheric corr, Inverse barometric corr, Dynamic atm corr, Model lonospheric corr, Solid Earth tide, Geocentr. polar tide, Snow depth model	There is an error with the Dry tropospheric correction, Wet tropospheric correction, Inverse barometric correction, Dynamic atm correction, Model lonospheric correction, Solid Earth tide, Geocentral polar tide, and Snow depth model, where one or more records falls outside of the extent of the current snow depth model
CS_OFFL_SIR_SAR_2__20230426T003137_20230426T003139_E001	Dry tropospheric corr, Wet tropospheric corr, Inverse barometric corr, Dynamic atm corr, Model lonospheric corr, Solid Earth tide, Geocentr. polar tide, Snow depth model	There is an error with the Dry tropospheric correction, Wet tropospheric correction, Inverse barometric correction, Dynamic atm correction, Model lonospheric correction, Solid Earth tide, Geocentral polar tide, and Snow depth model, where one or more records falls outside of the extent of the current snow depth model
CS_OFFL_SIR_SAR_2__20230426T003142_20230426T003151_E001	Snow depth model	There is an error with the Snow Depth value, where one or more records falls outside of the extent of the current snow depth model
CS_OFFL_SIR_SAR_2__20230426T003154_20230426T003156_E001	Snow depth model	There is an error with the Snow Depth value, where one or more records falls outside of the extent of the current snow depth model
CS_OFFL_SIR_SAR_2__20230426T003200_20230426T003201_E001	Snow depth model	There is an error with the Snow Depth value, where one or more records falls outside of the extent of the current snow depth model
CS_OFFL_SIR_SAR_2__20230426T003205_20230426T003210_E001	Snow depth model	There is an error with the Snow Depth value, where one or more records falls outside of the extent of the current snow depth model
CS_OFFL_SIR_SAR_2__20230426T003213_20230426T003214_E001	Dry tropospheric corr, Wet tropospheric corr, Inverse barometric corr, Dynamic atm corr, Model lonospheric corr, Solid Earth tide, Geocentr. polar tide, Snow depth model	There is an error with the Dry tropospheric correction, Wet tropospheric correction, Inverse barometric correction, Dynamic atm correction, Model lonospheric correction, Solid Earth tide, Geocentral polar tide, and Snow depth model, where one or more records falls outside of the extent of the current snow depth model
CS_OFFL_SIR_SAR_2__20230426T003216_20230426T003227_E001	Snow depth model	There is an error with the Snow Depth value, where one or more records falls outside of the extent of the current snow depth model
CS_OFFL_SIR_SAR_2__20230426T003236_20230426T003245_E001	Snow depth model	There is an error with the Snow Depth value, where one or more records falls outside of the extent of the current snow depth model
CS_OFFL_SIR_SAR_2__20230426T003248_20230426T003249_E001	Snow depth model	There is an error with the Snow Depth value, where one or more records falls outside of the extent of the current snow depth model
CS_OFFL_SIR_SAR_2__20230426T003251_20230426T003303_E001	Snow depth model	There is an error with the Snow Depth value, where one or more records falls outside of the extent of the current snow depth model





CS_OFFL_SIR_SIN_2__20230426T094411_20230426T094729_E001	Mean Sea Surface model	There is an error with the Mean Sea Surface for one or more records
CS_OFFL_SIR_SIN_2__20230426T130846_20230426T131058_E001	Mean Sea Surface model	There is an error with the Mean Sea Surface for one or more records
CS_OFFL_SIR_SIN_2__20230426T144737_20230426T145355_E001	Mean Sea Surface model	There is an error with the Mean Sea Surface for one or more records
CS_OFFL_SIR_SIN_2__20230426T212354_20230426T212659_E001	Mean Sea Surface model	There is an error with the Mean Sea Surface for one or more records
CS_OFFL_SIR_SIN_2__20230426T225750_20230426T230046_E001	Mean Sea Surface model	There is an error with the Mean Sea Surface for one or more records
CS_OFFL_SIR_SIN_2__20230426T230258_20230426T230819_E001	Mean Sea Surface model	There is an error with the Mean Sea Surface for one or more records

## 5.5 L2 Measurement Quality Flag Check

CryoSat L2 data includes a quality flag for each 20-Hz measurement record. The bit value of this flag indicates any problems when set.

**Currently, there are several common error flags raised in the Level 2 products which are expected due to operational mode or surface type. All common flags are summarised in the list below, followed by a table of any additional issues arising from this test.**

**Height and Backscatter errors:** These flags are currently set for products over land, but this is to be expected. Retracker 1 Height and Backscatter error flags are also set for products over sea-ice, but this is to be expected.

**SSHA interpolation error:** This flag is currently set for a number of SAR products occurring at surface type boundaries, but this is to be expected.

**Freeboard error:** This flag is correctly set in all L2 SAR products that are not discriminated as sea-ice, and for which freeboard cannot be calculated.

**Peakiness error:** This flag is currently set for products over sea-ice, but this is to be expected.

**SARIn X-Track Angle Error:** This flag is set when the difference between the computed surface elevation and the DEM is >50 m. The DEM is only available over Greenland and Antarctica and as a result this flag is set for L2 SARIn products in all other locations as expected.

**Number of products with errors:** 259

Product	Test Failed	Description
CS_OFFL_SIR_LRM_2__20230426T000026_20230426T000631_E001	Height Error (Retracker 2), Backscatter Error (Retracker 2)	There is a height and backscatter error for Retracker 2 for one or more records
CS_OFFL_SIR_LRM_2__20230426T000823_20230426T001616_E001	Height Error (Retracker 2), Height Error (Retracker 3), Backscatter Error (Retracker 2)	There is a height and backscatter error for Retracker 2 and a height error for Retracker 3 for one or more records
CS_OFFL_SIR_LRM_2__20230426T001619_20230426T001750_E001	Height Error (Retracker 2), Backscatter Error (Retracker 2)	There is a height and backscatter error for Retracker 2 for one or more records
CS_OFFL_SIR_LRM_2__20230426T002231_20230426T003001_E001	Height Error (Retracker 2), Backscatter Error (Retracker 2), Surface model unavailable	There is a height and backscatter error for Retracker 2 and no DEM or Slope Model was used for the location of one or more records
CS_OFFL_SIR_LRM_2__20230426T005819_20230426T010635_E001	Height Error (Retracker 2), Backscatter Error (Retracker 2)	There is a height and backscatter error for Retracker 2 for one or more records
CS_OFFL_SIR_LRM_2__20230426T010849_20230426T012347_E001	Height Error (Retracker 2), Backscatter Error (Retracker 2)	There is a height and backscatter error for Retracker 2 for one or more records
CS_OFFL_SIR_LRM_2__20230426T013928_20230426T015419_E001	Height Error (Retracker 2), Backscatter Error (Retracker 2)	There is a height and backscatter error for Retracker 2 for one or more records
CS_OFFL_SIR_LRM_2__20230426T015559_20230426T015759_E001	Height Error (Retracker 2), Backscatter Error (Retracker 2)	There is a height and backscatter error for Retracker 2 for one or more records
CS_OFFL_SIR_LRM_2__20230426T015801_20230426T021038_E001	Height Error (Retracker 2), Height Error (Retracker 3), Backscatter Error (Retracker 2)	There is a height and backscatter error for Retracker 2 and a height error for Retracker 3 for one or more records
CS_OFFL_SIR_LRM_2__20230426T021735_20230426T021750_E001	Surface Model Unavailable	No DEM or Slope Model was used for the location of one or more records
CS_OFFL_SIR_LRM_2__20230426T023406_20230426T024004_E001	Height Error (Retracker 2), Height Error (Retracker 3), Backscatter Error (Retracker 2)	There is a height and backscatter error for Retracker 2 and a height error for Retracker 3 for one or more records
CS_OFFL_SIR_LRM_2__20230426T024126_20230426T024402_E001	Height Error (Retracker 2), Height Error (Retracker 3), Backscatter Error (Retracker 2)	There is a height and backscatter error for Retracker 2 and a height error for Retracker 3 for one or more records
CS_OFFL_SIR_LRM_2__20230426T025011_20230426T030526_E001	Height Error (Retracker 2), Backscatter Error (Retracker 2)	There is a height and backscatter error for Retracker 2 for one or more records
CS_OFFL_SIR_LRM_2__20230426T031907_20230426T034149_E001	Height Error (Retracker 2), Backscatter Error (Retracker 2)	There is a height and backscatter error for Retracker 2 for one or more records
CS_OFFL_SIR_LRM_2__20230426T034853_20230426T035531_E001	Surface Model Unavailable	No DEM or Slope Model was used for the location of one or more records
CS_OFFL_SIR_LRM_2__20230426T040739_20230426T040815_E001	Height Error (Retracker 2), Backscatter Error (Retracker 2)	There is a height and backscatter error for Retracker 2 for one or more records
CS_OFFL_SIR_LRM_2__20230426T041734_20230426T042051_E001	Height Error (Retracker 2), Backscatter Error (Retracker 2)	There is a height and backscatter error for Retracker 2 for one or more records
CS_OFFL_SIR_LRM_2__20230426T042058_20230426T044440_E001	Height Error (Retracker 2), Backscatter Error (Retracker 2)	There is a height and backscatter error for Retracker 2 for one or more records
CS_OFFL_SIR_LRM_2__20230426T050216_20230426T052406_E001	Height Error (Retracker 2), Height Error (Retracker 3), Backscatter Error (Retracker 2)	There is a height and backscatter error for Retracker 2 and a height error for Retracker 3 for one or more records
CS_OFFL_SIR_LRM_2__20230426T055638_20230426T062330_E001	Height Error (Retracker 2), Backscatter Error (Retracker 2)	There is a height and backscatter error for Retracker 2 for one or more records
CS_OFFL_SIR_LRM_2__20230426T063700_20230426T070557_E001	Height Error (Retracker 2), Backscatter Error (Retracker 2)	There is a height and backscatter error for Retracker 2 for one or more records
CS_OFFL_SIR_LRM_2__20230426T071325_20230426T071413_E001	Height Error (Retracker 2), Height Error (Retracker 3), Backscatter Error (Retracker 2)	There is a height and backscatter error for Retracker 2 and a height error for Retracker 3 for one or more records
CS_OFFL_SIR_LRM_2__20230426T071415_20230426T071527_E001	Height Error (Retracker 2), Backscatter Error (Retracker 2)	There is a height and backscatter error for Retracker 2 for one or more records
CS_OFFL_SIR_LRM_2__20230426T072811_20230426T080230_E001	Height Error (Retracker 2), Backscatter Error (Retracker 2)	There is a height and backscatter error for Retracker 2 for one or more records

















