

1. Overview

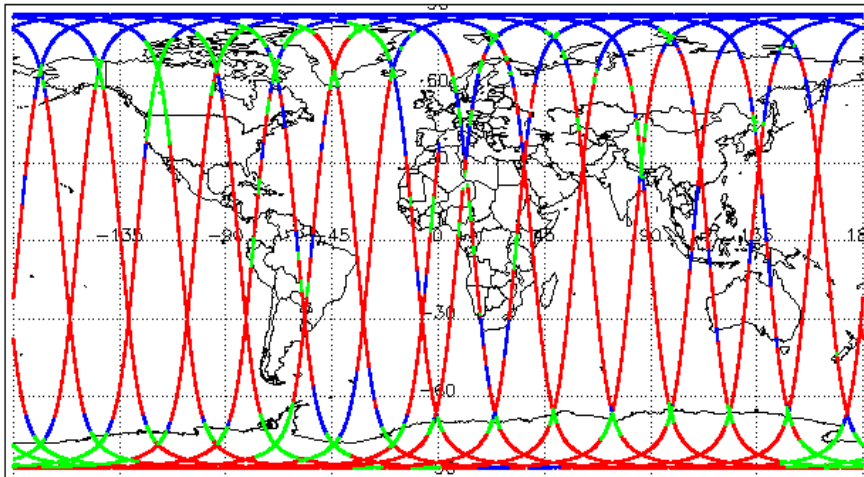
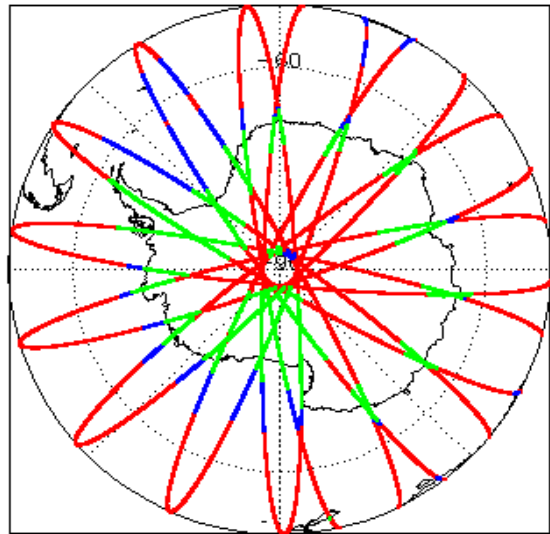
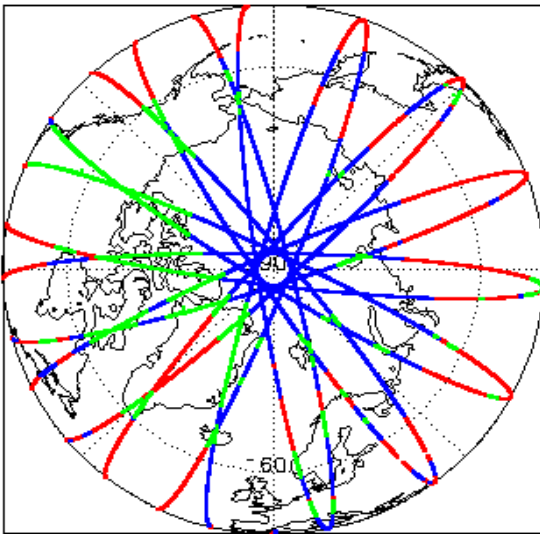
Report Production Date:	14-Apr-2023
Processor Used:	CryoSat Ice Processor
Data Used:	L1B and L2 OFFLINE Data

Check	Status
Server check: science-pds.cryosat.esa.int	Nominal
Server check: calval-pds.cryosat.esa.int	Nominal
Product Software Check	Nominal
Product Format Check	Nominal
Product Header Analysis	See Section 4.2
Star Tracker Usage Check	Nominal
L1B Tracking Flag Check	See Section 4.4
L1B Calibration Usage Check	Nominal
L1B & L2 Auxiliary Data File Usage Check	Nominal
L1B & L2 Auxiliary Correction Error Check	See Section 4.7 and 5.4
L1B & L2 Measurement Confidence Data Check	See Section 4.8 and 5.5
QCC Errors/ Warnings	See Section 6.1, 6.2 and 6.3

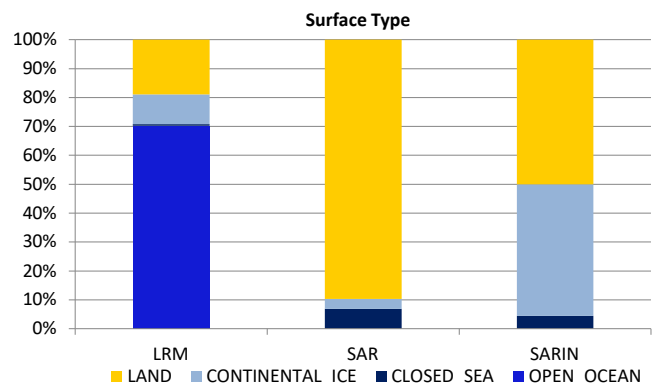
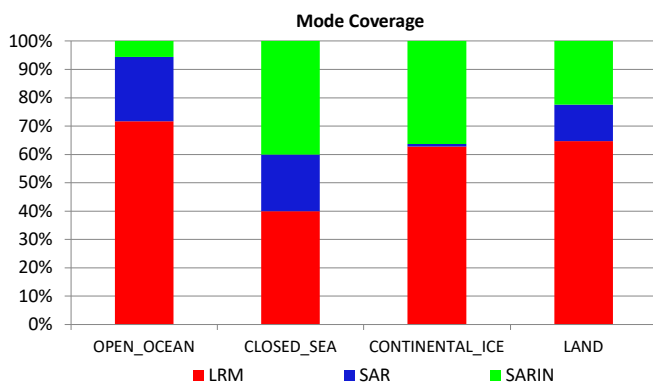
We would love to hear from you!
 Please let us know your feedback about these daily quality reports: What do you like/ dislike? What quality information do you need? Send your feedback to cs2_qc_team@telespazio.com

Mission / Instrument News	
12-Mar-2023	None
13-Mar-2023	None
14-Mar-2023	Nothing planned

2. Global Coverage



Mode Coverage (%)		
	LRM	68.9
	SAR	18.3
	SARIn	12.8



3. Instrument Configuration

The SIRAL instrument configuration for the day of acquisition is provided below.

SIRAL instrument(s) in use:	SIRAL - A
-----------------------------	-----------

4. Level 1B Data Quality Check

4.1 L1B Product Format Check

Each product, retrieved and unpacked from the science server, is checked to ensure it consists of both an XML header file (.HDR) and a product file (.DBL).

Number of products with errors: 0

4.2 L1B Product Header Analysis

For all products, a series of pre-defined checks are carried out on the MPH and SPH in order to identify any inconsistencies and/or errors raised by the ground-segment processing chain.

Number of products with errors: 0

4.3 Star Tracker Usage Check

Each product is checked in order to ensure a valid star tracker file has been used in processing.

Number of products with errors: 0

4.4 L1B Tracking Flags Check

CryoSat L1B data includes a tracking flag for each measurement record. The bit value of this flag indicates any problems when set.

Loss of Echo Flag: This flag is currently set for some products over land, but this is to be expected.

Number of products with errors: 134

Product	Test Failed	Description
CS_OFFL_SIR_LRM_1B_20230313T000003_20230313T000506_E001	Loss of echo	The tracking echo is missing for one or more records
CS_OFFL_SIR_LRM_1B_20230313T003144_20230313T003519_E001	Loss of echo	The tracking echo is missing for one or more records
CS_OFFL_SIR_LRM_1B_20230313T004041_20230313T004720_E001	Loss of echo	The tracking echo is missing for one or more records
CS_OFFL_SIR_LRM_1B_20230313T004729_20230313T011336_E001	Loss of echo	The tracking echo is missing for one or more records
CS_OFFL_SIR_LRM_1B_20230313T011655_20230313T011703_E001	Loss of echo	The tracking echo is missing for one or more records
CS_OFFL_SIR_LRM_1B_20230313T011706_20230313T011708_E001	Loss of echo	The tracking echo is missing for one or more records
CS_OFFL_SIR_LRM_1B_20230313T011711_20230313T011726_E001	Loss of echo	The tracking echo is missing for one or more records
CS_OFFL_SIR_LRM_1B_20230313T011728_20230313T011729_E001	Loss of echo	The tracking echo is missing for one or more records
CS_OFFL_SIR_LRM_1B_20230313T011732_20230313T011743_E001	Loss of echo	The tracking echo is missing for one or more records
CS_OFFL_SIR_LRM_1B_20230313T011746_20230313T011846_E001	Loss of echo	The tracking echo is missing for one or more records
CS_OFFL_SIR_LRM_1B_20230313T022813_20230313T023358_E001	Loss of echo	The tracking echo is missing for one or more records
CS_OFFL_SIR_LRM_1B_20230313T023638_20230313T023726_E001	Loss of echo	The tracking echo is missing for one or more records
CS_OFFL_SIR_LRM_1B_20230313T023728_20230313T023849_E001	Loss of echo	The tracking echo is missing for one or more records
CS_OFFL_SIR_LRM_1B_20230313T024329_20230313T025008_E001	Loss of echo	The tracking echo is missing for one or more records
CS_OFFL_SIR_LRM_1B_20230313T025158_20230313T025221_E001	Loss of echo	The tracking echo is missing for one or more records
CS_OFFL_SIR_LRM_1B_20230313T025224_20230313T025239_E001	Loss of echo	The tracking echo is missing for one or more records
CS_OFFL_SIR_LRM_1B_20230313T025351_20230313T025357_E001	Loss of echo	The tracking echo is missing for one or more records
CS_OFFL_SIR_LRM_1B_20230313T025359_20230313T025413_E001	Loss of echo	The tracking echo is missing for one or more records
CS_OFFL_SIR_LRM_1B_20230313T025415_20230313T025444_E001	Loss of echo	The tracking echo is missing for one or more records
CS_OFFL_SIR_LRM_1B_20230313T025447_20230313T025626_E001	Loss of echo	The tracking echo is missing for one or more records
CS_OFFL_SIR_LRM_1B_20230313T025631_20230313T025738_E001	Loss of echo	The tracking echo is missing for one or more records
CS_OFFL_SIR_LRM_1B_20230313T025748_20230313T025752_E001	Loss of echo	The tracking echo is missing for one or more records
CS_OFFL_SIR_LRM_1B_20230313T025755_20230313T025809_E001	Loss of echo	The tracking echo is missing for one or more records
CS_OFFL_SIR_LRM_1B_20230313T031829_20230313T032731_E001	Loss of echo	The tracking echo is missing for one or more records
CS_OFFL_SIR_LRM_1B_20230313T032945_20230313T033244_E001	Loss of echo	The tracking echo is missing for one or more records
CS_OFFL_SIR_LRM_1B_20230313T033351_20230313T034528_E001	Loss of echo	The tracking echo is missing for one or more records
CS_OFFL_SIR_LRM_1B_20230313T035119_20230313T035342_E001	Loss of echo	The tracking echo is missing for one or more records
CS_OFFL_SIR_LRM_1B_20230313T040833_20230313T041518_E001	Loss of echo	The tracking echo is missing for one or more records
CS_OFFL_SIR_LRM_1B_20230313T041658_20230313T043130_E001	Loss of echo	The tracking echo is missing for one or more records
CS_OFFL_SIR_LRM_1B_20230313T043133_20230313T043136_E001	Loss of echo	The tracking echo is missing for one or more records
CS_OFFL_SIR_LRM_1B_20230313T043138_20230313T043142_E001	Loss of echo	The tracking echo is missing for one or more records
CS_OFFL_SIR_LRM_1B_20230313T043145_20230313T043200_E001	Loss of echo	The tracking echo is missing for one or more records
CS_OFFL_SIR_LRM_1B_20230313T043202_20230313T043204_E001	Loss of echo	The tracking echo is missing for one or more records
CS_OFFL_SIR_LRM_1B_20230313T043207_20230313T043211_E001	Loss of echo	The tracking echo is missing for one or more records
CS_OFFL_SIR_LRM_1B_20230313T043213_20230313T043226_E001	Loss of echo	The tracking echo is missing for one or more records
CS_OFFL_SIR_LRM_1B_20230313T043302_20230313T043802_E001	Loss of echo	The tracking echo is missing for one or more records
CS_OFFL_SIR_LRM_1B_20230313T043808_20230313T043843_E001	Loss of echo	The tracking echo is missing for one or more records
CS_OFFL_SIR_LRM_1B_20230313T045126_20230313T045227_E001	Loss of echo	The tracking echo is missing for one or more records
CS_OFFL_SIR_LRM_1B_20230313T045349_20230313T045701_E001	Loss of echo	The tracking echo is missing for one or more records
CS_OFFL_SIR_LRM_1B_20230313T045833_20230313T050059_E001	Loss of echo	The tracking echo is missing for one or more records
CS_OFFL_SIR_LRM_1B_20230313T050222_20230313T050706_E001	Loss of echo	The tracking echo is missing for one or more records

CS_OFFL_SIR_LRM_1B_20230313T171318_20230313T174709_E001	Loss of echo	The tracking echo is missing for one or more records
CS_OFFL_SIR_LRM_1B_20230313T180111_20230313T180628_E001	Loss of echo	The tracking echo is missing for one or more records
CS_OFFL_SIR_LRM_1B_20230313T180630_20230313T180730_E001	Loss of echo	The tracking echo is missing for one or more records
CS_OFFL_SIR_LRM_1B_20230313T180732_20230313T180812_E001	Loss of echo	The tracking echo is missing for one or more records
CS_OFFL_SIR_LRM_1B_20230313T180815_20230313T180902_E001	Loss of echo	The tracking echo is missing for one or more records
CS_OFFL_SIR_LRM_1B_20230313T181010_20230313T181055_E001	Loss of echo	The tracking echo is missing for one or more records
CS_OFFL_SIR_LRM_1B_20230313T181503_20230313T183925_E001	Loss of echo	The tracking echo is missing for one or more records
CS_OFFL_SIR_LRM_1B_20230313T184235_20230313T184607_E001	Loss of echo	The tracking echo is missing for one or more records
CS_OFFL_SIR_LRM_1B_20230313T184629_20230313T184956_E001	Loss of echo	The tracking echo is missing for one or more records
CS_OFFL_SIR_LRM_1B_20230313T185214_20230313T191827_E001	Loss of echo	The tracking echo is missing for one or more records
CS_OFFL_SIR_LRM_1B_20230313T191829_20230313T191834_E001	Loss of echo	The tracking echo is missing for one or more records
CS_OFFL_SIR_LRM_1B_20230313T191836_20230313T192132_E001	Loss of echo	The tracking echo is missing for one or more records
CS_OFFL_SIR_LRM_1B_20230313T194347_20230313T195113_E001	Loss of echo	The tracking echo is missing for one or more records
CS_OFFL_SIR_LRM_1B_20230313T195116_20230313T195229_E001	Loss of echo	The tracking echo is missing for one or more records
CS_OFFL_SIR_LRM_1B_20230313T195231_20230313T201847_E001	Loss of echo	The tracking echo is missing for one or more records
CS_OFFL_SIR_LRM_1B_20230313T202529_20230313T202856_E001	Loss of echo	The tracking echo is missing for one or more records
CS_OFFL_SIR_LRM_1B_20230313T212257_20230313T212537_E001	Loss of echo	The tracking echo is missing for one or more records
CS_OFFL_SIR_LRM_1B_20230313T212611_20230313T212656_E001	Loss of echo	The tracking echo is missing for one or more records
CS_OFFL_SIR_LRM_1B_20230313T212855_20230313T213348_E001	Loss of echo	The tracking echo is missing for one or more records
CS_OFFL_SIR_LRM_1B_20230313T213350_20230313T213351_E001	Loss of echo	The tracking echo is missing for one or more records
CS_OFFL_SIR_LRM_1B_20230313T213353_20230313T213913_E001	Loss of echo	The tracking echo is missing for one or more records
CS_OFFL_SIR_LRM_1B_20230313T214247_20230313T214828_E001	Loss of echo	The tracking echo is missing for one or more records
CS_OFFL_SIR_LRM_1B_20230313T220019_20230313T220555_E001	Loss of echo	The tracking echo is missing for one or more records
CS_OFFL_SIR_LRM_1B_20230313T230448_20230313T230518_E001	Loss of echo	The tracking echo is missing for one or more records
CS_OFFL_SIR_LRM_1B_20230313T230542_20230313T230550_E001	Loss of echo	The tracking echo is missing for one or more records
CS_OFFL_SIR_LRM_1B_20230313T230602_20230313T230605_E001	Loss of echo	The tracking echo is missing for one or more records
CS_OFFL_SIR_LRM_1B_20230313T231017_20230313T231158_E001	Loss of echo	The tracking echo is missing for one or more records
CS_OFFL_SIR_LRM_1B_20230313T231341_20230313T231715_E001	Loss of echo	The tracking echo is missing for one or more records
CS_OFFL_SIR_LRM_1B_20230313T233942_20230313T234451_E001	Loss of echo	The tracking echo is missing for one or more records

4.5 L1B Calibration Usage Check

Each product is checked in order to ensure that the necessary calibration files have been used in processing.

Number of products with errors: 0

4.6 L1B Auxiliary Data File Usage Check

Each product is checked for missing Data Set Descriptors with respect to a pre-determined baseline and also to check the validity of Auxiliary Data Files is correct.

Number of products with errors: 0

4.7 L1B Auxiliary Correction Error Check

CryoSat L1B data includes a correction error flag for each measurement record. The bit value of this flag indicates any problems when set.

Number of products with errors: 4

Product	Test Failed	Description
CS_OFFL_SIR_SAR_1B_20230313T011617_20230313T011617_E001	Dry tropospheric Correction Error, Wet tropospheric Correction Error, Inverse barometric Correction Error, Dynamic atmosphere Correction Error, Ocean equilibrium tide, Ocean long period tide, Ocean loading tide, Solid Earth tide, Geocentr. polar tide, Surface type flag	There are errors with the correction errors on the left.
CS_OFFL_SIR_SAR_1B_20230313T011625_20230313T011625_E001	Dry tropospheric Correction Error, Wet tropospheric Correction Error, Inverse barometric Correction Error, Dynamic atmosphere Correction Error, Ocean equilibrium tide, Ocean long period tide, Ocean loading tide, Solid Earth tide, Geocentr. polar tide, Surface type flag	There are errors with the correction errors on the left.
CS_OFFL_SIR_SAR_1B_20230313T130625_20230313T130625_E001	Dry tropospheric Correction Error, Wet tropospheric Correction Error, Inverse barometric Correction Error, Dynamic atmosphere Correction Error, Ocean equilibrium tide, Ocean long period tide, Ocean loading tide, Solid Earth tide, Geocentr. polar tide, Surface type flag	There are errors with the correction errors on the left.
CS_OFFL_SIR_SAR_1B_20230313T210817_20230313T210817_E001	Dry tropospheric Correction Error, Wet tropospheric Correction Error, Inverse barometric Correction Error, Dynamic atmosphere Correction Error, Ocean equilibrium tide, Ocean long period tide, Ocean loading tide, Solid Earth tide, Geocentr. polar tide, Surface type flag	There are errors with the correction errors on the left.

4.8 L1B Measurement Confidence Data Check

CryoSat L1B data includes a measurement confidence flag for each measurement record. The bit value of this flag indicates any problems when set.

Currently, there are several common error flags raised in the Level 1B products which are expected due to operational mode or surface type. All common flags are summarised in the list below, followed by a table of any additional issues arising from this test.

Block Degraded Flag: This flag is currently set for a number of individual records generally at the start or end of products (all modes), but this is to be expected.

Phase Perturbation Applied Flag: This flag is currently set for all L1B SARIn products, indicating that the ADC correction application is deactivated, but this is in line with the current configuration.

Number of products with errors: 0

5. Level 2 Data Quality Check

5.1 L2 Product Format Check

Each product, retrieved and unpacked from the science server, is checked to ensure it consists of both an XML header file (.HDR) and a product file (.DBL).

Number of products with errors: 0

5.2 L2 Product Header Analysis

For all products, a series of pre-defined checks are carried out on the MPH and SPH in order to identify any inconsistencies and/or errors raised by the ground-segment processing chain.

Number of products with errors: 0

5.3 L2 Auxiliary Data File Usage Check

Each product is checked for missing Data Set Descriptors with respect to a pre-determined baseline and also to check the validity of Auxiliary Data Files is correct.

Number of products with errors: 0

5.4 L2 Auxiliary Correction Error Check

CryoSat L2 data includes a correction error flag for each measurement record. The bit value of this flag indicates any problems when set.

Currently, there are several common error flags raised in the Level 2 products which are expected due to operational mode or surface type. All common flags are summarised in the list below, followed by a table of any additional issues arising from this test.

Sea State Bias error: This flag is currently set in all L2 LRM products over ocean, indicating a problem with the sea state bias. Due to a known anomaly, the sea state bias field is currently unfilled in all Baseline-E L2 LRM products. This anomaly will be resolved in the next IPF update.

Snow Depth Model error: This flag is currently set in all L2 SAR products over ocean, which fall outside of the extent of the current snow depth model. Currently the snow depth model is only available over the high-latitude Arctic. There is no model currently provided for the Antarctic or marginal Arctic regions. An updated model will be provided in the next IPF update.

Number of products with errors: 128

Product	Test Failed	Description
CS_OFFL_SIR_LRM_2_20230313T220019_20230313T202555_E001	Slope model	There is an error with the Slope Model for one or more records
CS_OFFL_SIR_SAR_2_20230312T235833_20230313T000002_E001	Snow depth model	There is an error with the Snow Depth value, where one or more records falls outside of the extent of the current snow depth model
CS_OFFL_SIR_SAR_2_20230313T001322_20230313T001509_E001	Snow depth model	There is an error with the Snow Depth value, where one or more records falls outside of the extent of the current snow depth model
CS_OFFL_SIR_SAR_2_20230313T002819_20230313T002916_E001	Snow depth model	There is an error with the Snow Depth value, where one or more records falls outside of the extent of the current snow depth model
CS_OFFL_SIR_SAR_2_20230313T003853_20230313T004041_E001	Snow depth model	There is an error with the Snow Depth value, where one or more records falls outside of the extent of the current snow depth model
CS_OFFL_SIR_SAR_2_20230313T011337_20230313T011358_E001	Snow depth model	There is an error with the Snow Depth value, where one or more records falls outside of the extent of the current snow depth model
CS_OFFL_SIR_SAR_2_20230313T011359_20230313T011413_E001	Snow depth model	There is an error with the Snow Depth value, where one or more records falls outside of the extent of the current snow depth model
CS_OFFL_SIR_SAR_2_20230313T011421_20230313T011616_E001	Snow depth model	There is an error with the Snow Depth value, where one or more records falls outside of the extent of the current snow depth model
CS_OFFL_SIR_SAR_2_20230313T011620_20230313T011623_E001	Snow depth model	There is an error with the Snow Depth value, where one or more records falls outside of the extent of the current snow depth model
CS_OFFL_SIR_SAR_2_20230313T011627_20230313T011637_E001	Snow depth model	There is an error with the Snow Depth value, where one or more records falls outside of the extent of the current snow depth model
CS_OFFL_SIR_SAR_2_20230313T011641_20230313T011650_E001	Snow depth model	There is an error with the Snow Depth value, where one or more records falls outside of the extent of the current snow depth model
CS_OFFL_SIR_SAR_2_20230313T012656_20230313T012814_E001	Snow depth model	There is an error with the Snow Depth value, where one or more records falls outside of the extent of the current snow depth model
CS_OFFL_SIR_SAR_2_20230313T012827_20230313T013052_E001	Snow depth model	There is an error with the Snow Depth value, where one or more records falls outside of the extent of the current snow depth model
CS_OFFL_SIR_SAR_2_20230313T020258_20230313T020621_E001	Snow depth model	There is an error with the Snow Depth value, where one or more records falls outside of the extent of the current snow depth model
CS_OFFL_SIR_SAR_2_20230313T020644_20230313T020958_E001	Snow depth model	There is an error with the Snow Depth value, where one or more records falls outside of the extent of the current snow depth model
CS_OFFL_SIR_SAR_2_20230313T022052_20230313T022102_E001	Snow depth model	There is an error with the Snow Depth value, where one or more records falls outside of the extent of the current snow depth model
CS_OFFL_SIR_SAR_2_20230313T022726_20230313T022812_E001	Snow depth model	There is an error with the Snow Depth value, where one or more records falls outside of the extent of the current snow depth model
CS_OFFL_SIR_SAR_2_20230313T023359_20230313T023638_E001	Snow depth model	There is an error with the Snow Depth value, where one or more records falls outside of the extent of the current snow depth model
CS_OFFL_SIR_SAR_2_20230313T023850_20230313T024329_E001	Snow depth model	There is an error with the Snow Depth value, where one or more records falls outside of the extent of the current snow depth model
CS_OFFL_SIR_SAR_2_20230313T025009_20230313T025027_E001	Snow depth model	There is an error with the Snow Depth value, where one or more records falls outside of the extent of the current snow depth model
CS_OFFL_SIR_SAR_2_20230313T025240_20230313T025258_E001	Snow depth model	There is an error with the Snow Depth value, where one or more records falls outside of the extent of the current snow depth model
CS_OFFL_SIR_SAR_2_20230313T025259_20230313T025301_E001	Snow depth model	There is an error with the Snow Depth value, where one or more records falls outside of the extent of the current snow depth model
CS_OFFL_SIR_SAR_2_20230313T025304_20230313T025315_E001	Snow depth model	There is an error with the Snow Depth value, where one or more records falls outside of the extent of the current snow depth model
CS_OFFL_SIR_SAR_2_20230313T025318_20230313T025343_E001	Snow depth model	There is an error with the Snow Depth value, where one or more records falls outside of the extent of the current snow depth model
CS_OFFL_SIR_SAR_2_20230313T025346_20230313T025351_E001	Snow depth model	There is an error with the Snow Depth value, where one or more records falls outside of the extent of the current snow depth model
CS_OFFL_SIR_SAR_2_20230313T031448_20230313T031534_E001	Snow depth model	There is an error with the Snow Depth value, where one or more records falls outside of the extent of the current snow depth model

CS_OFFL_SIR_SIN_2_20230313T170837_20230313T171317_E001	Mean Sea Surface model	There is an error with the Mean Sea Surface for one or more records
CS_OFFL_SIR_SIN_2_20230313T234451_20230313T234800_E001	Mean Sea Surface model	There is an error with the Mean Sea Surface for one or more records

5.5 L2 Measurement Quality Flag Check

CryoSat L2 data includes a quality flag for each 20-Hz measurement record. The bit value of this flag indicates any problems when set.

Currently, there are several common error flags raised in the Level 2 products which are expected due to operational mode or surface type. All common flags are summarised in the list below, followed by a table of any additional issues arising from this test.

Height and Backscatter errors: These flags are currently set for products over land, but this is to be expected. Retracker 1 Height and Backscatter error flags are also set for products over sea-ice, but this is to be expected.

SSHA interpolation error: This flag is currently set for a number of SAR products occurring at surface type boundaries, but this is to be expected.

Freeboard error: This flag is correctly set in all L2 SAR products that are not discriminated as sea-ice, and for which freeboard cannot be calculated.

Peakiness error: This flag is currently set for products over sea-ice, but this is to be expected.

SARIn X-Track Angle Error: This flag is set when the difference between the computed surface elevation and the DEM is >50 m. The DEM is only available over Greenland and Antarctica and as a result this flag is set for L2 SARIn products in all other locations as expected.

Number of products with errors: 256

Product	Test Failed	Description
CS_OFFL_SIR_LRM_2_20230313T000835_20230313T001321_E001	Height Error (Retracker 2), Backscatter Error (Retracker 2)	There is a height and backscatter error for Retracker 2 for one or more records
CS_OFFL_SIR_LRM_2_20230313T001509_20230313T002819_E001	Height Error (Retracker 2), Backscatter Error (Retracker 2)	There is a height and backscatter error for Retracker 2 for one or more records
CS_OFFL_SIR_LRM_2_20230313T004041_20230313T004720_E001	Height Error (Retracker 2), Backscatter Error (Retracker 2), Surface model unavailable	There is a height and backscatter error for Retracker 2 and no DEM or Slope Model was used for the location of one or more records
CS_OFFL_SIR_LRM_2_20230313T004729_20230313T011336_E001	Height Error (Retracker 2), Height Error (Retracker 3), Backscatter Error (Retracker 2)	There is a height and backscatter error for Retracker 2 and a height error for Retracker 3 for one or more records
CS_OFFL_SIR_LRM_2_20230313T013139_20230313T020258_E001	Height Error (Retracker 2), Backscatter Error (Retracker 2)	There is a height and backscatter error for Retracker 2 for one or more records
CS_OFFL_SIR_LRM_2_20230313T022813_20230313T023358_E001	Height Error (Retracker 2), Backscatter Error (Retracker 2)	There is a height and backscatter error for Retracker 2 for one or more records
CS_OFFL_SIR_LRM_2_20230313T023728_20230313T023849_E001	Height Error (Retracker 2), Backscatter Error (Retracker 2)	There is a height and backscatter error for Retracker 2 for one or more records
CS_OFFL_SIR_LRM_2_20230313T024329_20230313T025008_E001	Height Error (Retracker 2), Height Error (Retracker 3), Backscatter Error (Retracker 2)	There is a height and backscatter error for Retracker 2 and a height error for Retracker 3 for one or more records
CS_OFFL_SIR_LRM_2_20230313T025631_20230313T025738_E001	Surface Model Unavailable	No DEM or Slope Model was used for the location of one or more records
CS_OFFL_SIR_LRM_2_20230313T031829_20230313T032731_E001	Height Error (Retracker 2), Backscatter Error (Retracker 2)	There is a height and backscatter error for Retracker 2 for one or more records
CS_OFFL_SIR_LRM_2_20230313T033351_20230313T034528_E001	Height Error (Retracker 2), Height Error (Retracker 3), Backscatter Error (Retracker 2)	There is a height and backscatter error for Retracker 2 and a height error for Retracker 3 for one or more records
CS_OFFL_SIR_LRM_2_20230313T040833_20230313T041518_E001	Height Error (Retracker 2), Backscatter Error (Retracker 2)	There is a height and backscatter error for Retracker 2 for one or more records
CS_OFFL_SIR_LRM_2_20230313T041658_20230313T043130_E001	Height Error (Retracker 2), Backscatter Error (Retracker 2), Surface model unavailable	There is a height and backscatter error for Retracker 2 and no DEM or Slope Model was used for the location of one or more records
CS_OFFL_SIR_LRM_2_20230313T045126_20230313T045227_E001	Surface Model Unavailable	No DEM or Slope Model was used for the location of one or more records
CS_OFFL_SIR_LRM_2_20230313T045349_20230313T045701_E001	Height Error (Retracker 2), Height Error (Retracker 3), Backscatter Error (Retracker 2)	There is a height and backscatter error for Retracker 2 and a height error for Retracker 3 for one or more records
CS_OFFL_SIR_LRM_2_20230313T045833_20230313T050059_E001	Height Error (Retracker 2), Backscatter Error (Retracker 2)	There is a height and backscatter error for Retracker 2 for one or more records
CS_OFFL_SIR_LRM_2_20230313T050222_20230313T050706_E001	Height Error (Retracker 2), Height Error (Retracker 3), Backscatter Error (Retracker 2)	There is a height and backscatter error for Retracker 2 and a height error for Retracker 3 for one or more records
CS_OFFL_SIR_LRM_2_20230313T051001_20230313T052642_E001	Height Error (Retracker 2), Backscatter Error (Retracker 2)	There is a height and backscatter error for Retracker 2 for one or more records
CS_OFFL_SIR_LRM_2_20230313T053951_20230313T060239_E001	Height Error (Retracker 2), Backscatter Error (Retracker 2)	There is a height and backscatter error for Retracker 2 for one or more records
CS_OFFL_SIR_LRM_2_20230313T064147_20230313T070606_E001	Height Error (Retracker 2), Backscatter Error (Retracker 2)	There is a height and backscatter error for Retracker 2 for one or more records
CS_OFFL_SIR_LRM_2_20230313T071841_20230313T074414_E001	Height Error (Retracker 2), Height Error (Retracker 3), Backscatter Error (Retracker 2), Surface model unavailable	There is a height and backscatter error for Retracker 2, a height error for Retracker 3 and no DEM or Slope Model was used for the location of one or more records
CS_OFFL_SIR_LRM_2_20230313T074429_20230313T074611_E001	Surface Model Unavailable	No DEM or Slope Model was used for the location of one or more records
CS_OFFL_SIR_LRM_2_20230313T081503_20230313T081539_E001	Height Error (Retracker 3),	#N/A
CS_OFFL_SIR_LRM_2_20230313T081659_20230313T084507_E001	Height Error (Retracker 2), Backscatter Error (Retracker 2)	There is a height and backscatter error for Retracker 2 for one or more records
CS_OFFL_SIR_LRM_2_20230313T085749_20230313T091703_E001	Height Error (Retracker 2), Backscatter Error (Retracker 2)	There is a height and backscatter error for Retracker 2 for one or more records
CS_OFFL_SIR_LRM_2_20230313T092021_20230313T092304_E001	Height Error (Retracker 2), Backscatter Error (Retracker 2)	There is a height and backscatter error for Retracker 2 for one or more records

