

1. Overview

Report Production Date:	06-Jan-2023
Processor Used:	CryoSat Ice Processor
Data Used:	L1B and L2 OFFLINE Data

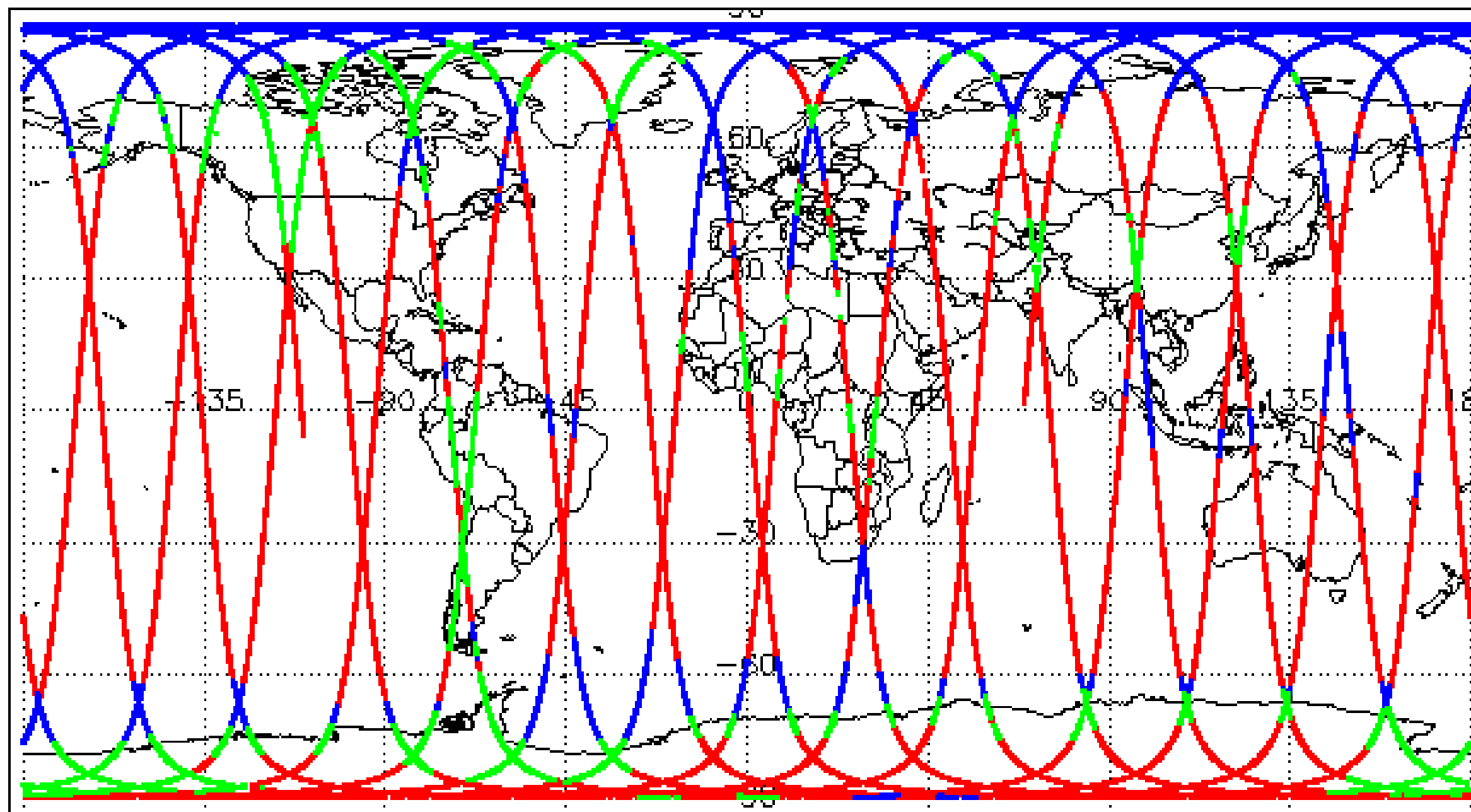
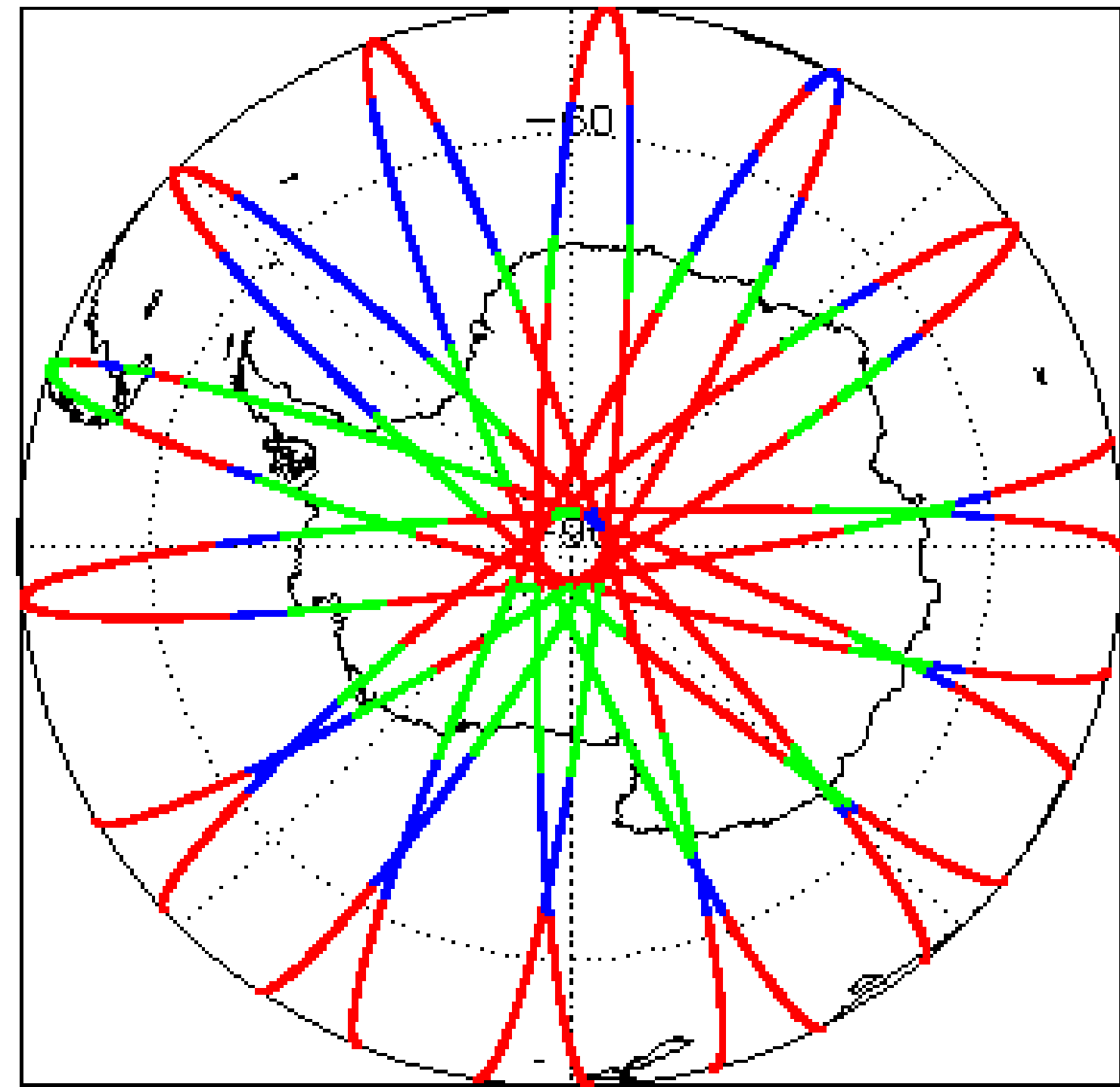
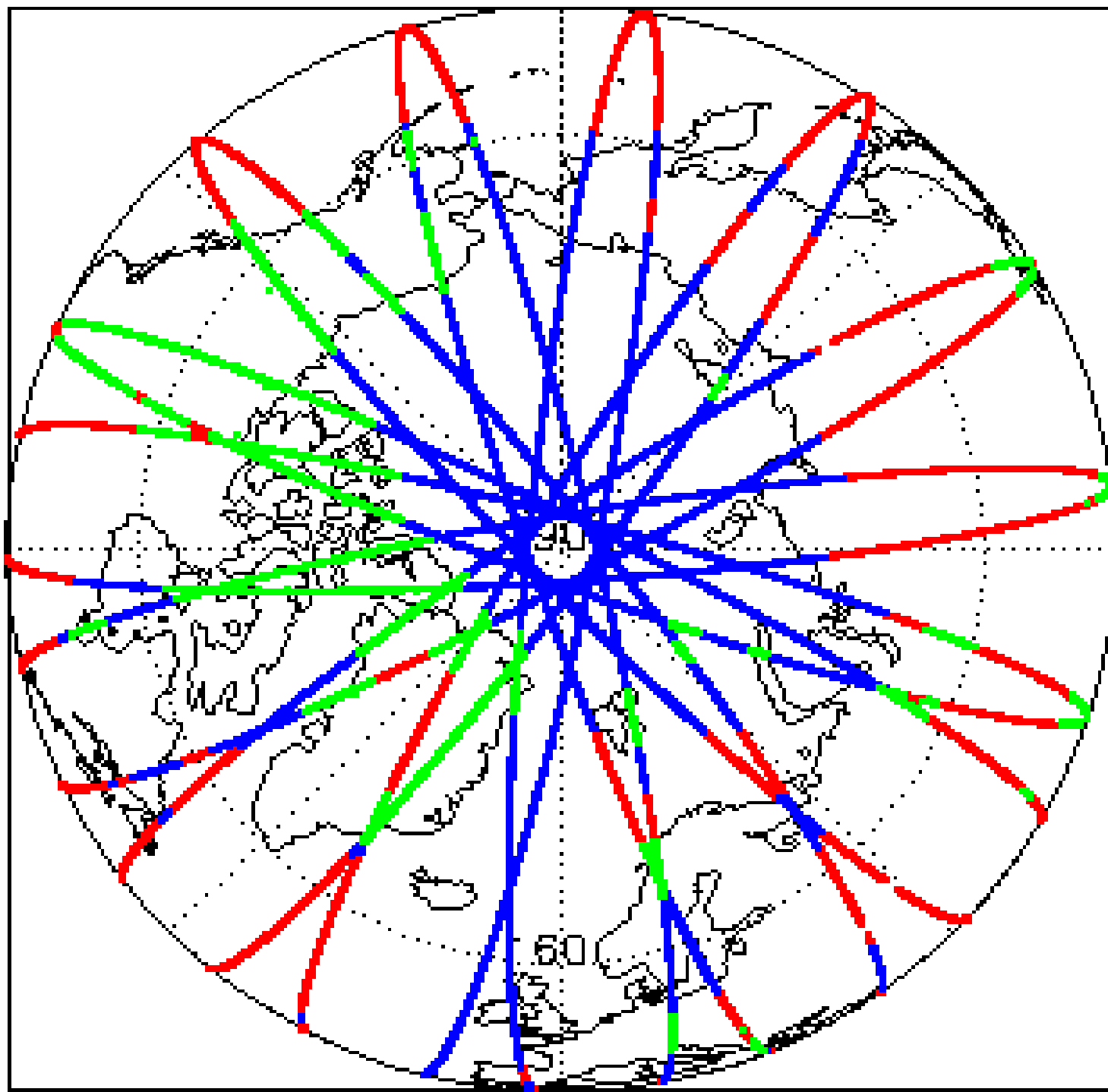
Check	Status
Server check: science-pds.cryosat.esa.int	Nominal
Server check: calval-pds.cryosat.esa.int	Nominal
Product Software Check	Nominal
Product Format Check	Nominal
Product Header Analysis	Nominal
Star Tracker Usage Check	Nominal
L1B Tracking Flag Check	See Section 4.4
L1B Calibration Usage Check	Nominal
L1B & L2 Auxiliary Data File Usage Check	Nominal
L1B & L2 Auxiliary Correction Error Check	See Section 5.4
L1B & L2 Measurement Confidence Data Check	See Section 4.8 and 5.5
QCC Errors/ Warnings	See Section 6.1, 6.2 and 6.3

We would love to hear from you! Please let us know your feedback about these daily quality reports: What do you like/ dislike? What quality information do you need? Send your feedback to cs2_qc_team@telespazio.com

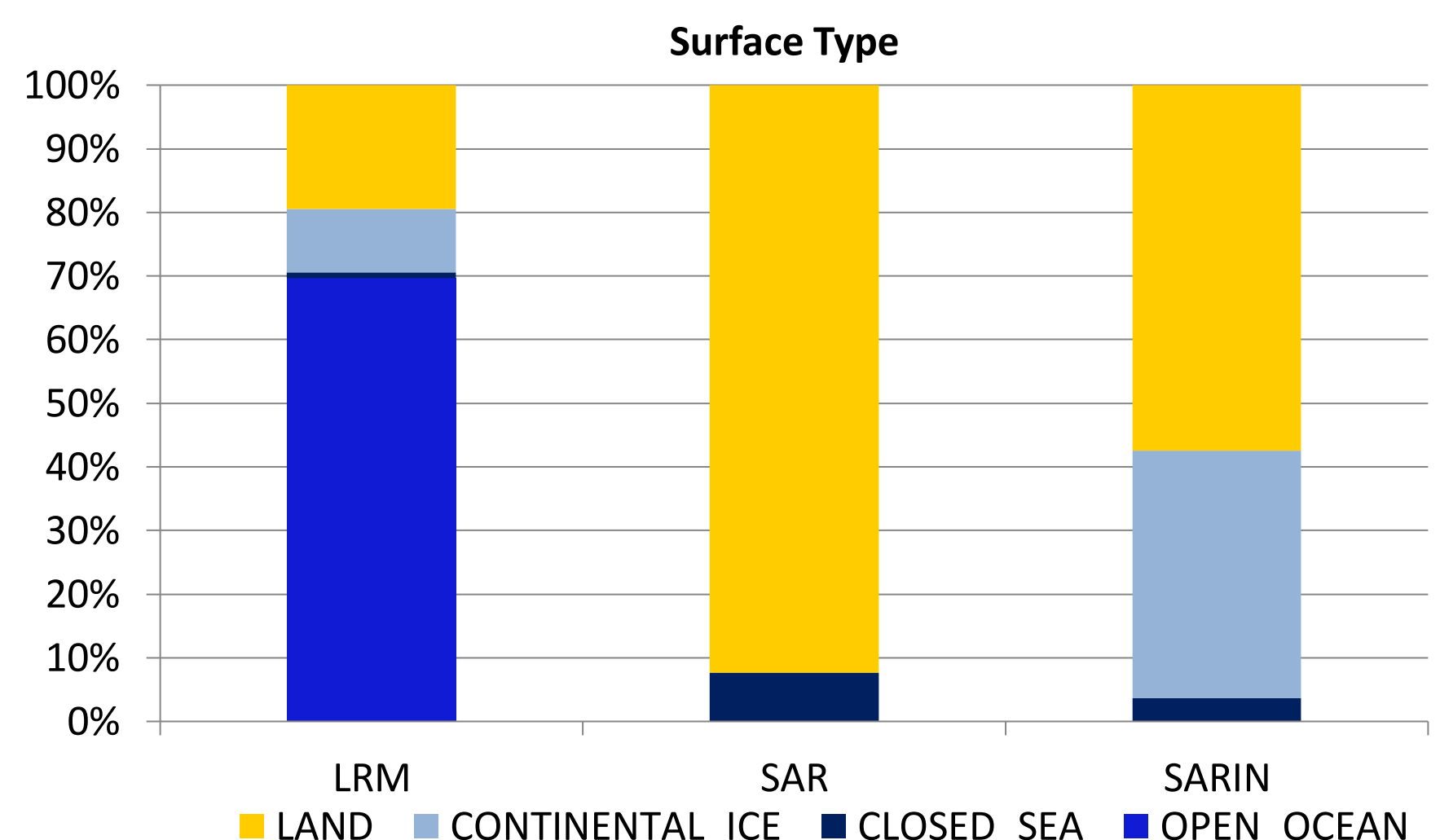
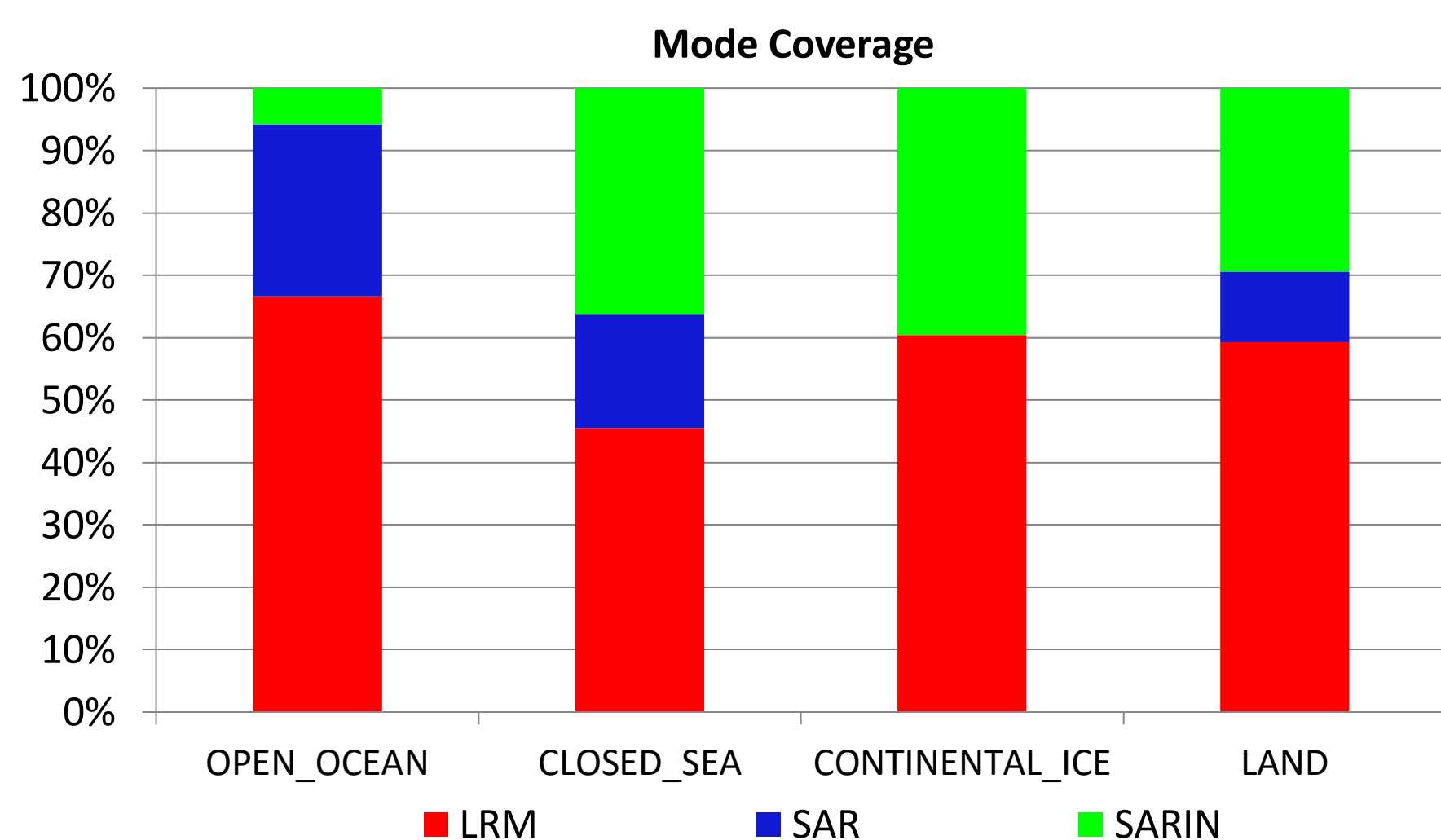
Mission / Instrument News

07-Dec-2022	None
08-Dec-2022	None
09-Dec-2022	Nothing planned

2. Global Coverage



Mode Coverage (%)		
	LRM	64.2
	SAR	21.2
	SARIn	14.7



3. Instrument Configuration

The SIRAL instrument configuration for the day of acquisition is provided below.

SIRAL instrument(s) in use:	SIRAL - A
-----------------------------	-----------

4. Level 1B Data Quality Check

4.1 L1B Product Format Check

Each product, retrieved and unpacked from the science server, is checked to ensure it consists of both an XML header file (.HDR) and a product file (.DBL).

Number of products with errors: 0

4.2 L1B Product Header Analysis

For all products, a series of pre-defined checks are carried out on the MPH and SPH in order to identify any inconsistencies and/or errors raised by the ground-segment processing chain.

Number of products with errors: 0

4.3 Star Tracker Usage Check

Each product is checked in order to ensure a valid star tracker file has been used in processing.

Number of products with errors: 0

4.4 L1B Tracking Flags Check

CryoSat L1B data includes a tracking flag for each measurement record. The bit value of this flag indicates any problems when set.

Loss of Echo Flag: This flag is currently set for some products over land, but this is to be expected.

Number of products with errors: 153

Product	Test Failed	Description
CS_OFFL_SIR_LRM_1B_20221207T234232_20221208T001019_E001	Loss of echo	The tracking echo is missing for one or more records
CS_OFFL_SIR_LRM_1B_20221208T001021_20221208T001047_E001	Loss of echo	The tracking echo is missing for one or more records
CS_OFFL_SIR_LRM_1B_20221208T001049_20221208T001102_E001	Loss of echo	The tracking echo is missing for one or more records
CS_OFFL_SIR_LRM_1B_20221208T001104_20221208T001119_E001	Loss of echo	The tracking echo is missing for one or more records
CS_OFFL_SIR_LRM_1B_20221208T003319_20221208T003755_E001	Loss of echo	The tracking echo is missing for one or more records
CS_OFFL_SIR_LRM_1B_20221208T003839_20221208T004134_E001	Loss of echo	The tracking echo is missing for one or more records
CS_OFFL_SIR_LRM_1B_20221208T004137_20221208T004213_E001	Loss of echo	The tracking echo is missing for one or more records
CS_OFFL_SIR_LRM_1B_20221208T004219_20221208T010724_E001	Loss of echo	The tracking echo is missing for one or more records
CS_OFFL_SIR_LRM_1B_20221208T021229_20221208T021518_E001	Loss of echo	The tracking echo is missing for one or more records
CS_OFFL_SIR_LRM_1B_20221208T021552_20221208T021632_E001	Loss of echo	The tracking echo is missing for one or more records
CS_OFFL_SIR_LRM_1B_20221208T021831_20221208T021856_E001	Loss of echo	The tracking echo is missing for one or more records
CS_OFFL_SIR_LRM_1B_20221208T021858_20221208T021904_E001	Loss of echo	The tracking echo is missing for one or more records
CS_OFFL_SIR_LRM_1B_20221208T021907_20221208T021933_E001	Loss of echo	The tracking echo is missing for one or more records
CS_OFFL_SIR_LRM_1B_20221208T022031_20221208T022140_E001	Loss of echo	The tracking echo is missing for one or more records
CS_OFFL_SIR_LRM_1B_20221208T022147_20221208T022853_E001	Loss of echo	The tracking echo is missing for one or more records
CS_OFFL_SIR_LRM_1B_20221208T023227_20221208T023358_E001	Loss of echo	The tracking echo is missing for one or more records
CS_OFFL_SIR_LRM_1B_20221208T023402_20221208T023828_E001	Loss of echo	The tracking echo is missing for one or more records
CS_OFFL_SIR_LRM_1B_20221208T025000_20221208T025534_E001	Loss of echo	The tracking echo is missing for one or more records
CS_OFFL_SIR_LRM_1B_20221208T035057_20221208T035107_E001	Loss of echo	The tracking echo is missing for one or more records
CS_OFFL_SIR_LRM_1B_20221208T035504_20221208T035525_E001	Loss of echo	The tracking echo is missing for one or more records
CS_OFFL_SIR_LRM_1B_20221208T035536_20221208T035546_E001	Loss of echo	The tracking echo is missing for one or more records
CS_OFFL_SIR_LRM_1B_20221208T040321_20221208T040627_E001	Loss of echo	The tracking echo is missing for one or more records
CS_OFFL_SIR_LRM_1B_20221208T042921_20221208T043430_E001	Loss of echo	The tracking echo is missing for one or more records
CS_OFFL_SIR_LRM_1B_20221208T051622_20221208T051631_E001	Loss of echo	The tracking echo is missing for one or more records
CS_OFFL_SIR_LRM_1B_20221208T051636_20221208T051711_E001	Loss of echo	The tracking echo is missing for one or more records
CS_OFFL_SIR_LRM_1B_20221208T051715_20221208T051720_E001	Loss of echo	The tracking echo is missing for one or more records
CS_OFFL_SIR_LRM_1B_20221208T053907_20221208T054328_E001	Loss of echo	The tracking echo is missing for one or more records
CS_OFFL_SIR_LRM_1B_20221208T054423_20221208T060202_E001	Loss of echo	The tracking echo is missing for one or more records
CS_OFFL_SIR_LRM_1B_20221208T062047_20221208T063550_E001	Loss of echo	The tracking echo is missing for one or more records
CS_OFFL_SIR_LRM_1B_20221208T064235_20221208T065103_E001	Loss of echo	The tracking echo is missing for one or more records
CS_OFFL_SIR_LRM_1B_20221208T065437_20221208T065515_E001	Loss of echo	The tracking echo is missing for one or more records
CS_OFFL_SIR_LRM_1B_20221208T065518_20221208T065521_E001	Loss of echo	The tracking echo is missing for one or more records
CS_OFFL_SIR_LRM_1B_20221208T065526_20221208T065531_E001	Loss of echo	The tracking echo is missing for one or more records
CS_OFFL_SIR_LRM_1B_20221208T065534_20221208T065547_E001	Loss of echo	The tracking echo is missing for one or more records
CS_OFFL_SIR_LRM_1B_20221208T065551_20221208T065552_E001	Loss of echo	The tracking echo is missing for one or more records
CS_OFFL_SIR_LRM_1B_20221208T065555_20221208T065608_E001	Loss of echo	The tracking echo is missing for one or more records
CS_OFFL_SIR_LRM_1B_20221208T065610_20221208T065632_E001	Loss of echo	The tracking echo is missing for one or more records
CS_OFFL_SIR_LRM_1B_20221208T065634_20221208T065636_E001	Loss of echo	The tracking echo is missing for one or more records
CS_OFFL_SIR_LRM_1B_20221208T065639_20221208T065643_E001	Loss of echo	The tracking echo is missing for one or more records
CS_OFFL_SIR_LRM_1B_20221208T065647_20221208T065648_E001	Loss of echo	The tracking echo is missing for one or more records
CS_OFFL_SIR_LRM_1B_20221208T065650_20221208T065651_E001	Loss of echo	The tracking echo is missing for one or more records

CS_OFFL_SIR_LRM_1B_20221208T174809_20221208T175205_E001	Loss of echo	The tracking echo is missing for one or more records
CS_OFFL_SIR_LRM_1B_20221208T184304_20221208T184348_E001	Loss of echo	The tracking echo is missing for one or more records
CS_OFFL_SIR_LRM_1B_20221208T184350_20221208T184432_E001	Loss of echo	The tracking echo is missing for one or more records
CS_OFFL_SIR_LRM_1B_20221208T184434_20221208T184442_E001	Loss of echo	The tracking echo is missing for one or more records
CS_OFFL_SIR_LRM_1B_20221208T184444_20221208T184447_E001	Loss of echo	The tracking echo is missing for one or more records
CS_OFFL_SIR_LRM_1B_20221208T190209_20221208T190325_E001	Loss of echo	The tracking echo is missing for one or more records
CS_OFFL_SIR_LRM_1B_20221208T190328_20221208T190330_E001	Loss of echo	The tracking echo is missing for one or more records
CS_OFFL_SIR_LRM_1B_20221208T190333_20221208T191934_E001	Loss of echo	The tracking echo is missing for one or more records
CS_OFFL_SIR_LRM_1B_20221208T193733_20221208T195028_E001	Loss of echo	The tracking echo is missing for one or more records
CS_OFFL_SIR_LRM_1B_20221208T195242_20221208T200608_E001	Loss of echo	The tracking echo is missing for one or more records
CS_OFFL_SIR_LRM_1B_20221208T202216_20221208T202220_E001	Loss of echo	The tracking echo is missing for one or more records
CS_OFFL_SIR_LRM_1B_20221208T202223_20221208T202227_E001	Loss of echo	The tracking echo is missing for one or more records
CS_OFFL_SIR_LRM_1B_20221208T202245_20221208T202257_E001	Loss of echo	The tracking echo is missing for one or more records
CS_OFFL_SIR_LRM_1B_20221208T202305_20221208T202517_E001	Loss of echo	The tracking echo is missing for one or more records
CS_OFFL_SIR_LRM_1B_20221208T202519_20221208T202601_E001	Loss of echo	The tracking echo is missing for one or more records
CS_OFFL_SIR_LRM_1B_20221208T202604_20221208T202617_E001	Loss of echo	The tracking echo is missing for one or more records
CS_OFFL_SIR_LRM_1B_20221208T202620_20221208T202647_E001	Loss of echo	The tracking echo is missing for one or more records
CS_OFFL_SIR_LRM_1B_20221208T202653_20221208T202709_E001	Loss of echo	The tracking echo is missing for one or more records
CS_OFFL_SIR_LRM_1B_20221208T202711_20221208T202711_E001	Loss of echo	The tracking echo is missing for one or more records
CS_OFFL_SIR_LRM_1B_20221208T202718_20221208T202835_E001	Loss of echo	The tracking echo is missing for one or more records
CS_OFFL_SIR_LRM_1B_20221208T203203_20221208T204230_E001	Loss of echo	The tracking echo is missing for one or more records
CS_OFFL_SIR_LRM_1B_20221208T204409_20221208T205818_E001	Loss of echo	The tracking echo is missing for one or more records
CS_OFFL_SIR_LRM_1B_20221208T211737_20221208T212013_E001	Loss of echo	The tracking echo is missing for one or more records
CS_OFFL_SIR_LRM_1B_20221208T212316_20221208T212320_E001	Loss of echo	The tracking echo is missing for one or more records
CS_OFFL_SIR_LRM_1B_20221208T212322_20221208T212628_E001	Loss of echo	The tracking echo is missing for one or more records
CS_OFFL_SIR_LRM_1B_20221208T213153_20221208T213309_E001	Loss of echo	The tracking echo is missing for one or more records
CS_OFFL_SIR_LRM_1B_20221208T213743_20221208T214426_E001	Loss of echo	The tracking echo is missing for one or more records

4.5 L1B Calibration Usage Check

Each product is checked in order to ensure that the necessary calibration files have been used in processing.

Number of products with errors: 0

4.6 L1B Auxiliary Data File Usage Check

Each product is checked for missing Data Set Descriptors with respect to a pre-determined baseline and also to check the validity of Auxiliary Data Files is correct.

Number of products with errors: 0

4.7 L1B Auxiliary Correction Error Check

CryoSat L1B data includes a correction error flag for each measurement record. The bit value of this flag indicates any problems when set.

Number of products with errors: 0

4.8 L1B Measurement Confidence Data Check

CryoSat L1B data includes a measurement confidence flag for each measurement record. The bit value of this flag indicates any problems when set.

Currently, there are several common error flags raised in the Level 1B products which are expected due to operational mode or surface type. All common flags are summarised in the list below, followed by a table of any additional issues arising from this test.

Block Degraded Flag: This flag is currently set for a number of individual records generally at the start or end of products (all modes), but this is to be expected.

Phase Perturbation Applied Flag: This flag is currently set for all L1B SARIn products, indicating that the ADC correction application is deactivated, but this is in line with the current configuration.

Number of products with errors: 0

5. Level 2 Data Quality Check

5.1 L2 Product Format Check

Each product, retrieved and unpacked from the science server, is checked to ensure it consists of both an XML header file (.HDR) and a product file (.DBL).

Number of products with errors: 0

5.2 L2 Product Header Analysis

For all products, a series of pre-defined checks are carried out on the MPH and SPH in order to identify any inconsistencies and/or errors raised by the ground-segment processing chain.

Number of products with errors: 0

5.3 L2 Auxiliary Data File Usage Check

Each product is checked for missing Data Set Descriptors with respect to a pre-determined baseline and also to check the validity of Auxiliary Data Files is correct.

Number of products with errors: 0

5.4 L2 Auxiliary Correction Error Check

CryoSat L2 data includes a correction error flag for each measurement record. The bit value of this flag indicates any problems when set.

Currently, there are several common error flags raised in the Level 2 products which are expected due to operational mode or surface type. All common flags are summarised in the list below, followed by a table of any additional issues arising from this test.

CS_OFFL_SIR_SIN_2__20221208T043431_20221208T043741_E001	Mean Sea Surface model	There is an error with the Mean Sea Surface for one or more records
CS_OFFL_SIR_SIN_2__20221208T060856_20221208T061135_E001	Mean Sea Surface model	There is an error with the Mean Sea Surface for one or more records
CS_OFFL_SIR_SIN_2__20221208T061335_20221208T061906_E001	Mean Sea Surface model	There is an error with the Mean Sea Surface for one or more records
CS_OFFL_SIR_SIN_2__20221208T074808_20221208T075044_E001	Mean Sea Surface model	There is an error with the Mean Sea Surface for one or more records
CS_OFFL_SIR_SIN_2__20221208T142514_20221208T142846_E001	Mean Sea Surface model	There is an error with the Mean Sea Surface for one or more records
CS_OFFL_SIR_SIN_2__20221208T160430_20221208T160751_E001	Mean Sea Surface model	There is an error with the Mean Sea Surface for one or more records
CS_OFFL_SIR_SIN_2__20221208T192908_20221208T193101_E001	Mean Sea Surface model	There is an error with the Mean Sea Surface for one or more records
CS_OFFL_SIR_SIN_2__20221208T210742_20221208T211434_E001	Mean Sea Surface model	There is an error with the Mean Sea Surface for one or more records

5.5 L2 Measurement Quality Flag Check

CryoSat L2 data includes a quality flag for each 20-Hz measurement record. The bit value of this flag indicates any problems when set.

Currently, there are several common error flags raised in the Level 2 products which are expected due to operational mode or surface type. All common flags are summarised in the list below, followed by a table of any additional issues arising from this test.

Height and Backscatter errors: These flags are currently set for products over land, but this is to be expected. Retracker 1 Height and Backscatter error flags are also set for products over sea-ice, but this is to be expected.

SSHA interpolation error: This flag is currently set for a number of SAR products occurring at surface type boundaries, but this is to be expected.

Freeboard error: This flag is correctly set in all L2 SAR products that are not discriminated as sea-ice, and for which freeboard cannot be calculated.

Peakiness error: This flag is currently set for products over sea-ice, but this is to be expected.

SARIn X-Track Angle Error: This flag is set when the difference between the computed surface elevation and the DEM is >50 m. The DEM is only available over Greenland and Antarctica and as a result this flag is set for L2 SARIn products in all other locations as expected.

Number of products with errors: 235

Product	Test Failed	Description
CS_OFFL_SIR_LRM_2__20221207T234232_20221208T001019_E001	Height Error (Retracker 2), Backscatter Error (Retracker 2)	There is a height and backscatter error for Retracker 2 for one or more records
CS_OFFL_SIR_LRM_2__20221208T004219_20221208T010724_E001	Height Error (Retracker 2), Height Error (Retracker 3), Backscatter Error (Retracker 2)	There is a height and backscatter error for Retracker 2 and a height error for Retracker 3 for one or more records
CS_OFFL_SIR_LRM_2__20221208T012309_20221208T015624_E001	Height Error (Retracker 2), Height Error (Retracker 3), Backscatter Error (Retracker 2)	There is a height and backscatter error for Retracker 2 and a height error for Retracker 3 for one or more records
CS_OFFL_SIR_LRM_2__20221208T021907_20221208T021933_E001	Height Error (Retracker 2), Backscatter Error (Retracker 2)	There is a height and backscatter error for Retracker 2 for one or more records
CS_OFFL_SIR_LRM_2__20221208T022147_20221208T022853_E001	Height Error (Retracker 2), Height Error (Retracker 3), Backscatter Error (Retracker 2)	There is a height and backscatter error for Retracker 2 and a height error for Retracker 3 for one or more records
CS_OFFL_SIR_LRM_2__20221208T030216_20221208T033517_E001	Height Error (Retracker 2), Backscatter Error (Retracker 2), Surface model unavailable	There is a height and backscatter error for Retracker 2 and no DEM or Slope Model was used for the location of one or more records
CS_OFFL_SIR_LRM_2__20221208T040804_20221208T042432_E001	Height Error (Retracker 2), Backscatter Error (Retracker 2)	There is a height and backscatter error for Retracker 2 for one or more records
CS_OFFL_SIR_LRM_2__20221208T044050_20221208T051442_E001	Height Error (Retracker 2), Backscatter Error (Retracker 2)	There is a height and backscatter error for Retracker 2 for one or more records
CS_OFFL_SIR_LRM_2__20221208T053907_20221208T054328_E001	Height Error (Retracker 2), Height Error (Retracker 3), Backscatter Error (Retracker 2)	There is a height and backscatter error for Retracker 2 and a height error for Retracker 3 for one or more records
CS_OFFL_SIR_LRM_2__20221208T054423_20221208T060202_E001	Height Error (Retracker 2), Backscatter Error (Retracker 2)	There is a height and backscatter error for Retracker 2 for one or more records
CS_OFFL_SIR_LRM_2__20221208T062047_20221208T063550_E001	Height Error (Retracker 2), Height Error (Retracker 3), Backscatter Error (Retracker 2)	There is a height and backscatter error for Retracker 2 and a height error for Retracker 3 for one or more records
CS_OFFL_SIR_LRM_2__20221208T063710_20221208T063754_E001	Height Error (Retracker 2), Height Error (Retracker 3), Backscatter Error (Retracker 2)	There is a height and backscatter error for Retracker 2 and a height error for Retracker 3 for one or more records
CS_OFFL_SIR_LRM_2__20221208T064235_20221208T065103_E001	Height Error (Retracker 2), Height Error (Retracker 3), Backscatter Error (Retracker 2)	There is a height and backscatter error for Retracker 2 and a height error for Retracker 3 for one or more records
CS_OFFL_SIR_LRM_2__20221208T070935_20221208T072725_E001	Height Error (Retracker 2), Height Error (Retracker 3), Backscatter Error (Retracker 2)	There is a height and backscatter error for Retracker 2 and a height error for Retracker 3 for one or more records
CS_OFFL_SIR_LRM_2__20221208T072850_20221208T074249_E001	Height Error (Retracker 2), Backscatter Error (Retracker 2)	There is a height and backscatter error for Retracker 2 for one or more records
CS_OFFL_SIR_LRM_2__20221208T075944_20221208T081504_E001	Height Error (Retracker 2), Backscatter Error (Retracker 2)	There is a height and backscatter error for Retracker 2 for one or more records
CS_OFFL_SIR_LRM_2__20221208T081706_20221208T082628_E001	Height Error (Retracker 2), Height Error (Retracker 3), Backscatter Error (Retracker 2), Surface model unavailable	There is a height and backscatter error for Retracker 2, a height error for Retracker 3 and no DEM or Slope Model was used for the location of one or more records
CS_OFFL_SIR_LRM_2__20221208T085217_20221208T085310_E001	Height Error (Retracker 2), Height Error (Retracker 3), Backscatter Error (Retracker 2)	There is a height and backscatter error for Retracker 2 and a height error for Retracker 3 for one or more records
CS_OFFL_SIR_LRM_2__20221208T085323_20221208T090531_E001	Height Error (Retracker 2), Height Error (Retracker 3), Backscatter Error (Retracker 2)	There is a height and backscatter error for Retracker 2 and a height error for Retracker 3 for one or more records
CS_OFFL_SIR_LRM_2__20221208T092134_20221208T092502_E001	Height Error (Retracker 2), Backscatter Error (Retracker 2)	There is a height and backscatter error for Retracker 2 for one or more records
CS_OFFL_SIR_LRM_2__20221208T093930_20221208T095412_E001	Height Error (Retracker 2), Backscatter Error (Retracker 2)	There is a height and backscatter error for Retracker 2 for one or more records

CS_OFFL_SIR_SIN_2__20221208T201242_20221208T201458_E001	Backscatter Error (Retracker 2), Backscatter Error (Retracker 3), SARIn X-track Angle Error, Surface model unavailable	There is a backscatter error for Retracker 2 and 3, an ambiguous angle was detected for SARIn mode, and no DEM or Slope Model was used for the location for one or more records
CS_OFFL_SIR_SIN_2__20221208T202836_20221208T203203_E001	Backscatter Error (Retracker 2), Backscatter Error (Retracker 3), SARIn X-track Angle Error, Surface model unavailable	There is a backscatter error for Retracker 2 and 3, an ambiguous angle was detected for SARIn mode, and no DEM or Slope Model was used for the location for one or more records
CS_OFFL_SIR_SIN_2__20221208T205911_20221208T210058_E001	Backscatter Error (Retracker 2), Backscatter Error (Retracker 3), SARIn X-track Angle Error	There is a backscatter error for Retracker 2 and 3 and an ambiguous angle was detected for SARIn mode for one or more records
CS_OFFL_SIR_SIN_2__20221208T210742_20221208T211434_E001	Backscatter Error (Retracker 2), Backscatter Error (Retracker 3), SARIn X-track Angle Error	There is a backscatter error for Retracker 2 and 3 and an ambiguous angle was detected for SARIn mode for one or more records
CS_OFFL_SIR_SIN_2__20221208T211546_20221208T211627_E001	Backscatter Error (Retracker 2), Backscatter Error (Retracker 3), SARIn X-track Angle Error, Surface model unavailable	There is a backscatter error for Retracker 2 and 3, an ambiguous angle was detected for SARIn mode, and no DEM or Slope Model was used for the location for one or more records
CS_OFFL_SIR_SIN_2__20221208T212013_20221208T212315_E001	SARIn X-track Angle Error, Surface model unavailable	An ambiguous angle was detected for SARIn mode and no DEM or Slope Model was used for one or more records
CS_OFFL_SIR_SIN_2__20221208T212628_20221208T213152_E001	SARIn X-track Angle Error, Surface model unavailable	An ambiguous angle was detected for SARIn mode and no DEM or Slope Model was used for one or more records
CS_OFFL_SIR_SIN_2__20221208T213621_20221208T213743_E001	Backscatter Error (Retracker 2), Backscatter Error (Retracker 3)	There is a backscatter error for Retracker 2 and 3 for one or more records
CS_OFFL_SIR_SIN_2__20221208T214454_20221208T214616_E001	Backscatter Error (Retracker 2), Backscatter Error (Retracker 3)	There is a backscatter error for Retracker 2 and 3 for one or more records
CS_OFFL_SIR_SIN_2__20221208T214827_20221208T215339_E001	Backscatter Error (Retracker 2), Backscatter Error (Retracker 3), SARIn X-track Angle Error, Surface model unavailable	There is a backscatter error for Retracker 2 and 3, an ambiguous angle was detected for SARIn mode, and no DEM or Slope Model was used for the location for one or more records
CS_OFFL_SIR_SIN_2__20221208T220952_20221208T221302_E001	SARIn X-track Angle Error, Surface model unavailable	An ambiguous angle was detected for SARIn mode and no DEM or Slope Model was used for one or more records
CS_OFFL_SIR_SIN_2__20221208T223816_20221208T224109_E001	Backscatter Error (Retracker 2), Backscatter Error (Retracker 3), SARIn X-track Angle Error	There is a backscatter error for Retracker 2 and 3 and an ambiguous angle was detected for SARIn mode for one or more records
CS_OFFL_SIR_SIN_2__20221208T224733_20221208T225032_E001	Backscatter Error (Retracker 2), Backscatter Error (Retracker 3), SARIn X-track Angle Error	There is a backscatter error for Retracker 2 and 3 and an ambiguous angle was detected for SARIn mode for one or more records
CS_OFFL_SIR_SIN_2__20221208T232821_20221208T233022_E001	Backscatter Error (Retracker 2), Backscatter Error (Retracker 3), SARIn X-track Angle Error, Surface model unavailable	There is a backscatter error for Retracker 2 and 3, an ambiguous angle was detected for SARIn mode, and no DEM or Slope Model was used for the location for one or more records
CS_OFFL_SIR_SIN_2__20221208T233022_20221208T233202_E001	Backscatter Error (Retracker 2), Backscatter Error (Retracker 3), SARIn X-track Angle Error, Surface model unavailable	There is a backscatter error for Retracker 2 and 3, an ambiguous angle was detected for SARIn mode, and no DEM or Slope Model was used for the location for one or more records
CS_OFFL_SIR_SIN_2__20221208T234758_20221208T235018_E001	SARIn X-track Angle Error, Surface model unavailable	An ambiguous angle was detected for SARIn mode and no DEM or Slope Model was used for one or more records