

### 1. Overview

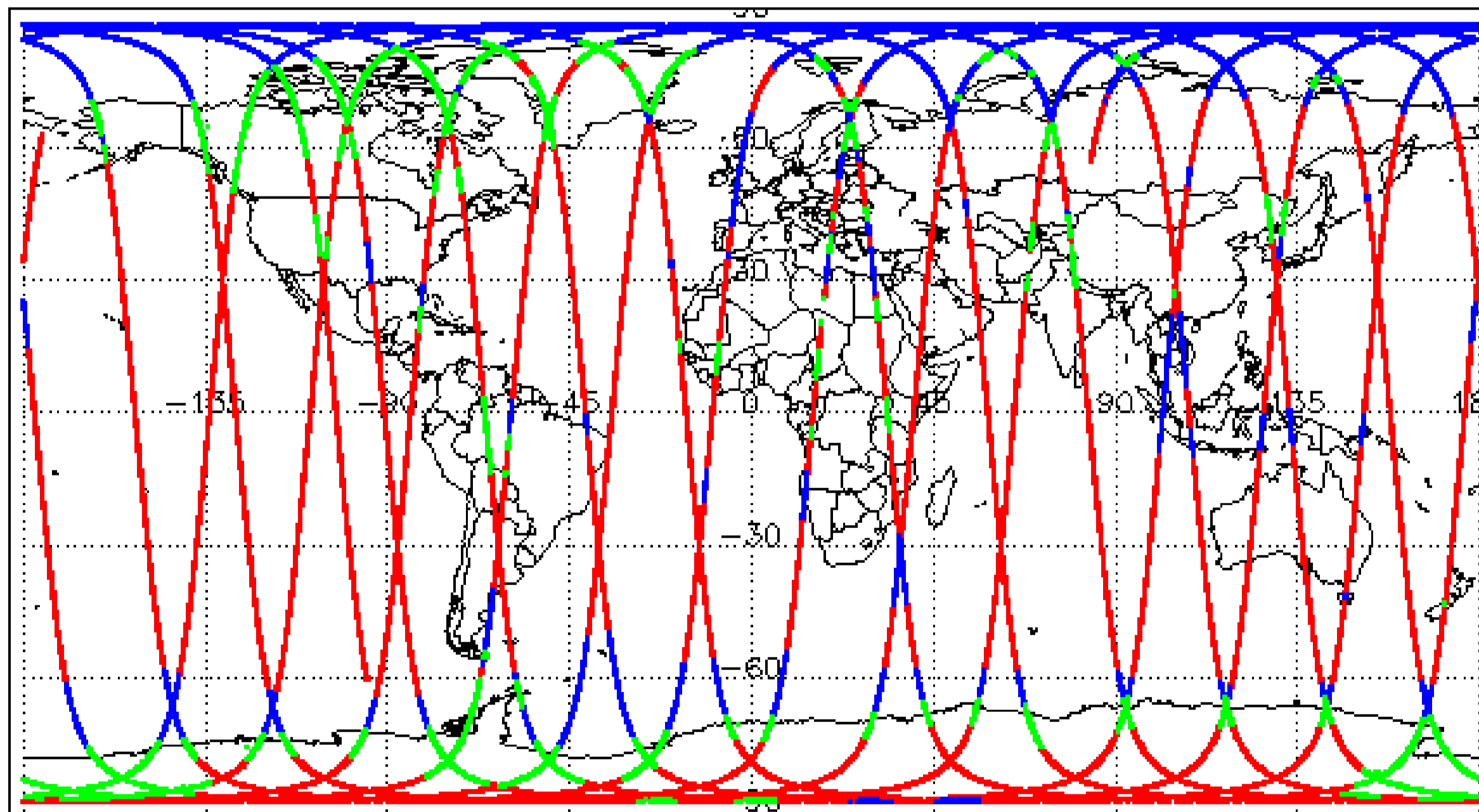
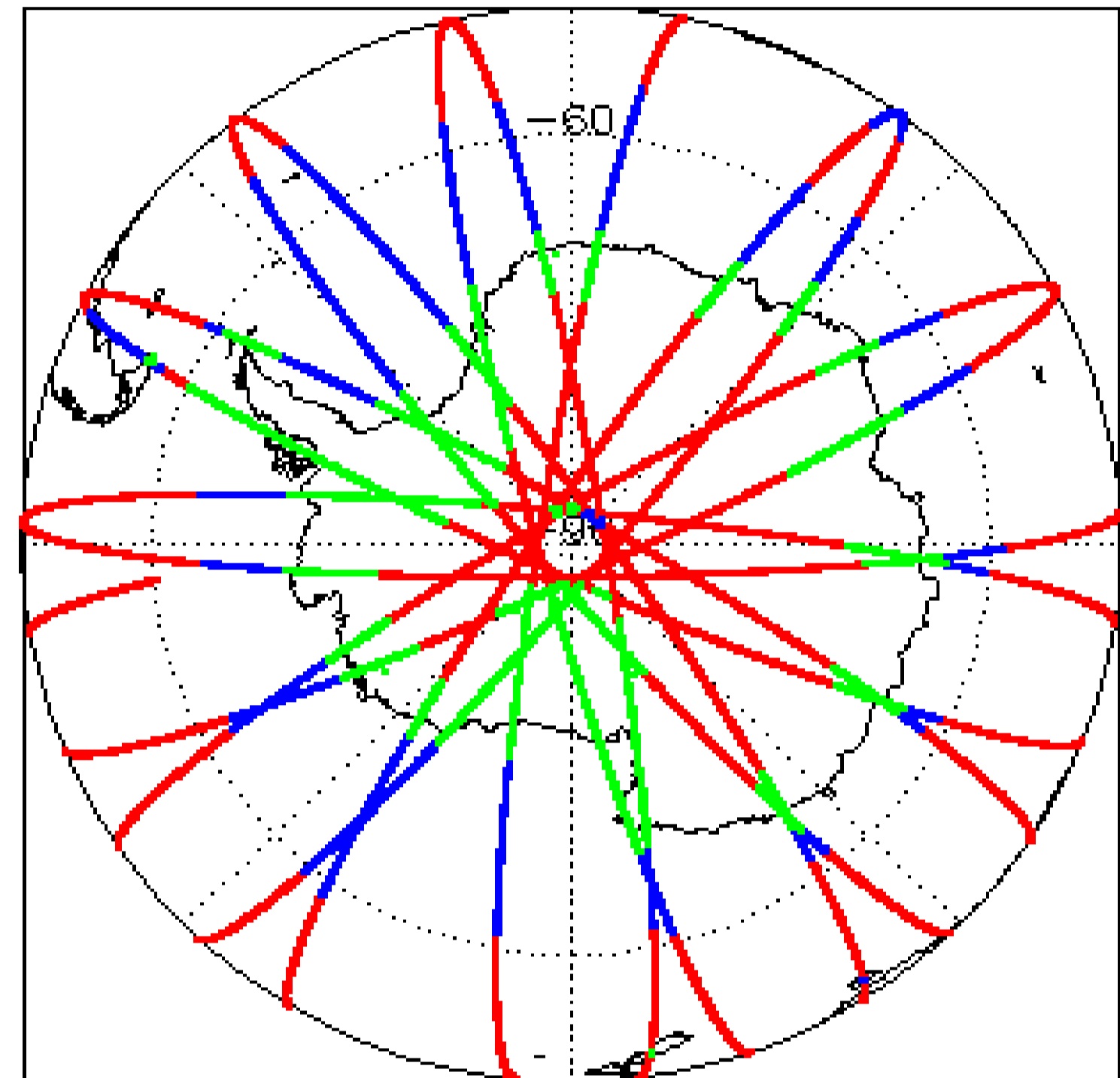
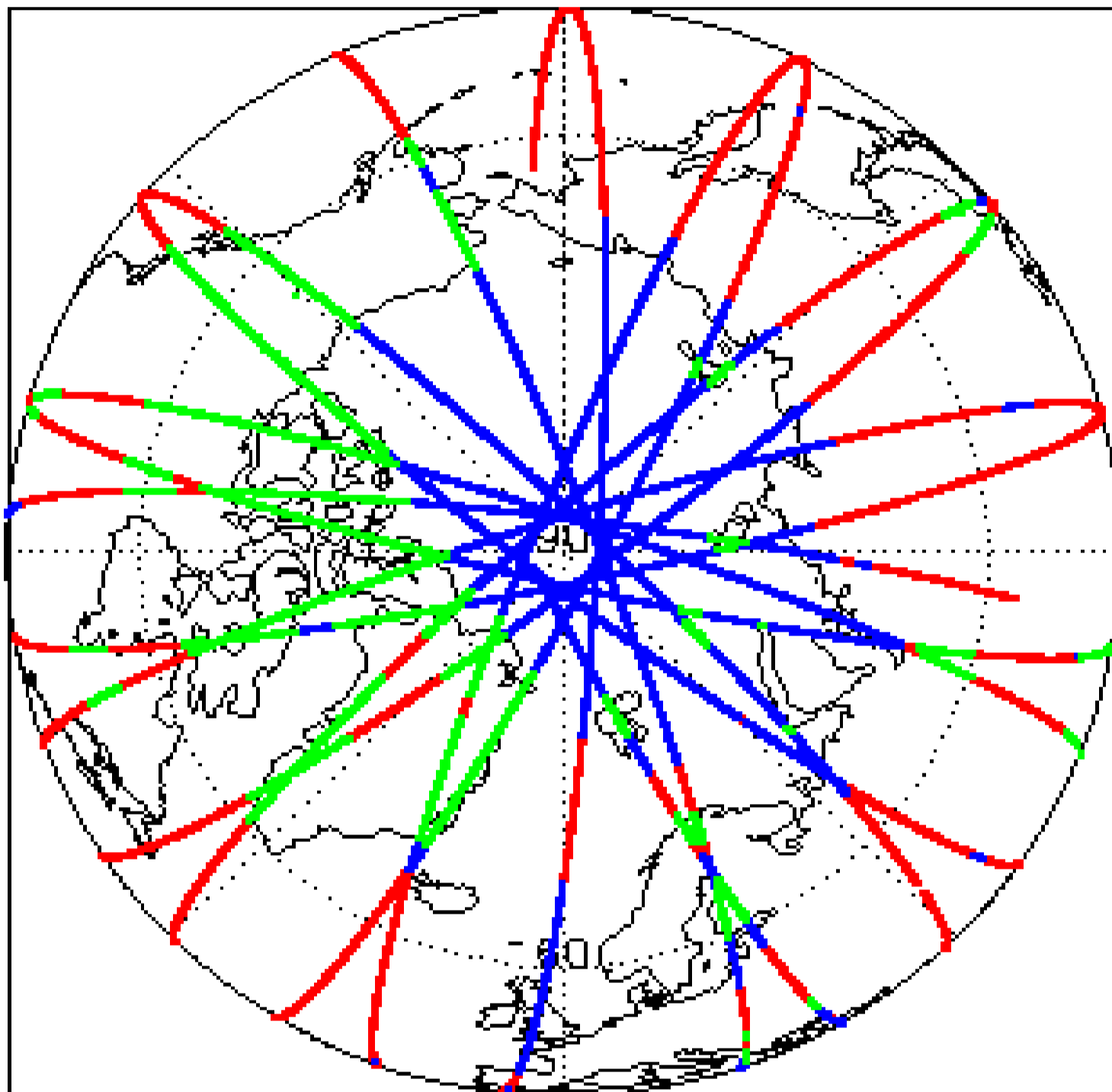
Report Production Date:	22-Dec-2022
Processor Used:	CryoSat Ice Processor
Data Used:	L1B and L2 OFFLINE Data

Check	Status
Server check: science-pds.cryosat.esa.int	Nominal
Server check: calval-pds.cryosat.esa.int	Nominal
Product Software Check	Nominal
Product Format Check	Nominal
Product Header Analysis	Nominal
Star Tracker Usage Check	Nominal
L1B Tracking Flag Check	See Section 4.4
L1B Calibration Usage Check	Nominal
L1B & L2 Auxiliary Data File Usage Check	Nominal
L1B & L2 Auxiliary Correction Error Check	See Section 5.4
L1B & L2 Measurement Confidence Data Check	See Section 4.8 and 5.5
QCC Errors/ Warnings	See Section 6.1, 6.2 and 6.3

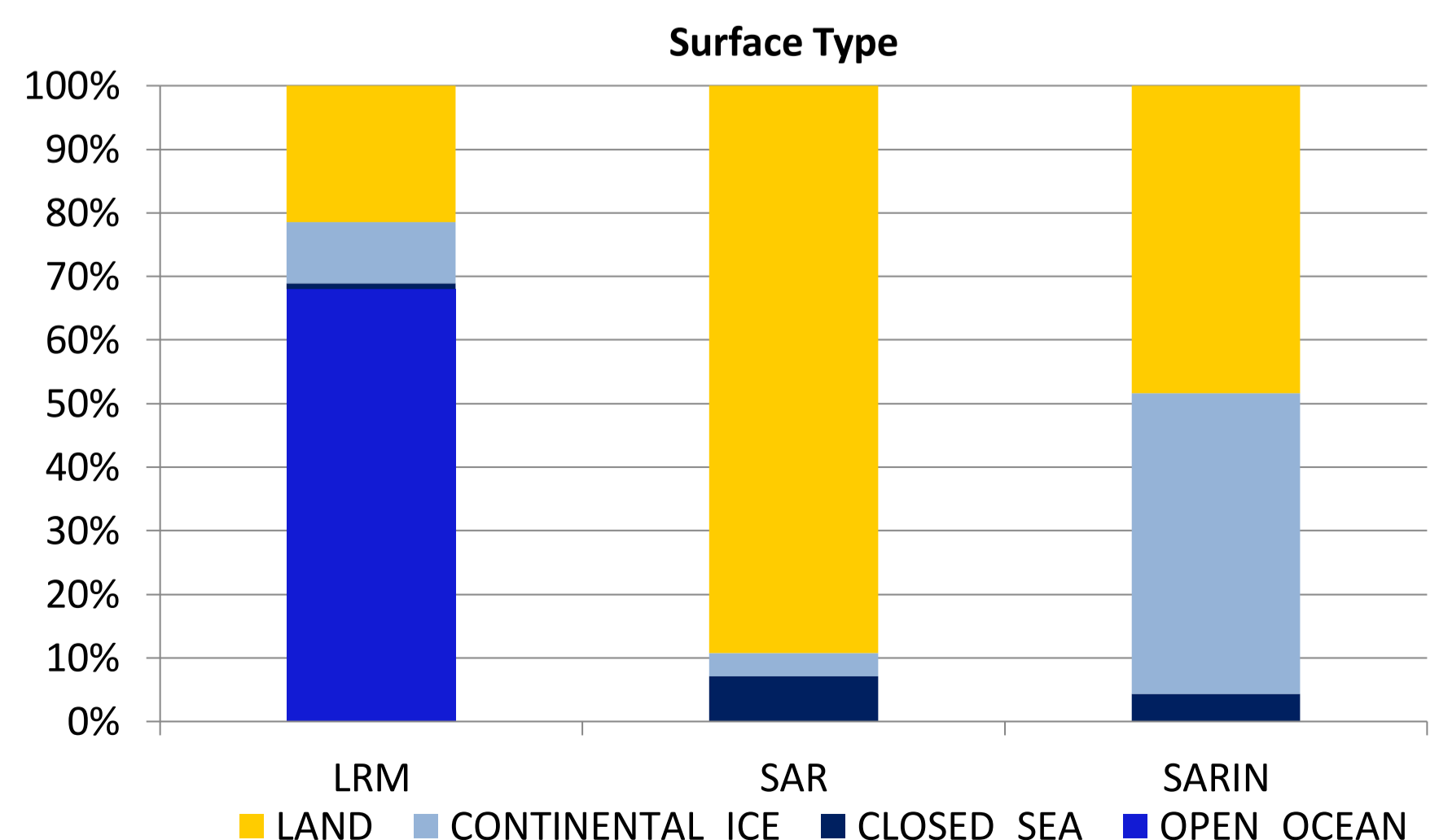
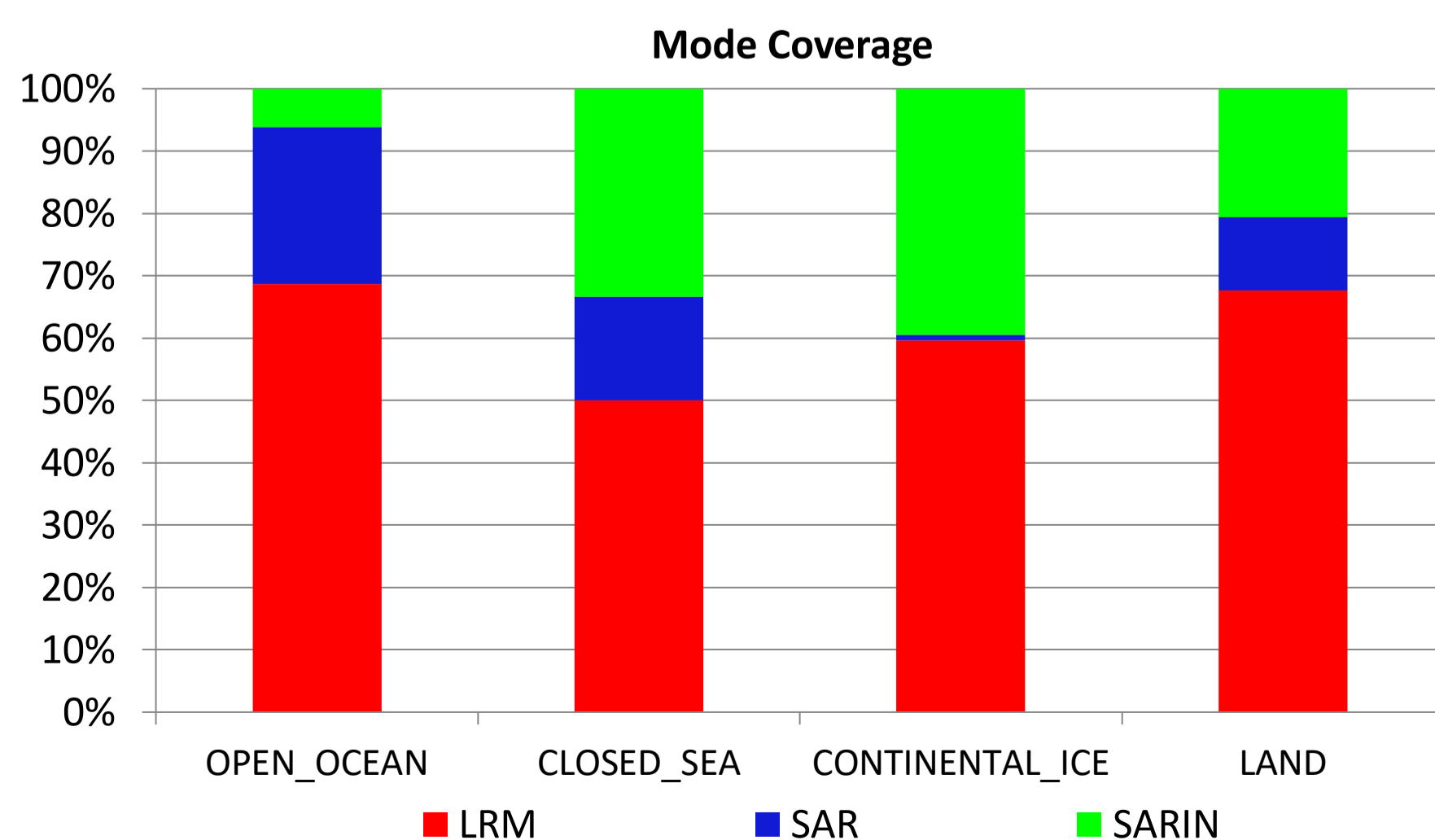
**We would love to hear from you!** Please let us know your feedback about these daily quality reports: What do you like/ dislike? What quality information do you need? Send your feedback to [cs2\\_qc\\_team@telespazio.com](mailto:cs2_qc_team@telespazio.com)

Mission / Instrument News	
21-Nov-2022	None
22-Nov-2022	SIRAL Unavailability from 15:33:59 - 17:20:40 due to an orbit control manoeuvre
23-Nov-2022	Nothing planned

### 2. Global Coverage



Mode Coverage (%)		
	LRM	67.2
	SAR	19.6
	SARIn	13.2



### 3. Instrument Configuration

The SIRAL instrument configuration for the day of acquisition is provided below.

SIRAL instrument(s) in use:	SIRAL - A
-----------------------------	-----------

### 4. Level 1B Data Quality Check

#### 4.1 L1B Product Format Check

Each product, retrieved and unpacked from the science server, is checked to ensure it consists of both an XML header file (.HDR) and a product file (.DBL).

Number of products with errors: 0

#### 4.2 L1B Product Header Analysis

For all products, a series of pre-defined checks are carried out on the MPH and SPH in order to identify any inconsistencies and/or errors raised by the ground-segment processing chain.

Number of products with errors: 0

#### 4.3 Star Tracker Usage Check

Each product is checked in order to ensure a valid star tracker file has been used in processing.

Number of products with errors: 0

#### 4.4 L1B Tracking Flags Check

CryoSat L1B data includes a tracking flag for each measurement record. The bit value of this flag indicates any problems when set.

**Loss of Echo Flag:** This flag is currently set for some products over land, but this is to be expected.

Number of products with errors: 140

Product	Test Failed	Description
CS_OFFL_SIR_LRM_1B_20221121T235819_20221122T002532_E001	Loss of echo	The tracking echo is missing for one or more records
CS_OFFL_SIR_LRM_1B_20221122T002535_20221122T002552_E001	Loss of echo	The tracking echo is missing for one or more records
CS_OFFL_SIR_LRM_1B_20221122T002554_20221122T002604_E001	Loss of echo	The tracking echo is missing for one or more records
CS_OFFL_SIR_LRM_1B_20221122T002817_20221122T002819_E001	Loss of echo	The tracking echo is missing for one or more records
CS_OFFL_SIR_LRM_1B_20221122T002822_20221122T002823_E001	Loss of echo	The tracking echo is missing for one or more records
CS_OFFL_SIR_LRM_1B_20221122T002827_20221122T003203_E001	Loss of echo	The tracking echo is missing for one or more records
CS_OFFL_SIR_LRM_1B_20221122T004713_20221122T004747_E001	Loss of echo	The tracking echo is missing for one or more records
CS_OFFL_SIR_LRM_1B_20221122T004910_20221122T005354_E001	Loss of echo	The tracking echo is missing for one or more records
CS_OFFL_SIR_LRM_1B_20221122T005753_20221122T012141_E001	Loss of echo	The tracking echo is missing for one or more records
CS_OFFL_SIR_LRM_1B_20221122T013027_20221122T013353_E001	Loss of echo	The tracking echo is missing for one or more records
CS_OFFL_SIR_LRM_1B_20221122T022705_20221122T023034_E001	Loss of echo	The tracking echo is missing for one or more records
CS_OFFL_SIR_LRM_1B_20221122T023107_20221122T023304_E001	Loss of echo	The tracking echo is missing for one or more records
CS_OFFL_SIR_LRM_1B_20221122T023310_20221122T023329_E001	Loss of echo	The tracking echo is missing for one or more records
CS_OFFL_SIR_LRM_1B_20221122T023331_20221122T023355_E001	Loss of echo	The tracking echo is missing for one or more records
CS_OFFL_SIR_LRM_1B_20221122T023359_20221122T024316_E001	Loss of echo	The tracking echo is missing for one or more records
CS_OFFL_SIR_LRM_1B_20221122T024319_20221122T025256_E001	Loss of echo	The tracking echo is missing for one or more records
CS_OFFL_SIR_LRM_1B_20221122T030503_20221122T031258_E001	Loss of echo	The tracking echo is missing for one or more records
CS_OFFL_SIR_LRM_1B_20221122T031832_20221122T035018_E001	Loss of echo	The tracking echo is missing for one or more records
CS_OFFL_SIR_LRM_1B_20221122T040917_20221122T041143_E001	Loss of echo	The tracking echo is missing for one or more records
CS_OFFL_SIR_LRM_1B_20221122T041155_20221122T041257_E001	Loss of echo	The tracking echo is missing for one or more records
CS_OFFL_SIR_LRM_1B_20221122T041833_20221122T042014_E001	Loss of echo	The tracking echo is missing for one or more records
CS_OFFL_SIR_LRM_1B_20221122T042159_20221122T042233_E001	Loss of echo	The tracking echo is missing for one or more records
CS_OFFL_SIR_LRM_1B_20221122T042235_20221122T042247_E001	Loss of echo	The tracking echo is missing for one or more records
CS_OFFL_SIR_LRM_1B_20221122T042249_20221122T042502_E001	Loss of echo	The tracking echo is missing for one or more records
CS_OFFL_SIR_LRM_1B_20221122T042537_20221122T042747_E001	Loss of echo	The tracking echo is missing for one or more records
CS_OFFL_SIR_LRM_1B_20221122T052047_20221122T053224_E001	Loss of echo	The tracking echo is missing for one or more records
CS_OFFL_SIR_LRM_1B_20221122T055135_20221122T055324_E001	Loss of echo	The tracking echo is missing for one or more records
CS_OFFL_SIR_LRM_1B_20221122T055338_20221122T055440_E001	Loss of echo	The tracking echo is missing for one or more records
CS_OFFL_SIR_LRM_1B_20221122T055442_20221122T055858_E001	Loss of echo	The tracking echo is missing for one or more records
CS_OFFL_SIR_LRM_1B_20221122T060046_20221122T060654_E001	Loss of echo	The tracking echo is missing for one or more records
CS_OFFL_SIR_LRM_1B_20221122T062619_20221122T062851_E001	Loss of echo	The tracking echo is missing for one or more records
CS_OFFL_SIR_LRM_1B_20221122T070628_20221122T070948_E001	Loss of echo	The tracking echo is missing for one or more records
CS_OFFL_SIR_LRM_1B_20221122T070950_20221122T071008_E001	Loss of echo	The tracking echo is missing for one or more records
CS_OFFL_SIR_LRM_1B_20221122T071011_20221122T071017_E001	Loss of echo	The tracking echo is missing for one or more records
CS_OFFL_SIR_LRM_1B_20221122T071019_20221122T071035_E001	Loss of echo	The tracking echo is missing for one or more records
CS_OFFL_SIR_LRM_1B_20221122T071038_20221122T071053_E001	Loss of echo	The tracking echo is missing for one or more records
CS_OFFL_SIR_LRM_1B_20221122T071056_20221122T071059_E001	Loss of echo	The tracking echo is missing for one or more records
CS_OFFL_SIR_LRM_1B_20221122T071105_20221122T071129_E001	Loss of echo	The tracking echo is missing for one or more records
CS_OFFL_SIR_LRM_1B_20221122T071134_20221122T071146_E001	Loss of echo	The tracking echo is missing for one or more records
CS_OFFL_SIR_LRM_1B_20221122T072425_20221122T075631_E001	Loss of echo	The tracking echo is missing for one or more records
CS_OFFL_SIR_LRM_1B_20221122T080603_20221122T080759_E001	Loss of echo	The tracking echo is missing for one or more records







CS_OFFL_SIR_LRM_1B_20221122T203825_20221122T203840_E001	Loss of echo	The tracking echo is missing for one or more records
CS_OFFL_SIR_LRM_1B_20221122T203845_20221122T204012_E001	Loss of echo	The tracking echo is missing for one or more records
CS_OFFL_SIR_LRM_1B_20221122T204017_20221122T204026_E001	Loss of echo	The tracking echo is missing for one or more records
CS_OFFL_SIR_LRM_1B_20221122T204028_20221122T204041_E001	Loss of echo	The tracking echo is missing for one or more records
CS_OFFL_SIR_LRM_1B_20221122T204043_20221122T204114_E001	Loss of echo	The tracking echo is missing for one or more records
CS_OFFL_SIR_LRM_1B_20221122T204116_20221122T204118_E001	Loss of echo	The tracking echo is missing for one or more records
CS_OFFL_SIR_LRM_1B_20221122T204120_20221122T204127_E001	Loss of echo	The tracking echo is missing for one or more records
CS_OFFL_SIR_LRM_1B_20221122T204135_20221122T204152_E001	Loss of echo	The tracking echo is missing for one or more records
CS_OFFL_SIR_LRM_1B_20221122T204155_20221122T204214_E001	Loss of echo	The tracking echo is missing for one or more records
CS_OFFL_SIR_LRM_1B_20221122T204217_20221122T204239_E001	Loss of echo	The tracking echo is missing for one or more records
CS_OFFL_SIR_LRM_1B_20221122T204243_20221122T204321_E001	Loss of echo	The tracking echo is missing for one or more records
CS_OFFL_SIR_LRM_1B_20221122T204644_20221122T205639_E001	Loss of echo	The tracking echo is missing for one or more records
CS_OFFL_SIR_LRM_1B_20221122T205842_20221122T211339_E001	Loss of echo	The tracking echo is missing for one or more records
CS_OFFL_SIR_LRM_1B_20221122T212958_20221122T214032_E001	Loss of echo	The tracking echo is missing for one or more records
CS_OFFL_SIR_LRM_1B_20221122T214034_20221122T214111_E001	Loss of echo	The tracking echo is missing for one or more records
CS_OFFL_SIR_LRM_1B_20221122T214113_20221122T214230_E001	Loss of echo	The tracking echo is missing for one or more records
CS_OFFL_SIR_LRM_1B_20221122T214711_20221122T220006_E001	Loss of echo	The tracking echo is missing for one or more records
CS_OFFL_SIR_LRM_1B_20221122T220129_20221122T220344_E001	Loss of echo	The tracking echo is missing for one or more records
CS_OFFL_SIR_LRM_1B_20221122T221606_20221122T221936_E001	Loss of echo	The tracking echo is missing for one or more records
CS_OFFL_SIR_LRM_1B_20221122T221939_20221122T222036_E001	Loss of echo	The tracking echo is missing for one or more records
CS_OFFL_SIR_LRM_1B_20221122T222130_20221122T222138_E001	Loss of echo	The tracking echo is missing for one or more records
CS_OFFL_SIR_LRM_1B_20221122T222140_20221122T222146_E001	Loss of echo	The tracking echo is missing for one or more records
CS_OFFL_SIR_LRM_1B_20221122T222148_20221122T222154_E001	Loss of echo	The tracking echo is missing for one or more records
CS_OFFL_SIR_LRM_1B_20221122T222200_20221122T222223_E001	Loss of echo	The tracking echo is missing for one or more records
CS_OFFL_SIR_LRM_1B_20221122T222230_20221122T222504_E001	Loss of echo	The tracking echo is missing for one or more records
CS_OFFL_SIR_LRM_1B_20221122T222507_20221122T222507_E001	Loss of echo	The tracking echo is missing for one or more records
CS_OFFL_SIR_LRM_1B_20221122T222509_20221122T222546_E001	Loss of echo	The tracking echo is missing for one or more records

#### 4.5 L1B Calibration Usage Check

Each product is checked in order to ensure that the necessary calibration files have been used in processing.

Number of products with errors: 0

#### 4.6 L1B Auxiliary Data File Usage Check

Each product is checked for missing Data Set Descriptors with respect to a pre-determined baseline and also to check the validity of Auxiliary Data Files is correct.

Number of products with errors: 0

#### 4.7 L1B Auxiliary Correction Error Check

CryoSat L1B data includes a correction error flag for each measurement record. The bit value of this flag indicates any problems when set.

Number of products with errors: 0

#### 4.8 L1B Measurement Confidence Data Check

CryoSat L1B data includes a measurement confidence flag for each measurement record. The bit value of this flag indicates any problems when set.

Currently, there are several common error flags raised in the Level 1B products which are expected due to operational mode or surface type. All common flags are summarised in the list below, followed by a table of any additional issues arising from this test.

**Block Degraded Flag:** This flag is currently set for a number of individual records generally at the start or end of products (all modes), but this is to be expected.

**Phase Perturbation Applied Flag:** This flag is currently set for all L1B SARIn products, indicating that the ADC correction application is deactivated, but this is in line with the current configuration.

Number of products with errors: 2

Product	Test Failed	Description
CS_OFFL_SIR_LRM_1B_20221122T090445_20221122T092105_E001	Echo error, TRK echo error	The tracking echo has returned an error and the Rx1 Echo Error flag is set, indicating a degraded echo

### 5. Level 2 Data Quality Check

#### 5.1 L2 Product Format Check

Each product, retrieved and unpacked from the science server, is checked to ensure it consists of both an XML header file (.HDR) and a product file (.DBL).

Number of products with errors: 0

#### 5.2 L2 Product Header Analysis

For all products, a series of pre-defined checks are carried out on the MPH and SPH in order to identify any inconsistencies and/or errors raised by the ground-segment processing chain.

Number of products with errors: 0

#### 5.3 L2 Auxiliary Data File Usage Check

Each product is checked for missing Data Set Descriptors with respect to a pre-determined baseline and also to check the validity of Auxiliary Data Files is correct.

Number of products with errors: 0



## 5.4 L2 Auxiliary Correction Error Check

CryoSat L2 data includes a correction error flag for each measurement record. The bit value of this flag indicates any problems when set.

Currently, there are several common error flags raised in the Level 2 products which are expected due to operational mode or surface type. All common flags are summarised in the list below, followed by a table of any additional issues arising from this test.

**Sea State Bias error:** This flag is currently set in all L2 LRM products over ocean, indicating a problem with the sea state bias. Due to a known anomaly, the sea state bias field is currently unfilled in all Baseline-E L2 LRM products. This anomaly will be resolved in the next IPF update.

**Snow Depth Model error:** This flag is currently set in all L2 SAR products over ocean, which fall outside of the extent of the current snow depth model. Currently the snow depth model is only available over the high-latitude Arctic. There is no model currently provided for the Antarctic or marginal Arctic regions. An updated model will be provided in the next IPF update.

**Number of products with errors:** 92

Product	Test Failed	Description
CS_OFFL_SIR_SAR_2__20221122T012141_20221122T012331_E001	Snow depth model	There is an error with the Snow Depth value, where one or more records falls outside of the extent of the current snow depth model
CS_OFFL_SIR_SAR_2__20221122T013516_20221122T013755_E001	Snow depth model	There is an error with the Snow Depth value, where one or more records falls outside of the extent of the current snow depth model
CS_OFFL_SIR_SAR_2__20221122T022512_20221122T022704_E001	Snow depth model	There is an error with the Snow Depth value, where one or more records falls outside of the extent of the current snow depth model
CS_OFFL_SIR_SAR_2__20221122T025256_20221122T025652_E001	Snow depth model	There is an error with the Snow Depth value, where one or more records falls outside of the extent of the current snow depth model
CS_OFFL_SIR_SAR_2__20221122T030056_20221122T030337_E001	Snow depth model	There is an error with the Snow Depth value, where one or more records falls outside of the extent of the current snow depth model
CS_OFFL_SIR_SAR_2__20221122T031411_20221122T031832_E001	Snow depth model	There is an error with the Snow Depth value, where one or more records falls outside of the extent of the current snow depth model
CS_OFFL_SIR_SAR_2__20221122T035109_20221122T035201_E001	Snow depth model	There is an error with the Snow Depth value, where one or more records falls outside of the extent of the current snow depth model
CS_OFFL_SIR_SAR_2__20221122T040042_20221122T040328_E001	Snow depth model	There is an error with the Snow Depth value, where one or more records falls outside of the extent of the current snow depth model
CS_OFFL_SIR_SAR_2__20221122T040538_20221122T040617_E001	Snow depth model	There is an error with the Snow Depth value, where one or more records falls outside of the extent of the current snow depth model
CS_OFFL_SIR_SAR_2__20221122T040741_20221122T040917_E001	Snow depth model	There is an error with the Snow Depth value, where one or more records falls outside of the extent of the current snow depth model
CS_OFFL_SIR_SAR_2__20221122T041257_20221122T041302_E001	Snow depth model	There is an error with the Snow Depth value, where one or more records falls outside of the extent of the current snow depth model
CS_OFFL_SIR_SAR_2__20221122T041403_20221122T041552_E001	Snow depth model	There is an error with the Snow Depth value, where one or more records falls outside of the extent of the current snow depth model
CS_OFFL_SIR_SAR_2__20221122T042747_20221122T043035_E001	Snow depth model	There is an error with the Snow Depth value, where one or more records falls outside of the extent of the current snow depth model
CS_OFFL_SIR_SAR_2__20221122T043857_20221122T044309_E001	Snow depth model	There is an error with the Snow Depth value, where one or more records falls outside of the extent of the current snow depth model
CS_OFFL_SIR_SAR_2__20221122T045251_20221122T045648_E001	Snow depth model	There is an error with the Snow Depth value, where one or more records falls outside of the extent of the current snow depth model
CS_OFFL_SIR_SAR_2__20221122T051802_20221122T052047_E001	Snow depth model	There is an error with the Snow Depth value, where one or more records falls outside of the extent of the current snow depth model
CS_OFFL_SIR_SAR_2__20221122T053942_20221122T054144_E001	Snow depth model	There is an error with the Snow Depth value, where one or more records falls outside of the extent of the current snow depth model
CS_OFFL_SIR_SAR_2__20221122T054441_20221122T055134_E001	Snow depth model	There is an error with the Snow Depth value, where one or more records falls outside of the extent of the current snow depth model
CS_OFFL_SIR_SAR_2__20221122T055324_20221122T055338_E001	Snow depth model	There is an error with the Snow Depth value, where one or more records falls outside of the extent of the current snow depth model
CS_OFFL_SIR_SAR_2__20221122T060655_20221122T060842_E001	Snow depth model	There is an error with the Snow Depth value, where one or more records falls outside of the extent of the current snow depth model
CS_OFFL_SIR_SAR_2__20221122T061859_20221122T062314_E001	Snow depth model	There is an error with the Snow Depth value, where one or more records falls outside of the extent of the current snow depth model
CS_OFFL_SIR_SAR_2__20221122T063404_20221122T063613_E001	Snow depth model	There is an error with the Snow Depth value, where one or more records falls outside of the extent of the current snow depth model
CS_OFFL_SIR_SAR_2__20221122T070626_20221122T070628_E001	Snow depth model	There is an error with the Snow Depth value, where one or more records falls outside of the extent of the current snow depth model
CS_OFFL_SIR_SAR_2__20221122T072345_20221122T072425_E001	Snow depth model	There is an error with the Snow Depth value, where one or more records falls outside of the extent of the current snow depth model
CS_OFFL_SIR_SAR_2__20221122T075632_20221122T080329_E001	Snow depth model	There is an error with the Snow Depth value, where one or more records falls outside of the extent of the current snow depth model
CS_OFFL_SIR_SAR_2__20221122T081428_20221122T081522_E001	Snow depth model	There is an error with the Snow Depth value, where one or more records falls outside of the extent of the current snow depth model
CS_OFFL_SIR_SAR_2__20221122T083026_20221122T083206_E001	Snow depth model	There is an error with the Snow Depth value, where one or more records falls outside of the extent of the current snow depth model
CS_OFFL_SIR_SAR_2__20221122T083208_20221122T083229_E001	Snow depth model	There is an error with the Snow Depth value, where one or more records falls outside of the extent of the current snow depth model
CS_OFFL_SIR_SAR_2__20221122T092105_20221122T092317_E001	Snow depth model	There is an error with the Snow Depth value, where one or more records falls outside of the extent of the current snow depth model
CS_OFFL_SIR_SAR_2__20221122T093249_20221122T093649_E001	Snow depth model	There is an error with the Snow Depth value, where one or more records falls outside of the extent of the current snow depth model
CS_OFFL_SIR_SAR_2__20221122T093706_20221122T093730_E001	Snow depth model	There is an error with the Snow Depth value, where one or more records falls outside of the extent of the current snow depth model
CS_OFFL_SIR_SAR_2__20221122T095347_20221122T095442_E001	Snow depth model	There is an error with the Snow Depth value, where one or more records falls outside of the extent of the current snow depth model
CS_OFFL_SIR_SAR_2__20221122T100853_20221122T101032_E001	Snow depth model	There is an error with the Snow Depth value, where one or more records falls outside of the extent of the current snow depth model
CS_OFFL_SIR_SAR_2__20221122T101315_20221122T101527_E001	Snow depth model	There is an error with the Snow Depth value, where one or more records falls outside of the extent of the current snow depth model
CS_OFFL_SIR_SAR_2__20221122T101527_20221122T101616_E001	Snow depth model	There is an error with the Snow Depth value, where one or more records falls outside of the extent of the current snow depth model
CS_OFFL_SIR_SAR_2__20221122T101619_20221122T101742_E001	Snow depth model	There is an error with the Snow Depth value, where one or more records falls outside of the extent of the current snow depth model
CS_OFFL_SIR_SAR_2__20221122T104024_20221122T104112_E001	Snow depth model	There is an error with the Snow Depth value, where one or more records falls outside of the extent of the current snow depth model
CS_OFFL_SIR_SAR_2__20221122T105311_20221122T105432_E001	Snow depth model	There is an error with the Snow Depth value, where one or more records falls outside of the extent of the current snow depth model
CS_OFFL_SIR_SAR_2__20221122T111900_20221122T112049_E001	Snow depth model	There is an error with the Snow Depth value, where one or more records falls outside of the extent of the current snow depth model
CS_OFFL_SIR_SAR_2__20221122T113255_20221122T113436_E001	Snow depth model	There is an error with the Snow Depth value, where one or more records falls outside of the extent of the current snow depth model
CS_OFFL_SIR_SAR_2__20221122T120305_20221122T120321_E001	Snow depth model	There is an error with the Snow Depth value, where one or more records falls outside of the extent of the current snow depth model
CS_OFFL_SIR_SAR_2__20221122T125751_20221122T130027_E001	Snow depth model	There is an error with the Snow Depth value, where one or more records falls outside of the extent of the current snow depth model







## 5.5 L2 Measurement Quality Flag Check

CryoSat L2 data includes a quality flag for each 20-Hz measurement record. The bit value of this flag indicates any problems when set.

**Currently, there are several common error flags raised in the Level 2 products which are expected due to operational mode or surface type. All common flags are summarised in the list below, followed by a table of any additional issues arising from this test.**

**Height and Backscatter errors:** These flags are currently set for products over land, but this is to be expected. Retracker 1 Height and Backscatter error flags are also set for products over sea-ice, but this is to be expected.

**SSHA interpolation error:** This flag is currently set for a number of SAR products occurring at surface type boundaries, but this is to be expected.

**Freeboard error:** This flag is correctly set in all L2 SAR products that are not discriminated as sea-ice, and for which freeboard cannot be calculated.

**Peakiness error:** This flag is currently set for products over sea-ice, but this is to be expected.

**SARIn X-Track Angle Error:** This flag is set when the difference between the computed surface elevation and the DEM is >50 m. The DEM is only available over Greenland and Antarctica and as a result this flag is set for L2 SARIn products in all other locations as expected.

**Number of products with errors:** 215

Product	Test Failed	Description
CS_OFFL_SIR_LRM_2_20221121T235819_20221122T002532_E001	Height Error (Retracker 2), Backscatter Error (Retracker 2)	There is a height and backscatter error for Retracker 2 for one or more records
CS_OFFL_SIR_LRM_2_20221122T005753_20221122T012141_E001	Height Error (Retracker 2), Backscatter Error (Retracker 2), Surface model unavailable	There is a height and backscatter error for Retracker 2 and no DEM or Slope Model was used for the location of one or more records
CS_OFFL_SIR_LRM_2_20221122T013755_20221122T021022_E001	Height Error (Retracker 2), Backscatter Error (Retracker 2)	There is a height and backscatter error for Retracker 2 for one or more records
CS_OFFL_SIR_LRM_2_20221122T023359_20221122T024316_E001	Height Error (Retracker 2), Backscatter Error (Retracker 2)	There is a height and backscatter error for Retracker 2 for one or more records
CS_OFFL_SIR_LRM_2_20221122T024319_20221122T025256_E001	Height Error (Retracker 2), Height Error (Retracker 3), Backscatter Error (Retracker 2)	There is a height and backscatter error for Retracker 2 and a height error for Retracker 3 for one or more records
CS_OFFL_SIR_LRM_2_20221122T031832_20221122T035018_E001	Height Error (Retracker 2), Backscatter Error (Retracker 2), Surface model unavailable	There is a height and backscatter error for Retracker 2 and no DEM or Slope Model was used for the location of one or more records
CS_OFFL_SIR_LRM_2_20221122T040328_20221122T040433_E001	Height Error (Retracker 2), Backscatter Error (Retracker 2)	There is a height and backscatter error for Retracker 2 for one or more records
CS_OFFL_SIR_LRM_2_20221122T043035_20221122T043857_E001	Height Error (Retracker 2), Backscatter Error (Retracker 2)	There is a height and backscatter error for Retracker 2 for one or more records
CS_OFFL_SIR_LRM_2_20221122T045649_20221122T051802_E001	Height Error (Retracker 2), Backscatter Error (Retracker 2)	There is a height and backscatter error for Retracker 2 for one or more records
CS_OFFL_SIR_LRM_2_20221122T052047_20221122T053224_E001	Height Error (Retracker 2), Backscatter Error (Retracker 2)	There is a height and backscatter error for Retracker 2 for one or more records
CS_OFFL_SIR_LRM_2_20221122T054144_20221122T054441_E001	Height Error (Retracker 2), Backscatter Error (Retracker 2)	There is a height and backscatter error for Retracker 2 for one or more records
CS_OFFL_SIR_LRM_2_20221122T060046_20221122T060654_E001	Height Error (Retracker 2), Backscatter Error (Retracker 2)	There is a height and backscatter error for Retracker 2 for one or more records
CS_OFFL_SIR_LRM_2_20221122T060842_20221122T061859_E001	Height Error (Retracker 2), Backscatter Error (Retracker 2)	There is a height and backscatter error for Retracker 2 for one or more records
CS_OFFL_SIR_LRM_2_20221122T063613_20221122T070626_E001	Height Error (Retracker 2), Backscatter Error (Retracker 2)	There is a height and backscatter error for Retracker 2 for one or more records
CS_OFFL_SIR_LRM_2_20221122T070628_20221122T070948_E001	Height Error (Retracker 2), Backscatter Error (Retracker 2)	There is a height and backscatter error for Retracker 2 for one or more records
CS_OFFL_SIR_LRM_2_20221122T070950_20221122T071008_E001	Surface Model Unavailable	No DEM or Slope Model was used for the location of one or more records
CS_OFFL_SIR_LRM_2_20221122T072425_20221122T075631_E001	Height Error (Retracker 2), Height Error (Retracker 3), Backscatter Error (Retracker 2)	There is a height and backscatter error for Retracker 2 and a height error for Retracker 3 for one or more records
CS_OFFL_SIR_LRM_2_20221122T081522_20221122T083026_E001	Height Error (Retracker 2), Height Error (Retracker 3), Backscatter Error (Retracker 2)	There is a height and backscatter error for Retracker 2 and a height error for Retracker 3 for one or more records
CS_OFFL_SIR_LRM_2_20221122T083229_20221122T084258_E001	Height Error (Retracker 2), Backscatter Error (Retracker 2)	There is a height and backscatter error for Retracker 2 for one or more records
CS_OFFL_SIR_LRM_2_20221122T090445_20221122T092105_E001	Height Error (Retracker 2), Height Error (Retracker 3), Backscatter Error (Retracker 2)	There is a height and backscatter error for Retracker 2 and a height error for Retracker 3 for one or more records
CS_OFFL_SIR_LRM_2_20221122T095442_20221122T100852_E001	Height Error (Retracker 2), Backscatter Error (Retracker 2)	There is a height and backscatter error for Retracker 2 for one or more records
CS_OFFL_SIR_LRM_2_20221122T101032_20221122T101315_E001	Height Error (Retracker 2), Backscatter Error (Retracker 2)	There is a height and backscatter error for Retracker 2 for one or more records
CS_OFFL_SIR_LRM_2_20221122T102528_20221122T102532_E001	Surface Model Unavailable	No DEM or Slope Model was used for the location of one or more records
CS_OFFL_SIR_LRM_2_20221122T104341_20221122T104558_E001	Height Error (Retracker 2), Height Error (Retracker 3), Backscatter Error (Retracker 2)	There is a height and backscatter error for Retracker 2 and a height error for Retracker 3 for one or more records
CS_OFFL_SIR_LRM_2_20221122T104721_20221122T105311_E001	Height Error (Retracker 2), Height Error (Retracker 3), Backscatter Error (Retracker 2)	There is a height and backscatter error for Retracker 2 and a height error for Retracker 3 for one or more records
CS_OFFL_SIR_LRM_2_20221122T105555_20221122T105823_E001	Height Error (Retracker 2), Height Error (Retracker 3), Backscatter Error (Retracker 2)	There is a height and backscatter error for Retracker 2 and a height error for Retracker 3 for one or more records
CS_OFFL_SIR_LRM_2_20221122T105825_20221122T111900_E001	Height Error (Retracker 2), Height Error (Retracker 3), Backscatter Error (Retracker 2)	There is a height and backscatter error for Retracker 2 and a height error for Retracker 3 for one or more records























