

1. Overview

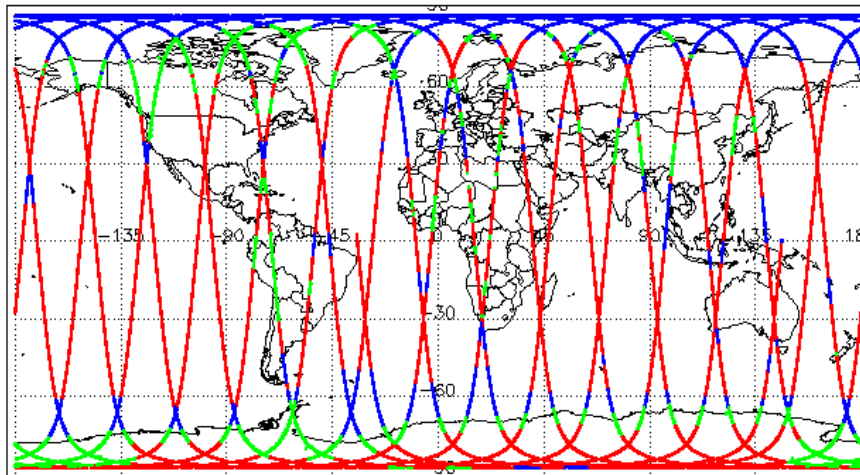
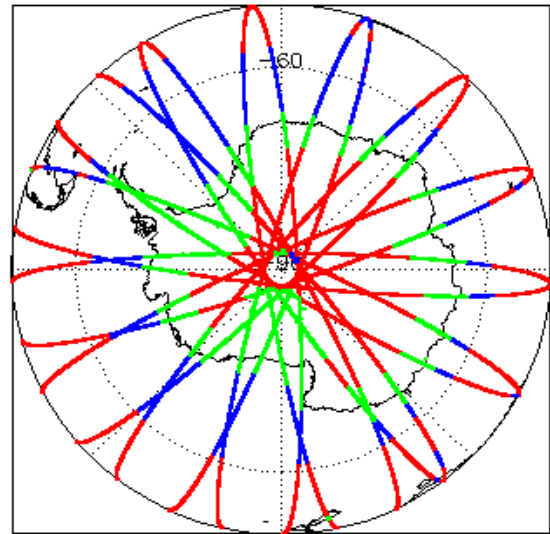
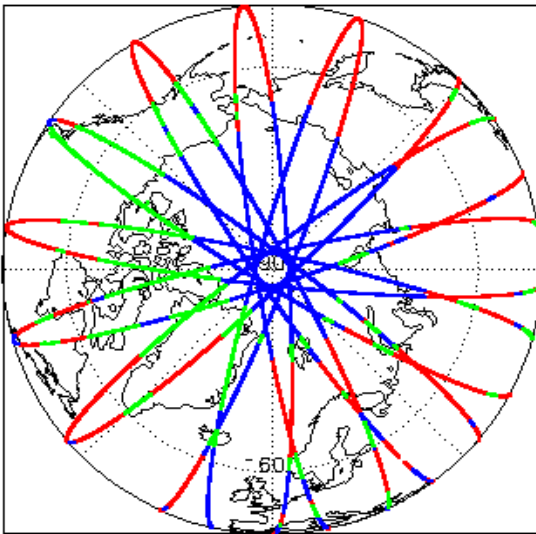
Report Production Date:	23-Sep-2022
Processor Used:	CryoSat Ice Processor
Data Used:	L1B and L2 OFFLINE Data

Check	Status
Server check: science-pds.cryosat.esa.int	Nominal
Server check: calval-pds.cryosat.esa.int	Nominal
Product Software Check	Nominal
Product Format Check	Nominal
Product Header Analysis	Nominal
Star Tracker Usage Check	Nominal
L1B Tracking Flag Check	See Section 4.4
L1B Calibration Usage Check	See Section 4.5
L1B & L2 Auxiliary Data File Usage Check	Nominal
L1B & L2 Auxiliary Correction Error Check	See Section 5.4
L1B & L2 Measurement Confidence Data Check	See Section 4.8 and 5.5
QCC Errors/ Warnings	See Section 6.1, 6.2 and 6.3

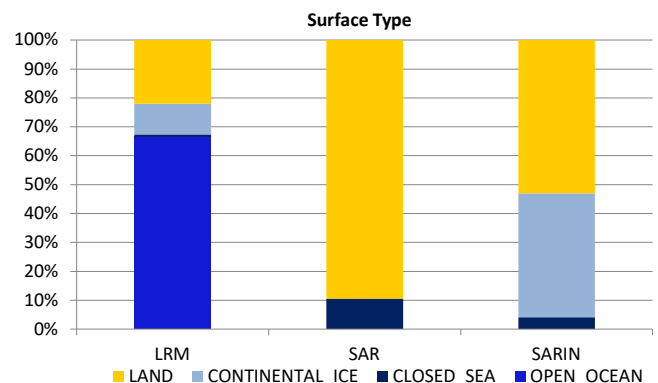
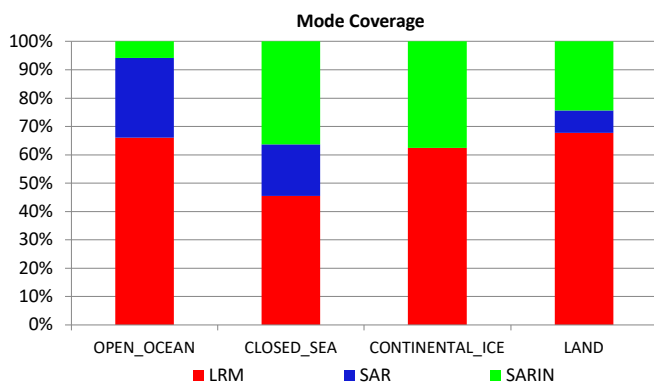
Mission / Instrument News

26-Aug-2022	None
27-Aug-2022	None
28-Aug-2022	Nothing planned

2. Global Coverage



Mode Coverage (%)		
	LRM	65.9
	SAR	20.5
	SARIn	13.6



3. Instrument Configuration

The SIRAL instrument configuration for the day of acquisition is provided below.

SIRAL instrument(s) in use:	SIRAL - A
-----------------------------	-----------

4. Level 1B Data Quality Check

4.1 L1B Product Format Check

Each product, retrieved and unpacked from the science server, is checked to ensure it consists of both an XML header file (.HDR) and a product file (.DBL).

Number of products with errors: 0

4.2 L1B Product Header Analysis

For all products, a series of pre-defined checks are carried out on the MPH and SPH in order to identify any inconsistencies and/or errors raised by the ground-segment processing chain.

Number of products with errors: 0

4.3 Star Tracker Usage Check

Each product is checked in order to ensure a valid star tracker file has been used in processing.

Number of products with errors: 0

4.4 L1B Tracking Flags Check

CryoSat L1B data includes a tracking flag for each measurement record. The bit value of this flag indicates any problems when set.

Loss of Echo Flag: This flag is currently set for some products over land, but this is to be expected.

Number of products with errors: 105

Product	Test Failed	Description
CS_OFFL_SIR_LRM_1B_20220826T235930_20220827T000106_E001	Loss of echo	The tracking echo is missing for one or more records
CS_OFFL_SIR_LRM_1B_20220827T000109_20220827T001142_E001	Loss of echo	The tracking echo is missing for one or more records
CS_OFFL_SIR_LRM_1B_20220827T003523_20220827T004748_E001	Loss of echo	The tracking echo is missing for one or more records
CS_OFFL_SIR_LRM_1B_20220827T011952_20220827T012526_E001	Loss of echo	The tracking echo is missing for one or more records
CS_OFFL_SIR_LRM_1B_20220827T012921_20220827T013852_E001	Loss of echo	The tracking echo is missing for one or more records
CS_OFFL_SIR_LRM_1B_20220827T014054_20220827T015525_E001	Loss of echo	The tracking echo is missing for one or more records
CS_OFFL_SIR_LRM_1B_20220827T021624_20220827T022006_E001	Loss of echo	The tracking echo is missing for one or more records
CS_OFFL_SIR_LRM_1B_20220827T022917_20220827T023036_E001	Loss of echo	The tracking echo is missing for one or more records
CS_OFFL_SIR_LRM_1B_20220827T023039_20220827T023340_E001	Loss of echo	The tracking echo is missing for one or more records
CS_OFFL_SIR_LRM_1B_20220827T023859_20220827T024215_E001	Loss of echo	The tracking echo is missing for one or more records
CS_OFFL_SIR_LRM_1B_20220827T024337_20220827T024555_E001	Loss of echo	The tracking echo is missing for one or more records
CS_OFFL_SIR_LRM_1B_20220827T025825_20220827T030537_E001	Loss of echo	The tracking echo is missing for one or more records
CS_OFFL_SIR_LRM_1B_20220827T030540_20220827T030740_E001	Loss of echo	The tracking echo is missing for one or more records
CS_OFFL_SIR_LRM_1B_20220827T030808_20220827T030816_E001	Loss of echo	The tracking echo is missing for one or more records
CS_OFFL_SIR_LRM_1B_20220827T031050_20220827T031155_E001	Loss of echo	The tracking echo is missing for one or more records
CS_OFFL_SIR_LRM_1B_20220827T034304_20220827T034436_E001	Loss of echo	The tracking echo is missing for one or more records
CS_OFFL_SIR_LRM_1B_20220827T035016_20220827T041402_E001	Loss of echo	The tracking echo is missing for one or more records
CS_OFFL_SIR_LRM_1B_20220827T041408_20220827T041409_E001	Loss of echo	The tracking echo is missing for one or more records
CS_OFFL_SIR_LRM_1B_20220827T041411_20220827T041412_E001	Loss of echo	The tracking echo is missing for one or more records
CS_OFFL_SIR_LRM_1B_20220827T041414_20220827T041424_E001	Loss of echo	The tracking echo is missing for one or more records
CS_OFFL_SIR_LRM_1B_20220827T041426_20220827T041426_E001	Loss of echo	The tracking echo is missing for one or more records
CS_OFFL_SIR_LRM_1B_20220827T041428_20220827T042336_E001	Loss of echo	The tracking echo is missing for one or more records
CS_OFFL_SIR_LRM_1B_20220827T042458_20220827T042540_E001	Loss of echo	The tracking echo is missing for one or more records
CS_OFFL_SIR_LRM_1B_20220827T043805_20220827T043946_E001	Loss of echo	The tracking echo is missing for one or more records
CS_OFFL_SIR_LRM_1B_20220827T044055_20220827T044409_E001	Loss of echo	The tracking echo is missing for one or more records
CS_OFFL_SIR_LRM_1B_20220827T044452_20220827T044514_E001	Loss of echo	The tracking echo is missing for one or more records
CS_OFFL_SIR_LRM_1B_20220827T044848_20220827T051321_E001	Loss of echo	The tracking echo is missing for one or more records
CS_OFFL_SIR_LRM_1B_20220827T052203_20220827T052528_E001	Loss of echo	The tracking echo is missing for one or more records
CS_OFFL_SIR_LRM_1B_20220827T061707_20220827T062328_E001	Loss of echo	The tracking echo is missing for one or more records
CS_OFFL_SIR_LRM_1B_20220827T062416_20220827T062622_E001	Loss of echo	The tracking echo is missing for one or more records
CS_OFFL_SIR_LRM_1B_20220827T062624_20220827T062626_E001	Loss of echo	The tracking echo is missing for one or more records
CS_OFFL_SIR_LRM_1B_20220827T062628_20220827T062629_E001	Loss of echo	The tracking echo is missing for one or more records
CS_OFFL_SIR_LRM_1B_20220827T062631_20220827T062748_E001	Loss of echo	The tracking echo is missing for one or more records
CS_OFFL_SIR_LRM_1B_20220827T062750_20220827T063232_E001	Loss of echo	The tracking echo is missing for one or more records
CS_OFFL_SIR_LRM_1B_20220827T063234_20220827T063326_E001	Loss of echo	The tracking echo is missing for one or more records
CS_OFFL_SIR_LRM_1B_20220827T063328_20220827T065241_E001	Loss of echo	The tracking echo is missing for one or more records
CS_OFFL_SIR_LRM_1B_20220827T065622_20220827T070059_E001	Loss of echo	The tracking echo is missing for one or more records
CS_OFFL_SIR_LRM_1B_20220827T070102_20220827T070435_E001	Loss of echo	The tracking echo is missing for one or more records
CS_OFFL_SIR_LRM_1B_20220827T070936_20220827T074216_E001	Loss of echo	The tracking echo is missing for one or more records
CS_OFFL_SIR_LRM_1B_20220827T075353_20220827T075726_E001	Loss of echo	The tracking echo is missing for one or more records
CS_OFFL_SIR_LRM_1B_20220827T075930_20220827T080322_E001	Loss of echo	The tracking echo is missing for one or more records

4.5 L1B Calibration Usage Check

Each product is checked in order to ensure that the necessary calibration files have been used in processing.

Number of products with errors: 1

Product	Test Failed	Description
CS_OFFL_SIR_SIN_1B_20220827T203212_20220827T203216_E001	Cal1 Correction missing	The Cal1 correction has not been applied for one or more records

4.6 L1B Auxiliary Data File Usage Check

Each product is checked for missing Data Set Descriptors with respect to a pre-determined baseline and also to check the validity of Auxiliary Data Files is correct.

Number of products with errors: 0

4.7 L1B Auxiliary Correction Error Check

CryoSat L1B data includes a correction error flag for each measurement record. The bit value of this flag indicates any problems when set.

Number of products with errors: 0

4.8 L1B Measurement Confidence Data Check

CryoSat L1B data includes a measurement confidence flag for each measurement record. The bit value of this flag indicates any problems when set.

Currently, there are several common error flags raised in the Level 1B products which are expected due to operational mode or surface type. All common flags are summarised in the list below, followed by a table of any additional issues arising from this test.

Block Degraded Flag: This flag is currently set for a number of individual records generally at the start or end of products (all modes), but this is to be expected.

Phase Perturbation Applied Flag: This flag is currently set for all L1B SARIn products, indicating that the ADC correction application is deactivated, but this is in line with the current configuration.

Number of products with errors: 2

Product	Test Failed	Description
CS_OFFL_SIR_LRM_1B_20220827T062631_20220827T062748_E001	Echo error, TRK echo error	The tracking echo has returned an error and the Rx1 Echo Error flag is set, indicating a degraded echo
CS_OFFL_SIR_LRM_1B_20220827T075930_20220827T080322_E001	Echo error, TRK echo error	The tracking echo has returned an error and the Rx1 Echo Error flag is set, indicating a degraded echo

5. Level 2 Data Quality Check

5.1 L2 Product Format Check

Each product, retrieved and unpacked from the science server, is checked to ensure it consists of both an XML header file (.HDR) and a product file (.DBL).

Number of products with errors: 0

5.2 L2 Product Header Analysis

For all products, a series of pre-defined checks are carried out on the MPH and SPH in order to identify any inconsistencies and/or errors raised by the ground-segment processing chain.

Number of products with errors: 0

5.3 L2 Auxiliary Data File Usage Check

Each product is checked for missing Data Set Descriptors with respect to a pre-determined baseline and also to check the validity of Auxiliary Data Files is correct.

Number of products with errors: 0

5.4 L2 Auxiliary Correction Error Check

CryoSat L2 data includes a correction error flag for each measurement record. The bit value of this flag indicates any problems when set.

Currently, there are several common error flags raised in the Level 2 products which are expected due to operational mode or surface type. All common flags are summarised in the list below, followed by a table of any additional issues arising from this test.

Sea State Bias error: This flag is currently set in all L2 LRM products over ocean, indicating a problem with the sea state bias. Due to a known anomaly, the sea state bias field is currently unfilled in all Baseline-E L2 LRM products. This anomaly will be resolved in the next IPF update.

Snow Depth Model error: This flag is currently set in all L2 SAR products over ocean, which fall outside of the extent of the current snow depth model. Currently the snow depth model is only available over the high-latitude Arctic. There is no model currently provided for the Antarctic or marginal Arctic regions. An updated model will be provided in the next IPF update.

Number of products with errors: 106

Product	Test Failed	Description
CS_OFFL_SIR_SAR_2_20220826T235449_20220826T235930_E001	Snow depth model	There is an error with the Snow Depth value, where one or more records falls outside of the extent of the current snow depth model
CS_OFFL_SIR_SAR_2_20220827T001142_20220827T001318_E001	Snow depth model	There is an error with the Snow Depth value, where one or more records falls outside of the extent of the current snow depth model
CS_OFFL_SIR_SAR_2_20220827T001626_20220827T001716_E001	Snow depth model	There is an error with the Snow Depth value, where one or more records falls outside of the extent of the current snow depth model
CS_OFFL_SIR_SAR_2_20220827T002413_20220827T002419_E001	Snow depth model	There is an error with the Snow Depth value, where one or more records falls outside of the extent of the current snow depth model
CS_OFFL_SIR_SAR_2_20220827T002426_20220827T002432_E001	Snow depth model	There is an error with the Snow Depth value, where one or more records falls outside of the extent of the current snow depth model
CS_OFFL_SIR_SAR_2_20220827T002823_20220827T003202_E001	Snow depth model	There is an error with the Snow Depth value, where one or more records falls outside of the extent of the current snow depth model
CS_OFFL_SIR_SAR_2_20220827T003202_20220827T003523_E001	Snow depth model	There is an error with the Snow Depth value, where one or more records falls outside of the extent of the current snow depth model
CS_OFFL_SIR_SAR_2_20220827T004749_20220827T004957_E001	Snow depth model	There is an error with the Snow Depth value, where one or more records falls outside of the extent of the current snow depth model
CS_OFFL_SIR_SAR_2_20220827T013853_20220827T013919_E001	Snow depth model	There is an error with the Snow Depth value, where one or more records falls outside of the extent of the current snow depth model
CS_OFFL_SIR_SAR_2_20220827T013921_20220827T014054_E001	Snow depth model	There is an error with the Snow Depth value, where one or more records falls outside of the extent of the current snow depth model
CS_OFFL_SIR_SAR_2_20220827T015526_20220827T015634_E001	Snow depth model	There is an error with the Snow Depth value, where one or more records falls outside of the extent of the current snow depth model
CS_OFFL_SIR_SAR_2_20220827T020325_20220827T020331_E001	Snow depth model	There is an error with the Snow Depth value, where one or more records falls outside of the extent of the current snow depth model

CS_OFFL_SIR_SAR_2__20220827T152454_20220827T152620_E001	Snow depth model	There is an error with the Snow Depth value, where one or more records falls outside of the extent of the current snow depth model
CS_OFFL_SIR_SAR_2__20220827T154752_20220827T154848_E001	Snow depth model	There is an error with the Snow Depth value, where one or more records falls outside of the extent of the current snow depth model
CS_OFFL_SIR_SAR_2__20220827T154855_20220827T154933_E001	Snow depth model	There is an error with the Snow Depth value, where one or more records falls outside of the extent of the current snow depth model
CS_OFFL_SIR_SAR_2__20220827T155530_20220827T155557_E001	Snow depth model	There is an error with the Snow Depth value, where one or more records falls outside of the extent of the current snow depth model
CS_OFFL_SIR_SAR_2__20220827T164947_20220827T165207_E001	Snow depth model	There is an error with the Snow Depth value, where one or more records falls outside of the extent of the current snow depth model
CS_OFFL_SIR_SAR_2__20220827T170312_20220827T170551_E001	Snow depth model	There is an error with the Snow Depth value, where one or more records falls outside of the extent of the current snow depth model
CS_OFFL_SIR_SAR_2__20220827T170833_20220827T170919_E001	Snow depth model	There is an error with the Snow Depth value, where one or more records falls outside of the extent of the current snow depth model
CS_OFFL_SIR_SAR_2__20220827T180045_20220827T180241_E001	Snow depth model	There is an error with the Snow Depth value, where one or more records falls outside of the extent of the current snow depth model
CS_OFFL_SIR_SAR_2__20220827T182759_20220827T183141_E001	Snow depth model	There is an error with the Snow Depth value, where one or more records falls outside of the extent of the current snow depth model
CS_OFFL_SIR_SAR_2__20220827T184256_20220827T184443_E001	Snow depth model	There is an error with the Snow Depth value, where one or more records falls outside of the extent of the current snow depth model
CS_OFFL_SIR_SAR_2__20220827T191035_20220827T191103_E001	Snow depth model	There is an error with the Snow Depth value, where one or more records falls outside of the extent of the current snow depth model
CS_OFFL_SIR_SAR_2__20220827T191209_20220827T191406_E001	Snow depth model	There is an error with the Snow Depth value, where one or more records falls outside of the extent of the current snow depth model
CS_OFFL_SIR_SAR_2__20220827T191724_20220827T191911_E001	Snow depth model	There is an error with the Snow Depth value, where one or more records falls outside of the extent of the current snow depth model
CS_OFFL_SIR_SAR_2__20220827T193230_20220827T193240_E001	Snow depth model	There is an error with the Snow Depth value, where one or more records falls outside of the extent of the current snow depth model
CS_OFFL_SIR_SAR_2__20220827T200721_20220827T201131_E001	Snow depth model	There is an error with the Snow Depth value, where one or more records falls outside of the extent of the current snow depth model
CS_OFFL_SIR_SAR_2__20220827T202115_20220827T202431_E001	Snow depth model	There is an error with the Snow Depth value, where one or more records falls outside of the extent of the current snow depth model
CS_OFFL_SIR_SAR_2__20220827T202442_20220827T202641_E001	Snow depth model	There is an error with the Snow Depth value, where one or more records falls outside of the extent of the current snow depth model
CS_OFFL_SIR_SAR_2__20220827T202843_20220827T203052_E001	Snow depth model	There is an error with the Snow Depth value, where one or more records falls outside of the extent of the current snow depth model
CS_OFFL_SIR_SAR_2__20220827T204909_20220827T205228_E001	Snow depth model	There is an error with the Snow Depth value, where one or more records falls outside of the extent of the current snow depth model
CS_OFFL_SIR_SAR_2__20220827T205426_20220827T205605_E001	Snow depth model	There is an error with the Snow Depth value, where one or more records falls outside of the extent of the current snow depth model
CS_OFFL_SIR_SAR_2__20220827T210146_20220827T211005_E001	Snow depth model	There is an error with the Snow Depth value, where one or more records falls outside of the extent of the current snow depth model
CS_OFFL_SIR_SAR_2__20220827T212246_20220827T212532_E001	Snow depth model	There is an error with the Snow Depth value, where one or more records falls outside of the extent of the current snow depth model
CS_OFFL_SIR_SAR_2__20220827T214644_20220827T214919_E001	Snow depth model	There is an error with the Snow Depth value, where one or more records falls outside of the extent of the current snow depth model
CS_OFFL_SIR_SAR_2__20220827T215447_20220827T215454_E001	Snow depth model	There is an error with the Snow Depth value, where one or more records falls outside of the extent of the current snow depth model
CS_OFFL_SIR_SAR_2__20220827T220026_20220827T220413_E001	Snow depth model	There is an error with the Snow Depth value, where one or more records falls outside of the extent of the current snow depth model
CS_OFFL_SIR_SAR_2__20220827T221407_20220827T221554_E001	Snow depth model	There is an error with the Snow Depth value, where one or more records falls outside of the extent of the current snow depth model
CS_OFFL_SIR_SAR_2__20220827T222828_20220827T223533_E001	Snow depth model	There is an error with the Snow Depth value, where one or more records falls outside of the extent of the current snow depth model
CS_OFFL_SIR_SAR_2__20220827T223533_20220827T223651_E001	Snow depth model	There is an error with the Snow Depth value, where one or more records falls outside of the extent of the current snow depth model
CS_OFFL_SIR_SAR_2__20220827T223737_20220827T223838_E001	Snow depth model	There is an error with the Snow Depth value, where one or more records falls outside of the extent of the current snow depth model
CS_OFFL_SIR_SAR_2__20220827T232532_20220827T232653_E001	Snow depth model	There is an error with the Snow Depth value, where one or more records falls outside of the extent of the current snow depth model
CS_OFFL_SIR_SAR_2__20220827T233346_20220827T233352_E001	Snow depth model	There is an error with the Snow Depth value, where one or more records falls outside of the extent of the current snow depth model
CS_OFFL_SIR_SAR_2__20220827T233359_20220827T233406_E001	Snow depth model	There is an error with the Snow Depth value, where one or more records falls outside of the extent of the current snow depth model
CS_OFFL_SIR_SAR_2__20220827T233838_20220827T234446_E001	Snow depth model	There is an error with the Snow Depth value, where one or more records falls outside of the extent of the current snow depth model
CS_OFFL_SIR_SIN_2__20220827T002637_20220827T002823_E001	Mean Sea Surface model	There is an error with the Mean Sea Surface for one or more records
CS_OFFL_SIR_SIN_2__20220827T020505_20220827T021117_E001	Mean Sea Surface model	There is an error with the Mean Sea Surface for one or more records
CS_OFFL_SIR_SIN_2__20220827T034436_20220827T034750_E001	Mean Sea Surface model	There is an error with the Mean Sea Surface for one or more records
CS_OFFL_SIR_SIN_2__20220827T084126_20220827T084434_E001	Mean Sea Surface model	There is an error with the Mean Sea Surface for one or more records
CS_OFFL_SIR_SIN_2__20220827T102026_20220827T102357_E001	Mean Sea Surface model	There is an error with the Mean Sea Surface for one or more records
CS_OFFL_SIR_SIN_2__20220827T115505_20220827T115740_E001	Mean Sea Surface model	There is an error with the Mean Sea Surface for one or more records
CS_OFFL_SIR_SIN_2__20220827T115933_20220827T120233_E001	Mean Sea Surface model	There is an error with the Mean Sea Surface for one or more records
CS_OFFL_SIR_SIN_2__20220827T133034_20220827T133627_E001	Mean Sea Surface model	There is an error with the Mean Sea Surface for one or more records
CS_OFFL_SIR_SIN_2__20220827T183307_20220827T183536_E001	Mean Sea Surface model	There is an error with the Mean Sea Surface for one or more records
CS_OFFL_SIR_SIN_2__20220827T201131_20220827T201444_E001	Mean Sea Surface model	There is an error with the Mean Sea Surface for one or more records
CS_OFFL_SIR_SIN_2__20220827T214919_20220827T215328_E001	Mean Sea Surface model	There is an error with the Mean Sea Surface for one or more records

5.5 L2 Measurement Quality Flag Check

CryoSat L2 data includes a quality flag for each 20-Hz measurement record. The bit value of this flag indicates any problems when set.

Currently, there are several common error flags raised in the Level 2 products which are expected due to operational mode or surface type. All common flags are summarised in the list below, followed by a table of any additional issues arising from this test.

Height and Backscatter errors: These flags are currently set for products over land, but this is to be expected. Retracker 1 Height and Backscatter error flags are also set for products over sea-ice, but this is to be expected.

SSHA interpolation error: This flag is currently set for a number of SAR products occurring at surface type boundaries, but this is to be expected.

Freeboard error: This flag is correctly set in all L2 SAR products that are not discriminated as sea-ice, and for which freeboard cannot be calculated.

Peakiness error: This flag is currently set for products over sea-ice, but this is to be expected.

SARin X-Track Angle Error: This flag is set when the difference between the computed surface elevation and the DEM is >50 m. The DEM is only available over Greenland and Antarctica and as a result this flag is set for L2 SARin products in all other locations as expected.

Number of products with errors: 252

Product	Test Failed	Description
CS_OFFL_SIR_LRM_2__20220826T235930_20220827T000106_E001	Height Error (Retracker 2), Backscatter Error (Retracker 2)	There is a height and backscatter error for Retracker 2 for one or more records
CS_OFFL_SIR_LRM_2__20220827T000109_20220827T001142_E001	Height Error (Retracker 2), Backscatter Error (Retracker 2)	There is a height and backscatter error for Retracker 2 for one or more records
CS_OFFL_SIR_LRM_2__20220827T003523_20220827T004748_E001	Height Error (Retracker 2), Backscatter Error (Retracker 2)	There is a height and backscatter error for Retracker 2 for one or more records
CS_OFFL_SIR_LRM_2__20220827T004957_20220827T010805_E001	Height Error (Retracker 2), Backscatter Error (Retracker 2)	There is a height and backscatter error for Retracker 2 for one or more records
CS_OFFL_SIR_LRM_2__20220827T011952_20220827T012526_E001	Surface Model Unavailable	No DEM or Slope Model was used for the location of one or more records
CS_OFFL_SIR_LRM_2__20220827T012921_20220827T013852_E001	Height Error (Retracker 2), Height Error (Retracker 3), Backscatter Error (Retracker 2)	There is a height and backscatter error for Retracker 2 and a height error for Retracker 3 for one or more records
CS_OFFL_SIR_LRM_2__20220827T014054_20220827T015525_E001	Height Error (Retracker 2), Height Error (Retracker 3), Backscatter Error (Retracker 2)	There is a height and backscatter error for Retracker 2 and a height error for Retracker 3 for one or more records
CS_OFFL_SIR_LRM_2__20220827T021227_20220827T021323_E001	Height Error (Retracker 2), Height Error (Retracker 3), Backscatter Error (Retracker 2)	There is a height and backscatter error for Retracker 2 and a height error for Retracker 3 for one or more records
CS_OFFL_SIR_LRM_2__20220827T021624_20220827T022006_E001	Surface Model Unavailable	No DEM or Slope Model was used for the location of one or more records
CS_OFFL_SIR_LRM_2__20220827T023039_20220827T023340_E001	Height Error (Retracker 2), Backscatter Error (Retracker 2)	There is a height and backscatter error for Retracker 2 for one or more records
CS_OFFL_SIR_LRM_2__20220827T023502_20220827T023729_E001	Height Error (Retracker 2), Height Error (Retracker 3), Backscatter Error (Retracker 2)	There is a height and backscatter error for Retracker 2 and a height error for Retracker 3 for one or more records
CS_OFFL_SIR_LRM_2__20220827T023859_20220827T024215_E001	Height Error (Retracker 2), Backscatter Error (Retracker 2)	There is a height and backscatter error for Retracker 2 for one or more records
CS_OFFL_SIR_LRM_2__20220827T024337_20220827T024555_E001	Height Error (Retracker 2), Height Error (Retracker 3), Backscatter Error (Retracker 2), Surface model unavailable	There is a height and backscatter error for Retracker 2, a height error for Retracker 3 and no DEM or Slope Model was used for the location of one or more records
CS_OFFL_SIR_LRM_2__20220827T025825_20220827T030537_E001	Surface Model Unavailable	No DEM or Slope Model was used for the location of one or more records
CS_OFFL_SIR_LRM_2__20220827T030540_20220827T030740_E001	Surface Model Unavailable	No DEM or Slope Model was used for the location of one or more records
CS_OFFL_SIR_LRM_2__20220827T031846_20220827T033420_E001	Height Error (Retracker 2), Height Error (Retracker 3), Backscatter Error (Retracker 2)	There is a height and backscatter error for Retracker 2 and a height error for Retracker 3 for one or more records
CS_OFFL_SIR_LRM_2__20220827T035016_20220827T041402_E001	Height Error (Retracker 2), Backscatter Error (Retracker 2)	There is a height and backscatter error for Retracker 2 for one or more records
CS_OFFL_SIR_LRM_2__20220827T044848_20220827T051321_E001	Height Error (Retracker 2), Height Error (Retracker 3), Backscatter Error (Retracker 2)	There is a height and backscatter error for Retracker 2 and a height error for Retracker 3 for one or more records
CS_OFFL_SIR_LRM_2__20220827T052908_20220827T055602_E001	Height Error (Retracker 2), Backscatter Error (Retracker 2)	There is a height and backscatter error for Retracker 2 for one or more records
CS_OFFL_SIR_LRM_2__20220827T061707_20220827T062328_E001	Height Error (Retracker 2), Backscatter Error (Retracker 2)	There is a height and backscatter error for Retracker 2 for one or more records
CS_OFFL_SIR_LRM_2__20220827T062750_20220827T063232_E001	Height Error (Retracker 2), Height Error (Retracker 3), Backscatter Error (Retracker 2)	There is a height and backscatter error for Retracker 2 and a height error for Retracker 3 for one or more records
CS_OFFL_SIR_LRM_2__20220827T063234_20220827T063326_E001	Height Error (Retracker 2), Height Error (Retracker 3), Backscatter Error (Retracker 2)	There is a height and backscatter error for Retracker 2 and a height error for Retracker 3 for one or more records
CS_OFFL_SIR_LRM_2__20220827T063328_20220827T065241_E001	Height Error (Retracker 2), Height Error (Retracker 3), Backscatter Error (Retracker 2)	There is a height and backscatter error for Retracker 2 and a height error for Retracker 3 for one or more records
CS_OFFL_SIR_LRM_2__20220827T070936_20220827T074216_E001	Height Error (Retracker 2), Height Error (Retracker 3), Backscatter Error (Retracker 2), Surface model unavailable	There is a height and backscatter error for Retracker 2, a height error for Retracker 3 and no DEM or Slope Model was used for the location of one or more records
CS_OFFL_SIR_LRM_2__20220827T075353_20220827T075726_E001	Height Error (Retracker 2), Backscatter Error (Retracker 2)	There is a height and backscatter error for Retracker 2 for one or more records
CS_OFFL_SIR_LRM_2__20220827T084831_20220827T090935_E001	Height Error (Retracker 2), Backscatter Error (Retracker 2)	There is a height and backscatter error for Retracker 2 for one or more records
CS_OFFL_SIR_LRM_2__20220827T091220_20220827T092351_E001	Height Error (Retracker 2), Height Error (Retracker 3), Backscatter Error (Retracker 2), Surface model unavailable	There is a height and backscatter error for Retracker 2, a height error for Retracker 3 and no DEM or Slope Model was used for the location of one or more records
CS_OFFL_SIR_LRM_2__20220827T093326_20220827T093745_E001	Height Error (Retracker 2), Backscatter Error (Retracker 2)	There is a height and backscatter error for Retracker 2 for one or more records
CS_OFFL_SIR_LRM_2__20220827T095340_20220827T095828_E001	Height Error (Retracker 2), Backscatter Error (Retracker 2)	There is a height and backscatter error for Retracker 2 for one or more records
CS_OFFL_SIR_LRM_2__20220827T102744_20220827T103231_E001	Height Error (Retracker 2), Height Error (Retracker 3), Backscatter Error (Retracker 2)	There is a height and backscatter error for Retracker 2 and a height error for Retracker 3 for one or more records
CS_OFFL_SIR_LRM_2__20220827T103240_20220827T103813_E001	Height Error (Retracker 2), Height Error (Retracker 3), Backscatter Error (Retracker 2)	There is a height and backscatter error for Retracker 2 and a height error for Retracker 3 for one or more records

CS_OFFL_SIR_SIN_2_20220827T174339_20220827T174359_E001	Backscatter Error (Retracker 2), Backscatter Error (Retracker 3), SARIn X-track Angle Error, Surface model unavailable	There is a backscatter error for Retracker 2 and 3, an ambiguous angle was detected for SARIn mode, and no DEM or Slope Model was used for the location for one or more records
CS_OFFL_SIR_SIN_2_20220827T174921_20220827T180017_E001	Backscatter Error (Retracker 2), Backscatter Error (Retracker 3), SARIn X-track Angle Error, Surface model unavailable	There is a backscatter error for Retracker 2 and 3, an ambiguous angle was detected for SARIn mode, and no DEM or Slope Model was used for the location for one or more records
CS_OFFL_SIR_SIN_2_20220827T183141_20220827T183301_E001	Backscatter Error (Retracker 2), Backscatter Error (Retracker 3), SARIn X-track Angle Error	There is a backscatter error for Retracker 2 and 3 and an ambiguous angle was detected for SARIn mode for one or more records
CS_OFFL_SIR_SIN_2_20220827T183307_20220827T183536_E001	Backscatter Error (Retracker 2), Backscatter Error (Retracker 3), SARIn X-track Angle Error	There is a backscatter error for Retracker 2 and 3 and an ambiguous angle was detected for SARIn mode for one or more records
CS_OFFL_SIR_SIN_2_20220827T184129_20220827T184256_E001	Backscatter Error (Retracker 2), Backscatter Error (Retracker 3), SARIn X-track Angle Error	There is a backscatter error for Retracker 2 and 3 and an ambiguous angle was detected for SARIn mode for one or more records
CS_OFFL_SIR_SIN_2_20220827T192008_20220827T192025_E001	Backscatter Error (Retracker 2), Backscatter Error (Retracker 3)	There is a backscatter error for Retracker 2 and 3 for one or more records
CS_OFFL_SIR_SIN_2_20220827T192241_20220827T192306_E001	Backscatter Error (Retracker 2), Backscatter Error (Retracker 3), SARIn X-track Angle Error, Surface model unavailable	There is a backscatter error for Retracker 2 and 3, an ambiguous angle was detected for SARIn mode, and no DEM or Slope Model was used for the location for one or more records
CS_OFFL_SIR_SIN_2_20220827T193102_20220827T193209_E001	Backscatter Error (Retracker 2), Backscatter Error (Retracker 3)	There is a backscatter error for Retracker 2 and 3 for one or more records
CS_OFFL_SIR_SIN_2_20220827T193240_20220827T193401_E001	Backscatter Error (Retracker 2), Backscatter Error (Retracker 3), SARIn X-track Angle Error, Surface model unavailable	There is a backscatter error for Retracker 2 and 3, an ambiguous angle was detected for SARIn mode, and no DEM or Slope Model was used for the location for one or more records
CS_OFFL_SIR_SIN_2_20220827T201131_20220827T201444_E001	Backscatter Error (Retracker 2), Backscatter Error (Retracker 3), SARIn X-track Angle Error	There is a backscatter error for Retracker 2 and 3 and an ambiguous angle was detected for SARIn mode for one or more records
CS_OFFL_SIR_SIN_2_20220827T202002_20220827T202114_E001	Backscatter Error (Retracker 2), Backscatter Error (Retracker 3), SARIn X-track Angle Error	There is a backscatter error for Retracker 2 and 3 and an ambiguous angle was detected for SARIn mode for one or more records
CS_OFFL_SIR_SIN_2_20220827T203212_20220827T203216_E001	Calibration Warning	The Calibration correction is missing or has been taken from the IPFDB instead of the Calibration products for one or more records
CS_OFFL_SIR_SIN_2_20220827T205228_20220827T205348_E001	SARIn X-track Angle Error, Surface model unavailable	An ambiguous angle was detected for SARIn mode and no DEM or Slope Model was used for one or more records
CS_OFFL_SIR_SIN_2_20220827T205605_20220827T205732_E001	Backscatter Error (Retracker 2), Backscatter Error (Retracker 3), SARIn X-track Angle Error, Surface model unavailable	There is a backscatter error for Retracker 2 and 3, an ambiguous angle was detected for SARIn mode, and no DEM or Slope Model was used for the location for one or more records
CS_OFFL_SIR_SIN_2_20220827T211042_20220827T211058_E001	Backscatter Error (Retracker 2), Backscatter Error (Retracker 3)	There is a backscatter error for Retracker 2 and 3 for one or more records
CS_OFFL_SIR_SIN_2_20220827T211132_20220827T211153_E001	Backscatter Error (Retracker 2), Backscatter Error (Retracker 3)	There is a backscatter error for Retracker 2 and 3 for one or more records
CS_OFFL_SIR_SIN_2_20220827T214919_20220827T215328_E001	Backscatter Error (Retracker 2), Backscatter Error (Retracker 3), SARIn X-track Angle Error	There is a backscatter error for Retracker 2 and 3 and an ambiguous angle was detected for SARIn mode for one or more records
CS_OFFL_SIR_SIN_2_20220827T215901_20220827T220026_E001	Backscatter Error (Retracker 2), Backscatter Error (Retracker 3), SARIn X-track Angle Error	There is a backscatter error for Retracker 2 and 3 and an ambiguous angle was detected for SARIn mode for one or more records
CS_OFFL_SIR_SIN_2_20220827T223651_20220827T223737_E001	Backscatter Error (Retracker 2), Backscatter Error (Retracker 3), SARIn X-track Angle Error, Surface model unavailable	There is a backscatter error for Retracker 2 and 3, an ambiguous angle was detected for SARIn mode, and no DEM or Slope Model was used for the location for one or more records
CS_OFFL_SIR_SIN_2_20220827T223838_20220827T224237_E001	Backscatter Error (Retracker 2), Backscatter Error (Retracker 3), SARIn X-track Angle Error	There is a backscatter error for Retracker 2 and 3 and an ambiguous angle was detected for SARIn mode for one or more records
CS_OFFL_SIR_SIN_2_20220827T232653_20220827T232831_E001	Backscatter Error (Retracker 2), Backscatter Error (Retracker 3), SARIn X-track Angle Error	There is a backscatter error for Retracker 2 and 3 and an ambiguous angle was detected for SARIn mode for one or more records
CS_OFFL_SIR_SIN_2_20220827T233655_20220827T233838_E001	Backscatter Error (Retracker 2), Backscatter Error (Retracker 3)	There is a backscatter error for Retracker 2 and 3 for one or more records