

### 1. Overview

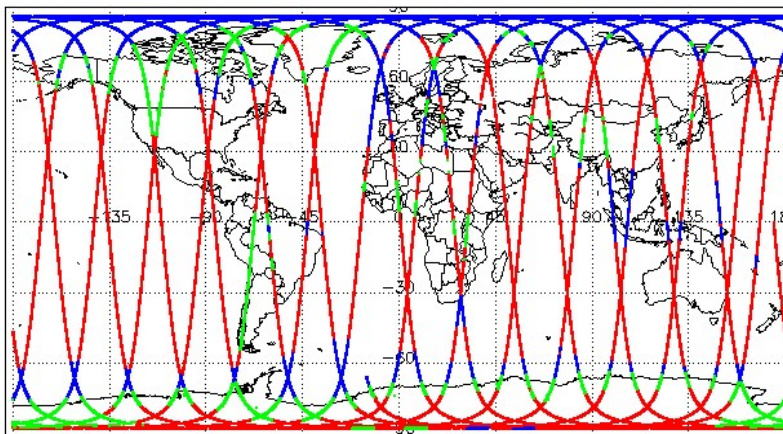
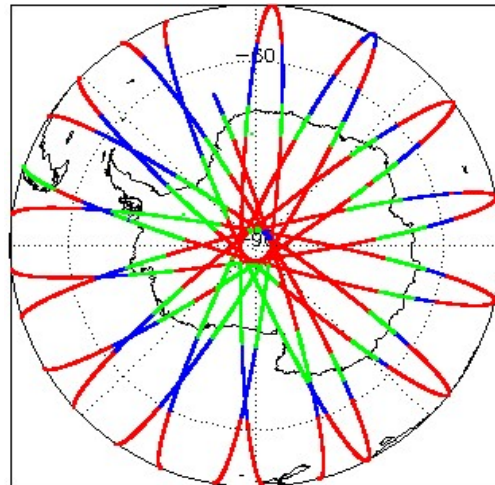
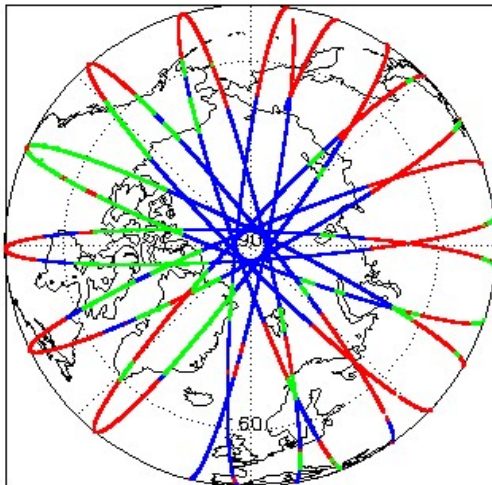
Report Production Date:	07-Sep-2022
Processor Used:	CryoSat Ice Processor
Data Used:	L1B and L2 OFFLINE Data

Check	Status
Server check: science-pds.cryosat.esa.int	Nominal
Server check: calval-pds.cryosat.esa.int	Nominal
Product Software Check	Fail
Product Format Check	See Sections 4.1, 5.1 and 6.1
Product Header Analysis	See Section 5.2
Star Tracker Usage Check	Nominal
L1B Tracking Flag Check	See Section 4.4
L1B Calibration Usage Check	Nominal
L1B & L2 Auxiliary Data File Usage Check	See Section 4.6, 5.3 and 6.3
L1B & L2 Auxiliary Correction Error Check	See Section 4.7 and 5.4
L1B & L2 Measurement Confidence Data Check	See Section 4.8 and 5.5
QCC Errors/ Warnings	See Section 6.1, 6.2 and 6.3

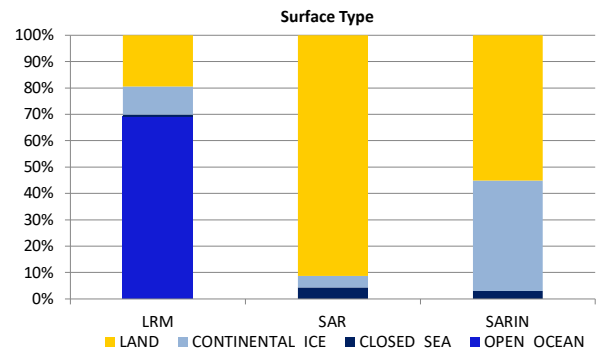
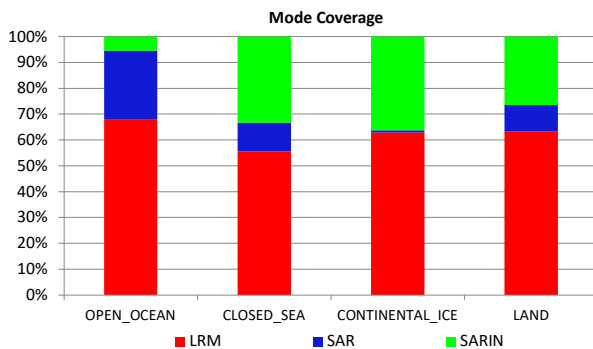
#### Mission / Instrument News

06-Aug-2022	None
07-Aug-2022	None
08-Aug-2022	Nothing planned

### 2. Global Coverage



Mode Coverage (%)		
	LRM	66.4
	SAR	20.1
	SARin	13.5



### 3. Instrument Configuration

The SIRAL instrument configuration for the day of acquisition is provided below.

SIRAL instrument(s) in use:	SIRAL - A
-----------------------------	-----------

### 4. Level 1B Data Quality Check

#### 4.1 L1B Product Format Check

Each product, retrieved and unpacked from the science server, is checked to ensure it consists of both an XML header file (.HDR) and a product file (.DBL).

Number of products with errors: Not 0!

#### 4.2 L1B Product Header Analysis

For all products, a series of pre-defined checks are carried out on the MPH and SPH in order to identify any inconsistencies and/or errors raised by the ground-segment processing chain.

Number of products with errors: Not 0!

#### 4.3 Star Tracker Usage Check

Each product is checked in order to ensure a valid star tracker file has been used in processing.

Number of products with errors: 0

#### 4.4 L1B Tracking Flags Check

CryoSat L1B data includes a tracking flag for each measurement record. The bit value of this flag indicates any problems when set.

**Loss of Echo Flag:** This flag is currently set for some products over land, but this is to be expected.

Number of products with errors: 100

Product	Test Failed	Description
CS_OFFL_SIR_LRM_1B_20220807T000000_20220807T003518_E001	Loss of echo	The tracking echo is missing for one or more records
CS_OFFL_SIR_LRM_1B_20220807T005415_20220807T010646_E001	Loss of echo	The tracking echo is missing for one or more records
CS_OFFL_SIR_LRM_1B_20220807T013828_20220807T014311_E001	Loss of echo	The tracking echo is missing for one or more records
CS_OFFL_SIR_LRM_1B_20220807T014314_20220807T014429_E001	Loss of echo	The tracking echo is missing for one or more records
CS_OFFL_SIR_LRM_1B_20220807T014431_20220807T014435_E001	Loss of echo	The tracking echo is missing for one or more records
CS_OFFL_SIR_LRM_1B_20220807T014437_20220807T014447_E001	Loss of echo	The tracking echo is missing for one or more records
CS_OFFL_SIR_LRM_1B_20220807T014535_20220807T015735_E001	Loss of echo	The tracking echo is missing for one or more records
CS_OFFL_SIR_LRM_1B_20220807T015940_20220807T021430_E001	Loss of echo	The tracking echo is missing for one or more records
CS_OFFL_SIR_LRM_1B_20220807T023128_20220807T024153_E001	Loss of echo	The tracking echo is missing for one or more records
CS_OFFL_SIR_LRM_1B_20220807T024300_20220807T024355_E001	Loss of echo	The tracking echo is missing for one or more records
CS_OFFL_SIR_LRM_1B_20220807T024358_20220807T024518_E001	Loss of echo	The tracking echo is missing for one or more records
CS_OFFL_SIR_LRM_1B_20220807T024813_20220807T030306_E001	Loss of echo	The tracking echo is missing for one or more records
CS_OFFL_SIR_LRM_1B_20220807T031717_20220807T032347_E001	Loss of echo	The tracking echo is missing for one or more records
CS_OFFL_SIR_LRM_1B_20220807T032349_20220807T033051_E001	Loss of echo	The tracking echo is missing for one or more records
CS_OFFL_SIR_LRM_1B_20220807T040206_20220807T040312_E001	Loss of echo	The tracking echo is missing for one or more records
CS_OFFL_SIR_LRM_1B_20220807T040922_20220807T044147_E001	Loss of echo	The tracking echo is missing for one or more records
CS_OFFL_SIR_LRM_1B_20220807T044354_20220807T044450_E001	Loss of echo	The tracking echo is missing for one or more records
CS_OFFL_SIR_LRM_1B_20220807T045548_20220807T050336_E001	Loss of echo	The tracking echo is missing for one or more records
CS_OFFL_SIR_LRM_1B_20220807T050450_20220807T050541_E001	Loss of echo	The tracking echo is missing for one or more records
CS_OFFL_SIR_LRM_1B_20220807T050939_20220807T053051_E001	Loss of echo	The tracking echo is missing for one or more records
CS_OFFL_SIR_LRM_1B_20220807T054754_20220807T061339_E001	Loss of echo	The tracking echo is missing for one or more records
CS_OFFL_SIR_LRM_1B_20220807T061342_20220807T061519_E001	Loss of echo	The tracking echo is missing for one or more records
CS_OFFL_SIR_LRM_1B_20220807T061522_20220807T061547_E001	Loss of echo	The tracking echo is missing for one or more records
CS_OFFL_SIR_LRM_1B_20220807T061549_20220807T061616_E001	Loss of echo	The tracking echo is missing for one or more records
CS_OFFL_SIR_LRM_1B_20220807T063657_20220807T063703_E001	Loss of echo	The tracking echo is missing for one or more records
CS_OFFL_SIR_LRM_1B_20220807T063816_20220807T064254_E001	Loss of echo	The tracking echo is missing for one or more records
CS_OFFL_SIR_LRM_1B_20220807T064335_20220807T064633_E001	Loss of echo	The tracking echo is missing for one or more records
CS_OFFL_SIR_LRM_1B_20220807T064636_20220807T064715_E001	Loss of echo	The tracking echo is missing for one or more records
CS_OFFL_SIR_LRM_1B_20220807T064719_20220807T071158_E001	Loss of echo	The tracking echo is missing for one or more records
CS_OFFL_SIR_LRM_1B_20220807T072003_20220807T072331_E001	Loss of echo	The tracking echo is missing for one or more records
CS_OFFL_SIR_LRM_1B_20220807T081331_20220807T082014_E001	Loss of echo	The tracking echo is missing for one or more records
CS_OFFL_SIR_LRM_1B_20220807T082048_20220807T082129_E001	Loss of echo	The tracking echo is missing for one or more records
CS_OFFL_SIR_LRM_1B_20220807T082328_20220807T082354_E001	Loss of echo	The tracking echo is missing for one or more records
CS_OFFL_SIR_LRM_1B_20220807T082356_20220807T082403_E001	Loss of echo	The tracking echo is missing for one or more records
CS_OFFL_SIR_LRM_1B_20220807T082405_20220807T082410_E001	Loss of echo	The tracking echo is missing for one or more records
CS_OFFL_SIR_LRM_1B_20220807T082412_20220807T082429_E001	Loss of echo	The tracking echo is missing for one or more records
CS_OFFL_SIR_LRM_1B_20220807T082526_20220807T082634_E001	Loss of echo	The tracking echo is missing for one or more records
CS_OFFL_SIR_LRM_1B_20220807T082637_20220807T082639_E001	Loss of echo	The tracking echo is missing for one or more records
CS_OFFL_SIR_LRM_1B_20220807T082642_20220807T082643_E001	Loss of echo	The tracking echo is missing for one or more records
CS_OFFL_SIR_LRM_1B_20220807T082645_20220807T083348_E001	Loss of echo	The tracking echo is missing for one or more records
CS_OFFL_SIR_LRM_1B_20220807T083723_20220807T083853_E001	Loss of echo	The tracking echo is missing for one or more records



## 4.6 L1B Auxiliary Data File Usage Check

Each product is checked for missing Data Set Descriptors with respect to a pre-determined baseline and also to check the validity of Auxiliary Data Files is correct.

Number of products with errors: 0

## 4.7 L1B Auxiliary Correction Error Check

CryoSat L1B data includes a correction error flag for each measurement record. The bit value of this flag indicates any problems when set.

Number of products with errors: 1

## 4.8 L1B Measurement Confidence Data Check

CryoSat L1B data includes a measurement confidence flag for each measurement record. The bit value of this flag indicates any problems when set.

Currently, there are several common error flags raised in the Level 1B products which are expected due to operational mode or surface type. All common flags are summarised in the list below, followed by a table of any additional issues arising from this test.

**Block Degraded Flag:** This flag is currently set for a number of individual records generally at the start or end of products (all modes), but this is to be expected.

**Phase Perturbation Applied Flag:** This flag is currently set for all L1B SARIn products, indicating that the ADC correction application is deactivated, but this is in line with the current configuration.

Number of products with errors: 3

Product	Test Failed	Description
CS_OFFL_SIR_LRM_1B_20220807T040922_20220807T044147_E001	Echo error, TRK echo error	The tracking echo has returned an error and the Rx1 Echo Error flag is set, indicating a degraded echo

## 5. Level 2 Data Quality Check

### 5.1 L2 Product Format Check

Each product, retrieved and unpacked from the science server, is checked to ensure it consists of both an XML header file (.HDR) and a product file (.DBL).

Number of products with errors: Not 0!

### 5.2 L2 Product Header Analysis

For all products, a series of pre-defined checks are carried out on the MPH and SPH in order to identify any inconsistencies and/or errors raised by the ground-segment processing chain.

Number of products with errors: Not 0!

### 5.3 L2 Auxiliary Data File Usage Check

Each product is checked for missing Data Set Descriptors with respect to a pre-determined baseline and also to check the validity of Auxiliary Data Files is correct.

Number of products with errors: 0

### 5.4 L2 Auxiliary Correction Error Check

CryoSat L2 data includes a correction error flag for each measurement record. The bit value of this flag indicates any problems when set.

Currently, there are several common error flags raised in the Level 2 products which are expected due to operational mode or surface type. All common flags are summarised in the list below, followed by a table of any additional issues arising from this test.

**Sea State Bias error:** This flag is currently set in all L2 LRM products over ocean, indicating a problem with the sea state bias. Due to a known anomaly, the sea state bias field is currently unfilled in all Baseline-E L2 LRM products. This anomaly will be resolved in the next IPF update.

**Snow Depth Model error:** This flag is currently set in all L2 SAR products over ocean, which fall outside of the extent of the current snow depth model. Currently the snow depth model is only available over the high-latitude Arctic. There is no model currently provided for the Antarctic or marginal Arctic regions. An updated model will be provided in the next IPF update.

Number of products with errors: 88

Product	Test Failed	Description
CS_OFFL_SIR_LRM_2_20220807T000000_20220807T003518_E001	GIM Ionospheric corr,	#N/A
CS_OFFL_SIR_SAR_2_20220807T003518_20220807T003623_E001	Snow depth model	There is an error with the Snow Depth value, where one or more records falls outside of the extent of the current snow depth model
CS_OFFL_SIR_SAR_2_20220807T004314_20220807T004319_E001	Snow depth model	There is an error with the Snow Depth value, where one or more records falls outside of the extent of the current snow depth model
CS_OFFL_SIR_SAR_2_20220807T004326_20220807T004333_E001	Snow depth model	There is an error with the Snow Depth value, where one or more records falls outside of the extent of the current snow depth model
CS_OFFL_SIR_SAR_2_20220807T004759_20220807T005415_E001	Snow depth model	There is an error with the Snow Depth value, where one or more records falls outside of the extent of the current snow depth model
CS_OFFL_SIR_SAR_2_20220807T010646_20220807T010654_E001	Snow depth model	There is an error with the Snow Depth value, where one or more records falls outside of the extent of the current snow depth model
CS_OFFL_SIR_SAR_2_20220807T015736_20220807T015939_E001	Snow depth model	There is an error with the Snow Depth value, where one or more records falls outside of the extent of the current snow depth model
CS_OFFL_SIR_SAR_2_20220807T021430_20220807T021529_E001	Snow depth model	There is an error with the Snow Depth value, where one or more records falls outside of the extent of the current snow depth model
CS_OFFL_SIR_SAR_2_20220807T022212_20220807T022219_E001	Snow depth model	There is an error with the Snow Depth value, where one or more records falls outside of the extent of the current snow depth model
CS_OFFL_SIR_SAR_2_20220807T022226_20220807T022231_E001	Snow depth model	There is an error with the Snow Depth value, where one or more records falls outside of the extent of the current snow depth model
CS_OFFL_SIR_SAR_2_20220807T022835_20220807T023127_E001	Snow depth model	There is an error with the Snow Depth value, where one or more records falls outside of the extent of the current snow depth model
CS_OFFL_SIR_SAR_2_20220807T024601_20220807T024713_E001	Snow depth model	There is an error with the Snow Depth value, where one or more records falls outside of the extent of the current snow depth model
CS_OFFL_SIR_SAR_2_20220807T030307_20220807T030341_E001	Snow depth model	There is an error with the Snow Depth value, where one or more records falls outside of the extent of the current snow depth model
CS_OFFL_SIR_SAR_2_20220807T030341_20220807T030422_E001	Snow depth model	There is an error with the Snow Depth value, where one or more records falls outside of the extent of the current snow depth model
CS_OFFL_SIR_SAR_2_20220807T030718_20220807T030806_E001	Snow depth model	There is an error with the Snow Depth value, where one or more records falls outside of the extent of the current snow depth model
CS_OFFL_SIR_SAR_2_20220807T033052_20220807T033516_E001	Snow depth model	There is an error with the Snow Depth value, where one or more records falls outside of the extent of the current snow depth model
CS_OFFL_SIR_SAR_2_20220807T033541_20220807T033938_E001	Snow depth model	There is an error with the Snow Depth value, where one or more records falls outside of the extent of the current snow depth model
CS_OFFL_SIR_SAR_2_20220807T035310_20220807T035424_E001	Snow depth model	There is an error with the Snow Depth value, where one or more records falls outside of the extent of the current snow depth model
CS_OFFL_SIR_SAR_2_20220807T040124_20220807T040130_E001	Snow depth model	There is an error with the Snow Depth value, where one or more records falls outside of the extent of the current snow depth model



CS_OFFL_SIR_SAR_2_20220807T220553_20220807T220925_E001	Snow depth model	There is an error with the Snow Depth value, where one or more records falls outside of the extent of the current snow depth model
CS_OFFL_SIR_SAR_2_20220807T221924_20220807T222306_E001	Snow depth model	There is an error with the Snow Depth value, where one or more records falls outside of the extent of the current snow depth model
CS_OFFL_SIR_SAR_2_20220807T224757_20220807T224828_E001	Snow depth model	There is an error with the Snow Depth value, where one or more records falls outside of the extent of the current snow depth model
CS_OFFL_SIR_SAR_2_20220807T225010_20220807T225320_E001	Snow depth model	There is an error with the Snow Depth value, where one or more records falls outside of the extent of the current snow depth model
CS_OFFL_SIR_SAR_2_20220807T225320_20220807T225740_E001	Snow depth model	There is an error with the Snow Depth value, where one or more records falls outside of the extent of the current snow depth model
CS_OFFL_SIR_SAR_2_20220807T225801_20220807T230008_E001	Snow depth model	There is an error with the Snow Depth value, where one or more records falls outside of the extent of the current snow depth model
CS_OFFL_SIR_SAR_2_20220807T233152_20220807T233300_E001	Snow depth model	There is an error with the Snow Depth value, where one or more records falls outside of the extent of the current snow depth model
CS_OFFL_SIR_SAR_2_20220807T234437_20220807T234637_E001	Snow depth model	There is an error with the Snow Depth value, where one or more records falls outside of the extent of the current snow depth model
CS_OFFL_SIR_SAR_2_20220807T235247_20220807T235252_E001	Snow depth model	There is an error with the Snow Depth value, where one or more records falls outside of the extent of the current snow depth model
CS_OFFL_SIR_SAR_2_20220807T235300_20220807T235303_E001	Snow depth model	There is an error with the Snow Depth value, where one or more records falls outside of the extent of the current snow depth model
CS_OFFL_SIR_SAR_2_20220807T235810_20220808T000205_E001	Snow depth model	There is an error with the Snow Depth value, where one or more records falls outside of the extent of the current snow depth model
CS_OFFL_SIR_SIN_2_20220807T022414_20220807T022634_E001	Mean Sea Surface model	There is an error with the Mean Sea Surface for one or more records
CS_OFFL_SIR_SIN_2_20220807T040313_20220807T040746_E001	Mean Sea Surface model	There is an error with the Mean Sea Surface for one or more records
CS_OFFL_SIR_SIN_2_20220807T103926_20220807T104236_E001	Mean Sea Surface model	There is an error with the Mean Sea Surface for one or more records
CS_OFFL_SIR_SIN_2_20220807T121352_20220807T121630_E001	Mean Sea Surface model	There is an error with the Mean Sea Surface for one or more records
CS_OFFL_SIR_SIN_2_20220807T121830_20220807T122401_E001	Mean Sea Surface model	There is an error with the Mean Sea Surface for one or more records
CS_OFFL_SIR_SIN_2_20220807T135303_20220807T135539_E001	Mean Sea Surface model	There is an error with the Mean Sea Surface for one or more records
CS_OFFL_SIR_SIN_2_20220807T203010_20220807T203341_E001	Mean Sea Surface model	There is an error with the Mean Sea Surface for one or more records
CS_OFFL_SIR_SIN_2_20220807T220925_20220807T221246_E001	Mean Sea Surface model	There is an error with the Mean Sea Surface for one or more records

## 5.5 L2 Measurement Quality Flag Check

CryoSat L2 data includes a quality flag for each 20-Hz measurement record. The bit value of this flag indicates any problems when set.

**Currently, there are several common error flags raised in the Level 2 products which are expected due to operational mode or surface type. All common flags are summarised in the list below, followed by a table of any additional issues arising from this test.**

**Height and Backscatter errors:** These flags are currently set for products over land, but this is to be expected. Retracker 1 Height and Backscatter error flags are also set for products over sea-ice, but this is to be expected.

**SSHA interpolation error:** This flag is currently set for a number of SAR products occurring at surface type boundaries, but this is to be expected.

**Freeboard error:** This flag is correctly set in all L2 SAR products that are not discriminated as sea-ice, and for which freeboard cannot be calculated.

**Peakiness error:** This flag is currently set for products over sea-ice, but this is to be expected.

**SARin X-Track Angle Error:** This flag is set when the difference between the computed surface elevation and the DEM is >50 m. The DEM is only available over Greenland and Antarctica and as a result this flag is set for L2 SARin products in all other locations as expected.

**Number of products with errors:** 223

Product	Test Failed	Description
CS_OFFL_SIR_LRM_2_20220807T000000_20220807T003518_E001	Height Error (Retracker 2), Height Error (Retracker 3), Backscatter Error (Retracker 2), Surface model unavailable	There is a height and backscatter error for Retracker 2, a height error for Retracker 3 and no DEM or Slope Model was used for the location of one or more records
CS_OFFL_SIR_LRM_2_20220807T005415_20220807T010646_E001	Height Error (Retracker 2), Height Error (Retracker 3), Backscatter Error (Retracker 2)	There is a height and backscatter error for Retracker 2 and a height error for Retracker 3 for one or more records
CS_OFFL_SIR_LRM_2_20220807T010654_20220807T012427_E001	Height Error (Retracker 2), Backscatter Error (Retracker 2)	There is a height and backscatter error for Retracker 2 for one or more records
CS_OFFL_SIR_LRM_2_20220807T013828_20220807T014311_E001	Height Error (Retracker 2), Backscatter Error (Retracker 2)	There is a height and backscatter error for Retracker 2 for one or more records
CS_OFFL_SIR_LRM_2_20220807T014535_20220807T015735_E001	Height Error (Retracker 2), Height Error (Retracker 3), Backscatter Error (Retracker 2)	There is a height and backscatter error for Retracker 2 and a height error for Retracker 3 for one or more records
CS_OFFL_SIR_LRM_2_20220807T015940_20220807T021430_E001	Height Error (Retracker 2), Height Error (Retracker 3), Backscatter Error (Retracker 2)	There is a height and backscatter error for Retracker 2 and a height error for Retracker 3 for one or more records
CS_OFFL_SIR_LRM_2_20220807T023128_20220807T024153_E001	Height Error (Retracker 2), Height Error (Retracker 3), Backscatter Error (Retracker 2)	There is a height and backscatter error for Retracker 2 and a height error for Retracker 3 for one or more records
CS_OFFL_SIR_LRM_2_20220807T024813_20220807T030306_E001	Height Error (Retracker 2), Height Error (Retracker 3), Backscatter Error (Retracker 2)	There is a height and backscatter error for Retracker 2 and a height error for Retracker 3 for one or more records
CS_OFFL_SIR_LRM_2_20220807T033517_20220807T033540_E001	Height Error (Retracker 2), Backscatter Error (Retracker 2)	There is a height and backscatter error for Retracker 2 for one or more records
CS_OFFL_SIR_LRM_2_20220807T033939_20220807T035309_E001	Height Error (Retracker 2), Backscatter Error (Retracker 2)	There is a height and backscatter error for Retracker 2 for one or more records
CS_OFFL_SIR_LRM_2_20220807T040922_20220807T044147_E001	Height Error (Retracker 2), Height Error (Retracker 3), Backscatter Error (Retracker 2)	There is a height and backscatter error for Retracker 2 and a height error for Retracker 3 for one or more records
CS_OFFL_SIR_LRM_2_20220807T045548_20220807T050336_E001	Surface Model Unavailable	No DEM or Slope Model was used for the location of one or more records
CS_OFFL_SIR_LRM_2_20220807T050939_20220807T053051_E001	Height Error (Retracker 2), Backscatter Error (Retracker 2)	There is a height and backscatter error for Retracker 2 for one or more records
CS_OFFL_SIR_LRM_2_20220807T054754_20220807T061339_E001	Height Error (Retracker 2), Backscatter Error (Retracker 2)	There is a height and backscatter error for Retracker 2 for one or more records















CS_OFFL_SIR_SIN_2_20220807T210838_20220807T211016_E001	Backscatter Error (Retracker 2), Backscatter Error (Retracker 3)	There is a backscatter error for Retracker 2 and 3 for one or more records
CS_OFFL_SIR_SIN_2_20220807T211708_20220807T211809_E001	Backscatter Error (Retracker 2), Backscatter Error (Retracker 3), SARIn X, track Angle Error, Surface model unavailable	There is a backscatter error for Retracker 2 and 3, an ambiguous angle was detected for SARIn mode, and no DEM or Slope Model was used for the location for one or more records
CS_OFFL_SIR_SIN_2_20220807T212850_20220807T213033_E001	Backscatter Error (Retracker 2), Backscatter Error (Retracker 3), SARIn X, track Angle Error, Surface model unavailable	There is a backscatter error for Retracker 2 and 3, an ambiguous angle was detected for SARIn mode, and no DEM or Slope Model was used for the location for one or more records
CS_OFFL_SIR_SIN_2_20220807T213152_20220807T213256_E001	Backscatter Error (Retracker 2), Backscatter Error (Retracker 3), SARIn X, track Angle Error, Surface model unavailable	There is a backscatter error for Retracker 2 and 3, an ambiguous angle was detected for SARIn mode, and no DEM or Slope Model was used for the location for one or more records
CS_OFFL_SIR_SIN_2_20220807T220925_20220807T221246_E001	Backscatter Error (Retracker 2), Backscatter Error (Retracker 3), SARIn X, track Angle Error	There is a backscatter error for Retracker 2 and 3 and an ambiguous angle was detected for SARIn mode for one or more records
CS_OFFL_SIR_SIN_2_20220807T221759_20220807T221923_E001	Backscatter Error (Retracker 2), Backscatter Error (Retracker 3), SARIn X, track Angle Error	There is a backscatter error for Retracker 2 and 3 and an ambiguous angle was detected for SARIn mode for one or more records
CS_OFFL_SIR_SIN_2_20220807T223942_20220807T224303_E001	Backscatter Error (Retracker 2), Backscatter Error (Retracker 3)	There is a backscatter error for Retracker 2 and 3 for one or more records
CS_OFFL_SIR_SIN_2_20220807T230009_20220807T230130_E001	Backscatter Error (Retracker 2), Backscatter Error (Retracker 3), SARIn X, track Angle Error	There is a backscatter error for Retracker 2 and 3 and an ambiguous angle was detected for SARIn mode for one or more records
CS_OFFL_SIR_SIN_2_20220807T234637_20220807T234855_E001	Backscatter Error (Retracker 2), Backscatter Error (Retracker 3), SARIn X, track Angle Error	There is a backscatter error for Retracker 2 and 3 and an ambiguous angle was detected for SARIn mode for one or more records
CS_OFFL_SIR_SIN_2_20220807T235701_20220807T235810_E001	Backscatter Error (Retracker 2), Backscatter Error (Retracker 3), SARIn X, track Angle Error	There is a backscatter error for Retracker 2 and 3 and an ambiguous angle was detected for SARIn mode for one or more records