

1. Overview

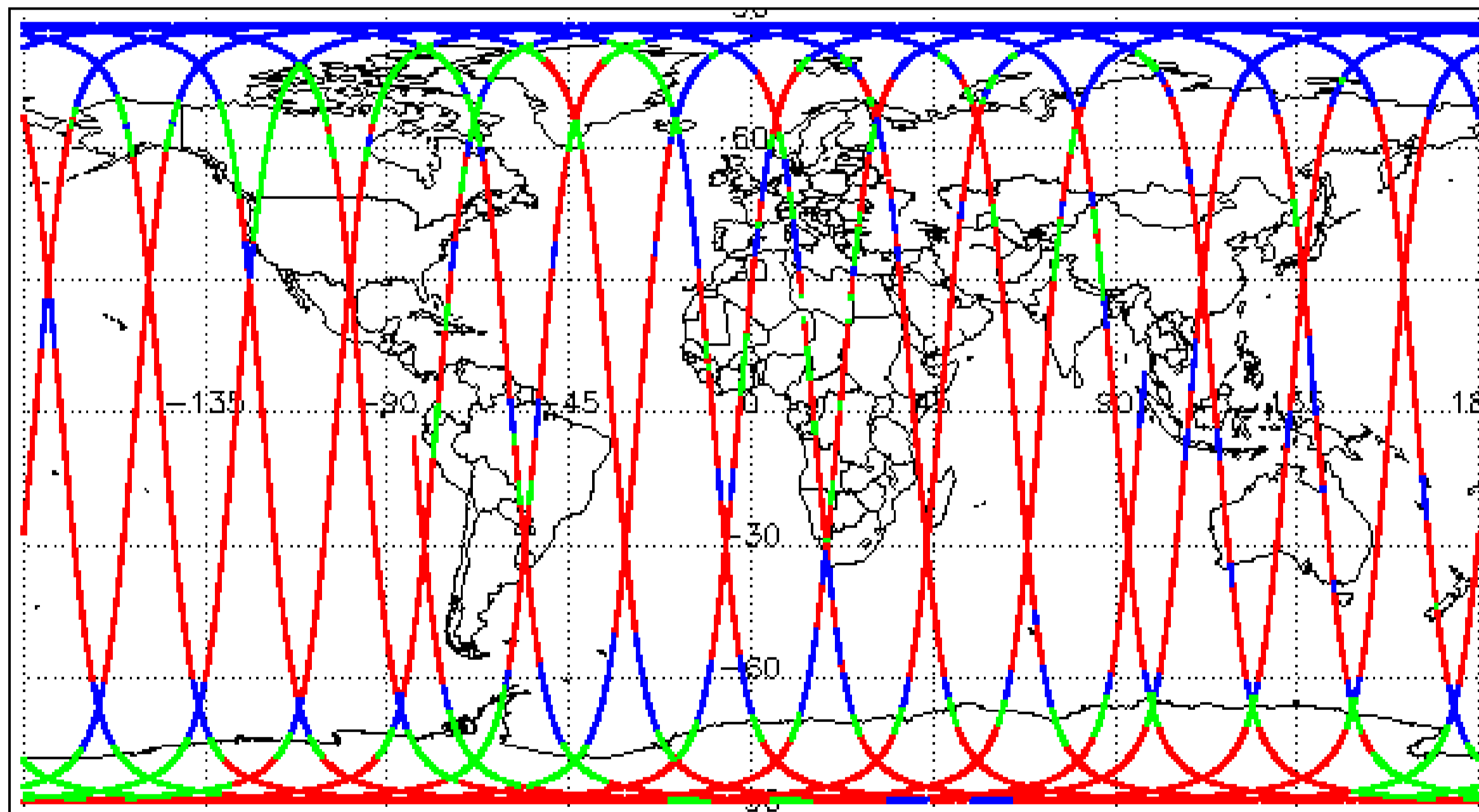
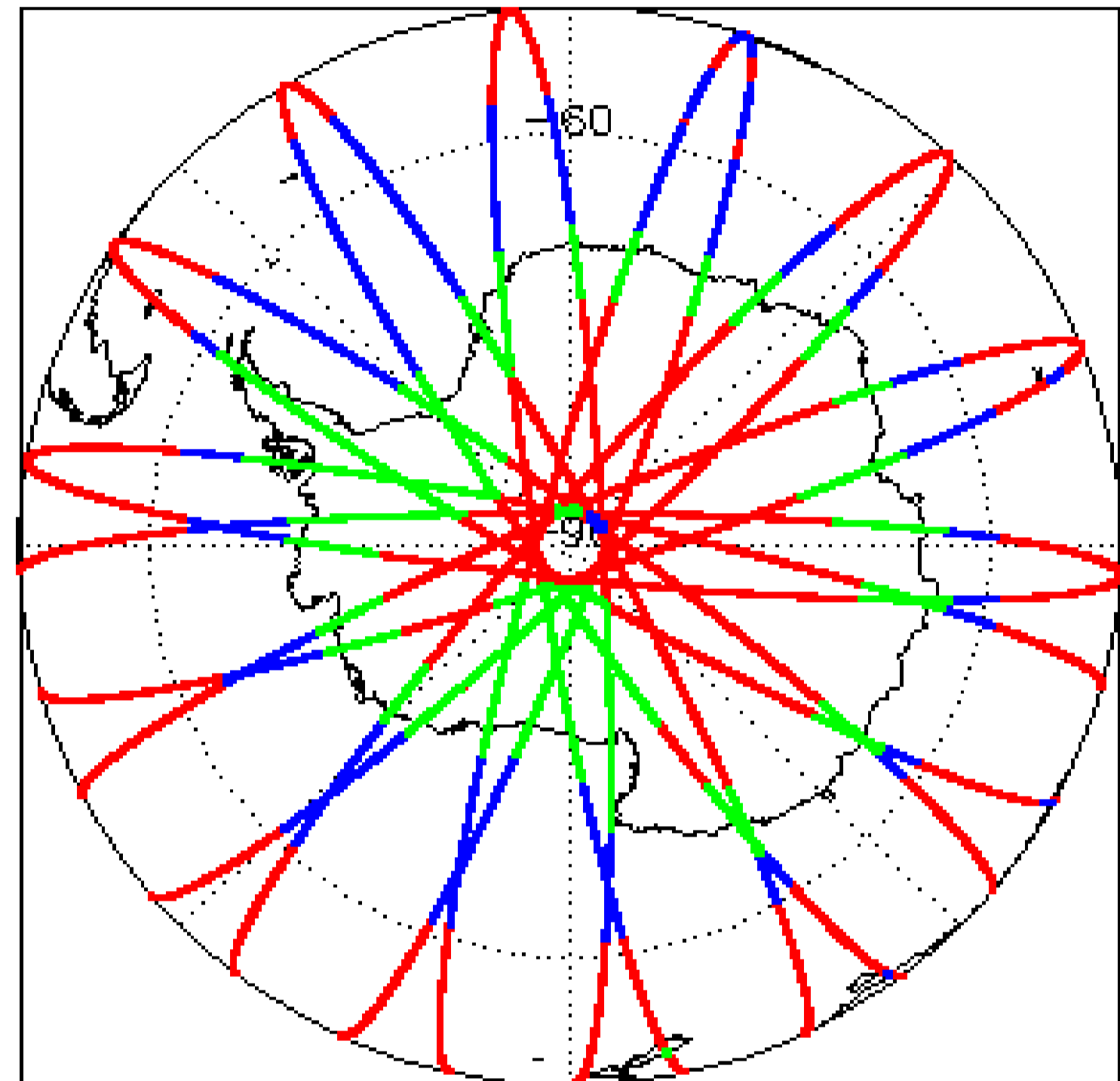
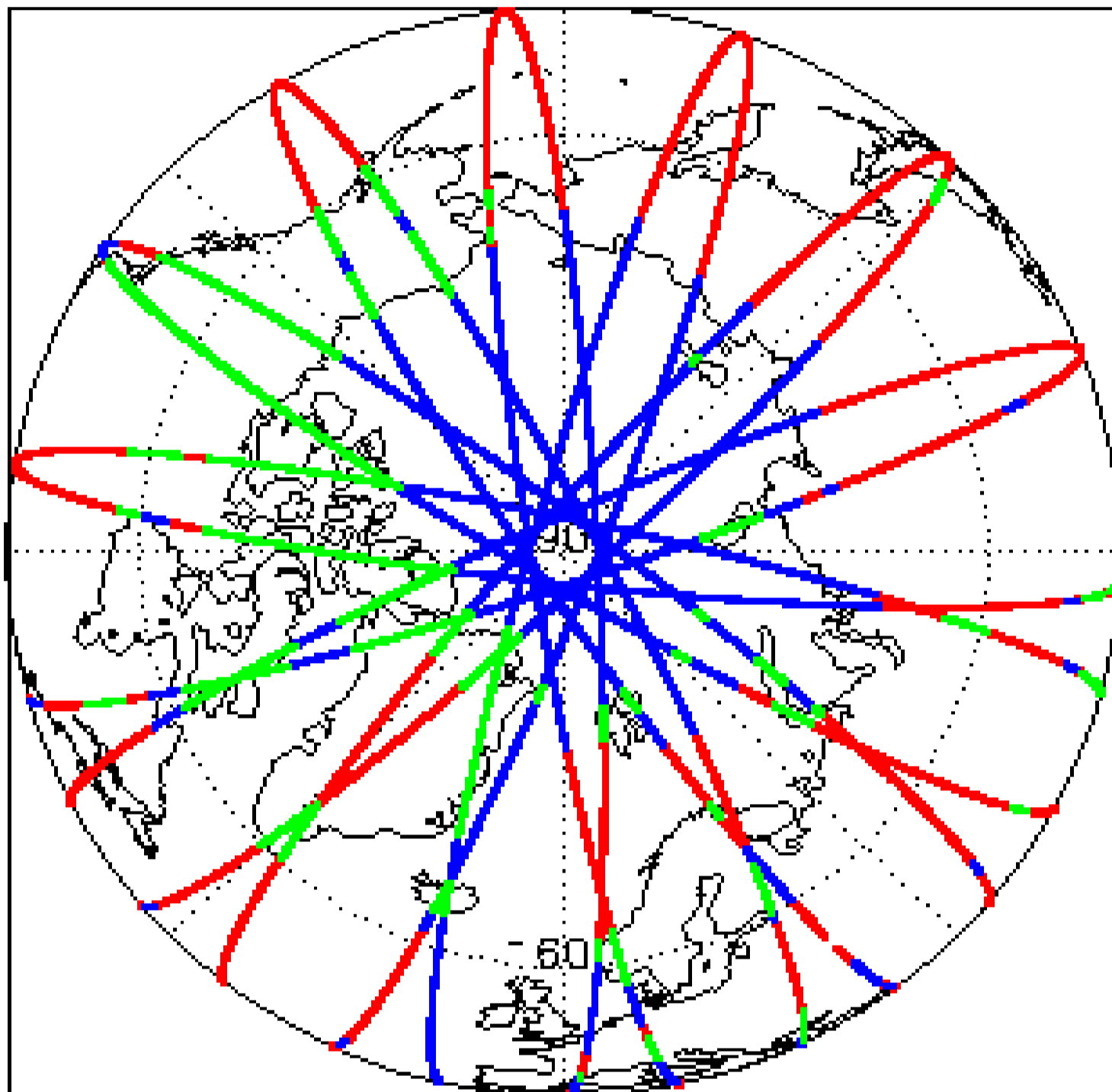
Report Production Date:	04-Aug-2021
Processor Used:	CryoSat Ice Processor
Data Used:	L1B and L2 OFFLINE Data

Check	Status
Server check: science-pds.cryosat.esa.int	Nominal
Server check: calval-pds.cryosat.esa.int	Nominal
Product Software Check	Nominal
Product Format Check	Nominal
Product Header Analysis	Nominal
Star Tracker Usage Check	Nominal
L1B Tracking Flag Check	See Section 4.4
L1B Calibration Usage Check	See Section 4.5
L1B & L2 Auxiliary Data File Usage Check	Nominal
L1B & L2 Auxiliary Correction Error Check	Nominal
L1B & L2 Measurement Confidence Data Check	See Section 4.8 and 5.5
QCC Errors/ Warnings	See Section 6.1, 6.2 and 6.3

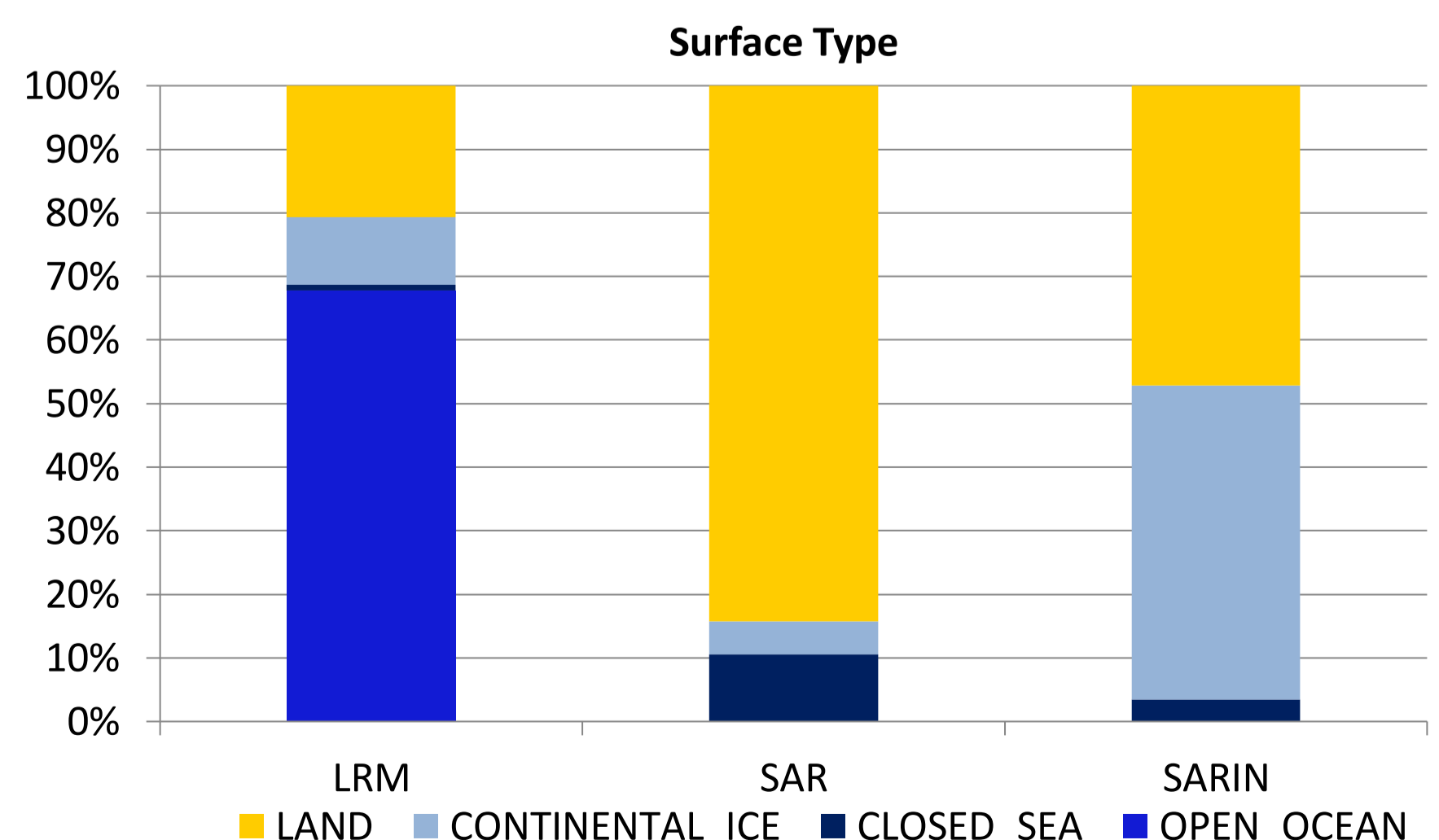
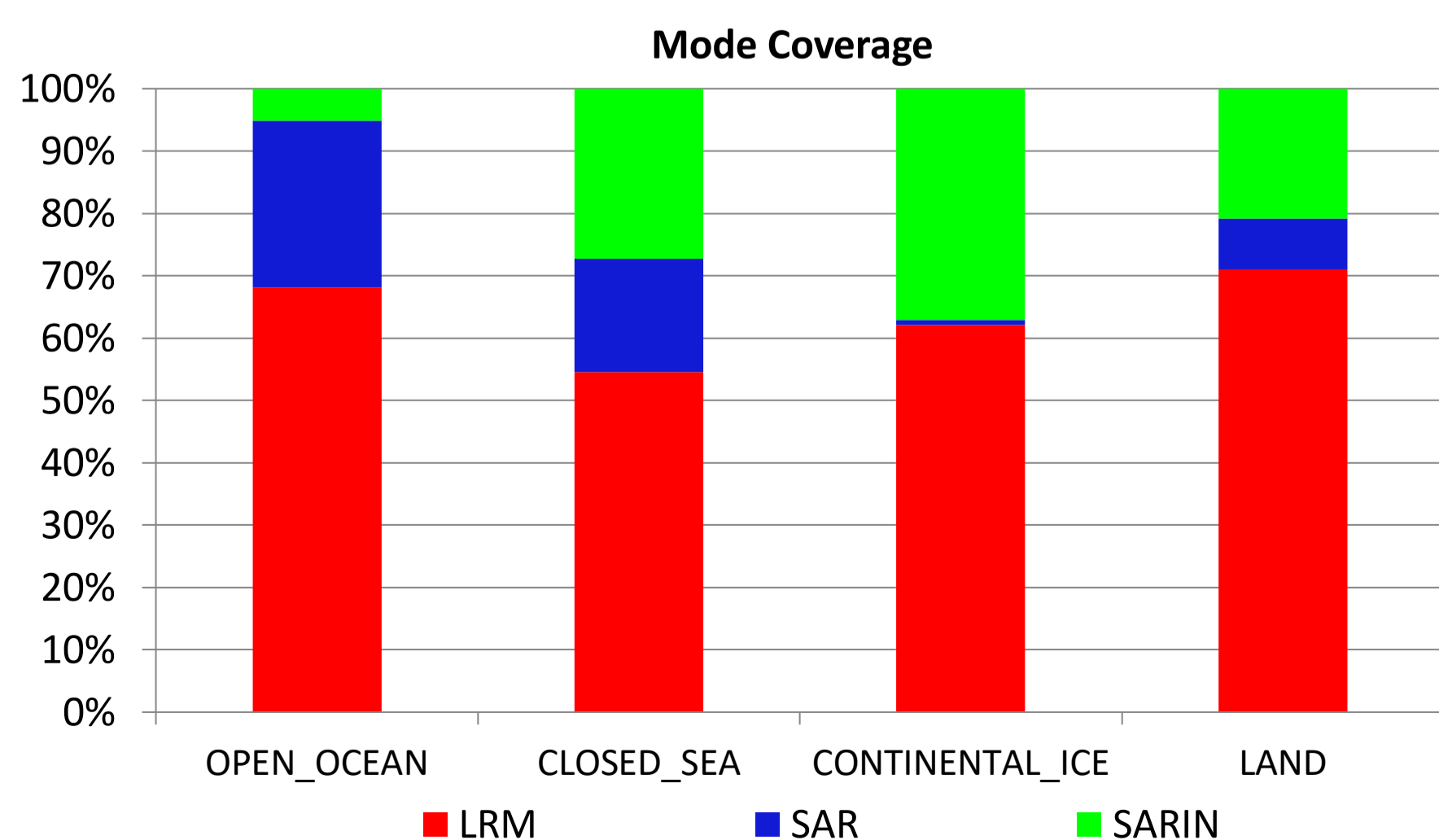
Mission / Instrument News

04-Jul-2021	None
05-Jul-2021	None
06-Jul-2021	Nothing planned

2. Global Coverage



Mode Coverage (%)		
	LRM	67.7
	SAR	20.1
	SARIn	12.2



3. Instrument Configuration

The SIRAL instrument configuration for the day of acquisition is provided below.

SIRAL instrument(s) in use:	SIRAL - A
-----------------------------	-----------

4. Level 1B Data Quality Check

4.1 L1B Product Format Check

Each product, retrieved and unpacked from the science server, is checked to ensure it consists of both an XML header file (.HDR) and a product file (.DBL).

Number of products with errors: 0

4.2 L1B Product Header Analysis

For all products, a series of pre-defined checks are carried out on the MPH and SPH in order to identify any inconsistencies and/or errors raised by the ground-segment processing chain.

Number of products with errors: 0

4.3 Star Tracker Usage Check

Each product is checked in order to ensure a valid star tracker file has been used in processing.

Number of products with errors: 0

4.4 L1B Tracking Flags Check

CryoSat L1B data includes a tracking flag for each measurement record. The bit value of this flag indicates any problems when set.

Loss of Echo Flag: This flag is currently set for some products over land, but this is to be expected.

Number of products with errors: 94

Product	Test Failed	Description
CS_OFFL_SIR_LRM_1B_20210705T002203_20210705T002636_D001	Loss of echo	The tracking echo is missing for one or more records
CS_OFFL_SIR_LRM_1B_20210705T002658_20210705T002831_D001	Loss of echo	The tracking echo is missing for one or more records
CS_OFFL_SIR_LRM_1B_20210705T003356_20210705T005755_D001	Loss of echo	The tracking echo is missing for one or more records
CS_OFFL_SIR_LRM_1B_20210705T005802_20210705T005806_D001	Loss of echo	The tracking echo is missing for one or more records
CS_OFFL_SIR_LRM_1B_20210705T005808_20210705T005818_D001	Loss of echo	The tracking echo is missing for one or more records
CS_OFFL_SIR_LRM_1B_20210705T005821_20210705T010729_D001	Loss of echo	The tracking echo is missing for one or more records
CS_OFFL_SIR_LRM_1B_20210705T010852_20210705T010934_D001	Loss of echo	The tracking echo is missing for one or more records
CS_OFFL_SIR_LRM_1B_20210705T012154_20210705T012335_D001	Loss of echo	The tracking echo is missing for one or more records
CS_OFFL_SIR_LRM_1B_20210705T012449_20210705T012723_D001	Loss of echo	The tracking echo is missing for one or more records
CS_OFFL_SIR_LRM_1B_20210705T012725_20210705T012802_D001	Loss of echo	The tracking echo is missing for one or more records
CS_OFFL_SIR_LRM_1B_20210705T012845_20210705T012908_D001	Loss of echo	The tracking echo is missing for one or more records
CS_OFFL_SIR_LRM_1B_20210705T013243_20210705T015724_D001	Loss of echo	The tracking echo is missing for one or more records
CS_OFFL_SIR_LRM_1B_20210705T020032_20210705T020538_D001	Loss of echo	The tracking echo is missing for one or more records
CS_OFFL_SIR_LRM_1B_20210705T020558_20210705T020922_D001	Loss of echo	The tracking echo is missing for one or more records
CS_OFFL_SIR_LRM_1B_20210705T030101_20210705T030722_D001	Loss of echo	The tracking echo is missing for one or more records
CS_OFFL_SIR_LRM_1B_20210705T030810_20210705T031016_D001	Loss of echo	The tracking echo is missing for one or more records
CS_OFFL_SIR_LRM_1B_20210705T031022_20210705T031626_D001	Loss of echo	The tracking echo is missing for one or more records
CS_OFFL_SIR_LRM_1B_20210705T031628_20210705T033659_D001	Loss of echo	The tracking echo is missing for one or more records
CS_OFFL_SIR_LRM_1B_20210705T034456_20210705T034829_D001	Loss of echo	The tracking echo is missing for one or more records
CS_OFFL_SIR_LRM_1B_20210705T035316_20210705T042609_D001	Loss of echo	The tracking echo is missing for one or more records
CS_OFFL_SIR_LRM_1B_20210705T043840_20210705T044119_D001	Loss of echo	The tracking echo is missing for one or more records
CS_OFFL_SIR_LRM_1B_20210705T044324_20210705T044716_D001	Loss of echo	The tracking echo is missing for one or more records
CS_OFFL_SIR_LRM_1B_20210705T044742_20210705T044814_D001	Loss of echo	The tracking echo is missing for one or more records
CS_OFFL_SIR_LRM_1B_20210705T045058_20210705T045218_D001	Loss of echo	The tracking echo is missing for one or more records
CS_OFFL_SIR_LRM_1B_20210705T045401_20210705T045856_D001	Loss of echo	The tracking echo is missing for one or more records
CS_OFFL_SIR_LRM_1B_20210705T045917_20210705T050401_D001	Loss of echo	The tracking echo is missing for one or more records
CS_OFFL_SIR_LRM_1B_20210705T050508_20210705T050732_D001	Loss of echo	The tracking echo is missing for one or more records
CS_OFFL_SIR_LRM_1B_20210705T050736_20210705T050822_D001	Loss of echo	The tracking echo is missing for one or more records
CS_OFFL_SIR_LRM_1B_20210705T055613_20210705T060748_D001	Loss of echo	The tracking echo is missing for one or more records
CS_OFFL_SIR_LRM_1B_20210705T062534_20210705T062704_D001	Loss of echo	The tracking echo is missing for one or more records
CS_OFFL_SIR_LRM_1B_20210705T062717_20210705T062730_D001	Loss of echo	The tracking echo is missing for one or more records
CS_OFFL_SIR_LRM_1B_20210705T062855_20210705T063408_D001	Loss of echo	The tracking echo is missing for one or more records
CS_OFFL_SIR_LRM_1B_20210705T070026_20210705T070420_D001	Loss of echo	The tracking echo is missing for one or more records
CS_OFFL_SIR_LRM_1B_20210705T071133_20210705T071624_D001	Loss of echo	The tracking echo is missing for one or more records
CS_OFFL_SIR_LRM_1B_20210705T072432_20210705T074748_D001	Loss of echo	The tracking echo is missing for one or more records
CS_OFFL_SIR_LRM_1B_20210705T085715_20210705T090305_D001	Loss of echo	The tracking echo is missing for one or more records
CS_OFFL_SIR_LRM_1B_20210705T090307_20210705T090748_D001	Loss of echo	The tracking echo is missing for one or more records
CS_OFFL_SIR_LRM_1B_20210705T091228_20210705T091930_D001	Loss of echo	The tracking echo is missing for one or more records
CS_OFFL_SIR_LRM_1B_20210705T092054_20210705T092420_D001	Loss of echo	The tracking echo is missing for one or more records
CS_OFFL_SIR_LRM_1B_20210705T092422_20210705T092634_D001	Loss of echo	The tracking echo is missing for one or more records
CS_OFFL_SIR_LRM_1B_20210705T094811_20210705T095631_D001	Loss of echo	The tracking echo is missing for one or more records

CS_OFFL_SIR_LRM_1B_20210705T095846_20210705T100145_D001	Loss of echo	The tracking echo is missing for one or more records
CS_OFFL_SIR_LRM_1B_20210705T100251_20210705T101332_D001	Loss of echo	The tracking echo is missing for one or more records
CS_OFFL_SIR_LRM_1B_20210705T103735_20210705T104418_D001	Loss of echo	The tracking echo is missing for one or more records
CS_OFFL_SIR_LRM_1B_20210705T104557_20210705T110035_D001	Loss of echo	The tracking echo is missing for one or more records
CS_OFFL_SIR_LRM_1B_20210705T110037_20210705T110130_D001	Loss of echo	The tracking echo is missing for one or more records
CS_OFFL_SIR_LRM_1B_20210705T110212_20210705T110655_D001	Loss of echo	The tracking echo is missing for one or more records
CS_OFFL_SIR_LRM_1B_20210705T110711_20210705T110740_D001	Loss of echo	The tracking echo is missing for one or more records
CS_OFFL_SIR_LRM_1B_20210705T112029_20210705T112127_D001	Loss of echo	The tracking echo is missing for one or more records
CS_OFFL_SIR_LRM_1B_20210705T112249_20210705T112601_D001	Loss of echo	The tracking echo is missing for one or more records
CS_OFFL_SIR_LRM_1B_20210705T113122_20210705T113554_D001	Loss of echo	The tracking echo is missing for one or more records
CS_OFFL_SIR_LRM_1B_20210705T113601_20210705T113601_D001	Loss of echo	The tracking echo is missing for one or more records
CS_OFFL_SIR_LRM_1B_20210705T113607_20210705T113611_D001	Loss of echo	The tracking echo is missing for one or more records
CS_OFFL_SIR_LRM_1B_20210705T115810_20210705T120647_D001	Loss of echo	The tracking echo is missing for one or more records
CS_OFFL_SIR_LRM_1B_20210705T123854_20210705T123901_D001	Loss of echo	The tracking echo is missing for one or more records
CS_OFFL_SIR_LRM_1B_20210705T123903_20210705T123916_D001	Loss of echo	The tracking echo is missing for one or more records
CS_OFFL_SIR_LRM_1B_20210705T123919_20210705T123922_D001	Loss of echo	The tracking echo is missing for one or more records
CS_OFFL_SIR_LRM_1B_20210705T123953_20210705T124522_D001	Loss of echo	The tracking echo is missing for one or more records
CS_OFFL_SIR_LRM_1B_20210705T130001_20210705T130911_D001	Loss of echo	The tracking echo is missing for one or more records
CS_OFFL_SIR_LRM_1B_20210705T130915_20210705T133345_D001	Loss of echo	The tracking echo is missing for one or more records
CS_OFFL_SIR_LRM_1B_20210705T134011_20210705T134446_D001	Loss of echo	The tracking echo is missing for one or more records
CS_OFFL_SIR_LRM_1B_20210705T135312_20210705T141307_D001	Loss of echo	The tracking echo is missing for one or more records
CS_OFFL_SIR_LRM_1B_20210705T141310_20210705T141720_D001	Loss of echo	The tracking echo is missing for one or more records
CS_OFFL_SIR_LRM_1B_20210705T141827_20210705T142140_D001	Loss of echo	The tracking echo is missing for one or more records
CS_OFFL_SIR_LRM_1B_20210705T142140_20210705T142456_D001	Loss of echo	The tracking echo is missing for one or more records
CS_OFFL_SIR_LRM_1B_20210705T144411_20210705T144439_D001	Loss of echo	The tracking echo is missing for one or more records
CS_OFFL_SIR_LRM_1B_20210705T152812_20210705T154856_D001	Loss of echo	The tracking echo is missing for one or more records
CS_OFFL_SIR_LRM_1B_20210705T154859_20210705T154911_D001	Loss of echo	The tracking echo is missing for one or more records
CS_OFFL_SIR_LRM_1B_20210705T154917_20210705T154929_D001	Loss of echo	The tracking echo is missing for one or more records
CS_OFFL_SIR_LRM_1B_20210705T154931_20210705T155200_D001	Loss of echo	The tracking echo is missing for one or more records
CS_OFFL_SIR_LRM_1B_20210705T155205_20210705T155407_D001	Loss of echo	The tracking echo is missing for one or more records
CS_OFFL_SIR_LRM_1B_20210705T155409_20210705T155427_D001	Loss of echo	The tracking echo is missing for one or more records
CS_OFFL_SIR_LRM_1B_20210705T155456_20210705T155515_D001	Loss of echo	The tracking echo is missing for one or more records
CS_OFFL_SIR_LRM_1B_20210705T155517_20210705T155601_D001	Loss of echo	The tracking echo is missing for one or more records
CS_OFFL_SIR_LRM_1B_20210705T155759_20210705T155851_D001	Loss of echo	The tracking echo is missing for one or more records
CS_OFFL_SIR_LRM_1B_20210705T155851_20210705T155908_D001	Loss of echo	The tracking echo is missing for one or more records
CS_OFFL_SIR_LRM_1B_20210705T160304_20210705T160401_D001	Loss of echo	The tracking echo is missing for one or more records
CS_OFFL_SIR_LRM_1B_20210705T171446_20210705T171605_D001	Loss of echo	The tracking echo is missing for one or more records
CS_OFFL_SIR_LRM_1B_20210705T171609_20210705T172247_D001	Loss of echo	The tracking echo is missing for one or more records
CS_OFFL_SIR_LRM_1B_20210705T172322_20210705T172613_D001	Loss of echo	The tracking echo is missing for one or more records
CS_OFFL_SIR_LRM_1B_20210705T173126_20210705T173301_D001	Loss of echo	The tracking echo is missing for one or more records
CS_OFFL_SIR_LRM_1B_20210705T173740_20210705T173759_D001	Loss of echo	The tracking echo is missing for one or more records
CS_OFFL_SIR_LRM_1B_20210705T173759_20210705T173818_D001	Loss of echo	The tracking echo is missing for one or more records
CS_OFFL_SIR_LRM_1B_20210705T185947_20210705T190603_D001	Loss of echo	The tracking echo is missing for one or more records
CS_OFFL_SIR_LRM_1B_20210705T190617_20210705T190652_D001	Loss of echo	The tracking echo is missing for one or more records
CS_OFFL_SIR_LRM_1B_20210705T190738_20210705T191221_D001	Loss of echo	The tracking echo is missing for one or more records
CS_OFFL_SIR_LRM_1B_20210705T193419_20210705T200926_D001	Loss of echo	The tracking echo is missing for one or more records
CS_OFFL_SIR_LRM_1B_20210705T211248_20210705T211835_D001	Loss of echo	The tracking echo is missing for one or more records
CS_OFFL_SIR_LRM_1B_20210705T211837_20210705T213203_D001	Loss of echo	The tracking echo is missing for one or more records
CS_OFFL_SIR_LRM_1B_20210705T213403_20210705T214901_D001	Loss of echo	The tracking echo is missing for one or more records
CS_OFFL_SIR_LRM_1B_20210705T220604_20210705T221616_D001	Loss of echo	The tracking echo is missing for one or more records
CS_OFFL_SIR_LRM_1B_20210705T221723_20210705T221953_D001	Loss of echo	The tracking echo is missing for one or more records
CS_OFFL_SIR_LRM_1B_20210705T222235_20210705T223734_D001	Loss of echo	The tracking echo is missing for one or more records
CS_OFFL_SIR_LRM_1B_20210705T225139_20210705T230651_D001	Loss of echo	The tracking echo is missing for one or more records

4.5 L1B Calibration Usage Check

Each product is checked in order to ensure that the necessary calibration files have been used in processing.

Number of products with errors: 1

Product	Test Failed	Description
CS_OFFL_SIR_SIN_1B_20210705T171605_20210705T171609_D001	Cal1 corr. missing	The Cal1 correction has not been applied

4.6 L1B Auxiliary Data File Usage Check

Each product is checked for missing Data Set Descriptors with respect to a pre-determined baseline and also to check the validity of Auxiliary Data Files is correct.

Number of products with errors: 0

4.7 L1B Auxiliary Correction Error Check

CryoSat L1B data includes a correction error flag (field 54) for each measurement record. The bit value of this flag indicates any problems when set.

Number of products with errors: 0

4.8 L1B Measurement Confidence Data Check

CryoSat L1B data includes a measurement confidence flag (field 18) for each measurement record. The bit value of this flag indicates any problems when set.

Currently, there are several common error flags raised in the Level 1B products which are expected due to operational mode or surface type. All common flags are summarised in the list below, followed by a table of any additional issues arising from this test.

Block Degraded Flag: This flag is currently set for a number of individual records generally at the start or end of products (all modes), but this is to be expected.

Phase Perturbation Flag: This flag is currently set for all L1B SARIn products, indicating that the ADC correction application is deactivated, but this is in line with the current configuration.

Number of products with errors: 3

Product	Test Failed	Description
CS_OFFL_SIR_LRM_1B_20210705T044324_20210705T044716_D001	Echo error, TRK echo error	The tracking echo has returned an error and the Rx1 Echo Error flag is set, indicating a degraded echo
CS_OFFL_SIR_LRM_1B_20210705T211248_20210705T211835_D001	Echo error, TRK echo error	The tracking echo has returned an error and the Rx1 Echo Error flag is set, indicating a degraded echo
CS_OFFL_SIR_SIN_1B_20210705T171605_20210705T171609_D001	Cal1 Correction missing,	The Cal1 Correction has not been applied

5. Level 2 Data Quality Check

5.1 L2 Product Format Check

Each product, retrieved and unpacked from the science server, is checked to ensure it consists of both an XML header file (.HDR) and a product file (.DBL).

Number of products with errors: 0

5.2 L2 Product Header Analysis

For all products, a series of pre-defined checks are carried out on the MPH and SPH in order to identify any inconsistencies and/or errors raised by the ground-segment processing chain.

Number of products with errors: 0

5.3 L2 Auxiliary Data File Usage Check

Each product is checked for missing Data Set Descriptors with respect to a pre-determined baseline and also to check the validity of Auxiliary Data Files is correct.

Number of products with errors: 0

5.4 L2 Auxiliary Correction Error Check

CryoSat L2 data includes a correction error flag (field 30) for each measurement record. The bit value of this flag indicates any problems when set.

Number of products with errors: 0

5.5 L2 Measurement Quality Flag Check

CryoSat L2 data includes a quality flag (field 50) for each 20-Hz measurement record. The bit value of this flag indicates any problems when set.

Currently, there are several common error flags raised in the Level 2 products which are expected due to operational mode or surface type. All common flags are summarised in the list below, followed by a table of any additional issues arising from this test.

Freeboard error: This flag is correctly set in all L2 SAR products that are not discriminated as sea-ice, and for which freeboard cannot be calculated.

Height and Backscatter errors: These flags are currently set for products over land, but this is to be expected. Retracker 1 Height and Backscatter error flags are also set for products over sea-ice, but this is to be expected.

Peakiness error: This flag is currently set for products over sea-ice, but this is to be expected.

SARIn X-Track Angle Error: This flag is set when the difference between the computed surface elevation and the DEM is >50 m. The DEM is only available over Greenland and Antarctica and as a result this flag is set for L2 SARIn products in all other locations as expected.

SSHA interpolation error: This flag is currently set for a number of SAR products occurring at surface type boundaries, but this is to be expected.

Number of products with errors: 65

Product	Test Failed	Description
CS_OFFL_SIR_LRM_2__20210705T000240_20210705T001816_D001	Height Error (Retracker 2), Height Error (Retracker 3), Backscatter Error (Retracker 2)	There is a height and backscatter error for Retracker 2 and a height error for Retracker 3 for one or more records
CS_OFFL_SIR_LRM_2__20210705T003356_20210705T005755_D001	Height Error (Retracker 2), Backscatter Error (Retracker 2)	There is a height and backscatter error for Retracker 2 for one or more records
CS_OFFL_SIR_LRM_2__20210705T013243_20210705T015724_D001	Height Error (Retracker 2), Height Error (Retracker 3), Backscatter Error (Retracker 2)	There is a height and backscatter error for Retracker 2 and a height error for Retracker 3 for one or more records
CS_OFFL_SIR_LRM_2__20210705T021259_20210705T023955_D001	Height Error (Retracker 2), Backscatter Error (Retracker 2)	There is a height and backscatter error for Retracker 2 for one or more records
CS_OFFL_SIR_LRM_2__20210705T030101_20210705T030722_D001	Height Error (Retracker 2), Backscatter Error (Retracker 2)	There is a height and backscatter error for Retracker 2 for one or more records
CS_OFFL_SIR_LRM_2__20210705T031022_20210705T031626_D001	Height Error (Retracker 2), Height Error (Retracker 3), Backscatter Error (Retracker 2)	There is a height and backscatter error for Retracker 2 and a height error for Retracker 3 for one or more records
CS_OFFL_SIR_LRM_2__20210705T031628_20210705T033659_D001	Height Error (Retracker 2), Height Error (Retracker 3), Backscatter Error (Retracker 2)	There is a height and backscatter error for Retracker 2 and a height error for Retracker 3 for one or more records
CS_OFFL_SIR_LRM_2__20210705T035316_20210705T042609_D001	Height Error (Retracker 2), Height Error (Retracker 3), Backscatter Error (Retracker 2), Surface model unavailable	There is a height and backscatter error for Retracker 2, a height error for Retracker 3 and no DEM or Slope Model was used for the location of one or more records

6. QCC Report Analysis

The Quality Control for CryoSat (QCC) facility performs a primary survey of data products immediately after production by the PDS and LTA processing facilities. A list of the tests which raised errors or warnings is provided below.

Product type	No. Products	No. QCC Reports	No. Valid	No. Warnings	No. Errors
SIR_LRM_1B	164	164	164	0	0
SIR_SAR_1B	120	120	120	0	0
SIR_SIN_1B	110	110	110	0	0
SIR_LRM_2	164	164	159	5	0
SIR_SAR_2	110	120	120	0	0
SIR_SIN_2	120	110	108	2	0
SIR_GDR_2	14	14	0	0	14

6.1 QCC Errors

Number of products with QCC errors: 14

Product Type	MPHDUTNCDF	MPHXPFNCDF	MPHXVFNCDF	MPHYPFNCDF	MPHYVFNCDF	MPHZPFNCDF	MPHZVFNCDF	-	-	-	-
SIR_GDR_2_	14	14	14	14	14	14	14	-	-	-	-

Test Description Key:

Abbreviation	Test name	Details
MPHDUTNCDF	MPH_Delta_UT1_NetCDF	Delta_UT1 mismatch
MPHXPFNCDF	MPH_X_Position_Float_v2_NetCDF	X_Position mismatch (DBL float (GDR), rounded to 100)
MPHXVFNCDF	MPH_X_Velocity_Float_v2_NetCDF	X_Velocity mismatch (DBL float (GDR), rounded to 1)
MPHYPFNCDF	MPH_Y_Position_Float_v2_NetCDF	Y_Position mismatch (DBL float (GDR), rounded to 100)
MPHYVFNCDF	MPH_Y_Velocity_Float_v2_NetCDF	Y_Velocity mismatch (DBL float (GDR), rounded to 1)
MPHZPFNCDF	MPH_Z_Position_Float_v2_NetCDF	Z_Position mismatch (DBL float (GDR), rounded to 100)
MPHZVFNCDF	MPH_Z_Velocity_Float_v2_NetCDF	Z_Velocity mismatch (DBL float (GDR), rounded to 1)

6.2 QCC Warnings

Number of QCC reports with warnings: 7

Total number of occurrences of each warning

Product Type	AXDME	AXSMMEOCI	-	-	-	-	-
SIR_LRM_2_	0	5					
SIR_SIN_2_	2	0					

Test Description Key:

Abbreviation	Test name	Details
AXDME	AttributeXrefDemMustExist	The xref_dem attribute is mandatory in SIN products over continental ice
AXSMMEOCI	AttributeXrefSlopeModelMustExistOverContinentalIce	The xref_slope_model is mandatory in LRM products over continental ice

6.2 Missing QCC Reports

Number of products with missing QCC reports: 0