

### 1. Overview

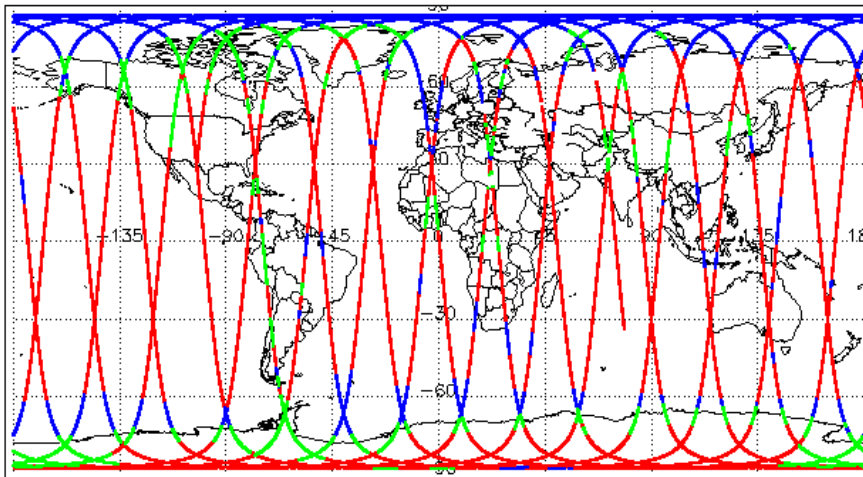
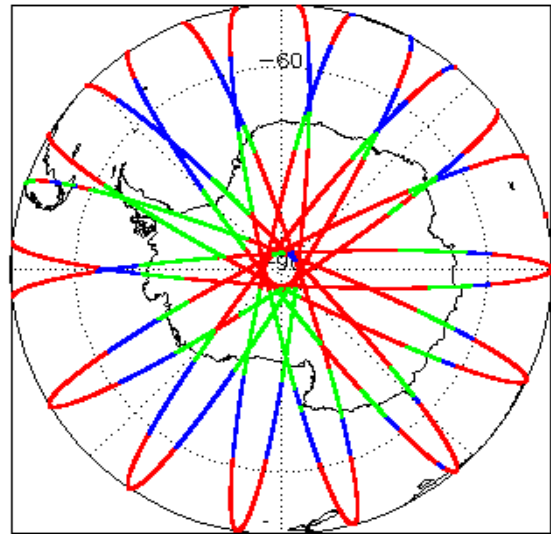
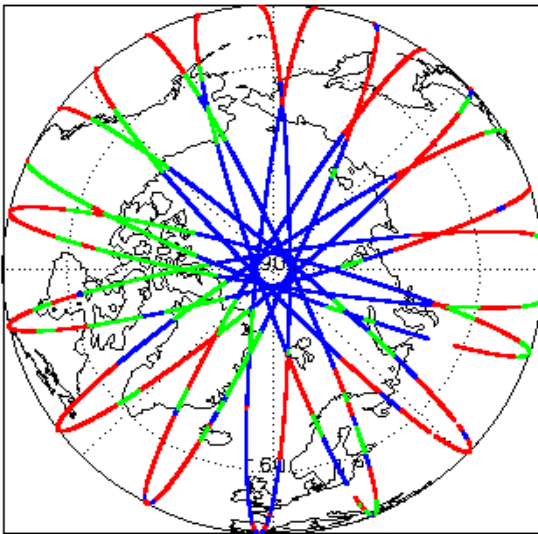
Report Production Date:	06-Jan-2021
Processor Used:	CryoSat Ice Processor
Data Used:	L1B and L2 OFFLINE Data

Check	Status
Server check: science-pds.cryosat.esa.int	Nominal
Server check: calval-pds.cryosat.esa.int	Nominal
Product Software Check	Nominal
Product Format Check	Nominal
Product Header Analysis	Nominal
Star Tracker Usage Check	Nominal
L1B Tracking Flag Check	See Section 4.4
L1B Calibration Usage Check	Nominal
L1B & L2 Auxiliary Data File Usage Check	Nominal
L1B & L2 Auxiliary Correction Error Check	Nominal
L1B & L2 Measurement Confidence Data Check	See Section 4.8 and 5.5
QCC Errors/ Warnings	See Section 6.1, 6.2 and 6.3

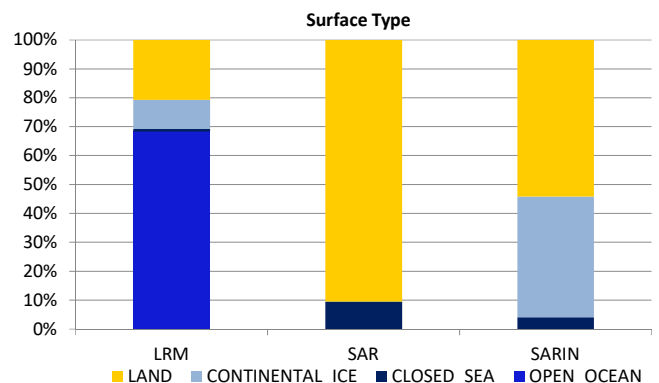
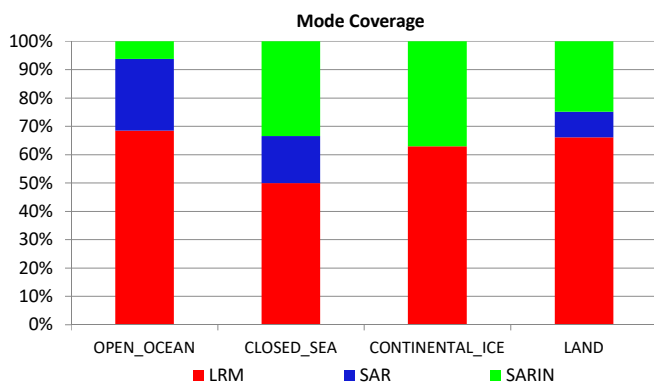
#### Mission / Instrument News

01-Dec-2020	None
02-Dec-2020	None
03-Dec-2020	Due to a Collision Avoidance Manoeuvre, SIRAL will be unavailable from the 03/12/2020 at 08:48:39 until 13:03:20

### 2. Global Coverage



Mode Coverage (%)		
	LRM	67.3
	SAR	19.1
	SARIn	13.6



### 3. Instrument Configuration

The SIRAL instrument configuration for the day of acquisition is provided below.

SIRAL instrument(s) in use:	SIRAL - A
-----------------------------	-----------

### 4. Level 1B Data Quality Check

#### 4.1 L1B Product Format Check

Each product, retrieved and unpacked from the science server, is checked to ensure it consists of both an XML header file (.HDR) and a product file (.DBL).

Number of products with errors: 0

#### 4.2 L1B Product Header Analysis

For all products, a series of pre-defined checks are carried out on the MPH and SPH in order to identify any inconsistencies and/or errors raised by the ground-segment processing chain.

Number of products with errors: 0

#### 4.3 Star Tracker Usage Check

Each product is checked in order to ensure a valid star tracker file has been used in processing.

Number of products with errors: 0

#### 4.4 L1B Tracking Flags Check

CryoSat L1B data includes a tracking flag for each measurement record. The bit value of this flag indicates any problems when set.

**Loss of Echo Flag:** This flag is currently set for some products over land, but this is to be expected.

Number of products with errors: 129

Product	Test Failed	Description
CS_OFFL_SIR_LRM_1B_20201202T002034_20201202T002541_D001	Loss of echo	The tracking echo is missing for one or more records
CS_OFFL_SIR_LRM_1B_20201202T002704_20201202T002706_D001	Loss of echo	The tracking echo is missing for one or more records
CS_OFFL_SIR_LRM_1B_20201202T004804_20201202T004807_D001	Loss of echo	The tracking echo is missing for one or more records
CS_OFFL_SIR_LRM_1B_20201202T004810_20201202T004812_D001	Loss of echo	The tracking echo is missing for one or more records
CS_OFFL_SIR_LRM_1B_20201202T004818_20201202T004838_D001	Loss of echo	The tracking echo is missing for one or more records
CS_OFFL_SIR_LRM_1B_20201202T004844_20201202T004904_D001	Loss of echo	The tracking echo is missing for one or more records
CS_OFFL_SIR_LRM_1B_20201202T004907_20201202T004910_D001	Loss of echo	The tracking echo is missing for one or more records
CS_OFFL_SIR_LRM_1B_20201202T004912_20201202T011517_D001	Loss of echo	The tracking echo is missing for one or more records
CS_OFFL_SIR_LRM_1B_20201202T013204_20201202T015934_D001	Loss of echo	The tracking echo is missing for one or more records
CS_OFFL_SIR_LRM_1B_20201202T015940_20201202T015940_D001	Loss of echo	The tracking echo is missing for one or more records
CS_OFFL_SIR_LRM_1B_20201202T015944_20201202T020224_D001	Loss of echo	The tracking echo is missing for one or more records
CS_OFFL_SIR_LRM_1B_20201202T020258_20201202T020524_D001	Loss of echo	The tracking echo is missing for one or more records
CS_OFFL_SIR_LRM_1B_20201202T031833_20201202T032613_D001	Loss of echo	The tracking echo is missing for one or more records
CS_OFFL_SIR_LRM_1B_20201202T032740_20201202T033257_D001	Loss of echo	The tracking echo is missing for one or more records
CS_OFFL_SIR_LRM_1B_20201202T033827_20201202T033933_D001	Loss of echo	The tracking echo is missing for one or more records
CS_OFFL_SIR_LRM_1B_20201202T033946_20201202T034037_D001	Loss of echo	The tracking echo is missing for one or more records
CS_OFFL_SIR_LRM_1B_20201202T034039_20201202T034102_D001	Loss of echo	The tracking echo is missing for one or more records
CS_OFFL_SIR_LRM_1B_20201202T034102_20201202T034201_D001	Loss of echo	The tracking echo is missing for one or more records
CS_OFFL_SIR_LRM_1B_20201202T034510_20201202T034517_D001	Loss of echo	The tracking echo is missing for one or more records
CS_OFFL_SIR_LRM_1B_20201202T051117_20201202T051608_D001	Loss of echo	The tracking echo is missing for one or more records
CS_OFFL_SIR_LRM_1B_20201202T051641_20201202T051821_D001	Loss of echo	The tracking echo is missing for one or more records
CS_OFFL_SIR_LRM_1B_20201202T053724_20201202T060007_D001	Loss of echo	The tracking echo is missing for one or more records
CS_OFFL_SIR_LRM_1B_20201202T060050_20201202T061250_D001	Loss of echo	The tracking echo is missing for one or more records
CS_OFFL_SIR_LRM_1B_20201202T062119_20201202T062515_D001	Loss of echo	The tracking echo is missing for one or more records
CS_OFFL_SIR_LRM_1B_20201202T071606_20201202T071706_D001	Loss of echo	The tracking echo is missing for one or more records
CS_OFFL_SIR_LRM_1B_20201202T071708_20201202T071739_D001	Loss of echo	The tracking echo is missing for one or more records
CS_OFFL_SIR_LRM_1B_20201202T071742_20201202T071826_D001	Loss of echo	The tracking echo is missing for one or more records
CS_OFFL_SIR_LRM_1B_20201202T071828_20201202T073037_D001	Loss of echo	The tracking echo is missing for one or more records
CS_OFFL_SIR_LRM_1B_20201202T073519_20201202T073635_D001	Loss of echo	The tracking echo is missing for one or more records
CS_OFFL_SIR_LRM_1B_20201202T073637_20201202T073645_D001	Loss of echo	The tracking echo is missing for one or more records
CS_OFFL_SIR_LRM_1B_20201202T073648_20201202T073943_D001	Loss of echo	The tracking echo is missing for one or more records
CS_OFFL_SIR_LRM_1B_20201202T074008_20201202T075233_D001	Loss of echo	The tracking echo is missing for one or more records
CS_OFFL_SIR_LRM_1B_20201202T081038_20201202T082337_D001	Loss of echo	The tracking echo is missing for one or more records
CS_OFFL_SIR_LRM_1B_20201202T082551_20201202T084242_D001	Loss of echo	The tracking echo is missing for one or more records
CS_OFFL_SIR_LRM_1B_20201202T085524_20201202T085535_D001	Loss of echo	The tracking echo is missing for one or more records
CS_OFFL_SIR_LRM_1B_20201202T085538_20201202T085552_D001	Loss of echo	The tracking echo is missing for one or more records
CS_OFFL_SIR_LRM_1B_20201202T085558_20201202T085558_D001	Loss of echo	The tracking echo is missing for one or more records
CS_OFFL_SIR_LRM_1B_20201202T085601_20201202T085604_D001	Loss of echo	The tracking echo is missing for one or more records
CS_OFFL_SIR_LRM_1B_20201202T085610_20201202T085622_D001	Loss of echo	The tracking echo is missing for one or more records
CS_OFFL_SIR_LRM_1B_20201202T085624_20201202T085937_D001	Loss of echo	The tracking echo is missing for one or more records
CS_OFFL_SIR_LRM_1B_20201202T085940_20201202T090001_D001	Loss of echo	The tracking echo is missing for one or more records



CS_OFFL_SIR_LRM_1B_20201202T205135_20201202T205340_D001	Loss of echo	The tracking echo is missing for one or more records
CS_OFFL_SIR_LRM_1B_20201202T205446_20201202T205638_D001	Loss of echo	The tracking echo is missing for one or more records
CS_OFFL_SIR_LRM_1B_20201202T205715_20201202T210620_D001	Loss of echo	The tracking echo is missing for one or more records
CS_OFFL_SIR_LRM_1B_20201202T211209_20201202T211440_D001	Loss of echo	The tracking echo is missing for one or more records
CS_OFFL_SIR_LRM_1B_20201202T212156_20201202T213613_D001	Loss of echo	The tracking echo is missing for one or more records
CS_OFFL_SIR_LRM_1B_20201202T213752_20201202T214301_D001	Loss of echo	The tracking echo is missing for one or more records
CS_OFFL_SIR_LRM_1B_20201202T214500_20201202T215154_D001	Loss of echo	The tracking echo is missing for one or more records
CS_OFFL_SIR_LRM_1B_20201202T215156_20201202T215208_D001	Loss of echo	The tracking echo is missing for one or more records
CS_OFFL_SIR_LRM_1B_20201202T215211_20201202T215233_D001	Loss of echo	The tracking echo is missing for one or more records
CS_OFFL_SIR_LRM_1B_20201202T215236_20201202T215241_D001	Loss of echo	The tracking echo is missing for one or more records
CS_OFFL_SIR_LRM_1B_20201202T215244_20201202T215254_D001	Loss of echo	The tracking echo is missing for one or more records
CS_OFFL_SIR_LRM_1B_20201202T215256_20201202T215302_D001	Loss of echo	The tracking echo is missing for one or more records
CS_OFFL_SIR_LRM_1B_20201202T215333_20201202T215339_D001	Loss of echo	The tracking echo is missing for one or more records
CS_OFFL_SIR_LRM_1B_20201202T215344_20201202T215350_D001	Loss of echo	The tracking echo is missing for one or more records
CS_OFFL_SIR_LRM_1B_20201202T215354_20201202T215927_D001	Loss of echo	The tracking echo is missing for one or more records
CS_OFFL_SIR_LRM_1B_20201202T221113_20201202T221320_D001	Loss of echo	The tracking echo is missing for one or more records
CS_OFFL_SIR_LRM_1B_20201202T221442_20201202T222153_D001	Loss of echo	The tracking echo is missing for one or more records
CS_OFFL_SIR_LRM_1B_20201202T222316_20201202T224623_D001	Loss of echo	The tracking echo is missing for one or more records
CS_OFFL_SIR_LRM_1B_20201202T230142_20201202T232443_D001	Loss of echo	The tracking echo is missing for one or more records
CS_OFFL_SIR_LRM_1B_20201202T232823_20201202T232918_D001	Loss of echo	The tracking echo is missing for one or more records
CS_OFFL_SIR_LRM_1B_20201202T233055_20201202T233107_D001	Loss of echo	The tracking echo is missing for one or more records
CS_OFFL_SIR_LRM_1B_20201202T233109_20201202T233429_D001	Loss of echo	The tracking echo is missing for one or more records
CS_OFFL_SIR_LRM_1B_20201202T234933_20201202T235030_D001	Loss of echo	The tracking echo is missing for one or more records
CS_OFFL_SIR_LRM_1B_20201202T235152_20201202T235942_D001	Loss of echo	The tracking echo is missing for one or more records

#### 4.5 L1B Calibration Usage Check

Each product is checked in order to ensure that the necessary calibration files have been used in processing.

Number of products with errors: 0

#### 4.6 L1B Auxiliary Data File Usage Check

Each product is checked for missing Data Set Descriptors with respect to a pre-determined baseline and also to check the validity of Auxiliary Data Files is correct.

Number of products with errors: 0

#### 4.7 L1B Auxiliary Correction Error Check

CryoSat L1B data includes a correction error flag (field 54) for each measurement record. The bit value of this flag indicates any problems when set.

Number of products with errors: 0

#### 4.8 L1B Measurement Confidence Data Check

CryoSat L1B data includes a measurement confidence flag (field 18) for each measurement record. The bit value of this flag indicates any problems when set.

**Currently, there are several common error flags raised in the Level 1B products which are expected due to operational mode or surface type. All common flags are summarised in the list below, followed by a table of any additional issues arising from this test.**

**Block Degraded Flag:** This flag is currently set for a number of individual records generally at the start or end of products (all modes), but this is to be expected.

**Phase Perturbation Flag:** This flag is currently set for all L1B SARIn products, indicating that the ADC correction application is deactivated, but this is in line with the current configuration.

Number of products with errors: 0

### 5. Level 2 Data Quality Check

#### 5.1 L2 Product Format Check

Each product, retrieved and unpacked from the science server, is checked to ensure it consists of both an XML header file (.HDR) and a product file (.DBL).

Number of products with errors: 0

#### 5.2 L2 Product Header Analysis

For all products, a series of pre-defined checks are carried out on the MPH and SPH in order to identify any inconsistencies and/or errors raised by the ground-segment processing chain.

Number of products with errors: 0

#### 5.3 L2 Auxiliary Data File Usage Check

Each product is checked for missing Data Set Descriptors with respect to a pre-determined baseline and also to check the validity of Auxiliary Data Files is correct.

Number of products with errors: 0

#### 5.4 L2 Auxiliary Correction Error Check

CryoSat L2 data includes a correction error flag (field 30) for each measurement record. The bit value of this flag indicates any problems when set.

Number of products with errors: 0

#### 5.5 L2 Measurement Quality Flag Check

CryoSat L2 data includes a quality flag (field 50) for each 20-Hz measurement record. The bit value of this flag indicates any problems when set.

Currently, there are several common error flags raised in the Level 2 products which are expected due to operational mode or surface type. All common flags are summarised in the list below, followed by a table of any additional issues arising from this test.

**Freeboard error:** This flag is correctly set in all L2 SAR products that are not discriminated as sea-ice, and for which freeboard cannot be calculated.

**Height and Backscatter errors:** These flags are currently set for products over land, but this is to be expected. Retracker 1 Height and Backscatter error flags are also set for products over sea-ice, but this is to be expected.

**Peakiness error:** This flag is currently set for products over sea-ice, but this is to be expected.

**SARin X-Track Angle Error:** This flag is set when the difference between the computed surface elevation and the DEM is >50 m. The DEM is only available over Greenland and Antarctica and as a result this flag is set for L2 SARin products in all other locations as expected.

**SSHA interpolation error:** This flag is currently set for a number of SAR products occurring at surface type boundaries, but this is to be expected.

**Number of products with errors:** 55

Product	Test Failed	Description
CS_OFFL_SIR_LRM_2__20201201T235254_20201202T001631_D001	Height Error (Retracker 2), Height Error (Retracker 3), Backscatter Error (Retracker 2)	There is a height and backscatter error for Retracker 2 and a height error for Retracker 3 for one or more records
CS_OFFL_SIR_LRM_2__20201202T004912_20201202T011517_D001	Height Error (Retracker 2), Height Error (Retracker 3), Backscatter Error (Retracker 2)	There is a height and backscatter error for Retracker 2 and a height error for Retracker 3 for one or more records
CS_OFFL_SIR_LRM_2__20201202T013204_20201202T015934_D001	Height Error (Retracker 2), Height Error (Retracker 3), Backscatter Error (Retracker 2)	There is a height and backscatter error for Retracker 2 and a height error for Retracker 3 for one or more records
CS_OFFL_SIR_LRM_2__20201202T020630_20201202T020851_D001	Height Error (Retracker 2), Height Error (Retracker 3), Backscatter Error (Retracker 2)	There is a height and backscatter error for Retracker 2 and a height error for Retracker 3 for one or more records
CS_OFFL_SIR_LRM_2__20201202T022220_20201202T025348_D001	Height Error (Retracker 2), Backscatter Error (Retracker 2)	There is a height and backscatter error for Retracker 2 for one or more records
CS_OFFL_SIR_LRM_2__20201202T031120_20201202T031515_D001	Height Error (Retracker 2), Backscatter Error (Retracker 2)	There is a height and backscatter error for Retracker 2 for one or more records
CS_OFFL_SIR_LRM_2__20201202T034619_20201202T034907_D001	Height Error (Retracker 2), Backscatter Error (Retracker 2)	There is a height and backscatter error for Retracker 2 for one or more records
CS_OFFL_SIR_LRM_2__20201202T040107_20201202T043404_D001	Height Error (Retracker 2), Backscatter Error (Retracker 2), Surface model unavailable	There is a height and backscatter error for Retracker 2 and no DEM or Slope Model was used for the location of one or more records
CS_OFFL_SIR_LRM_2__20201202T045144_20201202T050753_D001	Height Error (Retracker 2), Backscatter Error (Retracker 2)	There is a height and backscatter error for Retracker 2 for one or more records
CS_OFFL_SIR_LRM_2__20201202T051117_20201202T051608_D001	Height Error (Retracker 3)	There is a height error for Retracker 3 for one or more records
CS_OFFL_SIR_LRM_2__20201202T053724_20201202T060007_D001	Height Error (Retracker 2), Height Error (Retracker 3), Backscatter Error (Retracker 2), Surface model unavailable	There is a height and backscatter error for Retracker 2, a height error for Retracker 3 and no DEM or Slope Model was used for the location of one or more records
CS_OFFL_SIR_LRM_2__20201202T060050_20201202T061250_D001	Height Error (Retracker 2), Backscatter Error (Retracker 2)	There is a height and backscatter error for Retracker 2 for one or more records
CS_OFFL_SIR_LRM_2__20201202T063014_20201202T065612_D001	Height Error (Retracker 2), Height Error (Retracker 3), Backscatter Error (Retracker 2)	There is a height and backscatter error for Retracker 2 and a height error for Retracker 3 for one or more records
CS_OFFL_SIR_LRM_2__20201202T071828_20201202T073037_D001	Height Error (Retracker 2), Height Error (Retracker 3), Backscatter Error (Retracker 2)	There is a height and backscatter error for Retracker 2 and a height error for Retracker 3 for one or more records
CS_OFFL_SIR_LRM_2__20201202T073519_20201202T073635_D001	Height Error (Retracker 2), Backscatter Error (Retracker 2)	There is a height and backscatter error for Retracker 2 for one or more records
CS_OFFL_SIR_LRM_2__20201202T073648_20201202T073943_D001	Height Error (Retracker 2), Height Error (Retracker 3), Backscatter Error (Retracker 2)	There is a height and backscatter error for Retracker 2 and a height error for Retracker 3 for one or more records
CS_OFFL_SIR_LRM_2__20201202T074008_20201202T075233_D001	Height Error (Retracker 2), Backscatter Error (Retracker 2)	There is a height and backscatter error for Retracker 2 for one or more records
CS_OFFL_SIR_LRM_2__20201202T081038_20201202T082337_D001	Height Error (Retracker 2), Backscatter Error (Retracker 2)	There is a height and backscatter error for Retracker 2 for one or more records
CS_OFFL_SIR_LRM_2__20201202T082551_20201202T084242_D001	Height Error (Retracker 2), Height Error (Retracker 3), Backscatter Error (Retracker 2)	There is a height and backscatter error for Retracker 2 and a height error for Retracker 3 for one or more records
CS_OFFL_SIR_LRM_2__20201202T085524_20201202T085535_D001	Surface Model Unavailable	No DEM or Slope Model was used for the location of one or more records
CS_OFFL_SIR_LRM_2__20201202T090512_20201202T091539_D001	Height Error (Retracker 2), Height Error (Retracker 3), Backscatter Error (Retracker 2)	There is a height and backscatter error for Retracker 2 and a height error for Retracker 3 for one or more records
CS_OFFL_SIR_LRM_2__20201202T091719_20201202T093107_D001	Height Error (Retracker 2), Height Error (Retracker 3), Backscatter Error (Retracker 2)	There is a height and backscatter error for Retracker 2 and a height error for Retracker 3 for one or more records
CS_OFFL_SIR_LRM_2__20201202T095558_20201202T095942_D001	Height Error (Retracker 2), Backscatter Error (Retracker 2)	There is a height and backscatter error for Retracker 2 for one or more records
CS_OFFL_SIR_LRM_2__20201202T100643_20201202T100929_D001	Height Error (Retracker 2), Backscatter Error (Retracker 2)	There is a height and backscatter error for Retracker 2 for one or more records



CS_OFFL_SIR_LRM_2_20201202T222316_20201202T224623_D001	Height Error (Retracker 2), Height Error (Retracker 3), Backscatter Error (Retracker 2)	There is a height and backscatter error for Retracker 2 and a height error for Retracker 3 for one or more records
CS_OFFL_SIR_LRM_2_20201202T230142_20201202T232443_D001	Height Error (Retracker 2), Height Error (Retracker 3), Backscatter Error (Retracker 2)	There is a height and backscatter error for Retracker 2 and a height error for Retracker 3 for one or more records
CS_OFFL_SIR_LRM_2_20201202T233606_20201202T233656_D001	Height Error (Retracker 2), Backscatter Error (Retracker 2)	There is a height and backscatter error for Retracker 2 for one or more records

## 6. QCC Report Analysis

The Quality Control for CryoSat (QCC) facility performs a primary survey of data products immediately after production by the PDS and LTA processing facilities. A list of the tests which raised errors or warnings is provided below.

Product type	No. Products	No. QCC Reports	No. Valid	No. Warnings	No. Errors
SIR_LRM_1B	185	185	185	0	0
SIR_SAR_1B	115	115	115	0	0
SIR_SIN_1B	108	108	108	0	0
SIR_LRM_2	183	183	180	3	0
SIR_SAR_2	106	114	114	0	0
SIR_SIN_2	114	106	104	2	0
SIR_GDR_2	15	15	0	0	15

### 6.1 QCC Errors

Number of products with QCC errors: 15

Product Type	MPHDUTNCDF	MPHXPFNCDF	MPHXVFNCDF	MPHYPFNCDF	MPHYVFNCDF	MPHZPFNCDF	MPHZVFNCDF	STRUCTURESIZ EANDREAD	-	-	-
SIR_GDR_2_	15	15	15	15	15	15	15	15			

#### Test Description Key:

Abbreviation	Test name	Details
MPHDUTNCDF	MPH_Delta_UT1_NetCDF	Delta_UT1 mismatch
MPHXPFNCDF	MPH_X_Position_Float_v2_NetCDF	X_Position mismatch (DBL float (GDR), rounded to 100)
MPHXVFNCDF	MPH_X_Velocity_Float_v2_NetCDF	X_Velocity mismatch (DBL float (GDR), rounded to 1)
MPHYPFNCDF	MPH_Y_Position_Float_v2_NetCDF	Y_Position mismatch (DBL float (GDR), rounded to 100)
MPHYVFNCDF	MPH_Y_Velocity_Float_v2_NetCDF	Y_Velocity mismatch (DBL float (GDR), rounded to 1)
MPHZPFNCDF	MPH_Z_Position_Float_v2_NetCDF	Z_Position mismatch (DBL float (GDR), rounded to 100)
MPHZVFNCDF	MPH_Z_Velocity_Float_v2_NetCDF	Z_Velocity mismatch (DBL float (GDR), rounded to 1)
STRUCTURESIZ EANDREAD	STRUCTURE_SIZE_AND_READ	Under investigation.

### 6.2 QCC Warnings

Number of QCC reports with warnings: 6

Total number of occurrences of each warning

Product Type	AXDME	AXSMMEOCI	-	-	-	-
SIR_GDR_2_	0	1				
SIR_LRM_2_	0	3				

#### Test Description Key:

Abbreviation	Test name	Details
AXDME	AttributeXrefDemMustExist	The xref_dem attribute is mandatory in SIN products over continental ice
AXSMMEOCI	AttributeXrefSlopeModelMustExistOverContinentalIce	The xref_slope_model is mandatory in LRM products over continental ice

### 6.2 Missing QCC Reports

Number of products with missing QCC reports: 1

Product name
CS_OFFL_SIR_GDR_2_20201202T231808_20201203T005723_D002