

### 1. Overview

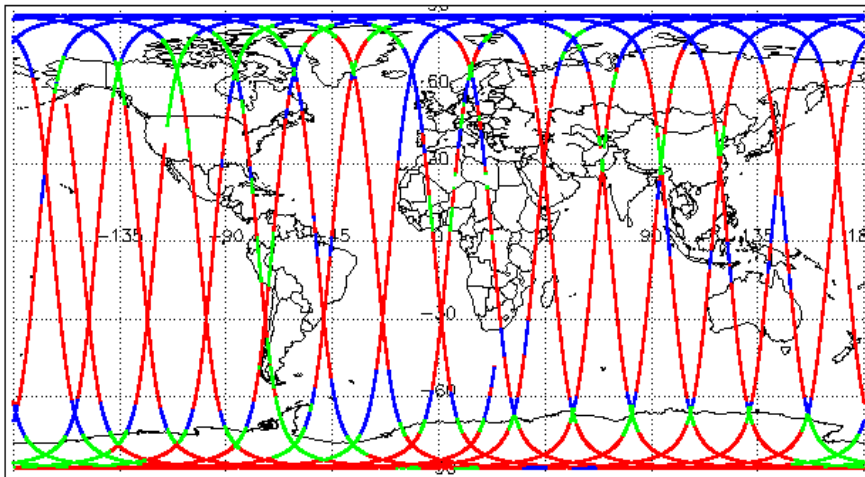
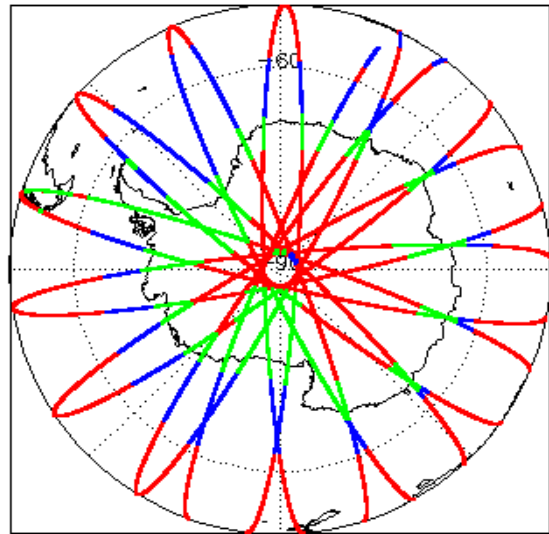
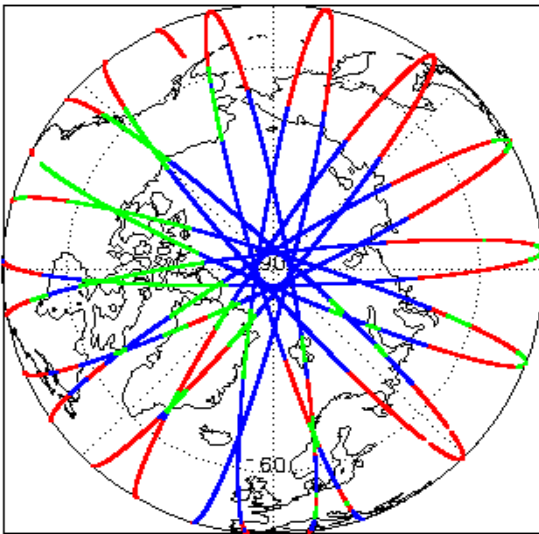
Report Production Date:	10-Jul-2020
Processor Used:	CryoSat Ice Processor
Data Used:	L1B and L2 OFFLINE Data

Check	Status
Server check: science-pds.cryosat.esa.int	Nominal
Server check: calval-pds.cryosat.esa.int	Nominal
Product Software Check	Nominal
Product Format Check	Nominal
Product Header Analysis	Nominal
Star Tracker Usage Check	Nominal
L1B Tracking Flag Check	See Section 4.4
L1B Calibration Usage Check	Nominal
L1B & L2 Auxiliary Data File Usage Check	Nominal
L1B & L2 Auxiliary Correction Error Check	Nominal
L1B & L2 Measurement Confidence Data Check	See Section 4.8 and 5.5
QCC Errors/ Warnings	See Section 6.1, 6.2 and 6.3

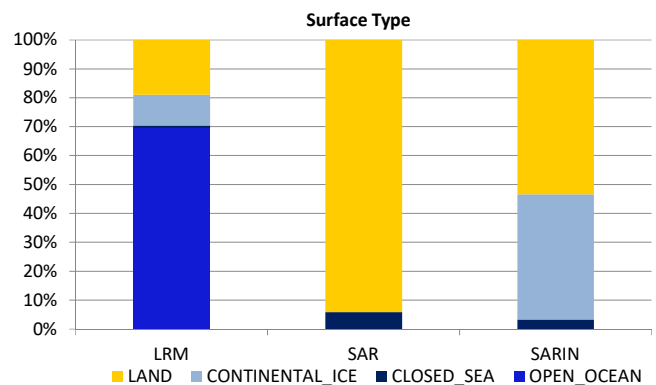
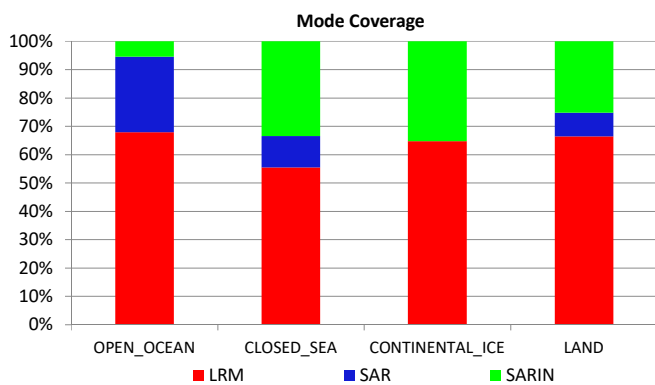
#### Mission / Instrument News

11-Jun-2020	None
12-Jun-2020	None
13-Jun-2020	Nothing planned

### 2. Global Coverage



Mode Coverage (%)		
	LRM	67.2
	SAR	20.1
	SARIn	12.7



### 3. Instrument Configuration

The SIRAL instrument configuration for the day of acquisition is provided below.

SIRAL instrument(s) in use:	SIRAL - A
-----------------------------	-----------

### 4. Level 1B Data Quality Check

#### 4.1 L1B Product Format Check

Each product, retrieved and unpacked from the science server, is checked to ensure it consists of both an XML header file (.HDR) and a product file (.DBL).

Number of products with errors: 0

#### 4.2 L1B Product Header Analysis

For all products, a series of pre-defined checks are carried out on the MPH and SPH in order to identify any inconsistencies and/or errors raised by the ground-segment processing chain.

Number of products with errors: 0

#### 4.3 Star Tracker Usage Check

Each product is checked in order to ensure a valid star tracker file has been used in processing.

Number of products with errors: 0

#### 4.4 L1B Tracking Flags Check

CryoSat L1B data includes a tracking flag for each measurement record. The bit value of this flag indicates any problems when set.

**Loss of Echo Flag:** This flag is currently set for some products over land, but this is to be expected.

Number of products with errors: 93

Product	Test Failed	Description
CS_OFFL_SIR_LRM_1B_20200612T010748_20200612T010812_D001	Loss of echo	The tracking echo is missing for one or more records
CS_OFFL_SIR_LRM_1B_20200612T011043_20200612T011145_D001	Loss of echo	The tracking echo is missing for one or more records
CS_OFFL_SIR_LRM_1B_20200612T011506_20200612T011755_D001	Loss of echo	The tracking echo is missing for one or more records
CS_OFFL_SIR_LRM_1B_20200612T011938_20200612T012139_D001	Loss of echo	The tracking echo is missing for one or more records
CS_OFFL_SIR_LRM_1B_20200612T014535_20200612T015040_D001	Loss of echo	The tracking echo is missing for one or more records
CS_OFFL_SIR_LRM_1B_20200612T015717_20200612T023323_D001	Loss of echo	The tracking echo is missing for one or more records
CS_OFFL_SIR_LRM_1B_20200612T033716_20200612T034908_D001	Loss of echo	The tracking echo is missing for one or more records
CS_OFFL_SIR_LRM_1B_20200612T035030_20200612T035128_D001	Loss of echo	The tracking echo is missing for one or more records
CS_OFFL_SIR_LRM_1B_20200612T035132_20200612T035132_D001	Loss of echo	The tracking echo is missing for one or more records
CS_OFFL_SIR_LRM_1B_20200612T035135_20200612T035404_D001	Loss of echo	The tracking echo is missing for one or more records
CS_OFFL_SIR_LRM_1B_20200612T035846_20200612T041312_D001	Loss of echo	The tracking echo is missing for one or more records
CS_OFFL_SIR_LRM_1B_20200612T044503_20200612T045923_D001	Loss of echo	The tracking echo is missing for one or more records
CS_OFFL_SIR_LRM_1B_20200612T050649_20200612T050854_D001	Loss of echo	The tracking echo is missing for one or more records
CS_OFFL_SIR_LRM_1B_20200612T051607_20200612T052909_D001	Loss of echo	The tracking echo is missing for one or more records
CS_OFFL_SIR_LRM_1B_20200612T053311_20200612T053330_D001	Loss of echo	The tracking echo is missing for one or more records
CS_OFFL_SIR_LRM_1B_20200612T053332_20200612T053333_D001	Loss of echo	The tracking echo is missing for one or more records
CS_OFFL_SIR_LRM_1B_20200612T053335_20200612T054234_D001	Loss of echo	The tracking echo is missing for one or more records
CS_OFFL_SIR_LRM_1B_20200612T054453_20200612T055254_D001	Loss of echo	The tracking echo is missing for one or more records
CS_OFFL_SIR_LRM_1B_20200612T060706_20200612T060850_D001	Loss of echo	The tracking echo is missing for one or more records
CS_OFFL_SIR_LRM_1B_20200612T060932_20200612T062010_D001	Loss of echo	The tracking echo is missing for one or more records
CS_OFFL_SIR_LRM_1B_20200612T062013_20200612T062203_D001	Loss of echo	The tracking echo is missing for one or more records
CS_OFFL_SIR_LRM_1B_20200612T062733_20200612T063617_D001	Loss of echo	The tracking echo is missing for one or more records
CS_OFFL_SIR_LRM_1B_20200612T071554_20200612T071951_D001	Loss of echo	The tracking echo is missing for one or more records
CS_OFFL_SIR_LRM_1B_20200612T072336_20200612T072419_D001	Loss of echo	The tracking echo is missing for one or more records
CS_OFFL_SIR_LRM_1B_20200612T072452_20200612T072454_D001	Loss of echo	The tracking echo is missing for one or more records
CS_OFFL_SIR_LRM_1B_20200612T072457_20200612T072516_D001	Loss of echo	The tracking echo is missing for one or more records
CS_OFFL_SIR_LRM_1B_20200612T072519_20200612T072533_D001	Loss of echo	The tracking echo is missing for one or more records
CS_OFFL_SIR_LRM_1B_20200612T072542_20200612T072724_D001	Loss of echo	The tracking echo is missing for one or more records
CS_OFFL_SIR_LRM_1B_20200612T072726_20200612T073209_D001	Loss of echo	The tracking echo is missing for one or more records
CS_OFFL_SIR_LRM_1B_20200612T074710_20200612T075325_D001	Loss of echo	The tracking echo is missing for one or more records
CS_OFFL_SIR_LRM_1B_20200612T075401_20200612T075743_D001	Loss of echo	The tracking echo is missing for one or more records
CS_OFFL_SIR_LRM_1B_20200612T082616_20200612T083133_D001	Loss of echo	The tracking echo is missing for one or more records
CS_OFFL_SIR_LRM_1B_20200612T090152_20200612T090208_D001	Loss of echo	The tracking echo is missing for one or more records
CS_OFFL_SIR_LRM_1B_20200612T090255_20200612T091007_D001	Loss of echo	The tracking echo is missing for one or more records
CS_OFFL_SIR_LRM_1B_20200612T093059_20200612T093120_D001	Loss of echo	The tracking echo is missing for one or more records
CS_OFFL_SIR_LRM_1B_20200612T093122_20200612T093201_D001	Loss of echo	The tracking echo is missing for one or more records
CS_OFFL_SIR_LRM_1B_20200612T093203_20200612T093208_D001	Loss of echo	The tracking echo is missing for one or more records
CS_OFFL_SIR_LRM_1B_20200612T093211_20200612T095851_D001	Loss of echo	The tracking echo is missing for one or more records
CS_OFFL_SIR_LRM_1B_20200612T101411_20200612T104115_D001	Loss of echo	The tracking echo is missing for one or more records
CS_OFFL_SIR_LRM_1B_20200612T104117_20200612T104228_D001	Loss of echo	The tracking echo is missing for one or more records
CS_OFFL_SIR_LRM_1B_20200612T104231_20200612T104251_D001	Loss of echo	The tracking echo is missing for one or more records

CS_OFFL_SIR_LRM_1B_20200612T104253_20200612T104302_D001	Loss of echo	The tracking echo is missing for one or more records
CS_OFFL_SIR_LRM_1B_20200612T104304_20200612T104523_D001	Loss of echo	The tracking echo is missing for one or more records
CS_OFFL_SIR_LRM_1B_20200612T104557_20200612T105119_D001	Loss of echo	The tracking echo is missing for one or more records
CS_OFFL_SIR_LRM_1B_20200612T120100_20200612T120644_D001	Loss of echo	The tracking echo is missing for one or more records
CS_OFFL_SIR_LRM_1B_20200612T120646_20200612T121031_D001	Loss of echo	The tracking echo is missing for one or more records
CS_OFFL_SIR_LRM_1B_20200612T121054_20200612T121554_D001	Loss of echo	The tracking echo is missing for one or more records
CS_OFFL_SIR_LRM_1B_20200612T121738_20200612T121828_D001	Loss of echo	The tracking echo is missing for one or more records
CS_OFFL_SIR_LRM_1B_20200612T122202_20200612T122319_D001	Loss of echo	The tracking echo is missing for one or more records
CS_OFFL_SIR_LRM_1B_20200612T122331_20200612T122501_D001	Loss of echo	The tracking echo is missing for one or more records
CS_OFFL_SIR_LRM_1B_20200612T122743_20200612T122756_D001	Loss of echo	The tracking echo is missing for one or more records
CS_OFFL_SIR_LRM_1B_20200612T135411_20200612T135758_D001	Loss of echo	The tracking echo is missing for one or more records
CS_OFFL_SIR_LRM_1B_20200612T135802_20200612T135810_D001	Loss of echo	The tracking echo is missing for one or more records
CS_OFFL_SIR_LRM_1B_20200612T135813_20200612T135824_D001	Loss of echo	The tracking echo is missing for one or more records
CS_OFFL_SIR_LRM_1B_20200612T135826_20200612T135904_D001	Loss of echo	The tracking echo is missing for one or more records
CS_OFFL_SIR_LRM_1B_20200612T135939_20200612T140118_D001	Loss of echo	The tracking echo is missing for one or more records
CS_OFFL_SIR_LRM_1B_20200612T142026_20200612T145548_D001	Loss of echo	The tracking echo is missing for one or more records
CS_OFFL_SIR_LRM_1B_20200612T155856_20200612T161333_D001	Loss of echo	The tracking echo is missing for one or more records
CS_OFFL_SIR_LRM_1B_20200612T161814_20200612T161933_D001	Loss of echo	The tracking echo is missing for one or more records
CS_OFFL_SIR_LRM_1B_20200612T161935_20200612T162025_D001	Loss of echo	The tracking echo is missing for one or more records
CS_OFFL_SIR_LRM_1B_20200612T162127_20200612T163528_D001	Loss of echo	The tracking echo is missing for one or more records
CS_OFFL_SIR_LRM_1B_20200612T165308_20200612T170629_D001	Loss of echo	The tracking echo is missing for one or more records
CS_OFFL_SIR_LRM_1B_20200612T170843_20200612T171018_D001	Loss of echo	The tracking echo is missing for one or more records
CS_OFFL_SIR_LRM_1B_20200612T171037_20200612T172203_D001	Loss of echo	The tracking echo is missing for one or more records
CS_OFFL_SIR_LRM_1B_20200612T173759_20200612T174512_D001	Loss of echo	The tracking echo is missing for one or more records
CS_OFFL_SIR_LRM_1B_20200612T174811_20200612T175650_D001	Loss of echo	The tracking echo is missing for one or more records
CS_OFFL_SIR_LRM_1B_20200612T175652_20200612T175833_D001	Loss of echo	The tracking echo is missing for one or more records
CS_OFFL_SIR_LRM_1B_20200612T183349_20200612T183411_D001	Loss of echo	The tracking echo is missing for one or more records
CS_OFFL_SIR_LRM_1B_20200612T183642_20200612T184300_D001	Loss of echo	The tracking echo is missing for one or more records
CS_OFFL_SIR_LRM_1B_20200612T184731_20200612T184747_D001	Loss of echo	The tracking echo is missing for one or more records
CS_OFFL_SIR_LRM_1B_20200612T184751_20200612T185221_D001	Loss of echo	The tracking echo is missing for one or more records
CS_OFFL_SIR_LRM_1B_20200612T185505_20200612T190053_D001	Loss of echo	The tracking echo is missing for one or more records
CS_OFFL_SIR_LRM_1B_20200612T191558_20200612T192036_D001	Loss of echo	The tracking echo is missing for one or more records
CS_OFFL_SIR_LRM_1B_20200612T192040_20200612T192332_D001	Loss of echo	The tracking echo is missing for one or more records
CS_OFFL_SIR_LRM_1B_20200612T192334_20200612T192401_D001	Loss of echo	The tracking echo is missing for one or more records
CS_OFFL_SIR_LRM_1B_20200612T192403_20200612T192407_D001	Loss of echo	The tracking echo is missing for one or more records
CS_OFFL_SIR_LRM_1B_20200612T192409_20200612T192528_D001	Loss of echo	The tracking echo is missing for one or more records
CS_OFFL_SIR_LRM_1B_20200612T192928_20200612T193027_D001	Loss of echo	The tracking echo is missing for one or more records
CS_OFFL_SIR_LRM_1B_20200612T200139_20200612T200412_D001	Loss of echo	The tracking echo is missing for one or more records
CS_OFFL_SIR_LRM_1B_20200612T200813_20200612T203246_D001	Loss of echo	The tracking echo is missing for one or more records
CS_OFFL_SIR_LRM_1B_20200612T203249_20200612T203433_D001	Loss of echo	The tracking echo is missing for one or more records
CS_OFFL_SIR_LRM_1B_20200612T203440_20200612T203535_D001	Loss of echo	The tracking echo is missing for one or more records
CS_OFFL_SIR_LRM_1B_20200612T203537_20200612T203608_D001	Loss of echo	The tracking echo is missing for one or more records
CS_OFFL_SIR_LRM_1B_20200612T203613_20200612T203614_D001	Loss of echo	The tracking echo is missing for one or more records
CS_OFFL_SIR_LRM_1B_20200612T203819_20200612T204215_D001	Loss of echo	The tracking echo is missing for one or more records
CS_OFFL_SIR_LRM_1B_20200612T205924_20200612T210405_D001	Loss of echo	The tracking echo is missing for one or more records
CS_OFFL_SIR_LRM_1B_20200612T214038_20200612T214403_D001	Loss of echo	The tracking echo is missing for one or more records
CS_OFFL_SIR_LRM_1B_20200612T223717_20200612T224048_D001	Loss of echo	The tracking echo is missing for one or more records
CS_OFFL_SIR_LRM_1B_20200612T224121_20200612T224323_D001	Loss of echo	The tracking echo is missing for one or more records
CS_OFFL_SIR_LRM_1B_20200612T224326_20200612T224418_D001	Loss of echo	The tracking echo is missing for one or more records
CS_OFFL_SIR_LRM_1B_20200612T224420_20200612T230342_D001	Loss of echo	The tracking echo is missing for one or more records
CS_OFFL_SIR_LRM_1B_20200612T231511_20200612T232308_D001	Loss of echo	The tracking echo is missing for one or more records
CS_OFFL_SIR_LRM_1B_20200612T232735_20200613T000019_D001	Loss of echo	The tracking echo is missing for one or more records

#### 4.5 L1B Calibration Usage Check

Each product is checked in order to ensure that the necessary calibration files have been used in processing.

Number of products with errors: 0

#### 4.6 L1B Auxiliary Data File Usage Check

Each product is checked for missing Data Set Descriptors with respect to a pre-determined baseline and also to check the validity of Auxiliary Data Files is correct.

Number of products with errors: 0

#### 4.7 L1B Auxiliary Correction Error Check

CryoSat L1B data includes a correction error flag (field 54) for each measurement record. The bit value of this flag indicates any problems when set.

Number of products with errors: 0

## 4.8 L1B Measurement Confidence Data Check

CryoSat L1B data includes a measurement confidence flag (field 18) for each measurement record. The bit value of this flag indicates any problems when set.

Currently, there are several common error flags raised in the Level 1B products which are expected due to operational mode or surface type. All common flags are summarised in the list below, followed by a table of any additional issues arising from this test.

**Block Degraded Flag:** This flag is currently set for a number of individual records generally at the start or end of products (all modes), but this is to be expected.

**Phase Perturbation Flag:** This flag is currently set for all L1B SARIn products, indicating that the ADC correction application is deactivated, but this is in line with the current configuration.

Number of products with errors: 1

Product	Test Failed	Description
CS_OFFL_SIR_LRM_1B_20200612T033716_20200612T034908_D001	Echo error, TRK echo error	The tracking echo has returned an error and the Rx1 Echo Error flag is set, indicating a degraded echo

## 5. Level 2 Data Quality Check

### 5.1 L2 Product Format Check

Each product, retrieved and unpacked from the science server, is checked to ensure it consists of both an XML header file (.HDR) and a product file (.DBL).

Number of products with errors: 0

### 5.2 L2 Product Header Analysis

For all products, a series of pre-defined checks are carried out on the MPH and SPH in order to identify any inconsistencies and/or errors raised by the ground-segment processing chain.

Number of products with errors: 0

### 5.3 L2 Auxiliary Data File Usage Check

Each product is checked for missing Data Set Descriptors with respect to a pre-determined baseline and also to check the validity of Auxiliary Data Files is correct.

Number of products with errors: 0

### 5.4 L2 Auxiliary Correction Error Check

CryoSat L2 data includes a correction error flag (field 30) for each measurement record. The bit value of this flag indicates any problems when set.

Number of products with errors: 0

### 5.5 L2 Measurement Quality Flag Check

CryoSat L2 data includes a quality flag (field 50) for each 20-Hz measurement record. The bit value of this flag indicates any problems when set.

Currently, there are several common error flags raised in the Level 2 products which are expected due to operational mode or surface type. All common flags are summarised in the list below, followed by a table of any additional issues arising from this test.

**Freeboard error:** This flag is correctly set in all L2 SAR products that are not discriminated as sea-ice, and for which freeboard cannot be calculated.

**Height and Backscatter errors:** These flags are currently set for products over land, but this is to be expected. Retracker 1 Height and Backscatter error flags are also set for products over sea-ice, but this is to be expected.

**Peakiness error:** This flag is currently set for products over sea-ice, but this is to be expected.

**SARIn X-Track Angle Error:** This flag is set when the difference between the computed surface elevation and the DEM is >50 m. The DEM is only available over Greenland and Antarctica and as a result this flag is set for L2 SARIn products in all other locations as expected.

**SSHA interpolation error:** This flag is currently set for a number of SAR products occurring at surface type boundaries, but this is to be expected.

Number of products with errors: 53

Product	Test Failed	Description
CS_OFFL_SIR_LRM_2_20200612T001834_20200612T005325_D001	Height Error (Retracker 2), Height Error (Retracker 3), Backscatter Error (Retracker 2)	There is a height and backscatter error for Retracker 2 and a height error for Retracker 3 for one or more records
CS_OFFL_SIR_LRM_2_20200612T012400_20200612T014112_D001	Height Error (Retracker 2), Backscatter Error (Retracker 2)	There is a height and backscatter error for Retracker 2 for one or more records
CS_OFFL_SIR_LRM_2_20200612T015717_20200612T023323_D001	Height Error (Retracker 2), Height Error (Retracker 3), Backscatter Error (Retracker 2)	There is a height and backscatter error for Retracker 2 and a height error for Retracker 3 for one or more records
CS_OFFL_SIR_LRM_2_20200612T025536_20200612T031816_D001	Height Error (Retracker 2), Backscatter Error (Retracker 2)	There is a height and backscatter error for Retracker 2 for one or more records
CS_OFFL_SIR_LRM_2_20200612T033716_20200612T034908_D001	Height Error (Retracker 2), Backscatter Error (Retracker 2)	There is a height and backscatter error for Retracker 2 for one or more records
CS_OFFL_SIR_LRM_2_20200612T035030_20200612T035128_D001	Height Error (Retracker 2), Backscatter Error (Retracker 2)	There is a height and backscatter error for Retracker 2 for one or more records
CS_OFFL_SIR_LRM_2_20200612T035135_20200612T035404_D001	Height Error (Retracker 2), Backscatter Error (Retracker 2)	There is a height and backscatter error for Retracker 2 for one or more records
CS_OFFL_SIR_LRM_2_20200612T035846_20200612T041312_D001	Height Error (Retracker 2), Height Error (Retracker 3), Backscatter Error (Retracker 2)	There is a height and backscatter error for Retracker 2 and a height error for Retracker 3 for one or more records
CS_OFFL_SIR_LRM_2_20200612T042613_20200612T044308_D001	Height Error (Retracker 2), Backscatter Error (Retracker 2)	There is a height and backscatter error for Retracker 2 for one or more records
CS_OFFL_SIR_LRM_2_20200612T044503_20200612T045923_D001	Height Error (Retracker 2), Height Error (Retracker 3), Backscatter Error (Retracker 2)	There is a height and backscatter error for Retracker 2 and a height error for Retracker 3 for one or more records
CS_OFFL_SIR_LRM_2_20200612T051607_20200612T052909_D001	Height Error (Retracker 2), Backscatter Error (Retracker 2)	There is a height and backscatter error for Retracker 2 for one or more records
CS_OFFL_SIR_LRM_2_20200612T053029_20200612T053110_D001	Height Error (Retracker 2), Height Error (Retracker 3), Backscatter Error (Retracker 2)	There is a height and backscatter error for Retracker 2 and a height error for Retracker 3 for one or more records
CS_OFFL_SIR_LRM_2_20200612T053311_20200612T053330_D001	Height Error (Retracker 2), Backscatter Error (Retracker 2)	There is a height and backscatter error for Retracker 2 for one or more records



CS_OFFL_SIR_LRM_2_20200612T193203_20200612T195251_D001	Height Error (Retracker 2), Height Error (Retracker 3), Backscatter Error (Retracker 2)	There is a height and backscatter error for Retracker 2 and a height error for Retracker 3 for one or more records
CS_OFFL_SIR_LRM_2_20200612T200813_20200612T203246_D001	Height Error (Retracker 2), Backscatter Error (Retracker 2)	There is a height and backscatter error for Retracker 2 for one or more records
CS_OFFL_SIR_LRM_2_20200612T210815_20200612T213233_D001	Height Error (Retracker 2), Height Error (Retracker 3), Backscatter Error (Retracker 2)	There is a height and backscatter error for Retracker 2 and a height error for Retracker 3 for one or more records
CS_OFFL_SIR_LRM_2_20200612T214743_20200612T222019_D001	Height Error (Retracker 2), Backscatter Error (Retracker 2)	There is a height and backscatter error for Retracker 2 for one or more records
CS_OFFL_SIR_LRM_2_20200612T224420_20200612T230342_D001	Height Error (Retracker 2), Backscatter Error (Retracker 2)	There is a height and backscatter error for Retracker 2 for one or more records
CS_OFFL_SIR_LRM_2_20200612T232735_20200613T000019_D001	Height Error (Retracker 2), Backscatter Error (Retracker 2)	There is a height and backscatter error for Retracker 2 for one or more records

## 6. QCC Report Analysis

The Quality Control for CryoSat (QCC) facility performs a primary survey of data products immediately after production by the PDS and LTA processing facilities. A list of the tests which raised errors or warnings is provided below.

Product type	No. Products	No. QCC Reports	No. Valid	No. Warnings	No. Errors
SIR_LRM_1B	151	151	151	0	0
SIR_SAR_1B	93	93	93	0	0
SIR_SIN_1B	97	97	97	0	0
SIR_LRM_2	151	151	150	1	0
SIR_SAR_2	97	93	93	0	0
SIR_SIN_2	93	97	95	2	0
SIR_GDR_2	15	15	0	0	15

### 6.1 QCC Errors

Number of products with QCC errors: 15

Product Type	MPHDUTNCDF	MPHXPFNCDF	MPHXVFNCFD	MPHYPFNCDF	MPHYVFNCFD	MPHZPFNCDF	MPHZVFNCFD	STRUCTURESIZ	-	-	-
SIR_GDR_2_	15	15	15	15	15	15	15	15			

#### Test Description Key:

Abbreviation	Test name	Details
MPHDUTNCDF	MPH_Delta_UT1_NetCDF	Delta_UT1 mismatch
MPHXPFNCDF	MPH_X_Position_Float_v2_NetCDF	X_Position mismatch (DBL float (GDR), rounded to 100)
MPHXVFNCFD	MPH_X_Velocity_Float_v2_NetCDF	X_Velocity mismatch (DBL float (GDR), rounded to 1)
MPHYPFNCDF	MPH_Y_Position_Float_v2_NetCDF	Y_Position mismatch (DBL float (GDR), rounded to 100)
MPHYVFNCFD	MPH_Y_Velocity_Float_v2_NetCDF	Y_Velocity mismatch (DBL float (GDR), rounded to 1)
MPHZPFNCDF	MPH_Z_Position_Float_v2_NetCDF	Z_Position mismatch (DBL float (GDR), rounded to 100)
MPHZVFNCFD	MPH_Z_Velocity_Float_v2_NetCDF	Z_Velocity mismatch (DBL float (GDR), rounded to 1)
STRUCTURESIZ	STRUCTURE_SIZE_AND_READ	Under investigation.

### 6.2 QCC Warnings

Number of QCC reports with warnings: 3

Total number of occurrences of each warning

Product Type	AXDME	AXSMMEOCI	-	-	-	-	-
SIR_LRM_2_	0	1					
SIR_SIN_2_	2	0					

#### Test Description Key:

Abbreviation	Test name	Details
AXDME	AttributeXrefDemMustExist	The xref_dem attribute is mandatory in SIN products over continental ice
AXSMMEOCI	AttributeXrefSlopeModelMustExistOverContinentalIce	The xref_slope_model is mandatory in LRM products over continental ice

### 6.2 Missing QCC Reports

Number of products with missing QCC reports: 0