

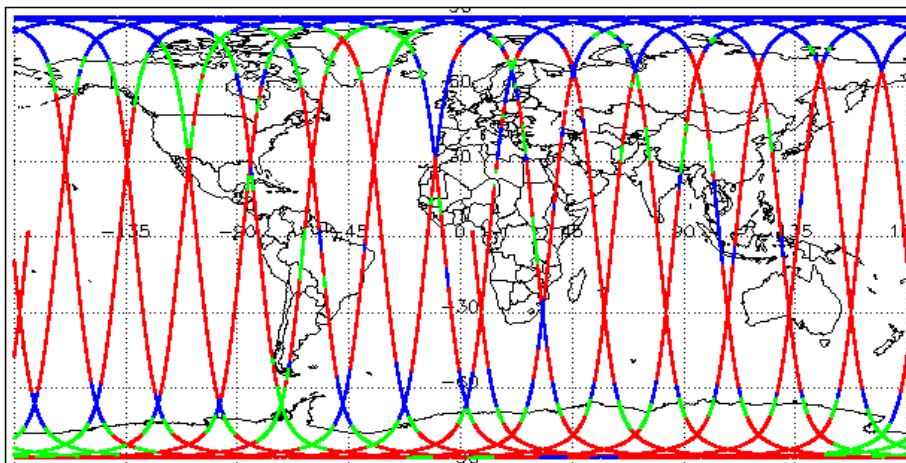
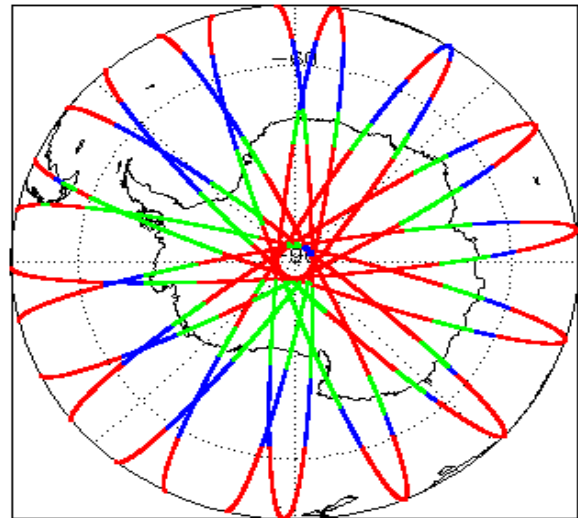
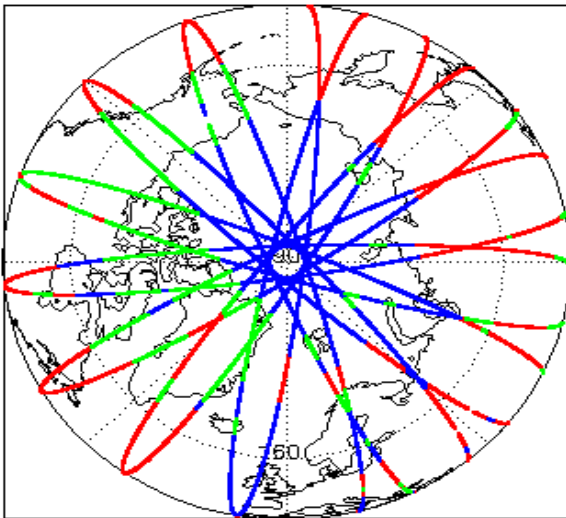
### 1. Overview

Report Production Date:	11-Dec-2019
Processor Used:	CryoSat Ice Processor
Data Used:	L1B and L2 OFFLINE Data

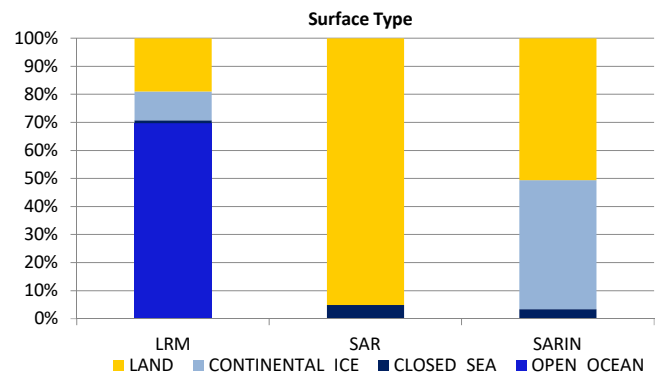
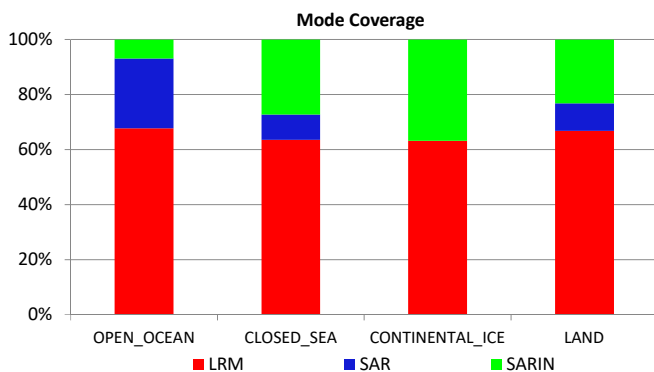
Check	Status
Server check: science-pds.cryosat.esa.int	Nominal
Server check: calval-pds.cryosat.esa.int	Nominal
Product Software Check	Nominal
Product Format Check	Nominal
Product Header Analysis	Nominal
Star Tracker Usage Check	Nominal
L1B Tracking Flag Check	See Section 4.4
L1B Calibration Usage Check	Nominal
L1B & L2 Auxiliary Data File Usage Check	Nominal
L1B & L2 Auxiliary Correction Error Check	Nominal
L1B & L2 Measurement Confidence Data Check	See Section 4.8 and 5.5

Mission / Instrument News	
09-Nov-2019	None
10-Nov-2019	None
11-Nov-2019	Nothing planned

### 2. Global Coverage



Mode Coverage (%)		
	LRM	67.1
	SAR	19.6
	SARIn	13.3



### 3. Instrument Configuration

The SIRAL instrument configuration for the day of acquisition is provided below.

SIRAL instrument(s) in use:	SIRAL - A
-----------------------------	-----------

## 4. Level 1B Data Quality Check

### 4.1 L1B Product Format Check

Each product, retrieved and unpacked from the science server, is checked to ensure it consists of both an XML header file (.HDR) and a product file (.DBL).

Number of products with errors: 0

### 4.2 L1B Product Header Analysis

For all products, a series of pre-defined checks are carried out on the MPH and SPH in order to identify any inconsistencies and/or errors raised by the ground-segment processing chain.

Number of products with errors: 0

### 4.3 Star Tracker Usage Check

Each product is checked in order to ensure a valid star tracker file has been used in processing.

Number of products with errors: 0

### 4.4 L1B Tracking Flags Check

CryoSat L1B data includes a tracking flag for each measurement record. The bit value of this flag indicates any problems when set.

**Loss of Echo Flag:** This flag is currently set for some products over land, but this is to be expected.

Number of products with errors: 85

Product	Test Failed	Description
CS_OFFL_SIR_LRM_1B_20191110T004607_20191110T005213_D001	Loss of echo	The tracking echo is missing for one or more records
CS_OFFL_SIR_LRM_1B_20191110T005344_20191110T005842_D001	Loss of echo	The tracking echo is missing for one or more records
CS_OFFL_SIR_LRM_1B_20191110T012050_20191110T012114_D001	Loss of echo	The tracking echo is missing for one or more records
CS_OFFL_SIR_LRM_1B_20191110T012117_20191110T015556_D001	Loss of echo	The tracking echo is missing for one or more records
CS_OFFL_SIR_LRM_1B_20191110T025902_20191110T030004_D001	Loss of echo	The tracking echo is missing for one or more records
CS_OFFL_SIR_LRM_1B_20191110T030009_20191110T030046_D001	Loss of echo	The tracking echo is missing for one or more records
CS_OFFL_SIR_LRM_1B_20191110T030053_20191110T031345_D001	Loss of echo	The tracking echo is missing for one or more records
CS_OFFL_SIR_LRM_1B_20191110T031501_20191110T033541_D001	Loss of echo	The tracking echo is missing for one or more records
CS_OFFL_SIR_LRM_1B_20191110T035240_20191110T040235_D001	Loss of echo	The tracking echo is missing for one or more records
CS_OFFL_SIR_LRM_1B_20191110T040341_20191110T040641_D001	Loss of echo	The tracking echo is missing for one or more records
CS_OFFL_SIR_LRM_1B_20191110T040854_20191110T042437_D001	Loss of echo	The tracking echo is missing for one or more records
CS_OFFL_SIR_LRM_1B_20191110T043756_20191110T044222_D001	Loss of echo	The tracking echo is missing for one or more records
CS_OFFL_SIR_LRM_1B_20191110T044225_20191110T044233_D001	Loss of echo	The tracking echo is missing for one or more records
CS_OFFL_SIR_LRM_1B_20191110T044238_20191110T044247_D001	Loss of echo	The tracking echo is missing for one or more records
CS_OFFL_SIR_LRM_1B_20191110T044254_20191110T044302_D001	Loss of echo	The tracking echo is missing for one or more records
CS_OFFL_SIR_LRM_1B_20191110T044306_20191110T045845_D001	Loss of echo	The tracking echo is missing for one or more records
CS_OFFL_SIR_LRM_1B_20191110T053353_20191110T055231_D001	Loss of echo	The tracking echo is missing for one or more records
CS_OFFL_SIR_LRM_1B_20191110T055450_20191110T060308_D001	Loss of echo	The tracking echo is missing for one or more records
CS_OFFL_SIR_LRM_1B_20191110T060524_20191110T060532_D001	Loss of echo	The tracking echo is missing for one or more records
CS_OFFL_SIR_LRM_1B_20191110T061623_20191110T062015_D001	Loss of echo	The tracking echo is missing for one or more records
CS_OFFL_SIR_LRM_1B_20191110T062017_20191110T062243_D001	Loss of echo	The tracking echo is missing for one or more records
CS_OFFL_SIR_LRM_1B_20191110T062247_20191110T062251_D001	Loss of echo	The tracking echo is missing for one or more records
CS_OFFL_SIR_LRM_1B_20191110T062255_20191110T062307_D001	Loss of echo	The tracking echo is missing for one or more records
CS_OFFL_SIR_LRM_1B_20191110T062310_20191110T062325_D001	Loss of echo	The tracking echo is missing for one or more records
CS_OFFL_SIR_LRM_1B_20191110T062329_20191110T062345_D001	Loss of echo	The tracking echo is missing for one or more records
CS_OFFL_SIR_LRM_1B_20191110T062349_20191110T062425_D001	Loss of echo	The tracking echo is missing for one or more records
CS_OFFL_SIR_LRM_1B_20191110T070840_20191110T073628_D001	Loss of echo	The tracking echo is missing for one or more records
CS_OFFL_SIR_LRM_1B_20191110T075927_20191110T080611_D001	Loss of echo	The tracking echo is missing for one or more records
CS_OFFL_SIR_LRM_1B_20191110T080741_20191110T083208_D001	Loss of echo	The tracking echo is missing for one or more records
CS_OFFL_SIR_LRM_1B_20191110T093742_20191110T094055_D001	Loss of echo	The tracking echo is missing for one or more records
CS_OFFL_SIR_LRM_1B_20191110T094128_20191110T094323_D001	Loss of echo	The tracking echo is missing for one or more records
CS_OFFL_SIR_LRM_1B_20191110T094412_20191110T094833_D001	Loss of echo	The tracking echo is missing for one or more records
CS_OFFL_SIR_LRM_1B_20191110T094836_20191110T095150_D001	Loss of echo	The tracking echo is missing for one or more records
CS_OFFL_SIR_LRM_1B_20191110T095215_20191110T100210_D001	Loss of echo	The tracking echo is missing for one or more records
CS_OFFL_SIR_LRM_1B_20191110T102853_20191110T110054_D001	Loss of echo	The tracking echo is missing for one or more records
CS_OFFL_SIR_LRM_1B_20191110T111556_20191110T111605_D001	Loss of echo	The tracking echo is missing for one or more records
CS_OFFL_SIR_LRM_1B_20191110T111950_20191110T112115_D001	Loss of echo	The tracking echo is missing for one or more records
CS_OFFL_SIR_LRM_1B_20191110T112126_20191110T112234_D001	Loss of echo	The tracking echo is missing for one or more records
CS_OFFL_SIR_LRM_1B_20191110T112855_20191110T114923_D001	Loss of echo	The tracking echo is missing for one or more records
CS_OFFL_SIR_LRM_1B_20191110T120656_20191110T124114_D001	Loss of echo	The tracking echo is missing for one or more records
CS_OFFL_SIR_LRM_1B_20191110T124117_20191110T124119_D001	Loss of echo	The tracking echo is missing for one or more records
CS_OFFL_SIR_LRM_1B_20191110T124122_20191110T124233_D001	Loss of echo	The tracking echo is missing for one or more records
CS_OFFL_SIR_LRM_1B_20191110T130442_20191110T130923_D001	Loss of echo	The tracking echo is missing for one or more records
CS_OFFL_SIR_LRM_1B_20191110T131002_20191110T132843_D001	Loss of echo	The tracking echo is missing for one or more records
CS_OFFL_SIR_LRM_1B_20191110T134641_20191110T142124_D001	Loss of echo	The tracking echo is missing for one or more records
CS_OFFL_SIR_LRM_1B_20191110T142128_20191110T142142_D001	Loss of echo	The tracking echo is missing for one or more records
CS_OFFL_SIR_LRM_1B_20191110T142149_20191110T142149_D001	Loss of echo	The tracking echo is missing for one or more records
CS_OFFL_SIR_LRM_1B_20191110T142154_20191110T142250_D001	Loss of echo	The tracking echo is missing for one or more records

CS_OFFL_SIR_LRM_1B_20191110T145423_20191110T150737_D001	Loss of echo	The tracking echo is missing for one or more records
CS_OFFL_SIR_LRM_1B_20191110T151619_20191110T151816_D001	Loss of echo	The tracking echo is missing for one or more records
CS_OFFL_SIR_LRM_1B_20191110T152539_20191110T154038_D001	Loss of echo	The tracking echo is missing for one or more records
CS_OFFL_SIR_LRM_1B_20191110T155529_20191110T155644_D001	Loss of echo	The tracking echo is missing for one or more records
CS_OFFL_SIR_LRM_1B_20191110T155648_20191110T155707_D001	Loss of echo	The tracking echo is missing for one or more records
CS_OFFL_SIR_LRM_1B_20191110T155710_20191110T155714_D001	Loss of echo	The tracking echo is missing for one or more records
CS_OFFL_SIR_LRM_1B_20191110T155717_20191110T160225_D001	Loss of echo	The tracking echo is missing for one or more records
CS_OFFL_SIR_LRM_1B_20191110T161416_20191110T163124_D001	Loss of echo	The tracking echo is missing for one or more records
CS_OFFL_SIR_LRM_1B_20191110T163648_20191110T163854_D001	Loss of echo	The tracking echo is missing for one or more records
CS_OFFL_SIR_LRM_1B_20191110T163857_20191110T163902_D001	Loss of echo	The tracking echo is missing for one or more records
CS_OFFL_SIR_LRM_1B_20191110T163907_20191110T163940_D001	Loss of echo	The tracking echo is missing for one or more records
CS_OFFL_SIR_LRM_1B_20191110T163945_20191110T164552_D001	Loss of echo	The tracking echo is missing for one or more records
CS_OFFL_SIR_LRM_1B_20191110T165439_20191110T165741_D001	Loss of echo	The tracking echo is missing for one or more records
CS_OFFL_SIR_LRM_1B_20191110T172757_20191110T172904_D001	Loss of echo	The tracking echo is missing for one or more records
CS_OFFL_SIR_LRM_1B_20191110T173128_20191110T173145_D001	Loss of echo	The tracking echo is missing for one or more records
CS_OFFL_SIR_LRM_1B_20191110T173214_20191110T173517_D001	Loss of echo	The tracking echo is missing for one or more records
CS_OFFL_SIR_LRM_1B_20191110T173521_20191110T173641_D001	Loss of echo	The tracking echo is missing for one or more records
CS_OFFL_SIR_LRM_1B_20191110T173644_20191110T173755_D001	Loss of echo	The tracking echo is missing for one or more records
CS_OFFL_SIR_LRM_1B_20191110T173758_20191110T174212_D001	Loss of echo	The tracking echo is missing for one or more records
CS_OFFL_SIR_LRM_1B_20191110T175741_20191110T180452_D001	Loss of echo	The tracking echo is missing for one or more records
CS_OFFL_SIR_LRM_1B_20191110T180613_20191110T182918_D001	Loss of echo	The tracking echo is missing for one or more records
CS_OFFL_SIR_LRM_1B_20191110T183252_20191110T184116_D001	Loss of echo	The tracking echo is missing for one or more records
CS_OFFL_SIR_LRM_1B_20191110T184444_20191110T190937_D001	Loss of echo	The tracking echo is missing for one or more records
CS_OFFL_SIR_LRM_1B_20191110T191303_20191110T191738_D001	Loss of echo	The tracking echo is missing for one or more records
CS_OFFL_SIR_LRM_1B_20191110T193446_20191110T193834_D001	Loss of echo	The tracking echo is missing for one or more records
CS_OFFL_SIR_LRM_1B_20191110T194045_20191110T194129_D001	Loss of echo	The tracking echo is missing for one or more records
CS_OFFL_SIR_LRM_1B_20191110T194132_20191110T200803_D001	Loss of echo	The tracking echo is missing for one or more records
CS_OFFL_SIR_LRM_1B_20191110T202413_20191110T205020_D001	Loss of echo	The tracking echo is missing for one or more records
CS_OFFL_SIR_LRM_1B_20191110T205310_20191110T205439_D001	Loss of echo	The tracking echo is missing for one or more records
CS_OFFL_SIR_LRM_1B_20191110T205513_20191110T205802_D001	Loss of echo	The tracking echo is missing for one or more records
CS_OFFL_SIR_LRM_1B_20191110T211526_20191110T214601_D001	Loss of echo	The tracking echo is missing for one or more records
CS_OFFL_SIR_LRM_1B_20191110T221227_20191110T221649_D001	Loss of echo	The tracking echo is missing for one or more records
CS_OFFL_SIR_LRM_1B_20191110T222023_20191110T222040_D001	Loss of echo	The tracking echo is missing for one or more records
CS_OFFL_SIR_LRM_1B_20191110T222144_20191110T222809_D001	Loss of echo	The tracking echo is missing for one or more records
CS_OFFL_SIR_LRM_1B_20191110T223055_20191110T223129_D001	Loss of echo	The tracking echo is missing for one or more records
CS_OFFL_SIR_LRM_1B_20191110T223146_20191110T223443_D001	Loss of echo	The tracking echo is missing for one or more records
CS_OFFL_SIR_LRM_1B_20191110T223802_20191110T223806_D001	Loss of echo	The tracking echo is missing for one or more records

#### 4.5 L1B Calibration Usage Check

Each product is checked in order to ensure that the necessary calibration files have been used in processing.

Number of products with errors: 0

#### 4.6 L1B Auxiliary Data File Usage Check

Each product is checked for missing Data Set Descriptors with respect to a pre-determined baseline and also to check the validity of Auxiliary Data Files is correct.

Number of products with errors: 0

#### 4.7 L1B Auxiliary Correction Error Check

CryoSat L1B data includes a correction error flag (field 54) for each measurement record. The bit value of this flag indicates any problems when set.

Number of products with errors: 0

#### 4.8 L1B Measurement Confidence Data Check

CryoSat L1B data includes a measurement confidence flag (field 18) for each measurement record. The bit value of this flag indicates any problems when set.

**Currently, there are several common error flags raised in the Level 1B products which are expected due to operational mode or surface type. All common flags are summarised in the list below, followed by a table of any additional issues arising from this test.**

**Block Degraded Flag:** This flag is currently set for a number of individual records generally at the start or end of products (all modes), but this is to be expected.

**Phase Perturbation Flag:** This flag is currently set for all L1B SARIn products, indicating that the ADC correction application is deactivated, but this is in line with the current configuration.

Number of products with errors: 0

### 5. Level 2 Data Quality Check

#### 5.1 L2 Product Format Check

Each product, retrieved and unpacked from the science server, is checked to ensure it consists of both an XML header file (.HDR) and a product file (.DBL).

Number of products with errors: 0

#### 5.2 L2 Product Header Analysis

For all products, a series of pre-defined checks are carried out on the MPH and SPH in order to identify any inconsistencies and/or errors raised by the ground-segment processing chain.

Number of products with errors: 0

### 5.3 L2 Auxiliary Data File Usage Check

Each product is checked for missing Data Set Descriptors with respect to a pre-determined baseline and also to check the validity of Auxiliary Data Files is correct.

Number of products with errors: 0

### 5.4 L2 Auxiliary Correction Error Check

CryoSat L2 data includes a correction error flag (field 30) for each measurement record. The bit value of this flag indicates any problems when set.

Number of products with errors: 0

### 5.5 L2 Measurement Quality Flag Check

CryoSat L2 data includes a quality flag (field 50) for each 20-Hz measurement record. The bit value of this flag indicates any problems when set.

**Currently, there are several common error flags raised in the Level 2 products which are expected due to operational mode or surface type. All common flags are summarised in the list below, followed by a table of any additional issues arising from this test.**

**Freeboard error:** This flag is correctly set in all L2 SAR products that are not discriminated as sea-ice, and for which freeboard cannot be calculated.

**Height and Backscatter errors:** These flags are currently set for products over land, but this is to be expected. Retracker 1 Height and Backscatter error flags are also set for products over sea-ice, but this is to be expected.

**Peakiness error:** This flag is currently set for products over sea-ice, but this is to be expected.

**SARin X-Track Angle Error:** This flag is set when the difference between the computed surface elevation and the DEM is >50 m. The DEM is only available over Greenland and Antarctica and as a result this flag is set for L2 SARin products in all other locations as expected.

**SSHA interpolation error:** This flag is currently set for a number of SAR products occurring at surface type boundaries, but this is to be expected.

Number of products with errors: 49

Product	Test Failed	Description
CS_OFFL_SIR_LRM_2__20191109T235549_20191110T001715_D001	Height Error (Retracker 2), Backscatter Error (Retracker 2)	There is a height and backscatter error for Retracker 2 for one or more records
CS_OFFL_SIR_LRM_2__20191110T003450_20191110T004420_D001	Height Error (Retracker 2), Backscatter Error (Retracker 2)	There is a height and backscatter error for Retracker 2 for one or more records
CS_OFFL_SIR_LRM_2__20191110T004607_20191110T005213_D001	Height Error (Retracker 2), Backscatter Error (Retracker 2)	There is a height and backscatter error for Retracker 2 for one or more records
CS_OFFL_SIR_LRM_2__20191110T005344_20191110T005842_D001	Height Error (Retracker 2), Backscatter Error (Retracker 2)	There is a height and backscatter error for Retracker 2 for one or more records
CS_OFFL_SIR_LRM_2__20191110T012117_20191110T015556_D001	Height Error (Retracker 2), Height Error (Retracker 3), Backscatter Error (Retracker 2)	There is a height and backscatter error for Retracker 2 and a height error for Retracker 3 for one or more records
CS_OFFL_SIR_LRM_2__20191110T021459_20191110T024611_D001	Height Error (Retracker 2), Backscatter Error (Retracker 2)	There is a height and backscatter error for Retracker 2 for one or more records
CS_OFFL_SIR_LRM_2__20191110T025902_20191110T030004_D001	Surface Model Unavailable	No DEM or Slope Model was used for the location of one or more records
CS_OFFL_SIR_LRM_2__20191110T030053_20191110T031345_D001	Height Error (Retracker 2), Height Error (Retracker 3), Backscatter Error (Retracker 2), Surface Model Unavailable	There is a height and backscatter error for Retracker 2, a height error for Retracker 3 and no DEM or Slope Model was used for the location of one or more records
CS_OFFL_SIR_LRM_2__20191110T031501_20191110T033541_D001	Height Error (Retracker 2), Height Error (Retracker 3), Backscatter Error (Retracker 2)	There is a height and backscatter error for Retracker 2 and a height error for Retracker 3 for one or more records
CS_OFFL_SIR_LRM_2__20191110T035240_20191110T040235_D001	Height Error (Retracker 2), Backscatter Error (Retracker 2)	There is a height and backscatter error for Retracker 2 for one or more records
CS_OFFL_SIR_LRM_2__20191110T040854_20191110T042437_D001	Height Error (Retracker 2), Height Error (Retracker 3), Backscatter Error (Retracker 2), Surface Model Unavailable	There is a height and backscatter error for Retracker 2, a height error for Retracker 3 and no DEM or Slope Model was used for the location of one or more records
CS_OFFL_SIR_LRM_2__20191110T044306_20191110T045845_D001	Height Error (Retracker 2), Backscatter Error (Retracker 2)	There is a height and backscatter error for Retracker 2 for one or more records
CS_OFFL_SIR_LRM_2__20191110T050024_20191110T051400_D001	Height Error (Retracker 2), Backscatter Error (Retracker 2)	There is a height and backscatter error for Retracker 2 for one or more records
CS_OFFL_SIR_LRM_2__20191110T053046_20191110T053327_D001	Height Error (Retracker 2), Backscatter Error (Retracker 2)	There is a height and backscatter error for Retracker 2 for one or more records
CS_OFFL_SIR_LRM_2__20191110T053353_20191110T055231_D001	Height Error (Retracker 2), Backscatter Error (Retracker 2)	There is a height and backscatter error for Retracker 2 for one or more records
CS_OFFL_SIR_LRM_2__20191110T055450_20191110T060308_D001	Height Error (Retracker 2), Backscatter Error (Retracker 2)	There is a height and backscatter error for Retracker 2 for one or more records
CS_OFFL_SIR_LRM_2__20191110T060524_20191110T060532_D001	Height Error (Retracker 2), Height Error (Retracker 3), Backscatter Error (Retracker 2)	There is a height and backscatter error for Retracker 2 and a height error for Retracker 3 for one or more records
CS_OFFL_SIR_LRM_2__20191110T062349_20191110T062425_D001	Surface Model Unavailable	No DEM or Slope Model was used for the location of one or more records
CS_OFFL_SIR_LRM_2__20191110T063123_20191110T065242_D001	Height Error (Retracker 2), Backscatter Error (Retracker 2)	There is a height and backscatter error for Retracker 2 for one or more records
CS_OFFL_SIR_LRM_2__20191110T070840_20191110T073628_D001	Height Error (Retracker 2), Backscatter Error (Retracker 2)	There is a height and backscatter error for Retracker 2 for one or more records
CS_OFFL_SIR_LRM_2__20191110T080741_20191110T083208_D001	Height Error (Retracker 2), Height Error (Retracker 3), Backscatter Error (Retracker 2)	There is a height and backscatter error for Retracker 2 and a height error for Retracker 3 for one or more records
CS_OFFL_SIR_LRM_2__20191110T084832_20191110T092123_D001	Height Error (Retracker 2), Backscatter Error (Retracker 2)	There is a height and backscatter error for Retracker 2 for one or more records
CS_OFFL_SIR_LRM_2__20191110T094836_20191110T095150_D001	Height Error (Retracker 2), Backscatter Error (Retracker 2)	There is a height and backscatter error for Retracker 2 for one or more records
CS_OFFL_SIR_LRM_2__20191110T102853_20191110T110054_D001	Height Error (Retracker 2), Height Error (Retracker 3), Backscatter Error (Retracker 2), Surface Model Unavailable	There is a height and backscatter error for Retracker 2, a height error for Retracker 3 and no DEM or Slope Model was used for the location of one or more records
CS_OFFL_SIR_LRM_2__20191110T112855_20191110T114923_D001	Height Error (Retracker 2), Backscatter Error (Retracker 2)	There is a height and backscatter error for Retracker 2 for one or more records

CS_OFFL_SIR_LRM_2_2019110T120656_2019110T124114_D001	Height Error (Retracker 2), Height Error (Retracker 3), Backscatter Error (Retracker 2)	There is a height and backscatter error for Retracker 2 and a height error for Retracker 3 for one or more records
CS_OFFL_SIR_LRM_2_2019110T125223_2019110T125428_D001	Height Error (Retracker 2), Backscatter Error (Retracker 2)	There is a height and backscatter error for Retracker 2 for one or more records
CS_OFFL_SIR_LRM_2_2019110T131002_2019110T132843_D001	Height Error (Retracker 2), Backscatter Error (Retracker 2)	There is a height and backscatter error for Retracker 2 for one or more records
CS_OFFL_SIR_LRM_2_2019110T134641_2019110T142124_D001	Height Error (Retracker 2), Backscatter Error (Retracker 2)	There is a height and backscatter error for Retracker 2 for one or more records
CS_OFFL_SIR_LRM_2_2019110T143457_2019110T145343_D001	Height Error (Retracker 2), Backscatter Error (Retracker 2)	There is a height and backscatter error for Retracker 2 for one or more records
CS_OFFL_SIR_LRM_2_2019110T145423_2019110T150737_D001	Height Error (Retracker 2), Backscatter Error (Retracker 2)	There is a height and backscatter error for Retracker 2 for one or more records
CS_OFFL_SIR_LRM_2_2019110T152539_2019110T154038_D001	Height Error (Retracker 2), Backscatter Error (Retracker 2)	There is a height and backscatter error for Retracker 2 for one or more records
CS_OFFL_SIR_LRM_2_2019110T154240_2019110T155203_D001	Height Error (Retracker 2), Backscatter Error (Retracker 2)	There is a height and backscatter error for Retracker 2 for one or more records
CS_OFFL_SIR_LRM_2_2019110T161416_2019110T163124_D001	Height Error (Retracker 2), Height Error (Retracker 3), Backscatter Error (Retracker 2)	There is a height and backscatter error for Retracker 2 and a height error for Retracker 3 for one or more records
CS_OFFL_SIR_LRM_2_2019110T164739_2019110T164846_D001	Height Error (Retracker 2), Backscatter Error (Retracker 2)	There is a height and backscatter error for Retracker 2 for one or more records
CS_OFFL_SIR_LRM_2_2019110T170518_2019110T171908_D001	Height Error (Retracker 2), Backscatter Error (Retracker 2)	There is a height and backscatter error for Retracker 2 for one or more records
CS_OFFL_SIR_LRM_2_2019110T173214_2019110T173517_D001	Surface Model Unavailable	No DEM or Slope Model was used for the location of one or more records
CS_OFFL_SIR_LRM_2_2019110T175444_2019110T175617_D001	Height Error (Retracker 2), Backscatter Error (Retracker 2)	There is a height and backscatter error for Retracker 2 for one or more records
CS_OFFL_SIR_LRM_2_2019110T175741_2019110T180452_D001	Height Error (Retracker 2), Backscatter Error (Retracker 2)	There is a height and backscatter error for Retracker 2 for one or more records
CS_OFFL_SIR_LRM_2_2019110T180613_2019110T182918_D001	Height Error (Retracker 2), Backscatter Error (Retracker 2)	There is a height and backscatter error for Retracker 2 for one or more records
CS_OFFL_SIR_LRM_2_2019110T184444_2019110T190937_D001	Height Error (Retracker 2), Backscatter Error (Retracker 2)	There is a height and backscatter error for Retracker 2 for one or more records
CS_OFFL_SIR_LRM_2_2019110T191303_2019110T191738_D001	Surface Model Unavailable	No DEM or Slope Model was used for the location of one or more records
CS_OFFL_SIR_LRM_2_2019110T194132_2019110T200803_D001	Height Error (Retracker 2), Height Error (Retracker 3), Backscatter Error (Retracker 2)	There is a height and backscatter error for Retracker 2 and a height error for Retracker 3 for one or more records
CS_OFFL_SIR_LRM_2_2019110T202413_2019110T205020_D001	Height Error (Retracker 2), Backscatter Error (Retracker 2)	There is a height and backscatter error for Retracker 2 for one or more records
CS_OFFL_SIR_LRM_2_2019110T205907_2019110T210112_D001	Height Error (Retracker 2), Height Error (Retracker 3), Backscatter Error (Retracker 2)	There is a height and backscatter error for Retracker 2 and a height error for Retracker 3 for one or more records
CS_OFFL_SIR_LRM_2_2019110T211526_2019110T214601_D001	Height Error (Retracker 2), Height Error (Retracker 3), Backscatter Error (Retracker 2)	There is a height and backscatter error for Retracker 2 and a height error for Retracker 3 for one or more records
CS_OFFL_SIR_LRM_2_2019110T223857_2019110T224008_D001	Height Error (Retracker 2), Backscatter Error (Retracker 2)	There is a height and backscatter error for Retracker 2 for one or more records
CS_OFFL_SIR_LRM_2_2019110T225320_2019110T232617_D001	Height Error (Retracker 2), Backscatter Error (Retracker 2)	There is a height and backscatter error for Retracker 2 for one or more records
CS_OFFL_SIR_LRM_2_2019110T234406_2019111T000001_D001	Height Error (Retracker 2), Backscatter Error (Retracker 2)	There is a height and backscatter error for Retracker 2 for one or more records