

1. Overview

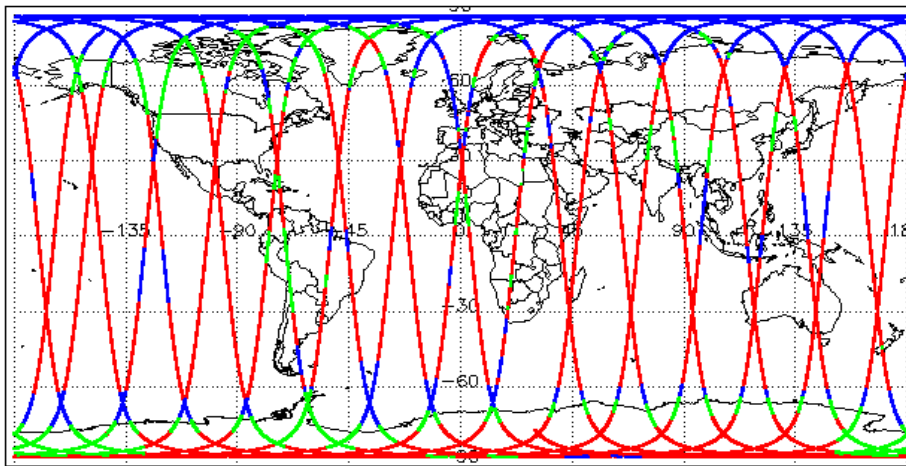
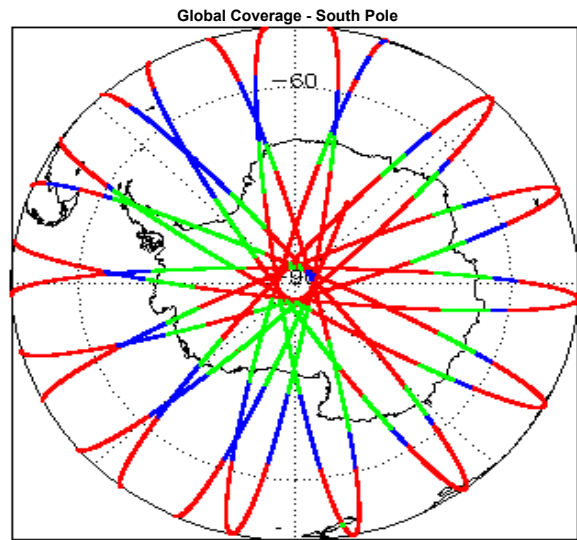
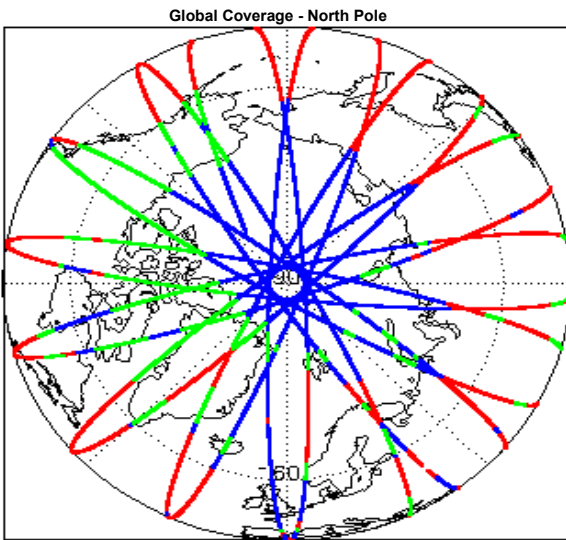
Report Production Date:	20-Jul-2018
Processor Used:	CryoSat Ice Processor
Data Used:	L1B and L2 OFFLINE Data

Check	Status
Server check: science-pds.cryosat.esa.int	Nominal
Server check: calval-pds.cryosat.esa.int	Nominal
Product Software Check	Nominal
Product Format Check	Nominal
Product Header Analysis	Nominal
Star Tracker Usage Check	Nominal
L1B Calibration Usage Check	Nominal
L1B & L2 Auxiliary Data File Usage Check	Nominal
L1B & L2 Auxiliary Correction Error Check	Nominal
L1B & L2 Measurement Confidence Data Check	See Section 4.7 and 5.5

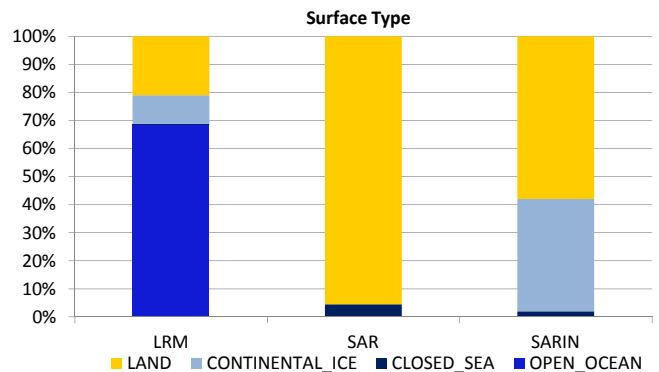
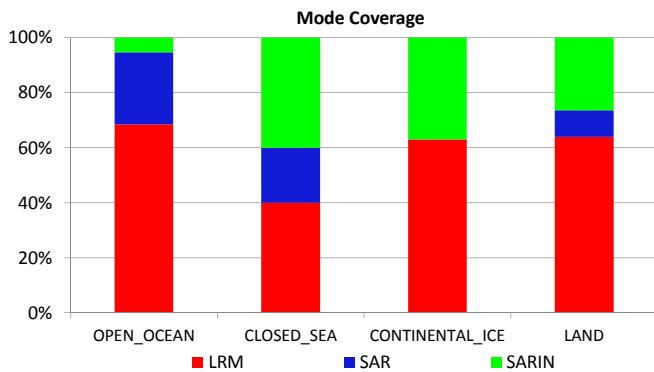
Mission / Instrument News

21-Jun-2018	None
22-Jun-2018	None
23-Jun-2018	Nothing planned

2. Global Coverage



Mode Coverage (%)		
	LRM	19.8
	SAR	13.5
	SARIn	0.0



3. Instrument Configuration

The SIRAL instrument configuration for the day of acquisition is provided below.

SIRAL instrument(s) in use:	SIRAL - A
-----------------------------	-----------

4. Level 1B Data Quality Check

4.1 L1B Product Format Check

Each product, retrieved and unpacked from the science server, is checked to ensure it consists of both an XML header file (.HDR) and a product file (.DBL).

Number of products with errors: 0

4.2 L1B Product Header Analysis

For all products, a series of pre-defined checks are carried out on the MPH and SPH in order to identify any inconsistencies and/or errors raised by the ground-segment processing chain.

Number of products with errors: 0

4.3 Star Tracker Usage Check

Each product is checked in order to ensure a valid star tracker file has been used in processing.

Number of products with errors: 0

4.4 L1B Calibration Usage Check

Each product is checked in order to ensure that the necessary calibration files have been used in processing.

Number of products with errors: 0

4.5 L1B Auxiliary Data File Usage Check

Each product is checked for missing Data Set Descriptors with respect to a pre-determined baseline and also to check the validity of Auxiliary Data Files is correct.

Number of products with errors: 0

4.6 L1B Auxiliary Correction Error Check

CryoSat L1B data includes a correction error flag (field 54) for each measurement record. The bit value of this flag indicates any problems when set.

Number of products with errors: 0

4.7 L1B Measurement Confidence Data Check

CryoSat L1B data includes a measurement confidence flag (field 18) for each measurement record. The bit value of this flag indicates any problems when set.

Currently, there are several common error flags raised in the Level 1B products which are expected due to operational mode or surface type. All common flags are summarised in the list below, followed by a table of any additional issues arising from this test.

Block Degraded Flag: This flag is currently set for a number of individual records generally at the start or end of products (all modes), but this is to be expected.

Phase Perturbation Flag: This flag is currently set for all L1B SARIn products, indicating that the ADC correction application is deactivated, but this is in line with the current configuration.

Number of products with errors: 2

Product	Test Failed	Description
CS_OFFL_SIR_LRM_1B_20180622T061548_20180622T062301_C001	Echo error, TRK echo error	The tracking echo has returned an error and the Rx1 Echo Error flag is set, indicating a degraded echo
CS_OFFL_SIR_LRM_1B_20180622T100718_20180622T100843_C001	Echo error, TRK echo error	The tracking echo has returned an error and the Rx1 Echo Error flag is set, indicating a degraded echo

5. Level 2 Data Quality Check

5.1 L2 Product Format Check

Each product, retrieved and unpacked from the science server, is checked to ensure it consists of both an XML header file (.HDR) and a product file (.DBL).

Number of products with errors: 0

5.2 L2 Product Header Analysis

For all products, a series of pre-defined checks are carried out on the MPH and SPH in order to identify any inconsistencies and/or errors raised by the ground-segment processing chain.

Number of products with errors: 0

5.3 L2 Auxiliary Data File Usage Check

Each product is checked for missing Data Set Descriptors with respect to a pre-determined baseline and also to check the validity of Auxiliary Data Files is correct.

Number of products with errors: 0

5.4 L2 Auxiliary Correction Error Check

CryoSat L2 data includes a correction error flag (field 30) for each measurement record. The bit value of this flag indicates any problems when set.

Number of products with errors: 0

5.5 L2 Measurement Quality Flag Check

CryoSat L2 data includes a quality flag (field 50) for each 20-Hz measurement record. The bit value of this flag indicates any problems when set.

Currently, there are several common error flags raised in the Level 2 products which are expected due to operational mode or surface type. All common flags are summarised in the list below, followed by a table of any additional issues arising from this test.

Freeboard error: This flag is correctly set in all L2 SAR products that are not discriminated as sea-ice, and for which freeboard cannot be calculated.

Height and Backscatter errors: These flags are currently set for products over land, but this is to be expected. Retracker 1 Height and Backscatter error flags are also set for products over sea-ice, but this is to be expected.

Peakiness error: This flag is currently set for products over sea-ice, but this is to be expected.

SARIn X-Track Angle Error: This flag is set when the difference between the computed surface elevation and the DEM is >50 m. The DEM is only available over Greenland and Antarctica and as a result this flag is set for L2 SARIn products in all other locations as expected.

SSHA interpolation error: This flag is currently set for a number of SAR products occurring at surface type boundaries, but this is to be expected.

Number of products with errors: 112

Product	Test Failed	Description
CS_OFFL_SIR_LRM_2_20180622T000614_20180622T003922_C001	Height Error (Retracker 2), Backscatter Error (Retracker 2)	There is a height and backscatter error for Retracker 2 for one or more records

CS_OFFL_SIR_SIN_2_20180622T154439_20180622T154636_C001	SARIn X-track Angle Error	An ambiguous angle was detected for SARIn mode for one or more records
CS_OFFL_SIR_SIN_2_20180622T163053_20180622T163214_C001	SARIn X-track Angle Error	An ambiguous angle was detected for SARIn mode for one or more records
CS_OFFL_SIR_SIN_2_20180622T163546_20180622T163744_C001	SARIn X-track Angle Error	An ambiguous angle was detected for SARIn mode for one or more records
CS_OFFL_SIR_SIN_2_20180622T171109_20180622T171703_C001	SARIn X-track Angle Error, Surface Model Unavailable	An ambiguous angle was detected for SARIn mode and no DEM or Slope Model was used for one or more records
CS_OFFL_SIR_SIN_2_20180622T171924_20180622T171958_C001	SARIn X-track Angle Error	An ambiguous angle was detected for SARIn mode for one or more records
CS_OFFL_SIR_SIN_2_20180622T172419_20180622T172558_C001	SARIn X-track Angle Error	An ambiguous angle was detected for SARIn mode for one or more records
CS_OFFL_SIR_SIN_2_20180622T180516_20180622T180617_C001	SARIn X-track Angle Error, Surface Model Unavailable	An ambiguous angle was detected for SARIn mode and no DEM or Slope Model was used for one or more records
CS_OFFL_SIR_SIN_2_20180622T181019_20180622T181231_C001	SARIn X-track Angle Error	An ambiguous angle was detected for SARIn mode for one or more records
CS_OFFL_SIR_SIN_2_20180622T185307_20180622T185451_C001	SARIn X-track Angle Error	An ambiguous angle was detected for SARIn mode for one or more records
CS_OFFL_SIR_SIN_2_20180622T190328_20180622T190527_C001	SARIn X-track Angle Error	An ambiguous angle was detected for SARIn mode for one or more records
CS_OFFL_SIR_SIN_2_20180622T194932_20180622T195422_C001	SARIn X-track Angle Error, Surface Model Unavailable	An ambiguous angle was detected for SARIn mode and no DEM or Slope Model was used for one or more records
CS_OFFL_SIR_SIN_2_20180622T203241_20180622T203404_C001	SARIn X-track Angle Error	An ambiguous angle was detected for SARIn mode for one or more records
CS_OFFL_SIR_SIN_2_20180622T203554_20180622T203651_C001	SARIn X-track Angle Error	An ambiguous angle was detected for SARIn mode for one or more records
CS_OFFL_SIR_SIN_2_20180622T204128_20180622T204346_C001	SARIn X-track Angle Error	An ambiguous angle was detected for SARIn mode for one or more records
CS_OFFL_SIR_SIN_2_20180622T212415_20180622T212436_C001	SARIn X-track Angle Error, Surface Model Unavailable	An ambiguous angle was detected for SARIn mode and no DEM or Slope Model was used for one or more records
CS_OFFL_SIR_SIN_2_20180622T221213_20180622T221333_C001	SARIn X-track Angle Error	An ambiguous angle was detected for SARIn mode for one or more records
CS_OFFL_SIR_SIN_2_20180622T221342_20180622T221608_C001	SARIn X-track Angle Error	An ambiguous angle was detected for SARIn mode for one or more records
CS_OFFL_SIR_SIN_2_20180622T222202_20180622T222329_C001	SARIn X-track Angle Error	An ambiguous angle was detected for SARIn mode for one or more records
CS_OFFL_SIR_SIN_2_20180622T230317_20180622T230343_C001	SARIn X-track Angle Error, Surface Model Unavailable	An ambiguous angle was detected for SARIn mode and no DEM or Slope Model was used for one or more records
CS_OFFL_SIR_SIN_2_20180622T235203_20180622T235515_C001	SARIn X-track Angle Error	An ambiguous angle was detected for SARIn mode for one or more records

6. QCC Report Analysis

The Quality Control for CryoSat (QCC) facility performs a primary survey of data products immediately after production by the PDS and LTA processing facilities. A list of the tests which raised errors or warnings is provided below.

Product type	No. Products	No. QCC Reports	No. Valid	No. Warnings	No. Errors
SIR_LRM_1B	131	131	131	0	0
SIR_LRM_2	131	131	131	0	0
SIR_LRMI2	131	131	131	0	0
SIR_SAR_1B	105	105	105	0	0
SIR_SAR_2	105	105	105	0	0
SIR_SARI2	105	105	105	0	0
SIR_SIN_1B	103	103	103	0	0
SIR_SIN_2	103	103	103	0	0
SIR_SINI2	103	103	103	0	0
SIR_GDR_2	14	14	14	0	0

6.1 QCC Errors

Number of products with QCC errors: 0

6.2 QCC Warnings

Number of QCC reports with warnings: 0

6.2 Missing QCC Reports

Number of products with missing QCC reports: 184