

### 1. Overview

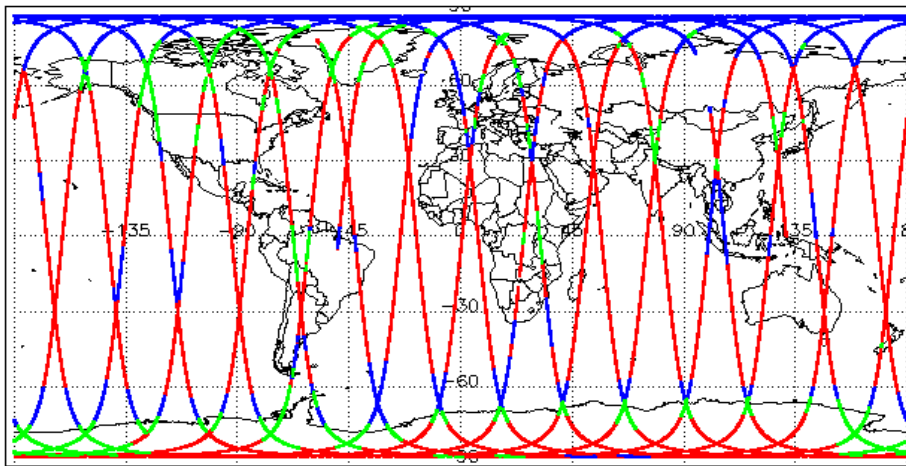
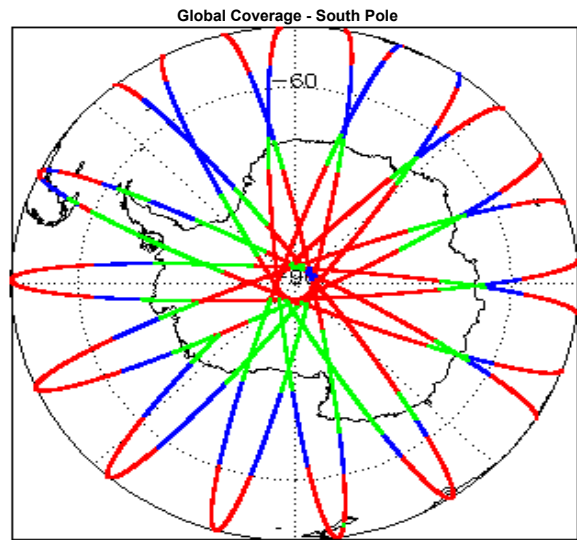
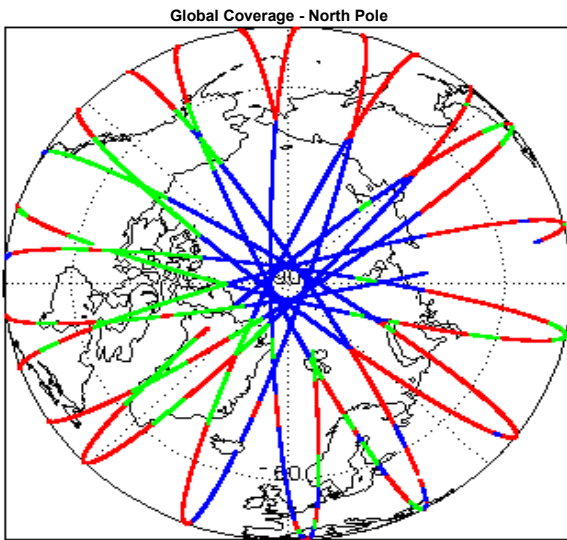
Report Production Date:	26-Oct-2016
Processor Used:	CryoSat Ice Processor
Data Used:	L1B and L2 OFFLINE Data

Check	Status
Server check: science-pds.cryosat.esa.int	Nominal
Server check: calval-pds.cryosat.esa.int	Nominal
Product Software Check	Nominal
Product Format Check	Nominal
Product Header Analysis	See Section 4.2 and 5.2
Star Tracker Usage Check	Nominal
L1B Calibration Usage Check	Nominal
L1B & L2 Auxiliary Data File Usage Check	Nominal
L1B & L2 Auxiliary Correction Error Check	Nominal
L1B & L2 Measurement Confidence Data Check	See Section 4.7 and 5.5

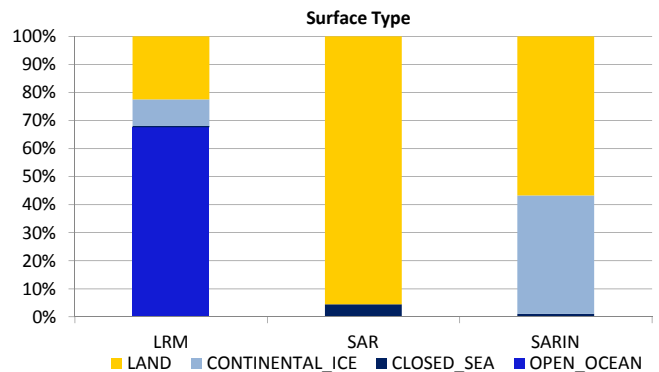
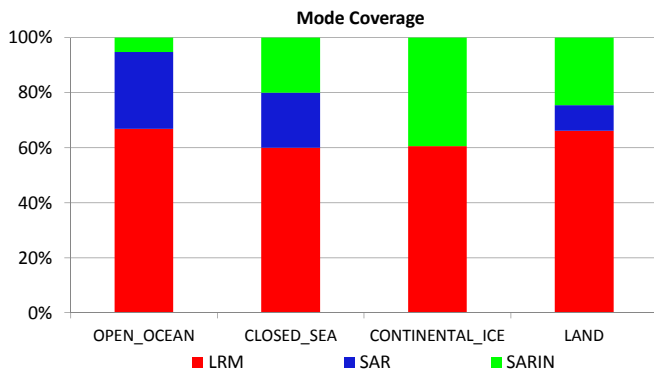
#### Mission / Instrument News

28-Sep-2016	None
29-Sep-2016	None
30-Sep-2016	Nothing planned

### 2. Global Coverage



Mode Coverage (%)		
	LRM	20.8
	SAR	13.2
	SARIn	0.0



### 3. Instrument Configuration

The SIRAL instrument configuration for the day of acquisition is provided below.

SIRAL instrument(s) in use:	SIRAL - A
-----------------------------	-----------

## 4. Level 1B Data Quality Check

### 4.1 L1B Product Format Check

Each product, retrieved and unpacked from the science server, is checked to ensure it consists of both an XML header file (.HDR) and a product file (.DBL).

Number of products with errors: 0

### 4.2 L1B Product Header Analysis

For all products, a series of pre-defined checks are carried out on the MPH and SPH in order to identify any inconsistencies and/or errors raised by the ground-segment processing chain.

Number of products with errors: 1

Product	Test Failed
CS_OFFL_SIR_SAR_1B_20160929T164156_20160929T164159_C001	Percentage of processing errors detected greater than minimum acceptable threshold.

### 4.3 Star Tracker Usage Check

Each product is checked in order to ensure a valid star tracker file has been used in processing.

Number of products with errors: 0

### 4.4 L1B Calibration Usage Check

Each product is checked in order to ensure that the necessary calibration files have been used in processing.

Number of products with errors: 0

### 4.5 L1B Auxiliary Data File Usage Check

Each product is checked for missing Data Set Descriptors with respect to a pre-determined baseline and also to check the validity of Auxiliary Data Files is correct.

Number of products with errors: 0

### 4.6 L1B Auxiliary Correction Error Check

CryoSat L1B data includes a correction error flag (field 54) for each measurement record. The bit value of this flag indicates any problems when set.

Number of products with errors: 0

### 4.7 L1B Measurement Confidence Data Check

CryoSat L1B data includes a measurement confidence flag (field 18) for each measurement record. The bit value of this flag indicates any problems when set.

Currently, there are several common error flags raised in the Level 1B products which are expected due to operational mode or surface type. All common flags are summarised in the list below, followed by a table of any additional issues arising from this test.

**Block Degraded Flag:** This flag is currently set for a number of individual records generally at the start or end of products (all modes), but this is to be expected.

**Phase Perturbation Flag:** This flag is currently set for all L1B SARIn products, indicating that the ADC correction application is deactivated, but this is in line with the current configuration.

Number of products with errors: 4

Product	Test Failed	Description
CS_OFFL_SIR_LRM_1B_20160929T032944_20160929T033415_C001	Echo error, TRK echo error	The tracking echo has returned an error and the Rx1 Echo Error flag is set, indicating a degraded echo
CS_OFFL_SIR_LRM_1B_20160929T035121_20160929T035522_C001	Echo error, TRK echo error	The tracking echo has returned an error and the Rx1 Echo Error flag is set, indicating a degraded echo
CS_OFFL_SIR_LRM_1B_20160929T150256_20160929T150812_C001	Echo error, TRK echo error	The tracking echo has returned an error and the Rx1 Echo Error flag is set, indicating a degraded echo
CS_OFFL_SIR_LRM_1B_20160929T184633_20160929T184725_C001	Echo error, TRK echo error	The tracking echo has returned an error and the Rx1 Echo Error flag is set, indicating a degraded echo

## 5. Level 2 Data Quality Check

### 5.1 L2 Product Format Check

Each product, retrieved and unpacked from the science server, is checked to ensure it consists of both an XML header file (.HDR) and a product file (.DBL).

Number of products with errors: 0

### 5.2 L2 Product Header Analysis

For all products, a series of pre-defined checks are carried out on the MPH and SPH in order to identify any inconsistencies and/or errors raised by the ground-segment processing chain.

Number of products with errors: 1

Product	Test Failed
CS_OFFL_SIR_SAR_2__20160929T164156_20160929T164159_C001	Percentage of processing errors detected greater than minimum acceptable threshold.

### 5.3 L2 Auxiliary Data File Usage Check

Each product is checked for missing Data Set Descriptors with respect to a pre-determined baseline and also to check the validity of Auxiliary Data Files is correct.

Number of products with errors: 0

### 5.4 L2 Auxiliary Correction Error Check

CryoSat L2 data includes a correction error flag (field 30) for each measurement record. The bit value of this flag indicates any problems when set.

Number of products with errors: 0

### 5.5 L2 Measurement Quality Flag Check

CryoSat L2 data includes a quality flag (field 50) for each 20-Hz measurement record. The bit value of this flag indicates any problems when set.

Currently, there are several common error flags raised in the Level 2 products which are expected due to operational mode or surface type. All common flags are summarised in the list below, followed by a table of any additional issues arising from this test.

**Freeboard error:** This flag is correctly set in all L2 SAR products that are not discriminated as sea-ice, and for which freeboard cannot be calculated.

**Height and Backscatter errors:** These flags are currently set for products over land, but this is to be expected. Retracker 1 Height and Backscatter error flags are also set for products over sea-ice, but this is to be expected.

**Peakiness error:** This flag is currently set for products over sea-ice, but this is to be expected.

**SARin X-Track Angle Error:** This flag is set when the difference between the computed surface elevation and the DEM is >50 m. The DEM is only available over Greenland and Antarctica and as a result this flag is set for L2 SARin products in all other locations as expected.

**SSHA interpolation error:** This flag is currently set for a number of SAR products occurring at surface type boundaries, but this is to be expected.

**Number of products with errors:** 112

Product	Test Failed	Description
CS_OFFL_SIR_LRM_2__20160928T235920_20160929T000857_C001	Height Error (Retracker 2), Height Error (Retracker 3), Backscatter Error (Retracker 2)	There is a height and backscatter error for Retracker 2 and a height error for Retracker 3 for one or more records
CS_OFFL_SIR_LRM_2__20160929T003117_20160929T004758_C001	Height Error (Retracker 2), Height Error (Retracker 3), Backscatter Error (Retracker 2)	There is a height and backscatter error for Retracker 2 and a height error for Retracker 3 for one or more records
CS_OFFL_SIR_LRM_2__20160929T011121_20160929T011412_C001	Surface Model Unavailable	No DEM or Slope Model was used for the location of one or more records
CS_OFFL_SIR_LRM_2__20160929T012159_20160929T013544_C001	Height Error (Retracker 2), Backscatter Error (Retracker 2)	There is a height and backscatter error for Retracker 2 for one or more records
CS_OFFL_SIR_LRM_2__20160929T020718_20160929T020757_C001	Height Error (Retracker 2), Backscatter Error (Retracker 2)	There is a height and backscatter error for Retracker 2 for one or more records
CS_OFFL_SIR_LRM_2__20160929T021031_20160929T021252_C001	Height Error (Retracker 2), Height Error (Retracker 3), Backscatter Error (Retracker 2)	There is a height and backscatter error for Retracker 2 and a height error for Retracker 3 for one or more records
CS_OFFL_SIR_LRM_2__20160929T022248_20160929T024534_C001	Height Error (Retracker 2), Backscatter Error (Retracker 2)	There is a height and backscatter error for Retracker 2 for one or more records
CS_OFFL_SIR_LRM_2__20160929T024924_20160929T025757_C001	Surface Model Unavailable	No DEM or Slope Model was used for the location of one or more records
CS_OFFL_SIR_LRM_2__20160929T030143_20160929T032550_C001	Height Error (Retracker 2), Backscatter Error (Retracker 2)	There is a height and backscatter error for Retracker 2 for one or more records
CS_OFFL_SIR_LRM_2__20160929T033538_20160929T033841_C001	Height Error (Retracker 2), Backscatter Error (Retracker 2)	There is a height and backscatter error for Retracker 2 for one or more records
CS_OFFL_SIR_LRM_2__20160929T033900_20160929T033907_C001	Height Error (Retracker 2), Height Error (Retracker 3), Backscatter Error (Retracker 2), Surface Model Unavailable	There is a height and backscatter error for Retracker 2, a height error for Retracker 3 and no Surface Model available for one or more records
CS_OFFL_SIR_LRM_2__20160929T035804_20160929T041017_C001	Height Error (Retracker 2), Backscatter Error (Retracker 2)	There is a height and backscatter error for Retracker 2 for one or more records
CS_OFFL_SIR_LRM_2__20160929T041408_20160929T042452_C001	Height Error (Retracker 2), Backscatter Error (Retracker 2)	There is a height and backscatter error for Retracker 2 for one or more records
CS_OFFL_SIR_LRM_2__20160929T044108_20160929T050646_C001	Height Error (Retracker 2), Backscatter Error (Retracker 2)	There is a height and backscatter error for Retracker 2 for one or more records
CS_OFFL_SIR_LRM_2__20160929T050957_20160929T051844_C001	Height Error (Retracker 2), Height Error (Retracker 3), Backscatter Error (Retracker 2)	There is a height and backscatter error for Retracker 2 and a height error for Retracker 3 for one or more records
CS_OFFL_SIR_LRM_2__20160929T053223_20160929T054751_C001	Height Error (Retracker 2), Backscatter Error (Retracker 2)	There is a height and backscatter error for Retracker 2 for one or more records
CS_OFFL_SIR_LRM_2__20160929T055321_20160929T060229_C001	Height Error (Retracker 2), Backscatter Error (Retracker 2)	There is a height and backscatter error for Retracker 2 for one or more records
CS_OFFL_SIR_LRM_2__20160929T062925_20160929T063326_C001	Height Error (Retracker 2), Backscatter Error (Retracker 2)	There is a height and backscatter error for Retracker 2 for one or more records
CS_OFFL_SIR_LRM_2__20160929T065541_20160929T065725_C001	Height Error (Retracker 2), Height Error (Retracker 3), Backscatter Error (Retracker 2)	There is a height and backscatter error for Retracker 2 and a height error for Retracker 3 for one or more records
CS_OFFL_SIR_LRM_2__20160929T070940_20160929T074222_C001	Height Error (Retracker 2), Height Error (Retracker 3), Backscatter Error (Retracker 2)	There is a height and backscatter error for Retracker 2 and a height error for Retracker 3 for one or more records
CS_OFFL_SIR_LRM_2__20160929T080049_20160929T082528_C001	Height Error (Retracker 2), Backscatter Error (Retracker 2)	There is a height and backscatter error for Retracker 2 for one or more records
CS_OFFL_SIR_LRM_2__20160929T082651_20160929T082702_C001	Height Error (Retracker 2), Backscatter Error (Retracker 2)	There is a height and backscatter error for Retracker 2 for one or more records
CS_OFFL_SIR_LRM_2__20160929T083444_20160929T083616_C001	Height Error (Retracker 2), Backscatter Error (Retracker 2)	There is a height and backscatter error for Retracker 2 for one or more records
CS_OFFL_SIR_LRM_2__20160929T084641_20160929T091653_C001	Height Error (Retracker 2), Backscatter Error (Retracker 2)	There is a height and backscatter error for Retracker 2 for one or more records
CS_OFFL_SIR_LRM_2__20160929T091704_20160929T092143_C001	Height Error (Retracker 2), Backscatter Error (Retracker 2)	There is a height and backscatter error for Retracker 2 for one or more records
CS_OFFL_SIR_LRM_2__20160929T093925_20160929T101319_C001	Height Error (Retracker 2), Height Error (Retracker 3), Backscatter Error (Retracker 2)	There is a height and backscatter error for Retracker 2 and a height error for Retracker 3 for one or more records
CS_OFFL_SIR_LRM_2__20160929T102524_20160929T104325_C001	Height Error (Retracker 2), Height Error (Retracker 3), Backscatter Error (Retracker 2)	There is a height and backscatter error for Retracker 2 and a height error for Retracker 3 for one or more records
CS_OFFL_SIR_LRM_2__20160929T104409_20160929T110057_C001	Height Error (Retracker 2), Height Error (Retracker 3), Backscatter Error (Retracker 2)	There is a height and backscatter error for Retracker 2 and a height error for Retracker 3 for one or more records
CS_OFFL_SIR_LRM_2__20160929T112001_20160929T113102_C001	Height Error (Retracker 2), Backscatter Error (Retracker 2)	There is a height and backscatter error for Retracker 2 for one or more records
CS_OFFL_SIR_LRM_2__20160929T113354_20160929T115051_C001	Height Error (Retracker 2), Height Error (Retracker 3), Backscatter Error (Retracker 2)	There is a height and backscatter error for Retracker 2 and a height error for Retracker 3 for one or more records
CS_OFFL_SIR_LRM_2__20160929T121225_20160929T122150_C001	Height Error (Retracker 2), Height Error (Retracker 3), Backscatter Error (Retracker 2)	There is a height and backscatter error for Retracker 2 and a height error for Retracker 3 for one or more records
CS_OFFL_SIR_LRM_2__20160929T122152_20160929T122326_C001	Height Error (Retracker 2), Backscatter Error (Retracker 2)	There is a height and backscatter error for Retracker 2 for one or more records
CS_OFFL_SIR_LRM_2__20160929T122529_20160929T123954_C001	Height Error (Retracker 2), Height Error (Retracker 3), Backscatter Error (Retracker 2)	There is a height and backscatter error for Retracker 2 and a height error for Retracker 3 for one or more records
CS_OFFL_SIR_LRM_2__20160929T125654_20160929T130046_C001	Height Error (Retracker 2), Backscatter Error (Retracker 2)	There is a height and backscatter error for Retracker 2 for one or more records
CS_OFFL_SIR_LRM_2__20160929T131415_20160929T132652_C001	Height Error (Retracker 2), Height Error (Retracker 3), Backscatter Error (Retracker 2)	There is a height and backscatter error for Retracker 2 and a height error for Retracker 3 for one or more records
CS_OFFL_SIR_LRM_2__20160929T132816_20160929T133034_C001	Height Error (Retracker 2), Height Error (Retracker 3), Backscatter Error (Retracker 2)	There is a height and backscatter error for Retracker 2 and a height error for Retracker 3 for one or more records
CS_OFFL_SIR_LRM_2__20160929T133114_20160929T133127_C001	Height Error (Retracker 2), Backscatter Error (Retracker 2)	There is a height and backscatter error for Retracker 2 for one or more records
CS_OFFL_SIR_LRM_2__20160929T142740_20160929T142858_C001	Surface Model Unavailable	No DEM or Slope Model was used for the location of one or more records
CS_OFFL_SIR_LRM_2__20160929T143459_20160929T150020_C001	Height Error (Retracker 2), Backscatter Error (Retracker 2)	There is a height and backscatter error for Retracker 2 for one or more records



CS_OFFL_SIR_SIN_2_20160929T124112_20160929T124255_C001	SARIn X-track Angle Error	An ambiguous angle was detected for SARIn mode for one or more records
CS_OFFL_SIR_SIN_2_20160929T124820_20160929T124826_C001	SARIn X-track Angle Error	An ambiguous angle was detected for SARIn mode for one or more records
CS_OFFL_SIR_SIN_2_20160929T124945_20160929T125222_C001	SARIn X-track Angle Error	An ambiguous angle was detected for SARIn mode for one or more records
CS_OFFL_SIR_SIN_2_20160929T125428_20160929T125601_C001	SARIn X-track Angle Error, Surface Model Unavailable	An ambiguous angle was detected for SARIn mode and no DEM or Slope Model was used for one or more records
CS_OFFL_SIR_SIN_2_20160929T133128_20160929T133553_C001	SARIn X-track Angle Error, Surface Model Unavailable	An ambiguous angle was detected for SARIn mode and no DEM or Slope Model was used for one or more records
CS_OFFL_SIR_SIN_2_20160929T142033_20160929T142231_C001	SARIn X-track Angle Error	An ambiguous angle was detected for SARIn mode for one or more records
CS_OFFL_SIR_SIN_2_20160929T142719_20160929T142725_C001	SARIn X-track Angle Error	An ambiguous angle was detected for SARIn mode for one or more records
CS_OFFL_SIR_SIN_2_20160929T142858_20160929T143223_C001	SARIn X-track Angle Error	An ambiguous angle was detected for SARIn mode for one or more records
CS_OFFL_SIR_SIN_2_20160929T160001_20160929T160226_C001	SARIn X-track Angle Error	An ambiguous angle was detected for SARIn mode for one or more records
CS_OFFL_SIR_SIN_2_20160929T160617_20160929T160622_C001	SARIn X-track Angle Error	An ambiguous angle was detected for SARIn mode for one or more records
CS_OFFL_SIR_SIN_2_20160929T160633_20160929T160638_C001	SARIn X-track Angle Error	An ambiguous angle was detected for SARIn mode for one or more records
CS_OFFL_SIR_SIN_2_20160929T161004_20160929T161132_C001	SARIn X-track Angle Error	An ambiguous angle was detected for SARIn mode for one or more records
CS_OFFL_SIR_SIN_2_20160929T170000_20160929T170019_C001	SARIn X-track Angle Error, Surface Model Unavailable	An ambiguous angle was detected for SARIn mode and no DEM or Slope Model was used for one or more records
CS_OFFL_SIR_SIN_2_20160929T173920_20160929T174043_C001	SARIn X-track Angle Error	An ambiguous angle was detected for SARIn mode for one or more records
CS_OFFL_SIR_SIN_2_20160929T174531_20160929T174536_C001	SARIn X-track Angle Error	An ambiguous angle was detected for SARIn mode for one or more records
CS_OFFL_SIR_SIN_2_20160929T174907_20160929T175036_C001	SARIn X-track Angle Error	An ambiguous angle was detected for SARIn mode for one or more records
CS_OFFL_SIR_SIN_2_20160929T191910_20160929T192035_C001	SARIn X-track Angle Error	An ambiguous angle was detected for SARIn mode for one or more records
CS_OFFL_SIR_SIN_2_20160929T192600_20160929T192911_C001	SARIn X-track Angle Error	An ambiguous angle was detected for SARIn mode for one or more records
CS_OFFL_SIR_SIN_2_20160929T201722_20160929T201750_C001	SARIn X-track Angle Error, Surface Model Unavailable	An ambiguous angle was detected for SARIn mode and no DEM or Slope Model was used for one or more records
CS_OFFL_SIR_SIN_2_20160929T205846_20160929T210001_C001	SARIn X-track Angle Error	An ambiguous angle was detected for SARIn mode for one or more records
CS_OFFL_SIR_SIN_2_20160929T210458_20160929T210821_C001	SARIn X-track Angle Error	An ambiguous angle was detected for SARIn mode for one or more records
CS_OFFL_SIR_SIN_2_20160929T223934_20160929T224209_C001	SARIn X-track Angle Error	An ambiguous angle was detected for SARIn mode for one or more records
CS_OFFL_SIR_SIN_2_20160929T224402_20160929T225029_C001	SARIn X-track Angle Error	An ambiguous angle was detected for SARIn mode for one or more records
CS_OFFL_SIR_SIN_2_20160929T233448_20160929T233609_C001	SARIn X-track Angle Error	An ambiguous angle was detected for SARIn mode for one or more records
CS_OFFL_SIR_SIN_2_20160929T233907_20160929T234101_C001	SARIn X-track Angle Error	An ambiguous angle was detected for SARIn mode for one or more records