

1. Overview

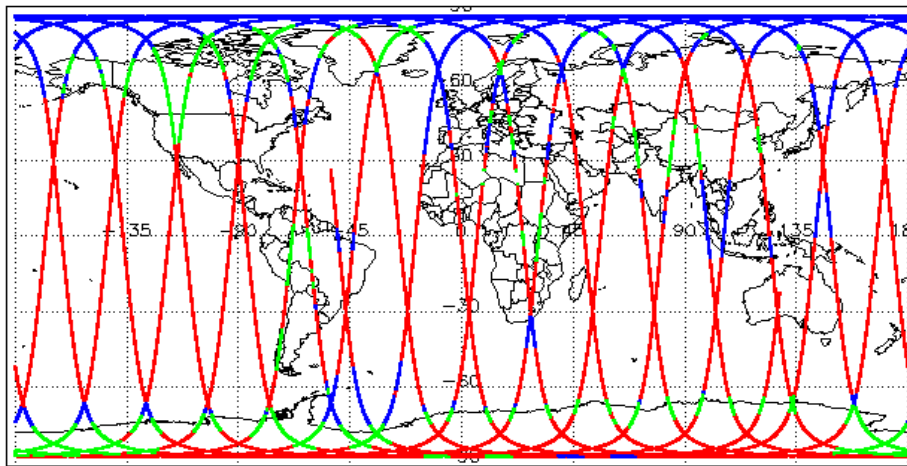
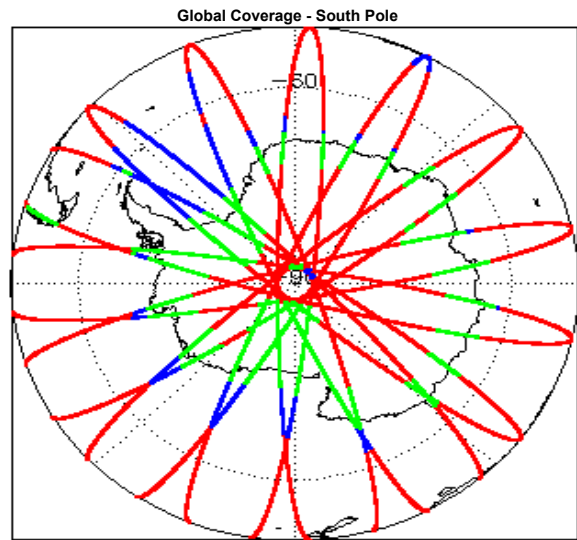
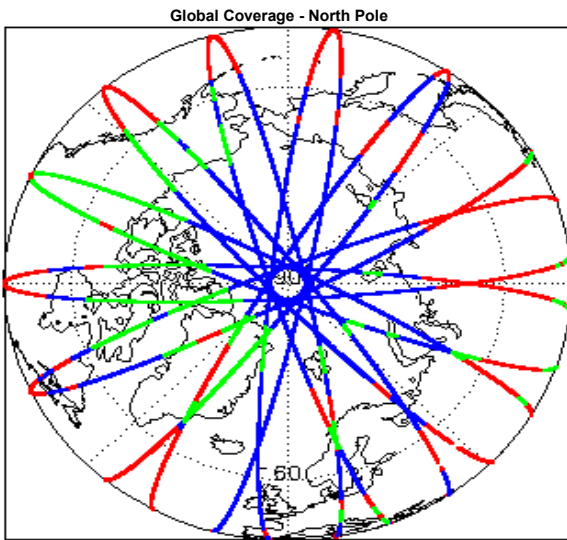
Report Production Date:	03-Mar-2016
Processor Used:	CryoSat Ice Processor
Data Used:	L1B and L2 OFFLINE Data

Check	Status
Server check: science-pds.cryosat.esa.int	Nominal
Server check: calval-pds.cryosat.esa.int	Nominal
Product Software Check	Nominal
Product Format Check	Nominal
Product Header Analysis	See Section 4.2 and 5.2
Star Tracker Usage Check	Nominal
L1B Calibration Usage Check	Nominal
L1B & L2 Auxiliary Data File Usage Check	Nominal
L1B & L2 Auxiliary Correction Error Check	Nominal
L1B & L2 Measurement Confidence Data Check	See Section 4.7 and 5.5

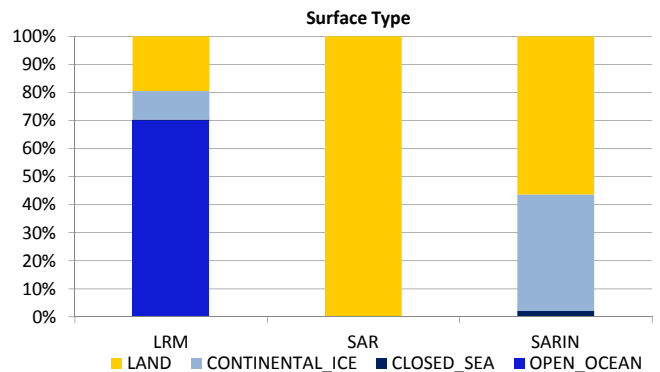
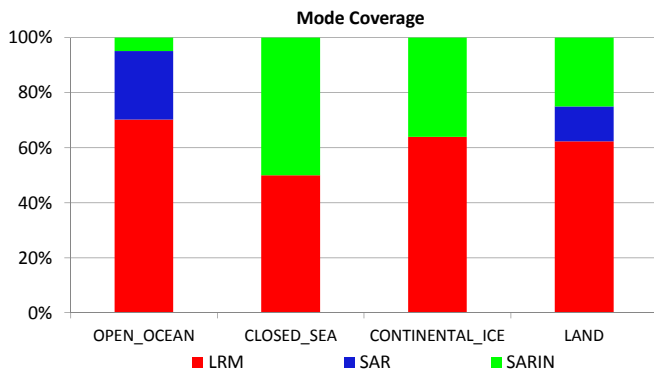
Mission / Instrument News

02-Feb-2016	None
03-Feb-2016	None
04-Feb-2016	Nothing planned

2. Global Coverage



Mode Coverage (%)		
	LRM	19.6
	SAR	12.7
	SARIn	0.0



3. Instrument Configuration

The SIRAL instrument configuration for the day of acquisition is provided below.

SIRAL instrument(s) in use:	SIRAL - A
-----------------------------	-----------

4. Level 1B Data Quality Check

4.1 L1B Product Format Check

Each product, retrieved and unpacked from the science server, is checked to ensure it consists of both an XML header file (.HDR) and a product file (.DBL).

Number of products with errors: 0

4.2 L1B Product Header Analysis

For all products, a series of pre-defined checks are carried out on the MPH and SPH in order to identify any inconsistencies and/or errors raised by the ground-segment processing chain.

Number of products with errors: 1

Product	Test Failed
CS_OFFL_SIR_SAR_1B_20160203T055817_20160203T055818_C001	Percentage of processing errors detected greater than minimum acceptable threshold.

4.3 Star Tracker Usage Check

Each product is checked in order to ensure a valid star tracker file has been used in processing.

Number of products with errors: 0

4.4 L1B Calibration Usage Check

Each product is checked in order to ensure that the necessary calibration files have been used in processing.

Number of products with errors: 0

4.5 L1B Auxiliary Data File Usage Check

Each product is checked for missing Data Set Descriptors with respect to a pre-determined baseline and also to check the validity of Auxiliary Data Files is correct.

Number of products with errors: 0

4.6 L1B Auxiliary Correction Error Check

CryoSat L1B data includes a correction error flag (field 54) for each measurement record. The bit value of this flag indicates any problems when set.

Number of products with errors: 0

4.7 L1B Measurement Confidence Data Check

CryoSat L1B data includes a measurement confidence flag (field 18) for each measurement record. The bit value of this flag indicates any problems when set.

Currently, there are several common error flags raised in the Level 1B products which are expected due to operational mode or surface type. All common flags are summarised in the list below, followed by a table of any additional issues arising from this test.

Block Degraded Flag: This flag is currently set for a number of individual records generally at the start or end of products (all modes), but this is to be expected.

Phase Perturbation Flag: This flag is currently set for all L1B SARIn products, indicating that the ADC correction application is deactivated, but this is in line with the current configuration.

Number of products with errors: 1

Product	Test Failed	Description
CS_OFFL_SIR_LRM_1B_20160203T190732_20160203T190907_C001	Echo error, TRK echo error	The tracking echo has returned an error and the Rx1 Echo Error flag is set, indicating a degraded echo

5. Level 2 Data Quality Check

5.1 L2 Product Format Check

Each product, retrieved and unpacked from the science server, is checked to ensure it consists of both an XML header file (.HDR) and a product file (.DBL).

Number of products with errors: 0

5.2 L2 Product Header Analysis

For all products, a series of pre-defined checks are carried out on the MPH and SPH in order to identify any inconsistencies and/or errors raised by the ground-segment processing chain.

Number of products with errors: 1

Product	Test Failed
CS_OFFL_SIR_SAR_2_20160203T055817_20160203T055818_C001	Percentage of processing errors detected greater than minimum acceptable threshold.

5.3 L2 Auxiliary Data File Usage Check

Each product is checked for missing Data Set Descriptors with respect to a pre-determined baseline and also to check the validity of Auxiliary Data Files is correct.

Number of products with errors: 0

5.4 L2 Auxiliary Correction Error Check

CryoSat L2 data includes a correction error flag (field 30) for each measurement record. The bit value of this flag indicates any problems when set.

Number of products with errors: 0

5.5 L2 Measurement Quality Flag Check

CryoSat L2 data includes a quality flag (field 50) for each 20-Hz measurement record. The bit value of this flag indicates any problems when set.

Currently, there are several common error flags raised in the Level 2 products which are expected due to operational mode or surface type. All common flags are summarised in the list below, followed by a table of any additional issues arising from this test.

Freeboard error: This flag is correctly set in all L2 SAR products that are not discriminated as sea-ice, and for which freeboard cannot be calculated.

Height and Backscatter errors: These flags are currently set for products over land, but this is to be expected. Retracker 1 Height and Backscatter error flags are also set for products over sea-ice, but this is to be expected.

Peakiness error: This flag is currently set for products over sea-ice, but this is to be expected.

SARIn X-Track Angle Error: This flag is set when the difference between the computed surface elevation and the DEM is >50 m. The DEM is only available over Greenland and Antarctica and as a result this flag is set for L2 SARIn products in all other locations as expected.

SSHA interpolation error: This flag is currently set for a number of SAR products occurring at surface type boundaries, but this is to be expected.

Number of products with errors: 97

Product	Test Failed	Description
CS_OFFL_SIR_LRM_2__20160202T235512_20160203T001059_C001	Height Error (Retracker 2), Backscatter Error (Retracker 2)	There is a height and backscatter error for Retracker 2 for one or more records
CS_OFFL_SIR_LRM_2__20160203T002650_20160203T003500_C001	Height Error (Retracker 2), Backscatter Error (Retracker 2)	There is a height and backscatter error for Retracker 2 for one or more records
CS_OFFL_SIR_LRM_2__20160203T004339_20160203T005458_C001	Height Error (Retracker 2), Backscatter Error (Retracker 2)	There is a height and backscatter error for Retracker 2 for one or more records
CS_OFFL_SIR_LRM_2__20160203T013436_20160203T014935_C001	Height Error (Retracker 2), Backscatter Error (Retracker 2)	There is a height and backscatter error for Retracker 2 for one or more records
CS_OFFL_SIR_LRM_2__20160203T020309_20160203T023717_C001	Height Error (Retracker 2), Height Error (Retracker 3), Backscatter Error (Retracker 2)	There is a height and backscatter error for Retracker 2 and a height error for Retracker 3 for one or more records
CS_OFFL_SIR_LRM_2__20160203T030714_20160203T030909_C001	Height Error (Retracker 2), Backscatter Error (Retracker 2)	There is a height and backscatter error for Retracker 2 for one or more records
CS_OFFL_SIR_LRM_2__20160203T031007_20160203T032946_C001	Height Error (Retracker 2), Height Error (Retracker 3), Backscatter Error (Retracker 2)	There is a height and backscatter error for Retracker 2 and a height error for Retracker 3 for one or more records
CS_OFFL_SIR_LRM_2__20160203T033630_20160203T033957_C001	Surface Model Unavailable	No DEM or Slope Model was used for the location of one or more records
CS_OFFL_SIR_LRM_2__20160203T034215_20160203T040944_C001	Height Error (Retracker 2), Backscatter Error (Retracker 2)	There is a height and backscatter error for Retracker 2 for one or more records
CS_OFFL_SIR_LRM_2__20160203T043904_20160203T050853_C001	Height Error (Retracker 2), Height Error (Retracker 3), Backscatter Error (Retracker 2)	There is a height and backscatter error for Retracker 2 and a height error for Retracker 3 for one or more records
CS_OFFL_SIR_LRM_2__20160203T051528_20160203T051856_C001	Surface Model Unavailable	No DEM or Slope Model was used for the location of one or more records
CS_OFFL_SIR_LRM_2__20160203T052205_20160203T055652_C001	Height Error (Retracker 2), Backscatter Error (Retracker 2)	There is a height and backscatter error for Retracker 2 for one or more records
CS_OFFL_SIR_LRM_2__20160203T062228_20160203T062350_C001	Height Error (Retracker 2), Height Error (Retracker 3), Backscatter Error (Retracker 2)	There is a height and backscatter error for Retracker 2 and a height error for Retracker 3 for one or more records
CS_OFFL_SIR_LRM_2__20160203T070119_20160203T073513_C001	Height Error (Retracker 2), Height Error (Retracker 3), Backscatter Error (Retracker 2)	There is a height and backscatter error for Retracker 2 and a height error for Retracker 3 for one or more records
CS_OFFL_SIR_LRM_2__20160203T080344_20160203T082735_C001	Height Error (Retracker 2), Backscatter Error (Retracker 2)	There is a height and backscatter error for Retracker 2 for one or more records
CS_OFFL_SIR_LRM_2__20160203T082940_20160203T083448_C001	Surface Model Unavailable	No DEM or Slope Model was used for the location of one or more records
CS_OFFL_SIR_LRM_2__20160203T084003_20160203T091444_C001	Height Error (Retracker 2), Backscatter Error (Retracker 2)	There is a height and backscatter error for Retracker 2 for one or more records
CS_OFFL_SIR_LRM_2__20160203T093928_20160203T100222_C001	Height Error (Retracker 2), Height Error (Retracker 3), Backscatter Error (Retracker 2)	There is a height and backscatter error for Retracker 2 and a height error for Retracker 3 for one or more records
CS_OFFL_SIR_LRM_2__20160203T101155_20160203T101352_C001	Surface Model Unavailable	No DEM or Slope Model was used for the location of one or more records
CS_OFFL_SIR_LRM_2__20160203T102040_20160203T103811_C001	Height Error (Retracker 2), Height Error (Retracker 3), Backscatter Error (Retracker 2)	There is a height and backscatter error for Retracker 2 and a height error for Retracker 3 for one or more records
CS_OFFL_SIR_LRM_2__20160203T104252_20160203T105007_C001	Height Error (Retracker 2), Backscatter Error (Retracker 2)	There is a height and backscatter error for Retracker 2 for one or more records
CS_OFFL_SIR_LRM_2__20160203T111001_20160203T112736_C001	Height Error (Retracker 2), Backscatter Error (Retracker 2)	There is a height and backscatter error for Retracker 2 for one or more records
CS_OFFL_SIR_LRM_2__20160203T112910_20160203T114314_C001	Height Error (Retracker 2), Backscatter Error (Retracker 2)	There is a height and backscatter error for Retracker 2 for one or more records
CS_OFFL_SIR_LRM_2__20160203T115941_20160203T121519_C001	Height Error (Retracker 2), Backscatter Error (Retracker 2)	There is a height and backscatter error for Retracker 2 for one or more records
CS_OFFL_SIR_LRM_2__20160203T121720_20160203T122644_C001	Height Error (Retracker 2), Height Error (Retracker 3), Backscatter Error (Retracker 2)	There is a height and backscatter error for Retracker 2 and a height error for Retracker 3 for one or more records
CS_OFFL_SIR_LRM_2__20160203T125443_20160203T130550_C001	Height Error (Retracker 2), Backscatter Error (Retracker 2)	There is a height and backscatter error for Retracker 2 for one or more records
CS_OFFL_SIR_LRM_2__20160203T131218_20160203T131715_C001	Height Error (Retracker 2), Backscatter Error (Retracker 2)	There is a height and backscatter error for Retracker 2 for one or more records
CS_OFFL_SIR_LRM_2__20160203T132137_20160203T132600_C001	Height Error (Retracker 2), Height Error (Retracker 3), Backscatter Error (Retracker 2)	There is a height and backscatter error for Retracker 2 and a height error for Retracker 3 for one or more records
CS_OFFL_SIR_LRM_2__20160203T132902_20160203T133705_C001	Surface Model Unavailable	No DEM or Slope Model was used for the location of one or more records
CS_OFFL_SIR_LRM_2__20160203T133853_20160203T135427_C001	Height Error (Retracker 2), Backscatter Error (Retracker 2)	There is a height and backscatter error for Retracker 2 for one or more records
CS_OFFL_SIR_LRM_2__20160203T143119_20160203T150514_C001	Height Error (Retracker 2), Height Error (Retracker 3), Backscatter Error (Retracker 2)	There is a height and backscatter error for Retracker 2 and a height error for Retracker 3 for one or more records
CS_OFFL_SIR_LRM_2__20160203T150741_20160203T150948_C001	Surface Model Unavailable	No DEM or Slope Model was used for the location of one or more records
CS_OFFL_SIR_LRM_2__20160203T151018_20160203T151549_C001	Surface Model Unavailable	No DEM or Slope Model was used for the location of one or more records
CS_OFFL_SIR_LRM_2__20160203T151814_20160203T154016_C001	Height Error (Retracker 2), Backscatter Error (Retracker 2)	There is a height and backscatter error for Retracker 2 for one or more records
CS_OFFL_SIR_LRM_2__20160203T161548_20160203T164351_C001	Height Error (Retracker 2), Height Error (Retracker 3), Backscatter Error (Retracker 2)	There is a height and backscatter error for Retracker 2 and a height error for Retracker 3 for one or more records
CS_OFFL_SIR_LRM_2__20160203T165709_20160203T172609_C001	Height Error (Retracker 2), Height Error (Retracker 3), Backscatter Error (Retracker 2)	There is a height and backscatter error for Retracker 2 and a height error for Retracker 3 for one or more records
CS_OFFL_SIR_LRM_2__20160203T174923_20160203T182305_C001	Height Error (Retracker 2), Backscatter Error (Retracker 2)	There is a height and backscatter error for Retracker 2 for one or more records

CS_OFFL_SIR_SIN_2__20160203T183429_20160203T183545_C001	SARIn X-track Angle Error	An ambiguous angle was detected for SARIn mode for one or more records
CS_OFFL_SIR_SIN_2__20160203T200440_20160203T200800_C001	SARIn X-track Angle Error	An ambiguous angle was detected for SARIn mode for one or more records
CS_OFFL_SIR_SIN_2__20160203T201314_20160203T201437_C001	SARIn X-track Angle Error	An ambiguous angle was detected for SARIn mode for one or more records
CS_OFFL_SIR_SIN_2__20160203T205511_20160203T205648_C001	SARIn X-track Angle Error	An ambiguous angle was detected for SARIn mode for one or more records
CS_OFFL_SIR_SIN_2__20160203T214149_20160203T214343_C001	SARIn X-track Angle Error	An ambiguous angle was detected for SARIn mode for one or more records
CS_OFFL_SIR_SIN_2__20160203T215213_20160203T215322_C001	SARIn X-track Angle Error	An ambiguous angle was detected for SARIn mode for one or more records
CS_OFFL_SIR_SIN_2__20160203T223058_20160203T223200_C001	SARIn X-track Angle Error	An ambiguous angle was detected for SARIn mode for one or more records
CS_OFFL_SIR_SIN_2__20160203T223446_20160203T223554_C001	SARIn X-track Angle Error	An ambiguous angle was detected for SARIn mode for one or more records
CS_OFFL_SIR_SIN_2__20160203T232003_20160203T232141_C001	SARIn X-track Angle Error	An ambiguous angle was detected for SARIn mode for one or more records
CS_OFFL_SIR_SIN_2__20160203T232915_20160203T233109_C001	SARIn X-track Angle Error	An ambiguous angle was detected for SARIn mode for one or more records