

1. Overview

Report Production Date:	05-Jan-2016
Processor Used:	CryoSat Ice Processor
Data Used:	L1B and L2 OFFLINE Data

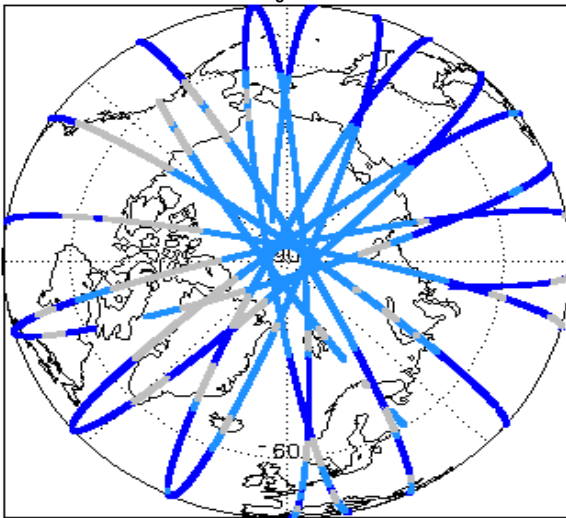
Check	Status
Server check: science-pds.cryosat.esa.int	Nominal
Server check: calval-pds.cryosat.esa.int	Nominal
Product Software Check	Nominal
Product Format Check	Nominal
Product Header Analysis	Nominal
Star Tracker Usage Check	Nominal
L1B Calibration Usage Check	Nominal
L1B & L2 Auxiliary Data File Usage Check	Nominal
L1B & L2 Auxiliary Correction Error Check	Nominal
L1B & L2 Measurement Confidence Data Check	See Section 4.7 and 5.5

Mission / Instrument News

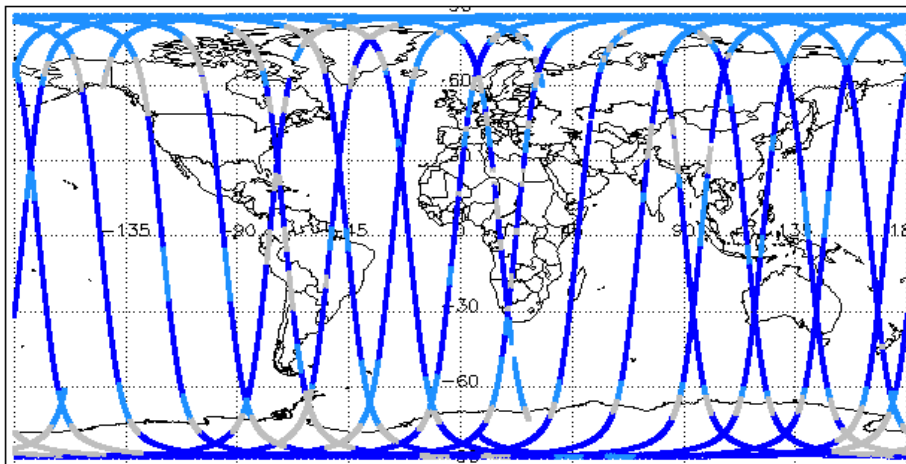
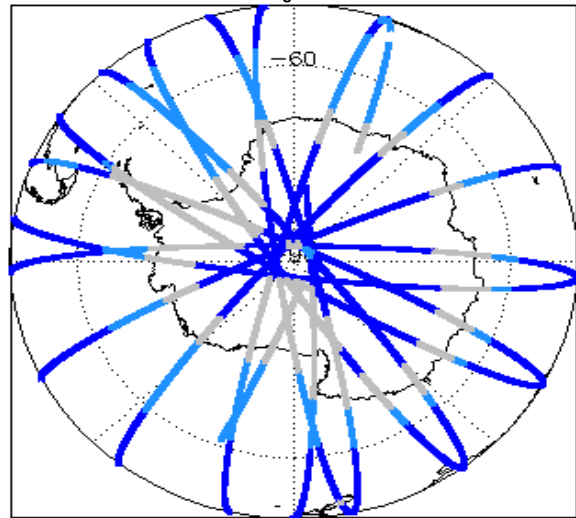
29-Nov-2015	None
30-Nov-2015	SIRAL unavailability on 30-Nov-2015 from 18:09:22 to 20:02:35 due to a planned orbit manoeuvre.
01-Dec-2015	Nothing planned

2. Global Coverage

Global Coverage - North Pole



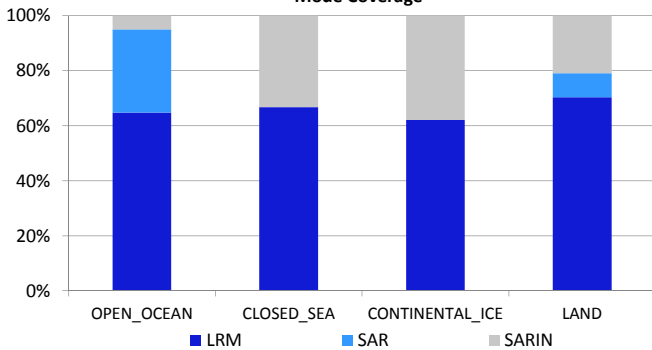
Global Coverage - South Pole



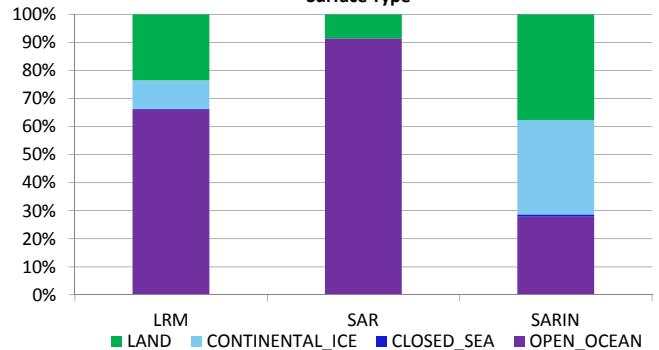
Mode Coverage (%)

LRM	65.6
SAR	22.3
SARIn	12.2

Mode Coverage



Surface Type



3. Instrument Configuration

The SIRAL instrument configuration for the day of acquisition is provided below.

SIRAL instrument(s) in use:	SIRAL - A
-----------------------------	-----------

4. Level 1B Data Quality Check

4.1 L1B Product Format Check

Each product, retrieved and unpacked from the science server, is checked to ensure it consists of both an XML header file (.HDR) and a product file (.DBL).

Number of products with errors: 0

4.2 L1B Product Header Analysis

For all products, a series of pre-defined checks are carried out on the MPH and SPH in order to identify any inconsistencies and/or errors raised by the ground-segment processing chain.

Number of products with errors: 0

4.3 Star Tracker Usage Check

Each product is checked in order to ensure a valid star tracker file has been used in processing.

Number of products with errors: 0

4.4 L1B Calibration Usage Check

Each product is checked in order to ensure that the necessary calibration files have been used in processing.

Number of products with errors: 0

4.5 L1B Auxiliary Data File Usage Check

Each product is checked for missing Data Set Descriptors with respect to a pre-determined baseline and also to check the validity of Auxiliary Data Files is correct.

Number of products with errors: 0

4.6 L1B Auxiliary Correction Error Check

CryoSat L1B data includes a correction error flag (field 54) for each measurement record. The bit value of this flag indicates any problems when set.

Number of products with errors: 0

4.7 L1B Measurement Confidence Data Check

CryoSat L1B data includes a measurement confidence flag (field 18) for each measurement record. The bit value of this flag indicates any problems when set.

Currently, there are several common error flags raised in the Level 1B products which are expected due to operational mode or surface type. All common flags are summarised in the list below, followed by a table of any additional issues arising from this test.

Block Degraded Flag: This flag is currently set for a number of individual records generally at the start or end of products (all modes), but this is to be expected.

Phase Perturbation Flag: This flag is currently set for all L1B SARIn products, indicating that the ADC correction application is deactivated, but this is in line with the current configuration.

Number of products with errors: 0

5. Level 2 Data Quality Check

5.1 L2 Product Format Check

Each product, retrieved and unpacked from the science server, is checked to ensure it consists of both an XML header file (.HDR) and a product file (.DBL).

Number of products with errors: 0

5.2 L2 Product Header Analysis

For all products, a series of pre-defined checks are carried out on the MPH and SPH in order to identify any inconsistencies and/or errors raised by the ground-segment processing chain.

Number of products with errors: 0

5.3 L2 Auxiliary Data File Usage Check

Each product is checked for missing Data Set Descriptors with respect to a pre-determined baseline and also to check the validity of Auxiliary Data Files is correct.

Number of products with errors: 0

5.4 L2 Auxiliary Correction Error Check

CryoSat L2 data includes a correction error flag (field 30) for each measurement record. The bit value of this flag indicates any problems when set.

Number of products with errors: 0

5.5 L2 Measurement Quality Flag Check

CryoSat L2 data includes a quality flag (field 50) for each 20-Hz measurement record. The bit value of this flag indicates any problems when set.

Currently, there are several common error flags raised in the Level 2 products which are expected due to operational mode or surface type. All common flags are summarised in the list below, followed by a table of any additional issues arising from this test.

Freeboard error: This flag is correctly set in all L2 SAR products that are not discriminated as sea-ice, and for which freeboard cannot be calculated.

Height and Backscatter errors: These flags are currently set for products over land, but this is to be expected. Retracker 1 Height and Backscatter error flags are also set for products over sea-ice, but this is to be expected.

Peakiness error: This flag is currently set for products over sea-ice, but this is to be expected.

SARIn X-Track Angle Error: This flag is set when the difference between the computed surface elevation and the DEM is >50 m. The DEM is only available over Greenland and Antarctica and as a result this flag is set for L2 SARIn products in all other locations as expected.

SSHA interpolation error: This flag is currently set for a number of SAR products occurring at surface type boundaries, but this is to be expected.

Number of products with errors: 94

Product	Test Failed	Description
CS_OFFL_SIR_LRM_2__20151130T000529_20151130T003928_C001	Height Error (Retracker 2), Height Error (Retracker 3), Backscatter Error (Retracker 2)	There is a height and backscatter error for Retracker 2 and a height error for Retracker 3 for one or more records
CS_OFFL_SIR_LRM_2__20151130T004742_20151130T005155_C001	Surface Model Unavailable	No DEM or Slope Model was used for the location of one or more records
CS_OFFL_SIR_LRM_2__20151130T005650_20151130T012226_C001	Height Error (Retracker 2), Backscatter Error (Retracker 2)	There is a height and backscatter error for Retracker 2 for one or more records

